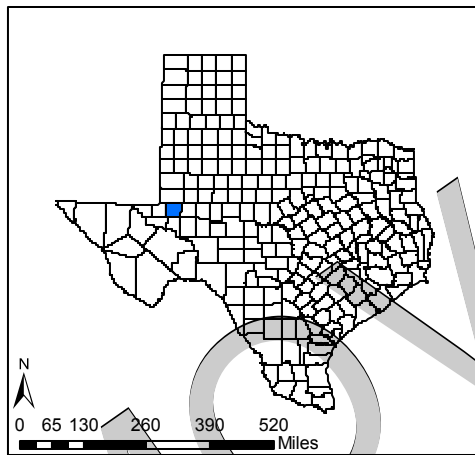
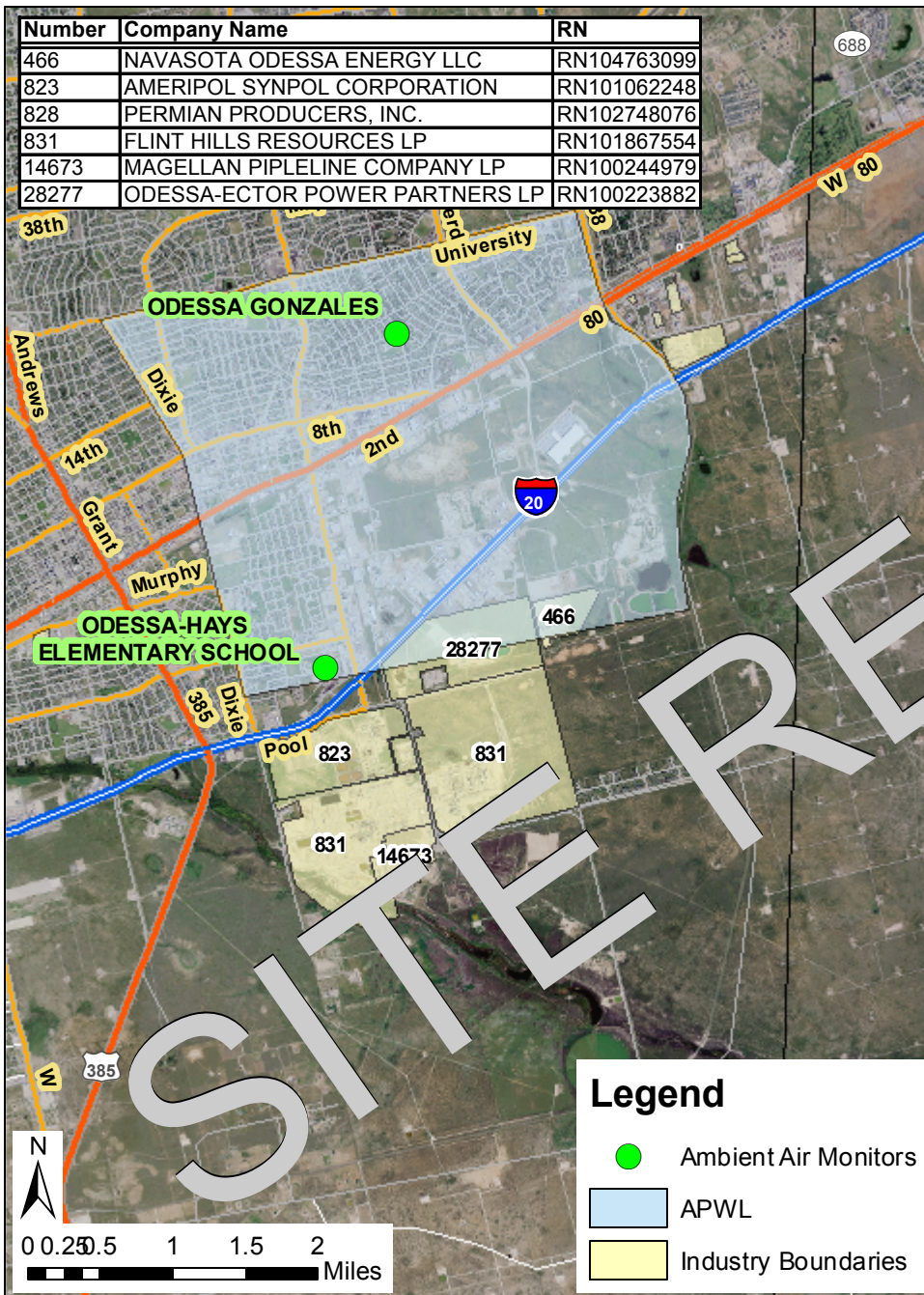



# S I T E R E M O V E D F R O M A P W L

## APWL0701 - Ethylene Odessa, Ector County, Texas

## Texas Commission on Environmental Quality

Map created on June 23, 2009

This map was generated by the Toxicology Division (TD) of the Texas Commission on Environmental Quality. No claims are made to the accuracy or completeness of the data, or to the suitability of the map for a particular use. This APWL area of concern may contain facilities which have not been identified by the TD. For more information regarding this map, please contact the TD at (512)239-1795.

TCEQ Region: 12  
 Year Added to APWL: 2001  
 Year Removed: 2007  
 Comments on Removal: None Submitted

- Area Boundaries**
- \* North of Monahans Draw
  - \* South of East University Blvd
  - \* East of Dixie Blvd (extended to Monahans Draw)
  - \* West of SE Loop 338/Major Road

**Why Remove this Location and Pollutant(s) from the APWL?**

From 2001 to 2005, twenty-six hourly ethylene concentrations reported at the CAMS 122 air monitoring site exceeded the vegetative ESL and thus were at levels that were potentially damaging to certain plant species. The maximum hourly ethylene concentration of 3,927 ppb<sub>v</sub> was reported on January 23, 2002. The 2003, 2004, and 2005 annual ambient air evaluations for Region 7 highlighted a select number of the elevated concentrations reported during those years, with only one hourly vegetative ESL exceedance in 2005. In addition, one of the 2004 reported elevated concentrations (2,051 ppb<sub>v</sub>) was related to an ethylene emission event that occurred at Huntsman Polymers Corporation (RN103911699) on March 16, 2004.

In 2006, there were no reported hourly ethylene concentrations above the vegetative ESL, and the maximum reported ethylene concentration for 2006 was 225 ppb<sub>v</sub> compared to 1,077 ppb<sub>v</sub> reported on April 15, 2005. Since that time, there have been no hourly ethylene concentrations reported above the vegetative ESL. Based on the significant decline in ethylene concentrations and diminished frequency of vegetative ESL exceedances, the TD has determined that the ethylene concentrations monitored at CAMS 122 are no longer a concern.

Annual evaluations may be accessed here:  
<http://www.tceq.state.tx.us/implementation/tox/regmemo/AirMain.html>