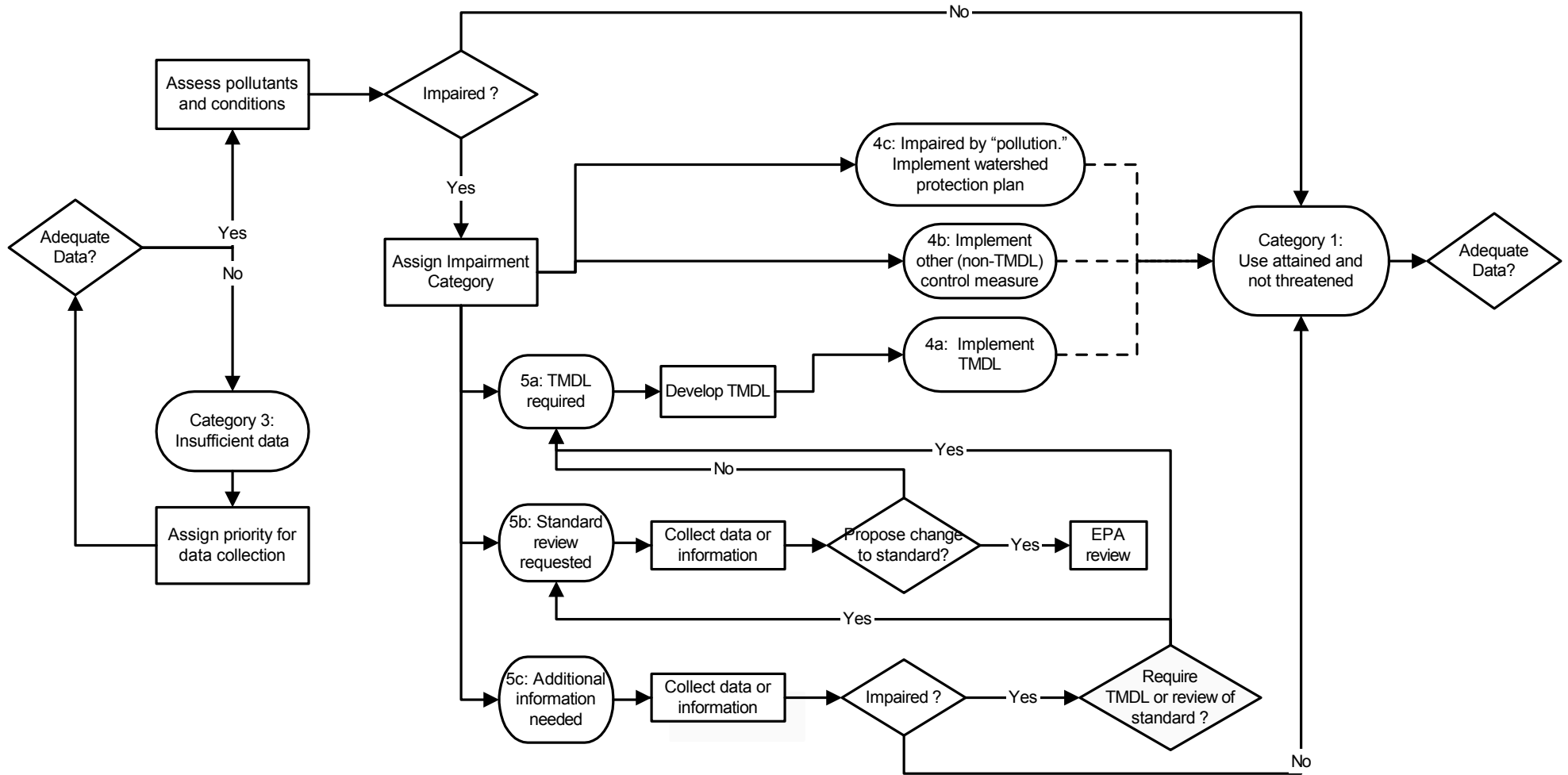


DRAFT
 Common Pathways for Categorizing Parameters
 in the Texas Water Quality Inventory and 303(d) List
 September 10, 2004



NOTES:

1. Pathways depicted represent the most common possible routes for categorizing parameters. Other, less common pathways are not depicted here but are described in the table.
2. "Impaired" means "one or more water quality standards are not attained."
3. "Standard" refers to a designated use and/or a water quality criterion.
4. Dashed line indicates a potentially long time period.
5. Category 2 is not depicted, since it is a rollup category applicable to water bodies, rather than individual parameters.
6. Impairment verification for 5c parameters is now used for a few historical listings and in the future will rarely, if ever, be a 5c strategy.