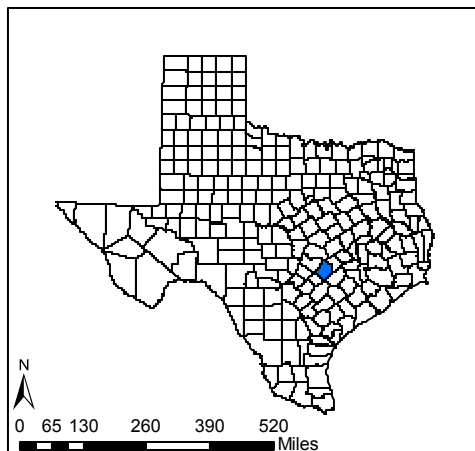
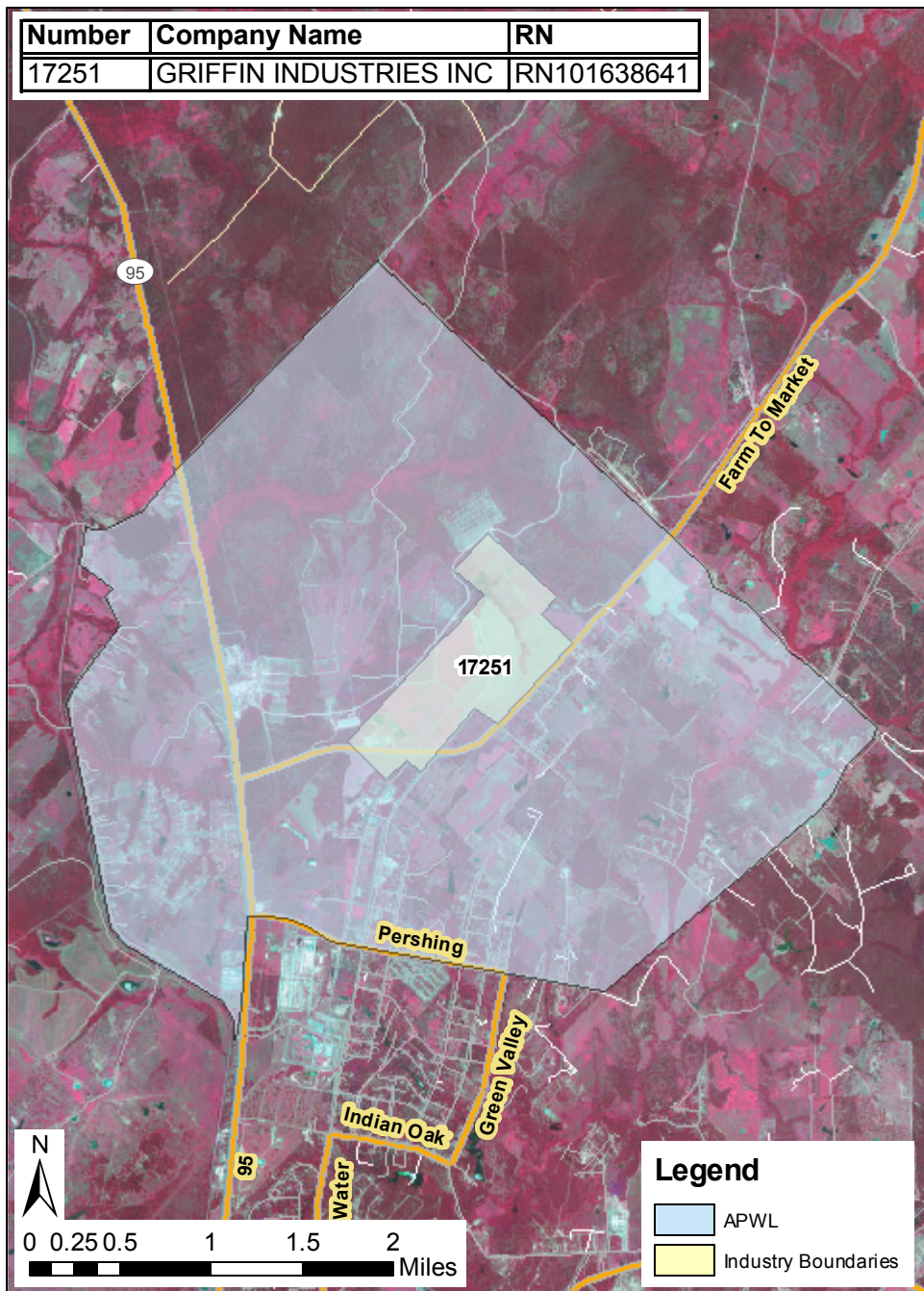


# Air Pollutant Watch List Area

## APWL1101 - Hydrogen Sulfide Bastrop, Bastrop County, Texas

## Texas Commission on Environmental Quality

Number	Company Name	RN
17251	GRIFFIN INDUSTRIES INC	RN101638641



Map created on June 26, 2009

This map was generated by the Toxicology Division (TD) of the Texas Commission on Environmental Quality. No claims are made to the accuracy or completeness of the data, or to the suitability of the map for a particular use. This APWL area of concern may contain facilities which have not been identified by the TD. For more information regarding this map, please contact the TD at (512)239-1795.

### Where is the Area of Concern Located?

- \* **North** of Pershing Blvd/CR 403 and Oak Hill Cemetery Rd
- \* **South** of Impact Rd
- \* **East** of CR 48
- \* **West** of Oak Hill Rd/CR 361

### Why is this Location and Pollutant(s) on the APWL?

In February 2006, the TCEQ conducted a mobile monitoring trip in Bastrop County, and measured hydrogen sulfide ( $H_2S$ ) levels downwind of Griffin Industries, Incorporated (RN 101638641) that exceeded the 30-minute state regulatory standard and odor threshold for  $H_2S$ .

In September, 2009, this area was recommended for removal because monitored concentrations on December 10-11, 2008 were below the state regulatory standard and odor complaints had declined since Griffin implemented a corrective action in March, 2007. However, during the 30-day public comment period the TCEQ Austin regional office received several odor complaints from citizens. In addition, strong odors were confirmed by TCEQ staff during a follow-up investigation near Griffin. Therefore, the proposal for removal was not adopted.

Comments received by the TD in response to the 2009 proposal may be accessed here:

[http://www.tceq.com/assets/public/implementation/tox/apwl/proposals/august09/1101\\_comments\\_and\\_responses.pdf](http://www.tceq.com/assets/public/implementation/tox/apwl/proposals/august09/1101_comments_and_responses.pdf)