





TEXAS WATCH

Water Quality Monitoring
Environmental Education
Community Action



Texas Watch Support Structure

- Cooperative Partnership Between EPA Region 6, TCEQ, and Tx State Univ.-San Marcos
- Funded annually through Federal Section 319 Nonpoint Source Pollution Program
- Matched primarily by 3rd party in-kind
- Planning Partners- State and Local Environmental Agencies, River Authorities, Regional Councils, Industries, Nonprofit Organizations

Texas Watch Mission

- Facilitate environmental **stewardship**
- by empowering a statewide **network** of concerned volunteers, partners, and institutions,
- in a collaborative effort to promote a healthy and **safe environment**
- through **watershed education, data collection, and community action.**

Watershed Education Resources

- Quarterly Newsletter
- Web Site
- Water Quality Monitoring Certification
- Watershed Survey Guide
- Data Interpretation Guide
- Curriculum

Main Theme - NPS Pollution Awareness and Reduction

Watershed Education Workshops



NPS Pollution Education



Water Quality Education



Companion Curriculum

- Texas Watch Monitoring- Middle School/High School
- Conducting a Watershed Survey- Middle School/ High School
- Data Interpretation- Middle School/High School

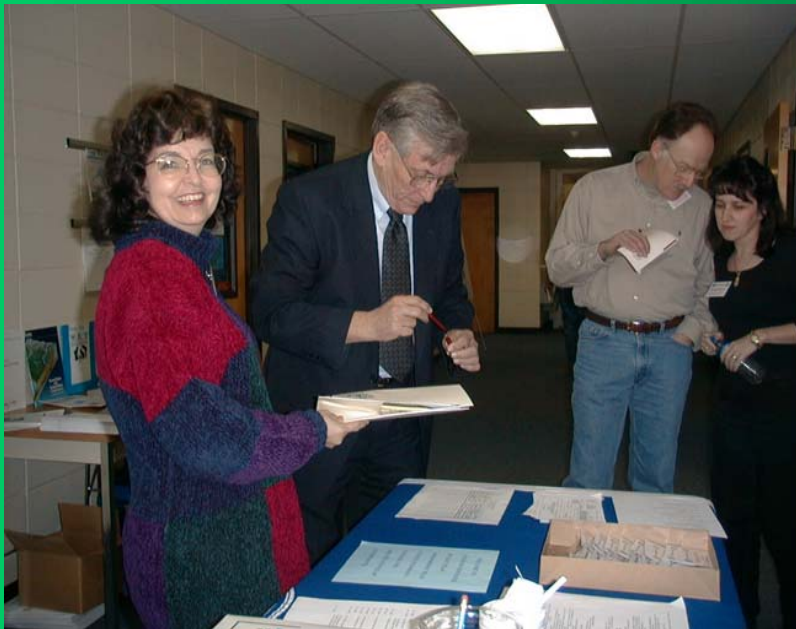
Teaching Environmental Sciences

- 18 schools across Texas
- 2 week course
- Graduate Credit
- Texas Watch 6 course-
 - Tx A&M Corpus Christi

Meeting of the Monitors



Regional Meetings



Certified Water Quality Monitoring



Data Collection

- Surface Water “ Core Program” : 5 ambient variables (DO, pH, Cond,Temp, Secchi)
- Limited support for:
 - Biological
 - Nutrient
 - Bacteria

Quality Assurance

- Quality Assurance Project Plan-QAPP
 - Federal and State review and approval
 - Data submitted to TW database
 - Access through data viewer

Quality Control

- Managed by Texas Watch QAO
- Field QC
- Managed by Partner QAO and a Certified Trainer
- Data validation and submission follows TCEQ requirements



TEXAS WATCH

LEGEND

OVERVIEW

ZOOM IN

ZOOM OUT

FULL EXTENT

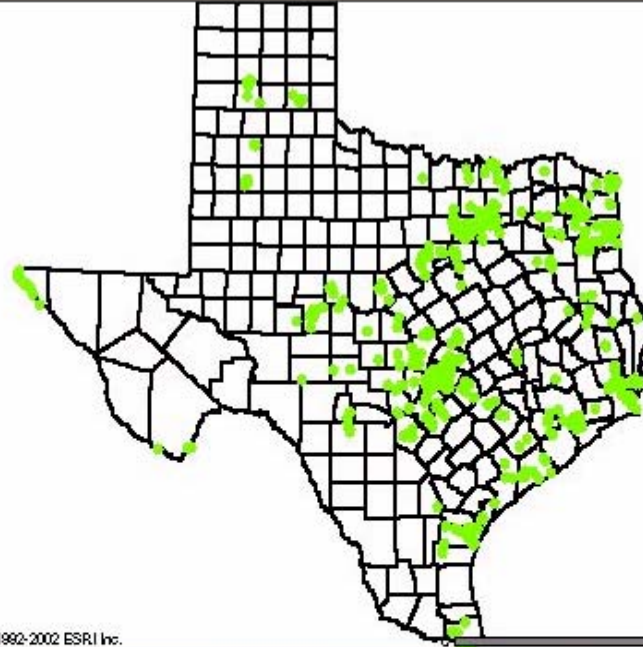
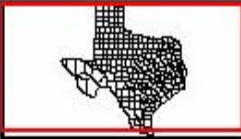
PAN

IDENTIFY

QUERY

CLEAR

PRINT



Layers

Visible Active

- Sampling Sites
- Counties
- Basins

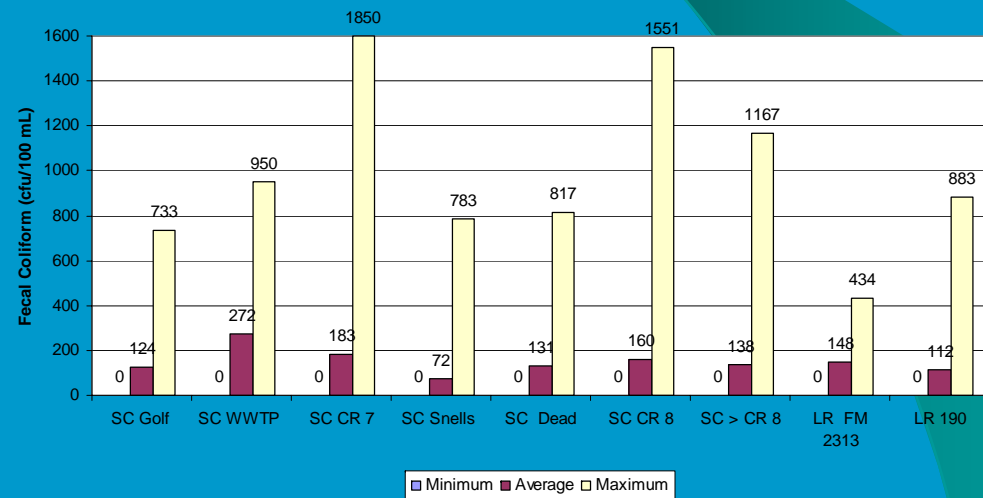
Refresh Map

Zoom In

Data to Action



Fecal Coliform Concentration of Sulphur Creek



Community Action



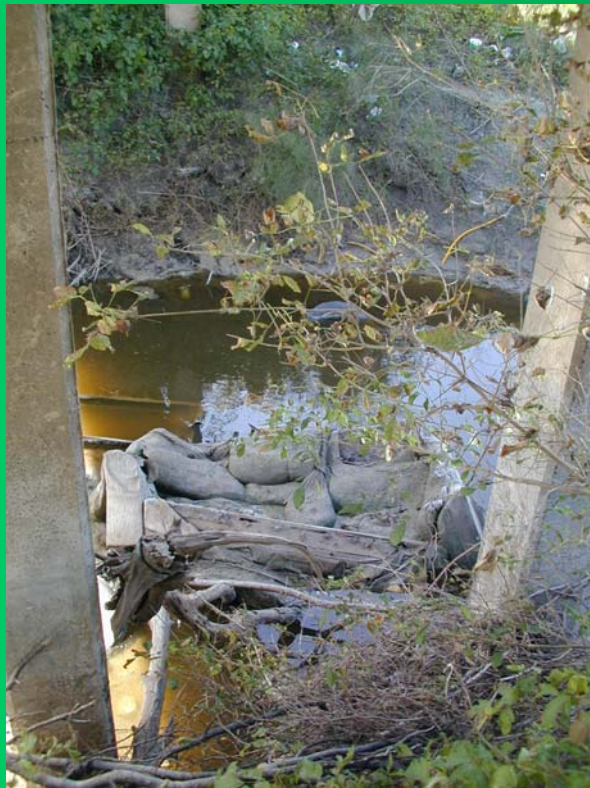
Texas Watch and the TMDL Program

- Common Funding Source
- Water resource issues are inextricably interlinked with human resource issues
- Positive, cooperative action increases the chances for success
- TMDL provides meaningful context for volunteer activities
- TW provides TMDL with positive long-term participation in implementation activities

Texas Watch TMDL Projects FY06

- Arroyo Colorado
- Orange County
- Petrolia Creek/Oso Bay-Oso Creek

Petronila Creek Issues



Texas Watch and Petronila Creek TMDL

- TMDL project manager, county representatives, Coastal Bend COG, Nueces River Authority, other members of the TMDL Steering Committee, CITGO
- Meetings:
 - Corpus Christi- June 16
 - Robstown – July 20
 - TCEQ- October 3
 - Conf call-October 12

Outcomes

- Petronila Creek and Oso Creek/Oso Bay Outreach initiatives will be coordinated
- Nueces County will pursue grant funding with Coastal Bend COG
 - Full-time Code Enforcement Officer
 - Educational media funded in part by CITGO
 - Community Cleanup in partnership with Texas Watch

Outcomes

- Nueces River Authority will identify best strategy for Petronila Creek cleanup funded through the 319 Program

Outcomes

- The CBCOG and Texas Watch will coordinate outreach and education for teachers
- Texas Watch will conduct one monitor training and one teacher training

Potential Projects

- Teacher Workshops
- Monitor Data Analysis Workshop
- Waste In Place Workshops
- TMDL based curriculum
- Expanded volunteer monitoring network
- Watershed Surveys
- Regional Meeting

Contacting Texas Watch

- Texas Watch Phone Contact:
1-877-506-1401
- Texas Watch Email:
texas_watch@geo.swt.edu
- Texas Watch Web Site:
www.texaswatch.geo.swt.edu
- Contact Eric Mendelman at:
em20@txstate.edu
512/245-1409