

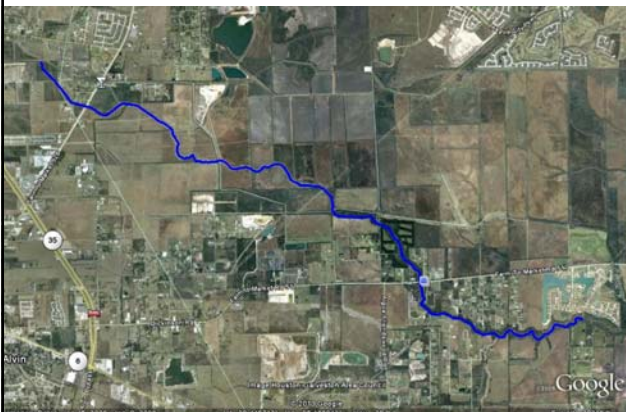
Dickinson Bayou Above Tidal Recreational Use Attainability Analysis



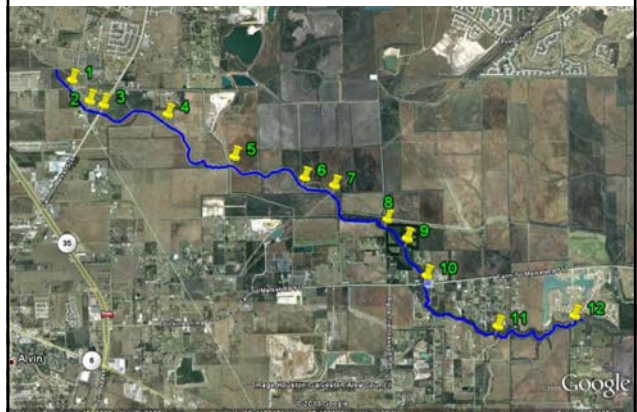
Public Meeting
1/29/2010
7:00-8:00pm

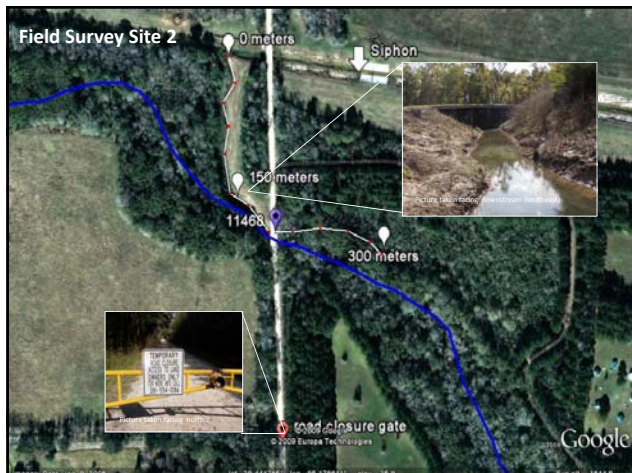
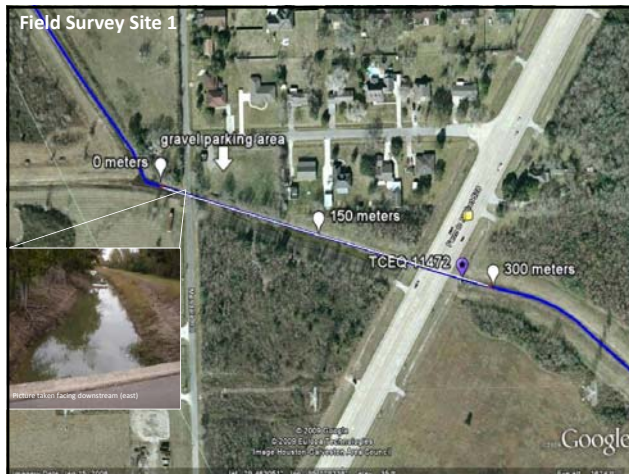
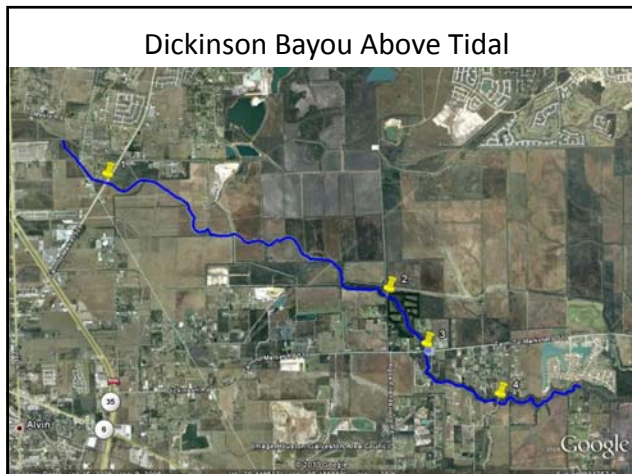
- Meeting Purpose Statement: Coordinate with local entities and citizens to gain understanding about the presence or absence and subsequent locations of water recreation activities within Dickinson Bayou, Above Tidal.

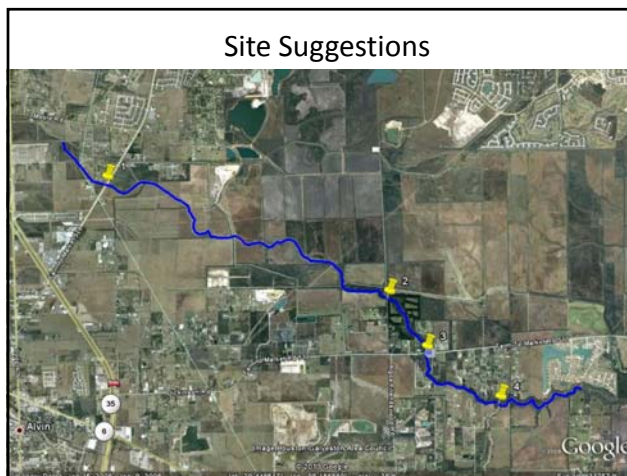
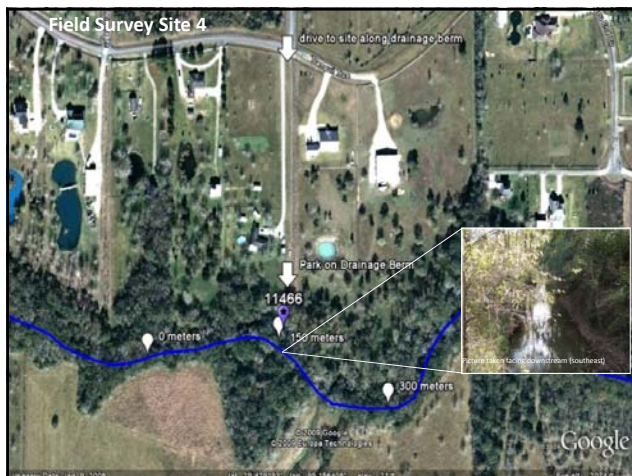
Dickinson Bayou Above Tidal



Dickinson Bayou RUAA Reconnaissance Sites







Interviews

Comprehensive RUA Interview Form

Stream Name: Dickinson Run Segment #: 1104 Site: NJA

Interviewer's Name: LEANN WILSON (e: leann@usgs.gov)
 Date of This Report: July 16, 2010
 Interviewed: By phone By phone By mail
 No interview used (check only if no interview was conducted, please provide an explanation: _____)

*Are you willing to respond to a short survey about this stream? Yes No
 If yes, complete extent information for the interview below. Do not collect names or contact information if respondents are a minor. The survey information portion is not required if the interview does not occur to provide this information.

Light use: _____ Daytime phone number: _____
 Mailing address: _____
 Interview site(s) located because (e.g., house adjacent to stream, meadow by stream, etc.): _____

Directions:

1. Are you familiar with this stream? Yes No Yes, how many years? _____
 If you proceed to #2, if no, skip here and do not conduct an interview.

2. Describe the location(s) of the stream reach the interviewee is familiar with:
 Subreach: A stream which flows only during or immediately after a rainfall event, and contains no refuge pools outside of stormwater runoff (occasional seepage).
 Intermittent: A stream which has periodic flow but is not flowing over bank. When flow ceases, an avian/AA, a stream with a 75% flow of less than 1.5 cubic feet per second is considered intermittent. (Channel contains flowing water only a portion of the year and contains no refuge pools.)
 Intermittent or perennial pool: An intermittent stream which maintains retention pools even when flow in the stream is less than 1.5 cubic feet per second. (When not flowing, the water may remain in isolated patches.)
 Perennial: A stream which flows continuously throughout the year. Perennial streams have 75% equal to or greater than 1.5 cubic feet per second.

3. Have the interviewee characterized the stream flow. Since the interviewee may not be familiar with USGS definitions or distinctions between the different water bodies, please refer to the definitions listed below when asking this question.
 Subreach: A stream which flows only during or immediately after a rainfall event, and contains no refuge pools outside of stormwater runoff (occasional seepage).
 Intermittent: A stream which has periodic flow but is not flowing over bank. When flow ceases, an avian/AA, a stream with a 75% flow of less than 1.5 cubic feet per second is considered intermittent. (Channel contains flowing water only a portion of the year and contains no refuge pools.)
 Intermittent or perennial pool: An intermittent stream which maintains retention pools even when flow in the stream is less than 1.5 cubic feet per second. (When not flowing, the water may remain in isolated patches.)
 Perennial: A stream which flows continuously throughout the year. Perennial streams have 75% equal to or greater than 1.5 cubic feet per second.

4. Have you or your family personally used the stream for recreation? Yes No
 If yes, proceed to #6. If no, proceed to #8.

5(a). List recent stream use:

 5(b). Proceed to #7.

6. How often do you use the stream? When did these uses occur (e.g., month, season) and how often (frequency)? What location did these uses occur (e.g., specific location and reach or a reach)?
 Swimming Kayaking Canoeing Fishing Hunting Birding Hiking Camping Walking-Adults Walking-Children

7. Have you observed others using this stream for recreation? Yes No
 If yes, proceed to #8. If no, proceed to #9.

8. What kinds of uses have you witnessed? When did you witness these uses occurring (e.g., month, season) and how often (frequency)? What location did these uses occur (e.g., specific location and reach or a reach)?
 Swimming Kayaking Canoeing Fishing Hunting Birding Hiking Camping Walking-Adults Walking-Children

9. Have you heard about anyone using this stream for recreation? Yes No
 If yes, proceed to #8. If no, conclude the interview.

10. What kind of uses have you heard about? When did you hear that these uses occur (e.g., month, season) and how often (frequency)? What location did these uses occur (e.g., specific location and reach or a reach)?
 Swimming Kayaking Canoeing Fishing Hunting Birding Hiking Camping Walking-Adults Walking-Children

11. Can you recommend someone else we could contact that knows the stream? Yes No
 If yes, list person's contact information: _____

12. Additional comments (from the interviewee or interviewer): _____