

# Oyster Water Assessment

Christine Kolbe  
Surface Water Quality Monitoring Team

Guidance Advisory Workgroup Meeting  
June 6, 2013

## Shellfish Sanitation Program

- **Seafood sanitation administered by the Texas Department of State Health Services follow National Shellfish Sanitation Program guidelines (all coastal states)**
- ***Role is to protect the consumer from disease or other health hazards transmissible by oysters, clams, mussels and scallops and crab meat produced in Texas...***
- **Use fecal coliform as the indicator**
- **Criteria (colonies/100 mL): Median 14; Single Sample 43**
- **Shellfish harvesting classifications are based on —**
  - **water quality (sanitary surveys)**
  - **administrative decisions (other than water quality-high contamination risk, shoreline areas, near outfalls)**

# Oyster Water Maps



Shellfish Classification Harvesting Area Maps updated annually by DSHS show classification of shellfish harvesting areas in all the major bay systems.

**THE APPROVED AREAS OF SHELLFISH HARVESTING AREAS OF**  
**OF**  
**CORPUS CHRISTI AND NUECES BAYS**

THE TEXAS DEPARTMENT OF STATE HEALTH SERVICES SEAFOOD AND AQUATIC LIFE GROUP HAS CLASSIFIED THE APPROVED AREAS OF SHELLFISH HARVESTING AREAS OF CORPUS CHRISTI AND NUECES BAYS AS FOLLOWS:

**APPROVED AREAS:** All areas shall be classified as Approved or Conditionally Approved or Restricted or Prohibited and shall be marked accordingly on the map.

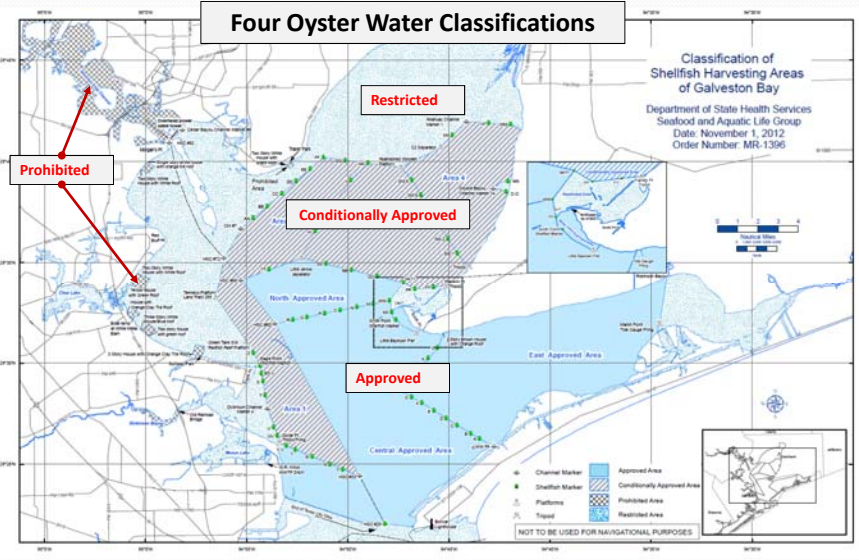
**RESTRICTED AREAS:** All areas shall be classified as Restricted or Prohibited or Conditionally Approved or Approved or Conditionally Approved or Restricted or Prohibited and shall be marked accordingly on the map.

**CONDITIONALLY APPROVED AREAS:** All areas shall be classified as Conditionally Approved or Approved or Restricted or Prohibited or Conditionally Approved or Approved or Restricted or Prohibited and shall be marked accordingly on the map.

**APPROVED AREAS:** All areas shall be classified as Approved or Conditionally Approved or Restricted or Prohibited or Conditionally Approved or Approved or Restricted or Prohibited and shall be marked accordingly on the map.

**PROHIBITED AREAS:** All areas shall be classified as Prohibited or Conditionally Approved or Approved or Restricted or Prohibited or Conditionally Approved or Approved or Restricted or Prohibited and shall be marked accordingly on the map.

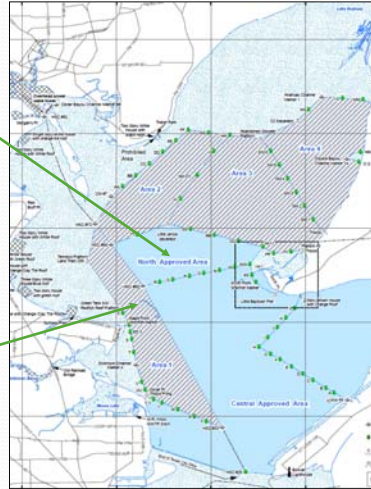
# Oyster Water Classification



## Oyster Water Assessment— Approved/Conditionally Approved Areas

**Approved Areas** meet the standard except under extreme conditions—  
**Fully Supporting**

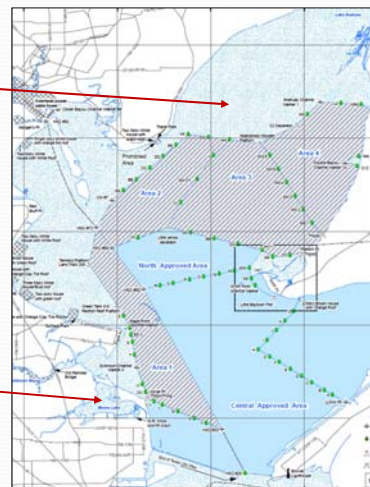
**Conditionally Approved Areas** are closed when the approved area criteria are occasionally not supported (heavy runoff, hurricane)—  
**Fully Supporting**



## Oyster Water Assessment—Restricted Areas

**Restricted Areas** classified based on poor water quality—  
**Not Supporting**

**Restricted Areas** classified as for reasons other than water quality impairment—  
**Not Assessed**



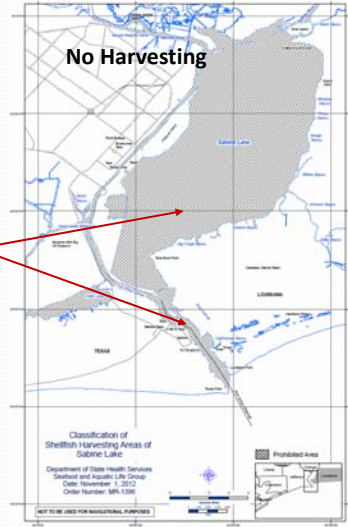


## OW Assessment—Prohibited Areas

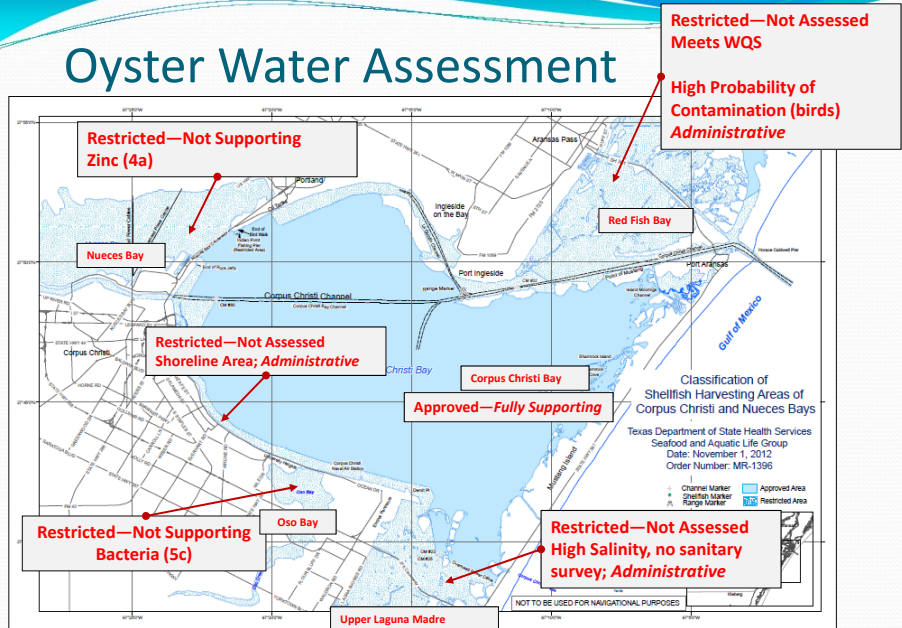
**Prohibited Areas** with sanitary surveys indicating poor water quality, or where the DSHS has determined that water quality is likely to be poor based in historical surveys are assessed as—**Not Supporting**

Sabine Lake (2412)  
Sabine Pass (2411)  
Prohibited—Not Assessed

**Prohibited Areas** classified for reasons other than water quality impairment or are prohibited solely because DSHS does not have the resources to conduct sanitary surveys or are reported as—**Not Assessed**



## Oyster Water Assessment



## Key Changes

### ***Reporting Oyster Water Use Attainment***

- The assessment describes the general attainment condition for large areas of the bay and reflects both **water quality conditions** and **administrative decisions** made by the DSHS Seafood and Aquatic Life Group.
- Due to the complexity of shellfish classification areas, assessment units will include **open bay area only**.
- **Restricted areas** that include **river channels, Intracoastal Waterway, shoreline, harbors, ship channels, tidal wetlands, subdivision channels** and **other structures** identified by DSHS Classification of Shellfish Harvesting Area maps will **not** be included in the defined oyster water assessment units.
- When the attainment status is assigned to entire assessment units, decisions on area-specific detail may be made in the planning stages of a TMDL.