

Below is an Electronic Version of an Out-of-Print Publication

You can scroll to view or print this publication here, or you can borrow a paper copy from the Texas State Library, 512/463-5455. You can also view a copy at the TCEQ Library, 512/239-0020, or borrow one through your branch library using interlibrary loan.

The TCEQ's current print publications are listed in our catalog at <http://www.tceq.state.tx.us/publications/>.



June 2006
AS-187/06

Municipal Solid Waste in Texas: A Year in Review

FY 2005 Data Summary and Analysis

Municipal Solid Waste in Texas: A Year in Review

2005 Data Summary and Analysis

Prepared by
Waste Permits Division

AS-187/06
June 2006



Kathleen Hartnett White, *Chairman*
Larry R. Soward, *Commissioner*

Glenn Shankle, *Executive Director*

We authorize you to use or reproduce any original material contained in this publication—that is, any material we did not obtain from other sources. Please acknowledge the TCEQ as your source.

Copies of this publication are available for public use through the Texas State Library, other state depository libraries, and the TCEQ Library, in compliance with state depository law. For more information on TCEQ publications, call 512/239-0028 or visit our Web site at:

www.tceq.state.tx.us/publications

Published and distributed
by the
Texas Commission on Environmental Quality
PO Box 13087
Austin TX 78711-3087

The TCEQ is an equal opportunity/affirmative action employer. The agency does not allow discrimination on the basis of race, color, religion, national origin, sex, disability, age, sexual orientation or veteran status. In compliance with the Americans with Disabilities Act, this document may be requested in alternate formats by contacting the TCEQ at 512/239-0028, Fax 239-4488, or 1-800-RELAY-TX (TDD), or by writing P.O. Box 13087, Austin, TX 78711-3087.

TABLE OF CONTENTS

About the MSW Reporting Program	1
Definition of Municipal Solid Waste (MSW).....	1
Who Files Reports.....	1
Reporting Period	1
Data Used.....	2
What the Data Show about Landfills	2
Facility Information	2
Capacity Information	4
Waste Information	6
Processing Facilities' Activity in 2005	8
MSW Importation and Exportation	9
MSW Generation	9
Trends Analysis	10
Individual MSW Landfill Facility Data	20
Individual Facility Data for Other Permitted and Registered MSW Facilities.....	27
References.....	32

TABLES

Table 1. Landfill Activity Status in 2005	2
Table 2. Remaining Capacity by Facility Type	4
Table 3. MSW Disposal Capacity Breakdown by Activity Status for 2005.....	5
Table 4. Yearly Changes in Residential, Commercial, and C&D Waste	6
Table 5. Detailed Characterization of Waste Landfilled in Texas in 2005.....	7
Table 6. Number of MSW Processing Facilities	8
Table 7. Number of Counties Served by Landfills	10
Table 8. Analysis of MSW Landfill Disposal in Texas in 2005, Grouped by COG	11
Table 9. Historical Data Summary for MSW Landfills in Texas	19

FIGURES

Figure 1. Characterization of Waste Landfilled in Texas in 2005.....	6
Figure 2. Calculation of MSW Generation in Texas	9
Figure 3. Texas Counties	12
Figure 4. TCEQ Service Regions	13
Figure 5. Councils of Governments	14
Figure 6. Counties with Active Landfills in 2005	15
Figure 7. Number of Permitted Landfills and Remaining Capacity	16
Figure 8. Texas Total and Per-Capita Landfill Disposal	17
Figure 9. Private Ownership of Texas MSW Landfills	18

ABOUT THE MUNICIPAL SOLID WASTE REPORTING PROGRAM

Definition of Municipal Solid Waste

The definition of municipal solid waste (MSW) is found in the Texas Administrative Code (TAC), Title 30, Chapter 330, Subchapter A (General Information). MSW is defined as "solid waste resulting from or incidental to municipal, community, commercial, institutional, and recreational activities, including garbage, rubbish, ashes, street cleanings, dead animals, abandoned automobiles, and all other solid waste other than industrial solid waste." Industrial solid waste is defined and regulated under 30 TAC Chapter 335.

Nonhazardous industrial waste may be accepted at certain permitted MSW facilities in Texas, though it is not defined as MSW under 30 TAC Chapter 330. The MSW rules allow the acceptance of industrial waste that does not require special handling. Industrial waste that does require special handling may also be accepted at MSW landfills under certain circumstances and with prior authorization from the TCEQ. Further, the Texas definition of MSW differs from that of the EPA and several other states, particularly in that the Texas definition includes construction and demolition (C&D) debris and municipal sludge. Consequently, per capita MSW disposal and generation rates for Texas appear to be significantly higher than those of other states and the nation as a whole.

Who Files Reports

Under 30 TAC 330, Subchapter P (Fees and Reports), "All registered or permitted facility operators are required to submit reports to the commission covering the types and amounts of waste processed or disposed of at the facility or process location..." This report includes data submitted by both permitted and registered facilities. However, the main focus of this report is the permitted facilities.

Reporting Period

Reports from MSW facilities are based on the Texas state fiscal year, which runs from September 1 through August 31. All references to 2005 are to fiscal year 2005. This report covers data from September 1, 2004, through August 31, 2005.

Data Used

The data in this summary is condensed from reports submitted by 249 landfills and 75 other permitted MSW facilities in 2005. Other permitted facility types include transfer stations and resource recovery (recycling, composting, etc.) facilities. Data was also received from 146 registered facilities, mostly small transfer stations that do not require a permit. However, this report is focused mainly on permitted facilities.

Facility operators report information about different aspects of the facility, such as operational (e.g., what is the average haul distance to their facility), administrative (e.g., who is operating the facility), and facility activities (e.g., amounts and types of waste accepted at the facility).

Facilities are referred to in this report as "open" if their permits have not been revoked. Permit holders may request revocation of their own permits, or the agency may revoke them—these are the only conditions that change a facility from "open" to "closed." TCEQ rules state that even inactive landfills that are in post-closure care are able to reactivate and accept waste, under certain circumstances. All open facilities retain the use of their permits, no matter what their operational state.

Population data for this report was obtained from the US Census Bureau state population estimates for July 1, 2005, found at <http://www.census.gov>. Previous reports relied on population estimates from the Texas State Data Center (TSDC) which uses U.S. Census data and other information to create Texas estimates. However, the TSDC estimates are usually not available until October of the following year. Census Bureau population estimates are used in this report to allow more timely publication.

WHAT THE DATA SHOW ABOUT LANDFILLS

Facility Information

Reporting facilities. There were 249 MSW landfills providing data in 2005, and 218 were considered open. Of these landfills, 186 were active (accepting waste) and 32 were open but inactive (not accepting waste.) Table 1 details the status codes. Of the inactive landfills, 19 previously accepted waste and 13 had not yet received waste. The remaining 31 landfills were considered closed; 3 landfills ceased operation in 2005 and 28 landfills reporting were in post-closure status.

<i>Activity Status</i>	<i>Open or Closed</i>	<i>Count</i>
Active	open	186
Inactive - New	open	13
Inactive - Previously Active	open	19
Post-closure care	closed	28
Closed this year	closed	3
Total		249

Table 1. Landfill Activity Status in 2005

Type IV facilities. Of the 218 landfills open at the end of the year, 44 (20 percent) were permitted as Type IV. These facilities accept only brush, construction and demolition (C&D) debris, and other similar waste that will not putrefy. These Type IV facilities are not distributed equally across the state; nearly half are located in the greater Houston area. Type IV landfills handled 8 percent of the total waste disposed in landfills and accounted for 6 percent of the total statewide capacity remaining in 2005.

Arid exemption (AE) facilities. In 2005, 69 facilities (31 percent of active facilities) had an arid exemption¹ from some regulatory requirements. Of these, 49 are Type I AE and 20 are Type IVAE. All arid exempt facilities accounted for just over 1 percent of the total disposal and 1.7 percent of the total remaining landfill capacity in the state in 2005.

Use of scales. The vast majority of active landfills in Texas (93 percent) used scales to measure some portion of their incoming waste. Those facilities handled about 90 percent of the total waste stream. However, facilities without scales as well as many facilities with scales also reported waste disposal by volume (i.e., cubic yards) which was then converted to tons for this report.

Tipping fees. Landfills charge their customers based upon different units of measure, depending upon the type of waste and method of delivery to the landfill. For example, one landfill might measure an open roll-off dumpster by weight and measure a compactor truck by volume. Most landfill operators (110, or 59 percent of the active landfills) reported that they collected tipping fees by the ton of waste, and the state-wide average rate was \$27.41 per ton. Fees for waste measured in compacted cubic yards averaged \$7.82 per yard at 53 facilities (28 percent); and 82 facilities (43 percent) reported collecting fees for waste measured in uncompacted cubic yards, with an average rate of \$14.72 per yard.

Texas Solid Waste Disposal Fee. As defined in Title 5 (Sanitation and Environmental Quality) §361.013(a) of the Texas Health and Safety Code,

“...the commission shall charge a fee on all solid waste that is disposed of within this state. The fee is \$1.25 per ton received for disposal at a municipal solid waste landfill if the solid waste is measured by weight. If the solid waste is measured by volume, the fee for compacted solid waste is 40 cents per cubic yard or, for uncompacted solid waste, 25 cents per cubic yard received for disposal at a municipal solid waste landfill.”

Landfill operators collect this Texas solid waste disposal fee as part of the tipping fee that they charge to their customers. The average tipping fees detailed above include this state fee.

Gas recovery. There were 12 permitted landfills and 5 registered facilities that recovered landfill gas for fuel in 2005. These gas recovery facilities collected 7.795 billion cubic feet of methane gas. The gas was used to generate 14.91 million kilowatt-hours of electricity for on-site facility use and 483.01 million kilowatt-hours for sale or off-site use.

CAPACITY INFORMATION

Per-capita rate. For 2005, total disposal in the state was 29.67 million tons. Using the EPA definition of MSW, which excludes construction and demolition debris and treatment plant sludge, the per capita disposal rate in Texas was 5.55 pounds per person per day which is above the EPA national average for 2003 (most recent data available) of 4.5 pounds per person per day. Based on the Texas definition of MSW, which includes those categories listed above, and using the state population estimate of 22,859,968,ⁱⁱ the per-capita landfill disposal rate for 2005 was 7.11 pounds per person per day.

The 2005 Texas per-capita disposal rate decreased from the 2004 rate of 7.21 pounds per person per day, even though increases were reported in some categories. Construction and demolition debris (C&D) increased by only 1.02 percent. It is expected that C&D waste will increase in next year's reporting cycle because of potential increases due to hurricane related debris.

Residential waste decreased by four percent and commercial waste decreased by six percent. This translates to just under a quarter of a million tons less waste landfilled in 2005 than in 2004, a decrease of less than one percent of the total annual waste stream. However, the population of the state is estimated to have increased by 369,946 persons. The population increase, coupled with slight reductions in waste landfilled, result in the lower per capita disposal rate in 2005.

Landfill capacity. Total remaining landfill capacity in the state at the end of 2005 was 1.845 billion cubic yards. Based on reported compaction rates, this volume would hold 1.22 billion tons of waste and serve for 41.05 years. Table 2 details remaining capacity for Type I and Type IV landfills. All estimates of remaining years presume that no new landfill expansions or new permits will be issued and that the 2005 population and disposal amounts remain constant.

Table 2. Remaining Capacity by Facility Type

Facility Type	2005 Tons Disposed	2005 Tons Remaining	Years Capacity Remaining*
I and IAE	27,320,648.24	1,144,360,199.42	41.89
IV and IVAE	2,350,502.48	73,485,362.27	31.26
all types	29,671,150.72	1,217,845,561.69	41.04

* Average, at the 2005 disposal rate of 29.67 million tons per year

Growth and attrition. Statewide capacity increased slightly in 2005, although the number of Active facilities decreased by three. Three facilities closed. Four facilities changed their status to Inactive. Two new facilities opened, and nineteen facilities received permit amendments to expand. The resulting net increase was approximately 70.3 million tons (roughly 211 million cubic yards) or a 6.2 percent increase from the statewide 2004 capacity.

Table 3. MSW Disposal Capacity Breakdown by Activity Status for 2005

Landfill Status	Number	Percent of Total	Disposal Tons	Remaining Tons	Remaining Years *
Accepting waste:					
Active	186	74.69	29,671,150.723	1,204,410,758	41.04
Not accepting:					
New	13	5.22		12,439,391	--
Inactive	19	7.63		995,413	--
Post-closure	28	11.24		--	--
Closed this year	3	1.20		--	--
Total not accepting waste	63	25.30		13,434,804	--
State total	249	100	29,671,150.723	1,217,845,562	41.04

* Average, at the 2005 disposal rate of 29.67 million tons per year

Statewide distribution. Although on a statewide basis Texas appears to have a significant reserve of landfill capacity in 2005, this capacity is not evenly distributed over every region of the state. There are 24 councils of governments (COGs) across the state (see Figure 5 on page 14), which are responsible for MSW management planning.ⁱⁱⁱ Of the 24 COGs, four had less than 20 year's capacity remaining: Capital Area Planning Council (CAPCO), Brazos Valley Council of Governments (BVCOG), South Texas Development Council (STDC), and Coastal Bend Council of Governments (CBCOG). One of these, BVCOG, had less than 10 years of capacity remaining; however, a new landfill has been permitted that, when opened, will raise the BVCOG capacity to over 30 years. All of these COGs are adjacent to other COGs with substantially more than 20 years remaining. See Table 8 on page 11 for further capacity details for each COG. Also, see Figure 5 on page 14 for a map of COG regions.

Waste Information

Waste types. The largest single waste type disposed of in landfills in 2005 was residential waste, comprising 35 percent of the total waste stream, followed by commercial waste, with 33 percent of the waste stream, and construction and demolition debris (C&D) with 19 percent. These three types compose the vast majority of the waste stream -- 87 percent of all the waste disposed of in Texas. See Table 4 for a comparison of these waste types over the past five years. Figure 1 details percentage of each waste type. See Table 5 on page 7 for detailed waste characterization.

Table 4: Yearly Changes in Residential, Commercial, and C&D Waste

Year	Residential Tons	Commercial Tons	C&D Tons
2001	8,208,630	10,182,535	5,885,678
2002	8,252,119	10,599,521	6,427,465
2003	9,803,619	9,572,517	5,406,766
2004	10,407,185	10,260,035	5,322,424
2005	10,070,782	9,680,195	5,468,701

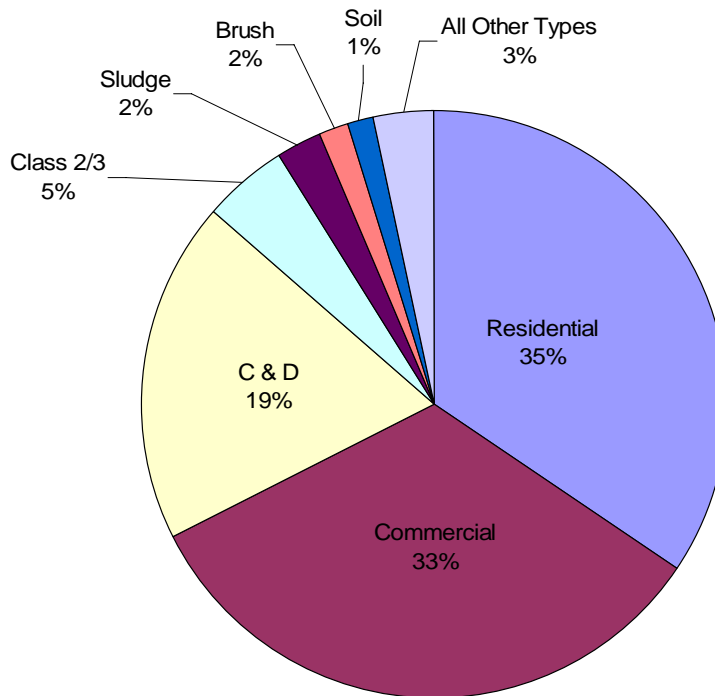


Figure 1. Characterization of Waste Landfilled in Texas, 2005
 Note: Class 1 waste is included in 'Soil' and "All Other Types' categories

Table 5. Detailed Characterization of Waste Landfilled in Texas in 2005

Waste Type	Number of Landfills That Accepted This Waste Type	Tons Disposed	Percent of Total Tons Disposed
TYPICAL MUNICIPAL SOLID WASTE			
Residential	156	10,070,782	34.64
Commercial	135	9,680,195	32.62
Institutional	52	242,777	0.82
Recreational	17	21,288	0.07
Brush	73	507,736	1.71
Construction/ Demolition	142	5,468,701	19.33
Dump and Litter Cleanup	18	23,674	0.08
NON-HAZARDOUS INDUSTRIAL WASTE			
Class 1 (asbestos)	12	7,191	0.02
Class 1 (other)	10	114,778	0.39
Classes 2 and 3	42	1,406,900	4.72
SPECIAL NON-INDUSTRIAL WASTE			
Incinerator ash	5	2,380	0.01
Treated medical waste	11	44,640	0.15
Asbestos	35	46,482	0.16
Dead animals	74	6,077	0.02
Sludge	76	712,835	2.40
Grease trap waste	11	4,416	0.01
Grit trap waste	21	8,437	0.03
Septage	4	19,239	0.06
Contaminated soil	43	386,309	1.30
Tire pieces	16	7,091	0.02
Rejected materials	9	4,865	0.01
Other	17	548,359	1.85
Total		29,671,151	100

Processing Facilities' Activity in 2005

Separate permitted and registered solid waste processing facilities (i.e., not landfills) are classified as Type V with several sub-types as indicated. These facilities encompass processing plants that transfer, incinerate, shred, grind, bale, compost, salvage, separate, dewater, reclaim, and/or provide other processing of solid waste. A closed disposal facility, an inactive portion of a disposal facility, or an active disposal facility may extract materials for energy and material recovery. A facility engaged in gas recovery for beneficial use is classified as Type IX.

Transfer stations (5TS) Permitted transfer stations handled 7.15 million tons of waste. Registered transfer stations handled 4.34 million tons.

Waste incinerators (5WI) Permitted waste incinerators processed 18,906 tons of waste. Registered incinerators processed 1,240 tons.

Waste-to-energy (5RE) Permitted waste to energy facilities recovered energy from 14,052.11 tons of waste. There are no registered waste-to-energy facilities.

Liquid processors (5GG) Permitted liquid processors treated 112.31 million gallons of grease, grit, septage, and other liquid wastes. Registered liquid processors handled 33.10 million gallons.

Facility Type	Active Permitted Facilities	Active Registered Facilities
5TS	33	89
5WI	3	2
5RE	2	0
5GG	11	8
5RC	3	17
5RR	3	3
9GR	1	5

Table 6. Number of MSW Processing Facilities

Composting (5RC) The three permitted composting facilities in the state processed 7.6 million tons of waste. Two new permitted facilities have not yet opened. In addition to these, there are 17 registered composting facilities that handled 114,655 tons of waste. The majority of composting facilities are exempt from permitting or registration requirements under the MSW regulations, and are, therefore, outside the scope of this report.

Recycling and recovery (5RR) Three permitted active recycling and recovery facility recovered 218,713 tons of waste that otherwise would have been landfilled. Similarly, three registered facilities recovered 184,970 tons.

Gas recovery (9GR) Landfill gas was recovered at one permitted processing facility, which collected 26.29 billion cubic feet of gas for beneficial use. The five registered facilities recovered 12.67cubic feet.

MSW IMPORTATION AND EXPORTATION

Mexico imports. Texas received 83,533 tons of MSW from Mexico in 2005 at six facilities, up from 48,121 tons in 2004.

State imports. Nine facilities imported 259,041 tons of MSW in 2005 from Arkansas, Kansas, Louisiana, Mississippi, New Mexico, and Oklahoma.

Waste exports. There are no requirements to track MSW exported from Texas. The regional solid waste management plans maintained by the COGs estimate that 518,698 tons of waste are exported to other states or Mexico each year. It is assumed that this estimate is valid for 2005.

Net result. Based on the estimated exports from the COG plans and the known imports, facilities exported 259,657 more tons from Texas than were imported.

MSW GENERATION

EPA definition. The U.S. Environmental Protection Agency (EPA) defines MSW generation as the sum of: disposal (landfilling and combustion), recycling (including composting), and the net of imports and exports.

Texas recycling. Texas established an official recycling rate for the first time in 1997.^{iv} The analysis herein assumes that the established 35 percent recycling rate is still appropriate for this data.

Diversion. Materials were diverted for recycling or reuse at 120 permitted facilities and 43 registered facilities in 2005, accounting for 922,083 tons of material that was not landfilled. Facilities are required to report the amount of waste diverted from within the facility; recycling efforts that divert materials before reaching the facility gate are not measured in this report.

Generation in 2005. Using the EPA definition of generation, Texas' generation of MSW for the 2005 fiscal year is:

Disposal		Net Exports		Recycling	=	Generation
29,671,151 tons	+	259,657 tons	+	16,116,589 tons	=	46,047,397 tons
(64.4%)		(0.6%)		(35%)		(100 %)

Figure 2. Calculation of MSW Generation in Texas

TRENDS ANALYSIS

Landfill closures. There have been over 700 MSW landfill closures in Texas since 1986, most due to the more stringent requirements of the Federal Resource Conservation and Recovery Act (RCRA) Subtitle D. However, since the late 1990s the total number of permitted facilities has stopped decreasing, leveling out at about 220. Even with fewer landfills in the state, capacity has grown significantly in the past ten years. This indicates a continued move away from smaller community landfills and towards larger regional landfills. See Figure 7 on Page 16 for a graphic representation of this trend.

Capacity reserve. From 1986 to the mid-1990s, the state's reserve capacity for disposal was less than 22 years. The reserves have shown a steady increase since that time, with the current reserve capacity for disposal at about 41 years. This increase is due in part to increases in available volume of permitted disposal capacity, and in part to improvements in landfill technology. These technological improvements have nearly doubled the average waste compaction rates over the last twenty years. In 1986 the average compaction rate was 650 pounds of waste per cubic yard; the average in 2000 was approximately 1,200 pounds per cubic yard and the rate has remained nearly constant since then. The 'flattening' of this trend may indicate that available, affordable landfill compaction technologies have reached their peak efficiencies.

Landfill Size. In addition to improvements in the operation of landfills, the size and service area of landfills has continued to grow over the last decade and a half. In 1986, the average landfill size was 50 acres with an average depth of 6.5 feet and a height of 13 feet. In 2005, the average landfill size was 208 acres with an average maximum permitted depth of 37 feet and average maximum permitted height of 69 feet. This data year, 2005, is the third consecutive year in which there has been an increase in the number of regional landfills with maximum heights over 100 feet (44, up from 39 in 2003 and 31 in 2000). There was also an increase in the number of landfills with maximum heights over 200 feet (9 in 2005, up from 6 in 2004).

Counties served. 173 landfills reported the number of counties served, detailed in Table 7. Service to more than one county was provided by 113 landfills (65.32 percent). The most counties served by one landfill was 27.

Number of Landfills	Counties Served
60	1
67	2-5
30	6-10
7	11-15
8	16-20
1	> 20

Table 7. Number of Counties Served by Landfills

Table 8. Analysis of MSW Landfill Disposal in

Texas in 2005, Grouped by COG

COG	Active MSW Landfills		Disposal				Remaining Capacity		
	Count	% of Total	Tons	% of Total	Population	Per Cap	Tons	% of total	Years
1 PRPC	20	10.75	626,204	2.11	410,113	8.37	25,320,671	2.08	40.44
2 SPAG	17	9.14	341,465	1.15	384,964	4.86	67,491,981	5.54	197.65
3 NRPC	2	1.08	397,808	1.34	218,311	9.98	58,484,903	4.80	147.02
4 NCTCOG	24	12.90	8,854,867	29.84	5,979,744	8.11	363,051,461	29.81	41
5 ARK-TEX	4	2.15	344,180	1.16	275,459	6.85	18,276,611	1.50	53.10
6 ETCOG	5	2.69	619,165	2.09	791,281	4.29	25,376,949	2.08	40.99
7 WCTCOG	7	3.76	365,442	1.23	319,115	6.27	52,205,415	4.29	142.86
8 RGCOG	6	3.23	480,233	1.62	746,627	3.52	25,049,939	2.06	52.16
9 PBRPC	15	8.06	470,712	1.59	379,689	6.79	57,833,598	4.75	122.86
10 CVCOG	10	5.38	164,138	0.55	141,937	6.34	6,708,611	0.55	40.87
11 HOTCOG	4	2.15	507,304	1.71	337,354	8.24	45,215,959	3.71	89.13
12 CAPCO	6	3.23	2,366,365	7.98	1,560,614	8.31	41,856,745	3.44	17.69
13 BVCOG	1	0.54	251,015	0.85	275,959	4.98	1,412,460	0.12	5.63
14 DETCOG	4	2.15	524,262	1.77	367,229	7.82	39,362,478	3.23	75.08
15 SETRPC	4	2.15	613,109	2.07	383,530	8.76	24,001,538	1.97	39.15
16 HGAC	23	12.37	7,023,975	23.67	5,418,150	7.10	164,347,246	13.49	23.40
17 GCRPC	1	0.54	135,049	0.46	166,207	4.45	4,119,498	0.34	30.50
18 AACOG	6	3.23	2,876,341	9.69	1,996,217	7.90	117,702,390	9.66	40.92
19 STDC	6	3.23	378,415	1.28	304,038	6.82	5,845,956	0.48	15.45
20 CBCOG	7	3.76	756,666	2.55	559,055	7.42	14,392,261	1.18	19.02
21 LRGVDC	4	2.15	1,042,880	3.51	1,096,968	5.21	26,677,336	2.19	25.58
22 TCOG	2	1.08	178,886	0.60	188,823	5.19	18,890,998	1.55	105.60
23 CTCOG	2	1.08	325,031	1.10	396,300	4.49	11,326,987	0.93	34.85
24 MRGDC	6	3.23	91,645	0.31	162,284	3.09	2,893,570	0.24	31.57
Totals	186	100	29,671,151	100	22,859,968	7.11	1,217,845,562	100	41.05



Figure 3. Texas Counties

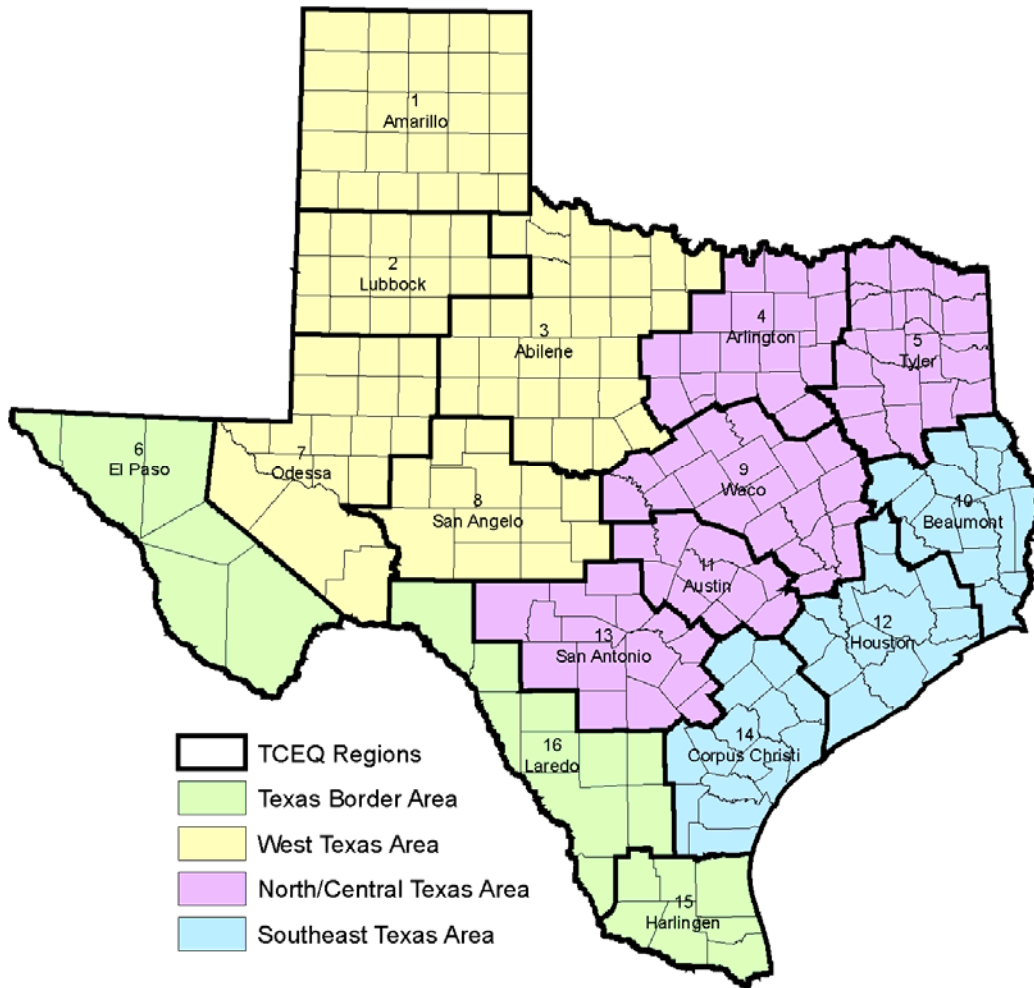


Figure 4. TCEQ Service Regions

Note: The recent restructuring of the TCEQ Field Operations Division resulted in the creation of four new Areas, each comprised of several Regions. This map shows Region and Area designations.

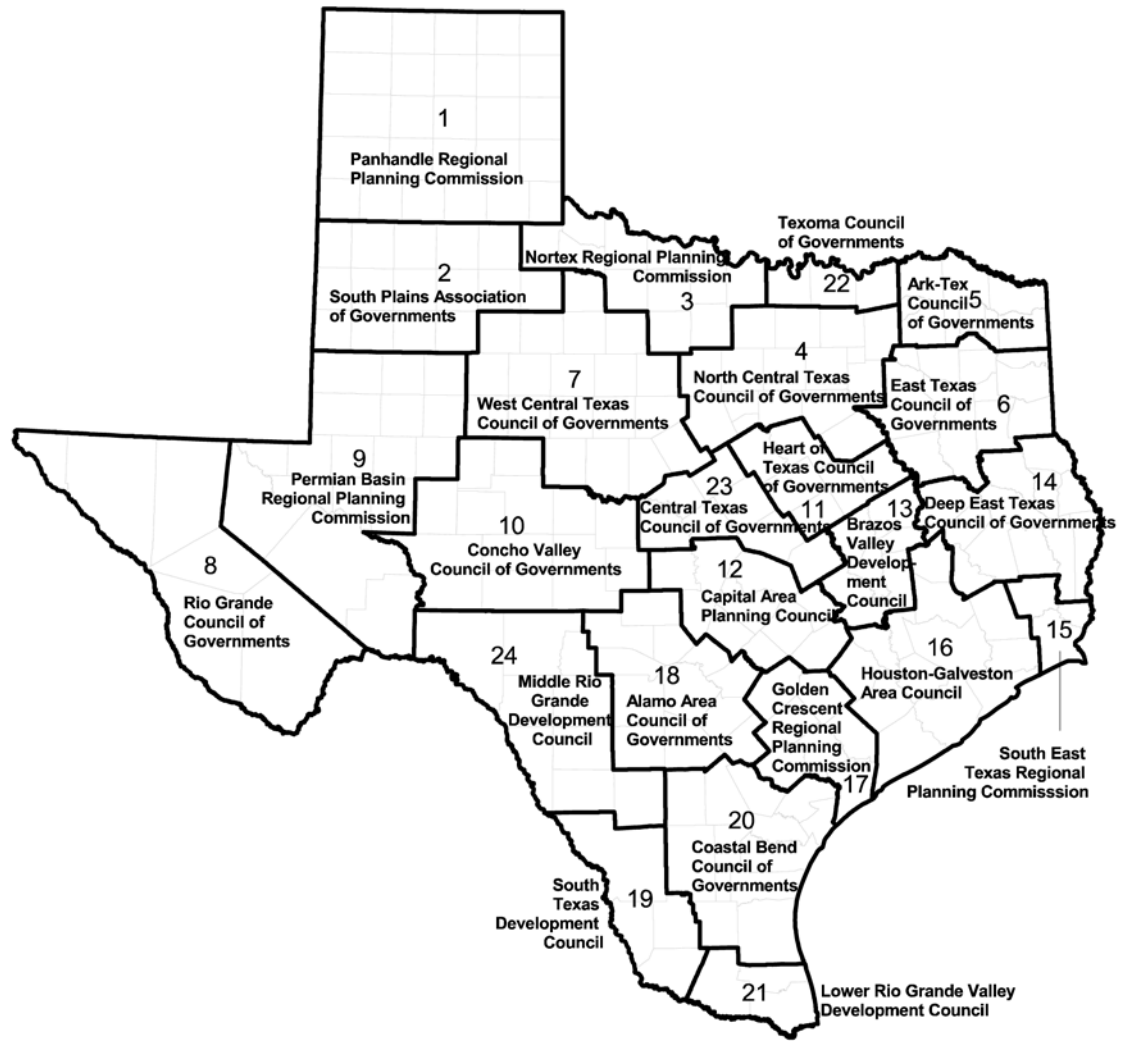


Figure 5. Councils of Governments

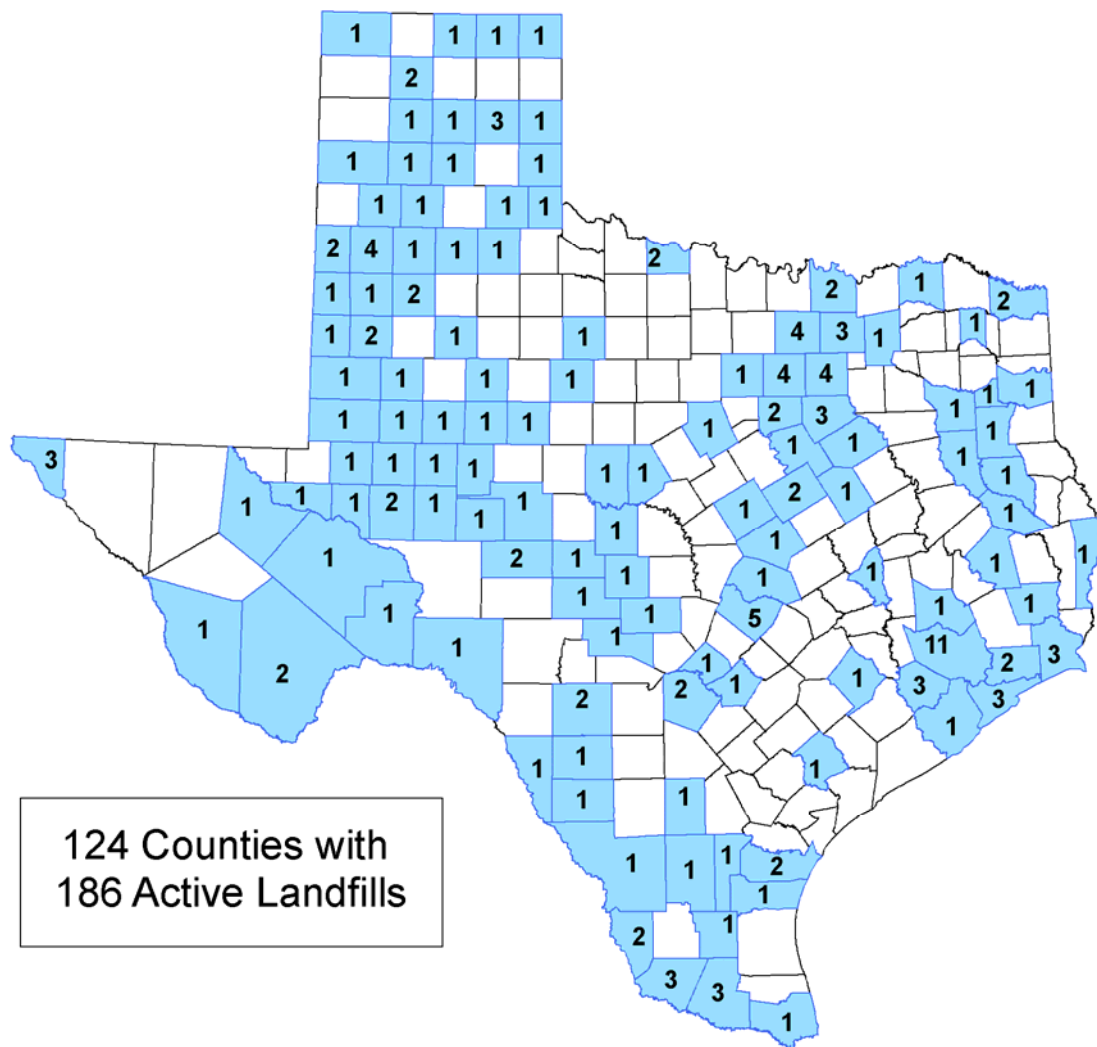


Figure 6. Counties with Active Landfills in 2005

Figure 7: Number of Permitted Landfills and Remaining Capacity

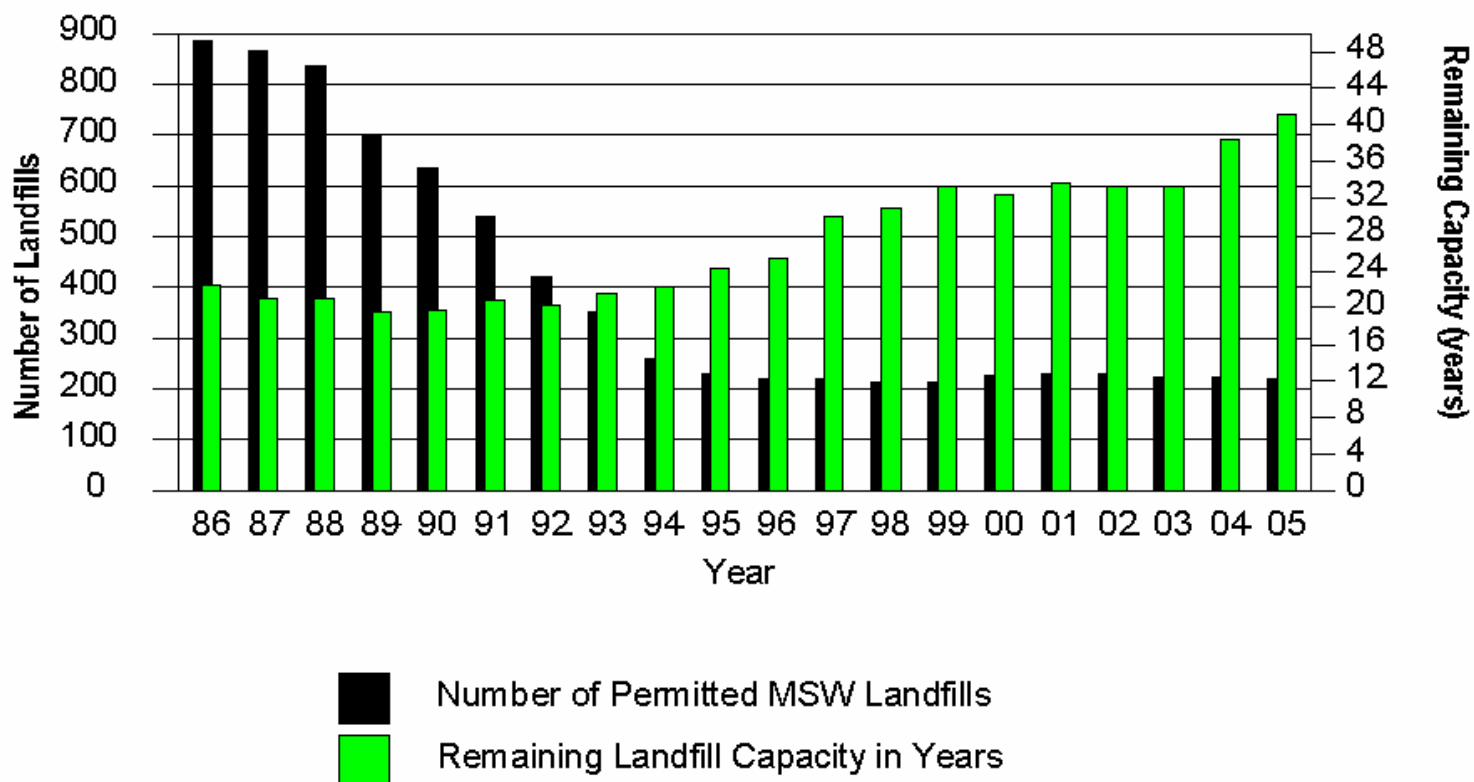


Figure 8. Texas Total and Per-Capita Landfill Disposal

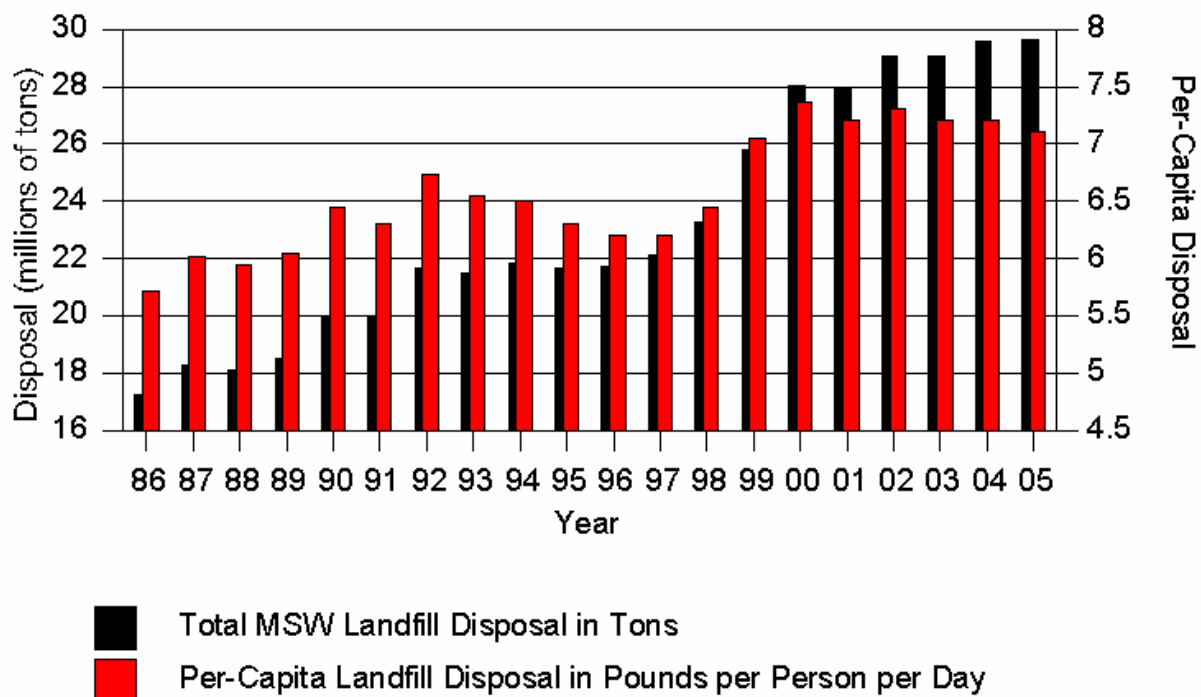


Figure 9. Private Ownership of Texas MSW Landfills

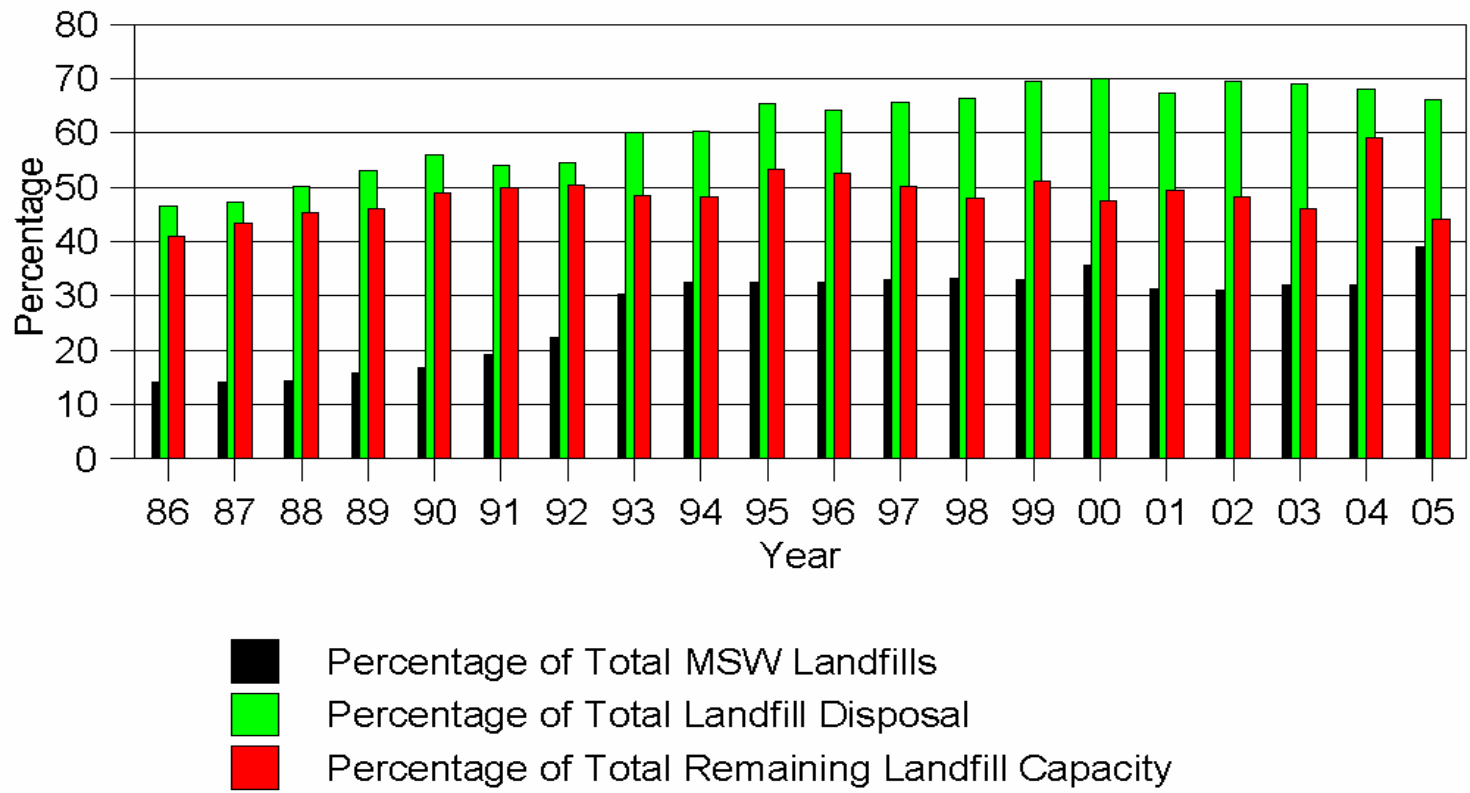


Table 9. Historical Data Summary for MSW Landfills in Texas

Year	Waste Disposal (Tons)	State Population	Per Capita Disposal*	Number of Landfills Accepting Waste	Number of landfills Not Accepting Waste**	Remaining Capacity		
						Cubic Yards	Tons	Years
1986	17,283,977	16,562,639	5.72	790	94	1,194,118,393	388,088,478	22.5
1987	18,269,917	16,623,592	6.02	763	104	1,188,680,680	386,301,221	21.1
1988	18,114,295	16,668,639	5.95	750	84	1,162,374,628	377,771,754	20.9
1989	18,531,001	16,806,521	6.04	616	83	1,111,902,033	361,368,161	19.5
1990	19,969,615	16,986,510	6.44	493	142	1,124,524,795	393,583,678	19.7
1991	19,973,622	17,349,000	6.31	405	135	1,183,699,041	414,294,664	20.7
1992	21,675,661	17,655,650	6.73	345	77	1,193,233,770	440,730,048	20.3
1993	21,517,063	18,031,484	6.54	289	62	1,205,635,627	456,161,796	21.2
1994	21,808,274	18,378,185	6.50	199	58	1,269,565,453	483,752,986	22.2
1995	21,639,678	18,723,991	6.33	191	39	1,071,520,039	523,633,365	24.2
1996	21,738,137	19,128,261	6.23	186	35	1,023,799,597	554,095,949	25.5
1997	22,094,777	19,439,337	6.23	181	37	1,169,628,669	659,694,441	29.9
1998	23,259,425	19,759,614	6.45	184	29	1,300,609,247	716,302,147	30.8
1999	25,791,066	20,044,141	7.05	179	34	1,557,349,331	862,778,821	33.4
2000	28,034,517	20,851,820	7.37	183	44	1,633,321,824	904,891,939	32.3
2001	27,938,751	21,235,018	7.18	186	42	1,710,713,869	939,383,633	33.6
2002	29,061,966	21,779,893	7.31	190	40	1,691,970,227	971,314,962	33.4
2003	29,073,315	22,118,509	7.20	184	39	1,506,807,849	963,972,887	33.1
2004	29,581,785	22,490,022	7.21	189	34	1,826,587,075	1,134,462,509	37.4
2005	29,671,151	22,859,968	7.11	186	32	1,870,868,394	1,217,845,562	41.0

* using the Texas per capita definition, as defined on p. 4

** excludes landfills in Post-Closure status

Individual MSW Landfill Facility Data

Active landfills, organized by COG number and permit number

Database codes used:

2005Tons = Total tons landfilled in 2005

RemYds = Remaining landfill capacity in cubic yards

Rate = In-landfill compaction rate in pounds per cubic yard

RemTons = Remaining landfill capacity in equivalent tons (based on landfill compaction rate)

RemYrs = Remaining landfill capacity in years (based on compaction rate and amount disposed of in 2005)

Individual MSW Landfill Facility Data									
COG	Permit	Site Name	County	Type	2005Tons	RemYds	Rate	RemTons	RemYrs
PANHANDLE REGIONAL PLANNING COMMISSION									
01	0073	CITY OF AMARILLO LANDFILL	POTTER	1	243,082	28,286,000	800	11,314,400	46.50
01	0211	CITY OF DUMAS LANDFILL	MOORE	1	13,389	280,842	800	112,337	8.40
01	0215	CITY OF HEREFORD LANDFILL	DEAF SMITH	4AE	3,972	390,315	800	156,126	39.31
01	0338	CITY OF SPEARMAN LANDFILL	HANSFORD	1AE	4,930	329,687	955	157,426	29.66
01	0414	ARMSTRONG COUNTY LANDFILL	ARMSTRONG	4AE	150	309,341	500	77,335	515
01	0445	CITY OF DIMMITT LANDFILL	CASTRO	1AE	5,537	1,321,679	750	495,630	90
01	0570	CITY OF MCLEAN LANDFILL	GRAY	1AE	848	562,653	750	210,995	248
01	0589	CITY OF PAMPA LANDFILL	GRAY	1	2,952	471,558	1,000	235,779	80
01	0876	CITY OF PERRYTON LANDFILL	OCHILTREE	1AE	5,478	129,345	1,070	69,200	12.42
01	0955	CITY OF WELLINGTON LANDFILL	COLLINGSWORTH	1AE	3,811	612,314	800	244,926	64.35
01	1009	CITY OF TULIA LANDFILL	SWISHER	1AE	6,222	880,886	850	374,376	57
01	1038	CITY OF DALHART MUNICIPAL LANDFILL	DALLAM	1AE	11,592	564,039	785	221,385	19.10
01	1164	PANHANDLE LANDFILL	CARSON	1AE	2,601	805,199	400	161,040	62
01	1663	BFI SOUTHWEST AMARILLO LANDFILL	RANDALL	1	256,498	5,285,172	1,316	3,477,643	13.60
01	1943	CITY OF BOOKER LANDFILL	LIPSCOMB	1AE	1,552	480,805	850	2,043,742	131
01	2238	CITY OF PAMPA LANDFILL	GRAY	1	44,702	8,356,168	1,000	4,178,084	93.50
01	2263	CITY OF CHILDRESS LANDFILL	CHILDRESS	1AE	5,760	2,529,718	800	1,011,887	176
01	2266	CITY OF MEMPHIS LANDFILL	HALL	1AE	5,758	1,126,242	850	478,653	84
01	2281	CITY OF SHAMROCK	WHEELER	1AE	5,515	408,618	800	163,447	29.63
01	2285	CITY OF DUMAS LANDFILL	MOORE	4AE	1,855	340,652	800	136,261	74

Individual MSW Landfill Facility Data									
COG	Permit	Site Name	County	Type	2005Tons	RemYds	Rate	RemTons	RemYrs
SOUTH PLAINS ASSOCIATION OF GOVERNMENTS									
02	0069	CALICHE CANYON LANDFILL	LUBBOCK	1	14,245	1,293,378	600	388,013	27.24
02	0363	CITY OF AMHERST LANDFILL	LAMB	1AE	257	9,063	400	1813	7.04
02	0549	CITY OF MATADOR LANDFILL	MOTLEY	1AE	3,907	847,709	800	339,084	86.80
02	0564	CITY OF MULESHOE LANDFILL	BAILEY	4AE	1,460	217,875	700	76,256	52
02	0583	CITY OF OLTON LANDFILL	LAMB	1AE	9,258	84,000	666	27,972	3.02
02	1298	CITY OF LITTLEFIELD LANDFILL	LAMB	4AE	4,295	376,918	1,300	244,997	57.04
02	1733	CITY OF SUNDOWN LANDFILL	HOCKLEY	4AE	205	237,668	850	101,009	492
02	2157	CITY OF PLAINVIEW LANDFILL	HALE	1	29,243	10,835,585	800	4,334,234	148
02	2170	BROWNFIELD MSW LANDFILL	TERRY	1	9,297	4,652,324	1,080	2,512,255	270
02	2207	CITY OF FLOYDADA LANDFILL	FLOYD	1AE	6,361	879,616	830	365,041	57.40
02	2217	YOAKUM COUNTY LANDFILL	YOAKUM	1AE	9,031	3,409,613	800	1,363,845	151.01
02	2227	CITY OF POST LANDFILL	GARZA	1AE	3,708	337,535	650	109,699	29.60
02	2252	WEST TEXAS REGIONAL DISPOSAL	LUBBOCK	1	221,920	110,921,345	1,000	55,460,672	249.87
02	2268	CITY OF MORTON LANDFILL	COCHRAN	4AE	235	812,449	400	612,490	5,416
02	2274	CITY OF LITTLEFIELD LANDFILL	LAMB	1AE	7,296	1,389,007	1,300	902,855	123.74
02	2291	CITY OF MULESHOE LANDFILL	BAILEY	1AE	6,439	626,626	800	252,650	38
02	2293	CITY OF MEADOW LANDFILL	TERRY	1AE	14,308	1,002,228	800	400,891	28.01
NORTEX REGIONAL PLANNING COMMISSION									
03	1428	CITY OF WICHITA FALLS LANDFILL	WICHITA	1	190,391	73,842,801	1,000	36,921,401	193.92
03	1571	IESI BUFFALO CREEK LANDFILL	WICHITA	1	207,417	31,711,032	1,360	21,563,502	104
NORTH CENTRAL TEXAS COUNCIL OF GOVERNMENTS									
04	0042	SKYLINE LANDFILL	ELLIS	1	881,415	42,036,000	1,360	28,584,480	32
04	0044	MAXWELL CREEK LANDFILL	COLLIN	1	822	14,506	1,100	7,978	9.70
04	0047	IESI WEATHERFORD LANDFILL	PARKER	1	194,125	1,624,884	1,360	1,104,921	5.50
04	0062	MCCOMMAS BLUFF LANDFILL	DALLAS	1	1,635,403	111,229,444	1,205	67,015,740	41
04	0218	SOUTHEAST LANDFILL	TARRANT	1	295,306	3,999,605	1,140	2,279,775	7.70
04	0358	ARLINGTON MUNICIPAL LANDFILL	TARRANT	1	448,247	18,622,300	1,565	14,571,950	32.50
04	0534	CITY OF CLEBURNE LANDFILL	JOHNSON	1	1,728	39,037	1,000	19,548	11.31
04	0568	MCKINNEY LANDFILL	COLLIN	1	104,576	NA	1,280	0	0
04	0664	STEPHENVILLE MUNICIPAL LANDFILL	ERATH	4	4,888	691,266	850	293,789	60
04	0996	CITY OF GRAND PRARIE LANDFILL	DALLAS	1	161,597	6,603,667	1,391	4,592,850	194

Individual MSW Landfill Facility Data

COG	Permit	Site Name	County	Type	2005Tons	RemYds	Rate	RemTons	RemYrs
04	1019	WESTSIDE RECYCLING AND DISPOSAL	TARRANT	1	587,447	1,244,000	2,000	1,244,000	2
04	1025	DFW LANDFILL	DENTON	1	1,161,099	24,665,000	1,720	21,211,900	18
04	1195	REPUBLIC MALOY LANDFILL	HUNT	1	139,550	7,912,413	1,388	5,491,215	39.30
04	1209	CSC DISPOSAL & LANDFILL	ELLIS	1	261,594	32,131,976	1,500	24,098,982	92
04	1312	CAMELOT LANDFILL	DENTON	1	417,343	9,211,650	1,123	5,172,341	12.40
04	1394	HUNTER FERRELL LANDFILL	DALLAS	1	111,713	9,861,700	1,100	5,423,935	50
04	1417	TURKEY CREEK LANDFILL	JOHNSON	1	625,461	13,283,876	1,320	8,767,358	14
04	1590	CITY OF DENTON LANDFILL	DENTON	1	124,513	13,501,015	1,536	10,368,780	83.30
04	1745	ECD LANDFILL	ELLIS	1	171,482	41,129,716	1,419	29,181,534	170.20
04	1749	LEWISVILLE LANDFILL	DENTON	4	228,995	25,072,936	2,164	27,128,917	118.50
04	1895	CHARLES M HINTON LANDFILL	DALLAS	1	368,089	32,064,038	1,100	17,635,221	47.90
04	1983	IESI FORT WORTH C&D LANDFILL	TARRANT	4	253,984	7,890,404	1,580	6,233,419	24.50
04	2190	CORSICANA REGIONAL LANDFILL	NAVARRO	1	119,364	25,615,777	1,000	12,807,889	107.30
04	2294	121 REGIONAL DISPOSAL LANDFILL	COLLIN	1	556,125	109,085,840	1,280	69,814,938	125.40
ARK-TEX COUNCIL OF GOVERNMENTS									
05	0576	NEW BOSTON LANDFILL	BOWIE	1	146,315	3,055,000	1,040	1,588,600	11
05	0797	PLEASANT OAKS LANDFILL	TITUS	1	60,866	6,087,100	1,818	5,333,174	90.90
05	1454	B & B LANDFILL	LAMAR	1	135,845	17,954,000	1,140	10,233,780	75
05	1898	AREA A LANDFILL	BOWIE	1	1,154	2,041,998	1,098	1,121,057	971.10
EAST TEXAS COUNCIL OF GOVERNMENTS									
06	0307	MUNTZ CUTOFF ROAD	HARRISON	4	12,107	16,234	800	6,493	0.50
06	1249	IESI EAST TEXAS REGIONAL LANDFILL	RUSK	1	64,519	2,526,807	1,070	1,351,842	21
06	1327	PINE HILL LANDFILL	GREGG	1	211,543	16,859,400	1,976	16,657,087	78.70
06	1614	ROYAL OAKS LANDFILL	CHEROKEE	1	94,608	3,347,854	1,588	2,658,196	28.10
06	1972	GREENWOOD FARMS LANDFILL	SMITH	1	236,388	5,732,274	1,641	4,703,331	19.90
WEST CENTRAL TEXAS COUNCIL OF GOVERNMENTS									
07	0050	SWEETWATER LANDFILL	NOLAN	4AE	3,660	384,154	400	76,831	20.99
07	0420	COLORADO CITY MSW LANDFILL	MITCHELL	1AE	3,203	59,939	700	20,978	6.50
07	1302	COLEMAN LANDFILL	COLEMAN	4AE	13	15,426	500	3,857	297
07	1463	CITY OF SNYDER LANDFILL	SCURRY	1	32,828	11,216,494	1,000	5,608,247	171
07	1469	ABILENE REGIONAL LANDFILL	JONES	1	215,735	40,055,612	1,769	35,429,189	164.20
07	1562	BROWNWOOD REGIONAL MSW LANDFILL	BROWN	1	103,534	19,459,534	1,100	10,702,743	103.37

Individual MSW Landfill Facility Data

COG	Permit	Site Name	County	Type	2005Tons	RemYds	Rate	RemTons	RemYrs
07	1604	HASKELL MUNICIPAL LANDFILL	HASKELL	1AE	6,469	1,038,770	700	363,570	59.58
RIO GRANDE COUNCIL OF GOVERNMENTS									
08	0729	MCCOMBS LANDFILL	EL PASO	1	41,701	17,233,692	1,200	10,340,215	248
08	1276	GRAPEVINE HILLS LANDFILL	BREWSTER	1AE	428	64,596	750	24,224	56.60
08	1422	FORT BLISS LANDFILL	EL PASO	1	29,812	150,231	1,273	95,599	2.96
08	1482	CLINT LANDFILL	EL PASO	1	53,870	74,024	1,200	62	0
08	1737	CITY OF PRESIDIO LANDFILL	PRESIDIO	1AE	5,918	21,107	550	5,804	1
08	2197	CITY OF ALPINE LANDFILL	BREWSTER	1AE	14,663	4,289,289	1,000	2,144,644	147.30
PERMIAN BASIN REGIONAL PLANNING COMMISSION									
09	0039	CITY OF SEMINOLE LANDFILL	GAINES	1AE	17,211	2,758,399	550	758,560	69
09	0171	CITY OF ANDREWS LANDFILL	ANDREWS	1AE	9,223	1,254,259	850	533,060	57.70
09	0288	CITY OF BIG SPRING LANDFILL	HOWARD	1	36,756	953,095	1,848	880,660	24
09	0427	CITY OF CRANE LANDFILL	CRANE	1AE	3,996	74,121	700	25,942	6.49
09	0517	LAMESA LANDFILL	DAWSON	1	11,815	1,755,608	1,005	882,193	75
09	0566	CITY OF MCCAMEY LANDFILL	UPTON	4AE	1,067	1,270,882	750	476,581	447
09	0673	TERRELL COUNTY LANDFILL	TERRELL	4AE	31	34,030	300	5,105	166.80
09	0691	UPTON COUNTY LANDFILL	UPTON	4AE	67	96,674	400	19,335	310.84
09	0772	MONAHANS LANDFILL	WARD	1AE	10,846	1,353,253	650	439,807	40.55
09	0976	CITY OF FORT STOCKTON LANDFILL	PECOS	1AE	8,313	212,599	800	85,040	10.23
09	1605	CITY OF MIDLAND LANDFILL	MIDLAND	1	141,896	36,982,713	1,360	25,148,245	177
09	2120	CITY OF PECOS LANDFILL	REEVES	1	10,935	771,986	850	328,094	30
09	2154	GLASSCOCK COUNTY LANDFILL	GLASSCOCK	1AE	296	97,013	250	12,127	40.97
09	2158	CHARTER WASTE LANDFILL	ECTOR	1	215,642	37,160,727	1,503	27,926,286	129.50
09	2189	CITY OF STANTON LANDFILL	MARTIN	1AE	2,618	625,126	1,000	312,563	119.39
CONCHO VALLEY COUNCIL OF GOVERNMENTS									
10	0026	CITY OF JUNCTION	KIMBLE	4AE	1,200	255,833	1,000	127,916	106.60
10	0079	SAN ANGELO LANDFILL	TOM GREEN	1	138,684	7,677,307	1,150	4,414,452	32
10	0086	BIG LAKE LANDFILL	REAGAN	1AE	2,820	1,161,447	500	290,362	96.79
10	0195	MASON LANDFILL	MASON	1AE	2,400	122,365	1,000	61,182	25.50
10	0349	ELDORADO LANDFILL	SCHLEICHER	1AE	364	6,486	1,000	3,243	8.91
10	1270	BARNHART LANDFILL	IRION	1AE	1,771	105,965	530	28,081	15.90
10	1325	STERLING COUNTY LANDFILL	STERLING	1AE	136	74,862	400	14,972	109

Individual MSW Landfill Facility Data									
COG	Permit	Site Name	County	Type	2005Tons	RemYds	Rate	RemTons	RemYrs
10	1404	CITY OF MENARD LANDFILL	MENARD	4AE	68	95,887	750	35,958	526.46
10	1732	CITY OF BRADY LANDFILL	MCCULLOCH	1AE	9,625	2,669,622	900	1,201,330	124.81
10	2264	CITY OF ELDORADO LANDFILL	SCHLEICHER	1AE	7,069	1,416,307	750	531,115	75.13
HEART OF TEXAS COUNCIL OF GOVERNMENTS									
11	0241	ITASCA LANDFILL	HILL	1	123,442	35,819,409	1,830	32,774,759	265.50
11	0948	CITY OF WACO LANDFILL 948A	MCLENNAN	1	249,826	10,049,250	1,005	5,049,295	20.20
11	1558	MEXIA LANDFILL	LIMESTONE	1	40,146	7,761,832	1,370	5,316,855	132.40
11	1646	LACY-LAKEVIEW LANDFILL	MCLENNAN	1	93,889	2,660,321	1,560	2,075,050	22
CAPITAL AREA PLANNING COUNCIL									
12	0249	AUSTIN COMMUNITY LANDFILL	TRAVIS	1	447,658	6,427,395	1,600	5,141,916	10.76
12	0360	CITY OF AUSTIN LANDFILL	TRAVIS	4	37,904	2,432,482	1,000	1,216,241	32.09
12	1405	WILLIAMSON COUNTY LANDFILL	WILLIAMSON	1	133,949	7,620,417	1,500	5,715,313	43
12	1447	BFI SUNSET FARMS LANDFILL	TRAVIS	1	842,707	7,544,984	1,171	4,417,588	5.20
12	1841	IESI TRAVIS COUNTY C&D LANDFILL	TRAVIS	4	261,132	3,698,908	1,480	2,737,192	10.50
12	2123	TEXAS DISPOSAL SYSTEMS LANDFILL	TRAVIS	1	643,015	10,390,800	1,360	22,628,495	35.20
BRAZOS VALLEY COUNCIL OF GOVERNMENTS									
13	1444	ROCK PRAIRIE ROAD LANDFILL	BRAZOS	1	251,015	2,319,310	1,218	1,412,460	5.60
DEEP EAST TEXAS COUNCIL OF GOVERNMENTS									
14	0720	CITY OF NACOGDOCHES LANDFILL	NACOGDOCHES	1	81,196	4,805,738	800	1,922,295	23.68
14	1384	POLK COUNTY REGIONAL WASTE MGT CENTER	POLK	1	94,494	9,633,994	1,258	6,059,782	64.10
14	2105	ANGELINA COUNTY WASTE MGT CENTER	ANGELINA	1	133,466	5,878,203	1,200	3,526,922	26.40
14	2242	NEWTON COUNTY LANDFILL	NEWTON	1	215,106	45,661,436	1,220	27,853,479	129.50
SOUTH EAST TEXAS REGIONAL PLANNING COMMISSION									
15	1486	CITY OF BEAUMONT MUNICIPAL LANDFILL	JEFFERSON	1	221,211	22,953,081	1,345	15,435,947	78
15	1815	CITY OF PORT ARTHUR LANDFILL	JEFFERSON	1	89,948	3,572,894	1,000	1,786,447	19.85
15	2027	GOLDEN TRIANGLE LANDFILL	JEFFERSON	1	269,817	9,773,301	1,387	6,777,784	25.10
15	2214	IESI HARDIN COUNTY LANDFILL	HARDIN	1	32,134	2,247,889	1,210	1,360	42.30
HOUSTON-GALVESTON AREA COUNCIL									
16	0203	ALTAIR LANDFILL	COLORADO	1	13,070	3,815	850	3,243	0.25
16	0261	MCCARTY ROAD LANDFILL	HARRIS	1	1,302,485	4,194,704	2,714	5,692,213	4.40
16	1149	GALVESTON COUNTY LANDFILL	GALVESTON	1	285,406	6,012,416	1,374	4,130,530	14.50

Individual MSW Landfill Facility Data

COG	Permit	Site Name	County	Type	2005Tons	RemYds	Rate	RemTons	RemYrs
16	1193	WHISPERING PINES LANDFILL	HARRIS	1	19,147	11,552,766	1,386	8,006,067	418.10
16	1307	ATASCOCITA LANDFILL	HARRIS	1	1,041,674	31,725,302	1,400	22,207,711	21.30
16	1403	CASCO LANDFILL	HARRIS	4	40,892	2,610,384	900	1,174,673	28.70
16	1502	CHAMBERS COUNTY LANDFILL	CHAMBERS	1	16,585	649,804	850	276,167	17
16	1505	BLUE RIDGE LANDFILL	FORT BEND	1	632,964	15,295,559	1,320	10,095,069	15.90
16	1535	BAYTOWN LANDFILL	CHAMBERS	1	315,634	13,083,521	1,244	8,137,950	25.80
16	1539	SEABREEZE ENVIRONMENTAL LANDFILL	BRAZORIA	1	952,610	33,334,148	1,500	26,500,611	27.80
16	1540	GREENSHADOW LANDFILL	HARRIS	4	81,326	4,022,233	1,233	2,479,706	30.50
16	1565	FAIRBANKS LANDFILL	HARRIS	4	326,097	710,141	1,556	552,490	1.70
16	1586	OLSHAN LANDFILL	HARRIS	4	194,317	6,650,800	1,000	3,325,400	17.10
16	1599	GREENHOUSE ROAD LANDFILL	HARRIS	4	79,334	7,823,144	800	3,129,258	39.40
16	1721	COASTAL PLAINS LANDFILL	GALVESTON	1	629,672	18,398,043	1,252	11,517,175	18.30
16	1752	SECURITY LANDFILL	MONTGOMERY	1	393,813	18,750,317	1,210	11,343,942	28.80
16	1797	SPRINT FORT BEND COUNTY LANDFILL	FORT BEND	4	191,400	20,319,221	1,164	11,825,787	62
16	1849	NORTH COUNTY LANDFILL	GALVESTON	4	65,864	1,529,535	900	688,291	10.50
16	1921	COUGAR LANDFILL	HARRIS	4	182,105	2,183,414	1,316	1,436,686	7.90
16	2185	HAWTHORN PARK LANDFILL	HARRIS	4	990	3,425,241	1,000	1,712,621	7.79
16	2240	RALSTON ROAD LANDFILL	HARRIS	4	141,086	1,328,500	1,000	664,250	4.70
16	2270	FORT BEND REGIONAL LANDFILL	FORT BEND	1	95,339	47,419,990	1,200	28,451,994	298
GOLDEN CRESCENT REGIONAL PLANNING COMMISSION									
17	1522	CITY OF VICTORIA LANDFILL	VICTORIA	1	135,049	8,061,640	1,022	4,119,498	30.50
ALAMO AREA COUNCIL OF GOVERNMENTS									
18	0066	COMAL COUNTY LANDFILL	COMAL	1	310,659	2,466,043	1,580	1,948,174	6.30
18	1410	TESSMAN ROAD LANDFILL	BEXAR	1	980,568	112,074,438	1,416	79,348,702	80.90
18	1506	CITY OF KERRVILLE LANDFILL	KERR	1	46,821	1,350,289	974	657,591	14
18	1848	NIDO INC DBA BECK LANDFILL	GUADALUPE	4	214,874	9,379,711	1,100	5,158,841	24
18	1995	CITY OF FREDERICKSBURG LANDFILL	GILLESPIE	1	23,520	1,780,591	1,180	1,050,549	44.70
18	2093	COVEL GARDENS RPDF	BEXAR	1	1,255,900	32,820,592	1,800	29,538,533	28.80
SOUTH TEXAS DEVELOPMENT COUNCIL									
19	0783	ZAPATA COUNTY LANDFILL	ZAPATA	1AE	288	85,593	600	25,678	25
19	0954	CITY OF ROMA LANDFILL	STARR	1AE	1,906	183,573	628	57,642	30
19	1033	CITY OF LA GRULLA LANDFILL	STARR	4	86	62,696	300	9,404	109.67

Individual MSW Landfill Facility Data									
COG	Permit	Site Name	County	Type	2005Tons	RemYds	Rate	RemTons	RemYrs
19	1528	ZAPATA COUNTY LANDFILL	ZAPATA	4AE	474	40,406	400	8,081	17
19	1693	CITY OF LAREDO SANITARY LANDFILL	WEBB	1	345,303	9,538,859	1,200	5,723,315	16.60
19	1762	STARR COUNTY LANDFILL	STARR	1AE	30,358	65,573	666	21,836	0.70
COASTAL BEND COUNCIL OF GOVERNMENTS									
20	0235	CITY OF KINGSVILLE LANDFILL	KLEBERG	1	29,100	3,891,559	817	1,589,702	65
20	0262	CITY OF ALICE MSW LANDFILL	JIM WELLS	1	54,301	1,497,993	1,394	1,044,101	19.23
20	0379	BROOKS COUNTY LANDFILL	BROOKS	4AE	1,695	283,776	400	56,755	33.48
20	0423	JC ELLIOTT LANDFILL	NUECES	1	452,549	667,600	1,200	400,560	0.89
20	0571	MCMULLEN COUNTY LANDFILL	MCMULLEN	1AE	500	40,000	200	4,000	8
20	1481	DUVAL COUNTY LANDFILL	DUVAL	4AE	5,004	5,360	1,000	2,680	0.54
20	2267	EL CENTRO LANDFILL	NUECES	1	213,518	17,177,890	1,315	11,294,463	52.90
LOWER RIO GRANDE VALLEY DEVELOPMENT COUNCIL									
21	0956	EDINBURG REGIONAL SANITARY LANDFILL	HIDALGO	1	371,257	11,578,788	1,400	8,115,151	21.70
21	1273	BROWNSVILLE SANITARY LANDFILL	CAMERON	1	194,235	31,422,888	1,020	16,025,673	80.20
21	1727	PENITAS LANDFILL	HIDALGO	1AE	3,574	25,580	1,000	12,970	3.58
21	1948	BFI RIO GRANDE VALLEY LANDFILL	HIDALGO	1	473,814	4,943,276	1,021	2,523,542	5.30
TEXOMA COUNCIL OF GOVERNMENTS									
22	0523	HILLSIDE LANDFILL	GRAYSON	1	133,791	13,017,000	1,200	7,810,200	58
CENTRAL TEXAS COUNCIL OF GOVERNMENTS									
23	0692	TEMPLE LANDFILL	BELL	1	296,995	12,848,845	1,440	9,251,168	31.15
23	1866	FORT HOOD LANDFILL	CORYELL	1	28,036	3,459,698	1,200	2,075,819	74.04
MIDDLE RIO GRANDE DEVELOPMENT COUNCIL									
24	0207	CITY OF DEL RIO MUNICIPAL LANDFILL	VAL VERDE	1	43,926	2,231,608	600	669,482	15.20
24	0630	CITY OF SABINAL LANDFILL	UVALDE	4	9	3,869	400	774	86.75
24	1308	CRYSTAL CITY MSW FACILITY	ZAVALA	1AE	7,980	1,620,715	850	688,804	86
24	1725	CITY OF UVALDE LANDFILL	UVALDE	1	30,770	1,150,240	1,000	575,120	18.69
24	1918	CITY OF EAGLE PASS TYPE IV LANDFILL SITE	MAVERICK	4AE	5,502	1,328,685	750	498,144	90.54
24	2225	CITY OF CARRIZO SPRINGS LANDFILL	DIMIT	1AE	3,458	1,537	600	461,246	86

Individual Facility Data for Non-Landfill Permitted and Registered Facilities

Active facilities, organized by COG number and facility permit or registration number

Database codes used:

TYPE 5AC = Medical waste autoclave facility

TYPE 5GG = Liquid waste (i.e., grease trap waste, grit trap waste, sludge, septage) processing facility

TYPE 5RC = Mixed-waste composting facility

TYPE 5RR = Materials recovery facility (MRF)

TYPE 5RE = Waste-to-energy facility (incineration with electrical power generation)

TYPE 5TS = Transfer station

TYPE 5WI = Incinerator (no electrical power generation)

TYPE 9GR = Landfill gas recovery facility

2005TONS = Total tons handled in 2005 in terms of major permitted activity (e.g., for a transfer station total tons transferred, for an incinerator total tons incinerated; for a liquid waste processing facility, waste is reported in gallons but converted here to approximate tons equivalent)

Individual Facility Data for Non-Landfill Facilities					
COG	Permit	Site Name	County	Type	2005Tons
PANHANDLE REGIONAL PLANNING COMMISSION					
01	0076	CITY OF AMARILLO SOLID WASTE TS	POTTER	5TS	162,826
01	40015	CITY OF BORGER TRANSFER STATION	HUTCHINSON	5TS	17,654
01	40026	CITY OF CANADIAN TRANSFER STATION	HEMPHILL	5TS	9,018
01	40031	CITY OF CACTUS TRANSFER STATION	MOORE	5TS	1,748
01	40037	CITY OF HIGGINS CITIZENS DROP	LIPSCOMB	5TS	328
01	40041	CITY OF SUNRAY TRANSFER STATION FACILITY	MOORE	5TS	555
01	40109	CITY OF STRATFORD TRANSFER STATION FACILITY	SHERMAN	5TS	700
01	40192	CITY OF CLARENDON MSW TRANSFER STATION	DONLEY	5TS	507
SOUTH PLAINS ASSOCIATION OF GOVERNMENTS					
02	2231	SOJO LUBBOCK	LUBBOCK	5GG	1,511,257
02	2287	LUBBOCK TRANSFER STATION	LUBBOCK	5TS	77,272
02	40010	CITY OF EARTH TRANSFER STATION FACILITY	LAMB	5TS	113
02	40051	CITY OF LEVELLAND TRANSFER STATION FACILITY	HOCKLEY	5TS	1,585
02	40060	CITY OF LITTLEFIELD TRANSFER STATION FACILITY	LAMB	5TS	174
02	40084	STERICYCLE LUBBOCK	LUBBOCK	5	1,351
02	40176	CALICHE CANYON TRANSFER STATION	LUBBOCK	5TS	382
NORTEX REGIONAL PLANNING COMMISSION					
03	1429	CITY OF WICHITA FALLS TRANSFER STATION	WICHITA	5TS	95,117
03	2229	LIQUID WASTE PROCESSING	WICHITA	5GG	3,395,878
03	2295	IESI BOWIE TRANSFER STATION	MONTAGUE	5TS	36,449
03	40008	CITY OF ARCHER CITY TRANSFER STATION	ARCHER	5TS	225
03	40059	CITY OF VERNON TRANSFER STATION	WILBARGER	5TS	20,411
03	40144	CITY OF SEYMOUR TRANSFER STATION	BAYLOR	5TS	1,089
03	42010	CITY OF WICHITA FALLS COMPOSTING FACILITY	WICHITA	5RC	17,870

Individual Facility Data for Non-Landfill Facilities

COG	Permit	Site Name	County	Type	2005Tons
NORTH CENTRAL TEXAS COUNCIL OF GOVERNMENTS					
04	0012	CITY OF GARLAND TRANSFER STATION	DALLAS	5TS	69,437
04	0053	LOOKOUT DRIVE TRANSFER STATION	COLLIN	5TS	162,284
04	0060	FAIR OAKS TRANSFER STATION	DALLAS	5TS	50,406
04	0115	TERMINAL B INCINERATORS	TARRANT	5WI	18
04	0227	CITY OF UNIVERSITY PARK TRANSFER STATION	DALLAS	5TS	16,111
04	1225	COLD SPRINGS PROCESSING	TARRANT	5GG	11,639,308
04	1263	CITY OF MESQUITE TRANSFER STATION	DALLAS	5TS	46,979
04	1421	PSC RECOVERY SYSTEMS INC	DALLAS	5GG	10,752,743
04	1433	BURLESON TRANSFER STATION	JOHNSON	5TS	37,507
04	1494	PARKWAY TRANSFER STATION	COLLIN	5TS	112,898
04	1592	IESI GRANBURY TRANSFER STATION	HOOD	5TS	16,153
04	1784	CLEBURNE RESOURCE RECOVERY FACILITY	JOHNSON	5RE	13,344
04	2045	CUSTER ROAD TRANSFER STATION	COLLIN	5TS	163,229
04	2069	LIQUID ENVIROMENTAL SOLUTIONS OF TEXAS DALLAS	DALLAS	5GG	15,362,057
04	2136	J C DUNCAN COMPANY	TARRANT	5TS	84,909
04	2245	ENVIROCLEAN AUTOCLAVE FACILITY	DALLAS	5WI	0
04	2275	ALLIED WASTE FW TRANSFER STATION	TARRANT	5TS	592,091
04	40032	TARLETON STATE UNIVERSITY TRANSFER STATION	ERATH	5TS	1,255
04	40052	SOUTHWEST PAPER STOCK TRANSFER STATION	TARRANT	5TS	34,225
04	40075	TRINITY WASTE SERVICES MRF	DALLAS	5TS	39,600
04	40080	HARRINGTON ENVIROMENTAL LIQUID TS	JOHNSON	5TL	304,869
04	40104	IESI MINGUS TRANSFER STATION	PALO PINTO	5TS	1,693
04	40112	ENVIROCLEAN GARLAND TRANSFER STATION	DALLAS	5TS	4,711
04	40159	IESI MINNIS DRIVE TRANSFER STATION	TARRANT	5TS	183
04	40181	SOMERVELL COUNTY TRANSFER STATION	SOMERVELL	5TS	14,284
04	40196	COMMUNITY WASTE DISPOSAL LP	DALLAS	5TS	43,758
04	41892	TRINITY WASTE SERVICES PLANO HAULING AND MRF	DALLAS	5RR	118,230
04	42005	CITY OF GARLAND COMPOSTING FACILITY	DALLAS	5RC	3,436
04	42008	SILVER CREEK MATERIALS RECYCLING AND COMPOSTING FACILITY	TARRANT	5RC	17,150
04	43003	ALCO ENVIRONMENTAL INC	TARRANT	5GG	11,827,181
ARK-TEX TEXAS COUNCIL OF GOVERNMENTS					
05	40009	DEKALB TRANSFER STATION	BOWIE	5TS	360
05	40061	SOUTH REGIONAL WWTP	BOWIE	5TS	485,055
EAST TEXAS COUNCIL OF GOVERNMENTS					
06	0356	VITAL EARTH RESOURCES	UPSHUR	5RC	1,260
06	1741	CITY OF CARTHAGE INCINERATION FACILITY	PANOLA	5RE	708
06	40005	TDCJ BETO I	ANDERSON	5WI	1,240
06	40006	COFFIELD TRANSFER STATION FACILITY	ANDERSON	5TS	1,346
06	40030	CITY OF CANTON TRANSFER STATION FACILITY	VAN ZANDT	5TS	5,899
06	40040	ANDERSON COUNTY TRANSFER STATION FACILITY	ANDERSON	5TS	1,818

Individual Facility Data for Non-Landfill Facilities

COG	Permit	Site Name	County	Type	2005Tons
06	40058	WINNSBORO TRANSFER STATION	WOOD	5TS	350
06	40091	AAA SANITATION	HENDERSON	5TL	632,553
06	40172	CITY OF CARTHAGE TRANSFER STATION	PANOLA	5TS	16,589
06	40174	PITTSBURG TRANSFER STATION FACILITY	CAMP	5TS	30,145
WEST CENTRAL TEXAS COUNCIL OF GOVERNMENTS					
07	40117	CITY OF THROCKMORTON TRANSFER STATION	THROCKMORTON	5TS	200
RIO GRANDE COUNCIL OF GOVERNMENTS					
08	0728	DELTA TRANSFER STATION	EL PASO	5TS	52,725
08	40158	VALLEY BY PRODUCTS	EL PASO	5TL	1,979,927
CONCHO VALLEY COUNCIL OF GOVERNMENTS					
10	42022	KICKAPOO COMPOSTING FACILITY	TOM GREEN	5RC	1,812
CAPITAL AREA PLANNING COUNCIL					
12	0119	ECO DEPOT	TRAVIS	5TS	8,810
12	0466	GEORGETOWN TRANSFER STATION	WILLIAMSON	5TS	65,000
12	1787	HAYS COUNTY TRANSFER & RECYCLING STATION	HAYS	5TS	1,010
12	2250	LIQUID ENVIROMENTAL SOLUTIONS OF TX AT AUSTIN	TRAVIS	5GG	4,992,939
12	2260	STERICYCLE AUTOCLAVE FACILITY	BASTROP	5AC	11,194
12	2320	TEXAS ORGANIC RECOVERY	TRAVIS	5RC	1,022,760
12	40007	IESI BLANCO COUNTY TRANSFER STATION	BLANCO	5TS	12,528
12	40035	BFI BURNET TRANSFER STATION	BURNET	5TS	40,927
12	42006	CITY OF LLANO RESOURCE RECOVERY	LLANO	5RR	6,898
BRAZOS VALLEY COUNCIL OF GOVERNMENTS					
13	40018	CITY OF BRENHAM TRANSFER STATION	WASHINGTON	5TS	14,069
13	42003	CITY OF BRYAN COMPOSTING FACILITY	BRAZOS	5RC	15,765
DEEP EAST TEXAS COUNCIL OF GOVERNMENTS					
14	40013	CITY OF WOODVILLE TRANSFER STATION	TYLER	5TS	3,624
14	40024	CITY OF SAN AUGUSTINE TRANSFER STATION	SAN AUGUSTINE	5TS	4,050
14	40033	HUTTO GARAGE SERVICE	HOUSTON	5TS	9,130
14	40038	TYLER COUNTY TRANSFER STATION	TYLER	5TS	7,242
14	40054	CITY OF PINELAND TRANSFER STATION FACILITY	SABINE	5TS	5,437
14	40106	NEWTON COUNTY TRANSFER STATION FACILITY	NEWTON	5TS	27
14	40114	CITY OF CROCKETT TRANSFER STATION FACILITY	HOUSTON	5TS	6,040
14	40165	DOUGLASS TRANSFER STATION	NACOGDOCHES	5TS	356
14	40166	ETOILE TRANSFER STATION	NACOGDOCHES	5TS	152
14	40167	ELBOW RIDGE TRANSFER STATION	NACOGDOCHES	5TS	426
14	40206	LAKE AREA TRASH DISPOSAL	TRINITY	5TS	80
14	40213	COMPLETE LIQUID SOLUTIONS	TRAVIS	5TL	70,080
14	42025	CITY OF CROCKETT COMPOSTING FACILITY	HOUSTON	5RC	6,446
14	43007	CITY OF NACOGDOCHES	NACOGDOCHES	5GG	538,178
SOUTH EAST TEXAS REGIONAL PLANNING COMMISSION					
15	40164	JTB RECYCLING TRANSFER STATION FACILITY	JEFFERSON	5TS	93,696
15	43000	JTB RECYCLING TRANSFER STATION FACILITY	JEFFERSON	5TS	1,906,307

Individual Facility Data for Non-Landfill Facilities

COG	Permit	Site Name	County	Type	2005Tons
HOUSTON-GALVESTON AREA COUNCIL					
16	0164	GALVESTON TRANSFER STATION	GALVESTON	5TS	105,577
16	1092	SOMMERMEYER NORTHWEST TRANSFER STATION	HARRIS	5TS	123,290
16	1355	RUFFINO HILLS TRANSFER STATION	HARRIS	5RR	33,743
16	1471	SAM HOUSTON TRANSFER STATION	HARRIS	5TS	188,142
16	2099	CITY OF WHARTON TRANSFER STATION	WHARTON	5TS	8,901
16	2106	WEIMAR TRANSFER STATION	COLORADO	5TS	16,702
16	2222	STERICYCLE INC	MONTGOMERY	5AC	30,649
16	2232	UTMB GALVESTON SOLID INCINERATOR	GALVESTON	5WI	5,584
16	2234	LIQUID ENVIRONMENTAL SOLUTIONS OF TX HOUSTON	HARRIS	5GG	29,459,322
16	2239	CHAMBERS COUNTY SOLID WASTE INCINERATION FACILITY	CHAMBERS	5WI	12,063
16	2298	BR PERRIN PLANT	HARRIS	5GG	5,802,122
16	2318	DON TOL COMPOST FACILITY	MATAGORDA	5RC	4,199
16	40014	CITY OF HEMPSTEAD TRANSFER STATION FACILITY	WALLER	5TS	232
16	40025	CITY OF SEALY TRANSFER STATION	AUSTIN	5TS	6,135
16	40028	MATAGORDA COUNTY TRANSFER STATION	MATAGORDA	5TS	50,229
16	40053	BEST SEPTIC TANK CLEANING	FORT BEND	5TL	686,140
16	40056	CITY OF HUNTSVILLE TRANSFER STATION FACILITY	WALKER	5TS	35,559
16	40098	BFI WASTE SERVICES OF TEXAS LP	HARRIS	5RR	59,842
16	40118	HARDY ROAD TRANSFER STATION	HARRIS	5TS	222,509
16	40131	HOUSTON SOUTHEAST TRANSFER STATION	HARRIS	5TS	423,877
16	40132	HOUSTON SOUTHWEST TRANSFER STATION	HARRIS	5TS	406,837
16	40141	MONTAGUE COUNTY TRANSFER STATION FACILITY	MONTGOMERY	5TS	45
16	40148	ALLIED WASTE JACKSBORO TRANSFER STATION	HARRIS	5TS	16,295
16	40182	ENVIROCLEAN MANAGEMENT SERVICES INC	HARRIS	5TS	2,285
16	40189	EGBERT TRANSFER STATION	HARRIS	5TS	85,915
16	40191	COUNTRY WASTE INC	AUSTIN	5TS	5,750
16	40202	US OIL RECOVERY LP - PASADENA	HARRIS	5TL	873,595
16	42020	DON TOL COMPOST FACILITY	MATAGORDA	5RC	2,702
16	43009	DARLING TORVAC PLANT LIQUID WASTE PROCESSING FACILITY	HARRIS	5GG	1,918,036
16	9483	BRAZORIA COUNTY RECYCLING CENTER	HARRIS	5TS	287,930
GOLDEN CRESCENT REGIONAL PLANNING COMMISSION					
17	2181	JACKSON COUNTY MSW TS AND RECYCLING CTR	JACKSON	5TS	4,526
17	40011	CITY OF HALLETTSVILLE TRANSFER STATION	LAVACA	5TS	558
17	40017	CITY OF YOAKUM	DE WITT	5TS	9,137
17	40094	STERICYCLE EL PASO MEDICAL WASTE TS	VICTORIA	5TS	2,408
ALAMO AREA COUNCIL OF GOVERNMENTS					
18	1443	STARCREST TRANSFER STATION	BEXAR	5TS	134,993
18	1871	JOURDANTON TRANSFER STATION FACILITY	ATASCOSA	5TS	320
18	2248	LIQUID ENVIRONMENTAL SOLUTIONS OF TX SAN ANTONIO	BEXAR	5GG	7,803,658

Individual Facility Data for Non-Landfill Facilities

COG	Permit	Site Name	County	Type	2005Tons
18	2317	WHOLE EARTH ORGANIC COMPOSTING	BEXAR	5RC	6,489,674
18	42012	GARDEN-VILLE RESEARCH AND RECYCLING PARK	BEXAR	5RC	10,263
18	42028	CITY OF KERRVILLE LANDFILL	KERR	5RC	6,631
18	43011	LACOSTE WASTE WATER TREATMENT PLANT	MEDINA	5GG	12,993,724
COASTAL BEND COUNCIL OF GOVERNMENTS					
20	40002	LIVE OAK COUNTY TRANSFER STATION	LIVE OAK	5TS	600
20	40027	ARANSAS COUNTY TRANSFER STATION FACILITY	ARANSAS	5TS	26,331
20	40093	LIQUID ENVIRONMENTAL SOLUTIONS OF TX ROBSTOWN	NUECES	5TL	2,558,200
20	40143	KLEBERG COUNTY CITIZENS COLLECTION SITE	KLEBERG	5TS	1,132
20	42024	TEXAS SLUDGE DISPOSAL INC	SAN PATRICIO	5RC	6,308
20	43013	TEXAS SLUDGE DISPOSAL INC	SAN PATRICIO	5GG	4,033,782
LOWER RIO GRANDE VALLEY DEVELOPMENT COUNCIL					
21	0748	CITY OF PHARR TRANSFER STATION	HIDALGO	5TS	1,312
21	2102	HIDALGO COUNTY PRECINCT 4 RECOVERY CENTER	HIDALGO	5SG	18,404
21	40110	CITY OF HARLINGEN TRANSFER STATION FACILITY	CAMERON	5TS	55,016
21	42015	CITY OF BROWNSVILLE COMPOSTING FACILITY	CAMERON	5RC	24,451
TEXOMA COUNCIL OF GOVERNMENTS					
22	1030	CITY OF GAINESVILLE TRANSFER STATION	COOKE	5TS	28,956
22	1136	CITY OF SHERMAN TRANSFER STATION	GRAYSON	5TS	53,039
CENTRAL TEXAS COUNCIL OF GOVERNMENTS					
23	40004	CITY OF HICO TRANSFER STATION FACILITY	HAMILTON	5TS	353
23	40043	CITY OF KILLEEN TRANSFER STATION FACILITY	BELL	5TS	98,447
23	40145	CITY OF COPPERAS COVE TRANSFER STATION	CORYELL	5TS	15,344
23	40160	CITY OF SAN SABA MSW PROCESSING FACILITY	SAN SABA	5TS	3,047
23	42017	CITY OF COPPERAS COVE COMPOSTING FACILITY	CORYELL	5RC	1,821
23	43010	S & M VACUUM WASTE LTD	BELL	5GG	1,790,200
MIDDLE RIO GRANDE DEVELOPMENT COUNCIL					
24	40034	CITY OF SABINAL	UVALDE	5TS	1,141
24	40042	CITY OF EAGLE PASS TRANSFER STATION FACILITY	MAVERICK	5TS	30,240
24	40057	CITY OF ROCKSPRINGS TRANSFER STATION	EDWARDS	5TS	1,979

References

- i. Title 30, Texas Administrative Code, Chapter 330, Sections 330.3 and 330.14
- ii. Data from the US Census Bureau state population estimates for July 1, 2005, found at <http://www.census.gov>
- iii. Texas Health and Safety Code, Section 363.0615
- iv. 1997 Survey performed by Small Business and Local Government Assistance Section of the TCEQ