

Below is an Electronic Version of an Out-of-Print Publication

You can scroll to view or print this publication here, or you can borrow a paper copy from the Texas State Library, 512/463-5455. You can also view a copy at the TCEQ Library, 512/239-0020, or borrow one through your branch library using interlibrary loan.

The TCEQ's current print publications are listed in our catalog at <http://www.tceq.texas.gov/publications/>.



September 2008
AS-187/08

Municipal Solid Waste in Texas: A Year in Review

FY2007 Data Summary and Analysis

Municipal Solid Waste in Texas: A Year in Review

FY2007 Data Summary and Analysis

Prepared by
Waste Permits Division

AS-187/08
September 2008



Buddy Garcia, *Chairman*
Larry R. Soward, *Commissioner*
Bryan W. Shaw, Ph.D., *Commissioner*

Mark R. Vickery, P.G., *Executive Director*

We authorize you to use or reproduce any original material contained in this publication—that is, any material we did not obtain from other sources. Please acknowledge the TCEQ as your source.

Copies of this publication are available for public use through the Texas State Library, other state depository libraries, and the TCEQ Library, in compliance with state depository law. For more information on TCEQ publications call 512-239-0028 or visit our Web site at:

www.tceq.state.tx.us/goto/publications

Published and distributed
by the
Texas Commission on Environmental Quality
PO Box 13087
Austin TX 78711-3087

The TCEQ is an equal opportunity employer. The agency does not allow discrimination on the basis of race, color, religion, national origin, sex, disability, age, sexual orientation or veteran status. In compliance with the Americans with Disabilities Act, this document may be requested in alternate formats by contacting the TCEQ at 512-239-0028, Fax 512-239-4488, or 1-800-RELAY-TX (TDD), or by writing P.O. Box 13087, Austin, TX 78711-3087.

TABLE OF CONTENTS

| | |
|---|----|
| About the Municipal Solid Waste Reporting Program..... | 1 |
| Definition of Municipal Solid Waste..... | 1 |
| Who Files Reports..... | 2 |
| Reporting Period..... | 2 |
| Data Used..... | 3 |
| Landfills Reporting..... | 4 |
| Classification of MSW Facilities..... | 4 |
| Landfills..... | 4 |
| Processing Facilities..... | 5 |
| Other Information..... | 6 |
| Capacity Information..... | 7 |
| Waste Information..... | 11 |
| MSW Importation and Exportation..... | 13 |
| MSW Generation..... | 13 |
| Impact of Recycling on MSW Disposal..... | 14 |
| Trends Analyses..... | 15 |
| Historical Data Summary for MSW Landfills in Texas..... | 17 |
| Individual MSW Landfill Facility Data..... | 18 |
| Individual Facility Data for Other Permitted and Registered MSW Facilities..... | 26 |
| References..... | 31 |

TABLES

| | |
|---|----|
| Table 1. Landfill Activity Status in 2007 | 4 |
| Table 2. Number of MSW Processing Facilities | 5 |
| Table 3. Remaining Capacity by Facility Type | 8 |
| Table 4. Analysis of MSW Landfill Disposal in Texas in 2007, Grouped by COG | 9 |
| Table 5. Amounts of Residential, Commercial, and C&D Waste Disposed by Year..... | 11 |
| Table 6. Detailed Breakdown of Waste Types Landfilled in Texas in 2007..... | 12 |
| Table 7. Number of Counties Served by Landfills | 16 |

FIGURES

| | |
|--|----|
| Figure 1. Texas Total and Per-Capita Landfill Disposal | 7 |
| Figure 2. Councils of Governments | 10 |
| Figure 3. Breakdown of Waste Types Landfilled in Texas, 2007 | 11 |
| Figure 4. Potential Reduction in Amounts Disposed..... | 14 |
| Figure 5. Number of Permitted Landfills and Remaining Capacity | 15 |
| Figure 6. Counties with Active Landfills in 2007 | 16 |

ABOUT THE MUNICIPAL SOLID WASTE REPORTING PROGRAM

Definition of Municipal Solid Waste

The definition of municipal solid waste (MSW) is found in the Texas Administrative Code (TAC), Title 30, Chapter 330, Subchapter A (General Information). MSW is defined as "solid waste resulting from or incidental to municipal, community, commercial, institutional, and recreational activities, including garbage, rubbish, ashes, street cleanings, dead animals, abandoned automobiles, and all other solid waste other than industrial solid waste." Industrial solid waste is defined and regulated under 30 TAC Chapter 335.

The Texas definition of municipal solid waste considers the source, rather than the constituents or properties of the waste. Distributors, retailers, repair services and the general public are considered municipal generators while manufacturers are considered industrial solid waste generators. As an example, a power distribution provider is a municipal solid waste generator while an electric power generation plant would be an industrial waste generator.

It is worth noting that the Texas definition of MSW is more encompassing than that of the US EPA and several other states. The Texas definition of MSW includes construction and demolition (C&D) debris and municipal sludge. Based on the Texas definition, the per capita MSW disposal and generation rates for Texas appear to be significantly higher than those of other states and of the nation as a whole.

The US EPA and most states including Texas define MSW in terms of hazardous or non-hazardous. Texas also defines industrial solid wastes as being separate and distinct from MSW. In Texas, industrial solid waste may also be defined as hazardous or non-hazardous, with the non-hazardous industrial solid waste further defined by classes.

- Class 1 non-hazardous waste includes waste that may pose a substantial danger to human health or the environment if not properly managed, based on its constituents and properties. There are special handling requirements for Class 1 wastes. An example of Class 1 waste is solidified industrial sludges contaminated with metals or organics.
- Class 2 is a category for industrial solid waste that cannot be described as hazardous, Class 1, or Class 3. Examples of Class 2 wastes include waste activated sludge from industrial biological wastewater treatment and regular trash from plant offices. Class 3 wastes are inert and essentially insoluble industrial solid wastes, not readily decomposed.

- Class 3 includes materials such as demolition debris and bricks from an industrial facility that are insoluble, do not react with other materials, and do not decompose.

Class 2 and 3 wastes are often accepted by local MSW landfills. The acceptance of non-hazardous industrial solid waste at MSW landfills requires prior written authorization from the TCEQ. For example, the acceptance of Class 1 non-hazardous industrial solid waste at MSW landfills requires that the landfill construct a special unit for disposal and have written authorization in their permit. The Texas MSW rules do not use the Class 1, Class 2, and Class 3 designations for non-hazardous municipal waste. Although not required by definition, some MSW landfills manage commercial MSW that exhibits the characteristics of Class 1 non-hazardous industrial waste in the same manner as the industrial waste.

Additional terms that are used in this report include:

- Residential waste which is waste generated in single and multi-family homes, including newspapers, clothing, disposable tableware, food packaging, cans, bottles, food scraps, and yard trimmings other than those that are diverted to backyard composting.
- Commercial waste which is all solid waste emanating from business establishments such as stores, markets, office buildings, restaurants, shopping centers, and theaters; and construction and demolition (C&D) waste which is waste building materials, dredging materials, tree stumps, and rubble resulting from construction, remodeling, repair, and demolition of homes.
- Commercial buildings and other structures and pavements. C&D waste may contain lead, asbestos, or other hazardous substances.

Who Files Reports

This report includes data submitted to the agency by both permitted and registered solid waste facilities. The data is obtained by the TCEQ Executive Director under the authority of 30 TAC 330, Subchapter P (Fees and Reporting) which requires all registered or permitted facility operators to report the types and amounts of waste processed or disposed of at the facility or process location.

Reporting Period

Reports from MSW facilities are based on the Texas state fiscal year, which runs from September 1 through August 31. All references to 2007 are to fiscal year 2007. This report covers data from September 1, 2006, through August 31, 2007.

Data Used

The data in this summary is condensed from reports submitted by 246 landfills and 91 other permitted MSW facilities in 2007. Other permitted facility types include transfer stations and resource recovery (recycling, composting, etc.) facilities. Data was also received from 110 registered facilities, mostly small transfer stations that do not require a permit. However, this report is focused mainly on permitted facilities.

Facility operators report information about different aspects of the facility, such as operational (e.g., what is the average haul distance to their facility), administrative (e.g., who is operating the facility), and facility activities (e.g., amounts and types of waste accepted at the facility).

A facility is referred to in this report as "open," even if it is not accepting waste and as long as the permit for the facility has not been revoked. Permit holders may request voluntary revocation of their own permits once they have successfully completed their post-closure-care period. Or, the agency may initiate, with just cause, the revocation of a permit. Permit revocation is the only action that can change a facility status from "open" to "closed" in the TCEQ Waste Permits Division data base. Texas statute allows an open but inactive landfill to reactivate and accept waste, under certain circumstances. All open facilities are held to the requirements of their permit, regardless of their operational state.

Population data for this report was obtained from the US Census Bureau state population estimates for July 1, 2007, found at <<http://www.census.gov>>.

LANDFILLS REPORTING

There are 272 permitted landfills in Texas. Only 246 MSW landfills provided data for 2007, of which 216 were open. Of the 216 landfills, 188 were active (accepting waste) and 27 were open but inactive (not accepting waste). Table 1 provides the status of the landfills that submitted reports. Of the inactive landfills, 16 had previously accepted waste and 11 had not yet received waste. The remaining 31 landfills reporting were in post-closure status. Active and Inactive landfills that intend to accept waste in the future are required to post signs and provide published and mailed public notice once a year stating that they may open in the future.

| <i>Activity Status</i> | <i>Open or Closed</i> | <i>Count</i> |
|--------------------------------------|-----------------------|--------------|
| Active | open | 188 |
| Inactive – yet to receive waste | open | 11 |
| Inactive – previously received waste | open | 16 |
| Post-closure care | closed | 31 |
| Total | | 246 |

Table 1. Landfill Activity Status in 2007

CLASSIFICATION OF MSW FACILITIES

The TCEQ has classified all MSW facilities according to the method of processing or disposal of MSW.

Landfills

Type I facilities. A Type I landfill is the standard landfill for the disposal of municipal solid waste. Of the 216 landfills open at the end of the year, 171 were permitted as Type I.

Type IV facilities. A Type IV landfill accepts only brush, construction and demolition (C&D) debris, and other similar waste that will not putrefy. Type IV facilities are not distributed equally across the state; nearly half are located in the greater Houston area. Type IV landfills handled 9 percent of the total waste disposed in landfills and accounted for 3.23 percent of the total statewide capacity remaining in 2007. Of the 216 landfills open at the end of the year, 45 (21 percent) were permitted as Type IV.

Arid exemption (AE) facilities. Type I and Type IV landfills in relatively dry parts of the state may be permitted as arid-exempt landfills. Arid exempt landfills are limited in the amount of solid waste they may accept and they are exempt from liner and groundwater monitoring requirements¹. In 2007, 69 facilities (37 percent of active facilities) had an arid exemption. Of these, 50 are Type I AE and 19 are Type IV AE. All arid exempt facilities accounted for just over one percent of the total disposal and 1.3 percent of the total remaining landfill capacity in the state in 2007.

Processing Facilities

Separate permitted and registered solid waste processing facilities (i.e., not landfills) are classified as Type V facilities with several sub-types, as indicated in Table 2, or Type IX facilities. Type V facilities encompass processing plants that transfer, incinerate, shred, grind, bale, compost, salvage, separate, dewater, reclaim, and/or provide other processing of solid waste. A closed disposal facility, an inactive portion of a disposal facility, or an active disposal facility may be used for materials extraction for energy and material recovery under a Type V authorization. A Type IX facility is an energy, material, or gas recovery for beneficial use facility, or a landfill mining facility located within or adjacent to a landfill. Processing facilities may be authorized by permit. However, some facilities qualify for authorization by registration if they meet specific requirements identified by statute and rule. An example of a facility that would qualify for a registration is a transfer station that includes a material recovery operation that recovers at least 10% by weight of the incoming stream for reuse or recycling.

Transfer stations (5TS) Permitted transfer stations handled 3.08 million tons of waste. Registered transfer stations handled 2.63 million tons.

Waste incinerators (5WI) Permitted waste incinerators processed 13,868 tons of waste. There are no registered waste incinerators.

Waste-to-energy (5RE) Permitted waste to energy facilities recovered energy from 801.86 tons of waste. There are no registered waste-to-energy facilities.

Liquid waste processors (5GG) Permitted liquid processors treated 109 million gallons of grease, grit, septage, and other liquid wastes. Registered liquid waste processors handled 23.9 million gallons.

Composting (5RC) The four permitted composting facilities in the state processed 10.4 million tons of compostable material. One new permitted facility has not yet opened. In addition to these, there are 13 registered composting facilities that handled 153,472 tons of compostable material. The majorities of composting facilities are exempt from permitting or registration requirements under the MSW regulations and are therefore outside the scope of this report.

Recycling and recovery (5RR) Two permitted active recycling and recovery facilities recovered 155,970 tons of recyclable material that otherwise would have been disposed of at a landfill. Similarly, three registered facilities recovered 141,854 tons.

| Facility Type | Active Permitted Facilities | Active Registered Facilities |
|---------------|-----------------------------|------------------------------|
| 5TS | 34 | 77 |
| 5WI | 3 | -- |
| 5RE | 1 | -- |
| 5GG | 13 | 7 |
| 5RC | 4 | 13 |
| 5RR | 2 | 3 |
| 9GR | 1 | 12 |

Table 2. Number of MSW Processing Facilities in the State

Gas recovery (9GR) Landfill gas was recovered at one permitted processing facility, which collected 2.76 billion cubic feet of gas for beneficial use. The eleven registered facilities recovered 2.45 billion cubic feet. There were also 13 permitted landfills that recovered landfill gas for fuel in 2007, which collected a total of 2.64 billion cubic feet of methane gas. Altogether, the gas was used to generate 80.06 million kilowatt-hours of electricity for on-site facility use and 297.10 million kilowatt-hours for sale or off-site use.

Other Information

Use of scales. The majority of active landfills in Texas (64 percent) used scales to measure all or some of their incoming waste. Facilities using scales accepted about 92 percent of the total waste stream disposed. Facilities without scales (as well as many facilities with scales) reported waste disposal by volume (i.e., cubic yards) which was then converted to tons for this report.

Texas Solid Waste Disposal Fee. As defined in Title 5 (Sanitation and Environmental Quality) §361.013(a) of the Texas Health and Safety Code,

“...the commission shall charge a fee on all solid waste that is disposed of within this state. The fee is \$1.25 per ton received for disposal at a municipal solid waste landfill if the solid waste is measured by weight. If the solid waste is measured by volume, the fee for compacted solid waste is 40 cents per cubic yard or, for uncompacted solid waste, 25 cents per cubic yard received for disposal at a municipal solid waste landfill.”

Landfill operators collect this Texas solid waste disposal fee as part of the tipping fee that they charge to their customers. The average tipping fees detailed below include this state fee.

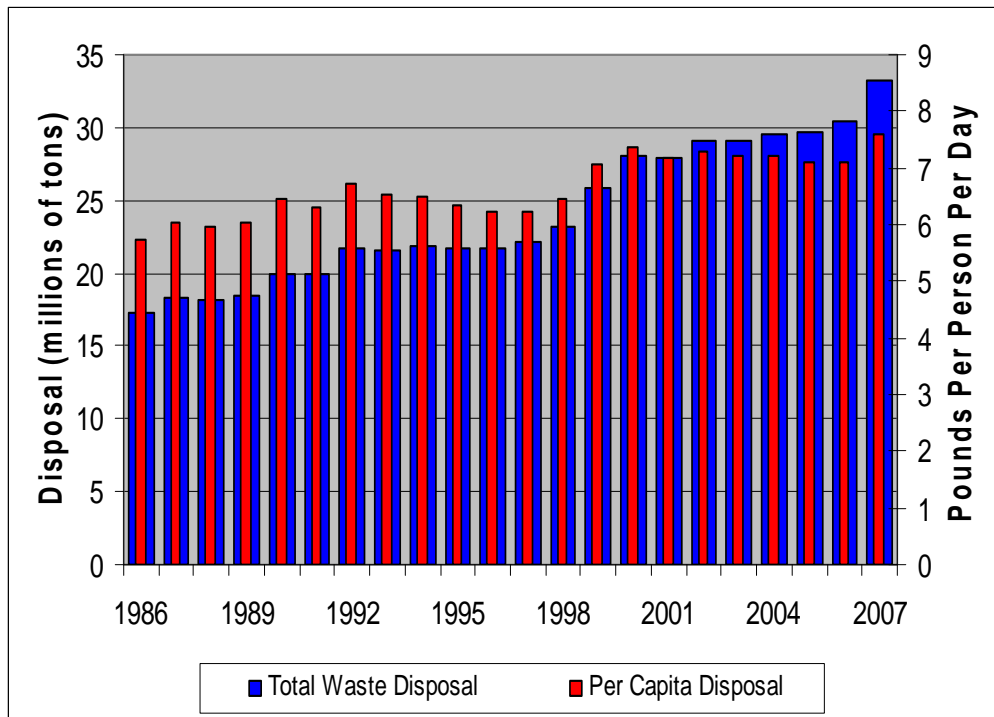
Tipping fees. Landfills charge their customers a tipping (disposal) fee based on weight or volume depending upon the type of waste and method of delivery to the landfill. For example, one landfill might measure an open roll-off dumpster by volume and measure a compactor truck by weight. Most landfill operators (125, or 58 percent of the active landfills) reported that they collected tipping fees by the ton of waste, and the state-wide reported average rate was \$26.84 per ton. Fees for waste measured in compacted cubic yards averaged \$7.19 per yard at 38 facilities (18 percent); and 73 facilities (34 percent) reported collecting fees for waste measured in uncompacted cubic yards, with an average rate of \$7.81 per yard. Some landfills use both weight and volume to measure various types of incoming waste.

CAPACITY INFORMATION

Per-capita rate. For 2007, total disposal in the state was 33.19 million tons. Using the US EPA definition of MSW, which excludes construction and demolition debris and treatment plant sludge, the per capita disposal rate in Texas was 6.2 pounds per person per day which is above the US EPA national average for 2005 (the most recent data available) of 4.5 pounds per person per day. Using the Texas definition of MSW, which includes those categories listed above, and using the state population estimate of 23,904,380,ⁱⁱ the per-capita landfill disposal rate for Texas for 2007 was 7.6 pounds per person per day.

The 2007 Texas per-capita disposal was greater than the 2006 rate of 7.1, because increases were reported in all major categories. Residential and C&D waste each increased by approximately 8 percent and commercial waste increased by 15 percent. This translates to just over 2.7 million tons more waste landfilled in 2007 than in 2006, an increase of almost 9 percent of the total annual waste stream. However, the population of the state is estimated to have increased by less than 2% or 396,597 persons. The limited population increase, coupled with the increases in waste landfilled, result in the higher per capita disposal rate in 2007. See Figure 1 for a graphic representation of disposal amounts and per capita rates over time.

Figure 1. Texas Total and Per-Capita Landfill Disposal



Landfill capacity. Total remaining landfill capacity in the state at the end of 2007 was 2.15 billion cubic yards. Based on reported compaction rates, this volume would hold 1.40 billion tons of waste and serve for 42 years. Table 3 details remaining capacity for Type I and Type IV landfills. Throughout this report, all estimates of remaining years presume that no new landfill expansions or new permits will be issued and that the 2007 population and disposal amounts will remain constant.

Table 3. Remaining Capacity by Facility Type

| Facility Type | 2007 Tons Disposed | 2007 Tons Remaining | Years Capacity Remaining* |
|---------------|--------------------|---------------------|---------------------------|
| I and IAE | 30,204,900 | 1,327,371,700 | 44 |
| IV and IVAE | 2,978,588 | 76,200,711 | 26 |
| all types | 33,183,488 | 1,403,572,411 | 42 |

* Average, assuming the 2007 disposal rate of 33.18 million tons per year

Growth and attrition. Statewide capacity increased in 2007, the number of active landfills increased by two. Twenty-eight facilities received permit amendments to expand. The resulting net capacity increased approximately 37.2 million tons (roughly 47.6 million cubic yards) or a 2.7 percent increase from the statewide 2006 capacity.

Statewide distribution. Although on a statewide basis, Texas appears to have an adequate reserve of landfill capacity in 2007, this capacity is not evenly distributed over every region of the state. There are 24 councils of governments (COGs) across the state, which are responsible for MSW management planning on a regional basis.ⁱⁱ Of the 24 COG regions; two have less than 10 years of capacity remaining: Brazos Valley Council of Governments (BVCOG) and Capital Area Planning Council (CAPCO). A new landfill has been permitted in the BVCOG region which, when opened, will raise the remaining capacity to over 30 years. Three CAPCO region landfills have submitted applications for major permit amendments to expand their landfill capacities. Four other COG regions have from 10 to 20 years of capacity remaining: Houston-Galveston Area Council (HGAC), Golden Crescent Regional Planning Commission (GCRPC), Coastal Bend Council of Governments (CBCOG), and Central Texas Council of Governments (CTCOG). See Table 4 on Page 9 for further capacity details for each COG. See Figure 2 on Page 10 for a map of the COG regions.

Table 4. Analysis of MSW Landfill Disposal in Texas in 2007, Grouped by COG

| COG | Active MSW Landfills | | 2007 Disposal | | | | Remaining Capacity | | |
|---------------|----------------------|------------|-------------------|------------|-------------------|------------|----------------------|------------|-----------|
| | Count | % of Total | Tons | % of Total | Population | Per Cap* | Tons | % of Total | Years ** |
| 1 PRPC | 19 | 10.11 | 563,899 | 1.70 | 411,521 | 7.51 | 40,478,695 | 2.89 | 58 |
| 2 SPAG | 18 | 9.57 | 448,240 | 1.35 | 389,476 | 6.31 | 85,620,027 | 6.11 | 87 |
| 3 NRPC | 2 | 1.06 | 367,885 | 1.11 | 219,347 | 9.19 | 55,328,371 | 3.95 | 91 |
| 4 NCTCOG | 23 | 12.23 | 9,221,499 | 27.79 | 6,308,939 | 8.01 | 380,108,105 | 27.13 | 35 |
| 5 ARK-TEX | 4 | 2.13 | 355,645 | 1.07 | 275,972 | 7.06 | 29,629,698 | 2.12 | 118 |
| 6 ETCOG | 5 | 2.66 | 675,136 | 2.03 | 801,216 | 4.62 | 107,902,485 | 7.70 | 89 |
| 7 WCTCOG | 8 | 4.26 | 410,089 | 1.24 | 317,851 | 7.07 | 76,597,458 | 5.47 | 86 |
| 8 RGCOG | 8 | 4.26 | 609,821 | 1.84 | 759,525 | 4.40 | 20,111,730 | 1.44 | 44 |
| 9 PBRPC | 14 | 7.45 | 536,420 | 1.62 | 388,297 | 7.57 | 48,185,665 | 3.44 | 83 |
| 10 CVCOG | 9 | 4.79 | 163,752 | 0.49 | 144,332 | 6.22 | 6,879,516 | 0.49 | 62 |
| 11 HOTCOG | 4 | 2.13 | 1,312,112 | 3.95 | 339,784 | 21.16 | 38,175,535 | 2.73 | 28 |
| 12 CAPCO | 6 | 3.19 | 2,723,491 | 8.21 | 1,708,204 | 8.74 | 33,870,823 | 2.42 | 7 |
| 13 BVCOG | 1 | 0.53 | 272,037 | 0.82 | 290,849 | 5.13 | 819,192 | 0.06 | 3 |
| 14 DETCOG | 4 | 2.13 | 536,182 | 1.62 | 367,406 | 8.00 | 42,064,341 | 3.00 | 28 |
| 15 SETRPC | 4 | 2.13 | 739,005 | 2.23 | 376,241 | 10.76 | 28,387,228 | 2.03 | 31 |
| 16 HGAC | 23 | 12.23 | 8,180,518 | 24.65 | 5,765,772 | 7.77 | 162,370,446 | 11.59 | 19 |
| 17 GCRPC | 1 | 0.53 | 161,762 | 0.49 | 185,584 | 4.78 | 4,114,796 | 0.29 | 17 |
| 18 AACOG | 6 | 3.19 | 2,987,172 | 9.00 | 2,097,703 | 7.80 | 163,250,938 | 11.65 | 25 |
| 19 STDC | 6 | 3.19 | 400,900 | 1.21 | 313,563 | 7.01 | 5,070,116 | 0.36 | 22 |
| 20 CBCOG | 7 | 3.72 | 734,889 | 2.21 | 558,325 | 7.21 | 13,384,700 | 0.96 | 19 |
| 21 LRGVDC | 5 | 2.66 | 1,142,075 | 3.44 | 1,118,237 | 5.60 | 31,785,164 | 2.27 | 32 |
| 22 TCOG | 2 | 1.06 | 240,544 | 0.72 | 190,228 | 6.93 | 18,872,232 | 1.35 | 64 |
| 23 CTCOG | 2 | 1.06 | 305,044 | 0.92 | 414,000 | 4.04 | 7,980,129 | 0.57 | 17 |
| 24 MRGDC | 7 | 3.72 | 95,371 | 0.29 | 162,008 | 3.23 | 2,605,020 | 0.19 | 61 |
| Totals | 188 | 100 | 33,183,488 | 100 | 23,904,380 | 7.6 | 1,403,592,411 | 100 | 42 |

*Pounds per person per day

**Average, at 2007 disposal rate

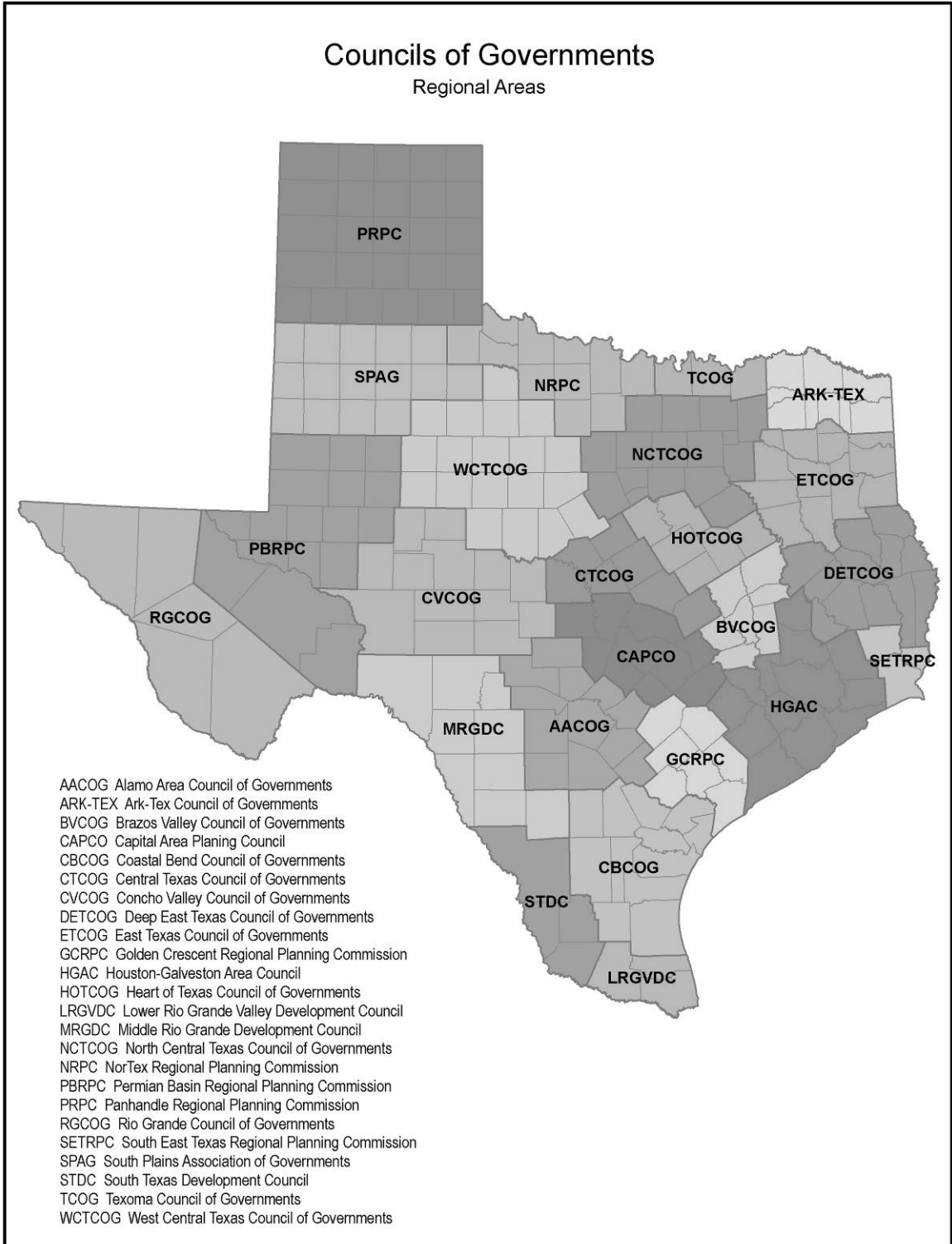


Figure 2. Councils of Governments

Waste Information

Types of wastes. The largest single type of waste disposed of in MSW landfills in Texas in 2007 was commercial waste, comprising 34 percent of the total waste stream, followed by residential waste with 32 percent of the waste stream, and construction and demolition debris (C&D) with 18 percent. These three types compose the vast majority of the waste stream -- 84 percent of all the waste disposed of in the state. See Table 5 which allows for a comparison of the amounts of these three waste types disposed over the past five years. Note that the increase in Residential and C&D Tons disposed from the previous year is greater than 8%. Commercial Tons disposed increased 15%. This is partly due to waste accepted at a NCTCOG Region (Dallas County) area landfill. Waste disposed was accepted from a project conducted by the Army Corp of Engineers that should now be completed. Figure 3 details percentage of each waste type. See Table 6 on Page 12 for a breakdown of the types of wastes disposed of in 2007.

Table 5. Amounts of Residential, Commercial, and C&D Waste Disposed by Year

| Year | Residential Tons | Commercial Tons | C&D Tons |
|------|------------------|-----------------|-----------|
| 2003 | 9,803,619 | 9,572,517 | 5,406,766 |
| 2004 | 10,407,185 | 10,260,035 | 5,322,424 |
| 2005 | 10,070,782 | 9,680,195 | 5,468,701 |
| 2006 | 9,998,672 | 9,882,398 | 5,655,773 |
| 2007 | 10,810,065 | 11,382,383 | 6,125,893 |

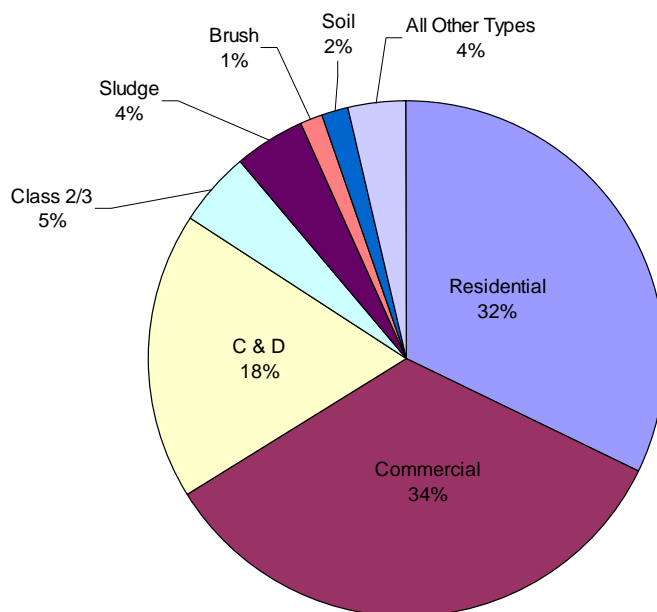


Figure 3. Breakdown of Waste Types Landfilled in Texas, 2007
 Note: Class 1 waste is included in "Soil" and "All Other Types" categories

Table 6. Detailed Breakdown of Waste Types Landfilled in Texas in 2007

| Waste Type | Number of Landfills That Accepted This Waste Type | Tons Disposed | Percent of Total Tons Disposed |
|---------------------------------------|---|-------------------|--------------------------------|
| TYPICAL MUNICIPAL SOLID WASTE | | | |
| Residential | 150 | 10,810,065 | 32.57 |
| Commercial | 132 | 11,382,383 | 34.30 |
| Institutional | 43 | 118,735 | 0.36 |
| Recreational | 14 | 2,797 | 0.01 |
| Brush | 70 | 458,064 | 1.38 |
| Construction/ Demolition | 144 | 6,125,893 | 18.46 |
| Dump and Litter Cleanup | 15 | 4,799 | 0.01 |
| NON-HAZARDOUS INDUSTRIAL WASTE | | | |
| Class 1 (asbestos) | 19 | 50,532 | 0.15 |
| Class 1 (other) | 13 | 114,506 | 0.34 |
| Classes 2 and 3 | 48 | 1,564,352 | 4.71 |
| SPECIAL NON-INDUSTRIAL WASTE | | | |
| Incinerator ash | 6 | 453 | 0.01 |
| Treated medical waste | 14 | 46,610 | 0.14 |
| Asbestos | 32 | 112,407 | 0.34 |
| Dead animals | 76 | 11,607 | 0.03 |
| Sludge | 84 | 1,483,631 | 4.48 |
| Grease trap waste | 15 | 22,290 | 0.07 |
| Grit trap waste | 24 | 19,111 | 0.06 |
| Septage | 6 | 18,758 | 0.06 |
| Contaminated soil | 49 | 570,061 | 1.71 |
| Tire pieces | 24 | 18,915 | 0.06 |
| Rejected materials | 14 | 13,169 | 0.04 |
| Other | 21 | 234,350 | 0.70 |
| Total | | 33,183,488 | 100 |

MSW IMPORTATION AND EXPORTATION

Mexico imports. Texas received 10,064 tons of MSW from Mexico in 2007 at two landfills, up from 4,235 tons in 2006.

State imports. Thirteen facilities imported 101,660 tons of MSW in 2007 from Arkansas, Louisiana, New Mexico, New York and Oklahoma. In 2006, 249,174 tons were imported from other states.

Waste exports. There are no requirements to track MSW exported out of Texas.

MSW GENERATION

US EPA definition. The US EPA defines MSW generation as the sum of: disposal (landfilling and combustion), recycling (including composting), and the net of imports and exports.

Texas recycling. Since there is no reporting requirement for entities in the state that may recycle, it is difficult to obtain an accurate statewide recycling rate.

Diversion at reporting sites. Materials were diverted for recycling or reuse at 122 permitted facilities and 48 registered facilities in 2007, accounting for 2,094,807 tons of material that was not landfilled. In addition, over 10.6 million tons of waste was composted or recycled at authorized processing facilities in the state. Landfills are required to report the amount of waste diverted from within the facility. Recycling efforts that divert materials before reaching the gate at permitted, registered, or authorized processing facilities are not captured in this report.

IMPACT OF RECYCLING ON MSW DISPOSAL

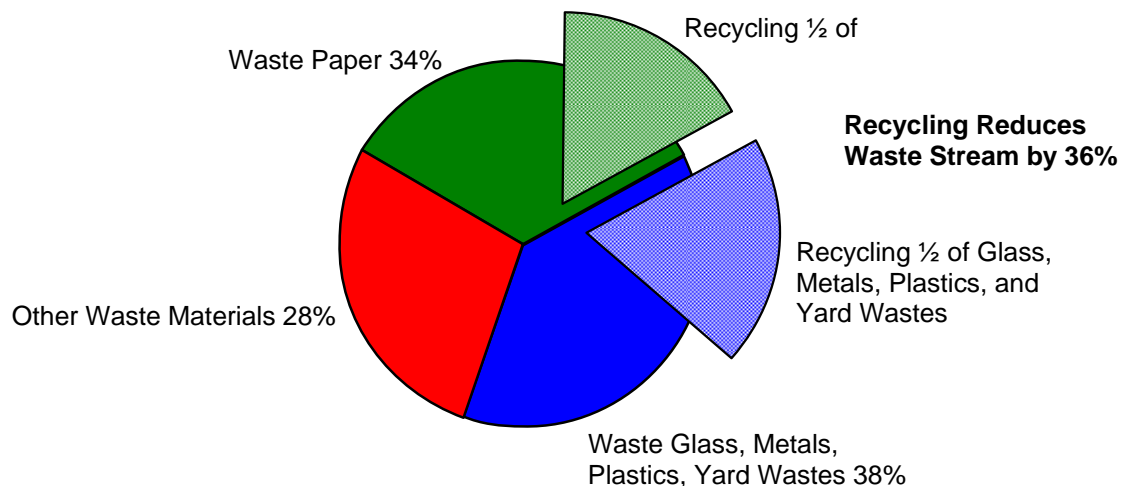
Landfill space is one way that MSW is managed in Texas. The incentive to minimize the need for future disposal capacity in the state can be attributed to costs associated with potential environmental impacts, engineering design, construction, and general operating expenses. These costs are passed on to citizens. In addition, locating, permitting, and constructing a new landfill can be major considerations.

The long-term solution to adequate landfill space is not more or larger landfills. The solution lies in the US EPA's "4 Rs" – reduce, reuse, recycle and rebuy which, when made a part of the waste management process within our communities, can reduce waste disposal and benefit the environment. In the management of waste, recycling alone can have a measurable impact on the amount disposed.

Throughout the state, paper, glass, aluminum cans, plastic, scrap metal, wood, and numerous other items are recycled every day. Citizens may choose reusable items over disposable items. New programs are developed every year that increase the impact that reducing, reusing, and recycling have on preserving disposal capacity. Figure 4 details the dramatic impact that can be achieved by recycling just one half of the available recyclables in household garbage.

Figure 4. Potential Reduction in Amounts Disposed

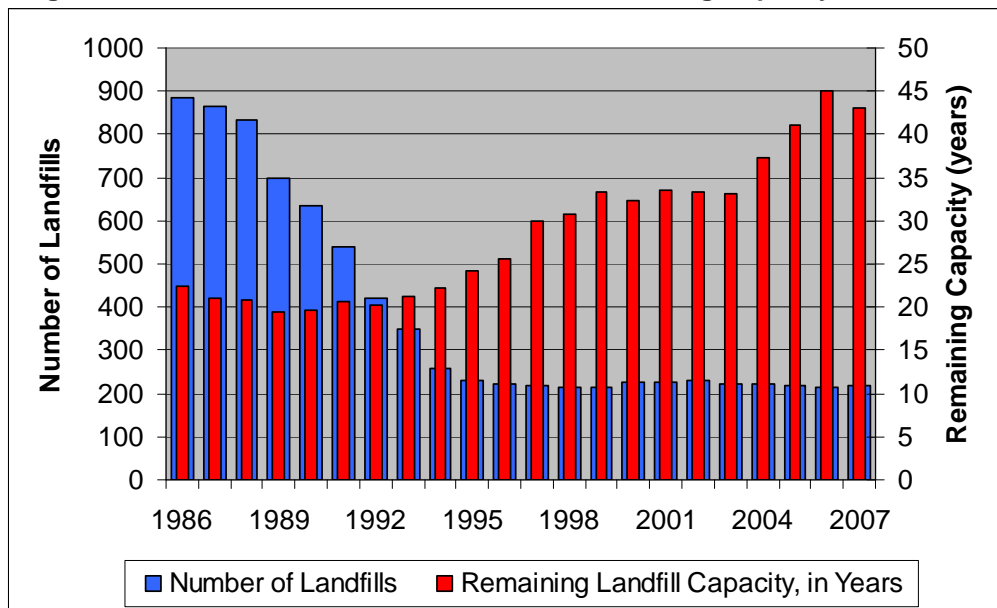
Source data: USEPA 2004 national averages for percentages of generated household wastes



TRENDS ANALYSES

Landfill closures. There have been over 700 MSW landfill closures in Texas since 1986, most due to the more stringent requirements of the Federal Resource Conservation and Recovery Act (RCRA) Subtitle D. However, since the late 1990s this decreasing trend has changed, leveling out at about 215 permitted facilities. Even with fewer landfills in the state, capacity has grown significantly in the past ten years. This indicates a continued move away from smaller community landfills and towards larger regional landfills. See Figure 5 for a graphic representation of this trend.

Figure 5. Number of Permitted Landfills and Remaining Capacity



Capacity reserve. From 1986 to the mid-1990s, the state's reserve capacity for disposal was less than 22 years. The reserves have shown a steady increase since that time, with the current reserve capacity for disposal at about 42 years. This increase is due in part to increases in available volume of permitted disposal capacity, and in part to improvements in landfill technology. These technological improvements have nearly doubled the average waste compaction rates over the last twenty years. In 1986 the average compaction rate was 650 pounds of waste per cubic yard; the average in 2000 was approximately 1,200 pounds per cubic yard and the rate has remained nearly constant since then. The flattening of this trend may indicate that available, affordable landfill compaction technologies have reached their peak efficiencies.

Landfill size. In addition to improvements in the operation of landfills, the size and service areas of landfills have continued to grow over the last decade and a half. In 1986, the state-wide average landfill size was 50 acres with an average depth of 6.5 feet and a height of 13 feet. In 2007, the state-wide average landfill size was 214 acres with an average maximum permitted depth of 34 feet and an average maximum permitted height of 72 feet. This data year, 2007, is the fifth consecutive year in which there has been an increase in the number of regional

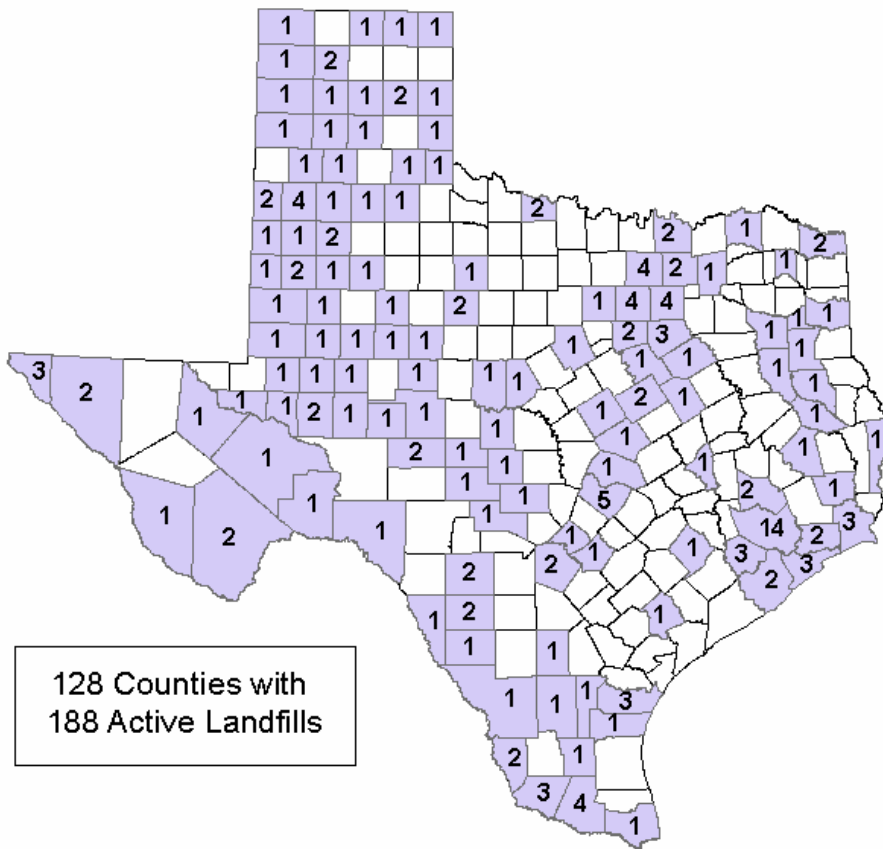
landfills with maximum heights over 100 feet (54, up from 44 in 2005 and 31 in 2000). The number of landfills with maximum permitted heights over 200 feet did not change in 2007 (12 in 2006, up from 9 in 2005).

Counties served. All active landfills reported the number of counties they served, as detailed in Table 7. Service to more than one county was provided by 122 landfills (65 percent). Figure 6 shows the number of active landfills in each Texas County.

| Number of Landfills | Counties Served |
|---------------------|-----------------|
| 66 | 1 |
| 79 | 2-5 |
| 27 | 6-10 |
| 7 | 11-15 |
| 5 | 16-20 |
| 4 | > 20 |

Figure 6. Counties with Active Landfills in 2007

Table 7. Number of Counties Served by Landfills



Historical Data Summary for MSW Landfills in Texas

| Year | Waste Disposal (Tons) | State Population | Per Capita Disposal* | Number of Landfills Accepting Waste | Number of landfills Not Accepting Waste** | Remaining Capacity | | |
|-------------|-----------------------|-------------------|----------------------|-------------------------------------|---|----------------------|----------------------|-------------|
| | | | | | | Cubic Yards | Tons | Years |
| 1988 | 18,114,295 | 16,668,639 | 5.95 | 750 | 84 | 1,162,374,628 | 377,771,754 | 20.9 |
| 1989 | 18,531,001 | 16,806,521 | 6.04 | 616 | 83 | 1,111,902,033 | 361,368,161 | 19.5 |
| 1990 | 19,969,615 | 16,986,510 | 6.44 | 493 | 142 | 1,124,524,795 | 393,583,678 | 19.7 |
| 1991 | 19,973,622 | 17,349,000 | 6.31 | 405 | 135 | 1,183,699,041 | 414,294,664 | 20.7 |
| 1992 | 21,675,661 | 17,655,650 | 6.73 | 345 | 77 | 1,193,233,770 | 440,730,048 | 20.3 |
| 1993 | 21,517,063 | 18,031,484 | 6.54 | 289 | 62 | 1,205,635,627 | 456,161,796 | 21.2 |
| 1994 | 21,808,274 | 18,378,185 | 6.50 | 199 | 58 | 1,269,565,453 | 483,752,986 | 22.2 |
| 1995 | 21,639,678 | 18,723,991 | 6.33 | 191 | 39 | 1,071,520,039 | 523,633,365 | 24.2 |
| 1996 | 21,738,137 | 19,128,261 | 6.23 | 186 | 35 | 1,023,799,597 | 554,095,949 | 25.5 |
| 1997 | 22,094,777 | 19,439,337 | 6.23 | 181 | 37 | 1,169,628,669 | 659,694,441 | 29.9 |
| 1998 | 23,259,425 | 19,759,614 | 6.45 | 184 | 29 | 1,300,609,247 | 716,302,147 | 30.8 |
| 1999 | 25,791,066 | 20,044,141 | 7.05 | 179 | 34 | 1,557,349,331 | 862,778,821 | 33.4 |
| 2000 | 28,034,517 | 20,851,820 | 7.37 | 183 | 44 | 1,633,321,824 | 904,891,939 | 32.3 |
| 2001 | 27,938,751 | 21,235,018 | 7.18 | 186 | 42 | 1,710,713,869 | 939,383,633 | 33.6 |
| 2002 | 29,061,966 | 21,779,893 | 7.31 | 190 | 40 | 1,691,970,227 | 971,314,962 | 33.4 |
| 2003 | 29,073,315 | 22,118,509 | 7.20 | 184 | 39 | 1,506,807,849 | 963,972,887 | 33.1 |
| 2004 | 29,581,785 | 22,490,022 | 7.21 | 189 | 34 | 1,826,587,075 | 1,134,462,509 | 37.4 |
| 2005 | 29,671,151 | 22,859,968 | 7.11 | 186 | 32 | 1,870,868,394 | 1,217,845,562 | 41.0 |
| 2006 | 30,453,702 | 23,507,783 | 7.10 | 187 | 28 | 2,110,807,960 | 1,366,311,822 | 45.0 |
| 2007 | 33,183,488 | 23,904,380 | 7.61 | 188 | 28 | 2,158,501,232 | 1,403,592,411 | 42.2 |

* using the Texas per capita definition, as defined on p. 7

** excludes landfills in Post-Closure status

Individual MSW Landfill Facility Data

Active landfills, organized by COG Number, Facility Type, and Permit Number

All values rounded to the nearest whole number

Database codes used:

2007Tons = Total tons landfilled in 2007

RemYds = Remaining landfill capacity in cubic yards

Rate = In-landfill compaction rate in pounds per cubic yard

RemTons = Remaining landfill capacity in equivalent tons (based on landfill compaction rate)

RemYrs = Remaining landfill capacity in years (based on permit volumes and waste acceptance rate)

| Individual MSW Landfill Facility Data | | | | | | | | | |
|---|--------|------------------------------------|---------------|------|-----------|------------|------|------------|--------|
| COG | Permit | Site Name | County | Type | 2007 Tons | RemYds | Rate | RemTons | RemYrs |
| PANHANDLE REGIONAL PLANNING COMMISSION | | | | | | | | | |
| 01 | 0073 | CITY OF AMARILLO LANDFILL | POTTER | 1 | 238,739 | 74,001,000 | 800 | 29,600,400 | 48 |
| 01 | 0211 | CITY OF DUMAS LANDFILL | MOORE | 1 | 18,576 | 234,402 | 800 | 93,761 | 5 |
| 01 | 0215 | CITY OF HEREFORD LANDFILL | DEAF SMITH | 4AE | 3,398 | 372,581 | 850 | 158,347 | 47 |
| 01 | 0414 | ARMSTRONG COUNTY LANDFILL | ARMSTRONG | 4AE | 2,148 | 292,157 | 500 | 73,039 | 34 |
| 01 | 0445 | CITY OF DIMMITT LANDFILL | CASTRO | 1AE | 4,778 | 1,296,994 | 750 | 486,373 | 102 |
| 01 | 0570 | CITY OF MCLEAN LANDFILL | GRAY | 1AE | 847 | 558,125 | 750 | 209,297 | 10 |
| 01 | 0791 | CAL FARLEYS BOYS RANCH LANDFILL | OLDHAM | 4AE | 100 | 152,500 | 400 | 30,500 | |
| 01 | 0876 | CITY OF PERRYTON LANDFILL | OCHILTREE | 1AE | 5,776 | 108,164 | 1015 | 54,893 | 10 |
| 01 | 0955 | CITY OF WELLINGTON LANDFILL | COLLINGSWORTH | 1AE | 5,652 | 586,111 | 800 | 234,445 | 49 |
| 01 | 1038 | CITY OF DALHART MUNICIPAL LANDFILL | DALLAM | 1AE | 11,104 | 509,826 | 785 | 200,107 | 18 |
| 01 | 1164 | PANHANDLE LANDFILL | CARSON | 1AE | 2,601 | 779,189 | 400 | 155,838 | 60 |
| 01 | 1663 | BFI SOUTHWEST AMARILLO LANDFILL | RANDALL | 1 | 186,918 | 4,539,329 | 1161 | 2,635,080 | 14 |
| 01 | 1943 | CITY OF BOOKER LANDFILL | LIPSCOMB | 1AE | 1,719 | 477,240 | 850 | 202,826 | 66 |
| 01 | 2238 | CITY OF PAMPA LANDFILL | GRAY | 1 | 54,581 | 8,137,376 | 1000 | 4,068,688 | 75 |
| 01 | 2263 | CITY OF CHILDRESS LANDFILL | CHILDRESS | 1AE | 7,013 | 2,495,557 | 800 | 998,223 | 142 |
| 01 | 2266 | CITY OF MEMPHIS LANDFILL | HALL | 1AE | 6,724 | 1,095,289 | 850 | 465,498 | 70 |
| 01 | 2281 | CITY OF SHAMROCK | WHEELER | 1AE | 4,786 | 385,617 | 800 | 154,247 | 32 |
| 01 | 2285 | CITY OF DUMAS LANDFILL | MOORE | 4AE | 2,701 | 333,902 | 800 | 133,561 | 49 |
| 01 | 2352 | CITY OF SPEARMAN MSW LANDFILL | HANSFORD | 1AE | 5,738 | 1,096,487 | 955 | 523,572 | 110 |

Individual MSW Landfill Facility Data

| COG | Permit | Site Name | County | Type | 2007 Tons | RemYds | Rate | RemTons | RemYrs |
|--|--------|---------------------------------|---------|------|-----------|-------------|------|------------|--------|
| SOUTH PLAINS ASSOCIATION OF GOVERNMENTS | | | | | | | | | |
| 02 | 0069 | CALICHE CANYON LANDFILL | LUBBOCK | 1 | 22,736 | 1,184,065 | 700 | 414,423 | 19 |
| 02 | 0363 | CITY OF AMHERST LANDFILL | LAMB | 1AE | 337 | 5,957 | 400 | 1,191 | 4 |
| 02 | 0549 | CITY OF MATADOR LANDFILL | MOTLEY | 1AE | 3,918 | 739,968 | 800 | 296 | 76 |
| 02 | 0564 | CITY OF MULESHOE LANDFILL | BAILEY | 4AE | 2,033 | 206,295 | 700 | 72,204 | 36 |
| 02 | 0583 | CITY OF OLTON LANDFILL | LAMB | 1AE | 8,865 | 26,622 | 666 | 8,865 | 1 |
| 02 | 1298 | CITY OF LITTLEFIELD LANDFILL | LAMB | 4AE | 5,320 | 360,666 | 1400 | 252,466 | 40 |
| 02 | 1733 | CITY OF SUNDOWN LANDFILL | HOCKLEY | 4AE | 460 | 236,278 | 850 | 100,418 | 390 |
| 02 | 2157 | CITY OF PLAINVIEW LANDFILL | HALE | 1 | 29,522 | 10,680,312 | 722 | 3,855,592 | 129 |
| 02 | 2170 | BROWNFIELD MSW LANDFILL | TERRY | 1 | 15,518 | 4,599,368 | 900 | 2,069,715 | 133 |
| 02 | 2207 | CITY OF FLOYDADA LANDFILL | FLOYD | 1AE | 7,159 | 981,349 | 830 | 407,260 | 57 |
| 02 | 2217 | YOAKUM COUNTY LANDFILL | YOAKUM | 1AE | 8,960 | 3,365,465 | 800 | 1,346,186 | 142 |
| 02 | 2227 | CITY OF POST LANDFILL | GARZA | 1AE | 4,872 | 276,116 | 650 | 89,738 | 20 |
| 02 | 2252 | W TX REGIONAL DISPOSAL FACILITY | LUBBOCK | 1 | 305,441 | 110,028,604 | 1360 | 74,819,450 | 244 |
| 02 | 2268 | CITY OF MORTON LANDFILL | COCHRAN | 4AE | 256 | 810,486 | 400 | 162,097 | 200 |
| 02 | 2274 | CITY OF LITTLEFIELD LANDFILL | LAMB | 1AE | 7,278 | 1,368,184 | 1400 | 957,729 | 120 |
| 02 | 2291 | CITY OF MULESHOE LANDFILL | BAILEY | 1AE | 7,247 | 591,110 | 800 | 236,444 | 32 |
| 02 | 2293 | CITY OF MEADOW LANDFILL | TERRY | 1AE | 12,832 | 939,073 | 800 | 375,629 | 29 |
| 02 | 2328 | CITY OF TAHOKA LANDFILL | LYNN | 1AE | 5,486 | 1,059,587 | 850 | 450,324 | 62 |
| NORTEX REGIONAL PLANNING COMMISSION | | | | | | | | | |
| 03 | 1428 | CITY OF WICHITA FALLS LANDFILL | WICHITA | 1 | 182,856 | 73,152,875 | 1006 | 36,795,896 | 201 |
| 03 | 1571 | IESI BUFFALO CREEK LANDFILL | WICHITA | 1 | 185,029 | 30,887,458 | 1200 | 18,532,475 | 72 |
| NORTH CENTRAL TEXAS COUNCIL OF GOVERNEMENTS | | | | | | | | | |
| 04 | 0042 | SKYLINE LANDFILL | ELLIS | 1 | 1,011,948 | 39,481,000 | 1450 | 28,624,000 | 28 |
| 04 | 0047 | IESI WEATHERFORD LANDFILL | PARKER | 1 | 217,541 | 5,193,841 | 1150 | 2,986,459 | 9 |
| 04 | 0062 | MCCOMMAS BLUFF LANDFILL | DALLAS | 1 | 2,123,991 | 106,615,951 | 1775 | 94,621,657 | 45 |
| 04 | 0218 | SOUTHEAST LANDFILL | TARRANT | 1 | 149,800 | 4,862,088 | 1342 | 3,262,461 | 22 |
| 04 | 0358 | ARLINGTON MUNICIPAL LANDFILL | TARRANT | 1 | 660,835 | 16,719,068 | 1416 | 11,837,100 | 18 |
| 04 | 0534 | CITY OF CLEBURNE LANDFILL | JOHNSON | 1 | 1,072 | 35,247 | 1000 | 17,624 | 16 |
| 04 | 0568 | MCKINNEY LANDFILL | COLLIN | 1 | 136,923 | 1,346,344 | 1531 | 1,030,626 | 6 |

Individual MSW Landfill Facility Data

| COG | Permit | Site Name | County | Type | 2007 Tons | RemYds | Rate | RemTons | RemYrs |
|--|--------|-----------------------------------|----------|------|-----------|-------------|------|------------|--------|
| 04 | 0664 | STEPHENVILLE MUNICIPAL LANDFILL | ERATH | 4 | 4,467 | 679,687 | 850 | 288,867 | 59 |
| 04 | 0996 | CITY OF GRAND PRAIRIE LANDFILL | DALLAS | 1 | 187,349 | 14,324,950 | 1527 | 10,937,099 | 38 |
| 04 | 1019 | WESTSIDE REC AND DISP FACILITY | TARRANT | 1 | 333,860 | | | | |
| 04 | 1025 | DFW LANDFILL | DENTON | 1 | 1,365,855 | 21,722,000 | 1620 | 17,595,000 | 13 |
| 04 | 1195 | REPUBLIC MALOY LANDFILL | HUNT | 1 | 146,400 | 7,388,300 | 1257 | 4,643,547 | 32 |
| 04 | 1209 | CSC DISPOSAL & LANDFILL | ELLIS | 1 | 166,123 | 31,579,489 | 1500 | 23,684,617 | 142 |
| 04 | 1312 | CAMELOT LANDFILL | DENTON | 1 | 334,792 | 8,407,391 | 1239 | 5,208,379 | 16 |
| 04 | 1394 | HUNTER FERRELL LANDFILL | DALLAS | 1 | 172,893 | 9,428,978 | 1500 | 7,071,734 | 46 |
| 04 | 1417 | TURKEY CREEK LANDFILL | JOHNSON | 1 | 30 | 12,303,977 | 1539 | 9,467,910 | 12 |
| 04 | 1590 | CITY OF DENTON LANDFILL | DENTON | 1 | 127,820 | 13,104,081 | 1349 | 8,837,703 | 69 |
| 04 | 1745 | ECD LANDFILL | ELLIS | 1 | 128,438 | 40,373,044 | 1515 | 22,582,580 | 238 |
| 04 | 1749 | LEWISVILLE LANDFILL | DENTON | 4 | 354,967 | 24,111,268 | 1962 | 23,653,153 | 67 |
| 04 | 1895 | CHARLES M HINTON LANDFILL | DALLAS | 1 | 438,355 | 30,579,544 | 1187 | 18,148,959 | 41 |
| 04 | 1983 | IESI FORT WORTH C&D LANDFILL | TARRANT | 4 | 398,194 | 6,802,875 | 1500 | 5,102,156 | 11 |
| 04 | 2190 | CORSICANA REGIONAL LANDFILL | NAVARRO | 1 | 97,749 | 25,177,491 | 1000 | 12,588,746 | 128 |
| 04 | 2294 | 121 REGIONAL DISPOSAL LANDFILL | COLLIN | 1 | 662,095 | 130,611,015 | 1040 | 67,917,728 | 104 |
| ARK-TEX COUNCIL OF GOVERNMENTS | | | | | | | | | |
| 05 | 0576 | NEW BOSTON LANDFILL | BOWIE | 1 | 157,250 | 2,472,000 | 1050 | 1,297,000 | 8 |
| 05 | 0797 | PLEASANT OAKS LANDFILL | TITUS | 1 | 72,681 | 20,590,205 | 1720 | 17,707,576 | 244 |
| 05 | 1454 | PARIS LANDFILL | LAMAR | 1 | 125,533 | 17,582,000 | 1110 | 9,758,000 | 81 |
| 05 | 1898 | AREA A LANDFILL | BOWIE | 1 | 181 | 2,040,287 | 850 | 867,122 | 139 |
| EAST TEXAS COUNCIL OF GOVERNMENTS | | | | | | | | | |
| 06 | 0307 | MUNTZ CUTOFF ROAD LANDFILL | HARRISON | 4 | 11,996 | 16,358 | 1600 | 13,086 | 1 |
| 06 | 1249 | IESI EAST TEXAS REGIONAL LANDFILL | RUSK | 1 | 79,042 | 2,657,093 | 1100 | 1,461,401 | 21 |
| 06 | 1327 | PINE HILL LANDFILL | GREGG | 1 | 221,946 | 16,373,067 | 1667 | 13,646,951 | 62 |
| 06 | 1614 | ROYAL OAKS LANDFILL | CHEROKEE | 1 | 94,217 | 3,107,978 | 1475 | 2,292,134 | 24 |
| 06 | 1972 | GREENWOOD FARMS LANDFILL | SMITH | 1 | 267,935 | 107,789,056 | 1679 | 90,488,913 | 338 |
| WEST CENTRAL TEXAS COUNCIL OF GOVERNMENTS | | | | | | | | | |
| 07 | 0050 | SWEETWATER LANDFILL | NOLAN | 4AE | 3,459 | 346,304 | 400 | 69,261 | 15 |
| 07 | 0420 | COLORADO CITY LANDFILL | MITCHELL | 1AE | 2,350 | 10,578 | 700 | 3,702 | 2 |

Individual MSW Landfill Facility Data

| COG | Permit | Site Name | County | Type | 2007 Tons | RemYds | Rate | RemTons | RemYrs |
|---|--------|--------------------------------|-----------|------|-----------|------------|------|------------|--------|
| 07 | 1302 | COLEMAN LANDFILL | COLEMAN | 4AE | 89 | 15,070 | 500 | 3,770 | 126 |
| 07 | 1463 | CITY OF SNYDER LANDFILL | SCURRY | 1 | 36,135 | 11,070,870 | 1000 | 5,535,435 | 151 |
| 07 | 1469 | ABILENE REGIONAL LANDFILL | JONES | 1 | 203,044 | 91,246,473 | 1079 | 49,227,472 | 242 |
| 07 | 1562 | BROWNWOOD REG MSWD LANDFILL | BROWN | 1 | 99,798 | 19,088,745 | 1100 | 10,498,809 | 105 |
| 07 | 1604 | HASKELL MUNICIPAL LANDFILL | HASKELL | 1AE | 10,996 | 980,457 | 700 | 343,160 | 31 |
| 07 | 2325 | ABILENE ENVIRONMENTAL LANDFILL | JONES | 1 | 54,217 | 20,214,536 | 1080 | 10,915,849 | 54 |
| RIO GRANDE COUNCIL OF GOVERNMENTS | | | | | | | | | |
| 08 | 0495 | DELL CITY MSW LANDFILL | HUDSPETH | 1AE | 1,452 | 457,689 | 666 | 152,410 | 105 |
| 08 | 0957 | SIERRA BLANCA MSW LANDFILL | HUDSPETH | 1AE | 5,720 | 1,448,211 | 666 | 482,254 | 80 |
| 08 | 1276 | GRAPEVINE HILLS LANDFILL | BREWSTER | 1AE | 328 | 109,341 | 750 | 41,019 | 18 |
| 08 | 1422 | FORT BLISS LANDFILL | EL PASO | 1 | 23,303 | 145,043 | 2639 | 191,384 | 8 |
| 08 | 1482 | CLINT LANDFILL | EL PASO | 1 | 237,873 | 541,016 | 1200 | 324,610 | 1 |
| 08 | 1737 | CITY OF PRESIDIO LANDFILL | PRESIDIO | 1AE | 6,243 | 0 | 0 | 0 | 0 |
| 08 | 2197 | CITY OF ALPINE LANDFILL | BREWSTER | 1AE | 14,412 | 4,231,206 | 1000 | 2,115,603 | 146 |
| 08 | 2284 | CLINT MUNICIPAL LANDFILL | EL PASO | 1 | 320,490 | 25,307,906 | 1328 | 16,804,450 | 27 |
| PERMIAN BASIN REGIONAL PLANNING COMMISSION | | | | | | | | | |
| 09 | 0039 | CITY OF SEMINOLE LANDFILL | GAINES | 1AE | 10,268 | 2,717,636 | 550 | 747,349 | 60 |
| 09 | 0171 | CITY OF ANDREWS LANDFILL | ANDREWS | 1AE | 11,048 | 1,203,349 | 850 | 511,423 | 46 |
| 09 | 0288 | CITY OF BIG SPRING LANDFILL | HOWARD | 1 | 33,202 | 627,994 | 1848 | 580,266 | 18 |
| 09 | 0427 | CITY OF CRANE LANDFILL | CRANE | 1AE | 3,996 | 51,287 | 700 | 17,951 | 4 |
| 09 | 0517 | LAMESA LANDFILL | DAWSON | 1 | 13,575 | 1,696,760 | 1000 | 848,380 | 71 |
| 09 | 0673 | TERRELL COUNTY LANDFILL | TERRELL | 4AE | 33 | 33,599 | 300 | 5,040 | 151 |
| 09 | 0691 | UPTON COUNTY LANDFILL | UPTON | 4AE | 46 | 96,362 | 400 | 19,272 | 308 |
| 09 | 0772 | MONAHANS LANDFILL | WARD | 1AE | 13,159 | 1,275,327 | 650 | 414,481 | 32 |
| 09 | 0976 | CITY OF FORT STOCKTON LANDFILL | PECOS | 1AE | 9,390 | 165,647 | 800 | 66,259 | 7 |
| 09 | 1605 | CITY OF MIDLAND LANDFILL | MIDLAND | 1 | 163,347 | 35,849,507 | 968 | 17,351,161 | 108 |
| 09 | 2120 | CITY OF PECOS CITY LANDFILL | REEVES | 1 | 12,675 | 711,595 | 850 | 302,428 | 24 |
| 09 | 2154 | GLASSCOCK COUNTY LANDFILL | GLASSCOCK | 1AE | 452 | 90,173 | 250 | 11,272 | 26 |
| 09 | 2158 | CHARTER WASTE LANDFILL | ECTOR | 1 | 261,997 | 36,005,055 | 1500 | 27,003,791 | 76 |
| 09 | 2189 | CITY OF STANTON LANDFILL | MARTIN | 1AE | 3,232 | 613,184 | 1000 | 306,592 | 94 |

| Individual MSW Landfill Facility Data | | | | | | | | | |
|--|---------------|---------------------------------|---------------|-------------|------------------|---------------|-------------|----------------|---------------|
| COG | Permit | Site Name | County | Type | 2007 Tons | RemYds | Rate | RemTons | RemYrs |
| CONCHO VALLEY COUNCIL OF GOVERNEMENTS | | | | | | | | | |
| 10 | 0026 | CITY OF JUNCTION | KIMBLE | 4AE | 1,275 | 250,533 | 1000 | 125,266 | 8 |
| 10 | 0079 | SAN ANGELO LANDFILL | TOM GREEN | 1 | 137,886 | 7,218,847 | 1150 | 4,150,837 | 30 |
| 10 | 0086 | BIG LAKE LANDFILL | REAGAN | 1AE | 3,050 | 1,147,167 | 500 | 286,791 | 95 |
| 10 | 0195 | MASON LANDFILL | MASON | 1AE | 2,477 | 112,422 | 1000 | 56,211 | 23 |
| 10 | 0349 | ELDORADO LANDFILL | SCHLEICHER | 1AE | 2,628 | 1,504 | 1500 | 1,128 | 1 |
| 10 | 1270 | BARNHART LANDFILL | IRION | 1AE | 1,771 | 92,599 | 530 | 24,539 | 14 |
| 10 | 1404 | CITY OF MENARD LANDFILL | MENARD | 4AE | 31 | 126,680 | 850 | 5,389 | 50 |
| 10 | 1732 | CITY OF BRADY LANDFILL | MCCULLOCH | 1AE | 8,434 | 2,632,631 | 900 | 1,184,684 | 133 |
| 10 | 2264 | CITY OF ELDORADO LANDFILL | SCHLEICHER | 1AE | 6,201 | 1,392,895 | 1500 | 1,044,671 | 90 |
| HEART OF TEXAS COUNCIL OF GOVERNMENTS | | | | | | | | | |
| 11 | 0241 | ITASCA LANDFILL | HILL | 1 | 883,966 | 35,804,547 | 1492 | 26,710,192 | 30 |
| 11 | 0948 | CITY OF WACO LANDFILL 948A | MCLENNAN | 1 | 250,528 | 8,940,485 | 990 | 4,424,335 | 18 |
| 11 | 1558 | MEXIA LANDFILL | LIMESTONE | 1 | 55,121 | 7,587,705 | 1547 | 5,869,090 | 107 |
| 11 | 1646 | LACY-LAKEVIEW LANDFILL | MCLENNAN | 1 | 122,497 | 2,204,926 | 1063 | 1,171,918 | 11 |
| CAPITAL AREA PLANNING COUNCIL | | | | | | | | | |
| 12 | 0249 | AUSTIN COMMUNITY LANDFILL | TRAVIS | 1 | 484,277 | 5,142,595 | 1500 | 3,856,946 | 6 |
| 12 | 0360 | CITY OF AUSTIN LANDFILL | TRAVIS | 4 | 23,067 | 111,059 | 1000 | 55,530 | 2 |
| 12 | 1405 | WILLIAMSON COUNTY LANDFILL | WILLIAMSON | 1 | 202,963 | 6,800,849 | 1323 | 4,498,762 | 18 |
| 12 | 1447 | BFI SUNSET FARMS LANDFILL | TRAVIS | 1 | 966,725 | 3,407,360 | 1244 | 2,119,378 | 2 |
| 12 | 1841 | IESI TRAVIS COUNTY C&D LANDFILL | TRAVIS | 4 | 229,329 | 3,456,164 | 1300 | 2,246,507 | 8 |
| 12 | 2123 | TEXAS DISPOSAL SYSTEMS LANDFILL | TRAVIS | 1 | 817,130 | 31,020,148 | 1360 | 21,093,700 | 26 |
| BRAZOS VALLEY COUNCIL OF GOVERNMENTS | | | | | | | | | |
| 13 | 1444 | ROCK PRAIRIE ROAD LANDFILL | BRAZOS | 1 | 272,037 | 1,424,682 | 1150 | 819,192 | 3 |
| DEEP EAST TEXAS COUNCIL OF GOVERNMENTS | | | | | | | | | |
| 14 | 0720 | CITY OF NACOGDOCHES LANDFILL | NACOGDOCHES | 1 | 79,064 | 4,245,919 | 800 | 1,698,368 | 21 |
| 14 | 1384 | POLK CNTY REG WASTE MGMT CENTER | POLK | 1 | 119,472 | 9,363,898 | 1250 | 5,852,436 | 49 |
| 14 | 2105 | ANGELINA CNTY WASTE MGMT CENTER | ANGELINA | 1 | 135,686 | 4,960,000 | 1200 | 2,976,000 | 22 |
| 14 | 2242 | NEWTON COUNTY LANDFILL | NEWTON | 1 | 201,960 | 45,053,624 | 1400 | 31,537,537 | 50 |
| SOUTH EAST TEXAS REGIONAL PLANNING COMMISSION | | | | | | | | | |

Individual MSW Landfill Facility Data

| COG | Permit | Site Name | County | Type | 2007 Tons | RemYds | Rate | RemTons | RemYrs |
|--|--------|----------------------------------|------------|------|-----------|------------|------|------------|--------|
| 15 | 1486 | CITY OF BEAUMONT MUNICIPAL LF | JEFFERSON | 1 | 265,596 | 21,653,657 | 1048 | 11,346,516 | 43 |
| 15 | 1815 | CITY OF PORT ARTHUR LANDFILL | JEFFERSON | 1 | 160,085 | 18,423,676 | 1000 | 9,211,838 | 58 |
| 15 | 2027 | GOLDEN TRIANGLE LANDFILL | JEFFERSON | 1 | 273,631 | 8,567,400 | 1501 | 6,429,834 | 23 |
| 15 | 2214 | IESI HARDIN COUNTY LANDFILL | HARDIN | 1 | 39,692 | 207,265 | 1350 | 1,399,040 | 33 |
| HOUSTON-GALVESTON AREA COUNCIL | | | | | | | | | |
| 16 | 0203 | ALTAIR LANDFILL | COLORADO | 1 | 14,970 | 1,200,000 | 1200 | 720,000 | 48 |
| 16 | 0261 | MCCARTY ROAD LANDFILL | HARRIS | 1 | 1,559,188 | 155,175 | 2062 | 1,599,959 | 2 |
| 16 | 1149 | GALVESTON COUNTY LANDFILL | GALVESTON | 1 | 340,007 | 5,122,922 | 1377 | 3,527,132 | 10 |
| 16 | 1193 | WHISPERING PINES LANDFILL | HARRIS | 1 | 192,825 | 11,484,917 | 1383 | 7,941,820 | 14 |
| 16 | 1301 | ADDICKS-FAIRBANKS LANDFILL | HARRIS | 4 | 45,900 | 1,282,969 | 1400 | 898,078 | 20 |
| 16 | 1307 | ATASCOCITA LANDFILL | HARRIS | 1 | 1,216,170 | 27,411,290 | 1500 | 20,558,468 | 19 |
| 16 | 1502 | CHAMBERS COUNTY LANDFILL | CHAMBERS | 1 | 20,060 | 567,027 | 850 | 240,986 | 12 |
| 16 | 1505 | BLUE RIDGE LANDFILL | FORT BEND | 1 | 606,778 | 13,528,700 | 1256 | 8,496,024 | 14 |
| 16 | 1535 | BAYTOWN LANDFILL | CHAMBERS | 1 | 239,507 | 12,668,695 | 1600 | 10,134,956 | 40 |
| 16 | 1539 | SEABREEZE ENVIRONMENTAL LANDFILL | BRAZORIA | 1 | 1,085,566 | 31,889,890 | 1500 | 23,917,417 | 21 |
| 16 | 1540 | GREENSHADOW LANDFILL | HARRIS | 4 | 94,900 | 3,843,435 | 1400 | 2,690,405 | 28 |
| 16 | 1565 | FAIRBANKS LANDFILL | HARRIS | 4 | 193,278 | 4,931 | 1900 | 4,684 | 0 |
| 16 | 1586 | WCT/GREENBELT LANDFILL | HARRIS | 4 | 157,377 | 5,728,457 | 1200 | 3,437,074 | 22 |
| 16 | 1599 | GREENHOUSE ROAD LANDFILL | HARRIS | 4 | 94,931 | 7,373,550 | 800 | 2,949,420 | 31 |
| 16 | 1721 | COASTAL PLAINS LANDFILL | GALVESTON | 1 | 536,710 | 17,381,021 | 1600 | 13,904,817 | 26 |
| 16 | 1752 | SECURITY LANDFILL | MONTGOMERY | 1 | 428,825 | 17,793,015 | 1500 | 13,344,761 | 30 |
| 16 | 1797 | SPRINT FORT BEND COUNTY LANDFILL | FORT BEND | 4 | 248,575 | 19,499,159 | 1140 | 11,145,521 | 51 |
| 16 | 1849 | NORTH COUNTY LANDFILL | GALVESTON | 4 | 63,521 | 1,207,298 | 1250 | 754,561 | 8 |
| 16 | 1921 | COUGAR LANDFILL | HARRIS | 4 | 182,846 | 1,654,538 | 1500 | 1,240,904 | 7 |
| 16 | 2185 | HAWTHORN PARK LANDFILL | HARRIS | 4 | 39,974 | 3,081,250 | 1600 | 2,465,000 | 30 |
| 16 | 2240 | RALSTON ROAD LANDFILL | HARRIS | 4 | 196,675 | 883,678 | 1200 | 530,207 | 3 |
| 16 | 2270 | FORT BEND REGIONAL LANDFILL | FORT BEND | 1 | 355,643 | 46,581,689 | 1200 | 27,949,013 | 79 |
| 16 | 2304 | TALL PINES LANDFILL | HARRIS | 4 | 266,292 | 6,532,065 | 1200 | 3,919,239 | 15 |
| GOLDEN CRESENT REGIONAL PLANNING COMMISSION | | | | | | | | | |

Individual MSW Landfill Facility Data

| COG | Permit | Site Name | County | Type | 2007 Tons | RemYds | Rate | RemTons | RemYrs |
|---|--------|-----------------------------------|-----------|------|-----------|-------------|------|------------|--------|
| 17 | 1522 | CITY OF VICTORIA LANDFILL | VICTORIA | 1 | 161,762 | 8,782,915 | 937 | 4,114,796 | 34 |
| ALAMO AREA COUNCIL OF GOVERNMENTS | | | | | | | | | |
| 18 | 0066 | COMAL COUNTY LANDFILL | COMAL | 1 | 340,012 | 1,421,098 | 1832 | 1,301,726 | 3 |
| 18 | 1410 | TESSMAN ROAD LANDFILL | BEXAR | 1 | 973,514 | 83,198,233 | 1405 | 58,446,758 | 49 |
| 18 | 1506 | CITY OF KERRVILLE LANDFILL | KERR | 1 | 51,992 | 1,106,370 | 1096 | 606,291 | 9 |
| 18 | 1848 | NIDO LTD DBA BECK LANDFILL | GUADALUPE | 4 | 272,246 | 8,512,912 | 1300 | 5,533,393 | 20 |
| 18 | 1995 | CITY OF FREDERICKSBURG LANDFILL | GILLESPIE | 1 | 27,068 | 2,149,696 | 1180 | 1,268,321 | 47 |
| 18 | 2093 | COVEL GARDENS RPDF | BEXAR | 1 | 1,322,341 | 119,002,414 | 1615 | 96,094,449 | 74 |
| SOUTH TEXAS DEVELOPMENT COUNCIL | | | | | | | | | |
| 19 | 0783 | ZAPATA CNTY SAN YGNACIO LANDFILL | ZAPATA | 1AE | 1,816 | 7,000 | 600 | 2,100 | 1 |
| 19 | 0954 | CITY OF ROMA LANDFILL | STARR | 1AE | 2,735 | 172,423 | 850 | 73,280 | 30 |
| 19 | 1033 | CITY OF LA GRULLA LANDFILL | STARR | 4 | 53 | 61,626 | 250 | 7,703 | 89 |
| 19 | 1528 | ZAPATA COUNTY LANDFILL | ZAPATA | 4AE | 425 | | 400 | | 0 |
| 19 | 1693 | CITY OF LAREDO SANITARY LANDFILL | WEBB | 1 | 363,916 | 8,311,723 | 1200 | 4,987,033 | 13 |
| 19 | 1762 | STARR COUNTY LANDFILL | STARR | 1AE | 31,955 | 0 | 666 | 0 | 0 |
| COASTAL BEND COUNCIL OF GOVERNMENTS | | | | | | | | | |
| 20 | 0235 | CITY OF KINGSVILLE LANDFILL | KLEBERG | 1 | 25,138 | 3,768,499 | 817 | 1,539,432 | 61 |
| 20 | 0262 | CITY OF ALICE MSW LANDFILL | JIM WELLS | 1 | 35,198 | 1,393,609 | 1394 | 971,345 | 28 |
| 20 | 0379 | BROOKS COUNTY LANDFILL | BROOKS | 4AE | 770 | 308,548 | 400 | 61,710 | 30 |
| 20 | 0423 | JC ELLIOTT LANDFILL | NUECES | 1 | 454,224 | 0 | 1200 | 0 | 0 |
| 20 | 0571 | MCMULLEN COUNTY LANDFILL | MCMULLEN | 1AE | 500 | 35,000 | 200 | 3,500 | 7 |
| 20 | 1481 | DUVAL COUNTY LANDFILL | DUVAL | 4AE | 5,584 | 1,326.50 | 1000 | 663 | 0 |
| 20 | 2267 | EL CENTRO LANDFILL | NUECES | 1 | 213,474 | 16,488,253 | 1311 | 10,808,050 | 41 |
| LOWER RIO GRANDE DEVELOPMENT COUNCIL | | | | | | | | | |
| 21 | 0956 | EDINBURG REG SANITARY LANDFILL | HIDALGO | 1 | 302,364 | 10,438,063 | 1200 | 6,262,838 | 21 |
| 21 | 1273 | BROWNSVILLE SANITARY LANDFILL | CAMERON | 1 | 249,485 | 30,935,407 | 1020 | 15,777,057 | 80 |
| 21 | 1727 | PENITAS LANDFILL | HIDALGO | 1AE | 5,452 | 7,264 | 1200 | 4,358 | 1 |
| 21 | 1948 | BFI RIO GRANDE VALLEY LANDFILL | HIDALGO | 1 | 522,652 | 3,407,122 | 1295 | 2,206,112 | 4 |
| 21 | 2302 | CITY OF EDINBURG TYPE IV LANDFILL | HIDALGO | 4 | 62,122 | 12,557,998 | 1200 | 7,534,799 | 121 |
| TEXOMA COUNCIL OF GOVERNMENTS | | | | | | | | | |

| Individual MSW Landfill Facility Data | | | | | | | | | |
|--|---------------|-------------------------------------|---------------|-------------|------------------|---------------|-------------|----------------|---------------|
| COG | Permit | Site Name | County | Type | 2007 Tons | RemYds | Rate | RemTons | RemYrs |
| 22 | 0523 | HILLSIDE LANDFILL | GRAYSON | 1 | 97,644 | 12,577,000 | 1190 | 7,471,000 | 68 |
| 22 | 2290 | TASWA DISPOSAL AND RECYCLING | GRAYSON | 1 | 142,900 | 25,336,072 | 900 | 11,401,232 | 60 |
| CENTRAL TEXAS COUNCIL OF GOVERNMENTS | | | | | | | | | |
| 23 | 0692 | TEMPLE LANDFILL | BELL | 1 | 280,099 | 11,935,197 | 1187 | 7,083,539 | 16 |
| 23 | 1866 | FORT HOOD LANDFILL | CORYELL | 1 | 24,945 | 3,296,287 | 544 | 896,590 | 36 |
| MIDDLE RIO GRANDE DEVELOPMENT COUNCIL | | | | | | | | | |
| 24 | 0207 | CITY OF DEL RIO MUNICIPAL LANDFILL | VAL VERDE | 1 | 46,536 | 1,921,773 | 600 | 576,520 | 12 |
| 24 | 0630 | CITY OF SABINAL LANDFILL | UVALDE | 4 | 7 | 3,798 | 400 | 759 | 10 |
| 24 | 1308 | CRYSTAL CITY MSW FACILITY | ZAVALA | 1AE | 2,860 | 1,583,497 | 850 | 672,986 | 235 |
| 24 | 1725 | CITY OF UVALDE LANDFILL | UVALDE | 1 | 31,431 | 1,026,189 | 1000 | 513,094 | 17 |
| 24 | 1918 | CITY OF EAGLE PASS TYPE IV LANDFILL | MAVERICK | 4AE | 9,741 | 1,271,094 | 750 | 476,660 | 48 |
| 24 | 2225 | CITY OF CARRIZO SPRINGS LANDFILL | DIMITT | 1AE | 3,364 | 1,216,600 | 600 | 365,000 | 45 |
| 24 | 2303 | ZAVALA CNTY LA PRYOR MSWF LF | ZAVALA | 1AE | 1,432 | | | | |

Individual Facility Data for Non-Landfill Permitted and Registered Facilities

Active facilities, organized by COG number and facility permit or registration number

Database codes used:

TYPE 5AC = Medical waste autoclave facility

TYPE 5GG = Liquid waste (i.e., grease trap waste, grit trap waste, sludge, septage) processing facility

TYPE 5RC = Mixed-waste composting facility

TYPE 5RR = Materials recovery facility (MRF)

TYPE 5RE = Waste-to-energy facility (incineration with electrical power generation)

TYPE 5TS = Transfer station

TYPE 5WI = Incinerator (no electrical power generation)

TYPE 9GR = Landfill gas recovery facility

2007TONS = Total tons handled in 2007 in terms of major permitted activity (e.g., for a transfer station total tons transferred, for an incinerator total tons incinerated; for a liquid waste processing facility, waste is reported in gallons but converted here to approximate tons equivalent)

| COG | P/R# | Site Name | County | Type | 2007 Tons |
|---|-------|---|------------|------|------------|
| PANHANDLE REGIONAL PLANNING COMMISSION | | | | | |
| 01 | 0076 | CITY OF AMARILLO SOLID WASTE TRANSFER STATION | POTTER | 5TS | 159,355 |
| 01 | 40015 | CITY OF BORGER TRANSFER STATION | HUTCHINSON | 5TS | 16,860 |
| 01 | 40026 | CITY OF CANADIAN TRANSFER STATION | HEMPHILL | 5TS | 9,906 |
| 01 | 40031 | CITY OF CACTUS TRANSFER STATION | MOORE | 5TS | 1,364 |
| 01 | 40037 | CITY OF HIGGINS CITIZENS DROP | LIPSCOMB | 5TS | 231 |
| 01 | 40041 | CITY OF SUNRAY TRANSFER STATION FACILITY | MOORE | 5TS | 328 |
| 01 | 40192 | CITY OF CLARENDON MSW TRANSFER STATION | DONLEY | 5TS | 570 |
| SOUTH PLAINS ASSOCIATION OF GOVERNMENTS | | | | | |
| 02 | 2231 | SOUTH PLAINS DISPOSAL | LUBBOCK | 5GG | 1,741,594 |
| 02 | 2287 | LUBBOCK TRANSFER STATION | LUBBOCK | 5TS | 121 |
| 02 | 40176 | CALICHE CANYON TRANSFER STATION | LUBBOCK | 5TS | 128 |
| NORTEX REGIONAL PLANNING COMMISSION | | | | | |
| 03 | 1429 | CITY OF WICHITA FALLS TRANSFER STATION | WICHITA | 5TS | 92,525 |
| 03 | 2229 | LIQUID WASTE PROCESSING | WICHITA | 5GG | 2,955,931 |
| 03 | 2295 | IESI BOWIE TRANSFER STATION | MONTAGUE | 5TS | 49,631 |
| 03 | 40008 | CITY OF ARCHER CITY TRANSFER STATION FACILITY | ARCHER | 5TS | 214 |
| 03 | 40059 | CITY OF VERNON TRANSFER STATION | WILBARGER | 5TS | 20,098 |
| 03 | 40144 | CITY OF SEYMOUR TRANSFER STATION | BAYLOR | 5TS | 227 |
| 03 | 42010 | CITY OF WICHITA FALLS COMPOSTING FACILITY | WICHITA | 5RC | 19,016 |
| NORTH CENTRAL TEXAS COUNCIL OF GOVERNMENTS | | | | | |
| 04 | 0012 | CITY OF GARLAND TRANSFER STATION | DALLAS | 5TS | 77,724 |
| 04 | 0053 | LOOKOUT DRIVE TRANSFER STATION | COLLIN | 5TS | 164,591 |
| 04 | 0060 | FAIR OAKS TRANSFER STATION | DALLAS | 5TS | 38,514 |
| 04 | 0227 | CITY OF UNIVERSITY PARK TRANSFER STATION | DALLAS | 5TS | 15,009 |
| 04 | 1145 | BACHMAN TRANSFER STATION | DALLAS | 5TS | 164,662 |
| 04 | 1225 | COLD SPRINGS PROCESSING | TARRANT | 5GG | 60,971 |
| 04 | 1263 | CITY OF MESQUITE TRANSFER STATION | DALLAS | 5TS | 485,323 |
| 04 | 1421 | PSC RECOVERY SYSTEMS INC | DALLAS | 5GG | 10,598,043 |
| NORTH CENTRAL TEXAS COUNCIL OF GOVERNMENTS – cont. | | | | | |

| COG | P/R# | Site Name | County | Type | 2007 Tons |
|---|-------|--|--------------|------|------------|
| 04 | 1433 | BURLESON TRANSFER STATION | JOHNSON | 5TS | 32,056 |
| 04 | 1453 | OAK CLIFF TRANSFER STATION | DALLAS | 5TS | 59,048 |
| 04 | 1494 | PARKWAY TRANSFER STATION | COLLIN | 5TS | 125,406 |
| 04 | 1592 | IESI GRANBURY TRANSFER STATION | HOOD | 5TS | 854 |
| 04 | 2045 | CUSTER ROAD TRANSFER STATION | COLLIN | 5TS | 240,603 |
| 04 | 2069 | LIQUID ENVIRONMENTAL SOLUTIONS OF TX AT DALLAS | DALLAS | 5GG | 18,567,458 |
| 04 | 2245 | ENVIROCLEAN AUTOCLAVE FACILITY | DALLAS | 5AC | 8,672 |
| 04 | 2256 | ALCO ENVIRONMENTAL | TARRANT | 5GG | 9,127,469 |
| 04 | 2275 | FORT WORTH TRANSFER STATION & MRF | TARRANT | 5TS | 639,641 |
| 04 | 2306 | IESI MINNIS DRIVE TRANSFER STATION | TARRANT | 5TS | 502 |
| 04 | 40052 | SOUTHWEST PAPER STOCK TRANSFER STATION | TARRANT | 5TS | 26,790 |
| 04 | 40075 | TRINITY WASTE SERVICES MATERIALS RECOVERY FACI | DALLAS | 5TS | 56,950 |
| 04 | 40080 | HARRINGTON ENVIRONMENTAL LIQUID TRANSFER STAT | JOHNSON | 5TL | 390,833 |
| 04 | 40104 | IESI MINGUS TRANSFER STATION | PALO PINTO | 5TS | 1,585 |
| 04 | 40112 | ENVIROCLEAN GARLAND TRANSFER STATION | DALLAS | 5TS | 8,672 |
| 04 | 40181 | SOMERVELL COUNTY TRANSFER STATION | SOMERVELL | 5TS | 15,126 |
| 04 | 40186 | WASTE MANAGEMENT WESTSIDE TRANSFER STATION | TARRANT | 5TS | 98,375 |
| 04 | 40196 | COMMUNITY WASTE DISPOSAL LP | DALLAS | 5TS | 678,308 |
| 04 | 41892 | TRINITY WASTE SVCS PLANO HAULING AND MRF | DALLAS | 5RR | 107,769 |
| 04 | 42005 | CITY OF GARLAND COMPOSTING FACILITY | DALLAS | 5RC | 24,935 |
| 04 | 42008 | SILVER CREEK MATERIALS RECYCLING AND COMPOST | TARRANT | 5RC | 20,925 |
| 04 | 43003 | ALCO ENVIRONMENTAL | TARRANT | 5GG | 4,935,904 |
| 04 | 40168 | CITY OF CLEBURNE TRANSFER STATION FACILITY | JOHNSON | 5TS | 58,359 |
| ARK-TEX COUNCIL OF GOVERNMENTS | | | | | |
| 05 | 40061 | SOUTH REGIONAL WWTP | BOWIE | 5TS | 193,733 |
| EAST TEXAS COUNCIL OF GOVERNMENTS | | | | | |
| 06 | 0356 | VITAL EARTH RESOURCES | UPSHUR | 5RC | 764 |
| 06 | 1741 | CITY OF CARTHAGE INCINERATION FACILITY | PANOLA | 5RE | 802 |
| 06 | 40005 | BETO TRANSFER STATION FACILITY | ANDERSON | 5TS | 1,205 |
| 06 | 40006 | COFFIELD TRANSFER STATION FACILITY | ANDERSON | 5TS | 1,306 |
| 06 | 40040 | ANDERSON COUNTY TRANSFER STATION FACILITY | ANDERSON | 5TS | 2,685 |
| 06 | 40058 | B & B EQUIPMENT TRANSFER STATION | WOOD | 5TS | 60 |
| 06 | 40091 | AAA SANITATION | HENDERSON | 5TL | 1,028,818 |
| 06 | 40102 | UPPER SABINE VALLEY TRANSFER STATION | WOOD | 5TL | 10,635 |
| 06 | 40172 | CITY OF CARTHAGE TRANSFER STATION | PANOLA | 5TS | 12,607 |
| 06 | 40174 | PITTSBURG TRANSFER STATION FACILITY | CAMP | 5TS | 27,309 |
| WEST TEXAS COUNCIL OF GOVERNMENTS | | | | | |
| 07 | 40117 | CITY OF THROCKMORTON TRANSFER STATION FACILITY | THROCKMORTON | 5TS | 2,160 |
| RIO GRANDE COUNCIL OF GOVERNMENTS | | | | | |
| 08 | 40158 | VALLEY BY PRODUCTS | EL PASO | 5TL | 2,445,532 |
| CONCHO VALLEY COUNCIL OF GOVERNMENTS | | | | | |
| 10 | 42022 | KICKAPOO COMPOSTING FACILITY | TOM GREEN | 5RC | 1,864 |
| CAPITAL AREA PLANNING COUNCIL | | | | | |
| 12 | 0119 | ECO DEPOT | TRAVIS | 5TS | 8,577 |
| 12 | 0466 | GEORGETOWN TRANSFER STATION | WILLIAMSON | 5TS | 62,624 |
| 12 | 1787 | HAYS COUNTY TRANSFER & RECYCLING STATION | HAYS | 5TS | 1,029 |

| COG | P/R# | Site Name | County | Type | 2007 Tons |
|--|-------|---|---------------|------|------------|
| 12 | 2250 | LIQUID ENVIRONMENTAL SOLUTIONS OF TX AT AUSTIN | TRAVIS | 5GG | 6,431,395 |
| 12 | 2260 | STERICYCLE AUTOCLAVE FACILITY | BASTROP | 5AC | 12,933 |
| 12 | 2320 | TEXAS ORGANIC RECOVERY | TRAVIS | 5RC | 6,260,716 |
| 12 | 40007 | IESI BLANCO COUNTY TRANSFER STATION | BLANCO | 5TS | 15,950 |
| 12 | 40035 | BFI BURNET TRANSFER STATION | BURNET | 5TS | 52,673 |
| 12 | 40212 | TOM DYE CONTRACTOR | TRAVIS | 5TL | 274,400 |
| 12 | 42006 | CITY OF LLANO CITIZEN COLLECTION & RECYCLE CNTR | LLANO | 5RR | 11,376 |
| BRAZOS VALLEY COUNCIL OF GOVERNMENTS | | | | | |
| 13 | 40018 | CITY OF BRENHAM TRANSFER STATION | WASHINGTON | 5TS | 72,898 |
| 13 | 40173 | BRENHAM TOTAL ROLL-OFFS TRANSFER STATION | WASHINGTON | 5TS | 32,772 |
| 13 | 42003 | CITY OF BRYAN COMPOSTING FACILITY | BRAZOS | 5RC | 11,491 |
| DEEP EAST TEXAS REGIONAL PLANNING COMMISSION | | | | | |
| 14 | 40013 | CITY OF WOODVILLE TRANSFER STATION | TYLER | 5TS | 3,154 |
| 14 | 40024 | CITY OF SAN AUGUSTINE TRANSFER STATION FACILIT | SAN AUGUSTINE | 5TS | 2,926 |
| 14 | 40033 | HUTTO GARAGE SERVICE | HOUSTON | 5TS | 4,923 |
| 14 | 40038 | TYLER COUNTY TRANSFER STATION | TYLER | 5TS | 1,366 |
| 14 | 40054 | CITY OF PINELAND TRANSFER STATION FACILITY | SABINE | 5TS | 5,333 |
| 14 | 40114 | CITY OF CROCKETT TRANSFER STATION FACILITY | HOUSTON | 5TS | 4,800 |
| 14 | 40206 | LAKE AREA TRASH DISPOSAL | TRINITY | 5TS | 90 |
| 14 | 42025 | CITY OF CROCKETT COMPOSTING FACILITY | HOUSTON | 5RC | 0 |
| SOUTH EAST TEXAS REGIONAL PLANNING COMMISSION | | | | | |
| 15 | 40164 | JTB RECYCLING TRANSFER STATION FACILITY | JEFFERSON | 5TS | 175,577 |
| 15 | 43000 | JTB RECYCLING LIQUID WASTE FACILITY | JEFFERSON | 5GG | 1,960,859 |
| HOUSTON-GALESTON AREA COUNCIL | | | | | |
| 16 | 0164 | GALVESTON TRANSFER STATION | GALVESTON | 5TS | 116,038 |
| 16 | 1092 | SOMMERMEYER NORTHWEST TRANSFER STATION | HARRIS | 5TS | 1,858,688 |
| 16 | 1355 | RUFFINO HILLS TRANSFER STATION | HARRIS | 5RR | 155,970 |
| 16 | 1471 | SAM HOUSTON TRANSFER STATION | HARRIS | 5TS | 213,644 |
| 16 | 1483 | KOENIG STREET TRANSFER STATION | HARRIS | 5TS | 303,797 |
| 16 | 1697 | CITY OF DEER PARK TRANSFER STATION | HARRIS | 5TS | 21,245 |
| 16 | 2099 | CITY OF WHARTON TRANSFER STATION | WHARTON | 5TS | 3,919 |
| 16 | 2106 | WEIMAR TRANSFER STATION | COLORADO | 5TS | 14,302 |
| 16 | 2222 | STERICYCLE INC | MONTGOMERY | 5AC | 17,096 |
| 16 | 2232 | UTMB GALVESTON SOLID WASTE INCINERATOR | GALVESTON | 5WI | 854 |
| 16 | 2234 | LIQUID ENVIRONMENTAL SOLUTIONS OF TX AT HOUSTON | HARRIS | 5GG | 41,322,824 |
| 16 | 2239 | CHAMBERS COUNTY SOLID WASTE INCINERATION | CHAMBERS | 5WI | 13,014 |
| 16 | 2298 | DOWNSTREAM ENVIRONMENTAL | HARRIS | 5GG | 9,438,587 |
| 16 | 2318 | DON TOL COMPOST FACILITY | MATAGORDA | 5RC | 5,385 |
| 16 | 2326 | MED-SHRED HOUSTON FACILITY | HARRIS | 5 | 516 |
| 16 | 40014 | CITY OF HEMPSTEAD TRANSFER STATION FACILITY | WALLER | 5TS | 264 |
| 16 | 40025 | CITY OF SEALY TRANSFER STATION | AUSTIN | 5TS | 5,774 |
| 16 | 40028 | MATAGORDA COUNTY TRANSFER STATION FACILITY | MATAGORDA | 5TS | 43,161 |
| 16 | 40053 | BEST SEPTIC TANK CLEANING | FORT BEND | 5TL | 716,360 |
| 16 | 40056 | CITY OF HUNTSVILLE TRANSFER STATION FACILITY | WALKER | 5TS | 38,349 |
| 16 | 40098 | BFI WASTE SERVICES OF TEXAS LP | HARRIS | 5RR | 22,710 |
| 16 | 40118 | HARDY ROAD TRANSFER STATION | HARRIS | 5TS | 266,186 |

| COG | P/R# | Site Name | County | Type | 2007 Tons |
|--|-------|--|--------------|------|-----------|
| 16 | 40131 | HOUSTON SOUTHEAST TRANSFER STATION FACILITY | HARRIS | 5TS | 398,873 |
| 16 | 40132 | HOUSTON SOUTHWEST TRANSFER STATION FACILITY | HARRIS | 5TS | 496,490 |
| 16 | 40141 | MONTAGUE COUNTY TRANSFER STATION FACILITY | MONTGOMERY | 5TS | 87 |
| 16 | 40148 | JACKSBORO TRANSFER STATION | HARRIS | 5TS | 3,690 |
| 16 | 40189 | EGBERT TRANSFER STATION | HARRIS | 5TS | 116,652 |
| 16 | 40191 | COUNTRY WASTE INC | AUSTIN | 5TS | 6,723 |
| 16 | 40224 | INTERDRIVE FACILITY | HARRIS | 5 | 5,452 |
| 16 | 43018 | A AFFORDABLE VACUUM SERVICES AND DISPOSAL SITE | HARRIS | 5GG | 1,290,699 |
| GOLDEN CRECENT REGIONAL PLANNING COMMISSION | | | | | |
| 17 | 2181 | JACKSON COUNTY MSW TS AND RECYCLING CENTER | JACKSON | 5TS | 15,424 |
| 17 | 2330 | VICTORIA ENVIRONMENTAL | VICTORIA | 5 | 2,076,287 |
| 17 | 40011 | CITY OF HALLETTSVILLE TRANSFER STATION | LAVACA | 5TS | 919 |
| 17 | 40017 | CITY OF YOAKUM TRANSFER STATION | DEWITT | 5TS | 17,191 |
| ALAMO AREA COUNCIL OF GOVERNMENTS | | | | | |
| 18 | 1443 | STARCREST TRANSFER STATION | BEXAR | 5TS | 173,093 |
| 18 | 1871 | JOURDANTON TRANSFER STATION FACILITY | ATASCOSA | 5TS | 114 |
| 18 | 2248 | LIQUID ENVIRONMENTAL SOLUTIONS OF TX SAN ANTONIO | BEXAR | 5GG | 9,657,263 |
| 18 | 2317 | SAN ANTONIO DISPOSAL INTERESTS LLC | BEXAR | 5RC | 4,177,064 |
| 18 | 42012 | GARDEN-VILLE RESEARCH AND RECYCLING PARK | BEXAR | 5RC | 26,058 |
| 18 | 42028 | CITY OF KERRVILLE COMPOSTING FACILITY | KERR | 5RC | 7,389 |
| 18 | 43011 | LACOSTE WASTE WATER TREATMENT PLANT | MEDINA | 5GG | 8,939,174 |
| SOUTH TEXAS DEVELOPMENT COUNCIL | | | | | |
| 19 | 40103 | JIM HOGG COUNTY TRANSFER STATION | JIM HOGG | 5TS | 8,651 |
| COASTAL BEND COUNCIL OF GOVERNMENTS | | | | | |
| 20 | 2319 | TEXAS SLUDGE DISPOSAL INC | SAN PATRICIO | 5GG | 4,657 |
| 20 | 40002 | LIVE OAK COUNTY TRANSFER STATION | LIVE OAK | 5TS | 600 |
| 20 | 40027 | ARANSAS COUNTY TRANSFER STATION FACILITY | ARANSAS | 5TS | 9,845 |
| 20 | 43013 | TEXAS SLUDGE DISPOSAL INC | SAN PATRICIO | 5GG | 5,533,790 |
| LOWER RIO GRANDE VALLEY DEVELOPMENT COUNCIL | | | | | |
| 21 | 0748 | CITY OF PHARR TRANSFER STATION | HIDALGO | 5TS | 624 |
| 21 | 2102 | HIDALGO COUNTY PRECINCT 4 RECOVERY CENTER | HIDALGO | 5SG | 22,408 |
| 21 | 2334 | MED-SHRED HARLINGEN PROCESSING FACILITY | CAMERON | 5 | 20 |
| 21 | 2343 | VALLEY DEWATERING SERVICES | HIDALGO | 5 | 1,373,580 |
| 21 | 40110 | CITY OF HARLINGEN TRANSFER STATION FACILITY | CAMERON | 5TS | 58,556 |
| 21 | 42015 | CITY OF BROWNSVILLE COMPOSTING FACILITY | CAMERON | 5RC | 37,458 |
| TEXOMA COUNCIL OF GOVERNMENTS | | | | | |
| 22 | 1030 | CITY OF GAINESVILLE TRANSFER STATION | COOKE | 5TS | 32,781 |
| 22 | 1136 | CITY OF SHERMAN TRANSFER STATION | GRAYSON | 5TS | 19,510 |
| CENTRAL TEXAS COUNCIL OF GOVERNMENTS | | | | | |
| 23 | 40004 | CITY OF HICO TRANSFER STATION FACILITY | HAMILTON | 5TS | 211 |
| 23 | 40043 | CITY OF KILLEEN TRANSFER STATION FACILITY | BELL | 5TS | 54,413 |
| 23 | 40145 | CITY OF COPPERAS COVE TRANSFER STATION FACILITY | CORYELL | 5TS | 25,032 |
| 23 | 40160 | CITY OF SAN SABA MUNICIPAL SOLID WASTE PROCESS | SAN SABA | 5TS | 3,549 |
| 23 | 40209 | CITY OF KILLEEN TRANSFER STATION | BELL | 5TS | 53,335 |
| 23 | 42017 | CITY OF COPPERAS COVE COMPOSTING FACILITY | CORYELL | 5RC | 4,336 |
| 23 | 43010 | S & M VACUUM AND WASTE LTD | BELL | 5GG | 1,247,986 |

| COG | P/R# | Site Name | County | Type | 2007 Tons |
|--|-------|--|----------|------|-----------|
| MIDDLE RIO GRANDE DEVELOPMENT COUNCIL | | | | | |
| 24 | 40034 | CITY OF SABINAL | UVALDE | 5TS | 1,233 |
| 24 | 40042 | CITY OF EAGLE PASS TRANSFER STATION FACILITY | MAVERICK | 5TS | 24,819 |
| 24 | 40057 | CITY OF ROCKSPRINGS TRANSFER STATION | EDWARDS | 5TS | 2,066 |
| 24 | 40170 | CITY OF BRACKETTVILLE MSW TRANSFER STATION | KINNEY | 5TS | 200 |

References

- i. Title 30, Texas Administrative Code, Chapter 330, Section 330.5 (b)
- ii. Annual Estimates of the Population for Counties of Texas: April 1, 2000 to July 1, 2007 (COEST2007-01-48), release date: March 22, 2008, source: Population Division, U.S. Census Bureau found at <http://www.census.gov/popest/counties/>
- iii. Texas Health and Safety Code , Section 363.0615