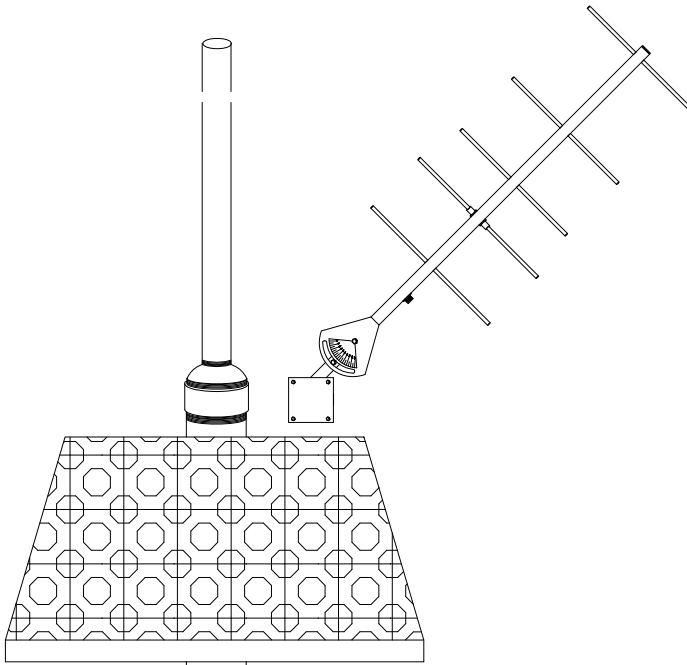


Water Site



4" X 10' Schedule 40 Spun Aluminum pole TOE, 4-1/2" OD x 0.273" wall Pelco Products PN: FB-5100-10

Coastal Environmental Zeno 3200 Data logger

Cabinet Eagle Traffic PN: FC1138 15 X 15 X 36

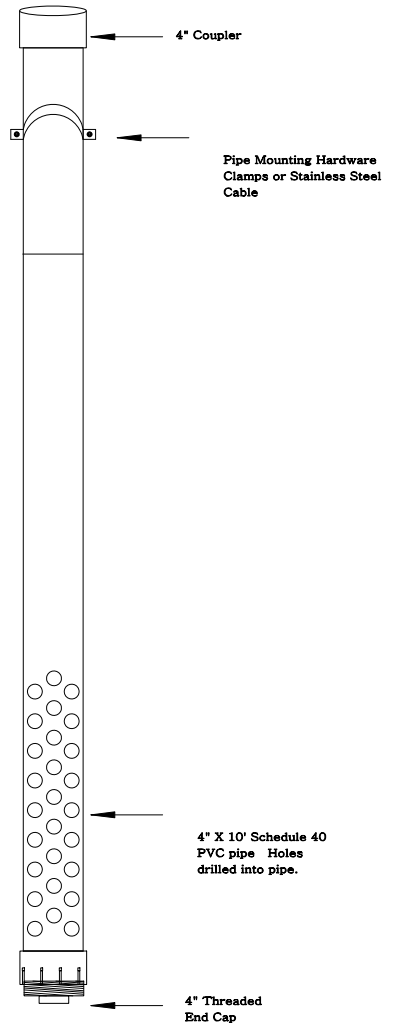
MaxStream Xstream 900 MHz transceiver X09-009PKI-RA Vendor: APW (512) 442-7824

Battery, Deep Cycle Maintenance Free Gel Cell 55-85 Ah

Collar assy for square base Pelco Products PN: PB-5325

Square base assy, aluminum w/plastic door Pelco Products PN: SP1014-TX-PB5335

Concrete square base 30X30X3 1/2



4" Coupler

Pipe Mounting Hardware Clamps or Stainless Steel Cable

GreenSpan CS4-1200

4" X 10' Schedule 40 PVC pipe Holes drilled into pipe.

4" Threaded End Cap