

2009h & 2012h Future Case HGB SIP Modeling with HGAC Proposed NO_x Reductions

September 13, 2006



2009h & 2012h Future Case
with HGAC Proposed NO_x Reduction
to On- & Non-Road Mobile Sources
within the Eight-County Area

NO_x Reductions include:

Source Category	2009 HGAC	2012 HGAC
Non-Road Mobile	3.9 tpd	4.4 tpd
On-Road Mobile	0.5 tpd	7.8 tpd
Total On- + Non-Road	4.4 tpd	12.2 tpd

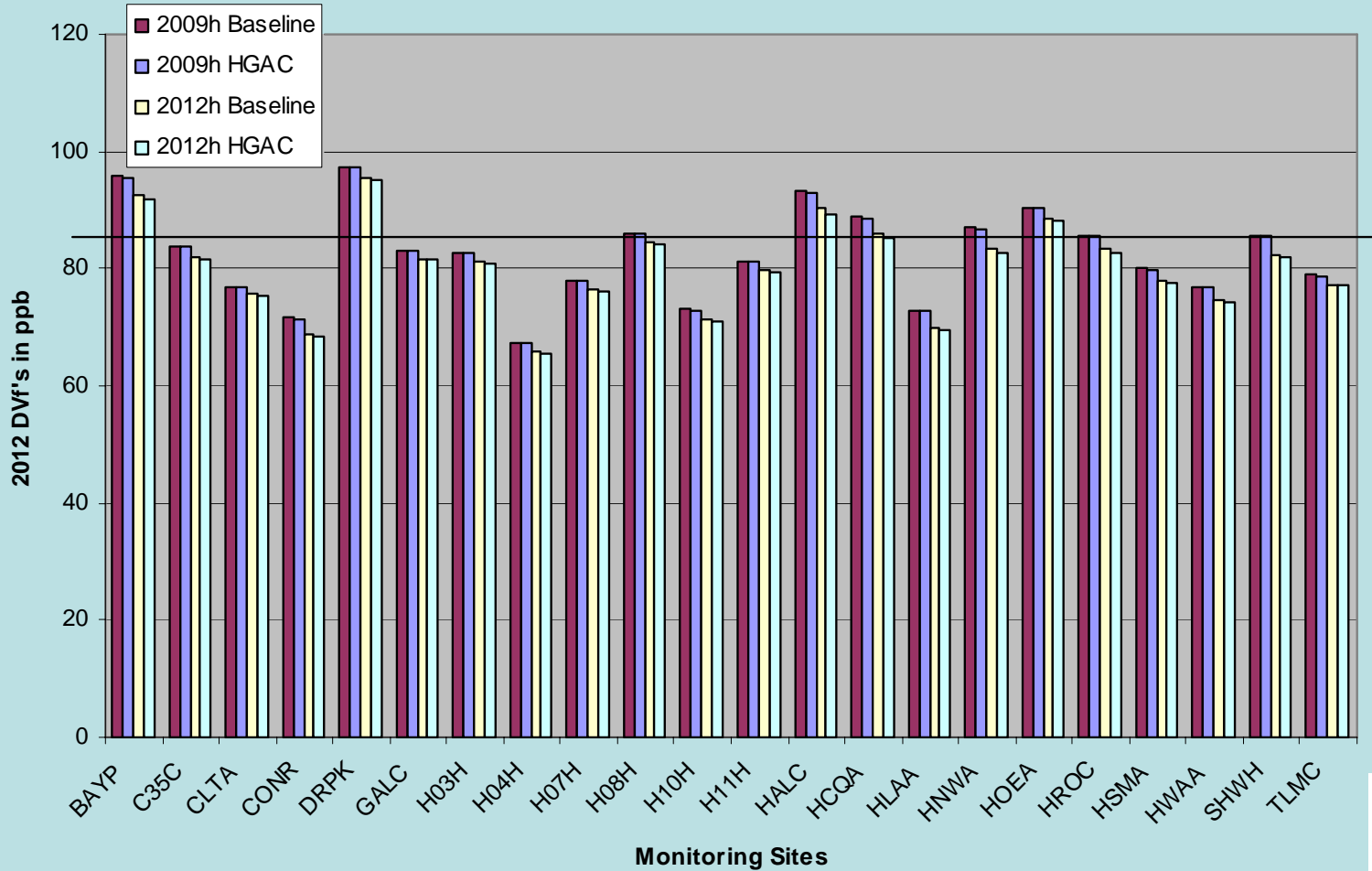


HGB Eight-County Total NO_x Emissions (tpd)

Emissions Category	2009h Baseline	2009 HGAC Proposal	2012h Baseline	2012 HGAC Proposal
Points	157.0	157.0	157.0	157.0
Ships	43.5	43.5	43.5	43.5
On-Road Mobile	152.7	152.2	110.4	102.6
Non-Road Mobile	46.4	42.5	39.4	35.0
Area	45.3	45.3	47.1	47.1
Totals	444.9	440.5	397.4	385.2
% Change	0.0 %	-0.99 %	0.0 %	-3.1 %



2009 & 2012 Future Design Values (DVf's) With HGAC Proposed NOx Reductions



Summary of Results

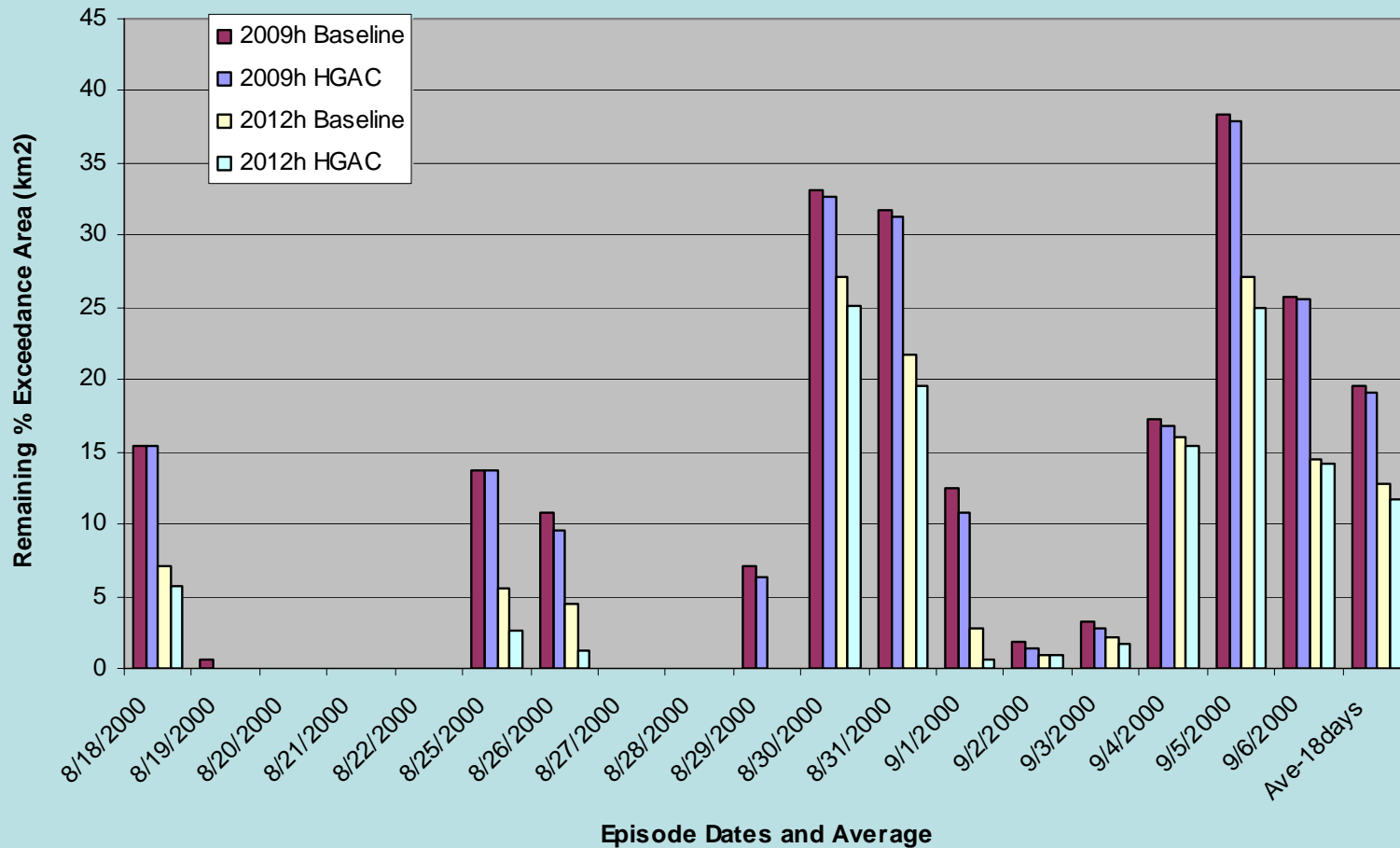
The 2009 & 2012 DVf's are lowered at each of the respective nonattainment monitors with the HGAC proposed NO_x emission reductions. All monitors are projected to remain nonattainment.

Monitor	2009h	2009-HGAC	2012h	2012-HGAC
DRPK(C35)	97.5 ppb	97.4 ppb	95.7 ppb	95.3 ppb
BAYP(C53)	95.8 ppb	95.6 ppb	92.6 ppb	91.9 ppb
HALC(C8)	93.2 ppb	93.0 ppb	90.2 ppb	89.4 ppb
HOEA(C1)	90.5 ppb	90.4 ppb	88.5 ppb	88.1 ppb
HCQA(C409)	88.8 ppb	88.7 ppb	85.9 ppb	85.3 ppb
HRM8(C608)	86.1 ppb	86.0 ppb	84.5 ppb*	84.1 ppb*
HNWA(C26)	87.0 ppb	86.8 ppb	83.6 ppb*	82.8 ppb*
HROC(C81)	85.7 ppb	85.6 ppb	83.3 ppb*	82.8 ppb*
SHWH(C554)	85.7 ppb	85.6 ppb	82.5 ppb*	81.8 ppb*

*Denotes attainment



Percent of 2000 Baseline Exceedance Area Remaining in 2009h & 2012h and with Proposed HGAC NOx Reductions



Summary of Results

- The average percent of the 2000 baseline exceedance area (area with eight-hour ozone > 84ppb) projected to be remaining in 2009h & 2012h is 19.6 and 12.8%, respectively; and of the 18 modeled exceedance days in the 2000 baseline, 13 and 11 exceedance days remain in the 2009h & 2012h baselines, respectively.
- With the HGAC proposed 4.4 tpd and 12.2 tpd NO_x emissions reductions in On- & Non-Road Mobile for 2009h & 2012h, respectively, the remaining average exceedance areas are 19.2% and 11.6%, respectively, and the number of exceedance days remains unchanged.

