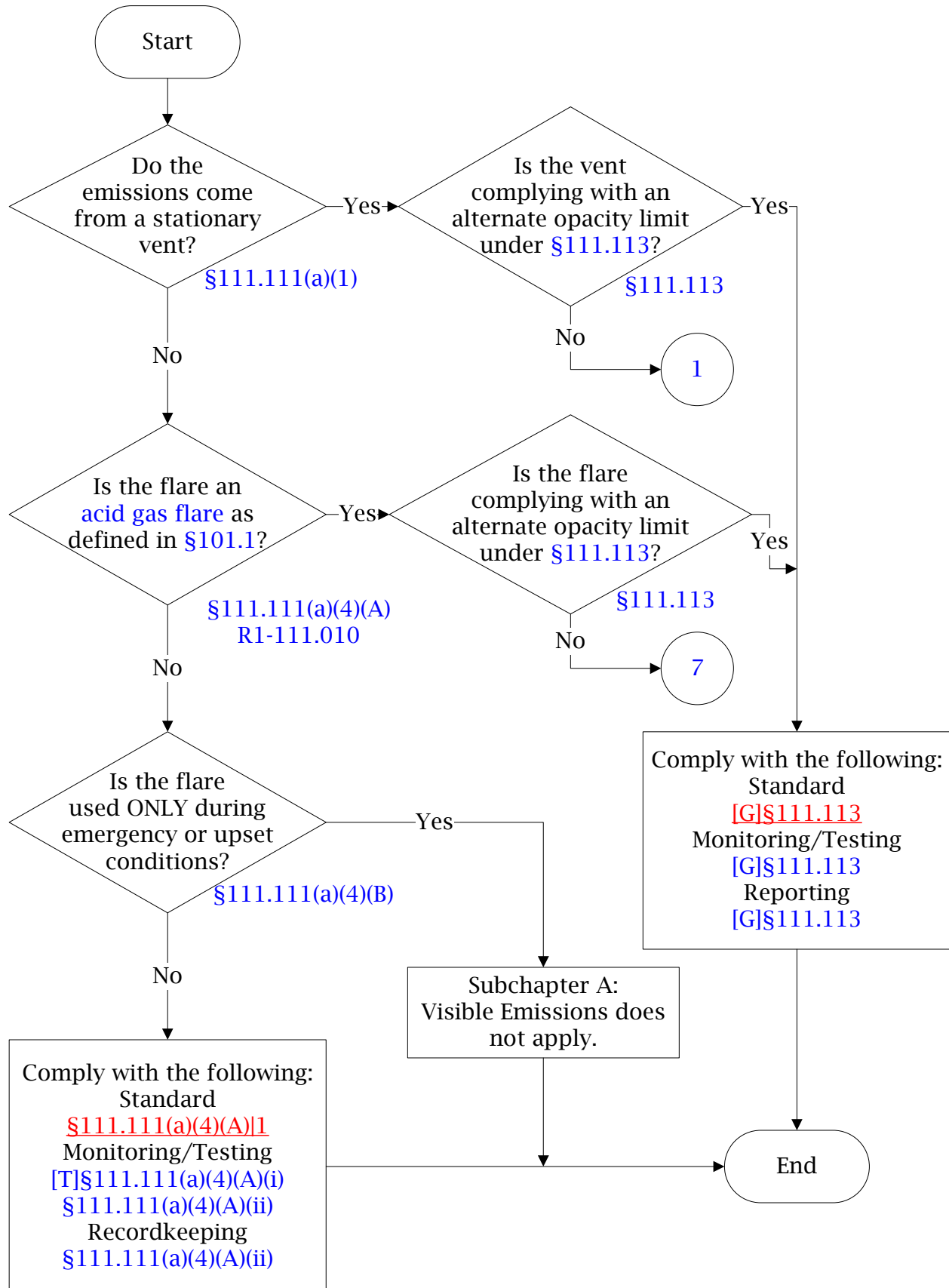


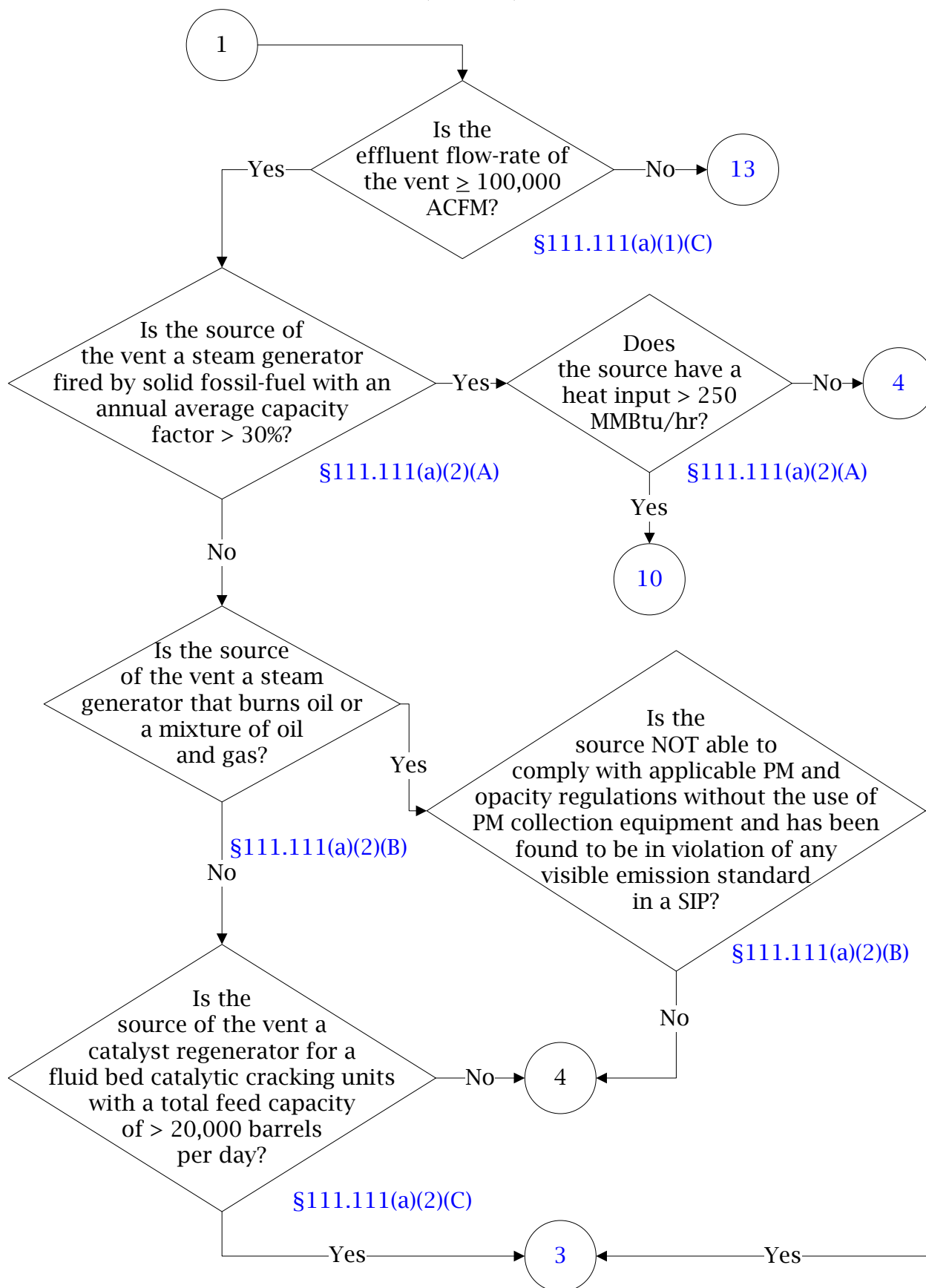


Below is a flowchart describing 30 TAC Chapter 111, Visible Emissions. It will likely not be accessible using a screen reader. For the text of the statute/rule, please go to [30 TAC Chapter 111, Visible Emissions](#) (1 of 13)



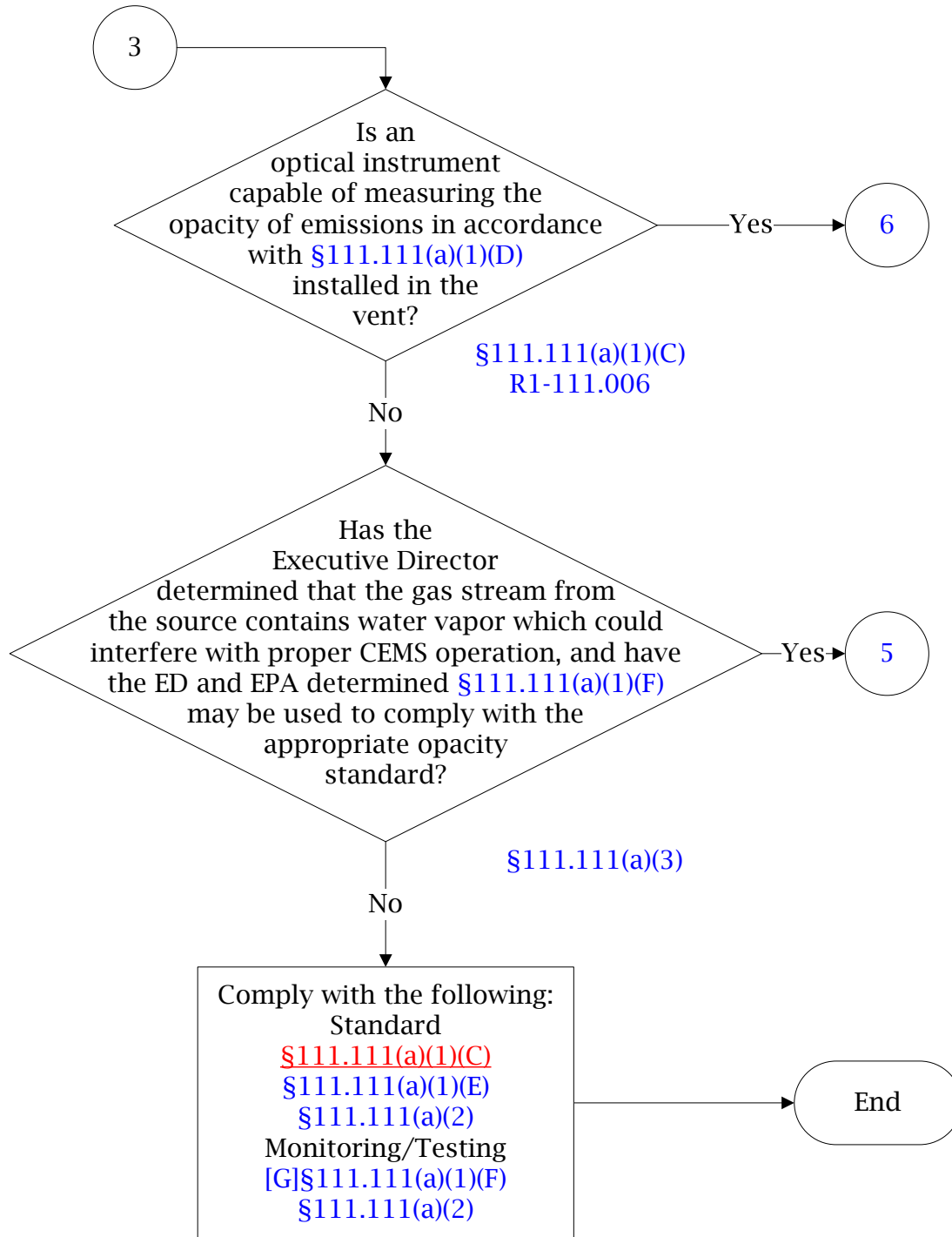
30 TAC Chapter 111, Visible Emissions (Stationary Vents/Flares)

(2 of 13)



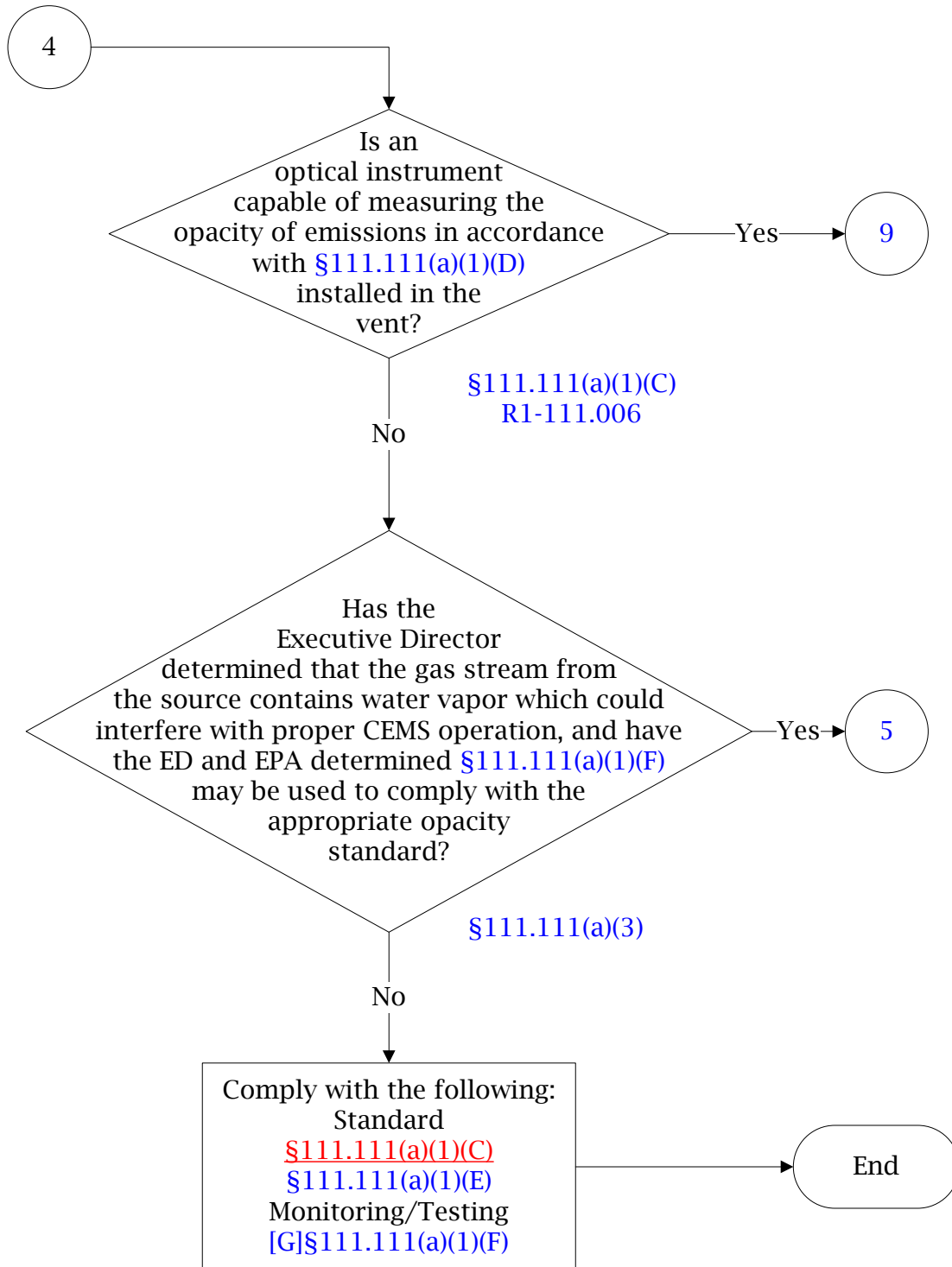
30 TAC Chapter 111, Visible Emissions (Stationary Vents/Flares)

(3 of 13)



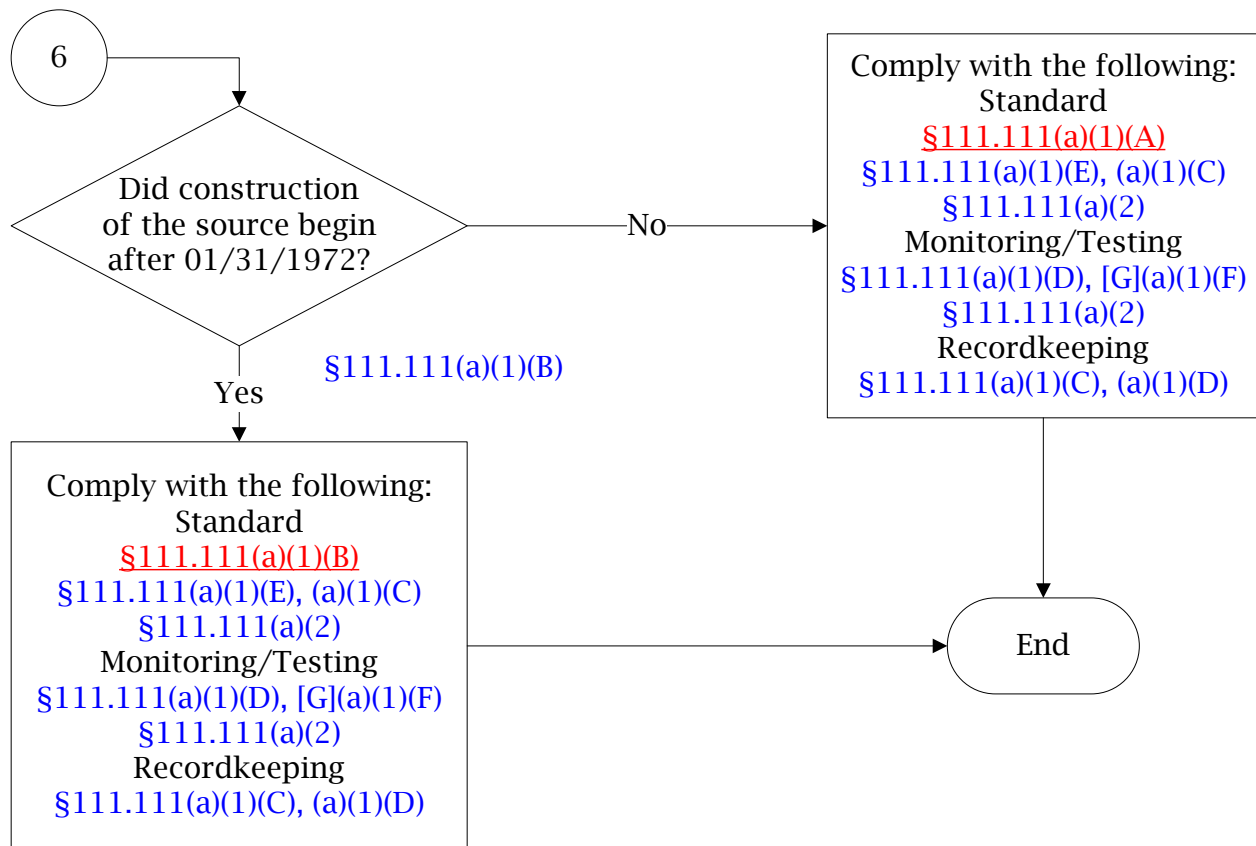
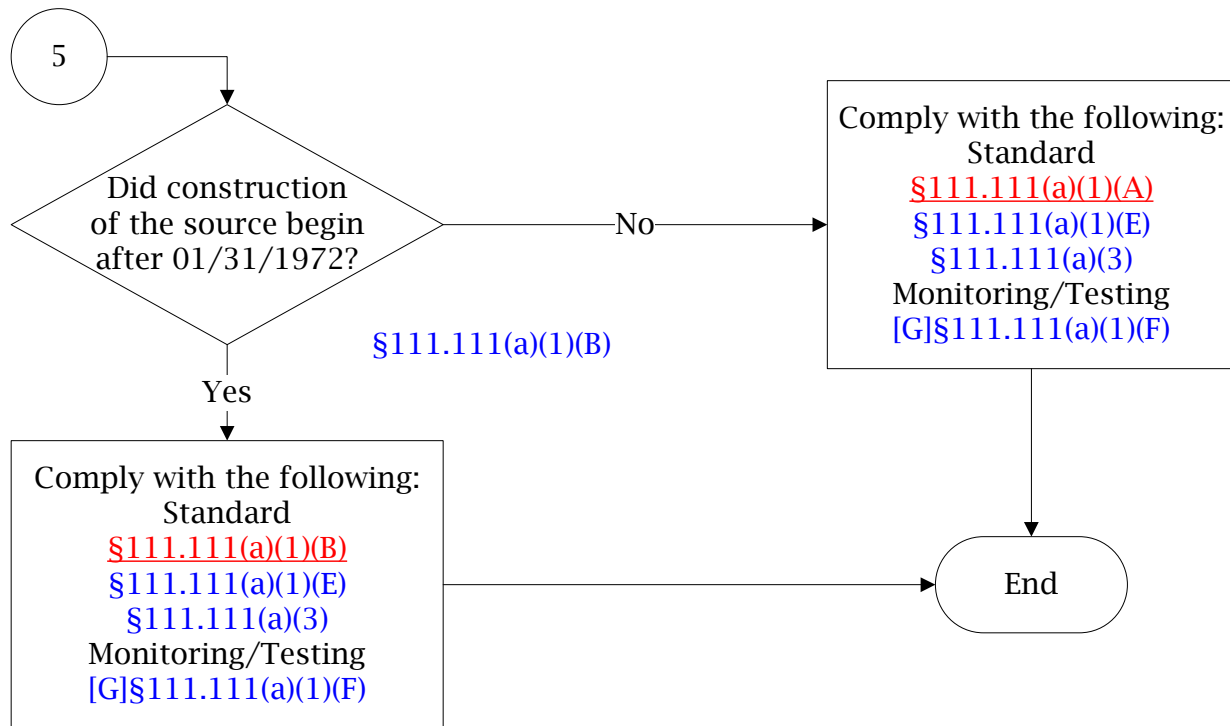
30 TAC Chapter 111, Visible Emissions (Stationary Vents/Flares)

(4 of 13)



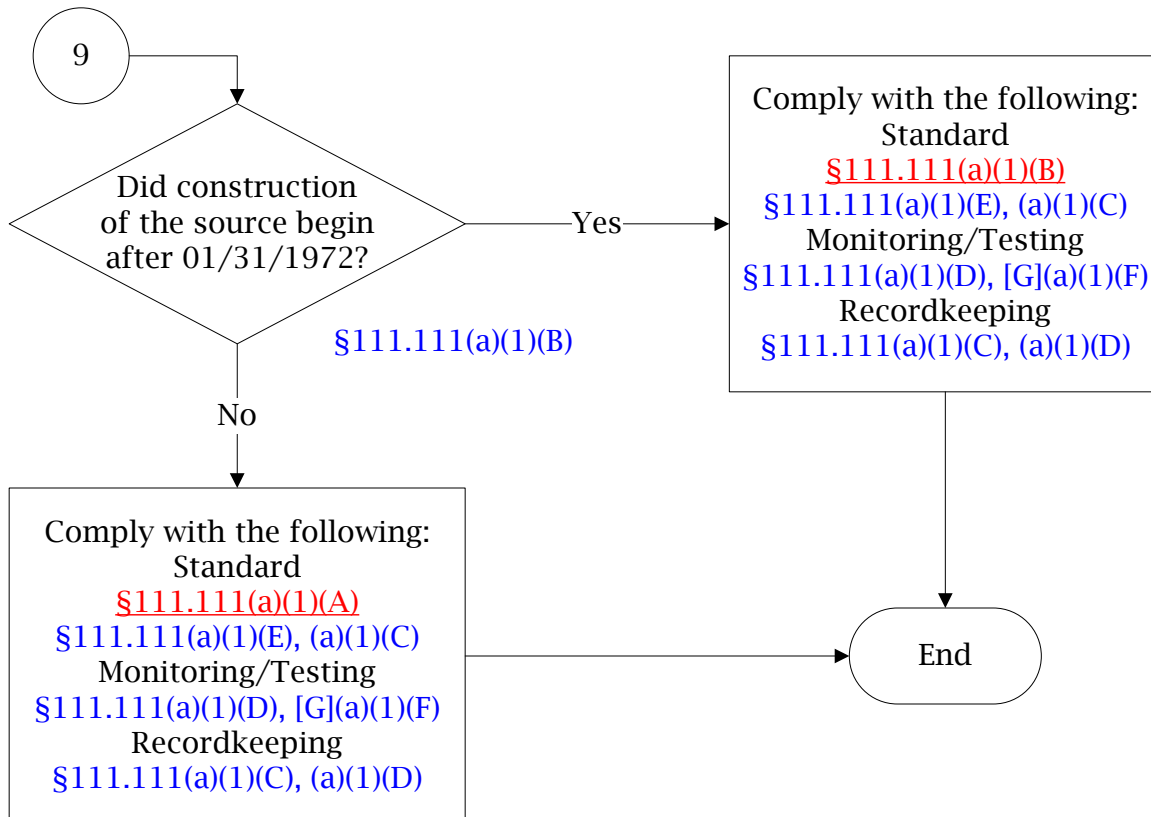
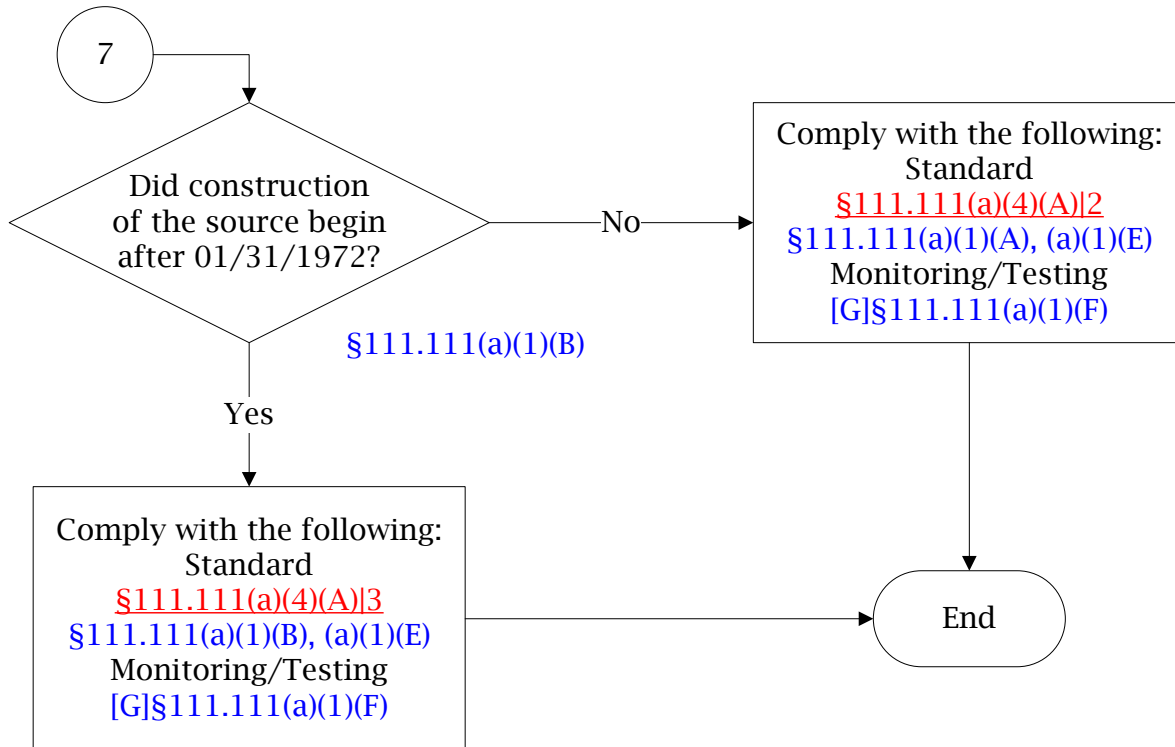
30 TAC Chapter 111, Visible Emissions (Stationary Vents/Flares)

(5 of 13)



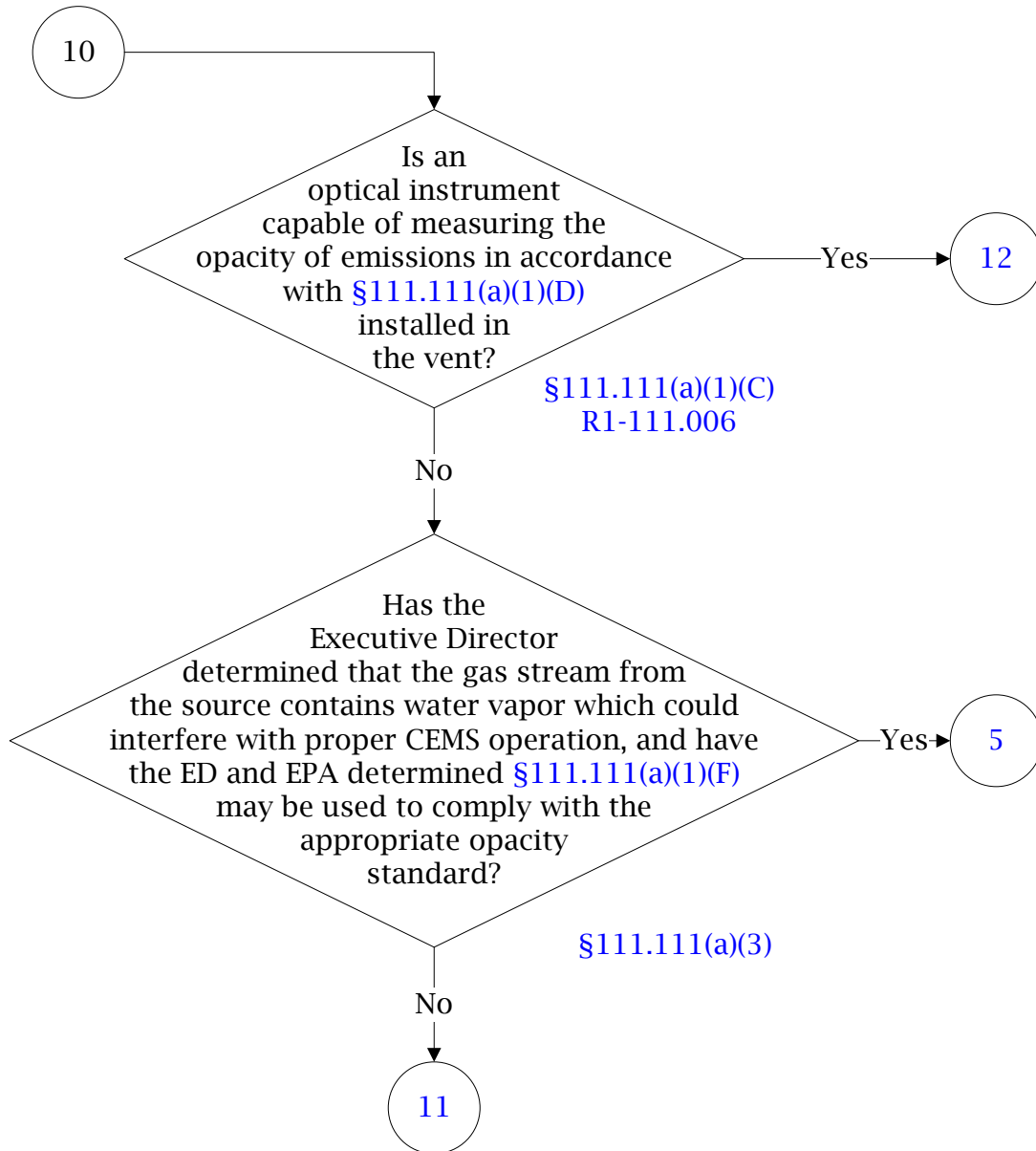
30 TAC Chapter 111, Visible Emissions (Stationary Vents/Flares)

(6 of 13)



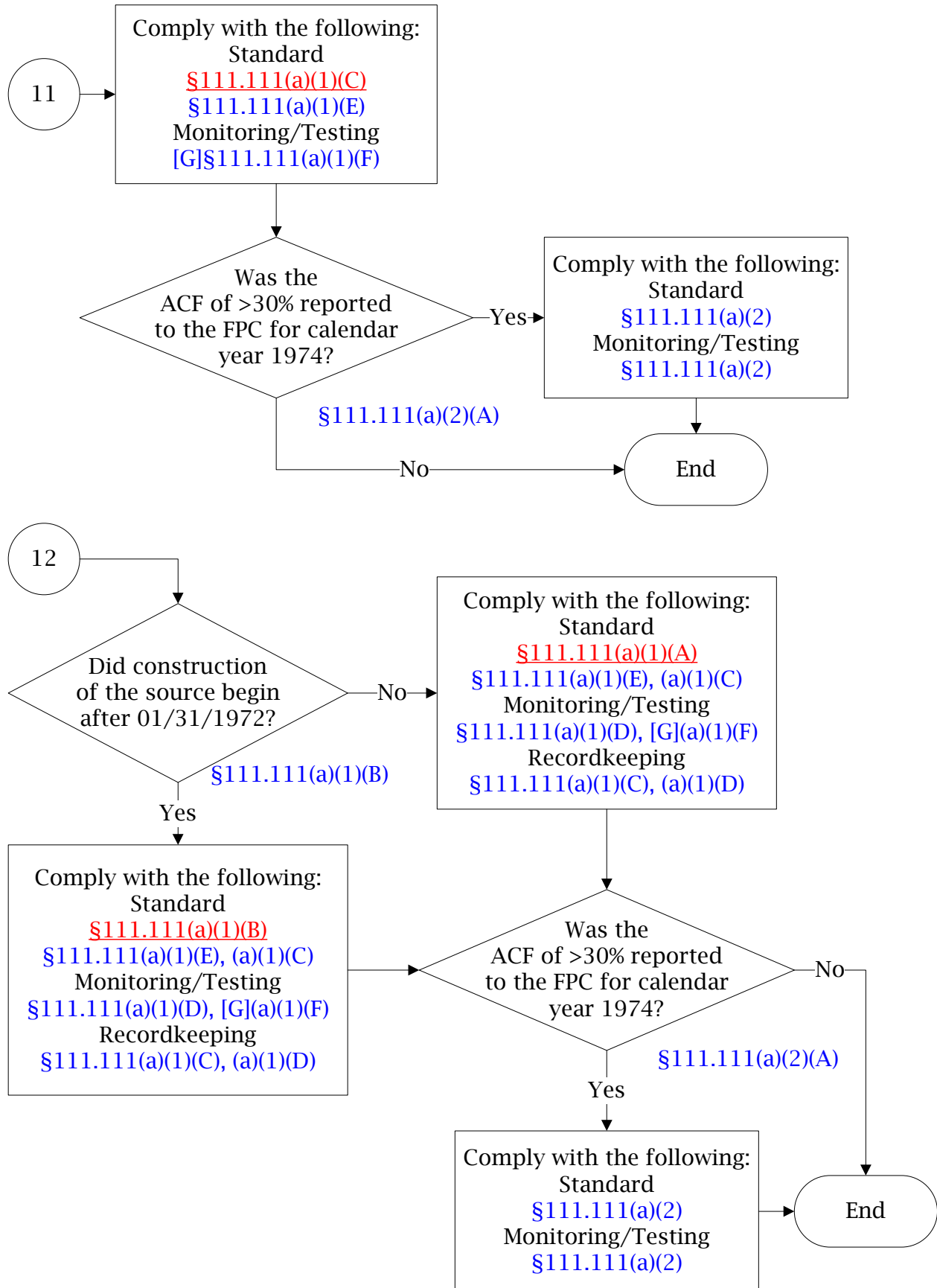
30 TAC Chapter 111, Visible Emissions (Stationary Vents/Flares)

(7 of 13)



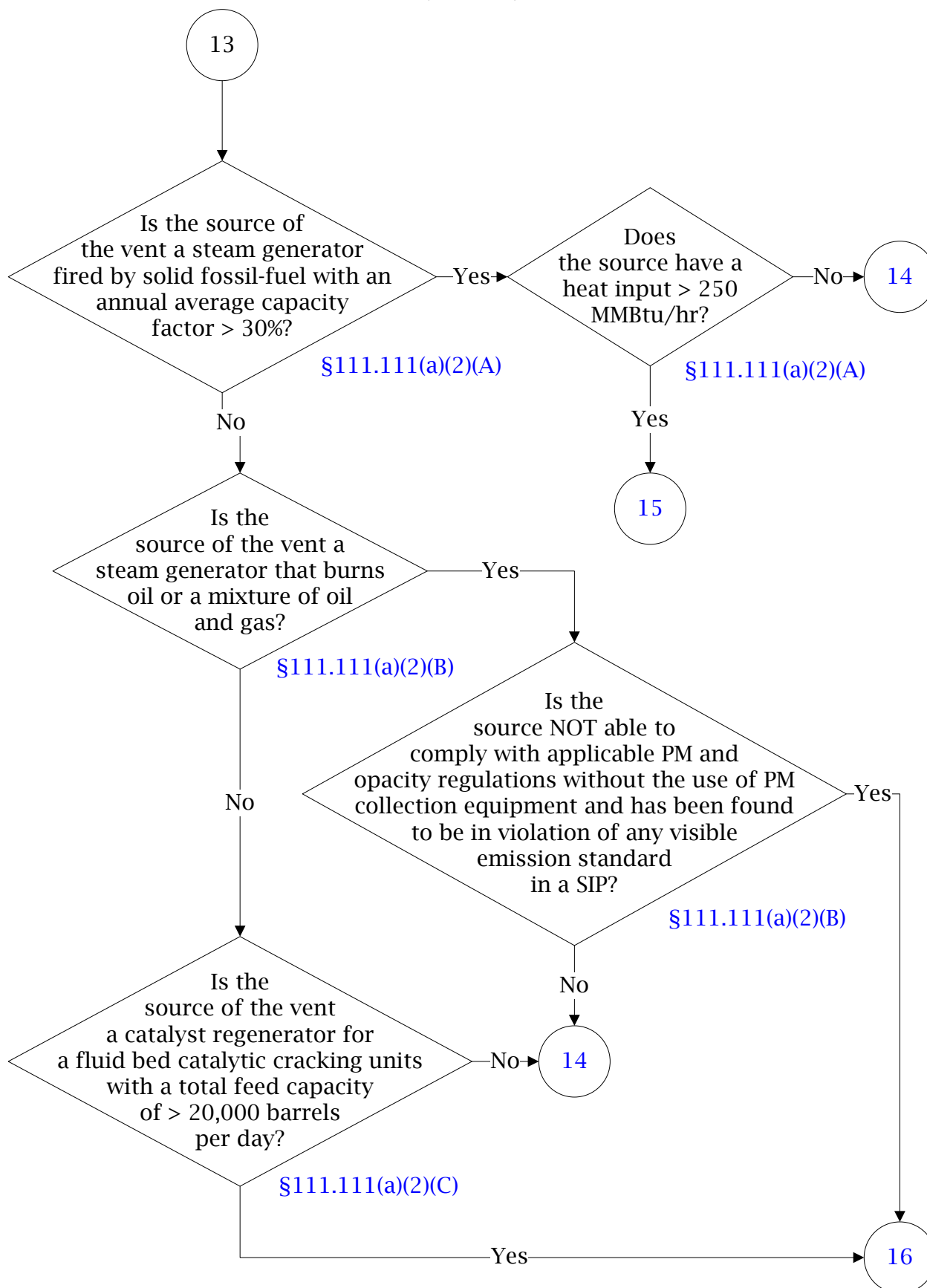
30 TAC Chapter 111, Visible Emissions (Stationary Vents/Flares)

(8 of 13)



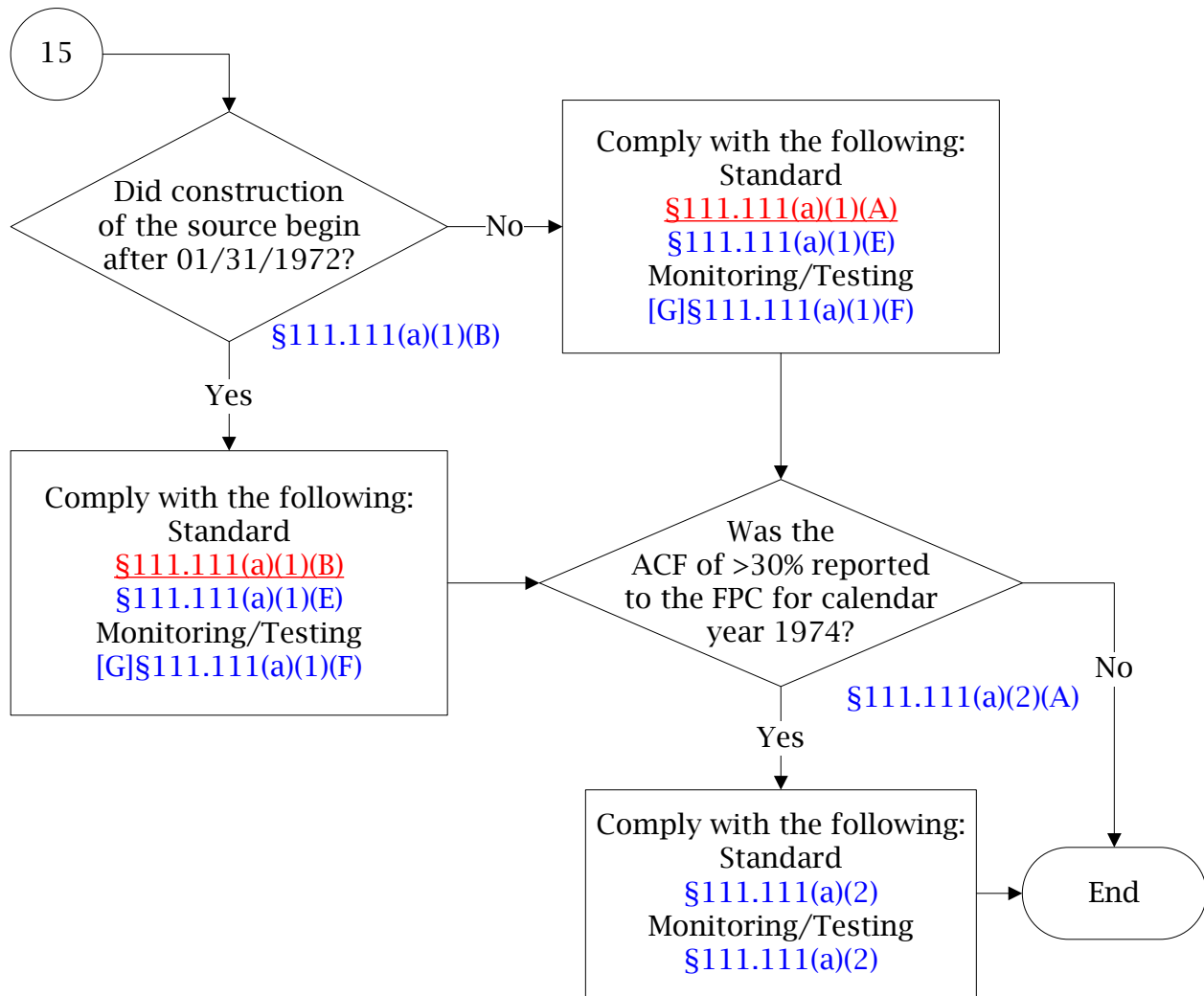
30 TAC Chapter 111, Visible Emissions (Stationary Vents/Flares)

(9 of 13)



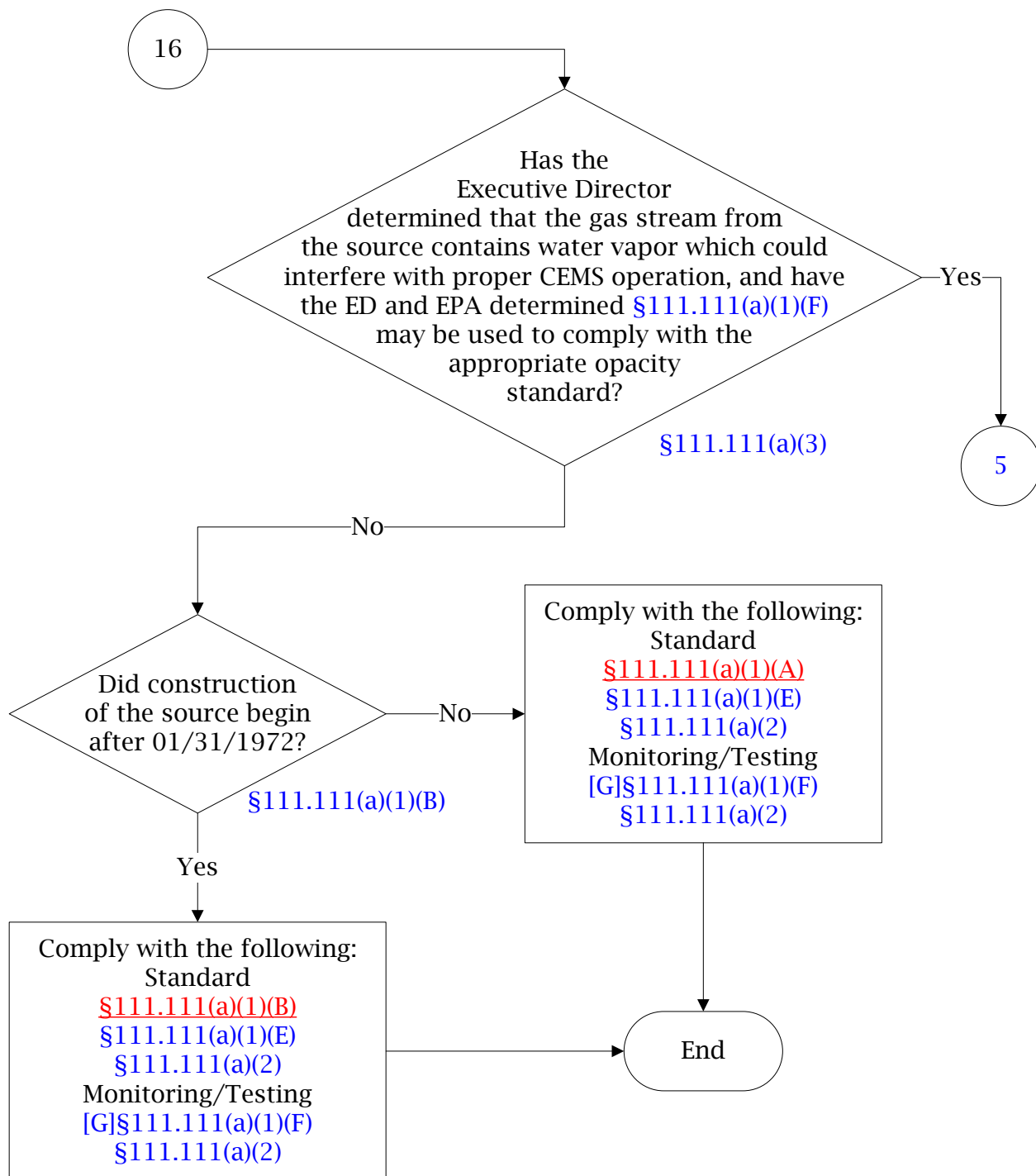
30 TAC Chapter 111, Visible Emissions (Stationary Vents/Flares)

(10 of 13)



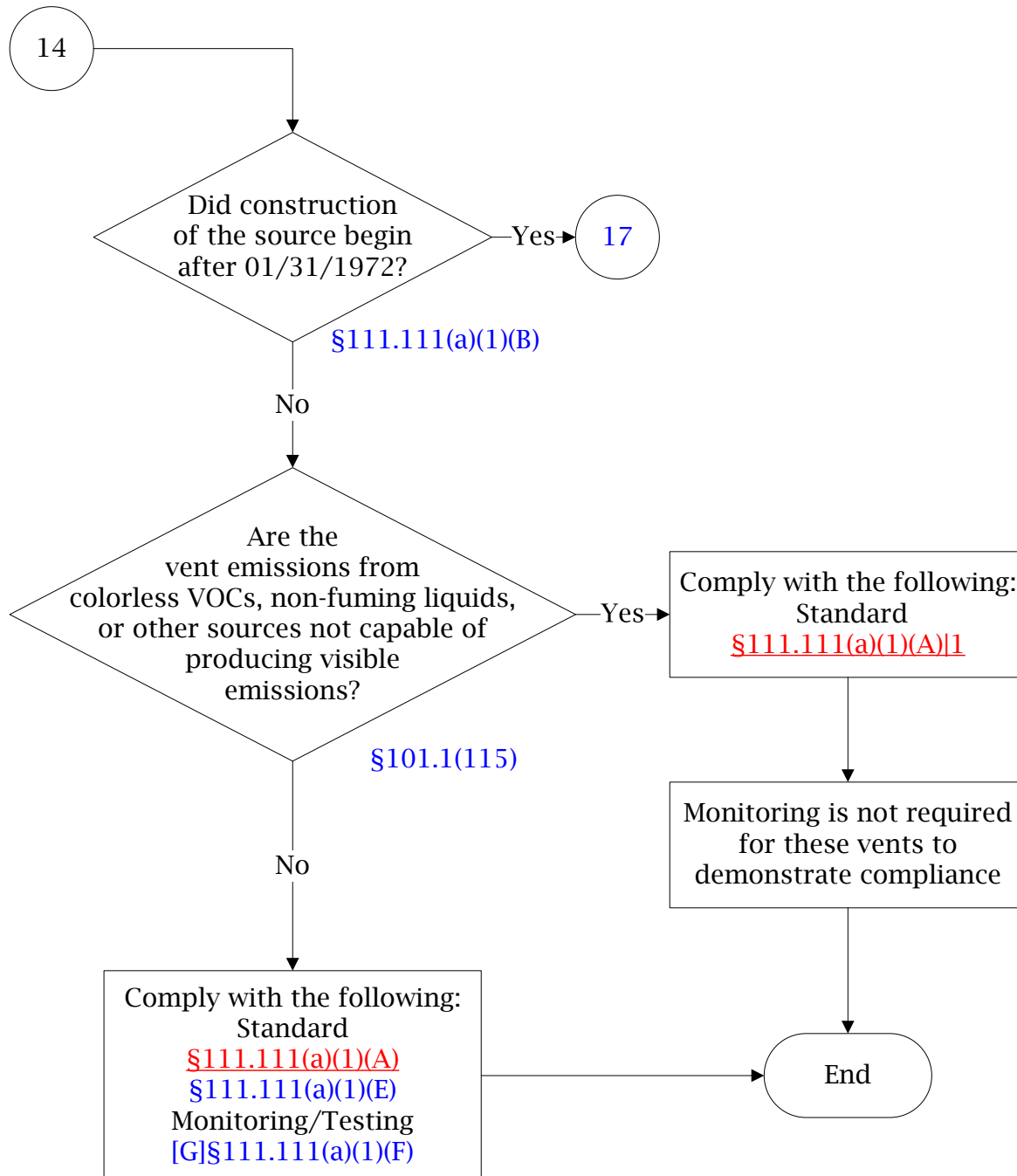
30 TAC Chapter 111, Visible Emissions (Stationary Vents/Flares)

(11 of 13)



30 TAC Chapter 111, Visible Emissions (Stationary Vents/Flares)

(12 of 13)



30 TAC Chapter 111, Visible Emissions (Stationary Vents/Flares)

(13 of 13)

