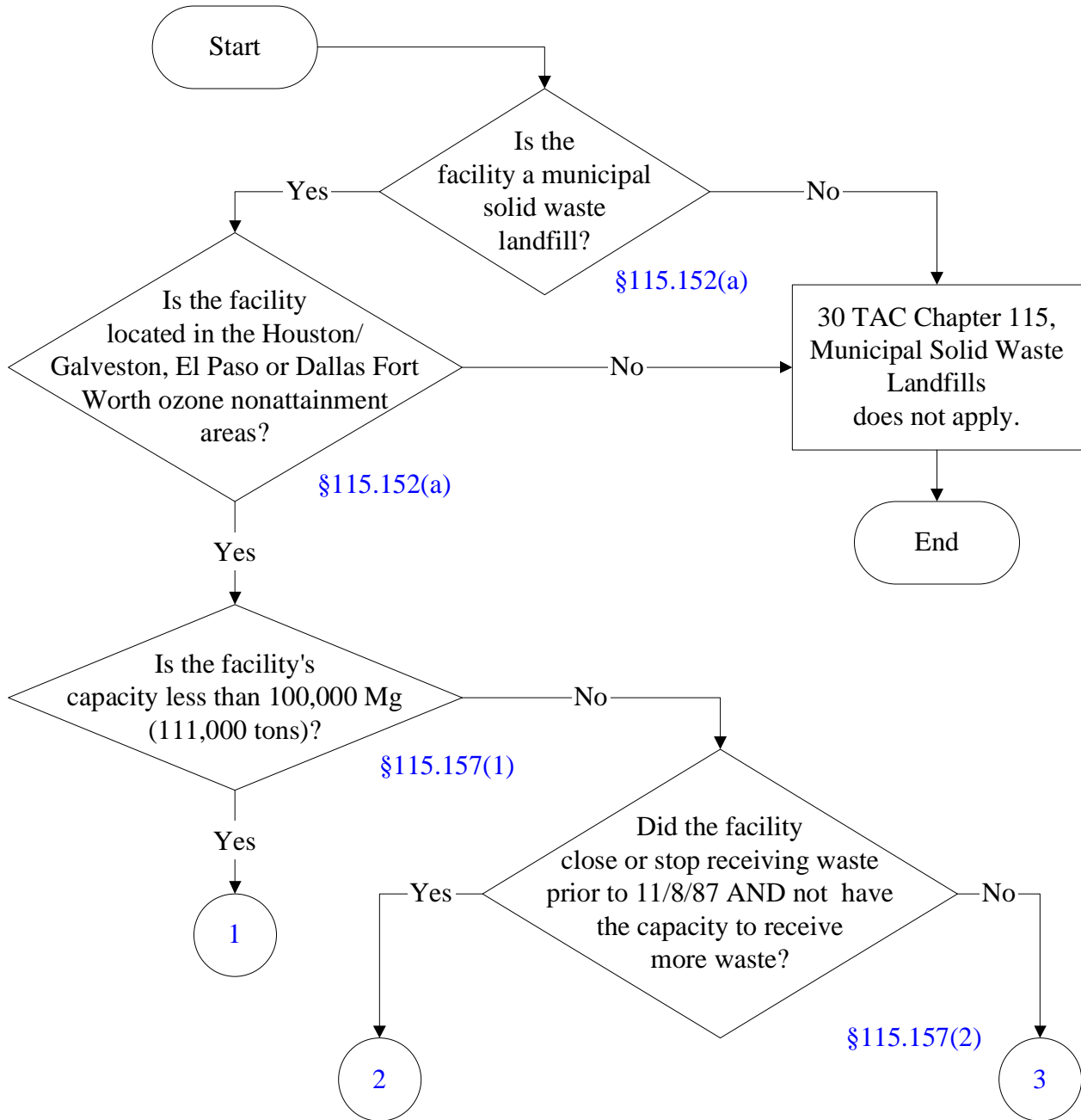




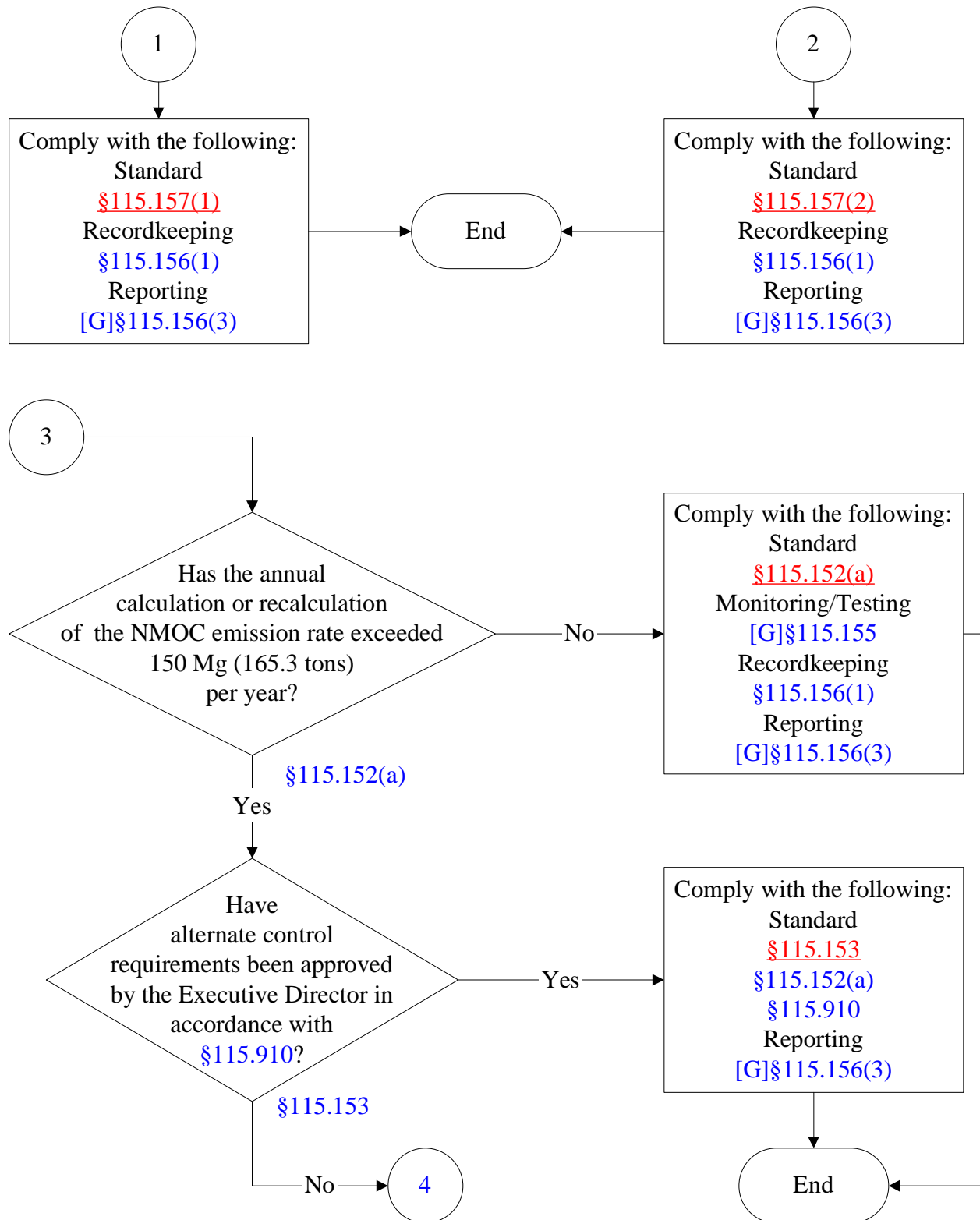
Below is a flowchart describing 30 TAC Chapter 115, MSW Landfills. It will likely not be accessible using a screen reader. For the text of the statute/rule, please go to [30 TAC Chapter 115, MSW Landfills](#)

(1 of 3)



# 30 TAC Chapter 115, Municipal Solid Waste Landfills

(2 of 3)



# 30 TAC Chapter 115, Municipal Solid Waste Landfills

(3 of 3)

