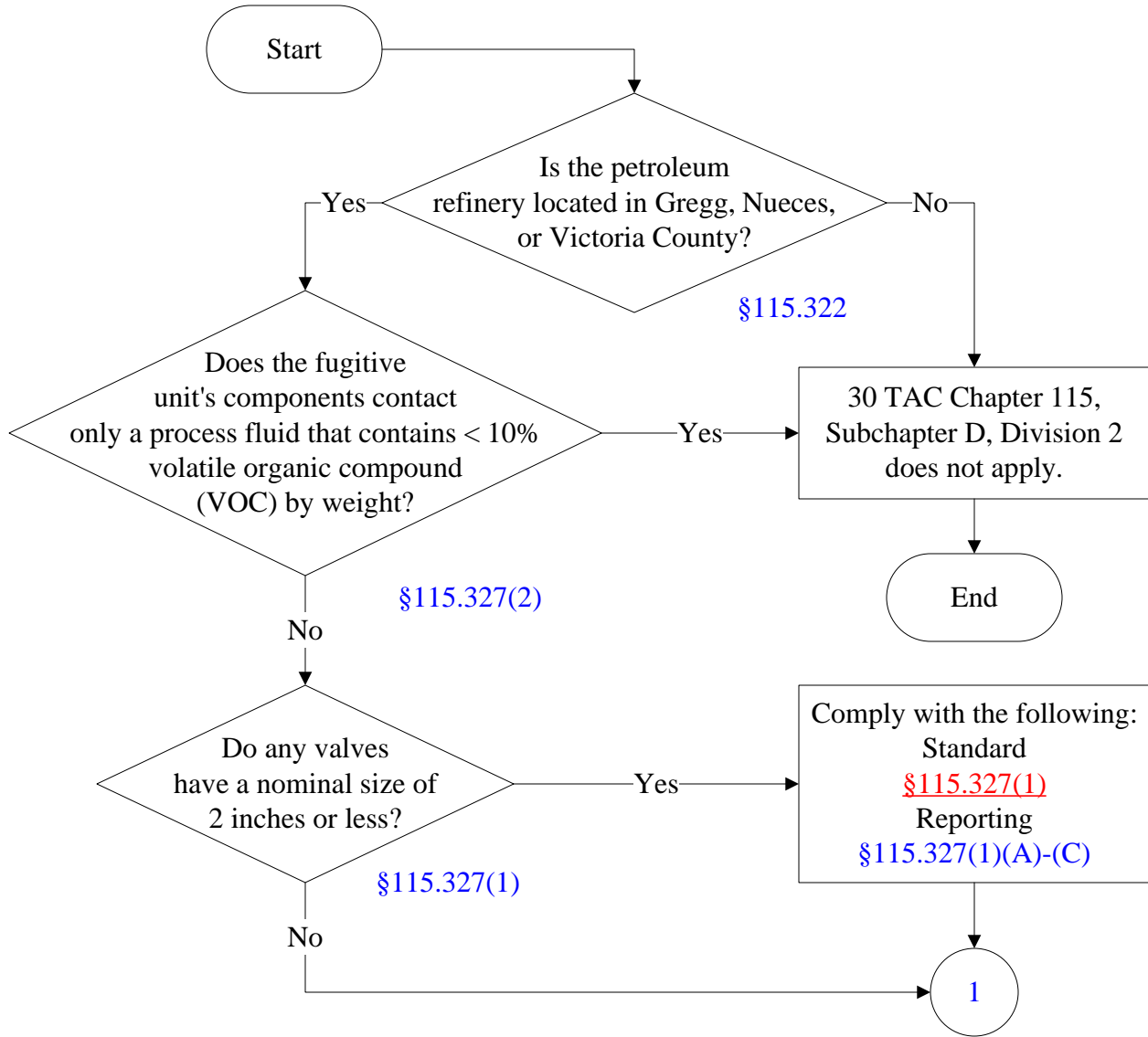




Below is a flowchart describing 30 TAC Chapter 115, Subchapter D, Division 2. It will likely not be accessible using a screen reader. For the text of the statute/rule, please go to

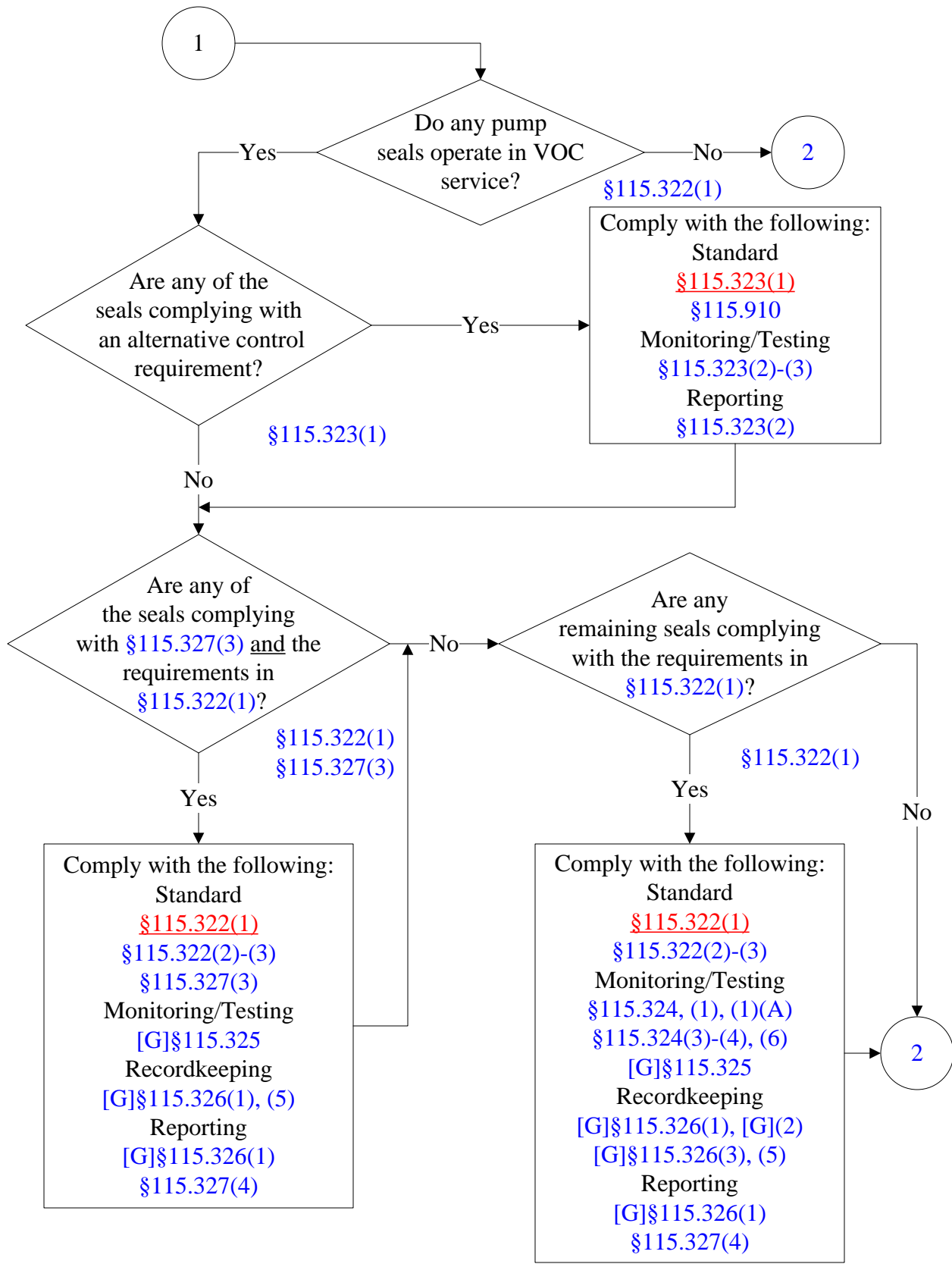
[30 TAC Chapter 115, Subchapter D, Division 2](#)

(1 of 10)



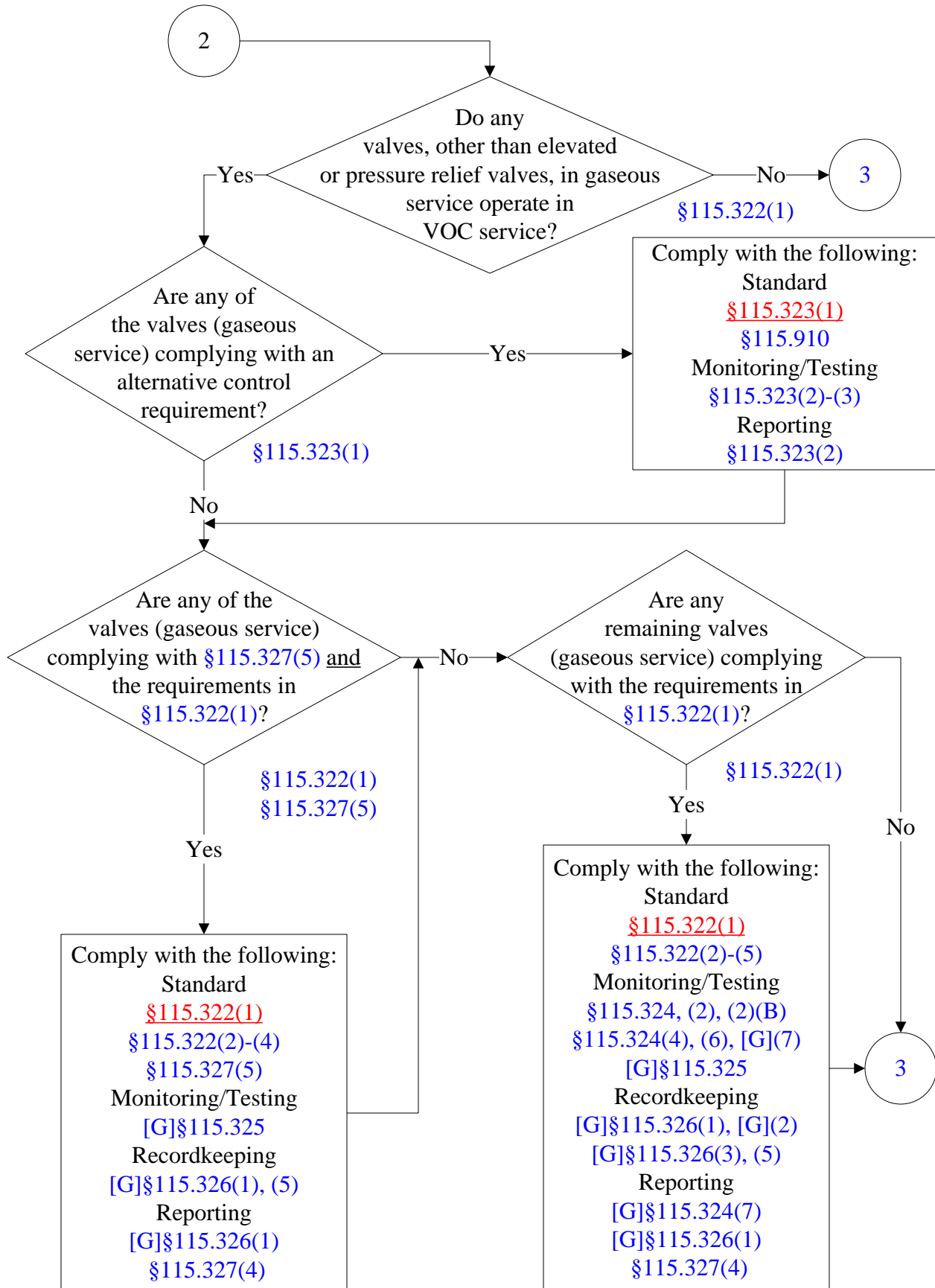
30 TAC Ch. 115, Subcha. D, Division 2: Fugitive Emission Control in Petroleum Refineries in Gregg, Nueces, and Victoria Counties

(2 of 10)

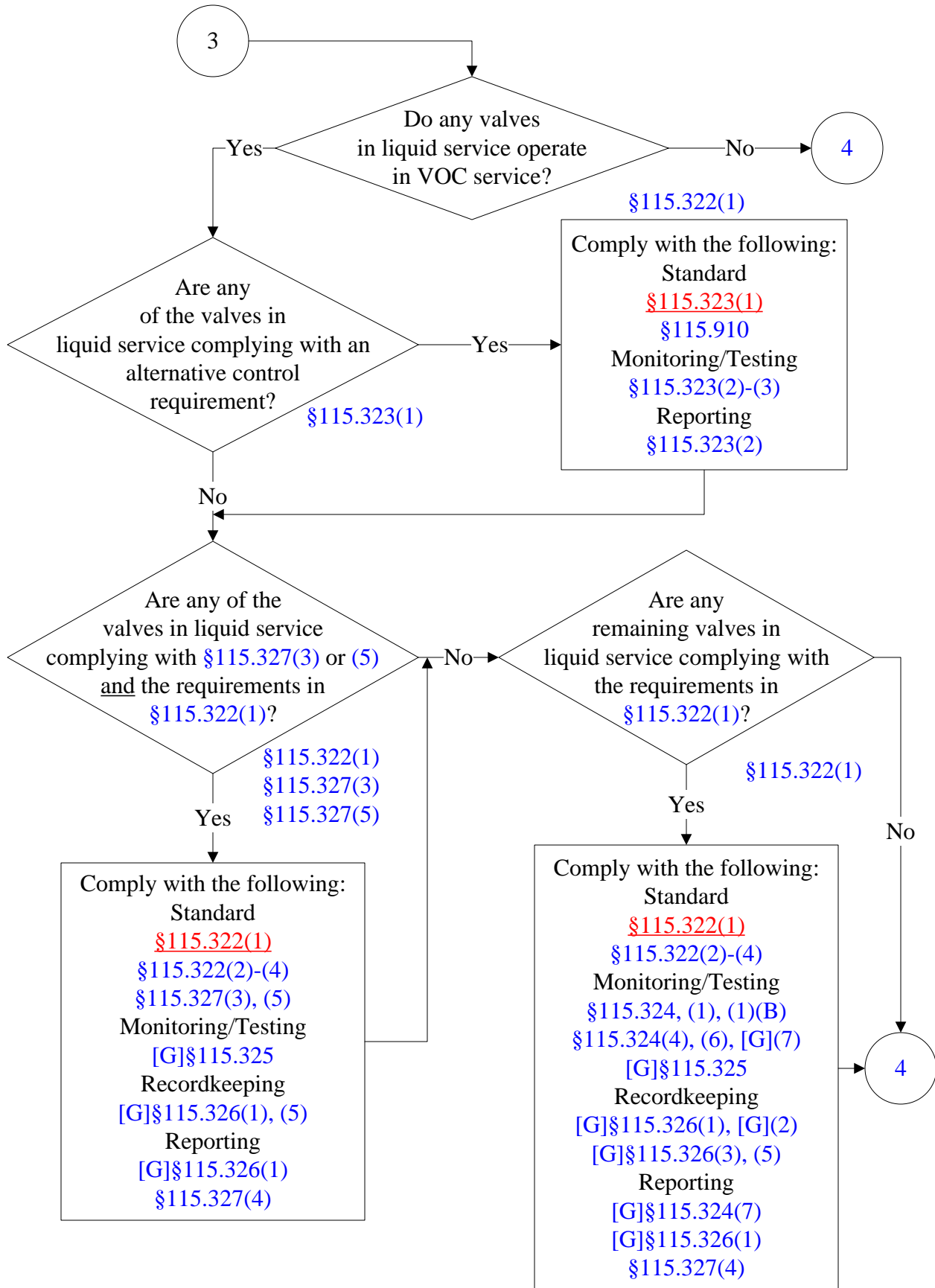


30 TAC Ch. 115, Subcha. D, Division 2: Fugitive Emission Control in Petroleum Refineries in Gregg, Nueces, and Victoria Counties

(3 of 10)

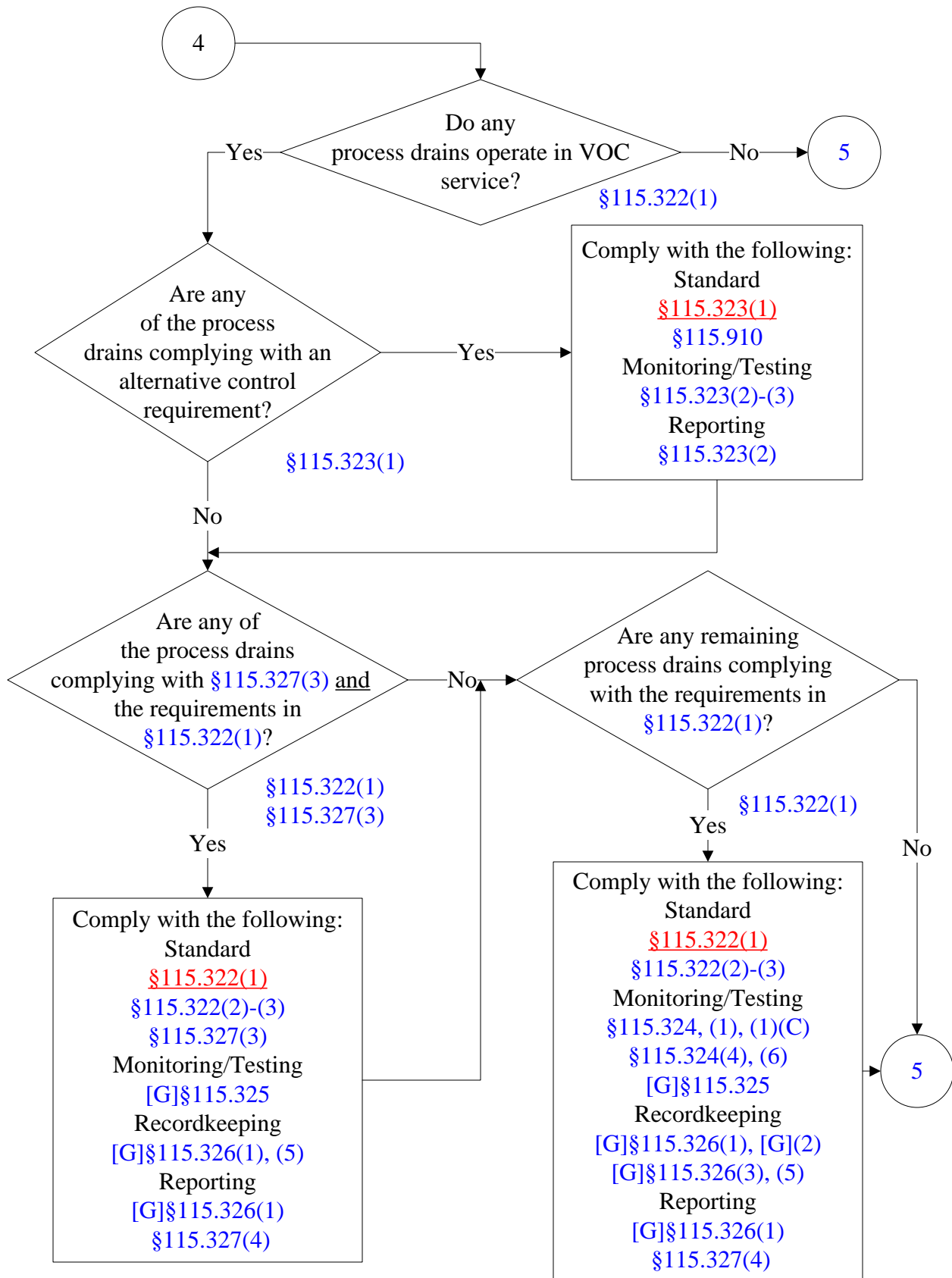


**30 TAC Ch. 115, Subcha. D, Division 2: Fugitive Emission Control
in Petroleum Refineries in Gregg, Nueces, and Victoria Counties
(4 of 10)**

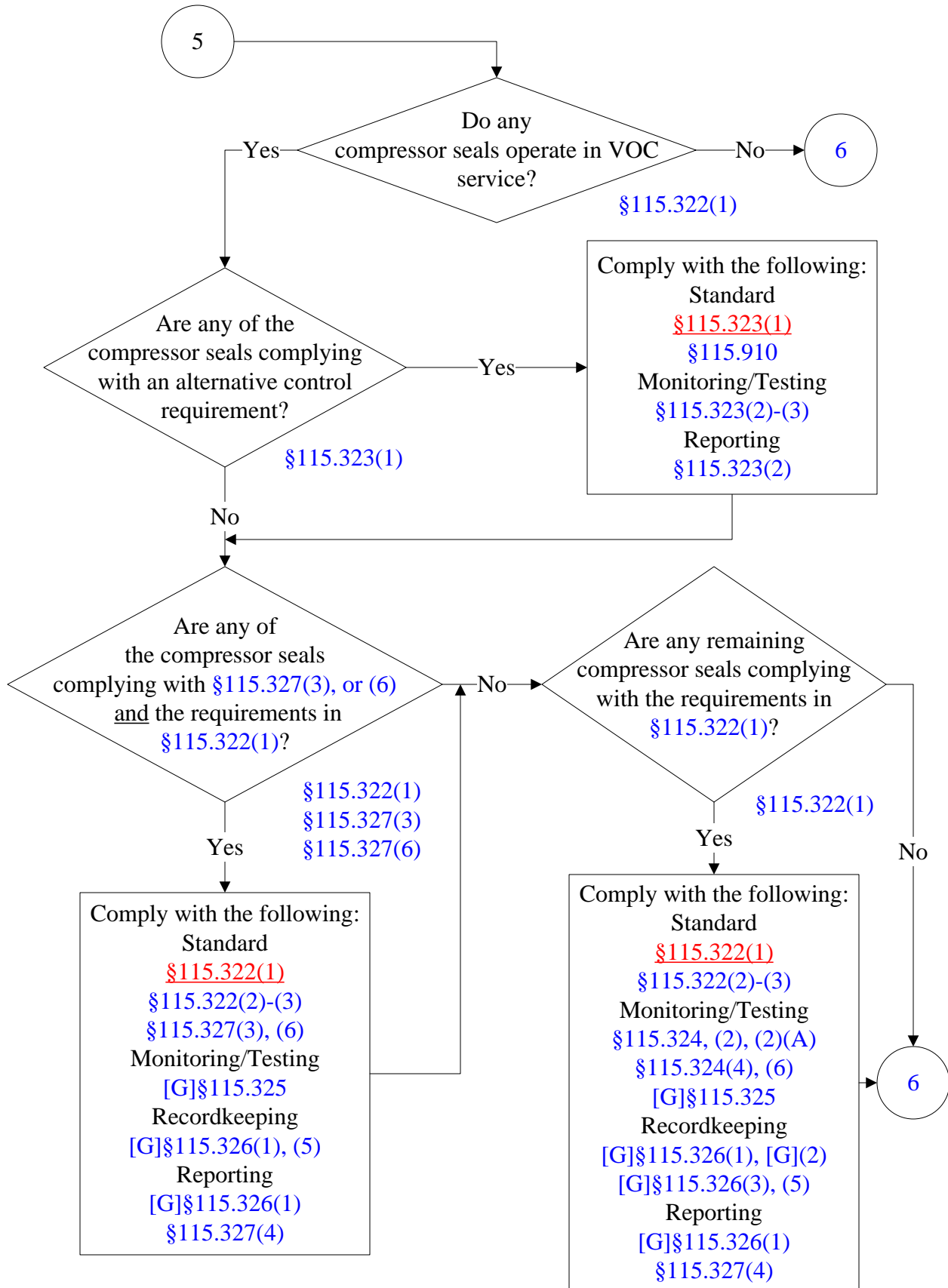


30 TAC Ch. 115, Subcha. D, Division 2: Fugitive Emission Control in Petroleum Refineries in Gregg, Nueces, and Victoria Counties

(5 of 10)

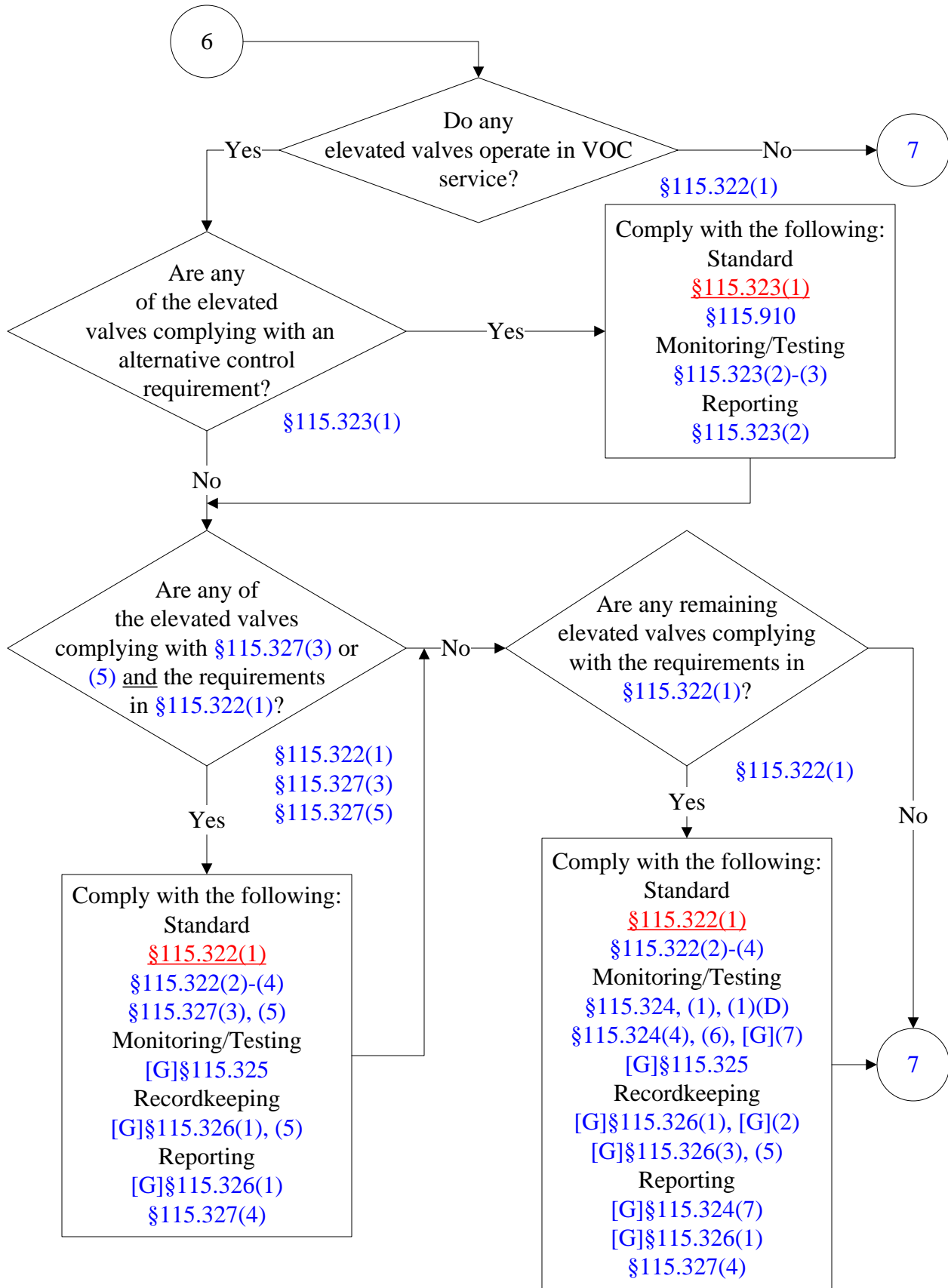


**30 TAC Ch. 115, Subcha. D, Division 2: Fugitive Emission Control
in Petroleum Refineries in Gregg, Nueces, and Victoria Counties
(6 of 10)**

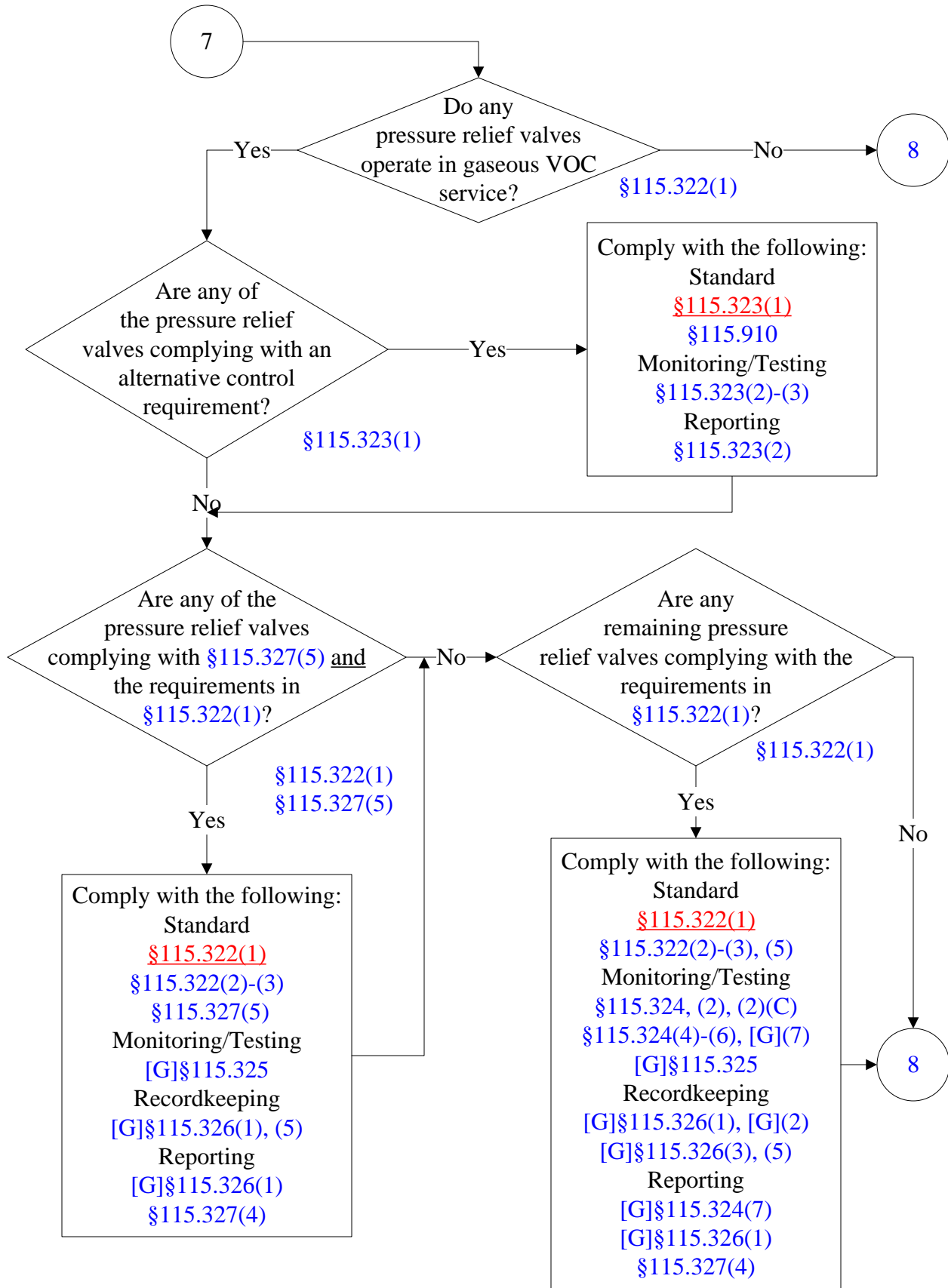


30 TAC Ch. 115, Subcha. D, Division 2: Fugitive Emission Control in Petroleum Refineries in Gregg, Nueces, and Victoria Counties

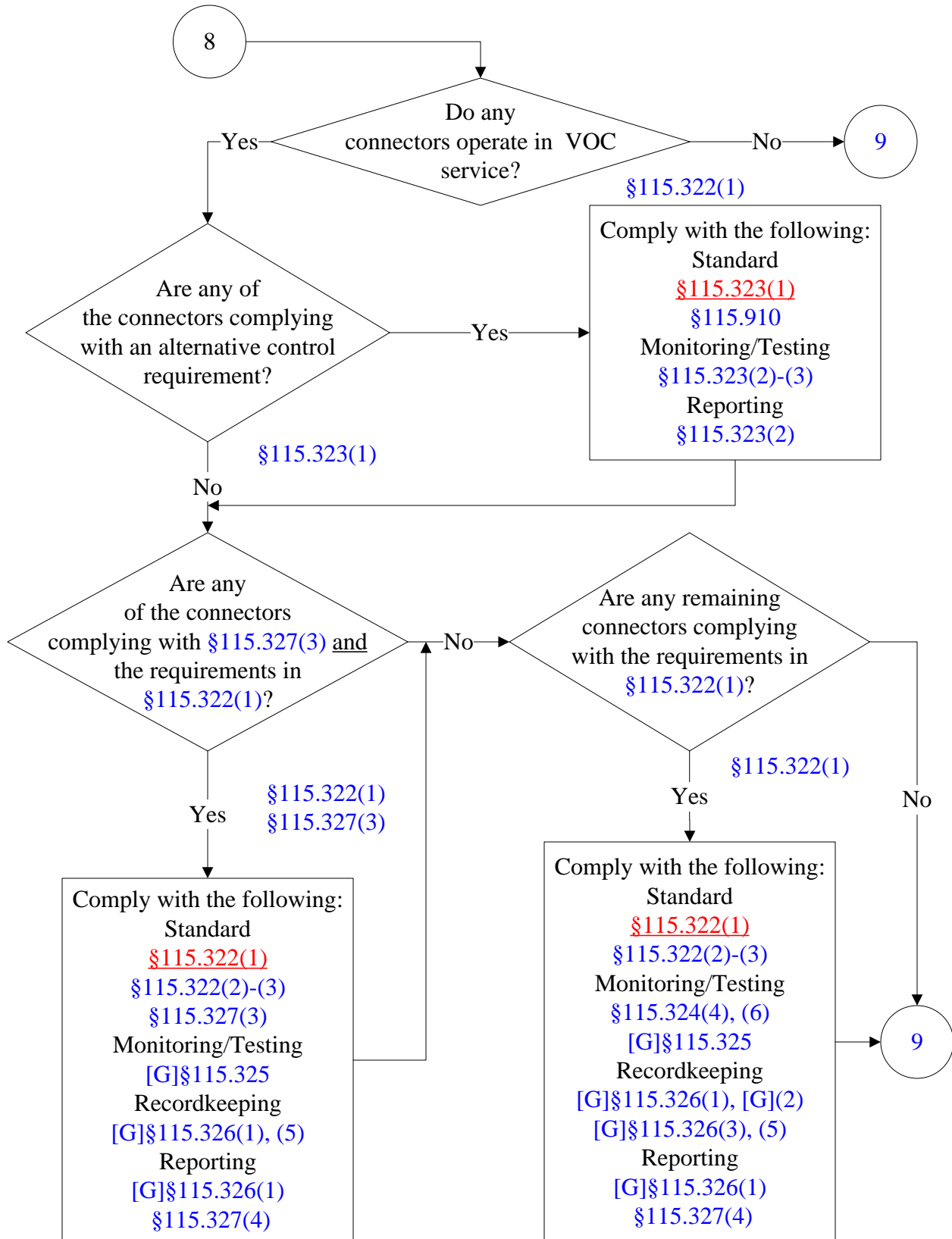
(7 of 10)



**30 TAC Ch. 115, Subcha. D, Division 2: Fugitive Emission Control
in Petroleum Refineries in Gregg, Nueces, and Victoria Counties
(8 of 10)**



**30 TAC Ch. 115, Subcha. D, Division 2: Fugitive Emission Control
in Petroleum Refineries in Gregg, Nueces, and Victoria Counties**
(9 of 10)



**30 TAC Ch. 115, Subcha. D, Division 2: Fugitive Emission Control
in Petroleum Refineries in Gregg, Nueces, and Victoria Counties
(10 of 10)**

