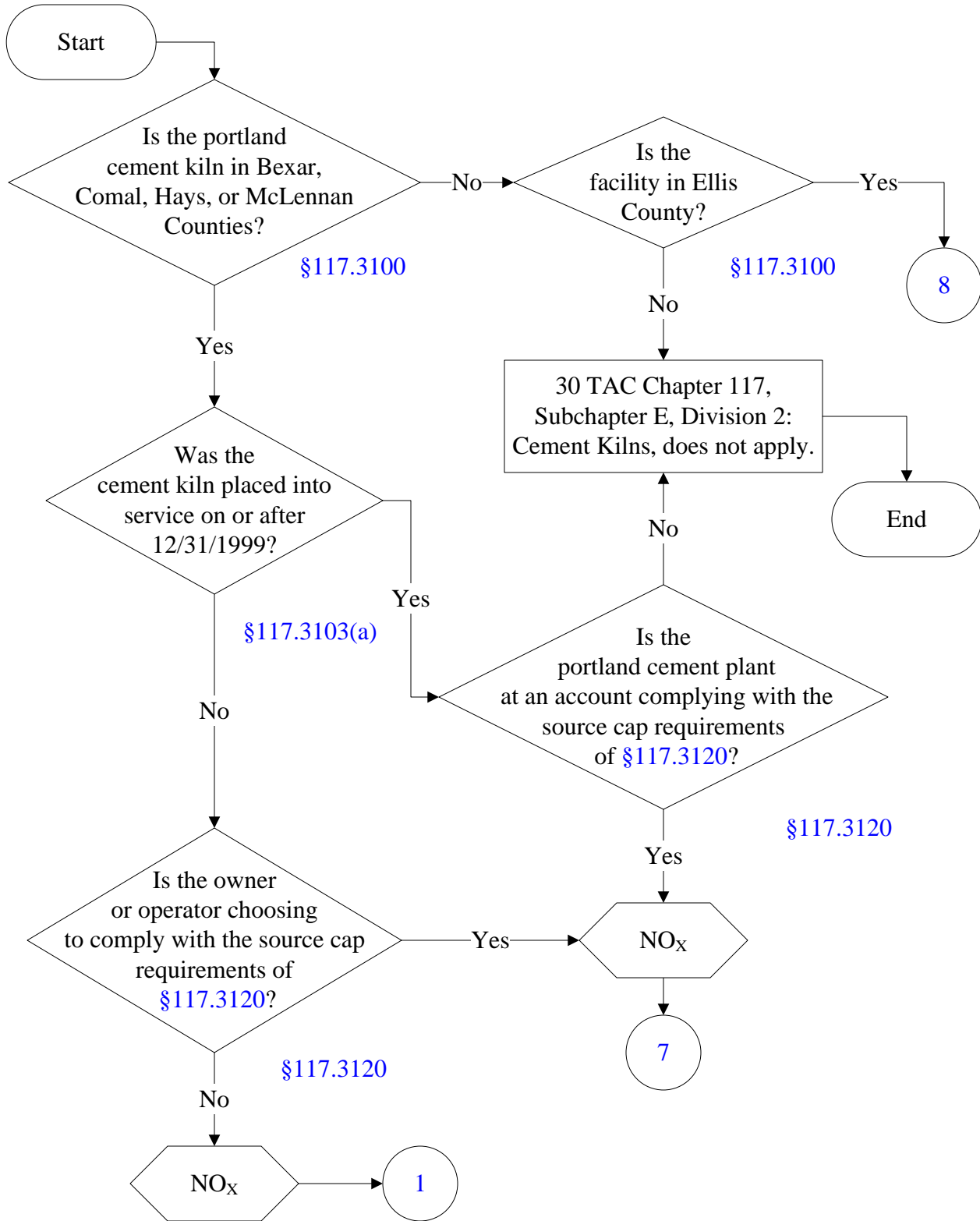




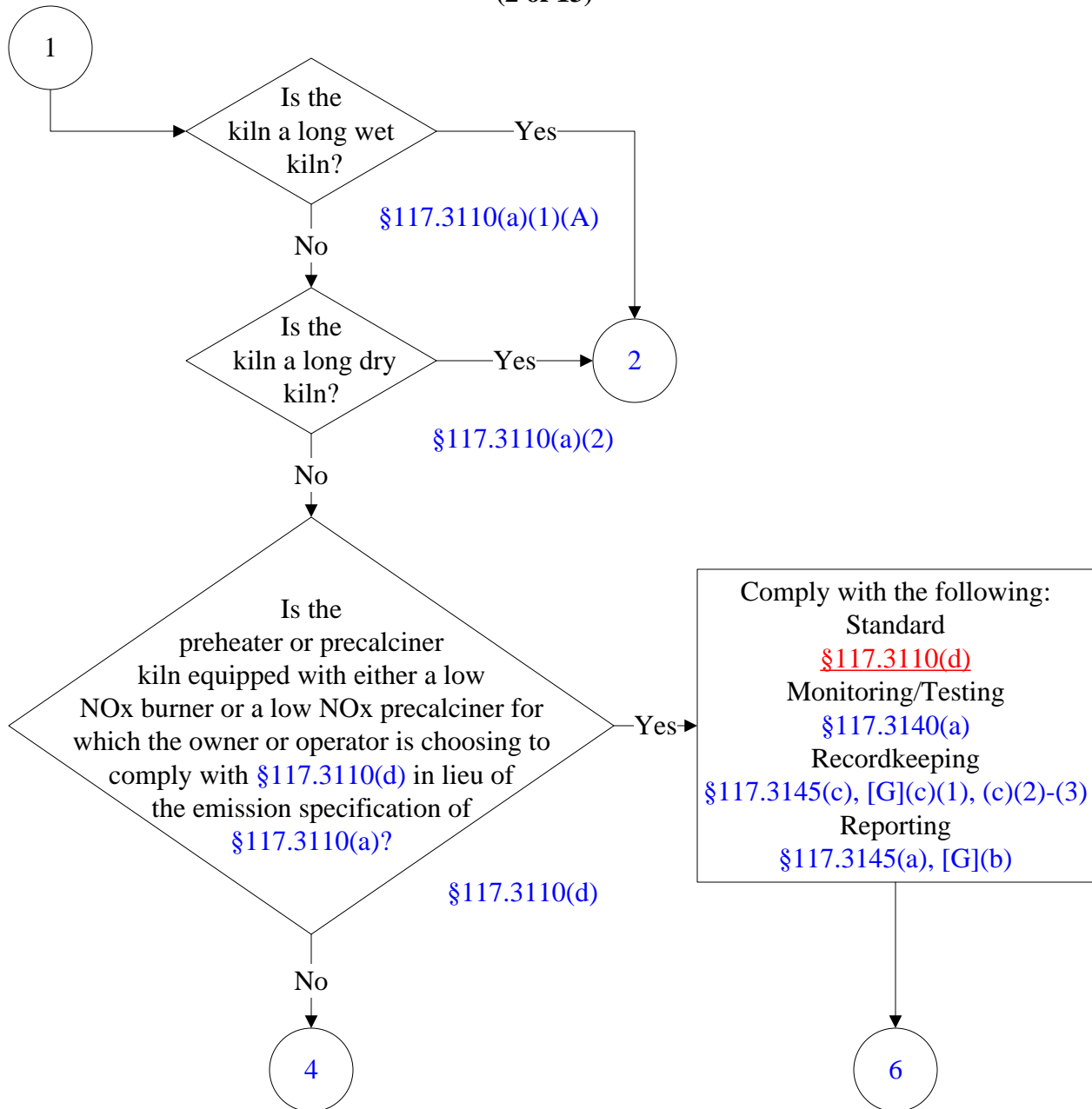
Below is a flowchart describing 30 TAC Chapter 117, Subchapter E, Division 2: Cement Kilns. It will likely not be accessible using a screen reader. For the text of the statute/rule, please go to [30 TAC Chapter 117, Subchapter E, Division 2: Cement Kilns](#)

( 1 of 13)



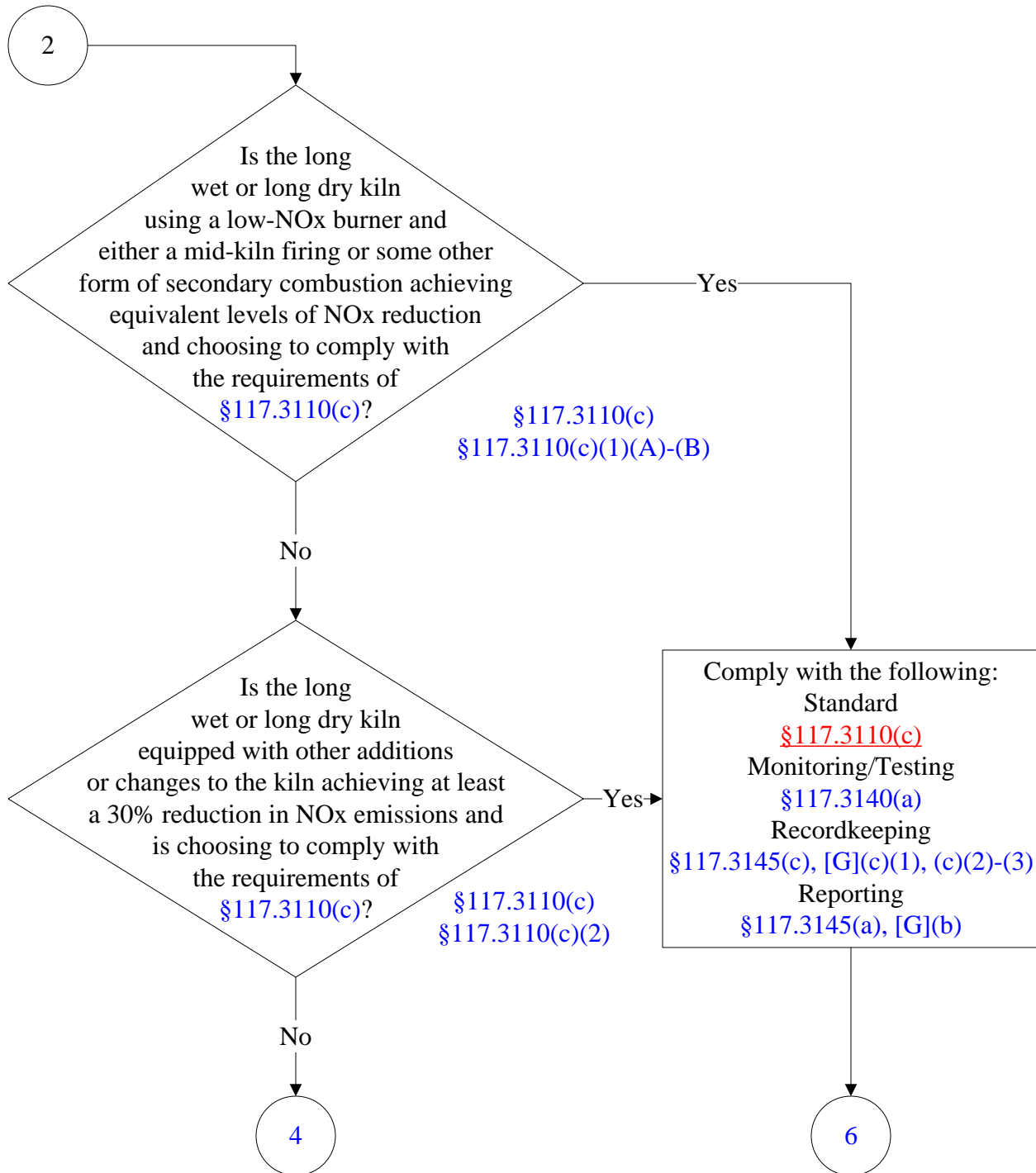
# 30 TAC Chapter 117, Subchapter E, Division 2: Cement Kilns

(2 of 13)



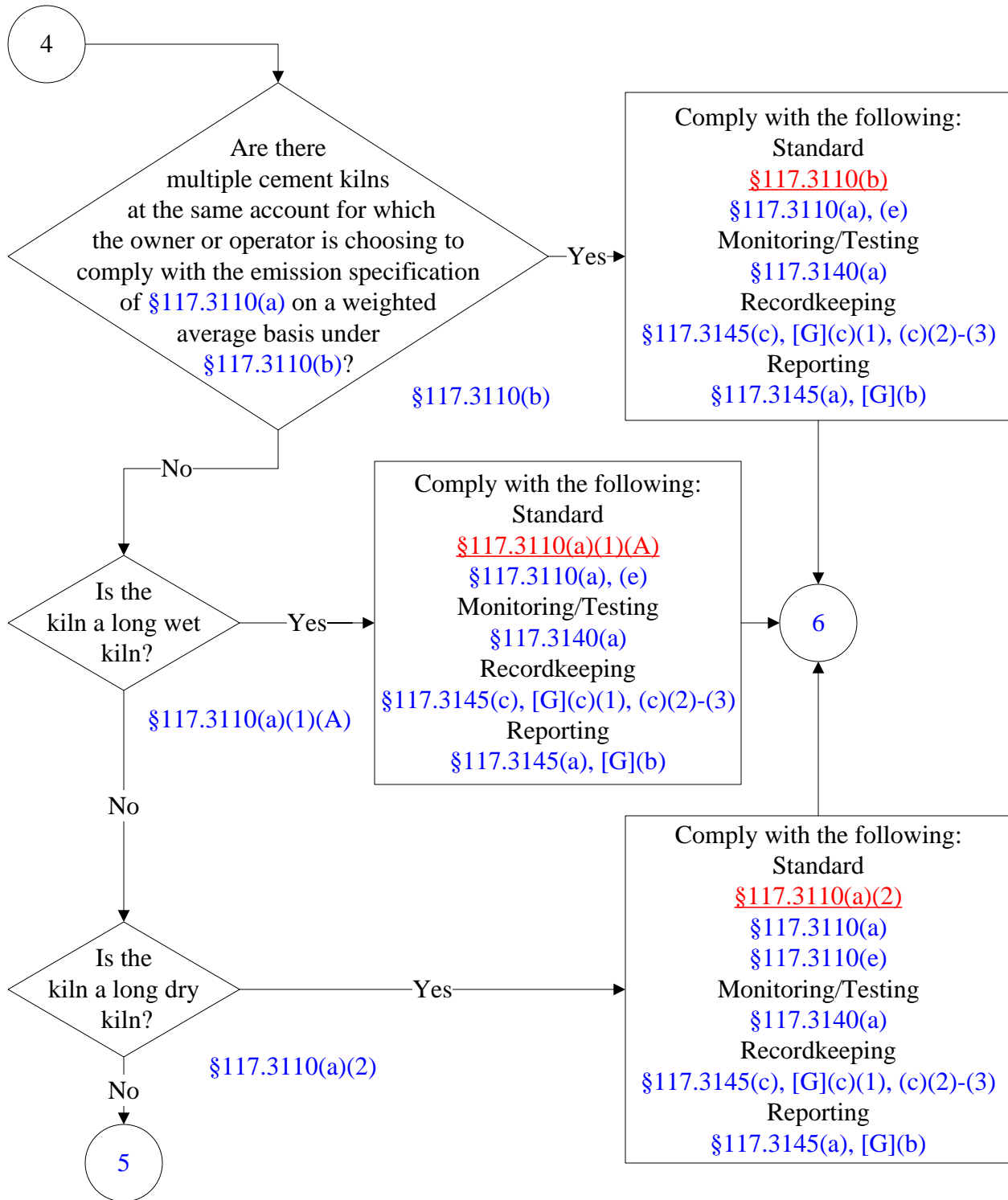
# 30 TAC Chapter 117, Subchapter E, Division 2: Cement Kilns

(3 of 13)



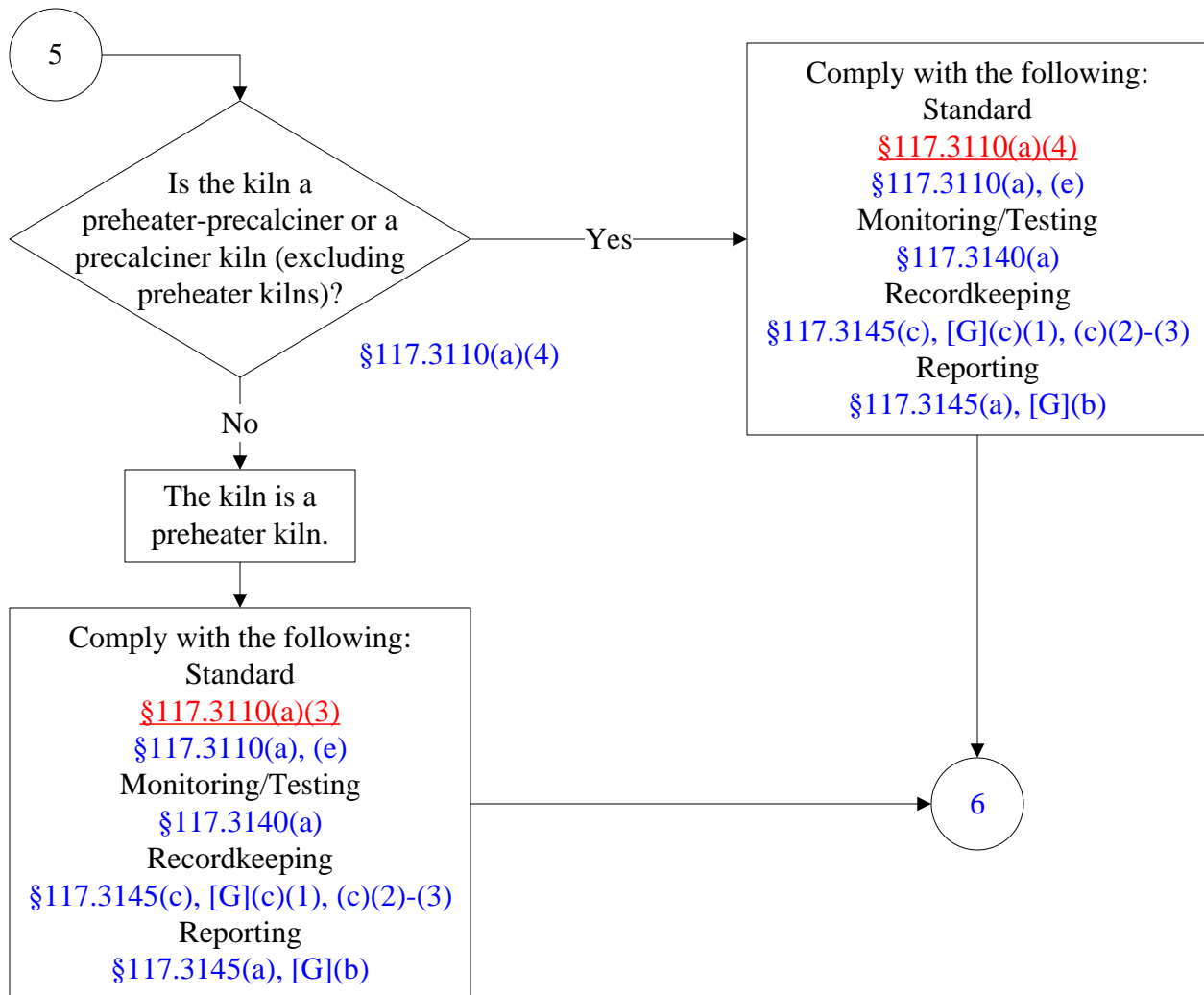
# 30 TAC Chapter 117, Subchapter E, Division 2: Cement Kilns

(4 of 13)



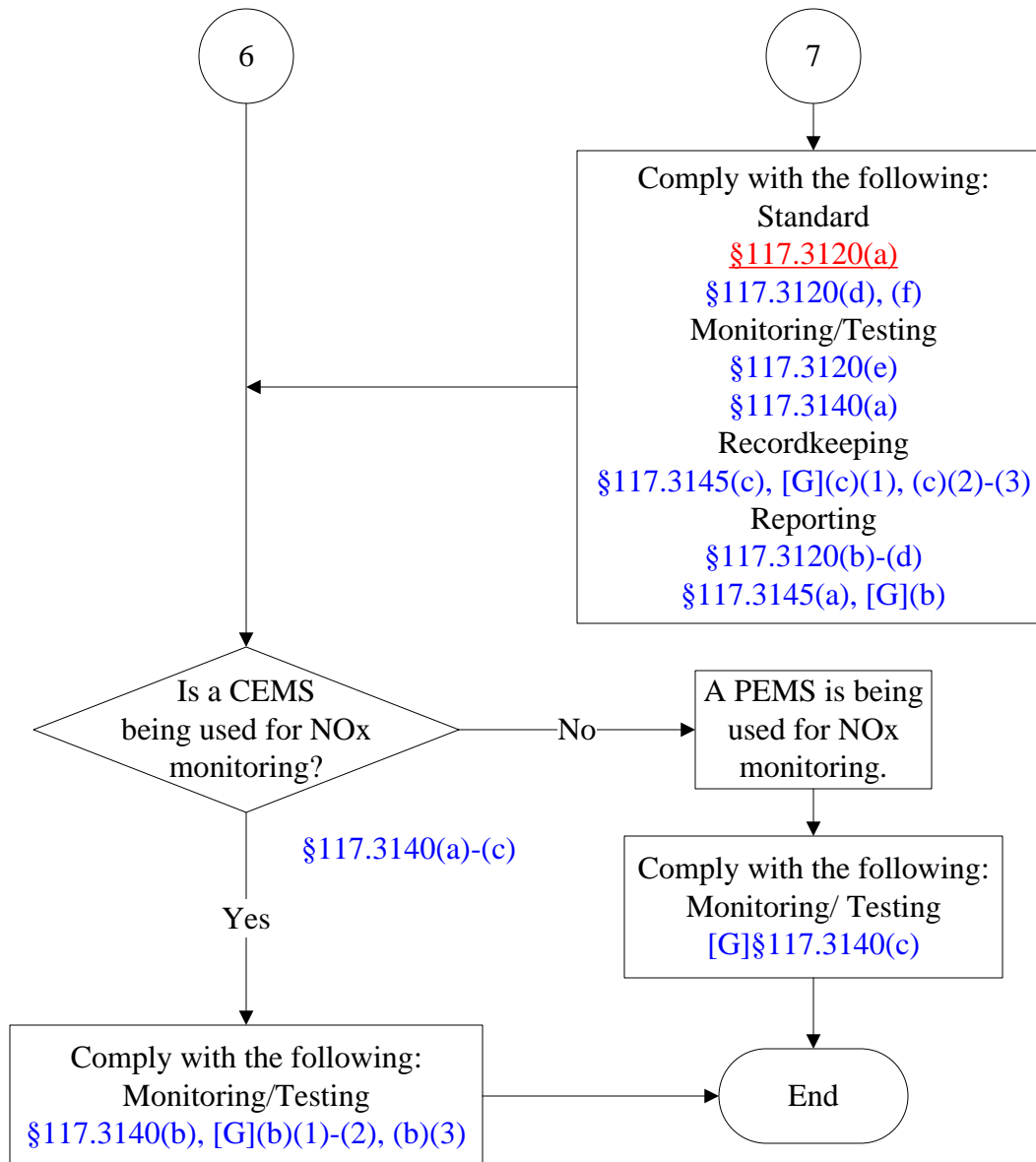
# 30 TAC Chapter 117, Subchapter E, Division 2: Cement Kilns

(5 of 13)



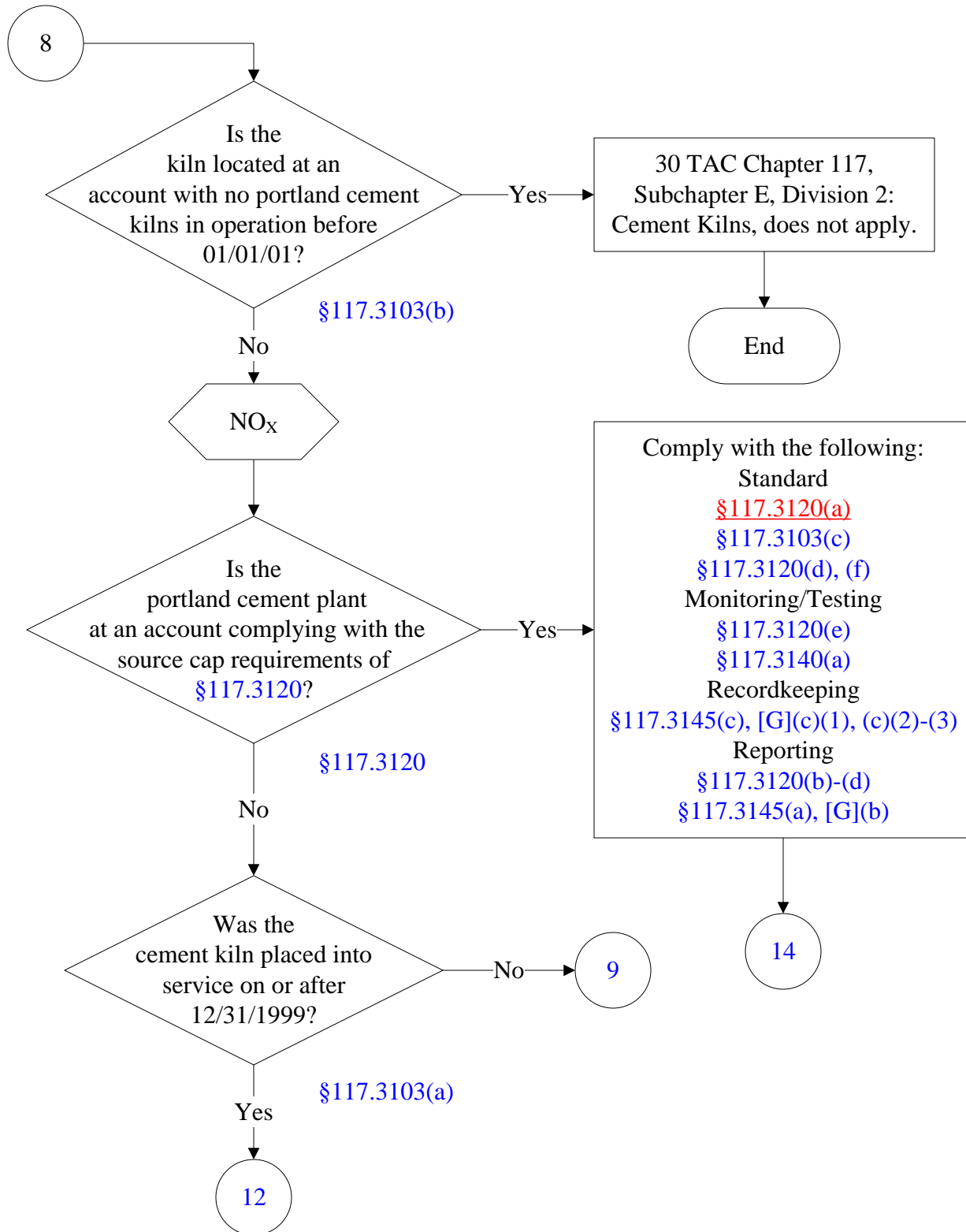
# 30 TAC Chapter 117, Subchapter E, Division 2: Cement Kilns

(6 of 13)

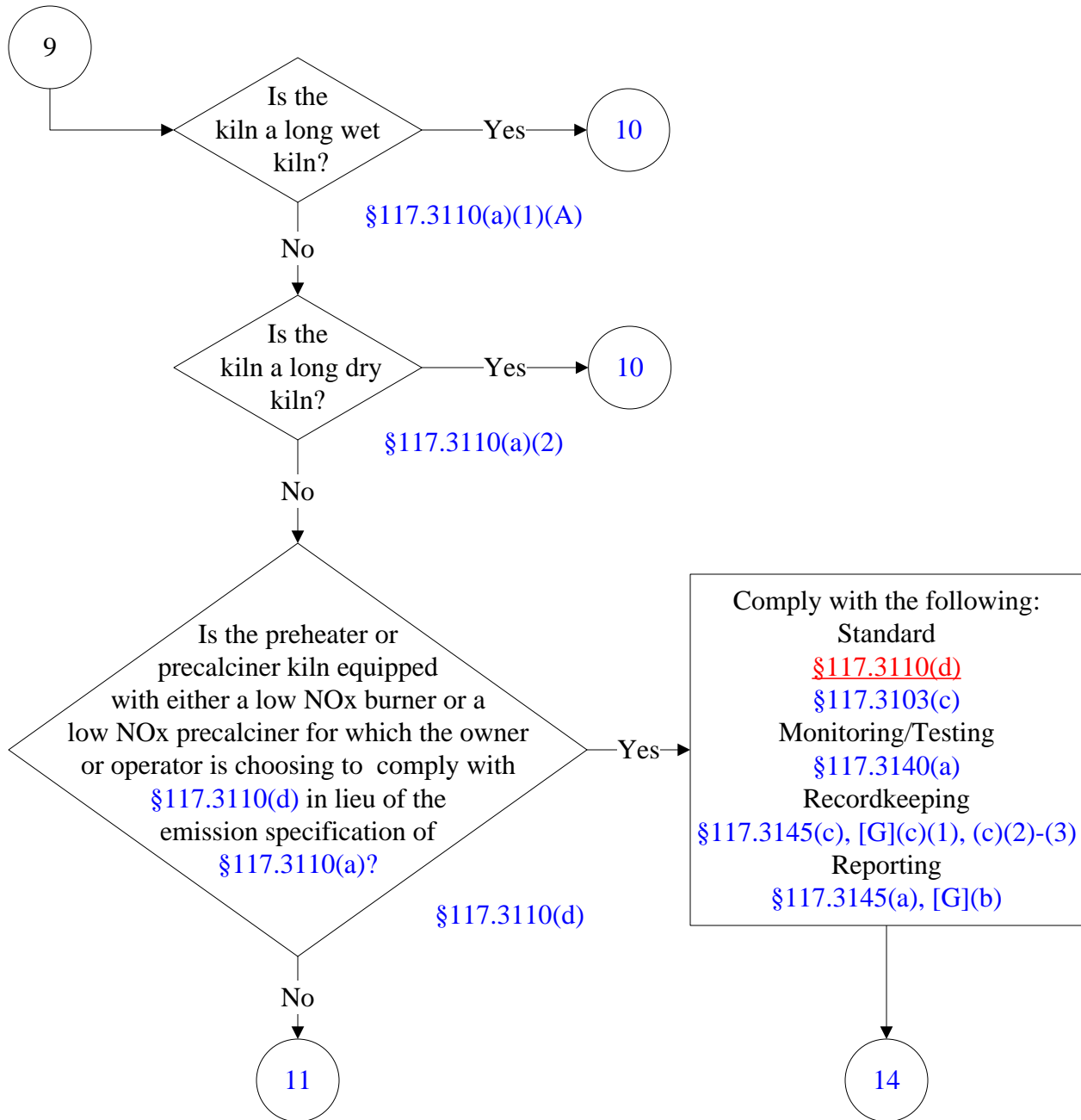


# 30 TAC Chapter 117, Subchapter E, Division 2: Cement Kilns

(7 of 13)

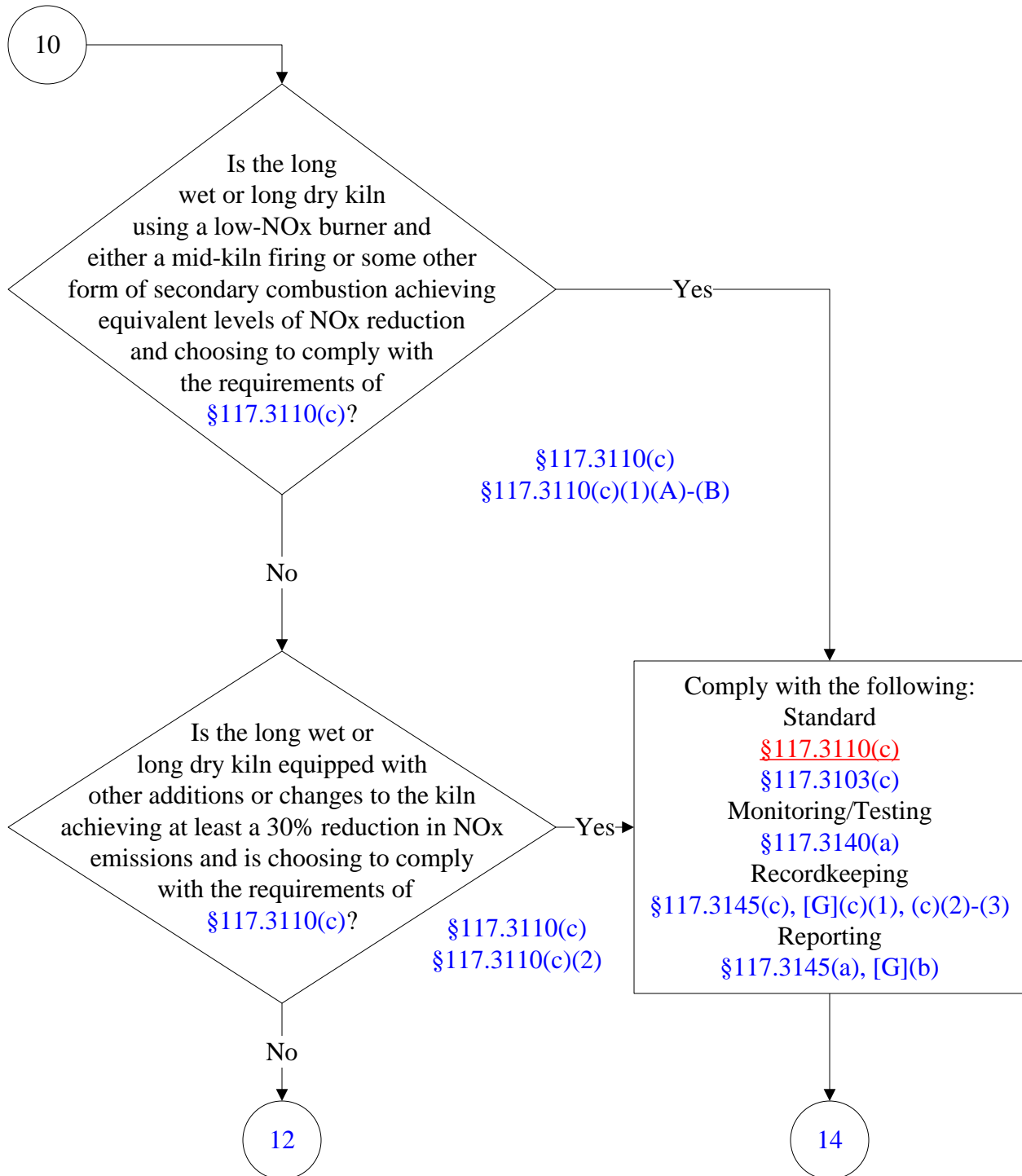


**30 TAC Chapter 117, Subchapter E,**  
**Division 2: Cement Kilns**  
(8 of 13)

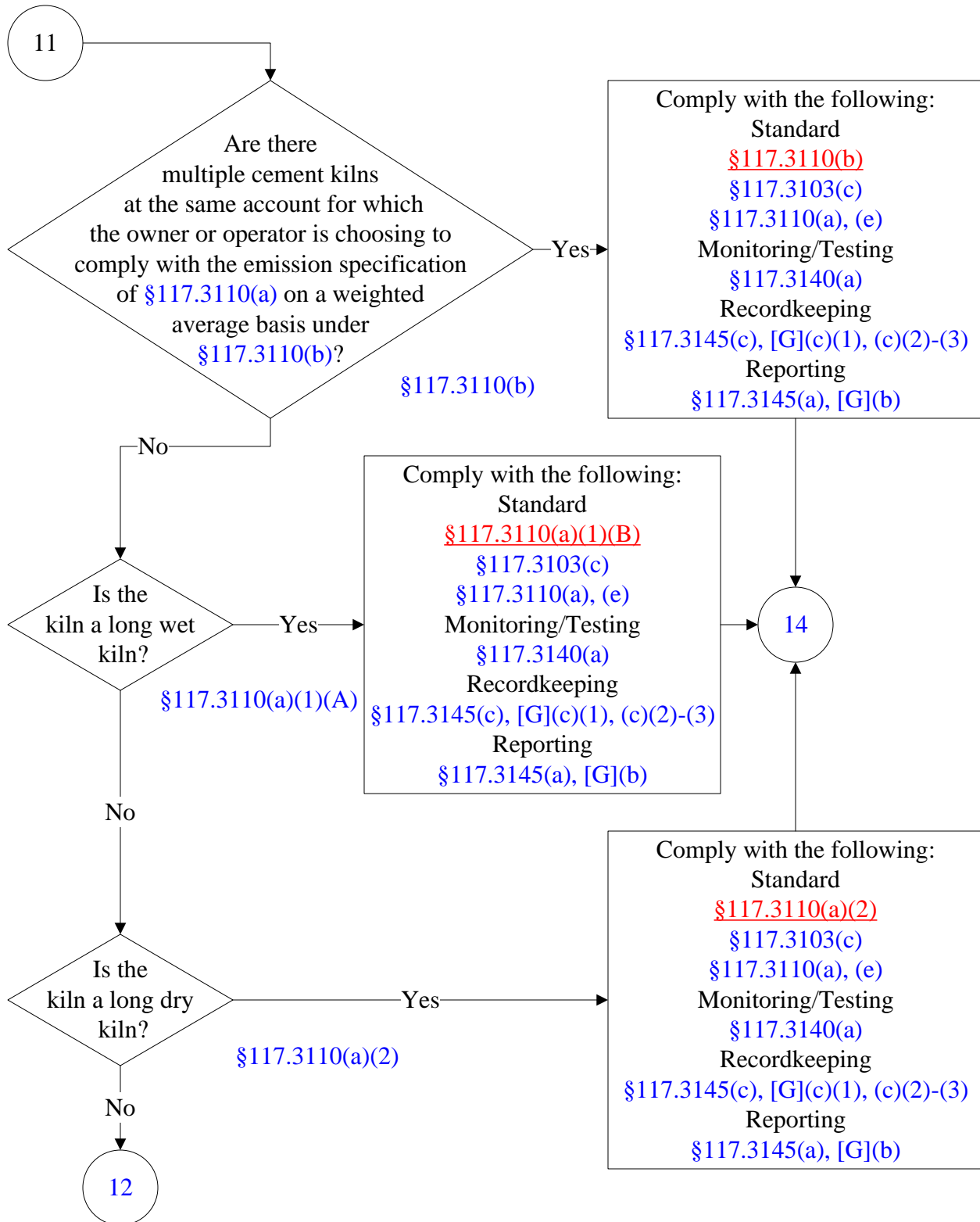




**30 TAC Chapter 117, Subchapter E,**  
**Division 2: Cement Kilns**  
(9 of 13)

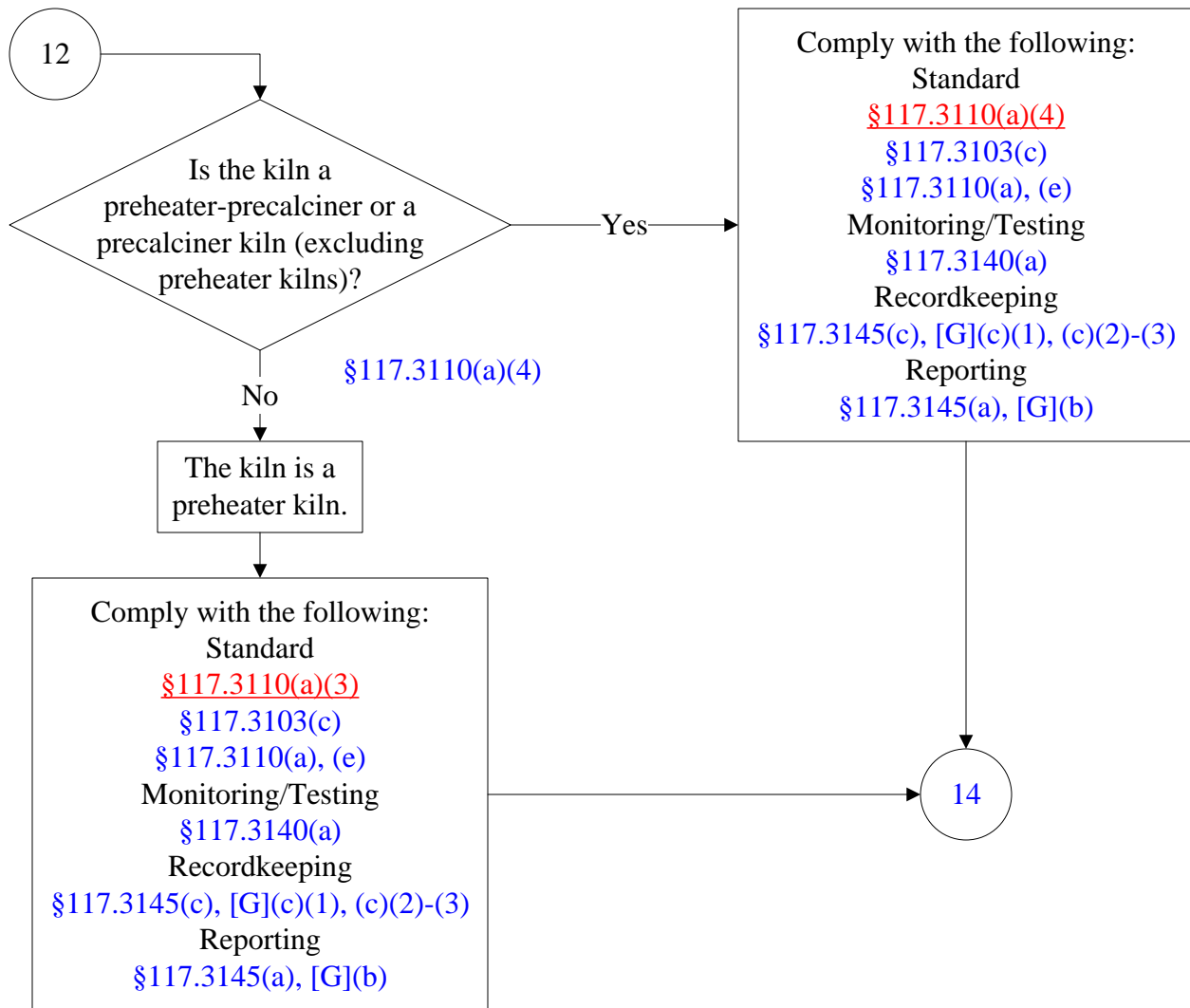


# 30 TAC Chapter 117, Subchapter E, Division 2: Cement Kilns (10 of 13)

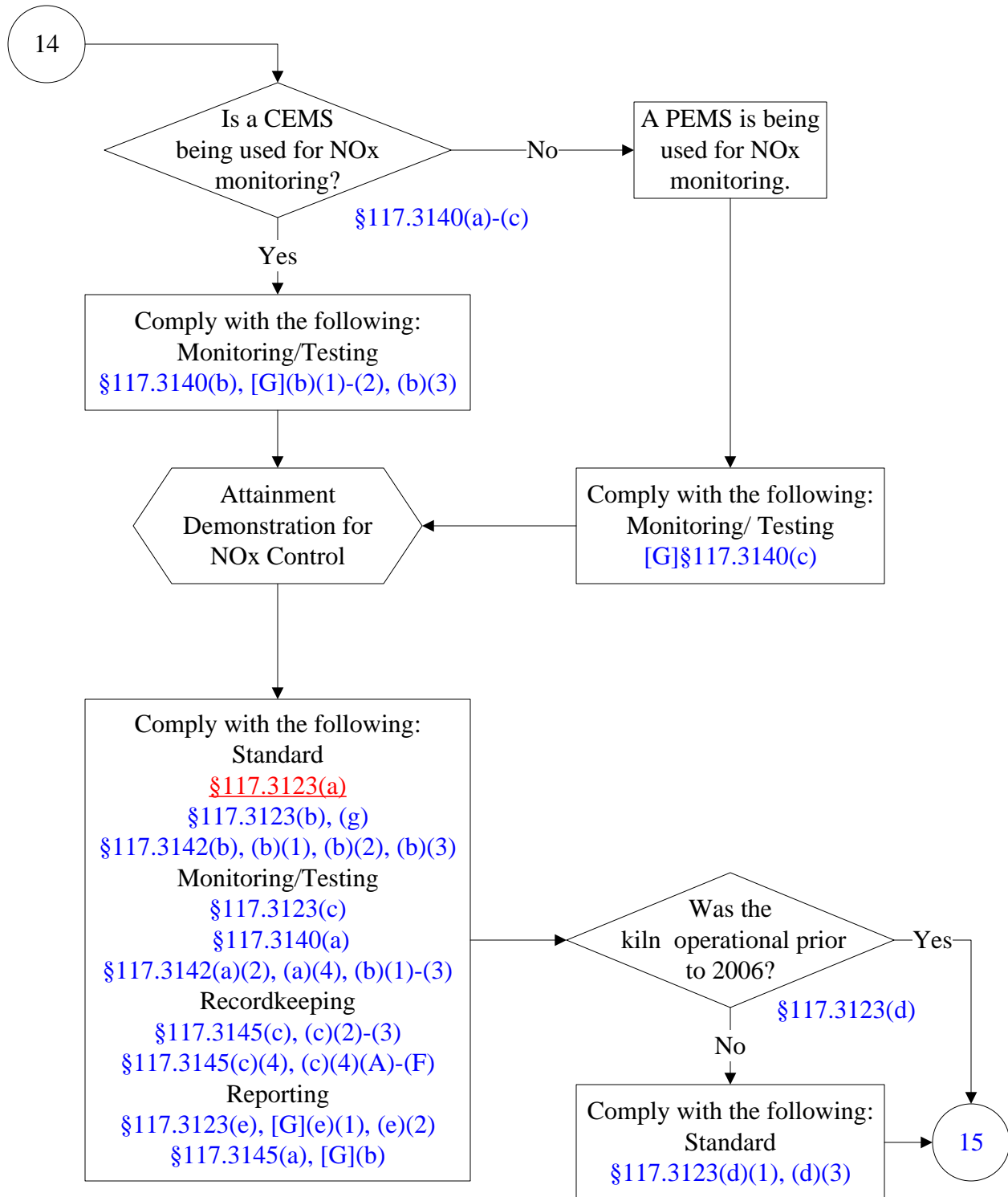


# 30 TAC Chapter 117, Subchapter E, Division 2: Cement Kilns

(11 of 13)



**30 TAC Chapter 117, Subchapter E,  
Division 2: Cement Kilns  
(12 of 13)**



**30 TAC Chapter 117, Subchapter E,  
Division 2: Cement Kilns  
(13 of 13)**

