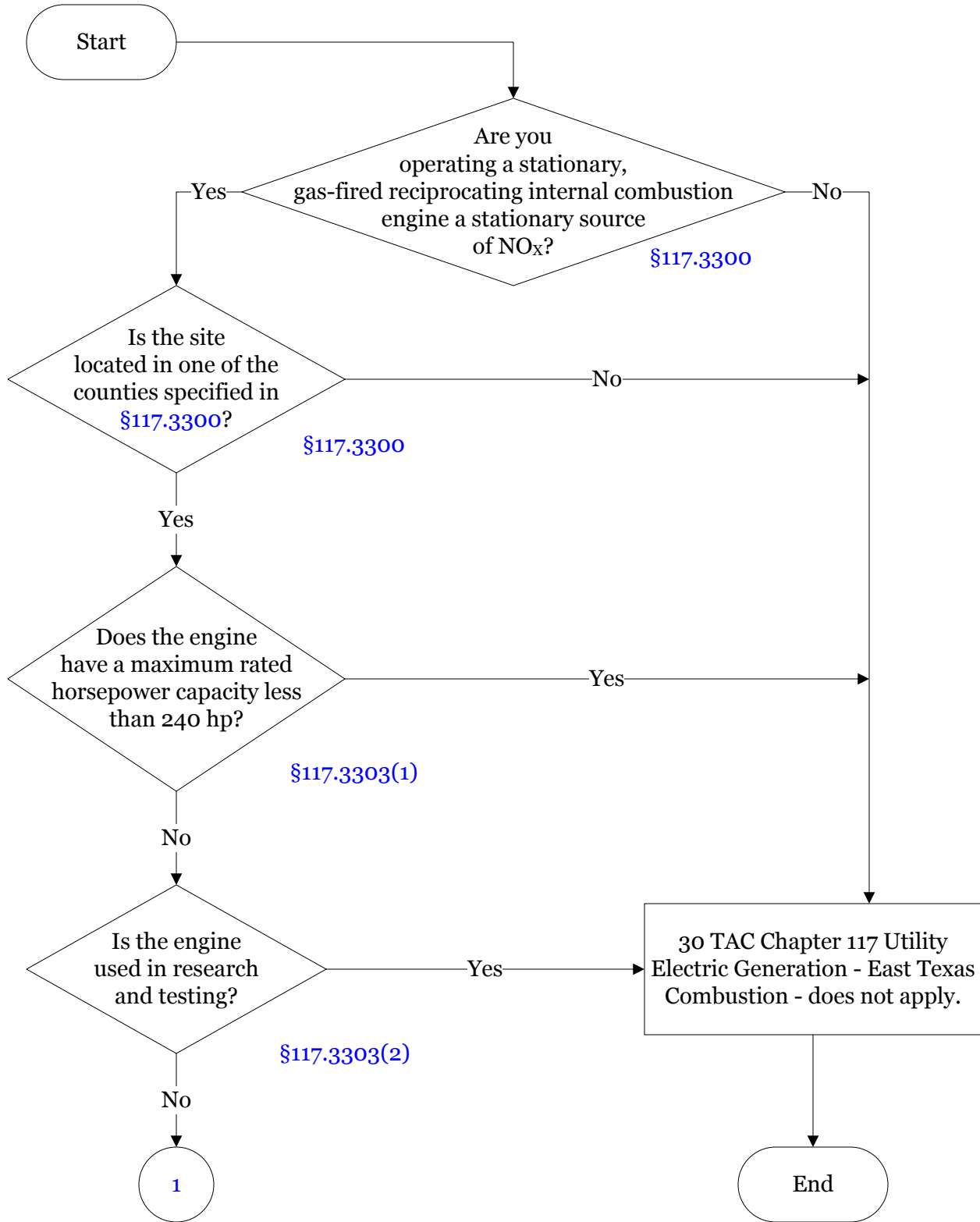
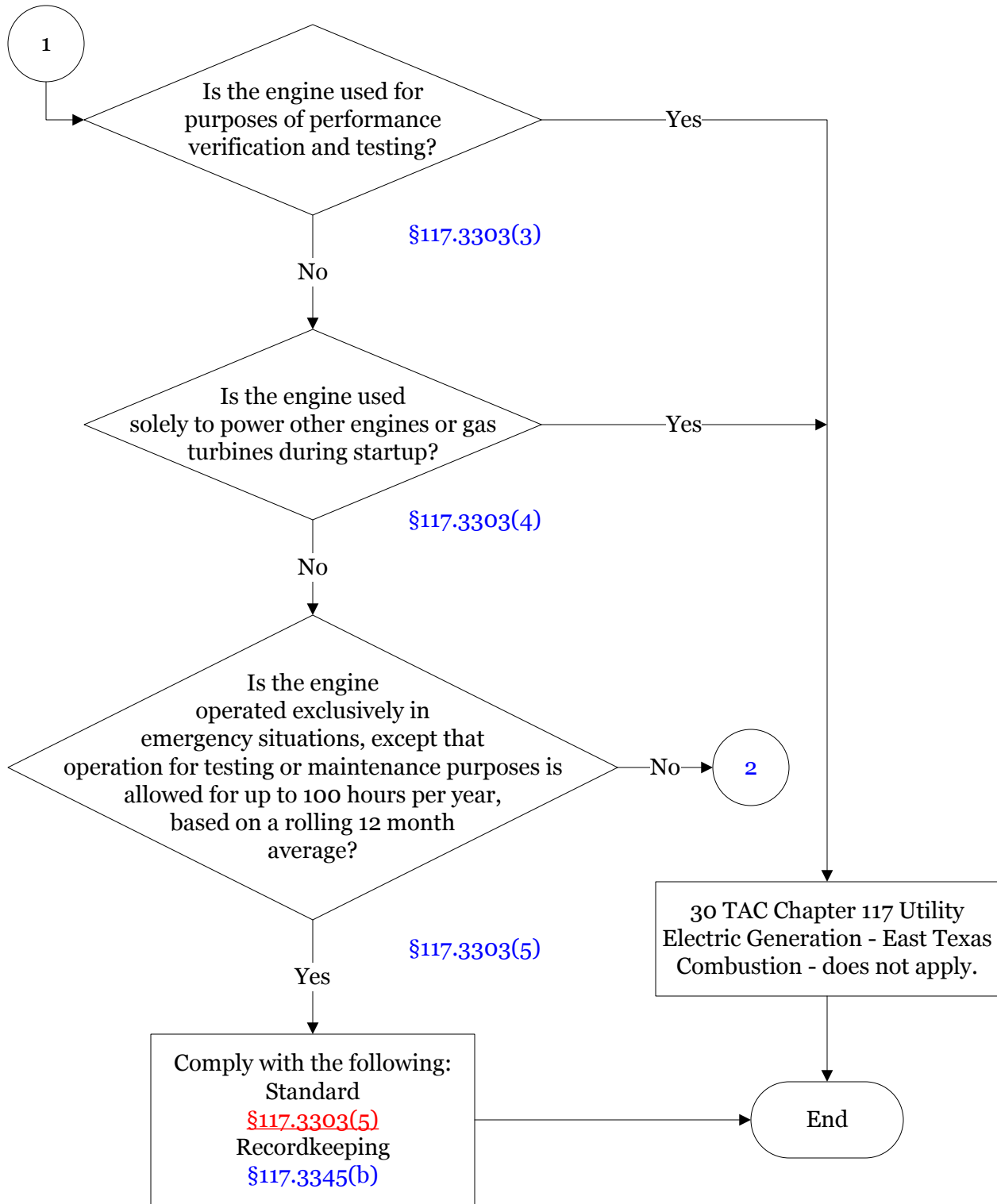




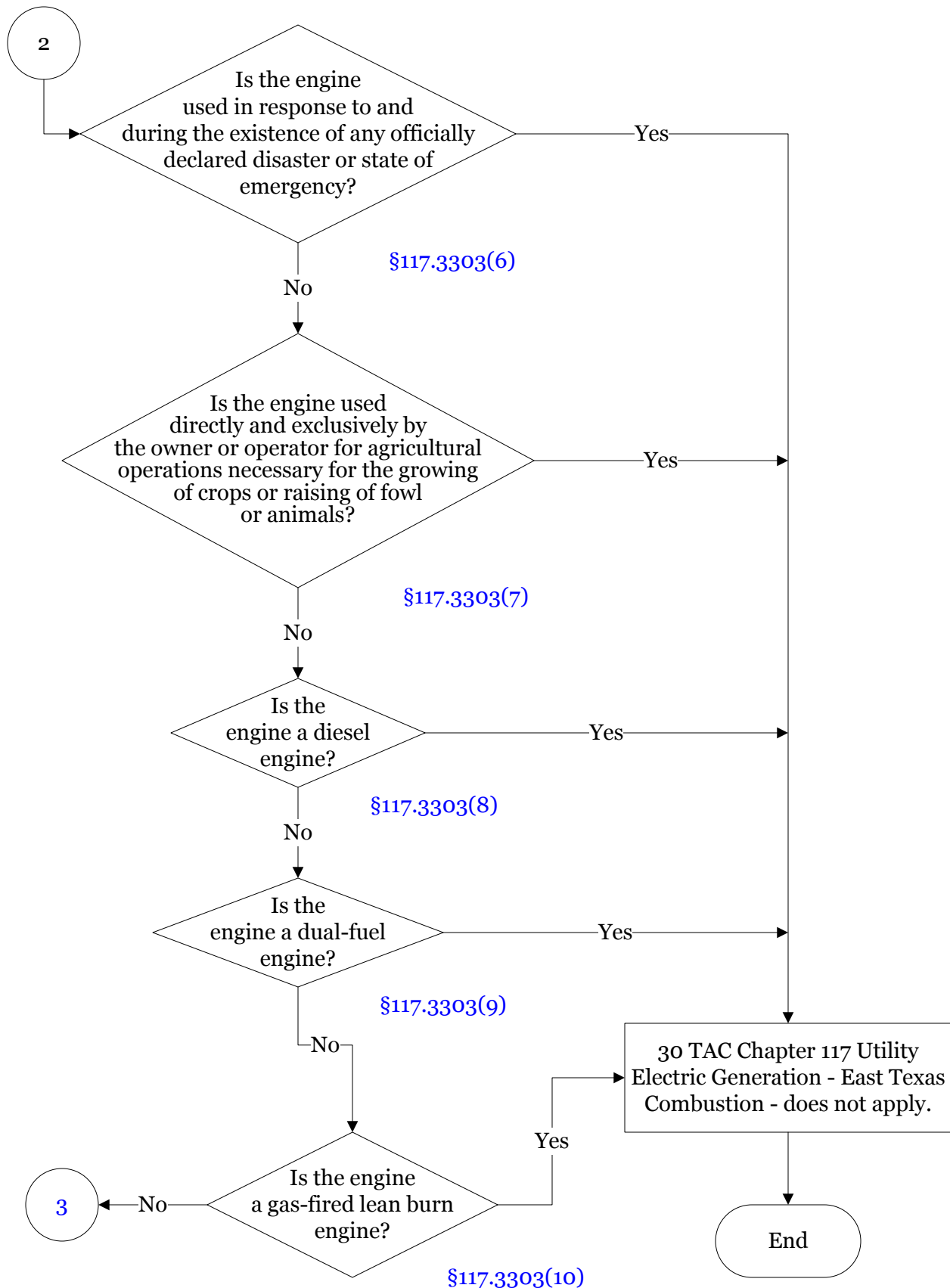
Below is a flowchart describing 30 TAC Ch. 117, Subch. E, Div. 4: East Texas Combustion. It will likely not be accessible using a screen reader. For the text of the statute/rule, please go to [30 TAC Ch. 117, Subch. E, Div. 4: East Texas Combustion](#) (1 of 9)



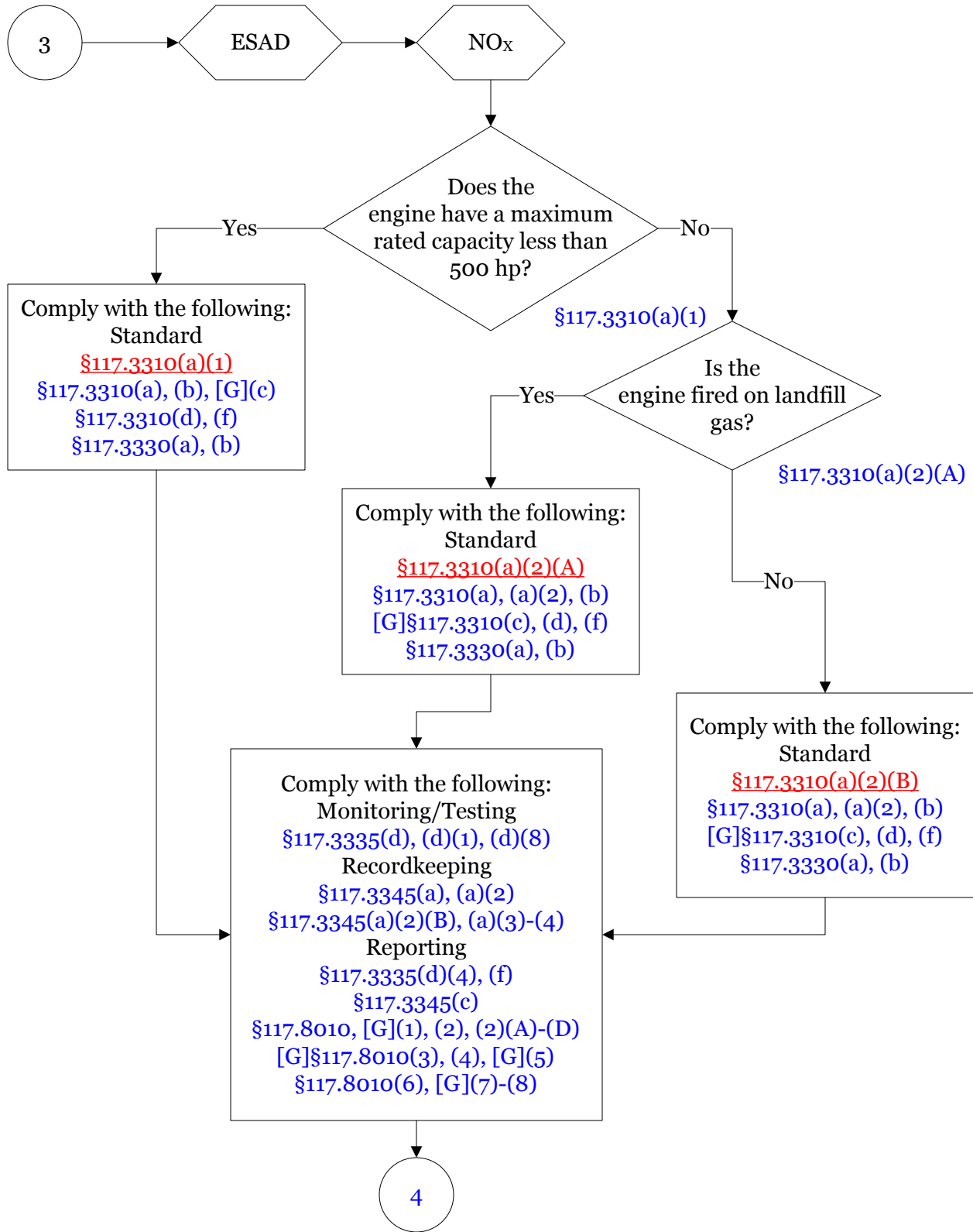
**30 TAC Chapter 117, Subchapter E, Multi-Region Combustion Control,
Division 4: East Texas Combustion
(2 of 9)**



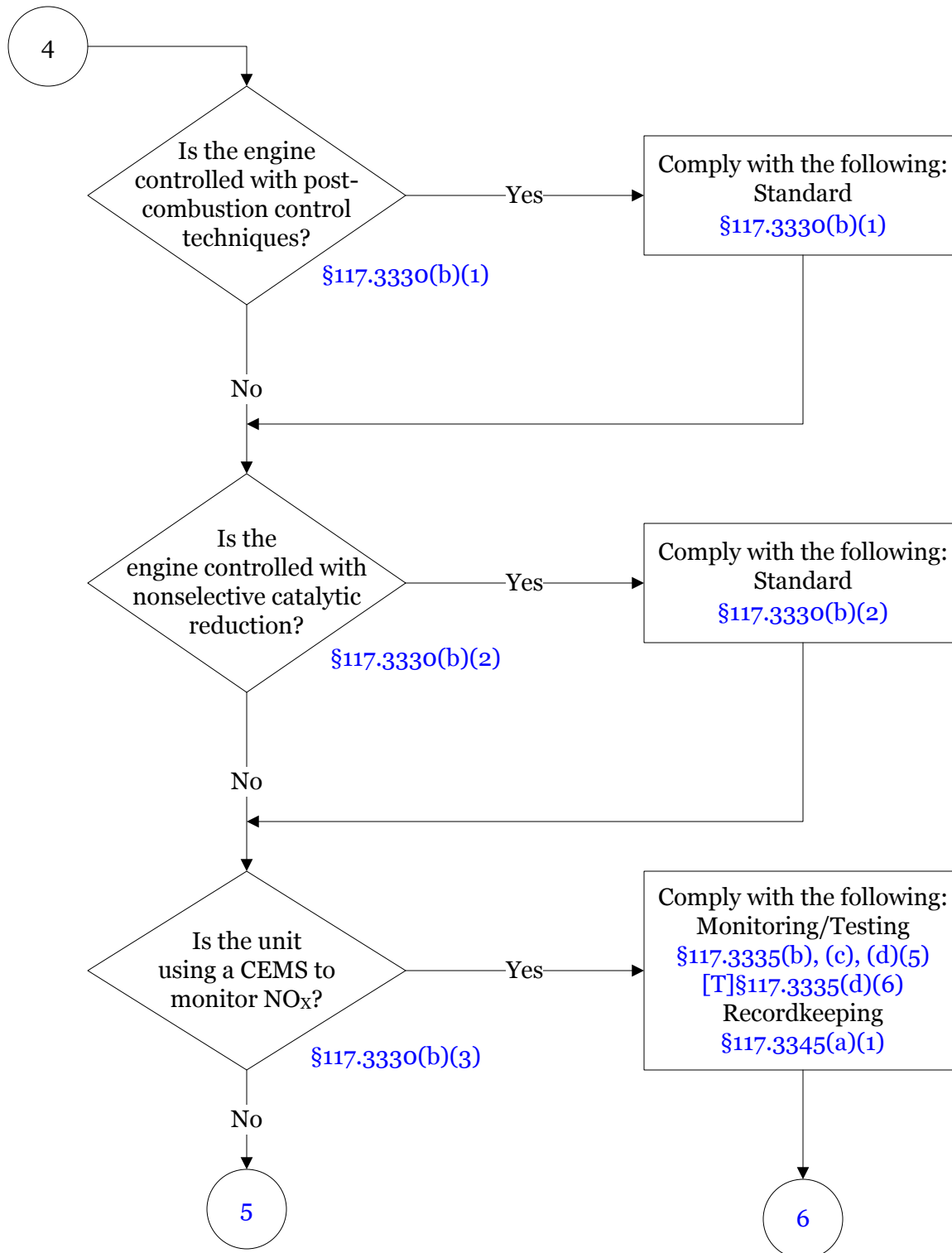
**30 TAC Chapter 117, Subchapter E, Multi-Region Combustion Control,
Division 4: East Texas Combustion
(3 of 9)**



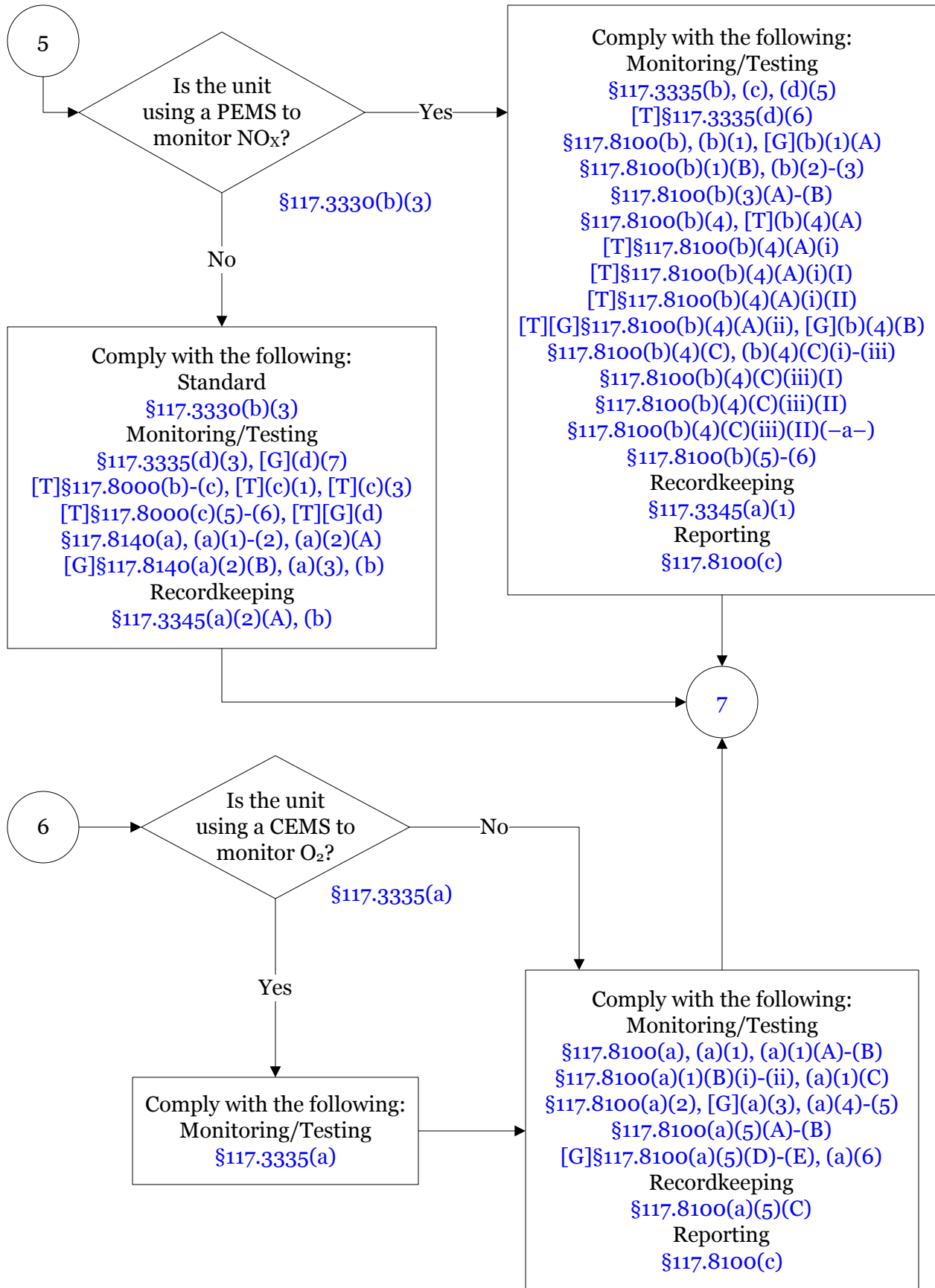
**30 TAC Chapter 117, Subchapter E, Multi-Region Combustion Control,
Division 4: East Texas Combustion
(4 of 9)**



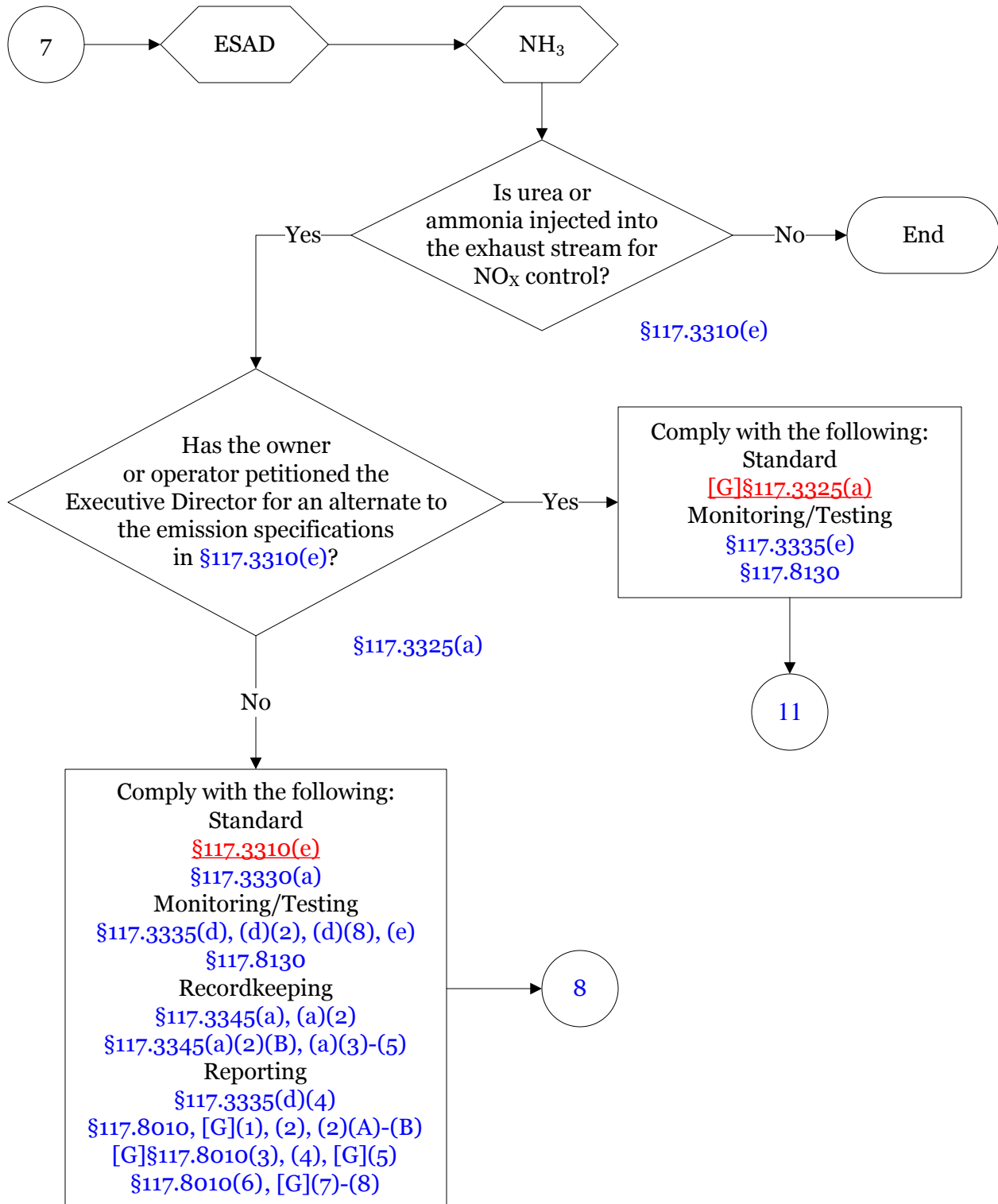
**30 TAC Chapter 117, Subchapter E, Multi-Region Combustion Control,
Division 4: East Texas Combustion
(5 of 9)**



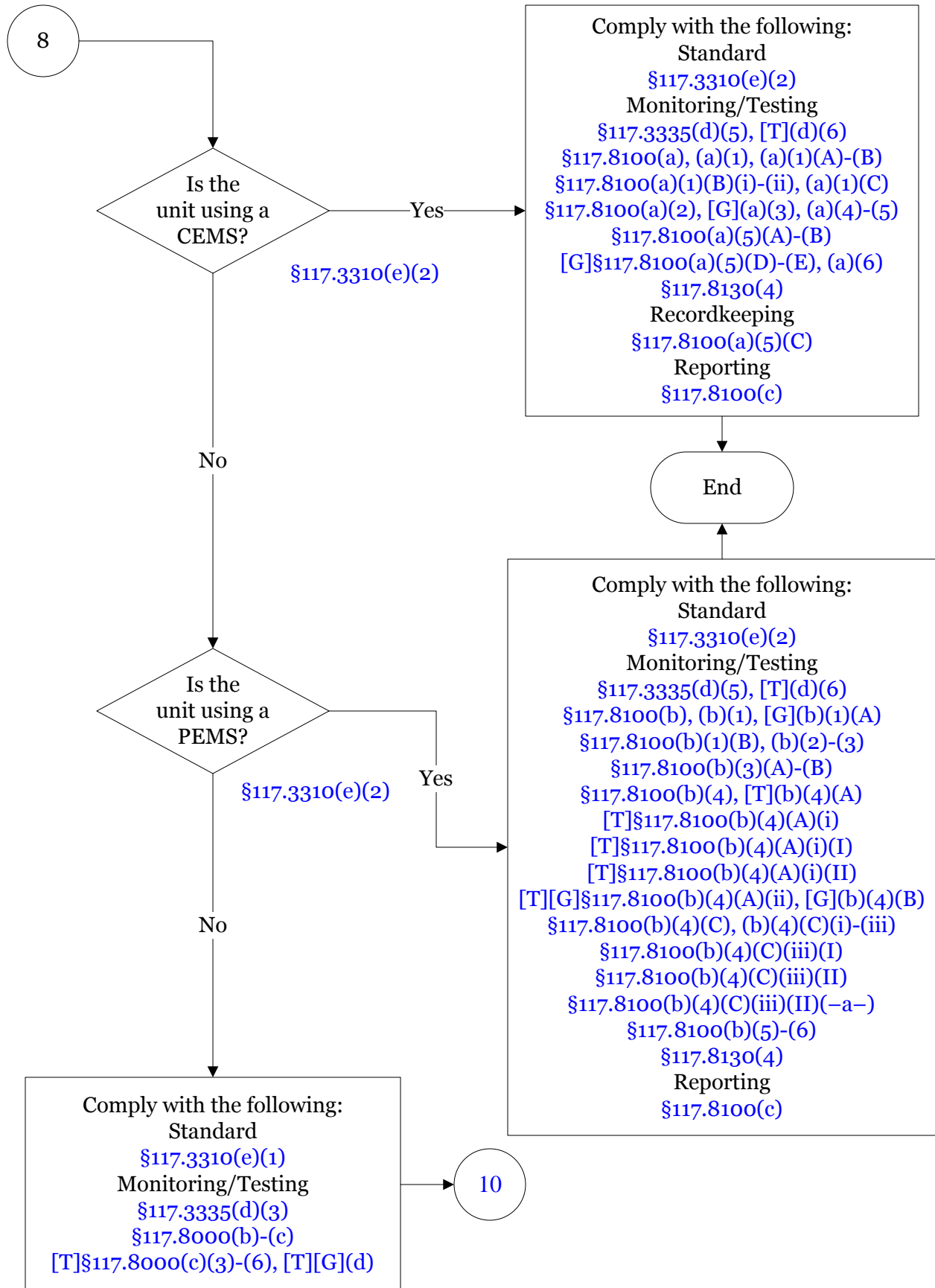
**30 TAC Chapter 117, Subchapter E, Multi-Region Combustion Control,
Division 4: East Texas Combustion
(6 of 9)**



**30 TAC Chapter 117, Subchapter E, Multi-Region Combustion Control,
Division 4: East Texas Combustion
(7 of 9)**



**30 TAC Chapter 117, Subchapter E, Multi-Region Combustion Control,
Division 4: East Texas Combustion
(8 of 9)**



**30 TAC Chapter 117, Subchapter E, Multi-Region Combustion Control,
Division 4: East Texas Combustion
(9 of 9)**

