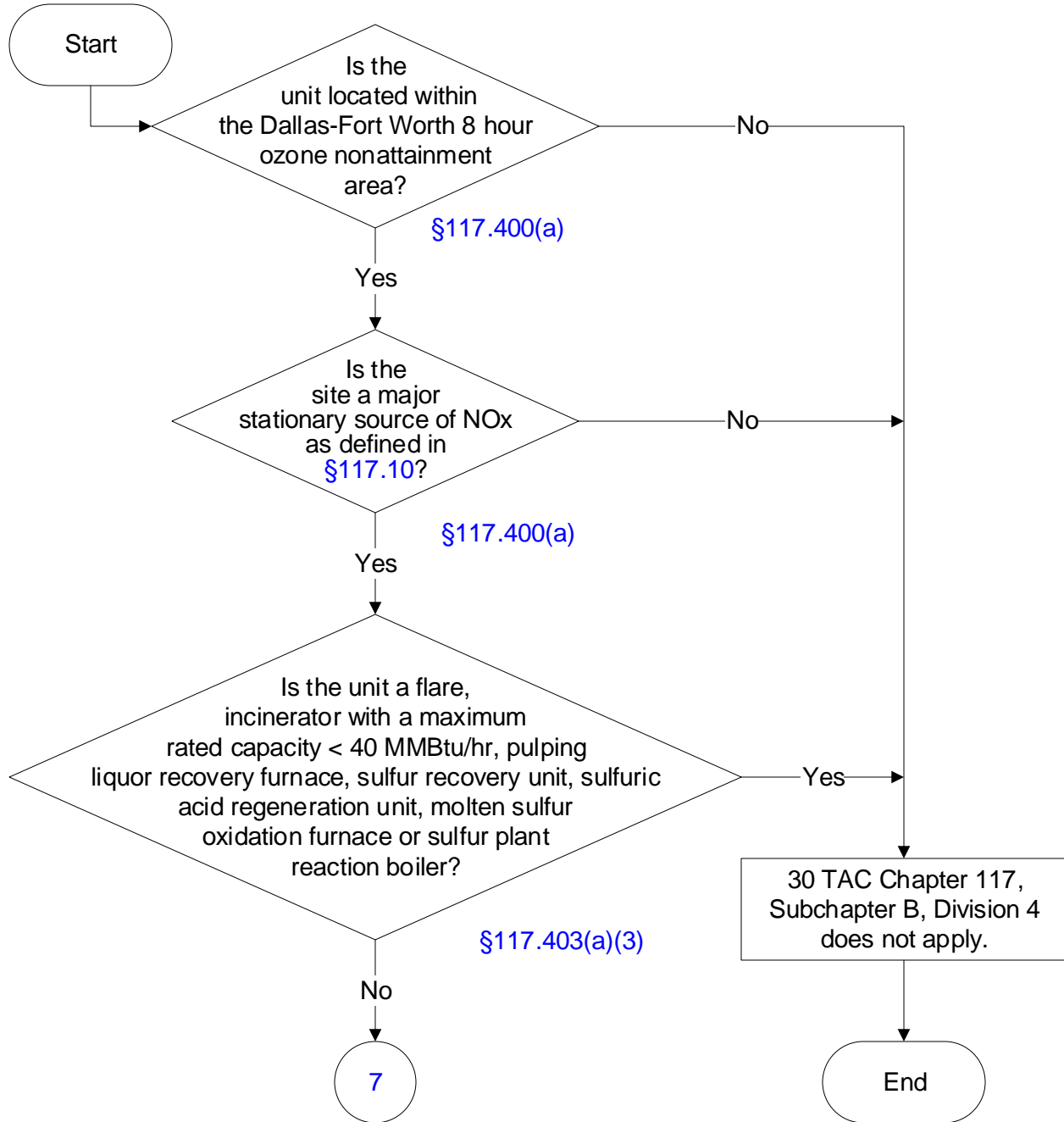
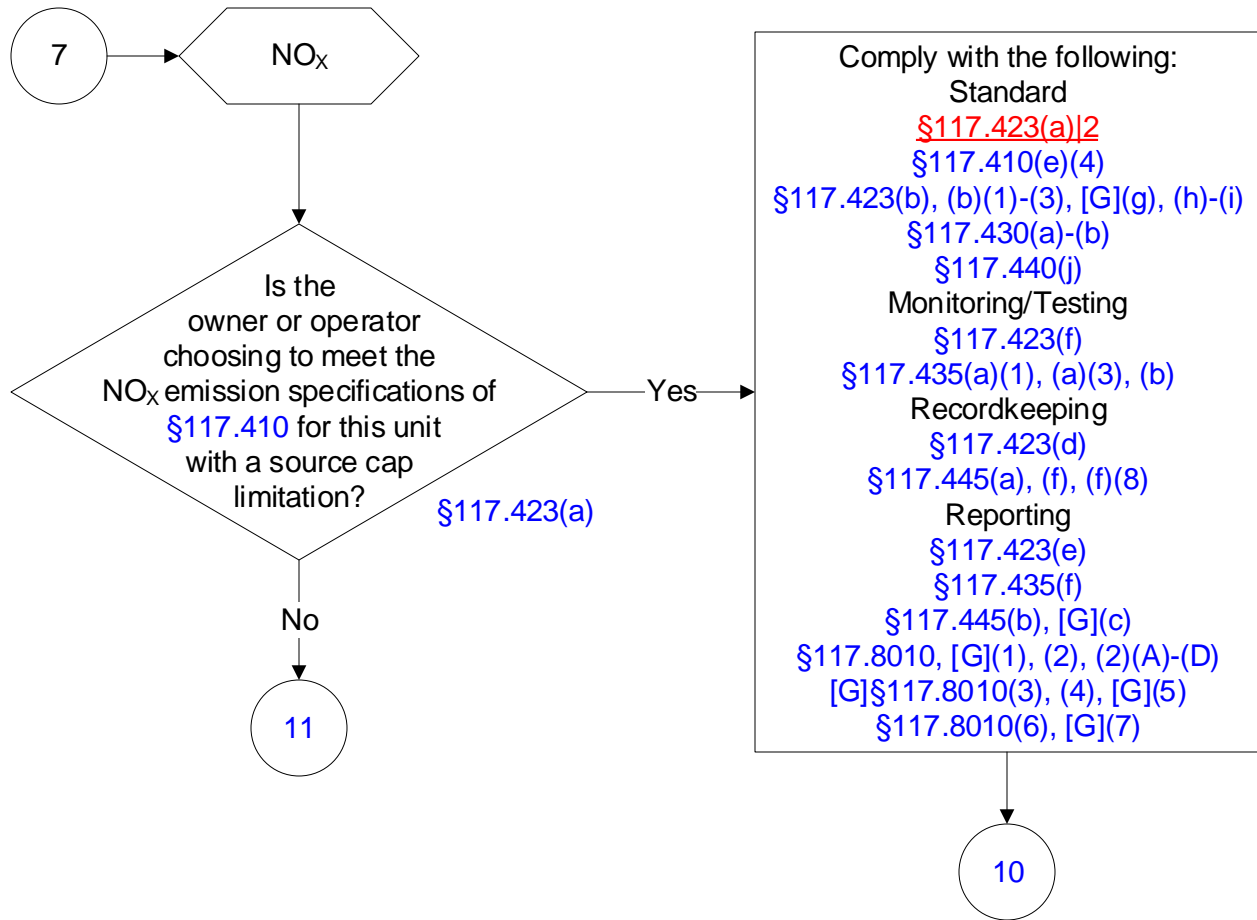




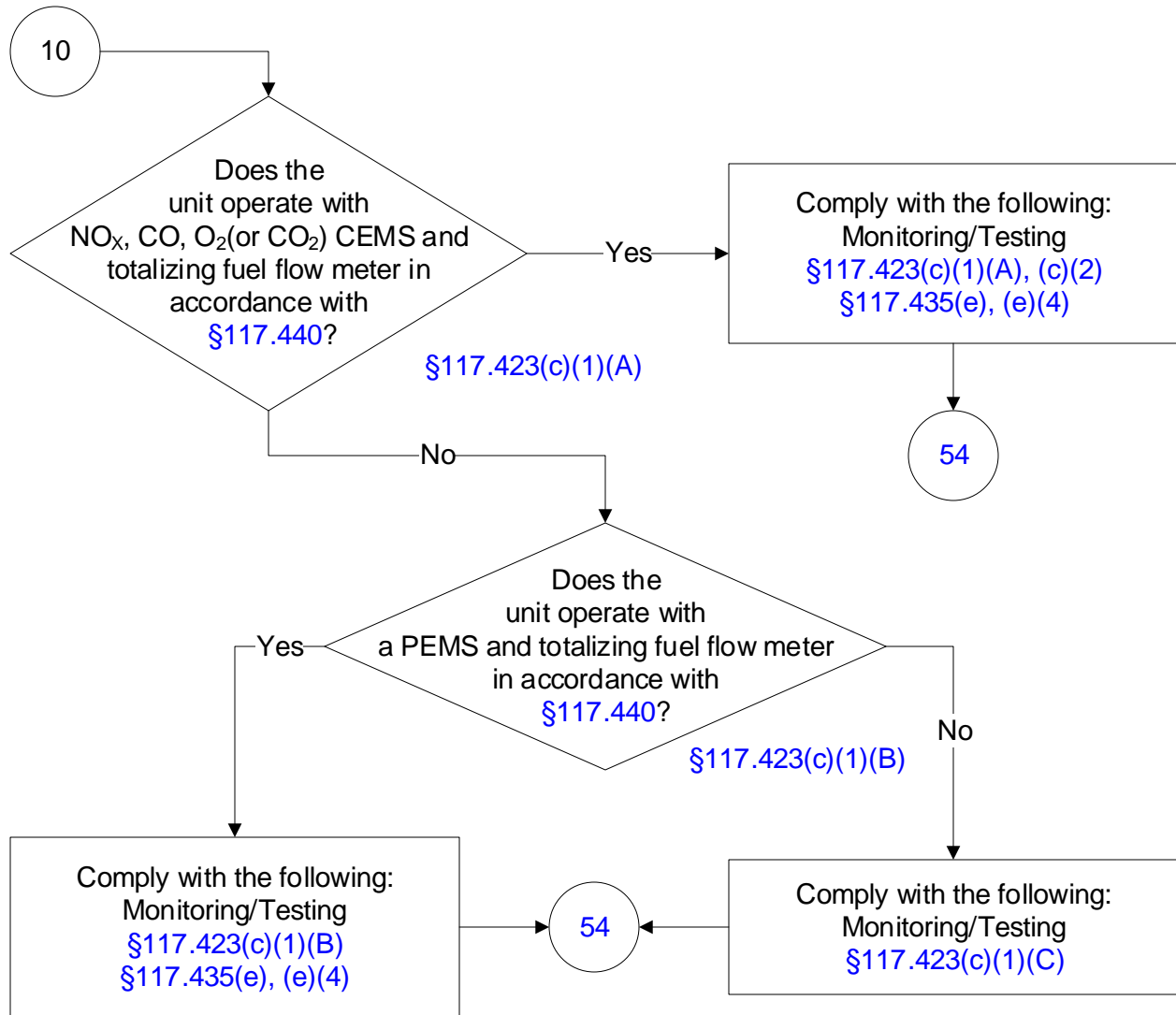
Below is a flowchart describing 30 TAC Ch. 117, Subch B, Div. 4: Incinerators. It will likely not be accessible using a screen reader. For the text of the statute/rule, please go to [30 TAC Chapter 117, Subchapter B, Division 4: Incinerators](#) (1 of 22)



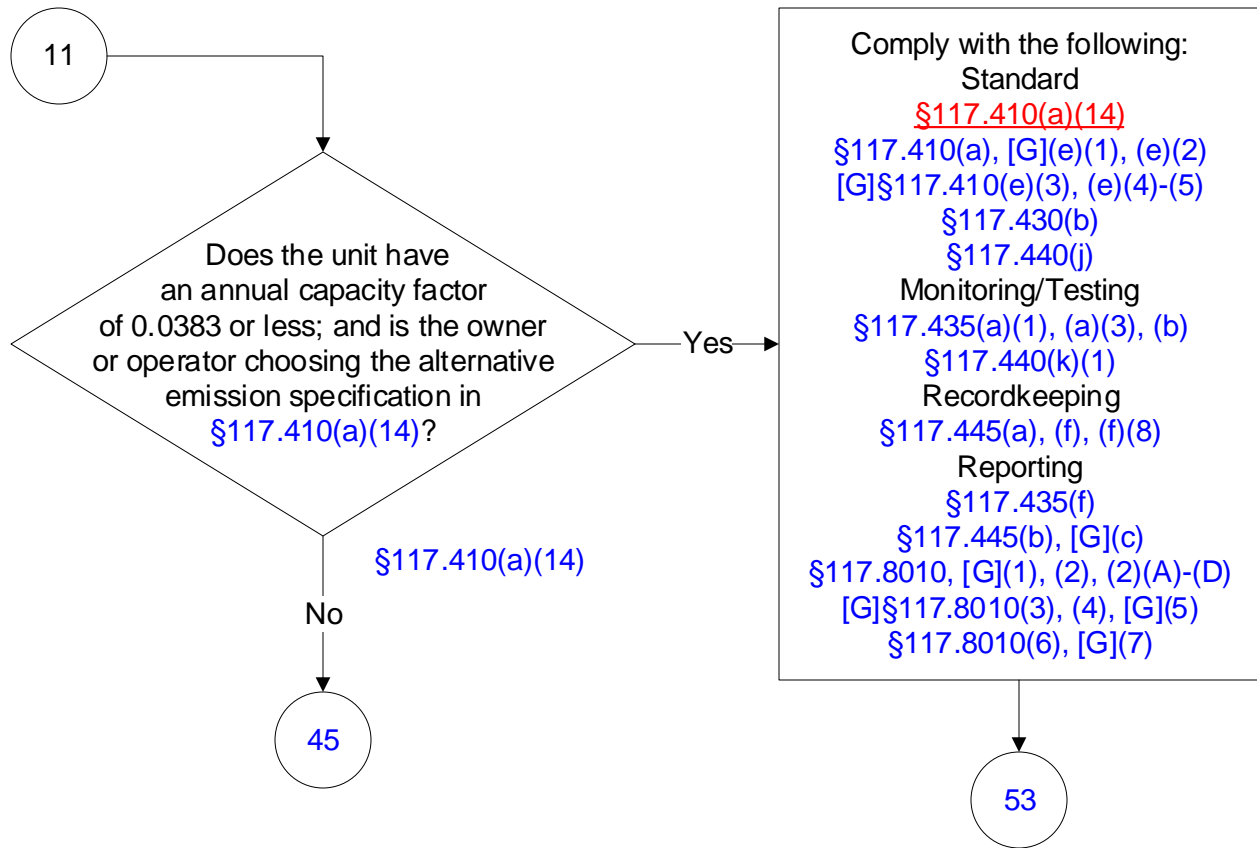
30 TAC Chapter 117, Subch. B, Division 4: Incinerators (2 of 22)



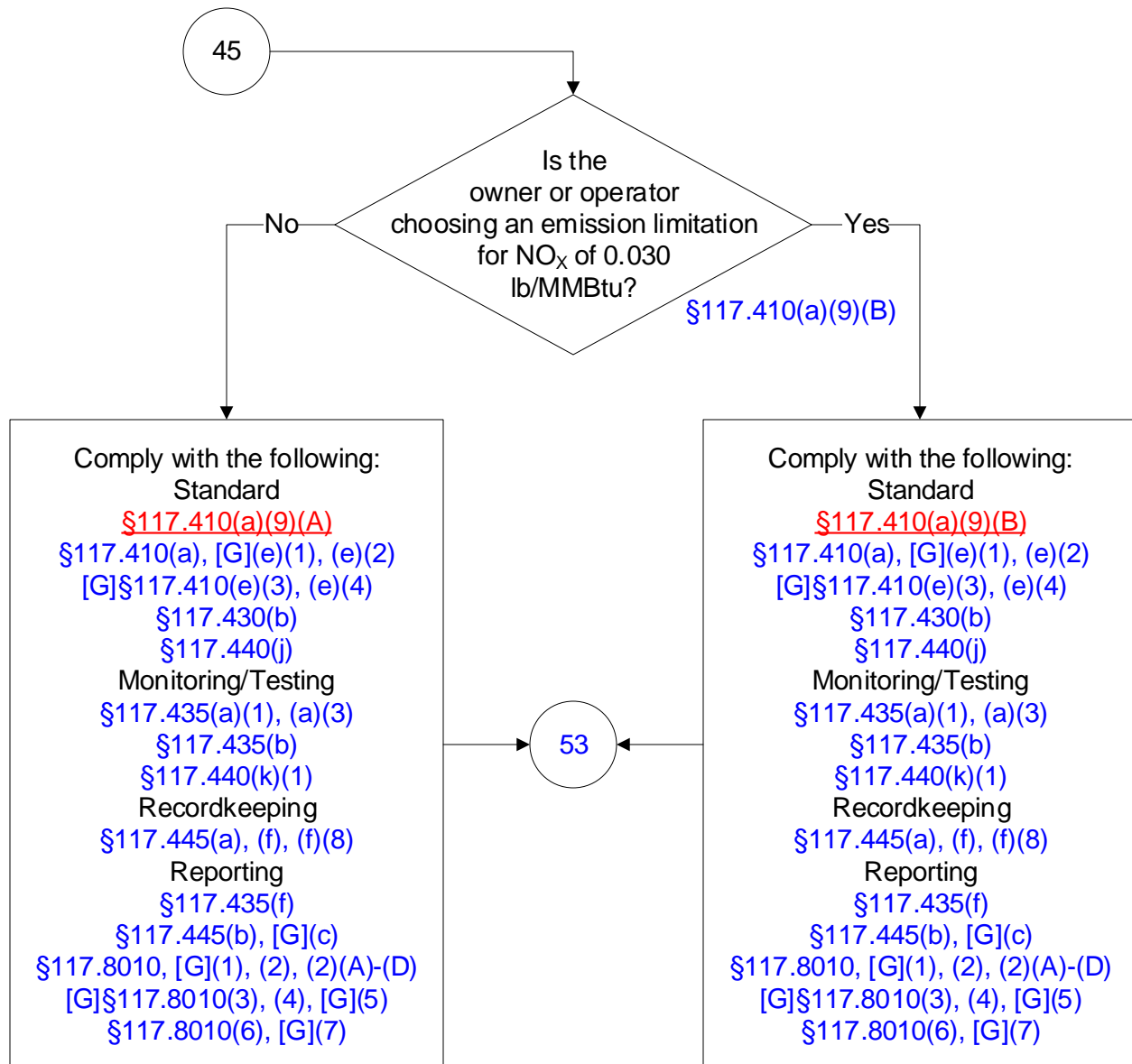
30 TAC Chapter 117, Subch. B, Division 4: Incinerators (3 of 22)



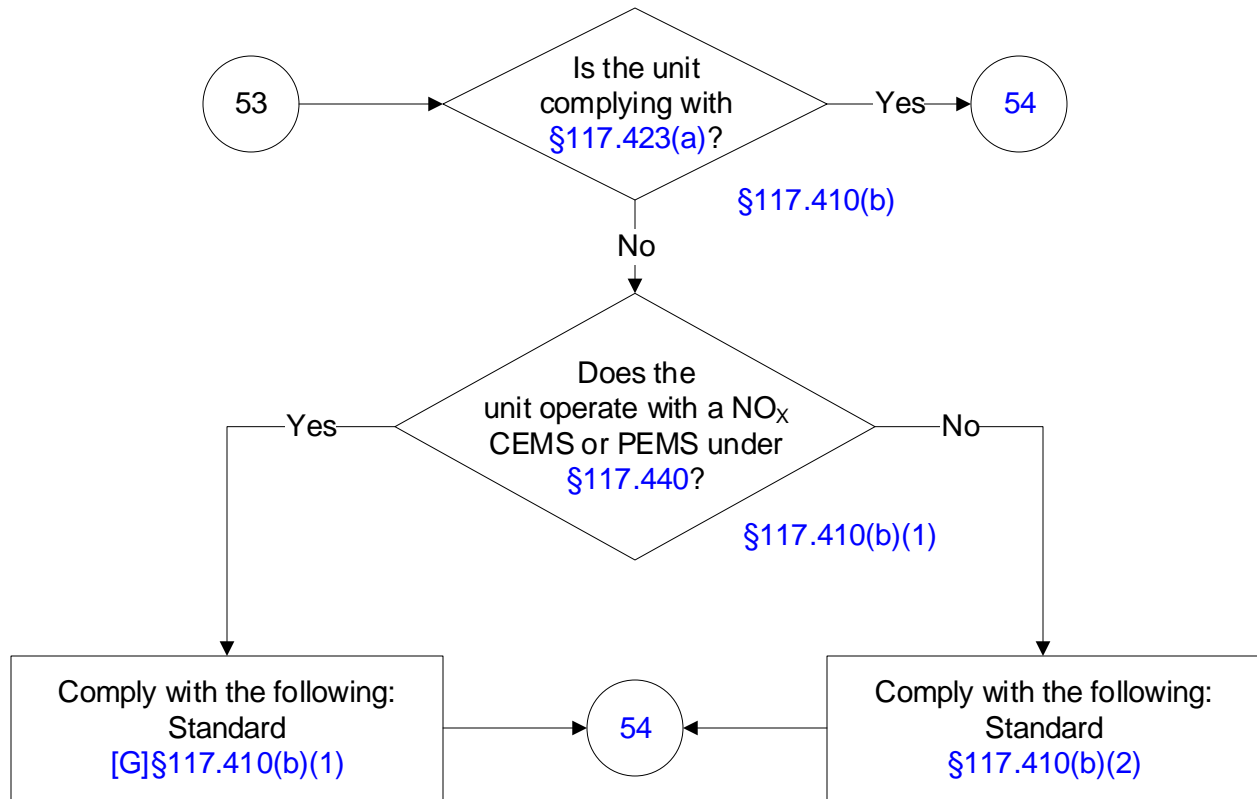
30 TAC Chapter 117, Subch. B, Division 4: Incinerators (4 of 22)



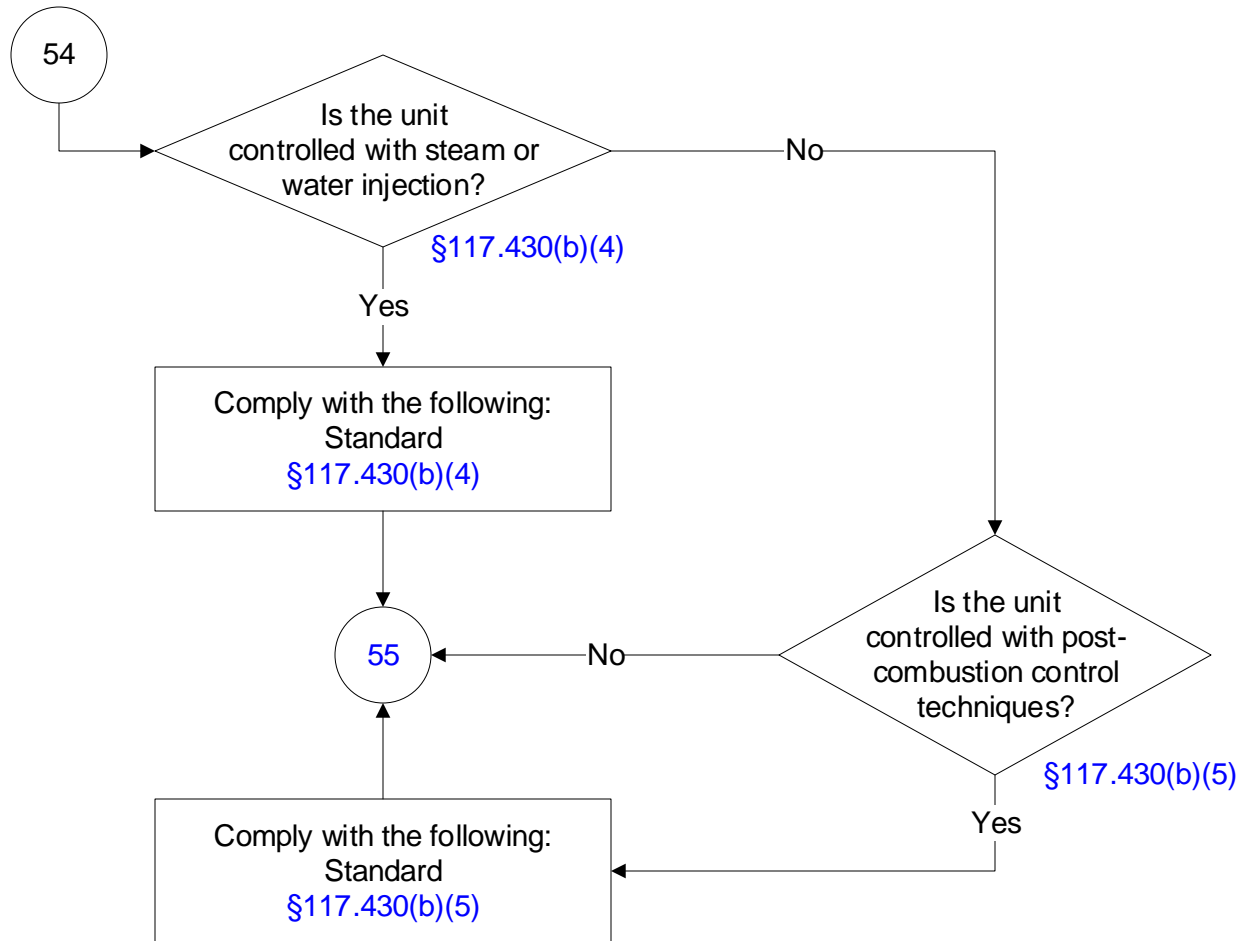
30 TAC Chapter 117, Subch. B, Division 4: Incinerators (5 of 22)



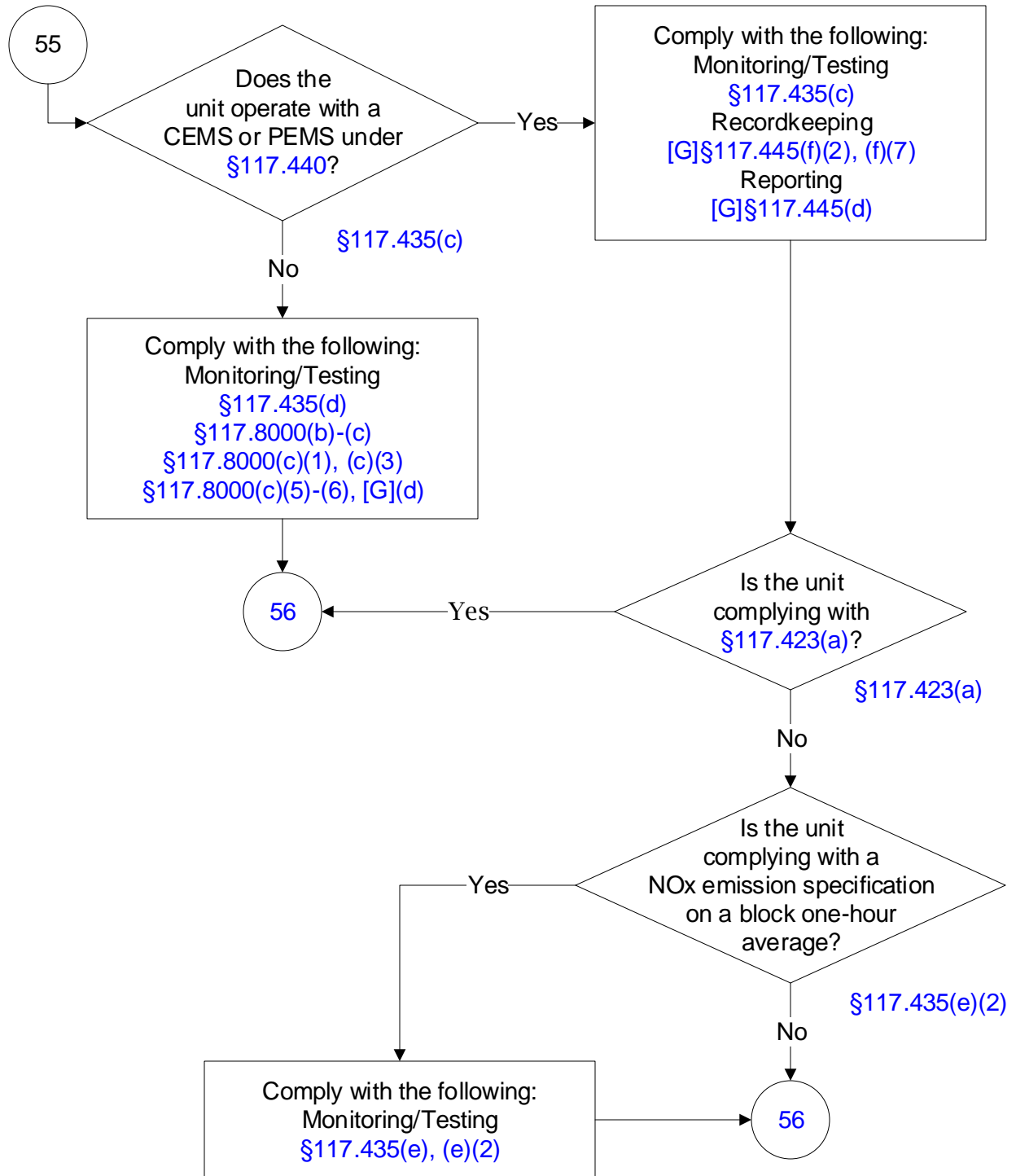
30 TAC Chapter 117, Subch. B, Division 4: Incinerators (6 of 22)



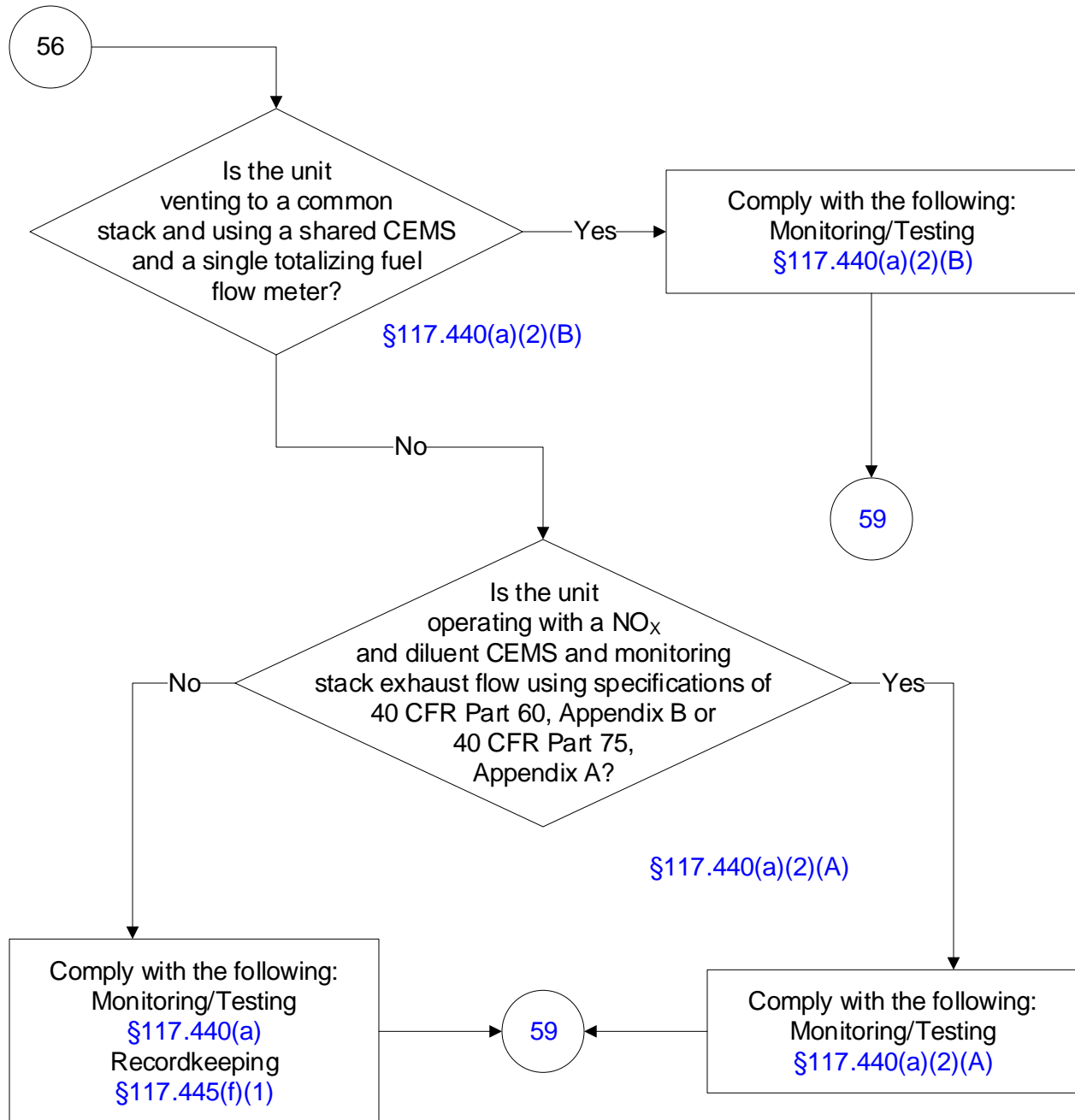
30 TAC Chapter 117, Subch. B, Division 4: Incinerators (7 of 22)



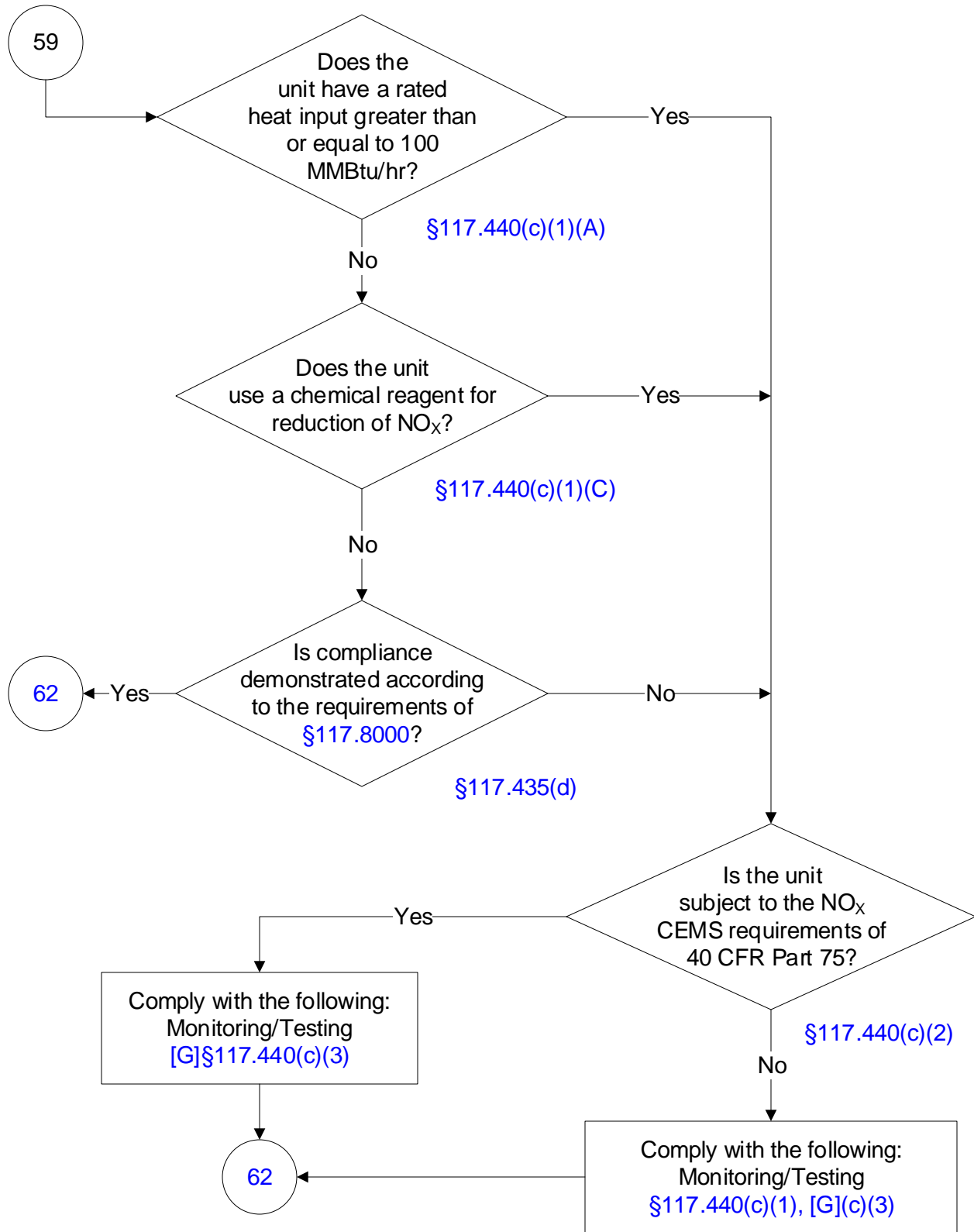
30 TAC Chapter 117, Subch. B, Division 4: Incinerators (8 of 22)



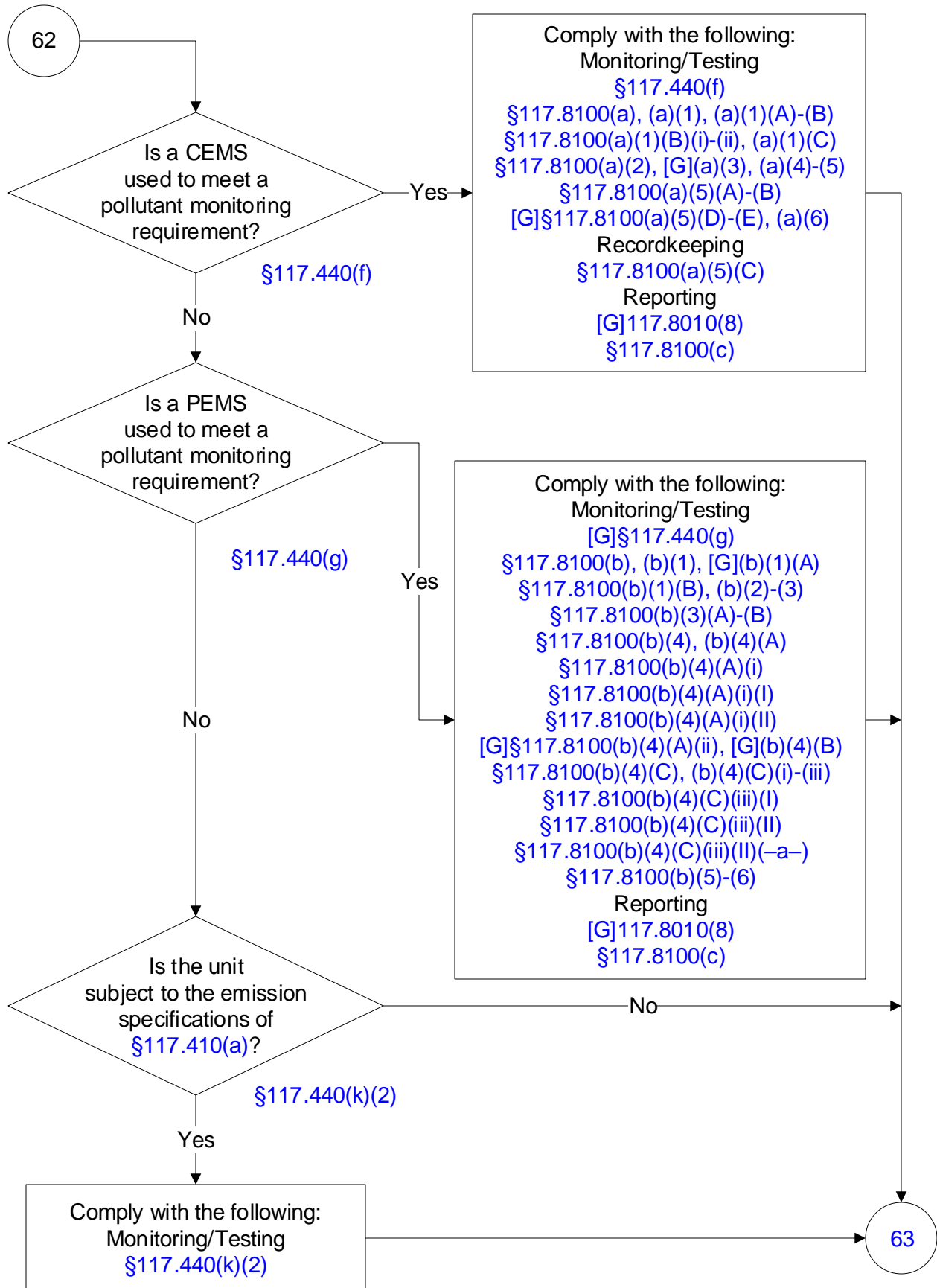
30 TAC Chapter 117, Subch. B, Division 4: Incinerators (9 of 22)



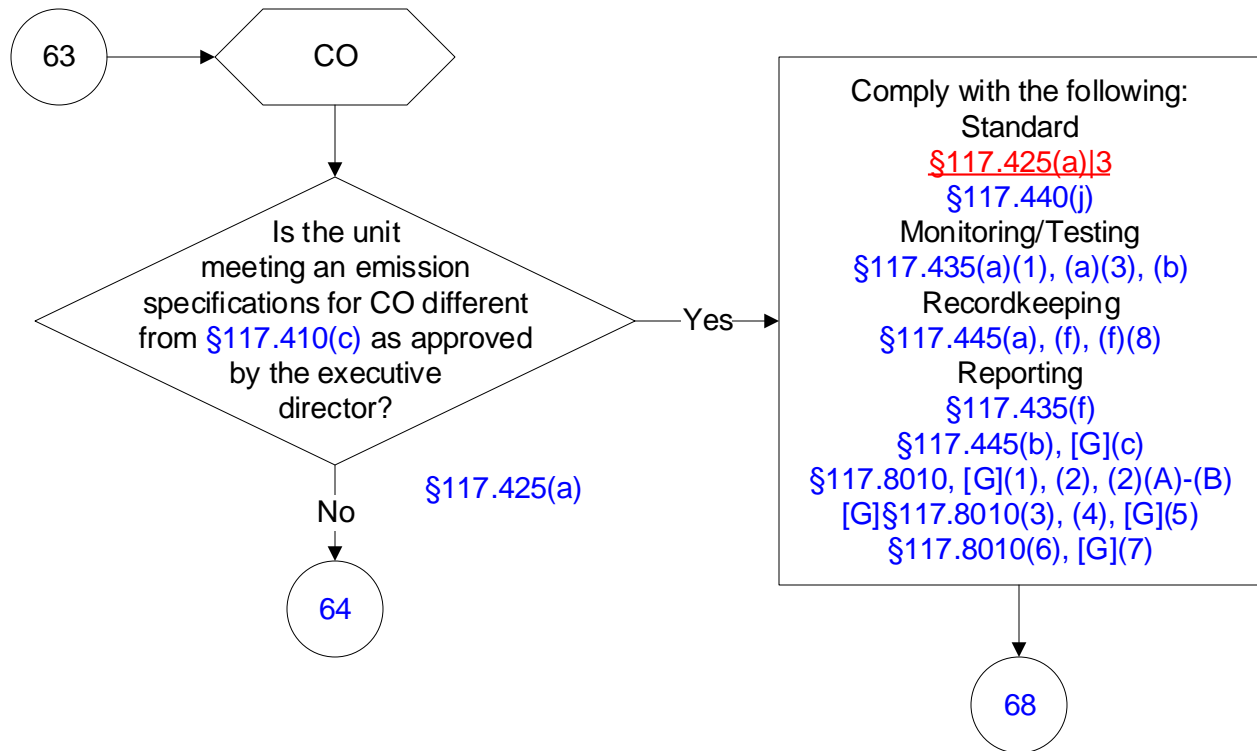
30 TAC Chapter 117, Subch. B, Division 4: Incinerators (10 of 22)



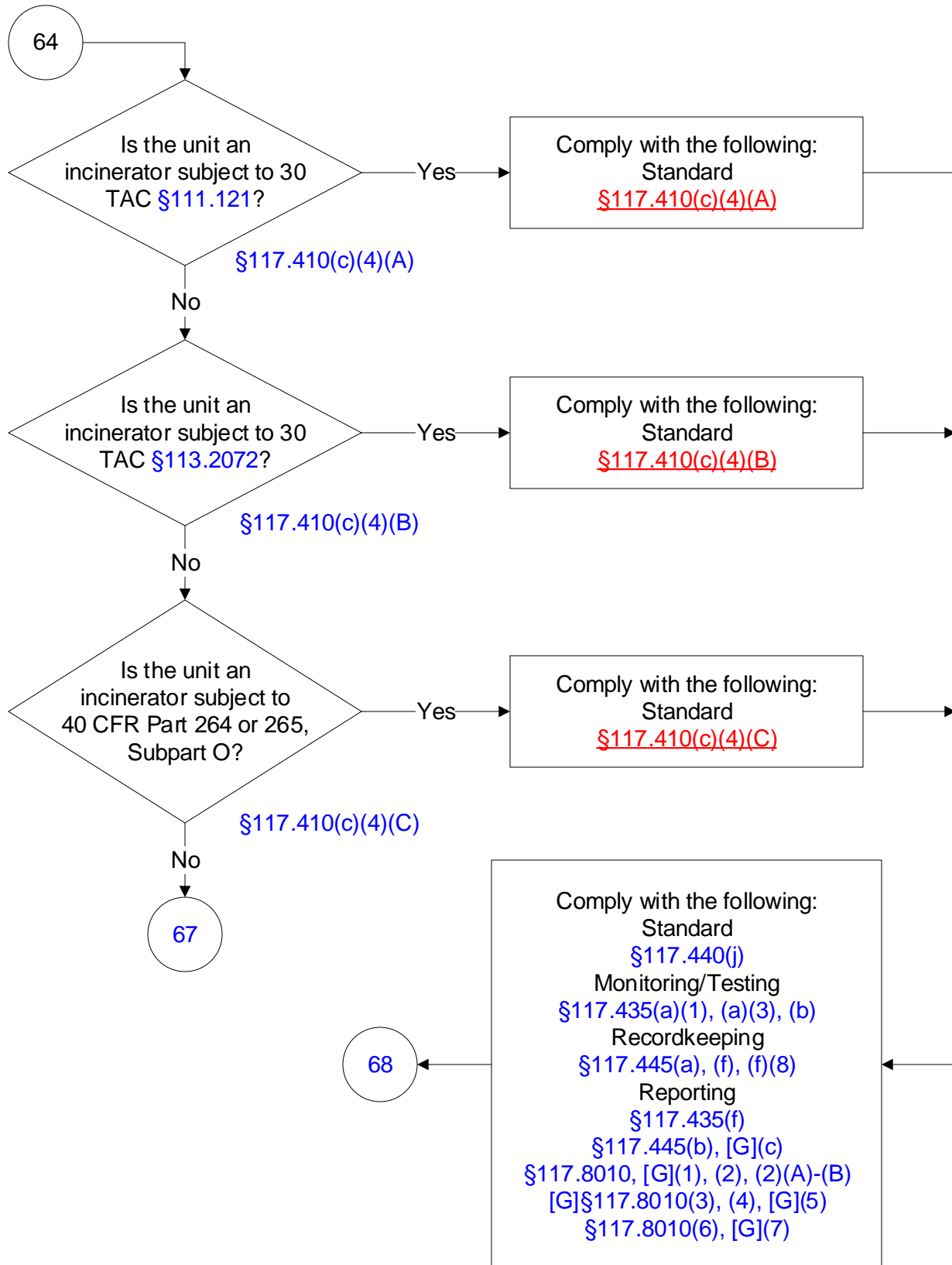
30 TAC Chapter 117, Subch. B, Division 4: Incinerators (11 of 22)



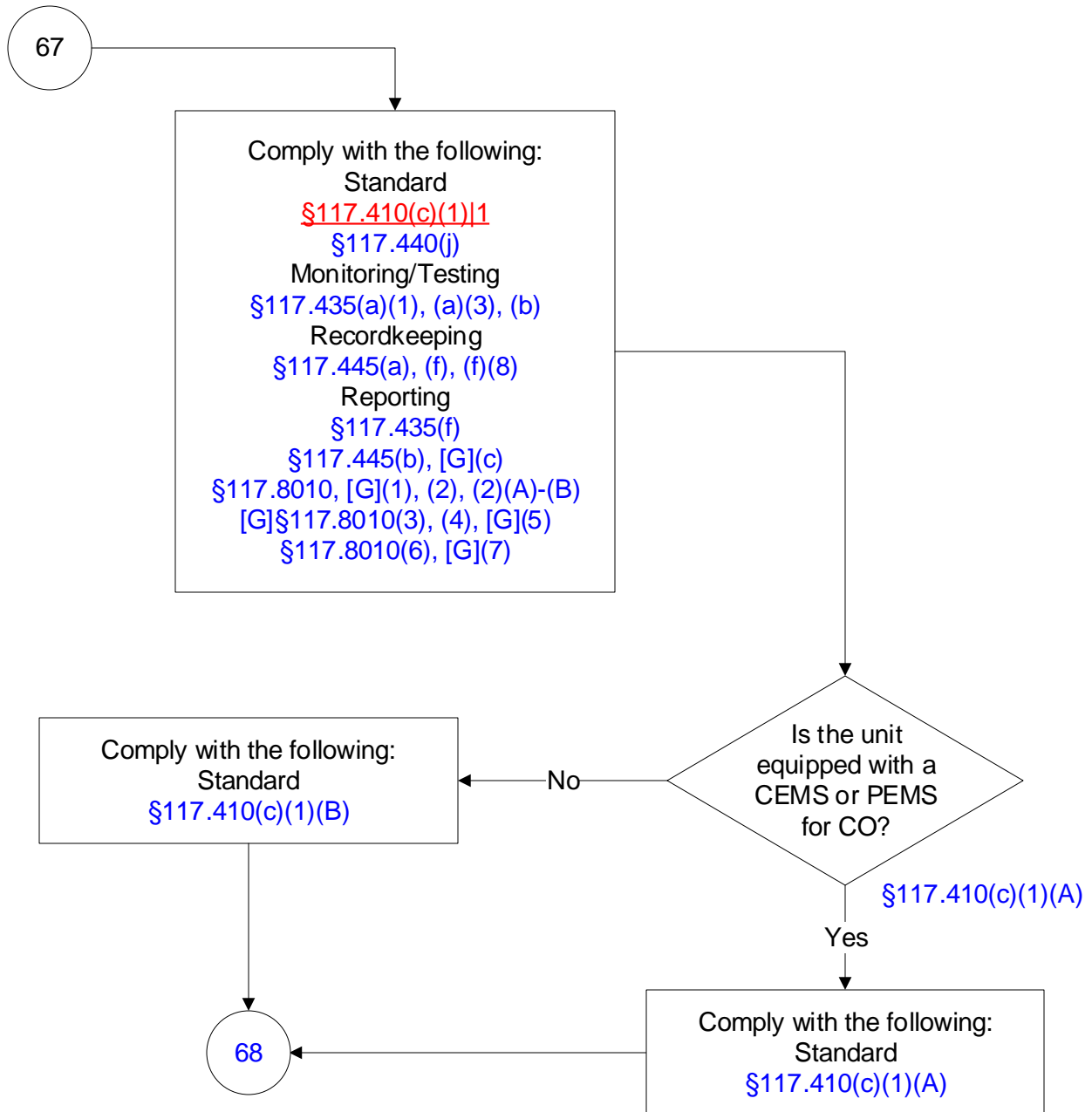
30 TAC Chapter 117, Subch. B, Division 4: Incinerators (12 of 22)



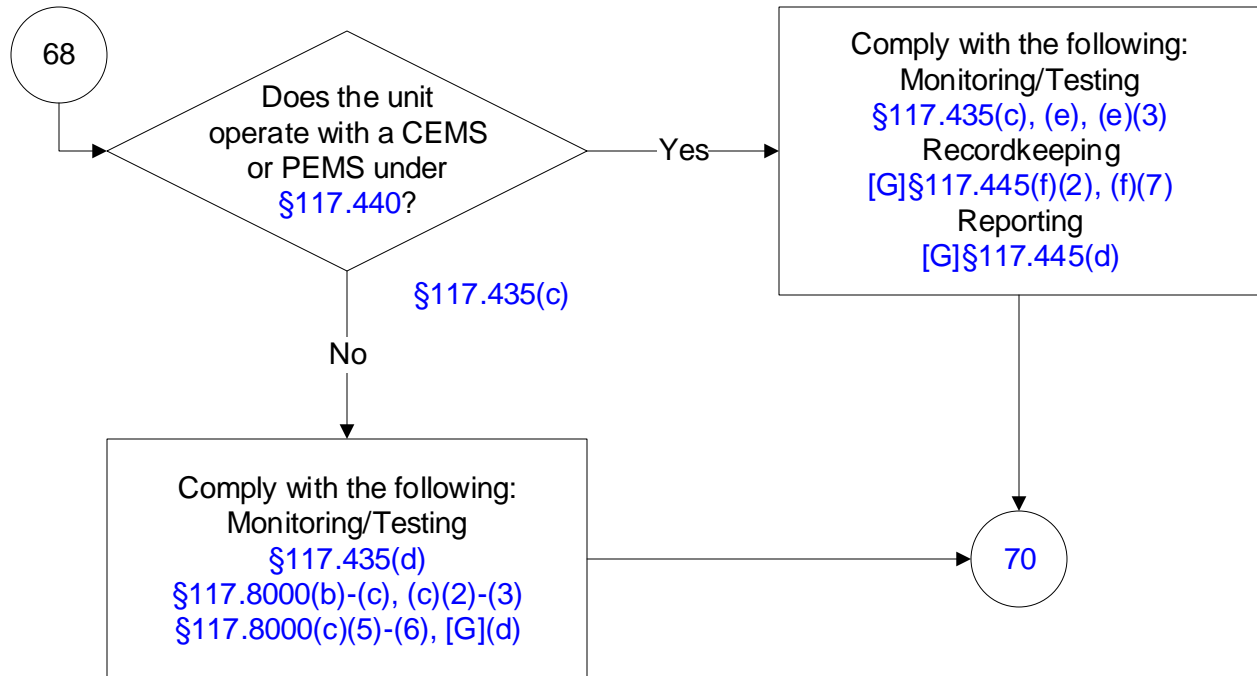
30 TAC Chapter 117, Subch. B, Division 4: Incinerators (13 of 22)



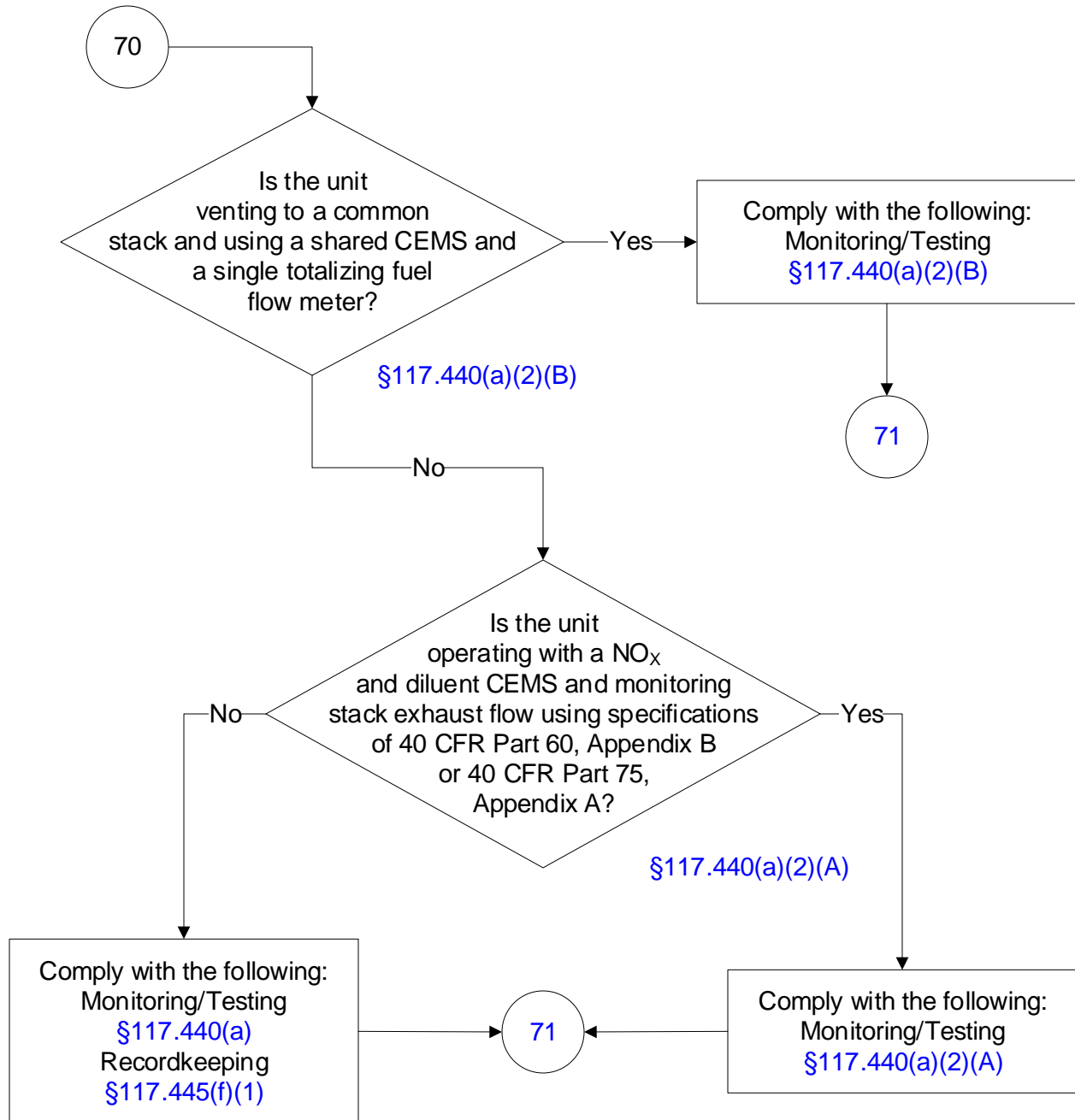
30 TAC Chapter 117, Subch. B, Division 4: Incinerators (14 of 22)



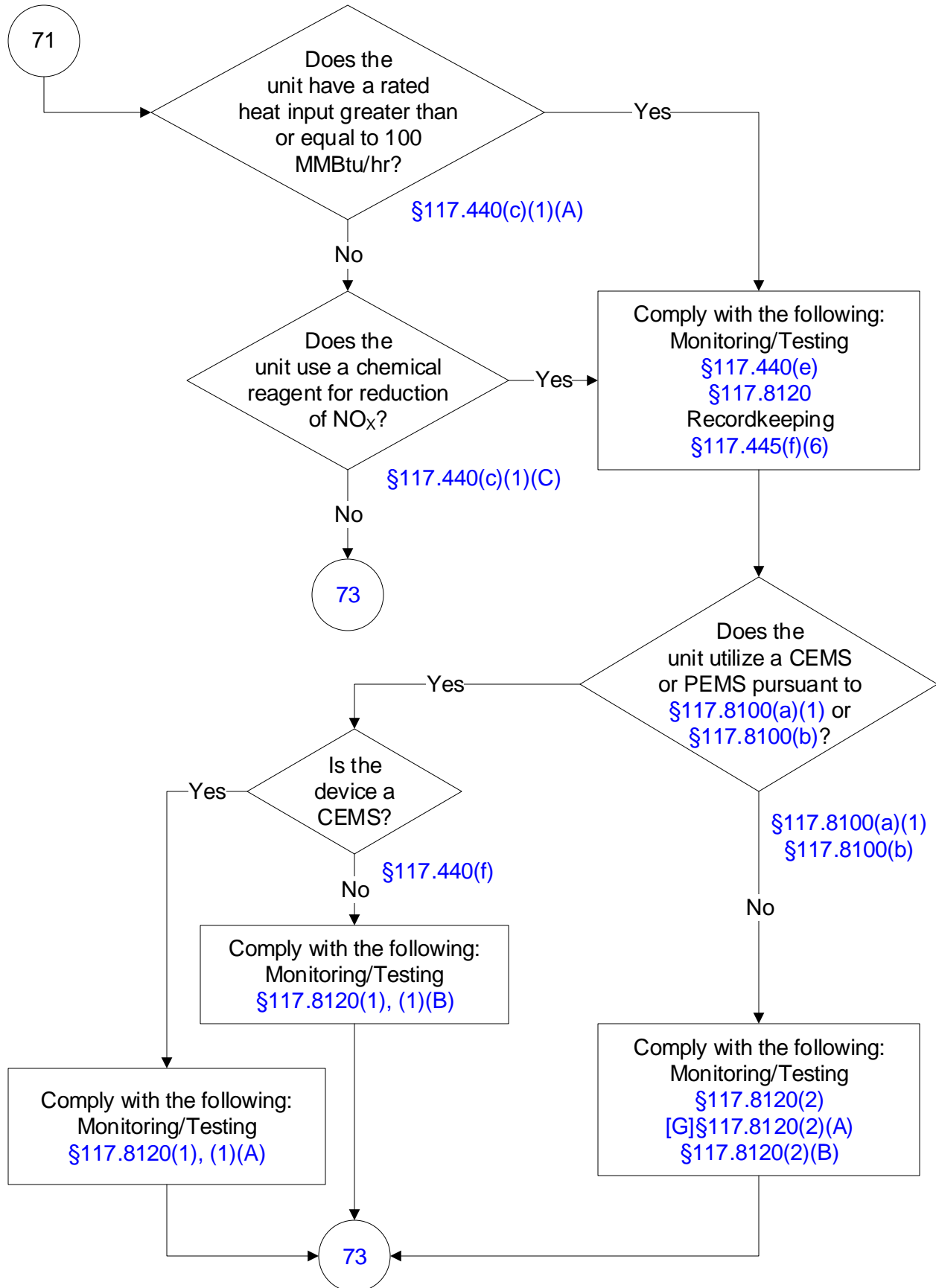
30 TAC Chapter 117, Subch. B, Division 4: Incinerators (15 of 22)



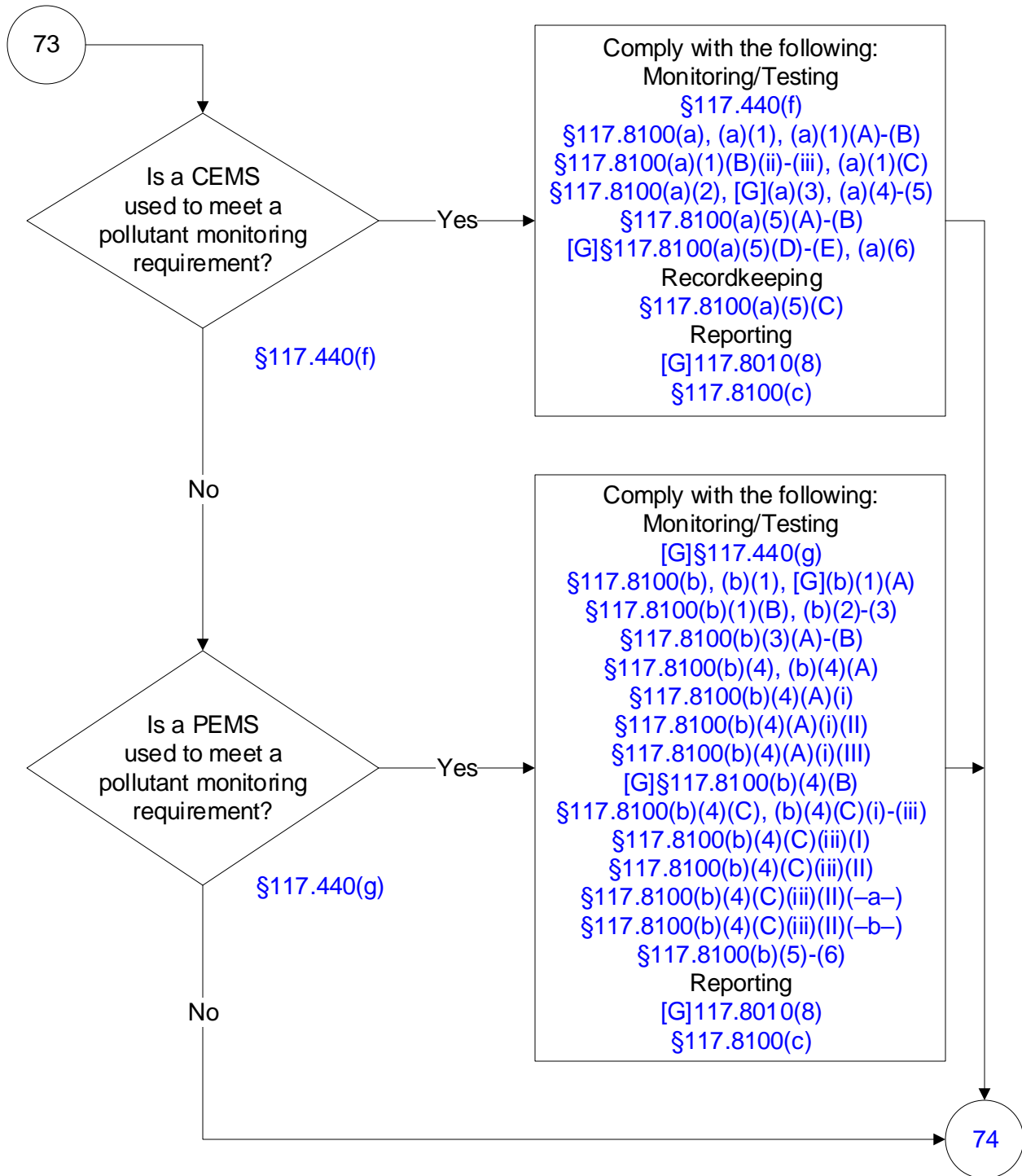
30 TAC Chapter 117, Subch. B, Division 4: Incinerators (16 of 22)



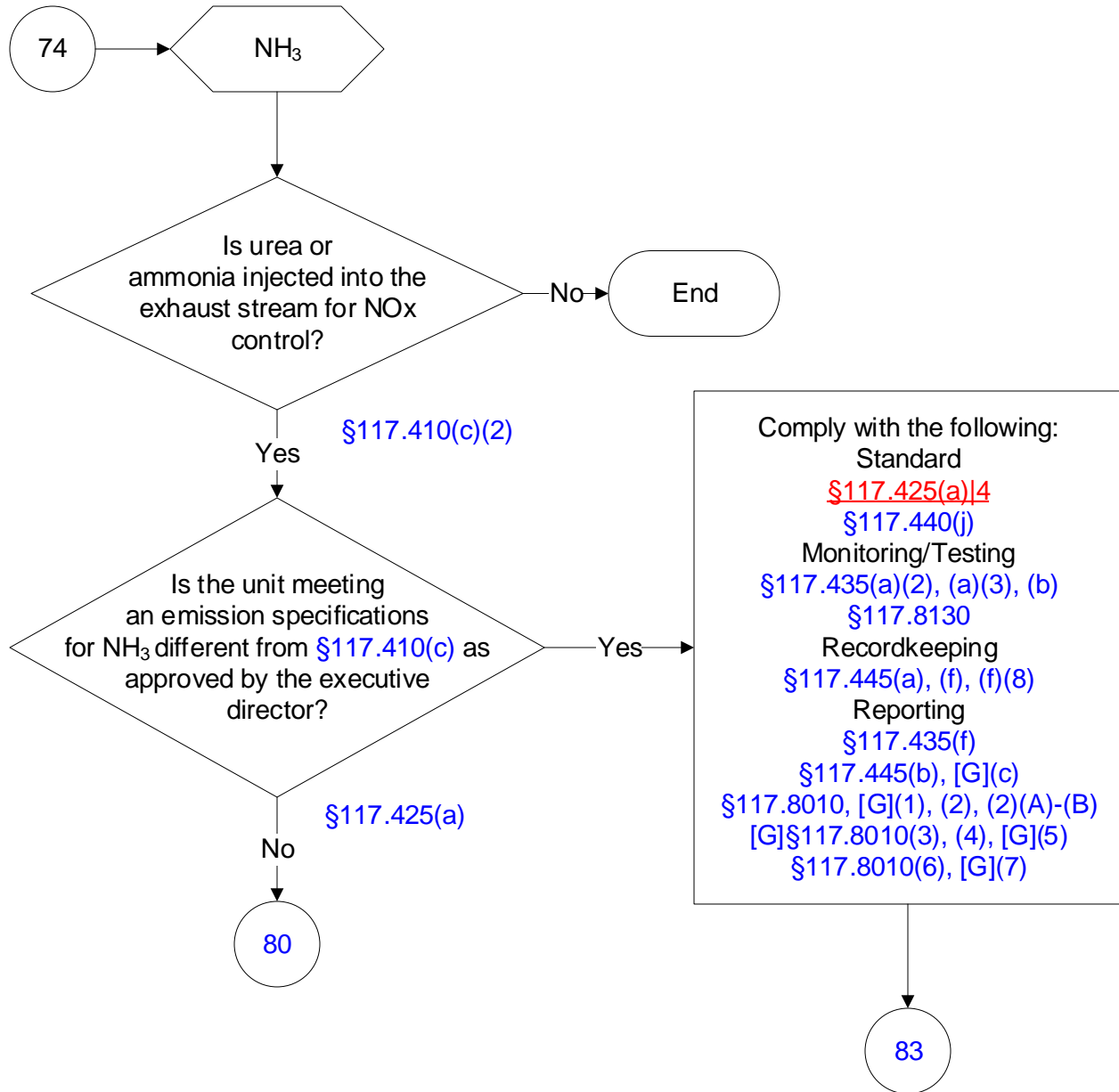
30 TAC Chapter 117, Subch. B, Division 4: Incinerators (17 of 22)



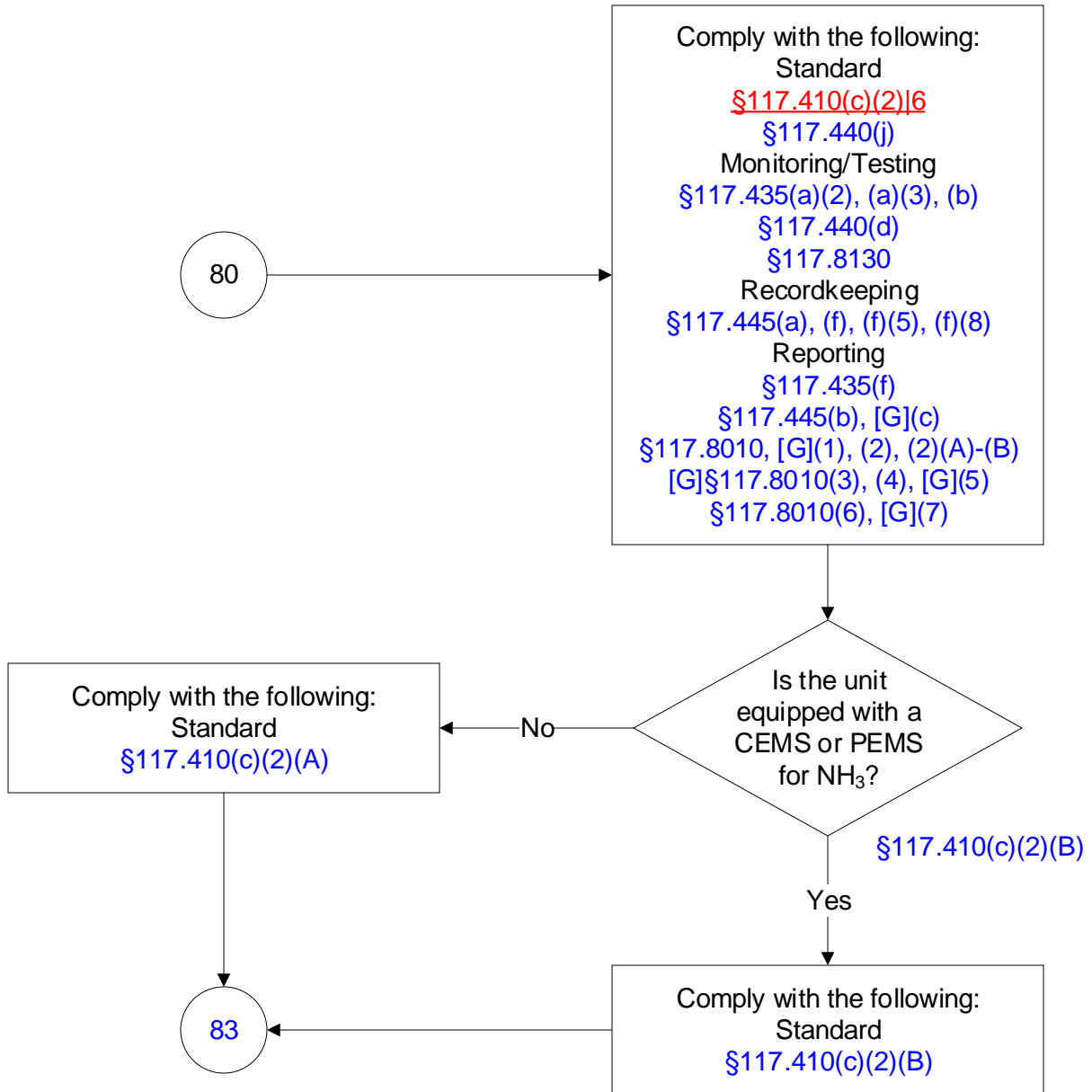
30 TAC Chapter 117, Subch. B, Division 4: Incinerators (18 of 22)



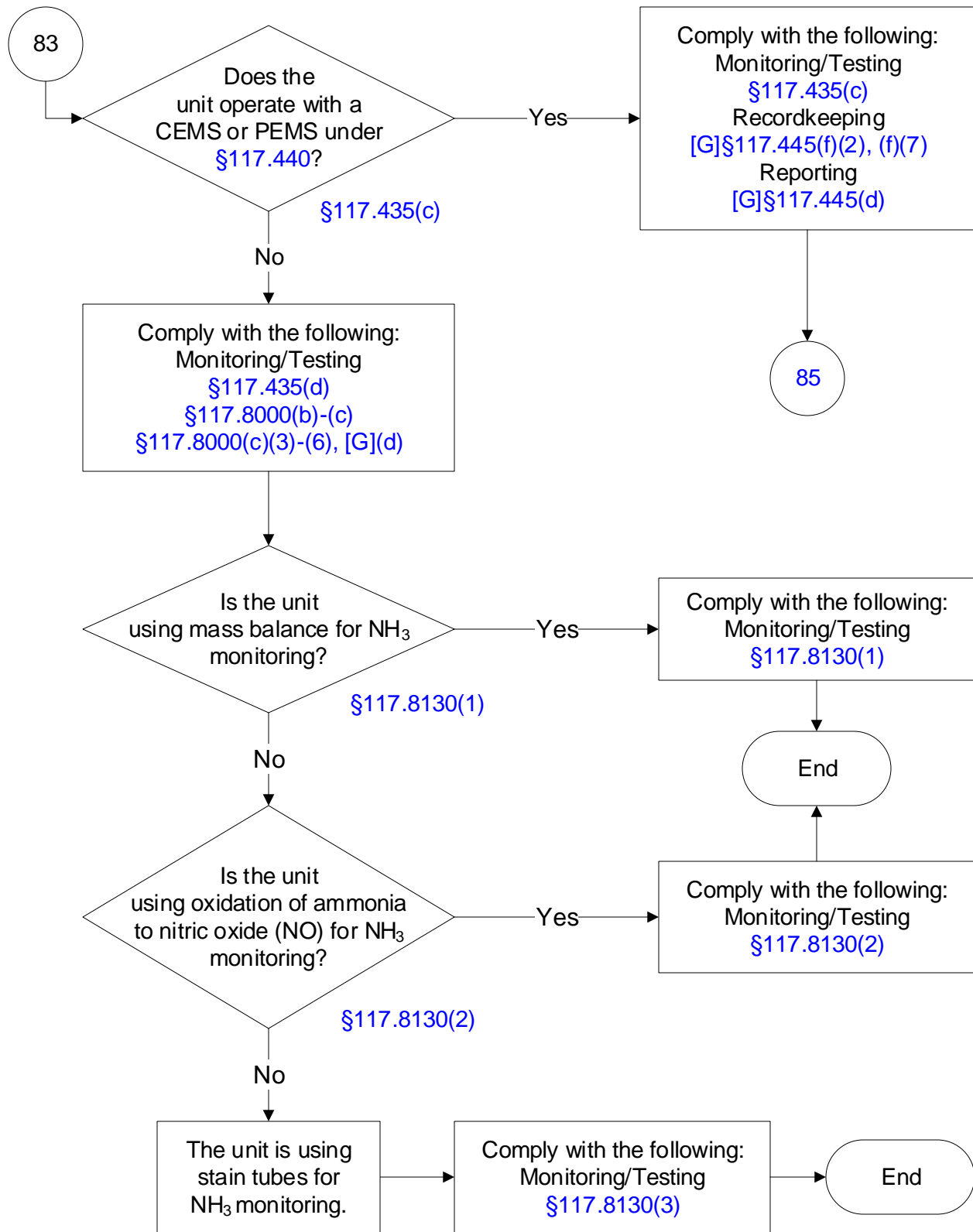
30 TAC Chapter 117, Subch. B, Division 4: Incinerators (19 of 22)



30 TAC Chapter 117, Subch. B, Division 4: Incinerators (20 of 22)



30 TAC Chapter 117, Subch. B, Division 4: Incinerators (21 of 22)



30 TAC Chapter 117, Subch. B, Division 4: Incinerators (22 of 22)

