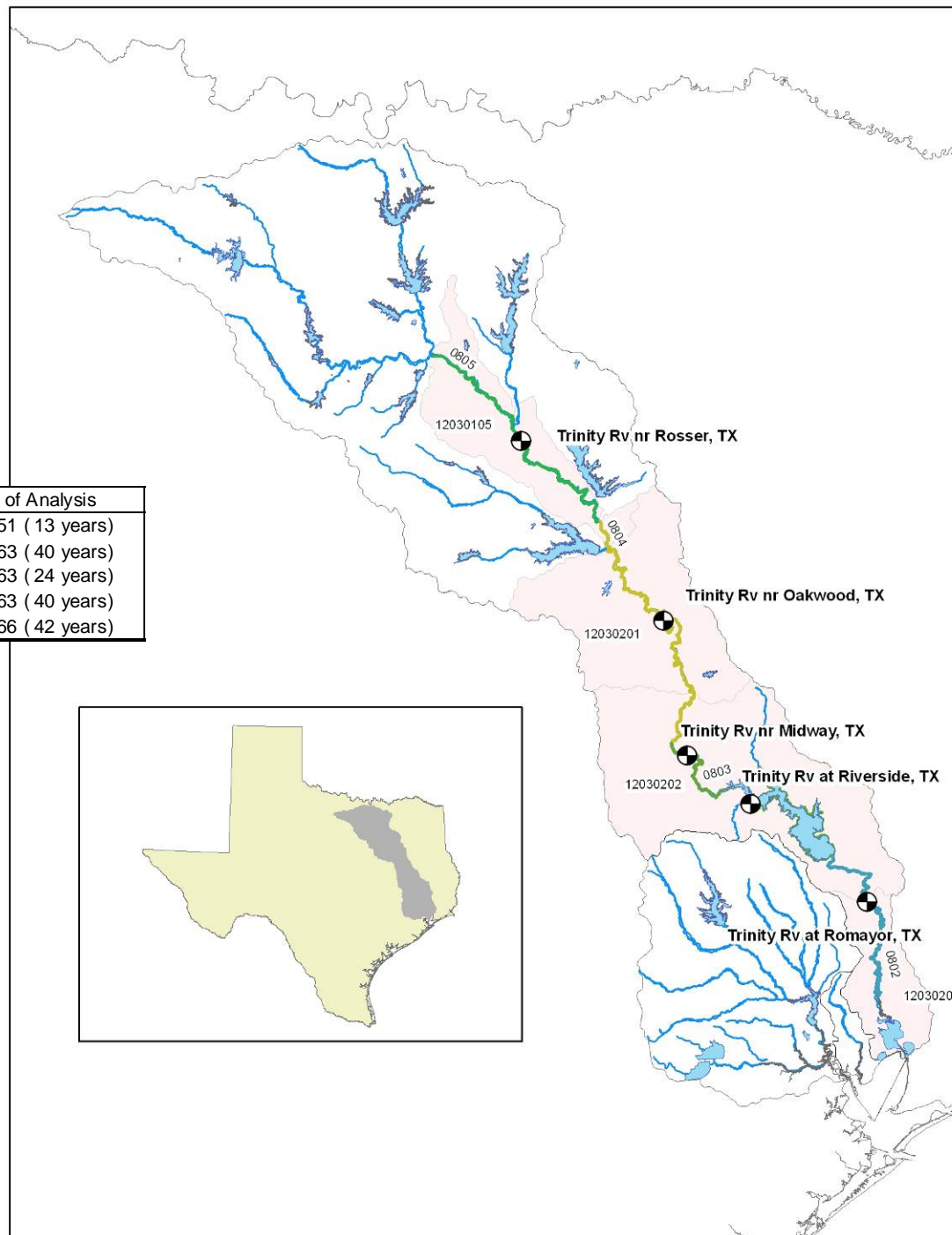
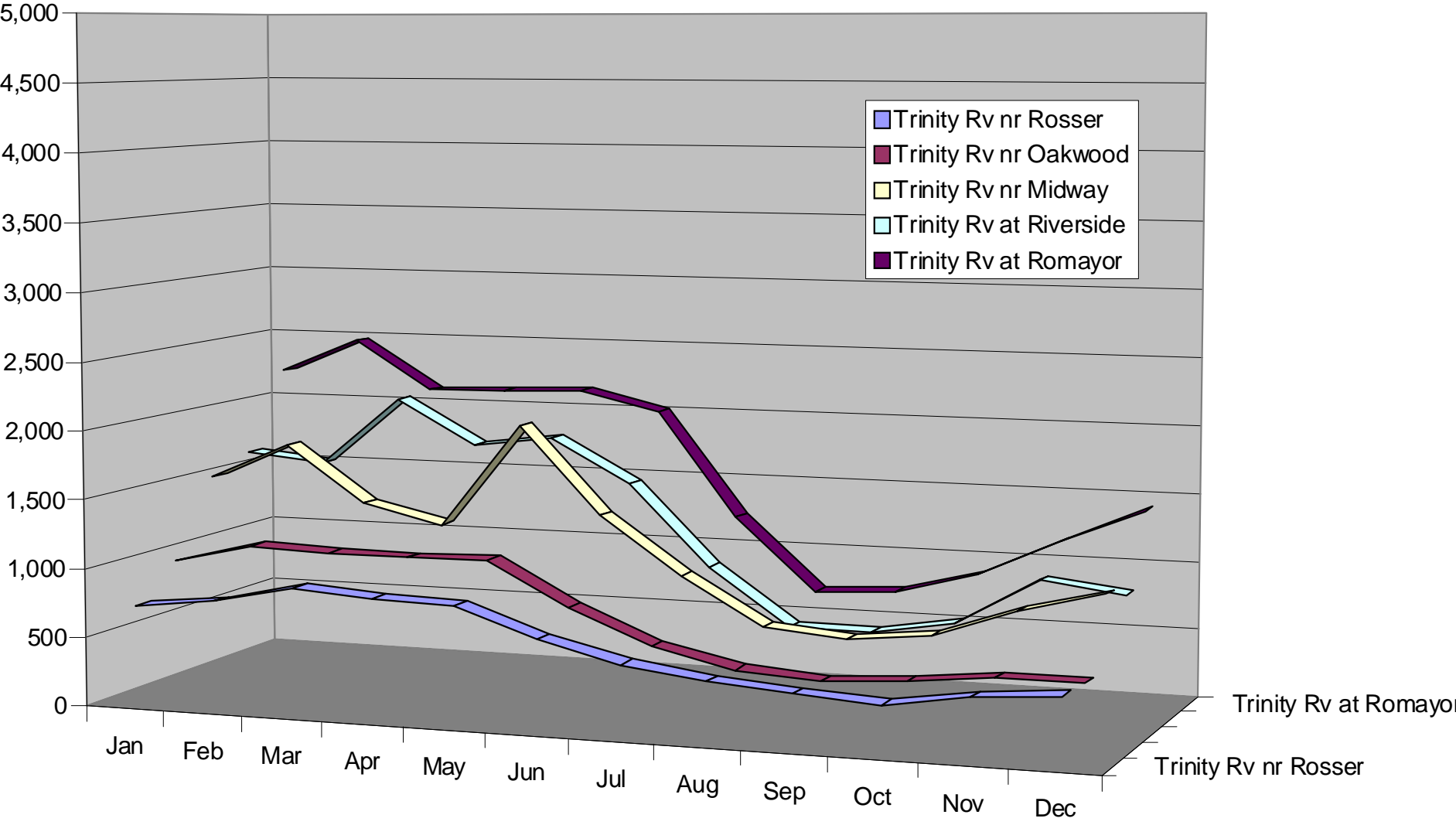


| HUC      | HUC Name                | Main River Segment(s)       | Seg  | RES_NAME                     | IMPOUND  | site | station                                      | Start | End  | Years |
|----------|-------------------------|-----------------------------|------|------------------------------|----------|------|--|-------|------|-------|
| 12030101 | Upper West Fork Trinity | West Fork Trinity River     | 812  |                              |          |      | 8042800 W Fk Trinity Rv nr Jacksboro, TX     | 1956  | 2007 | 52    |
| 12030101 | Upper West Fork Trinity | Brushy Creek                |      | LAKE AMON G. CARTER          | 5/31/56  |      | 8043950 Big Sandy Ck nr Chico, TX            | 1936  | 1955 | 20    |
| 12030101 | Upper West Fork Trinity | West Fork Trinity River     | 810  | LAKE BRIDGEPORT              | 4/1/32   |      | 8043500 W Fk Trinity Rv at Bridgeport, TX    | 1924  | 1930 | 7     |
| 12030102 | Lower West Fork Trinity | Clear Fork                  | 831  | LAKE WEATHERFORD             | 3/31/57  |      | 8046000 Clear Fk Trinity Rv nr Aledo, TX     | 1947  | 1956 | 10    |
| 12030102 | Lower West Fork Trinity | Clear Fork                  | 829  | BENBROOK LAKE                | 9/29/52  |      | 8047500 Clear Fk Trinity Rv at Ft Worth, TX  | 1924  | 1951 | 28    |
| 12030102 | Lower West Fork Trinity | West Fork Trinity River     | 806  | LAKE WORTH                   | 6/30/14  |      | 8048000 W Fk Trinity Rv at Ft Worth, TX      | 1920  | 1951 | 32    |
| 12030102 | Lower West Fork Trinity | West Fork Trinity River     | 841  | LAKE ARLINGTON               | 3/31/57  |      | 8049500 W Fk Trinity Rv at Grand Prairie, TX | 1925  | 1956 | 32    |
| 12030103 | Elm Fork Trinity        | Elm Fork Trinity River      | 824  |                              |          |      | 8050300 Elm Fk Trinity Rv nr Muenster, TX    | 1956  | 1973 | 18    |
| 12030103 | Elm Fork Trinity        | Elm Fork Trinity River      | 839  | LAKE RAY ROBERTS             | 6/30/87  |      | 8050500 Elm Fk Trinity Rv nr Sanger, TX      | 1949  | 1984 | 36    |
| 12030103 | Elm Fork Trinity        | Elm Fork Trinity River      | 822  | LEWISVILLE LAKE              | 11/1/54  |      | 8053000 Elm Fk Trinity Rv nr Lewisville, TX  | 1949  | 1953 | 5     |
| 12030104 | Denton                  | Denton Creek                |      |                              |          |      | 8053500 Denton Ck nr Justin, TX              | 1949  | 2007 | 59    |
| 12030104 | Denton                  | Denton Creek                | 825  | GRAPEVINE LAKE               | 7/3/52   |      | 8055000 Denton Ck nr Grapevine, TX           | 1947  | 1951 | 5     |
| 12030105 | Upper Trinity           | Trinity River               | 805  | DFW Reservoirs               | 11/1/54  |      | 8057000 Trinity Rv at Dallas, TX             | 1902  | 1953 | 52    |
| 12030106 | East Fork Trinity       | East Fork Trinity River     |      |                              |          |      | 8058900 E Fk Trinity Rv atnear McKinney.txt  | 1949  | 2007 | 59    |
| 12030106 | East Fork Trinity       | East Fork Trinity River     | 819  | LAVON LAKE / LAKE RAY HUBBAI | 9/14/53  |      | 8062000 E Fk Trinity Rv nr Crandall, TX      | 1949  | 1952 | 4     |
| 12030105 | Upper Trinity           | Trinity River               | 805  | LAVON LAKE / LAKE RAY HUBBAI | 9/14/53  |      | 8062500 Trinity Rv nr Rosser, TX             | 1924  | 1952 | 29    |
| 12030107 | Cedar                   | Cedar Creek                 |      |                              |          |      | 8062800 Cedar Ck nr Kemp, TX                 | 1963  | 2007 | 45    |
| 12030107 | Cedar                   | Cedar Creek                 |      | CEDAR CREEK RESERVOIR        | 7/2/65   |      | 8063000 Cedar Ck nr Mabank, TX               | 1938  | 1964 | 27    |
| 12030108 | Richland                | Richland Creek              | 837  | NAVARRO MILLS LAKE           | 3/15/63  |      | 8063500 Richland Ck nr Richland, TX          | 1939  | 1962 | 24    |
| 12030109 | Chambers                | Chambers Creek              | 814  |                              |          |      | 8064500 Chambers Ck nr Corsicana, TX         | 1939  | 1984 | 46    |
| 12030201 | Lower Trinity-Tehuacana | Trinity River               | 804  | RICHLAND-CHAMBERS RESERVOIR  | 7/2/65   |      | 8065000 Trinity Rv nr Oakwood, TX            | 1923  | 1964 | 42    |
| 12030202 | Lower Trinity-Kickapoo  | Trinity River               | 803  | RICHLAND-CHAMBERS RESERVOIR  | 7/2/65   |      | 8065500 Trinity Rv nr Midway, TX             | 1939  | 1964 | 26    |
| 12030202 | Lower Trinity-Kickapoo  | White Rock Creek            | 803B |                              |          |      | 8066100 White Rock Ck nr Trinity, TX         | 1965  | 1985 | 21    |
| 12030202 | Lower Trinity-Kickapoo  | Bedias                      |      |                              |          |      | 8065800 Bedias Ck nr Madisonville, TX        | 1967  | 2007 | 41    |
| 12030202 | Lower Trinity-Kickapoo  | Menard                      |      |                              |          |      | 8066300 Menard Ck nr Rye, TX                 | 1965  | 2007 | 43    |
| 12030203 | Lower Trinity           | Trinity River               | 802  | LAKE LIVINGSTON              | 10/31/68 |      | 8066500 Trinity Rv at Romayor, TX            | 1924  | 1967 | 44    |
| 12040101 | West Fork San Jacinto   | West Fork San Jacinto River | 1004 | LAKE CONROE                  | 1/31/73  |      | 8068000 W Fk San Jacinto Rv nr Conroe, TX    | 1924  | 1972 | 49    |
| 12040101 | West Fork San Jacinto   | Lake Creek                  | 1015 |                              |          |      | 8067900 Lake Ck nr Conroe, TX                | 2002  | 2004 | 3     |
| 12040102 | Spring                  | Spring Creek                | 1008 |                              |          |      | 8068500 Spring Ck nr Spring, TX              | 1939  | 2007 | 69    |
| 12040102 | Spring                  | Cypress Creek               | 1009 |                              |          |      | 8069000 Cypress Ck nr Westfield, TX          | 1944  | 2007 | 64    |
| 12040103 | East Fork San Jacinto   | East Fork San Jacinto River | 1003 |                              |          |      | 8070000 E Fk San Jacinto Rv nr Cleveland, TX | 1939  | 2007 | 69    |
| 12040103 | East Fork San Jacinto   | Caney Creek                 | 1010 |                              |          |      | 8070500 Caney Ck nr Splendor, TX             | 1944  | 2007 | 64    |
| 12040103 | East Fork San Jacinto   | Peach Creek                 | 1011 |                              |          |      | 8071000 Peach Ck at Splendor, TX             | 1943  | 2007 | 65    |
| 12040104 | Buffalo-San Jacinto     | Buffalo Bayou               | 1014 | BARKER RESERVOIR             | 2/3/45   |      | 8074000 Buffalo Bayou at Houston, TX         | 1936  | 1944 | 9     |
| 12040104 | Buffalo-San Jacinto     | Greens Bayou                | 1016 |                              |          |      | 8076000 Greens Bayou nr Houston, TX          | 1952  | 2007 | 56    |
| 12040104 | Buffalo-San Jacinto     | White Oak Bayou             | 1017 |                              |          |      | 8074500 Whiteoak Bayou at Houston, TX        | 1936  | 2007 | 72    |
| 12040104 | Buffalo-San Jacinto     | Brays Bayou                 |      |                              |          |      | 8075000 Brays Bayou at Houston, TX           | 1936  | 2007 | 72    |
| 12040104 | Buffalo-San Jacinto     | Sims Bayou                  |      |                              |          |      | 8075500 Sims Bayou at Houston, TX            | 1952  | 2001 | 50    |
| 12040203 | North Galveston Bay     | Cedar Bayou                 | 902  |                              |          |      | 8067500 Cedar Bayou nr Crosby, TX            | 1971  | 2007 | 37    |

| Gage | Name                            | Period of Analysis    |
|------|---------------------------------|-----------------------|
| 1    | 8062500 Trinity Rv nr Rosser    | 1939-1951 ( 13 years) |
| 2    | 8065000 Trinity Rv nr Oakwood   | 1924-1963 ( 40 years) |
| 3    | 8065500 Trinity Rv nr Midway    | 1940-1963 ( 24 years) |
| 4    | 8066000 Trinity Rv at Riverside | 1924-1963 ( 40 years) |
| 5    | 8066500 Trinity Rv at Romayor   | 1925-1966 ( 42 years) |





# Building Blocks Recommendations for TCEQ Stream Segment #804

|                  |                                 |       |       |       |       |       |     |     |     |     |     |       |
|------------------|---------------------------------|-------|-------|-------|-------|-------|-----|-----|-----|-----|-----|-------|
| Overbank Floods  | 110,000 cfs once every 10 years |       |       |       |       |       |     |     |     |     |     |       |
|                  | 43,000 cfs once every 2 years   |       |       |       |       |       |     |     |     |     |     |       |
| High Flow Pulses | 5,000 cfs 10 times per year     |       |       |       |       |       |     |     |     |     |     |       |
| Base             | 1,593                           | 1,988 | 2,155 | 1,745 | 1,955 | 1,120 | 861 | 608 | 555 | 792 | 778 | 1,050 |
|                  | 962                             | 1,102 | 1,080 | 1,080 | 1,093 | 783   | 536 | 403 | 361 | 399 | 464 | 464   |
|                  | 436                             | 632   | 622   | 636   | 712   | 509   | 331 | 249 | 239 | 265 | 270 | 311   |
| Subsistence      | 120                             |       |       |       |       |       |     |     |     |     |     |       |
|                  | JAN                             | FEB   | MAR   | APR   | MAY   | JUN   | JUL | AUG | SEP | OCT | NOV | DEC   |

|        |
|--------|
| Wet    |
| Normal |
| Dry    |

Base and Subsistence flows should be met for each day of the month. Flow should meet or exceed subsistence values 95% of the time, dry base 75% of the time, normal base 50% of the time and wet normal 25% of the time. High Flow Pulses and Overbank floods should be met for 3-5 days within the prescribed month or season

| Overbank Flows          | Return Period (R) : 2 (years) |           |          |           |          |           | Duration (D) : 32 (days)    |          |      |     |     |     |
|-------------------------|-------------------------------|-----------|----------|-----------|----------|-----------|-----------------------------|----------|------|-----|-----|-----|
|                         | Volume (V) : 1448043 (ac-ft)  |           |          |           |          |           | Peak Flow (Q) : 54600 (cfs) |          |      |     |     |     |
| High Flow Pulses        | F: 1                          | D: 15     | F: 1     | D: 15     | F: 1     | D: 13     | F: 1                        | D: 11    |      |     |     |     |
|                         | Q: 13225                      | V: 249179 | Q: 13825 | V: 247111 | Q: 8925  | V: 139885 | Q: 7780                     | V: 95753 |      |     |     |     |
|                         | F: 1                          | D: 9      | F: 2     | D: 10     | F: 1     | D: 6      | F: 1                        | D: 6     |      |     |     |     |
|                         | Q: 6280                       | V: 72774  | Q: 7815  | V: 97419  | Q: 3690  | V: 36040  | Q: 3425                     | V: 30913 |      |     |     |     |
|                         | F: 1                          | D: 5      | F: 1     | D: 6      | F: 1     | D: 4      | F: 1                        | D: 4     |      |     |     |     |
| Q: 3090                 | V: 26381                      | Q: 3598   | V: 28265 | Q: 2150   | V: 12318 | Q: 2038   | V: 13939                    |          |      |     |     |     |
| Base Flows (cfs)        | 838                           | 1165      | 1690     | 1465      | 1600     | 1638      | 1140                        | 860      | 645  | 574 | 751 | 800 |
|                         | 439                           | 666       | 838      | 794       | 914      | 996       | 666                         | 491      | 421  | 375 | 404 | 439 |
|                         | 281                           | 340       | 527      | 392       | 503      | 618       | 366                         | 266      | 261  | 220 | 266 | 254 |
| Subsistence Flows (cfs) | 128                           | 0         | 0        | 128       | 92       | 0         | 109                         | 86       | 92   | 86  | 99  | 112 |
| Dec                     | Jan                           | Feb       | Mar      | Apr       | May      | Jun       | Jul                         | Aug      | Sep  | Oct | Nov |     |
| Winter                  |                               |           | Spring   |           |          | Summer    |                             |          | Fall |     |     |     |

|                       |             |
|-----------------------|-------------|
| Hydrologic Conditions | Wet         |
|                       | Average     |
|                       | Dry         |
|                       | Subsistence |

|                                 |                            |
|---------------------------------|----------------------------|
| High Flow Pulse Characteristics | F = Frequency (per season) |
|                                 | D = Duration (days)        |
|                                 | Q = Peak Flows (cfs)       |
|                                 | V = Volume (ac-ft)         |

# Issues/Questions/Decisions

- Geographic Extent
- Period of Record (Pre, Post, All, Naturalized)
- Resolution
  - Intra-annual variation (vertical axis) flow regime components and hydrologic condition
  - Inter-annual (horizontal axis) annual, seasonal, monthly
- Overlays