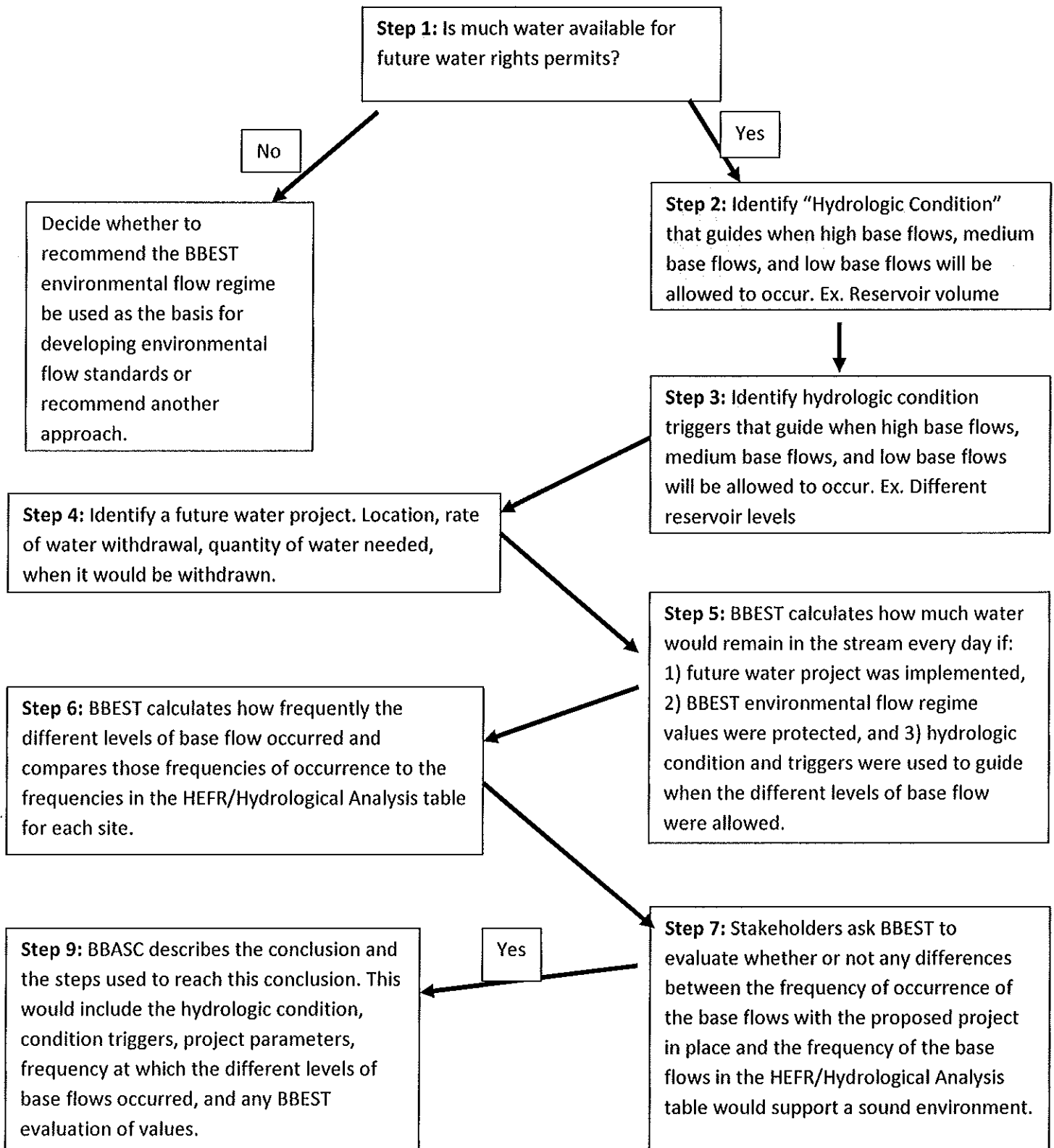


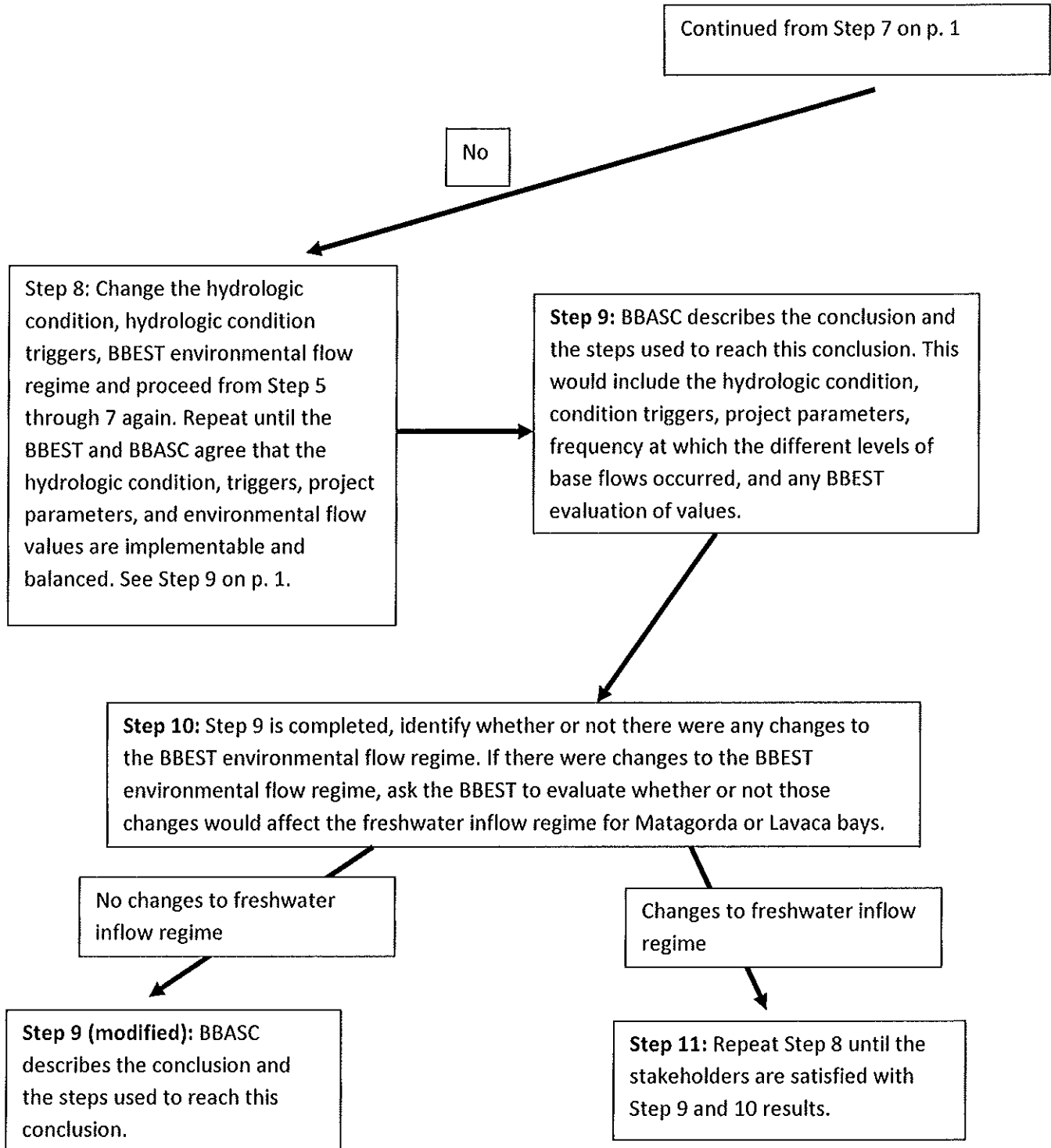
Draft Flow Chart for Colorado-Lavaca BBASC Decisions, p. 1

Colorado-Lavaca Stakeholders Decision Points (shaded in gray on the draft flow chart)



Draft Flow Chart for Colorado-Lavaca BBASC Decisions, p. 2

Colorado-Lavaca Stakeholders Decision Points (shaded in gray on the draft flow chart)



Colorado-Lavaca Stakeholders Decision Points (shaded in gray on the draft flow chart)

Step 1: Are significant amounts of water available for future water rights?

Stakeholders have tentatively made that decision and identified the Lavaca River at Edna, Pedernales River at Johnson City, Tres Palacios near Midfield, and Garcitas Creek at Inez

Step 2: Identify a hydrologic condition to guide when different levels of base flow apply.

BBEST has suggested reservoir storage be used as the hydrologic condition.

Step 3: Identify hydrologic condition triggers.

BBEST has suggested high base flow be protected when the reservoir is at or above the volume which is exceeded 25% of the time (calculated using the Water Availability Model Run 3), medium base flow protected when the reservoir is below the volume exceeded 25% of the time and above the volume exceeded 75% of the time, low base flow when the reservoir is below the volume exceeded 75% of the time, and subsistence flow when the reservoir is below the volume exceeded 95% of the time.

Step 4: Identify a possible project which would require a new water rights permit.

LNRA has identified a possible off-channel reservoir project for the Lavaca River at Edna.

Step 8: Identify any modifications of the hydrologic condition, hydrologic condition triggers, BBEST environmental flow regime that the stakeholders wish to see tested.

Step 10: Ask the BBEST to evaluate the effect of any changes on the BBEST's freshwater inflow regime

Assumptions:

The best way to encourage TCEQ to consider BBASC recommendations is for the BBASC and the BBEST to demonstrate they have worked together on the recommendations and both groups can live with those recommendations.

The BBASC will ask the BBEST for help with calculations and evaluations. The BBASC is not required to ask for BBEST participation.