



Jones Road
Ground Water Plume,
Harris County,
Texas

EPA ID:
TX Pending

Legend

[Concentrations Reported
in Parts Per Billion (ppb)]
Data Used Includes
Preliminary Results

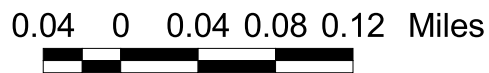
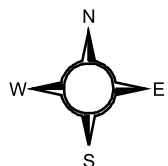
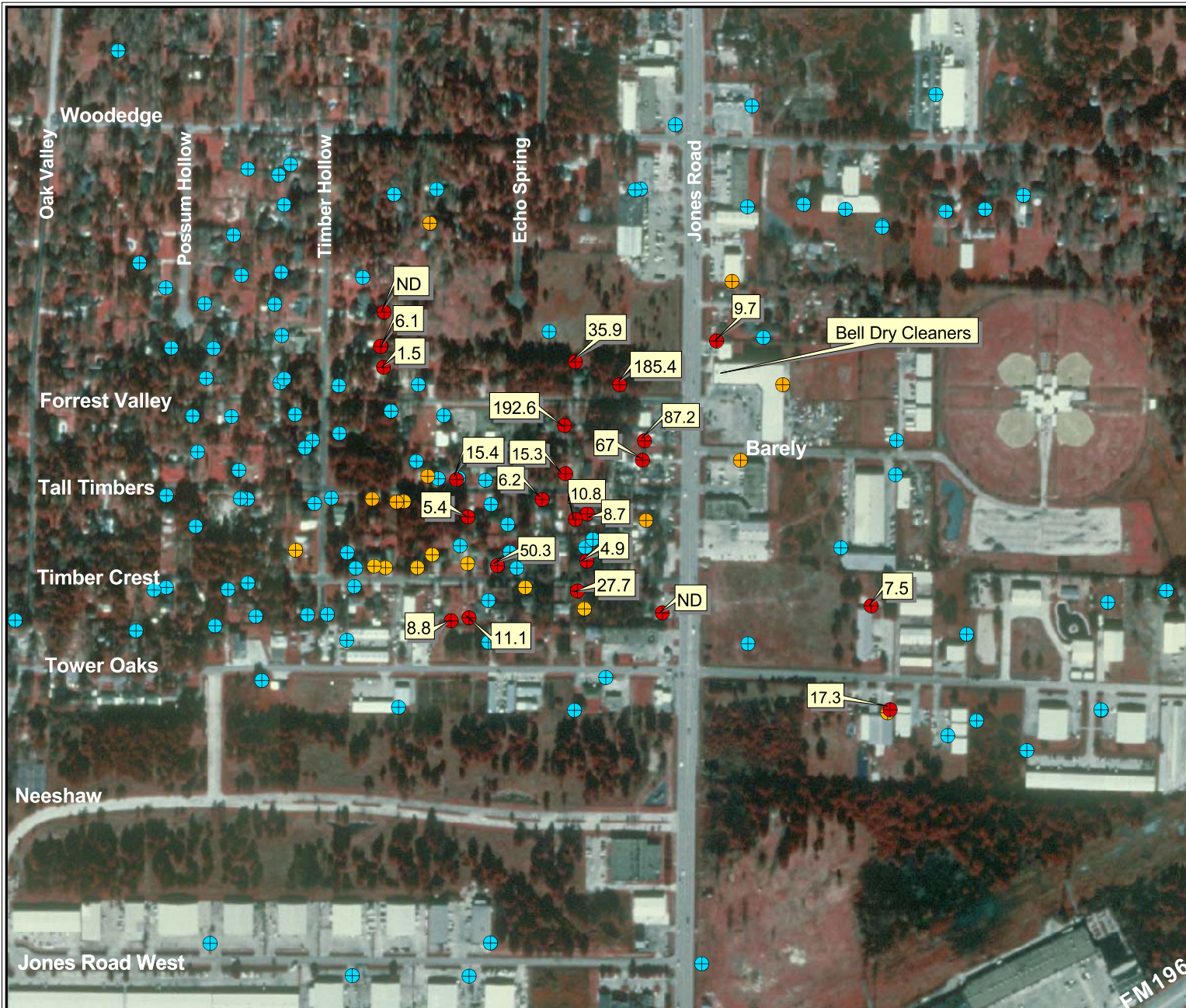
- Above the Maximum Contaminant Level (MCL*) of 5 ppb for Tetrachloroethene (PCE) or Trichloroethene (TCE), at One Time and Has a Filtration System Installed
- Detection of Tetrachloroethene or Trichloroethene, But Below Their MCLs of 5 ppb
- No Detections of PCE, TCE, or DCE

*MCL = The highest level of a contaminant that is allowed in drinking water.
ND = Not Detected

**Water Wells Sampled
During October - December 2002**

**Tetrachloroethene (PCE)
Concentrations In ppb**

As of January 24, 2003



Source

The base data used is the Satsuma NW and SW, Texas Digital Orthoquarter Quadrangles (DOQQs), which are digital versions of aerial photographs. These DOQQs were produced by the TNRCC using U.S. Geological Survey guidelines. UTM NAD 83 Zone 15