



Jones Road Ground Water Plume, Harris County, Texas

EPA ID:
TXN 000 605 460

Legend

[Concentrations Reported in Parts Per Billion (ppb)]
Data Used Includes Preliminary Results

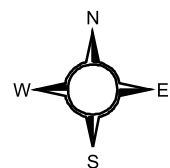
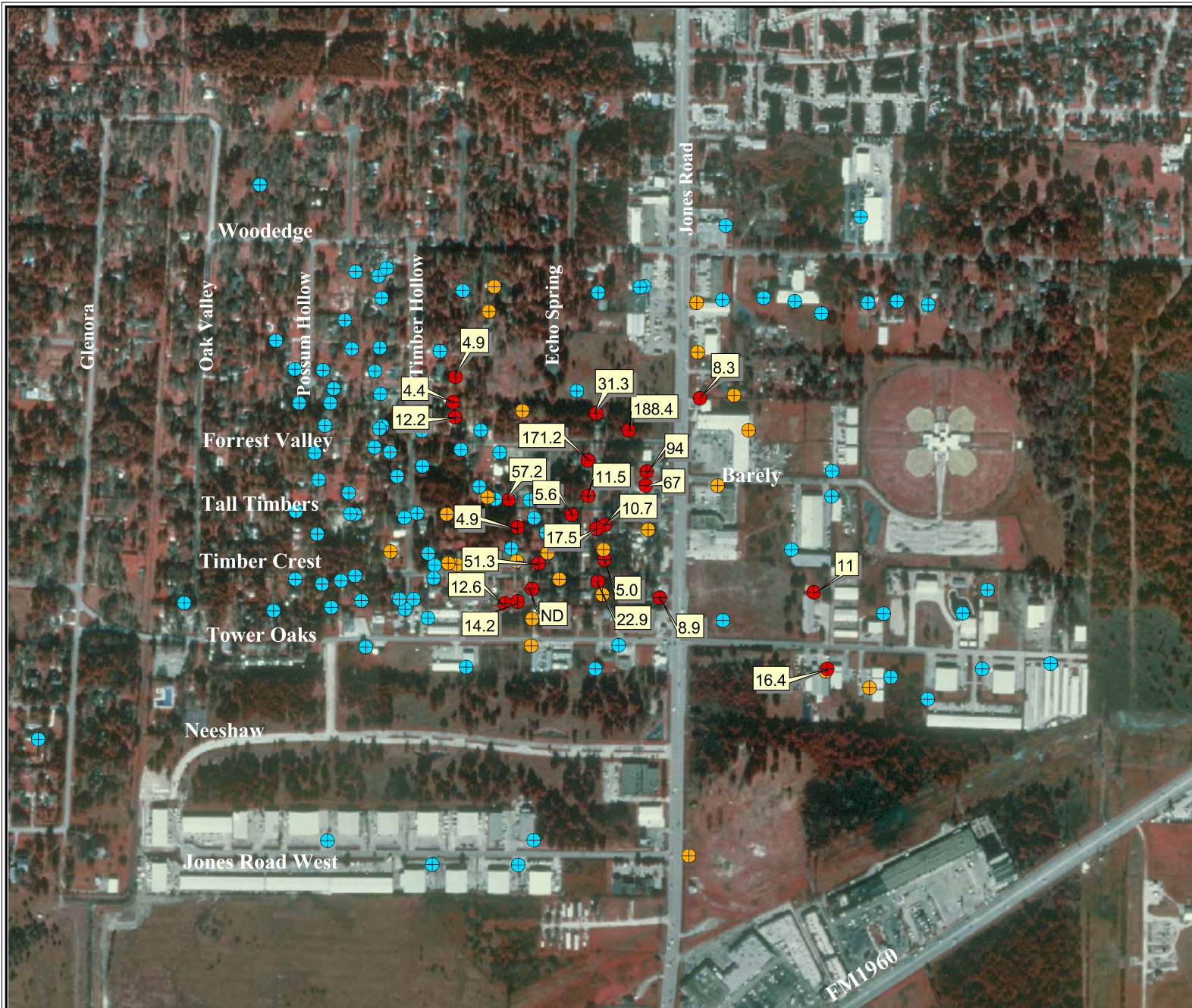
- Above the Maximum Contaminant Level (MCL*) of 5 ppb for Tetrachloroethene (PCE) or Trichloroethene (TCE), at One Time and Has a Filtration System Installed
- Detection of Tetrachloroethene or Trichloroethene, But Below Their MCLs of 5 ppb
- No Detections of PCE, TCE, or DCE

*MCL = The highest level of a contaminant that is allowed in drinking water.
ND = Not Detected

Water Wells Sampled During February 2003

Tetrachloroethene (PCE) Concentrations In ppb

As of March 25, 2003



0.06 0 0.06 0.12 Miles

Source

The base data used is the Satsuma NW and SW, Texas Digital Orthoquarter Quadrangles (DOQQs), which are digital versions of aerial photographs. These DOQQs were produced by the TNRCC using U.S. Geological Survey guidelines. UTM NAD 83 Zone 15