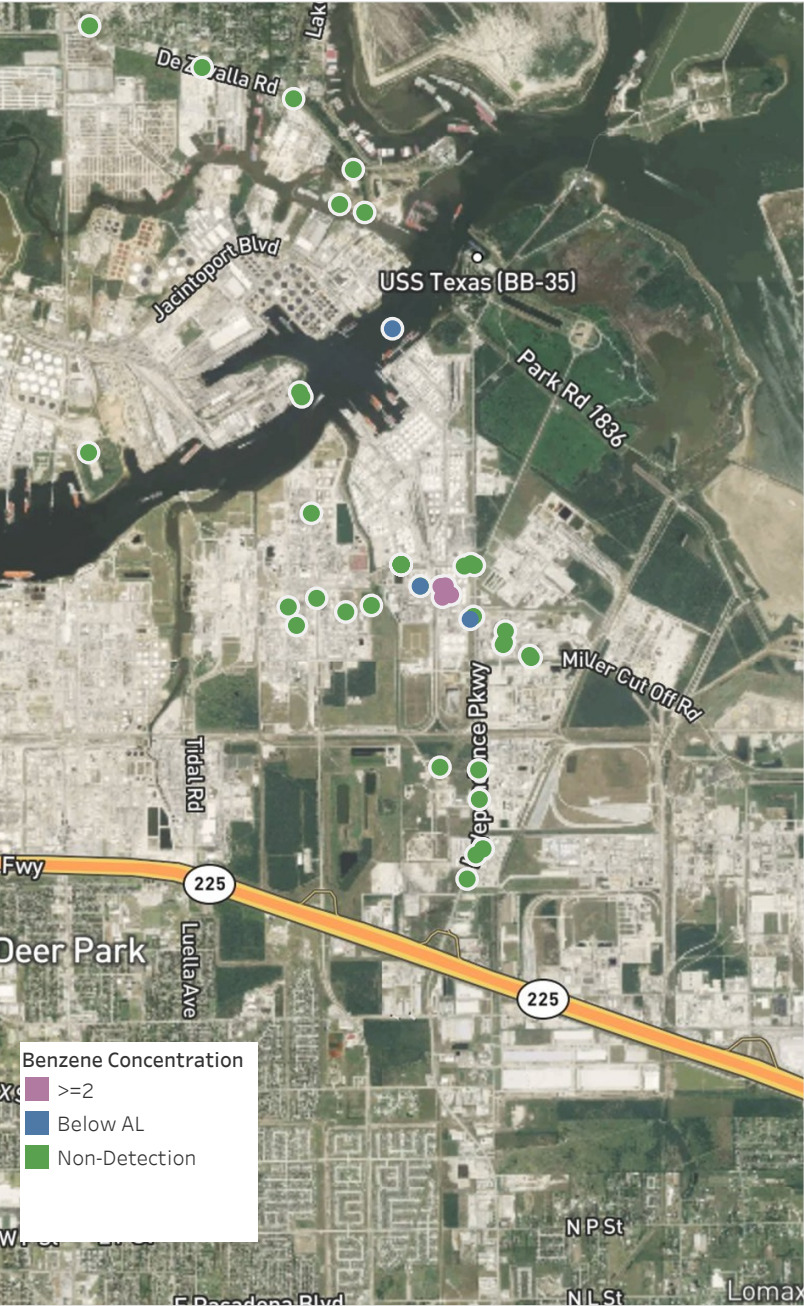


# Preliminary Hand- Held Air Monitoring Locations | ITC Deer Park Tank Fire

Reading Date  
3/26/2019 7:00:00 PM to 3/26/2019 8:00:00 PM



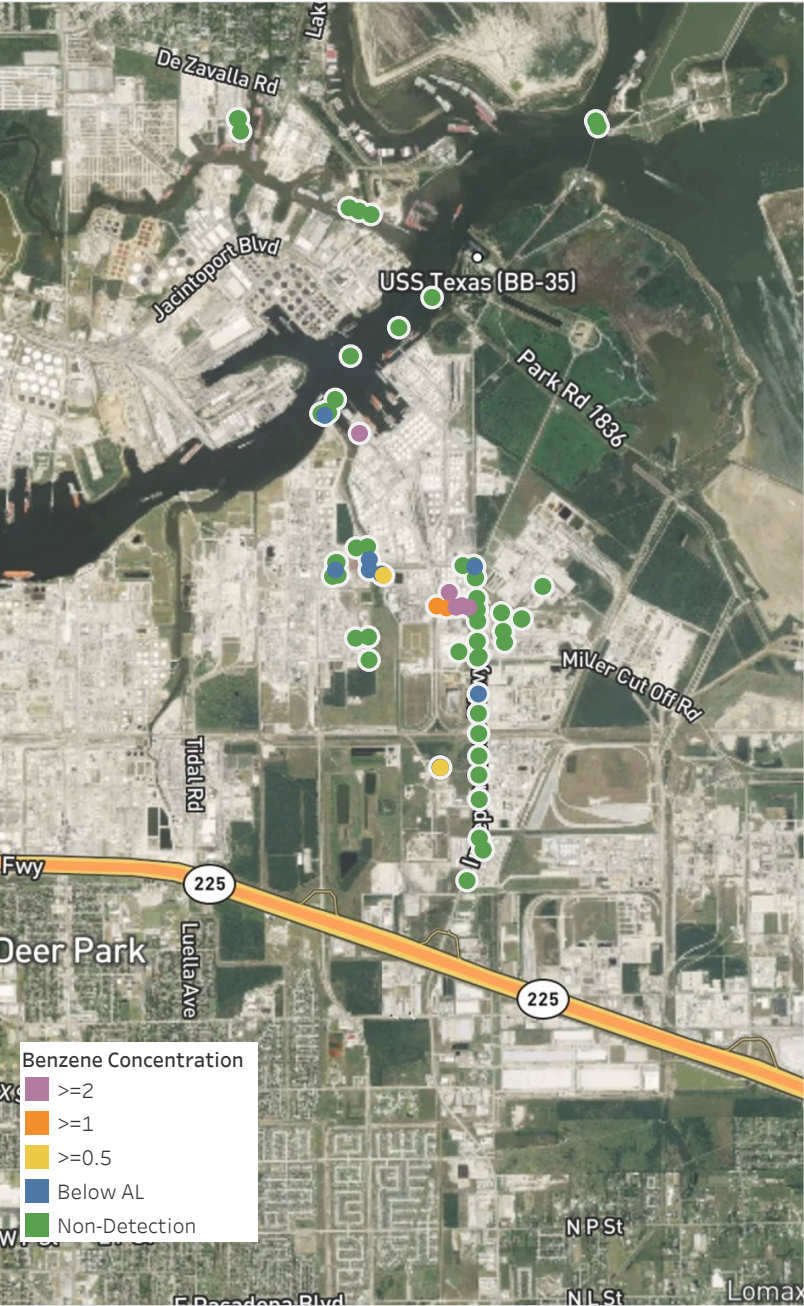
## Recent Benzene Detections

Location Category	Reading Date	Concentration
Division B	3/26/2019 19:10:44	0.150 ppm
Division E	3/26/2019 19:13:29	0.050 ppm
	3/26/2019 19:51:58	0.150 ppm
Impacted Tank Farm	3/26/2019 19:04:05	3.700 ppm
	3/26/2019 19:51:58	2.075 ppm
	3/26/2019 19:48:55	3.975 ppm
	3/26/2019 19:56:14	2.175 ppm

Not all real time data on this website have undergone full QA/QC (quality assurance/quality control) analysis. It has been provided expeditiously to regulatory agencies and on-site contractors for informational purposes only

# Preliminary Hand- Held Air Monitoring Locations | ITC Deer Park Tank Fire

Reading Date  
3/26/2019 8:00:00 PM to 3/26/2019 9:00:00 PM



## Recent Benzene Detections

Location Category	Reading Date	Concentration
Division B	3/26/2019 20:42:01	0.350 ppm
	3/26/2019 20:42:38	256.250 ppm
Division E	3/26/2019 20:14:16	0.525 ppm
	3/26/2019 20:17:17	0.100 ppm
	3/26/2019 20:37:00	0.380 ppm
Impacted Tank Farm	3/26/2019 20:22:55	7.900 ppm
	3/26/2019 20:19:34	5.275 ppm
	3/26/2019 20:27:45	6.275 ppm
	3/26/2019 20:36:58	1.275 ppm
	3/26/2019 20:31:57	1.900 ppm
	3/26/2019 20:58:24	2.525 ppm
Industrial Area	3/26/2019 20:21:18	0.225 ppm
	3/26/2019 20:20:23	0.650 ppm
	3/26/2019 20:17:25	0.425 ppm
	3/26/2019 20:22:41	0.400 ppm
	3/26/2019 20:55:05	0.325 ppm
	3/26/2019 20:51:48	0.425 ppm
	3/26/2019 20:05:39	0.225 ppm

Not all real time data on this website have undergone full QA/QC (quality assurance/quality control) analysis. It has been provided expeditiously to regulatory agencies and on-site contractors for informational purposes only



# Preliminary Hand- Held Air Monitoring Locations | ITC Deer Park Tank Fire

Reading Date  
3/26/2019 3:00:00 PM to 3/26/2019 4:00:00 PM  
and Null values



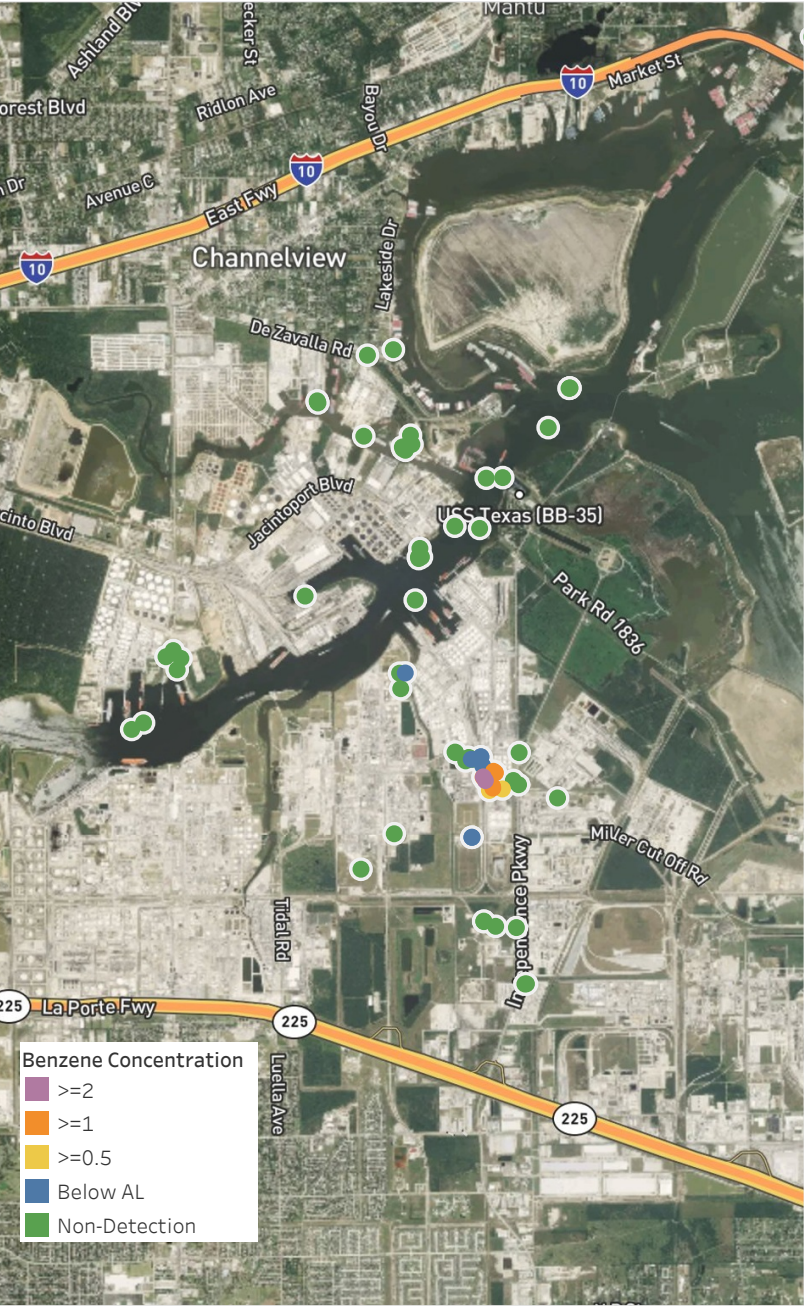
## Recent Benzene Detections

Location Category	Reading Date	Concentration
Division B	3/26/2019 15:16:15	2.900 ppm
	3/26/2019 15:33:06	0.170 ppm
	3/26/2019 15:41:59	1.200 ppm
Division E	3/26/2019 15:01:00	0.480 ppm
	3/26/2019 15:05:48	0.300 ppm
	3/26/2019 15:04:22	0.050 ppm
	3/26/2019 15:03:44	0.050 ppm
	3/26/2019 15:10:41	0.020 ppm
	3/26/2019 15:10:42	0.700 ppm
	3/26/2019 15:14:29	0.070 ppm
	3/26/2019 15:19:15	3.575 ppm
	3/26/2019 15:25:59	1.120 ppm
	3/26/2019 15:27:24	0.750 ppm
	3/26/2019 15:40:40	0.170 ppm
	3/26/2019 15:56:12	0.120 ppm
	3/26/2019 15:37:14	0.250 ppm
Impacted Tank Farm	3/26/2019 15:52:57	0.030 ppm
	3/26/2019 15:30:56	12.350 ppm
	3/26/2019 15:50:33	3.125 ppm
Industrial Area	3/26/2019 15:44:33	8.960 ppm
	3/26/2019 15:38:08	0.190 ppm
Over Water (No D..	3/26/2019 15:30:03	0.020 ppm
	3/26/2019 15:01:27	0.100 ppm

Not all real time data on this website have undergone full QA/QC (quality assurance/quality control) analysis.  
It has been provided expeditiously to regulatory agencies and on-site contractors for informational purposes only

# Preliminary Hand- Held Air Monitoring Locations | ITC Deer Park Tank Fire

Reading Date  
3/26/2019 4:00:00 PM to 3/26/2019 5:00:00 PM  
and Null values



## Recent Benzene Detections

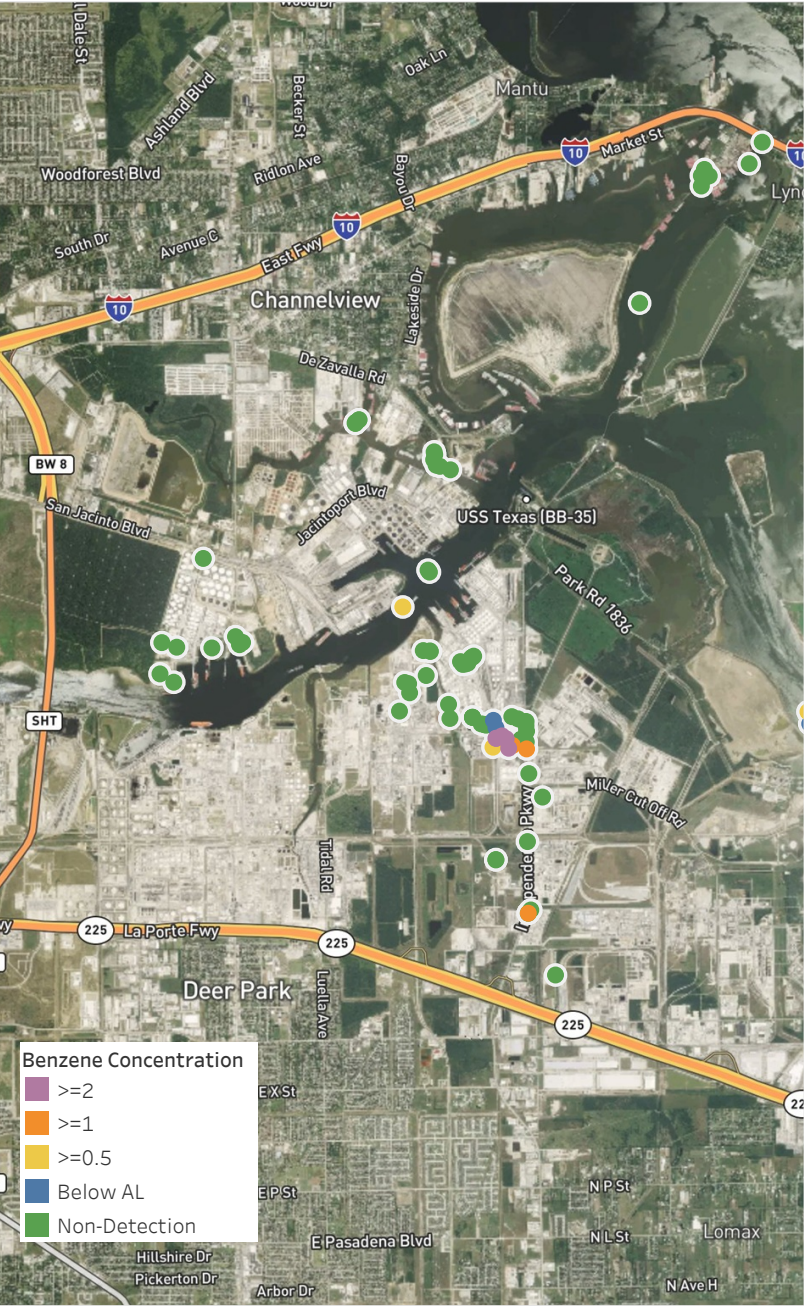
Location Category	Reading Date	Concentration
Division E	3/26/2019 16:09:45	0.300 ppm
	3/26/2019 16:09:27	0.400 ppm
	3/26/2019 16:10:01	0.310 ppm
	3/26/2019 16:16:15	1.290 ppm
	3/26/2019 16:17:19	1.200 ppm
	3/26/2019 16:22:17	0.275 ppm
	3/26/2019 16:24:54	0.980 ppm
	3/26/2019 16:29:20	0.300 ppm
	3/26/2019 16:35:09	0.040 ppm
	3/26/2019 16:37:12	1.925 ppm
	3/26/2019 16:40:53	2.840 ppm
	3/26/2019 16:43:01	0.825 ppm
	3/26/2019 16:45:34	1.680 ppm
Impacted Tank Farm	3/26/2019 16:00:52	10.300 ppm
	3/26/2019 16:12:38	1.430 ppm
	3/26/2019 16:23:49	1.460 ppm
Industrial Area	3/26/2019 16:05:58	0.140 ppm
	3/26/2019 16:11:27	

Not all real time data on this website have undergone full QA/QC (quality assurance/quality control) analysis.  
It has been provided expeditiously to regulatory agencies and on-site contractors for informational purposes only



# Preliminary Hand- Held Air Monitoring Locations | ITC Deer Park Tank Fire

Reading Date  
3/26/2019 5:00:00 PM to 3/26/2019 6:00:00 PM



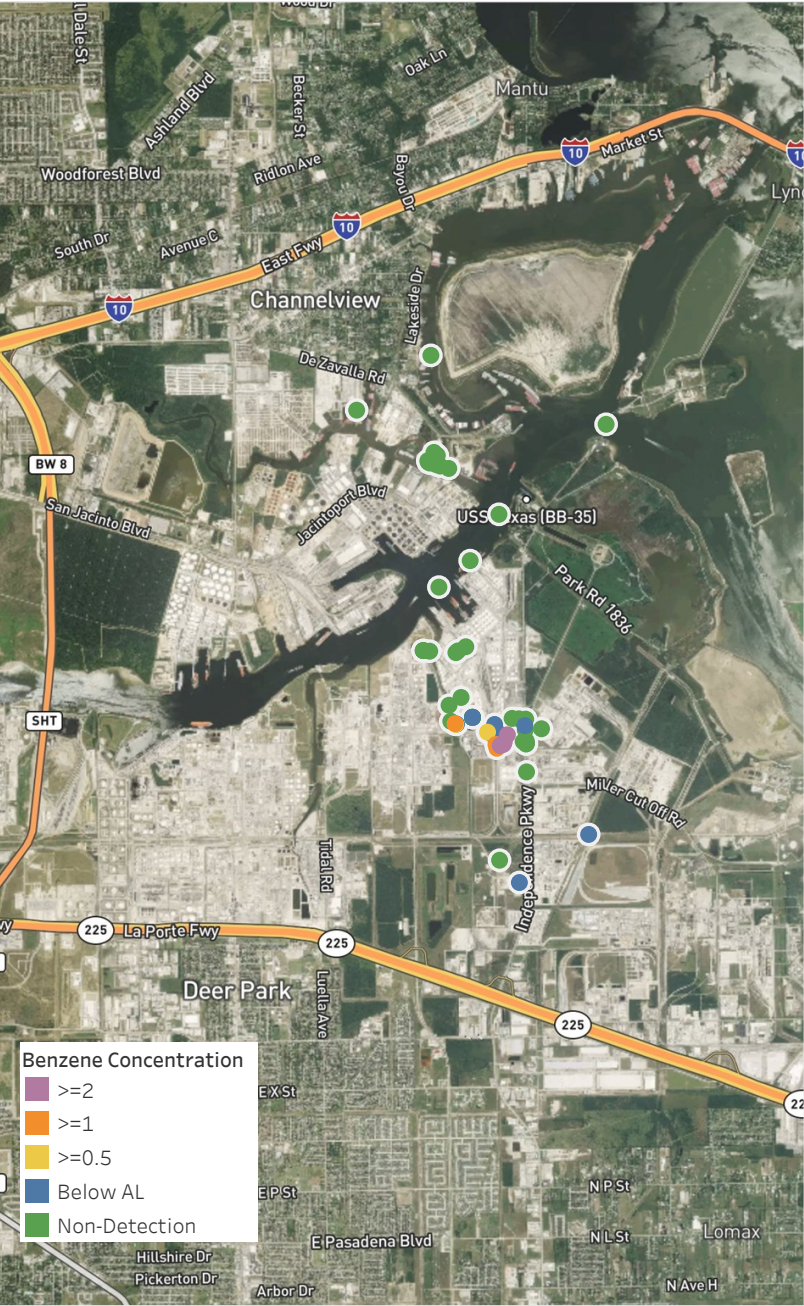
## Recent Benzene Detections

Location Category	Reading Date	Concentration
Division B	3/26/2019 17:01:20	0.500 ppm
	3/26/2019 17:05:38	0.200 ppm
	3/26/2019 17:08:25	0.750 ppm
Division E	3/26/2019 17:01:27	1.990 ppm
	3/26/2019 17:13:27	2.740 ppm
	3/26/2019 17:39:25	0.925 ppm
	3/26/2019 17:55:29	0.300 ppm
	3/26/2019 17:39:26	5.050 ppm
	3/26/2019 17:36:57	4.180 ppm
Impacted Tank Farm	3/26/2019 17:02:41	11.800 ppm
	3/26/2019 17:09:18	2.025 ppm
	3/26/2019 17:29:33	1.825 ppm
	3/26/2019 17:44:13	0.775 ppm
	3/26/2019 17:49:08	0.325 ppm
Industrial Area	3/26/2019 17:58:31	1.200 ppm

Not all real time data on this website have undergone full QA/QC (quality assurance/quality control) analysis. It has been provided expeditiously to regulatory agencies and on-site contractors for informational purposes only

# Preliminary Hand- Held Air Monitoring Locations | ITC Deer Park Tank Fire

Reading Date  
3/26/2019 6:00:00 PM to 3/26/2019 7:00:00 PM



## Recent Benzene Detections

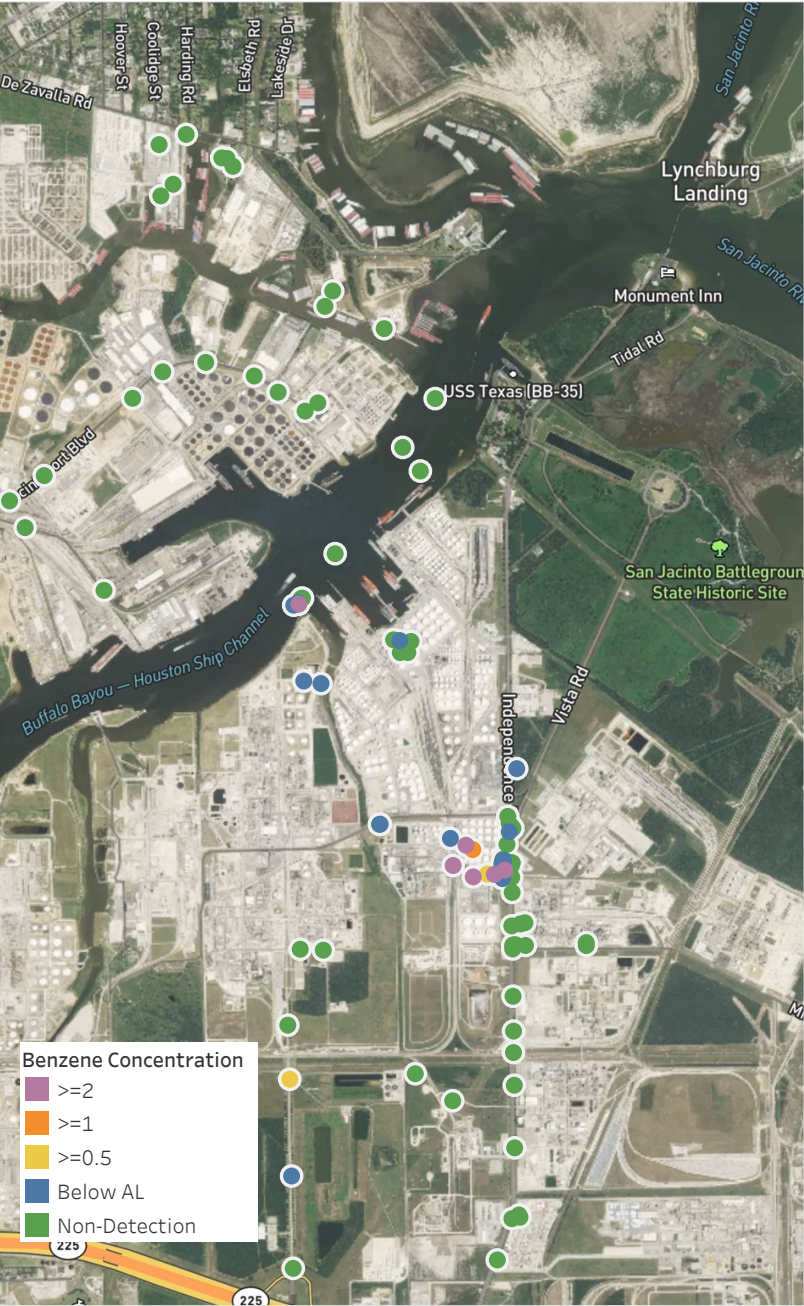
Location Category	Reading Date	Concentration
Division E	3/26/2019 18:04:19	0.275 ppm
	3/26/2019 18:00:26	2.560 ppm
	3/26/2019 18:11:00	0.325 ppm
	3/26/2019 18:04:55	2.360 ppm
	3/26/2019 18:16:51	0.350 ppm
	3/26/2019 18:23:18	0.325 ppm
	3/26/2019 18:01:38	2.760 ppm
	3/26/2019 18:23:48	0.500 ppm
	3/26/2019 18:37:09	0.520 ppm
	3/26/2019 18:42:56	1.050 ppm
	3/26/2019 18:32:52	1.150 ppm
	3/26/2019 18:45:53	0.240 ppm
	3/26/2019 18:45:05	1.280 ppm
	3/26/2019 18:47:21	0.120 ppm
	3/26/2019 18:52:14	0.170 ppm
Impacted Tank Farm	3/26/2019 18:49:39	2.400 ppm
Industrial Area	3/26/2019 18:32:05	0.120 ppm

Not all real time data on this website have undergone full QA/QC (quality assurance/quality control) analysis. It has been provided expeditiously to regulatory agencies and on-site contractors for informational purposes only



# Preliminary Hand- Held Air Monitoring Locations | ITC Deer Park Tank Fire

Reading Date  
3/26/2019 9:00:00 PM to 3/26/2019 10:00:00 PM



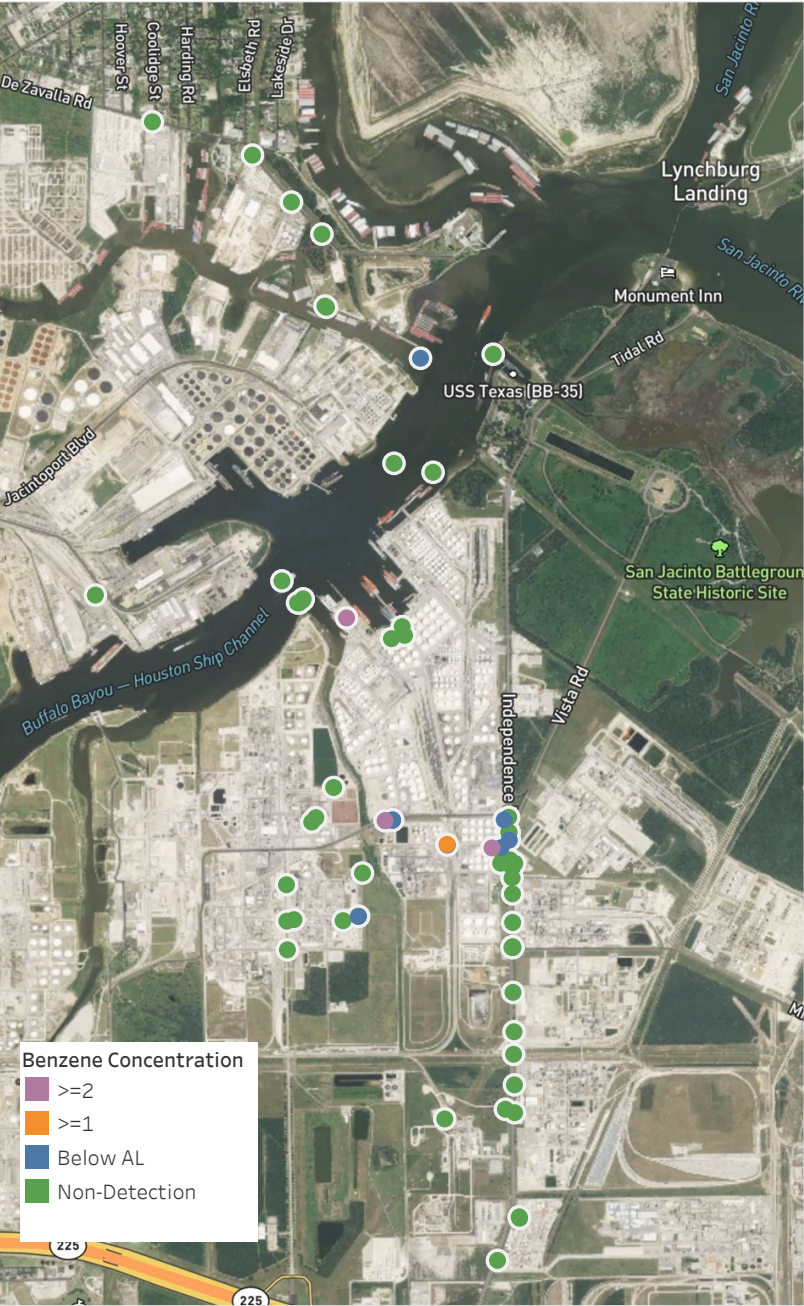
## Recent Benzene Detections

Location Category	Reading Date	Concentration
Division B	3/26/2019 21:00:36	0.120 ppm
	3/26/2019 21:23:56	0.160 ppm
	3/26/2019 21:14:02	3.580 ppm
	3/26/2019 21:18:27	0.120 ppm
	3/26/2019 21:36:52	0.100 ppm
	3/26/2019 21:41:09	0.140 ppm
	3/26/2019 21:31:35	0.100 ppm
	3/26/2019 21:49:14	0.110 ppm
Division E	3/26/2019 21:10:21	0.100 ppm
	3/26/2019 21:20:23	0.080 ppm
	3/26/2019 21:35:51	0.850 ppm
	3/26/2019 21:32:28	3.075 ppm
	3/26/2019 21:39:03	4.000 ppm
	3/26/2019 21:46:20	0.150 ppm
	3/26/2019 21:43:10	2.100 ppm
	3/26/2019 21:21:56	0.250 ppm
Impacted Tank Farm	3/26/2019 21:05:24	7.900 ppm
	3/26/2019 21:01:33	1.800 ppm
	3/26/2019 21:42:19	0.275 ppm
	3/26/2019 21:15:12	0.125 ppm
	3/26/2019 21:30:23	0.275 ppm
	3/26/2019 21:33:56	0.200 ppm
	3/26/2019 21:22:17	0.100 ppm
	3/26/2019 21:28:56	2.800 ppm
Industrial Area	3/26/2019 21:25:26	0.200 ppm
	3/26/2019 21:25:53	0.450 ppm
	3/26/2019 21:32:57	0.450 ppm
	3/26/2019 21:49:52	0.530 ppm
	3/26/2019 21:38:06	0.350 ppm

Not all real time data on this website have undergone full QA/QC (quality assurance/quality control) analysis. It has been provided expeditiously to regulatory agencies and on-site contractors for informational purposes only

# Preliminary Hand- Held Air Monitoring Locations | ITC Deer Park Tank Fire

Reading Date  
3/26/2019 10:00:00 PM to 3/26/2019 11:00:00 PM



## Recent Benzene Detections

Location Category	Reading Date	Concentration
Division B	3/26/2019 22:32:25	0.200 ppm
	3/26/2019 22:30:04	2.750 ppm
Division E	3/26/2019 22:02:35	0.140 ppm
	3/26/2019 22:08:19	1.425 ppm
	3/26/2019 22:10:27	0.425 ppm
	3/26/2019 22:16:48	0.180 ppm
	3/26/2019 22:24:35	0.400 ppm
	3/26/2019 22:19:24	0.100 ppm
	3/26/2019 22:41:08	0.475 ppm
	3/26/2019 22:46:49	2.075 ppm
Impacted Tank Farm	3/26/2019 22:40:27	0.250 ppm
	3/26/2019 22:42:59	30.750 ppm
Industrial Area	3/26/2019 22:24:29	0.120 ppm

Not all real time data on this website have undergone full QA/QC (quality assurance/quality control) analysis. It has been provided expeditiously to regulatory agencies and on-site contractors for informational purposes only