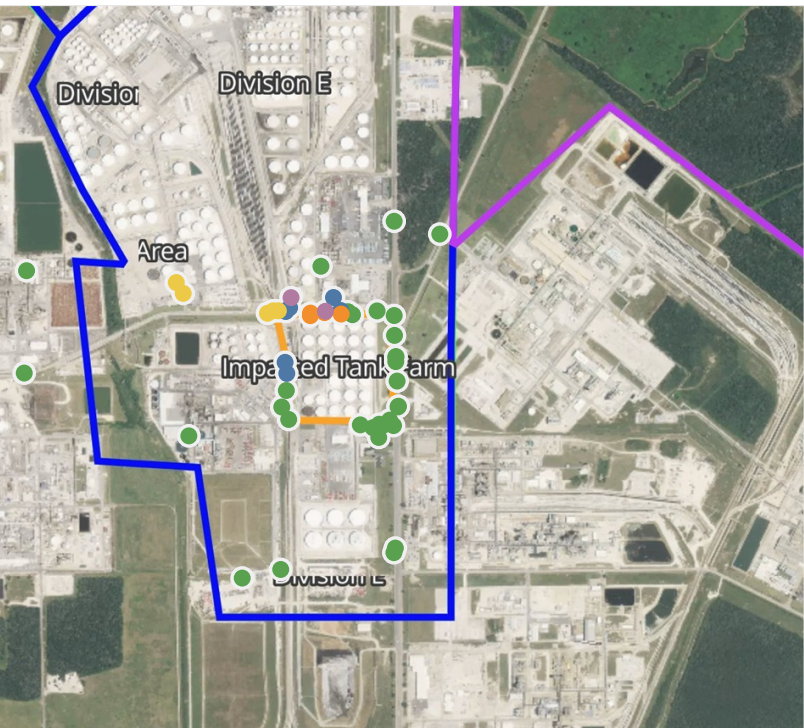
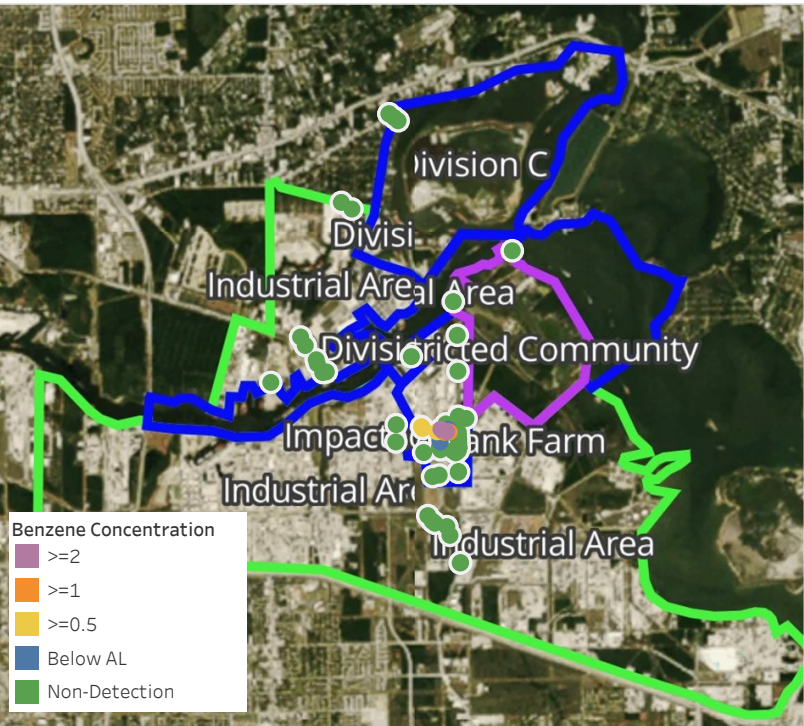


# Preliminary Hand- Held Air Monitoring Locations | ITC Deer Park Tank Fire

Reading Date  
4/12/2019 11:00:00 PM to 4/13/2019 12:00:00 AM



## Recent Benzene Detections

Location Category	Reading Date	Concentration
Division E	4/12/2019 23:00:39	0.650 ppm
	4/12/2019 23:15:55	1.790 ppm
	4/12/2019 23:14:07	2.326 ppm
	4/12/2019 23:19:12	1.820 ppm
	4/12/2019 23:14:57	0.470 ppm
	4/12/2019 23:17:57	2.640 ppm
	4/12/2019 23:21:38	1.150 ppm
	4/12/2019 23:21:45	1.000 ppm
	4/12/2019 23:10:53	0.826 ppm
	4/12/2019 23:16:42	0.600 ppm
	4/12/2019 23:24:56	0.350 ppm
	4/12/2019 23:22:13	0.110 ppm
	4/12/2019 23:29:53	0.880 ppm
	4/12/2019 23:25:16	0.410 ppm
	4/12/2019 23:35:46	0.860 ppm
	4/12/2019 23:57:59	0.475 ppm
	4/12/2019 23:54:44	0.175 ppm

This data has been provided expeditiously to ITC and regulatory agencies for informational and/or operational purposes only. Data reported within this summary is preliminary in nature and has not undergone complete QA/QC (quality assurance/quality control) process. Until this complete QA/QC process is completed, the locations of each reading are approximate in nature and subject to further refinement. As some readings may represent non-breathing zone measurements, the data reported herein may not be suitable to assess potential occupational exposure. Site Assessment readings are not representative of an individual's breathing zone (e.g., container head space, ground level, directly above product, etc.).

Reading Date  
4/12/2019 11:00:00 PM to 4/13/2019 12:00:00 AM

Benzene Action Level Concentration (ppm)  
 >=1     >=2

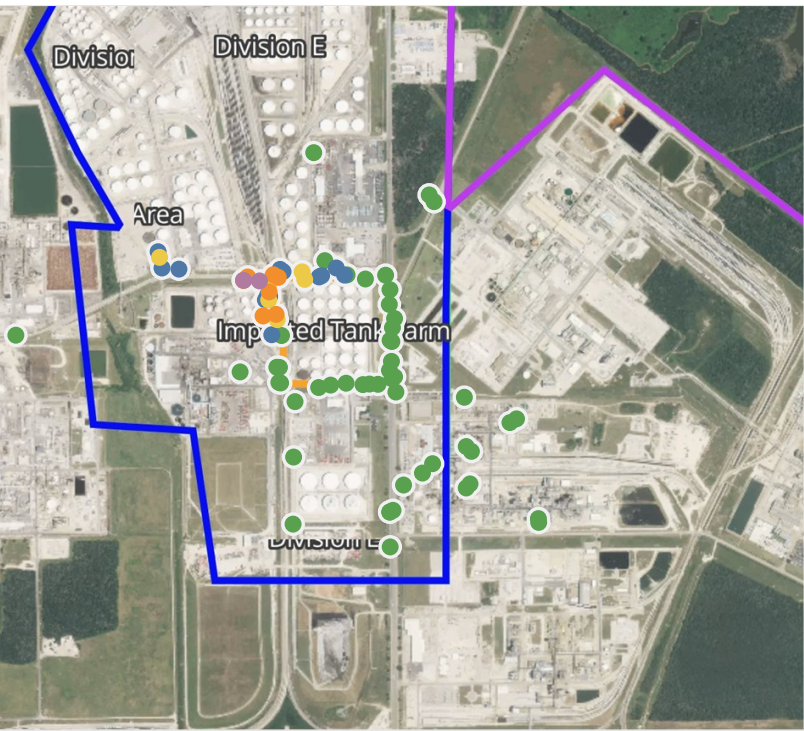
PRELIMINARY  
Recent Benzene Detections Greater than 1.00 ppm

Reading Date	Location Category	GPS	Google Maps URL	Concentration
4/12/2019 23:21:45	Division E	29.7331310,-95.0924660	<a href="https://www.google.com/maps/search/?api=1&amp;query=29.7331310,-95.0924660">https://www.google.com/maps/search/?api=1&amp;query=29.7331310,-95.0924660</a>	1.000 ppm
4/12/2019 23:21:38	Division E	29.7331980,-95.0924610	<a href="https://www.google.com/maps/search/?api=1&amp;query=29.7331980,-95.0924610">https://www.google.com/maps/search/?api=1&amp;query=29.7331980,-95.0924610</a>	1.150 ppm
4/12/2019 23:19:12	Division E	29.7332110,-95.0920350	<a href="https://www.google.com/maps/search/?api=1&amp;query=29.7332110,-95.0920350">https://www.google.com/maps/search/?api=1&amp;query=29.7332110,-95.0920350</a>	1.820 ppm
4/12/2019 23:17:57	Division E	29.7332460,-95.0920060	<a href="https://www.google.com/maps/search/?api=1&amp;query=29.7332460,-95.0920060">https://www.google.com/maps/search/?api=1&amp;query=29.7332460,-95.0920060</a>	2.640 ppm
4/12/2019 23:15:55	Division E	29.7331730,-95.0915270	<a href="https://www.google.com/maps/search/?api=1&amp;query=29.7331730,-95.0915270">https://www.google.com/maps/search/?api=1&amp;query=29.7331730,-95.0915270</a>	1.790 ppm
4/12/2019 23:14:07	Division E	29.7336070,-95.0930540	<a href="https://www.google.com/maps/search/?api=1&amp;query=29.7336070,-95.0930540">https://www.google.com/maps/search/?api=1&amp;query=29.7336070,-95.0930540</a>	2.326 ppm



# Preliminary Hand- Held Air Monitoring Locations | ITC Deer Park Tank Fire

Reading Date  
4/13/2019 12:00:00 AM to 4/13/2019 1:00:00 AM



## Recent Benzene Detections

Location Category	Reading Date	Concentration
Division E	4/13/2019 00:00:47	1.450 ppm
	4/13/2019 00:02:20	0.200 ppm
	4/13/2019 00:07:47	0.275 ppm
	4/13/2019 00:22:37	0.840 ppm
	4/13/2019 00:25:31	0.020 ppm
	4/13/2019 00:24:44	0.260 ppm
	4/13/2019 00:21:23	1.100 ppm
	4/13/2019 00:25:28	0.450 ppm
	4/13/2019 00:15:39	0.080 ppm
	4/13/2019 00:19:27	0.670 ppm
	4/13/2019 00:27:43	0.450 ppm
	4/13/2019 00:28:13	0.320 ppm
	4/13/2019 00:29:05	0.400 ppm
	4/13/2019 00:31:24	0.600 ppm
	4/13/2019 00:31:46	0.640 ppm
	4/13/2019 00:34:50	0.730 ppm
	4/13/2019 00:33:08	1.150 ppm
	4/13/2019 00:33:56	1.990 ppm
	4/13/2019 00:30:12	0.380 ppm
	4/13/2019 00:26:04	0.340 ppm
	4/13/2019 00:36:30	3.170 ppm
	4/13/2019 00:36:36	0.340 ppm
	4/13/2019 00:38:00	1.090 ppm
	4/13/2019 00:39:10	0.440 ppm
	4/13/2019 00:39:00	0.320 ppm
	4/13/2019 00:35:07	0.420 ppm
	4/13/2019 00:48:39	0.750 ppm
	4/13/2019 00:47:02	0.780 ppm
	4/13/2019 00:36:47	1.526 ppm
	4/13/2019 00:30:05	0.650 ppm
	4/13/2019 00:40:29	2.975 ppm
	4/13/2019 00:56:04	0.950 ppm
	4/13/2019 00:53:33	1.120 ppm

This data has been provided expeditiously to ITC and regulatory agencies for informational and/or operational purposes only. Data reported within this summary is preliminary in nature and has not undergone complete QA/QC (quality assurance/quality control) process. Until this complete QA/QC process is completed, the locations of each reading are approximate in nature and subject to further refinement. As some readings may represent non-breathing zone measurements, the data reported herein may not be suitable to assess potential occupational exposure. Site Assessment readings are not representative of an individual's breathing zone (e.g., container head space, ground level, directly above product, etc.).

Reading Date  
4/13/2019 12:00:00 AM to 4/13/2019 1:00:00 AM

Benzene Action Level Concentration (ppm)  
 >=1     >=2

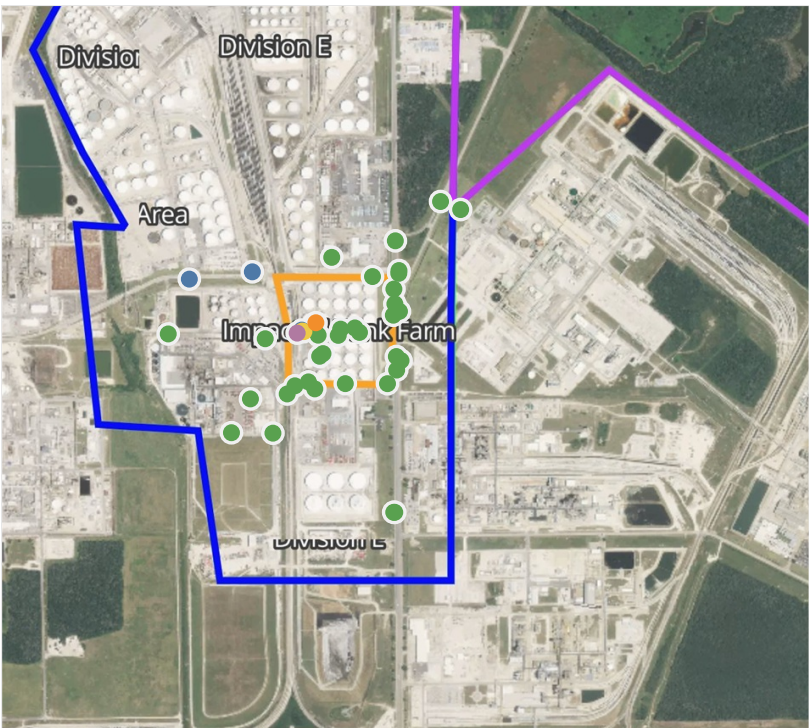
PRELIMINARY  
Recent Benzene Detections Greater than 1.00 ppm

Reading Date	Location Category	GPS	Google Maps URL	Concentration
4/13/2019 00:53:33	Division E	29.7332260,-95.0934380	<a href="https://www.google.com/maps/search/?api=1&amp;query=29.7332260,-95.0934380">https://www.google.com/maps/search/?api=1&amp;query=29.7332260,-95.0934380</a>	1.120 ppm
4/13/2019 00:40:29	Division E	29.7330630,-95.0938610	<a href="https://www.google.com/maps/search/?api=1&amp;query=29.7330630,-95.0938610">https://www.google.com/maps/search/?api=1&amp;query=29.7330630,-95.0938610</a>	2.975 ppm
4/13/2019 00:38:00	Division E	29.7327740,-95.0935671	<a href="https://www.google.com/maps/search/?api=1&amp;query=29.7327740,-95.0935671">https://www.google.com/maps/search/?api=1&amp;query=29.7327740,-95.0935671</a>	1.090 ppm
4/13/2019 00:36:47	Division E	29.7331680,-95.0942210	<a href="https://www.google.com/maps/search/?api=1&amp;query=29.7331680,-95.0942210">https://www.google.com/maps/search/?api=1&amp;query=29.7331680,-95.0942210</a>	1.526 ppm
4/13/2019 00:36:30	Division E	29.7331687,-95.0935705	<a href="https://www.google.com/maps/search/?api=1&amp;query=29.7331687,-95.0935705">https://www.google.com/maps/search/?api=1&amp;query=29.7331687,-95.0935705</a>	3.170 ppm
4/13/2019 00:33:56	Division E	29.7331570,-95.0932870	<a href="https://www.google.com/maps/search/?api=1&amp;query=29.7331570,-95.0932870">https://www.google.com/maps/search/?api=1&amp;query=29.7331570,-95.0932870</a>	1.990 ppm
4/13/2019 00:33:08	Division E	29.7331594,-95.0938197	<a href="https://www.google.com/maps/search/?api=1&amp;query=29.7331594,-95.0938197">https://www.google.com/maps/search/?api=1&amp;query=29.7331594,-95.0938197</a>	1.150 ppm
4/13/2019 00:21:23	Division E	29.7321380,-95.0937500	<a href="https://www.google.com/maps/search/?api=1&amp;query=29.7321380,-95.0937500">https://www.google.com/maps/search/?api=1&amp;query=29.7321380,-95.0937500</a>	1.100 ppm
4/13/2019 00:00:47	Division E	29.7321780,-95.0933550	<a href="https://www.google.com/maps/search/?api=1&amp;query=29.7321780,-95.0933550">https://www.google.com/maps/search/?api=1&amp;query=29.7321780,-95.0933550</a>	1.450 ppm



# Preliminary Hand- Held Air Monitoring Locations | ITC Deer Park Tank Fire

Reading Date  
4/13/2019 1:00:00 AM to 4/13/2019 2:00:00 AM



## Recent Benzene Detections

Location Category	Reading Date	Concentration
Division E	4/13/2019 01:36:02	0.025 ppm
	4/13/2019 01:27:45	0.326 ppm
Impacted Tank Farm	4/13/2019 01:31:11	0.610 ppm
	4/13/2019 01:40:31	0.500 ppm
	4/13/2019 01:34:39	0.390 ppm
	4/13/2019 01:39:51	2.270 ppm
	4/13/2019 01:51:32	1.290 ppm

This data has been provided expeditiously to ITC and regulatory agencies for informational and/or operational purposes only. Data reported within this summary is preliminary in nature and has not undergone complete QA/QC (quality assurance/quality control) process. Until this complete QA/QC process is completed, the locations of each reading are approximate in nature and subject to further refinement. As some readings may represent non-breathing zone measurements, the data reported herein may not be suitable to assess potential occupational exposure. Site Assessment readings are not representative of an individual's breathing zone (e.g., container head space, ground level, directly above product, etc.).

Reading Date  
4/13/2019 1:00:00 AM to 4/13/2019 2:00:00 AM

Benzene Action Level Concentration (ppm)  
 >=1     >=2

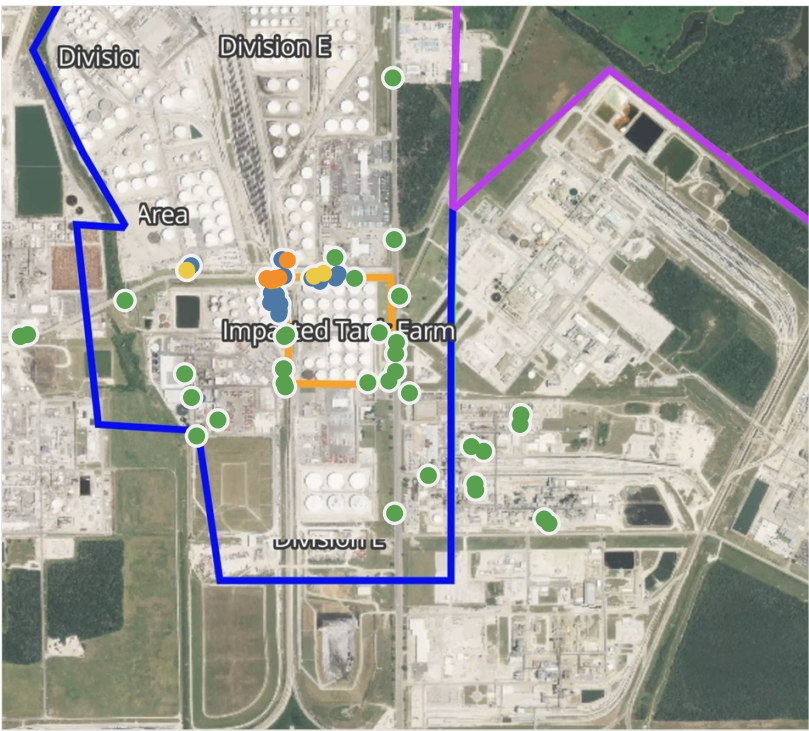
PRELIMINARY  
Recent Benzene Detections Greater than 1.00 ppm

Reading Date	Location Category	GPS	Google Maps URL	Concentration
4/13/2019 01:51:32	Impacted Tank Farm	29.7319560,-95.0922950	<a href="https://www.google.com/maps/search/?api=1&amp;query=29.7319560,-95.0922950">https://www.google.com/maps/search/?api=1&amp;query=29.7319560,-95.0922950</a>	1.2900 ppm
4/13/2019 01:39:51	Impacted Tank Farm	29.7316820,-95.0928650	<a href="https://www.google.com/maps/search/?api=1&amp;query=29.7316820,-95.0928650">https://www.google.com/maps/search/?api=1&amp;query=29.7316820,-95.0928650</a>	2.2700 ppm



# Preliminary Hand- Held Air Monitoring Locations | ITC Deer Park Tank Fire

Reading Date  
4/13/2019 2:00:00 AM to 4/13/2019 3:00:00 AM



## Recent Benzene Detections

Location Category	Reading Date	Concentration
Division E	4/13/2019 02:09:02	0.050 ppm
	4/13/2019 02:11:52	0.640 ppm
	4/13/2019 02:07:47	0.010 ppm
	4/13/2019 02:11:37	0.340 ppm
	4/13/2019 02:17:03	0.480 ppm
	4/13/2019 02:20:46	0.480 ppm
	4/13/2019 02:20:43	0.480 ppm
	4/13/2019 02:17:15	0.620 ppm
	4/13/2019 02:25:03	1.170 ppm
	4/13/2019 02:24:42	0.740 ppm
	4/13/2019 02:27:30	1.200 ppm
	4/13/2019 02:31:59	0.400 ppm
	4/13/2019 02:29:43	0.420 ppm
	4/13/2019 02:46:51	0.090 ppm
	4/13/2019 02:51:30	0.320 ppm
	4/13/2019 02:56:15	1.890 ppm
	4/13/2019 02:57:50	1.870 ppm
	4/13/2019 02:52:56	0.160 ppm
	4/13/2019 02:58:44	1.830 ppm
	4/13/2019 02:59:35	1.025 ppm
	4/13/2019 02:48:40	0.260 ppm
	4/13/2019 02:55:30	0.500 ppm

This data has been provided expeditiously to ITC and regulatory agencies for informational and/or operational purposes only. Data reported within this summary is preliminary in nature and has not undergone complete QA/QC (quality assurance/quality control) process. Until this complete QA/QC process is completed, the locations of each reading are approximate in nature and subject to further refinement. As some readings may represent non-breathing zone measurements, the data reported herein may not be suitable to assess potential occupational exposure. Site Assessment readings are not representative of an individual's breathing zone (e.g., container head space, ground level, directly above product, etc.).

Reading Date  
4/13/2019 2:00:00 AM to 4/13/2019 3:00:00 AM

Benzene Action Level Concentration (ppm)  
 >=1

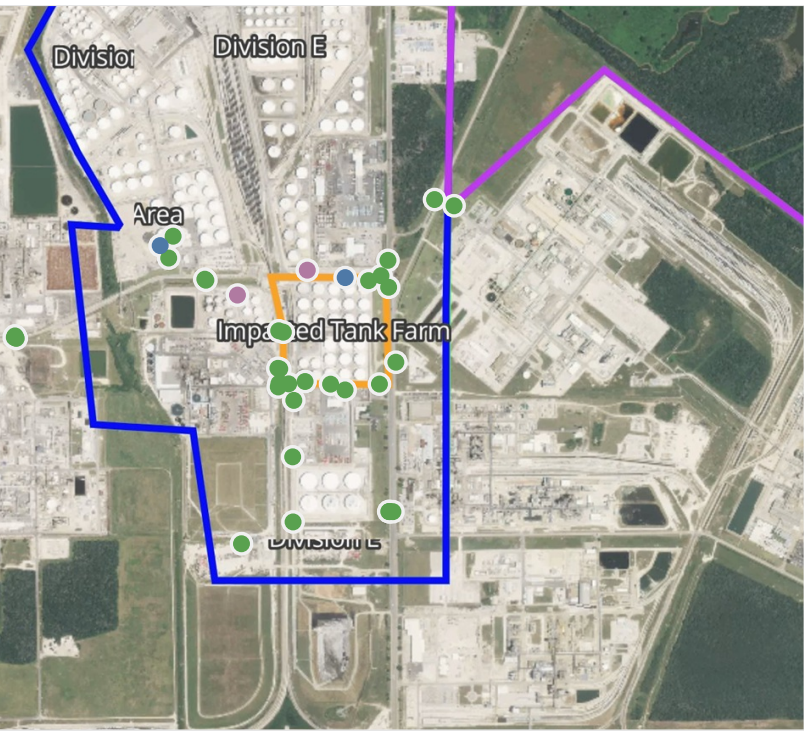
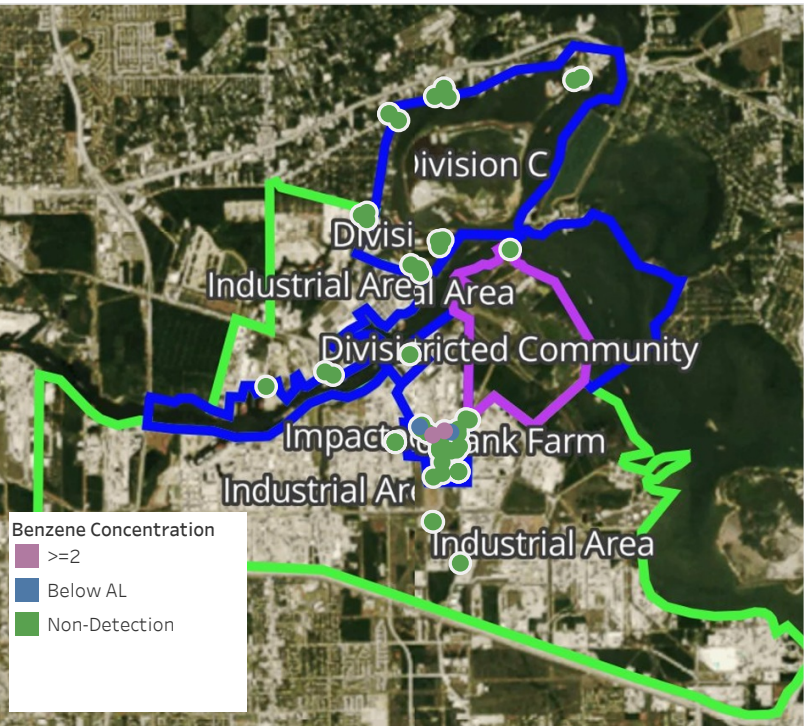
PRELIMINARY  
Recent Benzene Detections Greater than 1.00 ppm

Reading Date	Location Category	GPS	Google Maps URL	Concentration
4/13/2019 02:59:35	Division E	29.7336120,-95.0931650	<a href="https://www.google.com/maps/search/?api=1&amp;query=29.7336120,-95.0931650">https://www.google.com/maps/search/?api=1&amp;query=29.7336120,-95.0931650</a>	1.0250 ppm
4/13/2019 02:58:44	Division E	29.7331220,-95.0937840	<a href="https://www.google.com/maps/search/?api=1&amp;query=29.7331220,-95.0937840">https://www.google.com/maps/search/?api=1&amp;query=29.7331220,-95.0937840</a>	1.8300 ppm
4/13/2019 02:57:50	Division E	29.7330650,-95.0936560	<a href="https://www.google.com/maps/search/?api=1&amp;query=29.7330650,-95.0936560">https://www.google.com/maps/search/?api=1&amp;query=29.7330650,-95.0936560</a>	1.8700 ppm
4/13/2019 02:56:15	Division E	29.7331220,-95.0937840	<a href="https://www.google.com/maps/search/?api=1&amp;query=29.7331220,-95.0937840">https://www.google.com/maps/search/?api=1&amp;query=29.7331220,-95.0937840</a>	1.8900 ppm
4/13/2019 02:27:30	Division E	29.7331270,-95.0935380	<a href="https://www.google.com/maps/search/?api=1&amp;query=29.7331270,-95.0935380">https://www.google.com/maps/search/?api=1&amp;query=29.7331270,-95.0935380</a>	1.2000 ppm
4/13/2019 02:25:03	Division E	29.7331460,-95.0934180	<a href="https://www.google.com/maps/search/?api=1&amp;query=29.7331460,-95.0934180">https://www.google.com/maps/search/?api=1&amp;query=29.7331460,-95.0934180</a>	1.1700 ppm



# Preliminary Hand- Held Air Monitoring Locations | ITC Deer Park Tank Fire

Reading Date  
4/13/2019 3:00:00 AM to 4/13/2019 4:00:00 AM



## Recent Benzene Detections

Location Category	Reading Date	Concentration
Division E	4/13/2019 03:05:44	2.700 ppm
	4/13/2019 03:16:49	0.100 ppm
	4/13/2019 03:57:58	0.130 ppm
	4/13/2019 03:44:59	3.560 ppm

This data has been provided expeditiously to ITC and regulatory agencies for informational and/or operational purposes only. Data reported within this summary is preliminary in nature and has not undergone complete QA/QC (quality assurance/quality control) process. Until this complete QA/QC process is completed, the locations of each reading are approximate in nature and subject to further refinement. As some readings may represent non-breathing zone measurements, the data reported herein may not be suitable to assess potential occupational exposure. Site Assessment readings are not representative of an individual's breathing zone (e.g., container head space, ground level, directly above product, etc.).

Reading Date  
4/13/2019 3:00:00 AM to 4/13/2019 4:00:00 AM

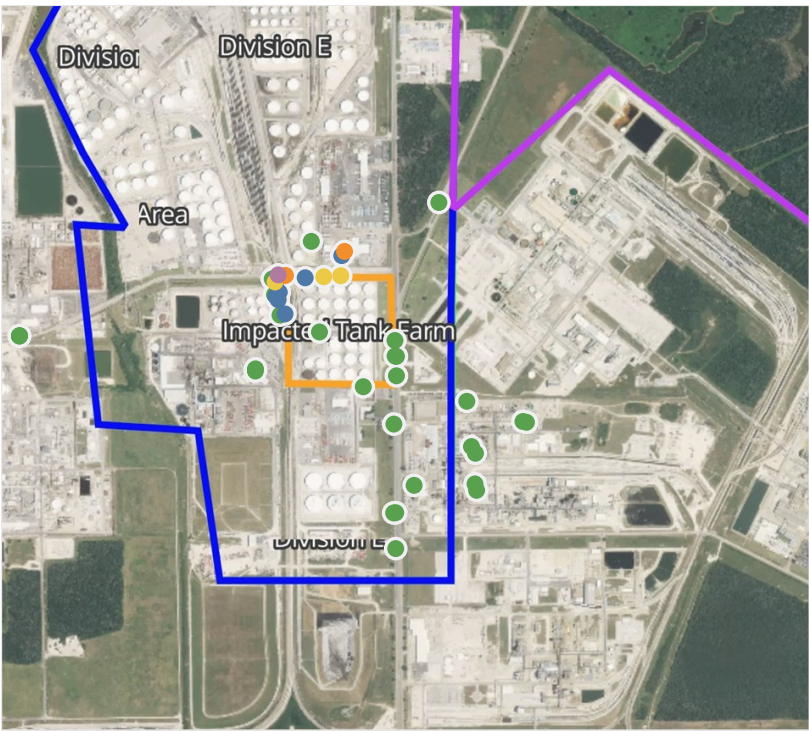
Benzene Action Level Concentration (ppm)  
■ >=2

PRELIMINARY  
Recent Benzene Detections Greater than 1.00 ppm

Reading Date	Location Category	GPS	Google Maps URL	Concentration
4/13/2019 03:44:59	Division E	29.7326890,-95.0945330	<a href="https://www.google.com/maps/search/?api=1&amp;query=29.7326890,-95.0945330">https://www.google.com/maps/search/?api=1&amp;query=29.7326890,-95.0945330</a>	3.5600 ppm
4/13/2019 03:05:44	Division E	29.7333480,-95.0924040	<a href="https://www.google.com/maps/search/?api=1&amp;query=29.7333480,-95.0924040">https://www.google.com/maps/search/?api=1&amp;query=29.7333480,-95.0924040</a>	2.7000 ppm

# Preliminary Hand- Held Air Monitoring Locations | ITC Deer Park Tank Fire

Reading Date  
4/13/2019 4:00:00 AM to 4/13/2019 5:00:00 AM



## Recent Benzene Detections

Location Category	Reading Date	Concentration
Division E	4/13/2019 04:01:42	0.080 ppm
	4/13/2019 04:02:21	1.080 ppm
	4/13/2019 04:03:28	0.860 ppm
	4/13/2019 04:08:05	0.120 ppm
	4/13/2019 04:04:30	0.030 ppm
	4/13/2019 04:08:38	0.550 ppm
	4/13/2019 04:11:52	0.430 ppm
	4/13/2019 04:20:55	2.930 ppm
	4/13/2019 04:16:39	1.450 ppm
	4/13/2019 04:27:59	0.230 ppm
	4/13/2019 04:37:19	0.530 ppm
	4/13/2019 04:43:41	0.160 ppm
	4/13/2019 04:46:55	0.200 ppm
	4/13/2019 04:52:41	0.120 ppm
	4/13/2019 04:53:49	0.100 ppm
	4/13/2019 04:54:41	0.100 ppm

This data has been provided expeditiously to ITC and regulatory agencies for informational and/or operational purposes only. Data reported within this summary is preliminary in nature and has not undergone complete QA/QC (quality assurance/quality control) process. Until this complete QA/QC process is completed, the locations of each reading are approximate in nature and subject to further refinement. As some readings may represent non-breathing zone measurements, the data reported herein may not be suitable to assess potential occupational exposure. Site Assessment readings are not representative of an individual's breathing zone (e.g., container head space, ground level, directly above product, etc.).



Reading Date  
4/13/2019 4:00:00 AM to 4/13/2019 5:00:00 AM

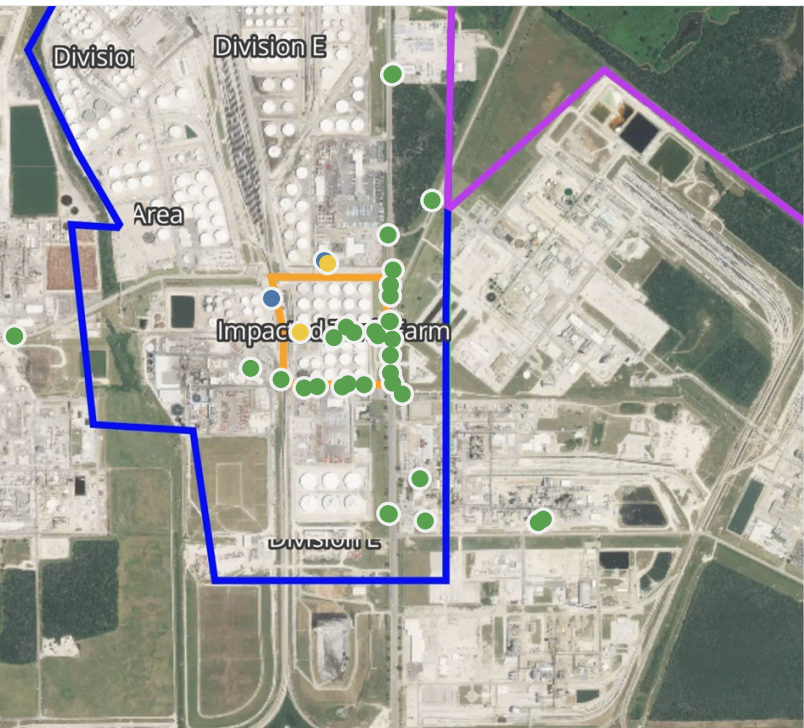
Benzene Action Level Concentration (ppm)  
 >=1       >=2

PRELIMINARY  
Recent Benzene Detections Greater than 1.00 ppm

Reading Date	Location Category	GPS	Google Maps URL	Concentration
4/13/2019 04:20:55	Division E	29.7332240,-95.0934430	<a href="https://www.google.com/maps/search/?api=1&amp;query=29.7332240,-95.0934430">https://www.google.com/maps/search/?api=1&amp;query=29.7332240,-95.0934430</a>	2.930 ppm
4/13/2019 04:16:39	Division E	29.7332090,-95.0932230	<a href="https://www.google.com/maps/search/?api=1&amp;query=29.7332090,-95.0932230">https://www.google.com/maps/search/?api=1&amp;query=29.7332090,-95.0932230</a>	1.450 ppm
4/13/2019 04:02:21	Division E	29.7338440,-95.0914210	<a href="https://www.google.com/maps/search/?api=1&amp;query=29.7338440,-95.0914210">https://www.google.com/maps/search/?api=1&amp;query=29.7338440,-95.0914210</a>	1.080 ppm

# Preliminary Hand- Held Air Monitoring Locations | ITC Deer Park Tank Fire

Reading Date  
4/13/2019 5:00:00 AM to 4/13/2019 6:00:00 AM



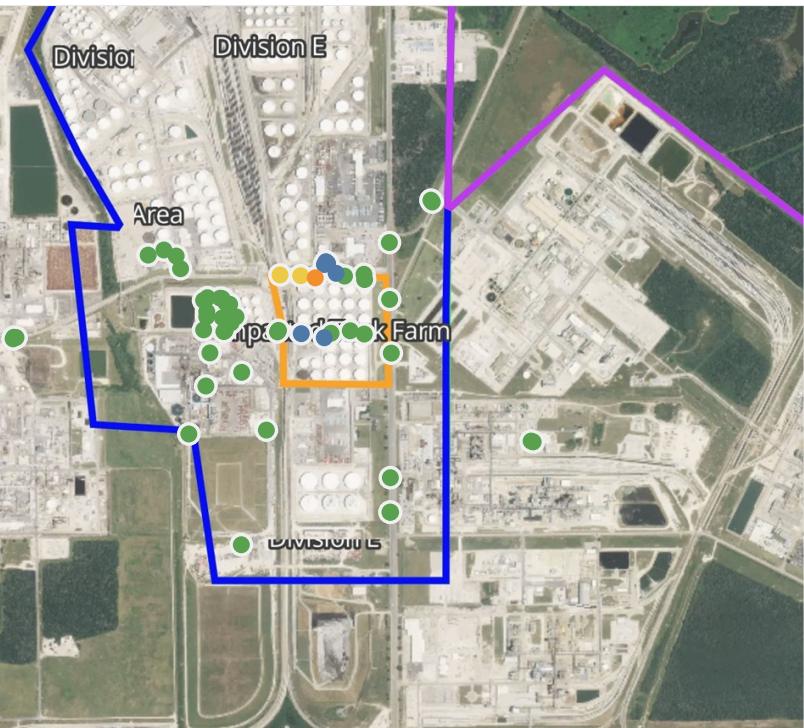
## Recent Benzene Detections

Location Category	Reading Date	Concentration
Division E	4/13/2019 05:04:05	0.0400 ppm
	4/13/2019 05:28:50	0.3000 ppm
	4/13/2019 05:52:31	0.5200 ppm
Impacted Tank Farm	4/13/2019 05:16:16	0.7900 ppm

This data has been provided expeditiously to ITC and regulatory agencies for informational and/or operational purposes only. Data reported within this summary is preliminary in nature and has not undergone complete QA/QC (quality assurance/quality control) process. Until this complete QA/QC process is completed, the locations of each reading are approximate in nature and subject to further refinement. As some readings may represent non-breathing zone measurements, the data reported herein may not be suitable to assess potential occupational exposure. Site Assessment readings are not representative of an individual's breathing zone (e.g., container head space, ground level, directly above product, etc.).

# Preliminary Hand- Held Air Monitoring Locations | ITC Deer Park Tank Fire

Reading Date  
4/13/2019 6:00:00 AM to 4/13/2019 7:00:00 AM



## Recent Benzene Detections

Location Category	Reading Date	Concentration
Division E	4/13/2019 06:16:16	0.1300 ppm
	4/13/2019 06:15:01	0.2200 ppm
	4/13/2019 06:18:33	1.0100 ppm
	4/13/2019 06:22:33	0.8100 ppm
	4/13/2019 06:25:51	0.8100 ppm
Impacted Tank Farm	4/13/2019 06:31:57	0.4000 ppm
	4/13/2019 06:57:15	0.2500 ppm
	4/13/2019 06:34:03	0.0200 ppm
Impacted Tank Farm	4/13/2019 06:50:37	0.0500 ppm

This data has been provided expeditiously to ITC and regulatory agencies for informational and/or operational purposes only. Data reported within this summary is preliminary in nature and has not undergone complete QA/QC (quality assurance/quality control) process. Until this complete QA/QC process is completed, the locations of each reading are approximate in nature and subject to further refinement. As some readings may represent non-breathing zone measurements, the data reported herein may not be suitable to assess potential occupational exposure. Site Assessment readings are not representative of an individual's breathing zone (e.g., container head space, ground level, directly above product, etc.).



Reading Date  
4/13/2019 6:00:00 AM to 4/13/2019 7:00:00 AM

Benzene Action Level Concentration (ppm)  
 >=1

PRELIMINARY  
Recent Benzene Detections Greater than 1.00 ppm

Reading Date	Location Category	GPS	Google Maps URL	Concentration
4/13/2019 06:18:33	Division E	29.7331440,-95.0921620	<a href="https://www.google.com/maps/search/?api=1&amp;query=29.7331440,-95.0921620">https://www.google.com/maps/search/?api=1&amp;query=29.7331440,-95.0921620</a>	1.010 ppm

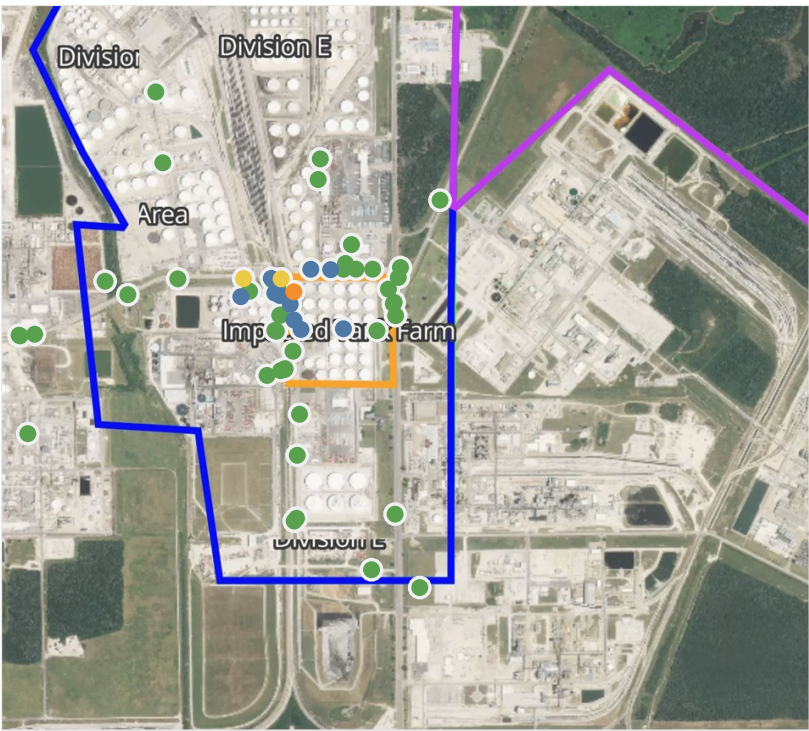
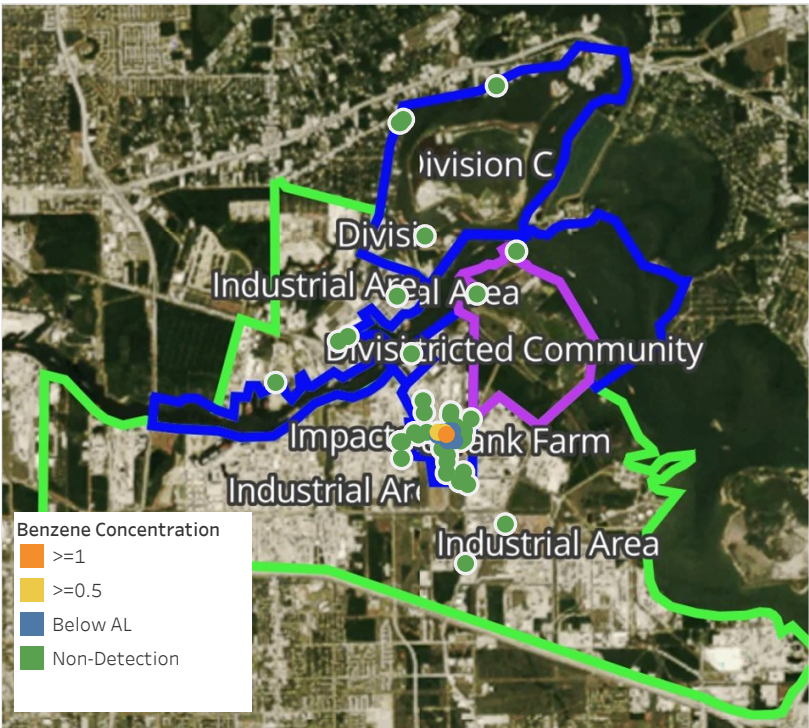


**Please Note:** These updates display data from the 2<sup>nd</sup> 80's Fire site (Impacted Tank Farm), in the industrial areas surrounding the 2<sup>nd</sup> 80's Fire site (US Coast Guard Division E), within the Houston Ship Channel (US Coast Guard Divisions A-D), and in the industrial areas north and south of the Houston Ship Channel (Industrial Area). Real-time air monitoring data for the surrounding communities are communicated daily in a separate report.



# Preliminary Hand- Held Air Monitoring Locations | ITC Deer Park Tank Fire

Reading Date  
4/13/2019 7:00:00 AM to 4/13/2019 8:00:00 AM



## Recent Benzene Detections

Location Category	Reading Date	Concentration
Division E	4/13/2019 07:05:02	0.180 ppm
	4/13/2019 07:09:16	0.120 ppm
	4/13/2019 07:21:15	0.976 ppm
	4/13/2019 07:29:21	0.600 ppm
	4/13/2019 07:17:20	0.125 ppm
	4/13/2019 07:48:29	0.100 ppm
	4/13/2019 07:53:14	0.200 ppm
Impacted Tank Farm	4/13/2019 07:59:52	0.300 ppm
	4/13/2019 07:35:37	0.250 ppm
	4/13/2019 07:43:22	0.275 ppm
	4/13/2019 07:45:56	0.450 ppm
	4/13/2019 07:49:57	1.450 ppm
	4/13/2019 07:54:56	0.150 ppm

This data has been provided expeditiously to ITC and regulatory agencies for informational and/or operational purposes only. Data reported within this summary is preliminary in nature and has not undergone complete QA/QC (quality assurance/quality control) process. Until this complete QA/QC process is completed, the locations of each reading are approximate in nature and subject to further refinement. As some readings may represent non-breathing zone measurements, the data reported herein may not be suitable to assess potential occupational exposure. Site Assessment readings are not representative of an individual's breathing zone (e.g., container head space, ground level, directly above product, etc.).



Reading Date  
4/13/2019 7:00:00 AM to 4/13/2019 8:00:00 AM

Benzene Action Level Concentration (ppm)  
 >=1

PRELIMINARY  
Recent Benzene Detections Greater than 1.00 ppm

Reading Date	Location Category	GPS	Google Maps URL	Concentration
4/13/2019 07:49:57	Impacted Tank Farm	29.7327760,-95.0929670	<a href="https://www.google.com/maps/search/?api=1&amp;query=29.7327760,-95.0929670">https://www.google.com/maps/search/?api=1&amp;query=29.7327760,-95.0929670</a>	1.450 ppm



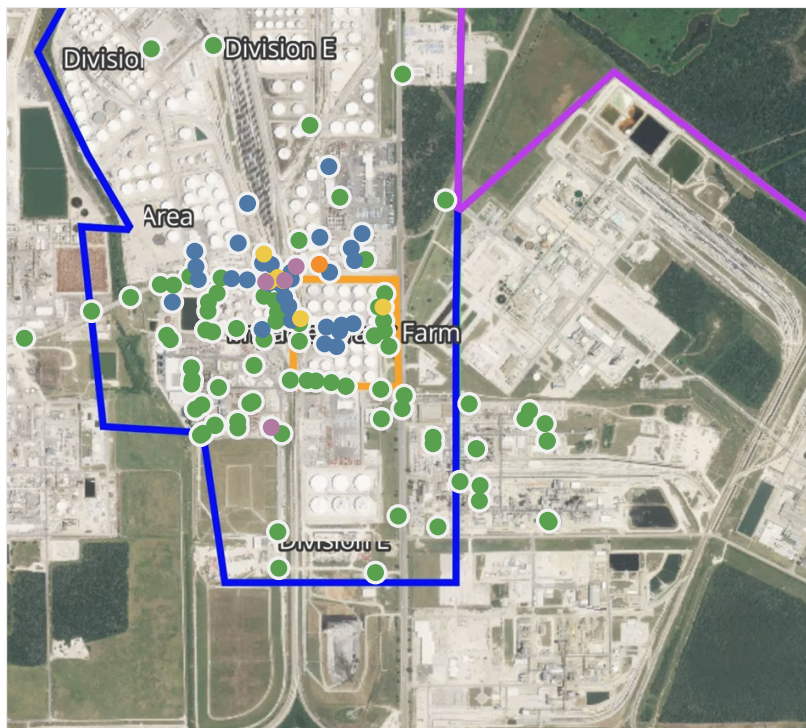
**Please Note:** These updates display data from the 2<sup>nd</sup> 80's Fire site (Impacted Tank Farm), in the industrial areas surrounding the 2<sup>nd</sup> 80's Fire site (US Coast Guard Division E), within the Houston Ship Channel (US Coast Guard Divisions A-D), and in the industrial areas north and south of the Houston Ship Channel (Industrial Area). Real-time air monitoring data for the surrounding communities are communicated daily in a separate report.



# Preliminary Hand- Held Air Monitoring Locations | ITC Deer Park Tank Fire

Reading Date

4/13/2019 8:00:00 AM to 4/13/2019 9:00:00 AM



## Recent Benzene Detections

Location Category	Reading Date	Concentration
Division E	4/13/2019 08:03:51	0.130 ppm
	4/13/2019 08:06:39	0.120 ppm
	4/13/2019 08:09:05	0.450 ppm
	4/13/2019 08:08:04	0.050 ppm
	4/13/2019 08:13:31	0.330 ppm
	4/13/2019 08:16:20	0.100 ppm
	4/13/2019 08:17:41	0.300 ppm
	4/13/2019 08:20:21	0.050 ppm
	4/13/2019 08:20:56	0.210 ppm
	4/13/2019 08:25:45	0.050 ppm
	4/13/2019 08:22:44	4.000 ppm
	4/13/2019 08:28:43	0.030 ppm
	4/13/2019 08:29:31	6.640 ppm
	4/13/2019 08:31:18	0.150 ppm
	4/13/2019 08:30:02	1.400 ppm
	4/13/2019 08:35:43	0.080 ppm
	4/13/2019 08:40:48	0.150 ppm
	4/13/2019 08:40:53	0.540 ppm
	4/13/2019 08:45:32	0.210 ppm
	4/13/2019 08:48:46	0.710 ppm
	4/13/2019 08:51:31	0.090 ppm
	4/13/2019 08:43:27	0.375 ppm
	4/13/2019 08:51:56	2.650 ppm
	4/13/2019 08:48:44	0.510 ppm
	4/13/2019 08:58:46	0.190 ppm
	4/13/2019 08:32:35	0.030 ppm
	4/13/2019 08:36:55	0.540 ppm
	4/13/2019 08:47:09	0.150 ppm
	4/13/2019 08:46:21	0.480 ppm
	4/13/2019 08:57:46	0.050 ppm
	4/13/2019 08:54:38	0.100 ppm
	4/13/2019 08:38:13	0.200 ppm
	4/13/2019 08:56:20	0.330 ppm
	4/13/2019 08:42:07	0.380 ppm
	4/13/2019 08:14:56	0.020 ppm
	4/13/2019 08:39:33	2.500 ppm
	4/13/2019 08:50:35	0.280 ppm
	4/13/2019 08:52:27	0.340 ppm
	4/13/2019 08:56:39	0.020 ppm
	4/13/2019 08:42:58	0.150 ppm
Impacted Tank Farm	4/13/2019 08:15:23	0.300 ppm
	4/13/2019 08:10:31	0.870 ppm
	4/13/2019 08:24:17	0.080 ppm
	4/13/2019 08:23:37	0.850 ppm
	4/13/2019 08:26:58	0.080 ppm
	4/13/2019 08:36:19	0.060 ppm
	4/13/2019 08:45:07	0.140 ppm

This data has been provided expeditiously to ITC and regulatory agencies for informational and/or operational purposes only. Data reported within this summary is preliminary in nature and has not undergone complete QA/QC (quality assurance/quality control) process. Until this complete QA/QC process is completed, the locations of each reading are approximate in nature and subject to further refinement. As some readings may represent non-breathing zone measurements, the data reported herein may not be suitable to assess potential occupational exposure. Site Assessment readings are not representative of an individual's breathing zone (e.g., container head space, ground level, directly above product, etc.).



Reading Date  
4/13/2019 8:00:00 AM to 4/13/2019 9:00:00 AM

Benzene Action Level Concentration (ppm)  
 >=1       >=2

PRELIMINARY  
Recent Benzene Detections Greater than 1.00 ppm

Reading Date	Location Category	GPS	Google Maps URL	Concentration
4/13/2019 08:51:56	Division E	29.7292400,-95.0938050	<a href="https://www.google.com/maps/search/?api=1&amp;query=29.7292400,-95.0938050">https://www.google.com/maps/search/?api=1&amp;query=29.7292400,-95.0938050</a>	2.650 ppm
4/13/2019 08:39:33	Division E	29.7330870,-95.0939770	<a href="https://www.google.com/maps/search/?api=1&amp;query=29.7330870,-95.0939770">https://www.google.com/maps/search/?api=1&amp;query=29.7330870,-95.0939770</a>	2.500 ppm
4/13/2019 08:30:02	Division E	29.7335540,-95.0923420	<a href="https://www.google.com/maps/search/?api=1&amp;query=29.7335540,-95.0923420">https://www.google.com/maps/search/?api=1&amp;query=29.7335540,-95.0923420</a>	1.400 ppm
4/13/2019 08:29:31	Division E	29.7331290,-95.0934010	<a href="https://www.google.com/maps/search/?api=1&amp;query=29.7331290,-95.0934010">https://www.google.com/maps/search/?api=1&amp;query=29.7331290,-95.0934010</a>	6.640 ppm
4/13/2019 08:22:44	Division E	29.7334960,-95.0930500	<a href="https://www.google.com/maps/search/?api=1&amp;query=29.7334960,-95.0930500">https://www.google.com/maps/search/?api=1&amp;query=29.7334960,-95.0930500</a>	4.000 ppm

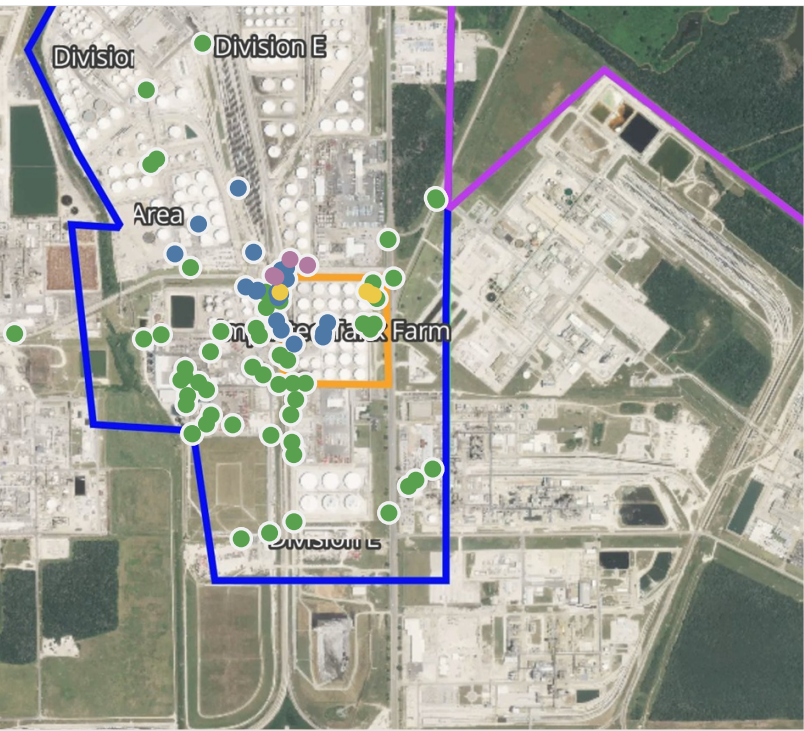
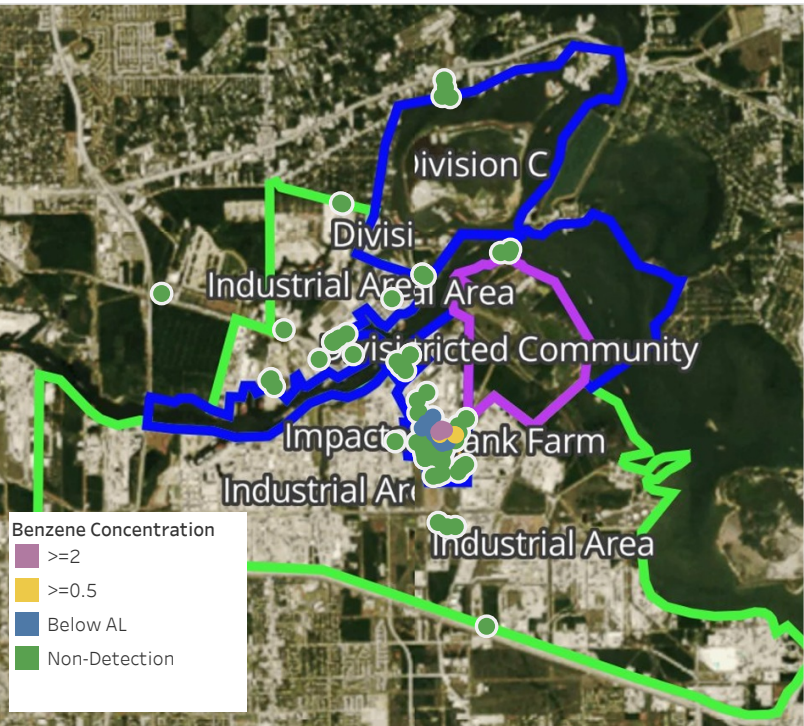


**Please Note:** These updates display data from the 2<sup>nd</sup> 80's Fire site (Impacted Tank Farm), in the industrial areas surrounding the 2<sup>nd</sup> 80's Fire site (US Coast Guard Division E), within the Houston Ship Channel (US Coast Guard Divisions A-D), and in the industrial areas north and south of the Houston Ship Channel (Industrial Area). Real-time air monitoring data for the surrounding communities are communicated daily in a separate report.



# Preliminary Hand- Held Air Monitoring Locations | ITC Deer Park Tank Fire

Reading Date  
4/13/2019 9:00:00 AM to 4/13/2019 10:00:00 AM



## Recent Benzene Detections

Location Category	Reading Date	Concentration
Division E	4/13/2019 09:07:40	0.130 ppm
	4/13/2019 09:10:04	0.090 ppm
	4/13/2019 09:11:25	0.180 ppm
	4/13/2019 09:14:11	0.130 ppm
	4/13/2019 09:14:13	0.210 ppm
	4/13/2019 09:18:17	3.530 ppm
	4/13/2019 09:26:24	0.100 ppm
	4/13/2019 09:25:09	0.340 ppm
	4/13/2019 09:28:44	0.030 ppm
	4/13/2019 09:35:41	0.020 ppm
	4/13/2019 09:34:40	0.290 ppm
	4/13/2019 09:39:16	0.110 ppm
	4/13/2019 09:41:02	0.170 ppm
	4/13/2019 09:45:59	0.200 ppm
	4/13/2019 09:46:25	0.040 ppm
	4/13/2019 09:50:20	2.020 ppm
Impacted Tank Farm	4/13/2019 09:52:55	6.000 ppm
	4/13/2019 09:59:09	8.400 ppm
	4/13/2019 09:02:23	0.525 ppm
	4/13/2019 09:08:19	0.200 ppm
	4/13/2019 09:06:44	0.060 ppm
	4/13/2019 09:12:16	0.150 ppm
	4/13/2019 09:22:04	0.125 ppm
	4/13/2019 09:22:55	0.180 ppm
	4/13/2019 09:38:07	0.840 ppm
	4/13/2019 09:45:31	0.090 ppm
	4/13/2019 09:55:46	0.750 ppm

This data has been provided expeditiously to ITC and regulatory agencies for informational and/or operational purposes only. Data reported within this summary is preliminary in nature and has not undergone complete QA/QC (quality assurance/quality control) process. Until this complete QA/QC process is completed, the locations of each reading are approximate in nature and subject to further refinement. As some readings may represent non-breathing zone measurements, the data reported herein may not be suitable to assess potential occupational exposure. Site Assessment readings are not representative of an individual's breathing zone (e.g., container head space, ground level, directly above product, etc.).



Reading Date  
4/13/2019 9:00:00 AM to 4/13/2019 10:00:00 AM

Benzene Action Level Concentration (ppm)  
■ >=2

PRELIMINARY  
Recent Benzene Detections Greater than 1.00 ppm

Reading Date	Location Category	GPS	Google Maps URL	Concentration
4/13/2019 09:59:09	Division E	29.7334790,-95.0923960	<a href="https://www.google.com/maps/search/?api=1&amp;query=29.7334790,-95.0923960">https://www.google.com/maps/search/?api=1&amp;query=29.7334790,-95.0923960</a>	8.400 ppm
4/13/2019 09:52:55	Division E	29.7336310,-95.0929310	<a href="https://www.google.com/maps/search/?api=1&amp;query=29.7336310,-95.0929310">https://www.google.com/maps/search/?api=1&amp;query=29.7336310,-95.0929310</a>	6.000 ppm
4/13/2019 09:50:20	Division E	29.7332040,-95.0934430	<a href="https://www.google.com/maps/search/?api=1&amp;query=29.7332040,-95.0934430">https://www.google.com/maps/search/?api=1&amp;query=29.7332040,-95.0934430</a>	2.020 ppm
4/13/2019 09:18:17	Division E	29.7331630,-95.0933630	<a href="https://www.google.com/maps/search/?api=1&amp;query=29.7331630,-95.0933630">https://www.google.com/maps/search/?api=1&amp;query=29.7331630,-95.0933630</a>	3.530 ppm

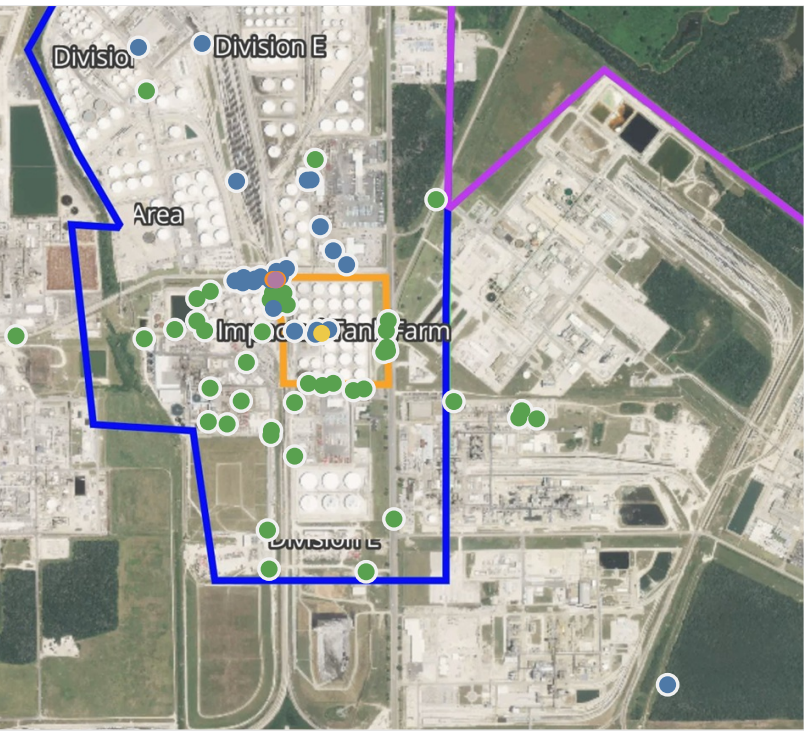
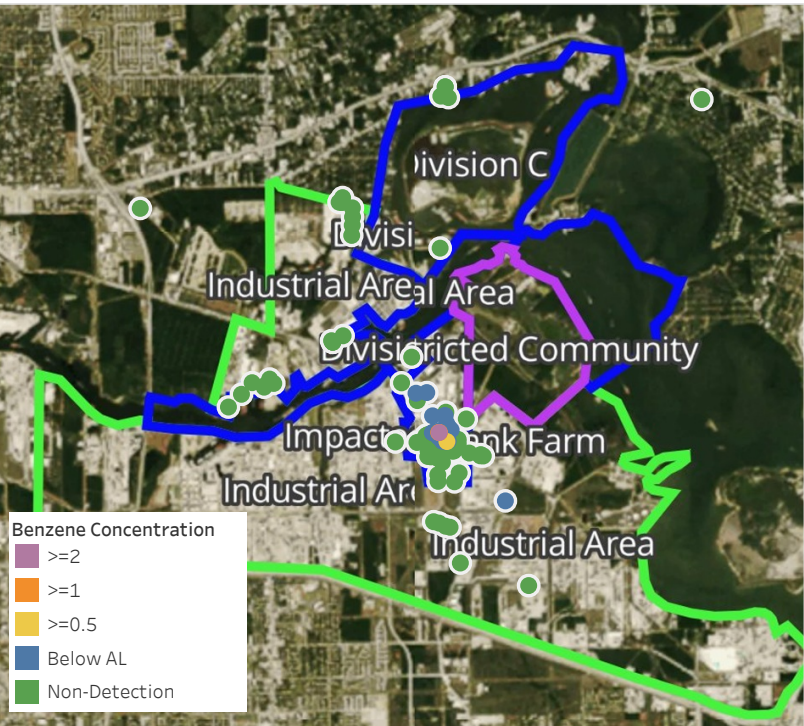


**Please Note:** These updates display data from the 2<sup>nd</sup> 80's Fire site (Impacted Tank Farm), in the industrial areas surrounding the 2<sup>nd</sup> 80's Fire site (US Coast Guard Division E), within the Houston Ship Channel (US Coast Guard Divisions A-D), and in the industrial areas north and south of the Houston Ship Channel (Industrial Area). Real-time air monitoring data for the surrounding communities are communicated daily in a separate report.



# Preliminary Hand- Held Air Monitoring Locations | ITC Deer Park Tank Fire

Reading Date  
4/13/2019 10:00:00 AM to 4/13/2019 11:00:00 AM



## Recent Benzene Detections

Location Category	Reading Date	Concentration
Division E	4/13/2019 10:06:19	0.240 ppm
	4/13/2019 10:11:08	0.590 ppm
	4/13/2019 10:13:20	0.300 ppm
	4/13/2019 10:15:11	0.020 ppm
	4/13/2019 10:17:26	0.100 ppm
	4/13/2019 10:19:45	0.270 ppm
	4/13/2019 10:20:43	0.320 ppm
	4/13/2019 10:23:06	0.020 ppm
	4/13/2019 10:23:12	4.990 ppm
	4/13/2019 10:14:40	0.120 ppm
	4/13/2019 10:06:07	0.110 ppm
	4/13/2019 10:23:50	0.120 ppm
	4/13/2019 10:31:41	0.100 ppm
	4/13/2019 10:03:54	0.100 ppm
	4/13/2019 10:26:25	0.210 ppm
	4/13/2019 10:08:45	0.130 ppm
	4/13/2019 10:34:06	0.460 ppm
	4/13/2019 10:21:57	0.130 ppm
	4/13/2019 10:17:07	0.410 ppm
	4/13/2019 10:37:02	0.030 ppm
	4/13/2019 10:44:24	0.160 ppm
	4/13/2019 10:41:13	0.210 ppm
	4/13/2019 10:37:08	1.220 ppm
	4/13/2019 10:38:40	0.200 ppm
	4/13/2019 10:40:19	1.290 ppm
	4/13/2019 10:46:21	0.020 ppm
	4/13/2019 10:48:41	0.060 ppm
	4/13/2019 10:53:59	0.150 ppm
	4/13/2019 10:56:52	0.070 ppm
Impacted Tank Farm	4/13/2019 10:18:31	0.060 ppm
	4/13/2019 10:38:41	0.180 ppm
	4/13/2019 10:43:36	0.200 ppm
	4/13/2019 10:55:30	0.070 ppm

This data has been provided expeditiously to ITC and regulatory agencies for informational and/or operational purposes only. Data reported within this summary is preliminary in nature and has not undergone complete QA/QC (quality assurance/quality control) process. Until this complete QA/QC process is completed, the locations of each reading are approximate in nature and subject to further refinement. As some readings may represent non-breathing zone measurements, the data reported herein may not be suitable to assess potential occupational exposure. Site Assessment readings are not representative of an individual's breathing zone (e.g., container head space, ground level, directly above product, etc.).



Reading Date  
4/13/2019 10:00:00 AM to 4/13/2019 11:00:00 AM

Benzene Action Level Concentration (ppm)  
 >=1       >=2

PRELIMINARY  
Recent Benzene Detections Greater than 1.00 ppm

Reading Date	Location Category	GPS	Google Maps URL	Concentration
4/13/2019 10:40:19	Division E	29.7330990,-95.0933070	<a href="https://www.google.com/maps/search/?api=1&amp;query=29.7330990,-95.0933070">https://www.google.com/maps/search/?api=1&amp;query=29.7330990,-95.0933070</a>	1.290 ppm
4/13/2019 10:37:08	Division E	29.7331010,-95.0934540	<a href="https://www.google.com/maps/search/?api=1&amp;query=29.7331010,-95.0934540">https://www.google.com/maps/search/?api=1&amp;query=29.7331010,-95.0934540</a>	1.220 ppm
4/13/2019 10:23:12	Division E	29.7330870,-95.0933670	<a href="https://www.google.com/maps/search/?api=1&amp;query=29.7330870,-95.0933670">https://www.google.com/maps/search/?api=1&amp;query=29.7330870,-95.0933670</a>	4.990 ppm

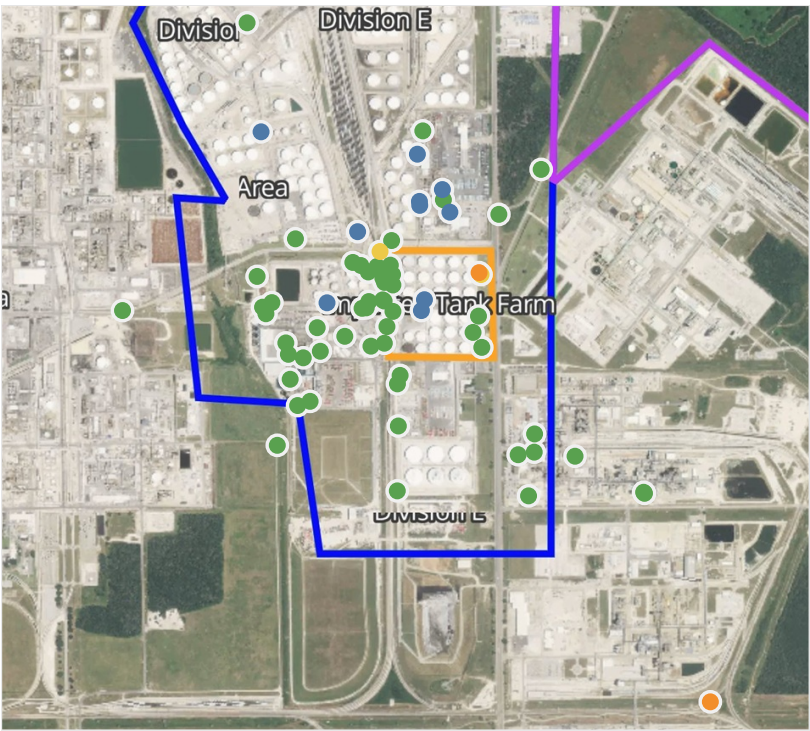


**Please Note:** These updates display data from the 2<sup>nd</sup> 80's Fire site (Impacted Tank Farm), in the industrial areas surrounding the 2<sup>nd</sup> 80's Fire site (US Coast Guard Division E), within the Houston Ship Channel (US Coast Guard Divisions A-D), and in the industrial areas north and south of the Houston Ship Channel (Industrial Area). Real-time air monitoring data for the surrounding communities are communicated daily in a separate report.



# Preliminary Hand- Held Air Monitoring Locations | ITC Deer Park Tank Fire

Reading Date  
4/13/2019 11:00:00 AM to 4/13/2019 12:00:00 PM



## Recent Benzene Detections

Location Category	Reading Date	Concentration
Division E	4/13/2019 11:01:54	0.020 ppm
	4/13/2019 11:05:22	0.580 ppm
	4/13/2019 11:08:21	0.340 ppm
	4/13/2019 11:10:56	0.290 ppm
	4/13/2019 11:39:11	0.100 ppm
	4/13/2019 11:43:12	0.020 ppm
	4/13/2019 11:50:43	0.330 ppm
	4/13/2019 11:51:49	1.260 ppm
	4/13/2019 11:36:37	0.020 ppm
	4/13/2019 11:53:39	0.280 ppm
Impacted Tank Farm	4/13/2019 11:20:26	0.070 ppm
	4/13/2019 11:20:55	0.510 ppm
	4/13/2019 11:42:06	0.120 ppm
	4/13/2019 11:50:42	1.320 ppm

This data has been provided expeditiously to ITC and regulatory agencies for informational and/or operational purposes only. Data reported within this summary is preliminary in nature and has not undergone complete QA/QC (quality assurance/quality control) process. Until this complete QA/QC process is completed, the locations of each reading are approximate in nature and subject to further refinement. As some readings may represent non-breathing zone measurements, the data reported herein may not be suitable to assess potential occupational exposure. Site Assessment readings are not representative of an individual's breathing zone (e.g., container head space, ground level, directly above product, etc.).

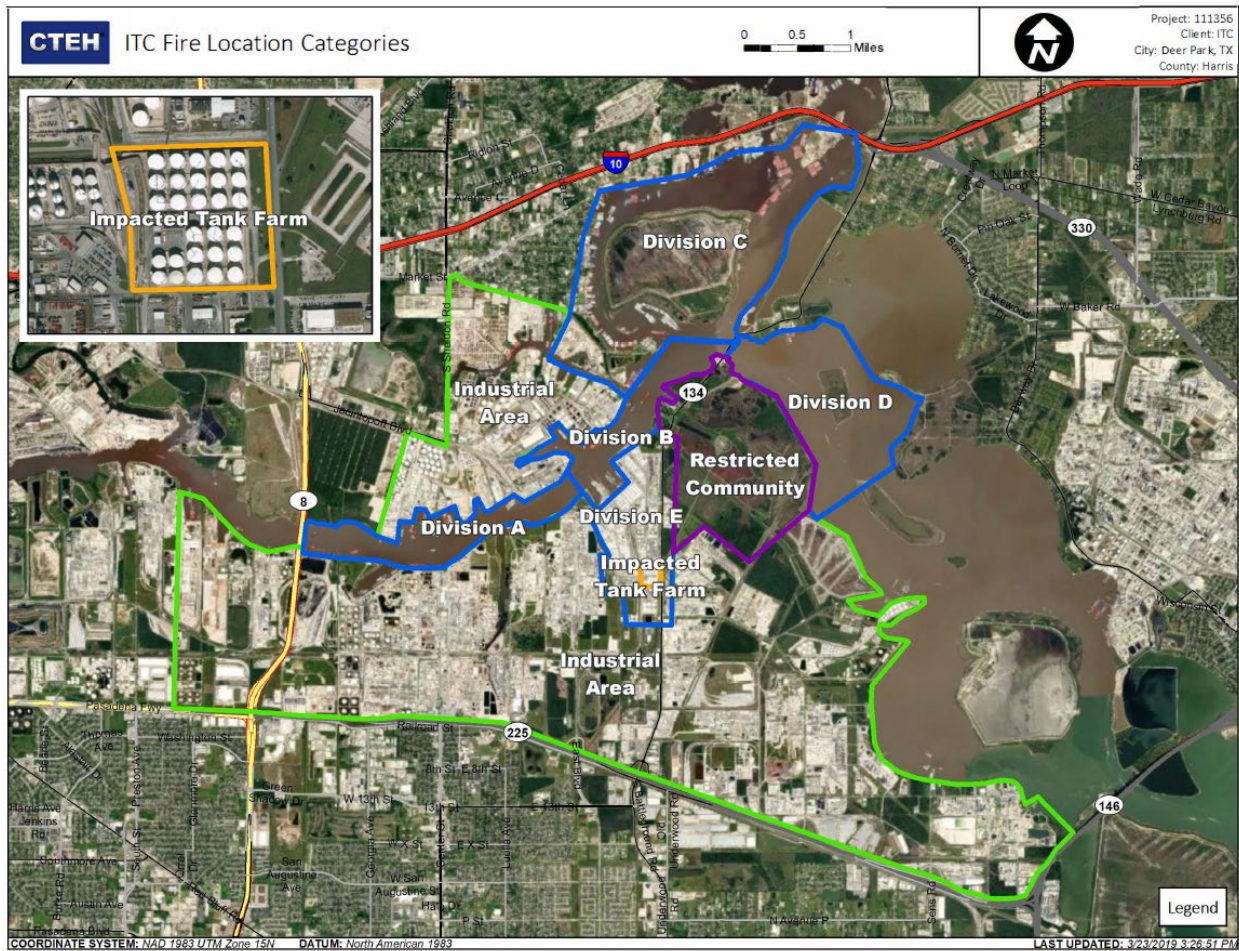


Reading Date  
4/13/2019 11:00:00 AM to 4/13/2019 12:00:00 PM

Benzene Action Level Concentration (ppm)  
 >=1

PRELIMINARY  
Recent Benzene Detections Greater than 1.00 ppm

Reading Date	Location Category	GPS	Google Maps URL	Concentration
4/13/2019 11:51:49	Division E	29.7212050,-95.0833180	<a href="https://www.google.com/maps/search/?api=1&amp;query=29.7212050,-95.0833180">https://www.google.com/maps/search/?api=1&amp;query=29.7212050,-95.0833180</a>	1.26000 ppm
4/13/2019 11:50:42	Impacted Tank Farm	29.7325650,-95.0903670	<a href="https://www.google.com/maps/search/?api=1&amp;query=29.7325650,-95.0903670">https://www.google.com/maps/search/?api=1&amp;query=29.7325650,-95.0903670</a>	1.32000 ppm

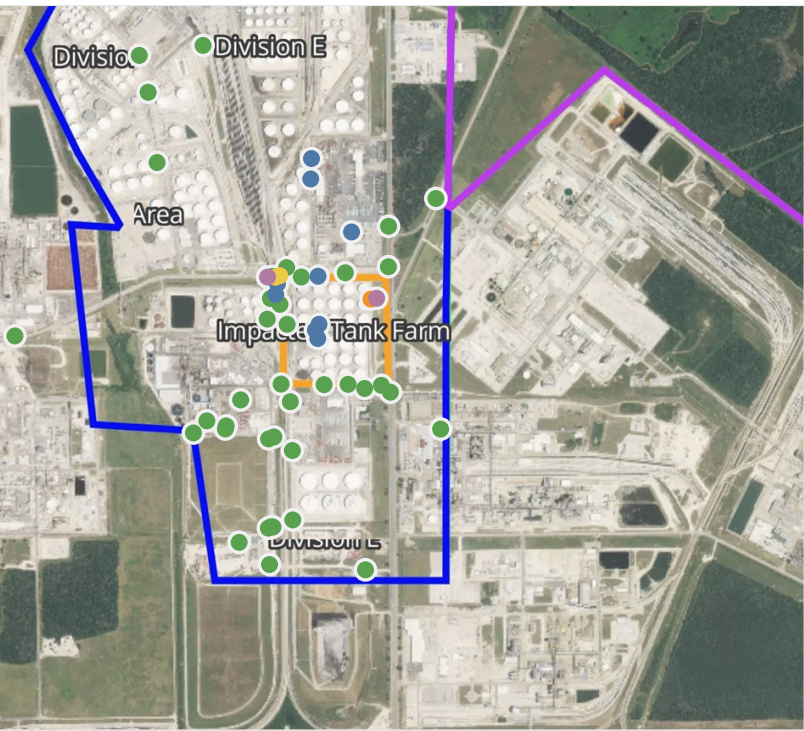


**Please Note:** These updates display data from the 2<sup>nd</sup> 80's Fire site (Impacted Tank Farm), in the industrial areas surrounding the 2<sup>nd</sup> 80's Fire site (US Coast Guard Division E), within the Houston Ship Channel (US Coast Guard Divisions A-D), and in the industrial areas north and south of the Houston Ship Channel (Industrial Area). Real-time air monitoring data for the surrounding communities are communicated daily in a separate report.



# Preliminary Hand- Held Air Monitoring Locations | ITC Deer Park Tank Fire

Reading Date  
4/13/2019 12:00:00 PM to 4/13/2019 1:00:00 PM



## Recent Benzene Detections

Location Category	Reading Date	Concentration
Division E	4/13/2019 12:00:04	0.110 ppm
	4/13/2019 12:00:11	0.100 ppm
	4/13/2019 12:08:03	0.020 ppm
	4/13/2019 12:20:05	3.960 ppm
	4/13/2019 12:24:44	0.130 ppm
	4/13/2019 12:09:07	0.325 ppm
	4/13/2019 12:38:39	0.810 ppm
	4/13/2019 12:45:39	0.900 ppm
	4/13/2019 12:57:09	0.050 ppm
Impacted Tank Farm	4/13/2019 12:03:36	0.090 ppm
	4/13/2019 12:07:38	1.380 ppm
	4/13/2019 12:20:57	6.170 ppm
	4/13/2019 12:28:31	0.080 ppm
	4/13/2019 12:51:30	0.060 ppm

This data has been provided expeditiously to ITC and regulatory agencies for informational and/or operational purposes only. Data reported within this summary is preliminary in nature and has not undergone complete QA/QC (quality assurance/quality control) process. Until this complete QA/QC process is completed, the locations of each reading are approximate in nature and subject to further refinement. As some readings may represent non-breathing zone measurements, the data reported herein may not be suitable to assess potential occupational exposure. Site Assessment readings are not representative of an individual's breathing zone (e.g., container head space, ground level, directly above product, etc.).



Reading Date  
4/13/2019 12:00:00 PM to 4/13/2019 1:00:00 PM

Benzene Action Level Concentration (ppm)  
 >=1       >=2

PRELIMINARY  
Recent Benzene Detections Greater than 1.00 ppm

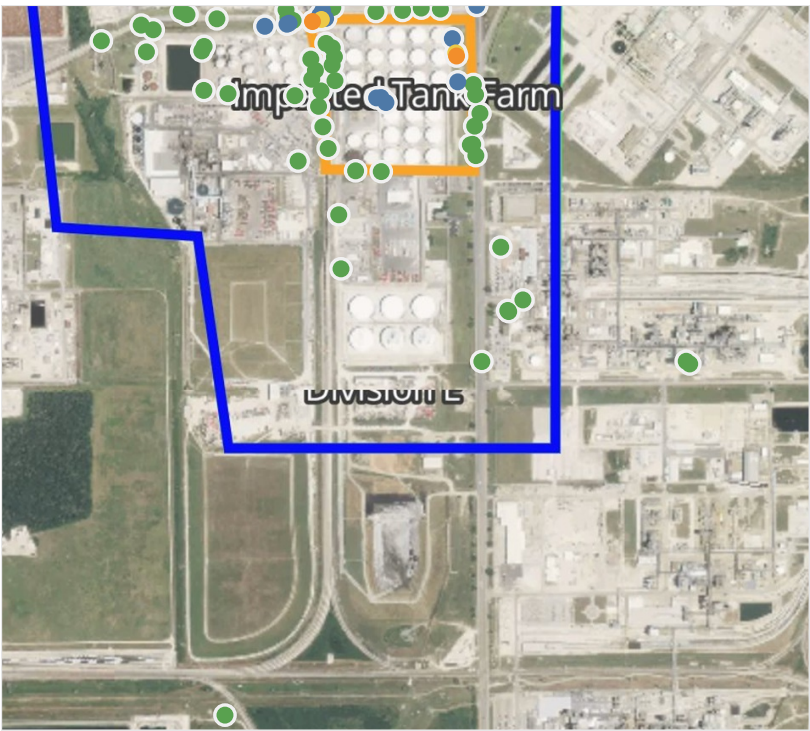
Reading Date	Location Category	GPS	Google Maps URL	Concentration
4/13/2019 12:20:57	Impacted Tank Farm	29.7326040,-95.0902890	<a href="https://www.google.com/maps/search/?api=1&amp;query=29.7326040,-95.0902890">https://www.google.com/maps/search/?api=1&amp;query=29.7326040,-95.0902890</a>	6.170 ppm
4/13/2019 12:20:05	Division E	29.7331660,-95.0936150	<a href="https://www.google.com/maps/search/?api=1&amp;query=29.7331660,-95.0936150">https://www.google.com/maps/search/?api=1&amp;query=29.7331660,-95.0936150</a>	3.960 ppm
4/13/2019 12:07:38	Impacted Tank Farm	29.7325820,-95.0904630	<a href="https://www.google.com/maps/search/?api=1&amp;query=29.7325820,-95.0904630">https://www.google.com/maps/search/?api=1&amp;query=29.7325820,-95.0904630</a>	1.380 ppm



**Please Note:** These updates display data from the 2<sup>nd</sup> 80's Fire site (Impacted Tank Farm), in the industrial areas surrounding the 2<sup>nd</sup> 80's Fire site (US Coast Guard Division E), within the Houston Ship Channel (US Coast Guard Divisions A-D), and in the industrial areas north and south of the Houston Ship Channel (Industrial Area). Real-time air monitoring data for the surrounding communities are communicated daily in a separate report.

# Preliminary Hand- Held Air Monitoring Locations | ITC Deer Park Tank Fire

Reading Date  
4/13/2019 1:00:00 PM to 4/13/2019 2:00:00 PM



## Recent Benzene Detections

Location Category	Reading Date	Concentration
Division E	4/13/2019 13:02:26	0.1700 ppm
	4/13/2019 13:06:49	0.4400 ppm
	4/13/2019 13:11:01	0.2200 ppm
	4/13/2019 13:08:47	0.5500 ppm
	4/13/2019 13:15:10	0.3300 ppm
Impacted Tank Farm	4/13/2019 13:15:44	0.3900 ppm
	4/13/2019 13:19:37	0.0300 ppm
	4/13/2019 13:05:39	0.1400 ppm

This data has been provided expeditiously to ITC and regulatory agencies for informational and/or operational purposes only. Data reported within this summary is preliminary in nature and has not undergone complete QA/QC (quality assurance/quality control) process. Until this complete QA/QC process is completed, the locations of each reading are approximate in nature and subject to further refinement. As some readings may represent non-breathing zone measurements, the data reported herein may not be suitable to assess potential occupational exposure. Site Assessment readings are not representative of an individual's breathing zone (e.g., container head space, ground level, directly above product, etc.).

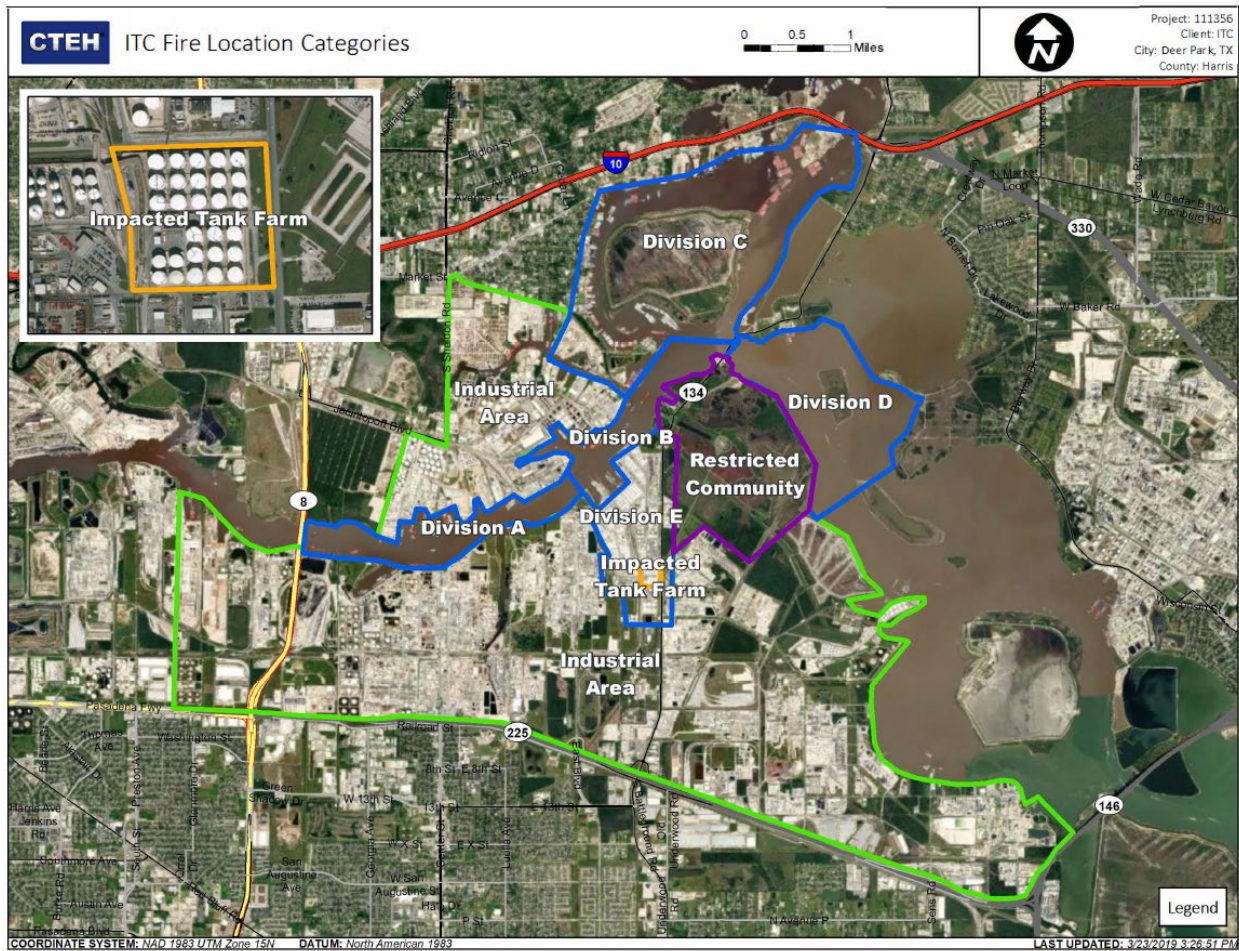


Reading Date  
4/13/2019 1:00:00 PM to 4/13/2019 2:00:00 PM

Benzene Action Level Concentration (ppm)  
 >=1

PRELIMINARY  
Recent Benzene Detections Greater than 1.00 ppm

Reading Date	Location Category	GPS	Google Maps URL	Concentration
4/13/2019 13:45:35	Impacted Tank Farm	29.7324870,-95.0903230	<a href="https://www.google.com/maps/search/?api=1&amp;query=29.7324870,-95.0903230">https://www.google.com/maps/search/?api=1&amp;query=29.7324870,-95.0903230</a>	1.7800 ppm
4/13/2019 13:41:37	Division E	29.7345080,-95.0901120	<a href="https://www.google.com/maps/search/?api=1&amp;query=29.7345080,-95.0901120">https://www.google.com/maps/search/?api=1&amp;query=29.7345080,-95.0901120</a>	1.3100 ppm
4/13/2019 13:23:59	Division E	29.7331320,-95.0934280	<a href="https://www.google.com/maps/search/?api=1&amp;query=29.7331320,-95.0934280">https://www.google.com/maps/search/?api=1&amp;query=29.7331320,-95.0934280</a>	1.3100 ppm

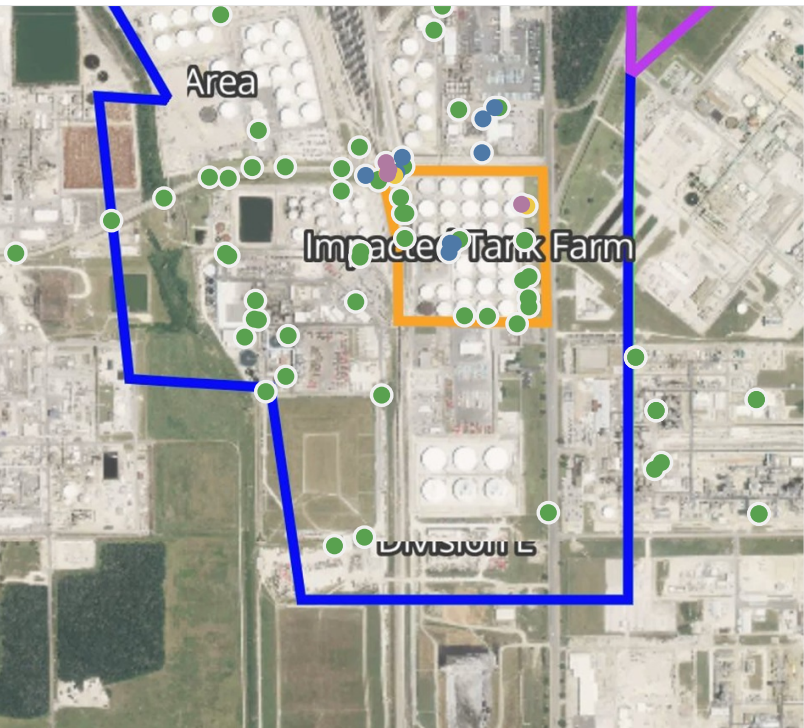


**Please Note:** These updates display data from the 2<sup>nd</sup> 80's Fire site (Impacted Tank Farm), in the industrial areas surrounding the 2<sup>nd</sup> 80's Fire site (US Coast Guard Division E), within the Houston Ship Channel (US Coast Guard Divisions A-D), and in the industrial areas north and south of the Houston Ship Channel (Industrial Area). Real-time air monitoring data for the surrounding communities are communicated daily in a separate report.



# Preliminary Hand- Held Air Monitoring Locations | ITC Deer Park Tank Fire

Reading Date  
4/13/2019 2:00:00 PM to 4/13/2019 3:00:00 PM



## Recent Benzene Detections

Location Category	Reading Date	Concentration
Division E	4/13/2019 14:04:21	0.100 ppm
	4/13/2019 14:05:14	8.320 ppm
	4/13/2019 14:07:43	0.130 ppm
	4/13/2019 14:11:37	7.080 ppm
	4/13/2019 14:15:45	0.250 ppm
	4/13/2019 14:22:44	3.400 ppm
	4/13/2019 14:29:30	0.700 ppm
	4/13/2019 14:47:09	0.100 ppm
	4/13/2019 14:45:17	0.900 ppm
	4/13/2019 14:46:56	0.360 ppm
Impacted Tank Farm	4/13/2019 14:42:24	0.070 ppm
	4/13/2019 14:10:24	0.050 ppm
	4/13/2019 14:13:42	0.770 ppm
	4/13/2019 14:26:16	0.060 ppm
	4/13/2019 14:32:57	2.050 ppm
Restricted Community	4/13/2019 14:44:24	0.080 ppm
	4/13/2019 14:02:44	0.160 ppm
	4/13/2019 14:14:25	0.090 ppm
	4/13/2019 14:25:12	0.030 ppm

This data has been provided expeditiously to ITC and regulatory agencies for informational and/or operational purposes only. Data reported within this summary is preliminary in nature and has not undergone complete QA/QC (quality assurance/quality control) process. Until this complete QA/QC process is completed, the locations of each reading are approximate in nature and subject to further refinement. As some readings may represent non-breathing zone measurements, the data reported herein may not be suitable to assess potential occupational exposure. Site Assessment readings are not representative of an individual's breathing zone (e.g., container head space, ground level, directly above product, etc.).



Reading Date  
4/13/2019 2:00:00 PM to 4/13/2019 3:00:00 PM

Benzene Action Level Concentration (ppm)  
■ >=2

PRELIMINARY  
Recent Benzene Detections Greater than 1.00 ppm

Reading Date	Location Category	GPS	Google Maps URL	Concentration
4/13/2019 14:32:57	Impacted Tank Farm	29.7325340,-95.0904560	<a href="https://www.google.com/maps/search/?api=1&amp;query=29.7325340,-95.0904560">https://www.google.com/maps/search/?api=1&amp;query=29.7325340,-95.0904560</a>	2.050 ppm
4/13/2019 14:22:44	Division E	29.7331040,-95.0933450	<a href="https://www.google.com/maps/search/?api=1&amp;query=29.7331040,-95.0933450">https://www.google.com/maps/search/?api=1&amp;query=29.7331040,-95.0933450</a>	3.400 ppm
4/13/2019 14:11:37	Division E	29.7333140,-95.0933770	<a href="https://www.google.com/maps/search/?api=1&amp;query=29.7333140,-95.0933770">https://www.google.com/maps/search/?api=1&amp;query=29.7333140,-95.0933770</a>	7.080 ppm
4/13/2019 14:05:14	Division E	29.7331810,-95.0933180	<a href="https://www.google.com/maps/search/?api=1&amp;query=29.7331810,-95.0933180">https://www.google.com/maps/search/?api=1&amp;query=29.7331810,-95.0933180</a>	8.320 ppm

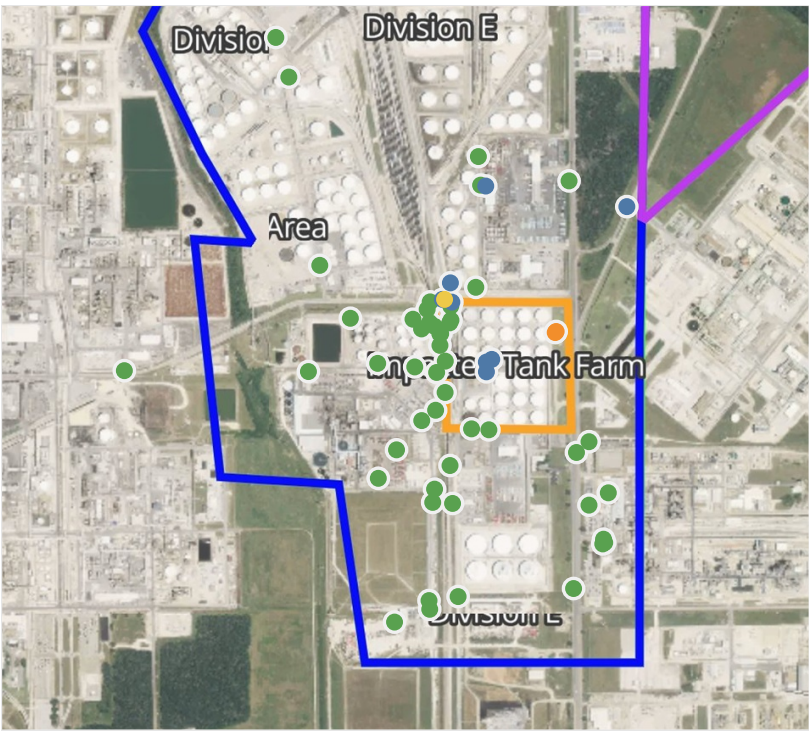


**Please Note:** These updates display data from the 2<sup>nd</sup> 80's Fire site (Impacted Tank Farm), in the industrial areas surrounding the 2<sup>nd</sup> 80's Fire site (US Coast Guard Division E), within the Houston Ship Channel (US Coast Guard Divisions A-D), and in the industrial areas north and south of the Houston Ship Channel (Industrial Area). Real-time air monitoring data for the surrounding communities are communicated daily in a separate report.



# Preliminary Hand- Held Air Monitoring Locations | ITC Deer Park Tank Fire

Reading Date  
4/13/2019 3:00:00 PM to 4/13/2019 4:00:00 PM



## Recent Benzene Detections

Location Category	Reading Date	Concentration
Division E	4/13/2019 15:11:05	0.125 ppm
	4/13/2019 15:14:35	0.440 ppm
	4/13/2019 15:28:16	0.840 ppm
	4/13/2019 15:34:08	0.030 ppm
	4/13/2019 15:35:39	0.250 ppm
	4/13/2019 15:39:23	0.370 ppm
Impacted Tank Farm	4/13/2019 15:01:12	0.040 ppm
	4/13/2019 15:14:36	0.090 ppm
	4/13/2019 15:31:52	0.100 ppm
	4/13/2019 15:33:26	1.250 ppm
	4/13/2019 15:37:12	1.230 ppm
Wildlife Warehouse	4/13/2019 15:52:41	0.090 ppm

This data has been provided expeditiously to ITC and regulatory agencies for informational and/or operational purposes only. Data reported within this summary is preliminary in nature and has not undergone complete QA/QC (quality assurance/quality control) process. Until this complete QA/QC process is completed, the locations of each reading are approximate in nature and subject to further refinement. As some readings may represent non-breathing zone measurements, the data reported herein may not be suitable to assess potential occupational exposure. Site Assessment readings are not representative of an individual's breathing zone (e.g., container head space, ground level, directly above product, etc.).



Reading Date  
4/13/2019 3:00:00 PM to 4/13/2019 4:00:00 PM

Benzene Action Level Concentration (ppm)  
 >=1

PRELIMINARY  
Recent Benzene Detections Greater than 1.00 ppm

Reading Date	Location Category	GPS	Google Maps URL	Concentration
4/13/2019 15:49:00	Impacted Tank Farm	29.7318620,-95.0904930	<a href="https://www.google.com/maps/search/?api=1&amp;query=29.7318620,-95.0904930">https://www.google.com/maps/search/?api=1&amp;query=29.7318620,-95.0904930</a>	1.8400 ppm
4/13/2019 15:37:12	Impacted Tank Farm	29.7324800,-95.0903420	<a href="https://www.google.com/maps/search/?api=1&amp;query=29.7324800,-95.0903420">https://www.google.com/maps/search/?api=1&amp;query=29.7324800,-95.0903420</a>	1.2300 ppm
4/13/2019 15:33:26	Impacted Tank Farm	29.7325040,-95.0903180	<a href="https://www.google.com/maps/search/?api=1&amp;query=29.7325040,-95.0903180">https://www.google.com/maps/search/?api=1&amp;query=29.7325040,-95.0903180</a>	1.2500 ppm

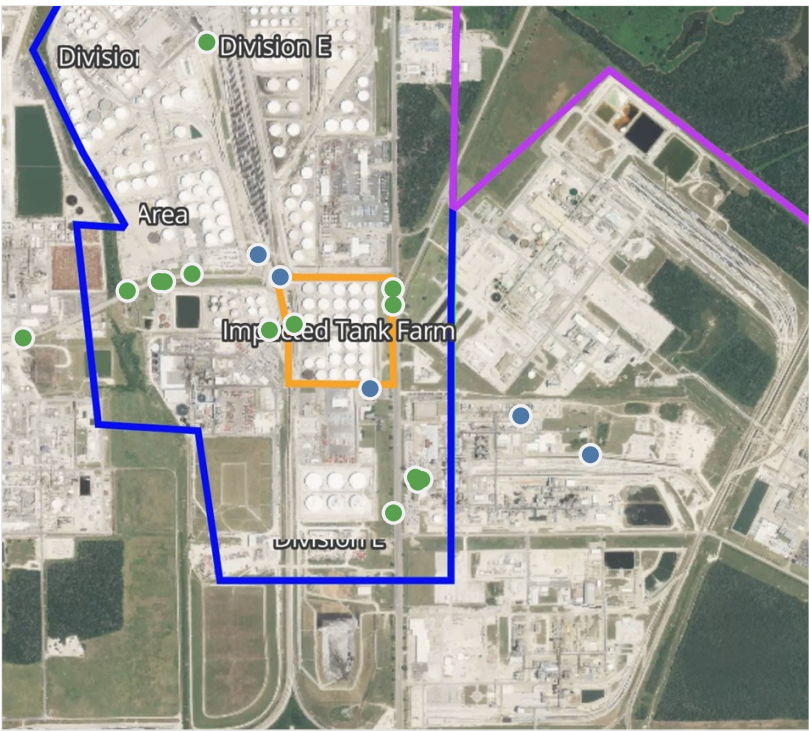
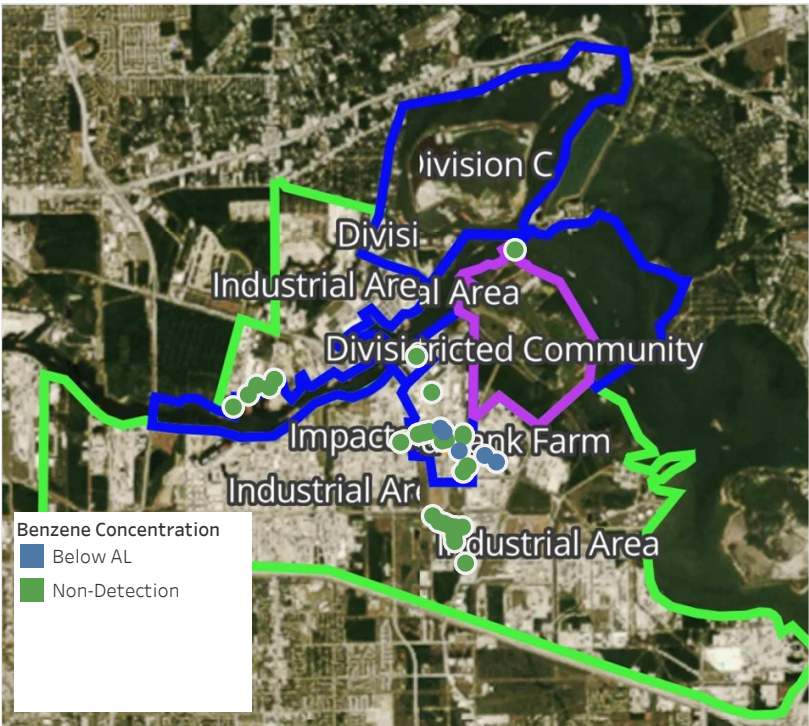


**Please Note:** These updates display data from the 2<sup>nd</sup> 80's Fire site (Impacted Tank Farm), in the industrial areas surrounding the 2<sup>nd</sup> 80's Fire site (US Coast Guard Division E), within the Houston Ship Channel (US Coast Guard Divisions A-D), and in the industrial areas north and south of the Houston Ship Channel (Industrial Area). Real-time air monitoring data for the surrounding communities are communicated daily in a separate report.



# Preliminary Hand- Held Air Monitoring Locations | ITC Deer Park Tank Fire

Reading Date  
4/13/2019 4:00:00 PM to 4/13/2019 5:00:00 PM



## Recent Benzene Detections

Location Category	Reading Date	Concentration
Division E	4/13/2019 16:01:44	0.1200 ppm
	4/13/2019 16:56:23	0.0200 ppm
	4/13/2019 16:45:05	0.1300 ppm
Industrial Area	4/13/2019 16:55:31	0.0600 ppm
	4/13/2019 16:57:45	0.0700 ppm

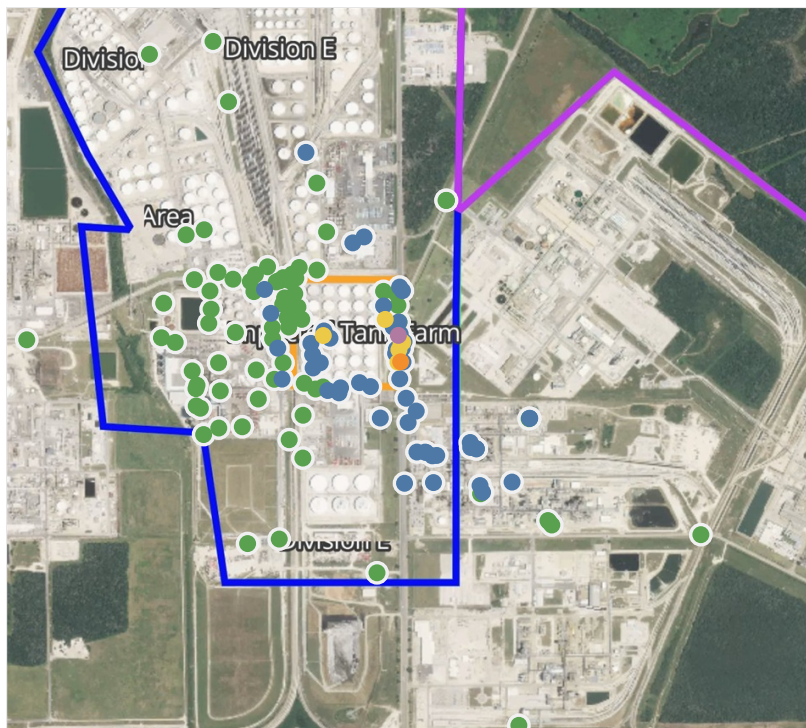
This data has been provided expeditiously to ITC and regulatory agencies for informational and/or operational purposes only. Data reported within this summary is preliminary in nature and has not undergone complete QA/QC (quality assurance/quality control) process. Until this complete QA/QC process is completed, the locations of each reading are approximate in nature and subject to further refinement. As some readings may represent non-breathing zone measurements, the data reported herein may not be suitable to assess potential occupational exposure. Site Assessment readings are not representative of an individual's breathing zone (e.g., container head space, ground level, directly above product, etc.).



# Preliminary Hand- Held Air Monitoring Locations | ITC Deer Park Tank Fire

Reading Date

4/13/2019 5:00:00 PM to 4/13/2019 6:00:00 PM



## Recent Benzene Detections

Location Category	Reading Date	Concentration
Division E	4/13/2019 17:01:56	0.190 ppm
	4/13/2019 17:00:04	0.370 ppm
	4/13/2019 17:06:22	0.140 ppm
	4/13/2019 17:06:03	0.250 ppm
	4/13/2019 17:09:00	0.020 ppm
	4/13/2019 17:10:22	0.070 ppm
	4/13/2019 17:13:31	0.110 ppm
	4/13/2019 17:13:09	0.790 ppm
	4/13/2019 17:18:24	0.030 ppm
	4/13/2019 17:18:49	0.100 ppm
	4/13/2019 17:21:11	0.080 ppm
	4/13/2019 17:21:04	0.370 ppm
	4/13/2019 17:05:57	2.100 ppm
	4/13/2019 17:01:04	0.300 ppm
	4/13/2019 17:24:36	0.100 ppm
	4/13/2019 17:23:08	0.080 ppm
	4/13/2019 17:25:00	0.070 ppm
	4/13/2019 17:30:54	0.030 ppm
	4/13/2019 17:29:28	0.030 ppm
	4/13/2019 17:34:05	0.030 ppm
	4/13/2019 17:33:25	0.800 ppm
	4/13/2019 17:37:30	0.820 ppm
	4/13/2019 17:37:17	0.110 ppm
	4/13/2019 17:39:14	0.890 ppm
	4/13/2019 17:26:08	0.200 ppm
	4/13/2019 17:52:34	0.090 ppm
	4/13/2019 17:57:16	0.440 ppm
	4/13/2019 17:56:10	0.310 ppm
	4/13/2019 17:57:49	0.100 ppm
	4/13/2019 17:59:05	1.210 ppm
Impacted Tank Farm	4/13/2019 17:06:01	0.570 ppm
	4/13/2019 17:15:50	0.800 ppm
	4/13/2019 17:19:30	0.270 ppm
	4/13/2019 17:25:01	0.430 ppm
	4/13/2019 17:33:58	0.120 ppm
	4/13/2019 17:42:36	0.050 ppm
	4/13/2019 17:44:32	0.190 ppm
	4/13/2019 17:47:00	0.090 ppm
	4/13/2019 17:52:21	0.050 ppm
	4/13/2019 17:59:45	0.080 ppm
Industrial Area	4/13/2019 17:09:09	0.030 ppm
	4/13/2019 17:01:21	0.040 ppm
	4/13/2019 17:05:07	0.020 ppm
	4/13/2019 17:02:46	0.060 ppm
	4/13/2019 17:04:01	0.050 ppm
	4/13/2019 17:16:14	0.040 ppm
	4/13/2019 17:11:19	0.030 ppm
	4/13/2019 17:17:18	0.030 ppm
	4/13/2019 17:23:09	0.100 ppm
	4/13/2019 17:25:46	0.050 ppm
	4/13/2019 17:23:49	0.070 ppm
	4/13/2019 17:32:56	0.040 ppm
	4/13/2019 17:26:38	0.050 ppm
	4/13/2019 17:34:23	0.030 ppm
Restricted Community	4/13/2019 17:58:57	0.040 ppm
	4/13/2019 17:14:57	0.100 ppm
	4/13/2019 17:19:26	0.240 ppm
	4/13/2019 17:23:42	0.040 ppm

This data has been provided expeditiously to ITC and regulatory agencies for informational and/or operational purposes only. Data reported within this summary is preliminary in nature and has not undergone complete QA/QC (quality assurance/quality control) process. Until this complete QA/QC process is completed, the locations of each reading are approximate in nature and subject to further refinement. As some readings may represent non-breathing zone measurements, the data reported herein may not be suitable to assess potential occupational exposure. Site Assessment readings are not representative of an individual's breathing zone (e.g., container head space, ground level, directly above product, etc.).

Reading Date  
4/13/2019 5:00:00 PM to 4/13/2019 6:00:00 PM

Benzene Action Level Concentration (ppm)  
 >=1       >=2

PRELIMINARY  
Recent Benzene Detections Greater than 1.00 ppm

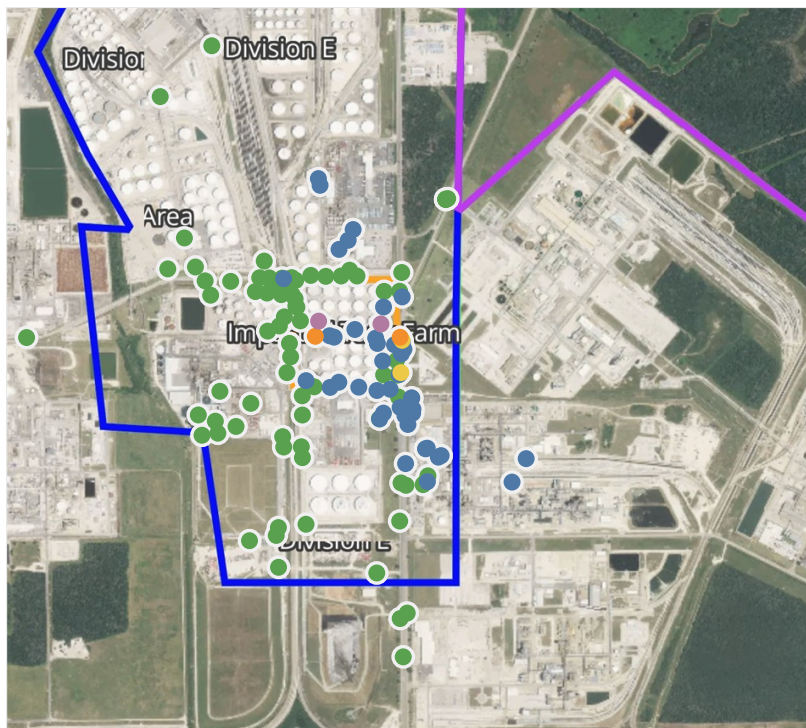
Reading Date	Location Category	GPS	Google Maps URL	Concentration
4/13/2019 17:59:05	Division E	29.7309760,-95.0898630	<a href="https://www.google.com/maps/search/?api=1&amp;query=29.7309760,-95.0898630">https://www.google.com/maps/search/?api=1&amp;query=29.7309760,-95.0898630</a>	1.2100 ppm
4/13/2019 17:05:57	Division E	29.7316750,-95.0899330	<a href="https://www.google.com/maps/search/?api=1&amp;query=29.7316750,-95.0899330">https://www.google.com/maps/search/?api=1&amp;query=29.7316750,-95.0899330</a>	2.1000 ppm



# Preliminary Hand- Held Air Monitoring Locations | ITC Deer Park Tank Fire

## Reading Date

4/13/2019 6:00:00 PM to 4/13/2019 7:00:00 PM



## Recent Benzene Detections

Location Category	Reading Date	Concentration
Division E	4/13/2019 18:01:38	0.350 ppm
	4/13/2019 18:01:26	0.040 ppm
	4/13/2019 18:06:34	0.100 ppm
	4/13/2019 18:06:59	0.200 ppm
	4/13/2019 18:19:20	0.030 ppm
	4/13/2019 18:22:48	0.060 ppm
	4/13/2019 18:22:31	0.050 ppm
	4/13/2019 18:10:12	0.060 ppm
	4/13/2019 18:25:43	0.210 ppm
	4/13/2019 18:16:33	0.090 ppm
	4/13/2019 18:28:31	0.090 ppm
	4/13/2019 18:20:05	0.020 ppm
	4/13/2019 18:31:40	0.050 ppm
	4/13/2019 18:33:39	0.430 ppm
	4/13/2019 18:28:48	0.130 ppm
	4/13/2019 18:38:28	0.030 ppm
	4/13/2019 18:37:19	0.090 ppm
	4/13/2019 18:42:16	0.040 ppm
	4/13/2019 18:45:47	0.030 ppm
	4/13/2019 18:48:07	0.840 ppm
	4/13/2019 18:48:24	0.090 ppm
	4/13/2019 18:49:18	0.030 ppm
	4/13/2019 18:52:17	0.030 ppm
	4/13/2019 18:51:44	0.640 ppm
	4/13/2019 18:55:23	0.070 ppm
	4/13/2019 18:57:23	0.060 ppm
	4/13/2019 18:48:06	1.110 ppm
Impacted Tank Farm	4/13/2019 18:06:03	0.390 ppm
	4/13/2019 18:00:43	2.480 ppm
	4/13/2019 18:14:15	0.170 ppm
	4/13/2019 18:19:08	0.220 ppm
	4/13/2019 18:28:19	0.200 ppm
	4/13/2019 18:34:24	0.200 ppm
	4/13/2019 18:39:26	0.250 ppm
	4/13/2019 18:49:11	1.250 ppm
	4/13/2019 18:46:58	0.100 ppm
	4/13/2019 18:59:42	8.600 ppm
Industrial Area	4/13/2019 18:00:36	0.040 ppm
	4/13/2019 18:13:58	0.050 ppm
	4/13/2019 18:21:42	0.030 ppm
	4/13/2019 18:39:27	0.040 ppm
	4/13/2019 18:40:12	0.040 ppm
	4/13/2019 18:42:21	0.020 ppm
	4/13/2019 18:43:30	0.070 ppm
	4/13/2019 18:49:51	0.200 ppm
	4/13/2019 18:52:30	0.020 ppm
	4/13/2019 18:50:40	0.130 ppm
	4/13/2019 18:53:46	0.040 ppm

This data has been provided expeditiously to ITC and regulatory agencies for informational and/or operational purposes only. Data reported within this summary is preliminary in nature and has not undergone complete QA/QC (quality assurance/quality control) process. Until this complete QA/QC process is completed, the locations of each reading are approximate in nature and subject to further refinement. As some readings may represent non-breathing zone measurements, the data reported herein may not be suitable to assess potential occupational exposure. Site Assessment readings are not representative of an individual's breathing zone (e.g., container head space, ground level, directly above product, etc.).



Reading Date  
4/13/2019 6:00:00 PM to 4/13/2019 7:00:00 PM

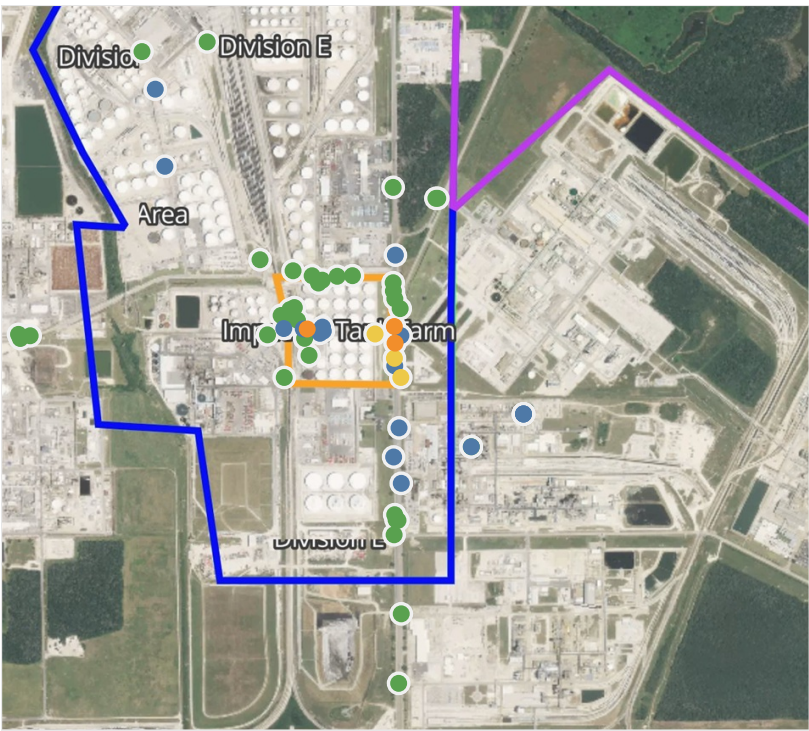
Benzene Action Level Concentration (ppm)  
 >=1       >=2

PRELIMINARY  
Recent Benzene Detections Greater than 1.00 ppm

Reading Date	Location Category	GPS	Google Maps URL	Concentration
4/13/2019 18:59:42	Impacted Tank Farm	29.7320520,-95.0923640	<a href="https://www.google.com/maps/search/?api=1&amp;query=29.7320520,-95.0923640">https://www.google.com/maps/search/?api=1&amp;query=29.7320520,-95.0923640</a>	8.600 ppm
4/13/2019 18:49:11	Impacted Tank Farm	29.7316510,-95.0924640	<a href="https://www.google.com/maps/search/?api=1&amp;query=29.7316510,-95.0924640">https://www.google.com/maps/search/?api=1&amp;query=29.7316510,-95.0924640</a>	1.250 ppm
4/13/2019 18:48:06	Division E	29.7316250,-95.0898790	<a href="https://www.google.com/maps/search/?api=1&amp;query=29.7316250,-95.0898790">https://www.google.com/maps/search/?api=1&amp;query=29.7316250,-95.0898790</a>	1.110 ppm
4/13/2019 18:00:43	Impacted Tank Farm	29.7319770,-95.0904650	<a href="https://www.google.com/maps/search/?api=1&amp;query=29.7319770,-95.0904650">https://www.google.com/maps/search/?api=1&amp;query=29.7319770,-95.0904650</a>	2.480 ppm

# Preliminary Hand- Held Air Monitoring Locations | ITC Deer Park Tank Fire

Reading Date  
4/13/2019 7:00:00 PM to 4/13/2019 8:00:00 PM



## Recent Benzene Detections

Location Category	Reading Date	Concentration
Division E	4/13/2019 19:00:59	0.050 ppm
	4/13/2019 19:03:39	0.030 ppm
	4/13/2019 19:01:04	0.100 ppm
	4/13/2019 19:05:02	0.010 ppm
	4/13/2019 19:03:18	0.810 ppm
	4/13/2019 19:00:19	1.190 ppm
	4/13/2019 19:06:52	0.510 ppm
	4/13/2019 19:11:35	0.450 ppm
	4/13/2019 19:24:49	0.020 ppm
	4/13/2019 19:28:00	0.070 ppm
	4/13/2019 19:28:33	0.190 ppm
	4/13/2019 19:35:55	1.080 ppm
	4/13/2019 19:42:05	0.030 ppm
Impacted Tank Farm	4/13/2019 19:02:15	0.700 ppm
	4/13/2019 19:07:47	0.080 ppm
	4/13/2019 19:44:49	0.250 ppm
	4/13/2019 19:52:43	0.190 ppm
	4/13/2019 19:47:34	1.010 ppm
	4/13/2019 19:54:37	0.170 ppm
Industrial Area	4/13/2019 19:00:02	0.080 ppm
	4/13/2019 19:02:09	0.150 ppm
	4/13/2019 19:07:45	0.050 ppm
	4/13/2019 19:12:04	0.110 ppm

This data has been provided expeditiously to ITC and regulatory agencies for informational and/or operational purposes only. Data reported within this summary is preliminary in nature and has not undergone complete QA/QC (quality assurance/quality control) process. Until this complete QA/QC process is completed, the locations of each reading are approximate in nature and subject to further refinement. As some readings may represent non-breathing zone measurements, the data reported herein may not be suitable to assess potential occupational exposure. Site Assessment readings are not representative of an individual's breathing zone (e.g., container head space, ground level, directly above product, etc.).

Reading Date  
4/13/2019 7:00:00 PM to 4/13/2019 8:00:00 PM

Benzene Action Level Concentration (ppm)  
 >=1

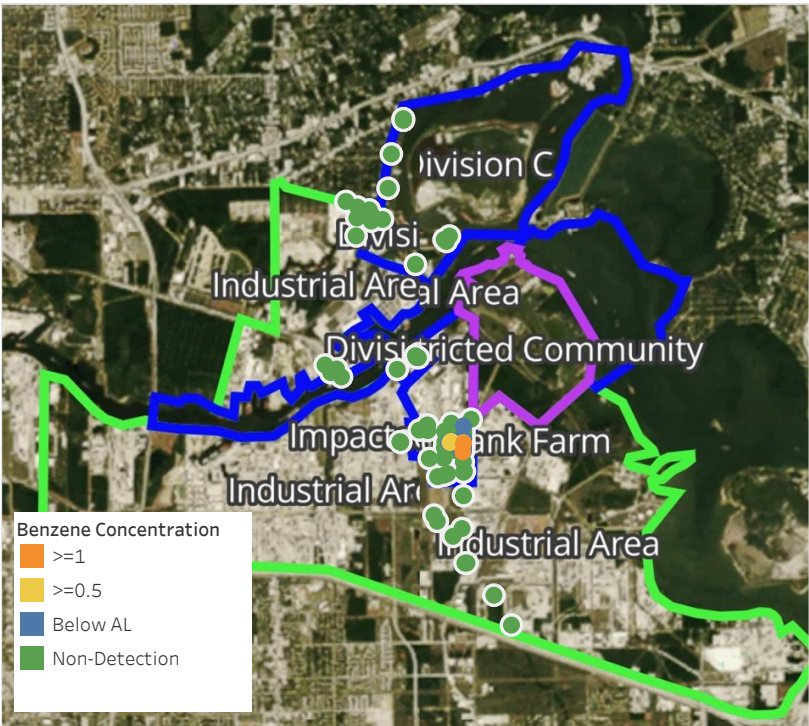
PRELIMINARY  
Recent Benzene Detections Greater than 1.00 ppm

Reading Date	Location Category	GPS	Google Maps URL	Concentration
4/13/2019 19:47:34	Impacted Tank Farm	29.7317910,-95.0925590	<a href="https://www.google.com/maps/search/?api=1&amp;query=29.7317910,-95.0925590">https://www.google.com/maps/search/?api=1&amp;query=29.7317910,-95.0925590</a>	1.0100 ppm
4/13/2019 19:35:55	Division E	29.7318570,-95.0899030	<a href="https://www.google.com/maps/search/?api=1&amp;query=29.7318570,-95.0899030">https://www.google.com/maps/search/?api=1&amp;query=29.7318570,-95.0899030</a>	1.0800 ppm
4/13/2019 19:00:19	Division E	29.7314170,-95.0898810	<a href="https://www.google.com/maps/search/?api=1&amp;query=29.7314170,-95.0898810">https://www.google.com/maps/search/?api=1&amp;query=29.7314170,-95.0898810</a>	1.1900 ppm



# Preliminary Hand- Held Air Monitoring Locations | ITC Deer Park Tank Fire

Reading Date  
4/13/2019 8:00:00 PM to 4/13/2019 9:00:00 PM



## Recent Benzene Detections

Location Category	Reading Date	Concentration
Division E	4/13/2019 20:00:19	0.340 ppm
	4/13/2019 20:00:28	0.030 ppm
	4/13/2019 20:09:39	1.030 ppm
	4/13/2019 20:05:59	0.410 ppm
	4/13/2019 20:12:01	0.100 ppm
	4/13/2019 20:13:46	0.070 ppm
	4/13/2019 20:03:54	0.830 ppm
	4/13/2019 20:18:54	0.080 ppm
	4/13/2019 20:17:33	0.140 ppm
	4/13/2019 20:22:38	0.080 ppm
	4/13/2019 20:22:12	0.120 ppm
	4/13/2019 20:29:09	0.430 ppm
	4/13/2019 20:27:10	0.170 ppm
	4/13/2019 20:29:35	0.050 ppm
	4/13/2019 20:38:08	0.270 ppm
Impacted Tank Farm	4/13/2019 20:48:45	0.020 ppm
	4/13/2019 20:00:01	0.380 ppm
	4/13/2019 20:04:10	0.060 ppm
	4/13/2019 20:02:55	0.760 ppm
	4/13/2019 20:02:48	0.300 ppm
	4/13/2019 20:16:36	0.160 ppm
	4/13/2019 20:16:59	0.260 ppm
	4/13/2019 20:20:44	0.240 ppm
	4/13/2019 20:20:56	0.520 ppm
	4/13/2019 20:32:31	0.050 ppm
	4/13/2019 20:41:01	0.100 ppm
	4/13/2019 20:42:25	0.060 ppm
	4/13/2019 20:40:43	1.230 ppm
	4/13/2019 20:46:33	0.100 ppm

This data has been provided expeditiously to ITC and regulatory agencies for informational and/or operational purposes only. Data reported within this summary is preliminary in nature and has not undergone complete QA/QC (quality assurance/quality control) process. Until this complete QA/QC process is completed, the locations of each reading are approximate in nature and subject to further refinement. As some readings may represent non-breathing zone measurements, the data reported herein may not be suitable to assess potential occupational exposure. Site Assessment readings are not representative of an individual's breathing zone (e.g., container head space, ground level, directly above product, etc.).

Reading Date  
4/13/2019 8:00:00 PM to 4/13/2019 9:00:00 PM

Benzene Action Level Concentration (ppm)  
 >=1

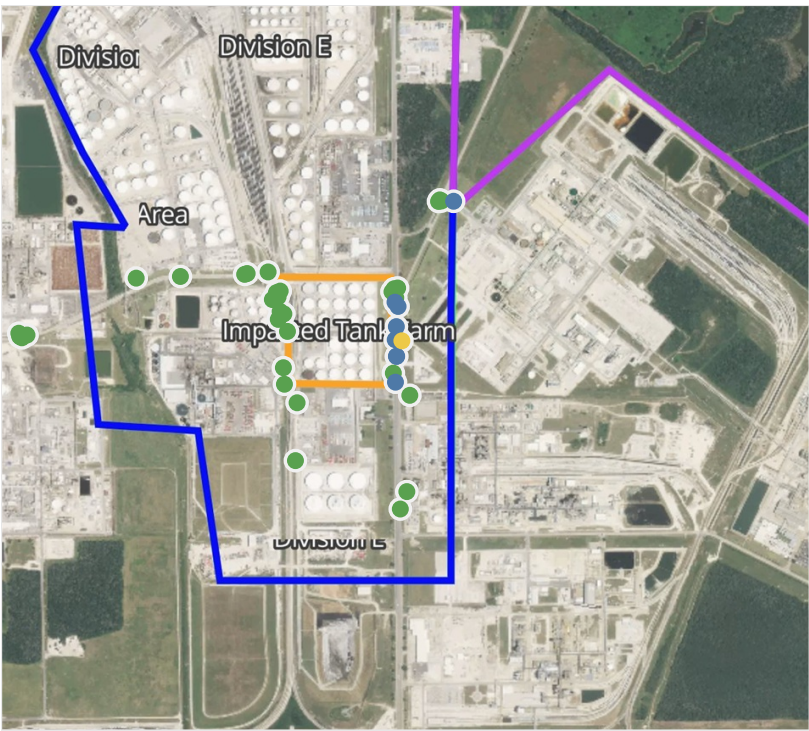
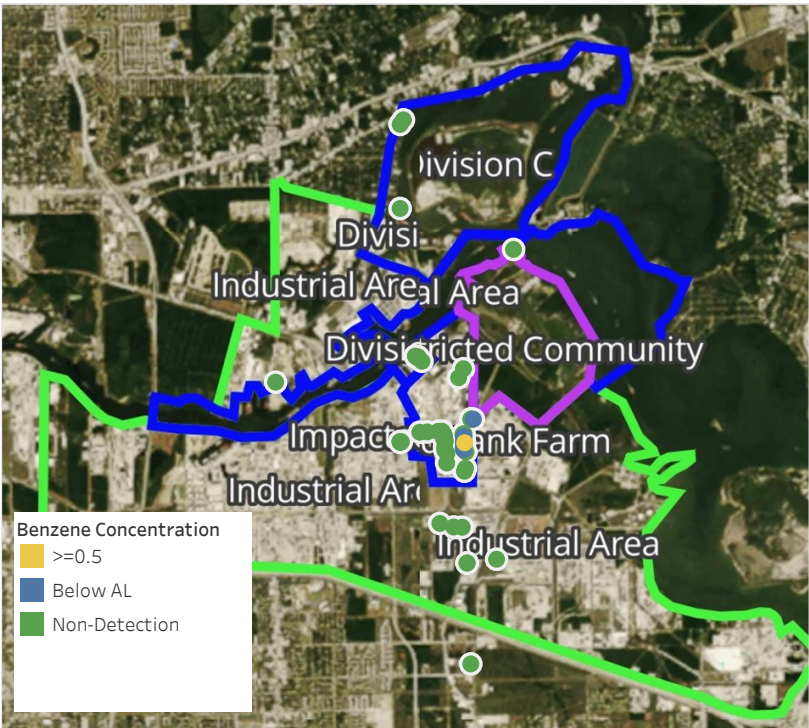
PRELIMINARY  
Recent Benzene Detections Greater than 1.00 ppm

Reading Date	Location Category	GPS	Google Maps URL	Concentration
4/13/2019 20:40:43	Impacted Tank Farm	29.7300570,-95.0900250	<a href="https://www.google.com/maps/search/?api=1&amp;query=29.7300570,-95.0900250">https://www.google.com/maps/search/?api=1&amp;query=29.7300570,-95.0900250</a>	1.2300 ppm
4/13/2019 20:09:39	Division E	29.7313970,-95.0898760	<a href="https://www.google.com/maps/search/?api=1&amp;query=29.7313970,-95.0898760">https://www.google.com/maps/search/?api=1&amp;query=29.7313970,-95.0898760</a>	1.0300 ppm



# Preliminary Hand- Held Air Monitoring Locations | ITC Deer Park Tank Fire

Reading Date  
4/13/2019 9:00:00 PM to 4/13/2019 10:00:00 PM



## Recent Benzene Detections

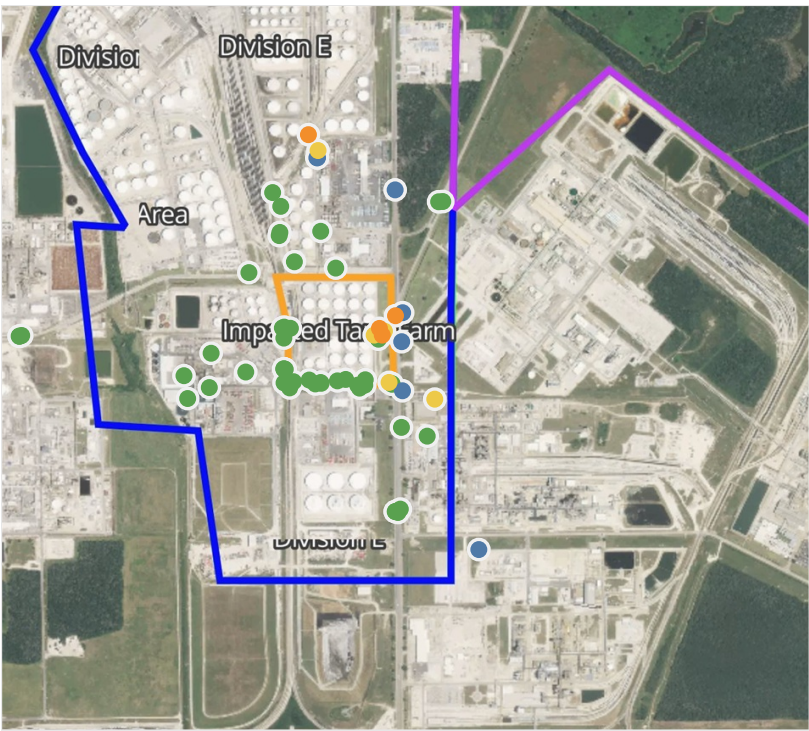
Location Category	Reading Date	Concentration
Division E	4/13/2019 21:36:14	0.3700 ppm
	4/13/2019 21:27:23	0.3900 ppm
	4/13/2019 21:31:00	0.1200 ppm
	4/13/2019 21:34:01	0.0400 ppm
	4/13/2019 21:41:11	0.2300 ppm
	4/13/2019 21:41:00	0.0600 ppm
	4/13/2019 21:49:06	0.0800 ppm
	4/13/2019 21:48:54	0.5300 ppm
	4/13/2019 21:57:49	0.0500 ppm
	4/13/2019 21:50:43	0.2100 ppm
Restricted Community	4/13/2019 21:50:43	0.2100 ppm

This data has been provided expeditiously to ITC and regulatory agencies for informational and/or operational purposes only. Data reported within this summary is preliminary in nature and has not undergone complete QA/QC (quality assurance/quality control) process. Until this complete QA/QC process is completed, the locations of each reading are approximate in nature and subject to further refinement. As some readings may represent non-breathing zone measurements, the data reported herein may not be suitable to assess potential occupational exposure. Site Assessment readings are not representative of an individual's breathing zone (e.g., container head space, ground level, directly above product, etc.).



# Preliminary Hand- Held Air Monitoring Locations | ITC Deer Park Tank Fire

Reading Date  
4/13/2019 10:00:00 PM to 4/13/2019 11:00:00 PM



## Recent Benzene Detections

Location Category	Reading Date	Concentration
Division E	4/13/2019 22:09:29	0.380 ppm
	4/13/2019 22:17:10	0.260 ppm
	4/13/2019 22:30:12	0.030 ppm
	4/13/2019 22:46:58	0.650 ppm
	4/13/2019 22:36:24	0.080 ppm
	4/13/2019 22:42:17	0.210 ppm
	4/13/2019 22:44:11	1.850 ppm
	4/13/2019 22:53:34	0.710 ppm
	4/13/2019 22:58:09	1.510 ppm
	4/13/2019 22:52:47	0.260 ppm
Impacted Tank Farm	4/13/2019 22:48:54	0.300 ppm
	4/13/2019 22:49:53	0.880 ppm
	4/13/2019 22:44:23	0.440 ppm
	4/13/2019 22:46:20	1.100 ppm
	4/13/2019 22:53:36	0.600 ppm
	4/13/2019 22:59:01	1.350 ppm
	4/13/2019 22:52:49	0.740 ppm
	4/13/2019 22:55:17	0.100 ppm
	4/13/2019 22:59:14	0.200 ppm
	4/13/2019 22:56:57	0.740 ppm

This data has been provided expeditiously to ITC and regulatory agencies for informational and/or operational purposes only. Data reported within this summary is preliminary in nature and has not undergone complete QA/QC (quality assurance/quality control) process. Until this complete QA/QC process is completed, the locations of each reading are approximate in nature and subject to further refinement. As some readings may represent non-breathing zone measurements, the data reported herein may not be suitable to assess potential occupational exposure. Site Assessment readings are not representative of an individual's breathing zone (e.g., container head space, ground level, directly above product, etc.).

Reading Date  
4/13/2019 10:00:00 PM to 4/13/2019 11:00:00 PM

Benzene Action Level Concentration (ppm)  
 >=1

PRELIMINARY  
Recent Benzene Detections Greater than 1.00 ppm

Reading Date	Location Category	GPS	Google Maps URL	Concentration
4/13/2019 22:59:01	Impacted Tank Farm	29.7318070,-95.0903570	<a href="https://www.google.com/maps/search/?api=1&amp;query=29.7318070,-95.0903570">https://www.google.com/maps/search/?api=1&amp;query=29.7318070,-95.0903570</a>	1.3500 ppm
4/13/2019 22:58:09	Division E	29.7321420,-95.0898680	<a href="https://www.google.com/maps/search/?api=1&amp;query=29.7321420,-95.0898680">https://www.google.com/maps/search/?api=1&amp;query=29.7321420,-95.0898680</a>	1.5100 ppm
4/13/2019 22:46:20	Impacted Tank Farm	29.7316290,-95.0902720	<a href="https://www.google.com/maps/search/?api=1&amp;query=29.7316290,-95.0902720">https://www.google.com/maps/search/?api=1&amp;query=29.7316290,-95.0902720</a>	1.1000 ppm
4/13/2019 22:44:11	Division E	29.7369340,-95.0925220	<a href="https://www.google.com/maps/search/?api=1&amp;query=29.7369340,-95.0925220">https://www.google.com/maps/search/?api=1&amp;query=29.7369340,-95.0925220</a>	1.8500 ppm