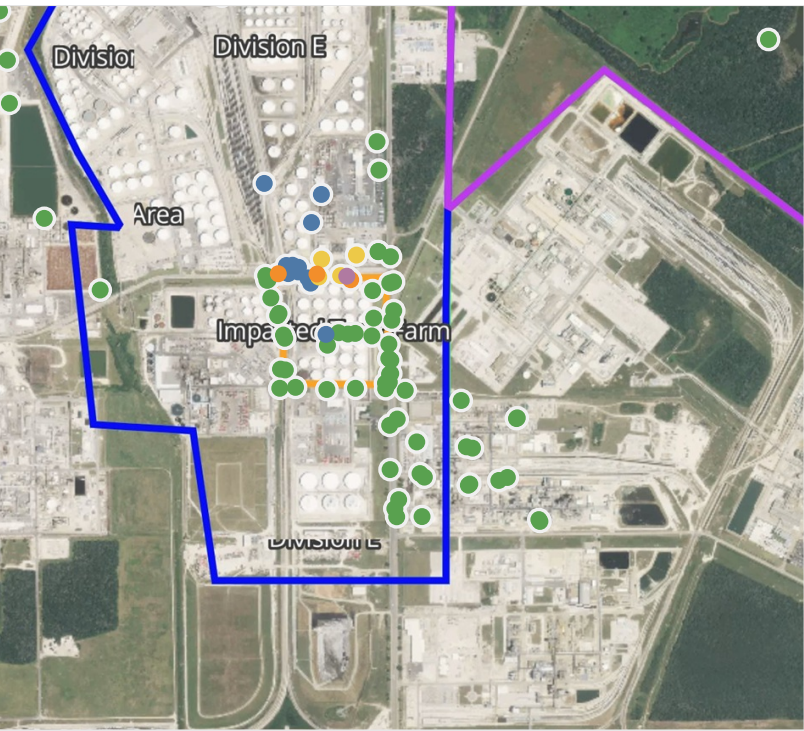


# Preliminary Hand- Held Air Monitoring Locations | ITC Deer Park Tank Fire

Reading Date  
4/16/2019 11:00:00 PM to 4/17/2019 12:00:00 AM



## Recent Benzene Detections

Location Category	Reading Date	Concentration
Division E	4/16/2019 23:09:33	0.400 ppm
	4/16/2019 23:36:41	0.400 ppm
	4/16/2019 23:40:32	0.225 ppm
	4/16/2019 23:38:55	0.100 ppm
	4/16/2019 23:41:51	0.110 ppm
	4/16/2019 23:48:54	1.890 ppm
	4/16/2019 23:43:12	0.320 ppm
	4/16/2019 23:46:41	0.960 ppm
	4/16/2019 23:49:08	0.050 ppm
	4/16/2019 23:45:32	0.750 ppm
	4/16/2019 23:42:11	0.300 ppm
	4/16/2019 23:34:36	0.600 ppm
	4/16/2019 23:40:43	0.250 ppm
	4/16/2019 23:59:15	2.470 ppm
	4/16/2019 23:54:56	0.810 ppm
	4/16/2019 23:44:30	0.420 ppm
	4/16/2019 23:48:02	1.080 ppm
	4/16/2019 23:58:31	1.650 ppm
	4/16/2019 23:52:20	0.670 ppm
Impacted Tank Farm	4/16/2019 23:14:51	0.040 ppm

This data has been provided expeditiously to ITC and regulatory agencies for informational and/or operational purposes only. Data reported within this summary is preliminary in nature and has not undergone complete QA/QC (quality assurance/quality control) process. Until this complete QA/QC process is completed, the locations of each reading are approximate in nature and subject to further refinement. As some readings may represent non-breathing zone measurements, the data reported herein may not be suitable to assess potential occupational exposure. Site Assessment readings are not representative of an individual's breathing zone (e.g., container head space, ground level, directly above product, etc.).

Reading Date  
4/16/2019 11:00:00 PM to 4/17/2019 12:00:00 AM

Benzene Action Level Concentration (ppm)  
 >=1       >=2

PRELIMINARY  
Recent Benzene Detections Greater than 1.00 ppm

Reading Date	Location Category	GPS	Google Maps URL	Concentration
4/16/2019 23:59:15	Division E	29.7331880,-95.0912010	<a href="https://www.google.com/maps/search/?api=1&amp;query=29.7331880,-95.0912010">https://www.google.com/maps/search/?api=1&amp;query=29.7331880,-95.0912010</a>	2.470 ppm
4/16/2019 23:58:31	Division E	29.7330950,-95.0910820	<a href="https://www.google.com/maps/search/?api=1&amp;query=29.7330950,-95.0910820">https://www.google.com/maps/search/?api=1&amp;query=29.7330950,-95.0910820</a>	1.650 ppm
4/16/2019 23:48:54	Division E	29.7332530,-95.0932880	<a href="https://www.google.com/maps/search/?api=1&amp;query=29.7332530,-95.0932880">https://www.google.com/maps/search/?api=1&amp;query=29.7332530,-95.0932880</a>	1.890 ppm
4/16/2019 23:48:02	Division E	29.7332450,-95.0921080	<a href="https://www.google.com/maps/search/?api=1&amp;query=29.7332450,-95.0921080">https://www.google.com/maps/search/?api=1&amp;query=29.7332450,-95.0921080</a>	1.080 ppm



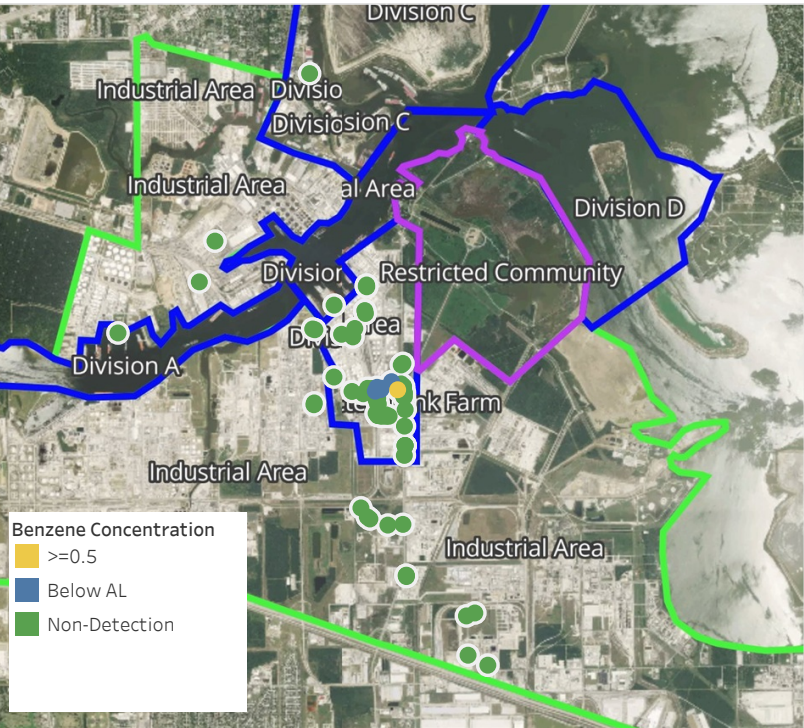


**Please Note:** These updates display data from the 2<sup>nd</sup> 80's Fire site (Impacted Tank Farm), in the industrial areas surrounding the 2<sup>nd</sup> 80's Fire site (US Coast Guard Division E), within the Houston Ship Channel (US Coast Guard Divisions A-D), and in the industrial areas north and south of the Houston Ship Channel (Industrial Area). Real-time air monitoring data for the surrounding communities are communicated daily in a separate report.



# Preliminary Hand- Held Air Monitoring Locations | ITC Deer Park Tank Fire

Reading Date  
4/17/2019 12:00:00 AM to 4/17/2019 1:00:00 AM



## Recent Benzene Detections

Location Category	Reading Date	Concentration
Division E	4/17/2019 00:00:23	0.2250 ppm
	4/17/2019 00:23:56	0.1750 ppm
	4/17/2019 00:35:51	0.4000 ppm
	4/17/2019 00:05:36	0.8400 ppm
	4/17/2019 00:56:07	0.0800 ppm
	4/17/2019 00:59:51	0.1000 ppm
	4/17/2019 00:43:15	0.2500 ppm

This data has been provided expeditiously to ITC and regulatory agencies for informational and/or operational purposes only. Data reported within this summary is preliminary in nature and has not undergone complete QA/QC (quality assurance/quality control) process. Until this complete QA/QC process is completed, the locations of each reading are approximate in nature and subject to further refinement. As some readings may represent non-breathing zone measurements, the data reported herein may not be suitable to assess potential occupational exposure. Site Assessment readings are not representative of an individual's breathing zone (e.g., container head space, ground level, directly above product, etc.).



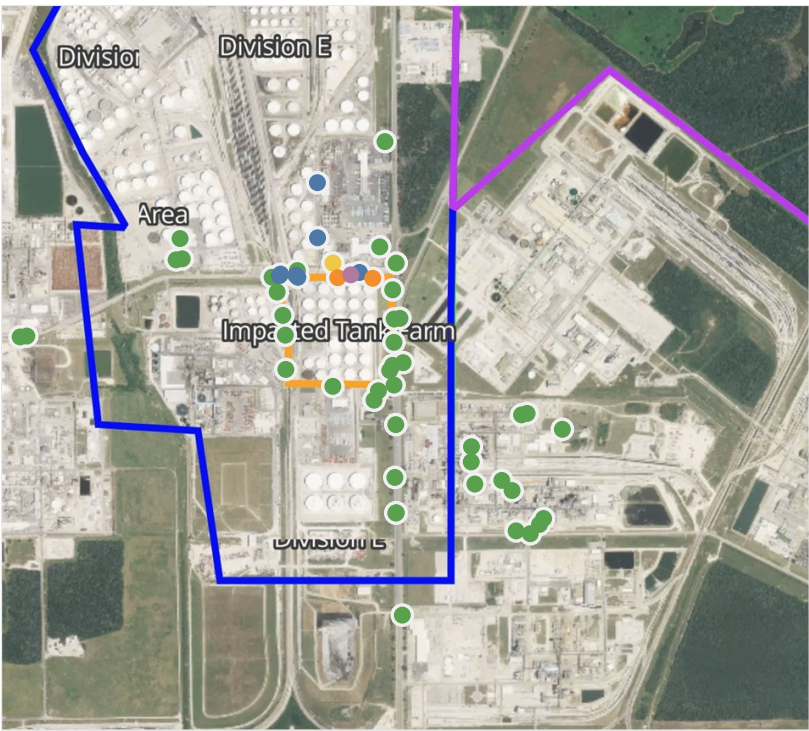
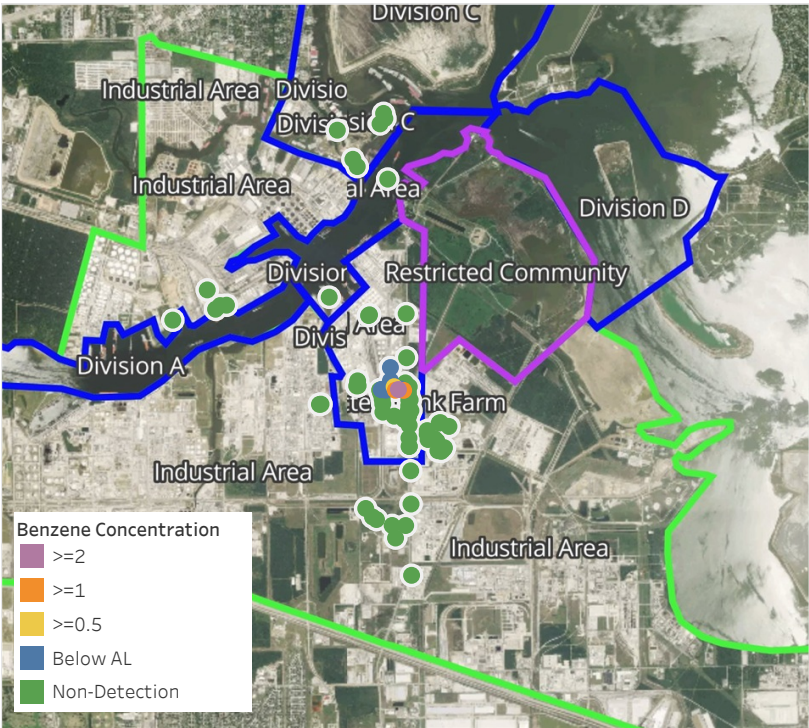


**Please Note:** These updates display data from the 2<sup>nd</sup> 80's Fire site (Impacted Tank Farm), in the industrial areas surrounding the 2<sup>nd</sup> 80's Fire site (US Coast Guard Division E), within the Houston Ship Channel (US Coast Guard Divisions A-D), and in the industrial areas north and south of the Houston Ship Channel (Industrial Area). Real-time air monitoring data for the surrounding communities are communicated daily in a separate report.



# Preliminary Hand- Held Air Monitoring Locations | ITC Deer Park Tank Fire

Reading Date  
4/17/2019 1:00:00 AM to 4/17/2019 2:00:00 AM



## Recent Benzene Detections

Location Category	Reading Date	Concentration
Division E	4/17/2019 01:00:52	0.050 ppm
	4/17/2019 01:16:55	0.970 ppm
	4/17/2019 01:21:54	0.310 ppm
	4/17/2019 01:25:36	0.300 ppm
	4/17/2019 01:27:52	0.280 ppm
	4/17/2019 01:47:18	2.390 ppm
	4/17/2019 01:45:37	1.350 ppm
	4/17/2019 01:50:08	1.010 ppm
	4/17/2019 01:36:16	0.270 ppm
	4/17/2019 01:12:17	0.225 ppm
	4/17/2019 01:56:30	0.050 ppm

This data has been provided expeditiously to ITC and regulatory agencies for informational and/or operational purposes only. Data reported within this summary is preliminary in nature and has not undergone complete QA/QC (quality assurance/quality control) process. Until this complete QA/QC process is completed, the locations of each reading are approximate in nature and subject to further refinement. As some readings may represent non-breathing zone measurements, the data reported herein may not be suitable to assess potential occupational exposure. Site Assessment readings are not representative of an individual's breathing zone (e.g., container head space, ground level, directly above product, etc.).

Reading Date  
4/17/2019 1:00:00 AM to 4/17/2019 2:00:00 AM

Benzene Action Level Concentration (ppm)  
 >=1       >=2

PRELIMINARY  
Recent Benzene Detections Greater than 1.00 ppm

Reading Date	Location Category	GPS	Google Maps URL	Concentration
4/17/2019 01:50:08	Division E	29.7331330,-95.0905620	<a href="https://www.google.com/maps/search/?api=1&amp;query=29.7331330,-95.0905620">https://www.google.com/maps/search/?api=1&amp;query=29.7331330,-95.0905620</a>	1.010 ppm
4/17/2019 01:47:18	Division E	29.7332240,-95.0912310	<a href="https://www.google.com/maps/search/?api=1&amp;query=29.7332240,-95.0912310">https://www.google.com/maps/search/?api=1&amp;query=29.7332240,-95.0912310</a>	2.390 ppm
4/17/2019 01:45:37	Division E	29.7331490,-95.0916280	<a href="https://www.google.com/maps/search/?api=1&amp;query=29.7331490,-95.0916280">https://www.google.com/maps/search/?api=1&amp;query=29.7331490,-95.0916280</a>	1.350 ppm



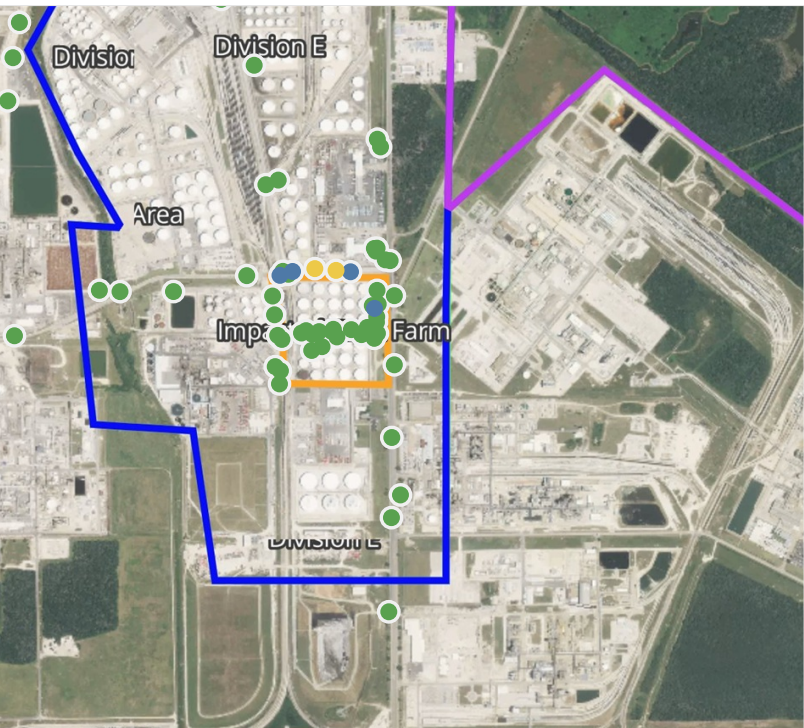


**Please Note:** These updates display data from the 2<sup>nd</sup> 80's Fire site (Impacted Tank Farm), in the industrial areas surrounding the 2<sup>nd</sup> 80's Fire site (US Coast Guard Division E), within the Houston Ship Channel (US Coast Guard Divisions A-D), and in the industrial areas north and south of the Houston Ship Channel (Industrial Area). Real-time air monitoring data for the surrounding communities are communicated daily in a separate report.



# Preliminary Hand- Held Air Monitoring Locations | ITC Deer Park Tank Fire

Reading Date  
4/17/2019 2:00:00 AM to 4/17/2019 3:00:00 AM



## Recent Benzene Detections

Location Category	Reading Date	Concentration
Division E	4/17/2019 02:08:16	0.7300 ppm
	4/17/2019 02:04:21	0.8000 ppm
	4/17/2019 02:10:41	0.2400 ppm
	4/17/2019 02:00:40	0.2000 ppm
	4/17/2019 02:17:19	0.2200 ppm
Impacted Tank Farm	4/17/2019 02:36:09	0.0600 ppm

This data has been provided expeditiously to ITC and regulatory agencies for informational and/or operational purposes only. Data reported within this summary is preliminary in nature and has not undergone complete QA/QC (quality assurance/quality control) process. Until this complete QA/QC process is completed, the locations of each reading are approximate in nature and subject to further refinement. As some readings may represent non-breathing zone measurements, the data reported herein may not be suitable to assess potential occupational exposure. Site Assessment readings are not representative of an individual's breathing zone (e.g., container head space, ground level, directly above product, etc.).

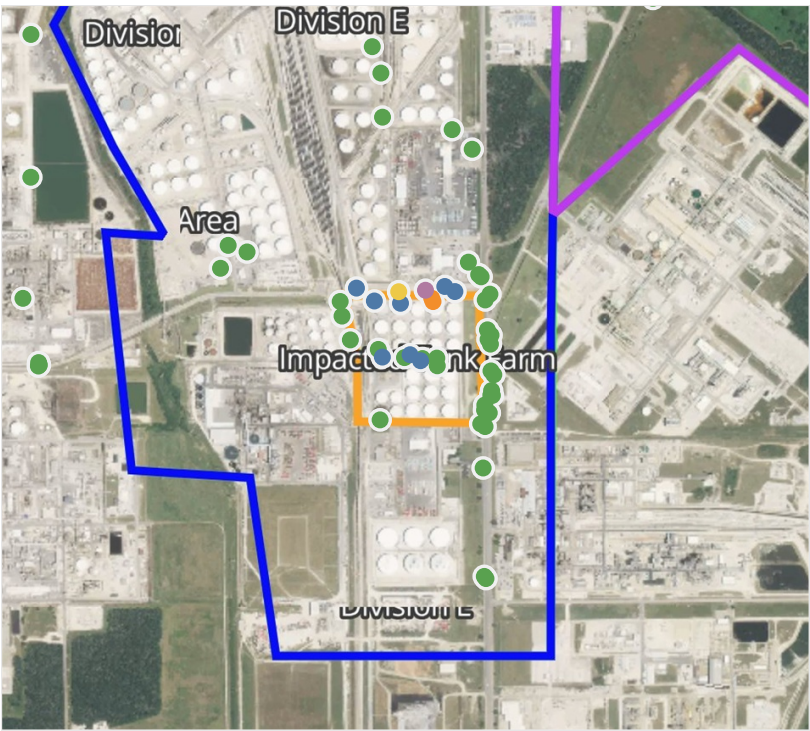


**Please Note:** These updates display data from the 2<sup>nd</sup> 80's Fire site (Impacted Tank Farm), in the industrial areas surrounding the 2<sup>nd</sup> 80's Fire site (US Coast Guard Division E), within the Houston Ship Channel (US Coast Guard Divisions A-D), and in the industrial areas north and south of the Houston Ship Channel (Industrial Area). Real-time air monitoring data for the surrounding communities are communicated daily in a separate report.



# Preliminary Hand- Held Air Monitoring Locations | ITC Deer Park Tank Fire

Reading Date  
4/17/2019 3:00:00 AM to 4/17/2019 4:00:00 AM



## Recent Benzene Detections

Location Category	Reading Date	Concentration
Division E	4/17/2019 03:11:11	0.050 ppm
	4/17/2019 03:15:30	0.190 ppm
	4/17/2019 03:18:30	0.360 ppm
	4/17/2019 03:28:20	1.080 ppm
	4/17/2019 03:22:12	1.940 ppm
	4/17/2019 03:53:40	2.200 ppm
	4/17/2019 03:47:18	2.910 ppm
	4/17/2019 03:52:50	0.570 ppm
	4/17/2019 03:40:07	0.150 ppm
	4/17/2019 03:58:15	0.060 ppm
Impacted Tank Farm	4/17/2019 03:47:15	0.040 ppm
	4/17/2019 03:55:05	0.040 ppm
	4/17/2019 03:51:42	0.060 ppm

This data has been provided expeditiously to ITC and regulatory agencies for informational and/or operational purposes only. Data reported within this summary is preliminary in nature and has not undergone complete QA/QC (quality assurance/quality control) process. Until this complete QA/QC process is completed, the locations of each reading are approximate in nature and subject to further refinement. As some readings may represent non-breathing zone measurements, the data reported herein may not be suitable to assess potential occupational exposure. Site Assessment readings are not representative of an individual's breathing zone (e.g., container head space, ground level, directly above product, etc.).

Reading Date  
4/17/2019 3:00:00 AM to 4/17/2019 4:00:00 AM

Benzene Action Level Concentration (ppm)  
 >=1       >=2

PRELIMINARY  
Recent Benzene Detections Greater than 1.00 ppm

Reading Date	Location Category	GPS	Google Maps URL	Concentration
4/17/2019 03:53:40	Division E			2.200 ppm
4/17/2019 03:47:18	Division E	29.7332600,-95.0913930	<a href="https://www.google.com/maps/search/?api=1&amp;query=29.7332600,-95.0913930">https://www.google.com/maps/search/?api=1&amp;query=29.7332600,-95.0913930</a>	2.910 ppm
4/17/2019 03:28:20	Division E	29.7330820,-95.0912330	<a href="https://www.google.com/maps/search/?api=1&amp;query=29.7330820,-95.0912330">https://www.google.com/maps/search/?api=1&amp;query=29.7330820,-95.0912330</a>	1.080 ppm
4/17/2019 03:22:12	Division E	29.7330080,-95.0912000	<a href="https://www.google.com/maps/search/?api=1&amp;query=29.7330080,-95.0912000">https://www.google.com/maps/search/?api=1&amp;query=29.7330080,-95.0912000</a>	1.940 ppm



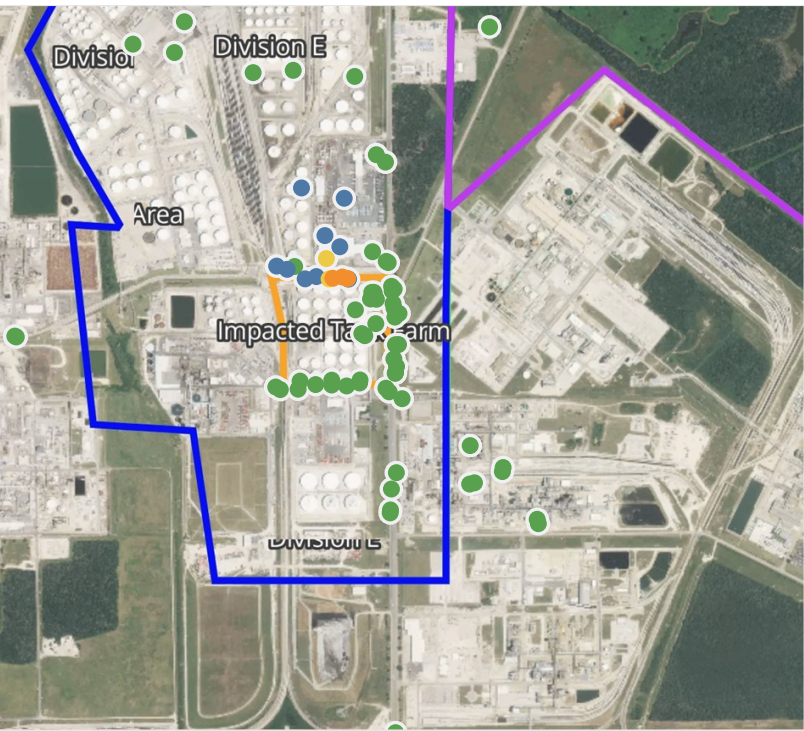


**Please Note:** These updates display data from the 2<sup>nd</sup> 80's Fire site (Impacted Tank Farm), in the industrial areas surrounding the 2<sup>nd</sup> 80's Fire site (US Coast Guard Division E), within the Houston Ship Channel (US Coast Guard Divisions A-D), and in the industrial areas north and south of the Houston Ship Channel (Industrial Area). Real-time air monitoring data for the surrounding communities are communicated daily in a separate report.



# Preliminary Hand- Held Air Monitoring Locations | ITC Deer Park Tank Fire

Reading Date  
4/17/2019 4:00:00 AM to 4/17/2019 5:00:00 AM



## Recent Benzene Detections

Location Category	Reading Date	Concentration
Division E	4/17/2019 04:04:03	0.250 ppm
	4/17/2019 04:25:27	1.520 ppm
	4/17/2019 04:20:02	1.980 ppm
	4/17/2019 04:36:16	0.760 ppm
	4/17/2019 04:28:08	0.300 ppm
	4/17/2019 04:31:12	1.850 ppm
	4/17/2019 04:39:58	0.480 ppm
	4/17/2019 04:44:21	0.130 ppm
	4/17/2019 04:49:48	0.070 ppm
	4/17/2019 04:43:26	0.910 ppm
	4/17/2019 04:40:12	0.110 ppm
	4/17/2019 04:35:17	0.140 ppm
	4/17/2019 04:49:53	0.230 ppm
	4/17/2019 04:52:17	0.180 ppm

This data has been provided expeditiously to ITC and regulatory agencies for informational and/or operational purposes only. Data reported within this summary is preliminary in nature and has not undergone complete QA/QC (quality assurance/quality control) process. Until this complete QA/QC process is completed, the locations of each reading are approximate in nature and subject to further refinement. As some readings may represent non-breathing zone measurements, the data reported herein may not be suitable to assess potential occupational exposure. Site Assessment readings are not representative of an individual's breathing zone (e.g., container head space, ground level, directly above product, etc.).



Reading Date  
4/17/2019 4:00:00 AM to 4/17/2019 5:00:00 AM

Benzene Action Level Concentration (ppm)  
 >=1

PRELIMINARY  
Recent Benzene Detections Greater than 1.00 ppm

Reading Date	Location Category	GPS	Google Maps URL	Concentration
4/17/2019 04:31:12	Division E	29.7331340,-95.0916270	<a href="https://www.google.com/maps/search/?api=1&amp;query=29.7331340,-95.0916270">https://www.google.com/maps/search/?api=1&amp;query=29.7331340,-95.0916270</a>	1.8500 ppm
4/17/2019 04:25:27	Division E	29.7331670,-95.0913330	<a href="https://www.google.com/maps/search/?api=1&amp;query=29.7331670,-95.0913330">https://www.google.com/maps/search/?api=1&amp;query=29.7331670,-95.0913330</a>	1.5200 ppm
4/17/2019 04:20:02	Division E	29.7331250,-95.0911740	<a href="https://www.google.com/maps/search/?api=1&amp;query=29.7331250,-95.0911740">https://www.google.com/maps/search/?api=1&amp;query=29.7331250,-95.0911740</a>	1.9800 ppm

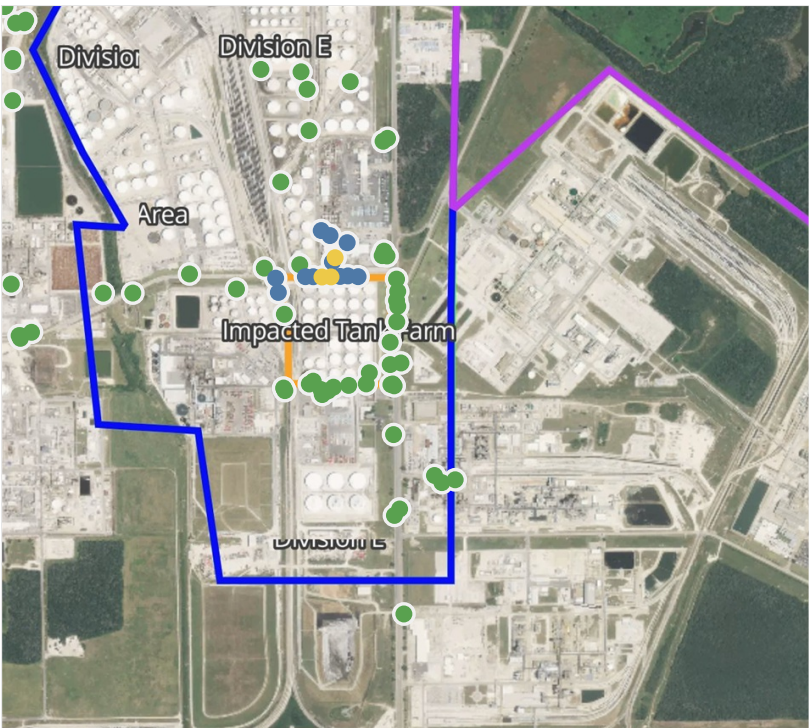


**Please Note:** These updates display data from the 2<sup>nd</sup> 80's Fire site (Impacted Tank Farm), in the industrial areas surrounding the 2<sup>nd</sup> 80's Fire site (US Coast Guard Division E), within the Houston Ship Channel (US Coast Guard Divisions A-D), and in the industrial areas north and south of the Houston Ship Channel (Industrial Area). Real-time air monitoring data for the surrounding communities are communicated daily in a separate report.



# Preliminary Hand- Held Air Monitoring Locations | ITC Deer Park Tank Fire

Reading Date  
4/17/2019 5:00:00 AM to 4/17/2019 6:00:00 AM



## Recent Benzene Detections

Location Category	Reading Date	Concentration
Division E	4/17/2019 05:17:41	0.4500 ppm
	4/17/2019 05:13:03	0.6800 ppm
	4/17/2019 05:09:56	0.1700 ppm
	4/17/2019 05:13:50	0.2800 ppm
	4/17/2019 05:22:54	0.6400 ppm
	4/17/2019 05:16:20	0.4900 ppm
	4/17/2019 05:19:58	0.4300 ppm
	4/17/2019 05:25:37	0.6500 ppm
	4/17/2019 05:29:42	0.1700 ppm
	4/17/2019 05:33:02	0.1000 ppm
	4/17/2019 05:39:04	0.0100 ppm
	4/17/2019 05:36:56	0.0500 ppm
	4/17/2019 05:42:34	0.3500 ppm
	4/17/2019 05:40:12	0.0600 ppm

This data has been provided expeditiously to ITC and regulatory agencies for informational and/or operational purposes only. Data reported within this summary is preliminary in nature and has not undergone complete QA/QC (quality assurance/quality control) process. Until this complete QA/QC process is completed, the locations of each reading are approximate in nature and subject to further refinement. As some readings may represent non-breathing zone measurements, the data reported herein may not be suitable to assess potential occupational exposure. Site Assessment readings are not representative of an individual's breathing zone (e.g., container head space, ground level, directly above product, etc.).



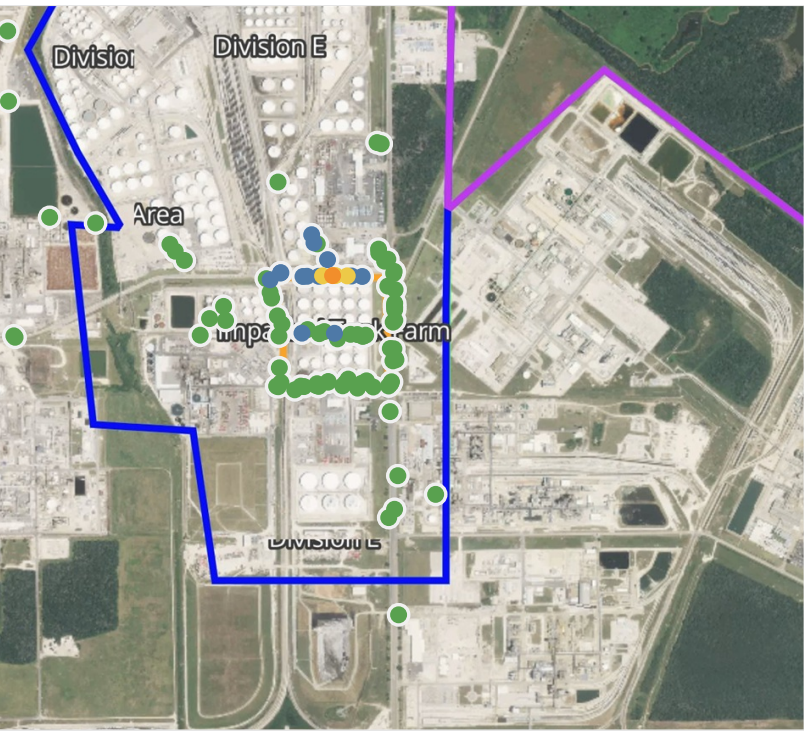


**Please Note:** These updates display data from the 2<sup>nd</sup> 80's Fire site (Impacted Tank Farm), in the industrial areas surrounding the 2<sup>nd</sup> 80's Fire site (US Coast Guard Division E), within the Houston Ship Channel (US Coast Guard Divisions A-D), and in the industrial areas north and south of the Houston Ship Channel (Industrial Area). Real-time air monitoring data for the surrounding communities are communicated daily in a separate report.



# Preliminary Hand- Held Air Monitoring Locations | ITC Deer Park Tank Fire

Reading Date  
4/17/2019 6:00:00 AM to 4/17/2019 7:00:00 AM



## Recent Benzene Detections

Location Category	Reading Date	Concentration
Division E	4/17/2019 06:14:02	0.030 ppm
	4/17/2019 06:15:38	0.080 ppm
	4/17/2019 06:17:46	0.250 ppm
	4/17/2019 06:16:45	0.360 ppm
	4/17/2019 06:20:34	1.030 ppm
	4/17/2019 06:24:52	0.740 ppm
	4/17/2019 06:29:38	0.030 ppm
	4/17/2019 06:33:53	0.120 ppm
	4/17/2019 06:36:40	0.540 ppm
	4/17/2019 06:39:23	0.540 ppm
	4/17/2019 06:43:05	0.100 ppm
	4/17/2019 06:45:07	0.040 ppm
	4/17/2019 06:47:18	0.180 ppm
	4/17/2019 06:48:07	0.150 ppm
Impacted Tank Farm	4/17/2019 06:45:40	0.240 ppm
	4/17/2019 06:32:31	0.040 ppm
	4/17/2019 06:40:50	0.050 ppm

This data has been provided expeditiously to ITC and regulatory agencies for informational and/or operational purposes only. Data reported within this summary is preliminary in nature and has not undergone complete QA/QC (quality assurance/quality control) process. Until this complete QA/QC process is completed, the locations of each reading are approximate in nature and subject to further refinement. As some readings may represent non-breathing zone measurements, the data reported herein may not be suitable to assess potential occupational exposure. Site Assessment readings are not representative of an individual's breathing zone (e.g., container head space, ground level, directly above product, etc.).

Reading Date  
4/17/2019 6:00:00 AM to 4/17/2019 7:00:00 AM

Benzene Action Level Concentration (ppm)  
 >=1

PRELIMINARY  
Recent Benzene Detections Greater than 1.00 ppm

Reading Date	Location Category	GPS	Google Maps URL	Concentration
4/17/2019 06:20:34	Division E	29.7332040,-95.0916330	<a href="https://www.google.com/maps/search/?api=1&amp;query=29.7332040,-95.0916330">https://www.google.com/maps/search/?api=1&amp;query=29.7332040,-95.0916330</a>	1.030 ppm

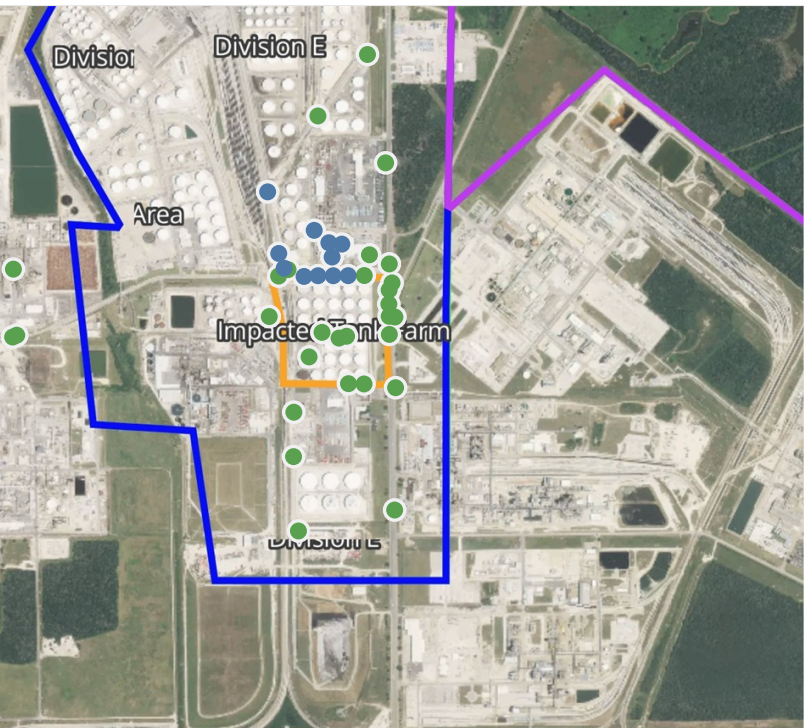
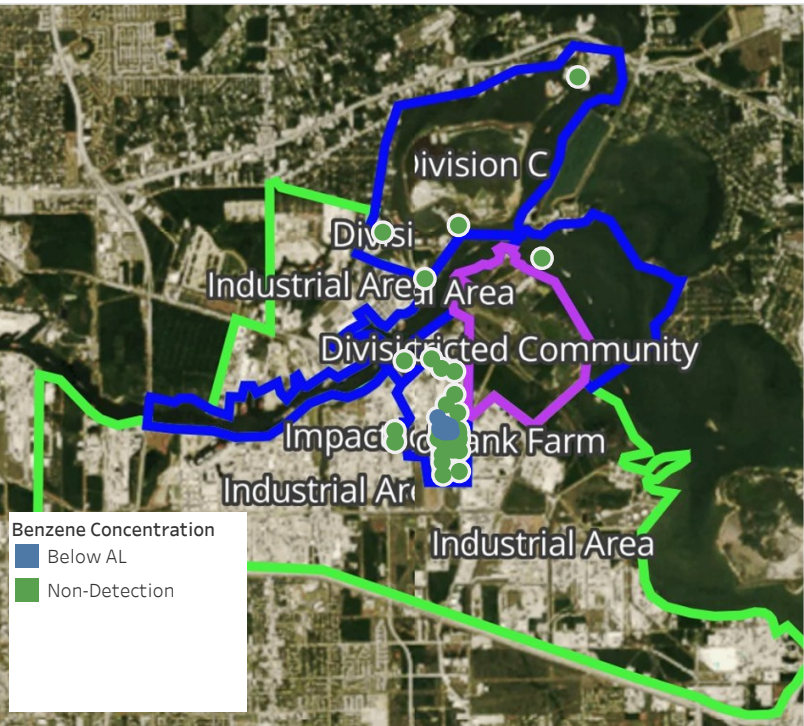




**Please Note:** These updates display data from the 2<sup>nd</sup> 80's Fire site (Impacted Tank Farm), in the industrial areas surrounding the 2<sup>nd</sup> 80's Fire site (US Coast Guard Division E), within the Houston Ship Channel (US Coast Guard Divisions A-D), and in the industrial areas north and south of the Houston Ship Channel (Industrial Area). Real-time air monitoring data for the surrounding communities are communicated daily in a separate report.

# Preliminary Hand- Held Air Monitoring Locations | ITC Deer Park Tank Fire

Reading Date  
4/17/2019 7:00:00 AM to 4/17/2019 8:00:00 AM



## Recent Benzene Detections

Location Category	Reading Date	Concentration
Division E	4/17/2019 07:31:04	0.0600 ppm
	4/17/2019 07:31:47	0.1300 ppm
	4/17/2019 07:35:05	0.2400 ppm
	4/17/2019 07:35:16	0.0600 ppm
	4/17/2019 07:36:58	0.2500 ppm
	4/17/2019 07:40:04	0.3800 ppm
	4/17/2019 07:40:26	0.4200 ppm
	4/17/2019 07:44:22	0.4100 ppm
	4/17/2019 07:44:08	0.2000 ppm
	4/17/2019 07:43:31	0.0900 ppm
	4/17/2019 07:47:16	0.1100 ppm

This data has been provided expeditiously to ITC and regulatory agencies for informational and/or operational purposes only. Data reported within this summary is preliminary in nature and has not undergone complete QA/QC (quality assurance/quality control) process. Until this complete QA/QC process is completed, the locations of each reading are approximate in nature and subject to further refinement. As some readings may represent non-breathing zone measurements, the data reported herein may not be suitable to assess potential occupational exposure. Site Assessment readings are not representative of an individual's breathing zone (e.g., container head space, ground level, directly above product, etc.).



**Reading Date**

4/17/2019 7:00:00 AM to 4/17/2019 8:00:00 AM

**Benzene Action Level Concentration (ppm)**

**PRELIMINARY**

Recent Benzene Detections Greater than 1.00 ppm

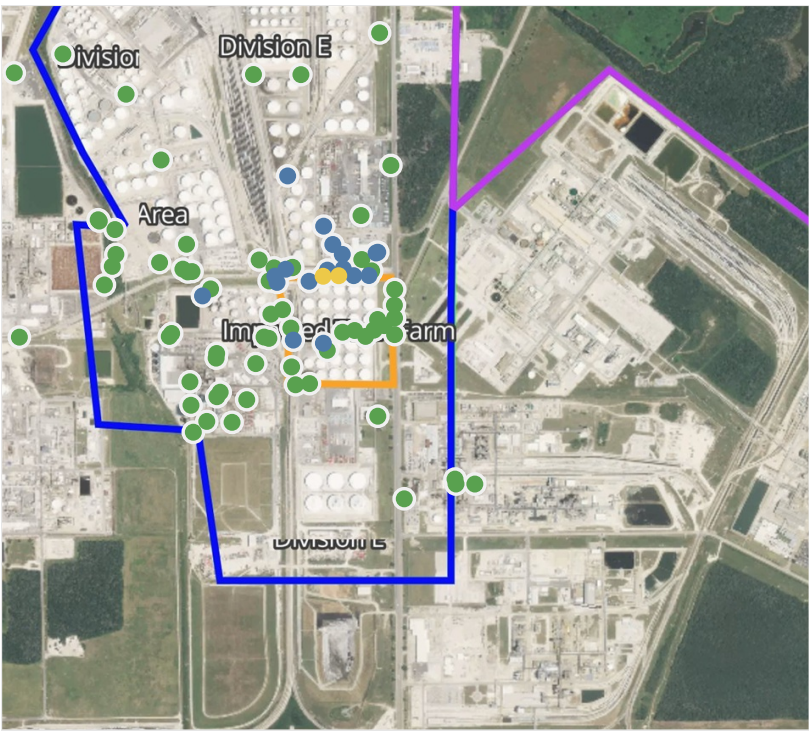


**Please Note:** These updates display data from the 2<sup>nd</sup> 80's Fire site (Impacted Tank Farm), in the industrial areas surrounding the 2<sup>nd</sup> 80's Fire site (US Coast Guard Division E), within the Houston Ship Channel (US Coast Guard Divisions A-D), and in the industrial areas north and south of the Houston Ship Channel (Industrial Area). Real-time air monitoring data for the surrounding communities are communicated daily in a separate report.



# Preliminary Hand- Held Air Monitoring Locations | ITC Deer Park Tank Fire

Reading Date  
4/17/2019 8:00:00 AM to 4/17/2019 9:00:00 AM



## Recent Benzene Detections

Location Category	Reading Date	Concentration
Below Grate	4/17/2019 08:01:56	0.2750 ppm
	4/17/2019 08:31:41	0.1750 ppm
Division B	4/17/2019 08:40:05	0.0100 ppm
Division C	4/17/2019 08:05:35	0.0750 ppm
Division E	4/17/2019 08:01:22	0.0900 ppm
	4/17/2019 08:15:54	0.4600 ppm
	4/17/2019 08:23:59	0.0600 ppm
	4/17/2019 08:27:26	0.0800 ppm
	4/17/2019 08:27:00	0.4200 ppm
	4/17/2019 08:32:32	0.0800 ppm
	4/17/2019 08:35:25	0.3000 ppm
	4/17/2019 08:32:29	0.0750 ppm
	4/17/2019 08:34:44	0.0500 ppm
	4/17/2019 08:34:59	0.6200 ppm
	4/17/2019 08:38:23	0.4000 ppm
	4/17/2019 08:30:49	0.4800 ppm
	4/17/2019 08:42:24	0.3100 ppm
	4/17/2019 08:41:22	0.7600 ppm
	4/17/2019 08:44:18	0.0800 ppm
	4/17/2019 08:46:32	0.0800 ppm
	4/17/2019 08:44:49	0.0300 ppm
	4/17/2019 08:51:30	0.2000 ppm
	4/17/2019 08:54:09	0.1000 ppm
Impacted Tank Farm	4/17/2019 08:08:42	0.0400 ppm

This data has been provided expeditiously to ITC and regulatory agencies for informational and/or operational purposes only. Data reported within this summary is preliminary in nature and has not undergone complete QA/QC (quality assurance/quality control) process. Until this complete QA/QC process is completed, the locations of each reading are approximate in nature and subject to further refinement. As some readings may represent non-breathing zone measurements, the data reported herein may not be suitable to assess potential occupational exposure. Site Assessment readings are not representative of an individual's breathing zone (e.g., container head space, ground level, directly above product, etc.).

**Reading Date**

4/17/2019 8:00:00 AM to 4/17/2019 9:00:00 AM

**Benzene Action Level Concentration (ppm)**

**PRELIMINARY**

Recent Benzene Detections Greater than 1.00 ppm



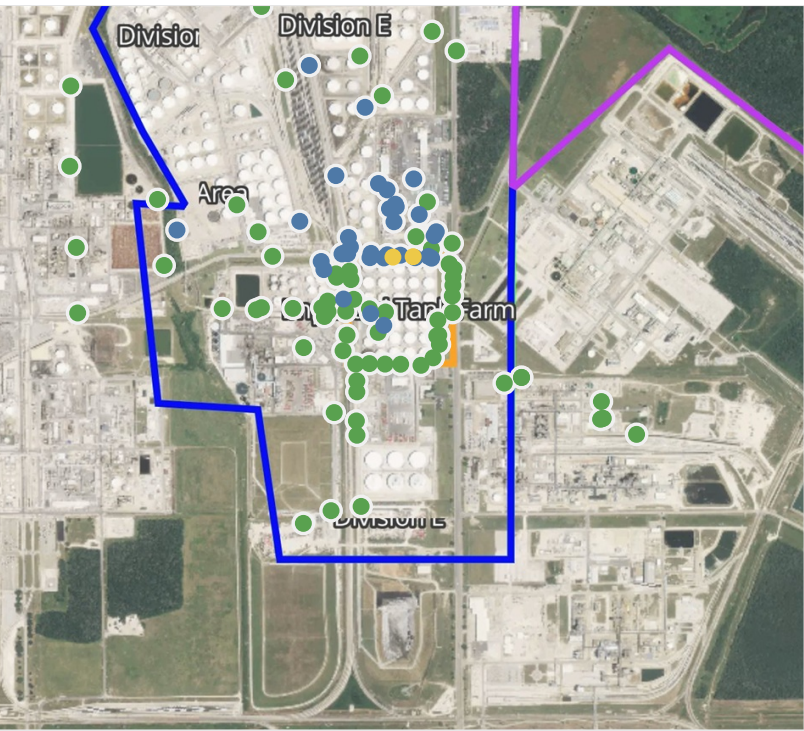
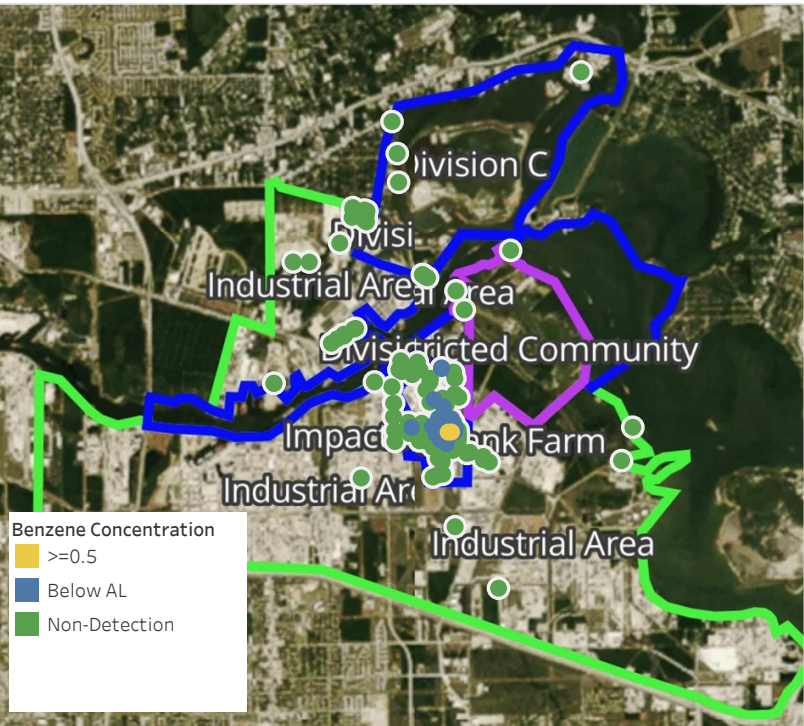


**Please Note:** These updates display data from the 2<sup>nd</sup> 80's Fire site (Impacted Tank Farm), in the industrial areas surrounding the 2<sup>nd</sup> 80's Fire site (US Coast Guard Division E), within the Houston Ship Channel (US Coast Guard Divisions A-D), and in the industrial areas north and south of the Houston Ship Channel (Industrial Area). Real-time air monitoring data for the surrounding communities are communicated daily in a separate report.



# Preliminary Hand- Held Air Monitoring Locations | ITC Deer Park Tank Fire

Reading Date  
4/17/2019 9:00:00 AM to 4/17/2019 10:00:00 AM



## Recent Benzene Detections

Location Category	Reading Date	Concentration
Division E	4/17/2019 09:00:14	0.4400 ppm
	4/17/2019 09:02:44	0.3000 ppm
	4/17/2019 09:05:21	0.1400 ppm
	4/17/2019 09:04:42	0.0400 ppm
	4/17/2019 09:04:51	0.1100 ppm
	4/17/2019 09:10:49	0.1000 ppm
	4/17/2019 09:08:41	0.3800 ppm
	4/17/2019 09:17:17	0.3200 ppm
	4/17/2019 09:18:55	0.3700 ppm
	4/17/2019 09:15:26	0.1500 ppm
	4/17/2019 09:21:15	0.1100 ppm
	4/17/2019 09:24:46	0.0500 ppm
	4/17/2019 09:30:10	0.2900 ppm
	4/17/2019 09:26:01	0.4100 ppm
	4/17/2019 09:29:17	0.0600 ppm
	4/17/2019 09:31:48	0.0700 ppm
	4/17/2019 09:33:21	0.0900 ppm
	4/17/2019 09:15:10	0.8700 ppm
	4/17/2019 09:35:11	0.3700 ppm
	4/17/2019 09:38:02	0.3300 ppm
	4/17/2019 09:20:20	0.4600 ppm
	4/17/2019 09:40:42	0.3800 ppm
	4/17/2019 09:43:13	0.1200 ppm
	4/17/2019 09:40:28	0.1000 ppm
	4/17/2019 09:46:00	0.0500 ppm
	4/17/2019 09:46:33	0.1200 ppm
	4/17/2019 09:45:04	0.1750 ppm
	4/17/2019 09:46:09	0.0300 ppm
	4/17/2019 09:47:56	0.4200 ppm
	4/17/2019 09:49:47	0.5700 ppm
	4/17/2019 09:52:42	0.0900 ppm
	4/17/2019 09:53:45	0.2100 ppm
	4/17/2019 09:23:42	0.1300 ppm
	4/17/2019 09:45:40	0.0100 ppm
	4/17/2019 09:14:01	0.1200 ppm
	4/17/2019 09:53:53	0.0300 ppm
Impacted Tank Farm	4/17/2019 09:31:51	0.0300 ppm
	4/17/2019 09:54:48	0.0400 ppm

This data has been provided expeditiously to ITC and regulatory agencies for informational and/or operational purposes only. Data reported within this summary is preliminary in nature and has not undergone complete QA/QC (quality assurance/quality control) process. Until this complete QA/QC process is completed, the locations of each reading are approximate in nature and subject to further refinement. As some readings may represent non-breathing zone measurements, the data reported herein may not be suitable to assess potential occupational exposure. Site Assessment readings are not representative of an individual's breathing zone (e.g., container head space, ground level, directly above product, etc.).



**Reading Date**

4/17/2019 9:00:00 AM to 4/17/2019 10:00:00 AM

**Benzene Action Level Concentration (ppm)**

**PRELIMINARY**

Recent Benzene Detections Greater than 1.00 ppm

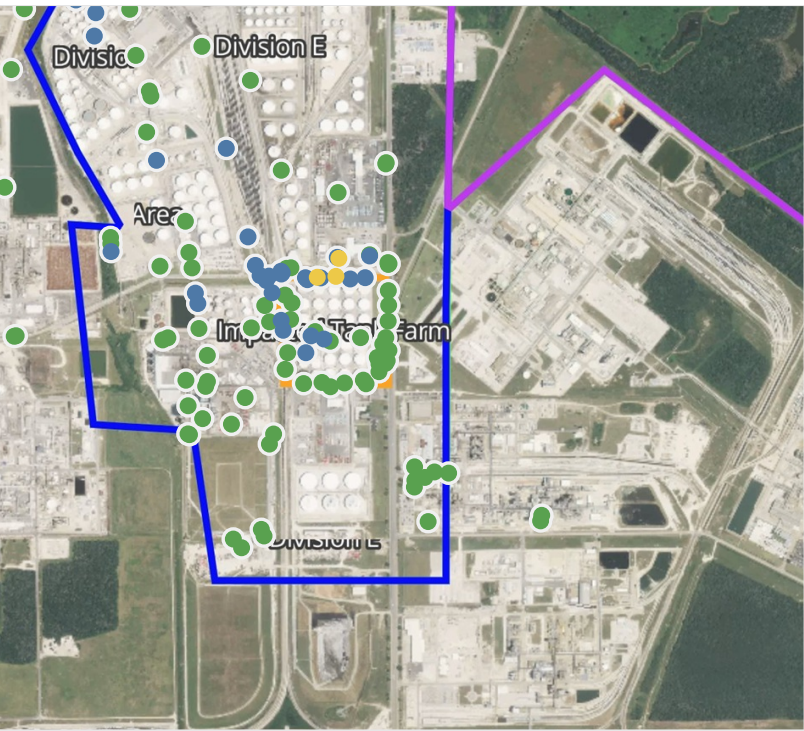
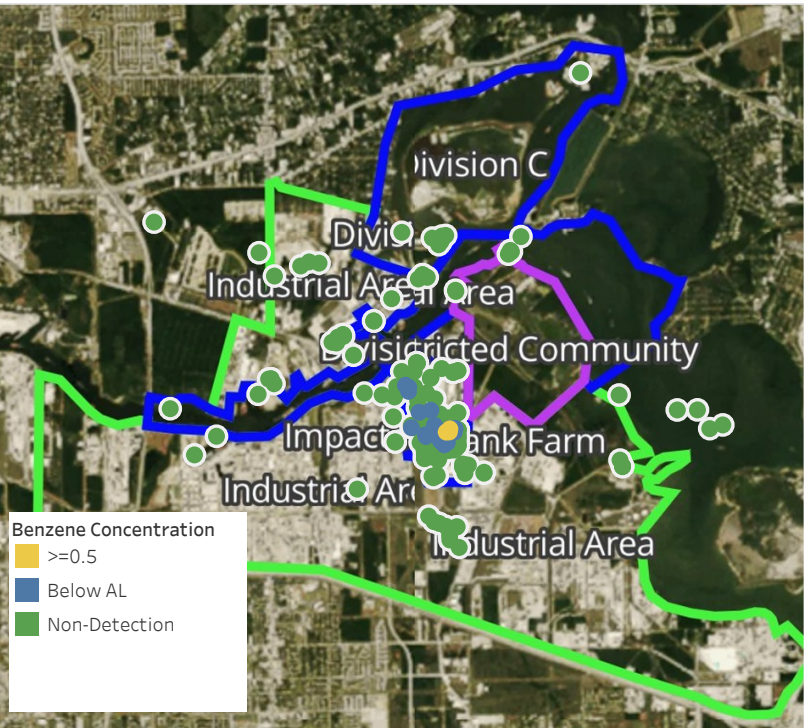


**Please Note:** These updates display data from the 2<sup>nd</sup> 80's Fire site (Impacted Tank Farm), in the industrial areas surrounding the 2<sup>nd</sup> 80's Fire site (US Coast Guard Division E), within the Houston Ship Channel (US Coast Guard Divisions A-D), and in the industrial areas north and south of the Houston Ship Channel (Industrial Area). Real-time air monitoring data for the surrounding communities are communicated daily in a separate report.



# Preliminary Hand- Held Air Monitoring Locations | ITC Deer Park Tank Fire

Reading Date  
4/17/2019 10:00:00 AM to 4/17/2019 11:00:00 AM



## Recent Benzene Detections

Location Category	Reading Date	Concentration
Division E	4/17/2019 10:01:01	0.6000 ppm
	4/17/2019 10:03:58	0.0600 ppm
	4/17/2019 10:11:56	0.1700 ppm
	4/17/2019 10:13:13	0.0750 ppm
	4/17/2019 10:17:02	0.0200 ppm
	4/17/2019 10:21:07	0.0300 ppm
	4/17/2019 10:23:16	0.1700 ppm
	4/17/2019 10:22:10	0.0600 ppm
	4/17/2019 10:25:13	0.2300 ppm
	4/17/2019 10:18:45	0.0400 ppm
	4/17/2019 10:24:09	0.0200 ppm
	4/17/2019 10:27:43	0.8000 ppm
	4/17/2019 10:30:04	0.3400 ppm
	4/17/2019 10:32:15	0.2300 ppm
	4/17/2019 10:18:52	0.0300 ppm
	4/17/2019 10:35:53	0.0900 ppm
	4/17/2019 10:35:34	0.0600 ppm
	4/17/2019 10:25:04	0.0400 ppm
	4/17/2019 10:33:41	0.0400 ppm
	4/17/2019 10:54:19	0.3500 ppm
Impacted Tank Farm	4/17/2019 10:46:51	0.1600 ppm
	4/17/2019 10:48:24	0.0500 ppm
	4/17/2019 10:44:51	0.0500 ppm
	4/17/2019 10:50:21	0.0300 ppm
	4/17/2019 10:04:44	0.0600 ppm
	4/17/2019 10:27:00	0.0200 ppm
	4/17/2019 10:52:02	0.0200 ppm
	4/17/2019 10:35:50	0.3500 ppm
	4/17/2019 10:54:40	0.6500 ppm
	4/17/2019 10:27:27	0.0400 ppm
	4/17/2019 10:33:27	0.0600 ppm
	4/17/2019 10:47:22	0.0400 ppm

This data has been provided expeditiously to ITC and regulatory agencies for informational and/or operational purposes only. Data reported within this summary is preliminary in nature and has not undergone complete QA/QC (quality assurance/quality control) process. Until this complete QA/QC process is completed, the locations of each reading are approximate in nature and subject to further refinement. As some readings may represent non-breathing zone measurements, the data reported herein may not be suitable to assess potential occupational exposure. Site Assessment readings are not representative of an individual's breathing zone (e.g., container head space, ground level, directly above product, etc.).

**Reading Date**

4/17/2019 10:00:00 AM to 4/17/2019 11:00:00 AM

**Benzene Action Level Concentration (ppm)**

**PRELIMINARY**

Recent Benzene Detections Greater than 1.00 ppm

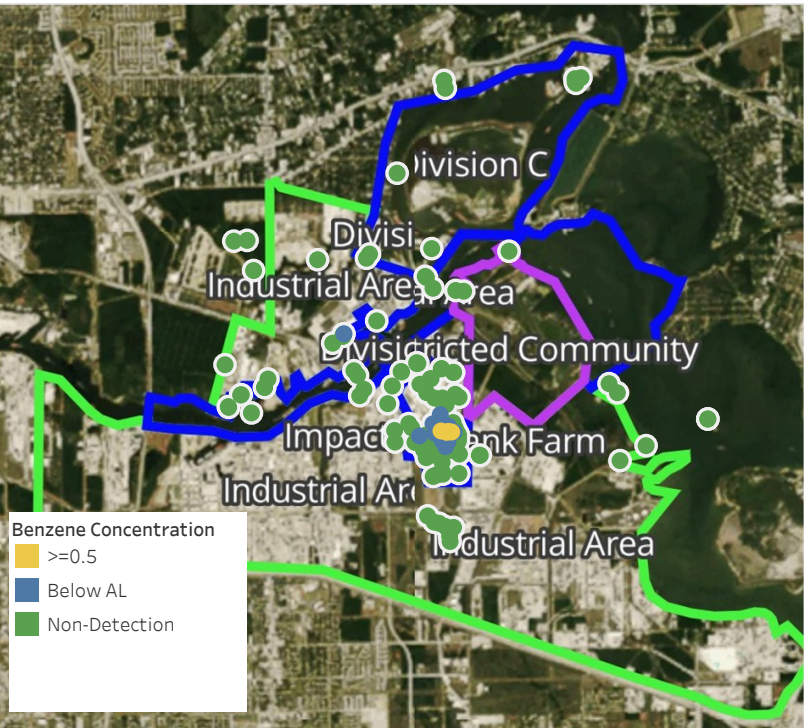




**Please Note:** These updates display data from the 2<sup>nd</sup> 80's Fire site (Impacted Tank Farm), in the industrial areas surrounding the 2<sup>nd</sup> 80's Fire site (US Coast Guard Division E), within the Houston Ship Channel (US Coast Guard Divisions A-D), and in the industrial areas north and south of the Houston Ship Channel (Industrial Area). Real-time air monitoring data for the surrounding communities are communicated daily in a separate report.

# Preliminary Hand- Held Air Monitoring Locations | ITC Deer Park Tank Fire

Reading Date  
4/17/2019 11:00:00 AM to 4/17/2019 12:00:00 PM



## Recent Benzene Detections

Location Category	Reading Date	Concentration
Below Grate	4/17/2019 11:04:34	0.0700 ppm
	4/17/2019 11:00:08	0.0500 ppm
	4/17/2019 11:08:29	0.2400 ppm
	4/17/2019 11:10:30	0.8500 ppm
	4/17/2019 11:12:56	0.3100 ppm
	4/17/2019 11:13:41	0.1700 ppm
	4/17/2019 11:15:28	0.9100 ppm
	4/17/2019 11:17:30	0.1500 ppm
	4/17/2019 11:17:57	0.0400 ppm
	4/17/2019 11:21:22	0.1800 ppm
Division E	4/17/2019 11:00:27	0.0900 ppm
	4/17/2019 11:28:28	0.8750 ppm
	4/17/2019 11:35:02	0.0200 ppm
	4/17/2019 11:14:10	0.0300 ppm
	4/17/2019 11:49:21	0.6700 ppm
	4/17/2019 11:49:18	0.0400 ppm
	4/17/2019 11:05:55	0.0800 ppm
	4/17/2019 11:00:14	0.8200 ppm
	4/17/2019 11:24:45	0.0400 ppm
	4/17/2019 11:27:59	0.0700 ppm
Impacted Tank Farm	4/17/2019 11:30:42	0.1500 ppm
	4/17/2019 11:33:45	0.0400 ppm
	4/17/2019 11:38:44	0.0700 ppm
	4/17/2019 11:52:13	0.0300 ppm

This data has been provided expeditiously to ITC and regulatory agencies for informational and/or operational purposes only. Data reported within this summary is preliminary in nature and has not undergone complete QA/QC (quality assurance/quality control) process. Until this complete QA/QC process is completed, the locations of each reading are approximate in nature and subject to further refinement. As some readings may represent non-breathing zone measurements, the data reported herein may not be suitable to assess potential occupational exposure. Site Assessment readings are not representative of an individual's breathing zone (e.g., container head space, ground level, directly above product, etc.).



**Reading Date**

4/17/2019 11:00:00 AM to 4/17/2019 12:00:00 PM

**Benzene Action Level Concentration (ppm)**

**PRELIMINARY**

Recent Benzene Detections Greater than 1.00 ppm

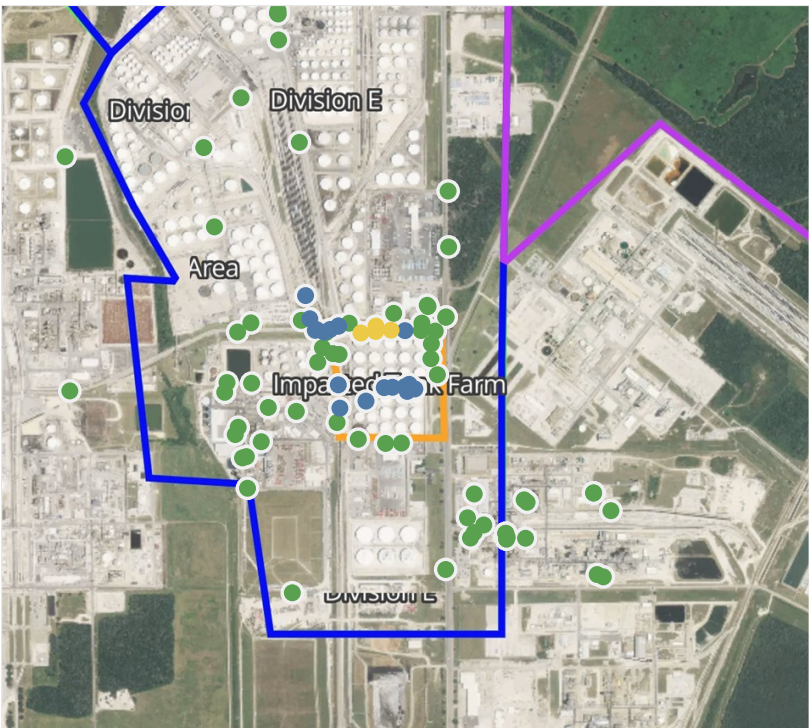
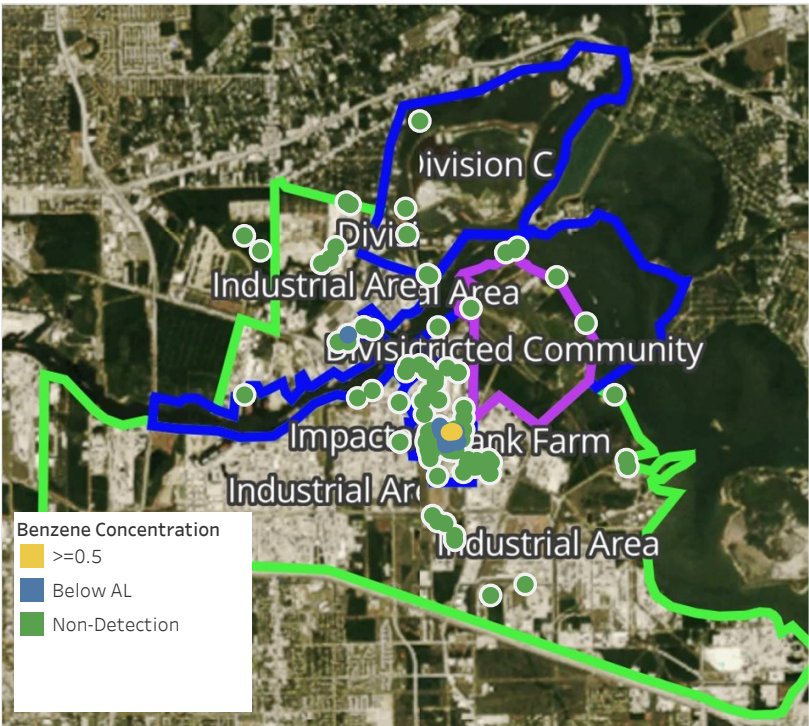


**Please Note:** These updates display data from the 2<sup>nd</sup> 80's Fire site (Impacted Tank Farm), in the industrial areas surrounding the 2<sup>nd</sup> 80's Fire site (US Coast Guard Division E), within the Houston Ship Channel (US Coast Guard Divisions A-D), and in the industrial areas north and south of the Houston Ship Channel (Industrial Area). Real-time air monitoring data for the surrounding communities are communicated daily in a separate report.



# Preliminary Hand- Held Air Monitoring Locations | ITC Deer Park Tank Fire

Reading Date  
4/17/2019 12:00:00 PM to 4/17/2019 1:00:00 PM



## Recent Benzene Detections

Location Category	Reading Date	Concentration
Above Grate	4/17/2019 12:14:05	0.0700 ppm
	4/17/2019 12:33:42	0.0700 ppm
Division E	4/17/2019 12:11:40	0.0700 ppm
	4/17/2019 12:03:25	0.6100 ppm
	4/17/2019 12:20:42	0.0200 ppm
	4/17/2019 12:24:09	0.5000 ppm
	4/17/2019 12:28:53	0.7100 ppm
	4/17/2019 12:24:47	0.0200 ppm
	4/17/2019 12:31:15	0.6200 ppm
	4/17/2019 12:34:04	0.3000 ppm
	4/17/2019 12:33:39	0.0300 ppm
	4/17/2019 12:38:17	0.0400 ppm
	4/17/2019 12:36:41	0.0500 ppm
	4/17/2019 12:29:49	0.1500 ppm
	4/17/2019 12:28:07	0.0600 ppm
	4/17/2019 12:44:11	0.1200 ppm
	4/17/2019 12:47:36	0.0300 ppm
Impacted Tank Farm	4/17/2019 12:11:21	0.1500 ppm
	4/17/2019 12:15:44	0.0800 ppm
	4/17/2019 12:42:36	0.0400 ppm
	4/17/2019 12:48:35	0.0600 ppm
	4/17/2019 12:51:47	0.1100 ppm
	4/17/2019 12:54:18	0.2500 ppm
	4/17/2019 12:58:13	0.1200 ppm

This data has been provided expeditiously to ITC and regulatory agencies for informational and/or operational purposes only. Data reported within this summary is preliminary in nature and has not undergone complete QA/QC (quality assurance/quality control) process. Until this complete QA/QC process is completed, the locations of each reading are approximate in nature and subject to further refinement. As some readings may represent non-breathing zone measurements, the data reported herein may not be suitable to assess potential occupational exposure. Site Assessment readings are not representative of an individual's breathing zone (e.g., container head space, ground level, directly above product, etc.).

**Reading Date**

4/17/2019 12:00:00 PM to 4/17/2019 1:00:00 PM

**Benzene Action Level Concentration (ppm)**

**PRELIMINARY**

Recent Benzene Detections Greater than 1.00 ppm



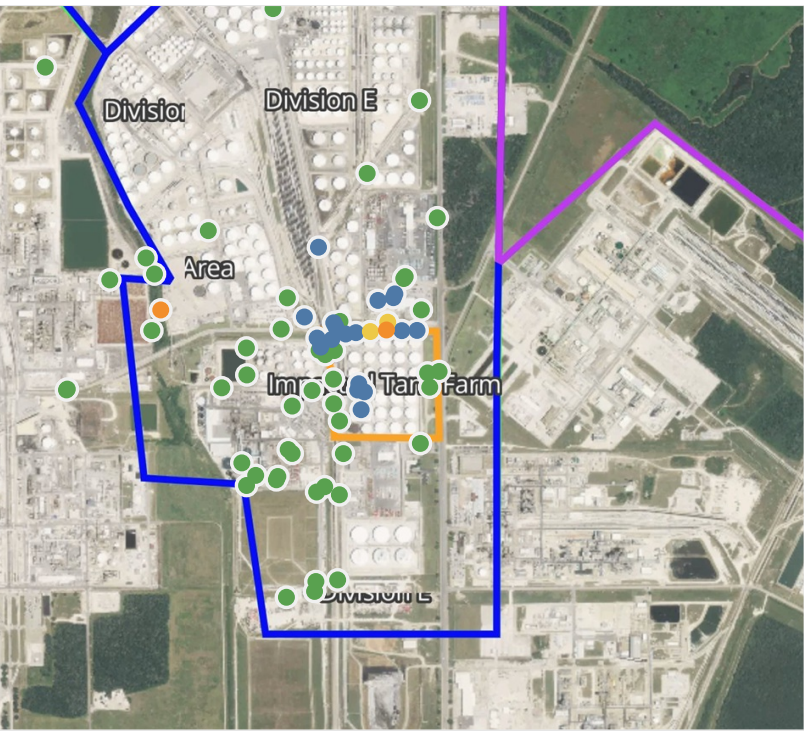
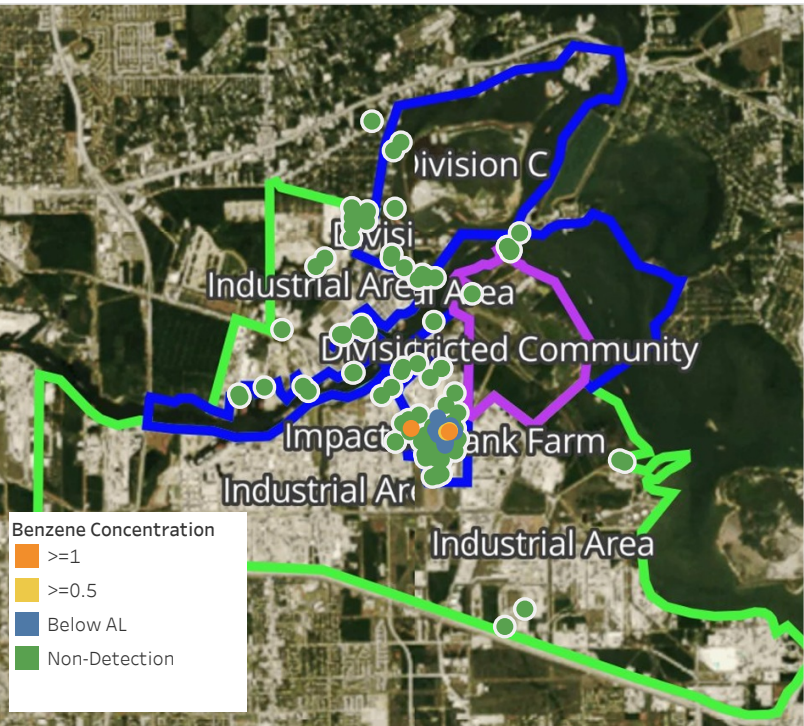


**Please Note:** These updates display data from the 2<sup>nd</sup> 80's Fire site (Impacted Tank Farm), in the industrial areas surrounding the 2<sup>nd</sup> 80's Fire site (US Coast Guard Division E), within the Houston Ship Channel (US Coast Guard Divisions A-D), and in the industrial areas north and south of the Houston Ship Channel (Industrial Area). Real-time air monitoring data for the surrounding communities are communicated daily in a separate report.



# Preliminary Hand- Held Air Monitoring Locations | ITC Deer Park Tank Fire

Reading Date  
4/17/2019 1:00:00 PM to 4/17/2019 2:00:00 PM



## Recent Benzene Detections

Location Category	Reading Date	Concentration
Division E	4/17/2019 13:04:02	0.190 ppm
	4/17/2019 13:01:49	0.080 ppm
	4/17/2019 13:06:12	0.160 ppm
	4/17/2019 13:11:26	0.130 ppm
	4/17/2019 13:12:22	0.300 ppm
	4/17/2019 13:14:56	0.050 ppm
	4/17/2019 13:16:25	0.030 ppm
	4/17/2019 13:18:21	0.050 ppm
	4/17/2019 13:18:02	1.750 ppm
	4/17/2019 13:20:44	0.660 ppm
	4/17/2019 13:22:49	1.500 ppm
	4/17/2019 13:25:23	0.310 ppm
	4/17/2019 13:27:14	0.050 ppm
	4/17/2019 13:07:04	0.100 ppm
	4/17/2019 13:11:53	0.030 ppm
	4/17/2019 13:15:48	0.040 ppm
Impacted Tank Farm	4/17/2019 13:40:25	0.680 ppm
	4/17/2019 13:56:22	0.240 ppm
	4/17/2019 13:00:27	0.060 ppm
	4/17/2019 13:14:16	0.040 ppm
	4/17/2019 13:22:39	0.030 ppm
	4/17/2019 13:48:16	0.040 ppm

This data has been provided expeditiously to ITC and regulatory agencies for informational and/or operational purposes only. Data reported within this summary is preliminary in nature and has not undergone complete QA/QC (quality assurance/quality control) process. Until this complete QA/QC process is completed, the locations of each reading are approximate in nature and subject to further refinement. As some readings may represent non-breathing zone measurements, the data reported herein may not be suitable to assess potential occupational exposure. Site Assessment readings are not representative of an individual's breathing zone (e.g., container head space, ground level, directly above product, etc.).



Reading Date  
4/17/2019 1:00:00 PM to 4/17/2019 2:00:00 PM

Benzene Action Level Concentration (ppm)  
 >=1

PRELIMINARY  
Recent Benzene Detections Greater than 1.00 ppm

Reading Date	Location Category	GPS	Google Maps URL	Concentration
4/17/2019 13:22:49	Division E	29.7332000,-95.0915400	<a href="https://www.google.com/maps/search/?api=1&amp;query=29.7332000,-95.0915400">https://www.google.com/maps/search/?api=1&amp;query=29.7332000,-95.0915400</a>	1.5000 ppm
4/17/2019 13:18:02	Division E	29.7337300,-95.0984200	<a href="https://www.google.com/maps/search/?api=1&amp;query=29.7337300,-95.0984200">https://www.google.com/maps/search/?api=1&amp;query=29.7337300,-95.0984200</a>	1.7500 ppm

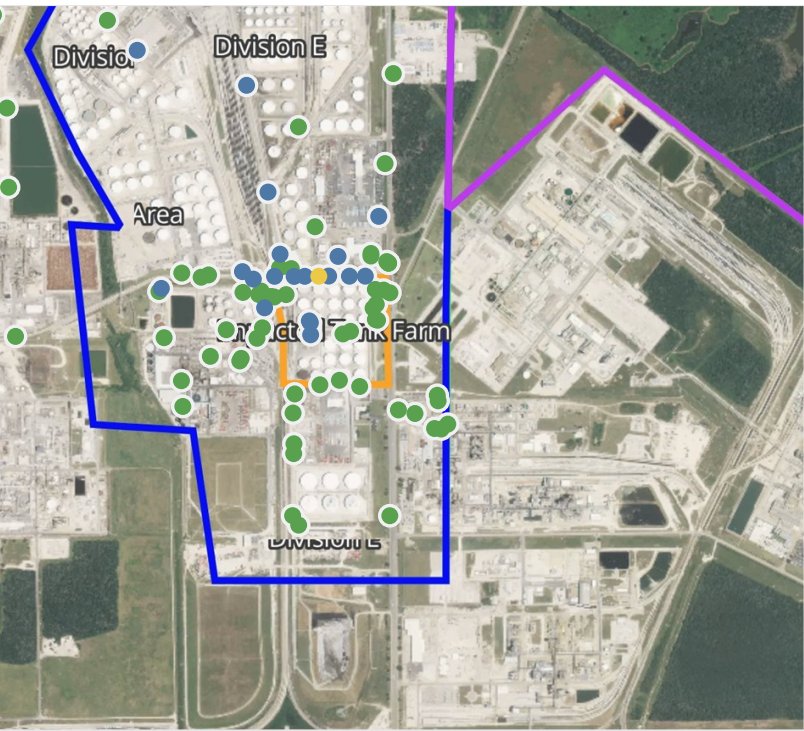
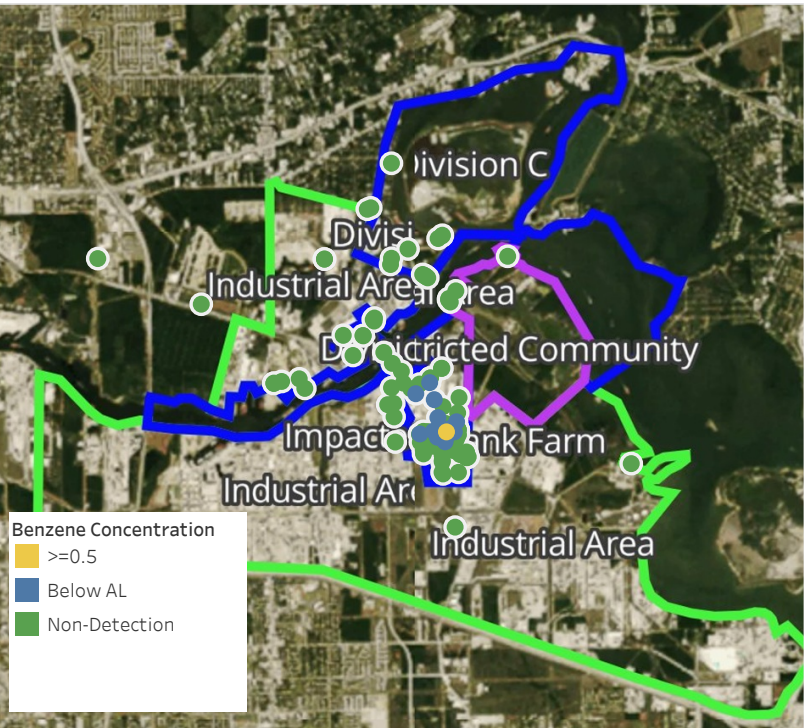


**Please Note:** These updates display data from the 2<sup>nd</sup> 80's Fire site (Impacted Tank Farm), in the industrial areas surrounding the 2<sup>nd</sup> 80's Fire site (US Coast Guard Division E), within the Houston Ship Channel (US Coast Guard Divisions A-D), and in the industrial areas north and south of the Houston Ship Channel (Industrial Area). Real-time air monitoring data for the surrounding communities are communicated daily in a separate report.



# Preliminary Hand- Held Air Monitoring Locations | ITC Deer Park Tank Fire

Reading Date  
4/17/2019 2:00:00 PM to 4/17/2019 3:00:00 PM



## Recent Benzene Detections

Location Category	Reading Date	Concentration
Division E	4/17/2019 14:02:09	0.4500 ppm
	4/17/2019 14:05:43	0.2100 ppm
	4/17/2019 14:04:50	0.0400 ppm
	4/17/2019 14:08:19	0.1100 ppm
	4/17/2019 14:10:44	0.1200 ppm
	4/17/2019 14:13:13	0.2900 ppm
	4/17/2019 14:15:16	0.0500 ppm
	4/17/2019 14:25:30	0.0300 ppm
	4/17/2019 14:12:08	0.0300 ppm
	4/17/2019 14:14:17	0.0300 ppm
	4/17/2019 14:25:44	0.0300 ppm
	4/17/2019 14:47:06	0.0200 ppm
	4/17/2019 14:39:34	0.0300 ppm
	4/17/2019 14:56:31	0.1300 ppm
	4/17/2019 14:46:47	0.0800 ppm
Impacted Tank Farm	4/17/2019 14:59:04	0.6300 ppm
	4/17/2019 14:41:35	0.0300 ppm
	4/17/2019 14:50:21	0.0900 ppm
	4/17/2019 14:12:02	0.2600 ppm
	4/17/2019 14:36:28	0.0300 ppm
	4/17/2019 14:53:13	0.0400 ppm

This data has been provided expeditiously to ITC and regulatory agencies for informational and/or operational purposes only. Data reported within this summary is preliminary in nature and has not undergone complete QA/QC (quality assurance/quality control) process. Until this complete QA/QC process is completed, the locations of each reading are approximate in nature and subject to further refinement. As some readings may represent non-breathing zone measurements, the data reported herein may not be suitable to assess potential occupational exposure. Site Assessment readings are not representative of an individual's breathing zone (e.g., container head space, ground level, directly above product, etc.).

**Reading Date**

4/17/2019 2:00:00 PM to 4/17/2019 3:00:00 PM

**Benzene Action Level Concentration (ppm)**

**PRELIMINARY**

Recent Benzene Detections Greater than 1.00 ppm

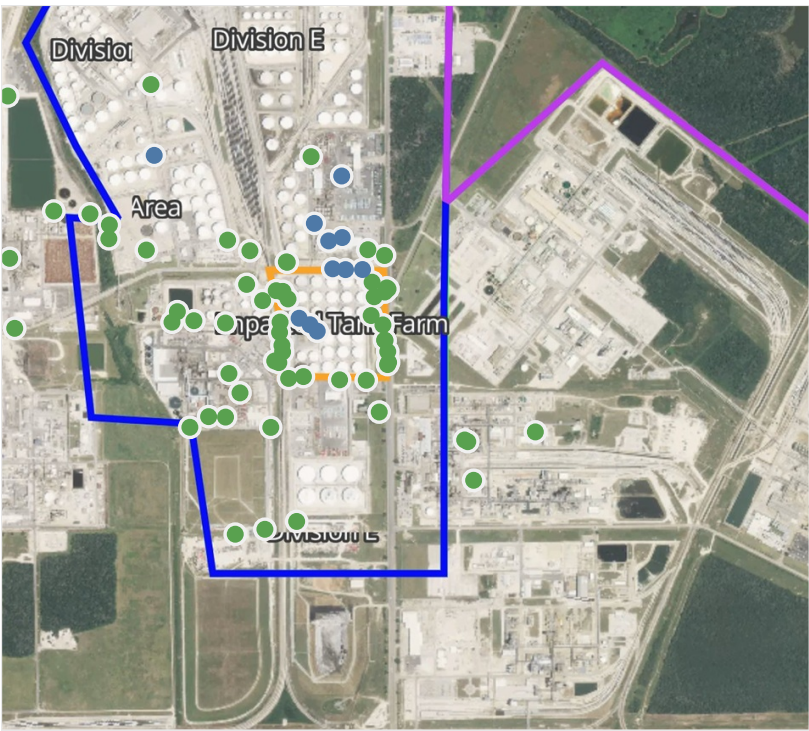
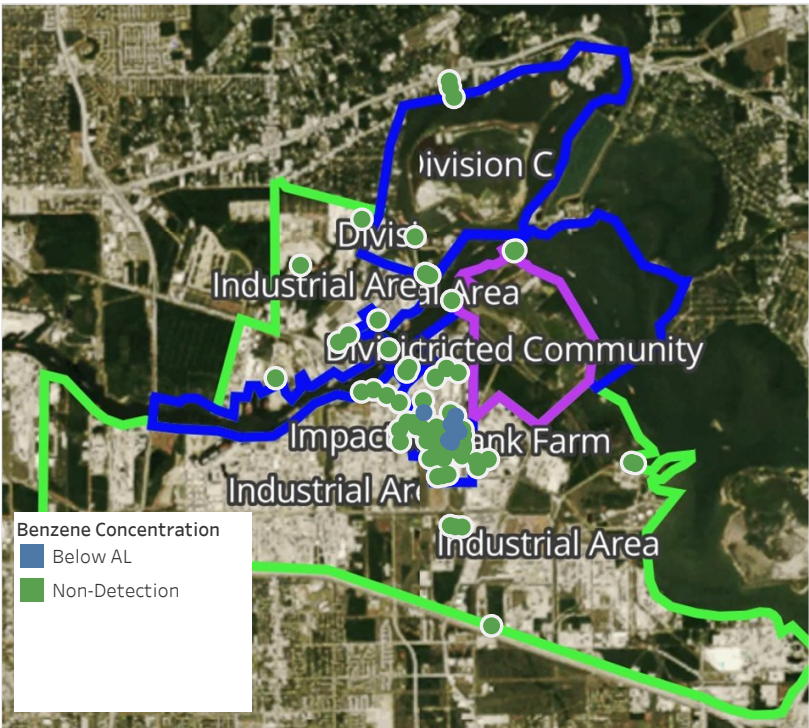




**Please Note:** These updates display data from the 2<sup>nd</sup> 80's Fire site (Impacted Tank Farm), in the industrial areas surrounding the 2<sup>nd</sup> 80's Fire site (US Coast Guard Division E), within the Houston Ship Channel (US Coast Guard Divisions A-D), and in the industrial areas north and south of the Houston Ship Channel (Industrial Area). Real-time air monitoring data for the surrounding communities are communicated daily in a separate report.

# Preliminary Hand- Held Air Monitoring Locations | ITC Deer Park Tank Fire

Reading Date  
4/17/2019 3:00:00 PM to 4/17/2019 4:00:00 PM



## Recent Benzene Detections

Location Category	Reading Date	Concentration
Division E	4/17/2019 15:01:23	0.4100 ppm
	4/17/2019 15:03:36	0.4700 ppm
	4/17/2019 15:06:42	0.1100 ppm
	4/17/2019 15:33:17	0.0100 ppm
	4/17/2019 15:43:48	0.0500 ppm
	4/17/2019 15:49:05	0.1300 ppm
	4/17/2019 15:52:17	0.3500 ppm
	4/17/2019 15:55:09	0.1200 ppm
Impacted Tank Farm	4/17/2019 15:04:57	0.0300 ppm
	4/17/2019 15:38:53	0.0400 ppm
	4/17/2019 15:53:43	0.0400 ppm

This data has been provided expeditiously to ITC and regulatory agencies for informational and/or operational purposes only. Data reported within this summary is preliminary in nature and has not undergone complete QA/QC (quality assurance/quality control) process. Until this complete QA/QC process is completed, the locations of each reading are approximate in nature and subject to further refinement. As some readings may represent non-breathing zone measurements, the data reported herein may not be suitable to assess potential occupational exposure. Site Assessment readings are not representative of an individual's breathing zone (e.g., container head space, ground level, directly above product, etc.).



**Reading Date**

4/17/2019 3:00:00 PM to 4/17/2019 4:00:00 PM

**Benzene Action Level Concentration (ppm)**

**PRELIMINARY**

Recent Benzene Detections Greater than 1.00 ppm

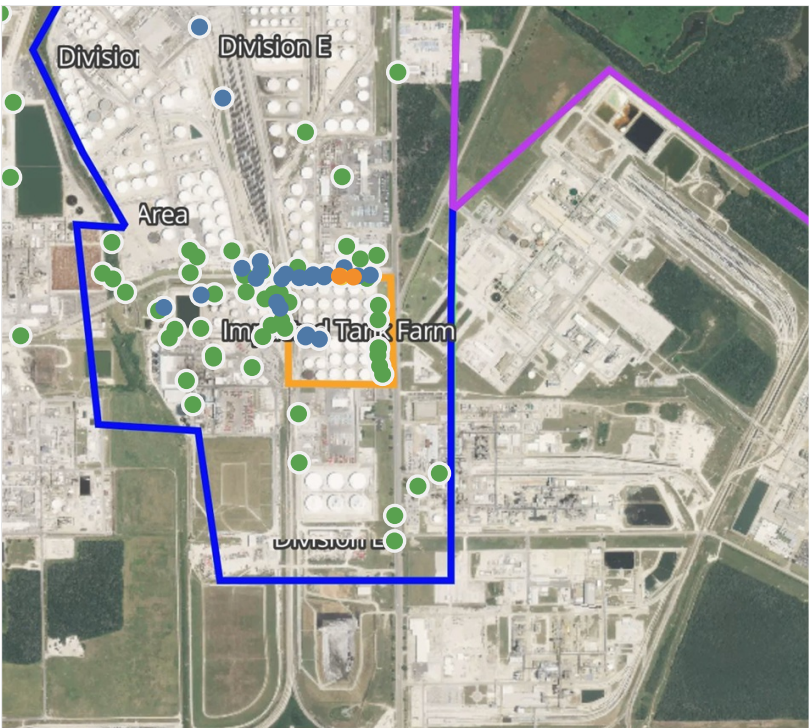


**Please Note:** These updates display data from the 2<sup>nd</sup> 80's Fire site (Impacted Tank Farm), in the industrial areas surrounding the 2<sup>nd</sup> 80's Fire site (US Coast Guard Division E), within the Houston Ship Channel (US Coast Guard Divisions A-D), and in the industrial areas north and south of the Houston Ship Channel (Industrial Area). Real-time air monitoring data for the surrounding communities are communicated daily in a separate report.



# Preliminary Hand- Held Air Monitoring Locations | ITC Deer Park Tank Fire

Reading Date  
4/17/2019 4:00:00 PM to 4/17/2019 5:00:00 PM



## Recent Benzene Detections

Location Category	Reading Date	Concentration
Division E	4/17/2019 16:01:06	0.100 ppm
	4/17/2019 16:03:40	0.210 ppm
	4/17/2019 16:04:53	0.020 ppm
	4/17/2019 16:06:03	0.030 ppm
	4/17/2019 16:03:59	0.040 ppm
	4/17/2019 16:06:20	0.140 ppm
	4/17/2019 16:07:50	0.030 ppm
	4/17/2019 16:08:18	0.020 ppm
	4/17/2019 16:09:07	1.070 ppm
	4/17/2019 16:13:31	0.200 ppm
	4/17/2019 16:11:20	1.100 ppm
	4/17/2019 16:07:52	0.370 ppm
	4/17/2019 16:02:34	0.030 ppm
	4/17/2019 16:30:29	0.050 ppm
	4/17/2019 16:37:18	0.050 ppm
	4/17/2019 16:09:20	0.370 ppm
	4/17/2019 16:42:45	0.250 ppm
	4/17/2019 16:33:07	0.020 ppm
	4/17/2019 16:19:12	0.370 ppm
	4/17/2019 16:58:32	0.040 ppm
Impacted Tank Farm	4/17/2019 16:44:26	0.030 ppm
	4/17/2019 16:33:32	0.060 ppm
	4/17/2019 16:34:39	0.050 ppm
	4/17/2019 16:20:55	0.870 ppm
	4/17/2019 16:14:53	0.030 ppm
	4/17/2019 16:29:31	0.110 ppm
	4/17/2019 16:48:47	0.030 ppm

This data has been provided expeditiously to ITC and regulatory agencies for informational and/or operational purposes only. Data reported within this summary is preliminary in nature and has not undergone complete QA/QC (quality assurance/quality control) process. Until this complete QA/QC process is completed, the locations of each reading are approximate in nature and subject to further refinement. As some readings may represent non-breathing zone measurements, the data reported herein may not be suitable to assess potential occupational exposure. Site Assessment readings are not representative of an individual's breathing zone (e.g., container head space, ground level, directly above product, etc.).

Reading Date  
4/17/2019 4:00:00 PM to 4/17/2019 5:00:00 PM

Benzene Action Level Concentration (ppm)  
 >=1

PRELIMINARY  
Recent Benzene Detections Greater than 1.00 ppm

Reading Date	Location Category	GPS	Google Maps URL	Concentration
4/17/2019 16:11:20	Division E	29.7331660,-95.0911510	<a href="https://www.google.com/maps/search/?api=1&amp;query=29.7331660,-95.0911510">https://www.google.com/maps/search/?api=1&amp;query=29.7331660,-95.0911510</a>	1.10000 ppm
4/17/2019 16:09:07	Division E	29.7331920,-95.0915780	<a href="https://www.google.com/maps/search/?api=1&amp;query=29.7331920,-95.0915780">https://www.google.com/maps/search/?api=1&amp;query=29.7331920,-95.0915780</a>	1.07000 ppm



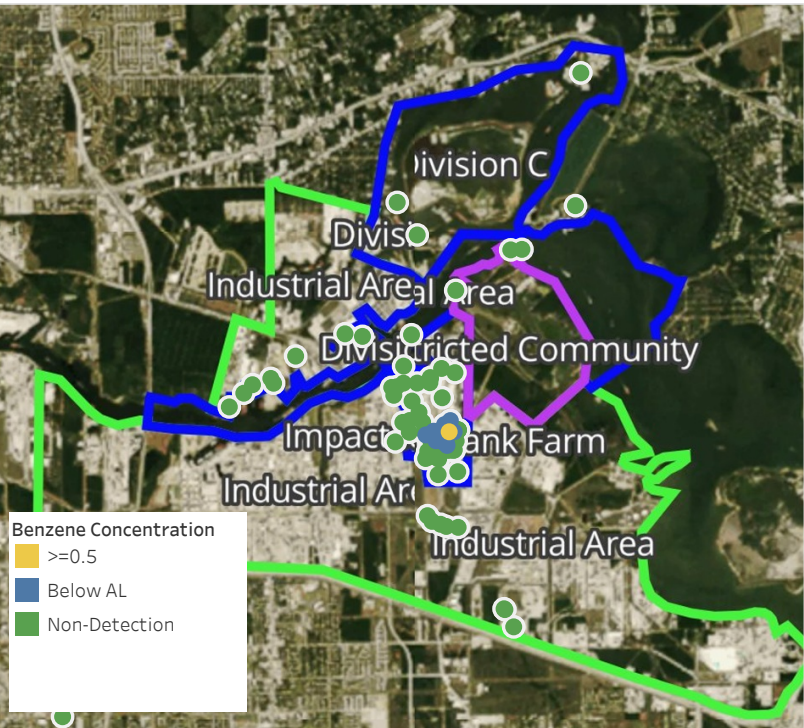


**Please Note:** These updates display data from the 2<sup>nd</sup> 80's Fire site (Impacted Tank Farm), in the industrial areas surrounding the 2<sup>nd</sup> 80's Fire site (US Coast Guard Division E), within the Houston Ship Channel (US Coast Guard Divisions A-D), and in the industrial areas north and south of the Houston Ship Channel (Industrial Area). Real-time air monitoring data for the surrounding communities are communicated daily in a separate report.



# Preliminary Hand- Held Air Monitoring Locations | ITC Deer Park Tank Fire

Reading Date  
4/17/2019 5:00:00 PM to 4/17/2019 6:00:00 PM



## Recent Benzene Detections

Location Category	Reading Date	Concentration
Division E	4/17/2019 17:00:33	0.1500 ppm
	4/17/2019 17:02:56	0.6400 ppm
	4/17/2019 17:05:00	0.0900 ppm
	4/17/2019 17:07:06	0.1200 ppm
	4/17/2019 17:16:45	0.0200 ppm
	4/17/2019 17:21:09	0.0200 ppm
	4/17/2019 17:18:42	0.0600 ppm
	4/17/2019 17:22:41	0.0100 ppm
	4/17/2019 17:21:52	0.3000 ppm
	4/17/2019 17:25:56	0.1300 ppm
	4/17/2019 17:34:52	0.0300 ppm
	4/17/2019 17:36:20	0.0200 ppm
	4/17/2019 17:39:37	0.1100 ppm
	4/17/2019 17:50:28	0.0200 ppm
	4/17/2019 17:29:25	0.0700 ppm
Impacted Tank Farm	4/17/2019 17:32:38	0.1100 ppm
	4/17/2019 17:07:23	0.0300 ppm
	4/17/2019 17:25:01	0.0300 ppm
	4/17/2019 17:38:07	0.0300 ppm
	4/17/2019 17:49:16	0.0400 ppm

This data has been provided expeditiously to ITC and regulatory agencies for informational and/or operational purposes only. Data reported within this summary is preliminary in nature and has not undergone complete QA/QC (quality assurance/quality control) process. Until this complete QA/QC process is completed, the locations of each reading are approximate in nature and subject to further refinement. As some readings may represent non-breathing zone measurements, the data reported herein may not be suitable to assess potential occupational exposure. Site Assessment readings are not representative of an individual's breathing zone (e.g., container head space, ground level, directly above product, etc.).



**Reading Date**

4/17/2019 5:00:00 PM to 4/17/2019 6:00:00 PM

**Benzene Action Level Concentration (ppm)**

**PRELIMINARY**

Recent Benzene Detections Greater than 1.00 ppm

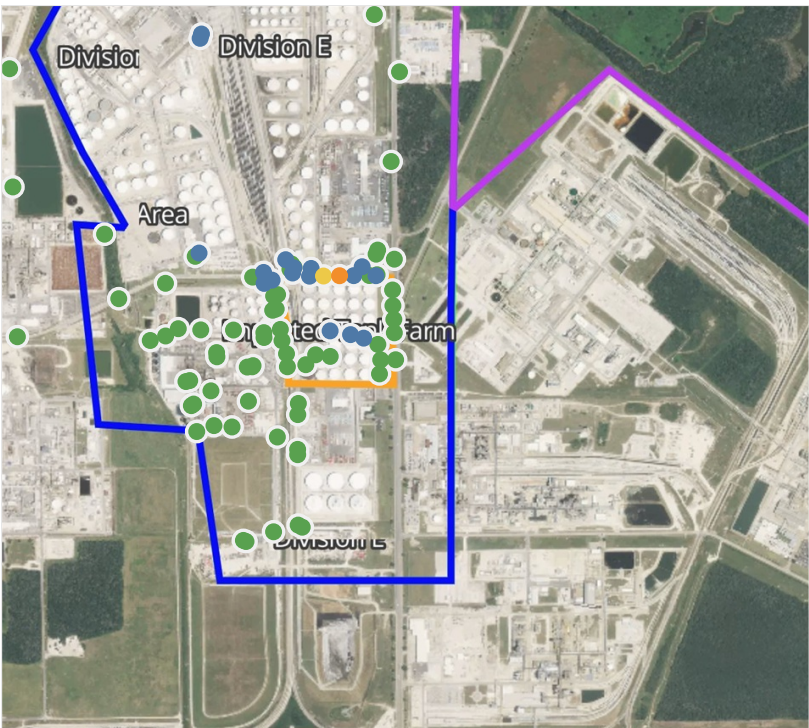
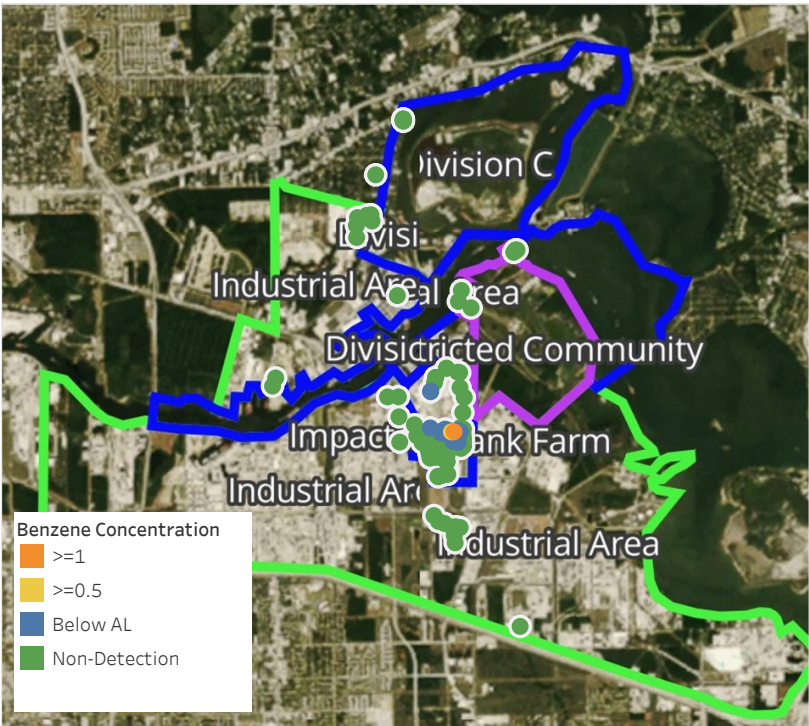


**Please Note:** These updates display data from the 2<sup>nd</sup> 80's Fire site (Impacted Tank Farm), in the industrial areas surrounding the 2<sup>nd</sup> 80's Fire site (US Coast Guard Division E), within the Houston Ship Channel (US Coast Guard Divisions A-D), and in the industrial areas north and south of the Houston Ship Channel (Industrial Area). Real-time air monitoring data for the surrounding communities are communicated daily in a separate report.



# Preliminary Hand- Held Air Monitoring Locations | ITC Deer Park Tank Fire

Reading Date  
4/17/2019 6:00:00 PM to 4/17/2019 7:00:00 PM



## Recent Benzene Detections

Location Category	Reading Date	Concentration
Division E	4/17/2019 18:06:46	0.030 ppm
	4/17/2019 18:16:38	0.080 ppm
	4/17/2019 18:18:54	0.550 ppm
	4/17/2019 18:21:30	1.720 ppm
	4/17/2019 18:23:48	0.050 ppm
	4/17/2019 18:27:49	0.100 ppm
	4/17/2019 18:27:41	0.320 ppm
	4/17/2019 18:05:29	0.200 ppm
	4/17/2019 18:34:06	0.100 ppm
	4/17/2019 18:42:30	0.040 ppm
	4/17/2019 18:45:40	0.310 ppm
	4/17/2019 18:44:04	0.080 ppm
	4/17/2019 18:31:33	0.120 ppm
	4/17/2019 18:26:48	0.030 ppm
Impacted Tank Farm	4/17/2019 18:49:40	0.030 ppm
	4/17/2019 18:53:10	0.050 ppm
	4/17/2019 18:53:16	0.110 ppm
	4/17/2019 18:55:59	0.080 ppm
	4/17/2019 18:59:17	0.120 ppm

This data has been provided expeditiously to ITC and regulatory agencies for informational and/or operational purposes only. Data reported within this summary is preliminary in nature and has not undergone complete QA/QC (quality assurance/quality control) process. Until this complete QA/QC process is completed, the locations of each reading are approximate in nature and subject to further refinement. As some readings may represent non-breathing zone measurements, the data reported herein may not be suitable to assess potential occupational exposure. Site Assessment readings are not representative of an individual's breathing zone (e.g., container head space, ground level, directly above product, etc.).

Reading Date  
4/17/2019 6:00:00 PM to 4/17/2019 7:00:00 PM

Benzene Action Level Concentration (ppm)  
 >=1

PRELIMINARY  
Recent Benzene Detections Greater than 1.00 ppm

Reading Date	Location Category	GPS	Google Maps URL	Concentration
4/17/2019 18:21:30	Division E	29.7332010,-95.0915730	<a href="https://www.google.com/maps/search/?api=1&amp;query=29.7332010,-95.0915730">https://www.google.com/maps/search/?api=1&amp;query=29.7332010,-95.0915730</a>	1.720 ppm

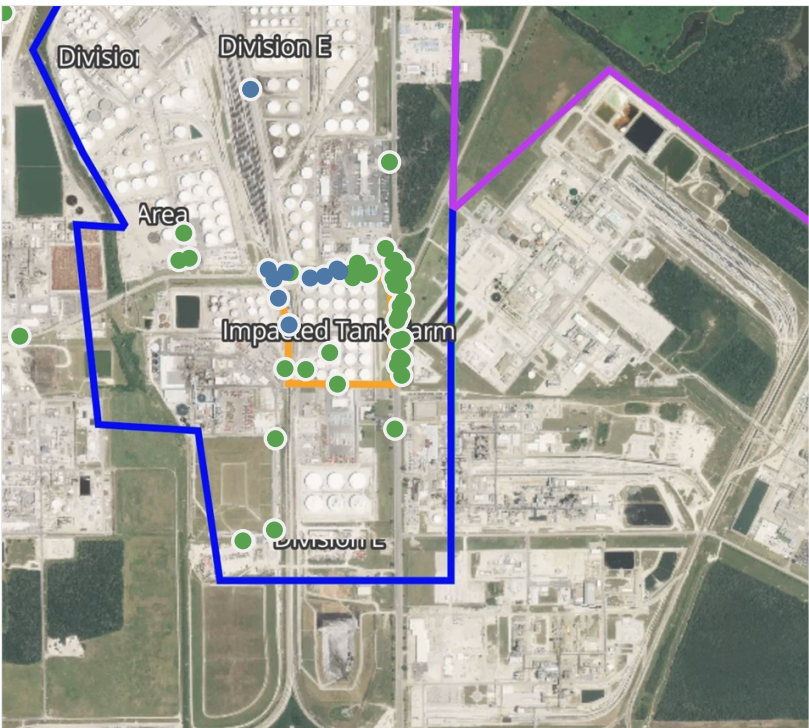
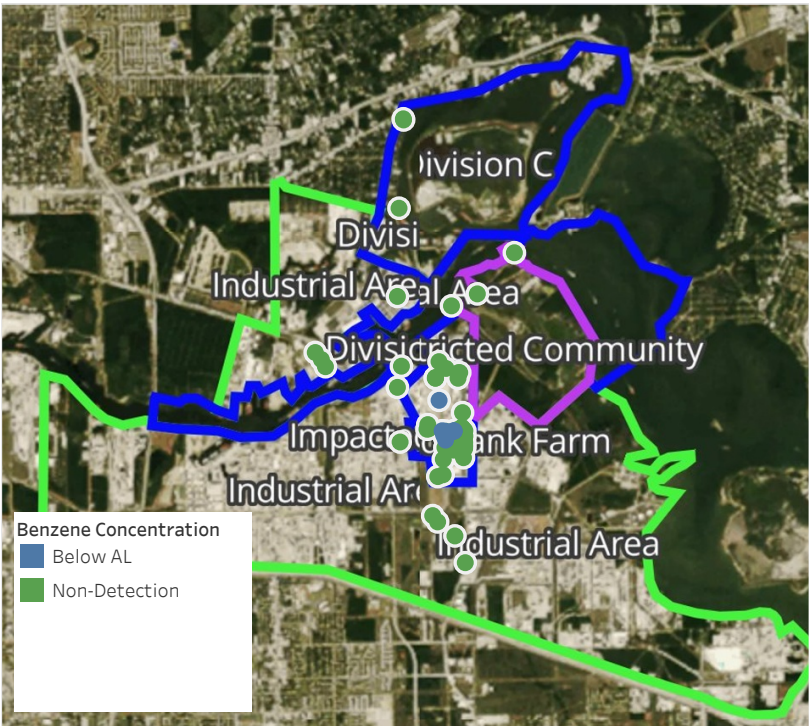




**Please Note:** These updates display data from the 2<sup>nd</sup> 80's Fire site (Impacted Tank Farm), in the industrial areas surrounding the 2<sup>nd</sup> 80's Fire site (US Coast Guard Division E), within the Houston Ship Channel (US Coast Guard Divisions A-D), and in the industrial areas north and south of the Houston Ship Channel (Industrial Area). Real-time air monitoring data for the surrounding communities are communicated daily in a separate report.

# Preliminary Hand- Held Air Monitoring Locations | ITC Deer Park Tank Fire

Reading Date  
4/17/2019 7:00:00 PM to 4/17/2019 8:00:00 PM



## Recent Benzene Detections

Location Category	Reading Date	Concentration
Division E	4/17/2019 19:00:05	0.0400 ppm
	4/17/2019 19:15:06	0.1500 ppm
	4/17/2019 19:33:27	0.1500 ppm
	4/17/2019 19:39:02	0.1200 ppm
	4/17/2019 19:42:56	0.0200 ppm
	4/17/2019 19:50:47	0.1600 ppm
	4/17/2019 19:49:14	0.2200 ppm
	4/17/2019 19:49:55	0.1700 ppm
	4/17/2019 19:54:22	0.2100 ppm
	4/17/2019 19:56:02	0.2500 ppm
	4/17/2019 19:59:52	0.1800 ppm

This data has been provided expeditiously to ITC and regulatory agencies for informational and/or operational purposes only. Data reported within this summary is preliminary in nature and has not undergone complete QA/QC (quality assurance/quality control) process. Until this complete QA/QC process is completed, the locations of each reading are approximate in nature and subject to further refinement. As some readings may represent non-breathing zone measurements, the data reported herein may not be suitable to assess potential occupational exposure. Site Assessment readings are not representative of an individual’s breathing zone (e.g., container head space, ground level, directly above product, etc.).



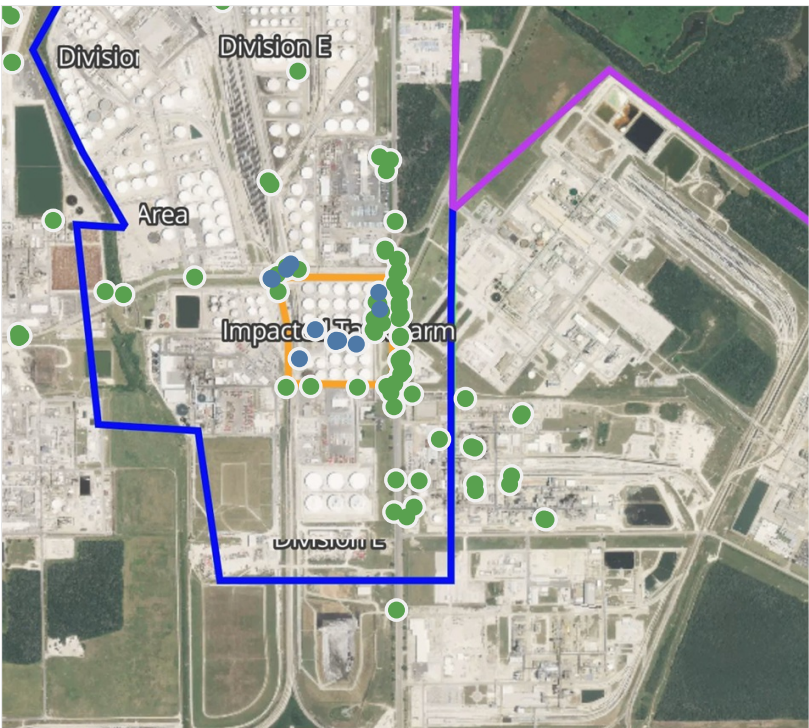
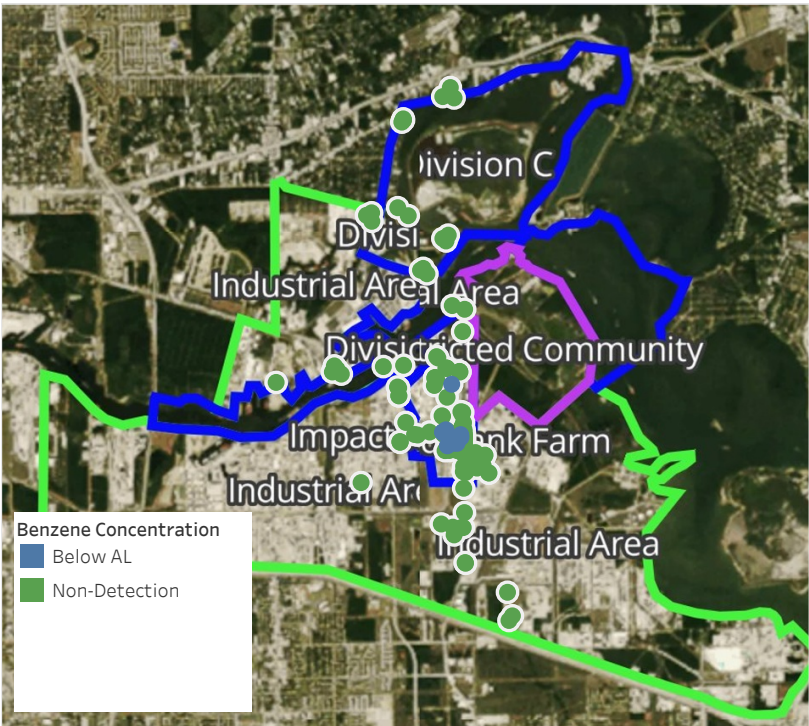


**Please Note:** These updates display data from the 2<sup>nd</sup> 80's Fire site (Impacted Tank Farm), in the industrial areas surrounding the 2<sup>nd</sup> 80's Fire site (US Coast Guard Division E), within the Houston Ship Channel (US Coast Guard Divisions A-D), and in the industrial areas north and south of the Houston Ship Channel (Industrial Area). Real-time air monitoring data for the surrounding communities are communicated daily in a separate report.



# Preliminary Hand- Held Air Monitoring Locations | ITC Deer Park Tank Fire

Reading Date  
4/17/2019 8:00:00 PM to 4/17/2019 9:00:00 PM



## Recent Benzene Detections

Location Category	Reading Date	Concentration
Division E	4/17/2019 20:03:55	0.0500 ppm
	4/17/2019 20:01:34	0.1700 ppm
	4/17/2019 20:32:53	0.0400 ppm
	4/17/2019 20:47:39	0.0200 ppm
	4/17/2019 20:49:30	0.0300 ppm
Impacted Tank Farm	4/17/2019 20:17:13	0.0700 ppm
	4/17/2019 20:35:14	0.0700 ppm
	4/17/2019 20:52:27	0.0400 ppm
	4/17/2019 20:47:23	0.1100 ppm
	4/17/2019 20:49:12	0.1100 ppm
	4/17/2019 20:50:42	0.1700 ppm
	4/17/2019 20:45:40	0.0100 ppm
	4/17/2019 20:57:01	0.0200 ppm

This data has been provided expeditiously to ITC and regulatory agencies for informational and/or operational purposes only. Data reported within this summary is preliminary in nature and has not undergone complete QA/QC (quality assurance/quality control) process. Until this complete QA/QC process is completed, the locations of each reading are approximate in nature and subject to further refinement. As some readings may represent non-breathing zone measurements, the data reported herein may not be suitable to assess potential occupational exposure. Site Assessment readings are not representative of an individual's breathing zone (e.g., container head space, ground level, directly above product, etc.).

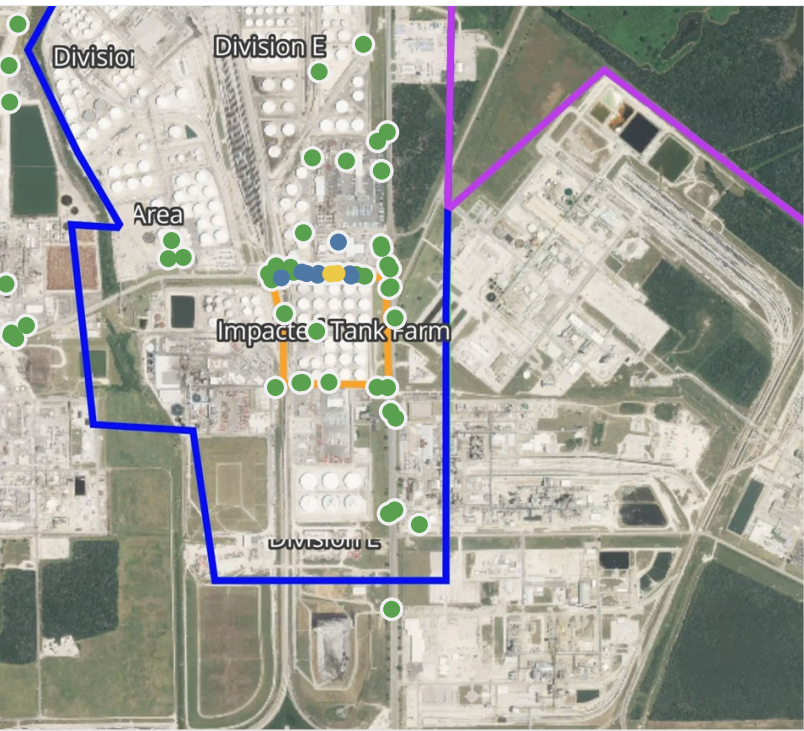
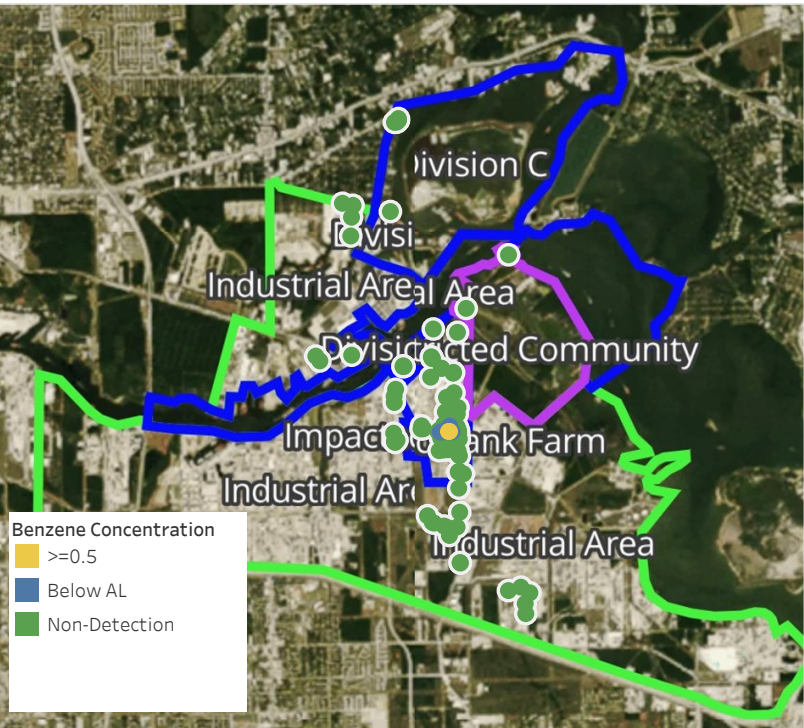




**Please Note:** These updates display data from the 2<sup>nd</sup> 80's Fire site (Impacted Tank Farm), in the industrial areas surrounding the 2<sup>nd</sup> 80's Fire site (US Coast Guard Division E), within the Houston Ship Channel (US Coast Guard Divisions A-D), and in the industrial areas north and south of the Houston Ship Channel (Industrial Area). Real-time air monitoring data for the surrounding communities are communicated daily in a separate report.

# Preliminary Hand- Held Air Monitoring Locations | ITC Deer Park Tank Fire

Reading Date  
4/17/2019 9:00:00 PM to 4/17/2019 10:00:00 PM



## Recent Benzene Detections

Location Category	Reading Date	Concentration
Division E	4/17/2019 21:10:48	0.7400 ppm
	4/17/2019 21:05:25	0.3900 ppm
	4/17/2019 21:17:25	0.1000 ppm
	4/17/2019 21:14:08	0.3500 ppm
	4/17/2019 21:19:03	0.0300 ppm
	4/17/2019 21:15:34	0.3100 ppm
	4/17/2019 21:07:14	0.4200 ppm
	4/17/2019 21:12:01	0.7400 ppm
	4/17/2019 21:17:41	0.1600 ppm
	4/17/2019 21:43:18	0.1400 ppm

This data has been provided expeditiously to ITC and regulatory agencies for informational and/or operational purposes only. Data reported within this summary is preliminary in nature and has not undergone complete QA/QC (quality assurance/quality control) process. Until this complete QA/QC process is completed, the locations of each reading are approximate in nature and subject to further refinement. As some readings may represent non-breathing zone measurements, the data reported herein may not be suitable to assess potential occupational exposure. Site Assessment readings are not representative of an individual's breathing zone (e.g., container head space, ground level, directly above product, etc.).

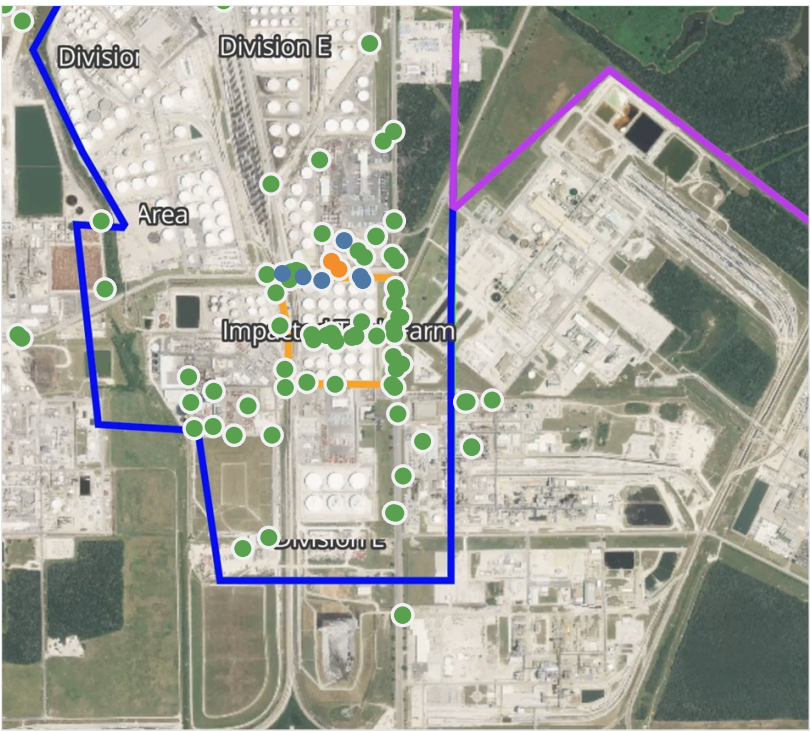
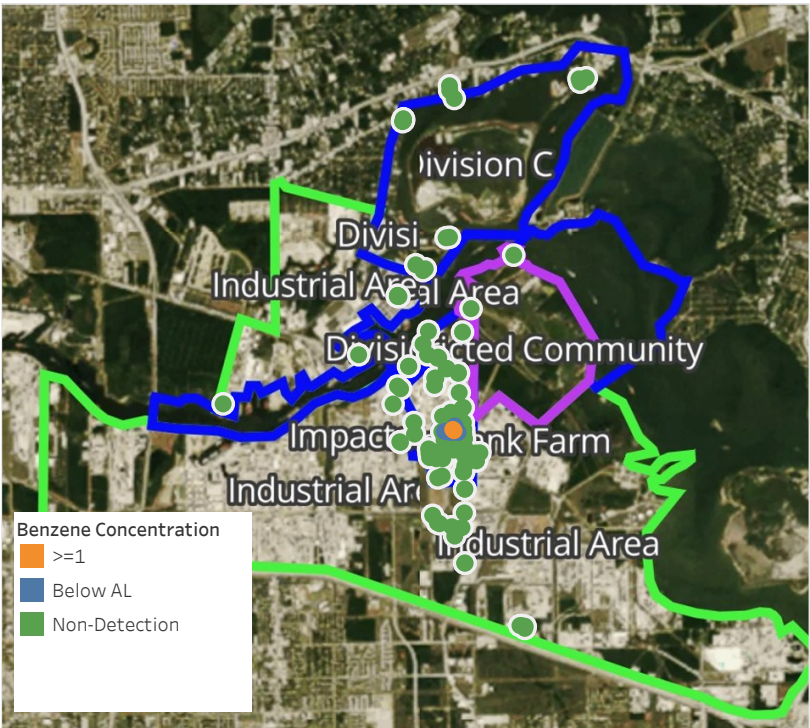




**Please Note:** These updates display data from the 2<sup>nd</sup> 80's Fire site (Impacted Tank Farm), in the industrial areas surrounding the 2<sup>nd</sup> 80's Fire site (US Coast Guard Division E), within the Houston Ship Channel (US Coast Guard Divisions A-D), and in the industrial areas north and south of the Houston Ship Channel (Industrial Area). Real-time air monitoring data for the surrounding communities are communicated daily in a separate report.

# Preliminary Hand- Held Air Monitoring Locations | ITC Deer Park Tank Fire

Reading Date  
4/17/2019 10:00:00 PM to 4/17/2019 11:00:00 PM



## Recent Benzene Detections

Location Category	Reading Date	Concentration
Division E	4/17/2019 22:02:02	0.050 ppm
	4/17/2019 22:07:51	0.130 ppm
	4/17/2019 22:10:07	0.360 ppm
	4/17/2019 22:12:58	1.130 ppm
	4/17/2019 22:15:42	0.130 ppm
	4/17/2019 22:19:56	0.090 ppm
	4/17/2019 22:16:39	0.020 ppm
	4/17/2019 22:21:08	1.160 ppm

This data has been provided expeditiously to ITC and regulatory agencies for informational and/or operational purposes only. Data reported within this summary is preliminary in nature and has not undergone complete QA/QC (quality assurance/quality control) process. Until this complete QA/QC process is completed, the locations of each reading are approximate in nature and subject to further refinement. As some readings may represent non-breathing zone measurements, the data reported herein may not be suitable to assess potential occupational exposure. Site Assessment readings are not representative of an individual's breathing zone (e.g., container head space, ground level, directly above product, etc.).



Reading Date  
4/17/2019 10:00:00 PM to 4/17/2019 11:00:00 PM

Benzene Action Level Concentration (ppm)  
 >=1

PRELIMINARY  
Recent Benzene Detections Greater than 1.00 ppm

Reading Date	Location Category	GPS	Google Maps URL	Concentration
4/17/2019 22:21:08	Division E	29.7335820,-95.0918190	<a href="https://www.google.com/maps/search/?api=1&amp;query=29.7335820,-95.0918190">https://www.google.com/maps/search/?api=1&amp;query=29.7335820,-95.0918190</a>	1.16000 ppm
4/17/2019 22:12:58	Division E	29.7333730,-95.0915930	<a href="https://www.google.com/maps/search/?api=1&amp;query=29.7333730,-95.0915930">https://www.google.com/maps/search/?api=1&amp;query=29.7333730,-95.0915930</a>	1.13000 ppm



**Please Note:** These updates display data from the 2<sup>nd</sup> 80's Fire site (Impacted Tank Farm), in the industrial areas surrounding the 2<sup>nd</sup> 80's Fire site (US Coast Guard Division E), within the Houston Ship Channel (US Coast Guard Divisions A-D), and in the industrial areas north and south of the Houston Ship Channel (Industrial Area). Real-time air monitoring data for the surrounding communities are communicated daily in a separate report.