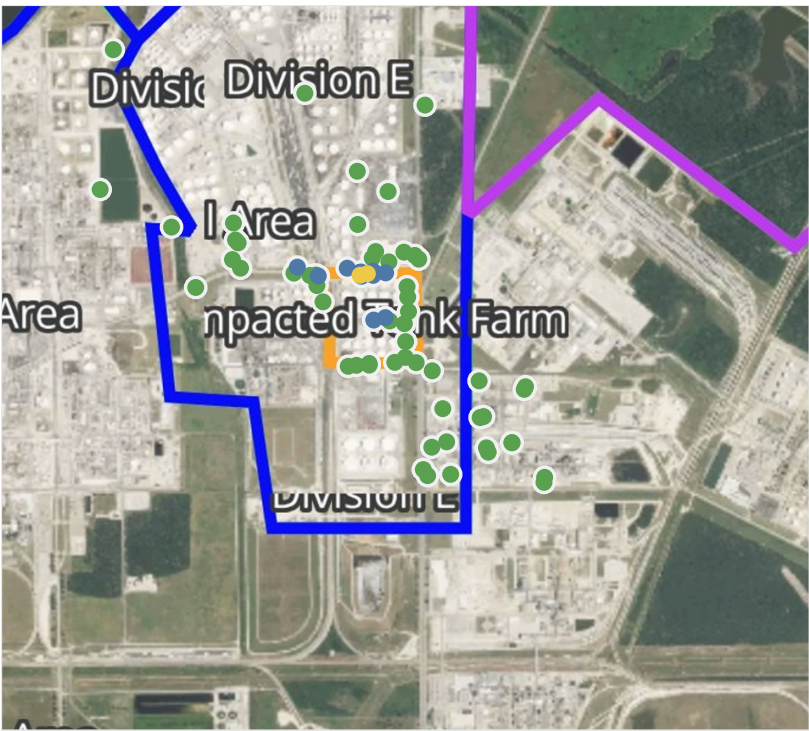


Preliminary Hand- Held Air Monitoring Locations | ITC Deer Park Tank Fire

Reading Date
4/22/2019 11:00:00 PM to 4/23/2019 12:00:00 AM



Recent Benzene Detections

Location Category	Reading Date	Concentration
Division C	4/22/2019 23:38:13	0.0900 ppm
Division E	4/22/2019 23:14:48	0.0300 ppm
	4/22/2019 23:23:51	0.4100 ppm
	4/22/2019 23:20:42	0.8000 ppm
	4/22/2019 23:31:34	0.1000 ppm
	4/22/2019 23:17:50	0.0800 ppm
	4/22/2019 23:26:18	0.2800 ppm
	4/22/2019 23:29:29	0.0500 ppm
	4/22/2019 23:28:23	0.8200 ppm
	4/22/2019 23:35:54	0.0600 ppm
	4/22/2019 23:39:20	0.0500 ppm
Impacted Tank Farm	4/22/2019 23:01:04	0.0800 ppm
	4/22/2019 23:02:04	0.0700 ppm

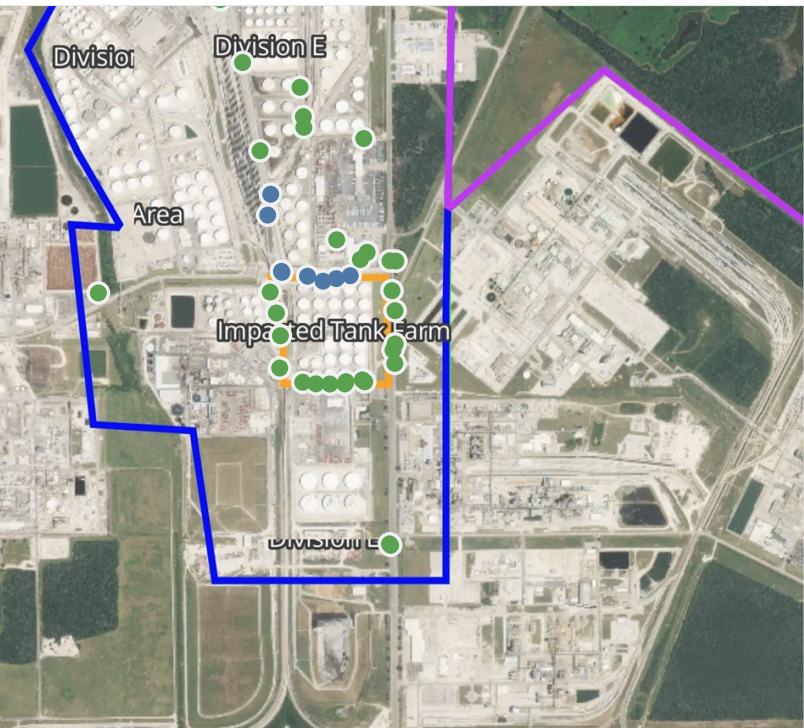
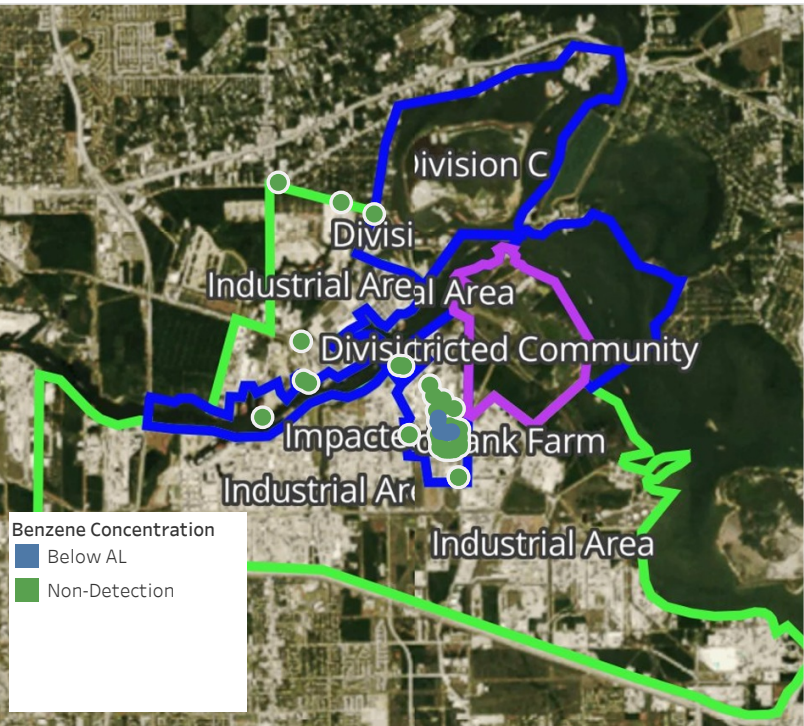
This data has been provided expeditiously to ITC and regulatory agencies for informational and/or operational purposes only. Data reported within this summary is preliminary in nature and has not undergone complete QA/QC (quality assurance/quality control) process. Until this complete QA/QC process is completed, the locations of each reading are approximate in nature and subject to further refinement. As some readings may represent non-breathing zone measurements, the data reported herein may not be suitable to assess potential occupational exposure. Site Assessment readings are not representative of an individual's breathing zone (e.g., container head space, ground level, directly above product, etc.).



Please Note: These updates display data from the 2nd 80's Fire site (Impacted Tank Farm), in the industrial areas surrounding the 2nd 80's Fire site (US Coast Guard Division E), within the Houston Ship Channel (US Coast Guard Divisions A-D), and in the industrial areas north and south of the Houston Ship Channel (Industrial Area). Real-time air monitoring data for the surrounding communities are communicated daily in a separate report.

Preliminary Hand- Held Air Monitoring Locations | ITC Deer Park Tank Fire

Reading Date
4/23/2019 12:00:00 AM to 4/23/2019 1:00:00 AM



Recent Benzene Detections

Location Category	Reading Date	Concentration
Division C	4/23/2019 00:08:03	0.0800 ppm
	4/23/2019 00:13:48	0.1100 ppm
	4/23/2019 00:18:57	0.0600 ppm
Division E	4/23/2019 00:18:13	0.4600 ppm
	4/23/2019 00:20:00	0.1300 ppm
	4/23/2019 00:10:07	0.1800 ppm
	4/23/2019 00:22:19	0.0600 ppm
	4/23/2019 00:15:56	0.4800 ppm

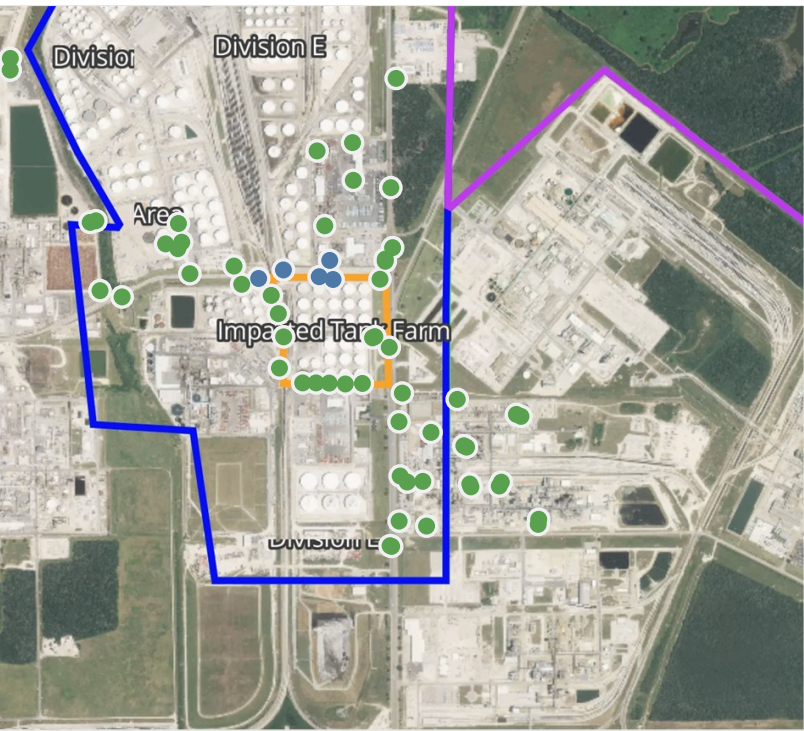
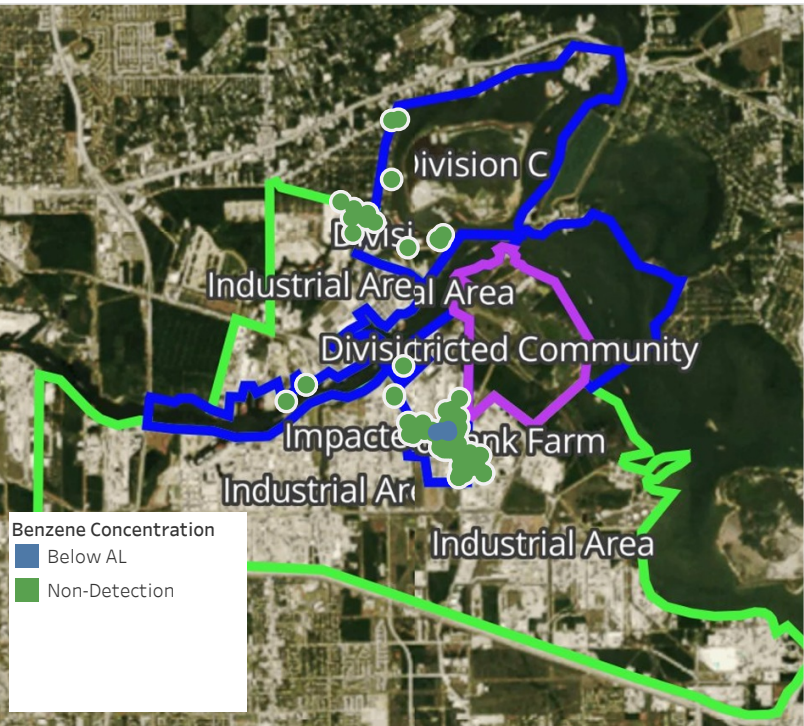
This data has been provided expeditiously to ITC and regulatory agencies for informational and/or operational purposes only. Data reported within this summary is preliminary in nature and has not undergone complete QA/QC (quality assurance/quality control) process. Until this complete QA/QC process is completed, the locations of each reading are approximate in nature and subject to further refinement. As some readings may represent non-breathing zone measurements, the data reported herein may not be suitable to assess potential occupational exposure. Site Assessment readings are not representative of an individual's breathing zone (e.g., container head space, ground level, directly above product, etc.).



Please Note: These updates display data from the 2nd 80's Fire site (Impacted Tank Farm), in the industrial areas surrounding the 2nd 80's Fire site (US Coast Guard Division E), within the Houston Ship Channel (US Coast Guard Divisions A-D), and in the industrial areas north and south of the Houston Ship Channel (Industrial Area). Real-time air monitoring data for the surrounding communities are communicated daily in a separate report.

Preliminary Hand- Held Air Monitoring Locations | ITC Deer Park Tank Fire

Reading Date
4/23/2019 1:00:00 AM to 4/23/2019 2:00:00 AM



Recent Benzene Detections

Location Category	Reading Date	Concentration
Division C	4/23/2019 01:45:40	0.0600 ppm
Division E	4/23/2019 01:17:52	0.1200 ppm
	4/23/2019 01:30:29	0.2400 ppm
	4/23/2019 01:41:41	0.0500 ppm
	4/23/2019 01:32:21	0.3700 ppm

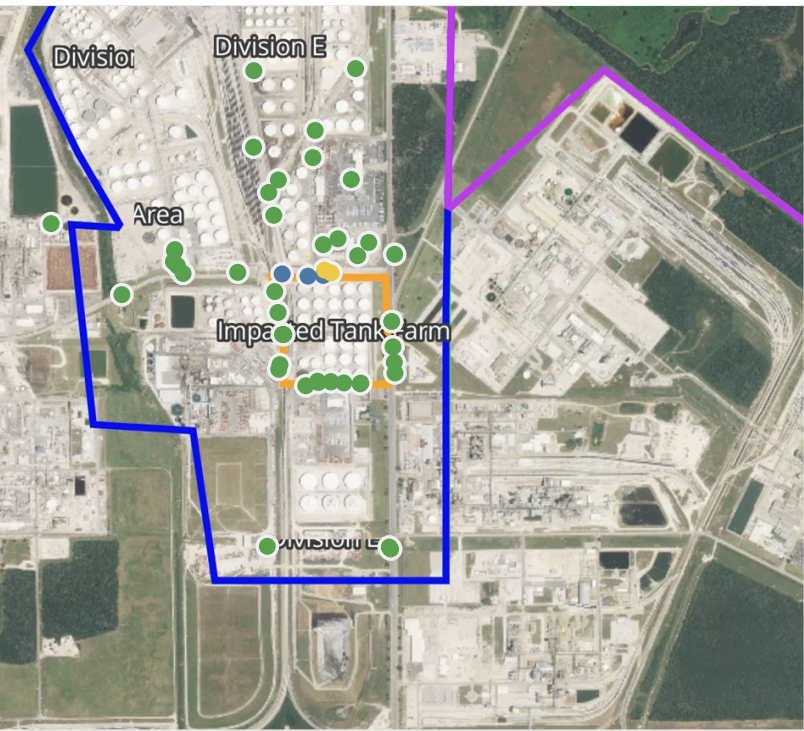
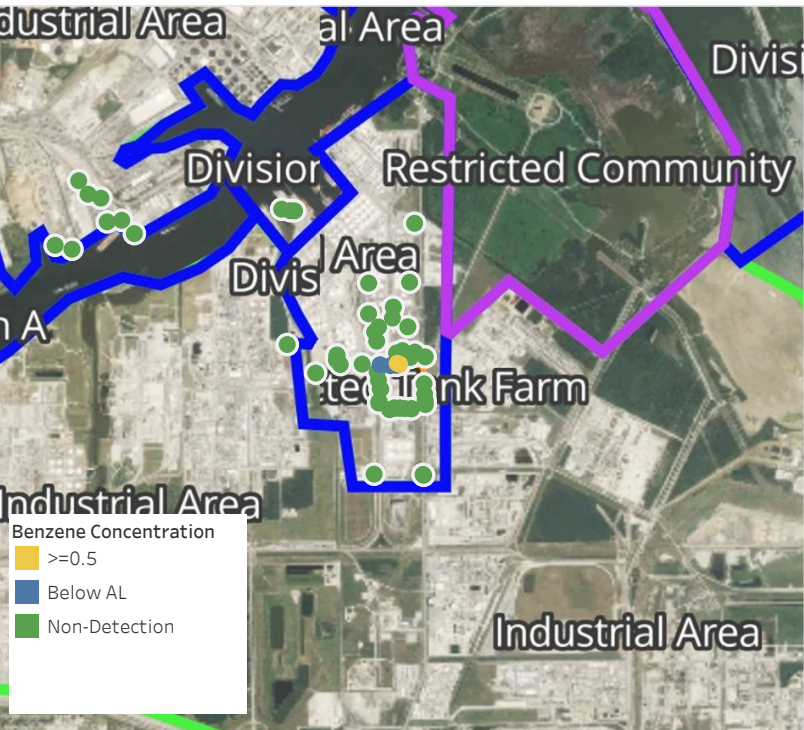
This data has been provided expeditiously to ITC and regulatory agencies for informational and/or operational purposes only. Data reported within this summary is preliminary in nature and has not undergone complete QA/QC (quality assurance/quality control) process. Until this complete QA/QC process is completed, the locations of each reading are approximate in nature and subject to further refinement. As some readings may represent non-breathing zone measurements, the data reported herein may not be suitable to assess potential occupational exposure. Site Assessment readings are not representative of an individual's breathing zone (e.g., container head space, ground level, directly above product, etc.).



Please Note: These updates display data from the 2nd 80's Fire site (Impacted Tank Farm), in the industrial areas surrounding the 2nd 80's Fire site (US Coast Guard Division E), within the Houston Ship Channel (US Coast Guard Divisions A-D), and in the industrial areas north and south of the Houston Ship Channel (Industrial Area). Real-time air monitoring data for the surrounding communities are communicated daily in a separate report.

Preliminary Hand- Held Air Monitoring Locations | ITC Deer Park Tank Fire

Reading Date
4/23/2019 2:00:00 AM to 4/23/2019 3:00:00 AM



Recent Benzene Detections

Location Category	Reading Date	Concentration
Division E	4/23/2019 02:15:22	0.2500 ppm
	4/23/2019 02:12:51	0.3100 ppm
	4/23/2019 02:17:43	0.0600 ppm
	4/23/2019 02:10:57	0.7600 ppm
	4/23/2019 02:34:03	0.6600 ppm

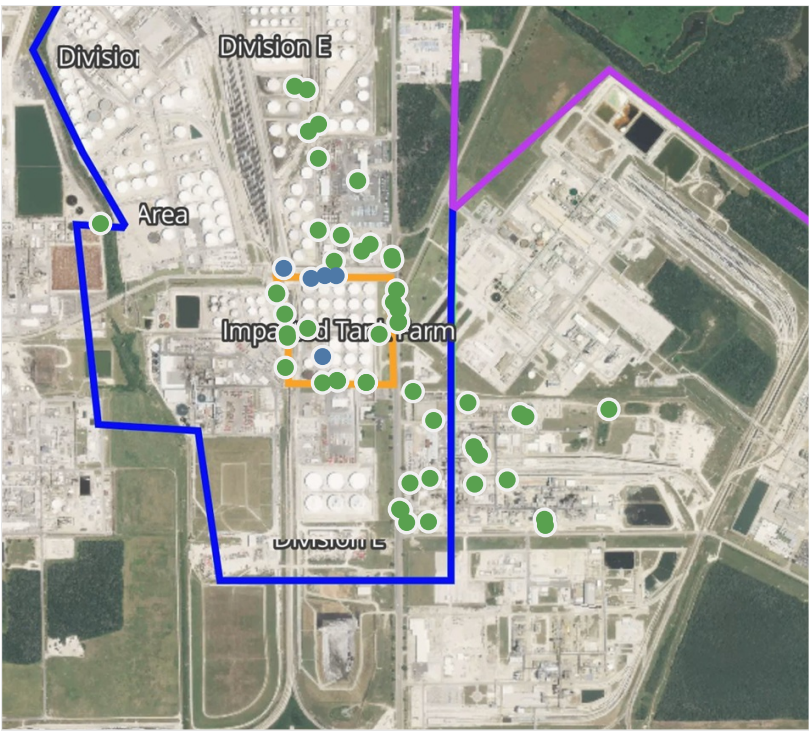
This data has been provided expeditiously to ITC and regulatory agencies for informational and/or operational purposes only. Data reported within this summary is preliminary in nature and has not undergone complete QA/QC (quality assurance/quality control) process. Until this complete QA/QC process is completed, the locations of each reading are approximate in nature and subject to further refinement. As some readings may represent non-breathing zone measurements, the data reported herein may not be suitable to assess potential occupational exposure. Site Assessment readings are not representative of an individual's breathing zone (e.g., container head space, ground level, directly above product, etc.).



Please Note: These updates display data from the 2nd 80's Fire site (Impacted Tank Farm), in the industrial areas surrounding the 2nd 80's Fire site (US Coast Guard Division E), within the Houston Ship Channel (US Coast Guard Divisions A-D), and in the industrial areas north and south of the Houston Ship Channel (Industrial Area). Real-time air monitoring data for the surrounding communities are communicated daily in a separate report.

Preliminary Hand- Held Air Monitoring Locations | ITC Deer Park Tank Fire

Reading Date
4/23/2019 3:00:00 AM to 4/23/2019 4:00:00 AM



Recent Benzene Detections

Location Category	Reading Date	Concentration
Division E	4/23/2019 03:18:47	0.0600 ppm
	4/23/2019 03:21:48	0.1200 ppm
	4/23/2019 03:23:48	0.0800 ppm
Impact Tank Farm	4/23/2019 03:16:43	0.4300 ppm
	4/23/2019 03:06:35	0.0300 ppm

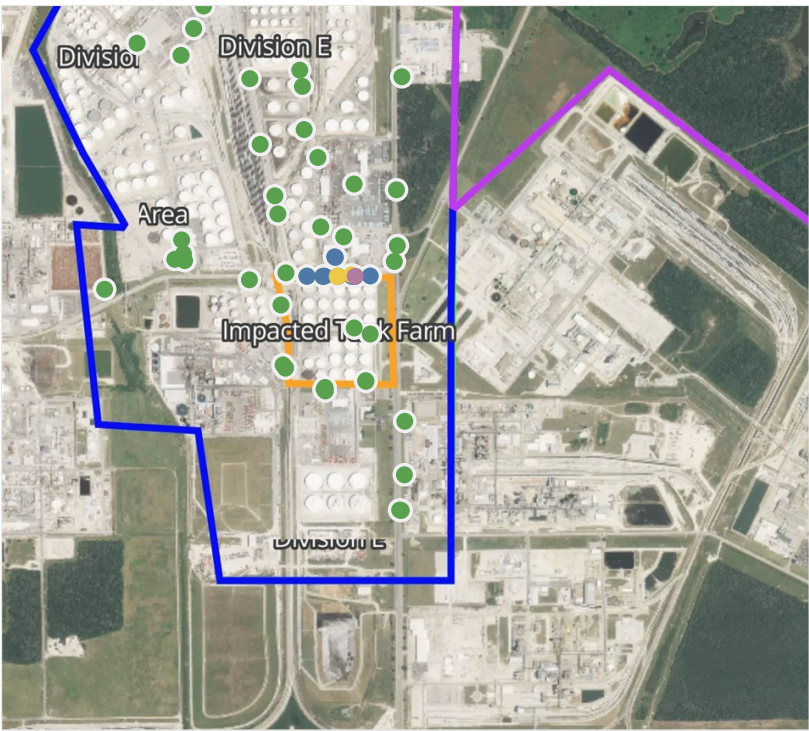
This data has been provided expeditiously to ITC and regulatory agencies for informational and/or operational purposes only. Data reported within this summary is preliminary in nature and has not undergone complete QA/QC (quality assurance/quality control) process. Until this complete QA/QC process is completed, the locations of each reading are approximate in nature and subject to further refinement. As some readings may represent non-breathing zone measurements, the data reported herein may not be suitable to assess potential occupational exposure. Site Assessment readings are not representative of an individual's breathing zone (e.g., container head space, ground level, directly above product, etc.).



Please Note: These updates display data from the 2nd 80's Fire site (Impacted Tank Farm), in the industrial areas surrounding the 2nd 80's Fire site (US Coast Guard Division E), within the Houston Ship Channel (US Coast Guard Divisions A-D), and in the industrial areas north and south of the Houston Ship Channel (Industrial Area). Real-time air monitoring data for the surrounding communities are communicated daily in a separate report.

Preliminary Hand- Held Air Monitoring Locations | ITC Deer Park Tank Fire

Reading Date
4/23/2019 4:00:00 AM to 4/23/2019 5:00:00 AM



Recent Benzene Detections

Location Category	Reading Date	Concentration
Division E	4/23/2019 04:03:55	0.080 ppm
	4/23/2019 04:10:21	0.690 ppm
	4/23/2019 04:15:30	0.550 ppm
	4/23/2019 04:17:50	0.130 ppm
	4/23/2019 04:34:25	0.140 ppm
	4/23/2019 04:35:53	0.290 ppm
	4/23/2019 04:34:27	6.680 ppm
	4/23/2019 04:39:05	0.030 ppm
	4/23/2019 04:45:59	0.950 ppm
	4/23/2019 04:47:39	0.150 ppm
	4/23/2019 04:42:27	0.160 ppm
	4/23/2019 04:44:59	0.370 ppm
	4/23/2019 04:49:22	0.130 ppm
	4/23/2019 04:50:50	0.050 ppm
	4/23/2019 04:55:02	0.030 ppm

This data has been provided expeditiously to ITC and regulatory agencies for informational and/or operational purposes only. Data reported within this summary is preliminary in nature and has not undergone complete QA/QC (quality assurance/quality control) process. Until this complete QA/QC process is completed, the locations of each reading are approximate in nature and subject to further refinement. As some readings may represent non-breathing zone measurements, the data reported herein may not be suitable to assess potential occupational exposure. Site Assessment readings are not representative of an individual's breathing zone (e.g., container head space, ground level, directly above product, etc.).

Reading Date
4/23/2019 4:00:00 AM to 4/23/2019 5:00:00 AM

Benzene Action Level Concentration (ppm)
 >=2

PRELIMINARY
Recent Benzene Detections Greater than 1.00 ppm

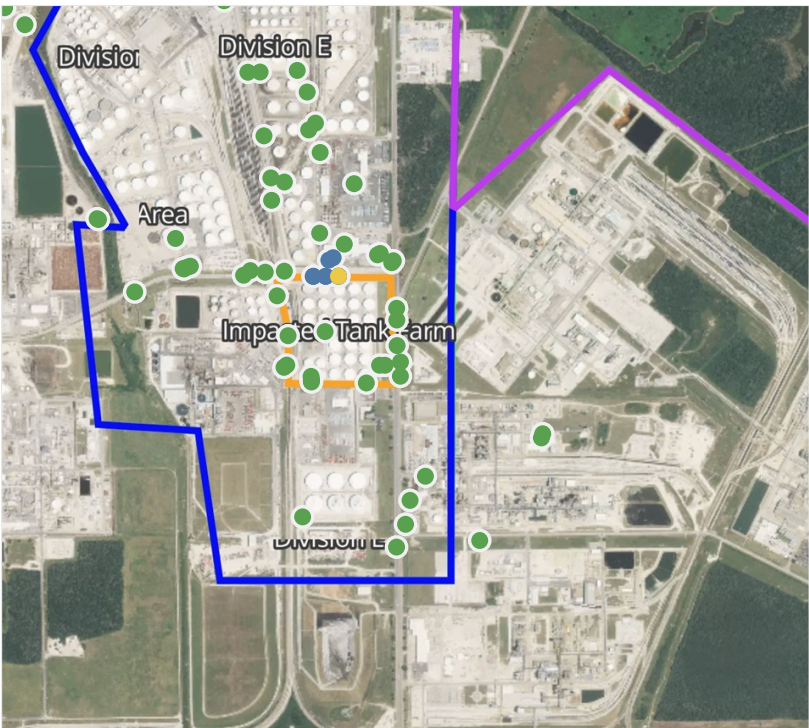
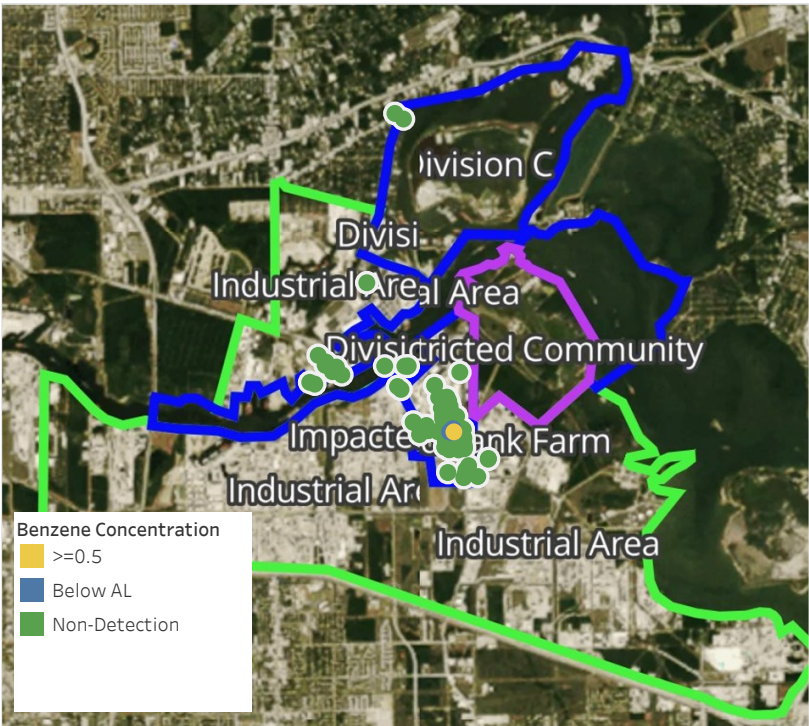
Reading Date	Location Category	GPS	Google Maps URL	Concentration
4/23/2019 04:34:27	Division E	29.7331840,-95.0910980	https://www.google.com/maps/search/?api=1&query=29.7331840,-95.0910980	6.680 ppm



Please Note: These updates display data from the 2nd 80's Fire site (Impacted Tank Farm), in the industrial areas surrounding the 2nd 80's Fire site (US Coast Guard Division E), within the Houston Ship Channel (US Coast Guard Divisions A-D), and in the industrial areas north and south of the Houston Ship Channel (Industrial Area). Real-time air monitoring data for the surrounding communities are communicated daily in a separate report.

Preliminary Hand- Held Air Monitoring Locations | ITC Deer Park Tank Fire

Reading Date
4/23/2019 5:00:00 AM to 4/23/2019 6:00:00 AM



Recent Benzene Detections

Location Category	Reading Date	Concentration
Division E	4/23/2019 05:13:14	0.0400 ppm
	4/23/2019 05:12:08	0.0600 ppm
	4/23/2019 05:15:02	0.1300 ppm
	4/23/2019 05:16:35	0.0800 ppm
	4/23/2019 05:18:54	0.3700 ppm
	4/23/2019 05:20:33	0.5000 ppm
	4/23/2019 05:21:54	0.2400 ppm
	4/23/2019 05:29:33	0.1300 ppm
	4/23/2019 05:50:34	0.0500 ppm

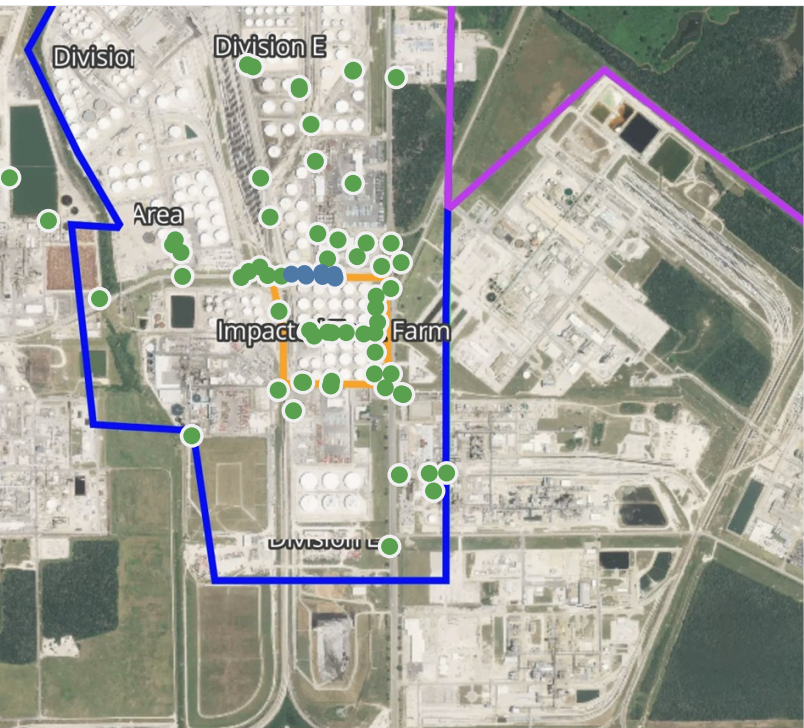
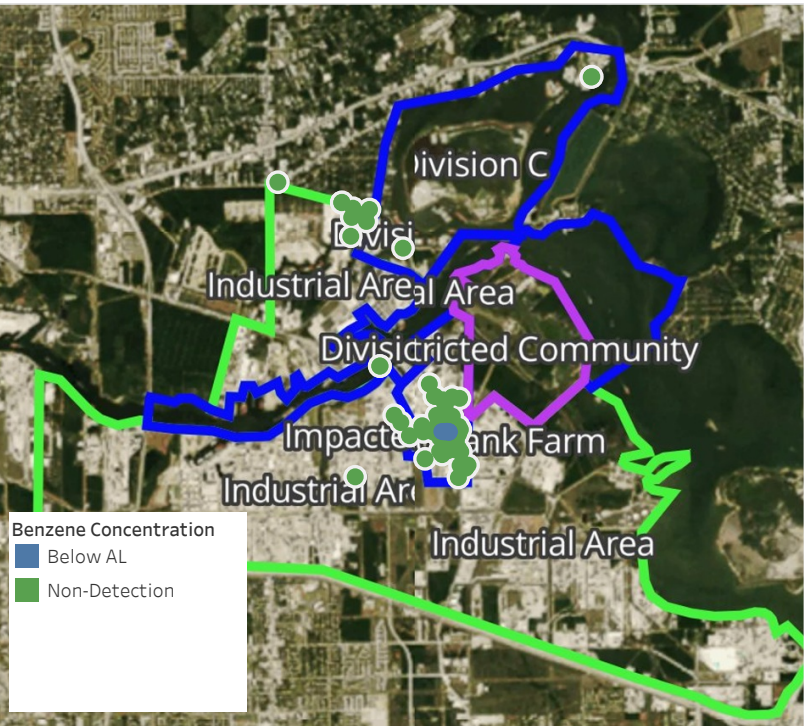
This data has been provided expeditiously to ITC and regulatory agencies for informational and/or operational purposes only. Data reported within this summary is preliminary in nature and has not undergone complete QA/QC (quality assurance/quality control) process. Until this complete QA/QC process is completed, the locations of each reading are approximate in nature and subject to further refinement. As some readings may represent non-breathing zone measurements, the data reported herein may not be suitable to assess potential occupational exposure. Site Assessment readings are not representative of an individual's breathing zone (e.g., container head space, ground level, directly above product, etc.).



Please Note: These updates display data from the 2nd 80's Fire site (Impacted Tank Farm), in the industrial areas surrounding the 2nd 80's Fire site (US Coast Guard Division E), within the Houston Ship Channel (US Coast Guard Divisions A-D), and in the industrial areas north and south of the Houston Ship Channel (Industrial Area). Real-time air monitoring data for the surrounding communities are communicated daily in a separate report.

Preliminary Hand- Held Air Monitoring Locations | ITC Deer Park Tank Fire

Reading Date
4/23/2019 6:00:00 AM to 4/23/2019 7:00:00 AM



Recent Benzene Detections

Location Category	Reading Date	Concentration
Division E	4/23/2019 06:13:22	0.0700 ppm
	4/23/2019 06:15:32	0.1300 ppm
	4/23/2019 06:17:37	0.0800 ppm
	4/23/2019 06:21:29	0.2600 ppm
	4/23/2019 06:43:47	0.0600 ppm
	4/23/2019 06:45:47	0.2400 ppm
	4/23/2019 06:48:55	0.4200 ppm
	4/23/2019 06:51:59	0.2100 ppm

This data has been provided expeditiously to ITC and regulatory agencies for informational and/or operational purposes only. Data reported within this summary is preliminary in nature and has not undergone complete QA/QC (quality assurance/quality control) process. Until this complete QA/QC process is completed, the locations of each reading are approximate in nature and subject to further refinement. As some readings may represent non-breathing zone measurements, the data reported herein may not be suitable to assess potential occupational exposure. Site Assessment readings are not representative of an individual's breathing zone (e.g., container head space, ground level, directly above product, etc.).

Reading Date

4/23/2019 6:00:00 AM to 4/23/2019 7:00:00 AM

Benzene Action Level Concentration (ppm)

PRELIMINARY

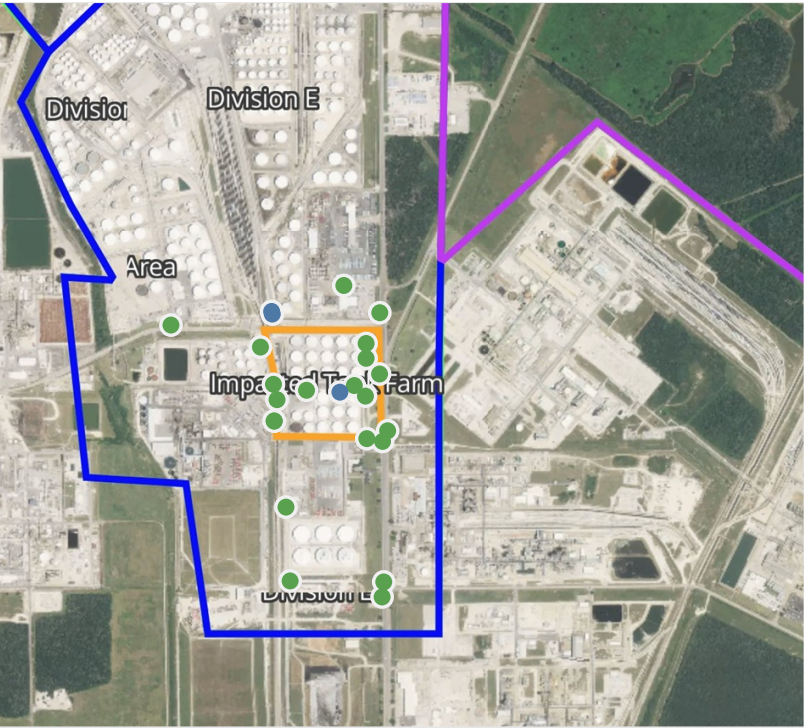
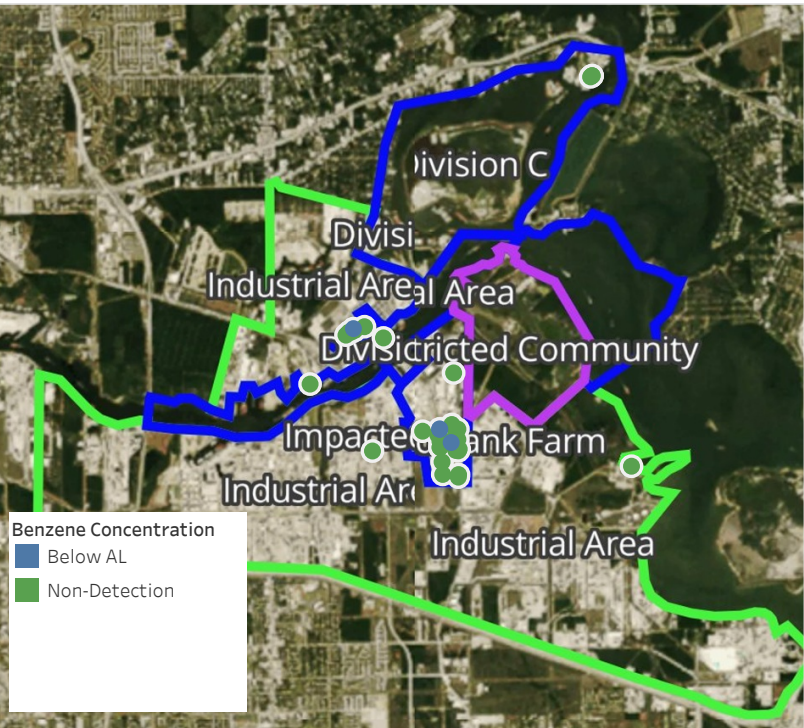
Recent Benzene Detections Greater than 1.00 ppm



Please Note: These updates display data from the 2nd 80's Fire site (Impacted Tank Farm), in the industrial areas surrounding the 2nd 80's Fire site (US Coast Guard Division E), within the Houston Ship Channel (US Coast Guard Divisions A-D), and in the industrial areas north and south of the Houston Ship Channel (Industrial Area). Real-time air monitoring data for the surrounding communities are communicated daily in a separate report.

Preliminary Hand- Held Air Monitoring Locations | ITC Deer Park Tank Fire

Reading Date
4/23/2019 7:00:00 AM to 4/23/2019 8:00:00 AM



Recent Benzene Detections

Location Category	Reading Date	Concentration
Below Grate	4/23/2019 07:58:17	0.3750 ppm
Division E	4/23/2019 07:49:54	0.0300 ppm
	4/23/2019 07:47:58	0.2000 ppm
Impacted Tank Farm	4/23/2019 07:59:42	0.0400 ppm

This data has been provided expeditiously to ITC and regulatory agencies for informational and/or operational purposes only. Data reported within this summary is preliminary in nature and has not undergone complete QA/QC (quality assurance/quality control) process. Until this complete QA/QC process is completed, the locations of each reading are approximate in nature and subject to further refinement. As some readings may represent non-breathing zone measurements, the data reported herein may not be suitable to assess potential occupational exposure. Site Assessment readings are not representative of an individual's breathing zone (e.g., container head space, ground level, directly above product, etc.).

Reading Date

4/23/2019 7:00:00 AM to 4/23/2019 8:00:00 AM

Benzene Action Level Concentration (ppm)

PRELIMINARY

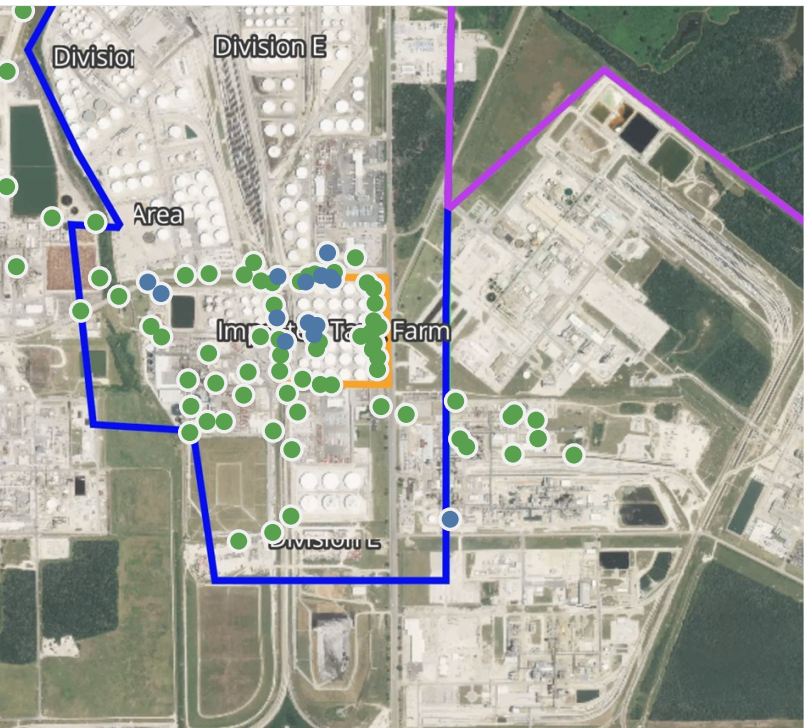
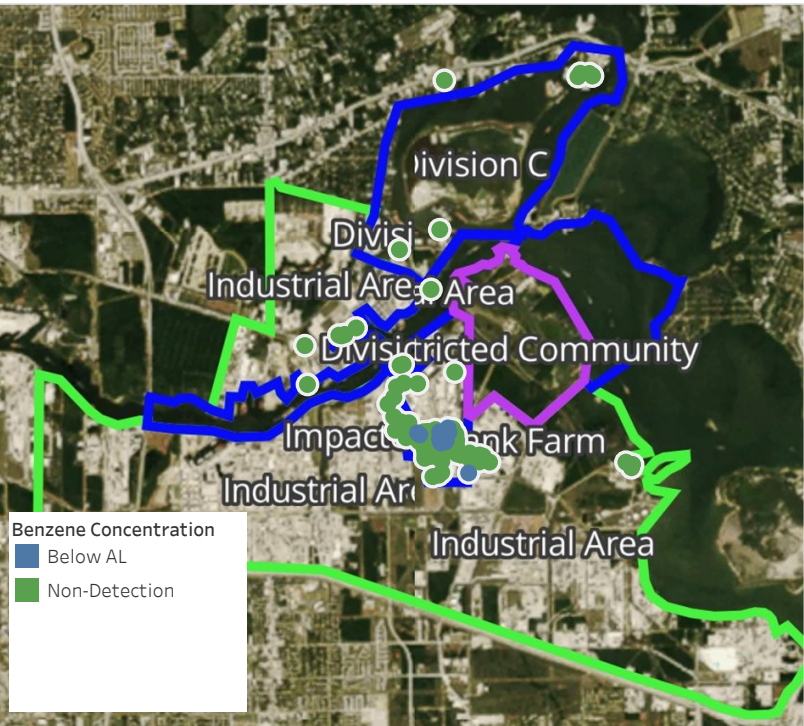
Recent Benzene Detections Greater than 1.00 ppm



Please Note: These updates display data from the 2nd 80's Fire site (Impacted Tank Farm), in the industrial areas surrounding the 2nd 80's Fire site (US Coast Guard Division E), within the Houston Ship Channel (US Coast Guard Divisions A-D), and in the industrial areas north and south of the Houston Ship Channel (Industrial Area). Real-time air monitoring data for the surrounding communities are communicated daily in a separate report.

Preliminary Hand- Held Air Monitoring Locations | ITC Deer Park Tank Fire

Reading Date
4/23/2019 8:00:00 AM to 4/23/2019 9:00:00 AM



Recent Benzene Detections

Location Category	Reading Date	Concentration
Division E	4/23/2019 08:41:12	0.2800 ppm
	4/23/2019 08:41:54	0.0200 ppm
	4/23/2019 08:38:19	0.3300 ppm
	4/23/2019 08:47:51	0.1300 ppm
	4/23/2019 08:47:17	0.0300 ppm
	4/23/2019 08:55:32	0.1500 ppm
	4/23/2019 08:55:18	0.1100 ppm
	4/23/2019 08:38:53	0.0300 ppm
	4/23/2019 08:51:06	0.0900 ppm
Impacted Tank Farm	4/23/2019 08:36:55	0.0500 ppm
	4/23/2019 08:16:51	0.0400 ppm
	4/23/2019 08:44:24	0.1100 ppm
	4/23/2019 08:41:36	0.0600 ppm
	4/23/2019 08:59:40	0.0500 ppm

This data has been provided expeditiously to ITC and regulatory agencies for informational and/or operational purposes only. Data reported within this summary is preliminary in nature and has not undergone complete QA/QC (quality assurance/quality control) process. Until this complete QA/QC process is completed, the locations of each reading are approximate in nature and subject to further refinement. As some readings may represent non-breathing zone measurements, the data reported herein may not be suitable to assess potential occupational exposure. Site Assessment readings are not representative of an individual's breathing zone (e.g., container head space, ground level, directly above product, etc.).

Reading Date

4/23/2019 8:00:00 AM to 4/23/2019 9:00:00 AM

Benzene Action Level Concentration (ppm)

PRELIMINARY

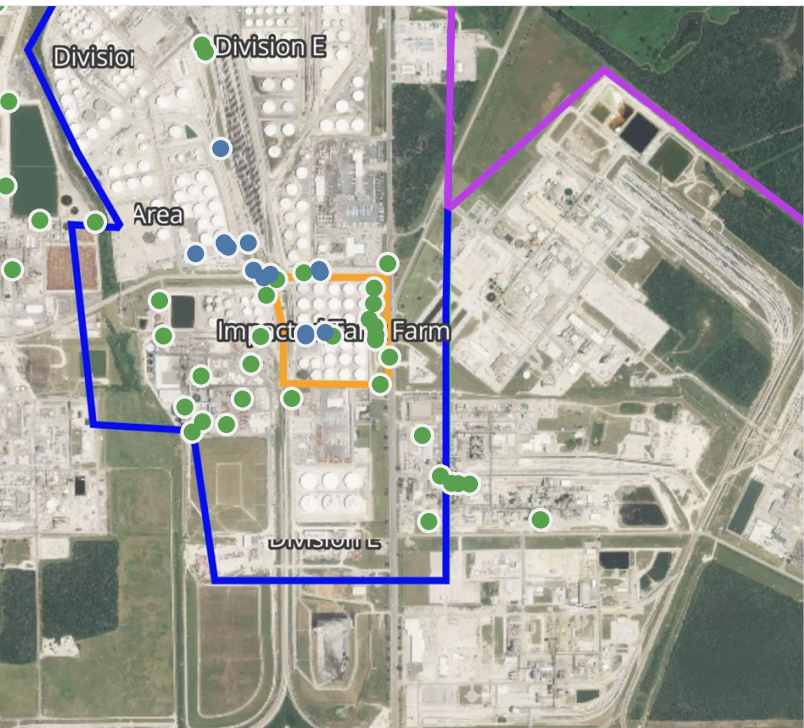
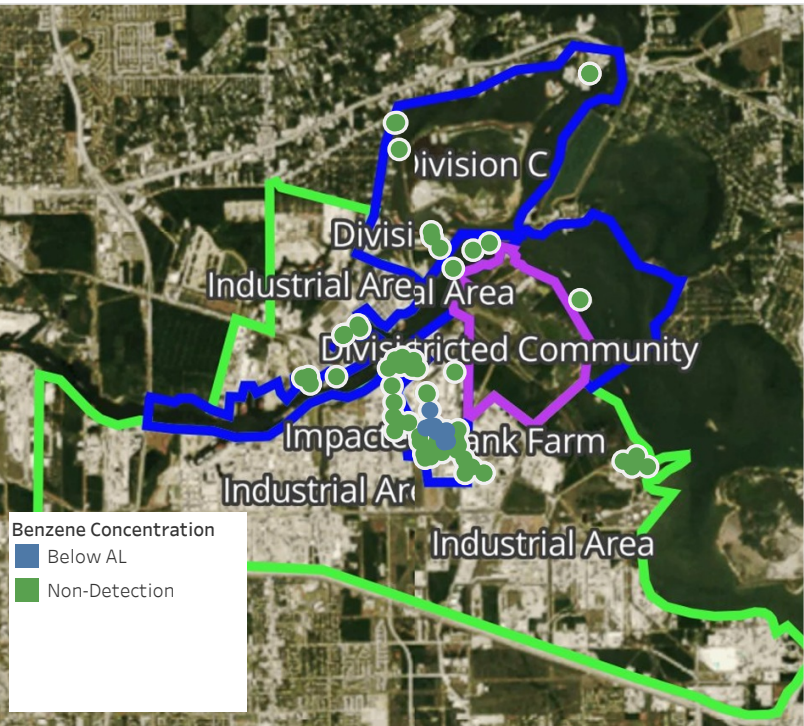
Recent Benzene Detections Greater than 1.00 ppm



Please Note: These updates display data from the 2nd 80's Fire site (Impacted Tank Farm), in the industrial areas surrounding the 2nd 80's Fire site (US Coast Guard Division E), within the Houston Ship Channel (US Coast Guard Divisions A-D), and in the industrial areas north and south of the Houston Ship Channel (Industrial Area). Real-time air monitoring data for the surrounding communities are communicated daily in a separate report.

Preliminary Hand- Held Air Monitoring Locations | ITC Deer Park Tank Fire

Reading Date
4/23/2019 9:00:00 AM to 4/23/2019 10:00:00 AM



Recent Benzene Detections

Location Category	Reading Date	Concentration
Division E	4/23/2019 09:06:15	0.0200 ppm
	4/23/2019 09:22:06	0.0900 ppm
	4/23/2019 09:07:46	0.0500 ppm
	4/23/2019 09:09:29	0.0400 ppm
	4/23/2019 09:05:44	0.0200 ppm
	4/23/2019 09:45:49	0.2600 ppm
	4/23/2019 09:42:32	0.0300 ppm
	4/23/2019 09:48:50	0.0700 ppm
	4/23/2019 09:50:10	0.0300 ppm
	4/23/2019 09:50:37	0.1800 ppm
Impacted Tank Farm	4/23/2019 09:52:33	0.1400 ppm
	4/23/2019 09:05:49	0.0500 ppm
	4/23/2019 09:27:58	0.0600 ppm
	4/23/2019 09:41:32	0.0900 ppm

This data has been provided expeditiously to ITC and regulatory agencies for informational and/or operational purposes only. Data reported within this summary is preliminary in nature and has not undergone complete QA/QC (quality assurance/quality control) process. Until this complete QA/QC process is completed, the locations of each reading are approximate in nature and subject to further refinement. As some readings may represent non-breathing zone measurements, the data reported herein may not be suitable to assess potential occupational exposure. Site Assessment readings are not representative of an individual's breathing zone (e.g., container head space, ground level, directly above product, etc.).

Reading Date

4/23/2019 9:00:00 AM to 4/23/2019 10:00:00 AM

Benzene Action Level Concentration (ppm)

PRELIMINARY

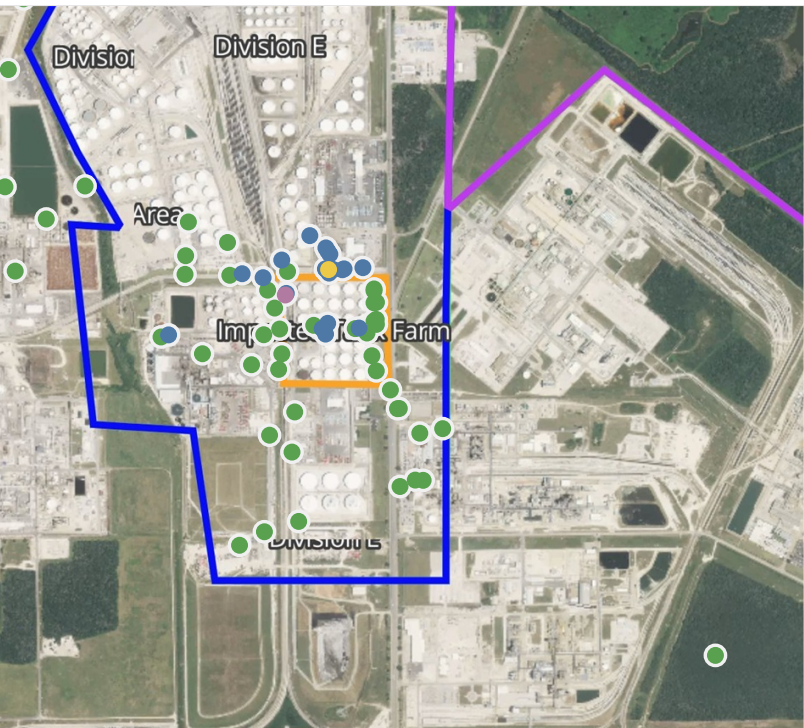
Recent Benzene Detections Greater than 1.00 ppm



Please Note: These updates display data from the 2nd 80's Fire site (Impacted Tank Farm), in the industrial areas surrounding the 2nd 80's Fire site (US Coast Guard Division E), within the Houston Ship Channel (US Coast Guard Divisions A-D), and in the industrial areas north and south of the Houston Ship Channel (Industrial Area). Real-time air monitoring data for the surrounding communities are communicated daily in a separate report.

Preliminary Hand- Held Air Monitoring Locations | ITC Deer Park Tank Fire

Reading Date
4/23/2019 10:00:00 AM to 4/23/2019 11:00:00 AM



Recent Benzene Detections

Location Category	Reading Date	Concentration
Division E	4/23/2019 10:07:16	0.120 ppm
	4/23/2019 10:04:05	0.290 ppm
	4/23/2019 10:00:26	0.060 ppm
	4/23/2019 10:09:45	0.550 ppm
	4/23/2019 10:13:42	0.140 ppm
	4/23/2019 10:22:44	0.030 ppm
	4/23/2019 10:31:34	0.330 ppm
	4/23/2019 10:33:21	0.140 ppm
	4/23/2019 10:34:41	0.120 ppm
	4/23/2019 10:40:30	0.270 ppm
	4/23/2019 10:16:32	0.310 ppm
	4/23/2019 10:45:21	0.090 ppm
	4/23/2019 10:44:17	0.020 ppm
	4/23/2019 10:52:59	0.160 ppm
	4/23/2019 10:56:13	0.140 ppm
	4/23/2019 10:42:34	0.020 ppm
Impacted Tank Farm	4/23/2019 10:58:16	0.350 ppm
	4/23/2019 10:06:37	0.060 ppm
	4/23/2019 10:17:32	0.050 ppm
	4/23/2019 10:20:35	0.030 ppm
	4/23/2019 10:31:56	0.060 ppm
	4/23/2019 10:21:52	6.100 ppm
	4/23/2019 10:54:46	0.210 ppm

This data has been provided expeditiously to ITC and regulatory agencies for informational and/or operational purposes only. Data reported within this summary is preliminary in nature and has not undergone complete QA/QC (quality assurance/quality control) process. Until this complete QA/QC process is completed, the locations of each reading are approximate in nature and subject to further refinement. As some readings may represent non-breathing zone measurements, the data reported herein may not be suitable to assess potential occupational exposure. Site Assessment readings are not representative of an individual's breathing zone (e.g., container head space, ground level, directly above product, etc.).

Reading Date
4/23/2019 10:00:00 AM to 4/23/2019 11:00:00 AM

Benzene Action Level Concentration (ppm)
■ >=2

PRELIMINARY
Recent Benzene Detections Greater than 1.00 ppm

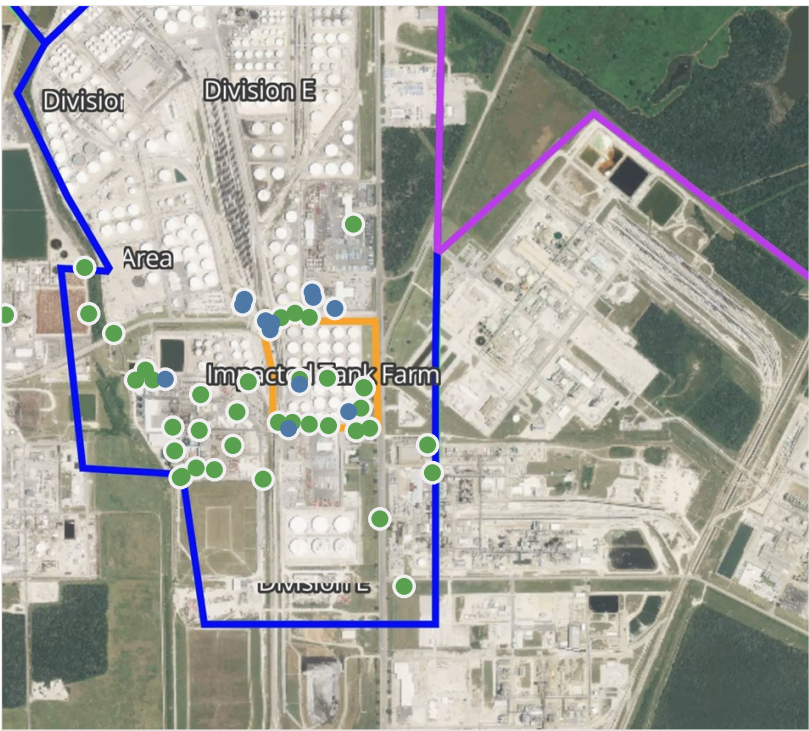
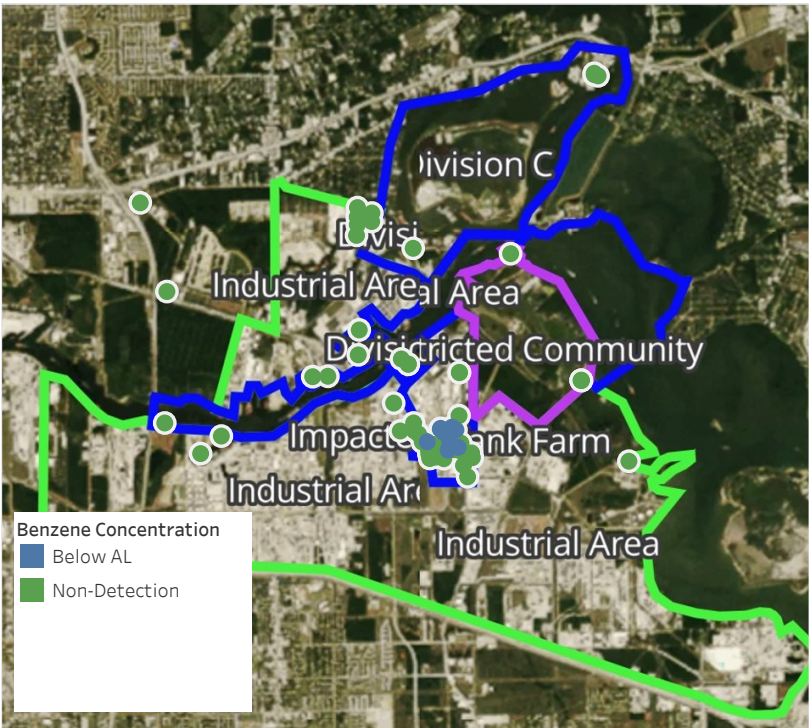
Reading Date	Location Category	GPS	Google Maps URL	Concentration
4/23/2019 10:21:52	Impacted Tank Farm	29.7326910,-95.0930740	https://www.google.com/maps/search/?api=1&query=29.7326910,-95.0930740	6.100 ppm



Please Note: These updates display data from the 2nd 80's Fire site (Impacted Tank Farm), in the industrial areas surrounding the 2nd 80's Fire site (US Coast Guard Division E), within the Houston Ship Channel (US Coast Guard Divisions A-D), and in the industrial areas north and south of the Houston Ship Channel (Industrial Area). Real-time air monitoring data for the surrounding communities are communicated daily in a separate report.

Preliminary Hand- Held Air Monitoring Locations | ITC Deer Park Tank Fire

Reading Date
4/23/2019 11:00:00 AM to 4/23/2019 12:00:00 PM



Recent Benzene Detections

Location Category	Reading Date	Concentration
Division E	4/23/2019 11:09:21	0.1400 ppm
	4/23/2019 11:11:56	0.2100 ppm
	4/23/2019 11:26:42	0.0400 ppm
	4/23/2019 11:35:33	0.4800 ppm
	4/23/2019 11:33:41	0.4700 ppm
	4/23/2019 11:31:38	0.0900 ppm
	4/23/2019 11:36:43	0.1800 ppm
	4/23/2019 11:52:12	0.0600 ppm
	4/23/2019 11:41:49	0.0600 ppm
Impacted Tank Farm	4/23/2019 11:54:04	0.1600 ppm
	4/23/2019 11:21:13	0.2600 ppm
	4/23/2019 11:30:14	0.0700 ppm
	4/23/2019 11:50:37	0.0400 ppm

This data has been provided expeditiously to ITC and regulatory agencies for informational and/or operational purposes only. Data reported within this summary is preliminary in nature and has not undergone complete QA/QC (quality assurance/quality control) process. Until this complete QA/QC process is completed, the locations of each reading are approximate in nature and subject to further refinement. As some readings may represent non-breathing zone measurements, the data reported herein may not be suitable to assess potential occupational exposure. Site Assessment readings are not representative of an individual's breathing zone (e.g., container head space, ground level, directly above product, etc.).

Reading Date

4/23/2019 11:00:00 AM to 4/23/2019 12:00:00 PM

Benzene Action Level Concentration (ppm)

PRELIMINARY

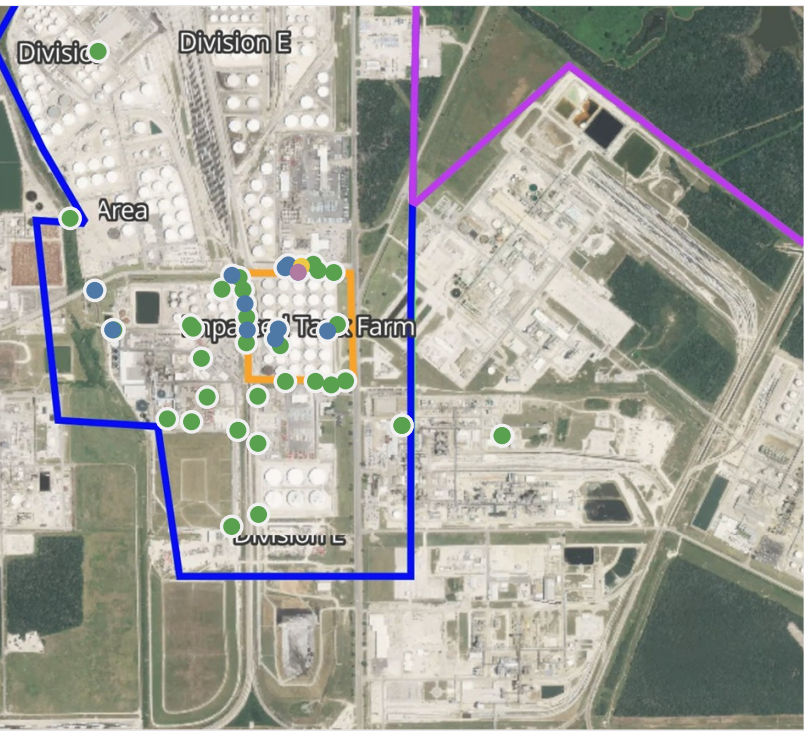
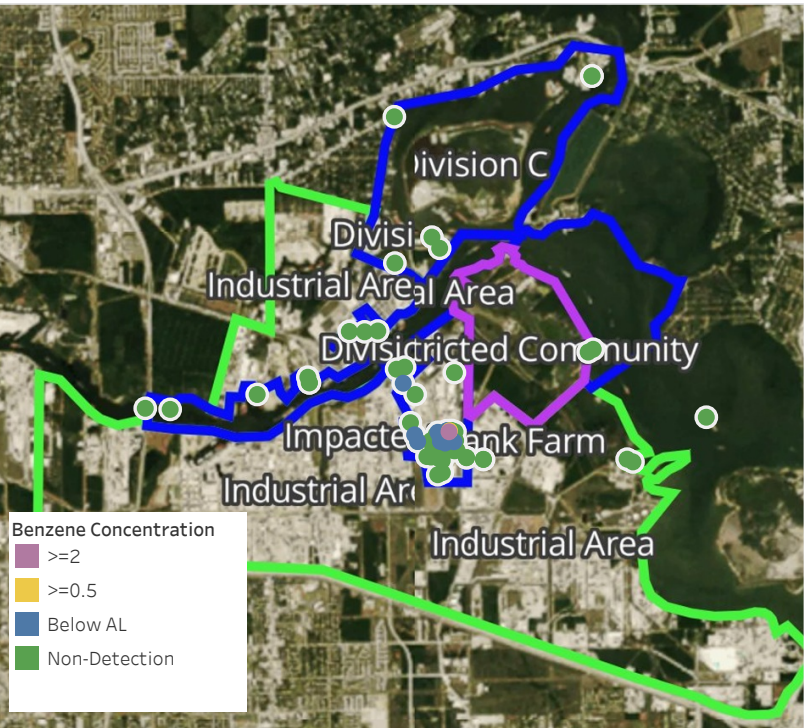
Recent Benzene Detections Greater than 1.00 ppm



Please Note: These updates display data from the 2nd 80's Fire site (Impacted Tank Farm), in the industrial areas surrounding the 2nd 80's Fire site (US Coast Guard Division E), within the Houston Ship Channel (US Coast Guard Divisions A-D), and in the industrial areas north and south of the Houston Ship Channel (Industrial Area). Real-time air monitoring data for the surrounding communities are communicated daily in a separate report.

Preliminary Hand- Held Air Monitoring Locations | ITC Deer Park Tank Fire

Reading Date
4/23/2019 12:00:00 PM to 4/23/2019 1:00:00 PM



Recent Benzene Detections

Location Category	Reading Date	Concentration
Division B	4/23/2019 12:57:52	0.020 ppm
Division E	4/23/2019 12:05:29	2.470 ppm
	4/23/2019 12:01:37	0.340 ppm
	4/23/2019 12:10:46	0.020 ppm
	4/23/2019 12:14:52	0.030 ppm
	4/23/2019 12:25:22	0.030 ppm
	4/23/2019 12:19:36	0.960 ppm
	4/23/2019 12:31:55	0.340 ppm
	4/23/2019 12:34:55	0.410 ppm
	4/23/2019 12:40:11	0.130 ppm
Impacted Tank Farm	4/23/2019 12:48:48	0.020 ppm
	4/23/2019 12:03:53	0.040 ppm
	4/23/2019 12:47:58	0.080 ppm
	4/23/2019 12:58:13	0.040 ppm

This data has been provided expeditiously to ITC and regulatory agencies for informational and/or operational purposes only. Data reported within this summary is preliminary in nature and has not undergone complete QA/QC (quality assurance/quality control) process. Until this complete QA/QC process is completed, the locations of each reading are approximate in nature and subject to further refinement. As some readings may represent non-breathing zone measurements, the data reported herein may not be suitable to assess potential occupational exposure. Site Assessment readings are not representative of an individual's breathing zone (e.g., container head space, ground level, directly above product, etc.).

Reading Date
4/23/2019 12:00:00 PM to 4/23/2019 1:00:00 PM

Benzene Action Level Concentration (ppm)
 >=2

PRELIMINARY
Recent Benzene Detections Greater than 1.00 ppm

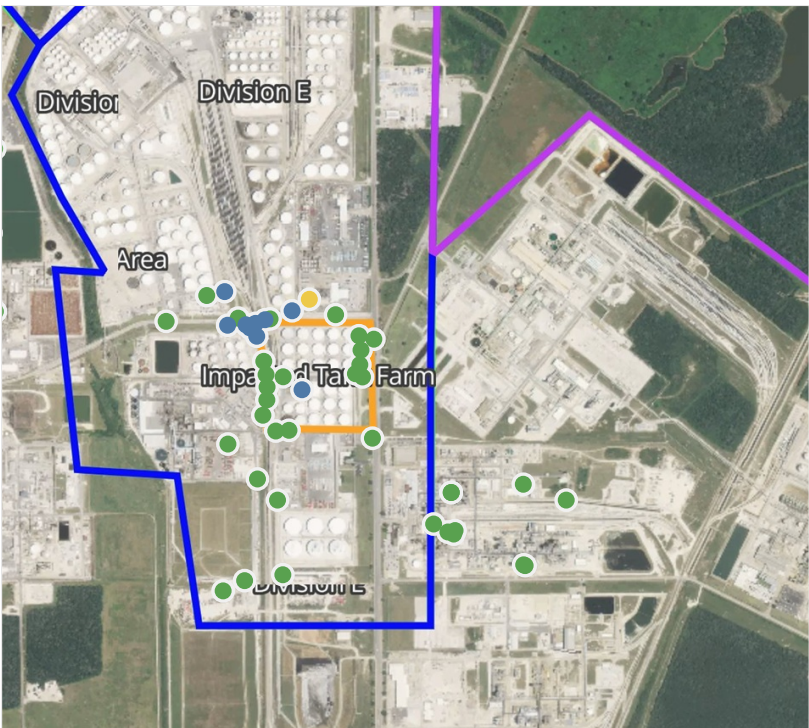
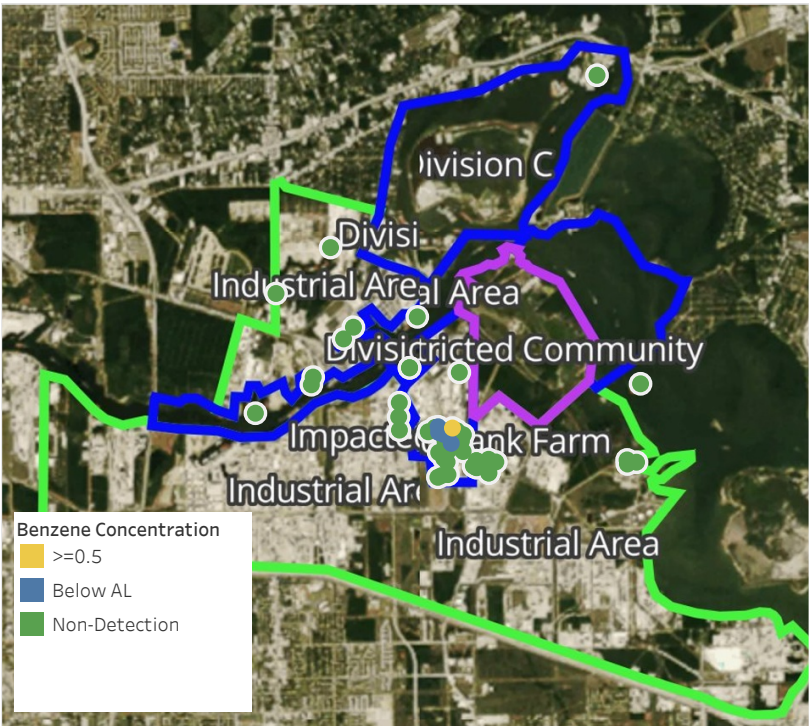
Reading Date	Location Category	GPS	Google Maps URL	Concentration
4/23/2019 12:05:29	Division E	29.7332050,-95.0915960	https://www.google.com/maps/search/?api=1&query=29.7332050,-95.0915960	2.470 ppm



Please Note: These updates display data from the 2nd 80's Fire site (Impacted Tank Farm), in the industrial areas surrounding the 2nd 80's Fire site (US Coast Guard Division E), within the Houston Ship Channel (US Coast Guard Divisions A-D), and in the industrial areas north and south of the Houston Ship Channel (Industrial Area). Real-time air monitoring data for the surrounding communities are communicated daily in a separate report.

Preliminary Hand- Held Air Monitoring Locations | ITC Deer Park Tank Fire

Reading Date
4/23/2019 1:00:00 PM to 4/23/2019 2:00:00 PM



Recent Benzene Detections

Location Category	Reading Date	Concentration
Division E	4/23/2019 13:08:08	0.0200 ppm
	4/23/2019 13:34:12	0.0500 ppm
	4/23/2019 13:35:35	0.7300 ppm
	4/23/2019 13:36:47	0.2800 ppm
	4/23/2019 13:31:39	0.0400 ppm
	4/23/2019 13:34:36	0.0300 ppm
	4/23/2019 13:29:43	0.0200 ppm
	4/23/2019 13:23:20	0.1100 ppm
	4/23/2019 13:26:56	0.0600 ppm
Impacted Tank Farm	4/23/2019 13:33:25	0.0300 ppm
	4/23/2019 13:02:03	0.0400 ppm

This data has been provided expeditiously to ITC and regulatory agencies for informational and/or operational purposes only. Data reported within this summary is preliminary in nature and has not undergone complete QA/QC (quality assurance/quality control) process. Until this complete QA/QC process is completed, the locations of each reading are approximate in nature and subject to further refinement. As some readings may represent non-breathing zone measurements, the data reported herein may not be suitable to assess potential occupational exposure. Site Assessment readings are not representative of an individual's breathing zone (e.g., container head space, ground level, directly above product, etc.).

Reading Date

4/23/2019 1:00:00 PM to 4/23/2019 2:00:00 PM

Benzene Action Level Concentration (ppm)

PRELIMINARY

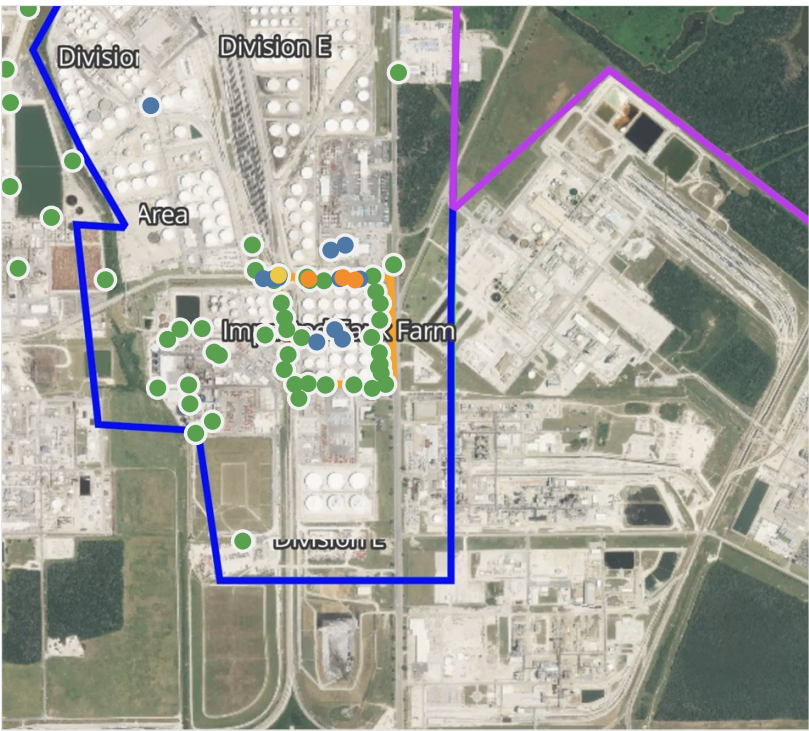
Recent Benzene Detections Greater than 1.00 ppm



Please Note: These updates display data from the 2nd 80's Fire site (Impacted Tank Farm), in the industrial areas surrounding the 2nd 80's Fire site (US Coast Guard Division E), within the Houston Ship Channel (US Coast Guard Divisions A-D), and in the industrial areas north and south of the Houston Ship Channel (Industrial Area). Real-time air monitoring data for the surrounding communities are communicated daily in a separate report.

Preliminary Hand- Held Air Monitoring Locations | ITC Deer Park Tank Fire

Reading Date
4/23/2019 2:00:00 PM to 4/23/2019 3:00:00 PM



Recent Benzene Detections

Location Category	Reading Date	Concentration
Division E	4/23/2019 14:03:38	0.050 ppm
	4/23/2019 14:19:34	1.150 ppm
	4/23/2019 14:20:41	0.030 ppm
	4/23/2019 14:24:07	1.530 ppm
	4/23/2019 14:27:50	0.160 ppm
	4/23/2019 14:30:34	0.120 ppm
	4/23/2019 14:35:57	0.140 ppm
	4/23/2019 14:52:45	0.370 ppm
	4/23/2019 14:54:06	1.100 ppm
	4/23/2019 14:53:52	0.500 ppm
	4/23/2019 14:49:42	0.180 ppm
	4/23/2019 14:55:11	0.470 ppm
	4/23/2019 14:57:06	0.020 ppm
Impacted Tank Farm	4/23/2019 14:07:21	0.040 ppm
	4/23/2019 14:28:41	0.030 ppm
	4/23/2019 14:56:05	0.060 ppm

This data has been provided expeditiously to ITC and regulatory agencies for informational and/or operational purposes only. Data reported within this summary is preliminary in nature and has not undergone complete QA/QC (quality assurance/quality control) process. Until this complete QA/QC process is completed, the locations of each reading are approximate in nature and subject to further refinement. As some readings may represent non-breathing zone measurements, the data reported herein may not be suitable to assess potential occupational exposure. Site Assessment readings are not representative of an individual's breathing zone (e.g., container head space, ground level, directly above product, etc.).

Reading Date
4/23/2019 2:00:00 PM to 4/23/2019 3:00:00 PM

Benzene Action Level Concentration (ppm)
 >=1

PRELIMINARY
Recent Benzene Detections Greater than 1.00 ppm

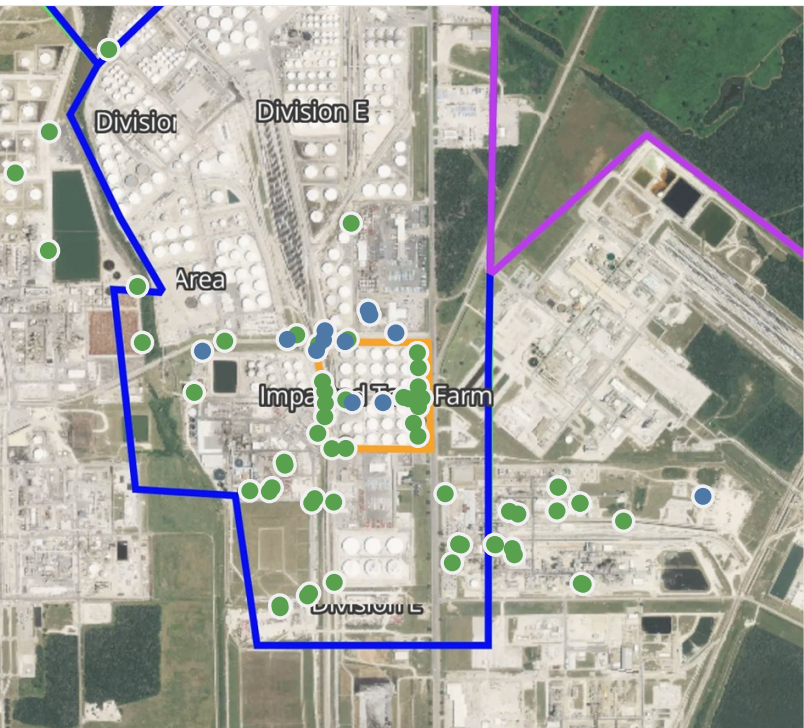
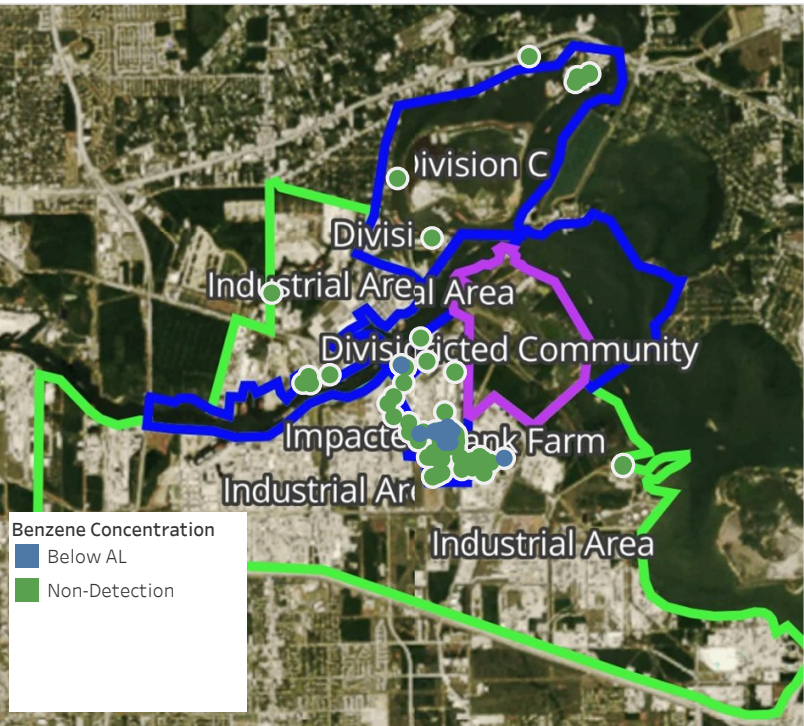
Reading Date	Location Category	GPS	Google Maps URL	Concentration
4/23/2019 14:54:06	Division E	29.7331200,-95.0925100	https://www.google.com/maps/search/?api=1&query=29.7331200,-95.0925100	1.1000 ppm
4/23/2019 14:24:07	Division E	29.7331520,-95.0914720	https://www.google.com/maps/search/?api=1&query=29.7331520,-95.0914720	1.5300 ppm
4/23/2019 14:19:34	Division E	29.7330880,-95.0910980	https://www.google.com/maps/search/?api=1&query=29.7330880,-95.0910980	1.1500 ppm



Please Note: These updates display data from the 2nd 80's Fire site (Impacted Tank Farm), in the industrial areas surrounding the 2nd 80's Fire site (US Coast Guard Division E), within the Houston Ship Channel (US Coast Guard Divisions A-D), and in the industrial areas north and south of the Houston Ship Channel (Industrial Area). Real-time air monitoring data for the surrounding communities are communicated daily in a separate report.

Preliminary Hand- Held Air Monitoring Locations | ITC Deer Park Tank Fire

Reading Date
4/23/2019 3:00:00 PM to 4/23/2019 4:00:00 PM



Recent Benzene Detections

Location Category	Reading Date	Concentration
Division B	4/23/2019 15:06:35	0.1600 ppm
Division E	4/23/2019 15:03:23	0.1500 ppm
	4/23/2019 15:08:37	0.1400 ppm
	4/23/2019 15:36:13	0.1200 ppm
	4/23/2019 15:08:26	0.0200 ppm
	4/23/2019 15:02:32	0.0500 ppm
	4/23/2019 15:01:03	0.0100 ppm
	4/23/2019 15:50:02	0.0500 ppm
	4/23/2019 15:51:53	0.0600 ppm
Impacted Tank Farm	4/23/2019 15:34:07	0.0500 ppm
	4/23/2019 15:42:30	0.0400 ppm
	4/23/2019 15:46:10	0.0600 ppm

This data has been provided expeditiously to ITC and regulatory agencies for informational and/or operational purposes only. Data reported within this summary is preliminary in nature and has not undergone complete QA/QC (quality assurance/quality control) process. Until this complete QA/QC process is completed, the locations of each reading are approximate in nature and subject to further refinement. As some readings may represent non-breathing zone measurements, the data reported herein may not be suitable to assess potential occupational exposure. Site Assessment readings are not representative of an individual's breathing zone (e.g., container head space, ground level, directly above product, etc.).

Reading Date

4/23/2019 3:00:00 PM to 4/23/2019 4:00:00 PM

Benzene Action Level Concentration (ppm)

PRELIMINARY

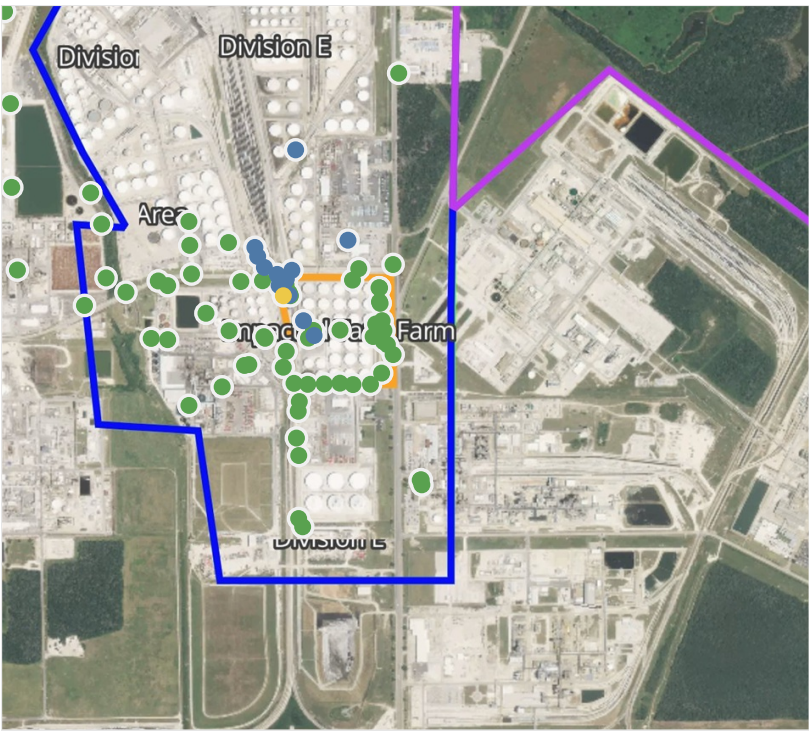
Recent Benzene Detections Greater than 1.00 ppm



Please Note: These updates display data from the 2nd 80's Fire site (Impacted Tank Farm), in the industrial areas surrounding the 2nd 80's Fire site (US Coast Guard Division E), within the Houston Ship Channel (US Coast Guard Divisions A-D), and in the industrial areas north and south of the Houston Ship Channel (Industrial Area). Real-time air monitoring data for the surrounding communities are communicated daily in a separate report.

Preliminary Hand- Held Air Monitoring Locations | ITC Deer Park Tank Fire

Reading Date
4/23/2019 4:00:00 PM to 4/23/2019 5:00:00 PM



Recent Benzene Detections

Location Category	Reading Date	Concentration
Division E	4/23/2019 16:00:18	0.0900 ppm
	4/23/2019 16:03:05	0.0600 ppm
	4/23/2019 16:03:15	0.1500 ppm
	4/23/2019 16:05:40	0.1100 ppm
	4/23/2019 16:23:13	0.1800 ppm
	4/23/2019 16:46:13	0.0500 ppm
	4/23/2019 16:24:17	0.0800 ppm
	4/23/2019 16:26:34	0.0900 ppm
	4/23/2019 16:22:50	0.0300 ppm
Impacted Tank Farm	4/23/2019 16:28:12	0.0700 ppm
	4/23/2019 16:03:05	0.2900 ppm
	4/23/2019 16:07:51	0.1200 ppm
	4/23/2019 16:12:06	0.1500 ppm
	4/23/2019 16:10:03	0.5400 ppm
	4/23/2019 16:17:47	0.0700 ppm
	4/23/2019 16:39:48	0.0400 ppm

This data has been provided expeditiously to ITC and regulatory agencies for informational and/or operational purposes only. Data reported within this summary is preliminary in nature and has not undergone complete QA/QC (quality assurance/quality control) process. Until this complete QA/QC process is completed, the locations of each reading are approximate in nature and subject to further refinement. As some readings may represent non-breathing zone measurements, the data reported herein may not be suitable to assess potential occupational exposure. Site Assessment readings are not representative of an individual's breathing zone (e.g., container head space, ground level, directly above product, etc.).

Reading Date

4/23/2019 4:00:00 PM to 4/23/2019 5:00:00 PM

Benzene Action Level Concentration (ppm)

PRELIMINARY

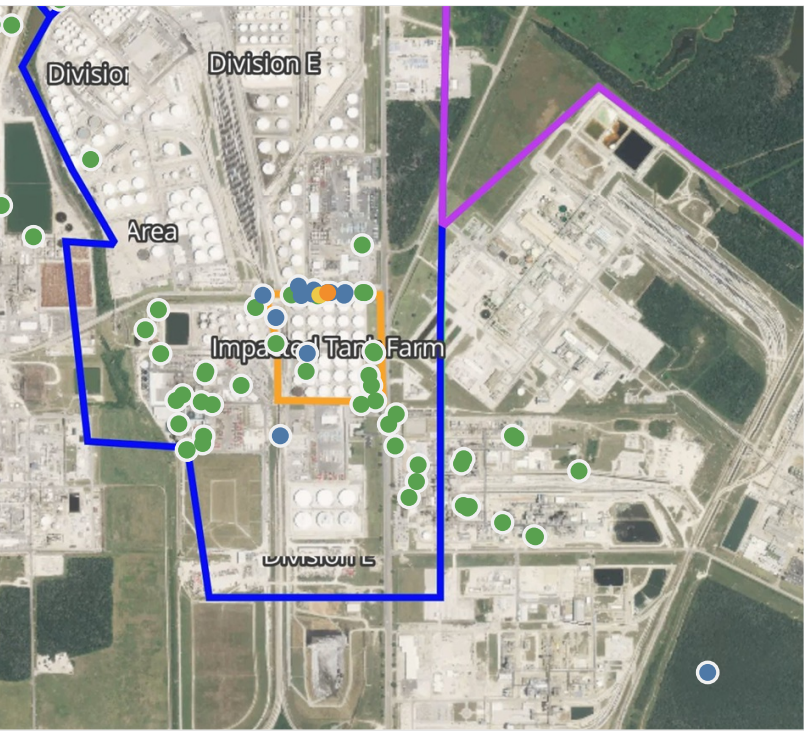
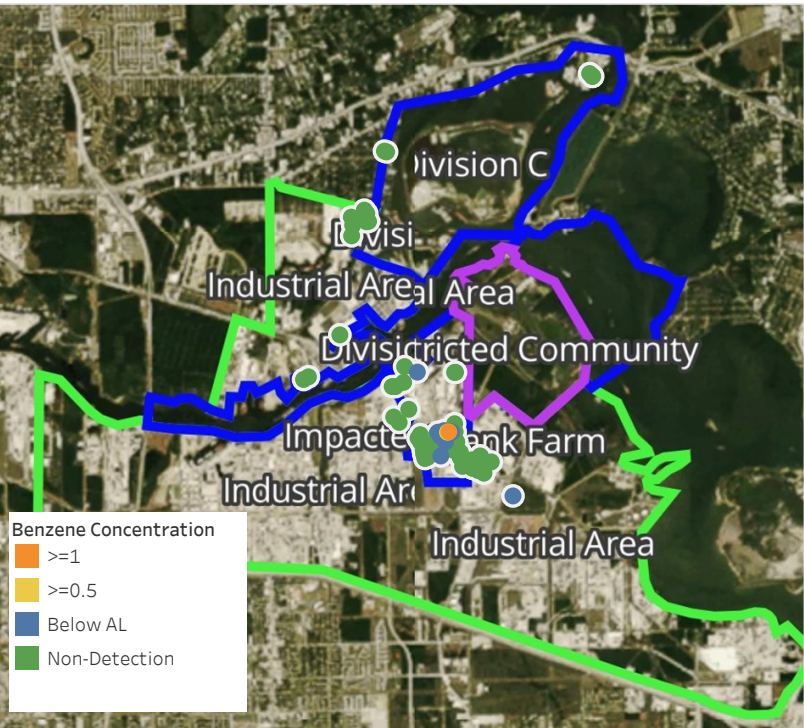
Recent Benzene Detections Greater than 1.00 ppm



Please Note: These updates display data from the 2nd 80's Fire site (Impacted Tank Farm), in the industrial areas surrounding the 2nd 80's Fire site (US Coast Guard Division E), within the Houston Ship Channel (US Coast Guard Divisions A-D), and in the industrial areas north and south of the Houston Ship Channel (Industrial Area). Real-time air monitoring data for the surrounding communities are communicated daily in a separate report.

Preliminary Hand- Held Air Monitoring Locations | ITC Deer Park Tank Fire

Reading Date
4/23/2019 5:00:00 PM to 4/23/2019 6:00:00 PM



Recent Benzene Detections

Location Category	Reading Date	Concentration
Division E	4/23/2019 17:19:01	0.030 ppm
	4/23/2019 17:21:14	0.040 ppm
	4/23/2019 17:25:58	0.780 ppm
	4/23/2019 17:28:54	0.080 ppm
	4/23/2019 17:34:28	0.220 ppm
	4/23/2019 17:36:59	0.020 ppm
	4/23/2019 17:41:14	0.020 ppm
	4/23/2019 17:47:07	0.150 ppm
	4/23/2019 17:45:48	0.480 ppm
	4/23/2019 17:47:47	1.890 ppm
	4/23/2019 17:53:54	0.030 ppm
	4/23/2019 17:51:44	0.330 ppm
Impacted Tank Farm	4/23/2019 17:55:44	0.330 ppm
	4/23/2019 17:10:45	0.040 ppm
	4/23/2019 17:14:40	0.110 ppm
	4/23/2019 17:44:10	0.040 ppm

This data has been provided expeditiously to ITC and regulatory agencies for informational and/or operational purposes only. Data reported within this summary is preliminary in nature and has not undergone complete QA/QC (quality assurance/quality control) process. Until this complete QA/QC process is completed, the locations of each reading are approximate in nature and subject to further refinement. As some readings may represent non-breathing zone measurements, the data reported herein may not be suitable to assess potential occupational exposure. Site Assessment readings are not representative of an individual's breathing zone (e.g., container head space, ground level, directly above product, etc.).

Reading Date
4/23/2019 5:00:00 PM to 4/23/2019 6:00:00 PM

Benzene Action Level Concentration (ppm)
 >=1

PRELIMINARY
Recent Benzene Detections Greater than 1.00 ppm

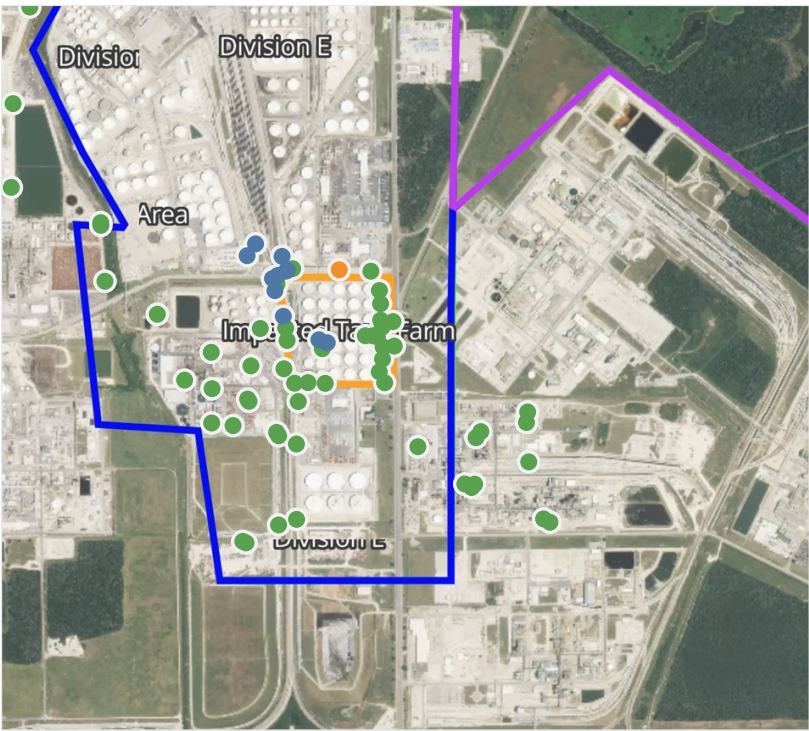
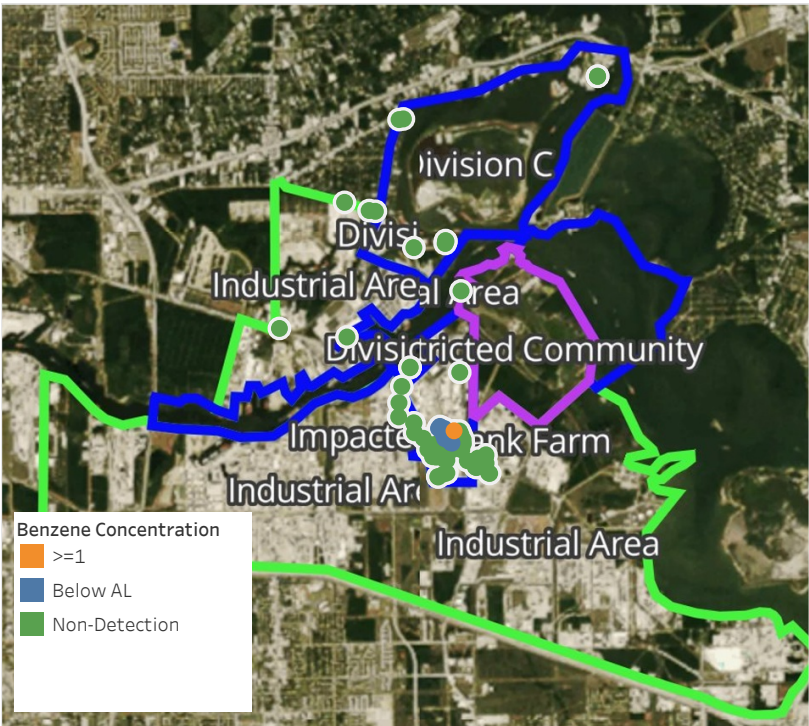
Reading Date	Location Category	GPS	Google Maps URL	Concentration
4/23/2019 17:47:47	Division E	29.7332010,-95.0916280	https://www.google.com/maps/search/?api=1&query=29.7332010,-95.0916280	1.890 ppm



Please Note: These updates display data from the 2nd 80's Fire site (Impacted Tank Farm), in the industrial areas surrounding the 2nd 80's Fire site (US Coast Guard Division E), within the Houston Ship Channel (US Coast Guard Divisions A-D), and in the industrial areas north and south of the Houston Ship Channel (Industrial Area). Real-time air monitoring data for the surrounding communities are communicated daily in a separate report.

Preliminary Hand- Held Air Monitoring Locations | ITC Deer Park Tank Fire

Reading Date
4/23/2019 6:00:00 PM to 4/23/2019 7:00:00 PM



Recent Benzene Detections

Location Category	Reading Date	Concentration
Division E	4/23/2019 18:02:52	1.160 ppm
	4/23/2019 18:12:26	0.060 ppm
	4/23/2019 18:30:10	0.020 ppm
	4/23/2019 18:32:47	0.020 ppm
	4/23/2019 18:42:33	0.050 ppm
	4/23/2019 18:01:09	0.020 ppm
	4/23/2019 18:15:57	0.040 ppm
	4/23/2019 18:29:42	0.050 ppm
Impacted Tank Farm	4/23/2019 18:44:31	0.120 ppm
	4/23/2019 18:11:48	0.050 ppm
	4/23/2019 18:45:01	0.040 ppm

This data has been provided expeditiously to ITC and regulatory agencies for informational and/or operational purposes only. Data reported within this summary is preliminary in nature and has not undergone complete QA/QC (quality assurance/quality control) process. Until this complete QA/QC process is completed, the locations of each reading are approximate in nature and subject to further refinement. As some readings may represent non-breathing zone measurements, the data reported herein may not be suitable to assess potential occupational exposure. Site Assessment readings are not representative of an individual's breathing zone (e.g., container head space, ground level, directly above product, etc.).

Reading Date
4/23/2019 6:00:00 PM to 4/23/2019 7:00:00 PM

Benzene Action Level Concentration (ppm)
 >=1

PRELIMINARY
Recent Benzene Detections Greater than 1.00 ppm

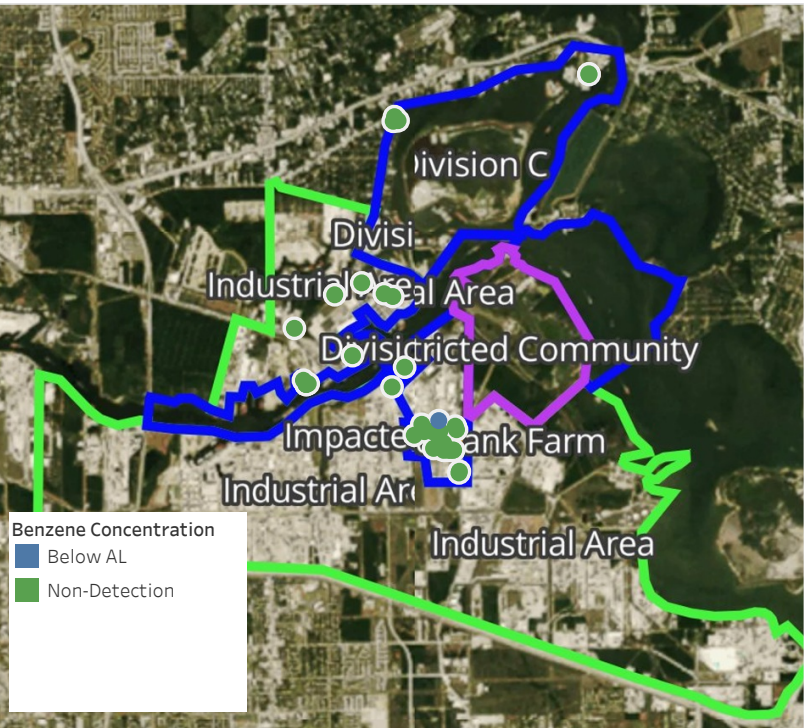
Reading Date	Location Category	GPS	Google Maps URL	Concentration
4/23/2019 18:02:52	Division E	29.7333590,-95.0915830	https://www.google.com/maps/search/?api=1&query=29.7333590,-95.0915830	1.160 ppm



Please Note: These updates display data from the 2nd 80's Fire site (Impacted Tank Farm), in the industrial areas surrounding the 2nd 80's Fire site (US Coast Guard Division E), within the Houston Ship Channel (US Coast Guard Divisions A-D), and in the industrial areas north and south of the Houston Ship Channel (Industrial Area). Real-time air monitoring data for the surrounding communities are communicated daily in a separate report.

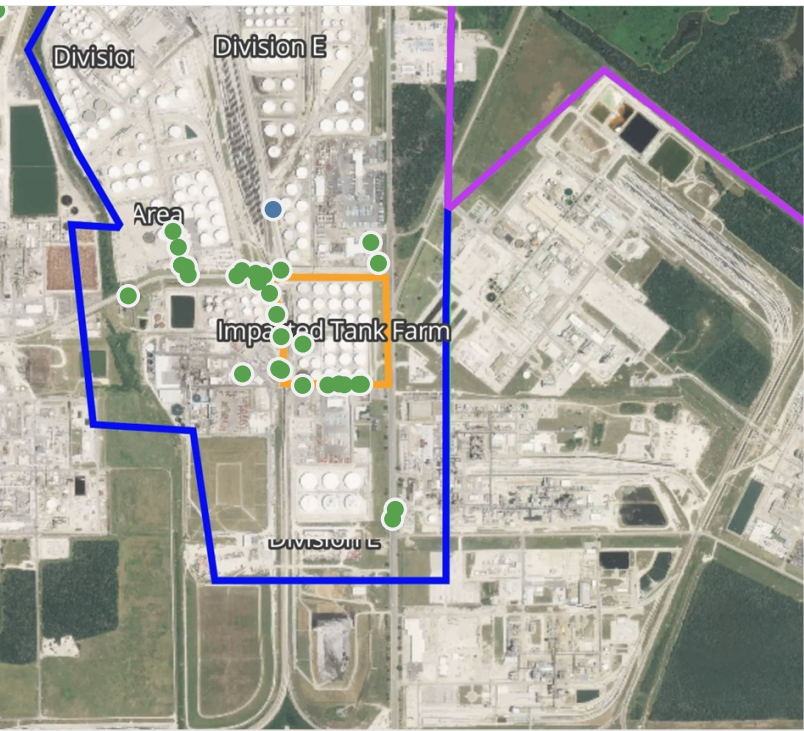
Preliminary Hand- Held Air Monitoring Locations | ITC Deer Park Tank Fire

Reading Date
4/23/2019 7:00:00 PM to 4/23/2019 8:00:00 PM



Recent Benzene Detections

Location Category	Reading Date	Concentration
Division C	4/23/2019 19:45:57	0.1000 ppm



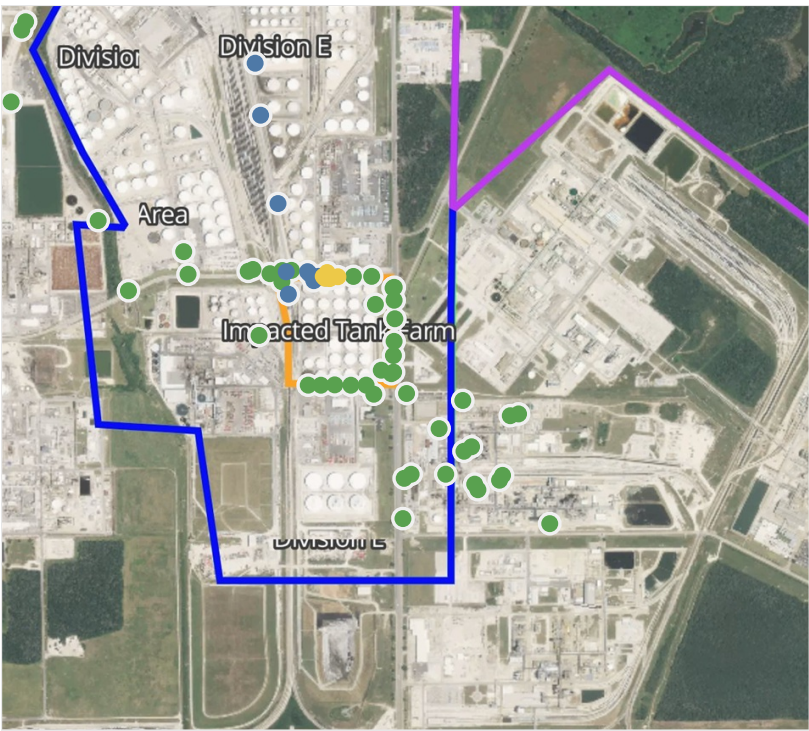
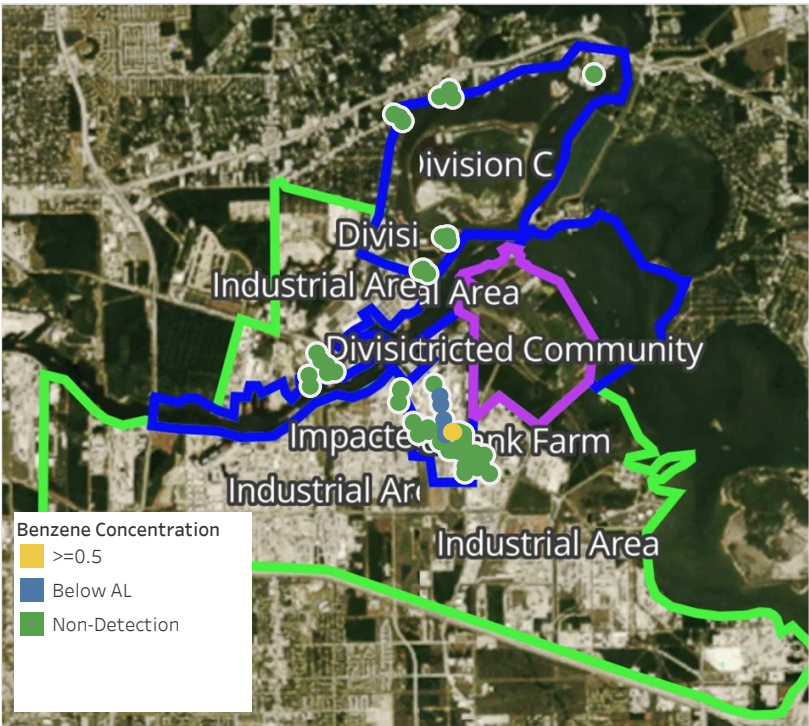
This data has been provided expeditiously to ITC and regulatory agencies for informational and/or operational purposes only. Data reported within this summary is preliminary in nature and has not undergone complete QA/QC (quality assurance/quality control) process. Until this complete QA/QC process is completed, the locations of each reading are approximate in nature and subject to further refinement. As some readings may represent non-breathing zone measurements, the data reported herein may not be suitable to assess potential occupational exposure. Site Assessment readings are not representative of an individual's breathing zone (e.g., container head space, ground level, directly above product, etc.).



Please Note: These updates display data from the 2nd 80's Fire site (Impacted Tank Farm), in the industrial areas surrounding the 2nd 80's Fire site (US Coast Guard Division E), within the Houston Ship Channel (US Coast Guard Divisions A-D), and in the industrial areas north and south of the Houston Ship Channel (Industrial Area). Real-time air monitoring data for the surrounding communities are communicated daily in a separate report.

Preliminary Hand- Held Air Monitoring Locations | ITC Deer Park Tank Fire

Reading Date
4/23/2019 8:00:00 PM to 4/23/2019 9:00:00 PM



Recent Benzene Detections

Location Category	Reading Date	Concentration
Division C	4/23/2019 20:02:57	0.1300 ppm
	4/23/2019 20:08:00	0.1100 ppm
	4/23/2019 20:14:16	ppm
	4/23/2019 20:55:10	0.1700 ppm
Division E	4/23/2019 20:31:16	0.0400 ppm
	4/23/2019 20:26:48	0.9600 ppm
	4/23/2019 20:28:30	0.6100 ppm
	4/23/2019 20:30:13	0.3300 ppm
	4/23/2019 20:53:35	0.0200 ppm
	4/23/2019 20:53:59	0.0700 ppm
	4/23/2019 20:54:49	0.0600 ppm
	4/23/2019 20:57:01	0.7800 ppm
	4/23/2019 20:55:16	0.1400 ppm
	4/23/2019 20:59:14	0.2500 ppm
	4/23/2019 20:59:49	0.5600 ppm
	4/23/2019 20:57:17	0.6200 ppm
Impacted Tank Farm	4/23/2019 20:09:38	0.0200 ppm

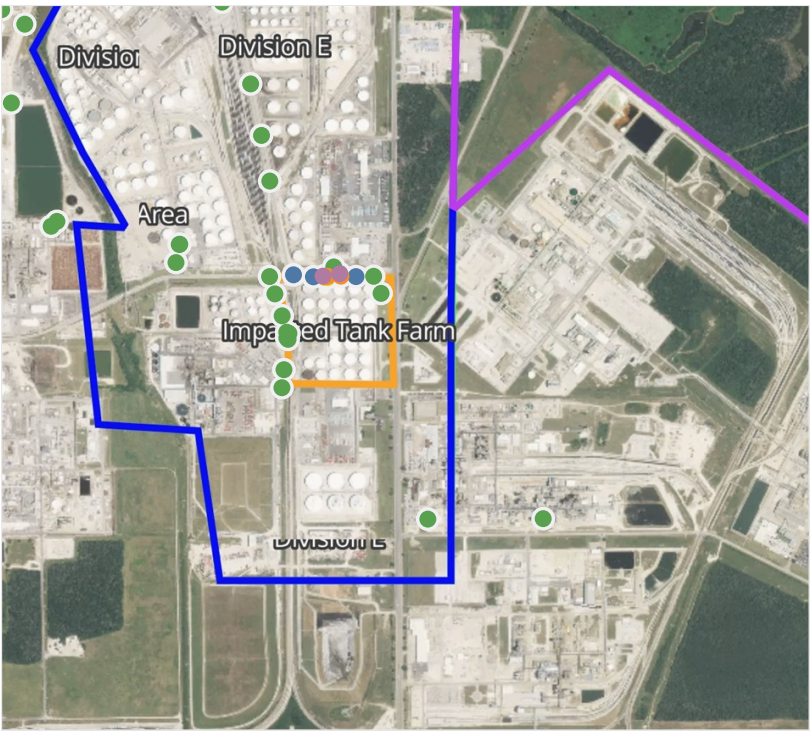
This data has been provided expeditiously to ITC and regulatory agencies for informational and/or operational purposes only. Data reported within this summary is preliminary in nature and has not undergone complete QA/QC (quality assurance/quality control) process. Until this complete QA/QC process is completed, the locations of each reading are approximate in nature and subject to further refinement. As some readings may represent non-breathing zone measurements, the data reported herein may not be suitable to assess potential occupational exposure. Site Assessment readings are not representative of an individual's breathing zone (e.g., container head space, ground level, directly above product, etc.).



Please Note: These updates display data from the 2nd 80's Fire site (Impacted Tank Farm), in the industrial areas surrounding the 2nd 80's Fire site (US Coast Guard Division E), within the Houston Ship Channel (US Coast Guard Divisions A-D), and in the industrial areas north and south of the Houston Ship Channel (Industrial Area). Real-time air monitoring data for the surrounding communities are communicated daily in a separate report.

Preliminary Hand- Held Air Monitoring Locations | ITC Deer Park Tank Fire

Reading Date
4/23/2019 9:00:00 PM to 4/23/2019 10:00:00 PM



Recent Benzene Detections

Location Category	Reading Date	Concentration
Division E	4/23/2019 21:01:27	0.760 ppm
	4/23/2019 21:00:57	0.610 ppm
	4/23/2019 21:12:19	0.050 ppm
	4/23/2019 21:15:17	2.500 ppm
	4/23/2019 21:26:14	3.490 ppm
	4/23/2019 21:30:37	1.870 ppm
	4/23/2019 21:13:42	0.360 ppm
	4/23/2019 21:20:51	0.240 ppm
	4/23/2019 21:18:37	1.220 ppm
	4/23/2019 21:27:46	0.200 ppm
	4/23/2019 21:19:44	1.890 ppm

This data has been provided expeditiously to ITC and regulatory agencies for informational and/or operational purposes only. Data reported within this summary is preliminary in nature and has not undergone complete QA/QC (quality assurance/quality control) process. Until this complete QA/QC process is completed, the locations of each reading are approximate in nature and subject to further refinement. As some readings may represent non-breathing zone measurements, the data reported herein may not be suitable to assess potential occupational exposure. Site Assessment readings are not representative of an individual's breathing zone (e.g., container head space, ground level, directly above product, etc.).

Reading Date
4/23/2019 9:00:00 PM to 4/23/2019 10:00:00 PM

Benzene Action Level Concentration (ppm)
 >=1  >=2

PRELIMINARY
Recent Benzene Detections Greater than 1.00 ppm

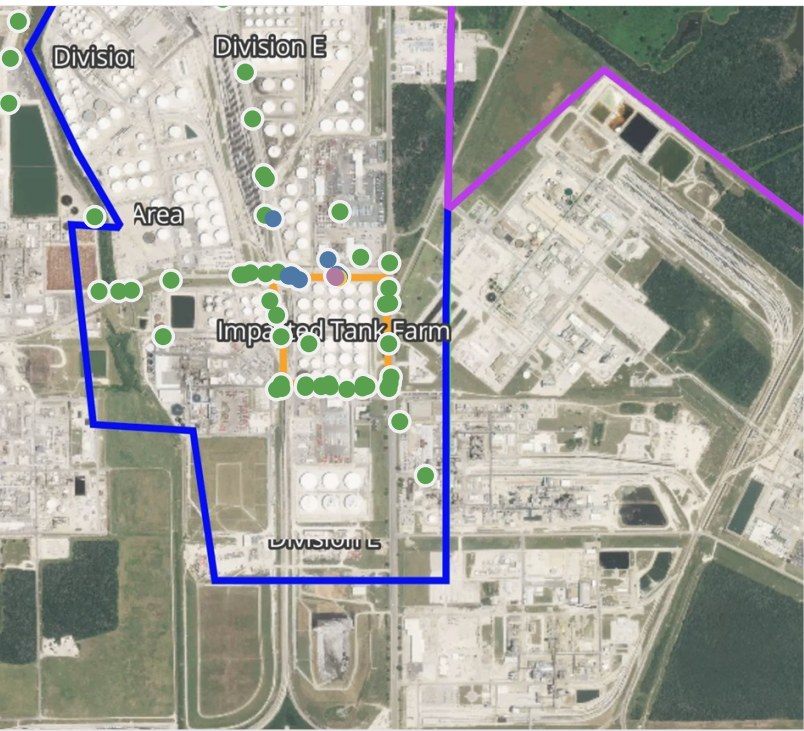
Reading Date	Location Category	GPS	Google Maps URL	Concentration
4/23/2019 21:30:37	Division E	29.7331870,-95.0920080	https://www.google.com/maps/search/?api=1&query=29.7331870,-95.0920080	1.870 ppm
4/23/2019 21:26:14	Division E	29.7332550,-95.0915700	https://www.google.com/maps/search/?api=1&query=29.7332550,-95.0915700	3.490 ppm
4/23/2019 21:19:44	Division E	29.7331890,-95.0915320	https://www.google.com/maps/search/?api=1&query=29.7331890,-95.0915320	1.890 ppm
4/23/2019 21:18:37	Division E	29.7331860,-95.0919380	https://www.google.com/maps/search/?api=1&query=29.7331860,-95.0919380	1.220 ppm
4/23/2019 21:15:17	Division E	29.7331890,-95.0920770	https://www.google.com/maps/search/?api=1&query=29.7331890,-95.0920770	2.500 ppm



Please Note: These updates display data from the 2nd 80's Fire site (Impacted Tank Farm), in the industrial areas surrounding the 2nd 80's Fire site (US Coast Guard Division E), within the Houston Ship Channel (US Coast Guard Divisions A-D), and in the industrial areas north and south of the Houston Ship Channel (Industrial Area). Real-time air monitoring data for the surrounding communities are communicated daily in a separate report.

Preliminary Hand- Held Air Monitoring Locations | ITC Deer Park Tank Fire

Reading Date
4/23/2019 10:00:00 PM to 4/23/2019 11:00:00 PM



Recent Benzene Detections

Location Category	Reading Date	Concentration
Division E	4/23/2019 22:00:42	0.030 ppm
	4/23/2019 22:10:34	0.030 ppm
	4/23/2019 22:11:42	0.050 ppm
	4/23/2019 22:15:07	0.110 ppm
	4/23/2019 22:11:49	0.360 ppm
	4/23/2019 22:10:05	0.030 ppm
	4/23/2019 22:20:21	0.660 ppm
	4/23/2019 22:18:14	0.150 ppm
	4/23/2019 22:17:14	3.440 ppm
	4/23/2019 22:17:01	2.990 ppm
	4/23/2019 22:18:36	0.280 ppm
	4/23/2019 22:37:32	0.100 ppm
	4/23/2019 22:41:22	0.100 ppm

This data has been provided expeditiously to ITC and regulatory agencies for informational and/or operational purposes only. Data reported within this summary is preliminary in nature and has not undergone complete QA/QC (quality assurance/quality control) process. Until this complete QA/QC process is completed, the locations of each reading are approximate in nature and subject to further refinement. As some readings may represent non-breathing zone measurements, the data reported herein may not be suitable to assess potential occupational exposure. Site Assessment readings are not representative of an individual's breathing zone (e.g., container head space, ground level, directly above product, etc.).

Reading Date
4/23/2019 10:00:00 PM to 4/23/2019 11:00:00 PM

Benzene Action Level Concentration (ppm)
■ >=2

PRELIMINARY
Recent Benzene Detections Greater than 1.00 ppm

Reading Date	Location Category	GPS	Google Maps URL	Concentration
4/23/2019 22:17:14	Division E	29.7331540,-95.0915290	https://www.google.com/maps/search/?api=1&query=29.7331540,-95.0915290	3.4400 ppm
4/23/2019 22:17:01	Division E	29.7331960,-95.0915670	https://www.google.com/maps/search/?api=1&query=29.7331960,-95.0915670	2.9900 ppm



Please Note: These updates display data from the 2nd 80's Fire site (Impacted Tank Farm), in the industrial areas surrounding the 2nd 80's Fire site (US Coast Guard Division E), within the Houston Ship Channel (US Coast Guard Divisions A-D), and in the industrial areas north and south of the Houston Ship Channel (Industrial Area). Real-time air monitoring data for the surrounding communities are communicated daily in a separate report.