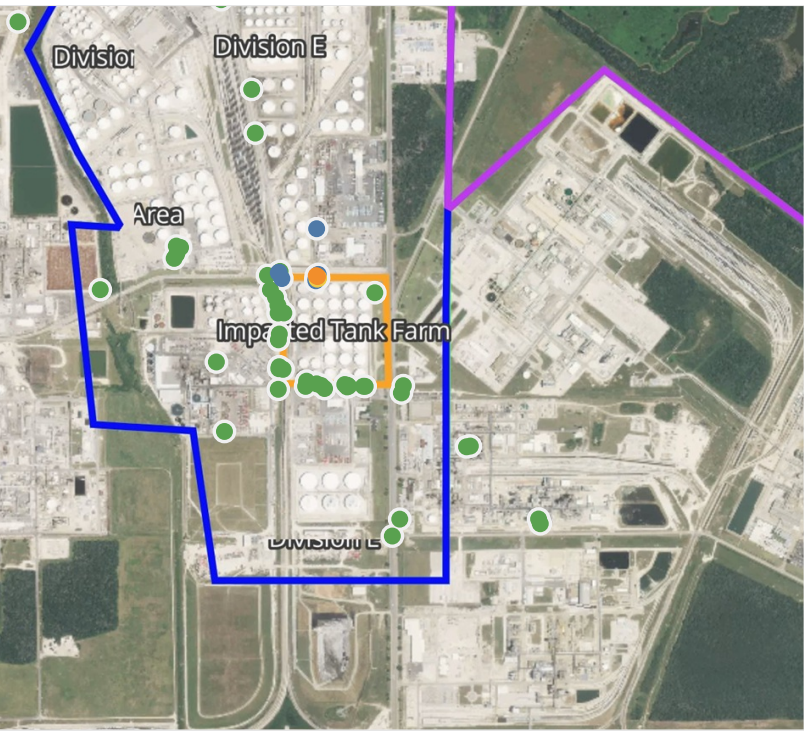


Preliminary Hand- Held Air Monitoring Locations | ITC Deer Park Tank Fire

Reading Date
4/23/2019 11:00:00 PM to 4/24/2019 12:00:00 AM



Recent Benzene Detections

Location Category	Reading Date	Concentration
Division E	4/23/2019 23:18:02	1.0300 ppm
	4/23/2019 23:16:29	0.1900 ppm
	4/23/2019 23:15:14	0.5000 ppm
	4/23/2019 23:20:07	1.0400 ppm
	4/23/2019 23:21:14	0.9500 ppm
	4/23/2019 23:17:03	0.4000 ppm
	4/23/2019 23:15:44	0.3500 ppm
	4/23/2019 23:18:32	0.7700 ppm
	4/23/2019 23:26:07	0.1200 ppm
	4/23/2019 23:27:39	0.0500 ppm
Division E	4/23/2019 23:30:52	0.0600 ppm
	4/23/2019 23:42:01	0.1200 ppm

This data has been provided expeditiously to ITC and regulatory agencies for informational and/or operational purposes only. Data reported within this summary is preliminary in nature and has not undergone complete QA/QC (quality assurance/quality control) process. Until this complete QA/QC process is completed, the locations of each reading are approximate in nature and subject to further refinement. As some readings may represent non-breathing zone measurements, the data reported herein may not be suitable to assess potential occupational exposure. Site Assessment readings are not representative of an individual's breathing zone (e.g., container head space, ground level, directly above product, etc.).

Reading Date
4/23/2019 11:00:00 PM to 4/24/2019 12:00:00 AM

Benzene Action Level Concentration (ppm)
 >=1

PRELIMINARY
Recent Benzene Detections Greater than 1.00 ppm

Reading Date	Location Category	GPS	Google Maps URL	Concentration
4/23/2019 23:20:07	Division E	29.7331790,-95.0920930	https://www.google.com/maps/search/?api=1&query=29.7331790,-95.0920930	1.04000 ppm
4/23/2019 23:18:02	Division E	29.7332030,-95.0921310	https://www.google.com/maps/search/?api=1&query=29.7332030,-95.0921310	1.03000 ppm



Please Note: These updates display data from the 2nd 80's Fire site (Impacted Tank Farm), in the industrial areas surrounding the 2nd 80's Fire site (US Coast Guard Division E), within the Houston Ship Channel (US Coast Guard Divisions A-D), and in the industrial areas north and south of the Houston Ship Channel (Industrial Area). Real-time air monitoring data for the surrounding communities are communicated daily in a separate report.

Preliminary Hand- Held Air Monitoring Locations | ITC Deer Park Tank Fire

Reading Date
4/24/2019 12:00:00 AM to 4/24/2019 1:00:00 AM



Recent Benzene Detections

Location Category	Reading Date	Concentration
Division E	4/24/2019 00:08:59	0.120 ppm
	4/24/2019 00:23:51	0.080 ppm
	4/24/2019 00:25:14	3.720 ppm
	4/24/2019 00:21:14	1.160 ppm
	4/24/2019 00:39:27	0.040 ppm
	4/24/2019 00:40:18	0.080 ppm
	4/24/2019 00:42:08	0.090 ppm
	4/24/2019 00:42:35	0.110 ppm
	4/24/2019 00:49:06	0.020 ppm
	4/24/2019 00:50:56	0.030 ppm
	4/24/2019 00:59:11	0.680 ppm

This data has been provided expeditiously to ITC and regulatory agencies for informational and/or operational purposes only. Data reported within this summary is preliminary in nature and has not undergone complete QA/QC (quality assurance/quality control) process. Until this complete QA/QC process is completed, the locations of each reading are approximate in nature and subject to further refinement. As some readings may represent non-breathing zone measurements, the data reported herein may not be suitable to assess potential occupational exposure. Site Assessment readings are not representative of an individual's breathing zone (e.g., container head space, ground level, directly above product, etc.).

Reading Date
4/24/2019 12:00:00 AM to 4/24/2019 1:00:00 AM

Benzene Action Level Concentration (ppm)
 >=1  >=2

PRELIMINARY
Recent Benzene Detections Greater than 1.00 ppm

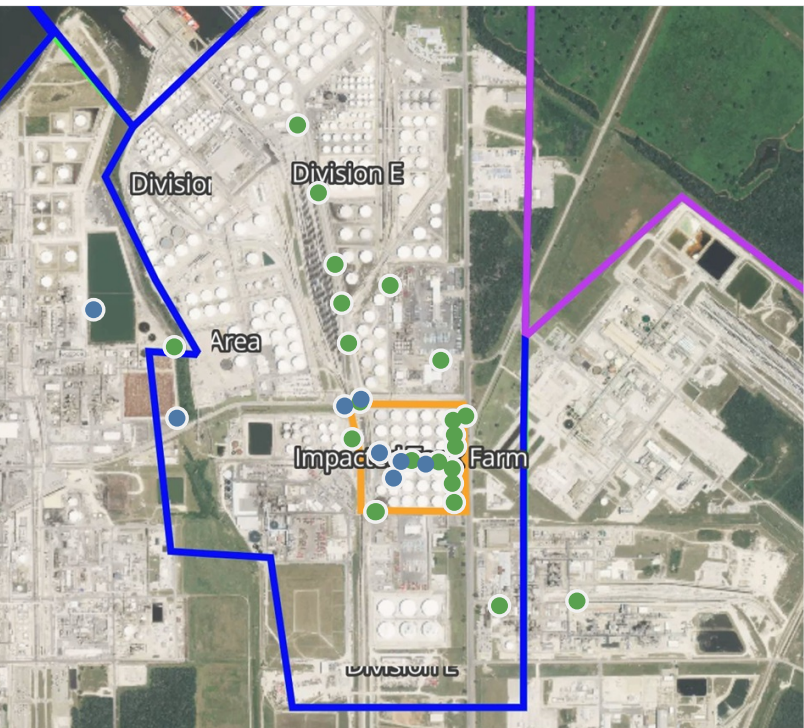
Reading Date	Location Category	GPS	Google Maps URL	Concentration
4/24/2019 00:25:14	Division E	29.7331370,-95.0916210	https://www.google.com/maps/search/?api=1&query=29.7331370,-95.0916210	3.720 ppm
4/24/2019 00:21:14	Division E	29.7270440,-95.0875170	https://www.google.com/maps/search/?api=1&query=29.7270440,-95.0875170	1.160 ppm



Please Note: These updates display data from the 2nd 80's Fire site (Impacted Tank Farm), in the industrial areas surrounding the 2nd 80's Fire site (US Coast Guard Division E), within the Houston Ship Channel (US Coast Guard Divisions A-D), and in the industrial areas north and south of the Houston Ship Channel (Industrial Area). Real-time air monitoring data for the surrounding communities are communicated daily in a separate report.

Preliminary Hand- Held Air Monitoring Locations | ITC Deer Park Tank Fire

Reading Date
4/24/2019 1:00:00 AM to 4/24/2019 2:00:00 AM



Recent Benzene Detections

Location Category	Reading Date	Concentration
Division E	4/24/2019 01:13:01	0.01000 ppm
	4/24/2019 01:53:57	0.09000 ppm
Impacted Tank Farm	4/24/2019 01:22:46	0.06000 ppm
	4/24/2019 01:40:51	0.04000 ppm
	4/24/2019 01:21:32	0.04000 ppm
Industrial Area	4/24/2019 01:24:26	0.10000 ppm
	4/24/2019 01:17:27	0.02000 ppm
	4/24/2019 01:53:59	0.02000 ppm

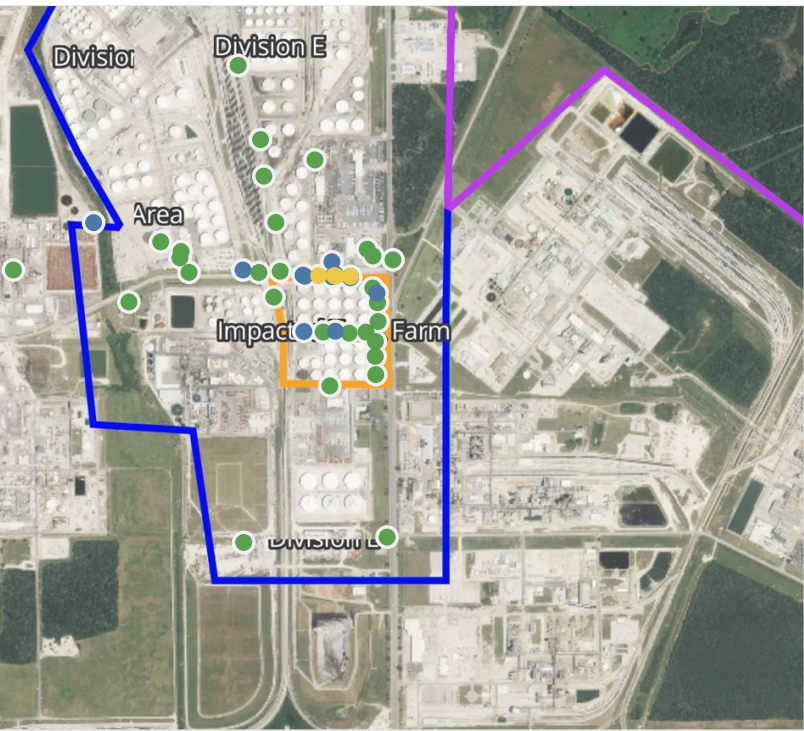
This data has been provided expeditiously to ITC and regulatory agencies for informational and/or operational purposes only. Data reported within this summary is preliminary in nature and has not undergone complete QA/QC (quality assurance/quality control) process. Until this complete QA/QC process is completed, the locations of each reading are approximate in nature and subject to further refinement. As some readings may represent non-breathing zone measurements, the data reported herein may not be suitable to assess potential occupational exposure. Site Assessment readings are not representative of an individual's breathing zone (e.g., container head space, ground level, directly above product, etc.).



Please Note: These updates display data from the 2nd 80's Fire site (Impacted Tank Farm), in the industrial areas surrounding the 2nd 80's Fire site (US Coast Guard Division E), within the Houston Ship Channel (US Coast Guard Divisions A-D), and in the industrial areas north and south of the Houston Ship Channel (Industrial Area). Real-time air monitoring data for the surrounding communities are communicated daily in a separate report.

Preliminary Hand- Held Air Monitoring Locations | ITC Deer Park Tank Fire

Reading Date
4/24/2019 2:00:00 AM to 4/24/2019 3:00:00 AM



Recent Benzene Detections

Location Category	Reading Date	Concentration
Division E	4/24/2019 02:00:32	0.5200 ppm
	4/24/2019 02:02:48	0.0600 ppm
	4/24/2019 02:07:03	0.0500 ppm
	4/24/2019 02:04:24	0.2900 ppm
	4/24/2019 02:07:42	0.0600 ppm
	4/24/2019 02:06:35	0.5400 ppm
	4/24/2019 02:25:53	0.3800 ppm
	4/24/2019 02:21:12	0.0700 ppm
	4/24/2019 02:24:18	0.8900 ppm
	4/24/2019 02:24:43	0.6700 ppm
	4/24/2019 02:19:55	0.1000 ppm
	4/24/2019 02:26:22	0.1900 ppm
	4/24/2019 02:28:37	0.0500 ppm
Impacted Tank Farm	4/24/2019 02:29:08	0.3500 ppm
	4/24/2019 02:13:10	0.0400 ppm
	4/24/2019 02:34:24	0.0300 ppm
	4/24/2019 02:29:55	0.0500 ppm
	4/24/2019 02:40:49	0.0200 ppm
Industrial Area	4/24/2019 02:33:46	0.0200 ppm

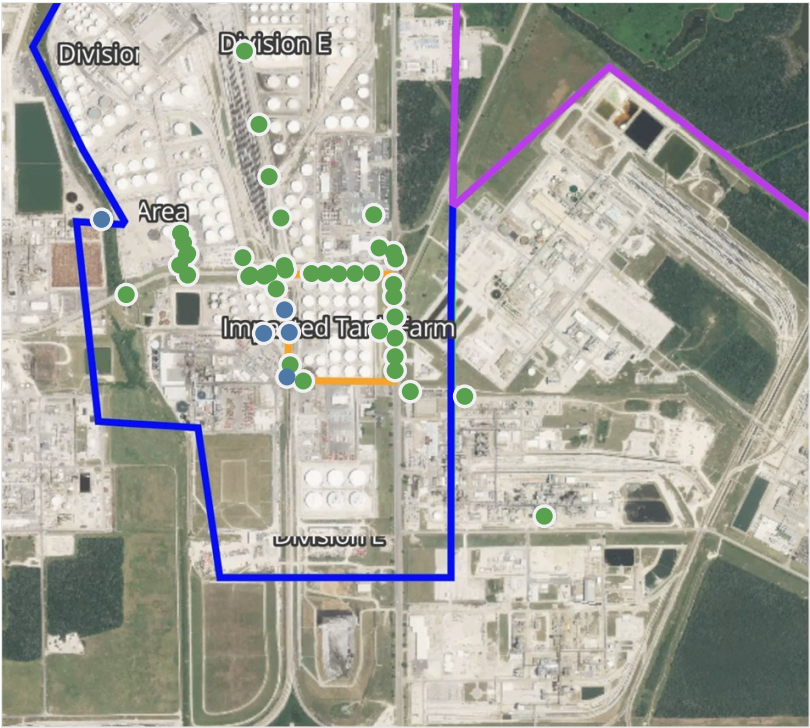
This data has been provided expeditiously to ITC and regulatory agencies for informational and/or operational purposes only. Data reported within this summary is preliminary in nature and has not undergone complete QA/QC (quality assurance/quality control) process. Until this complete QA/QC process is completed, the locations of each reading are approximate in nature and subject to further refinement. As some readings may represent non-breathing zone measurements, the data reported herein may not be suitable to assess potential occupational exposure. Site Assessment readings are not representative of an individual's breathing zone (e.g., container head space, ground level, directly above product, etc.).



Please Note: These updates display data from the 2nd 80's Fire site (Impacted Tank Farm), in the industrial areas surrounding the 2nd 80's Fire site (US Coast Guard Division E), within the Houston Ship Channel (US Coast Guard Divisions A-D), and in the industrial areas north and south of the Houston Ship Channel (Industrial Area). Real-time air monitoring data for the surrounding communities are communicated daily in a separate report.

Preliminary Hand- Held Air Monitoring Locations | ITC Deer Park Tank Fire

Reading Date
4/24/2019 3:00:00 AM to 4/24/2019 4:00:00 AM



Recent Benzene Detections

Location Category	Reading Date	Concentration
Division E	4/24/2019 03:41:41	0.1750 ppm
	4/24/2019 03:32:45	0.0100 ppm
	4/24/2019 03:52:11	0.0500 ppm
Industrial Area	4/24/2019 03:53:18	0.0300 ppm
	4/24/2019 03:06:18	0.0200 ppm

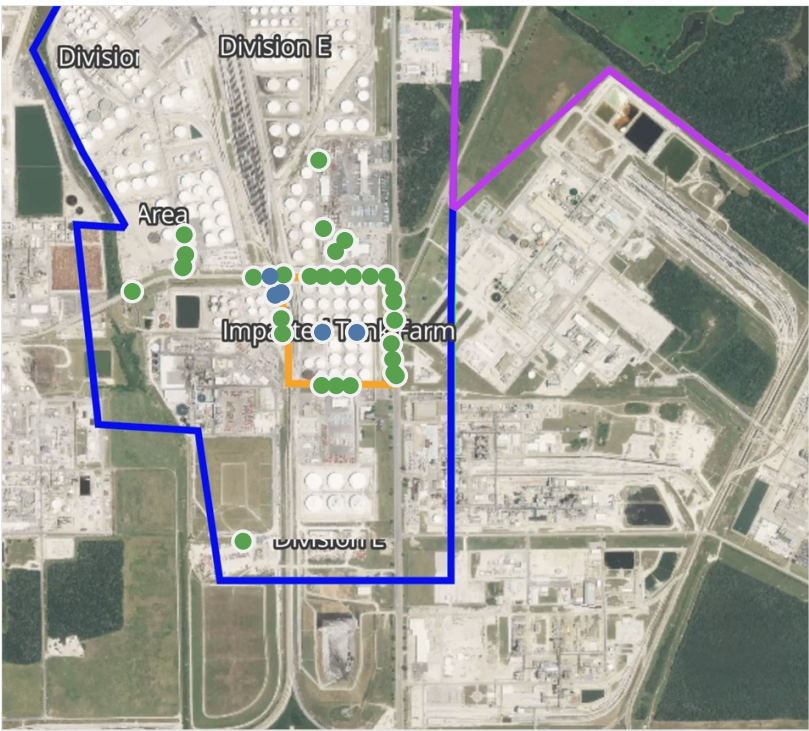
This data has been provided expeditiously to ITC and regulatory agencies for informational and/or operational purposes only. Data reported within this summary is preliminary in nature and has not undergone complete QA/QC (quality assurance/quality control) process. Until this complete QA/QC process is completed, the locations of each reading are approximate in nature and subject to further refinement. As some readings may represent non-breathing zone measurements, the data reported herein may not be suitable to assess potential occupational exposure. Site Assessment readings are not representative of an individual's breathing zone (e.g., container head space, ground level, directly above product, etc.).



Please Note: These updates display data from the 2nd 80's Fire site (Impacted Tank Farm), in the industrial areas surrounding the 2nd 80's Fire site (US Coast Guard Division E), within the Houston Ship Channel (US Coast Guard Divisions A-D), and in the industrial areas north and south of the Houston Ship Channel (Industrial Area). Real-time air monitoring data for the surrounding communities are communicated daily in a separate report.

Preliminary Hand- Held Air Monitoring Locations | ITC Deer Park Tank Fire

Reading Date
4/24/2019 4:00:00 AM to 4/24/2019 5:00:00 AM



Recent Benzene Detections

Location Category	Reading Date	Concentration
Division E	4/24/2019 04:31:53	0.06000 ppm
	4/24/2019 04:42:27	0.06000 ppm
	4/24/2019 04:47:33	0.10000 ppm
Impacted Tank Farm	4/24/2019 04:04:09	0.06000 ppm
	4/24/2019 04:09:41	0.02000 ppm

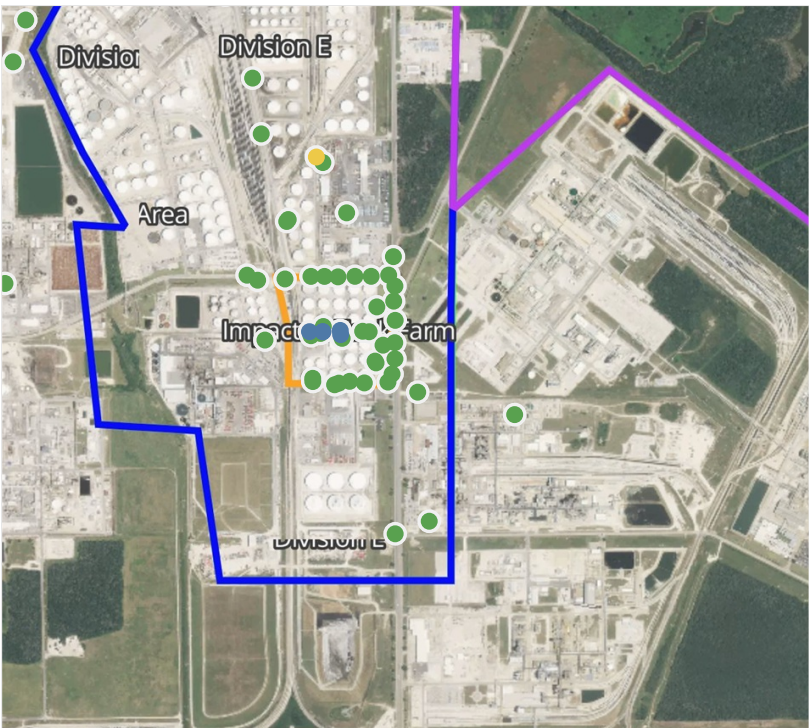
This data has been provided expeditiously to ITC and regulatory agencies for informational and/or operational purposes only. Data reported within this summary is preliminary in nature and has not undergone complete QA/QC (quality assurance/quality control) process. Until this complete QA/QC process is completed, the locations of each reading are approximate in nature and subject to further refinement. As some readings may represent non-breathing zone measurements, the data reported herein may not be suitable to assess potential occupational exposure. Site Assessment readings are not representative of an individual's breathing zone (e.g., container head space, ground level, directly above product, etc.).



Please Note: These updates display data from the 2nd 80's Fire site (Impacted Tank Farm), in the industrial areas surrounding the 2nd 80's Fire site (US Coast Guard Division E), within the Houston Ship Channel (US Coast Guard Divisions A-D), and in the industrial areas north and south of the Houston Ship Channel (Industrial Area). Real-time air monitoring data for the surrounding communities are communicated daily in a separate report.

Preliminary Hand- Held Air Monitoring Locations | ITC Deer Park Tank Fire

Reading Date
4/24/2019 5:00:00 AM to 4/24/2019 6:00:00 AM



Recent Benzene Detections

Location Category	Reading Date	Concentration
Division E	4/24/2019 05:28:03	0.6700 ppm
Impacted Tank Farm	4/24/2019 05:21:11	0.0400 ppm
	4/24/2019 05:23:28	0.0900 ppm
	4/24/2019 05:23:42	0.1000 ppm
	4/24/2019 05:25:46	0.0500 ppm
	4/24/2019 05:25:13	0.0400 ppm

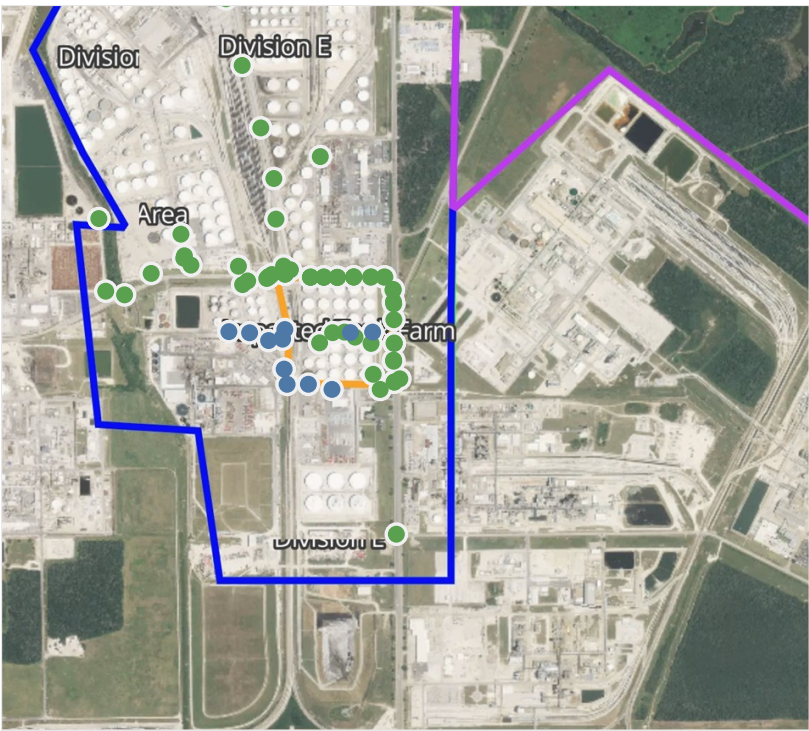
This data has been provided expeditiously to ITC and regulatory agencies for informational and/or operational purposes only. Data reported within this summary is preliminary in nature and has not undergone complete QA/QC (quality assurance/quality control) process. Until this complete QA/QC process is completed, the locations of each reading are approximate in nature and subject to further refinement. As some readings may represent non-breathing zone measurements, the data reported herein may not be suitable to assess potential occupational exposure. Site Assessment readings are not representative of an individual's breathing zone (e.g., container head space, ground level, directly above product, etc.).



Please Note: These updates display data from the 2nd 80's Fire site (Impacted Tank Farm), in the industrial areas surrounding the 2nd 80's Fire site (US Coast Guard Division E), within the Houston Ship Channel (US Coast Guard Divisions A-D), and in the industrial areas north and south of the Houston Ship Channel (Industrial Area). Real-time air monitoring data for the surrounding communities are communicated daily in a separate report.

Preliminary Hand- Held Air Monitoring Locations | ITC Deer Park Tank Fire

Reading Date
4/24/2019 6:00:00 AM to 4/24/2019 7:00:00 AM



Recent Benzene Detections

Location Category	Reading Date	Concentration
Division E	4/24/2019 06:03:18	0.1250 ppm
	4/24/2019 06:11:24	0.0900 ppm
	4/24/2019 06:14:06	0.0400 ppm
	4/24/2019 06:18:06	0.0700 ppm
	4/24/2019 06:21:02	0.0700 ppm
	4/24/2019 06:24:43	0.0400 ppm
	4/24/2019 06:39:47	0.0200 ppm
	4/24/2019 06:42:47	0.0300 ppm
	4/24/2019 06:51:11	0.0700 ppm
Impacted Tank Farm	4/24/2019 06:51:59	0.0800 ppm
	4/24/2019 06:06:21	0.1100 ppm
Industrial Area	4/24/2019 06:04:15	0.1800 ppm
	4/24/2019 06:13:35	0.4000 ppm
	4/24/2019 06:33:59	0.8250 ppm
	4/24/2019 06:19:54	0.8000 ppm
	4/24/2019 06:51:28	0.3500 ppm

This data has been provided expeditiously to ITC and regulatory agencies for informational and/or operational purposes only. Data reported within this summary is preliminary in nature and has not undergone complete QA/QC (quality assurance/quality control) process. Until this complete QA/QC process is completed, the locations of each reading are approximate in nature and subject to further refinement. As some readings may represent non-breathing zone measurements, the data reported herein may not be suitable to assess potential occupational exposure. Site Assessment readings are not representative of an individual's breathing zone (e.g., container head space, ground level, directly above product, etc.).

Reading Date

4/24/2019 6:00:00 AM to 4/24/2019 7:00:00 AM

Benzene Action Level Concentration (ppm)

PRELIMINARY

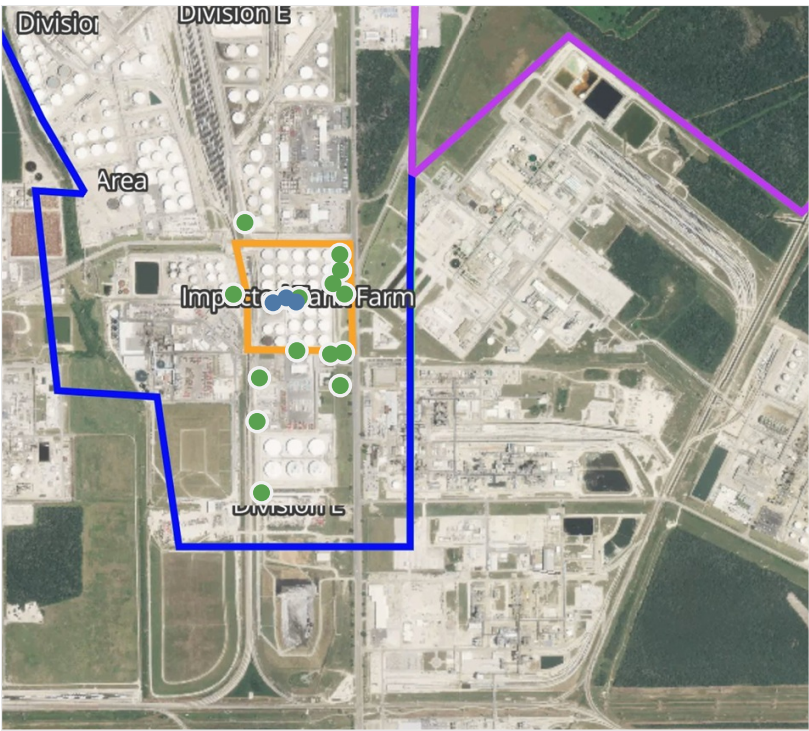
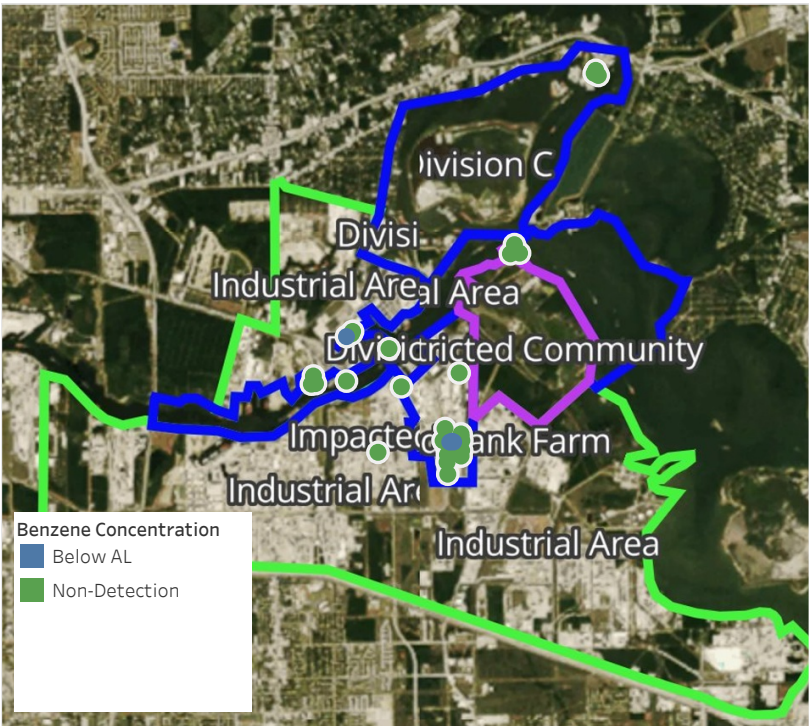
Recent Benzene Detections Greater than 1.00 ppm



Please Note: These updates display data from the 2nd 80's Fire site (Impacted Tank Farm), in the industrial areas surrounding the 2nd 80's Fire site (US Coast Guard Division E), within the Houston Ship Channel (US Coast Guard Divisions A-D), and in the industrial areas north and south of the Houston Ship Channel (Industrial Area). Real-time air monitoring data for the surrounding communities are communicated daily in a separate report.

Preliminary Hand- Held Air Monitoring Locations | ITC Deer Park Tank Fire

Reading Date
4/24/2019 7:00:00 AM to 4/24/2019 8:00:00 AM



Recent Benzene Detections

Location Category	Reading Date	Concentration
Below Grate	4/24/2019 07:43:15	0.1500 ppm
Impacted Tank Farm	4/24/2019 07:34:58	0.0400 ppm
	4/24/2019 07:41:36	0.0500 ppm
	4/24/2019 07:43:49	0.0300 ppm

This data has been provided expeditiously to ITC and regulatory agencies for informational and/or operational purposes only. Data reported within this summary is preliminary in nature and has not undergone complete QA/QC (quality assurance/quality control) process. Until this complete QA/QC process is completed, the locations of each reading are approximate in nature and subject to further refinement. As some readings may represent non-breathing zone measurements, the data reported herein may not be suitable to assess potential occupational exposure. Site Assessment readings are not representative of an individual's breathing zone (e.g., container head space, ground level, directly above product, etc.).

Reading Date

4/24/2019 7:00:00 AM to 4/24/2019 8:00:00 AM

Benzene Action Level Concentration (ppm)

PRELIMINARY

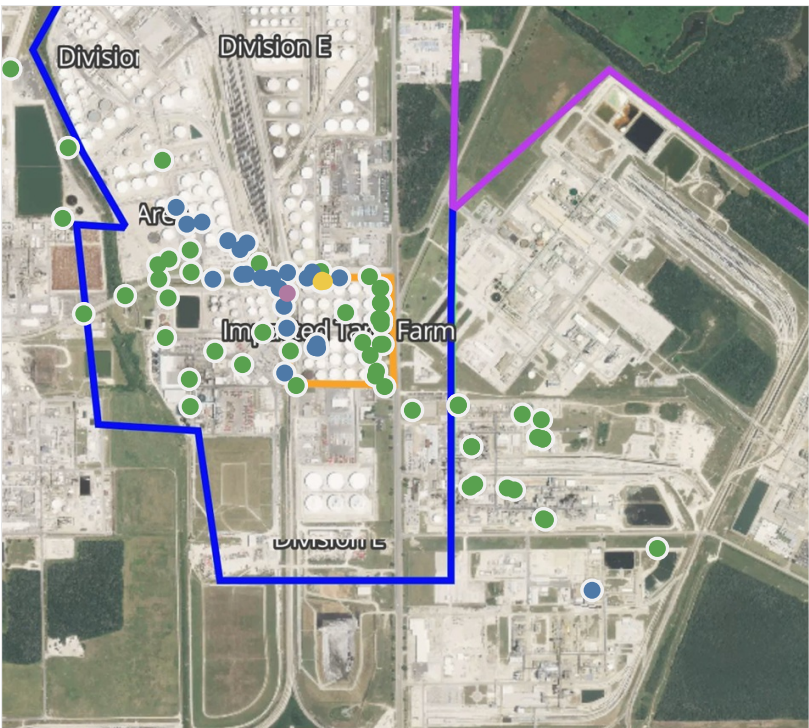
Recent Benzene Detections Greater than 1.00 ppm



Please Note: These updates display data from the 2nd 80's Fire site (Impacted Tank Farm), in the industrial areas surrounding the 2nd 80's Fire site (US Coast Guard Division E), within the Houston Ship Channel (US Coast Guard Divisions A-D), and in the industrial areas north and south of the Houston Ship Channel (Industrial Area). Real-time air monitoring data for the surrounding communities are communicated daily in a separate report.

Preliminary Hand- Held Air Monitoring Locations | ITC Deer Park Tank Fire

Reading Date
4/24/2019 8:00:00 AM to 4/24/2019 9:00:00 AM



Recent Benzene Detections

Location Category	Reading Date	Concentration
Division E	4/24/2019 08:09:26	0.23 ppm
	4/24/2019 08:12:25	0.10 ppm
	4/24/2019 08:14:50	0.02 ppm
	4/24/2019 08:26:54	0.56 ppm
	4/24/2019 08:24:02	0.87 ppm
	4/24/2019 08:25:50	0.03 ppm
	4/24/2019 08:28:01	0.69 ppm
	4/24/2019 08:28:09	0.02 ppm
	4/24/2019 08:33:01	0.02 ppm
	4/24/2019 08:38:58	0.07 ppm
	4/24/2019 08:41:00	0.14 ppm
	4/24/2019 08:42:30	0.03 ppm
	4/24/2019 08:38:10	0.05 ppm
	4/24/2019 08:38:18	0.02 ppm
	4/24/2019 08:17:02	0.04 ppm
	4/24/2019 08:54:19	0.03 ppm
	4/24/2019 08:12:19	0.12 ppm
	4/24/2019 08:15:36	0.06 ppm
	4/24/2019 08:39:47	0.04 ppm
	4/24/2019 08:46:12	0.06 ppm
Impacted Tank Farm	4/24/2019 08:44:05	0.04 ppm
	4/24/2019 08:56:40	0.04 ppm
	4/24/2019 08:13:59	0.11 ppm
	4/24/2019 08:01:56	0.05 ppm
	4/24/2019 08:12:44	0.03 ppm
	4/24/2019 08:27:34	0.06 ppm
	4/24/2019 08:30:52	0.05 ppm
	4/24/2019 08:10:25	31.20 ppm

This data has been provided expeditiously to ITC and regulatory agencies for informational and/or operational purposes only. Data reported within this summary is preliminary in nature and has not undergone complete QA/QC (quality assurance/quality control) process. Until this complete QA/QC process is completed, the locations of each reading are approximate in nature and subject to further refinement. As some readings may represent non-breathing zone measurements, the data reported herein may not be suitable to assess potential occupational exposure. Site Assessment readings are not representative of an individual's breathing zone (e.g., container head space, ground level, directly above product, etc.).

Reading Date
4/24/2019 8:00:00 AM to 4/24/2019 9:00:00 AM

Benzene Action Level Concentration (ppm)
 >=2

PRELIMINARY
Recent Benzene Detections Greater than 1.00 ppm

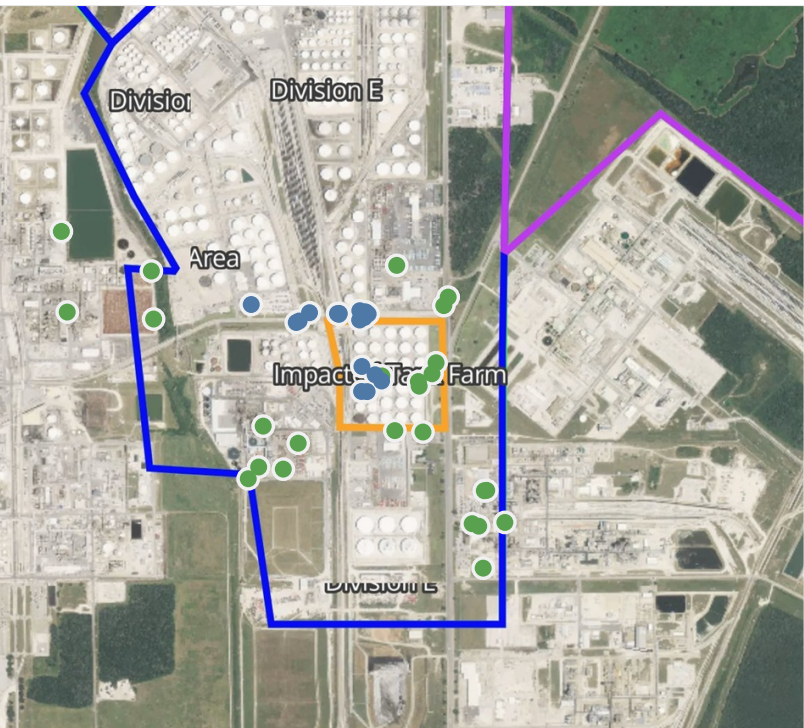
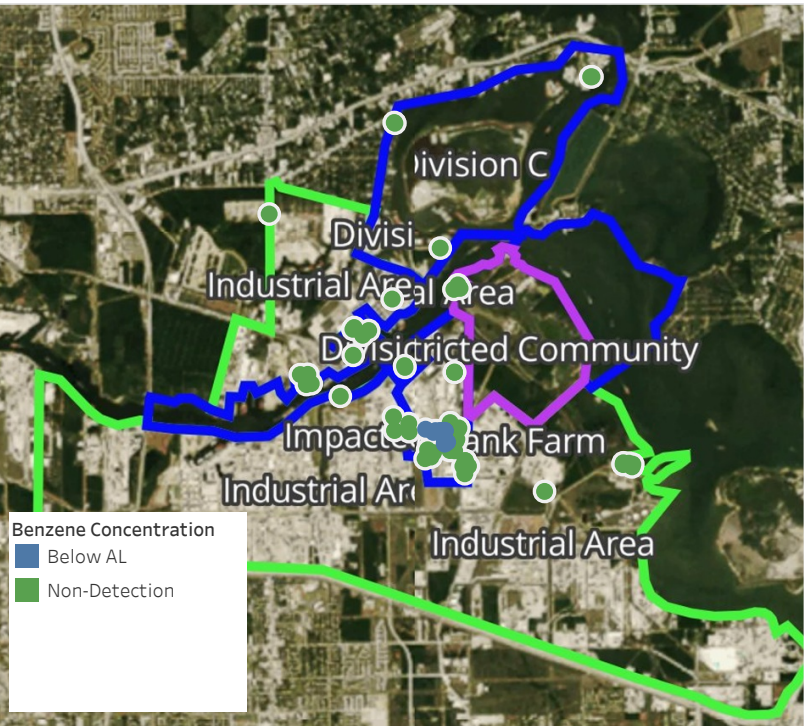
Reading Date	Location Category	GPS	Google Maps URL	Concentration
4/24/2019 08:10:25	Impacted Tank Farm	29.7327340,-95.0931670	https://www.google.com/maps/search/?api=1&query=29.7327340,-95.0931670	31.20 ppm



Please Note: These updates display data from the 2nd 80's Fire site (Impacted Tank Farm), in the industrial areas surrounding the 2nd 80's Fire site (US Coast Guard Division E), within the Houston Ship Channel (US Coast Guard Divisions A-D), and in the industrial areas north and south of the Houston Ship Channel (Industrial Area). Real-time air monitoring data for the surrounding communities are communicated daily in a separate report.

Preliminary Hand- Held Air Monitoring Locations | ITC Deer Park Tank Fire

Reading Date
4/24/2019 9:00:00 AM to 4/24/2019 10:00:00 AM



Recent Benzene Detections

Location Category	Reading Date	Concentration
Division E	4/24/2019 09:13:16	0.0900 ppm
	4/24/2019 09:16:44	0.0900 ppm
	4/24/2019 09:20:35	0.1900 ppm
	4/24/2019 09:21:43	0.0300 ppm
	4/24/2019 09:07:06	0.0700 ppm
	4/24/2019 09:24:17	0.3600 ppm
	4/24/2019 09:22:24	0.2100 ppm
	4/24/2019 09:27:27	0.0200 ppm
	4/24/2019 09:26:26	0.1000 ppm
	4/24/2019 09:24:35	0.0400 ppm
	4/24/2019 09:50:57	0.0200 ppm
	4/24/2019 09:45:46	0.0400 ppm
	4/24/2019 09:45:31	0.1100 ppm
	4/24/2019 09:54:28	0.2100 ppm
Impacted Tank Farm	4/24/2019 09:09:58	0.0400 ppm
	4/24/2019 09:26:25	0.0800 ppm
	4/24/2019 09:42:13	0.0500 ppm
	4/24/2019 09:51:14	0.0500 ppm
	4/24/2019 09:54:24	0.0400 ppm

This data has been provided expeditiously to ITC and regulatory agencies for informational and/or operational purposes only. Data reported within this summary is preliminary in nature and has not undergone complete QA/QC (quality assurance/quality control) process. Until this complete QA/QC process is completed, the locations of each reading are approximate in nature and subject to further refinement. As some readings may represent non-breathing zone measurements, the data reported herein may not be suitable to assess potential occupational exposure. Site Assessment readings are not representative of an individual's breathing zone (e.g., container head space, ground level, directly above product, etc.).

Reading Date

4/24/2019 9:00:00 AM to 4/24/2019 10:00:00 AM

Benzene Action Level Concentration (ppm)

PRELIMINARY

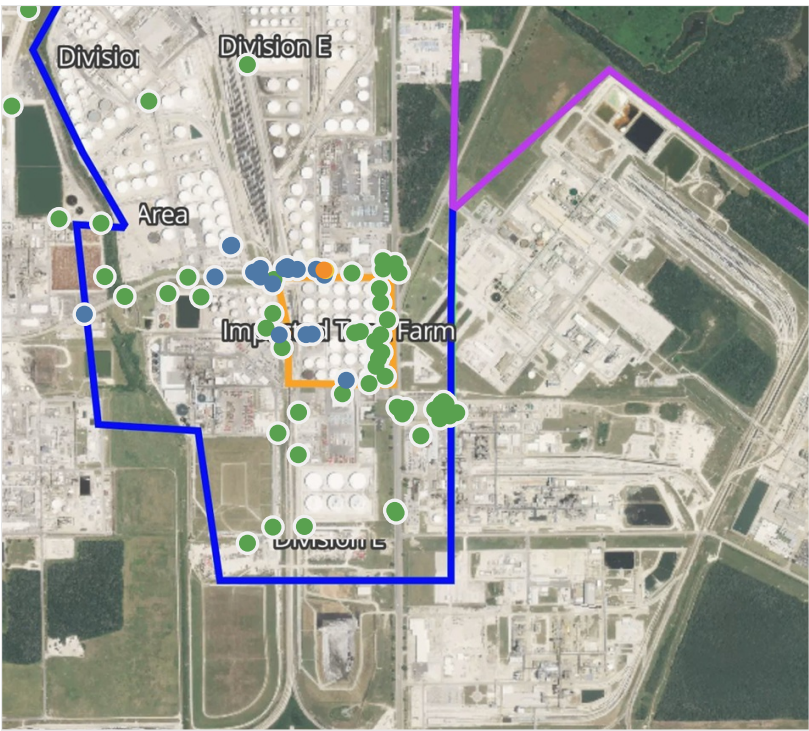
Recent Benzene Detections Greater than 1.00 ppm



Please Note: These updates display data from the 2nd 80's Fire site (Impacted Tank Farm), in the industrial areas surrounding the 2nd 80's Fire site (US Coast Guard Division E), within the Houston Ship Channel (US Coast Guard Divisions A-D), and in the industrial areas north and south of the Houston Ship Channel (Industrial Area). Real-time air monitoring data for the surrounding communities are communicated daily in a separate report.

Preliminary Hand- Held Air Monitoring Locations | ITC Deer Park Tank Fire

Reading Date
4/24/2019 10:00:00 AM to 4/24/2019 11:00:00 AM



Recent Benzene Detections

Location Category	Reading Date	Concentration
Division E	4/24/2019 10:04:04	0.330 ppm
	4/24/2019 10:11:20	0.060 ppm
	4/24/2019 10:02:22	0.020 ppm
	4/24/2019 10:10:19	0.040 ppm
	4/24/2019 10:08:29	0.070 ppm
	4/24/2019 10:16:08	0.040 ppm
	4/24/2019 10:26:05	0.060 ppm
	4/24/2019 10:28:03	0.060 ppm
	4/24/2019 10:40:12	0.460 ppm
	4/24/2019 10:44:51	0.130 ppm
	4/24/2019 10:54:29	0.130 ppm
	4/24/2019 10:26:54	0.060 ppm
	4/24/2019 10:42:20	0.020 ppm
	4/24/2019 10:24:48	0.110 ppm
	4/24/2019 10:55:08	0.080 ppm
Impacted Tank Farm	4/24/2019 10:39:40	0.020 ppm
	4/24/2019 10:34:55	0.030 ppm
	4/24/2019 10:54:02	0.860 ppm
	4/24/2019 10:54:58	1.220 ppm
	4/24/2019 10:32:04	0.030 ppm
	4/24/2019 10:46:17	0.040 ppm
	4/24/2019 10:49:30	0.040 ppm

This data has been provided expeditiously to ITC and regulatory agencies for informational and/or operational purposes only. Data reported within this summary is preliminary in nature and has not undergone complete QA/QC (quality assurance/quality control) process. Until this complete QA/QC process is completed, the locations of each reading are approximate in nature and subject to further refinement. As some readings may represent non-breathing zone measurements, the data reported herein may not be suitable to assess potential occupational exposure. Site Assessment readings are not representative of an individual's breathing zone (e.g., container head space, ground level, directly above product, etc.).

Reading Date
4/24/2019 10:00:00 AM to 4/24/2019 11:00:00 AM

Benzene Action Level Concentration (ppm)
 >=1

PRELIMINARY
Recent Benzene Detections Greater than 1.00 ppm

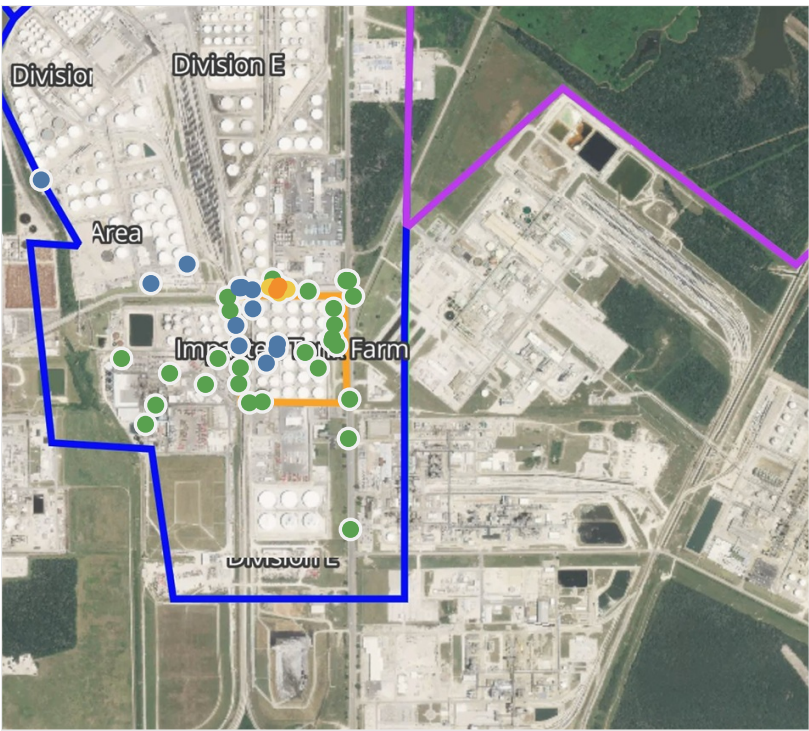
Reading Date	Location Category	GPS	Google Maps URL	Concentration
4/24/2019 10:54:58	Division E	29.7333510,-95.0920500	https://www.google.com/maps/search/?api=1&query=29.7333510,-95.0920500	1.220 ppm



Please Note: These updates display data from the 2nd 80's Fire site (Impacted Tank Farm), in the industrial areas surrounding the 2nd 80's Fire site (US Coast Guard Division E), within the Houston Ship Channel (US Coast Guard Divisions A-D), and in the industrial areas north and south of the Houston Ship Channel (Industrial Area). Real-time air monitoring data for the surrounding communities are communicated daily in a separate report.

Preliminary Hand- Held Air Monitoring Locations | ITC Deer Park Tank Fire

Reading Date
4/24/2019 11:00:00 AM to 4/24/2019 12:00:00 PM



Recent Benzene Detections

Location Category	Reading Date	Concentration
Division E	4/24/2019 11:03:53	0.110 ppm
	4/24/2019 11:10:05	1.640 ppm
	4/24/2019 11:12:17	0.580 ppm
	4/24/2019 11:02:19	0.040 ppm
	4/24/2019 11:14:11	0.180 ppm
	4/24/2019 11:17:39	1.050 ppm
	4/24/2019 11:22:07	0.300 ppm
	4/24/2019 11:21:52	0.060 ppm
	4/24/2019 11:23:25	0.550 ppm
	4/24/2019 11:18:18	0.080 ppm
	4/24/2019 11:38:59	0.160 ppm
	4/24/2019 11:40:48	0.020 ppm
	4/24/2019 11:45:11	0.020 ppm
	4/24/2019 11:38:34	0.030 ppm
	4/24/2019 11:53:43	0.830 ppm
Impacted Tank Farm	4/24/2019 11:51:47	0.640 ppm
	4/24/2019 11:50:09	0.020 ppm
	4/24/2019 11:54:45	0.910 ppm
	4/24/2019 11:10:21	0.100 ppm
	4/24/2019 11:25:09	0.210 ppm
	4/24/2019 11:29:35	0.060 ppm
	4/24/2019 11:46:27	0.030 ppm

This data has been provided expeditiously to ITC and regulatory agencies for informational and/or operational purposes only. Data reported within this summary is preliminary in nature and has not undergone complete QA/QC (quality assurance/quality control) process. Until this complete QA/QC process is completed, the locations of each reading are approximate in nature and subject to further refinement. As some readings may represent non-breathing zone measurements, the data reported herein may not be suitable to assess potential occupational exposure. Site Assessment readings are not representative of an individual's breathing zone (e.g., container head space, ground level, directly above product, etc.).

Reading Date
4/24/2019 11:00:00 AM to 4/24/2019 12:00:00 PM

Benzene Action Level Concentration (ppm)
 >=1

PRELIMINARY
Recent Benzene Detections Greater than 1.00 ppm

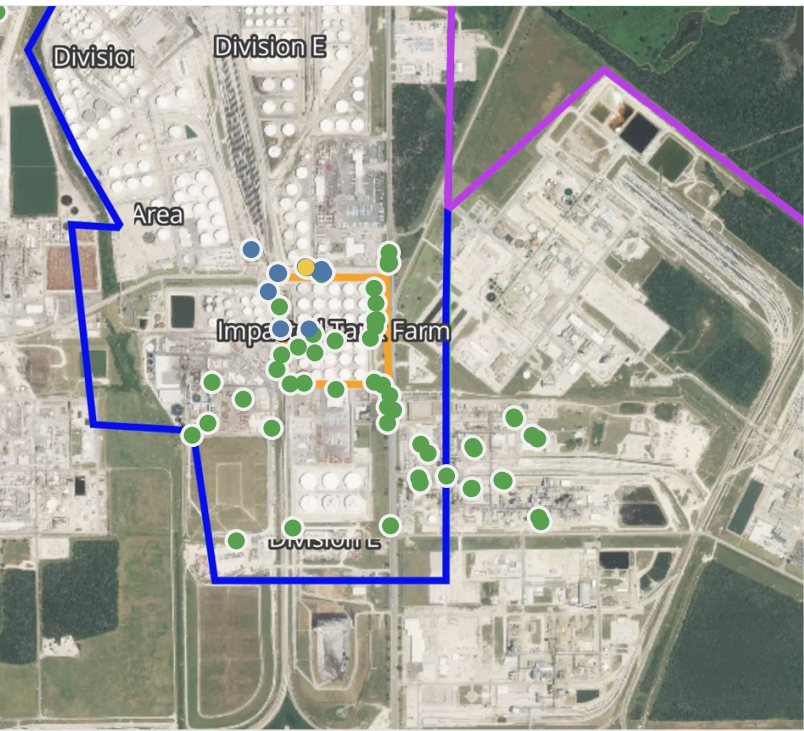
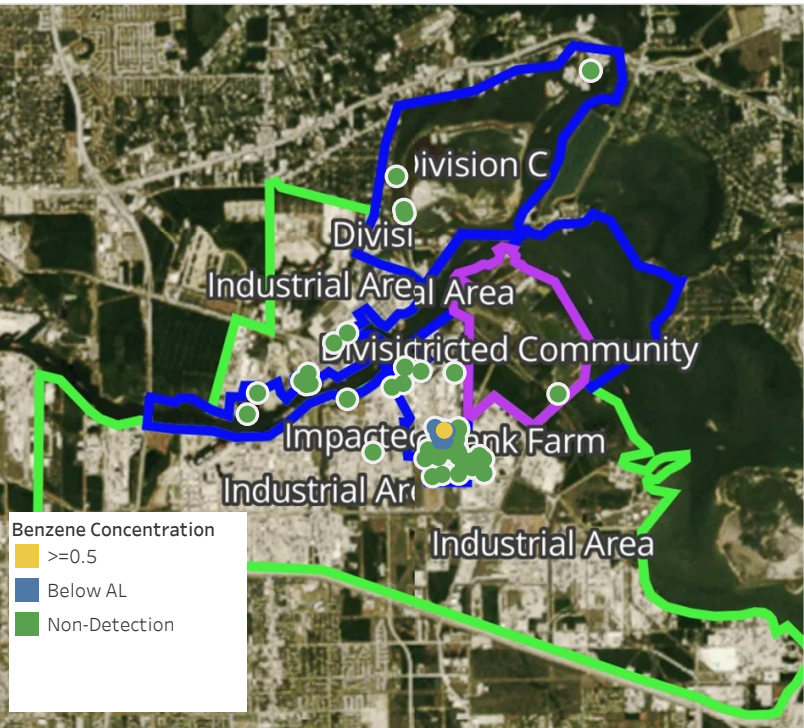
Reading Date	Location Category	GPS	Google Maps URL	Concentration
4/24/2019 11:17:39	Division E	29.7333070,-95.0920970	https://www.google.com/maps/search/?api=1&query=29.7333070,-95.0920970	1.0500 ppm
4/24/2019 11:10:05	Division E	29.7334230,-95.0920270	https://www.google.com/maps/search/?api=1&query=29.7334230,-95.0920270	1.6400 ppm



Please Note: These updates display data from the 2nd 80's Fire site (Impacted Tank Farm), in the industrial areas surrounding the 2nd 80's Fire site (US Coast Guard Division E), within the Houston Ship Channel (US Coast Guard Divisions A-D), and in the industrial areas north and south of the Houston Ship Channel (Industrial Area). Real-time air monitoring data for the surrounding communities are communicated daily in a separate report.

Preliminary Hand- Held Air Monitoring Locations | ITC Deer Park Tank Fire

Reading Date
4/24/2019 12:00:00 PM to 4/24/2019 1:00:00 PM



Recent Benzene Detections

Location Category	Reading Date	Concentration
Division E	4/24/2019 12:04:45	0.4200 ppm
	4/24/2019 12:08:19	0.0900 ppm
	4/24/2019 12:06:54	0.8800 ppm
	4/24/2019 12:12:50	0.1700 ppm
	4/24/2019 12:14:52	0.1300 ppm
	4/24/2019 12:20:31	0.1000 ppm
	4/24/2019 12:16:38	0.0500 ppm
	4/24/2019 12:33:08	0.1100 ppm
	4/24/2019 12:36:57	0.0900 ppm
	4/24/2019 12:38:10	0.0500 ppm
	4/24/2019 12:48:04	0.0200 ppm
	4/24/2019 12:55:58	0.0300 ppm
	4/24/2019 12:56:57	0.0900 ppm
	4/24/2019 12:53:52	0.0500 ppm
Impacted Tank Farm	4/24/2019 12:21:50	0.0300 ppm

This data has been provided expeditiously to ITC and regulatory agencies for informational and/or operational purposes only. Data reported within this summary is preliminary in nature and has not undergone complete QA/QC (quality assurance/quality control) process. Until this complete QA/QC process is completed, the locations of each reading are approximate in nature and subject to further refinement. As some readings may represent non-breathing zone measurements, the data reported herein may not be suitable to assess potential occupational exposure. Site Assessment readings are not representative of an individual's breathing zone (e.g., container head space, ground level, directly above product, etc.).

Reading Date

4/24/2019 12:00:00 PM to 4/24/2019 1:00:00 PM

Benzene Action Level Concentration (ppm)

PRELIMINARY

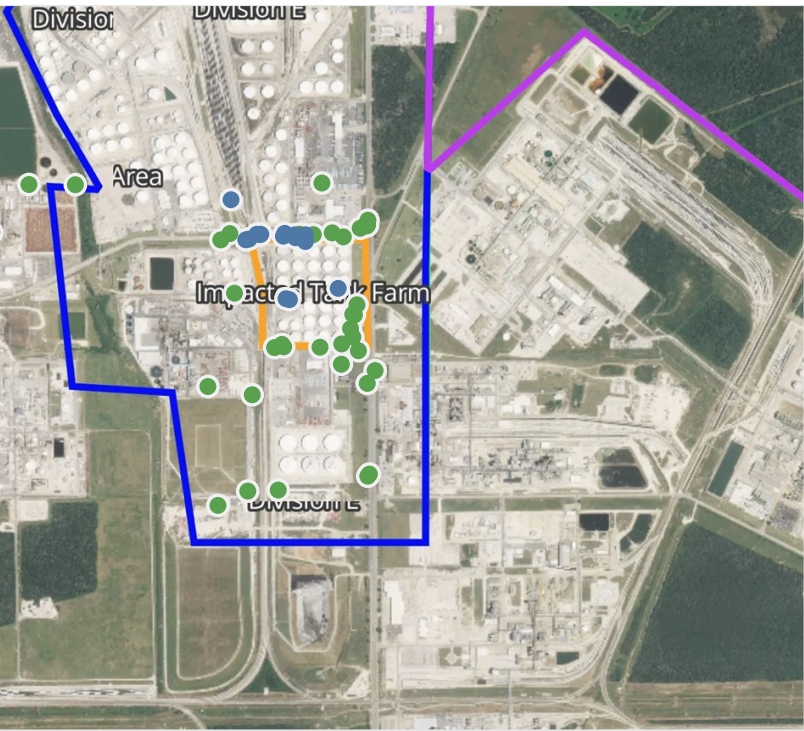
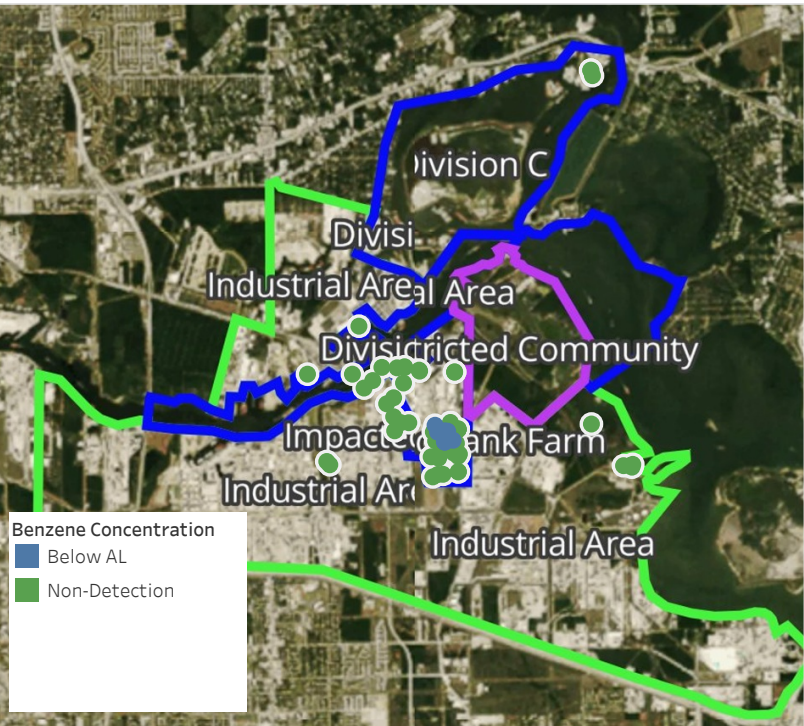
Recent Benzene Detections Greater than 1.00 ppm



Please Note: These updates display data from the 2nd 80's Fire site (Impacted Tank Farm), in the industrial areas surrounding the 2nd 80's Fire site (US Coast Guard Division E), within the Houston Ship Channel (US Coast Guard Divisions A-D), and in the industrial areas north and south of the Houston Ship Channel (Industrial Area). Real-time air monitoring data for the surrounding communities are communicated daily in a separate report.

Preliminary Hand- Held Air Monitoring Locations | ITC Deer Park Tank Fire

Reading Date
4/24/2019 1:00:00 PM to 4/24/2019 2:00:00 PM



Recent Benzene Detections

Location Category	Reading Date	Concentration
Division E	4/24/2019 13:00:13	0.05000 ppm
	4/24/2019 13:06:21	0.10000 ppm
	4/24/2019 13:13:56	0.04000 ppm
	4/24/2019 13:16:07	0.12000 ppm
	4/24/2019 13:20:43	0.03000 ppm
	4/24/2019 13:16:28	0.06000 ppm
	4/24/2019 13:27:45	0.03000 ppm
	4/24/2019 13:30:40	0.07000 ppm
	4/24/2019 13:37:17	0.10000 ppm
	4/24/2019 13:41:57	0.08000 ppm
Impacted Tank Farm	4/24/2019 13:31:24	0.06000 ppm
	4/24/2019 13:45:21	0.06000 ppm
	4/24/2019 13:32:40	0.07000 ppm
	4/24/2019 13:52:49	0.04000 ppm
	4/24/2019 13:29:32	0.06000 ppm

This data has been provided expeditiously to ITC and regulatory agencies for informational and/or operational purposes only. Data reported within this summary is preliminary in nature and has not undergone complete QA/QC (quality assurance/quality control) process. Until this complete QA/QC process is completed, the locations of each reading are approximate in nature and subject to further refinement. As some readings may represent non-breathing zone measurements, the data reported herein may not be suitable to assess potential occupational exposure. Site Assessment readings are not representative of an individual's breathing zone (e.g., container head space, ground level, directly above product, etc.).

Reading Date

4/24/2019 1:00:00 PM to 4/24/2019 2:00:00 PM

Benzene Action Level Concentration (ppm)

PRELIMINARY

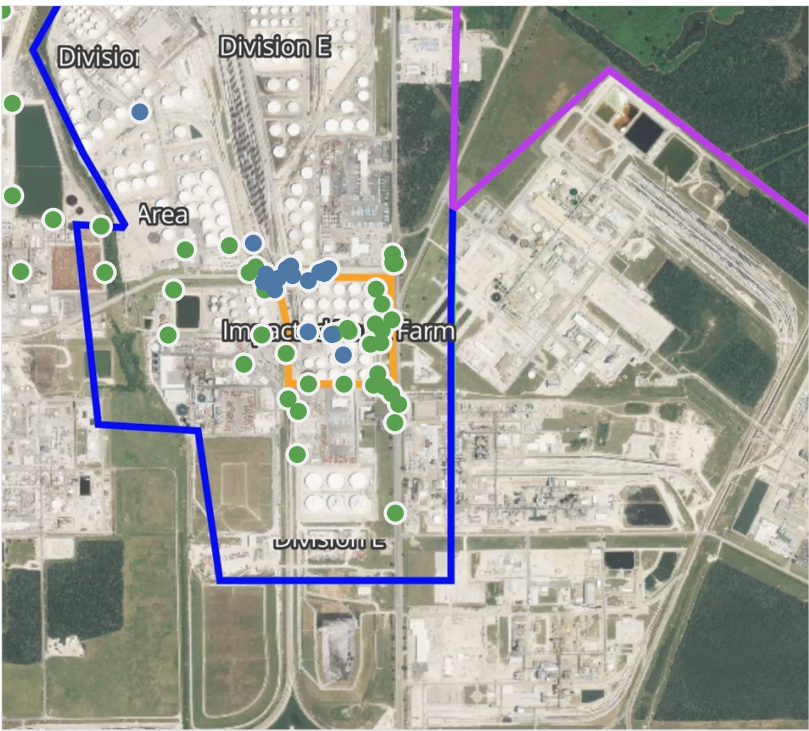
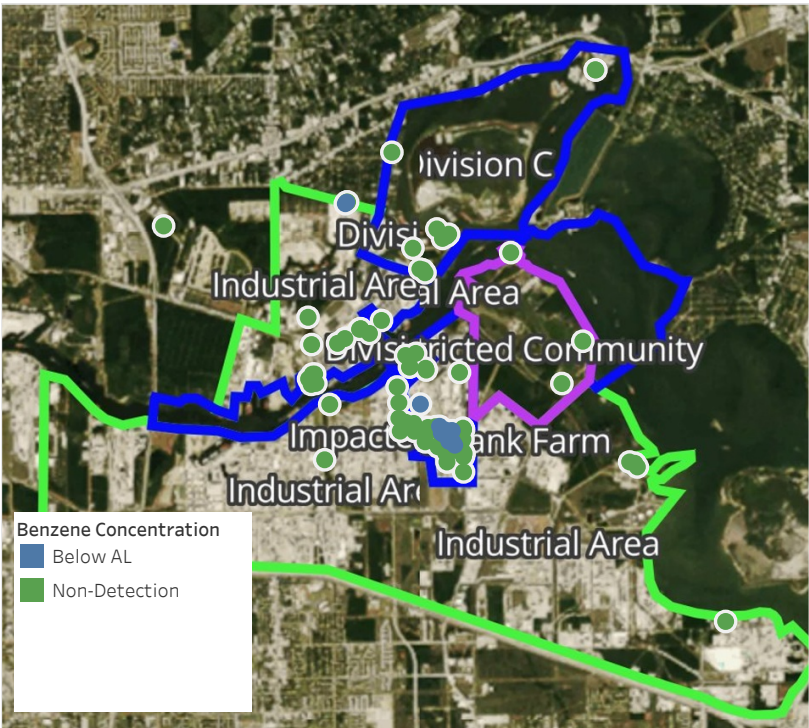
Recent Benzene Detections Greater than 1.00 ppm



Please Note: These updates display data from the 2nd 80's Fire site (Impacted Tank Farm), in the industrial areas surrounding the 2nd 80's Fire site (US Coast Guard Division E), within the Houston Ship Channel (US Coast Guard Divisions A-D), and in the industrial areas north and south of the Houston Ship Channel (Industrial Area). Real-time air monitoring data for the surrounding communities are communicated daily in a separate report.

Preliminary Hand- Held Air Monitoring Locations | ITC Deer Park Tank Fire

Reading Date
4/24/2019 2:00:00 PM to 4/24/2019 3:00:00 PM



Recent Benzene Detections

Location Category	Reading Date	Concentration
Division E	4/24/2019 14:08:41	0.0500 ppm
	4/24/2019 14:14:38	0.1900 ppm
	4/24/2019 14:16:52	0.1900 ppm
	4/24/2019 14:15:12	0.1500 ppm
	4/24/2019 14:21:54	0.0400 ppm
	4/24/2019 14:30:47	0.0500 ppm
	4/24/2019 14:43:11	0.0700 ppm
	4/24/2019 14:46:11	0.0800 ppm
	4/24/2019 14:47:55	0.0700 ppm
	4/24/2019 14:47:23	0.0200 ppm
	4/24/2019 14:44:20	0.0200 ppm
	4/24/2019 14:49:44	0.3400 ppm
	4/24/2019 14:25:09	0.0500 ppm
	4/24/2019 14:53:11	0.0200 ppm
	4/24/2019 14:59:37	0.0200 ppm
	4/24/2019 14:56:39	0.1500 ppm
Impacted Tank Farm	4/24/2019 14:57:56	0.0400 ppm
	4/24/2019 14:57:45	0.0600 ppm
	4/24/2019 14:16:23	0.0500 ppm
	4/24/2019 14:19:34	0.0700 ppm
Industrial Area	4/24/2019 14:32:25	0.0400 ppm
	4/24/2019 14:43:02	0.2750 ppm
	4/24/2019 14:17:18	0.1250 ppm
	4/24/2019 14:25:24	0.1250 ppm

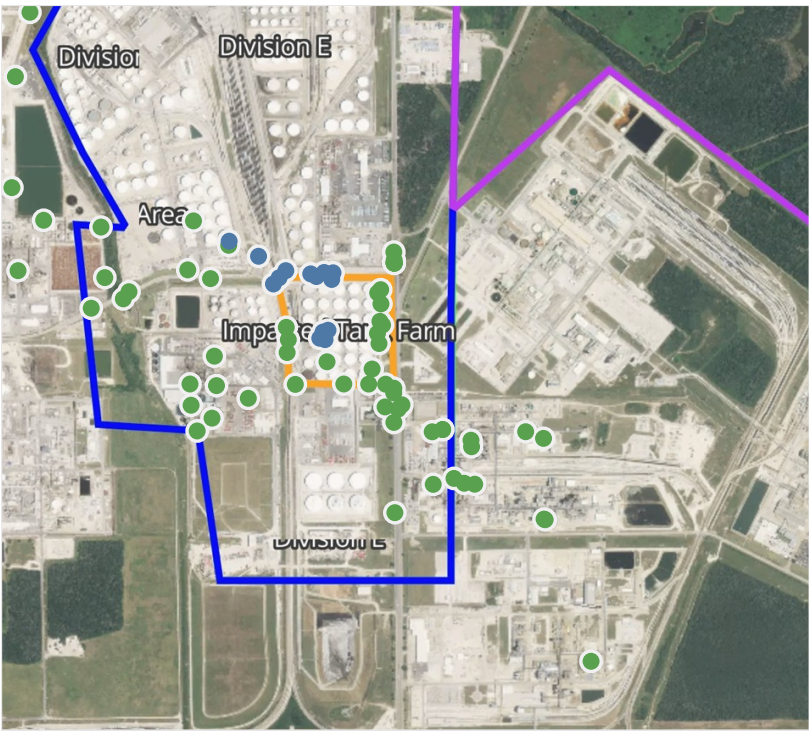
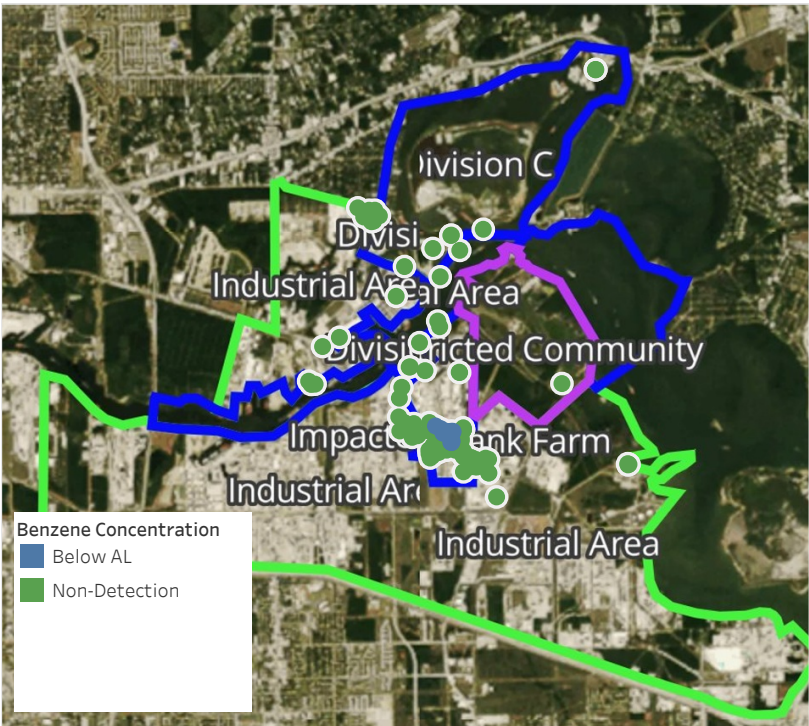
This data has been provided expeditiously to ITC and regulatory agencies for informational and/or operational purposes only. Data reported within this summary is preliminary in nature and has not undergone complete QA/QC (quality assurance/quality control) process. Until this complete QA/QC process is completed, the locations of each reading are approximate in nature and subject to further refinement. As some readings may represent non-breathing zone measurements, the data reported herein may not be suitable to assess potential occupational exposure. Site Assessment readings are not representative of an individual's breathing zone (e.g., container head space, ground level, directly above product, etc.).



Please Note: These updates display data from the 2nd 80's Fire site (Impacted Tank Farm), in the industrial areas surrounding the 2nd 80's Fire site (US Coast Guard Division E), within the Houston Ship Channel (US Coast Guard Divisions A-D), and in the industrial areas north and south of the Houston Ship Channel (Industrial Area). Real-time air monitoring data for the surrounding communities are communicated daily in a separate report.

Preliminary Hand- Held Air Monitoring Locations | ITC Deer Park Tank Fire

Reading Date
4/24/2019 3:00:00 PM to 4/24/2019 4:00:00 PM



Recent Benzene Detections

Location Category	Reading Date	Concentration
Division E	4/24/2019 15:01:50	0.0300 ppm
	4/24/2019 15:04:49	0.0200 ppm
	4/24/2019 15:01:42	0.0300 ppm
	4/24/2019 15:17:04	0.1900 ppm
	4/24/2019 15:25:41	0.0700 ppm
	4/24/2019 15:30:35	0.0800 ppm
	4/24/2019 15:12:30	0.1200 ppm
	4/24/2019 15:58:37	0.0600 ppm
	4/24/2019 15:43:30	0.0900 ppm
Impacted Tank Farm	4/24/2019 15:08:23	0.0500 ppm
	4/24/2019 15:14:11	0.0500 ppm
	4/24/2019 15:22:15	0.2250 ppm
	4/24/2019 15:45:11	0.0600 ppm
	4/24/2019 15:48:11	0.0900 ppm

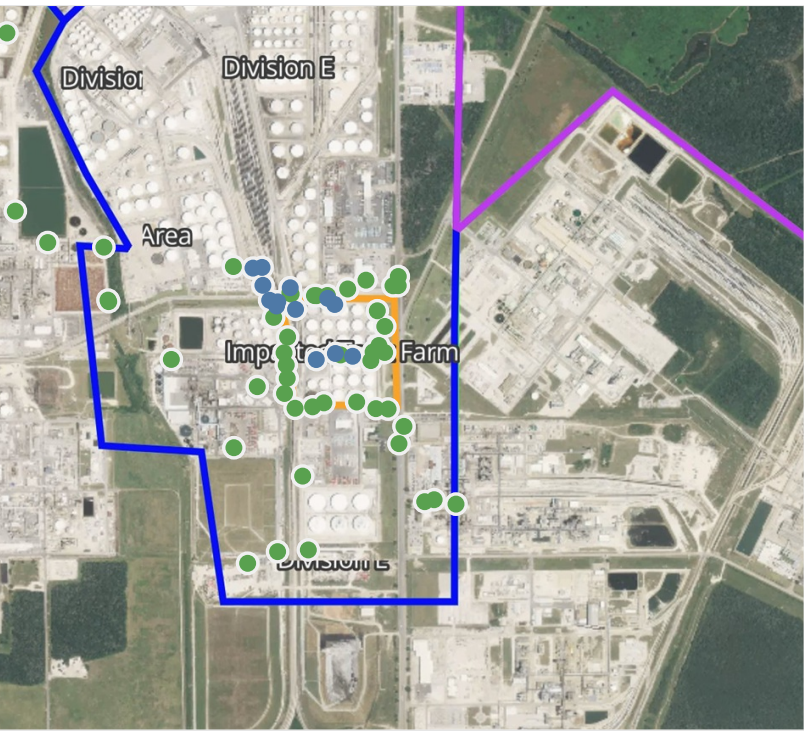
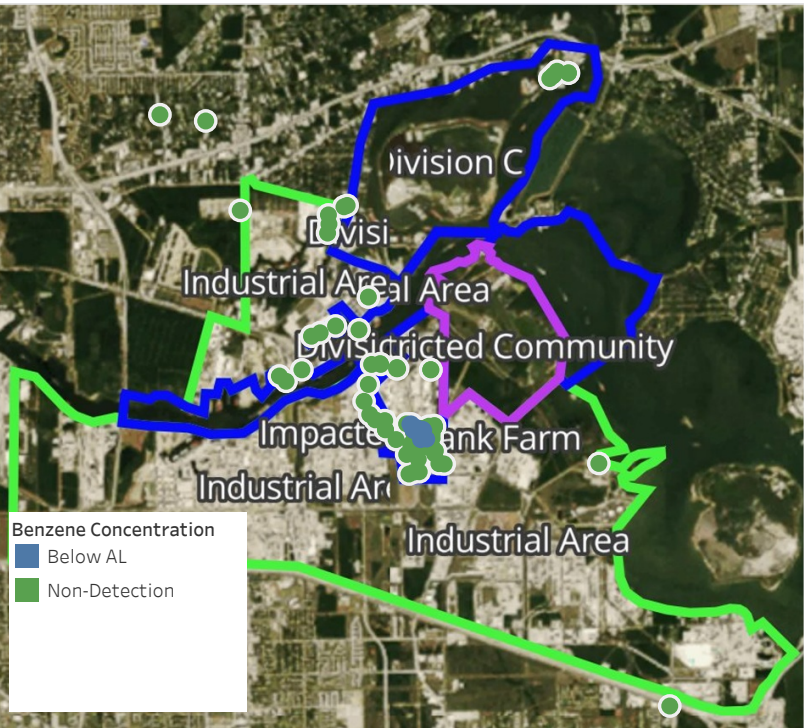
This data has been provided expeditiously to ITC and regulatory agencies for informational and/or operational purposes only. Data reported within this summary is preliminary in nature and has not undergone complete QA/QC (quality assurance/quality control) process. Until this complete QA/QC process is completed, the locations of each reading are approximate in nature and subject to further refinement. As some readings may represent non-breathing zone measurements, the data reported herein may not be suitable to assess potential occupational exposure. Site Assessment readings are not representative of an individual's breathing zone (e.g., container head space, ground level, directly above product, etc.).



Please Note: These updates display data from the 2nd 80's Fire site (Impacted Tank Farm), in the industrial areas surrounding the 2nd 80's Fire site (US Coast Guard Division E), within the Houston Ship Channel (US Coast Guard Divisions A-D), and in the industrial areas north and south of the Houston Ship Channel (Industrial Area). Real-time air monitoring data for the surrounding communities are communicated daily in a separate report.

Preliminary Hand- Held Air Monitoring Locations | ITC Deer Park Tank Fire

Reading Date
4/24/2019 4:00:00 PM to 4/24/2019 5:00:00 PM



Recent Benzene Detections

Location Category	Reading Date	Concentration
Division E	4/24/2019 16:47:33	0.1100 ppm
	4/24/2019 16:19:35	0.1000 ppm
	4/24/2019 16:58:48	0.0400 ppm
	4/24/2019 16:14:27	0.0300 ppm
	4/24/2019 16:16:39	0.0200 ppm
	4/24/2019 16:56:29	0.0500 ppm
	4/24/2019 16:40:32	0.0600 ppm
	4/24/2019 16:30:08	0.1400 ppm
	4/24/2019 16:40:58	0.0300 ppm
Impacted Tank Farm	4/24/2019 16:52:11	0.0200 ppm
	4/24/2019 16:10:35	0.0300 ppm
	4/24/2019 16:14:48	0.0500 ppm
	4/24/2019 16:35:57	0.0400 ppm
	4/24/2019 16:37:14	0.1500 ppm

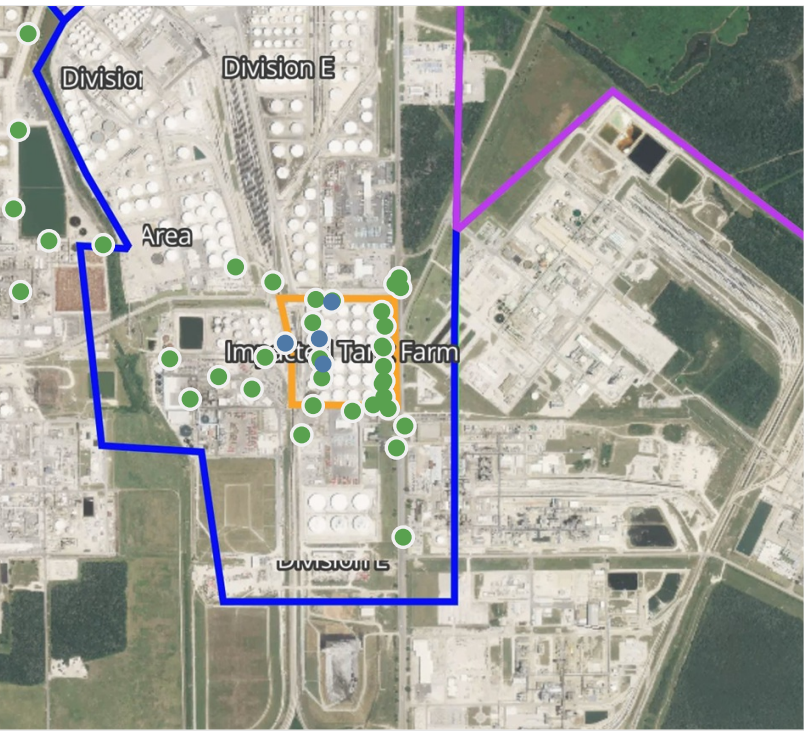
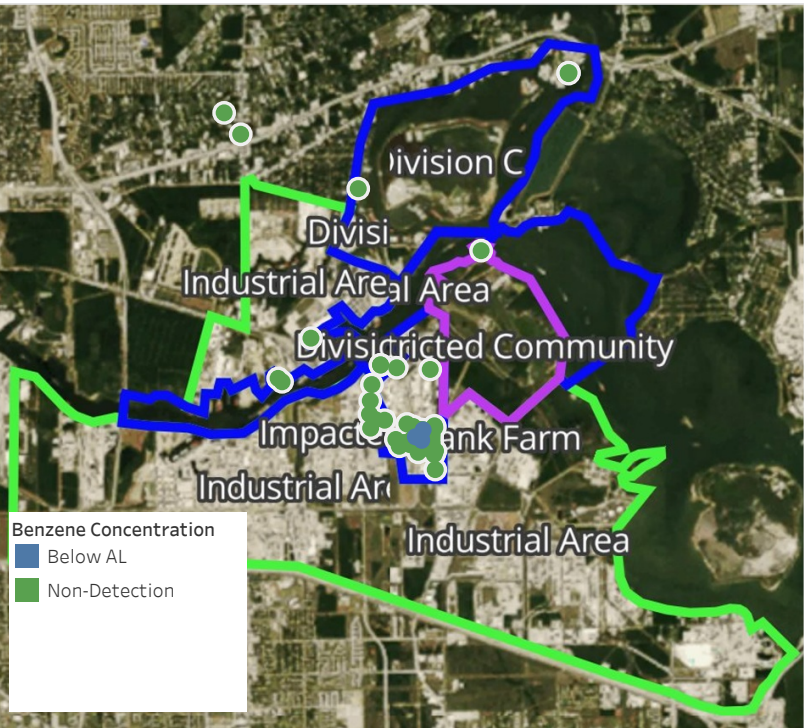
This data has been provided expeditiously to ITC and regulatory agencies for informational and/or operational purposes only. Data reported within this summary is preliminary in nature and has not undergone complete QA/QC (quality assurance/quality control) process. Until this complete QA/QC process is completed, the locations of each reading are approximate in nature and subject to further refinement. As some readings may represent non-breathing zone measurements, the data reported herein may not be suitable to assess potential occupational exposure. Site Assessment readings are not representative of an individual's breathing zone (e.g., container head space, ground level, directly above product, etc.).



Please Note: These updates display data from the 2nd 80's Fire site (Impacted Tank Farm), in the industrial areas surrounding the 2nd 80's Fire site (US Coast Guard Division E), within the Houston Ship Channel (US Coast Guard Divisions A-D), and in the industrial areas north and south of the Houston Ship Channel (Industrial Area). Real-time air monitoring data for the surrounding communities are communicated daily in a separate report.

Preliminary Hand- Held Air Monitoring Locations | ITC Deer Park Tank Fire

Reading Date
4/24/2019 5:00:00 PM to 4/24/2019 6:00:00 PM



Recent Benzene Detections

Location Category	Reading Date	Concentration
Division E	4/24/2019 17:08:54	0.0300 ppm
	4/24/2019 17:31:14	0.2100 ppm
Impacted Tank Farm	4/24/2019 17:27:55	0.0300 ppm
	4/24/2019 17:32:06	0.0400 ppm

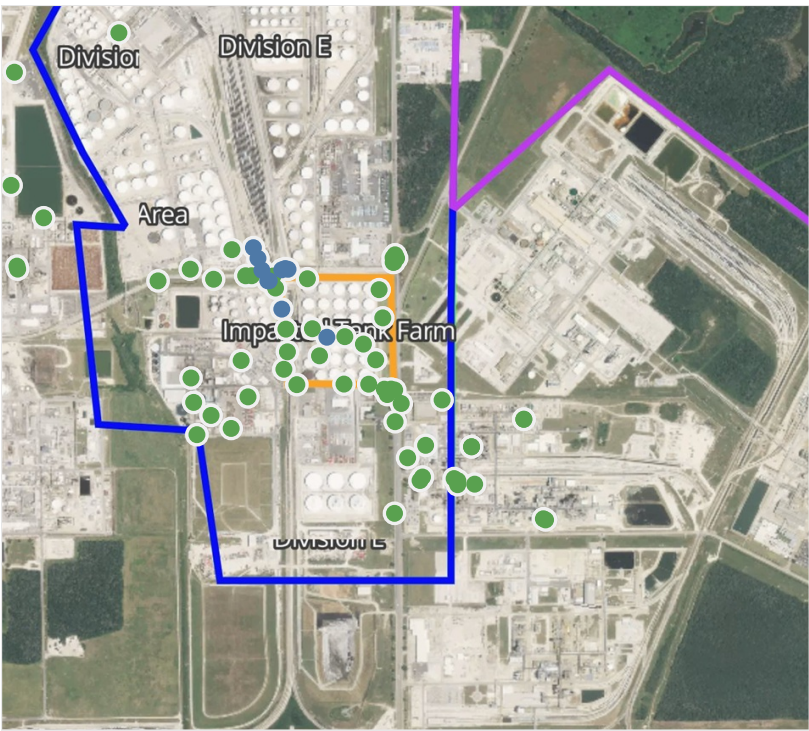
This data has been provided expeditiously to ITC and regulatory agencies for informational and/or operational purposes only. Data reported within this summary is preliminary in nature and has not undergone complete QA/QC (quality assurance/quality control) process. Until this complete QA/QC process is completed, the locations of each reading are approximate in nature and subject to further refinement. As some readings may represent non-breathing zone measurements, the data reported herein may not be suitable to assess potential occupational exposure. Site Assessment readings are not representative of an individual's breathing zone (e.g., container head space, ground level, directly above product, etc.).



Please Note: These updates display data from the 2nd 80's Fire site (Impacted Tank Farm), in the industrial areas surrounding the 2nd 80's Fire site (US Coast Guard Division E), within the Houston Ship Channel (US Coast Guard Divisions A-D), and in the industrial areas north and south of the Houston Ship Channel (Industrial Area). Real-time air monitoring data for the surrounding communities are communicated daily in a separate report.

Preliminary Hand- Held Air Monitoring Locations | ITC Deer Park Tank Fire

Reading Date
4/24/2019 6:00:00 PM to 4/24/2019 7:00:00 PM



Recent Benzene Detections

Location Category	Reading Date	Concentration
Below Grate	4/24/2019 18:01:38	0.1750 ppm
Division B	4/24/2019 18:17:50	0.0200 ppm
Division E	4/24/2019 18:15:15	0.0300 ppm
	4/24/2019 18:22:14	0.0500 ppm
	4/24/2019 18:35:32	0.0800 ppm
	4/24/2019 18:39:43	0.0600 ppm
	4/24/2019 18:14:33	0.0600 ppm
	4/24/2019 18:24:43	0.0200 ppm
	4/24/2019 18:26:35	0.0200 ppm
	4/24/2019 18:40:20	0.1100 ppm
	4/24/2019 18:49:26	0.0200 ppm
Impacted Tank Farm	4/24/2019 18:15:11	0.0300 ppm

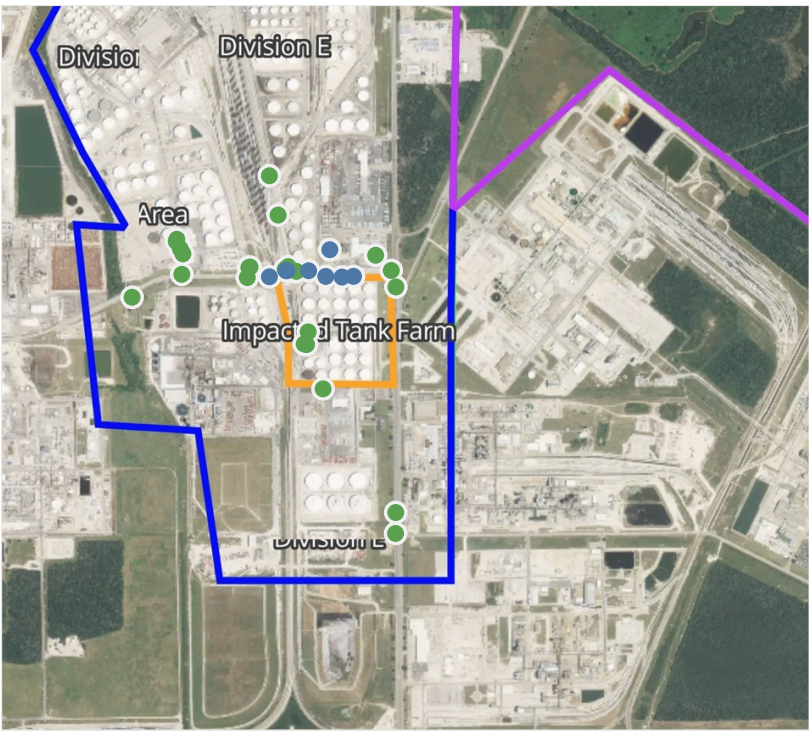
This data has been provided expeditiously to ITC and regulatory agencies for informational and/or operational purposes only. Data reported within this summary is preliminary in nature and has not undergone complete QA/QC (quality assurance/quality control) process. Until this complete QA/QC process is completed, the locations of each reading are approximate in nature and subject to further refinement. As some readings may represent non-breathing zone measurements, the data reported herein may not be suitable to assess potential occupational exposure. Site Assessment readings are not representative of an individual's breathing zone (e.g., container head space, ground level, directly above product, etc.).



Please Note: These updates display data from the 2nd 80's Fire site (Impacted Tank Farm), in the industrial areas surrounding the 2nd 80's Fire site (US Coast Guard Division E), within the Houston Ship Channel (US Coast Guard Divisions A-D), and in the industrial areas north and south of the Houston Ship Channel (Industrial Area). Real-time air monitoring data for the surrounding communities are communicated daily in a separate report.

Preliminary Hand- Held Air Monitoring Locations | ITC Deer Park Tank Fire

Reading Date
4/24/2019 7:00:00 PM to 4/24/2019 8:00:00 PM



Recent Benzene Detections

Location Category	Reading Date	Concentration
Division E	4/24/2019 19:00:48	0.1200 ppm
	4/24/2019 19:14:51	0.0300 ppm
	4/24/2019 19:53:18	0.3700 ppm
	4/24/2019 19:47:51	0.0800 ppm
	4/24/2019 19:49:47	0.1200 ppm
	4/24/2019 19:52:18	0.1600 ppm
	4/24/2019 19:54:18	0.3300 ppm
	4/24/2019 19:58:48	0.0700 ppm

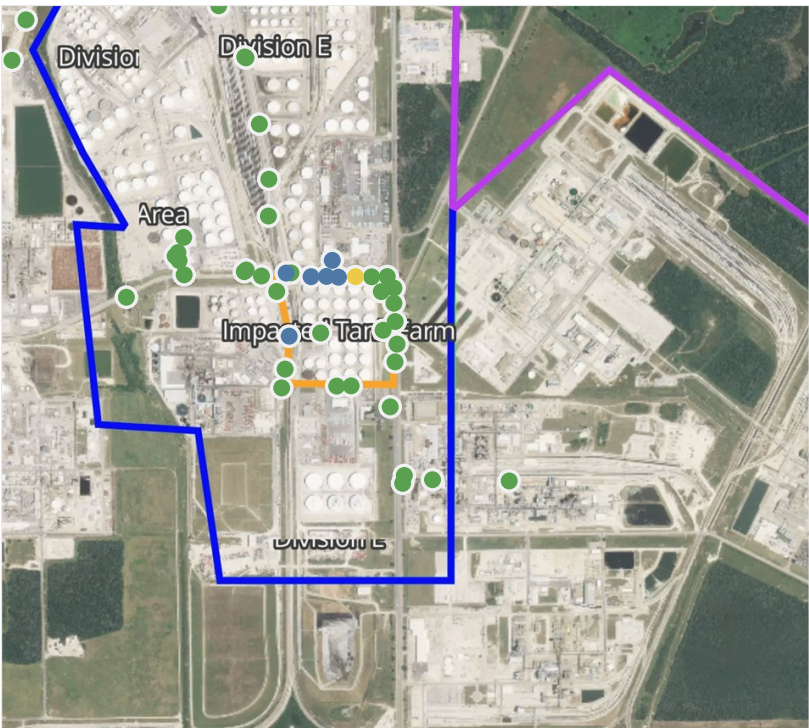
This data has been provided expeditiously to ITC and regulatory agencies for informational and/or operational purposes only. Data reported within this summary is preliminary in nature and has not undergone complete QA/QC (quality assurance/quality control) process. Until this complete QA/QC process is completed, the locations of each reading are approximate in nature and subject to further refinement. As some readings may represent non-breathing zone measurements, the data reported herein may not be suitable to assess potential occupational exposure. Site Assessment readings are not representative of an individual's breathing zone (e.g., container head space, ground level, directly above product, etc.).



Please Note: These updates display data from the 2nd 80's Fire site (Impacted Tank Farm), in the industrial areas surrounding the 2nd 80's Fire site (US Coast Guard Division E), within the Houston Ship Channel (US Coast Guard Divisions A-D), and in the industrial areas north and south of the Houston Ship Channel (Industrial Area). Real-time air monitoring data for the surrounding communities are communicated daily in a separate report.

Preliminary Hand- Held Air Monitoring Locations | ITC Deer Park Tank Fire

Reading Date
4/24/2019 8:00:00 PM to 4/24/2019 9:00:00 PM



Recent Benzene Detections

Location Category	Reading Date	Concentration
Division E	4/24/2019 20:06:14	0.0300 ppm
	4/24/2019 20:36:32	0.1700 ppm
	4/24/2019 20:38:58	0.2500 ppm
	4/24/2019 20:40:39	0.1900 ppm
	4/24/2019 20:37:05	0.8700 ppm
	4/24/2019 20:42:31	0.0300 ppm
	4/24/2019 20:43:46	0.0200 ppm

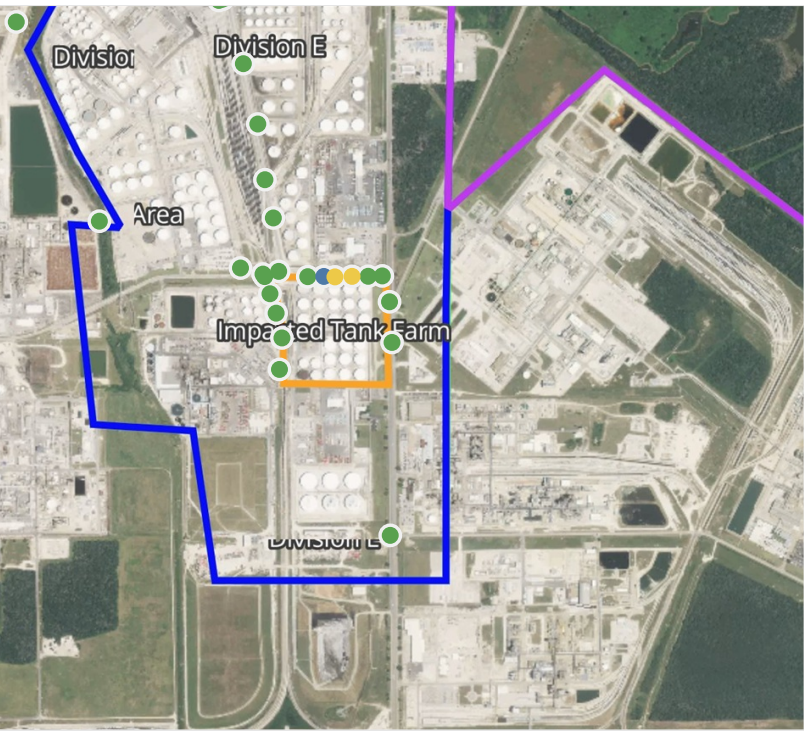
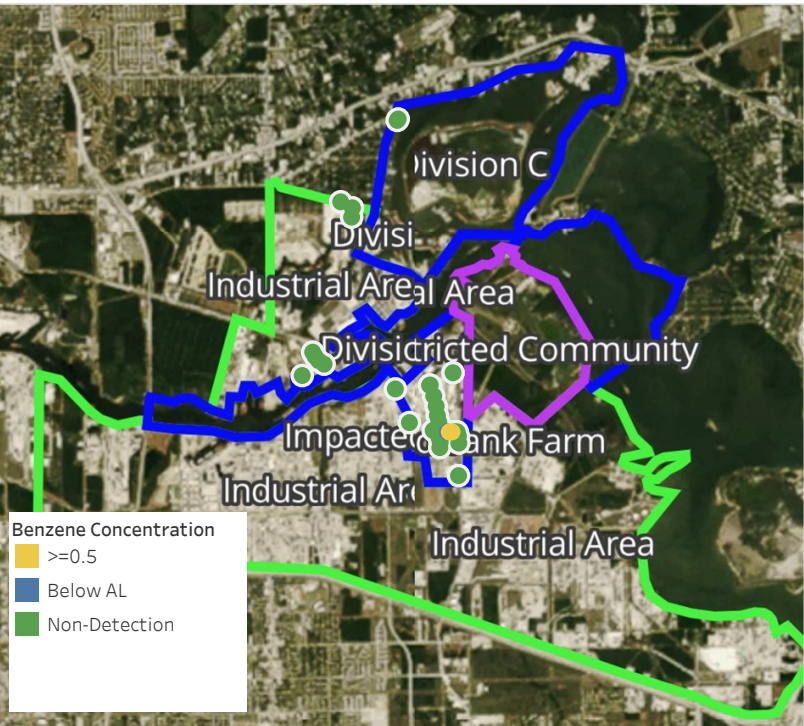
This data has been provided expeditiously to ITC and regulatory agencies for informational and/or operational purposes only. Data reported within this summary is preliminary in nature and has not undergone complete QA/QC (quality assurance/quality control) process. Until this complete QA/QC process is completed, the locations of each reading are approximate in nature and subject to further refinement. As some readings may represent non-breathing zone measurements, the data reported herein may not be suitable to assess potential occupational exposure. Site Assessment readings are not representative of an individual's breathing zone (e.g., container head space, ground level, directly above product, etc.).



Please Note: These updates display data from the 2nd 80's Fire site (Impacted Tank Farm), in the industrial areas surrounding the 2nd 80's Fire site (US Coast Guard Division E), within the Houston Ship Channel (US Coast Guard Divisions A-D), and in the industrial areas north and south of the Houston Ship Channel (Industrial Area). Real-time air monitoring data for the surrounding communities are communicated daily in a separate report.

Preliminary Hand- Held Air Monitoring Locations | ITC Deer Park Tank Fire

Reading Date
4/24/2019 9:00:00 PM to 4/24/2019 10:00:00 PM



Recent Benzene Detections

Location Category	Reading Date	Concentration
Division E	4/24/2019 21:27:33	0.5200 ppm
	4/24/2019 21:24:25	0.9000 ppm
	4/24/2019 21:28:31	0.0200 ppm

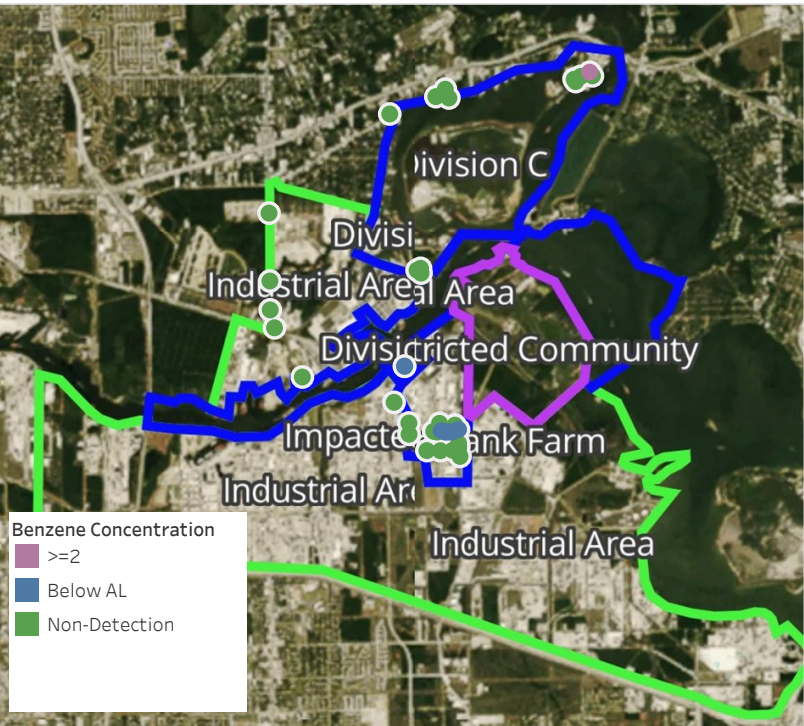
This data has been provided expeditiously to ITC and regulatory agencies for informational and/or operational purposes only. Data reported within this summary is preliminary in nature and has not undergone complete QA/QC (quality assurance/quality control) process. Until this complete QA/QC process is completed, the locations of each reading are approximate in nature and subject to further refinement. As some readings may represent non-breathing zone measurements, the data reported herein may not be suitable to assess potential occupational exposure. Site Assessment readings are not representative of an individual's breathing zone (e.g., container head space, ground level, directly above product, etc.).



Please Note: These updates display data from the 2nd 80's Fire site (Impacted Tank Farm), in the industrial areas surrounding the 2nd 80's Fire site (US Coast Guard Division E), within the Houston Ship Channel (US Coast Guard Divisions A-D), and in the industrial areas north and south of the Houston Ship Channel (Industrial Area). Real-time air monitoring data for the surrounding communities are communicated daily in a separate report.

Preliminary Hand- Held Air Monitoring Locations | ITC Deer Park Tank Fire

Reading Date
4/24/2019 10:00:00 PM to 4/24/2019 11:00:00 PM



Recent Benzene Detections

Location Category	Reading Date	Concentration
Division E	4/24/2019 22:13:23	0.090 ppm
	4/24/2019 22:16:20	0.150 ppm
	4/24/2019 22:14:32	0.460 ppm
	4/24/2019 22:10:51	0.040 ppm
	4/24/2019 22:12:47	0.050 ppm
	4/24/2019 22:37:01	0.300 ppm
MSRC Shipyard Decon Area	4/24/2019 22:53:50	0.250 ppm
	4/24/2019 22:02:52	2.300 ppm

This data has been provided expeditiously to ITC and regulatory agencies for informational and/or operational purposes only. Data reported within this summary is preliminary in nature and has not undergone complete QA/QC (quality assurance/quality control) process. Until this complete QA/QC process is completed, the locations of each reading are approximate in nature and subject to further refinement. As some readings may represent non-breathing zone measurements, the data reported herein may not be suitable to assess potential occupational exposure. Site Assessment readings are not representative of an individual's breathing zone (e.g., container head space, ground level, directly above product, etc.).

Reading Date
4/24/2019 10:00:00 PM to 4/24/2019 11:00:00 PM

Benzene Action Level Concentration (ppm)
 >=2

PRELIMINARY
Recent Benzene Detections Greater than 1.00 ppm

Reading Date	Location Category	GPS	Google Maps URL	Concentration
4/24/2019 22:02:52	MSRC Shipyard Decon Area	29.7895470,-95.0662060	https://www.google.com/maps/search/?api=1&query=29.7895470,-95.0662060	2.300 ppm



Please Note: These updates display data from the 2nd 80's Fire site (Impacted Tank Farm), in the industrial areas surrounding the 2nd 80's Fire site (US Coast Guard Division E), within the Houston Ship Channel (US Coast Guard Divisions A-D), and in the industrial areas north and south of the Houston Ship Channel (Industrial Area). Real-time air monitoring data for the surrounding communities are communicated daily in a separate report.