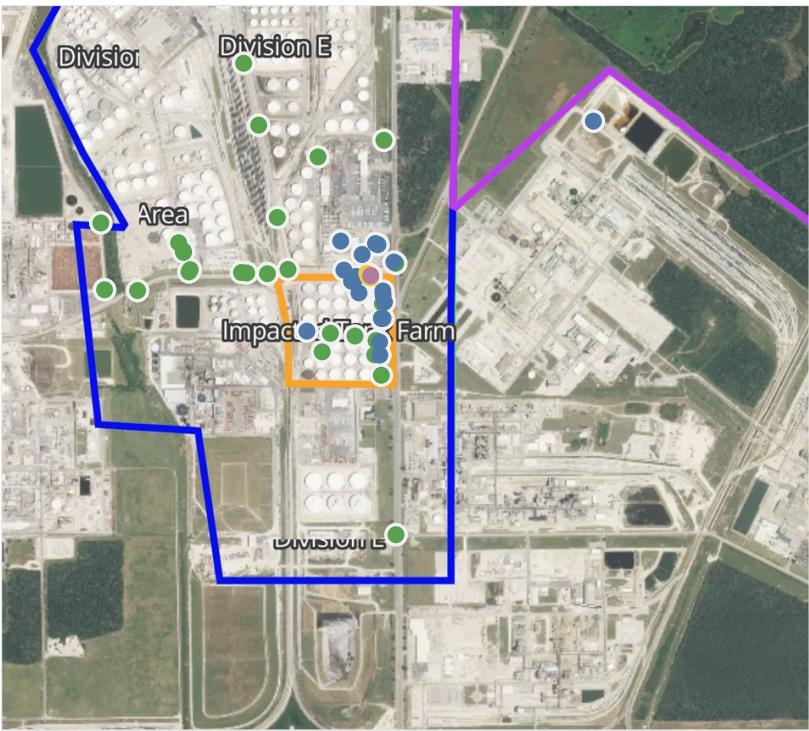


# Preliminary Hand- Held Air Monitoring Locations | ITC Deer Park Tank Fire

Reading Date  
4/24/2019 11:00:00 PM to 4/25/2019 12:00:00 AM



## Recent Benzene Detections

Location Category	Reading Date	Concentration
Division E	4/24/2019 23:00:23	0.040 ppm
	4/24/2019 23:18:22	0.110 ppm
	4/24/2019 23:38:42	0.930 ppm
	4/24/2019 23:36:38	0.680 ppm
	4/24/2019 23:35:14	0.970 ppm
	4/24/2019 23:37:48	3.110 ppm
	4/24/2019 23:34:28	1.590 ppm
	4/24/2019 23:35:44	0.610 ppm
	4/24/2019 23:49:03	0.080 ppm
	4/24/2019 23:46:01	0.120 ppm
	4/24/2019 23:50:15	0.070 ppm
	4/24/2019 23:45:50	0.120 ppm
	4/24/2019 23:48:20	0.050 ppm
	4/24/2019 23:53:23	0.110 ppm
	4/24/2019 23:31:49	0.360 ppm
	4/24/2019 23:26:41	0.140 ppm
	4/24/2019 23:35:38	0.150 ppm
	4/24/2019 23:58:53	0.040 ppm
Impacted Tank Farm	4/24/2019 23:05:51	0.360 ppm
	4/24/2019 23:03:00	0.040 ppm
	4/24/2019 23:20:01	0.070 ppm
	4/24/2019 23:07:30	0.090 ppm
	4/24/2019 23:12:14	0.020 ppm
	4/24/2019 23:10:49	0.070 ppm
	4/24/2019 23:34:57	0.090 ppm
	4/24/2019 23:33:45	0.020 ppm

This data has been provided expeditiously to ITC and regulatory agencies for informational and/or operational purposes only. Data reported within this summary is preliminary in nature and has not undergone complete QA/QC (quality assurance/quality control) process. Until this complete QA/QC process is completed, the locations of each reading are approximate in nature and subject to further refinement. As some readings may represent non-breathing zone measurements, the data reported herein may not be suitable to assess potential occupational exposure. Site Assessment readings are not representative of an individual's breathing zone (e.g., container head space, ground level, directly above product, etc.).

Reading Date  
4/24/2019 11:00:00 PM to 4/25/2019 12:00:00 AM

Benzene Action Level Concentration (ppm)  
 >=1     >=2

PRELIMINARY  
Recent Benzene Detections Greater than 1.00 ppm

Reading Date	Location Category	GPS	Google Maps URL	Concentration
4/24/2019 23:37:48	Division E	29.7331990,-95.0906270	<a href="https://www.google.com/maps/search/?api=1&amp;query=29.7331990,-95.0906270">https://www.google.com/maps/search/?api=1&amp;query=29.7331990,-95.0906270</a>	3.110 ppm
4/24/2019 23:34:28	Division E	29.7332110,-95.0906250	<a href="https://www.google.com/maps/search/?api=1&amp;query=29.7332110,-95.0906250">https://www.google.com/maps/search/?api=1&amp;query=29.7332110,-95.0906250</a>	1.590 ppm

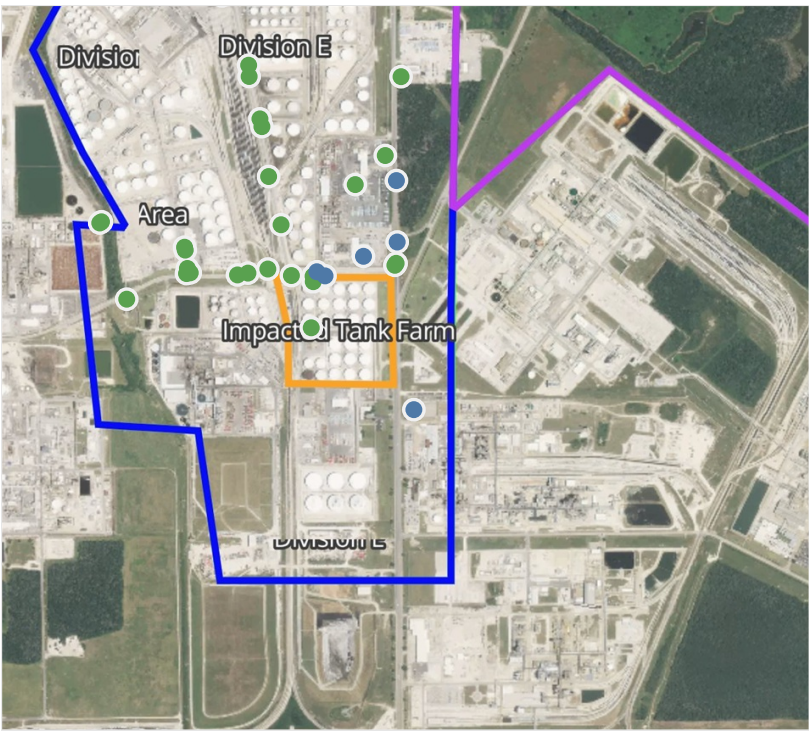
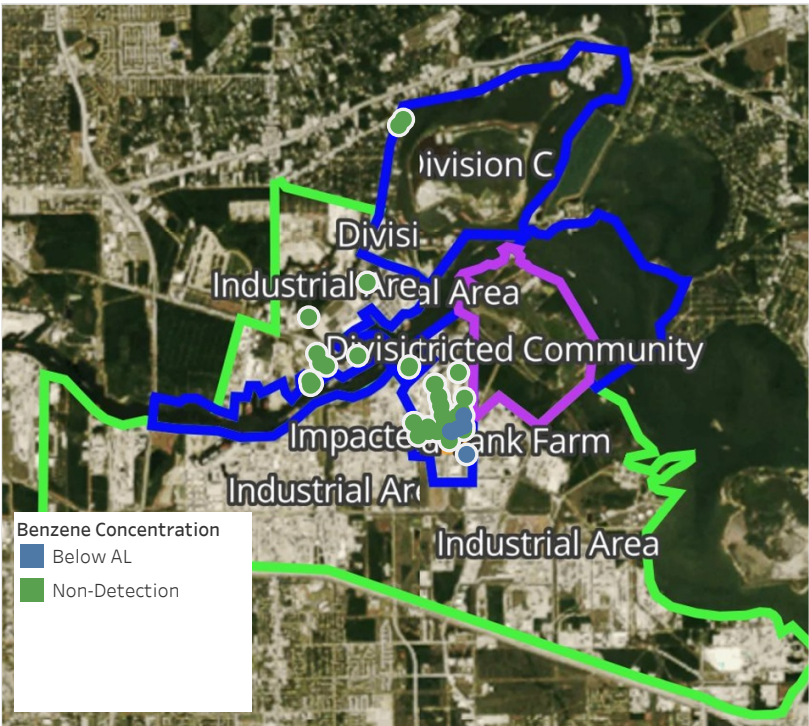




**Please Note:** These updates display data from the 2<sup>nd</sup> 80's Fire site (Impacted Tank Farm), in the industrial areas surrounding the 2<sup>nd</sup> 80's Fire site (US Coast Guard Division E), within the Houston Ship Channel (US Coast Guard Divisions A-D), and in the industrial areas north and south of the Houston Ship Channel (Industrial Area). Real-time air monitoring data for the surrounding communities are communicated daily in a separate report.

# Preliminary Hand- Held Air Monitoring Locations | ITC Deer Park Tank Fire

Reading Date  
4/25/2019 12:00:00 AM to 4/25/2019 1:00:00 AM



## Recent Benzene Detections

Location Category	Reading Date	Concentration
Division E	4/25/2019 00:01:43	0.0400 ppm
	4/25/2019 00:05:21	0.0400 ppm
	4/25/2019 00:05:39	0.0300 ppm
	4/25/2019 00:06:30	0.4500 ppm
	4/25/2019 00:16:04	0.1800 ppm
	4/25/2019 00:38:47	0.2500 ppm

This data has been provided expeditiously to ITC and regulatory agencies for informational and/or operational purposes only. Data reported within this summary is preliminary in nature and has not undergone complete QA/QC (quality assurance/quality control) process. Until this complete QA/QC process is completed, the locations of each reading are approximate in nature and subject to further refinement. As some readings may represent non-breathing zone measurements, the data reported herein may not be suitable to assess potential occupational exposure. Site Assessment readings are not representative of an individual's breathing zone (e.g., container head space, ground level, directly above product, etc.).

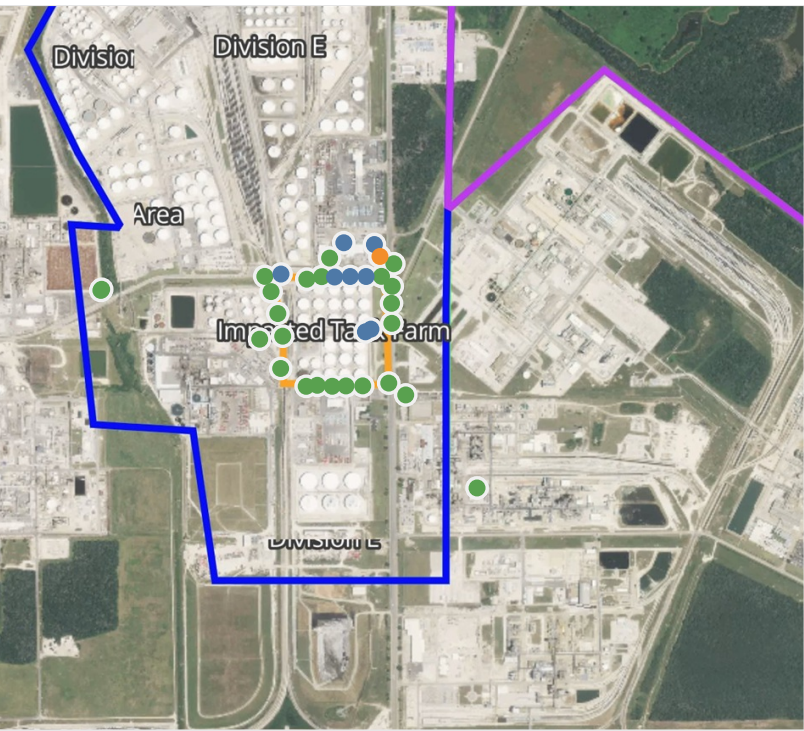




**Please Note:** These updates display data from the 2<sup>nd</sup> 80's Fire site (Impacted Tank Farm), in the industrial areas surrounding the 2<sup>nd</sup> 80's Fire site (US Coast Guard Division E), within the Houston Ship Channel (US Coast Guard Divisions A-D), and in the industrial areas north and south of the Houston Ship Channel (Industrial Area). Real-time air monitoring data for the surrounding communities are communicated daily in a separate report.

# Preliminary Hand- Held Air Monitoring Locations | ITC Deer Park Tank Fire

Reading Date  
4/25/2019 1:00:00 AM to 4/25/2019 2:00:00 AM



## Recent Benzene Detections

Location Category	Reading Date	Concentration
Division E	4/25/2019 01:02:17	1.150 ppm
	4/25/2019 01:14:28	0.150 ppm
	4/25/2019 01:20:58	0.030 ppm
	4/25/2019 01:13:07	0.380 ppm
	4/25/2019 01:16:03	0.090 ppm
	4/25/2019 01:21:57	0.080 ppm
Impacted Tank Farm	4/25/2019 01:09:30	0.370 ppm
	4/25/2019 01:22:48	0.050 ppm
	4/25/2019 01:23:44	0.080 ppm
	4/25/2019 01:24:03	0.060 ppm

This data has been provided expeditiously to ITC and regulatory agencies for informational and/or operational purposes only. Data reported within this summary is preliminary in nature and has not undergone complete QA/QC (quality assurance/quality control) process. Until this complete QA/QC process is completed, the locations of each reading are approximate in nature and subject to further refinement. As some readings may represent non-breathing zone measurements, the data reported herein may not be suitable to assess potential occupational exposure. Site Assessment readings are not representative of an individual's breathing zone (e.g., container head space, ground level, directly above product, etc.).



Reading Date  
4/25/2019 1:00:00 AM to 4/25/2019 2:00:00 AM

Benzene Action Level Concentration (ppm)  
 >=1

PRELIMINARY  
Recent Benzene Detections Greater than 1.00 ppm

Reading Date	Location Category	GPS	Google Maps URL	Concentration
4/25/2019 01:02:17	Division E	29.7337110,-95.0901890	<a href="https://www.google.com/maps/search/?api=1&amp;query=29.7337110,-95.0901890">https://www.google.com/maps/search/?api=1&amp;query=29.7337110,-95.0901890</a>	1.150 ppm

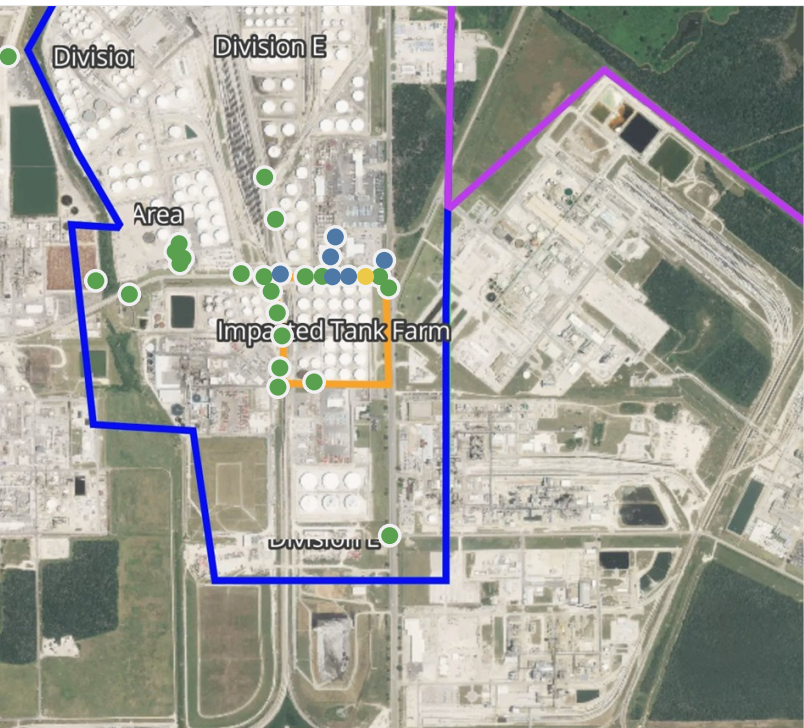
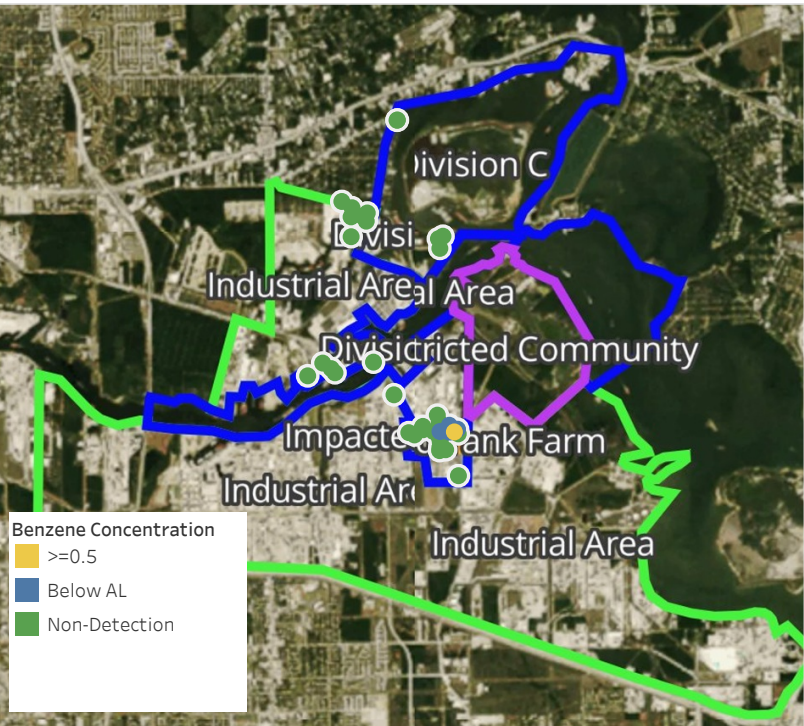


**Please Note:** These updates display data from the 2<sup>nd</sup> 80's Fire site (Impacted Tank Farm), in the industrial areas surrounding the 2<sup>nd</sup> 80's Fire site (US Coast Guard Division E), within the Houston Ship Channel (US Coast Guard Divisions A-D), and in the industrial areas north and south of the Houston Ship Channel (Industrial Area). Real-time air monitoring data for the surrounding communities are communicated daily in a separate report.



# Preliminary Hand- Held Air Monitoring Locations | ITC Deer Park Tank Fire

Reading Date  
4/25/2019 2:00:00 AM to 4/25/2019 3:00:00 AM



## Recent Benzene Detections

Location Category	Reading Date	Concentration
Division E	4/25/2019 02:02:29	0.0400 ppm
	4/25/2019 02:04:36	0.0400 ppm
	4/25/2019 02:05:35	0.5900 ppm
	4/25/2019 02:07:10	0.1300 ppm
	4/25/2019 02:08:48	0.0500 ppm
	4/25/2019 02:14:09	0.0500 ppm
	4/25/2019 02:45:08	0.1300 ppm

This data has been provided expeditiously to ITC and regulatory agencies for informational and/or operational purposes only. Data reported within this summary is preliminary in nature and has not undergone complete QA/QC (quality assurance/quality control) process. Until this complete QA/QC process is completed, the locations of each reading are approximate in nature and subject to further refinement. As some readings may represent non-breathing zone measurements, the data reported herein may not be suitable to assess potential occupational exposure. Site Assessment readings are not representative of an individual's breathing zone (e.g., container head space, ground level, directly above product, etc.).

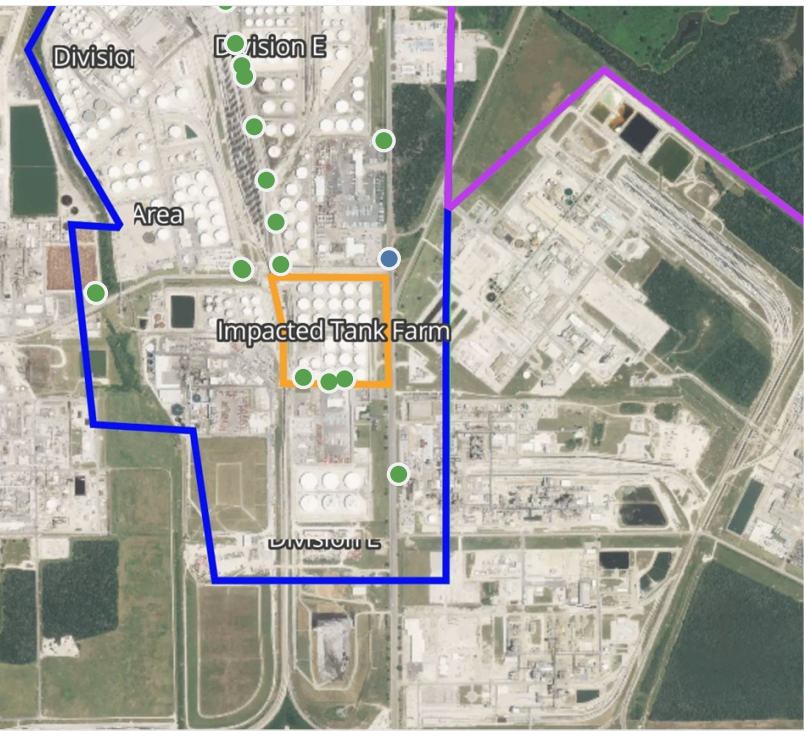


**Please Note:** These updates display data from the 2<sup>nd</sup> 80's Fire site (Impacted Tank Farm), in the industrial areas surrounding the 2<sup>nd</sup> 80's Fire site (US Coast Guard Division E), within the Houston Ship Channel (US Coast Guard Divisions A-D), and in the industrial areas north and south of the Houston Ship Channel (Industrial Area). Real-time air monitoring data for the surrounding communities are communicated daily in a separate report.



# Preliminary Hand- Held Air Monitoring Locations | ITC Deer Park Tank Fire

Reading Date  
4/25/2019 3:00:00 AM to 4/25/2019 4:00:00 AM



## Recent Benzene Detections

Location Category	Reading Date	Concentration
Division E	4/25/2019 03:07:33	0.1000 ppm
MSRC Shipyard Decon Area	4/25/2019 03:02:54	0.9000 ppm

This data has been provided expeditiously to ITC and regulatory agencies for informational and/or operational purposes only. Data reported within this summary is preliminary in nature and has not undergone complete QA/QC (quality assurance/quality control) process. Until this complete QA/QC process is completed, the locations of each reading are approximate in nature and subject to further refinement. As some readings may represent non-breathing zone measurements, the data reported herein may not be suitable to assess potential occupational exposure. Site Assessment readings are not representative of an individual's breathing zone (e.g., container head space, ground level, directly above product, etc.).

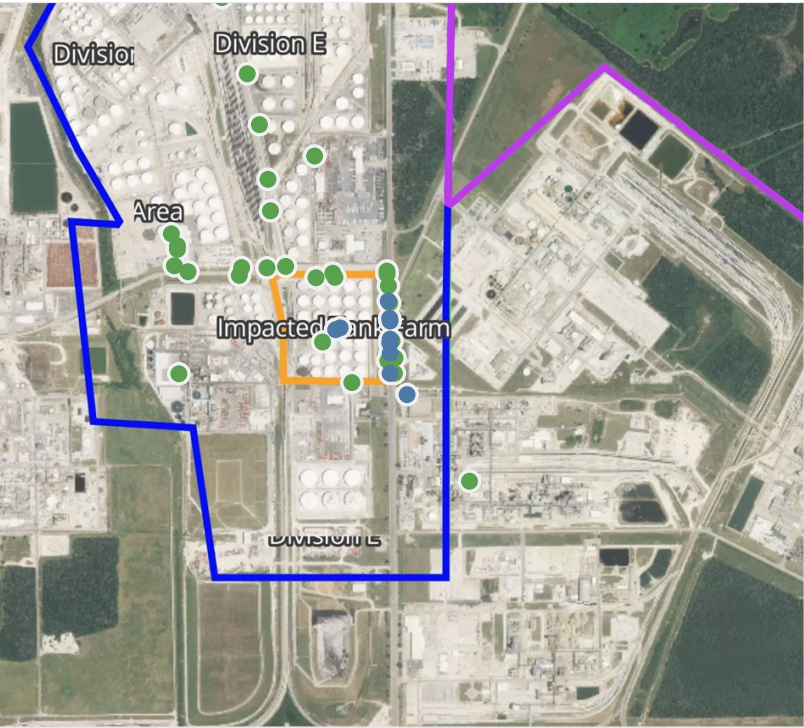


**Please Note:** These updates display data from the 2<sup>nd</sup> 80's Fire site (Impacted Tank Farm), in the industrial areas surrounding the 2<sup>nd</sup> 80's Fire site (US Coast Guard Division E), within the Houston Ship Channel (US Coast Guard Divisions A-D), and in the industrial areas north and south of the Houston Ship Channel (Industrial Area). Real-time air monitoring data for the surrounding communities are communicated daily in a separate report.



# Preliminary Hand- Held Air Monitoring Locations | ITC Deer Park Tank Fire

Reading Date  
4/25/2019 4:00:00 AM to 4/25/2019 5:00:00 AM



## Recent Benzene Detections

Location Category	Reading Date	Concentration
Division E	4/25/2019 04:25:01	0.0400 ppm
	4/25/2019 04:23:00	0.1200 ppm
	4/25/2019 04:54:07	0.0900 ppm
	4/25/2019 04:50:47	0.1100 ppm
	4/25/2019 04:55:17	0.0400 ppm
	4/25/2019 04:57:26	0.0500 ppm
Impacted Tank Farm	4/25/2019 04:52:47	0.1400 ppm
	4/25/2019 04:52:50	0.0200 ppm
Industrial Area	4/25/2019 04:52:53	0.0200 ppm
	4/25/2019 04:42:09	0.0300 ppm

This data has been provided expeditiously to ITC and regulatory agencies for informational and/or operational purposes only. Data reported within this summary is preliminary in nature and has not undergone complete QA/QC (quality assurance/quality control) process. Until this complete QA/QC process is completed, the locations of each reading are approximate in nature and subject to further refinement. As some readings may represent non-breathing zone measurements, the data reported herein may not be suitable to assess potential occupational exposure. Site Assessment readings are not representative of an individual's breathing zone (e.g., container head space, ground level, directly above product, etc.).

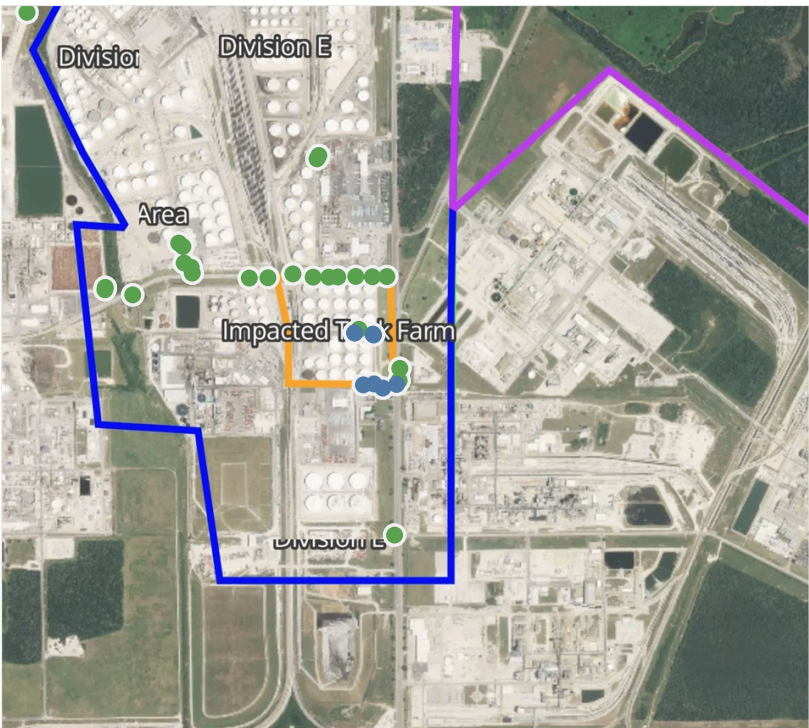


**Please Note:** These updates display data from the 2<sup>nd</sup> 80's Fire site (Impacted Tank Farm), in the industrial areas surrounding the 2<sup>nd</sup> 80's Fire site (US Coast Guard Division E), within the Houston Ship Channel (US Coast Guard Divisions A-D), and in the industrial areas north and south of the Houston Ship Channel (Industrial Area). Real-time air monitoring data for the surrounding communities are communicated daily in a separate report.



# Preliminary Hand- Held Air Monitoring Locations | ITC Deer Park Tank Fire

Reading Date  
4/25/2019 5:00:00 AM to 4/25/2019 6:00:00 AM



## Recent Benzene Detections

Location Category	Reading Date	Concentration
Division E	4/25/2019 05:01:36	0.1500 ppm
	4/25/2019 05:02:38	0.0300 ppm
	4/25/2019 05:11:25	0.1500 ppm
	4/25/2019 05:22:14	0.2100 ppm
Impacted Tank Farm	4/25/2019 05:03:21	0.0200 ppm
	4/25/2019 05:06:53	0.0200 ppm
	4/25/2019 05:12:03	0.0400 ppm
	4/25/2019 05:12:02	0.0700 ppm

This data has been provided expeditiously to ITC and regulatory agencies for informational and/or operational purposes only. Data reported within this summary is preliminary in nature and has not undergone complete QA/QC (quality assurance/quality control) process. Until this complete QA/QC process is completed, the locations of each reading are approximate in nature and subject to further refinement. As some readings may represent non-breathing zone measurements, the data reported herein may not be suitable to assess potential occupational exposure. Site Assessment readings are not representative of an individual's breathing zone (e.g., container head space, ground level, directly above product, etc.).

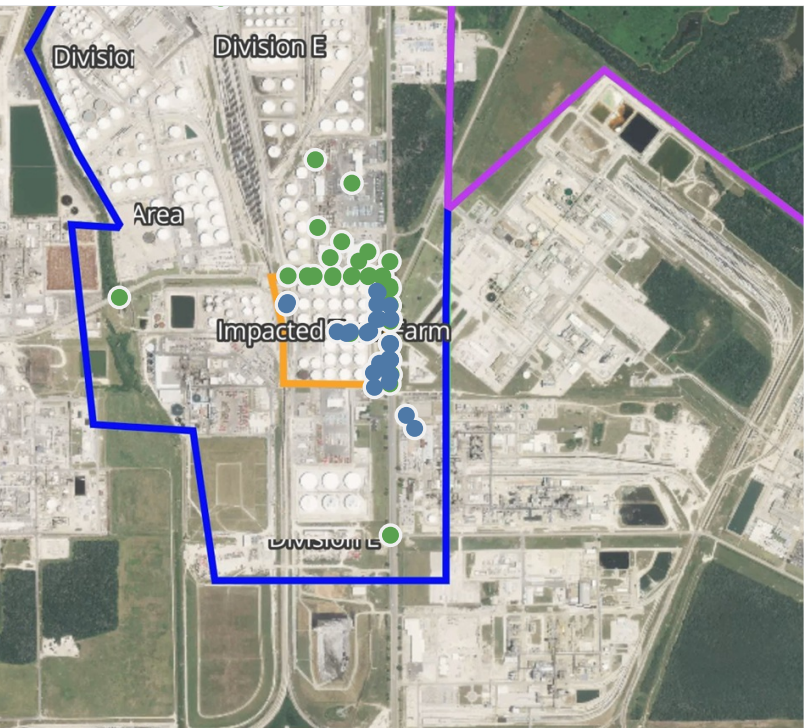
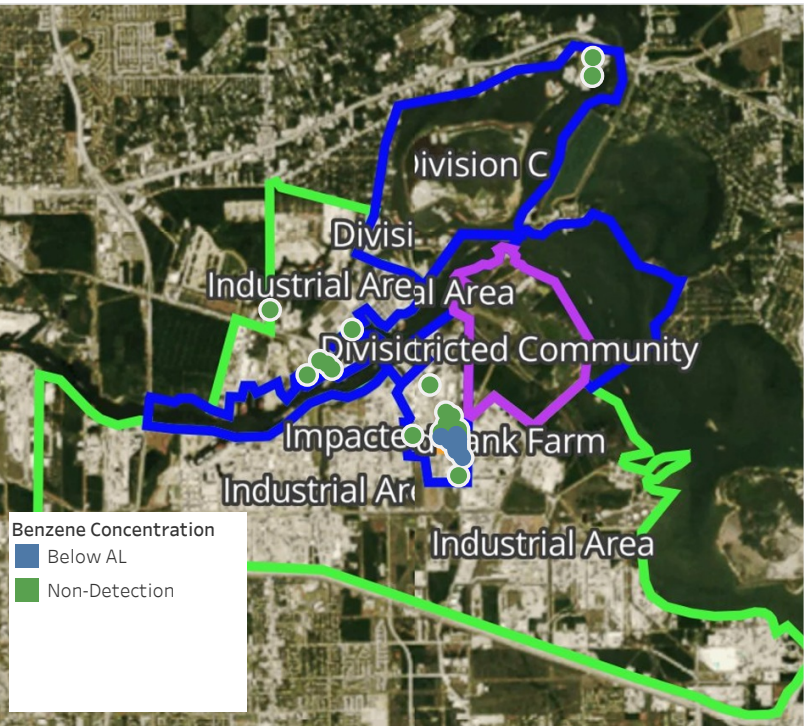


**Please Note:** These updates display data from the 2<sup>nd</sup> 80's Fire site (Impacted Tank Farm), in the industrial areas surrounding the 2<sup>nd</sup> 80's Fire site (US Coast Guard Division E), within the Houston Ship Channel (US Coast Guard Divisions A-D), and in the industrial areas north and south of the Houston Ship Channel (Industrial Area). Real-time air monitoring data for the surrounding communities are communicated daily in a separate report.



# Preliminary Hand- Held Air Monitoring Locations | ITC Deer Park Tank Fire

Reading Date  
4/25/2019 6:00:00 AM to 4/25/2019 7:00:00 AM



## Recent Benzene Detections

Location Category	Reading Date	Concentration
Division E	4/25/2019 06:13:57	0.1400 ppm
	4/25/2019 06:12:46	0.0500 ppm
	4/25/2019 06:15:21	0.0300 ppm
	4/25/2019 06:17:18	0.0400 ppm
	4/25/2019 06:31:51	0.1000 ppm
	4/25/2019 06:33:00	0.0800 ppm
	4/25/2019 06:35:01	0.2500 ppm
	4/25/2019 06:36:34	0.0500 ppm
	4/25/2019 06:51:58	0.1800 ppm
Impacted Tank Farm	4/25/2019 06:13:46	0.0300 ppm
	4/25/2019 06:13:52	0.0300 ppm
	4/25/2019 06:21:31	0.0300 ppm
	4/25/2019 06:25:25	0.0200 ppm
	4/25/2019 06:23:55	0.0600 ppm
	4/25/2019 06:29:11	0.2800 ppm
	4/25/2019 06:31:13	0.0300 ppm
	4/25/2019 06:33:48	0.0900 ppm
	4/25/2019 06:34:38	0.1400 ppm
	4/25/2019 06:36:57	0.1100 ppm
	4/25/2019 06:38:12	0.1300 ppm
	4/25/2019 06:47:51	0.0200 ppm
	4/25/2019 06:47:31	0.0900 ppm
	4/25/2019 06:45:56	0.0400 ppm
	4/25/2019 06:45:03	0.0400 ppm
	4/25/2019 06:48:58	0.1600 ppm
	4/25/2019 06:47:29	0.1200 ppm
	4/25/2019 06:56:16	0.0200 ppm
	4/25/2019 06:55:55	0.0300 ppm
Industrial Area	4/25/2019 06:14:03	0.0200 ppm
	4/25/2019 06:11:21	0.0200 ppm

This data has been provided expeditiously to ITC and regulatory agencies for informational and/or operational purposes only. Data reported within this summary is preliminary in nature and has not undergone complete QA/QC (quality assurance/quality control) process. Until this complete QA/QC process is completed, the locations of each reading are approximate in nature and subject to further refinement. As some readings may represent non-breathing zone measurements, the data reported herein may not be suitable to assess potential occupational exposure. Site Assessment readings are not representative of an individual's breathing zone (e.g., container head space, ground level, directly above product, etc.).



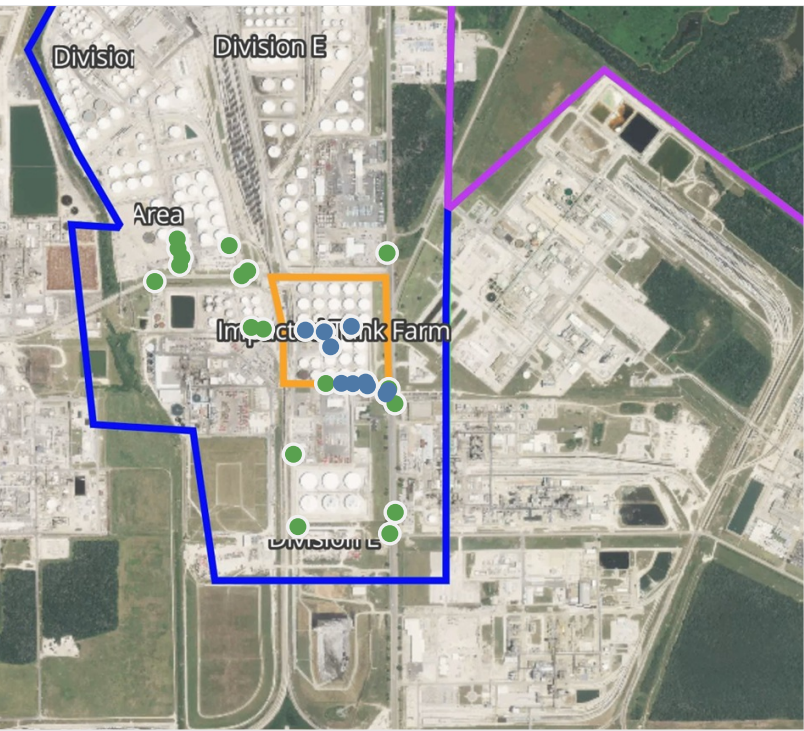
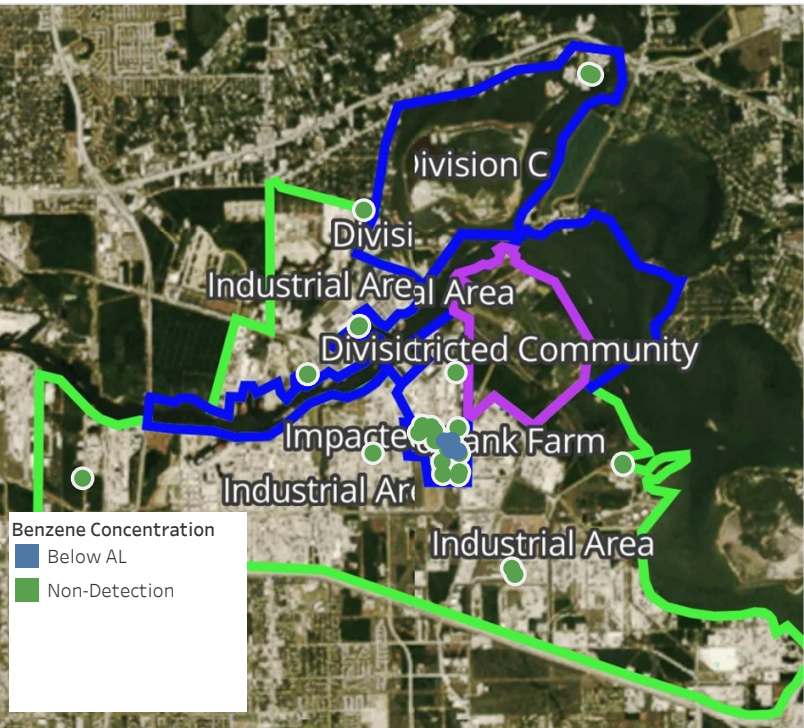


**Please Note:** These updates display data from the 2<sup>nd</sup> 80's Fire site (Impacted Tank Farm), in the industrial areas surrounding the 2<sup>nd</sup> 80's Fire site (US Coast Guard Division E), within the Houston Ship Channel (US Coast Guard Divisions A-D), and in the industrial areas north and south of the Houston Ship Channel (Industrial Area). Real-time air monitoring data for the surrounding communities are communicated daily in a separate report.



# Preliminary Hand- Held Air Monitoring Locations | ITC Deer Park Tank Fire

Reading Date  
4/25/2019 7:00:00 AM to 4/25/2019 8:00:00 AM



## Recent Benzene Detections

Location Category	Reading Date	Concentration
Division E	4/25/2019 07:00:34	0.1500 ppm
	4/25/2019 07:40:12	0.1200 ppm
	4/25/2019 07:48:07	0.1700 ppm
	4/25/2019 07:50:55	0.1100 ppm
Impacted Tank Farm	4/25/2019 07:30:57	0.0400 ppm
	4/25/2019 07:37:42	0.0300 ppm
	4/25/2019 07:46:11	0.0800 ppm
	4/25/2019 07:47:17	0.3200 ppm
	4/25/2019 07:53:19	0.1900 ppm
	4/25/2019 07:57:28	0.0800 ppm

This data has been provided expeditiously to ITC and regulatory agencies for informational and/or operational purposes only. Data reported within this summary is preliminary in nature and has not undergone complete QA/QC (quality assurance/quality control) process. Until this complete QA/QC process is completed, the locations of each reading are approximate in nature and subject to further refinement. As some readings may represent non-breathing zone measurements, the data reported herein may not be suitable to assess potential occupational exposure. Site Assessment readings are not representative of an individual's breathing zone (e.g., container head space, ground level, directly above product, etc.).

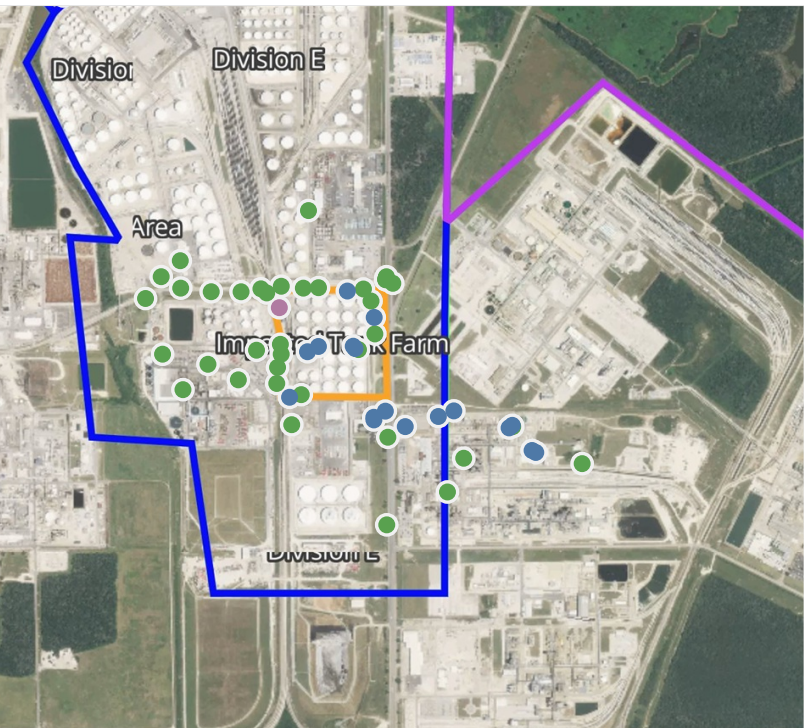
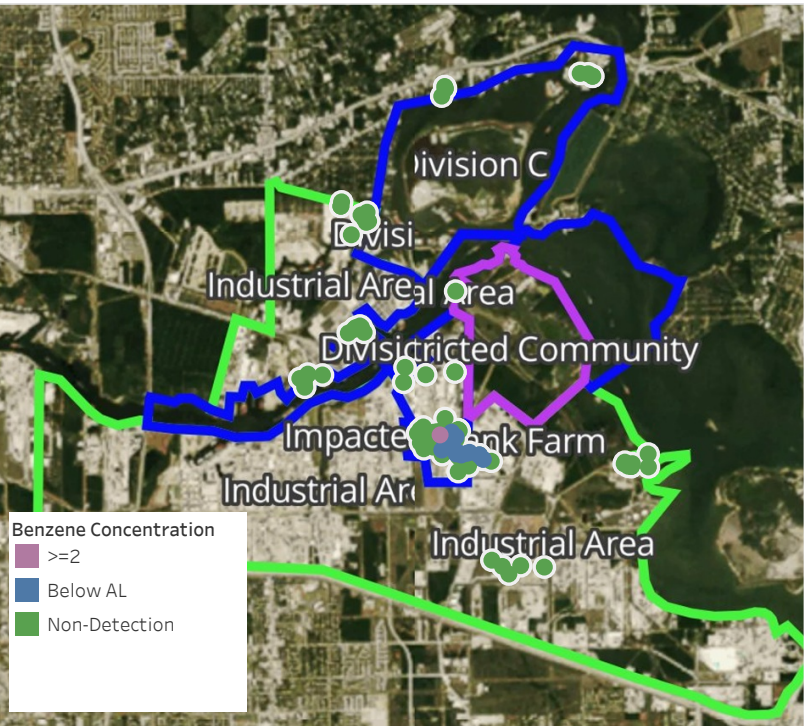


**Please Note:** These updates display data from the 2<sup>nd</sup> 80's Fire site (Impacted Tank Farm), in the industrial areas surrounding the 2<sup>nd</sup> 80's Fire site (US Coast Guard Division E), within the Houston Ship Channel (US Coast Guard Divisions A-D), and in the industrial areas north and south of the Houston Ship Channel (Industrial Area). Real-time air monitoring data for the surrounding communities are communicated daily in a separate report.



# Preliminary Hand- Held Air Monitoring Locations | ITC Deer Park Tank Fire

Reading Date  
4/25/2019 8:00:00 AM to 4/25/2019 9:00:00 AM



## Recent Benzene Detections

Location Category	Reading Date	Concentration
Division E	4/25/2019 08:18:44	0.05 ppm
	4/25/2019 08:26:22	0.01 ppm
Impacted Tank Farm	4/25/2019 08:05:36	0.02 ppm
	4/25/2019 08:25:53	0.05 ppm
	4/25/2019 08:30:40	0.03 ppm
	4/25/2019 08:18:03	0.11 ppm
	4/25/2019 08:28:40	0.48 ppm
	4/25/2019 08:13:41	51.60 ppm
	4/25/2019 08:58:51	0.03 ppm
Industrial Area	4/25/2019 08:08:09	0.04 ppm
	4/25/2019 08:13:25	0.06 ppm
	4/25/2019 08:15:50	0.06 ppm
	4/25/2019 08:19:27	0.03 ppm
	4/25/2019 08:37:56	0.08 ppm
	4/25/2019 08:41:54	0.02 ppm
	4/25/2019 08:44:38	0.05 ppm
	4/25/2019 08:48:17	0.03 ppm
	4/25/2019 08:50:48	0.03 ppm

This data has been provided expeditiously to ITC and regulatory agencies for informational and/or operational purposes only. Data reported within this summary is preliminary in nature and has not undergone complete QA/QC (quality assurance/quality control) process. Until this complete QA/QC process is completed, the locations of each reading are approximate in nature and subject to further refinement. As some readings may represent non-breathing zone measurements, the data reported herein may not be suitable to assess potential occupational exposure. Site Assessment readings are not representative of an individual's breathing zone (e.g., container head space, ground level, directly above product, etc.).

Reading Date  
4/25/2019 8:00:00 AM to 4/25/2019 9:00:00 AM

Benzene Action Level Concentration (ppm)  
■ >=2

PRELIMINARY  
Recent Benzene Detections Greater than 1.00 ppm

Reading Date	Location Category	GPS	Google Maps URL	Concentration
4/25/2019 08:13:41	Impacted Tank Farm	29.7327140,-95.0932050	<a href="https://www.google.com/maps/search/?api=1&amp;query=29.7327140,-95.0932050">https://www.google.com/maps/search/?api=1&amp;query=29.7327140,-95.0932050</a>	51.60 ppm



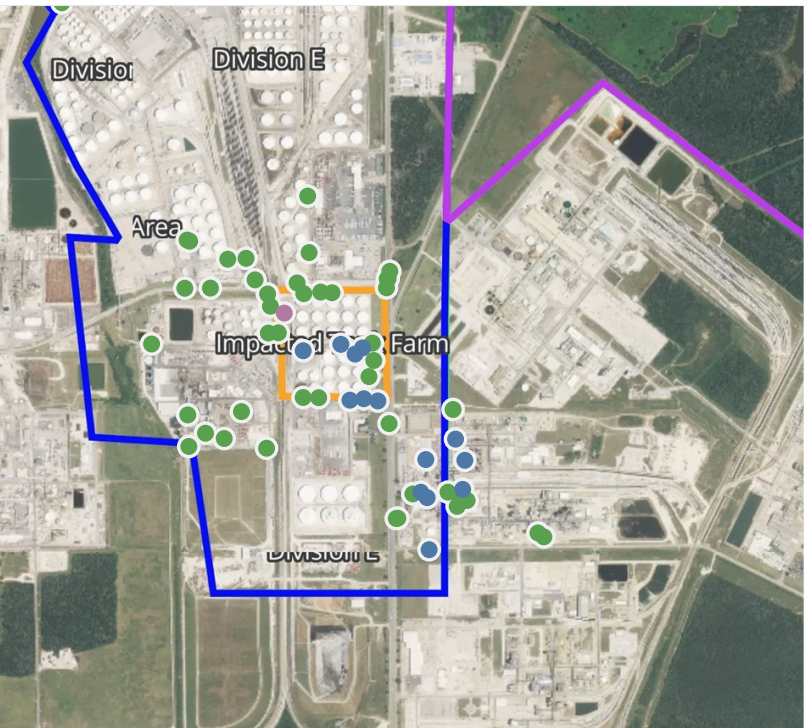
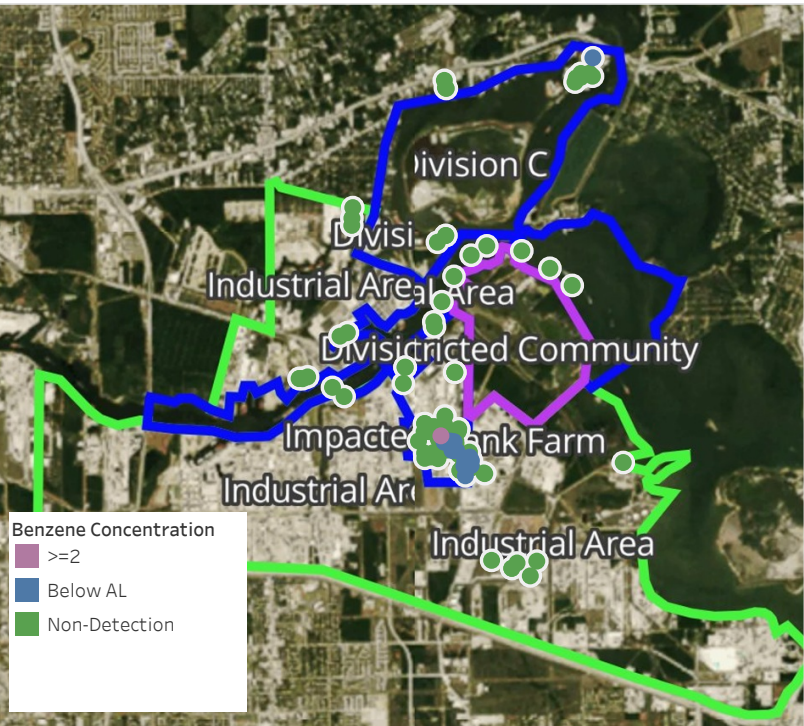


**Please Note:** These updates display data from the 2<sup>nd</sup> 80's Fire site (Impacted Tank Farm), in the industrial areas surrounding the 2<sup>nd</sup> 80's Fire site (US Coast Guard Division E), within the Houston Ship Channel (US Coast Guard Divisions A-D), and in the industrial areas north and south of the Houston Ship Channel (Industrial Area). Real-time air monitoring data for the surrounding communities are communicated daily in a separate report.



# Preliminary Hand- Held Air Monitoring Locations | ITC Deer Park Tank Fire

Reading Date  
4/25/2019 9:00:00 AM to 4/25/2019 10:00:00 AM



## Recent Benzene Detections

Location Category	Reading Date	Concentration
Division E	4/25/2019 09:27:41	0.030 ppm
	4/25/2019 09:36:40	0.310 ppm
	4/25/2019 09:42:35	0.140 ppm
Impacted Tank Farm	4/25/2019 09:18:15	0.060 ppm
	4/25/2019 09:01:48	2.550 ppm
	4/25/2019 09:22:50	0.140 ppm
	4/25/2019 09:46:52	0.020 ppm
	4/25/2019 09:50:21	0.020 ppm
Industrial Area	4/25/2019 09:01:55	0.020 ppm
	4/25/2019 09:30:40	0.020 ppm
	4/25/2019 09:26:29	0.020 ppm
	4/25/2019 09:37:54	0.020 ppm
	4/25/2019 09:39:46	0.030 ppm
	4/25/2019 09:47:42	0.020 ppm
	4/25/2019 09:44:44	0.020 ppm
MSRC Shipyard Decon Area	4/25/2019 09:40:25	0.030 ppm

This data has been provided expeditiously to ITC and regulatory agencies for informational and/or operational purposes only. Data reported within this summary is preliminary in nature and has not undergone complete QA/QC (quality assurance/quality control) process. Until this complete QA/QC process is completed, the locations of each reading are approximate in nature and subject to further refinement. As some readings may represent non-breathing zone measurements, the data reported herein may not be suitable to assess potential occupational exposure. Site Assessment readings are not representative of an individual's breathing zone (e.g., container head space, ground level, directly above product, etc.).



Reading Date  
4/25/2019 9:00:00 AM to 4/25/2019 10:00:00 AM

Benzene Action Level Concentration (ppm)  
 >=2

PRELIMINARY  
Recent Benzene Detections Greater than 1.00 ppm

Reading Date	Location Category	GPS	Google Maps URL	Concentration
4/25/2019 09:01:48	Impacted Tank Farm	29.7325710,-95.0930550	<a href="https://www.google.com/maps/search/?api=1&amp;query=29.7325710,-95.0930550">https://www.google.com/maps/search/?api=1&amp;query=29.7325710,-95.0930550</a>	2.550 ppm

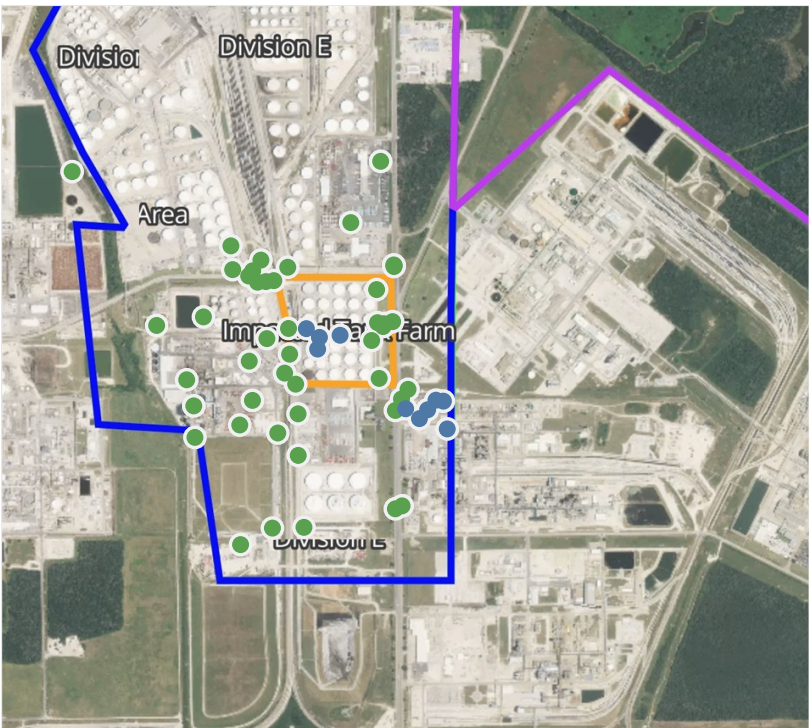
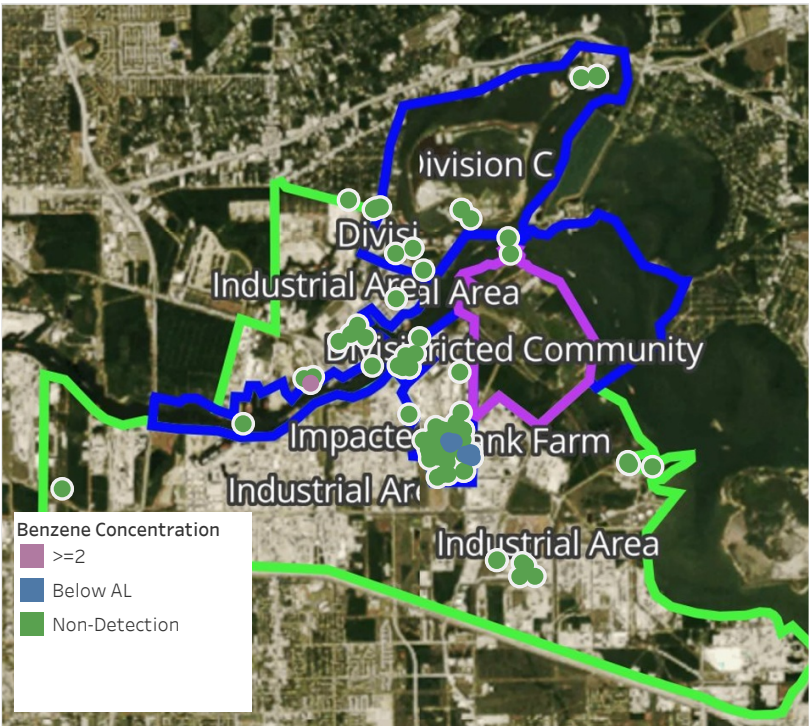


**Please Note:** These updates display data from the 2<sup>nd</sup> 80's Fire site (Impacted Tank Farm), in the industrial areas surrounding the 2<sup>nd</sup> 80's Fire site (US Coast Guard Division E), within the Houston Ship Channel (US Coast Guard Divisions A-D), and in the industrial areas north and south of the Houston Ship Channel (Industrial Area). Real-time air monitoring data for the surrounding communities are communicated daily in a separate report.



# Preliminary Hand- Held Air Monitoring Locations | ITC Deer Park Tank Fire

Reading Date  
4/25/2019 10:00:00 AM to 4/25/2019 11:00:00 AM



## Recent Benzene Detections

Location Category	Reading Date	Concentration
Impacted Tank Farm	4/25/2019 10:10:32	0.040 ppm
	4/25/2019 10:15:42	0.120 ppm
	4/25/2019 10:35:28	0.120 ppm
	4/25/2019 10:47:10	0.030 ppm
Industrial Area	4/25/2019 10:45:45	0.020 ppm
	4/25/2019 10:48:45	0.030 ppm
	4/25/2019 10:50:36	0.030 ppm
	4/25/2019 10:55:47	0.020 ppm
	4/25/2019 10:53:12	0.020 ppm
	4/25/2019 10:58:23	0.030 ppm
Site Assessment	4/25/2019 10:08:39	7.225 ppm

This data has been provided expeditiously to ITC and regulatory agencies for informational and/or operational purposes only. Data reported within this summary is preliminary in nature and has not undergone complete QA/QC (quality assurance/quality control) process. Until this complete QA/QC process is completed, the locations of each reading are approximate in nature and subject to further refinement. As some readings may represent non-breathing zone measurements, the data reported herein may not be suitable to assess potential occupational exposure. Site Assessment readings are not representative of an individual's breathing zone (e.g., container head space, ground level, directly above product, etc.).

Reading Date  
4/25/2019 10:00:00 AM to 4/25/2019 11:00:00 AM

Benzene Action Level Concentration (ppm)  
 >=2

PRELIMINARY  
Recent Benzene Detections Greater than 1.00 ppm

Reading Date	Location Category	GPS	Google Maps URL	Concentration
4/25/2019 10:08:39	Site Assessment	29.7408140,-95.1174720	<a href="https://www.google.com/maps/search/?api=1&amp;query=29.7408140,-95.1174720">https://www.google.com/maps/search/?api=1&amp;query=29.7408140,-95.1174720</a>	7.225 ppm



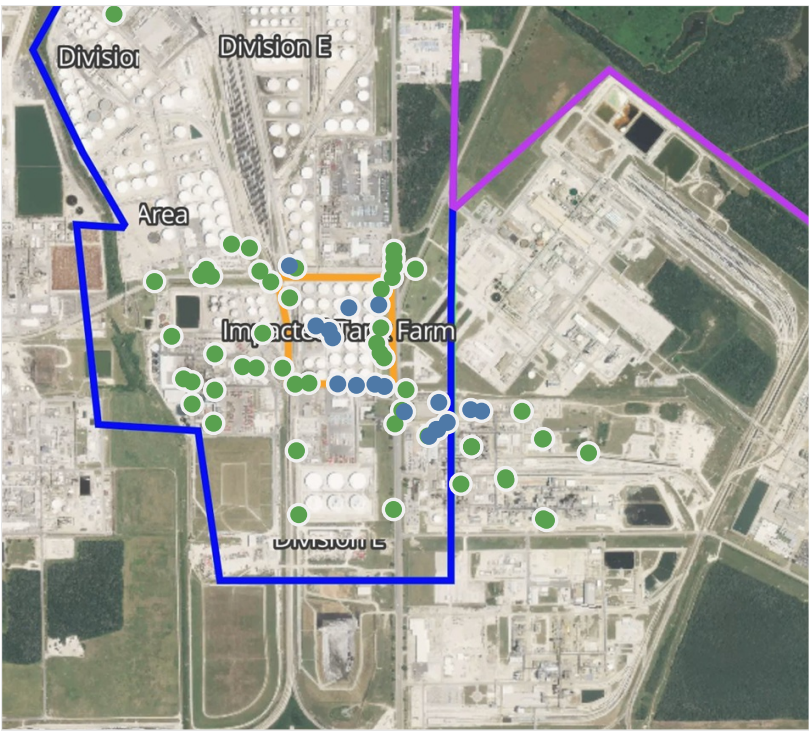
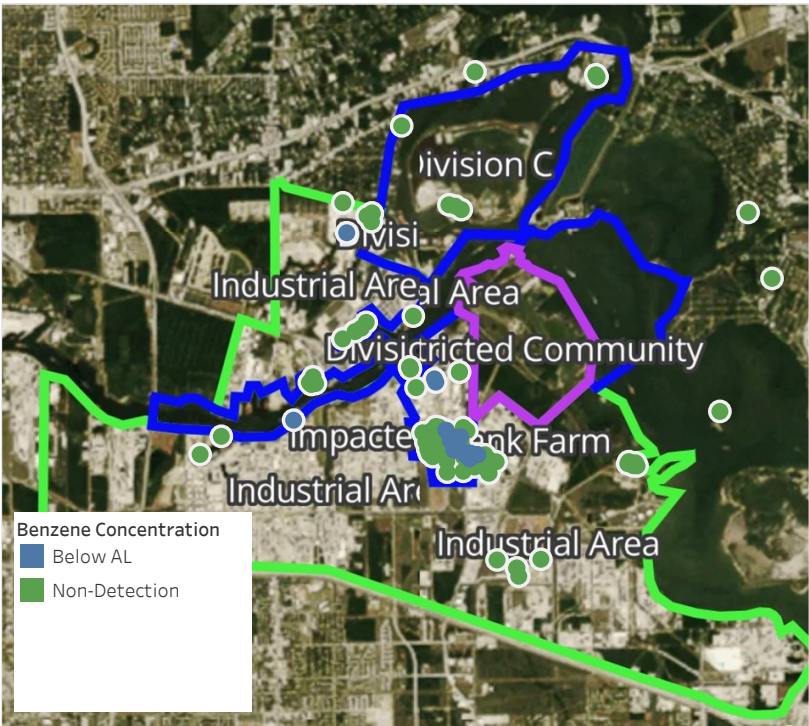


**Please Note:** These updates display data from the 2<sup>nd</sup> 80's Fire site (Impacted Tank Farm), in the industrial areas surrounding the 2<sup>nd</sup> 80's Fire site (US Coast Guard Division E), within the Houston Ship Channel (US Coast Guard Divisions A-D), and in the industrial areas north and south of the Houston Ship Channel (Industrial Area). Real-time air monitoring data for the surrounding communities are communicated daily in a separate report.



# Preliminary Hand- Held Air Monitoring Locations | ITC Deer Park Tank Fire

Reading Date  
4/25/2019 11:00:00 AM to 4/25/2019 12:00:00 PM



## Recent Benzene Detections

Location Category	Reading Date	Concentration
Division A	4/25/2019 11:27:56	0.1300 ppm
Division C	4/25/2019 11:27:13	0.1000 ppm
Division E	4/25/2019 11:18:20	0.0700 ppm
	4/25/2019 11:21:44	0.0500 ppm
	4/25/2019 11:24:27	0.0200 ppm
	4/25/2019 11:29:14	0.0200 ppm
	4/25/2019 11:01:04	0.0200 ppm
	4/25/2019 11:46:45	0.0800 ppm
	4/25/2019 11:49:28	0.0200 ppm
Impacted Tank Farm	4/25/2019 11:09:16	0.0900 ppm
	4/25/2019 11:10:49	0.0400 ppm
	4/25/2019 11:34:55	0.0300 ppm
	4/25/2019 11:36:47	0.0300 ppm
	4/25/2019 11:40:46	0.1000 ppm
Industrial Area	4/25/2019 11:00:41	0.0200 ppm
	4/25/2019 11:03:26	0.0200 ppm
	4/25/2019 11:04:54	0.0200 ppm
	4/25/2019 11:07:42	0.0200 ppm
	4/25/2019 11:10:02	0.0200 ppm
	4/25/2019 11:12:02	0.0300 ppm
	4/25/2019 11:14:30	0.0300 ppm
	4/25/2019 11:21:20	0.0300 ppm

This data has been provided expeditiously to ITC and regulatory agencies for informational and/or operational purposes only. Data reported within this summary is preliminary in nature and has not undergone complete QA/QC (quality assurance/quality control) process. Until this complete QA/QC process is completed, the locations of each reading are approximate in nature and subject to further refinement. As some readings may represent non-breathing zone measurements, the data reported herein may not be suitable to assess potential occupational exposure. Site Assessment readings are not representative of an individual's breathing zone (e.g., container head space, ground level, directly above product, etc.).

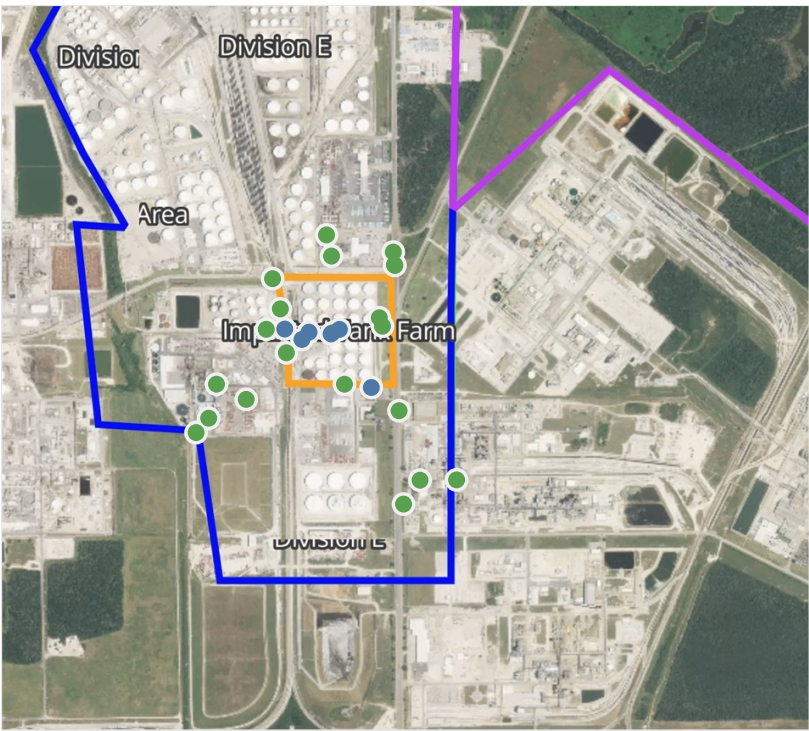
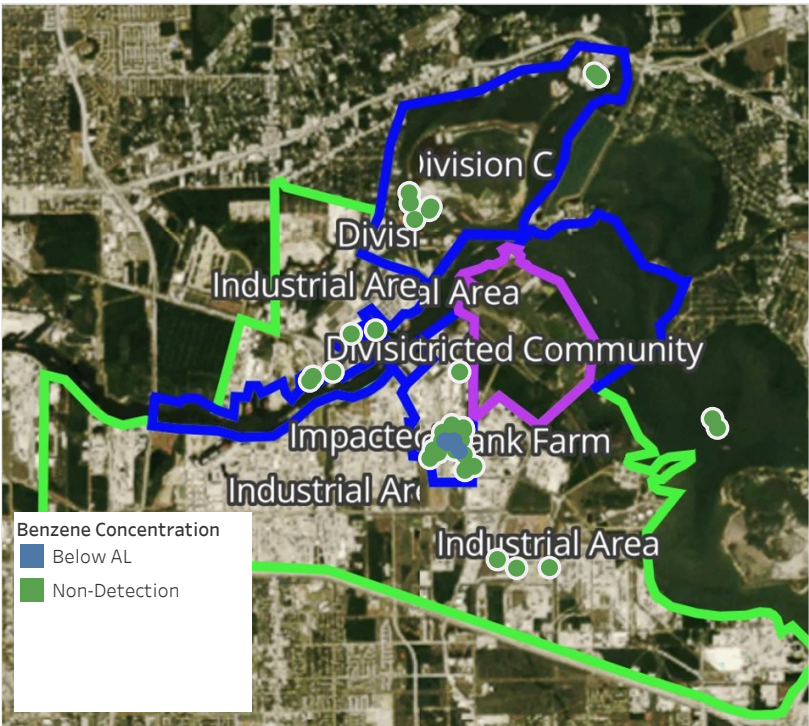




**Please Note:** These updates display data from the 2<sup>nd</sup> 80's Fire site (Impacted Tank Farm), in the industrial areas surrounding the 2<sup>nd</sup> 80's Fire site (US Coast Guard Division E), within the Houston Ship Channel (US Coast Guard Divisions A-D), and in the industrial areas north and south of the Houston Ship Channel (Industrial Area). Real-time air monitoring data for the surrounding communities are communicated daily in a separate report.

# Preliminary Hand- Held Air Monitoring Locations | ITC Deer Park Tank Fire

Reading Date  
4/25/2019 12:00:00 PM to 4/25/2019 1:00:00 PM



## Recent Benzene Detections

Location Category	Reading Date	Concentration
Division E	4/25/2019 12:18:40	0.04000 ppm
	4/25/2019 12:51:30	0.10000 ppm
Impacted Tank Farm	4/25/2019 12:00:11	0.07000 ppm
	4/25/2019 12:25:52	0.03000 ppm
	4/25/2019 12:50:11	0.03000 ppm
	4/25/2019 12:52:12	0.02000 ppm

This data has been provided expeditiously to ITC and regulatory agencies for informational and/or operational purposes only. Data reported within this summary is preliminary in nature and has not undergone complete QA/QC (quality assurance/quality control) process. Until this complete QA/QC process is completed, the locations of each reading are approximate in nature and subject to further refinement. As some readings may represent non-breathing zone measurements, the data reported herein may not be suitable to assess potential occupational exposure. Site Assessment readings are not representative of an individual's breathing zone (e.g., container head space, ground level, directly above product, etc.).

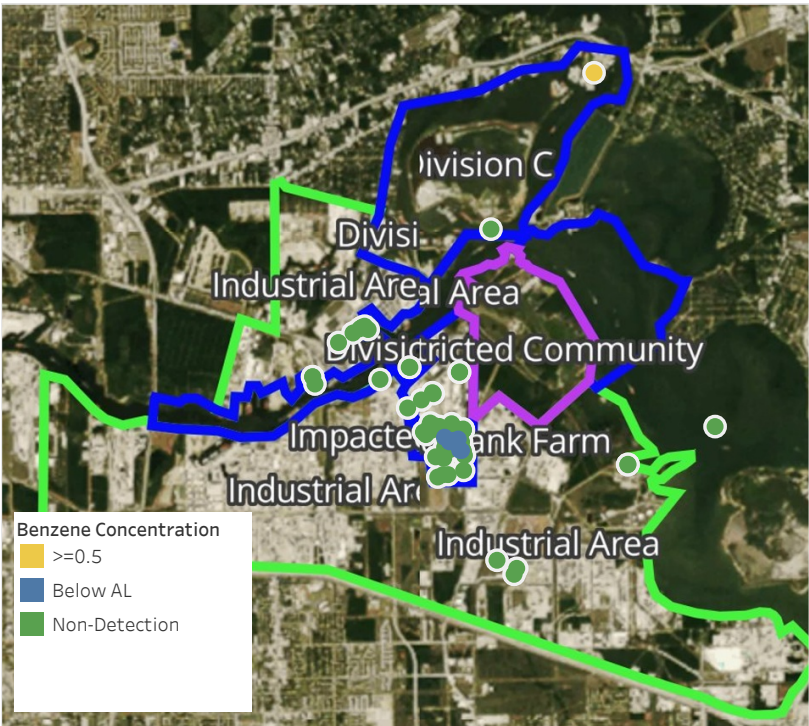




**Please Note:** These updates display data from the 2<sup>nd</sup> 80's Fire site (Impacted Tank Farm), in the industrial areas surrounding the 2<sup>nd</sup> 80's Fire site (US Coast Guard Division E), within the Houston Ship Channel (US Coast Guard Divisions A-D), and in the industrial areas north and south of the Houston Ship Channel (Industrial Area). Real-time air monitoring data for the surrounding communities are communicated daily in a separate report.

# Preliminary Hand- Held Air Monitoring Locations | ITC Deer Park Tank Fire

Reading Date  
4/25/2019 1:00:00 PM to 4/25/2019 2:00:00 PM



## Recent Benzene Detections

Location Category	Reading Date	Concentration
Division E	4/25/2019 13:40:57	0.0300 ppm
	4/25/2019 13:50:30	0.0500 ppm
	4/25/2019 13:53:01	0.0500 ppm
Impacted Tank Farm	4/25/2019 13:07:14	0.1100 ppm
	4/25/2019 13:44:57	0.0200 ppm
	4/25/2019 13:48:38	0.0700 ppm
MSRC Shipyard Decon Area	4/25/2019 13:51:06	0.5300 ppm

This data has been provided expeditiously to ITC and regulatory agencies for informational and/or operational purposes only. Data reported within this summary is preliminary in nature and has not undergone complete QA/QC (quality assurance/quality control) process. Until this complete QA/QC process is completed, the locations of each reading are approximate in nature and subject to further refinement. As some readings may represent non-breathing zone measurements, the data reported herein may not be suitable to assess potential occupational exposure. Site Assessment readings are not representative of an individual's breathing zone (e.g., container head space, ground level, directly above product, etc.).

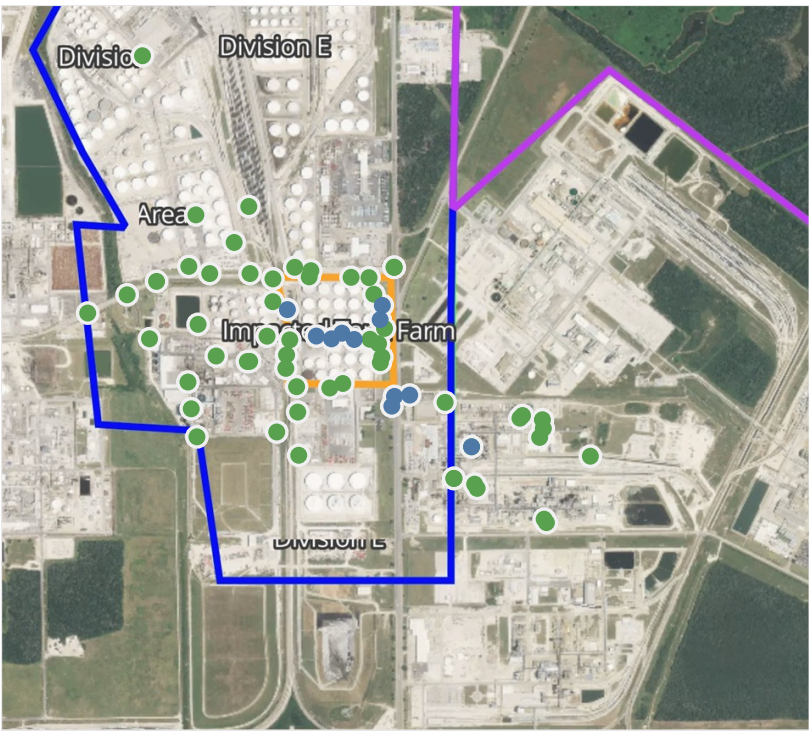
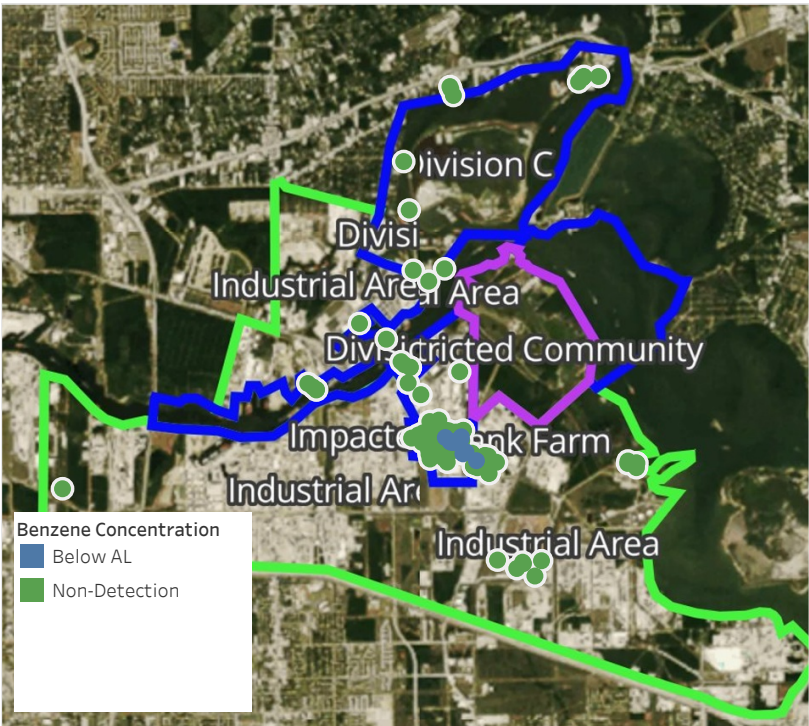




**Please Note:** These updates display data from the 2<sup>nd</sup> 80's Fire site (Impacted Tank Farm), in the industrial areas surrounding the 2<sup>nd</sup> 80's Fire site (US Coast Guard Division E), within the Houston Ship Channel (US Coast Guard Divisions A-D), and in the industrial areas north and south of the Houston Ship Channel (Industrial Area). Real-time air monitoring data for the surrounding communities are communicated daily in a separate report.

# Preliminary Hand- Held Air Monitoring Locations | ITC Deer Park Tank Fire

Reading Date  
4/25/2019 2:00:00 PM to 4/25/2019 3:00:00 PM



## Recent Benzene Detections

Location Category	Reading Date	Concentration
Division E	4/25/2019 14:42:04	0.1000 ppm
Impacted Tank Farm	4/25/2019 14:01:09	0.3100 ppm
	4/25/2019 14:05:31	0.1200 ppm
	4/25/2019 14:14:36	0.0500 ppm
	4/25/2019 14:18:31	0.0300 ppm
	4/25/2019 14:38:14	0.0300 ppm
	4/25/2019 14:45:53	0.0800 ppm
Industrial Area	4/25/2019 14:10:10	0.0700 ppm
	4/25/2019 14:11:39	0.0600 ppm
	4/25/2019 14:14:40	0.0300 ppm
	4/25/2019 14:36:31	0.0300 ppm

This data has been provided expeditiously to ITC and regulatory agencies for informational and/or operational purposes only. Data reported within this summary is preliminary in nature and has not undergone complete QA/QC (quality assurance/quality control) process. Until this complete QA/QC process is completed, the locations of each reading are approximate in nature and subject to further refinement. As some readings may represent non-breathing zone measurements, the data reported herein may not be suitable to assess potential occupational exposure. Site Assessment readings are not representative of an individual's breathing zone (e.g., container head space, ground level, directly above product, etc.).

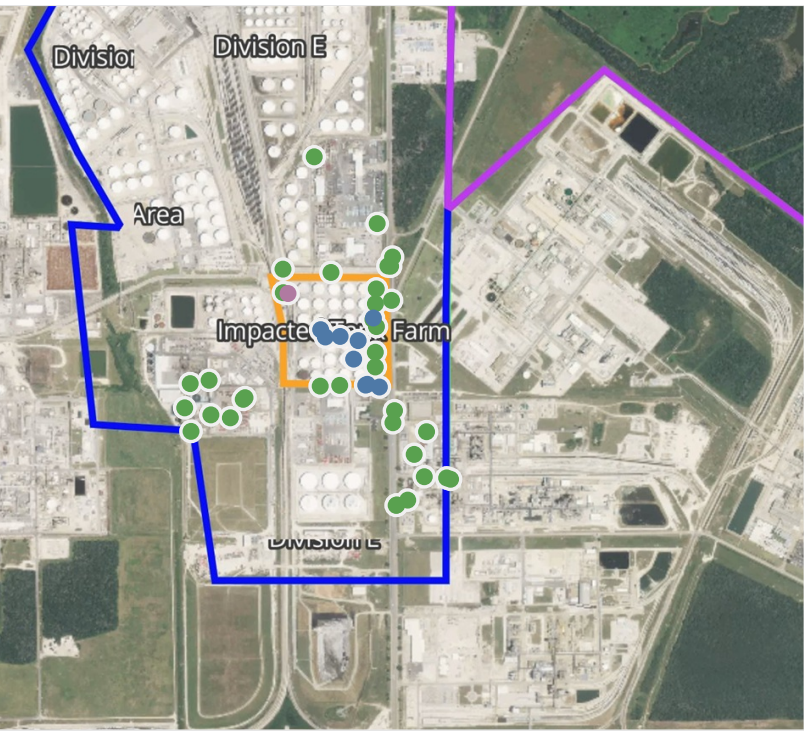
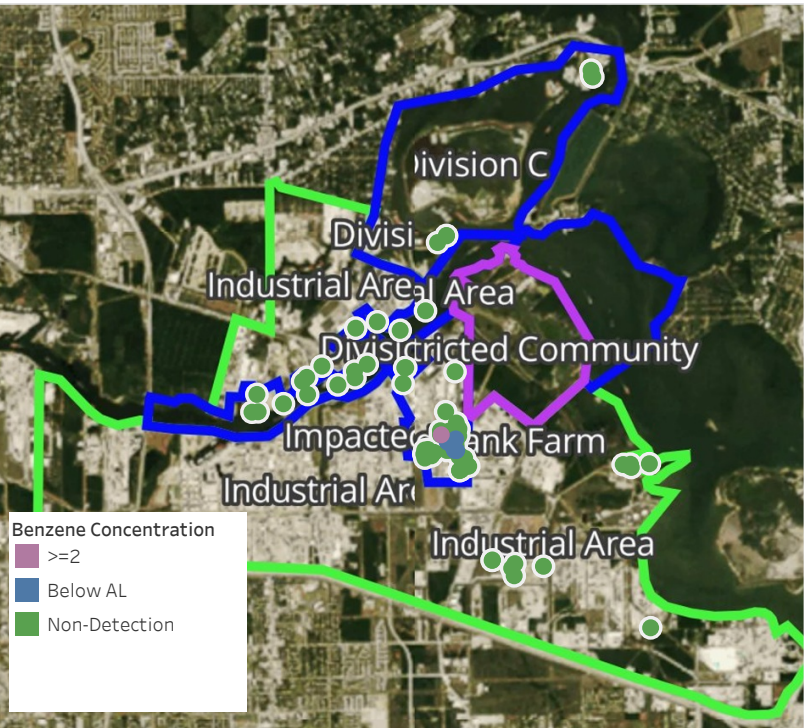




**Please Note:** These updates display data from the 2<sup>nd</sup> 80's Fire site (Impacted Tank Farm), in the industrial areas surrounding the 2<sup>nd</sup> 80's Fire site (US Coast Guard Division E), within the Houston Ship Channel (US Coast Guard Divisions A-D), and in the industrial areas north and south of the Houston Ship Channel (Industrial Area). Real-time air monitoring data for the surrounding communities are communicated daily in a separate report.

# Preliminary Hand- Held Air Monitoring Locations | ITC Deer Park Tank Fire

Reading Date  
4/25/2019 3:00:00 PM to 4/25/2019 4:00:00 PM



## Recent Benzene Detections

Location Category	Reading Date	Concentration
Division E	4/25/2019 15:07:47	0.180 ppm
	4/25/2019 15:25:24	0.170 ppm
	4/25/2019 15:31:51	0.070 ppm
Impacted Tank Farm	4/25/2019 15:05:55	0.050 ppm
	4/25/2019 15:03:24	0.370 ppm
	4/25/2019 15:10:13	0.040 ppm
	4/25/2019 15:11:13	7.750 ppm
	4/25/2019 15:31:33	0.020 ppm
	4/25/2019 15:38:21	0.030 ppm
	4/25/2019 15:59:25	0.030 ppm

This data has been provided expeditiously to ITC and regulatory agencies for informational and/or operational purposes only. Data reported within this summary is preliminary in nature and has not undergone complete QA/QC (quality assurance/quality control) process. Until this complete QA/QC process is completed, the locations of each reading are approximate in nature and subject to further refinement. As some readings may represent non-breathing zone measurements, the data reported herein may not be suitable to assess potential occupational exposure. Site Assessment readings are not representative of an individual's breathing zone (e.g., container head space, ground level, directly above product, etc.).



Reading Date  
4/25/2019 3:00:00 PM to 4/25/2019 4:00:00 PM

Benzene Action Level Concentration (ppm)  
 >=2

PRELIMINARY  
Recent Benzene Detections Greater than 1.00 ppm

Reading Date	Location Category	GPS	Google Maps URL	Concentration
4/25/2019 15:11:13	Impacted Tank Farm	29.7327300,-95.0929920	<a href="https://www.google.com/maps/search/?api=1&amp;query=29.7327300,-95.0929920">https://www.google.com/maps/search/?api=1&amp;query=29.7327300,-95.0929920</a>	7.750 ppm

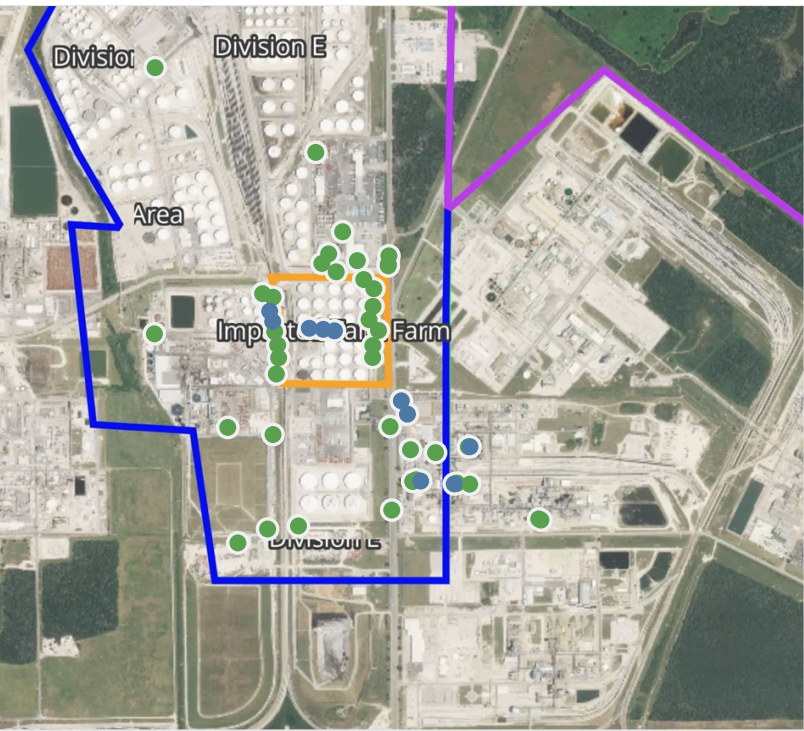
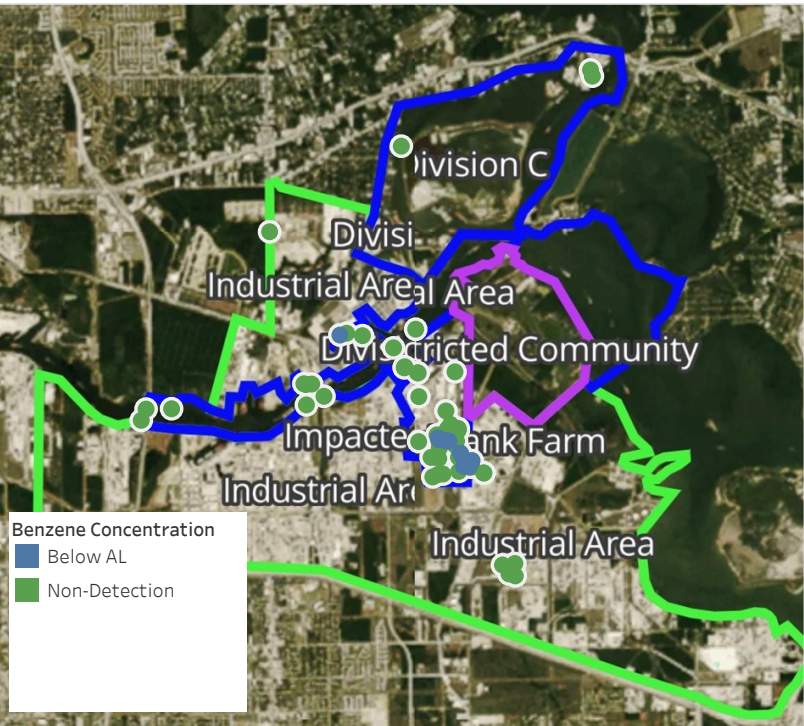


**Please Note:** These updates display data from the 2<sup>nd</sup> 80's Fire site (Impacted Tank Farm), in the industrial areas surrounding the 2<sup>nd</sup> 80's Fire site (US Coast Guard Division E), within the Houston Ship Channel (US Coast Guard Divisions A-D), and in the industrial areas north and south of the Houston Ship Channel (Industrial Area). Real-time air monitoring data for the surrounding communities are communicated daily in a separate report.



# Preliminary Hand- Held Air Monitoring Locations | ITC Deer Park Tank Fire

Reading Date  
4/25/2019 4:00:00 PM to 4/25/2019 5:00:00 PM



## Recent Benzene Detections

Location Category	Reading Date	Concentration
Below Grate	4/25/2019 16:23:34	0.10000 ppm
Division E	4/25/2019 16:27:26	0.04000 ppm
	4/25/2019 16:32:01	0.02000 ppm
Impacted Tank Farm	4/25/2019 16:12:19	0.05000 ppm
	4/25/2019 16:36:34	0.08000 ppm
	4/25/2019 16:40:02	0.04000 ppm
Industrial Area	4/25/2019 16:04:51	0.04000 ppm
	4/25/2019 16:08:08	0.02000 ppm
	4/25/2019 16:18:03	0.02000 ppm
	4/25/2019 16:23:27	0.02000 ppm
	4/25/2019 16:45:17	0.03000 ppm

This data has been provided expeditiously to ITC and regulatory agencies for informational and/or operational purposes only. Data reported within this summary is preliminary in nature and has not undergone complete QA/QC (quality assurance/quality control) process. Until this complete QA/QC process is completed, the locations of each reading are approximate in nature and subject to further refinement. As some readings may represent non-breathing zone measurements, the data reported herein may not be suitable to assess potential occupational exposure. Site Assessment readings are not representative of an individual's breathing zone (e.g., container head space, ground level, directly above product, etc.).

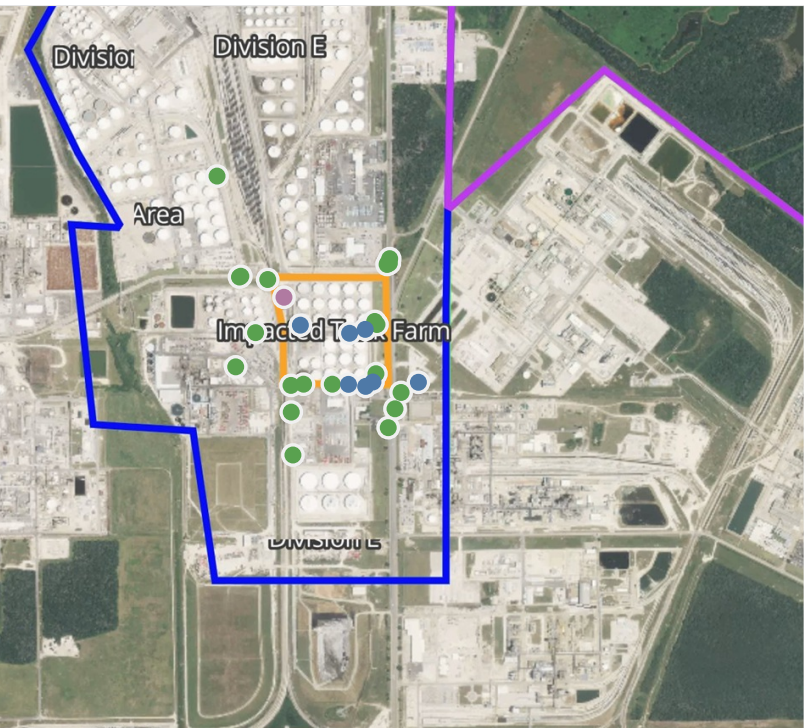
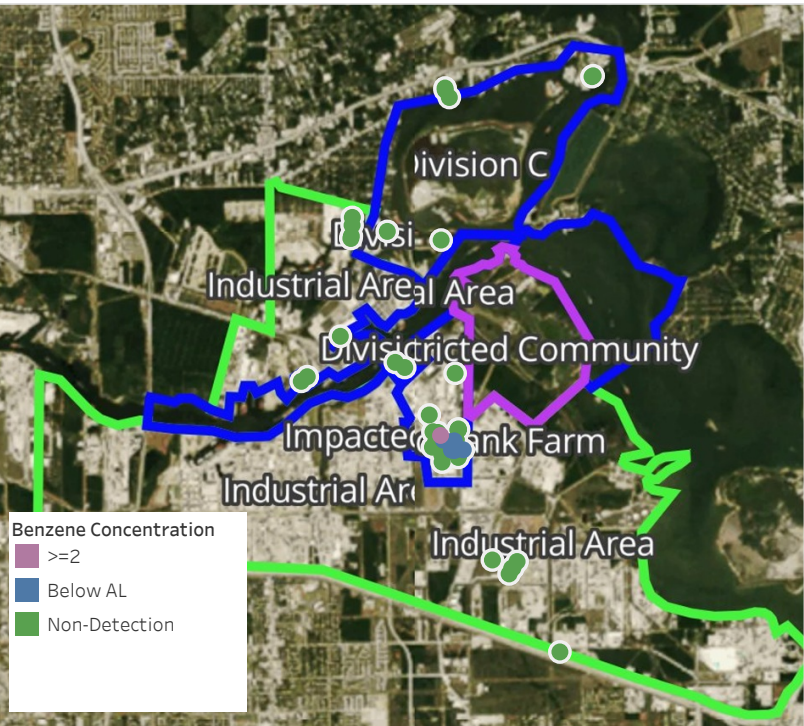


**Please Note:** These updates display data from the 2<sup>nd</sup> 80's Fire site (Impacted Tank Farm), in the industrial areas surrounding the 2<sup>nd</sup> 80's Fire site (US Coast Guard Division E), within the Houston Ship Channel (US Coast Guard Divisions A-D), and in the industrial areas north and south of the Houston Ship Channel (Industrial Area). Real-time air monitoring data for the surrounding communities are communicated daily in a separate report.



# Preliminary Hand- Held Air Monitoring Locations | ITC Deer Park Tank Fire

Reading Date  
4/25/2019 5:00:00 PM to 4/25/2019 6:00:00 PM



## Recent Benzene Detections

Location Category	Reading Date	Concentration
Division E	4/25/2019 17:17:00	0.040 ppm
	4/25/2019 17:21:36	0.070 ppm
	4/25/2019 17:27:12	0.030 ppm
Impacted Tank Farm	4/25/2019 17:00:21	0.020 ppm
	4/25/2019 17:03:22	0.110 ppm
	4/25/2019 17:25:53	0.030 ppm
	4/25/2019 17:36:16	0.080 ppm
	4/25/2019 17:17:11	2.725 ppm

This data has been provided expeditiously to ITC and regulatory agencies for informational and/or operational purposes only. Data reported within this summary is preliminary in nature and has not undergone complete QA/QC (quality assurance/quality control) process. Until this complete QA/QC process is completed, the locations of each reading are approximate in nature and subject to further refinement. As some readings may represent non-breathing zone measurements, the data reported herein may not be suitable to assess potential occupational exposure. Site Assessment readings are not representative of an individual's breathing zone (e.g., container head space, ground level, directly above product, etc.).

Reading Date  
4/25/2019 5:00:00 PM to 4/25/2019 6:00:00 PM

Benzene Action Level Concentration (ppm)  
 >=2

PRELIMINARY  
Recent Benzene Detections Greater than 1.00 ppm

Reading Date	Location Category	GPS	Google Maps URL	Concentration
4/25/2019 17:17:11	Impacted Tank Farm	29.7326310,-95.0931150	<a href="https://www.google.com/maps/search/?api=1&amp;query=29.7326310,-95.0931150">https://www.google.com/maps/search/?api=1&amp;query=29.7326310,-95.0931150</a>	2.725 ppm



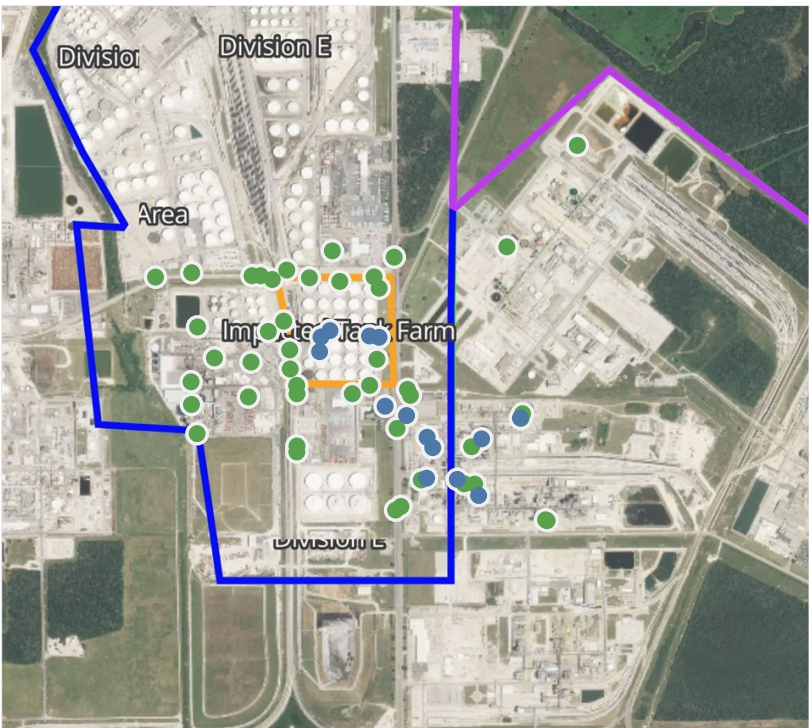


**Please Note:** These updates display data from the 2<sup>nd</sup> 80's Fire site (Impacted Tank Farm), in the industrial areas surrounding the 2<sup>nd</sup> 80's Fire site (US Coast Guard Division E), within the Houston Ship Channel (US Coast Guard Divisions A-D), and in the industrial areas north and south of the Houston Ship Channel (Industrial Area). Real-time air monitoring data for the surrounding communities are communicated daily in a separate report.



# Preliminary Hand- Held Air Monitoring Locations | ITC Deer Park Tank Fire

Reading Date  
4/25/2019 6:00:00 PM to 4/25/2019 7:00:00 PM



## Recent Benzene Detections

Location Category	Reading Date	Concentration
Impacted Tank Farm	4/25/2019 18:23:11	0.09000 ppm
	4/25/2019 18:27:49	0.06000 ppm
	4/25/2019 18:23:34	0.02000 ppm
	4/25/2019 18:45:07	0.03000 ppm
	4/25/2019 18:59:44	0.03000 ppm
Industrial Area	4/25/2019 18:00:31	0.02000 ppm
	4/25/2019 18:03:16	0.05000 ppm
	4/25/2019 18:08:16	0.08000 ppm
	4/25/2019 18:16:05	0.02000 ppm
	4/25/2019 18:19:50	0.03000 ppm
	4/25/2019 18:29:49	0.02000 ppm
	4/25/2019 18:41:48	0.04000 ppm
	4/25/2019 18:44:35	0.05000 ppm
	4/25/2019 18:47:12	0.03000 ppm

This data has been provided expeditiously to ITC and regulatory agencies for informational and/or operational purposes only. Data reported within this summary is preliminary in nature and has not undergone complete QA/QC (quality assurance/quality control) process. Until this complete QA/QC process is completed, the locations of each reading are approximate in nature and subject to further refinement. As some readings may represent non-breathing zone measurements, the data reported herein may not be suitable to assess potential occupational exposure. Site Assessment readings are not representative of an individual's breathing zone (e.g., container head space, ground level, directly above product, etc.).

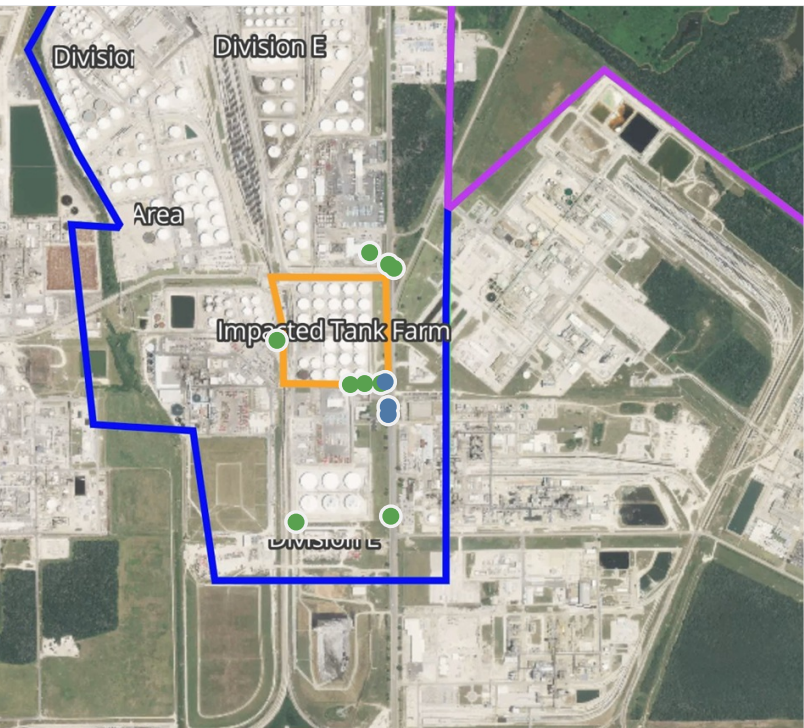




**Please Note:** These updates display data from the 2<sup>nd</sup> 80's Fire site (Impacted Tank Farm), in the industrial areas surrounding the 2<sup>nd</sup> 80's Fire site (US Coast Guard Division E), within the Houston Ship Channel (US Coast Guard Divisions A-D), and in the industrial areas north and south of the Houston Ship Channel (Industrial Area). Real-time air monitoring data for the surrounding communities are communicated daily in a separate report.

# Preliminary Hand- Held Air Monitoring Locations | ITC Deer Park Tank Fire

Reading Date  
4/25/2019 7:00:00 PM to 4/25/2019 8:00:00 PM



## Recent Benzene Detections

Location Category	Reading Date	Concentration
Division C	4/25/2019 19:12:57	0.0100 ppm
Division E	4/25/2019 19:45:46	0.1000 ppm
	4/25/2019 19:47:00	0.1200 ppm
	4/25/2019 19:44:01	0.0900 ppm

This data has been provided expeditiously to ITC and regulatory agencies for informational and/or operational purposes only. Data reported within this summary is preliminary in nature and has not undergone complete QA/QC (quality assurance/quality control) process. Until this complete QA/QC process is completed, the locations of each reading are approximate in nature and subject to further refinement. As some readings may represent non-breathing zone measurements, the data reported herein may not be suitable to assess potential occupational exposure. Site Assessment readings are not representative of an individual's breathing zone (e.g., container head space, ground level, directly above product, etc.).



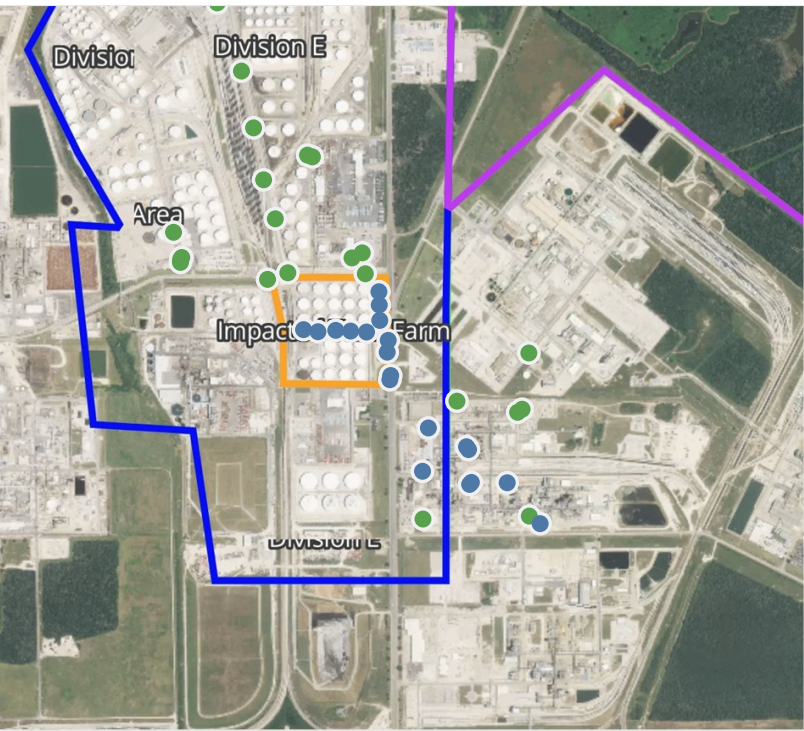


**Please Note:** These updates display data from the 2<sup>nd</sup> 80's Fire site (Impacted Tank Farm), in the industrial areas surrounding the 2<sup>nd</sup> 80's Fire site (US Coast Guard Division E), within the Houston Ship Channel (US Coast Guard Divisions A-D), and in the industrial areas north and south of the Houston Ship Channel (Industrial Area). Real-time air monitoring data for the surrounding communities are communicated daily in a separate report.



# Preliminary Hand- Held Air Monitoring Locations | ITC Deer Park Tank Fire

Reading Date  
4/25/2019 8:00:00 PM to 4/25/2019 9:00:00 PM



## Recent Benzene Detections

Location Category	Reading Date	Concentration
Division E	4/25/2019 20:13:26	0.0400 ppm
	4/25/2019 20:18:04	0.1600 ppm
	4/25/2019 20:14:53	0.1100 ppm
	4/25/2019 20:16:28	0.1500 ppm
Impacted Tank Farm	4/25/2019 20:13:44	0.0500 ppm
	4/25/2019 20:21:01	0.0500 ppm
	4/25/2019 20:23:22	0.0200 ppm
	4/25/2019 20:26:45	0.0300 ppm
	4/25/2019 20:31:48	0.2500 ppm
	4/25/2019 20:36:57	0.0300 ppm
	4/25/2019 20:39:14	0.1200 ppm
	4/25/2019 20:41:23	0.1000 ppm
Industrial Area	4/25/2019 20:31:46	0.0300 ppm
	4/25/2019 20:27:44	0.0200 ppm
	4/25/2019 20:12:52	0.0600 ppm
	4/25/2019 20:29:37	0.0200 ppm
	4/25/2019 20:22:35	0.0200 ppm
	4/25/2019 20:46:50	0.0300 ppm
	4/25/2019 20:24:15	0.0500 ppm
	4/25/2019 20:08:40	0.0400 ppm

This data has been provided expeditiously to ITC and regulatory agencies for informational and/or operational purposes only. Data reported within this summary is preliminary in nature and has not undergone complete QA/QC (quality assurance/quality control) process. Until this complete QA/QC process is completed, the locations of each reading are approximate in nature and subject to further refinement. As some readings may represent non-breathing zone measurements, the data reported herein may not be suitable to assess potential occupational exposure. Site Assessment readings are not representative of an individual's breathing zone (e.g., container head space, ground level, directly above product, etc.).



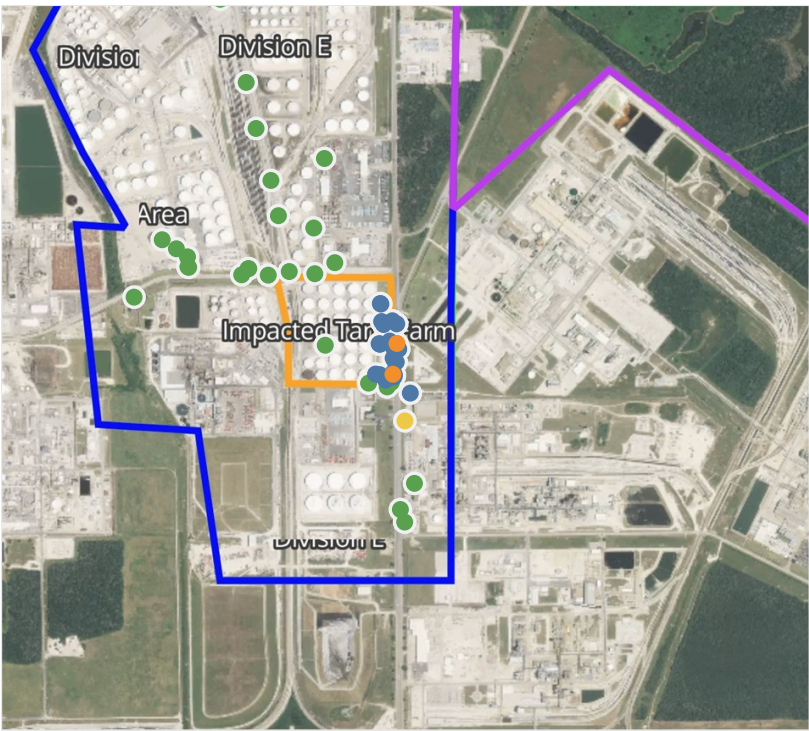


**Please Note:** These updates display data from the 2<sup>nd</sup> 80's Fire site (Impacted Tank Farm), in the industrial areas surrounding the 2<sup>nd</sup> 80's Fire site (US Coast Guard Division E), within the Houston Ship Channel (US Coast Guard Divisions A-D), and in the industrial areas north and south of the Houston Ship Channel (Industrial Area). Real-time air monitoring data for the surrounding communities are communicated daily in a separate report.



# Preliminary Hand- Held Air Monitoring Locations | ITC Deer Park Tank Fire

Reading Date  
4/25/2019 9:00:00 PM to 4/25/2019 10:00:00 PM



## Recent Benzene Detections

Location Category	Reading Date	Concentration
Division E	4/25/2019 21:16:36	0.520 ppm
	4/25/2019 21:15:15	0.330 ppm
	4/25/2019 21:12:06	0.030 ppm
	4/25/2019 21:13:47	0.080 ppm
	4/25/2019 21:09:49	0.090 ppm
	4/25/2019 21:16:54	0.040 ppm
	4/25/2019 21:25:58	1.230 ppm
	4/25/2019 21:32:21	1.250 ppm
	4/25/2019 21:41:22	0.330 ppm
	4/25/2019 21:38:03	0.060 ppm
	4/25/2019 21:39:46	0.270 ppm
	4/25/2019 21:43:27	0.210 ppm
	4/25/2019 21:51:06	0.400 ppm
	4/25/2019 21:52:35	0.250 ppm
	4/25/2019 21:51:37	0.390 ppm
	4/25/2019 21:57:56	0.380 ppm
Impacted Tank Farm	4/25/2019 21:55:29	0.400 ppm
	4/25/2019 21:48:41	0.040 ppm
	4/25/2019 21:47:44	0.040 ppm
	4/25/2019 21:49:52	0.040 ppm
	4/25/2019 21:51:19	0.100 ppm
	4/25/2019 21:51:21	0.110 ppm
	4/25/2019 21:56:32	0.440 ppm
	4/25/2019 21:58:27	0.210 ppm
	4/25/2019 21:54:01	0.070 ppm
Industrial Area	4/25/2019 21:58:07	0.250 ppm
	4/25/2019 21:55:49	0.270 ppm
Industrial Area	4/25/2019 21:09:00	0.100 ppm

This data has been provided expeditiously to ITC and regulatory agencies for informational and/or operational purposes only. Data reported within this summary is preliminary in nature and has not undergone complete QA/QC (quality assurance/quality control) process. Until this complete QA/QC process is completed, the locations of each reading are approximate in nature and subject to further refinement. As some readings may represent non-breathing zone measurements, the data reported herein may not be suitable to assess potential occupational exposure. Site Assessment readings are not representative of an individual's breathing zone (e.g., container head space, ground level, directly above product, etc.).



Reading Date  
4/25/2019 9:00:00 PM to 4/25/2019 10:00:00 PM

Benzene Action Level Concentration (ppm)  
 >=1

PRELIMINARY  
Recent Benzene Detections Greater than 1.00 ppm

Reading Date	Location Category	GPS	Google Maps URL	Concentration
4/25/2019 21:32:21	Division E	29.7314090,-95.0898240	<a href="https://www.google.com/maps/search/?api=1&amp;query=29.7314090,-95.0898240">https://www.google.com/maps/search/?api=1&amp;query=29.7314090,-95.0898240</a>	1.25000 ppm
4/25/2019 21:25:58	Division E	29.7305930,-95.0899470	<a href="https://www.google.com/maps/search/?api=1&amp;query=29.7305930,-95.0899470">https://www.google.com/maps/search/?api=1&amp;query=29.7305930,-95.0899470</a>	1.23000 ppm

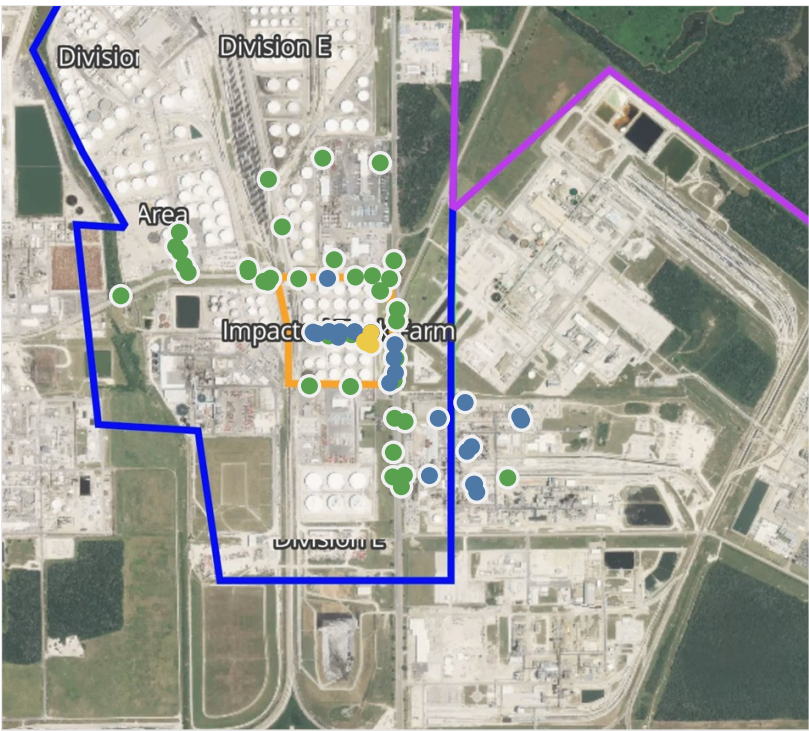


**Please Note:** These updates display data from the 2<sup>nd</sup> 80's Fire site (Impacted Tank Farm), in the industrial areas surrounding the 2<sup>nd</sup> 80's Fire site (US Coast Guard Division E), within the Houston Ship Channel (US Coast Guard Divisions A-D), and in the industrial areas north and south of the Houston Ship Channel (Industrial Area). Real-time air monitoring data for the surrounding communities are communicated daily in a separate report.



# Preliminary Hand- Held Air Monitoring Locations | ITC Deer Park Tank Fire

Reading Date  
4/25/2019 10:00:00 PM to 4/25/2019 11:00:00 PM



## Recent Benzene Detections

Location Category	Reading Date	Concentration
Division E	4/25/2019 22:34:30	0.2700 ppm
	4/25/2019 22:32:19	0.4400 ppm
	4/25/2019 22:36:06	0.3100 ppm
	4/25/2019 22:30:31	0.2100 ppm
	4/25/2019 22:53:47	0.0300 ppm
Impacted Tank Farm	4/25/2019 22:03:48	0.7700 ppm
	4/25/2019 22:07:05	0.3600 ppm
	4/25/2019 22:05:27	0.2400 ppm
	4/25/2019 22:11:32	0.0300 ppm
	4/25/2019 22:09:43	0.1400 ppm
	4/25/2019 22:07:50	0.6500 ppm
	4/25/2019 22:06:19	0.5800 ppm
	4/25/2019 22:05:17	0.6600 ppm
	4/25/2019 22:18:50	0.0400 ppm
	4/25/2019 22:21:43	0.0300 ppm
	4/25/2019 22:20:05	0.0200 ppm
	4/25/2019 22:27:34	0.0300 ppm
	4/25/2019 22:32:07	0.1700 ppm
	4/25/2019 22:36:55	0.1700 ppm
	4/25/2019 22:32:44	0.1200 ppm
Industrial Area	4/25/2019 22:29:50	0.1400 ppm
	4/25/2019 22:40:45	0.0200 ppm
	4/25/2019 22:43:11	0.0200 ppm
	4/25/2019 22:23:18	0.0300 ppm
	4/25/2019 22:33:27	0.0200 ppm
	4/25/2019 22:48:23	0.0900 ppm
	4/25/2019 22:54:00	0.1000 ppm
	4/25/2019 22:51:44	0.1000 ppm
	4/25/2019 22:46:05	0.0700 ppm
	4/25/2019 22:55:32	0.0900 ppm

This data has been provided expeditiously to ITC and regulatory agencies for informational and/or operational purposes only. Data reported within this summary is preliminary in nature and has not undergone complete QA/QC (quality assurance/quality control) process. Until this complete QA/QC process is completed, the locations of each reading are approximate in nature and subject to further refinement. As some readings may represent non-breathing zone measurements, the data reported herein may not be suitable to assess potential occupational exposure. Site Assessment readings are not representative of an individual's breathing zone (e.g., container head space, ground level, directly above product, etc.).





**Please Note:** These updates display data from the 2<sup>nd</sup> 80's Fire site (Impacted Tank Farm), in the industrial areas surrounding the 2<sup>nd</sup> 80's Fire site (US Coast Guard Division E), within the Houston Ship Channel (US Coast Guard Divisions A-D), and in the industrial areas north and south of the Houston Ship Channel (Industrial Area). Real-time air monitoring data for the surrounding communities are communicated daily in a separate report.