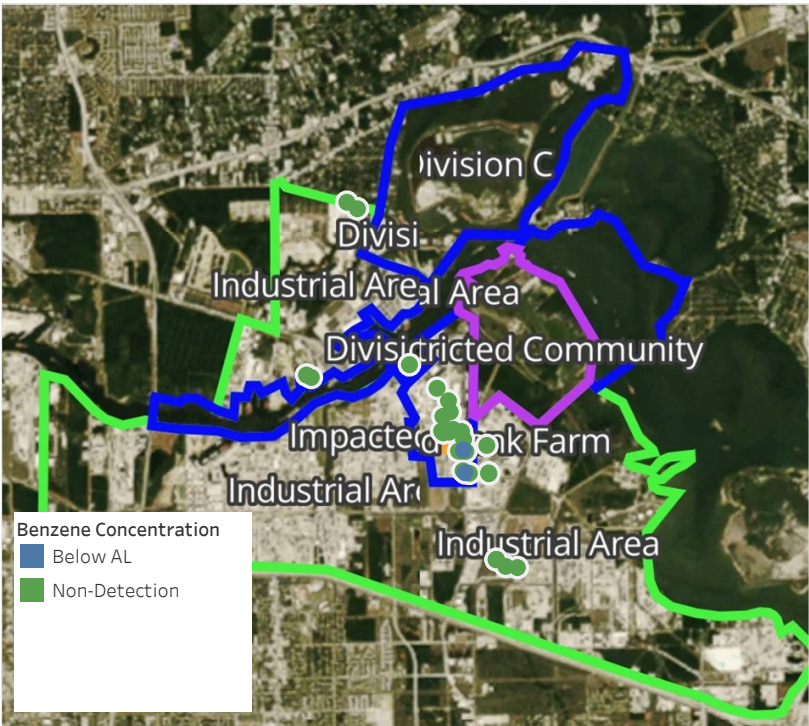


Preliminary Hand- Held Air Monitoring Locations | ITC Deer Park Tank Fire

Reading Date
4/25/2019 11:00:00 PM to 4/26/2019 12:00:00 AM



Recent Benzene Detections

Location Category	Reading Date	Concentration
Division E	4/25/2019 23:10:27	0.07000 ppm
Industrial Area	4/25/2019 23:13:04	0.09000 ppm

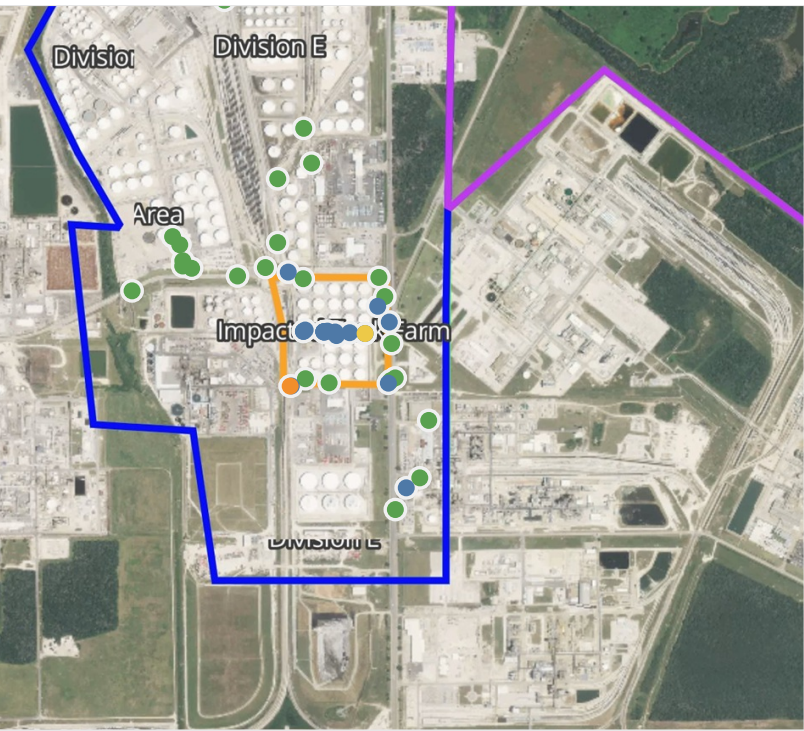
This data has been provided expeditiously to ITC and regulatory agencies for informational and/or operational purposes only. Data reported within this summary is preliminary in nature and has not undergone complete QA/QC (quality assurance/quality control) process. Until this complete QA/QC process is completed, the locations of each reading are approximate in nature and subject to further refinement. As some readings may represent non-breathing zone measurements, the data reported herein may not be suitable to assess potential occupational exposure. Site Assessment readings are not representative of an individual's breathing zone (e.g., container head space, ground level, directly above product, etc.).



Please Note: These updates display data from the 2nd 80's Fire site (Impacted Tank Farm), in the industrial areas surrounding the 2nd 80's Fire site (US Coast Guard Division E), within the Houston Ship Channel (US Coast Guard Divisions A-D), and in the industrial areas north and south of the Houston Ship Channel (Industrial Area). Real-time air monitoring data for the surrounding communities are communicated daily in a separate report.

Preliminary Hand- Held Air Monitoring Locations | ITC Deer Park Tank Fire

Reading Date
4/26/2019 12:00:00 AM to 4/26/2019 1:00:00 AM



Recent Benzene Detections

Location Category	Reading Date	Concentration
Division E	4/26/2019 00:07:19	1.700 ppm
	4/26/2019 00:26:14	0.040 ppm
	4/26/2019 00:15:52	0.420 ppm
	4/26/2019 00:46:36	0.060 ppm
	4/26/2019 00:59:47	0.400 ppm
Impacted Tank Farm	4/26/2019 00:07:40	0.070 ppm
	4/26/2019 00:09:00	0.020 ppm
	4/26/2019 00:10:37	0.030 ppm
	4/26/2019 00:15:16	0.060 ppm
	4/26/2019 00:18:30	0.050 ppm
	4/26/2019 00:17:23	0.050 ppm
	4/26/2019 00:22:17	0.060 ppm
	4/26/2019 00:23:07	0.090 ppm
	4/26/2019 00:28:28	0.210 ppm
	4/26/2019 00:30:21	0.410 ppm
	4/26/2019 00:38:45	0.180 ppm
	4/26/2019 00:44:54	0.280 ppm
Industrial Area	4/26/2019 00:42:39	0.890 ppm
	4/26/2019 00:53:16	0.020 ppm
	4/26/2019 00:44:06	0.080 ppm

This data has been provided expeditiously to ITC and regulatory agencies for informational and/or operational purposes only. Data reported within this summary is preliminary in nature and has not undergone complete QA/QC (quality assurance/quality control) process. Until this complete QA/QC process is completed, the locations of each reading are approximate in nature and subject to further refinement. As some readings may represent non-breathing zone measurements, the data reported herein may not be suitable to assess potential occupational exposure. Site Assessment readings are not representative of an individual's breathing zone (e.g., container head space, ground level, directly above product, etc.).

Reading Date
4/26/2019 12:00:00 AM to 4/26/2019 1:00:00 AM

Benzene Action Level Concentration (ppm)
 >=1

PRELIMINARY
Recent Benzene Detections Greater than 1.00 ppm

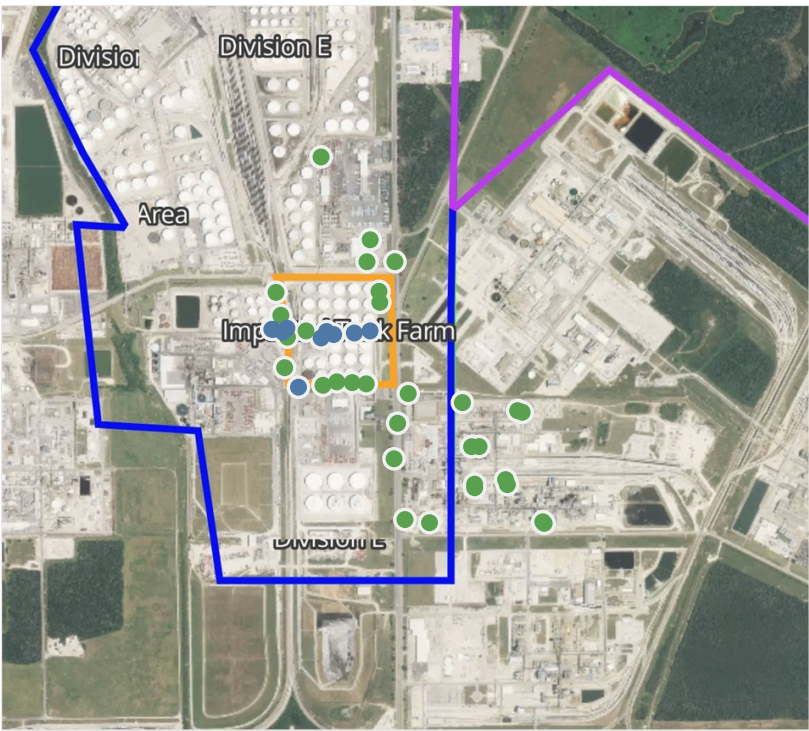
Reading Date	Location Category	GPS	Google Maps URL	Concentration
4/26/2019 00:07:19	Division E	29.7302790,-95.0929260	https://www.google.com/maps/search/?api=1&query=29.7302790,-95.0929260	1.700 ppm



Please Note: These updates display data from the 2nd 80's Fire site (Impacted Tank Farm), in the industrial areas surrounding the 2nd 80's Fire site (US Coast Guard Division E), within the Houston Ship Channel (US Coast Guard Divisions A-D), and in the industrial areas north and south of the Houston Ship Channel (Industrial Area). Real-time air monitoring data for the surrounding communities are communicated daily in a separate report.

Preliminary Hand- Held Air Monitoring Locations | ITC Deer Park Tank Fire

Reading Date
4/26/2019 1:00:00 AM to 4/26/2019 2:00:00 AM



Recent Benzene Detections

Location Category	Reading Date	Concentration
Division E	4/26/2019 01:31:46	0.1300 ppm
	4/26/2019 01:54:28	0.0800 ppm
	4/26/2019 01:55:16	0.0800 ppm
	4/26/2019 01:58:13	0.0500 ppm
	4/26/2019 01:58:34	0.0600 ppm
Impacted Tank Farm	4/26/2019 01:38:57	0.0900 ppm
	4/26/2019 01:41:07	0.4100 ppm
	4/26/2019 01:37:19	0.0800 ppm
	4/26/2019 01:43:08	0.2500 ppm
	4/26/2019 01:34:57	0.0700 ppm

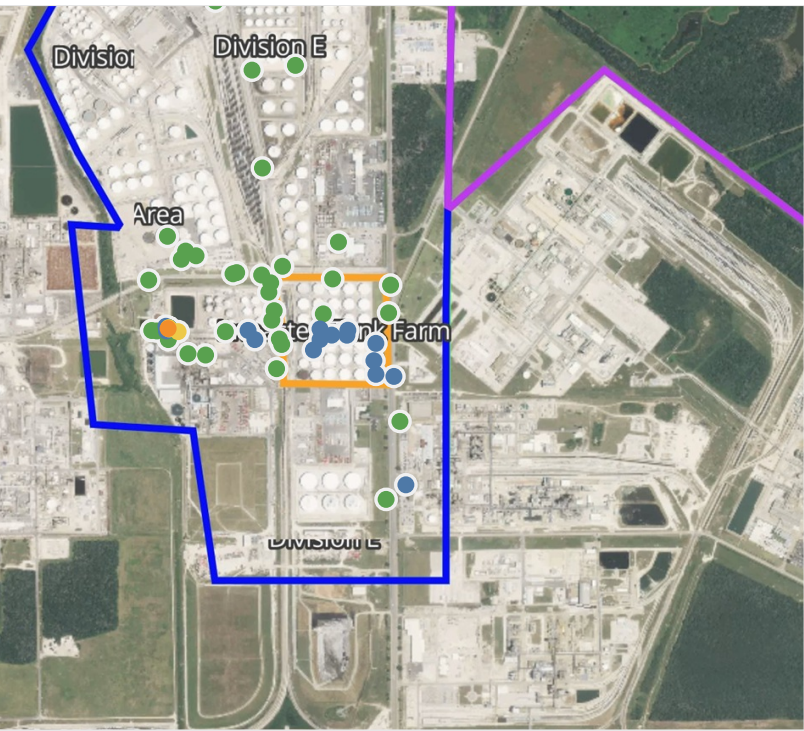
This data has been provided expeditiously to ITC and regulatory agencies for informational and/or operational purposes only. Data reported within this summary is preliminary in nature and has not undergone complete QA/QC (quality assurance/quality control) process. Until this complete QA/QC process is completed, the locations of each reading are approximate in nature and subject to further refinement. As some readings may represent non-breathing zone measurements, the data reported herein may not be suitable to assess potential occupational exposure. Site Assessment readings are not representative of an individual's breathing zone (e.g., container head space, ground level, directly above product, etc.).



Please Note: These updates display data from the 2nd 80's Fire site (Impacted Tank Farm), in the industrial areas surrounding the 2nd 80's Fire site (US Coast Guard Division E), within the Houston Ship Channel (US Coast Guard Divisions A-D), and in the industrial areas north and south of the Houston Ship Channel (Industrial Area). Real-time air monitoring data for the surrounding communities are communicated daily in a separate report.

Preliminary Hand- Held Air Monitoring Locations | ITC Deer Park Tank Fire

Reading Date
4/26/2019 2:00:00 AM to 4/26/2019 3:00:00 AM



Recent Benzene Detections

Location Category	Reading Date	Concentration
Division E	4/26/2019 02:01:08	0.0200 ppm
	4/26/2019 02:01:53	0.0200 ppm
	4/26/2019 02:12:39	1.0100 ppm
	4/26/2019 02:15:41	0.4700 ppm
	4/26/2019 02:15:45	0.5800 ppm
	4/26/2019 02:42:52	0.3100 ppm
	4/26/2019 02:38:19	0.4200 ppm
	4/26/2019 02:37:07	0.5600 ppm
	4/26/2019 02:49:55	0.2200 ppm
	4/26/2019 02:41:06	0.3900 ppm
	4/26/2019 02:39:09	0.7700 ppm
	4/26/2019 02:35:28	0.4600 ppm
Impacted Tank Farm	4/26/2019 02:16:09	0.1100 ppm
	4/26/2019 02:14:12	0.0800 ppm
	4/26/2019 02:08:57	0.2400 ppm
	4/26/2019 02:10:21	0.1400 ppm
	4/26/2019 02:12:05	0.1300 ppm
	4/26/2019 02:07:21	0.4600 ppm
	4/26/2019 02:22:56	0.0500 ppm
	4/26/2019 02:19:28	0.0900 ppm
	4/26/2019 02:21:06	0.1900 ppm
Industrial Area	4/26/2019 02:58:07	0.0700 ppm

This data has been provided expeditiously to ITC and regulatory agencies for informational and/or operational purposes only. Data reported within this summary is preliminary in nature and has not undergone complete QA/QC (quality assurance/quality control) process. Until this complete QA/QC process is completed, the locations of each reading are approximate in nature and subject to further refinement. As some readings may represent non-breathing zone measurements, the data reported herein may not be suitable to assess potential occupational exposure. Site Assessment readings are not representative of an individual's breathing zone (e.g., container head space, ground level, directly above product, etc.).

Reading Date
4/26/2019 2:00:00 AM to 4/26/2019 3:00:00 AM

Benzene Action Level Concentration (ppm)
 >=1

PRELIMINARY
Recent Benzene Detections Greater than 1.00 ppm

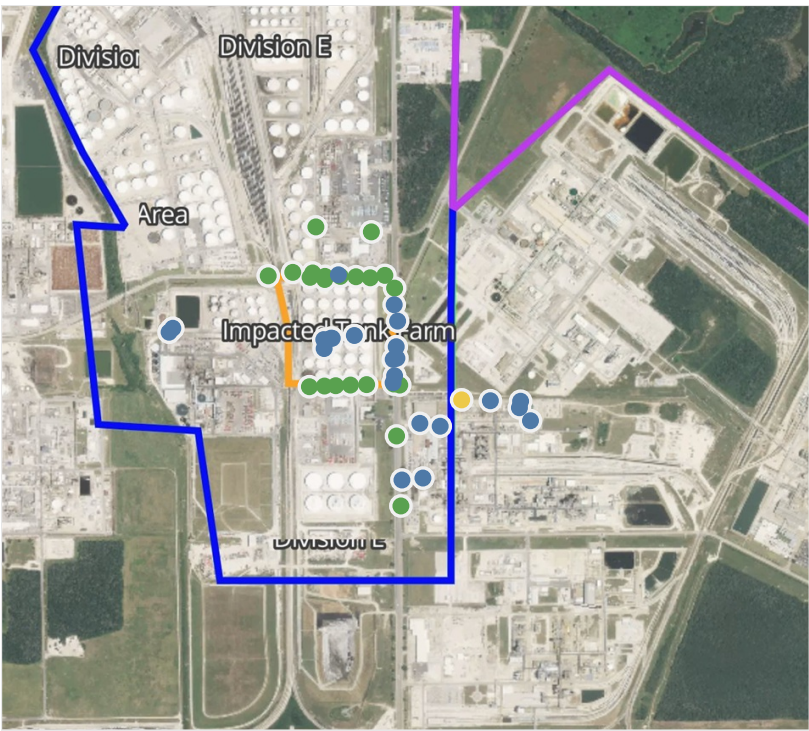
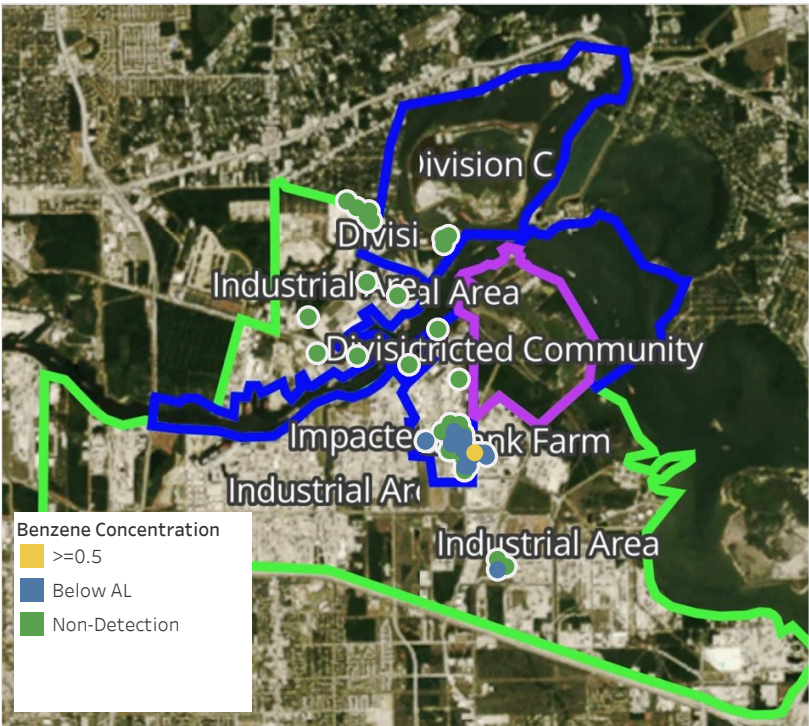
Reading Date	Location Category	GPS	Google Maps URL	Concentration
4/26/2019 02:12:39	Division E	29.7318030,-95.0966470	https://www.google.com/maps/search/?api=1&query=29.7318030,-95.0966470	1.010 ppm



Please Note: These updates display data from the 2nd 80's Fire site (Impacted Tank Farm), in the industrial areas surrounding the 2nd 80's Fire site (US Coast Guard Division E), within the Houston Ship Channel (US Coast Guard Divisions A-D), and in the industrial areas north and south of the Houston Ship Channel (Industrial Area). Real-time air monitoring data for the surrounding communities are communicated daily in a separate report.

Preliminary Hand- Held Air Monitoring Locations | ITC Deer Park Tank Fire

Reading Date
4/26/2019 3:00:00 AM to 4/26/2019 4:00:00 AM



Recent Benzene Detections

Location Category	Reading Date	Concentration
Division E	4/26/2019 03:04:29	0.3000 ppm
	4/26/2019 03:11:16	0.3500 ppm
	4/26/2019 03:11:09	0.0400 ppm
	4/26/2019 03:16:21	0.2400 ppm
	4/26/2019 03:25:47	0.3400 ppm
	4/26/2019 03:30:08	0.4600 ppm
	4/26/2019 03:27:48	0.4800 ppm
	4/26/2019 03:32:26	0.4000 ppm
	4/26/2019 03:22:10	0.1100 ppm
	4/26/2019 03:33:57	0.1600 ppm
Impacted Tank Farm	4/26/2019 03:59:28	0.0200 ppm
	4/26/2019 03:55:55	0.0300 ppm
	4/26/2019 03:51:44	0.0500 ppm
	4/26/2019 03:53:37	0.0500 ppm
	4/26/2019 03:58:18	0.0600 ppm
Industrial Area	4/26/2019 03:45:11	0.0900 ppm
	4/26/2019 03:01:03	0.1500 ppm
	4/26/2019 03:05:52	0.4400 ppm
	4/26/2019 03:36:18	0.0700 ppm
	4/26/2019 03:39:06	0.0200 ppm
	4/26/2019 03:17:13	0.7700 ppm
	4/26/2019 03:53:38	0.2600 ppm
	4/26/2019 03:51:50	0.3300 ppm
	4/26/2019 03:55:08	0.2100 ppm
	4/26/2019 03:56:58	0.0800 ppm

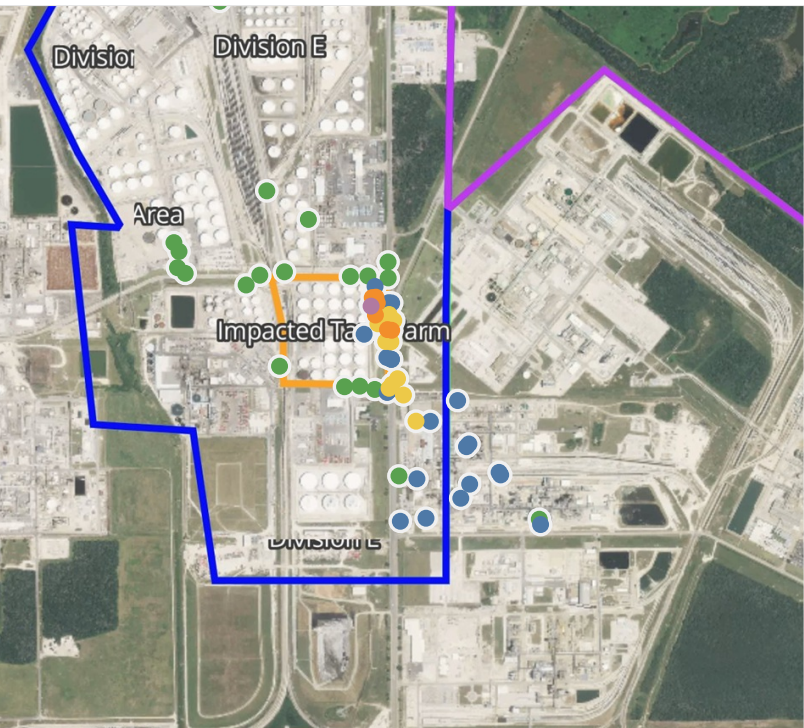
This data has been provided expeditiously to ITC and regulatory agencies for informational and/or operational purposes only. Data reported within this summary is preliminary in nature and has not undergone complete QA/QC (quality assurance/quality control) process. Until this complete QA/QC process is completed, the locations of each reading are approximate in nature and subject to further refinement. As some readings may represent non-breathing zone measurements, the data reported herein may not be suitable to assess potential occupational exposure. Site Assessment readings are not representative of an individual's breathing zone (e.g., container head space, ground level, directly above product, etc.).



Please Note: These updates display data from the 2nd 80's Fire site (Impacted Tank Farm), in the industrial areas surrounding the 2nd 80's Fire site (US Coast Guard Division E), within the Houston Ship Channel (US Coast Guard Divisions A-D), and in the industrial areas north and south of the Houston Ship Channel (Industrial Area). Real-time air monitoring data for the surrounding communities are communicated daily in a separate report.

Preliminary Hand- Held Air Monitoring Locations | ITC Deer Park Tank Fire

Reading Date
4/26/2019 4:00:00 AM to 4/26/2019 5:00:00 AM



Recent Benzene Detections

Location Category	Reading Date	Concentration
Division E	4/26/2019 04:07:45	0.050 ppm
	4/26/2019 04:07:41	0.060 ppm
	4/26/2019 04:11:19	0.690 ppm
	4/26/2019 04:11:56	0.870 ppm
	4/26/2019 04:21:15	1.060 ppm
	4/26/2019 04:23:38	0.460 ppm
	4/26/2019 04:11:47	0.890 ppm
	4/26/2019 04:23:40	0.460 ppm
	4/26/2019 04:10:30	0.840 ppm
	4/26/2019 04:20:50	1.280 ppm
	4/26/2019 04:24:41	0.300 ppm
	4/26/2019 04:27:18	0.140 ppm
	4/26/2019 04:27:49	0.200 ppm
	4/26/2019 04:25:46	0.320 ppm
	4/26/2019 04:33:16	0.750 ppm
Impacted Tank Farm	4/26/2019 04:43:46	0.500 ppm
	4/26/2019 04:44:59	0.500 ppm
	4/26/2019 04:58:36	0.770 ppm
	4/26/2019 04:06:37	1.610 ppm
	4/26/2019 04:03:01	0.740 ppm
	4/26/2019 04:12:50	0.030 ppm
	4/26/2019 04:00:38	0.080 ppm
	4/26/2019 04:26:48	1.540 ppm
Industrial Area	4/26/2019 04:46:58	1.020 ppm
	4/26/2019 04:55:13	1.090 ppm
	4/26/2019 04:40:00	4.170 ppm
	4/26/2019 04:02:47	0.140 ppm
	4/26/2019 04:09:12	0.150 ppm
	4/26/2019 04:11:32	0.160 ppm
	4/26/2019 04:13:33	0.120 ppm
	4/26/2019 04:15:38	0.020 ppm
	4/26/2019 04:16:56	0.030 ppm
	4/26/2019 04:19:15	0.020 ppm
	4/26/2019 04:23:11	0.060 ppm
	4/26/2019 04:25:53	0.040 ppm
	4/26/2019 04:28:17	0.680 ppm
	4/26/2019 04:53:27	0.220 ppm
	4/26/2019 04:50:55	0.080 ppm

This data has been provided expeditiously to ITC and regulatory agencies for informational and/or operational purposes only. Data reported within this summary is preliminary in nature and has not undergone complete QA/QC (quality assurance/quality control) process. Until this complete QA/QC process is completed, the locations of each reading are approximate in nature and subject to further refinement. As some readings may represent non-breathing zone measurements, the data reported herein may not be suitable to assess potential occupational exposure. Site Assessment readings are not representative of an individual's breathing zone (e.g., container head space, ground level, directly above product, etc.).

Reading Date
4/26/2019 4:00:00 AM to 4/26/2019 5:00:00 AM

Benzene Action Level Concentration (ppm)
 >=1  >=2

PRELIMINARY
Recent Benzene Detections Greater than 1.00 ppm

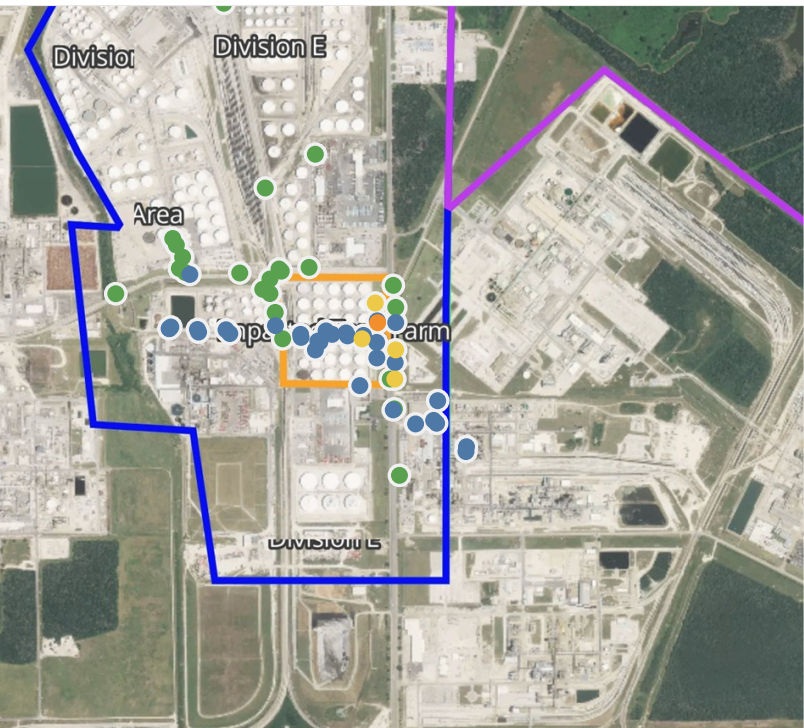
Reading Date	Location Category	GPS	Google Maps URL	Concentration
4/26/2019 04:55:13	Impacted Tank Farm	29.7326220,-95.0904250	https://www.google.com/maps/search/?api=1&query=29.7326220,-95.0904250	1.090 ppm
4/26/2019 04:46:58	Impacted Tank Farm	29.7326330,-95.0903120	https://www.google.com/maps/search/?api=1&query=29.7326330,-95.0903120	1.020 ppm
4/26/2019 04:40:00	Impacted Tank Farm	29.7323960,-95.0904600	https://www.google.com/maps/search/?api=1&query=29.7323960,-95.0904600	4.170 ppm
4/26/2019 04:26:48	Impacted Tank Farm	29.7321600,-95.0903280	https://www.google.com/maps/search/?api=1&query=29.7321600,-95.0903280	1.540 ppm
4/26/2019 04:21:15	Division E	29.7317570,-95.0898320	https://www.google.com/maps/search/?api=1&query=29.7317570,-95.0898320	1.060 ppm
4/26/2019 04:20:50	Division E	29.7317750,-95.0899590	https://www.google.com/maps/search/?api=1&query=29.7317750,-95.0899590	1.280 ppm
4/26/2019 04:06:37	Impacted Tank Farm	29.7324810,-95.0902700	https://www.google.com/maps/search/?api=1&query=29.7324810,-95.0902700	1.610 ppm



Please Note: These updates display data from the 2nd 80's Fire site (Impacted Tank Farm), in the industrial areas surrounding the 2nd 80's Fire site (US Coast Guard Division E), within the Houston Ship Channel (US Coast Guard Divisions A-D), and in the industrial areas north and south of the Houston Ship Channel (Industrial Area). Real-time air monitoring data for the surrounding communities are communicated daily in a separate report.

Preliminary Hand- Held Air Monitoring Locations | ITC Deer Park Tank Fire

Reading Date
4/26/2019 5:00:00 AM to 4/26/2019 6:00:00 AM



Recent Benzene Detections

Location Category	Reading Date	Concentration
Division E	4/26/2019 05:11:38	0.090 ppm
	4/26/2019 05:33:49	0.100 ppm
	4/26/2019 05:37:33	0.225 ppm
	4/26/2019 05:40:40	0.575 ppm
	4/26/2019 05:45:04	0.175 ppm
	4/26/2019 05:46:43	0.160 ppm
	4/26/2019 05:49:58	0.160 ppm
	4/26/2019 05:52:30	0.020 ppm
	4/26/2019 05:56:39	0.030 ppm
	4/26/2019 05:56:48	0.850 ppm
	4/26/2019 05:56:57	0.060 ppm
Impacted Tank Farm	4/26/2019 05:03:08	0.700 ppm
	4/26/2019 05:06:52	0.230 ppm
	4/26/2019 05:05:13	0.460 ppm
	4/26/2019 05:08:20	0.200 ppm
	4/26/2019 05:01:08	1.060 ppm
	4/26/2019 05:11:55	0.030 ppm
	4/26/2019 05:13:36	0.130 ppm
	4/26/2019 05:33:08	0.110 ppm
	4/26/2019 05:30:38	0.090 ppm
	4/26/2019 05:28:55	0.110 ppm
	4/26/2019 05:35:32	0.090 ppm
	4/26/2019 05:41:47	0.460 ppm
	4/26/2019 05:43:48	0.730 ppm
	4/26/2019 05:39:18	0.120 ppm
	4/26/2019 05:47:51	0.380 ppm
Industrial Area	4/26/2019 05:46:48	0.430 ppm
	4/26/2019 05:47:53	0.210 ppm
	4/26/2019 05:46:46	0.070 ppm
	4/26/2019 05:52:22	0.040 ppm
	4/26/2019 05:04:55	0.340 ppm
	4/26/2019 05:28:32	0.250 ppm
	4/26/2019 05:31:07	0.290 ppm
	4/26/2019 05:22:51	0.400 ppm
	4/26/2019 05:48:51	0.090 ppm
	4/26/2019 05:40:34	0.120 ppm
	4/26/2019 05:53:49	0.100 ppm

This data has been provided expeditiously to ITC and regulatory agencies for informational and/or operational purposes only. Data reported within this summary is preliminary in nature and has not undergone complete QA/QC (quality assurance/quality control) process. Until this complete QA/QC process is completed, the locations of each reading are approximate in nature and subject to further refinement. As some readings may represent non-breathing zone measurements, the data reported herein may not be suitable to assess potential occupational exposure. Site Assessment readings are not representative of an individual's breathing zone (e.g., container head space, ground level, directly above product, etc.).

Reading Date
4/26/2019 5:00:00 AM to 4/26/2019 6:00:00 AM

Benzene Action Level Concentration (ppm)
 >=1

PRELIMINARY
Recent Benzene Detections Greater than 1.00 ppm

Reading Date	Location Category	GPS	Google Maps URL	Concentration
4/26/2019 05:01:08	Impacted Tank Farm	29.7319580,-95.0902610	https://www.google.com/maps/search/?api=1&query=29.7319580,-95.0902610	1.060 ppm

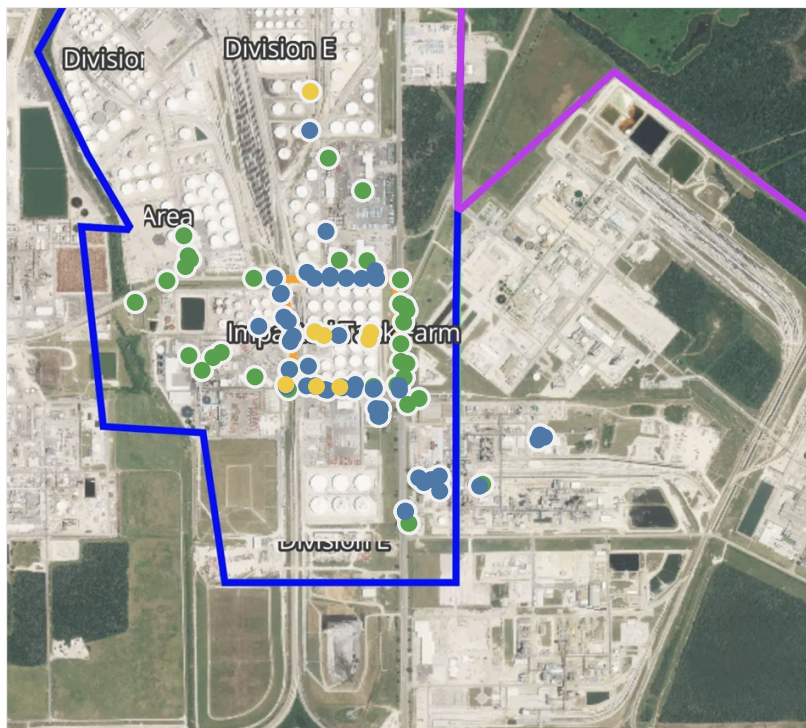


Please Note: These updates display data from the 2nd 80's Fire site (Impacted Tank Farm), in the industrial areas surrounding the 2nd 80's Fire site (US Coast Guard Division E), within the Houston Ship Channel (US Coast Guard Divisions A-D), and in the industrial areas north and south of the Houston Ship Channel (Industrial Area). Real-time air monitoring data for the surrounding communities are communicated daily in a separate report.

Preliminary Hand- Held Air Monitoring Locations | ITC Deer Park Tank Fire

Reading Date

4/26/2019 6:00:00 AM to 4/26/2019 7:00:00 AM



Recent Benzene Detections

Location Category	Reading Date	Concentration
Division E	4/26/2019 06:07:36	0.0200 ppm
	4/26/2019 06:12:40	0.0300 ppm
	4/26/2019 06:12:19	0.0400 ppm
	4/26/2019 06:12:18	0.0500 ppm
	4/26/2019 06:13:47	0.0700 ppm
	4/26/2019 06:15:12	0.0500 ppm
	4/26/2019 06:14:58	0.0600 ppm
	4/26/2019 06:16:58	0.0900 ppm
	4/26/2019 06:18:03	0.0800 ppm
	4/26/2019 06:19:53	0.0700 ppm
	4/26/2019 06:20:16	0.0700 ppm
	4/26/2019 06:15:30	0.1300 ppm
	4/26/2019 06:17:17	0.1400 ppm
	4/26/2019 06:20:42	0.0500 ppm
	4/26/2019 06:18:48	0.4300 ppm
	4/26/2019 06:23:47	0.4750 ppm
	4/26/2019 06:23:59	0.0500 ppm
	4/26/2019 06:23:36	0.7500 ppm
	4/26/2019 06:23:36	0.0600 ppm
	4/26/2019 06:27:46	0.5800 ppm
	4/26/2019 06:22:10	0.1000 ppm
	4/26/2019 06:30:42	0.5000 ppm
	4/26/2019 06:31:48	0.8500 ppm
	4/26/2019 06:29:05	0.2200 ppm
	4/26/2019 06:24:40	0.1300 ppm
	4/26/2019 06:30:59	0.3000 ppm
	4/26/2019 06:26:56	0.1400 ppm
	4/26/2019 06:33:27	0.1500 ppm
	4/26/2019 06:36:56	0.0750 ppm
	4/26/2019 06:35:52	0.0200 ppm
	4/26/2019 06:43:41	0.3000 ppm
	4/26/2019 06:49:07	0.3900 ppm
	4/26/2019 06:45:26	0.2300 ppm
	4/26/2019 06:42:01	0.0600 ppm
	4/26/2019 06:44:56	0.0300 ppm
	4/26/2019 06:47:06	0.1600 ppm
	4/26/2019 06:49:58	0.3500 ppm
	4/26/2019 06:50:30	0.4200 ppm
	4/26/2019 06:48:56	0.2000 ppm
	4/26/2019 06:38:07	0.1900 ppm
	4/26/2019 06:54:59	0.1500 ppm
	4/26/2019 06:55:52	0.2600 ppm
	4/26/2019 06:56:00	0.3300 ppm
	4/26/2019 06:53:39	0.5750 ppm
	4/26/2019 06:58:23	0.1100 ppm
	4/26/2019 06:59:52	0.3000 ppm
	4/26/2019 06:56:26	0.1700 ppm
	4/26/2019 06:59:37	0.2200 ppm
	4/26/2019 06:59:45	0.0600 ppm
Impacted Tank Farm	4/26/2019 06:33:09	0.9800 ppm
	4/26/2019 06:44:07	0.5800 ppm
	4/26/2019 06:38:58	0.3600 ppm
	4/26/2019 06:50:28	0.5000 ppm
Industrial Area	4/26/2019 06:00:55	0.1000 ppm
	4/26/2019 06:14:42	0.2500 ppm
	4/26/2019 06:04:54	0.1100 ppm
	4/26/2019 06:03:53	0.1000 ppm
	4/26/2019 06:17:33	0.1200 ppm
	4/26/2019 06:21:14	0.3000 ppm
	4/26/2019 06:21:55	0.0300 ppm
	4/26/2019 06:23:28	0.0200 ppm
	4/26/2019 06:28:41	0.0600 ppm

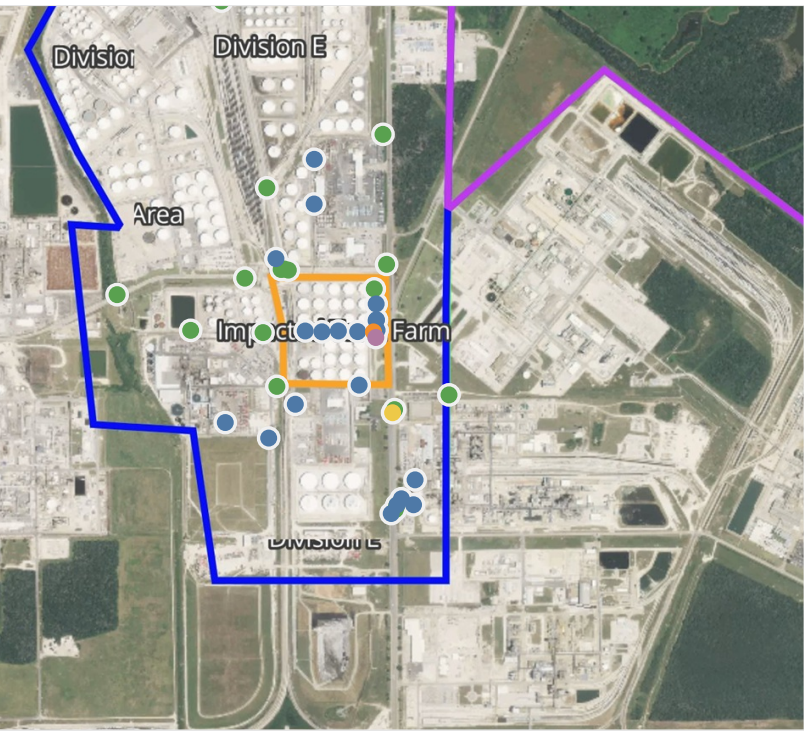
This data has been provided expeditiously to ITC and regulatory agencies for informational and/or operational purposes only. Data reported within this summary is preliminary in nature and has not undergone complete QA/QC (quality assurance/quality control) process. Until this complete QA/QC process is completed, the locations of each reading are approximate in nature and subject to further refinement. As some readings may represent non-breathing zone measurements, the data reported herein may not be suitable to assess potential occupational exposure. Site Assessment readings are not representative of an individual's breathing zone (e.g., container head space, ground level, directly above product, etc.).



Please Note: These updates display data from the 2nd 80's Fire site (Impacted Tank Farm), in the industrial areas surrounding the 2nd 80's Fire site (US Coast Guard Division E), within the Houston Ship Channel (US Coast Guard Divisions A-D), and in the industrial areas north and south of the Houston Ship Channel (Industrial Area). Real-time air monitoring data for the surrounding communities are communicated daily in a separate report.

Preliminary Hand- Held Air Monitoring Locations | ITC Deer Park Tank Fire

Reading Date
4/26/2019 7:00:00 AM to 4/26/2019 8:00:00 AM



Recent Benzene Detections

Location Category	Reading Date	Concentration
Division E	4/26/2019 07:05:02	0.740 ppm
	4/26/2019 07:12:32	0.125 ppm
	4/26/2019 07:42:02	0.020 ppm
	4/26/2019 07:41:33	0.170 ppm
	4/26/2019 07:48:10	0.100 ppm
	4/26/2019 07:55:51	0.160 ppm
	4/26/2019 07:44:55	0.040 ppm
	4/26/2019 07:45:05	0.020 ppm
	4/26/2019 07:59:34	0.130 ppm
Impacted Tank Farm	4/26/2019 07:01:33	1.870 ppm
	4/26/2019 07:22:50	2.010 ppm
	4/26/2019 07:24:55	0.350 ppm
	4/26/2019 07:40:35	0.320 ppm
	4/26/2019 07:39:29	0.070 ppm
	4/26/2019 07:45:36	0.190 ppm
	4/26/2019 07:47:39	0.090 ppm
	4/26/2019 07:50:35	0.070 ppm
	4/26/2019 07:53:52	0.350 ppm
	4/26/2019 07:55:11	0.050 ppm
Industrial Area	4/26/2019 07:10:12	0.160 ppm
	4/26/2019 07:21:57	0.070 ppm
	4/26/2019 07:26:41	0.120 ppm
	4/26/2019 07:44:17	0.090 ppm

This data has been provided expeditiously to ITC and regulatory agencies for informational and/or operational purposes only. Data reported within this summary is preliminary in nature and has not undergone complete QA/QC (quality assurance/quality control) process. Until this complete QA/QC process is completed, the locations of each reading are approximate in nature and subject to further refinement. As some readings may represent non-breathing zone measurements, the data reported herein may not be suitable to assess potential occupational exposure. Site Assessment readings are not representative of an individual's breathing zone (e.g., container head space, ground level, directly above product, etc.).

Reading Date
4/26/2019 7:00:00 AM to 4/26/2019 8:00:00 AM

Benzene Action Level Concentration (ppm)
 >=1  >=2

PRELIMINARY
Recent Benzene Detections Greater than 1.00 ppm

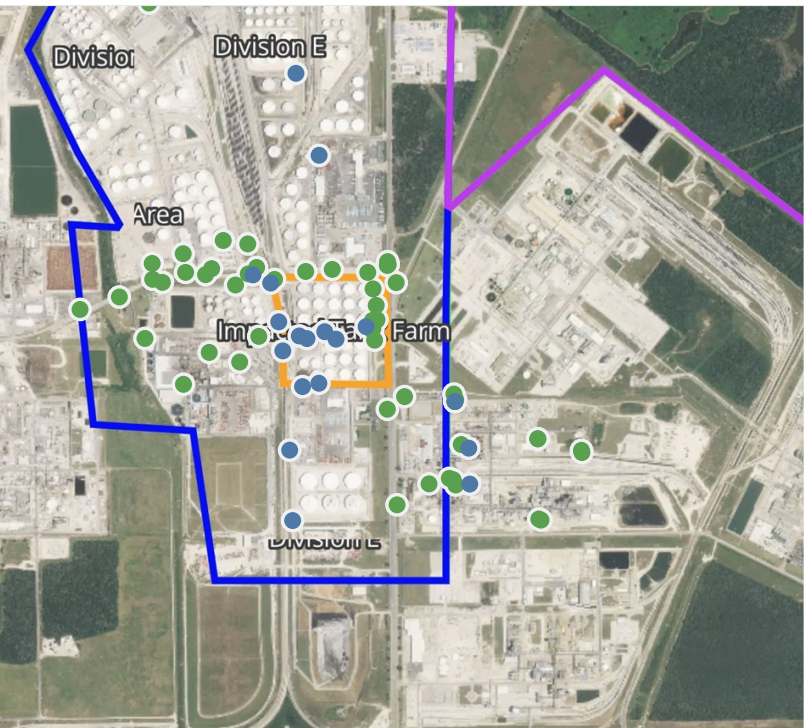
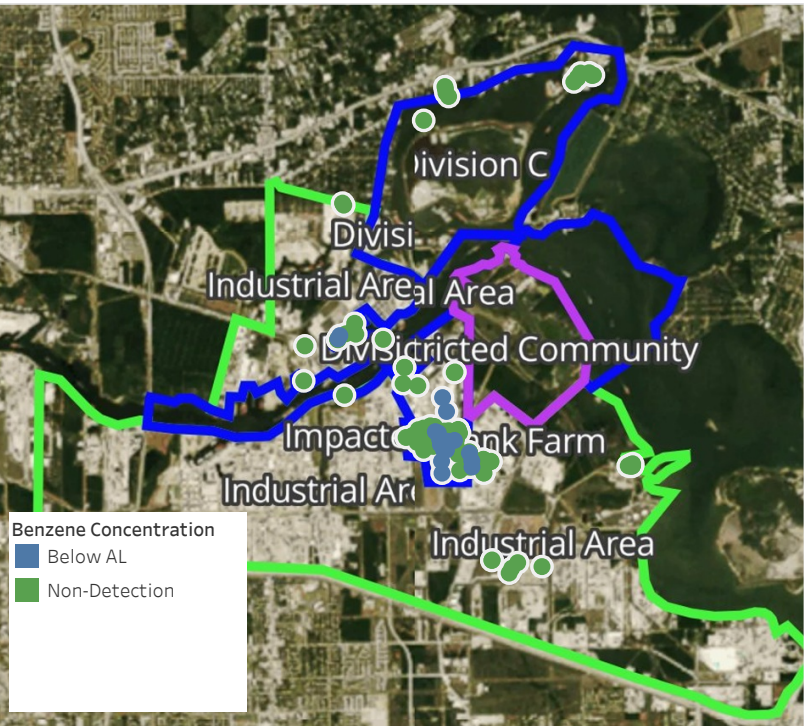
Reading Date	Location Category	GPS	Google Maps URL	Concentration
4/26/2019 07:22:50	Impacted Tank Farm	29.7315650,-95.0903160	https://www.google.com/maps/search/?api=1&query=29.7315650,-95.0903160	2.0100 ppm
4/26/2019 07:01:33	Impacted Tank Farm	29.7317140,-95.0903870	https://www.google.com/maps/search/?api=1&query=29.7317140,-95.0903870	1.8700 ppm



Please Note: These updates display data from the 2nd 80's Fire site (Impacted Tank Farm), in the industrial areas surrounding the 2nd 80's Fire site (US Coast Guard Division E), within the Houston Ship Channel (US Coast Guard Divisions A-D), and in the industrial areas north and south of the Houston Ship Channel (Industrial Area). Real-time air monitoring data for the surrounding communities are communicated daily in a separate report.

Preliminary Hand- Held Air Monitoring Locations | ITC Deer Park Tank Fire

Reading Date
4/26/2019 8:00:00 AM to 4/26/2019 9:00:00 AM



Recent Benzene Detections

Location Category	Reading Date	Concentration
Above Grate	4/26/2019 08:27:58	0.2300 ppm
	4/26/2019 08:07:45	0.0750 ppm
Division E	4/26/2019 08:03:26	0.1400 ppm
	4/26/2019 08:02:19	0.4600 ppm
	4/26/2019 08:08:46	0.0800 ppm
	4/26/2019 08:10:03	0.0300 ppm
	4/26/2019 08:03:25	0.0200 ppm
	4/26/2019 08:21:21	0.0700 ppm
	4/26/2019 08:39:39	0.0500 ppm
	4/26/2019 08:50:55	0.0700 ppm
Impacted Tank Farm	4/26/2019 08:05:13	0.0300 ppm
	4/26/2019 08:07:16	0.0400 ppm
	4/26/2019 08:04:37	0.3250 ppm
	4/26/2019 08:18:28	0.1600 ppm
	4/26/2019 08:22:14	0.0800 ppm
Industrial Area	4/26/2019 08:43:24	0.0800 ppm
	4/26/2019 08:52:59	0.0800 ppm
	4/26/2019 08:21:31	0.0200 ppm
	4/26/2019 08:39:47	0.0300 ppm
	4/26/2019 08:45:24	0.0200 ppm

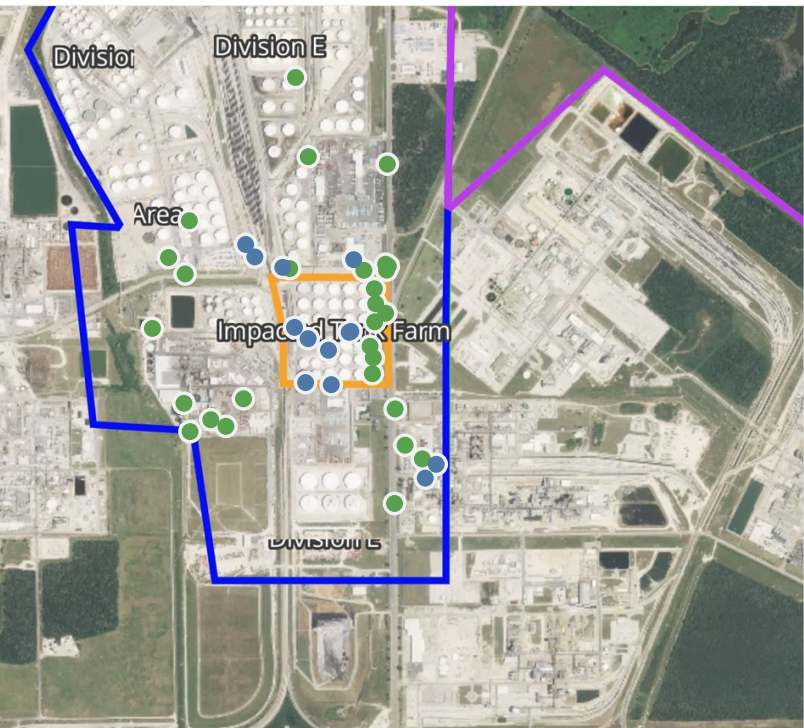
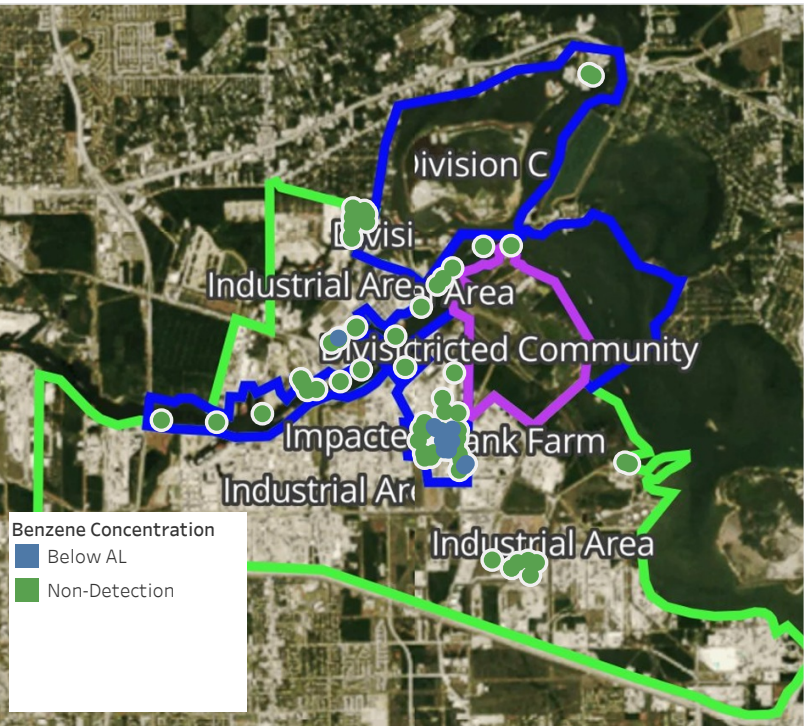
This data has been provided expeditiously to ITC and regulatory agencies for informational and/or operational purposes only. Data reported within this summary is preliminary in nature and has not undergone complete QA/QC (quality assurance/quality control) process. Until this complete QA/QC process is completed, the locations of each reading are approximate in nature and subject to further refinement. As some readings may represent non-breathing zone measurements, the data reported herein may not be suitable to assess potential occupational exposure. Site Assessment readings are not representative of an individual's breathing zone (e.g., container head space, ground level, directly above product, etc.).



Please Note: These updates display data from the 2nd 80's Fire site (Impacted Tank Farm), in the industrial areas surrounding the 2nd 80's Fire site (US Coast Guard Division E), within the Houston Ship Channel (US Coast Guard Divisions A-D), and in the industrial areas north and south of the Houston Ship Channel (Industrial Area). Real-time air monitoring data for the surrounding communities are communicated daily in a separate report.

Preliminary Hand- Held Air Monitoring Locations | ITC Deer Park Tank Fire

Reading Date
4/26/2019 9:00:00 AM to 4/26/2019 10:00:00 AM



Recent Benzene Detections

Location Category	Reading Date	Concentration
Below Grate	4/26/2019 09:21:26	0.3200 ppm
Division E	4/26/2019 09:02:06	0.0500 ppm
	4/26/2019 09:02:34	0.0400 ppm
	4/26/2019 09:30:06	0.0200 ppm
	4/26/2019 09:26:04	0.1700 ppm
	4/26/2019 09:34:21	0.1500 ppm
	4/26/2019 09:43:26	0.1600 ppm
Impacted Tank Farm	4/26/2019 09:09:21	0.0600 ppm
	4/26/2019 09:16:59	0.2900 ppm
	4/26/2019 09:20:50	0.0800 ppm
	4/26/2019 09:42:36	0.0300 ppm
	4/26/2019 09:47:06	0.0500 ppm
Industrial Area	4/26/2019 09:11:55	0.0200 ppm
	4/26/2019 09:07:13	0.0500 ppm

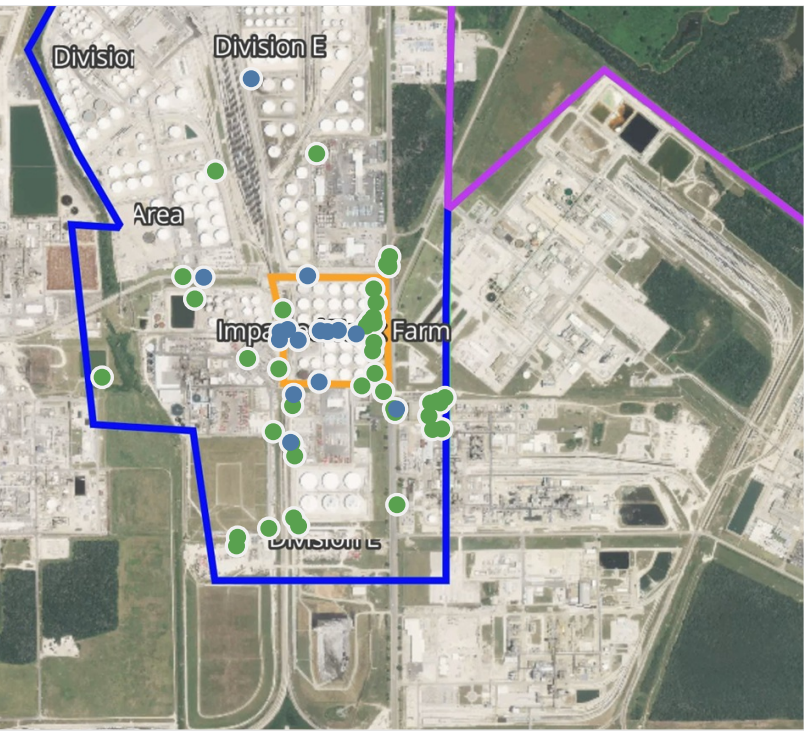
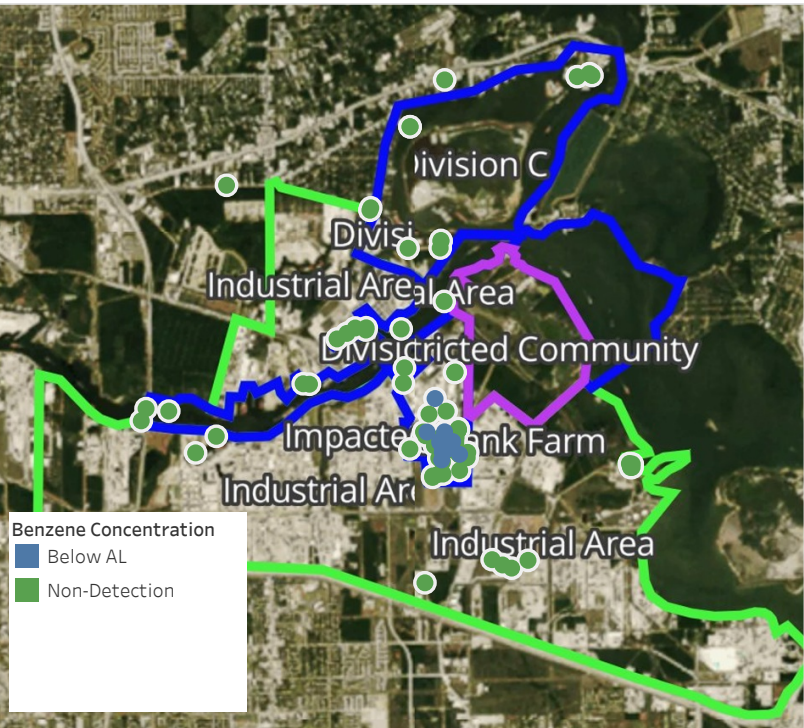
This data has been provided expeditiously to ITC and regulatory agencies for informational and/or operational purposes only. Data reported within this summary is preliminary in nature and has not undergone complete QA/QC (quality assurance/quality control) process. Until this complete QA/QC process is completed, the locations of each reading are approximate in nature and subject to further refinement. As some readings may represent non-breathing zone measurements, the data reported herein may not be suitable to assess potential occupational exposure. Site Assessment readings are not representative of an individual's breathing zone (e.g., container head space, ground level, directly above product, etc.).



Please Note: These updates display data from the 2nd 80's Fire site (Impacted Tank Farm), in the industrial areas surrounding the 2nd 80's Fire site (US Coast Guard Division E), within the Houston Ship Channel (US Coast Guard Divisions A-D), and in the industrial areas north and south of the Houston Ship Channel (Industrial Area). Real-time air monitoring data for the surrounding communities are communicated daily in a separate report.

Preliminary Hand- Held Air Monitoring Locations | ITC Deer Park Tank Fire

Reading Date
4/26/2019 10:00:00 AM to 4/26/2019 11:00:00 AM



Recent Benzene Detections

Location Category	Reading Date	Concentration
Division E	4/26/2019 10:00:10	0.2000 ppm
	4/26/2019 10:04:55	0.0200 ppm
	4/26/2019 10:14:15	0.0200 ppm
	4/26/2019 10:39:06	0.2000 ppm
	4/26/2019 10:46:55	0.0300 ppm
	4/26/2019 10:52:48	0.0200 ppm
	4/26/2019 10:09:59	0.0300 ppm
	4/26/2019 10:06:44	0.0200 ppm
Impacted Tank Farm	4/26/2019 10:07:17	0.0300 ppm
	4/26/2019 10:13:29	0.1100 ppm
	4/26/2019 10:23:05	0.0800 ppm
	4/26/2019 10:26:31	0.1200 ppm
	4/26/2019 10:47:22	0.0300 ppm
	4/26/2019 10:49:56	0.0400 ppm
Industrial Area	4/26/2019 10:30:01	0.0200 ppm

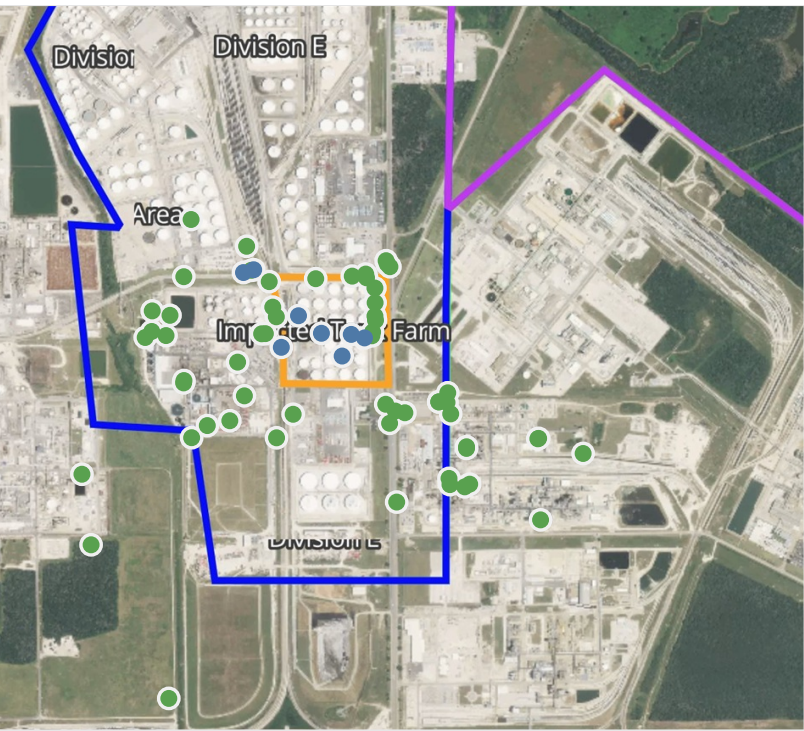
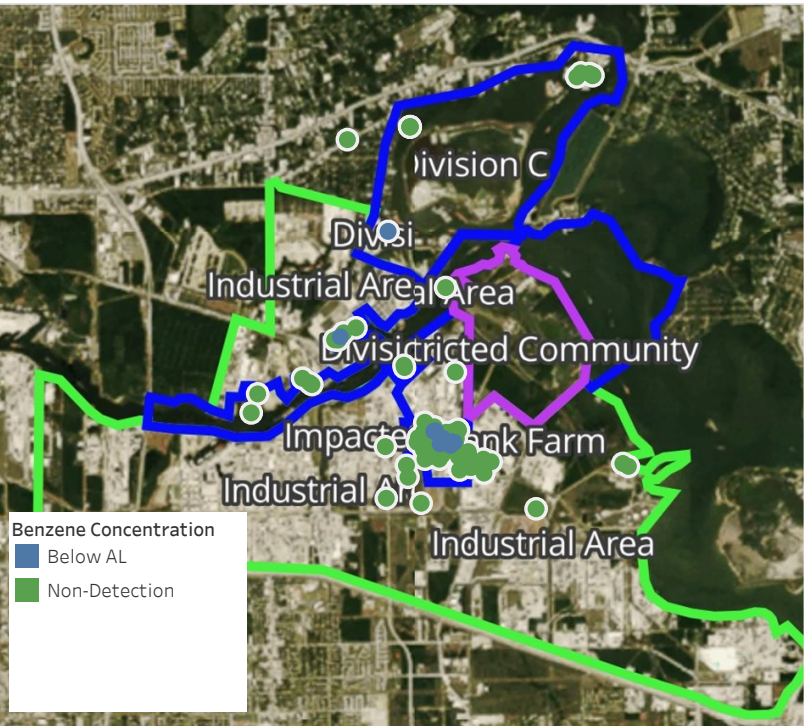
This data has been provided expeditiously to ITC and regulatory agencies for informational and/or operational purposes only. Data reported within this summary is preliminary in nature and has not undergone complete QA/QC (quality assurance/quality control) process. Until this complete QA/QC process is completed, the locations of each reading are approximate in nature and subject to further refinement. As some readings may represent non-breathing zone measurements, the data reported herein may not be suitable to assess potential occupational exposure. Site Assessment readings are not representative of an individual's breathing zone (e.g., container head space, ground level, directly above product, etc.).



Please Note: These updates display data from the 2nd 80's Fire site (Impacted Tank Farm), in the industrial areas surrounding the 2nd 80's Fire site (US Coast Guard Division E), within the Houston Ship Channel (US Coast Guard Divisions A-D), and in the industrial areas north and south of the Houston Ship Channel (Industrial Area). Real-time air monitoring data for the surrounding communities are communicated daily in a separate report.

Preliminary Hand- Held Air Monitoring Locations | ITC Deer Park Tank Fire

Reading Date
4/26/2019 11:00:00 AM to 4/26/2019 12:00:00 PM



Recent Benzene Detections

Location Category	Reading Date	Concentration
Division C	4/26/2019 11:04:13	0.0500 ppm
Division E	4/26/2019 11:27:48	0.0600 ppm
	4/26/2019 11:23:24	0.0200 ppm
	4/26/2019 11:57:08	0.0400 ppm
Impacted Tank Farm	4/26/2019 11:10:58	0.2100 ppm
	4/26/2019 11:13:44	0.0500 ppm
	4/26/2019 11:37:53	0.0400 ppm
	4/26/2019 11:36:05	0.0500 ppm
	4/26/2019 11:50:48	0.1300 ppm
Industrial Area	4/26/2019 11:33:23	0.2200 ppm

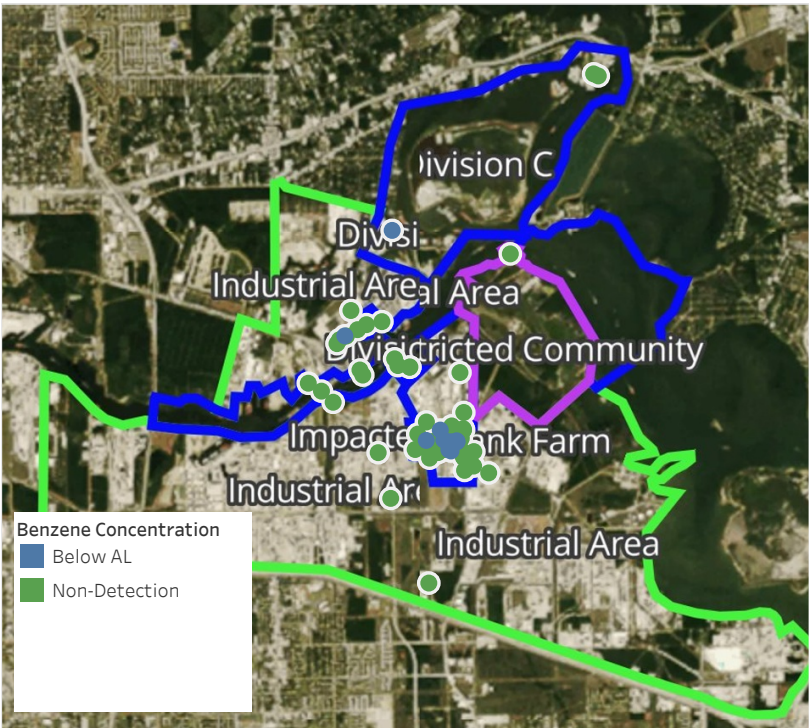
This data has been provided expeditiously to ITC and regulatory agencies for informational and/or operational purposes only. Data reported within this summary is preliminary in nature and has not undergone complete QA/QC (quality assurance/quality control) process. Until this complete QA/QC process is completed, the locations of each reading are approximate in nature and subject to further refinement. As some readings may represent non-breathing zone measurements, the data reported herein may not be suitable to assess potential occupational exposure. Site Assessment readings are not representative of an individual's breathing zone (e.g., container head space, ground level, directly above product, etc.).



Please Note: These updates display data from the 2nd 80's Fire site (Impacted Tank Farm), in the industrial areas surrounding the 2nd 80's Fire site (US Coast Guard Division E), within the Houston Ship Channel (US Coast Guard Divisions A-D), and in the industrial areas north and south of the Houston Ship Channel (Industrial Area). Real-time air monitoring data for the surrounding communities are communicated daily in a separate report.

Preliminary Hand- Held Air Monitoring Locations | ITC Deer Park Tank Fire

Reading Date
4/26/2019 12:00:00 PM to 4/26/2019 1:00:00 PM



Recent Benzene Detections

Location Category	Reading Date	Concentration
Above Grate	4/26/2019 12:52:25	0.0250 ppm
Division C	4/26/2019 12:06:16	0.0500 ppm
Division E	4/26/2019 12:14:27	0.2000 ppm
	4/26/2019 12:16:51	0.0500 ppm
	4/26/2019 12:10:31	0.0600 ppm
	4/26/2019 12:25:45	0.0200 ppm
	4/26/2019 12:51:37	0.0600 ppm
Impacted Tank Farm	4/26/2019 12:13:07	0.0900 ppm
	4/26/2019 12:14:35	0.1200 ppm
	4/26/2019 12:43:10	0.1100 ppm
	4/26/2019 12:50:11	0.1100 ppm

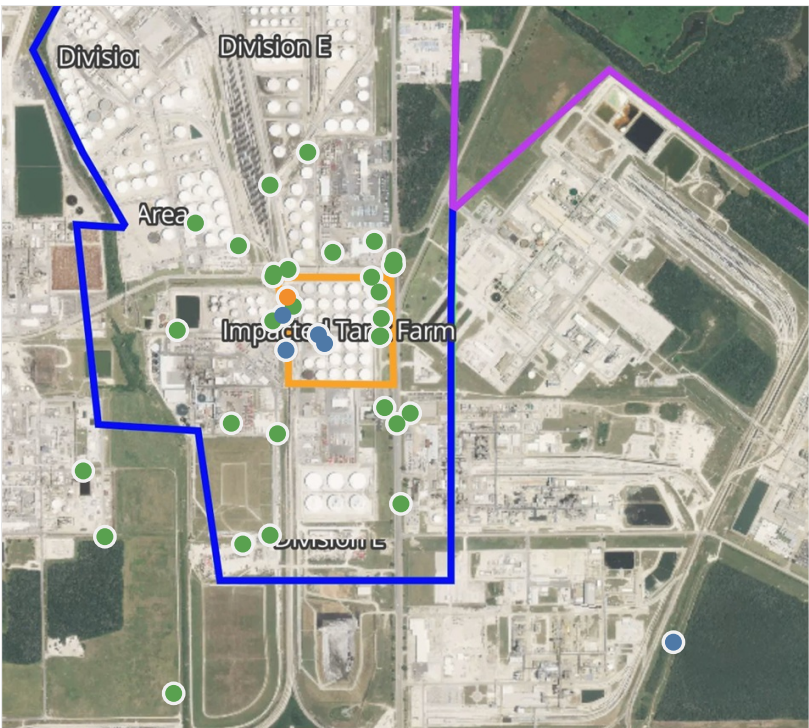
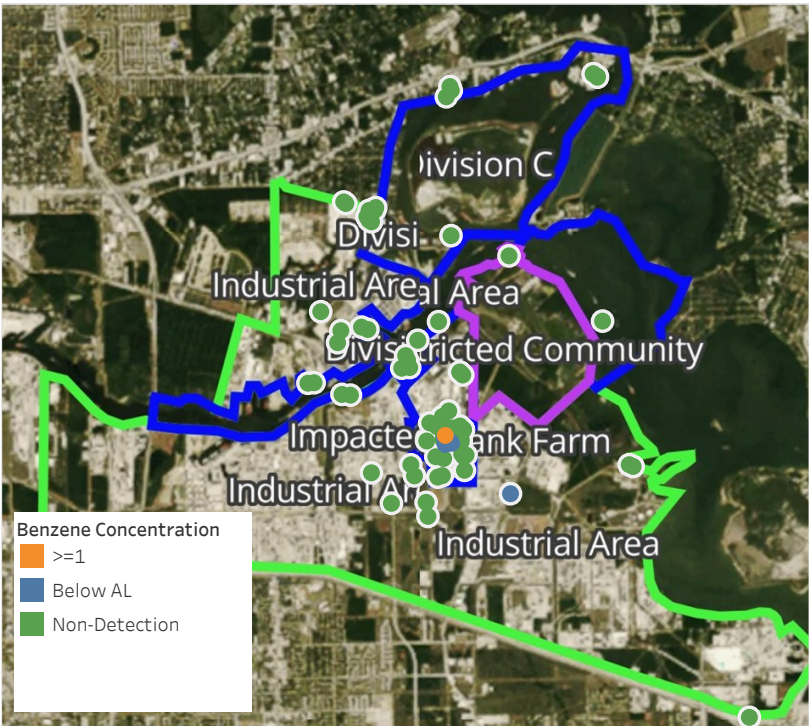
This data has been provided expeditiously to ITC and regulatory agencies for informational and/or operational purposes only. Data reported within this summary is preliminary in nature and has not undergone complete QA/QC (quality assurance/quality control) process. Until this complete QA/QC process is completed, the locations of each reading are approximate in nature and subject to further refinement. As some readings may represent non-breathing zone measurements, the data reported herein may not be suitable to assess potential occupational exposure. Site Assessment readings are not representative of an individual's breathing zone (e.g., container head space, ground level, directly above product, etc.).



Please Note: These updates display data from the 2nd 80's Fire site (Impacted Tank Farm), in the industrial areas surrounding the 2nd 80's Fire site (US Coast Guard Division E), within the Houston Ship Channel (US Coast Guard Divisions A-D), and in the industrial areas north and south of the Houston Ship Channel (Industrial Area). Real-time air monitoring data for the surrounding communities are communicated daily in a separate report.

Preliminary Hand- Held Air Monitoring Locations | ITC Deer Park Tank Fire

Reading Date
4/26/2019 1:00:00 PM to 4/26/2019 2:00:00 PM



Recent Benzene Detections

Location Category	Reading Date	Concentration
Division E	4/26/2019 13:18:45	0.020 ppm
	4/26/2019 13:34:05	0.040 ppm
Impacted Tank Farm	4/26/2019 13:20:17	1.160 ppm
	4/26/2019 13:11:55	0.050 ppm
	4/26/2019 13:44:50	0.020 ppm
	4/26/2019 13:50:32	0.110 ppm

This data has been provided expeditiously to ITC and regulatory agencies for informational and/or operational purposes only. Data reported within this summary is preliminary in nature and has not undergone complete QA/QC (quality assurance/quality control) process. Until this complete QA/QC process is completed, the locations of each reading are approximate in nature and subject to further refinement. As some readings may represent non-breathing zone measurements, the data reported herein may not be suitable to assess potential occupational exposure. Site Assessment readings are not representative of an individual's breathing zone (e.g., container head space, ground level, directly above product, etc.).

Reading Date
4/26/2019 1:00:00 PM to 4/26/2019 2:00:00 PM

Benzene Action Level Concentration (ppm)
 >=1

PRELIMINARY
Recent Benzene Detections Greater than 1.00 ppm

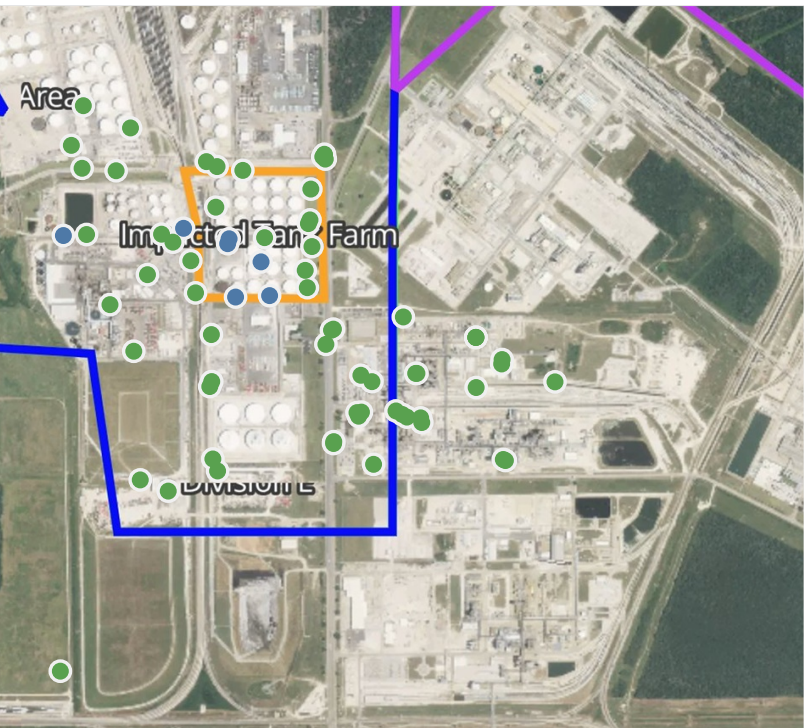
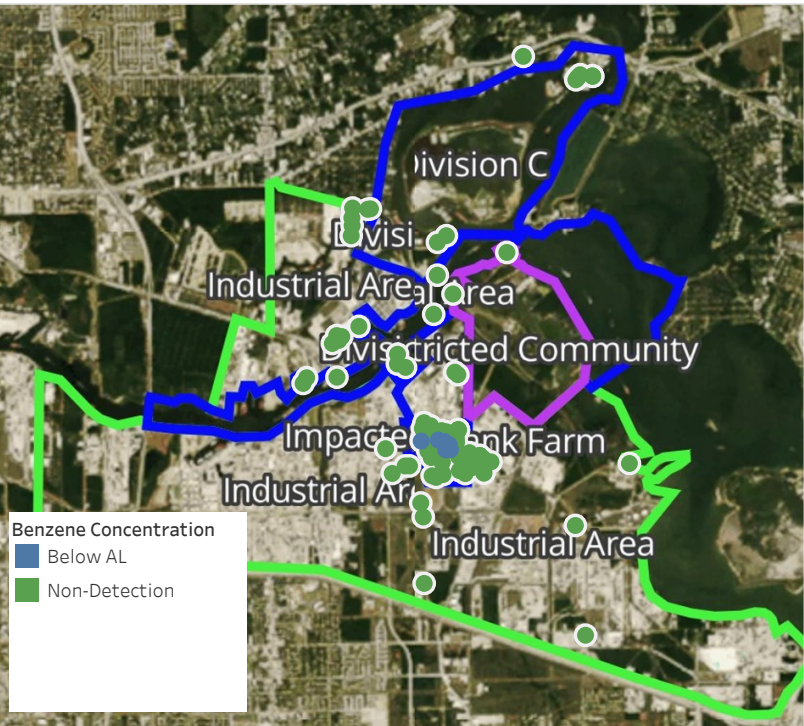
Reading Date	Location Category	GPS	Google Maps URL	Concentration
4/26/2019 13:20:17	Impacted Tank Farm	29.7326320,-95.0931600	https://www.google.com/maps/search/?api=1&query=29.7326320,-95.0931600	1.160 ppm



Please Note: These updates display data from the 2nd 80's Fire site (Impacted Tank Farm), in the industrial areas surrounding the 2nd 80's Fire site (US Coast Guard Division E), within the Houston Ship Channel (US Coast Guard Divisions A-D), and in the industrial areas north and south of the Houston Ship Channel (Industrial Area). Real-time air monitoring data for the surrounding communities are communicated daily in a separate report.

Preliminary Hand- Held Air Monitoring Locations | ITC Deer Park Tank Fire

Reading Date
4/26/2019 2:00:00 PM to 4/26/2019 3:00:00 PM



Recent Benzene Detections

Location Category	Reading Date	Concentration
Division E	4/26/2019 14:20:51	0.0500 ppm
	4/26/2019 14:26:17	0.0200 ppm
	4/26/2019 14:12:45	0.0700 ppm
	4/26/2019 14:58:21	0.3100 ppm
Impacted Tank Farm	4/26/2019 14:12:28	0.0300 ppm
	4/26/2019 14:38:56	0.0800 ppm
	4/26/2019 14:41:51	0.0800 ppm

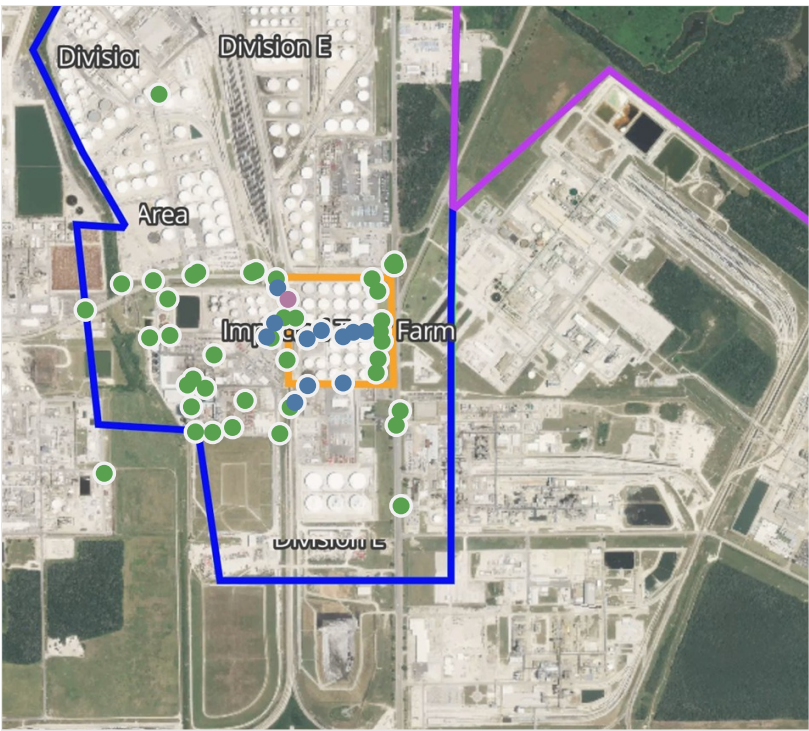
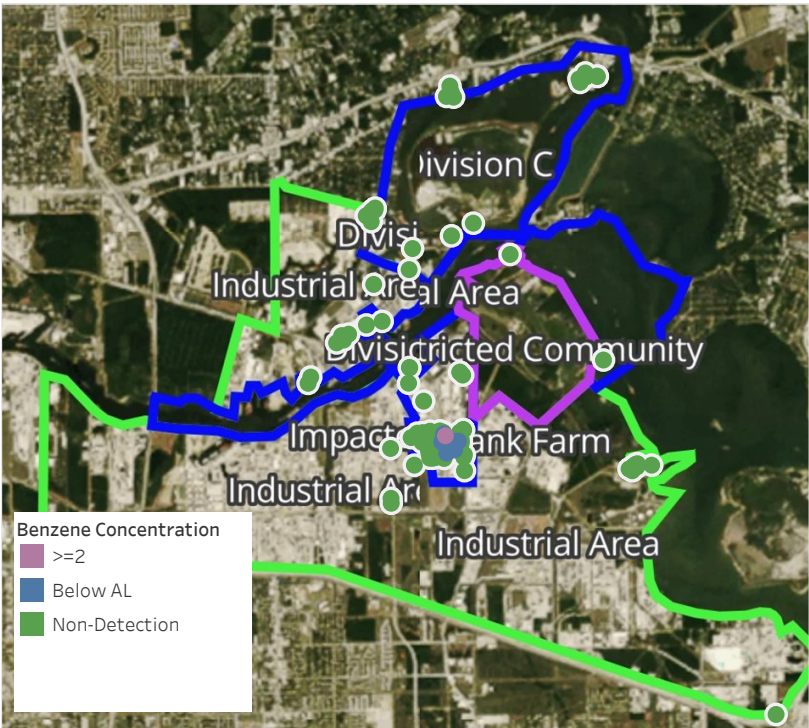
This data has been provided expeditiously to ITC and regulatory agencies for informational and/or operational purposes only. Data reported within this summary is preliminary in nature and has not undergone complete QA/QC (quality assurance/quality control) process. Until this complete QA/QC process is completed, the locations of each reading are approximate in nature and subject to further refinement. As some readings may represent non-breathing zone measurements, the data reported herein may not be suitable to assess potential occupational exposure. Site Assessment readings are not representative of an individual's breathing zone (e.g., container head space, ground level, directly above product, etc.).



Please Note: These updates display data from the 2nd 80's Fire site (Impacted Tank Farm), in the industrial areas surrounding the 2nd 80's Fire site (US Coast Guard Division E), within the Houston Ship Channel (US Coast Guard Divisions A-D), and in the industrial areas north and south of the Houston Ship Channel (Industrial Area). Real-time air monitoring data for the surrounding communities are communicated daily in a separate report.

Preliminary Hand- Held Air Monitoring Locations | ITC Deer Park Tank Fire

Reading Date
4/26/2019 3:00:00 PM to 4/26/2019 4:00:00 PM



Recent Benzene Detections

Location Category	Reading Date	Concentration
Division E	4/26/2019 15:05:46	0.050 ppm
	4/26/2019 15:00:57	0.080 ppm
	4/26/2019 15:11:50	0.070 ppm
	4/26/2019 15:41:07	0.000 ppm
	4/26/2019 15:11:51	0.010 ppm
	4/26/2019 15:19:41	0.020 ppm
Impacted Tank Farm	4/26/2019 15:06:08	0.180 ppm
	4/26/2019 15:10:21	0.220 ppm
	4/26/2019 15:07:58	4.910 ppm
	4/26/2019 15:29:40	0.160 ppm
	4/26/2019 15:36:34	0.090 ppm
	4/26/2019 15:57:54	0.030 ppm

This data has been provided expeditiously to ITC and regulatory agencies for informational and/or operational purposes only. Data reported within this summary is preliminary in nature and has not undergone complete QA/QC (quality assurance/quality control) process. Until this complete QA/QC process is completed, the locations of each reading are approximate in nature and subject to further refinement. As some readings may represent non-breathing zone measurements, the data reported herein may not be suitable to assess potential occupational exposure. Site Assessment readings are not representative of an individual's breathing zone (e.g., container head space, ground level, directly above product, etc.).

Reading Date
4/26/2019 3:00:00 PM to 4/26/2019 4:00:00 PM

Benzene Action Level Concentration (ppm)
 >=2

PRELIMINARY
Recent Benzene Detections Greater than 1.00 ppm

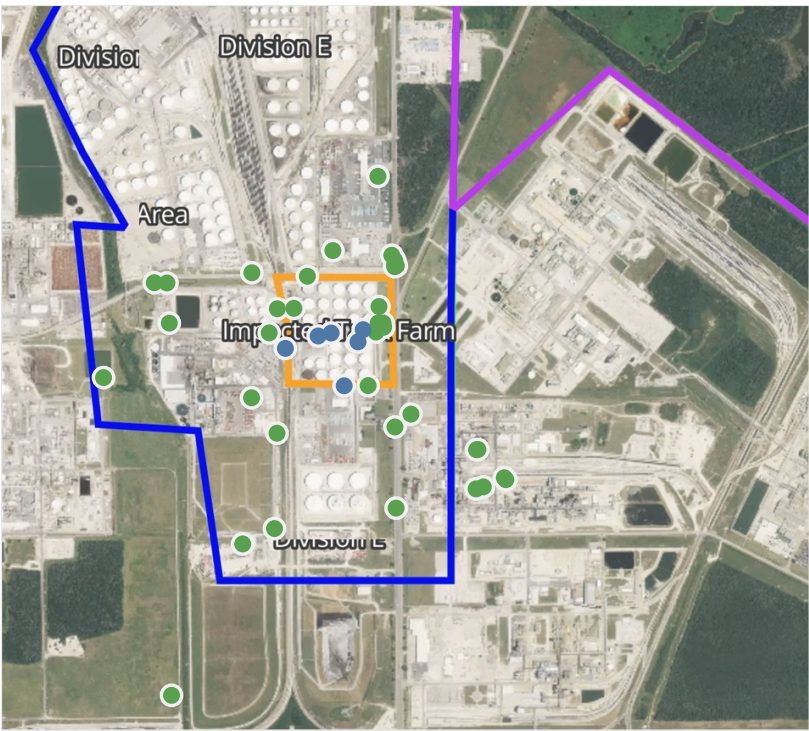
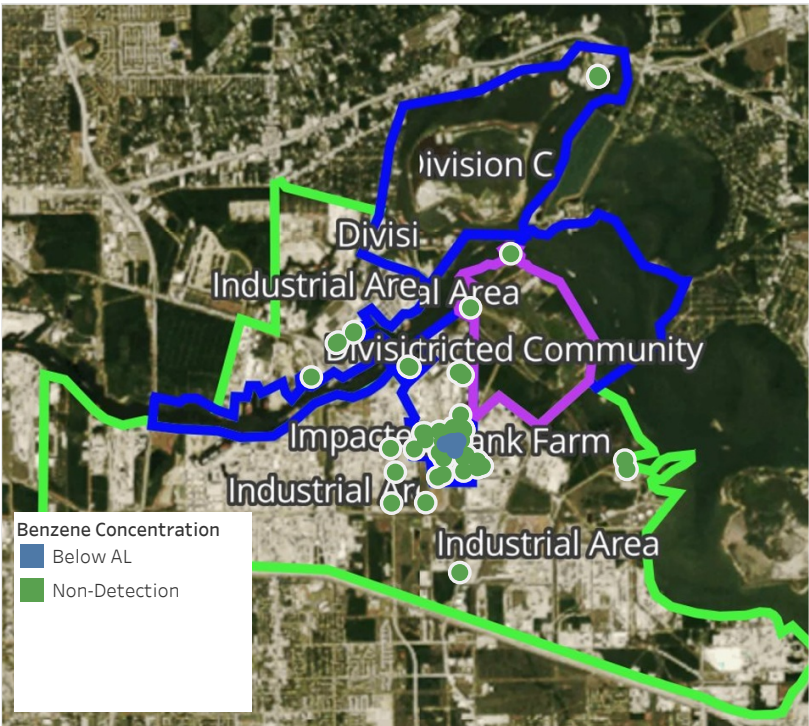
Reading Date	Location Category	GPS	Google Maps URL	Concentration
4/26/2019 15:07:58	Impacted Tank Farm	29.7325740,-95.0931440	https://www.google.com/maps/search/?api=1&query=29.7325740,-95.0931440	4.910 ppm



Please Note: These updates display data from the 2nd 80's Fire site (Impacted Tank Farm), in the industrial areas surrounding the 2nd 80's Fire site (US Coast Guard Division E), within the Houston Ship Channel (US Coast Guard Divisions A-D), and in the industrial areas north and south of the Houston Ship Channel (Industrial Area). Real-time air monitoring data for the surrounding communities are communicated daily in a separate report.

Preliminary Hand- Held Air Monitoring Locations | ITC Deer Park Tank Fire

Reading Date
4/26/2019 4:00:00 PM to 4/26/2019 5:00:00 PM



Recent Benzene Detections

Location Category	Reading Date	Concentration
Division E	4/26/2019 16:17:01	0.0200 ppm
	4/26/2019 16:52:14	0.0500 ppm
Impacted Tank Farm	4/26/2019 16:04:52	0.0200 ppm
	4/26/2019 16:27:26	0.3000 ppm
	4/26/2019 16:32:58	0.0700 ppm
	4/26/2019 16:53:12	0.0800 ppm

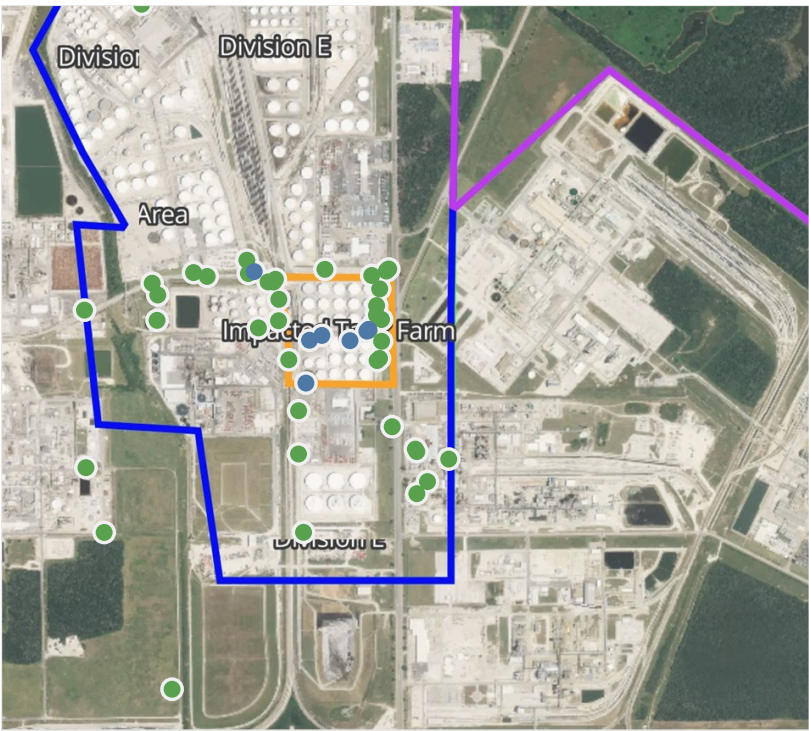
This data has been provided expeditiously to ITC and regulatory agencies for informational and/or operational purposes only. Data reported within this summary is preliminary in nature and has not undergone complete QA/QC (quality assurance/quality control) process. Until this complete QA/QC process is completed, the locations of each reading are approximate in nature and subject to further refinement. As some readings may represent non-breathing zone measurements, the data reported herein may not be suitable to assess potential occupational exposure. Site Assessment readings are not representative of an individual's breathing zone (e.g., container head space, ground level, directly above product, etc.).



Please Note: These updates display data from the 2nd 80's Fire site (Impacted Tank Farm), in the industrial areas surrounding the 2nd 80's Fire site (US Coast Guard Division E), within the Houston Ship Channel (US Coast Guard Divisions A-D), and in the industrial areas north and south of the Houston Ship Channel (Industrial Area). Real-time air monitoring data for the surrounding communities are communicated daily in a separate report.

Preliminary Hand- Held Air Monitoring Locations | ITC Deer Park Tank Fire

Reading Date
4/26/2019 5:00:00 PM to 4/26/2019 6:00:00 PM



Recent Benzene Detections

Location Category	Reading Date	Concentration
Division E	4/26/2019 17:08:14	0.05000 ppm
	4/26/2019 17:43:03	0.03000 ppm
Impacted Tank Farm	4/26/2019 17:00:14	0.06000 ppm
	4/26/2019 17:20:09	0.04000 ppm
	4/26/2019 17:25:02	0.11000 ppm
	4/26/2019 17:47:32	0.03000 ppm
	4/26/2019 17:49:26	0.07000 ppm

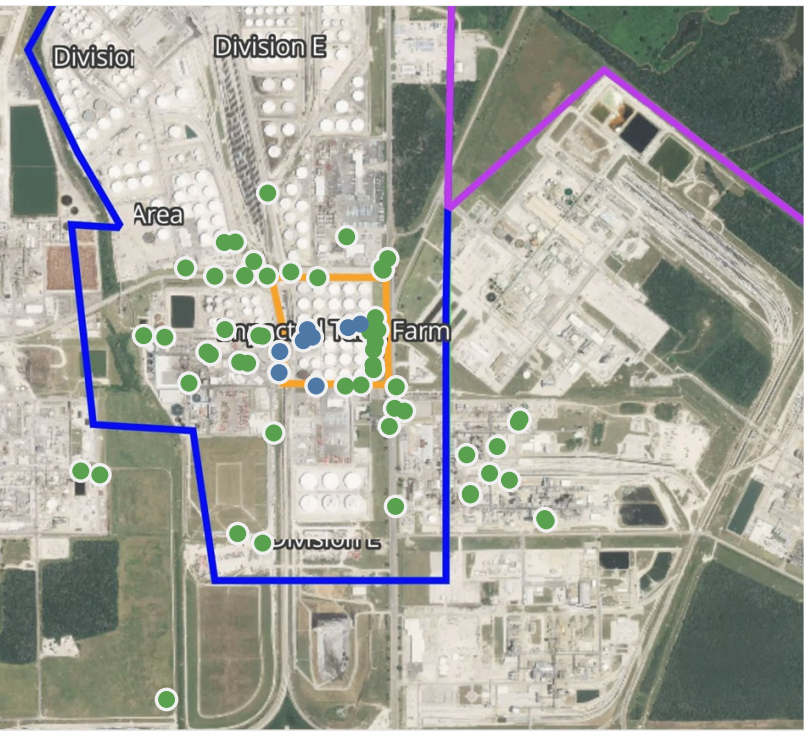
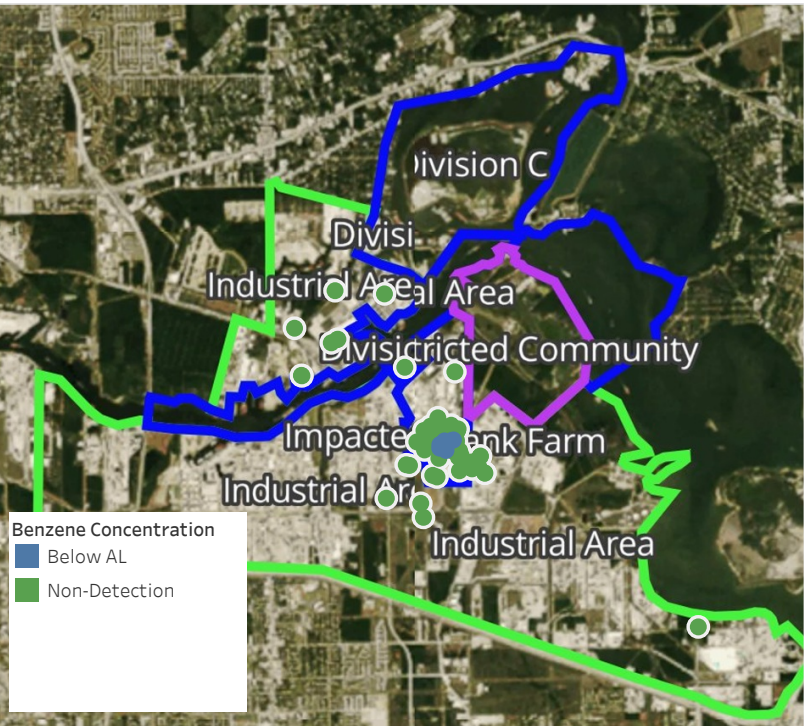
This data has been provided expeditiously to ITC and regulatory agencies for informational and/or operational purposes only. Data reported within this summary is preliminary in nature and has not undergone complete QA/QC (quality assurance/quality control) process. Until this complete QA/QC process is completed, the locations of each reading are approximate in nature and subject to further refinement. As some readings may represent non-breathing zone measurements, the data reported herein may not be suitable to assess potential occupational exposure. Site Assessment readings are not representative of an individual's breathing zone (e.g., container head space, ground level, directly above product, etc.).



Please Note: These updates display data from the 2nd 80's Fire site (Impacted Tank Farm), in the industrial areas surrounding the 2nd 80's Fire site (US Coast Guard Division E), within the Houston Ship Channel (US Coast Guard Divisions A-D), and in the industrial areas north and south of the Houston Ship Channel (Industrial Area). Real-time air monitoring data for the surrounding communities are communicated daily in a separate report.

Preliminary Hand- Held Air Monitoring Locations | ITC Deer Park Tank Fire

Reading Date
4/26/2019 6:00:00 PM to 4/26/2019 7:00:00 PM



Recent Benzene Detections

Location Category	Reading Date	Concentration
Division E	4/26/2019 18:10:24	0.0400 ppm
	4/26/2019 18:18:33	0.0400 ppm
	4/26/2019 18:24:21	0.0400 ppm
Impacted Tank Farm	4/26/2019 18:10:43	0.0800 ppm
	4/26/2019 18:15:15	0.1400 ppm
	4/26/2019 18:40:15	0.0900 ppm
	4/26/2019 18:41:36	0.2900 ppm
	4/26/2019 18:58:37	0.0700 ppm

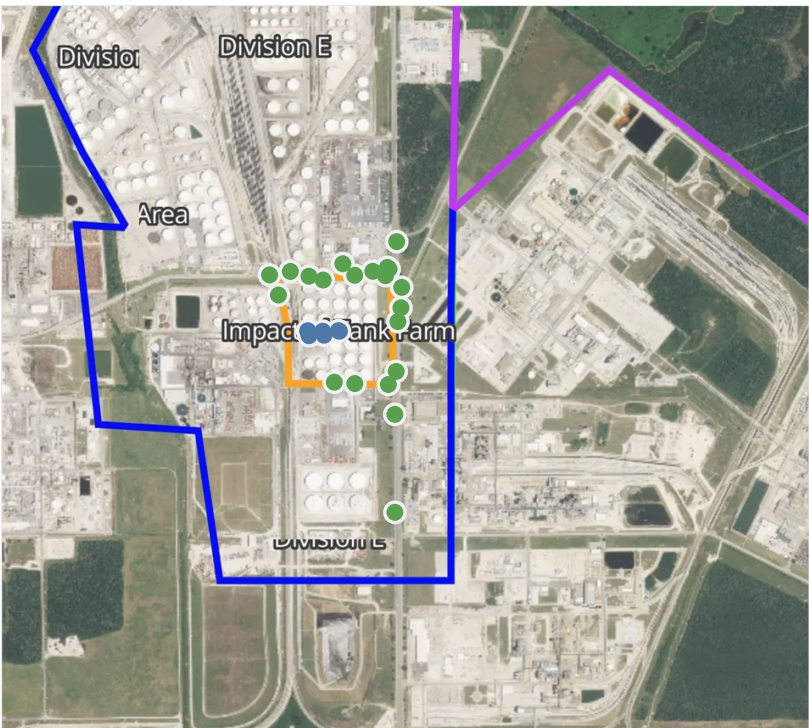
This data has been provided expeditiously to ITC and regulatory agencies for informational and/or operational purposes only. Data reported within this summary is preliminary in nature and has not undergone complete QA/QC (quality assurance/quality control) process. Until this complete QA/QC process is completed, the locations of each reading are approximate in nature and subject to further refinement. As some readings may represent non-breathing zone measurements, the data reported herein may not be suitable to assess potential occupational exposure. Site Assessment readings are not representative of an individual's breathing zone (e.g., container head space, ground level, directly above product, etc.).



Please Note: These updates display data from the 2nd 80's Fire site (Impacted Tank Farm), in the industrial areas surrounding the 2nd 80's Fire site (US Coast Guard Division E), within the Houston Ship Channel (US Coast Guard Divisions A-D), and in the industrial areas north and south of the Houston Ship Channel (Industrial Area). Real-time air monitoring data for the surrounding communities are communicated daily in a separate report.

Preliminary Hand- Held Air Monitoring Locations | ITC Deer Park Tank Fire

Reading Date
4/26/2019 7:00:00 PM to 4/26/2019 8:00:00 PM



Recent Benzene Detections

Location Category	Reading Date	Concentration
Impacted Tank Farm	4/26/2019 19:46:12	0.07000 ppm
	4/26/2019 19:48:07	0.11000 ppm
	4/26/2019 19:45:44	0.09000 ppm
	4/26/2019 19:54:14	0.04000 ppm
	4/26/2019 19:52:59	0.05000 ppm
	4/26/2019 19:56:59	0.10000 ppm
	4/26/2019 19:56:46	0.09000 ppm

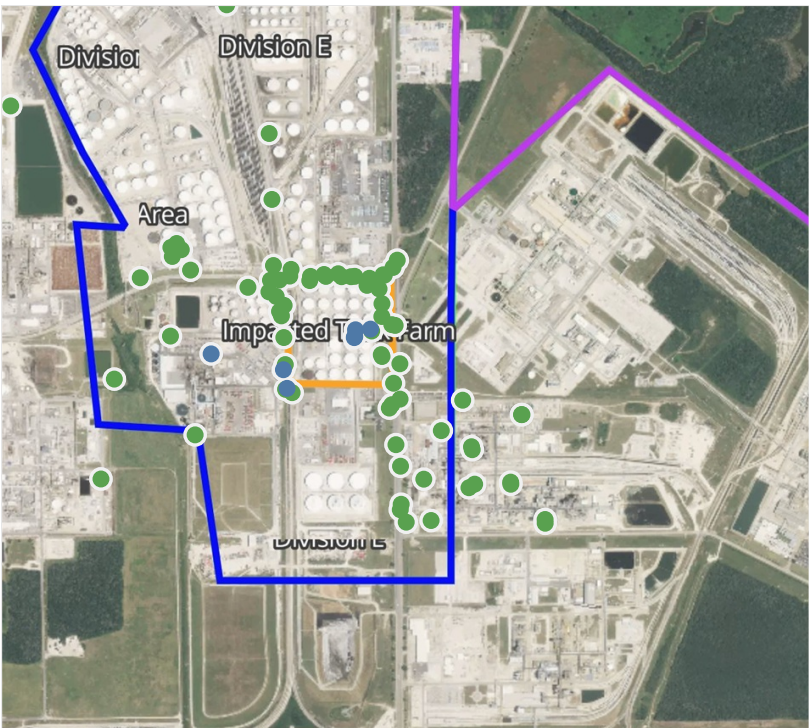
This data has been provided expeditiously to ITC and regulatory agencies for informational and/or operational purposes only. Data reported within this summary is preliminary in nature and has not undergone complete QA/QC (quality assurance/quality control) process. Until this complete QA/QC process is completed, the locations of each reading are approximate in nature and subject to further refinement. As some readings may represent non-breathing zone measurements, the data reported herein may not be suitable to assess potential occupational exposure. Site Assessment readings are not representative of an individual's breathing zone (e.g., container head space, ground level, directly above product, etc.).



Please Note: These updates display data from the 2nd 80's Fire site (Impacted Tank Farm), in the industrial areas surrounding the 2nd 80's Fire site (US Coast Guard Division E), within the Houston Ship Channel (US Coast Guard Divisions A-D), and in the industrial areas north and south of the Houston Ship Channel (Industrial Area). Real-time air monitoring data for the surrounding communities are communicated daily in a separate report.

Preliminary Hand- Held Air Monitoring Locations | ITC Deer Park Tank Fire

Reading Date
4/26/2019 8:00:00 PM to 4/26/2019 9:00:00 PM



Recent Benzene Detections

Location Category	Reading Date	Concentration
Division E	4/26/2019 20:34:57	0.1500 ppm
	4/26/2019 20:26:44	0.1300 ppm
	4/26/2019 20:49:42	0.1750 ppm
Impacted Tank Farm	4/26/2019 20:03:03	0.1200 ppm
	4/26/2019 20:01:48	0.4300 ppm
	4/26/2019 20:02:25	0.1800 ppm
	4/26/2019 20:06:55	0.0500 ppm

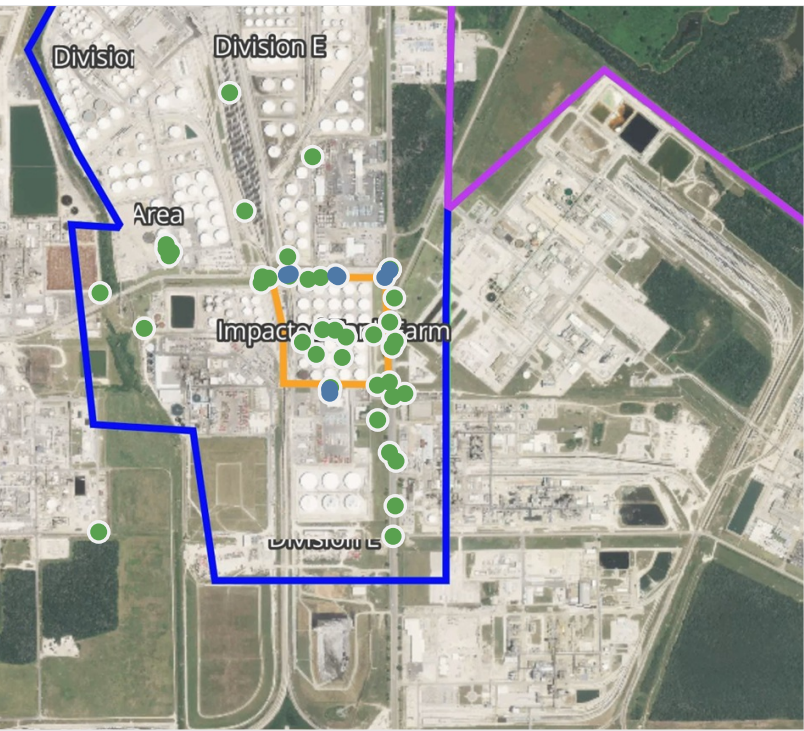
This data has been provided expeditiously to ITC and regulatory agencies for informational and/or operational purposes only. Data reported within this summary is preliminary in nature and has not undergone complete QA/QC (quality assurance/quality control) process. Until this complete QA/QC process is completed, the locations of each reading are approximate in nature and subject to further refinement. As some readings may represent non-breathing zone measurements, the data reported herein may not be suitable to assess potential occupational exposure. Site Assessment readings are not representative of an individual's breathing zone (e.g., container head space, ground level, directly above product, etc.).



Please Note: These updates display data from the 2nd 80's Fire site (Impacted Tank Farm), in the industrial areas surrounding the 2nd 80's Fire site (US Coast Guard Division E), within the Houston Ship Channel (US Coast Guard Divisions A-D), and in the industrial areas north and south of the Houston Ship Channel (Industrial Area). Real-time air monitoring data for the surrounding communities are communicated daily in a separate report.

Preliminary Hand- Held Air Monitoring Locations | ITC Deer Park Tank Fire

Reading Date
4/26/2019 9:00:00 PM to 4/26/2019 10:00:00 PM



Recent Benzene Detections

Location Category	Reading Date	Concentration
Division E	4/26/2019 21:08:14	0.1200 ppm
	4/26/2019 21:07:05	0.1500 ppm
	4/26/2019 21:04:58	0.0800 ppm
	4/26/2019 21:26:11	0.1500 ppm
	4/26/2019 21:26:31	0.0900 ppm
	4/26/2019 21:31:19	0.0750 ppm
	4/26/2019 21:56:20	0.0200 ppm
	4/26/2019 21:57:22	0.0300 ppm
	4/26/2019 21:51:39	0.1000 ppm

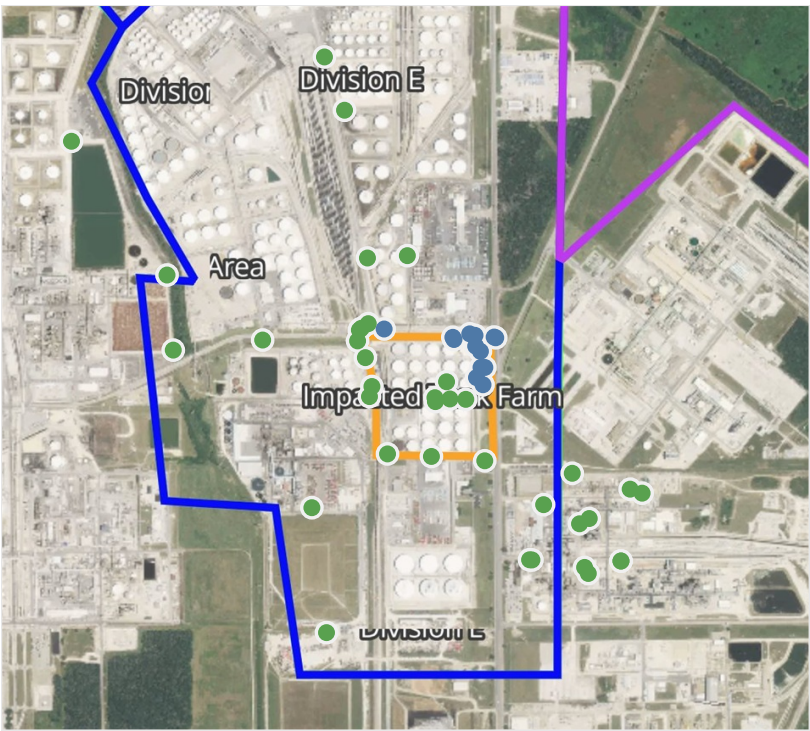
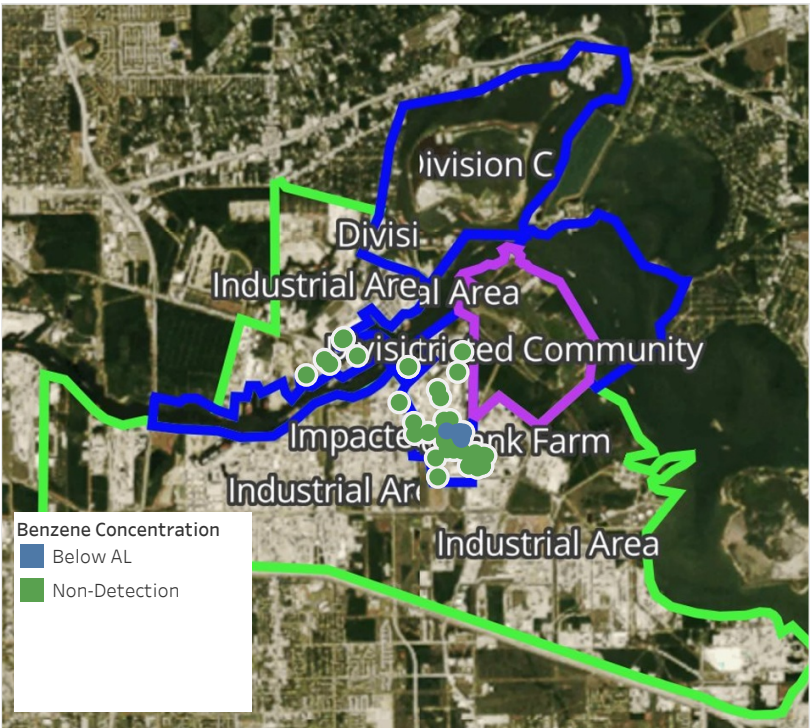
This data has been provided expeditiously to ITC and regulatory agencies for informational and/or operational purposes only. Data reported within this summary is preliminary in nature and has not undergone complete QA/QC (quality assurance/quality control) process. Until this complete QA/QC process is completed, the locations of each reading are approximate in nature and subject to further refinement. As some readings may represent non-breathing zone measurements, the data reported herein may not be suitable to assess potential occupational exposure. Site Assessment readings are not representative of an individual's breathing zone (e.g., container head space, ground level, directly above product, etc.).



Please Note: These updates display data from the 2nd 80's Fire site (Impacted Tank Farm), in the industrial areas surrounding the 2nd 80's Fire site (US Coast Guard Division E), within the Houston Ship Channel (US Coast Guard Divisions A-D), and in the industrial areas north and south of the Houston Ship Channel (Industrial Area). Real-time air monitoring data for the surrounding communities are communicated daily in a separate report.

Preliminary Hand- Held Air Monitoring Locations | ITC Deer Park Tank Fire

Reading Date
4/26/2019 10:00:00 PM to 4/26/2019 11:00:00 PM



Recent Benzene Detections

Location Category	Reading Date	Concentration
Division E	4/26/2019 22:04:40	0.0400 ppm
	4/26/2019 22:02:24	0.1000 ppm
	4/26/2019 22:08:37	0.0600 ppm
	4/26/2019 22:15:26	0.1800 ppm
	4/26/2019 22:15:44	0.1000 ppm
	4/26/2019 22:09:37	0.1100 ppm
	4/26/2019 22:24:53	0.3200 ppm
	4/26/2019 22:21:08	0.2300 ppm
	4/26/2019 22:27:11	0.0500 ppm
	4/26/2019 22:58:38	0.1200 ppm
Impacted Tank Farm	4/26/2019 22:20:53	0.2100 ppm
	4/26/2019 22:24:21	0.3600 ppm
	4/26/2019 22:26:23	0.0500 ppm

This data has been provided expeditiously to ITC and regulatory agencies for informational and/or operational purposes only. Data reported within this summary is preliminary in nature and has not undergone complete QA/QC (quality assurance/quality control) process. Until this complete QA/QC process is completed, the locations of each reading are approximate in nature and subject to further refinement. As some readings may represent non-breathing zone measurements, the data reported herein may not be suitable to assess potential occupational exposure. Site Assessment readings are not representative of an individual's breathing zone (e.g., container head space, ground level, directly above product, etc.).



Please Note: These updates display data from the 2nd 80's Fire site (Impacted Tank Farm), in the industrial areas surrounding the 2nd 80's Fire site (US Coast Guard Division E), within the Houston Ship Channel (US Coast Guard Divisions A-D), and in the industrial areas north and south of the Houston Ship Channel (Industrial Area). Real-time air monitoring data for the surrounding communities are communicated daily in a separate report.