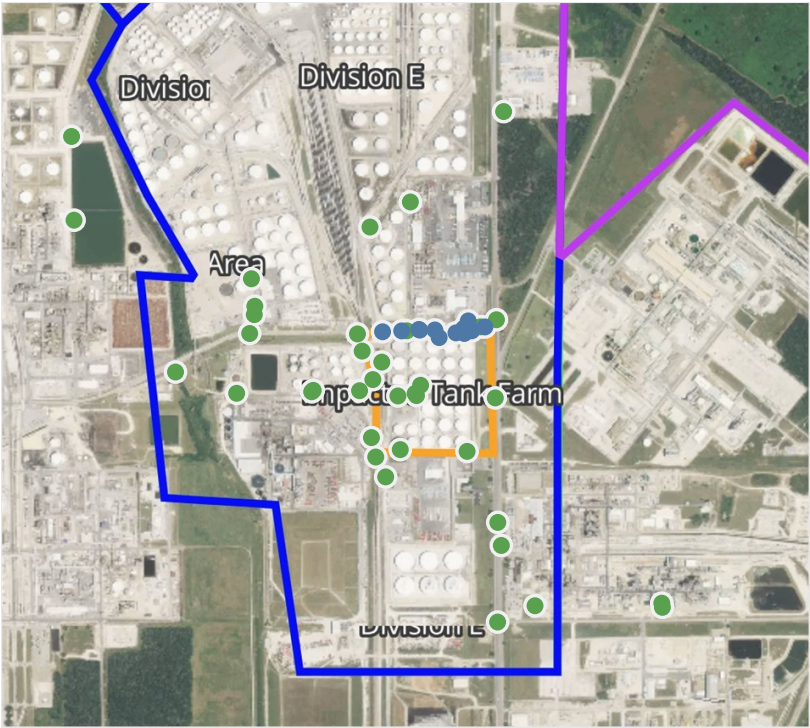


# Preliminary Hand- Held Air Monitoring Locations | ITC Deer Park Tank Fire

Reading Date  
4/26/2019 11:00:00 PM to 4/27/2019 12:00:00 AM



## Recent Benzene Detections

Location Category	Reading Date	Concentration
Division E	4/26/2019 23:04:27	0.0500 ppm
	4/26/2019 23:01:05	0.2000 ppm
	4/26/2019 23:06:13	0.0600 ppm
	4/26/2019 23:02:34	0.0400 ppm
	4/26/2019 23:07:49	0.0500 ppm
	4/26/2019 23:33:44	0.0600 ppm
	4/26/2019 23:31:58	0.0400 ppm
	4/26/2019 23:40:46	0.0900 ppm
	4/26/2019 23:36:24	0.0700 ppm
	4/26/2019 23:27:35	0.0900 ppm
	4/26/2019 23:35:27	0.1100 ppm
	4/26/2019 23:40:34	0.0700 ppm

This data has been provided expeditiously to ITC and regulatory agencies for informational and/or operational purposes only. Data reported within this summary is preliminary in nature and has not undergone complete QA/QC (quality assurance/quality control) process. Until this complete QA/QC process is completed, the locations of each reading are approximate in nature and subject to further refinement. As some readings may represent non-breathing zone measurements, the data reported herein may not be suitable to assess potential occupational exposure. Site Assessment readings are not representative of an individual's breathing zone (e.g., container head space, ground level, directly above product, etc.).

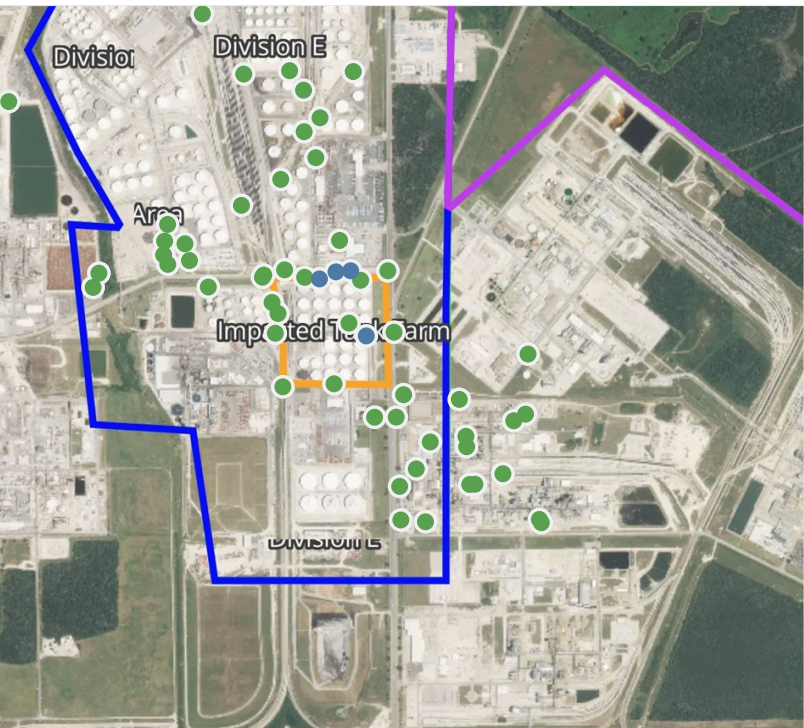
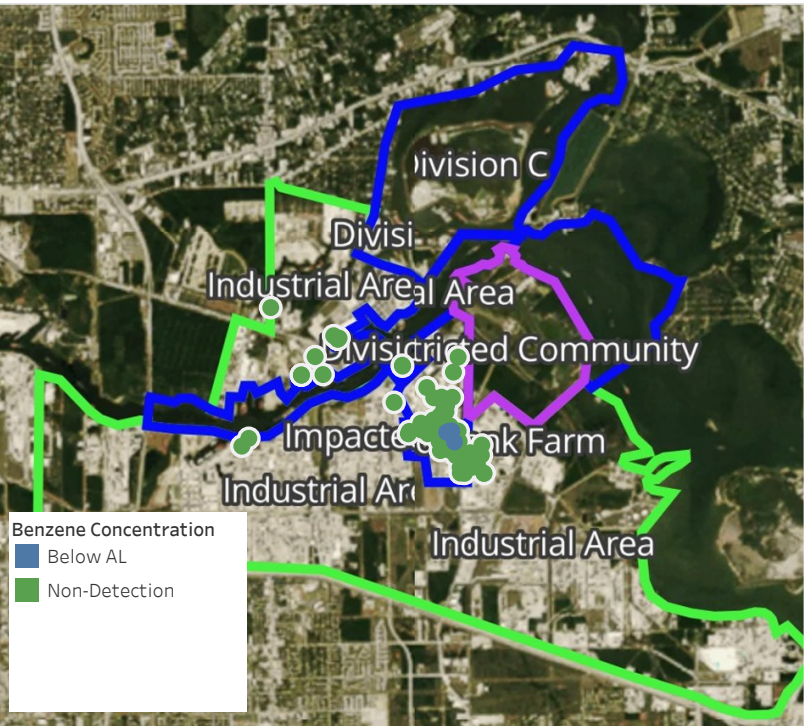


**Please Note:** These updates display data from the 2<sup>nd</sup> 80's Fire site (Impacted Tank Farm), in the industrial areas surrounding the 2<sup>nd</sup> 80's Fire site (US Coast Guard Division E), within the Houston Ship Channel (US Coast Guard Divisions A-D), and in the industrial areas north and south of the Houston Ship Channel (Industrial Area). Real-time air monitoring data for the surrounding communities are communicated daily in a separate report.



# Preliminary Hand- Held Air Monitoring Locations | ITC Deer Park Tank Fire

Reading Date  
4/27/2019 12:00:00 AM to 4/27/2019 1:00:00 AM



## Recent Benzene Detections

Location Category	Reading Date	Concentration
Division E	4/27/2019 00:03:00	0.0900 ppm
	4/27/2019 00:07:00	0.0300 ppm
	4/27/2019 00:05:07	0.0600 ppm
Impacted Tank Farm	4/27/2019 00:08:59	0.1400 ppm

This data has been provided expeditiously to ITC and regulatory agencies for informational and/or operational purposes only. Data reported within this summary is preliminary in nature and has not undergone complete QA/QC (quality assurance/quality control) process. Until this complete QA/QC process is completed, the locations of each reading are approximate in nature and subject to further refinement. As some readings may represent non-breathing zone measurements, the data reported herein may not be suitable to assess potential occupational exposure. Site Assessment readings are not representative of an individual's breathing zone (e.g., container head space, ground level, directly above product, etc.).

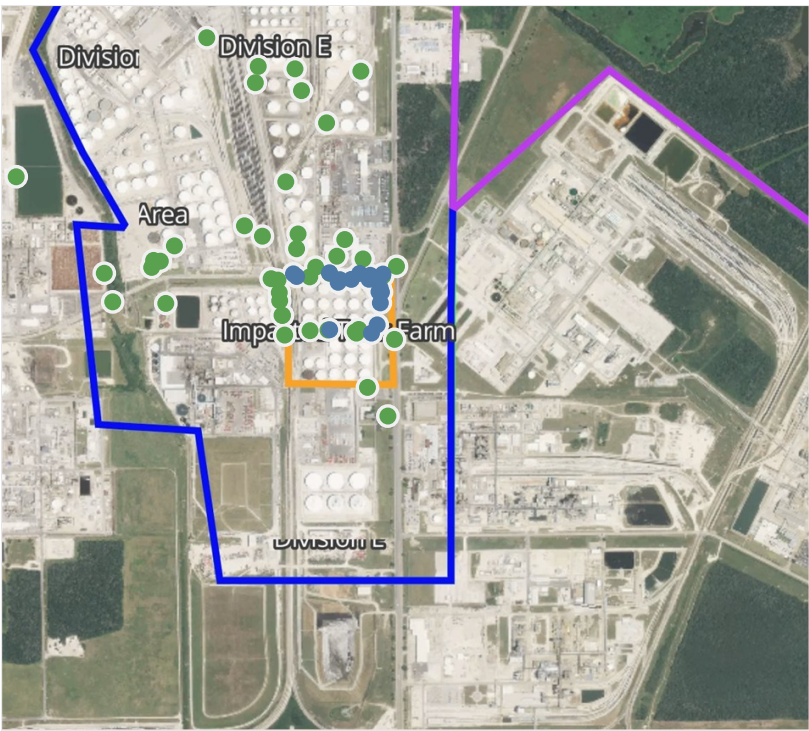


**Please Note:** These updates display data from the 2<sup>nd</sup> 80's Fire site (Impacted Tank Farm), in the industrial areas surrounding the 2<sup>nd</sup> 80's Fire site (US Coast Guard Division E), within the Houston Ship Channel (US Coast Guard Divisions A-D), and in the industrial areas north and south of the Houston Ship Channel (Industrial Area). Real-time air monitoring data for the surrounding communities are communicated daily in a separate report.



# Preliminary Hand- Held Air Monitoring Locations | ITC Deer Park Tank Fire

Reading Date  
4/27/2019 1:00:00 AM to 4/27/2019 2:00:00 AM



## Recent Benzene Detections

Location Category	Reading Date	Concentration
Division E	4/27/2019 01:12:08	0.0500 ppm
	4/27/2019 01:15:58	0.0500 ppm
	4/27/2019 01:07:17	0.0500 ppm
	4/27/2019 01:14:10	0.0300 ppm
	4/27/2019 01:41:02	0.0500 ppm
	4/27/2019 01:46:11	0.1400 ppm
	4/27/2019 01:44:38	0.0600 ppm
	4/27/2019 01:47:34	0.0500 ppm
	4/27/2019 01:34:56	0.2600 ppm
Impacted Tank Farm	4/27/2019 01:43:02	0.1000 ppm
	4/27/2019 01:31:14	0.0200 ppm
	4/27/2019 01:41:48	0.1400 ppm
	4/27/2019 01:41:08	0.1900 ppm
	4/27/2019 01:48:50	0.3500 ppm
	4/27/2019 01:51:32	0.4200 ppm
	4/27/2019 01:48:20	0.4100 ppm
	4/27/2019 01:54:12	0.0900 ppm

This data has been provided expeditiously to ITC and regulatory agencies for informational and/or operational purposes only. Data reported within this summary is preliminary in nature and has not undergone complete QA/QC (quality assurance/quality control) process. Until this complete QA/QC process is completed, the locations of each reading are approximate in nature and subject to further refinement. As some readings may represent non-breathing zone measurements, the data reported herein may not be suitable to assess potential occupational exposure. Site Assessment readings are not representative of an individual's breathing zone (e.g., container head space, ground level, directly above product, etc.).

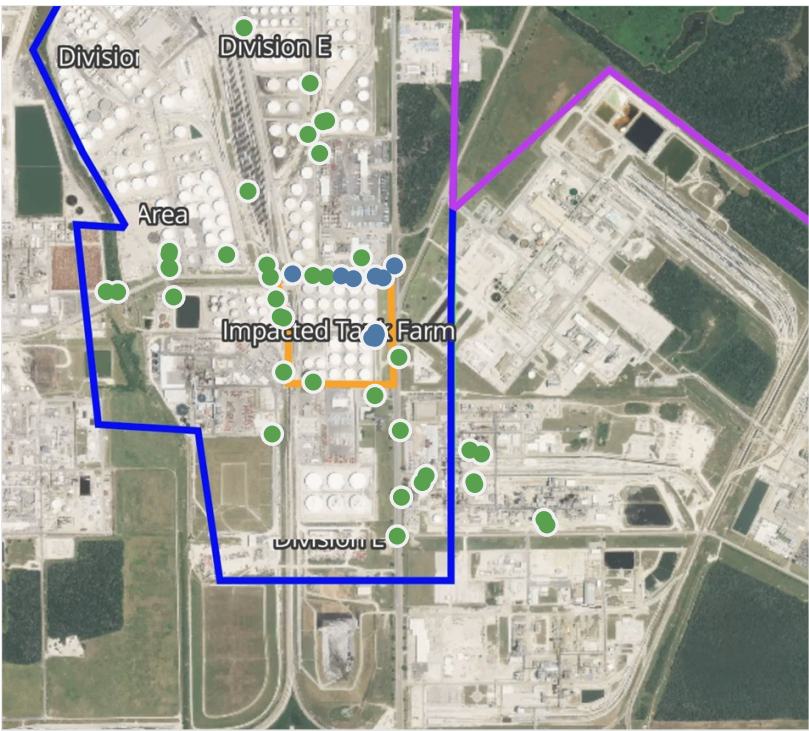




**Please Note:** These updates display data from the 2<sup>nd</sup> 80's Fire site (Impacted Tank Farm), in the industrial areas surrounding the 2<sup>nd</sup> 80's Fire site (US Coast Guard Division E), within the Houston Ship Channel (US Coast Guard Divisions A-D), and in the industrial areas north and south of the Houston Ship Channel (Industrial Area). Real-time air monitoring data for the surrounding communities are communicated daily in a separate report.

# Preliminary Hand- Held Air Monitoring Locations | ITC Deer Park Tank Fire

Reading Date  
4/27/2019 2:00:00 AM to 4/27/2019 3:00:00 AM



## Recent Benzene Detections

Location Category	Reading Date	Concentration
Division E	4/27/2019 02:44:22	0.06000 ppm
	4/27/2019 02:36:17	0.14000 ppm
	4/27/2019 02:46:34	0.09000 ppm
	4/27/2019 02:42:53	0.05000 ppm
	4/27/2019 02:48:50	0.09000 ppm
Impacted Tank Farm	4/27/2019 02:56:09	0.07500 ppm
	4/27/2019 02:03:43	0.10000 ppm
	4/27/2019 02:05:40	0.08000 ppm
	4/27/2019 02:17:32	0.11000 ppm
	4/27/2019 02:17:18	0.10000 ppm

This data has been provided expeditiously to ITC and regulatory agencies for informational and/or operational purposes only. Data reported within this summary is preliminary in nature and has not undergone complete QA/QC (quality assurance/quality control) process. Until this complete QA/QC process is completed, the locations of each reading are approximate in nature and subject to further refinement. As some readings may represent non-breathing zone measurements, the data reported herein may not be suitable to assess potential occupational exposure. Site Assessment readings are not representative of an individual's breathing zone (e.g., container head space, ground level, directly above product, etc.).



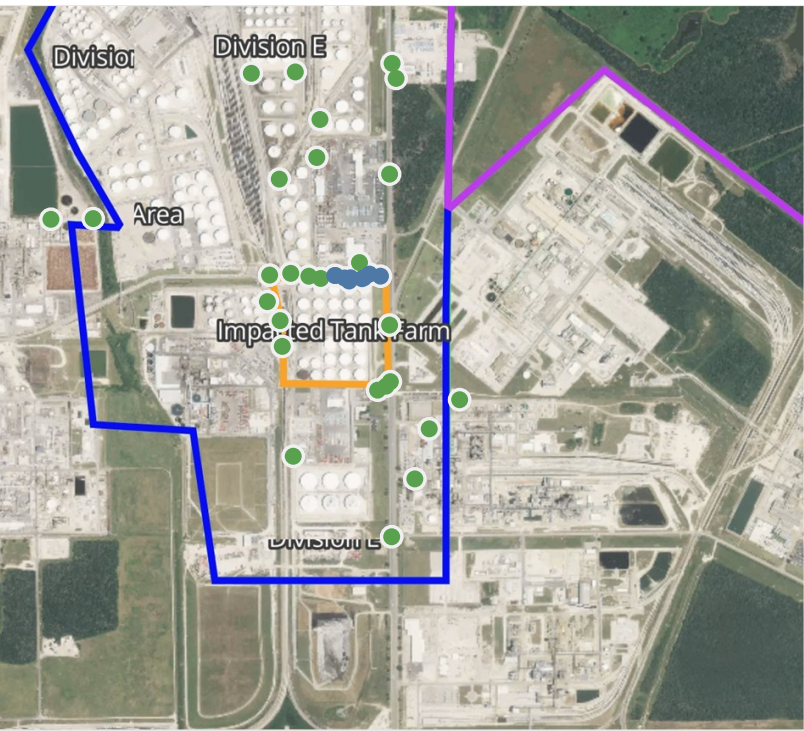
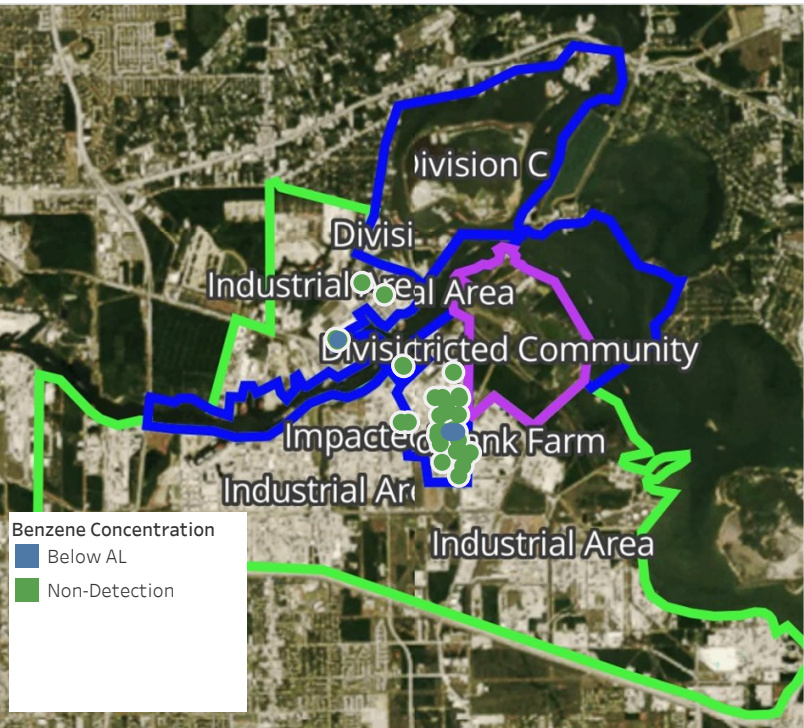


**Please Note:** These updates display data from the 2<sup>nd</sup> 80's Fire site (Impacted Tank Farm), in the industrial areas surrounding the 2<sup>nd</sup> 80's Fire site (US Coast Guard Division E), within the Houston Ship Channel (US Coast Guard Divisions A-D), and in the industrial areas north and south of the Houston Ship Channel (Industrial Area). Real-time air monitoring data for the surrounding communities are communicated daily in a separate report.



# Preliminary Hand- Held Air Monitoring Locations | ITC Deer Park Tank Fire

Reading Date  
4/27/2019 3:00:00 AM to 4/27/2019 4:00:00 AM



## Recent Benzene Detections

Location Category	Reading Date	Concentration
Division E	4/27/2019 03:29:36	0.05000 ppm
	4/27/2019 03:26:33	0.13000 ppm
	4/27/2019 03:28:10	0.09000 ppm
	4/27/2019 03:51:49	0.12000 ppm
	4/27/2019 03:52:13	0.07000 ppm
Division E	4/27/2019 03:55:01	0.08000 ppm
	4/27/2019 03:55:25	0.12000 ppm

This data has been provided expeditiously to ITC and regulatory agencies for informational and/or operational purposes only. Data reported within this summary is preliminary in nature and has not undergone complete QA/QC (quality assurance/quality control) process. Until this complete QA/QC process is completed, the locations of each reading are approximate in nature and subject to further refinement. As some readings may represent non-breathing zone measurements, the data reported herein may not be suitable to assess potential occupational exposure. Site Assessment readings are not representative of an individual's breathing zone (e.g., container head space, ground level, directly above product, etc.).

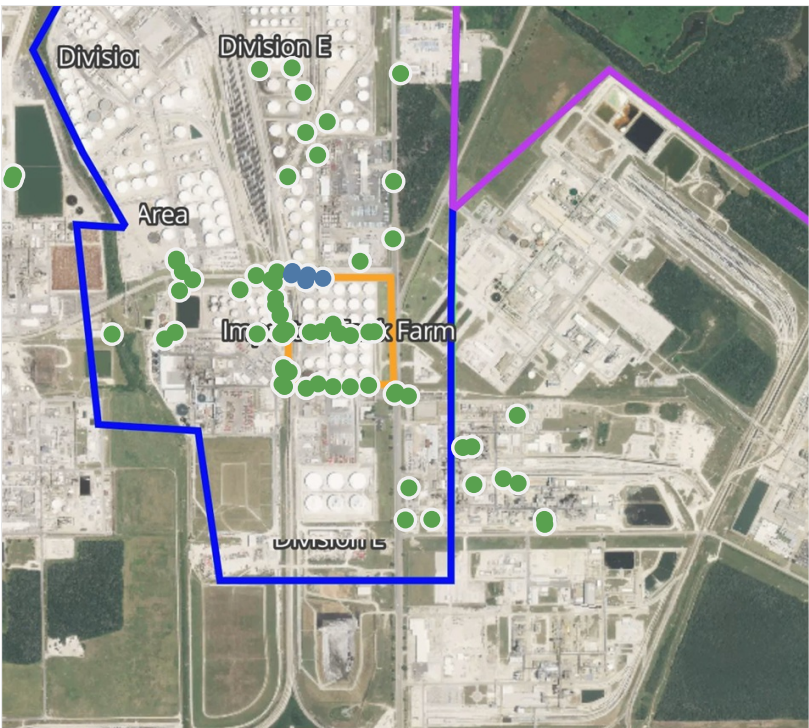
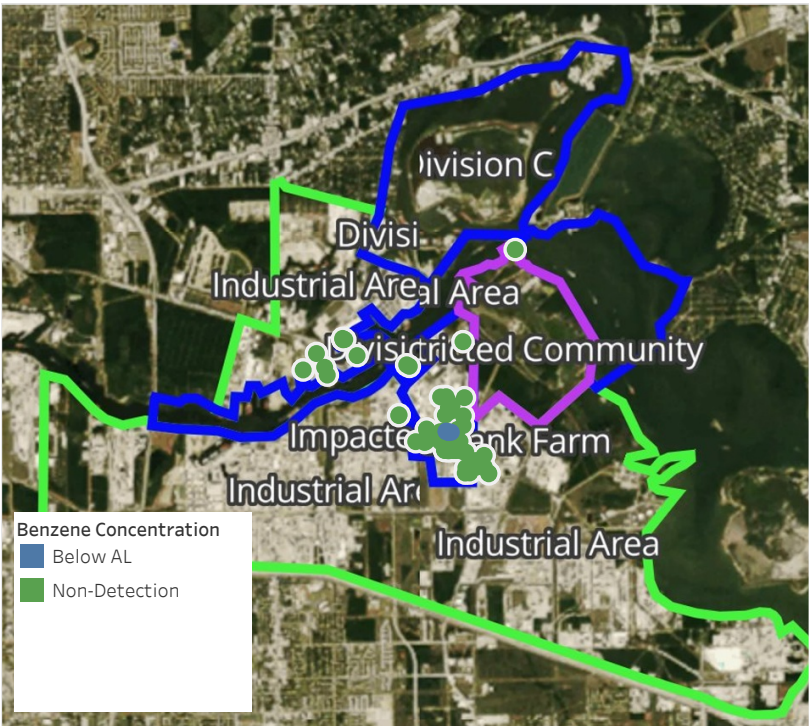


**Please Note:** These updates display data from the 2<sup>nd</sup> 80's Fire site (Impacted Tank Farm), in the industrial areas surrounding the 2<sup>nd</sup> 80's Fire site (US Coast Guard Division E), within the Houston Ship Channel (US Coast Guard Divisions A-D), and in the industrial areas north and south of the Houston Ship Channel (Industrial Area). Real-time air monitoring data for the surrounding communities are communicated daily in a separate report.



# Preliminary Hand- Held Air Monitoring Locations | ITC Deer Park Tank Fire

Reading Date  
4/27/2019 4:00:00 AM to 4/27/2019 5:00:00 AM



## Recent Benzene Detections

Location Category	Reading Date	Concentration
Division E	4/27/2019 04:00:17	0.1800 ppm
	4/27/2019 04:01:59	0.0900 ppm
	4/27/2019 04:02:34	0.0600 ppm
	4/27/2019 04:07:00	0.0600 ppm
	4/27/2019 04:06:44	0.0500 ppm

This data has been provided expeditiously to ITC and regulatory agencies for informational and/or operational purposes only. Data reported within this summary is preliminary in nature and has not undergone complete QA/QC (quality assurance/quality control) process. Until this complete QA/QC process is completed, the locations of each reading are approximate in nature and subject to further refinement. As some readings may represent non-breathing zone measurements, the data reported herein may not be suitable to assess potential occupational exposure. Site Assessment readings are not representative of an individual's breathing zone (e.g., container head space, ground level, directly above product, etc.).

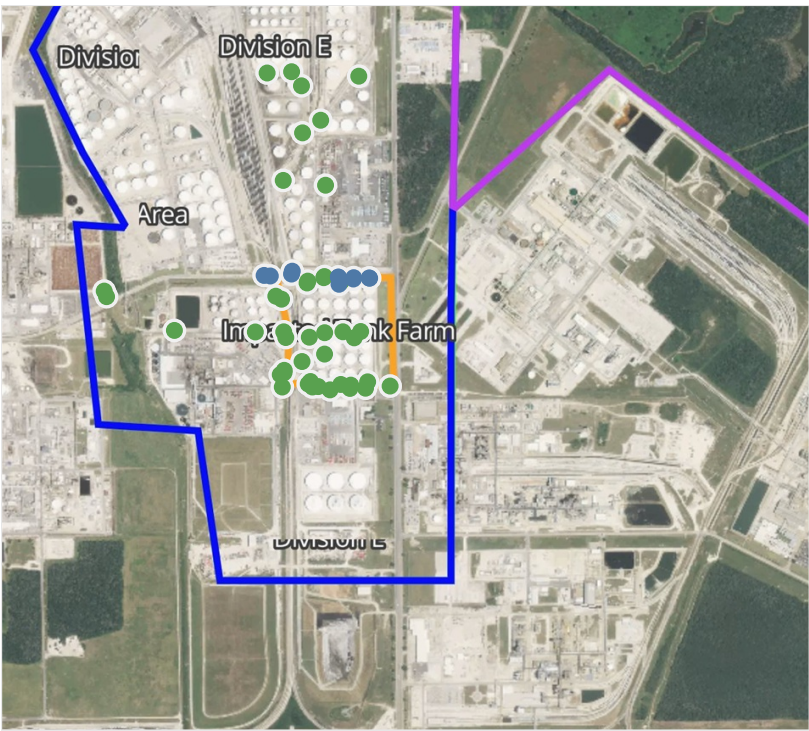
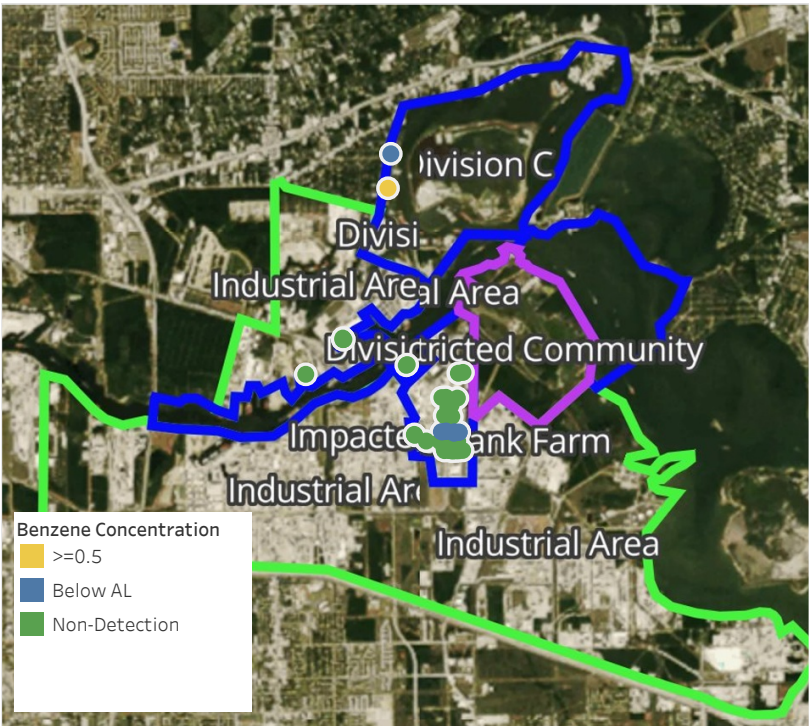


**Please Note:** These updates display data from the 2<sup>nd</sup> 80's Fire site (Impacted Tank Farm), in the industrial areas surrounding the 2<sup>nd</sup> 80's Fire site (US Coast Guard Division E), within the Houston Ship Channel (US Coast Guard Divisions A-D), and in the industrial areas north and south of the Houston Ship Channel (Industrial Area). Real-time air monitoring data for the surrounding communities are communicated daily in a separate report.



# Preliminary Hand- Held Air Monitoring Locations | ITC Deer Park Tank Fire

Reading Date  
4/27/2019 5:00:00 AM to 4/27/2019 6:00:00 AM



## Recent Benzene Detections

Location Category	Reading Date	Concentration
Division C	4/27/2019 05:16:36	0.5500 ppm
	4/27/2019 05:25:23	0.1600 ppm
Division E	4/27/2019 05:09:17	0.1200 ppm
	4/27/2019 05:09:49	0.1000 ppm
	4/27/2019 05:12:05	0.1300 ppm
	4/27/2019 05:12:40	0.2100 ppm
	4/27/2019 05:15:03	0.0700 ppm
	4/27/2019 05:17:14	0.1700 ppm
	4/27/2019 05:15:21	0.0900 ppm
	4/27/2019 05:28:41	0.1700 ppm
	4/27/2019 05:28:25	0.1900 ppm
	4/27/2019 05:33:56	0.0300 ppm
	4/27/2019 05:33:26	0.0600 ppm

This data has been provided expeditiously to ITC and regulatory agencies for informational and/or operational purposes only. Data reported within this summary is preliminary in nature and has not undergone complete QA/QC (quality assurance/quality control) process. Until this complete QA/QC process is completed, the locations of each reading are approximate in nature and subject to further refinement. As some readings may represent non-breathing zone measurements, the data reported herein may not be suitable to assess potential occupational exposure. Site Assessment readings are not representative of an individual's breathing zone (e.g., container head space, ground level, directly above product, etc.).



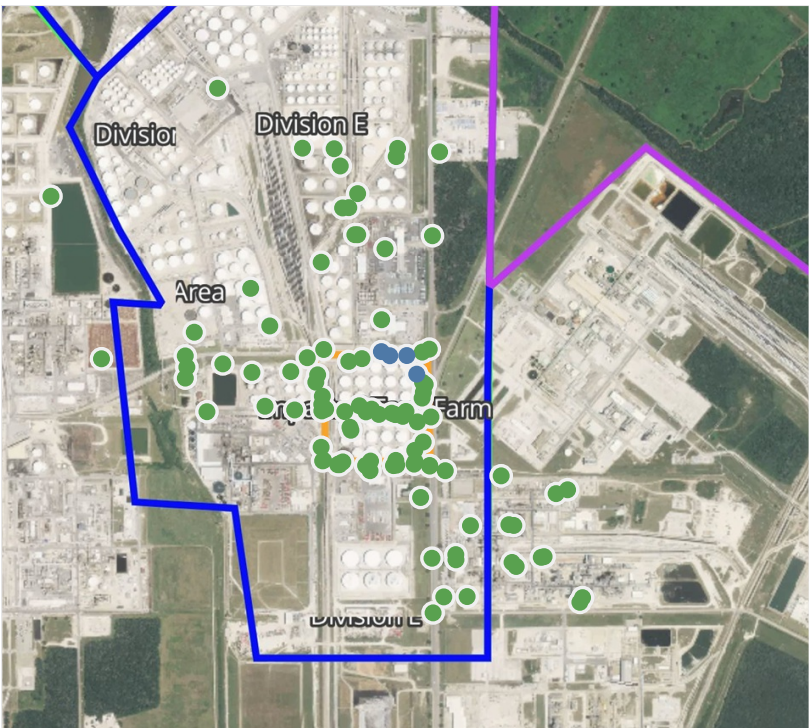
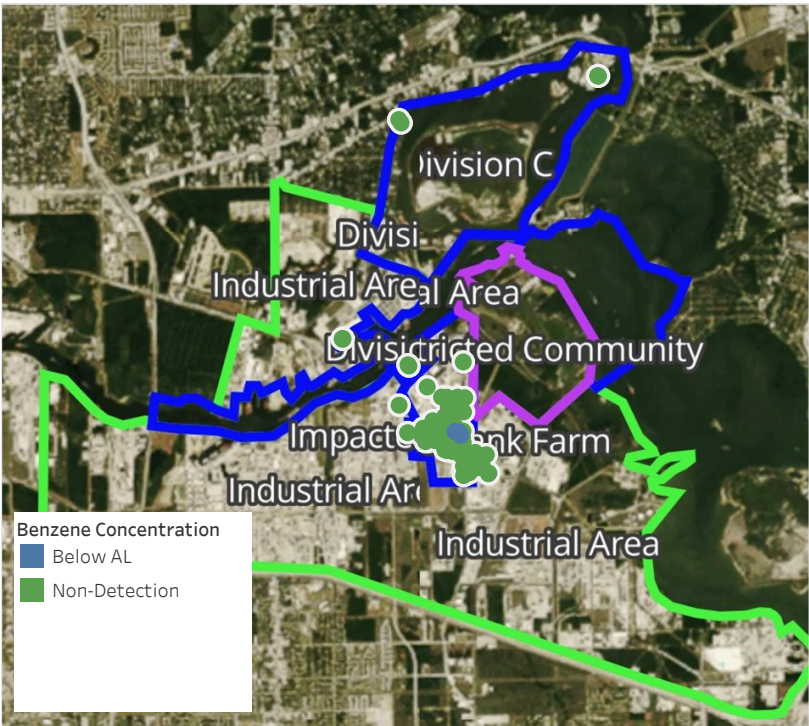


**Please Note:** These updates display data from the 2<sup>nd</sup> 80's Fire site (Impacted Tank Farm), in the industrial areas surrounding the 2<sup>nd</sup> 80's Fire site (US Coast Guard Division E), within the Houston Ship Channel (US Coast Guard Divisions A-D), and in the industrial areas north and south of the Houston Ship Channel (Industrial Area). Real-time air monitoring data for the surrounding communities are communicated daily in a separate report.



# Preliminary Hand- Held Air Monitoring Locations | ITC Deer Park Tank Fire

Reading Date  
4/27/2019 6:00:00 AM to 4/27/2019 7:00:00 AM



## Recent Benzene Detections

Location Category	Reading Date	Concentration
Division E	4/27/2019 06:16:16	0.16000 ppm
	4/27/2019 06:11:01	0.19000 ppm
	4/27/2019 06:04:54	0.22000 ppm
Impacted Tank Farm	4/27/2019 06:08:47	0.13000 ppm

This data has been provided expeditiously to ITC and regulatory agencies for informational and/or operational purposes only. Data reported within this summary is preliminary in nature and has not undergone complete QA/QC (quality assurance/quality control) process. Until this complete QA/QC process is completed, the locations of each reading are approximate in nature and subject to further refinement. As some readings may represent non-breathing zone measurements, the data reported herein may not be suitable to assess potential occupational exposure. Site Assessment readings are not representative of an individual's breathing zone (e.g., container head space, ground level, directly above product, etc.).

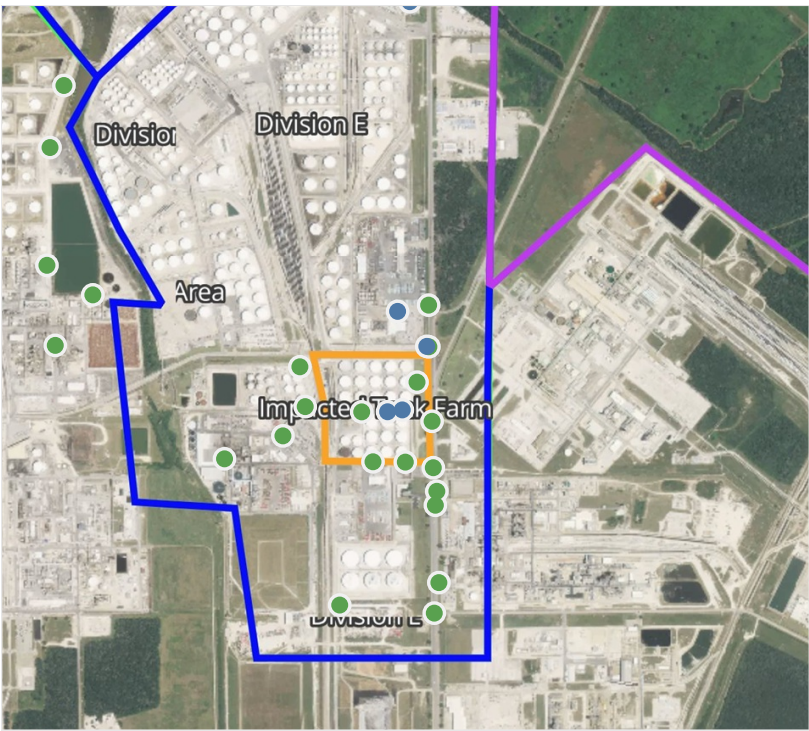


**Please Note:** These updates display data from the 2<sup>nd</sup> 80's Fire site (Impacted Tank Farm), in the industrial areas surrounding the 2<sup>nd</sup> 80's Fire site (US Coast Guard Division E), within the Houston Ship Channel (US Coast Guard Divisions A-D), and in the industrial areas north and south of the Houston Ship Channel (Industrial Area). Real-time air monitoring data for the surrounding communities are communicated daily in a separate report.



# Preliminary Hand- Held Air Monitoring Locations | ITC Deer Park Tank Fire

Reading Date  
4/27/2019 7:00:00 AM to 4/27/2019 8:00:00 AM



## Recent Benzene Detections

Location Category	Reading Date	Concentration
Division E	4/27/2019 07:32:14	0.06000 ppm
	4/27/2019 07:37:32	0.03000 ppm
	4/27/2019 07:59:55	0.02000 ppm
Impacted Tank Farm	4/27/2019 07:39:11	0.11000 ppm
	4/27/2019 07:46:04	0.04000 ppm

This data has been provided expeditiously to ITC and regulatory agencies for informational and/or operational purposes only. Data reported within this summary is preliminary in nature and has not undergone complete QA/QC (quality assurance/quality control) process. Until this complete QA/QC process is completed, the locations of each reading are approximate in nature and subject to further refinement. As some readings may represent non-breathing zone measurements, the data reported herein may not be suitable to assess potential occupational exposure. Site Assessment readings are not representative of an individual's breathing zone (e.g., container head space, ground level, directly above product, etc.).

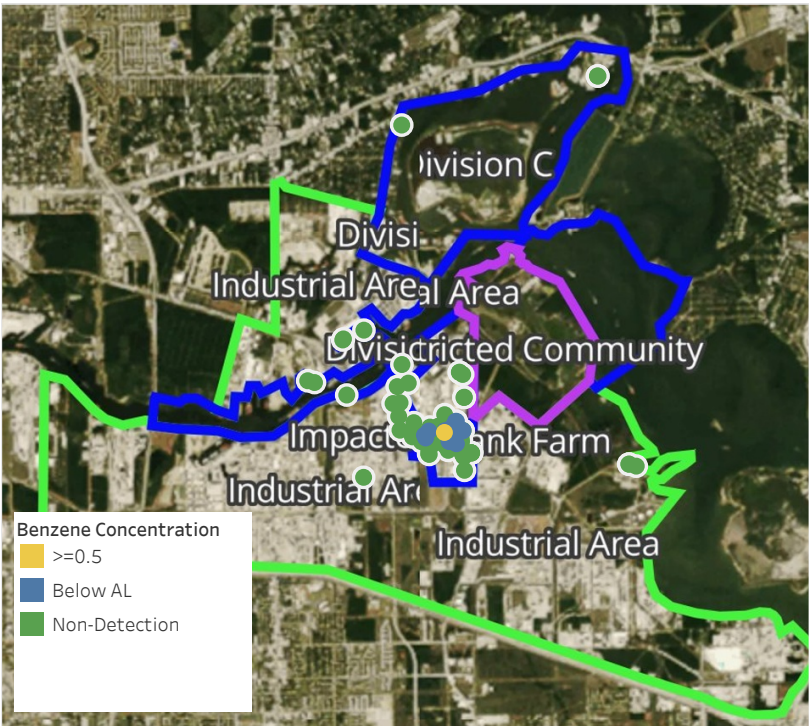


**Please Note:** These updates display data from the 2<sup>nd</sup> 80's Fire site (Impacted Tank Farm), in the industrial areas surrounding the 2<sup>nd</sup> 80's Fire site (US Coast Guard Division E), within the Houston Ship Channel (US Coast Guard Divisions A-D), and in the industrial areas north and south of the Houston Ship Channel (Industrial Area). Real-time air monitoring data for the surrounding communities are communicated daily in a separate report.



# Preliminary Hand- Held Air Monitoring Locations | ITC Deer Park Tank Fire

Reading Date  
4/27/2019 8:00:00 AM to 4/27/2019 9:00:00 AM



## Recent Benzene Detections

Location Category	Reading Date	Range of Detections
Division E	4/27/2019 08:21:02	0.0300 ppm
	4/27/2019 08:29:58	0.0200 ppm
	4/27/2019 08:31:32	0.0300 ppm
	4/27/2019 08:35:08	0.0300 ppm
	4/27/2019 08:35:13	0.0600 ppm
	4/27/2019 08:36:58	0.0300 ppm
	4/27/2019 08:47:04	0.0500 ppm
	4/27/2019 08:45:43	0.0800 ppm
	4/27/2019 08:56:04	0.0400 ppm
	4/27/2019 08:54:36	0.0900 ppm
Impacted Tank Farm	4/27/2019 08:19:45	0.0600 ppm
	4/27/2019 08:31:52	0.0900 ppm
	4/27/2019 08:11:00	0.0300 ppm
	4/27/2019 08:37:49	0.0400 ppm
	4/27/2019 08:36:00	0.5500 ppm

This data has been provided expeditiously to ITC and regulatory agencies for informational and/or operational purposes only. Data reported within this summary is preliminary in nature and has not undergone complete QA/QC (quality assurance/quality control) process. Until this complete QA/QC process is completed, the locations of each reading are approximate in nature and subject to further refinement. As some readings may represent non-breathing zone measurements, the data reported herein may not be suitable to assess potential occupational exposure. Site Assessment readings are not representative of an individual's breathing zone (e.g., container head space, ground level, directly above product, etc.).



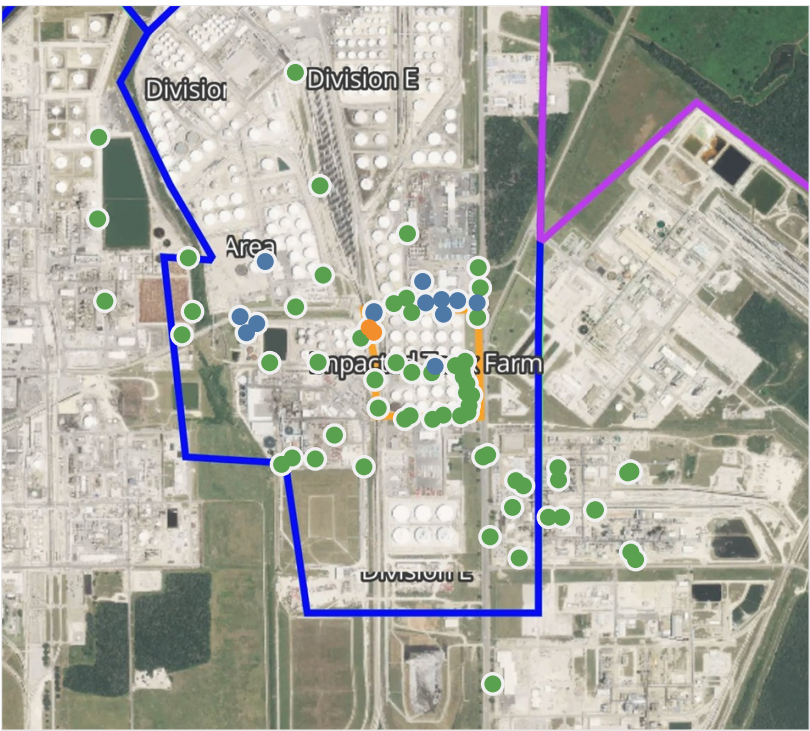
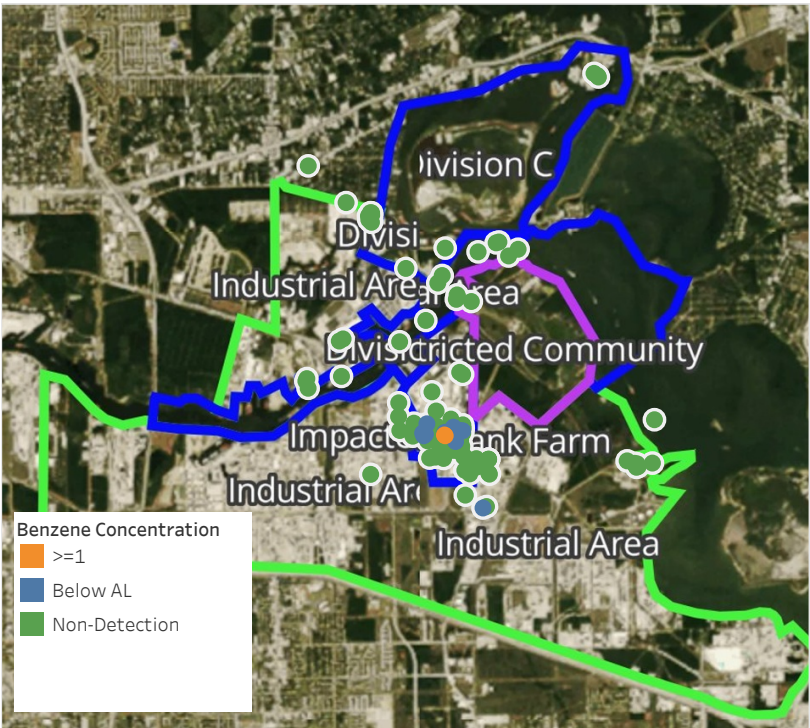


**Please Note:** These updates display data from the 2<sup>nd</sup> 80's Fire site (Impacted Tank Farm), in the industrial areas surrounding the 2<sup>nd</sup> 80's Fire site (US Coast Guard Division E), within the Houston Ship Channel (US Coast Guard Divisions A-D), and in the industrial areas north and south of the Houston Ship Channel (Industrial Area). Real-time air monitoring data for the surrounding communities are communicated daily in a separate report.



# Preliminary Hand- Held Air Monitoring Locations | ITC Deer Park Tank Fire

Reading Date  
4/27/2019 9:00:00 AM to 4/27/2019 10:00:00 AM



## Recent Benzene Detections

Location Category	Reading Date	Range of Detections
Division E	4/27/2019 09:08:54	0.080 ppm
	4/27/2019 09:11:40	0.110 ppm
	4/27/2019 09:13:35	0.040 ppm
	4/27/2019 09:23:29	0.050 ppm
	4/27/2019 09:16:52	0.090 ppm
	4/27/2019 09:11:58	0.020 ppm
	4/27/2019 09:37:05	0.020 ppm
	4/27/2019 09:45:30	0.210 ppm
	4/27/2019 09:44:42	0.310 ppm
	4/27/2019 09:25:19	0.020 ppm
	4/27/2019 09:21:17	0.030 ppm
	4/27/2019 09:40:29	0.030 ppm
Impacted Tank Farm	4/27/2019 09:59:51	0.020 ppm
	4/27/2019 09:24:06	0.060 ppm
	4/27/2019 09:40:38	1.525 ppm
	4/27/2019 09:35:15	1.175 ppm

This data has been provided expeditiously to ITC and regulatory agencies for informational and/or operational purposes only. Data reported within this summary is preliminary in nature and has not undergone complete QA/QC (quality assurance/quality control) process. Until this complete QA/QC process is completed, the locations of each reading are approximate in nature and subject to further refinement. As some readings may represent non-breathing zone measurements, the data reported herein may not be suitable to assess potential occupational exposure. Site Assessment readings are not representative of an individual's breathing zone (e.g., container head space, ground level, directly above product, etc.).



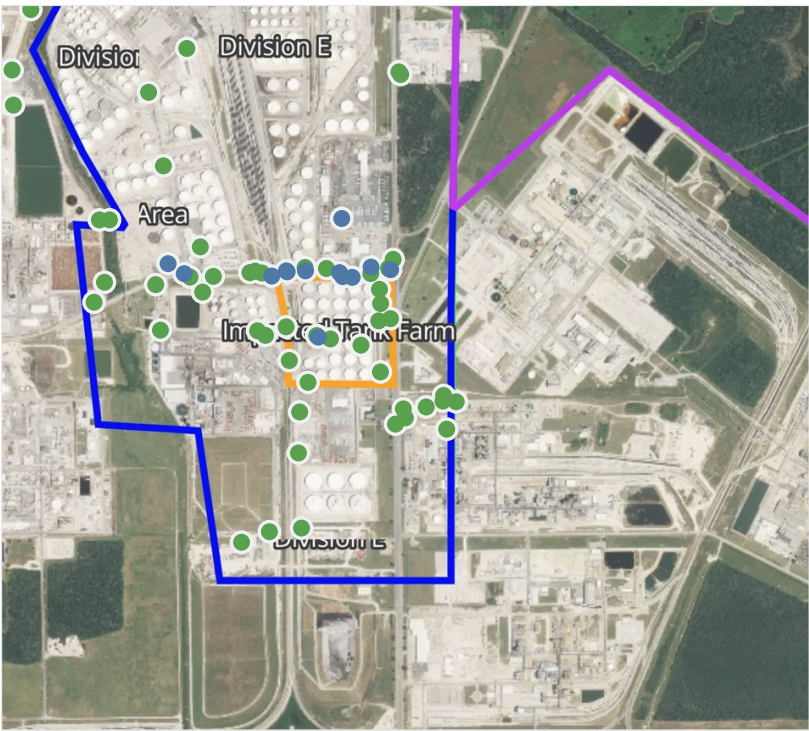
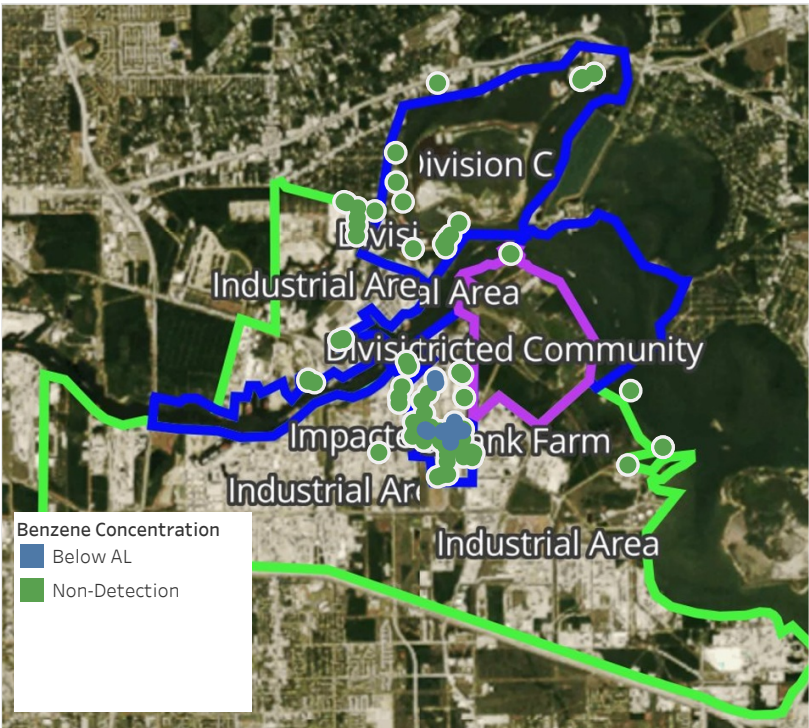


**Please Note:** These updates display data from the 2<sup>nd</sup> 80's Fire site (Impacted Tank Farm), in the industrial areas surrounding the 2<sup>nd</sup> 80's Fire site (US Coast Guard Division E), within the Houston Ship Channel (US Coast Guard Divisions A-D), and in the industrial areas north and south of the Houston Ship Channel (Industrial Area). Real-time air monitoring data for the surrounding communities are communicated daily in a separate report.



# Preliminary Hand- Held Air Monitoring Locations | ITC Deer Park Tank Fire

Reading Date  
4/27/2019 10:00:00 AM to 4/27/2019 11:00:00 AM



## Recent Benzene Detections

Location Category	Reading Date	Range of Detections
Division E	4/27/2019 10:08:44	0.0300 ppm
	4/27/2019 10:18:07	0.0500 ppm
	4/27/2019 10:20:22	0.0400 ppm
	4/27/2019 10:23:44	0.0300 ppm
	4/27/2019 10:26:28	0.0200 ppm
	4/27/2019 10:33:26	0.0400 ppm
	4/27/2019 10:22:39	0.1000 ppm
	4/27/2019 10:42:33	0.0200 ppm
	4/27/2019 10:50:58	0.0600 ppm
	4/27/2019 10:57:15	0.4100 ppm
	4/27/2019 10:58:43	0.0300 ppm
	4/27/2019 10:59:33	0.0300 ppm
	4/27/2019 10:48:47	0.0200 ppm
Impacted Tank Farm	4/27/2019 10:53:23	0.1200 ppm
	4/27/2019 10:18:31	0.0600 ppm

This data has been provided expeditiously to ITC and regulatory agencies for informational and/or operational purposes only. Data reported within this summary is preliminary in nature and has not undergone complete QA/QC (quality assurance/quality control) process. Until this complete QA/QC process is completed, the locations of each reading are approximate in nature and subject to further refinement. As some readings may represent non-breathing zone measurements, the data reported herein may not be suitable to assess potential occupational exposure. Site Assessment readings are not representative of an individual's breathing zone (e.g., container head space, ground level, directly above product, etc.).



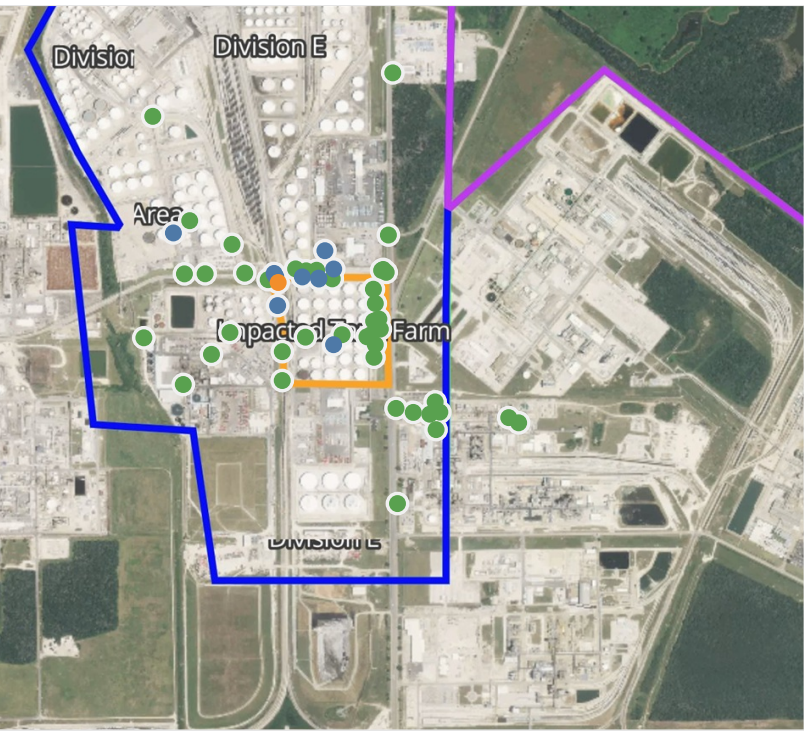
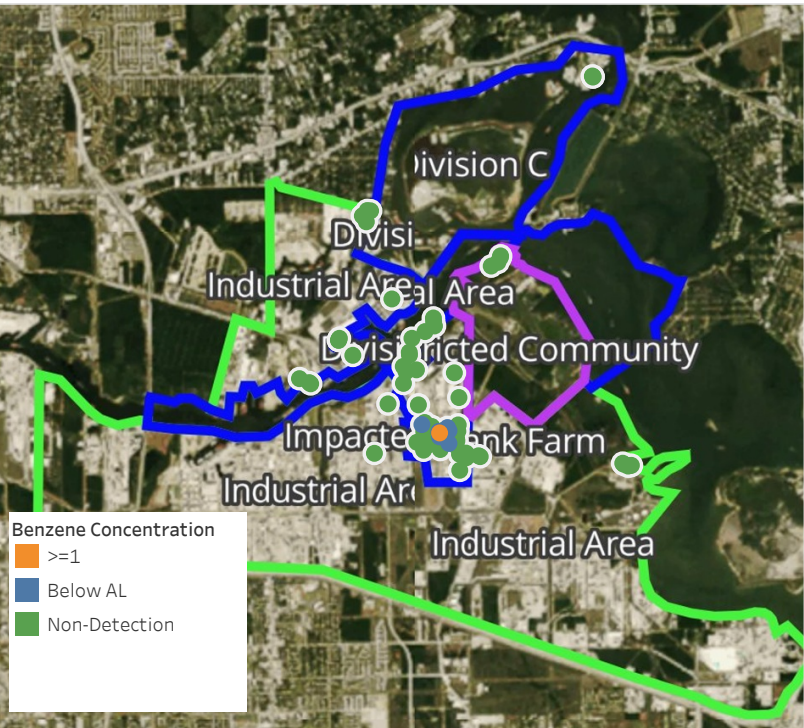


**Please Note:** These updates display data from the 2<sup>nd</sup> 80's Fire site (Impacted Tank Farm), in the industrial areas surrounding the 2<sup>nd</sup> 80's Fire site (US Coast Guard Division E), within the Houston Ship Channel (US Coast Guard Divisions A-D), and in the industrial areas north and south of the Houston Ship Channel (Industrial Area). Real-time air monitoring data for the surrounding communities are communicated daily in a separate report.



# Preliminary Hand- Held Air Monitoring Locations | ITC Deer Park Tank Fire

Reading Date  
4/27/2019 11:00:00 AM to 4/27/2019 12:00:00 PM



## Recent Benzene Detections

Location Category	Reading Date	Range of Detections
Division E	4/27/2019 11:09:38	0.100 ppm
	4/27/2019 11:11:03	0.020 ppm
	4/27/2019 11:18:46	0.030 ppm
	4/27/2019 11:08:56	0.020 ppm
	4/27/2019 11:22:28	0.020 ppm
	4/27/2019 11:33:06	0.270 ppm
	4/27/2019 11:34:04	0.360 ppm
	4/27/2019 11:34:57	0.020 ppm
Impacted Tank Farm	4/27/2019 11:59:31	0.040 ppm
	4/27/2019 11:06:58	1.125 ppm
	4/27/2019 11:40:39	0.040 ppm

This data has been provided expeditiously to ITC and regulatory agencies for informational and/or operational purposes only. Data reported within this summary is preliminary in nature and has not undergone complete QA/QC (quality assurance/quality control) process. Until this complete QA/QC process is completed, the locations of each reading are approximate in nature and subject to further refinement. As some readings may represent non-breathing zone measurements, the data reported herein may not be suitable to assess potential occupational exposure. Site Assessment readings are not representative of an individual's breathing zone (e.g., container head space, ground level, directly above product, etc.).

Reading Date

4/27/2019 11:00:00 AM to 4/27/2019 12:00:00 PM

Benzene Action Level Concentration (ppm)

 >=1

PRELIMINARY

Recent Benzene Detections Greater than 1.00 ppm

Reading Date	Location Category	GPS	Google Maps URL	Range of Detections
4/27/2019 11:06:58	Impacted Tank Farm	29.7330220,-95.0932920	<a href="https://www.google.com/maps/search/?api=1&amp;query=29.7330220,-95.0932920">https://www.google.com/maps/search/?api=1&amp;query=29.7330220,-95.0932920</a>	1.125 ppm

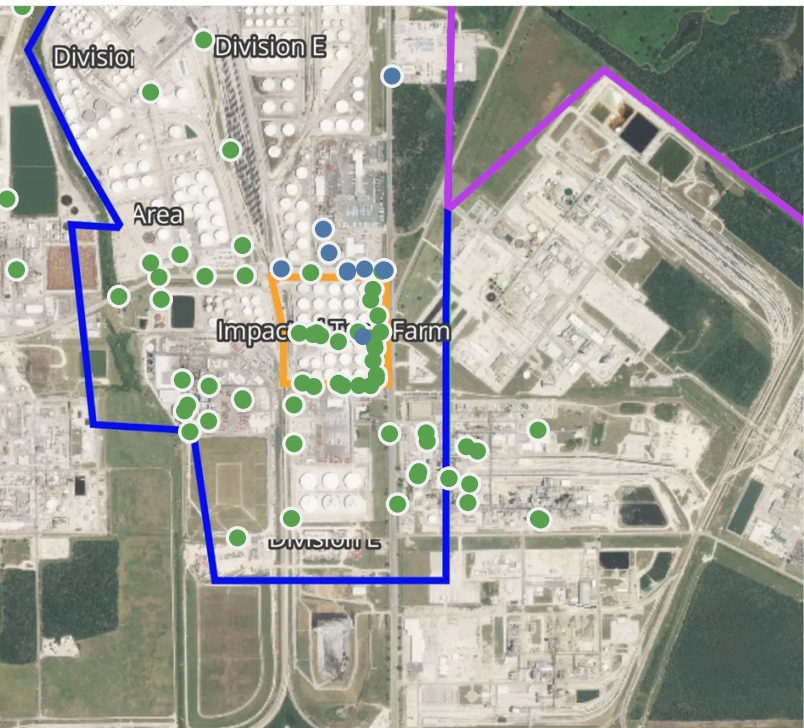
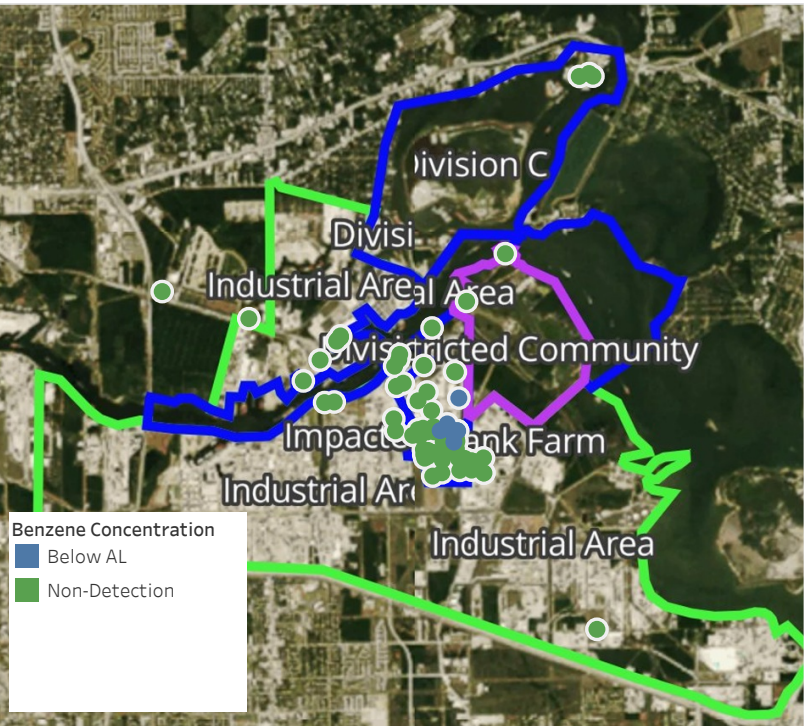




**Please Note:** These updates display data from the 2<sup>nd</sup> 80's Fire site (Impacted Tank Farm), in the industrial areas surrounding the 2<sup>nd</sup> 80's Fire site (US Coast Guard Division E), within the Houston Ship Channel (US Coast Guard Divisions A-D), and in the industrial areas north and south of the Houston Ship Channel (Industrial Area). Real-time air monitoring data for the surrounding communities are communicated daily in a separate report.

# Preliminary Hand- Held Air Monitoring Locations | ITC Deer Park Tank Fire

Reading Date  
4/27/2019 12:00:00 PM to 4/27/2019 1:00:00 PM



## Recent Benzene Detections

Location Category	Reading Date	Range of Detections
Division E	4/27/2019 12:07:45	0.07000 ppm
	4/27/2019 12:08:19	0.06000 ppm
	4/27/2019 12:15:44	0.04000 ppm
	4/27/2019 12:17:18	0.02000 ppm
	4/27/2019 12:36:34	0.04000 ppm
	4/27/2019 12:49:27	0.02000 ppm
	4/27/2019 12:52:09	0.02000 ppm
	4/27/2019 12:57:57	0.06000 ppm
Impacted Tank Farm	4/27/2019 12:43:34	0.10000 ppm
	4/27/2019 12:28:26	0.03000 ppm

This data has been provided expeditiously to ITC and regulatory agencies for informational and/or operational purposes only. Data reported within this summary is preliminary in nature and has not undergone complete QA/QC (quality assurance/quality control) process. Until this complete QA/QC process is completed, the locations of each reading are approximate in nature and subject to further refinement. As some readings may represent non-breathing zone measurements, the data reported herein may not be suitable to assess potential occupational exposure. Site Assessment readings are not representative of an individual's breathing zone (e.g., container head space, ground level, directly above product, etc.).

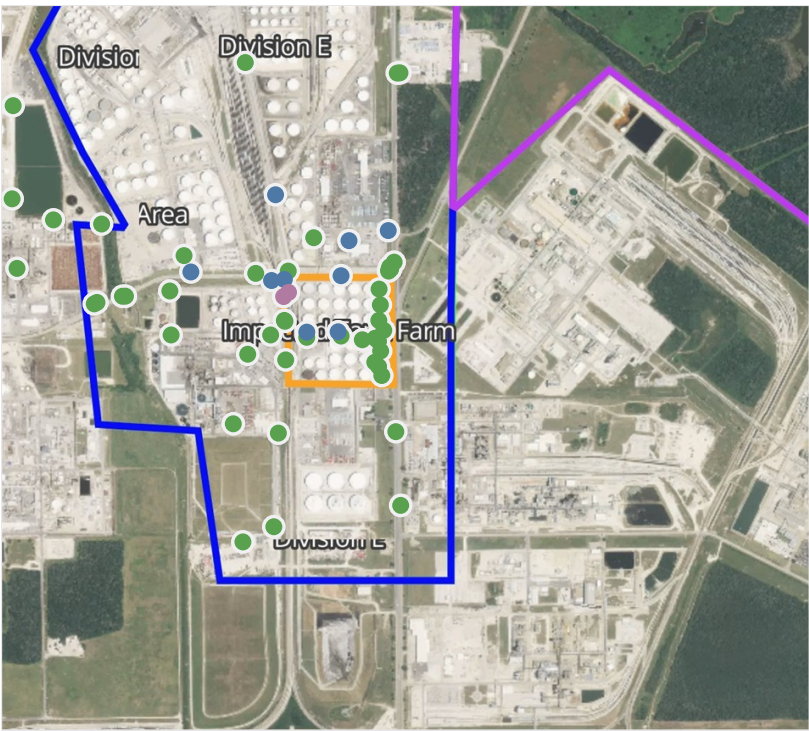
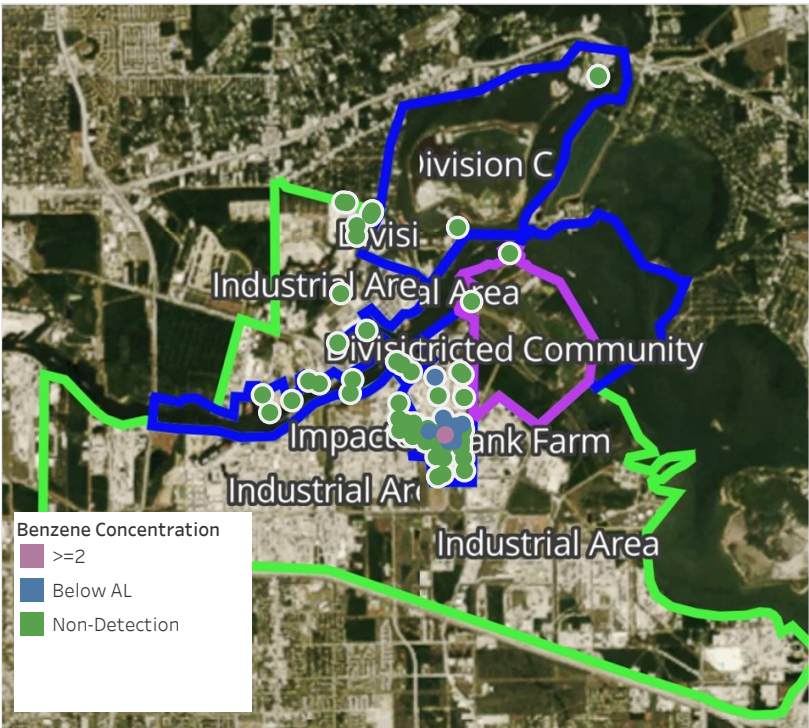




**Please Note:** These updates display data from the 2<sup>nd</sup> 80's Fire site (Impacted Tank Farm), in the industrial areas surrounding the 2<sup>nd</sup> 80's Fire site (US Coast Guard Division E), within the Houston Ship Channel (US Coast Guard Divisions A-D), and in the industrial areas north and south of the Houston Ship Channel (Industrial Area). Real-time air monitoring data for the surrounding communities are communicated daily in a separate report.

# Preliminary Hand- Held Air Monitoring Locations | ITC Deer Park Tank Fire

Reading Date  
4/27/2019 1:00:00 PM to 4/27/2019 2:00:00 PM



## Recent Benzene Detections

Location Category	Reading Date	Range of Detections
Division E	4/27/2019 13:03:16	0.020 ppm
	4/27/2019 13:10:41	0.020 ppm
	4/27/2019 13:19:09	0.060 ppm
	4/27/2019 13:21:26	0.030 ppm
	4/27/2019 13:28:55	0.110 ppm
	4/27/2019 13:36:00	0.030 ppm
	4/27/2019 13:43:12	0.030 ppm
	4/27/2019 13:40:17	0.020 ppm
Impacted Tank Farm	4/27/2019 13:00:31	6.450 ppm
	4/27/2019 13:54:50	0.030 ppm
	4/27/2019 13:56:08	0.040 ppm
	4/27/2019 13:44:49	6.850 ppm

This data has been provided expeditiously to ITC and regulatory agencies for informational and/or operational purposes only. Data reported within this summary is preliminary in nature and has not undergone complete QA/QC (quality assurance/quality control) process. Until this complete QA/QC process is completed, the locations of each reading are approximate in nature and subject to further refinement. As some readings may represent non-breathing zone measurements, the data reported herein may not be suitable to assess potential occupational exposure. Site Assessment readings are not representative of an individual's breathing zone (e.g., container head space, ground level, directly above product, etc.).



Reading Date  
4/27/2019 1:00:00 PM to 4/27/2019 2:00:00 PM

Benzene Action Level Concentration (ppm)  
■ >=2

PRELIMINARY  
Recent Benzene Detections Greater than 1.00 ppm

Reading Date	Location Category	GPS	Google Maps URL	Range of Detections
4/27/2019 13:44:49	Impacted Tank Farm	29.7326500,-95.0932770	<a href="https://www.google.com/maps/search/?api=1&amp;query=29.7326500,-95.0932770">https://www.google.com/maps/search/?api=1&amp;query=29.7326500,-95.0932770</a>	6.8500 ppm
4/27/2019 13:00:31	Impacted Tank Farm	29.7327600,-95.0931290	<a href="https://www.google.com/maps/search/?api=1&amp;query=29.7327600,-95.0931290">https://www.google.com/maps/search/?api=1&amp;query=29.7327600,-95.0931290</a>	6.4500 ppm

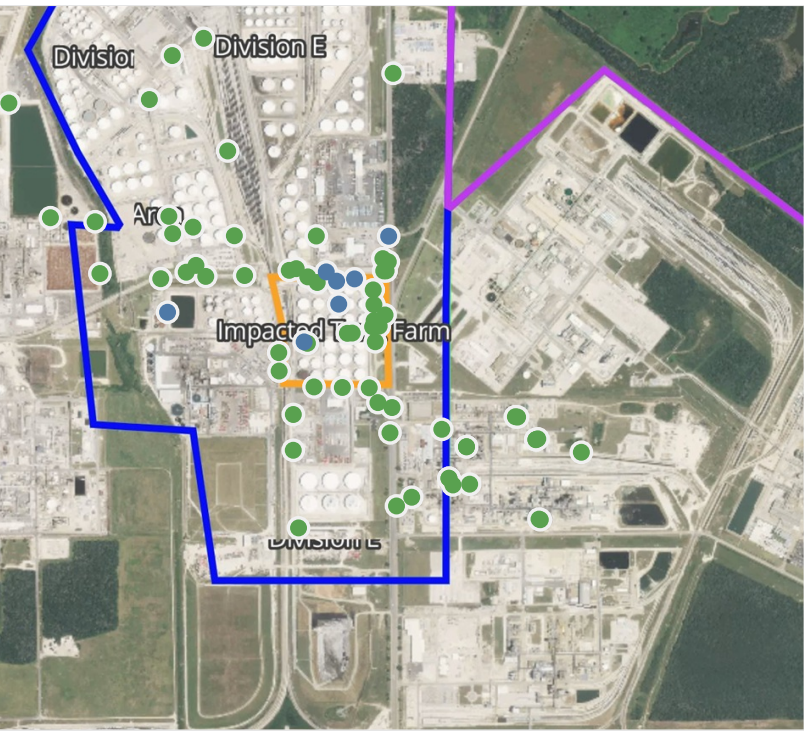
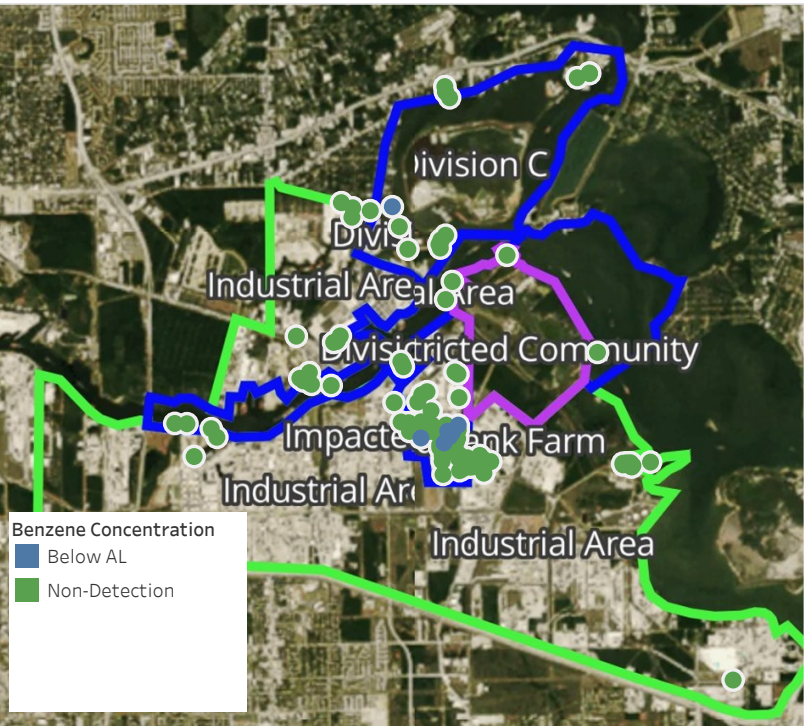


**Please Note:** These updates display data from the 2<sup>nd</sup> 80's Fire site (Impacted Tank Farm), in the industrial areas surrounding the 2<sup>nd</sup> 80's Fire site (US Coast Guard Division E), within the Houston Ship Channel (US Coast Guard Divisions A-D), and in the industrial areas north and south of the Houston Ship Channel (Industrial Area). Real-time air monitoring data for the surrounding communities are communicated daily in a separate report.



# Preliminary Hand- Held Air Monitoring Locations | ITC Deer Park Tank Fire

Reading Date  
4/27/2019 2:00:00 PM to 4/27/2019 3:00:00 PM



## Recent Benzene Detections

Location Category	Reading Date	Range of Detections
Division C	4/27/2019 14:28:36	0.10000 ppm
Division E	4/27/2019 14:18:21	0.02000 ppm
	4/27/2019 14:21:57	0.03000 ppm
	4/27/2019 14:27:29	0.06000 ppm
	4/27/2019 14:11:52	0.04000 ppm
	4/27/2019 14:37:51	0.10000 ppm
Impacted Tank Farm	4/27/2019 14:20:38	0.06000 ppm
	4/27/2019 14:48:06	0.04000 ppm

This data has been provided expeditiously to ITC and regulatory agencies for informational and/or operational purposes only. Data reported within this summary is preliminary in nature and has not undergone complete QA/QC (quality assurance/quality control) process. Until this complete QA/QC process is completed, the locations of each reading are approximate in nature and subject to further refinement. As some readings may represent non-breathing zone measurements, the data reported herein may not be suitable to assess potential occupational exposure. Site Assessment readings are not representative of an individual's breathing zone (e.g., container head space, ground level, directly above product, etc.).

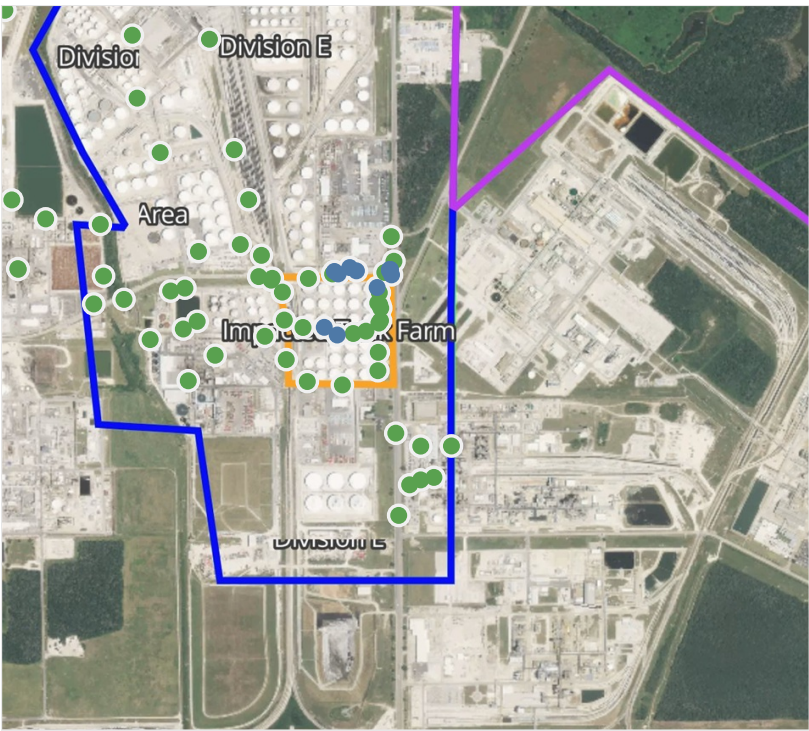


**Please Note:** These updates display data from the 2<sup>nd</sup> 80's Fire site (Impacted Tank Farm), in the industrial areas surrounding the 2<sup>nd</sup> 80's Fire site (US Coast Guard Division E), within the Houston Ship Channel (US Coast Guard Divisions A-D), and in the industrial areas north and south of the Houston Ship Channel (Industrial Area). Real-time air monitoring data for the surrounding communities are communicated daily in a separate report.



# Preliminary Hand- Held Air Monitoring Locations | ITC Deer Park Tank Fire

Reading Date  
4/27/2019 3:00:00 PM to 4/27/2019 4:00:00 PM



## Recent Benzene Detections

Location Category	Reading Date	Range of Detections
Division E	4/27/2019 15:01:24	0.0400 ppm
	4/27/2019 15:14:25	0.0400 ppm
	4/27/2019 15:33:20	0.0600 ppm
	4/27/2019 15:29:40	0.0300 ppm
	4/27/2019 15:37:10	0.0500 ppm
	4/27/2019 15:51:16	0.0200 ppm
Impacted Tank Farm	4/27/2019 15:52:04	0.0500 ppm
	4/27/2019 15:48:35	0.0300 ppm
	4/27/2019 15:15:21	0.1500 ppm
	4/27/2019 15:20:13	0.0300 ppm
	4/27/2019 15:47:08	0.0500 ppm

This data has been provided expeditiously to ITC and regulatory agencies for informational and/or operational purposes only. Data reported within this summary is preliminary in nature and has not undergone complete QA/QC (quality assurance/quality control) process. Until this complete QA/QC process is completed, the locations of each reading are approximate in nature and subject to further refinement. As some readings may represent non-breathing zone measurements, the data reported herein may not be suitable to assess potential occupational exposure. Site Assessment readings are not representative of an individual's breathing zone (e.g., container head space, ground level, directly above product, etc.).

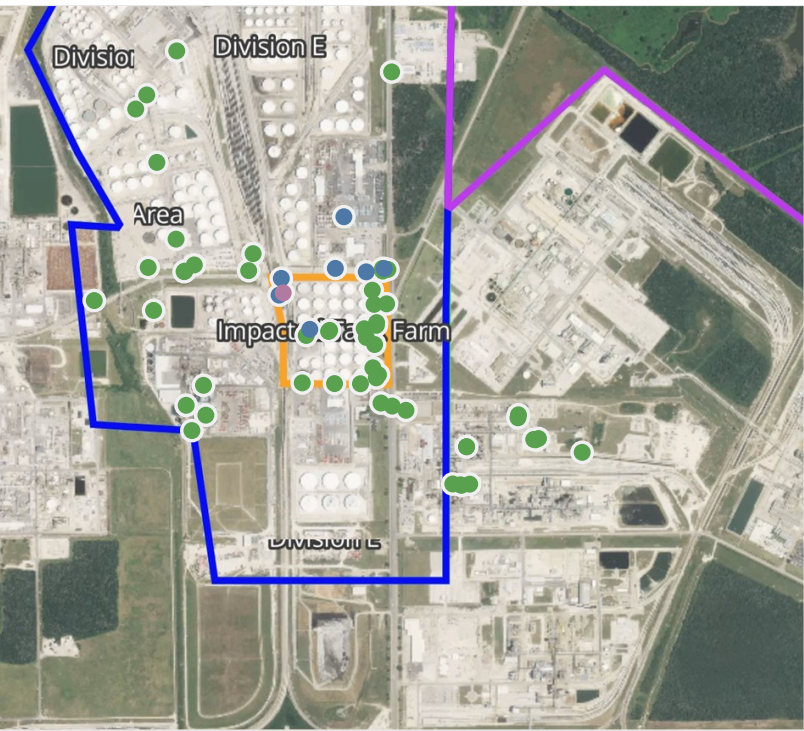
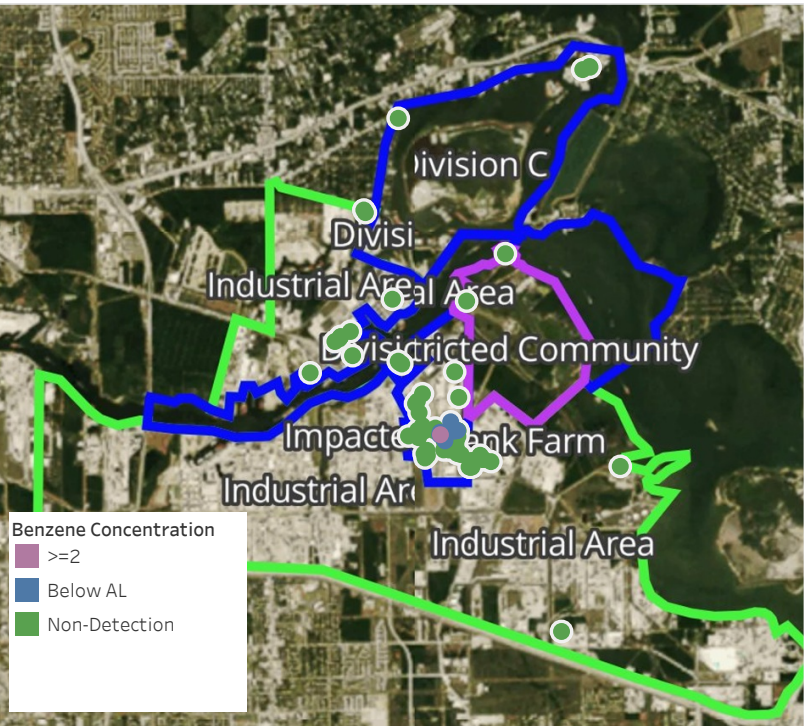


**Please Note:** These updates display data from the 2<sup>nd</sup> 80's Fire site (Impacted Tank Farm), in the industrial areas surrounding the 2<sup>nd</sup> 80's Fire site (US Coast Guard Division E), within the Houston Ship Channel (US Coast Guard Divisions A-D), and in the industrial areas north and south of the Houston Ship Channel (Industrial Area). Real-time air monitoring data for the surrounding communities are communicated daily in a separate report.



# Preliminary Hand- Held Air Monitoring Locations | ITC Deer Park Tank Fire

Reading Date  
4/27/2019 4:00:00 PM to 4/27/2019 5:00:00 PM



## Recent Benzene Detections

Location Category	Reading Date	Range of Detections
Division E	4/27/2019 16:03:11	0.020 ppm
	4/27/2019 16:06:03	0.020 ppm
	4/27/2019 16:14:41	0.070 ppm
	4/27/2019 16:59:27	0.020 ppm
	4/27/2019 16:48:33	0.020 ppm
Impacted Tank Farm	4/27/2019 16:05:29	6.425 ppm
	4/27/2019 16:45:58	0.040 ppm
	4/27/2019 16:48:47	0.275 ppm

This data has been provided expeditiously to ITC and regulatory agencies for informational and/or operational purposes only. Data reported within this summary is preliminary in nature and has not undergone complete QA/QC (quality assurance/quality control) process. Until this complete QA/QC process is completed, the locations of each reading are approximate in nature and subject to further refinement. As some readings may represent non-breathing zone measurements, the data reported herein may not be suitable to assess potential occupational exposure. Site Assessment readings are not representative of an individual's breathing zone (e.g., container head space, ground level, directly above product, etc.).

Reading Date  
4/27/2019 4:00:00 PM to 4/27/2019 5:00:00 PM

Benzene Action Level Concentration (ppm)  
■ >=2

PRELIMINARY  
Recent Benzene Detections Greater than 1.00 ppm

Reading Date	Location Category	GPS	Google Maps URL	Range of Detections
4/27/2019 16:05:29	Impacted Tank Farm	29.7327470,-95.0931390	<a href="https://www.google.com/maps/search/?api=1&amp;query=29.7327470,-95.0931390">https://www.google.com/maps/search/?api=1&amp;query=29.7327470,-95.0931390</a>	6.425 ppm

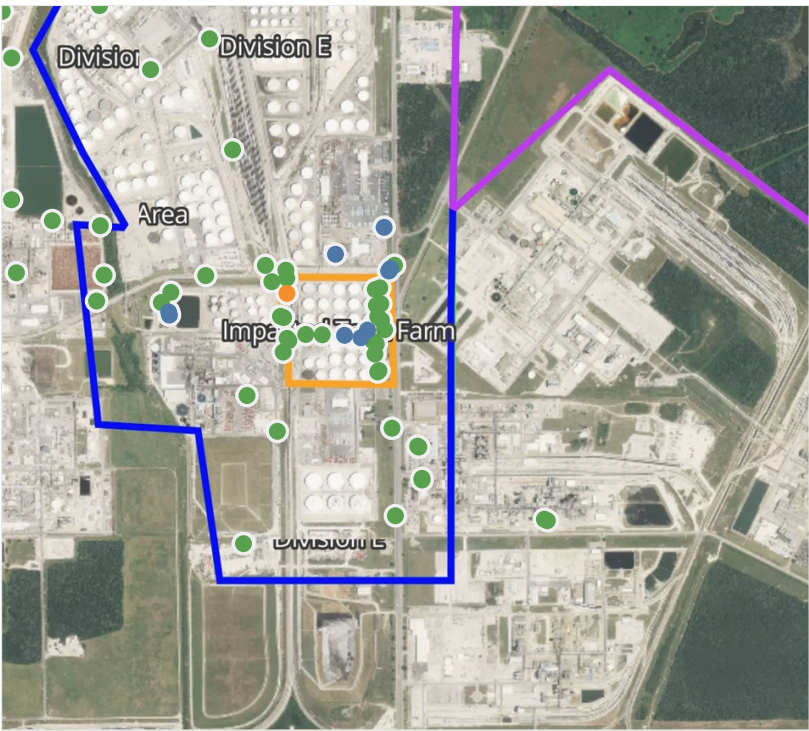




**Please Note:** These updates display data from the 2<sup>nd</sup> 80's Fire site (Impacted Tank Farm), in the industrial areas surrounding the 2<sup>nd</sup> 80's Fire site (US Coast Guard Division E), within the Houston Ship Channel (US Coast Guard Divisions A-D), and in the industrial areas north and south of the Houston Ship Channel (Industrial Area). Real-time air monitoring data for the surrounding communities are communicated daily in a separate report.

# Preliminary Hand- Held Air Monitoring Locations | ITC Deer Park Tank Fire

Reading Date  
4/27/2019 5:00:00 PM to 4/27/2019 6:00:00 PM



## Recent Benzene Detections

Location Category	Reading Date	Range of Detections
Division E	4/27/2019 17:02:32	0.040 ppm
	4/27/2019 17:15:55	0.020 ppm
	4/27/2019 17:32:19	0.010 ppm
	4/27/2019 17:27:48	0.030 ppm
	4/27/2019 17:41:18	0.100 ppm
	4/27/2019 17:44:50	0.020 ppm
Impacted Tank Farm	4/27/2019 17:47:42	0.020 ppm
	4/27/2019 17:10:59	0.030 ppm
	4/27/2019 17:18:40	0.060 ppm
	4/27/2019 17:21:10	0.070 ppm
	4/27/2019 17:21:29	1.925 ppm

This data has been provided expeditiously to ITC and regulatory agencies for informational and/or operational purposes only. Data reported within this summary is preliminary in nature and has not undergone complete QA/QC (quality assurance/quality control) process. Until this complete QA/QC process is completed, the locations of each reading are approximate in nature and subject to further refinement. As some readings may represent non-breathing zone measurements, the data reported herein may not be suitable to assess potential occupational exposure. Site Assessment readings are not representative of an individual's breathing zone (e.g., container head space, ground level, directly above product, etc.).



Reading Date  
4/27/2019 5:00:00 PM to 4/27/2019 6:00:00 PM

Benzene Action Level Concentration (ppm)  
 >=1

PRELIMINARY  
Recent Benzene Detections Greater than 1.00 ppm

Reading Date	Location Category	GPS	Google Maps URL	Range of Detections
4/27/2019 17:21:29	Impacted Tank Farm	29.7327320,-95.0931750	<a href="https://www.google.com/maps/search/?api=1&amp;query=29.7327320,-95.0931750">https://www.google.com/maps/search/?api=1&amp;query=29.7327320,-95.0931750</a>	1.925 ppm

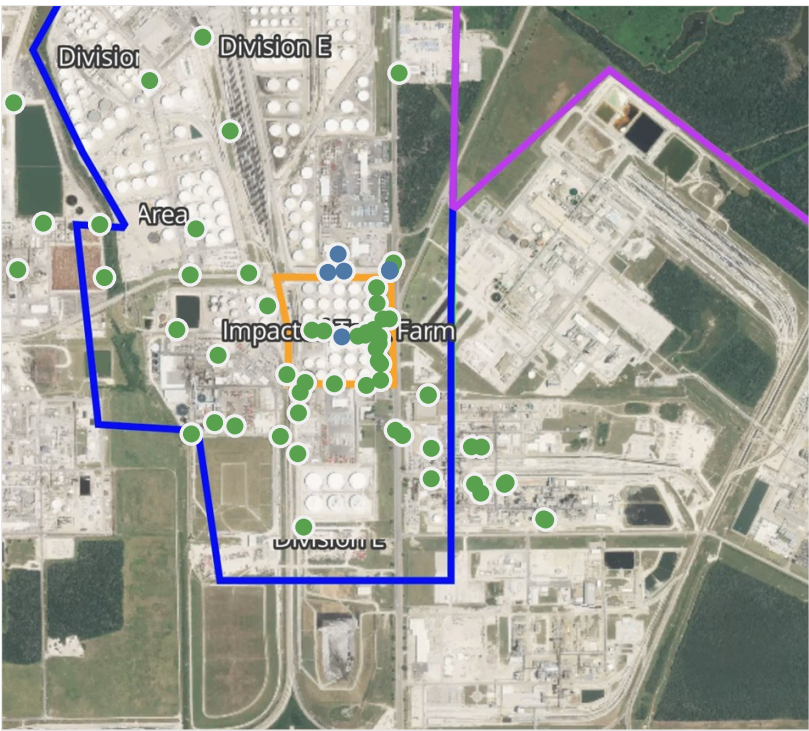


**Please Note:** These updates display data from the 2<sup>nd</sup> 80's Fire site (Impacted Tank Farm), in the industrial areas surrounding the 2<sup>nd</sup> 80's Fire site (US Coast Guard Division E), within the Houston Ship Channel (US Coast Guard Divisions A-D), and in the industrial areas north and south of the Houston Ship Channel (Industrial Area). Real-time air monitoring data for the surrounding communities are communicated daily in a separate report.



# Preliminary Hand- Held Air Monitoring Locations | ITC Deer Park Tank Fire

Reading Date  
4/27/2019 6:00:00 PM to 4/27/2019 7:00:00 PM



## Recent Benzene Detections

Location Category	Reading Date	Range of Detections
Division E	4/27/2019 18:10:31	0.04000 ppm
	4/27/2019 18:06:30	0.02000 ppm
	4/27/2019 18:14:12	0.05000 ppm
	4/27/2019 18:23:42	0.04000 ppm
	4/27/2019 18:57:25	0.02000 ppm
Impacted Tank Farm	4/27/2019 18:11:24	0.07000 ppm

This data has been provided expeditiously to ITC and regulatory agencies for informational and/or operational purposes only. Data reported within this summary is preliminary in nature and has not undergone complete QA/QC (quality assurance/quality control) process. Until this complete QA/QC process is completed, the locations of each reading are approximate in nature and subject to further refinement. As some readings may represent non-breathing zone measurements, the data reported herein may not be suitable to assess potential occupational exposure. Site Assessment readings are not representative of an individual's breathing zone (e.g., container head space, ground level, directly above product, etc.).

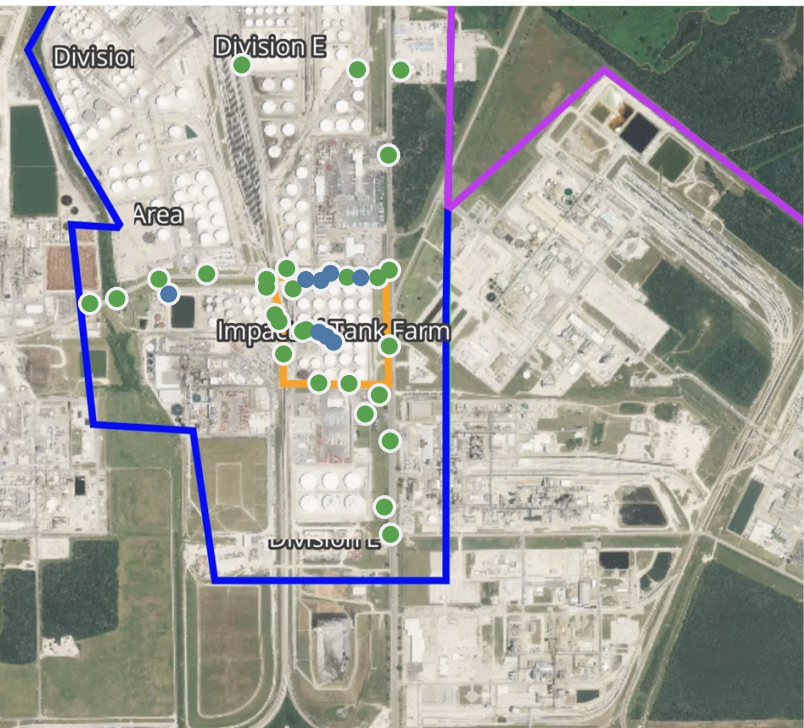
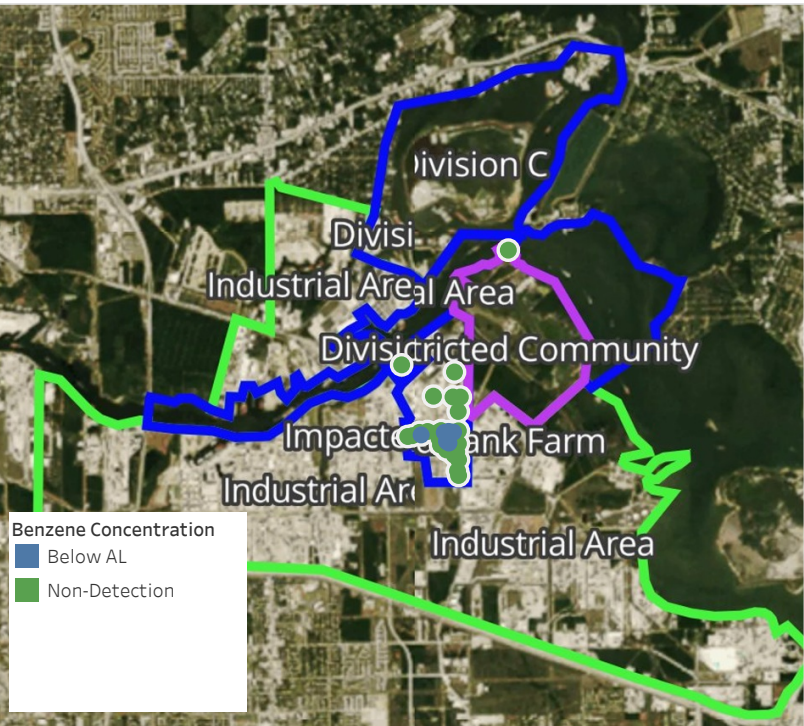


**Please Note:** These updates display data from the 2<sup>nd</sup> 80's Fire site (Impacted Tank Farm), in the industrial areas surrounding the 2<sup>nd</sup> 80's Fire site (US Coast Guard Division E), within the Houston Ship Channel (US Coast Guard Divisions A-D), and in the industrial areas north and south of the Houston Ship Channel (Industrial Area). Real-time air monitoring data for the surrounding communities are communicated daily in a separate report.



# Preliminary Hand- Held Air Monitoring Locations | ITC Deer Park Tank Fire

Reading Date  
4/27/2019 7:00:00 PM to 4/27/2019 8:00:00 PM



## Recent Benzene Detections

Location Category	Reading Date	Range of Detections
Division E	4/27/2019 19:15:23	0.02000 ppm
	4/27/2019 19:48:41	0.04000 ppm
	4/27/2019 19:46:49	0.05000 ppm
	4/27/2019 19:44:41	0.09000 ppm
	4/27/2019 19:41:38	0.04000 ppm
Impacted Tank Farm	4/27/2019 19:01:54	0.05000 ppm
	4/27/2019 19:58:11	0.02000 ppm
	4/27/2019 19:59:18	0.03000 ppm

This data has been provided expeditiously to ITC and regulatory agencies for informational and/or operational purposes only. Data reported within this summary is preliminary in nature and has not undergone complete QA/QC (quality assurance/quality control) process. Until this complete QA/QC process is completed, the locations of each reading are approximate in nature and subject to further refinement. As some readings may represent non-breathing zone measurements, the data reported herein may not be suitable to assess potential occupational exposure. Site Assessment readings are not representative of an individual's breathing zone (e.g., container head space, ground level, directly above product, etc.).

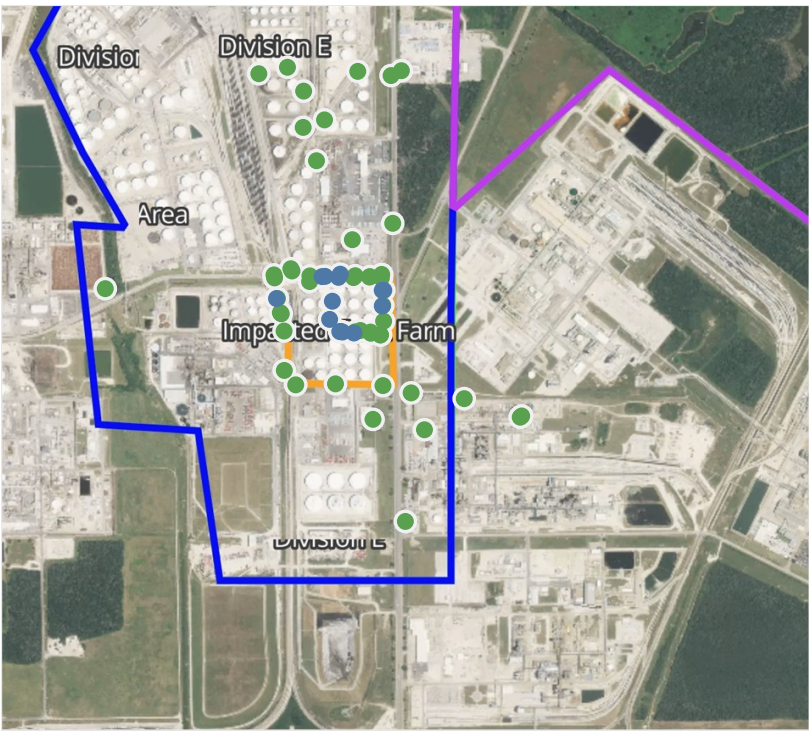


**Please Note:** These updates display data from the 2<sup>nd</sup> 80's Fire site (Impacted Tank Farm), in the industrial areas surrounding the 2<sup>nd</sup> 80's Fire site (US Coast Guard Division E), within the Houston Ship Channel (US Coast Guard Divisions A-D), and in the industrial areas north and south of the Houston Ship Channel (Industrial Area). Real-time air monitoring data for the surrounding communities are communicated daily in a separate report.



# Preliminary Hand- Held Air Monitoring Locations | ITC Deer Park Tank Fire

Reading Date  
4/27/2019 8:00:00 PM to 4/27/2019 9:00:00 PM



## Recent Benzene Detections

Location Category	Reading Date	Range of Detections
Division E	4/27/2019 20:10:24	0.0700 ppm
	4/27/2019 20:12:21	0.0400 ppm
	4/27/2019 20:12:21	0.0500 ppm
	4/27/2019 20:21:48	0.1100 ppm
	4/27/2019 20:36:52	0.0600 ppm
	4/27/2019 20:34:54	0.0400 ppm
	4/27/2019 20:56:34	0.0500 ppm
Impacted Tank Farm	4/27/2019 20:02:25	0.1800 ppm
	4/27/2019 20:05:37	0.0700 ppm
	4/27/2019 20:04:02	0.4300 ppm
	4/27/2019 20:10:02	0.0200 ppm
	4/27/2019 20:20:41	0.0400 ppm
	4/27/2019 20:21:42	0.0300 ppm
	4/27/2019 20:28:38	0.0400 ppm

This data has been provided expeditiously to ITC and regulatory agencies for informational and/or operational purposes only. Data reported within this summary is preliminary in nature and has not undergone complete QA/QC (quality assurance/quality control) process. Until this complete QA/QC process is completed, the locations of each reading are approximate in nature and subject to further refinement. As some readings may represent non-breathing zone measurements, the data reported herein may not be suitable to assess potential occupational exposure. Site Assessment readings are not representative of an individual's breathing zone (e.g., container head space, ground level, directly above product, etc.).



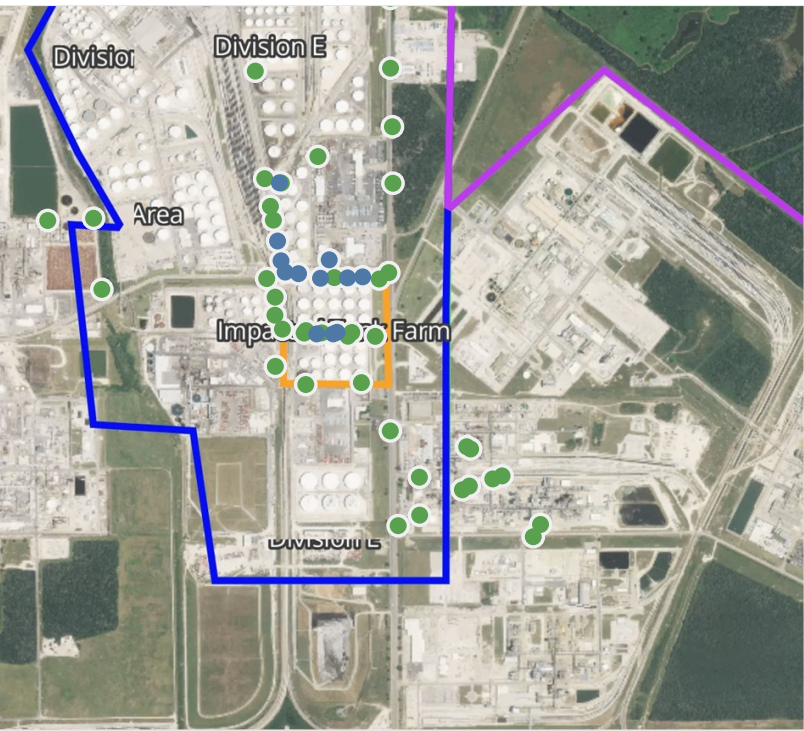
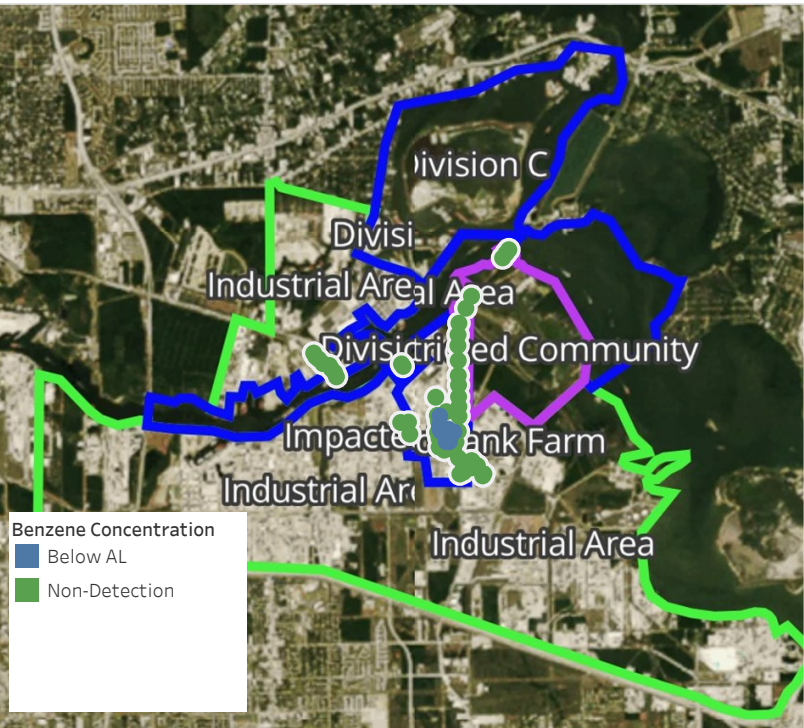


**Please Note:** These updates display data from the 2<sup>nd</sup> 80's Fire site (Impacted Tank Farm), in the industrial areas surrounding the 2<sup>nd</sup> 80's Fire site (US Coast Guard Division E), within the Houston Ship Channel (US Coast Guard Divisions A-D), and in the industrial areas north and south of the Houston Ship Channel (Industrial Area). Real-time air monitoring data for the surrounding communities are communicated daily in a separate report.



# Preliminary Hand- Held Air Monitoring Locations | ITC Deer Park Tank Fire

Reading Date  
4/27/2019 9:00:00 PM to 4/27/2019 10:00:00 PM



## Recent Benzene Detections

Location Category	Reading Date	Range of Detections
Division E	4/27/2019 21:05:23	0.0400 ppm
	4/27/2019 21:06:58	0.0700 ppm
	4/27/2019 21:13:13	0.1300 ppm
	4/27/2019 21:10:56	0.0400 ppm
	4/27/2019 21:16:13	0.2400 ppm
	4/27/2019 21:25:34	0.0700 ppm
	4/27/2019 21:29:10	0.0500 ppm
	4/27/2019 21:29:22	0.2250 ppm
	4/27/2019 21:42:28	0.1050 ppm
Impacted Tank Farm	4/27/2019 21:16:53	0.1400 ppm
	4/27/2019 21:17:50	0.1600 ppm
	4/27/2019 21:21:46	0.0200 ppm

This data has been provided expeditiously to ITC and regulatory agencies for informational and/or operational purposes only. Data reported within this summary is preliminary in nature and has not undergone complete QA/QC (quality assurance/quality control) process. Until this complete QA/QC process is completed, the locations of each reading are approximate in nature and subject to further refinement. As some readings may represent non-breathing zone measurements, the data reported herein may not be suitable to assess potential occupational exposure. Site Assessment readings are not representative of an individual's breathing zone (e.g., container head space, ground level, directly above product, etc.).



**Please Note:** These updates display data from the 2<sup>nd</sup> 80's Fire site (Impacted Tank Farm), in the industrial areas surrounding the 2<sup>nd</sup> 80's Fire site (US Coast Guard Division E), within the Houston Ship Channel (US Coast Guard Divisions A-D), and in the industrial areas north and south of the Houston Ship Channel (Industrial Area). Real-time air monitoring data for the surrounding communities are communicated daily in a separate report.



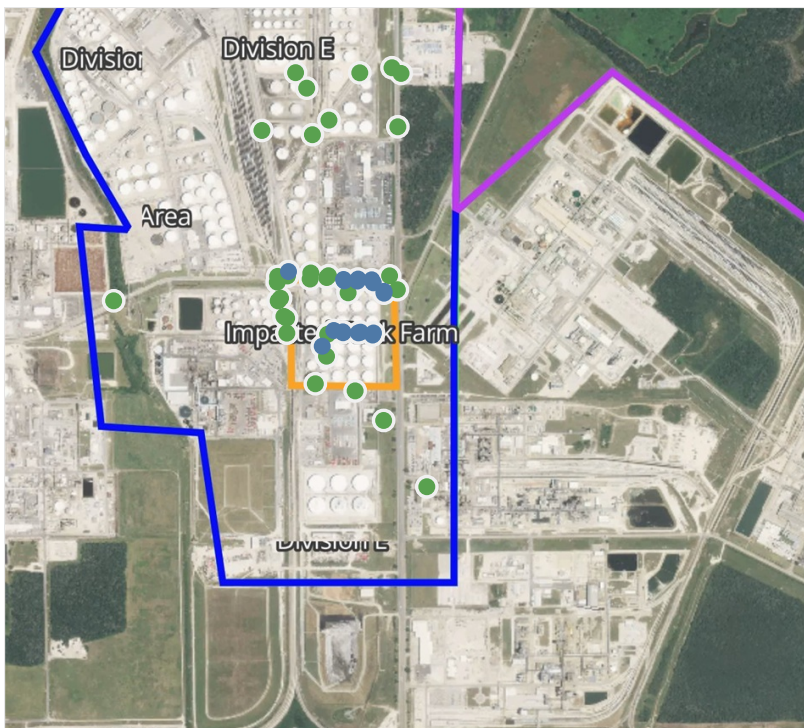
# Preliminary Hand- Held Air Monitoring Locations | ITC Deer Park Tank Fire

Reading Date

4/27/2019 10:00:00 PM to 4/27/2019 11:00:00 PM



Recent Benzene Detections



This data has been provided expeditiously to ITC and regulatory agencies for informational and/or operational purposes only. Data reported within this summary is preliminary in nature and has not undergone complete QA/QC (quality assurance/quality control) process. Until this complete QA/QC process is completed, the locations of each reading are approximate in nature and subject to further refinement. As some readings may represent non-breathing zone measurements, the data reported herein may not be suitable to assess potential occupational exposure. Site Assessment readings are not representative of an individual's breathing zone (e.g., container head space, ground level, directly above product, etc.).



**Please Note:** These updates display data from the 2<sup>nd</sup> 80's Fire site (Impacted Tank Farm), in the industrial areas surrounding the 2<sup>nd</sup> 80's Fire site (US Coast Guard Division E), within the Houston Ship Channel (US Coast Guard Divisions A-D), and in the industrial areas north and south of the Houston Ship Channel (Industrial Area). Real-time air monitoring data for the surrounding communities are communicated daily in a separate report.