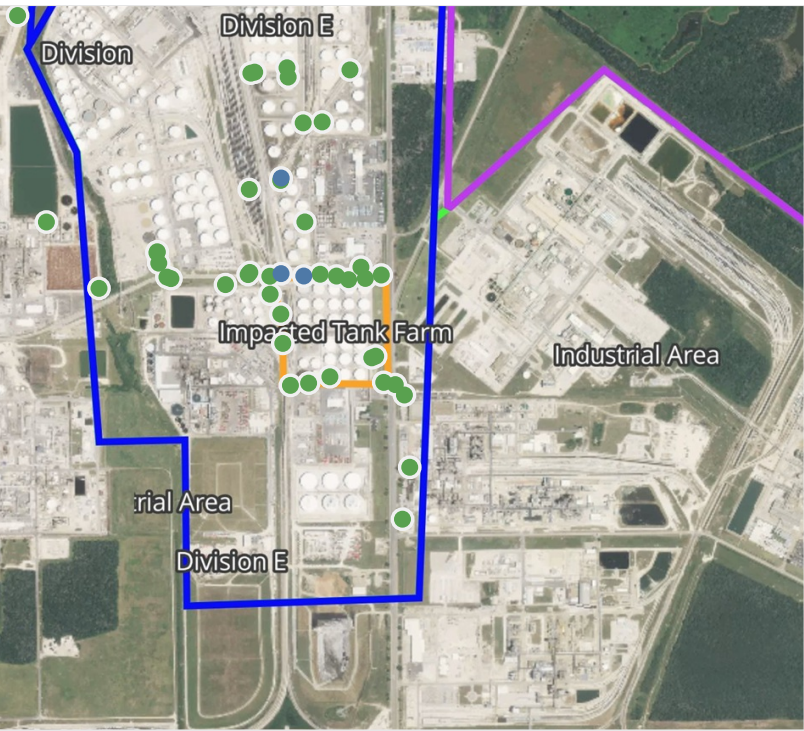


Preliminary Hand- Held Air Monitoring Locations | ITC Deer Park Tank Fire

Reading Date
4/28/2019 11:00:00 PM to 4/29/2019 12:00:00 AM



Recent Benzene Detections

Location Category	Reading Date	Range of Detections
Division E	4/28/2019 23:14:22	0.03000 ppm
	4/28/2019 23:16:55	0.05000 ppm
	4/28/2019 23:42:23	0.04000 ppm
	4/28/2019 23:48:18	0.03000 ppm

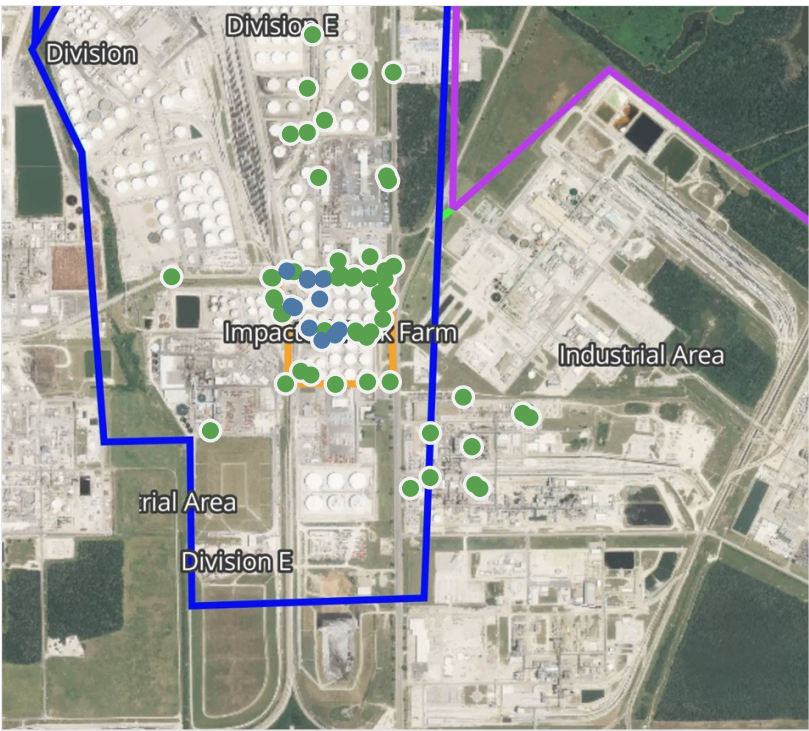
This data has been provided expeditiously to ITC and regulatory agencies for informational and/or operational purposes only. Data reported within this summary is preliminary in nature and has not undergone complete QA/QC (quality assurance/quality control) process. Until this complete QA/QC process is completed, the locations of each reading are approximate in nature and subject to further refinement. As some readings may represent non-breathing zone measurements, the data reported herein may not be suitable to assess potential occupational exposure. Site Assessment readings are not representative of an individual's breathing zone (e.g., container head space, ground level, directly above product, etc.).



Please Note: These updates display data from the 2nd 80's Fire site (Impacted Tank Farm), in the industrial areas surrounding the 2nd 80's Fire site (US Coast Guard Division E), within the Houston Ship Channel (US Coast Guard Divisions A-D), and in the industrial areas north and south of the Houston Ship Channel (Industrial Area). Real-time air monitoring data for the surrounding communities are communicated daily in a separate report.

Preliminary Hand- Held Air Monitoring Locations | ITC Deer Park Tank Fire

Reading Date
4/29/2019 12:00:00 AM to 4/29/2019 1:00:00 AM



Recent Benzene Detections

Location Category	Reading Date	Range of Detections
Division E	4/29/2019 00:05:15	0.05000 ppm
	4/29/2019 00:06:48	0.07000 ppm
	4/29/2019 00:28:19	0.04000 ppm
	4/29/2019 00:30:19	0.11000 ppm
Impacted Tank Farm	4/29/2019 00:21:56	0.04000 ppm
	4/29/2019 00:18:54	0.03000 ppm
	4/29/2019 00:24:16	0.03000 ppm
	4/29/2019 00:30:29	0.04000 ppm
	4/29/2019 00:30:39	0.04000 ppm
	4/29/2019 00:35:03	0.03000 ppm
	4/29/2019 00:34:52	0.02000 ppm

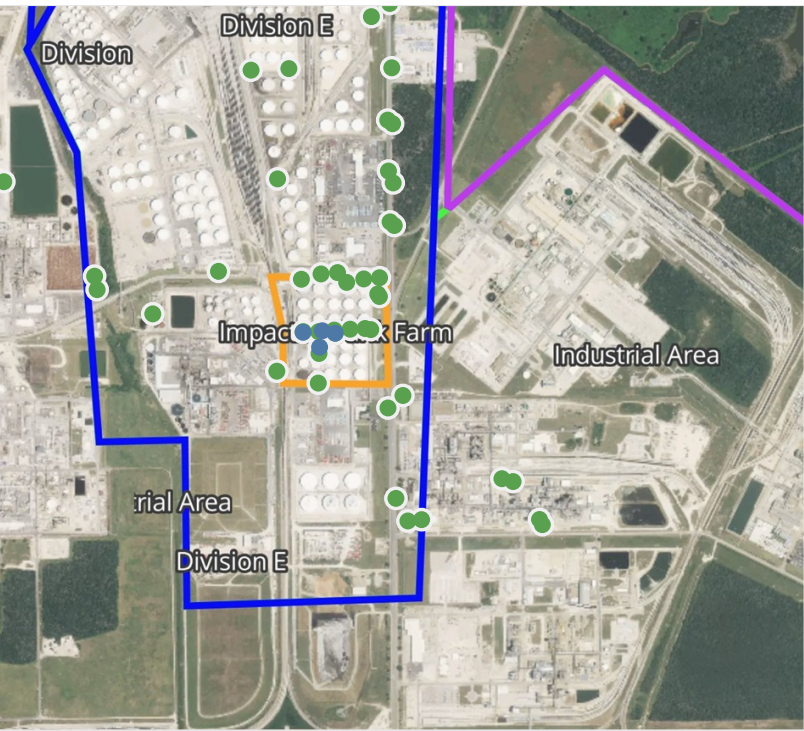
This data has been provided expeditiously to ITC and regulatory agencies for informational and/or operational purposes only. Data reported within this summary is preliminary in nature and has not undergone complete QA/QC (quality assurance/quality control) process. Until this complete QA/QC process is completed, the locations of each reading are approximate in nature and subject to further refinement. As some readings may represent non-breathing zone measurements, the data reported herein may not be suitable to assess potential occupational exposure. Site Assessment readings are not representative of an individual's breathing zone (e.g., container head space, ground level, directly above product, etc.).



Please Note: These updates display data from the 2nd 80's Fire site (Impacted Tank Farm), in the industrial areas surrounding the 2nd 80's Fire site (US Coast Guard Division E), within the Houston Ship Channel (US Coast Guard Divisions A-D), and in the industrial areas north and south of the Houston Ship Channel (Industrial Area). Real-time air monitoring data for the surrounding communities are communicated daily in a separate report.

Preliminary Hand- Held Air Monitoring Locations | ITC Deer Park Tank Fire

Reading Date
4/29/2019 1:00:00 AM to 4/29/2019 2:00:00 AM



Recent Benzene Detections

Location Category	Reading Date	Range of Detections
Impacted Tank Farm	4/29/2019 01:15:18	0.05000 ppm
	4/29/2019 01:46:57	0.03000 ppm
	4/29/2019 01:45:19	0.04000 ppm
	4/29/2019 01:49:18	0.04000 ppm

This data has been provided expeditiously to ITC and regulatory agencies for informational and/or operational purposes only. Data reported within this summary is preliminary in nature and has not undergone complete QA/QC (quality assurance/quality control) process. Until this complete QA/QC process is completed, the locations of each reading are approximate in nature and subject to further refinement. As some readings may represent non-breathing zone measurements, the data reported herein may not be suitable to assess potential occupational exposure. Site Assessment readings are not representative of an individual's breathing zone (e.g., container head space, ground level, directly above product, etc.).

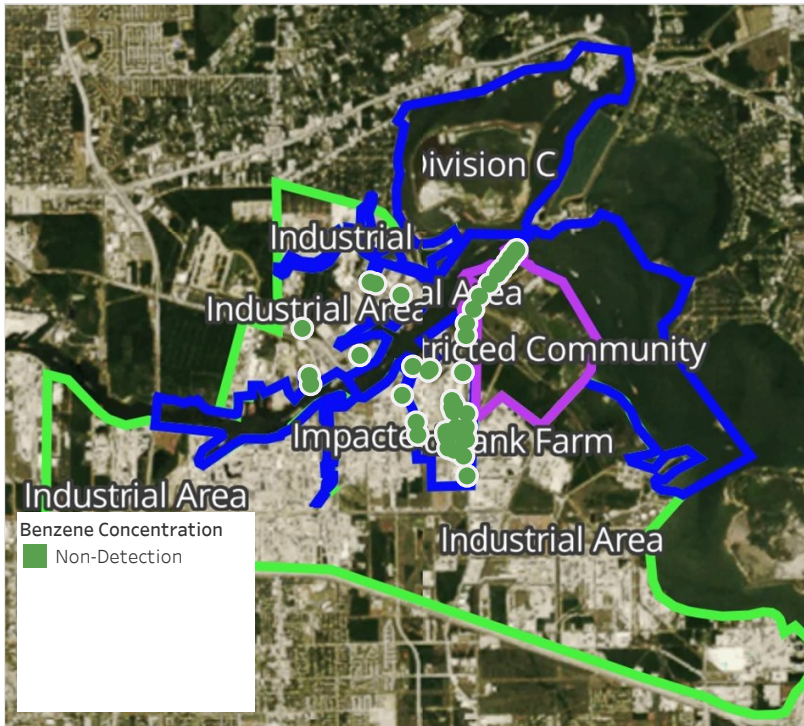


Please Note: These updates display data from the 2nd 80's Fire site (Impacted Tank Farm), in the industrial areas surrounding the 2nd 80's Fire site (US Coast Guard Division E), within the Houston Ship Channel (US Coast Guard Divisions A-D), and in the industrial areas north and south of the Houston Ship Channel (Industrial Area). Real-time air monitoring data for the surrounding communities are communicated daily in a separate report.

Preliminary Hand- Held Air Monitoring Locations | ITC Deer Park Tank Fire

Reading Date

4/29/2019 2:00:00 AM to 4/29/2019 3:00:00 AM



Recent Benzene Detections



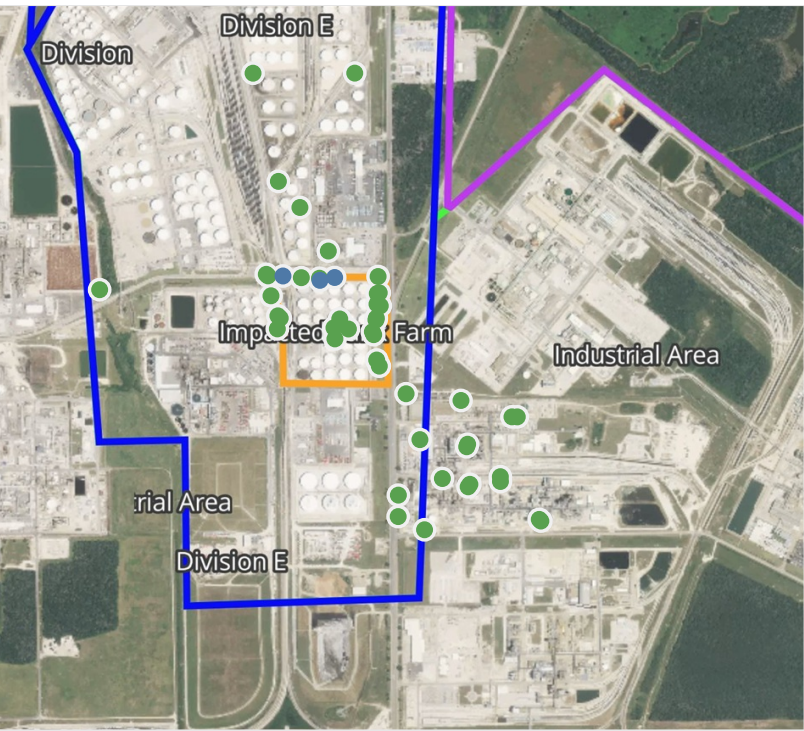
This data has been provided expeditiously to ITC and regulatory agencies for informational and/or operational purposes only. Data reported within this summary is preliminary in nature and has not undergone complete QA/QC (quality assurance/quality control) process. Until this complete QA/QC process is completed, the locations of each reading are approximate in nature and subject to further refinement. As some readings may represent non-breathing zone measurements, the data reported herein may not be suitable to assess potential occupational exposure. Site Assessment readings are not representative of an individual's breathing zone (e.g., container head space, ground level, directly above product, etc.).



Please Note: These updates display data from the 2nd 80's Fire site (Impacted Tank Farm), in the industrial areas surrounding the 2nd 80's Fire site (US Coast Guard Division E), within the Houston Ship Channel (US Coast Guard Divisions A-D), and in the industrial areas north and south of the Houston Ship Channel (Industrial Area). Real-time air monitoring data for the surrounding communities are communicated daily in a separate report.

Preliminary Hand- Held Air Monitoring Locations | ITC Deer Park Tank Fire

Reading Date
4/29/2019 3:00:00 AM to 4/29/2019 4:00:00 AM



Recent Benzene Detections

Location Category	Reading Date	Range of Detections
Division E	4/29/2019 03:02:15	0.05000 ppm
	4/29/2019 03:00:06	0.03000 ppm
	4/29/2019 03:06:57	0.09000 ppm

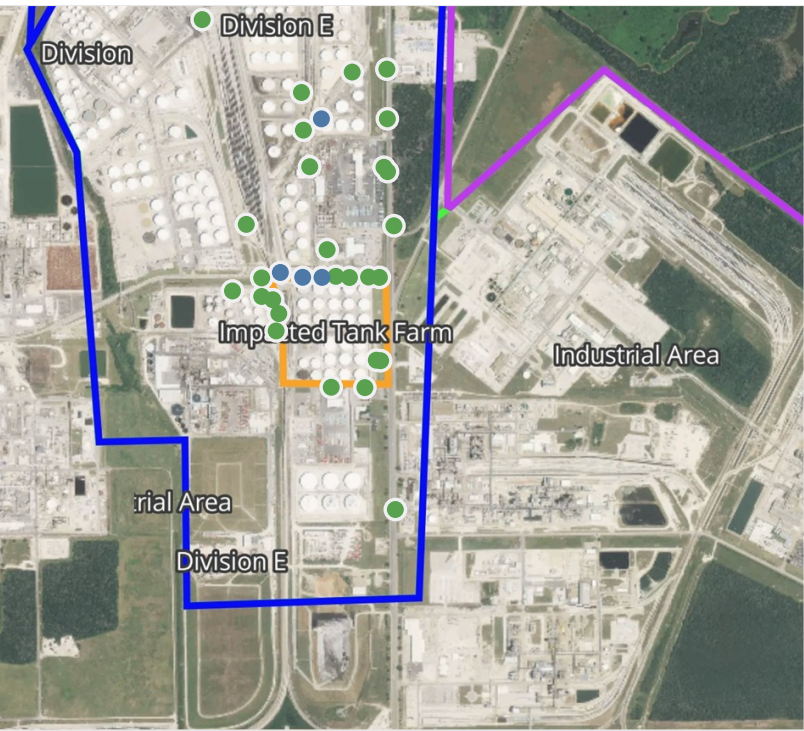
This data has been provided expeditiously to ITC and regulatory agencies for informational and/or operational purposes only. Data reported within this summary is preliminary in nature and has not undergone complete QA/QC (quality assurance/quality control) process. Until this complete QA/QC process is completed, the locations of each reading are approximate in nature and subject to further refinement. As some readings may represent non-breathing zone measurements, the data reported herein may not be suitable to assess potential occupational exposure. Site Assessment readings are not representative of an individual's breathing zone (e.g., container head space, ground level, directly above product, etc.).



Please Note: These updates display data from the 2nd 80's Fire site (Impacted Tank Farm), in the industrial areas surrounding the 2nd 80's Fire site (US Coast Guard Division E), within the Houston Ship Channel (US Coast Guard Divisions A-D), and in the industrial areas north and south of the Houston Ship Channel (Industrial Area). Real-time air monitoring data for the surrounding communities are communicated daily in a separate report.

Preliminary Hand- Held Air Monitoring Locations | ITC Deer Park Tank Fire

Reading Date
4/29/2019 4:00:00 AM to 4/29/2019 5:00:00 AM



Recent Benzene Detections

Location Category	Reading Date	Range of Detections
Division E	4/29/2019 04:30:24	0.0400 ppm
	4/29/2019 04:26:18	0.0600 ppm
	4/29/2019 04:41:53	0.0200 ppm
	4/29/2019 04:32:25	0.1300 ppm

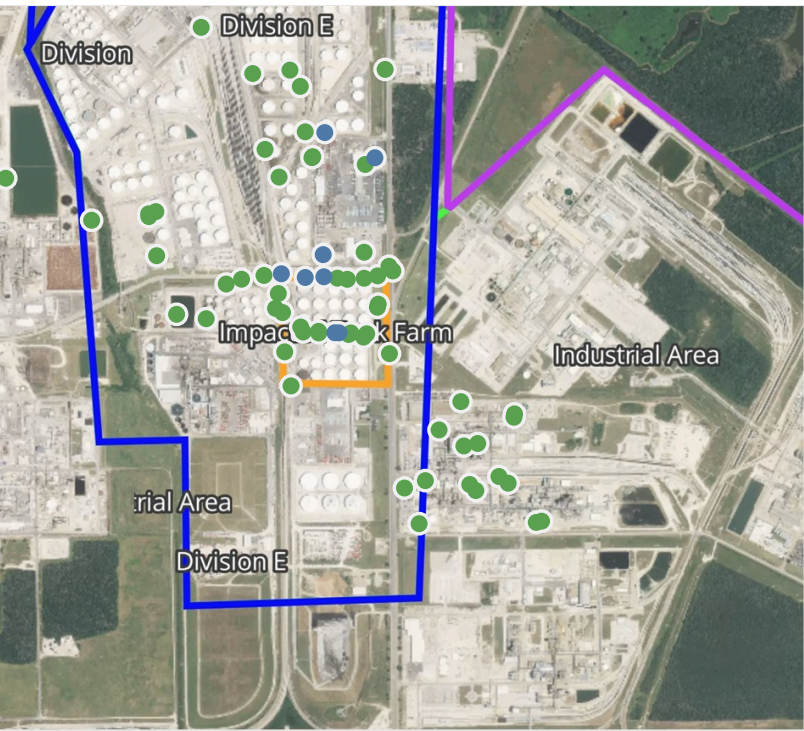
This data has been provided expeditiously to ITC and regulatory agencies for informational and/or operational purposes only. Data reported within this summary is preliminary in nature and has not undergone complete QA/QC (quality assurance/quality control) process. Until this complete QA/QC process is completed, the locations of each reading are approximate in nature and subject to further refinement. As some readings may represent non-breathing zone measurements, the data reported herein may not be suitable to assess potential occupational exposure. Site Assessment readings are not representative of an individual's breathing zone (e.g., container head space, ground level, directly above product, etc.).



Please Note: These updates display data from the 2nd 80's Fire site (Impacted Tank Farm), in the industrial areas surrounding the 2nd 80's Fire site (US Coast Guard Division E), within the Houston Ship Channel (US Coast Guard Divisions A-D), and in the industrial areas north and south of the Houston Ship Channel (Industrial Area). Real-time air monitoring data for the surrounding communities are communicated daily in a separate report.

Preliminary Hand- Held Air Monitoring Locations | ITC Deer Park Tank Fire

Reading Date
4/29/2019 5:00:00 AM to 4/29/2019 6:00:00 AM



Recent Benzene Detections

Location Category	Reading Date	Range of Detections
Division E	4/29/2019 05:19:23	0.09000 ppm
	4/29/2019 05:22:47	0.09000 ppm
	4/29/2019 05:21:07	0.04000 ppm
	4/29/2019 05:28:10	0.02000 ppm
	4/29/2019 05:39:32	0.03000 ppm
	4/29/2019 05:58:53	0.01000 ppm
Impacted Tank Farm	4/29/2019 05:45:57	0.07000 ppm
	4/29/2019 05:46:01	0.07000 ppm

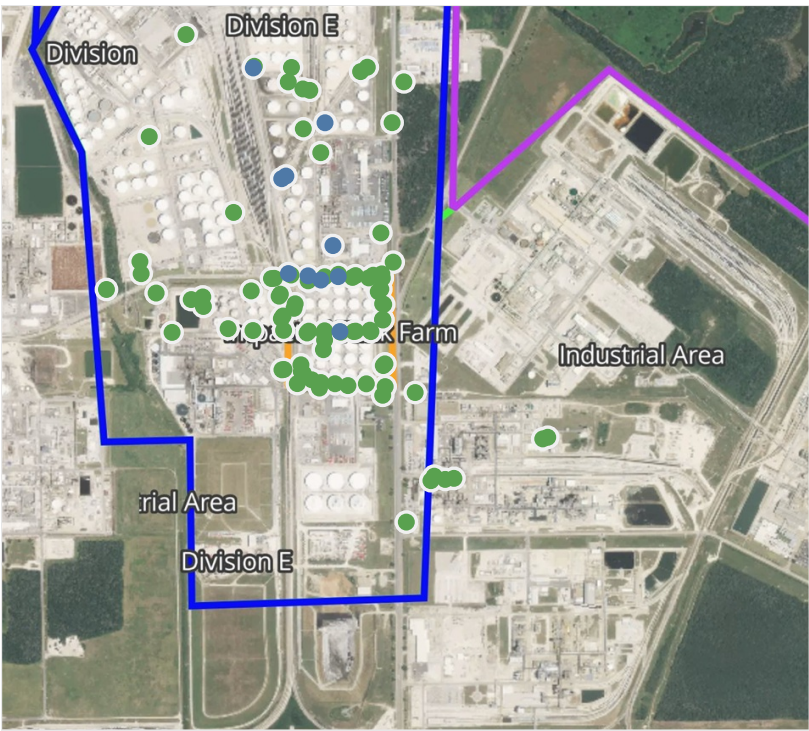
This data has been provided expeditiously to ITC and regulatory agencies for informational and/or operational purposes only. Data reported within this summary is preliminary in nature and has not undergone complete QA/QC (quality assurance/quality control) process. Until this complete QA/QC process is completed, the locations of each reading are approximate in nature and subject to further refinement. As some readings may represent non-breathing zone measurements, the data reported herein may not be suitable to assess potential occupational exposure. Site Assessment readings are not representative of an individual's breathing zone (e.g., container head space, ground level, directly above product, etc.).



Please Note: These updates display data from the 2nd 80's Fire site (Impacted Tank Farm), in the industrial areas surrounding the 2nd 80's Fire site (US Coast Guard Division E), within the Houston Ship Channel (US Coast Guard Divisions A-D), and in the industrial areas north and south of the Houston Ship Channel (Industrial Area). Real-time air monitoring data for the surrounding communities are communicated daily in a separate report.

Preliminary Hand- Held Air Monitoring Locations | ITC Deer Park Tank Fire

Reading Date
4/29/2019 6:00:00 AM to 4/29/2019 7:00:00 AM



Recent Benzene Detections

Location Category	Reading Date	Range of Detections
Division E	4/29/2019 06:11:06	0.0300 ppm
	4/29/2019 06:13:16	0.0500 ppm
	4/29/2019 06:20:52	0.0100 ppm
	4/29/2019 06:17:07	0.1800 ppm
	4/29/2019 06:23:28	0.0200 ppm
	4/29/2019 06:33:59	0.0200 ppm
	4/29/2019 06:44:00	0.0200 ppm
	4/29/2019 06:42:24	0.0300 ppm
Impacted Tank Farm	4/29/2019 06:43:29	0.0400 ppm
	4/29/2019 06:32:02	0.0600 ppm

This data has been provided expeditiously to ITC and regulatory agencies for informational and/or operational purposes only. Data reported within this summary is preliminary in nature and has not undergone complete QA/QC (quality assurance/quality control) process. Until this complete QA/QC process is completed, the locations of each reading are approximate in nature and subject to further refinement. As some readings may represent non-breathing zone measurements, the data reported herein may not be suitable to assess potential occupational exposure. Site Assessment readings are not representative of an individual's breathing zone (e.g., container head space, ground level, directly above product, etc.).

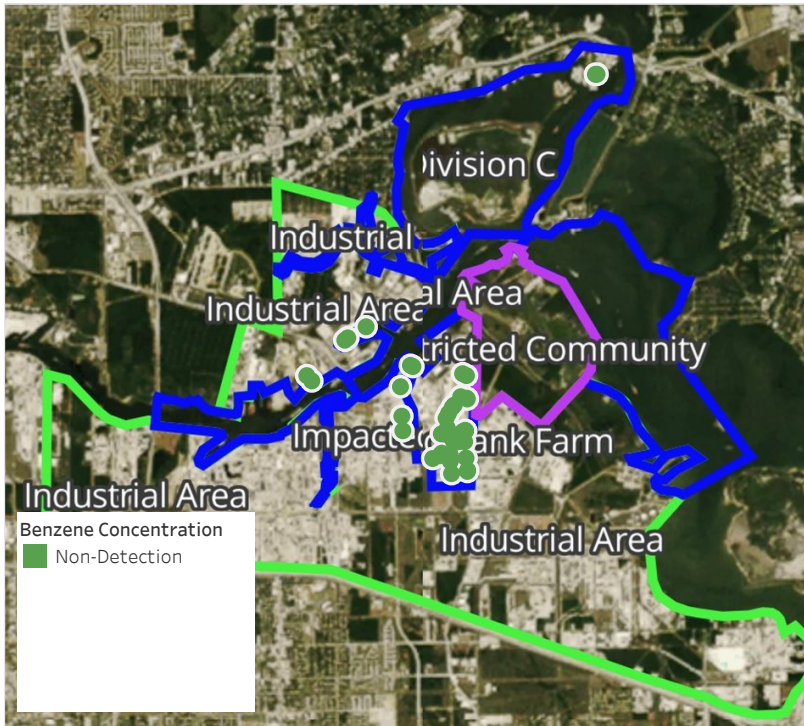


Please Note: These updates display data from the 2nd 80's Fire site (Impacted Tank Farm), in the industrial areas surrounding the 2nd 80's Fire site (US Coast Guard Division E), within the Houston Ship Channel (US Coast Guard Divisions A-D), and in the industrial areas north and south of the Houston Ship Channel (Industrial Area). Real-time air monitoring data for the surrounding communities are communicated daily in a separate report.

Preliminary Hand- Held Air Monitoring Locations | ITC Deer Park Tank Fire

Reading Date

4/29/2019 7:00:00 AM to 4/29/2019 8:00:00 AM



Recent Benzene Detections



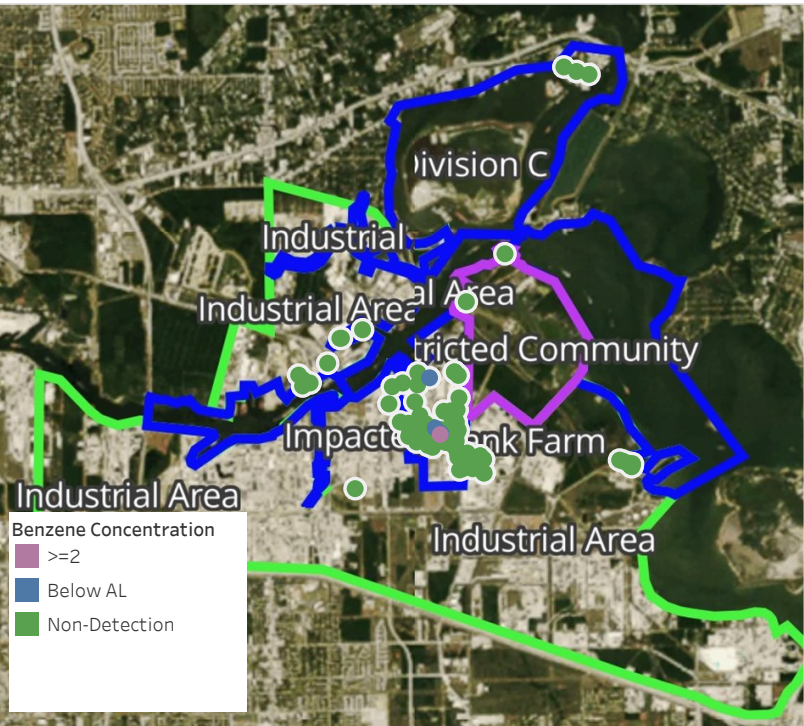
This data has been provided expeditiously to ITC and regulatory agencies for informational and/or operational purposes only. Data reported within this summary is preliminary in nature and has not undergone complete QA/QC (quality assurance/quality control) process. Until this complete QA/QC process is completed, the locations of each reading are approximate in nature and subject to further refinement. As some readings may represent non-breathing zone measurements, the data reported herein may not be suitable to assess potential occupational exposure. Site Assessment readings are not representative of an individual's breathing zone (e.g., container head space, ground level, directly above product, etc.).



Please Note: These updates display data from the 2nd 80's Fire site (Impacted Tank Farm), in the industrial areas surrounding the 2nd 80's Fire site (US Coast Guard Division E), within the Houston Ship Channel (US Coast Guard Divisions A-D), and in the industrial areas north and south of the Houston Ship Channel (Industrial Area). Real-time air monitoring data for the surrounding communities are communicated daily in a separate report.

Preliminary Hand- Held Air Monitoring Locations | ITC Deer Park Tank Fire

Reading Date
4/29/2019 8:00:00 AM to 4/29/2019 9:00:00 AM



Recent Benzene Detections

Location Category	Reading Date	Range of Detections
Division E	4/29/2019 08:06:16	0.1 ppm
	4/29/2019 08:58:10	0.2 ppm
	4/29/2019 08:27:22	0.1 ppm
Site Assessment	4/29/2019 08:02:49	148.0 ppm

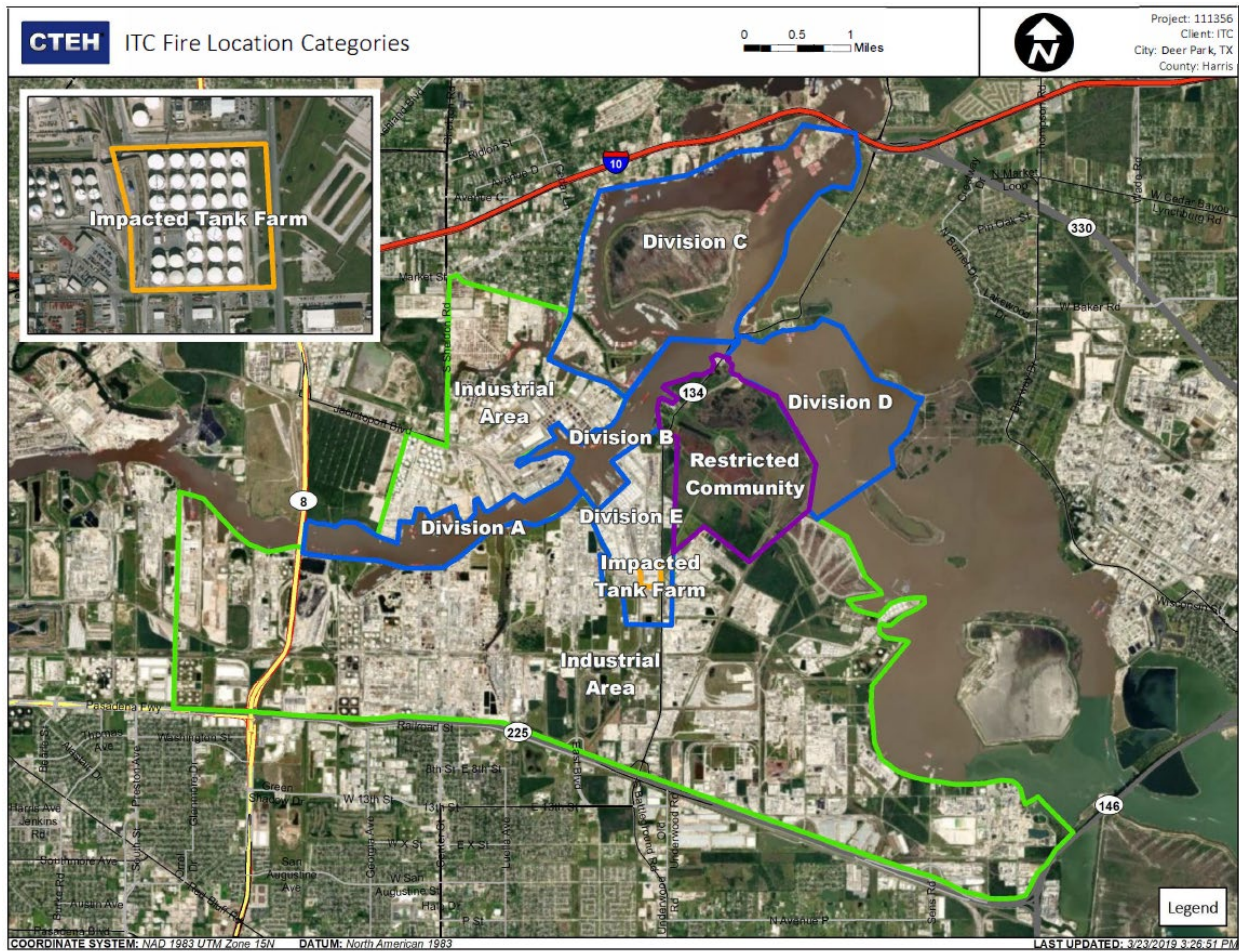
This data has been provided expeditiously to ITC and regulatory agencies for informational and/or operational purposes only. Data reported within this summary is preliminary in nature and has not undergone complete QA/QC (quality assurance/quality control) process. Until this complete QA/QC process is completed, the locations of each reading are approximate in nature and subject to further refinement. As some readings may represent non-breathing zone measurements, the data reported herein may not be suitable to assess potential occupational exposure. Site Assessment readings are not representative of an individual's breathing zone (e.g., container head space, ground level, directly above product, etc.).

Reading Date
4/29/2019 8:00:00 AM to 4/29/2019 9:00:00 AM

Benzene Action Level Concentration (ppm)
■ >=2

PRELIMINARY
Recent Benzene Detections Greater than 1.00 ppm

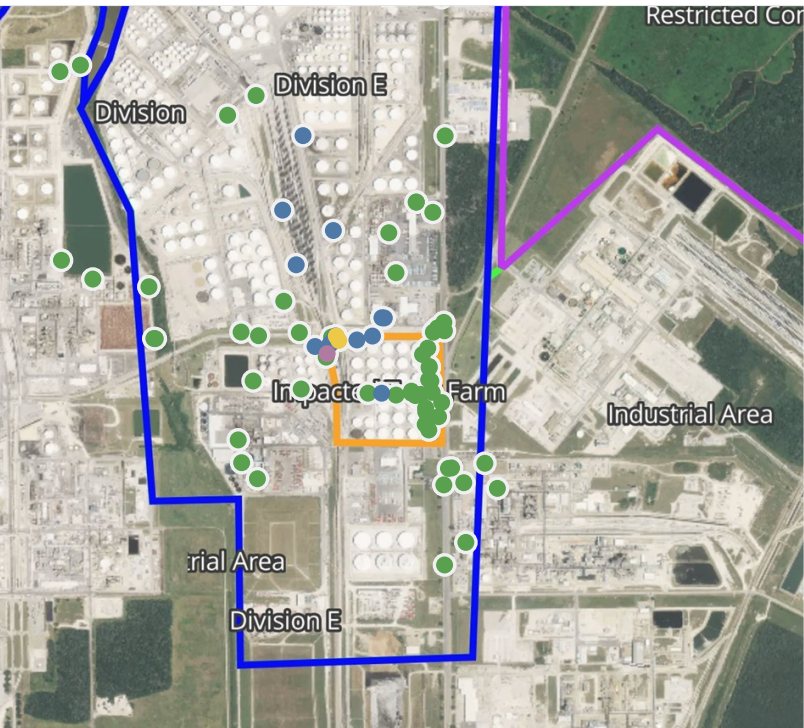
Reading Date	Location Category	GPS	Google Maps URL	Range of Detections
4/29/2019 08:02:49	Site Assessment	29.7327660,-95.0931820	https://www.google.com/maps/search/?api=1&query=29.7327660,-95.0931820	148.0 ppm



Please Note: These updates display data from the 2nd 80's Fire site (Impacted Tank Farm), in the industrial areas surrounding the 2nd 80's Fire site (US Coast Guard Division E), within the Houston Ship Channel (US Coast Guard Divisions A-D), and in the industrial areas north and south of the Houston Ship Channel (Industrial Area). Real-time air monitoring data for the surrounding communities are communicated daily in a separate report.

Preliminary Hand- Held Air Monitoring Locations | ITC Deer Park Tank Fire

Reading Date
4/29/2019 9:00:00 AM to 4/29/2019 10:00:00 AM



Recent Benzene Detections

Location Category	Reading Date	Range of Detections
Division E	4/29/2019 09:04:57	0.370 ppm
	4/29/2019 09:03:02	0.420 ppm
	4/29/2019 09:19:42	0.070 ppm
	4/29/2019 09:33:05	0.670 ppm
	4/29/2019 09:35:47	0.550 ppm
	4/29/2019 09:13:28	0.040 ppm
	4/29/2019 09:37:49	0.280 ppm
	4/29/2019 09:32:12	0.020 ppm
	4/29/2019 09:33:24	0.020 ppm
	4/29/2019 09:49:52	0.030 ppm
	4/29/2019 09:47:41	0.020 ppm
	4/29/2019 09:49:30	0.020 ppm
	4/29/2019 09:52:12	0.020 ppm
Impacted Tank Farm	4/29/2019 09:57:08	0.010 ppm
	4/29/2019 09:39:03	0.040 ppm
	4/29/2019 09:40:22	0.475 ppm
	4/29/2019 09:28:09	4.925 ppm
	4/29/2019 09:47:26	0.025 ppm

This data has been provided expeditiously to ITC and regulatory agencies for informational and/or operational purposes only. Data reported within this summary is preliminary in nature and has not undergone complete QA/QC (quality assurance/quality control) process. Until this complete QA/QC process is completed, the locations of each reading are approximate in nature and subject to further refinement. As some readings may represent non-breathing zone measurements, the data reported herein may not be suitable to assess potential occupational exposure. Site Assessment readings are not representative of an individual's breathing zone (e.g., container head space, ground level, directly above product, etc.).

Reading Date
4/29/2019 9:00:00 AM to 4/29/2019 10:00:00 AM

Benzene Action Level Concentration (ppm)
■ >=2

PRELIMINARY
Recent Benzene Detections Greater than 1.00 ppm

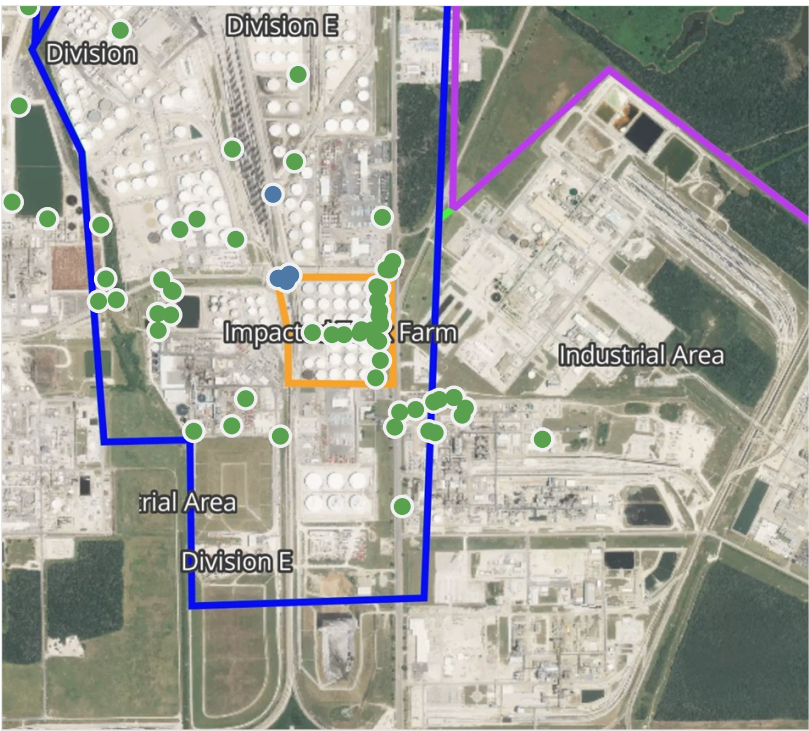
Reading Date	Location Category	GPS	Google Maps URL	Range of Detections
4/29/2019 09:28:09	Impacted Tank Farm	29.7327080,-95.0934510	https://www.google.com/maps/search/?api=1&query=29.7327080,-95.0934510	4.925 ppm



Please Note: These updates display data from the 2nd 80's Fire site (Impacted Tank Farm), in the industrial areas surrounding the 2nd 80's Fire site (US Coast Guard Division E), within the Houston Ship Channel (US Coast Guard Divisions A-D), and in the industrial areas north and south of the Houston Ship Channel (Industrial Area). Real-time air monitoring data for the surrounding communities are communicated daily in a separate report.

Preliminary Hand- Held Air Monitoring Locations | ITC Deer Park Tank Fire

Reading Date
4/29/2019 10:00:00 AM to 4/29/2019 11:00:00 AM



Recent Benzene Detections

Location Category	Reading Date	Range of Detections
Division E	4/29/2019 10:45:11	0.1100 ppm
	4/29/2019 10:46:16	0.0300 ppm
	4/29/2019 10:33:24	0.0200 ppm
	4/29/2019 10:48:24	0.4200 ppm
	4/29/2019 10:49:49	0.2400 ppm
	4/29/2019 10:51:52	0.3400 ppm
	4/29/2019 10:52:51	0.2500 ppm
	4/29/2019 10:55:51	0.0800 ppm
	4/29/2019 10:56:28	0.0900 ppm
	4/29/2019 10:59:29	0.2000 ppm
Division E	4/29/2019 10:58:56	0.2900 ppm
	4/29/2019 10:53:19	0.0300 ppm

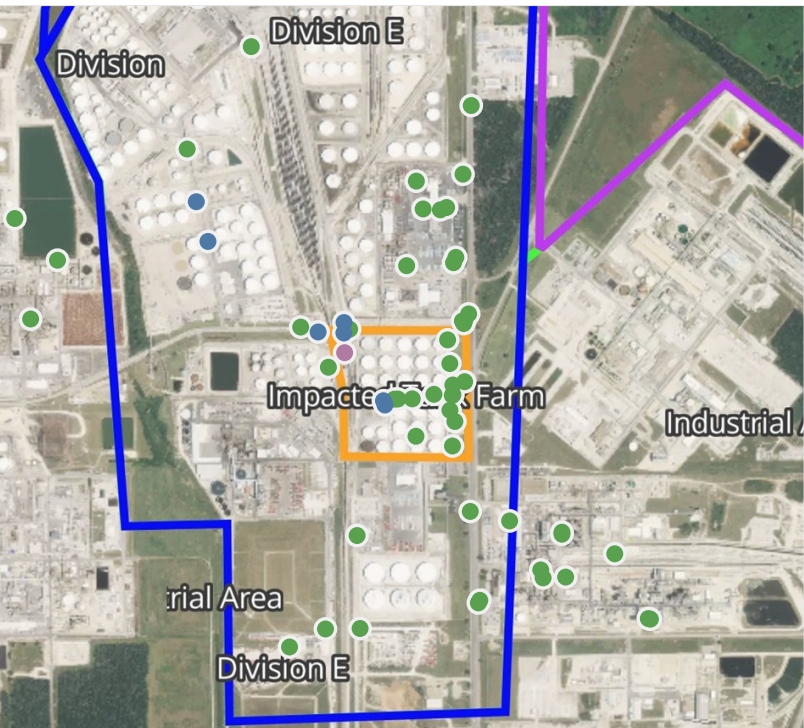
This data has been provided expeditiously to ITC and regulatory agencies for informational and/or operational purposes only. Data reported within this summary is preliminary in nature and has not undergone complete QA/QC (quality assurance/quality control) process. Until this complete QA/QC process is completed, the locations of each reading are approximate in nature and subject to further refinement. As some readings may represent non-breathing zone measurements, the data reported herein may not be suitable to assess potential occupational exposure. Site Assessment readings are not representative of an individual's breathing zone (e.g., container head space, ground level, directly above product, etc.).



Please Note: These updates display data from the 2nd 80's Fire site (Impacted Tank Farm), in the industrial areas surrounding the 2nd 80's Fire site (US Coast Guard Division E), within the Houston Ship Channel (US Coast Guard Divisions A-D), and in the industrial areas north and south of the Houston Ship Channel (Industrial Area). Real-time air monitoring data for the surrounding communities are communicated daily in a separate report.

Preliminary Hand- Held Air Monitoring Locations | ITC Deer Park Tank Fire

Reading Date
4/29/2019 11:00:00 AM to 4/29/2019 12:00:00 PM



Recent Benzene Detections

Location Category	Reading Date	Range of Detections
Division E	4/29/2019 11:13:11	0.060 ppm
	4/29/2019 11:01:30	0.030 ppm
	4/29/2019 11:39:50	0.050 ppm
	4/29/2019 11:43:02	0.020 ppm
Impacted Tank Farm	4/29/2019 11:02:08	0.050 ppm
	4/29/2019 11:03:52	0.040 ppm
Site Assessment	4/29/2019 11:18:45	2.800 ppm

This data has been provided expeditiously to ITC and regulatory agencies for informational and/or operational purposes only. Data reported within this summary is preliminary in nature and has not undergone complete QA/QC (quality assurance/quality control) process. Until this complete QA/QC process is completed, the locations of each reading are approximate in nature and subject to further refinement. As some readings may represent non-breathing zone measurements, the data reported herein may not be suitable to assess potential occupational exposure. Site Assessment readings are not representative of an individual's breathing zone (e.g., container head space, ground level, directly above product, etc.).

Reading Date
4/29/2019 11:00:00 AM to 4/29/2019 12:00:00 PM

Benzene Action Level Concentration (ppm)
■ >=2

PRELIMINARY
Recent Benzene Detections Greater than 1.00 ppm

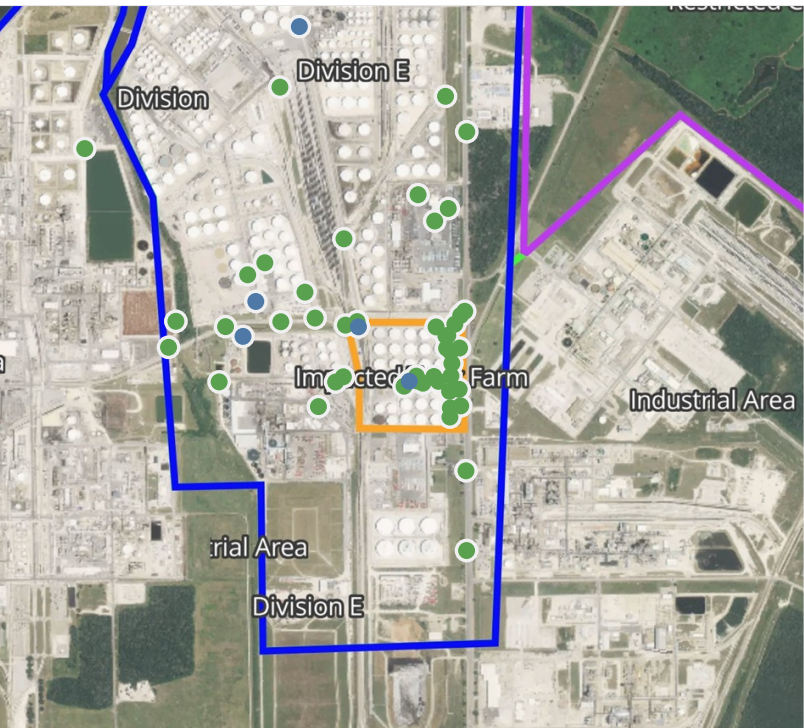
Reading Date	Location Category	GPS	Google Maps URL	Range of Detections
4/29/2019 11:18:45	Site Assessment	29.7326700,-95.0931140	https://www.google.com/maps/search/?api=1&query=29.7326700,-95.0931140	2.800 ppm



Please Note: These updates display data from the 2nd 80's Fire site (Impacted Tank Farm), in the industrial areas surrounding the 2nd 80's Fire site (US Coast Guard Division E), within the Houston Ship Channel (US Coast Guard Divisions A-D), and in the industrial areas north and south of the Houston Ship Channel (Industrial Area). Real-time air monitoring data for the surrounding communities are communicated daily in a separate report.

Preliminary Hand- Held Air Monitoring Locations | ITC Deer Park Tank Fire

Reading Date
4/29/2019 12:00:00 PM to 4/29/2019 1:00:00 PM



Recent Benzene Detections

Location Category	Reading Date	Range of Detections
Division E	4/29/2019 12:00:09	0.1900 ppm
	4/29/2019 12:09:54	0.0400 ppm
	4/29/2019 12:21:14	0.0200 ppm
	4/29/2019 12:40:06	0.0400 ppm
	4/29/2019 12:46:04	0.0300 ppm
Impacted Tank Farm	4/29/2019 12:18:55	0.0500 ppm

This data has been provided expeditiously to ITC and regulatory agencies for informational and/or operational purposes only. Data reported within this summary is preliminary in nature and has not undergone complete QA/QC (quality assurance/quality control) process. Until this complete QA/QC process is completed, the locations of each reading are approximate in nature and subject to further refinement. As some readings may represent non-breathing zone measurements, the data reported herein may not be suitable to assess potential occupational exposure. Site Assessment readings are not representative of an individual's breathing zone (e.g., container head space, ground level, directly above product, etc.).



Please Note: These updates display data from the 2nd 80's Fire site (Impacted Tank Farm), in the industrial areas surrounding the 2nd 80's Fire site (US Coast Guard Division E), within the Houston Ship Channel (US Coast Guard Divisions A-D), and in the industrial areas north and south of the Houston Ship Channel (Industrial Area). Real-time air monitoring data for the surrounding communities are communicated daily in a separate report.

Preliminary Hand- Held Air Monitoring Locations | ITC Deer Park Tank Fire

Reading Date
4/29/2019 1:00:00 PM to 4/29/2019 2:00:00 PM



Recent Benzene Detections

Location Category	Reading Date	Range of Detections
Division E	4/29/2019 13:21:29	0.2000 ppm
	4/29/2019 13:22:41	0.0400 ppm
	4/29/2019 13:29:43	0.0200 ppm
	4/29/2019 13:05:16	0.0100 ppm
	4/29/2019 13:11:10	0.0200 ppm
Impacted Tank Farm	4/29/2019 13:00:25	0.0500 ppm
	4/29/2019 13:35:31	0.1250 ppm
	4/29/2019 13:38:45	0.0400 ppm

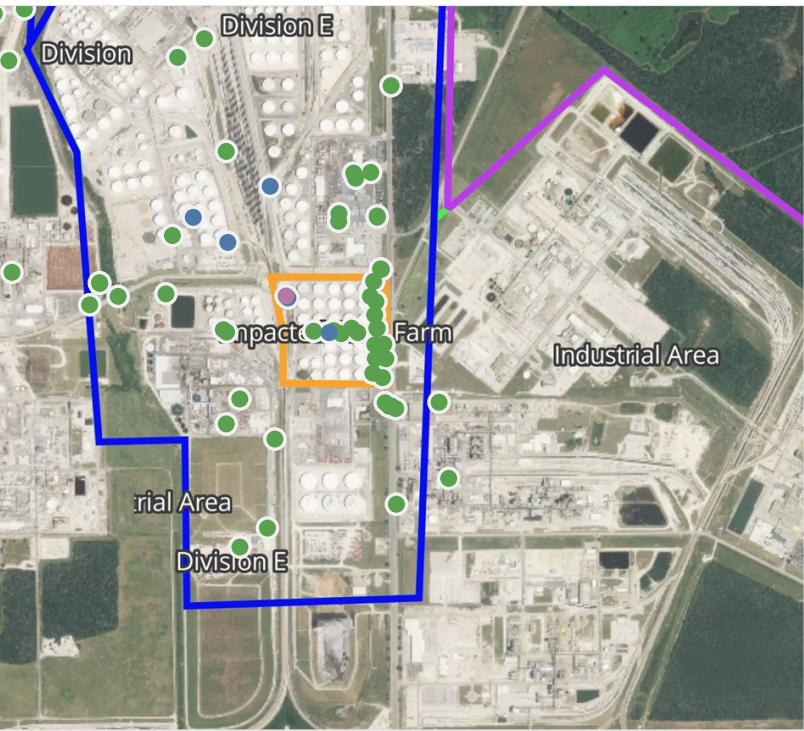
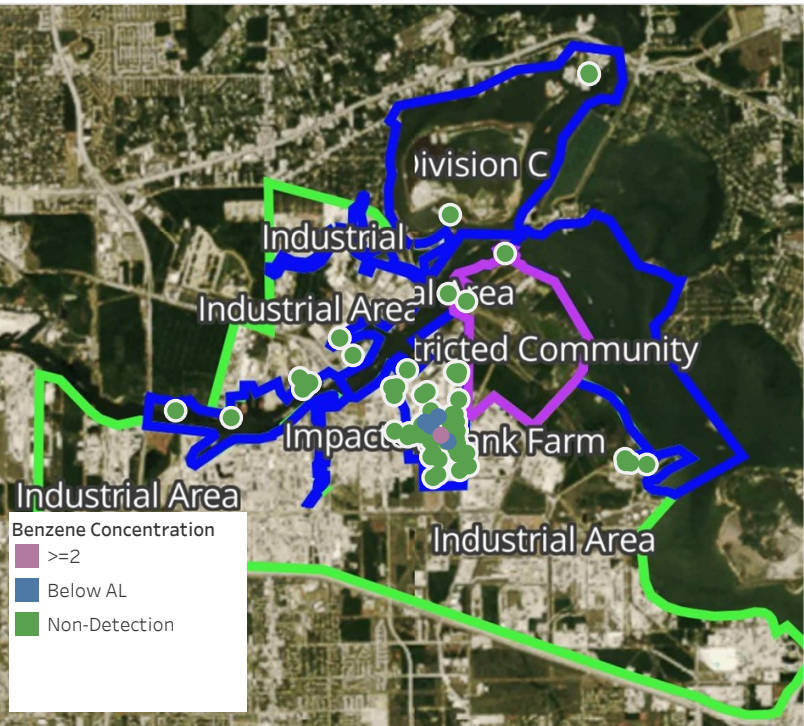
This data has been provided expeditiously to ITC and regulatory agencies for informational and/or operational purposes only. Data reported within this summary is preliminary in nature and has not undergone complete QA/QC (quality assurance/quality control) process. Until this complete QA/QC process is completed, the locations of each reading are approximate in nature and subject to further refinement. As some readings may represent non-breathing zone measurements, the data reported herein may not be suitable to assess potential occupational exposure. Site Assessment readings are not representative of an individual's breathing zone (e.g., container head space, ground level, directly above product, etc.).



Please Note: These updates display data from the 2nd 80's Fire site (Impacted Tank Farm), in the industrial areas surrounding the 2nd 80's Fire site (US Coast Guard Division E), within the Houston Ship Channel (US Coast Guard Divisions A-D), and in the industrial areas north and south of the Houston Ship Channel (Industrial Area). Real-time air monitoring data for the surrounding communities are communicated daily in a separate report.

Preliminary Hand- Held Air Monitoring Locations | ITC Deer Park Tank Fire

Reading Date
4/29/2019 2:00:00 PM to 4/29/2019 3:00:00 PM



Recent Benzene Detections

Location Category	Reading Date	Range of Detections
Division E	4/29/2019 14:45:03	0.040 ppm
	4/29/2019 14:41:54	0.030 ppm
	4/29/2019 14:37:20	0.020 ppm
Impacted Tank Farm	4/29/2019 14:13:49	0.060 ppm
	4/29/2019 14:26:59	0.020 ppm
	4/29/2019 14:32:27	2.090 ppm

This data has been provided expeditiously to ITC and regulatory agencies for informational and/or operational purposes only. Data reported within this summary is preliminary in nature and has not undergone complete QA/QC (quality assurance/quality control) process. Until this complete QA/QC process is completed, the locations of each reading are approximate in nature and subject to further refinement. As some readings may represent non-breathing zone measurements, the data reported herein may not be suitable to assess potential occupational exposure. Site Assessment readings are not representative of an individual's breathing zone (e.g., container head space, ground level, directly above product, etc.).

Reading Date
4/29/2019 2:00:00 PM to 4/29/2019 3:00:00 PM

Benzene Action Level Concentration (ppm)
■ >=2

PRELIMINARY
Recent Benzene Detections Greater than 1.00 ppm

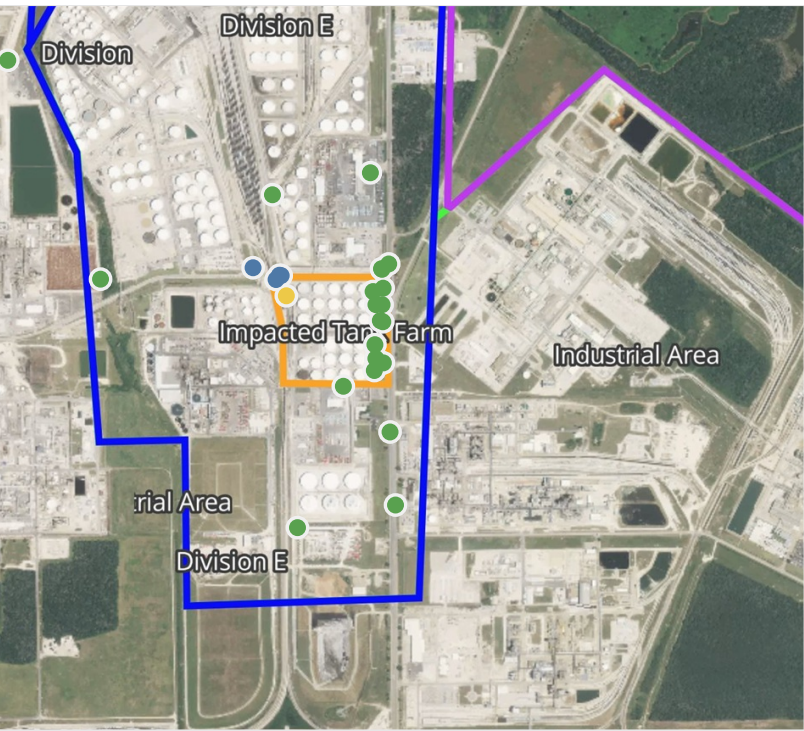
Reading Date	Location Category	GPS	Google Maps URL	Range of Detections
4/29/2019 14:32:27	Impacted Tank Farm	29.7326650,-95.0930510	https://www.google.com/maps/search/?api=1&query=29.7326650,-95.0930510	2.090 ppm



Please Note: These updates display data from the 2nd 80's Fire site (Impacted Tank Farm), in the industrial areas surrounding the 2nd 80's Fire site (US Coast Guard Division E), within the Houston Ship Channel (US Coast Guard Divisions A-D), and in the industrial areas north and south of the Houston Ship Channel (Industrial Area). Real-time air monitoring data for the surrounding communities are communicated daily in a separate report.

Preliminary Hand- Held Air Monitoring Locations | ITC Deer Park Tank Fire

Reading Date
4/29/2019 3:00:00 PM to 4/29/2019 4:00:00 PM



Recent Benzene Detections

Location Category	Reading Date	Range of Detections
Division E	4/29/2019 15:01:45	0.0200 ppm
	4/29/2019 15:06:50	0.0400 ppm
	4/29/2019 15:05:45	0.0700 ppm
	4/29/2019 15:09:41	0.0700 ppm
Impacted Tank Farm	4/29/2019 15:06:41	0.7750 ppm

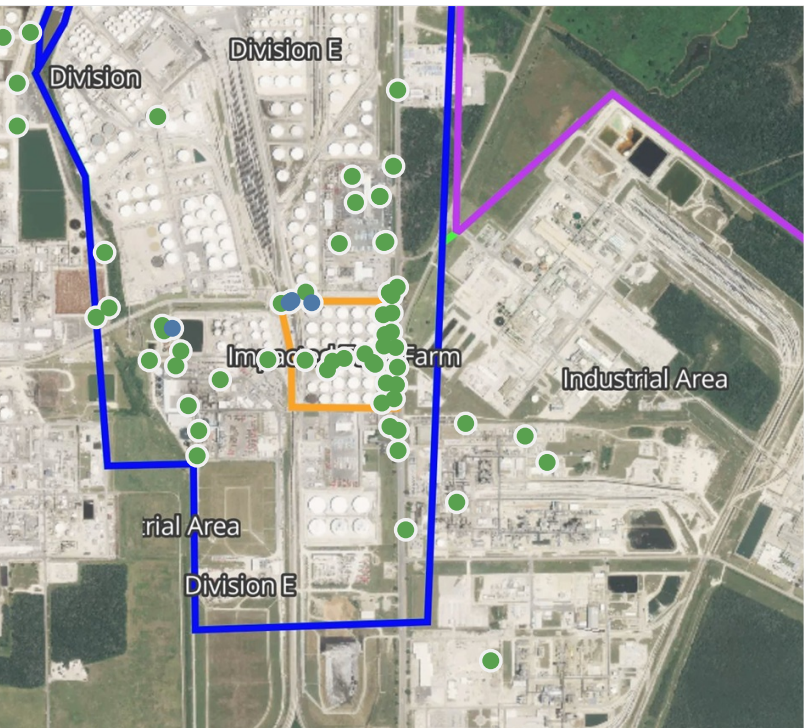
This data has been provided expeditiously to ITC and regulatory agencies for informational and/or operational purposes only. Data reported within this summary is preliminary in nature and has not undergone complete QA/QC (quality assurance/quality control) process. Until this complete QA/QC process is completed, the locations of each reading are approximate in nature and subject to further refinement. As some readings may represent non-breathing zone measurements, the data reported herein may not be suitable to assess potential occupational exposure. Site Assessment readings are not representative of an individual's breathing zone (e.g., container head space, ground level, directly above product, etc.).



Please Note: These updates display data from the 2nd 80's Fire site (Impacted Tank Farm), in the industrial areas surrounding the 2nd 80's Fire site (US Coast Guard Division E), within the Houston Ship Channel (US Coast Guard Divisions A-D), and in the industrial areas north and south of the Houston Ship Channel (Industrial Area). Real-time air monitoring data for the surrounding communities are communicated daily in a separate report.

Preliminary Hand- Held Air Monitoring Locations | ITC Deer Park Tank Fire

Reading Date
4/29/2019 4:00:00 PM to 4/29/2019 5:00:00 PM



Recent Benzene Detections

Location Category	Reading Date	Range of Detections
Division E	4/29/2019 16:13:25	0.02000 ppm
	4/29/2019 16:18:29	0.11000 ppm
	4/29/2019 16:25:05	0.03000 ppm
	4/29/2019 16:15:31	0.03000 ppm

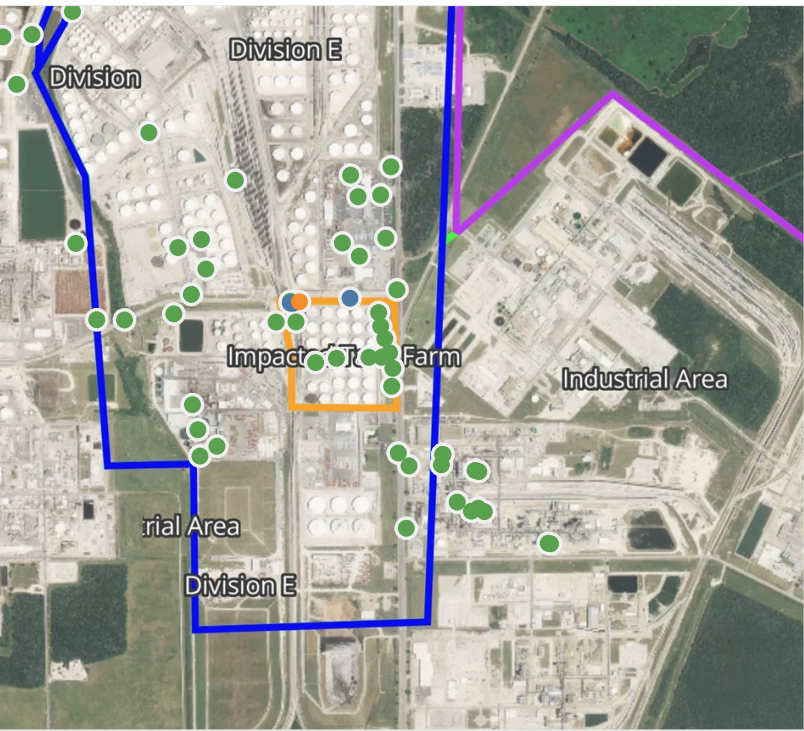
This data has been provided expeditiously to ITC and regulatory agencies for informational and/or operational purposes only. Data reported within this summary is preliminary in nature and has not undergone complete QA/QC (quality assurance/quality control) process. Until this complete QA/QC process is completed, the locations of each reading are approximate in nature and subject to further refinement. As some readings may represent non-breathing zone measurements, the data reported herein may not be suitable to assess potential occupational exposure. Site Assessment readings are not representative of an individual's breathing zone (e.g., container head space, ground level, directly above product, etc.).



Please Note: These updates display data from the 2nd 80's Fire site (Impacted Tank Farm), in the industrial areas surrounding the 2nd 80's Fire site (US Coast Guard Division E), within the Houston Ship Channel (US Coast Guard Divisions A-D), and in the industrial areas north and south of the Houston Ship Channel (Industrial Area). Real-time air monitoring data for the surrounding communities are communicated daily in a separate report.

Preliminary Hand- Held Air Monitoring Locations | ITC Deer Park Tank Fire

Reading Date
4/29/2019 5:00:00 PM to 4/29/2019 6:00:00 PM



Recent Benzene Detections

Location Category	Reading Date	Range of Detections
Division E	4/29/2019 17:12:31	0.390 ppm
	4/29/2019 17:13:10	0.200 ppm
	4/29/2019 17:12:24	0.040 ppm
Impacted Tank Farm	4/29/2019 17:06:07	1.275 ppm

This data has been provided expeditiously to ITC and regulatory agencies for informational and/or operational purposes only. Data reported within this summary is preliminary in nature and has not undergone complete QA/QC (quality assurance/quality control) process. Until this complete QA/QC process is completed, the locations of each reading are approximate in nature and subject to further refinement. As some readings may represent non-breathing zone measurements, the data reported herein may not be suitable to assess potential occupational exposure. Site Assessment readings are not representative of an individual's breathing zone (e.g., container head space, ground level, directly above product, etc.).

Reading Date
4/29/2019 5:00:00 PM to 4/29/2019 6:00:00 PM

Benzene Action Level Concentration (ppm)
 >=1

PRELIMINARY
Recent Benzene Detections Greater than 1.00 ppm

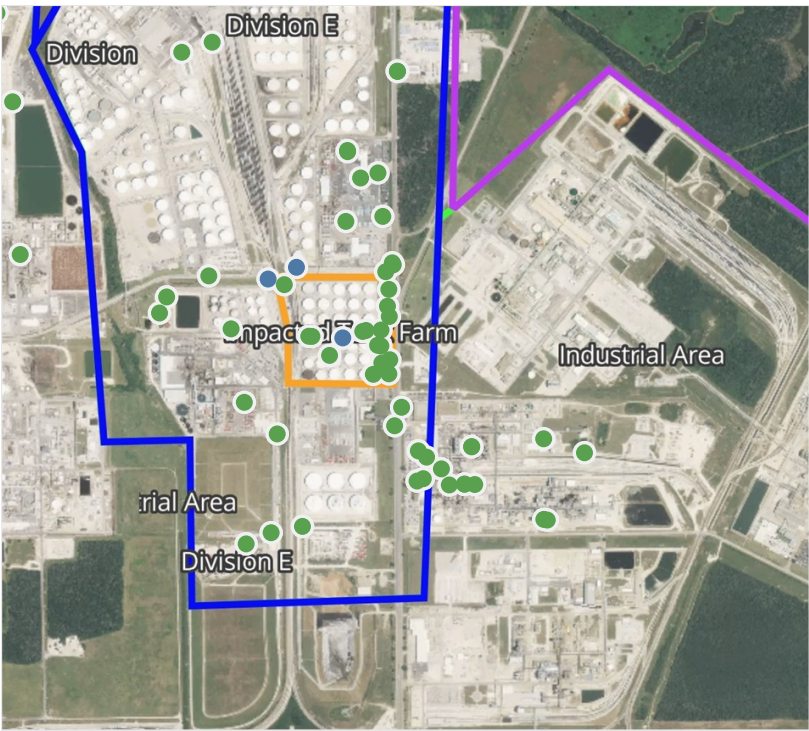
Reading Date	Location Category	GPS	Google Maps URL	Range of Detections
4/29/2019 17:06:07	Impacted Tank Farm	29.7331410,-95.0929010	https://www.google.com/maps/search/?api=1&query=29.7331410,-95.0929010	1.275 ppm



Please Note: These updates display data from the 2nd 80's Fire site (Impacted Tank Farm), in the industrial areas surrounding the 2nd 80's Fire site (US Coast Guard Division E), within the Houston Ship Channel (US Coast Guard Divisions A-D), and in the industrial areas north and south of the Houston Ship Channel (Industrial Area). Real-time air monitoring data for the surrounding communities are communicated daily in a separate report.

Preliminary Hand- Held Air Monitoring Locations | ITC Deer Park Tank Fire

Reading Date
4/29/2019 6:00:00 PM to 4/29/2019 7:00:00 PM



Recent Benzene Detections

Location Category	Reading Date	Range of Detections
Division E	4/29/2019 18:16:06	0.02000 ppm
	4/29/2019 18:48:09	0.02000 ppm
Impacted Tank Farm	4/29/2019 18:04:55	0.04000 ppm

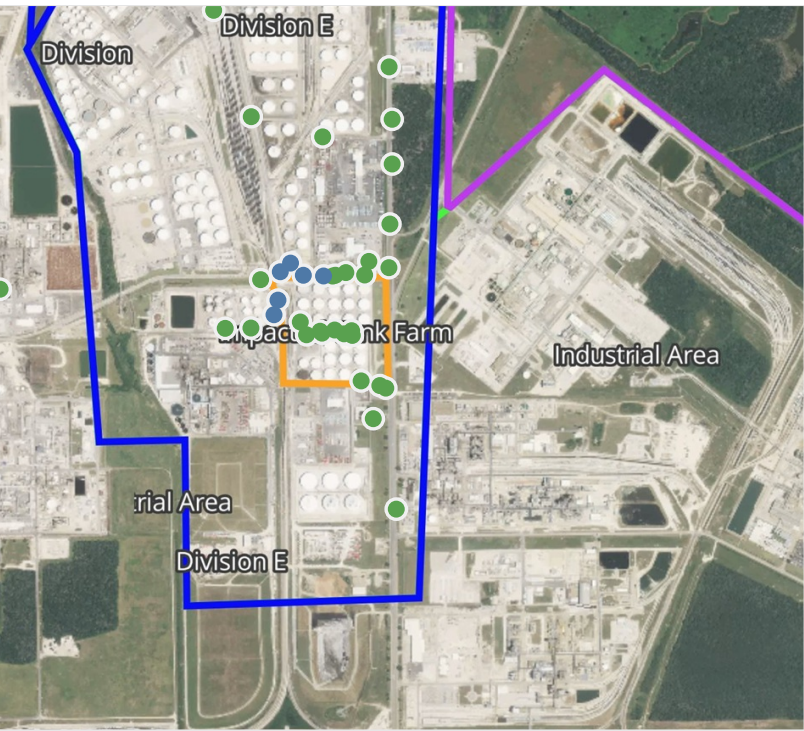
This data has been provided expeditiously to ITC and regulatory agencies for informational and/or operational purposes only. Data reported within this summary is preliminary in nature and has not undergone complete QA/QC (quality assurance/quality control) process. Until this complete QA/QC process is completed, the locations of each reading are approximate in nature and subject to further refinement. As some readings may represent non-breathing zone measurements, the data reported herein may not be suitable to assess potential occupational exposure. Site Assessment readings are not representative of an individual's breathing zone (e.g., container head space, ground level, directly above product, etc.).



Please Note: These updates display data from the 2nd 80's Fire site (Impacted Tank Farm), in the industrial areas surrounding the 2nd 80's Fire site (US Coast Guard Division E), within the Houston Ship Channel (US Coast Guard Divisions A-D), and in the industrial areas north and south of the Houston Ship Channel (Industrial Area). Real-time air monitoring data for the surrounding communities are communicated daily in a separate report.

Preliminary Hand- Held Air Monitoring Locations | ITC Deer Park Tank Fire

Reading Date
4/29/2019 7:00:00 PM to 4/29/2019 8:00:00 PM



Recent Benzene Detections

Location Category	Reading Date	Range of Detections
Division E	4/29/2019 19:42:28	0.04000 ppm
	4/29/2019 19:41:20	0.03000 ppm
	4/29/2019 19:44:58	0.03000 ppm
	4/29/2019 19:46:27	0.04000 ppm
	4/29/2019 19:51:17	0.04000 ppm
	4/29/2019 19:53:57	0.04000 ppm

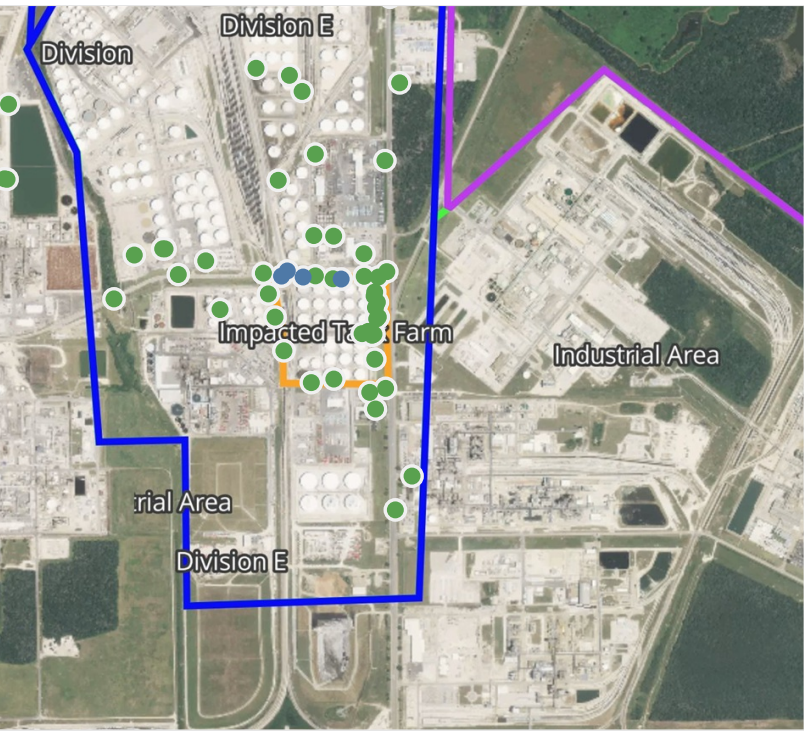
This data has been provided expeditiously to ITC and regulatory agencies for informational and/or operational purposes only. Data reported within this summary is preliminary in nature and has not undergone complete QA/QC (quality assurance/quality control) process. Until this complete QA/QC process is completed, the locations of each reading are approximate in nature and subject to further refinement. As some readings may represent non-breathing zone measurements, the data reported herein may not be suitable to assess potential occupational exposure. Site Assessment readings are not representative of an individual's breathing zone (e.g., container head space, ground level, directly above product, etc.).



Please Note: These updates display data from the 2nd 80's Fire site (Impacted Tank Farm), in the industrial areas surrounding the 2nd 80's Fire site (US Coast Guard Division E), within the Houston Ship Channel (US Coast Guard Divisions A-D), and in the industrial areas north and south of the Houston Ship Channel (Industrial Area). Real-time air monitoring data for the surrounding communities are communicated daily in a separate report.

Preliminary Hand- Held Air Monitoring Locations | ITC Deer Park Tank Fire

Reading Date
4/29/2019 8:00:00 PM to 4/29/2019 9:00:00 PM



Recent Benzene Detections

Location Category	Reading Date	Range of Detections
Division E	4/29/2019 20:27:20	0.03000 ppm
	4/29/2019 20:24:58	0.06000 ppm
	4/29/2019 20:19:42	0.02000 ppm
	4/29/2019 20:29:50	0.04000 ppm
	4/29/2019 20:21:35	0.02000 ppm
	4/29/2019 20:28:24	0.05000 ppm

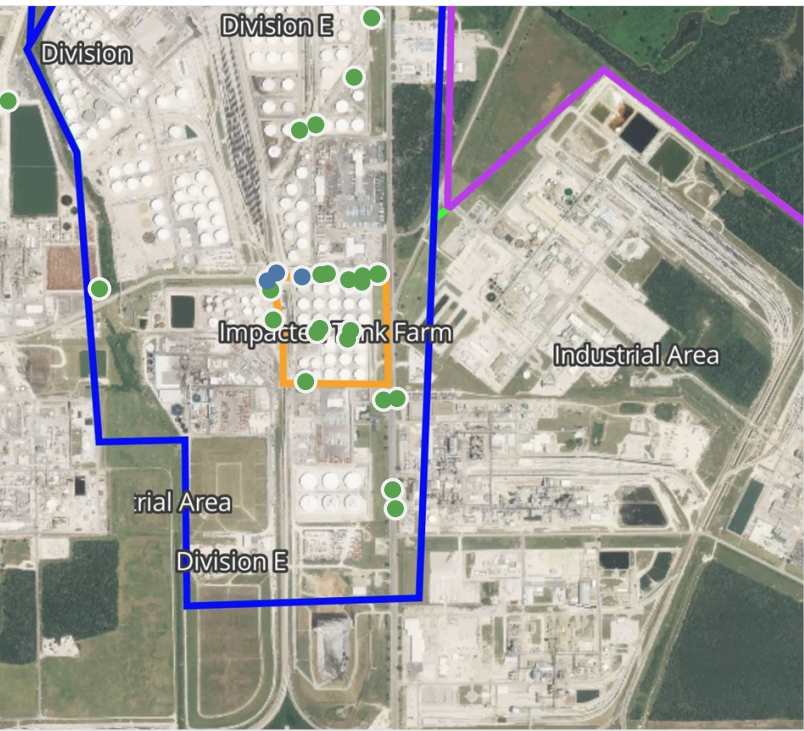
This data has been provided expeditiously to ITC and regulatory agencies for informational and/or operational purposes only. Data reported within this summary is preliminary in nature and has not undergone complete QA/QC (quality assurance/quality control) process. Until this complete QA/QC process is completed, the locations of each reading are approximate in nature and subject to further refinement. As some readings may represent non-breathing zone measurements, the data reported herein may not be suitable to assess potential occupational exposure. Site Assessment readings are not representative of an individual's breathing zone (e.g., container head space, ground level, directly above product, etc.).



Please Note: These updates display data from the 2nd 80's Fire site (Impacted Tank Farm), in the industrial areas surrounding the 2nd 80's Fire site (US Coast Guard Division E), within the Houston Ship Channel (US Coast Guard Divisions A-D), and in the industrial areas north and south of the Houston Ship Channel (Industrial Area). Real-time air monitoring data for the surrounding communities are communicated daily in a separate report.

Preliminary Hand- Held Air Monitoring Locations | ITC Deer Park Tank Fire

Reading Date
4/29/2019 9:00:00 PM to 4/29/2019 10:00:00 PM



Recent Benzene Detections

Location Category	Reading Date	Range of Detections
Division E	4/29/2019 21:20:58	0.02000 ppm
	4/29/2019 21:18:17	0.04000 ppm
	4/29/2019 21:22:48	0.02000 ppm

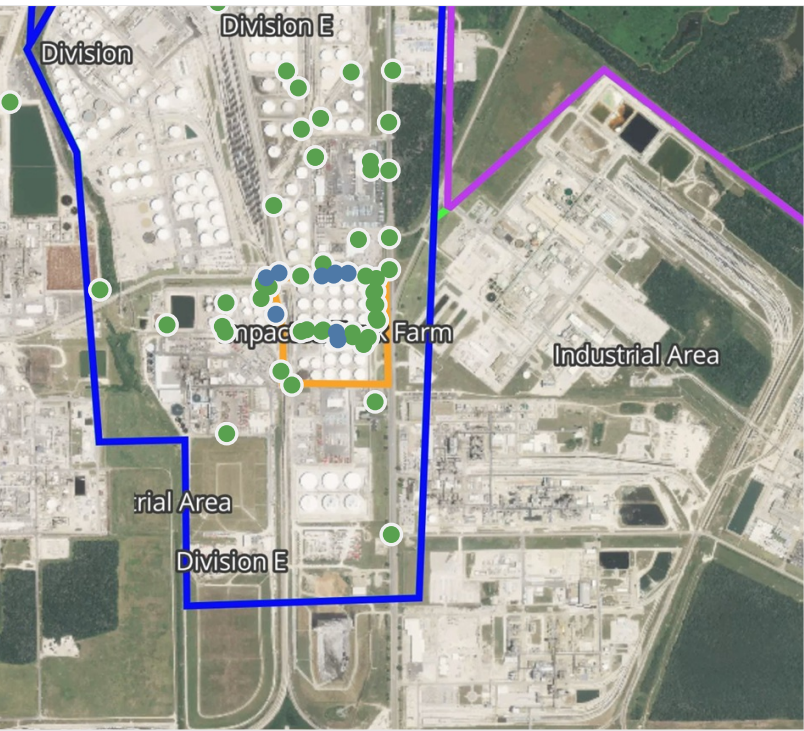
This data has been provided expeditiously to ITC and regulatory agencies for informational and/or operational purposes only. Data reported within this summary is preliminary in nature and has not undergone complete QA/QC (quality assurance/quality control) process. Until this complete QA/QC process is completed, the locations of each reading are approximate in nature and subject to further refinement. As some readings may represent non-breathing zone measurements, the data reported herein may not be suitable to assess potential occupational exposure. Site Assessment readings are not representative of an individual's breathing zone (e.g., container head space, ground level, directly above product, etc.).



Please Note: These updates display data from the 2nd 80's Fire site (Impacted Tank Farm), in the industrial areas surrounding the 2nd 80's Fire site (US Coast Guard Division E), within the Houston Ship Channel (US Coast Guard Divisions A-D), and in the industrial areas north and south of the Houston Ship Channel (Industrial Area). Real-time air monitoring data for the surrounding communities are communicated daily in a separate report.

Preliminary Hand- Held Air Monitoring Locations | ITC Deer Park Tank Fire

Reading Date
4/29/2019 10:00:00 PM to 4/29/2019 11:00:00 PM



Recent Benzene Detections

Location Category	Reading Date	Range of Detections
Division E	4/29/2019 22:30:43	0.02000 ppm
	4/29/2019 22:25:23	0.04000 ppm
	4/29/2019 22:21:05	0.04000 ppm
	4/29/2019 22:24:02	0.03000 ppm
	4/29/2019 22:28:12	0.02000 ppm
	4/29/2019 22:20:07	0.03000 ppm
Impacted Tank Farm	4/29/2019 22:36:07	0.02000 ppm
	4/29/2019 22:39:34	0.05000 ppm
	4/29/2019 22:41:27	0.04000 ppm

This data has been provided expeditiously to ITC and regulatory agencies for informational and/or operational purposes only. Data reported within this summary is preliminary in nature and has not undergone complete QA/QC (quality assurance/quality control) process. Until this complete QA/QC process is completed, the locations of each reading are approximate in nature and subject to further refinement. As some readings may represent non-breathing zone measurements, the data reported herein may not be suitable to assess potential occupational exposure. Site Assessment readings are not representative of an individual's breathing zone (e.g., container head space, ground level, directly above product, etc.).



Please Note: These updates display data from the 2nd 80's Fire site (Impacted Tank Farm), in the industrial areas surrounding the 2nd 80's Fire site (US Coast Guard Division E), within the Houston Ship Channel (US Coast Guard Divisions A-D), and in the industrial areas north and south of the Houston Ship Channel (Industrial Area). Real-time air monitoring data for the surrounding communities are communicated daily in a separate report.