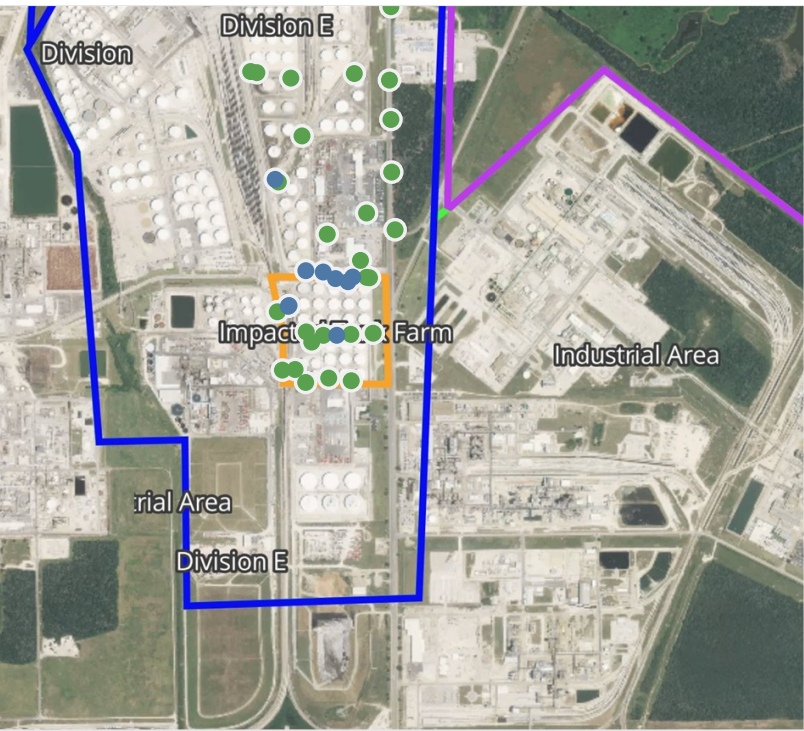
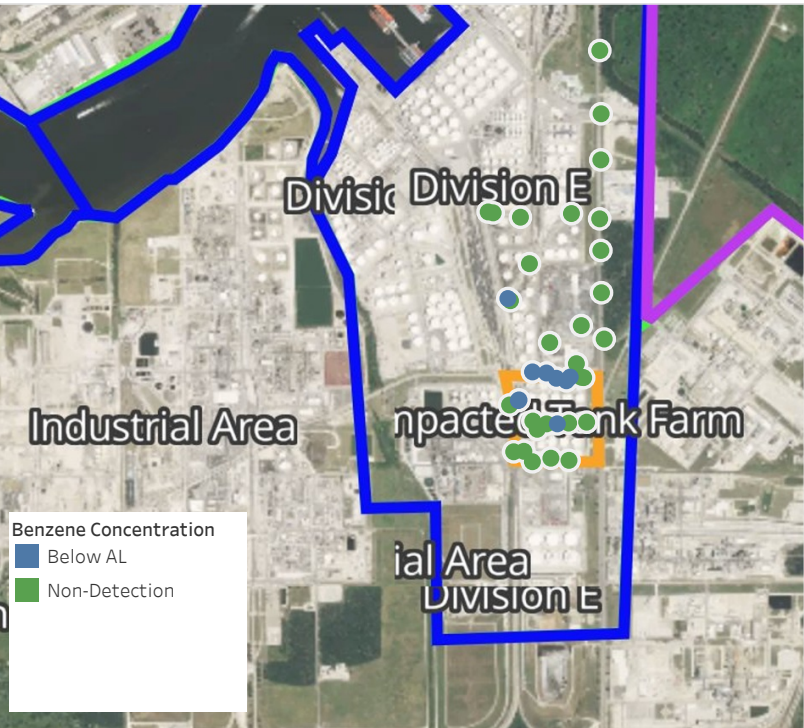


# Preliminary Hand- Held Air Monitoring Locations | ITC Deer Park Tank Fire

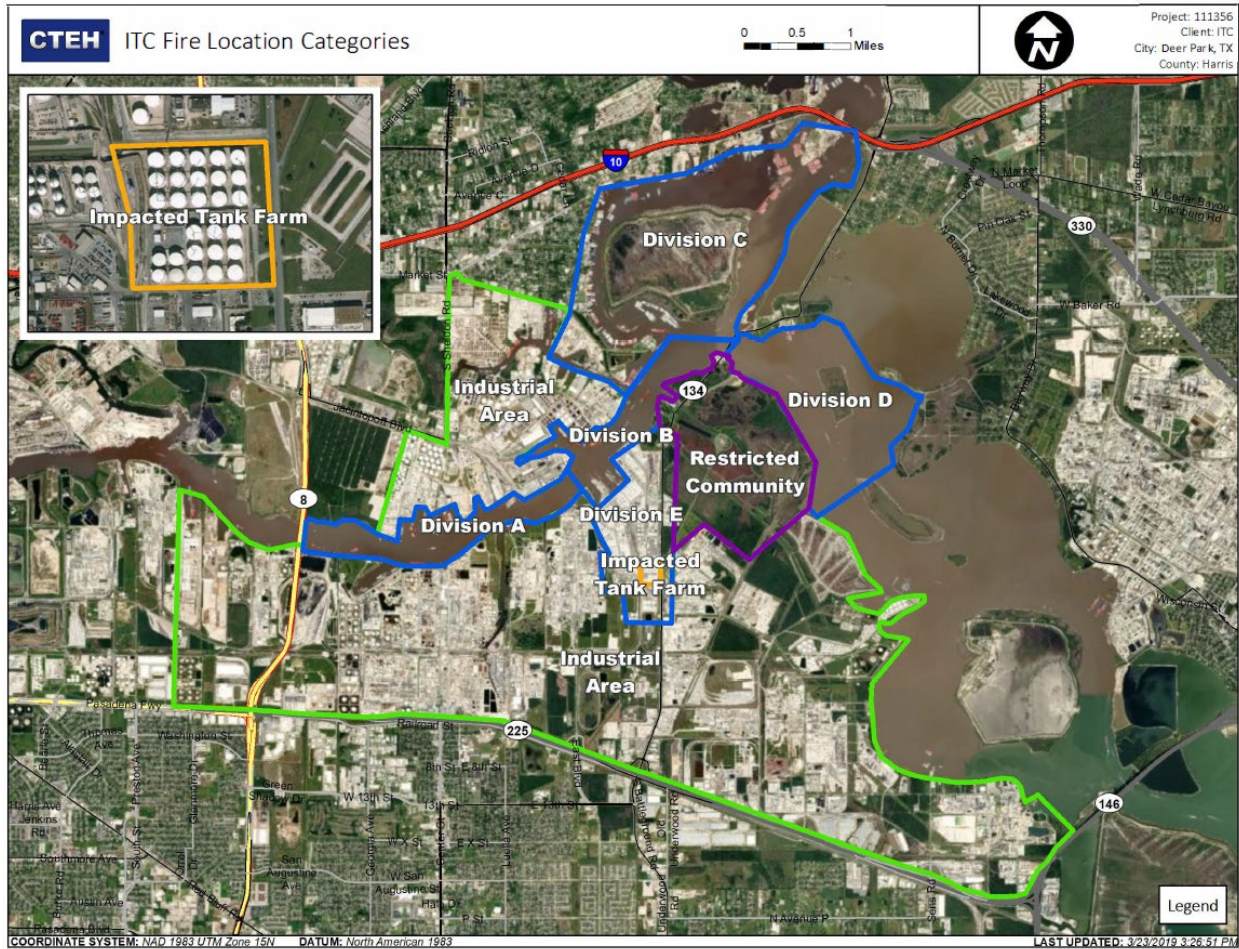
Reading Date  
5/3/2019 11:00:00 PM to 5/4/2019 12:00:00 AM



## Recent Benzene Detections

Location Category	Reading Date	Range of Detections
Division E	5/3/2019 23:03:48	0.0700 ppm
	5/3/2019 23:21:44	0.0200 ppm
	5/3/2019 23:29:33	0.1700 ppm
	5/3/2019 23:26:51	0.0400 ppm
	5/3/2019 23:42:43	0.0300 ppm
	5/3/2019 23:53:18	0.0500 ppm
Impacted Tank Farm	5/3/2019 23:19:31	0.0900 ppm
	5/3/2019 23:46:38	0.0300 ppm
	5/3/2019 23:46:26	0.0300 ppm

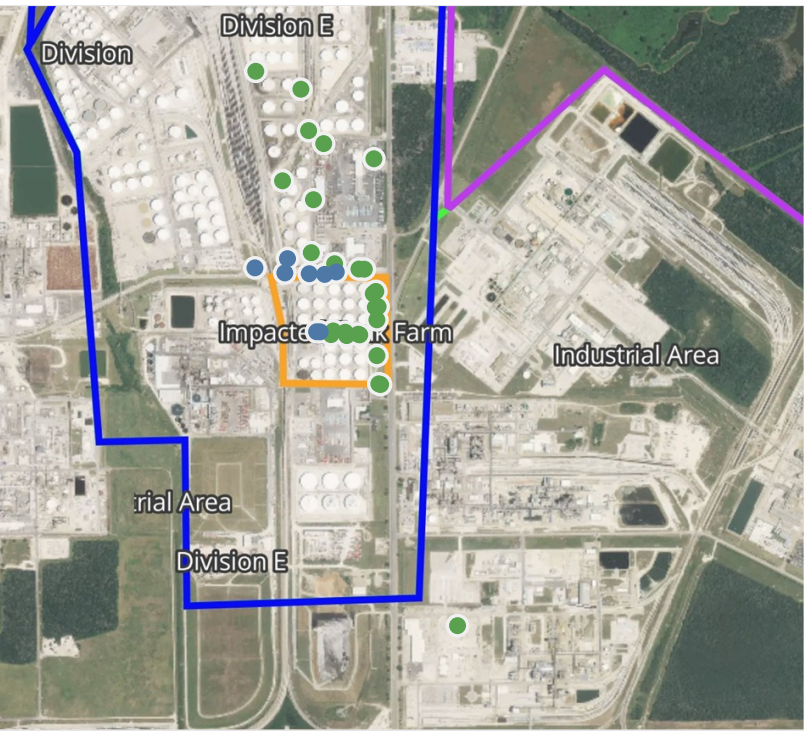
This data has been provided expeditiously to ITC and regulatory agencies for informational and/or operational purposes only. Data reported within this summary is preliminary in nature and has not undergone complete QA/QC (quality assurance/quality control) process. Until this complete QA/QC process is completed, the locations of each reading are approximate in nature and subject to further refinement. As some readings may represent non-breathing zone measurements, the data reported herein may not be suitable to assess potential occupational exposure. Site Assessment readings are not representative of an individual's breathing zone (e.g., container head space, ground level, directly above product, etc.).



**Please Note:** These updates display data from the 2<sup>nd</sup> 80's Fire site (Impacted Tank Farm), in the industrial areas surrounding the 2<sup>nd</sup> 80's Fire site (US Coast Guard Division E), within the Houston Ship Channel (US Coast Guard Divisions A-D), and in the industrial areas north and south of the Houston Ship Channel (Industrial Area). Real-time air monitoring data for the surrounding communities are communicated daily in a separate report.

# Preliminary Hand- Held Air Monitoring Locations | ITC Deer Park Tank Fire

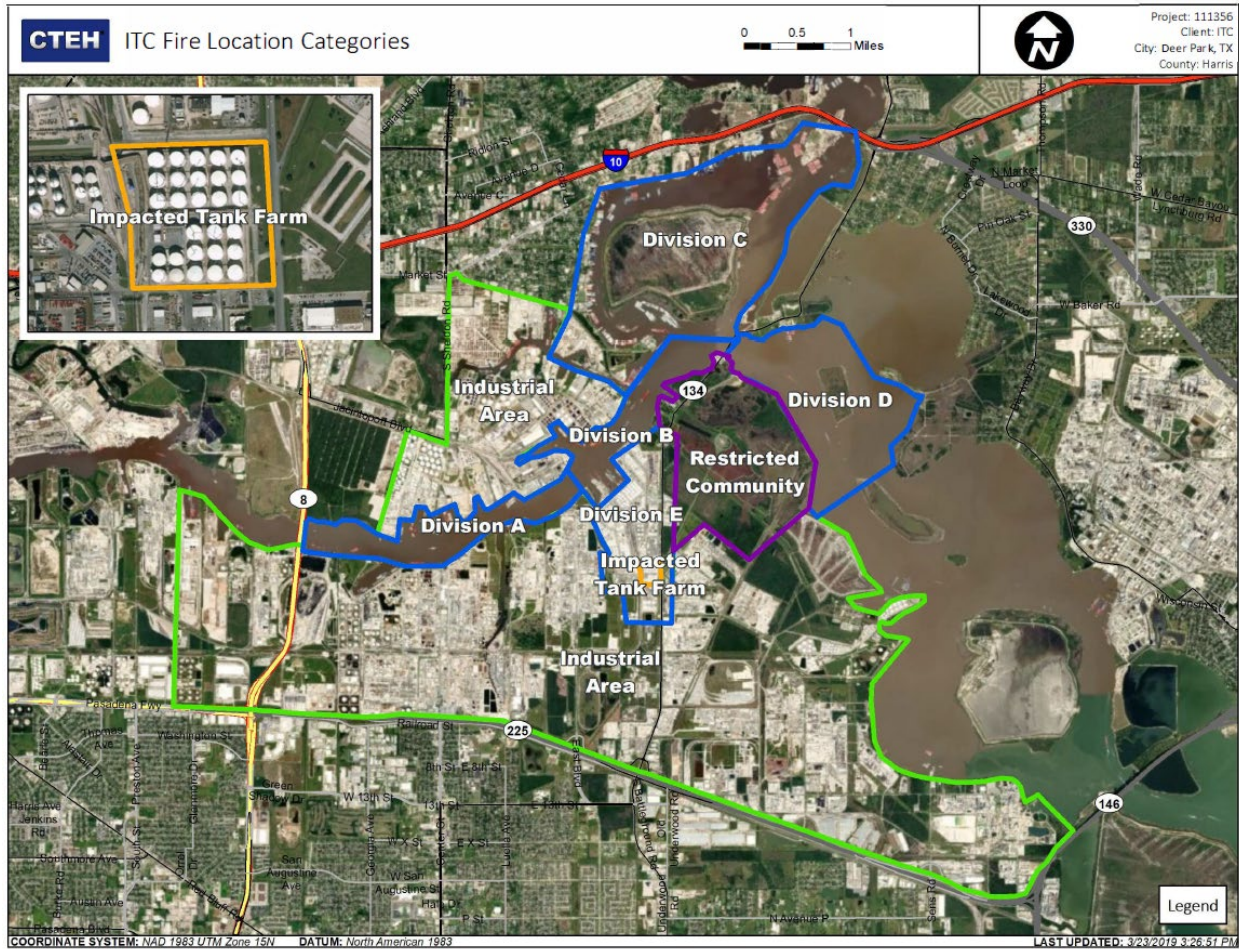
Reading Date  
5/4/2019 12:00:00 AM to 5/4/2019 1:00:00 AM



## Recent Benzene Detections

Location Category	Reading Date	Range of Detections
Division E	5/4/2019 00:36:48	0.0200 ppm
	5/4/2019 00:39:03	0.0300 ppm
	5/4/2019 00:41:42	0.0300 ppm
	5/4/2019 00:48:34	0.0200 ppm
	5/4/2019 00:44:30	0.0200 ppm
Impacted Tank Farm	5/4/2019 00:54:47	0.0200 ppm
	5/4/2019 00:58:29	0.1200 ppm
	5/4/2019 00:58:45	0.0600 ppm

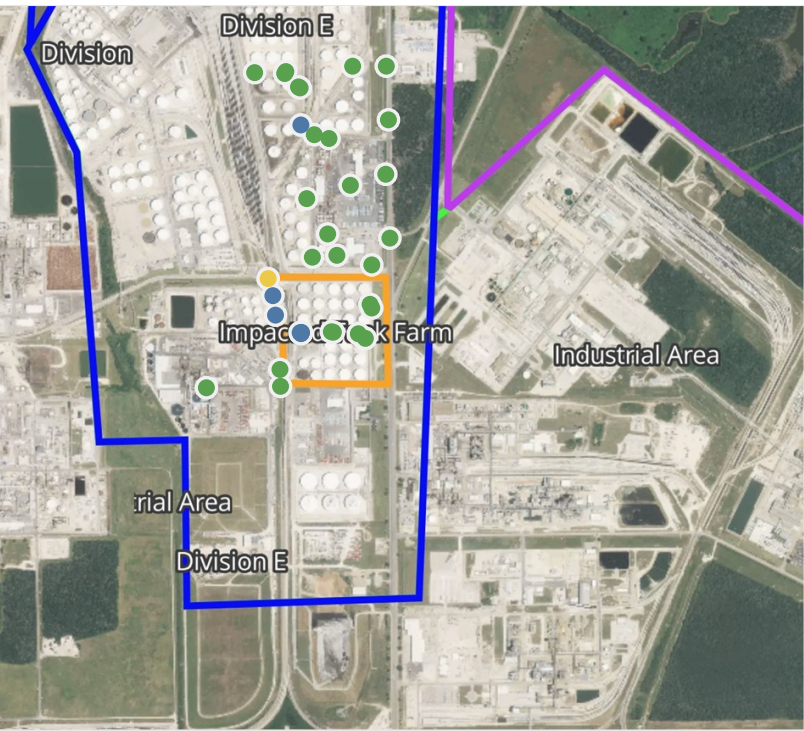
This data has been provided expeditiously to ITC and regulatory agencies for informational and/or operational purposes only. Data reported within this summary is preliminary in nature and has not undergone complete QA/QC (quality assurance/quality control) process. Until this complete QA/QC process is completed, the locations of each reading are approximate in nature and subject to further refinement. As some readings may represent non-breathing zone measurements, the data reported herein may not be suitable to assess potential occupational exposure. Site Assessment readings are not representative of an individual's breathing zone (e.g., container head space, ground level, directly above product, etc.).



**Please Note:** These updates display data from the 2<sup>nd</sup> 80's Fire site (Impacted Tank Farm), in the industrial areas surrounding the 2<sup>nd</sup> 80's Fire site (US Coast Guard Division E), within the Houston Ship Channel (US Coast Guard Divisions A-D), and in the industrial areas north and south of the Houston Ship Channel (Industrial Area). Real-time air monitoring data for the surrounding communities are communicated daily in a separate report.

# Preliminary Hand- Held Air Monitoring Locations | ITC Deer Park Tank Fire

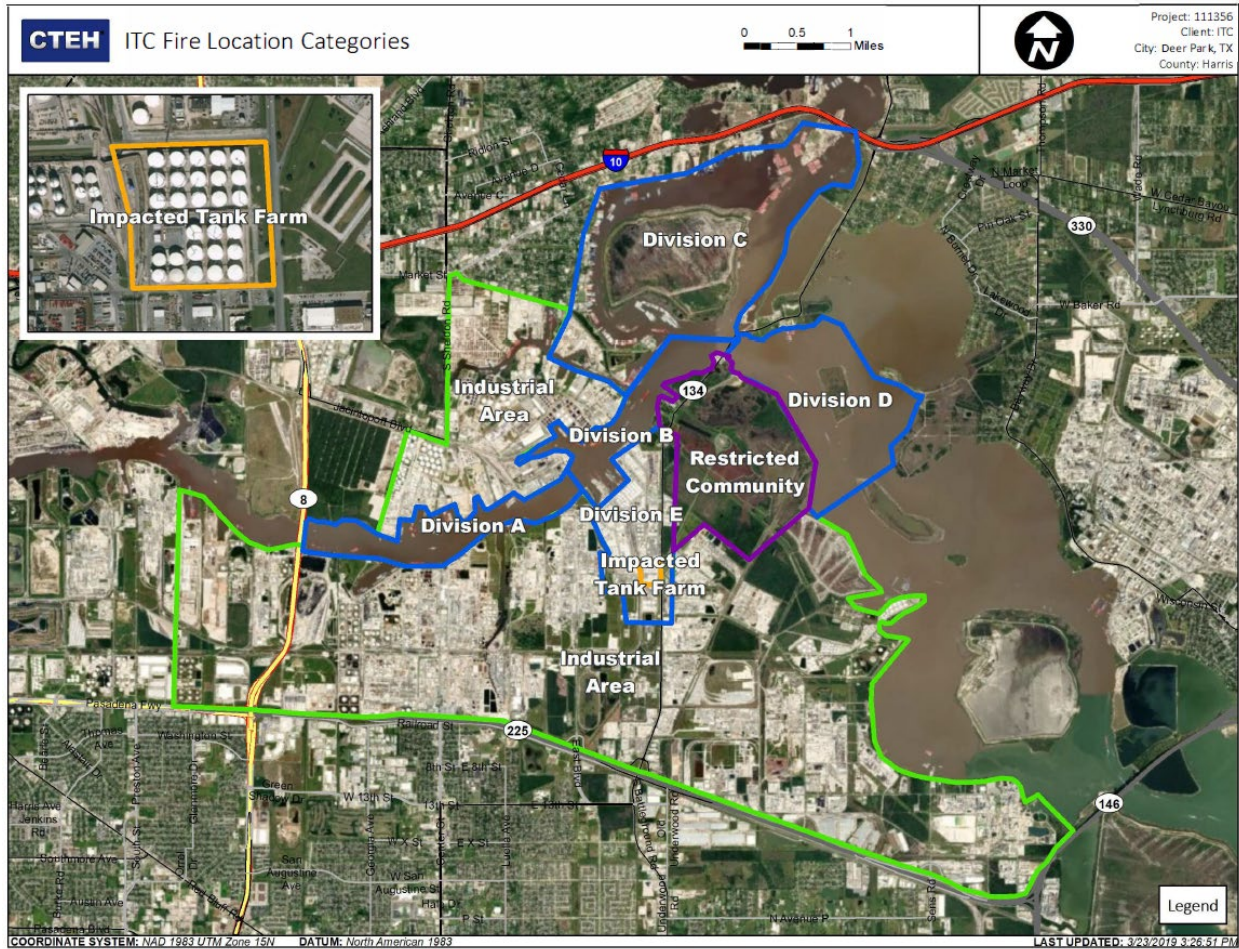
Reading Date  
5/4/2019 1:00:00 AM to 5/4/2019 2:00:00 AM



## Recent Benzene Detections

Location Category	Reading Date	Range of Detections
Division E	5/4/2019 01:00:37	0.5000 ppm
	5/4/2019 01:03:30	0.4000 ppm
	5/4/2019 01:05:46	0.0200 ppm
	5/4/2019 01:08:12	0.0400 ppm
Impacted Tank Farm	5/4/2019 01:00:15	0.0400 ppm
	5/4/2019 01:00:21	0.0400 ppm
	5/4/2019 01:34:57	0.0400 ppm
	5/4/2019 01:35:05	0.0400 ppm

This data has been provided expeditiously to ITC and regulatory agencies for informational and/or operational purposes only. Data reported within this summary is preliminary in nature and has not undergone complete QA/QC (quality assurance/quality control) process. Until this complete QA/QC process is completed, the locations of each reading are approximate in nature and subject to further refinement. As some readings may represent non-breathing zone measurements, the data reported herein may not be suitable to assess potential occupational exposure. Site Assessment readings are not representative of an individual's breathing zone (e.g., container head space, ground level, directly above product, etc.).



**Please Note:** These updates display data from the 2<sup>nd</sup> 80's Fire site (Impacted Tank Farm), in the industrial areas surrounding the 2<sup>nd</sup> 80's Fire site (US Coast Guard Division E), within the Houston Ship Channel (US Coast Guard Divisions A-D), and in the industrial areas north and south of the Houston Ship Channel (Industrial Area). Real-time air monitoring data for the surrounding communities are communicated daily in a separate report.

# Preliminary Hand- Held Air Monitoring Locations | ITC Deer Park Tank Fire

Reading Date

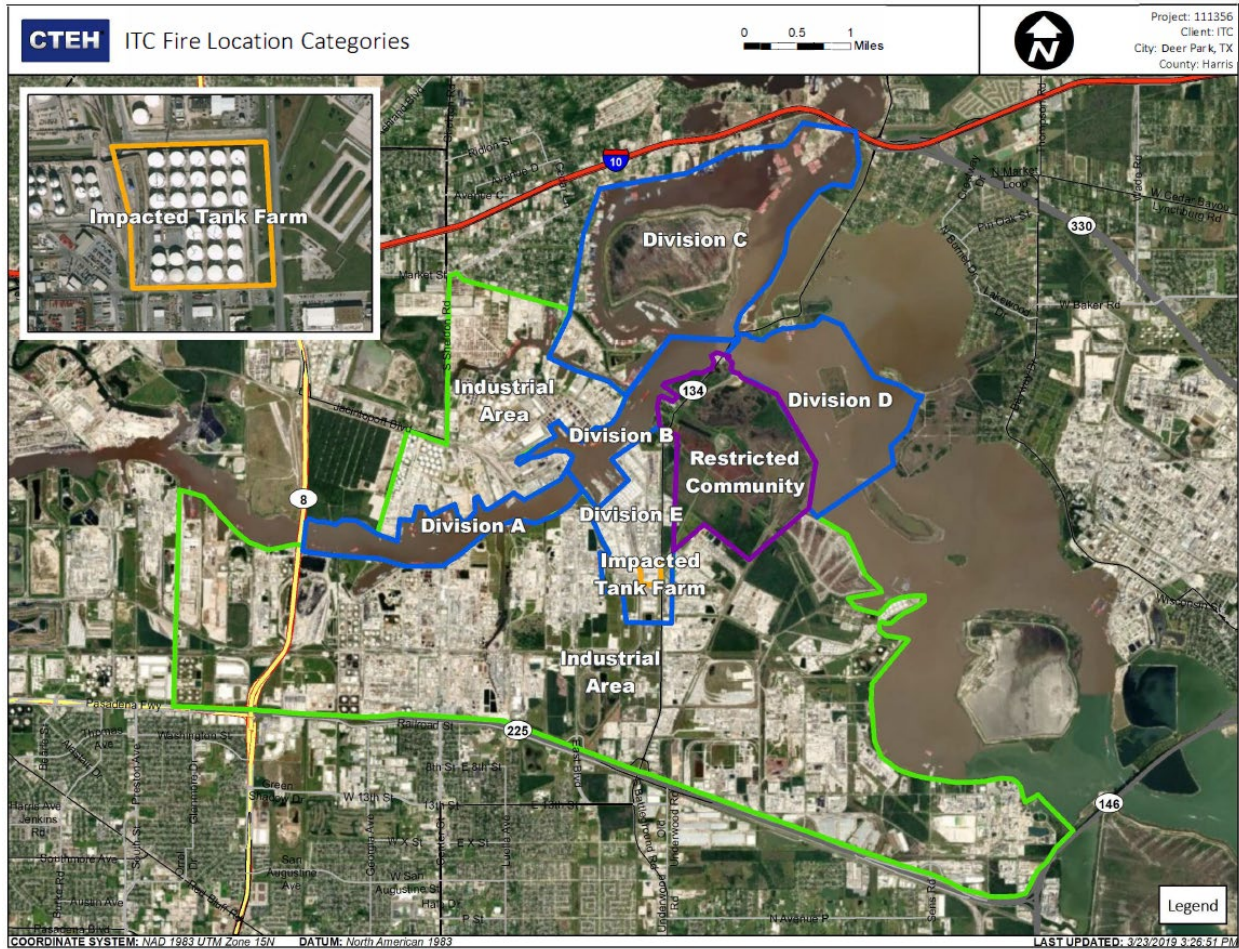
5/4/2019 2:00:00 AM to 5/4/2019 3:00:00 AM



Recent Benzene Detections



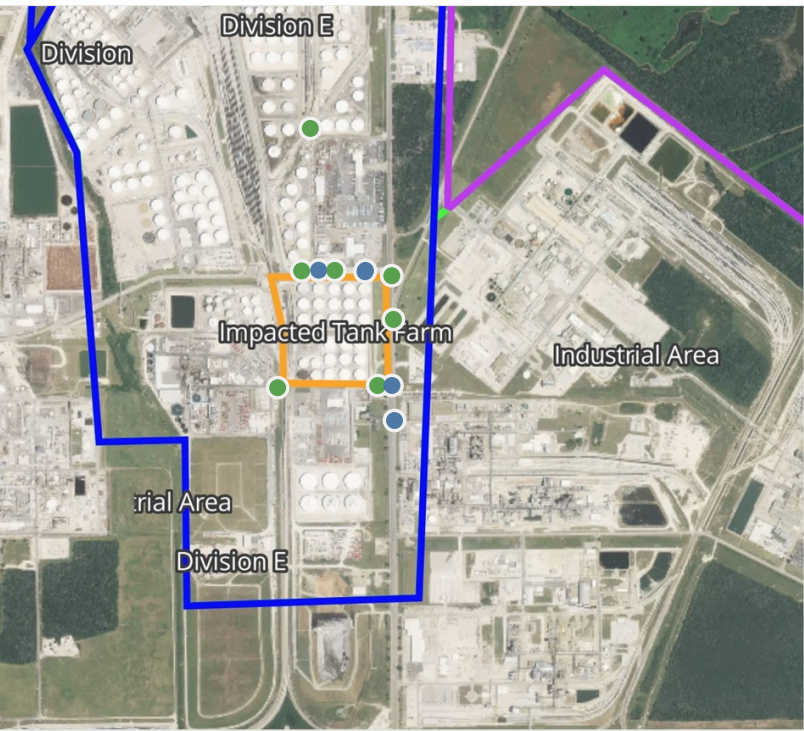
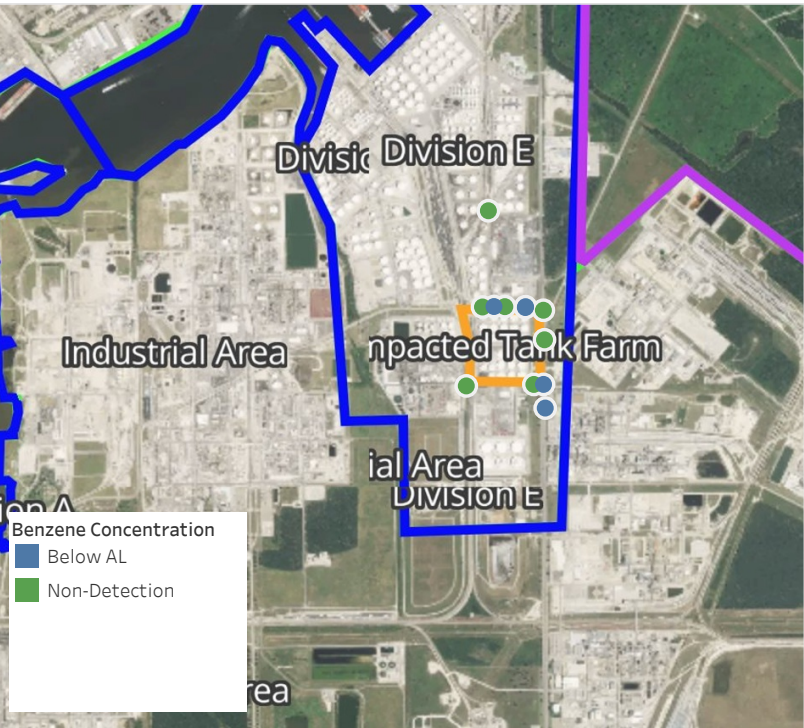
This data has been provided expeditiously to ITC and regulatory agencies for informational and/or operational purposes only. Data reported within this summary is preliminary in nature and has not undergone complete QA/QC (quality assurance/quality control) process. Until this complete QA/QC process is completed, the locations of each reading are approximate in nature and subject to further refinement. As some readings may represent non-breathing zone measurements, the data reported herein may not be suitable to assess potential occupational exposure. Site Assessment readings are not representative of an individual's breathing zone (e.g., container head space, ground level, directly above product, etc.).



**Please Note:** These updates display data from the 2<sup>nd</sup> 80's Fire site (Impacted Tank Farm), in the industrial areas surrounding the 2<sup>nd</sup> 80's Fire site (US Coast Guard Division E), within the Houston Ship Channel (US Coast Guard Divisions A-D), and in the industrial areas north and south of the Houston Ship Channel (Industrial Area). Real-time air monitoring data for the surrounding communities are communicated daily in a separate report.

# Preliminary Hand- Held Air Monitoring Locations | ITC Deer Park Tank Fire

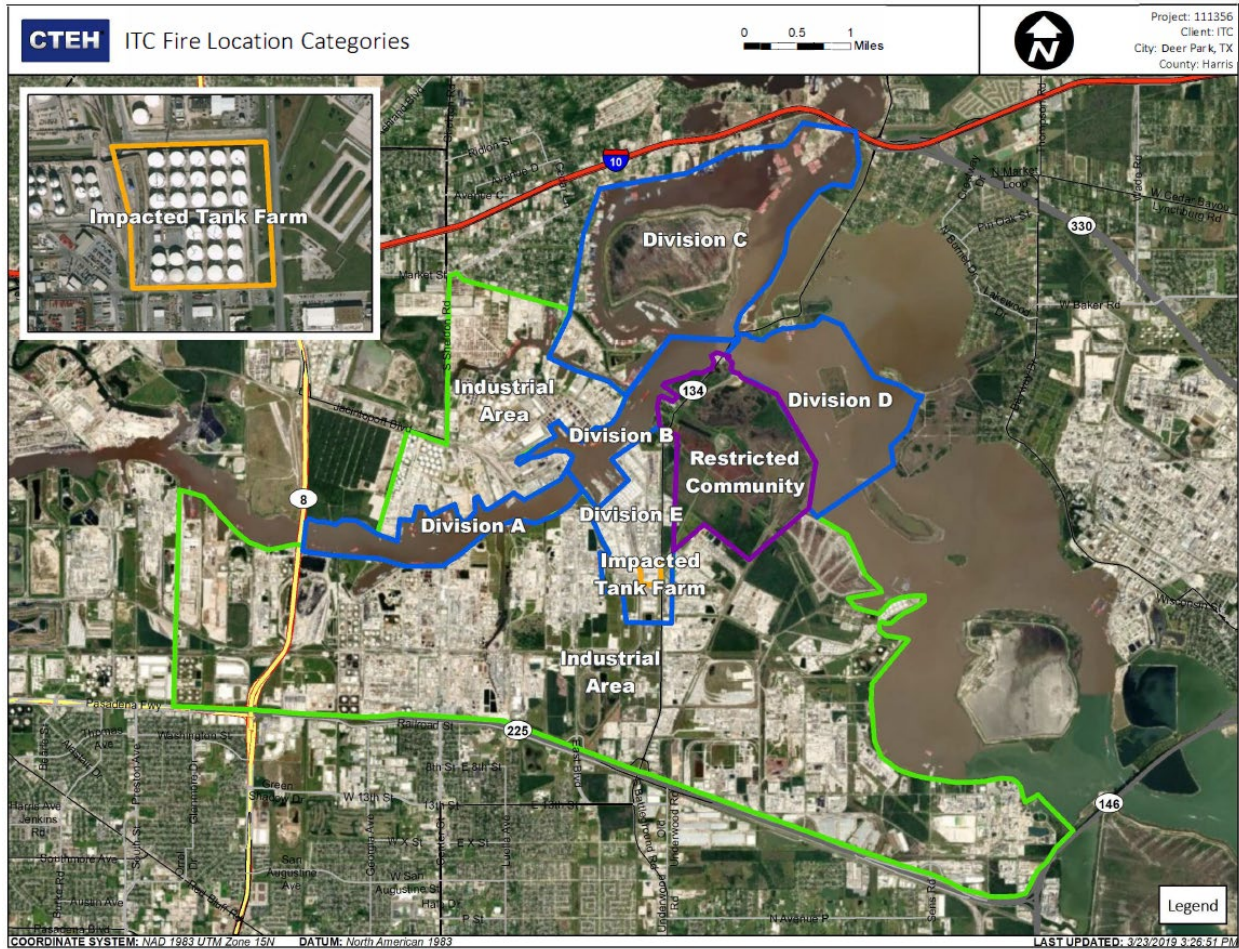
Reading Date  
5/4/2019 3:00:00 AM to 5/4/2019 4:00:00 AM



## Recent Benzene Detections

Location Category	Reading Date	Range of Detections
Division E	5/4/2019 03:10:52	0.02000 ppm
	5/4/2019 03:13:13	0.02000 ppm
	5/4/2019 03:24:16	0.04000 ppm
	5/4/2019 03:32:15	0.02000 ppm
	5/4/2019 03:52:45	0.01000 ppm

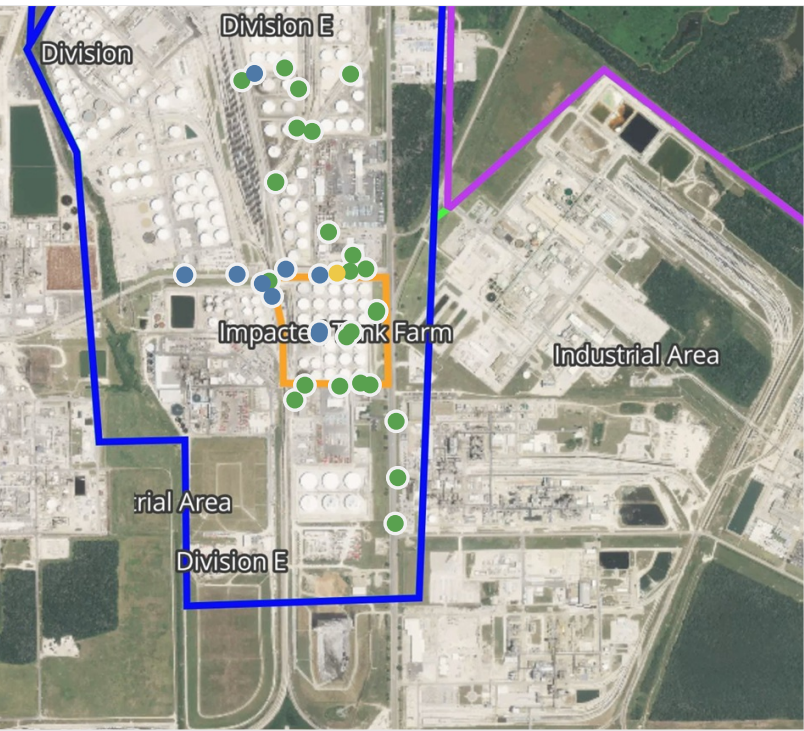
This data has been provided expeditiously to ITC and regulatory agencies for informational and/or operational purposes only. Data reported within this summary is preliminary in nature and has not undergone complete QA/QC (quality assurance/quality control) process. Until this complete QA/QC process is completed, the locations of each reading are approximate in nature and subject to further refinement. As some readings may represent non-breathing zone measurements, the data reported herein may not be suitable to assess potential occupational exposure. Site Assessment readings are not representative of an individual's breathing zone (e.g., container head space, ground level, directly above product, etc.).



**Please Note:** These updates display data from the 2<sup>nd</sup> 80's Fire site (Impacted Tank Farm), in the industrial areas surrounding the 2<sup>nd</sup> 80's Fire site (US Coast Guard Division E), within the Houston Ship Channel (US Coast Guard Divisions A-D), and in the industrial areas north and south of the Houston Ship Channel (Industrial Area). Real-time air monitoring data for the surrounding communities are communicated daily in a separate report.

# Preliminary Hand- Held Air Monitoring Locations | ITC Deer Park Tank Fire

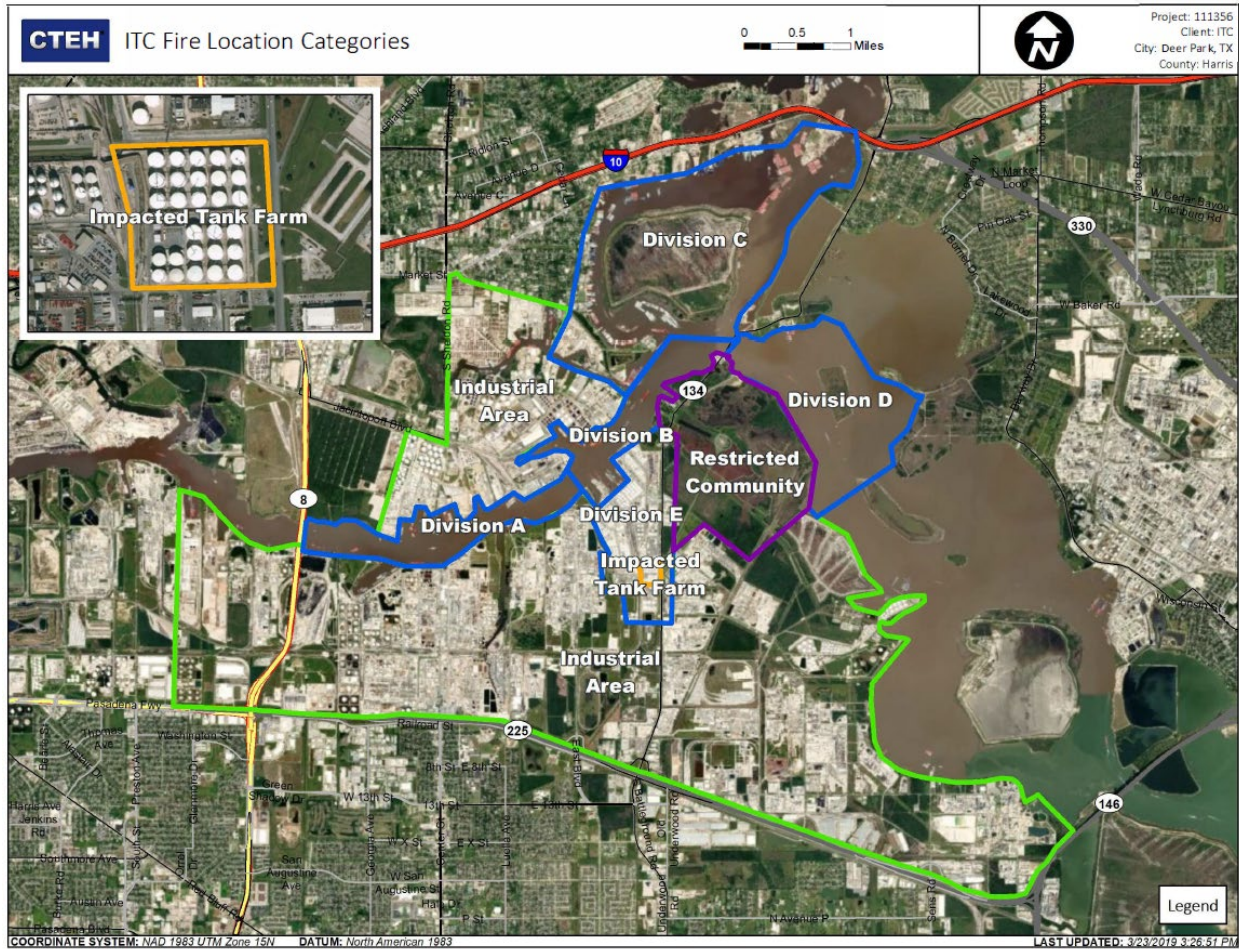
Reading Date  
5/4/2019 4:00:00 AM to 5/4/2019 5:00:00 AM



## Recent Benzene Detections

Location Category	Reading Date	Range of Detections
Division E	5/4/2019 04:09:18	0.0200 ppm
	5/4/2019 04:05:40	0.0100 ppm
	5/4/2019 04:10:05	0.0300 ppm
	5/4/2019 04:23:04	0.1000 ppm
	5/4/2019 04:13:39	0.0800 ppm
	5/4/2019 04:53:41	0.0200 ppm
	5/4/2019 04:56:31	0.6000 ppm
	5/4/2019 04:59:20	0.0300 ppm
Impacted Tank Farm	5/4/2019 04:59:05	0.0400 ppm
	5/4/2019 04:59:13	0.0700 ppm

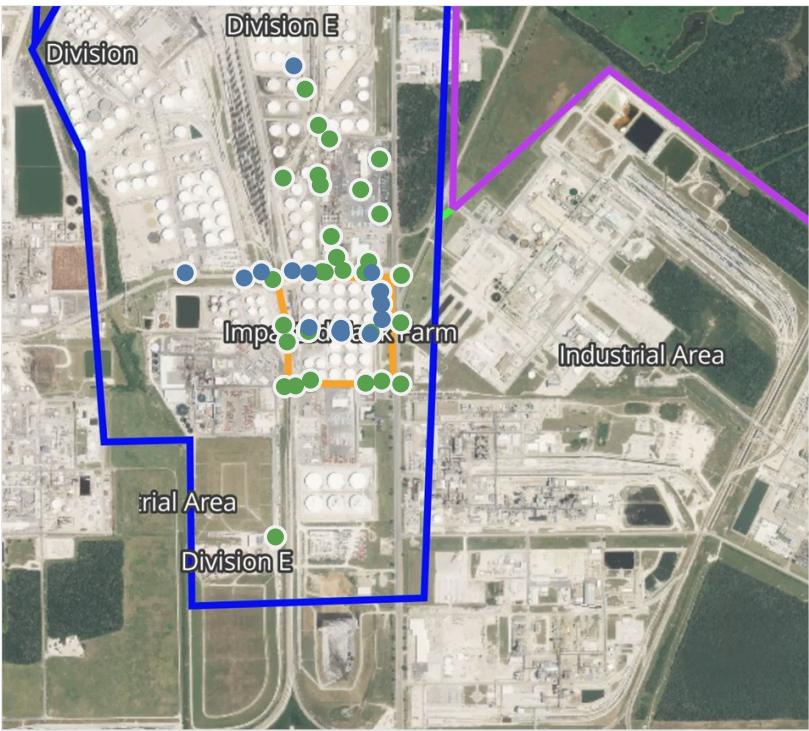
This data has been provided expeditiously to ITC and regulatory agencies for informational and/or operational purposes only. Data reported within this summary is preliminary in nature and has not undergone complete QA/QC (quality assurance/quality control) process. Until this complete QA/QC process is completed, the locations of each reading are approximate in nature and subject to further refinement. As some readings may represent non-breathing zone measurements, the data reported herein may not be suitable to assess potential occupational exposure. Site Assessment readings are not representative of an individual's breathing zone (e.g., container head space, ground level, directly above product, etc.).



**Please Note:** These updates display data from the 2<sup>nd</sup> 80's Fire site (Impacted Tank Farm), in the industrial areas surrounding the 2<sup>nd</sup> 80's Fire site (US Coast Guard Division E), within the Houston Ship Channel (US Coast Guard Divisions A-D), and in the industrial areas north and south of the Houston Ship Channel (Industrial Area). Real-time air monitoring data for the surrounding communities are communicated daily in a separate report.

# Preliminary Hand- Held Air Monitoring Locations | ITC Deer Park Tank Fire

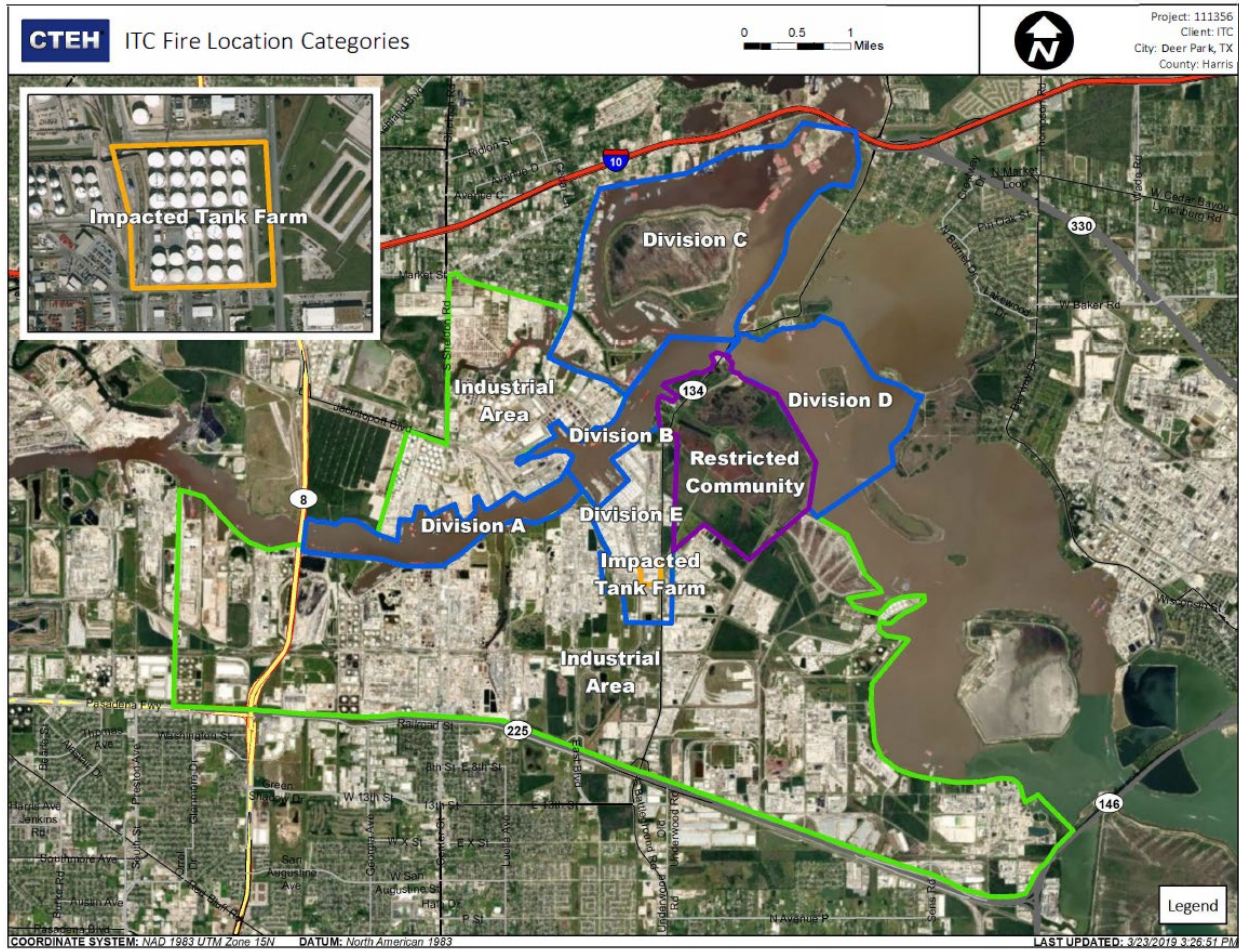
Reading Date  
5/4/2019 5:00:00 AM to 5/4/2019 6:00:00 AM



## Recent Benzene Detections

Location Category	Reading Date	Range of Detections
Division E	5/4/2019 05:01:59	0.0300 ppm
	5/4/2019 05:10:46	0.0100 ppm
	5/4/2019 05:04:31	0.0700 ppm
	5/4/2019 05:07:44	0.0200 ppm
	5/4/2019 05:14:23	0.0300 ppm
	5/4/2019 05:10:38	0.0300 ppm
	5/4/2019 05:33:21	0.0200 ppm
Impacted Tank Farm	5/4/2019 05:02:46	0.0700 ppm
	5/4/2019 05:05:37	0.1500 ppm
	5/4/2019 05:06:31	0.0500 ppm
	5/4/2019 05:05:16	0.1200 ppm
	5/4/2019 05:12:49	0.0500 ppm
	5/4/2019 05:16:27	0.0300 ppm
	5/4/2019 05:17:35	0.0200 ppm
	5/4/2019 05:19:33	0.0400 ppm
	5/4/2019 05:19:27	0.3900 ppm
	5/4/2019 05:23:55	0.2200 ppm
	5/4/2019 05:23:17	0.1900 ppm

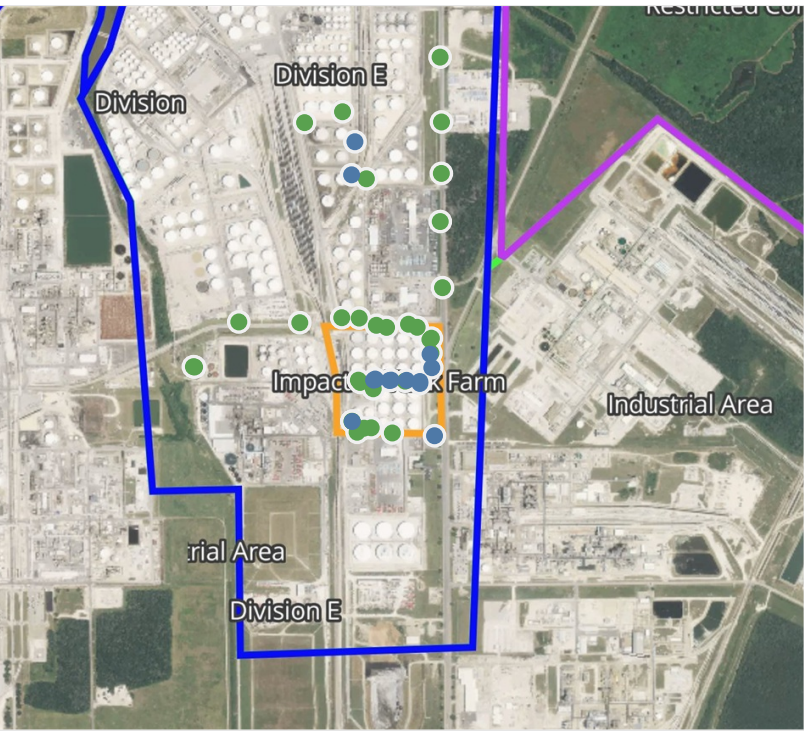
This data has been provided expeditiously to ITC and regulatory agencies for informational and/or operational purposes only. Data reported within this summary is preliminary in nature and has not undergone complete QA/QC (quality assurance/quality control) process. Until this complete QA/QC process is completed, the locations of each reading are approximate in nature and subject to further refinement. As some readings may represent non-breathing zone measurements, the data reported herein may not be suitable to assess potential occupational exposure. Site Assessment readings are not representative of an individual's breathing zone (e.g., container head space, ground level, directly above product, etc.).



**Please Note:** These updates display data from the 2<sup>nd</sup> 80's Fire site (Impacted Tank Farm), in the industrial areas surrounding the 2<sup>nd</sup> 80's Fire site (US Coast Guard Division E), within the Houston Ship Channel (US Coast Guard Divisions A-D), and in the industrial areas north and south of the Houston Ship Channel (Industrial Area). Real-time air monitoring data for the surrounding communities are communicated daily in a separate report.

# Preliminary Hand- Held Air Monitoring Locations | ITC Deer Park Tank Fire

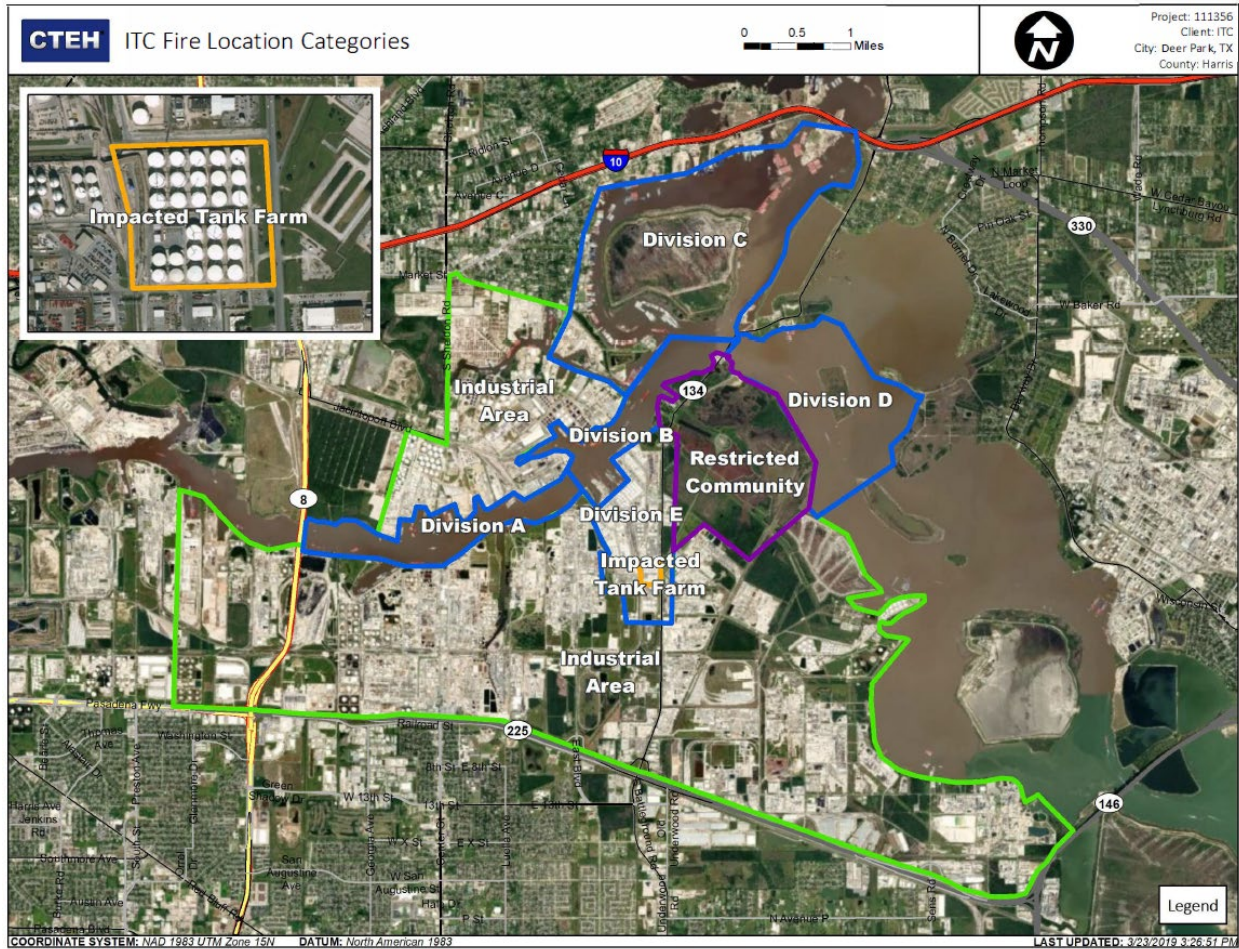
Reading Date  
5/4/2019 6:00:00 AM to 5/4/2019 7:00:00 AM



## Recent Benzene Detections

Location Category	Reading Date	Range of Detections
Division E	5/4/2019 06:29:20	0.4000 ppm
	5/4/2019 06:31:21	0.1300 ppm
	5/4/2019 06:47:11	0.0200 ppm
Impacted Tank Farm	5/4/2019 06:17:08	0.0600 ppm
	5/4/2019 06:21:47	0.1800 ppm
	5/4/2019 06:23:45	0.0700 ppm
	5/4/2019 06:21:50	0.0800 ppm
	5/4/2019 06:25:55	0.0500 ppm
	5/4/2019 06:25:46	0.0400 ppm
	5/4/2019 06:27:25	0.0300 ppm
	5/4/2019 06:29:37	0.0200 ppm
	5/4/2019 06:29:21	0.0400 ppm
	5/4/2019 06:42:45	0.0400 ppm
	5/4/2019 06:46:42	0.0400 ppm

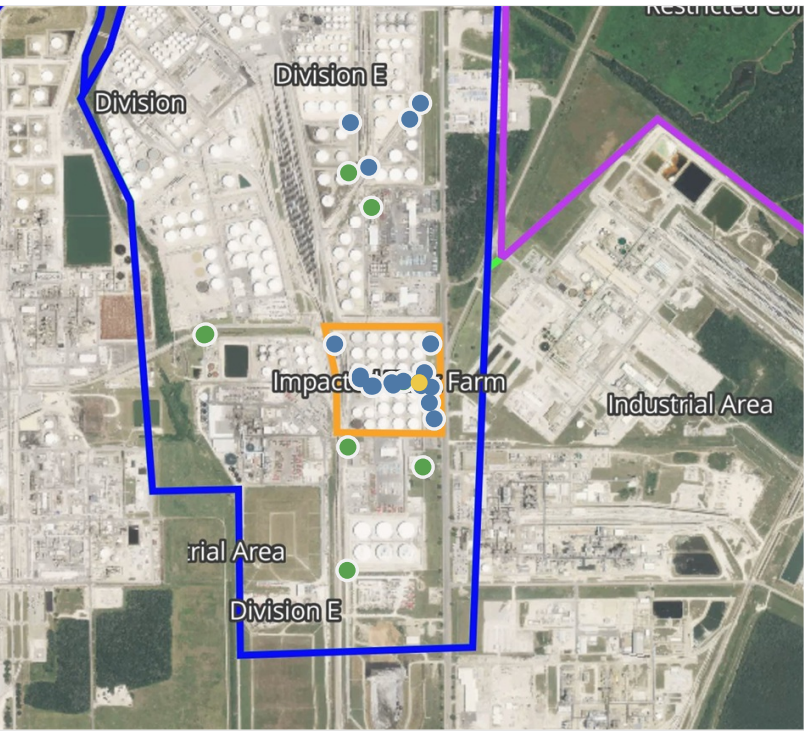
This data has been provided expeditiously to ITC and regulatory agencies for informational and/or operational purposes only. Data reported within this summary is preliminary in nature and has not undergone complete QA/QC (quality assurance/quality control) process. Until this complete QA/QC process is completed, the locations of each reading are approximate in nature and subject to further refinement. As some readings may represent non-breathing zone measurements, the data reported herein may not be suitable to assess potential occupational exposure. Site Assessment readings are not representative of an individual's breathing zone (e.g., container head space, ground level, directly above product, etc.).



**Please Note:** These updates display data from the 2<sup>nd</sup> 80's Fire site (Impacted Tank Farm), in the industrial areas surrounding the 2<sup>nd</sup> 80's Fire site (US Coast Guard Division E), within the Houston Ship Channel (US Coast Guard Divisions A-D), and in the industrial areas north and south of the Houston Ship Channel (Industrial Area). Real-time air monitoring data for the surrounding communities are communicated daily in a separate report.

# Preliminary Hand- Held Air Monitoring Locations | ITC Deer Park Tank Fire

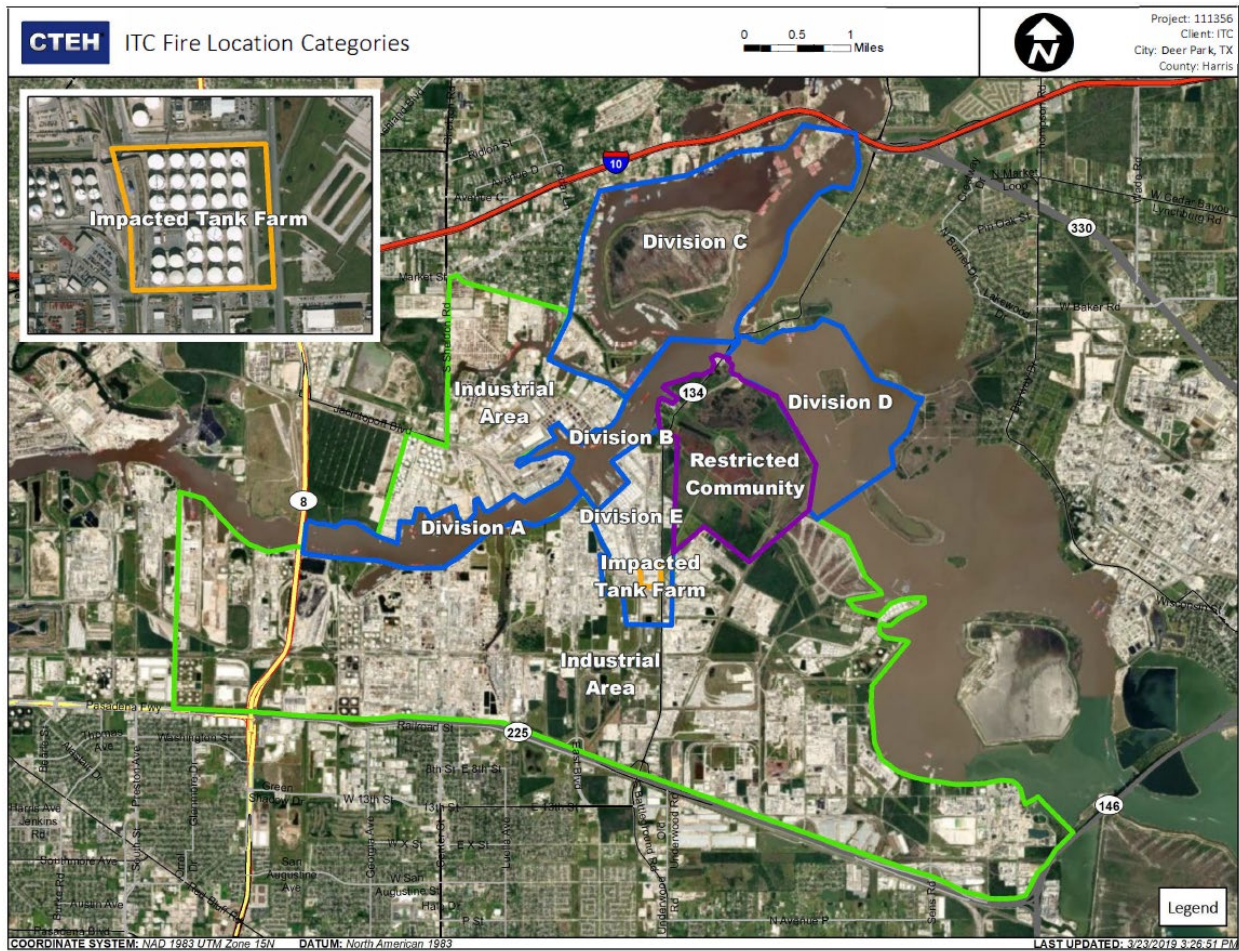
Reading Date  
5/4/2019 7:00:00 AM to 5/4/2019 8:00:00 AM



## Recent Benzene Detections

Location Category	Reading Date	Range of Detections
Division E	5/4/2019 07:01:40	0.0700 ppm
	5/4/2019 07:25:46	0.0500 ppm
	5/4/2019 07:29:35	0.0800 ppm
	5/4/2019 07:40:20	0.1100 ppm
Impacted Tank Farm	5/4/2019 07:26:58	0.0200 ppm
	5/4/2019 07:38:07	0.0200 ppm
	5/4/2019 07:27:24	0.0500 ppm
	5/4/2019 07:31:40	0.0300 ppm
	5/4/2019 07:34:54	0.0300 ppm
	5/4/2019 07:43:21	0.0800 ppm
	5/4/2019 07:42:41	0.0400 ppm
	5/4/2019 07:43:43	0.0900 ppm
	5/4/2019 07:34:31	0.0200 ppm
	5/4/2019 07:27:53	0.5700 ppm
	5/4/2019 07:39:16	0.0500 ppm
	5/4/2019 07:38:59	0.0600 ppm
	5/4/2019 07:28:57	0.0600 ppm
	5/4/2019 07:47:29	0.1200 ppm
	5/4/2019 07:56:41	0.0300 ppm
	5/4/2019 07:58:21	0.0200 ppm

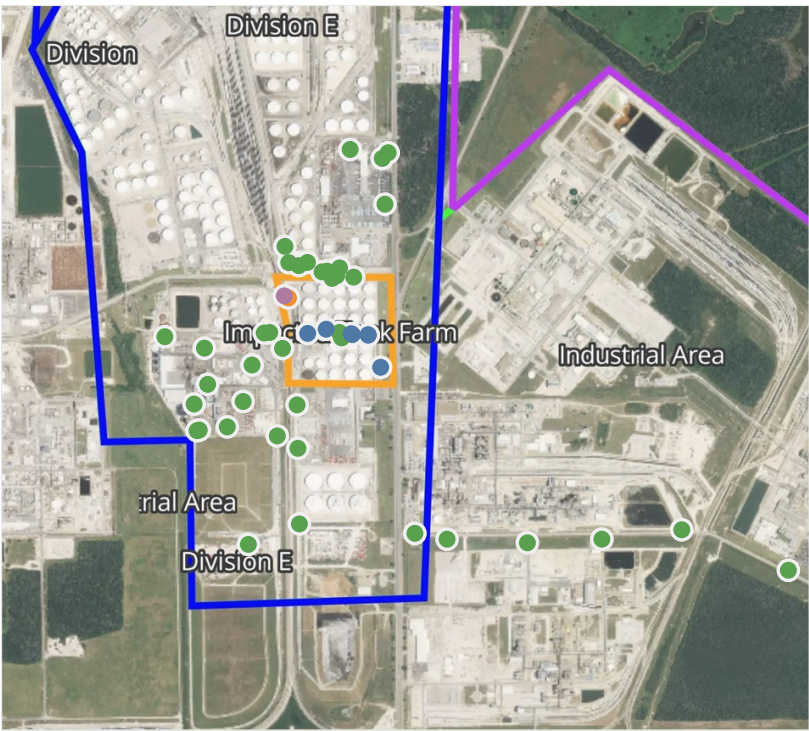
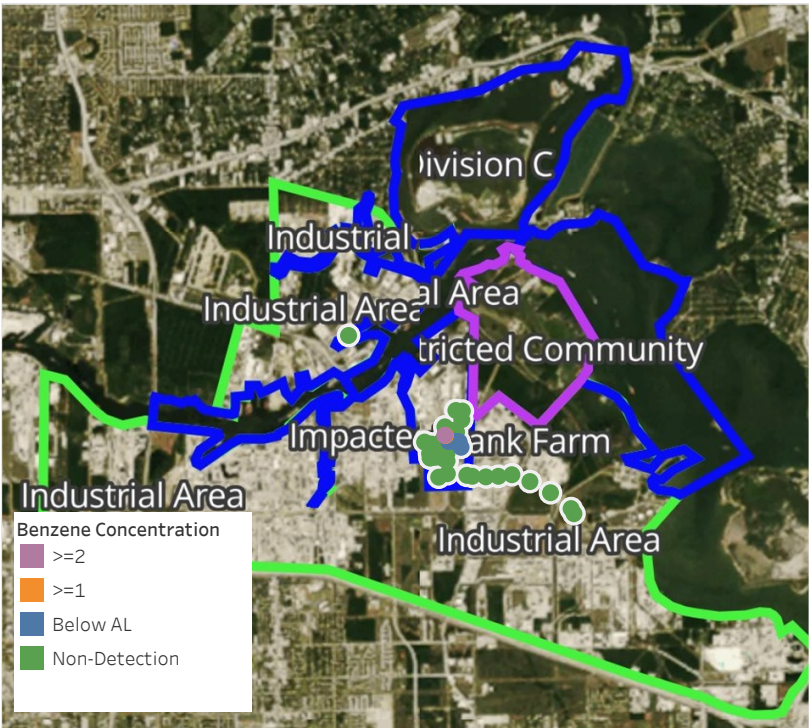
This data has been provided expeditiously to ITC and regulatory agencies for informational and/or operational purposes only. Data reported within this summary is preliminary in nature and has not undergone complete QA/QC (quality assurance/quality control) process. Until this complete QA/QC process is completed, the locations of each reading are approximate in nature and subject to further refinement. As some readings may represent non-breathing zone measurements, the data reported herein may not be suitable to assess potential occupational exposure. Site Assessment readings are not representative of an individual's breathing zone (e.g., container head space, ground level, directly above product, etc.).



**Please Note:** These updates display data from the 2<sup>nd</sup> 80's Fire site (Impacted Tank Farm), in the industrial areas surrounding the 2<sup>nd</sup> 80's Fire site (US Coast Guard Division E), within the Houston Ship Channel (US Coast Guard Divisions A-D), and in the industrial areas north and south of the Houston Ship Channel (Industrial Area). Real-time air monitoring data for the surrounding communities are communicated daily in a separate report.

# Preliminary Hand- Held Air Monitoring Locations | ITC Deer Park Tank Fire

Reading Date  
5/4/2019 8:00:00 AM to 5/4/2019 9:00:00 AM



## Recent Benzene Detections

Location Category	Reading Date	Range of Detections
Impacted Tank Farm	5/4/2019 08:27:07	0.050 ppm
	5/4/2019 08:41:43	0.060 ppm
	5/4/2019 08:30:51	0.030 ppm
	5/4/2019 08:30:32	0.030 ppm
	5/4/2019 08:50:53	0.030 ppm
	5/4/2019 08:27:39	0.180 ppm
	5/4/2019 08:33:32	0.070 ppm
Site Assessment	5/4/2019 08:40:09	1.525 ppm

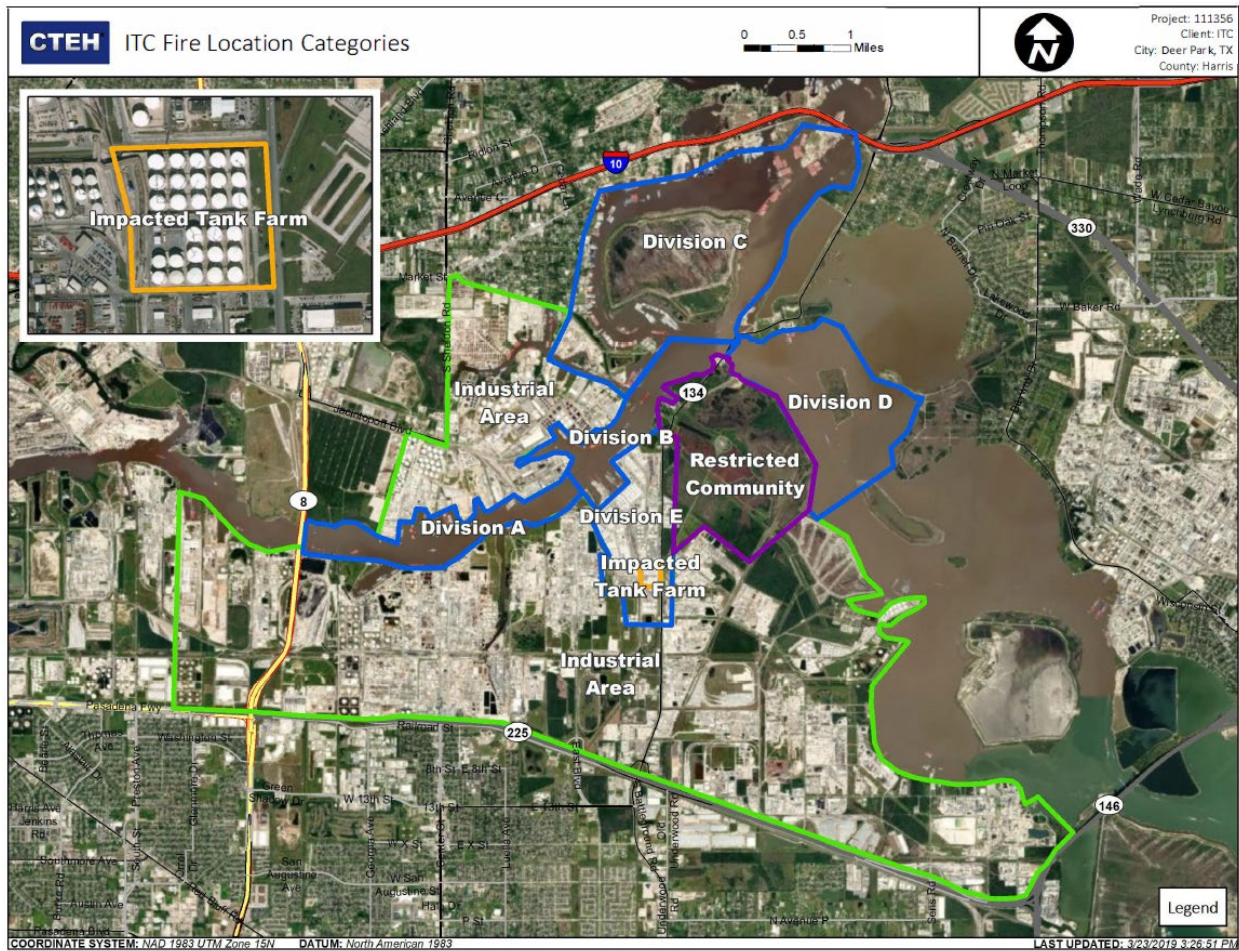
This data has been provided expeditiously to ITC and regulatory agencies for informational and/or operational purposes only. Data reported within this summary is preliminary in nature and has not undergone complete QA/QC (quality assurance/quality control) process. Until this complete QA/QC process is completed, the locations of each reading are approximate in nature and subject to further refinement. As some readings may represent non-breathing zone measurements, the data reported herein may not be suitable to assess potential occupational exposure. Site Assessment readings are not representative of an individual's breathing zone (e.g., container head space, ground level, directly above product, etc.).

Reading Date  
5/4/2019 8:00:00 AM to 5/4/2019 9:00:00 AM

Benzene Action Level Concentration (ppm)  
 >=1

PRELIMINARY  
Recent Benzene Detections Greater than 1.00 ppm

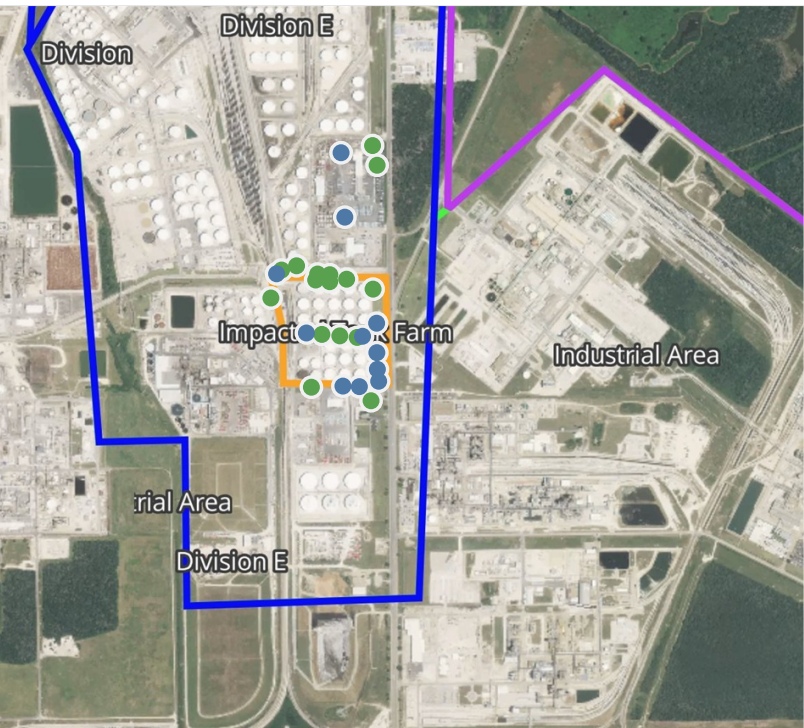
Reading Date	Location Category	GPS	Google Maps URL	Range of Detections
5/4/2019 08:40:09	Site Assessment	29.7326130,-95.0931290	<a href="https://www.google.com/maps/search/?api=1&amp;query=29.7326130,-95.0931290">https://www.google.com/maps/search/?api=1&amp;query=29.7326130,-95.0931290</a>	1.525 ppm



**Please Note:** These updates display data from the 2<sup>nd</sup> 80's Fire site (Impacted Tank Farm), in the industrial areas surrounding the 2<sup>nd</sup> 80's Fire site (US Coast Guard Division E), within the Houston Ship Channel (US Coast Guard Divisions A-D), and in the industrial areas north and south of the Houston Ship Channel (Industrial Area). Real-time air monitoring data for the surrounding communities are communicated daily in a separate report.

# Preliminary Hand- Held Air Monitoring Locations | ITC Deer Park Tank Fire

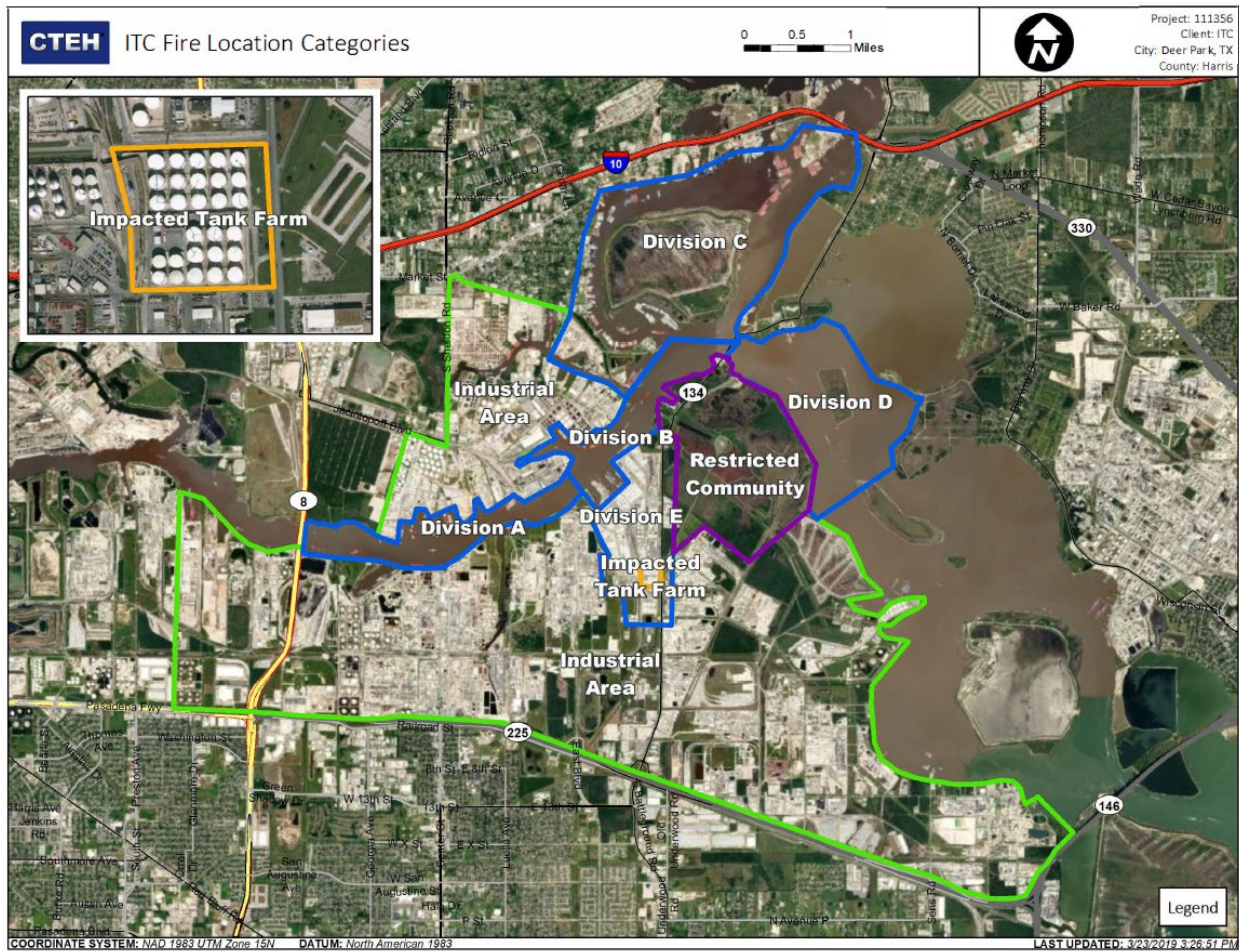
Reading Date  
5/4/2019 9:00:00 AM to 5/4/2019 10:00:00 AM



## Recent Benzene Detections

Location Category	Reading Date	Range of Detections
Division E	5/4/2019 09:00:05	0.0200 ppm
	5/4/2019 09:16:17	0.0300 ppm
	5/4/2019 09:21:01	0.0300 ppm
	5/4/2019 09:27:58	0.0200 ppm
	5/4/2019 09:30:14	0.2100 ppm
Impacted Tank Farm	5/4/2019 09:06:43	0.0200 ppm
	5/4/2019 09:14:36	0.0200 ppm
	5/4/2019 09:28:59	0.1100 ppm
	5/4/2019 09:37:12	0.1400 ppm
	5/4/2019 09:08:04	0.2600 ppm
	5/4/2019 09:56:51	0.0400 ppm

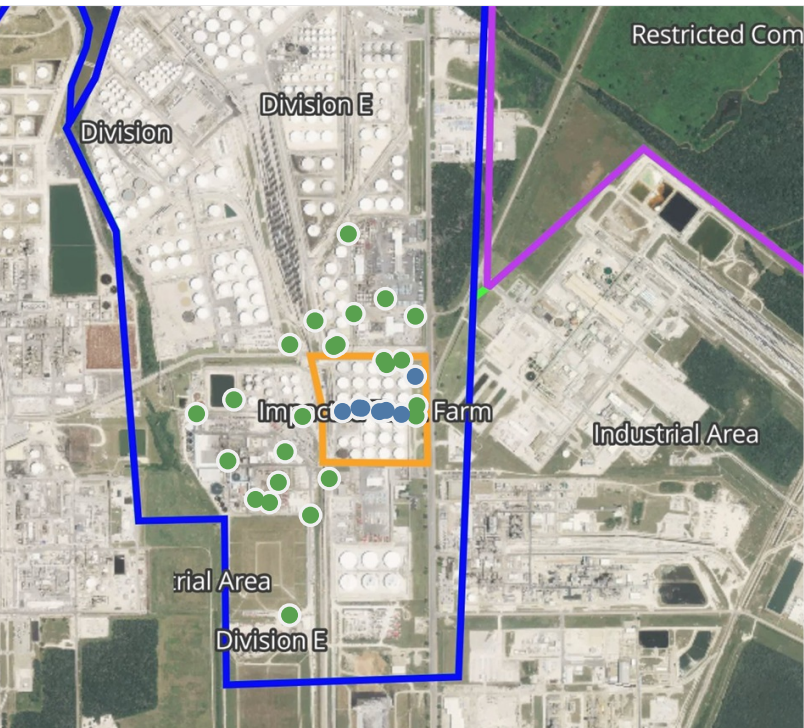
This data has been provided expeditiously to ITC and regulatory agencies for informational and/or operational purposes only. Data reported within this summary is preliminary in nature and has not undergone complete QA/QC (quality assurance/quality control) process. Until this complete QA/QC process is completed, the locations of each reading are approximate in nature and subject to further refinement. As some readings may represent non-breathing zone measurements, the data reported herein may not be suitable to assess potential occupational exposure. Site Assessment readings are not representative of an individual's breathing zone (e.g., container head space, ground level, directly above product, etc.).



**Please Note:** These updates display data from the 2<sup>nd</sup> 80's Fire site (Impacted Tank Farm), in the industrial areas surrounding the 2<sup>nd</sup> 80's Fire site (US Coast Guard Division E), within the Houston Ship Channel (US Coast Guard Divisions A-D), and in the industrial areas north and south of the Houston Ship Channel (Industrial Area). Real-time air monitoring data for the surrounding communities are communicated daily in a separate report.

# Preliminary Hand- Held Air Monitoring Locations | ITC Deer Park Tank Fire

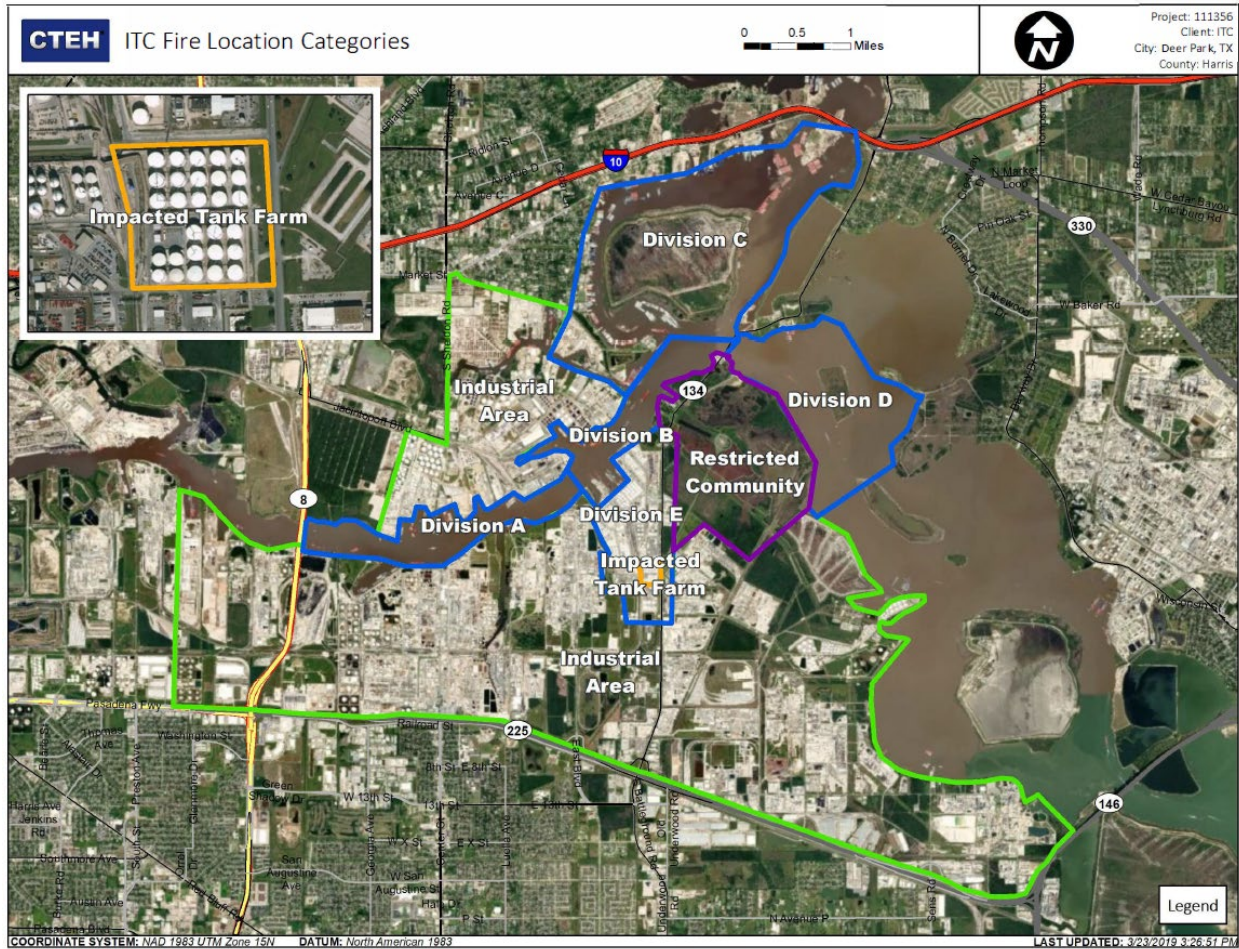
Reading Date  
5/4/2019 10:00:00 AM to 5/4/2019 11:00:00 AM



## Recent Benzene Detections

Location Category	Reading Date	Range of Detections
Impacted Tank Farm	5/4/2019 10:18:55	0.02000 ppm
	5/4/2019 10:26:27	0.09000 ppm
	5/4/2019 10:22:03	0.02000 ppm
	5/4/2019 10:40:44	0.06000 ppm
	5/4/2019 10:24:58	0.03000 ppm
	5/4/2019 10:28:43	0.07000 ppm
	5/4/2019 10:42:13	0.09000 ppm

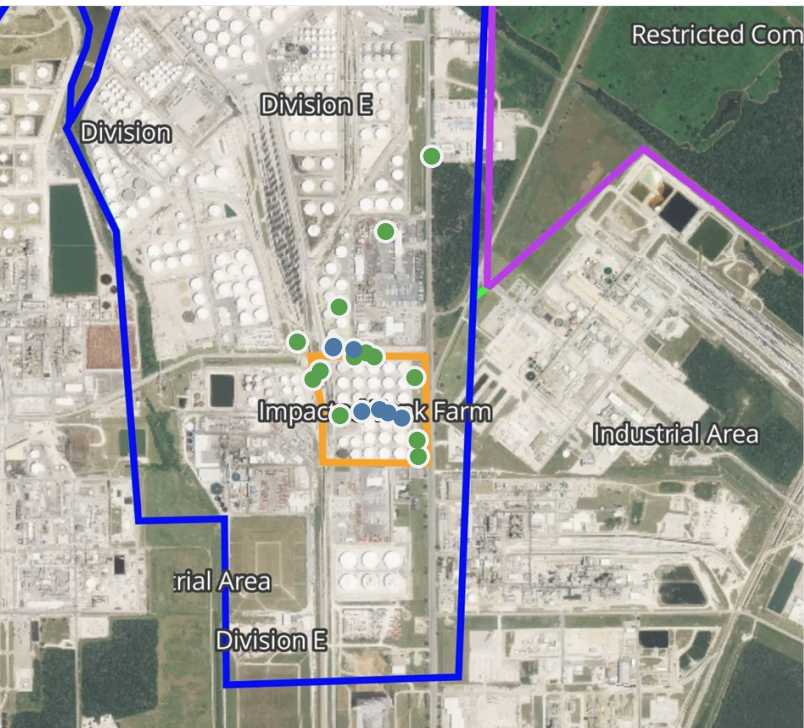
This data has been provided expeditiously to ITC and regulatory agencies for informational and/or operational purposes only. Data reported within this summary is preliminary in nature and has not undergone complete QA/QC (quality assurance/quality control) process. Until this complete QA/QC process is completed, the locations of each reading are approximate in nature and subject to further refinement. As some readings may represent non-breathing zone measurements, the data reported herein may not be suitable to assess potential occupational exposure. Site Assessment readings are not representative of an individual's breathing zone (e.g., container head space, ground level, directly above product, etc.).



**Please Note:** These updates display data from the 2<sup>nd</sup> 80's Fire site (Impacted Tank Farm), in the industrial areas surrounding the 2<sup>nd</sup> 80's Fire site (US Coast Guard Division E), within the Houston Ship Channel (US Coast Guard Divisions A-D), and in the industrial areas north and south of the Houston Ship Channel (Industrial Area). Real-time air monitoring data for the surrounding communities are communicated daily in a separate report.

# Preliminary Hand- Held Air Monitoring Locations | ITC Deer Park Tank Fire

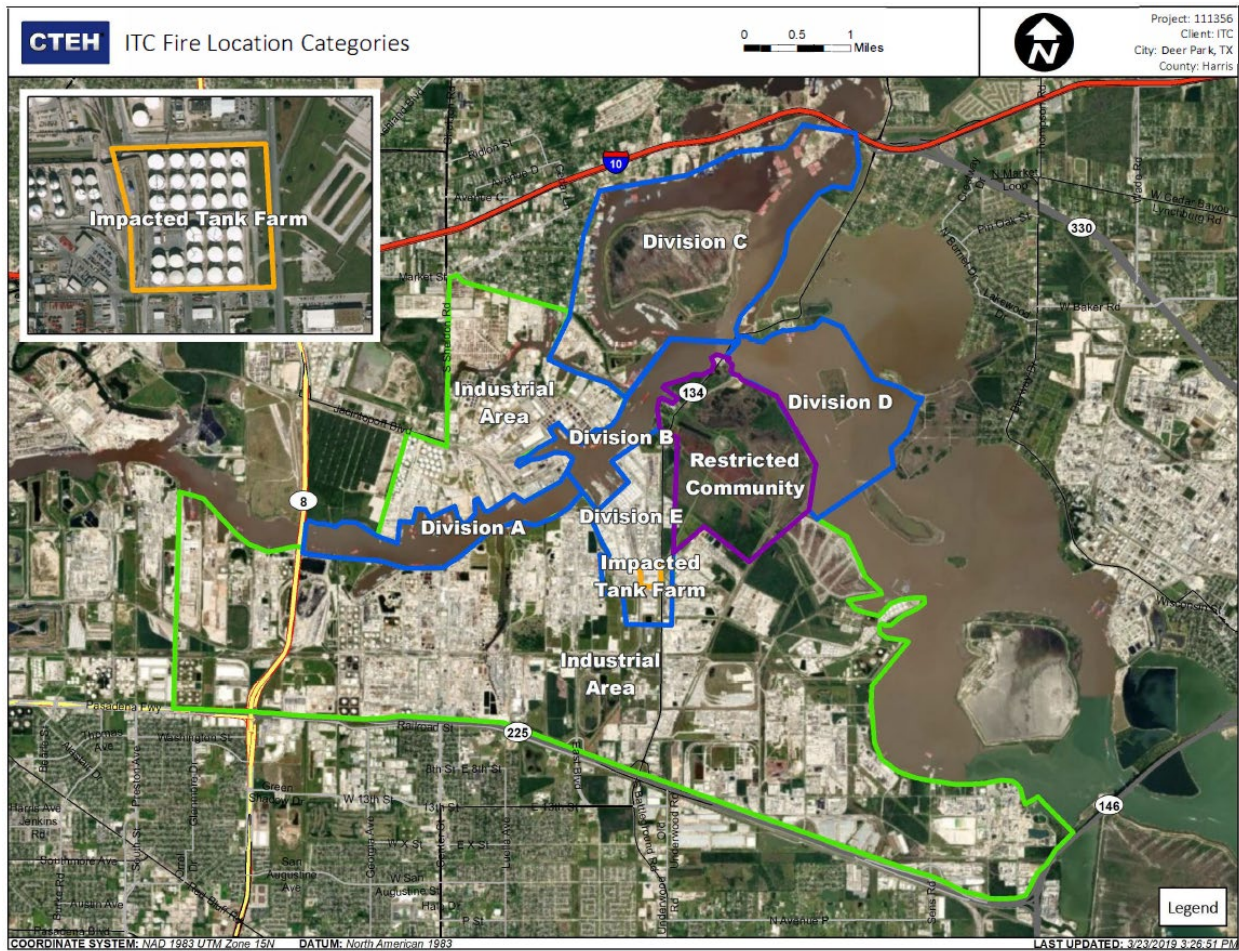
Reading Date  
5/4/2019 11:00:00 AM to 5/4/2019 12:00:00 PM



## Recent Benzene Detections

Location Category	Reading Date	Range of Detections
Division E	5/4/2019 11:19:47	0.0100 ppm
	5/4/2019 11:48:15	0.0200 ppm
	5/4/2019 11:52:39	0.0300 ppm
Impacted Tank Farm	5/4/2019 11:35:22	0.0700 ppm
	5/4/2019 11:42:36	0.2100 ppm
	5/4/2019 11:45:21	0.0700 ppm
	5/4/2019 11:48:28	0.0500 ppm

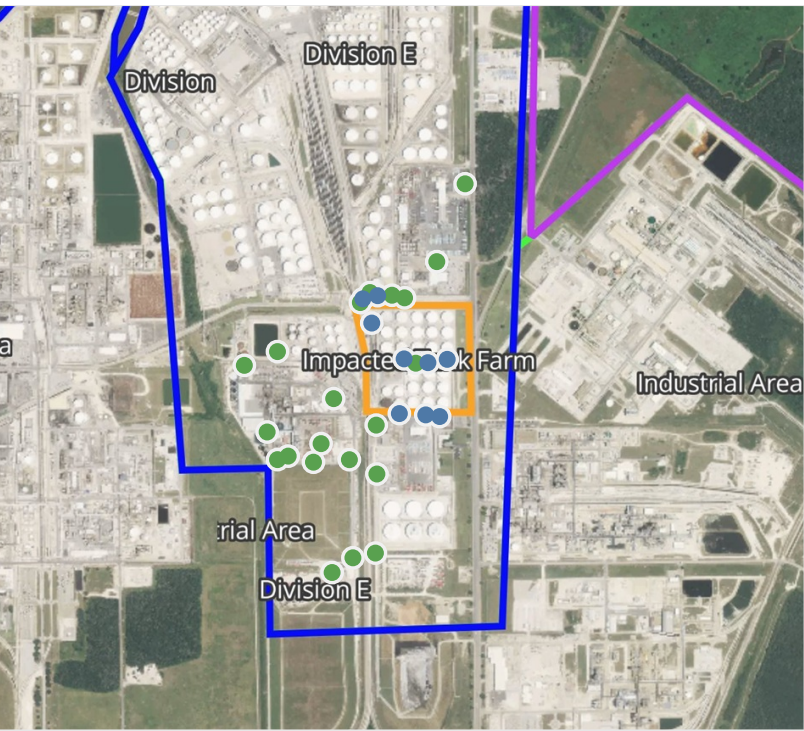
This data has been provided expeditiously to ITC and regulatory agencies for informational and/or operational purposes only. Data reported within this summary is preliminary in nature and has not undergone complete QA/QC (quality assurance/quality control) process. Until this complete QA/QC process is completed, the locations of each reading are approximate in nature and subject to further refinement. As some readings may represent non-breathing zone measurements, the data reported herein may not be suitable to assess potential occupational exposure. Site Assessment readings are not representative of an individual's breathing zone (e.g., container head space, ground level, directly above product, etc.).



**Please Note:** These updates display data from the 2<sup>nd</sup> 80's Fire site (Impacted Tank Farm), in the industrial areas surrounding the 2<sup>nd</sup> 80's Fire site (US Coast Guard Division E), within the Houston Ship Channel (US Coast Guard Divisions A-D), and in the industrial areas north and south of the Houston Ship Channel (Industrial Area). Real-time air monitoring data for the surrounding communities are communicated daily in a separate report.

# Preliminary Hand- Held Air Monitoring Locations | ITC Deer Park Tank Fire

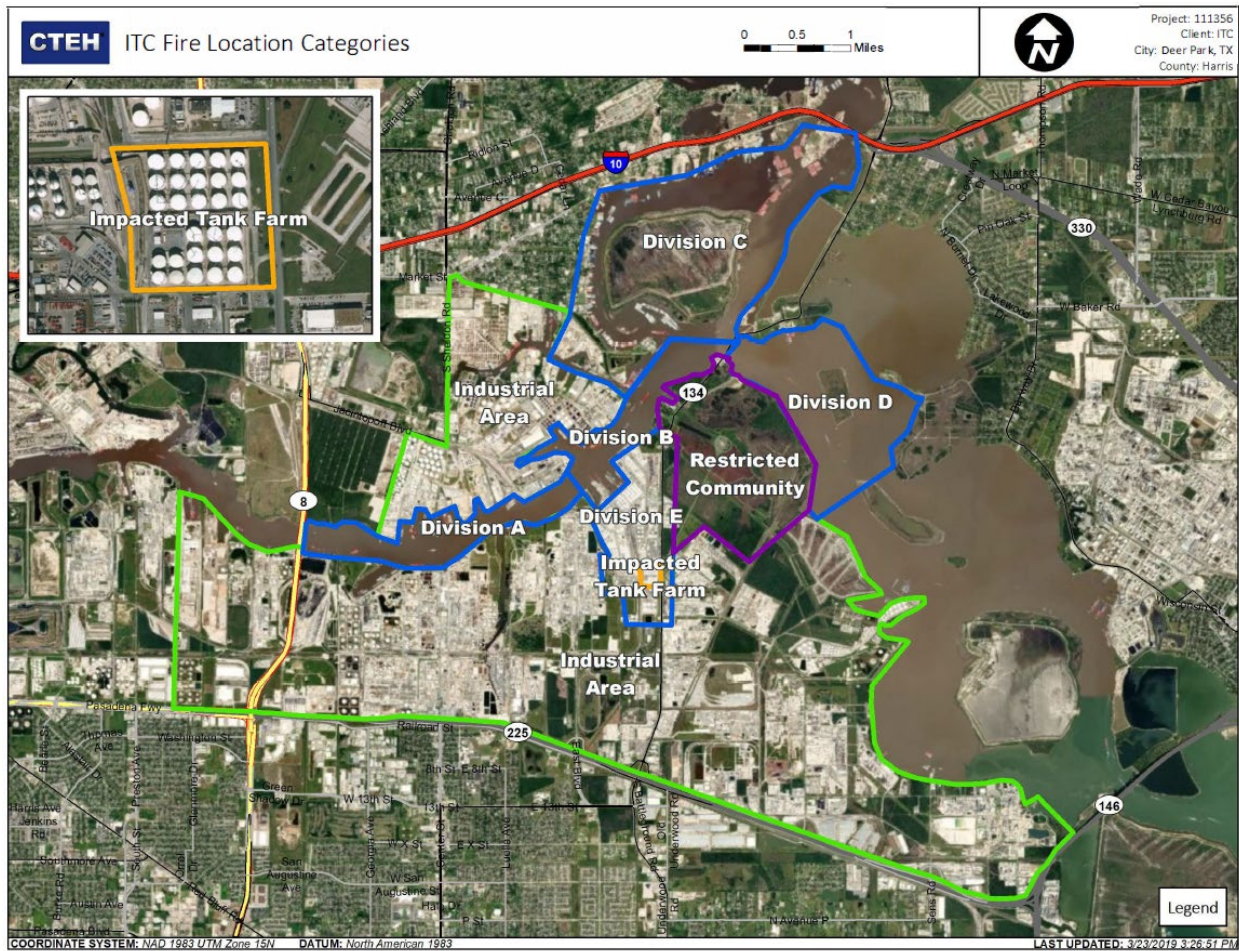
Reading Date  
5/4/2019 12:00:00 PM to 5/4/2019 1:00:00 PM



## Recent Benzene Detections

Location Category	Reading Date	Range of Detections
Division E	5/4/2019 12:01:24	0.0200 ppm
	5/4/2019 12:33:14	0.0300 ppm
	5/4/2019 12:41:38	0.0100 ppm
	5/4/2019 12:43:37	0.2400 ppm
	5/4/2019 12:51:27	0.0800 ppm
Impacted Tank Farm	5/4/2019 12:27:40	0.0500 ppm
	5/4/2019 12:29:27	0.1500 ppm
	5/4/2019 12:25:00	0.0800 ppm
	5/4/2019 12:59:18	0.0600 ppm

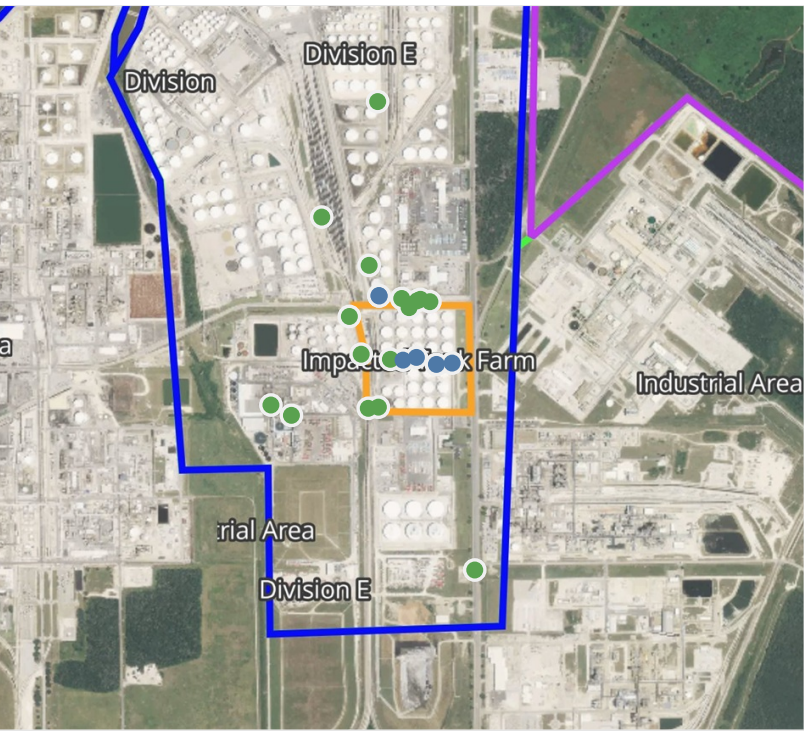
This data has been provided expeditiously to ITC and regulatory agencies for informational and/or operational purposes only. Data reported within this summary is preliminary in nature and has not undergone complete QA/QC (quality assurance/quality control) process. Until this complete QA/QC process is completed, the locations of each reading are approximate in nature and subject to further refinement. As some readings may represent non-breathing zone measurements, the data reported herein may not be suitable to assess potential occupational exposure. Site Assessment readings are not representative of an individual's breathing zone (e.g., container head space, ground level, directly above product, etc.).



**Please Note:** These updates display data from the 2<sup>nd</sup> 80's Fire site (Impacted Tank Farm), in the industrial areas surrounding the 2<sup>nd</sup> 80's Fire site (US Coast Guard Division E), within the Houston Ship Channel (US Coast Guard Divisions A-D), and in the industrial areas north and south of the Houston Ship Channel (Industrial Area). Real-time air monitoring data for the surrounding communities are communicated daily in a separate report.

# Preliminary Hand- Held Air Monitoring Locations | ITC Deer Park Tank Fire

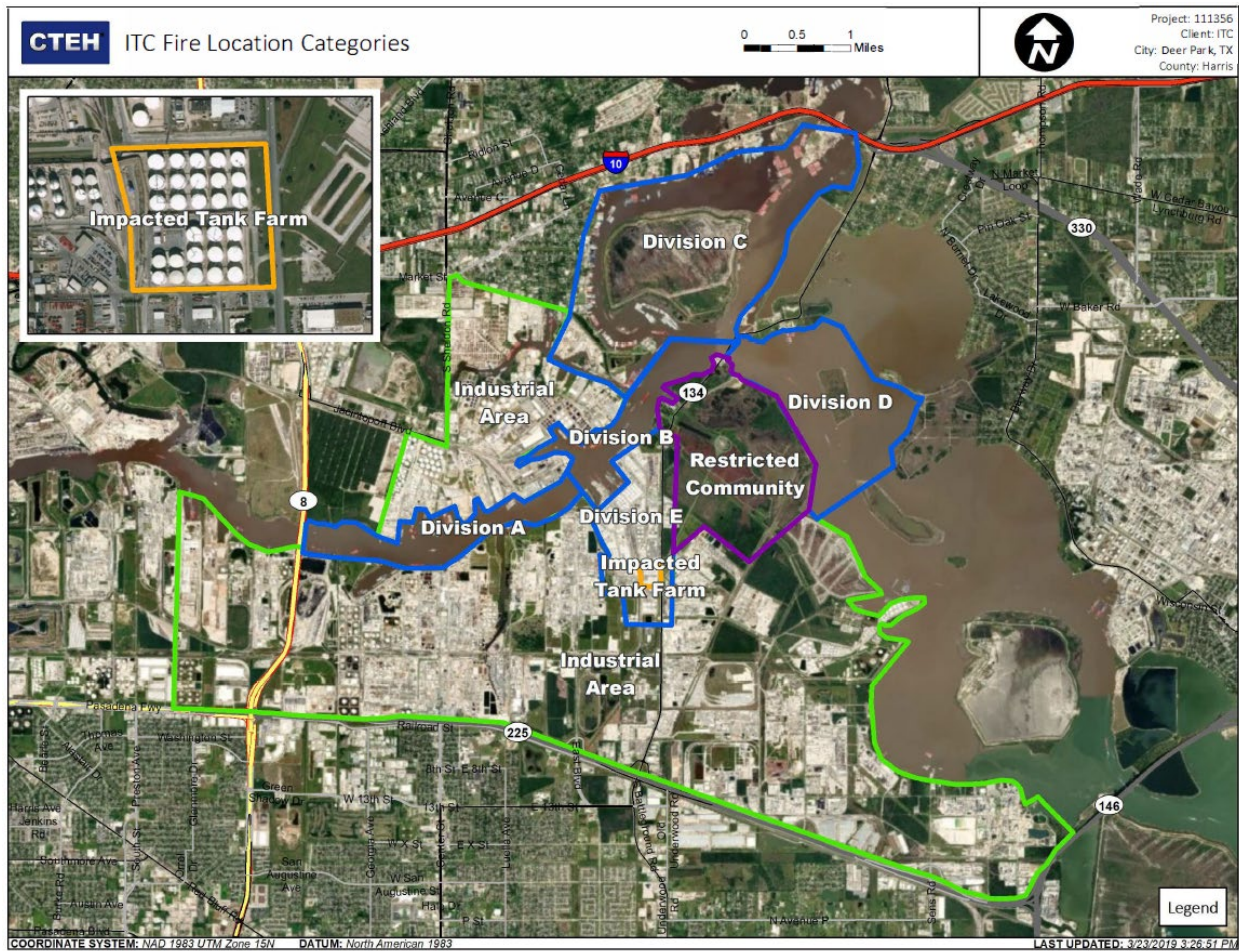
Reading Date  
5/4/2019 1:00:00 PM to 5/4/2019 2:00:00 PM



## Recent Benzene Detections

Location Category	Reading Date	Range of Detections
Division E	5/4/2019 13:10:43	0.02000 ppm
	5/4/2019 13:18:09	0.04000 ppm
Impacted Tank Farm	5/4/2019 13:29:47	0.09000 ppm
	5/4/2019 13:24:55	0.04000 ppm
	5/4/2019 13:26:54	0.02000 ppm
	5/4/2019 13:33:29	0.06000 ppm

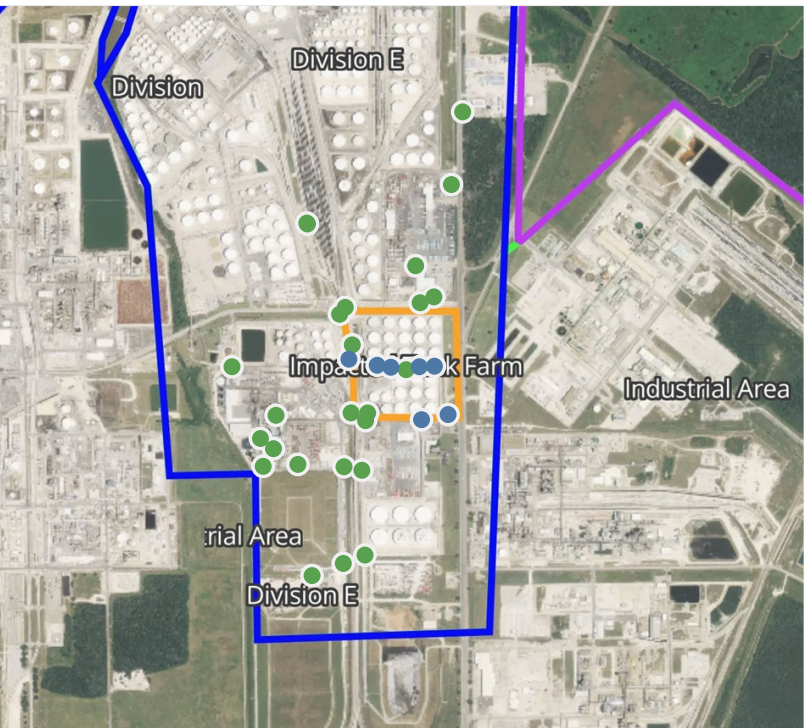
This data has been provided expeditiously to ITC and regulatory agencies for informational and/or operational purposes only. Data reported within this summary is preliminary in nature and has not undergone complete QA/QC (quality assurance/quality control) process. Until this complete QA/QC process is completed, the locations of each reading are approximate in nature and subject to further refinement. As some readings may represent non-breathing zone measurements, the data reported herein may not be suitable to assess potential occupational exposure. Site Assessment readings are not representative of an individual's breathing zone (e.g., container head space, ground level, directly above product, etc.).



**Please Note:** These updates display data from the 2<sup>nd</sup> 80's Fire site (Impacted Tank Farm), in the industrial areas surrounding the 2<sup>nd</sup> 80's Fire site (US Coast Guard Division E), within the Houston Ship Channel (US Coast Guard Divisions A-D), and in the industrial areas north and south of the Houston Ship Channel (Industrial Area). Real-time air monitoring data for the surrounding communities are communicated daily in a separate report.

# Preliminary Hand- Held Air Monitoring Locations | ITC Deer Park Tank Fire

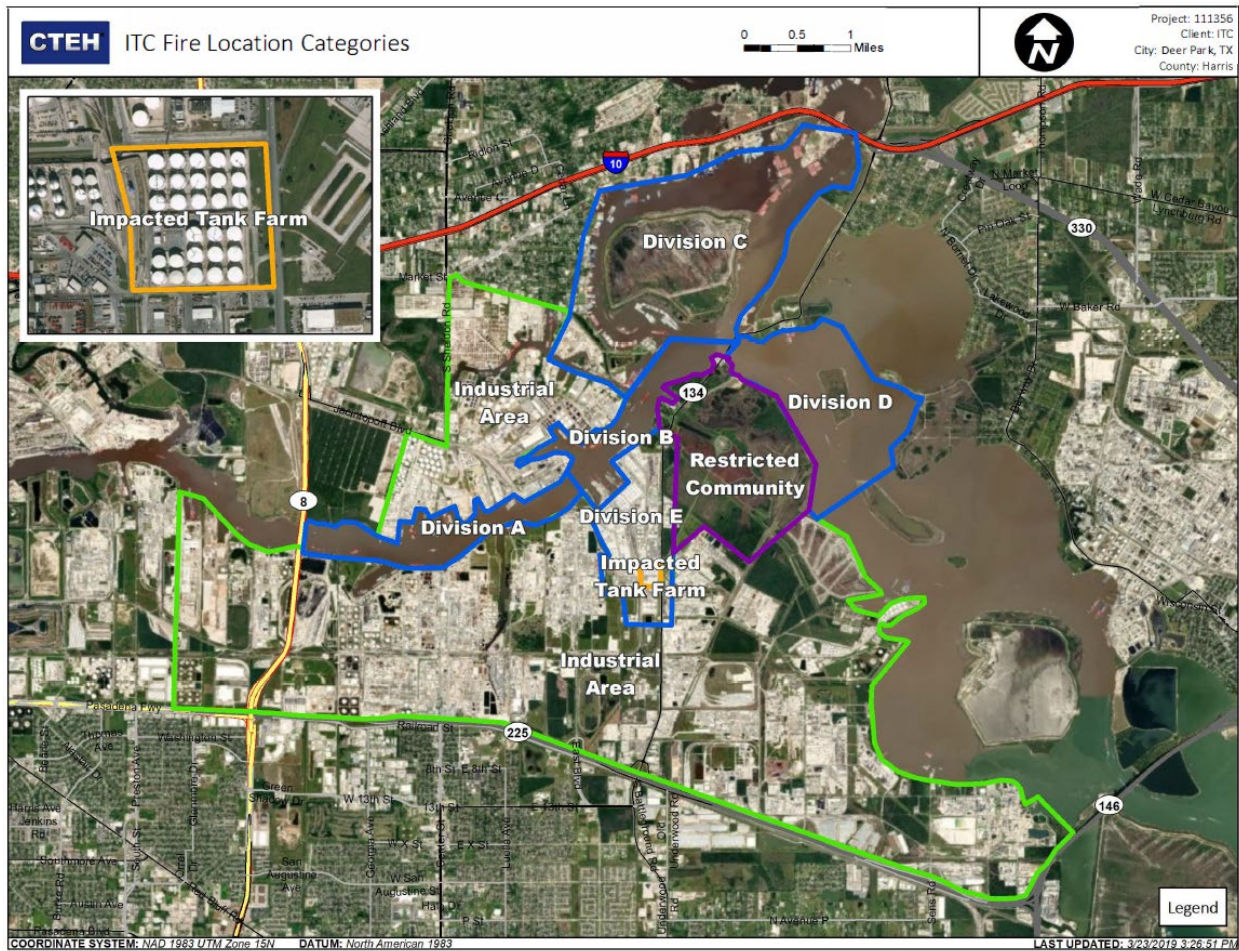
Reading Date  
5/4/2019 2:00:00 PM to 5/4/2019 3:00:00 PM



## Recent Benzene Detections

Location Category	Reading Date	Range of Detections
Division E	5/4/2019 14:13:15	0.0100 ppm
	5/4/2019 14:40:11	0.0500 ppm
	5/4/2019 14:46:07	0.0800 ppm
Impacted Tank Farm	5/4/2019 14:47:35	0.0500 ppm
	5/4/2019 14:57:50	0.0500 ppm
	5/4/2019 14:48:55	0.1300 ppm
	5/4/2019 14:54:54	0.0800 ppm

This data has been provided expeditiously to ITC and regulatory agencies for informational and/or operational purposes only. Data reported within this summary is preliminary in nature and has not undergone complete QA/QC (quality assurance/quality control) process. Until this complete QA/QC process is completed, the locations of each reading are approximate in nature and subject to further refinement. As some readings may represent non-breathing zone measurements, the data reported herein may not be suitable to assess potential occupational exposure. Site Assessment readings are not representative of an individual's breathing zone (e.g., container head space, ground level, directly above product, etc.).



**Please Note:** These updates display data from the 2<sup>nd</sup> 80's Fire site (Impacted Tank Farm), in the industrial areas surrounding the 2<sup>nd</sup> 80's Fire site (US Coast Guard Division E), within the Houston Ship Channel (US Coast Guard Divisions A-D), and in the industrial areas north and south of the Houston Ship Channel (Industrial Area). Real-time air monitoring data for the surrounding communities are communicated daily in a separate report.

# Preliminary Hand- Held Air Monitoring Locations | ITC Deer Park Tank Fire

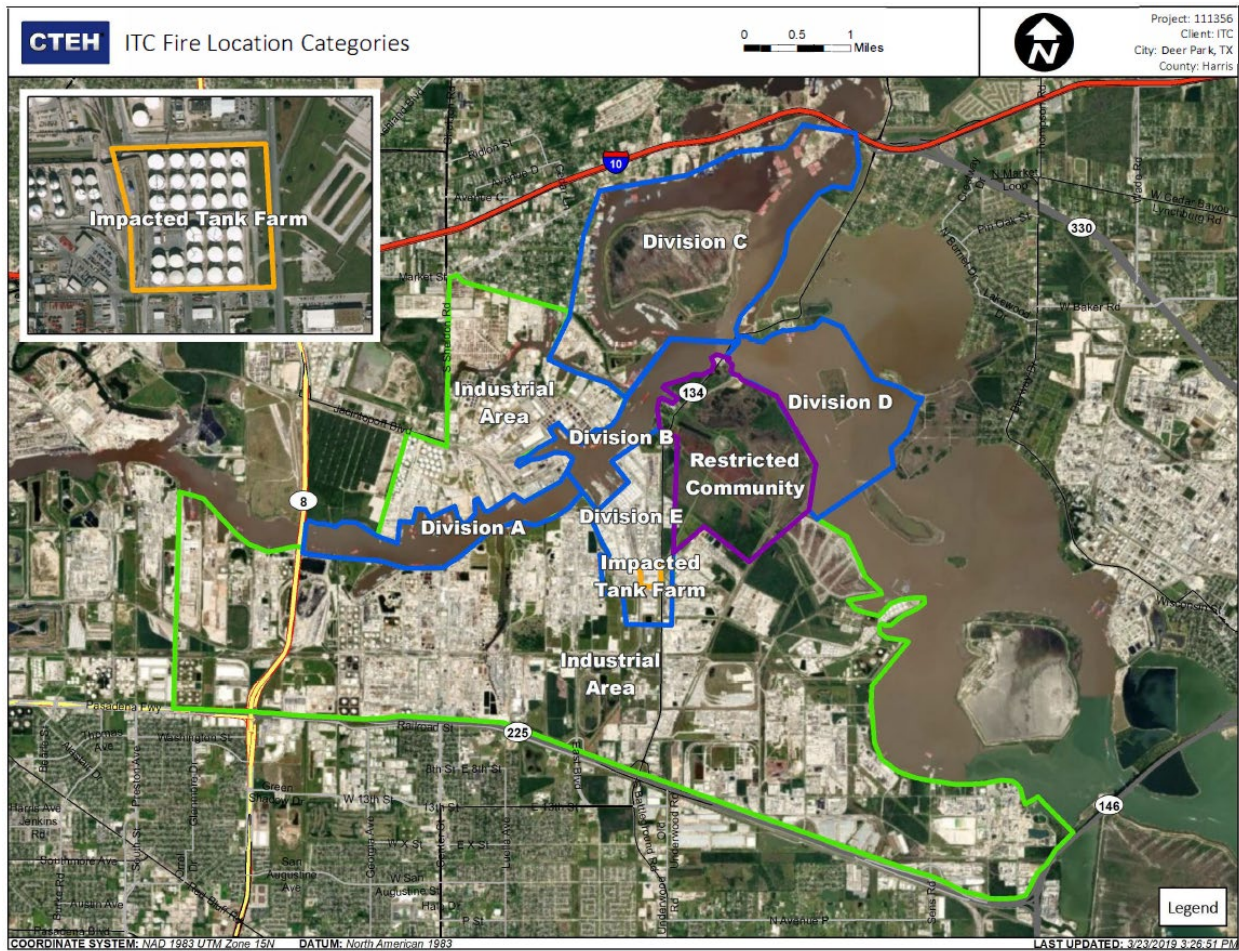
Reading Date  
5/4/2019 3:00:00 PM to 5/4/2019 4:00:00 PM



## Recent Benzene Detections

Location Category	Reading Date	Range of Detections
Division E	5/4/2019 15:11:32	0.0100 ppm
	5/4/2019 15:23:41	0.0200 ppm
	5/4/2019 15:40:36	0.0200 ppm
	5/4/2019 15:44:12	0.2400 ppm
	5/4/2019 15:48:09	0.0100 ppm
	5/4/2019 15:51:18	0.0700 ppm
Impacted Tank Farm	5/4/2019 15:42:06	0.0800 ppm
	5/4/2019 15:48:33	0.0800 ppm
	5/4/2019 15:46:34	0.0200 ppm
	5/4/2019 15:44:49	0.0200 ppm

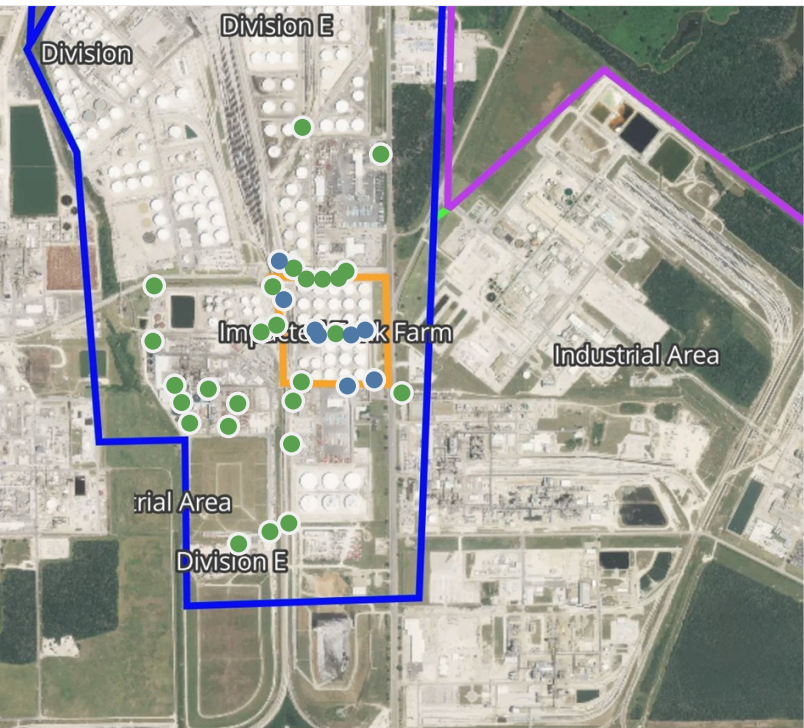
This data has been provided expeditiously to ITC and regulatory agencies for informational and/or operational purposes only. Data reported within this summary is preliminary in nature and has not undergone complete QA/QC (quality assurance/quality control) process. Until this complete QA/QC process is completed, the locations of each reading are approximate in nature and subject to further refinement. As some readings may represent non-breathing zone measurements, the data reported herein may not be suitable to assess potential occupational exposure. Site Assessment readings are not representative of an individual's breathing zone (e.g., container head space, ground level, directly above product, etc.).



**Please Note:** These updates display data from the 2<sup>nd</sup> 80's Fire site (Impacted Tank Farm), in the industrial areas surrounding the 2<sup>nd</sup> 80's Fire site (US Coast Guard Division E), within the Houston Ship Channel (US Coast Guard Divisions A-D), and in the industrial areas north and south of the Houston Ship Channel (Industrial Area). Real-time air monitoring data for the surrounding communities are communicated daily in a separate report.

# Preliminary Hand- Held Air Monitoring Locations | ITC Deer Park Tank Fire

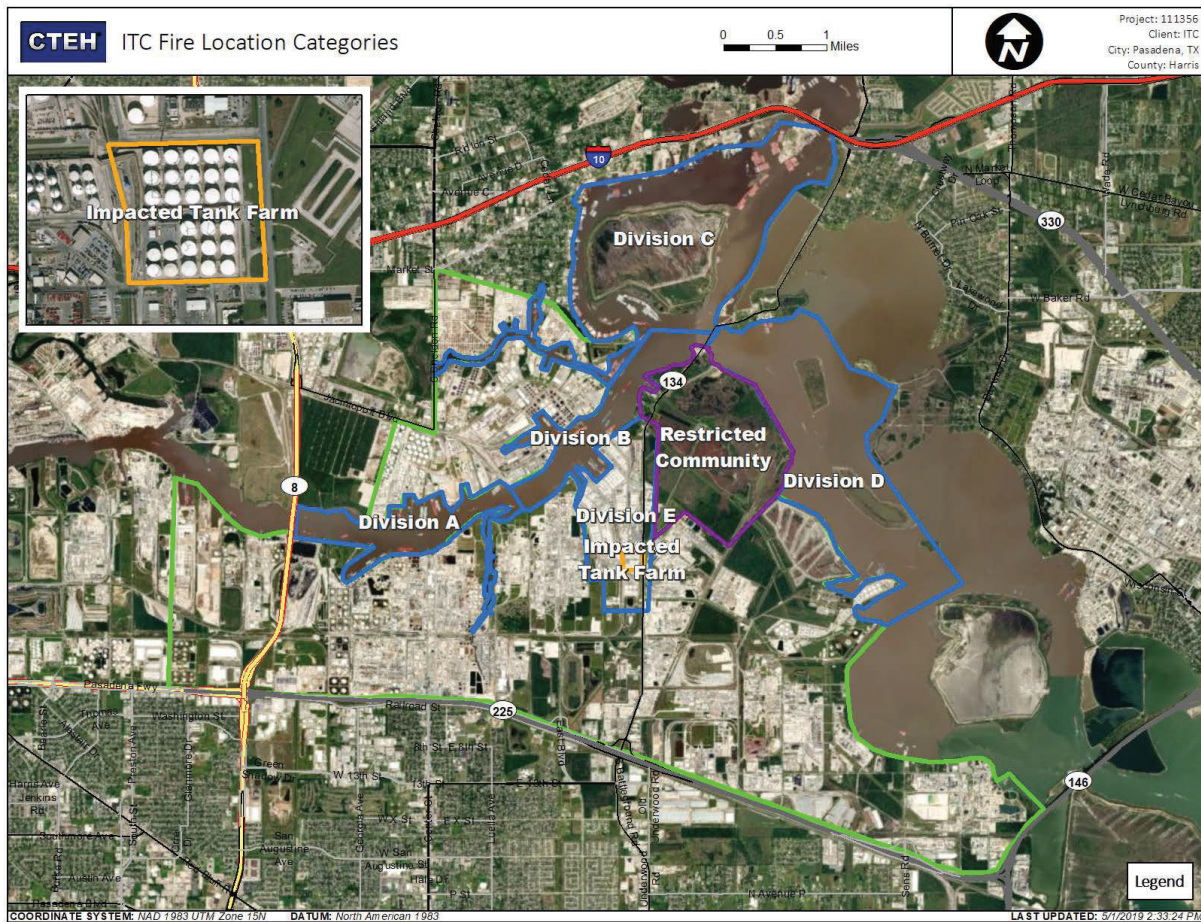
Reading Date  
5/4/2019 4:00:00 PM to 5/4/2019 5:00:00 PM



## Recent Benzene Detections

Location Category	Reading Date	Range of Detections
Division E	5/4/2019 16:07:29	0.0200 ppm
	5/4/2019 16:30:52	0.0800 ppm
	5/4/2019 16:43:26	0.0900 ppm
Impacted Tank Farm	5/4/2019 16:10:04	0.0400 ppm
	5/4/2019 16:29:20	0.0200 ppm
	5/4/2019 16:25:50	0.0400 ppm
	5/4/2019 16:33:40	0.1100 ppm
	5/4/2019 16:24:00	0.1300 ppm

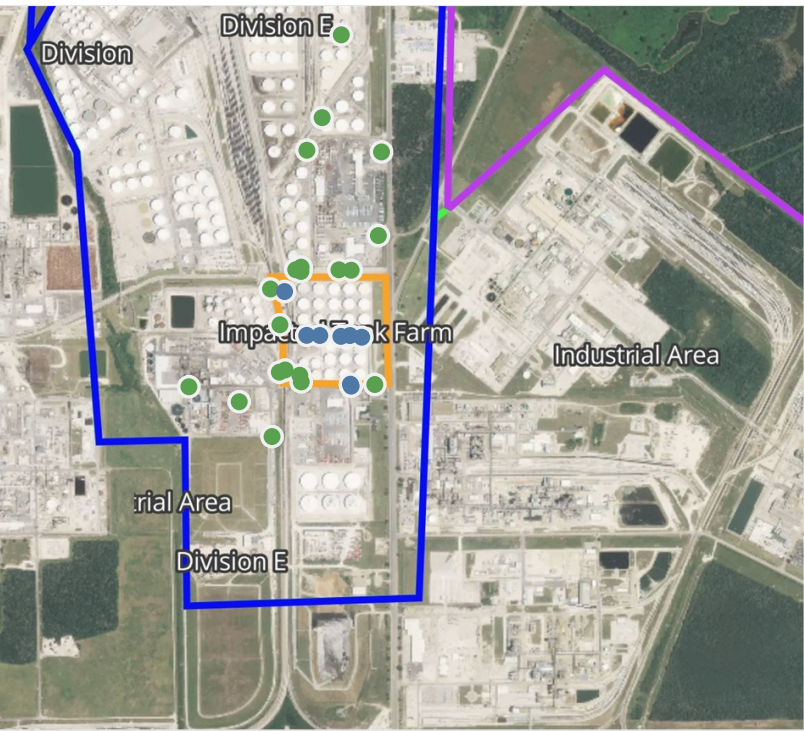
This data has been provided expeditiously to ITC and regulatory agencies for informational and/or operational purposes only. Data reported within this summary is preliminary in nature and has not undergone complete QA/QC (quality assurance/quality control) process. Until this complete QA/QC process is completed, the locations of each reading are approximate in nature and subject to further refinement. As some readings may represent non-breathing zone measurements, the data reported herein may not be suitable to assess potential occupational exposure. Site Assessment readings are not representative of an individual's breathing zone (e.g., container head space, ground level, directly above product, etc.).



**Please Note:** These updates display data from the 2<sup>nd</sup> 80's Fire site (Impacted Tank Farm), in the industrial areas surrounding the 2<sup>nd</sup> 80's Fire site (US Coast Guard Division E), within the Houston Ship Channel (US Coast Guard Divisions A-D), and in the industrial areas north and south of the Houston Ship Channel (Industrial Area). Real-time air monitoring data for the surrounding communities are communicated daily in a separate report.

# Preliminary Hand- Held Air Monitoring Locations | ITC Deer Park Tank Fire

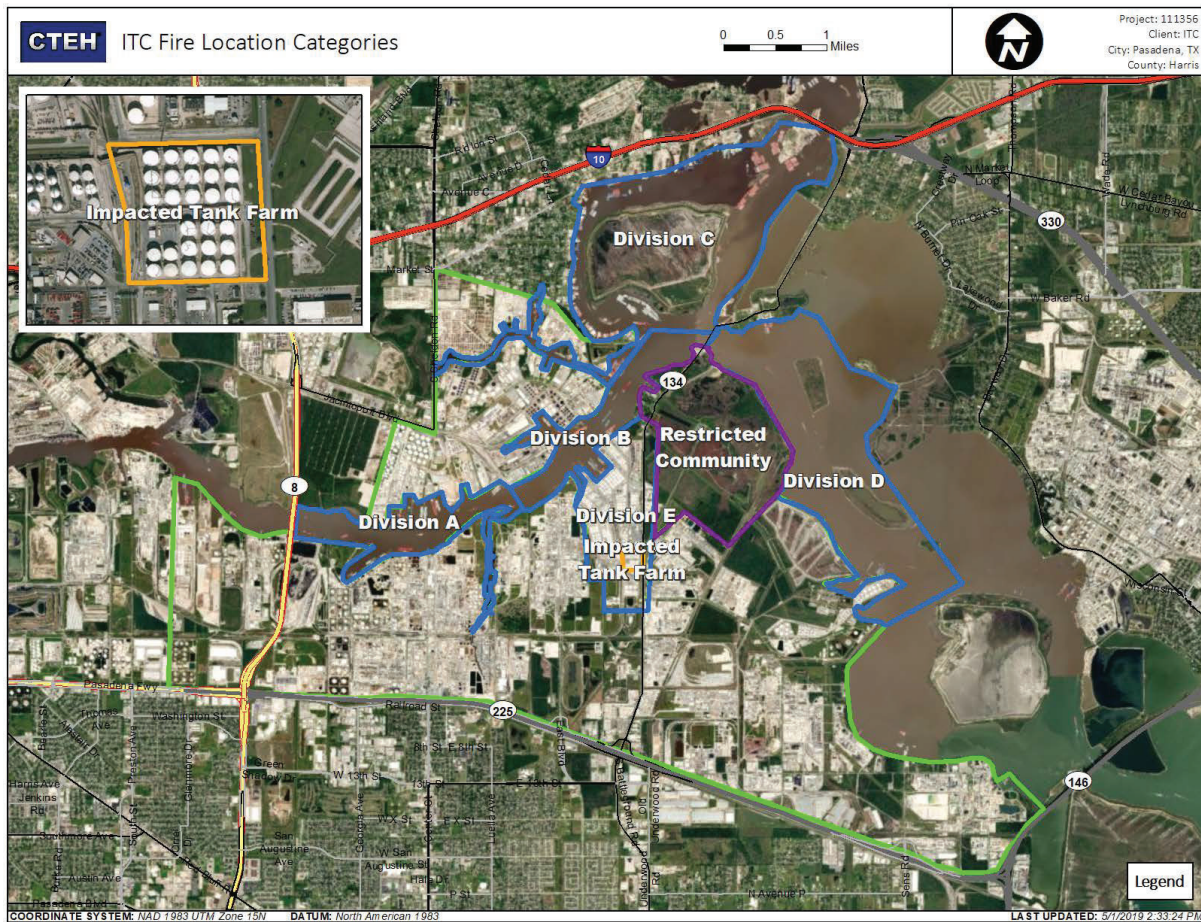
Reading Date  
5/4/2019 5:00:00 PM to 5/4/2019 6:00:00 PM



## Recent Benzene Detections

Location Category	Reading Date	Range of Detections
Division E	5/4/2019 17:19:30	0.02000 ppm
	5/4/2019 17:45:57	0.04000 ppm
Impacted Tank Farm	5/4/2019 17:26:52	0.03000 ppm
	5/4/2019 17:50:49	0.05000 ppm
	5/4/2019 17:59:44	0.03000 ppm
	5/4/2019 17:49:29	0.05000 ppm
	5/4/2019 17:56:00	0.02000 ppm
	5/4/2019 17:47:49	0.07000 ppm

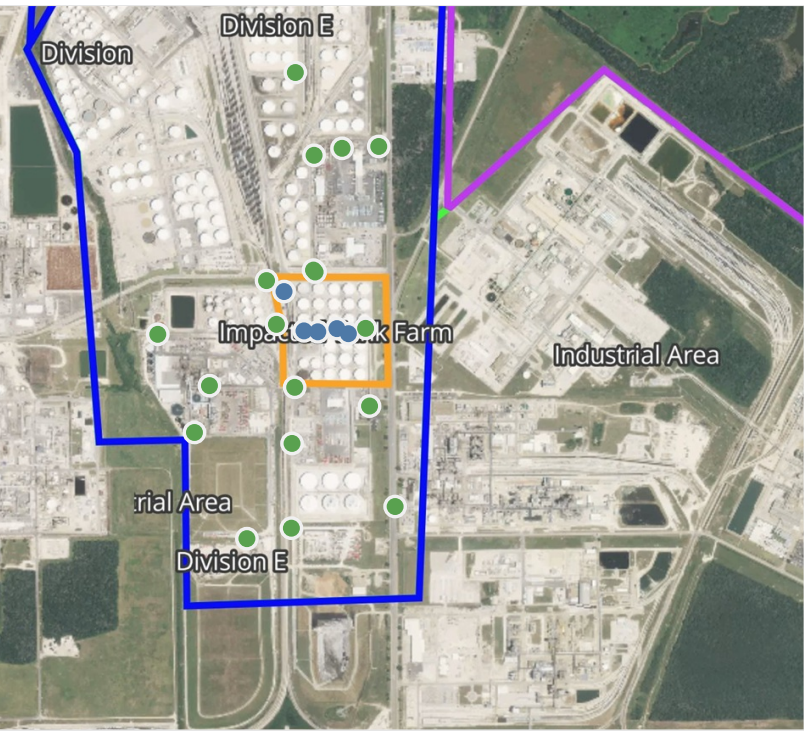
This data has been provided expeditiously to ITC and regulatory agencies for informational and/or operational purposes only. Data reported within this summary is preliminary in nature and has not undergone complete QA/QC (quality assurance/quality control) process. Until this complete QA/QC process is completed, the locations of each reading are approximate in nature and subject to further refinement. As some readings may represent non-breathing zone measurements, the data reported herein may not be suitable to assess potential occupational exposure. Site Assessment readings are not representative of an individual's breathing zone (e.g., container head space, ground level, directly above product, etc.).



**Please Note:** These updates display data from the 2<sup>nd</sup> 80's Fire site (Impacted Tank Farm), in the industrial areas surrounding the 2<sup>nd</sup> 80's Fire site (US Coast Guard Division E), within the Houston Ship Channel (US Coast Guard Divisions A-D), and in the industrial areas north and south of the Houston Ship Channel (Industrial Area). Real-time air monitoring data for the surrounding communities are communicated daily in a separate report.

# Preliminary Hand- Held Air Monitoring Locations | ITC Deer Park Tank Fire

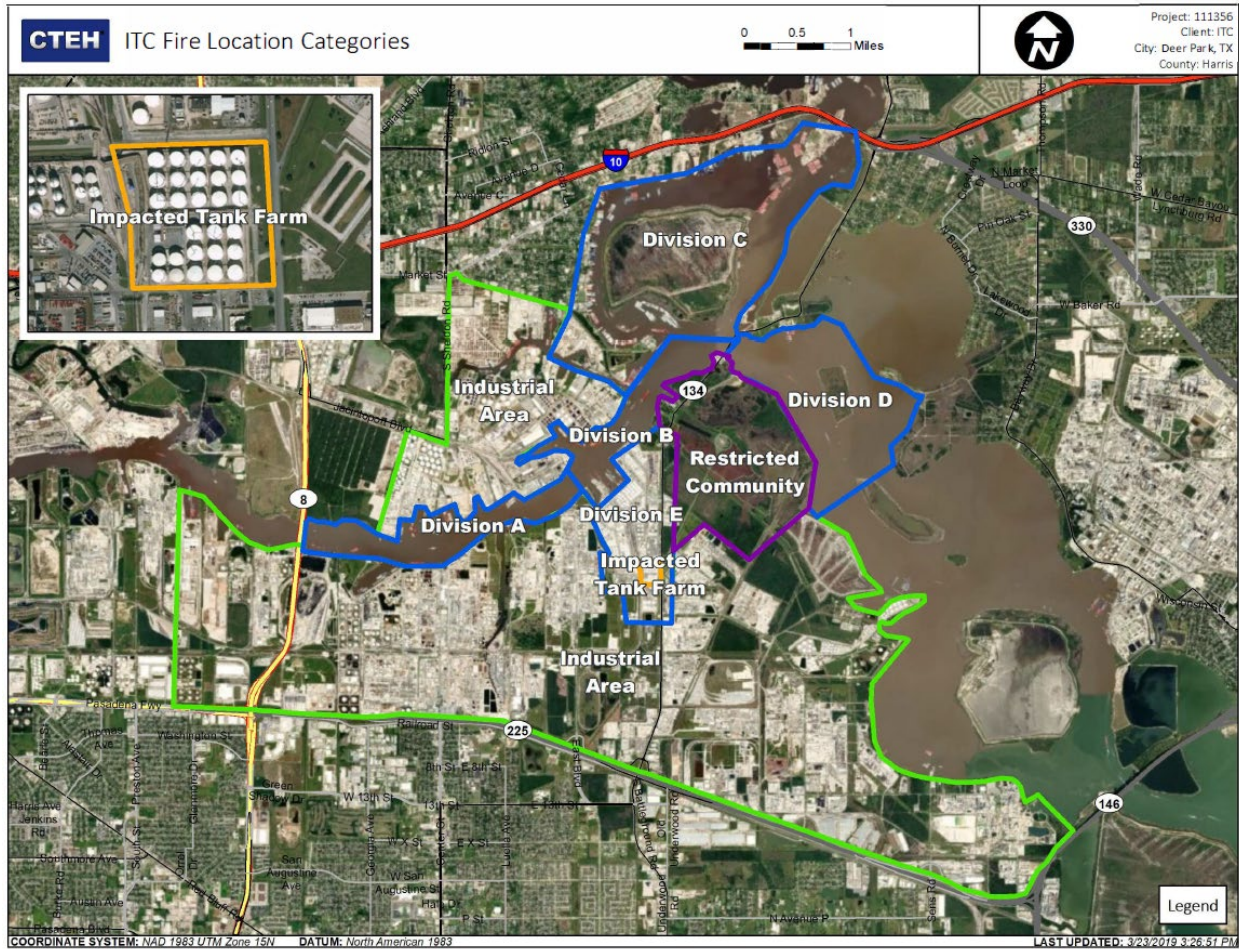
Reading Date  
5/4/2019 6:00:00 PM to 5/4/2019 7:00:00 PM



## Recent Benzene Detections

Location Category	Reading Date	Range of Detections
Impacted Tank Farm	5/4/2019 18:30:19	0.04000 ppm
	5/4/2019 18:42:10	0.04000 ppm
	5/4/2019 18:46:56	0.10000 ppm
	5/4/2019 18:43:41	0.04000 ppm
	5/4/2019 18:44:46	0.10000 ppm

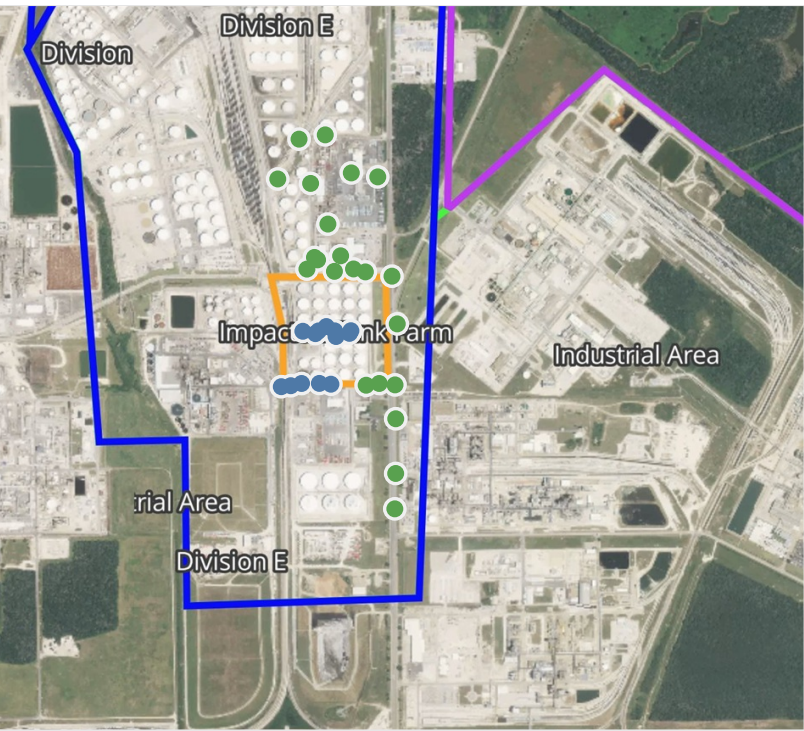
This data has been provided expeditiously to ITC and regulatory agencies for informational and/or operational purposes only. Data reported within this summary is preliminary in nature and has not undergone complete QA/QC (quality assurance/quality control) process. Until this complete QA/QC process is completed, the locations of each reading are approximate in nature and subject to further refinement. As some readings may represent non-breathing zone measurements, the data reported herein may not be suitable to assess potential occupational exposure. Site Assessment readings are not representative of an individual's breathing zone (e.g., container head space, ground level, directly above product, etc.).



**Please Note:** These updates display data from the 2<sup>nd</sup> 80's Fire site (Impacted Tank Farm), in the industrial areas surrounding the 2<sup>nd</sup> 80's Fire site (US Coast Guard Division E), within the Houston Ship Channel (US Coast Guard Divisions A-D), and in the industrial areas north and south of the Houston Ship Channel (Industrial Area). Real-time air monitoring data for the surrounding communities are communicated daily in a separate report.

# Preliminary Hand- Held Air Monitoring Locations | ITC Deer Park Tank Fire

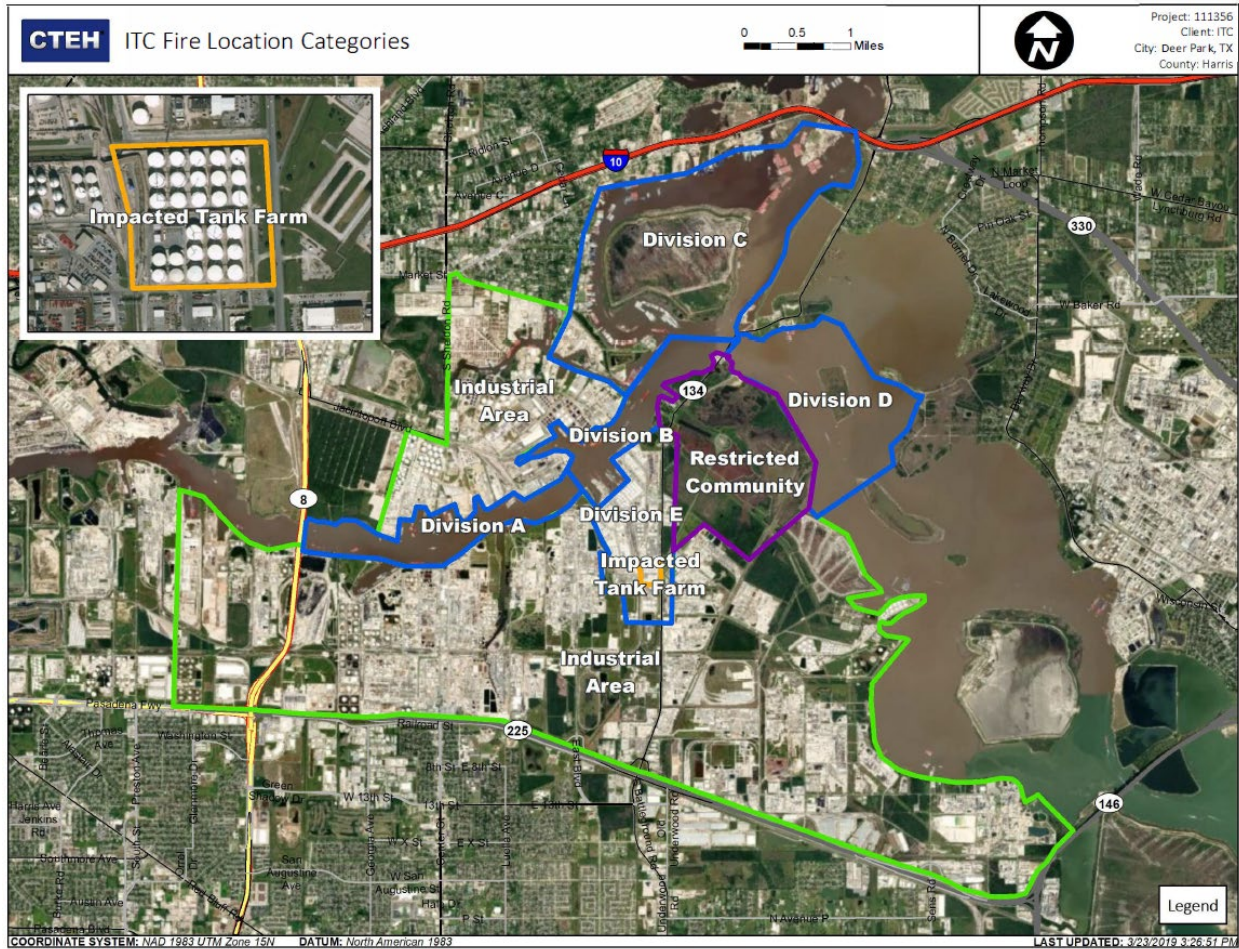
Reading Date  
5/4/2019 7:00:00 PM to 5/4/2019 8:00:00 PM



## Recent Benzene Detections

Location Category	Reading Date	Range of Detections
Division E	5/4/2019 19:39:55	0.0800 ppm
	5/4/2019 19:50:21	0.0900 ppm
	5/4/2019 19:48:22	0.1200 ppm
	5/4/2019 19:49:29	0.1700 ppm
	5/4/2019 19:52:22	0.0400 ppm
	5/4/2019 19:55:35	0.0500 ppm
Impacted Tank Farm	5/4/2019 19:49:16	0.0900 ppm
	5/4/2019 19:52:33	0.1100 ppm
	5/4/2019 19:52:32	0.1500 ppm
	5/4/2019 19:56:08	0.0500 ppm
	5/4/2019 19:58:06	0.0600 ppm
	5/4/2019 19:56:19	0.0400 ppm
	5/4/2019 19:58:01	0.1100 ppm

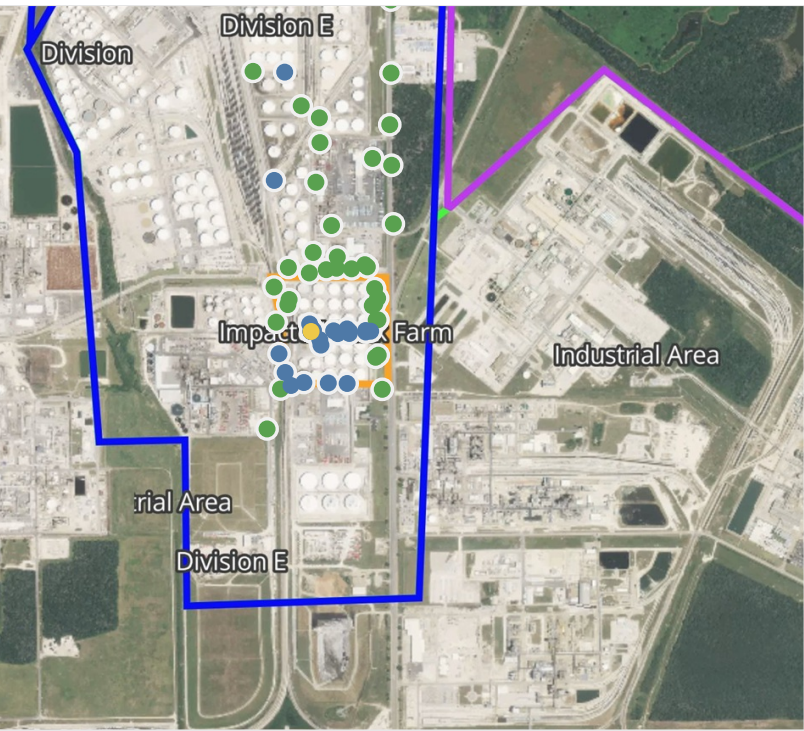
This data has been provided expeditiously to ITC and regulatory agencies for informational and/or operational purposes only. Data reported within this summary is preliminary in nature and has not undergone complete QA/QC (quality assurance/quality control) process. Until this complete QA/QC process is completed, the locations of each reading are approximate in nature and subject to further refinement. As some readings may represent non-breathing zone measurements, the data reported herein may not be suitable to assess potential occupational exposure. Site Assessment readings are not representative of an individual's breathing zone (e.g., container head space, ground level, directly above product, etc.).



**Please Note:** These updates display data from the 2<sup>nd</sup> 80's Fire site (Impacted Tank Farm), in the industrial areas surrounding the 2<sup>nd</sup> 80's Fire site (US Coast Guard Division E), within the Houston Ship Channel (US Coast Guard Divisions A-D), and in the industrial areas north and south of the Houston Ship Channel (Industrial Area). Real-time air monitoring data for the surrounding communities are communicated daily in a separate report.

# Preliminary Hand- Held Air Monitoring Locations | ITC Deer Park Tank Fire

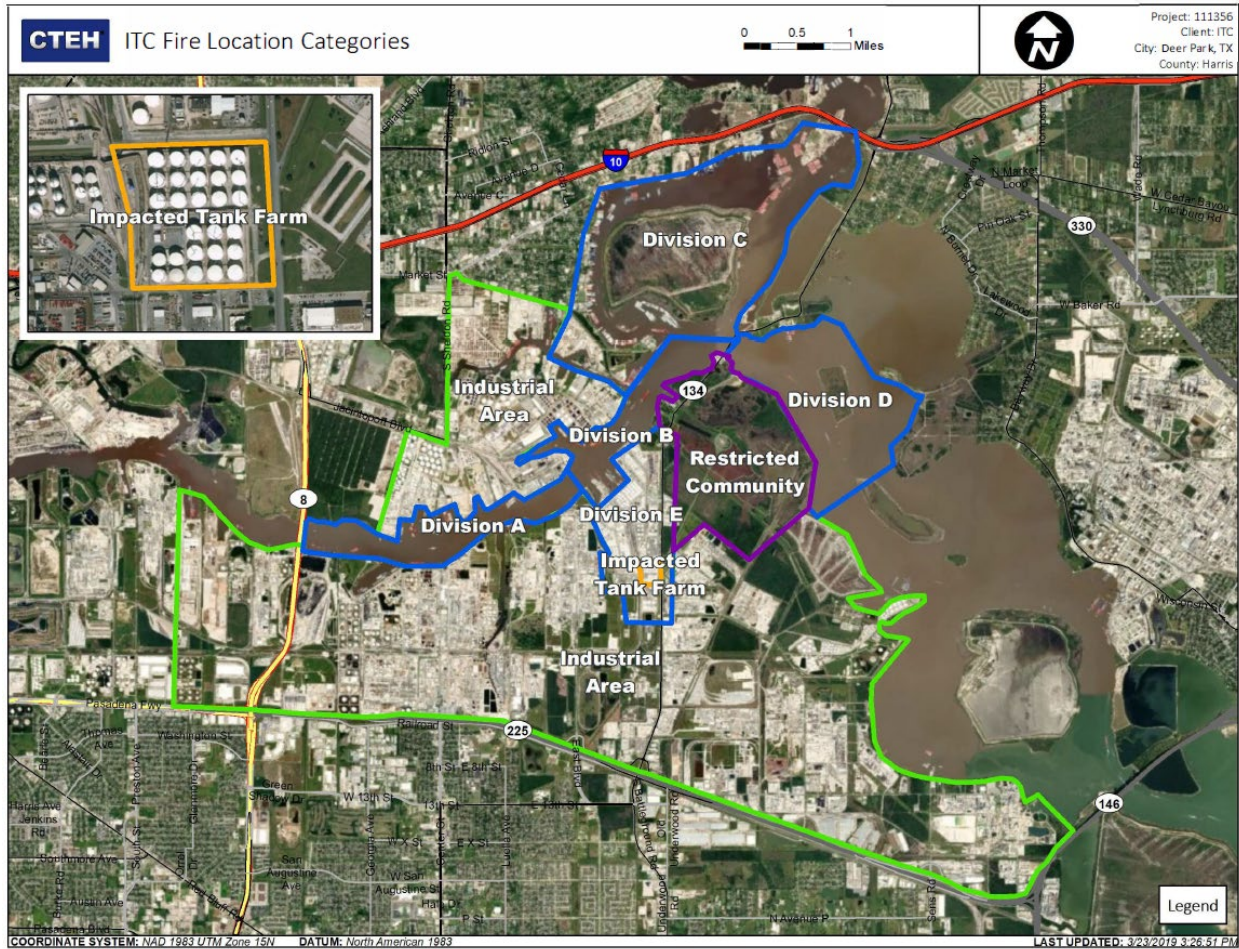
Reading Date  
5/4/2019 8:00:00 PM to 5/4/2019 9:00:00 PM



## Recent Benzene Detections

Location Category	Reading Date	Range of Detections
Division E	5/4/2019 20:08:54	0.0900 ppm
	5/4/2019 20:08:14	0.0300 ppm
	5/4/2019 20:06:37	0.0200 ppm
	5/4/2019 20:30:22	0.1300 ppm
	5/4/2019 20:33:42	0.1600 ppm
	5/4/2019 20:43:10	0.0600 ppm
	5/4/2019 20:50:57	0.1400 ppm
	5/4/2019 20:51:44	0.0300 ppm
Impacted Tank Farm	5/4/2019 20:04:42	0.2200 ppm
	5/4/2019 20:04:46	0.2600 ppm
	5/4/2019 20:25:03	0.1800 ppm
	5/4/2019 20:24:51	0.2100 ppm
	5/4/2019 20:38:36	0.4000 ppm
	5/4/2019 20:39:47	0.0900 ppm
	5/4/2019 20:46:58	0.1000 ppm
	5/4/2019 20:44:10	0.0700 ppm
	5/4/2019 20:41:09	0.6000 ppm
	5/4/2019 20:46:55	0.1500 ppm
	5/4/2019 20:45:37	0.4200 ppm
	5/4/2019 20:51:20	0.0400 ppm
	5/4/2019 20:51:04	0.0600 ppm
	5/4/2019 20:53:40	0.2300 ppm
	5/4/2019 20:55:43	0.1600 ppm
	5/4/2019 20:55:38	0.1600 ppm
	5/4/2019 20:53:52	0.1900 ppm

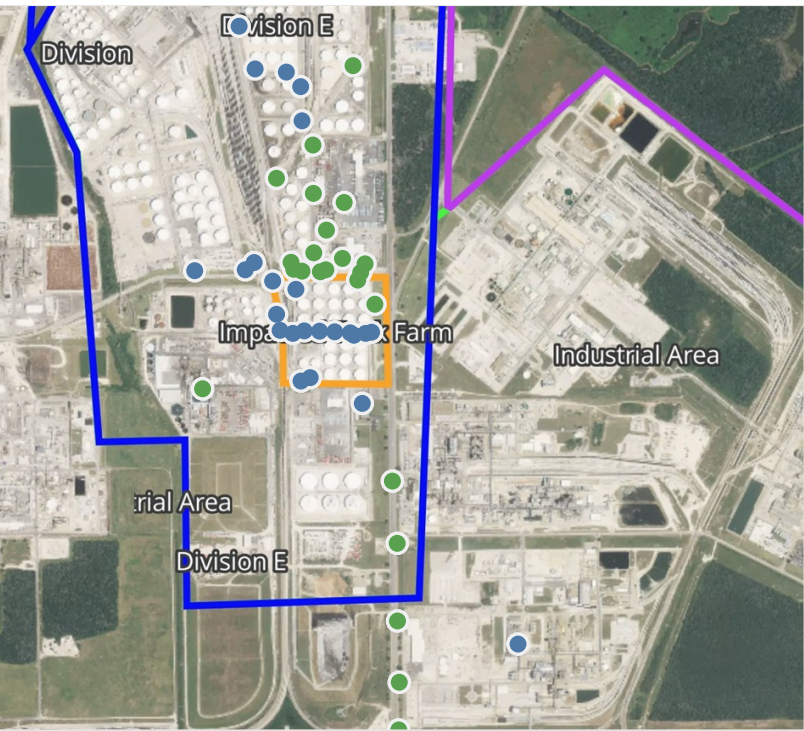
This data has been provided expeditiously to ITC and regulatory agencies for informational and/or operational purposes only. Data reported within this summary is preliminary in nature and has not undergone complete QA/QC (quality assurance/quality control) process. Until this complete QA/QC process is completed, the locations of each reading are approximate in nature and subject to further refinement. As some readings may represent non-breathing zone measurements, the data reported herein may not be suitable to assess potential occupational exposure. Site Assessment readings are not representative of an individual's breathing zone (e.g., container head space, ground level, directly above product, etc.).



**Please Note:** These updates display data from the 2<sup>nd</sup> 80's Fire site (Impacted Tank Farm), in the industrial areas surrounding the 2<sup>nd</sup> 80's Fire site (US Coast Guard Division E), within the Houston Ship Channel (US Coast Guard Divisions A-D), and in the industrial areas north and south of the Houston Ship Channel (Industrial Area). Real-time air monitoring data for the surrounding communities are communicated daily in a separate report.

# Preliminary Hand- Held Air Monitoring Locations | ITC Deer Park Tank Fire

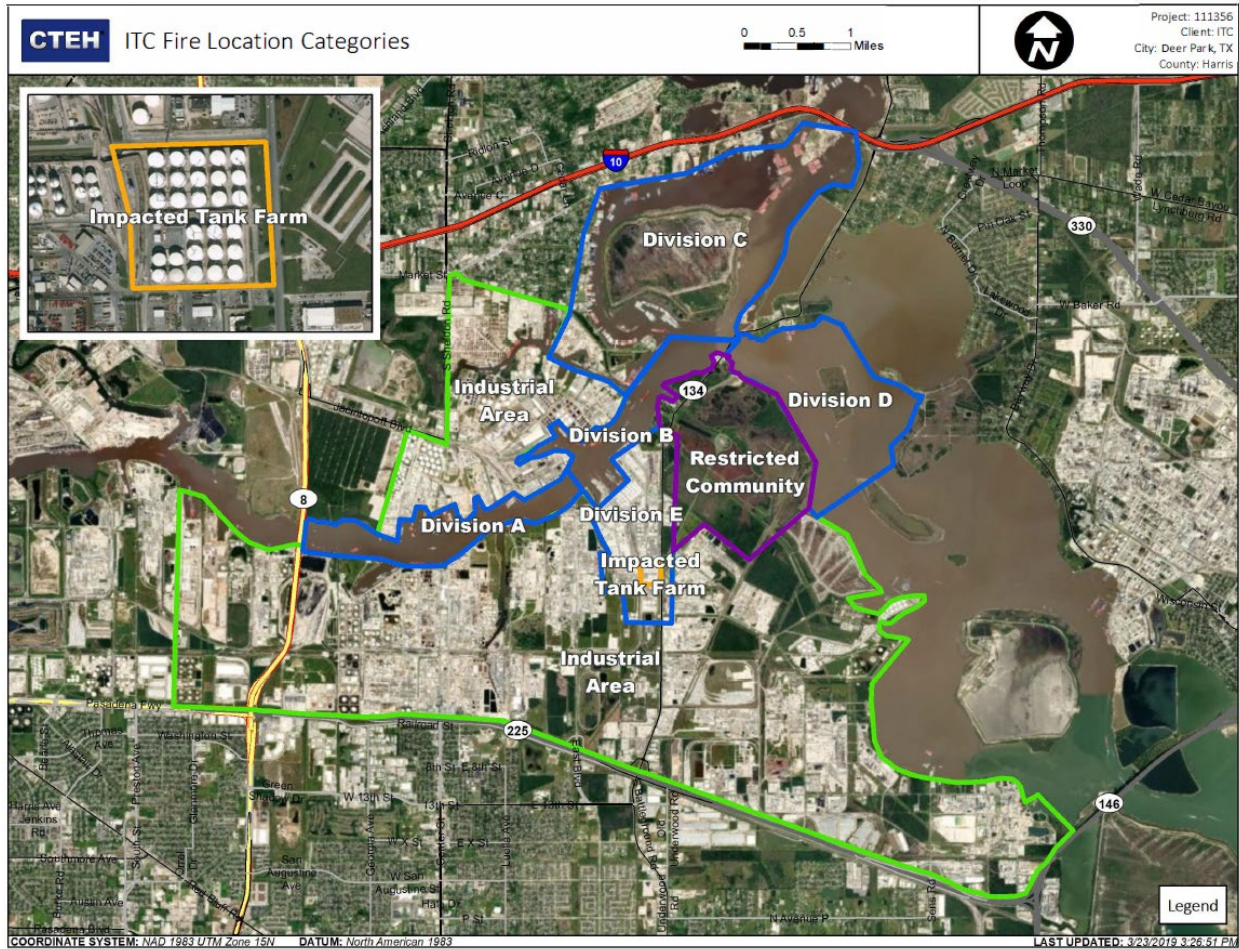
Reading Date  
5/4/2019 9:00:00 PM to 5/4/2019 10:00:00 PM



## Recent Benzene Detections

Location Category	Reading Date	Range of Detections
Division E	5/4/2019 21:05:16	0.3000 ppm
	5/4/2019 21:10:24	0.1900 ppm
	5/4/2019 21:17:33	0.0300 ppm
	5/4/2019 21:20:47	0.0600 ppm
	5/4/2019 21:24:09	0.2900 ppm
	5/4/2019 21:32:20	0.1100 ppm
	5/4/2019 21:30:41	0.0300 ppm
	5/4/2019 21:32:50	0.0200 ppm
	5/4/2019 21:36:12	0.1100 ppm
	5/4/2019 21:25:24	0.0300 ppm
	5/4/2019 21:29:48	0.1500 ppm
	5/4/2019 21:40:53	0.0100 ppm
	5/4/2019 21:38:15	0.0200 ppm
	5/4/2019 21:57:01	0.0600 ppm
Impacted Tank Farm	5/4/2019 21:46:44	0.0300 ppm
	5/4/2019 21:48:16	0.0600 ppm
	5/4/2019 21:48:11	0.0300 ppm
	5/4/2019 21:46:20	0.0500 ppm
	5/4/2019 21:50:09	0.1000 ppm
	5/4/2019 21:50:08	0.1300 ppm
	5/4/2019 21:51:36	0.2200 ppm
	5/4/2019 21:51:38	0.1700 ppm
	5/4/2019 21:53:52	0.3300 ppm
	5/4/2019 21:55:31	0.2500 ppm

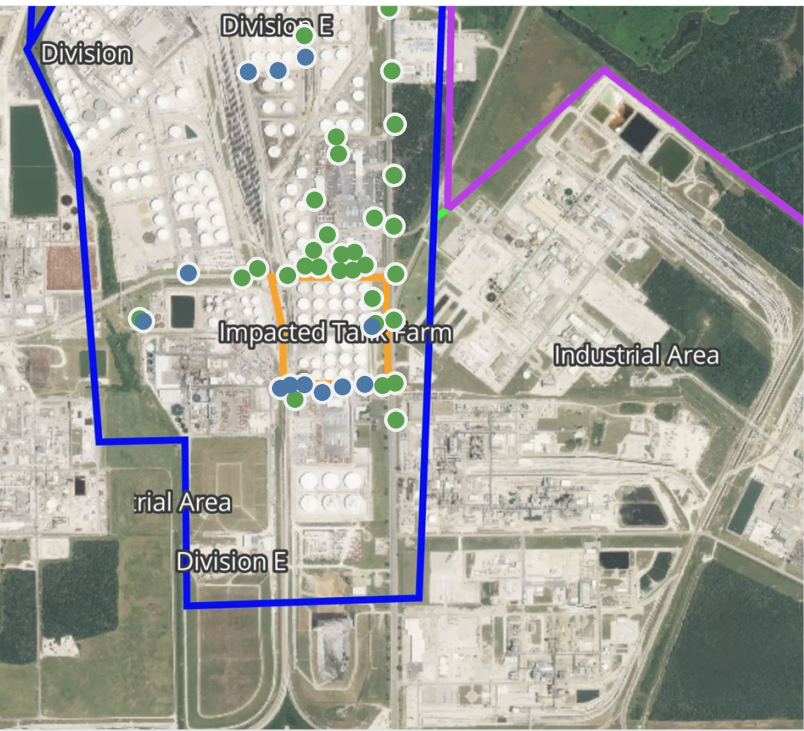
This data has been provided expeditiously to ITC and regulatory agencies for informational and/or operational purposes only. Data reported within this summary is preliminary in nature and has not undergone complete QA/QC (quality assurance/quality control) process. Until this complete QA/QC process is completed, the locations of each reading are approximate in nature and subject to further refinement. As some readings may represent non-breathing zone measurements, the data reported herein may not be suitable to assess potential occupational exposure. Site Assessment readings are not representative of an individual's breathing zone (e.g., container head space, ground level, directly above product, etc.).



**Please Note:** These updates display data from the 2<sup>nd</sup> 80's Fire site (Impacted Tank Farm), in the industrial areas surrounding the 2<sup>nd</sup> 80's Fire site (US Coast Guard Division E), within the Houston Ship Channel (US Coast Guard Divisions A-D), and in the industrial areas north and south of the Houston Ship Channel (Industrial Area). Real-time air monitoring data for the surrounding communities are communicated daily in a separate report.

# Preliminary Hand- Held Air Monitoring Locations | ITC Deer Park Tank Fire

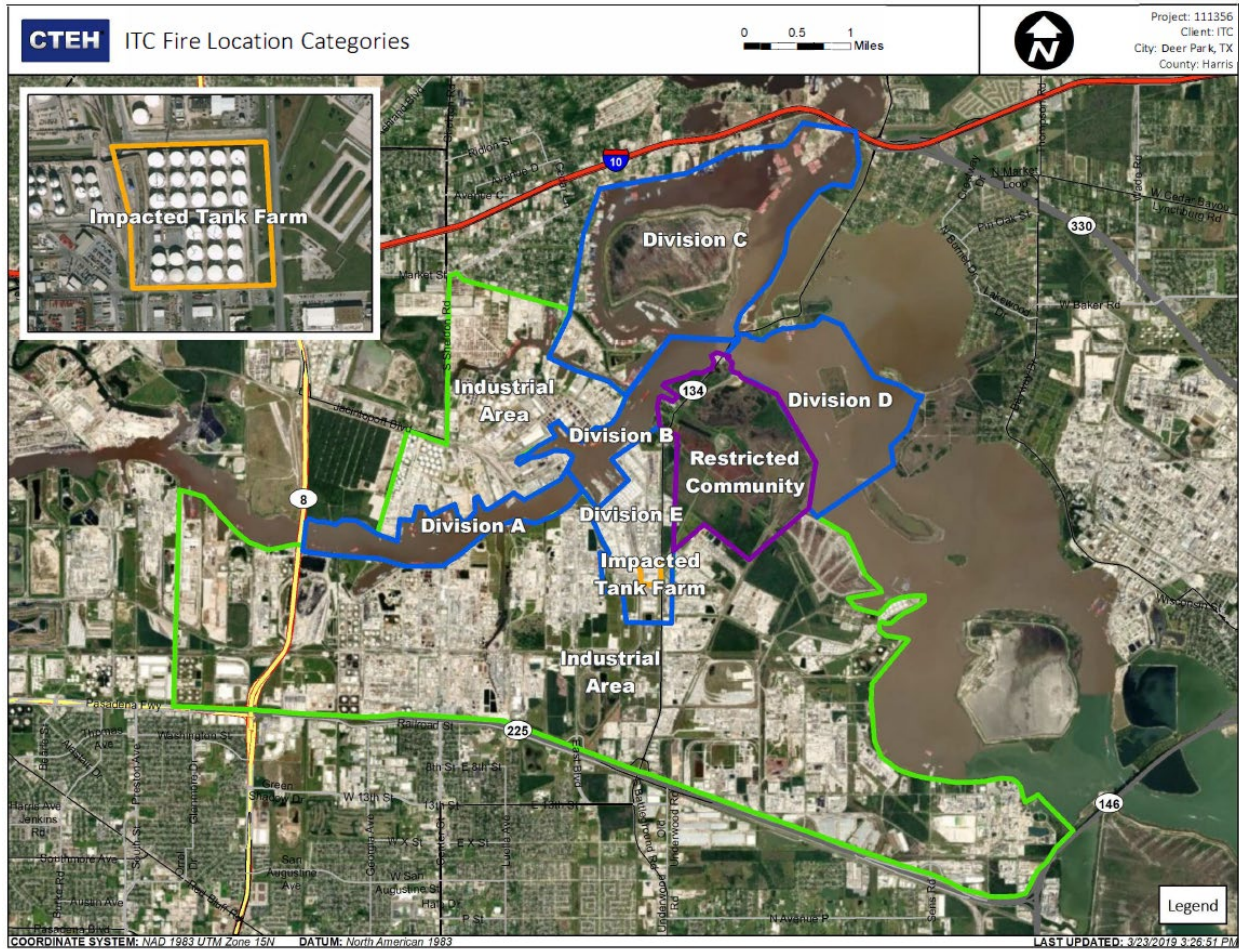
Reading Date  
5/4/2019 10:00:00 PM to 5/4/2019 11:00:02 PM



## Recent Benzene Detections

Location Category	Reading Date	Range of Detections
Division E	5/4/2019 22:04:06	0.0100 ppm
	5/4/2019 22:04:04	0.0400 ppm
	5/4/2019 22:10:59	0.1200 ppm
	5/4/2019 22:18:41	0.0400 ppm
	5/4/2019 22:23:02	0.0200 ppm
	5/4/2019 22:26:24	0.1700 ppm
	5/4/2019 22:25:48	0.0700 ppm
	5/4/2019 22:38:55	0.0600 ppm
	5/4/2019 22:54:04	0.0400 ppm
	5/4/2019 22:57:41	0.0800 ppm
Impacted Tank Farm	5/4/2019 22:56:18	0.0300 ppm
	5/4/2019 22:35:20	0.0500 ppm

This data has been provided expeditiously to ITC and regulatory agencies for informational and/or operational purposes only. Data reported within this summary is preliminary in nature and has not undergone complete QA/QC (quality assurance/quality control) process. Until this complete QA/QC process is completed, the locations of each reading are approximate in nature and subject to further refinement. As some readings may represent non-breathing zone measurements, the data reported herein may not be suitable to assess potential occupational exposure. Site Assessment readings are not representative of an individual's breathing zone (e.g., container head space, ground level, directly above product, etc.).



**Please Note:** These updates display data from the 2<sup>nd</sup> 80's Fire site (Impacted Tank Farm), in the industrial areas surrounding the 2<sup>nd</sup> 80's Fire site (US Coast Guard Division E), within the Houston Ship Channel (US Coast Guard Divisions A-D), and in the industrial areas north and south of the Houston Ship Channel (Industrial Area). Real-time air monitoring data for the surrounding communities are communicated daily in a separate report.