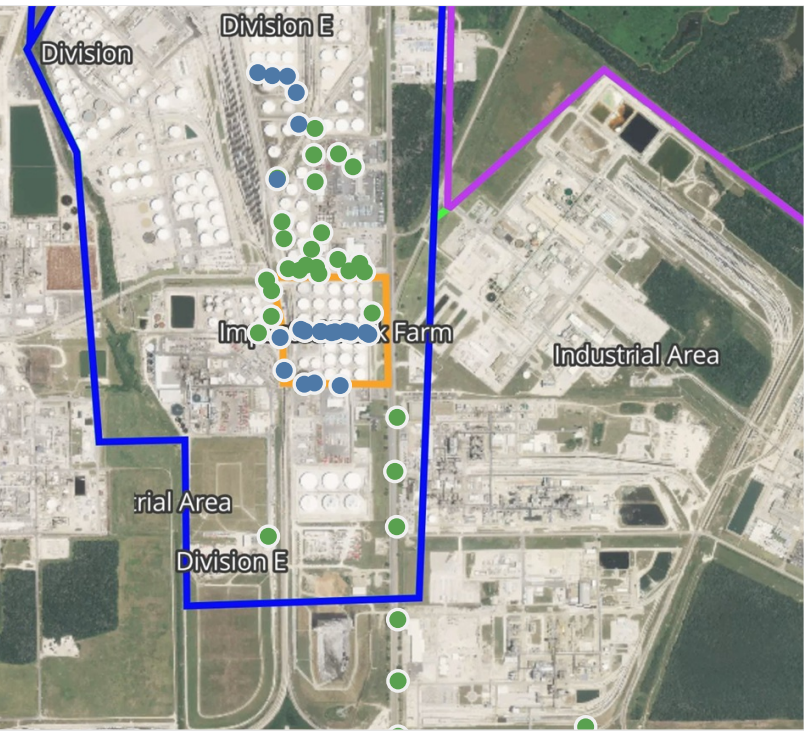


# Preliminary Hand- Held Air Monitoring Locations | ITC Deer Park Tank Fire

Reading Date  
5/4/2019 11:00:00 PM to 5/5/2019 12:00:02 AM



## Recent Benzene Detections

Location Category	Reading Date	Range of Detections
Division E	5/4/2019 23:15:00	0.0400 ppm
	5/4/2019 23:20:11	0.0200 ppm
	5/4/2019 23:28:42	0.0900 ppm
	5/4/2019 23:38:02	0.1900 ppm
	5/4/2019 23:41:13	0.0300 ppm
	5/4/2019 23:44:31	0.2300 ppm
	5/4/2019 23:47:24	0.4100 ppm
	5/4/2019 23:49:33	0.2500 ppm
	5/4/2019 23:48:53	0.1200 ppm
	5/4/2019 23:54:06	0.0800 ppm
Impacted Tank Farm	5/4/2019 23:56:42	0.0300 ppm
	5/4/2019 23:42:05	0.0500 ppm
	5/4/2019 23:40:55	0.0900 ppm
	5/4/2019 23:45:16	0.0600 ppm
	5/4/2019 23:45:27	0.0700 ppm
	5/4/2019 23:50:22	0.0700 ppm
	5/4/2019 23:50:07	0.0700 ppm
	5/4/2019 23:55:58	0.0300 ppm
	5/4/2019 23:55:42	0.0600 ppm
	5/4/2019 23:57:41	0.1900 ppm
	5/4/2019 23:58:25	0.1500 ppm

This data has been provided expeditiously to ITC and regulatory agencies for informational and/or operational purposes only. Data reported within this summary is preliminary in nature and has not undergone complete QA/QC (quality assurance/quality control) process. Until this complete QA/QC process is completed, the locations of each reading are approximate in nature and subject to further refinement. As some readings may represent non-breathing zone measurements, the data reported herein may not be suitable to assess potential occupational exposure. Site Assessment readings are not representative of an individual's breathing zone (e.g., container head space, ground level, directly above product, etc.).



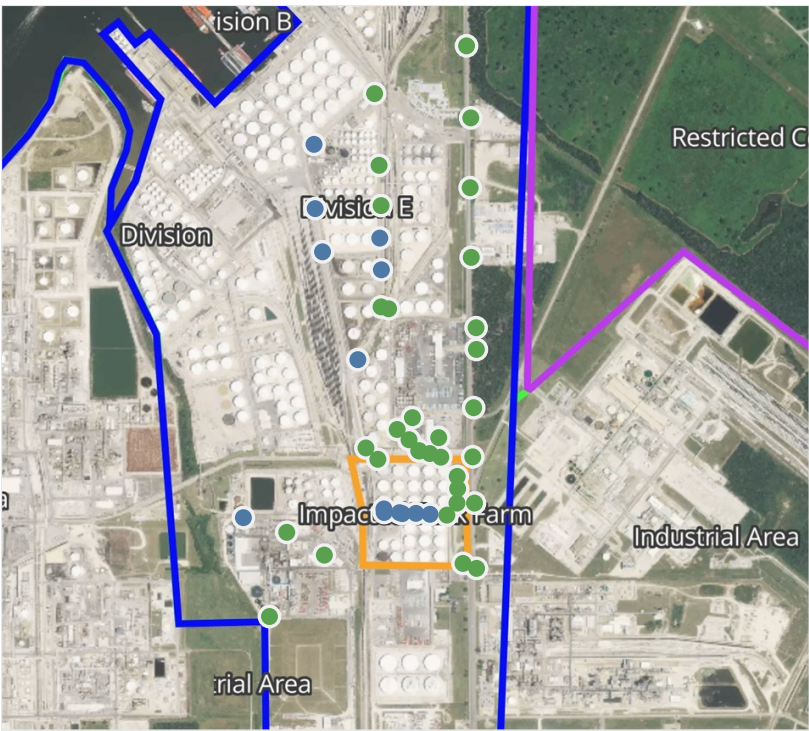


**Please Note:** These updates display data from the 2<sup>nd</sup> 80's Fire site (Impacted Tank Farm), in the industrial areas surrounding the 2<sup>nd</sup> 80's Fire site (US Coast Guard Division E), within the Houston Ship Channel (US Coast Guard Divisions A-D), and in the industrial areas north and south of the Houston Ship Channel (Industrial Area). Real-time air monitoring data for the surrounding communities are communicated daily in a separate report.



# Preliminary Hand- Held Air Monitoring Locations | ITC Deer Park Tank Fire

Reading Date  
5/5/2019 12:00:03 AM to 5/5/2019 1:00:03 AM



## Recent Benzene Detections

Location Category	Reading Date	Range of Detections
Division E	5/5/2019 00:23:34	0.0300 ppm
	5/5/2019 00:27:30	0.1000 ppm
	5/5/2019 00:27:03	0.1900 ppm
	5/5/2019 00:35:00	0.0200 ppm
	5/5/2019 00:32:08	0.0800 ppm
	5/5/2019 00:51:12	0.0200 ppm
Impacted Tank Farm	5/5/2019 00:48:48	0.0500 ppm
	5/5/2019 00:33:38	0.1400 ppm
	5/5/2019 00:33:59	0.2500 ppm
	5/5/2019 00:38:50	0.1000 ppm
	5/5/2019 00:37:32	0.1200 ppm
	5/5/2019 00:41:36	0.0600 ppm
	5/5/2019 00:43:44	0.1100 ppm

This data has been provided expeditiously to ITC and regulatory agencies for informational and/or operational purposes only. Data reported within this summary is preliminary in nature and has not undergone complete QA/QC (quality assurance/quality control) process. Until this complete QA/QC process is completed, the locations of each reading are approximate in nature and subject to further refinement. As some readings may represent non-breathing zone measurements, the data reported herein may not be suitable to assess potential occupational exposure. Site Assessment readings are not representative of an individual's breathing zone (e.g., container head space, ground level, directly above product, etc.).





**Please Note:** These updates display data from the 2<sup>nd</sup> 80's Fire site (Impacted Tank Farm), in the industrial areas surrounding the 2<sup>nd</sup> 80's Fire site (US Coast Guard Division E), within the Houston Ship Channel (US Coast Guard Divisions A-D), and in the industrial areas north and south of the Houston Ship Channel (Industrial Area). Real-time air monitoring data for the surrounding communities are communicated daily in a separate report.

# Preliminary Hand- Held Air Monitoring Locations | ITC Deer Park Tank Fire

Reading Date  
5/5/2019 1:00:00 AM to 5/5/2019 2:00:00 AM



## Recent Benzene Detections

Location Category	Reading Date	Range of Detections
Division E	5/5/2019 01:06:12	0.05000 ppm
	5/5/2019 01:34:47	0.02000 ppm
Impacted Tank Farm	5/5/2019 01:02:02	0.09000 ppm
	5/5/2019 01:11:00	0.05000 ppm

This data has been provided expeditiously to ITC and regulatory agencies for informational and/or operational purposes only. Data reported within this summary is preliminary in nature and has not undergone complete QA/QC (quality assurance/quality control) process. Until this complete QA/QC process is completed, the locations of each reading are approximate in nature and subject to further refinement. As some readings may represent non-breathing zone measurements, the data reported herein may not be suitable to assess potential occupational exposure. Site Assessment readings are not representative of an individual's breathing zone (e.g., container head space, ground level, directly above product, etc.).



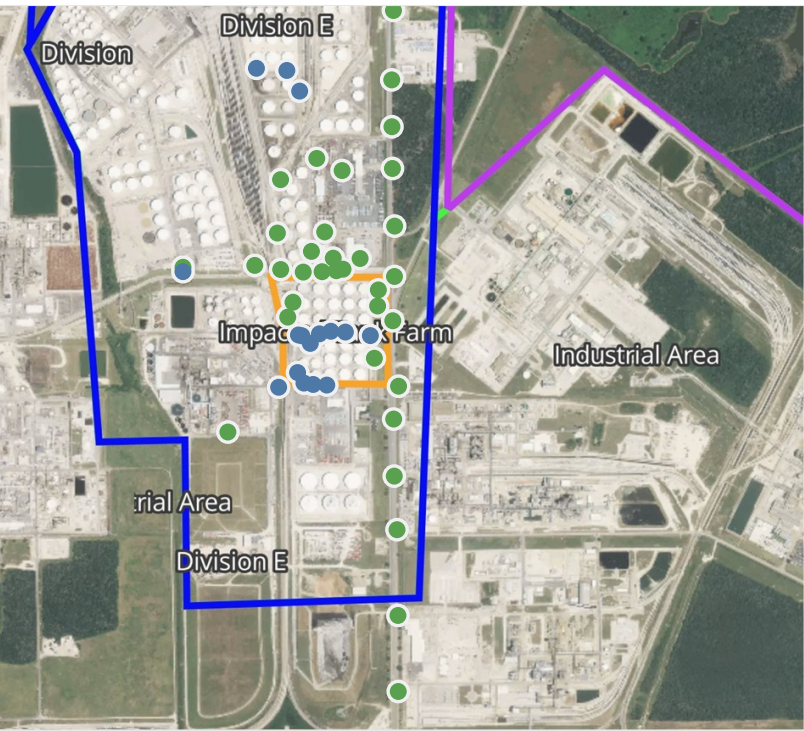


**Please Note:** These updates display data from the 2<sup>nd</sup> 80's Fire site (Impacted Tank Farm), in the industrial areas surrounding the 2<sup>nd</sup> 80's Fire site (US Coast Guard Division E), within the Houston Ship Channel (US Coast Guard Divisions A-D), and in the industrial areas north and south of the Houston Ship Channel (Industrial Area). Real-time air monitoring data for the surrounding communities are communicated daily in a separate report.



# Preliminary Hand- Held Air Monitoring Locations | ITC Deer Park Tank Fire

Reading Date  
5/5/2019 2:00:00 AM to 5/5/2019 3:00:00 AM



## Recent Benzene Detections

Location Category	Reading Date	Range of Detections
Division E	5/5/2019 02:09:19	0.0800 ppm
	5/5/2019 02:24:52	0.1900 ppm
	5/5/2019 02:24:44	0.0800 ppm
	5/5/2019 02:39:06	0.0200 ppm
	5/5/2019 02:48:11	0.0200 ppm
	5/5/2019 02:49:14	0.0600 ppm
	5/5/2019 02:39:33	0.1900 ppm
	5/5/2019 02:50:46	0.0400 ppm
Impacted Tank Farm	5/5/2019 02:08:30	0.0500 ppm
	5/5/2019 02:11:01	0.1000 ppm
	5/5/2019 02:14:17	0.0600 ppm
	5/5/2019 02:17:53	0.1600 ppm
	5/5/2019 02:21:13	0.4800 ppm
	5/5/2019 02:22:41	0.0300 ppm
	5/5/2019 02:25:11	0.0600 ppm
	5/5/2019 02:28:21	0.0400 ppm

This data has been provided expeditiously to ITC and regulatory agencies for informational and/or operational purposes only. Data reported within this summary is preliminary in nature and has not undergone complete QA/QC (quality assurance/quality control) process. Until this complete QA/QC process is completed, the locations of each reading are approximate in nature and subject to further refinement. As some readings may represent non-breathing zone measurements, the data reported herein may not be suitable to assess potential occupational exposure. Site Assessment readings are not representative of an individual's breathing zone (e.g., container head space, ground level, directly above product, etc.).



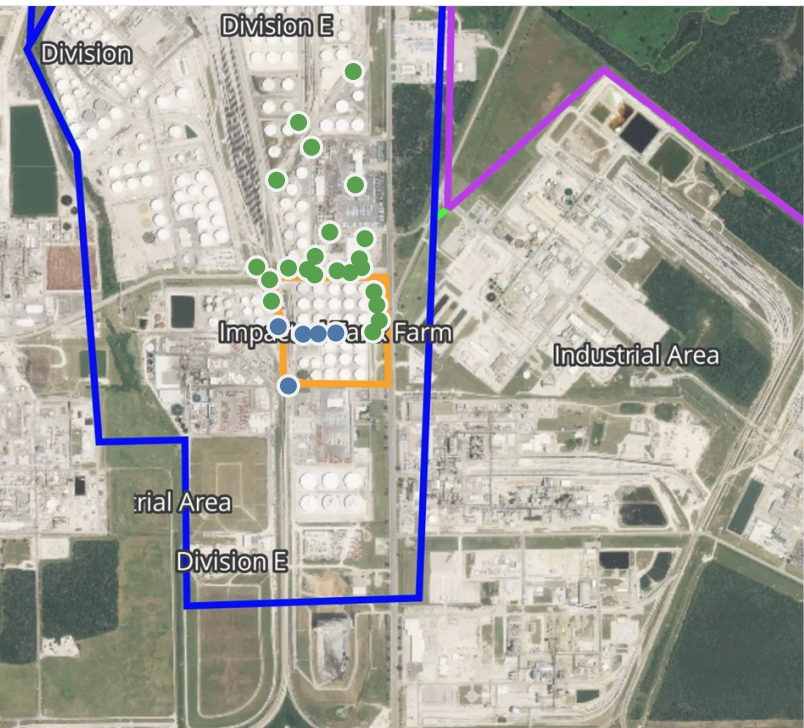


**Please Note:** These updates display data from the 2<sup>nd</sup> 80's Fire site (Impacted Tank Farm), in the industrial areas surrounding the 2<sup>nd</sup> 80's Fire site (US Coast Guard Division E), within the Houston Ship Channel (US Coast Guard Divisions A-D), and in the industrial areas north and south of the Houston Ship Channel (Industrial Area). Real-time air monitoring data for the surrounding communities are communicated daily in a separate report.



# Preliminary Hand- Held Air Monitoring Locations | ITC Deer Park Tank Fire

Reading Date  
5/5/2019 3:00:00 AM to 5/5/2019 4:00:00 AM



## Recent Benzene Detections

Location Category	Reading Date	Range of Detections
Division E	5/5/2019 03:23:43	0.1600 ppm
	5/5/2019 03:24:53	0.0800 ppm
	5/5/2019 03:44:25	0.0400 ppm
Impacted Tank Farm	5/5/2019 03:38:34	0.0600 ppm
	5/5/2019 03:39:54	0.0200 ppm
	5/5/2019 03:43:41	0.0800 ppm
	5/5/2019 03:46:23	0.1000 ppm

This data has been provided expeditiously to ITC and regulatory agencies for informational and/or operational purposes only. Data reported within this summary is preliminary in nature and has not undergone complete QA/QC (quality assurance/quality control) process. Until this complete QA/QC process is completed, the locations of each reading are approximate in nature and subject to further refinement. As some readings may represent non-breathing zone measurements, the data reported herein may not be suitable to assess potential occupational exposure. Site Assessment readings are not representative of an individual's breathing zone (e.g., container head space, ground level, directly above product, etc.).



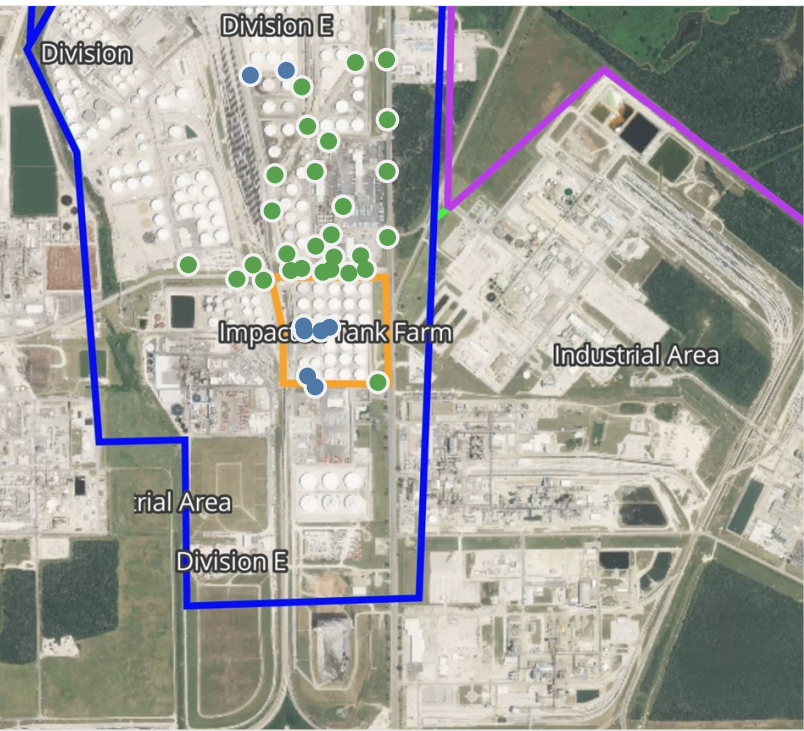


**Please Note:** These updates display data from the 2<sup>nd</sup> 80's Fire site (Impacted Tank Farm), in the industrial areas surrounding the 2<sup>nd</sup> 80's Fire site (US Coast Guard Division E), within the Houston Ship Channel (US Coast Guard Divisions A-D), and in the industrial areas north and south of the Houston Ship Channel (Industrial Area). Real-time air monitoring data for the surrounding communities are communicated daily in a separate report.



# Preliminary Hand- Held Air Monitoring Locations | ITC Deer Park Tank Fire

Reading Date  
5/5/2019 4:00:00 AM to 5/5/2019 5:00:00 AM



## Recent Benzene Detections

Location Category	Reading Date	Range of Detections
Division E	5/5/2019 04:32:58	0.1200 ppm
	5/5/2019 04:43:53	0.1600 ppm
	5/5/2019 04:56:31	0.1200 ppm
Impacted Tank Farm	5/5/2019 04:57:24	0.1100 ppm
	5/5/2019 04:56:32	0.1000 ppm
	5/5/2019 04:59:15	0.0600 ppm
	5/5/2019 04:58:59	0.0700 ppm

This data has been provided expeditiously to ITC and regulatory agencies for informational and/or operational purposes only. Data reported within this summary is preliminary in nature and has not undergone complete QA/QC (quality assurance/quality control) process. Until this complete QA/QC process is completed, the locations of each reading are approximate in nature and subject to further refinement. As some readings may represent non-breathing zone measurements, the data reported herein may not be suitable to assess potential occupational exposure. Site Assessment readings are not representative of an individual's breathing zone (e.g., container head space, ground level, directly above product, etc.).

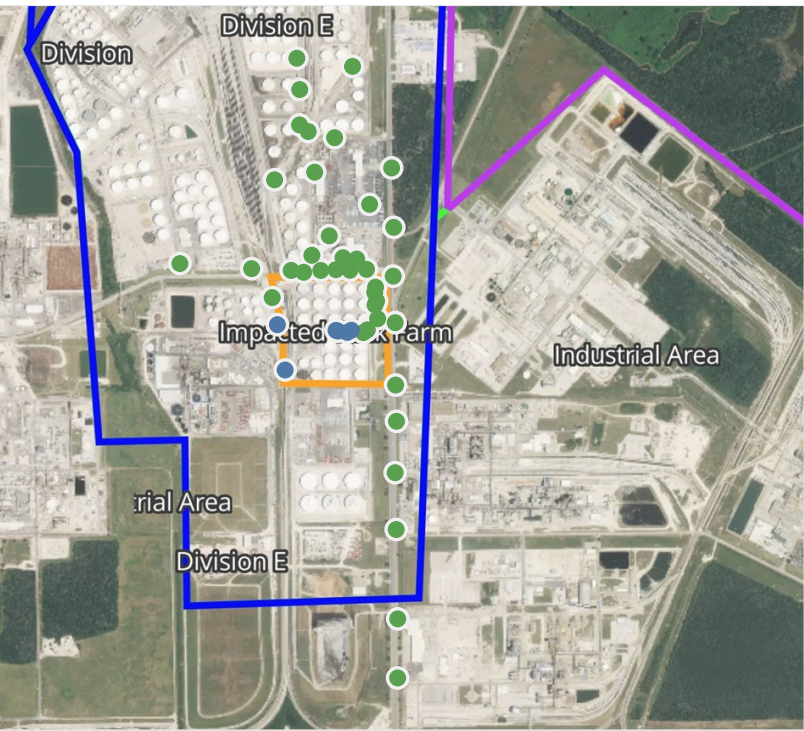




**Please Note:** These updates display data from the 2<sup>nd</sup> 80's Fire site (Impacted Tank Farm), in the industrial areas surrounding the 2<sup>nd</sup> 80's Fire site (US Coast Guard Division E), within the Houston Ship Channel (US Coast Guard Divisions A-D), and in the industrial areas north and south of the Houston Ship Channel (Industrial Area). Real-time air monitoring data for the surrounding communities are communicated daily in a separate report.

# Preliminary Hand- Held Air Monitoring Locations | ITC Deer Park Tank Fire

Reading Date  
5/5/2019 5:00:00 AM to 5/5/2019 6:00:00 AM



## Recent Benzene Detections

Location Category	Reading Date	Range of Detections
Division E	5/5/2019 05:20:07	0.03000 ppm
	5/5/2019 05:41:25	0.04000 ppm
Impacted Tank Farm	5/5/2019 05:00:49	0.06000 ppm
	5/5/2019 05:00:52	0.04000 ppm
	5/5/2019 05:02:50	0.06000 ppm
	5/5/2019 05:02:46	0.04000 ppm

This data has been provided expeditiously to ITC and regulatory agencies for informational and/or operational purposes only. Data reported within this summary is preliminary in nature and has not undergone complete QA/QC (quality assurance/quality control) process. Until this complete QA/QC process is completed, the locations of each reading are approximate in nature and subject to further refinement. As some readings may represent non-breathing zone measurements, the data reported herein may not be suitable to assess potential occupational exposure. Site Assessment readings are not representative of an individual's breathing zone (e.g., container head space, ground level, directly above product, etc.).



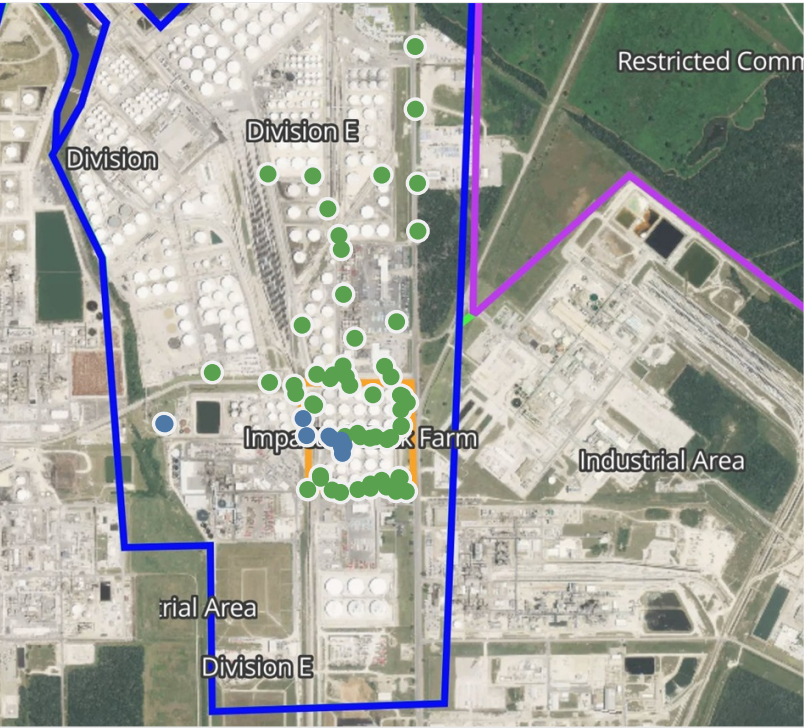


**Please Note:** These updates display data from the 2<sup>nd</sup> 80's Fire site (Impacted Tank Farm), in the industrial areas surrounding the 2<sup>nd</sup> 80's Fire site (US Coast Guard Division E), within the Houston Ship Channel (US Coast Guard Divisions A-D), and in the industrial areas north and south of the Houston Ship Channel (Industrial Area). Real-time air monitoring data for the surrounding communities are communicated daily in a separate report.



# Preliminary Hand- Held Air Monitoring Locations | ITC Deer Park Tank Fire

Reading Date  
5/5/2019 6:00:00 AM to 5/5/2019 7:00:00 AM



## Recent Benzene Detections

Location Category	Reading Date	Range of Detections
Division E	5/5/2019 06:04:19	0.0700 ppm
	5/5/2019 06:03:24	0.0400 ppm
	5/5/2019 06:21:33	0.0600 ppm
	5/5/2019 06:25:38	0.0300 ppm
Impacted Tank Farm	5/5/2019 06:18:52	0.1200 ppm
	5/5/2019 06:18:51	0.1800 ppm
	5/5/2019 06:34:19	0.0400 ppm
	5/5/2019 06:36:01	0.0400 ppm
	5/5/2019 06:36:25	0.1500 ppm
	5/5/2019 06:56:00	0.0800 ppm

This data has been provided expeditiously to ITC and regulatory agencies for informational and/or operational purposes only. Data reported within this summary is preliminary in nature and has not undergone complete QA/QC (quality assurance/quality control) process. Until this complete QA/QC process is completed, the locations of each reading are approximate in nature and subject to further refinement. As some readings may represent non-breathing zone measurements, the data reported herein may not be suitable to assess potential occupational exposure. Site Assessment readings are not representative of an individual's breathing zone (e.g., container head space, ground level, directly above product, etc.).

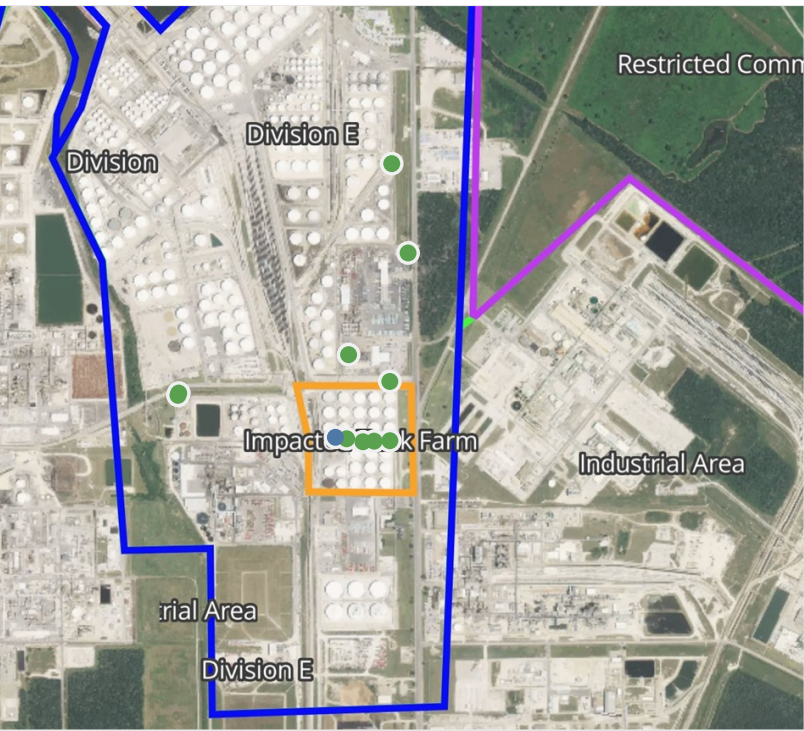




**Please Note:** These updates display data from the 2<sup>nd</sup> 80's Fire site (Impacted Tank Farm), in the industrial areas surrounding the 2<sup>nd</sup> 80's Fire site (US Coast Guard Division E), within the Houston Ship Channel (US Coast Guard Divisions A-D), and in the industrial areas north and south of the Houston Ship Channel (Industrial Area). Real-time air monitoring data for the surrounding communities are communicated daily in a separate report.

# Preliminary Hand- Held Air Monitoring Locations | ITC Deer Park Tank Fire

Reading Date  
5/5/2019 7:00:00 AM to 5/5/2019 8:00:00 AM



## Recent Benzene Detections

Location Category	Reading Date	Range of Detections
Impacted Tank Farm	5/5/2019 07:47:39	0.09000 ppm

This data has been provided expeditiously to ITC and regulatory agencies for informational and/or operational purposes only. Data reported within this summary is preliminary in nature and has not undergone complete QA/QC (quality assurance/quality control) process. Until this complete QA/QC process is completed, the locations of each reading are approximate in nature and subject to further refinement. As some readings may represent non-breathing zone measurements, the data reported herein may not be suitable to assess potential occupational exposure. Site Assessment readings are not representative of an individual's breathing zone (e.g., container head space, ground level, directly above product, etc.).

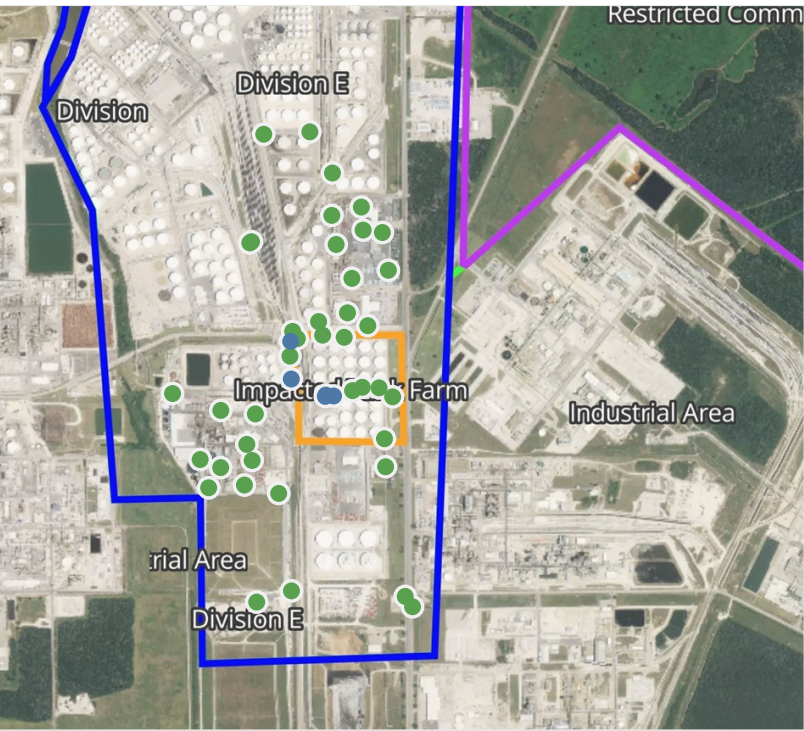




**Please Note:** These updates display data from the 2<sup>nd</sup> 80's Fire site (Impacted Tank Farm), in the industrial areas surrounding the 2<sup>nd</sup> 80's Fire site (US Coast Guard Division E), within the Houston Ship Channel (US Coast Guard Divisions A-D), and in the industrial areas north and south of the Houston Ship Channel (Industrial Area). Real-time air monitoring data for the surrounding communities are communicated daily in a separate report.

# Preliminary Hand- Held Air Monitoring Locations | ITC Deer Park Tank Fire

Reading Date  
5/5/2019 8:00:00 AM to 5/5/2019 9:00:00 AM



## Recent Benzene Detections

Location Category	Reading Date	Range of Detections
Division E	5/5/2019 08:22:19	0.0500 ppm
Impacted Tank Farm	5/5/2019 08:12:50	0.0200 ppm
	5/5/2019 08:27:29	0.3300 ppm
	5/5/2019 08:25:04	0.0300 ppm
	5/5/2019 08:27:57	0.3800 ppm

This data has been provided expeditiously to ITC and regulatory agencies for informational and/or operational purposes only. Data reported within this summary is preliminary in nature and has not undergone complete QA/QC (quality assurance/quality control) process. Until this complete QA/QC process is completed, the locations of each reading are approximate in nature and subject to further refinement. As some readings may represent non-breathing zone measurements, the data reported herein may not be suitable to assess potential occupational exposure. Site Assessment readings are not representative of an individual's breathing zone (e.g., container head space, ground level, directly above product, etc.).

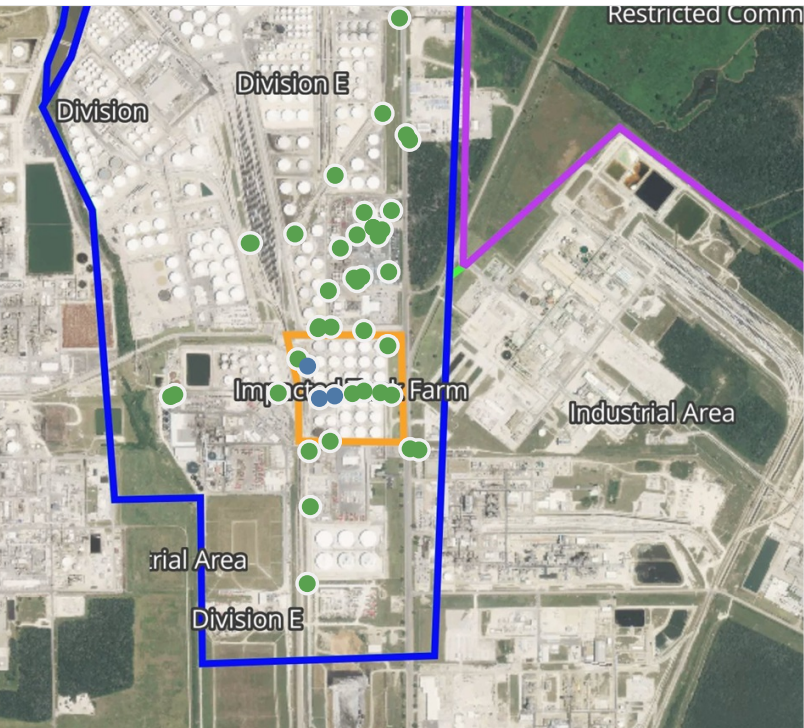




**Please Note:** These updates display data from the 2<sup>nd</sup> 80's Fire site (Impacted Tank Farm), in the industrial areas surrounding the 2<sup>nd</sup> 80's Fire site (US Coast Guard Division E), within the Houston Ship Channel (US Coast Guard Divisions A-D), and in the industrial areas north and south of the Houston Ship Channel (Industrial Area). Real-time air monitoring data for the surrounding communities are communicated daily in a separate report.

# Preliminary Hand- Held Air Monitoring Locations | ITC Deer Park Tank Fire

Reading Date  
5/5/2019 9:00:00 AM to 5/5/2019 10:00:00 AM



## Recent Benzene Detections

Location Category	Reading Date	Range of Detections
Impacted Tank Farm	5/5/2019 09:37:41	0.1400 ppm
	5/5/2019 09:36:13	0.0600 ppm
	5/5/2019 09:43:09	0.0200 ppm

This data has been provided expeditiously to ITC and regulatory agencies for informational and/or operational purposes only. Data reported within this summary is preliminary in nature and has not undergone complete QA/QC (quality assurance/quality control) process. Until this complete QA/QC process is completed, the locations of each reading are approximate in nature and subject to further refinement. As some readings may represent non-breathing zone measurements, the data reported herein may not be suitable to assess potential occupational exposure. Site Assessment readings are not representative of an individual's breathing zone (e.g., container head space, ground level, directly above product, etc.).

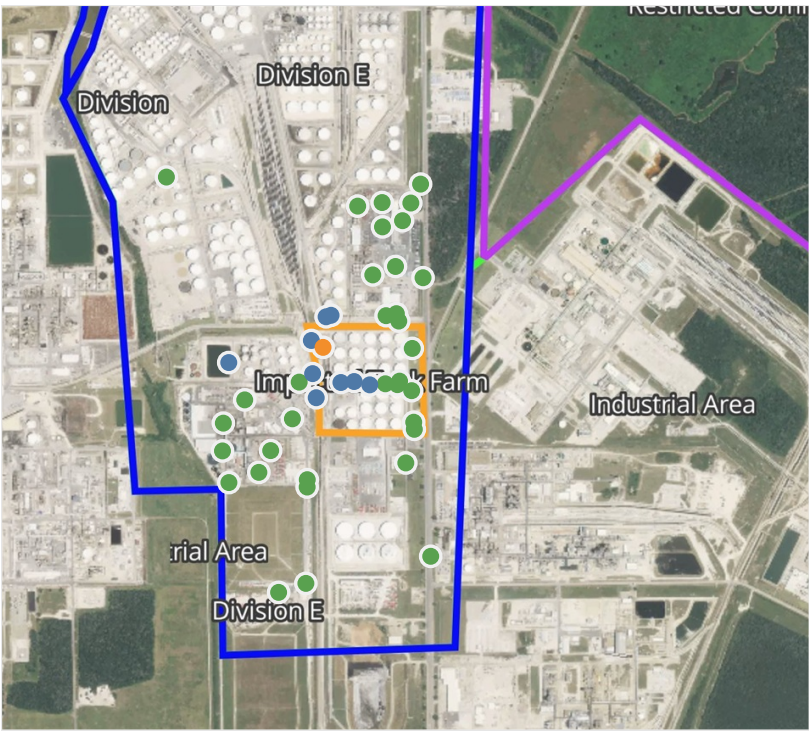
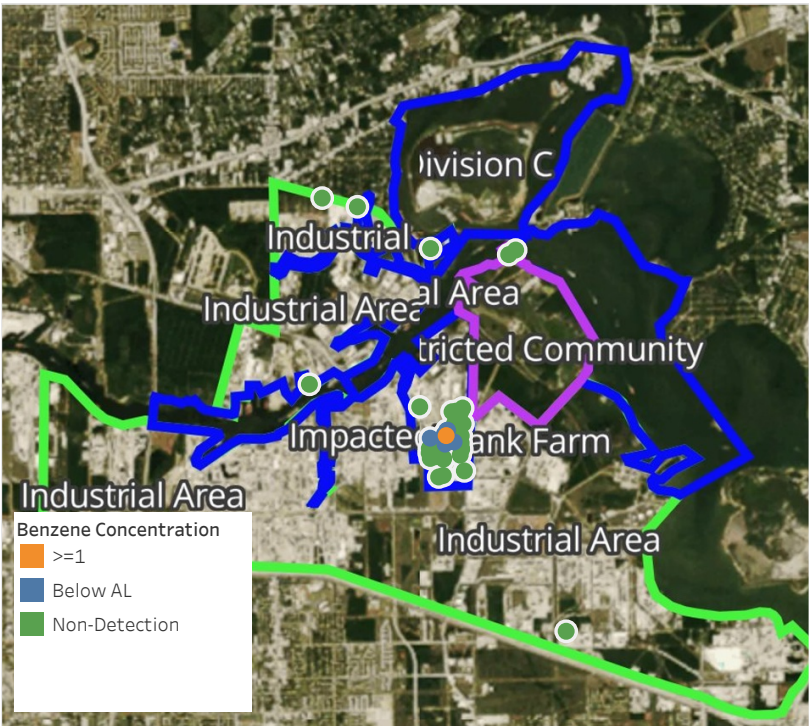




**Please Note:** These updates display data from the 2<sup>nd</sup> 80's Fire site (Impacted Tank Farm), in the industrial areas surrounding the 2<sup>nd</sup> 80's Fire site (US Coast Guard Division E), within the Houston Ship Channel (US Coast Guard Divisions A-D), and in the industrial areas north and south of the Houston Ship Channel (Industrial Area). Real-time air monitoring data for the surrounding communities are communicated daily in a separate report.

# Preliminary Hand- Held Air Monitoring Locations | ITC Deer Park Tank Fire

Reading Date  
5/5/2019 10:00:00 AM to 5/5/2019 11:00:00 AM



## Recent Benzene Detections

Location Category	Reading Date	Range of Detections
Division E	5/5/2019 10:02:15	0.050 ppm
	5/5/2019 10:26:56	0.030 ppm
	5/5/2019 10:34:26	0.040 ppm
	5/5/2019 10:42:49	0.020 ppm
	5/5/2019 10:51:37	0.050 ppm
Impacted Tank Farm	5/5/2019 10:13:51	0.170 ppm
	5/5/2019 10:16:49	0.190 ppm
	5/5/2019 10:15:12	0.030 ppm
	5/5/2019 10:49:06	0.030 ppm
Site Assessment	5/5/2019 10:02:39	1.320 ppm

This data has been provided expeditiously to ITC and regulatory agencies for informational and/or operational purposes only. Data reported within this summary is preliminary in nature and has not undergone complete QA/QC (quality assurance/quality control) process. Until this complete QA/QC process is completed, the locations of each reading are approximate in nature and subject to further refinement. As some readings may represent non-breathing zone measurements, the data reported herein may not be suitable to assess potential occupational exposure. Site Assessment readings are not representative of an individual's breathing zone (e.g., container head space, ground level, directly above product, etc.).



Reading Date  
5/5/2019 10:00:00 AM to 5/5/2019 11:00:00 AM

Benzene Action Level Concentration (ppm)  
 >=1

PRELIMINARY  
Recent Benzene Detections Greater than 1.00 ppm

Reading Date	Location Category	GPS	Google Maps URL	Range of Detections
5/5/2019 10:02:39	Site Assessment	29.7326050,-95.0930060	<a href="https://www.google.com/maps/search/?api=1&amp;query=29.7326050,-95.0930060">https://www.google.com/maps/search/?api=1&amp;query=29.7326050,-95.0930060</a>	1.320 ppm

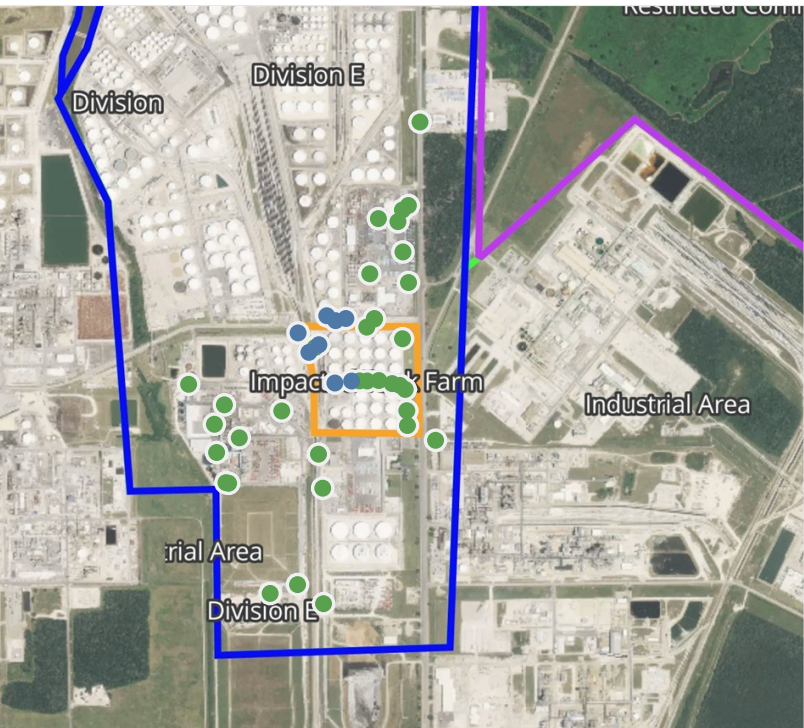


**Please Note:** These updates display data from the 2<sup>nd</sup> 80's Fire site (Impacted Tank Farm), in the industrial areas surrounding the 2<sup>nd</sup> 80's Fire site (US Coast Guard Division E), within the Houston Ship Channel (US Coast Guard Divisions A-D), and in the industrial areas north and south of the Houston Ship Channel (Industrial Area). Real-time air monitoring data for the surrounding communities are communicated daily in a separate report.



# Preliminary Hand- Held Air Monitoring Locations | ITC Deer Park Tank Fire

Reading Date  
5/5/2019 11:00:00 AM to 5/5/2019 12:00:00 PM



## Recent Benzene Detections

Location Category	Reading Date	Range of Detections
Division E	5/5/2019 11:04:01	0.01000 ppm
	5/5/2019 11:27:33	0.02000 ppm
	5/5/2019 11:55:13	0.02000 ppm
Impacted Tank Farm	5/5/2019 11:05:28	0.03000 ppm
	5/5/2019 11:19:06	0.07300 ppm
	5/5/2019 11:13:38	0.05000 ppm
	5/5/2019 11:12:25	0.02000 ppm
	5/5/2019 11:55:39	0.05000 ppm

This data has been provided expeditiously to ITC and regulatory agencies for informational and/or operational purposes only. Data reported within this summary is preliminary in nature and has not undergone complete QA/QC (quality assurance/quality control) process. Until this complete QA/QC process is completed, the locations of each reading are approximate in nature and subject to further refinement. As some readings may represent non-breathing zone measurements, the data reported herein may not be suitable to assess potential occupational exposure. Site Assessment readings are not representative of an individual's breathing zone (e.g., container head space, ground level, directly above product, etc.).

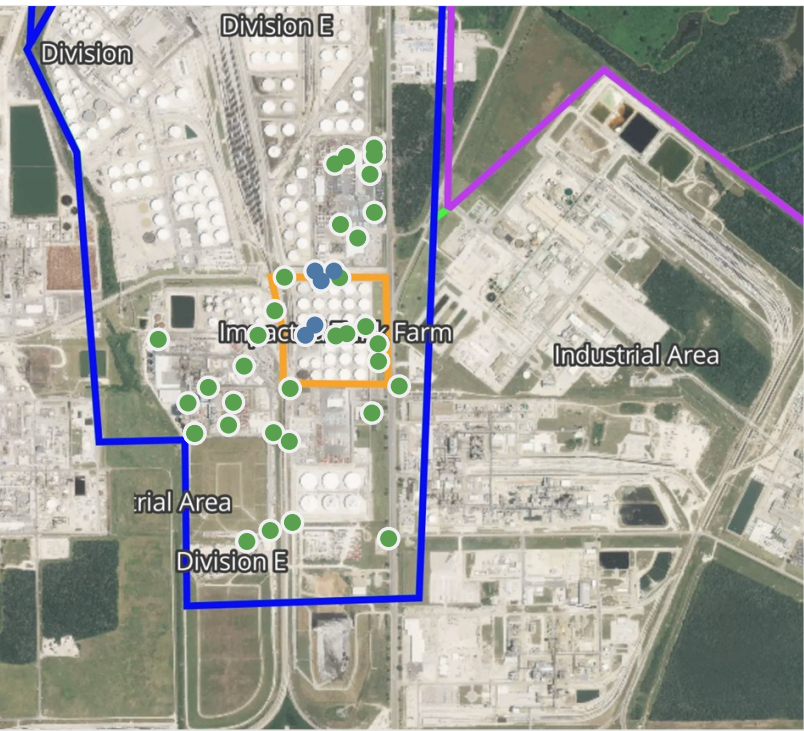


**Please Note:** These updates display data from the 2<sup>nd</sup> 80's Fire site (Impacted Tank Farm), in the industrial areas surrounding the 2<sup>nd</sup> 80's Fire site (US Coast Guard Division E), within the Houston Ship Channel (US Coast Guard Divisions A-D), and in the industrial areas north and south of the Houston Ship Channel (Industrial Area). Real-time air monitoring data for the surrounding communities are communicated daily in a separate report.



# Preliminary Hand- Held Air Monitoring Locations | ITC Deer Park Tank Fire

Reading Date  
5/5/2019 12:00:00 PM to 5/5/2019 1:00:00 PM



## Recent Benzene Detections

Location Category	Reading Date	Range of Detections
Division E	5/5/2019 12:22:05	0.01000 ppm
	5/5/2019 12:40:14	0.06000 ppm
	5/5/2019 12:51:39	0.02000 ppm
Impacted Tank Farm	5/5/2019 12:19:46	0.04000 ppm
	5/5/2019 12:21:21	0.08000 ppm

This data has been provided expeditiously to ITC and regulatory agencies for informational and/or operational purposes only. Data reported within this summary is preliminary in nature and has not undergone complete QA/QC (quality assurance/quality control) process. Until this complete QA/QC process is completed, the locations of each reading are approximate in nature and subject to further refinement. As some readings may represent non-breathing zone measurements, the data reported herein may not be suitable to assess potential occupational exposure. Site Assessment readings are not representative of an individual's breathing zone (e.g., container head space, ground level, directly above product, etc.).

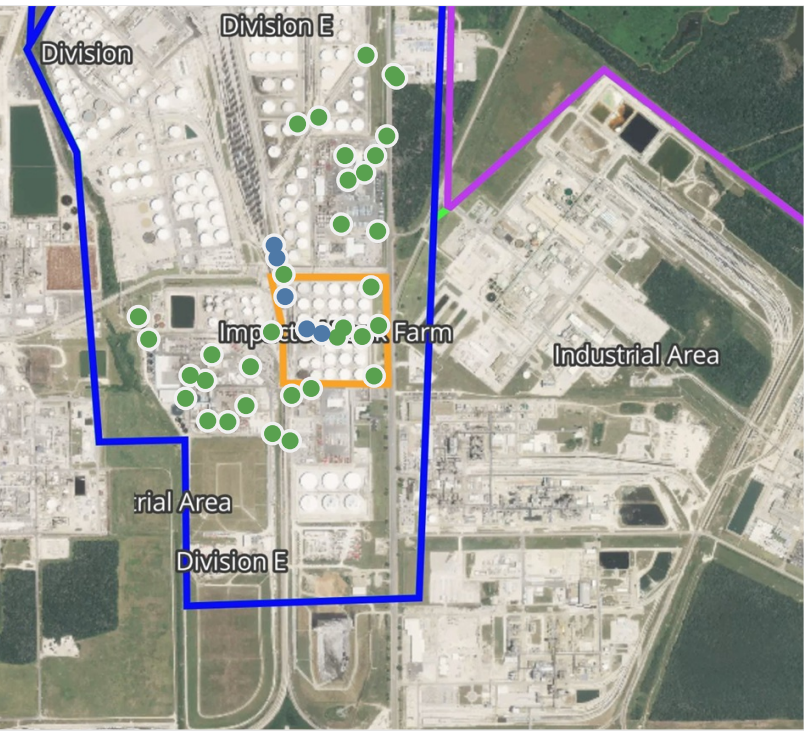


**Please Note:** These updates display data from the 2<sup>nd</sup> 80's Fire site (Impacted Tank Farm), in the industrial areas surrounding the 2<sup>nd</sup> 80's Fire site (US Coast Guard Division E), within the Houston Ship Channel (US Coast Guard Divisions A-D), and in the industrial areas north and south of the Houston Ship Channel (Industrial Area). Real-time air monitoring data for the surrounding communities are communicated daily in a separate report.



# Preliminary Hand- Held Air Monitoring Locations | ITC Deer Park Tank Fire

Reading Date  
5/5/2019 1:00:00 PM to 5/5/2019 2:00:00 PM



## Recent Benzene Detections

Location Category	Reading Date	Range of Detections
Division E	5/5/2019 13:24:59	0.02000 ppm
	5/5/2019 13:55:23	0.04000 ppm
Impacted Tank Farm	5/5/2019 13:15:46	0.05000 ppm
	5/5/2019 13:39:52	0.02000 ppm
	5/5/2019 13:42:25	0.03000 ppm

This data has been provided expeditiously to ITC and regulatory agencies for informational and/or operational purposes only. Data reported within this summary is preliminary in nature and has not undergone complete QA/QC (quality assurance/quality control) process. Until this complete QA/QC process is completed, the locations of each reading are approximate in nature and subject to further refinement. As some readings may represent non-breathing zone measurements, the data reported herein may not be suitable to assess potential occupational exposure. Site Assessment readings are not representative of an individual's breathing zone (e.g., container head space, ground level, directly above product, etc.).

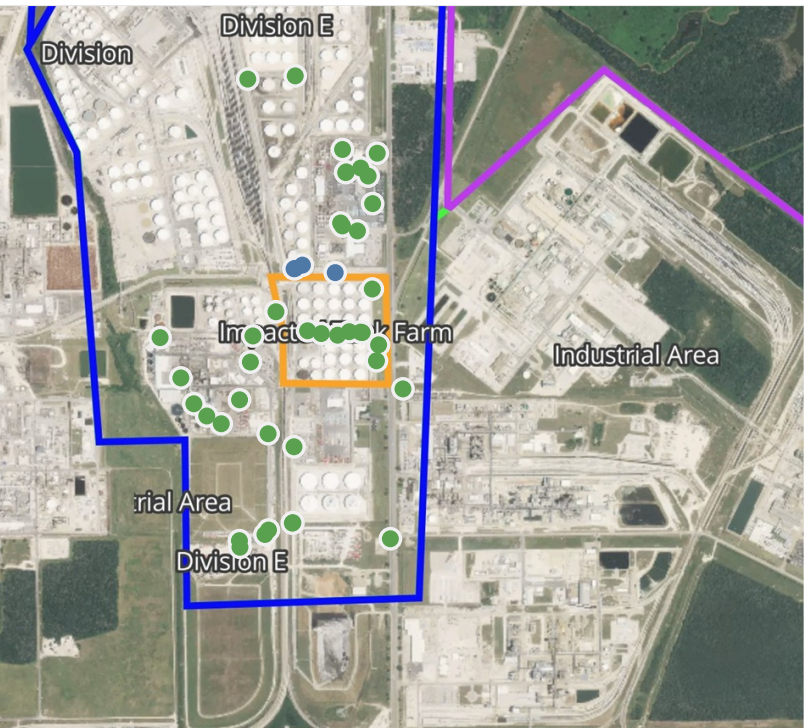


**Please Note:** These updates display data from the 2<sup>nd</sup> 80's Fire site (Impacted Tank Farm), in the industrial areas surrounding the 2<sup>nd</sup> 80's Fire site (US Coast Guard Division E), within the Houston Ship Channel (US Coast Guard Divisions A-D), and in the industrial areas north and south of the Houston Ship Channel (Industrial Area). Real-time air monitoring data for the surrounding communities are communicated daily in a separate report.



# Preliminary Hand- Held Air Monitoring Locations | ITC Deer Park Tank Fire

Reading Date  
5/5/2019 2:00:00 PM to 5/5/2019 3:00:00 PM



## Recent Benzene Detections

Location Category	Reading Date	Range of Detections
Division E	5/5/2019 14:12:25	0.02000 ppm
	5/5/2019 14:19:28	0.02000 ppm
	5/5/2019 14:24:55	0.03000 ppm
	5/5/2019 14:25:11	0.02000 ppm

This data has been provided expeditiously to ITC and regulatory agencies for informational and/or operational purposes only. Data reported within this summary is preliminary in nature and has not undergone complete QA/QC (quality assurance/quality control) process. Until this complete QA/QC process is completed, the locations of each reading are approximate in nature and subject to further refinement. As some readings may represent non-breathing zone measurements, the data reported herein may not be suitable to assess potential occupational exposure. Site Assessment readings are not representative of an individual's breathing zone (e.g., container head space, ground level, directly above product, etc.).

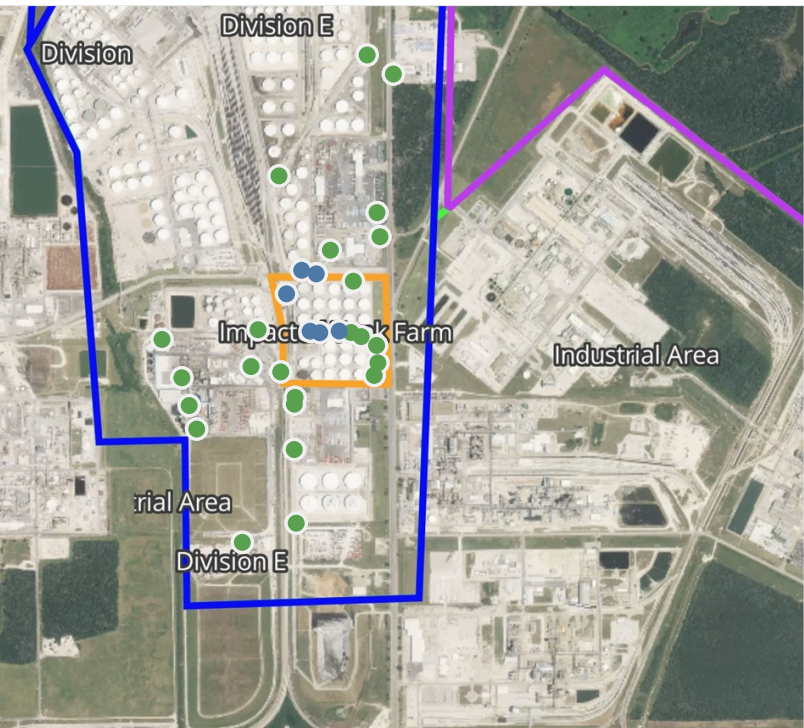


**Please Note:** These updates display data from the 2<sup>nd</sup> 80's Fire site (Impacted Tank Farm), in the industrial areas surrounding the 2<sup>nd</sup> 80's Fire site (US Coast Guard Division E), within the Houston Ship Channel (US Coast Guard Divisions A-D), and in the industrial areas north and south of the Houston Ship Channel (Industrial Area). Real-time air monitoring data for the surrounding communities are communicated daily in a separate report.



# Preliminary Hand- Held Air Monitoring Locations | ITC Deer Park Tank Fire

Reading Date  
5/5/2019 3:00:00 PM to 5/5/2019 4:00:00 PM



## Recent Benzene Detections

Location Category	Reading Date	Range of Detections
Division E	5/5/2019 15:17:24	0.03000 ppm
	5/5/2019 15:53:52	0.02000 ppm
Impacted Tank Farm	5/5/2019 15:01:27	0.06000 ppm
	5/5/2019 15:14:38	0.03000 ppm
	5/5/2019 15:18:30	0.05000 ppm
	5/5/2019 15:16:17	0.03000 ppm

This data has been provided expeditiously to ITC and regulatory agencies for informational and/or operational purposes only. Data reported within this summary is preliminary in nature and has not undergone complete QA/QC (quality assurance/quality control) process. Until this complete QA/QC process is completed, the locations of each reading are approximate in nature and subject to further refinement. As some readings may represent non-breathing zone measurements, the data reported herein may not be suitable to assess potential occupational exposure. Site Assessment readings are not representative of an individual's breathing zone (e.g., container head space, ground level, directly above product, etc.).

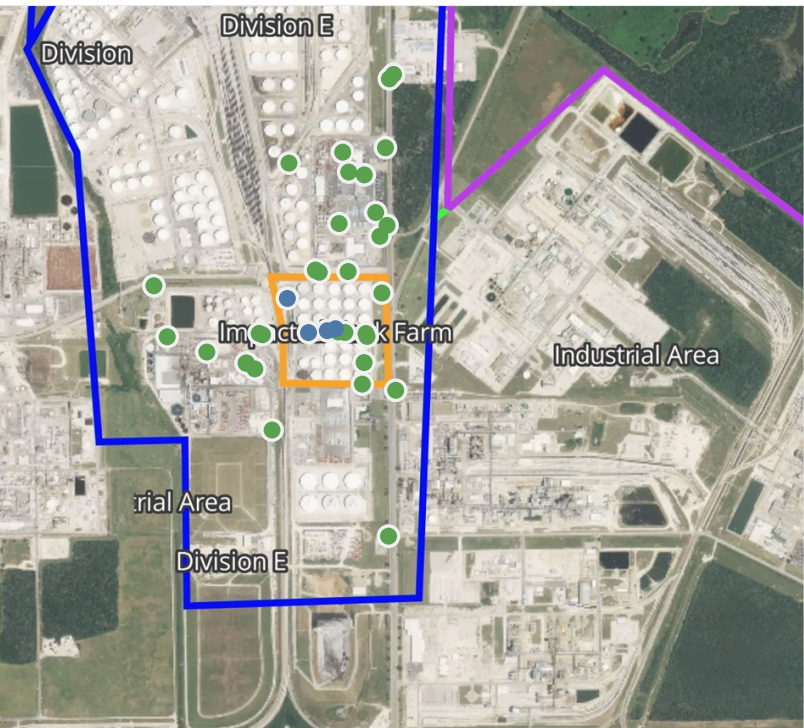


**Please Note:** These updates display data from the 2<sup>nd</sup> 80's Fire site (Impacted Tank Farm), in the industrial areas surrounding the 2<sup>nd</sup> 80's Fire site (US Coast Guard Division E), within the Houston Ship Channel (US Coast Guard Divisions A-D), and in the industrial areas north and south of the Houston Ship Channel (Industrial Area). Real-time air monitoring data for the surrounding communities are communicated daily in a separate report.



# Preliminary Hand- Held Air Monitoring Locations | ITC Deer Park Tank Fire

Reading Date  
5/5/2019 4:00:00 PM to 5/5/2019 5:00:00 PM



## Recent Benzene Detections

Location Category	Reading Date	Range of Detections
Impacted Tank Farm	5/5/2019 16:02:46	0.03000 ppm
	5/5/2019 16:04:36	0.02000 ppm
	5/5/2019 16:11:57	0.06000 ppm
	5/5/2019 16:59:23	0.02000 ppm

This data has been provided expeditiously to ITC and regulatory agencies for informational and/or operational purposes only. Data reported within this summary is preliminary in nature and has not undergone complete QA/QC (quality assurance/quality control) process. Until this complete QA/QC process is completed, the locations of each reading are approximate in nature and subject to further refinement. As some readings may represent non-breathing zone measurements, the data reported herein may not be suitable to assess potential occupational exposure. Site Assessment readings are not representative of an individual's breathing zone (e.g., container head space, ground level, directly above product, etc.).

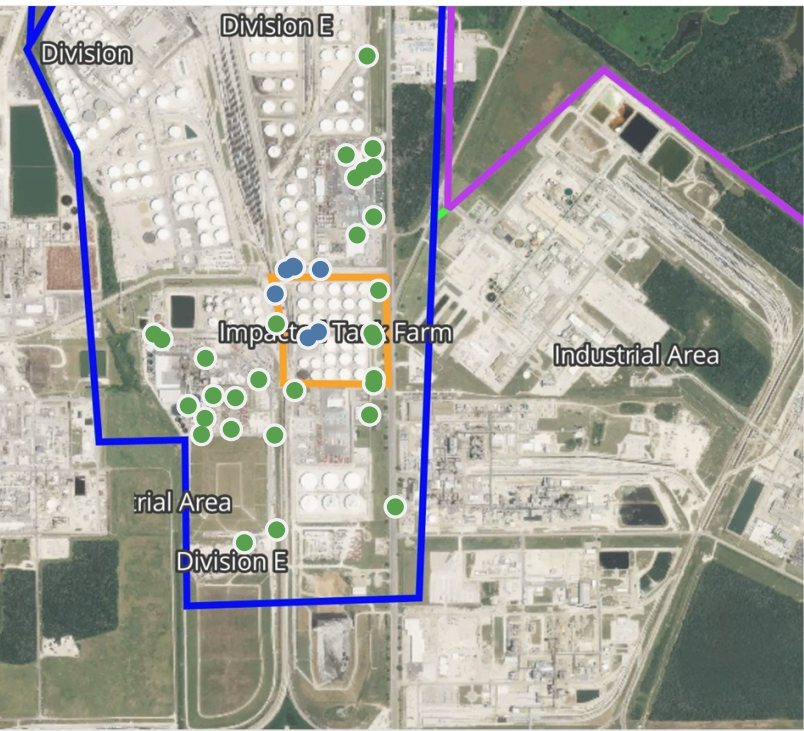


**Please Note:** These updates display data from the 2<sup>nd</sup> 80's Fire site (Impacted Tank Farm), in the industrial areas surrounding the 2<sup>nd</sup> 80's Fire site (US Coast Guard Division E), within the Houston Ship Channel (US Coast Guard Divisions A-D), and in the industrial areas north and south of the Houston Ship Channel (Industrial Area). Real-time air monitoring data for the surrounding communities are communicated daily in a separate report.



# Preliminary Hand- Held Air Monitoring Locations | ITC Deer Park Tank Fire

Reading Date  
5/5/2019 5:00:00 PM to 5/5/2019 6:00:00 PM



## Recent Benzene Detections

Location Category	Reading Date	Range of Detections
Division E	5/5/2019 17:01:52	0.05000 ppm
	5/5/2019 17:16:39	0.04000 ppm
	5/5/2019 17:20:05	0.02000 ppm
	5/5/2019 17:43:17	0.02000 ppm
Impacted Tank Farm	5/5/2019 17:00:51	0.07000 ppm
	5/5/2019 17:02:10	0.05000 ppm
	5/5/2019 17:51:31	0.02000 ppm

This data has been provided expeditiously to ITC and regulatory agencies for informational and/or operational purposes only. Data reported within this summary is preliminary in nature and has not undergone complete QA/QC (quality assurance/quality control) process. Until this complete QA/QC process is completed, the locations of each reading are approximate in nature and subject to further refinement. As some readings may represent non-breathing zone measurements, the data reported herein may not be suitable to assess potential occupational exposure. Site Assessment readings are not representative of an individual's breathing zone (e.g., container head space, ground level, directly above product, etc.).

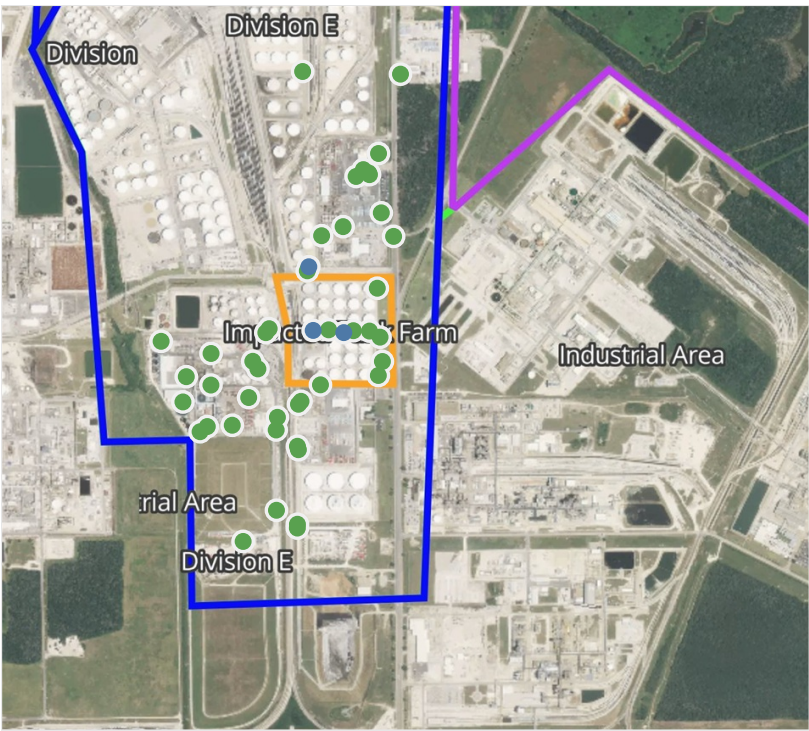


**Please Note:** These updates display data from the 2<sup>nd</sup> 80's Fire site (Impacted Tank Farm), in the industrial areas surrounding the 2<sup>nd</sup> 80's Fire site (US Coast Guard Division E), within the Houston Ship Channel (US Coast Guard Divisions A-D), and in the industrial areas north and south of the Houston Ship Channel (Industrial Area). Real-time air monitoring data for the surrounding communities are communicated daily in a separate report.



# Preliminary Hand- Held Air Monitoring Locations | ITC Deer Park Tank Fire

Reading Date  
5/5/2019 6:00:00 PM to 5/5/2019 7:00:00 PM



## Recent Benzene Detections

Location Category	Reading Date	Range of Detections
Division E	5/5/2019 18:04:25	0.03000 ppm
Impacted Tank Farm	5/5/2019 18:44:30	0.05000 ppm
	5/5/2019 18:40:58	0.04000 ppm

This data has been provided expeditiously to ITC and regulatory agencies for informational and/or operational purposes only. Data reported within this summary is preliminary in nature and has not undergone complete QA/QC (quality assurance/quality control) process. Until this complete QA/QC process is completed, the locations of each reading are approximate in nature and subject to further refinement. As some readings may represent non-breathing zone measurements, the data reported herein may not be suitable to assess potential occupational exposure. Site Assessment readings are not representative of an individual's breathing zone (e.g., container head space, ground level, directly above product, etc.).

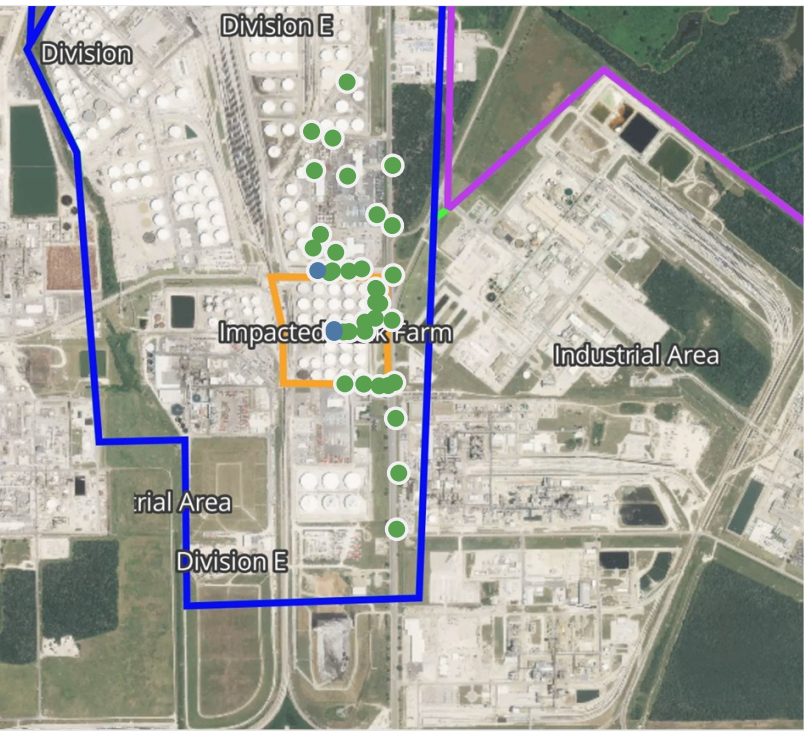


**Please Note:** These updates display data from the 2<sup>nd</sup> 80's Fire site (Impacted Tank Farm), in the industrial areas surrounding the 2<sup>nd</sup> 80's Fire site (US Coast Guard Division E), within the Houston Ship Channel (US Coast Guard Divisions A-D), and in the industrial areas north and south of the Houston Ship Channel (Industrial Area). Real-time air monitoring data for the surrounding communities are communicated daily in a separate report.



# Preliminary Hand- Held Air Monitoring Locations | ITC Deer Park Tank Fire

Reading Date  
5/5/2019 7:00:00 PM to 5/5/2019 8:00:00 PM



## Recent Benzene Detections

Location Category	Reading Date	Range of Detections
Division E	5/5/2019 19:51:06	0.0200 ppm
Impacted Tank Farm	5/5/2019 19:59:40	0.0900 ppm
	5/5/2019 19:59:38	0.1700 ppm

This data has been provided expeditiously to ITC and regulatory agencies for informational and/or operational purposes only. Data reported within this summary is preliminary in nature and has not undergone complete QA/QC (quality assurance/quality control) process. Until this complete QA/QC process is completed, the locations of each reading are approximate in nature and subject to further refinement. As some readings may represent non-breathing zone measurements, the data reported herein may not be suitable to assess potential occupational exposure. Site Assessment readings are not representative of an individual's breathing zone (e.g., container head space, ground level, directly above product, etc.).

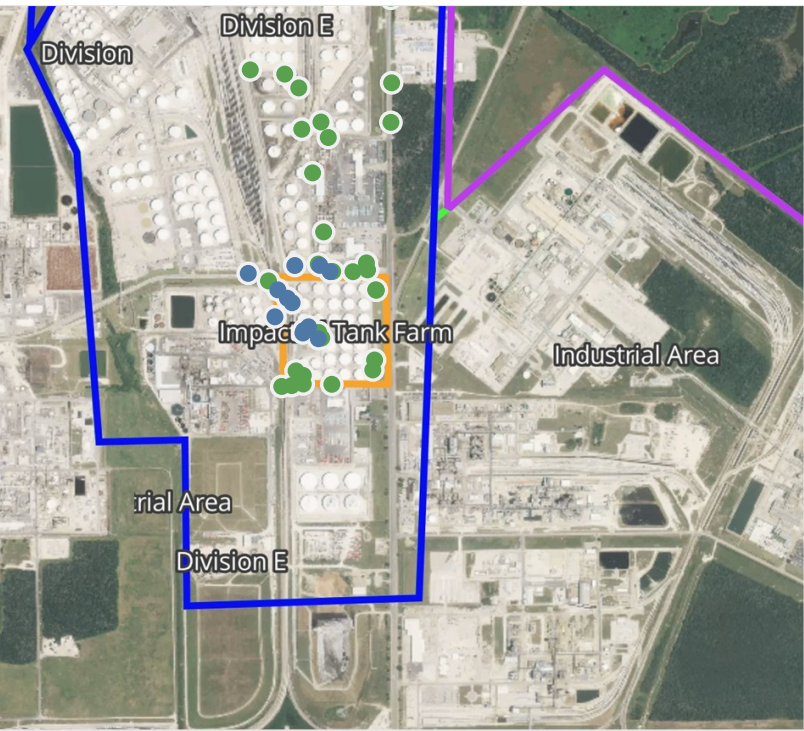


**Please Note:** These updates display data from the 2<sup>nd</sup> 80's Fire site (Impacted Tank Farm), in the industrial areas surrounding the 2<sup>nd</sup> 80's Fire site (US Coast Guard Division E), within the Houston Ship Channel (US Coast Guard Divisions A-D), and in the industrial areas north and south of the Houston Ship Channel (Industrial Area). Real-time air monitoring data for the surrounding communities are communicated daily in a separate report.



# Preliminary Hand- Held Air Monitoring Locations | ITC Deer Park Tank Fire

Reading Date  
5/5/2019 8:00:00 PM to 5/5/2019 9:00:00 PM



## Recent Benzene Detections

Location Category	Reading Date	Range of Detections
Division E	5/5/2019 20:44:22	0.06000 ppm
	5/5/2019 20:46:41	0.05000 ppm
	5/5/2019 20:50:09	0.05000 ppm
	5/5/2019 20:57:51	0.04000 ppm
	5/5/2019 20:58:13	0.02000 ppm
	5/5/2019 20:54:46	0.02000 ppm
Impacted Tank Farm	5/5/2019 20:03:39	0.03000 ppm
	5/5/2019 20:03:25	0.03000 ppm
	5/5/2019 20:06:01	0.05000 ppm
	5/5/2019 20:06:16	0.03000 ppm
	5/5/2019 20:10:11	0.05000 ppm
	5/5/2019 20:09:52	0.07000 ppm

This data has been provided expeditiously to ITC and regulatory agencies for informational and/or operational purposes only. Data reported within this summary is preliminary in nature and has not undergone complete QA/QC (quality assurance/quality control) process. Until this complete QA/QC process is completed, the locations of each reading are approximate in nature and subject to further refinement. As some readings may represent non-breathing zone measurements, the data reported herein may not be suitable to assess potential occupational exposure. Site Assessment readings are not representative of an individual's breathing zone (e.g., container head space, ground level, directly above product, etc.).



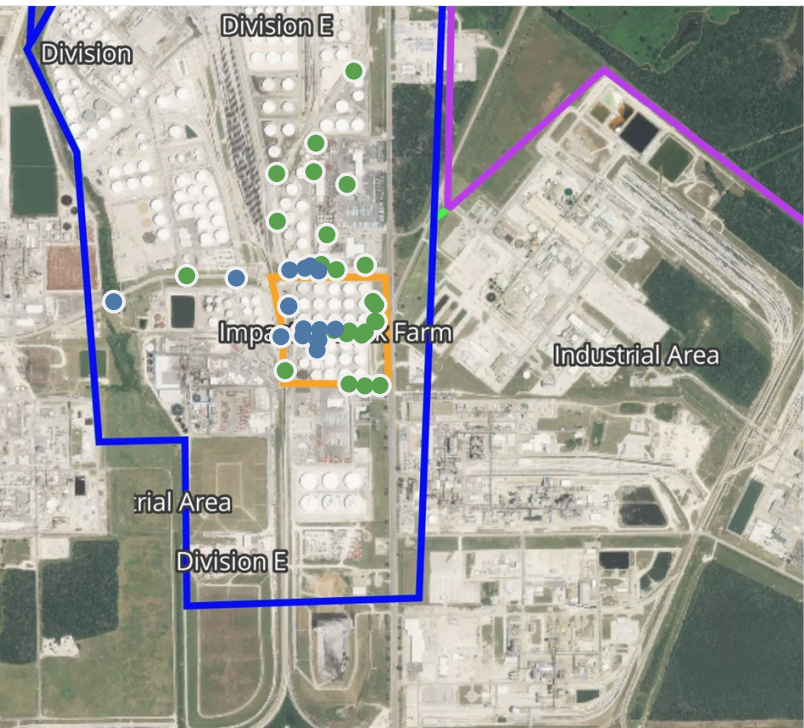


**Please Note:** These updates display data from the 2<sup>nd</sup> 80's Fire site (Impacted Tank Farm), in the industrial areas surrounding the 2<sup>nd</sup> 80's Fire site (US Coast Guard Division E), within the Houston Ship Channel (US Coast Guard Divisions A-D), and in the industrial areas north and south of the Houston Ship Channel (Industrial Area). Real-time air monitoring data for the surrounding communities are communicated daily in a separate report.



# Preliminary Hand- Held Air Monitoring Locations | ITC Deer Park Tank Fire

Reading Date  
5/5/2019 9:00:00 PM to 5/5/2019 10:00:00 PM



## Recent Benzene Detections

Location Category	Reading Date	Range of Detections
Division E	5/5/2019 21:04:24	0.0200 ppm
	5/5/2019 21:01:03	0.0200 ppm
	5/5/2019 21:36:18	0.0500 ppm
	5/5/2019 21:46:19	0.0100 ppm
	5/5/2019 21:41:54	0.0700 ppm
	5/5/2019 21:44:27	0.0500 ppm
	5/5/2019 21:33:47	0.0400 ppm
Impacted Tank Farm	5/5/2019 21:13:45	0.1200 ppm
	5/5/2019 21:15:36	0.0300 ppm
	5/5/2019 21:15:40	0.0300 ppm
	5/5/2019 21:17:32	0.0300 ppm
	5/5/2019 21:17:34	0.0400 ppm
	5/5/2019 21:21:05	0.0500 ppm
	5/5/2019 21:21:12	0.0400 ppm
	5/5/2019 21:23:58	0.0700 ppm
	5/5/2019 21:24:01	0.0600 ppm

This data has been provided expeditiously to ITC and regulatory agencies for informational and/or operational purposes only. Data reported within this summary is preliminary in nature and has not undergone complete QA/QC (quality assurance/quality control) process. Until this complete QA/QC process is completed, the locations of each reading are approximate in nature and subject to further refinement. As some readings may represent non-breathing zone measurements, the data reported herein may not be suitable to assess potential occupational exposure. Site Assessment readings are not representative of an individual's breathing zone (e.g., container head space, ground level, directly above product, etc.).



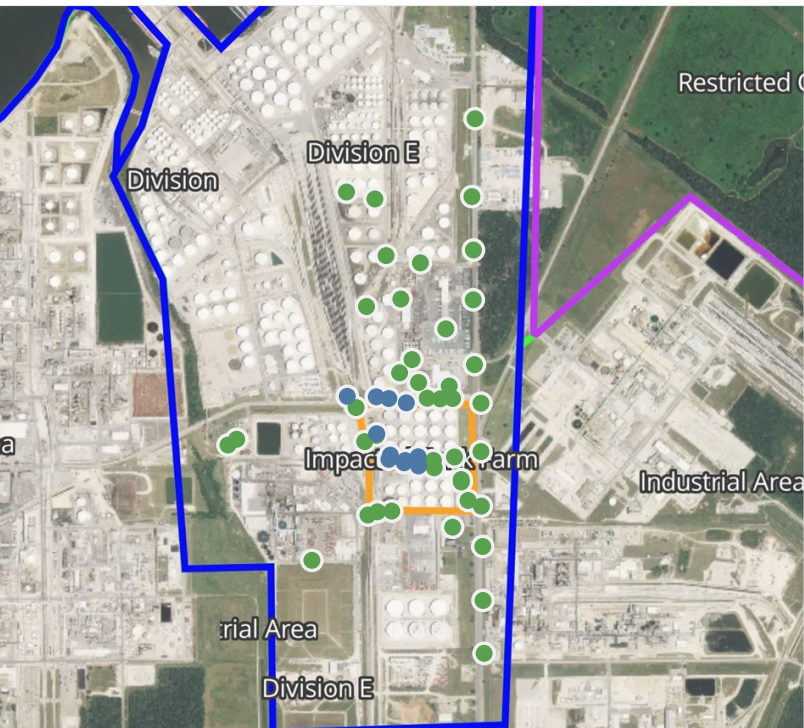


**Please Note:** These updates display data from the 2<sup>nd</sup> 80's Fire site (Impacted Tank Farm), in the industrial areas surrounding the 2<sup>nd</sup> 80's Fire site (US Coast Guard Division E), within the Houston Ship Channel (US Coast Guard Divisions A-D), and in the industrial areas north and south of the Houston Ship Channel (Industrial Area). Real-time air monitoring data for the surrounding communities are communicated daily in a separate report.



# Preliminary Hand- Held Air Monitoring Locations | ITC Deer Park Tank Fire

Reading Date  
5/5/2019 10:00:00 PM to 5/5/2019 11:00:00 PM



## Recent Benzene Detections

Location Category	Reading Date	Range of Detections
Division E	5/5/2019 22:37:26	0.1500 ppm
	5/5/2019 22:39:40	0.0800 ppm
	5/5/2019 22:51:37	0.0500 ppm
	5/5/2019 22:55:56	0.0600 ppm
Impacted Tank Farm	5/5/2019 22:35:04	0.1000 ppm
	5/5/2019 22:35:20	0.0800 ppm
	5/5/2019 22:38:20	0.0500 ppm
	5/5/2019 22:36:57	0.0800 ppm
	5/5/2019 22:36:54	0.0900 ppm
	5/5/2019 22:38:33	0.0700 ppm
	5/5/2019 22:43:07	0.0300 ppm

This data has been provided expeditiously to ITC and regulatory agencies for informational and/or operational purposes only. Data reported within this summary is preliminary in nature and has not undergone complete QA/QC (quality assurance/quality control) process. Until this complete QA/QC process is completed, the locations of each reading are approximate in nature and subject to further refinement. As some readings may represent non-breathing zone measurements, the data reported herein may not be suitable to assess potential occupational exposure. Site Assessment readings are not representative of an individual's breathing zone (e.g., container head space, ground level, directly above product, etc.).





**Please Note:** These updates display data from the 2<sup>nd</sup> 80's Fire site (Impacted Tank Farm), in the industrial areas surrounding the 2<sup>nd</sup> 80's Fire site (US Coast Guard Division E), within the Houston Ship Channel (US Coast Guard Divisions A-D), and in the industrial areas north and south of the Houston Ship Channel (Industrial Area). Real-time air monitoring data for the surrounding communities are communicated daily in a separate report.