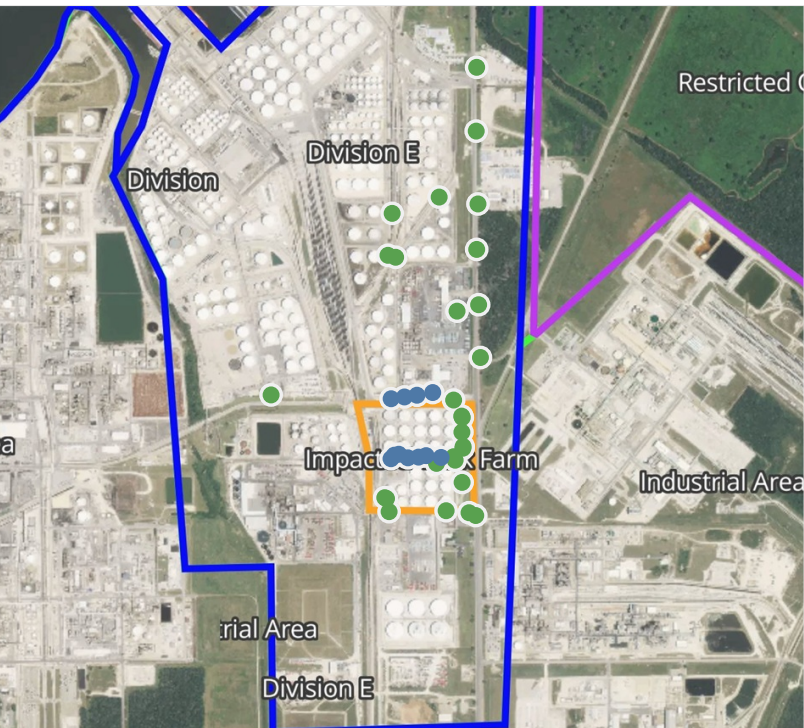


# Preliminary Hand- Held Air Monitoring Locations | ITC Deer Park Tank Fire

Reading Date  
5/5/2019 11:00:00 PM to 5/6/2019 12:00:00 AM



## Recent Benzene Detections

Location Category	Reading Date	Range of Detections
Division E	5/5/2019 23:38:31	0.0400 ppm
	5/5/2019 23:44:01	0.1400 ppm
	5/5/2019 23:46:31	0.0200 ppm
	5/5/2019 23:41:29	0.0500 ppm
Impacted Tank Farm	5/5/2019 23:37:36	0.0400 ppm
	5/5/2019 23:40:57	0.0900 ppm
	5/5/2019 23:37:10	0.0800 ppm
	5/5/2019 23:43:04	0.1200 ppm
	5/5/2019 23:41:05	0.0900 ppm
	5/5/2019 23:42:45	0.1400 ppm
	5/5/2019 23:44:50	0.0200 ppm

This data has been provided expeditiously to ITC and regulatory agencies for informational and/or operational purposes only. Data reported within this summary is preliminary in nature and has not undergone complete QA/QC (quality assurance/quality control) process. Until this complete QA/QC process is completed, the locations of each reading are approximate in nature and subject to further refinement. As some readings may represent non-breathing zone measurements, the data reported herein may not be suitable to assess potential occupational exposure. Site Assessment readings are not representative of an individual's breathing zone (e.g., container head space, ground level, directly above product, etc.).



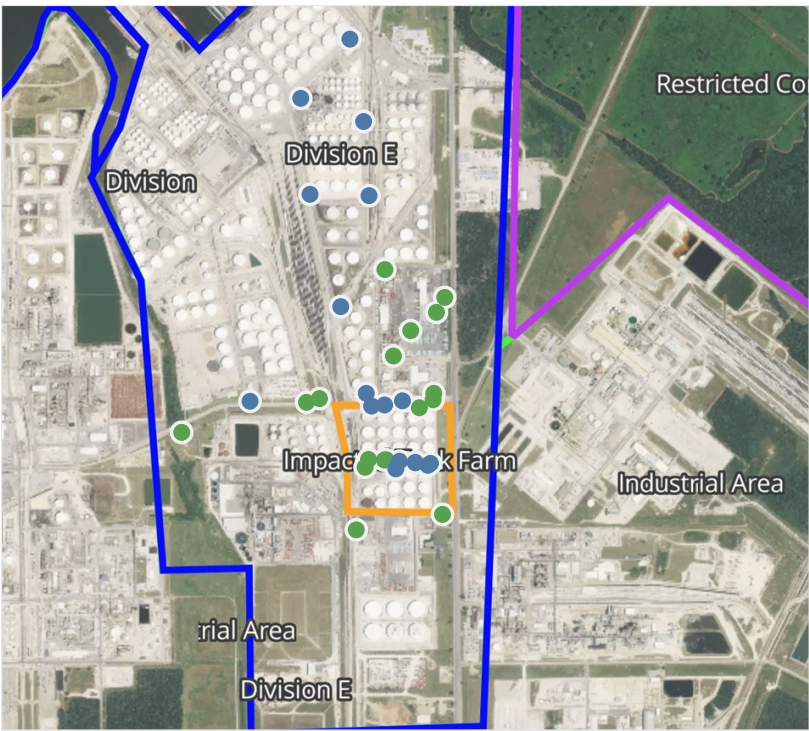


**Please Note:** These updates display data from the 2<sup>nd</sup> 80's Fire site (Impacted Tank Farm), in the industrial areas surrounding the 2<sup>nd</sup> 80's Fire site (US Coast Guard Division E), within the Houston Ship Channel (US Coast Guard Divisions A-D), and in the industrial areas north and south of the Houston Ship Channel (Industrial Area). Real-time air monitoring data for the surrounding communities are communicated daily in a separate report.



# Preliminary Hand- Held Air Monitoring Locations | ITC Deer Park Tank Fire

Reading Date  
5/6/2019 12:00:00 AM to 5/6/2019 1:00:00 AM



## Recent Benzene Detections

Location Category	Reading Date	Range of Detections
Division E	5/6/2019 00:11:14	0.0200 ppm
	5/6/2019 00:27:49	0.0800 ppm
	5/6/2019 00:36:32	0.0800 ppm
	5/6/2019 00:39:23	0.0300 ppm
	5/6/2019 00:41:30	0.0200 ppm
	5/6/2019 00:50:05	0.0200 ppm
	5/6/2019 00:53:17	0.0700 ppm
	5/6/2019 00:56:27	0.1700 ppm
	5/6/2019 00:44:21	0.0400 ppm
Impacted Tank Farm	5/6/2019 00:54:10	0.0300 ppm
	5/6/2019 00:59:23	0.1800 ppm
	5/6/2019 00:54:37	0.1300 ppm
	5/6/2019 00:54:42	0.0700 ppm
	5/6/2019 00:56:03	0.0500 ppm
	5/6/2019 00:57:54	0.1900 ppm
	5/6/2019 00:58:58	0.1500 ppm
	5/6/2019 00:57:01	0.0400 ppm

This data has been provided expeditiously to ITC and regulatory agencies for informational and/or operational purposes only. Data reported within this summary is preliminary in nature and has not undergone complete QA/QC (quality assurance/quality control) process. Until this complete QA/QC process is completed, the locations of each reading are approximate in nature and subject to further refinement. As some readings may represent non-breathing zone measurements, the data reported herein may not be suitable to assess potential occupational exposure. Site Assessment readings are not representative of an individual's breathing zone (e.g., container head space, ground level, directly above product, etc.).



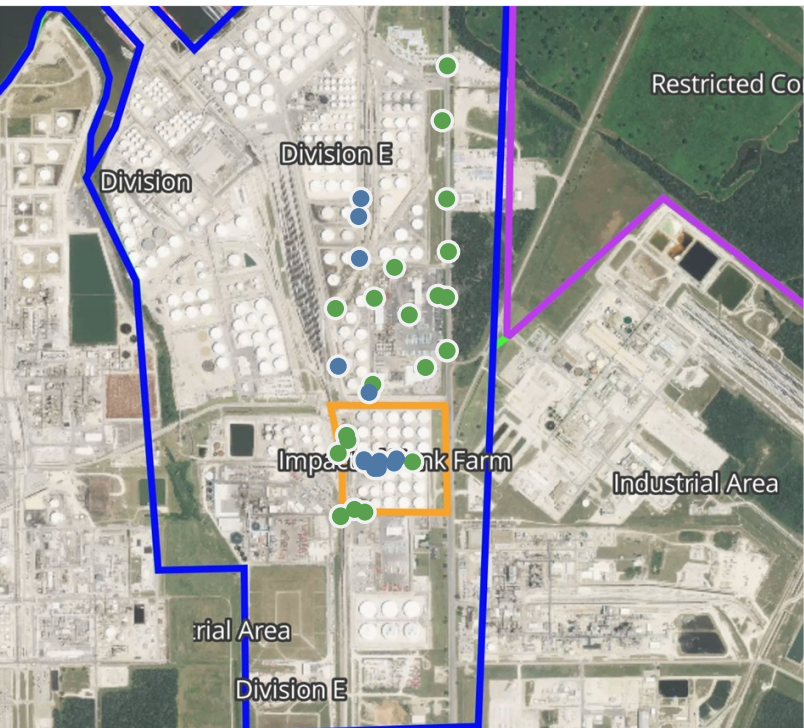


**Please Note:** These updates display data from the 2<sup>nd</sup> 80's Fire site (Impacted Tank Farm), in the industrial areas surrounding the 2<sup>nd</sup> 80's Fire site (US Coast Guard Division E), within the Houston Ship Channel (US Coast Guard Divisions A-D), and in the industrial areas north and south of the Houston Ship Channel (Industrial Area). Real-time air monitoring data for the surrounding communities are communicated daily in a separate report.



# Preliminary Hand- Held Air Monitoring Locations | ITC Deer Park Tank Fire

Reading Date  
5/6/2019 1:00:00 AM to 5/6/2019 2:00:00 AM



## Recent Benzene Detections

Location Category	Reading Date	Range of Detections
Division E	5/6/2019 01:02:34	0.2800 ppm
	5/6/2019 01:09:52	0.2300 ppm
	5/6/2019 01:12:11	0.0200 ppm
	5/6/2019 01:33:05	0.0100 ppm
	5/6/2019 01:46:42	0.0300 ppm
Impacted Tank Farm	5/6/2019 01:43:05	0.0300 ppm
	5/6/2019 01:42:38	0.0300 ppm
	5/6/2019 01:45:05	0.0400 ppm
	5/6/2019 01:45:40	0.0500 ppm
	5/6/2019 01:48:09	0.1100 ppm
	5/6/2019 01:48:15	0.1400 ppm
	5/6/2019 01:52:02	0.0300 ppm
	5/6/2019 01:52:30	0.0300 ppm

This data has been provided expeditiously to ITC and regulatory agencies for informational and/or operational purposes only. Data reported within this summary is preliminary in nature and has not undergone complete QA/QC (quality assurance/quality control) process. Until this complete QA/QC process is completed, the locations of each reading are approximate in nature and subject to further refinement. As some readings may represent non-breathing zone measurements, the data reported herein may not be suitable to assess potential occupational exposure. Site Assessment readings are not representative of an individual's breathing zone (e.g., container head space, ground level, directly above product, etc.).



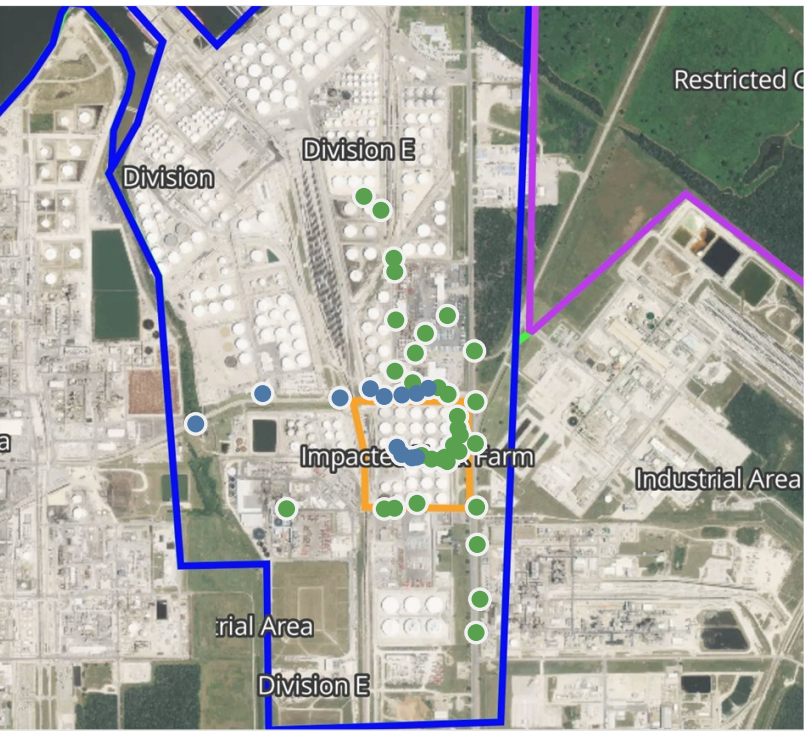


**Please Note:** These updates display data from the 2<sup>nd</sup> 80's Fire site (Impacted Tank Farm), in the industrial areas surrounding the 2<sup>nd</sup> 80's Fire site (US Coast Guard Division E), within the Houston Ship Channel (US Coast Guard Divisions A-D), and in the industrial areas north and south of the Houston Ship Channel (Industrial Area). Real-time air monitoring data for the surrounding communities are communicated daily in a separate report.



# Preliminary Hand- Held Air Monitoring Locations | ITC Deer Park Tank Fire

Reading Date  
5/6/2019 2:00:00 AM to 5/6/2019 3:00:07 AM



## Recent Benzene Detections

Location Category	Reading Date	Range of Detections
Division E	5/6/2019 02:20:02	0.1200 ppm
	5/6/2019 02:22:00	0.0400 ppm
	5/6/2019 02:17:52	0.0100 ppm
	5/6/2019 02:24:13	0.0200 ppm
	5/6/2019 02:26:37	0.0200 ppm
	5/6/2019 02:34:43	0.0400 ppm
	5/6/2019 02:32:28	0.0100 ppm
	5/6/2019 02:29:33	0.0400 ppm
Impacted Tank Farm	5/6/2019 02:57:05	0.2100 ppm
	5/6/2019 02:58:53	0.0700 ppm
	5/6/2019 02:56:54	0.2100 ppm
	5/6/2019 02:59:07	0.0500 ppm

This data has been provided expeditiously to ITC and regulatory agencies for informational and/or operational purposes only. Data reported within this summary is preliminary in nature and has not undergone complete QA/QC (quality assurance/quality control) process. Until this complete QA/QC process is completed, the locations of each reading are approximate in nature and subject to further refinement. As some readings may represent non-breathing zone measurements, the data reported herein may not be suitable to assess potential occupational exposure. Site Assessment readings are not representative of an individual's breathing zone (e.g., container head space, ground level, directly above product, etc.).



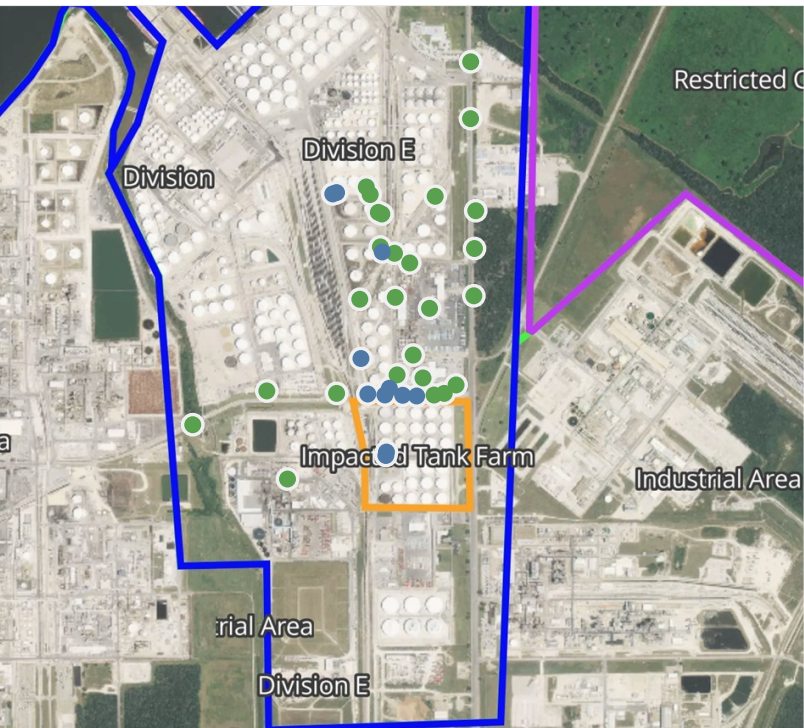


**Please Note:** These updates display data from the 2<sup>nd</sup> 80's Fire site (Impacted Tank Farm), in the industrial areas surrounding the 2<sup>nd</sup> 80's Fire site (US Coast Guard Division E), within the Houston Ship Channel (US Coast Guard Divisions A-D), and in the industrial areas north and south of the Houston Ship Channel (Industrial Area). Real-time air monitoring data for the surrounding communities are communicated daily in a separate report.



# Preliminary Hand- Held Air Monitoring Locations | ITC Deer Park Tank Fire

Reading Date  
5/6/2019 3:00:00 AM to 5/6/2019 4:00:07 AM



## Recent Benzene Detections

Location Category	Reading Date	Range of Detections
Division E	5/6/2019 03:20:03	0.07000 ppm
	5/6/2019 03:35:58	0.08000 ppm
	5/6/2019 03:40:57	0.04000 ppm
	5/6/2019 03:38:29	0.07000 ppm
	5/6/2019 03:40:07	0.03000 ppm
	5/6/2019 03:44:24	0.03000 ppm
	5/6/2019 03:49:24	0.09000 ppm
	5/6/2019 03:43:23	0.05000 ppm
	5/6/2019 03:59:06	0.01000 ppm
	5/6/2019 03:00:24	0.04000 ppm
Impacted Tank Farm	5/6/2019 03:00:42	0.06000 ppm

This data has been provided expeditiously to ITC and regulatory agencies for informational and/or operational purposes only. Data reported within this summary is preliminary in nature and has not undergone complete QA/QC (quality assurance/quality control) process. Until this complete QA/QC process is completed, the locations of each reading are approximate in nature and subject to further refinement. As some readings may represent non-breathing zone measurements, the data reported herein may not be suitable to assess potential occupational exposure. Site Assessment readings are not representative of an individual's breathing zone (e.g., container head space, ground level, directly above product, etc.).



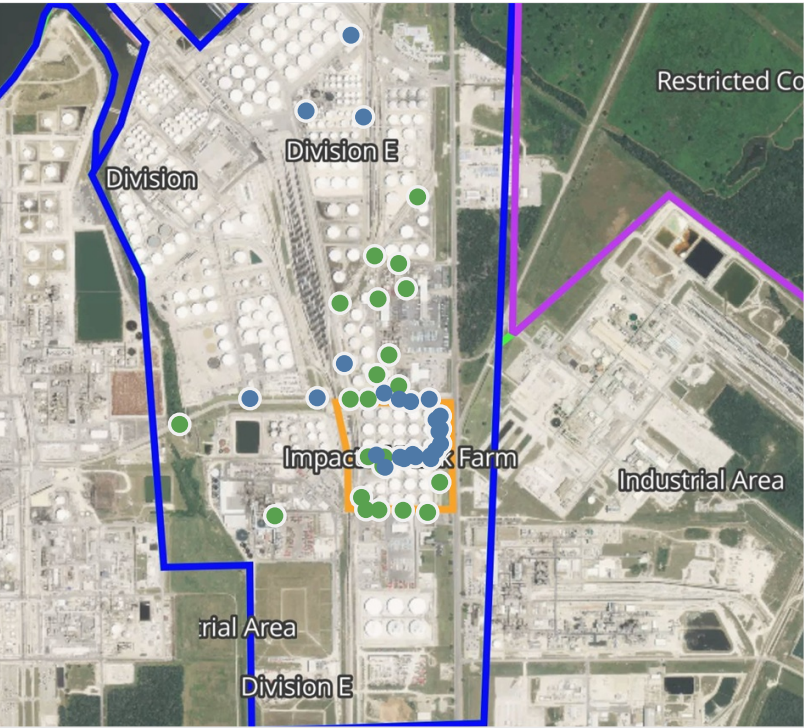


**Please Note:** These updates display data from the 2<sup>nd</sup> 80's Fire site (Impacted Tank Farm), in the industrial areas surrounding the 2<sup>nd</sup> 80's Fire site (US Coast Guard Division E), within the Houston Ship Channel (US Coast Guard Divisions A-D), and in the industrial areas north and south of the Houston Ship Channel (Industrial Area). Real-time air monitoring data for the surrounding communities are communicated daily in a separate report.



# Preliminary Hand- Held Air Monitoring Locations | ITC Deer Park Tank Fire

Reading Date  
5/6/2019 4:00:00 AM to 5/6/2019 5:00:00 AM



## Recent Benzene Detections

Location Category	Reading Date	Range of Detections
Division E	5/6/2019 04:29:05	0.0500 ppm
	5/6/2019 04:39:19	0.0400 ppm
	5/6/2019 04:37:35	0.0400 ppm
	5/6/2019 04:41:43	0.0300 ppm
	5/6/2019 04:42:40	0.0300 ppm
	5/6/2019 04:46:00	0.0800 ppm
	5/6/2019 04:53:10	0.0900 ppm
	5/6/2019 04:49:00	0.0100 ppm
	5/6/2019 04:51:57	0.0200 ppm
Impacted Tank Farm	5/6/2019 04:58:02	0.1900 ppm
	5/6/2019 04:15:32	0.0200 ppm
	5/6/2019 04:17:06	0.0200 ppm
	5/6/2019 04:19:33	0.0300 ppm
	5/6/2019 04:19:10	0.1300 ppm
	5/6/2019 04:22:18	0.1900 ppm
	5/6/2019 04:22:43	0.1800 ppm
	5/6/2019 04:26:35	0.2300 ppm
	5/6/2019 04:26:26	0.3400 ppm
	5/6/2019 04:36:22	0.1200 ppm
	5/6/2019 04:36:38	0.1300 ppm
	5/6/2019 04:39:55	0.1200 ppm
	5/6/2019 04:40:12	0.1000 ppm
	5/6/2019 04:43:40	0.0600 ppm
	5/6/2019 04:43:40	0.1200 ppm

This data has been provided expeditiously to ITC and regulatory agencies for informational and/or operational purposes only. Data reported within this summary is preliminary in nature and has not undergone complete QA/QC (quality assurance/quality control) process. Until this complete QA/QC process is completed, the locations of each reading are approximate in nature and subject to further refinement. As some readings may represent non-breathing zone measurements, the data reported herein may not be suitable to assess potential occupational exposure. Site Assessment readings are not representative of an individual's breathing zone (e.g., container head space, ground level, directly above product, etc.).



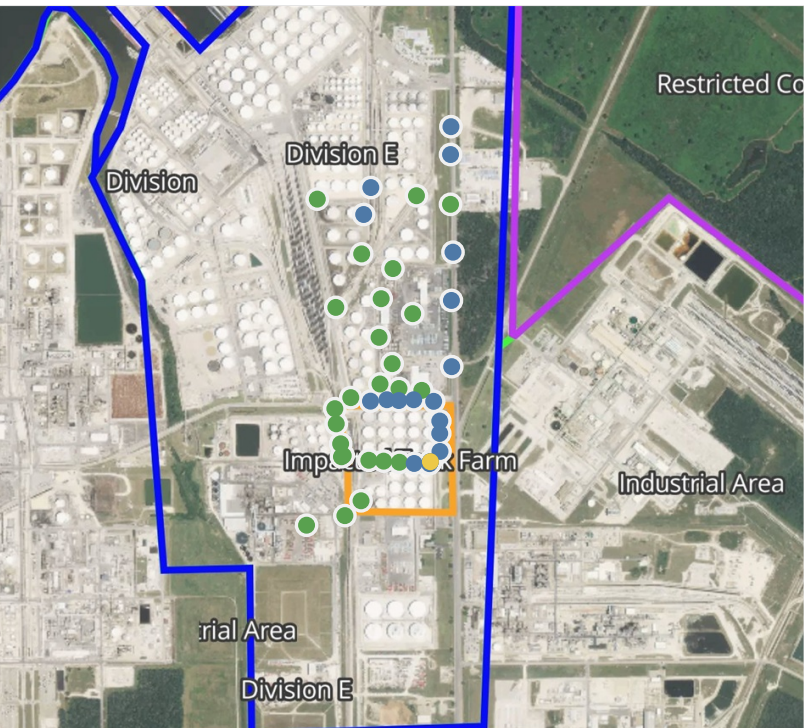


**Please Note:** These updates display data from the 2<sup>nd</sup> 80's Fire site (Impacted Tank Farm), in the industrial areas surrounding the 2<sup>nd</sup> 80's Fire site (US Coast Guard Division E), within the Houston Ship Channel (US Coast Guard Divisions A-D), and in the industrial areas north and south of the Houston Ship Channel (Industrial Area). Real-time air monitoring data for the surrounding communities are communicated daily in a separate report.



# Preliminary Hand- Held Air Monitoring Locations | ITC Deer Park Tank Fire

Reading Date  
5/6/2019 5:00:00 AM to 5/6/2019 6:00:00 AM



## Recent Benzene Detections

Location Category	Reading Date	Range of Detections
Division E	5/6/2019 05:00:57	0.2100 ppm
	5/6/2019 05:04:10	0.1400 ppm
	5/6/2019 05:05:59	0.0200 ppm
	5/6/2019 05:17:12	0.0200 ppm
	5/6/2019 05:24:18	0.0400 ppm
	5/6/2019 05:32:04	0.0400 ppm
	5/6/2019 05:34:20	0.0500 ppm
	5/6/2019 05:36:58	0.0300 ppm
	5/6/2019 05:38:42	0.0200 ppm
	5/6/2019 05:40:15	0.0400 ppm
Impacted Tank Farm	5/6/2019 05:43:40	0.0700 ppm
	5/6/2019 05:44:50	0.0400 ppm
	5/6/2019 05:08:47	0.0900 ppm
	5/6/2019 05:19:59	0.1900 ppm
	5/6/2019 05:39:06	0.0700 ppm
	5/6/2019 05:42:26	0.0700 ppm
	5/6/2019 05:45:44	0.0600 ppm
	5/6/2019 05:50:44	0.3000 ppm
	5/6/2019 05:52:30	0.2500 ppm
	5/6/2019 05:48:48	0.5300 ppm

This data has been provided expeditiously to ITC and regulatory agencies for informational and/or operational purposes only. Data reported within this summary is preliminary in nature and has not undergone complete QA/QC (quality assurance/quality control) process. Until this complete QA/QC process is completed, the locations of each reading are approximate in nature and subject to further refinement. As some readings may represent non-breathing zone measurements, the data reported herein may not be suitable to assess potential occupational exposure. Site Assessment readings are not representative of an individual's breathing zone (e.g., container head space, ground level, directly above product, etc.).



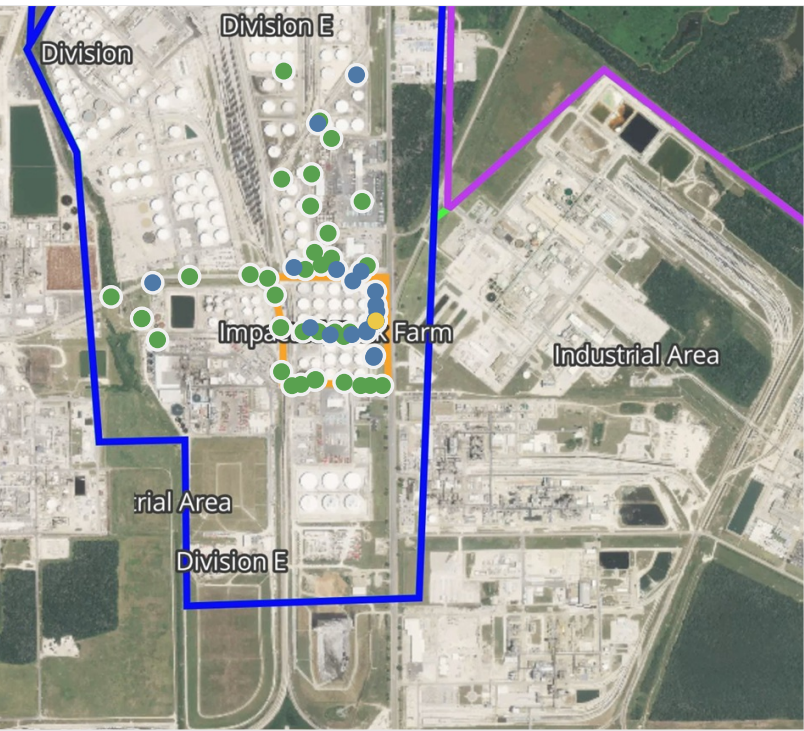


**Please Note:** These updates display data from the 2<sup>nd</sup> 80's Fire site (Impacted Tank Farm), in the industrial areas surrounding the 2<sup>nd</sup> 80's Fire site (US Coast Guard Division E), within the Houston Ship Channel (US Coast Guard Divisions A-D), and in the industrial areas north and south of the Houston Ship Channel (Industrial Area). Real-time air monitoring data for the surrounding communities are communicated daily in a separate report.



# Preliminary Hand- Held Air Monitoring Locations | ITC Deer Park Tank Fire

Reading Date  
5/6/2019 6:00:00 AM to 5/6/2019 7:00:00 AM



## Recent Benzene Detections

Location Category	Reading Date	Range of Detections
Division E	5/6/2019 06:10:45	0.0700 ppm
	5/6/2019 06:22:49	0.0300 ppm
	5/6/2019 06:25:20	0.0600 ppm
	5/6/2019 06:30:33	0.0400 ppm
	5/6/2019 06:32:44	0.0500 ppm
	5/6/2019 06:28:20	0.0200 ppm
	5/6/2019 06:57:35	0.0200 ppm
	5/6/2019 06:59:45	0.0200 ppm
Impacted Tank Farm	5/6/2019 06:12:44	0.0200 ppm
	5/6/2019 06:15:11	0.0200 ppm
	5/6/2019 06:19:38	0.0200 ppm
	5/6/2019 06:21:08	0.2100 ppm
	5/6/2019 06:21:11	0.1200 ppm
	5/6/2019 06:25:28	0.0700 ppm
	5/6/2019 06:25:28	0.1400 ppm
	5/6/2019 06:27:25	0.2000 ppm
	5/6/2019 06:27:24	0.1200 ppm
	5/6/2019 06:29:16	0.2100 ppm
	5/6/2019 06:29:14	0.2000 ppm
	5/6/2019 06:31:53	0.5000 ppm
	5/6/2019 06:33:17	0.0500 ppm
	5/6/2019 06:36:21	0.1500 ppm
	5/6/2019 06:31:38	0.3000 ppm
	5/6/2019 06:36:08	0.1200 ppm

This data has been provided expeditiously to ITC and regulatory agencies for informational and/or operational purposes only. Data reported within this summary is preliminary in nature and has not undergone complete QA/QC (quality assurance/quality control) process. Until this complete QA/QC process is completed, the locations of each reading are approximate in nature and subject to further refinement. As some readings may represent non-breathing zone measurements, the data reported herein may not be suitable to assess potential occupational exposure. Site Assessment readings are not representative of an individual's breathing zone (e.g., container head space, ground level, directly above product, etc.).



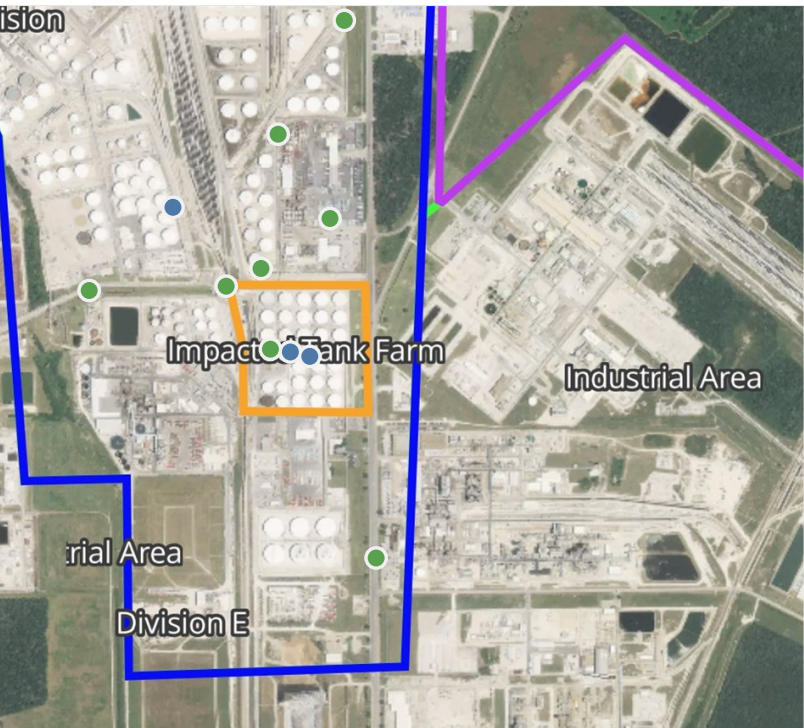


**Please Note:** These updates display data from the 2<sup>nd</sup> 80's Fire site (Impacted Tank Farm), in the industrial areas surrounding the 2<sup>nd</sup> 80's Fire site (US Coast Guard Division E), within the Houston Ship Channel (US Coast Guard Divisions A-D), and in the industrial areas north and south of the Houston Ship Channel (Industrial Area). Real-time air monitoring data for the surrounding communities are communicated daily in a separate report.



# Preliminary Hand- Held Air Monitoring Locations | ITC Deer Park Tank Fire

Reading Date  
5/6/2019 7:00:00 AM to 5/6/2019 8:00:00 AM



## Recent Benzene Detections

Location Category	Reading Date	Range of Detections
Division E	5/6/2019 07:52:18	0.05000 ppm
Impacted Tank Farm	5/6/2019 07:56:48	0.02000 ppm
	5/6/2019 07:58:45	0.02000 ppm

This data has been provided expeditiously to ITC and regulatory agencies for informational and/or operational purposes only. Data reported within this summary is preliminary in nature and has not undergone complete QA/QC (quality assurance/quality control) process. Until this complete QA/QC process is completed, the locations of each reading are approximate in nature and subject to further refinement. As some readings may represent non-breathing zone measurements, the data reported herein may not be suitable to assess potential occupational exposure. Site Assessment readings are not representative of an individual's breathing zone (e.g., container head space, ground level, directly above product, etc.).



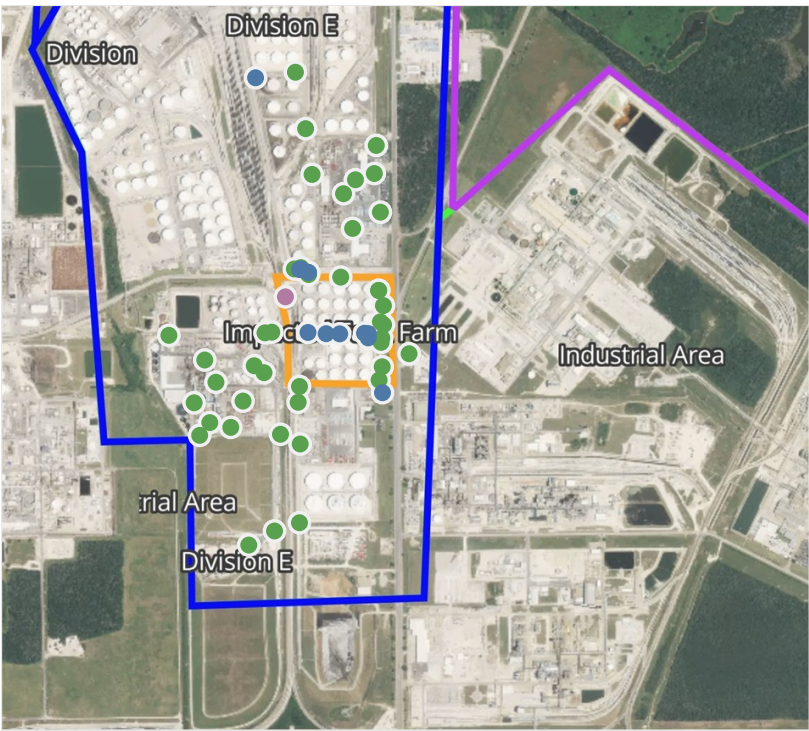
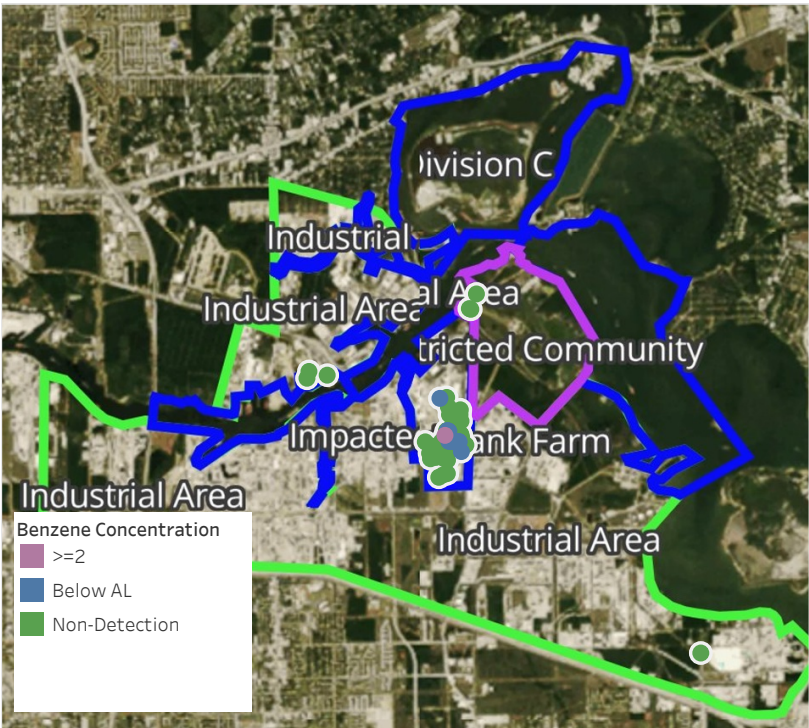


**Please Note:** These updates display data from the 2<sup>nd</sup> 80's Fire site (Impacted Tank Farm), in the industrial areas surrounding the 2<sup>nd</sup> 80's Fire site (US Coast Guard Division E), within the Houston Ship Channel (US Coast Guard Divisions A-D), and in the industrial areas north and south of the Houston Ship Channel (Industrial Area). Real-time air monitoring data for the surrounding communities are communicated daily in a separate report.



# Preliminary Hand- Held Air Monitoring Locations | ITC Deer Park Tank Fire

Reading Date  
5/6/2019 8:00:00 AM to 5/6/2019 9:00:00 AM



## Recent Benzene Detections

Location Category	Reading Date	Range of Detections
Division E	5/6/2019 08:10:11	0.080 ppm
	5/6/2019 08:14:50	0.070 ppm
	5/6/2019 08:26:30	0.280 ppm
	5/6/2019 08:43:52	0.060 ppm
Impacted Tank Farm	5/6/2019 08:01:18	0.040 ppm
	5/6/2019 08:06:56	0.010 ppm
	5/6/2019 08:12:01	0.090 ppm
	5/6/2019 08:10:16	0.060 ppm
	5/6/2019 08:13:48	0.030 ppm
	5/6/2019 08:08:26	0.100 ppm
	5/6/2019 08:17:58	0.030 ppm
Site Assessment	5/6/2019 08:31:26	2.770 ppm

This data has been provided expeditiously to ITC and regulatory agencies for informational and/or operational purposes only. Data reported within this summary is preliminary in nature and has not undergone complete QA/QC (quality assurance/quality control) process. Until this complete QA/QC process is completed, the locations of each reading are approximate in nature and subject to further refinement. As some readings may represent non-breathing zone measurements, the data reported herein may not be suitable to assess potential occupational exposure. Site Assessment readings are not representative of an individual's breathing zone (e.g., container head space, ground level, directly above product, etc.).



Reading Date  
5/6/2019 8:00:00 AM to 5/6/2019 9:00:00 AM

Benzene Action Level Concentration (ppm)  
 >=2

PRELIMINARY  
Recent Benzene Detections Greater than 1.00 ppm

Reading Date	Location Category	GPS	Google Maps URL	Range of Detections
5/6/2019 08:31:26	Site Assessment	29.7326420,-95.0932230	<a href="https://www.google.com/maps/search/?api=1&amp;query=29.7326420,-95.0932230">https://www.google.com/maps/search/?api=1&amp;query=29.7326420,-95.0932230</a>	2.770 ppm



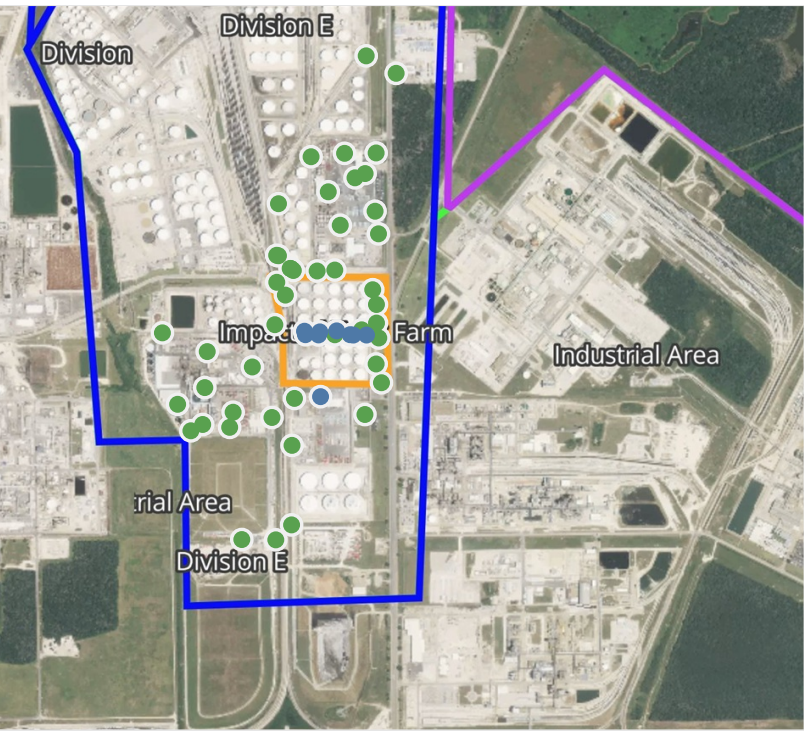


**Please Note:** These updates display data from the 2<sup>nd</sup> 80's Fire site (Impacted Tank Farm), in the industrial areas surrounding the 2<sup>nd</sup> 80's Fire site (US Coast Guard Division E), within the Houston Ship Channel (US Coast Guard Divisions A-D), and in the industrial areas north and south of the Houston Ship Channel (Industrial Area). Real-time air monitoring data for the surrounding communities are communicated daily in a separate report.



# Preliminary Hand- Held Air Monitoring Locations | ITC Deer Park Tank Fire

Reading Date  
5/6/2019 9:00:00 AM to 5/6/2019 10:00:00 AM



## Recent Benzene Detections

Location Category	Reading Date	Range of Detections
Division E	5/6/2019 09:51:52	0.1700 ppm
Impacted Tank Farm	5/6/2019 09:15:35	0.2700 ppm
	5/6/2019 09:02:43	0.0300 ppm
	5/6/2019 09:13:45	0.3400 ppm
	5/6/2019 09:11:42	0.0200 ppm
	5/6/2019 09:08:41	0.0800 ppm
	5/6/2019 09:54:42	0.0500 ppm
	5/6/2019 09:52:40	0.0800 ppm
	5/6/2019 09:56:26	0.0300 ppm

This data has been provided expeditiously to ITC and regulatory agencies for informational and/or operational purposes only. Data reported within this summary is preliminary in nature and has not undergone complete QA/QC (quality assurance/quality control) process. Until this complete QA/QC process is completed, the locations of each reading are approximate in nature and subject to further refinement. As some readings may represent non-breathing zone measurements, the data reported herein may not be suitable to assess potential occupational exposure. Site Assessment readings are not representative of an individual's breathing zone (e.g., container head space, ground level, directly above product, etc.).

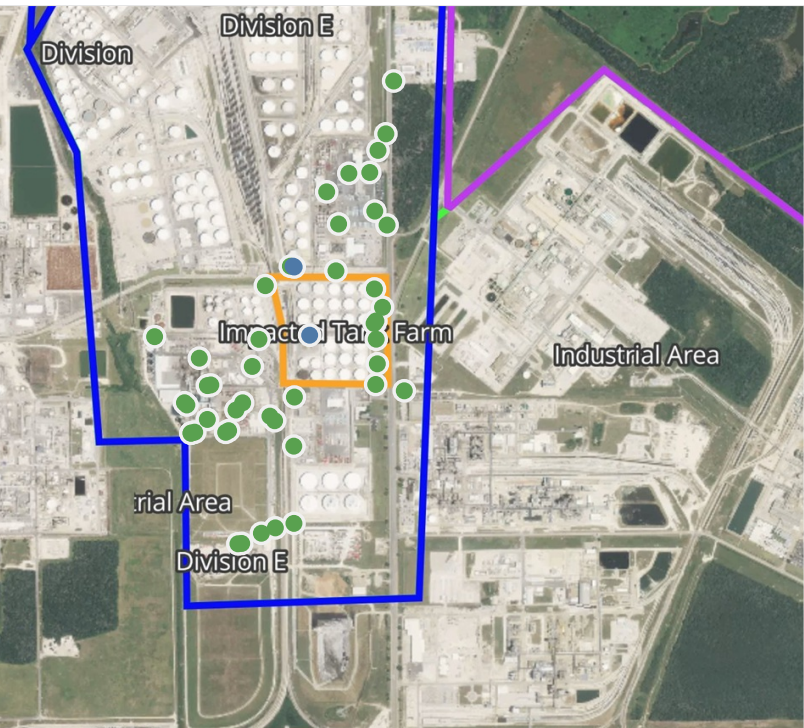




**Please Note:** These updates display data from the 2<sup>nd</sup> 80's Fire site (Impacted Tank Farm), in the industrial areas surrounding the 2<sup>nd</sup> 80's Fire site (US Coast Guard Division E), within the Houston Ship Channel (US Coast Guard Divisions A-D), and in the industrial areas north and south of the Houston Ship Channel (Industrial Area). Real-time air monitoring data for the surrounding communities are communicated daily in a separate report.

# Preliminary Hand- Held Air Monitoring Locations | ITC Deer Park Tank Fire

Reading Date  
5/6/2019 10:00:00 AM to 5/6/2019 11:00:00 AM



## Recent Benzene Detections

Location Category	Reading Date	Range of Detections
Division E	5/6/2019 10:29:12	0.03000 ppm
	5/6/2019 10:36:43	0.03000 ppm
Impacted Tank Farm	5/6/2019 10:01:49	0.09000 ppm

This data has been provided expeditiously to ITC and regulatory agencies for informational and/or operational purposes only. Data reported within this summary is preliminary in nature and has not undergone complete QA/QC (quality assurance/quality control) process. Until this complete QA/QC process is completed, the locations of each reading are approximate in nature and subject to further refinement. As some readings may represent non-breathing zone measurements, the data reported herein may not be suitable to assess potential occupational exposure. Site Assessment readings are not representative of an individual's breathing zone (e.g., container head space, ground level, directly above product, etc.).

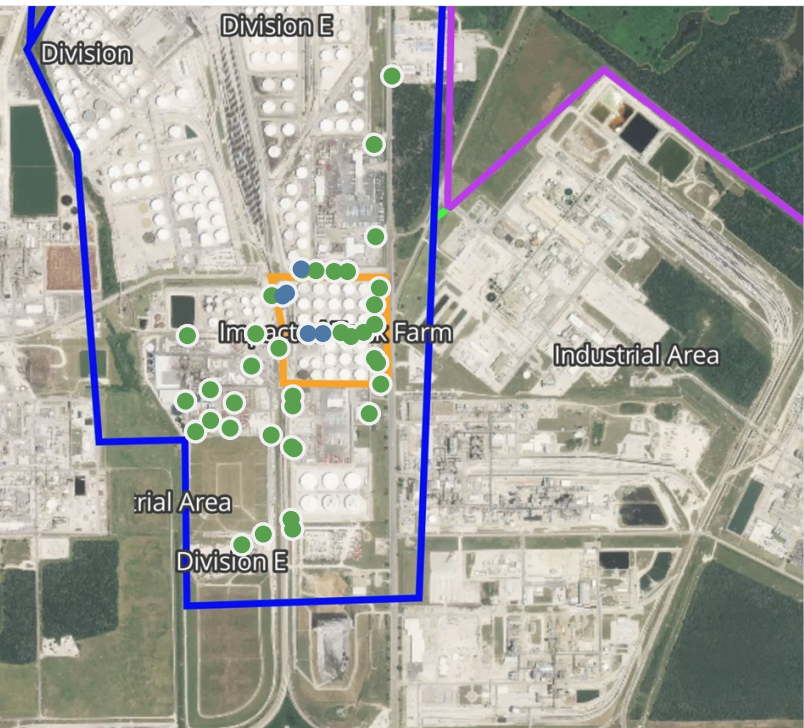




**Please Note:** These updates display data from the 2<sup>nd</sup> 80's Fire site (Impacted Tank Farm), in the industrial areas surrounding the 2<sup>nd</sup> 80's Fire site (US Coast Guard Division E), within the Houston Ship Channel (US Coast Guard Divisions A-D), and in the industrial areas north and south of the Houston Ship Channel (Industrial Area). Real-time air monitoring data for the surrounding communities are communicated daily in a separate report.

# Preliminary Hand- Held Air Monitoring Locations | ITC Deer Park Tank Fire

Reading Date  
5/6/2019 11:00:00 AM to 5/6/2019 12:00:00 PM



## Recent Benzene Detections

Location Category	Reading Date	Range of Detections
Division E	5/6/2019 11:16:36	0.0100 ppm
Impacted Tank Farm	5/6/2019 11:18:29	0.0500 ppm
	5/6/2019 11:23:29	0.1300 ppm
	5/6/2019 11:26:18	0.1800 ppm
	5/6/2019 11:34:22	0.0300 ppm

This data has been provided expeditiously to ITC and regulatory agencies for informational and/or operational purposes only. Data reported within this summary is preliminary in nature and has not undergone complete QA/QC (quality assurance/quality control) process. Until this complete QA/QC process is completed, the locations of each reading are approximate in nature and subject to further refinement. As some readings may represent non-breathing zone measurements, the data reported herein may not be suitable to assess potential occupational exposure. Site Assessment readings are not representative of an individual's breathing zone (e.g., container head space, ground level, directly above product, etc.).

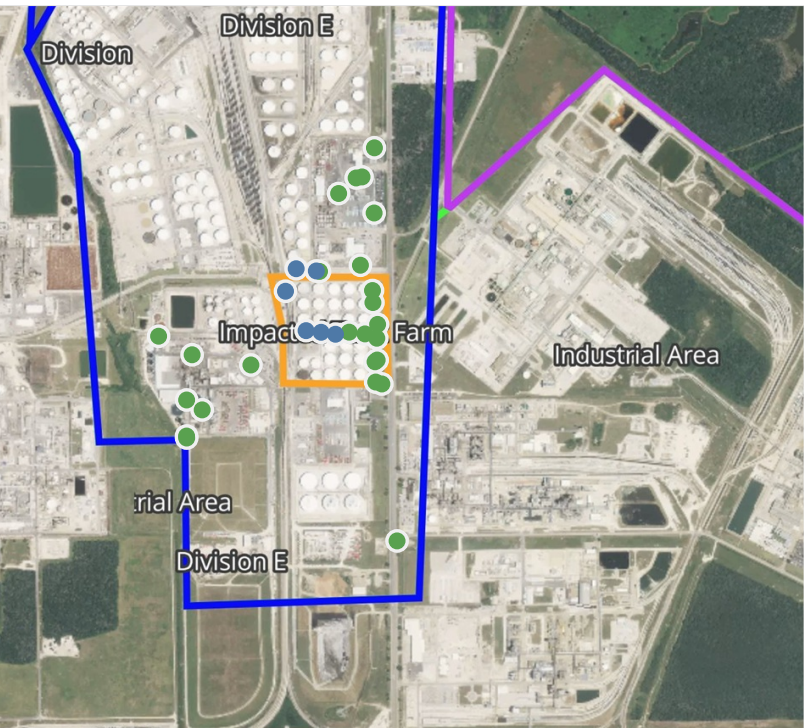




**Please Note:** These updates display data from the 2<sup>nd</sup> 80's Fire site (Impacted Tank Farm), in the industrial areas surrounding the 2<sup>nd</sup> 80's Fire site (US Coast Guard Division E), within the Houston Ship Channel (US Coast Guard Divisions A-D), and in the industrial areas north and south of the Houston Ship Channel (Industrial Area). Real-time air monitoring data for the surrounding communities are communicated daily in a separate report.

# Preliminary Hand- Held Air Monitoring Locations | ITC Deer Park Tank Fire

Reading Date  
5/6/2019 12:00:00 PM to 5/6/2019 1:00:00 PM



## Recent Benzene Detections

Location Category	Reading Date	Range of Detections
Division E	5/6/2019 12:09:59	0.05000 ppm
	5/6/2019 12:41:16	0.03000 ppm
Impacted Tank Farm	5/6/2019 12:20:47	0.04000 ppm
	5/6/2019 12:10:46	0.07000 ppm
	5/6/2019 12:12:52	0.02000 ppm
	5/6/2019 12:22:37	0.07000 ppm

This data has been provided expeditiously to ITC and regulatory agencies for informational and/or operational purposes only. Data reported within this summary is preliminary in nature and has not undergone complete QA/QC (quality assurance/quality control) process. Until this complete QA/QC process is completed, the locations of each reading are approximate in nature and subject to further refinement. As some readings may represent non-breathing zone measurements, the data reported herein may not be suitable to assess potential occupational exposure. Site Assessment readings are not representative of an individual's breathing zone (e.g., container head space, ground level, directly above product, etc.).

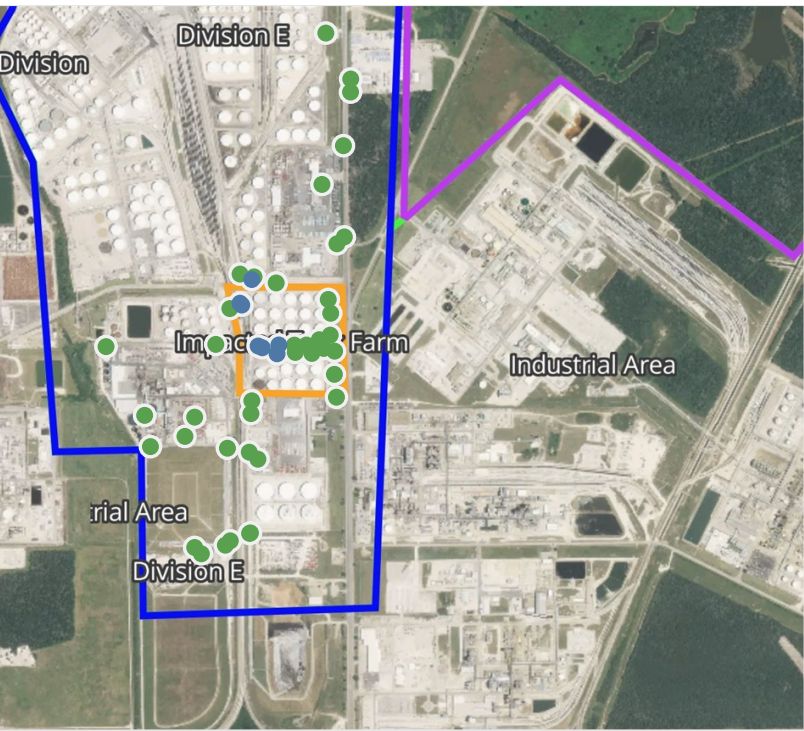




**Please Note:** These updates display data from the 2<sup>nd</sup> 80's Fire site (Impacted Tank Farm), in the industrial areas surrounding the 2<sup>nd</sup> 80's Fire site (US Coast Guard Division E), within the Houston Ship Channel (US Coast Guard Divisions A-D), and in the industrial areas north and south of the Houston Ship Channel (Industrial Area). Real-time air monitoring data for the surrounding communities are communicated daily in a separate report.

# Preliminary Hand- Held Air Monitoring Locations | ITC Deer Park Tank Fire

Reading Date  
5/6/2019 1:00:00 PM to 5/6/2019 2:00:00 PM



## Recent Benzene Detections

Location Category	Reading Date	Range of Detections
Division E	5/6/2019 13:58:05	0.04000 ppm
Impacted Tank Farm	5/6/2019 13:13:18	0.10000 ppm
	5/6/2019 13:18:45	0.08000 ppm
	5/6/2019 13:14:59	0.08000 ppm
	5/6/2019 13:35:31	0.06000 ppm
	5/6/2019 13:50:20	0.05000 ppm
	5/6/2019 13:45:00	0.04000 ppm

This data has been provided expeditiously to ITC and regulatory agencies for informational and/or operational purposes only. Data reported within this summary is preliminary in nature and has not undergone complete QA/QC (quality assurance/quality control) process. Until this complete QA/QC process is completed, the locations of each reading are approximate in nature and subject to further refinement. As some readings may represent non-breathing zone measurements, the data reported herein may not be suitable to assess potential occupational exposure. Site Assessment readings are not representative of an individual's breathing zone (e.g., container head space, ground level, directly above product, etc.).

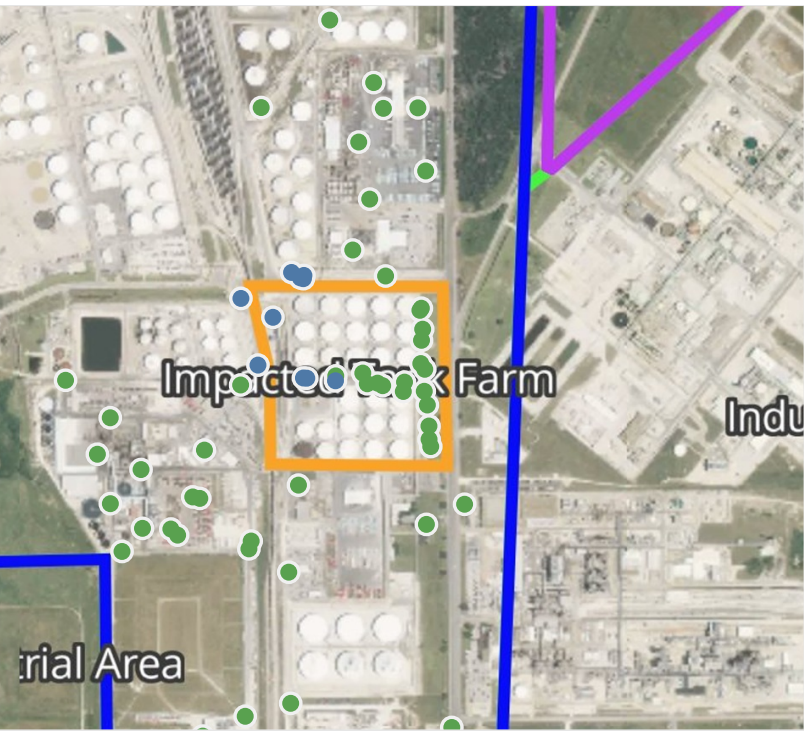
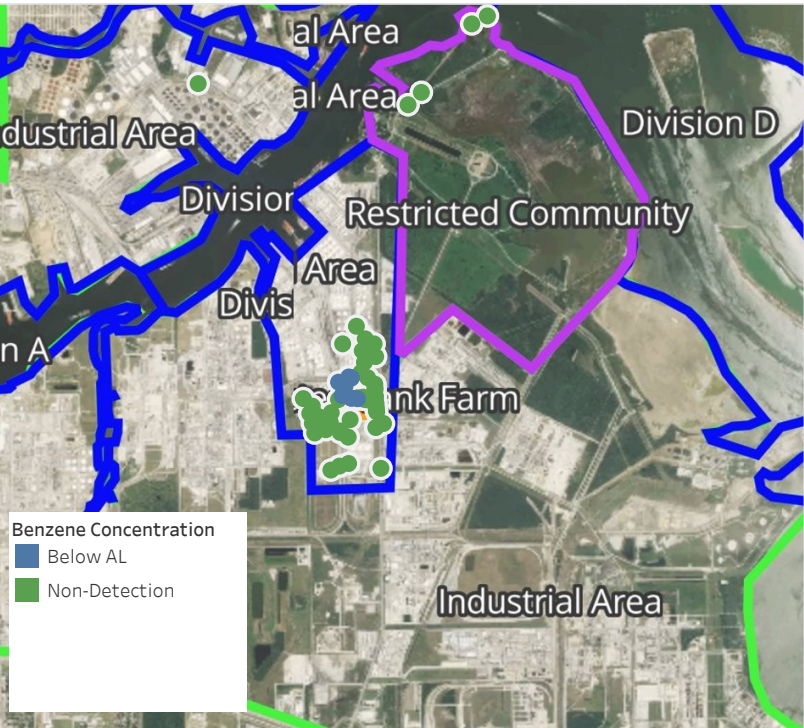




**Please Note:** These updates display data from the 2<sup>nd</sup> 80's Fire site (Impacted Tank Farm), in the industrial areas surrounding the 2<sup>nd</sup> 80's Fire site (US Coast Guard Division E), within the Houston Ship Channel (US Coast Guard Divisions A-D), and in the industrial areas north and south of the Houston Ship Channel (Industrial Area). Real-time air monitoring data for the surrounding communities are communicated daily in a separate report.

# Preliminary Hand- Held Air Monitoring Locations | ITC Deer Park Tank Fire

Reading Date  
5/6/2019 2:00:00 PM to 5/6/2019 3:00:00 PM



## Recent Benzene Detections

Location Category	Reading Date	Range of Detections
Division E	5/6/2019 14:02:16	0.0300 ppm
	5/6/2019 14:04:23	0.0500 ppm
	5/6/2019 14:23:59	0.0400 ppm
	5/6/2019 14:29:16	0.0300 ppm
	5/6/2019 14:41:13	0.0200 ppm
Impacted Tank Farm	5/6/2019 14:00:22	0.0200 ppm
	5/6/2019 14:07:25	0.0300 ppm
	5/6/2019 14:12:58	0.0800 ppm
	5/6/2019 14:57:18	0.0400 ppm
	5/6/2019 14:57:29	0.3400 ppm

This data has been provided expeditiously to ITC and regulatory agencies for informational and/or operational purposes only. Data reported within this summary is preliminary in nature and has not undergone complete QA/QC (quality assurance/quality control) process. Until this complete QA/QC process is completed, the locations of each reading are approximate in nature and subject to further refinement. As some readings may represent non-breathing zone measurements, the data reported herein may not be suitable to assess potential occupational exposure. Site Assessment readings are not representative of an individual's breathing zone (e.g., container head space, ground level, directly above product, etc.).

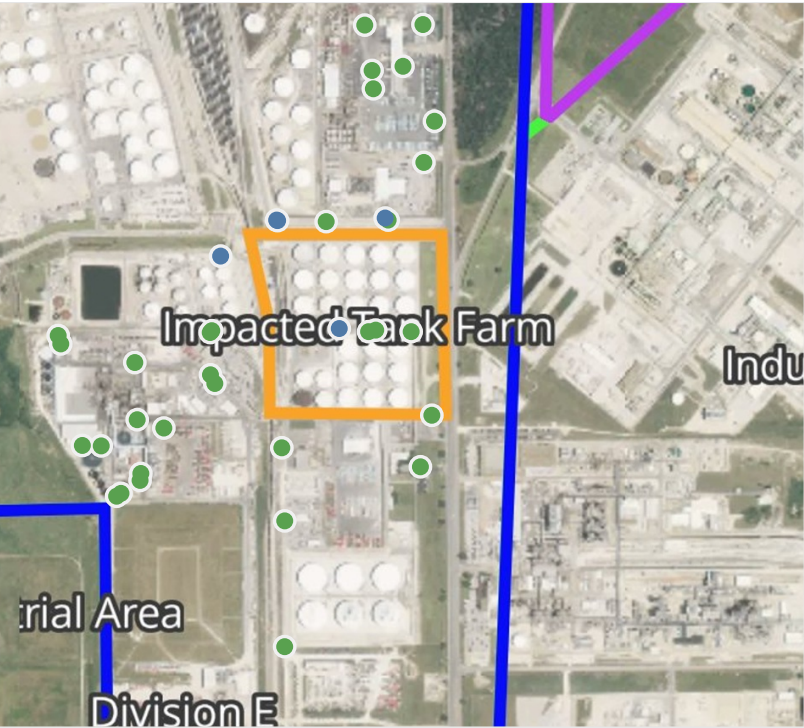
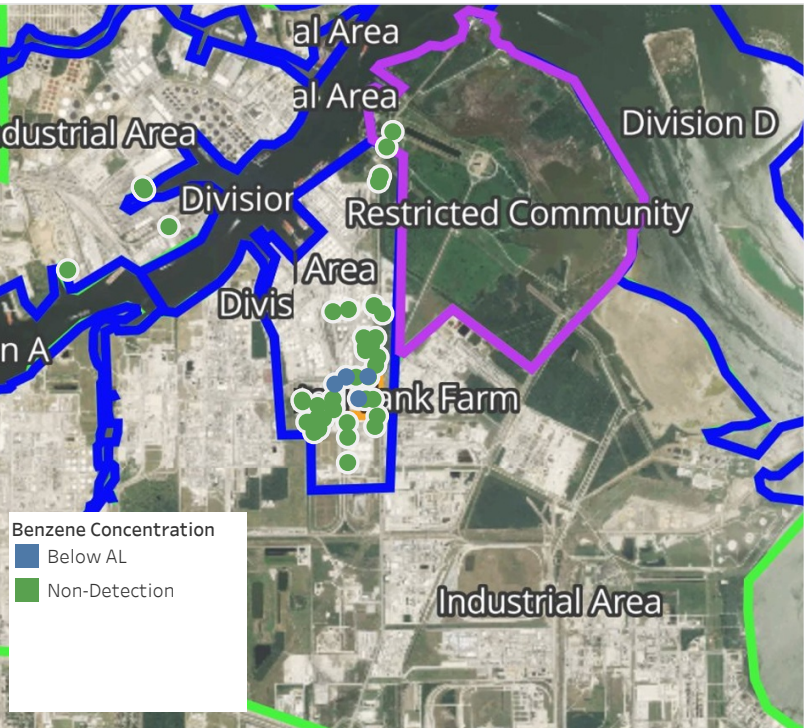




**Please Note:** These updates display data from the 2<sup>nd</sup> 80's Fire site (Impacted Tank Farm), in the industrial areas surrounding the 2<sup>nd</sup> 80's Fire site (US Coast Guard Division E), within the Houston Ship Channel (US Coast Guard Divisions A-D), and in the industrial areas north and south of the Houston Ship Channel (Industrial Area). Real-time air monitoring data for the surrounding communities are communicated daily in a separate report.

# Preliminary Hand- Held Air Monitoring Locations | ITC Deer Park Tank Fire

Reading Date  
5/6/2019 3:00:00 PM to 5/6/2019 4:00:00 PM



## Recent Benzene Detections

Location Category	Reading Date	Range of Detections
Division E	5/6/2019 15:13:25	0.02000 ppm
	5/6/2019 15:28:27	0.01000 ppm
	5/6/2019 15:59:44	0.03000 ppm
Impacted Tank Farm	5/6/2019 15:50:20	0.05000 ppm
	5/6/2019 15:59:14	0.04000 ppm

This data has been provided expeditiously to ITC and regulatory agencies for informational and/or operational purposes only. Data reported within this summary is preliminary in nature and has not undergone complete QA/QC (quality assurance/quality control) process. Until this complete QA/QC process is completed, the locations of each reading are approximate in nature and subject to further refinement. As some readings may represent non-breathing zone measurements, the data reported herein may not be suitable to assess potential occupational exposure. Site Assessment readings are not representative of an individual's breathing zone (e.g., container head space, ground level, directly above product, etc.).

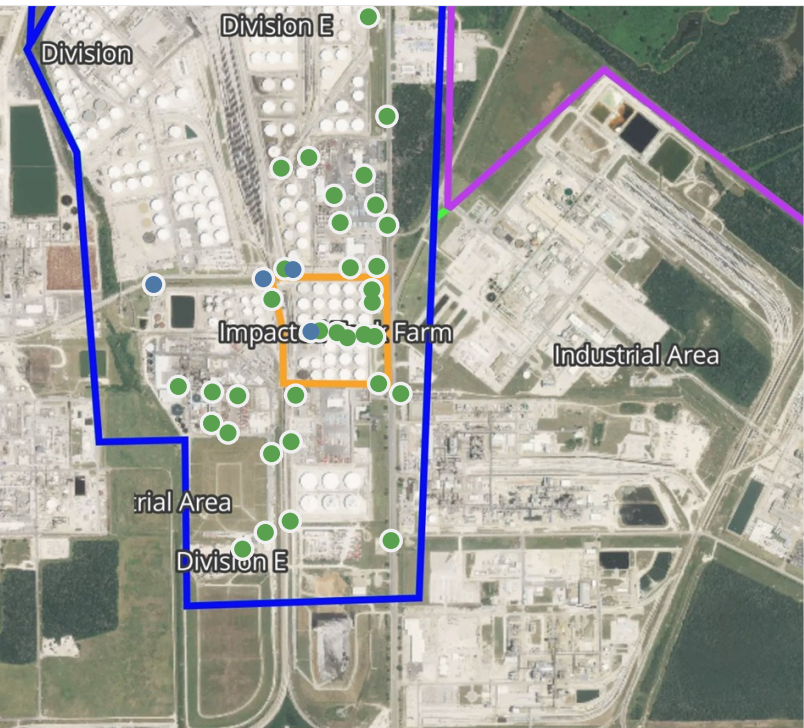




**Please Note:** These updates display data from the 2<sup>nd</sup> 80's Fire site (Impacted Tank Farm), in the industrial areas surrounding the 2<sup>nd</sup> 80's Fire site (US Coast Guard Division E), within the Houston Ship Channel (US Coast Guard Divisions A-D), and in the industrial areas north and south of the Houston Ship Channel (Industrial Area). Real-time air monitoring data for the surrounding communities are communicated daily in a separate report.

# Preliminary Hand- Held Air Monitoring Locations | ITC Deer Park Tank Fire

Reading Date  
5/6/2019 4:00:00 PM to 5/6/2019 5:00:00 PM



## Recent Benzene Detections

Location Category	Reading Date	Range of Detections
Division E	5/6/2019 16:38:57	0.02000 ppm
Impacted Tank Farm	5/6/2019 16:01:49	0.05000 ppm
	5/6/2019 16:36:28	0.02000 ppm
Industrial Area	5/6/2019 16:47:35	0.03000 ppm

This data has been provided expeditiously to ITC and regulatory agencies for informational and/or operational purposes only. Data reported within this summary is preliminary in nature and has not undergone complete QA/QC (quality assurance/quality control) process. Until this complete QA/QC process is completed, the locations of each reading are approximate in nature and subject to further refinement. As some readings may represent non-breathing zone measurements, the data reported herein may not be suitable to assess potential occupational exposure. Site Assessment readings are not representative of an individual's breathing zone (e.g., container head space, ground level, directly above product, etc.).

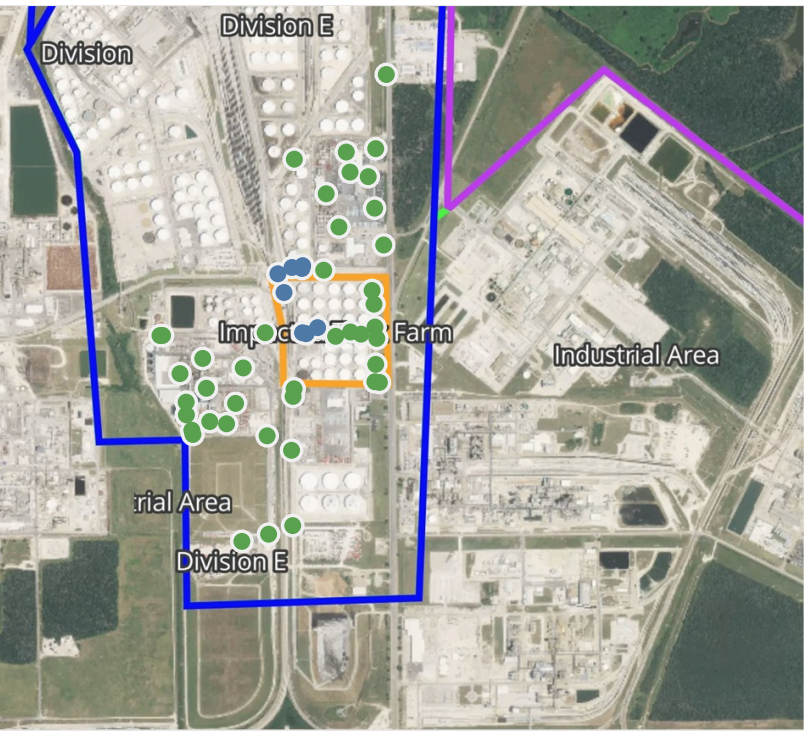




**Please Note:** These updates display data from the 2<sup>nd</sup> 80's Fire site (Impacted Tank Farm), in the industrial areas surrounding the 2<sup>nd</sup> 80's Fire site (US Coast Guard Division E), within the Houston Ship Channel (US Coast Guard Divisions A-D), and in the industrial areas north and south of the Houston Ship Channel (Industrial Area). Real-time air monitoring data for the surrounding communities are communicated daily in a separate report.

# Preliminary Hand- Held Air Monitoring Locations | ITC Deer Park Tank Fire

Reading Date  
5/6/2019 5:00:00 PM to 5/6/2019 6:00:00 PM



## Recent Benzene Detections

Location Category	Reading Date	Range of Detections
Division E	5/6/2019 17:16:41	0.0400 ppm
	5/6/2019 17:32:22	0.0300 ppm
	5/6/2019 17:42:07	0.0400 ppm
	5/6/2019 17:54:50	0.0200 ppm
Impacted Tank Farm	5/6/2019 17:02:21	0.0600 ppm
	5/6/2019 17:27:39	0.3000 ppm
	5/6/2019 17:38:45	0.0400 ppm
	5/6/2019 17:41:55	0.0500 ppm

This data has been provided expeditiously to ITC and regulatory agencies for informational and/or operational purposes only. Data reported within this summary is preliminary in nature and has not undergone complete QA/QC (quality assurance/quality control) process. Until this complete QA/QC process is completed, the locations of each reading are approximate in nature and subject to further refinement. As some readings may represent non-breathing zone measurements, the data reported herein may not be suitable to assess potential occupational exposure. Site Assessment readings are not representative of an individual's breathing zone (e.g., container head space, ground level, directly above product, etc.).

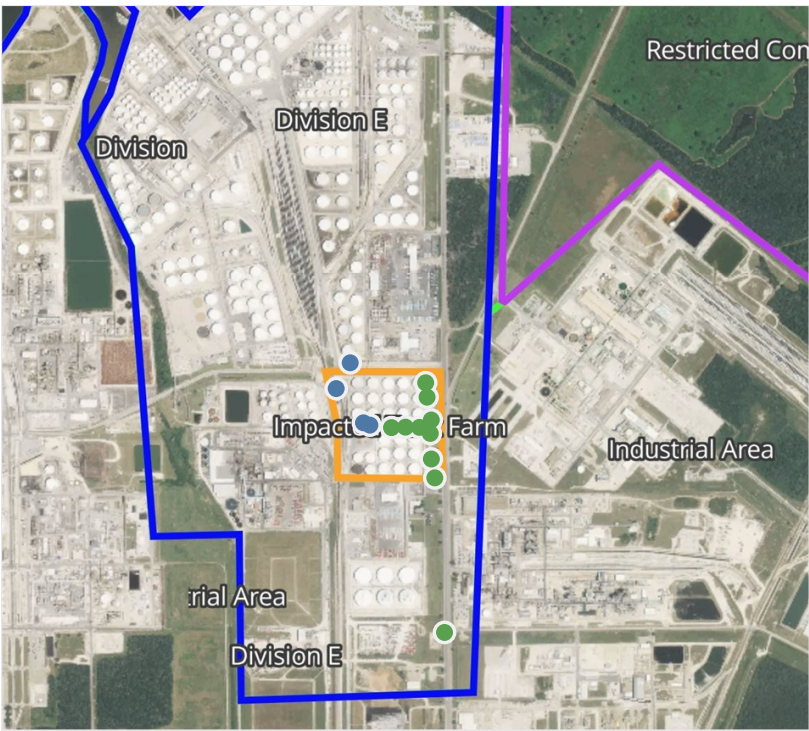




**Please Note:** These updates display data from the 2<sup>nd</sup> 80's Fire site (Impacted Tank Farm), in the industrial areas surrounding the 2<sup>nd</sup> 80's Fire site (US Coast Guard Division E), within the Houston Ship Channel (US Coast Guard Divisions A-D), and in the industrial areas north and south of the Houston Ship Channel (Industrial Area). Real-time air monitoring data for the surrounding communities are communicated daily in a separate report.

# Preliminary Hand- Held Air Monitoring Locations | ITC Deer Park Tank Fire

Reading Date  
5/6/2019 6:00:00 PM to 5/6/2019 7:00:00 PM



## Recent Benzene Detections

Location Category	Reading Date	Range of Detections
Division E	5/6/2019 18:28:02	0.01000 ppm
Impacted Tank Farm	5/6/2019 18:33:25	0.03000 ppm
	5/6/2019 18:44:59	0.04000 ppm
	5/6/2019 18:43:44	0.03000 ppm

This data has been provided expeditiously to ITC and regulatory agencies for informational and/or operational purposes only. Data reported within this summary is preliminary in nature and has not undergone complete QA/QC (quality assurance/quality control) process. Until this complete QA/QC process is completed, the locations of each reading are approximate in nature and subject to further refinement. As some readings may represent non-breathing zone measurements, the data reported herein may not be suitable to assess potential occupational exposure. Site Assessment readings are not representative of an individual's breathing zone (e.g., container head space, ground level, directly above product, etc.).





**Please Note:** These updates display data from the 2<sup>nd</sup> 80's Fire site (Impacted Tank Farm), in the industrial areas surrounding the 2<sup>nd</sup> 80's Fire site (US Coast Guard Division E), within the Houston Ship Channel (US Coast Guard Divisions A-D), and in the industrial areas north and south of the Houston Ship Channel (Industrial Area). Real-time air monitoring data for the surrounding communities are communicated daily in a separate report.

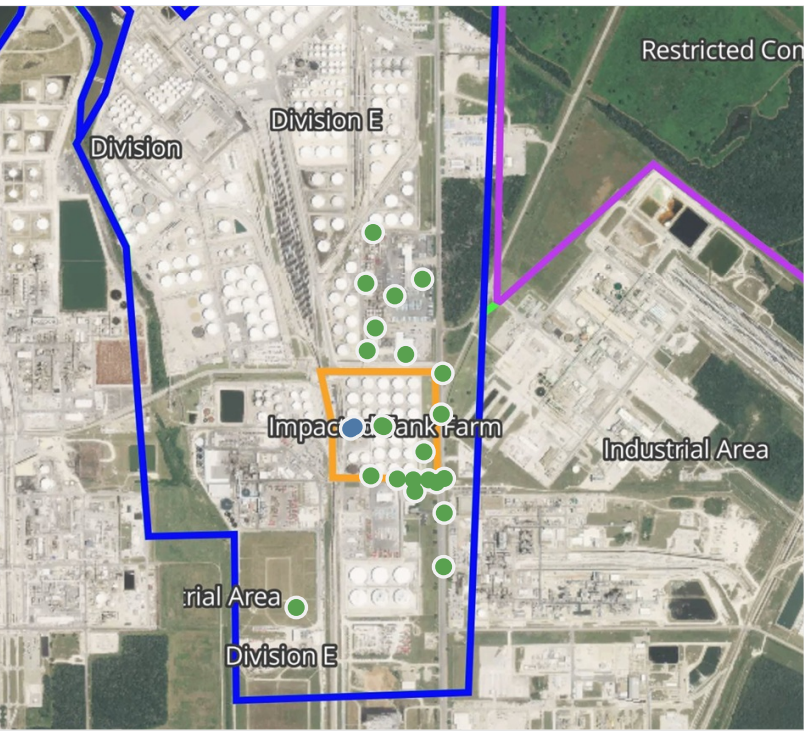
# Preliminary Hand- Held Air Monitoring Locations | ITC Deer Park Tank Fire

Reading Date  
5/6/2019 7:00:00 PM to 5/6/2019 8:00:00 PM



## Recent Benzene Detections

Location Category	Reading Date	Range of Detections
Impacted Tank Farm	5/6/2019 19:53:06	0.06000 ppm
	5/6/2019 19:53:08	0.03000 ppm



This data has been provided expeditiously to ITC and regulatory agencies for informational and/or operational purposes only. Data reported within this summary is preliminary in nature and has not undergone complete QA/QC (quality assurance/quality control) process. Until this complete QA/QC process is completed, the locations of each reading are approximate in nature and subject to further refinement. As some readings may represent non-breathing zone measurements, the data reported herein may not be suitable to assess potential occupational exposure. Site Assessment readings are not representative of an individual's breathing zone (e.g., container head space, ground level, directly above product, etc.).



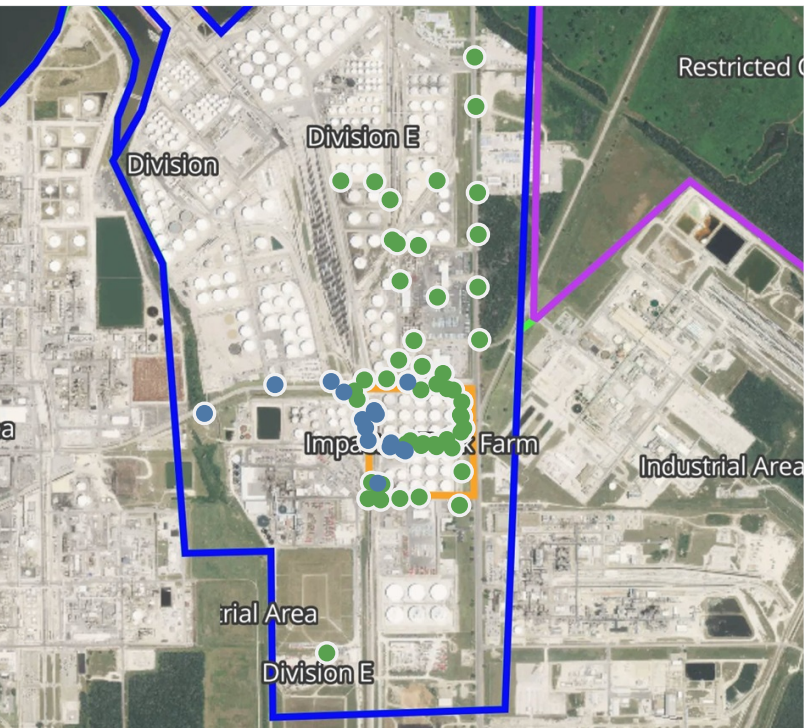


**Please Note:** These updates display data from the 2<sup>nd</sup> 80's Fire site (Impacted Tank Farm), in the industrial areas surrounding the 2<sup>nd</sup> 80's Fire site (US Coast Guard Division E), within the Houston Ship Channel (US Coast Guard Divisions A-D), and in the industrial areas north and south of the Houston Ship Channel (Industrial Area). Real-time air monitoring data for the surrounding communities are communicated daily in a separate report.



# Preliminary Hand- Held Air Monitoring Locations | ITC Deer Park Tank Fire

Reading Date  
5/6/2019 8:00:00 PM to 5/6/2019 9:00:00 PM



## Recent Benzene Detections

Location Category	Reading Date	Range of Detections
Division E	5/6/2019 20:15:06	0.0400 ppm
	5/6/2019 20:18:05	0.0200 ppm
	5/6/2019 20:06:17	0.0100 ppm
	5/6/2019 20:11:02	0.0100 ppm
	5/6/2019 20:18:12	0.0100 ppm
	5/6/2019 20:15:41	0.0100 ppm
	5/6/2019 20:29:45	0.0200 ppm
	5/6/2019 20:30:37	0.0300 ppm
Impacted Tank Farm	5/6/2019 20:07:48	0.0300 ppm
	5/6/2019 20:08:02	0.0200 ppm
	5/6/2019 20:10:15	0.0300 ppm
	5/6/2019 20:13:55	0.1100 ppm
	5/6/2019 20:17:03	0.0700 ppm
	5/6/2019 20:17:13	0.0700 ppm
	5/6/2019 20:13:31	0.1100 ppm

This data has been provided expeditiously to ITC and regulatory agencies for informational and/or operational purposes only. Data reported within this summary is preliminary in nature and has not undergone complete QA/QC (quality assurance/quality control) process. Until this complete QA/QC process is completed, the locations of each reading are approximate in nature and subject to further refinement. As some readings may represent non-breathing zone measurements, the data reported herein may not be suitable to assess potential occupational exposure. Site Assessment readings are not representative of an individual's breathing zone (e.g., container head space, ground level, directly above product, etc.).

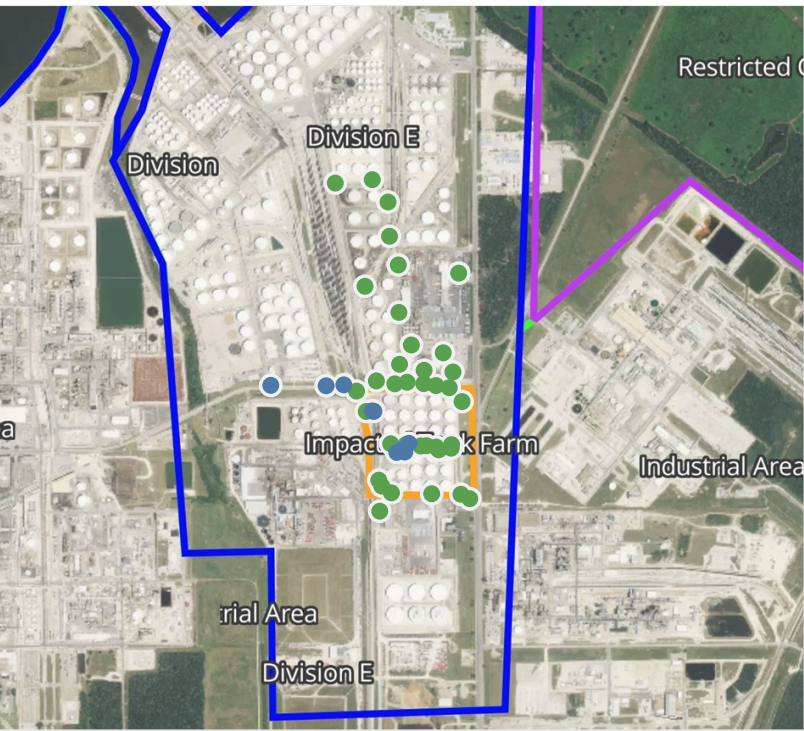




**Please Note:** These updates display data from the 2<sup>nd</sup> 80's Fire site (Impacted Tank Farm), in the industrial areas surrounding the 2<sup>nd</sup> 80's Fire site (US Coast Guard Division E), within the Houston Ship Channel (US Coast Guard Divisions A-D), and in the industrial areas north and south of the Houston Ship Channel (Industrial Area). Real-time air monitoring data for the surrounding communities are communicated daily in a separate report.

# Preliminary Hand- Held Air Monitoring Locations | ITC Deer Park Tank Fire

Reading Date  
5/6/2019 9:00:00 PM to 5/6/2019 10:00:00 PM



## Recent Benzene Detections

Location Category	Reading Date	Range of Detections
Division E	5/6/2019 21:39:37	0.02000 ppm
	5/6/2019 21:40:53	0.01000 ppm
	5/6/2019 21:44:11	0.01000 ppm
Impacted Tank Farm	5/6/2019 21:06:24	0.02000 ppm
	5/6/2019 21:07:05	0.02000 ppm
	5/6/2019 21:12:52	0.03000 ppm
	5/6/2019 21:12:49	0.03000 ppm
	5/6/2019 21:15:23	0.04000 ppm
	5/6/2019 21:18:19	0.05000 ppm

This data has been provided expeditiously to ITC and regulatory agencies for informational and/or operational purposes only. Data reported within this summary is preliminary in nature and has not undergone complete QA/QC (quality assurance/quality control) process. Until this complete QA/QC process is completed, the locations of each reading are approximate in nature and subject to further refinement. As some readings may represent non-breathing zone measurements, the data reported herein may not be suitable to assess potential occupational exposure. Site Assessment readings are not representative of an individual's breathing zone (e.g., container head space, ground level, directly above product, etc.).

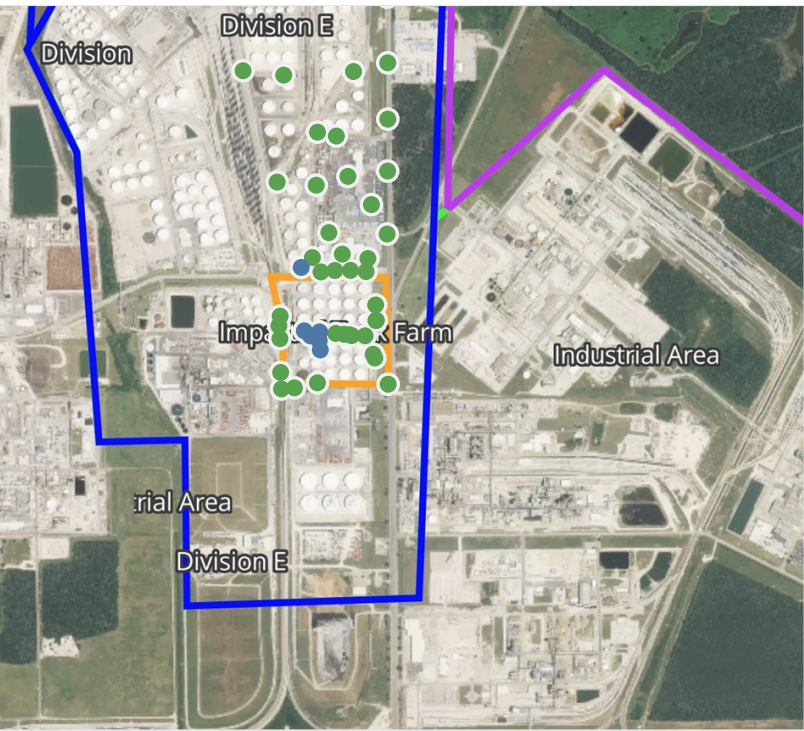




**Please Note:** These updates display data from the 2<sup>nd</sup> 80's Fire site (Impacted Tank Farm), in the industrial areas surrounding the 2<sup>nd</sup> 80's Fire site (US Coast Guard Division E), within the Houston Ship Channel (US Coast Guard Divisions A-D), and in the industrial areas north and south of the Houston Ship Channel (Industrial Area). Real-time air monitoring data for the surrounding communities are communicated daily in a separate report.

# Preliminary Hand- Held Air Monitoring Locations | ITC Deer Park Tank Fire

Reading Date  
5/6/2019 10:00:00 PM to 5/6/2019 11:00:00 PM



## Recent Benzene Detections

Location Category	Reading Date	Range of Detections
Division E	5/6/2019 22:35:17	0.0200 ppm
Impacted Tank Farm	5/6/2019 22:39:31	0.0400 ppm
	5/6/2019 22:38:54	0.0400 ppm
	5/6/2019 22:43:36	0.1200 ppm
	5/6/2019 22:44:10	0.0600 ppm
	5/6/2019 22:45:49	0.0200 ppm

This data has been provided expeditiously to ITC and regulatory agencies for informational and/or operational purposes only. Data reported within this summary is preliminary in nature and has not undergone complete QA/QC (quality assurance/quality control) process. Until this complete QA/QC process is completed, the locations of each reading are approximate in nature and subject to further refinement. As some readings may represent non-breathing zone measurements, the data reported herein may not be suitable to assess potential occupational exposure. Site Assessment readings are not representative of an individual's breathing zone (e.g., container head space, ground level, directly above product, etc.).





**Please Note:** These updates display data from the 2<sup>nd</sup> 80's Fire site (Impacted Tank Farm), in the industrial areas surrounding the 2<sup>nd</sup> 80's Fire site (US Coast Guard Division E), within the Houston Ship Channel (US Coast Guard Divisions A-D), and in the industrial areas north and south of the Houston Ship Channel (Industrial Area). Real-time air monitoring data for the surrounding communities are communicated daily in a separate report.