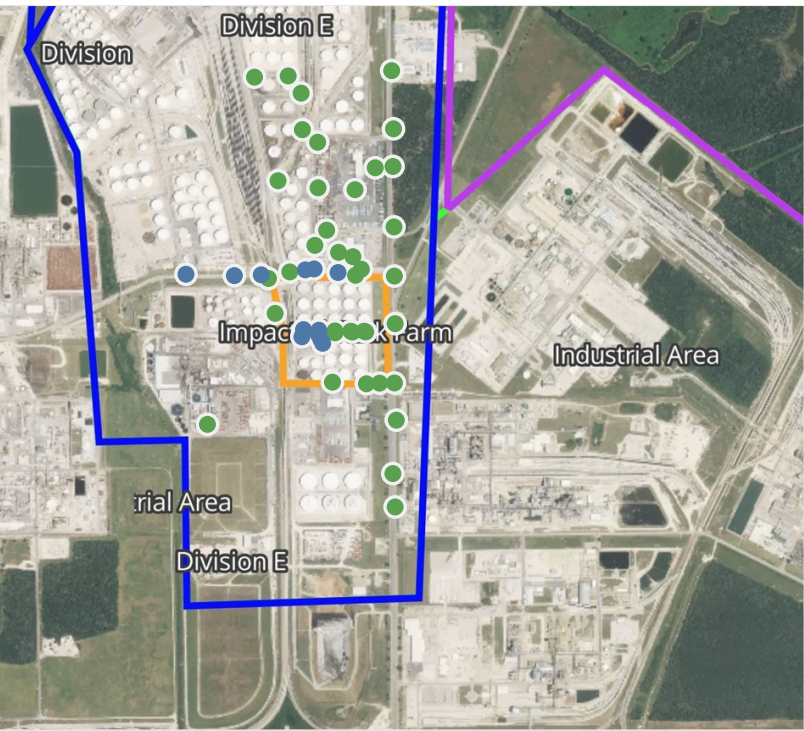


Preliminary Hand- Held Air Monitoring Locations | ITC Deer Park Tank Fire

Reading Date
5/6/2019 11:00:00 PM to 5/7/2019 12:00:00 AM



Recent Benzene Detections

Location Category	Reading Date	Range of Detections
Division E	5/6/2019 23:17:54	0.01000 ppm
	5/6/2019 23:15:39	0.01000 ppm
	5/6/2019 23:19:54	0.01000 ppm
	5/6/2019 23:43:34	0.05000 ppm
	5/6/2019 23:45:35	0.05000 ppm
	5/6/2019 23:41:42	0.03000 ppm
Impacted Tank Farm	5/6/2019 23:25:52	0.06000 ppm
	5/6/2019 23:25:43	0.04000 ppm
	5/6/2019 23:28:46	0.09000 ppm
	5/6/2019 23:28:39	0.06000 ppm
	5/6/2019 23:32:10	0.05000 ppm
	5/6/2019 23:33:00	0.07000 ppm

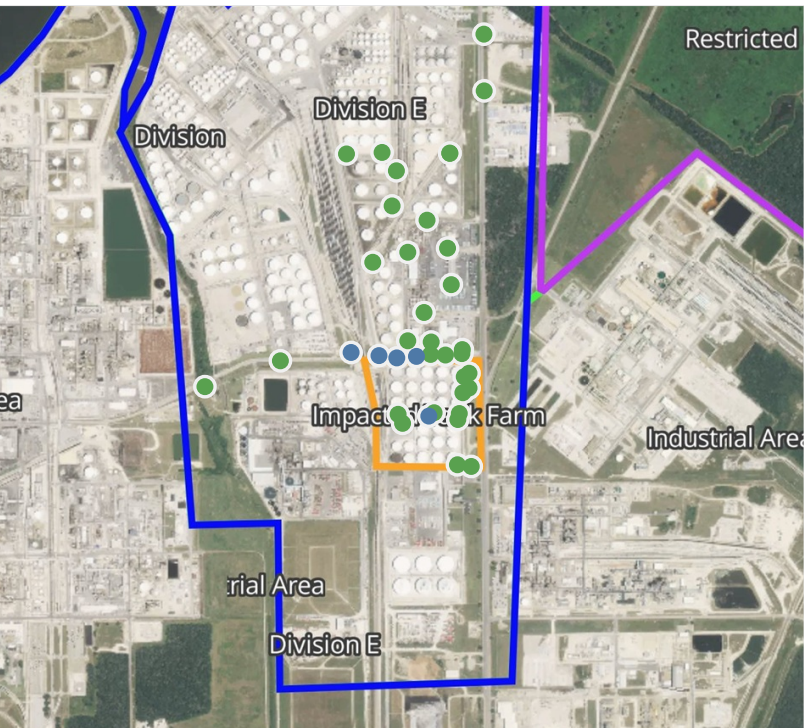
This data has been provided expeditiously to ITC and regulatory agencies for informational and/or operational purposes only. Data reported within this summary is preliminary in nature and has not undergone complete QA/QC (quality assurance/quality control) process. Until this complete QA/QC process is completed, the locations of each reading are approximate in nature and subject to further refinement. As some readings may represent non-breathing zone measurements, the data reported herein may not be suitable to assess potential occupational exposure. Site Assessment readings are not representative of an individual's breathing zone (e.g., container head space, ground level, directly above product, etc.).



Please Note: These updates display data from the 2nd 80's Fire site (Impacted Tank Farm), in the industrial areas surrounding the 2nd 80's Fire site (US Coast Guard Division E), within the Houston Ship Channel (US Coast Guard Divisions A-D), and in the industrial areas north and south of the Houston Ship Channel (Industrial Area). Real-time air monitoring data for the surrounding communities are communicated daily in a separate report.

Preliminary Hand- Held Air Monitoring Locations | ITC Deer Park Tank Fire

Reading Date
5/7/2019 12:00:00 AM to 5/7/2019 1:00:00 AM



Recent Benzene Detections

Location Category	Reading Date	Range of Detections
Division E	5/7/2019 00:32:48	0.02000 ppm
	5/7/2019 00:30:43	0.02000 ppm
	5/7/2019 00:47:38	0.02000 ppm
	5/7/2019 00:45:18	0.03000 ppm
Impacted Tank Farm	5/7/2019 00:51:50	0.03000 ppm

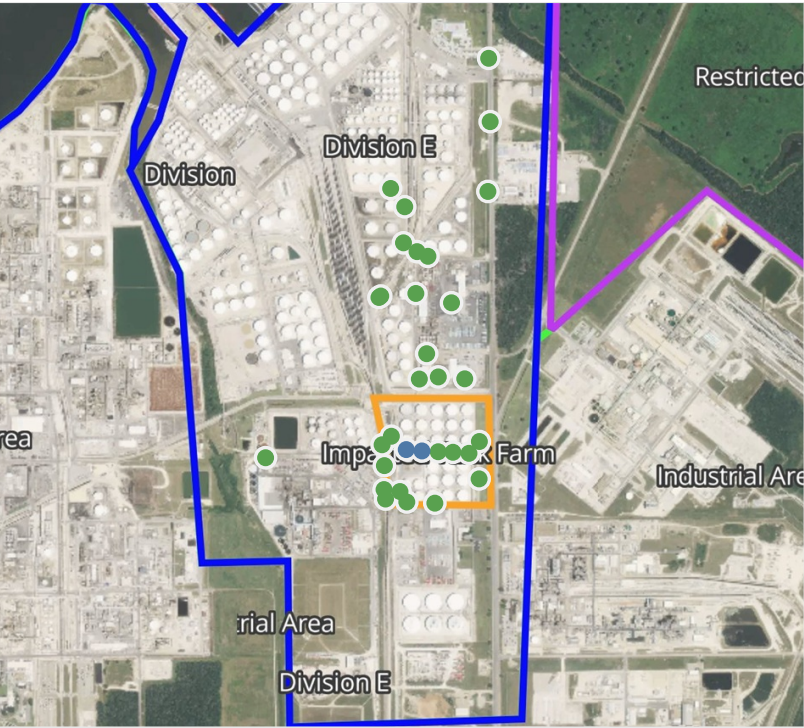
This data has been provided expeditiously to ITC and regulatory agencies for informational and/or operational purposes only. Data reported within this summary is preliminary in nature and has not undergone complete QA/QC (quality assurance/quality control) process. Until this complete QA/QC process is completed, the locations of each reading are approximate in nature and subject to further refinement. As some readings may represent non-breathing zone measurements, the data reported herein may not be suitable to assess potential occupational exposure. Site Assessment readings are not representative of an individual's breathing zone (e.g., container head space, ground level, directly above product, etc.).



Please Note: These updates display data from the 2nd 80's Fire site (Impacted Tank Farm), in the industrial areas surrounding the 2nd 80's Fire site (US Coast Guard Division E), within the Houston Ship Channel (US Coast Guard Divisions A-D), and in the industrial areas north and south of the Houston Ship Channel (Industrial Area). Real-time air monitoring data for the surrounding communities are communicated daily in a separate report.

Preliminary Hand- Held Air Monitoring Locations | ITC Deer Park Tank Fire

Reading Date
5/7/2019 1:00:00 AM to 5/7/2019 2:00:00 AM



Recent Benzene Detections

Location Category	Reading Date	Range of Detections
Impacted Tank Farm	5/7/2019 01:26:39	0.06000 ppm
	5/7/2019 01:28:33	0.03000 ppm

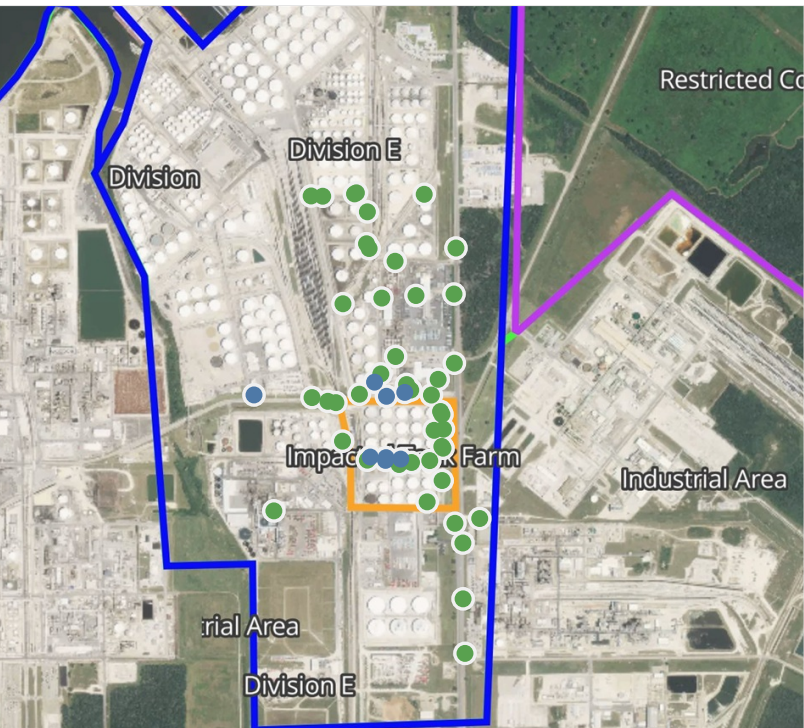
This data has been provided expeditiously to ITC and regulatory agencies for informational and/or operational purposes only. Data reported within this summary is preliminary in nature and has not undergone complete QA/QC (quality assurance/quality control) process. Until this complete QA/QC process is completed, the locations of each reading are approximate in nature and subject to further refinement. As some readings may represent non-breathing zone measurements, the data reported herein may not be suitable to assess potential occupational exposure. Site Assessment readings are not representative of an individual's breathing zone (e.g., container head space, ground level, directly above product, etc.).



Please Note: These updates display data from the 2nd 80's Fire site (Impacted Tank Farm), in the industrial areas surrounding the 2nd 80's Fire site (US Coast Guard Division E), within the Houston Ship Channel (US Coast Guard Divisions A-D), and in the industrial areas north and south of the Houston Ship Channel (Industrial Area). Real-time air monitoring data for the surrounding communities are communicated daily in a separate report.

Preliminary Hand- Held Air Monitoring Locations | ITC Deer Park Tank Fire

Reading Date
5/7/2019 2:00:00 AM to 5/7/2019 3:00:00 AM



Recent Benzene Detections

Location Category	Reading Date	Range of Detections
Division E	5/7/2019 02:32:02	0.07000 ppm
	5/7/2019 02:33:54	0.02000 ppm
	5/7/2019 02:29:55	0.06000 ppm
	5/7/2019 02:44:30	0.01000 ppm
Impacted Tank Farm	5/7/2019 02:55:27	0.03000 ppm
	5/7/2019 02:56:49	0.04000 ppm
	5/7/2019 02:56:31	0.05000 ppm
	5/7/2019 02:58:16	0.03000 ppm

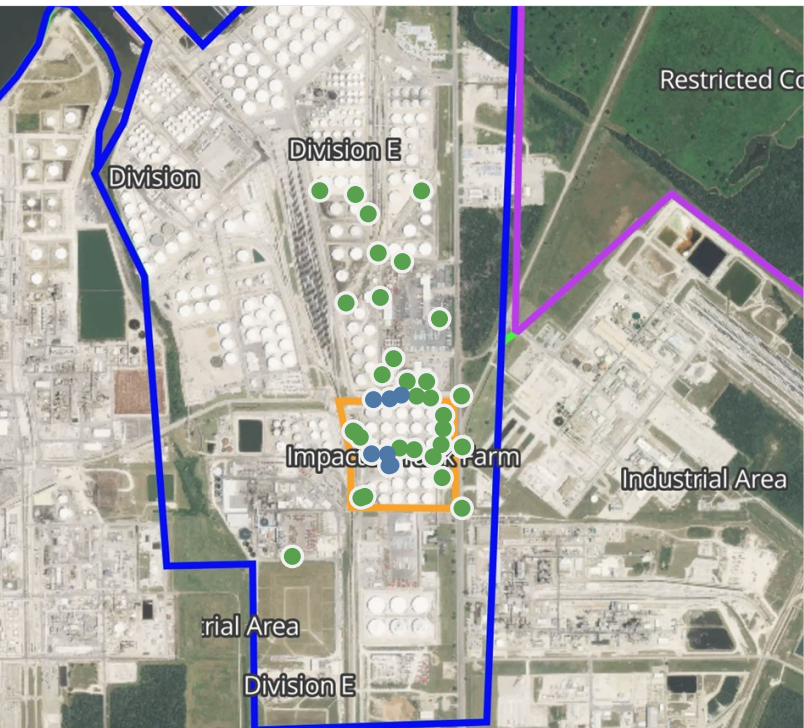
This data has been provided expeditiously to ITC and regulatory agencies for informational and/or operational purposes only. Data reported within this summary is preliminary in nature and has not undergone complete QA/QC (quality assurance/quality control) process. Until this complete QA/QC process is completed, the locations of each reading are approximate in nature and subject to further refinement. As some readings may represent non-breathing zone measurements, the data reported herein may not be suitable to assess potential occupational exposure. Site Assessment readings are not representative of an individual's breathing zone (e.g., container head space, ground level, directly above product, etc.).



Please Note: These updates display data from the 2nd 80's Fire site (Impacted Tank Farm), in the industrial areas surrounding the 2nd 80's Fire site (US Coast Guard Division E), within the Houston Ship Channel (US Coast Guard Divisions A-D), and in the industrial areas north and south of the Houston Ship Channel (Industrial Area). Real-time air monitoring data for the surrounding communities are communicated daily in a separate report.

Preliminary Hand- Held Air Monitoring Locations | ITC Deer Park Tank Fire

Reading Date
5/7/2019 3:00:00 AM to 5/7/2019 4:00:00 AM



Recent Benzene Detections

Location Category	Reading Date	Range of Detections
Division E	5/7/2019 03:37:25	0.07000 ppm
	5/7/2019 03:42:44	0.03000 ppm
	5/7/2019 03:45:04	0.03000 ppm
Impacted Tank Farm	5/7/2019 03:01:08	0.07000 ppm
	5/7/2019 03:00:44	0.06000 ppm
	5/7/2019 03:34:28	0.04000 ppm
	5/7/2019 03:36:38	0.03000 ppm

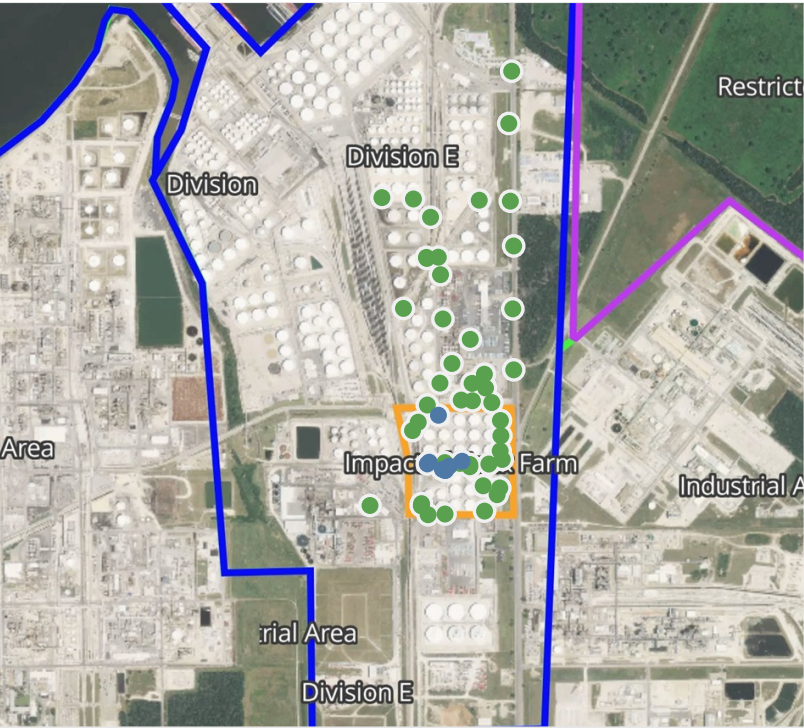
This data has been provided expeditiously to ITC and regulatory agencies for informational and/or operational purposes only. Data reported within this summary is preliminary in nature and has not undergone complete QA/QC (quality assurance/quality control) process. Until this complete QA/QC process is completed, the locations of each reading are approximate in nature and subject to further refinement. As some readings may represent non-breathing zone measurements, the data reported herein may not be suitable to assess potential occupational exposure. Site Assessment readings are not representative of an individual's breathing zone (e.g., container head space, ground level, directly above product, etc.).



Please Note: These updates display data from the 2nd 80's Fire site (Impacted Tank Farm), in the industrial areas surrounding the 2nd 80's Fire site (US Coast Guard Division E), within the Houston Ship Channel (US Coast Guard Divisions A-D), and in the industrial areas north and south of the Houston Ship Channel (Industrial Area). Real-time air monitoring data for the surrounding communities are communicated daily in a separate report.

Preliminary Hand- Held Air Monitoring Locations | ITC Deer Park Tank Fire

Reading Date
5/7/2019 4:00:00 AM to 5/7/2019 5:00:00 AM



Recent Benzene Detections

Location Category	Reading Date	Range of Detections
Division E	5/7/2019 04:39:13	0.04000 ppm
Impacted Tank Farm	5/7/2019 04:26:54	0.02000 ppm
	5/7/2019 04:28:32	0.05000 ppm
	5/7/2019 04:30:32	0.04000 ppm
	5/7/2019 04:30:26	0.03000 ppm
	5/7/2019 04:39:07	0.10000 ppm
	5/7/2019 04:39:42	0.06000 ppm
	5/7/2019 04:39:49	0.04000 ppm

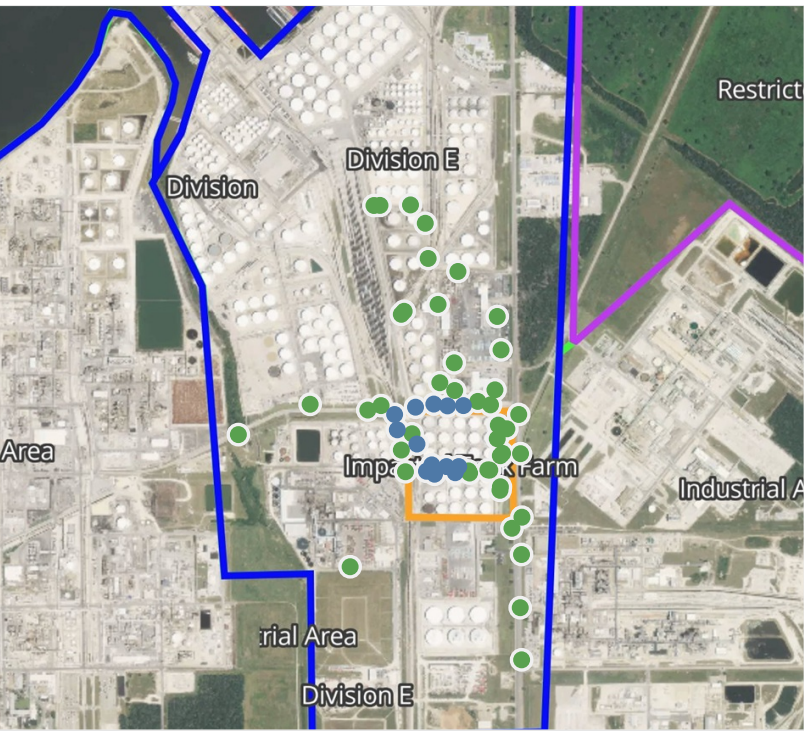
This data has been provided expeditiously to ITC and regulatory agencies for informational and/or operational purposes only. Data reported within this summary is preliminary in nature and has not undergone complete QA/QC (quality assurance/quality control) process. Until this complete QA/QC process is completed, the locations of each reading are approximate in nature and subject to further refinement. As some readings may represent non-breathing zone measurements, the data reported herein may not be suitable to assess potential occupational exposure. Site Assessment readings are not representative of an individual's breathing zone (e.g., container head space, ground level, directly above product, etc.).



Please Note: These updates display data from the 2nd 80's Fire site (Impacted Tank Farm), in the industrial areas surrounding the 2nd 80's Fire site (US Coast Guard Division E), within the Houston Ship Channel (US Coast Guard Divisions A-D), and in the industrial areas north and south of the Houston Ship Channel (Industrial Area). Real-time air monitoring data for the surrounding communities are communicated daily in a separate report.

Preliminary Hand- Held Air Monitoring Locations | ITC Deer Park Tank Fire

Reading Date
5/7/2019 5:00:00 AM to 5/7/2019 6:00:00 AM



Recent Benzene Detections

Location Category	Reading Date	Range of Detections
Division E	5/7/2019 05:03:04	0.04000 ppm
	5/7/2019 05:36:00	0.04000 ppm
	5/7/2019 05:29:18	0.02000 ppm
	5/7/2019 05:31:11	0.02000 ppm
	5/7/2019 05:33:53	0.02000 ppm
	5/7/2019 05:05:58	0.02000 ppm
Impacted Tank Farm	5/7/2019 05:46:19	0.02000 ppm
	5/7/2019 05:46:26	0.05000 ppm
	5/7/2019 05:48:28	0.03000 ppm
	5/7/2019 05:50:17	0.02000 ppm
	5/7/2019 05:48:12	0.05000 ppm
	5/7/2019 05:50:11	0.06000 ppm
	5/7/2019 05:53:51	0.04000 ppm

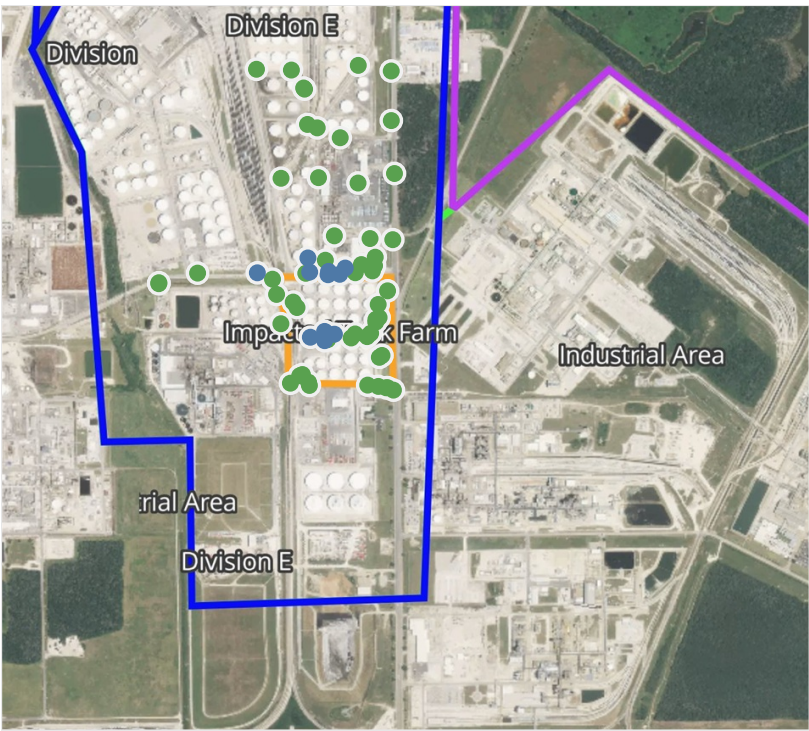
This data has been provided expeditiously to ITC and regulatory agencies for informational and/or operational purposes only. Data reported within this summary is preliminary in nature and has not undergone complete QA/QC (quality assurance/quality control) process. Until this complete QA/QC process is completed, the locations of each reading are approximate in nature and subject to further refinement. As some readings may represent non-breathing zone measurements, the data reported herein may not be suitable to assess potential occupational exposure. Site Assessment readings are not representative of an individual's breathing zone (e.g., container head space, ground level, directly above product, etc.).



Please Note: These updates display data from the 2nd 80's Fire site (Impacted Tank Farm), in the industrial areas surrounding the 2nd 80's Fire site (US Coast Guard Division E), within the Houston Ship Channel (US Coast Guard Divisions A-D), and in the industrial areas north and south of the Houston Ship Channel (Industrial Area). Real-time air monitoring data for the surrounding communities are communicated daily in a separate report.

Preliminary Hand- Held Air Monitoring Locations | ITC Deer Park Tank Fire

Reading Date
5/7/2019 6:00:00 AM to 5/7/2019 7:00:00 AM



Recent Benzene Detections

Location Category	Reading Date	Range of Detections
Division E	5/7/2019 06:15:32	0.04000 ppm
	5/7/2019 06:20:09	0.04000 ppm
	5/7/2019 06:22:33	0.02000 ppm
	5/7/2019 06:33:02	0.01000 ppm
	5/7/2019 06:35:35	0.02000 ppm
	5/7/2019 06:45:50	0.04000 ppm
Impacted Tank Farm	5/7/2019 06:47:32	0.05000 ppm
	5/7/2019 06:19:04	0.06000 ppm
	5/7/2019 06:18:50	0.05000 ppm
	5/7/2019 06:21:33	0.04000 ppm
	5/7/2019 06:21:10	0.03000 ppm
	5/7/2019 06:24:16	0.04000 ppm
	5/7/2019 06:26:54	0.03000 ppm

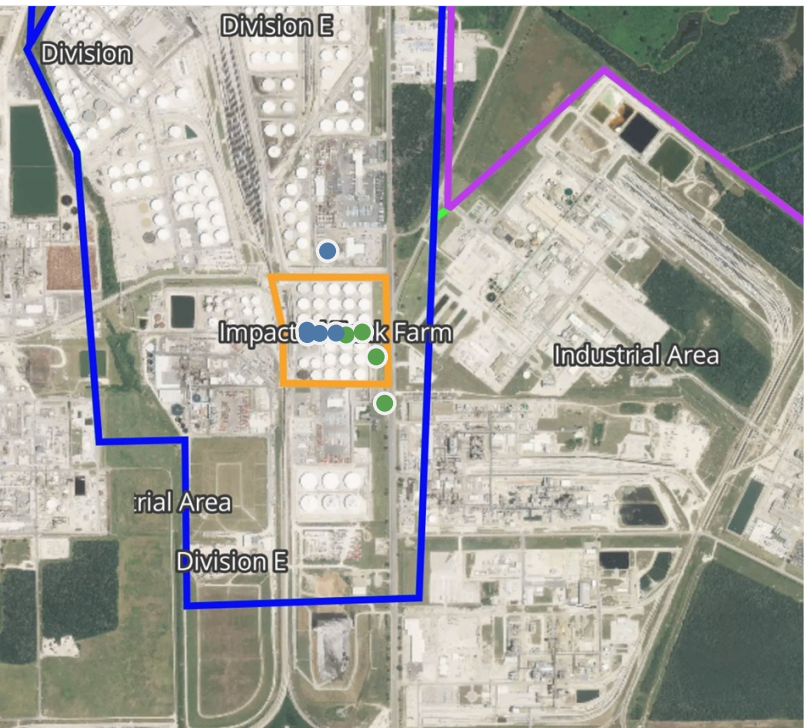
This data has been provided expeditiously to ITC and regulatory agencies for informational and/or operational purposes only. Data reported within this summary is preliminary in nature and has not undergone complete QA/QC (quality assurance/quality control) process. Until this complete QA/QC process is completed, the locations of each reading are approximate in nature and subject to further refinement. As some readings may represent non-breathing zone measurements, the data reported herein may not be suitable to assess potential occupational exposure. Site Assessment readings are not representative of an individual's breathing zone (e.g., container head space, ground level, directly above product, etc.).



Please Note: These updates display data from the 2nd 80's Fire site (Impacted Tank Farm), in the industrial areas surrounding the 2nd 80's Fire site (US Coast Guard Division E), within the Houston Ship Channel (US Coast Guard Divisions A-D), and in the industrial areas north and south of the Houston Ship Channel (Industrial Area). Real-time air monitoring data for the surrounding communities are communicated daily in a separate report.

Preliminary Hand- Held Air Monitoring Locations | ITC Deer Park Tank Fire

Reading Date
5/7/2019 7:00:00 AM to 5/7/2019 8:00:00 AM



Recent Benzene Detections

Location Category	Reading Date	Range of Detections
Division E	5/7/2019 07:32:56	0.0400 ppm
Impacted Tank Farm	5/7/2019 07:51:12	0.0200 ppm
	5/7/2019 07:55:15	0.0500 ppm
	5/7/2019 07:57:46	0.0400 ppm
	5/7/2019 07:57:04	0.1400 ppm

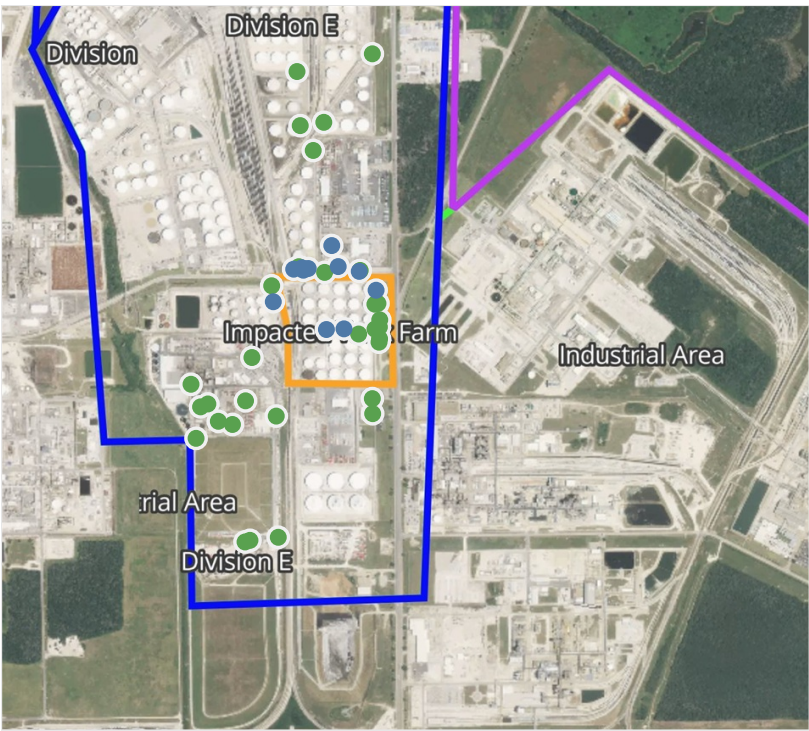
This data has been provided expeditiously to ITC and regulatory agencies for informational and/or operational purposes only. Data reported within this summary is preliminary in nature and has not undergone complete QA/QC (quality assurance/quality control) process. Until this complete QA/QC process is completed, the locations of each reading are approximate in nature and subject to further refinement. As some readings may represent non-breathing zone measurements, the data reported herein may not be suitable to assess potential occupational exposure. Site Assessment readings are not representative of an individual's breathing zone (e.g., container head space, ground level, directly above product, etc.).



Please Note: These updates display data from the 2nd 80's Fire site (Impacted Tank Farm), in the industrial areas surrounding the 2nd 80's Fire site (US Coast Guard Division E), within the Houston Ship Channel (US Coast Guard Divisions A-D), and in the industrial areas north and south of the Houston Ship Channel (Industrial Area). Real-time air monitoring data for the surrounding communities are communicated daily in a separate report.

Preliminary Hand- Held Air Monitoring Locations | ITC Deer Park Tank Fire

Reading Date
5/7/2019 8:00:00 AM to 5/7/2019 9:00:00 AM



Recent Benzene Detections

Location Category	Reading Date	Range of Detections
Division E	5/7/2019 08:06:37	0.03000 ppm
	5/7/2019 08:15:50	0.02000 ppm
	5/7/2019 08:25:30	0.03000 ppm
	5/7/2019 08:26:47	0.02000 ppm
	5/7/2019 08:26:53	0.03000 ppm
	5/7/2019 08:34:25	0.05000 ppm
	5/7/2019 08:39:17	0.02000 ppm
	5/7/2019 08:38:23	0.02000 ppm
	5/7/2019 08:48:45	0.02000 ppm
Impacted Tank Farm	5/7/2019 08:08:09	0.04000 ppm
	5/7/2019 08:34:10	0.06000 ppm
	5/7/2019 08:33:03	0.06000 ppm

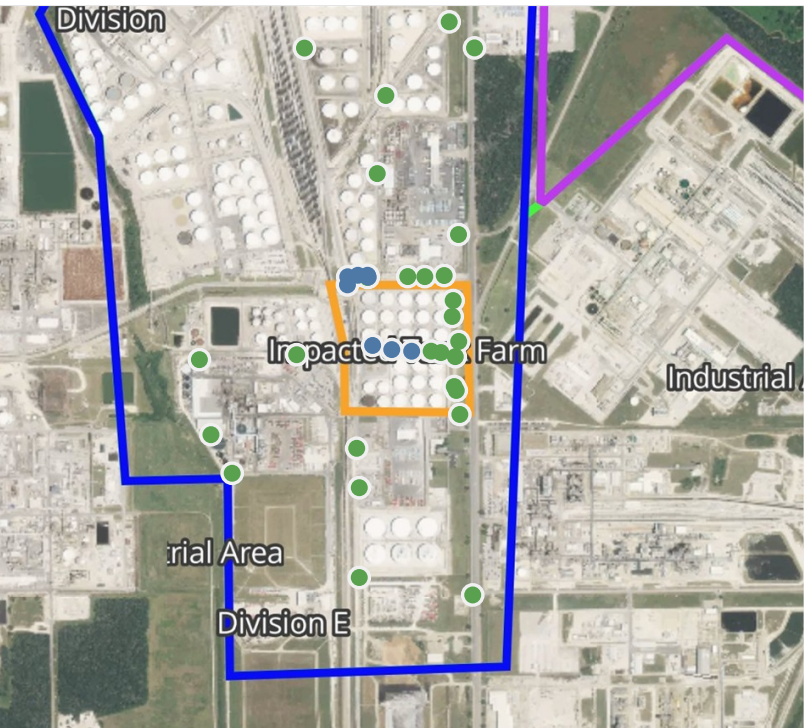
This data has been provided expeditiously to ITC and regulatory agencies for informational and/or operational purposes only. Data reported within this summary is preliminary in nature and has not undergone complete QA/QC (quality assurance/quality control) process. Until this complete QA/QC process is completed, the locations of each reading are approximate in nature and subject to further refinement. As some readings may represent non-breathing zone measurements, the data reported herein may not be suitable to assess potential occupational exposure. Site Assessment readings are not representative of an individual's breathing zone (e.g., container head space, ground level, directly above product, etc.).



Please Note: These updates display data from the 2nd 80's Fire site (Impacted Tank Farm), in the industrial areas surrounding the 2nd 80's Fire site (US Coast Guard Division E), within the Houston Ship Channel (US Coast Guard Divisions A-D), and in the industrial areas north and south of the Houston Ship Channel (Industrial Area). Real-time air monitoring data for the surrounding communities are communicated daily in a separate report.

Preliminary Hand- Held Air Monitoring Locations | ITC Deer Park Tank Fire

Reading Date
5/7/2019 9:00:00 AM to 5/7/2019 10:00:00 AM



Recent Benzene Detections

Location Category	Reading Date	Range of Detections
Division E	5/7/2019 09:00:51	0.02000 ppm
	5/7/2019 09:09:50	0.03000 ppm
	5/7/2019 09:28:24	0.04000 ppm
	5/7/2019 09:38:55	0.01000 ppm
Impacted Tank Farm	5/7/2019 09:20:38	0.08000 ppm
	5/7/2019 09:27:36	0.04000 ppm
	5/7/2019 09:17:16	0.05000 ppm

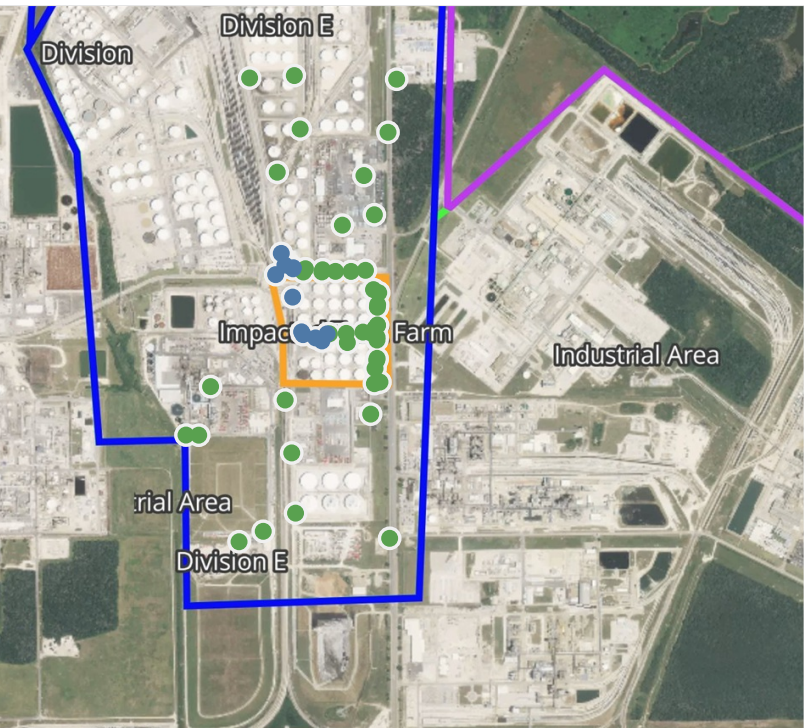
This data has been provided expeditiously to ITC and regulatory agencies for informational and/or operational purposes only. Data reported within this summary is preliminary in nature and has not undergone complete QA/QC (quality assurance/quality control) process. Until this complete QA/QC process is completed, the locations of each reading are approximate in nature and subject to further refinement. As some readings may represent non-breathing zone measurements, the data reported herein may not be suitable to assess potential occupational exposure. Site Assessment readings are not representative of an individual's breathing zone (e.g., container head space, ground level, directly above product, etc.).



Please Note: These updates display data from the 2nd 80's Fire site (Impacted Tank Farm), in the industrial areas surrounding the 2nd 80's Fire site (US Coast Guard Division E), within the Houston Ship Channel (US Coast Guard Divisions A-D), and in the industrial areas north and south of the Houston Ship Channel (Industrial Area). Real-time air monitoring data for the surrounding communities are communicated daily in a separate report.

Preliminary Hand- Held Air Monitoring Locations | ITC Deer Park Tank Fire

Reading Date
5/7/2019 10:00:00 AM to 5/7/2019 11:00:00 AM



Recent Benzene Detections

Location Category	Reading Date	Range of Detections
Division E	5/7/2019 10:03:14	0.03000 ppm
	5/7/2019 10:29:59	0.02000 ppm
	5/7/2019 10:35:10	0.02000 ppm
	5/7/2019 10:41:34	0.03000 ppm
	5/7/2019 10:58:32	0.03000 ppm
Impacted Tank Farm	5/7/2019 10:05:39	0.06000 ppm
	5/7/2019 10:09:12	0.06000 ppm
	5/7/2019 10:07:41	0.06000 ppm
	5/7/2019 10:27:08	0.03000 ppm
	5/7/2019 10:57:44	0.06000 ppm
	5/7/2019 10:59:04	0.05000 ppm

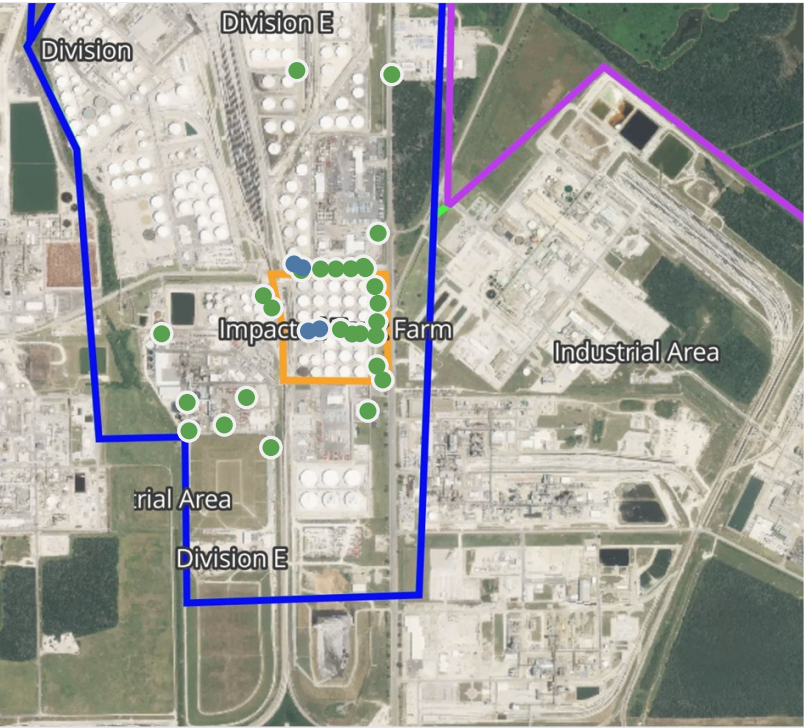
This data has been provided expeditiously to ITC and regulatory agencies for informational and/or operational purposes only. Data reported within this summary is preliminary in nature and has not undergone complete QA/QC (quality assurance/quality control) process. Until this complete QA/QC process is completed, the locations of each reading are approximate in nature and subject to further refinement. As some readings may represent non-breathing zone measurements, the data reported herein may not be suitable to assess potential occupational exposure. Site Assessment readings are not representative of an individual's breathing zone (e.g., container head space, ground level, directly above product, etc.).



Please Note: These updates display data from the 2nd 80's Fire site (Impacted Tank Farm), in the industrial areas surrounding the 2nd 80's Fire site (US Coast Guard Division E), within the Houston Ship Channel (US Coast Guard Divisions A-D), and in the industrial areas north and south of the Houston Ship Channel (Industrial Area). Real-time air monitoring data for the surrounding communities are communicated daily in a separate report.

Preliminary Hand- Held Air Monitoring Locations | ITC Deer Park Tank Fire

Reading Date
5/7/2019 11:00:00 AM to 5/7/2019 12:00:00 PM



Recent Benzene Detections

Location Category	Reading Date	Range of Detections
Division E	5/7/2019 11:20:56	0.01000 ppm
	5/7/2019 11:52:14	0.03000 ppm
Impacted Tank Farm	5/7/2019 11:39:35	0.06000 ppm
	5/7/2019 11:41:09	0.05000 ppm

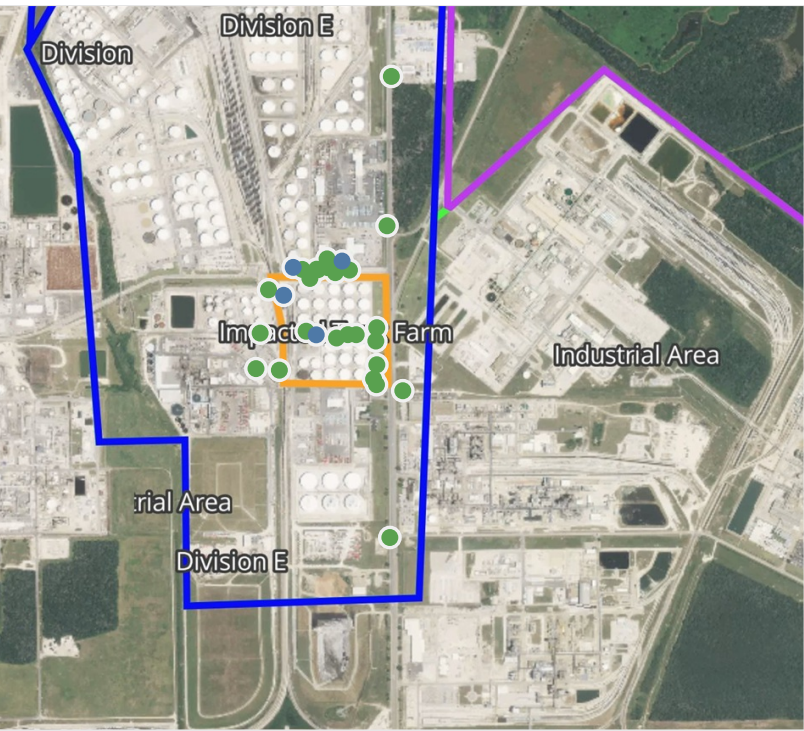
This data has been provided expeditiously to ITC and regulatory agencies for informational and/or operational purposes only. Data reported within this summary is preliminary in nature and has not undergone complete QA/QC (quality assurance/quality control) process. Until this complete QA/QC process is completed, the locations of each reading are approximate in nature and subject to further refinement. As some readings may represent non-breathing zone measurements, the data reported herein may not be suitable to assess potential occupational exposure. Site Assessment readings are not representative of an individual's breathing zone (e.g., container head space, ground level, directly above product, etc.).



Please Note: These updates display data from the 2nd 80's Fire site (Impacted Tank Farm), in the industrial areas surrounding the 2nd 80's Fire site (US Coast Guard Division E), within the Houston Ship Channel (US Coast Guard Divisions A-D), and in the industrial areas north and south of the Houston Ship Channel (Industrial Area). Real-time air monitoring data for the surrounding communities are communicated daily in a separate report.

Preliminary Hand- Held Air Monitoring Locations | ITC Deer Park Tank Fire

Reading Date
5/7/2019 12:00:00 PM to 5/7/2019 1:00:00 PM



Recent Benzene Detections

Location Category	Reading Date	Range of Detections
Division E	5/7/2019 12:50:02	0.01000 ppm
	5/7/2019 12:55:51	0.06000 ppm
Impacted Tank Farm	5/7/2019 12:32:44	0.07000 ppm
	5/7/2019 12:51:03	0.03000 ppm

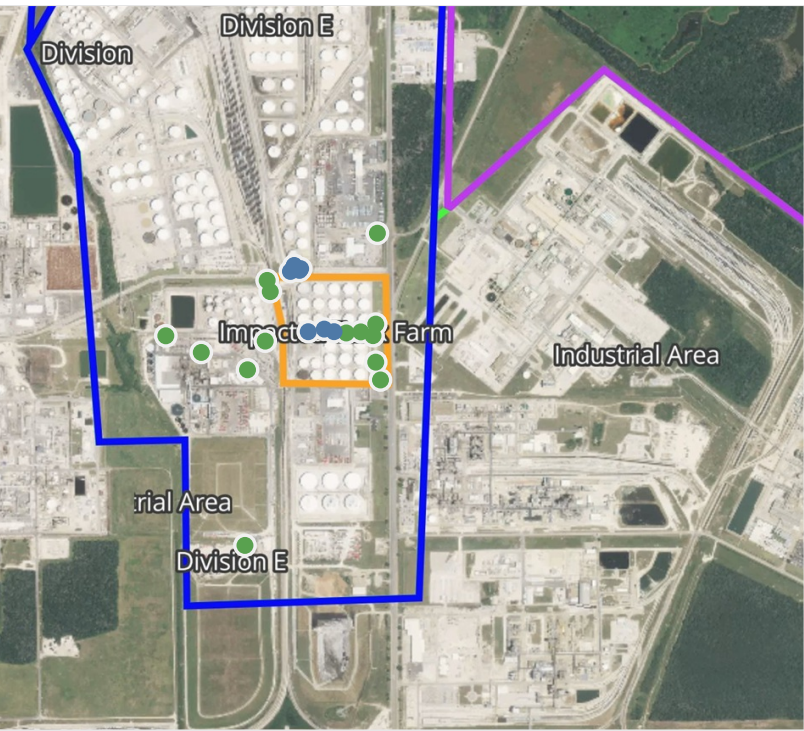
This data has been provided expeditiously to ITC and regulatory agencies for informational and/or operational purposes only. Data reported within this summary is preliminary in nature and has not undergone complete QA/QC (quality assurance/quality control) process. Until this complete QA/QC process is completed, the locations of each reading are approximate in nature and subject to further refinement. As some readings may represent non-breathing zone measurements, the data reported herein may not be suitable to assess potential occupational exposure. Site Assessment readings are not representative of an individual's breathing zone (e.g., container head space, ground level, directly above product, etc.).



Please Note: These updates display data from the 2nd 80's Fire site (Impacted Tank Farm), in the industrial areas surrounding the 2nd 80's Fire site (US Coast Guard Division E), within the Houston Ship Channel (US Coast Guard Divisions A-D), and in the industrial areas north and south of the Houston Ship Channel (Industrial Area). Real-time air monitoring data for the surrounding communities are communicated daily in a separate report.

Preliminary Hand- Held Air Monitoring Locations | ITC Deer Park Tank Fire

Reading Date
5/7/2019 1:00:00 PM to 5/7/2019 2:00:00 PM



Recent Benzene Detections

Location Category	Reading Date	Range of Detections
Division E	5/7/2019 13:07:14	0.03000 ppm
	5/7/2019 13:20:26	0.03000 ppm
	5/7/2019 13:38:07	0.02000 ppm
	5/7/2019 13:48:47	0.03000 ppm
	5/7/2019 13:45:53	0.02000 ppm
	5/7/2019 13:55:05	0.02000 ppm
Impacted Tank Farm	5/7/2019 13:25:11	0.03000 ppm
	5/7/2019 13:23:29	0.04000 ppm
	5/7/2019 13:26:18	0.03000 ppm

This data has been provided expeditiously to ITC and regulatory agencies for informational and/or operational purposes only. Data reported within this summary is preliminary in nature and has not undergone complete QA/QC (quality assurance/quality control) process. Until this complete QA/QC process is completed, the locations of each reading are approximate in nature and subject to further refinement. As some readings may represent non-breathing zone measurements, the data reported herein may not be suitable to assess potential occupational exposure. Site Assessment readings are not representative of an individual's breathing zone (e.g., container head space, ground level, directly above product, etc.).



Please Note: These updates display data from the 2nd 80's Fire site (Impacted Tank Farm), in the industrial areas surrounding the 2nd 80's Fire site (US Coast Guard Division E), within the Houston Ship Channel (US Coast Guard Divisions A-D), and in the industrial areas north and south of the Houston Ship Channel (Industrial Area). Real-time air monitoring data for the surrounding communities are communicated daily in a separate report.

Preliminary Hand- Held Air Monitoring Locations | ITC Deer Park Tank Fire

Reading Date
5/7/2019 2:00:00 PM to 5/7/2019 3:00:00 PM



Recent Benzene Detections

Location Category	Reading Date	Range of Detections
Division E	5/7/2019 14:06:49	0.02000 ppm
	5/7/2019 14:32:39	0.02000 ppm
	5/7/2019 14:49:01	0.03000 ppm
Impacted Tank Farm	5/7/2019 14:48:14	0.03000 ppm

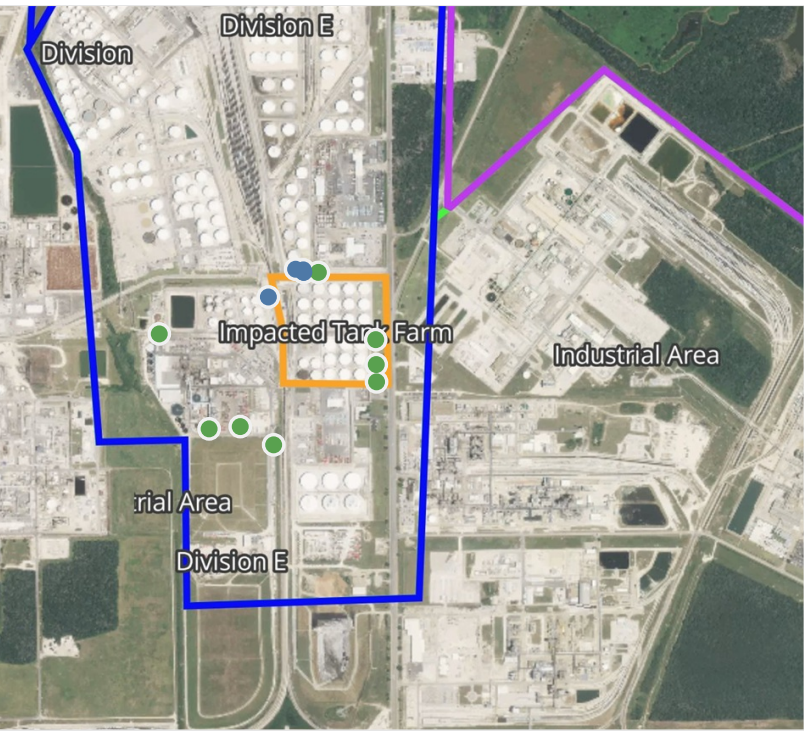
This data has been provided expeditiously to ITC and regulatory agencies for informational and/or operational purposes only. Data reported within this summary is preliminary in nature and has not undergone complete QA/QC (quality assurance/quality control) process. Until this complete QA/QC process is completed, the locations of each reading are approximate in nature and subject to further refinement. As some readings may represent non-breathing zone measurements, the data reported herein may not be suitable to assess potential occupational exposure. Site Assessment readings are not representative of an individual's breathing zone (e.g., container head space, ground level, directly above product, etc.).



Please Note: These updates display data from the 2nd 80's Fire site (Impacted Tank Farm), in the industrial areas surrounding the 2nd 80's Fire site (US Coast Guard Division E), within the Houston Ship Channel (US Coast Guard Divisions A-D), and in the industrial areas north and south of the Houston Ship Channel (Industrial Area). Real-time air monitoring data for the surrounding communities are communicated daily in a separate report.

Preliminary Hand- Held Air Monitoring Locations | ITC Deer Park Tank Fire

Reading Date
5/7/2019 3:00:00 PM to 5/7/2019 4:00:00 PM



Recent Benzene Detections

Location Category	Reading Date	Range of Detections
Division E	5/7/2019 15:01:36	0.03000 ppm
	5/7/2019 15:13:54	0.02000 ppm
	5/7/2019 15:19:05	0.03000 ppm
	5/7/2019 15:32:55	0.04000 ppm
	5/7/2019 15:39:03	0.04000 ppm
	5/7/2019 15:51:22	0.03000 ppm

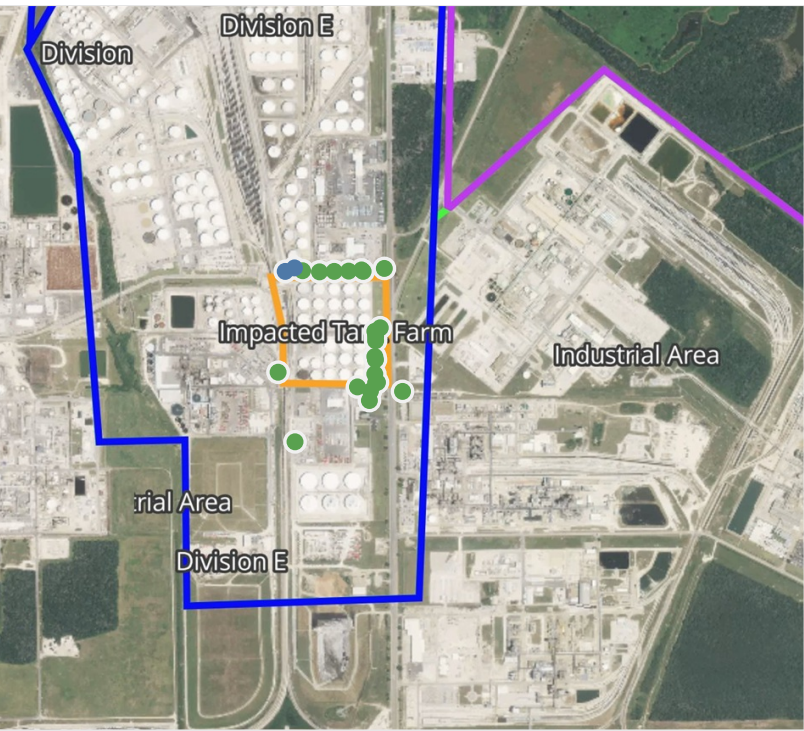
This data has been provided expeditiously to ITC and regulatory agencies for informational and/or operational purposes only. Data reported within this summary is preliminary in nature and has not undergone complete QA/QC (quality assurance/quality control) process. Until this complete QA/QC process is completed, the locations of each reading are approximate in nature and subject to further refinement. As some readings may represent non-breathing zone measurements, the data reported herein may not be suitable to assess potential occupational exposure. Site Assessment readings are not representative of an individual's breathing zone (e.g., container head space, ground level, directly above product, etc.).



Please Note: These updates display data from the 2nd 80's Fire site (Impacted Tank Farm), in the industrial areas surrounding the 2nd 80's Fire site (US Coast Guard Division E), within the Houston Ship Channel (US Coast Guard Divisions A-D), and in the industrial areas north and south of the Houston Ship Channel (Industrial Area). Real-time air monitoring data for the surrounding communities are communicated daily in a separate report.

Preliminary Hand- Held Air Monitoring Locations | ITC Deer Park Tank Fire

Reading Date
5/7/2019 4:00:00 PM to 5/7/2019 5:00:00 PM



Recent Benzene Detections

Location Category	Reading Date	Range of Detections
Division E	5/7/2019 16:28:58	0.02000 ppm
	5/7/2019 16:47:28	0.02000 ppm

This data has been provided expeditiously to ITC and regulatory agencies for informational and/or operational purposes only. Data reported within this summary is preliminary in nature and has not undergone complete QA/QC (quality assurance/quality control) process. Until this complete QA/QC process is completed, the locations of each reading are approximate in nature and subject to further refinement. As some readings may represent non-breathing zone measurements, the data reported herein may not be suitable to assess potential occupational exposure. Site Assessment readings are not representative of an individual's breathing zone (e.g., container head space, ground level, directly above product, etc.).



Please Note: These updates display data from the 2nd 80's Fire site (Impacted Tank Farm), in the industrial areas surrounding the 2nd 80's Fire site (US Coast Guard Division E), within the Houston Ship Channel (US Coast Guard Divisions A-D), and in the industrial areas north and south of the Houston Ship Channel (Industrial Area). Real-time air monitoring data for the surrounding communities are communicated daily in a separate report.

Preliminary Hand- Held Air Monitoring Locations | ITC Deer Park Tank Fire

Reading Date
5/7/2019 5:00:00 PM to 5/7/2019 6:00:00 PM



Recent Benzene Detections

Location Category	Reading Date	Range of Detections
Division E	5/7/2019 17:11:43	0.0900 ppm
	5/7/2019 17:48:15	0.1200 ppm
Impacted Tank Farm	5/7/2019 17:34:13	0.2300 ppm

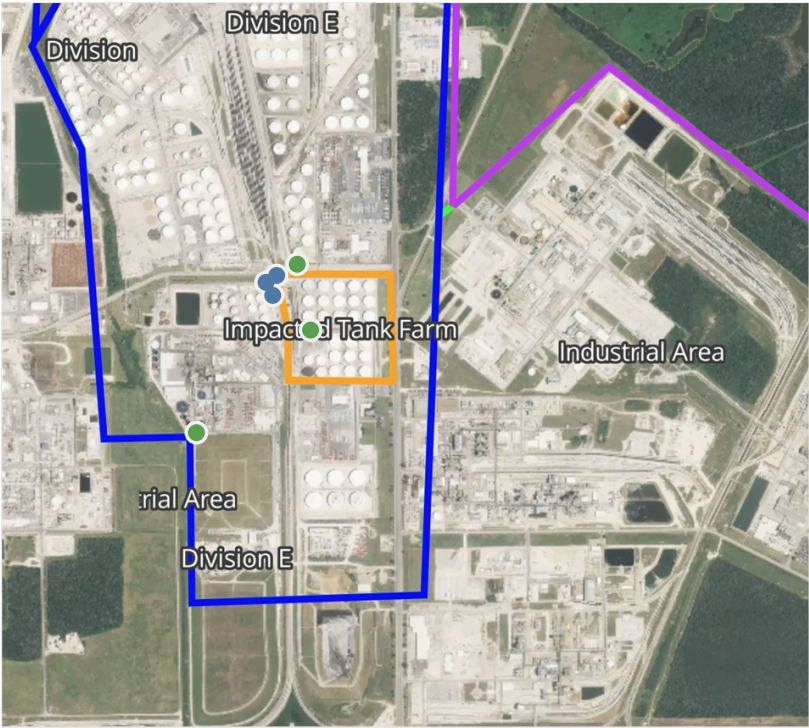
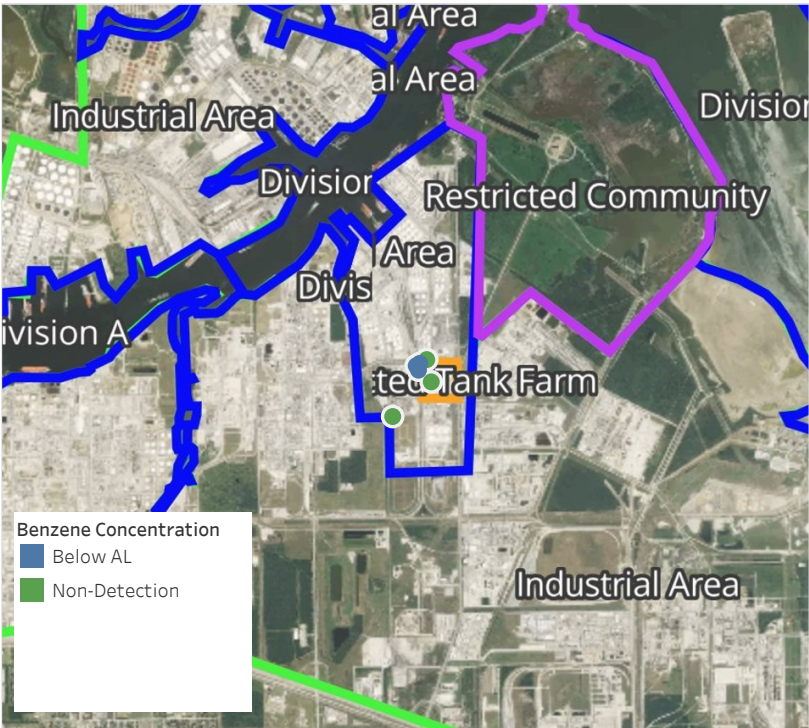
This data has been provided expeditiously to ITC and regulatory agencies for informational and/or operational purposes only. Data reported within this summary is preliminary in nature and has not undergone complete QA/QC (quality assurance/quality control) process. Until this complete QA/QC process is completed, the locations of each reading are approximate in nature and subject to further refinement. As some readings may represent non-breathing zone measurements, the data reported herein may not be suitable to assess potential occupational exposure. Site Assessment readings are not representative of an individual's breathing zone (e.g., container head space, ground level, directly above product, etc.).



Please Note: These updates display data from the 2nd 80's Fire site (Impacted Tank Farm), in the industrial areas surrounding the 2nd 80's Fire site (US Coast Guard Division E), within the Houston Ship Channel (US Coast Guard Divisions A-D), and in the industrial areas north and south of the Houston Ship Channel (Industrial Area). Real-time air monitoring data for the surrounding communities are communicated daily in a separate report.

Preliminary Hand- Held Air Monitoring Locations | ITC Deer Park Tank Fire

Reading Date
5/7/2019 6:00:00 PM to 5/7/2019 7:00:00 PM



Recent Benzene Detections

Location Category	Reading Date	Range of Detections
Impacted Tank Farm	5/7/2019 18:22:57	0.1700 ppm
	5/7/2019 18:26:01	0.0400 ppm
	5/7/2019 18:28:02	0.0800 ppm

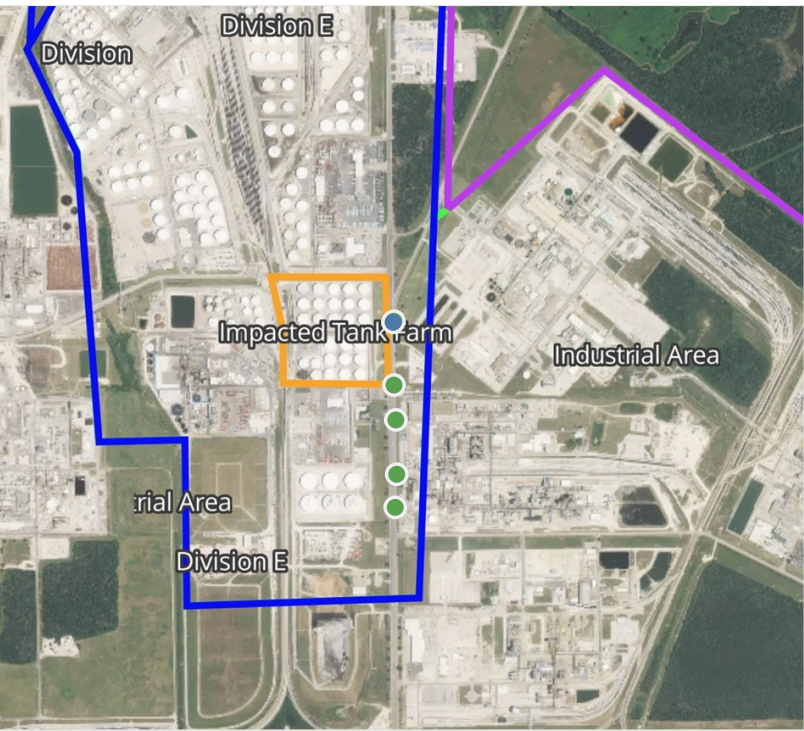
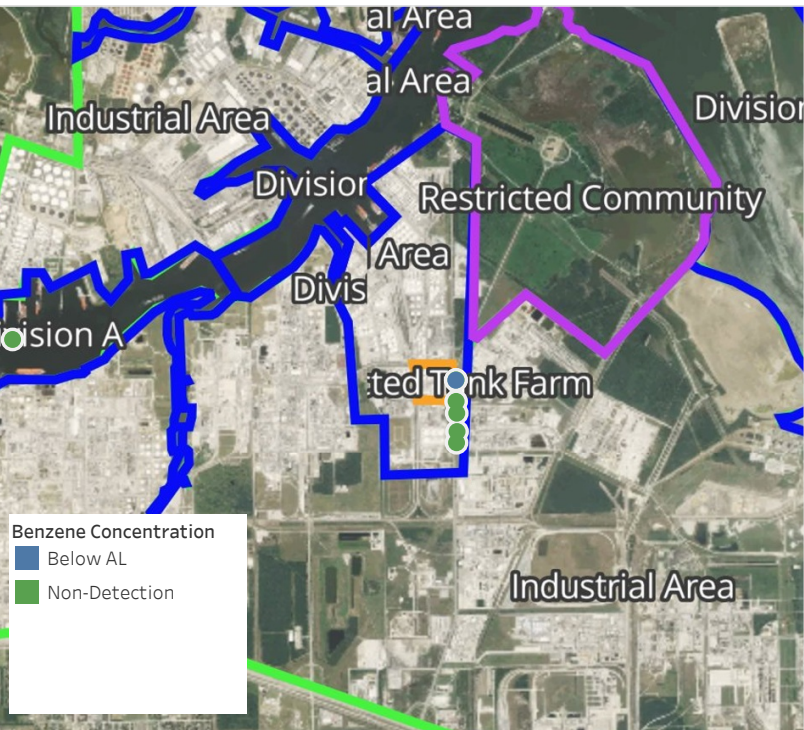
This data has been provided expeditiously to ITC and regulatory agencies for informational and/or operational purposes only. Data reported within this summary is preliminary in nature and has not undergone complete QA/QC (quality assurance/quality control) process. Until this complete QA/QC process is completed, the locations of each reading are approximate in nature and subject to further refinement. As some readings may represent non-breathing zone measurements, the data reported herein may not be suitable to assess potential occupational exposure. Site Assessment readings are not representative of an individual's breathing zone (e.g., container head space, ground level, directly above product, etc.).



Please Note: These updates display data from the 2nd 80's Fire site (Impacted Tank Farm), in the industrial areas surrounding the 2nd 80's Fire site (US Coast Guard Division E), within the Houston Ship Channel (US Coast Guard Divisions A-D), and in the industrial areas north and south of the Houston Ship Channel (Industrial Area). Real-time air monitoring data for the surrounding communities are communicated daily in a separate report.

Preliminary Hand- Held Air Monitoring Locations | ITC Deer Park Tank Fire

Reading Date
5/7/2019 7:00:00 PM to 5/7/2019 8:00:00 PM



Recent Benzene Detections

Location Category	Reading Date	Range of Detections
Division E	5/7/2019 19:54:56	0.09000 ppm

This data has been provided expeditiously to ITC and regulatory agencies for informational and/or operational purposes only. Data reported within this summary is preliminary in nature and has not undergone complete QA/QC (quality assurance/quality control) process. Until this complete QA/QC process is completed, the locations of each reading are approximate in nature and subject to further refinement. As some readings may represent non-breathing zone measurements, the data reported herein may not be suitable to assess potential occupational exposure. Site Assessment readings are not representative of an individual's breathing zone (e.g., container head space, ground level, directly above product, etc.).



Please Note: These updates display data from the 2nd 80's Fire site (Impacted Tank Farm), in the industrial areas surrounding the 2nd 80's Fire site (US Coast Guard Division E), within the Houston Ship Channel (US Coast Guard Divisions A-D), and in the industrial areas north and south of the Houston Ship Channel (Industrial Area). Real-time air monitoring data for the surrounding communities are communicated daily in a separate report.

Preliminary Hand- Held Air Monitoring Locations | ITC Deer Park Tank Fire

Reading Date

5/7/2019 8:00:00 PM to 5/7/2019 9:00:00 PM



Recent Benzene Detections



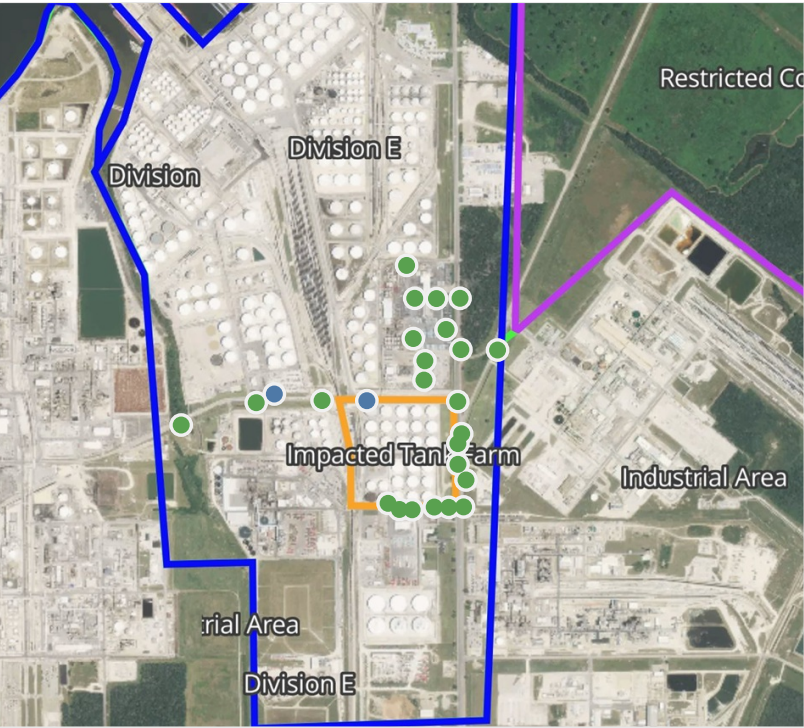
This data has been provided expeditiously to ITC and regulatory agencies for informational and/or operational purposes only. Data reported within this summary is preliminary in nature and has not undergone complete QA/QC (quality assurance/quality control) process. Until this complete QA/QC process is completed, the locations of each reading are approximate in nature and subject to further refinement. As some readings may represent non-breathing zone measurements, the data reported herein may not be suitable to assess potential occupational exposure. Site Assessment readings are not representative of an individual's breathing zone (e.g., container head space, ground level, directly above product, etc.).



Please Note: These updates display data from the 2nd 80's Fire site (Impacted Tank Farm), in the industrial areas surrounding the 2nd 80's Fire site (US Coast Guard Division E), within the Houston Ship Channel (US Coast Guard Divisions A-D), and in the industrial areas north and south of the Houston Ship Channel (Industrial Area). Real-time air monitoring data for the surrounding communities are communicated daily in a separate report.

Preliminary Hand- Held Air Monitoring Locations | ITC Deer Park Tank Fire

Reading Date
5/7/2019 9:00:00 PM to 5/7/2019 10:00:00 PM



Recent Benzene Detections

Location Category	Reading Date	Range of Detections
Division E	5/7/2019 21:40:19	0.01000 ppm
	5/7/2019 21:45:30	0.03000 ppm

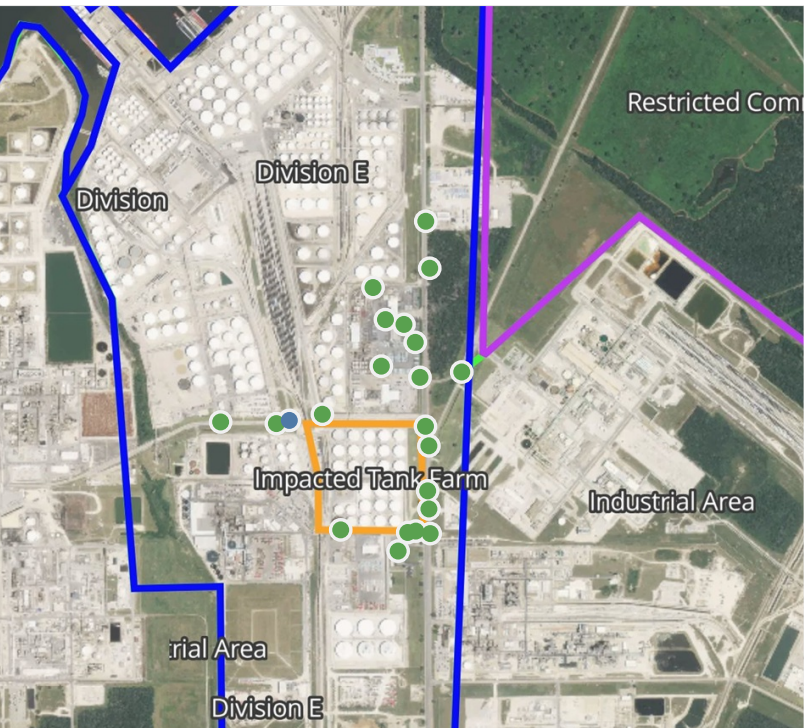
This data has been provided expeditiously to ITC and regulatory agencies for informational and/or operational purposes only. Data reported within this summary is preliminary in nature and has not undergone complete QA/QC (quality assurance/quality control) process. Until this complete QA/QC process is completed, the locations of each reading are approximate in nature and subject to further refinement. As some readings may represent non-breathing zone measurements, the data reported herein may not be suitable to assess potential occupational exposure. Site Assessment readings are not representative of an individual's breathing zone (e.g., container head space, ground level, directly above product, etc.).



Please Note: These updates display data from the 2nd 80's Fire site (Impacted Tank Farm), in the industrial areas surrounding the 2nd 80's Fire site (US Coast Guard Division E), within the Houston Ship Channel (US Coast Guard Divisions A-D), and in the industrial areas north and south of the Houston Ship Channel (Industrial Area). Real-time air monitoring data for the surrounding communities are communicated daily in a separate report.

Preliminary Hand- Held Air Monitoring Locations | ITC Deer Park Tank Fire

Reading Date
5/7/2019 10:00:00 PM to 5/7/2019 11:00:00 PM



Recent Benzene Detections

Location Category	Reading Date	Range of Detections
Division E	5/7/2019 22:36:49	0.03000 ppm

This data has been provided expeditiously to ITC and regulatory agencies for informational and/or operational purposes only. Data reported within this summary is preliminary in nature and has not undergone complete QA/QC (quality assurance/quality control) process. Until this complete QA/QC process is completed, the locations of each reading are approximate in nature and subject to further refinement. As some readings may represent non-breathing zone measurements, the data reported herein may not be suitable to assess potential occupational exposure. Site Assessment readings are not representative of an individual's breathing zone (e.g., container head space, ground level, directly above product, etc.).



Please Note: These updates display data from the 2nd 80's Fire site (Impacted Tank Farm), in the industrial areas surrounding the 2nd 80's Fire site (US Coast Guard Division E), within the Houston Ship Channel (US Coast Guard Divisions A-D), and in the industrial areas north and south of the Houston Ship Channel (Industrial Area). Real-time air monitoring data for the surrounding communities are communicated daily in a separate report.