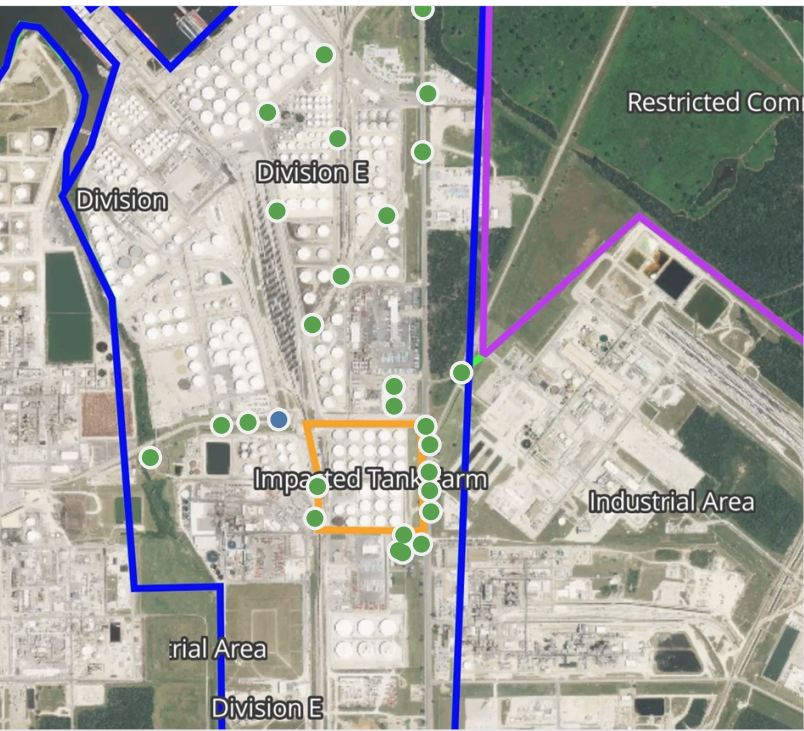


Preliminary Hand- Held Air Monitoring Locations | ITC Deer Park Tank Fire

Reading Date
5/7/2019 11:00:00 PM to 5/8/2019 12:00:00 AM



Recent Benzene Detections

Location Category	Reading Date	Range of Detections
Division E	5/7/2019 23:34:01	0.06000 ppm

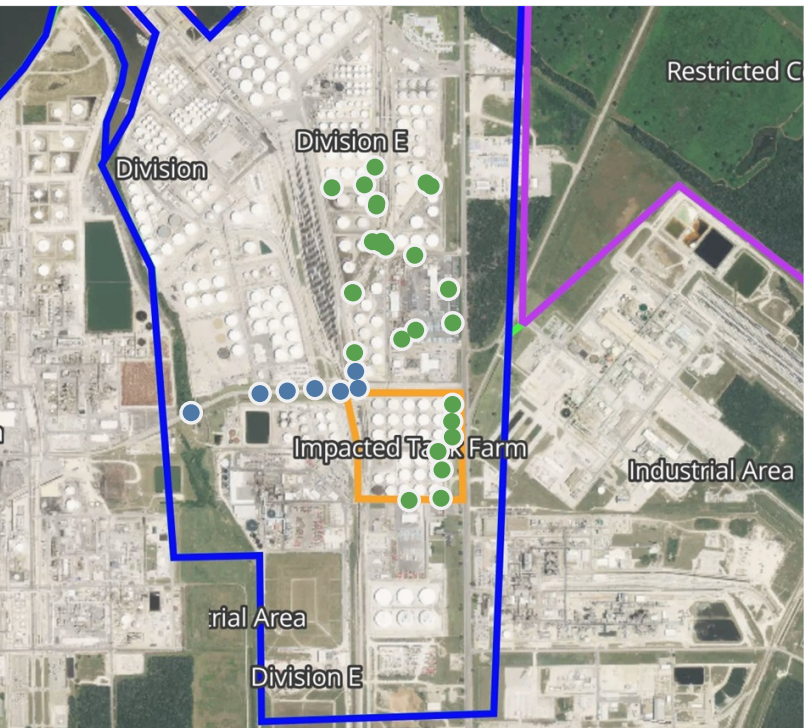
This data has been provided expeditiously to ITC and regulatory agencies for informational and/or operational purposes only. Data reported within this summary is preliminary in nature and has not undergone complete QA/QC (quality assurance/quality control) process. Until this complete QA/QC process is completed, the locations of each reading are approximate in nature and subject to further refinement. As some readings may represent non-breathing zone measurements, the data reported herein may not be suitable to assess potential occupational exposure. Site Assessment readings are not representative of an individual's breathing zone (e.g., container head space, ground level, directly above product, etc.).



Please Note: These updates display data from the 2nd 80's Fire site (Impacted Tank Farm), in the industrial areas surrounding the 2nd 80's Fire site (US Coast Guard Division E), within the Houston Ship Channel (US Coast Guard Divisions A-D), and in the industrial areas north and south of the Houston Ship Channel (Industrial Area). Real-time air monitoring data for the surrounding communities are communicated daily in a separate report.

Preliminary Hand- Held Air Monitoring Locations | ITC Deer Park Tank Fire

Reading Date
5/8/2019 12:00:00 AM to 5/8/2019 1:00:00 AM



Recent Benzene Detections

Location Category	Reading Date	Range of Detections
Division E	5/8/2019 00:32:07	0.02000 ppm
	5/8/2019 00:34:12	0.02000 ppm
	5/8/2019 00:37:45	0.03000 ppm
	5/8/2019 00:35:53	0.01000 ppm
	5/8/2019 00:39:56	0.06000 ppm
	5/8/2019 00:49:39	0.02000 ppm
	5/8/2019 00:56:25	0.10000 ppm

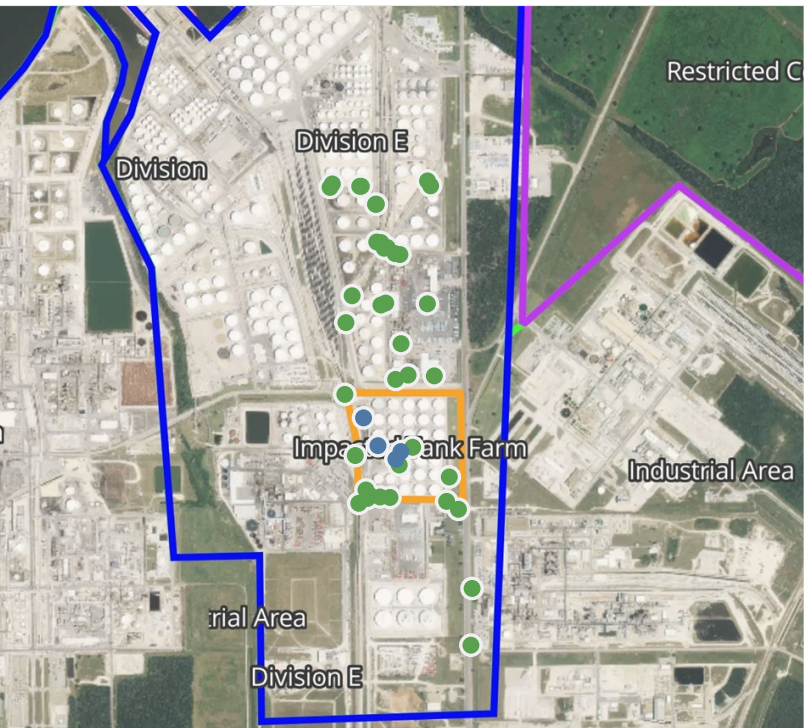
This data has been provided expeditiously to ITC and regulatory agencies for informational and/or operational purposes only. Data reported within this summary is preliminary in nature and has not undergone complete QA/QC (quality assurance/quality control) process. Until this complete QA/QC process is completed, the locations of each reading are approximate in nature and subject to further refinement. As some readings may represent non-breathing zone measurements, the data reported herein may not be suitable to assess potential occupational exposure. Site Assessment readings are not representative of an individual's breathing zone (e.g., container head space, ground level, directly above product, etc.).



Please Note: These updates display data from the 2nd 80's Fire site (Impacted Tank Farm), in the industrial areas surrounding the 2nd 80's Fire site (US Coast Guard Division E), within the Houston Ship Channel (US Coast Guard Divisions A-D), and in the industrial areas north and south of the Houston Ship Channel (Industrial Area). Real-time air monitoring data for the surrounding communities are communicated daily in a separate report.

Preliminary Hand- Held Air Monitoring Locations | ITC Deer Park Tank Fire

Reading Date
5/8/2019 1:00:00 AM to 5/8/2019 2:00:00 AM



Recent Benzene Detections

Location Category	Reading Date	Range of Detections
Impacted Tank Farm	5/8/2019 01:06:23	0.04000 ppm
	5/8/2019 01:10:30	0.02000 ppm
	5/8/2019 01:17:34	0.06000 ppm
	5/8/2019 01:22:42	0.05000 ppm

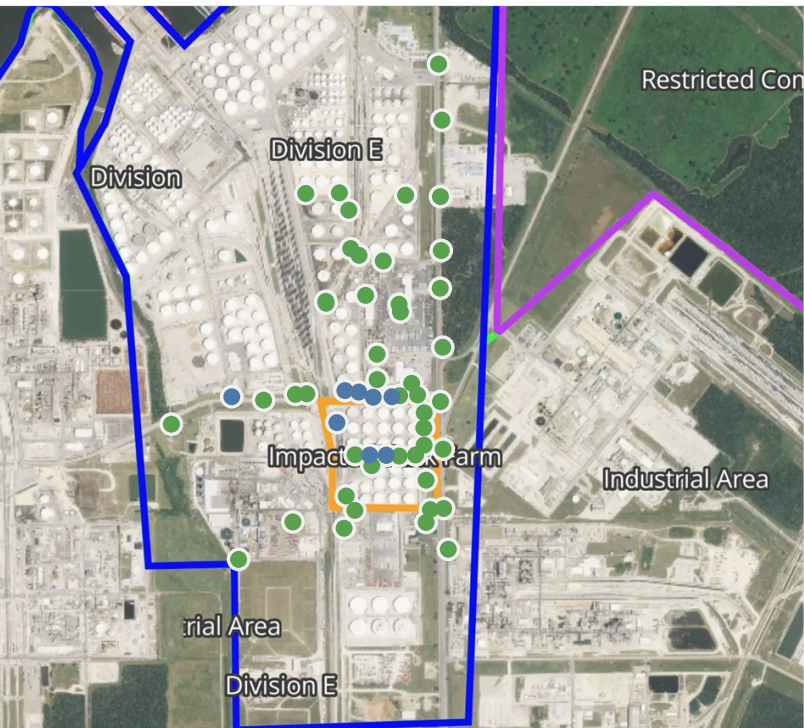
This data has been provided expeditiously to ITC and regulatory agencies for informational and/or operational purposes only. Data reported within this summary is preliminary in nature and has not undergone complete QA/QC (quality assurance/quality control) process. Until this complete QA/QC process is completed, the locations of each reading are approximate in nature and subject to further refinement. As some readings may represent non-breathing zone measurements, the data reported herein may not be suitable to assess potential occupational exposure. Site Assessment readings are not representative of an individual's breathing zone (e.g., container head space, ground level, directly above product, etc.).



Please Note: These updates display data from the 2nd 80's Fire site (Impacted Tank Farm), in the industrial areas surrounding the 2nd 80's Fire site (US Coast Guard Division E), within the Houston Ship Channel (US Coast Guard Divisions A-D), and in the industrial areas north and south of the Houston Ship Channel (Industrial Area). Real-time air monitoring data for the surrounding communities are communicated daily in a separate report.

Preliminary Hand- Held Air Monitoring Locations | ITC Deer Park Tank Fire

Reading Date
5/8/2019 2:00:00 AM to 5/8/2019 3:00:00 AM



Recent Benzene Detections

Location Category	Reading Date	Range of Detections
Division E	5/8/2019 02:29:41	0.02000 ppm
	5/8/2019 02:47:29	0.06000 ppm
	5/8/2019 02:49:44	0.03000 ppm
	5/8/2019 02:45:42	0.01000 ppm
	5/8/2019 02:43:45	0.02000 ppm
Impacted Tank Farm	5/8/2019 02:25:58	0.08000 ppm
	5/8/2019 02:27:01	0.03000 ppm
	5/8/2019 02:31:52	0.03000 ppm

This data has been provided expeditiously to ITC and regulatory agencies for informational and/or operational purposes only. Data reported within this summary is preliminary in nature and has not undergone complete QA/QC (quality assurance/quality control) process. Until this complete QA/QC process is completed, the locations of each reading are approximate in nature and subject to further refinement. As some readings may represent non-breathing zone measurements, the data reported herein may not be suitable to assess potential occupational exposure. Site Assessment readings are not representative of an individual's breathing zone (e.g., container head space, ground level, directly above product, etc.).



Please Note: These updates display data from the 2nd 80's Fire site (Impacted Tank Farm), in the industrial areas surrounding the 2nd 80's Fire site (US Coast Guard Division E), within the Houston Ship Channel (US Coast Guard Divisions A-D), and in the industrial areas north and south of the Houston Ship Channel (Industrial Area). Real-time air monitoring data for the surrounding communities are communicated daily in a separate report.

Preliminary Hand- Held Air Monitoring Locations | ITC Deer Park Tank Fire

Reading Date
5/8/2019 3:00:00 AM to 5/8/2019 4:00:00 AM



Recent Benzene Detections

Location Category	Reading Date	Range of Detections
Division E	5/8/2019 03:44:41	0.03000 ppm
	5/8/2019 03:41:33	0.03000 ppm
	5/8/2019 03:43:09	0.04000 ppm
	5/8/2019 03:56:31	0.02000 ppm
	5/8/2019 03:46:56	0.02000 ppm
Impacted Tank Farm	5/8/2019 03:58:18	0.07000 ppm
	5/8/2019 03:59:56	0.04000 ppm

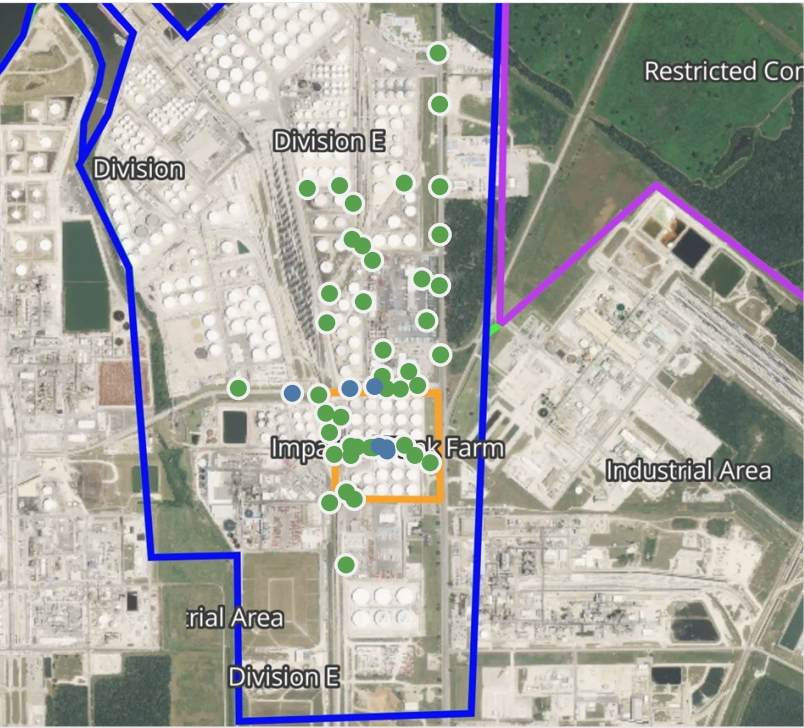
This data has been provided expeditiously to ITC and regulatory agencies for informational and/or operational purposes only. Data reported within this summary is preliminary in nature and has not undergone complete QA/QC (quality assurance/quality control) process. Until this complete QA/QC process is completed, the locations of each reading are approximate in nature and subject to further refinement. As some readings may represent non-breathing zone measurements, the data reported herein may not be suitable to assess potential occupational exposure. Site Assessment readings are not representative of an individual's breathing zone (e.g., container head space, ground level, directly above product, etc.).



Please Note: These updates display data from the 2nd 80's Fire site (Impacted Tank Farm), in the industrial areas surrounding the 2nd 80's Fire site (US Coast Guard Division E), within the Houston Ship Channel (US Coast Guard Divisions A-D), and in the industrial areas north and south of the Houston Ship Channel (Industrial Area). Real-time air monitoring data for the surrounding communities are communicated daily in a separate report.

Preliminary Hand- Held Air Monitoring Locations | ITC Deer Park Tank Fire

Reading Date
5/8/2019 4:00:00 AM to 5/8/2019 5:00:00 AM



Recent Benzene Detections

Location Category	Reading Date	Range of Detections
Division E	5/8/2019 04:00:21	0.02000 ppm
	5/8/2019 04:44:56	0.02000 ppm
	5/8/2019 04:43:57	0.03000 ppm
Impacted Tank Farm	5/8/2019 04:00:04	0.03000 ppm
	5/8/2019 04:12:09	0.03000 ppm
	5/8/2019 04:46:54	0.05000 ppm

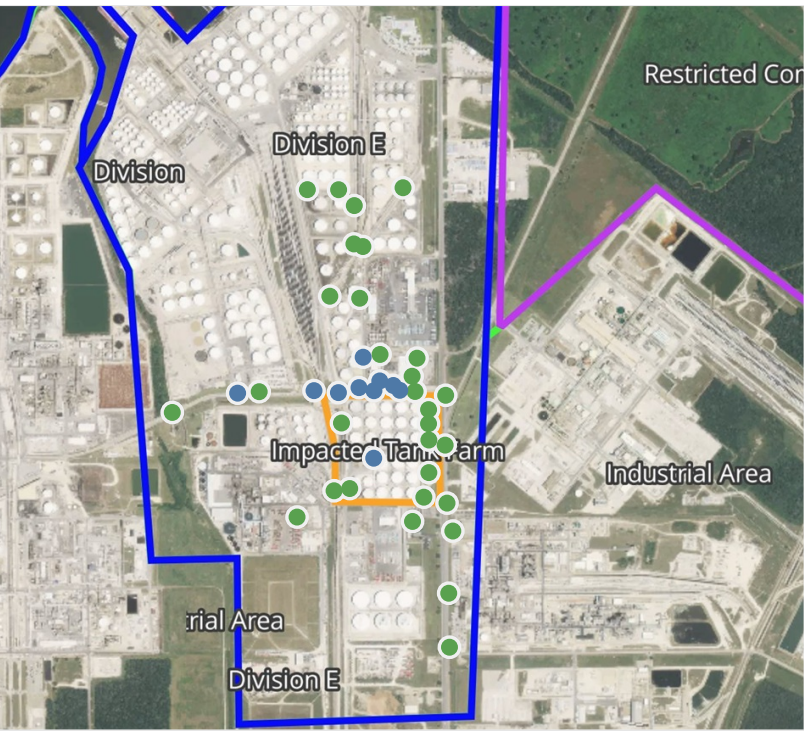
This data has been provided expeditiously to ITC and regulatory agencies for informational and/or operational purposes only. Data reported within this summary is preliminary in nature and has not undergone complete QA/QC (quality assurance/quality control) process. Until this complete QA/QC process is completed, the locations of each reading are approximate in nature and subject to further refinement. As some readings may represent non-breathing zone measurements, the data reported herein may not be suitable to assess potential occupational exposure. Site Assessment readings are not representative of an individual's breathing zone (e.g., container head space, ground level, directly above product, etc.).



Please Note: These updates display data from the 2nd 80's Fire site (Impacted Tank Farm), in the industrial areas surrounding the 2nd 80's Fire site (US Coast Guard Division E), within the Houston Ship Channel (US Coast Guard Divisions A-D), and in the industrial areas north and south of the Houston Ship Channel (Industrial Area). Real-time air monitoring data for the surrounding communities are communicated daily in a separate report.

Preliminary Hand- Held Air Monitoring Locations | ITC Deer Park Tank Fire

Reading Date
5/8/2019 5:00:00 AM to 5/8/2019 6:00:00 AM



Recent Benzene Detections

Location Category	Reading Date	Range of Detections
Division E	5/8/2019 05:33:10	0.04000 ppm
	5/8/2019 05:29:52	0.03000 ppm
	5/8/2019 05:30:49	0.03000 ppm
	5/8/2019 05:36:29	0.03000 ppm
	5/8/2019 05:38:38	0.02000 ppm
	5/8/2019 05:45:35	0.02000 ppm
	5/8/2019 05:43:38	0.03000 ppm
	5/8/2019 05:48:37	0.01000 ppm
	5/8/2019 05:41:50	0.02000 ppm
Impacted Tank Farm	5/8/2019 05:01:40	0.05000 ppm

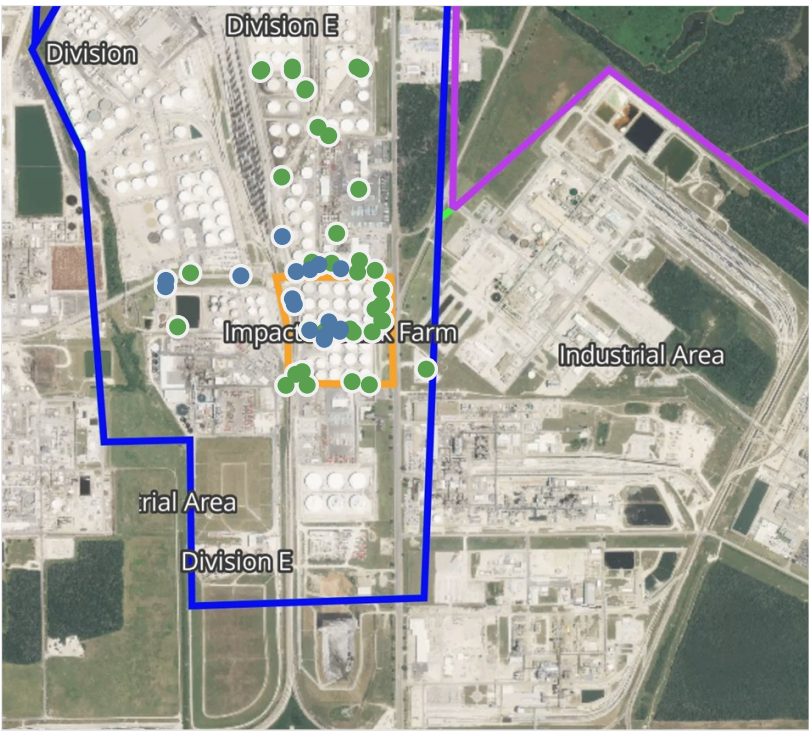
This data has been provided expeditiously to ITC and regulatory agencies for informational and/or operational purposes only. Data reported within this summary is preliminary in nature and has not undergone complete QA/QC (quality assurance/quality control) process. Until this complete QA/QC process is completed, the locations of each reading are approximate in nature and subject to further refinement. As some readings may represent non-breathing zone measurements, the data reported herein may not be suitable to assess potential occupational exposure. Site Assessment readings are not representative of an individual's breathing zone (e.g., container head space, ground level, directly above product, etc.).



Please Note: These updates display data from the 2nd 80's Fire site (Impacted Tank Farm), in the industrial areas surrounding the 2nd 80's Fire site (US Coast Guard Division E), within the Houston Ship Channel (US Coast Guard Divisions A-D), and in the industrial areas north and south of the Houston Ship Channel (Industrial Area). Real-time air monitoring data for the surrounding communities are communicated daily in a separate report.

Preliminary Hand- Held Air Monitoring Locations | ITC Deer Park Tank Fire

Reading Date
5/8/2019 6:00:00 AM to 5/8/2019 7:00:00 AM



Recent Benzene Detections

Location Category	Reading Date	Range of Detections
Division E	5/8/2019 06:33:09	0.0300 ppm
	5/8/2019 06:30:06	0.0200 ppm
	5/8/2019 06:34:53	0.0400 ppm
	5/8/2019 06:37:02	0.0400 ppm
	5/8/2019 06:47:29	0.0300 ppm
	5/8/2019 06:39:20	0.0300 ppm
	5/8/2019 06:59:18	0.0300 ppm
	5/8/2019 06:58:42	0.0200 ppm
Impacted Tank Farm	5/8/2019 06:15:34	0.1600 ppm
	5/8/2019 06:15:22	0.1600 ppm
	5/8/2019 06:17:10	0.0700 ppm
	5/8/2019 06:19:46	0.0200 ppm
	5/8/2019 06:22:46	0.0400 ppm
	5/8/2019 06:24:09	0.0400 ppm
	5/8/2019 06:30:48	0.0300 ppm
	5/8/2019 06:30:48	0.0300 ppm

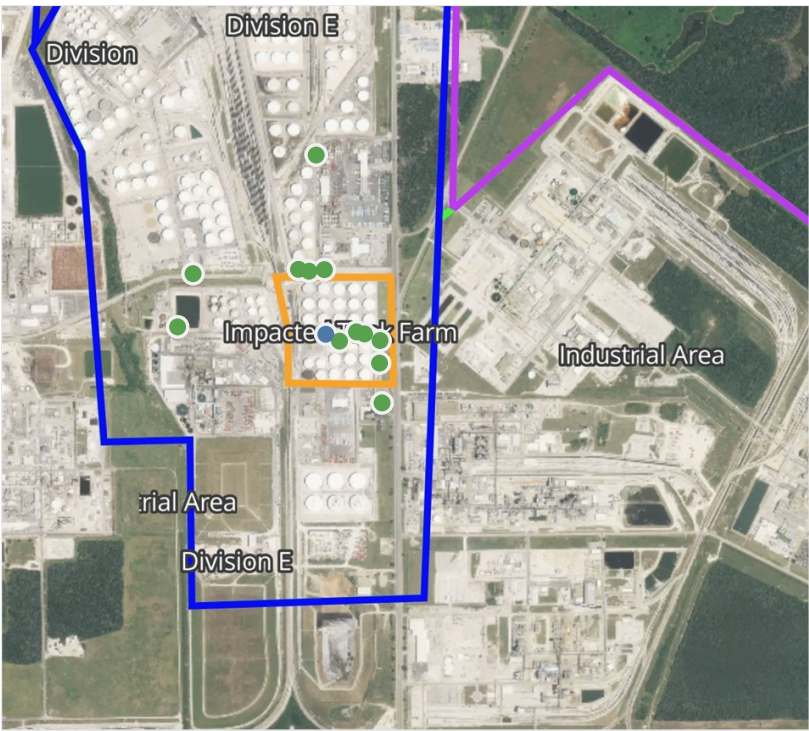
This data has been provided expeditiously to ITC and regulatory agencies for informational and/or operational purposes only. Data reported within this summary is preliminary in nature and has not undergone complete QA/QC (quality assurance/quality control) process. Until this complete QA/QC process is completed, the locations of each reading are approximate in nature and subject to further refinement. As some readings may represent non-breathing zone measurements, the data reported herein may not be suitable to assess potential occupational exposure. Site Assessment readings are not representative of an individual's breathing zone (e.g., container head space, ground level, directly above product, etc.).



Please Note: These updates display data from the 2nd 80's Fire site (Impacted Tank Farm), in the industrial areas surrounding the 2nd 80's Fire site (US Coast Guard Division E), within the Houston Ship Channel (US Coast Guard Divisions A-D), and in the industrial areas north and south of the Houston Ship Channel (Industrial Area). Real-time air monitoring data for the surrounding communities are communicated daily in a separate report.

Preliminary Hand- Held Air Monitoring Locations | ITC Deer Park Tank Fire

Reading Date
5/8/2019 7:00:00 AM to 5/8/2019 8:00:00 AM



Recent Benzene Detections

Location Category	Reading Date	Range of Detections
Impacted Tank Farm	5/8/2019 07:59:30	0.05000 ppm

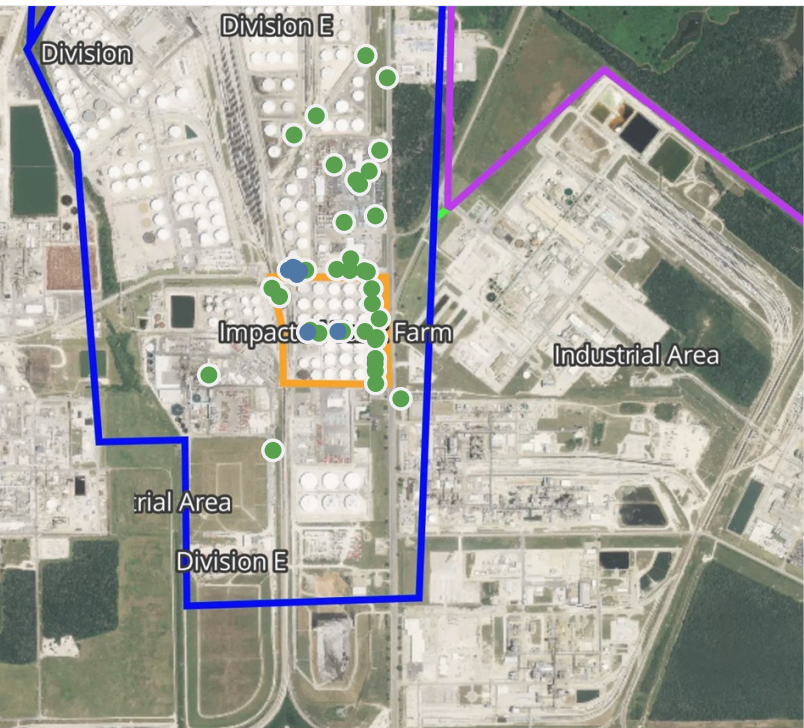
This data has been provided expeditiously to ITC and regulatory agencies for informational and/or operational purposes only. Data reported within this summary is preliminary in nature and has not undergone complete QA/QC (quality assurance/quality control) process. Until this complete QA/QC process is completed, the locations of each reading are approximate in nature and subject to further refinement. As some readings may represent non-breathing zone measurements, the data reported herein may not be suitable to assess potential occupational exposure. Site Assessment readings are not representative of an individual's breathing zone (e.g., container head space, ground level, directly above product, etc.).



Please Note: These updates display data from the 2nd 80's Fire site (Impacted Tank Farm), in the industrial areas surrounding the 2nd 80's Fire site (US Coast Guard Division E), within the Houston Ship Channel (US Coast Guard Divisions A-D), and in the industrial areas north and south of the Houston Ship Channel (Industrial Area). Real-time air monitoring data for the surrounding communities are communicated daily in a separate report.

Preliminary Hand- Held Air Monitoring Locations | ITC Deer Park Tank Fire

Reading Date
5/8/2019 8:00:00 AM to 5/8/2019 9:00:00 AM



Recent Benzene Detections

Location Category	Reading Date	Range of Detections
Division E	5/8/2019 08:08:49	0.04000 ppm
	5/8/2019 08:13:25	0.03000 ppm
	5/8/2019 08:23:27	0.02000 ppm
	5/8/2019 08:45:09	0.02000 ppm
Impacted Tank Farm	5/8/2019 08:59:17	0.02000 ppm
	5/8/2019 08:02:13	0.04000 ppm
	5/8/2019 08:43:36	0.08000 ppm

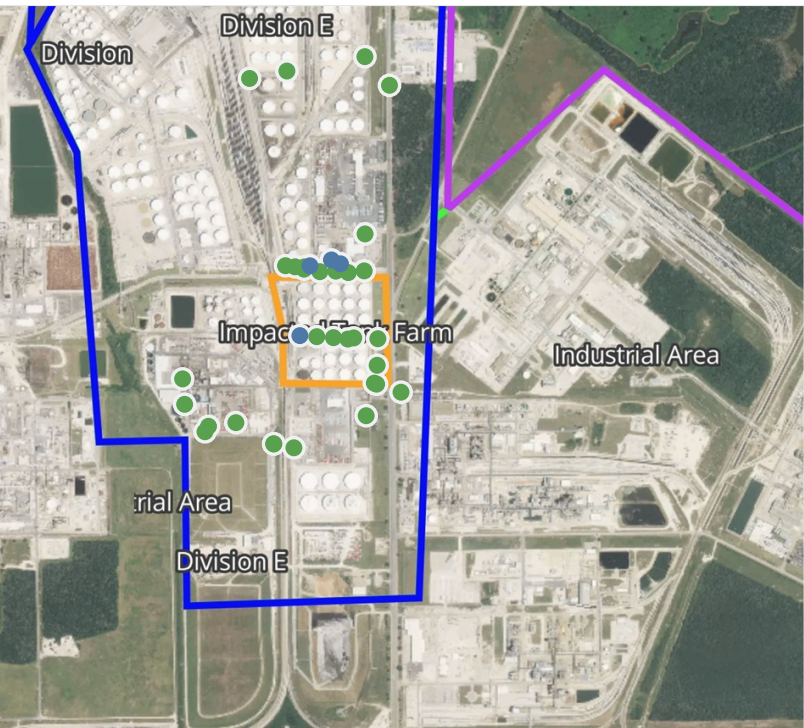
This data has been provided expeditiously to ITC and regulatory agencies for informational and/or operational purposes only. Data reported within this summary is preliminary in nature and has not undergone complete QA/QC (quality assurance/quality control) process. Until this complete QA/QC process is completed, the locations of each reading are approximate in nature and subject to further refinement. As some readings may represent non-breathing zone measurements, the data reported herein may not be suitable to assess potential occupational exposure. Site Assessment readings are not representative of an individual's breathing zone (e.g., container head space, ground level, directly above product, etc.).



Please Note: These updates display data from the 2nd 80's Fire site (Impacted Tank Farm), in the industrial areas surrounding the 2nd 80's Fire site (US Coast Guard Division E), within the Houston Ship Channel (US Coast Guard Divisions A-D), and in the industrial areas north and south of the Houston Ship Channel (Industrial Area). Real-time air monitoring data for the surrounding communities are communicated daily in a separate report.

Preliminary Hand- Held Air Monitoring Locations | ITC Deer Park Tank Fire

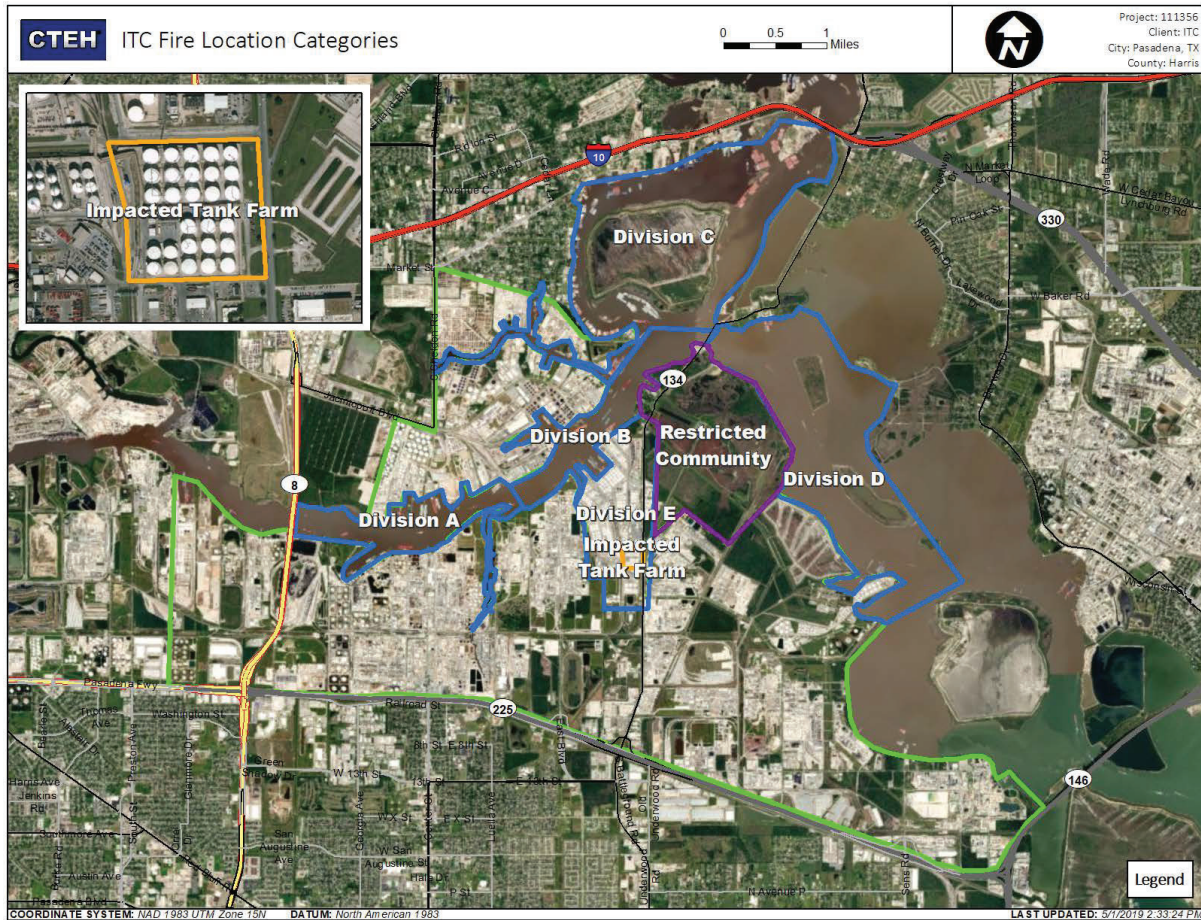
Reading Date
5/8/2019 9:00:00 AM to 5/8/2019 10:00:00 AM



Recent Benzene Detections

Location Category	Reading Date	Range of Detections
Division E	5/8/2019 09:15:04	0.05000 ppm
	5/8/2019 09:15:50	0.04000 ppm
	5/8/2019 09:49:17	0.07000 ppm
Impacted Tank Farm	5/8/2019 09:59:58	0.04000 ppm

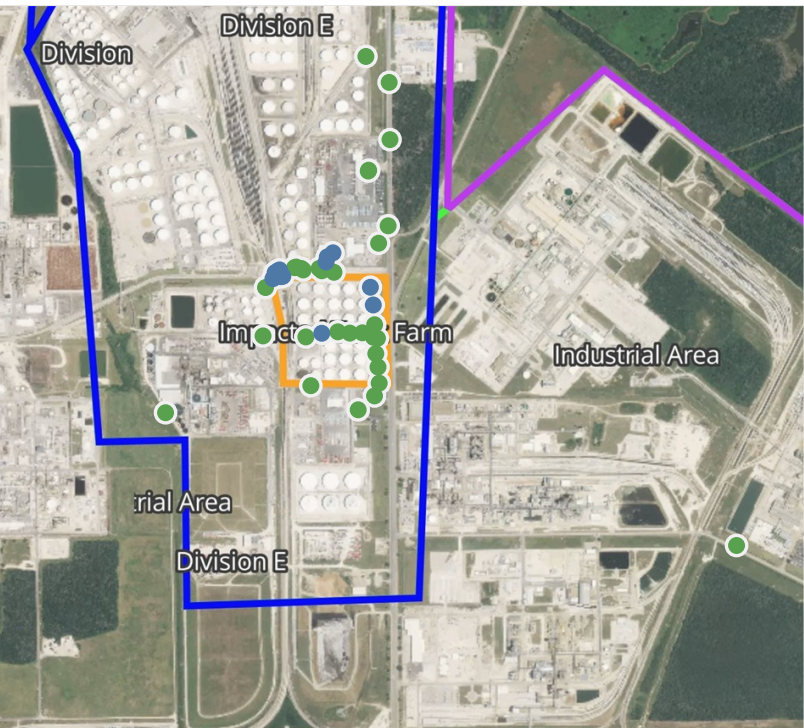
This data has been provided expeditiously to ITC and regulatory agencies for informational and/or operational purposes only. Data reported within this summary is preliminary in nature and has not undergone complete QA/QC (quality assurance/quality control) process. Until this complete QA/QC process is completed, the locations of each reading are approximate in nature and subject to further refinement. As some readings may represent non-breathing zone measurements, the data reported herein may not be suitable to assess potential occupational exposure. Site Assessment readings are not representative of an individual's breathing zone (e.g., container head space, ground level, directly above product, etc.).



Please Note: These updates display data from the 2nd 80's Fire site (Impacted Tank Farm), in the industrial areas surrounding the 2nd 80's Fire site (US Coast Guard Division E), within the Houston Ship Channel (US Coast Guard Divisions A-D), and in the industrial areas north and south of the Houston Ship Channel (Industrial Area). Real-time air monitoring data for the surrounding communities are communicated daily in a separate report.

Preliminary Hand- Held Air Monitoring Locations | ITC Deer Park Tank Fire

Reading Date
5/8/2019 10:00:00 AM to 5/8/2019 11:00:00 AM



Recent Benzene Detections

Location Category	Reading Date	Range of Detections
Division E	5/8/2019 10:00:07	0.3000 ppm
	5/8/2019 10:02:32	0.0900 ppm
	5/8/2019 10:03:01	0.1600 ppm
	5/8/2019 10:05:55	0.1000 ppm
	5/8/2019 10:08:47	0.1400 ppm
	5/8/2019 10:16:28	0.1800 ppm
	5/8/2019 10:18:39	0.0700 ppm
	5/8/2019 10:22:10	0.1600 ppm
	5/8/2019 10:24:05	0.0600 ppm
Impacted Tank Farm	5/8/2019 10:29:22	0.1200 ppm
	5/8/2019 10:46:06	0.1500 ppm
	5/8/2019 10:01:52	0.0500 ppm
	5/8/2019 10:27:07	0.0700 ppm
	5/8/2019 10:25:09	0.0200 ppm
	5/8/2019 10:50:35	0.0200 ppm

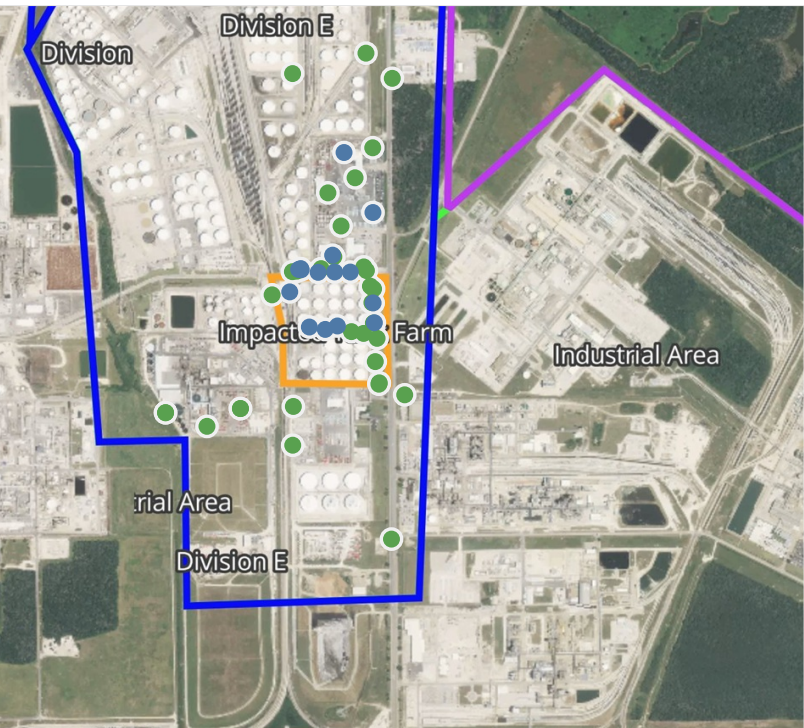
This data has been provided expeditiously to ITC and regulatory agencies for informational and/or operational purposes only. Data reported within this summary is preliminary in nature and has not undergone complete QA/QC (quality assurance/quality control) process. Until this complete QA/QC process is completed, the locations of each reading are approximate in nature and subject to further refinement. As some readings may represent non-breathing zone measurements, the data reported herein may not be suitable to assess potential occupational exposure. Site Assessment readings are not representative of an individual's breathing zone (e.g., container head space, ground level, directly above product, etc.).



Please Note: These updates display data from the 2nd 80's Fire site (Impacted Tank Farm), in the industrial areas surrounding the 2nd 80's Fire site (US Coast Guard Division E), within the Houston Ship Channel (US Coast Guard Divisions A-D), and in the industrial areas north and south of the Houston Ship Channel (Industrial Area). Real-time air monitoring data for the surrounding communities are communicated daily in a separate report.

Preliminary Hand- Held Air Monitoring Locations | ITC Deer Park Tank Fire

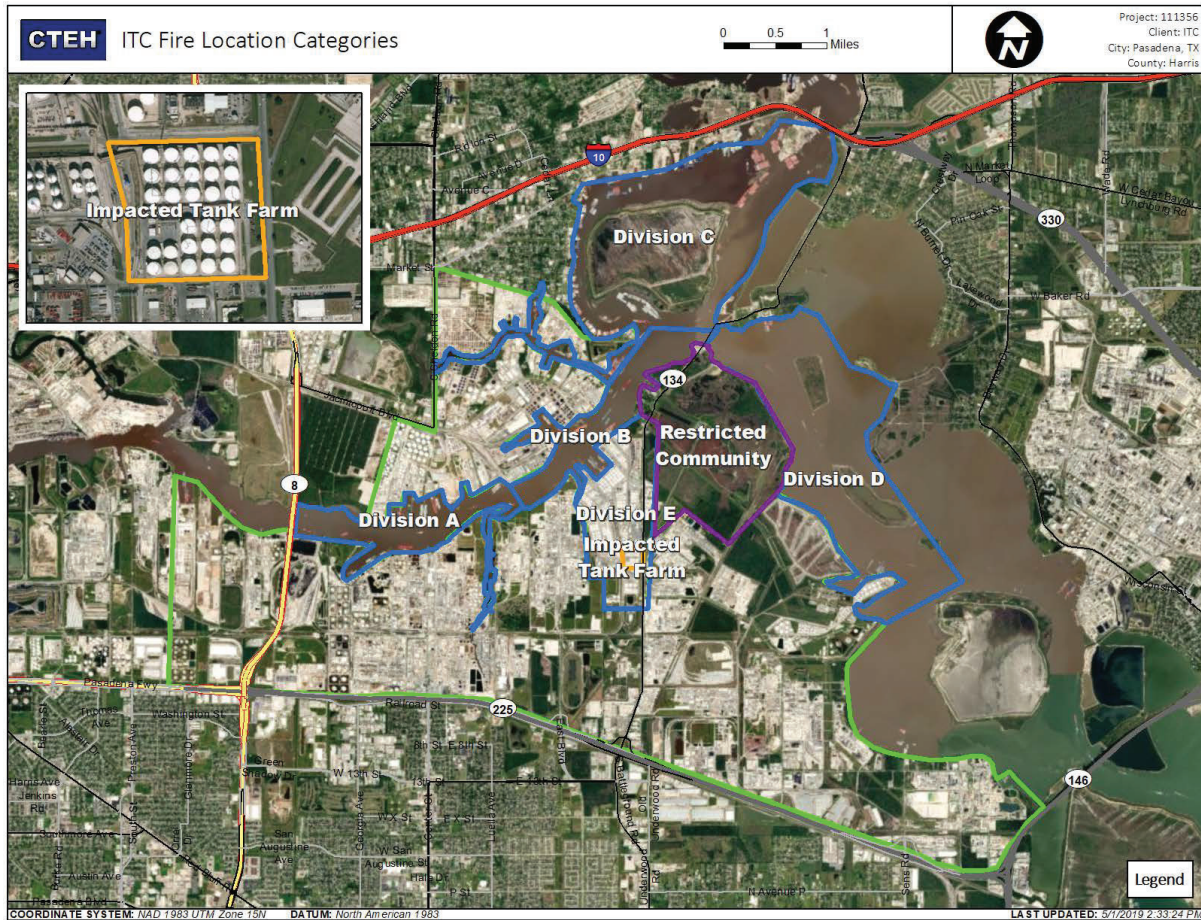
Reading Date
5/8/2019 11:00:00 AM to 5/8/2019 12:00:00 PM



Recent Benzene Detections

Location Category	Reading Date	Range of Detections
Division E	5/8/2019 11:17:11	0.0300 ppm
	5/8/2019 11:03:06	0.0200 ppm
	5/8/2019 11:14:29	0.0300 ppm
	5/8/2019 11:28:06	0.0300 ppm
	5/8/2019 11:28:36	0.1200 ppm
	5/8/2019 11:36:07	0.0700 ppm
	5/8/2019 11:40:43	0.0500 ppm
	5/8/2019 11:43:34	0.0800 ppm
Impacted Tank Farm	5/8/2019 11:47:58	0.0700 ppm
	5/8/2019 11:12:41	0.0500 ppm
	5/8/2019 11:09:50	0.0500 ppm
	5/8/2019 11:26:47	0.0400 ppm
	5/8/2019 11:26:10	0.0700 ppm
	5/8/2019 11:27:49	0.0900 ppm
	5/8/2019 11:30:23	0.0300 ppm

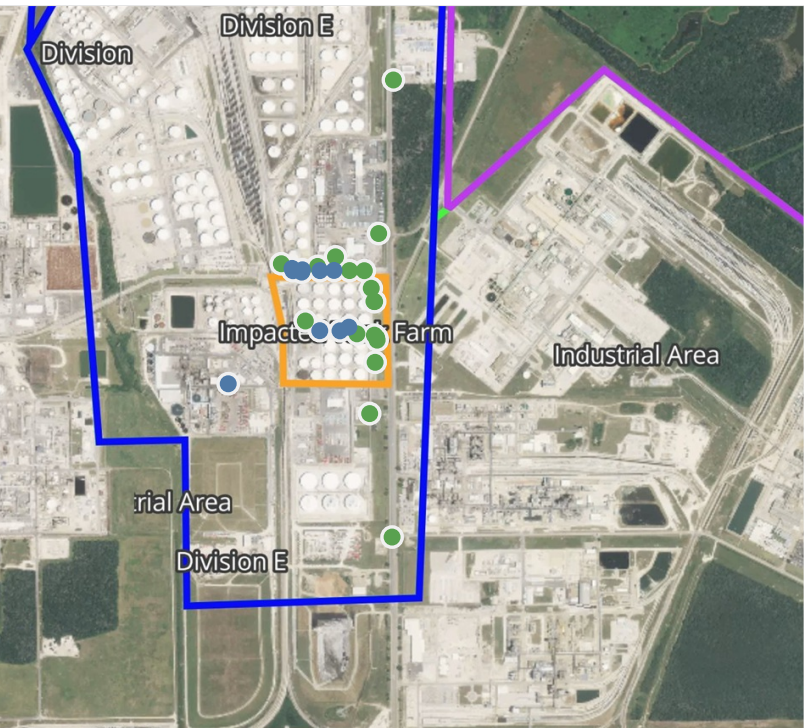
This data has been provided expeditiously to ITC and regulatory agencies for informational and/or operational purposes only. Data reported within this summary is preliminary in nature and has not undergone complete QA/QC (quality assurance/quality control) process. Until this complete QA/QC process is completed, the locations of each reading are approximate in nature and subject to further refinement. As some readings may represent non-breathing zone measurements, the data reported herein may not be suitable to assess potential occupational exposure. Site Assessment readings are not representative of an individual's breathing zone (e.g., container head space, ground level, directly above product, etc.).



Please Note: These updates display data from the 2nd 80's Fire site (Impacted Tank Farm), in the industrial areas surrounding the 2nd 80's Fire site (US Coast Guard Division E), within the Houston Ship Channel (US Coast Guard Divisions A-D), and in the industrial areas north and south of the Houston Ship Channel (Industrial Area). Real-time air monitoring data for the surrounding communities are communicated daily in a separate report.

Preliminary Hand- Held Air Monitoring Locations | ITC Deer Park Tank Fire

Reading Date
5/8/2019 12:00:00 PM to 5/8/2019 1:00:00 PM



Recent Benzene Detections

Location Category	Reading Date	Range of Detections
Division E	5/8/2019 12:00:40	0.04000 ppm
	5/8/2019 12:08:16	0.04000 ppm
	5/8/2019 12:29:35	0.04000 ppm
	5/8/2019 12:34:23	0.04000 ppm
	5/8/2019 12:36:11	0.05000 ppm
	5/8/2019 12:54:59	0.03000 ppm
	5/8/2019 12:59:18	0.09000 ppm
Impacted Tank Farm	5/8/2019 12:35:16	0.02000 ppm
	5/8/2019 12:37:57	0.09000 ppm
	5/8/2019 12:32:43	0.02000 ppm

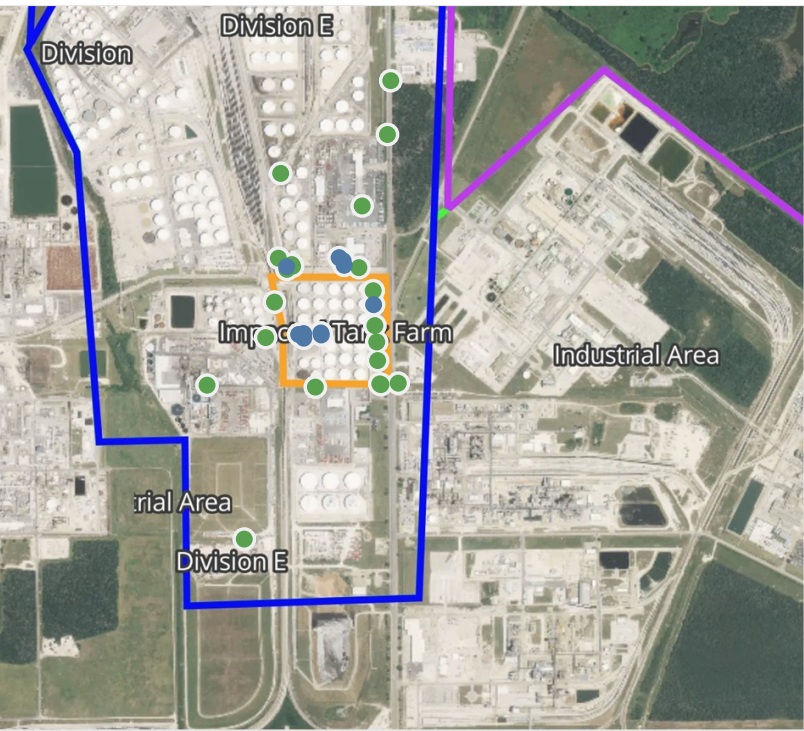
This data has been provided expeditiously to ITC and regulatory agencies for informational and/or operational purposes only. Data reported within this summary is preliminary in nature and has not undergone complete QA/QC (quality assurance/quality control) process. Until this complete QA/QC process is completed, the locations of each reading are approximate in nature and subject to further refinement. As some readings may represent non-breathing zone measurements, the data reported herein may not be suitable to assess potential occupational exposure. Site Assessment readings are not representative of an individual's breathing zone (e.g., container head space, ground level, directly above product, etc.).



Please Note: These updates display data from the 2nd 80's Fire site (Impacted Tank Farm), in the industrial areas surrounding the 2nd 80's Fire site (US Coast Guard Division E), within the Houston Ship Channel (US Coast Guard Divisions A-D), and in the industrial areas north and south of the Houston Ship Channel (Industrial Area). Real-time air monitoring data for the surrounding communities are communicated daily in a separate report.

Preliminary Hand- Held Air Monitoring Locations | ITC Deer Park Tank Fire

Reading Date
5/8/2019 1:00:00 PM to 5/8/2019 2:00:00 PM



Recent Benzene Detections

Location Category	Reading Date	Range of Detections
Division E	5/8/2019 13:06:48	0.0300 ppm
	5/8/2019 13:29:54	0.0600 ppm
	5/8/2019 13:38:53	0.0300 ppm
	5/8/2019 13:44:53	0.0900 ppm
Impacted Tank Farm	5/8/2019 13:17:05	0.1000 ppm
	5/8/2019 13:43:07	0.3600 ppm
	5/8/2019 13:32:23	0.0800 ppm
	5/8/2019 13:37:42	0.0800 ppm
	5/8/2019 13:30:44	0.1600 ppm
	5/8/2019 13:44:14	0.2300 ppm

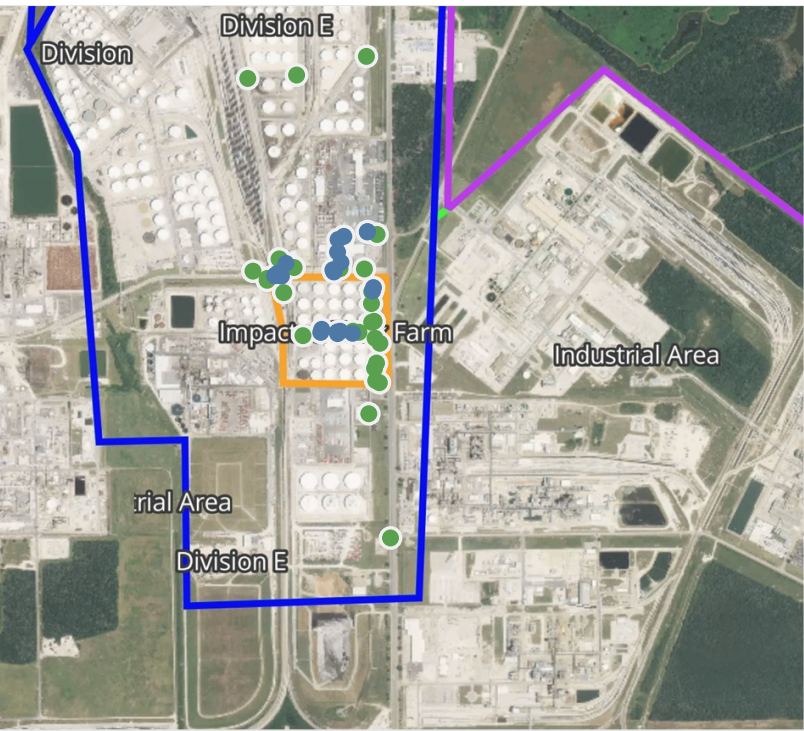
This data has been provided expeditiously to ITC and regulatory agencies for informational and/or operational purposes only. Data reported within this summary is preliminary in nature and has not undergone complete QA/QC (quality assurance/quality control) process. Until this complete QA/QC process is completed, the locations of each reading are approximate in nature and subject to further refinement. As some readings may represent non-breathing zone measurements, the data reported herein may not be suitable to assess potential occupational exposure. Site Assessment readings are not representative of an individual's breathing zone (e.g., container head space, ground level, directly above product, etc.).



Please Note: These updates display data from the 2nd 80's Fire site (Impacted Tank Farm), in the industrial areas surrounding the 2nd 80's Fire site (US Coast Guard Division E), within the Houston Ship Channel (US Coast Guard Divisions A-D), and in the industrial areas north and south of the Houston Ship Channel (Industrial Area). Real-time air monitoring data for the surrounding communities are communicated daily in a separate report.

Preliminary Hand- Held Air Monitoring Locations | ITC Deer Park Tank Fire

Reading Date
5/8/2019 2:00:00 PM to 5/8/2019 3:00:00 PM



Recent Benzene Detections

Location Category	Reading Date	Range of Detections
Division E	5/8/2019 14:05:10	0.0400 ppm
	5/8/2019 14:11:04	0.2000 ppm
	5/8/2019 14:10:34	0.2800 ppm
	5/8/2019 14:13:17	0.0200 ppm
	5/8/2019 14:18:00	0.0800 ppm
	5/8/2019 14:25:56	0.2600 ppm
	5/8/2019 14:29:03	0.0400 ppm
	5/8/2019 14:25:02	0.0700 ppm
	5/8/2019 14:31:08	0.0400 ppm
	5/8/2019 14:33:19	0.0500 ppm
	5/8/2019 14:36:22	0.0400 ppm
	5/8/2019 14:43:56	0.1200 ppm
	5/8/2019 14:45:32	0.0400 ppm
	5/8/2019 14:49:46	0.0900 ppm
	5/8/2019 14:49:56	0.0030 ppm
Impacted Tank Farm	5/8/2019 14:08:29	0.1000 ppm
	5/8/2019 14:06:41	0.0200 ppm
	5/8/2019 14:11:36	0.1000 ppm
	5/8/2019 14:00:14	0.0200 ppm
	5/8/2019 14:03:48	0.1400 ppm
	5/8/2019 14:36:03	0.0200 ppm
	5/8/2019 14:34:39	0.0200 ppm
	5/8/2019 14:38:10	0.3100 ppm

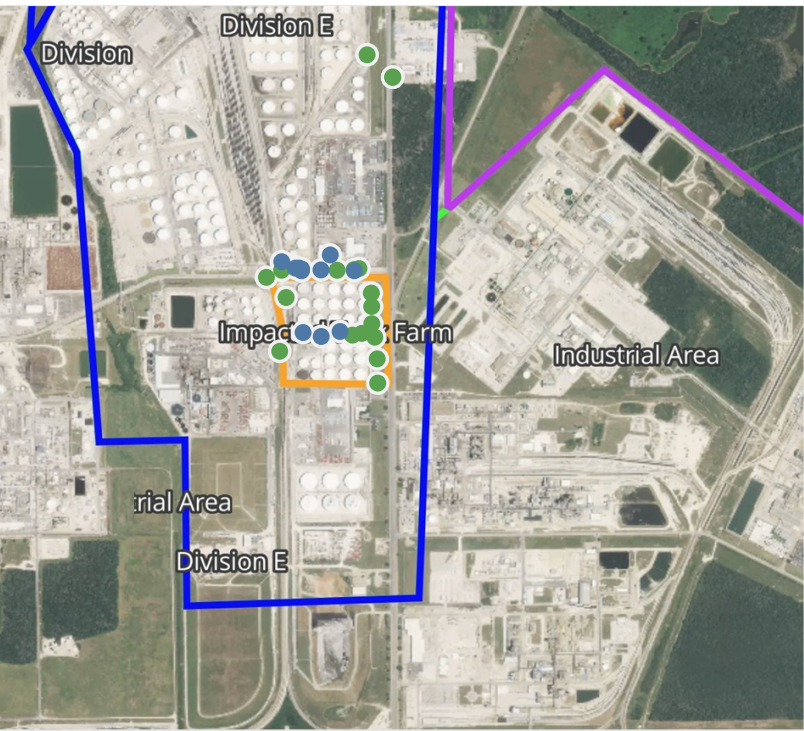
This data has been provided expeditiously to ITC and regulatory agencies for informational and/or operational purposes only. Data reported within this summary is preliminary in nature and has not undergone complete QA/QC (quality assurance/quality control) process. Until this complete QA/QC process is completed, the locations of each reading are approximate in nature and subject to further refinement. As some readings may represent non-breathing zone measurements, the data reported herein may not be suitable to assess potential occupational exposure. Site Assessment readings are not representative of an individual's breathing zone (e.g., container head space, ground level, directly above product, etc.).



Please Note: These updates display data from the 2nd 80's Fire site (Impacted Tank Farm), in the industrial areas surrounding the 2nd 80's Fire site (US Coast Guard Division E), within the Houston Ship Channel (US Coast Guard Divisions A-D), and in the industrial areas north and south of the Houston Ship Channel (Industrial Area). Real-time air monitoring data for the surrounding communities are communicated daily in a separate report.

Preliminary Hand- Held Air Monitoring Locations | ITC Deer Park Tank Fire

Reading Date
5/8/2019 3:00:00 PM to 5/8/2019 4:00:00 PM



Recent Benzene Detections

Location Category	Reading Date	Range of Detections
Division E	5/8/2019 15:02:26	0.05000 ppm
	5/8/2019 15:16:57	0.01000 ppm
	5/8/2019 15:18:10	0.04000 ppm
	5/8/2019 15:35:33	0.03000 ppm
	5/8/2019 15:42:41	0.09000 ppm
	5/8/2019 15:48:26	0.07000 ppm
Impacted Tank Farm	5/8/2019 15:48:00	0.04000 ppm
	5/8/2019 15:53:35	0.04000 ppm
	5/8/2019 15:28:33	0.04000 ppm
	5/8/2019 15:32:05	0.05000 ppm
	5/8/2019 15:20:50	0.05000 ppm

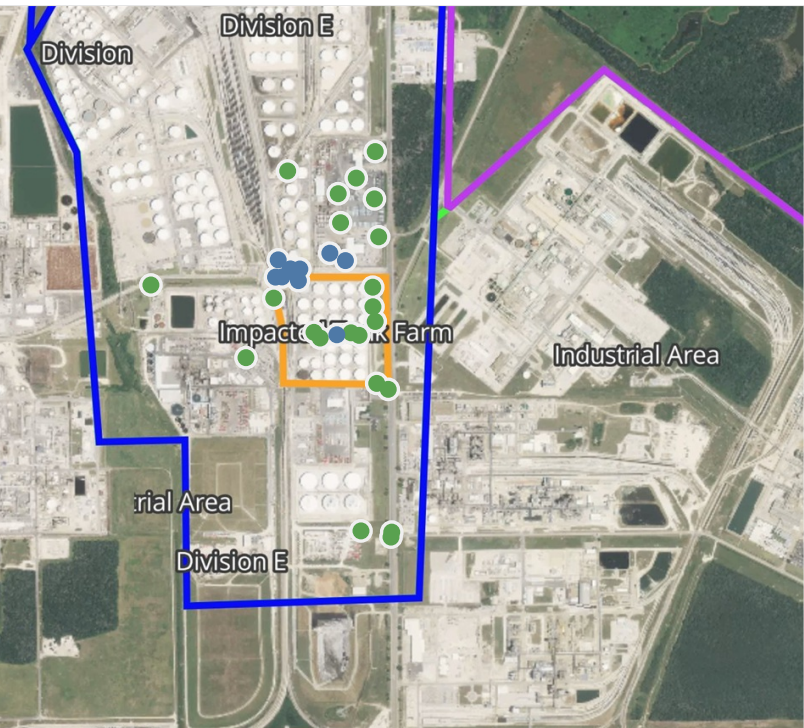
This data has been provided expeditiously to ITC and regulatory agencies for informational and/or operational purposes only. Data reported within this summary is preliminary in nature and has not undergone complete QA/QC (quality assurance/quality control) process. Until this complete QA/QC process is completed, the locations of each reading are approximate in nature and subject to further refinement. As some readings may represent non-breathing zone measurements, the data reported herein may not be suitable to assess potential occupational exposure. Site Assessment readings are not representative of an individual's breathing zone (e.g., container head space, ground level, directly above product, etc.).



Please Note: These updates display data from the 2nd 80's Fire site (Impacted Tank Farm), in the industrial areas surrounding the 2nd 80's Fire site (US Coast Guard Division E), within the Houston Ship Channel (US Coast Guard Divisions A-D), and in the industrial areas north and south of the Houston Ship Channel (Industrial Area). Real-time air monitoring data for the surrounding communities are communicated daily in a separate report.

Preliminary Hand- Held Air Monitoring Locations | ITC Deer Park Tank Fire

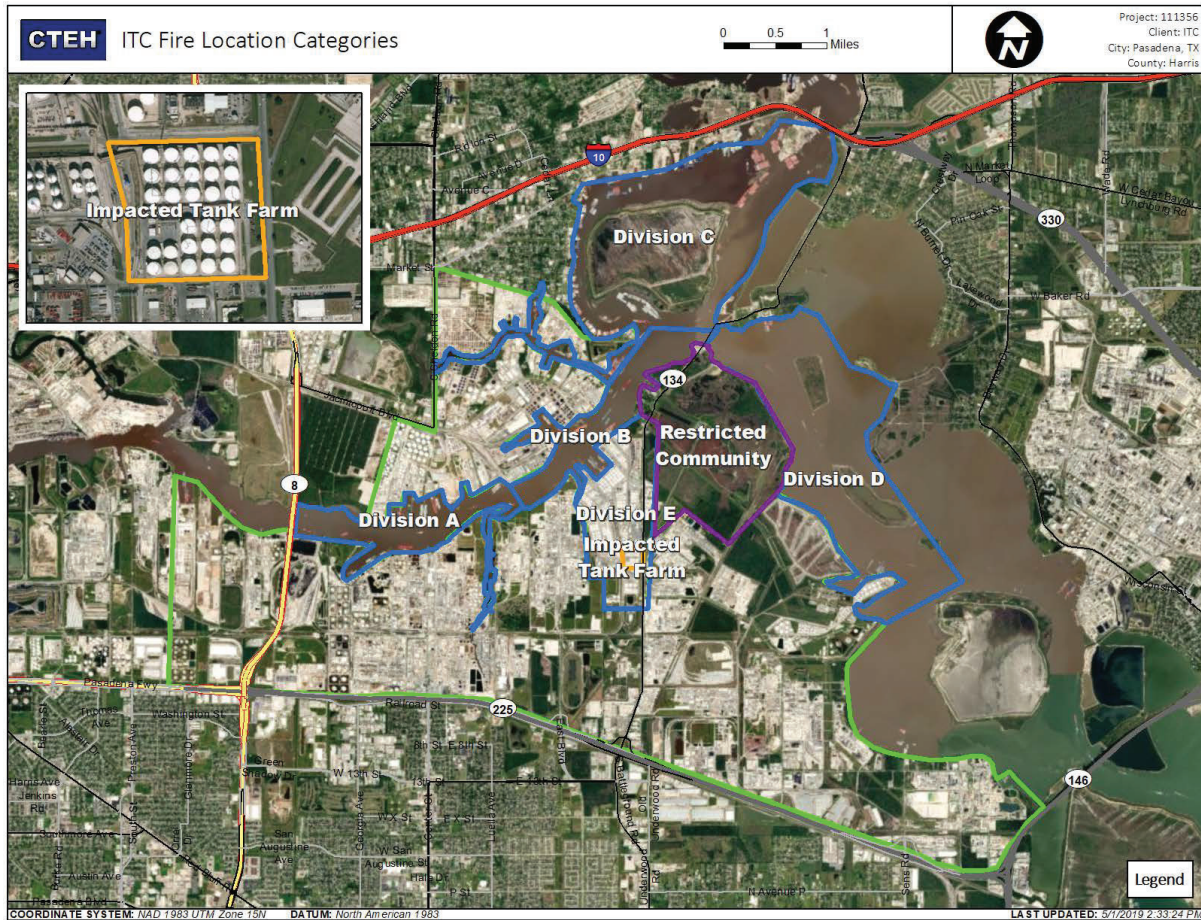
Reading Date
5/8/2019 4:00:00 PM to 5/8/2019 5:00:00 PM



Recent Benzene Detections

Location Category	Reading Date	Range of Detections
Division E	5/8/2019 16:02:53	0.0800 ppm
	5/8/2019 16:12:23	0.0500 ppm
	5/8/2019 16:14:32	0.0600 ppm
	5/8/2019 16:17:10	0.1200 ppm
	5/8/2019 16:22:02	0.0400 ppm
	5/8/2019 16:43:18	0.0300 ppm
	5/8/2019 16:52:43	0.2000 ppm
	5/8/2019 16:54:09	0.2200 ppm
	5/8/2019 16:53:35	0.0400 ppm
Impacted Tank Farm	5/8/2019 16:56:39	0.0500 ppm
	5/8/2019 16:13:48	0.0200 ppm

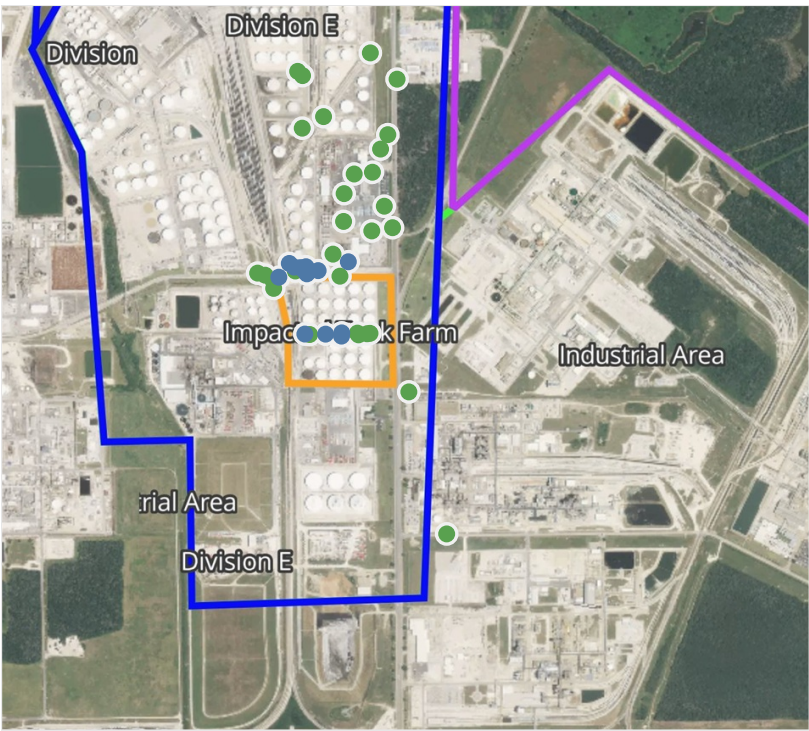
This data has been provided expeditiously to ITC and regulatory agencies for informational and/or operational purposes only. Data reported within this summary is preliminary in nature and has not undergone complete QA/QC (quality assurance/quality control) process. Until this complete QA/QC process is completed, the locations of each reading are approximate in nature and subject to further refinement. As some readings may represent non-breathing zone measurements, the data reported herein may not be suitable to assess potential occupational exposure. Site Assessment readings are not representative of an individual's breathing zone (e.g., container head space, ground level, directly above product, etc.).



Please Note: These updates display data from the 2nd 80's Fire site (Impacted Tank Farm), in the industrial areas surrounding the 2nd 80's Fire site (US Coast Guard Division E), within the Houston Ship Channel (US Coast Guard Divisions A-D), and in the industrial areas north and south of the Houston Ship Channel (Industrial Area). Real-time air monitoring data for the surrounding communities are communicated daily in a separate report.

Preliminary Hand- Held Air Monitoring Locations | ITC Deer Park Tank Fire

Reading Date
5/8/2019 5:00:00 PM to 5/8/2019 6:00:00 PM



Recent Benzene Detections

Location Category	Reading Date	Range of Detections
Division E	5/8/2019 17:07:20	0.0200 ppm
	5/8/2019 17:19:36	0.0500 ppm
	5/8/2019 17:28:25	0.0500 ppm
	5/8/2019 17:35:00	0.0300 ppm
	5/8/2019 17:37:26	0.0400 ppm
	5/8/2019 17:38:42	0.1100 ppm
	5/8/2019 17:42:51	0.0800 ppm
	5/8/2019 17:40:52	0.1100 ppm
	5/8/2019 17:49:20	0.0900 ppm
	5/8/2019 17:54:09	0.0500 ppm
Impacted Tank Farm	5/8/2019 17:59:25	0.3500 ppm
	5/8/2019 17:59:37	0.0500 ppm
	5/8/2019 17:59:48	0.0500 ppm
	5/8/2019 17:12:02	0.0600 ppm
	5/8/2019 17:14:03	0.0500 ppm
	5/8/2019 17:15:32	0.0500 ppm
	5/8/2019 17:52:59	0.0400 ppm

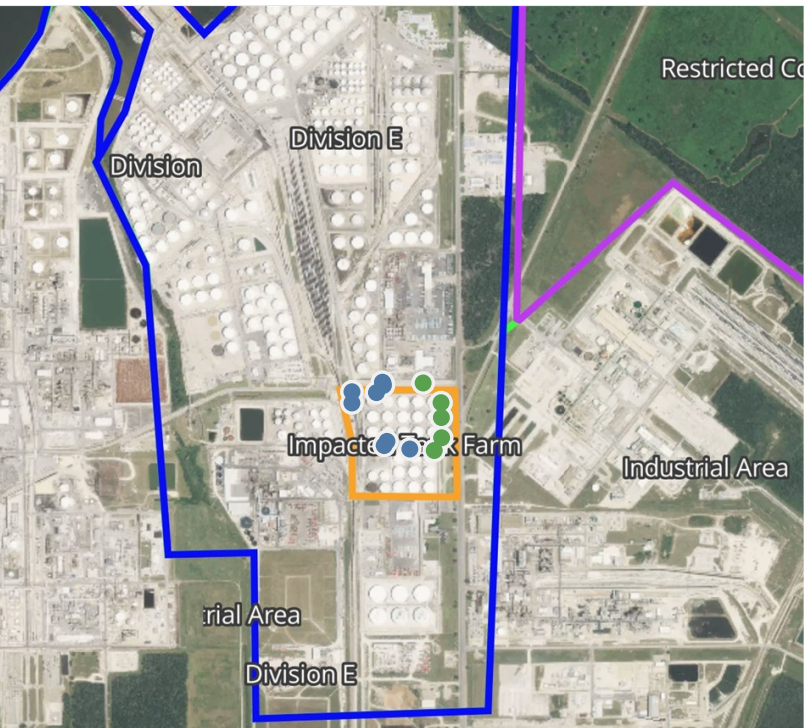
This data has been provided expeditiously to ITC and regulatory agencies for informational and/or operational purposes only. Data reported within this summary is preliminary in nature and has not undergone complete QA/QC (quality assurance/quality control) process. Until this complete QA/QC process is completed, the locations of each reading are approximate in nature and subject to further refinement. As some readings may represent non-breathing zone measurements, the data reported herein may not be suitable to assess potential occupational exposure. Site Assessment readings are not representative of an individual's breathing zone (e.g., container head space, ground level, directly above product, etc.).



Please Note: These updates display data from the 2nd 80's Fire site (Impacted Tank Farm), in the industrial areas surrounding the 2nd 80's Fire site (US Coast Guard Division E), within the Houston Ship Channel (US Coast Guard Divisions A-D), and in the industrial areas north and south of the Houston Ship Channel (Industrial Area). Real-time air monitoring data for the surrounding communities are communicated daily in a separate report.

Preliminary Hand- Held Air Monitoring Locations | ITC Deer Park Tank Fire

Reading Date
5/8/2019 6:00:00 PM to 5/8/2019 7:00:00 PM



Recent Benzene Detections

Location Category	Reading Date	Range of Detections
Division E	5/8/2019 18:01:32	0.1600 ppm
	5/8/2019 18:02:13	0.0400 ppm
	5/8/2019 18:07:25	0.0300 ppm
	5/8/2019 18:11:28	0.0700 ppm
	5/8/2019 18:24:39	0.0300 ppm
Impacted Tank Farm	5/8/2019 18:01:32	0.0500 ppm
	5/8/2019 18:23:43	0.2300 ppm
	5/8/2019 18:33:20	0.0500 ppm
	5/8/2019 18:26:28	0.0500 ppm

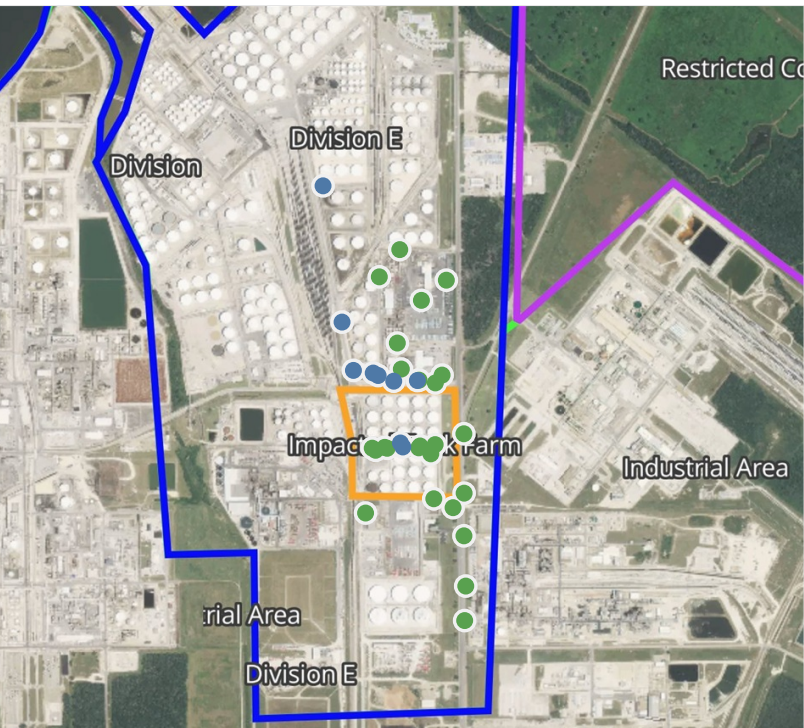
This data has been provided expeditiously to ITC and regulatory agencies for informational and/or operational purposes only. Data reported within this summary is preliminary in nature and has not undergone complete QA/QC (quality assurance/quality control) process. Until this complete QA/QC process is completed, the locations of each reading are approximate in nature and subject to further refinement. As some readings may represent non-breathing zone measurements, the data reported herein may not be suitable to assess potential occupational exposure. Site Assessment readings are not representative of an individual's breathing zone (e.g., container head space, ground level, directly above product, etc.).



Please Note: These updates display data from the 2nd 80's Fire site (Impacted Tank Farm), in the industrial areas surrounding the 2nd 80's Fire site (US Coast Guard Division E), within the Houston Ship Channel (US Coast Guard Divisions A-D), and in the industrial areas north and south of the Houston Ship Channel (Industrial Area). Real-time air monitoring data for the surrounding communities are communicated daily in a separate report.

Preliminary Hand- Held Air Monitoring Locations | ITC Deer Park Tank Fire

Reading Date
5/8/2019 7:00:00 PM to 5/8/2019 8:00:00 PM



Recent Benzene Detections

Location Category	Reading Date	Range of Detections
Division E	5/8/2019 19:42:46	0.03000 ppm
	5/8/2019 19:47:11	0.02000 ppm
	5/8/2019 19:51:18	0.02000 ppm
	5/8/2019 19:51:07	0.06000 ppm
	5/8/2019 19:49:29	0.06000 ppm
	5/8/2019 19:53:39	0.02000 ppm
Impacted Tank Farm	5/8/2019 19:57:38	0.06000 ppm
	5/8/2019 19:55:28	0.08000 ppm
	5/8/2019 19:55:30	0.06000 ppm

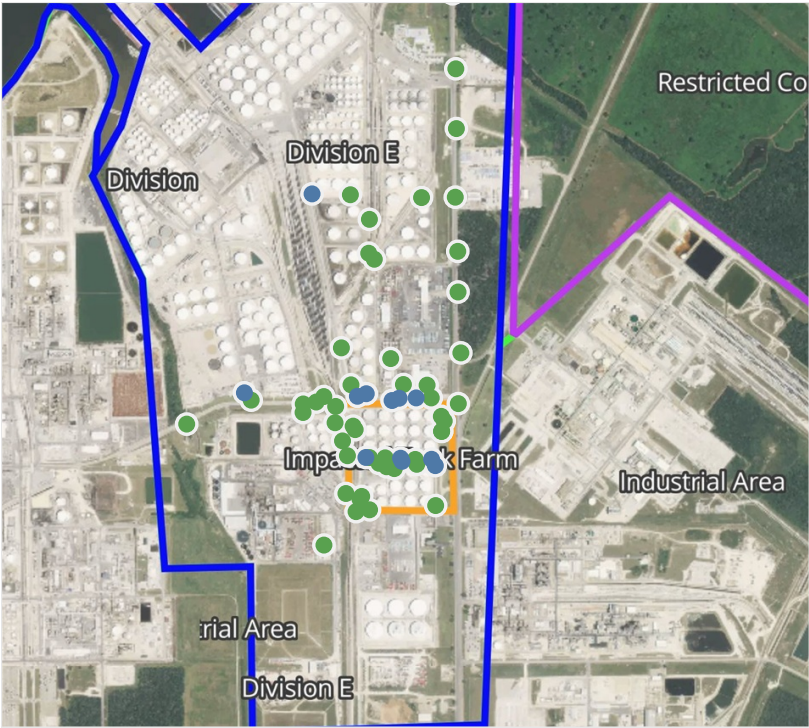
This data has been provided expeditiously to ITC and regulatory agencies for informational and/or operational purposes only. Data reported within this summary is preliminary in nature and has not undergone complete QA/QC (quality assurance/quality control) process. Until this complete QA/QC process is completed, the locations of each reading are approximate in nature and subject to further refinement. As some readings may represent non-breathing zone measurements, the data reported herein may not be suitable to assess potential occupational exposure. Site Assessment readings are not representative of an individual's breathing zone (e.g., container head space, ground level, directly above product, etc.).



Please Note: These updates display data from the 2nd 80's Fire site (Impacted Tank Farm), in the industrial areas surrounding the 2nd 80's Fire site (US Coast Guard Division E), within the Houston Ship Channel (US Coast Guard Divisions A-D), and in the industrial areas north and south of the Houston Ship Channel (Industrial Area). Real-time air monitoring data for the surrounding communities are communicated daily in a separate report.

Preliminary Hand- Held Air Monitoring Locations | ITC Deer Park Tank Fire

Reading Date
5/8/2019 8:00:00 PM to 5/8/2019 9:00:00 PM



Recent Benzene Detections

Location Category	Reading Date	Range of Detections
Division E	5/8/2019 20:03:59	0.01000 ppm
	5/8/2019 20:37:34	0.01000 ppm
	5/8/2019 20:43:21	0.01000 ppm
	5/8/2019 20:41:25	0.05000 ppm
	5/8/2019 20:39:22	0.06000 ppm
	5/8/2019 20:46:08	0.02000 ppm
	5/8/2019 20:58:03	0.02000 ppm
Impacted Tank Farm	5/8/2019 20:40:06	0.02000 ppm
	5/8/2019 20:49:32	0.03000 ppm
	5/8/2019 20:49:22	0.05000 ppm
	5/8/2019 20:54:46	0.06000 ppm
	5/8/2019 20:54:39	0.05000 ppm

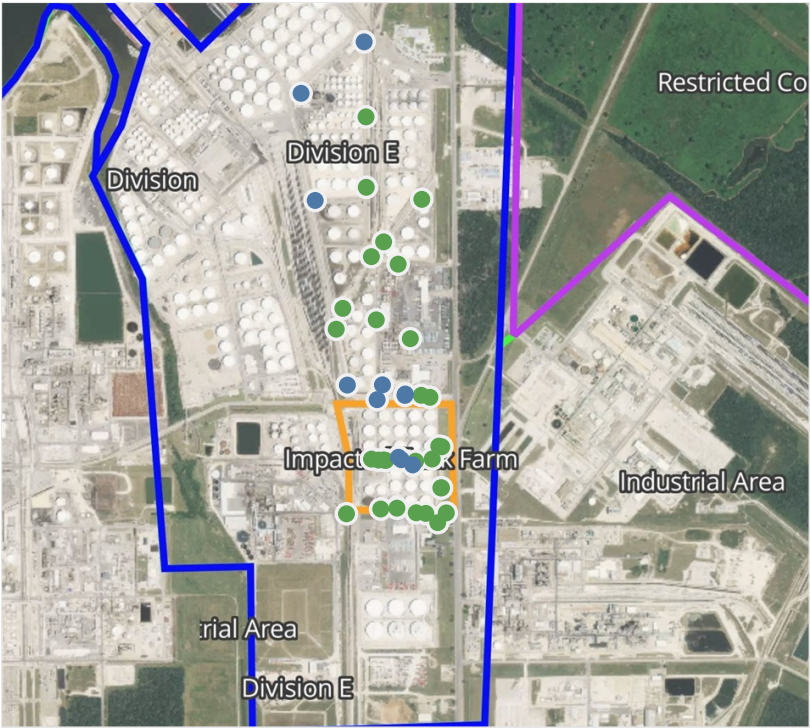
This data has been provided expeditiously to ITC and regulatory agencies for informational and/or operational purposes only. Data reported within this summary is preliminary in nature and has not undergone complete QA/QC (quality assurance/quality control) process. Until this complete QA/QC process is completed, the locations of each reading are approximate in nature and subject to further refinement. As some readings may represent non-breathing zone measurements, the data reported herein may not be suitable to assess potential occupational exposure. Site Assessment readings are not representative of an individual's breathing zone (e.g., container head space, ground level, directly above product, etc.).



Please Note: These updates display data from the 2nd 80's Fire site (Impacted Tank Farm), in the industrial areas surrounding the 2nd 80's Fire site (US Coast Guard Division E), within the Houston Ship Channel (US Coast Guard Divisions A-D), and in the industrial areas north and south of the Houston Ship Channel (Industrial Area). Real-time air monitoring data for the surrounding communities are communicated daily in a separate report.

Preliminary Hand- Held Air Monitoring Locations | ITC Deer Park Tank Fire

Reading Date
5/8/2019 9:00:00 PM to 5/8/2019 10:00:00 PM



Recent Benzene Detections

Location Category	Reading Date	Range of Detections
Division E	5/8/2019 21:01:00	0.03000 ppm
	5/8/2019 21:04:39	0.03000 ppm
	5/8/2019 21:04:17	0.02000 ppm
	5/8/2019 21:18:39	0.03000 ppm
	5/8/2019 21:39:58	0.02000 ppm
	5/8/2019 21:44:19	0.06000 ppm
	5/8/2019 21:40:33	0.03000 ppm
	5/8/2019 21:51:02	0.01000 ppm
Impacted Tank Farm	5/8/2019 21:49:12	0.02000 ppm
	5/8/2019 21:55:41	0.05000 ppm
	5/8/2019 21:55:24	0.06000 ppm

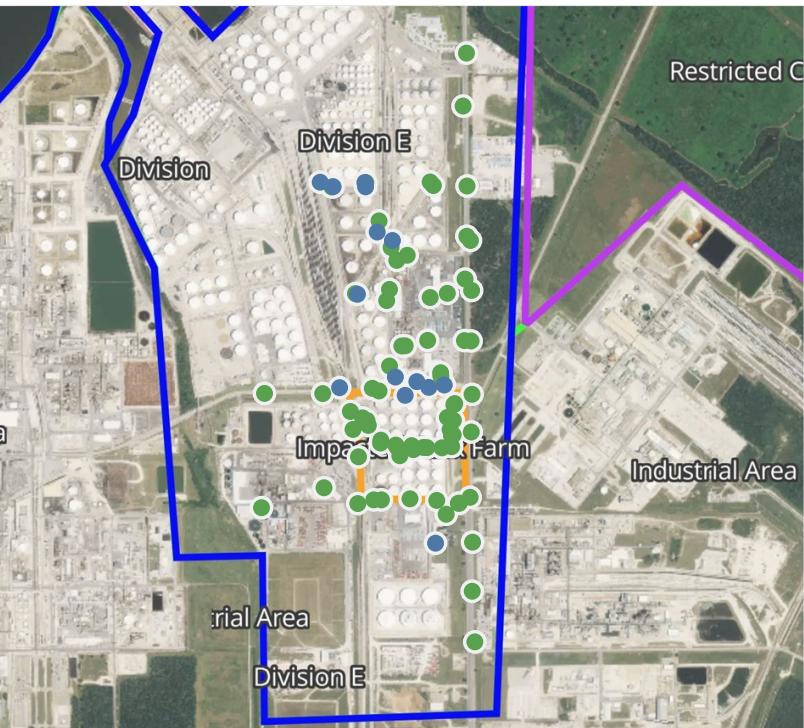
This data has been provided expeditiously to ITC and regulatory agencies for informational and/or operational purposes only. Data reported within this summary is preliminary in nature and has not undergone complete QA/QC (quality assurance/quality control) process. Until this complete QA/QC process is completed, the locations of each reading are approximate in nature and subject to further refinement. As some readings may represent non-breathing zone measurements, the data reported herein may not be suitable to assess potential occupational exposure. Site Assessment readings are not representative of an individual's breathing zone (e.g., container head space, ground level, directly above product, etc.).



Please Note: These updates display data from the 2nd 80's Fire site (Impacted Tank Farm), in the industrial areas surrounding the 2nd 80's Fire site (US Coast Guard Division E), within the Houston Ship Channel (US Coast Guard Divisions A-D), and in the industrial areas north and south of the Houston Ship Channel (Industrial Area). Real-time air monitoring data for the surrounding communities are communicated daily in a separate report.

Preliminary Hand- Held Air Monitoring Locations | ITC Deer Park Tank Fire

Reading Date
5/8/2019 10:00:00 PM to 5/9/2019 11:00:00 PM



Recent Benzene Detections

Location Category	Reading Date	Range of Detections
Division E	5/8/2019 22:01:06	0.05000 ppm
	5/8/2019 22:03:51	0.03000 ppm
	5/8/2019 22:08:49	0.01000 ppm
	5/8/2019 22:17:37	0.02000 ppm
	5/8/2019 22:20:44	0.04000 ppm
	5/8/2019 22:31:23	0.03000 ppm
	5/8/2019 22:44:47	0.02000 ppm
	5/8/2019 23:36:57	0.04000 ppm
	5/8/2019 23:40:05	0.02000 ppm
	5/8/2019 23:32:34	0.01000 ppm
	5/8/2019 23:34:59	0.03000 ppm
	5/8/2019 23:51:04	0.03000 ppm
	5/9/2019 00:00:39	0.03000 ppm
Impacted Tank Farm	5/8/2019 22:27:35	0.02000 ppm

This data has been provided expeditiously to ITC and regulatory agencies for informational and/or operational purposes only. Data reported within this summary is preliminary in nature and has not undergone complete QA/QC (quality assurance/quality control) process. Until this complete QA/QC process is completed, the locations of each reading are approximate in nature and subject to further refinement. As some readings may represent non-breathing zone measurements, the data reported herein may not be suitable to assess potential occupational exposure. Site Assessment readings are not representative of an individual's breathing zone (e.g., container head space, ground level, directly above product, etc.).



Please Note: These updates display data from the 2nd 80's Fire site (Impacted Tank Farm), in the industrial areas surrounding the 2nd 80's Fire site (US Coast Guard Division E), within the Houston Ship Channel (US Coast Guard Divisions A-D), and in the industrial areas north and south of the Houston Ship Channel (Industrial Area). Real-time air monitoring data for the surrounding communities are communicated daily in a separate report.