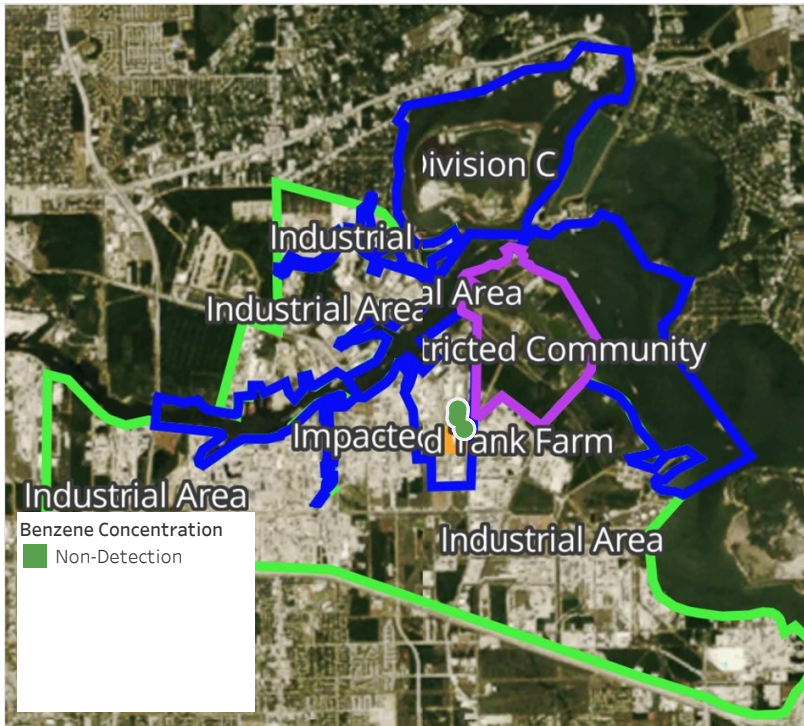


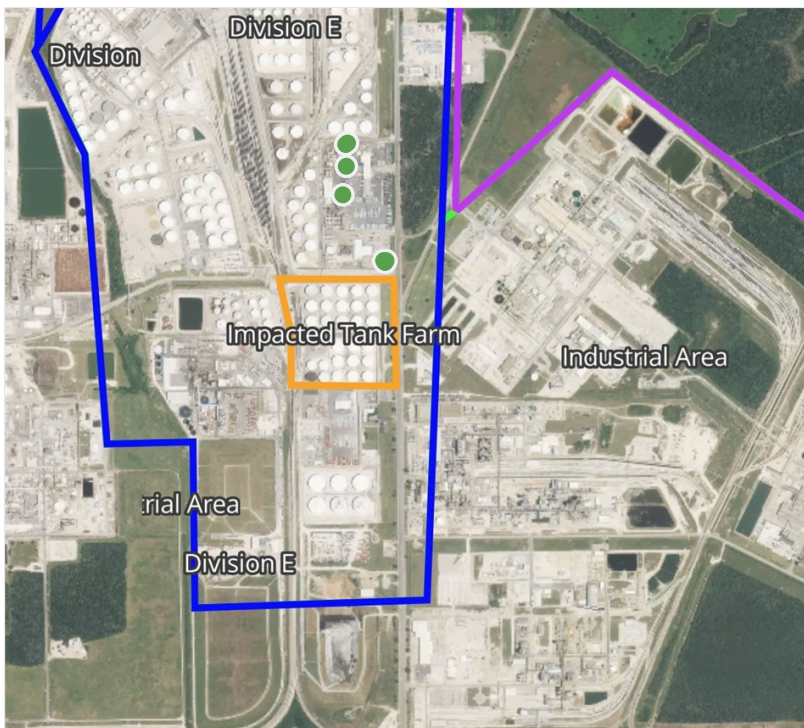
Preliminary Hand- Held Air Monitoring Locations | ITC Deer Park Tank Fire

Reading Date

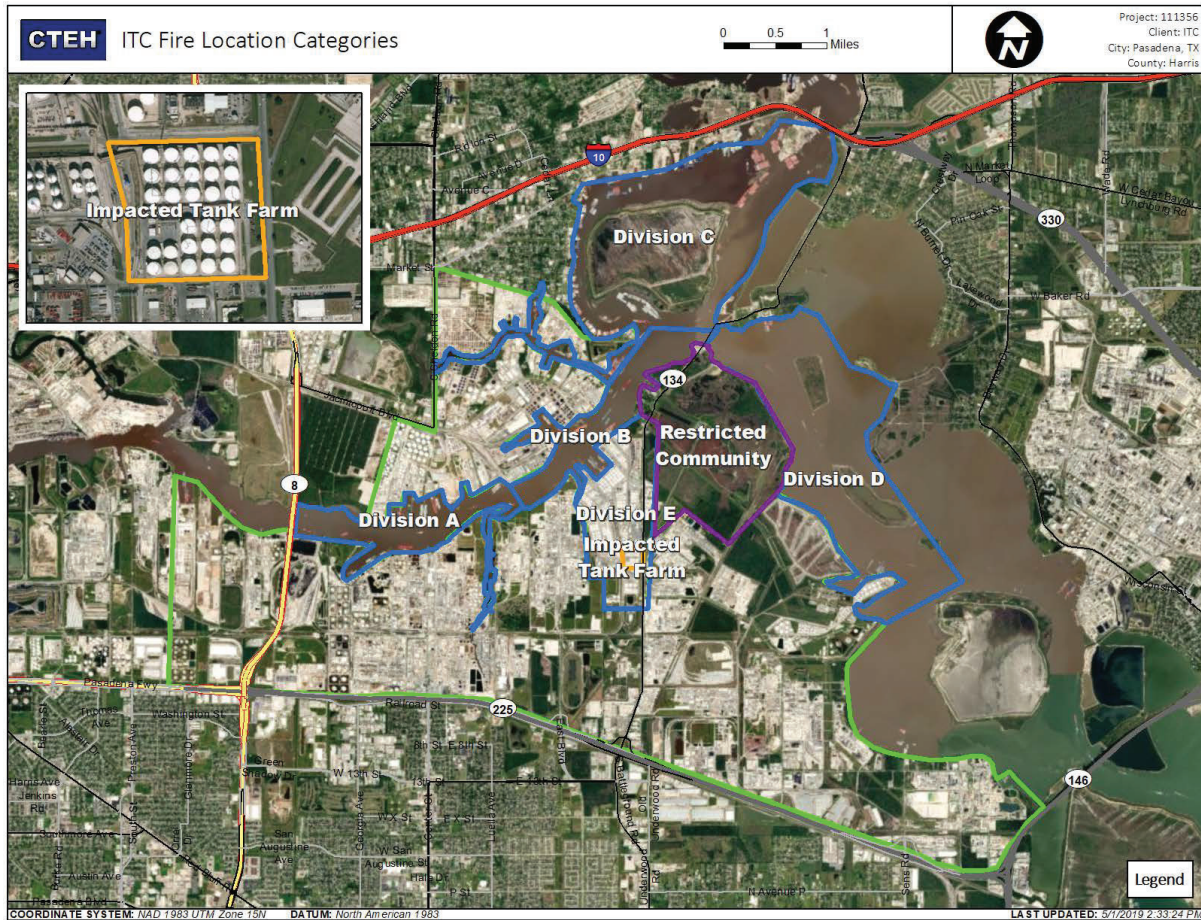
5/9/2019 11:00:00 PM to 5/10/2019 12:00:00 AM



Recent Benzene Detections



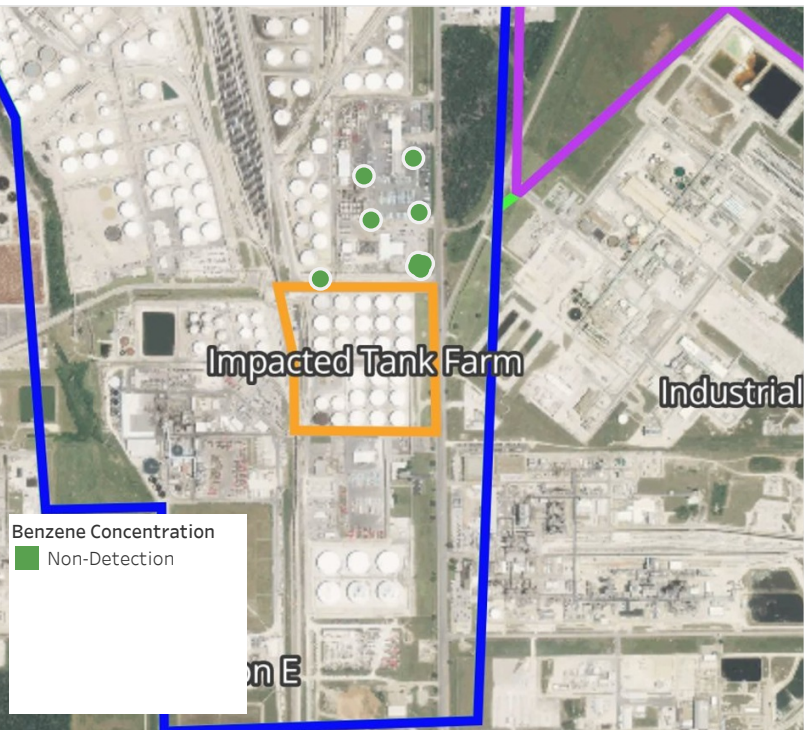
This data has been provided expeditiously to ITC and regulatory agencies for informational and/or operational purposes only. Data reported within this summary is preliminary in nature and has not undergone complete QA/QC (quality assurance/quality control) process. Until this complete QA/QC process is completed, the locations of each reading are approximate in nature and subject to further refinement. As some readings may represent non-breathing zone measurements, the data reported herein may not be suitable to assess potential occupational exposure. Site Assessment readings are not representative of an individual's breathing zone (e.g., container head space, ground level, directly above product, etc.).



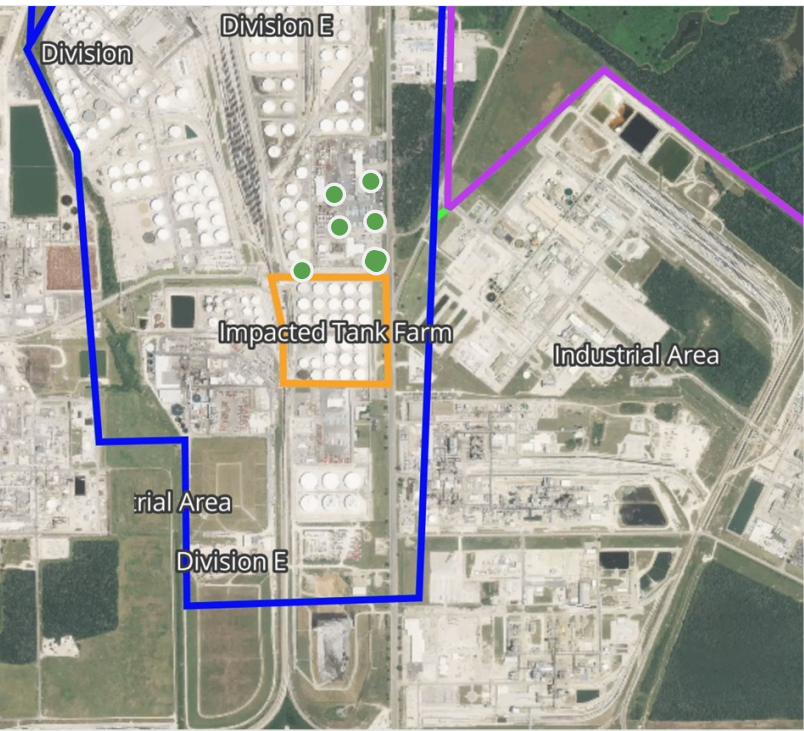
Please Note: These updates display data from the 2nd 80's Fire site (Impacted Tank Farm), in the industrial areas surrounding the 2nd 80's Fire site (US Coast Guard Division E), within the Houston Ship Channel (US Coast Guard Divisions A-D), and in the industrial areas north and south of the Houston Ship Channel (Industrial Area). Real-time air monitoring data for the surrounding communities are communicated daily in a separate report.

Preliminary Hand- Held Air Monitoring Locations | ITC Deer Park Tank Fire

Reading Date
5/10/2019 12:00:00 AM to 5/10/2019 1:00:00 AM



Recent Benzene Detections



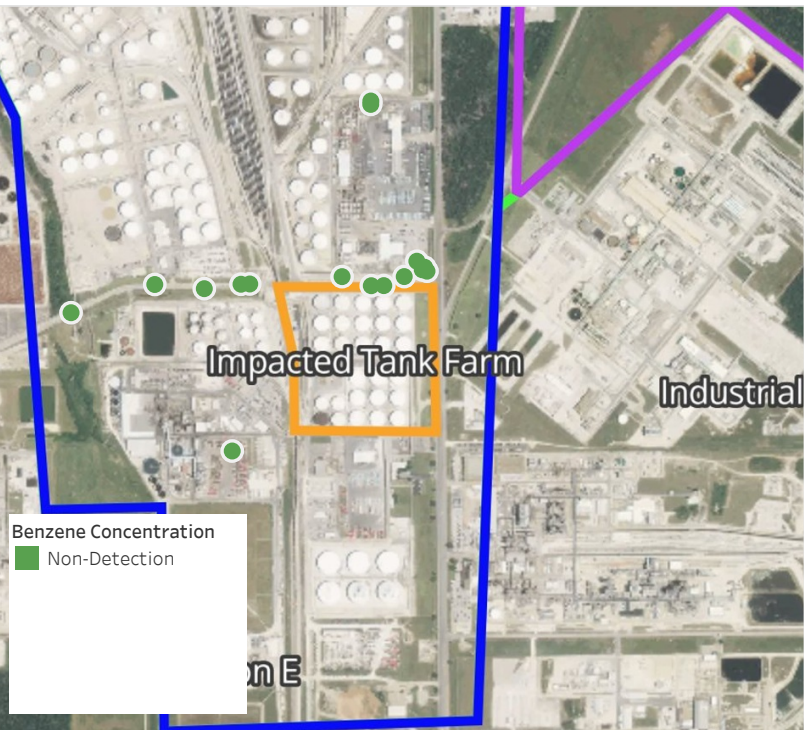
This data has been provided expeditiously to ITC and regulatory agencies for informational and/or operational purposes only. Data reported within this summary is preliminary in nature and has not undergone complete QA/QC (quality assurance/quality control) process. Until this complete QA/QC process is completed, the locations of each reading are approximate in nature and subject to further refinement. As some readings may represent non-breathing zone measurements, the data reported herein may not be suitable to assess potential occupational exposure. Site Assessment readings are not representative of an individual's breathing zone (e.g., container head space, ground level, directly above product, etc.).



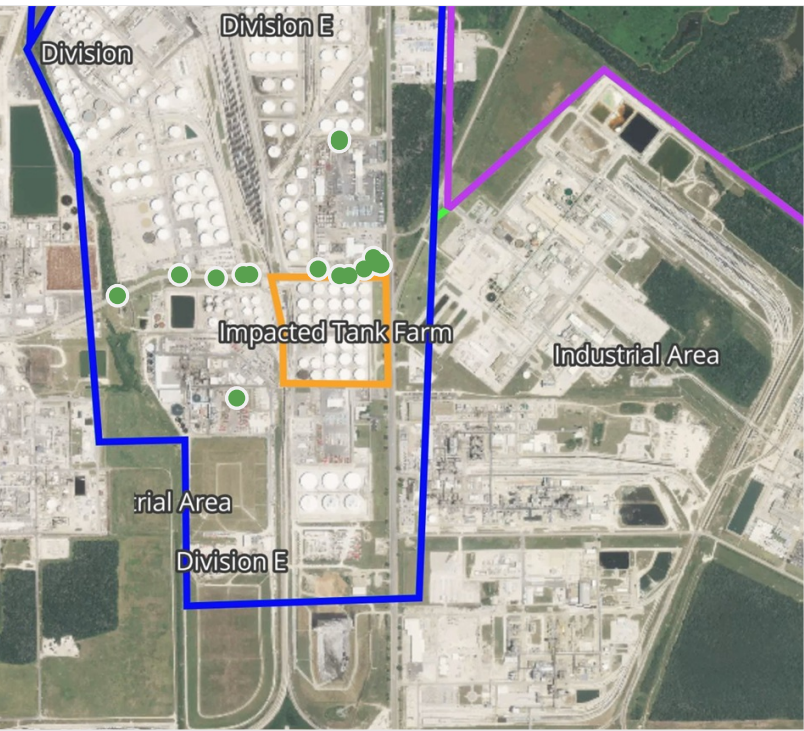
Please Note: These updates display data from the 2nd 80's Fire site (Impacted Tank Farm), in the industrial areas surrounding the 2nd 80's Fire site (US Coast Guard Division E), within the Houston Ship Channel (US Coast Guard Divisions A-D), and in the industrial areas north and south of the Houston Ship Channel (Industrial Area). Real-time air monitoring data for the surrounding communities are communicated daily in a separate report.

Preliminary Hand- Held Air Monitoring Locations | ITC Deer Park Tank Fire

Reading Date
5/10/2019 1:00:00 AM to 5/10/2019 2:00:00 AM



Recent Benzene Detections



This data has been provided expeditiously to ITC and regulatory agencies for informational and/or operational purposes only. Data reported within this summary is preliminary in nature and has not undergone complete QA/QC (quality assurance/quality control) process. Until this complete QA/QC process is completed, the locations of each reading are approximate in nature and subject to further refinement. As some readings may represent non-breathing zone measurements, the data reported herein may not be suitable to assess potential occupational exposure. Site Assessment readings are not representative of an individual's breathing zone (e.g., container head space, ground level, directly above product, etc.).



Please Note: These updates display data from the 2nd 80's Fire site (Impacted Tank Farm), in the industrial areas surrounding the 2nd 80's Fire site (US Coast Guard Division E), within the Houston Ship Channel (US Coast Guard Divisions A-D), and in the industrial areas north and south of the Houston Ship Channel (Industrial Area). Real-time air monitoring data for the surrounding communities are communicated daily in a separate report.

Preliminary Hand- Held Air Monitoring Locations | ITC Deer Park Tank Fire

Reading Date
5/10/2019 2:00:00 AM to 5/10/2019 3:00:00 AM



Recent Benzene Detections

Location Category	Reading Date	Range of Detections
Division E	5/10/2019 02:17:19	0.03000 ppm
	5/10/2019 02:24:16	0.01000 ppm
	5/10/2019 02:50:52	0.02000 ppm
	5/10/2019 02:42:53	0.03000 ppm
	5/10/2019 02:39:26	0.04000 ppm
	5/10/2019 02:27:06	0.01000 ppm
	5/10/2019 02:30:29	0.01000 ppm
	5/10/2019 02:45:48	0.03000 ppm
	5/10/2019 02:20:32	0.02000 ppm
	5/10/2019 02:48:05	0.03000 ppm

This data has been provided expeditiously to ITC and regulatory agencies for informational and/or operational purposes only. Data reported within this summary is preliminary in nature and has not undergone complete QA/QC (quality assurance/quality control) process. Until this complete QA/QC process is completed, the locations of each reading are approximate in nature and subject to further refinement. As some readings may represent non-breathing zone measurements, the data reported herein may not be suitable to assess potential occupational exposure. Site Assessment readings are not representative of an individual's breathing zone (e.g., container head space, ground level, directly above product, etc.).

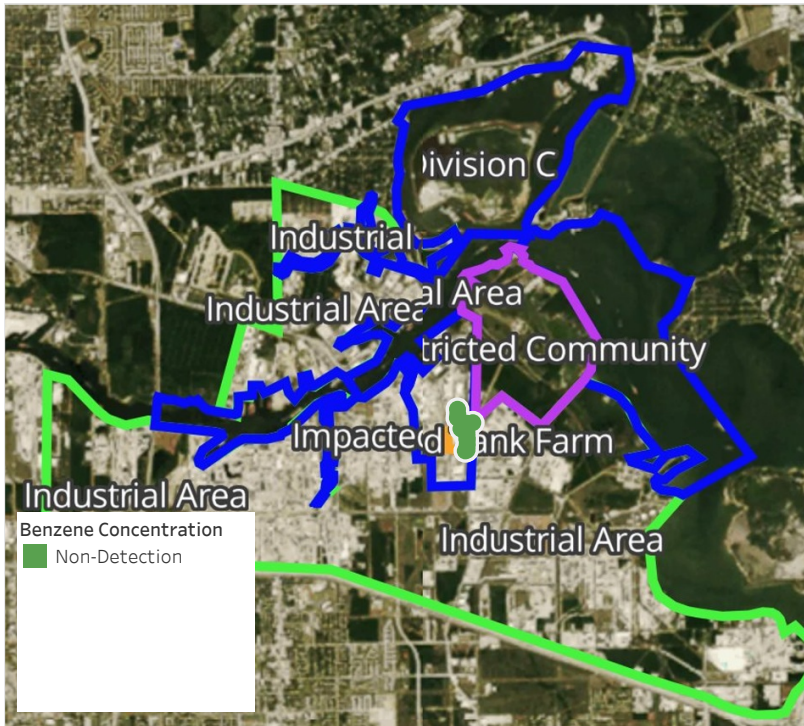


Please Note: These updates display data from the 2nd 80's Fire site (Impacted Tank Farm), in the industrial areas surrounding the 2nd 80's Fire site (US Coast Guard Division E), within the Houston Ship Channel (US Coast Guard Divisions A-D), and in the industrial areas north and south of the Houston Ship Channel (Industrial Area). Real-time air monitoring data for the surrounding communities are communicated daily in a separate report.

Preliminary Hand- Held Air Monitoring Locations | ITC Deer Park Tank Fire

Reading Date

5/10/2019 3:00:00 AM to 5/10/2019 4:00:00 AM



Recent Benzene Detections



This data has been provided expeditiously to ITC and regulatory agencies for informational and/or operational purposes only. Data reported within this summary is preliminary in nature and has not undergone complete QA/QC (quality assurance/quality control) process. Until this complete QA/QC process is completed, the locations of each reading are approximate in nature and subject to further refinement. As some readings may represent non-breathing zone measurements, the data reported herein may not be suitable to assess potential occupational exposure. Site Assessment readings are not representative of an individual's breathing zone (e.g., container head space, ground level, directly above product, etc.).



Please Note: These updates display data from the 2nd 80's Fire site (Impacted Tank Farm), in the industrial areas surrounding the 2nd 80's Fire site (US Coast Guard Division E), within the Houston Ship Channel (US Coast Guard Divisions A-D), and in the industrial areas north and south of the Houston Ship Channel (Industrial Area). Real-time air monitoring data for the surrounding communities are communicated daily in a separate report.

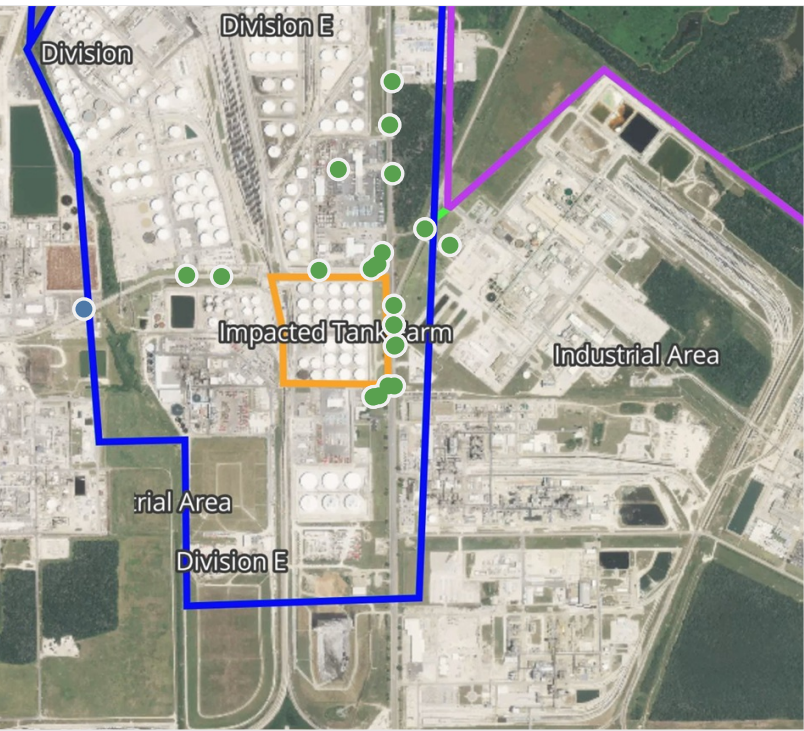
Preliminary Hand- Held Air Monitoring Locations | ITC Deer Park Tank Fire

Reading Date
5/10/2019 4:00:00 AM to 5/10/2019 5:00:00 AM



Recent Benzene Detections

Location Category	Reading Date	Range of Detections
Division E	5/10/2019 04:44:50	0.01000 ppm



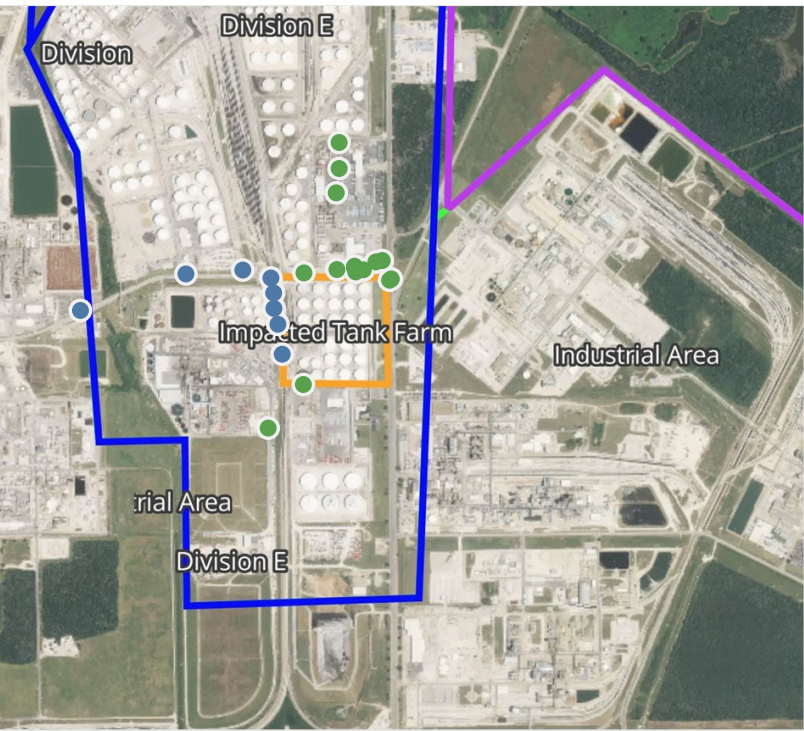
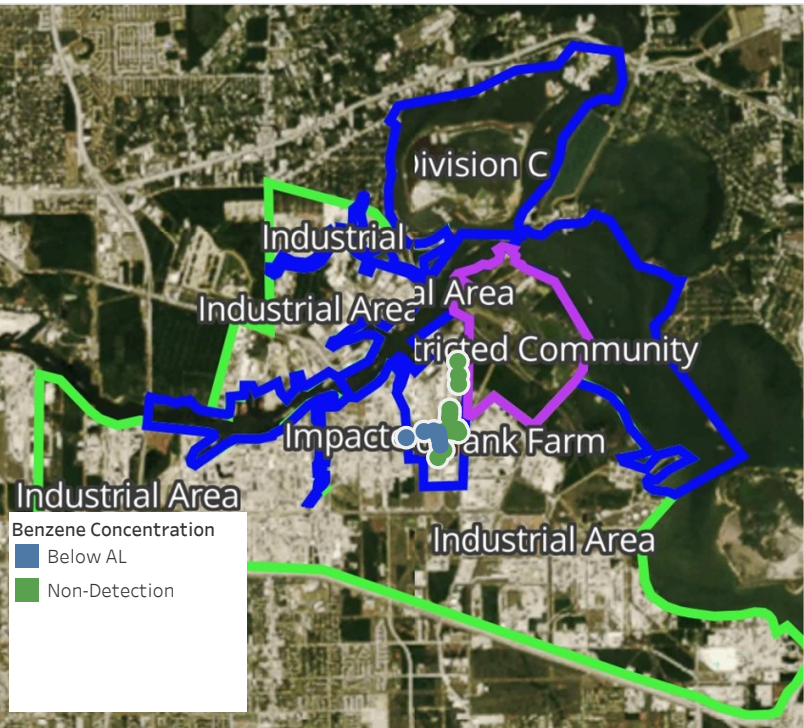
This data has been provided expeditiously to ITC and regulatory agencies for informational and/or operational purposes only. Data reported within this summary is preliminary in nature and has not undergone complete QA/QC (quality assurance/quality control) process. Until this complete QA/QC process is completed, the locations of each reading are approximate in nature and subject to further refinement. As some readings may represent non-breathing zone measurements, the data reported herein may not be suitable to assess potential occupational exposure. Site Assessment readings are not representative of an individual's breathing zone (e.g., container head space, ground level, directly above product, etc.).



Please Note: These updates display data from the 2nd 80's Fire site (Impacted Tank Farm), in the industrial areas surrounding the 2nd 80's Fire site (US Coast Guard Division E), within the Houston Ship Channel (US Coast Guard Divisions A-D), and in the industrial areas north and south of the Houston Ship Channel (Industrial Area). Real-time air monitoring data for the surrounding communities are communicated daily in a separate report.

Preliminary Hand- Held Air Monitoring Locations | ITC Deer Park Tank Fire

Reading Date
5/10/2019 5:00:00 AM to 5/10/2019 6:00:00 AM



Recent Benzene Detections

Location Category	Reading Date	Range of Detections
Division E	5/10/2019 05:47:51	0.02000 ppm
	5/10/2019 05:40:15	0.01000 ppm
	5/10/2019 05:44:13	0.01000 ppm
	5/10/2019 05:50:10	0.03000 ppm
	5/10/2019 05:47:55	0.03000 ppm
	5/10/2019 05:46:45	0.02000 ppm
	5/10/2019 05:51:26	0.03000 ppm
	5/10/2019 05:53:43	0.02000 ppm

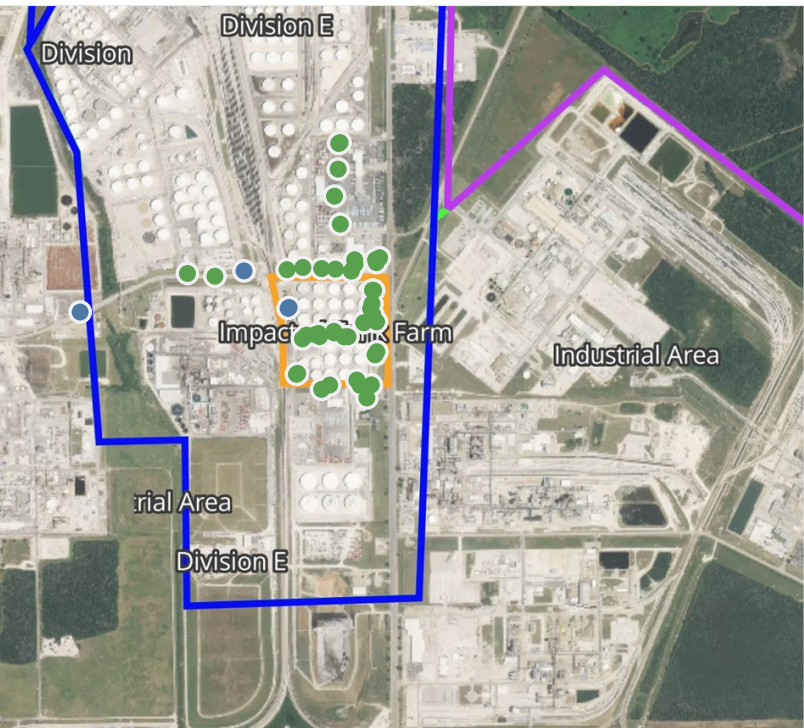
This data has been provided expeditiously to ITC and regulatory agencies for informational and/or operational purposes only. Data reported within this summary is preliminary in nature and has not undergone complete QA/QC (quality assurance/quality control) process. Until this complete QA/QC process is completed, the locations of each reading are approximate in nature and subject to further refinement. As some readings may represent non-breathing zone measurements, the data reported herein may not be suitable to assess potential occupational exposure. Site Assessment readings are not representative of an individual's breathing zone (e.g., container head space, ground level, directly above product, etc.).



Please Note: These updates display data from the 2nd 80's Fire site (Impacted Tank Farm), in the industrial areas surrounding the 2nd 80's Fire site (US Coast Guard Division E), within the Houston Ship Channel (US Coast Guard Divisions A-D), and in the industrial areas north and south of the Houston Ship Channel (Industrial Area). Real-time air monitoring data for the surrounding communities are communicated daily in a separate report.

Preliminary Hand- Held Air Monitoring Locations | ITC Deer Park Tank Fire

Reading Date
5/10/2019 6:00:00 AM to 5/10/2019 7:00:00 AM



Recent Benzene Detections

Location Category	Reading Date	Range of Detections
Division E	5/10/2019 06:27:47	0.01000 ppm
	5/10/2019 06:14:20	0.01000 ppm
Impacted Tank Farm	5/10/2019 06:25:40	0.02000 ppm
	5/10/2019 06:25:49	0.02000 ppm

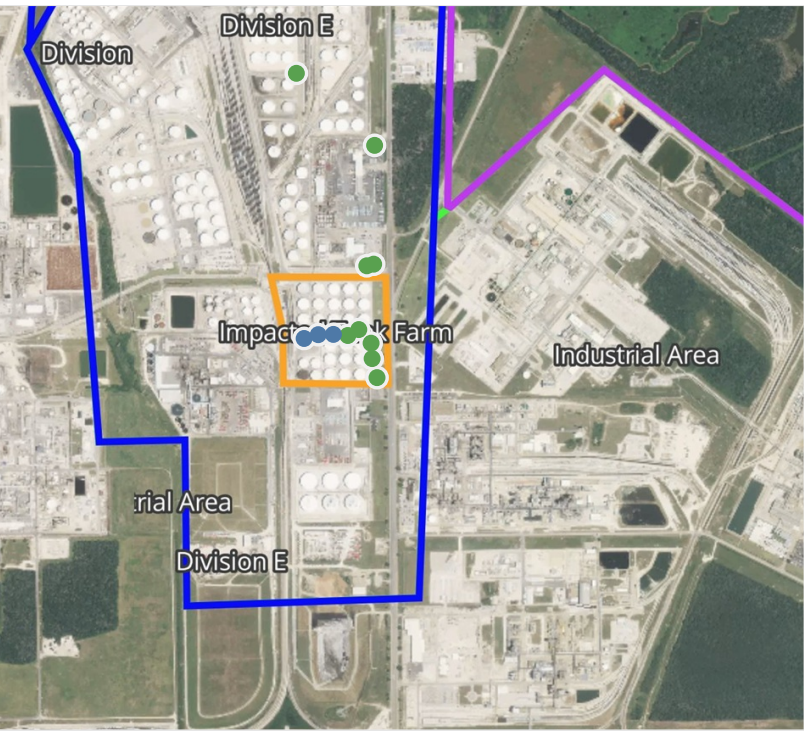
This data has been provided expeditiously to ITC and regulatory agencies for informational and/or operational purposes only. Data reported within this summary is preliminary in nature and has not undergone complete QA/QC (quality assurance/quality control) process. Until this complete QA/QC process is completed, the locations of each reading are approximate in nature and subject to further refinement. As some readings may represent non-breathing zone measurements, the data reported herein may not be suitable to assess potential occupational exposure. Site Assessment readings are not representative of an individual's breathing zone (e.g., container head space, ground level, directly above product, etc.).



Please Note: These updates display data from the 2nd 80's Fire site (Impacted Tank Farm), in the industrial areas surrounding the 2nd 80's Fire site (US Coast Guard Division E), within the Houston Ship Channel (US Coast Guard Divisions A-D), and in the industrial areas north and south of the Houston Ship Channel (Industrial Area). Real-time air monitoring data for the surrounding communities are communicated daily in a separate report.

Preliminary Hand- Held Air Monitoring Locations | ITC Deer Park Tank Fire

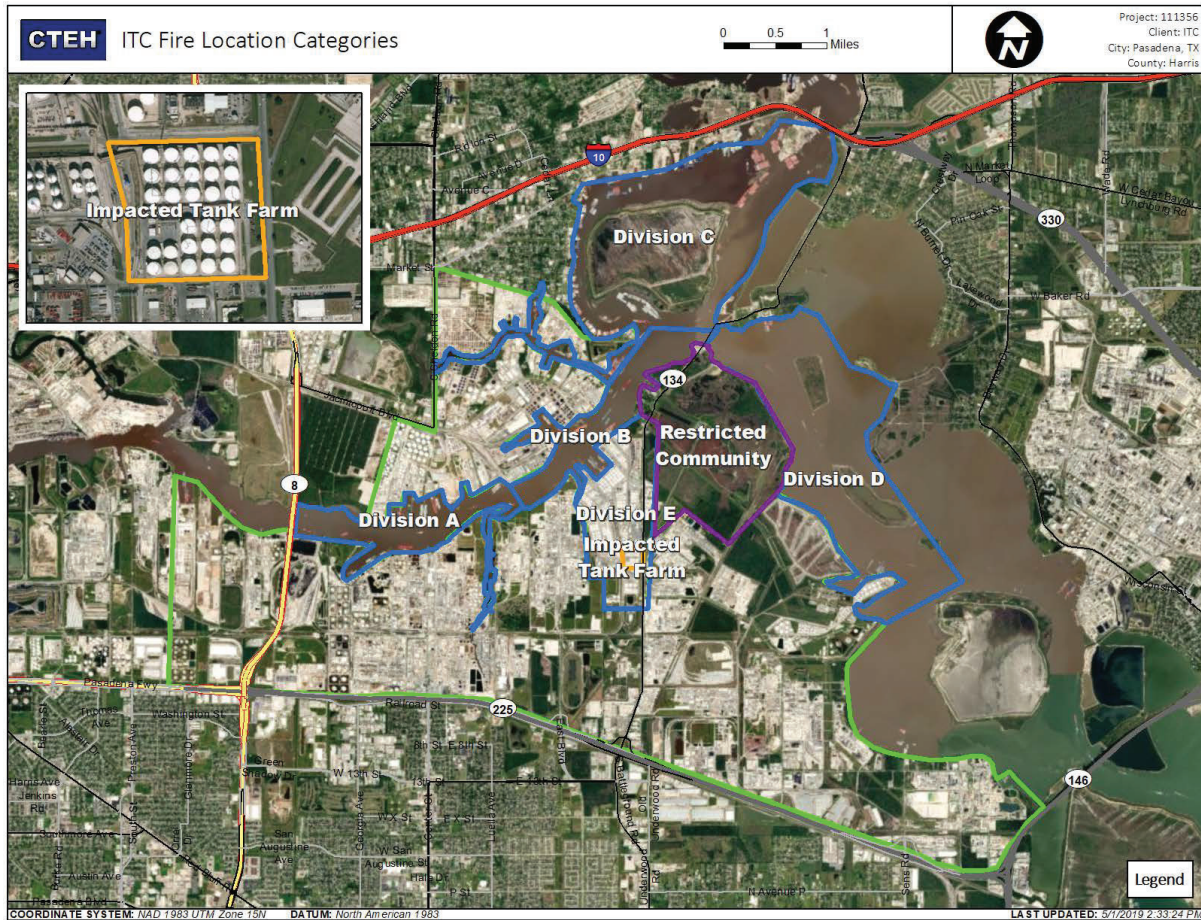
Reading Date
5/10/2019 7:00:00 AM to 5/10/2019 8:00:00 AM



Recent Benzene Detections

Location Category	Reading Date	Range of Detections
Impacted Tank Farm	5/10/2019 07:41:47	0.03000 ppm
	5/10/2019 07:47:21	0.08000 ppm
	5/10/2019 07:44:31	0.08000 ppm

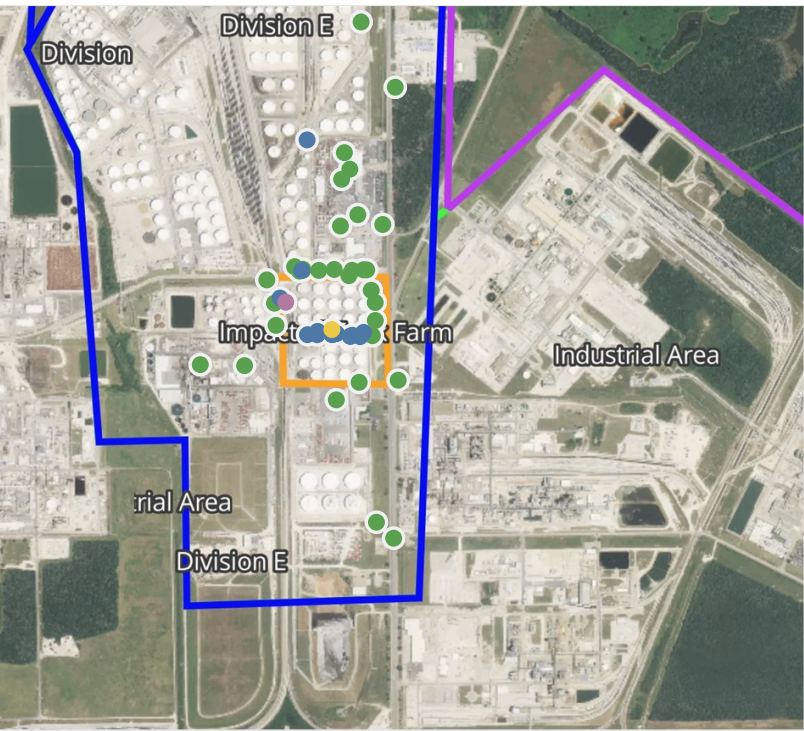
This data has been provided expeditiously to ITC and regulatory agencies for informational and/or operational purposes only. Data reported within this summary is preliminary in nature and has not undergone complete QA/QC (quality assurance/quality control) process. Until this complete QA/QC process is completed, the locations of each reading are approximate in nature and subject to further refinement. As some readings may represent non-breathing zone measurements, the data reported herein may not be suitable to assess potential occupational exposure. Site Assessment readings are not representative of an individual's breathing zone (e.g., container head space, ground level, directly above product, etc.).



Please Note: These updates display data from the 2nd 80's Fire site (Impacted Tank Farm), in the industrial areas surrounding the 2nd 80's Fire site (US Coast Guard Division E), within the Houston Ship Channel (US Coast Guard Divisions A-D), and in the industrial areas north and south of the Houston Ship Channel (Industrial Area). Real-time air monitoring data for the surrounding communities are communicated daily in a separate report.

Preliminary Hand- Held Air Monitoring Locations | ITC Deer Park Tank Fire

Reading Date
5/10/2019 8:00:00 AM to 5/10/2019 9:00:00 AM



Recent Benzene Detections

Location Category	Reading Date	Range of Detections
Division E	5/10/2019 08:30:25	0.260 ppm
	5/10/2019 08:45:15	0.030 ppm
	5/10/2019 08:54:30	0.060 ppm
Impacted Tank Farm	5/10/2019 08:16:25	0.040 ppm
	5/10/2019 08:33:29	0.110 ppm
	5/10/2019 08:28:05	0.590 ppm
	5/10/2019 08:31:54	0.100 ppm
	5/10/2019 08:20:19	0.060 ppm
	5/10/2019 08:29:31	0.200 ppm
	5/10/2019 08:22:11	0.110 ppm
	5/10/2019 08:50:47	0.270 ppm
	5/10/2019 08:56:56	0.070 ppm
	5/10/2019 08:52:20	0.130 ppm
	5/10/2019 08:56:42	0.080 ppm
	5/10/2019 08:46:26	0.300 ppm
Industrial Area	5/10/2019 08:43:39	0.240 ppm
	5/10/2019 08:47:53	0.200 ppm
	5/10/2019 08:32:35	2.790 ppm

This data has been provided expeditiously to ITC and regulatory agencies for informational and/or operational purposes only. Data reported within this summary is preliminary in nature and has not undergone complete QA/QC (quality assurance/quality control) process. Until this complete QA/QC process is completed, the locations of each reading are approximate in nature and subject to further refinement. As some readings may represent non-breathing zone measurements, the data reported herein may not be suitable to assess potential occupational exposure. Site Assessment readings are not representative of an individual's breathing zone (e.g., container head space, ground level, directly above product, etc.).

Reading Date
5/10/2019 8:00:00 AM to 5/10/2019 9:00:00 AM

Benzene Action Level Concentration (ppm)
■ >=2

PRELIMINARY
Recent Benzene Detections Greater than 1.00 ppm

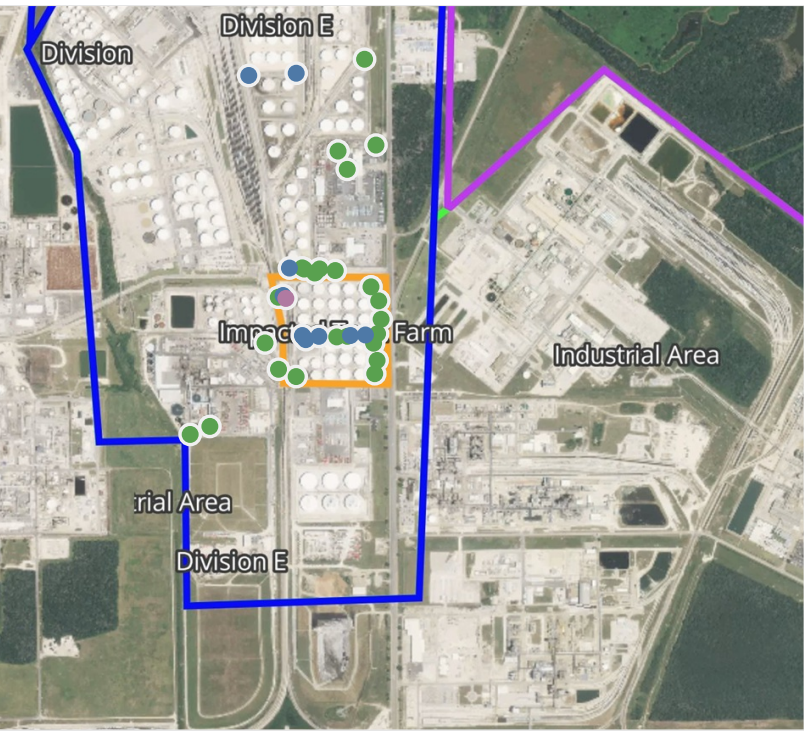
Reading Date	Location Category	GPS	Google Maps URL	Range of Detections
5/10/2019 08:32:35	Impacted Tank Farm	29.7325010,-95.0930600	https://www.google.com/maps/search/?api=1&query=29.7325010,-95.0930600	2.790 ppm



Please Note: These updates display data from the 2nd 80's Fire site (Impacted Tank Farm), in the industrial areas surrounding the 2nd 80's Fire site (US Coast Guard Division E), within the Houston Ship Channel (US Coast Guard Divisions A-D), and in the industrial areas north and south of the Houston Ship Channel (Industrial Area). Real-time air monitoring data for the surrounding communities are communicated daily in a separate report.

Preliminary Hand- Held Air Monitoring Locations | ITC Deer Park Tank Fire

Reading Date
5/10/2019 9:00:00 AM to 5/10/2019 10:00:00 AM



Recent Benzene Detections

Location Category	Reading Date	Range of Detections
Division E	5/10/2019 09:18:38	0.19 ppm
	5/10/2019 09:25:58	0.04 ppm
	5/10/2019 09:57:05	0.03 ppm
	5/10/2019 09:44:47	0.33 ppm
	5/10/2019 09:24:47	19.00 ppm
	5/10/2019 09:02:28	0.12 ppm
Impacted Tank Farm	5/10/2019 09:07:59	0.05 ppm
	5/10/2019 09:07:45	0.06 ppm
	5/10/2019 09:46:00	0.03 ppm
	5/10/2019 09:34:36	0.16 ppm
	5/10/2019 09:33:17	0.06 ppm
	5/10/2019 09:43:59	0.03 ppm
	5/10/2019 09:44:04	2.16 ppm
Site Assessment	5/10/2019 09:35:26	0.36 ppm

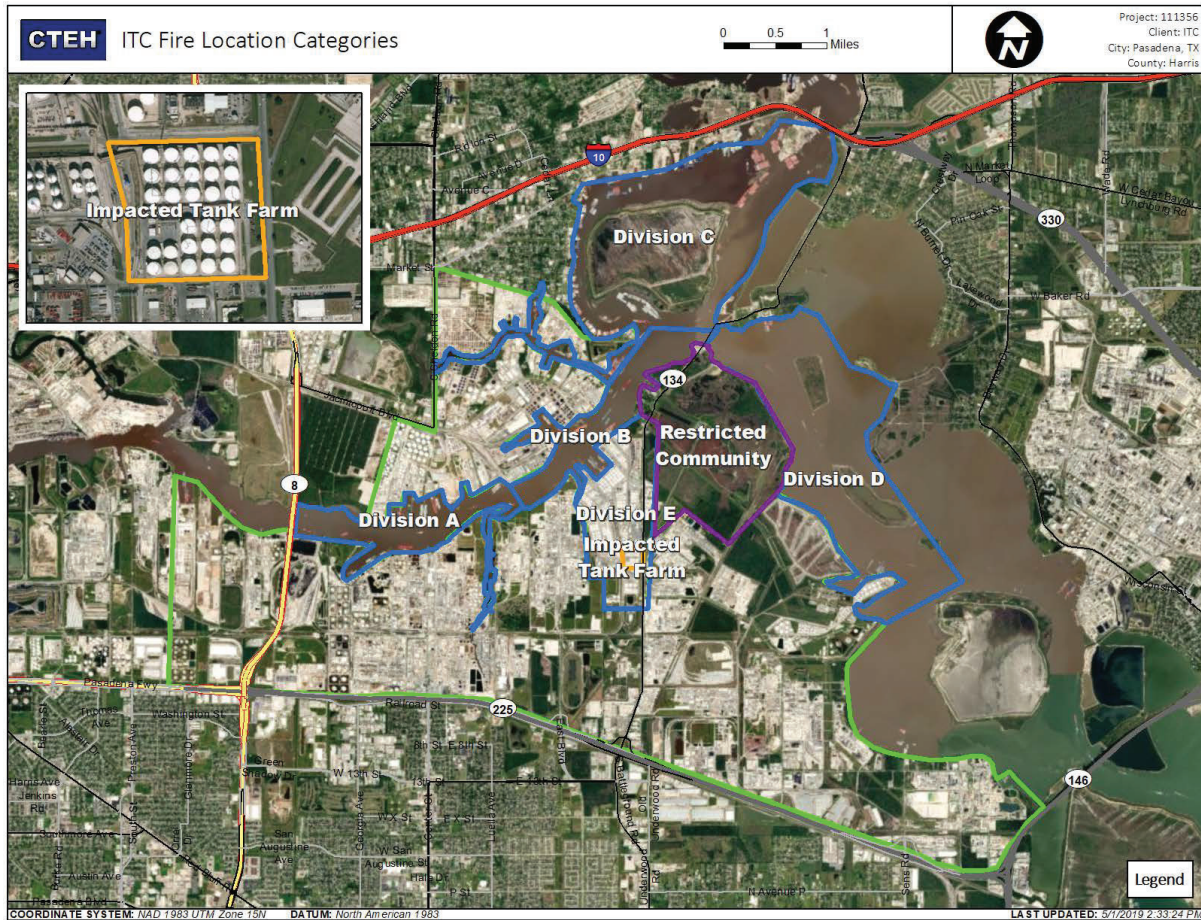
This data has been provided expeditiously to ITC and regulatory agencies for informational and/or operational purposes only. Data reported within this summary is preliminary in nature and has not undergone complete QA/QC (quality assurance/quality control) process. Until this complete QA/QC process is completed, the locations of each reading are approximate in nature and subject to further refinement. As some readings may represent non-breathing zone measurements, the data reported herein may not be suitable to assess potential occupational exposure. Site Assessment readings are not representative of an individual's breathing zone (e.g., container head space, ground level, directly above product, etc.).

Reading Date
5/10/2019 9:00:00 AM to 5/10/2019 10:00:00 AM

Benzene Action Level Concentration (ppm)
■ >=2

PRELIMINARY
Recent Benzene Detections Greater than 1.00 ppm

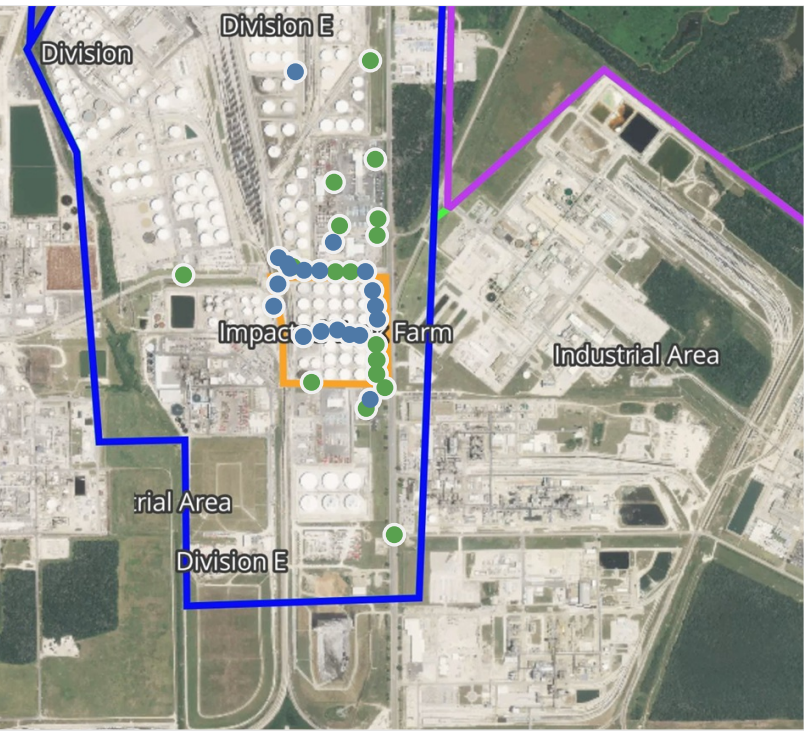
Reading Date	Location Category	GPS	Google Maps URL	Range of Detections
5/10/2019 09:44:04	Site Assessment	29.7326000,-95.0930580	https://www.google.com/maps/search/?api=1&query=29.7326000,-95.0930580	2.16 ppm
5/10/2019 09:24:47	Division E	29.7439280,-95.0968460	https://www.google.com/maps/search/?api=1&query=29.7439280,-95.0968460	19.00 ppm



Please Note: These updates display data from the 2nd 80's Fire site (Impacted Tank Farm), in the industrial areas surrounding the 2nd 80's Fire site (US Coast Guard Division E), within the Houston Ship Channel (US Coast Guard Divisions A-D), and in the industrial areas north and south of the Houston Ship Channel (Industrial Area). Real-time air monitoring data for the surrounding communities are communicated daily in a separate report.

Preliminary Hand- Held Air Monitoring Locations | ITC Deer Park Tank Fire

Reading Date
5/10/2019 10:00:00 AM to 5/10/2019 11:00:00 AM



Recent Benzene Detections

Location Category	Reading Date	Range of Detections
Division E	5/10/2019 10:02:28	0.020 ppm
	5/10/2019 10:13:08	0.160 ppm
	5/10/2019 10:15:46	0.030 ppm
	5/10/2019 10:19:12	0.100 ppm
	5/10/2019 10:23:55	0.060 ppm
	5/10/2019 10:31:41	0.020 ppm
	5/10/2019 10:33:02	0.020 ppm
	5/10/2019 10:27:04	3.530 ppm
	5/10/2019 10:44:32	0.030 ppm
	5/10/2019 10:44:07	0.030 ppm
Impacted Tank Farm	5/10/2019 10:54:53	0.020 ppm
	5/10/2019 10:10:40	0.010 ppm
	5/10/2019 10:07:38	0.030 ppm
	5/10/2019 10:13:39	0.030 ppm
	5/10/2019 10:25:44	0.030 ppm
	5/10/2019 10:29:26	0.030 ppm
	5/10/2019 10:33:01	0.120 ppm
	5/10/2019 10:27:15	0.080 ppm
	5/10/2019 10:30:35	0.110 ppm
	5/10/2019 10:51:16	0.220 ppm

This data has been provided expeditiously to ITC and regulatory agencies for informational and/or operational purposes only. Data reported within this summary is preliminary in nature and has not undergone complete QA/QC (quality assurance/quality control) process. Until this complete QA/QC process is completed, the locations of each reading are approximate in nature and subject to further refinement. As some readings may represent non-breathing zone measurements, the data reported herein may not be suitable to assess potential occupational exposure. Site Assessment readings are not representative of an individual's breathing zone (e.g., container head space, ground level, directly above product, etc.).

Reading Date
5/10/2019 10:00:00 AM to 5/10/2019 11:00:00 AM

Benzene Action Level Concentration (ppm)
■ >=2

PRELIMINARY
Recent Benzene Detections Greater than 1.00 ppm

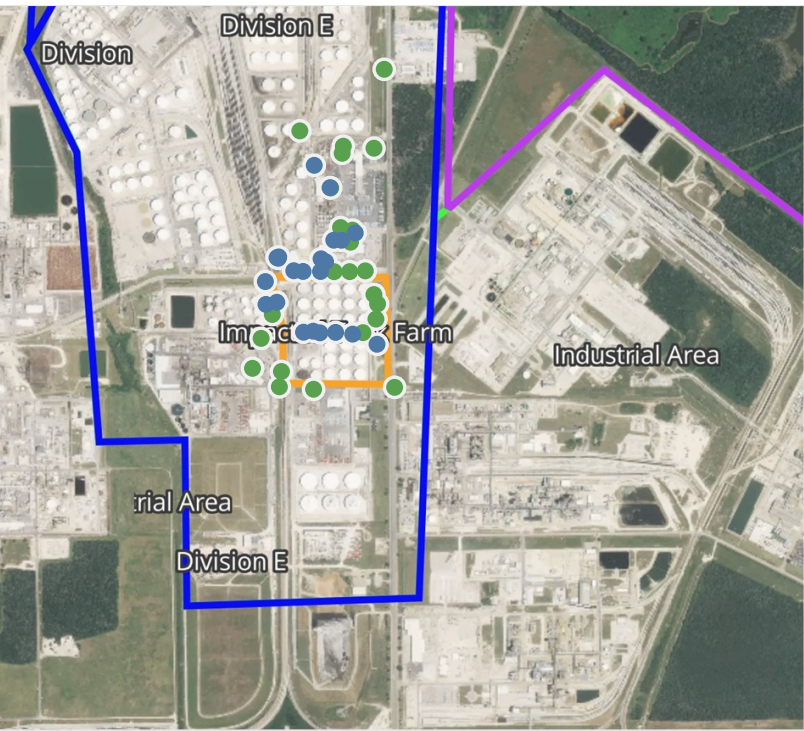
Reading Date	Location Category	GPS	Google Maps URL	Range of Detections
5/10/2019 10:27:04	Division E	29.7439410,-95.0969560	https://www.google.com/maps/search/?api=1&query=29.7439410,-95.0969560	3.530 ppm



Please Note: These updates display data from the 2nd 80's Fire site (Impacted Tank Farm), in the industrial areas surrounding the 2nd 80's Fire site (US Coast Guard Division E), within the Houston Ship Channel (US Coast Guard Divisions A-D), and in the industrial areas north and south of the Houston Ship Channel (Industrial Area). Real-time air monitoring data for the surrounding communities are communicated daily in a separate report.

Preliminary Hand- Held Air Monitoring Locations | ITC Deer Park Tank Fire

Reading Date
5/10/2019 11:00:00 AM to 5/10/2019 12:00:00 PM



Recent Benzene Detections

Location Category	Reading Date	Range of Detections
Division E	5/10/2019 11:10:03	0.0600 ppm
	5/10/2019 11:06:15	0.0000 ppm
	5/10/2019 11:14:53	0.0900 ppm
	5/10/2019 11:20:50	0.0100 ppm
	5/10/2019 11:32:02	0.0200 ppm
	5/10/2019 11:31:03	0.0100 ppm
	5/10/2019 11:36:49	0.0200 ppm
	5/10/2019 11:34:33	0.0700 ppm
	5/10/2019 11:39:20	0.0200 ppm
	5/10/2019 11:31:27	0.0300 ppm
	5/10/2019 11:45:53	0.0200 ppm
	5/10/2019 11:45:03	0.0400 ppm
	5/10/2019 11:52:57	0.0300 ppm
	5/10/2019 11:38:46	0.0200 ppm
	5/10/2019 11:56:25	0.0300 ppm
Impacted Tank Farm	5/10/2019 11:01:25	0.0300 ppm
	5/10/2019 11:17:00	0.1400 ppm
	5/10/2019 11:18:24	0.0600 ppm
	5/10/2019 11:22:10	0.1000 ppm
	5/10/2019 11:24:29	0.1000 ppm
	5/10/2019 11:20:06	0.0300 ppm
	5/10/2019 11:52:40	0.2200 ppm

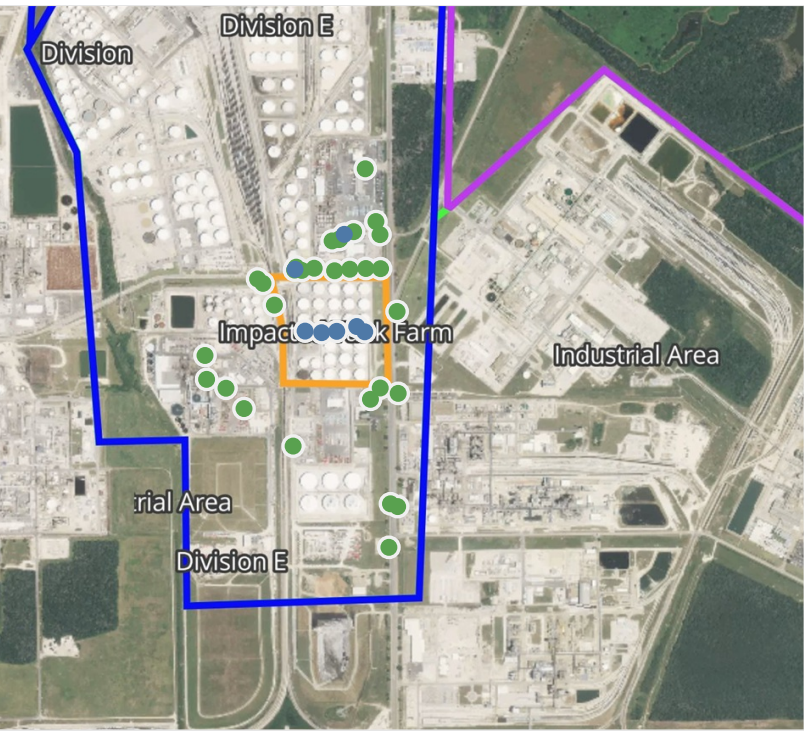
This data has been provided expeditiously to ITC and regulatory agencies for informational and/or operational purposes only. Data reported within this summary is preliminary in nature and has not undergone complete QA/QC (quality assurance/quality control) process. Until this complete QA/QC process is completed, the locations of each reading are approximate in nature and subject to further refinement. As some readings may represent non-breathing zone measurements, the data reported herein may not be suitable to assess potential occupational exposure. Site Assessment readings are not representative of an individual's breathing zone (e.g., container head space, ground level, directly above product, etc.).



Please Note: These updates display data from the 2nd 80's Fire site (Impacted Tank Farm), in the industrial areas surrounding the 2nd 80's Fire site (US Coast Guard Division E), within the Houston Ship Channel (US Coast Guard Divisions A-D), and in the industrial areas north and south of the Houston Ship Channel (Industrial Area). Real-time air monitoring data for the surrounding communities are communicated daily in a separate report.

Preliminary Hand- Held Air Monitoring Locations | ITC Deer Park Tank Fire

Reading Date
5/10/2019 12:00:00 PM to 5/10/2019 1:00:00 PM



Recent Benzene Detections

Location Category	Reading Date	Range of Detections
Division E	5/10/2019 12:05:23	0.03000 ppm
	5/10/2019 12:20:21	0.02000 ppm
Impacted Tank Farm	5/10/2019 12:28:19	0.05000 ppm
	5/10/2019 12:30:03	0.03000 ppm
	5/10/2019 12:25:46	0.03000 ppm
	5/10/2019 12:33:06	0.05000 ppm
	5/10/2019 12:26:56	0.09000 ppm

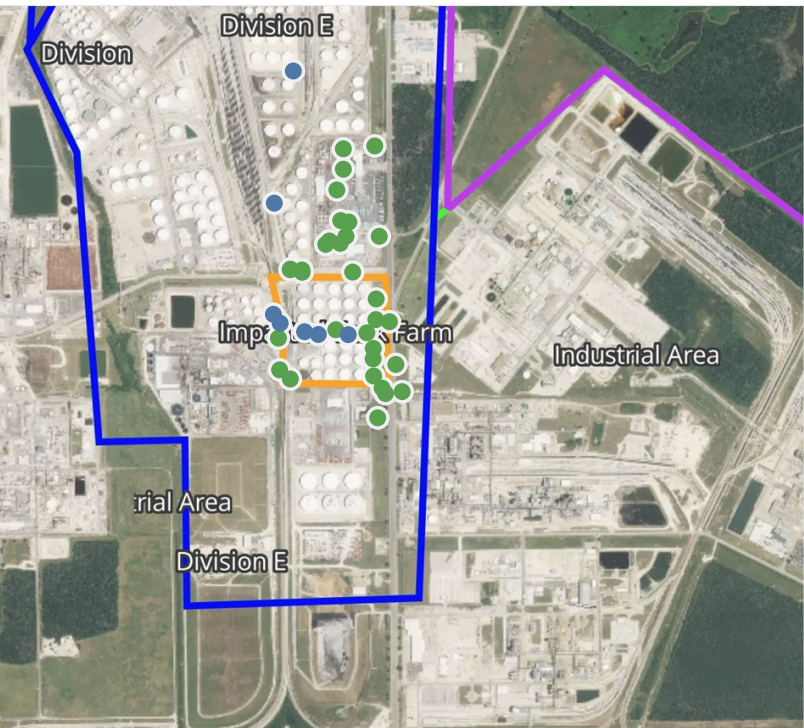
This data has been provided expeditiously to ITC and regulatory agencies for informational and/or operational purposes only. Data reported within this summary is preliminary in nature and has not undergone complete QA/QC (quality assurance/quality control) process. Until this complete QA/QC process is completed, the locations of each reading are approximate in nature and subject to further refinement. As some readings may represent non-breathing zone measurements, the data reported herein may not be suitable to assess potential occupational exposure. Site Assessment readings are not representative of an individual's breathing zone (e.g., container head space, ground level, directly above product, etc.).



Please Note: These updates display data from the 2nd 80's Fire site (Impacted Tank Farm), in the industrial areas surrounding the 2nd 80's Fire site (US Coast Guard Division E), within the Houston Ship Channel (US Coast Guard Divisions A-D), and in the industrial areas north and south of the Houston Ship Channel (Industrial Area). Real-time air monitoring data for the surrounding communities are communicated daily in a separate report.

Preliminary Hand- Held Air Monitoring Locations | ITC Deer Park Tank Fire

Reading Date
5/10/2019 1:00:00 PM to 5/10/2019 2:00:00 PM



Recent Benzene Detections

Location Category	Reading Date	Range of Detections
Division E	5/10/2019 13:03:22	0.3100 ppm
	5/10/2019 13:11:52	0.0800 ppm
	5/10/2019 13:10:40	0.0700 ppm
	5/10/2019 13:50:44	0.0200 ppm
Impacted Tank Farm	5/10/2019 13:09:09	0.0300 ppm
	5/10/2019 13:07:04	0.1100 ppm
	5/10/2019 13:14:06	0.0400 ppm

This data has been provided expeditiously to ITC and regulatory agencies for informational and/or operational purposes only. Data reported within this summary is preliminary in nature and has not undergone complete QA/QC (quality assurance/quality control) process. Until this complete QA/QC process is completed, the locations of each reading are approximate in nature and subject to further refinement. As some readings may represent non-breathing zone measurements, the data reported herein may not be suitable to assess potential occupational exposure. Site Assessment readings are not representative of an individual's breathing zone (e.g., container head space, ground level, directly above product, etc.).



Please Note: These updates display data from the 2nd 80's Fire site (Impacted Tank Farm), in the industrial areas surrounding the 2nd 80's Fire site (US Coast Guard Division E), within the Houston Ship Channel (US Coast Guard Divisions A-D), and in the industrial areas north and south of the Houston Ship Channel (Industrial Area). Real-time air monitoring data for the surrounding communities are communicated daily in a separate report.

Preliminary Hand- Held Air Monitoring Locations | ITC Deer Park Tank Fire

Reading Date
5/10/2019 2:00:00 PM to 5/10/2019 3:00:00 PM



Recent Benzene Detections

Location Category	Reading Date	Range of Detections
Division E	5/10/2019 14:17:48	0.1000 ppm
	5/10/2019 14:51:08	0.4700 ppm
Impacted Tank Farm	5/10/2019 14:35:02	0.0200 ppm
	5/10/2019 14:56:45	0.0300 ppm
	5/10/2019 14:58:10	0.2700 ppm
	5/10/2019 14:53:51	0.0600 ppm

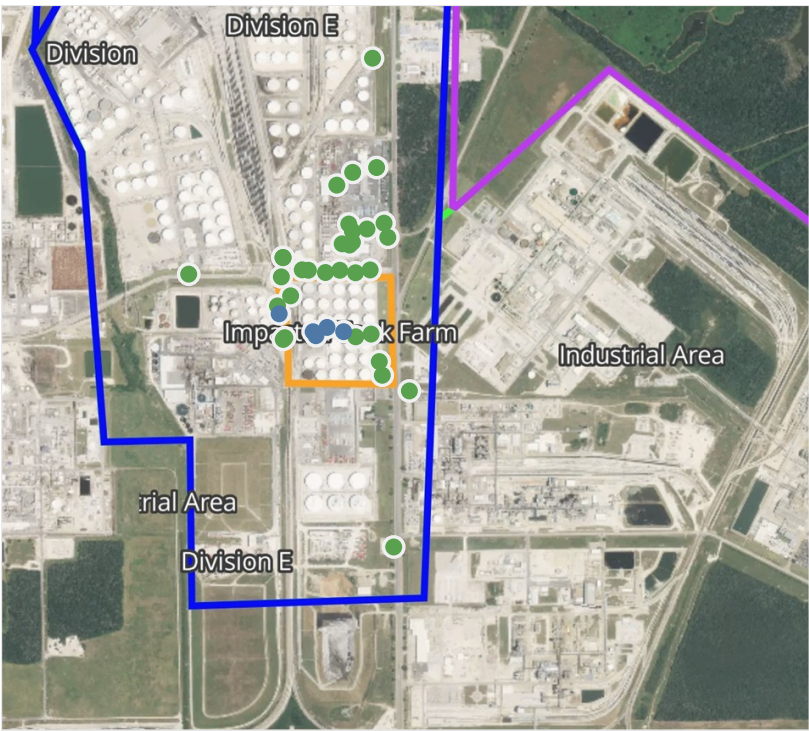
This data has been provided expeditiously to ITC and regulatory agencies for informational and/or operational purposes only. Data reported within this summary is preliminary in nature and has not undergone complete QA/QC (quality assurance/quality control) process. Until this complete QA/QC process is completed, the locations of each reading are approximate in nature and subject to further refinement. As some readings may represent non-breathing zone measurements, the data reported herein may not be suitable to assess potential occupational exposure. Site Assessment readings are not representative of an individual's breathing zone (e.g., container head space, ground level, directly above product, etc.).



Please Note: These updates display data from the 2nd 80's Fire site (Impacted Tank Farm), in the industrial areas surrounding the 2nd 80's Fire site (US Coast Guard Division E), within the Houston Ship Channel (US Coast Guard Divisions A-D), and in the industrial areas north and south of the Houston Ship Channel (Industrial Area). Real-time air monitoring data for the surrounding communities are communicated daily in a separate report.

Preliminary Hand- Held Air Monitoring Locations | ITC Deer Park Tank Fire

Reading Date
5/10/2019 3:00:00 PM to 5/10/2019 4:00:00 PM



Recent Benzene Detections

Location Category	Reading Date	Range of Detections
Division E	5/10/2019 15:44:25	0.0500 ppm
	5/10/2019 15:58:21	0.1600 ppm
Impacted Tank Farm	5/10/2019 15:00:08	0.1100 ppm
	5/10/2019 15:34:20	0.0400 ppm
	5/10/2019 15:36:00	0.0300 ppm
	5/10/2019 15:31:41	0.0400 ppm

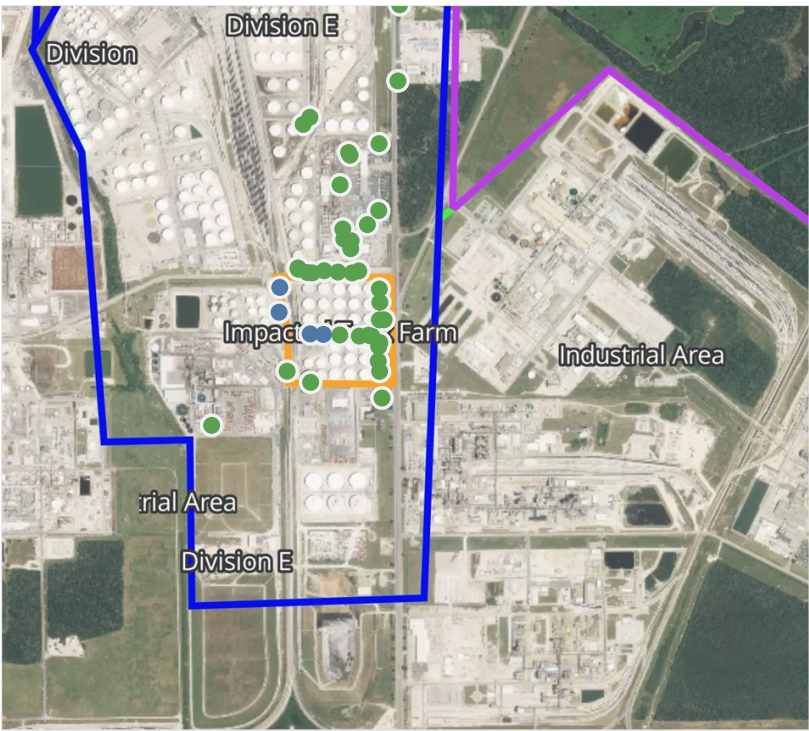
This data has been provided expeditiously to ITC and regulatory agencies for informational and/or operational purposes only. Data reported within this summary is preliminary in nature and has not undergone complete QA/QC (quality assurance/quality control) process. Until this complete QA/QC process is completed, the locations of each reading are approximate in nature and subject to further refinement. As some readings may represent non-breathing zone measurements, the data reported herein may not be suitable to assess potential occupational exposure. Site Assessment readings are not representative of an individual's breathing zone (e.g., container head space, ground level, directly above product, etc.).



Please Note: These updates display data from the 2nd 80's Fire site (Impacted Tank Farm), in the industrial areas surrounding the 2nd 80's Fire site (US Coast Guard Division E), within the Houston Ship Channel (US Coast Guard Divisions A-D), and in the industrial areas north and south of the Houston Ship Channel (Industrial Area). Real-time air monitoring data for the surrounding communities are communicated daily in a separate report.

Preliminary Hand- Held Air Monitoring Locations | ITC Deer Park Tank Fire

Reading Date
5/10/2019 4:00:00 PM to 5/10/2019 5:00:00 PM



Recent Benzene Detections

Location Category	Reading Date	Range of Detections
Division E	5/10/2019 16:07:44	0.02000 ppm
	5/10/2019 16:27:02	0.02000 ppm
	5/10/2019 16:28:03	0.05000 ppm
	5/10/2019 16:13:03	0.02000 ppm
Impacted Tank Farm	5/10/2019 16:12:03	0.08000 ppm
	5/10/2019 16:07:56	0.08000 ppm

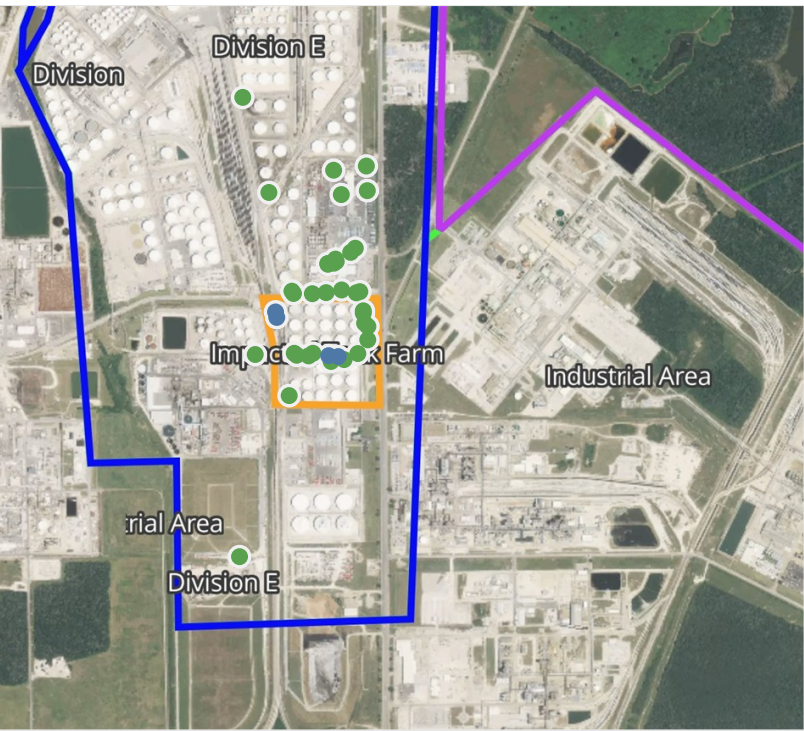
This data has been provided expeditiously to ITC and regulatory agencies for informational and/or operational purposes only. Data reported within this summary is preliminary in nature and has not undergone complete QA/QC (quality assurance/quality control) process. Until this complete QA/QC process is completed, the locations of each reading are approximate in nature and subject to further refinement. As some readings may represent non-breathing zone measurements, the data reported herein may not be suitable to assess potential occupational exposure. Site Assessment readings are not representative of an individual's breathing zone (e.g., container head space, ground level, directly above product, etc.).



Please Note: These updates display data from the 2nd 80's Fire site (Impacted Tank Farm), in the industrial areas surrounding the 2nd 80's Fire site (US Coast Guard Division E), within the Houston Ship Channel (US Coast Guard Divisions A-D), and in the industrial areas north and south of the Houston Ship Channel (Industrial Area). Real-time air monitoring data for the surrounding communities are communicated daily in a separate report.

Preliminary Hand- Held Air Monitoring Locations | ITC Deer Park Tank Fire

Reading Date
5/10/2019 5:00:00 PM to 5/10/2019 6:00:00 PM



Recent Benzene Detections

Location Category	Reading Date	Range of Detections
Division E	5/10/2019 17:13:41	0.02000 ppm
Impacted Tank Farm	5/10/2019 17:00:35	0.03000 ppm
	5/10/2019 17:03:07	0.03000 ppm
	5/10/2019 17:14:53	0.05000 ppm
	5/10/2019 17:32:07	0.02000 ppm

This data has been provided expeditiously to ITC and regulatory agencies for informational and/or operational purposes only. Data reported within this summary is preliminary in nature and has not undergone complete QA/QC (quality assurance/quality control) process. Until this complete QA/QC process is completed, the locations of each reading are approximate in nature and subject to further refinement. As some readings may represent non-breathing zone measurements, the data reported herein may not be suitable to assess potential occupational exposure. Site Assessment readings are not representative of an individual's breathing zone (e.g., container head space, ground level, directly above product, etc.).



Please Note: These updates display data from the 2nd 80's Fire site (Impacted Tank Farm), in the industrial areas surrounding the 2nd 80's Fire site (US Coast Guard Division E), within the Houston Ship Channel (US Coast Guard Divisions A-D), and in the industrial areas north and south of the Houston Ship Channel (Industrial Area). Real-time air monitoring data for the surrounding communities are communicated daily in a separate report.

Preliminary Hand- Held Air Monitoring Locations | ITC Deer Park Tank Fire

Reading Date
5/10/2019 6:00:00 PM to 5/10/2019 7:00:00 PM



Recent Benzene Detections

Location Category	Reading Date	Range of Detections
Division E	5/10/2019 18:35:43	0.03000 ppm
Impacted Tank Farm	5/10/2019 18:27:37	0.03000 ppm
	5/10/2019 18:38:58	0.02000 ppm
	5/10/2019 18:30:56	0.04000 ppm
	5/10/2019 18:29:13	0.04000 ppm
	5/10/2019 18:34:33	0.09000 ppm

This data has been provided expeditiously to ITC and regulatory agencies for informational and/or operational purposes only. Data reported within this summary is preliminary in nature and has not undergone complete QA/QC (quality assurance/quality control) process. Until this complete QA/QC process is completed, the locations of each reading are approximate in nature and subject to further refinement. As some readings may represent non-breathing zone measurements, the data reported herein may not be suitable to assess potential occupational exposure. Site Assessment readings are not representative of an individual's breathing zone (e.g., container head space, ground level, directly above product, etc.).



Please Note: These updates display data from the 2nd 80's Fire site (Impacted Tank Farm), in the industrial areas surrounding the 2nd 80's Fire site (US Coast Guard Division E), within the Houston Ship Channel (US Coast Guard Divisions A-D), and in the industrial areas north and south of the Houston Ship Channel (Industrial Area). Real-time air monitoring data for the surrounding communities are communicated daily in a separate report.

Preliminary Hand- Held Air Monitoring Locations | ITC Deer Park Tank Fire

Reading Date
5/10/2019 7:00:00 PM to 5/10/2019 8:00:00 PM



Recent Benzene Detections

Location Category	Reading Date	Range of Detections
Division E	5/10/2019 19:57:52	0.07000 ppm

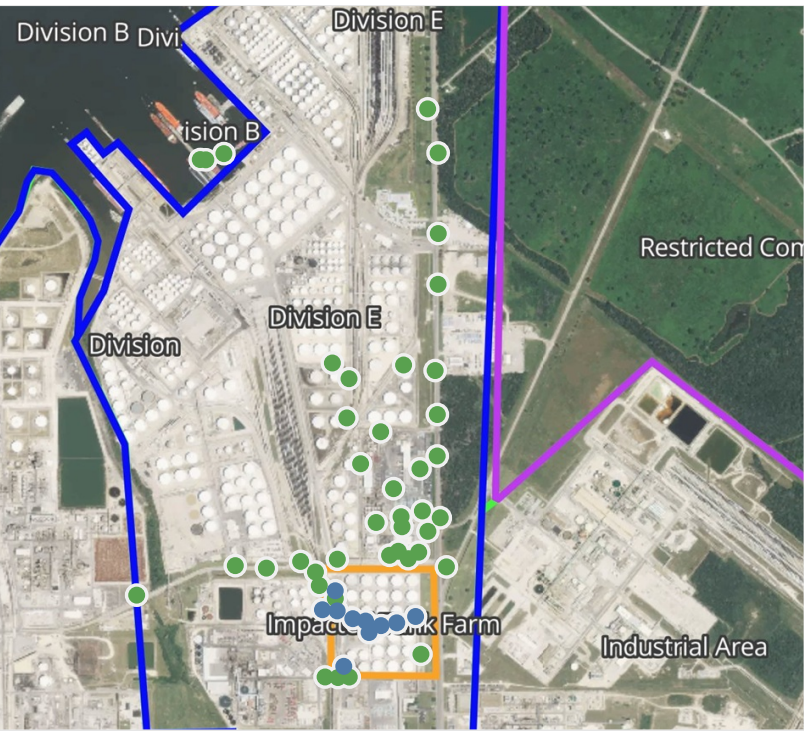
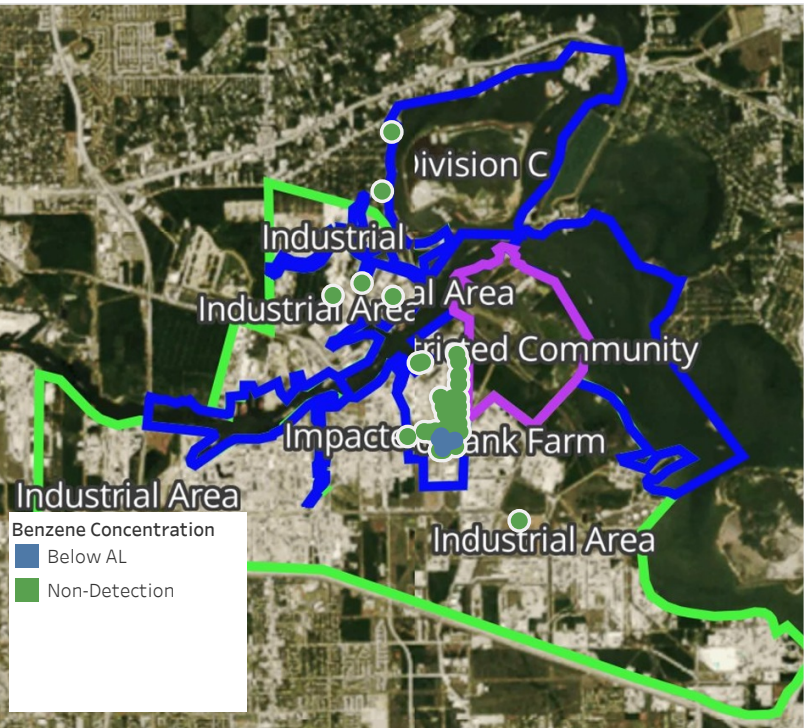
This data has been provided expeditiously to ITC and regulatory agencies for informational and/or operational purposes only. Data reported within this summary is preliminary in nature and has not undergone complete QA/QC (quality assurance/quality control) process. Until this complete QA/QC process is completed, the locations of each reading are approximate in nature and subject to further refinement. As some readings may represent non-breathing zone measurements, the data reported herein may not be suitable to assess potential occupational exposure. Site Assessment readings are not representative of an individual's breathing zone (e.g., container head space, ground level, directly above product, etc.).



Please Note: These updates display data from the 2nd 80's Fire site (Impacted Tank Farm), in the industrial areas surrounding the 2nd 80's Fire site (US Coast Guard Division E), within the Houston Ship Channel (US Coast Guard Divisions A-D), and in the industrial areas north and south of the Houston Ship Channel (Industrial Area). Real-time air monitoring data for the surrounding communities are communicated daily in a separate report.

Preliminary Hand- Held Air Monitoring Locations | ITC Deer Park Tank Fire

Reading Date
5/10/2019 8:00:00 PM to 5/10/2019 9:00:00 PM



Recent Benzene Detections

Location Category	Reading Date	Range of Detections
Division E	5/10/2019 20:49:12	0.0800 ppm
Impacted Tank Farm	5/10/2019 20:01:24	0.2400 ppm
	5/10/2019 20:05:57	0.0500 ppm
	5/10/2019 20:08:54	0.0600 ppm
	5/10/2019 20:15:41	0.0300 ppm
	5/10/2019 20:19:31	0.1900 ppm
	5/10/2019 20:24:25	0.1100 ppm
	5/10/2019 20:30:21	0.0100 ppm
	5/10/2019 20:38:33	0.0100 ppm
	5/10/2019 20:42:34	0.0300 ppm

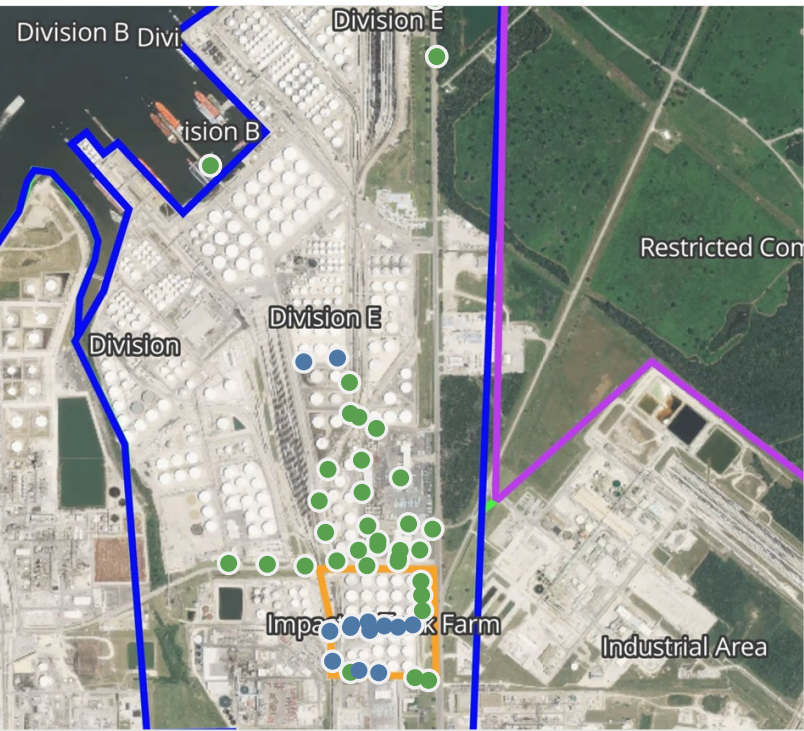
This data has been provided expeditiously to ITC and regulatory agencies for informational and/or operational purposes only. Data reported within this summary is preliminary in nature and has not undergone complete QA/QC (quality assurance/quality control) process. Until this complete QA/QC process is completed, the locations of each reading are approximate in nature and subject to further refinement. As some readings may represent non-breathing zone measurements, the data reported herein may not be suitable to assess potential occupational exposure. Site Assessment readings are not representative of an individual's breathing zone (e.g., container head space, ground level, directly above product, etc.).



Please Note: These updates display data from the 2nd 80's Fire site (Impacted Tank Farm), in the industrial areas surrounding the 2nd 80's Fire site (US Coast Guard Division E), within the Houston Ship Channel (US Coast Guard Divisions A-D), and in the industrial areas north and south of the Houston Ship Channel (Industrial Area). Real-time air monitoring data for the surrounding communities are communicated daily in a separate report.

Preliminary Hand- Held Air Monitoring Locations | ITC Deer Park Tank Fire

Reading Date
5/10/2019 9:00:00 PM to 5/10/2019 10:00:00 PM



Recent Benzene Detections

Location Category	Reading Date	Range of Detections
Division E	5/10/2019 21:00:51	0.0200 ppm
	5/10/2019 21:02:16	0.0200 ppm
	5/10/2019 21:04:41	0.0600 ppm
	5/10/2019 21:05:48	0.0600 ppm
	5/10/2019 21:37:47	0.1700 ppm
	5/10/2019 21:40:43	0.0100 ppm
Impacted Tank Farm	5/10/2019 21:40:08	0.1700 ppm
	5/10/2019 21:42:59	0.1100 ppm
	5/10/2019 21:45:19	0.0500 ppm
	5/10/2019 21:47:50	0.0400 ppm
	5/10/2019 21:51:18	0.1200 ppm
	5/10/2019 21:55:30	0.0200 ppm
	5/10/2019 22:00:00	0.0300 ppm

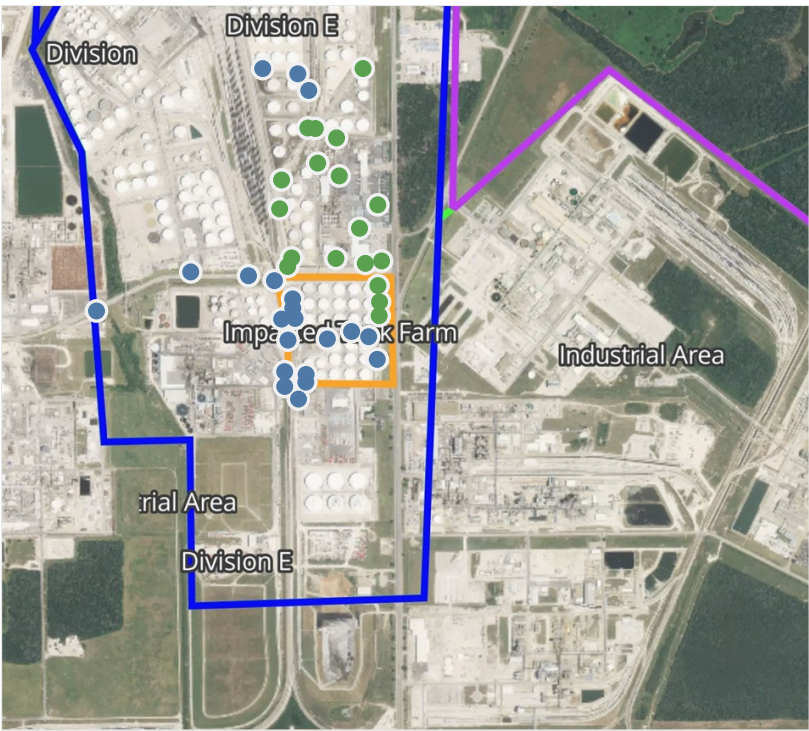
This data has been provided expeditiously to ITC and regulatory agencies for informational and/or operational purposes only. Data reported within this summary is preliminary in nature and has not undergone complete QA/QC (quality assurance/quality control) process. Until this complete QA/QC process is completed, the locations of each reading are approximate in nature and subject to further refinement. As some readings may represent non-breathing zone measurements, the data reported herein may not be suitable to assess potential occupational exposure. Site Assessment readings are not representative of an individual's breathing zone (e.g., container head space, ground level, directly above product, etc.).



Please Note: These updates display data from the 2nd 80's Fire site (Impacted Tank Farm), in the industrial areas surrounding the 2nd 80's Fire site (US Coast Guard Division E), within the Houston Ship Channel (US Coast Guard Divisions A-D), and in the industrial areas north and south of the Houston Ship Channel (Industrial Area). Real-time air monitoring data for the surrounding communities are communicated daily in a separate report.

Preliminary Hand- Held Air Monitoring Locations | ITC Deer Park Tank Fire

Reading Date
5/10/2019 10:00:00 PM to 5/10/2019 11:00:00 PM



Recent Benzene Detections

Location Category	Reading Date	Range of Detections
Division E	5/10/2019 22:05:13	0.4750 ppm
	5/10/2019 22:24:17	0.1000 ppm
	5/10/2019 22:01:32	0.0200 ppm
	5/10/2019 22:35:00	ppm
	5/10/2019 22:43:13	0.0900 ppm
	5/10/2019 22:44:51	0.1700 ppm
	5/10/2019 22:38:31	0.0100 ppm
	5/10/2019 22:50:58	0.0800 ppm
	5/10/2019 22:52:17	0.0400 ppm
	5/10/2019 22:49:51	0.0300 ppm
	5/10/2019 22:23:28	0.0200 ppm
	5/10/2019 22:29:40	0.0700 ppm
	5/10/2019 22:26:55	0.0300 ppm
	5/10/2019 22:58:41	0.0600 ppm
Impacted Tank Farm	5/10/2019 22:00:00	0.0300 ppm
	5/10/2019 22:08:23	0.0200 ppm
	5/10/2019 22:12:31	0.0200 ppm
	5/10/2019 22:17:41	0.0300 ppm
	5/10/2019 22:21:21	0.0300 ppm
	5/10/2019 22:27:53	0.0300 ppm
	5/10/2019 22:48:07	0.2400 ppm
	5/10/2019 22:54:12	0.3000 ppm

This data has been provided expeditiously to ITC and regulatory agencies for informational and/or operational purposes only. Data reported within this summary is preliminary in nature and has not undergone complete QA/QC (quality assurance/quality control) process. Until this complete QA/QC process is completed, the locations of each reading are approximate in nature and subject to further refinement. As some readings may represent non-breathing zone measurements, the data reported herein may not be suitable to assess potential occupational exposure. Site Assessment readings are not representative of an individual's breathing zone (e.g., container head space, ground level, directly above product, etc.).



Please Note: These updates display data from the 2nd 80's Fire site (Impacted Tank Farm), in the industrial areas surrounding the 2nd 80's Fire site (US Coast Guard Division E), within the Houston Ship Channel (US Coast Guard Divisions A-D), and in the industrial areas north and south of the Houston Ship Channel (Industrial Area). Real-time air monitoring data for the surrounding communities are communicated daily in a separate report.