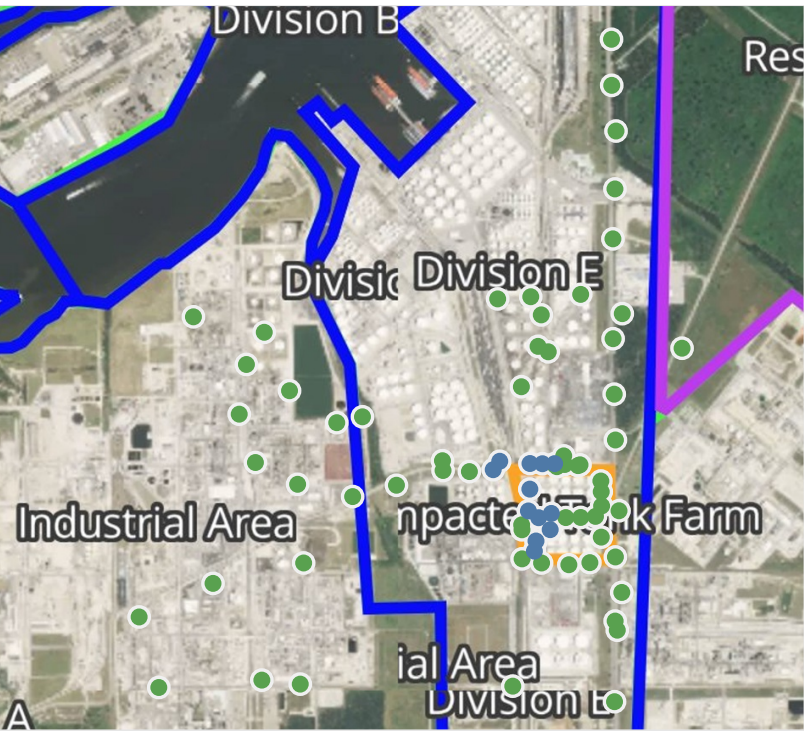


Preliminary Hand- Held Air Monitoring Locations | ITC Deer Park Tank Fire

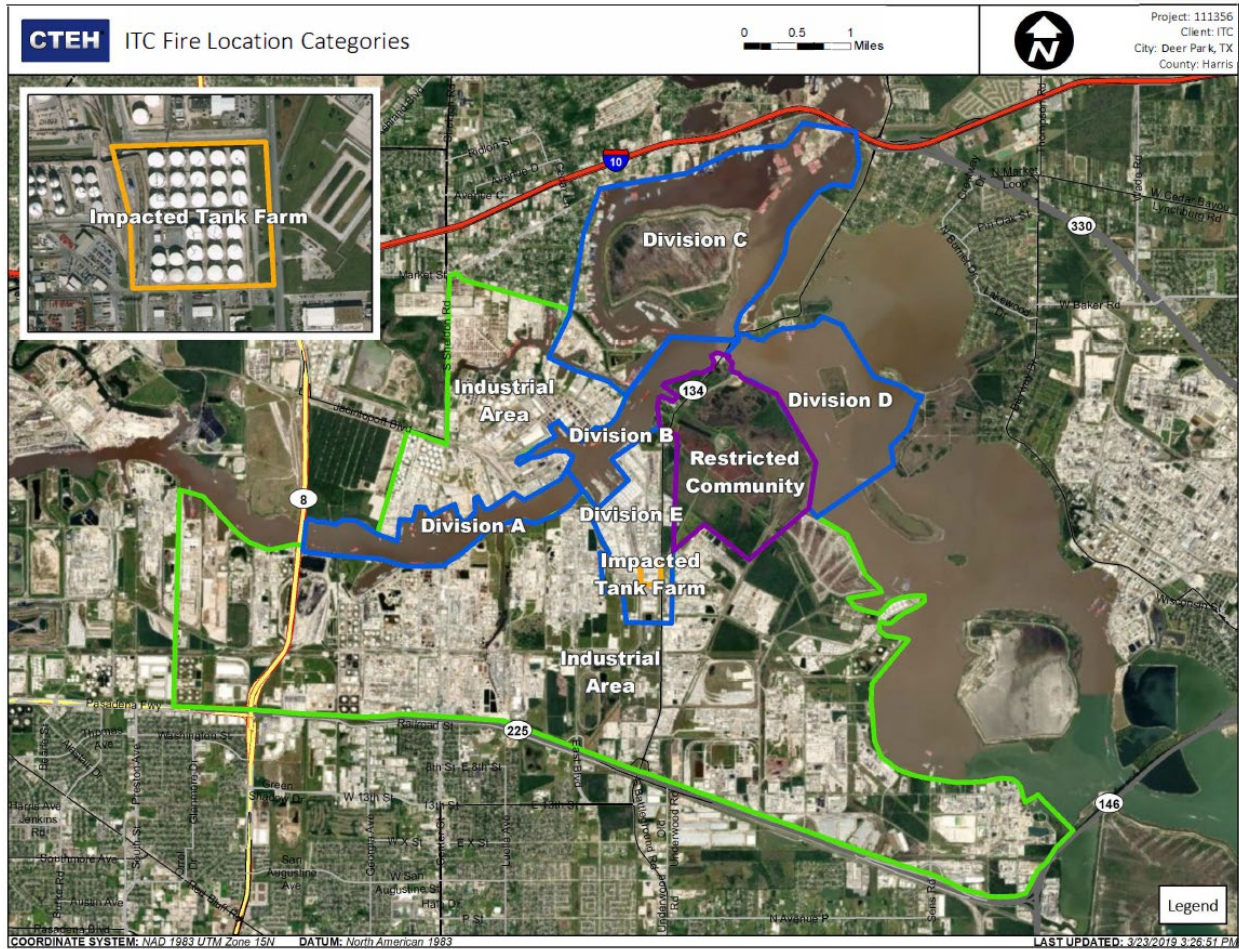
Reading Date
5/14/2019 11:00:00 PM to 5/15/2019 12:00:00 AM



Recent Benzene Detections

Location Category	Reading Date	Range of Detections
Division E	5/14/2019 23:24:14	0.03000 ppm
	5/14/2019 23:45:10	0.02000 ppm
	5/14/2019 23:39:01	0.03000 ppm
	5/14/2019 23:33:57	0.03000 ppm
	5/14/2019 23:29:26	0.03000 ppm
Impacted Tank Farm	5/14/2019 23:28:10	0.02000 ppm
	5/14/2019 23:19:44	0.06000 ppm
	5/14/2019 23:14:09	0.06000 ppm
	5/14/2019 23:22:25	0.08000 ppm
	5/14/2019 23:17:36	0.05000 ppm
	5/14/2019 23:25:11	0.05000 ppm
	5/14/2019 23:11:11	0.05000 ppm

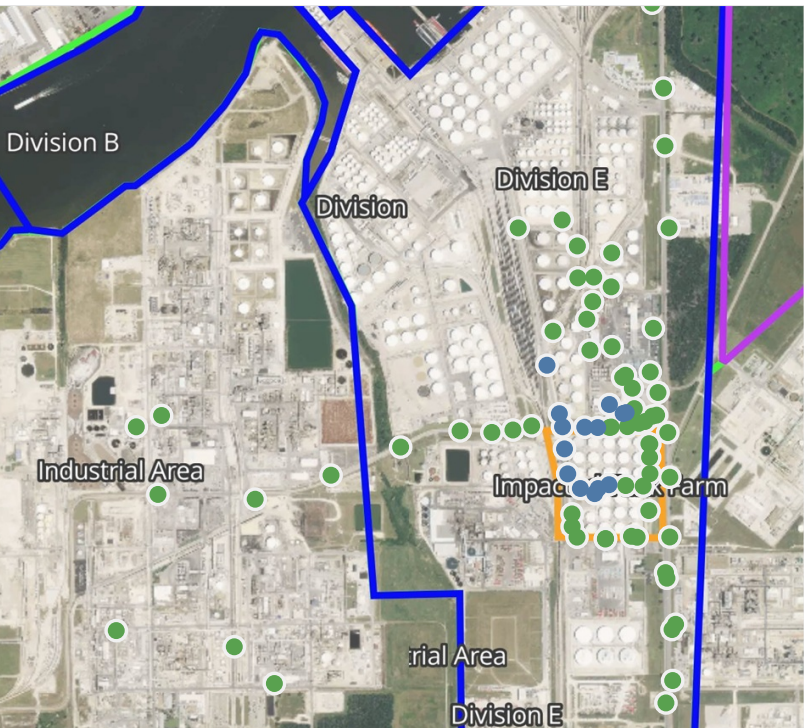
This data has been provided expeditiously to ITC and regulatory agencies for informational and/or operational purposes only. Data reported within this summary is preliminary in nature and has not undergone complete QA/QC (quality assurance/quality control) process. Until this complete QA/QC process is completed, the locations of each reading are approximate in nature and subject to further refinement. As some readings may represent non-breathing zone measurements, the data reported herein may not be suitable to assess potential occupational exposure. Site Assessment readings are not representative of an individual's breathing zone (e.g., container head space, ground level, directly above product, etc.).



Please Note: These updates display data from the 2nd 80's Fire site (Impacted Tank Farm), in the industrial areas surrounding the 2nd 80's Fire site (US Coast Guard Division E), within the Houston Ship Channel (US Coast Guard Divisions A-D), and in the industrial areas north and south of the Houston Ship Channel (Industrial Area). Real-time air monitoring data for the surrounding communities are communicated daily in a separate report.

Preliminary Hand- Held Air Monitoring Locations | ITC Deer Park Tank Fire

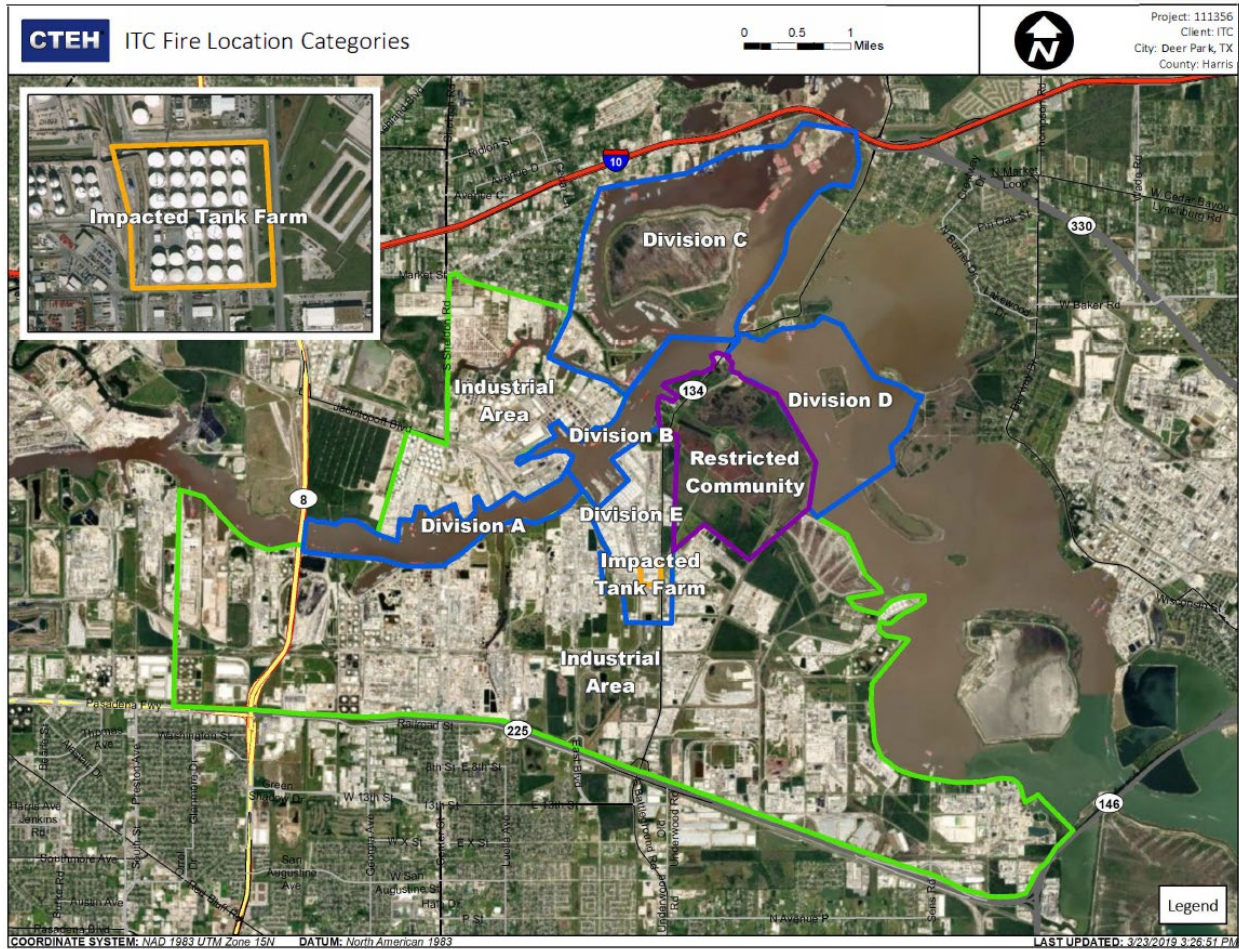
Reading Date
5/15/2019 12:00:00 AM to 5/15/2019 1:00:00 AM



Recent Benzene Detections

Location Category	Reading Date	Range of Detections
Division E	5/15/2019 00:19:17	0.03000 ppm
	5/15/2019 00:36:27	0.02000 ppm
	5/15/2019 00:19:31	0.09000 ppm
	5/15/2019 00:28:52	0.03000 ppm
	5/15/2019 00:24:15	0.02000 ppm
	5/15/2019 00:39:14	0.03000 ppm
	5/15/2019 00:52:07	0.07000 ppm
	5/15/2019 00:47:44	0.02000 ppm
Impacted Tank Farm	5/15/2019 00:25:36	0.04000 ppm
	5/15/2019 00:32:22	0.02000 ppm
	5/15/2019 00:40:29	0.07000 ppm
	5/15/2019 00:29:12	0.02000 ppm
	5/15/2019 00:43:39	0.05000 ppm
	5/15/2019 00:36:46	0.03000 ppm

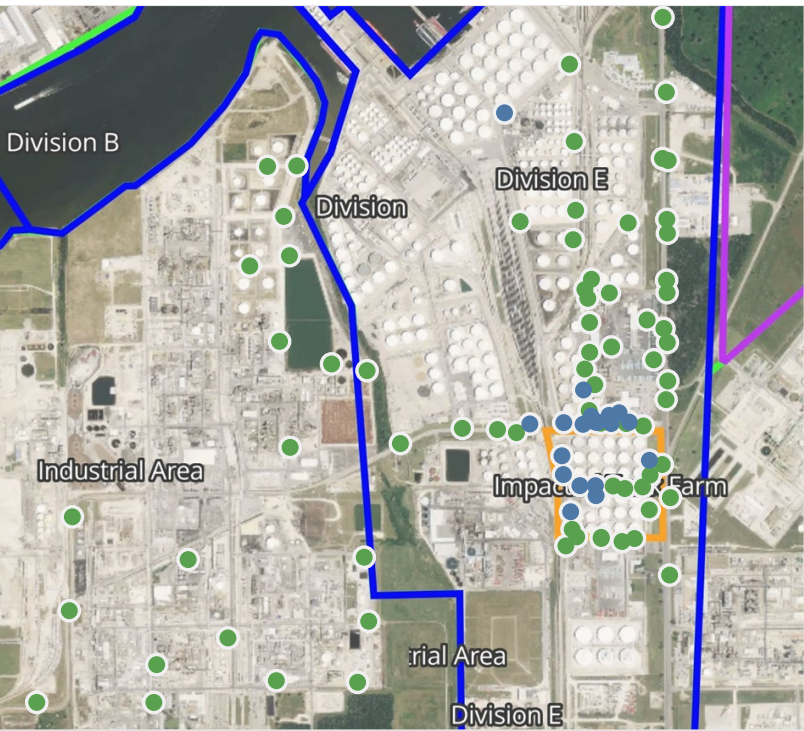
This data has been provided expeditiously to ITC and regulatory agencies for informational and/or operational purposes only. Data reported within this summary is preliminary in nature and has not undergone complete QA/QC (quality assurance/quality control) process. Until this complete QA/QC process is completed, the locations of each reading are approximate in nature and subject to further refinement. As some readings may represent non-breathing zone measurements, the data reported herein may not be suitable to assess potential occupational exposure. Site Assessment readings are not representative of an individual's breathing zone (e.g., container head space, ground level, directly above product, etc.).



Please Note: These updates display data from the 2nd 80's Fire site (Impacted Tank Farm), in the industrial areas surrounding the 2nd 80's Fire site (US Coast Guard Division E), within the Houston Ship Channel (US Coast Guard Divisions A-D), and in the industrial areas north and south of the Houston Ship Channel (Industrial Area). Real-time air monitoring data for the surrounding communities are communicated daily in a separate report.

Preliminary Hand- Held Air Monitoring Locations | ITC Deer Park Tank Fire

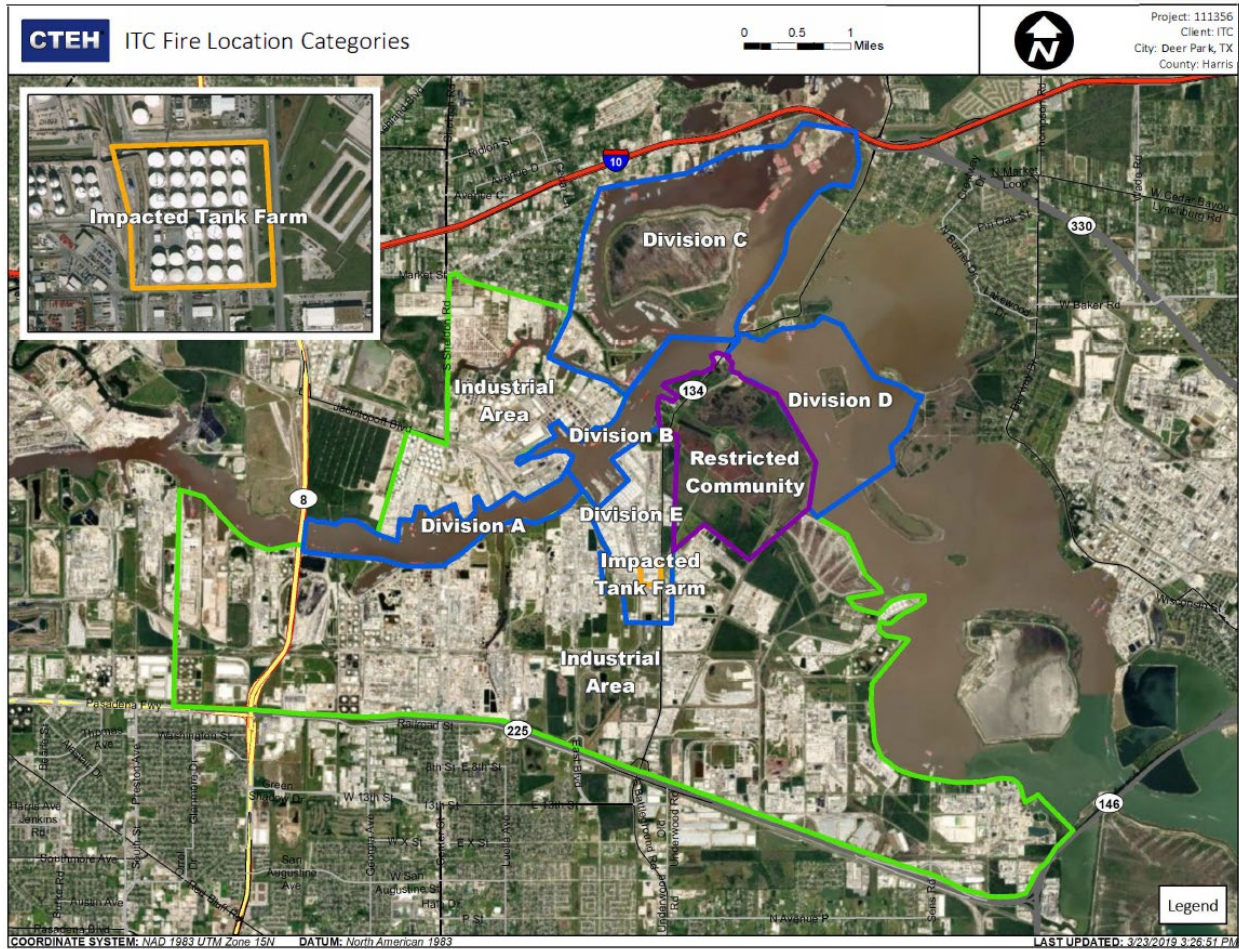
Reading Date
5/15/2019 1:00:00 AM to 5/15/2019 2:00:00 AM



Recent Benzene Detections

Location Category	Reading Date	Range of Detections
Division E	5/15/2019 01:11:49	0.1400 ppm
	5/15/2019 01:40:30	0.0300 ppm
	5/15/2019 01:43:09	0.0200 ppm
	5/15/2019 01:05:27	0.0600 ppm
	5/15/2019 01:19:10	0.0300 ppm
	5/15/2019 01:35:40	0.0300 ppm
	5/15/2019 01:25:45	0.0400 ppm
	5/15/2019 01:21:59	0.0200 ppm
	5/15/2019 01:29:14	0.0600 ppm
	5/15/2019 01:37:15	0.0500 ppm
	5/15/2019 01:41:20	0.0200 ppm
	5/15/2019 01:48:14	0.0200 ppm
	5/15/2019 01:38:18	0.0400 ppm
	5/15/2019 01:46:20	0.0300 ppm
Impacted Tank Farm	5/15/2019 01:00:46	0.0700 ppm
	5/15/2019 01:11:37	0.0300 ppm
	5/15/2019 01:06:46	0.0600 ppm
	5/15/2019 01:19:29	0.0600 ppm
	5/15/2019 01:22:43	0.0200 ppm
	5/15/2019 01:15:56	0.0300 ppm
	5/15/2019 01:03:33	0.0200 ppm

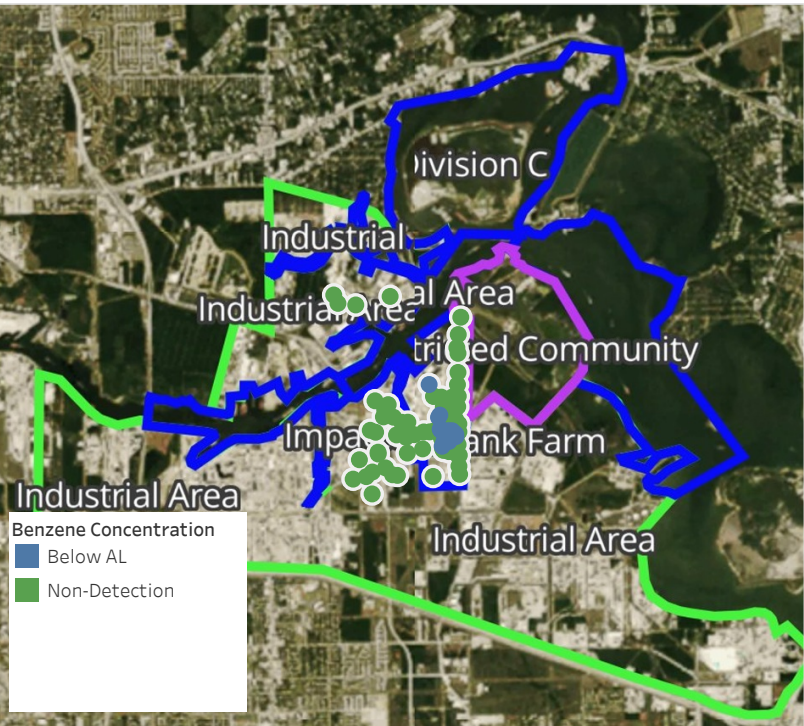
This data has been provided expeditiously to ITC and regulatory agencies for informational and/or operational purposes only. Data reported within this summary is preliminary in nature and has not undergone complete QA/QC (quality assurance/quality control) process. Until this complete QA/QC process is completed, the locations of each reading are approximate in nature and subject to further refinement. As some readings may represent non-breathing zone measurements, the data reported herein may not be suitable to assess potential occupational exposure. Site Assessment readings are not representative of an individual's breathing zone (e.g., container head space, ground level, directly above product, etc.).



Please Note: These updates display data from the 2nd 80's Fire site (Impacted Tank Farm), in the industrial areas surrounding the 2nd 80's Fire site (US Coast Guard Division E), within the Houston Ship Channel (US Coast Guard Divisions A-D), and in the industrial areas north and south of the Houston Ship Channel (Industrial Area). Real-time air monitoring data for the surrounding communities are communicated daily in a separate report.

Preliminary Hand- Held Air Monitoring Locations | ITC Deer Park Tank Fire

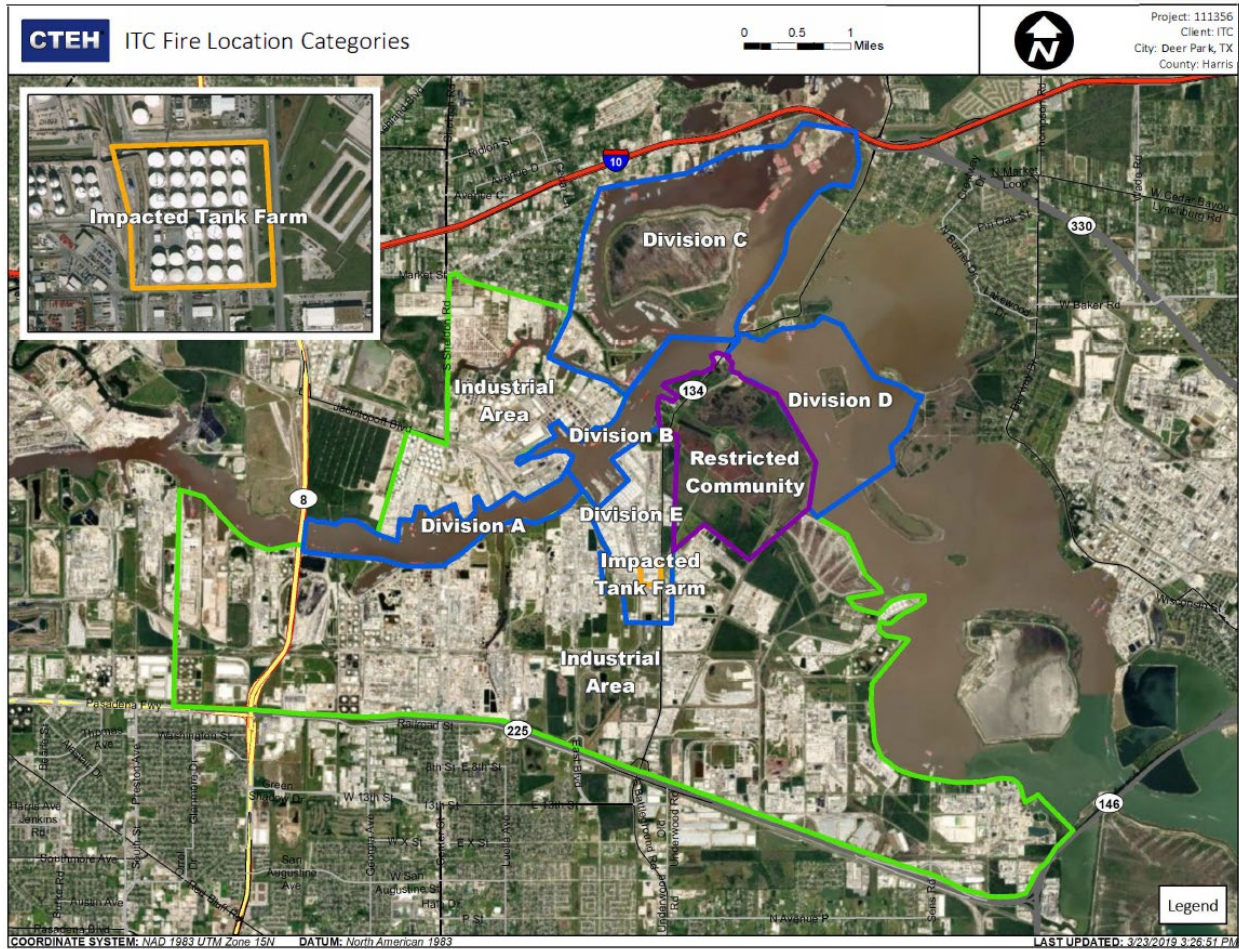
Reading Date
5/15/2019 2:00:00 AM to 5/15/2019 3:00:00 AM



Recent Benzene Detections

Location Category	Reading Date	Range of Detections
Division E	5/15/2019 02:02:09	0.0200 ppm
	5/15/2019 02:10:49	0.0200 ppm
	5/15/2019 02:17:43	0.0200 ppm
	5/15/2019 02:34:44	0.0900 ppm
	5/15/2019 02:36:56	0.0300 ppm
	5/15/2019 02:40:02	0.0200 ppm
	5/15/2019 02:48:23	0.0800 ppm
	5/15/2019 02:45:40	0.0900 ppm
	5/15/2019 02:42:52	0.0300 ppm
Impacted Tank Farm	5/15/2019 02:54:16	0.0300 ppm
	5/15/2019 02:18:58	0.0300 ppm
	5/15/2019 02:30:43	0.0800 ppm
	5/15/2019 02:21:41	0.1400 ppm
	5/15/2019 02:56:49	0.0200 ppm
	5/15/2019 02:51:16	0.0300 ppm
	5/15/2019 02:46:05	0.0300 ppm

This data has been provided expeditiously to ITC and regulatory agencies for informational and/or operational purposes only. Data reported within this summary is preliminary in nature and has not undergone complete QA/QC (quality assurance/quality control) process. Until this complete QA/QC process is completed, the locations of each reading are approximate in nature and subject to further refinement. As some readings may represent non-breathing zone measurements, the data reported herein may not be suitable to assess potential occupational exposure. Site Assessment readings are not representative of an individual's breathing zone (e.g., container head space, ground level, directly above product, etc.).



Please Note: These updates display data from the 2nd 80's Fire site (Impacted Tank Farm), in the industrial areas surrounding the 2nd 80's Fire site (US Coast Guard Division E), within the Houston Ship Channel (US Coast Guard Divisions A-D), and in the industrial areas north and south of the Houston Ship Channel (Industrial Area). Real-time air monitoring data for the surrounding communities are communicated daily in a separate report.

Preliminary Hand- Held Air Monitoring Locations | ITC Deer Park Tank Fire

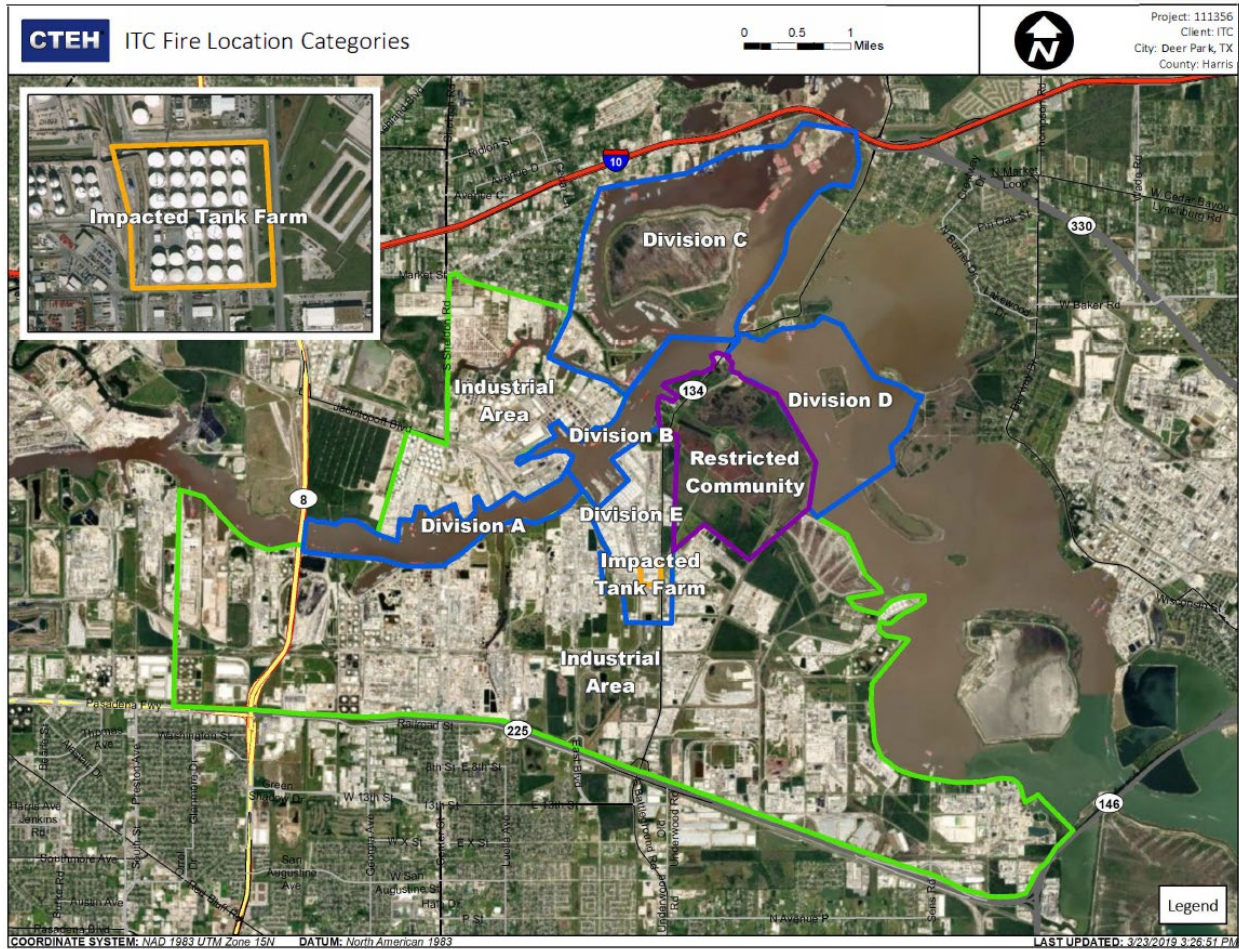
Reading Date
5/15/2019 3:00:00 AM to 5/15/2019 4:00:00 AM



Recent Benzene Detections

Location Category	Reading Date	Range of Detections
Division E	5/15/2019 03:22:45	0.0200 ppm
	5/15/2019 03:38:48	0.0200 ppm
	5/15/2019 03:38:04	0.1200 ppm
	5/15/2019 03:19:28	0.1000 ppm
	5/15/2019 03:44:00	0.0200 ppm
	5/15/2019 03:24:58	0.0600 ppm
	5/15/2019 03:41:29	0.0300 ppm
Impacted Tank Farm	5/15/2019 03:20:37	0.0200 ppm
	5/15/2019 03:18:09	0.0700 ppm
	5/15/2019 03:48:45	0.0200 ppm
	5/15/2019 03:43:47	0.0800 ppm
	5/15/2019 03:17:12	0.0400 ppm

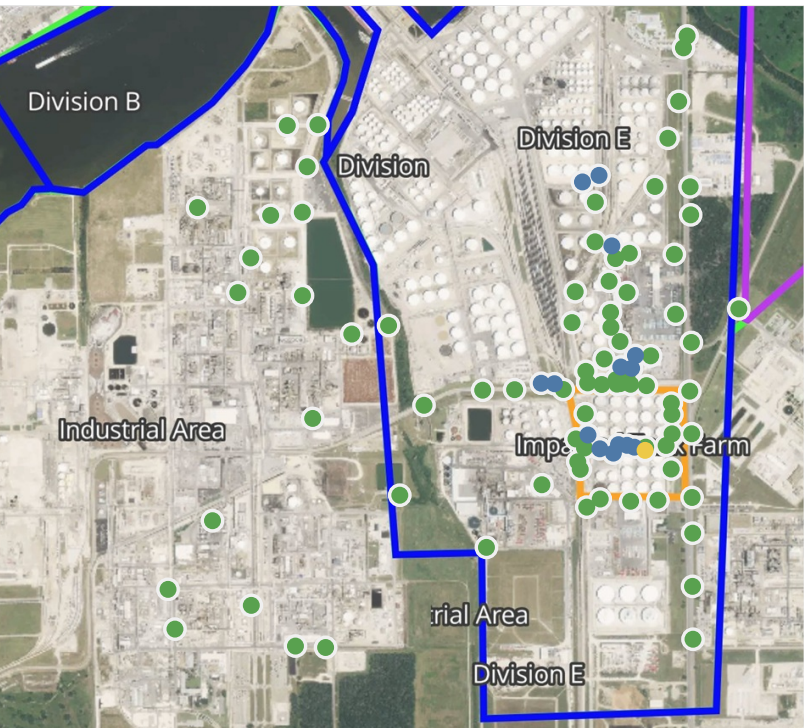
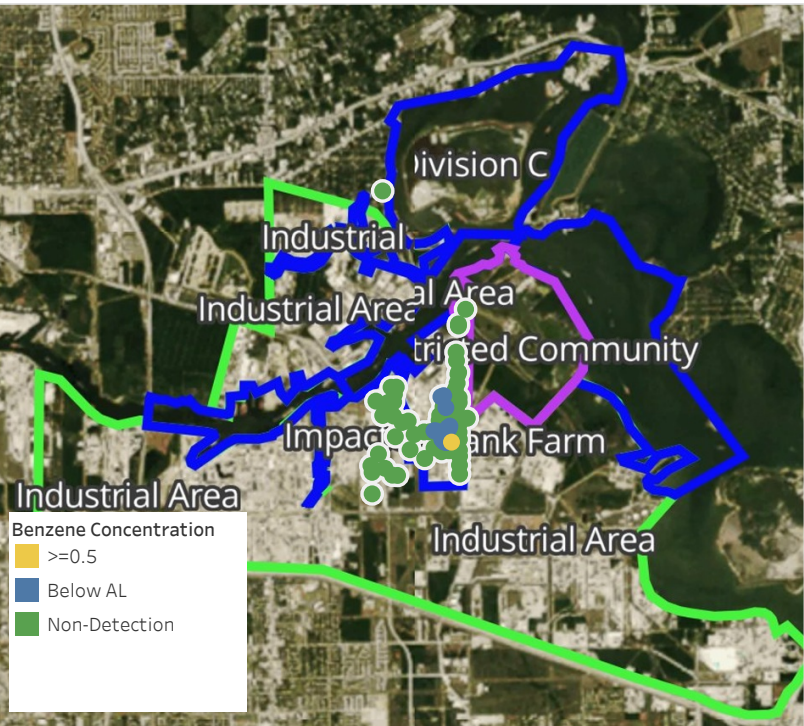
This data has been provided expeditiously to ITC and regulatory agencies for informational and/or operational purposes only. Data reported within this summary is preliminary in nature and has not undergone complete QA/QC (quality assurance/quality control) process. Until this complete QA/QC process is completed, the locations of each reading are approximate in nature and subject to further refinement. As some readings may represent non-breathing zone measurements, the data reported herein may not be suitable to assess potential occupational exposure. Site Assessment readings are not representative of an individual's breathing zone (e.g., container head space, ground level, directly above product, etc.).



Please Note: These updates display data from the 2nd 80's Fire site (Impacted Tank Farm), in the industrial areas surrounding the 2nd 80's Fire site (US Coast Guard Division E), within the Houston Ship Channel (US Coast Guard Divisions A-D), and in the industrial areas north and south of the Houston Ship Channel (Industrial Area). Real-time air monitoring data for the surrounding communities are communicated daily in a separate report.

Preliminary Hand- Held Air Monitoring Locations | ITC Deer Park Tank Fire

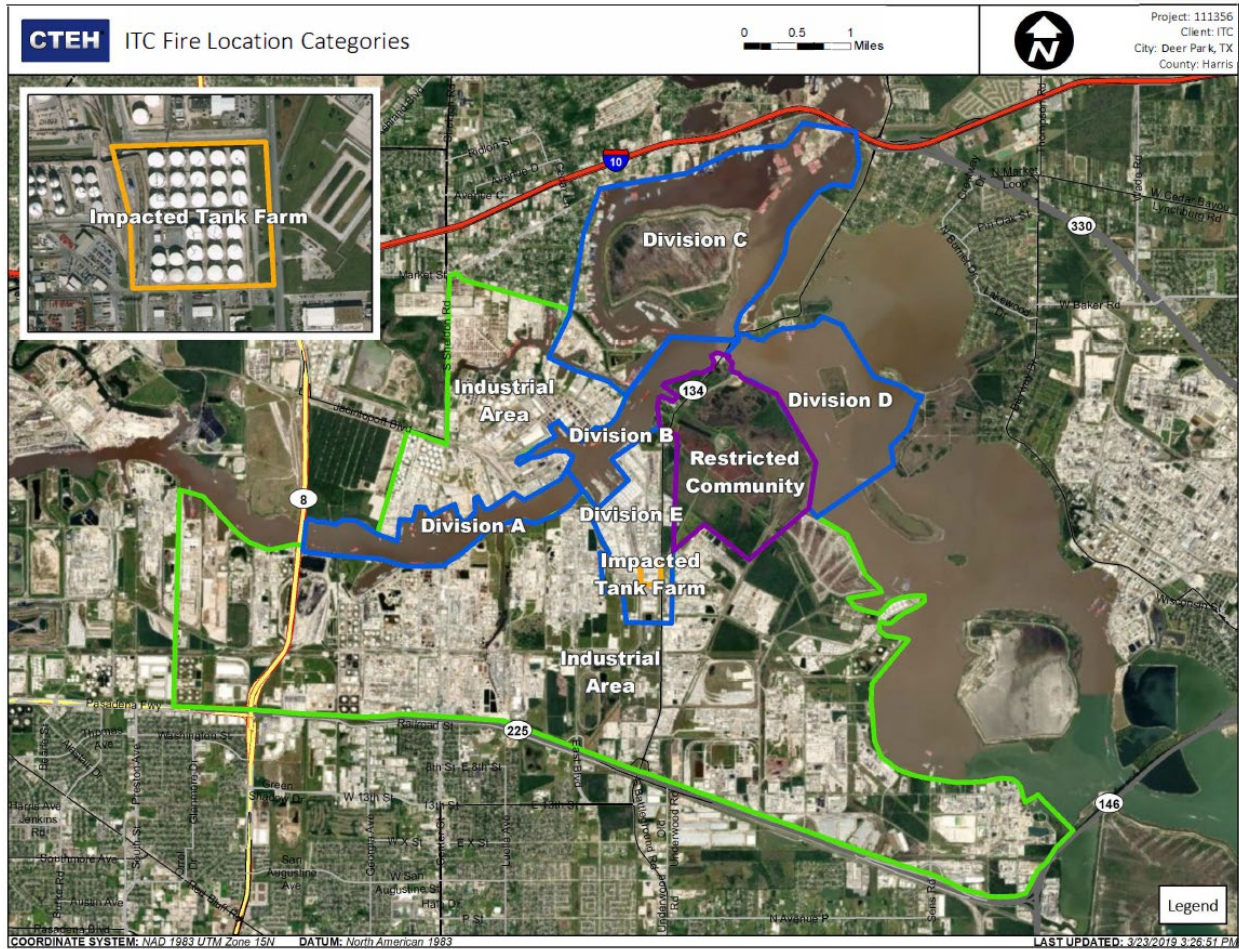
Reading Date
5/15/2019 4:00:00 AM to 5/15/2019 5:00:00 AM



Recent Benzene Detections

Location Category	Reading Date	Range of Detections
Division E	5/15/2019 04:04:21	0.0500 ppm
	5/15/2019 04:01:26	0.0900 ppm
	5/15/2019 04:06:05	0.0800 ppm
	5/15/2019 04:43:04	0.0200 ppm
	5/15/2019 04:55:29	0.1000 ppm
	5/15/2019 04:58:00	0.0300 ppm
	5/15/2019 04:26:01	0.0300 ppm
	5/15/2019 04:29:36	0.0400 ppm
Impacted Tank Farm	5/15/2019 04:26:11	0.1200 ppm
	5/15/2019 04:53:49	0.1100 ppm
	5/15/2019 04:41:40	0.0900 ppm
	5/15/2019 04:08:28	0.0500 ppm
	5/15/2019 04:46:05	0.0800 ppm
	5/15/2019 04:50:37	0.1400 ppm
	5/15/2019 04:58:37	0.8800 ppm

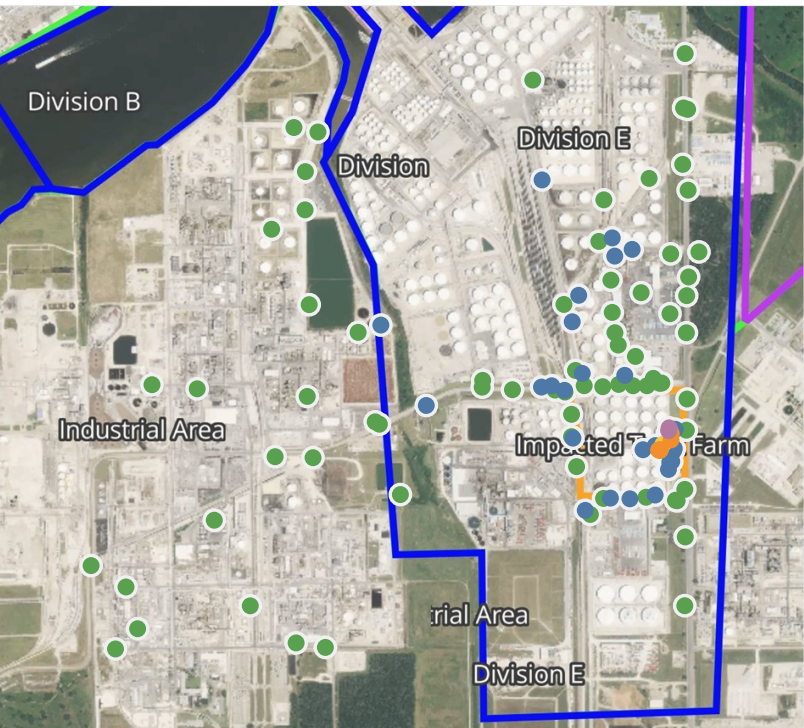
This data has been provided expeditiously to ITC and regulatory agencies for informational and/or operational purposes only. Data reported within this summary is preliminary in nature and has not undergone complete QA/QC (quality assurance/quality control) process. Until this complete QA/QC process is completed, the locations of each reading are approximate in nature and subject to further refinement. As some readings may represent non-breathing zone measurements, the data reported herein may not be suitable to assess potential occupational exposure. Site Assessment readings are not representative of an individual's breathing zone (e.g., container head space, ground level, directly above product, etc.).



Please Note: These updates display data from the 2nd 80's Fire site (Impacted Tank Farm), in the industrial areas surrounding the 2nd 80's Fire site (US Coast Guard Division E), within the Houston Ship Channel (US Coast Guard Divisions A-D), and in the industrial areas north and south of the Houston Ship Channel (Industrial Area). Real-time air monitoring data for the surrounding communities are communicated daily in a separate report.

Preliminary Hand- Held Air Monitoring Locations | ITC Deer Park Tank Fire

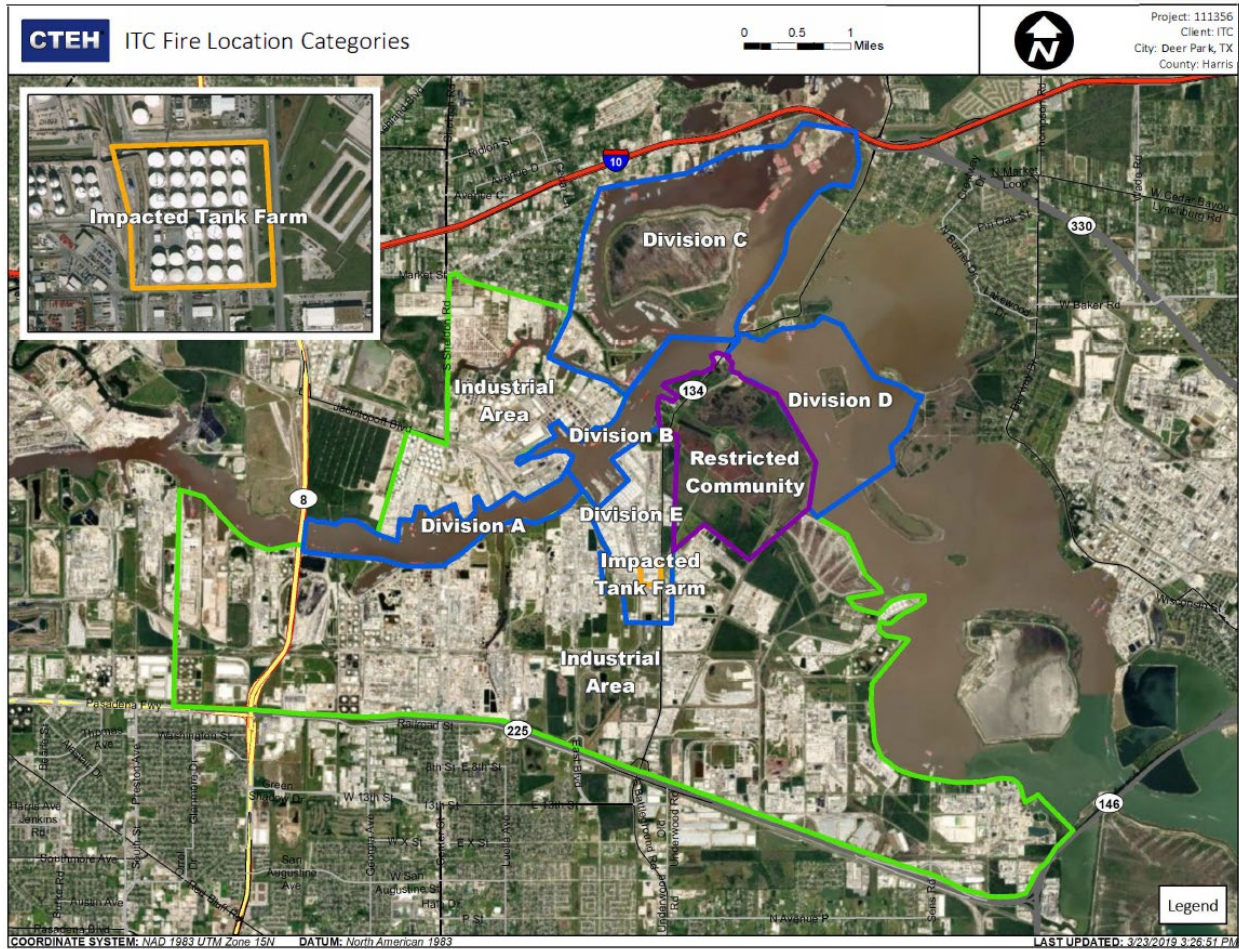
Reading Date
5/15/2019 5:00:00 AM to 5/15/2019 6:00:00 AM



Recent Benzene Detections

Location Category	Reading Date	Range of Dete..
Division E	5/15/2019 05:25:30	0.050 ppm
	5/15/2019 05:28:58	0.030 ppm
	5/15/2019 05:33:24	0.030 ppm
	5/15/2019 05:16:33	0.030 ppm
	5/15/2019 05:21:52	0.030 ppm
	5/15/2019 05:25:06	0.040 ppm
	5/15/2019 05:31:42	0.050 ppm
	5/15/2019 05:34:46	0.050 ppm
	5/15/2019 05:45:52	0.040 ppm
	5/15/2019 05:35:37	0.020 ppm
	5/15/2019 05:29:04	0.030 ppm
	5/15/2019 05:46:54	0.030 ppm
	5/15/2019 05:56:04	0.100 ppm
	5/15/2019 05:37:56	0.020 ppm
	5/15/2019 05:53:14	0.020 ppm
Impacted Tank Farm	5/15/2019 05:41:04	0.020 ppm
	5/15/2019 05:42:53	0.030 ppm
	5/15/2019 05:10:36	0.020 ppm
	5/15/2019 05:17:00	1.230 ppm
	5/15/2019 05:24:33	0.010 ppm
	5/15/2019 05:21:24	0.020 ppm
	5/15/2019 05:30:38	0.570 ppm
	5/15/2019 05:34:11	0.040 ppm
	5/15/2019 05:34:29	0.030 ppm
	5/15/2019 05:18:07	0.040 ppm
	5/15/2019 05:01:07	1.070 ppm
	5/15/2019 05:03:25	1.220 ppm
	5/15/2019 05:13:04	1.310 ppm
	5/15/2019 05:39:46	0.260 ppm
	5/15/2019 05:35:27	0.030 ppm
Industrial Area	5/15/2019 05:42:40	0.100 ppm
	5/15/2019 05:41:19	0.150 ppm
	5/15/2019 05:44:56	1.230 ppm
	5/15/2019 05:49:31	0.330 ppm
	5/15/2019 05:51:21	2.140 ppm
	5/15/2019 05:53:21	5.350 ppm
	5/15/2019 05:55:06	0.120 ppm
	5/15/2019 05:55:33	1.280 ppm
	5/15/2019 05:25:20	0.030 ppm

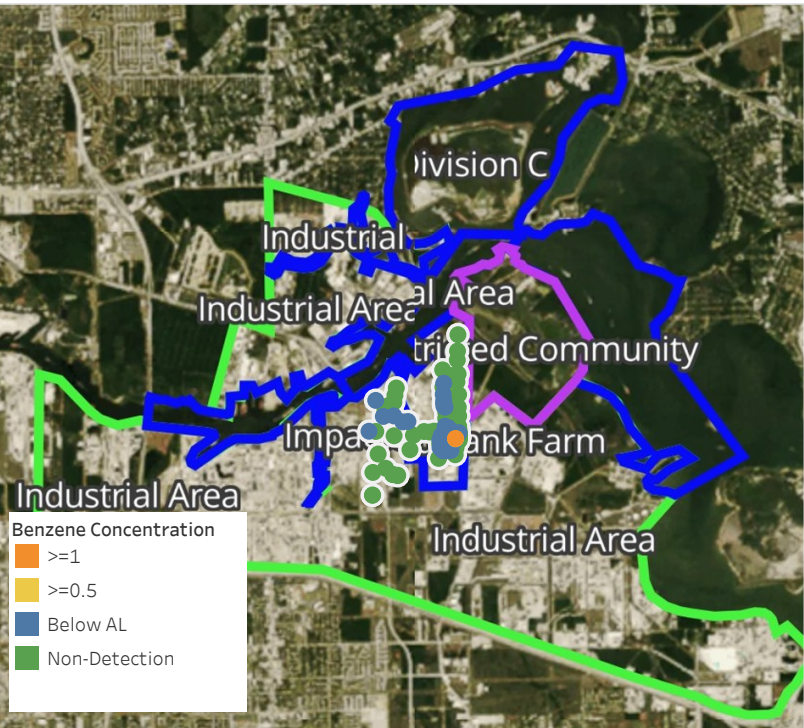
This data has been provided expeditiously to ITC and regulatory agencies for informational and/or operational purposes only. Data reported within this summary is preliminary in nature and has not undergone complete QA/QC (quality assurance/quality control) process. Until this complete QA/QC process is completed, the locations of each reading are approximate in nature and subject to further refinement. As some readings may represent non-breathing zone measurements, the data reported herein may not be suitable to assess potential occupational exposure. Site Assessment readings are not representative of an individual's breathing zone (e.g., container head space, ground level, directly above product, etc.).



Please Note: These updates display data from the 2nd 80's Fire site (Impacted Tank Farm), in the industrial areas surrounding the 2nd 80's Fire site (US Coast Guard Division E), within the Houston Ship Channel (US Coast Guard Divisions A-D), and in the industrial areas north and south of the Houston Ship Channel (Industrial Area). Real-time air monitoring data for the surrounding communities are communicated daily in a separate report.

Preliminary Hand- Held Air Monitoring Locations | ITC Deer Park Tank Fire

Reading Date
5/15/2019 6:00:00 AM to 5/15/2019 7:00:00 AM



Recent Benzene Detections

Location Category	Reading Date	Range of Dete..
Division E	5/15/2019 06:01:37	0.250 ppm
	5/15/2019 06:11:38	0.020 ppm
	5/15/2019 06:00:36	0.020 ppm
	5/15/2019 06:17:59	0.020 ppm
	5/15/2019 06:23:26	0.090 ppm
	5/15/2019 06:31:55	0.030 ppm
	5/15/2019 06:34:31	0.020 ppm
	5/15/2019 06:39:38	0.080 ppm
	5/15/2019 06:40:50	0.010 ppm
	5/15/2019 06:39:46	0.030 ppm
	5/15/2019 06:35:06	0.080 ppm
	5/15/2019 06:42:30	0.040 ppm
	5/15/2019 06:43:56	0.070 ppm
	5/15/2019 06:45:35	0.160 ppm
	5/15/2019 06:47:26	0.170 ppm
	5/15/2019 06:50:43	0.030 ppm
	5/15/2019 06:54:09	0.030 ppm
Impacted Tank Farm	5/15/2019 06:00:52	0.140 ppm
	5/15/2019 06:03:01	0.630 ppm
	5/15/2019 06:08:10	1.670 ppm
	5/15/2019 06:05:52	0.420 ppm
	5/15/2019 06:18:52	0.040 ppm
	5/15/2019 06:16:50	0.010 ppm
	5/15/2019 06:19:27	0.220 ppm
	5/15/2019 06:25:15	0.160 ppm
	5/15/2019 06:30:40	0.190 ppm
	5/15/2019 06:33:28	0.030 ppm
	5/15/2019 06:41:52	0.160 ppm
	5/15/2019 06:35:25	0.020 ppm
	5/15/2019 06:41:37	0.030 ppm
	5/15/2019 06:51:24	0.020 ppm
	5/15/2019 06:47:33	0.020 ppm
	5/15/2019 06:55:18	0.020 ppm
Industrial Area	5/15/2019 06:16:00	0.030 ppm
	5/15/2019 06:19:33	0.020 ppm
	5/15/2019 06:24:00	0.020 ppm
	5/15/2019 06:36:52	0.020 ppm
	5/15/2019 06:42:14	0.020 ppm
	5/15/2019 06:46:45	0.020 ppm

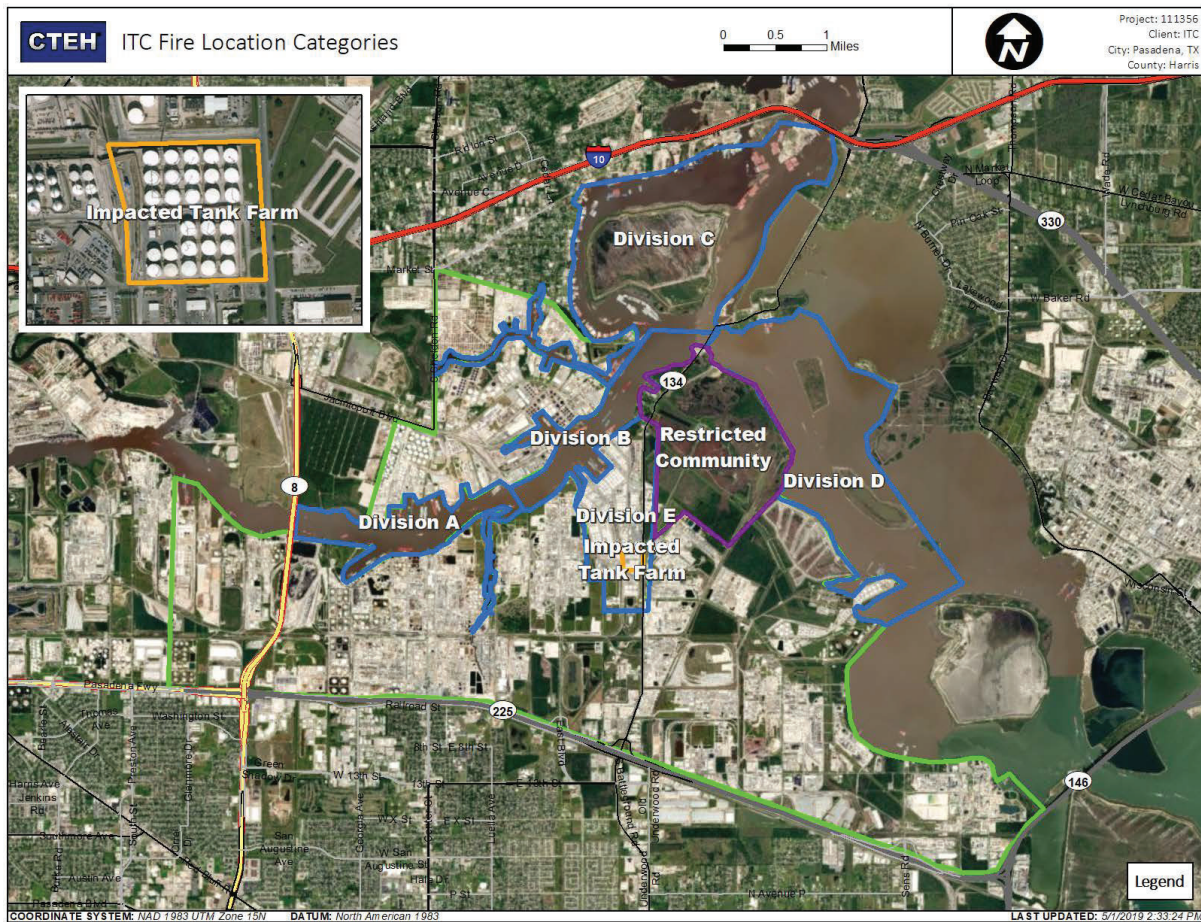
This data has been provided expeditiously to ITC and regulatory agencies for informational and/or operational purposes only. Data reported within this summary is preliminary in nature and has not undergone complete QA/QC (quality assurance/quality control) process. Until this complete QA/QC process is completed, the locations of each reading are approximate in nature and subject to further refinement. As some readings may represent non-breathing zone measurements, the data reported herein may not be suitable to assess potential occupational exposure. Site Assessment readings are not representative of an individual's breathing zone (e.g., container head space, ground level, directly above product, etc.).

Reading Date
5/15/2019 6:00:00 AM to 5/15/2019 7:00:00 AM

Benzene Action Level Concentration (ppm)
 >=1

PRELIMINARY
Recent Benzene Detections Greater than 1.00 ppm

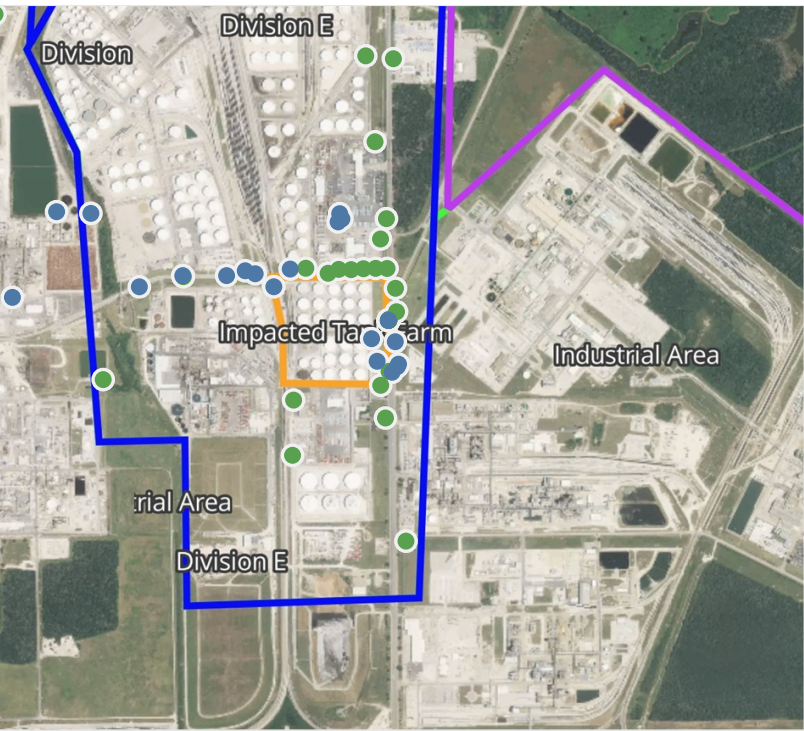
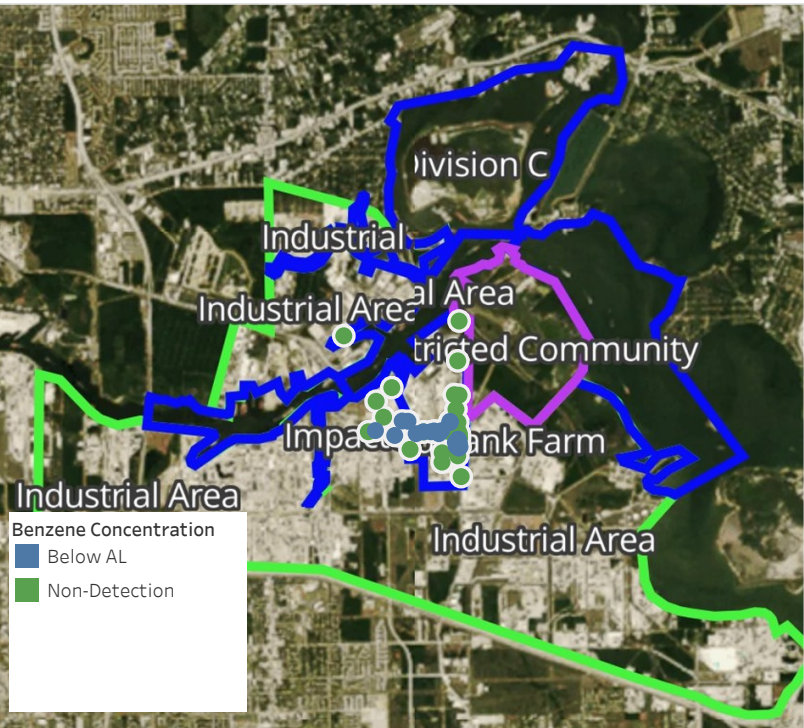
Reading Date	Location Category	GPS	Google Maps URL	Range of Detections
5/15/2019 06:08:10	Impacted Tank Farm	29.7321540,-95.0904260	https://www.google.com/maps/search/?api=1&query=29.7321540,-95.0904260	1.670 ppm



Please Note: These updates display data from the 2nd 80's Fire site (Impacted Tank Farm), in the industrial areas surrounding the 2nd 80's Fire site (US Coast Guard Division E), within the Houston Ship Channel (US Coast Guard Divisions A-D), and in the industrial areas north and south of the Houston Ship Channel (Industrial Area). Real-time air monitoring data for the surrounding communities are communicated daily in a separate report.

Preliminary Hand- Held Air Monitoring Locations | ITC Deer Park Tank Fire

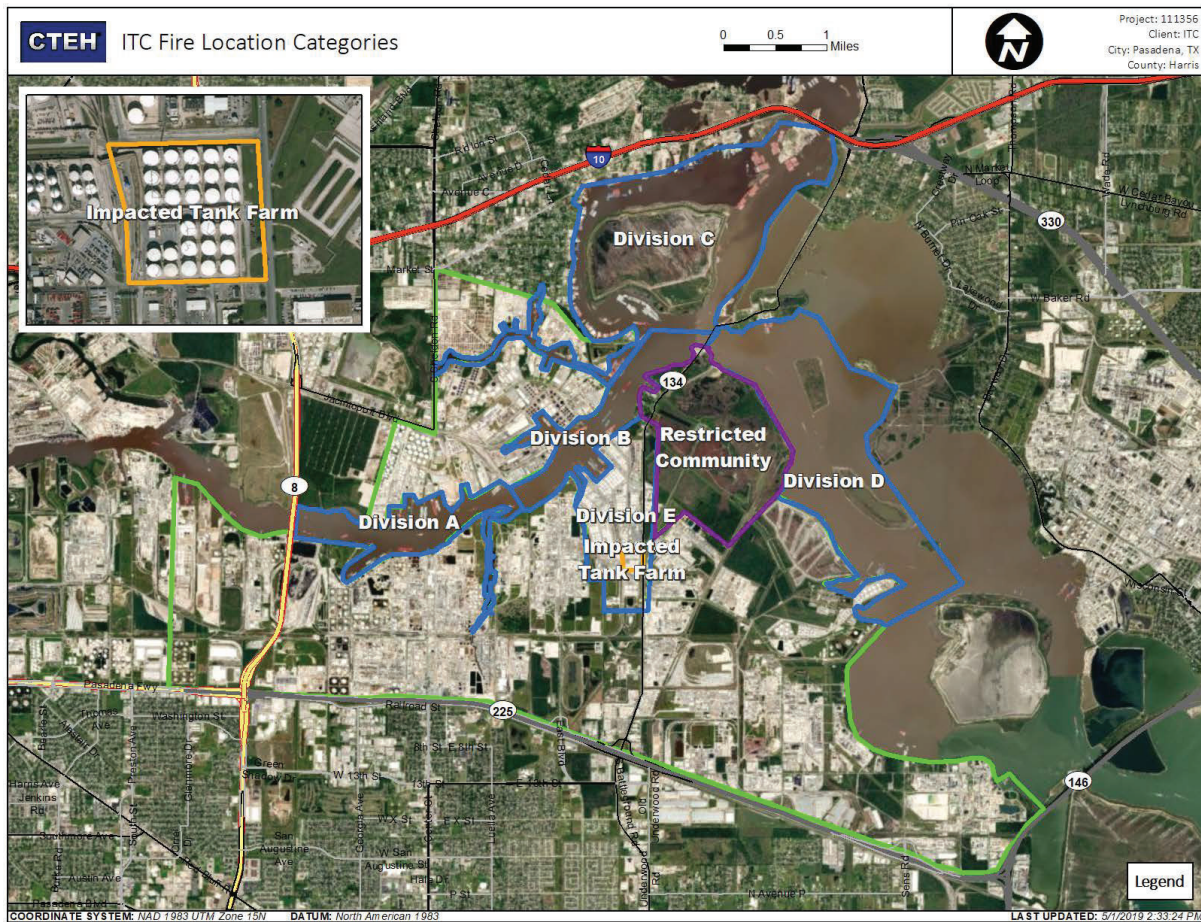
Reading Date
5/15/2019 7:00:00 AM to 5/15/2019 8:00:00 AM



Recent Benzene Detections

Location Category	Reading Date	Range of Detections
Division E	5/15/2019 07:17:14	0.1100 ppm
	5/15/2019 07:13:47	0.0800 ppm
	5/15/2019 07:09:25	0.0800 ppm
	5/15/2019 07:16:45	0.1600 ppm
	5/15/2019 07:29:45	0.0500 ppm
	5/15/2019 07:53:04	0.0300 ppm
	5/15/2019 07:54:28	0.0300 ppm
	5/15/2019 07:44:15	0.0200 ppm
	5/15/2019 07:40:21	0.0300 ppm
	5/15/2019 07:51:32	0.0400 ppm
	5/15/2019 07:54:47	0.0300 ppm
	5/15/2019 07:54:38	0.0200 ppm
	5/15/2019 07:47:47	0.0300 ppm
	5/15/2019 07:50:12	0.0200 ppm
	5/15/2019 07:57:54	0.0400 ppm
Impacted Tank Farm	5/15/2019 07:44:57	0.0800 ppm
	5/15/2019 07:46:01	0.0600 ppm
	5/15/2019 07:54:55	0.0400 ppm
Industrial Area	5/15/2019 07:22:18	0.0200 ppm
	5/15/2019 07:27:46	0.0300 ppm
	5/15/2019 07:31:45	0.0400 ppm
	5/15/2019 07:34:45	0.0300 ppm

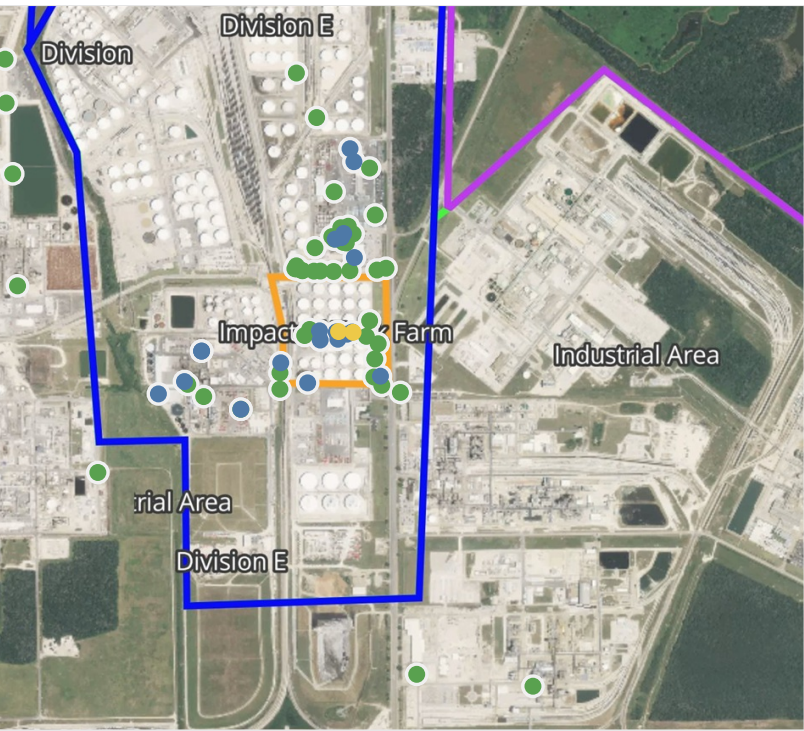
This data has been provided expeditiously to ITC and regulatory agencies for informational and/or operational purposes only. Data reported within this summary is preliminary in nature and has not undergone complete QA/QC (quality assurance/quality control) process. Until this complete QA/QC process is completed, the locations of each reading are approximate in nature and subject to further refinement. As some readings may represent non-breathing zone measurements, the data reported herein may not be suitable to assess potential occupational exposure. Site Assessment readings are not representative of an individual's breathing zone (e.g., container head space, ground level, directly above product, etc.).



Please Note: These updates display data from the 2nd 80's Fire site (Impacted Tank Farm), in the industrial areas surrounding the 2nd 80's Fire site (US Coast Guard Division E), within the Houston Ship Channel (US Coast Guard Divisions A-D), and in the industrial areas north and south of the Houston Ship Channel (Industrial Area). Real-time air monitoring data for the surrounding communities are communicated daily in a separate report.

Preliminary Hand- Held Air Monitoring Locations | ITC Deer Park Tank Fire

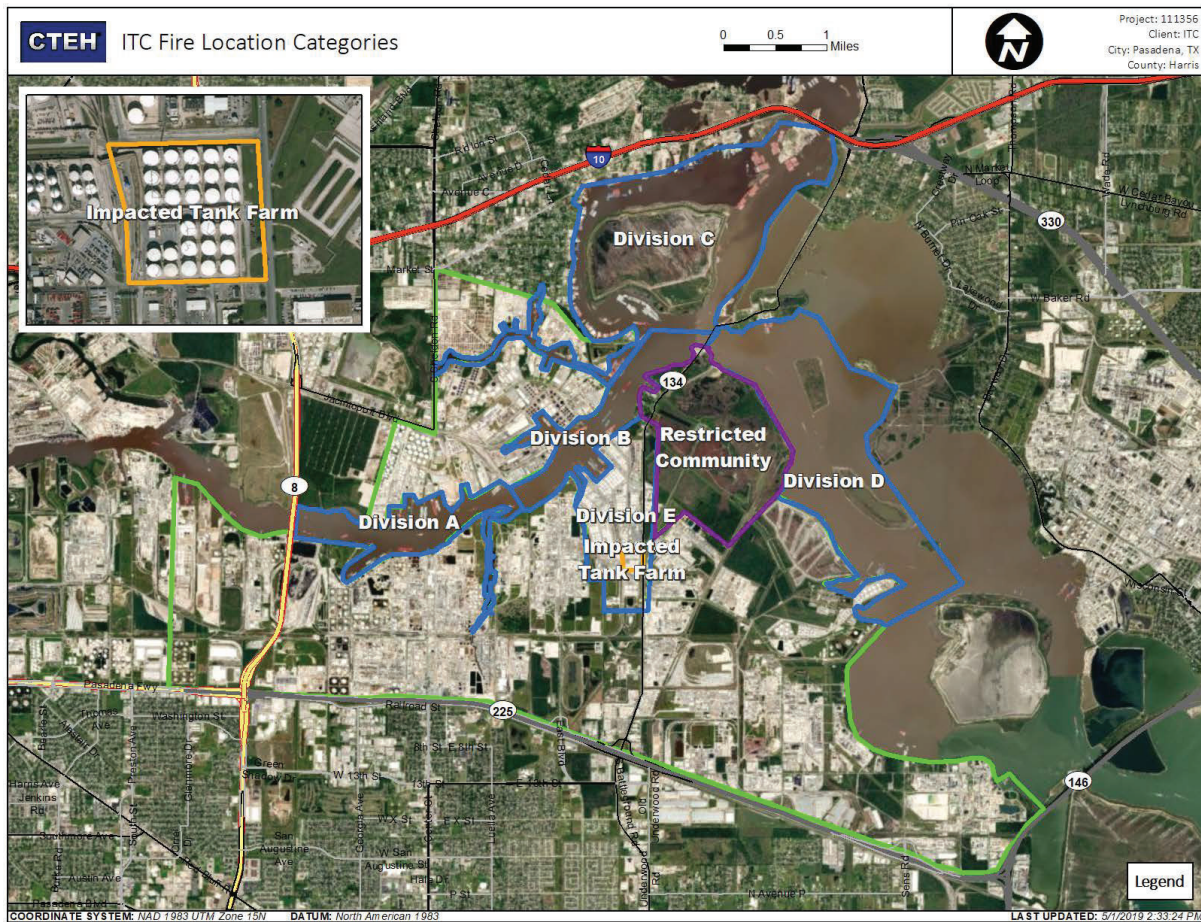
Reading Date
5/15/2019 8:00:00 AM to 5/15/2019 9:00:00 AM



Recent Benzene Detections

Location Category	Reading Date	Range of Detections
Division E	5/15/2019 08:00:33	0.0200 ppm
	5/15/2019 08:01:06	0.0400 ppm
	5/15/2019 08:03:32	0.0300 ppm
	5/15/2019 08:03:48	0.0400 ppm
	5/15/2019 08:05:21	0.0300 ppm
	5/15/2019 08:06:12	0.0200 ppm
	5/15/2019 08:10:13	0.0300 ppm
	5/15/2019 08:21:17	0.0300 ppm
	5/15/2019 08:37:41	0.0400 ppm
	5/15/2019 08:01:15	0.0300 ppm
	5/15/2019 08:07:39	0.0300 ppm
	5/15/2019 08:03:27	0.0700 ppm
Impacted Tank Farm	5/15/2019 08:02:39	0.0300 ppm
	5/15/2019 08:06:31	0.0400 ppm
	5/15/2019 08:22:13	0.2300 ppm
	5/15/2019 08:20:33	0.2600 ppm
	5/15/2019 08:24:47	0.0300 ppm
	5/15/2019 08:32:32	0.0800 ppm
	5/15/2019 08:38:03	0.4500 ppm
	5/15/2019 08:43:38	0.2600 ppm
	5/15/2019 08:42:27	0.5000 ppm
	5/15/2019 08:39:34	0.4900 ppm
	5/15/2019 08:34:51	0.5600 ppm

This data has been provided expeditiously to ITC and regulatory agencies for informational and/or operational purposes only. Data reported within this summary is preliminary in nature and has not undergone complete QA/QC (quality assurance/quality control) process. Until this complete QA/QC process is completed, the locations of each reading are approximate in nature and subject to further refinement. As some readings may represent non-breathing zone measurements, the data reported herein may not be suitable to assess potential occupational exposure. Site Assessment readings are not representative of an individual's breathing zone (e.g., container head space, ground level, directly above product, etc.).



Please Note: These updates display data from the 2nd 80's Fire site (Impacted Tank Farm), in the industrial areas surrounding the 2nd 80's Fire site (US Coast Guard Division E), within the Houston Ship Channel (US Coast Guard Divisions A-D), and in the industrial areas north and south of the Houston Ship Channel (Industrial Area). Real-time air monitoring data for the surrounding communities are communicated daily in a separate report.

Preliminary Hand- Held Air Monitoring Locations | ITC Deer Park Tank Fire

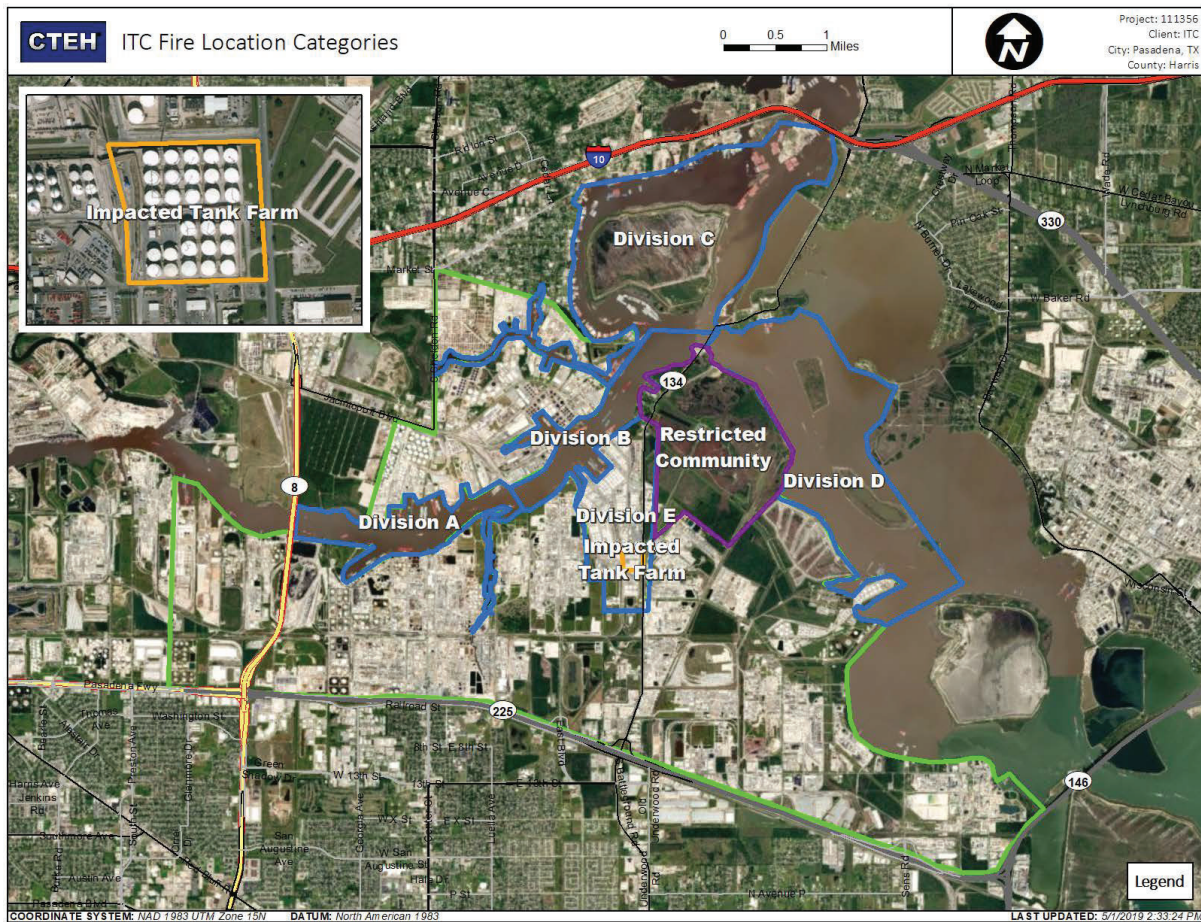
Reading Date
5/15/2019 9:00:00 AM to 5/15/2019 10:00:00 AM



Recent Benzene Detections

Location Category	Reading Date	Range of Detections
Division E	5/15/2019 09:04:41	0.0800 ppm
	5/15/2019 09:15:39	0.0300 ppm
	5/15/2019 09:50:42	0.0400 ppm
	5/15/2019 09:58:48	0.1600 ppm
Impacted Tank Farm	5/15/2019 09:18:34	0.0400 ppm
	5/15/2019 09:12:19	0.0500 ppm
	5/15/2019 09:15:32	0.0900 ppm
	5/15/2019 09:13:59	0.3300 ppm
	5/15/2019 09:10:46	0.1300 ppm
	5/15/2019 09:36:32	0.0600 ppm
	5/15/2019 09:28:07	0.0400 ppm
	5/15/2019 09:30:11	0.0900 ppm
	5/15/2019 09:25:26	0.1100 ppm
	5/15/2019 09:57:30	0.0800 ppm

This data has been provided expeditiously to ITC and regulatory agencies for informational and/or operational purposes only. Data reported within this summary is preliminary in nature and has not undergone complete QA/QC (quality assurance/quality control) process. Until this complete QA/QC process is completed, the locations of each reading are approximate in nature and subject to further refinement. As some readings may represent non-breathing zone measurements, the data reported herein may not be suitable to assess potential occupational exposure. Site Assessment readings are not representative of an individual's breathing zone (e.g., container head space, ground level, directly above product, etc.).



Please Note: These updates display data from the 2nd 80's Fire site (Impacted Tank Farm), in the industrial areas surrounding the 2nd 80's Fire site (US Coast Guard Division E), within the Houston Ship Channel (US Coast Guard Divisions A-D), and in the industrial areas north and south of the Houston Ship Channel (Industrial Area). Real-time air monitoring data for the surrounding communities are communicated daily in a separate report.

Preliminary Hand- Held Air Monitoring Locations | ITC Deer Park Tank Fire

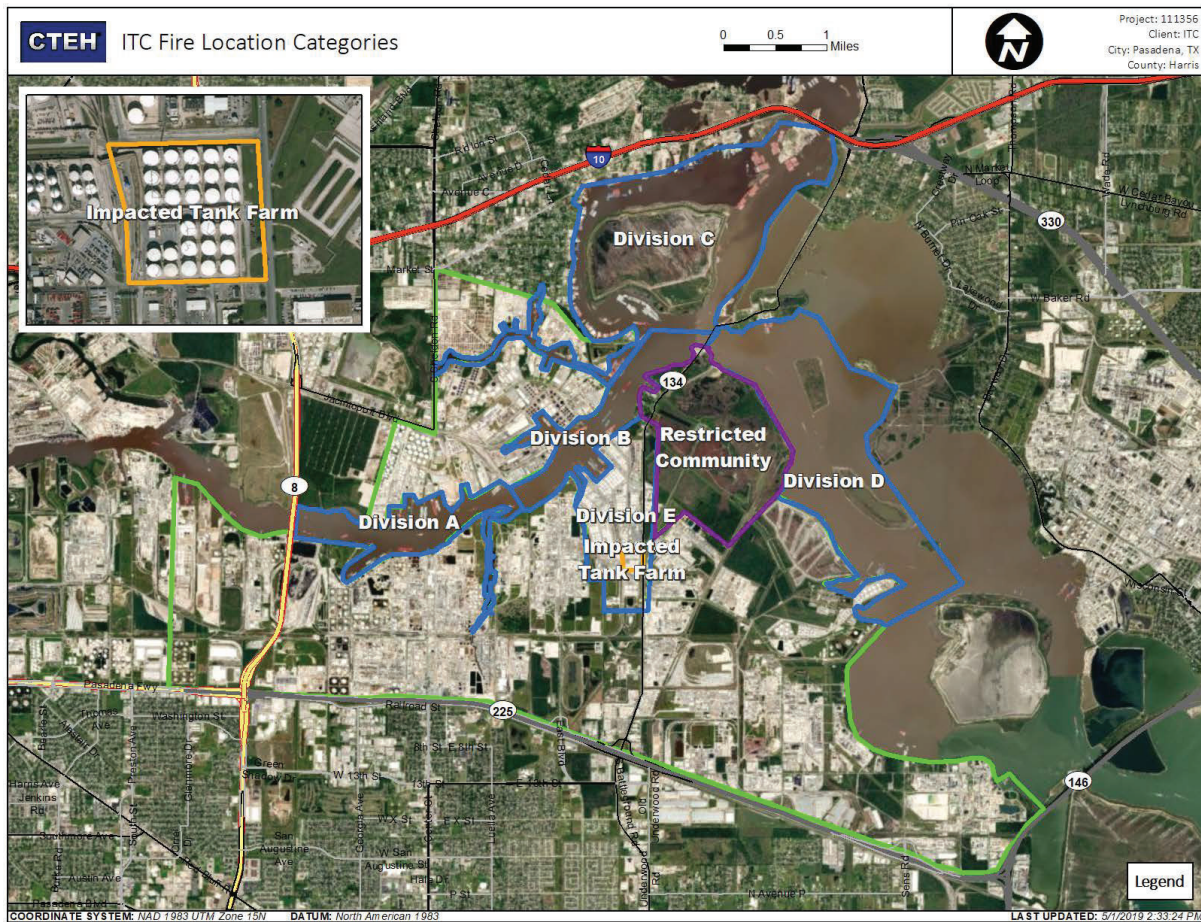
Reading Date
5/15/2019 10:00:00 AM to 5/15/2019 11:00:00 AM



Recent Benzene Detections

Location Category	Reading Date	Range of Detections
Division E	5/15/2019 10:09:17	0.1200 ppm
	5/15/2019 10:08:45	0.0300 ppm
	5/15/2019 10:11:46	0.0700 ppm
	5/15/2019 10:13:58	0.0800 ppm
	5/15/2019 10:22:58	0.0600 ppm
	5/15/2019 10:31:10	0.0400 ppm
	5/15/2019 10:17:45	0.0500 ppm
	5/15/2019 10:44:45	0.0800 ppm
Impacted Tank Farm	5/15/2019 10:59:14	0.0200 ppm
	5/15/2019 10:02:35	0.0400 ppm
	5/15/2019 10:20:13	0.1000 ppm
	5/15/2019 10:25:28	0.0900 ppm
	5/15/2019 10:22:17	0.0300 ppm
	5/15/2019 10:18:53	0.0500 ppm
	5/15/2019 10:57:02	0.1500 ppm
	5/15/2019 10:59:06	0.0300 ppm
	5/15/2019 10:56:45	0.0400 ppm

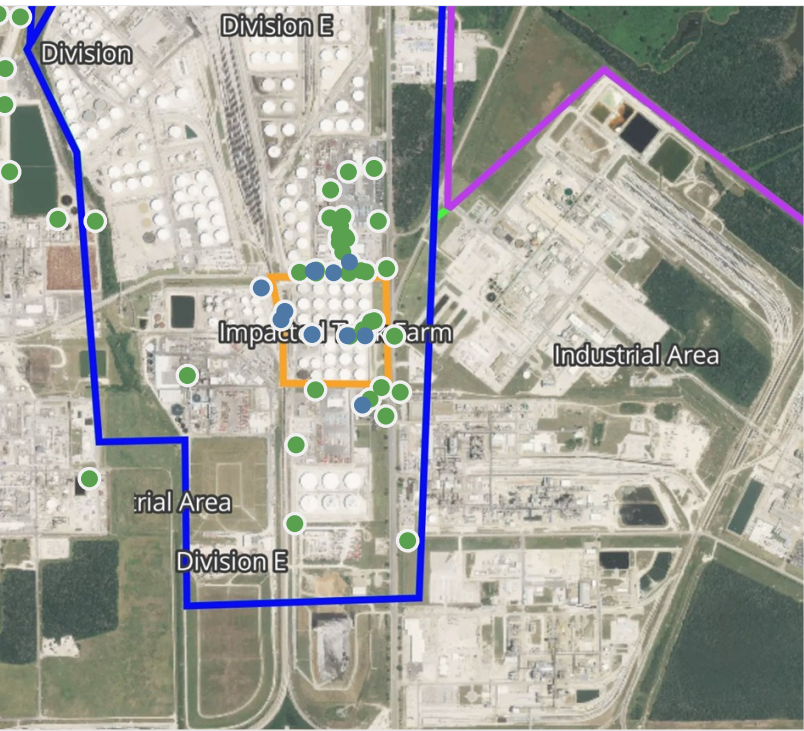
This data has been provided expeditiously to ITC and regulatory agencies for informational and/or operational purposes only. Data reported within this summary is preliminary in nature and has not undergone complete QA/QC (quality assurance/quality control) process. Until this complete QA/QC process is completed, the locations of each reading are approximate in nature and subject to further refinement. As some readings may represent non-breathing zone measurements, the data reported herein may not be suitable to assess potential occupational exposure. Site Assessment readings are not representative of an individual's breathing zone (e.g., container head space, ground level, directly above product, etc.).



Please Note: These updates display data from the 2nd 80's Fire site (Impacted Tank Farm), in the industrial areas surrounding the 2nd 80's Fire site (US Coast Guard Division E), within the Houston Ship Channel (US Coast Guard Divisions A-D), and in the industrial areas north and south of the Houston Ship Channel (Industrial Area). Real-time air monitoring data for the surrounding communities are communicated daily in a separate report.

Preliminary Hand- Held Air Monitoring Locations | ITC Deer Park Tank Fire

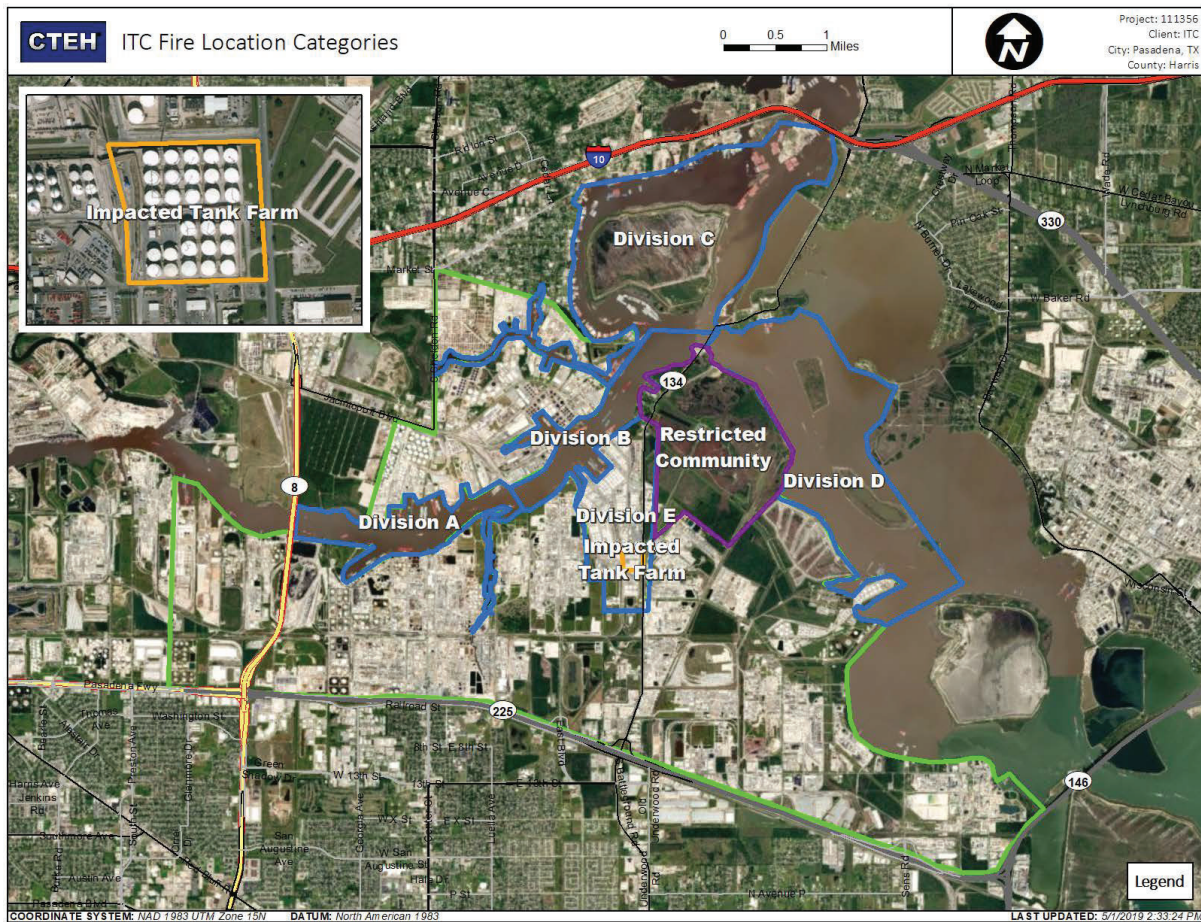
Reading Date
5/15/2019 11:00:00 AM to 5/15/2019 12:00:00 PM



Recent Benzene Detections

Location Category	Reading Date	Range of Detections
Division E	5/15/2019 11:01:18	0.0400 ppm
	5/15/2019 11:35:51	0.0800 ppm
	5/15/2019 11:41:08	0.0300 ppm
	5/15/2019 11:44:43	0.3300 ppm
	5/15/2019 11:46:21	0.3900 ppm
	5/15/2019 11:47:55	0.0600 ppm
	5/15/2019 11:47:39	0.0500 ppm
	5/15/2019 11:51:30	0.1700 ppm
	5/15/2019 11:56:51	0.0400 ppm
Impacted Tank Farm	5/15/2019 11:55:08	0.0600 ppm
	5/15/2019 11:05:21	0.0700 ppm
	5/15/2019 11:17:51	0.0400 ppm
	5/15/2019 11:52:36	0.0600 ppm
	5/15/2019 11:58:58	0.0900 ppm

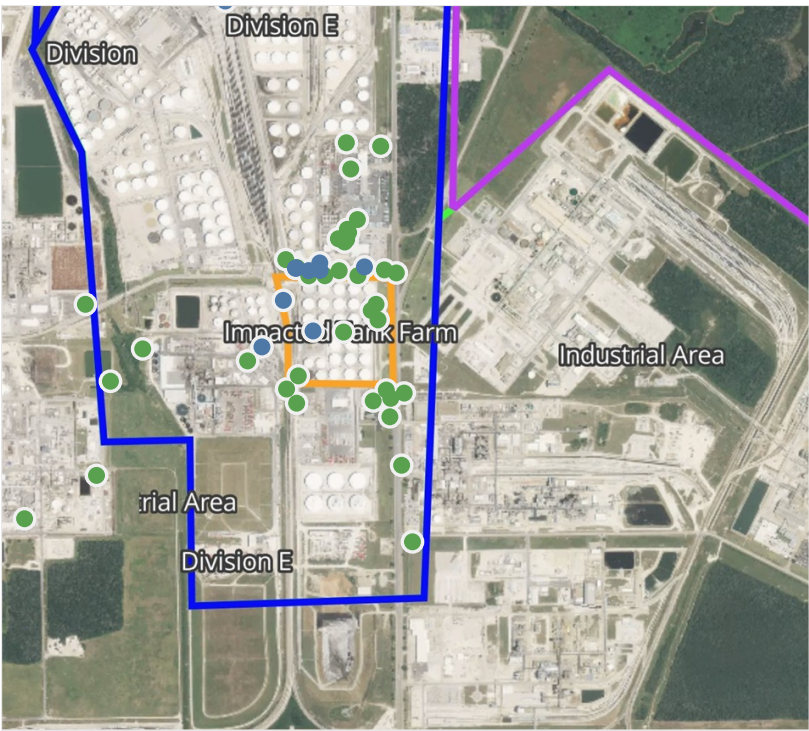
This data has been provided expeditiously to ITC and regulatory agencies for informational and/or operational purposes only. Data reported within this summary is preliminary in nature and has not undergone complete QA/QC (quality assurance/quality control) process. Until this complete QA/QC process is completed, the locations of each reading are approximate in nature and subject to further refinement. As some readings may represent non-breathing zone measurements, the data reported herein may not be suitable to assess potential occupational exposure. Site Assessment readings are not representative of an individual's breathing zone (e.g., container head space, ground level, directly above product, etc.).



Please Note: These updates display data from the 2nd 80's Fire site (Impacted Tank Farm), in the industrial areas surrounding the 2nd 80's Fire site (US Coast Guard Division E), within the Houston Ship Channel (US Coast Guard Divisions A-D), and in the industrial areas north and south of the Houston Ship Channel (Industrial Area). Real-time air monitoring data for the surrounding communities are communicated daily in a separate report.

Preliminary Hand- Held Air Monitoring Locations | ITC Deer Park Tank Fire

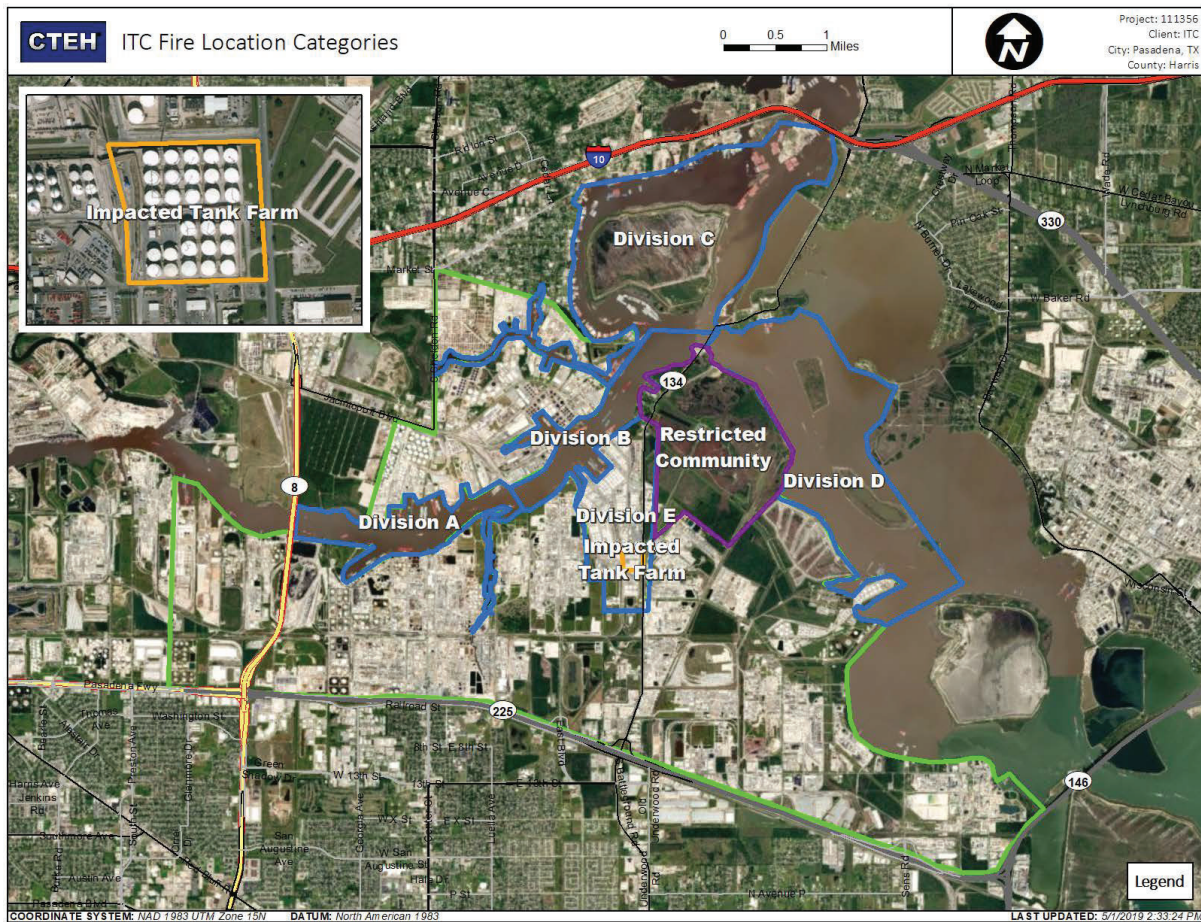
Reading Date
5/15/2019 12:00:00 PM to 5/15/2019 1:00:00 PM



Recent Benzene Detections

Location Category	Reading Date	Range of Detections
Division E	5/15/2019 12:01:58	0.0200 ppm
	5/15/2019 12:07:44	0.0600 ppm
	5/15/2019 12:19:20	0.0800 ppm
	5/15/2019 12:11:27	0.1200 ppm
	5/15/2019 12:33:46	0.1600 ppm
	5/15/2019 12:36:45	0.0200 ppm
	5/15/2019 12:53:07	0.1400 ppm
	5/15/2019 12:55:07	0.0200 ppm
	5/15/2019 12:59:57	0.0200 ppm
Impacted Tank Farm	5/15/2019 12:58:31	0.0300 ppm
	5/15/2019 12:36:06	0.0200 ppm
	5/15/2019 12:58:56	0.0900 ppm

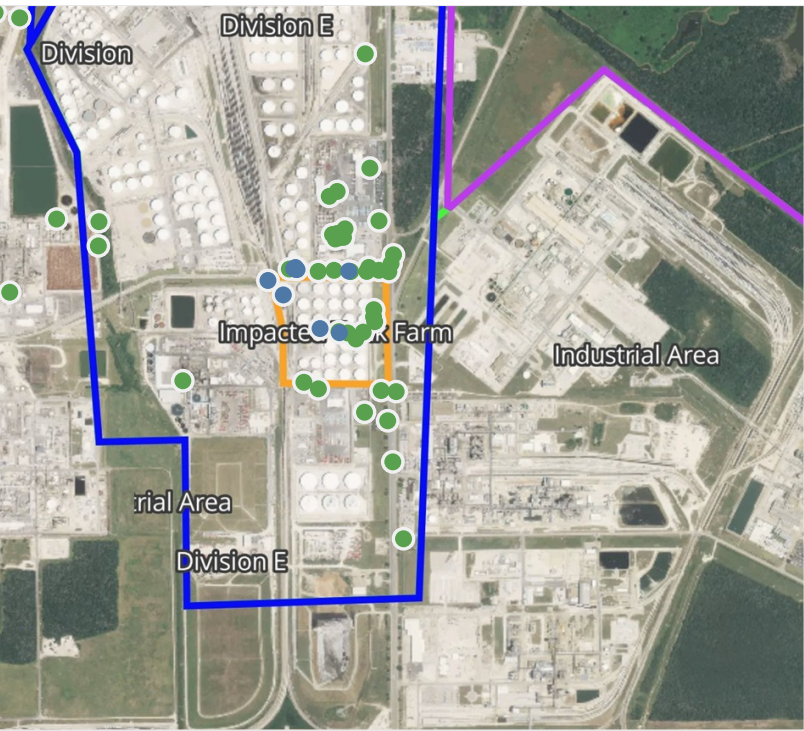
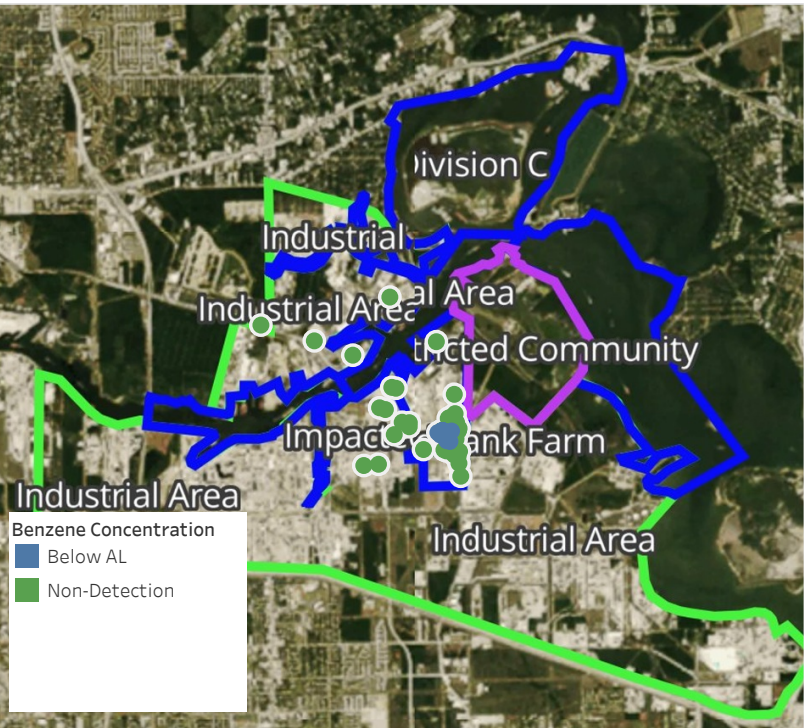
This data has been provided expeditiously to ITC and regulatory agencies for informational and/or operational purposes only. Data reported within this summary is preliminary in nature and has not undergone complete QA/QC (quality assurance/quality control) process. Until this complete QA/QC process is completed, the locations of each reading are approximate in nature and subject to further refinement. As some readings may represent non-breathing zone measurements, the data reported herein may not be suitable to assess potential occupational exposure. Site Assessment readings are not representative of an individual's breathing zone (e.g., container head space, ground level, directly above product, etc.).



Please Note: These updates display data from the 2nd 80's Fire site (Impacted Tank Farm), in the industrial areas surrounding the 2nd 80's Fire site (US Coast Guard Division E), within the Houston Ship Channel (US Coast Guard Divisions A-D), and in the industrial areas north and south of the Houston Ship Channel (Industrial Area). Real-time air monitoring data for the surrounding communities are communicated daily in a separate report.

Preliminary Hand- Held Air Monitoring Locations | ITC Deer Park Tank Fire

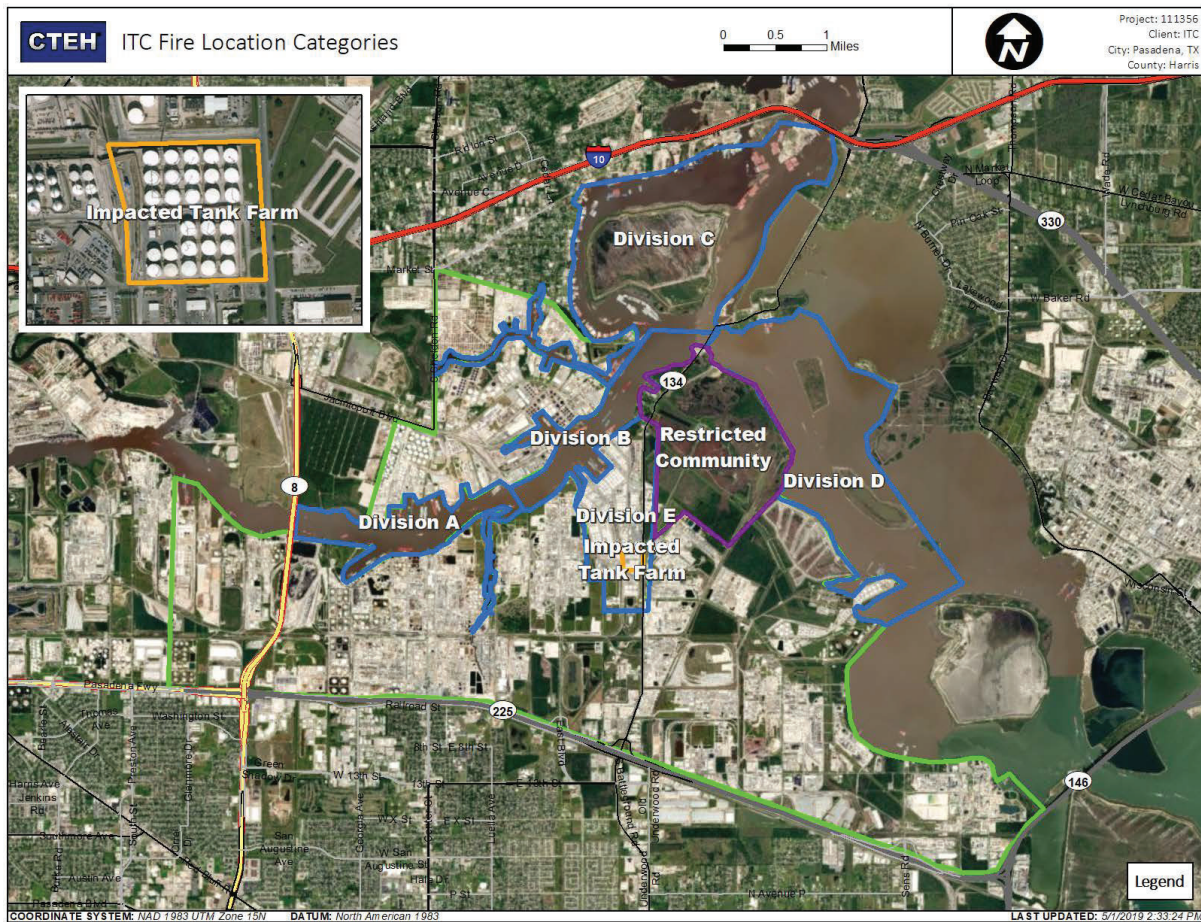
Reading Date
5/15/2019 1:00:00 PM to 5/15/2019 2:00:00 PM



Recent Benzene Detections

Location Category	Reading Date	Range of Detections
Division E	5/15/2019 13:19:45	0.0900 ppm
	5/15/2019 13:28:14	0.0900 ppm
	5/15/2019 13:29:43	0.3200 ppm
	5/15/2019 13:35:07	0.0500 ppm
	5/15/2019 13:31:30	0.2300 ppm
	5/15/2019 13:57:40	0.0600 ppm
	5/15/2019 13:59:39	0.0200 ppm
Impacted Tank Farm	5/15/2019 13:00:07	0.0800 ppm
	5/15/2019 13:07:02	0.0900 ppm
	5/15/2019 13:50:11	0.2700 ppm

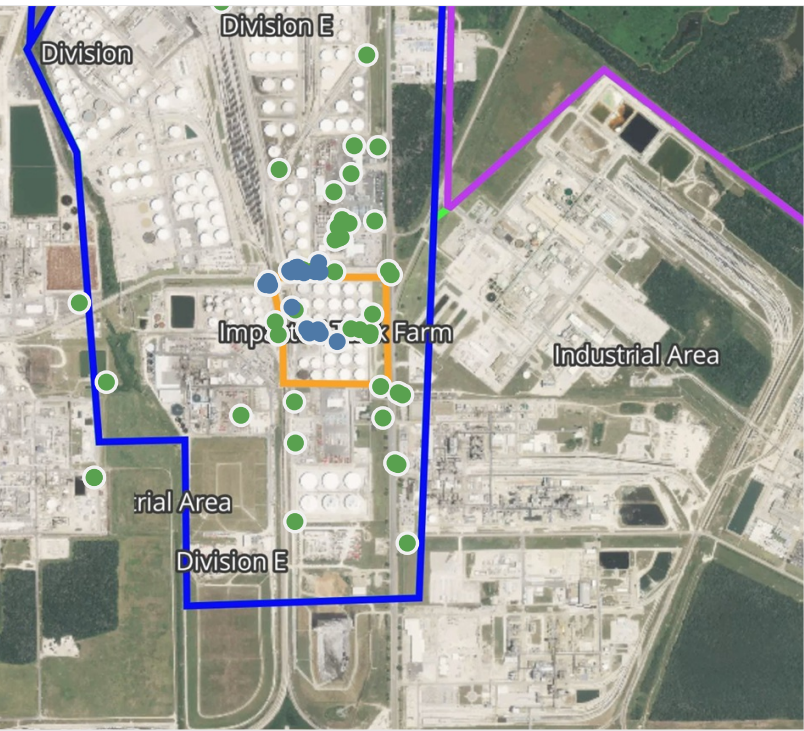
This data has been provided expeditiously to ITC and regulatory agencies for informational and/or operational purposes only. Data reported within this summary is preliminary in nature and has not undergone complete QA/QC (quality assurance/quality control) process. Until this complete QA/QC process is completed, the locations of each reading are approximate in nature and subject to further refinement. As some readings may represent non-breathing zone measurements, the data reported herein may not be suitable to assess potential occupational exposure. Site Assessment readings are not representative of an individual's breathing zone (e.g., container head space, ground level, directly above product, etc.).



Please Note: These updates display data from the 2nd 80's Fire site (Impacted Tank Farm), in the industrial areas surrounding the 2nd 80's Fire site (US Coast Guard Division E), within the Houston Ship Channel (US Coast Guard Divisions A-D), and in the industrial areas north and south of the Houston Ship Channel (Industrial Area). Real-time air monitoring data for the surrounding communities are communicated daily in a separate report.

Preliminary Hand- Held Air Monitoring Locations | ITC Deer Park Tank Fire

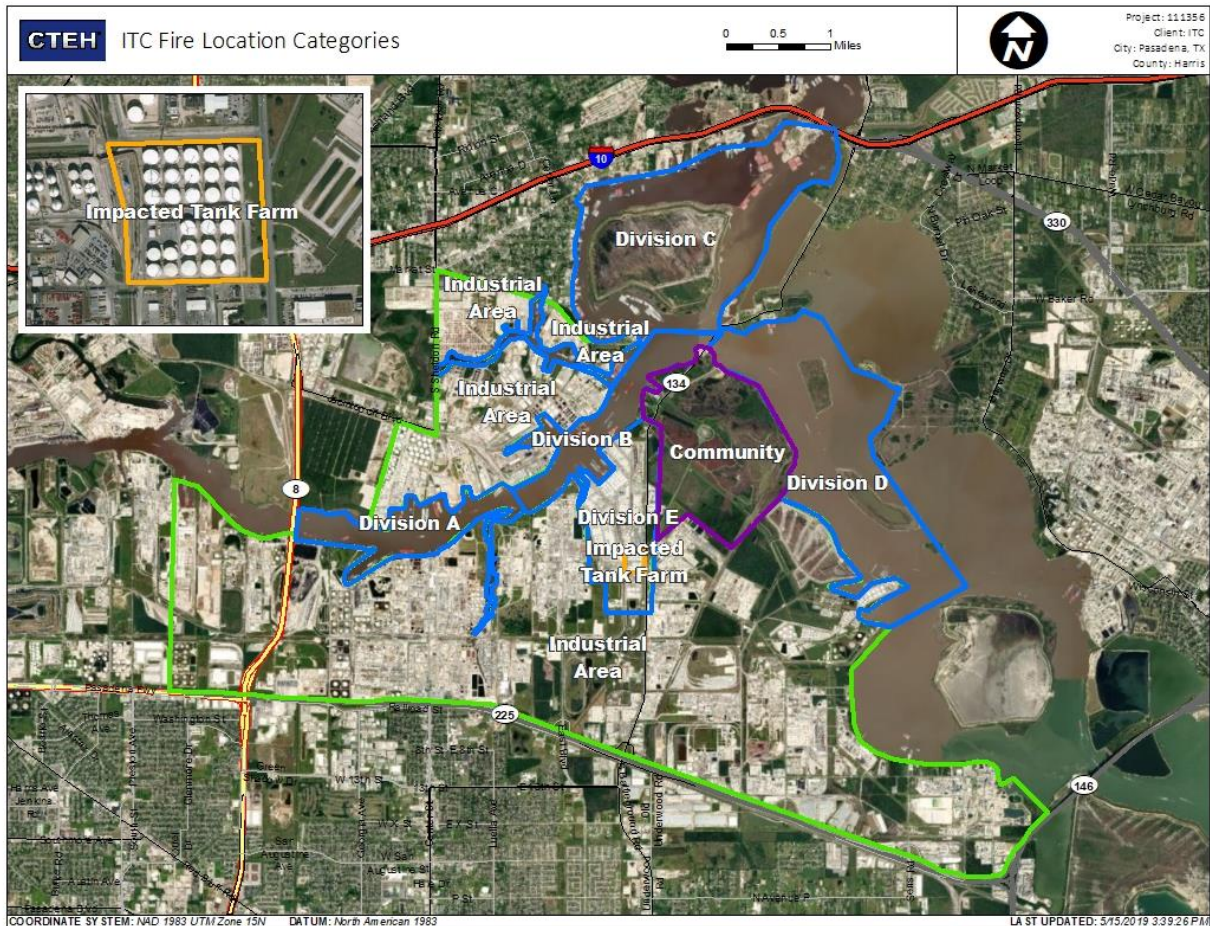
Reading Date
5/15/2019 2:00:00 PM to 5/15/2019 3:00:00 PM



Recent Benzene Detections

Location Category	Reading Date	Range of Detections
Division E	5/15/2019 14:02:34	0.2500 ppm
	5/15/2019 14:04:00	0.0700 ppm
	5/15/2019 14:04:50	0.0700 ppm
	5/15/2019 14:06:47	0.1800 ppm
	5/15/2019 14:06:57	0.2900 ppm
	5/15/2019 14:08:18	0.0800 ppm
	5/15/2019 14:10:05	0.2500 ppm
	5/15/2019 14:16:24	0.0900 ppm
	5/15/2019 14:20:31	0.0600 ppm
	5/15/2019 14:20:50	0.1000 ppm
	5/15/2019 14:10:45	0.0400 ppm
	5/15/2019 14:32:51	0.1800 ppm
	5/15/2019 14:40:45	0.0900 ppm
	5/15/2019 14:45:09	0.1200 ppm
	5/15/2019 14:53:41	0.0900 ppm
Impacted Tank Farm	5/15/2019 14:59:26	0.1200 ppm
	5/15/2019 14:58:37	0.1400 ppm
	5/15/2019 14:06:14	0.0300 ppm
	5/15/2019 14:12:57	0.0300 ppm
	5/15/2019 14:24:29	0.1500 ppm
	5/15/2019 14:39:36	0.0900 ppm
	5/15/2019 14:38:08	0.1500 ppm
	5/15/2019 14:36:31	0.0800 ppm

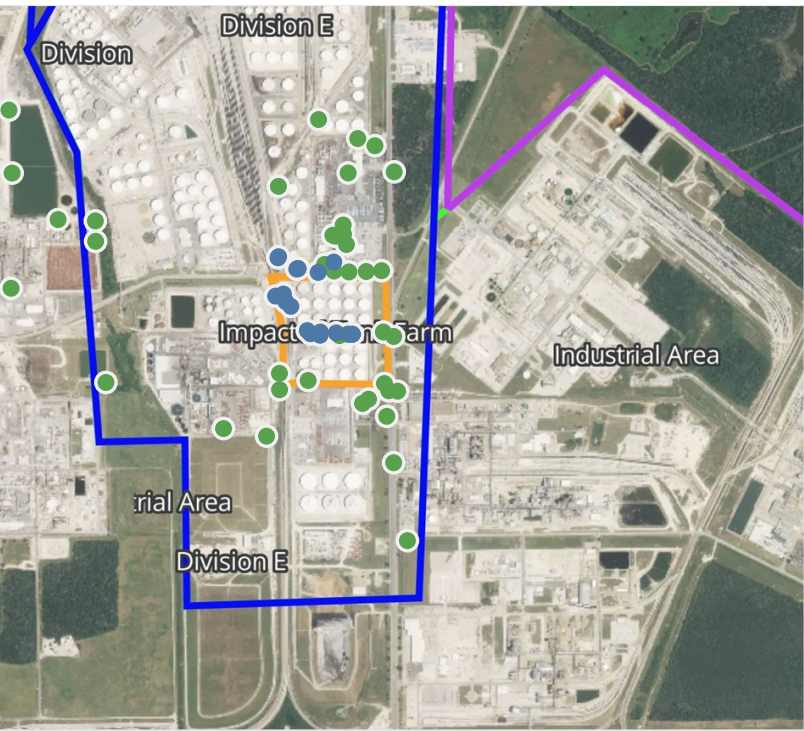
This data has been provided expeditiously to ITC and regulatory agencies for informational and/or operational purposes only. Data reported within this summary is preliminary in nature and has not undergone complete QA/QC (quality assurance/quality control) process. Until this complete QA/QC process is completed, the locations of each reading are approximate in nature and subject to further refinement. As some readings may represent non-breathing zone measurements, the data reported herein may not be suitable to assess potential occupational exposure. Site Assessment readings are not representative of an individual's breathing zone (e.g., container head space, ground level, directly above product, etc.).



Please Note: These updates display data from the 2nd 80's Fire site (Impacted Tank Farm), in the industrial areas surrounding the 2nd 80's Fire site (US Coast Guard Division E), within the Houston Ship Channel (US Coast Guard Divisions A-D), and in the industrial areas north and south of the Houston Ship Channel (Industrial Area). Real-time air monitoring data for the surrounding communities are communicated daily in a separate report.

Preliminary Hand- Held Air Monitoring Locations | ITC Deer Park Tank Fire

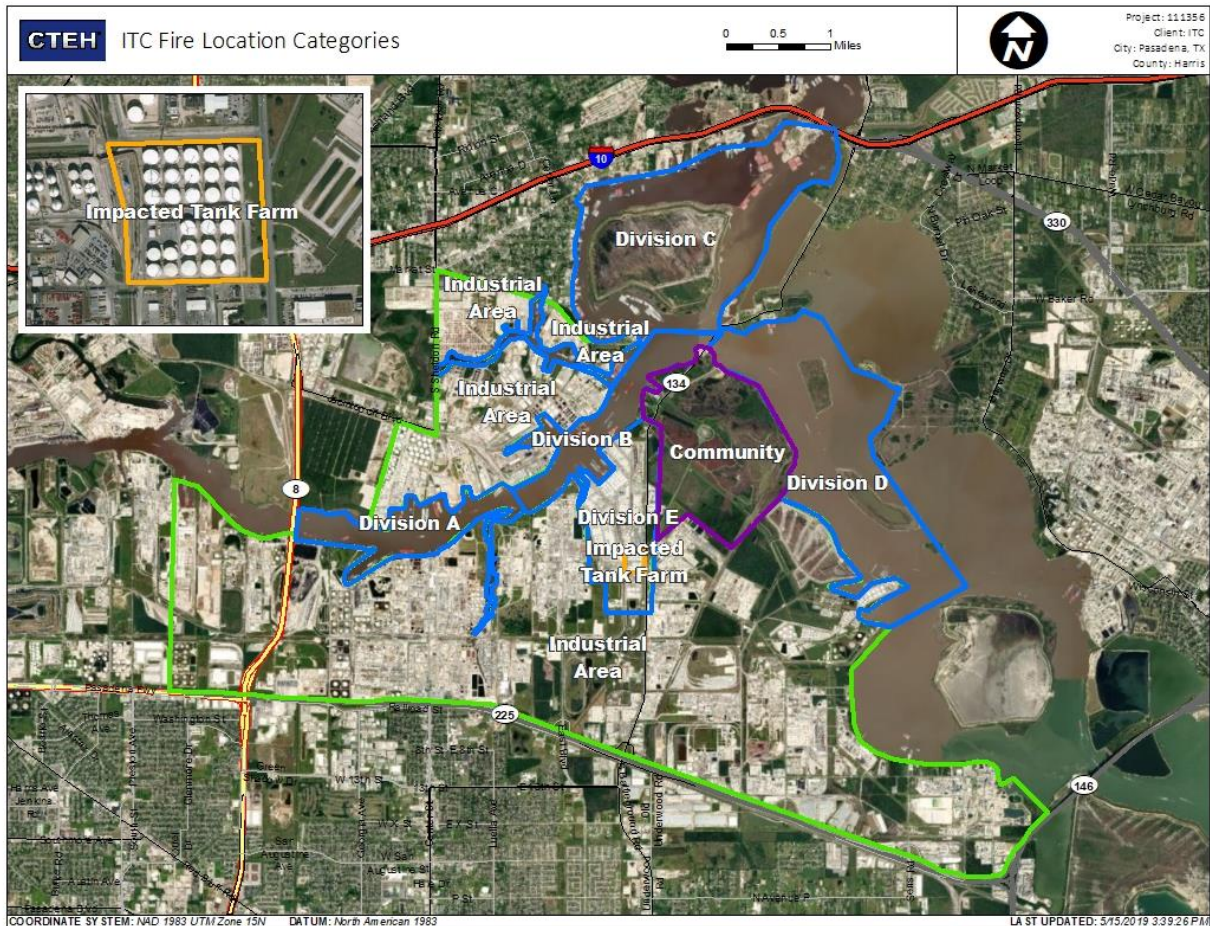
Reading Date
5/15/2019 3:00:00 PM to 5/15/2019 4:00:00 PM



Recent Benzene Detections

Location Category	Reading Date	Range of Detections
Division E	5/15/2019 15:01:20	0.1000 ppm
	5/15/2019 15:03:27	0.1200 ppm
	5/15/2019 15:13:14	0.1500 ppm
	5/15/2019 15:23:30	0.1200 ppm
	5/15/2019 15:30:48	0.0200 ppm
	5/15/2019 15:39:38	0.1300 ppm
	5/15/2019 15:41:37	0.0500 ppm
	5/15/2019 15:47:27	0.0200 ppm
Impacted Tank Farm	5/15/2019 15:03:39	0.0200 ppm
	5/15/2019 15:05:27	0.1100 ppm
	5/15/2019 15:08:20	0.0300 ppm
	5/15/2019 15:17:31	0.0800 ppm
	5/15/2019 15:35:40	0.3800 ppm
	5/15/2019 15:27:10	0.1900 ppm
	5/15/2019 15:29:19	0.0700 ppm
	5/15/2019 15:35:20	0.3000 ppm
	5/15/2019 15:39:13	0.0300 ppm
	5/15/2019 15:36:30	0.2700 ppm
	5/15/2019 15:49:48	0.0600 ppm

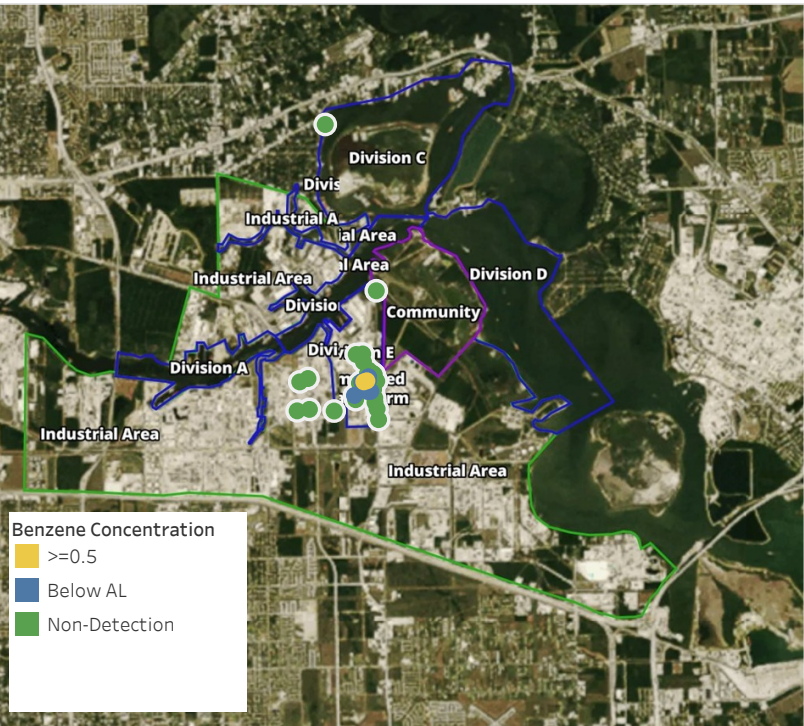
This data has been provided expeditiously to ITC and regulatory agencies for informational and/or operational purposes only. Data reported within this summary is preliminary in nature and has not undergone complete QA/QC (quality assurance/quality control) process. Until this complete QA/QC process is completed, the locations of each reading are approximate in nature and subject to further refinement. As some readings may represent non-breathing zone measurements, the data reported herein may not be suitable to assess potential occupational exposure. Site Assessment readings are not representative of an individual's breathing zone (e.g., container head space, ground level, directly above product, etc.).



Please Note: These updates display data from the 2nd 80's Fire site (Impacted Tank Farm), in the industrial areas surrounding the 2nd 80's Fire site (US Coast Guard Division E), within the Houston Ship Channel (US Coast Guard Divisions A-D), and in the industrial areas north and south of the Houston Ship Channel (Industrial Area). Real-time air monitoring data for the surrounding communities are communicated daily in a separate report.

Preliminary Hand- Held Air Monitoring Locations | ITC Deer Park Tank Fire

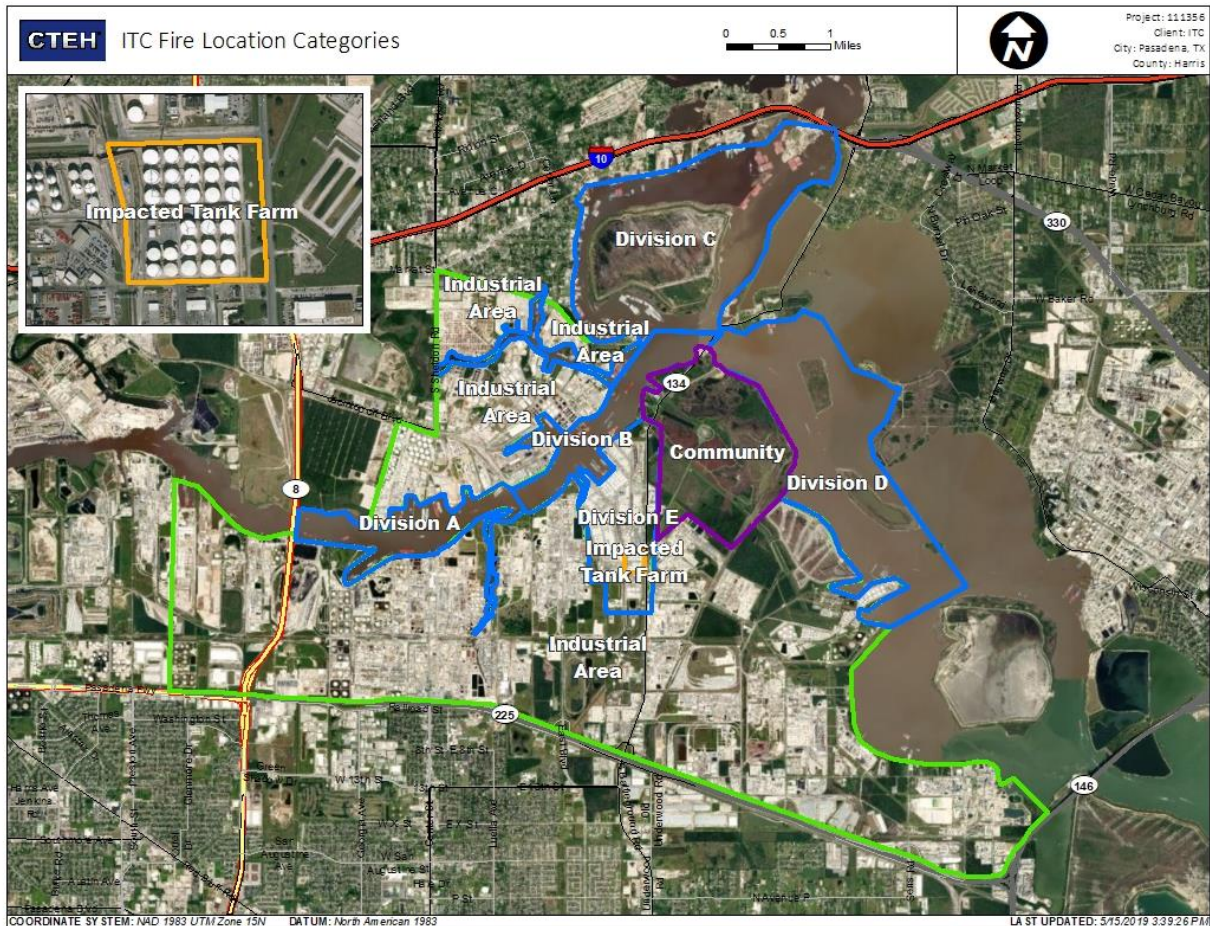
Reading Date
5/15/2019 4:00:00 PM to 5/15/2019 5:00:00 PM



Recent Benzene Detections

Location Category	Reading Date	Range of Detections
Division E	5/15/2019 16:03:50	0.1000 ppm
	5/15/2019 16:06:26	0.0300 ppm
	5/15/2019 16:08:42	0.0700 ppm
	5/15/2019 16:12:05	0.2000 ppm
	5/15/2019 16:14:06	0.0300 ppm
	5/15/2019 16:17:43	0.5400 ppm
	5/15/2019 16:19:08	0.0300 ppm
	5/15/2019 16:21:17	0.2400 ppm
	5/15/2019 16:24:23	0.3800 ppm
	5/15/2019 16:09:37	0.1000 ppm
	5/15/2019 16:31:37	0.2100 ppm
	5/15/2019 16:33:47	0.0900 ppm
	5/15/2019 16:37:29	0.1800 ppm
	5/15/2019 16:41:56	0.1300 ppm
	5/15/2019 16:43:37	0.1800 ppm
	5/15/2019 16:54:37	0.0400 ppm
	5/15/2019 16:54:46	0.2100 ppm
	5/15/2019 16:41:48	0.4800 ppm
	5/15/2019 16:59:09	0.0800 ppm
	5/15/2019 16:59:59	0.1000 ppm
	5/15/2019 16:52:01	0.1500 ppm
	5/15/2019 16:45:23	0.2100 ppm
	5/15/2019 16:56:55	0.3700 ppm
	5/15/2019 16:59:25	0.2000 ppm
	5/15/2019 16:14:55	0.5100 ppm
	5/15/2019 16:35:59	0.2100 ppm
	5/15/2019 16:44:35	0.1000 ppm
Impacted Tank Farm	5/15/2019 16:50:59	0.0800 ppm
	5/15/2019 16:46:49	0.0300 ppm
	5/15/2019 16:48:15	0.0800 ppm

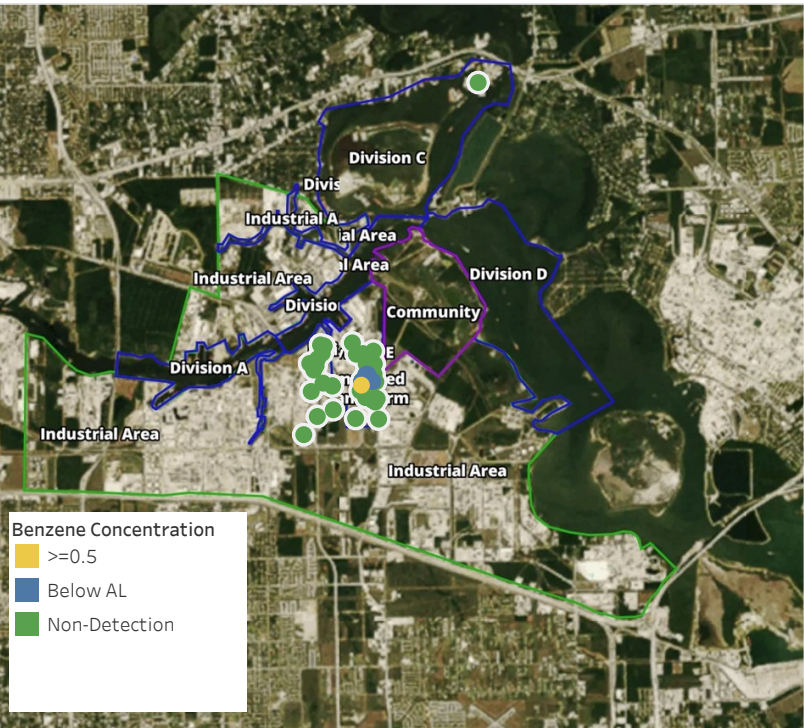
This data has been provided expeditiously to ITC and regulatory agencies for informational and/or operational purposes only. Data reported within this summary is preliminary in nature and has not undergone complete QA/QC (quality assurance/quality control) process. Until this complete QA/QC process is completed, the locations of each reading are approximate in nature and subject to further refinement. As some readings may represent non-breathing zone measurements, the data reported herein may not be suitable to assess potential occupational exposure. Site Assessment readings are not representative of an individual's breathing zone (e.g., container head space, ground level, directly above product, etc.).



Please Note: These updates display data from the 2nd 80's Fire site (Impacted Tank Farm), in the industrial areas surrounding the 2nd 80's Fire site (US Coast Guard Division E), within the Houston Ship Channel (US Coast Guard Divisions A-D), and in the industrial areas north and south of the Houston Ship Channel (Industrial Area). Real-time air monitoring data for the surrounding communities are communicated daily in a separate report.

Preliminary Hand- Held Air Monitoring Locations | ITC Deer Park Tank Fire

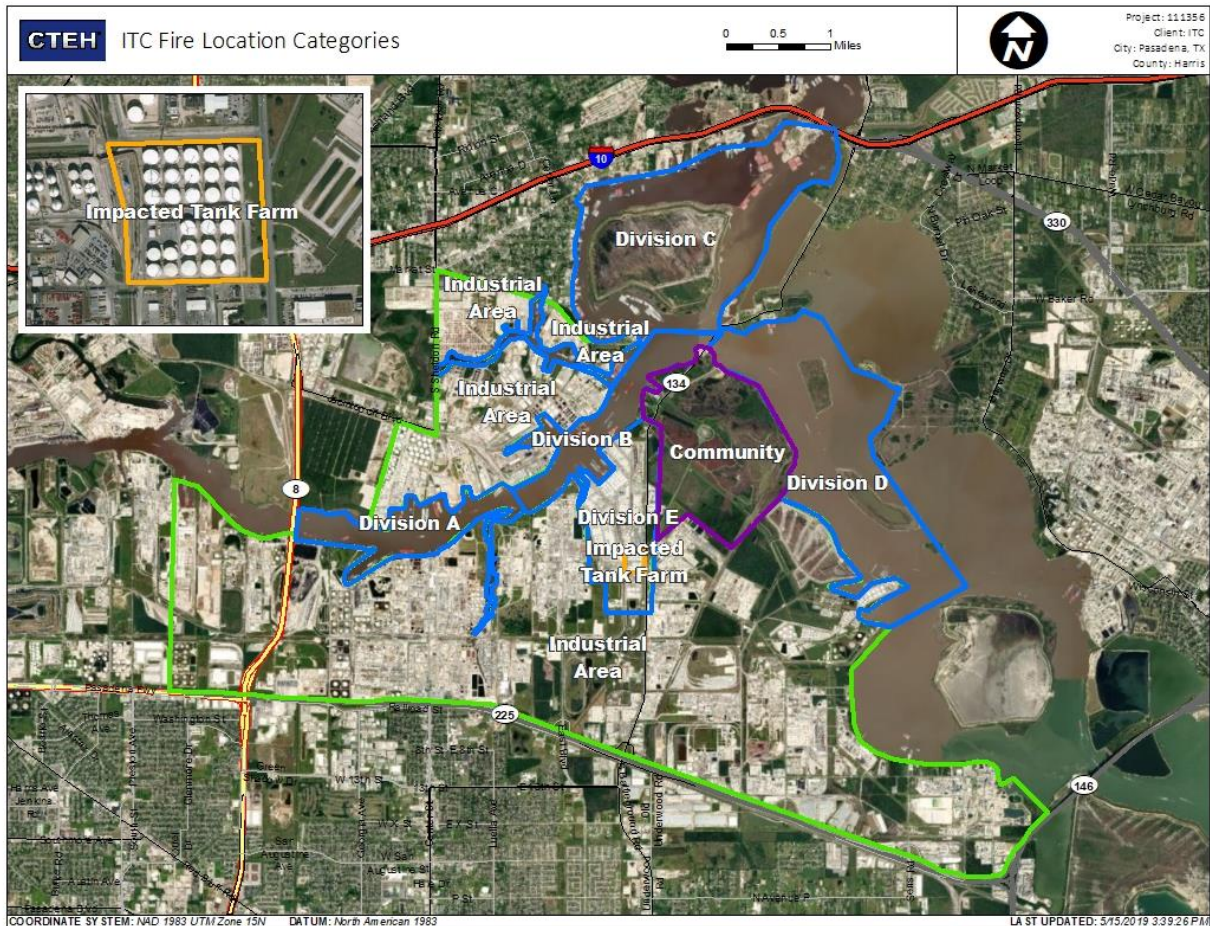
Reading Date
5/15/2019 5:00:00 PM to 5/15/2019 6:00:00 PM



Recent Benzene Detections

Location Category	Reading Date	Range of Detections
Division E	5/15/2019 17:01:41	0.1700 ppm
	5/15/2019 17:04:06	0.1000 ppm
	5/15/2019 17:06:59	0.0300 ppm
	5/15/2019 17:05:54	0.0400 ppm
	5/15/2019 17:08:01	0.1300 ppm
	5/15/2019 17:11:12	0.0500 ppm
	5/15/2019 17:07:45	0.1300 ppm
	5/15/2019 17:10:48	0.0400 ppm
	5/15/2019 17:15:33	0.1100 ppm
	5/15/2019 17:19:00	0.0800 ppm
	5/15/2019 17:22:11	0.2300 ppm
	5/15/2019 17:29:46	0.1000 ppm
	5/15/2019 17:30:50	0.1700 ppm
	5/15/2019 17:29:09	0.0300 ppm
	5/15/2019 17:32:21	0.0400 ppm
	5/15/2019 17:36:54	0.0200 ppm
	5/15/2019 17:43:05	0.0600 ppm
	5/15/2019 17:48:41	0.0300 ppm
	5/15/2019 17:47:35	0.1300 ppm
	5/15/2019 17:56:26	0.1500 ppm
	5/15/2019 17:52:49	0.0500 ppm
Impacted Tank Farm	5/15/2019 17:22:18	0.7000 ppm

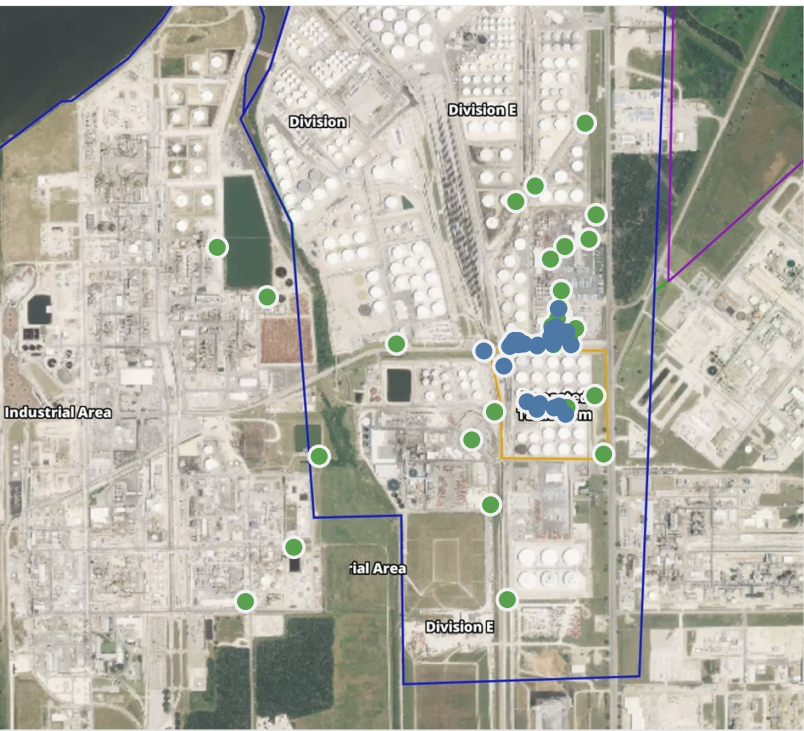
This data has been provided expeditiously to ITC and regulatory agencies for informational and/or operational purposes only. Data reported within this summary is preliminary in nature and has not undergone complete QA/QC (quality assurance/quality control) process. Until this complete QA/QC process is completed, the locations of each reading are approximate in nature and subject to further refinement. As some readings may represent non-breathing zone measurements, the data reported herein may not be suitable to assess potential occupational exposure. Site Assessment readings are not representative of an individual's breathing zone (e.g., container head space, ground level, directly above product, etc.).



Please Note: These updates display data from the 2nd 80's Fire site (Impacted Tank Farm), in the industrial areas surrounding the 2nd 80's Fire site (US Coast Guard Division E), within the Houston Ship Channel (US Coast Guard Divisions A-D), and in the industrial areas north and south of the Houston Ship Channel (Industrial Area). Real-time air monitoring data for the surrounding communities are communicated daily in a separate report.

Preliminary Hand- Held Air Monitoring Locations | ITC Deer Park Tank Fire

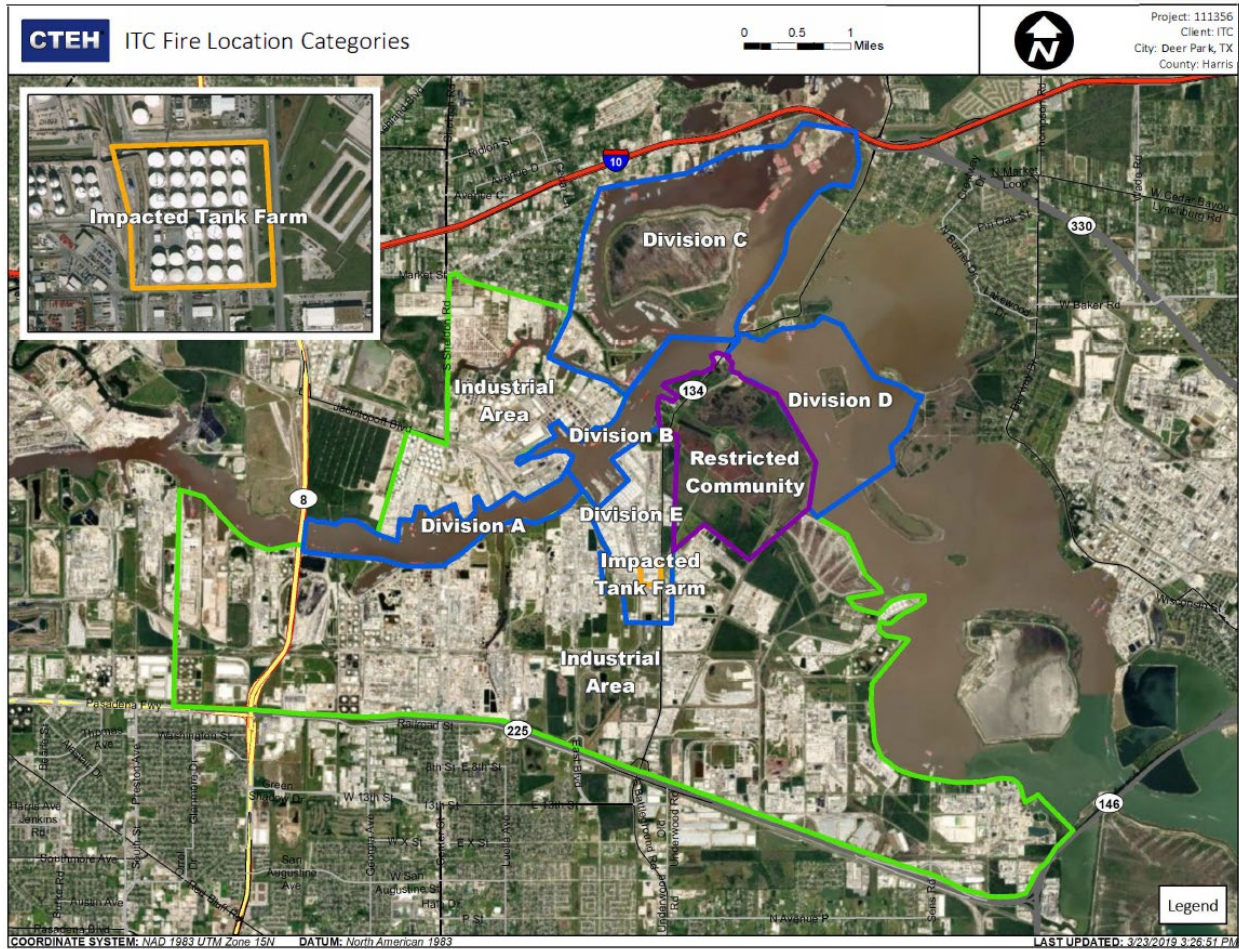
Reading Date
5/15/2019 6:00:00 PM to 5/15/2019 7:00:00 PM



Recent Benzene Detections

Location Category	Reading Date	Range of Detections
Division E	5/15/2019 18:03:40	0.1100 ppm
	5/15/2019 18:04:29	0.0200 ppm
	5/15/2019 18:06:58	0.0300 ppm
	5/15/2019 18:05:12	0.0600 ppm
	5/15/2019 18:09:18	0.0200 ppm
	5/15/2019 18:11:20	0.1400 ppm
	5/15/2019 18:11:54	0.0400 ppm
	5/15/2019 18:12:56	0.1600 ppm
	5/15/2019 18:18:23	0.0400 ppm
	5/15/2019 18:23:28	0.0600 ppm
	5/15/2019 18:25:00	0.0600 ppm
	5/15/2019 18:28:54	0.0500 ppm
	5/15/2019 18:32:37	0.1000 ppm
	5/15/2019 18:38:43	0.0500 ppm
	5/15/2019 18:43:32	0.0700 ppm
	5/15/2019 18:46:10	0.0300 ppm
	5/15/2019 18:43:24	0.0700 ppm
	5/15/2019 18:47:45	0.0500 ppm
	5/15/2019 18:50:15	0.2800 ppm
	5/15/2019 18:50:36	0.0500 ppm
	5/15/2019 18:53:47	0.3400 ppm
	5/15/2019 18:55:49	0.0700 ppm
	5/15/2019 18:56:48	0.0700 ppm
	5/15/2019 18:58:00	0.0300 ppm
Impacted Tank Farm	5/15/2019 18:55:33	0.2900 ppm
	5/15/2019 18:52:12	0.3300 ppm
	5/15/2019 18:55:27	0.1500 ppm
	5/15/2019 18:08:03	0.0500 ppm
	5/15/2019 18:25:36	0.0200 ppm
	5/15/2019 18:09:44	0.0700 ppm
	5/15/2019 18:06:46	0.0500 ppm
	5/15/2019 18:37:38	0.0200 ppm
	5/15/2019 18:50:36	0.0300 ppm
	5/15/2019 18:55:26	0.0400 ppm
	5/15/2019 18:56:48	0.0400 ppm

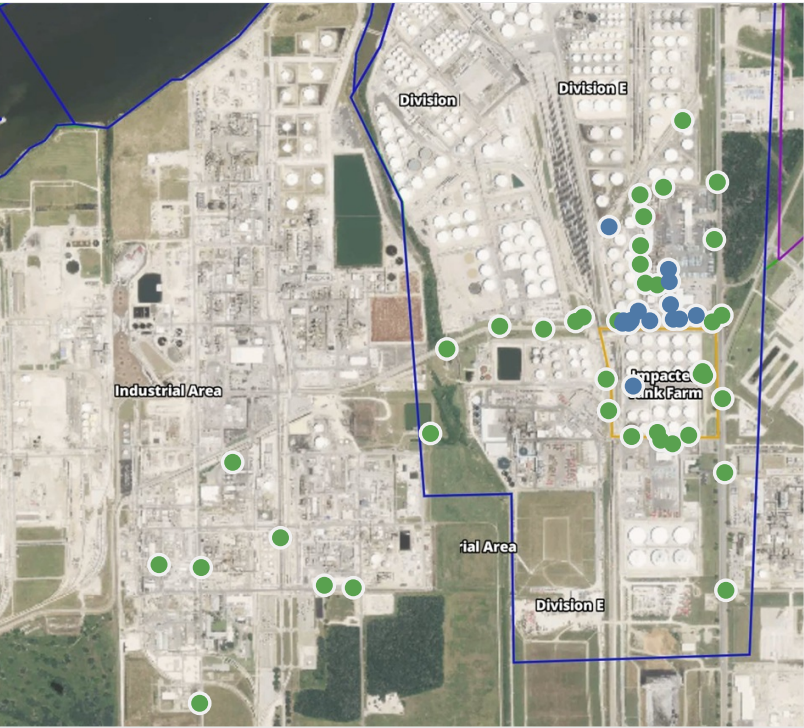
This data has been provided expeditiously to ITC and regulatory agencies for informational and/or operational purposes only. Data reported within this summary is preliminary in nature and has not undergone complete QA/QC (quality assurance/quality control) process. Until this complete QA/QC process is completed, the locations of each reading are approximate in nature and subject to further refinement. As some readings may represent non-breathing zone measurements, the data reported herein may not be suitable to assess potential occupational exposure. Site Assessment readings are not representative of an individual's breathing zone (e.g., container head space, ground level, directly above product, etc.).



Please Note: These updates display data from the 2nd 80's Fire site (Impacted Tank Farm), in the industrial areas surrounding the 2nd 80's Fire site (US Coast Guard Division E), within the Houston Ship Channel (US Coast Guard Divisions A-D), and in the industrial areas north and south of the Houston Ship Channel (Industrial Area). Real-time air monitoring data for the surrounding communities are communicated daily in a separate report.

Preliminary Hand- Held Air Monitoring Locations | ITC Deer Park Tank Fire

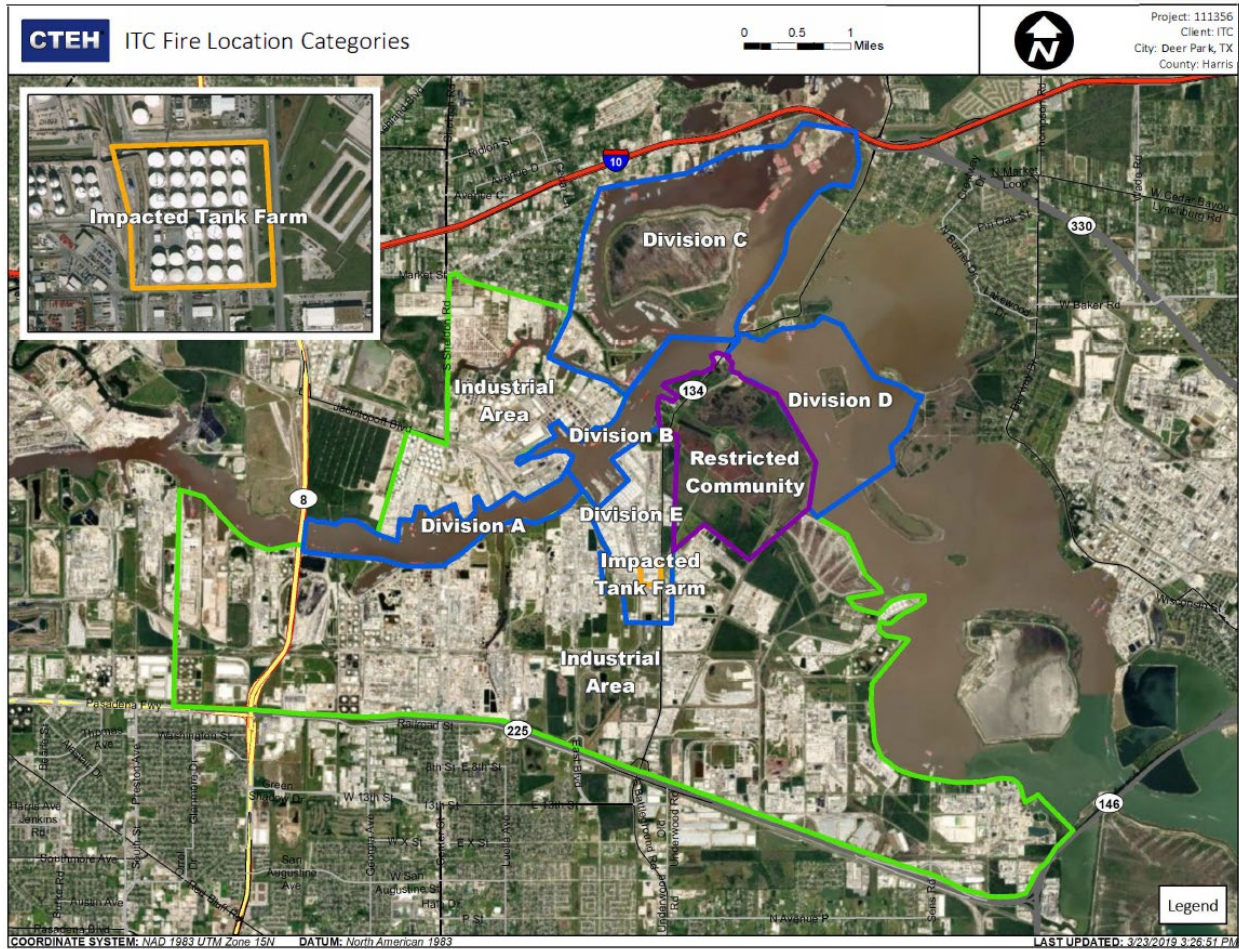
Reading Date
5/15/2019 7:00:00 PM to 5/15/2019 8:00:00 PM



Recent Benzene Detections

Location Category	Reading Date	Range of Detections
Division E	5/15/2019 19:02:33	0.3000 ppm
	5/15/2019 19:06:35	0.0300 ppm
	5/15/2019 19:15:01	0.0600 ppm
	5/15/2019 19:15:07	0.0500 ppm
	5/15/2019 19:08:21	0.0400 ppm
	5/15/2019 19:16:09	0.1800 ppm
	5/15/2019 19:23:09	0.0400 ppm
	5/15/2019 19:25:12	0.1500 ppm
	5/15/2019 19:52:35	0.0700 ppm
	5/15/2019 19:58:01	0.0500 ppm
	5/15/2019 19:50:42	0.3200 ppm
	5/15/2019 19:45:26	0.0700 ppm
	5/15/2019 19:56:50	0.1400 ppm
	5/15/2019 19:59:07	0.3800 ppm
Impacted Tank Farm	5/15/2019 19:47:51	0.0300 ppm
	5/15/2019 19:05:21	0.0400 ppm

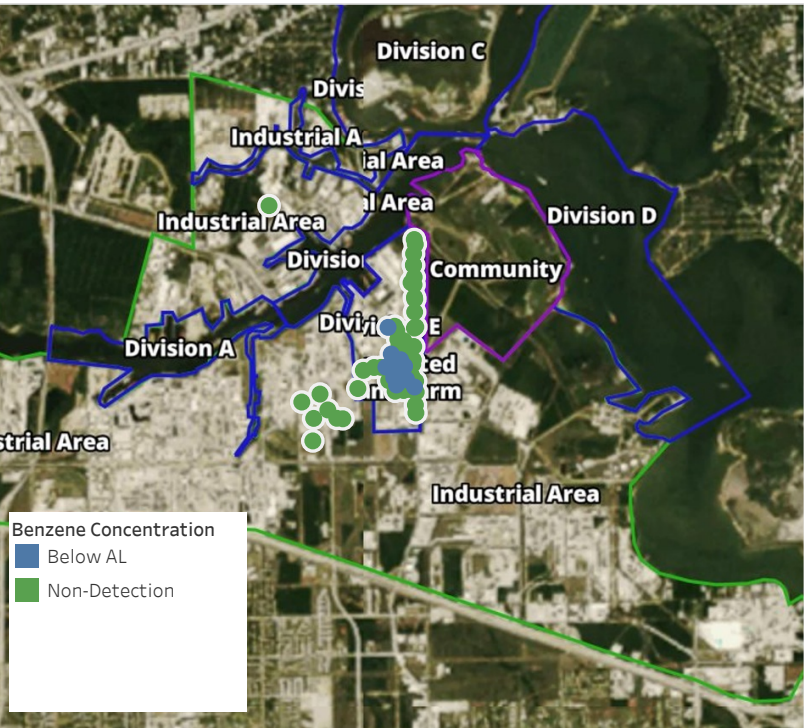
This data has been provided expeditiously to ITC and regulatory agencies for informational and/or operational purposes only. Data reported within this summary is preliminary in nature and has not undergone complete QA/QC (quality assurance/quality control) process. Until this complete QA/QC process is completed, the locations of each reading are approximate in nature and subject to further refinement. As some readings may represent non-breathing zone measurements, the data reported herein may not be suitable to assess potential occupational exposure. Site Assessment readings are not representative of an individual's breathing zone (e.g., container head space, ground level, directly above product, etc.).



Please Note: These updates display data from the 2nd 80's Fire site (Impacted Tank Farm), in the industrial areas surrounding the 2nd 80's Fire site (US Coast Guard Division E), within the Houston Ship Channel (US Coast Guard Divisions A-D), and in the industrial areas north and south of the Houston Ship Channel (Industrial Area). Real-time air monitoring data for the surrounding communities are communicated daily in a separate report.

Preliminary Hand- Held Air Monitoring Locations | ITC Deer Park Tank Fire

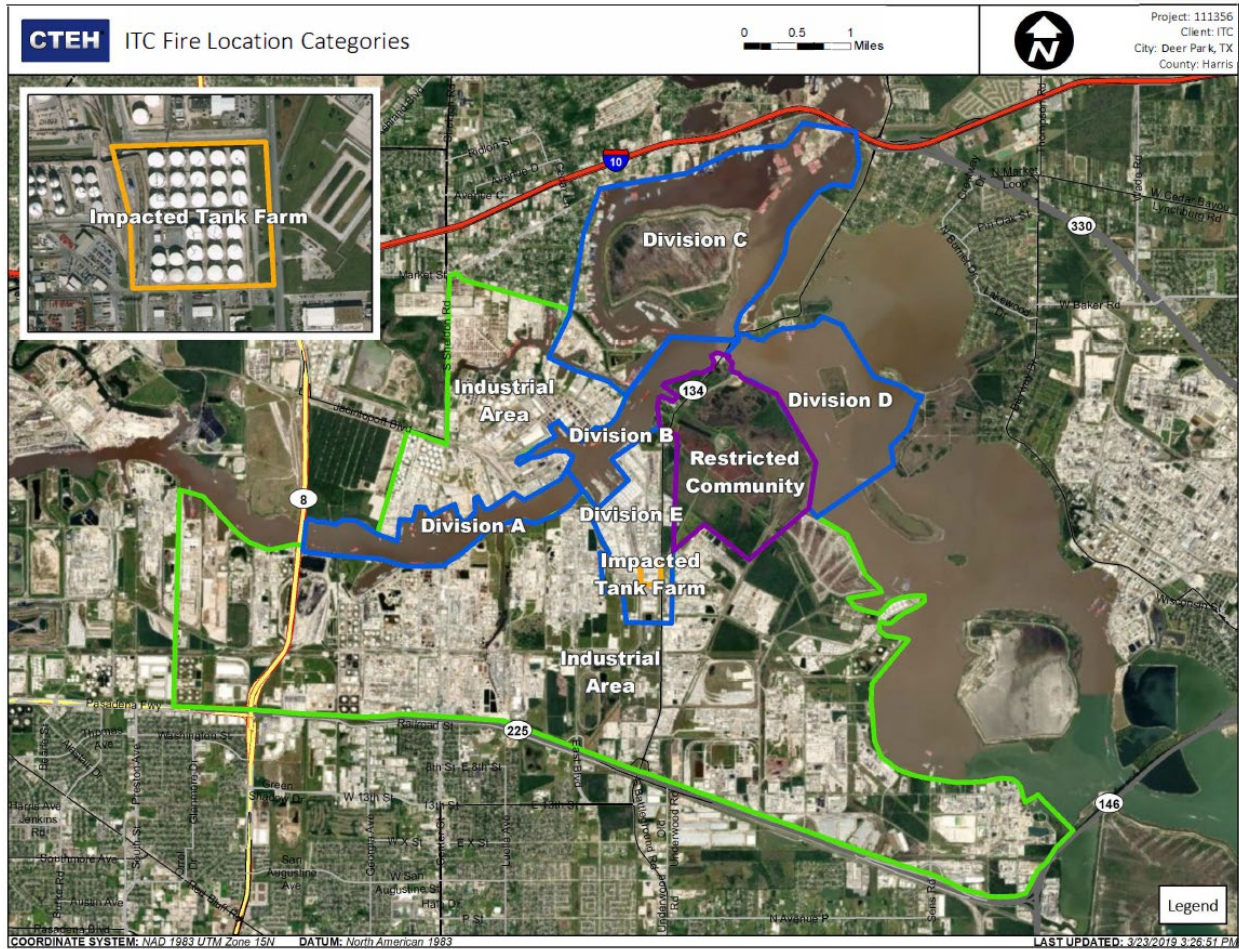
Reading Date
5/15/2019 8:00:00 PM to 5/15/2019 9:00:00 PM



Recent Benzene Detections

Location Category	Reading Date	Range of Detections
Division E	5/15/2019 20:07:55	0.0200 ppm
	5/15/2019 20:15:42	0.0200 ppm
	5/15/2019 20:24:56	0.0400 ppm
	5/15/2019 20:22:15	0.2100 ppm
	5/15/2019 20:17:04	0.0400 ppm
	5/15/2019 20:26:01	0.1100 ppm
	5/15/2019 20:27:44	0.0400 ppm
	5/15/2019 20:31:20	0.0300 ppm
	5/15/2019 20:23:45	0.0500 ppm
	5/15/2019 20:19:38	0.0600 ppm
Impacted Tank Farm	5/15/2019 20:31:40	0.0200 ppm
	5/15/2019 20:51:11	0.0600 ppm
	5/15/2019 20:53:44	0.0400 ppm
	5/15/2019 20:58:20	0.0200 ppm
	5/15/2019 20:47:56	0.0300 ppm
	5/15/2019 20:24:21	0.1000 ppm
	5/15/2019 20:55:30	0.0500 ppm
Industrial Area	5/15/2019 20:36:40	0.0900 ppm
	5/15/2019 20:55:29	0.0200 ppm

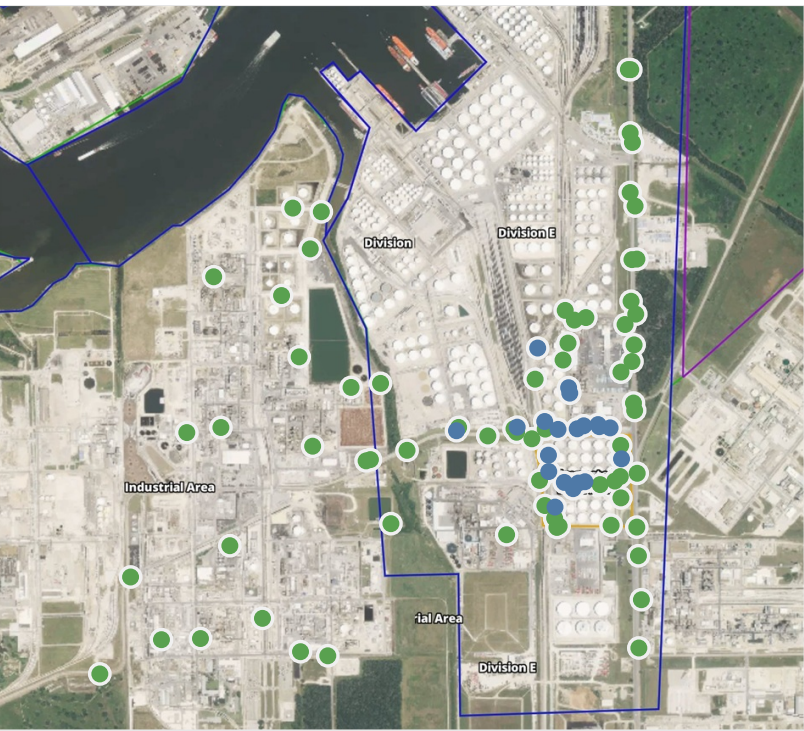
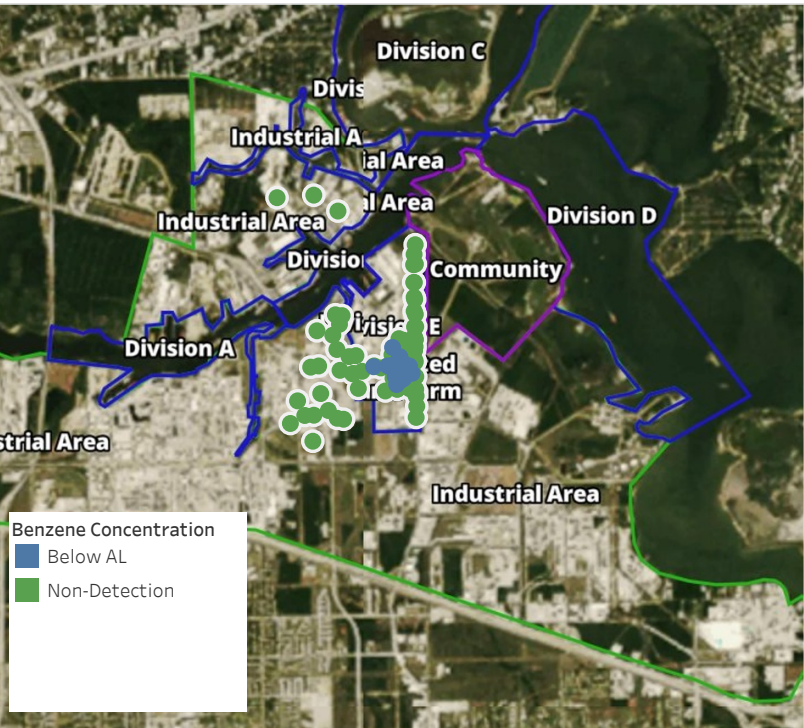
This data has been provided expeditiously to ITC and regulatory agencies for informational and/or operational purposes only. Data reported within this summary is preliminary in nature and has not undergone complete QA/QC (quality assurance/quality control) process. Until this complete QA/QC process is completed, the locations of each reading are approximate in nature and subject to further refinement. As some readings may represent non-breathing zone measurements, the data reported herein may not be suitable to assess potential occupational exposure. Site Assessment readings are not representative of an individual's breathing zone (e.g., container head space, ground level, directly above product, etc.).



Please Note: These updates display data from the 2nd 80's Fire site (Impacted Tank Farm), in the industrial areas surrounding the 2nd 80's Fire site (US Coast Guard Division E), within the Houston Ship Channel (US Coast Guard Divisions A-D), and in the industrial areas north and south of the Houston Ship Channel (Industrial Area). Real-time air monitoring data for the surrounding communities are communicated daily in a separate report.

Preliminary Hand- Held Air Monitoring Locations | ITC Deer Park Tank Fire

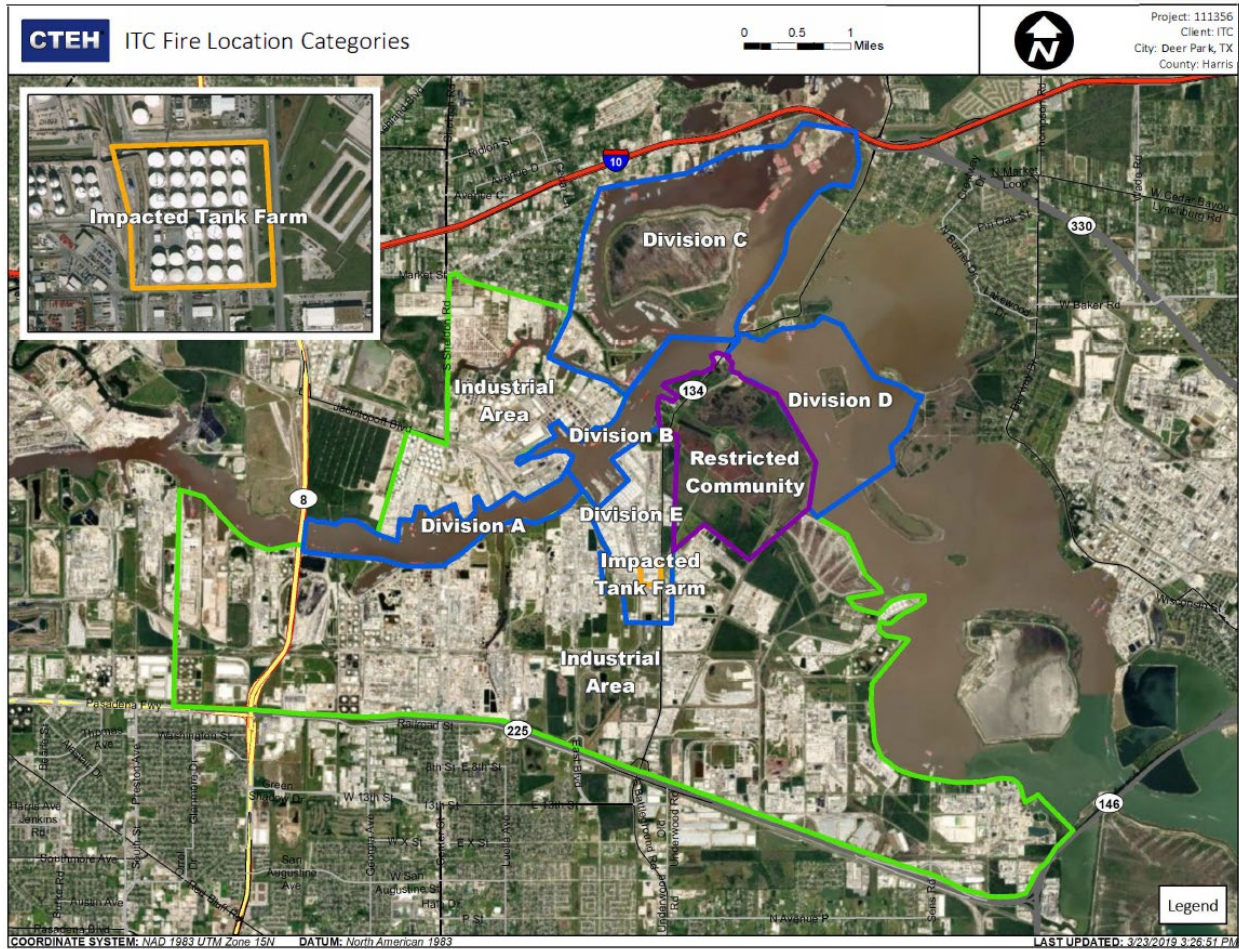
Reading Date
5/15/2019 9:00:00 PM to 5/15/2019 10:00:00 PM



Recent Benzene Detections

Location Category	Reading Date	Range of Detections
Division E	5/15/2019 21:22:14	0.0400 ppm
	5/15/2019 21:35:23	0.0800 ppm
	5/15/2019 21:52:39	0.0200 ppm
	5/15/2019 21:24:53	0.0200 ppm
	5/15/2019 21:58:08	0.0500 ppm
	5/15/2019 21:43:03	0.0400 ppm
	5/15/2019 21:47:16	0.1300 ppm
	5/15/2019 21:40:47	0.0300 ppm
	5/15/2019 21:54:30	0.1400 ppm
	5/15/2019 21:16:52	0.0200 ppm
	5/15/2019 21:41:38	0.0300 ppm
	5/15/2019 21:38:50	0.0300 ppm
Impacted Tank Farm	5/15/2019 21:14:47	0.0200 ppm
	5/15/2019 21:29:05	0.0700 ppm
	5/15/2019 21:26:02	0.1100 ppm
	5/15/2019 21:33:21	0.0400 ppm
	5/15/2019 21:39:09	0.0500 ppm
	5/15/2019 21:19:29	0.0200 ppm
	5/15/2019 21:53:26	0.0200 ppm
	5/15/2019 21:44:52	0.0400 ppm

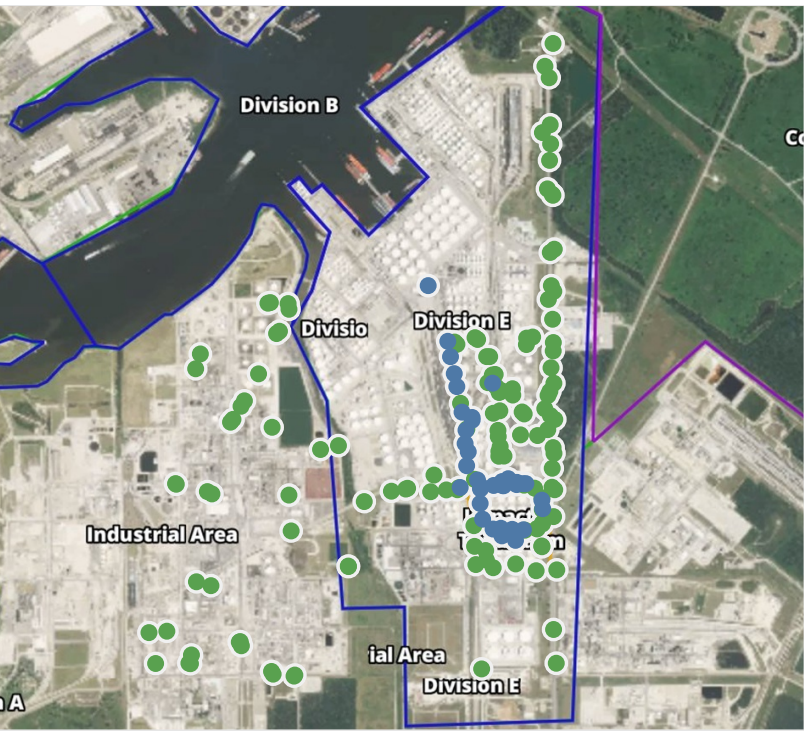
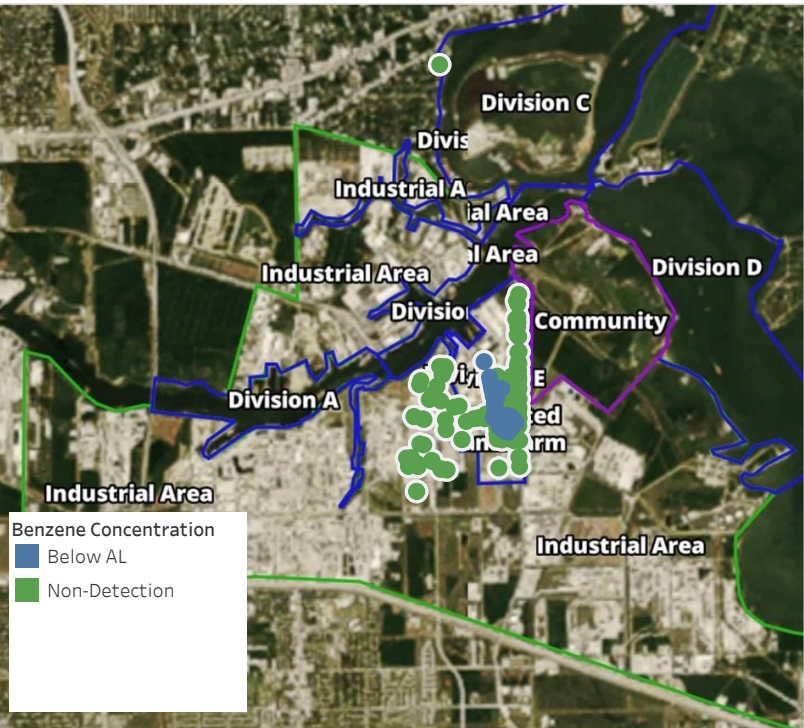
This data has been provided expeditiously to ITC and regulatory agencies for informational and/or operational purposes only. Data reported within this summary is preliminary in nature and has not undergone complete QA/QC (quality assurance/quality control) process. Until this complete QA/QC process is completed, the locations of each reading are approximate in nature and subject to further refinement. As some readings may represent non-breathing zone measurements, the data reported herein may not be suitable to assess potential occupational exposure. Site Assessment readings are not representative of an individual's breathing zone (e.g., container head space, ground level, directly above product, etc.).



Please Note: These updates display data from the 2nd 80's Fire site (Impacted Tank Farm), in the industrial areas surrounding the 2nd 80's Fire site (US Coast Guard Division E), within the Houston Ship Channel (US Coast Guard Divisions A-D), and in the industrial areas north and south of the Houston Ship Channel (Industrial Area). Real-time air monitoring data for the surrounding communities are communicated daily in a separate report.

Preliminary Hand- Held Air Monitoring Locations | ITC Deer Park Tank Fire

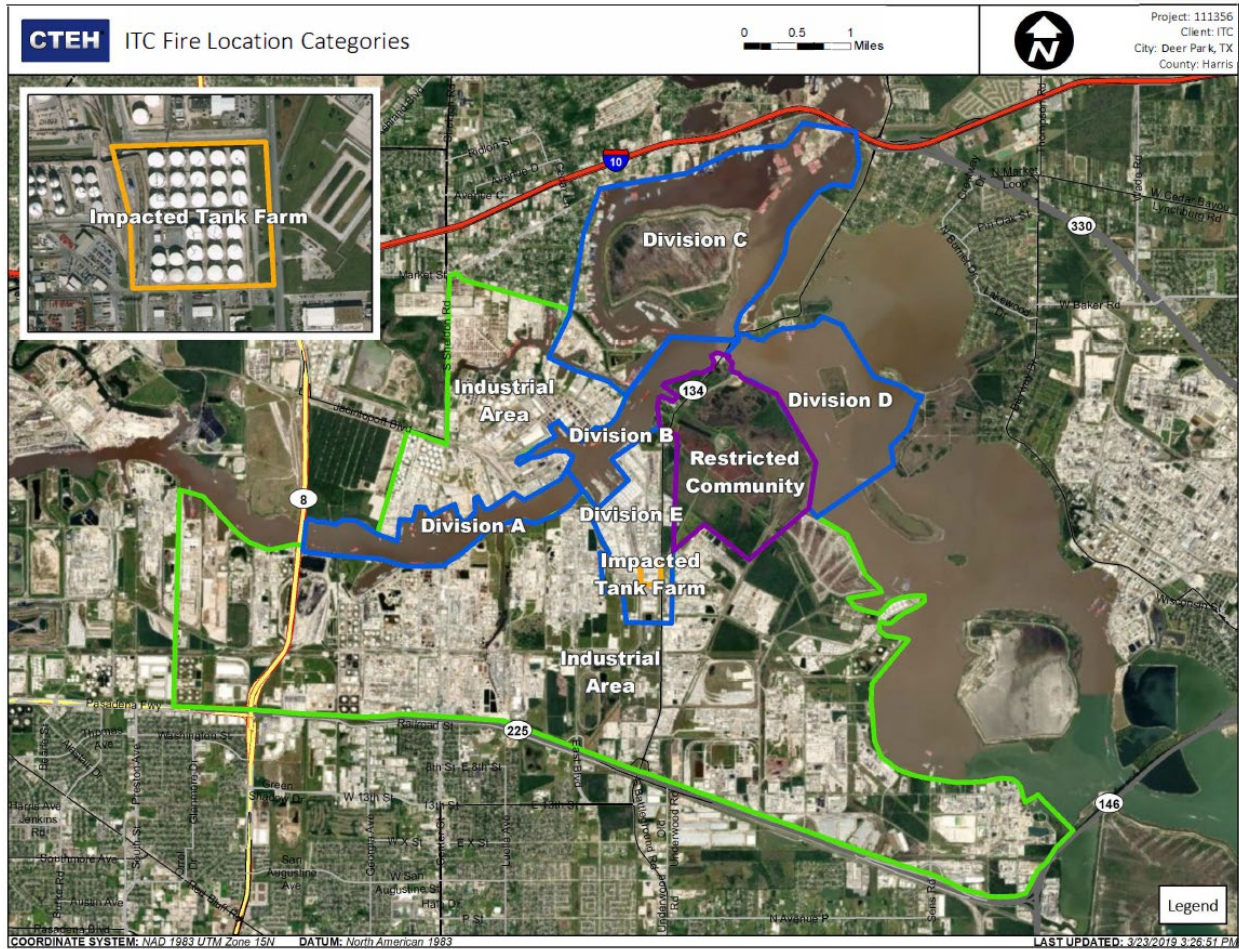
Reading Date
5/15/2019 10:00:00 PM to 5/16/2019 11:00:00 PM



Recent Benzene Detections

Location Category	Reading Date	Range of Detections
Division E	5/15/2019 22:29:08	0.0200 ppm
	5/15/2019 22:39:21	0.0900 ppm
	5/15/2019 22:28:01	0.0400 ppm
	5/15/2019 22:19:47	0.2400 ppm
	5/15/2019 22:24:48	0.0600 ppm
	5/15/2019 22:14:43	0.1100 ppm
	5/15/2019 22:11:19	0.0400 ppm
	5/15/2019 23:02:25	0.0400 ppm
	5/15/2019 23:26:32	0.0500 ppm
	5/15/2019 22:41:14	0.0900 ppm
	5/15/2019 22:36:43	0.0500 ppm
	5/15/2019 22:21:06	0.0500 ppm
	5/15/2019 23:39:11	0.0200 ppm
	5/15/2019 23:47:58	0.0200 ppm
	5/15/2019 23:48:40	0.0300 ppm
	5/15/2019 23:14:20	0.0200 ppm
	5/15/2019 23:22:30	0.0300 ppm
	5/15/2019 23:27:48	0.0300 ppm
	5/15/2019 23:17:58	0.0800 ppm
	5/15/2019 23:25:22	0.0500 ppm
Impacted Tank Farm	5/15/2019 23:52:46	0.0300 ppm
	5/15/2019 23:59:52	0.0300 ppm
	5/15/2019 23:58:49	0.0200 ppm
	5/16/2019 00:04:34	0.0200 ppm
	5/16/2019 00:08:37	0.0300 ppm
	5/15/2019 22:05:32	0.0800 ppm
	5/15/2019 22:28:08	0.1000 ppm
	5/15/2019 22:31:34	0.0700 ppm
	5/15/2019 22:46:24	0.0600 ppm
	5/15/2019 22:39:26	0.0600 ppm
Industrial Area	5/15/2019 22:12:52	0.0400 ppm
	5/15/2019 22:29:28	0.0300 ppm
	5/15/2019 23:16:34	0.0200 ppm
	5/15/2019 23:26:55	0.1200 ppm
	5/15/2019 23:30:10	0.0400 ppm
	5/15/2019 22:51:42	0.0700 ppm
	5/15/2019 23:35:05	0.0300 ppm
	5/15/2019 22:28:45	0.1200 ppm

This data has been provided expeditiously to ITC and regulatory agencies for informational and/or operational purposes only. Data reported within this summary is preliminary in nature and has not undergone complete QA/QC (quality assurance/quality control) process. Until this complete QA/QC process is completed, the locations of each reading are approximate in nature and subject to further refinement. As some readings may represent non-breathing zone measurements, the data reported herein may not be suitable to assess potential occupational exposure. Site Assessment readings are not representative of an individual's breathing zone (e.g., container head space, ground level, directly above product, etc.).



Please Note: These updates display data from the 2nd 80's Fire site (Impacted Tank Farm), in the industrial areas surrounding the 2nd 80's Fire site (US Coast Guard Division E), within the Houston Ship Channel (US Coast Guard Divisions A-D), and in the industrial areas north and south of the Houston Ship Channel (Industrial Area). Real-time air monitoring data for the surrounding communities are communicated daily in a separate report.