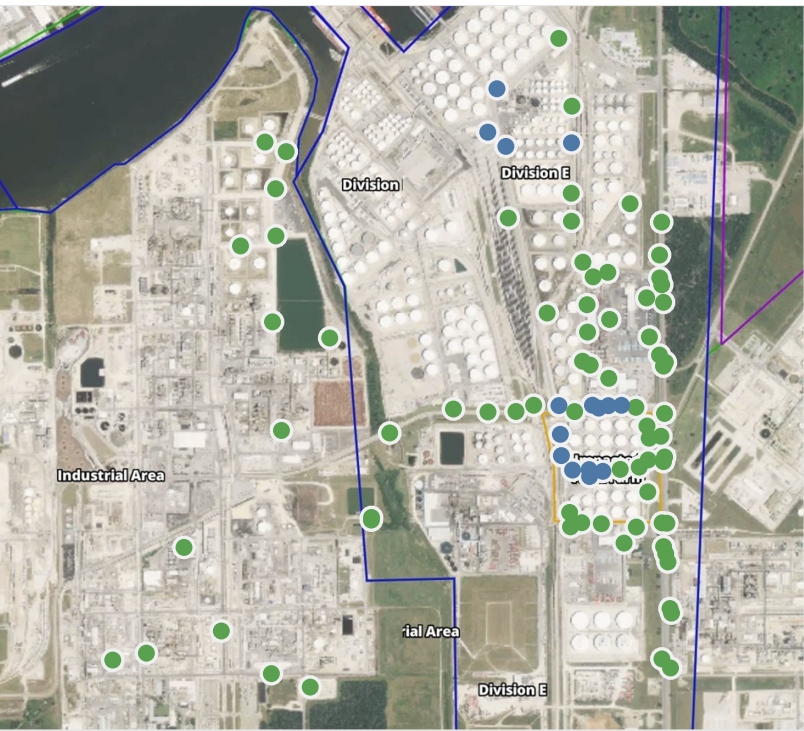
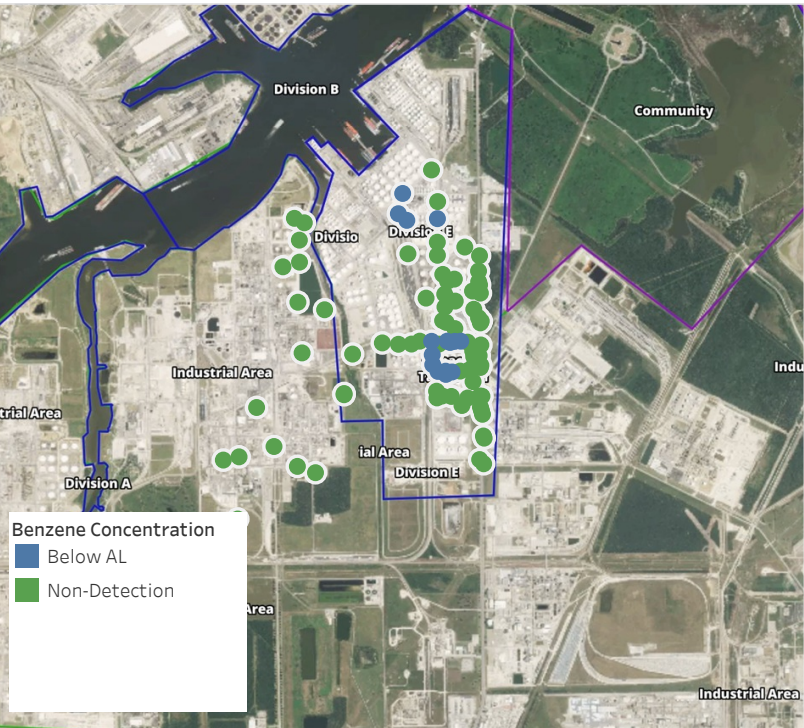


Preliminary Hand- Held Air Monitoring Locations | ITC Deer Park Tank Fire

Reading Date
5/16/2019 11:00:00 PM to 5/17/2019 12:00:00 AM



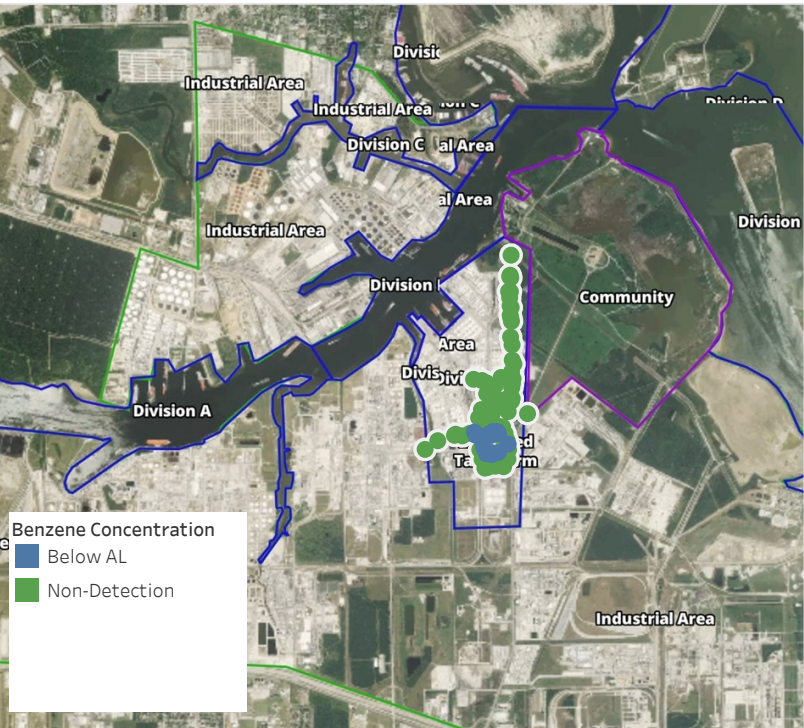
Recent Benzene Detections

Location Category	Reading Date	Range of Detections
Division E	5/16/2019 23:02:19	0.1300 ppm
	5/16/2019 23:08:23	0.0300 ppm
	5/16/2019 23:24:28	0.0500 ppm
	5/16/2019 23:36:34	0.0300 ppm
	5/16/2019 23:26:19	0.0300 ppm
	5/16/2019 23:33:49	0.0500 ppm
	5/16/2019 23:30:35	0.0200 ppm
	5/16/2019 23:36:32	0.0600 ppm
Impacted Tank Farm	5/16/2019 23:24:34	0.0500 ppm
	5/16/2019 23:35:29	0.0300 ppm
	5/16/2019 23:49:50	0.0500 ppm
	5/16/2019 23:39:45	0.0400 ppm
	5/16/2019 23:45:34	0.1600 ppm
	5/16/2019 23:58:34	0.0700 ppm
Industrial Area	5/16/2019 23:03:55	0.0400 ppm

This data has been provided expeditiously to ITC and regulatory agencies for informational and/or operational purposes only. Data reported within this summary is preliminary in nature and has not undergone complete QA/QC (quality assurance/quality control) process. Until this complete QA/QC process is completed, the locations of each reading are approximate in nature and subject to further refinement. As some readings may represent non-breathing zone measurements, the data reported herein may not be suitable to assess potential occupational exposure. Site Assessment readings are not representative of an individual's breathing zone (e.g., container head space, ground level, directly above product, etc.).

Preliminary Hand- Held Air Monitoring Locations | ITC Deer Park Tank Fire

Reading Date
5/17/2019 12:00:00 AM to 5/17/2019 1:00:00 AM



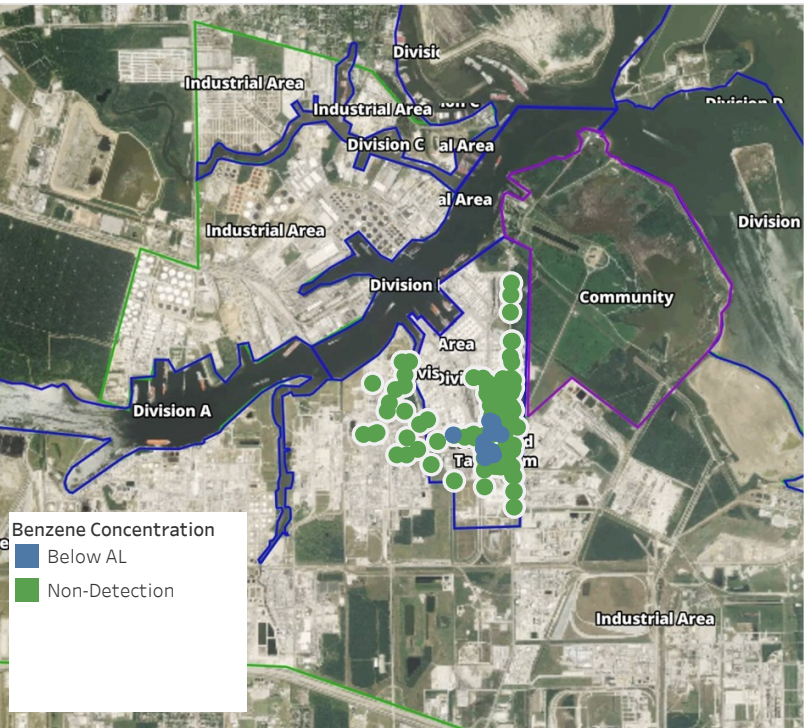
Recent Benzene Detections

Location Category	Reading Date	Range of Detections
Division E	5/17/2019 00:25:03	0.02000 ppm
	5/17/2019 00:33:16	0.03000 ppm
	5/17/2019 00:29:56	0.02000 ppm
	5/17/2019 00:33:11	0.04000 ppm
	5/17/2019 00:25:36	0.03000 ppm
	5/17/2019 00:38:16	0.05000 ppm
	5/17/2019 00:49:11	0.04000 ppm
	5/17/2019 00:56:02	0.05000 ppm
	5/17/2019 00:36:38	0.03000 ppm
	5/17/2019 00:43:06	0.02000 ppm
Impacted Tank Farm	5/17/2019 00:34:24	0.07000 ppm
	5/17/2019 00:07:14	0.01000 ppm
	5/17/2019 00:16:20	0.02000 ppm
	5/17/2019 00:12:21	0.07000 ppm
	5/17/2019 00:44:03	0.02000 ppm
	5/17/2019 00:40:08	0.04000 ppm
	5/17/2019 00:18:32	0.06000 ppm
	5/17/2019 00:25:26	0.08000 ppm

This data has been provided expeditiously to ITC and regulatory agencies for informational and/or operational purposes only. Data reported within this summary is preliminary in nature and has not undergone complete QA/QC (quality assurance/quality control) process. Until this complete QA/QC process is completed, the locations of each reading are approximate in nature and subject to further refinement. As some readings may represent non-breathing zone measurements, the data reported herein may not be suitable to assess potential occupational exposure. Site Assessment readings are not representative of an individual's breathing zone (e.g., container head space, ground level, directly above product, etc.).

Preliminary Hand- Held Air Monitoring Locations | ITC Deer Park Tank Fire

Reading Date
5/17/2019 1:00:00 AM to 5/17/2019 2:00:00 AM



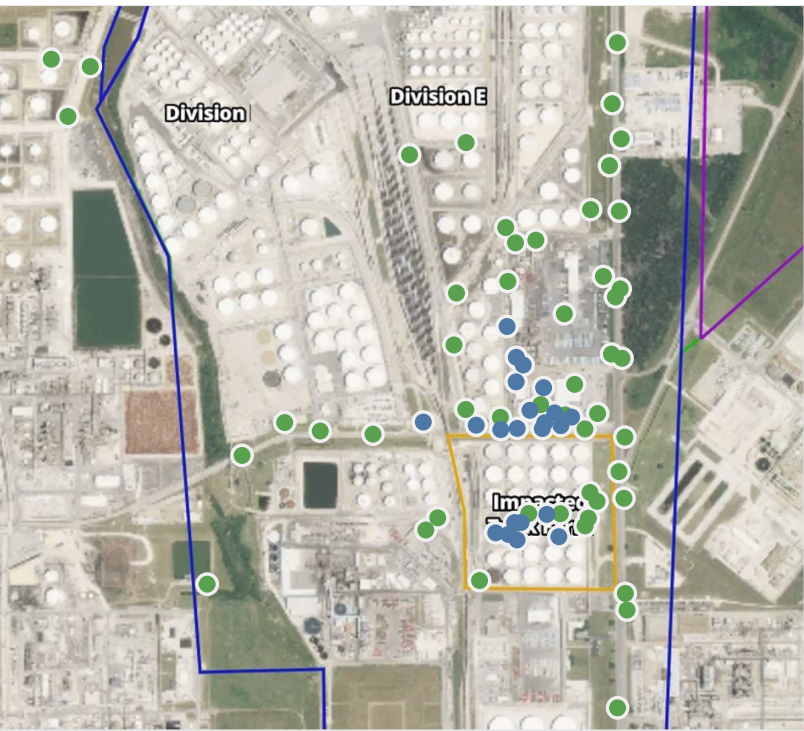
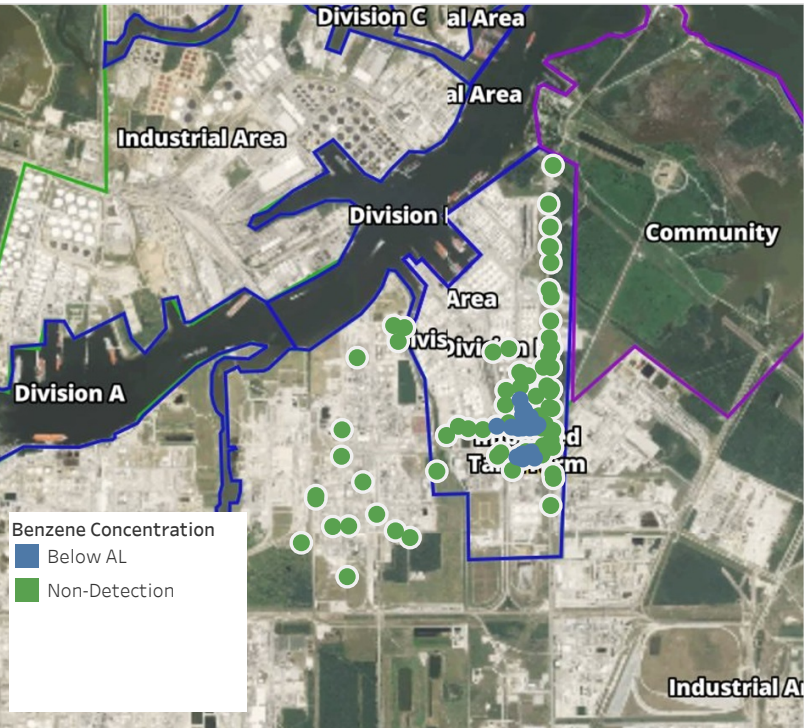
Recent Benzene Detections

Location Category	Reading Date	Range of Detections
Division E	5/17/2019 01:13:25	0.02000 ppm
	5/17/2019 01:20:51	0.03000 ppm
	5/17/2019 01:18:09	0.02000 ppm
	5/17/2019 01:44:02	0.02000 ppm
	5/17/2019 01:46:54	0.03000 ppm
	5/17/2019 01:47:11	0.02000 ppm
	5/17/2019 01:51:18	0.03000 ppm
	5/17/2019 01:55:36	0.05000 ppm
	5/17/2019 01:52:07	0.05000 ppm
	5/17/2019 01:58:04	0.02000 ppm
Impacted Tank Farm	5/17/2019 01:54:48	0.05000 ppm
	5/17/2019 01:08:59	0.06000 ppm
	5/17/2019 01:18:35	0.02000 ppm
	5/17/2019 01:12:44	0.05000 ppm
	5/17/2019 01:05:08	0.03000 ppm
	5/17/2019 01:02:16	0.03000 ppm
Industrial Area	5/17/2019 01:14:47	0.09000 ppm
	5/17/2019 01:28:41	ppm

This data has been provided expeditiously to ITC and regulatory agencies for informational and/or operational purposes only. Data reported within this summary is preliminary in nature and has not undergone complete QA/QC (quality assurance/quality control) process. Until this complete QA/QC process is completed, the locations of each reading are approximate in nature and subject to further refinement. As some readings may represent non-breathing zone measurements, the data reported herein may not be suitable to assess potential occupational exposure. Site Assessment readings are not representative of an individual's breathing zone (e.g., container head space, ground level, directly above product, etc.).

Preliminary Hand- Held Air Monitoring Locations | ITC Deer Park Tank Fire

Reading Date
5/17/2019 2:00:00 AM to 5/17/2019 3:00:00 AM



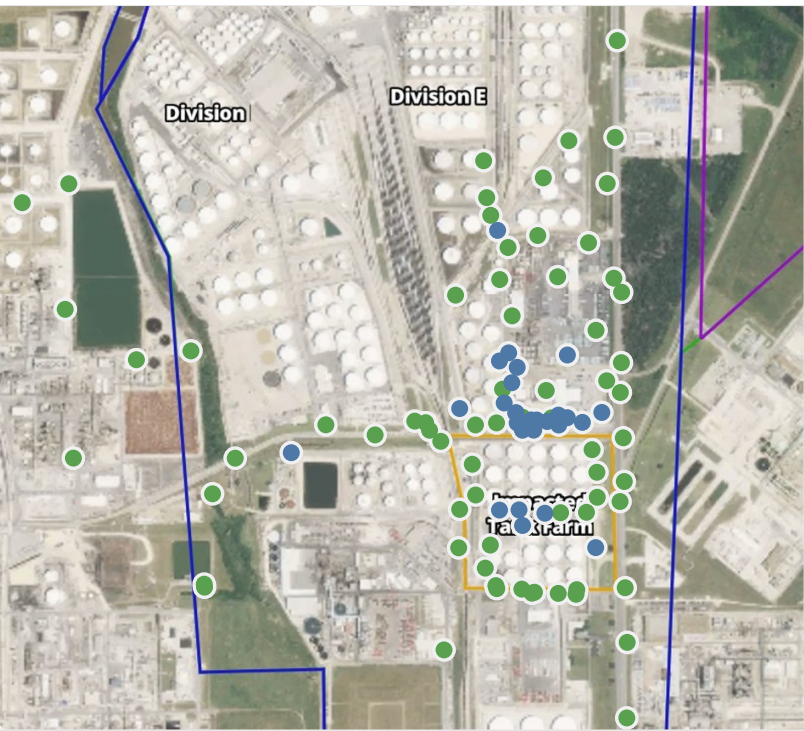
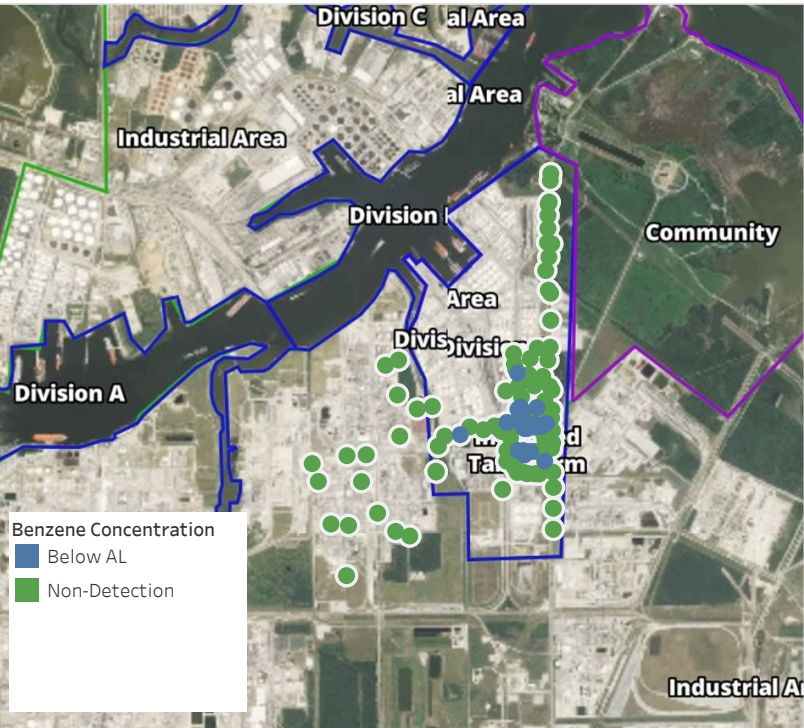
Recent Benzene Detections

Location Category	Reading Date	Range of Detections
Division E	5/17/2019 02:02:47	0.02000 ppm
	5/17/2019 02:05:13	0.05000 ppm
	5/17/2019 02:24:48	0.05000 ppm
	5/17/2019 02:22:26	0.02000 ppm
	5/17/2019 02:29:43	0.02000 ppm
	5/17/2019 02:19:43	0.04000 ppm
	5/17/2019 02:26:32	0.02000 ppm
	5/17/2019 02:55:12	0.02000 ppm
	5/17/2019 02:58:19	0.02000 ppm
	5/17/2019 02:36:01	0.06000 ppm
	5/17/2019 02:32:04	0.04000 ppm
	5/17/2019 02:29:15	0.07000 ppm
	5/17/2019 02:44:48	0.02000 ppm
	5/17/2019 02:42:16	0.05000 ppm
Impacted Tank Farm	5/17/2019 02:39:00	0.05000 ppm
	5/17/2019 02:02:17	0.02000 ppm
	5/17/2019 02:05:20	0.04000 ppm
	5/17/2019 02:10:33	0.08000 ppm
	5/17/2019 02:14:13	0.10000 ppm
	5/17/2019 02:30:04	0.03000 ppm
	5/17/2019 02:35:04	0.02000 ppm
	5/17/2019 02:39:47	0.02000 ppm

This data has been provided expeditiously to ITC and regulatory agencies for informational and/or operational purposes only. Data reported within this summary is preliminary in nature and has not undergone complete QA/QC (quality assurance/quality control) process. Until this complete QA/QC process is completed, the locations of each reading are approximate in nature and subject to further refinement. As some readings may represent non-breathing zone measurements, the data reported herein may not be suitable to assess potential occupational exposure. Site Assessment readings are not representative of an individual's breathing zone (e.g., container head space, ground level, directly above product, etc.).

Preliminary Hand- Held Air Monitoring Locations | ITC Deer Park Tank Fire

Reading Date
5/17/2019 3:00:00 AM to 5/17/2019 4:00:00 AM



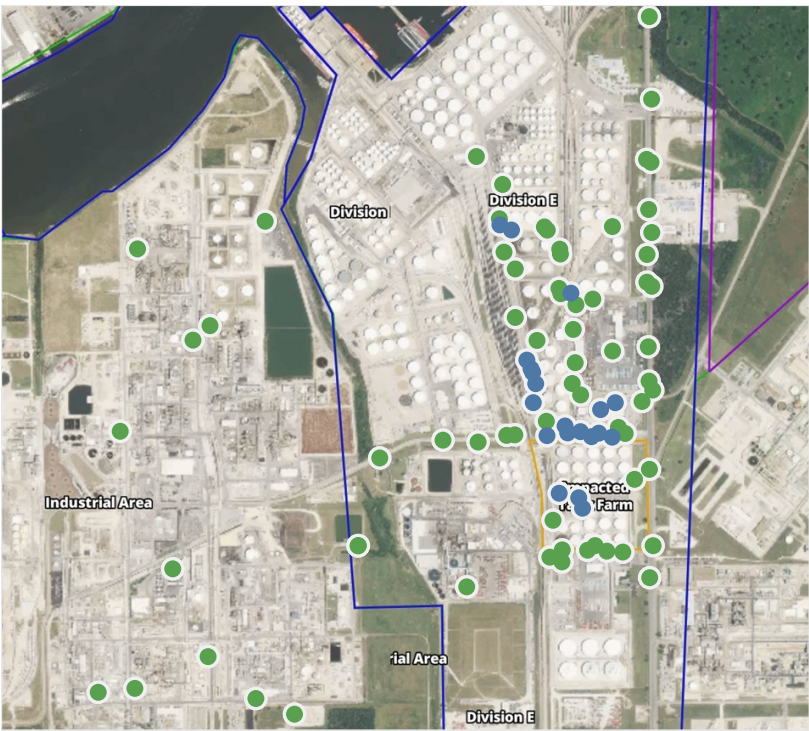
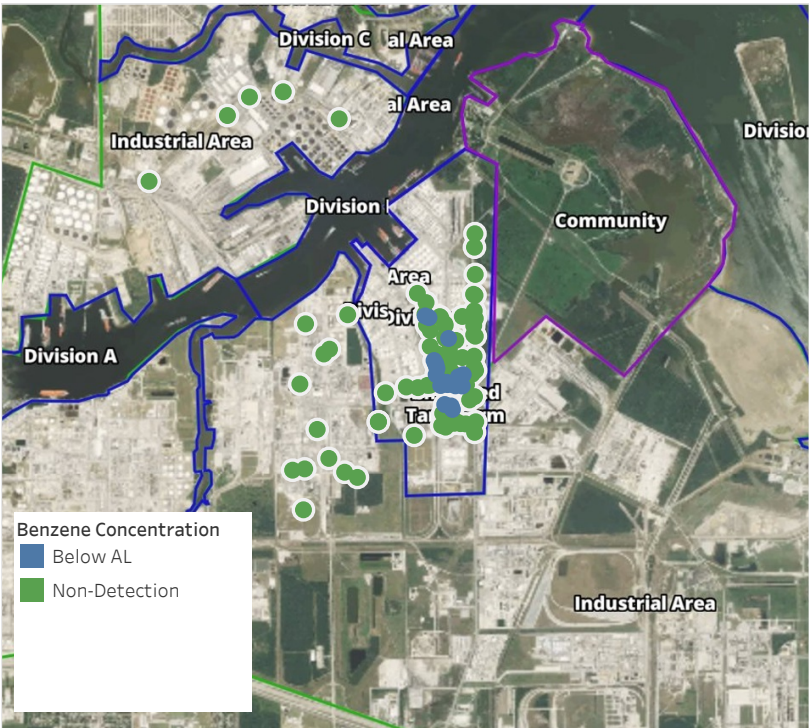
Recent Benzene Detections

Location Category	Reading Date	Range of Detections
Division E	5/17/2019 03:02:06	0.02000 ppm
	5/17/2019 03:08:51	0.02000 ppm
	5/17/2019 03:12:42	0.02000 ppm
	5/17/2019 03:19:19	0.03000 ppm
	5/17/2019 03:16:36	0.03000 ppm
	5/17/2019 03:23:13	0.02000 ppm
	5/17/2019 03:23:35	0.02000 ppm
	5/17/2019 03:30:32	0.04000 ppm
	5/17/2019 03:27:32	0.02000 ppm
	5/17/2019 03:33:50	0.08000 ppm
	5/17/2019 03:32:46	0.08000 ppm
	5/17/2019 03:36:08	0.05000 ppm
	5/17/2019 03:36:39	0.02000 ppm
	5/17/2019 03:41:00	0.11000 ppm
	5/17/2019 03:46:33	0.02000 ppm
	5/17/2019 03:24:34	0.02000 ppm
	5/17/2019 03:20:53	0.03000 ppm
	5/17/2019 03:39:50	0.03000 ppm
	5/17/2019 03:17:41	0.03000 ppm
	5/17/2019 03:55:25	0.03000 ppm
	5/17/2019 03:45:39	0.05000 ppm
	5/17/2019 03:57:20	0.03000 ppm
	5/17/2019 03:54:08	0.03000 ppm
	5/17/2019 03:50:40	0.08000 ppm
	5/17/2019 03:56:13	0.04000 ppm
Impacted Tank Farm	5/17/2019 03:30:26	0.02000 ppm
	5/17/2019 03:27:26	0.06000 ppm
	5/17/2019 03:43:27	0.02000 ppm
	5/17/2019 03:52:32	0.10000 ppm
	5/17/2019 03:47:54	0.02000 ppm

This data has been provided expeditiously to ITC and regulatory agencies for informational and/or operational purposes only. Data reported within this summary is preliminary in nature and has not undergone complete QA/QC (quality assurance/quality control) process. Until this complete QA/QC process is completed, the locations of each reading are approximate in nature and subject to further refinement. As some readings may represent non-breathing zone measurements, the data reported herein may not be suitable to assess potential occupational exposure. Site Assessment readings are not representative of an individual's breathing zone (e.g., container head space, ground level, directly above product, etc.).

Preliminary Hand- Held Air Monitoring Locations | ITC Deer Park Tank Fire

Reading Date
5/17/2019 4:00:00 AM to 5/17/2019 5:00:00 AM



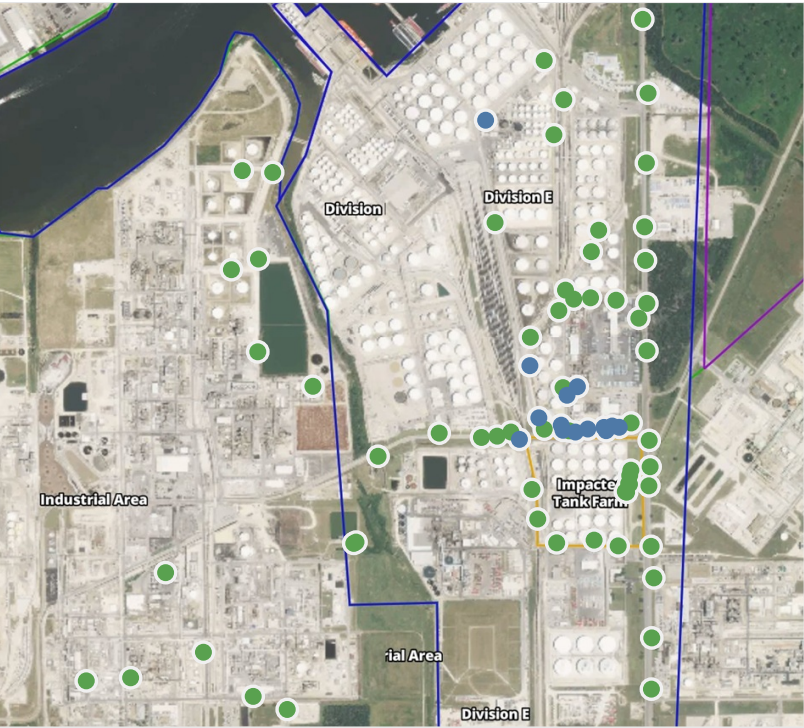
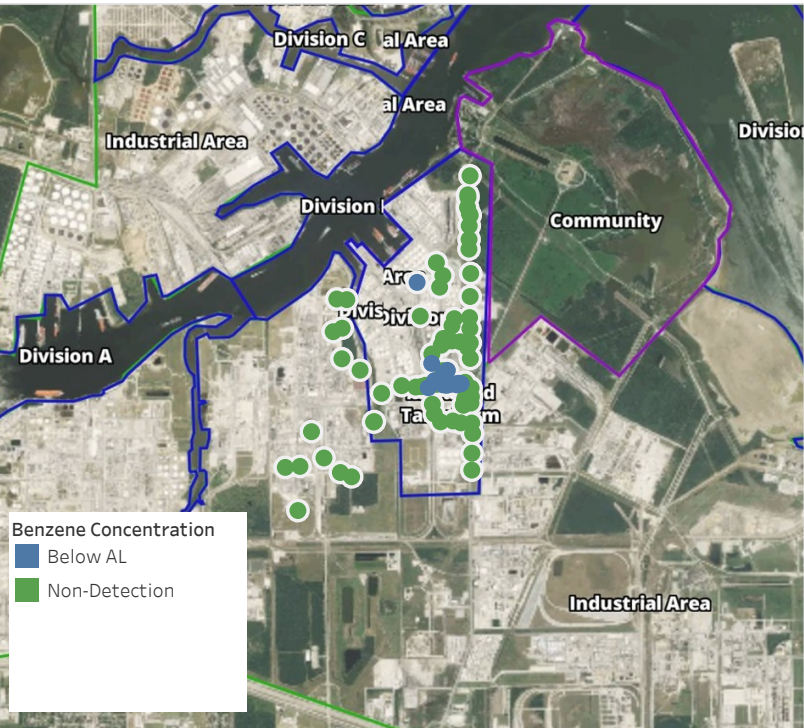
Recent Benzene Detections

Location Category	Reading Date	Range of Detections
Division E	5/17/2019 04:02:44	0.0300 ppm
	5/17/2019 04:06:48	0.0300 ppm
	5/17/2019 04:14:20	0.0600 ppm
	5/17/2019 04:17:23	0.0200 ppm
	5/17/2019 04:18:06	0.0700 ppm
	5/17/2019 04:20:37	0.0200 ppm
	5/17/2019 04:22:52	0.0300 ppm
	5/17/2019 04:20:50	0.0400 ppm
	5/17/2019 04:39:50	0.0200 ppm
	5/17/2019 04:19:58	0.0300 ppm
	5/17/2019 04:46:49	0.0200 ppm
	5/17/2019 04:27:03	0.0200 ppm
	5/17/2019 04:41:01	0.0300 ppm
	5/17/2019 04:35:21	0.0700 ppm
	5/17/2019 04:24:40	0.0500 ppm
	5/17/2019 04:57:30	ppm
	5/17/2019 04:38:30	0.0600 ppm
	5/17/2019 04:32:10	0.0300 ppm
Impacted Tank Farm	5/17/2019 04:59:20	0.1600 ppm
	5/17/2019 04:53:30	0.0800 ppm
	5/17/2019 04:50:48	0.0700 ppm

This data has been provided expeditiously to ITC and regulatory agencies for informational and/or operational purposes only. Data reported within this summary is preliminary in nature and has not undergone complete QA/QC (quality assurance/quality control) process. Until this complete QA/QC process is completed, the locations of each reading are approximate in nature and subject to further refinement. As some readings may represent non-breathing zone measurements, the data reported herein may not be suitable to assess potential occupational exposure. Site Assessment readings are not representative of an individual's breathing zone (e.g., container head space, ground level, directly above product, etc.).

Preliminary Hand- Held Air Monitoring Locations | ITC Deer Park Tank Fire

Reading Date
5/17/2019 5:00:00 AM to 5/17/2019 6:00:00 AM



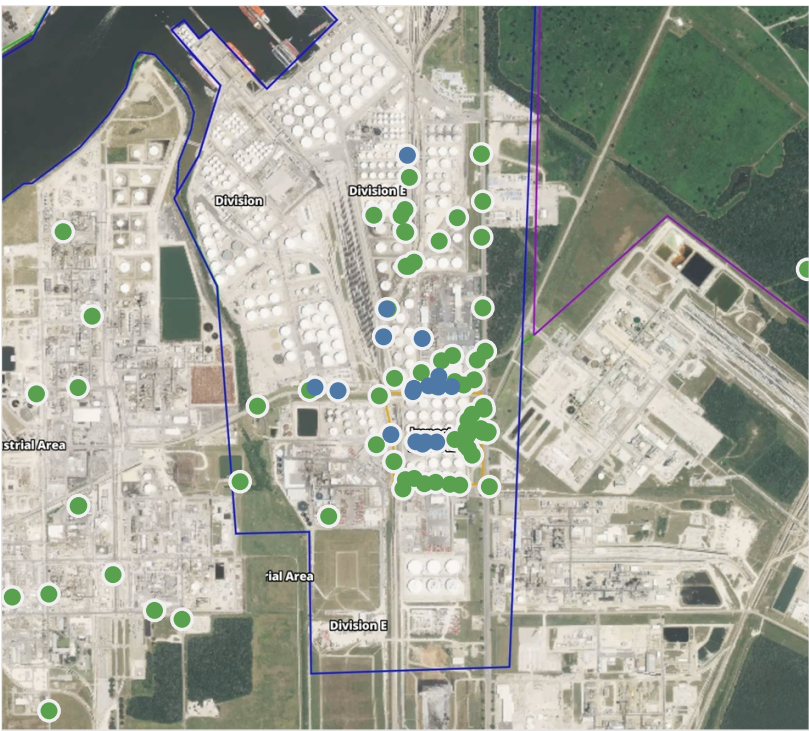
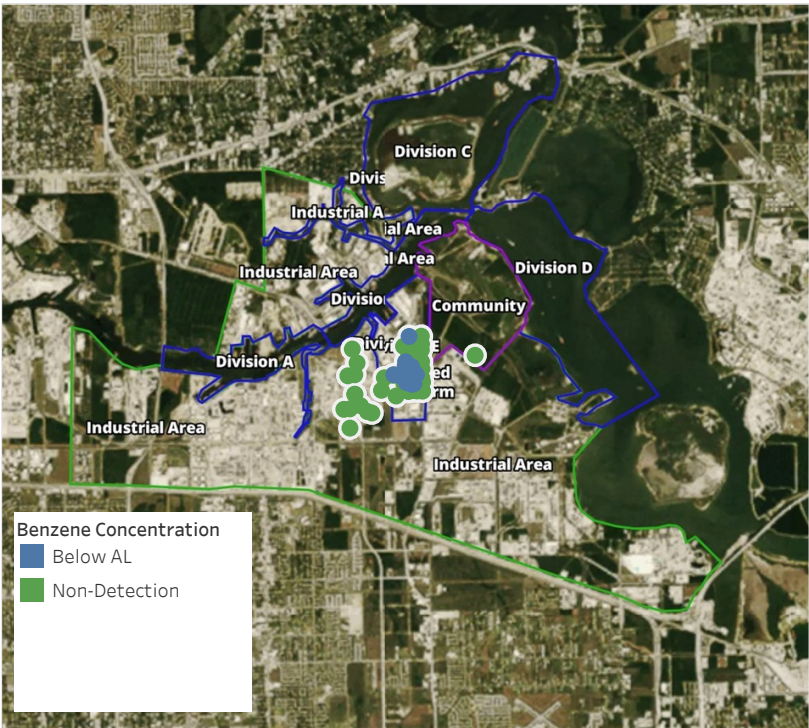
Recent Benzene Detections

Location Category	Reading Date	Range of Detections
Division E	5/17/2019 05:19:51	0.0400 ppm
	5/17/2019 05:27:54	0.0200 ppm
	5/17/2019 05:30:08	0.0300 ppm
	5/17/2019 05:22:17	0.0100 ppm
	5/17/2019 05:25:26	0.2000 ppm
	5/17/2019 05:33:13	0.0300 ppm
	5/17/2019 05:39:49	0.0600 ppm
	5/17/2019 05:51:07	0.0400 ppm
	5/17/2019 05:34:33	0.0400 ppm
	5/17/2019 05:43:02	0.0500 ppm
	5/17/2019 05:53:25	0.0200 ppm
	5/17/2019 05:29:10	0.0400 ppm
	5/17/2019 05:50:57	0.0500 ppm
	5/17/2019 05:39:36	0.0200 ppm

This data has been provided expeditiously to ITC and regulatory agencies for informational and/or operational purposes only. Data reported within this summary is preliminary in nature and has not undergone complete QA/QC (quality assurance/quality control) process. Until this complete QA/QC process is completed, the locations of each reading are approximate in nature and subject to further refinement. As some readings may represent non-breathing zone measurements, the data reported herein may not be suitable to assess potential occupational exposure. Site Assessment readings are not representative of an individual's breathing zone (e.g., container head space, ground level, directly above product, etc.).

Preliminary Hand- Held Air Monitoring Locations | ITC Deer Park Tank Fire

Reading Date
5/17/2019 6:00:00 AM to 5/17/2019 7:00:00 AM



Recent Benzene Detections

Location Category	Reading Date	Range of Detections
Division E	5/17/2019 06:00:18	0.0200 ppm
	5/17/2019 06:34:08	0.0200 ppm
	5/17/2019 06:39:12	0.0300 ppm
	5/17/2019 06:43:42	0.0200 ppm
	5/17/2019 06:48:16	0.0300 ppm
	5/17/2019 06:18:48	0.0700 ppm
	5/17/2019 06:21:57	0.0200 ppm
	5/17/2019 06:40:05	0.0200 ppm
	5/17/2019 06:39:51	0.0200 ppm
	5/17/2019 06:11:13	0.0200 ppm
	5/17/2019 06:15:46	0.0600 ppm
	5/17/2019 06:25:45	0.0500 ppm
	5/17/2019 06:37:55	0.0200 ppm
Impacted Tank Farm	5/17/2019 06:38:57	0.3100 ppm
	5/17/2019 06:53:42	0.0600 ppm
	5/17/2019 06:51:17	0.0600 ppm
	5/17/2019 06:44:53	0.0300 ppm

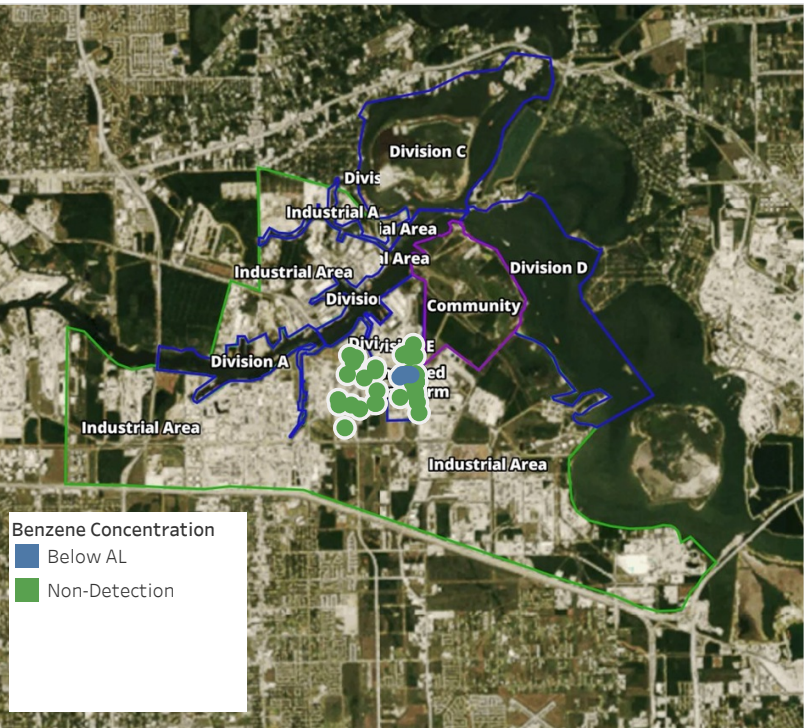
This data has been provided expeditiously to ITC and regulatory agencies for informational and/or operational purposes only. Data reported within this summary is preliminary in nature and has not undergone complete QA/QC (quality assurance/quality control) process. Until this complete QA/QC process is completed, the locations of each reading are approximate in nature and subject to further refinement. As some readings may represent non-breathing zone measurements, the data reported herein may not be suitable to assess potential occupational exposure. Site Assessment readings are not representative of an individual's breathing zone (e.g., container head space, ground level, directly above product, etc.).



Please Note: These updates display data from the 2nd 80's Fire site (Impacted Tank Farm), in the industrial areas surrounding the 2nd 80's Fire site (US Coast Guard Division E), within the Houston Ship Channel (US Coast Guard Divisions A-D), and in the industrial areas north and south of the Houston Ship Channel (Industrial Area). Real-time air monitoring data for the surrounding communities are communicated daily in a separate report.

Preliminary Hand- Held Air Monitoring Locations | ITC Deer Park Tank Fire

Reading Date
5/17/2019 7:00:00 AM to 5/17/2019 8:00:00 AM



Recent Benzene Detections

Location Category	Reading Date	Range of Detections
Division E	5/17/2019 07:11:05	0.04000 ppm
	5/17/2019 07:08:59	0.02000 ppm
	5/17/2019 07:13:21	0.04000 ppm
	5/17/2019 07:06:27	0.02000 ppm
	5/17/2019 07:16:02	0.03000 ppm
	5/17/2019 07:41:42	0.11000 ppm
	5/17/2019 07:42:45	0.03000 ppm
	5/17/2019 07:43:45	0.06000 ppm
	5/17/2019 07:46:41	0.04000 ppm
	5/17/2019 07:53:53	0.04000 ppm
Division E	5/17/2019 07:56:31	0.07000 ppm
	5/17/2019 07:58:23	0.04000 ppm

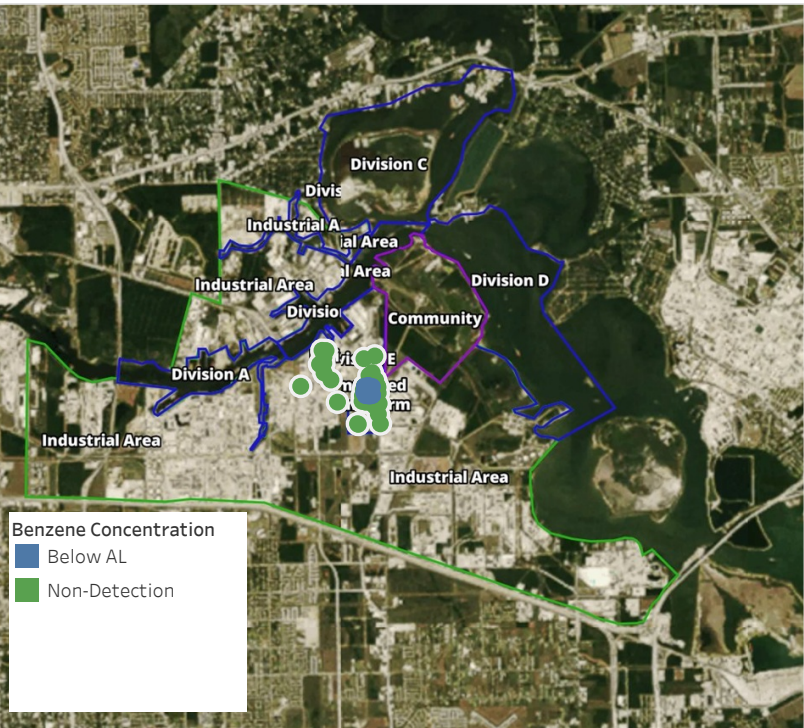
This data has been provided expeditiously to ITC and regulatory agencies for informational and/or operational purposes only. Data reported within this summary is preliminary in nature and has not undergone complete QA/QC (quality assurance/quality control) process. Until this complete QA/QC process is completed, the locations of each reading are approximate in nature and subject to further refinement. As some readings may represent non-breathing zone measurements, the data reported herein may not be suitable to assess potential occupational exposure. Site Assessment readings are not representative of an individual's breathing zone (e.g., container head space, ground level, directly above product, etc.).



Please Note: These updates display data from the 2nd 80's Fire site (Impacted Tank Farm), in the industrial areas surrounding the 2nd 80's Fire site (US Coast Guard Division E), within the Houston Ship Channel (US Coast Guard Divisions A-D), and in the industrial areas north and south of the Houston Ship Channel (Industrial Area). Real-time air monitoring data for the surrounding communities are communicated daily in a separate report.

Preliminary Hand- Held Air Monitoring Locations | ITC Deer Park Tank Fire

Reading Date
5/17/2019 8:00:00 AM to 5/17/2019 9:00:00 AM



Recent Benzene Detections

Location Category	Reading Date	Range of Detections
Division E	5/17/2019 08:00:09	0.0400 ppm
	5/17/2019 08:28:11	0.0200 ppm
	5/17/2019 08:18:56	0.0600 ppm
	5/17/2019 08:40:14	0.0300 ppm
	5/17/2019 08:58:50	0.0500 ppm
	5/17/2019 08:50:24	0.0400 ppm
Impacted Tank Farm	5/17/2019 08:06:21	0.0800 ppm
	5/17/2019 08:09:33	0.0400 ppm
	5/17/2019 08:11:42	0.2500 ppm
	5/17/2019 08:14:50	0.0600 ppm
	5/17/2019 08:48:08	0.0300 ppm
	5/17/2019 08:41:30	0.0200 ppm
	5/17/2019 08:50:44	0.0300 ppm
	5/17/2019 08:49:14	0.1100 ppm

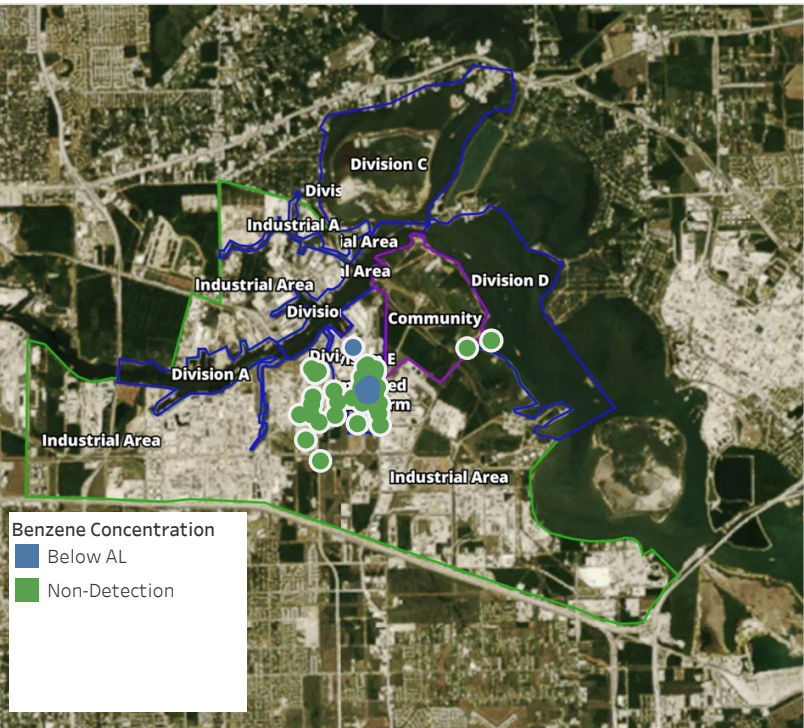
This data has been provided expeditiously to ITC and regulatory agencies for informational and/or operational purposes only. Data reported within this summary is preliminary in nature and has not undergone complete QA/QC (quality assurance/quality control) process. Until this complete QA/QC process is completed, the locations of each reading are approximate in nature and subject to further refinement. As some readings may represent non-breathing zone measurements, the data reported herein may not be suitable to assess potential occupational exposure. Site Assessment readings are not representative of an individual's breathing zone (e.g., container head space, ground level, directly above product, etc.).



Please Note: These updates display data from the 2nd 80's Fire site (Impacted Tank Farm), in the industrial areas surrounding the 2nd 80's Fire site (US Coast Guard Division E), within the Houston Ship Channel (US Coast Guard Divisions A-D), and in the industrial areas north and south of the Houston Ship Channel (Industrial Area). Real-time air monitoring data for the surrounding communities are communicated daily in a separate report.

Preliminary Hand- Held Air Monitoring Locations | ITC Deer Park Tank Fire

Reading Date
5/17/2019 9:00:00 AM to 5/17/2019 10:00:00 AM



Recent Benzene Detections

Location Category	Reading Date	Range of Detections
Division E	5/17/2019 09:01:05	0.0100 ppm
	5/17/2019 09:05:45	0.0300 ppm
	5/17/2019 09:09:39	0.0200 ppm
	5/17/2019 09:11:32	0.0400 ppm
	5/17/2019 09:07:43	0.0300 ppm
	5/17/2019 09:07:11	0.0500 ppm
	5/17/2019 09:18:10	0.0600 ppm
	5/17/2019 09:25:48	0.0400 ppm
	5/17/2019 09:43:04	0.0300 ppm
Impacted Tank Farm	5/17/2019 09:53:13	0.0500 ppm
	5/17/2019 09:21:51	0.0600 ppm
	5/17/2019 09:20:28	0.1300 ppm
	5/17/2019 09:18:19	0.1400 ppm
	5/17/2019 09:42:46	0.0400 ppm
	5/17/2019 09:57:02	0.1800 ppm
	5/17/2019 09:41:12	0.0200 ppm
	5/17/2019 09:52:06	0.0800 ppm
	5/17/2019 09:59:07	0.0400 ppm

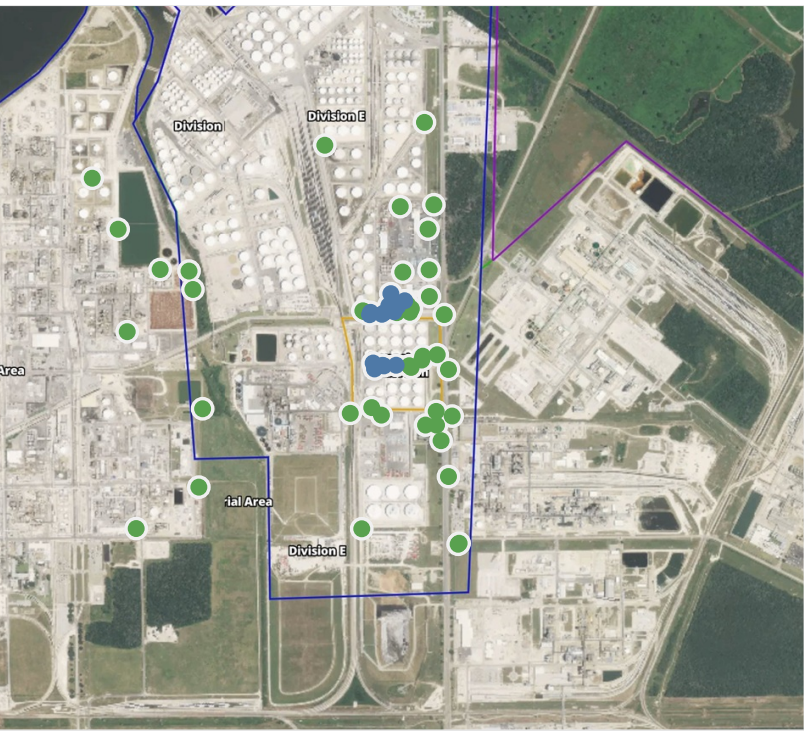
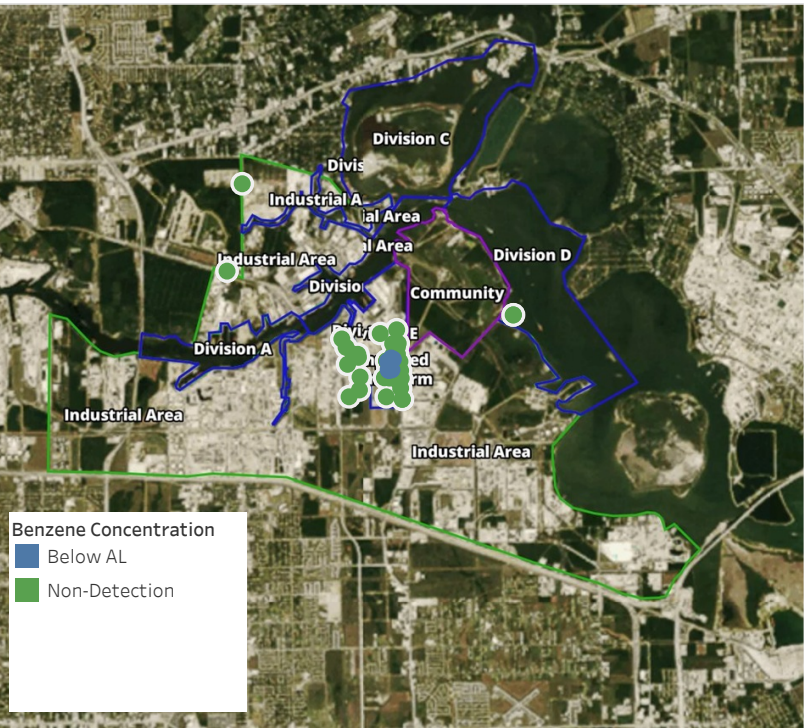
This data has been provided expeditiously to ITC and regulatory agencies for informational and/or operational purposes only. Data reported within this summary is preliminary in nature and has not undergone complete QA/QC (quality assurance/quality control) process. Until this complete QA/QC process is completed, the locations of each reading are approximate in nature and subject to further refinement. As some readings may represent non-breathing zone measurements, the data reported herein may not be suitable to assess potential occupational exposure. Site Assessment readings are not representative of an individual's breathing zone (e.g., container head space, ground level, directly above product, etc.).



Please Note: These updates display data from the 2nd 80's Fire site (Impacted Tank Farm), in the industrial areas surrounding the 2nd 80's Fire site (US Coast Guard Division E), within the Houston Ship Channel (US Coast Guard Divisions A-D), and in the industrial areas north and south of the Houston Ship Channel (Industrial Area). Real-time air monitoring data for the surrounding communities are communicated daily in a separate report.

Preliminary Hand- Held Air Monitoring Locations | ITC Deer Park Tank Fire

Reading Date
5/17/2019 10:00:00 AM to 5/17/2019 11:00:00 AM



Recent Benzene Detections

Location Category	Reading Date	Range of Detections
Division E	5/17/2019 10:05:51	0.05000 ppm
	5/17/2019 10:08:15	0.02000 ppm
	5/17/2019 10:02:46	0.04000 ppm
	5/17/2019 10:13:19	0.01000 ppm
	5/17/2019 10:28:26	0.01000 ppm
	5/17/2019 10:55:57	0.05000 ppm
	5/17/2019 10:57:53	0.03000 ppm
	5/17/2019 10:49:50	0.01000 ppm
	5/17/2019 10:59:46	0.03000 ppm
Impacted Tank Farm	5/17/2019 10:26:46	0.08000 ppm
	5/17/2019 10:28:36	0.07000 ppm
	5/17/2019 10:30:57	0.04000 ppm
	5/17/2019 10:54:49	0.06000 ppm
	5/17/2019 10:53:18	0.05000 ppm

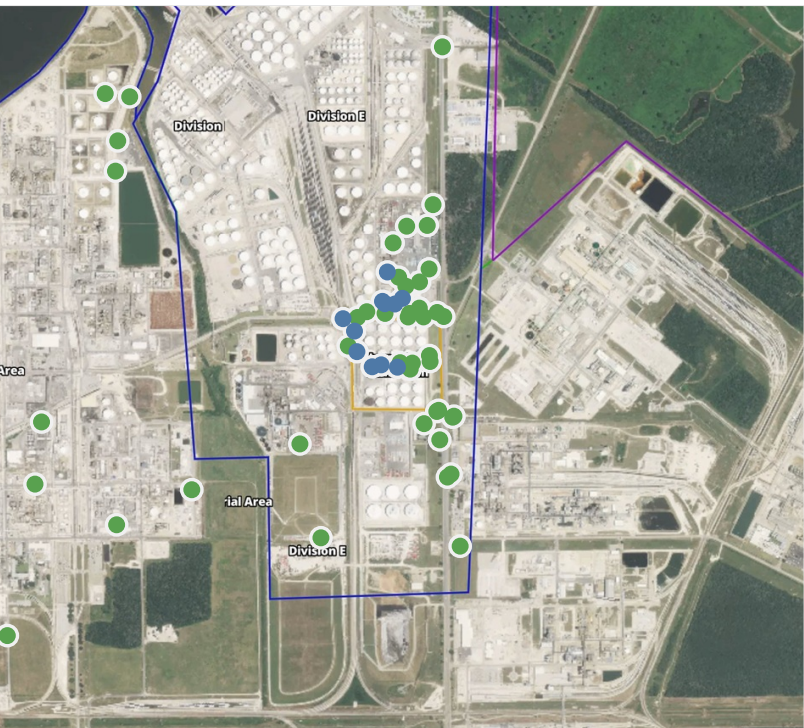
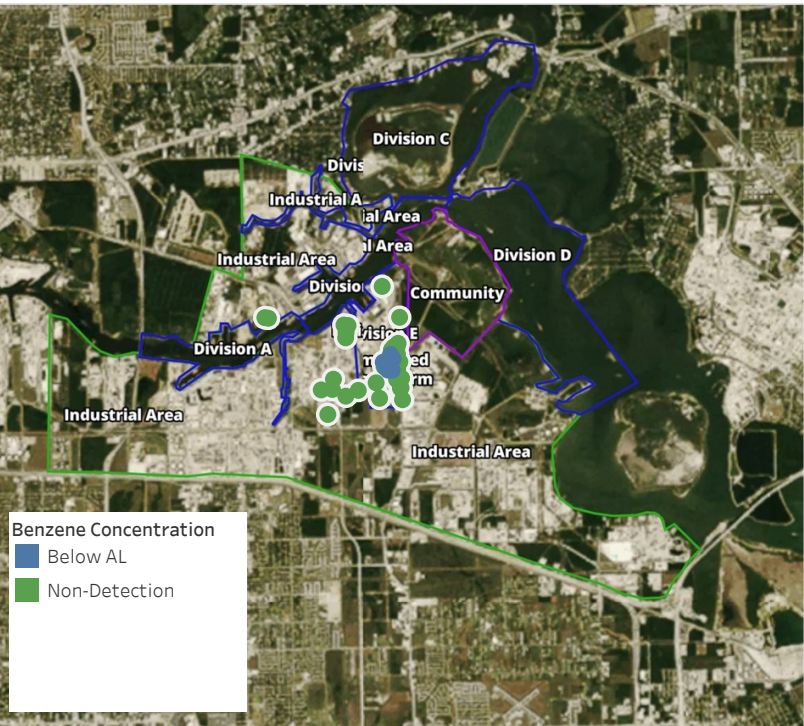
This data has been provided expeditiously to ITC and regulatory agencies for informational and/or operational purposes only. Data reported within this summary is preliminary in nature and has not undergone complete QA/QC (quality assurance/quality control) process. Until this complete QA/QC process is completed, the locations of each reading are approximate in nature and subject to further refinement. As some readings may represent non-breathing zone measurements, the data reported herein may not be suitable to assess potential occupational exposure. Site Assessment readings are not representative of an individual's breathing zone (e.g., container head space, ground level, directly above product, etc.).



Please Note: These updates display data from the 2nd 80's Fire site (Impacted Tank Farm), in the industrial areas surrounding the 2nd 80's Fire site (US Coast Guard Division E), within the Houston Ship Channel (US Coast Guard Divisions A-D), and in the industrial areas north and south of the Houston Ship Channel (Industrial Area). Real-time air monitoring data for the surrounding communities are communicated daily in a separate report.

Preliminary Hand- Held Air Monitoring Locations | ITC Deer Park Tank Fire

Reading Date
5/17/2019 11:00:00 AM to 5/17/2019 12:00:00 PM



Recent Benzene Detections

Location Category	Reading Date	Range of Detections
Division E	5/17/2019 11:09:18	0.03000 ppm
	5/17/2019 11:11:09	0.02000 ppm
	5/17/2019 11:20:48	0.02000 ppm
	5/17/2019 11:32:09	0.04000 ppm
	5/17/2019 11:32:07	0.02000 ppm
	5/17/2019 11:38:10	0.02000 ppm
Impacted Tank Farm	5/17/2019 11:02:02	0.03000 ppm
	5/17/2019 11:21:30	0.04000 ppm
	5/17/2019 11:30:07	0.03000 ppm
	5/17/2019 11:23:19	0.04000 ppm
	5/17/2019 11:25:12	0.04000 ppm

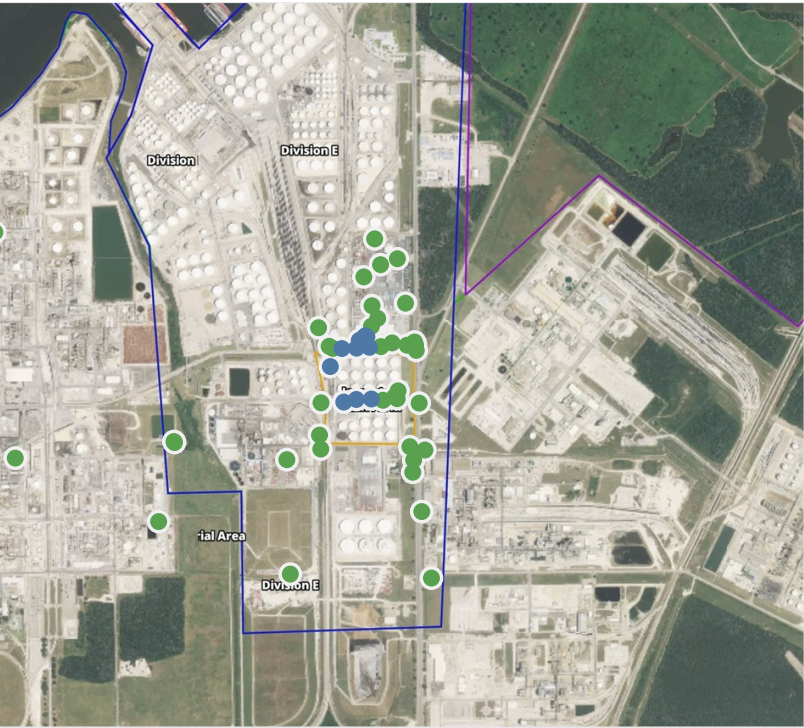
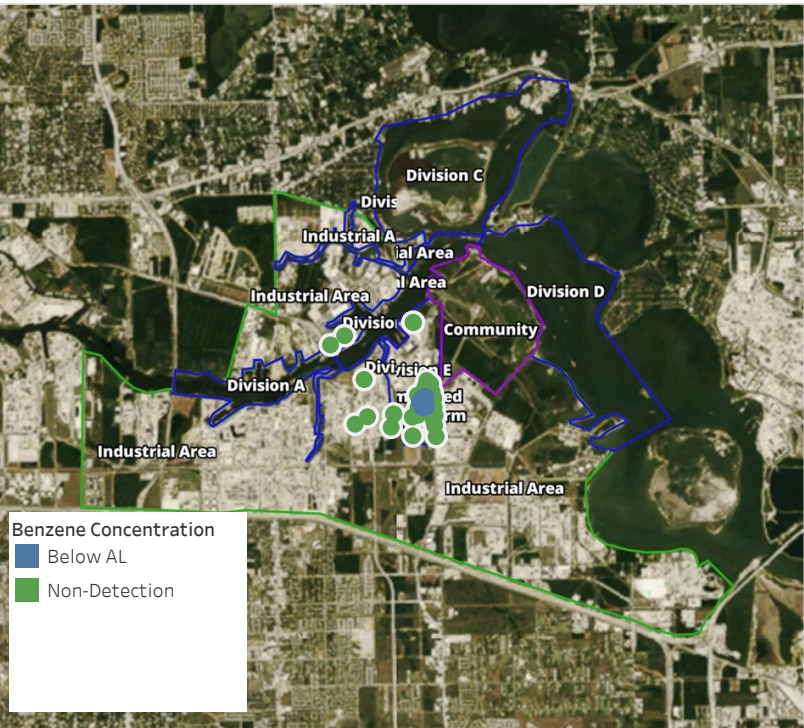
This data has been provided expeditiously to ITC and regulatory agencies for informational and/or operational purposes only. Data reported within this summary is preliminary in nature and has not undergone complete QA/QC (quality assurance/quality control) process. Until this complete QA/QC process is completed, the locations of each reading are approximate in nature and subject to further refinement. As some readings may represent non-breathing zone measurements, the data reported herein may not be suitable to assess potential occupational exposure. Site Assessment readings are not representative of an individual's breathing zone (e.g., container head space, ground level, directly above product, etc.).



Please Note: These updates display data from the 2nd 80's Fire site (Impacted Tank Farm), in the industrial areas surrounding the 2nd 80's Fire site (US Coast Guard Division E), within the Houston Ship Channel (US Coast Guard Divisions A-D), and in the industrial areas north and south of the Houston Ship Channel (Industrial Area). Real-time air monitoring data for the surrounding communities are communicated daily in a separate report.

Preliminary Hand- Held Air Monitoring Locations | ITC Deer Park Tank Fire

Reading Date
5/17/2019 12:00:00 PM to 5/17/2019 1:00:00 PM



Recent Benzene Detections

Location Category	Reading Date	Range of Detections
Division E	5/17/2019 12:01:02	0.0500 ppm
	5/17/2019 12:03:20	0.0400 ppm
	5/17/2019 12:05:22	0.0200 ppm
	5/17/2019 12:15:22	0.0200 ppm
	5/17/2019 12:01:42	0.0200 ppm
	5/17/2019 12:07:10	0.0200 ppm
	5/17/2019 12:27:14	0.0200 ppm
	5/17/2019 12:34:25	0.0300 ppm
Impacted Tank Farm	5/17/2019 12:31:46	0.0700 ppm
	5/17/2019 12:40:40	0.0400 ppm
	5/17/2019 12:42:48	0.1700 ppm
	5/17/2019 12:35:14	0.0400 ppm

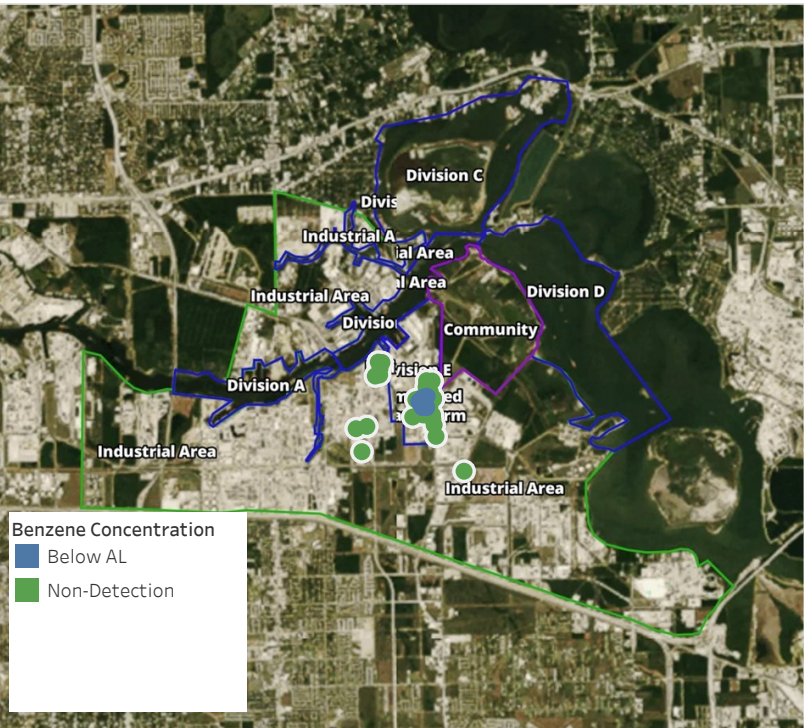
This data has been provided expeditiously to ITC and regulatory agencies for informational and/or operational purposes only. Data reported within this summary is preliminary in nature and has not undergone complete QA/QC (quality assurance/quality control) process. Until this complete QA/QC process is completed, the locations of each reading are approximate in nature and subject to further refinement. As some readings may represent non-breathing zone measurements, the data reported herein may not be suitable to assess potential occupational exposure. Site Assessment readings are not representative of an individual's breathing zone (e.g., container head space, ground level, directly above product, etc.).



Please Note: These updates display data from the 2nd 80's Fire site (Impacted Tank Farm), in the industrial areas surrounding the 2nd 80's Fire site (US Coast Guard Division E), within the Houston Ship Channel (US Coast Guard Divisions A-D), and in the industrial areas north and south of the Houston Ship Channel (Industrial Area). Real-time air monitoring data for the surrounding communities are communicated daily in a separate report.

Preliminary Hand- Held Air Monitoring Locations | ITC Deer Park Tank Fire

Reading Date
5/17/2019 1:00:00 PM to 5/17/2019 2:00:00 PM



Recent Benzene Detections

Location Category	Reading Date	Range of Detections
Division E	5/17/2019 13:16:57	0.02000 ppm
	5/17/2019 13:31:24	0.02000 ppm
	5/17/2019 13:32:58	0.01000 ppm
	5/17/2019 13:40:15	0.02000 ppm
	5/17/2019 13:58:11	0.03000 ppm
Impacted Tank Farm	5/17/2019 13:10:48	0.03000 ppm
	5/17/2019 13:03:13	0.06000 ppm
	5/17/2019 13:12:09	0.04000 ppm
	5/17/2019 13:37:19	0.03000 ppm
	5/17/2019 13:50:58	0.02000 ppm
	5/17/2019 13:53:41	0.06000 ppm
	5/17/2019 13:50:38	0.04000 ppm
	5/17/2019 13:49:35	0.05000 ppm

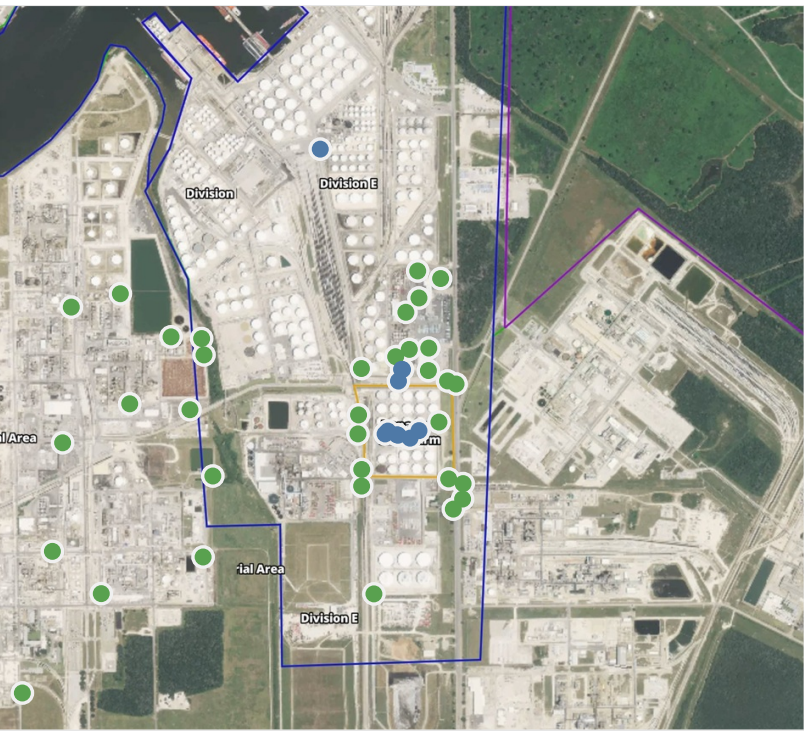
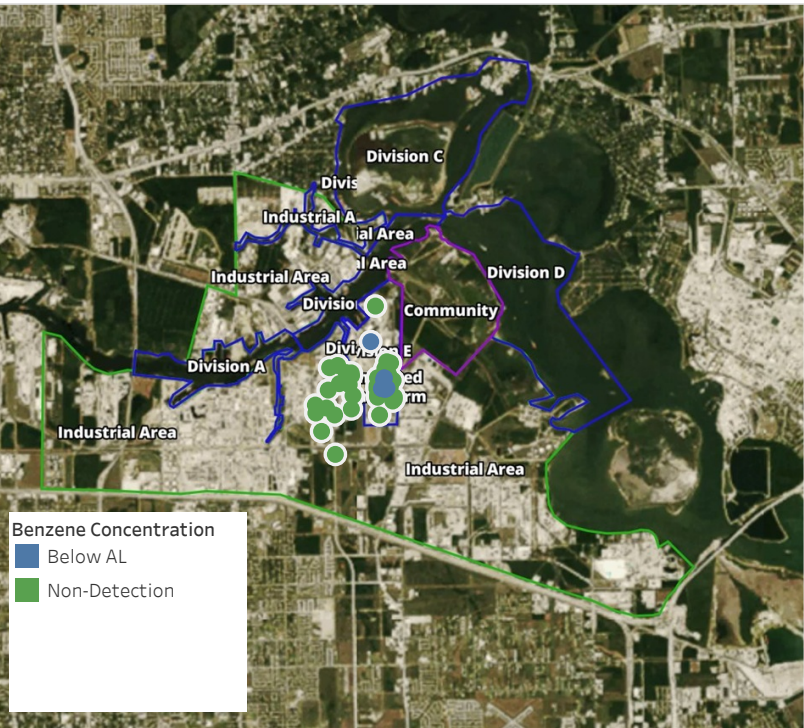
This data has been provided expeditiously to ITC and regulatory agencies for informational and/or operational purposes only. Data reported within this summary is preliminary in nature and has not undergone complete QA/QC (quality assurance/quality control) process. Until this complete QA/QC process is completed, the locations of each reading are approximate in nature and subject to further refinement. As some readings may represent non-breathing zone measurements, the data reported herein may not be suitable to assess potential occupational exposure. Site Assessment readings are not representative of an individual's breathing zone (e.g., container head space, ground level, directly above product, etc.).



Please Note: These updates display data from the 2nd 80's Fire site (Impacted Tank Farm), in the industrial areas surrounding the 2nd 80's Fire site (US Coast Guard Division E), within the Houston Ship Channel (US Coast Guard Divisions A-D), and in the industrial areas north and south of the Houston Ship Channel (Industrial Area). Real-time air monitoring data for the surrounding communities are communicated daily in a separate report.

Preliminary Hand- Held Air Monitoring Locations | ITC Deer Park Tank Fire

Reading Date
5/17/2019 2:00:00 PM to 5/17/2019 3:00:00 PM



Recent Benzene Detections

Location Category	Reading Date	Range of Detections
Division E	5/17/2019 14:01:58	0.0300 ppm
	5/17/2019 14:07:14	0.0500 ppm
	5/17/2019 14:43:18	0.0200 ppm
	5/17/2019 14:56:10	0.0300 ppm
Impacted Tank Farm	5/17/2019 14:25:52	0.0600 ppm
	5/17/2019 14:19:13	0.0200 ppm
	5/17/2019 14:24:16	0.0500 ppm
	5/17/2019 14:20:59	0.1900 ppm
	5/17/2019 14:57:37	0.0200 ppm
	5/17/2019 14:58:48	0.0900 ppm

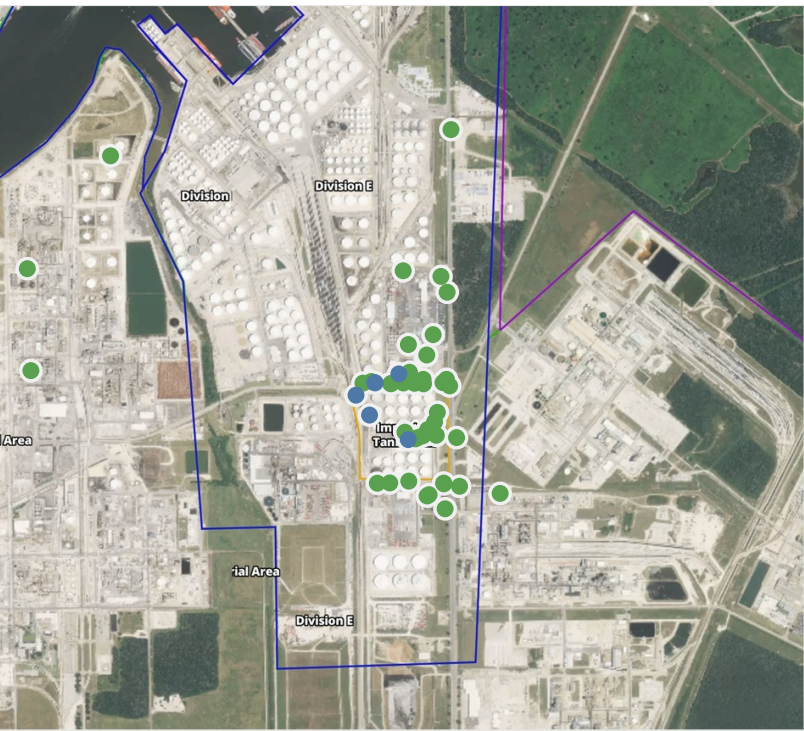
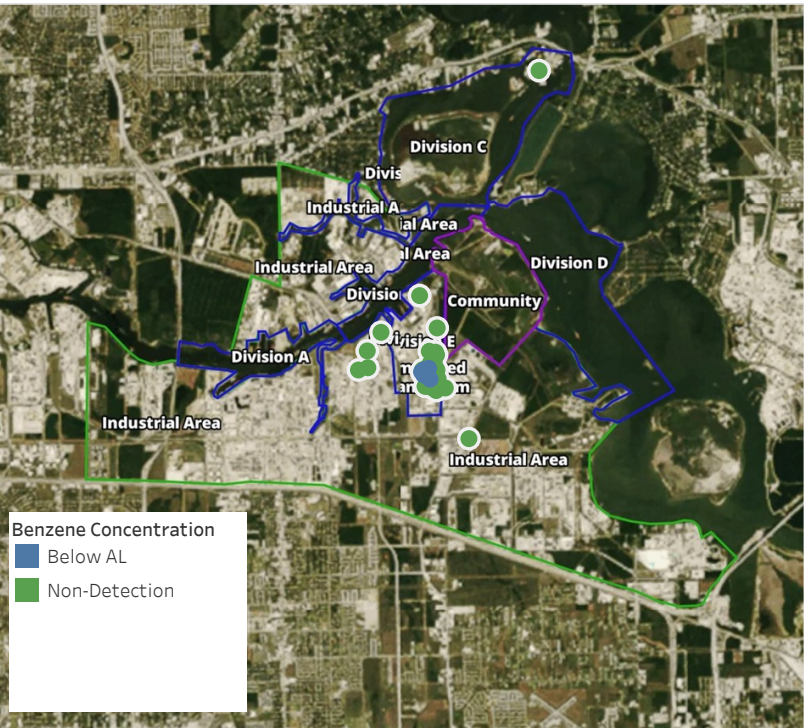
This data has been provided expeditiously to ITC and regulatory agencies for informational and/or operational purposes only. Data reported within this summary is preliminary in nature and has not undergone complete QA/QC (quality assurance/quality control) process. Until this complete QA/QC process is completed, the locations of each reading are approximate in nature and subject to further refinement. As some readings may represent non-breathing zone measurements, the data reported herein may not be suitable to assess potential occupational exposure. Site Assessment readings are not representative of an individual's breathing zone (e.g., container head space, ground level, directly above product, etc.).



Please Note: These updates display data from the 2nd 80's Fire site (Impacted Tank Farm), in the industrial areas surrounding the 2nd 80's Fire site (US Coast Guard Division E), within the Houston Ship Channel (US Coast Guard Divisions A-D), and in the industrial areas north and south of the Houston Ship Channel (Industrial Area). Real-time air monitoring data for the surrounding communities are communicated daily in a separate report.

Preliminary Hand- Held Air Monitoring Locations | ITC Deer Park Tank Fire

Reading Date
5/17/2019 3:00:00 PM to 5/17/2019 4:00:00 PM



Recent Benzene Detections

Location Category	Reading Date	Range of Detections
Division E	5/17/2019 15:03:00	0.02000 ppm
	5/17/2019 15:27:24	0.02000 ppm
	5/17/2019 15:59:42	0.02000 ppm
Impacted Tank Farm	5/17/2019 15:01:27	0.08000 ppm
	5/17/2019 15:33:26	0.02000 ppm
	5/17/2019 15:47:29	0.03000 ppm

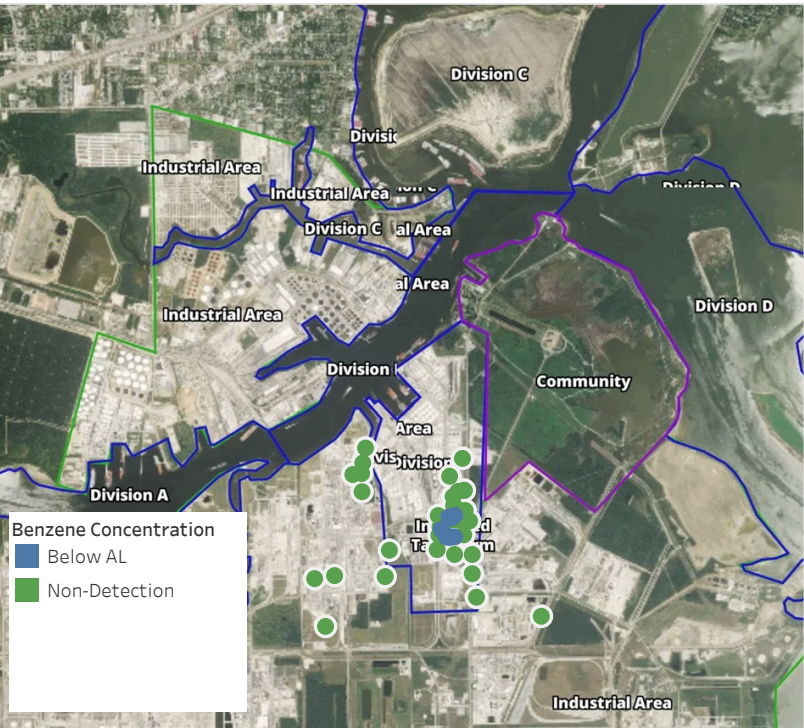
This data has been provided expeditiously to ITC and regulatory agencies for informational and/or operational purposes only. Data reported within this summary is preliminary in nature and has not undergone complete QA/QC (quality assurance/quality control) process. Until this complete QA/QC process is completed, the locations of each reading are approximate in nature and subject to further refinement. As some readings may represent non-breathing zone measurements, the data reported herein may not be suitable to assess potential occupational exposure. Site Assessment readings are not representative of an individual's breathing zone (e.g., container head space, ground level, directly above product, etc.).



Please Note: These updates display data from the 2nd 80's Fire site (Impacted Tank Farm), in the industrial areas surrounding the 2nd 80's Fire site (US Coast Guard Division E), within the Houston Ship Channel (US Coast Guard Divisions A-D), and in the industrial areas north and south of the Houston Ship Channel (Industrial Area). Real-time air monitoring data for the surrounding communities are communicated daily in a separate report.

Preliminary Hand- Held Air Monitoring Locations | ITC Deer Park Tank Fire

Reading Date
5/17/2019 4:00:00 PM to 5/17/2019 5:00:00 PM



Recent Benzene Detections

Location Category	Reading Date	Range of Detections
Division E	5/17/2019 16:09:59	0.03000 ppm
	5/17/2019 16:22:43	0.02000 ppm
	5/17/2019 16:31:20	0.01000 ppm
Impacted Tank Farm	5/17/2019 16:01:17	0.07000 ppm
	5/17/2019 16:02:39	0.04000 ppm
	5/17/2019 16:37:40	0.03000 ppm
	5/17/2019 16:55:45	0.05000 ppm
	5/17/2019 16:56:48	0.03000 ppm
	5/17/2019 16:58:04	0.09000 ppm

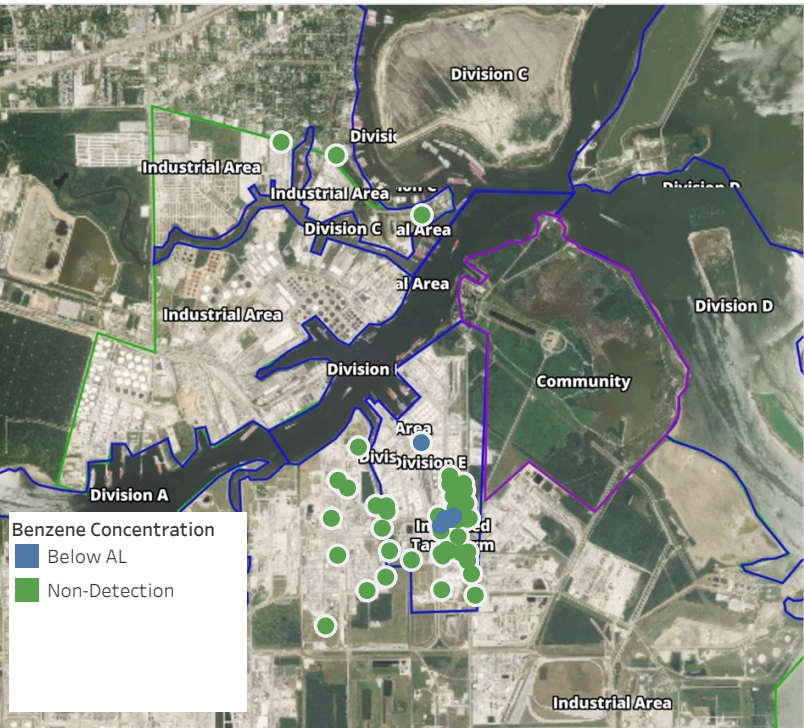
This data has been provided expeditiously to ITC and regulatory agencies for informational and/or operational purposes only. Data reported within this summary is preliminary in nature and has not undergone complete QA/QC (quality assurance/quality control) process. Until this complete QA/QC process is completed, the locations of each reading are approximate in nature and subject to further refinement. As some readings may represent non-breathing zone measurements, the data reported herein may not be suitable to assess potential occupational exposure. Site Assessment readings are not representative of an individual's breathing zone (e.g., container head space, ground level, directly above product, etc.).



Please Note: These updates display data from the 2nd 80's Fire site (Impacted Tank Farm), in the industrial areas surrounding the 2nd 80's Fire site (US Coast Guard Division E), within the Houston Ship Channel (US Coast Guard Divisions A-D), and in the industrial areas north and south of the Houston Ship Channel (Industrial Area). Real-time air monitoring data for the surrounding communities are communicated daily in a separate report.

Preliminary Hand- Held Air Monitoring Locations | ITC Deer Park Tank Fire

Reading Date
5/17/2019 5:00:00 PM to 5/17/2019 6:00:00 PM



Recent Benzene Detections

Location Category	Reading Date	Range of Detections
Division E	5/17/2019 17:10:46	0.04000 ppm
	5/17/2019 17:13:05	0.03000 ppm
	5/17/2019 17:11:17	0.02000 ppm
	5/17/2019 17:30:59	0.01000 ppm
	5/17/2019 17:23:40	0.09000 ppm
	5/17/2019 17:19:48	0.03000 ppm
	5/17/2019 17:34:59	0.02000 ppm
	5/17/2019 17:59:07	0.02000 ppm
Impacted Tank Farm	5/17/2019 17:36:53	0.02000 ppm

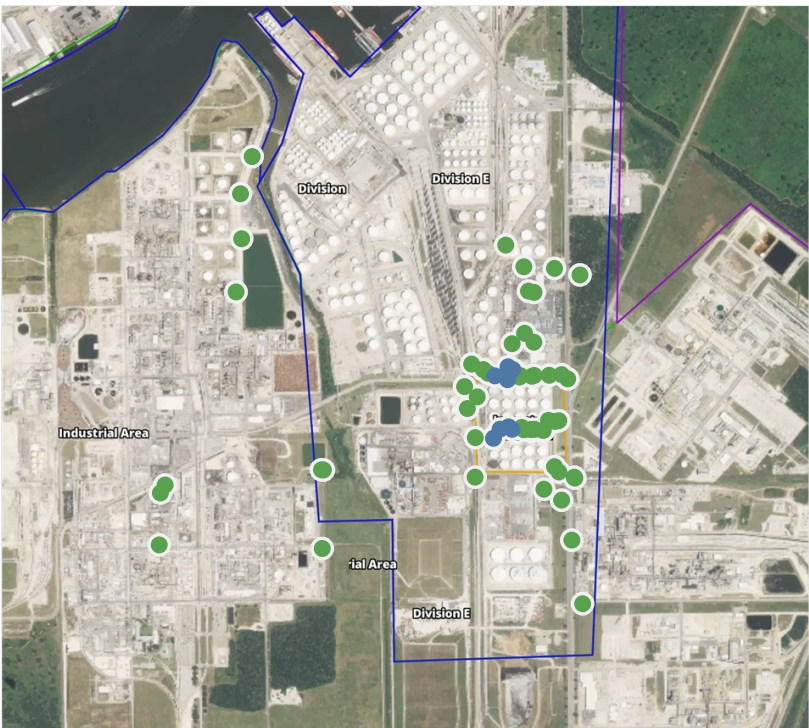
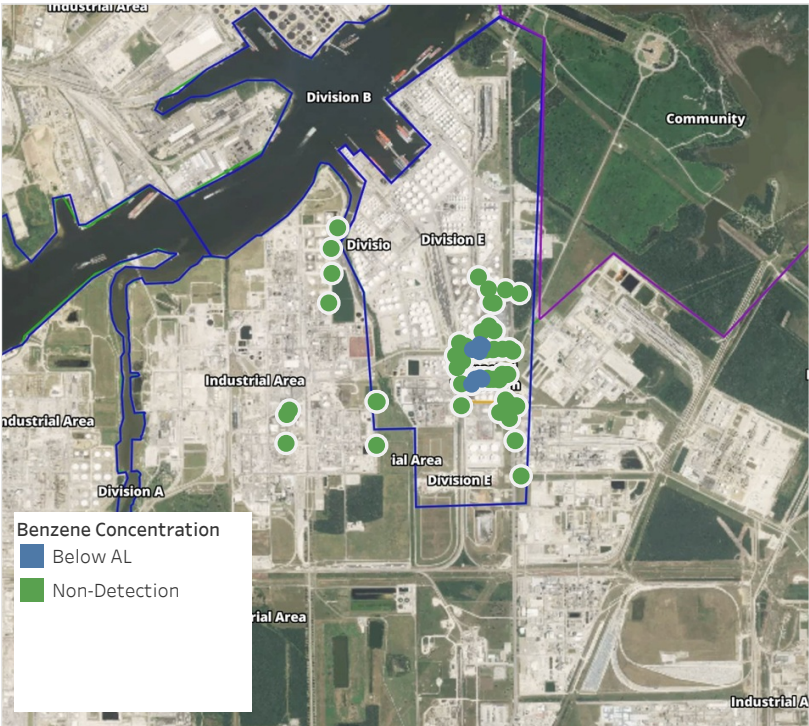
This data has been provided expeditiously to ITC and regulatory agencies for informational and/or operational purposes only. Data reported within this summary is preliminary in nature and has not undergone complete QA/QC (quality assurance/quality control) process. Until this complete QA/QC process is completed, the locations of each reading are approximate in nature and subject to further refinement. As some readings may represent non-breathing zone measurements, the data reported herein may not be suitable to assess potential occupational exposure. Site Assessment readings are not representative of an individual's breathing zone (e.g., container head space, ground level, directly above product, etc.).



Please Note: These updates display data from the 2nd 80's Fire site (Impacted Tank Farm), in the industrial areas surrounding the 2nd 80's Fire site (US Coast Guard Division E), within the Houston Ship Channel (US Coast Guard Divisions A-D), and in the industrial areas north and south of the Houston Ship Channel (Industrial Area). Real-time air monitoring data for the surrounding communities are communicated daily in a separate report.

Preliminary Hand- Held Air Monitoring Locations | ITC Deer Park Tank Fire

Reading Date
5/17/2019 6:00:00 PM to 5/17/2019 7:00:00 PM



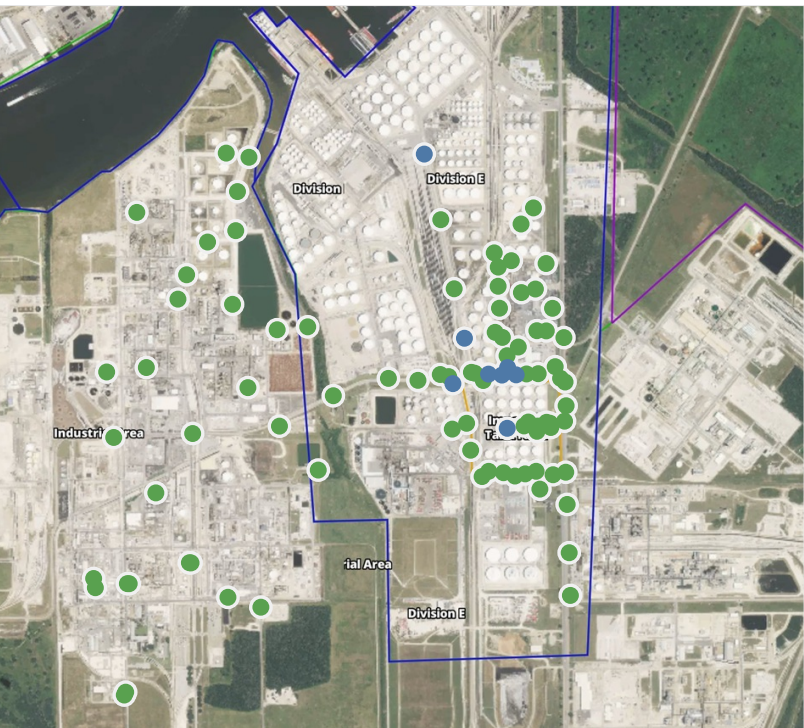
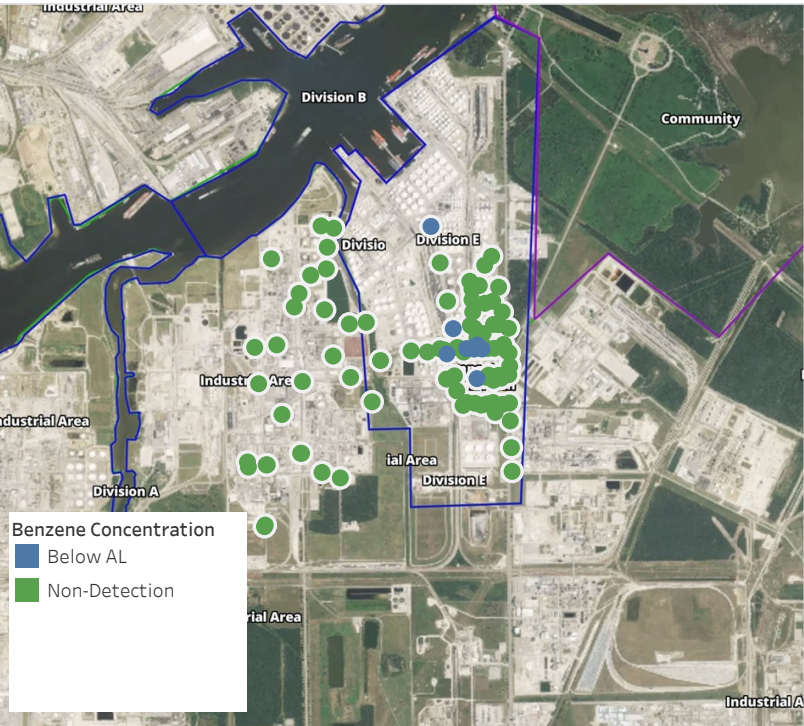
Recent Benzene Detections

Location Category	Reading Date	Range of Detections
Division E	5/17/2019 18:03:20	0.01000 ppm
	5/17/2019 18:12:59	0.02000 ppm
	5/17/2019 18:26:42	0.03000 ppm
	5/17/2019 18:47:45	0.04000 ppm
Impacted Tank Farm	5/17/2019 18:26:23	0.04000 ppm
	5/17/2019 18:25:12	0.04000 ppm
	5/17/2019 18:56:31	0.02000 ppm
	5/17/2019 18:55:27	0.03000 ppm

This data has been provided expeditiously to ITC and regulatory agencies for informational and/or operational purposes only. Data reported within this summary is preliminary in nature and has not undergone complete QA/QC (quality assurance/quality control) process. Until this complete QA/QC process is completed, the locations of each reading are approximate in nature and subject to further refinement. As some readings may represent non-breathing zone measurements, the data reported herein may not be suitable to assess potential occupational exposure. Site Assessment readings are not representative of an individual's breathing zone (e.g., container head space, ground level, directly above product, etc.).

Preliminary Hand- Held Air Monitoring Locations | ITC Deer Park Tank Fire

Reading Date
5/17/2019 7:00:00 PM to 5/17/2019 8:00:00 PM



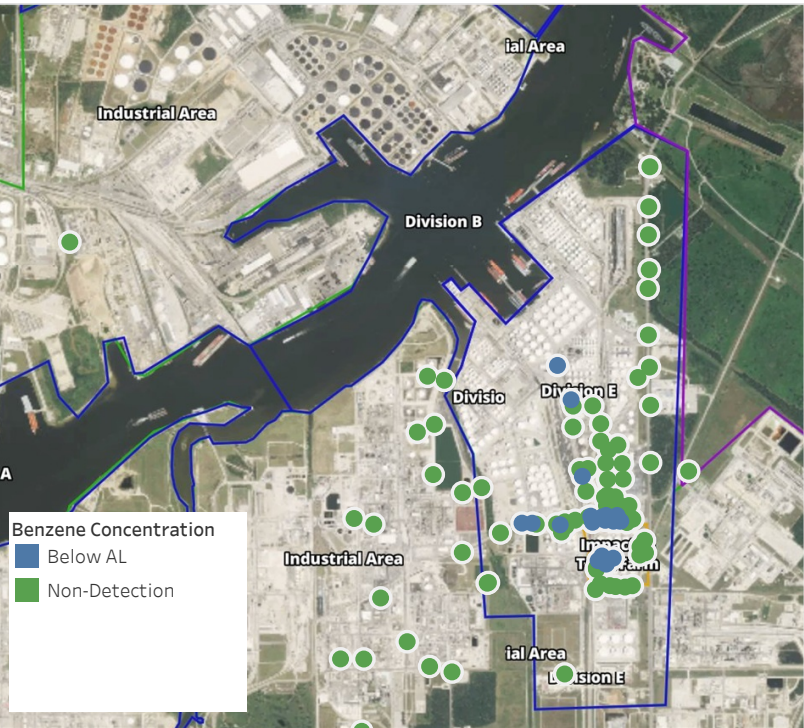
Recent Benzene Detections

Location Category	Reading Date	Range of Detections
Division E	5/17/2019 19:29:33	0.02000 ppm
	5/17/2019 19:39:22	0.10000 ppm
	5/17/2019 19:50:57	0.04000 ppm
	5/17/2019 19:39:30	0.02000 ppm
	5/17/2019 19:42:27	0.02000 ppm
	5/17/2019 19:58:00	0.01000 ppm
Impacted Tank Farm	5/17/2019 19:45:35	0.05000 ppm
	5/17/2019 19:58:41	0.08000 ppm

This data has been provided expeditiously to ITC and regulatory agencies for informational and/or operational purposes only. Data reported within this summary is preliminary in nature and has not undergone complete QA/QC (quality assurance/quality control) process. Until this complete QA/QC process is completed, the locations of each reading are approximate in nature and subject to further refinement. As some readings may represent non-breathing zone measurements, the data reported herein may not be suitable to assess potential occupational exposure. Site Assessment readings are not representative of an individual's breathing zone (e.g., container head space, ground level, directly above product, etc.).

Preliminary Hand- Held Air Monitoring Locations | ITC Deer Park Tank Fire

Reading Date
5/17/2019 8:00:00 PM to 5/17/2019 9:00:00 PM



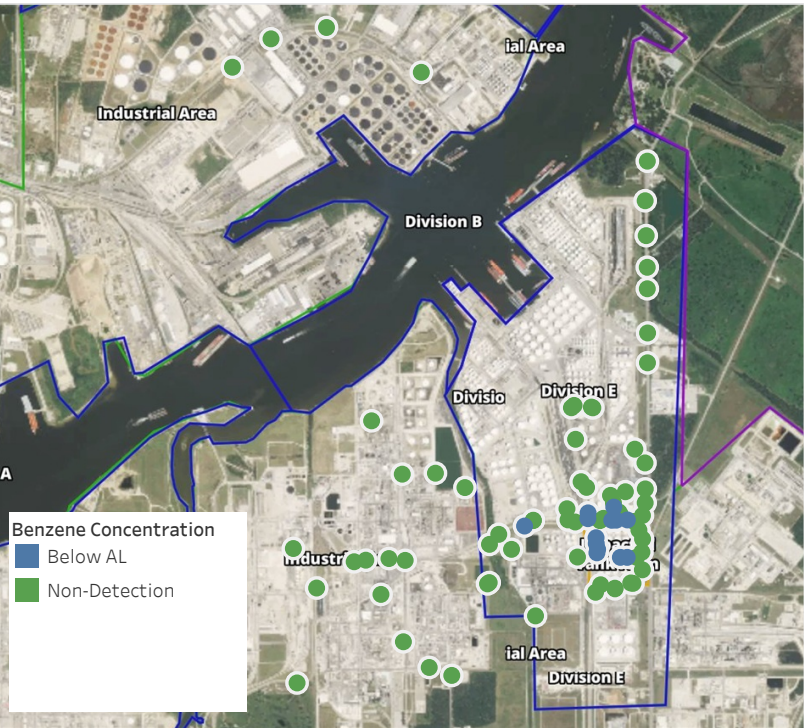
Recent Benzene Detections

Location Category	Reading Date	Range of Detections
Division E	5/17/2019 20:01:12	0.01000 ppm
	5/17/2019 20:07:50	0.03000 ppm
	5/17/2019 20:11:30	0.02000 ppm
	5/17/2019 20:18:07	0.06000 ppm
	5/17/2019 20:21:17	0.06000 ppm
	5/17/2019 20:22:19	0.03000 ppm
	5/17/2019 20:27:31	0.02000 ppm
	5/17/2019 20:37:12	0.05000 ppm
	5/17/2019 20:40:59	0.01000 ppm
	5/17/2019 20:42:25	0.06000 ppm
	5/17/2019 20:44:49	0.02000 ppm
	5/17/2019 20:48:32	0.02000 ppm
	5/17/2019 20:53:50	0.02000 ppm
	5/17/2019 20:25:42	0.02000 ppm
	5/17/2019 20:18:25	0.03000 ppm
Impacted Tank Farm	5/17/2019 20:12:30	0.04000 ppm
	5/17/2019 20:22:49	0.02000 ppm
	5/17/2019 20:02:21	0.04000 ppm
	5/17/2019 20:10:41	0.02000 ppm
	5/17/2019 20:39:24	0.02000 ppm
	5/17/2019 20:50:41	0.05000 ppm
	5/17/2019 20:53:32	0.06000 ppm

This data has been provided expeditiously to ITC and regulatory agencies for informational and/or operational purposes only. Data reported within this summary is preliminary in nature and has not undergone complete QA/QC (quality assurance/quality control) process. Until this complete QA/QC process is completed, the locations of each reading are approximate in nature and subject to further refinement. As some readings may represent non-breathing zone measurements, the data reported herein may not be suitable to assess potential occupational exposure. Site Assessment readings are not representative of an individual's breathing zone (e.g., container head space, ground level, directly above product, etc.).

Preliminary Hand- Held Air Monitoring Locations | ITC Deer Park Tank Fire

Reading Date
5/17/2019 9:00:00 PM to 5/17/2019 10:00:00 PM



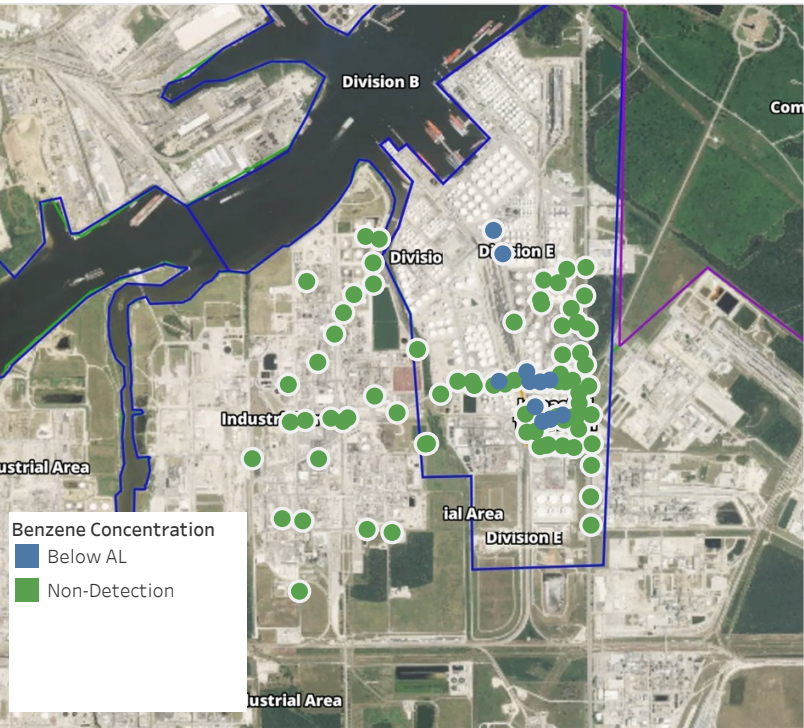
Recent Benzene Detections

Location Category	Reading Date	Range of Detections
Division E	5/17/2019 21:38:53	0.02000 ppm
	5/17/2019 21:42:14	0.01000 ppm
	5/17/2019 21:50:23	0.02000 ppm
	5/17/2019 21:41:02	0.02000 ppm
	5/17/2019 21:45:56	0.03000 ppm
	5/17/2019 21:51:54	0.02000 ppm
	5/17/2019 21:59:03	0.02000 ppm
Impacted Tank Farm	5/17/2019 21:33:40	0.09000 ppm
	5/17/2019 21:36:05	0.02000 ppm
	5/17/2019 21:41:21	0.03000 ppm
	5/17/2019 21:44:08	0.03000 ppm
	5/17/2019 21:49:09	0.03000 ppm
	5/17/2019 21:53:21	0.02000 ppm

This data has been provided expeditiously to ITC and regulatory agencies for informational and/or operational purposes only. Data reported within this summary is preliminary in nature and has not undergone complete QA/QC (quality assurance/quality control) process. Until this complete QA/QC process is completed, the locations of each reading are approximate in nature and subject to further refinement. As some readings may represent non-breathing zone measurements, the data reported herein may not be suitable to assess potential occupational exposure. Site Assessment readings are not representative of an individual's breathing zone (e.g., container head space, ground level, directly above product, etc.).

Preliminary Hand- Held Air Monitoring Locations | ITC Deer Park Tank Fire

Reading Date
5/17/2019 10:00:00 PM to 5/17/2019 11:00:00 PM



Recent Benzene Detections

Location Category	Reading Date	Range of Detections
Division E	5/17/2019 22:04:56	0.05000 ppm
	5/17/2019 22:09:50	0.05000 ppm
	5/17/2019 22:17:03	0.02000 ppm
	5/17/2019 22:23:25	0.01000 ppm
	5/17/2019 22:33:23	0.03000 ppm
	5/17/2019 22:29:59	0.03000 ppm
	5/17/2019 22:27:25	0.05000 ppm
Impacted Tank Farm	5/17/2019 22:07:46	0.05000 ppm
	5/17/2019 22:28:28	0.03000 ppm
	5/17/2019 22:32:44	0.03000 ppm
	5/17/2019 22:36:24	0.05000 ppm
	5/17/2019 22:40:17	0.03000 ppm

This data has been provided expeditiously to ITC and regulatory agencies for informational and/or operational purposes only. Data reported within this summary is preliminary in nature and has not undergone complete QA/QC (quality assurance/quality control) process. Until this complete QA/QC process is completed, the locations of each reading are approximate in nature and subject to further refinement. As some readings may represent non-breathing zone measurements, the data reported herein may not be suitable to assess potential occupational exposure. Site Assessment readings are not representative of an individual's breathing zone (e.g., container head space, ground level, directly above product, etc.).