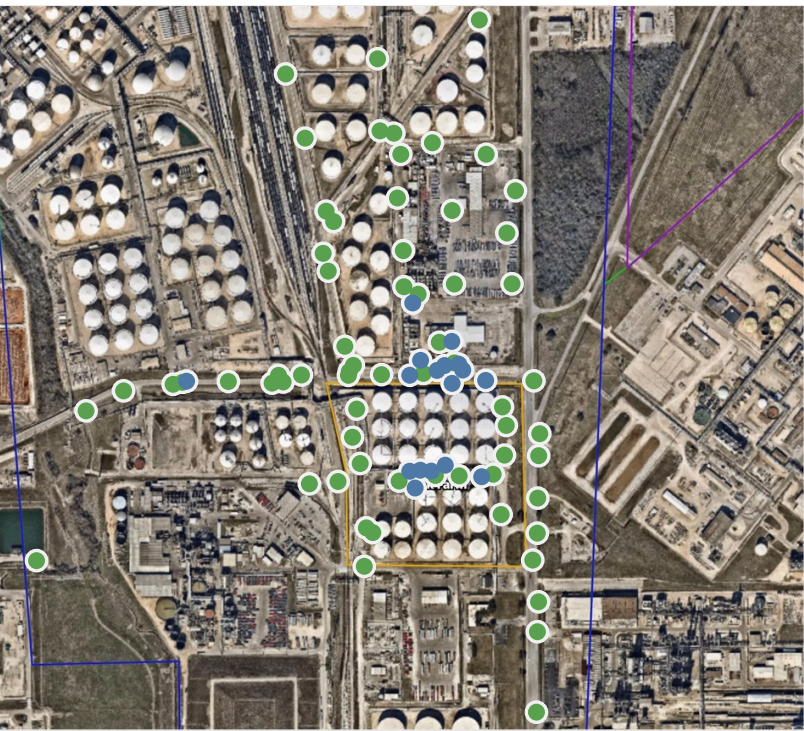
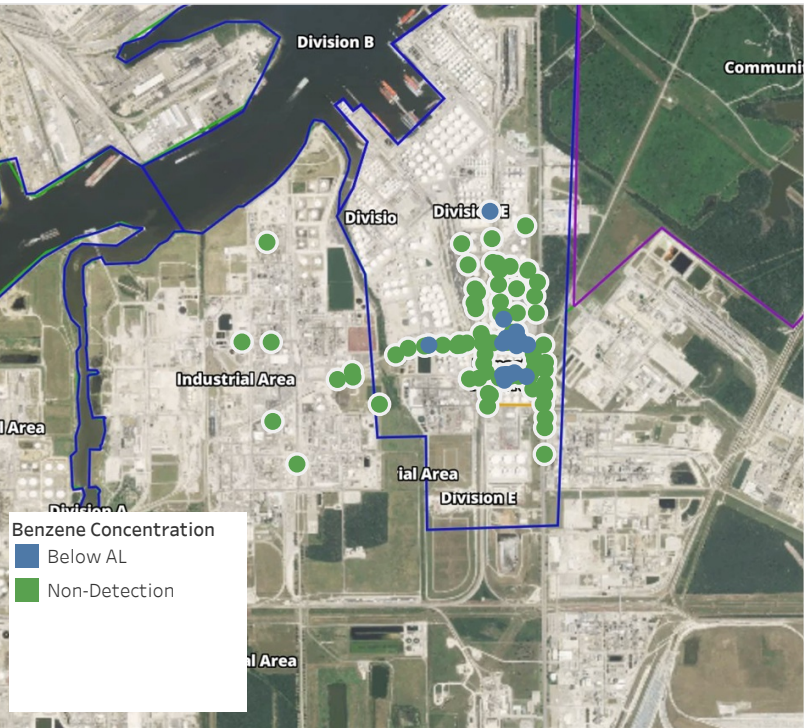


Preliminary Hand- Held Air Monitoring Locations | ITC Deer Park Tank Fire

Reading Date
5/18/2019 11:00:00 PM to 5/19/2019 12:00:00 AM



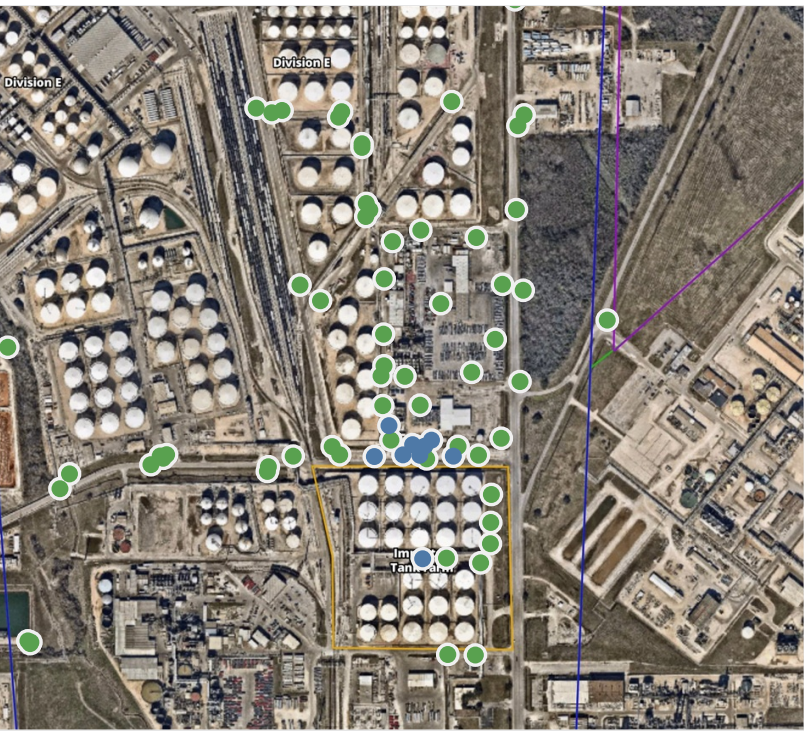
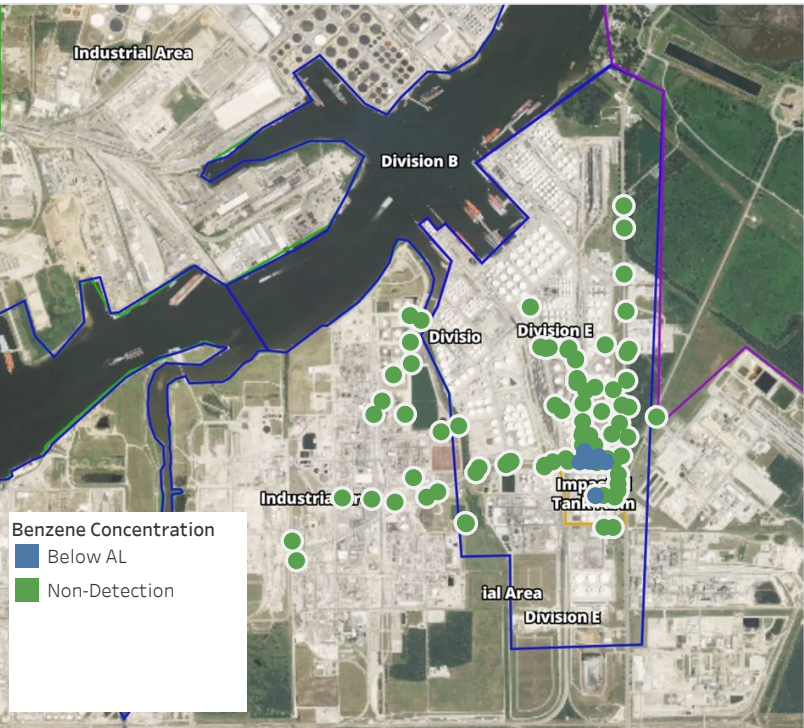
Recent Benzene Detections

Location Category	Reading Date	Range of Detections
Division E	5/18/2019 23:02:00	0.09000 ppm
	5/18/2019 23:07:53	0.02000 ppm
	5/18/2019 23:15:36	0.04000 ppm
	5/18/2019 23:19:57	0.04000 ppm
	5/18/2019 23:21:51	0.04000 ppm
	5/18/2019 23:24:17	0.02000 ppm
	5/18/2019 23:34:32	0.01000 ppm
	5/18/2019 23:39:11	0.02000 ppm
	5/18/2019 23:41:17	0.02000 ppm
	5/18/2019 23:39:11	0.04000 ppm
	5/18/2019 23:37:02	0.03000 ppm
	5/18/2019 23:30:05	0.03000 ppm
Impacted Tank Farm	5/18/2019 23:01:37	0.03000 ppm
	5/18/2019 23:08:30	0.03000 ppm
	5/18/2019 23:13:32	0.03000 ppm
	5/18/2019 23:16:00	0.02000 ppm
	5/18/2019 23:18:35	0.02000 ppm
	5/18/2019 23:23:35	0.02000 ppm

This data has been provided expeditiously to ITC and regulatory agencies for informational and/or operational purposes only. Data reported within this summary is preliminary in nature and has not undergone complete QA/QC (quality assurance/quality control) process. Until this complete QA/QC process is completed, the locations of each reading are approximate in nature and subject to further refinement. As some readings may represent non-breathing zone measurements, the data reported herein may not be suitable to assess potential occupational exposure. Site Assessment readings are not representative of an individual's breathing zone (e.g., container head space, ground level, directly above product, etc.).

Preliminary Hand- Held Air Monitoring Locations | ITC Deer Park Tank Fire

Reading Date
5/19/2019 12:00:00 AM to 5/19/2019 1:00:00 AM



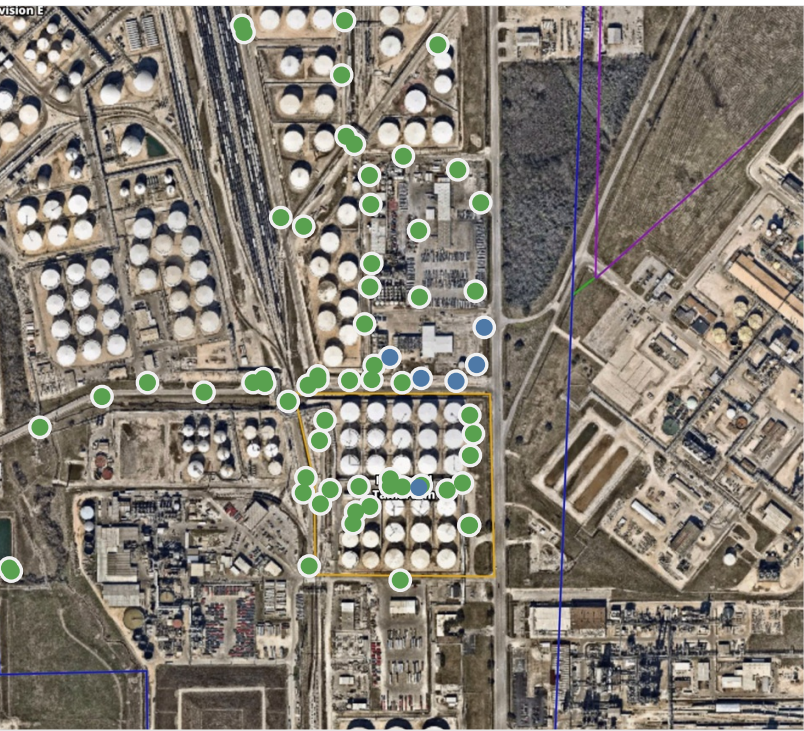
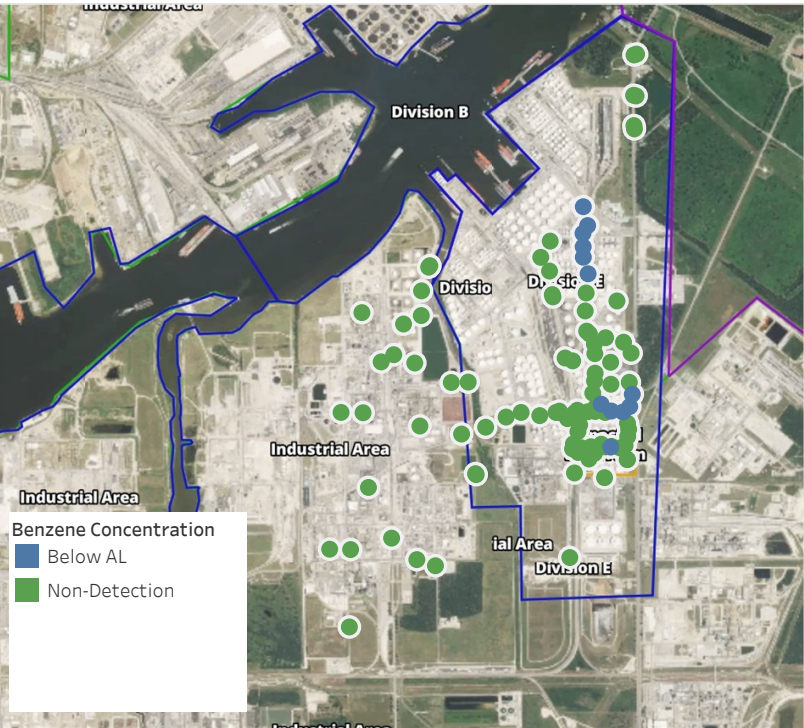
Recent Benzene Detections

Location Category	Reading Date	Range of Detections
Division E	5/19/2019 00:23:11	0.02000 ppm
	5/19/2019 00:38:42	0.03000 ppm
	5/19/2019 00:42:17	0.03000 ppm
	5/19/2019 00:18:59	0.03000 ppm
	5/19/2019 00:26:09	0.04000 ppm
	5/19/2019 00:29:08	0.03000 ppm
	5/19/2019 00:56:31	0.04000 ppm
Impacted Tank Farm	5/19/2019 00:58:19	0.02000 ppm
	5/19/2019 00:57:13	0.10000 ppm

This data has been provided expeditiously to ITC and regulatory agencies for informational and/or operational purposes only. Data reported within this summary is preliminary in nature and has not undergone complete QA/QC (quality assurance/quality control) process. Until this complete QA/QC process is completed, the locations of each reading are approximate in nature and subject to further refinement. As some readings may represent non-breathing zone measurements, the data reported herein may not be suitable to assess potential occupational exposure. Site Assessment readings are not representative of an individual's breathing zone (e.g., container head space, ground level, directly above product, etc.).

Preliminary Hand- Held Air Monitoring Locations | ITC Deer Park Tank Fire

Reading Date
5/19/2019 1:00:00 AM to 5/19/2019 2:00:00 AM



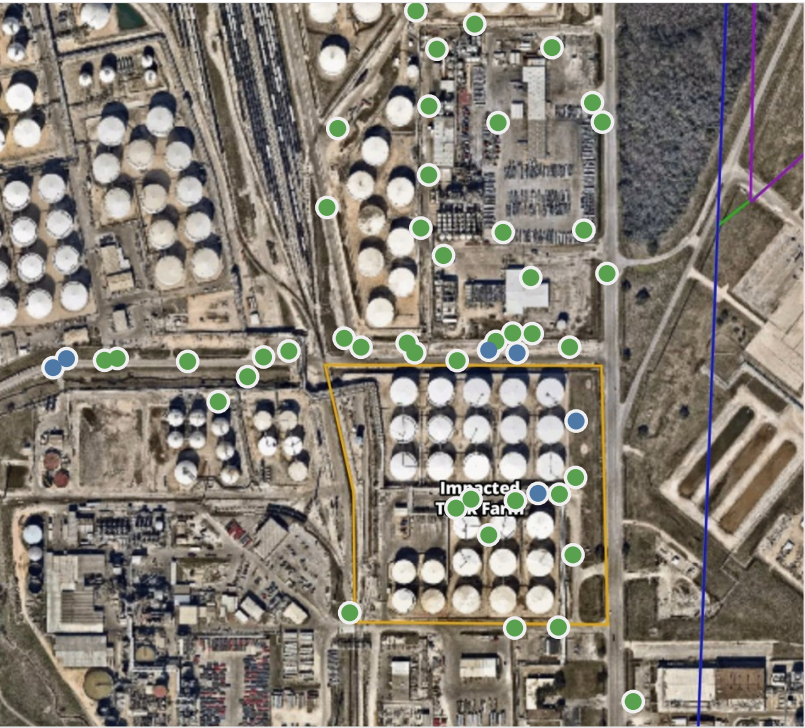
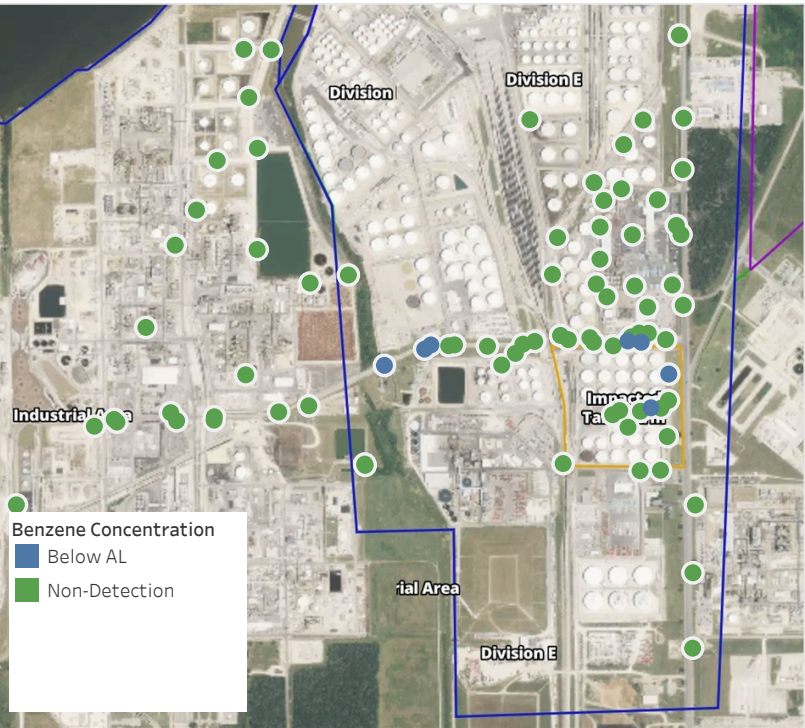
Recent Benzene Detections

Location Category	Reading Date	Range of Detections
Division E	5/19/2019 01:37:20	0.05000 ppm
	5/19/2019 01:40:20	0.06000 ppm
	5/19/2019 01:42:42	0.08000 ppm
	5/19/2019 01:44:42	0.03000 ppm
	5/19/2019 01:47:11	0.08000 ppm
	5/19/2019 01:49:02	0.04000 ppm
	5/19/2019 01:50:50	0.01000 ppm
	5/19/2019 01:23:28	0.02000 ppm
	5/19/2019 01:48:32	0.02000 ppm
	5/19/2019 01:51:33	0.02000 ppm
Impacted Tank Farm	5/19/2019 01:54:40	0.03000 ppm
	5/19/2019 01:13:30	0.06000 ppm

This data has been provided expeditiously to ITC and regulatory agencies for informational and/or operational purposes only. Data reported within this summary is preliminary in nature and has not undergone complete QA/QC (quality assurance/quality control) process. Until this complete QA/QC process is completed, the locations of each reading are approximate in nature and subject to further refinement. As some readings may represent non-breathing zone measurements, the data reported herein may not be suitable to assess potential occupational exposure. Site Assessment readings are not representative of an individual's breathing zone (e.g., container head space, ground level, directly above product, etc.).

Preliminary Hand- Held Air Monitoring Locations | ITC Deer Park Tank Fire

Reading Date
5/19/2019 2:00:00 AM to 5/19/2019 3:00:00 AM



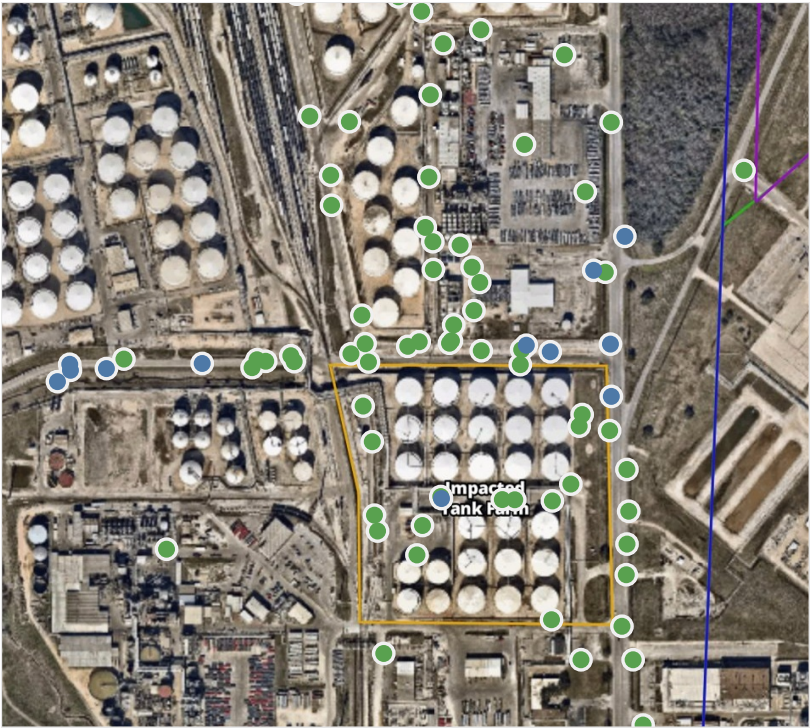
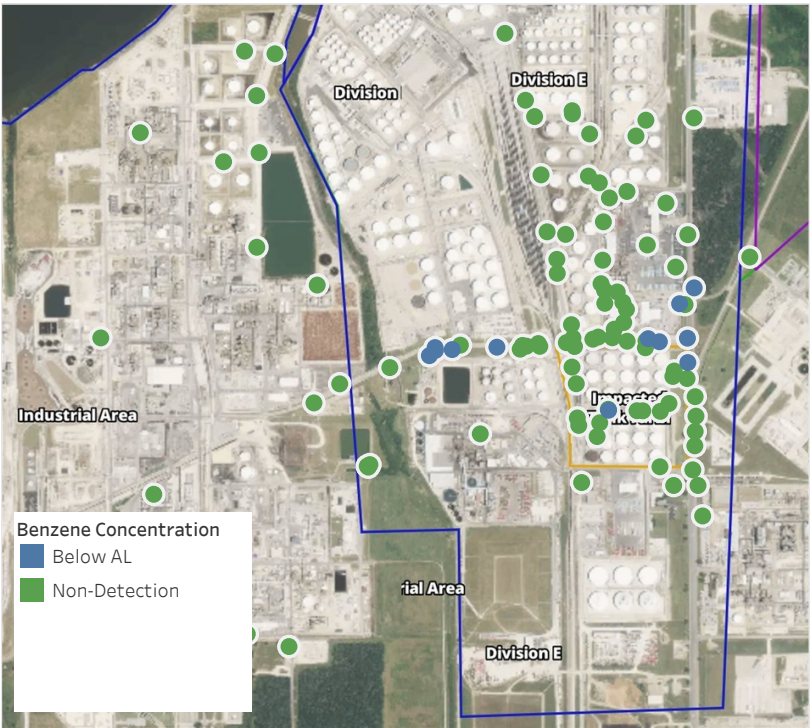
Recent Benzene Detections

Location Category	Reading Date	Range of Detections
Division E	5/19/2019 02:10:04	0.05000 ppm
	5/19/2019 02:26:17	0.04000 ppm
	5/19/2019 02:20:23	0.05000 ppm
	5/19/2019 02:52:49	0.02000 ppm
	5/19/2019 02:58:00	0.01000 ppm
Impacted Tank Farm	5/19/2019 02:01:35	0.02000 ppm
	5/19/2019 02:45:43	0.06000 ppm

This data has been provided expeditiously to ITC and regulatory agencies for informational and/or operational purposes only. Data reported within this summary is preliminary in nature and has not undergone complete QA/QC (quality assurance/quality control) process. Until this complete QA/QC process is completed, the locations of each reading are approximate in nature and subject to further refinement. As some readings may represent non-breathing zone measurements, the data reported herein may not be suitable to assess potential occupational exposure. Site Assessment readings are not representative of an individual's breathing zone (e.g., container head space, ground level, directly above product, etc.).

Preliminary Hand- Held Air Monitoring Locations | ITC Deer Park Tank Fire

Reading Date
5/19/2019 3:00:00 AM to 5/19/2019 4:00:00 AM



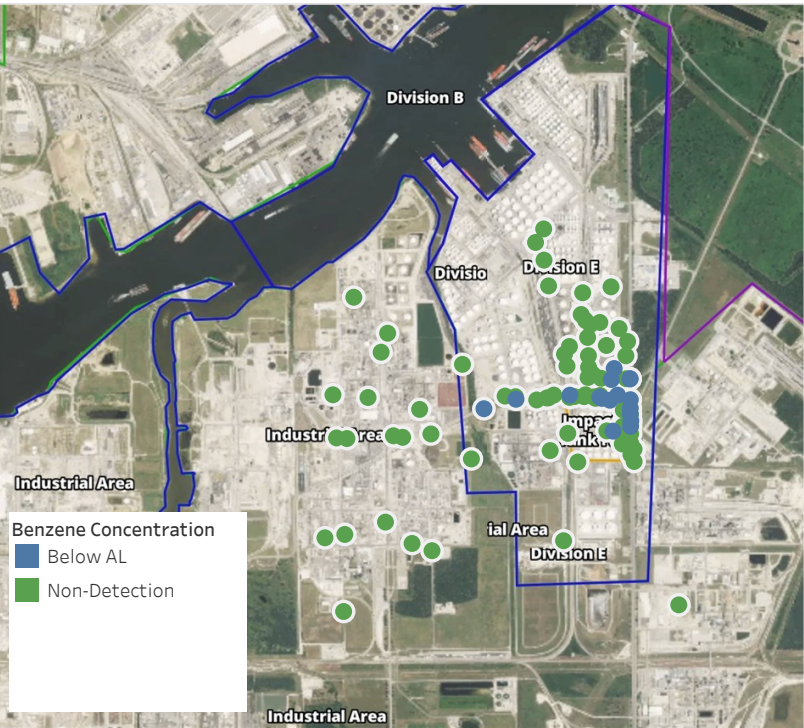
Recent Benzene Detections

Location Category	Reading Date	Range of Detections
Division E	5/19/2019 03:01:05	0.06000 ppm
	5/19/2019 03:17:11	0.03000 ppm
	5/19/2019 03:21:10	0.02000 ppm
	5/19/2019 03:28:33	0.03000 ppm
	5/19/2019 03:38:57	0.04000 ppm
	5/19/2019 03:43:15	0.02000 ppm
	5/19/2019 03:44:08	0.03000 ppm
	5/19/2019 03:47:28	0.02000 ppm
	5/19/2019 03:24:20	0.02000 ppm
	5/19/2019 03:57:43	0.02000 ppm
Impacted Tank Farm	5/19/2019 03:54:07	0.04000 ppm
	5/19/2019 03:01:04	0.02000 ppm

This data has been provided expeditiously to ITC and regulatory agencies for informational and/or operational purposes only. Data reported within this summary is preliminary in nature and has not undergone complete QA/QC (quality assurance/quality control) process. Until this complete QA/QC process is completed, the locations of each reading are approximate in nature and subject to further refinement. As some readings may represent non-breathing zone measurements, the data reported herein may not be suitable to assess potential occupational exposure. Site Assessment readings are not representative of an individual's breathing zone (e.g., container head space, ground level, directly above product, etc.).

Preliminary Hand- Held Air Monitoring Locations | ITC Deer Park Tank Fire

Reading Date
5/19/2019 4:00:00 AM to 5/19/2019 5:00:00 AM



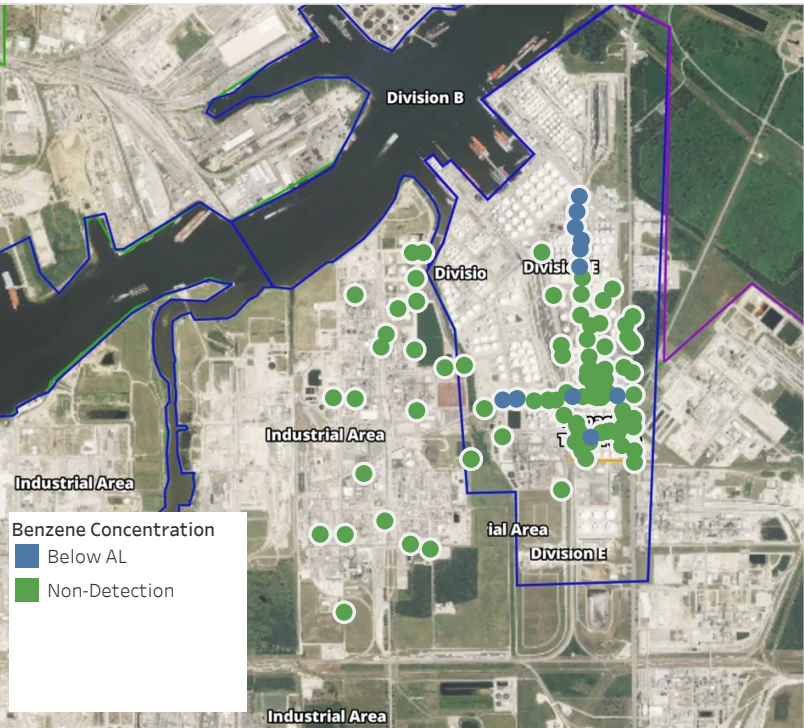
Recent Benzene Detections

Location Category	Reading Date	Range of Detections
Division E	5/19/2019 04:01:08	0.01000 ppm
	5/19/2019 04:04:30	0.04000 ppm
	5/19/2019 04:08:12	0.04000 ppm
	5/19/2019 04:12:20	0.05000 ppm
	5/19/2019 04:24:33	0.05000 ppm
	5/19/2019 04:29:01	0.06000 ppm
	5/19/2019 04:30:10	0.03000 ppm
	5/19/2019 04:37:16	0.04000 ppm
	5/19/2019 04:40:24	0.05000 ppm
	5/19/2019 04:36:51	0.02000 ppm
	5/19/2019 04:50:23	0.01000 ppm
	5/19/2019 04:54:28	0.06000 ppm
	5/19/2019 04:08:08	0.03000 ppm
	5/19/2019 04:51:27	0.02000 ppm
	5/19/2019 04:13:03	0.04000 ppm
Impacted Tank Farm	5/19/2019 04:19:51	0.03000 ppm
	5/19/2019 04:41:06	0.03000 ppm

This data has been provided expeditiously to ITC and regulatory agencies for informational and/or operational purposes only. Data reported within this summary is preliminary in nature and has not undergone complete QA/QC (quality assurance/quality control) process. Until this complete QA/QC process is completed, the locations of each reading are approximate in nature and subject to further refinement. As some readings may represent non-breathing zone measurements, the data reported herein may not be suitable to assess potential occupational exposure. Site Assessment readings are not representative of an individual's breathing zone (e.g., container head space, ground level, directly above product, etc.).

Preliminary Hand- Held Air Monitoring Locations | ITC Deer Park Tank Fire

Reading Date
5/19/2019 5:00:00 AM to 5/19/2019 6:00:00 AM



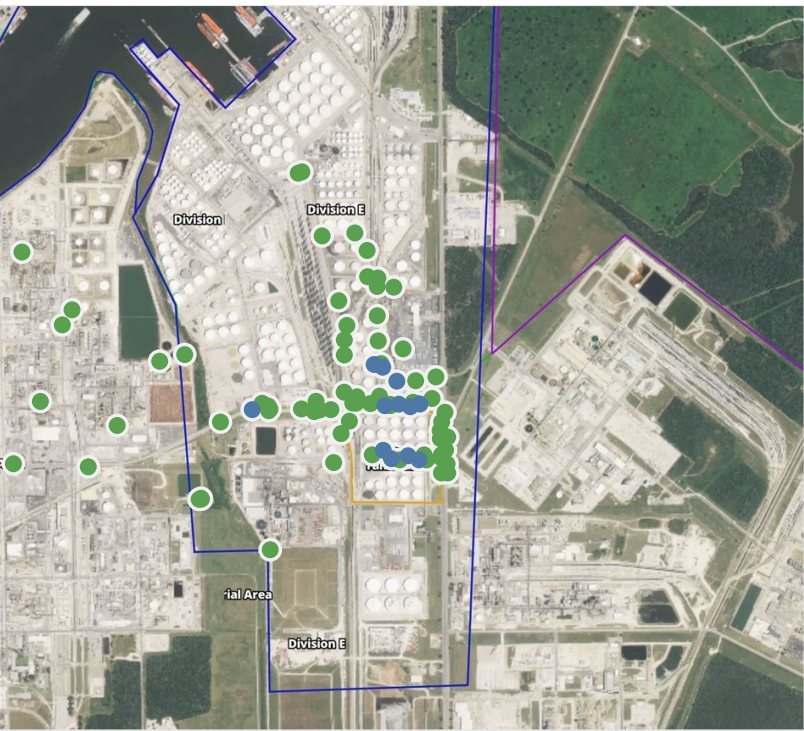
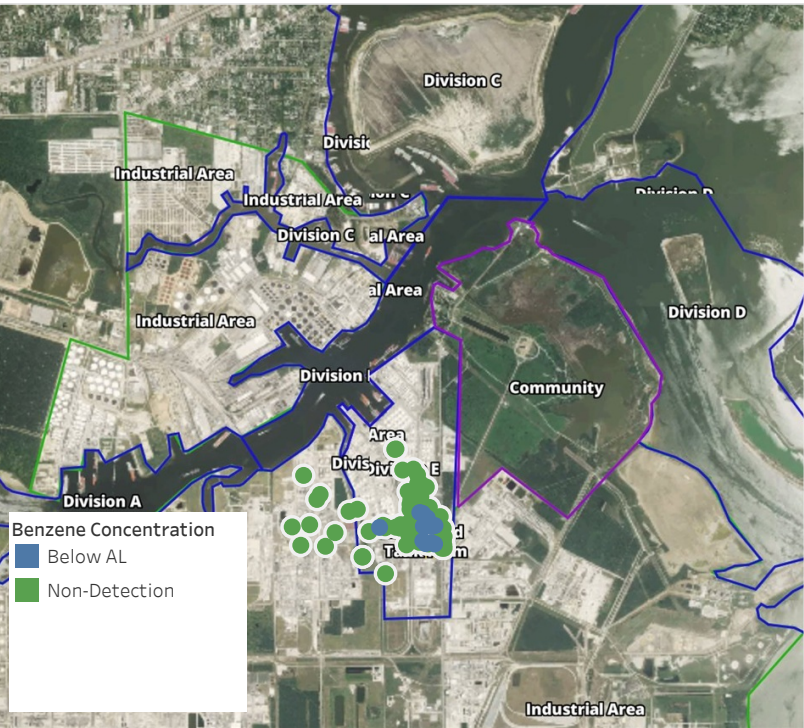
Recent Benzene Detections

Location Category	Reading Date	Range of Detections
Division E	5/19/2019 05:02:26	0.0800 ppm
	5/19/2019 05:05:38	0.2100 ppm
	5/19/2019 05:08:05	0.1000 ppm
	5/19/2019 05:11:49	0.0900 ppm
	5/19/2019 05:20:08	0.0900 ppm
	5/19/2019 05:21:49	0.0300 ppm
	5/19/2019 05:26:03	0.1300 ppm
	5/19/2019 05:29:36	0.0200 ppm
	5/19/2019 05:43:43	0.0500 ppm
Impacted Tank Farm	5/19/2019 05:59:59	0.0200 ppm
	5/19/2019 05:06:51	0.0200 ppm

This data has been provided expeditiously to ITC and regulatory agencies for informational and/or operational purposes only. Data reported within this summary is preliminary in nature and has not undergone complete QA/QC (quality assurance/quality control) process. Until this complete QA/QC process is completed, the locations of each reading are approximate in nature and subject to further refinement. As some readings may represent non-breathing zone measurements, the data reported herein may not be suitable to assess potential occupational exposure. Site Assessment readings are not representative of an individual's breathing zone (e.g., container head space, ground level, directly above product, etc.).

Preliminary Hand- Held Air Monitoring Locations | ITC Deer Park Tank Fire

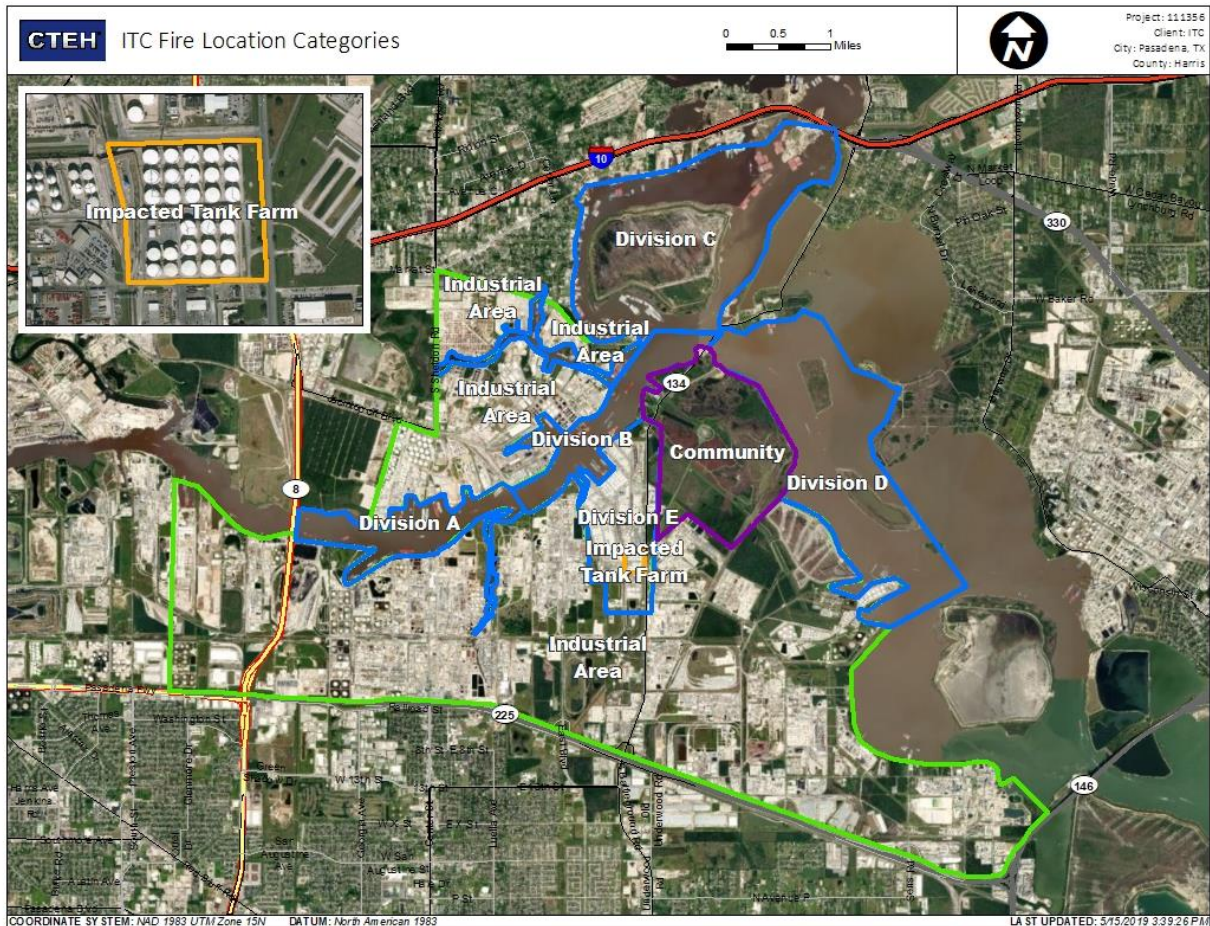
Reading Date
5/19/2019 6:00:00 AM to 5/19/2019 7:00:00 AM



Recent Benzene Detections

Location Category	Reading Date	Range of Detections
Division E	5/19/2019 06:20:19	0.0300 ppm
	5/19/2019 06:15:37	0.0300 ppm
	5/19/2019 06:05:55	0.0500 ppm
	5/19/2019 06:18:26	0.0600 ppm
	5/19/2019 06:21:37	0.0200 ppm
	5/19/2019 06:44:08	0.0400 ppm
	5/19/2019 06:48:25	0.0300 ppm
	5/19/2019 06:46:10	0.0300 ppm
Impacted Tank Farm	5/19/2019 06:42:18	0.0600 ppm
	5/19/2019 06:47:42	0.0300 ppm
	5/19/2019 06:52:02	0.1300 ppm
	5/19/2019 06:55:50	0.0400 ppm

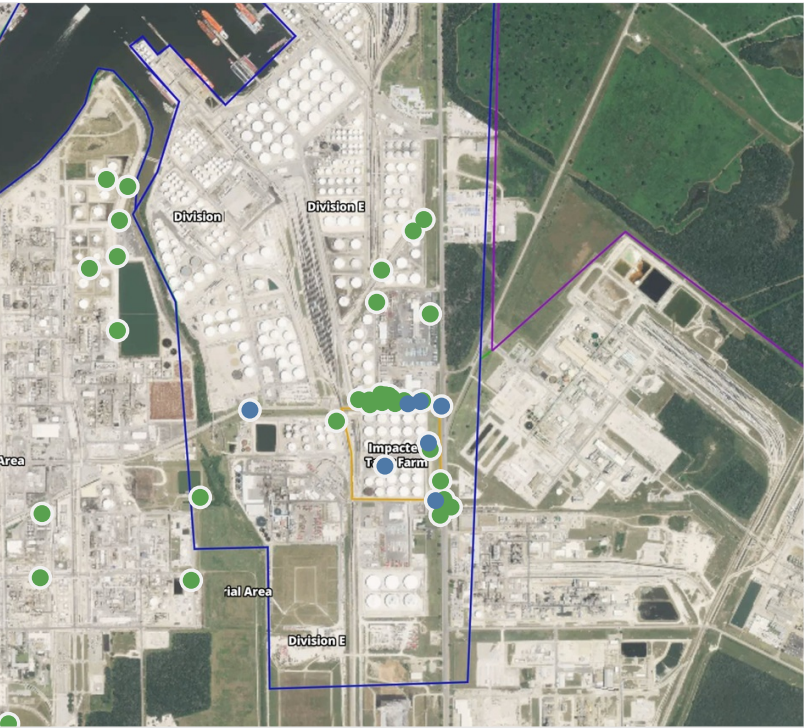
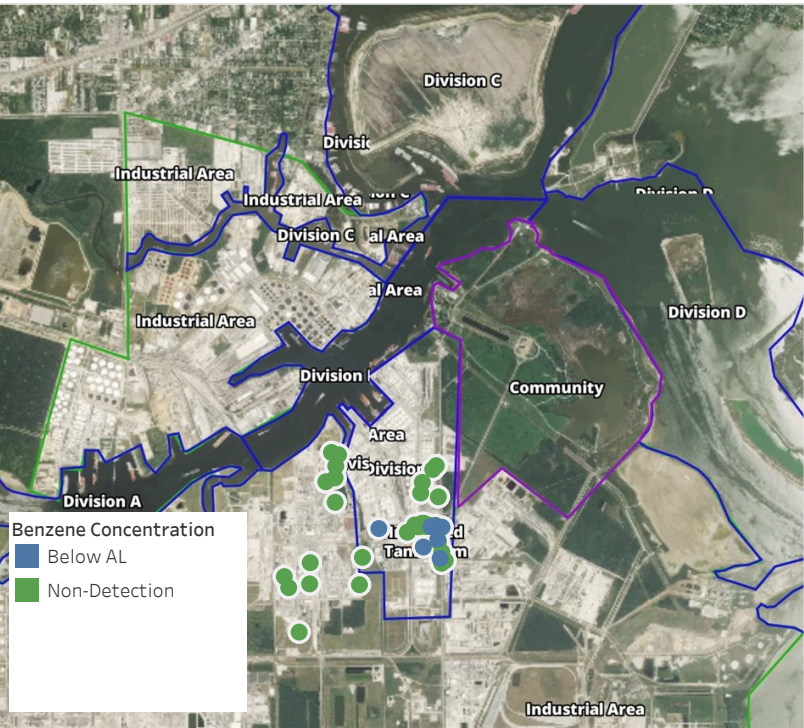
This data has been provided expeditiously to ITC and regulatory agencies for informational and/or operational purposes only. Data reported within this summary is preliminary in nature and has not undergone complete QA/QC (quality assurance/quality control) process. Until this complete QA/QC process is completed, the locations of each reading are approximate in nature and subject to further refinement. As some readings may represent non-breathing zone measurements, the data reported herein may not be suitable to assess potential occupational exposure. Site Assessment readings are not representative of an individual's breathing zone (e.g., container head space, ground level, directly above product, etc.).



Please Note: These updates display data from the 2nd 80's Fire site (Impacted Tank Farm), in the industrial areas surrounding the 2nd 80's Fire site (US Coast Guard Division E), within the Houston Ship Channel (US Coast Guard Divisions A-D), and in the industrial areas north and south of the Houston Ship Channel (Industrial Area). Real-time air monitoring data for the surrounding communities are communicated daily in a separate report.

Preliminary Hand- Held Air Monitoring Locations | ITC Deer Park Tank Fire

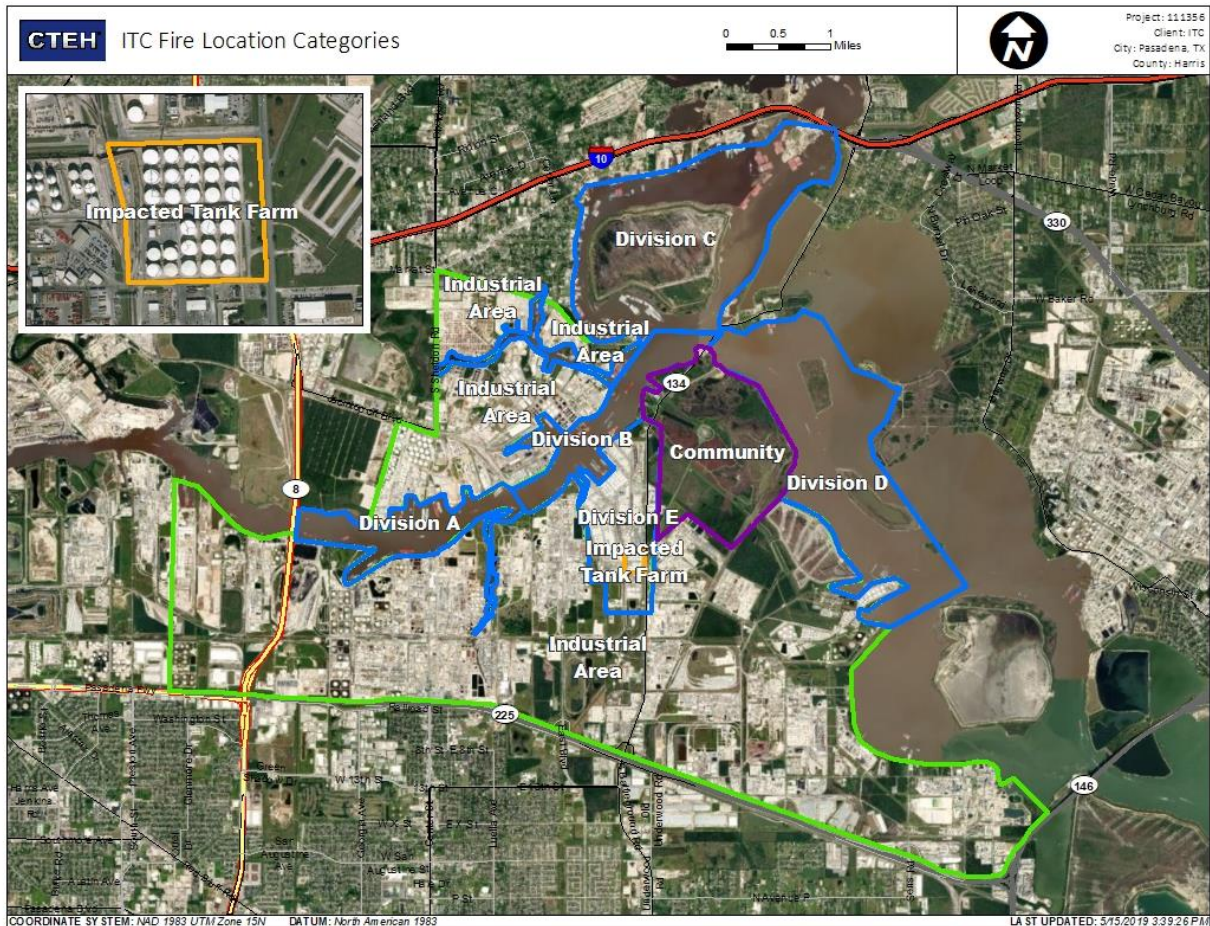
Reading Date
5/19/2019 7:00:00 AM to 5/19/2019 8:00:00 AM



Recent Benzene Detections

Location Category	Reading Date	Range of Detections
Division E	5/19/2019 07:01:32	0.02000 ppm
	5/19/2019 07:13:04	0.05000 ppm
	5/19/2019 07:28:24	0.05000 ppm
	5/19/2019 07:56:27	0.03000 ppm
Impacted Tank Farm	5/19/2019 07:03:39	0.02000 ppm
	5/19/2019 07:29:26	0.06000 ppm
	5/19/2019 07:56:41	0.07000 ppm

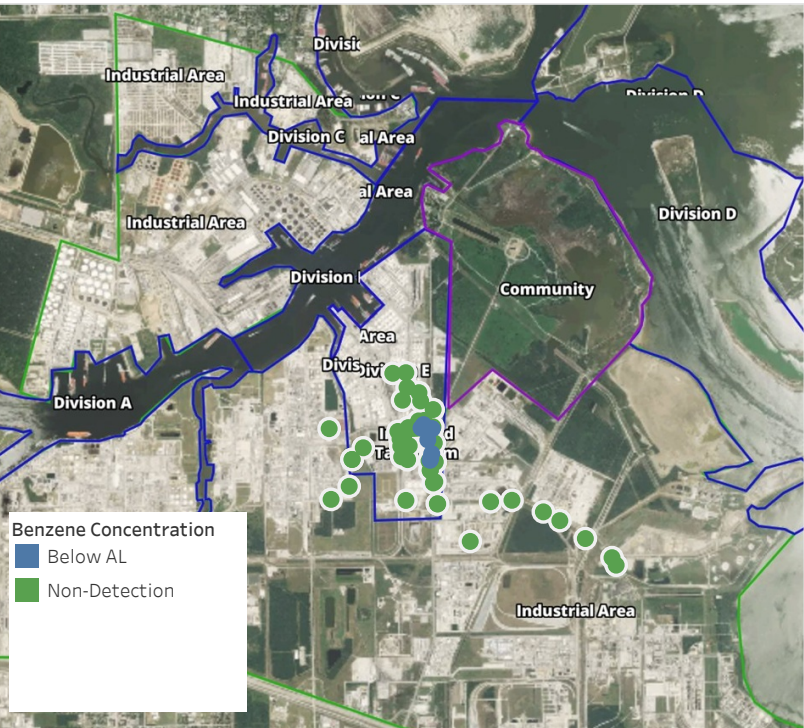
This data has been provided expeditiously to ITC and regulatory agencies for informational and/or operational purposes only. Data reported within this summary is preliminary in nature and has not undergone complete QA/QC (quality assurance/quality control) process. Until this complete QA/QC process is completed, the locations of each reading are approximate in nature and subject to further refinement. As some readings may represent non-breathing zone measurements, the data reported herein may not be suitable to assess potential occupational exposure. Site Assessment readings are not representative of an individual's breathing zone (e.g., container head space, ground level, directly above product, etc.).



Please Note: These updates display data from the 2nd 80's Fire site (Impacted Tank Farm), in the industrial areas surrounding the 2nd 80's Fire site (US Coast Guard Division E), within the Houston Ship Channel (US Coast Guard Divisions A-D), and in the industrial areas north and south of the Houston Ship Channel (Industrial Area). Real-time air monitoring data for the surrounding communities are communicated daily in a separate report.

Preliminary Hand- Held Air Monitoring Locations | ITC Deer Park Tank Fire

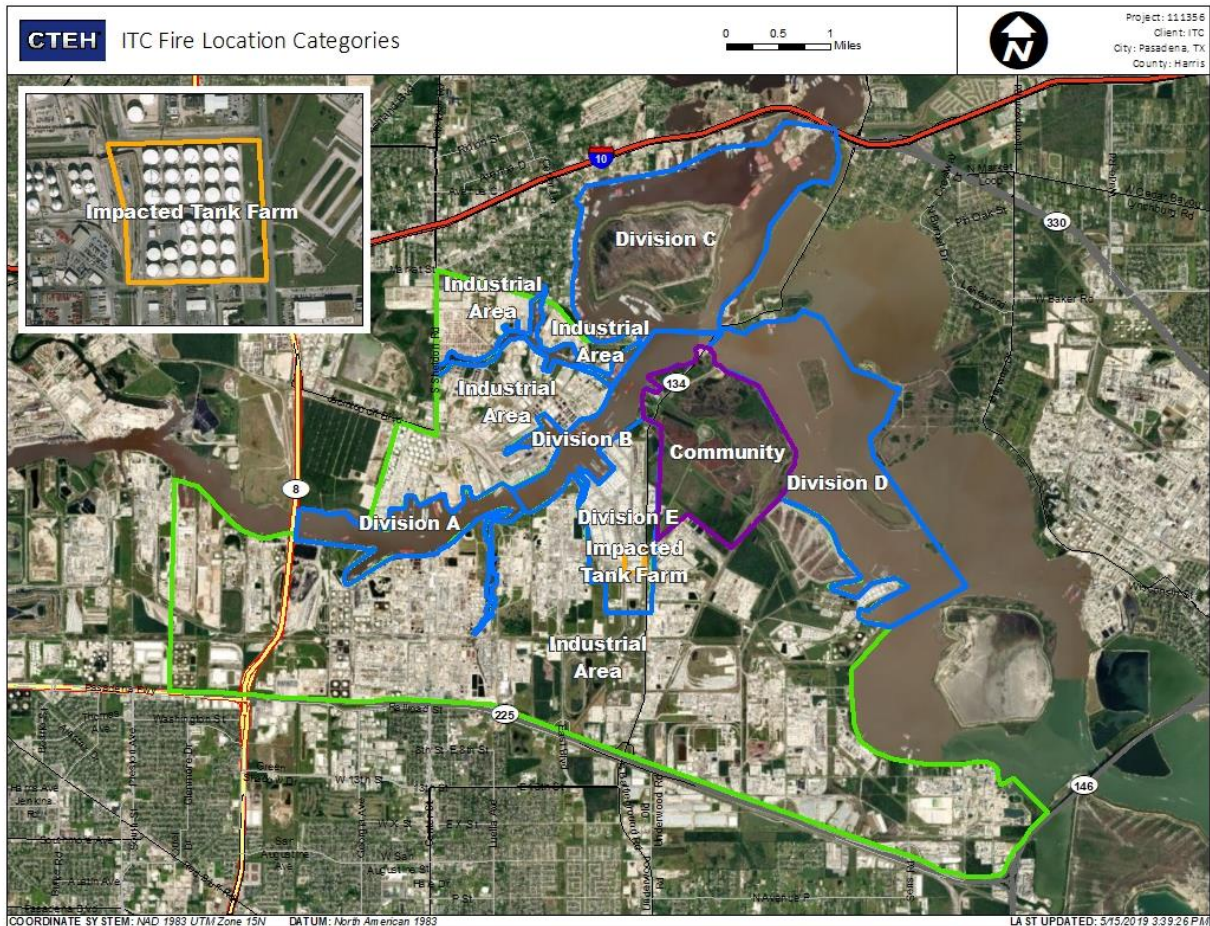
Reading Date
5/19/2019 8:00:00 AM to 5/19/2019 9:00:00 AM



Recent Benzene Detections

Location Category	Reading Date	Range of Detections
Division E	5/19/2019 08:08:02	0.04000 ppm
	5/19/2019 08:21:46	0.05000 ppm
	5/19/2019 08:27:33	0.05000 ppm
	5/19/2019 08:29:18	0.04000 ppm
	5/19/2019 08:57:40	0.05000 ppm
	5/19/2019 08:53:40	0.03000 ppm
Impacted Tank Farm	5/19/2019 08:14:15	0.04000 ppm
	5/19/2019 08:24:14	0.09000 ppm
	5/19/2019 08:37:51	0.06000 ppm
	5/19/2019 08:53:47	0.03000 ppm

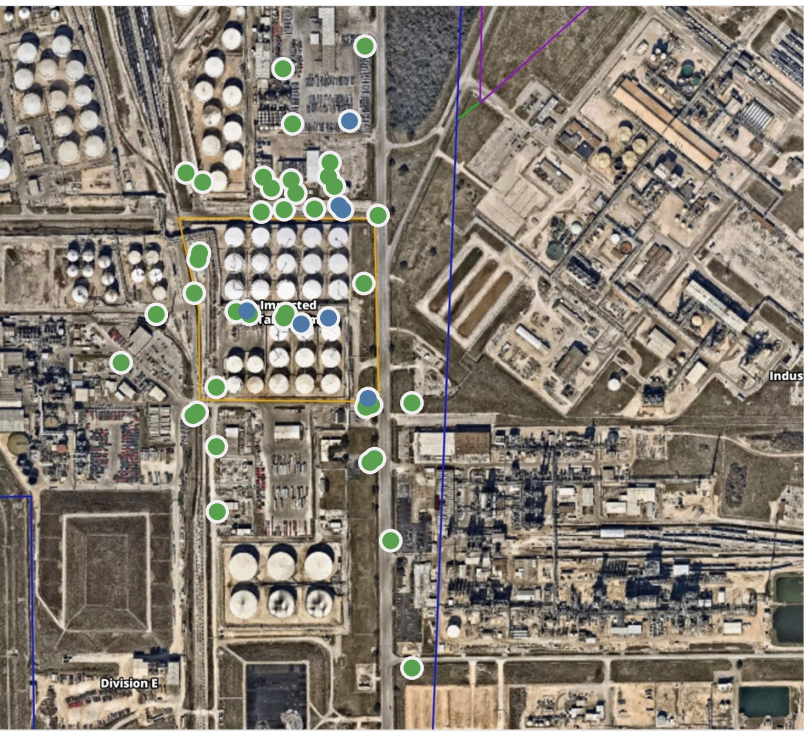
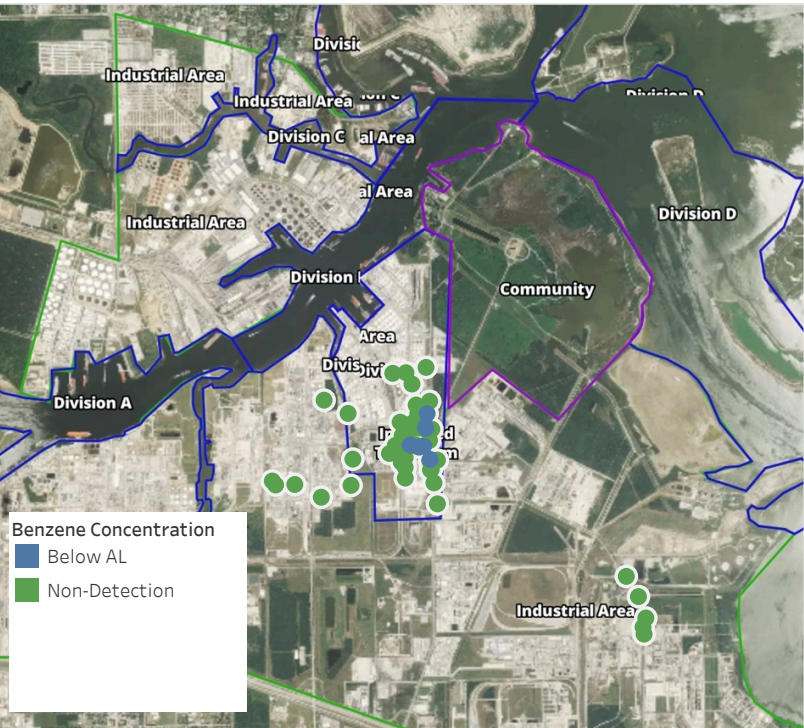
This data has been provided expeditiously to ITC and regulatory agencies for informational and/or operational purposes only. Data reported within this summary is preliminary in nature and has not undergone complete QA/QC (quality assurance/quality control) process. Until this complete QA/QC process is completed, the locations of each reading are approximate in nature and subject to further refinement. As some readings may represent non-breathing zone measurements, the data reported herein may not be suitable to assess potential occupational exposure. Site Assessment readings are not representative of an individual's breathing zone (e.g., container head space, ground level, directly above product, etc.).



Please Note: These updates display data from the 2nd 80's Fire site (Impacted Tank Farm), in the industrial areas surrounding the 2nd 80's Fire site (US Coast Guard Division E), within the Houston Ship Channel (US Coast Guard Divisions A-D), and in the industrial areas north and south of the Houston Ship Channel (Industrial Area). Real-time air monitoring data for the surrounding communities are communicated daily in a separate report.

Preliminary Hand- Held Air Monitoring Locations | ITC Deer Park Tank Fire

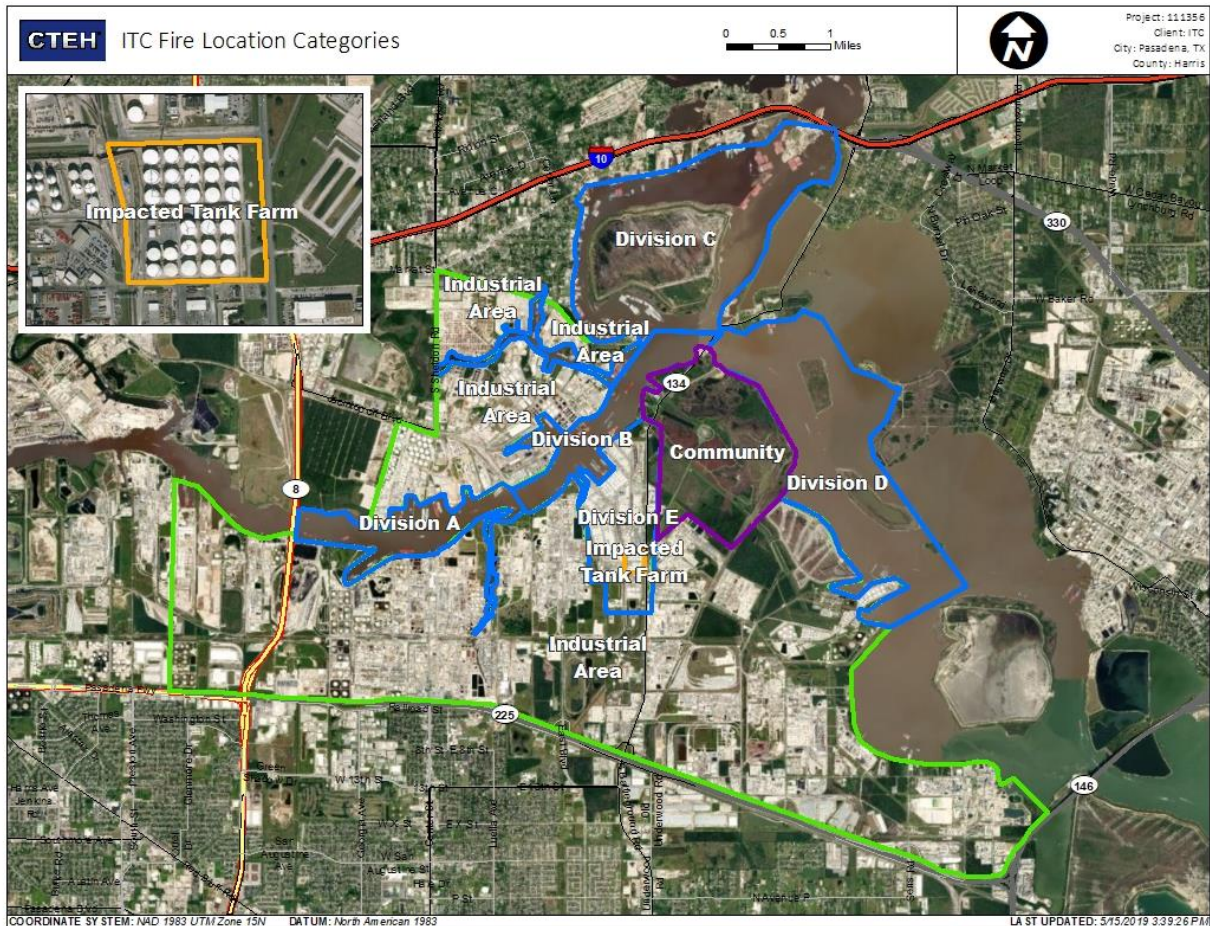
Reading Date
5/19/2019 9:00:00 AM to 5/19/2019 10:00:00 AM



Recent Benzene Detections

Location Category	Reading Date	Range of Detections
Division E	5/19/2019 09:08:01	0.04000 ppm
	5/19/2019 09:32:33	0.03000 ppm
	5/19/2019 09:57:45	0.04000 ppm
Impacted Tank Farm	5/19/2019 09:21:11	0.05000 ppm
	5/19/2019 09:15:16	0.03000 ppm
	5/19/2019 09:26:09	0.06000 ppm
	5/19/2019 09:48:04	0.02000 ppm

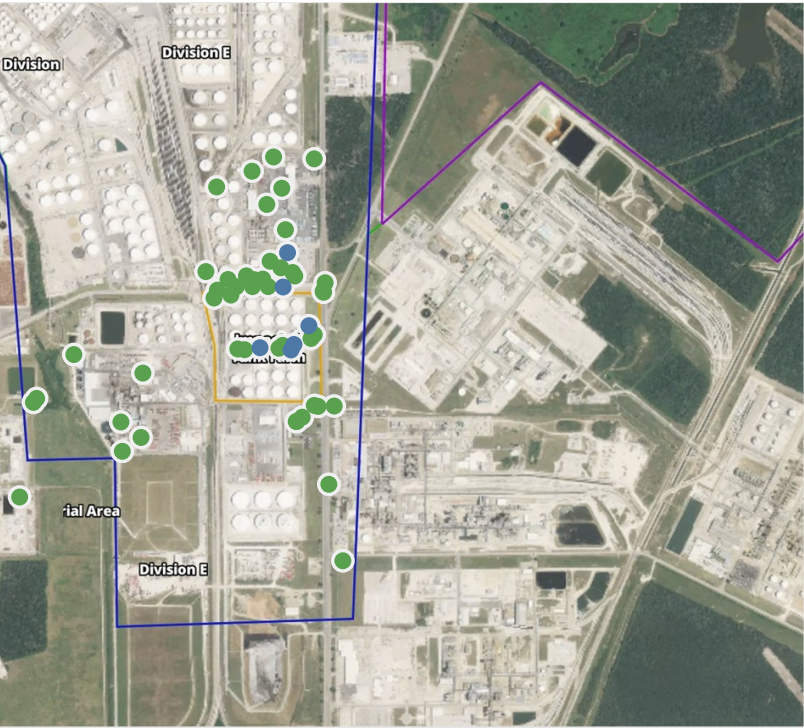
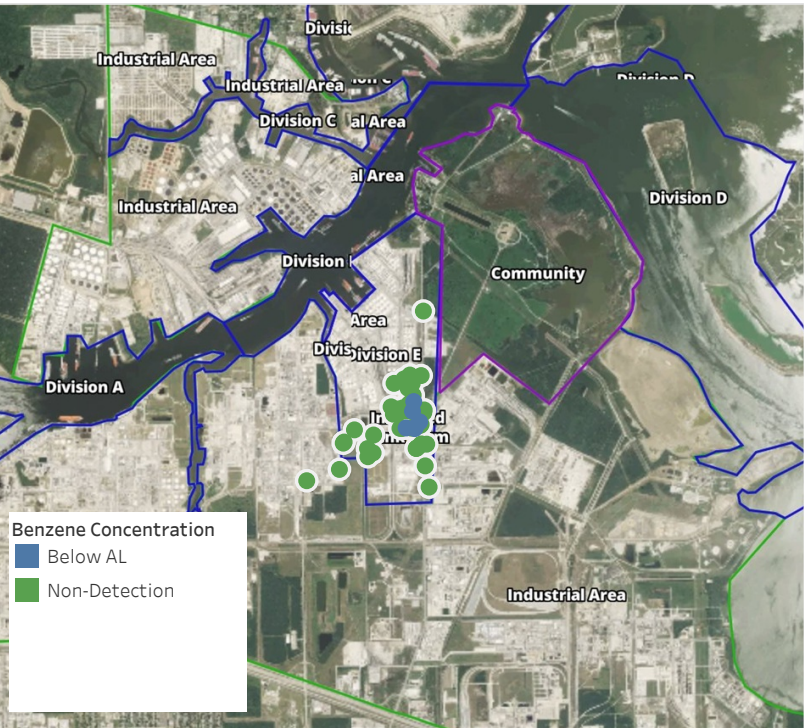
This data has been provided expeditiously to ITC and regulatory agencies for informational and/or operational purposes only. Data reported within this summary is preliminary in nature and has not undergone complete QA/QC (quality assurance/quality control) process. Until this complete QA/QC process is completed, the locations of each reading are approximate in nature and subject to further refinement. As some readings may represent non-breathing zone measurements, the data reported herein may not be suitable to assess potential occupational exposure. Site Assessment readings are not representative of an individual's breathing zone (e.g., container head space, ground level, directly above product, etc.).



Please Note: These updates display data from the 2nd 80's Fire site (Impacted Tank Farm), in the industrial areas surrounding the 2nd 80's Fire site (US Coast Guard Division E), within the Houston Ship Channel (US Coast Guard Divisions A-D), and in the industrial areas north and south of the Houston Ship Channel (Industrial Area). Real-time air monitoring data for the surrounding communities are communicated daily in a separate report.

Preliminary Hand- Held Air Monitoring Locations | ITC Deer Park Tank Fire

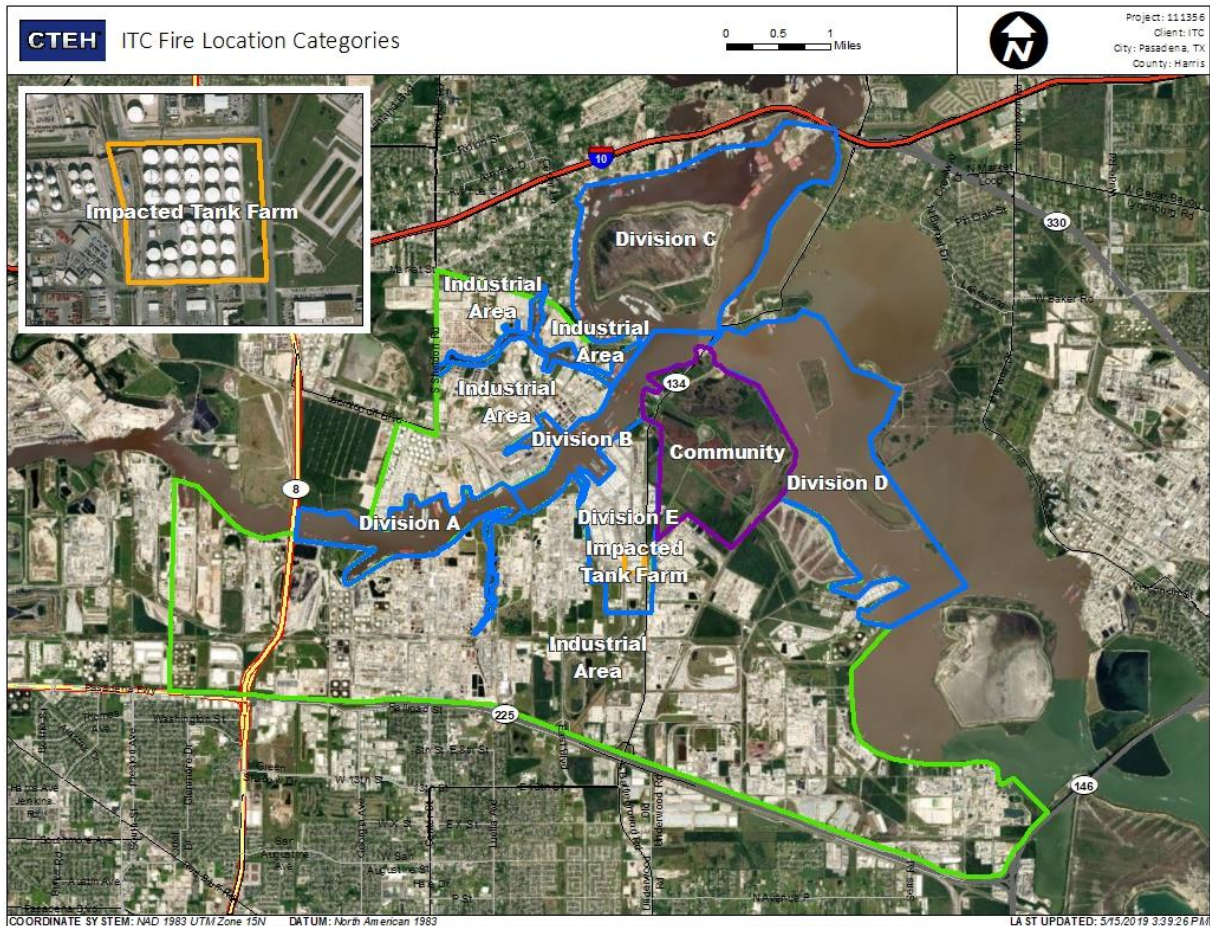
Reading Date
5/19/2019 10:00:00 AM to 5/19/2019 11:00:00 AM



Recent Benzene Detections

Location Category	Reading Date	Range of Detections
Division E	5/19/2019 10:00:12	0.0200 ppm
	5/19/2019 10:47:10	0.0300 ppm
Impacted Tank Farm	5/19/2019 10:08:05	0.0600 ppm
	5/19/2019 10:17:03	0.0600 ppm
	5/19/2019 10:57:11	0.1200 ppm
	5/19/2019 10:39:56	0.0100 ppm

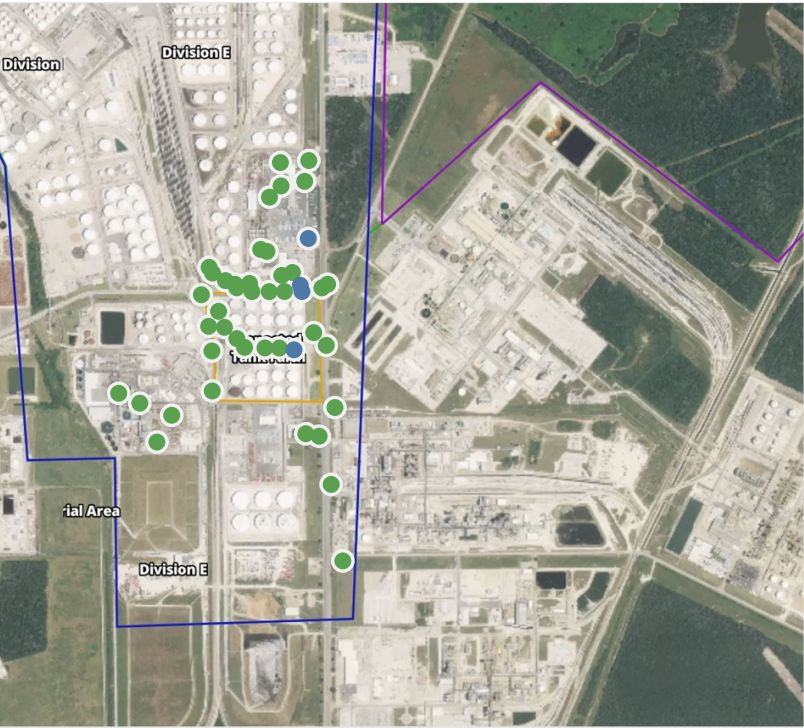
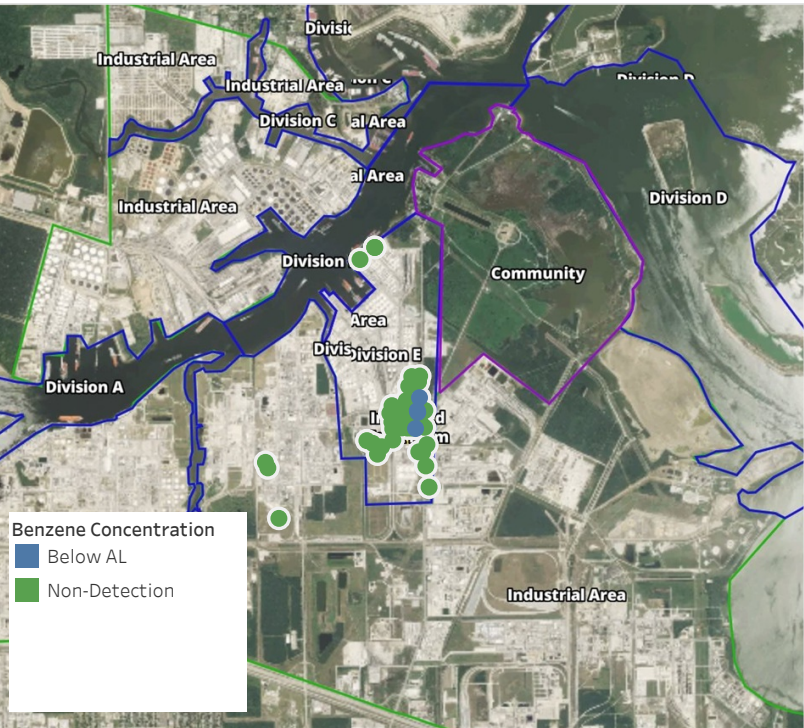
This data has been provided expeditiously to ITC and regulatory agencies for informational and/or operational purposes only. Data reported within this summary is preliminary in nature and has not undergone complete QA/QC (quality assurance/quality control) process. Until this complete QA/QC process is completed, the locations of each reading are approximate in nature and subject to further refinement. As some readings may represent non-breathing zone measurements, the data reported herein may not be suitable to assess potential occupational exposure. Site Assessment readings are not representative of an individual's breathing zone (e.g., container head space, ground level, directly above product, etc.).



Please Note: These updates display data from the 2nd 80's Fire site (Impacted Tank Farm), in the industrial areas surrounding the 2nd 80's Fire site (US Coast Guard Division E), within the Houston Ship Channel (US Coast Guard Divisions A-D), and in the industrial areas north and south of the Houston Ship Channel (Industrial Area). Real-time air monitoring data for the surrounding communities are communicated daily in a separate report.

Preliminary Hand- Held Air Monitoring Locations | ITC Deer Park Tank Fire

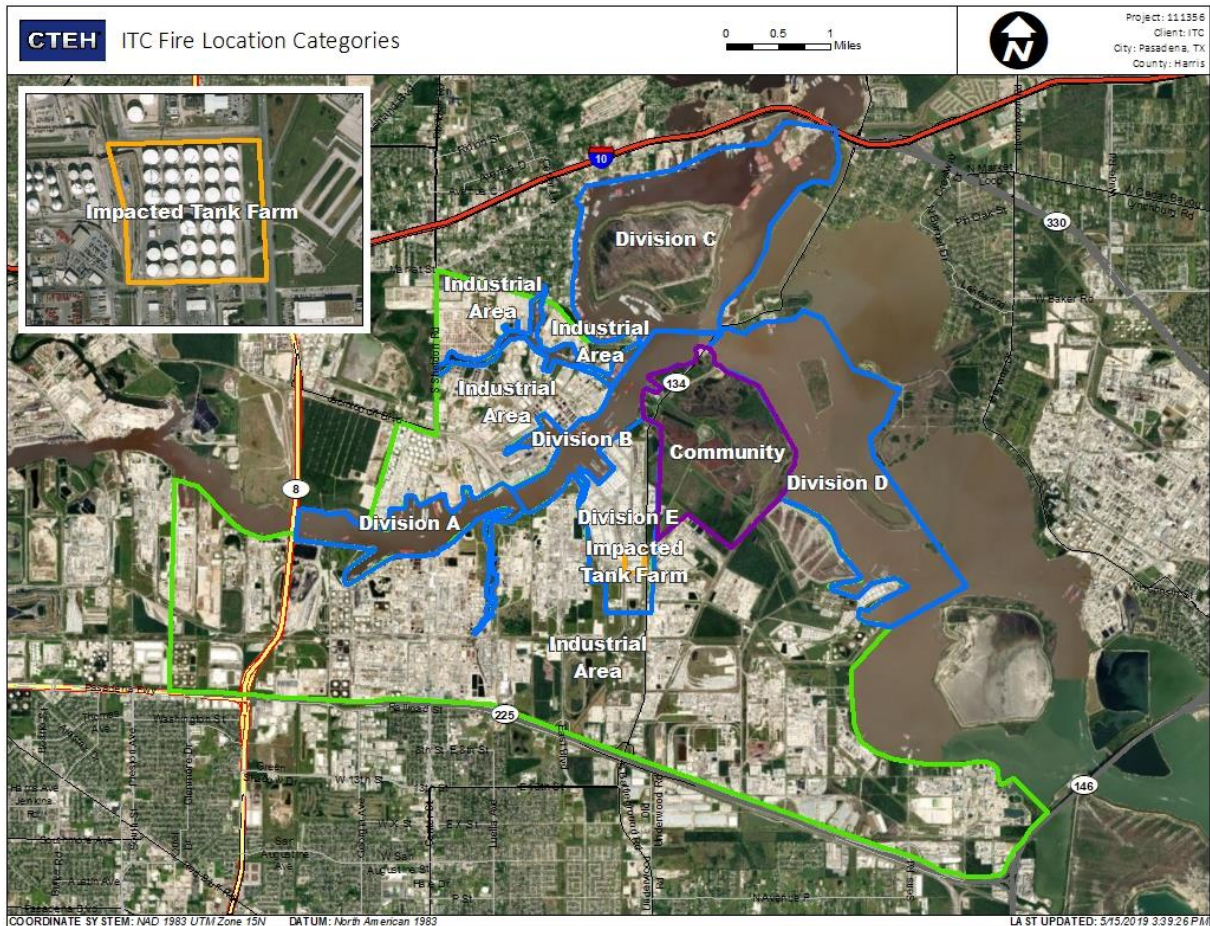
Reading Date
5/19/2019 11:00:00 AM to 5/19/2019 12:00:00 PM



Recent Benzene Detections

Location Category	Reading Date	Range of Detections
Division E	5/19/2019 11:07:55	0.04000 ppm
	5/19/2019 11:01:27	0.02000 ppm
	5/19/2019 11:58:44	0.03000 ppm
Impacted Tank Farm	5/19/2019 11:43:26	0.03000 ppm

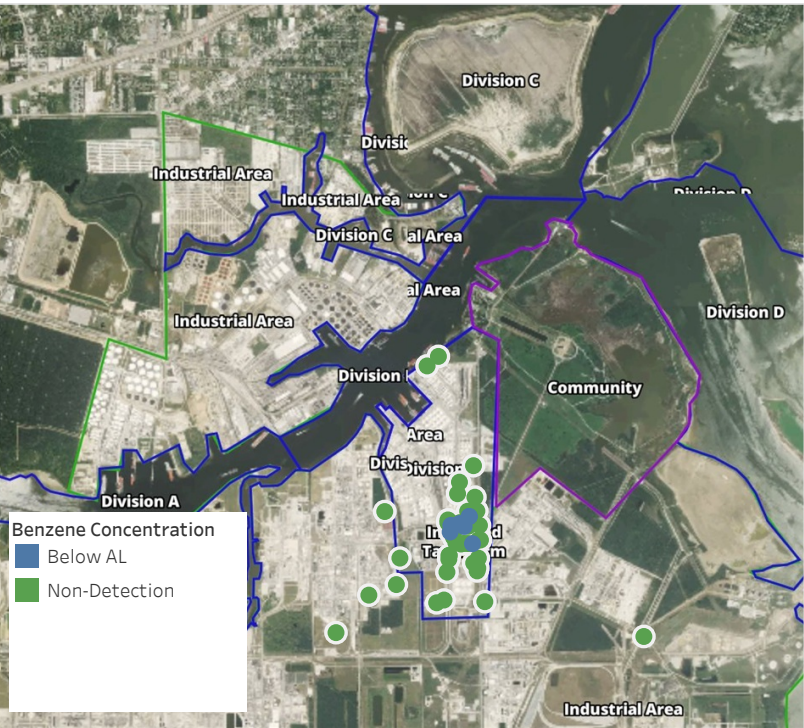
This data has been provided expeditiously to ITC and regulatory agencies for informational and/or operational purposes only. Data reported within this summary is preliminary in nature and has not undergone complete QA/QC (quality assurance/quality control) process. Until this complete QA/QC process is completed, the locations of each reading are approximate in nature and subject to further refinement. As some readings may represent non-breathing zone measurements, the data reported herein may not be suitable to assess potential occupational exposure. Site Assessment readings are not representative of an individual's breathing zone (e.g., container head space, ground level, directly above product, etc.).



Please Note: These updates display data from the 2nd 80's Fire site (Impacted Tank Farm), in the industrial areas surrounding the 2nd 80's Fire site (US Coast Guard Division E), within the Houston Ship Channel (US Coast Guard Divisions A-D), and in the industrial areas north and south of the Houston Ship Channel (Industrial Area). Real-time air monitoring data for the surrounding communities are communicated daily in a separate report.

Preliminary Hand- Held Air Monitoring Locations | ITC Deer Park Tank Fire

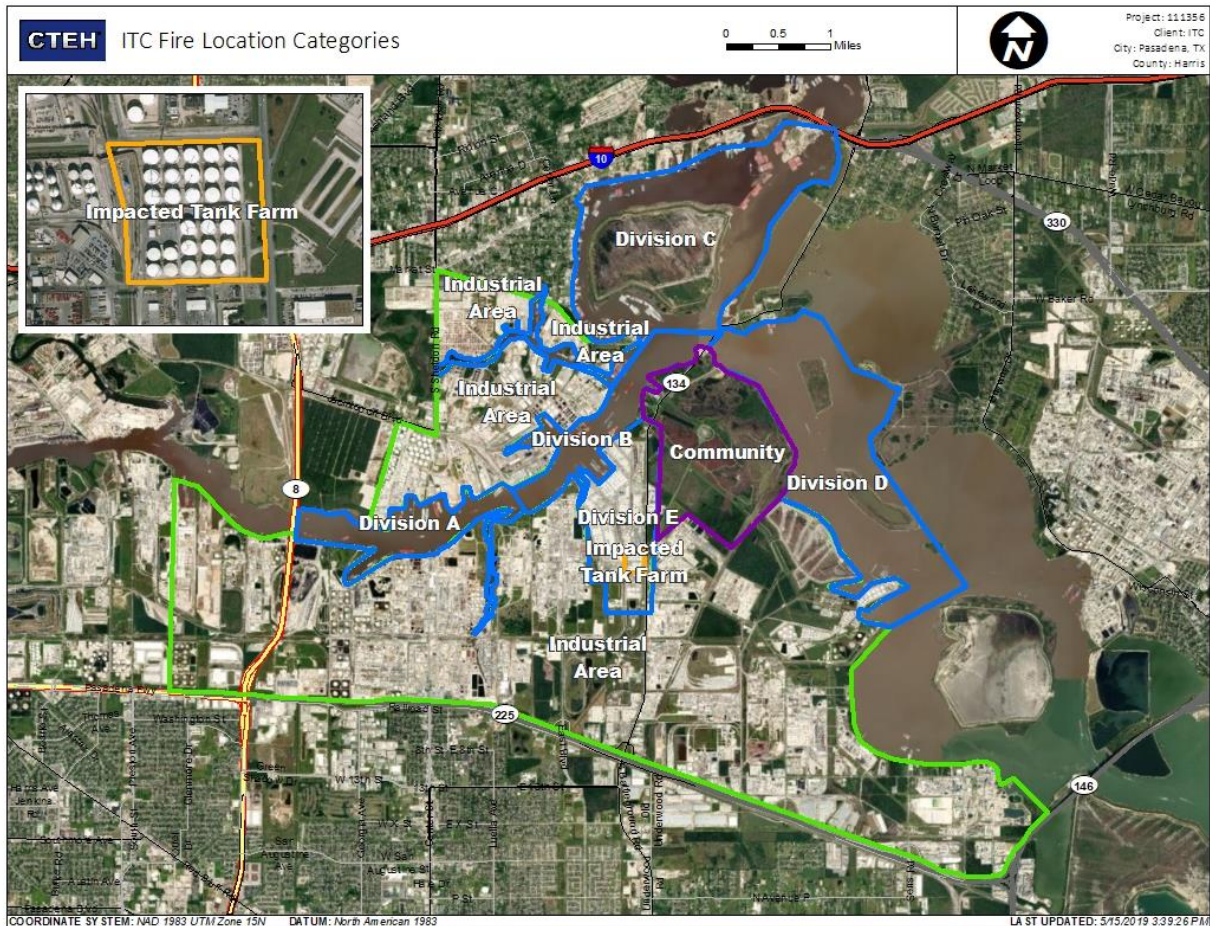
Reading Date
5/19/2019 12:00:00 PM to 5/19/2019 1:00:00 PM



Recent Benzene Detections

Location Category	Reading Date	Range of Detections
Division E	5/19/2019 12:03:56	0.03000 ppm
	5/19/2019 12:04:29	0.02000 ppm
	5/19/2019 12:16:00	0.02000 ppm
	5/19/2019 12:30:26	0.05000 ppm
	5/19/2019 12:57:04	0.02000 ppm
Impacted Tank Farm	5/19/2019 12:31:50	0.11000 ppm
	5/19/2019 12:42:11	0.08000 ppm

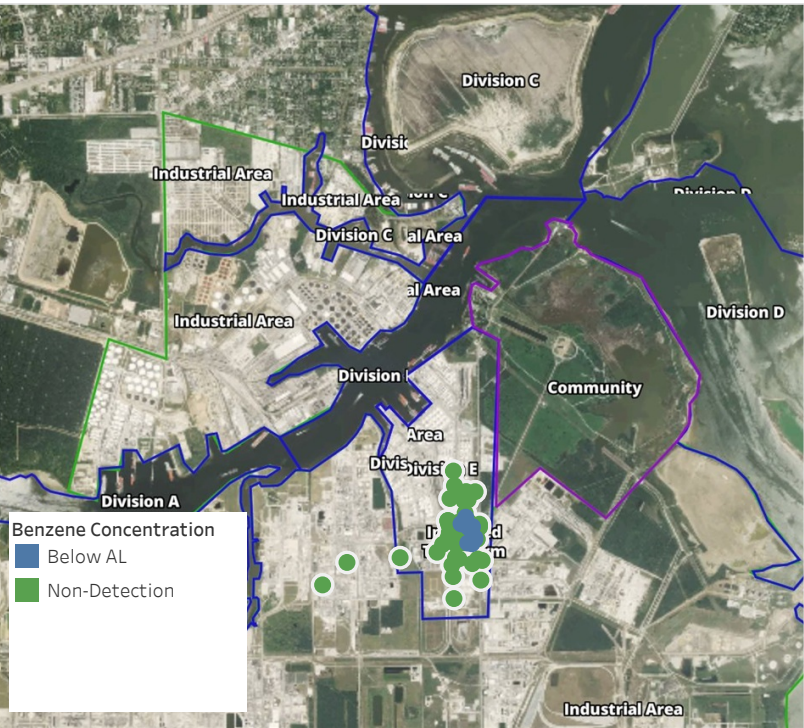
This data has been provided expeditiously to ITC and regulatory agencies for informational and/or operational purposes only. Data reported within this summary is preliminary in nature and has not undergone complete QA/QC (quality assurance/quality control) process. Until this complete QA/QC process is completed, the locations of each reading are approximate in nature and subject to further refinement. As some readings may represent non-breathing zone measurements, the data reported herein may not be suitable to assess potential occupational exposure. Site Assessment readings are not representative of an individual's breathing zone (e.g., container head space, ground level, directly above product, etc.).



Please Note: These updates display data from the 2nd 80's Fire site (Impacted Tank Farm), in the industrial areas surrounding the 2nd 80's Fire site (US Coast Guard Division E), within the Houston Ship Channel (US Coast Guard Divisions A-D), and in the industrial areas north and south of the Houston Ship Channel (Industrial Area). Real-time air monitoring data for the surrounding communities are communicated daily in a separate report.

Preliminary Hand- Held Air Monitoring Locations | ITC Deer Park Tank Fire

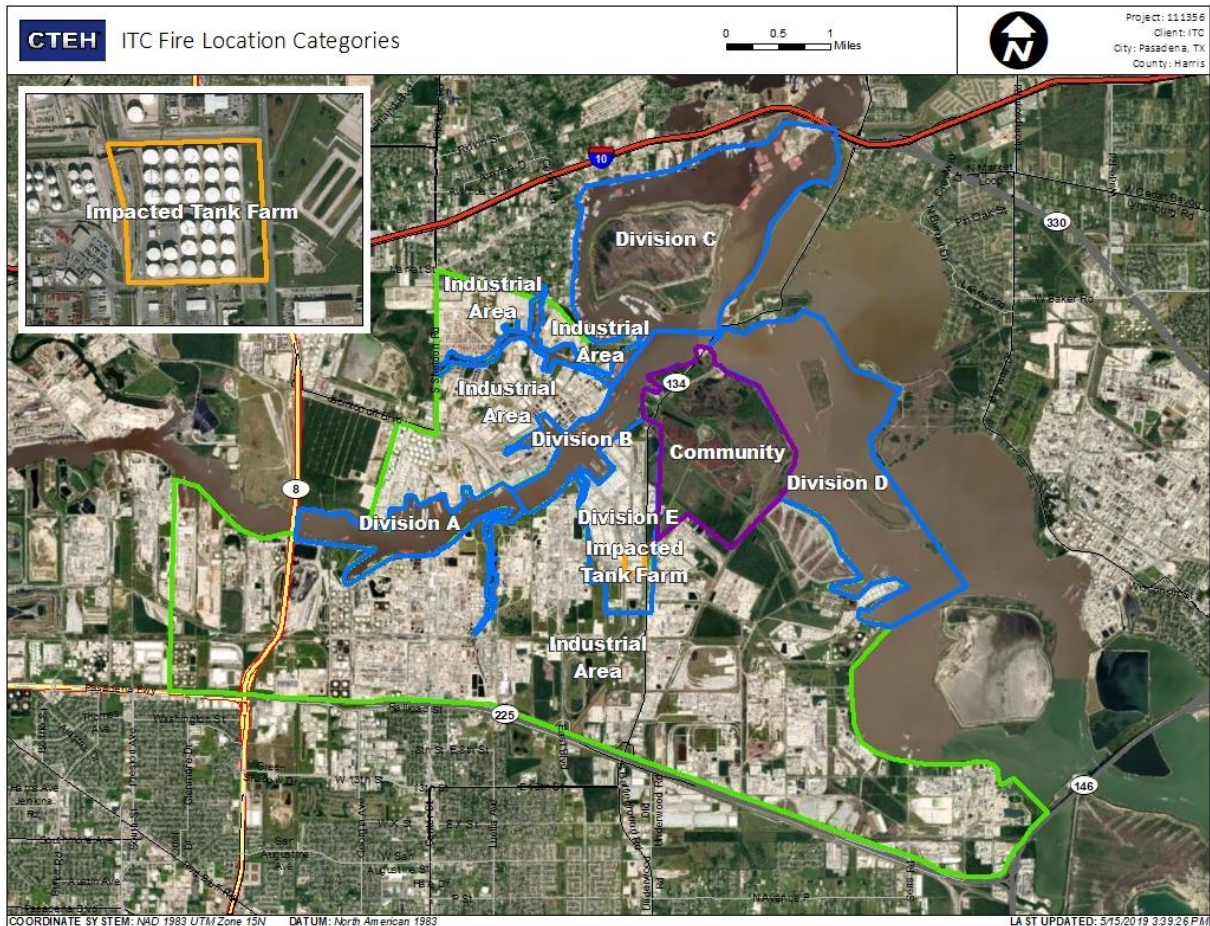
Reading Date
5/19/2019 1:00:00 PM to 5/19/2019 2:00:00 PM



Recent Benzene Detections

Location Category	Reading Date	Range of Detections
Division E	5/19/2019 13:02:19	0.0300 ppm
	5/19/2019 13:04:47	0.0300 ppm
	5/19/2019 13:07:23	0.0300 ppm
	5/19/2019 13:34:00	0.0300 ppm
	5/19/2019 13:56:50	0.1400 ppm
Impacted Tank Farm	5/19/2019 13:18:34	0.0300 ppm
	5/19/2019 13:29:29	0.1600 ppm
	5/19/2019 13:39:42	0.0400 ppm
	5/19/2019 13:55:35	0.0200 ppm

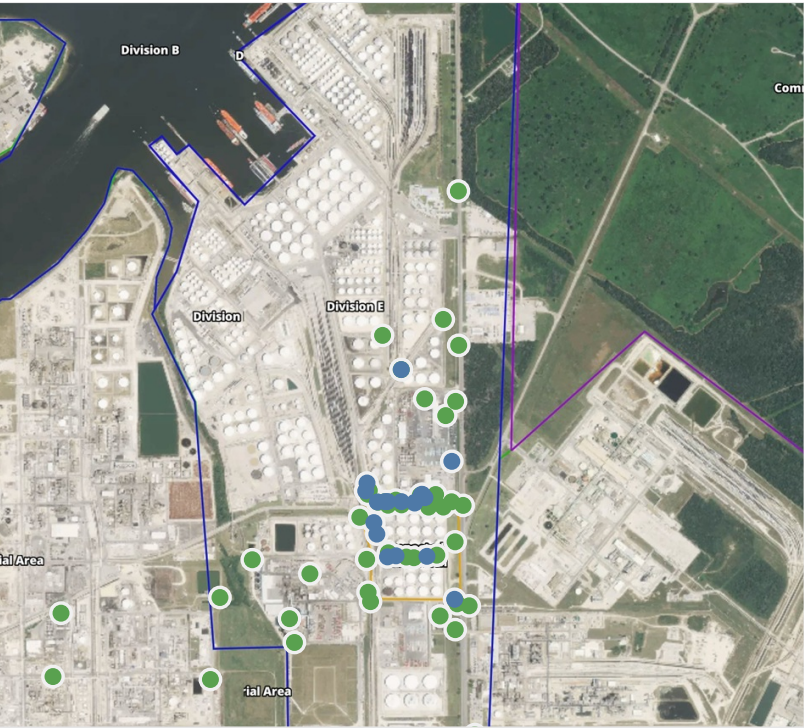
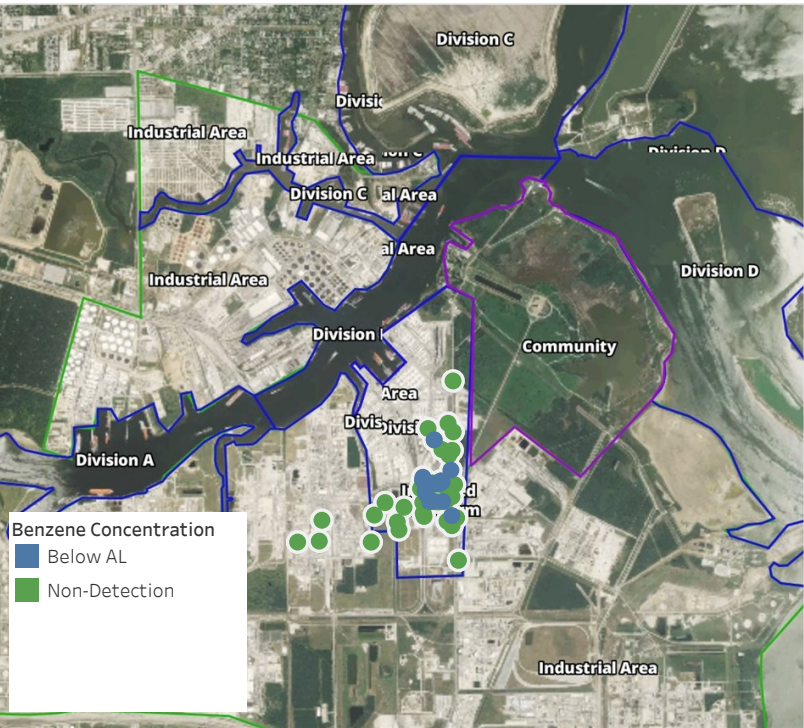
This data has been provided expeditiously to ITC and regulatory agencies for informational and/or operational purposes only. Data reported within this summary is preliminary in nature and has not undergone complete QA/QC (quality assurance/quality control) process. Until this complete QA/QC process is completed, the locations of each reading are approximate in nature and subject to further refinement. As some readings may represent non-breathing zone measurements, the data reported herein may not be suitable to assess potential occupational exposure. Site Assessment readings are not representative of an individual's breathing zone (e.g., container head space, ground level, directly above product, etc.).



Please Note: These updates display data from the 2nd 80's Fire site (Impacted Tank Farm), in the industrial areas surrounding the 2nd 80's Fire site (US Coast Guard Division E), within the Houston Ship Channel (US Coast Guard Divisions A-D), and in the industrial areas north and south of the Houston Ship Channel (Industrial Area). Real-time air monitoring data for the surrounding communities are communicated daily in a separate report.

Preliminary Hand- Held Air Monitoring Locations | ITC Deer Park Tank Fire

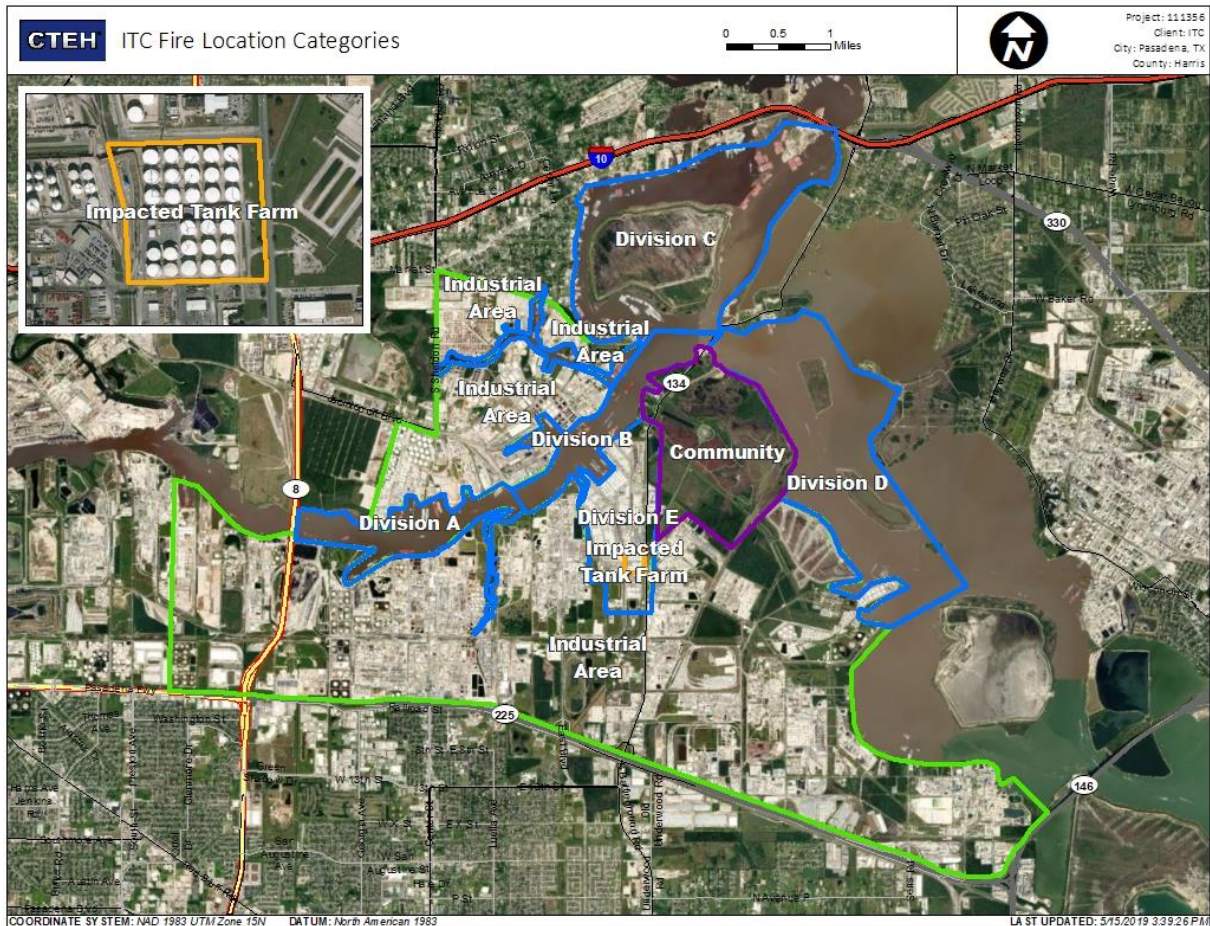
Reading Date
5/19/2019 2:00:00 PM to 5/19/2019 3:00:00 PM



Recent Benzene Detections

Location Category	Reading Date	Range of Detections
Division E	5/19/2019 14:00:57	0.0400 ppm
	5/19/2019 14:01:55	0.0300 ppm
	5/19/2019 14:00:32	0.1300 ppm
	5/19/2019 14:24:45	0.0500 ppm
	5/19/2019 14:17:29	0.1000 ppm
	5/19/2019 14:30:05	0.0200 ppm
	5/19/2019 14:32:14	0.0300 ppm
	5/19/2019 14:33:58	0.1100 ppm
	5/19/2019 14:03:12	0.0200 ppm
	5/19/2019 14:30:47	0.0200 ppm
	5/19/2019 14:41:04	0.0600 ppm
	5/19/2019 14:51:15	0.0300 ppm
	5/19/2019 14:45:39	0.0300 ppm
	5/19/2019 14:48:09	0.0400 ppm
Impacted Tank Farm	5/19/2019 14:10:30	0.1000 ppm
	5/19/2019 14:31:04	0.0300 ppm
	5/19/2019 14:39:12	0.0500 ppm
	5/19/2019 14:53:08	0.0600 ppm
	5/19/2019 14:57:19	0.0500 ppm
	5/19/2019 14:51:22	0.0500 ppm

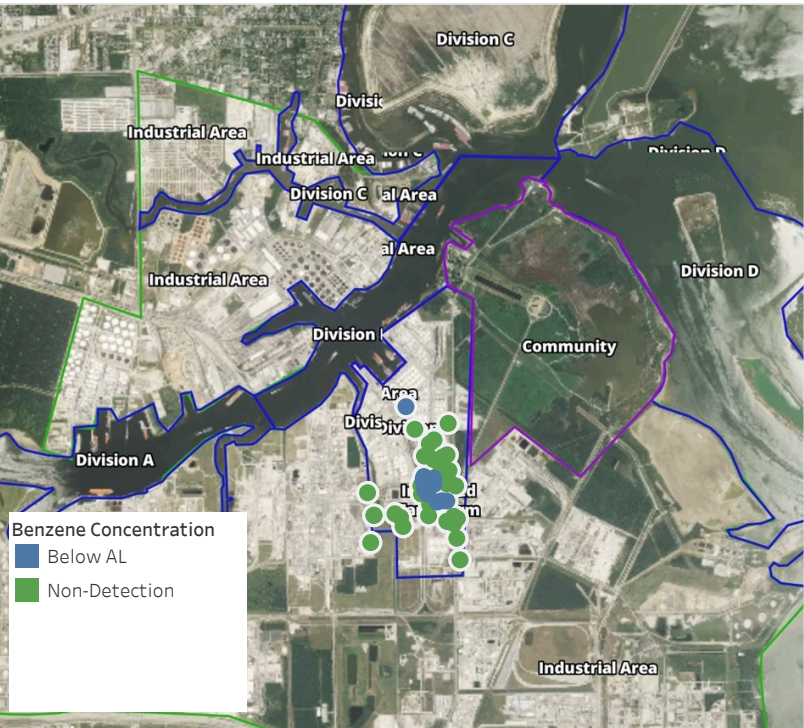
This data has been provided expeditiously to ITC and regulatory agencies for informational and/or operational purposes only. Data reported within this summary is preliminary in nature and has not undergone complete QA/QC (quality assurance/quality control) process. Until this complete QA/QC process is completed, the locations of each reading are approximate in nature and subject to further refinement. As some readings may represent non-breathing zone measurements, the data reported herein may not be suitable to assess potential occupational exposure. Site Assessment readings are not representative of an individual's breathing zone (e.g., container head space, ground level, directly above product, etc.).



Please Note: These updates display data from the 2nd 80's Fire site (Impacted Tank Farm), in the industrial areas surrounding the 2nd 80's Fire site (US Coast Guard Division E), within the Houston Ship Channel (US Coast Guard Divisions A-D), and in the industrial areas north and south of the Houston Ship Channel (Industrial Area). Real-time air monitoring data for the surrounding communities are communicated daily in a separate report.

Preliminary Hand- Held Air Monitoring Locations | ITC Deer Park Tank Fire

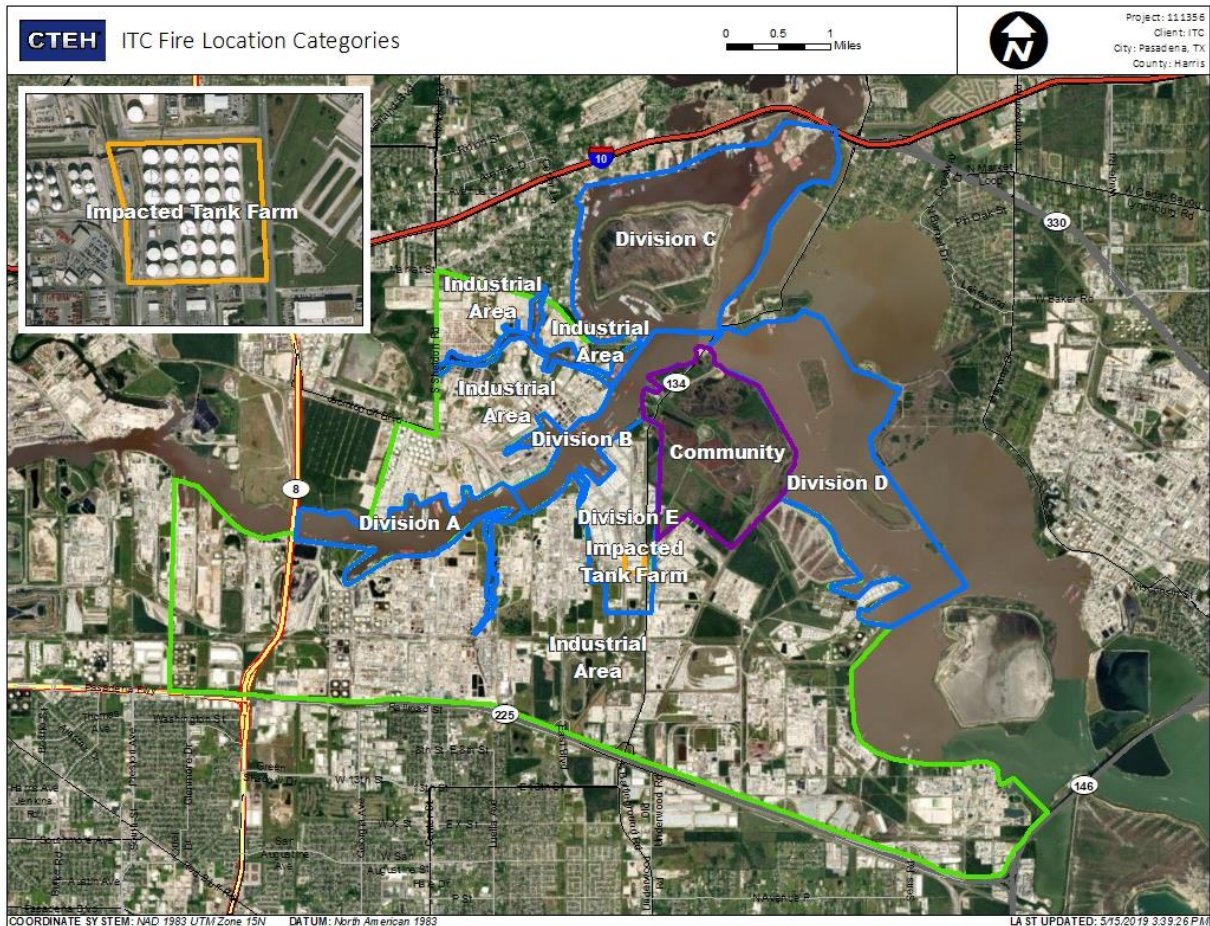
Reading Date
5/19/2019 3:00:00 PM to 5/19/2019 4:00:00 PM



Recent Benzene Detections

Location Category	Reading Date	Range of Detections
Division E	5/19/2019 15:01:54	0.1400 ppm
	5/19/2019 15:18:24	0.0400 ppm
	5/19/2019 15:20:38	0.0600 ppm
	5/19/2019 15:25:32	0.1200 ppm
	5/19/2019 15:22:50	0.0600 ppm
	5/19/2019 15:27:50	0.0300 ppm
	5/19/2019 15:46:52	0.0300 ppm
	5/19/2019 15:58:36	0.0300 ppm
	5/19/2019 15:55:06	0.0200 ppm
	5/19/2019 15:55:59	0.0300 ppm
	5/19/2019 15:51:55	0.0200 ppm
	5/19/2019 15:34:35	0.0400 ppm
	5/19/2019 15:53:23	0.0300 ppm
Impacted Tank Farm	5/19/2019 15:09:59	0.0300 ppm
	5/19/2019 15:03:14	0.0500 ppm
	5/19/2019 15:15:54	0.0300 ppm
	5/19/2019 15:48:39	0.0300 ppm
	5/19/2019 15:57:13	0.0200 ppm

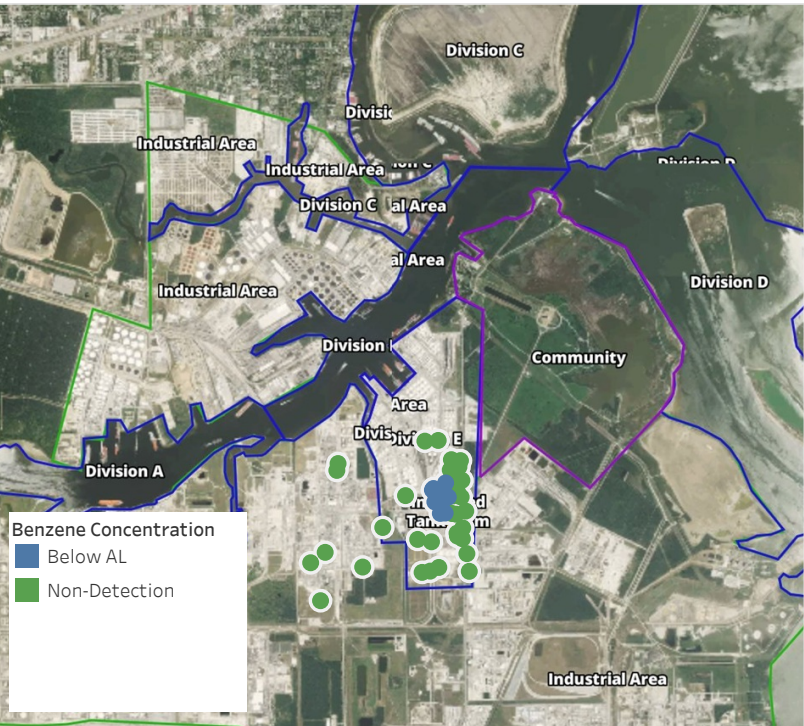
This data has been provided expeditiously to ITC and regulatory agencies for informational and/or operational purposes only. Data reported within this summary is preliminary in nature and has not undergone complete QA/QC (quality assurance/quality control) process. Until this complete QA/QC process is completed, the locations of each reading are approximate in nature and subject to further refinement. As some readings may represent non-breathing zone measurements, the data reported herein may not be suitable to assess potential occupational exposure. Site Assessment readings are not representative of an individual's breathing zone (e.g., container head space, ground level, directly above product, etc.).



Please Note: These updates display data from the 2nd 80's Fire site (Impacted Tank Farm), in the industrial areas surrounding the 2nd 80's Fire site (US Coast Guard Division E), within the Houston Ship Channel (US Coast Guard Divisions A-D), and in the industrial areas north and south of the Houston Ship Channel (Industrial Area). Real-time air monitoring data for the surrounding communities are communicated daily in a separate report.

Preliminary Hand- Held Air Monitoring Locations | ITC Deer Park Tank Fire

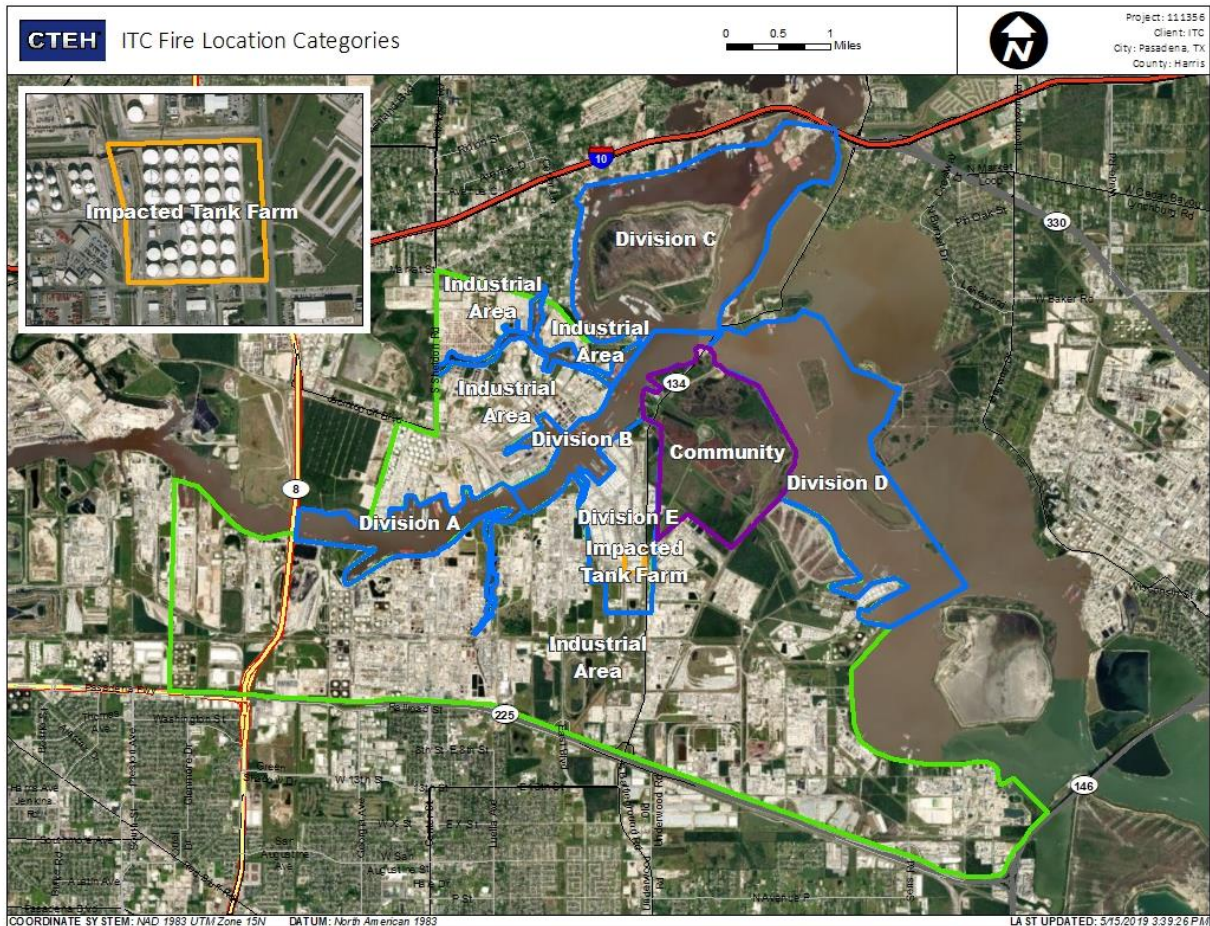
Reading Date
5/19/2019 4:00:00 PM to 5/19/2019 5:00:00 PM



Recent Benzene Detections

Location Category	Reading Date	Range of Detections
Division E	5/19/2019 16:01:22	0.03000 ppm
	5/19/2019 16:04:23	0.03000 ppm
	5/19/2019 16:05:32	0.02000 ppm
	5/19/2019 16:06:10	0.04000 ppm
	5/19/2019 16:08:27	0.05000 ppm
	5/19/2019 16:11:53	0.04000 ppm
	5/19/2019 16:57:50	0.02000 ppm
	5/19/2019 16:59:56	0.03000 ppm
	5/19/2019 16:58:12	0.02000 ppm
	5/19/2019 16:59:54	0.03000 ppm
	5/19/2019 16:41:17	0.02000 ppm
	5/19/2019 16:52:19	0.03000 ppm
Impacted Tank Farm	5/19/2019 16:53:54	0.02000 ppm
	5/19/2019 16:17:35	0.03000 ppm
	5/19/2019 16:47:18	0.03000 ppm
	5/19/2019 16:53:45	0.07000 ppm

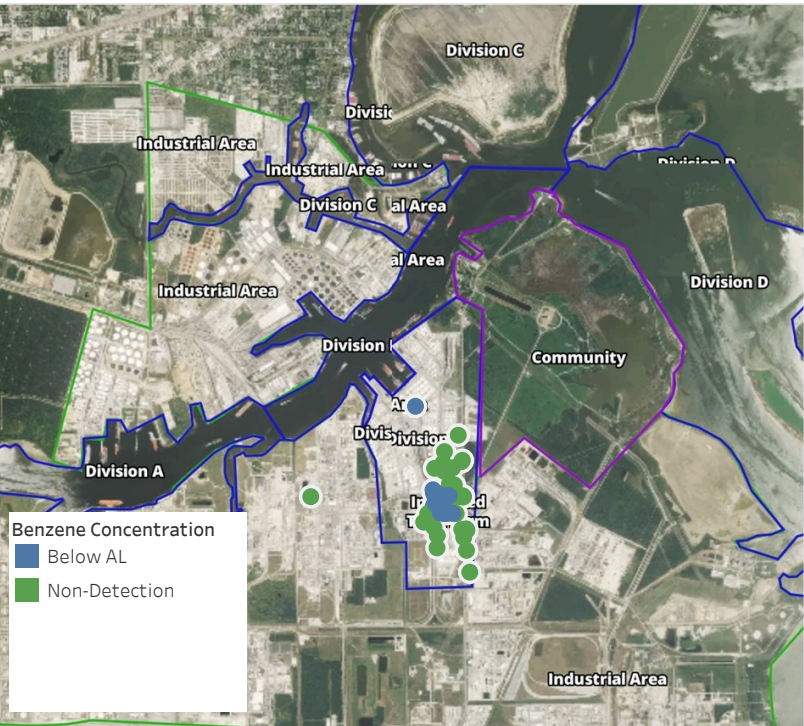
This data has been provided expeditiously to ITC and regulatory agencies for informational and/or operational purposes only. Data reported within this summary is preliminary in nature and has not undergone complete QA/QC (quality assurance/quality control) process. Until this complete QA/QC process is completed, the locations of each reading are approximate in nature and subject to further refinement. As some readings may represent non-breathing zone measurements, the data reported herein may not be suitable to assess potential occupational exposure. Site Assessment readings are not representative of an individual's breathing zone (e.g., container head space, ground level, directly above product, etc.).



Please Note: These updates display data from the 2nd 80's Fire site (Impacted Tank Farm), in the industrial areas surrounding the 2nd 80's Fire site (US Coast Guard Division E), within the Houston Ship Channel (US Coast Guard Divisions A-D), and in the industrial areas north and south of the Houston Ship Channel (Industrial Area). Real-time air monitoring data for the surrounding communities are communicated daily in a separate report.

Preliminary Hand- Held Air Monitoring Locations | ITC Deer Park Tank Fire

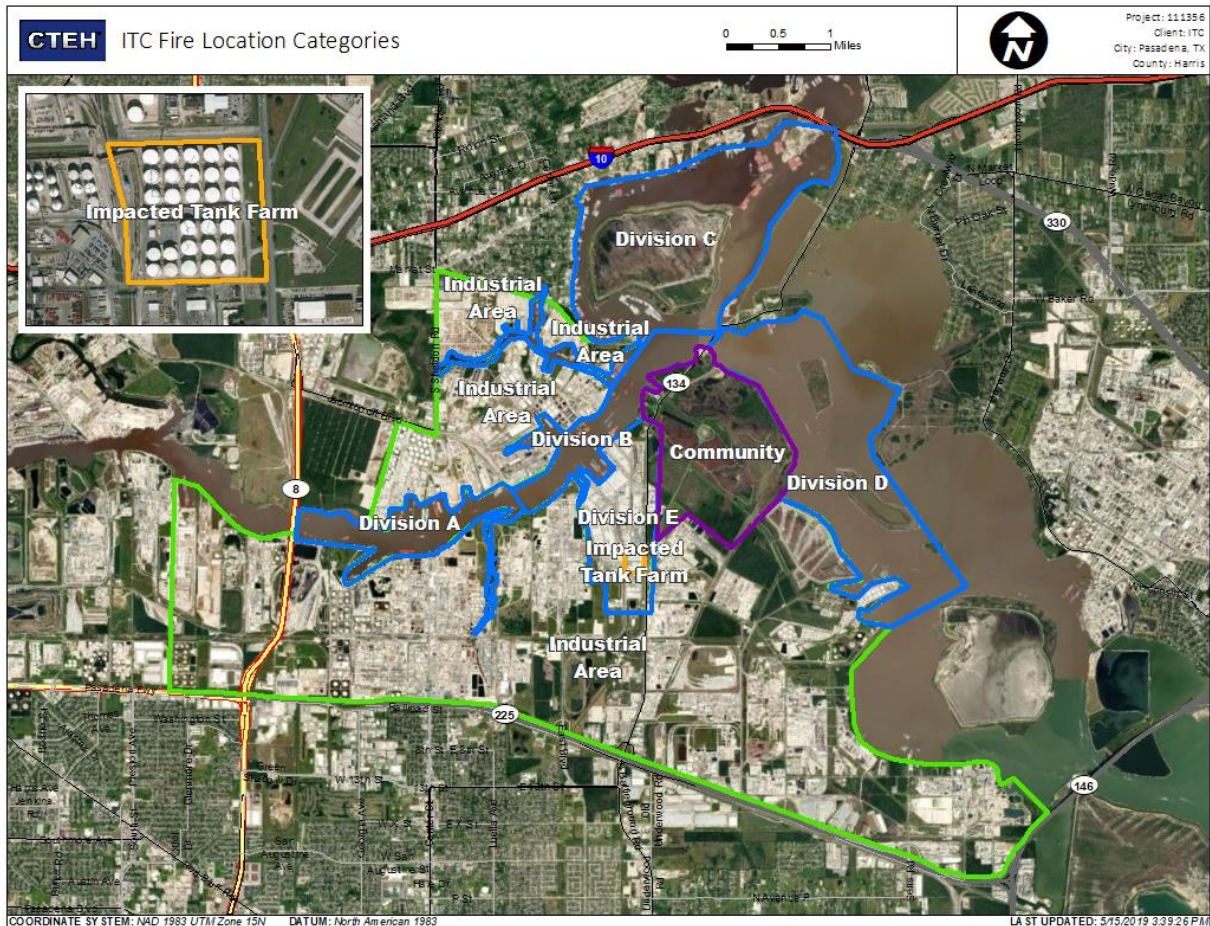
Reading Date
5/19/2019 5:00:00 PM to 5/19/2019 6:00:00 PM



Recent Benzene Detections

Location Category	Reading Date	Range of Detections
Division E	5/19/2019 17:01:43	0.05000 ppm
	5/19/2019 17:10:17	0.02000 ppm
	5/19/2019 17:18:20	0.03000 ppm
	5/19/2019 17:22:41	0.04000 ppm
	5/19/2019 17:20:09	0.03000 ppm
	5/19/2019 17:21:50	0.03000 ppm
	5/19/2019 17:25:49	0.02000 ppm
	5/19/2019 17:42:25	0.08000 ppm
	5/19/2019 17:56:56	0.02000 ppm
Impacted Tank Farm	5/19/2019 17:59:09	0.03000 ppm
	5/19/2019 17:06:56	0.05000 ppm
	5/19/2019 17:04:01	0.09000 ppm
	5/19/2019 17:22:56	0.03000 ppm
	5/19/2019 17:30:50	0.07000 ppm
	5/19/2019 17:25:51	0.04000 ppm
	5/19/2019 17:35:55	0.08000 ppm
	5/19/2019 17:46:14	0.07000 ppm

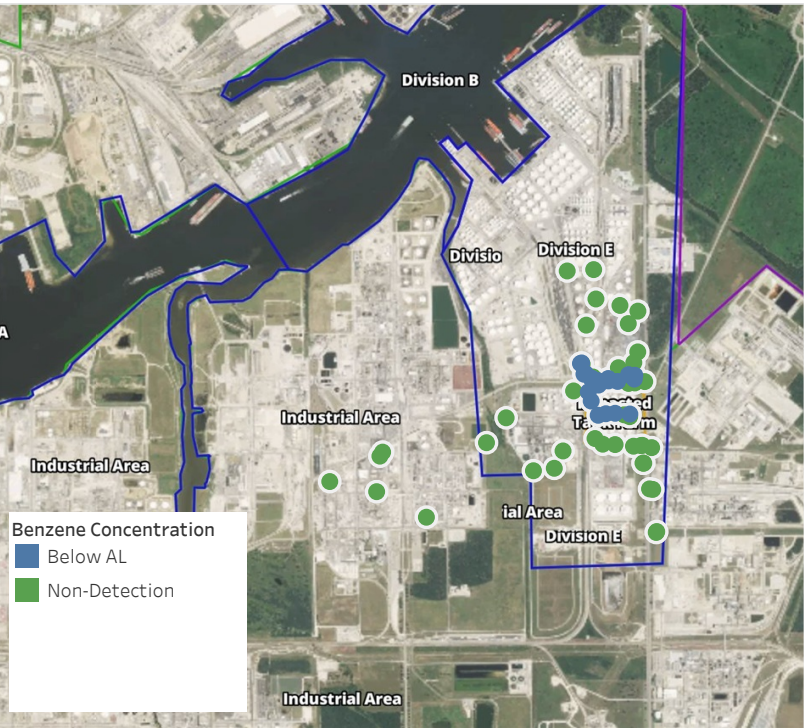
This data has been provided expeditiously to ITC and regulatory agencies for informational and/or operational purposes only. Data reported within this summary is preliminary in nature and has not undergone complete QA/QC (quality assurance/quality control) process. Until this complete QA/QC process is completed, the locations of each reading are approximate in nature and subject to further refinement. As some readings may represent non-breathing zone measurements, the data reported herein may not be suitable to assess potential occupational exposure. Site Assessment readings are not representative of an individual's breathing zone (e.g., container head space, ground level, directly above product, etc.).



Please Note: These updates display data from the 2nd 80's Fire site (Impacted Tank Farm), in the industrial areas surrounding the 2nd 80's Fire site (US Coast Guard Division E), within the Houston Ship Channel (US Coast Guard Divisions A-D), and in the industrial areas north and south of the Houston Ship Channel (Industrial Area). Real-time air monitoring data for the surrounding communities are communicated daily in a separate report.

Preliminary Hand- Held Air Monitoring Locations | ITC Deer Park Tank Fire

Reading Date
5/19/2019 6:00:00 PM to 5/19/2019 7:00:00 PM



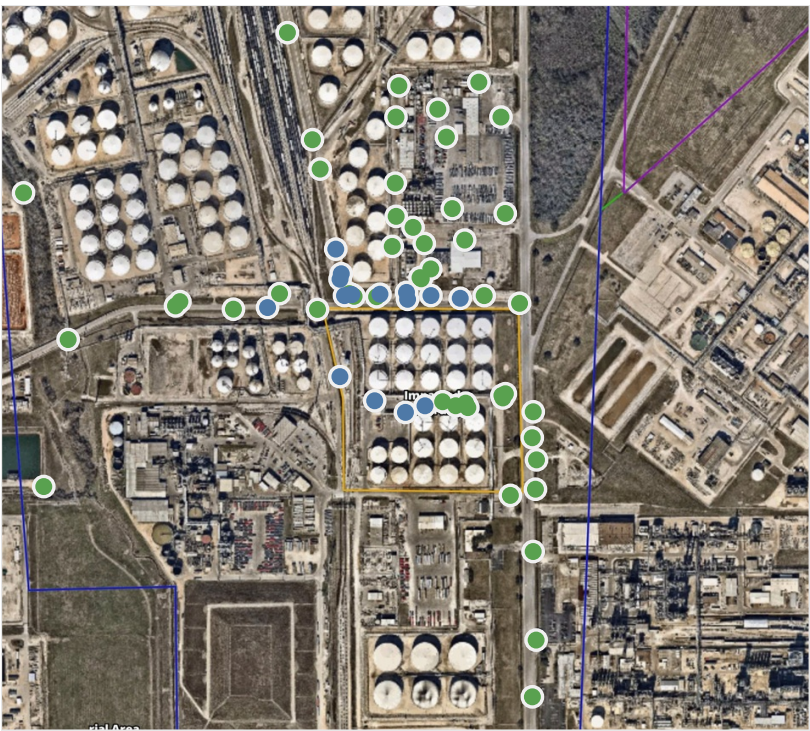
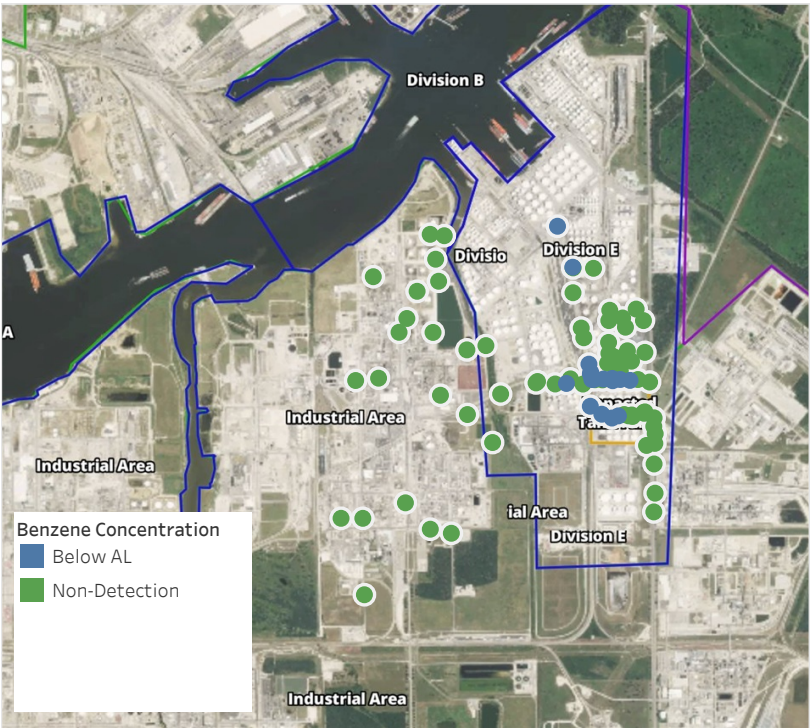
Recent Benzene Detections

Location Category	Reading Date	Range of Detections
Division E	5/19/2019 18:12:08	0.02000 ppm
	5/19/2019 18:28:57	0.02000 ppm
	5/19/2019 18:25:52	0.01000 ppm
	5/19/2019 18:19:32	0.02000 ppm
	5/19/2019 18:16:32	0.02000 ppm
	5/19/2019 18:25:09	0.04000 ppm
	5/19/2019 18:22:48	0.02000 ppm
	5/19/2019 18:31:34	0.03000 ppm
	5/19/2019 18:33:12	0.02000 ppm
	5/19/2019 18:13:34	0.03000 ppm
	5/19/2019 18:33:18	0.02000 ppm
	5/19/2019 18:22:17	0.02000 ppm
	5/19/2019 18:44:20	0.02000 ppm
	5/19/2019 18:58:00	0.03000 ppm
	5/19/2019 18:52:05	0.02000 ppm
Impacted Tank Farm	5/19/2019 18:52:43	0.03000 ppm
	5/19/2019 18:03:03	0.07000 ppm
	5/19/2019 18:41:04	0.04000 ppm
	5/19/2019 18:25:53	0.04000 ppm
	5/19/2019 18:30:31	0.05000 ppm
	5/19/2019 18:21:08	0.04000 ppm
	5/19/2019 18:54:40	0.02000 ppm

This data has been provided expeditiously to ITC and regulatory agencies for informational and/or operational purposes only. Data reported within this summary is preliminary in nature and has not undergone complete QA/QC (quality assurance/quality control) process. Until this complete QA/QC process is completed, the locations of each reading are approximate in nature and subject to further refinement. As some readings may represent non-breathing zone measurements, the data reported herein may not be suitable to assess potential occupational exposure. Site Assessment readings are not representative of an individual's breathing zone (e.g., container head space, ground level, directly above product, etc.).

Preliminary Hand- Held Air Monitoring Locations | ITC Deer Park Tank Fire

Reading Date
5/19/2019 7:00:00 PM to 5/19/2019 8:00:00 PM



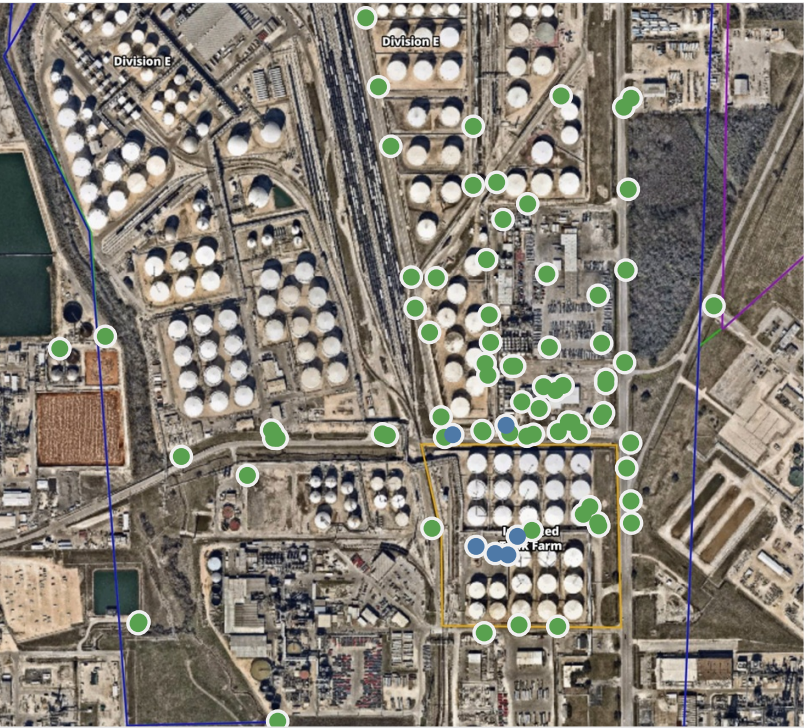
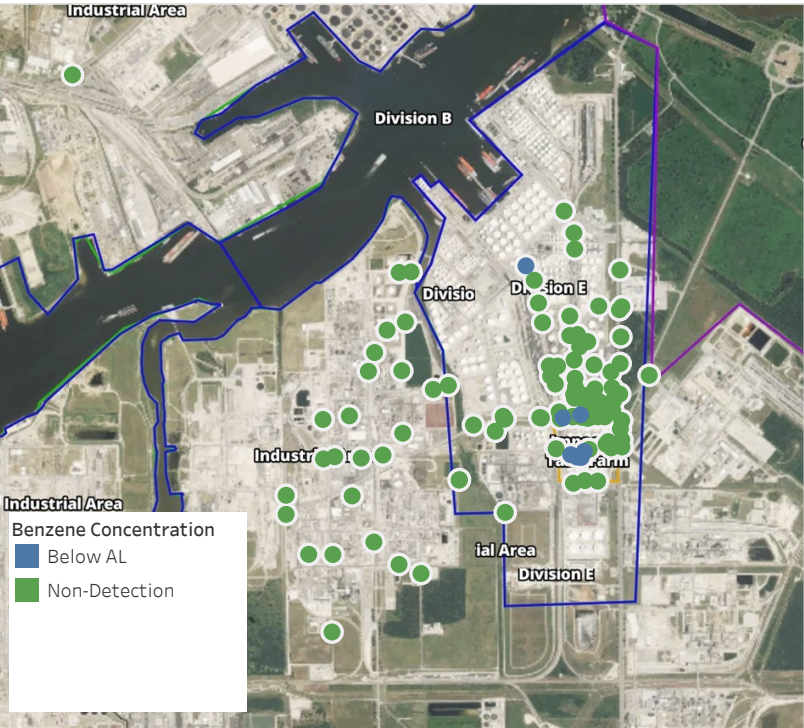
Recent Benzene Detections

Location Category	Reading Date	Range of Detections
Division E	5/19/2019 19:00:14	0.01000 ppm
	5/19/2019 19:11:20	0.02000 ppm
	5/19/2019 19:16:39	0.03000 ppm
	5/19/2019 19:16:01	0.03000 ppm
	5/19/2019 19:08:55	0.03000 ppm
	5/19/2019 19:13:11	0.02000 ppm
	5/19/2019 19:29:12	0.03000 ppm
	5/19/2019 19:39:48	0.10000 ppm
	5/19/2019 19:43:22	0.04000 ppm
	5/19/2019 19:48:46	0.02000 ppm
	5/19/2019 19:51:32	0.01000 ppm
	5/19/2019 19:54:18	0.02000 ppm
	5/19/2019 19:48:29	0.02000 ppm
	5/19/2019 19:56:19	0.07000 ppm
	5/19/2019 19:58:20	0.05000 ppm
Impacted Tank Farm	5/19/2019 19:13:10	0.04000 ppm
	5/19/2019 19:19:13	0.05000 ppm
	5/19/2019 19:25:01	0.05000 ppm

This data has been provided expeditiously to ITC and regulatory agencies for informational and/or operational purposes only. Data reported within this summary is preliminary in nature and has not undergone complete QA/QC (quality assurance/quality control) process. Until this complete QA/QC process is completed, the locations of each reading are approximate in nature and subject to further refinement. As some readings may represent non-breathing zone measurements, the data reported herein may not be suitable to assess potential occupational exposure. Site Assessment readings are not representative of an individual's breathing zone (e.g., container head space, ground level, directly above product, etc.).

Preliminary Hand- Held Air Monitoring Locations | ITC Deer Park Tank Fire

Reading Date
5/19/2019 8:00:00 PM to 5/19/2019 9:00:00 PM



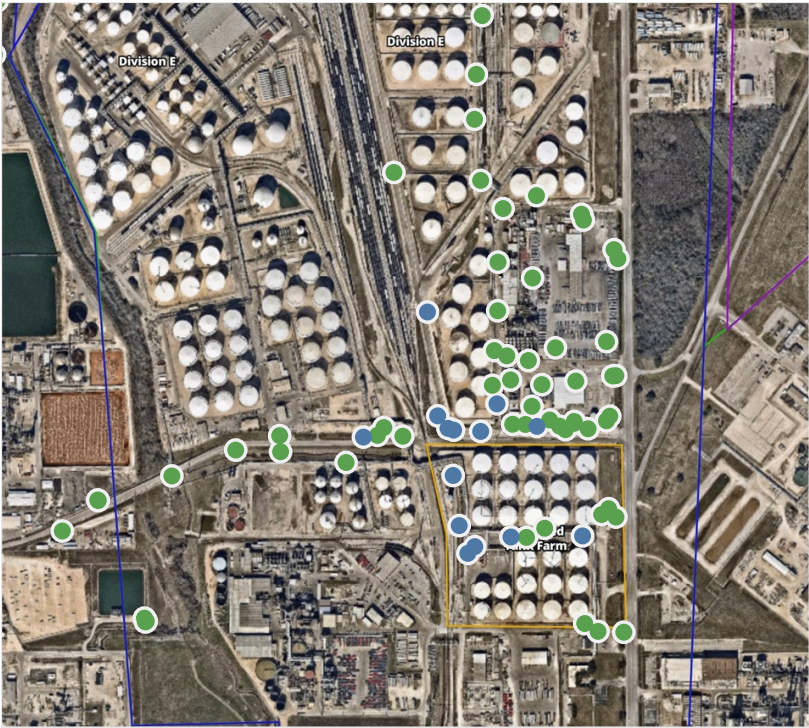
Recent Benzene Detections

Location Category	Reading Date	Range of Detections
Division E	5/19/2019 20:25:39	0.02000 ppm
	5/19/2019 20:52:37	0.05000 ppm
	5/19/2019 20:25:25	0.02000 ppm
Impacted Tank Farm	5/19/2019 20:09:20	0.05000 ppm
	5/19/2019 20:14:50	0.04000 ppm
	5/19/2019 20:50:11	0.05000 ppm
	5/19/2019 20:53:37	0.07000 ppm

This data has been provided expeditiously to ITC and regulatory agencies for informational and/or operational purposes only. Data reported within this summary is preliminary in nature and has not undergone complete QA/QC (quality assurance/quality control) process. Until this complete QA/QC process is completed, the locations of each reading are approximate in nature and subject to further refinement. As some readings may represent non-breathing zone measurements, the data reported herein may not be suitable to assess potential occupational exposure. Site Assessment readings are not representative of an individual's breathing zone (e.g., container head space, ground level, directly above product, etc.).

Preliminary Hand- Held Air Monitoring Locations | ITC Deer Park Tank Fire

Reading Date
5/19/2019 9:00:00 PM to 5/19/2019 10:00:00 PM



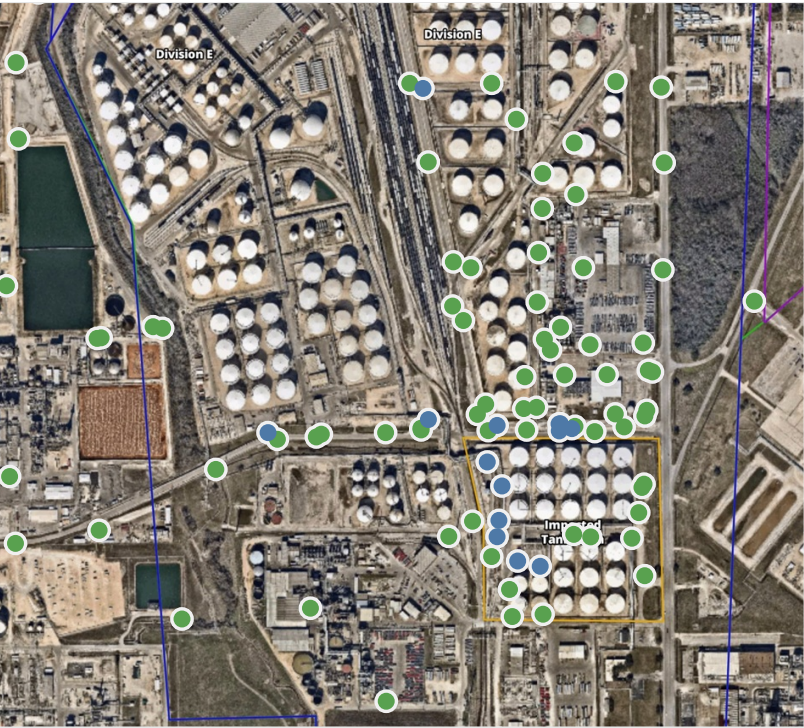
Recent Benzene Detections

Location Category	Reading Date	Range of Detections
Division E	5/19/2019 21:02:42	0.01000 ppm
	5/19/2019 21:03:24	0.07000 ppm
	5/19/2019 21:08:33	0.02000 ppm
	5/19/2019 21:26:24	0.02000 ppm
	5/19/2019 21:42:32	0.03000 ppm
	5/19/2019 21:48:46	0.02000 ppm
	5/19/2019 21:54:46	0.06000 ppm
	5/19/2019 21:39:39	0.02000 ppm
	5/19/2019 21:49:10	0.02000 ppm
Impacted Tank Farm	5/19/2019 21:33:49	0.02000 ppm
	5/19/2019 21:03:20	0.02000 ppm
	5/19/2019 21:06:36	0.07000 ppm
	5/19/2019 21:17:06	0.02000 ppm
	5/19/2019 21:29:51	0.03000 ppm
	5/19/2019 21:51:59	0.05000 ppm
	5/19/2019 21:54:26	0.05000 ppm

This data has been provided expeditiously to ITC and regulatory agencies for informational and/or operational purposes only. Data reported within this summary is preliminary in nature and has not undergone complete QA/QC (quality assurance/quality control) process. Until this complete QA/QC process is completed, the locations of each reading are approximate in nature and subject to further refinement. As some readings may represent non-breathing zone measurements, the data reported herein may not be suitable to assess potential occupational exposure. Site Assessment readings are not representative of an individual's breathing zone (e.g., container head space, ground level, directly above product, etc.).

Preliminary Hand- Held Air Monitoring Locations | ITC Deer Park Tank Fire

Reading Date
5/19/2019 10:00:00 PM to 5/19/2019 11:00:00 PM



Recent Benzene Detections

Location Category	Reading Date	Range of Detections
Division E	5/19/2019 22:30:56	0.02000 ppm
	5/19/2019 22:34:25	0.04000 ppm
	5/19/2019 22:37:04	0.04000 ppm
	5/19/2019 22:40:31	0.03000 ppm
	5/19/2019 22:47:02	0.05000 ppm
	5/19/2019 22:54:47	0.02000 ppm
	5/19/2019 22:39:32	0.02000 ppm
	5/19/2019 22:22:25	0.02000 ppm
Impacted Tank Farm	5/19/2019 22:54:54	0.03000 ppm
	5/19/2019 22:00:07	0.07000 ppm
	5/19/2019 22:02:29	0.04000 ppm
	5/19/2019 22:11:39	0.02000 ppm
	5/19/2019 22:14:19	0.04000 ppm
	5/19/2019 22:17:06	0.04000 ppm
	5/19/2019 22:19:27	0.03000 ppm

This data has been provided expeditiously to ITC and regulatory agencies for informational and/or operational purposes only. Data reported within this summary is preliminary in nature and has not undergone complete QA/QC (quality assurance/quality control) process. Until this complete QA/QC process is completed, the locations of each reading are approximate in nature and subject to further refinement. As some readings may represent non-breathing zone measurements, the data reported herein may not be suitable to assess potential occupational exposure. Site Assessment readings are not representative of an individual's breathing zone (e.g., container head space, ground level, directly above product, etc.).