

# Preliminary Hand- Held Air Monitoring Locations | ITC Deer Park Tank Fire

Reading Date  
5/25/2019 11:00:00 PM to 5/26/2019 12:00:00 AM



## Recent Benzene Detections

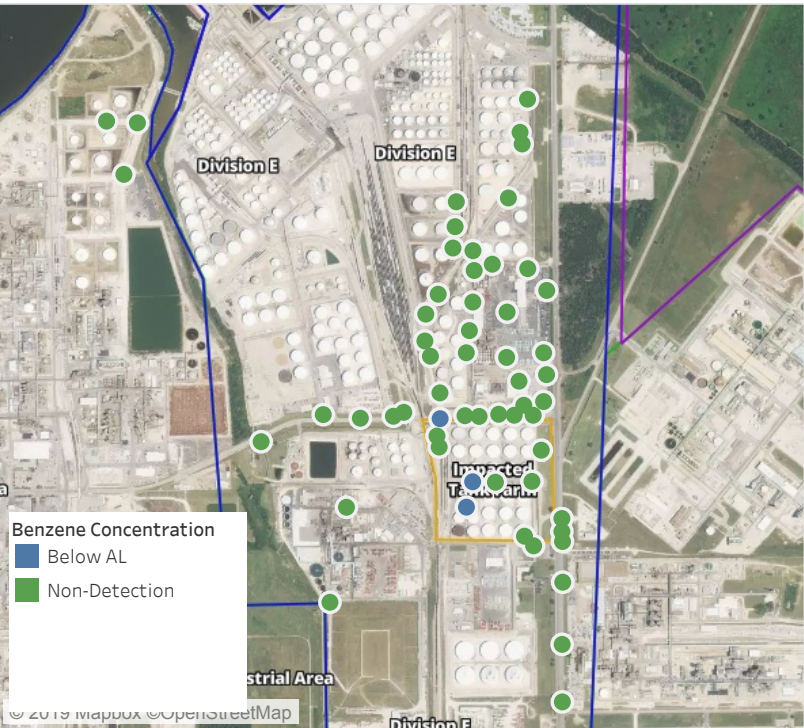
Location Category	Reading Date	Range of Detections
Division E	5/25/2019 23:41:26	0.2200 ppm
	5/25/2019 23:46:39	0.0200 ppm
Impacted Tank Farm	5/25/2019 23:11:11	0.1000 ppm
	5/25/2019 23:16:13	0.0300 ppm
	5/25/2019 23:20:30	0.0700 ppm
	5/25/2019 23:24:56	0.0300 ppm
	5/25/2019 23:29:57	0.0500 ppm
	5/25/2019 23:34:32	0.0700 ppm
	5/25/2019 23:39:26	0.1000 ppm
	5/25/2019 23:43:57	0.0400 ppm
	5/25/2019 23:58:56	0.0200 ppm

This data has been provided expeditiously to ITC and regulatory agencies for informational and/or operational purposes only. Data reported within this summary is preliminary in nature and has not undergone complete QA/QC (quality assurance/quality control) process. Until this complete QA/QC process is completed, the locations of each reading are approximate in nature and subject to further refinement. As some readings may represent non-breathing zone measurements, the data reported herein may not be suitable to assess potential occupational exposure. Site Assessment readings are not representative of an individual's breathing zone (e.g., container head space, ground level, directly above product, etc.).



# Preliminary Hand- Held Air Monitoring Locations | ITC Deer Park Tank Fire

Reading Date  
5/26/2019 12:00:00 AM to 5/26/2019 1:00:00 AM



## Recent Benzene Detections

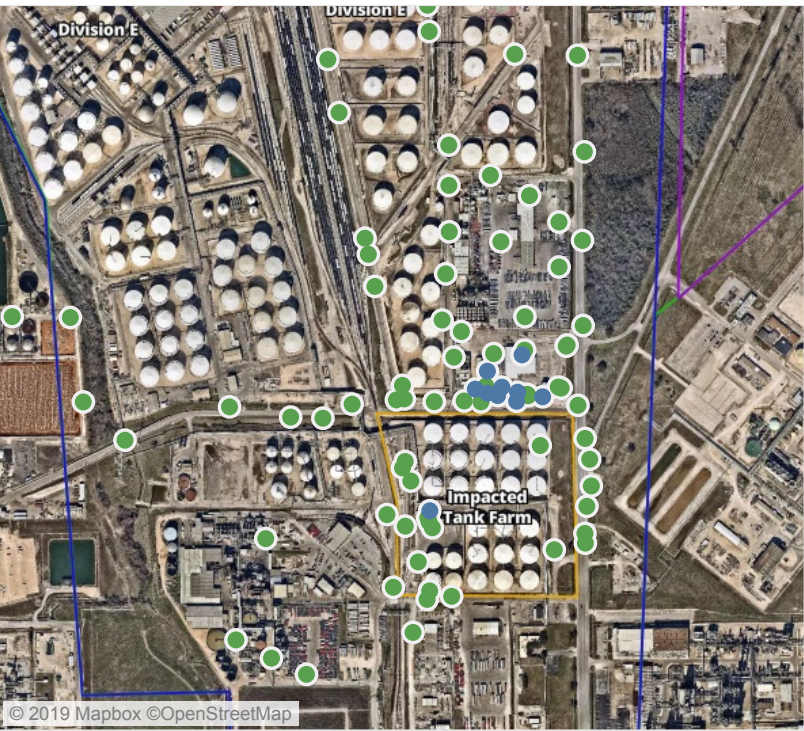
Location Category	Reading Date	Range of Detections
Division E	5/26/2019 00:38:51	0.02000 ppm
Impacted Tank Farm	5/26/2019 00:42:25	0.05000 ppm
	5/26/2019 00:56:20	0.02000 ppm

This data has been provided expeditiously to ITC and regulatory agencies for informational and/or operational purposes only. Data reported within this summary is preliminary in nature and has not undergone complete QA/QC (quality assurance/quality control) process. Until this complete QA/QC process is completed, the locations of each reading are approximate in nature and subject to further refinement. As some readings may represent non-breathing zone measurements, the data reported herein may not be suitable to assess potential occupational exposure. Site Assessment readings are not representative of an individual's breathing zone (e.g., container head space, ground level, directly above product, etc.).



# Preliminary Hand- Held Air Monitoring Locations | ITC Deer Park Tank Fire

Reading Date  
5/26/2019 1:00:00 AM to 5/26/2019 2:00:00 AM



## Recent Benzene Detections

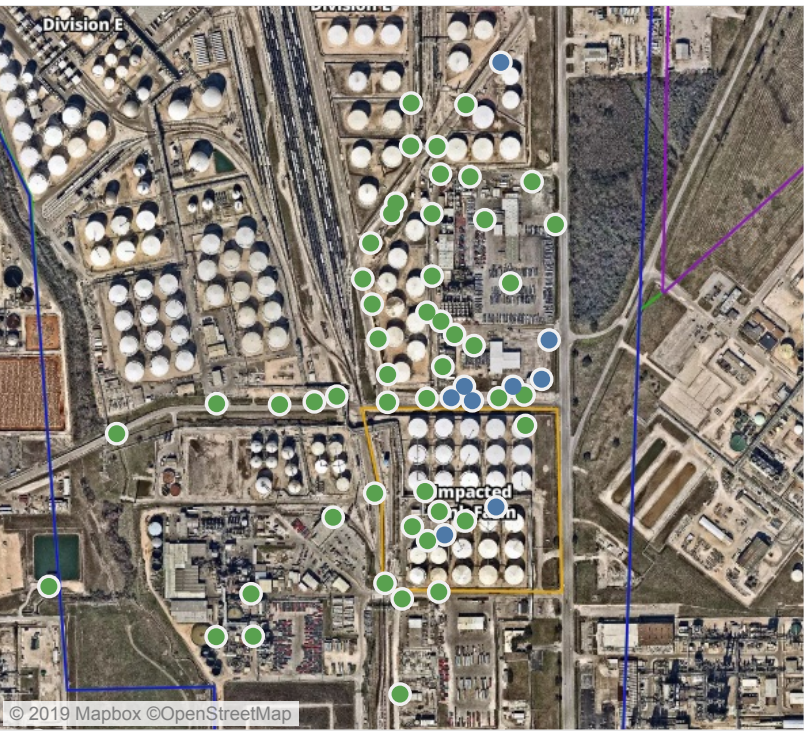
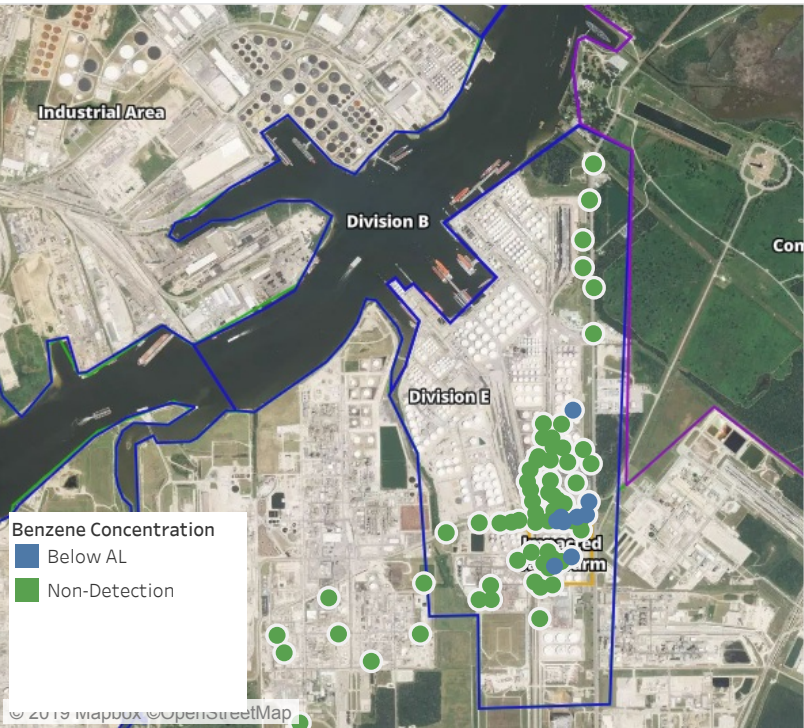
Location Category	Reading Date	Range of Detections
Division E	5/26/2019 01:15:19	0.0400 ppm
	5/26/2019 01:25:41	0.0300 ppm
	5/26/2019 01:30:25	0.0400 ppm
	5/26/2019 01:28:20	0.0200 ppm
	5/26/2019 01:43:12	0.0200 ppm
	5/26/2019 01:37:39	0.0200 ppm
	5/26/2019 01:33:50	0.1500 ppm
	5/26/2019 01:31:38	0.2200 ppm
	5/26/2019 01:30:06	0.0500 ppm
	5/26/2019 01:35:45	0.0600 ppm
Impacted Tank Farm	5/26/2019 01:55:01	0.0300 ppm
	5/26/2019 01:57:36	0.0600 ppm
	5/26/2019 01:54:30	0.0400 ppm
Impacted Tank Farm	5/26/2019 01:02:30	0.0700 ppm

This data has been provided expeditiously to ITC and regulatory agencies for informational and/or operational purposes only. Data reported within this summary is preliminary in nature and has not undergone complete QA/QC (quality assurance/quality control) process. Until this complete QA/QC process is completed, the locations of each reading are approximate in nature and subject to further refinement. As some readings may represent non-breathing zone measurements, the data reported herein may not be suitable to assess potential occupational exposure. Site Assessment readings are not representative of an individual's breathing zone (e.g., container head space, ground level, directly above product, etc.).



# Preliminary Hand- Held Air Monitoring Locations | ITC Deer Park Tank Fire

Reading Date  
5/26/2019 2:00:00 AM to 5/26/2019 3:00:00 AM



## Recent Benzene Detections

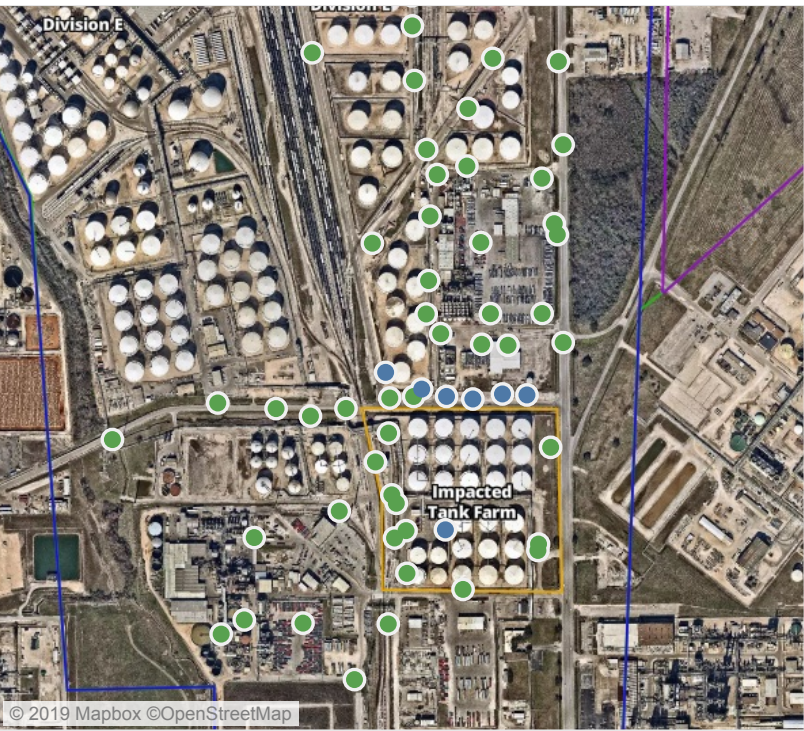
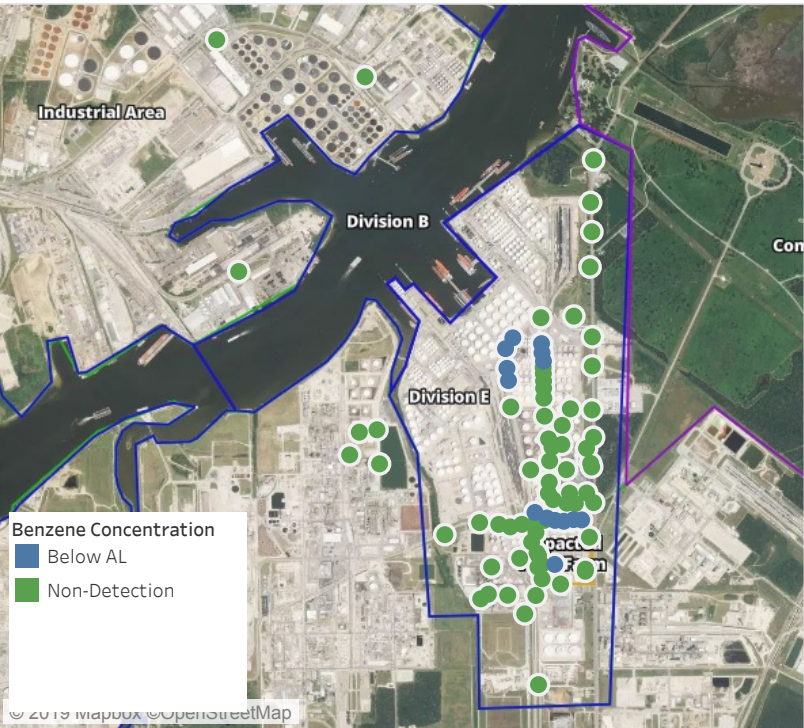
Location Category	Reading Date	Range of Detections
Division E	5/26/2019 02:31:28	0.02000 ppm
	5/26/2019 02:28:38	0.04000 ppm
	5/26/2019 02:31:13	0.02000 ppm
	5/26/2019 02:59:00	0.03000 ppm
	5/26/2019 02:42:00	0.04000 ppm
	5/26/2019 02:36:25	0.02000 ppm
Impacted Tank Farm	5/26/2019 02:55:59	0.06000 ppm
	5/26/2019 02:21:46	0.02000 ppm
	5/26/2019 02:58:29	0.08000 ppm

This data has been provided expeditiously to ITC and regulatory agencies for informational and/or operational purposes only. Data reported within this summary is preliminary in nature and has not undergone complete QA/QC (quality assurance/quality control) process. Until this complete QA/QC process is completed, the locations of each reading are approximate in nature and subject to further refinement. As some readings may represent non-breathing zone measurements, the data reported herein may not be suitable to assess potential occupational exposure. Site Assessment readings are not representative of an individual's breathing zone (e.g., container head space, ground level, directly above product, etc.).



# Preliminary Hand- Held Air Monitoring Locations | ITC Deer Park Tank Fire

Reading Date  
5/26/2019 3:00:00 AM to 5/26/2019 4:00:00 AM



## Recent Benzene Detections

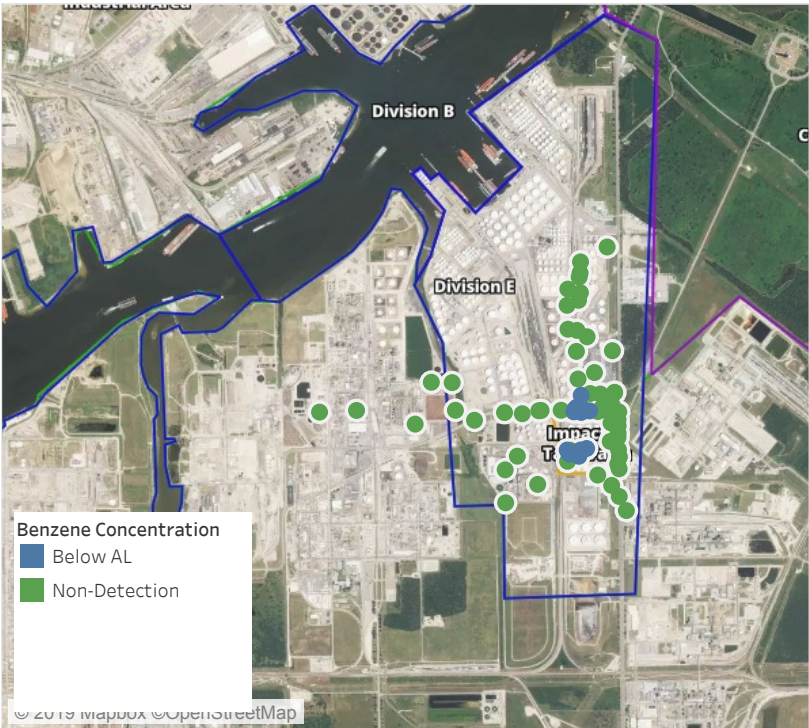
Location Category	Reading Date	Range of Detections
Division E	5/26/2019 03:51:56	0.0400 ppm
	5/26/2019 03:46:20	0.0400 ppm
	5/26/2019 03:56:00	0.0200 ppm
	5/26/2019 03:42:43	0.0400 ppm
	5/26/2019 03:25:47	0.1200 ppm
	5/26/2019 03:40:59	0.0300 ppm
	5/26/2019 03:13:28	0.0300 ppm
	5/26/2019 03:16:58	0.0200 ppm
	5/26/2019 03:27:18	0.1200 ppm
	5/26/2019 03:21:00	0.0100 ppm
	5/26/2019 03:22:56	0.1000 ppm
	5/26/2019 03:15:30	0.0300 ppm
Impacted Tank Farm	5/26/2019 03:42:44	0.0300 ppm
	5/26/2019 03:03:10	0.0300 ppm

This data has been provided expeditiously to ITC and regulatory agencies for informational and/or operational purposes only. Data reported within this summary is preliminary in nature and has not undergone complete QA/QC (quality assurance/quality control) process. Until this complete QA/QC process is completed, the locations of each reading are approximate in nature and subject to further refinement. As some readings may represent non-breathing zone measurements, the data reported herein may not be suitable to assess potential occupational exposure. Site Assessment readings are not representative of an individual's breathing zone (e.g., container head space, ground level, directly above product, etc.).



# Preliminary Hand- Held Air Monitoring Locations | ITC Deer Park Tank Fire

Reading Date  
5/26/2019 4:00:00 AM to 5/26/2019 5:00:00 AM



## Recent Benzene Detections

Location Category	Reading Date	Range of Detections
Division E	5/26/2019 04:13:29	0.0500 ppm
	5/26/2019 04:07:51	0.0300 ppm
	5/26/2019 04:15:37	0.0200 ppm
	5/26/2019 04:22:01	0.0500 ppm
	5/26/2019 04:35:13	0.0300 ppm
	5/26/2019 04:32:34	0.0400 ppm
	5/26/2019 04:30:25	0.0300 ppm
Impacted Tank Farm	5/26/2019 04:19:34	0.0800 ppm
	5/26/2019 04:25:17	0.1200 ppm
	5/26/2019 04:34:06	0.0300 ppm
	5/26/2019 04:38:31	0.0300 ppm
	5/26/2019 04:48:45	0.0900 ppm
	5/26/2019 04:54:56	0.0600 ppm

This data has been provided expeditiously to ITC and regulatory agencies for informational and/or operational purposes only. Data reported within this summary is preliminary in nature and has not undergone complete QA/QC (quality assurance/quality control) process. Until this complete QA/QC process is completed, the locations of each reading are approximate in nature and subject to further refinement. As some readings may represent non-breathing zone measurements, the data reported herein may not be suitable to assess potential occupational exposure. Site Assessment readings are not representative of an individual's breathing zone (e.g., container head space, ground level, directly above product, etc.).



# Preliminary Hand- Held Air Monitoring Locations | ITC Deer Park Tank Fire

Reading Date  
5/26/2019 5:00:00 AM to 5/26/2019 6:00:00 AM



## Recent Benzene Detections

Location Category	Reading Date	Range of Detections
Division E	5/26/2019 05:20:28	0.11000 ppm
	5/26/2019 05:22:25	0.10000 ppm
	5/26/2019 05:18:28	0.07000 ppm
	5/26/2019 05:25:02	0.09000 ppm
	5/26/2019 05:48:25	0.02000 ppm
	5/26/2019 05:51:27	0.02000 ppm
	5/26/2019 05:53:31	0.03000 ppm

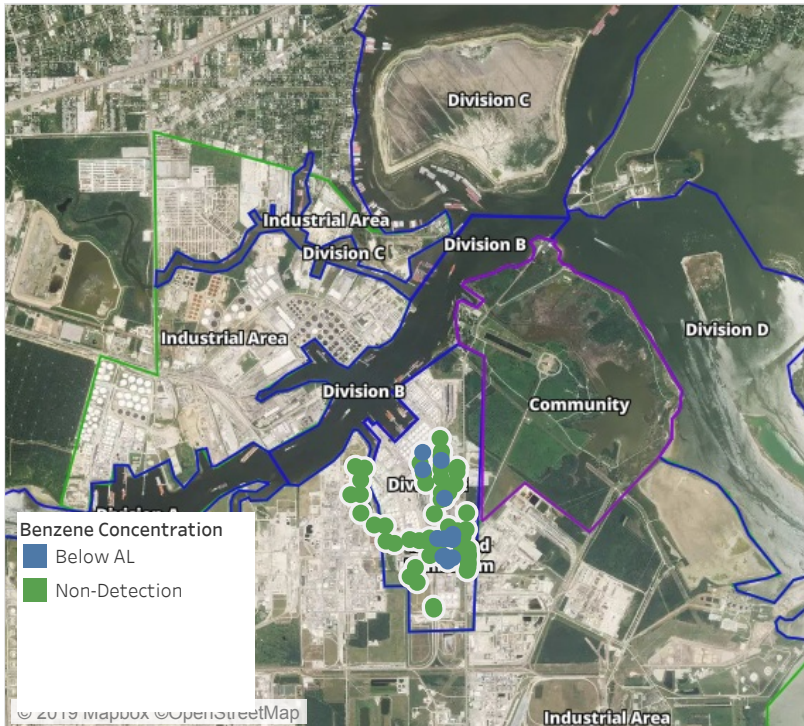
This data has been provided expeditiously to ITC and regulatory agencies for informational and/or operational purposes only. Data reported within this summary is preliminary in nature and has not undergone complete QA/QC (quality assurance/quality control) process. Until this complete QA/QC process is completed, the locations of each reading are approximate in nature and subject to further refinement. As some readings may represent non-breathing zone measurements, the data reported herein may not be suitable to assess potential occupational exposure. Site Assessment readings are not representative of an individual's breathing zone (e.g., container head space, ground level, directly above product, etc.).



# Preliminary Hand- Held Air Monitoring Locations | ITC Deer Park Tank Fire

## Reading Date

5/26/2019 6:00:00 AM to 5/26/2019 7:00:00 AM



## Recent Benzene Detections

Location Category	Reading Date	Range of Detections
Division E	5/26/2019 06:31:10	0.0200 ppm
	5/26/2019 06:17:54	0.0300 ppm
	5/26/2019 06:24:39	0.1400 ppm
	5/26/2019 06:26:14	0.0400 ppm
	5/26/2019 06:43:14	0.0200 ppm
	5/26/2019 06:12:44	0.0200 ppm
	5/26/2019 06:24:50	0.0300 ppm
	5/26/2019 06:18:12	0.0200 ppm
Impacted Tank Farm	5/26/2019 06:28:30	0.0200 ppm
	5/26/2019 06:15:30	0.0700 ppm
	5/26/2019 06:23:41	0.1100 ppm
	5/26/2019 06:28:26	0.2000 ppm
	5/26/2019 06:33:39	0.0400 ppm

This data has been provided expeditiously to ITC and regulatory agencies for informational and/or operational purposes only. Data reported within this summary is preliminary in nature and has not undergone complete QA/QC (quality assurance/quality control) process. Until this complete QA/QC process is completed, the locations of each reading are approximate in nature and subject to further refinement. As some readings may represent non-breathing zone measurements, the data reported herein may not be suitable to assess potential occupational exposure. Site Assessment readings are not representative of an individual's breathing zone (e.g., container head space, ground level, directly above product, etc.).





**Please Note:** These updates display data from the 2<sup>nd</sup> 80's Fire site (Impacted Tank Farm), in the industrial areas surrounding the 2<sup>nd</sup> 80's Fire site (US Coast Guard Division E), within the Houston Ship Channel (US Coast Guard Divisions A-D), and in the industrial areas north and south of the Houston Ship Channel (Industrial Area). Real-time air monitoring data for the surrounding communities are communicated daily in a separate report.



# Preliminary Hand- Held Air Monitoring Locations | ITC Deer Park Tank Fire

Reading Date  
5/26/2019 7:00:00 AM to 5/26/2019 8:00:00 AM



## Recent Benzene Detections

Location Category	Reading Date	Range of Detections
Division E	5/26/2019 07:01:25	0.06000 ppm
	5/26/2019 07:17:06	0.02000 ppm
	5/26/2019 07:46:02	0.02000 ppm

This data has been provided expeditiously to ITC and regulatory agencies for informational and/or operational purposes only. Data reported within this summary is preliminary in nature and has not undergone complete QA/QC (quality assurance/quality control) process. Until this complete QA/QC process is completed, the locations of each reading are approximate in nature and subject to further refinement. As some readings may represent non-breathing zone measurements, the data reported herein may not be suitable to assess potential occupational exposure. Site Assessment readings are not representative of an individual's breathing zone (e.g., container head space, ground level, directly above product, etc.).



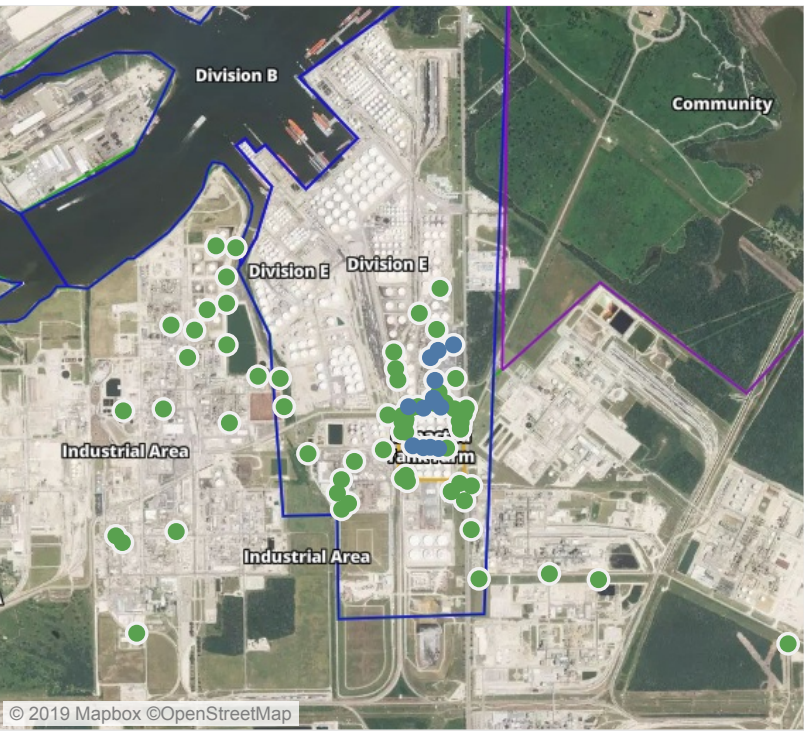


**Please Note:** These updates display data from the 2<sup>nd</sup> 80's Fire site (Impacted Tank Farm), in the industrial areas surrounding the 2<sup>nd</sup> 80's Fire site (US Coast Guard Division E), within the Houston Ship Channel (US Coast Guard Divisions A-D), and in the industrial areas north and south of the Houston Ship Channel (Industrial Area). Real-time air monitoring data for the surrounding communities are communicated daily in a separate report.



# Preliminary Hand- Held Air Monitoring Locations | ITC Deer Park Tank Fire

Reading Date  
5/26/2019 8:00:00 AM to 5/26/2019 9:00:00 AM



## Recent Benzene Detections

Location Category	Reading Date	Range of Detections
Division E	5/26/2019 08:07:23	0.02000 ppm
	5/26/2019 08:13:55	0.02000 ppm
	5/26/2019 08:20:16	0.02000 ppm
	5/26/2019 08:26:13	0.02000 ppm
	5/26/2019 08:19:53	0.02000 ppm
	5/26/2019 08:32:17	0.02000 ppm
	5/26/2019 08:12:35	0.02000 ppm
	5/26/2019 08:22:23	0.04000 ppm
Impacted Tank Farm	5/26/2019 08:54:18	0.02000 ppm
	5/26/2019 08:22:53	0.05000 ppm
	5/26/2019 08:27:40	0.03000 ppm
	5/26/2019 08:36:20	0.07000 ppm
	5/26/2019 08:31:49	0.05000 ppm

This data has been provided expeditiously to ITC and regulatory agencies for informational and/or operational purposes only. Data reported within this summary is preliminary in nature and has not undergone complete QA/QC (quality assurance/quality control) process. Until this complete QA/QC process is completed, the locations of each reading are approximate in nature and subject to further refinement. As some readings may represent non-breathing zone measurements, the data reported herein may not be suitable to assess potential occupational exposure. Site Assessment readings are not representative of an individual's breathing zone (e.g., container head space, ground level, directly above product, etc.).





**Please Note:** These updates display data from the 2<sup>nd</sup> 80's Fire site (Impacted Tank Farm), in the industrial areas surrounding the 2<sup>nd</sup> 80's Fire site (US Coast Guard Division E), within the Houston Ship Channel (US Coast Guard Divisions A-D), and in the industrial areas north and south of the Houston Ship Channel (Industrial Area). Real-time air monitoring data for the surrounding communities are communicated daily in a separate report.



# Preliminary Hand- Held Air Monitoring Locations | ITC Deer Park Tank Fire

Reading Date  
5/26/2019 9:00:00 AM to 5/26/2019 10:00:00 AM



## Recent Benzene Detections

Location Category	Reading Date	Range of Detections
Division E	5/26/2019 09:21:56	0.02000 ppm
	5/26/2019 09:35:13	0.02000 ppm
	5/26/2019 09:28:20	0.03000 ppm
	5/26/2019 09:40:23	0.03000 ppm
Impacted Tank Farm	5/26/2019 09:12:00	0.09000 ppm
	5/26/2019 09:08:02	0.05000 ppm
	5/26/2019 09:49:50	0.03000 ppm
	5/26/2019 09:47:09	0.03000 ppm
	5/26/2019 09:52:33	0.04000 ppm

This data has been provided expeditiously to ITC and regulatory agencies for informational and/or operational purposes only. Data reported within this summary is preliminary in nature and has not undergone complete QA/QC (quality assurance/quality control) process. Until this complete QA/QC process is completed, the locations of each reading are approximate in nature and subject to further refinement. As some readings may represent non-breathing zone measurements, the data reported herein may not be suitable to assess potential occupational exposure. Site Assessment readings are not representative of an individual's breathing zone (e.g., container head space, ground level, directly above product, etc.).



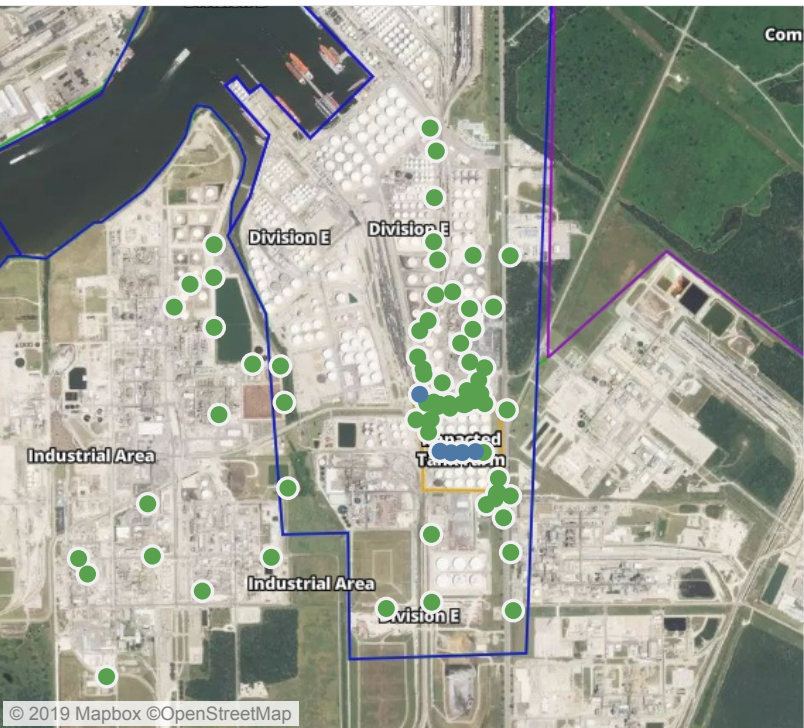
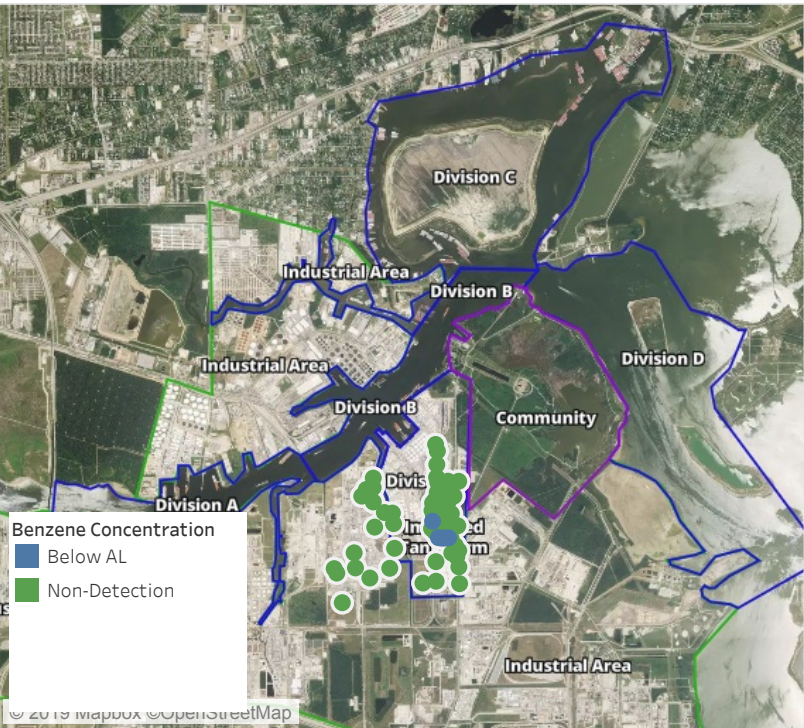


**Please Note:** These updates display data from the 2<sup>nd</sup> 80's Fire site (Impacted Tank Farm), in the industrial areas surrounding the 2<sup>nd</sup> 80's Fire site (US Coast Guard Division E), within the Houston Ship Channel (US Coast Guard Divisions A-D), and in the industrial areas north and south of the Houston Ship Channel (Industrial Area). Real-time air monitoring data for the surrounding communities are communicated daily in a separate report.



# Preliminary Hand- Held Air Monitoring Locations | ITC Deer Park Tank Fire

Reading Date  
5/26/2019 10:00:00 AM to 5/26/2019 11:00:00 AM



## Recent Benzene Detections

Location Category	Reading Date	Range of Detections
Division E	5/26/2019 10:46:54	0.02000 ppm
Impacted Tank Farm	5/26/2019 10:42:54	0.04000 ppm
	5/26/2019 10:45:43	0.04000 ppm
	5/26/2019 10:48:52	0.03000 ppm
	5/26/2019 10:39:57	0.03000 ppm

This data has been provided expeditiously to ITC and regulatory agencies for informational and/or operational purposes only. Data reported within this summary is preliminary in nature and has not undergone complete QA/QC (quality assurance/quality control) process. Until this complete QA/QC process is completed, the locations of each reading are approximate in nature and subject to further refinement. As some readings may represent non-breathing zone measurements, the data reported herein may not be suitable to assess potential occupational exposure. Site Assessment readings are not representative of an individual's breathing zone (e.g., container head space, ground level, directly above product, etc.).



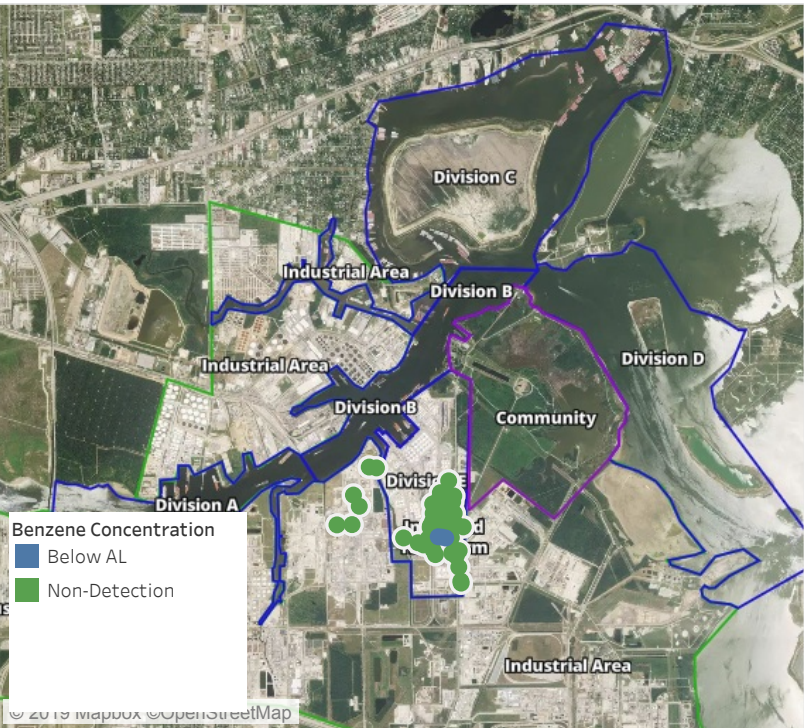


**Please Note:** These updates display data from the 2<sup>nd</sup> 80's Fire site (Impacted Tank Farm), in the industrial areas surrounding the 2<sup>nd</sup> 80's Fire site (US Coast Guard Division E), within the Houston Ship Channel (US Coast Guard Divisions A-D), and in the industrial areas north and south of the Houston Ship Channel (Industrial Area). Real-time air monitoring data for the surrounding communities are communicated daily in a separate report.



# Preliminary Hand- Held Air Monitoring Locations | ITC Deer Park Tank Fire

Reading Date  
5/26/2019 11:00:00 AM to 5/26/2019 12:00:00 PM



## Recent Benzene Detections

Location Category	Reading Date	Range of Detections
Impacted Tank Farm	5/26/2019 11:41:43	0.06000 ppm
	5/26/2019 11:38:49	0.03000 ppm
	5/26/2019 11:44:13	0.05000 ppm

This data has been provided expeditiously to ITC and regulatory agencies for informational and/or operational purposes only. Data reported within this summary is preliminary in nature and has not undergone complete QA/QC (quality assurance/quality control) process. Until this complete QA/QC process is completed, the locations of each reading are approximate in nature and subject to further refinement. As some readings may represent non-breathing zone measurements, the data reported herein may not be suitable to assess potential occupational exposure. Site Assessment readings are not representative of an individual's breathing zone (e.g., container head space, ground level, directly above product, etc.).



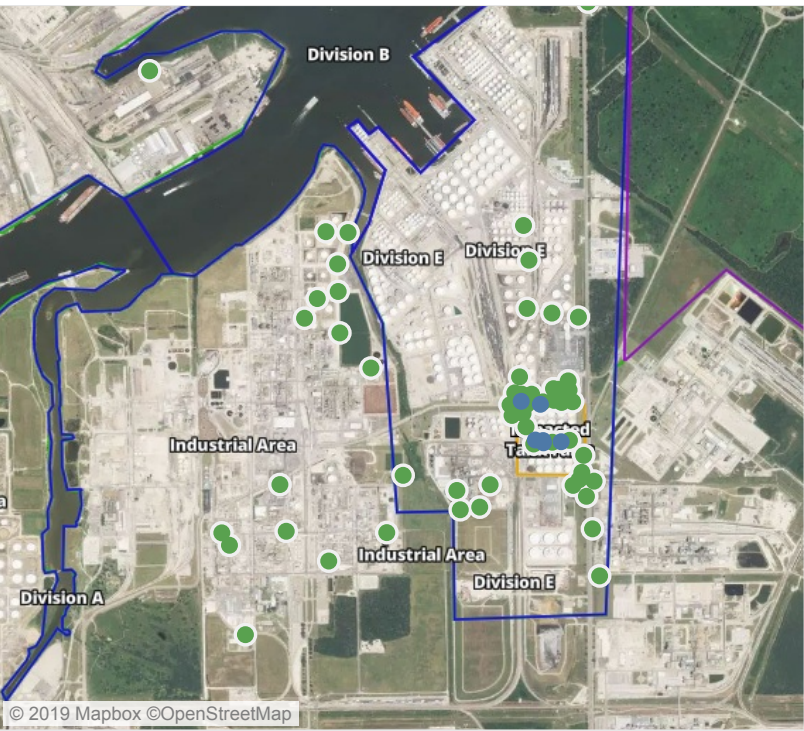
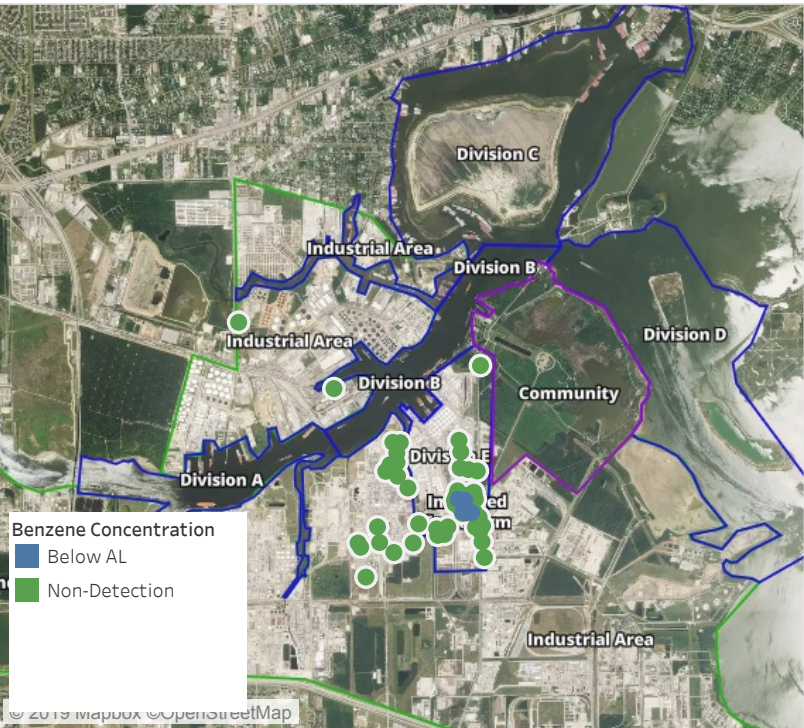


**Please Note:** These updates display data from the 2<sup>nd</sup> 80's Fire site (Impacted Tank Farm), in the industrial areas surrounding the 2<sup>nd</sup> 80's Fire site (US Coast Guard Division E), within the Houston Ship Channel (US Coast Guard Divisions A-D), and in the industrial areas north and south of the Houston Ship Channel (Industrial Area). Real-time air monitoring data for the surrounding communities are communicated daily in a separate report.



# Preliminary Hand- Held Air Monitoring Locations | ITC Deer Park Tank Fire

Reading Date  
5/26/2019 12:00:00 PM to 5/26/2019 1:00:00 PM



## Recent Benzene Detections

Location Category	Reading Date	Range of Detections
Division E	5/26/2019 12:44:45	0.02000 ppm
	5/26/2019 12:51:42	0.02000 ppm
Impacted Tank Farm	5/26/2019 12:18:28	0.04000 ppm
	5/26/2019 12:29:19	0.08000 ppm
	5/26/2019 12:55:10	0.03000 ppm
	5/26/2019 12:57:51	0.04000 ppm

This data has been provided expeditiously to ITC and regulatory agencies for informational and/or operational purposes only. Data reported within this summary is preliminary in nature and has not undergone complete QA/QC (quality assurance/quality control) process. Until this complete QA/QC process is completed, the locations of each reading are approximate in nature and subject to further refinement. As some readings may represent non-breathing zone measurements, the data reported herein may not be suitable to assess potential occupational exposure. Site Assessment readings are not representative of an individual's breathing zone (e.g., container head space, ground level, directly above product, etc.).



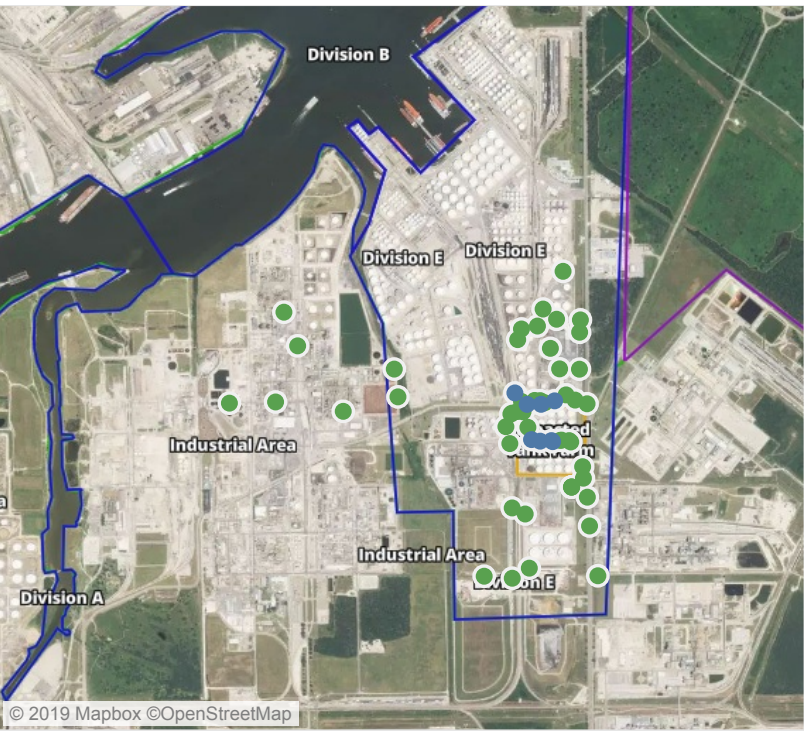
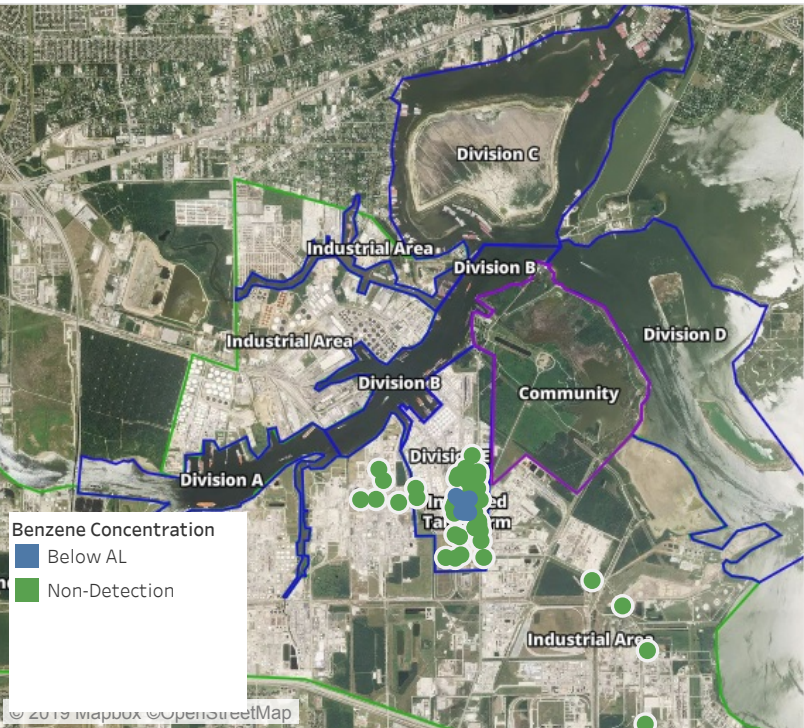


**Please Note:** These updates display data from the 2<sup>nd</sup> 80's Fire site (Impacted Tank Farm), in the industrial areas surrounding the 2<sup>nd</sup> 80's Fire site (US Coast Guard Division E), within the Houston Ship Channel (US Coast Guard Divisions A-D), and in the industrial areas north and south of the Houston Ship Channel (Industrial Area). Real-time air monitoring data for the surrounding communities are communicated daily in a separate report.



# Preliminary Hand- Held Air Monitoring Locations | ITC Deer Park Tank Fire

Reading Date  
5/26/2019 1:00:00 PM to 5/26/2019 2:00:00 PM



## Recent Benzene Detections

Location Category	Reading Date	Range of Detections
Division E	5/26/2019 13:33:10	0.02000 ppm
	5/26/2019 13:37:10	0.03000 ppm
	5/26/2019 13:29:46	0.02000 ppm
	5/26/2019 13:35:37	0.02000 ppm
Impacted Tank Farm	5/26/2019 13:01:02	0.04000 ppm
	5/26/2019 13:31:41	0.10000 ppm
	5/26/2019 13:28:17	0.04000 ppm
	5/26/2019 13:34:45	0.06000 ppm

This data has been provided expeditiously to ITC and regulatory agencies for informational and/or operational purposes only. Data reported within this summary is preliminary in nature and has not undergone complete QA/QC (quality assurance/quality control) process. Until this complete QA/QC process is completed, the locations of each reading are approximate in nature and subject to further refinement. As some readings may represent non-breathing zone measurements, the data reported herein may not be suitable to assess potential occupational exposure. Site Assessment readings are not representative of an individual's breathing zone (e.g., container head space, ground level, directly above product, etc.).





**Please Note:** These updates display data from the 2<sup>nd</sup> 80's Fire site (Impacted Tank Farm), in the industrial areas surrounding the 2<sup>nd</sup> 80's Fire site (US Coast Guard Division E), within the Houston Ship Channel (US Coast Guard Divisions A-D), and in the industrial areas north and south of the Houston Ship Channel (Industrial Area). Real-time air monitoring data for the surrounding communities are communicated daily in a separate report.



# Preliminary Hand- Held Air Monitoring Locations | ITC Deer Park Tank Fire

Reading Date  
5/26/2019 2:00:00 PM to 5/26/2019 3:00:00 PM



## Recent Benzene Detections

Location Category	Reading Date	Range of Detections
Division E	5/26/2019 14:20:46	0.02000 ppm
	5/26/2019 14:43:16	0.03000 ppm
Impacted Tank Farm	5/26/2019 14:15:15	0.04000 ppm
	5/26/2019 14:18:42	0.03000 ppm
	5/26/2019 14:48:42	0.04000 ppm
	5/26/2019 14:57:03	0.03000 ppm
	5/26/2019 14:51:14	0.05000 ppm
	5/26/2019 14:53:54	0.06000 ppm

This data has been provided expeditiously to ITC and regulatory agencies for informational and/or operational purposes only. Data reported within this summary is preliminary in nature and has not undergone complete QA/QC (quality assurance/quality control) process. Until this complete QA/QC process is completed, the locations of each reading are approximate in nature and subject to further refinement. As some readings may represent non-breathing zone measurements, the data reported herein may not be suitable to assess potential occupational exposure. Site Assessment readings are not representative of an individual's breathing zone (e.g., container head space, ground level, directly above product, etc.).





**Please Note:** These updates display data from the 2<sup>nd</sup> 80's Fire site (Impacted Tank Farm), in the industrial areas surrounding the 2<sup>nd</sup> 80's Fire site (US Coast Guard Division E), within the Houston Ship Channel (US Coast Guard Divisions A-D), and in the industrial areas north and south of the Houston Ship Channel (Industrial Area). Real-time air monitoring data for the surrounding communities are communicated daily in a separate report.



# Preliminary Hand- Held Air Monitoring Locations | ITC Deer Park Tank Fire

Reading Date  
5/26/2019 3:00:00 PM to 5/26/2019 4:00:00 PM



## Recent Benzene Detections

Location Category	Reading Date	Range of Detections
Division E	5/26/2019 15:36:52	0.02000 ppm
Impacted Tank Farm	5/26/2019 15:45:27	0.08000 ppm
	5/26/2019 15:40:09	0.04000 ppm
	5/26/2019 15:42:43	0.06000 ppm

This data has been provided expeditiously to ITC and regulatory agencies for informational and/or operational purposes only. Data reported within this summary is preliminary in nature and has not undergone complete QA/QC (quality assurance/quality control) process. Until this complete QA/QC process is completed, the locations of each reading are approximate in nature and subject to further refinement. As some readings may represent non-breathing zone measurements, the data reported herein may not be suitable to assess potential occupational exposure. Site Assessment readings are not representative of an individual's breathing zone (e.g., container head space, ground level, directly above product, etc.).



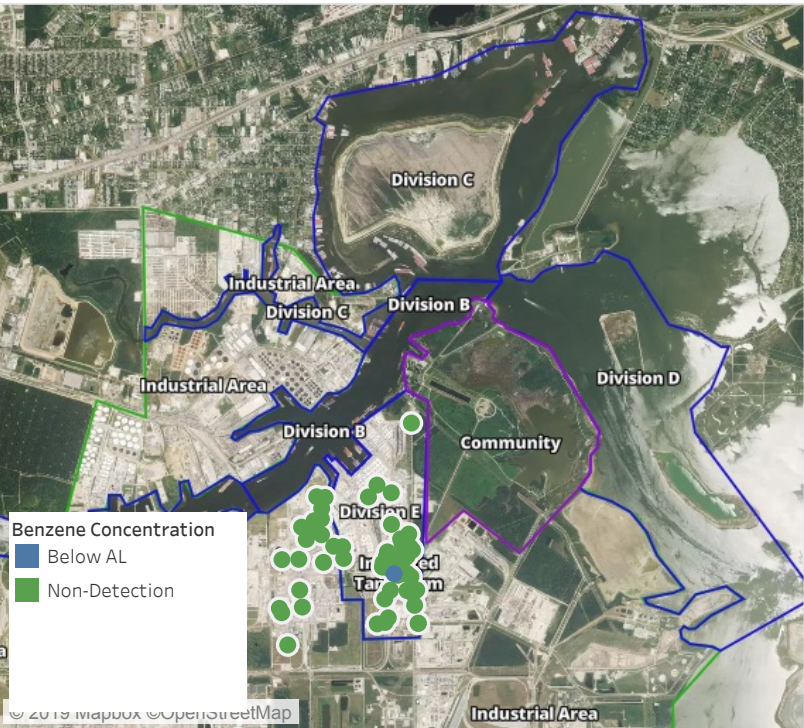


**Please Note:** These updates display data from the 2<sup>nd</sup> 80's Fire site (Impacted Tank Farm), in the industrial areas surrounding the 2<sup>nd</sup> 80's Fire site (US Coast Guard Division E), within the Houston Ship Channel (US Coast Guard Divisions A-D), and in the industrial areas north and south of the Houston Ship Channel (Industrial Area). Real-time air monitoring data for the surrounding communities are communicated daily in a separate report.



# Preliminary Hand- Held Air Monitoring Locations | ITC Deer Park Tank Fire

Reading Date  
5/26/2019 4:00:00 PM to 5/26/2019 5:00:00 PM



## Recent Benzene Detections

Location Category	Reading Date	Range of Detections
Impacted Tank Farm	5/26/2019 16:26:14	0.04000 ppm

This data has been provided expeditiously to ITC and regulatory agencies for informational and/or operational purposes only. Data reported within this summary is preliminary in nature and has not undergone complete QA/QC (quality assurance/quality control) process. Until this complete QA/QC process is completed, the locations of each reading are approximate in nature and subject to further refinement. As some readings may represent non-breathing zone measurements, the data reported herein may not be suitable to assess potential occupational exposure. Site Assessment readings are not representative of an individual's breathing zone (e.g., container head space, ground level, directly above product, etc.).



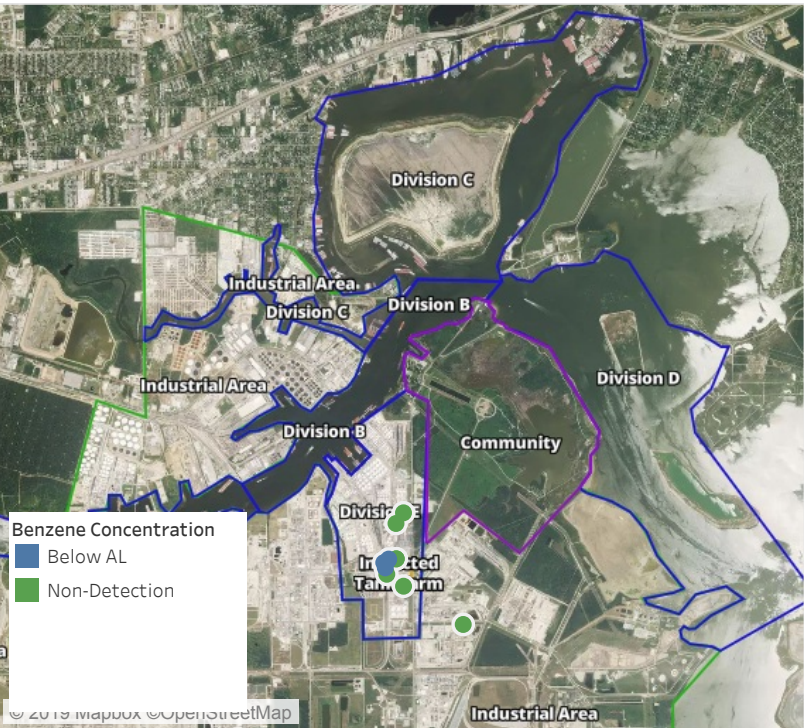


**Please Note:** These updates display data from the 2<sup>nd</sup> 80's Fire site (Impacted Tank Farm), in the industrial areas surrounding the 2<sup>nd</sup> 80's Fire site (US Coast Guard Division E), within the Houston Ship Channel (US Coast Guard Divisions A-D), and in the industrial areas north and south of the Houston Ship Channel (Industrial Area). Real-time air monitoring data for the surrounding communities are communicated daily in a separate report.



# Preliminary Hand- Held Air Monitoring Locations | ITC Deer Park Tank Fire

Reading Date  
5/26/2019 5:00:00 PM to 5/26/2019 6:00:00 PM



## Recent Benzene Detections

Location Category	Reading Date	Range of Detections
Division E	5/26/2019 17:24:10	0.02000 ppm
	5/26/2019 17:52:51	0.06000 ppm
	5/26/2019 17:44:43	0.02000 ppm
	5/26/2019 17:49:04	0.02000 ppm

This data has been provided expeditiously to ITC and regulatory agencies for informational and/or operational purposes only. Data reported within this summary is preliminary in nature and has not undergone complete QA/QC (quality assurance/quality control) process. Until this complete QA/QC process is completed, the locations of each reading are approximate in nature and subject to further refinement. As some readings may represent non-breathing zone measurements, the data reported herein may not be suitable to assess potential occupational exposure. Site Assessment readings are not representative of an individual's breathing zone (e.g., container head space, ground level, directly above product, etc.).





**Please Note:** These updates display data from the 2<sup>nd</sup> 80's Fire site (Impacted Tank Farm), in the industrial areas surrounding the 2<sup>nd</sup> 80's Fire site (US Coast Guard Division E), within the Houston Ship Channel (US Coast Guard Divisions A-D), and in the industrial areas north and south of the Houston Ship Channel (Industrial Area). Real-time air monitoring data for the surrounding communities are communicated daily in a separate report.



# Preliminary Hand- Held Air Monitoring Locations | ITC Deer Park Tank Fire

Reading Date

5/26/2019 7:00:00 PM to 5/26/2019 8:00:00 PM



Recent Benzene Detections

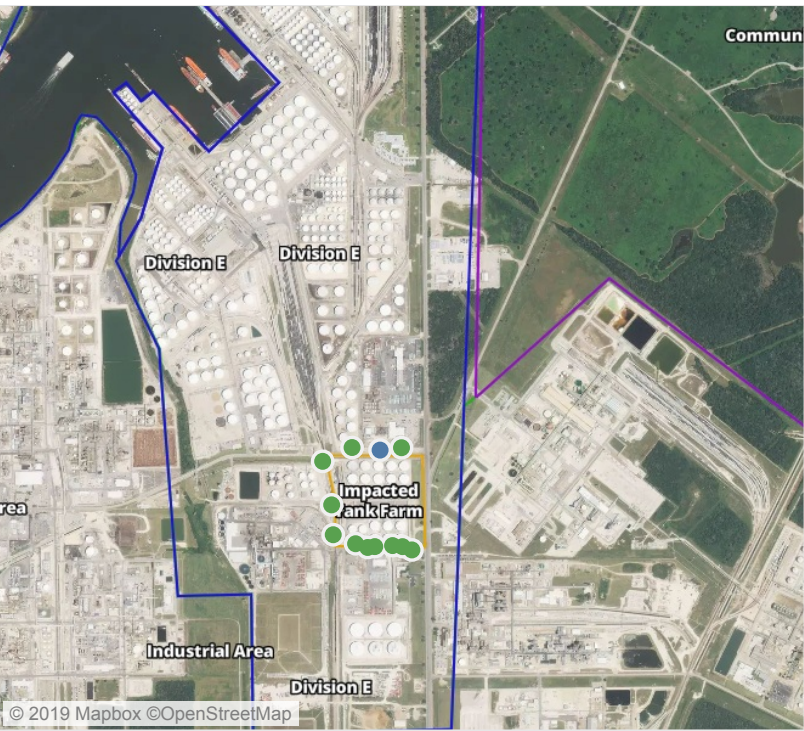
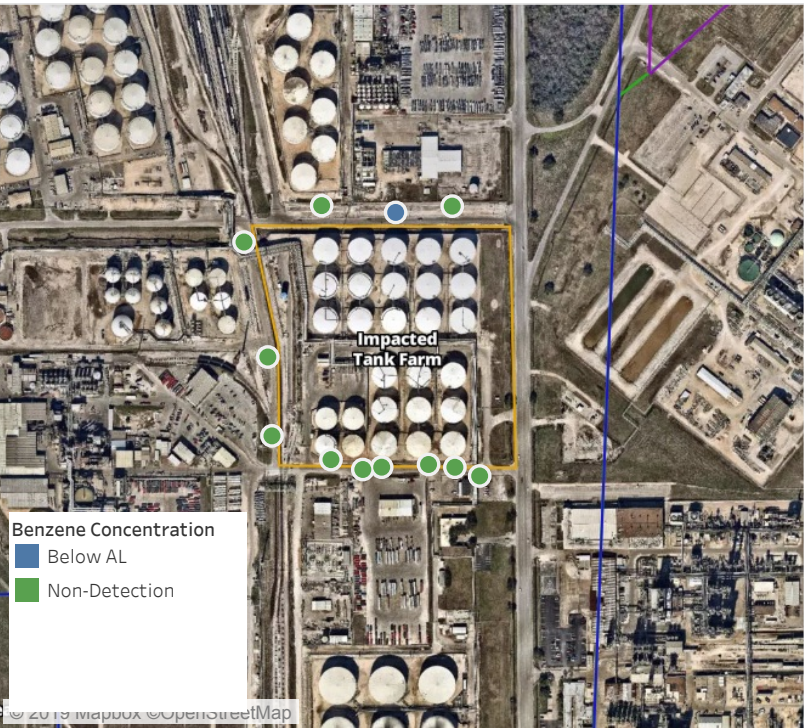


This data has been provided expeditiously to ITC and regulatory agencies for informational and/or operational purposes only. Data reported within this summary is preliminary in nature and has not undergone complete QA/QC (quality assurance/quality control) process. Until this complete QA/QC process is completed, the locations of each reading are approximate in nature and subject to further refinement. As some readings may represent non-breathing zone measurements, the data reported herein may not be suitable to assess potential occupational exposure. Site Assessment readings are not representative of an individual's breathing zone (e.g., container head space, ground level, directly above product, etc.).



# Preliminary Hand- Held Air Monitoring Locations | ITC Deer Park Tank Fire

Reading Date  
5/26/2019 8:00:00 PM to 5/26/2019 9:00:00 PM



## Recent Benzene Detections

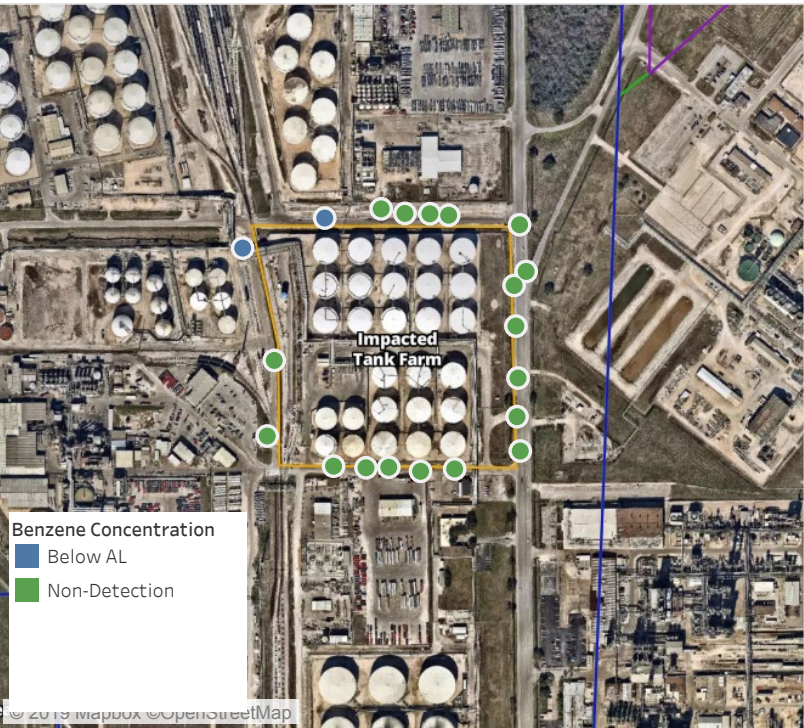
Location Category	Reading Date	Range of Detections
Division E	5/26/2019 20:18:58	0.03000 ppm

This data has been provided expeditiously to ITC and regulatory agencies for informational and/or operational purposes only. Data reported within this summary is preliminary in nature and has not undergone complete QA/QC (quality assurance/quality control) process. Until this complete QA/QC process is completed, the locations of each reading are approximate in nature and subject to further refinement. As some readings may represent non-breathing zone measurements, the data reported herein may not be suitable to assess potential occupational exposure. Site Assessment readings are not representative of an individual's breathing zone (e.g., container head space, ground level, directly above product, etc.).



# Preliminary Hand- Held Air Monitoring Locations | ITC Deer Park Tank Fire

Reading Date  
5/26/2019 9:00:00 PM to 5/26/2019 10:00:00 PM



## Recent Benzene Detections

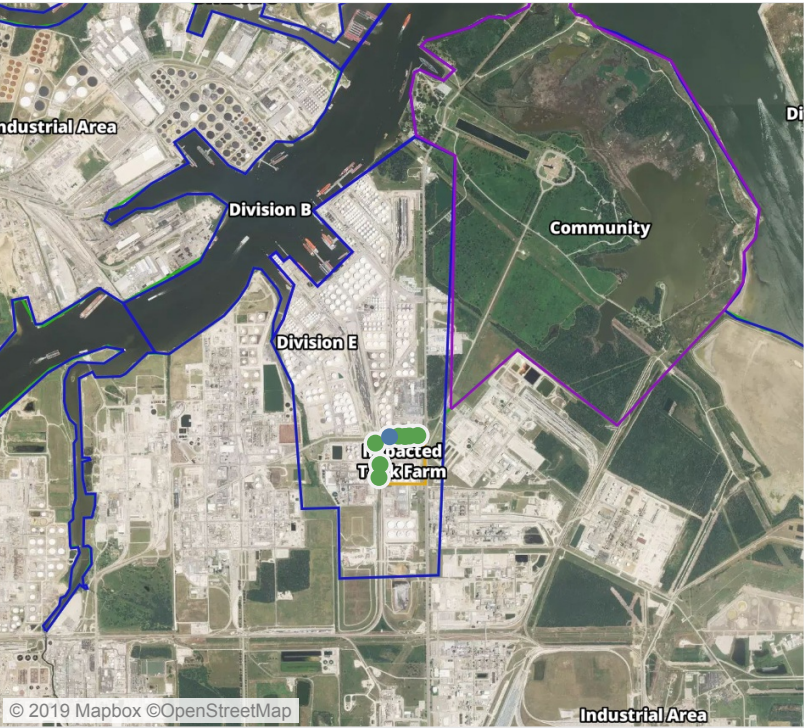
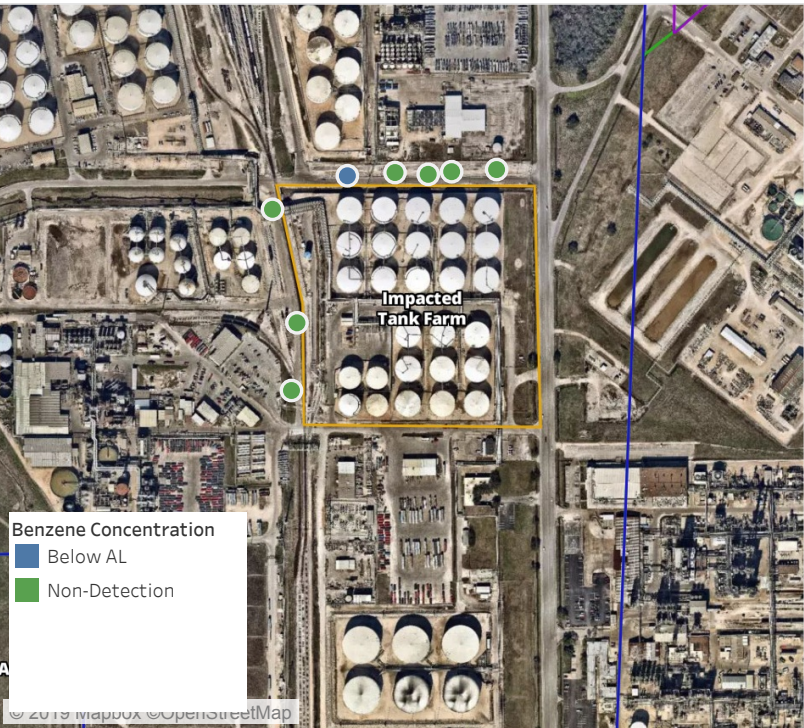
Location Category	Reading Date	Range of Detections
Division E	5/26/2019 21:18:51	0.02000 ppm
	5/26/2019 21:22:55	0.03000 ppm

This data has been provided expeditiously to ITC and regulatory agencies for informational and/or operational purposes only. Data reported within this summary is preliminary in nature and has not undergone complete QA/QC (quality assurance/quality control) process. Until this complete QA/QC process is completed, the locations of each reading are approximate in nature and subject to further refinement. As some readings may represent non-breathing zone measurements, the data reported herein may not be suitable to assess potential occupational exposure. Site Assessment readings are not representative of an individual's breathing zone (e.g., container head space, ground level, directly above product, etc.).



# Preliminary Hand- Held Air Monitoring Locations | ITC Deer Park Tank Fire

Reading Date  
5/26/2019 10:00:00 PM to 5/26/2019 11:00:00 PM



## Recent Benzene Detections

Location Category	Reading Date	Range of Detections
Division E	5/26/2019 22:15:58	0.02000 ppm

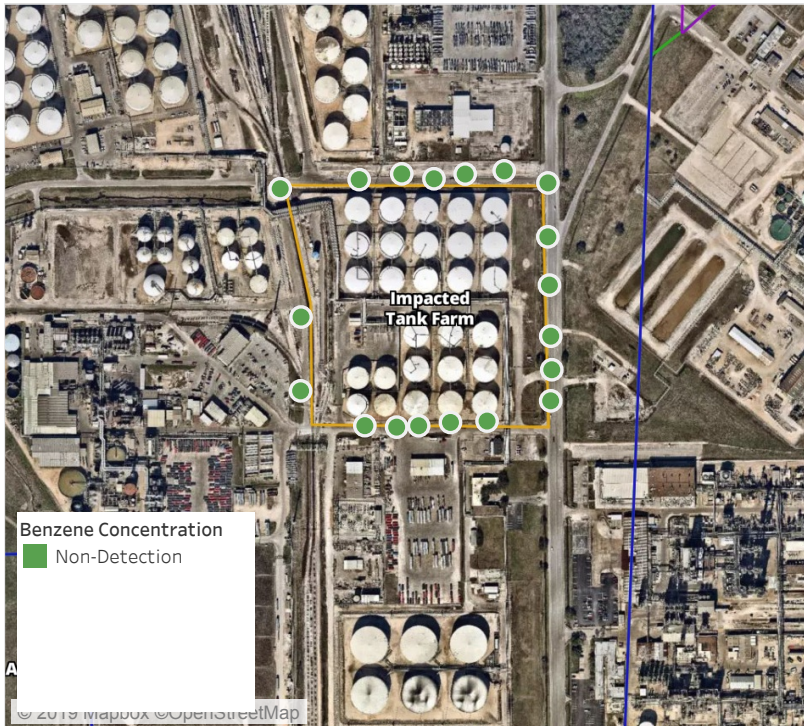
This data has been provided expeditiously to ITC and regulatory agencies for informational and/or operational purposes only. Data reported within this summary is preliminary in nature and has not undergone complete QA/QC (quality assurance/quality control) process. Until this complete QA/QC process is completed, the locations of each reading are approximate in nature and subject to further refinement. As some readings may represent non-breathing zone measurements, the data reported herein may not be suitable to assess potential occupational exposure. Site Assessment readings are not representative of an individual's breathing zone (e.g., container head space, ground level, directly above product, etc.).



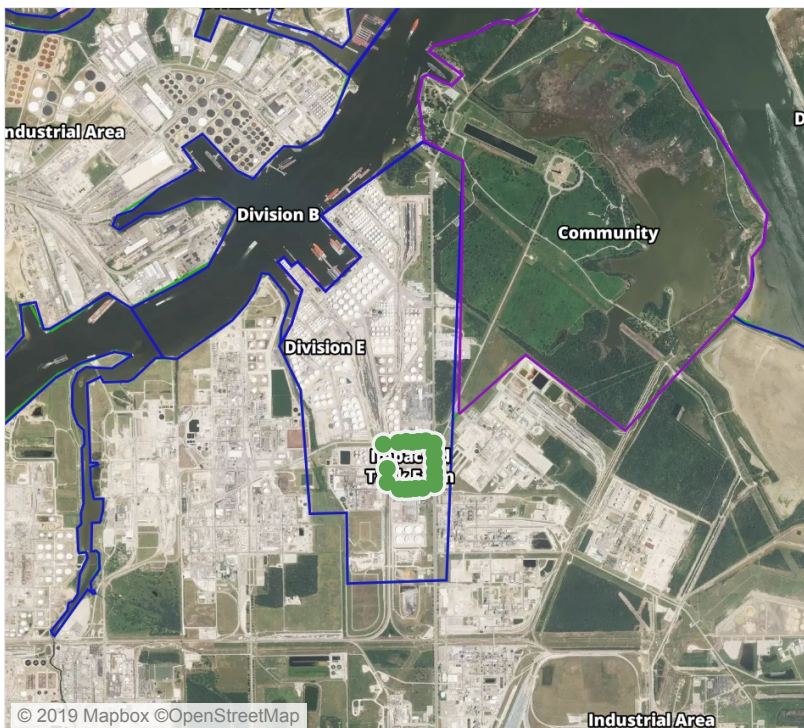
# Preliminary Hand- Held Air Monitoring Locations | ITC Deer Park Tank Fire

Reading Date

5/26/2019 11:00:00 PM to 5/27/2019 12:00:00 AM



Recent Benzene Detections



This data has been provided expeditiously to ITC and regulatory agencies for informational and/or operational purposes only. Data reported within this summary is preliminary in nature and has not undergone complete QA/QC (quality assurance/quality control) process. Until this complete QA/QC process is completed, the locations of each reading are approximate in nature and subject to further refinement. As some readings may represent non-breathing zone measurements, the data reported herein may not be suitable to assess potential occupational exposure. Site Assessment readings are not representative of an individual's breathing zone (e.g., container head space, ground level, directly above product, etc.).