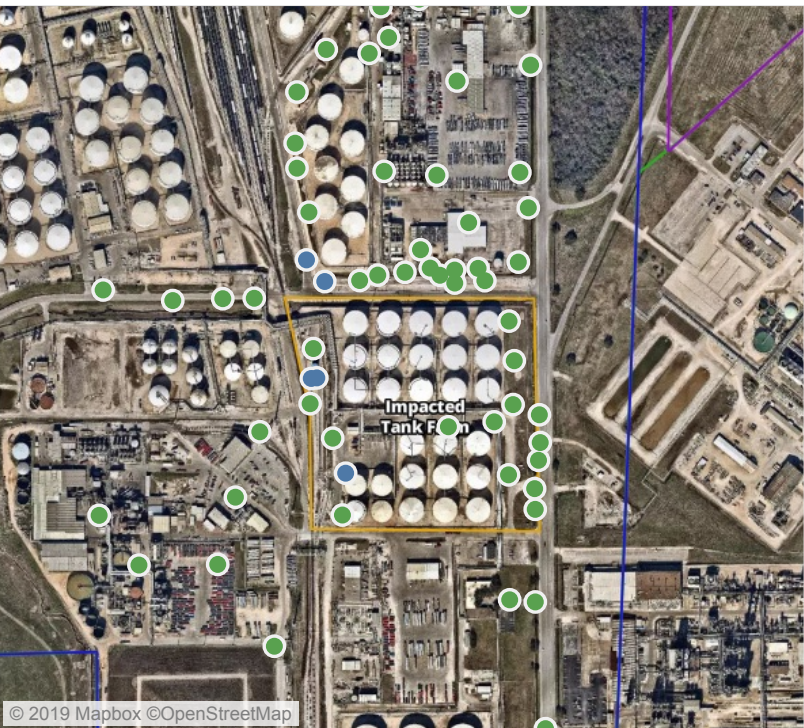
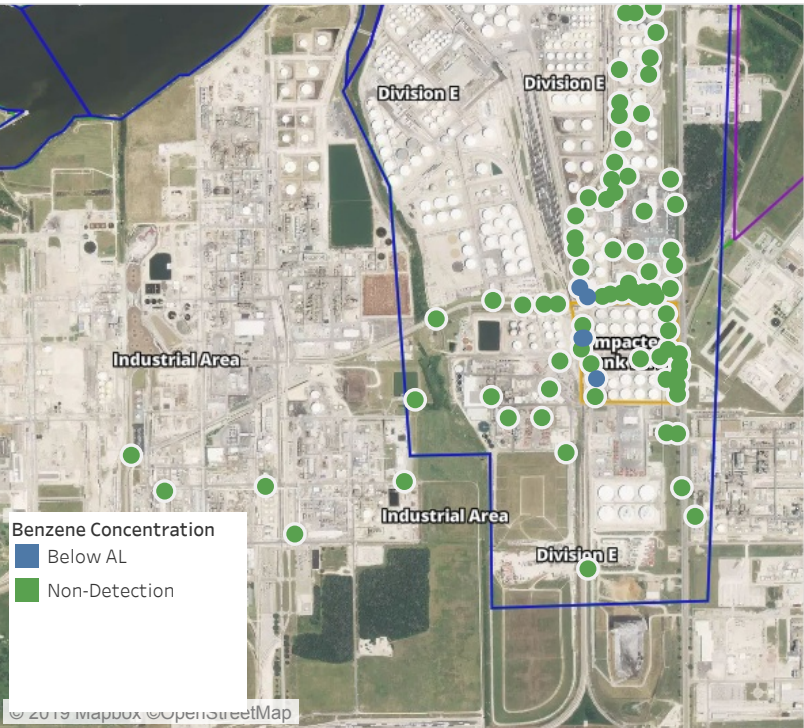


# Preliminary Hand- Held Air Monitoring Locations | ITC Deer Park Tank Fire

Reading Date  
5/28/2019 11:00:00 PM to 5/29/2019 12:00:00 AM



## Recent Benzene Detections

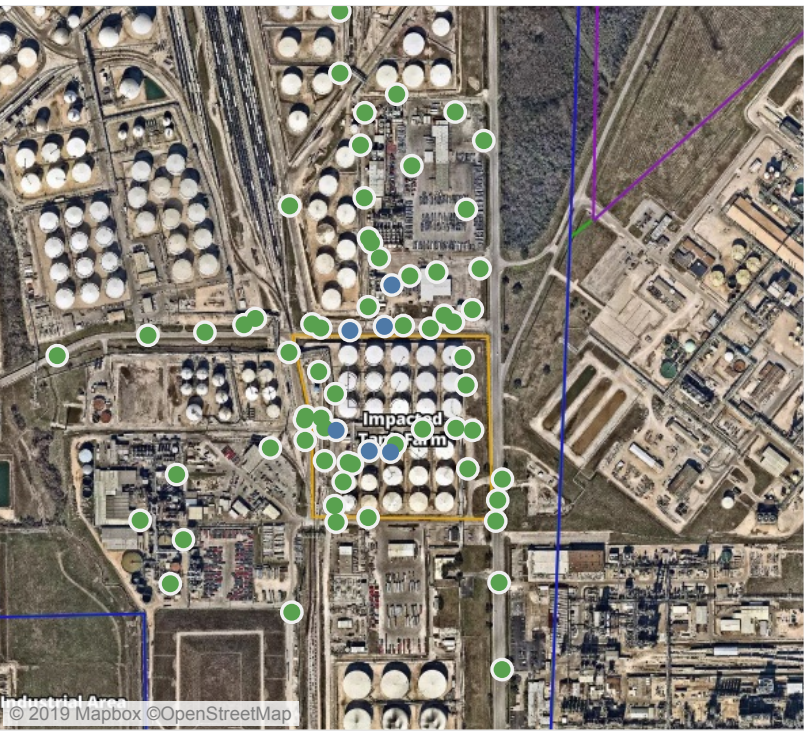
Location Category	Reading Date	Range of Detections
Division E	5/28/2019 23:19:01	0.02000 ppm
	5/28/2019 23:22:19	0.02000 ppm
Impacted Tank Farm	5/28/2019 23:01:59	0.02000 ppm
	5/28/2019 23:13:20	0.05000 ppm
	5/28/2019 23:19:19	0.02000 ppm

This data has been provided expeditiously to ITC and regulatory agencies for informational and/or operational purposes only. Data reported within this summary is preliminary in nature and has not undergone complete QA/QC (quality assurance/quality control) process. Until this complete QA/QC process is completed, the locations of each reading are approximate in nature and subject to further refinement. As some readings may represent non-breathing zone measurements, the data reported herein may not be suitable to assess potential occupational exposure. Site Assessment readings are not representative of an individual's breathing zone (e.g., container head space, ground level, directly above product, etc.).



# Preliminary Hand- Held Air Monitoring Locations | ITC Deer Park Tank Fire

Reading Date  
5/29/2019 12:00:00 AM to 5/29/2019 1:00:00 AM



## Recent Benzene Detections

Location Category	Reading Date	Range of Detections
Division E	5/29/2019 00:46:53	0.02000 ppm
	5/29/2019 00:28:28	0.03000 ppm
	5/29/2019 00:31:32	0.04000 ppm
	5/29/2019 00:47:37	0.08000 ppm
	5/29/2019 00:43:19	0.03000 ppm
	5/29/2019 00:53:45	0.04000 ppm
	5/29/2019 00:46:21	0.06000 ppm
	5/29/2019 00:51:20	0.03000 ppm
	5/29/2019 00:44:39	0.06000 ppm
Impacted Tank Farm	5/29/2019 00:08:18	0.06000 ppm
	5/29/2019 00:22:22	0.10000 ppm
	5/29/2019 00:24:59	0.03000 ppm

This data has been provided expeditiously to ITC and regulatory agencies for informational and/or operational purposes only. Data reported within this summary is preliminary in nature and has not undergone complete QA/QC (quality assurance/quality control) process. Until this complete QA/QC process is completed, the locations of each reading are approximate in nature and subject to further refinement. As some readings may represent non-breathing zone measurements, the data reported herein may not be suitable to assess potential occupational exposure. Site Assessment readings are not representative of an individual's breathing zone (e.g., container head space, ground level, directly above product, etc.).



# Preliminary Hand- Held Air Monitoring Locations | ITC Deer Park Tank Fire

Reading Date  
5/29/2019 1:00:00 AM to 5/29/2019 2:00:00 AM



## Recent Benzene Detections

Location Category	Reading Date	Range of Detections
Division E	5/29/2019 01:05:35	0.03000 ppm
Impacted Tank Farm	5/29/2019 01:41:04	0.06000 ppm
	5/29/2019 01:44:33	0.03000 ppm
	5/29/2019 01:47:33	0.09000 ppm

This data has been provided expeditiously to ITC and regulatory agencies for informational and/or operational purposes only. Data reported within this summary is preliminary in nature and has not undergone complete QA/QC (quality assurance/quality control) process. Until this complete QA/QC process is completed, the locations of each reading are approximate in nature and subject to further refinement. As some readings may represent non-breathing zone measurements, the data reported herein may not be suitable to assess potential occupational exposure. Site Assessment readings are not representative of an individual's breathing zone (e.g., container head space, ground level, directly above product, etc.).



# Preliminary Hand- Held Air Monitoring Locations | ITC Deer Park Tank Fire

Reading Date  
5/29/2019 2:00:00 AM to 5/29/2019 3:00:00 AM



## Recent Benzene Detections

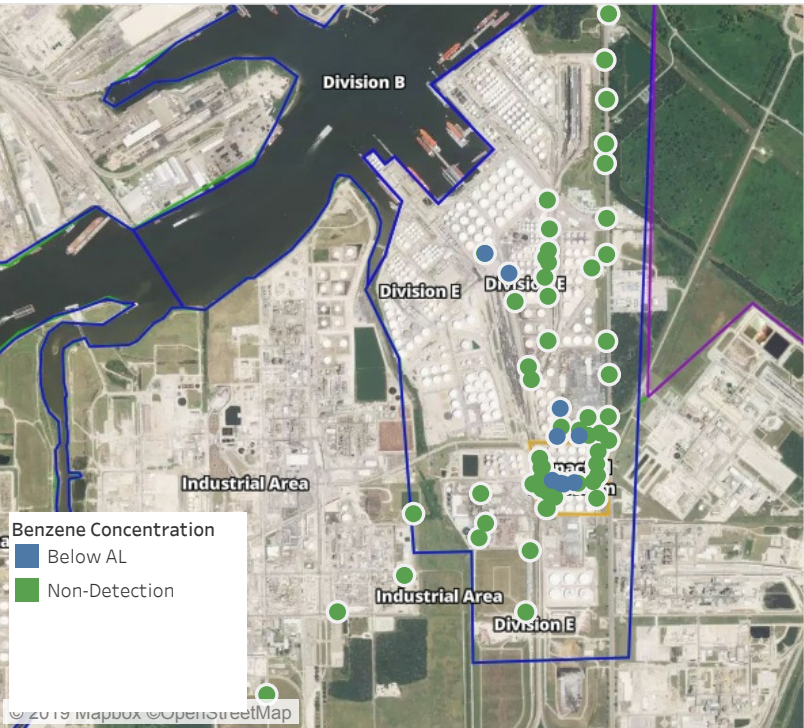
Location Category	Reading Date	Range of Detections
Division E	5/29/2019 02:00:46	0.04000 ppm
	5/29/2019 02:05:37	0.02000 ppm
	5/29/2019 02:22:47	0.03000 ppm
	5/29/2019 02:26:30	0.05000 ppm
	5/29/2019 02:29:52	0.02000 ppm

This data has been provided expeditiously to ITC and regulatory agencies for informational and/or operational purposes only. Data reported within this summary is preliminary in nature and has not undergone complete QA/QC (quality assurance/quality control) process. Until this complete QA/QC process is completed, the locations of each reading are approximate in nature and subject to further refinement. As some readings may represent non-breathing zone measurements, the data reported herein may not be suitable to assess potential occupational exposure. Site Assessment readings are not representative of an individual's breathing zone (e.g., container head space, ground level, directly above product, etc.).



# Preliminary Hand- Held Air Monitoring Locations | ITC Deer Park Tank Fire

Reading Date  
5/29/2019 3:00:00 AM to 5/29/2019 4:10:10 AM



## Recent Benzene Detections

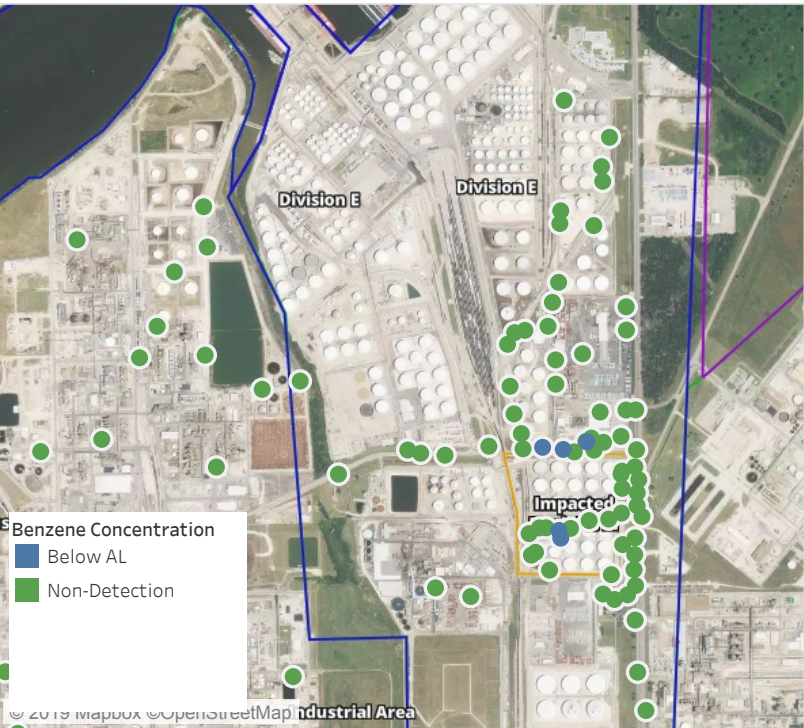
Location Category	Reading Date	Range of Detections
Division E	5/29/2019 03:25:48	0.0200 ppm
	5/29/2019 03:41:26	0.0200 ppm
	5/29/2019 03:34:50	0.0300 ppm
	5/29/2019 03:32:40	0.0500 ppm
	5/29/2019 04:02:48	0.0200 ppm
Impacted Tank Farm	5/29/2019 03:01:46	0.0200 ppm
	5/29/2019 03:07:54	0.1300 ppm
	5/29/2019 03:11:48	0.1100 ppm
	5/29/2019 03:14:52	0.0200 ppm

This data has been provided expeditiously to ITC and regulatory agencies for informational and/or operational purposes only. Data reported within this summary is preliminary in nature and has not undergone complete QA/QC (quality assurance/quality control) process. Until this complete QA/QC process is completed, the locations of each reading are approximate in nature and subject to further refinement. As some readings may represent non-breathing zone measurements, the data reported herein may not be suitable to assess potential occupational exposure. Site Assessment readings are not representative of an individual's breathing zone (e.g., container head space, ground level, directly above product, etc.).



# Preliminary Hand- Held Air Monitoring Locations | ITC Deer Park Tank Fire

Reading Date  
5/29/2019 4:00:00 AM to 5/29/2019 5:00:00 AM



## Recent Benzene Detections

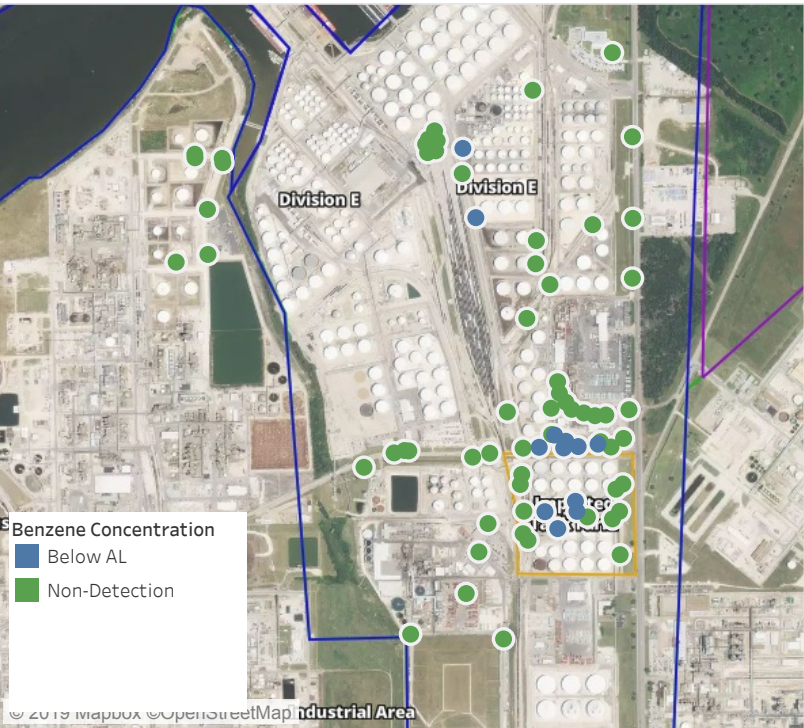
Location Category	Reading Date	Range of Detections
Division E	5/29/2019 04:02:48	0.02000 ppm
	5/29/2019 04:23:56	0.04000 ppm
	5/29/2019 04:27:26	0.02000 ppm
Impacted Tank Farm	5/29/2019 04:16:22	0.07000 ppm
	5/29/2019 04:23:05	0.07000 ppm

This data has been provided expeditiously to ITC and regulatory agencies for informational and/or operational purposes only. Data reported within this summary is preliminary in nature and has not undergone complete QA/QC (quality assurance/quality control) process. Until this complete QA/QC process is completed, the locations of each reading are approximate in nature and subject to further refinement. As some readings may represent non-breathing zone measurements, the data reported herein may not be suitable to assess potential occupational exposure. Site Assessment readings are not representative of an individual's breathing zone (e.g., container head space, ground level, directly above product, etc.).



# Preliminary Hand- Held Air Monitoring Locations | ITC Deer Park Tank Fire

Reading Date  
5/29/2019 5:00:00 AM to 5/29/2019 6:00:00 AM



## Recent Benzene Detections

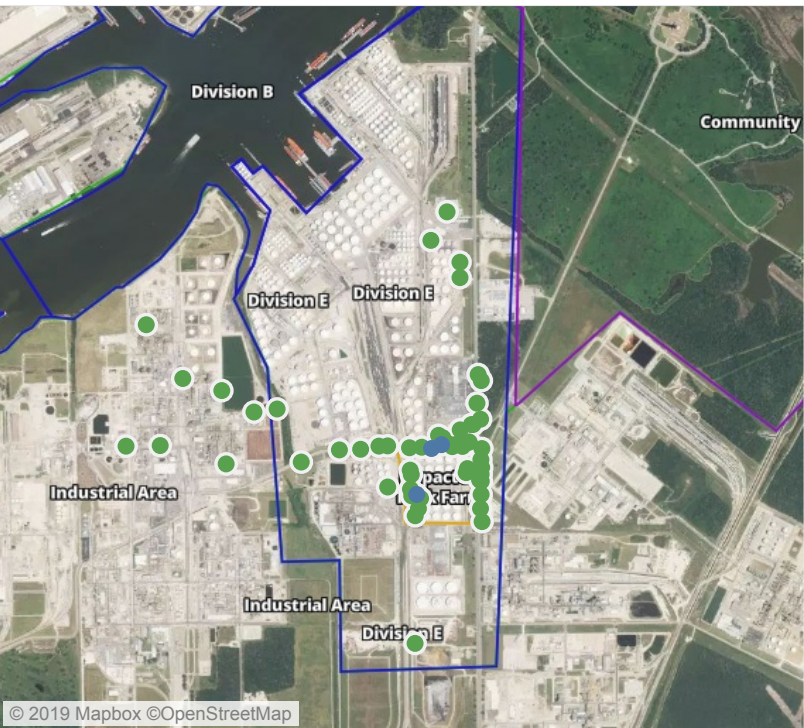
Location Category	Reading Date	Range of Detections
Division E	5/29/2019 05:04:48	0.03000 ppm
	5/29/2019 05:09:08	0.02000 ppm
	5/29/2019 05:49:15	0.04000 ppm
	5/29/2019 05:45:30	0.03000 ppm
	5/29/2019 05:52:20	0.02000 ppm
	5/29/2019 05:38:51	0.03000 ppm
	5/29/2019 05:53:27	0.02000 ppm
	5/29/2019 05:49:48	0.04000 ppm
Impacted Tank Farm	5/29/2019 05:46:37	0.07000 ppm
	5/29/2019 05:50:24	0.04000 ppm
	5/29/2019 05:54:02	0.03000 ppm
	5/29/2019 05:57:03	0.02000 ppm

This data has been provided expeditiously to ITC and regulatory agencies for informational and/or operational purposes only. Data reported within this summary is preliminary in nature and has not undergone complete QA/QC (quality assurance/quality control) process. Until this complete QA/QC process is completed, the locations of each reading are approximate in nature and subject to further refinement. As some readings may represent non-breathing zone measurements, the data reported herein may not be suitable to assess potential occupational exposure. Site Assessment readings are not representative of an individual's breathing zone (e.g., container head space, ground level, directly above product, etc.).



# Preliminary Hand- Held Air Monitoring Locations | ITC Deer Park Tank Fire

Reading Date  
5/29/2019 6:00:00 AM to 5/29/2019 7:00:00 AM



## Recent Benzene Detections

Location Category	Reading Date	Range of Detections
Division E	5/29/2019 06:11:16	0.02000 ppm
	5/29/2019 06:17:07	0.02000 ppm
Impacted Tank Farm	5/29/2019 06:07:05	0.02000 ppm

This data has been provided expeditiously to ITC and regulatory agencies for informational and/or operational purposes only. Data reported within this summary is preliminary in nature and has not undergone complete QA/QC (quality assurance/quality control) process. Until this complete QA/QC process is completed, the locations of each reading are approximate in nature and subject to further refinement. As some readings may represent non-breathing zone measurements, the data reported herein may not be suitable to assess potential occupational exposure. Site Assessment readings are not representative of an individual's breathing zone (e.g., container head space, ground level, directly above product, etc.).



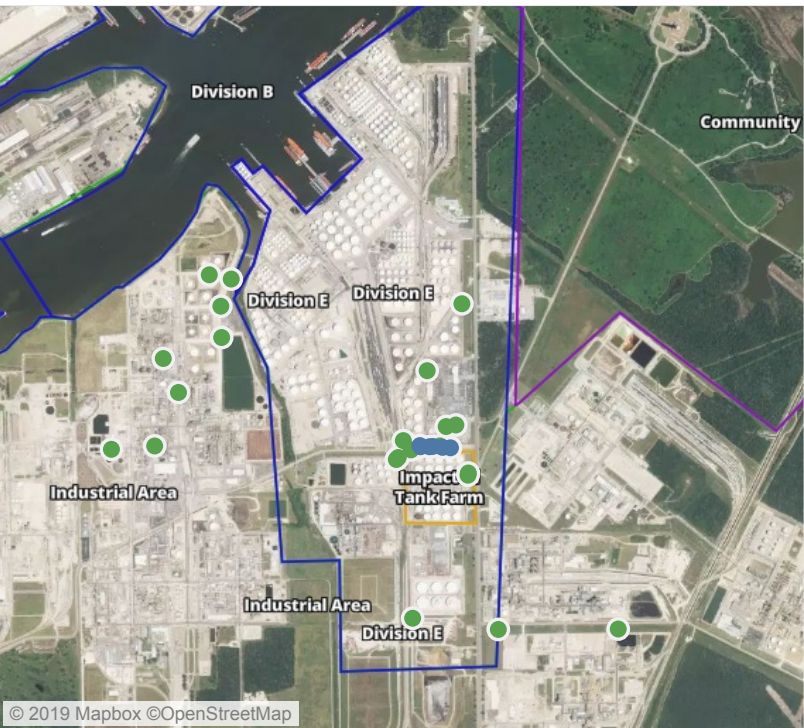


**Please Note:** These updates display data from the 2<sup>nd</sup> 80's Fire site (Impacted Tank Farm), in the industrial areas surrounding the 2<sup>nd</sup> 80's Fire site (US Coast Guard Division E), within the Houston Ship Channel (US Coast Guard Divisions A-D), and in the industrial areas north and south of the Houston Ship Channel (Industrial Area). Real-time air monitoring data for the surrounding communities are communicated daily in a separate report.



# Preliminary Hand- Held Air Monitoring Locations | ITC Deer Park Tank Fire

Reading Date  
5/29/2019 7:00:00 AM to 5/29/2019 8:00:00 AM



## Recent Benzene Detections

Location Category	Reading Date	Range of Detections
Division E	5/29/2019 07:01:58	0.02000 ppm
	5/29/2019 07:07:20	0.02000 ppm
	5/29/2019 07:15:24	0.02000 ppm
	5/29/2019 07:27:40	0.02000 ppm
	5/29/2019 07:37:44	0.02000 ppm
	5/29/2019 07:42:41	0.02000 ppm

This data has been provided expeditiously to ITC and regulatory agencies for informational and/or operational purposes only. Data reported within this summary is preliminary in nature and has not undergone complete QA/QC (quality assurance/quality control) process. Until this complete QA/QC process is completed, the locations of each reading are approximate in nature and subject to further refinement. As some readings may represent non-breathing zone measurements, the data reported herein may not be suitable to assess potential occupational exposure. Site Assessment readings are not representative of an individual's breathing zone (e.g., container head space, ground level, directly above product, etc.).



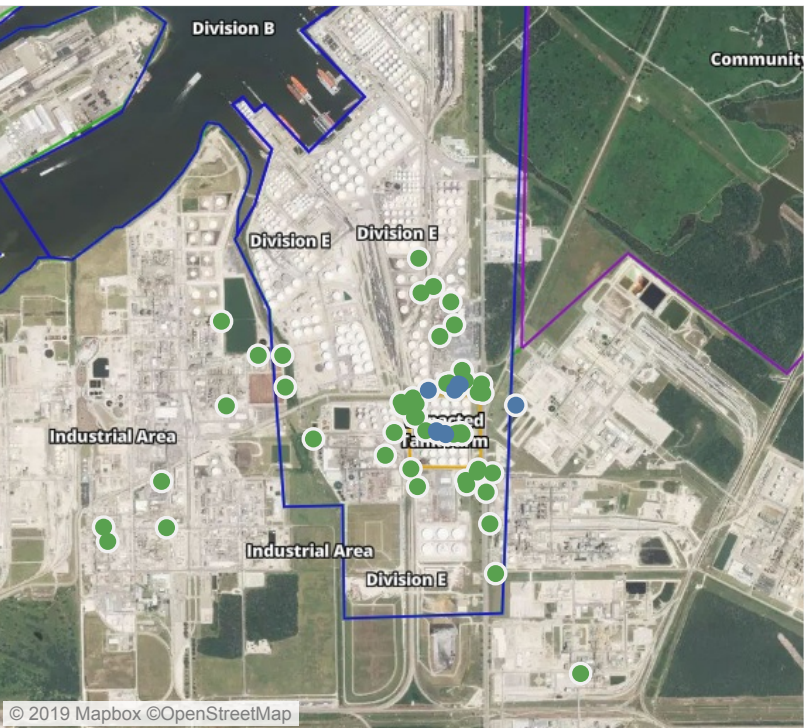
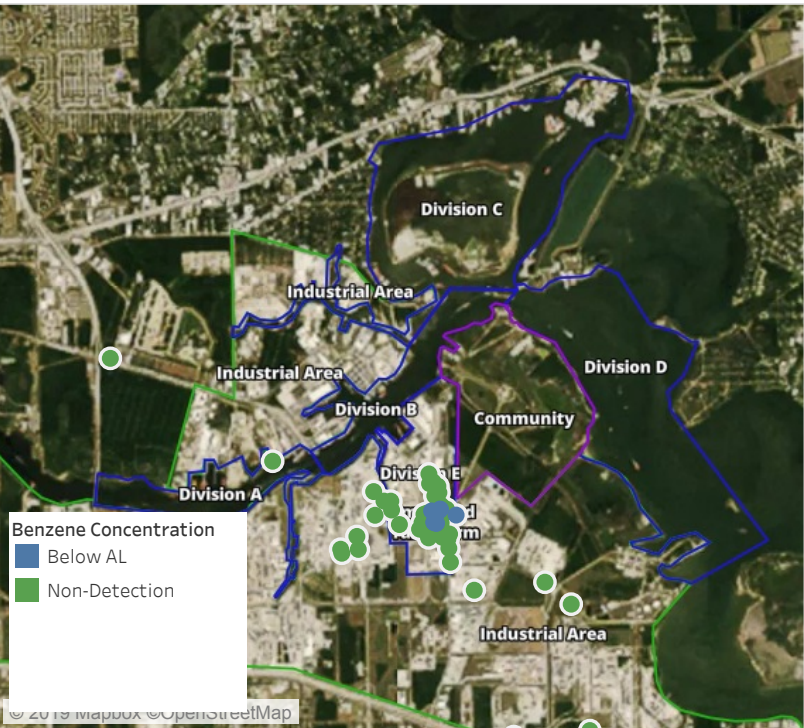


**Please Note:** These updates display data from the 2<sup>nd</sup> 80's Fire site (Impacted Tank Farm), in the industrial areas surrounding the 2<sup>nd</sup> 80's Fire site (US Coast Guard Division E), within the Houston Ship Channel (US Coast Guard Divisions A-D), and in the industrial areas north and south of the Houston Ship Channel (Industrial Area). Real-time air monitoring data for the surrounding communities are communicated daily in a separate report.



# Preliminary Hand- Held Air Monitoring Locations | ITC Deer Park Tank Fire

Reading Date  
5/29/2019 8:00:00 AM to 5/29/2019 9:00:00 AM



## Recent Benzene Detections

Location Category	Reading Date	Range of Detections
Division E	5/29/2019 08:26:28	0.03000 ppm
	5/29/2019 08:40:55	0.03000 ppm
	5/29/2019 08:23:14	0.02000 ppm
	5/29/2019 08:32:47	0.02000 ppm
	5/29/2019 08:59:10	0.06000 ppm
Impacted Tank Farm	5/29/2019 08:02:30	0.06000 ppm
	5/29/2019 08:06:15	0.06000 ppm
	5/29/2019 08:44:48	0.06000 ppm
	5/29/2019 08:42:10	0.03000 ppm

This data has been provided expeditiously to ITC and regulatory agencies for informational and/or operational purposes only. Data reported within this summary is preliminary in nature and has not undergone complete QA/QC (quality assurance/quality control) process. Until this complete QA/QC process is completed, the locations of each reading are approximate in nature and subject to further refinement. As some readings may represent non-breathing zone measurements, the data reported herein may not be suitable to assess potential occupational exposure. Site Assessment readings are not representative of an individual's breathing zone (e.g., container head space, ground level, directly above product, etc.).



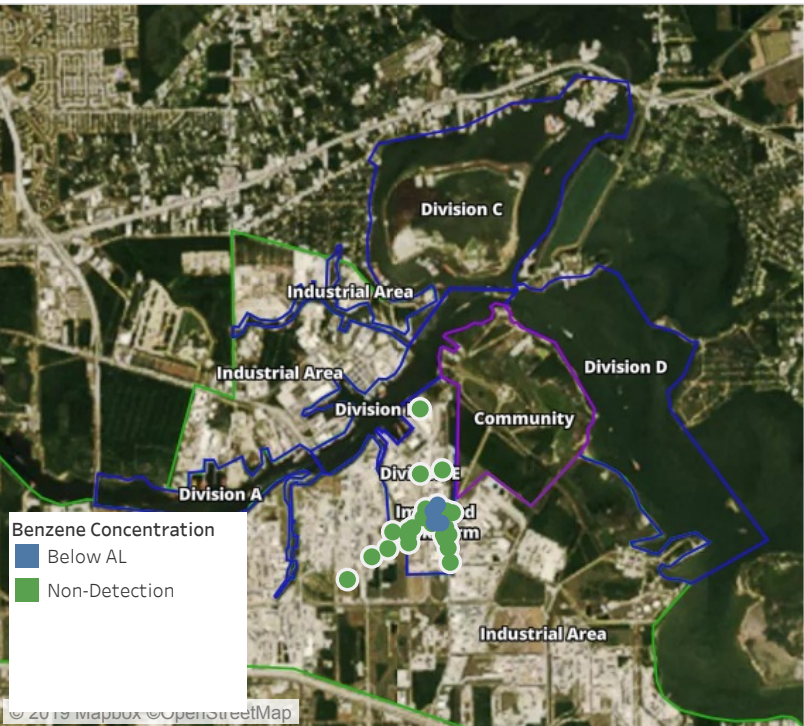


**Please Note:** These updates display data from the 2<sup>nd</sup> 80's Fire site (Impacted Tank Farm), in the industrial areas surrounding the 2<sup>nd</sup> 80's Fire site (US Coast Guard Division E), within the Houston Ship Channel (US Coast Guard Divisions A-D), and in the industrial areas north and south of the Houston Ship Channel (Industrial Area). Real-time air monitoring data for the surrounding communities are communicated daily in a separate report.



# Preliminary Hand- Held Air Monitoring Locations | ITC Deer Park Tank Fire

Reading Date  
5/29/2019 9:00:00 AM to 5/29/2019 10:00:00 AM



## Recent Benzene Detections

Location Category	Reading Date	Range of Detections
Division E	5/29/2019 09:10:38	0.02000 ppm
	5/29/2019 09:40:04	0.05000 ppm
	5/29/2019 09:52:41	0.04000 ppm
Impacted Tank Farm	5/29/2019 09:26:24	0.05000 ppm
	5/29/2019 09:38:45	0.03000 ppm
	5/29/2019 09:34:54	0.03000 ppm
	5/29/2019 09:33:35	0.11000 ppm
	5/29/2019 09:30:09	0.04000 ppm

This data has been provided expeditiously to ITC and regulatory agencies for informational and/or operational purposes only. Data reported within this summary is preliminary in nature and has not undergone complete QA/QC (quality assurance/quality control) process. Until this complete QA/QC process is completed, the locations of each reading are approximate in nature and subject to further refinement. As some readings may represent non-breathing zone measurements, the data reported herein may not be suitable to assess potential occupational exposure. Site Assessment readings are not representative of an individual's breathing zone (e.g., container head space, ground level, directly above product, etc.).



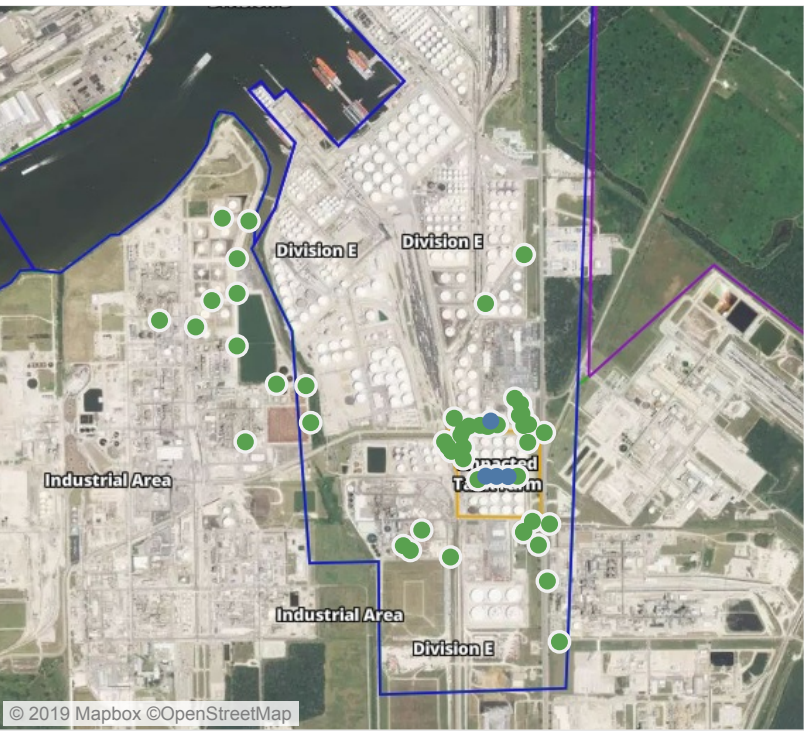
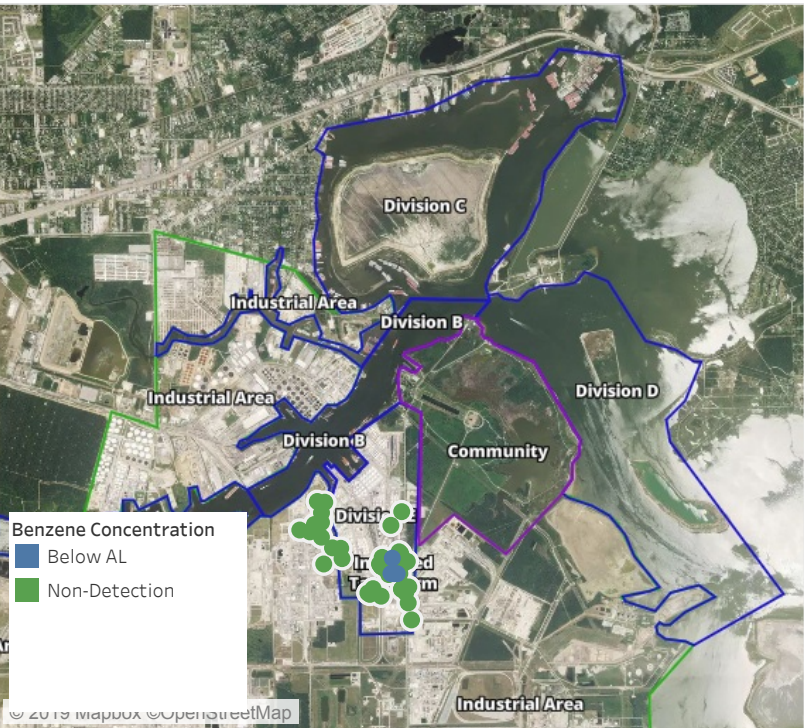


**Please Note:** These updates display data from the 2<sup>nd</sup> 80's Fire site (Impacted Tank Farm), in the industrial areas surrounding the 2<sup>nd</sup> 80's Fire site (US Coast Guard Division E), within the Houston Ship Channel (US Coast Guard Divisions A-D), and in the industrial areas north and south of the Houston Ship Channel (Industrial Area). Real-time air monitoring data for the surrounding communities are communicated daily in a separate report.



# Preliminary Hand- Held Air Monitoring Locations | ITC Deer Park Tank Fire

Reading Date  
5/29/2019 10:00:00 AM to 5/29/2019 11:00:00 AM



## Recent Benzene Detections

Location Category	Reading Date	Range of Detections
Division E	5/29/2019 10:32:10	0.02000 ppm
Impacted Tank Farm	5/29/2019 10:13:27	0.03000 ppm
	5/29/2019 10:16:22	0.03000 ppm
	5/29/2019 10:19:18	0.03000 ppm

This data has been provided expeditiously to ITC and regulatory agencies for informational and/or operational purposes only. Data reported within this summary is preliminary in nature and has not undergone complete QA/QC (quality assurance/quality control) process. Until this complete QA/QC process is completed, the locations of each reading are approximate in nature and subject to further refinement. As some readings may represent non-breathing zone measurements, the data reported herein may not be suitable to assess potential occupational exposure. Site Assessment readings are not representative of an individual's breathing zone (e.g., container head space, ground level, directly above product, etc.).



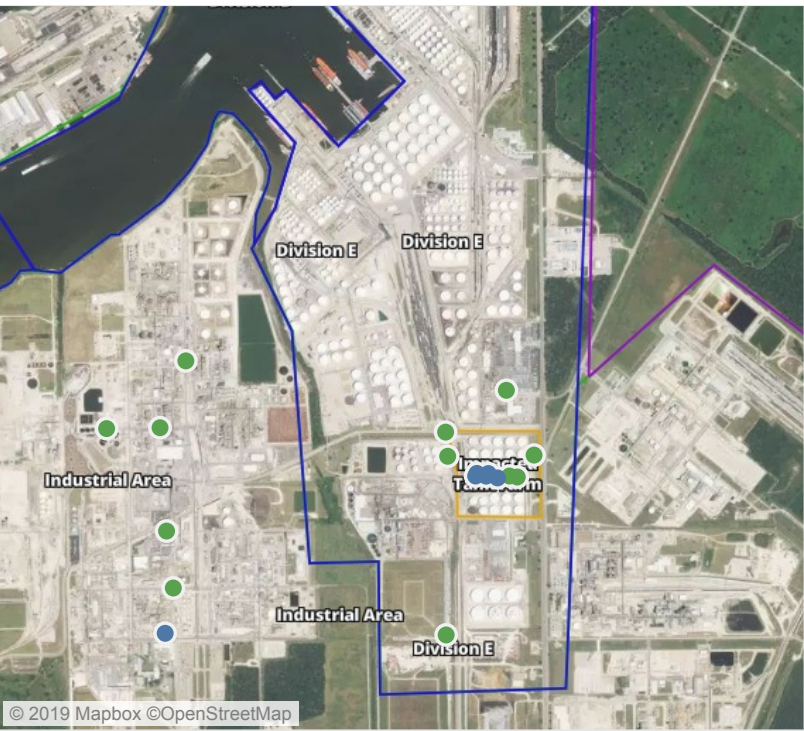
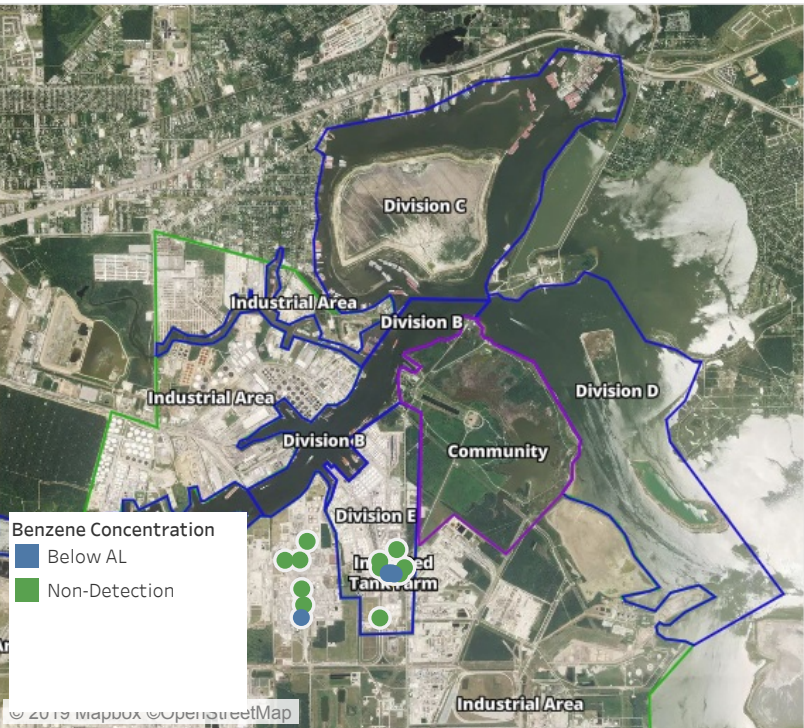


**Please Note:** These updates display data from the 2<sup>nd</sup> 80's Fire site (Impacted Tank Farm), in the industrial areas surrounding the 2<sup>nd</sup> 80's Fire site (US Coast Guard Division E), within the Houston Ship Channel (US Coast Guard Divisions A-D), and in the industrial areas north and south of the Houston Ship Channel (Industrial Area). Real-time air monitoring data for the surrounding communities are communicated daily in a separate report.



# Preliminary Hand- Held Air Monitoring Locations | ITC Deer Park Tank Fire

Reading Date  
5/29/2019 11:00:00 AM to 5/29/2019 12:00:00 PM



## Recent Benzene Detections

Location Category	Reading Date	Range of Detections
Division E	5/29/2019 11:05:49	0.02000 ppm
Impacted Tank Farm	5/29/2019 11:08:51	0.07000 ppm
	5/29/2019 11:06:24	0.04000 ppm
	5/29/2019 11:03:34	0.03000 ppm
	5/29/2019 11:58:03	0.03000 ppm
	5/29/2019 11:55:39	0.06000 ppm

This data has been provided expeditiously to ITC and regulatory agencies for informational and/or operational purposes only. Data reported within this summary is preliminary in nature and has not undergone complete QA/QC (quality assurance/quality control) process. Until this complete QA/QC process is completed, the locations of each reading are approximate in nature and subject to further refinement. As some readings may represent non-breathing zone measurements, the data reported herein may not be suitable to assess potential occupational exposure. Site Assessment readings are not representative of an individual's breathing zone (e.g., container head space, ground level, directly above product, etc.).



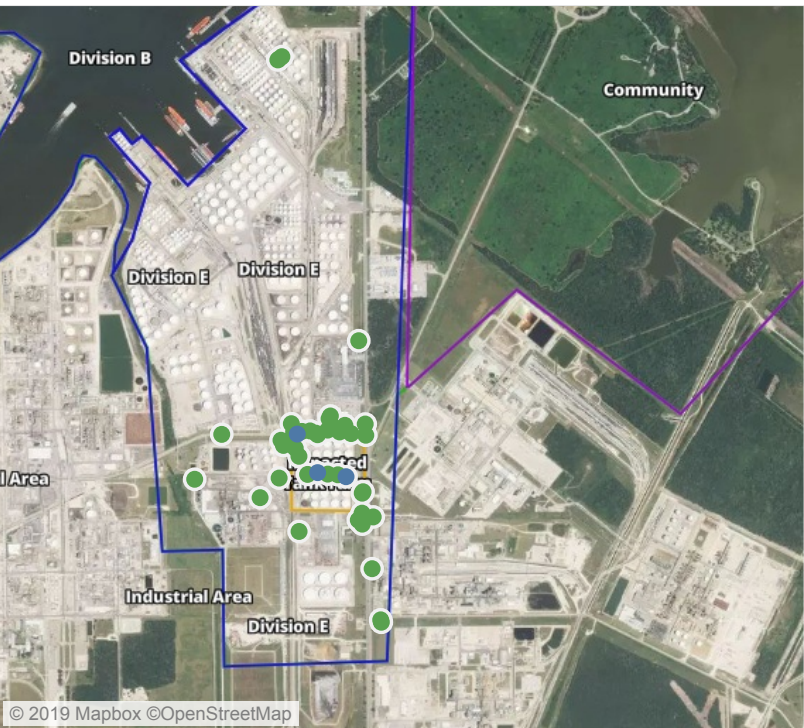
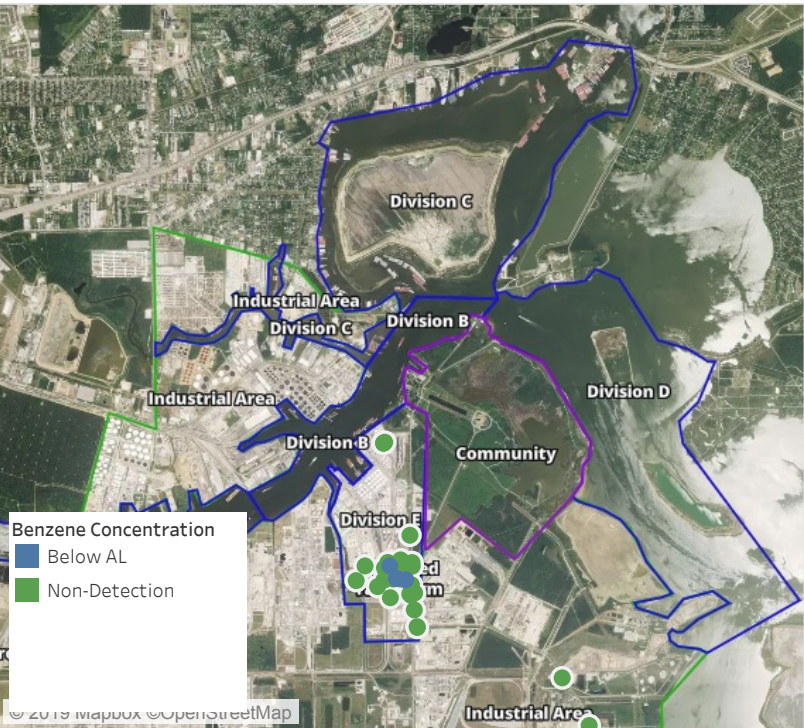


**Please Note:** These updates display data from the 2<sup>nd</sup> 80's Fire site (Impacted Tank Farm), in the industrial areas surrounding the 2<sup>nd</sup> 80's Fire site (US Coast Guard Division E), within the Houston Ship Channel (US Coast Guard Divisions A-D), and in the industrial areas north and south of the Houston Ship Channel (Industrial Area). Real-time air monitoring data for the surrounding communities are communicated daily in a separate report.



# Preliminary Hand- Held Air Monitoring Locations | ITC Deer Park Tank Fire

Reading Date  
5/29/2019 12:00:00 PM to 5/29/2019 1:00:00 PM



## Recent Benzene Detections

Location Category	Reading Date	Range of Detections
Division E	5/29/2019 12:36:30	0.02000 ppm
Impacted Tank Farm	5/29/2019 12:07:43	0.03000 ppm
	5/29/2019 12:59:09	0.05000 ppm

This data has been provided expeditiously to ITC and regulatory agencies for informational and/or operational purposes only. Data reported within this summary is preliminary in nature and has not undergone complete QA/QC (quality assurance/quality control) process. Until this complete QA/QC process is completed, the locations of each reading are approximate in nature and subject to further refinement. As some readings may represent non-breathing zone measurements, the data reported herein may not be suitable to assess potential occupational exposure. Site Assessment readings are not representative of an individual's breathing zone (e.g., container head space, ground level, directly above product, etc.).



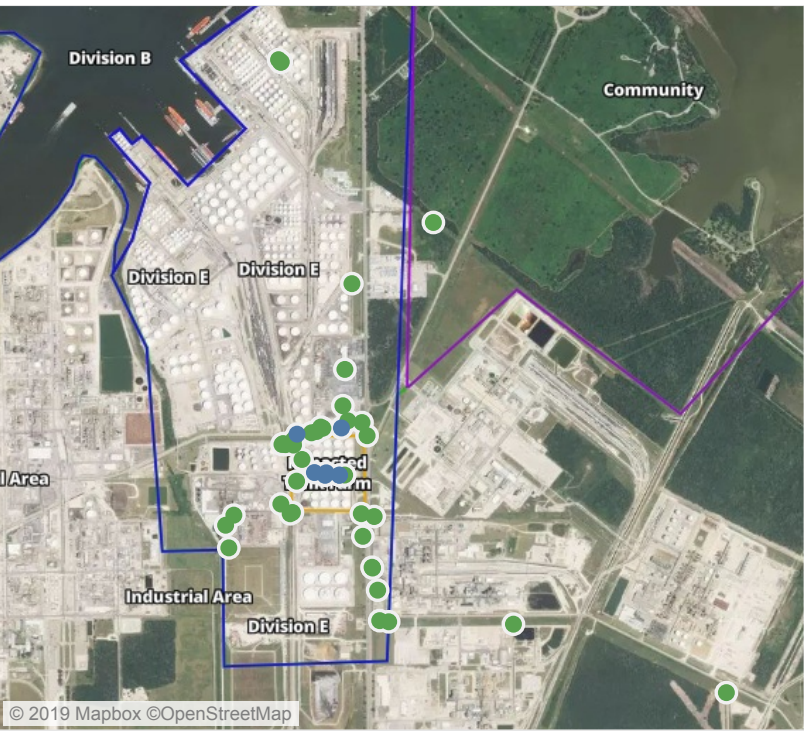


**Please Note:** These updates display data from the 2<sup>nd</sup> 80's Fire site (Impacted Tank Farm), in the industrial areas surrounding the 2<sup>nd</sup> 80's Fire site (US Coast Guard Division E), within the Houston Ship Channel (US Coast Guard Divisions A-D), and in the industrial areas north and south of the Houston Ship Channel (Industrial Area). Real-time air monitoring data for the surrounding communities are communicated daily in a separate report.



# Preliminary Hand- Held Air Monitoring Locations | ITC Deer Park Tank Fire

Reading Date  
5/29/2019 1:00:00 PM to 5/29/2019 2:00:00 PM



## Recent Benzene Detections

Location Category	Reading Date	Range of Detections
Division E	5/29/2019 13:47:47	0.0200 ppm
	5/29/2019 13:59:43	0.0300 ppm
Impacted Tank Farm	5/29/2019 13:05:40	0.0400 ppm
	5/29/2019 13:04:32	0.1000 ppm
	5/29/2019 13:01:55	0.0800 ppm
	5/29/2019 13:57:53	0.1400 ppm
	5/29/2019 13:48:06	0.0600 ppm

This data has been provided expeditiously to ITC and regulatory agencies for informational and/or operational purposes only. Data reported within this summary is preliminary in nature and has not undergone complete QA/QC (quality assurance/quality control) process. Until this complete QA/QC process is completed, the locations of each reading are approximate in nature and subject to further refinement. As some readings may represent non-breathing zone measurements, the data reported herein may not be suitable to assess potential occupational exposure. Site Assessment readings are not representative of an individual's breathing zone (e.g., container head space, ground level, directly above product, etc.).



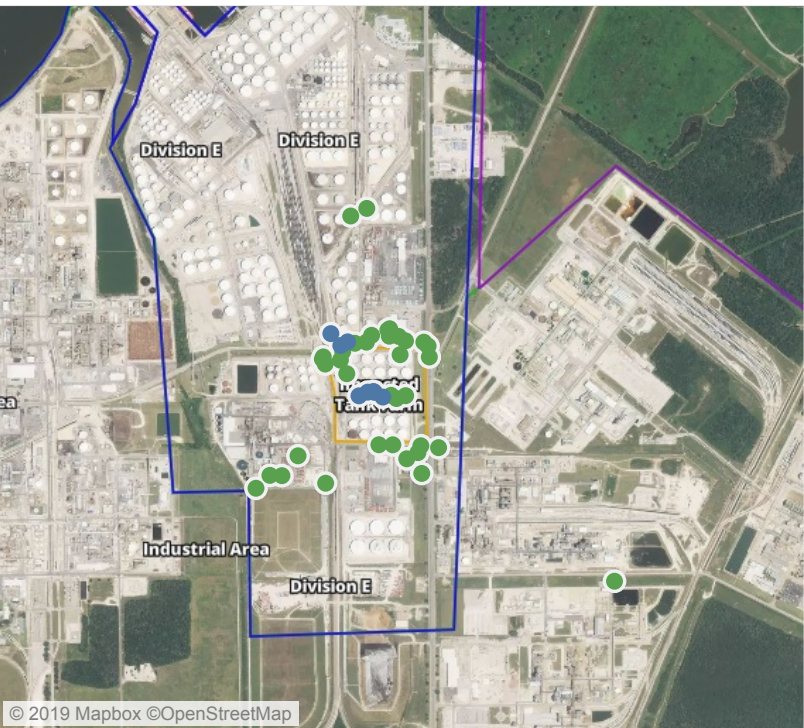
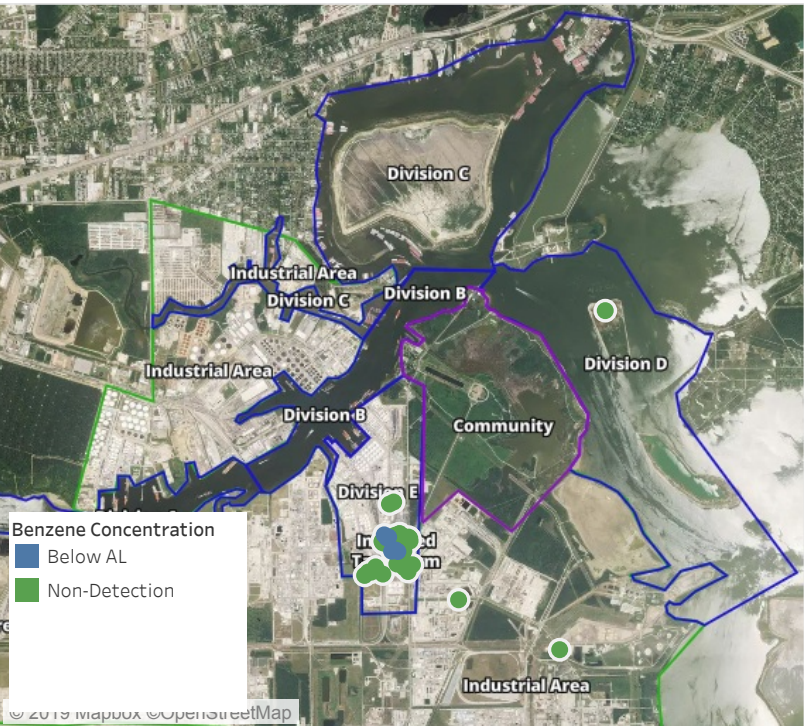


**Please Note:** These updates display data from the 2<sup>nd</sup> 80's Fire site (Impacted Tank Farm), in the industrial areas surrounding the 2<sup>nd</sup> 80's Fire site (US Coast Guard Division E), within the Houston Ship Channel (US Coast Guard Divisions A-D), and in the industrial areas north and south of the Houston Ship Channel (Industrial Area). Real-time air monitoring data for the surrounding communities are communicated daily in a separate report.



# Preliminary Hand- Held Air Monitoring Locations | ITC Deer Park Tank Fire

Reading Date  
5/29/2019 2:00:00 PM to 5/29/2019 3:00:00 PM



## Recent Benzene Detections

Location Category	Reading Date	Range of Detections
Division E	5/29/2019 14:09:21	0.02000 ppm
	5/29/2019 14:02:32	0.02000 ppm
	5/29/2019 14:59:32	0.02000 ppm
Impacted Tank Farm	5/29/2019 14:35:59	0.05000 ppm
	5/29/2019 14:38:26	0.03000 ppm
	5/29/2019 14:30:07	0.06000 ppm
	5/29/2019 14:41:43	0.10000 ppm
	5/29/2019 14:26:19	0.09000 ppm

This data has been provided expeditiously to ITC and regulatory agencies for informational and/or operational purposes only. Data reported within this summary is preliminary in nature and has not undergone complete QA/QC (quality assurance/quality control) process. Until this complete QA/QC process is completed, the locations of each reading are approximate in nature and subject to further refinement. As some readings may represent non-breathing zone measurements, the data reported herein may not be suitable to assess potential occupational exposure. Site Assessment readings are not representative of an individual's breathing zone (e.g., container head space, ground level, directly above product, etc.).



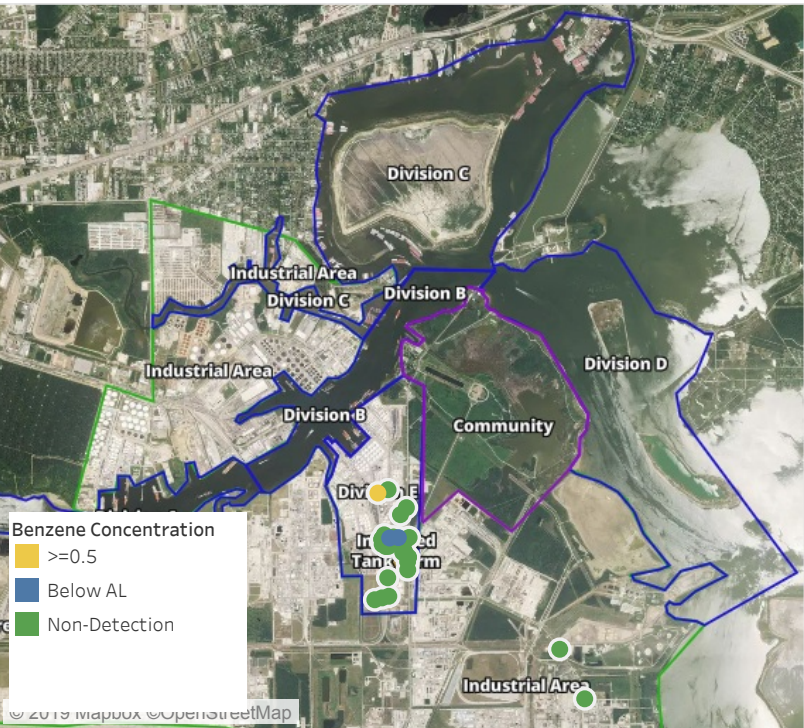


**Please Note:** These updates display data from the 2<sup>nd</sup> 80's Fire site (Impacted Tank Farm), in the industrial areas surrounding the 2<sup>nd</sup> 80's Fire site (US Coast Guard Division E), within the Houston Ship Channel (US Coast Guard Divisions A-D), and in the industrial areas north and south of the Houston Ship Channel (Industrial Area). Real-time air monitoring data for the surrounding communities are communicated daily in a separate report.



# Preliminary Hand- Held Air Monitoring Locations | ITC Deer Park Tank Fire

Reading Date  
5/29/2019 3:00:00 PM to 5/29/2019 4:00:00 PM



## Recent Benzene Detections

Location Category	Reading Date	Range of Detections
Division E	5/29/2019 15:03:53	0.0200 ppm
	5/29/2019 15:21:20	0.0200 ppm
	5/29/2019 15:49:11	0.5800 ppm

This data has been provided expeditiously to ITC and regulatory agencies for informational and/or operational purposes only. Data reported within this summary is preliminary in nature and has not undergone complete QA/QC (quality assurance/quality control) process. Until this complete QA/QC process is completed, the locations of each reading are approximate in nature and subject to further refinement. As some readings may represent non-breathing zone measurements, the data reported herein may not be suitable to assess potential occupational exposure. Site Assessment readings are not representative of an individual's breathing zone (e.g., container head space, ground level, directly above product, etc.).



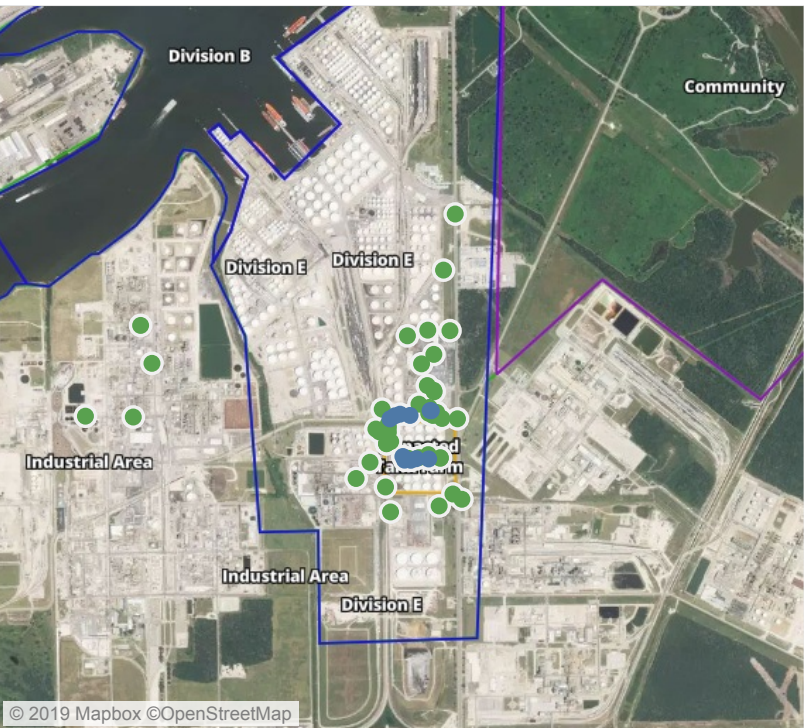


**Please Note:** These updates display data from the 2<sup>nd</sup> 80's Fire site (Impacted Tank Farm), in the industrial areas surrounding the 2<sup>nd</sup> 80's Fire site (US Coast Guard Division E), within the Houston Ship Channel (US Coast Guard Divisions A-D), and in the industrial areas north and south of the Houston Ship Channel (Industrial Area). Real-time air monitoring data for the surrounding communities are communicated daily in a separate report.



# Preliminary Hand- Held Air Monitoring Locations | ITC Deer Park Tank Fire

Reading Date  
5/29/2019 4:00:00 PM to 5/29/2019 5:00:00 PM



## Recent Benzene Detections

Location Category	Reading Date	Range of Detections
Division E	5/29/2019 16:30:40	0.02000 ppm
	5/29/2019 16:36:59	0.03000 ppm
	5/29/2019 16:33:59	0.03000 ppm
	5/29/2019 16:28:09	0.02000 ppm
	5/29/2019 16:40:46	0.05000 ppm
	5/29/2019 16:44:13	0.02000 ppm
Impacted Tank Farm	5/29/2019 16:16:20	0.05000 ppm
	5/29/2019 16:04:43	0.08000 ppm
	5/29/2019 16:08:39	0.05000 ppm
	5/29/2019 16:31:58	0.05000 ppm
	5/29/2019 16:45:42	0.10000 ppm

This data has been provided expeditiously to ITC and regulatory agencies for informational and/or operational purposes only. Data reported within this summary is preliminary in nature and has not undergone complete QA/QC (quality assurance/quality control) process. Until this complete QA/QC process is completed, the locations of each reading are approximate in nature and subject to further refinement. As some readings may represent non-breathing zone measurements, the data reported herein may not be suitable to assess potential occupational exposure. Site Assessment readings are not representative of an individual's breathing zone (e.g., container head space, ground level, directly above product, etc.).



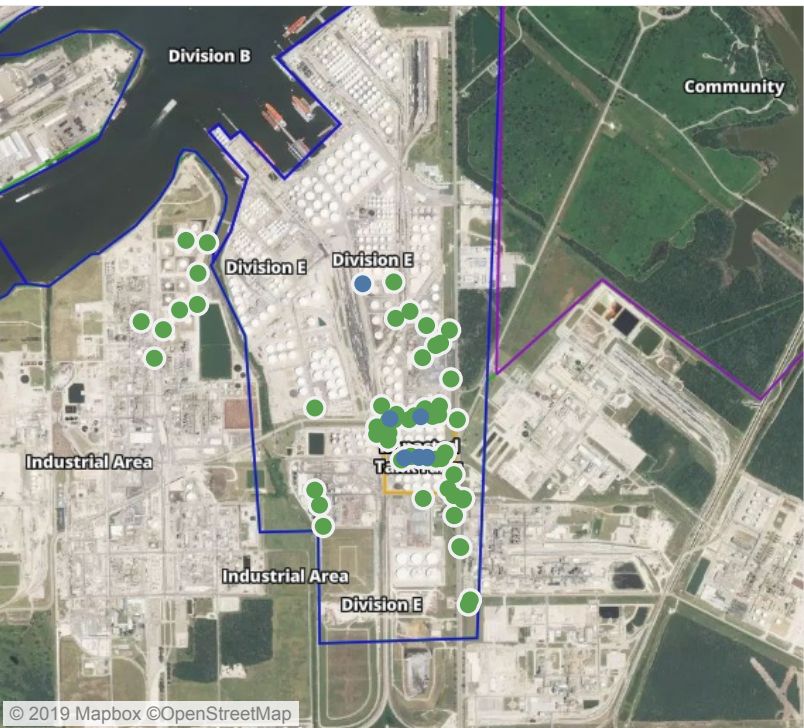
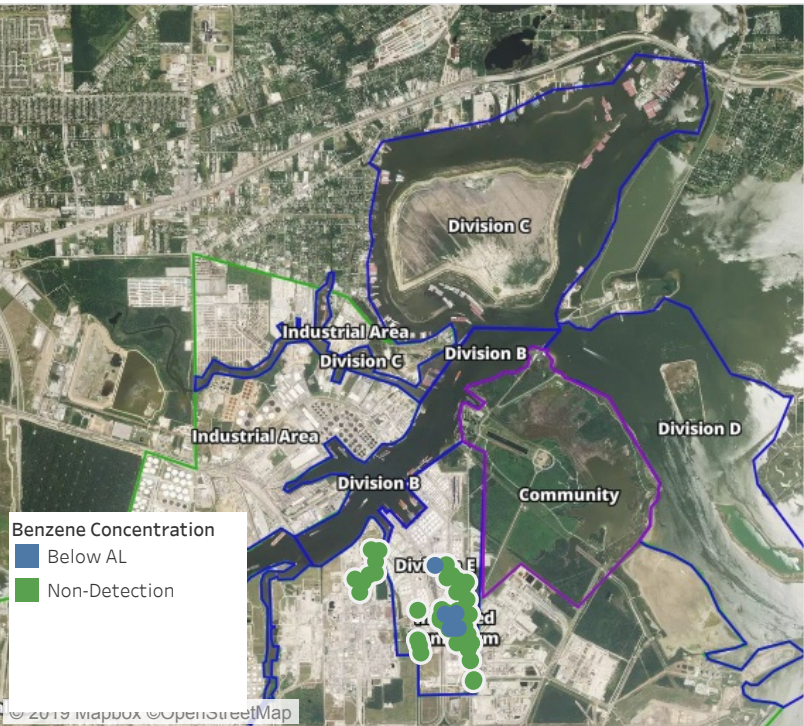


**Please Note:** These updates display data from the 2<sup>nd</sup> 80's Fire site (Impacted Tank Farm), in the industrial areas surrounding the 2<sup>nd</sup> 80's Fire site (US Coast Guard Division E), within the Houston Ship Channel (US Coast Guard Divisions A-D), and in the industrial areas north and south of the Houston Ship Channel (Industrial Area). Real-time air monitoring data for the surrounding communities are communicated daily in a separate report.



# Preliminary Hand- Held Air Monitoring Locations | ITC Deer Park Tank Fire

Reading Date  
5/29/2019 5:00:00 PM to 5/29/2019 6:00:00 PM



## Recent Benzene Detections

Location Category	Reading Date	Range of Detections
Division E	5/29/2019 17:33:13	0.0200 ppm
	5/29/2019 17:38:39	0.0200 ppm
	5/29/2019 17:47:52	0.3700 ppm
Impacted Tank Farm	5/29/2019 17:03:57	0.0400 ppm
	5/29/2019 17:10:10	0.1500 ppm
	5/29/2019 17:50:03	0.0500 ppm
	5/29/2019 17:47:07	0.0400 ppm

This data has been provided expeditiously to ITC and regulatory agencies for informational and/or operational purposes only. Data reported within this summary is preliminary in nature and has not undergone complete QA/QC (quality assurance/quality control) process. Until this complete QA/QC process is completed, the locations of each reading are approximate in nature and subject to further refinement. As some readings may represent non-breathing zone measurements, the data reported herein may not be suitable to assess potential occupational exposure. Site Assessment readings are not representative of an individual's breathing zone (e.g., container head space, ground level, directly above product, etc.).



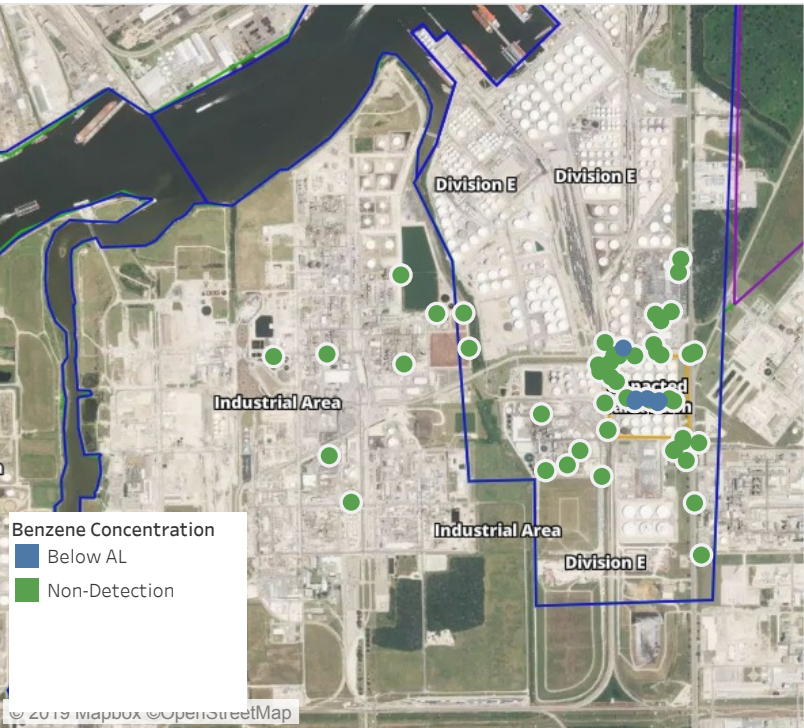


**Please Note:** These updates display data from the 2<sup>nd</sup> 80's Fire site (Impacted Tank Farm), in the industrial areas surrounding the 2<sup>nd</sup> 80's Fire site (US Coast Guard Division E), within the Houston Ship Channel (US Coast Guard Divisions A-D), and in the industrial areas north and south of the Houston Ship Channel (Industrial Area). Real-time air monitoring data for the surrounding communities are communicated daily in a separate report.



# Preliminary Hand- Held Air Monitoring Locations | ITC Deer Park Tank Fire

Reading Date  
5/29/2019 6:00:00 PM to 5/29/2019 7:00:00 PM



## Recent Benzene Detections

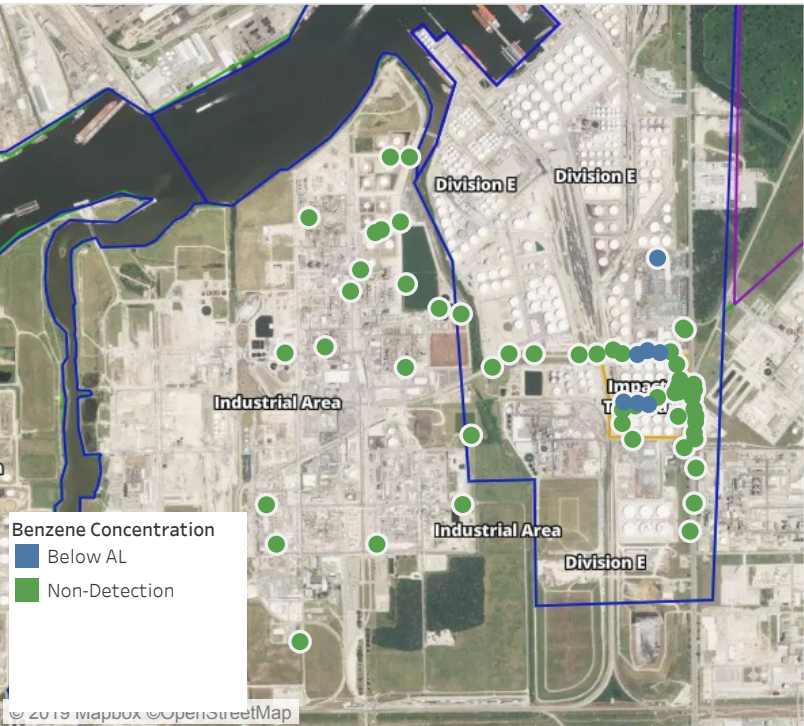
Location Category	Reading Date	Range of Detections
Division E	5/29/2019 18:30:07	0.03000 ppm
Impacted Tank Farm	5/29/2019 18:23:18	0.11000 ppm
	5/29/2019 18:16:12	0.07000 ppm
	5/29/2019 18:19:11	0.08000 ppm
	5/29/2019 18:35:21	0.03000 ppm
	5/29/2019 18:40:56	0.04000 ppm

This data has been provided expeditiously to ITC and regulatory agencies for informational and/or operational purposes only. Data reported within this summary is preliminary in nature and has not undergone complete QA/QC (quality assurance/quality control) process. Until this complete QA/QC process is completed, the locations of each reading are approximate in nature and subject to further refinement. As some readings may represent non-breathing zone measurements, the data reported herein may not be suitable to assess potential occupational exposure. Site Assessment readings are not representative of an individual's breathing zone (e.g., container head space, ground level, directly above product, etc.).



# Preliminary Hand- Held Air Monitoring Locations | ITC Deer Park Tank Fire

Reading Date  
5/29/2019 7:00:00 PM to 5/29/2019 8:00:00 PM



## Recent Benzene Detections

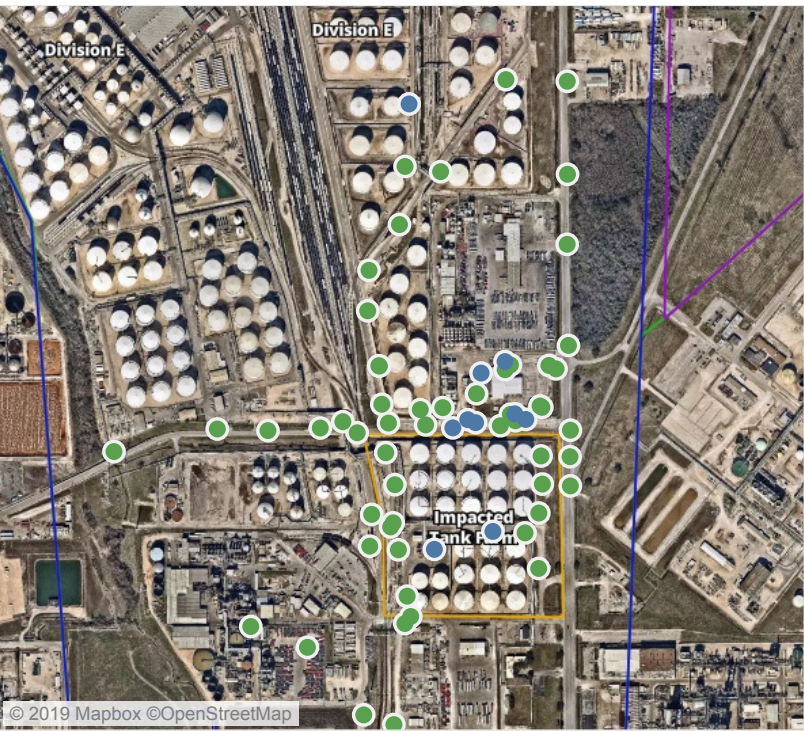
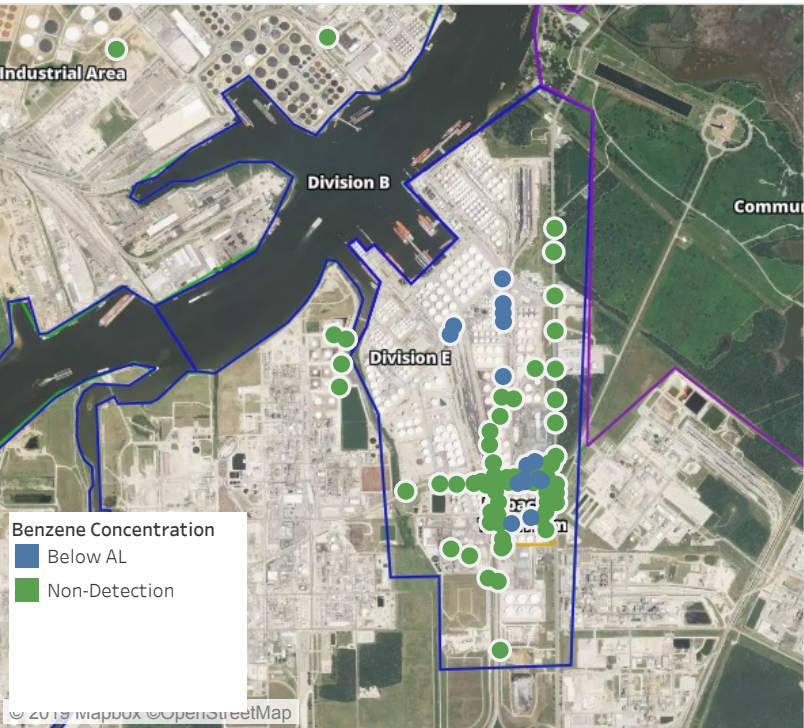
Location Category	Reading Date	Range of Detections
Division E	5/29/2019 19:07:25	0.0200 ppm
	5/29/2019 19:51:17	0.0200 ppm
	5/29/2019 19:54:16	0.0300 ppm
	5/29/2019 19:56:35	0.0300 ppm
Impacted Tank Farm	5/29/2019 19:35:48	0.1300 ppm
	5/29/2019 19:43:36	0.0400 ppm
	5/29/2019 19:47:11	0.0200 ppm

This data has been provided expeditiously to ITC and regulatory agencies for informational and/or operational purposes only. Data reported within this summary is preliminary in nature and has not undergone complete QA/QC (quality assurance/quality control) process. Until this complete QA/QC process is completed, the locations of each reading are approximate in nature and subject to further refinement. As some readings may represent non-breathing zone measurements, the data reported herein may not be suitable to assess potential occupational exposure. Site Assessment readings are not representative of an individual's breathing zone (e.g., container head space, ground level, directly above product, etc.).



# Preliminary Hand- Held Air Monitoring Locations | ITC Deer Park Tank Fire

Reading Date  
5/29/2019 8:00:00 PM to 5/29/2019 9:00:00 PM



## Recent Benzene Detections

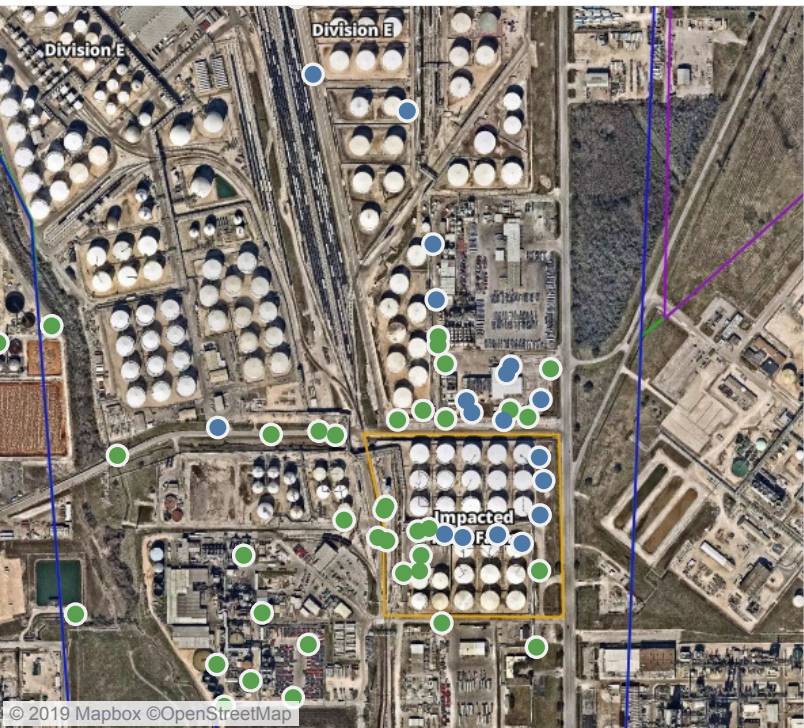
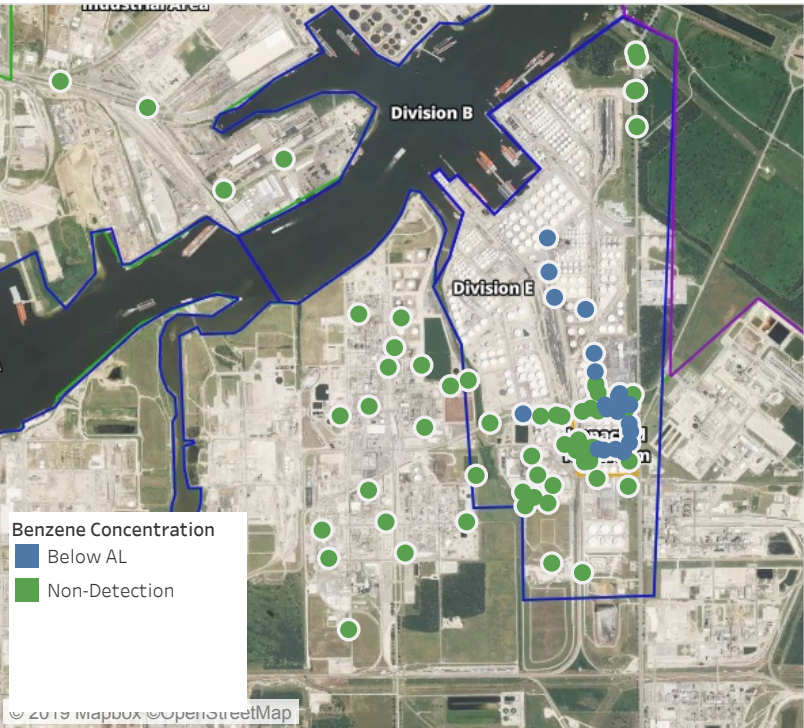
Location Category	Reading Date	Range of Detections
Division E	5/29/2019 20:02:25	0.0300 ppm
	5/29/2019 20:24:53	0.0200 ppm
	5/29/2019 20:37:53	0.0300 ppm
	5/29/2019 20:41:27	0.0900 ppm
	5/29/2019 20:47:32	0.3000 ppm
	5/29/2019 20:42:51	0.3400 ppm
	5/29/2019 20:42:48	0.0200 ppm
	5/29/2019 20:25:27	0.0500 ppm
	5/29/2019 20:20:52	0.0300 ppm
	5/29/2019 20:52:39	0.0400 ppm
	5/29/2019 20:59:45	0.2000 ppm
	5/29/2019 20:54:31	0.2000 ppm
	5/29/2019 20:57:21	0.2800 ppm
Impacted Tank Farm	5/29/2019 20:45:55	0.0200 ppm
	5/29/2019 20:18:08	0.0200 ppm
	5/29/2019 20:57:16	0.0400 ppm

This data has been provided expeditiously to ITC and regulatory agencies for informational and/or operational purposes only. Data reported within this summary is preliminary in nature and has not undergone complete QA/QC (quality assurance/quality control) process. Until this complete QA/QC process is completed, the locations of each reading are approximate in nature and subject to further refinement. As some readings may represent non-breathing zone measurements, the data reported herein may not be suitable to assess potential occupational exposure. Site Assessment readings are not representative of an individual's breathing zone (e.g., container head space, ground level, directly above product, etc.).



# Preliminary Hand- Held Air Monitoring Locations | ITC Deer Park Tank Fire

Reading Date  
5/29/2019 9:00:00 PM to 5/29/2019 10:00:00 PM



## Recent Benzene Detections

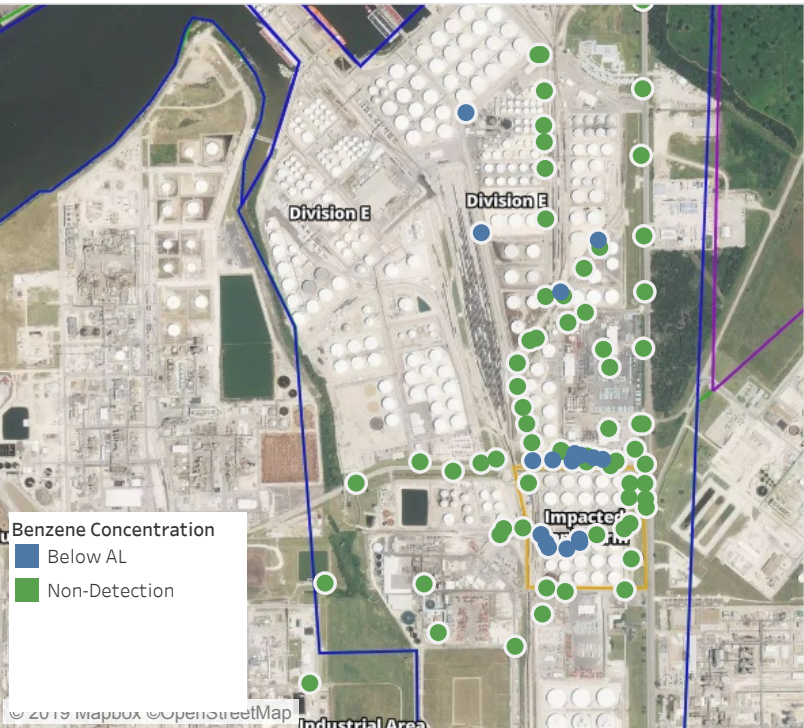
Location Category	Reading Date	Range of Detections
Division E	5/29/2019 21:00:42	0.0400 ppm
	5/29/2019 21:05:10	0.1000 ppm
	5/29/2019 21:03:20	0.2100 ppm
	5/29/2019 21:06:48	0.0800 ppm
	5/29/2019 21:08:49	0.1800 ppm
	5/29/2019 21:29:12	0.0200 ppm
	5/29/2019 21:40:46	0.0200 ppm
	5/29/2019 21:44:00	0.0200 ppm
	5/29/2019 21:12:14	0.0300 ppm
	5/29/2019 21:40:56	0.0500 ppm
	5/29/2019 21:37:41	0.0300 ppm
	5/29/2019 21:54:19	0.0200 ppm
	5/29/2019 21:43:27	0.0300 ppm
Impacted Tank Farm	5/29/2019 21:01:15	0.0200 ppm
	5/29/2019 21:06:39	0.0200 ppm
	5/29/2019 21:13:58	0.0400 ppm
	5/29/2019 21:09:47	0.0500 ppm
	5/29/2019 21:11:57	0.0500 ppm
	5/29/2019 21:07:40	0.0300 ppm
	5/29/2019 21:16:40	0.0700 ppm

This data has been provided expeditiously to ITC and regulatory agencies for informational and/or operational purposes only. Data reported within this summary is preliminary in nature and has not undergone complete QA/QC (quality assurance/quality control) process. Until this complete QA/QC process is completed, the locations of each reading are approximate in nature and subject to further refinement. As some readings may represent non-breathing zone measurements, the data reported herein may not be suitable to assess potential occupational exposure. Site Assessment readings are not representative of an individual's breathing zone (e.g., container head space, ground level, directly above product, etc.).



# Preliminary Hand- Held Air Monitoring Locations | ITC Deer Park Tank Fire

Reading Date  
5/29/2019 10:00:00 PM to 5/29/2019 11:00:00 PM



## Recent Benzene Detections

Location Category	Reading Date	Range of Detections
Division E	5/29/2019 22:10:00	0.0700 ppm
	5/29/2019 22:03:09	0.0300 ppm
	5/29/2019 22:05:59	0.1900 ppm
	5/29/2019 22:08:23	0.0900 ppm
	5/29/2019 22:18:17	0.0400 ppm
	5/29/2019 22:11:38	0.0500 ppm
	5/29/2019 22:27:39	0.0200 ppm
	5/29/2019 22:17:55	0.0300 ppm
	5/29/2019 22:07:20	0.0200 ppm
	5/29/2019 22:22:38	0.0600 ppm
Impacted Tank Farm	5/29/2019 22:25:58	0.0400 ppm
	5/29/2019 22:36:20	0.0400 ppm
	5/29/2019 22:40:22	0.0200 ppm
	5/29/2019 22:43:30	0.0500 ppm
	5/29/2019 22:51:17	0.0400 ppm
	5/29/2019 22:55:00	0.0700 ppm
	5/29/2019 22:58:24	0.0400 ppm

This data has been provided expeditiously to ITC and regulatory agencies for informational and/or operational purposes only. Data reported within this summary is preliminary in nature and has not undergone complete QA/QC (quality assurance/quality control) process. Until this complete QA/QC process is completed, the locations of each reading are approximate in nature and subject to further refinement. As some readings may represent non-breathing zone measurements, the data reported herein may not be suitable to assess potential occupational exposure. Site Assessment readings are not representative of an individual's breathing zone (e.g., container head space, ground level, directly above product, etc.).