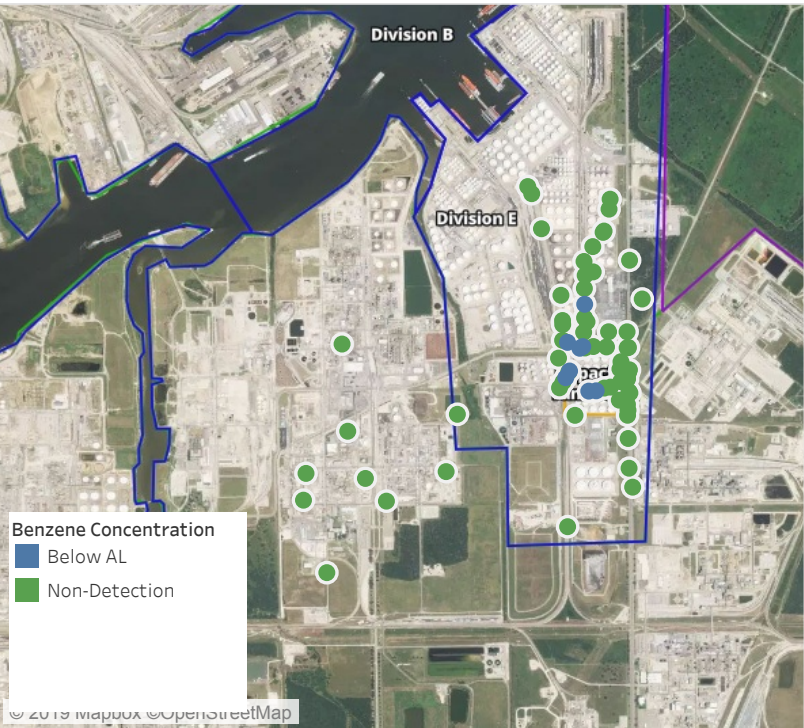


# Preliminary Hand- Held Air Monitoring Locations | ITC Deer Park Tank Fire

Reading Date  
5/30/2019 11:00:00 PM to 5/31/2019 12:00:00 AM



## Recent Benzene Detections

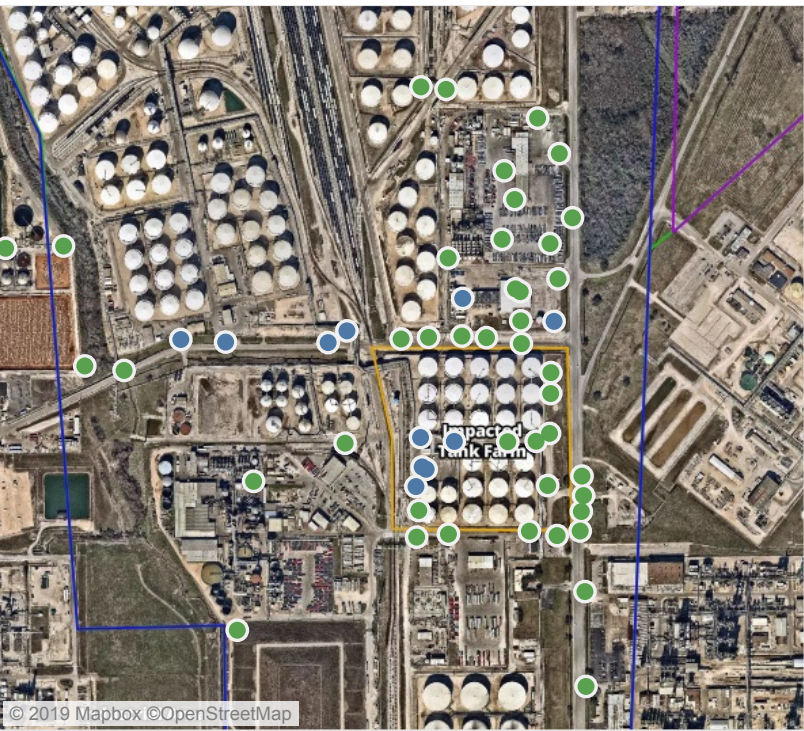
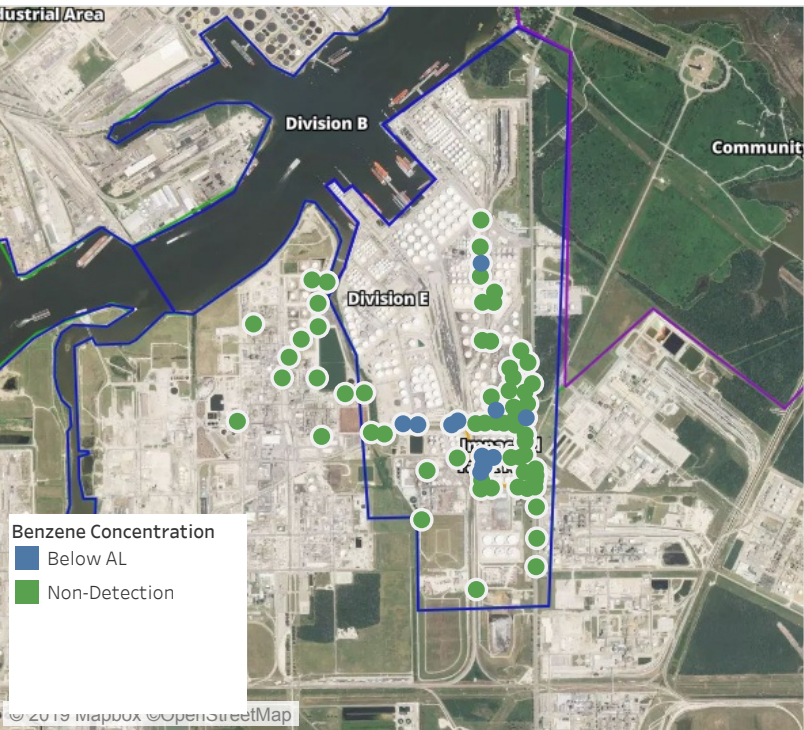
Location Category	Reading Date	Range of Detections
Division E	5/30/2019 23:22:37	0.0200 ppm
	5/30/2019 23:23:38	0.0300 ppm
	5/30/2019 23:28:17	0.0300 ppm
	5/30/2019 23:25:30	0.0700 ppm
Impacted Tank Farm	5/30/2019 23:01:55	0.1800 ppm
	5/30/2019 23:05:22	0.0700 ppm
	5/30/2019 23:52:15	0.1100 ppm
	5/30/2019 23:56:04	0.0300 ppm

This data has been provided expeditiously to ITC and regulatory agencies for informational and/or operational purposes only. Data reported within this summary is preliminary in nature and has not undergone complete QA/QC (quality assurance/quality control) process. Until this complete QA/QC process is completed, the locations of each reading are approximate in nature and subject to further refinement. As some readings may represent non-breathing zone measurements, the data reported herein may not be suitable to assess potential occupational exposure. Site Assessment readings are not representative of an individual’s breathing zone (e.g., container head space, ground level, directly above product, etc.).



# Preliminary Hand- Held Air Monitoring Locations | ITC Deer Park Tank Fire

Reading Date  
5/31/2019 12:00:00 AM to 5/31/2019 1:00:00 AM



## Recent Benzene Detections

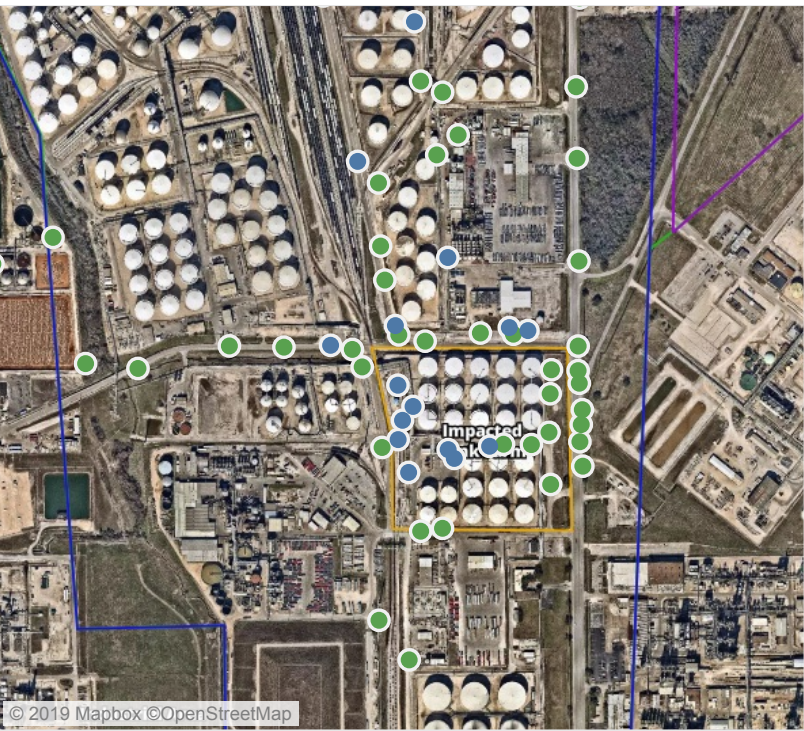
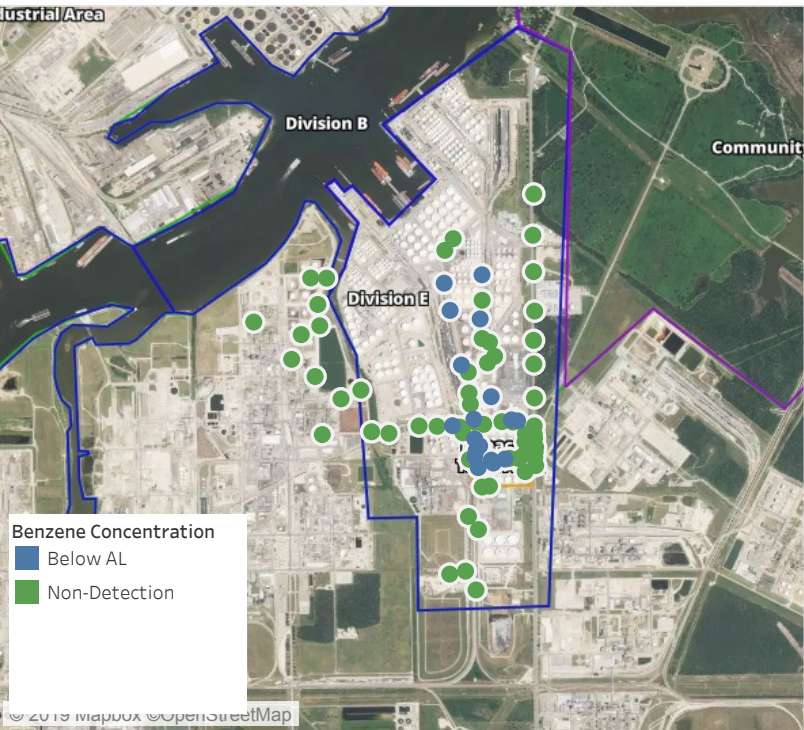
Location Category	Reading Date	Range of Detections
Division E	5/31/2019 00:24:55	0.03000 ppm
	5/31/2019 00:35:54	0.06000 ppm
	5/31/2019 00:54:22	0.02000 ppm
	5/31/2019 00:38:46	0.03000 ppm
	5/31/2019 00:50:14	0.03000 ppm
	5/31/2019 00:42:40	0.02000 ppm
	5/31/2019 00:45:40	0.10000 ppm
Impacted Tank Farm	5/31/2019 00:40:46	0.11000 ppm
	5/31/2019 00:45:36	0.08000 ppm
	5/31/2019 00:48:40	0.07000 ppm
	5/31/2019 00:51:39	0.08000 ppm
	5/31/2019 00:55:40	0.06000 ppm

This data has been provided expeditiously to ITC and regulatory agencies for informational and/or operational purposes only. Data reported within this summary is preliminary in nature and has not undergone complete QA/QC (quality assurance/quality control) process. Until this complete QA/QC process is completed, the locations of each reading are approximate in nature and subject to further refinement. As some readings may represent non-breathing zone measurements, the data reported herein may not be suitable to assess potential occupational exposure. Site Assessment readings are not representative of an individual's breathing zone (e.g., container head space, ground level, directly above product, etc.).



# Preliminary Hand- Held Air Monitoring Locations | ITC Deer Park Tank Fire

Reading Date  
5/31/2019 1:00:00 AM to 5/31/2019 2:06:05 AM



## Recent Benzene Detections

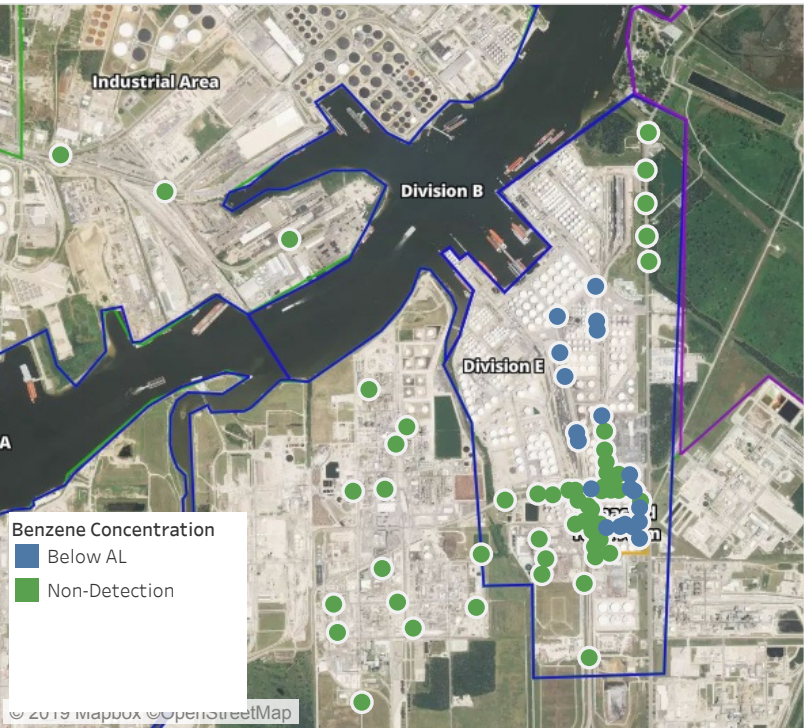
Location Category	Reading Date	Range of Detections
Division E	5/31/2019 01:04:11	0.07000 ppm
	5/31/2019 01:08:51	0.03000 ppm
	5/31/2019 01:06:29	0.04000 ppm
	5/31/2019 01:33:13	0.03000 ppm
	5/31/2019 01:51:36	0.06000 ppm
	5/31/2019 01:48:04	0.06000 ppm
	5/31/2019 01:13:55	0.02000 ppm
	5/31/2019 01:41:09	0.03000 ppm
	5/31/2019 01:24:11	0.02000 ppm
Impacted Tank Farm	5/31/2019 01:49:43	0.02000 ppm
	5/31/2019 01:01:28	0.03000 ppm
	5/31/2019 01:04:27	0.07000 ppm
	5/31/2019 01:07:32	0.07000 ppm
	5/31/2019 01:10:34	0.08000 ppm
	5/31/2019 01:13:28	0.03000 ppm
	5/31/2019 01:56:57	0.04000 ppm
	5/31/2019 02:00:53	0.02000 ppm
	5/31/2019 02:05:49	0.02000 ppm

This data has been provided expeditiously to ITC and regulatory agencies for informational and/or operational purposes only. Data reported within this summary is preliminary in nature and has not undergone complete QA/QC (quality assurance/quality control) process. Until this complete QA/QC process is completed, the locations of each reading are approximate in nature and subject to further refinement. As some readings may represent non-breathing zone measurements, the data reported herein may not be suitable to assess potential occupational exposure. Site Assessment readings are not representative of an individual's breathing zone (e.g., container head space, ground level, directly above product, etc.).



# Preliminary Hand- Held Air Monitoring Locations | ITC Deer Park Tank Fire

Reading Date  
5/31/2019 2:00:00 AM to 5/31/2019 3:00:00 AM



## Recent Benzene Detections

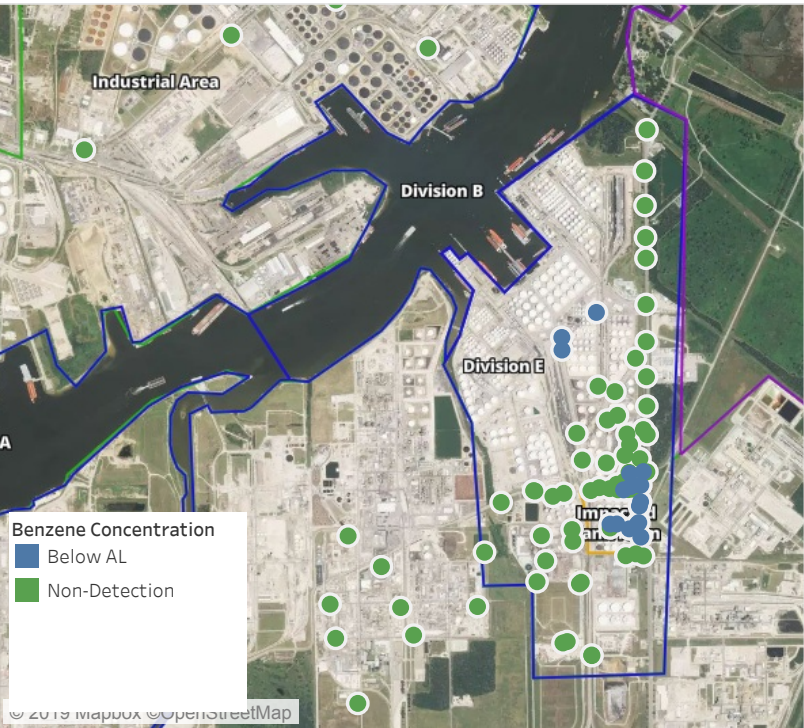
Location Category	Reading Date	Range of Detections
Division E	5/31/2019 02:20:59	0.0300 ppm
	5/31/2019 02:30:18	0.0400 ppm
	5/31/2019 02:18:52	0.1900 ppm
	5/31/2019 02:35:12	0.0300 ppm
	5/31/2019 02:25:47	0.2200 ppm
	5/31/2019 02:32:09	0.0400 ppm
	5/31/2019 02:36:42	0.0200 ppm
	5/31/2019 02:40:45	0.0200 ppm
	5/31/2019 02:28:30	0.0700 ppm
	5/31/2019 02:23:18	0.2000 ppm
	5/31/2019 02:20:23	0.0300 ppm
	5/31/2019 02:25:58	0.0200 ppm
	5/31/2019 02:40:27	0.0300 ppm
	5/31/2019 02:00:53	0.0200 ppm
Impacted Tank Farm	5/31/2019 02:05:49	0.0200 ppm
	5/31/2019 02:14:36	0.0800 ppm
	5/31/2019 02:11:23	0.0500 ppm
	5/31/2019 02:09:25	0.1300 ppm
	5/31/2019 02:03:00	0.1000 ppm
	5/31/2019 02:07:01	0.1000 ppm

This data has been provided expeditiously to ITC and regulatory agencies for informational and/or operational purposes only. Data reported within this summary is preliminary in nature and has not undergone complete QA/QC (quality assurance/quality control) process. Until this complete QA/QC process is completed, the locations of each reading are approximate in nature and subject to further refinement. As some readings may represent non-breathing zone measurements, the data reported herein may not be suitable to assess potential occupational exposure. Site Assessment readings are not representative of an individual's breathing zone (e.g., container head space, ground level, directly above product, etc.).



# Preliminary Hand- Held Air Monitoring Locations | ITC Deer Park Tank Fire

Reading Date  
5/31/2019 3:00:00 AM to 5/31/2019 4:00:00 AM



## Recent Benzene Detections

Location Category	Reading Date	Range of Detections
Division E	5/31/2019 03:25:31	0.0100 ppm
	5/31/2019 03:26:07	0.0200 ppm
	5/31/2019 03:18:52	0.0400 ppm
	5/31/2019 03:09:55	0.0500 ppm
	5/31/2019 03:41:30	0.0300 ppm
	5/31/2019 03:32:27	0.1900 ppm
	5/31/2019 03:40:03	0.0300 ppm
	5/31/2019 03:37:18	0.0200 ppm
	5/31/2019 03:40:10	0.0300 ppm
Impacted Tank Farm	5/31/2019 03:15:34	0.1800 ppm
	5/31/2019 03:22:46	0.0500 ppm
	5/31/2019 03:19:13	0.0200 ppm
	5/31/2019 03:10:36	0.0400 ppm
	5/31/2019 03:12:15	0.0800 ppm
	5/31/2019 03:14:06	0.1200 ppm
	5/31/2019 03:54:16	0.0300 ppm
	5/31/2019 03:58:01	0.0200 ppm

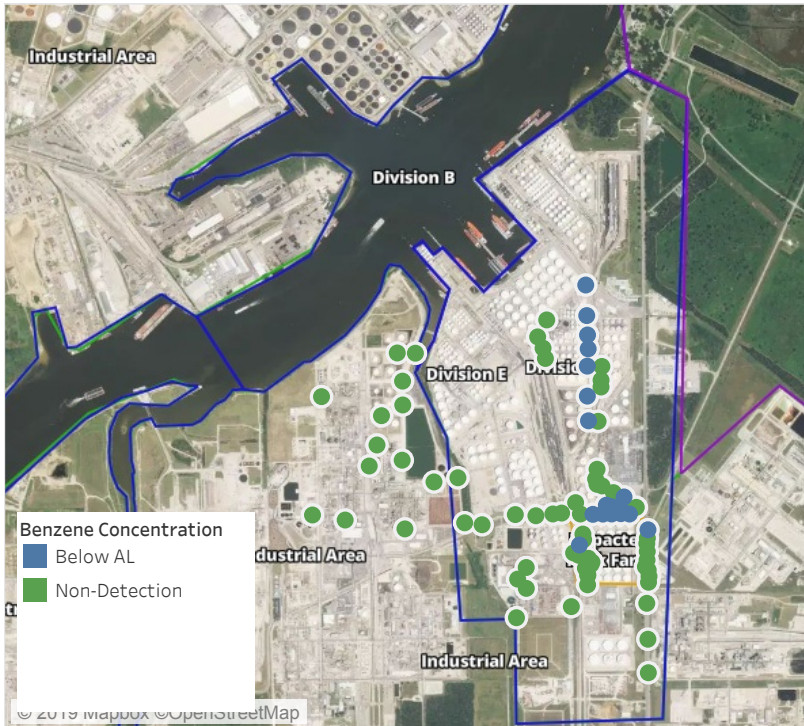
This data has been provided expeditiously to ITC and regulatory agencies for informational and/or operational purposes only. Data reported within this summary is preliminary in nature and has not undergone complete QA/QC (quality assurance/quality control) process. Until this complete QA/QC process is completed, the locations of each reading are approximate in nature and subject to further refinement. As some readings may represent non-breathing zone measurements, the data reported herein may not be suitable to assess potential occupational exposure. Site Assessment readings are not representative of an individual's breathing zone (e.g., container head space, ground level, directly above product, etc.).



# Preliminary Hand- Held Air Monitoring Locations | ITC Deer Park Tank Fire

## Reading Date

5/31/2019 4:00:00 AM to 5/31/2019 5:00:00 AM



## Recent Benzene Detections

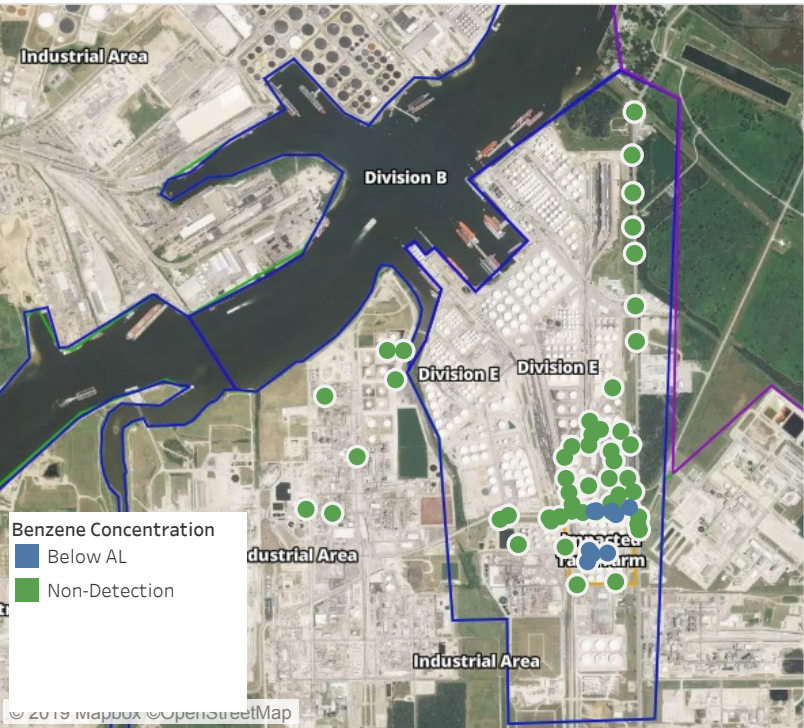
Location Category	Reading Date	Range of Detections
Division E	5/31/2019 04:20:10	0.0500 ppm
	5/31/2019 04:27:38	0.1200 ppm
	5/31/2019 04:36:22	0.0400 ppm
	5/31/2019 04:45:44	0.0200 ppm
	5/31/2019 04:21:41	0.0800 ppm
	5/31/2019 04:25:41	0.0500 ppm
	5/31/2019 04:37:21	0.0300 ppm
	5/31/2019 04:30:23	0.1500 ppm
	5/31/2019 04:33:08	0.0600 ppm
	5/31/2019 04:39:53	0.0300 ppm
	5/31/2019 04:58:16	0.1000 ppm
	5/31/2019 04:49:03	0.3500 ppm
	5/31/2019 04:42:19	0.1500 ppm
	5/31/2019 04:53:14	0.2600 ppm
	5/31/2019 04:50:53	0.3100 ppm
Impacted Tank Farm	5/31/2019 04:44:13	0.1800 ppm
	5/31/2019 04:55:30	0.1000 ppm
Impacted Tank Farm	5/31/2019 04:34:00	0.0700 ppm

This data has been provided expeditiously to ITC and regulatory agencies for informational and/or operational purposes only. Data reported within this summary is preliminary in nature and has not undergone complete QA/QC (quality assurance/quality control) process. Until this complete QA/QC process is completed, the locations of each reading are approximate in nature and subject to further refinement. As some readings may represent non-breathing zone measurements, the data reported herein may not be suitable to assess potential occupational exposure. Site Assessment readings are not representative of an individual's breathing zone (e.g., container head space, ground level, directly above product, etc.).



# Preliminary Hand- Held Air Monitoring Locations | ITC Deer Park Tank Fire

Reading Date  
5/31/2019 5:00:00 AM to 5/31/2019 6:00:00 AM



## Recent Benzene Detections

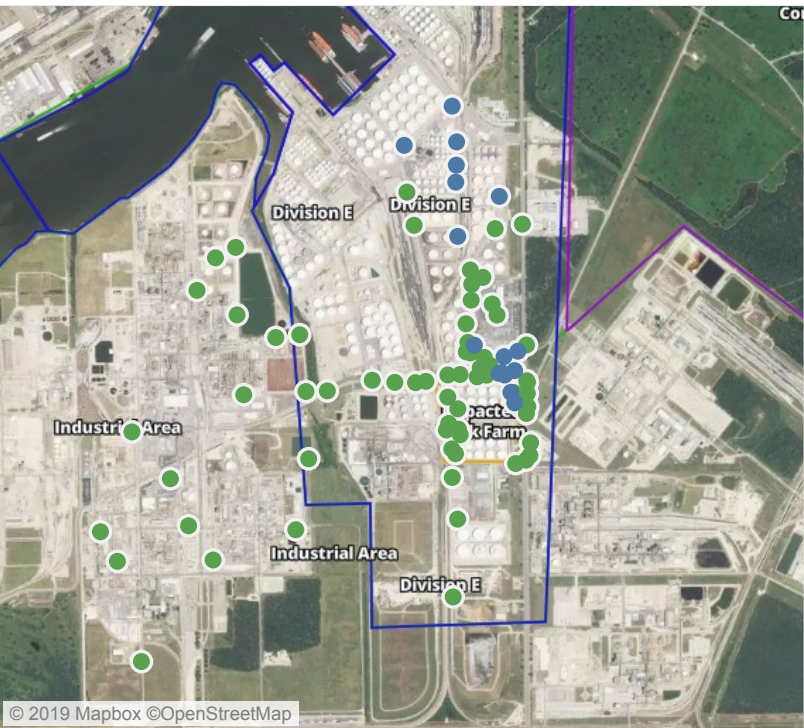
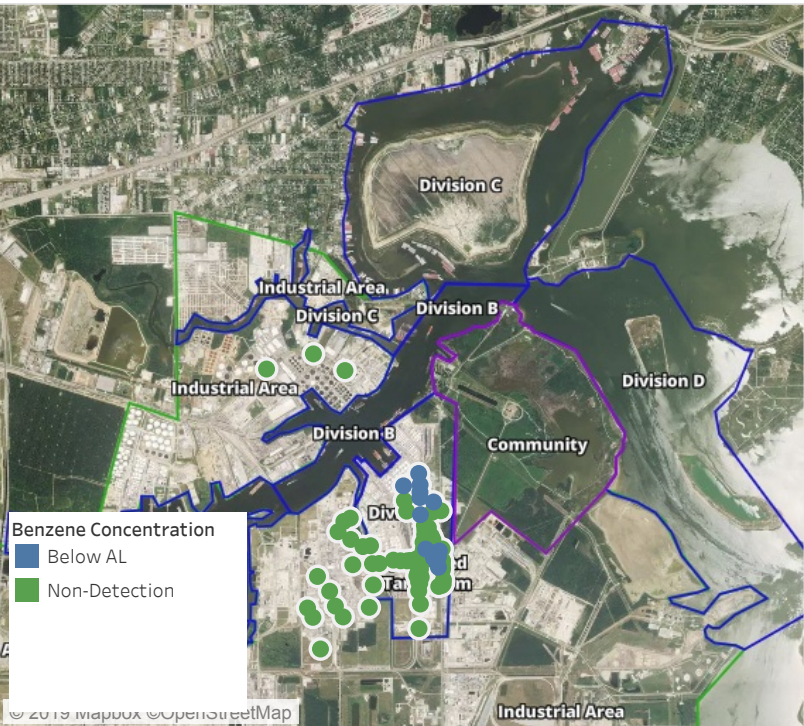
Location Category	Reading Date	Range of Detections
Division E	5/31/2019 05:44:30	0.03000 ppm
	5/31/2019 05:49:19	0.02000 ppm
	5/31/2019 05:44:01	0.02000 ppm
	5/31/2019 05:47:49	0.05000 ppm
	5/31/2019 05:36:07	0.05000 ppm
Impacted Tank Farm	5/31/2019 05:40:58	0.05000 ppm
	5/31/2019 05:46:39	0.07000 ppm
	5/31/2019 05:50:23	0.03000 ppm
	5/31/2019 05:56:36	0.05000 ppm

This data has been provided expeditiously to ITC and regulatory agencies for informational and/or operational purposes only. Data reported within this summary is preliminary in nature and has not undergone complete QA/QC (quality assurance/quality control) process. Until this complete QA/QC process is completed, the locations of each reading are approximate in nature and subject to further refinement. As some readings may represent non-breathing zone measurements, the data reported herein may not be suitable to assess potential occupational exposure. Site Assessment readings are not representative of an individual's breathing zone (e.g., container head space, ground level, directly above product, etc.).



# Preliminary Hand- Held Air Monitoring Locations | ITC Deer Park Tank Fire

Reading Date  
5/31/2019 6:00:00 AM to 5/31/2019 7:00:00 AM



## Recent Benzene Detections

Location Category	Reading Date	Range of Detections
Division E	5/31/2019 06:07:21	0.1300 ppm
	5/31/2019 06:12:56	0.1200 ppm
	5/31/2019 06:03:12	0.3600 ppm
	5/31/2019 06:04:59	0.1400 ppm
	5/31/2019 06:10:24	0.0900 ppm
	5/31/2019 06:00:31	0.0300 ppm
	5/31/2019 06:29:37	0.0200 ppm
	5/31/2019 06:38:36	0.0200 ppm
	5/31/2019 06:43:16	0.0200 ppm
	5/31/2019 06:28:34	0.0600 ppm
	5/31/2019 06:49:18	0.0600 ppm
	5/31/2019 06:32:03	0.0200 ppm
	5/31/2019 06:09:17	0.0400 ppm
	5/31/2019 06:04:53	0.0400 ppm
Impacted Tank Farm	5/31/2019 06:33:50	0.0800 ppm
	5/31/2019 06:55:17	0.0900 ppm

This data has been provided expeditiously to ITC and regulatory agencies for informational and/or operational purposes only. Data reported within this summary is preliminary in nature and has not undergone complete QA/QC (quality assurance/quality control) process. Until this complete QA/QC process is completed, the locations of each reading are approximate in nature and subject to further refinement. As some readings may represent non-breathing zone measurements, the data reported herein may not be suitable to assess potential occupational exposure. Site Assessment readings are not representative of an individual's breathing zone (e.g., container head space, ground level, directly above product, etc.).



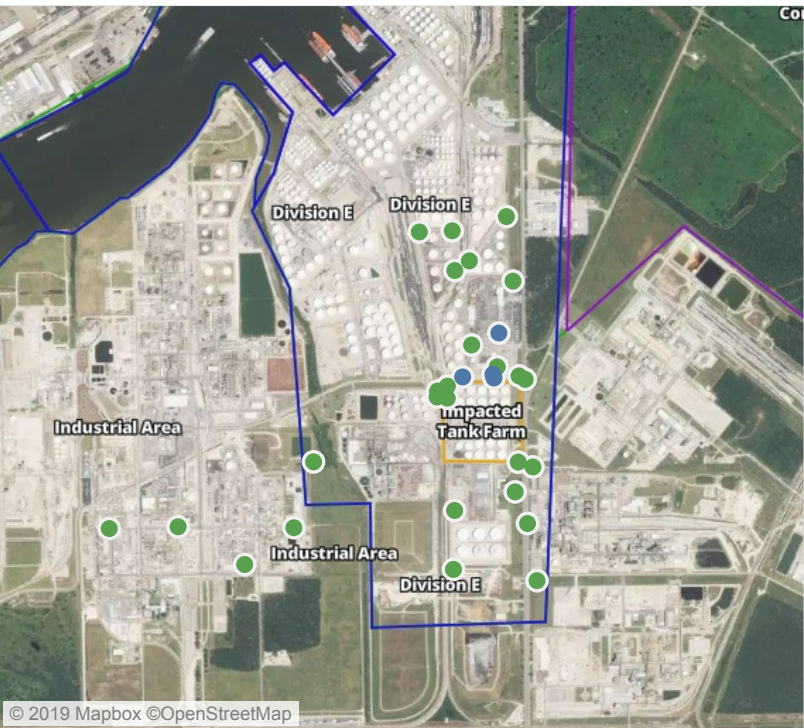
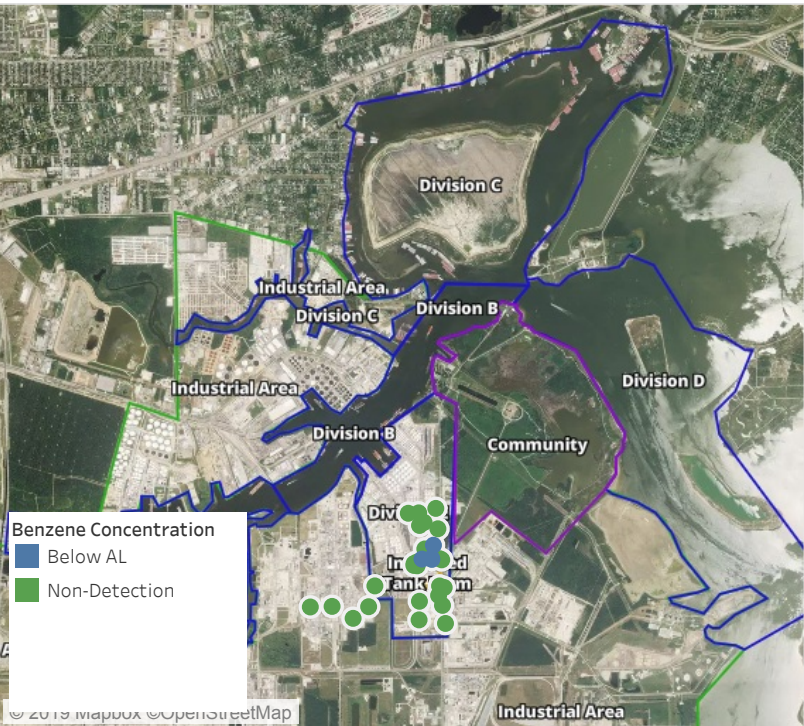


**Please Note:** These updates display data from the 2<sup>nd</sup> 80's Fire site (Impacted Tank Farm), in the industrial areas surrounding the 2<sup>nd</sup> 80's Fire site (US Coast Guard Division E), within the Houston Ship Channel (US Coast Guard Divisions A-D), and in the industrial areas north and south of the Houston Ship Channel (Industrial Area). Real-time air monitoring data for the surrounding communities are communicated daily in a separate report.



# Preliminary Hand- Held Air Monitoring Locations | ITC Deer Park Tank Fire

Reading Date  
5/31/2019 7:00:00 AM to 5/31/2019 8:00:00 AM



## Recent Benzene Detections

Location Category	Reading Date	Range of Detections
Division E	5/31/2019 07:32:46	0.2500 ppm
	5/31/2019 07:50:24	0.2000 ppm
	5/31/2019 07:44:35	0.0500 ppm
	5/31/2019 07:59:47	0.0400 ppm

This data has been provided expeditiously to ITC and regulatory agencies for informational and/or operational purposes only. Data reported within this summary is preliminary in nature and has not undergone complete QA/QC (quality assurance/quality control) process. Until this complete QA/QC process is completed, the locations of each reading are approximate in nature and subject to further refinement. As some readings may represent non-breathing zone measurements, the data reported herein may not be suitable to assess potential occupational exposure. Site Assessment readings are not representative of an individual's breathing zone (e.g., container head space, ground level, directly above product, etc.).



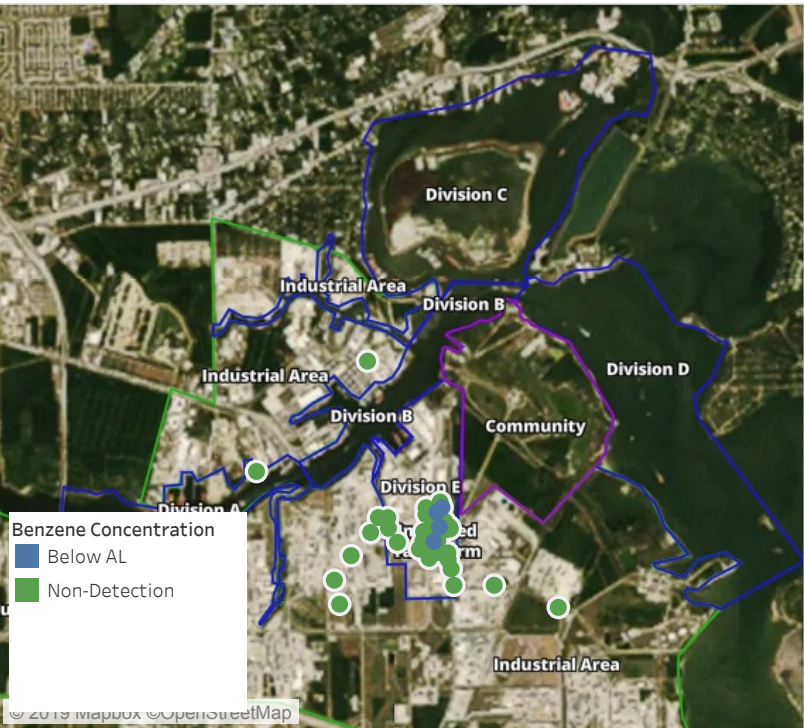


**Please Note:** These updates display data from the 2<sup>nd</sup> 80's Fire site (Impacted Tank Farm), in the industrial areas surrounding the 2<sup>nd</sup> 80's Fire site (US Coast Guard Division E), within the Houston Ship Channel (US Coast Guard Divisions A-D), and in the industrial areas north and south of the Houston Ship Channel (Industrial Area). Real-time air monitoring data for the surrounding communities are communicated daily in a separate report.



# Preliminary Hand- Held Air Monitoring Locations | ITC Deer Park Tank Fire

Reading Date  
5/31/2019 8:00:00 AM to 5/31/2019 9:00:00 AM



## Recent Benzene Detections

Location Category	Reading Date	Range of Detections
Division E	5/31/2019 08:01:55	0.10000 ppm
	5/31/2019 08:29:07	0.03000 ppm
	5/31/2019 08:35:04	0.02000 ppm
Impacted Tank Farm	5/31/2019 08:26:59	0.09000 ppm

This data has been provided expeditiously to ITC and regulatory agencies for informational and/or operational purposes only. Data reported within this summary is preliminary in nature and has not undergone complete QA/QC (quality assurance/quality control) process. Until this complete QA/QC process is completed, the locations of each reading are approximate in nature and subject to further refinement. As some readings may represent non-breathing zone measurements, the data reported herein may not be suitable to assess potential occupational exposure. Site Assessment readings are not representative of an individual's breathing zone (e.g., container head space, ground level, directly above product, etc.).



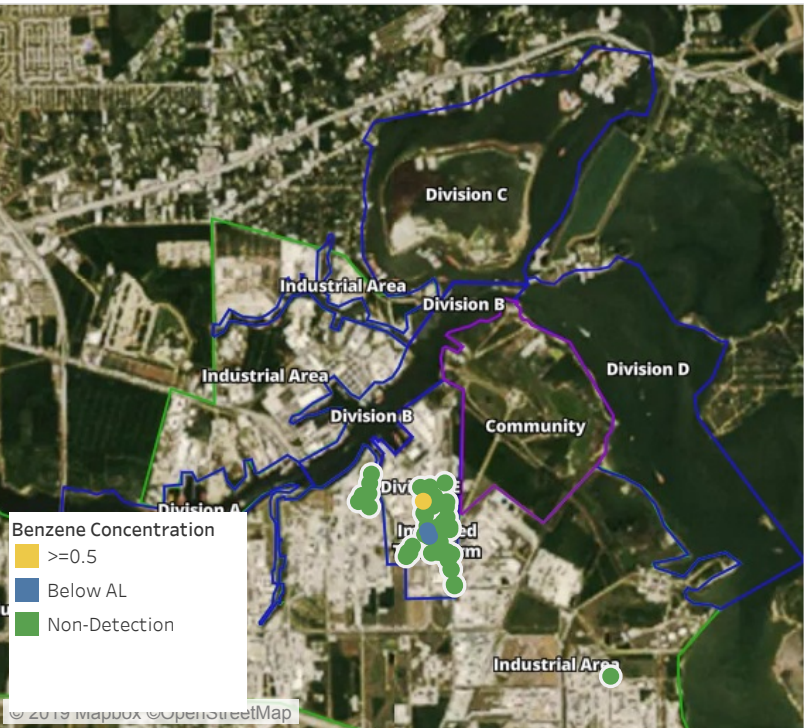


**Please Note:** These updates display data from the 2<sup>nd</sup> 80's Fire site (Impacted Tank Farm), in the industrial areas surrounding the 2<sup>nd</sup> 80's Fire site (US Coast Guard Division E), within the Houston Ship Channel (US Coast Guard Divisions A-D), and in the industrial areas north and south of the Houston Ship Channel (Industrial Area). Real-time air monitoring data for the surrounding communities are communicated daily in a separate report.



# Preliminary Hand- Held Air Monitoring Locations | ITC Deer Park Tank Fire

Reading Date  
5/31/2019 9:00:00 AM to 5/31/2019 10:00:00 AM



## Recent Benzene Detections

Location Category	Reading Date	Range of Detections
Division E	5/31/2019 09:47:09	0.6100 ppm
Impacted Tank Farm	5/31/2019 09:00:45	0.0200 ppm
	5/31/2019 09:39:33	0.0900 ppm

This data has been provided expeditiously to ITC and regulatory agencies for informational and/or operational purposes only. Data reported within this summary is preliminary in nature and has not undergone complete QA/QC (quality assurance/quality control) process. Until this complete QA/QC process is completed, the locations of each reading are approximate in nature and subject to further refinement. As some readings may represent non-breathing zone measurements, the data reported herein may not be suitable to assess potential occupational exposure. Site Assessment readings are not representative of an individual's breathing zone (e.g., container head space, ground level, directly above product, etc.).



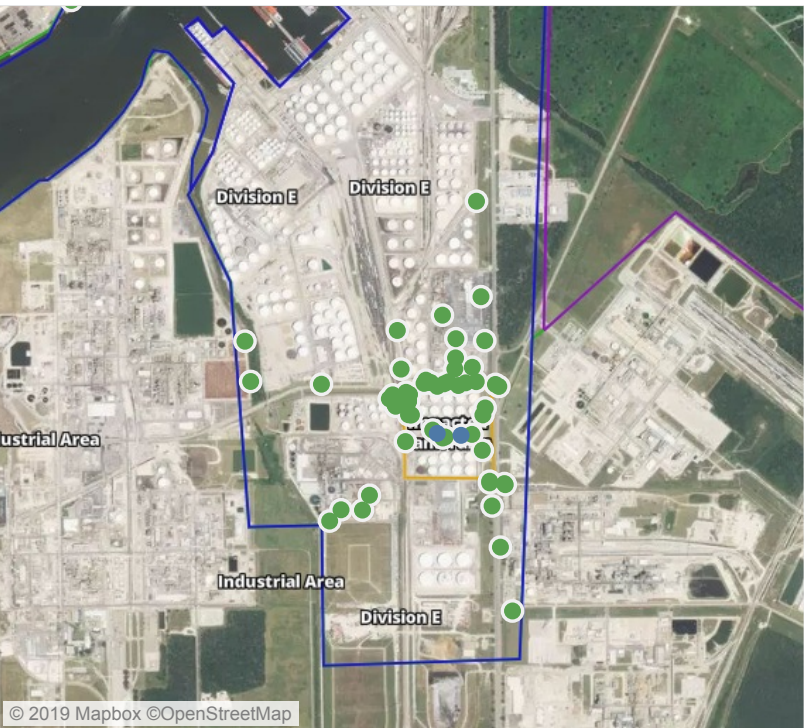
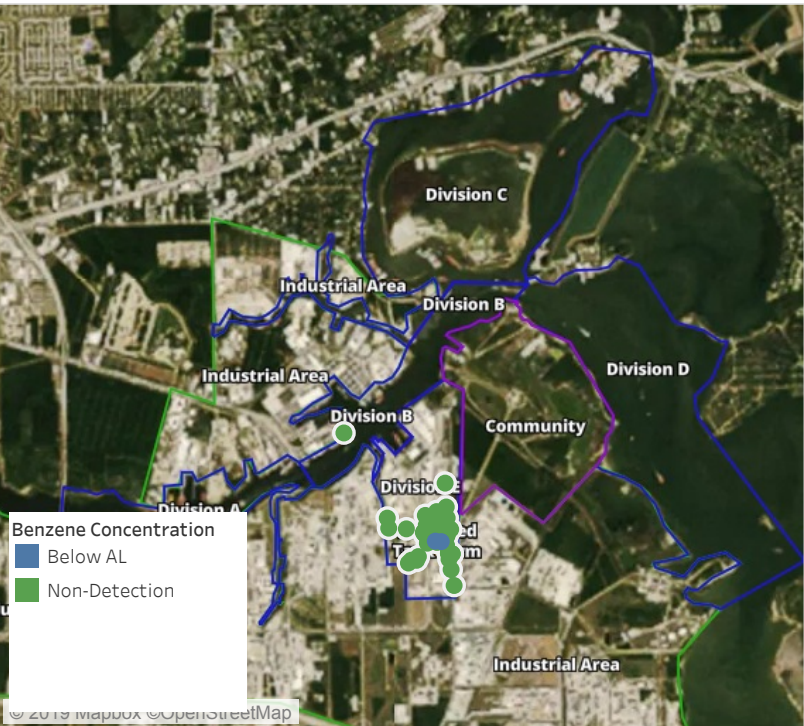


**Please Note:** These updates display data from the 2<sup>nd</sup> 80's Fire site (Impacted Tank Farm), in the industrial areas surrounding the 2<sup>nd</sup> 80's Fire site (US Coast Guard Division E), within the Houston Ship Channel (US Coast Guard Divisions A-D), and in the industrial areas north and south of the Houston Ship Channel (Industrial Area). Real-time air monitoring data for the surrounding communities are communicated daily in a separate report.



# Preliminary Hand- Held Air Monitoring Locations | ITC Deer Park Tank Fire

Reading Date  
5/31/2019 10:00:00 AM to 5/31/2019 11:00:00 AM



## Recent Benzene Detections

Location Category	Reading Date	Range of Detections
Impacted Tank Farm	5/31/2019 10:38:05	0.05000 ppm
	5/31/2019 10:57:15	0.04000 ppm

This data has been provided expeditiously to ITC and regulatory agencies for informational and/or operational purposes only. Data reported within this summary is preliminary in nature and has not undergone complete QA/QC (quality assurance/quality control) process. Until this complete QA/QC process is completed, the locations of each reading are approximate in nature and subject to further refinement. As some readings may represent non-breathing zone measurements, the data reported herein may not be suitable to assess potential occupational exposure. Site Assessment readings are not representative of an individual's breathing zone (e.g., container head space, ground level, directly above product, etc.).





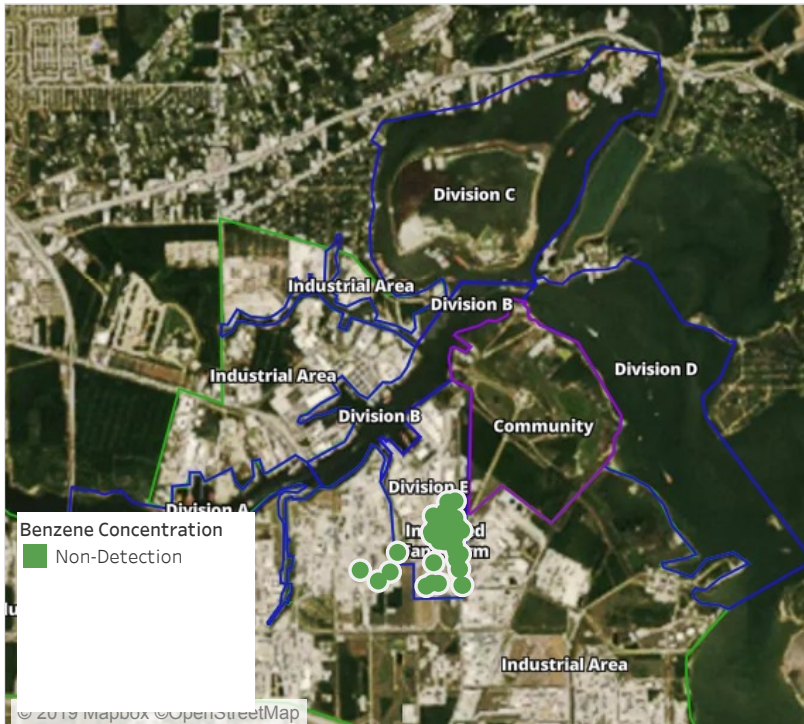
**Please Note:** These updates display data from the 2<sup>nd</sup> 80's Fire site (Impacted Tank Farm), in the industrial areas surrounding the 2<sup>nd</sup> 80's Fire site (US Coast Guard Division E), within the Houston Ship Channel (US Coast Guard Divisions A-D), and in the industrial areas north and south of the Houston Ship Channel (Industrial Area). Real-time air monitoring data for the surrounding communities are communicated daily in a separate report.



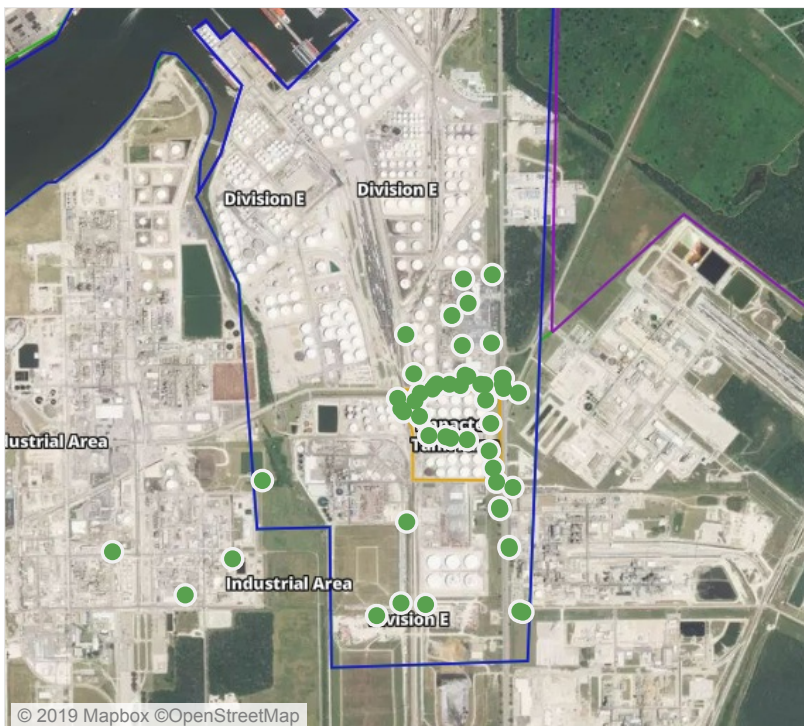
# Preliminary Hand- Held Air Monitoring Locations | ITC Deer Park Tank Fire

Reading Date

5/31/2019 11:00:00 AM to 5/31/2019 12:00:00 PM



Recent Benzene Detections



This data has been provided expeditiously to ITC and regulatory agencies for informational and/or operational purposes only. Data reported within this summary is preliminary in nature and has not undergone complete QA/QC (quality assurance/quality control) process. Until this complete QA/QC process is completed, the locations of each reading are approximate in nature and subject to further refinement. As some readings may represent non-breathing zone measurements, the data reported herein may not be suitable to assess potential occupational exposure. Site Assessment readings are not representative of an individual's breathing zone (e.g., container head space, ground level, directly above product, etc.).





**Please Note:** These updates display data from the 2<sup>nd</sup> 80's Fire site (Impacted Tank Farm), in the industrial areas surrounding the 2<sup>nd</sup> 80's Fire site (US Coast Guard Division E), within the Houston Ship Channel (US Coast Guard Divisions A-D), and in the industrial areas north and south of the Houston Ship Channel (Industrial Area). Real-time air monitoring data for the surrounding communities are communicated daily in a separate report.



# Preliminary Hand- Held Air Monitoring Locations | ITC Deer Park Tank Fire

Reading Date  
5/31/2019 12:00:00 PM to 5/31/2019 1:00:00 PM



## Recent Benzene Detections

Location Category	Reading Date	Range of Detections
Division E	5/31/2019 12:27:10	0.13000 ppm
	5/31/2019 12:36:08	0.08000 ppm

This data has been provided expeditiously to ITC and regulatory agencies for informational and/or operational purposes only. Data reported within this summary is preliminary in nature and has not undergone complete QA/QC (quality assurance/quality control) process. Until this complete QA/QC process is completed, the locations of each reading are approximate in nature and subject to further refinement. As some readings may represent non-breathing zone measurements, the data reported herein may not be suitable to assess potential occupational exposure. Site Assessment readings are not representative of an individual's breathing zone (e.g., container head space, ground level, directly above product, etc.).





**Please Note:** These updates display data from the 2<sup>nd</sup> 80's Fire site (Impacted Tank Farm), in the industrial areas surrounding the 2<sup>nd</sup> 80's Fire site (US Coast Guard Division E), within the Houston Ship Channel (US Coast Guard Divisions A-D), and in the industrial areas north and south of the Houston Ship Channel (Industrial Area). Real-time air monitoring data for the surrounding communities are communicated daily in a separate report.



# Preliminary Hand- Held Air Monitoring Locations | ITC Deer Park Tank Fire

Reading Date  
5/31/2019 1:00:00 PM to 5/31/2019 2:00:00 PM



## Recent Benzene Detections

Location Category	Reading Date	Range of Detections
Division E	5/31/2019 13:14:11	0.0300 ppm
	5/31/2019 13:25:50	0.2600 ppm
	5/31/2019 13:26:20	0.2300 ppm
	5/31/2019 13:27:17	0.0600 ppm
Impacted Tank Farm	5/31/2019 13:47:25	0.0600 ppm
	5/31/2019 13:57:17	0.0600 ppm

This data has been provided expeditiously to ITC and regulatory agencies for informational and/or operational purposes only. Data reported within this summary is preliminary in nature and has not undergone complete QA/QC (quality assurance/quality control) process. Until this complete QA/QC process is completed, the locations of each reading are approximate in nature and subject to further refinement. As some readings may represent non-breathing zone measurements, the data reported herein may not be suitable to assess potential occupational exposure. Site Assessment readings are not representative of an individual's breathing zone (e.g., container head space, ground level, directly above product, etc.).



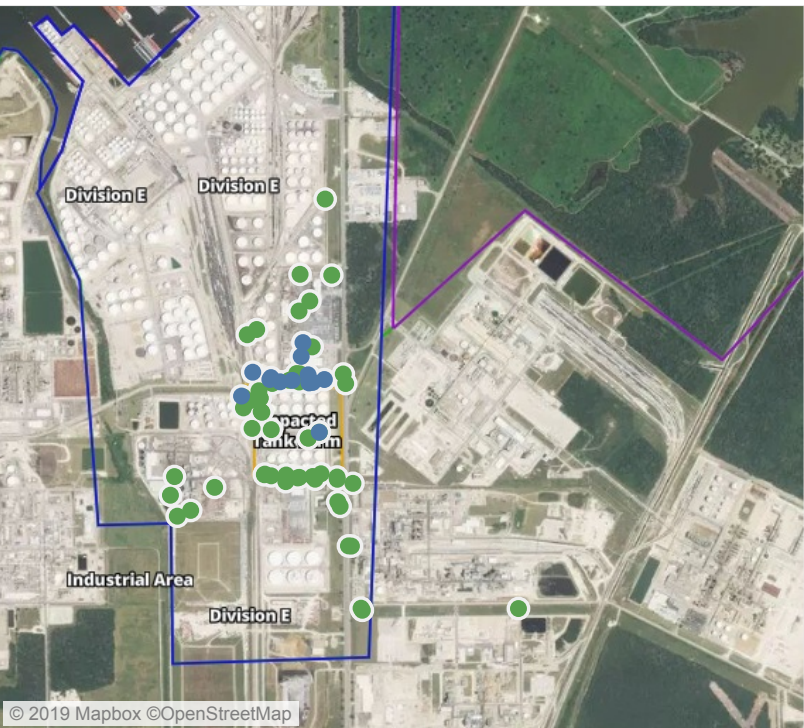
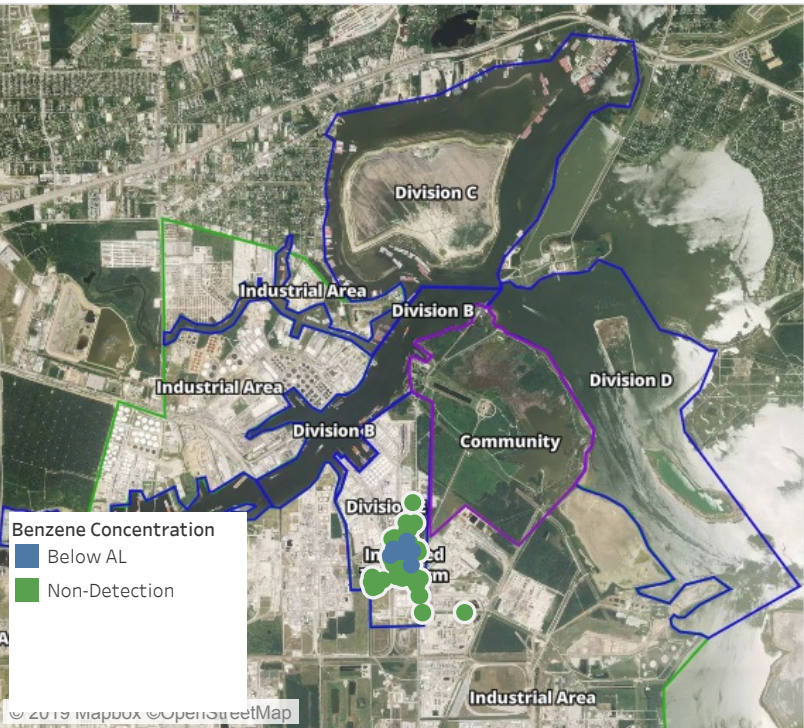


**Please Note:** These updates display data from the 2<sup>nd</sup> 80's Fire site (Impacted Tank Farm), in the industrial areas surrounding the 2<sup>nd</sup> 80's Fire site (US Coast Guard Division E), within the Houston Ship Channel (US Coast Guard Divisions A-D), and in the industrial areas north and south of the Houston Ship Channel (Industrial Area). Real-time air monitoring data for the surrounding communities are communicated daily in a separate report.



# Preliminary Hand- Held Air Monitoring Locations | ITC Deer Park Tank Fire

Reading Date  
5/31/2019 2:00:00 PM to 5/31/2019 3:00:00 PM



## Recent Benzene Detections

Location Category	Reading Date	Range of Detections
Division E	5/31/2019 14:03:31	0.0300 ppm
	5/31/2019 14:16:46	0.1400 ppm
	5/31/2019 14:19:28	0.2100 ppm
	5/31/2019 14:27:44	0.4100 ppm
	5/31/2019 14:47:57	0.0300 ppm
	5/31/2019 14:48:00	0.1800 ppm
	5/31/2019 14:52:18	0.0200 ppm
	5/31/2019 14:52:45	0.1300 ppm
	5/31/2019 14:57:28	0.0300 ppm
	5/31/2019 14:55:57	0.0600 ppm
Impacted Tank Farm	5/31/2019 14:55:37	0.1000 ppm
	5/31/2019 14:57:29	0.0600 ppm
	5/31/2019 14:29:04	0.0500 ppm
	5/31/2019 14:40:22	0.0500 ppm

This data has been provided expeditiously to ITC and regulatory agencies for informational and/or operational purposes only. Data reported within this summary is preliminary in nature and has not undergone complete QA/QC (quality assurance/quality control) process. Until this complete QA/QC process is completed, the locations of each reading are approximate in nature and subject to further refinement. As some readings may represent non-breathing zone measurements, the data reported herein may not be suitable to assess potential occupational exposure. Site Assessment readings are not representative of an individual's breathing zone (e.g., container head space, ground level, directly above product, etc.).



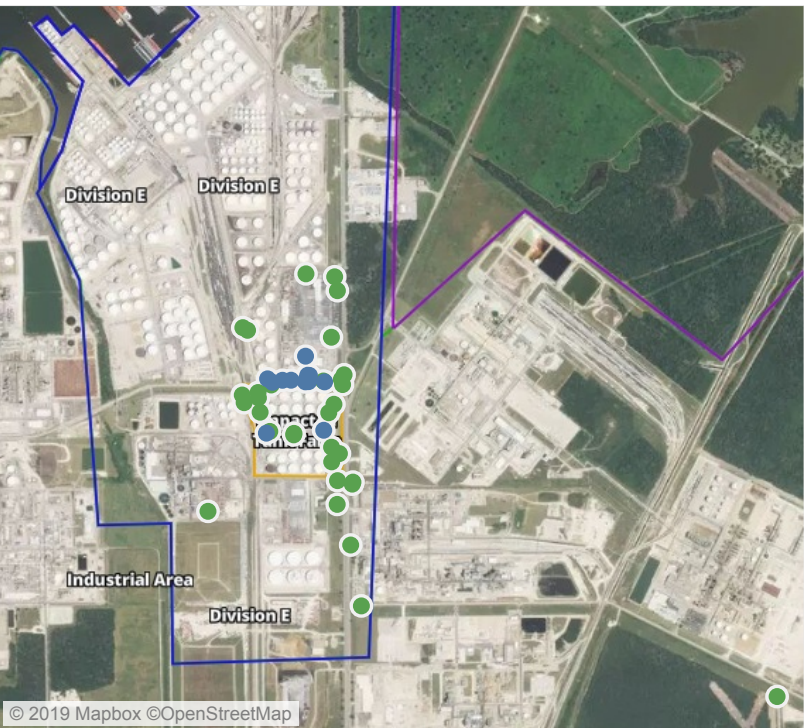
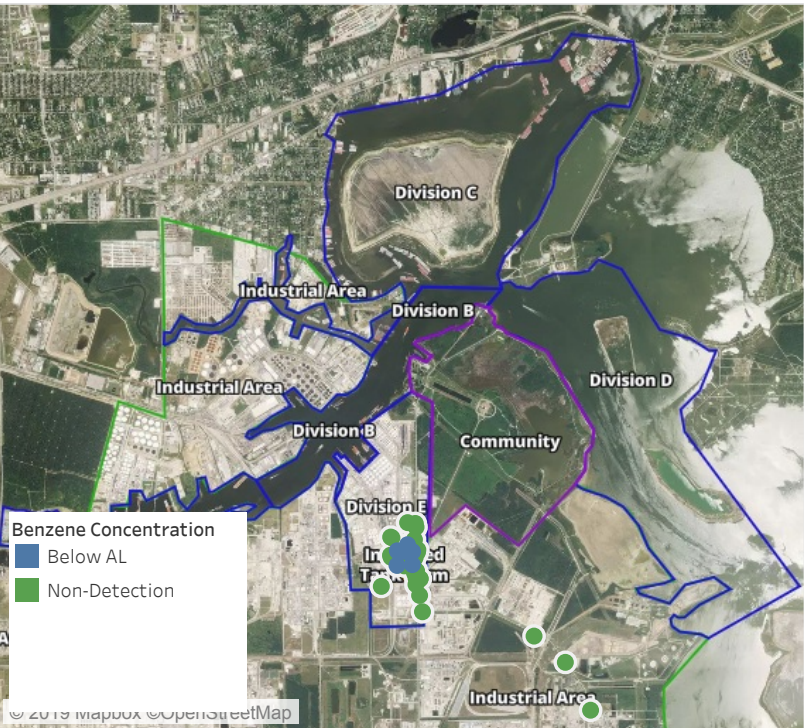


**Please Note:** These updates display data from the 2<sup>nd</sup> 80's Fire site (Impacted Tank Farm), in the industrial areas surrounding the 2<sup>nd</sup> 80's Fire site (US Coast Guard Division E), within the Houston Ship Channel (US Coast Guard Divisions A-D), and in the industrial areas north and south of the Houston Ship Channel (Industrial Area). Real-time air monitoring data for the surrounding communities are communicated daily in a separate report.



# Preliminary Hand- Held Air Monitoring Locations | ITC Deer Park Tank Fire

Reading Date  
5/31/2019 3:00:00 PM to 5/31/2019 4:00:00 PM



## Recent Benzene Detections

Location Category	Reading Date	Range of Detections
Division E	5/31/2019 15:01:18	0.0900 ppm
	5/31/2019 15:29:25	0.0800 ppm
	5/31/2019 15:25:49	0.0600 ppm
	5/31/2019 15:22:41	0.0200 ppm
	5/31/2019 15:35:29	0.2800 ppm
	5/31/2019 15:45:47	0.0200 ppm
	5/31/2019 15:37:06	0.1600 ppm
	5/31/2019 15:30:34	0.1700 ppm
	5/31/2019 15:44:21	0.0900 ppm
	5/31/2019 15:57:27	0.0300 ppm
Impacted Tank Farm	5/31/2019 15:57:42	0.0300 ppm
	5/31/2019 15:49:08	0.0900 ppm
	5/31/2019 15:44:51	0.0400 ppm

This data has been provided expeditiously to ITC and regulatory agencies for informational and/or operational purposes only. Data reported within this summary is preliminary in nature and has not undergone complete QA/QC (quality assurance/quality control) process. Until this complete QA/QC process is completed, the locations of each reading are approximate in nature and subject to further refinement. As some readings may represent non-breathing zone measurements, the data reported herein may not be suitable to assess potential occupational exposure. Site Assessment readings are not representative of an individual's breathing zone (e.g., container head space, ground level, directly above product, etc.).



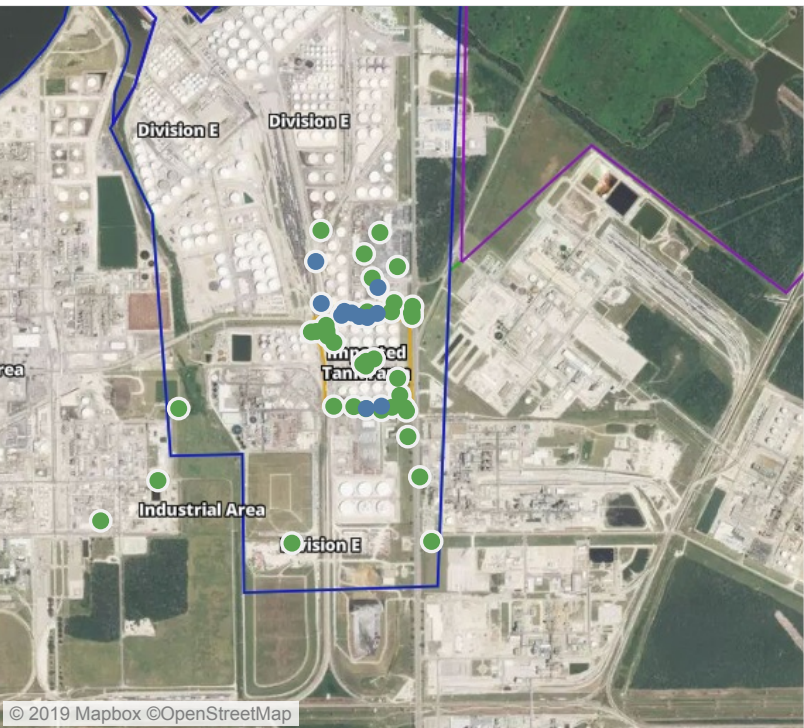


**Please Note:** These updates display data from the 2<sup>nd</sup> 80's Fire site (Impacted Tank Farm), in the industrial areas surrounding the 2<sup>nd</sup> 80's Fire site (US Coast Guard Division E), within the Houston Ship Channel (US Coast Guard Divisions A-D), and in the industrial areas north and south of the Houston Ship Channel (Industrial Area). Real-time air monitoring data for the surrounding communities are communicated daily in a separate report.



# Preliminary Hand- Held Air Monitoring Locations | ITC Deer Park Tank Fire

Reading Date  
5/31/2019 4:00:00 PM to 5/31/2019 5:00:00 PM



## Recent Benzene Detections

Location Category	Reading Date	Range of Detections
Division E	5/31/2019 16:12:55	0.0200 ppm
	5/31/2019 16:13:18	0.0200 ppm
	5/31/2019 16:28:39	0.0200 ppm
	5/31/2019 16:40:31	0.0600 ppm
	5/31/2019 16:39:55	0.0700 ppm
	5/31/2019 16:44:04	0.1200 ppm
	5/31/2019 16:06:55	0.0300 ppm
	5/31/2019 16:02:03	0.1000 ppm
	5/31/2019 16:04:07	0.0400 ppm
	5/31/2019 16:54:24	0.0400 ppm
	5/31/2019 17:00:00	0.1100 ppm

This data has been provided expeditiously to ITC and regulatory agencies for informational and/or operational purposes only. Data reported within this summary is preliminary in nature and has not undergone complete QA/QC (quality assurance/quality control) process. Until this complete QA/QC process is completed, the locations of each reading are approximate in nature and subject to further refinement. As some readings may represent non-breathing zone measurements, the data reported herein may not be suitable to assess potential occupational exposure. Site Assessment readings are not representative of an individual's breathing zone (e.g., container head space, ground level, directly above product, etc.).





**Please Note:** These updates display data from the 2<sup>nd</sup> 80's Fire site (Impacted Tank Farm), in the industrial areas surrounding the 2<sup>nd</sup> 80's Fire site (US Coast Guard Division E), within the Houston Ship Channel (US Coast Guard Divisions A-D), and in the industrial areas north and south of the Houston Ship Channel (Industrial Area). Real-time air monitoring data for the surrounding communities are communicated daily in a separate report.



# Preliminary Hand- Held Air Monitoring Locations | ITC Deer Park Tank Fire

Reading Date  
5/31/2019 5:00:00 PM to 5/31/2019 6:00:00 PM



## Recent Benzene Detections

Location Category	Reading Date	Range of Detections
Division E	5/31/2019 17:00:00	0.11000 ppm
	5/31/2019 17:07:07	0.13000 ppm

This data has been provided expeditiously to ITC and regulatory agencies for informational and/or operational purposes only. Data reported within this summary is preliminary in nature and has not undergone complete QA/QC (quality assurance/quality control) process. Until this complete QA/QC process is completed, the locations of each reading are approximate in nature and subject to further refinement. As some readings may represent non-breathing zone measurements, the data reported herein may not be suitable to assess potential occupational exposure. Site Assessment readings are not representative of an individual's breathing zone (e.g., container head space, ground level, directly above product, etc.).



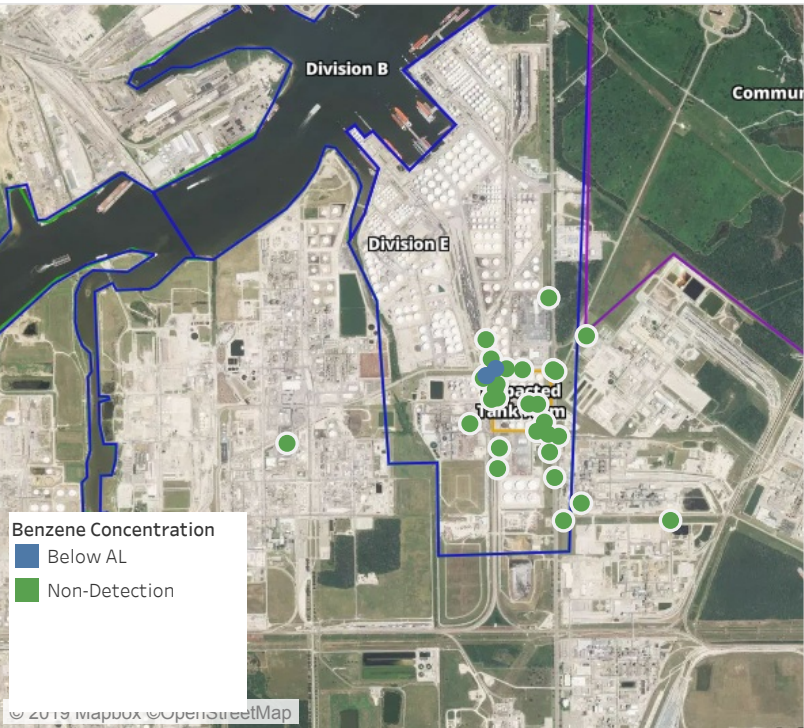


**Please Note:** These updates display data from the 2<sup>nd</sup> 80's Fire site (Impacted Tank Farm), in the industrial areas surrounding the 2<sup>nd</sup> 80's Fire site (US Coast Guard Division E), within the Houston Ship Channel (US Coast Guard Divisions A-D), and in the industrial areas north and south of the Houston Ship Channel (Industrial Area). Real-time air monitoring data for the surrounding communities are communicated daily in a separate report.



# Preliminary Hand- Held Air Monitoring Locations | ITC Deer Park Tank Fire

Reading Date  
5/31/2019 6:00:00 PM to 5/31/2019 7:00:00 PM



## Recent Benzene Detections

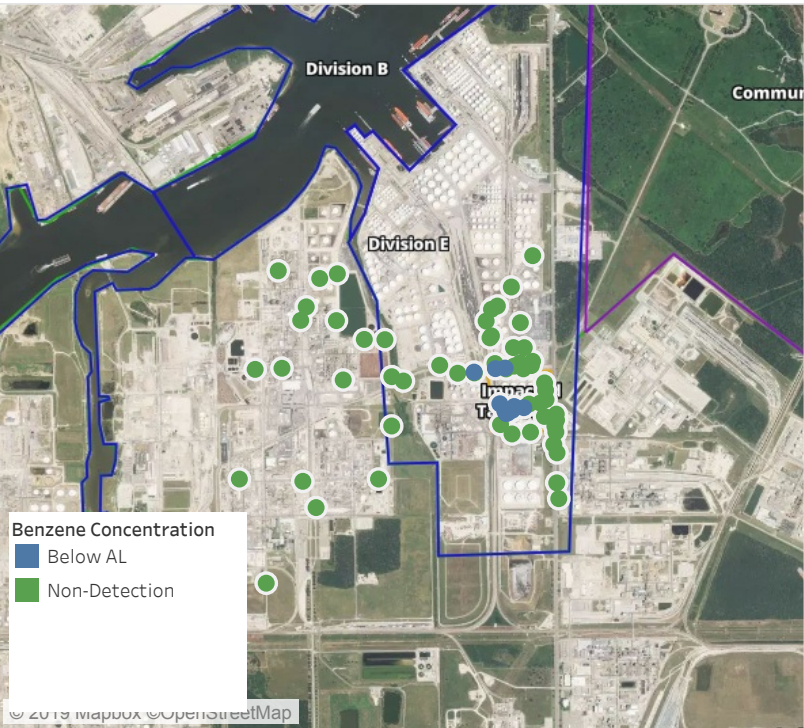
Location Category	Reading Date	Range of Detections
Division E	5/31/2019 18:48:59	0.05000 ppm
	5/31/2019 18:39:30	0.04000 ppm
	5/31/2019 18:36:48	0.08000 ppm

This data has been provided expeditiously to ITC and regulatory agencies for informational and/or operational purposes only. Data reported within this summary is preliminary in nature and has not undergone complete QA/QC (quality assurance/quality control) process. Until this complete QA/QC process is completed, the locations of each reading are approximate in nature and subject to further refinement. As some readings may represent non-breathing zone measurements, the data reported herein may not be suitable to assess potential occupational exposure. Site Assessment readings are not representative of an individual's breathing zone (e.g., container head space, ground level, directly above product, etc.).



# Preliminary Hand- Held Air Monitoring Locations | ITC Deer Park Tank Fire

Reading Date  
5/31/2019 7:00:00 PM to 5/31/2019 8:00:00 PM



## Recent Benzene Detections

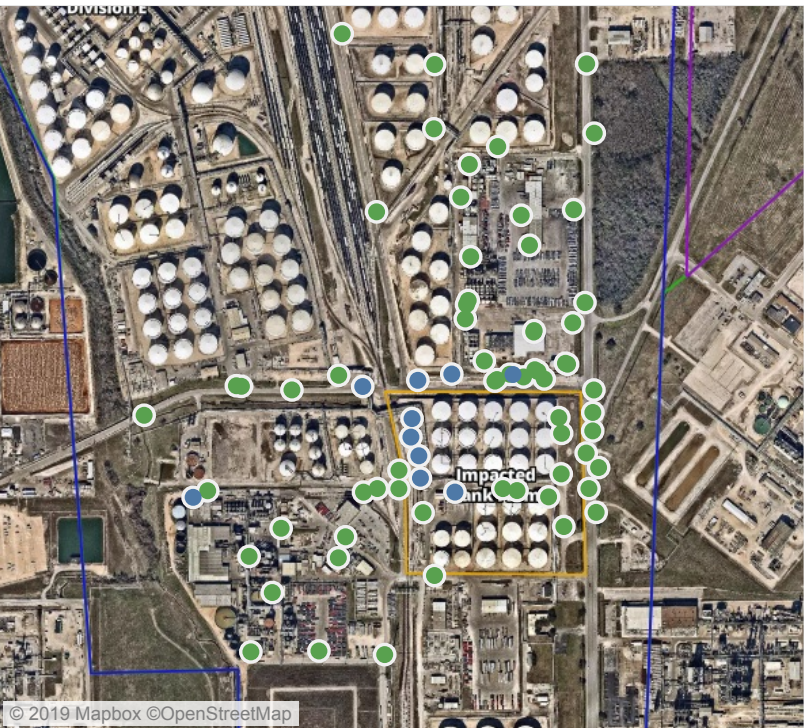
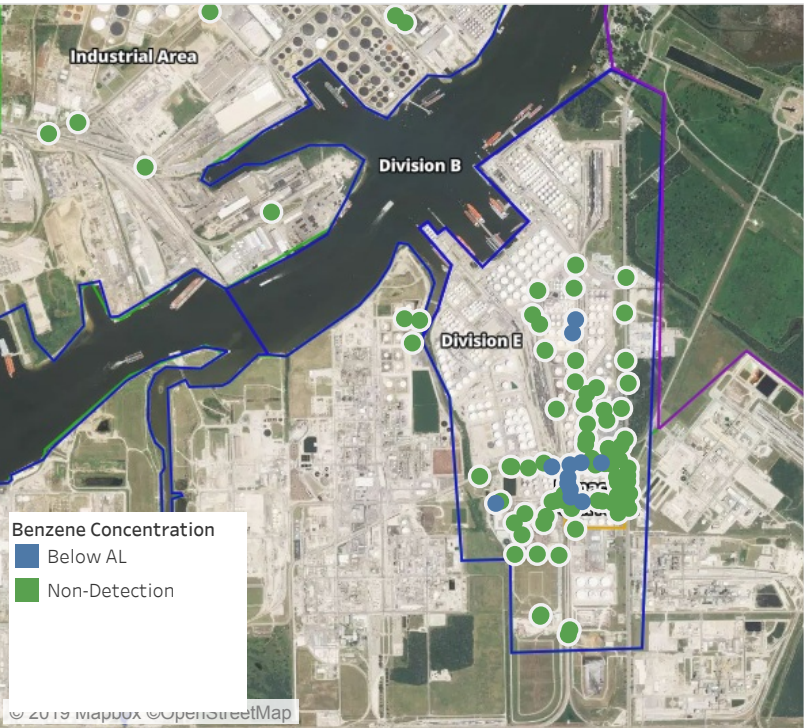
Location Category	Reading Date	Range of Detections
Division E	5/31/2019 19:35:20	ppm
	5/31/2019 19:46:59	0.0300 ppm
	5/31/2019 19:49:36	0.0200 ppm
	5/31/2019 19:36:05	0.0300 ppm
Impacted Tank Farm	5/31/2019 19:24:48	0.1500 ppm
	5/31/2019 19:36:01	0.1400 ppm
	5/31/2019 19:39:39	0.0500 ppm
	5/31/2019 19:43:29	0.0600 ppm
	5/31/2019 19:47:48	0.1000 ppm
	5/31/2019 19:50:44	0.0700 ppm
	5/31/2019 19:53:56	0.0300 ppm

This data has been provided expeditiously to ITC and regulatory agencies for informational and/or operational purposes only. Data reported within this summary is preliminary in nature and has not undergone complete QA/QC (quality assurance/quality control) process. Until this complete QA/QC process is completed, the locations of each reading are approximate in nature and subject to further refinement. As some readings may represent non-breathing zone measurements, the data reported herein may not be suitable to assess potential occupational exposure. Site Assessment readings are not representative of an individual's breathing zone (e.g., container head space, ground level, directly above product, etc.).



# Preliminary Hand- Held Air Monitoring Locations | ITC Deer Park Tank Fire

Reading Date  
5/31/2019 8:00:00 PM to 5/31/2019 9:00:00 PM



## Recent Benzene Detections

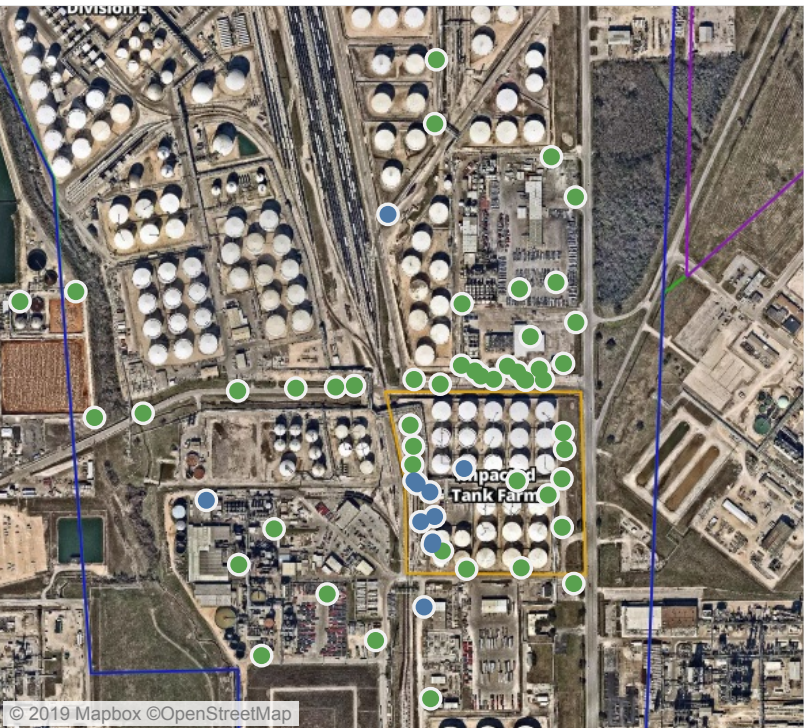
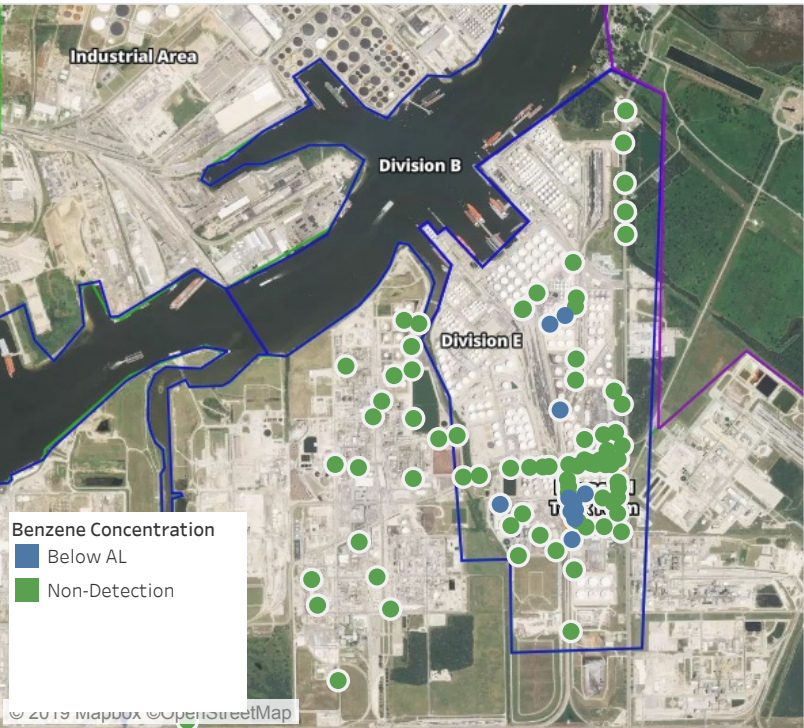
Location Category	Reading Date	Range of Detections
Division E	5/31/2019 20:06:03	0.0200 ppm
	5/31/2019 20:08:38	0.0300 ppm
	5/31/2019 20:32:23	0.0300 ppm
	5/31/2019 20:34:43	0.0400 ppm
	5/31/2019 20:41:27	0.0200 ppm
	5/31/2019 20:30:34	0.0400 ppm
	5/31/2019 20:58:38	0.0100 ppm
Impacted Tank Farm	5/31/2019 20:03:12	0.0200 ppm
	5/31/2019 20:07:05	0.3500 ppm
	5/31/2019 20:11:38	0.0200 ppm
	5/31/2019 20:15:04	0.0500 ppm
	5/31/2019 20:55:37	0.1000 ppm

This data has been provided expeditiously to ITC and regulatory agencies for informational and/or operational purposes only. Data reported within this summary is preliminary in nature and has not undergone complete QA/QC (quality assurance/quality control) process. Until this complete QA/QC process is completed, the locations of each reading are approximate in nature and subject to further refinement. As some readings may represent non-breathing zone measurements, the data reported herein may not be suitable to assess potential occupational exposure. Site Assessment readings are not representative of an individual's breathing zone (e.g., container head space, ground level, directly above product, etc.).



# Preliminary Hand- Held Air Monitoring Locations | ITC Deer Park Tank Fire

Reading Date  
5/31/2019 9:00:00 PM to 5/31/2019 10:00:00 PM



## Recent Benzene Detections

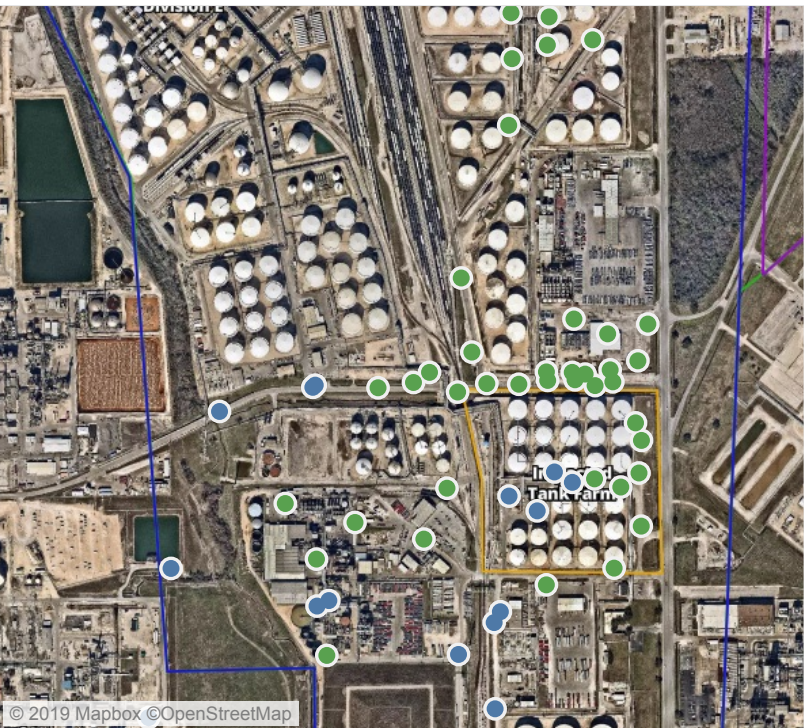
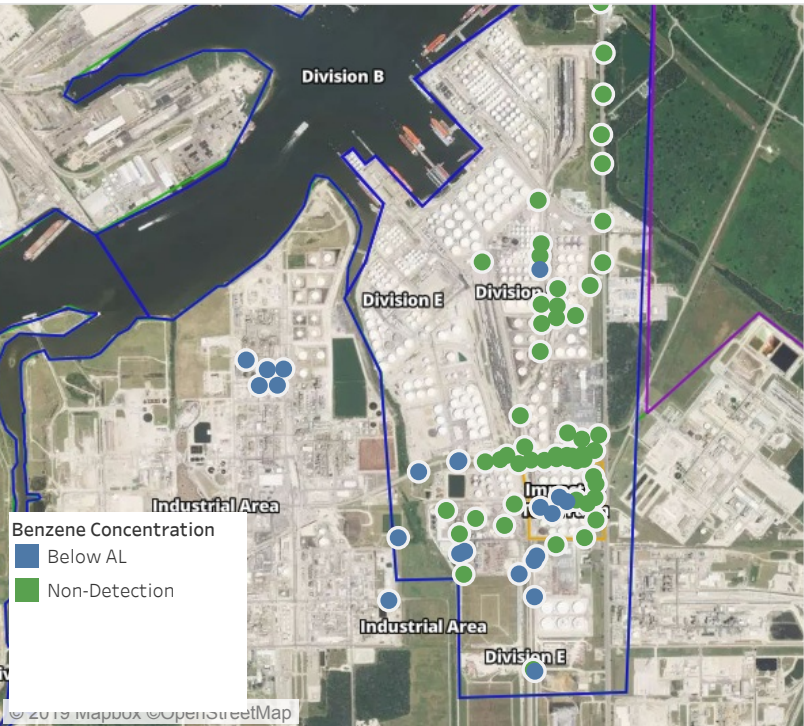
Location Category	Reading Date	Range of Detections
Division E	5/31/2019 21:04:14	0.0200 ppm
	5/31/2019 21:26:44	0.0400 ppm
	5/31/2019 21:28:48	0.2300 ppm
	5/31/2019 21:31:10	0.0200 ppm
	5/31/2019 21:17:23	0.1000 ppm
Impacted Tank Farm	5/31/2019 21:02:53	0.0600 ppm
	5/31/2019 21:09:24	0.0900 ppm
	5/31/2019 21:12:38	0.1200 ppm
	5/31/2019 21:16:16	0.0200 ppm
	5/31/2019 21:19:18	0.1000 ppm
	5/31/2019 21:23:20	0.0200 ppm
	5/31/2019 21:27:24	0.0300 ppm
	5/31/2019 21:31:13	0.0200 ppm

This data has been provided expeditiously to ITC and regulatory agencies for informational and/or operational purposes only. Data reported within this summary is preliminary in nature and has not undergone complete QA/QC (quality assurance/quality control) process. Until this complete QA/QC process is completed, the locations of each reading are approximate in nature and subject to further refinement. As some readings may represent non-breathing zone measurements, the data reported herein may not be suitable to assess potential occupational exposure. Site Assessment readings are not representative of an individual's breathing zone (e.g., container head space, ground level, directly above product, etc.).



# Preliminary Hand- Held Air Monitoring Locations | ITC Deer Park Tank Fire

Reading Date  
5/31/2019 10:00:00 PM to 5/31/2019 11:00:00 PM



## Recent Benzene Detections

Location Category	Reading Date	Range of Detections
Division E	5/31/2019 22:08:56	0.0800 ppm
	5/31/2019 22:04:20	0.0300 ppm
	5/31/2019 22:32:35	0.0400 ppm
	5/31/2019 22:28:23	0.0200 ppm
	5/31/2019 22:53:12	0.1100 ppm
	5/31/2019 22:45:38	0.1400 ppm
	5/31/2019 22:40:51	0.0400 ppm
	5/31/2019 22:49:34	0.0100 ppm
	5/31/2019 22:51:45	0.0300 ppm
	5/31/2019 22:49:04	0.1800 ppm
Impacted Tank Farm	5/31/2019 22:54:00	0.0200 ppm
	5/31/2019 22:28:14	0.0300 ppm
	5/31/2019 22:47:45	0.0300 ppm
	5/31/2019 22:51:43	0.0300 ppm
Industrial Area	5/31/2019 22:54:56	0.0500 ppm
	5/31/2019 22:03:39	0.0400 ppm
	5/31/2019 22:08:53	0.0200 ppm
	5/31/2019 22:10:43	0.0200 ppm
	5/31/2019 22:13:15	0.0400 ppm
	5/31/2019 22:15:38	0.0200 ppm
	5/31/2019 22:31:22	0.0400 ppm
	5/31/2019 22:35:49	0.0600 ppm

This data has been provided expeditiously to ITC and regulatory agencies for informational and/or operational purposes only. Data reported within this summary is preliminary in nature and has not undergone complete QA/QC (quality assurance/quality control) process. Until this complete QA/QC process is completed, the locations of each reading are approximate in nature and subject to further refinement. As some readings may represent non-breathing zone measurements, the data reported herein may not be suitable to assess potential occupational exposure. Site Assessment readings are not representative of an individual's breathing zone (e.g., container head space, ground level, directly above product, etc.).