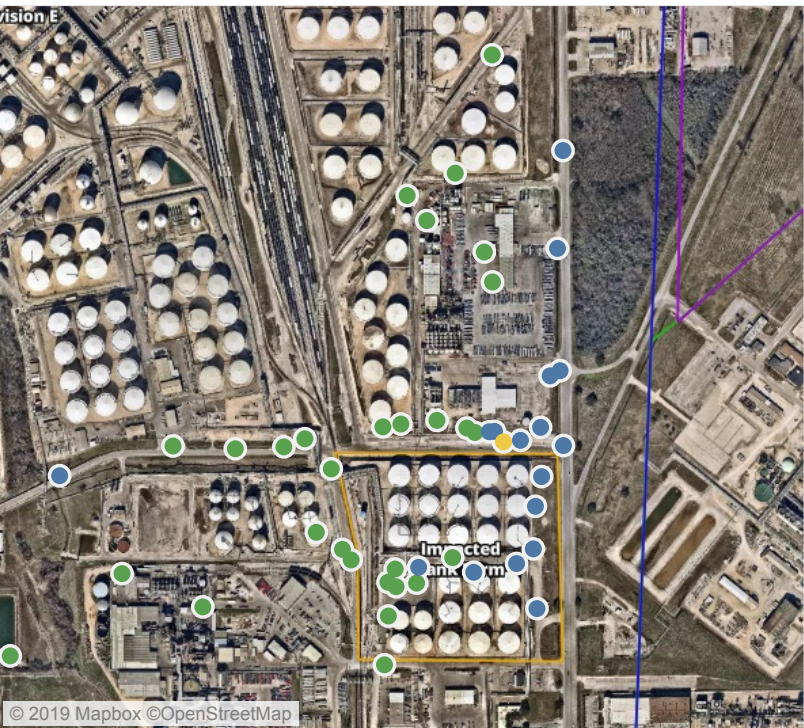
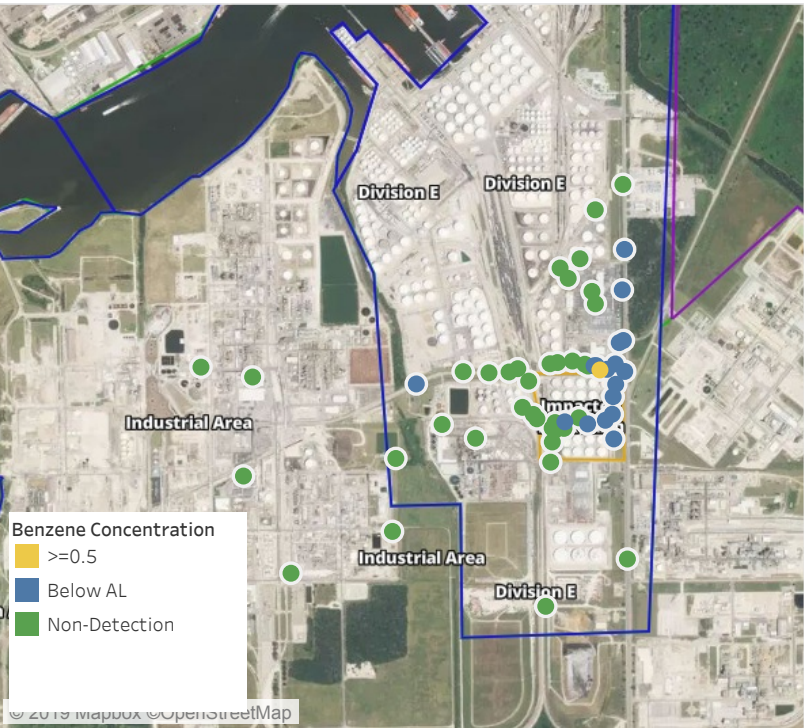


Preliminary Hand- Held Air Monitoring Locations | ITC Deer Park Tank Fire

Reading Date
6/1/2019 11:00:00 PM to 6/2/2019 12:00:26 AM



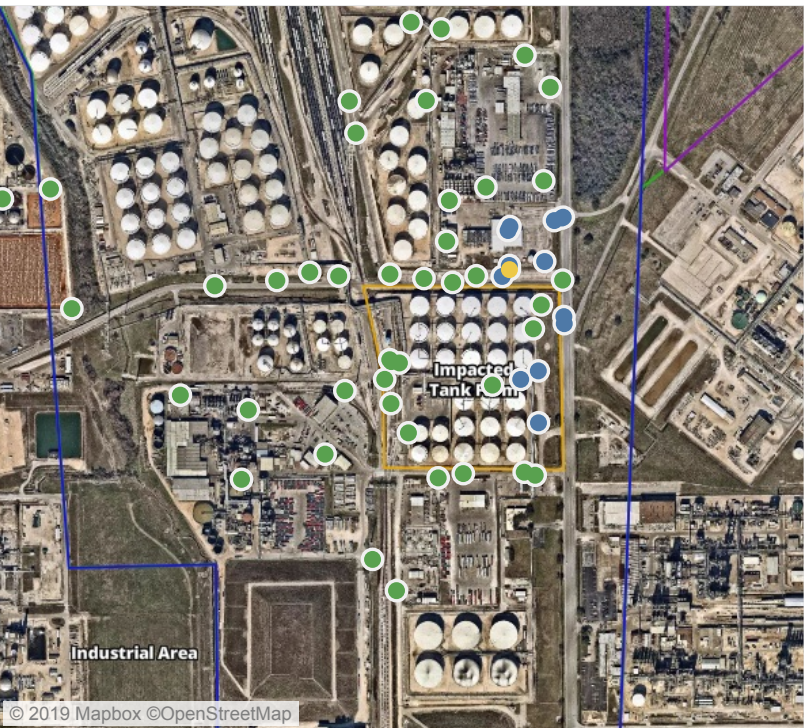
Recent Benzene Detections

Location Category	Reading Date	Range of Detections
Division E	6/1/2019 23:09:15	0.1000 ppm
	6/1/2019 23:09:48	0.6500 ppm
	6/1/2019 23:18:36	0.1600 ppm
	6/1/2019 23:32:06	0.0200 ppm
	6/1/2019 23:35:26	0.2500 ppm
	6/1/2019 23:09:21	0.2600 ppm
	6/1/2019 23:39:26	0.3900 ppm
	6/1/2019 23:31:34	0.3500 ppm
	6/1/2019 23:42:23	0.0700 ppm
	6/1/2019 23:56:47	0.0200 ppm
	6/1/2019 23:54:08	0.0300 ppm
	6/1/2019 23:32:03	0.1600 ppm
Impacted Tank Farm	6/1/2019 23:22:07	0.3000 ppm
	6/1/2019 23:19:09	0.3100 ppm
	6/1/2019 23:26:00	0.3800 ppm
	6/1/2019 23:17:30	0.2200 ppm
	6/1/2019 23:28:00	0.1600 ppm
	6/1/2019 23:40:27	0.0200 ppm

This data has been provided expeditiously to ITC and regulatory agencies for informational and/or operational purposes only. Data reported within this summary is preliminary in nature and has not undergone complete QA/QC (quality assurance/quality control) process. Until this complete QA/QC process is completed, the locations of each reading are approximate in nature and subject to further refinement. As some readings may represent non-breathing zone measurements, the data reported herein may not be suitable to assess potential occupational exposure. Site Assessment readings are not representative of an individual's breathing zone (e.g., container head space, ground level, directly above product, etc.).

Preliminary Hand- Held Air Monitoring Locations | ITC Deer Park Tank Fire

Reading Date
6/2/2019 12:00:00 AM to 6/2/2019 1:00:00 AM



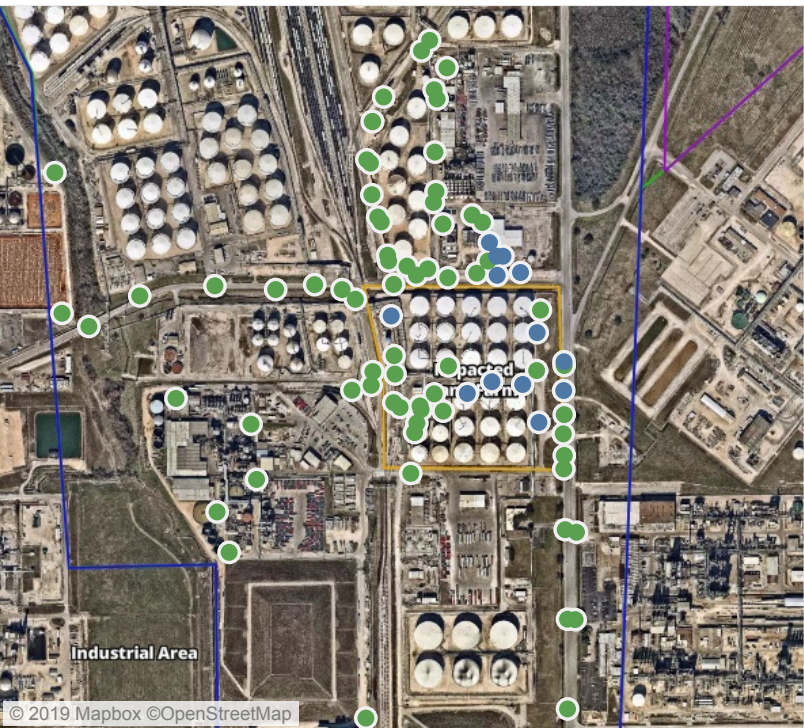
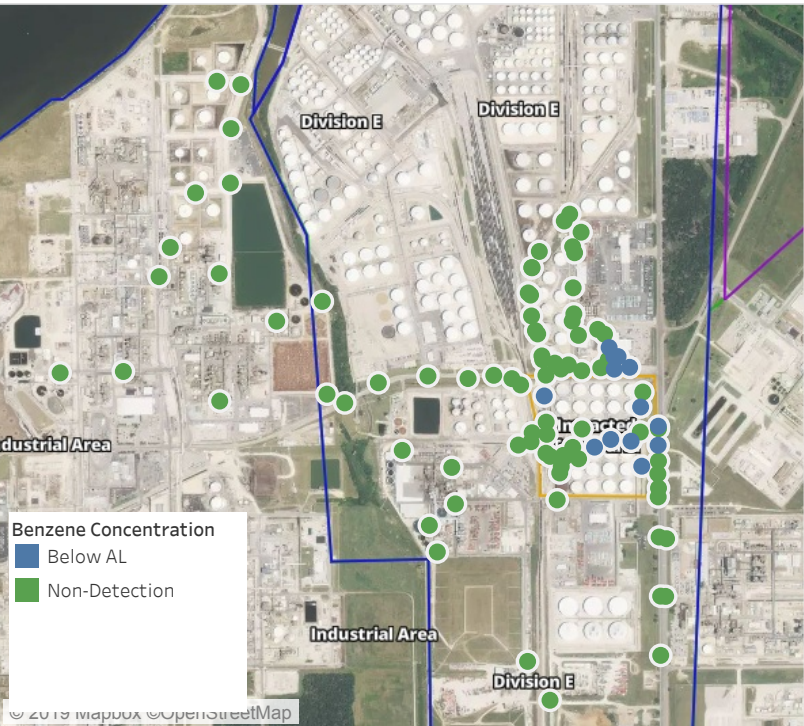
Recent Benzene Detections

Location Category	Reading Date	Range of Detections
Division E	6/2/2019 00:35:03	0.7400 ppm
	6/2/2019 00:34:46	0.4700 ppm
	6/2/2019 00:38:43	0.1600 ppm
	6/2/2019 00:39:28	0.2000 ppm
	6/2/2019 00:49:09	0.0600 ppm
	6/2/2019 00:45:56	0.0300 ppm
	6/2/2019 00:37:39	0.0800 ppm
	6/2/2019 00:53:29	0.0500 ppm
	6/2/2019 00:41:29	0.3800 ppm
	6/2/2019 00:44:28	0.1100 ppm
	6/2/2019 00:25:44	0.3000 ppm
	6/2/2019 00:49:31	0.0400 ppm
	6/2/2019 00:21:26	0.0600 ppm
	6/2/2019 00:59:13	0.1300 ppm
Impacted Tank Farm	6/2/2019 00:36:58	0.3400 ppm
	6/2/2019 00:32:01	0.3300 ppm
	6/2/2019 00:29:48	0.1600 ppm
	6/2/2019 00:47:54	0.3500 ppm

This data has been provided expeditiously to ITC and regulatory agencies for informational and/or operational purposes only. Data reported within this summary is preliminary in nature and has not undergone complete QA/QC (quality assurance/quality control) process. Until this complete QA/QC process is completed, the locations of each reading are approximate in nature and subject to further refinement. As some readings may represent non-breathing zone measurements, the data reported herein may not be suitable to assess potential occupational exposure. Site Assessment readings are not representative of an individual's breathing zone (e.g., container head space, ground level, directly above product, etc.).

Preliminary Hand- Held Air Monitoring Locations | ITC Deer Park Tank Fire

Reading Date
6/2/2019 1:00:00 AM to 6/2/2019 2:00:00 AM



Recent Benzene Detections

Location Category	Reading Date	Range of Detections
Division E	6/2/2019 01:04:38	0.1200 ppm
	6/2/2019 01:22:25	0.1400 ppm
	6/2/2019 01:38:42	0.0400 ppm
	6/2/2019 01:30:51	0.0500 ppm
	6/2/2019 01:44:32	0.2000 ppm
	6/2/2019 01:37:18	0.1200 ppm
	6/2/2019 01:47:03	0.0900 ppm
Impacted Tank Farm	6/2/2019 01:08:09	0.0200 ppm
	6/2/2019 01:13:28	0.1800 ppm
	6/2/2019 01:21:52	0.1800 ppm
	6/2/2019 01:25:34	0.3600 ppm
	6/2/2019 01:19:58	0.1200 ppm
	6/2/2019 01:44:13	0.0200 ppm

This data has been provided expeditiously to ITC and regulatory agencies for informational and/or operational purposes only. Data reported within this summary is preliminary in nature and has not undergone complete QA/QC (quality assurance/quality control) process. Until this complete QA/QC process is completed, the locations of each reading are approximate in nature and subject to further refinement. As some readings may represent non-breathing zone measurements, the data reported herein may not be suitable to assess potential occupational exposure. Site Assessment readings are not representative of an individual's breathing zone (e.g., container head space, ground level, directly above product, etc.).

Preliminary Hand- Held Air Monitoring Locations | ITC Deer Park Tank Fire

Reading Date
6/2/2019 2:00:00 AM to 6/2/2019 3:00:00 AM



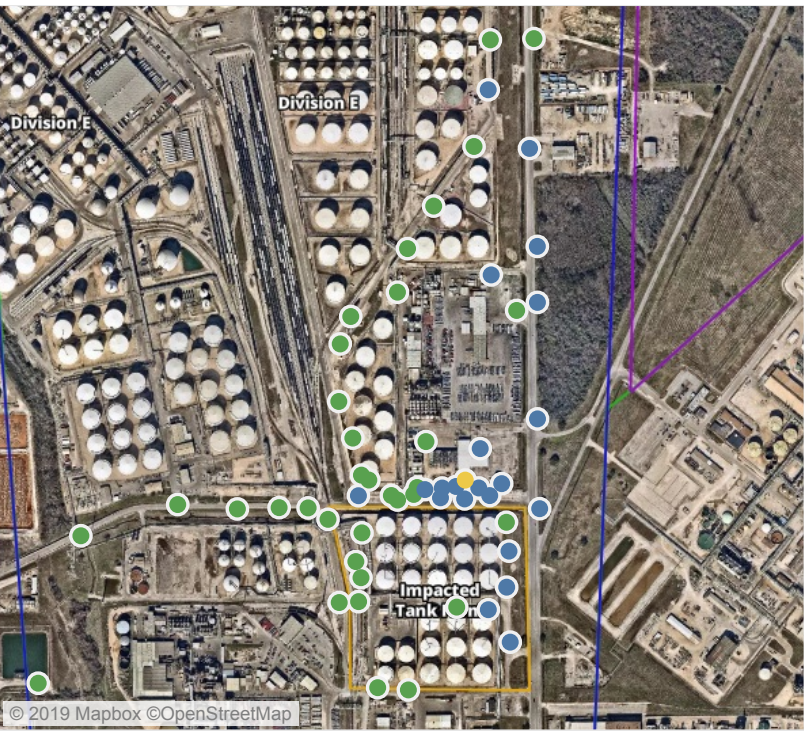
Recent Benzene Detections

Location Category	Reading Date	Range of Detections
Division E	6/2/2019 02:11:27	0.0400 ppm
	6/2/2019 02:22:13	0.6700 ppm
	6/2/2019 02:25:02	0.0700 ppm
	6/2/2019 02:10:00	0.4800 ppm
	6/2/2019 02:30:18	0.0200 ppm
	6/2/2019 02:32:35	0.0700 ppm
	6/2/2019 02:34:05	0.0700 ppm
	6/2/2019 02:42:14	0.0200 ppm
	6/2/2019 02:41:42	0.1000 ppm
	6/2/2019 02:27:52	0.2500 ppm
	6/2/2019 02:36:55	0.2500 ppm
	6/2/2019 02:41:23	0.0300 ppm
	6/2/2019 02:45:19	0.0800 ppm
	6/2/2019 02:33:41	0.0300 ppm
	6/2/2019 02:40:05	0.1200 ppm
	6/2/2019 02:51:11	0.0200 ppm
	6/2/2019 02:41:44	0.0300 ppm
	6/2/2019 02:52:52	0.0200 ppm
	6/2/2019 02:32:04	0.0800 ppm
	6/2/2019 02:30:27	0.0200 ppm
	6/2/2019 02:36:13	0.1600 ppm
	6/2/2019 02:37:36	0.2700 ppm
	6/2/2019 02:57:13	0.1300 ppm
	6/2/2019 02:52:07	0.2000 ppm
Impacted Tank Farm	6/2/2019 02:07:26	0.1900 ppm
	6/2/2019 02:05:42	0.3300 ppm
	6/2/2019 02:03:25	0.3500 ppm
	6/2/2019 02:00:39	0.3000 ppm
	6/2/2019 02:11:05	0.3800 ppm
	6/2/2019 02:31:56	0.0200 ppm
	6/2/2019 02:35:25	0.0500 ppm

This data has been provided expeditiously to ITC and regulatory agencies for informational and/or operational purposes only. Data reported within this summary is preliminary in nature and has not undergone complete QA/QC (quality assurance/quality control) process. Until this complete QA/QC process is completed, the locations of each reading are approximate in nature and subject to further refinement. As some readings may represent non-breathing zone measurements, the data reported herein may not be suitable to assess potential occupational exposure. Site Assessment readings are not representative of an individual's breathing zone (e.g., container head space, ground level, directly above product, etc.).

Preliminary Hand- Held Air Monitoring Locations | ITC Deer Park Tank Fire

Reading Date
6/2/2019 3:00:00 AM to 6/2/2019 4:00:00 AM



Recent Benzene Detections

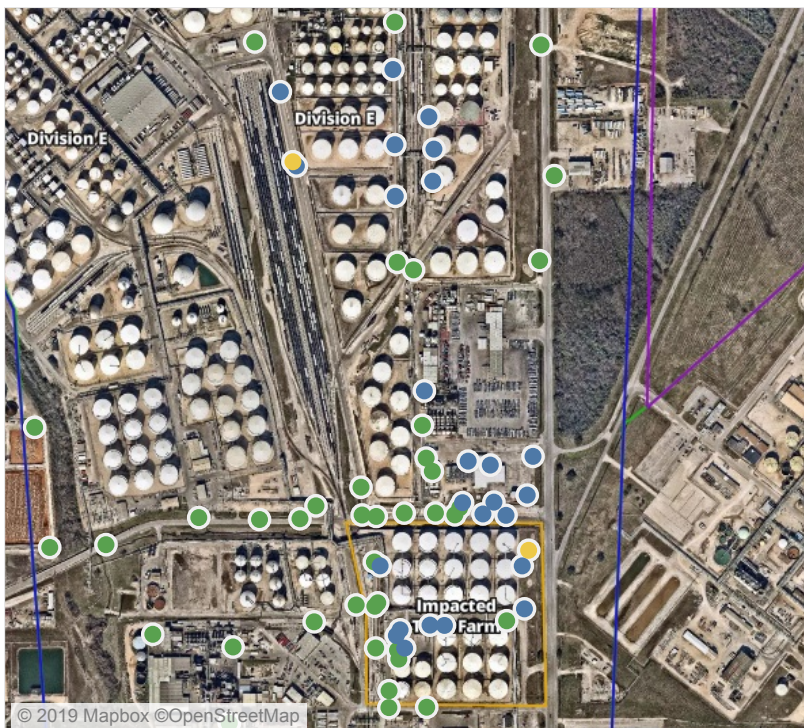
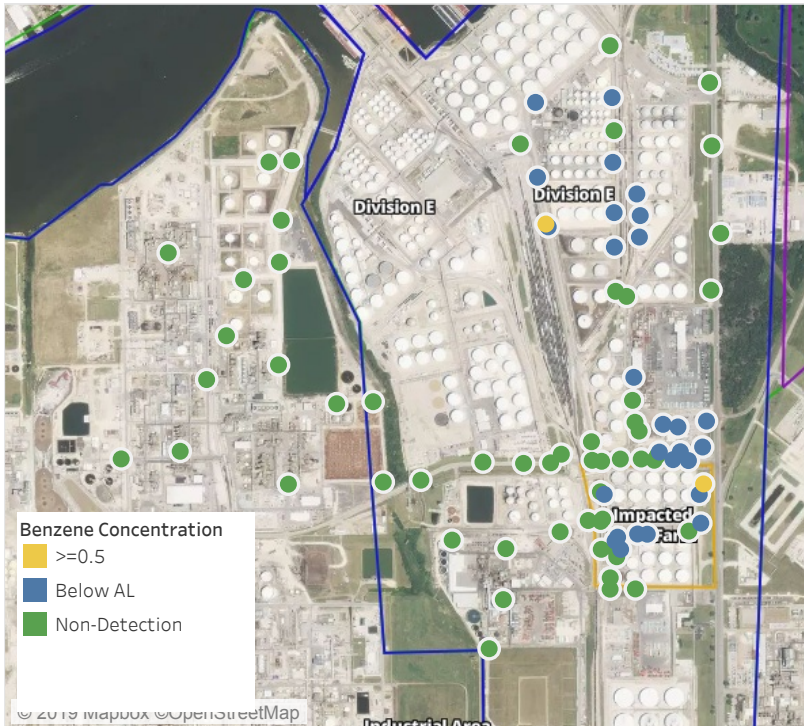
Location Category	Reading Date	Range of Detections
Division E	6/2/2019 03:01:28	0.0800 ppm
	6/2/2019 03:08:39	0.0600 ppm
	6/2/2019 03:18:31	0.0800 ppm
	6/2/2019 03:04:09	0.1500 ppm
	6/2/2019 03:20:13	0.1500 ppm
	6/2/2019 03:15:25	0.1500 ppm
	6/2/2019 03:12:32	0.0700 ppm
	6/2/2019 03:24:06	0.0400 ppm
	6/2/2019 03:23:59	0.0600 ppm
	6/2/2019 03:33:11	0.0500 ppm
	6/2/2019 03:04:42	0.5700 ppm
	6/2/2019 03:23:15	0.3000 ppm
	6/2/2019 03:33:52	0.3300 ppm
	6/2/2019 03:45:39	0.2600 ppm
	6/2/2019 03:40:21	0.1000 ppm
	6/2/2019 03:47:15	0.2900 ppm
	6/2/2019 03:50:35	0.0800 ppm
	6/2/2019 03:49:35	0.0300 ppm
	6/2/2019 03:53:26	0.0700 ppm
	6/2/2019 03:51:34	0.1300 ppm
Impacted Tank Farm	6/2/2019 03:44:49	0.1100 ppm
	6/2/2019 03:59:07	0.1300 ppm
	6/2/2019 03:38:13	0.1100 ppm
	6/2/2019 03:11:59	0.1500 ppm
	6/2/2019 03:22:00	0.1200 ppm
	6/2/2019 03:14:00	0.1200 ppm
	6/2/2019 03:16:35	0.1700 ppm

This data has been provided expeditiously to ITC and regulatory agencies for informational and/or operational purposes only. Data reported within this summary is preliminary in nature and has not undergone complete QA/QC (quality assurance/quality control) process. Until this complete QA/QC process is completed, the locations of each reading are approximate in nature and subject to further refinement. As some readings may represent non-breathing zone measurements, the data reported herein may not be suitable to assess potential occupational exposure. Site Assessment readings are not representative of an individual's breathing zone (e.g., container head space, ground level, directly above product, etc.).

Preliminary Hand- Held Air Monitoring Locations | ITC Deer Park Tank Fire

Reading Date

6/2/2019 4:00:00 AM to 6/2/2019 5:00:00 AM



Recent Benzene Detections

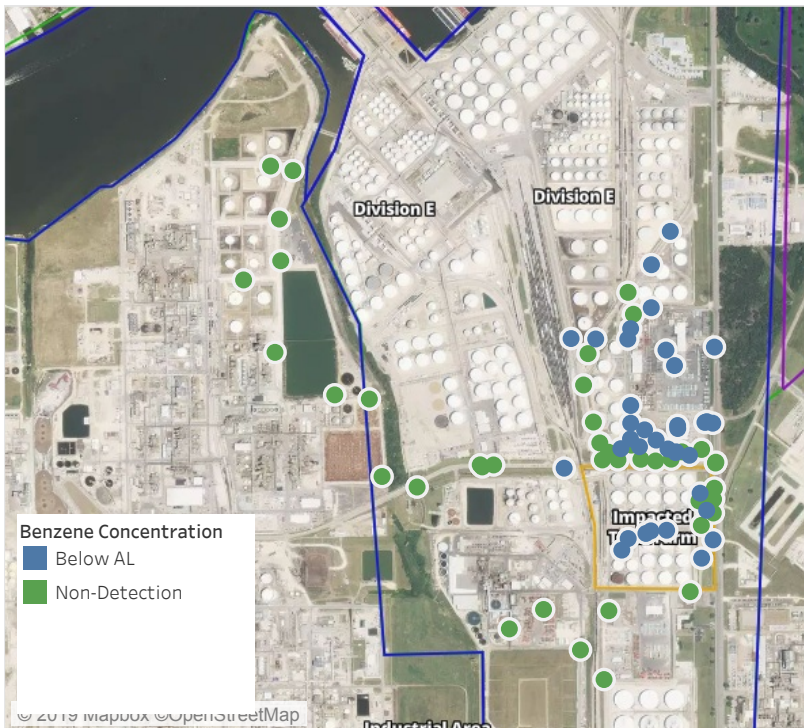
Location Category	Reading Date	Range of Detections
Division E	6/2/2019 04:01:00	0.0600 ppm
	6/2/2019 04:23:04	0.0500 ppm
	6/2/2019 04:25:23	0.3300 ppm
	6/2/2019 04:18:46	0.0300 ppm
	6/2/2019 04:40:44	0.1100 ppm
	6/2/2019 04:26:34	0.1400 ppm
	6/2/2019 04:20:50	0.1200 ppm
	6/2/2019 04:11:16	0.1200 ppm
	6/2/2019 04:46:28	0.5000 ppm
	6/2/2019 04:27:24	0.1900 ppm
	6/2/2019 04:29:29	0.0200 ppm
	6/2/2019 04:57:48	0.0400 ppm
	6/2/2019 04:52:55	0.0300 ppm
	6/2/2019 04:37:58	0.0200 ppm
	6/2/2019 04:48:40	0.0200 ppm
	6/2/2019 04:41:08	0.1200 ppm
	6/2/2019 04:54:50	0.0500 ppm
	6/2/2019 04:31:11	0.0300 ppm
	6/2/2019 04:39:25	0.0600 ppm
	6/2/2019 04:57:59	0.0300 ppm
	6/2/2019 04:48:40	0.1500 ppm
Impacted Tank Farm	6/2/2019 04:06:37	0.0300 ppm
	6/2/2019 04:21:26	0.0500 ppm
	6/2/2019 04:25:22	0.0400 ppm
	6/2/2019 04:28:17	0.0200 ppm
	6/2/2019 04:32:54	0.0200 ppm
	6/2/2019 04:54:46	0.1000 ppm
	6/2/2019 04:56:08	0.3200 ppm
	6/2/2019 04:48:21	0.8500 ppm
	6/2/2019 04:44:46	0.2600 ppm

This data has been provided expeditiously to ITC and regulatory agencies for informational and/or operational purposes only. Data reported within this summary is preliminary in nature and has not undergone complete QA/QC (quality assurance/quality control) process. Until this complete QA/QC process is completed, the locations of each reading are approximate in nature and subject to further refinement. As some readings may represent non-breathing zone measurements, the data reported herein may not be suitable to assess potential occupational exposure. Site Assessment readings are not representative of an individual's breathing zone (e.g., container head space, ground level, directly above product, etc.).

Preliminary Hand- Held Air Monitoring Locations | ITC Deer Park Tank Fire

Reading Date

6/2/2019 5:00:00 AM to 6/2/2019 6:00:00 AM



Recent Benzene Detections

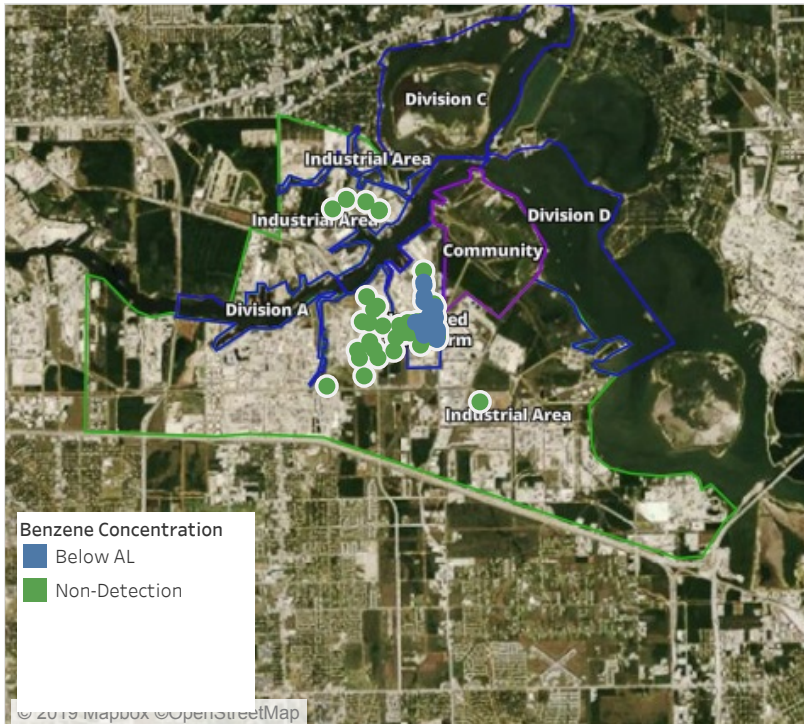
Location Category	Reading Date	Range of Detections
Division E	6/2/2019 05:00:26	0.1000 ppm
	6/2/2019 05:05:57	0.0700 ppm
	6/2/2019 05:07:17	0.0700 ppm
	6/2/2019 05:10:33	0.0400 ppm
	6/2/2019 05:11:12	0.1100 ppm
	6/2/2019 05:16:01	0.0700 ppm
	6/2/2019 05:13:58	0.0500 ppm
	6/2/2019 05:19:44	0.0300 ppm
	6/2/2019 05:24:15	0.0300 ppm
	6/2/2019 05:21:07	0.0800 ppm
	6/2/2019 05:27:18	0.0200 ppm
	6/2/2019 05:06:54	0.1000 ppm
	6/2/2019 05:36:20	0.0200 ppm
	6/2/2019 05:17:54	0.0300 ppm
	6/2/2019 05:31:41	0.0400 ppm
	6/2/2019 05:28:29	0.0700 ppm
	6/2/2019 05:36:19	0.0500 ppm
	6/2/2019 05:41:12	0.0500 ppm
	6/2/2019 05:45:20	0.2000 ppm
	6/2/2019 05:41:10	0.1100 ppm
Impacted Tank Farm	6/2/2019 05:39:26	0.0500 ppm
	6/2/2019 05:48:27	0.0200 ppm
	6/2/2019 05:31:17	0.0200 ppm
	6/2/2019 05:46:51	0.0200 ppm
	6/2/2019 05:51:07	0.0400 ppm
	6/2/2019 05:51:58	0.0200 ppm
	6/2/2019 05:55:08	0.3200 ppm
	6/2/2019 05:58:13	0.0300 ppm
	6/2/2019 05:59:42	0.1700 ppm
	6/2/2019 05:04:13	0.2200 ppm
	6/2/2019 05:01:01	0.2000 ppm
	6/2/2019 05:43:57	0.1600 ppm

This data has been provided expeditiously to ITC and regulatory agencies for informational and/or operational purposes only. Data reported within this summary is preliminary in nature and has not undergone complete QA/QC (quality assurance/quality control) process. Until this complete QA/QC process is completed, the locations of each reading are approximate in nature and subject to further refinement. As some readings may represent non-breathing zone measurements, the data reported herein may not be suitable to assess potential occupational exposure. Site Assessment readings are not representative of an individual's breathing zone (e.g., container head space, ground level, directly above product, etc.).

Preliminary Hand- Held Air Monitoring Locations | ITC Deer Park Tank Fire

Reading Date

6/2/2019 6:00:00 AM to 6/2/2019 7:00:00 AM



Recent Benzene Detections

Location Category	Reading Date	Range of Dete..
Division E	6/2/2019 06:02:21	0.0300 ppm
	6/2/2019 06:04:11	0.0900 ppm
	6/2/2019 06:08:25	0.0300 ppm
	6/2/2019 06:08:17	0.1500 ppm
	6/2/2019 06:12:53	0.0300 ppm
	6/2/2019 06:07:03	0.0700 ppm
	6/2/2019 06:20:52	0.0400 ppm
	6/2/2019 06:00:24	0.0300 ppm
	6/2/2019 06:21:59	0.0700 ppm
	6/2/2019 06:11:40	0.0600 ppm
	6/2/2019 06:15:07	0.0600 ppm
	6/2/2019 06:13:39	0.1200 ppm
	6/2/2019 06:21:54	0.0300 ppm
	6/2/2019 06:17:34	0.2800 ppm
	6/2/2019 06:25:58	0.0400 ppm
	6/2/2019 06:25:26	0.0600 ppm
	6/2/2019 06:05:20	0.0400 ppm
	6/2/2019 06:15:15	0.1300 ppm
	6/2/2019 06:29:56	0.0800 ppm
	6/2/2019 06:19:50	0.2900 ppm
	6/2/2019 06:29:47	0.0200 ppm
	6/2/2019 06:34:27	0.0500 ppm
	6/2/2019 06:34:04	0.1500 ppm
	6/2/2019 06:34:01	0.1000 ppm
	6/2/2019 06:27:23	0.0900 ppm
	6/2/2019 06:37:18	0.1200 ppm
	6/2/2019 06:40:00	0.1300 ppm
	6/2/2019 06:44:44	0.0200 ppm
	6/2/2019 06:42:56	0.1600 ppm
	6/2/2019 06:46:13	0.0200 ppm
	6/2/2019 06:43:17	0.0400 ppm
	6/2/2019 06:45:47	0.0800 ppm
	6/2/2019 06:53:21	0.1100 ppm
Impacted Tank Farm	6/2/2019 06:00:30	0.0200 ppm
	6/2/2019 06:01:52	0.0200 ppm
	6/2/2019 06:05:47	0.0300 ppm
	6/2/2019 06:10:39	0.1000 ppm
	6/2/2019 06:09:52	0.0500 ppm
	6/2/2019 06:18:03	0.1600 ppm
	6/2/2019 06:25:59	0.3200 ppm
	6/2/2019 06:39:55	0.0200 ppm
	6/2/2019 06:38:41	0.2100 ppm
	6/2/2019 06:36:48	0.1200 ppm
	6/2/2019 06:41:55	0.0300 ppm
	6/2/2019 06:43:52	0.0300 ppm

This data has been provided expeditiously to ITC and regulatory agencies for informational and/or operational purposes only. Data reported within this summary is preliminary in nature and has not undergone complete QA/QC (quality assurance/quality control) process. Until this complete QA/QC process is completed, the locations of each reading are approximate in nature and subject to further refinement. As some readings may represent non-breathing zone measurements, the data reported herein may not be suitable to assess potential occupational exposure. Site Assessment readings are not representative of an individual's breathing zone (e.g., container head space, ground level, directly above product, etc.).

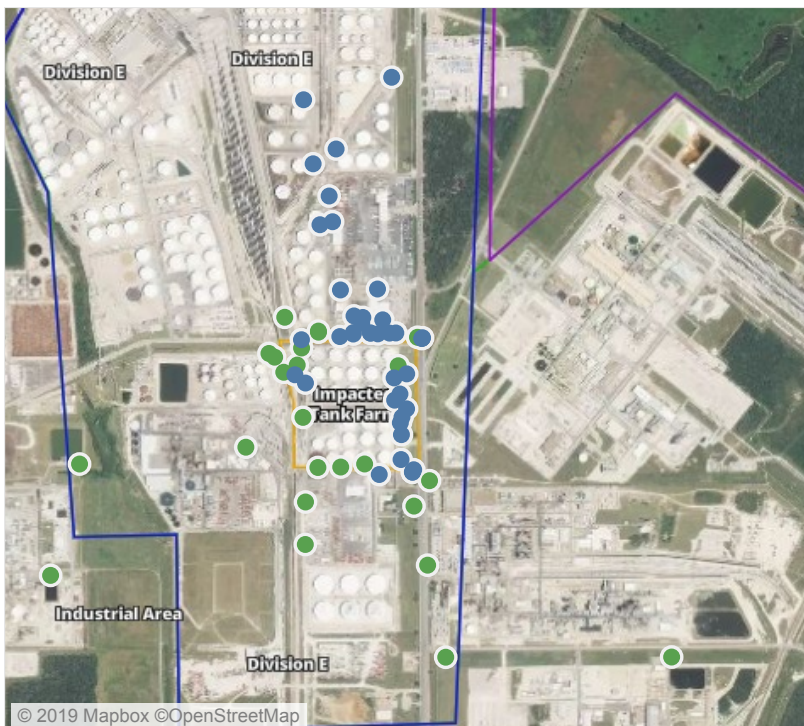
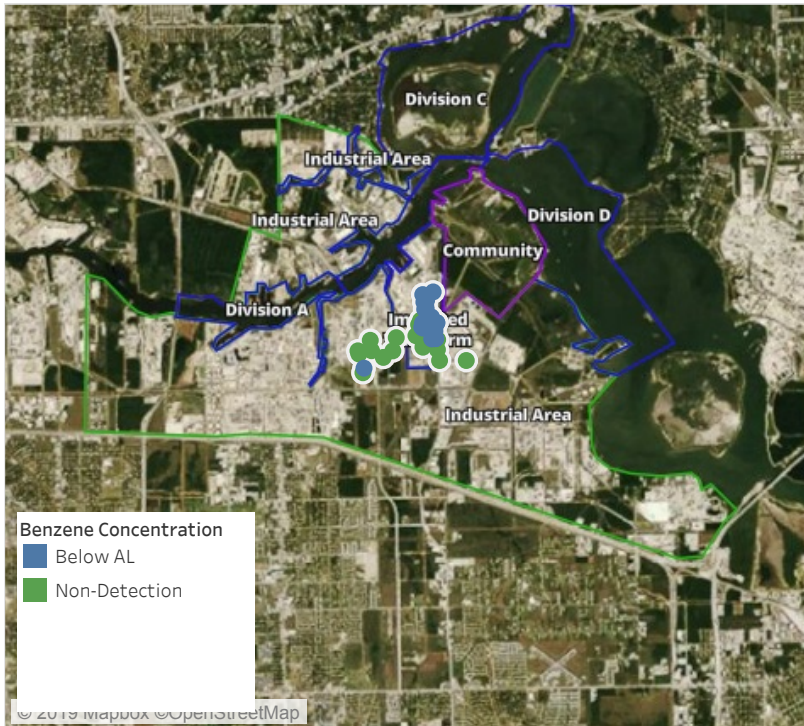


Please Note: These updates display data from the 2nd 80's Fire site (Impacted Tank Farm), in the industrial areas surrounding the 2nd 80's Fire site (US Coast Guard Division E), within the Houston Ship Channel (US Coast Guard Divisions A-D), and in the industrial areas north and south of the Houston Ship Channel (Industrial Area). Real-time air monitoring data for the surrounding communities are communicated daily in a separate report.

Preliminary Hand- Held Air Monitoring Locations | ITC Deer Park Tank Fire

Reading Date

6/2/2019 7:00:00 AM to 6/2/2019 8:00:00 AM



Recent Benzene Detections

Location Category	Reading Date	Range of Dete..
Division E	6/2/2019 07:04:02	0.0400 ppm
	6/2/2019 07:05:58	0.0500 ppm
	6/2/2019 07:11:31	0.0400 ppm
	6/2/2019 07:14:00	0.0500 ppm
	6/2/2019 07:16:25	0.0600 ppm
	6/2/2019 07:19:12	0.2500 ppm
	6/2/2019 07:22:46	0.1200 ppm
	6/2/2019 07:23:09	0.1300 ppm
	6/2/2019 07:32:32	0.1100 ppm
	6/2/2019 07:32:44	0.1300 ppm
	6/2/2019 07:30:48	0.0200 ppm
	6/2/2019 07:34:18	0.0800 ppm
	6/2/2019 07:32:18	0.0900 ppm
	6/2/2019 07:35:31	0.0800 ppm
	6/2/2019 07:37:57	0.0800 ppm
	6/2/2019 07:44:19	0.0500 ppm
	6/2/2019 07:49:08	0.2500 ppm
	6/2/2019 07:48:15	0.0400 ppm
	6/2/2019 07:51:29	0.0300 ppm
	6/2/2019 07:55:13	0.0500 ppm
	6/2/2019 07:54:05	0.0300 ppm
	6/2/2019 07:54:44	0.0600 ppm
	6/2/2019 07:57:08	0.0400 ppm
	6/2/2019 07:55:55	0.0400 ppm
	6/2/2019 07:55:19	0.0400 ppm
Impacted Tank Farm	6/2/2019 07:42:26	0.0300 ppm
	6/2/2019 07:39:15	0.1000 ppm
	6/2/2019 07:46:36	0.1300 ppm
	6/2/2019 07:37:31	0.0500 ppm
	6/2/2019 07:26:33	0.0600 ppm
	6/2/2019 07:55:55	0.0200 ppm
	6/2/2019 07:21:18	0.4000 ppm
	6/2/2019 07:23:59	0.2000 ppm
	6/2/2019 07:26:18	0.1100 ppm
	6/2/2019 07:18:34	0.1100 ppm
	6/2/2019 07:29:32	0.2400 ppm
	6/2/2019 07:47:26	0.0200 ppm
	6/2/2019 07:50:40	0.0500 ppm
	6/2/2019 07:36:51	0.0900 ppm
	6/2/2019 07:31:24	0.2700 ppm
	6/2/2019 07:34:27	0.0800 ppm

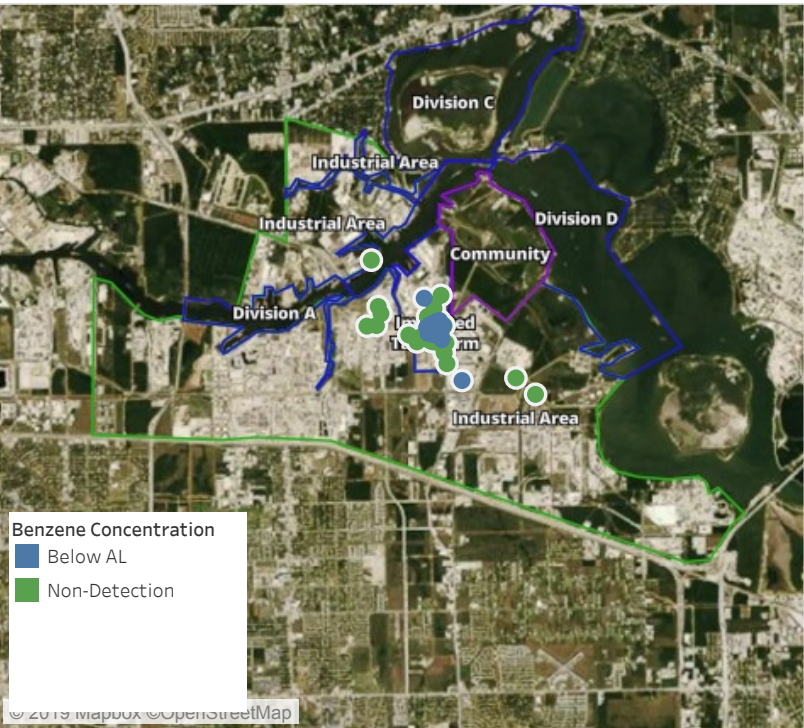
This data has been provided expeditiously to ITC and regulatory agencies for informational and/or operational purposes only. Data reported within this summary is preliminary in nature and has not undergone complete QA/QC (quality assurance/quality control) process. Until this complete QA/QC process is completed, the locations of each reading are approximate in nature and subject to further refinement. As some readings may represent non-breathing zone measurements, the data reported herein may not be suitable to assess potential occupational exposure. Site Assessment readings are not representative of an individual's breathing zone (e.g., container head space, ground level, directly above product, etc.).



Please Note: These updates display data from the 2nd 80's Fire site (Impacted Tank Farm), in the industrial areas surrounding the 2nd 80's Fire site (US Coast Guard Division E), within the Houston Ship Channel (US Coast Guard Divisions A-D), and in the industrial areas north and south of the Houston Ship Channel (Industrial Area). Real-time air monitoring data for the surrounding communities are communicated daily in a separate report.

Preliminary Hand- Held Air Monitoring Locations | ITC Deer Park Tank Fire

Reading Date
6/2/2019 8:00:00 AM to 6/2/2019 9:00:00 AM



Recent Benzene Detections

Location Category	Reading Date	Range of Detections
Division E	6/2/2019 08:01:30	0.3000 ppm
	6/2/2019 08:04:51	0.0200 ppm
	6/2/2019 08:15:43	0.1100 ppm
	6/2/2019 08:21:15	0.0200 ppm
	6/2/2019 08:24:54	0.0800 ppm
	6/2/2019 08:28:48	0.0900 ppm
	6/2/2019 08:33:22	0.1300 ppm
	6/2/2019 08:34:50	0.0500 ppm
	6/2/2019 08:35:38	0.0700 ppm
	6/2/2019 08:05:11	0.0200 ppm
	6/2/2019 08:31:38	0.2000 ppm
	6/2/2019 08:32:31	0.1000 ppm
	6/2/2019 08:22:25	0.0500 ppm
	6/2/2019 08:14:48	0.1400 ppm
	6/2/2019 08:08:41	0.0300 ppm
Impacted Tank Farm	6/2/2019 08:44:59	0.0800 ppm
	6/2/2019 08:53:29	0.0300 ppm
	6/2/2019 08:06:00	0.0200 ppm
	6/2/2019 08:02:32	0.0500 ppm
	6/2/2019 08:04:45	0.0600 ppm
	6/2/2019 08:20:20	0.0800 ppm
	6/2/2019 08:35:36	0.0300 ppm
	6/2/2019 08:36:40	0.0300 ppm
	6/2/2019 08:34:25	0.0300 ppm
	6/2/2019 08:49:51	0.3100 ppm
	6/2/2019 08:27:30	0.0700 ppm
	6/2/2019 08:29:37	0.0300 ppm

This data has been provided expeditiously to ITC and regulatory agencies for informational and/or operational purposes only. Data reported within this summary is preliminary in nature and has not undergone complete QA/QC (quality assurance/quality control) process. Until this complete QA/QC process is completed, the locations of each reading are approximate in nature and subject to further refinement. As some readings may represent non-breathing zone measurements, the data reported herein may not be suitable to assess potential occupational exposure. Site Assessment readings are not representative of an individual's breathing zone (e.g., container head space, ground level, directly above product, etc.).



Please Note: These updates display data from the 2nd 80's Fire site (Impacted Tank Farm), in the industrial areas surrounding the 2nd 80's Fire site (US Coast Guard Division E), within the Houston Ship Channel (US Coast Guard Divisions A-D), and in the industrial areas north and south of the Houston Ship Channel (Industrial Area). Real-time air monitoring data for the surrounding communities are communicated daily in a separate report.

Preliminary Hand- Held Air Monitoring Locations | ITC Deer Park Tank Fire

Reading Date
6/2/2019 9:00:00 AM to 6/2/2019 10:00:00 AM



Recent Benzene Detections

Location Category	Reading Date	Range of Detections
Division E	6/2/2019 09:18:34	0.0500 ppm
	6/2/2019 09:03:06	0.0400 ppm
	6/2/2019 09:28:15	0.0300 ppm
	6/2/2019 09:28:44	0.0200 ppm
	6/2/2019 09:30:18	0.0900 ppm
	6/2/2019 09:43:15	0.4800 ppm
	6/2/2019 09:31:55	0.0200 ppm
	6/2/2019 09:46:28	0.1400 ppm
	6/2/2019 09:49:38	0.0800 ppm
	6/2/2019 09:22:12	0.0800 ppm
	6/2/2019 09:50:13	0.1400 ppm
	6/2/2019 09:55:47	0.0200 ppm
	6/2/2019 09:33:02	0.4400 ppm
	6/2/2019 09:42:34	0.5400 ppm
Impacted Tank Farm	6/2/2019 09:05:43	0.0200 ppm
	6/2/2019 09:13:40	0.0300 ppm
	6/2/2019 09:45:10	0.0500 ppm

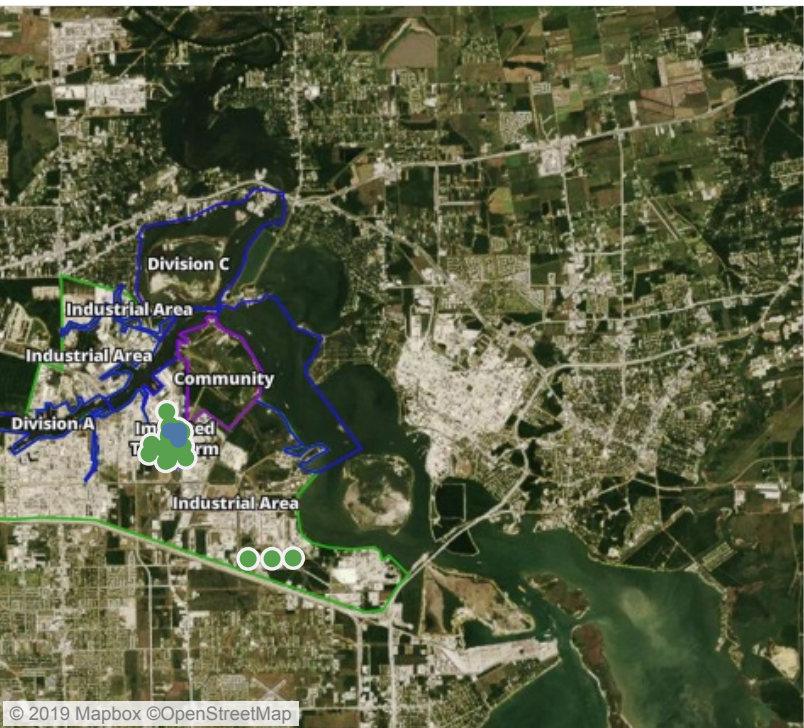
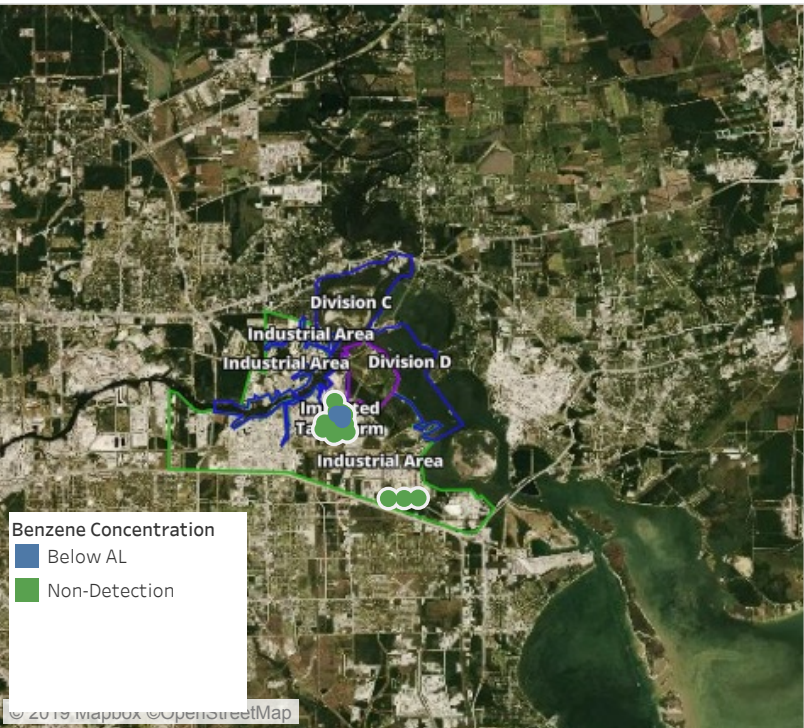
This data has been provided expeditiously to ITC and regulatory agencies for informational and/or operational purposes only. Data reported within this summary is preliminary in nature and has not undergone complete QA/QC (quality assurance/quality control) process. Until this complete QA/QC process is completed, the locations of each reading are approximate in nature and subject to further refinement. As some readings may represent non-breathing zone measurements, the data reported herein may not be suitable to assess potential occupational exposure. Site Assessment readings are not representative of an individual's breathing zone (e.g., container head space, ground level, directly above product, etc.).



Please Note: These updates display data from the 2nd 80's Fire site (Impacted Tank Farm), in the industrial areas surrounding the 2nd 80's Fire site (US Coast Guard Division E), within the Houston Ship Channel (US Coast Guard Divisions A-D), and in the industrial areas north and south of the Houston Ship Channel (Industrial Area). Real-time air monitoring data for the surrounding communities are communicated daily in a separate report.

Preliminary Hand- Held Air Monitoring Locations | ITC Deer Park Tank Fire

Reading Date
6/2/2019 10:00:00 AM to 6/2/2019 11:00:00 AM



Recent Benzene Detections

Location Category	Reading Date	Range of Detections
Division E	6/2/2019 10:17:49	0.0500 ppm
	6/2/2019 10:12:07	0.1400 ppm
	6/2/2019 10:27:57	0.0200 ppm
	6/2/2019 10:48:17	0.0200 ppm
	6/2/2019 10:10:59	0.0200 ppm
Impacted Tank Farm	6/2/2019 10:51:39	0.1500 ppm
	6/2/2019 10:34:15	0.2000 ppm

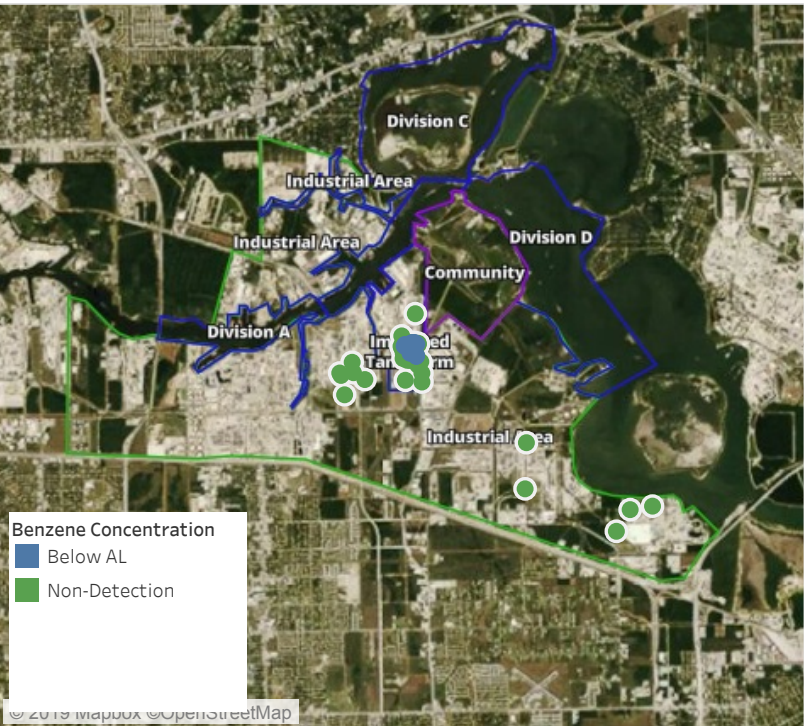
This data has been provided expeditiously to ITC and regulatory agencies for informational and/or operational purposes only. Data reported within this summary is preliminary in nature and has not undergone complete QA/QC (quality assurance/quality control) process. Until this complete QA/QC process is completed, the locations of each reading are approximate in nature and subject to further refinement. As some readings may represent non-breathing zone measurements, the data reported herein may not be suitable to assess potential occupational exposure. Site Assessment readings are not representative of an individual's breathing zone (e.g., container head space, ground level, directly above product, etc.).



Please Note: These updates display data from the 2nd 80's Fire site (Impacted Tank Farm), in the industrial areas surrounding the 2nd 80's Fire site (US Coast Guard Division E), within the Houston Ship Channel (US Coast Guard Divisions A-D), and in the industrial areas north and south of the Houston Ship Channel (Industrial Area). Real-time air monitoring data for the surrounding communities are communicated daily in a separate report.

Preliminary Hand- Held Air Monitoring Locations | ITC Deer Park Tank Fire

Reading Date
6/2/2019 11:00:00 AM to 6/2/2019 12:00:00 PM



Recent Benzene Detections

Location Category	Reading Date	Range of Detections
Division E	6/2/2019 11:03:54	0.1200 ppm
	6/2/2019 11:07:04	0.0300 ppm
	6/2/2019 11:09:05	0.3300 ppm
	6/2/2019 11:43:43	0.0200 ppm
	6/2/2019 11:46:55	0.0400 ppm
	6/2/2019 11:50:16	0.2900 ppm
	6/2/2019 11:38:58	0.0200 ppm
	6/2/2019 11:10:09	0.0200 ppm
Impacted Tank Farm	6/2/2019 11:04:43	0.0800 ppm
	6/2/2019 11:04:30	0.1400 ppm
	6/2/2019 11:02:25	0.0600 ppm
	6/2/2019 11:20:28	0.0300 ppm
	6/2/2019 11:57:51	0.0400 ppm

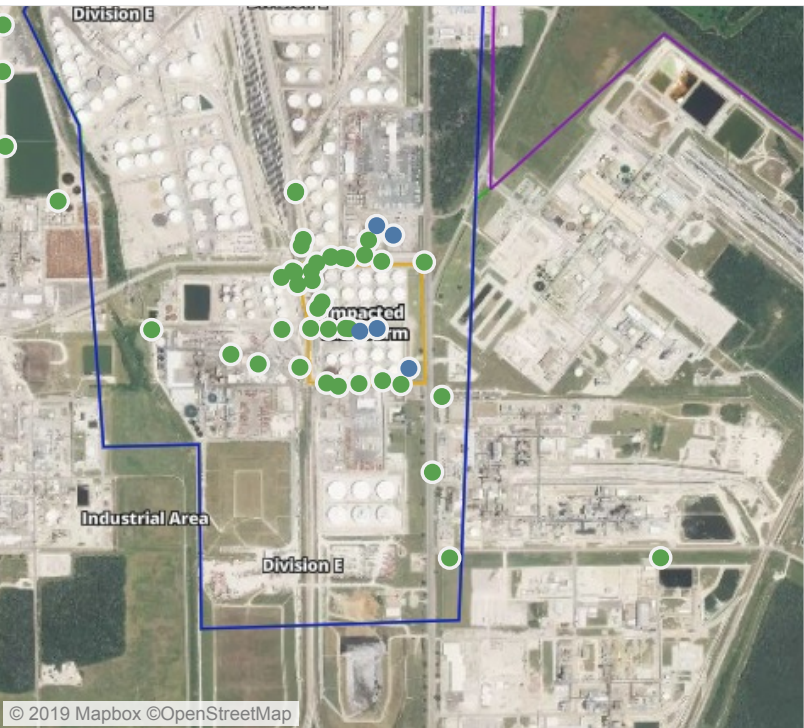
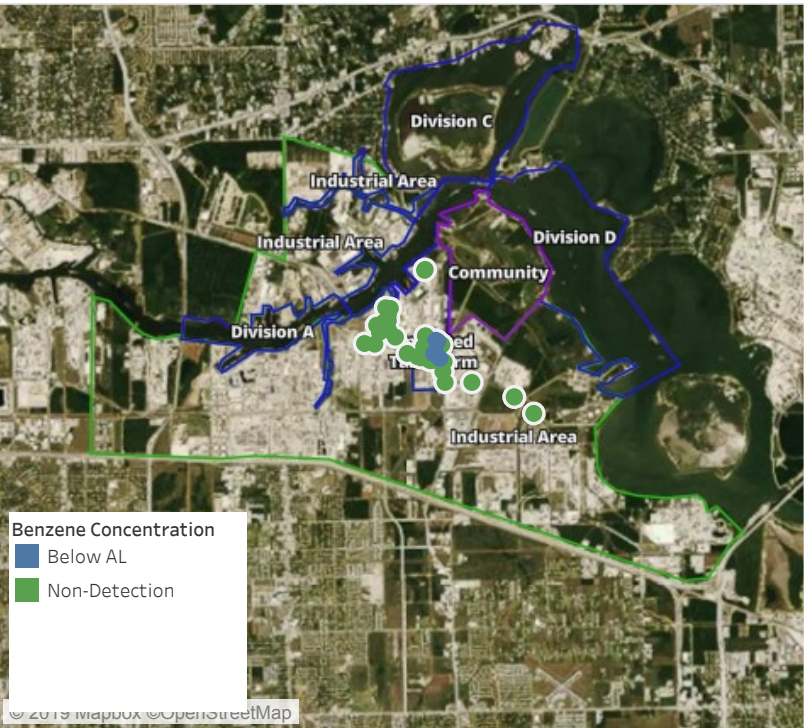
This data has been provided expeditiously to ITC and regulatory agencies for informational and/or operational purposes only. Data reported within this summary is preliminary in nature and has not undergone complete QA/QC (quality assurance/quality control) process. Until this complete QA/QC process is completed, the locations of each reading are approximate in nature and subject to further refinement. As some readings may represent non-breathing zone measurements, the data reported herein may not be suitable to assess potential occupational exposure. Site Assessment readings are not representative of an individual's breathing zone (e.g., container head space, ground level, directly above product, etc.).



Please Note: These updates display data from the 2nd 80's Fire site (Impacted Tank Farm), in the industrial areas surrounding the 2nd 80's Fire site (US Coast Guard Division E), within the Houston Ship Channel (US Coast Guard Divisions A-D), and in the industrial areas north and south of the Houston Ship Channel (Industrial Area). Real-time air monitoring data for the surrounding communities are communicated daily in a separate report.

Preliminary Hand- Held Air Monitoring Locations | ITC Deer Park Tank Fire

Reading Date
6/2/2019 12:00:00 PM to 6/2/2019 1:00:00 PM



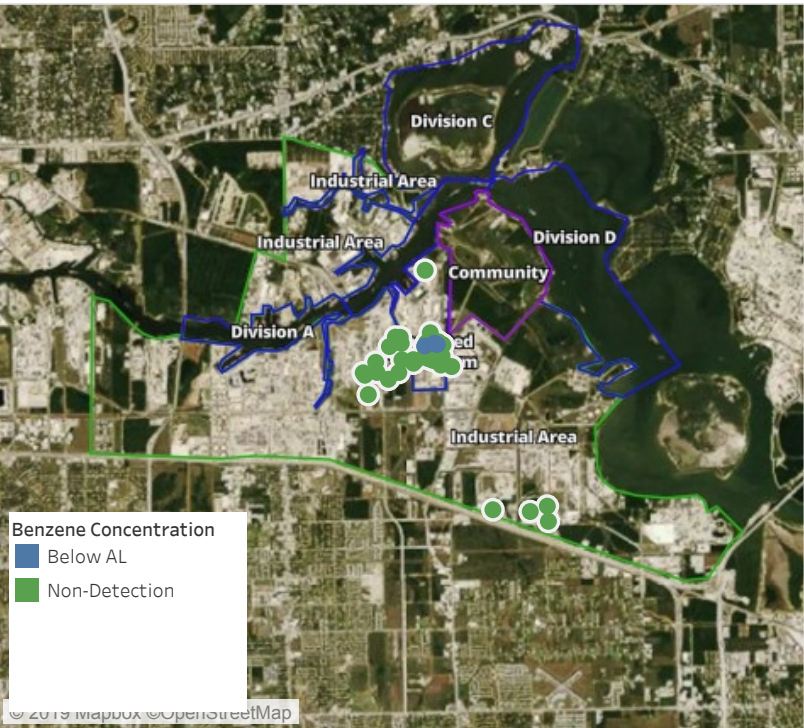
Recent Benzene Detections

Location Category	Reading Date	Range of Detections
Division E	6/2/2019 12:49:45	0.0400 ppm
	6/2/2019 12:19:56	0.0200 ppm
Impacted Tank Farm	6/2/2019 12:02:13	0.0600 ppm
	6/2/2019 12:05:12	0.0400 ppm
	6/2/2019 12:16:18	0.1200 ppm

This data has been provided expeditiously to ITC and regulatory agencies for informational and/or operational purposes only. Data reported within this summary is preliminary in nature and has not undergone complete QA/QC (quality assurance/quality control) process. Until this complete QA/QC process is completed, the locations of each reading are approximate in nature and subject to further refinement. As some readings may represent non-breathing zone measurements, the data reported herein may not be suitable to assess potential occupational exposure. Site Assessment readings are not representative of an individual's breathing zone (e.g., container head space, ground level, directly above product, etc.).

Preliminary Hand- Held Air Monitoring Locations | ITC Deer Park Tank Fire

Reading Date
6/2/2019 1:00:00 PM to 6/2/2019 2:00:00 PM



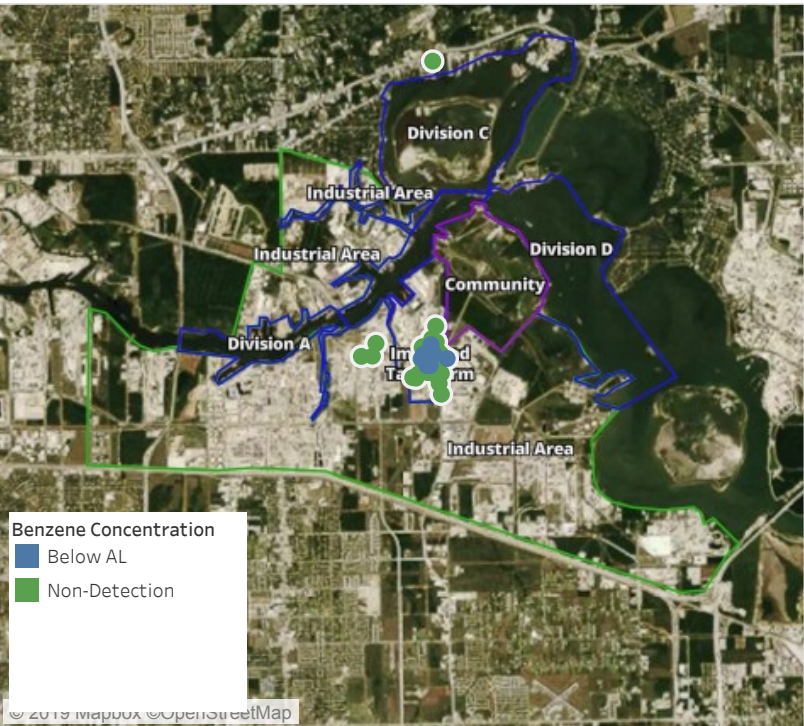
Recent Benzene Detections

Location Category	Reading Date	Range of Detections
Division E	6/2/2019 13:06:46	0.0500 ppm
	6/2/2019 13:01:56	0.0500 ppm
	6/2/2019 13:01:46	0.0400 ppm
	6/2/2019 13:40:15	0.2000 ppm

This data has been provided expeditiously to ITC and regulatory agencies for informational and/or operational purposes only. Data reported within this summary is preliminary in nature and has not undergone complete QA/QC (quality assurance/quality control) process. Until this complete QA/QC process is completed, the locations of each reading are approximate in nature and subject to further refinement. As some readings may represent non-breathing zone measurements, the data reported herein may not be suitable to assess potential occupational exposure. Site Assessment readings are not representative of an individual's breathing zone (e.g., container head space, ground level, directly above product, etc.).

Preliminary Hand- Held Air Monitoring Locations | ITC Deer Park Tank Fire

Reading Date
6/2/2019 2:00:00 PM to 6/2/2019 3:00:00 PM



Recent Benzene Detections

Location Category	Reading Date	Range of Detections
Division E	6/2/2019 14:05:53	0.1300 ppm
	6/2/2019 14:14:15	0.0500 ppm
	6/2/2019 14:19:35	0.0500 ppm
	6/2/2019 14:21:12	0.0200 ppm
	6/2/2019 14:27:27	0.0500 ppm
	6/2/2019 14:19:21	0.0400 ppm
	6/2/2019 14:31:17	0.1300 ppm
	6/2/2019 14:59:56	0.0400 ppm
	6/2/2019 14:58:10	0.0400 ppm
	6/2/2019 14:57:41	0.0900 ppm
Impacted Tank Farm	6/2/2019 14:33:28	0.0300 ppm
	6/2/2019 14:51:19	0.0200 ppm
	6/2/2019 14:28:20	0.0200 ppm
	6/2/2019 14:04:59	0.1700 ppm
	6/2/2019 14:22:23	0.0500 ppm
	6/2/2019 14:35:06	0.0900 ppm

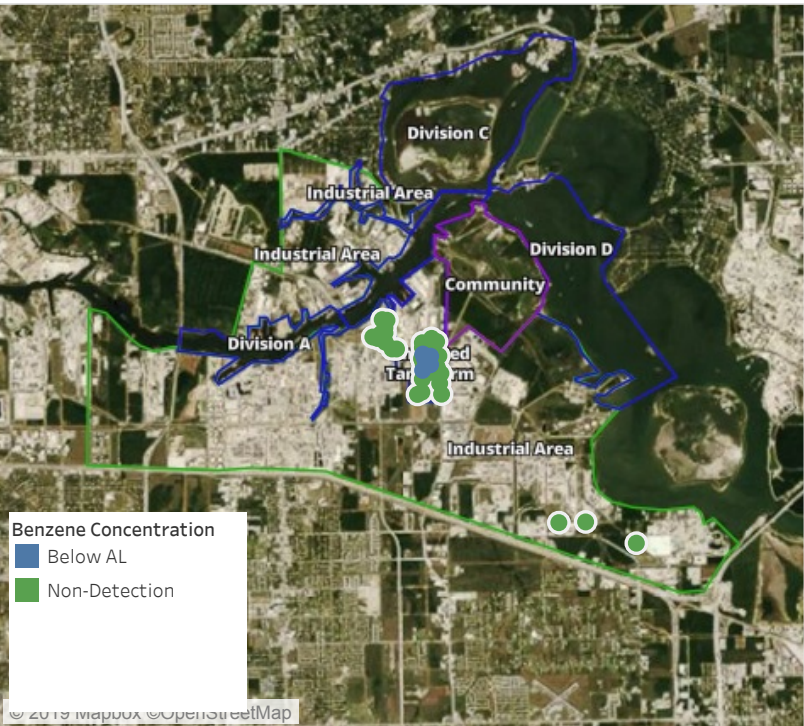
This data has been provided expeditiously to ITC and regulatory agencies for informational and/or operational purposes only. Data reported within this summary is preliminary in nature and has not undergone complete QA/QC (quality assurance/quality control) process. Until this complete QA/QC process is completed, the locations of each reading are approximate in nature and subject to further refinement. As some readings may represent non-breathing zone measurements, the data reported herein may not be suitable to assess potential occupational exposure. Site Assessment readings are not representative of an individual's breathing zone (e.g., container head space, ground level, directly above product, etc.).



Please Note: These updates display data from the 2nd 80's Fire site (Impacted Tank Farm), in the industrial areas surrounding the 2nd 80's Fire site (US Coast Guard Division E), within the Houston Ship Channel (US Coast Guard Divisions A-D), and in the industrial areas north and south of the Houston Ship Channel (Industrial Area). Real-time air monitoring data for the surrounding communities are communicated daily in a separate report.

Preliminary Hand- Held Air Monitoring Locations | ITC Deer Park Tank Fire

Reading Date
6/2/2019 3:00:00 PM to 6/2/2019 4:00:00 PM



Recent Benzene Detections

Location Category	Reading Date	Range of Detections
Division E	6/2/2019 15:01:54	0.0300 ppm
	6/2/2019 15:06:50	0.0600 ppm
	6/2/2019 15:13:32	0.0500 ppm
	6/2/2019 15:21:57	0.0500 ppm
	6/2/2019 15:22:55	0.0800 ppm
	6/2/2019 15:38:44	0.0200 ppm
	6/2/2019 15:41:04	0.0400 ppm
	6/2/2019 15:56:49	0.0300 ppm
	6/2/2019 15:57:58	0.1000 ppm
Impacted Tank Farm	6/2/2019 15:07:55	0.0800 ppm
	6/2/2019 15:04:33	0.0700 ppm
	6/2/2019 15:30:34	0.0900 ppm
	6/2/2019 15:43:03	0.0500 ppm
	6/2/2019 15:57:13	0.1200 ppm

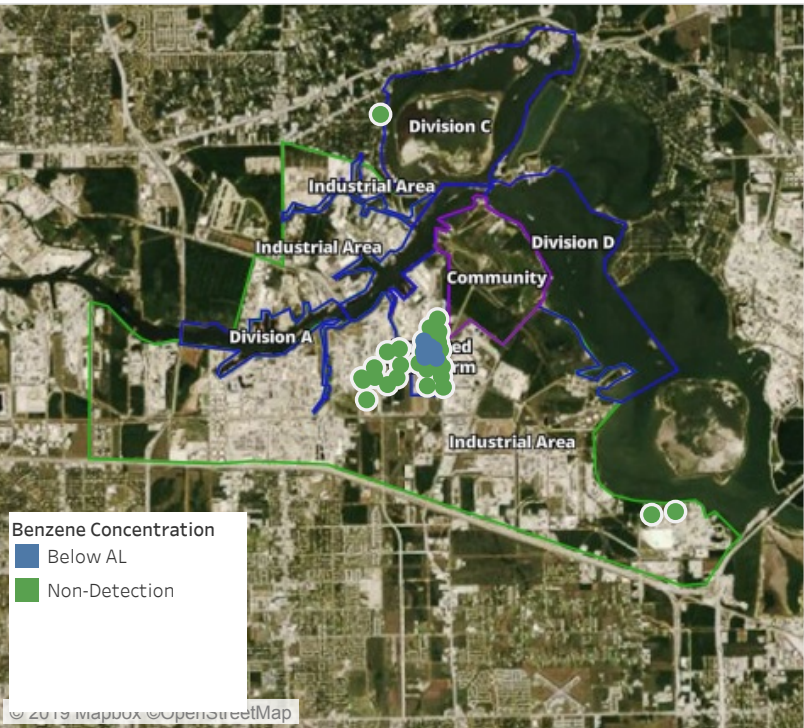
This data has been provided expeditiously to ITC and regulatory agencies for informational and/or operational purposes only. Data reported within this summary is preliminary in nature and has not undergone complete QA/QC (quality assurance/quality control) process. Until this complete QA/QC process is completed, the locations of each reading are approximate in nature and subject to further refinement. As some readings may represent non-breathing zone measurements, the data reported herein may not be suitable to assess potential occupational exposure. Site Assessment readings are not representative of an individual's breathing zone (e.g., container head space, ground level, directly above product, etc.).



Please Note: These updates display data from the 2nd 80's Fire site (Impacted Tank Farm), in the industrial areas surrounding the 2nd 80's Fire site (US Coast Guard Division E), within the Houston Ship Channel (US Coast Guard Divisions A-D), and in the industrial areas north and south of the Houston Ship Channel (Industrial Area). Real-time air monitoring data for the surrounding communities are communicated daily in a separate report.

Preliminary Hand- Held Air Monitoring Locations | ITC Deer Park Tank Fire

Reading Date
6/2/2019 4:00:00 PM to 6/2/2019 5:00:00 PM



Recent Benzene Detections

Location Category	Reading Date	Range of Detections
Division E	6/2/2019 16:06:47	0.05000 ppm
	6/2/2019 16:09:28	0.02000 ppm
	6/2/2019 16:12:21	0.03000 ppm
	6/2/2019 16:15:42	0.02000 ppm
	6/2/2019 16:19:14	0.06000 ppm
	6/2/2019 16:27:25	0.02000 ppm
	6/2/2019 16:32:39	0.04000 ppm
	6/2/2019 16:34:01	0.02000 ppm
	6/2/2019 16:31:26	0.07000 ppm
	6/2/2019 16:27:16	0.04000 ppm
	6/2/2019 16:42:51	0.03000 ppm
	6/2/2019 16:50:38	0.02000 ppm
	6/2/2019 16:54:42	0.05000 ppm
Impacted Tank Farm	6/2/2019 16:38:31	0.05000 ppm

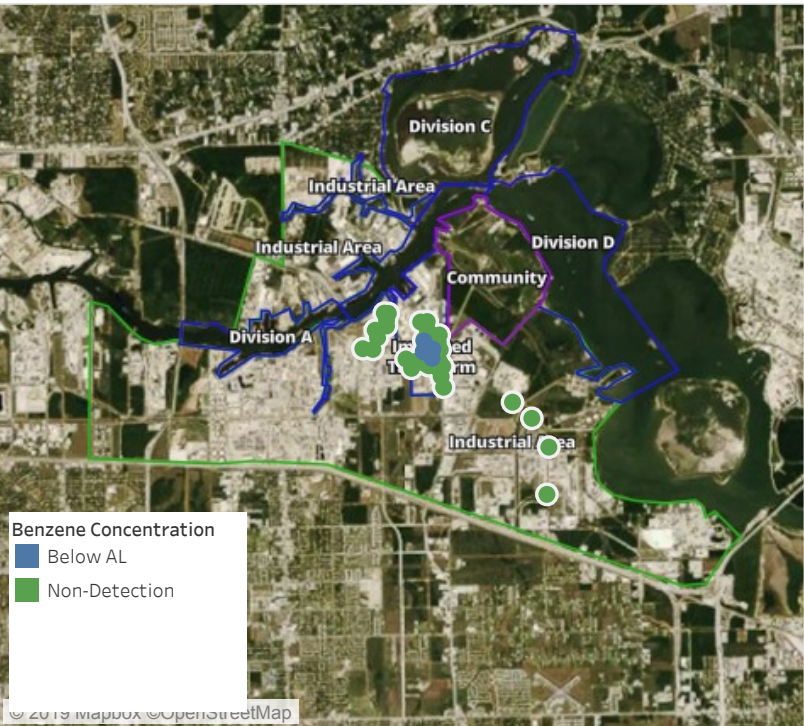
This data has been provided expeditiously to ITC and regulatory agencies for informational and/or operational purposes only. Data reported within this summary is preliminary in nature and has not undergone complete QA/QC (quality assurance/quality control) process. Until this complete QA/QC process is completed, the locations of each reading are approximate in nature and subject to further refinement. As some readings may represent non-breathing zone measurements, the data reported herein may not be suitable to assess potential occupational exposure. Site Assessment readings are not representative of an individual's breathing zone (e.g., container head space, ground level, directly above product, etc.).



Please Note: These updates display data from the 2nd 80's Fire site (Impacted Tank Farm), in the industrial areas surrounding the 2nd 80's Fire site (US Coast Guard Division E), within the Houston Ship Channel (US Coast Guard Divisions A-D), and in the industrial areas north and south of the Houston Ship Channel (Industrial Area). Real-time air monitoring data for the surrounding communities are communicated daily in a separate report.

Preliminary Hand- Held Air Monitoring Locations | ITC Deer Park Tank Fire

Reading Date
6/2/2019 5:00:00 PM to 6/2/2019 6:00:00 PM



Recent Benzene Detections

Location Category	Reading Date	Range of Detections
Division E	6/2/2019 17:04:46	0.0200 ppm
	6/2/2019 17:00:56	0.0200 ppm
	6/2/2019 17:09:41	0.1000 ppm
	6/2/2019 17:06:19	0.0400 ppm
	6/2/2019 17:20:51	0.1000 ppm
	6/2/2019 17:25:06	0.1300 ppm
	6/2/2019 17:24:10	0.0400 ppm
Impacted Tank Farm	6/2/2019 17:49:48	0.0300 ppm
	6/2/2019 17:47:53	0.0600 ppm

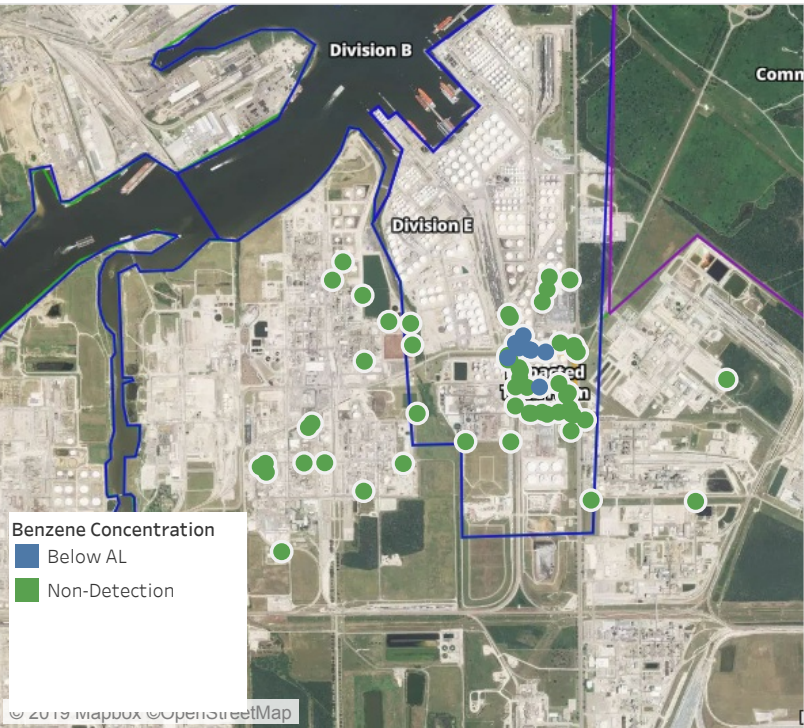
This data has been provided expeditiously to ITC and regulatory agencies for informational and/or operational purposes only. Data reported within this summary is preliminary in nature and has not undergone complete QA/QC (quality assurance/quality control) process. Until this complete QA/QC process is completed, the locations of each reading are approximate in nature and subject to further refinement. As some readings may represent non-breathing zone measurements, the data reported herein may not be suitable to assess potential occupational exposure. Site Assessment readings are not representative of an individual's breathing zone (e.g., container head space, ground level, directly above product, etc.).



Please Note: These updates display data from the 2nd 80's Fire site (Impacted Tank Farm), in the industrial areas surrounding the 2nd 80's Fire site (US Coast Guard Division E), within the Houston Ship Channel (US Coast Guard Divisions A-D), and in the industrial areas north and south of the Houston Ship Channel (Industrial Area). Real-time air monitoring data for the surrounding communities are communicated daily in a separate report.

Preliminary Hand- Held Air Monitoring Locations | ITC Deer Park Tank Fire

Reading Date
6/2/2019 6:00:00 PM to 6/2/2019 7:00:00 PM



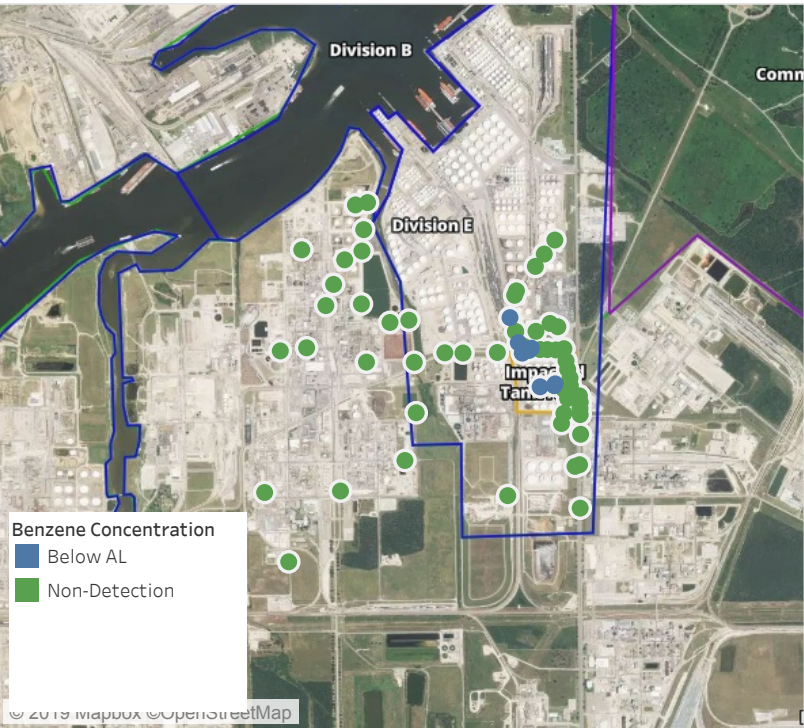
Recent Benzene Detections

Location Category	Reading Date	Range of Detections
Division E	6/2/2019 18:01:30	0.02000 ppm
	6/2/2019 18:07:23	0.05000 ppm
	6/2/2019 18:25:50	0.03000 ppm
	6/2/2019 18:26:17	0.02000 ppm
	6/2/2019 18:33:07	0.03000 ppm
	6/2/2019 18:37:24	0.02000 ppm
Impacted Tank Farm	6/2/2019 18:40:24	0.03000 ppm
	6/2/2019 18:01:45	0.04000 ppm

This data has been provided expeditiously to ITC and regulatory agencies for informational and/or operational purposes only. Data reported within this summary is preliminary in nature and has not undergone complete QA/QC (quality assurance/quality control) process. Until this complete QA/QC process is completed, the locations of each reading are approximate in nature and subject to further refinement. As some readings may represent non-breathing zone measurements, the data reported herein may not be suitable to assess potential occupational exposure. Site Assessment readings are not representative of an individual's breathing zone (e.g., container head space, ground level, directly above product, etc.).

Preliminary Hand- Held Air Monitoring Locations | ITC Deer Park Tank Fire

Reading Date
6/2/2019 7:00:00 PM to 6/2/2019 8:00:00 PM



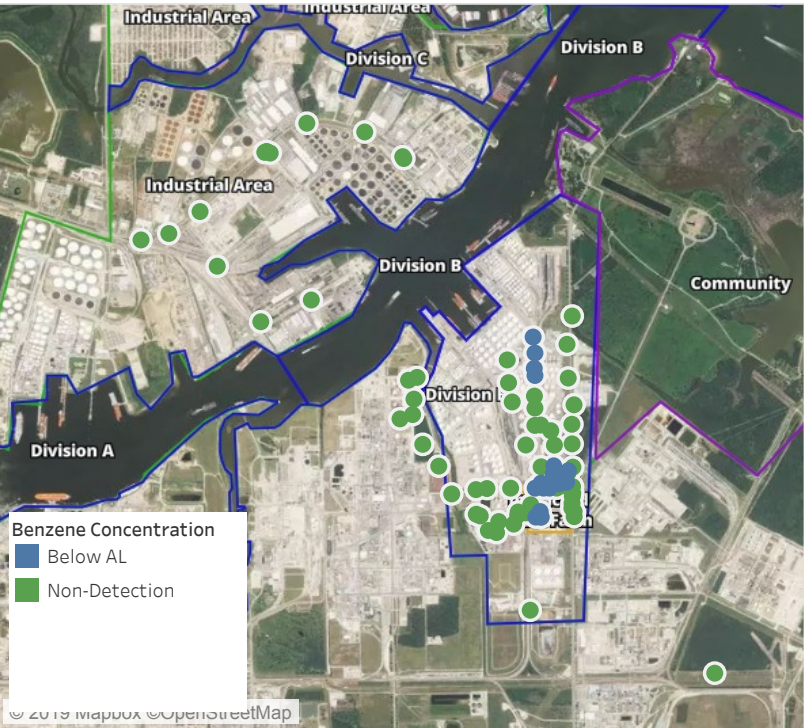
Recent Benzene Detections

Location Category	Reading Date	Range of Detections
Division E	6/2/2019 19:02:22	0.0300 ppm
	6/2/2019 19:06:14	0.0500 ppm
	6/2/2019 19:10:58	0.0400 ppm
	6/2/2019 19:33:50	0.0400 ppm
	6/2/2019 19:39:17	0.0200 ppm
Impacted Tank Farm	6/2/2019 19:52:41	0.0700 ppm
	6/2/2019 19:57:15	0.1200 ppm
	6/2/2019 19:59:59	0.0300 ppm

This data has been provided expeditiously to ITC and regulatory agencies for informational and/or operational purposes only. Data reported within this summary is preliminary in nature and has not undergone complete QA/QC (quality assurance/quality control) process. Until this complete QA/QC process is completed, the locations of each reading are approximate in nature and subject to further refinement. As some readings may represent non-breathing zone measurements, the data reported herein may not be suitable to assess potential occupational exposure. Site Assessment readings are not representative of an individual's breathing zone (e.g., container head space, ground level, directly above product, etc.).

Preliminary Hand- Held Air Monitoring Locations | ITC Deer Park Tank Fire

Reading Date
6/2/2019 8:00:00 PM to 6/2/2019 9:00:00 PM



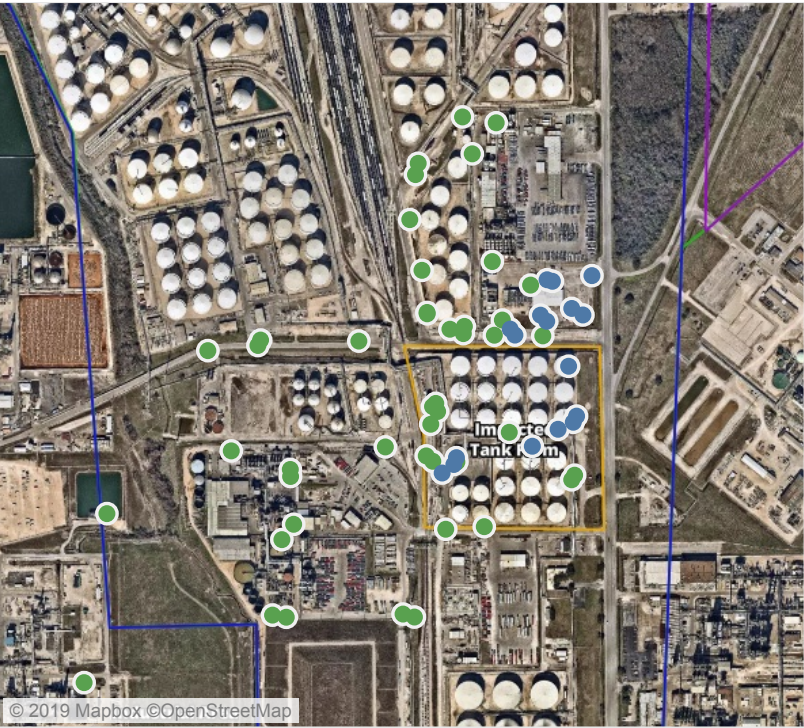
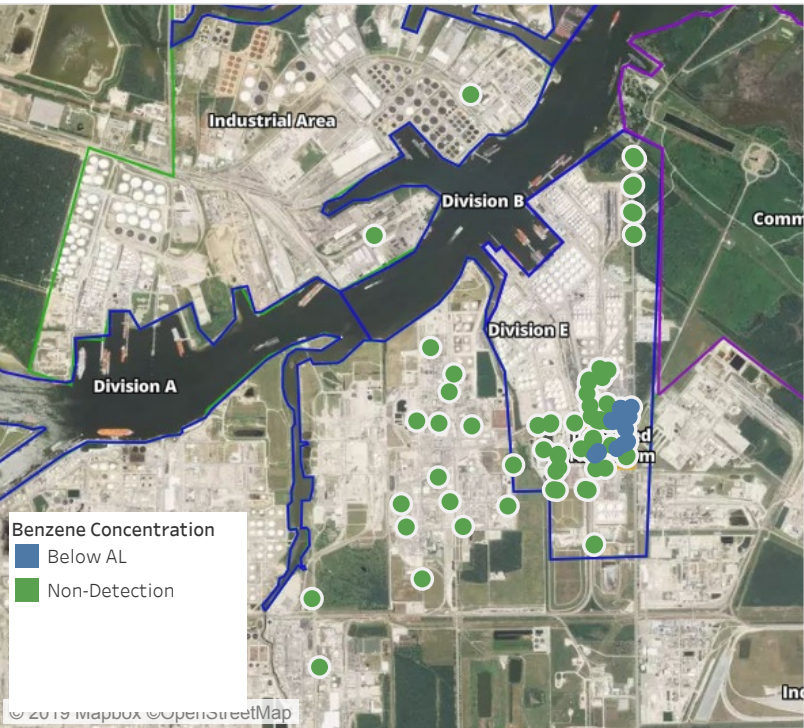
Recent Benzene Detections

Location Category	Reading Date	Range of Detections
Division E	6/2/2019 20:06:37	0.1200 ppm
	6/2/2019 20:08:31	0.0200 ppm
	6/2/2019 20:10:18	0.0200 ppm
	6/2/2019 20:17:03	0.0500 ppm
	6/2/2019 20:17:51	0.0300 ppm
	6/2/2019 20:11:40	0.0200 ppm
	6/2/2019 20:01:14	0.0400 ppm
	6/2/2019 20:31:48	0.0200 ppm
	6/2/2019 20:35:13	0.0300 ppm
	6/2/2019 20:46:01	0.0200 ppm
	6/2/2019 20:33:52	0.1800 ppm
	6/2/2019 20:35:49	0.1000 ppm
	6/2/2019 20:30:32	0.2900 ppm
	6/2/2019 20:48:06	0.0300 ppm
	6/2/2019 20:37:42	0.0700 ppm
Impacted Tank Farm	6/2/2019 20:53:05	0.0400 ppm
	6/2/2019 20:50:08	0.0200 ppm
	6/2/2019 20:57:41	0.0600 ppm
	6/2/2019 20:03:21	0.0200 ppm
	6/2/2019 20:06:13	0.0300 ppm
	6/2/2019 20:10:11	0.0300 ppm

This data has been provided expeditiously to ITC and regulatory agencies for informational and/or operational purposes only. Data reported within this summary is preliminary in nature and has not undergone complete QA/QC (quality assurance/quality control) process. Until this complete QA/QC process is completed, the locations of each reading are approximate in nature and subject to further refinement. As some readings may represent non-breathing zone measurements, the data reported herein may not be suitable to assess potential occupational exposure. Site Assessment readings are not representative of an individual's breathing zone (e.g., container head space, ground level, directly above product, etc.).

Preliminary Hand- Held Air Monitoring Locations | ITC Deer Park Tank Fire

Reading Date
6/2/2019 9:00:00 PM to 6/2/2019 10:00:00 PM



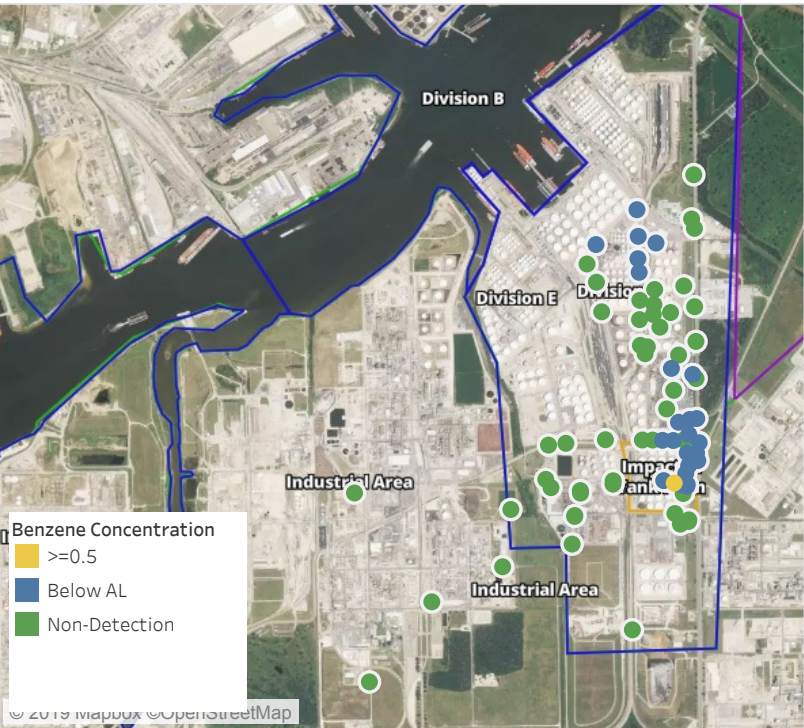
Recent Benzene Detections

Location Category	Reading Date	Range of Detections
Division E	6/2/2019 21:03:48	0.0200 ppm
	6/2/2019 21:19:34	0.0400 ppm
	6/2/2019 21:09:20	0.0300 ppm
	6/2/2019 21:12:43	0.0500 ppm
	6/2/2019 21:02:00	0.0300 ppm
	6/2/2019 21:16:08	0.0900 ppm
	6/2/2019 21:33:05	0.0600 ppm
	6/2/2019 21:41:34	0.0900 ppm
	6/2/2019 21:46:17	0.0200 ppm
Impacted Tank Farm	6/2/2019 21:10:31	0.0600 ppm
	6/2/2019 21:12:56	0.0600 ppm
	6/2/2019 21:15:36	0.0700 ppm
	6/2/2019 21:22:44	0.1000 ppm
	6/2/2019 21:25:26	0.1600 ppm
	6/2/2019 21:30:49	0.0200 ppm
	6/2/2019 21:33:17	0.0900 ppm
	6/2/2019 21:35:33	0.0200 ppm

This data has been provided expeditiously to ITC and regulatory agencies for informational and/or operational purposes only. Data reported within this summary is preliminary in nature and has not undergone complete QA/QC (quality assurance/quality control) process. Until this complete QA/QC process is completed, the locations of each reading are approximate in nature and subject to further refinement. As some readings may represent non-breathing zone measurements, the data reported herein may not be suitable to assess potential occupational exposure. Site Assessment readings are not representative of an individual's breathing zone (e.g., container head space, ground level, directly above product, etc.).

Preliminary Hand- Held Air Monitoring Locations | ITC Deer Park Tank Fire

Reading Date
6/2/2019 10:00:00 PM to 6/2/2019 11:00:00 PM



Recent Benzene Detections

Location Category	Reading Date	Range of Detections
Division E	6/2/2019 22:08:30	0.0300 ppm
	6/2/2019 22:05:13	0.1200 ppm
	6/2/2019 22:07:12	0.0200 ppm
	6/2/2019 22:22:25	0.0400 ppm
	6/2/2019 22:00:07	0.0400 ppm
	6/2/2019 22:38:08	0.0500 ppm
	6/2/2019 22:43:47	0.0600 ppm
	6/2/2019 22:46:44	0.0600 ppm
	6/2/2019 22:53:52	0.0600 ppm
	6/2/2019 22:27:28	0.0200 ppm
	6/2/2019 22:51:20	0.2400 ppm
	6/2/2019 22:53:19	0.1400 ppm
	6/2/2019 22:57:05	0.0600 ppm
	6/2/2019 22:55:23	0.1500 ppm
	6/2/2019 22:59:21	0.0600 ppm
	6/2/2019 22:56:17	0.0600 ppm
Impacted Tank Farm	6/2/2019 22:52:20	0.0500 ppm
	6/2/2019 22:39:42	0.0800 ppm
	6/2/2019 22:42:14	0.0700 ppm
	6/2/2019 22:44:57	0.1000 ppm
	6/2/2019 22:47:19	0.0600 ppm
	6/2/2019 22:50:00	0.0600 ppm
	6/2/2019 22:53:15	0.1300 ppm
	6/2/2019 22:55:27	0.7000 ppm
	6/2/2019 22:58:10	0.0200 ppm

This data has been provided expeditiously to ITC and regulatory agencies for informational and/or operational purposes only. Data reported within this summary is preliminary in nature and has not undergone complete QA/QC (quality assurance/quality control) process. Until this complete QA/QC process is completed, the locations of each reading are approximate in nature and subject to further refinement. As some readings may represent non-breathing zone measurements, the data reported herein may not be suitable to assess potential occupational exposure. Site Assessment readings are not representative of an individual's breathing zone (e.g., container head space, ground level, directly above product, etc.).