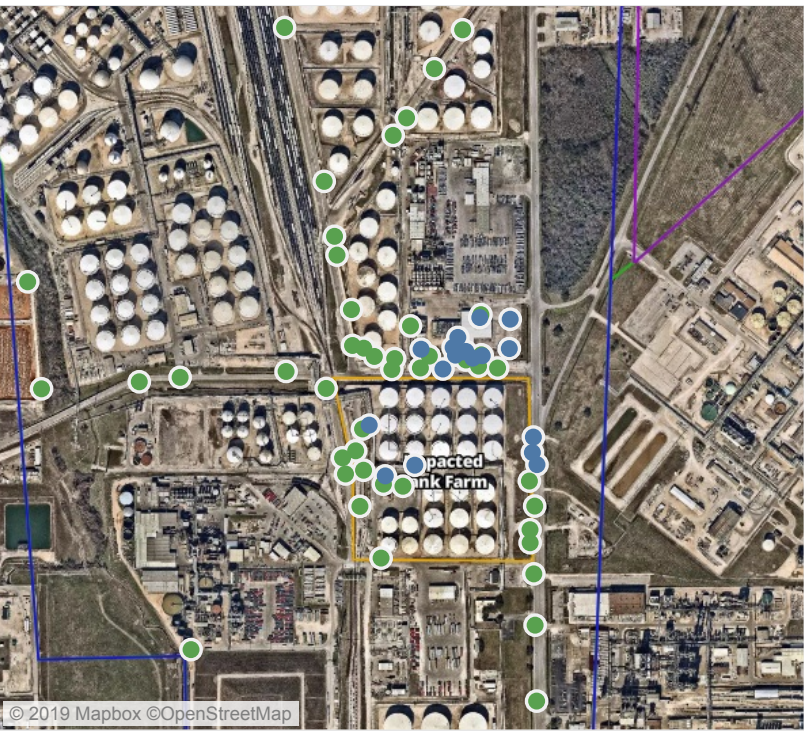


Preliminary Hand- Held Air Monitoring Locations | ITC Deer Park Tank Fire

Reading Date
6/2/2019 11:00:00 PM to 6/3/2019 12:00:00 AM



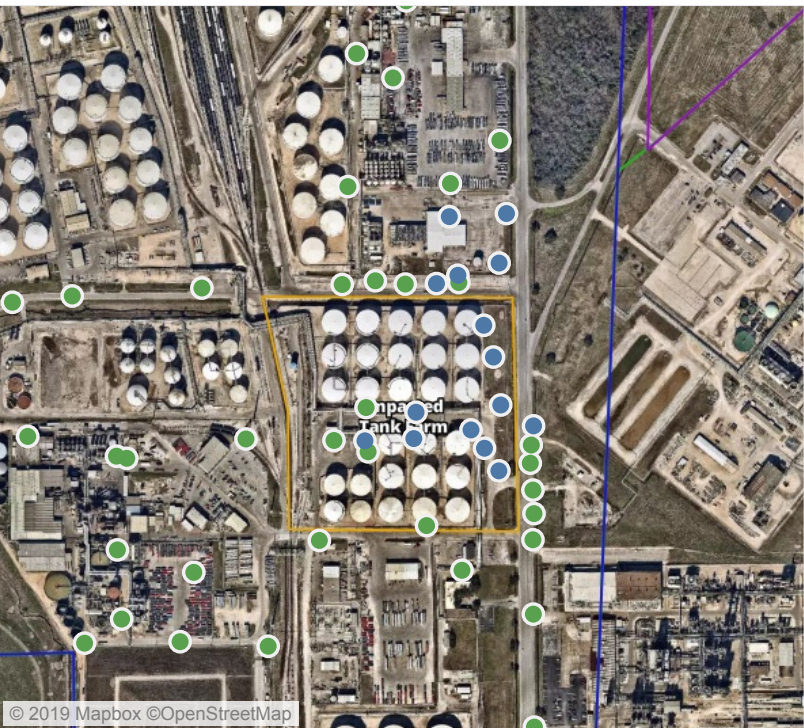
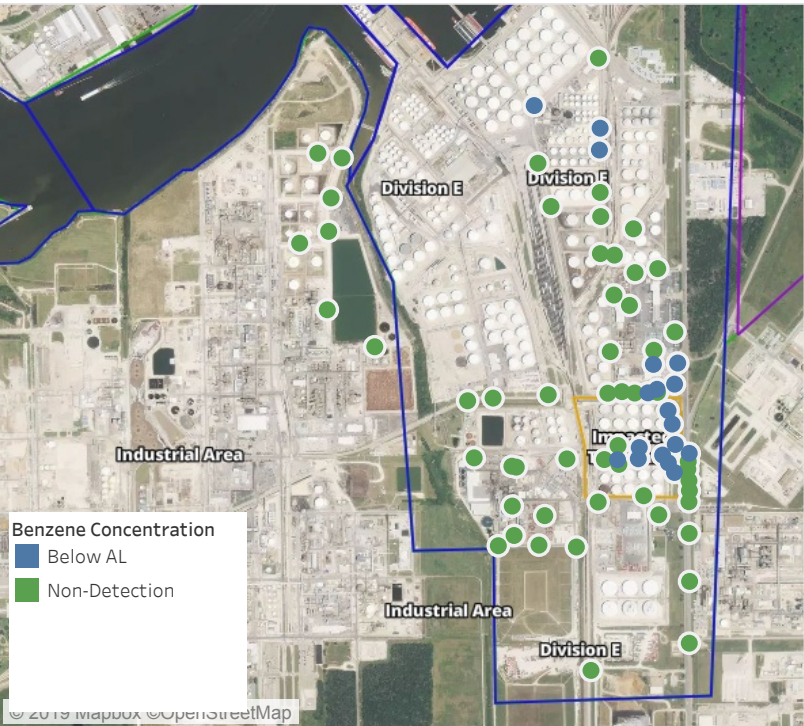
Recent Benzene Detections

Location Category	Reading Date	Range of Detections
Division E	6/2/2019 23:00:26	0.08000 ppm
	6/2/2019 23:09:40	0.10000 ppm
	6/2/2019 23:17:05	0.05000 ppm
	6/2/2019 23:08:14	0.10000 ppm
	6/2/2019 23:09:34	0.04000 ppm
	6/2/2019 23:04:51	0.04000 ppm
	6/2/2019 23:19:57	0.02000 ppm
	6/2/2019 23:37:29	0.06000 ppm
	6/2/2019 23:14:23	0.02000 ppm
	6/2/2019 23:24:19	0.03000 ppm
	6/2/2019 23:32:07	0.06000 ppm
	6/2/2019 23:32:17	0.04000 ppm
	6/2/2019 23:37:10	0.04000 ppm
	6/2/2019 23:39:23	0.05000 ppm
	6/2/2019 23:43:02	0.06000 ppm
Impacted Tank Farm	6/2/2019 23:01:16	0.02000 ppm
	6/2/2019 23:03:48	0.02000 ppm
	6/2/2019 23:17:37	0.02000 ppm

This data has been provided expeditiously to ITC and regulatory agencies for informational and/or operational purposes only. Data reported within this summary is preliminary in nature and has not undergone complete QA/QC (quality assurance/quality control) process. Until this complete QA/QC process is completed, the locations of each reading are approximate in nature and subject to further refinement. As some readings may represent non-breathing zone measurements, the data reported herein may not be suitable to assess potential occupational exposure. Site Assessment readings are not representative of an individual's breathing zone (e.g., container head space, ground level, directly above product, etc.).

Preliminary Hand- Held Air Monitoring Locations | ITC Deer Park Tank Fire

Reading Date
6/3/2019 12:00:00 AM to 6/3/2019 1:00:00 AM



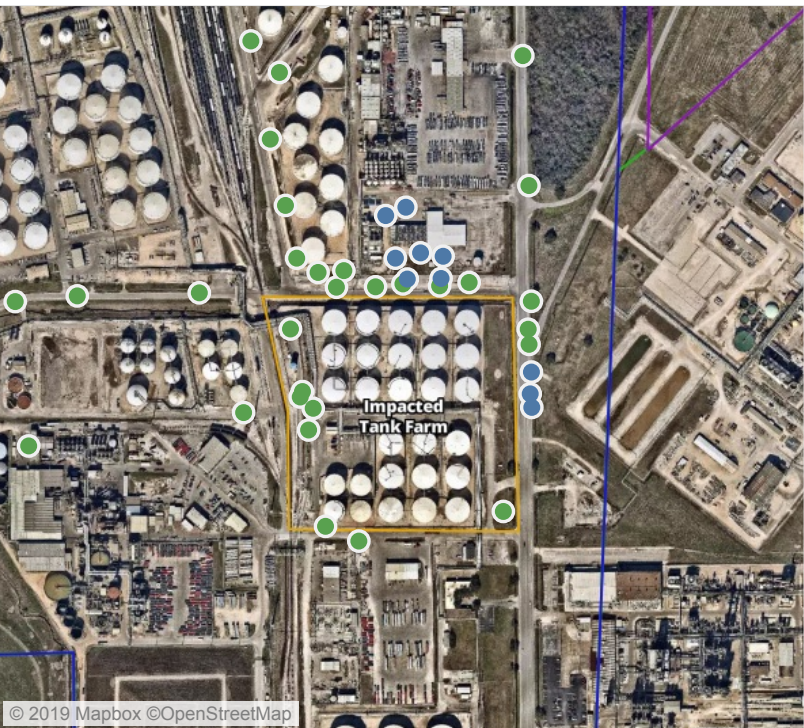
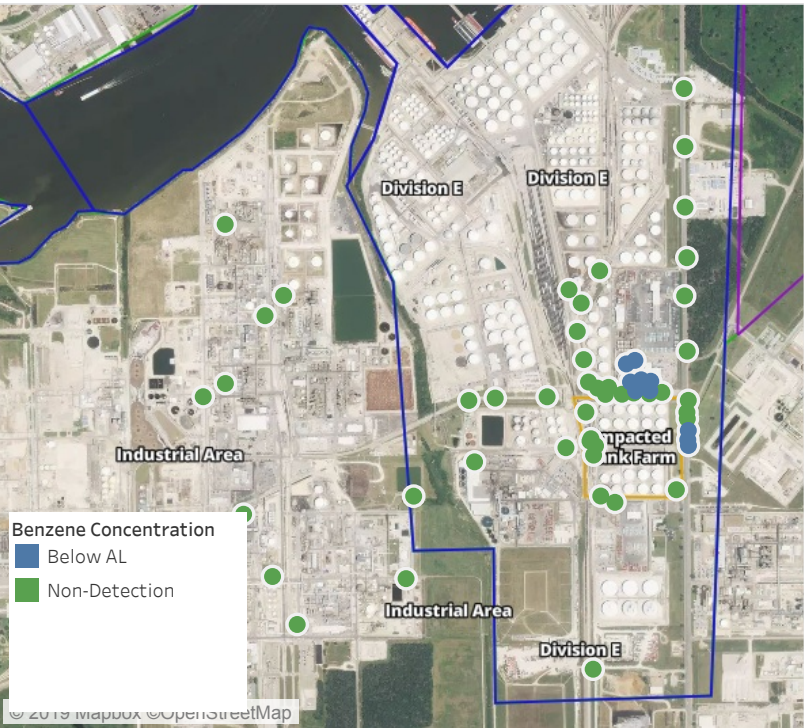
Recent Benzene Detections

Location Category	Reading Date	Range of Detections
Division E	6/3/2019 00:04:37	0.0200 ppm
	6/3/2019 00:19:50	0.0800 ppm
	6/3/2019 00:03:17	0.0200 ppm
	6/3/2019 00:09:28	0.0400 ppm
	6/3/2019 00:48:44	0.0300 ppm
	6/3/2019 00:57:47	0.1400 ppm
	6/3/2019 00:43:12	0.1000 ppm
	6/3/2019 00:46:00	0.0900 ppm
	6/3/2019 00:49:40	0.0300 ppm
Impacted Tank Farm	6/3/2019 00:05:44	0.0800 ppm
	6/3/2019 00:21:52	0.1600 ppm
	6/3/2019 00:24:50	0.2000 ppm
	6/3/2019 00:27:55	0.0900 ppm
	6/3/2019 00:31:07	0.0200 ppm
	6/3/2019 00:34:08	0.0800 ppm
	6/3/2019 00:37:10	0.0400 ppm
	6/3/2019 00:39:49	0.0200 ppm
	6/3/2019 00:49:46	0.0400 ppm

This data has been provided expeditiously to ITC and regulatory agencies for informational and/or operational purposes only. Data reported within this summary is preliminary in nature and has not undergone complete QA/QC (quality assurance/quality control) process. Until this complete QA/QC process is completed, the locations of each reading are approximate in nature and subject to further refinement. As some readings may represent non-breathing zone measurements, the data reported herein may not be suitable to assess potential occupational exposure. Site Assessment readings are not representative of an individual's breathing zone (e.g., container head space, ground level, directly above product, etc.).

Preliminary Hand- Held Air Monitoring Locations | ITC Deer Park Tank Fire

Reading Date
6/3/2019 1:00:00 AM to 6/3/2019 2:00:00 AM



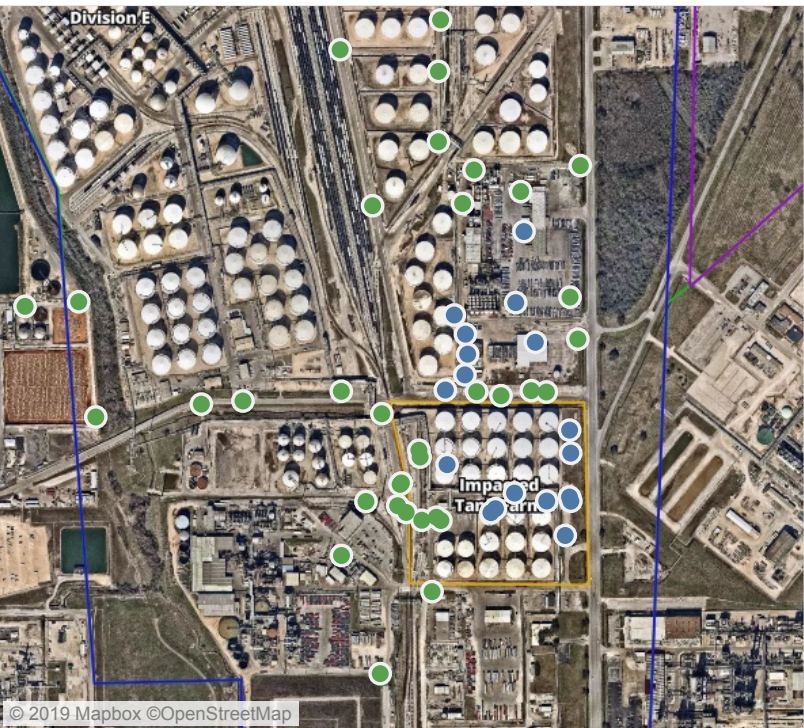
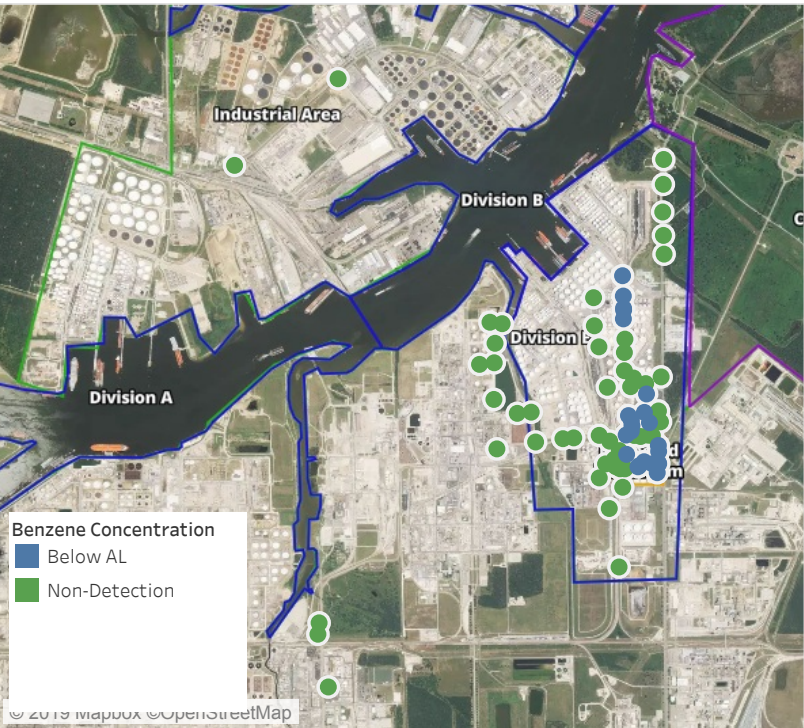
Recent Benzene Detections

Location Category	Reading Date	Range of Detections
Division E	6/3/2019 01:05:00	0.1900 ppm
	6/3/2019 01:08:53	0.1100 ppm
	6/3/2019 01:14:44	0.0900 ppm
	6/3/2019 01:25:51	0.0400 ppm
	6/3/2019 01:43:51	0.0400 ppm
	6/3/2019 01:37:06	0.0700 ppm
	6/3/2019 01:49:15	0.0700 ppm
	6/3/2019 01:46:59	0.0500 ppm
	6/3/2019 01:52:50	0.0700 ppm
	6/3/2019 01:54:50	0.0800 ppm

This data has been provided expeditiously to ITC and regulatory agencies for informational and/or operational purposes only. Data reported within this summary is preliminary in nature and has not undergone complete QA/QC (quality assurance/quality control) process. Until this complete QA/QC process is completed, the locations of each reading are approximate in nature and subject to further refinement. As some readings may represent non-breathing zone measurements, the data reported herein may not be suitable to assess potential occupational exposure. Site Assessment readings are not representative of an individual's breathing zone (e.g., container head space, ground level, directly above product, etc.).

Preliminary Hand- Held Air Monitoring Locations | ITC Deer Park Tank Fire

Reading Date
6/3/2019 2:00:00 AM to 6/3/2019 3:00:00 AM



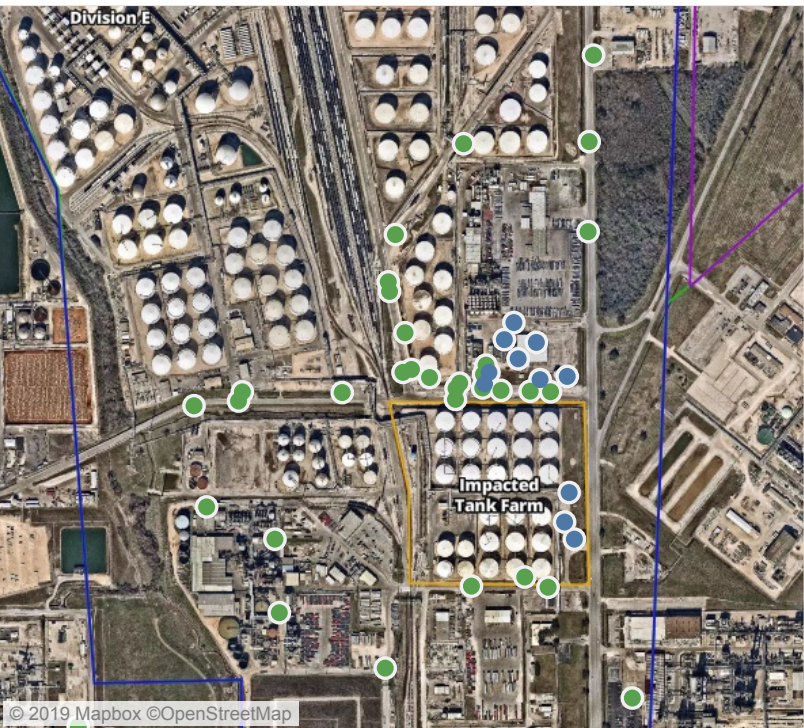
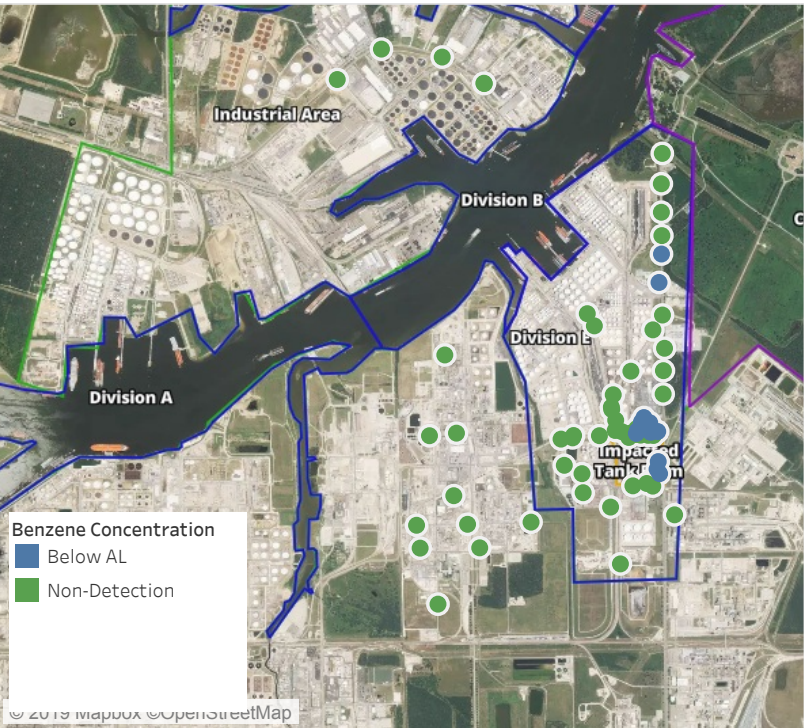
Recent Benzene Detections

Location Category	Reading Date	Range of Detections
Division E	6/3/2019 02:14:04	0.0400 ppm
	6/3/2019 02:03:33	0.0800 ppm
	6/3/2019 02:17:17	0.0700 ppm
	6/3/2019 02:20:26	0.0200 ppm
	6/3/2019 02:22:31	0.1000 ppm
	6/3/2019 02:20:23	0.2400 ppm
	6/3/2019 02:29:20	0.0200 ppm
	6/3/2019 02:21:50	0.0400 ppm
	6/3/2019 02:41:52	0.2500 ppm
	6/3/2019 02:47:27	0.0300 ppm
	6/3/2019 02:44:40	0.1300 ppm
	6/3/2019 02:46:23	0.0700 ppm
Impacted Tank Farm	6/3/2019 02:50:45	0.0300 ppm
	6/3/2019 02:02:39	0.0300 ppm
	6/3/2019 02:10:45	0.1800 ppm
	6/3/2019 02:13:11	0.0500 ppm
	6/3/2019 02:15:44	0.0400 ppm
	6/3/2019 02:20:19	0.0400 ppm
	6/3/2019 02:26:08	0.1600 ppm
	6/3/2019 02:29:06	0.0800 ppm
	6/3/2019 02:32:30	0.1800 ppm
	6/3/2019 02:35:04	0.1600 ppm
	6/3/2019 02:37:46	0.0700 ppm

This data has been provided expeditiously to ITC and regulatory agencies for informational and/or operational purposes only. Data reported within this summary is preliminary in nature and has not undergone complete QA/QC (quality assurance/quality control) process. Until this complete QA/QC process is completed, the locations of each reading are approximate in nature and subject to further refinement. As some readings may represent non-breathing zone measurements, the data reported herein may not be suitable to assess potential occupational exposure. Site Assessment readings are not representative of an individual's breathing zone (e.g., container head space, ground level, directly above product, etc.).

Preliminary Hand- Held Air Monitoring Locations | ITC Deer Park Tank Fire

Reading Date
6/3/2019 3:00:00 AM to 6/3/2019 4:00:00 AM



Recent Benzene Detections

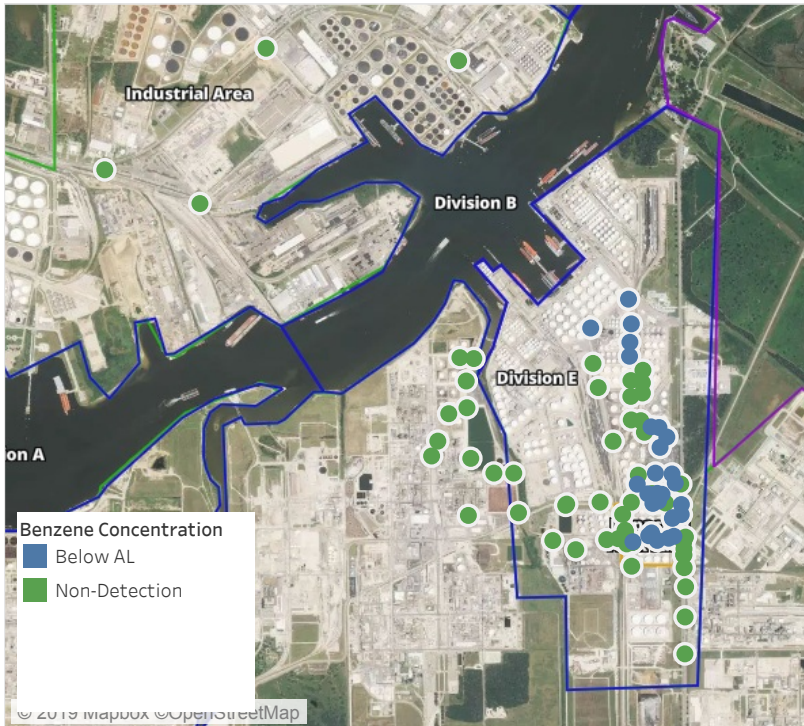
Location Category	Reading Date	Range of Detections
Division E	6/3/2019 03:01:52	0.0400 ppm
	6/3/2019 03:04:10	0.0300 ppm
	6/3/2019 03:06:28	0.0300 ppm
	6/3/2019 03:31:16	0.0500 ppm
	6/3/2019 03:01:56	0.0300 ppm
	6/3/2019 03:35:27	0.0200 ppm
	6/3/2019 03:35:11	0.0600 ppm
	6/3/2019 03:17:46	0.0500 ppm
	6/3/2019 03:38:52	0.0300 ppm
Impacted Tank Farm	6/3/2019 03:49:28	0.0500 ppm
	6/3/2019 03:36:22	0.2400 ppm
	6/3/2019 03:54:28	0.2600 ppm
	6/3/2019 03:57:11	0.1800 ppm

This data has been provided expeditiously to ITC and regulatory agencies for informational and/or operational purposes only. Data reported within this summary is preliminary in nature and has not undergone complete QA/QC (quality assurance/quality control) process. Until this complete QA/QC process is completed, the locations of each reading are approximate in nature and subject to further refinement. As some readings may represent non-breathing zone measurements, the data reported herein may not be suitable to assess potential occupational exposure. Site Assessment readings are not representative of an individual's breathing zone (e.g., container head space, ground level, directly above product, etc.).

Preliminary Hand- Held Air Monitoring Locations | ITC Deer Park Tank Fire

Reading Date

6/3/2019 4:00:00 AM to 6/3/2019 5:00:00 AM



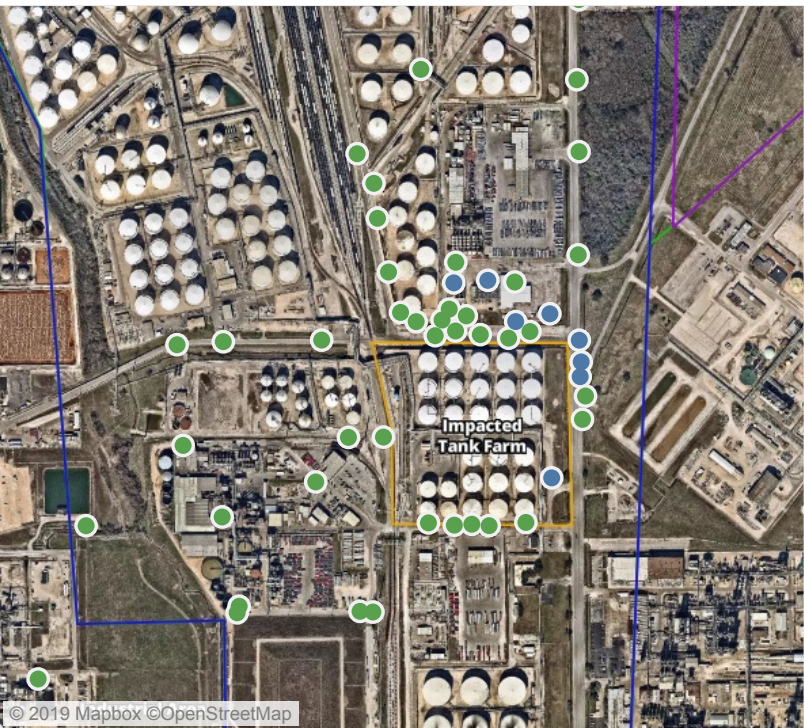
Recent Benzene Detections

Location Category	Reading Date	Range of Detections
Division E	6/3/2019 04:05:09	0.0700 ppm
	6/3/2019 04:02:33	0.0800 ppm
	6/3/2019 04:06:22	0.0900 ppm
	6/3/2019 04:08:46	0.0600 ppm
	6/3/2019 04:10:58	0.0800 ppm
	6/3/2019 04:11:07	0.1000 ppm
	6/3/2019 04:15:20	0.0600 ppm
	6/3/2019 04:27:01	0.0700 ppm
	6/3/2019 04:21:53	0.2000 ppm
	6/3/2019 04:25:18	0.0900 ppm
	6/3/2019 04:23:40	0.1100 ppm
	6/3/2019 04:20:14	0.2700 ppm
	6/3/2019 04:27:21	0.0300 ppm
	6/3/2019 04:46:55	0.0600 ppm
	6/3/2019 04:43:22	0.0400 ppm
	6/3/2019 04:40:35	0.0300 ppm
	6/3/2019 04:56:24	0.0400 ppm
	6/3/2019 04:50:52	0.0300 ppm
	6/3/2019 04:58:42	0.0800 ppm
	6/3/2019 04:55:29	0.0800 ppm
Impacted Tank Farm	6/3/2019 04:00:09	0.2000 ppm
	6/3/2019 04:05:30	0.1300 ppm
	6/3/2019 04:08:12	0.1800 ppm
	6/3/2019 04:12:08	0.1600 ppm
	6/3/2019 04:21:55	0.0400 ppm
	6/3/2019 04:18:54	0.2700 ppm
	6/3/2019 04:24:29	0.0600 ppm
	6/3/2019 04:27:02	0.0200 ppm
	6/3/2019 04:47:41	0.0200 ppm

This data has been provided expeditiously to ITC and regulatory agencies for informational and/or operational purposes only. Data reported within this summary is preliminary in nature and has not undergone complete QA/QC (quality assurance/quality control) process. Until this complete QA/QC process is completed, the locations of each reading are approximate in nature and subject to further refinement. As some readings may represent non-breathing zone measurements, the data reported herein may not be suitable to assess potential occupational exposure. Site Assessment readings are not representative of an individual's breathing zone (e.g., container head space, ground level, directly above product, etc.).

Preliminary Hand- Held Air Monitoring Locations | ITC Deer Park Tank Fire

Reading Date
6/3/2019 5:00:00 AM to 6/3/2019 6:00:00 AM



Recent Benzene Detections

Location Category	Reading Date	Range of Detections
Division E	6/3/2019 05:10:56	0.0400 ppm
	6/3/2019 05:17:00	0.0100 ppm
	6/3/2019 05:17:32	0.1600 ppm
	6/3/2019 05:08:13	0.0500 ppm
	6/3/2019 05:00:19	0.0900 ppm
	6/3/2019 05:24:06	0.1000 ppm
	6/3/2019 05:28:34	0.0900 ppm
	6/3/2019 05:38:01	0.0300 ppm
	6/3/2019 05:48:27	0.0200 ppm
	6/3/2019 05:45:13	0.0300 ppm
Impacted Tank Farm	6/3/2019 05:46:52	0.0300 ppm
	6/3/2019 05:54:47	0.2300 ppm

This data has been provided expeditiously to ITC and regulatory agencies for informational and/or operational purposes only. Data reported within this summary is preliminary in nature and has not undergone complete QA/QC (quality assurance/quality control) process. Until this complete QA/QC process is completed, the locations of each reading are approximate in nature and subject to further refinement. As some readings may represent non-breathing zone measurements, the data reported herein may not be suitable to assess potential occupational exposure. Site Assessment readings are not representative of an individual's breathing zone (e.g., container head space, ground level, directly above product, etc.).

Preliminary Hand- Held Air Monitoring Locations | ITC Deer Park Tank Fire

Reading Date

6/3/2019 6:00:00 AM to 6/3/2019 7:00:00 AM



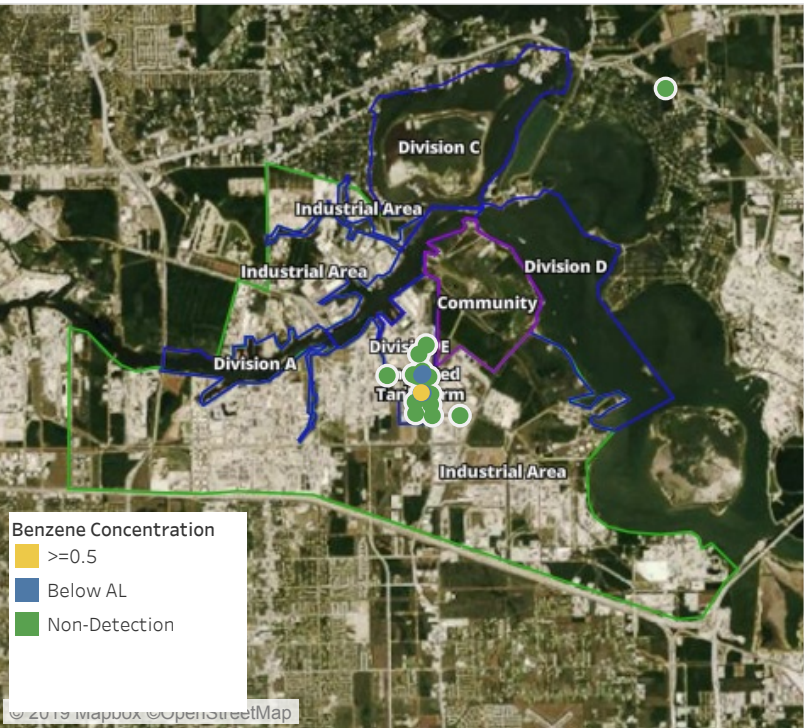
Recent Benzene Detections

Location Category	Reading Date	Range of Detections
Division E	6/3/2019 06:08:58	0.0700 ppm
	6/3/2019 06:03:29	0.0400 ppm
	6/3/2019 06:21:55	0.0900 ppm
	6/3/2019 06:25:30	0.0800 ppm
	6/3/2019 06:15:01	0.1000 ppm
	6/3/2019 06:11:49	0.0700 ppm
	6/3/2019 06:04:25	0.0500 ppm
	6/3/2019 06:08:39	0.0600 ppm
	6/3/2019 06:14:53	0.0600 ppm
	6/3/2019 06:31:42	0.0500 ppm
	6/3/2019 06:20:16	0.0800 ppm
	6/3/2019 06:34:51	0.0500 ppm
	6/3/2019 06:31:51	0.0500 ppm
	6/3/2019 06:22:46	0.0200 ppm
	6/3/2019 06:32:46	0.0300 ppm
	6/3/2019 06:26:18	0.0300 ppm
	6/3/2019 06:28:04	0.0500 ppm
	6/3/2019 06:36:57	0.0600 ppm
	6/3/2019 06:31:14	0.0500 ppm
	6/3/2019 06:21:08	0.0300 ppm
	6/3/2019 06:29:26	0.0500 ppm
	6/3/2019 06:41:16	0.0800 ppm
	6/3/2019 06:34:34	0.0300 ppm
	6/3/2019 06:35:14	0.0300 ppm
	6/3/2019 06:36:50	0.0500 ppm
Impacted Tank Farm	6/3/2019 06:49:18	0.0800 ppm
	6/3/2019 06:49:24	0.0400 ppm
	6/3/2019 06:54:46	0.0600 ppm
	6/3/2019 06:59:06	0.2500 ppm
	6/3/2019 06:01:46	0.1500 ppm
	6/3/2019 06:17:47	0.0900 ppm
	6/3/2019 06:22:47	0.1000 ppm
	6/3/2019 06:34:26	0.0300 ppm
	6/3/2019 06:44:48	0.0500 ppm

This data has been provided expeditiously to ITC and regulatory agencies for informational and/or operational purposes only. Data reported within this summary is preliminary in nature and has not undergone complete QA/QC (quality assurance/quality control) process. Until this complete QA/QC process is completed, the locations of each reading are approximate in nature and subject to further refinement. As some readings may represent non-breathing zone measurements, the data reported herein may not be suitable to assess potential occupational exposure. Site Assessment readings are not representative of an individual's breathing zone (e.g., container head space, ground level, directly above product, etc.).

Preliminary Hand- Held Air Monitoring Locations | ITC Deer Park Tank Fire

Reading Date
6/3/2019 7:00:00 AM to 6/3/2019 8:00:00 AM



Recent Benzene Detections

Location Category	Reading Date	Range of Detections
Division E	6/3/2019 07:11:14	0.2100 ppm
	6/3/2019 07:09:34	0.5000 ppm
	6/3/2019 07:16:42	0.2500 ppm
	6/3/2019 07:37:09	0.0500 ppm
	6/3/2019 07:25:39	0.0600 ppm

This data has been provided expeditiously to ITC and regulatory agencies for informational and/or operational purposes only. Data reported within this summary is preliminary in nature and has not undergone complete QA/QC (quality assurance/quality control) process. Until this complete QA/QC process is completed, the locations of each reading are approximate in nature and subject to further refinement. As some readings may represent non-breathing zone measurements, the data reported herein may not be suitable to assess potential occupational exposure. Site Assessment readings are not representative of an individual's breathing zone (e.g., container head space, ground level, directly above product, etc.).

Preliminary Hand- Held Air Monitoring Locations | ITC Deer Park Tank Fire

Reading Date
6/3/2019 8:00:00 AM to 6/3/2019 9:00:00 AM



Recent Benzene Detections

Location Category	Reading Date	Range of Detections
Division E	6/3/2019 08:49:58	0.4800 ppm
Impacted Tank Farm	6/3/2019 08:24:22	0.0400 ppm
	6/3/2019 08:32:13	0.0800 ppm
	6/3/2019 08:44:11	0.7900 ppm
	6/3/2019 08:45:59	0.4200 ppm
	6/3/2019 08:47:07	0.1500 ppm
	6/3/2019 08:37:10	0.1500 ppm
Industrial Area	6/3/2019 08:00:44	0.0400 ppm
	6/3/2019 08:17:59	0.0300 ppm
	6/3/2019 08:26:52	0.0500 ppm

This data has been provided expeditiously to ITC and regulatory agencies for informational and/or operational purposes only. Data reported within this summary is preliminary in nature and has not undergone complete QA/QC (quality assurance/quality control) process. Until this complete QA/QC process is completed, the locations of each reading are approximate in nature and subject to further refinement. As some readings may represent non-breathing zone measurements, the data reported herein may not be suitable to assess potential occupational exposure. Site Assessment readings are not representative of an individual's breathing zone (e.g., container head space, ground level, directly above product, etc.).

Preliminary Hand- Held Air Monitoring Locations | ITC Deer Park Tank Fire

Reading Date
6/3/2019 9:00:00 AM to 6/3/2019 10:00:00 AM



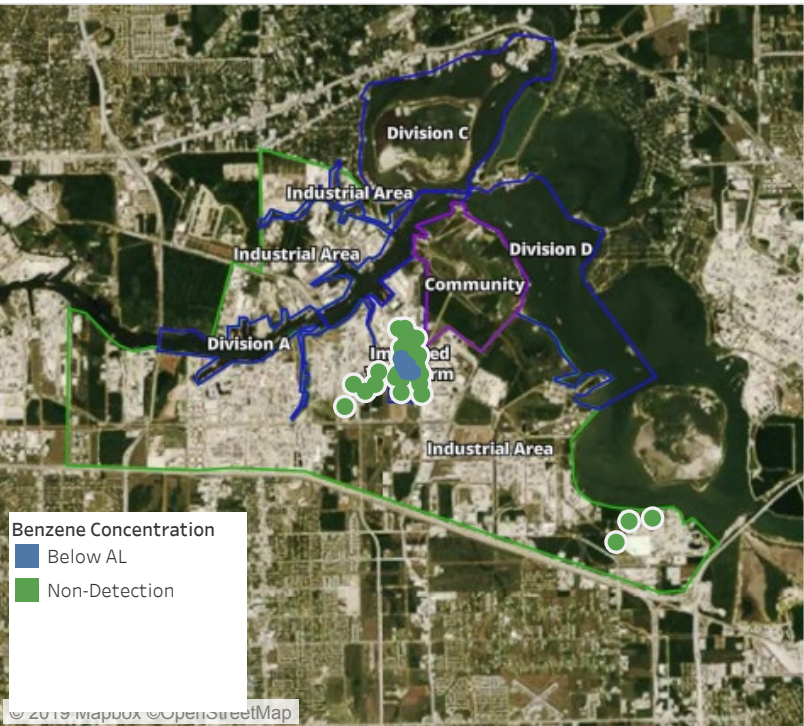
Recent Benzene Detections

Location Category	Reading Date	Range of Detections
Division E	6/3/2019 09:54:02	0.0300 ppm
	6/3/2019 09:58:38	0.0500 ppm
Impacted Tank Farm	6/3/2019 09:11:17	0.0400 ppm
	6/3/2019 09:27:49	0.0800 ppm
	6/3/2019 09:10:10	0.1700 ppm
	6/3/2019 09:01:51	0.2500 ppm
	6/3/2019 09:03:50	0.1600 ppm
Industrial Area	6/3/2019 09:59:56	0.0500 ppm
	6/3/2019 09:13:13	0.0200 ppm

This data has been provided expeditiously to ITC and regulatory agencies for informational and/or operational purposes only. Data reported within this summary is preliminary in nature and has not undergone complete QA/QC (quality assurance/quality control) process. Until this complete QA/QC process is completed, the locations of each reading are approximate in nature and subject to further refinement. As some readings may represent non-breathing zone measurements, the data reported herein may not be suitable to assess potential occupational exposure. Site Assessment readings are not representative of an individual's breathing zone (e.g., container head space, ground level, directly above product, etc.).

Preliminary Hand- Held Air Monitoring Locations | ITC Deer Park Tank Fire

Reading Date
6/3/2019 10:00:00 AM to 6/3/2019 11:00:00 AM



Recent Benzene Detections

Location Category	Reading Date	Range of Detections
Division E	6/3/2019 10:31:17	0.03000 ppm
	6/3/2019 10:25:15	0.03000 ppm
Impacted Tank Farm	6/3/2019 10:11:34	0.03000 ppm
	6/3/2019 10:24:23	0.05000 ppm
	6/3/2019 10:05:53	0.06000 ppm
	6/3/2019 10:17:20	0.10000 ppm

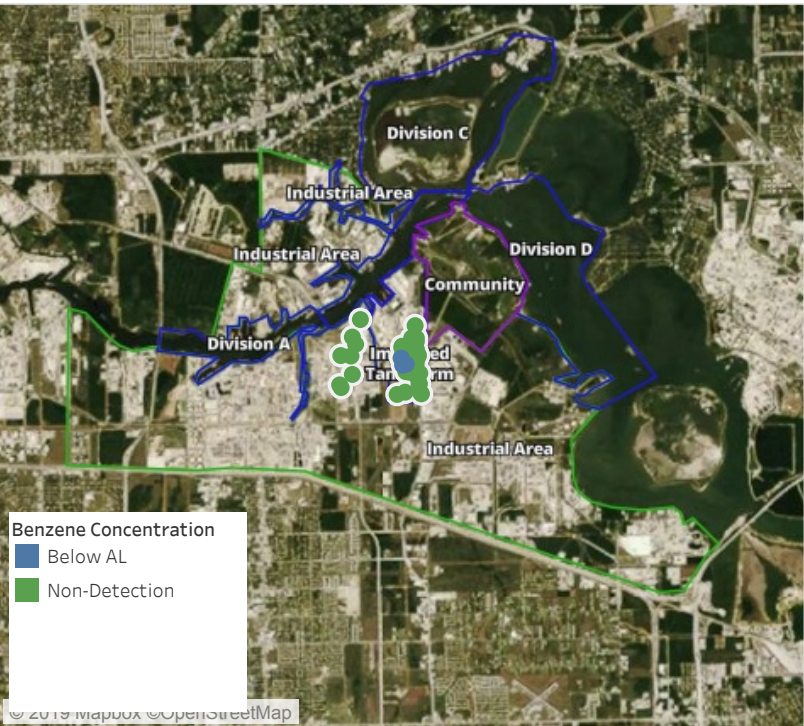
This data has been provided expeditiously to ITC and regulatory agencies for informational and/or operational purposes only. Data reported within this summary is preliminary in nature and has not undergone complete QA/QC (quality assurance/quality control) process. Until this complete QA/QC process is completed, the locations of each reading are approximate in nature and subject to further refinement. As some readings may represent non-breathing zone measurements, the data reported herein may not be suitable to assess potential occupational exposure. Site Assessment readings are not representative of an individual's breathing zone (e.g., container head space, ground level, directly above product, etc.).



Please Note: These updates display data from the 2nd 80's Fire site (Impacted Tank Farm), in the industrial areas surrounding the 2nd 80's Fire site (US Coast Guard Division E), within the Houston Ship Channel (US Coast Guard Divisions A-D), and in the industrial areas north and south of the Houston Ship Channel (Industrial Area). Real-time air monitoring data for the surrounding communities are communicated daily in a separate report.

Preliminary Hand- Held Air Monitoring Locations | ITC Deer Park Tank Fire

Reading Date
6/3/2019 11:00:00 AM to 6/3/2019 12:00:00 PM



Recent Benzene Detections

Location Category	Reading Date	Range of Detections
Division E	6/3/2019 11:33:36	0.07000 ppm
	6/3/2019 11:40:07	0.03000 ppm
Impacted Tank Farm	6/3/2019 11:29:44	0.03000 ppm

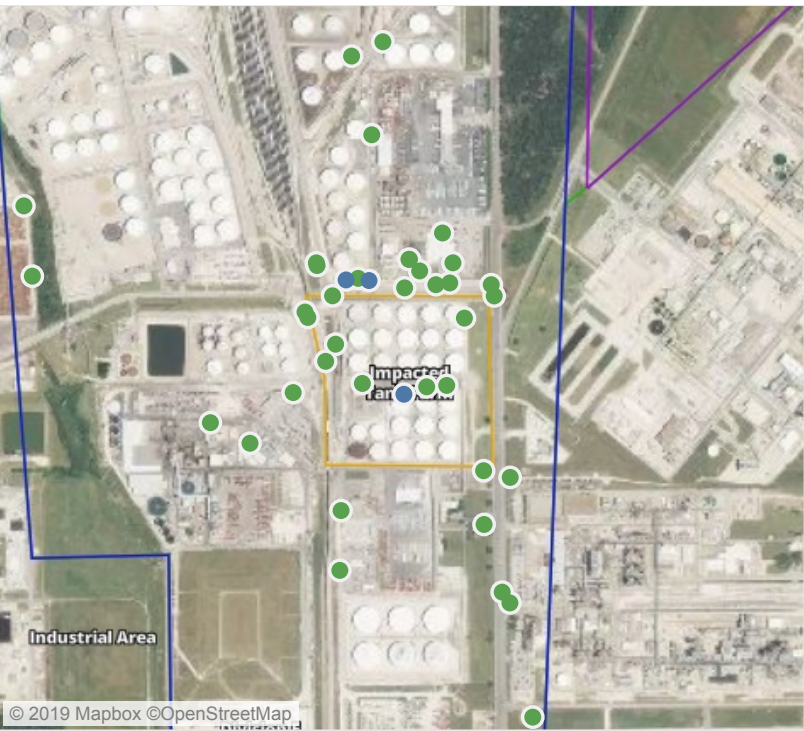
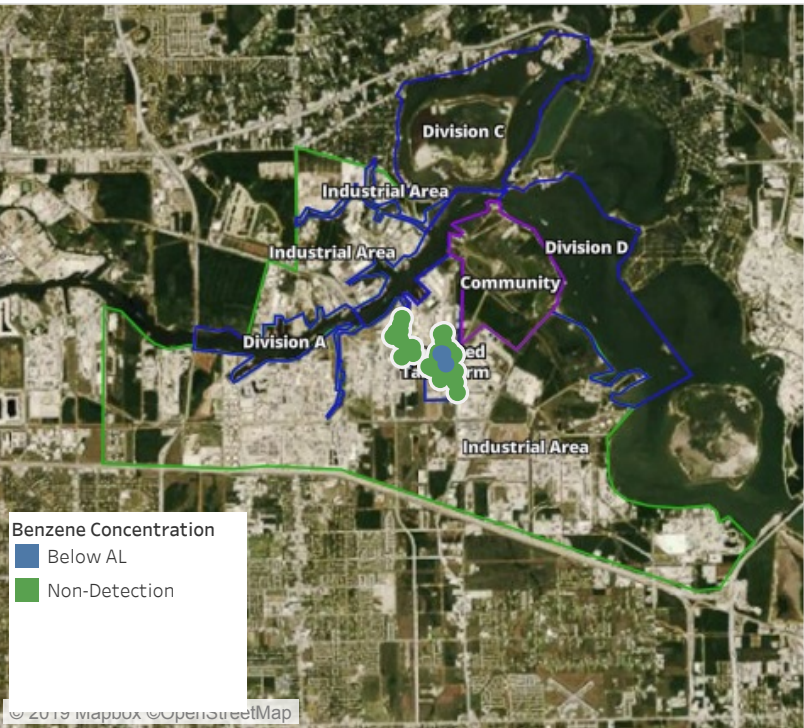
This data has been provided expeditiously to ITC and regulatory agencies for informational and/or operational purposes only. Data reported within this summary is preliminary in nature and has not undergone complete QA/QC (quality assurance/quality control) process. Until this complete QA/QC process is completed, the locations of each reading are approximate in nature and subject to further refinement. As some readings may represent non-breathing zone measurements, the data reported herein may not be suitable to assess potential occupational exposure. Site Assessment readings are not representative of an individual's breathing zone (e.g., container head space, ground level, directly above product, etc.).



Please Note: These updates display data from the 2nd 80's Fire site (Impacted Tank Farm), in the industrial areas surrounding the 2nd 80's Fire site (US Coast Guard Division E), within the Houston Ship Channel (US Coast Guard Divisions A-D), and in the industrial areas north and south of the Houston Ship Channel (Industrial Area). Real-time air monitoring data for the surrounding communities are communicated daily in a separate report.

Preliminary Hand- Held Air Monitoring Locations | ITC Deer Park Tank Fire

Reading Date
6/3/2019 12:00:00 PM to 6/3/2019 1:00:00 PM



Recent Benzene Detections

Location Category	Reading Date	Range of Detections
Division E	6/3/2019 12:07:57	0.02000 ppm
	6/3/2019 12:05:12	0.02000 ppm
Impacted Tank Farm	6/3/2019 12:49:34	0.03000 ppm

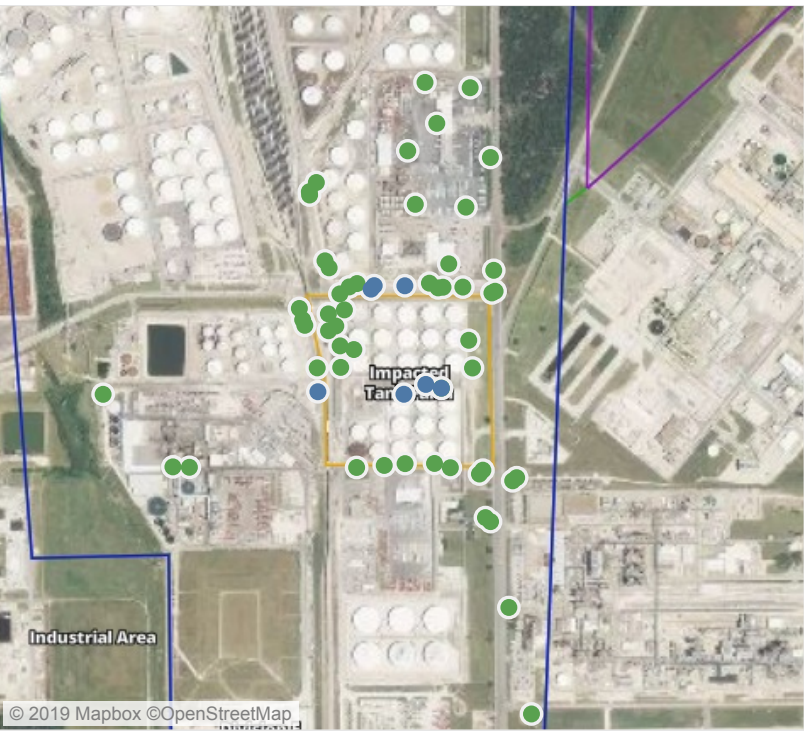
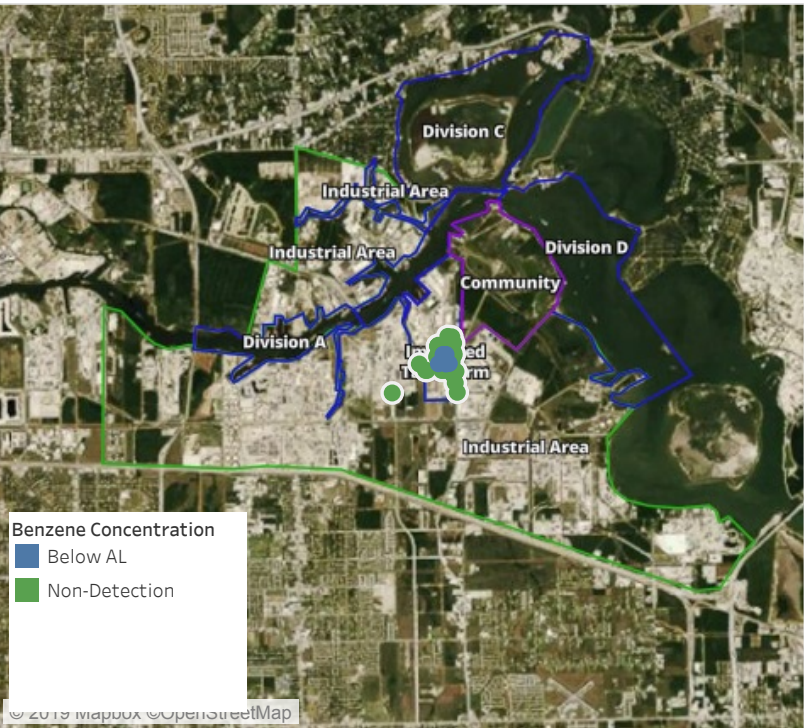
This data has been provided expeditiously to ITC and regulatory agencies for informational and/or operational purposes only. Data reported within this summary is preliminary in nature and has not undergone complete QA/QC (quality assurance/quality control) process. Until this complete QA/QC process is completed, the locations of each reading are approximate in nature and subject to further refinement. As some readings may represent non-breathing zone measurements, the data reported herein may not be suitable to assess potential occupational exposure. Site Assessment readings are not representative of an individual's breathing zone (e.g., container head space, ground level, directly above product, etc.).



Please Note: These updates display data from the 2nd 80's Fire site (Impacted Tank Farm), in the industrial areas surrounding the 2nd 80's Fire site (US Coast Guard Division E), within the Houston Ship Channel (US Coast Guard Divisions A-D), and in the industrial areas north and south of the Houston Ship Channel (Industrial Area). Real-time air monitoring data for the surrounding communities are communicated daily in a separate report.

Preliminary Hand- Held Air Monitoring Locations | ITC Deer Park Tank Fire

Reading Date
6/3/2019 1:00:00 PM to 6/3/2019 2:00:00 PM



Recent Benzene Detections

Location Category	Reading Date	Range of Detections
Division E	6/3/2019 13:11:42	0.03000 ppm
	6/3/2019 13:17:13	0.09000 ppm
	6/3/2019 13:43:40	0.02000 ppm
	6/3/2019 13:50:02	0.07000 ppm
Impacted Tank Farm	6/3/2019 13:15:45	0.10000 ppm
	6/3/2019 13:28:47	0.05000 ppm
	6/3/2019 13:40:59	0.04000 ppm

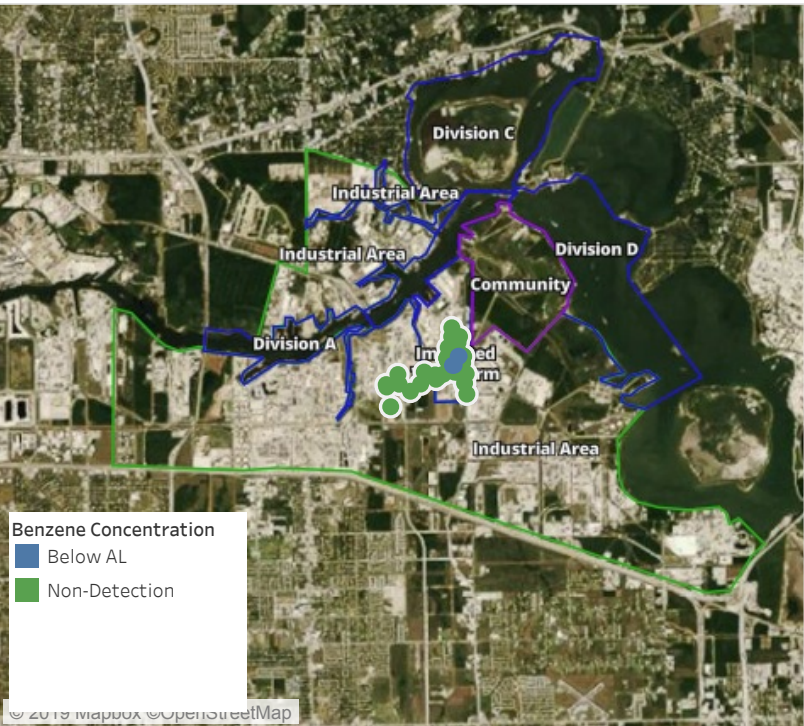
This data has been provided expeditiously to ITC and regulatory agencies for informational and/or operational purposes only. Data reported within this summary is preliminary in nature and has not undergone complete QA/QC (quality assurance/quality control) process. Until this complete QA/QC process is completed, the locations of each reading are approximate in nature and subject to further refinement. As some readings may represent non-breathing zone measurements, the data reported herein may not be suitable to assess potential occupational exposure. Site Assessment readings are not representative of an individual's breathing zone (e.g., container head space, ground level, directly above product, etc.).



Please Note: These updates display data from the 2nd 80's Fire site (Impacted Tank Farm), in the industrial areas surrounding the 2nd 80's Fire site (US Coast Guard Division E), within the Houston Ship Channel (US Coast Guard Divisions A-D), and in the industrial areas north and south of the Houston Ship Channel (Industrial Area). Real-time air monitoring data for the surrounding communities are communicated daily in a separate report.

Preliminary Hand- Held Air Monitoring Locations | ITC Deer Park Tank Fire

Reading Date
6/3/2019 2:00:00 PM to 6/3/2019 3:00:00 PM



Recent Benzene Detections

Location Category	Reading Date	Range of Detections
Division E	6/3/2019 14:22:05	0.02000 ppm
	6/3/2019 14:25:13	0.09000 ppm
Impacted Tank Farm	6/3/2019 14:09:50	0.04000 ppm
	6/3/2019 14:25:03	0.06000 ppm

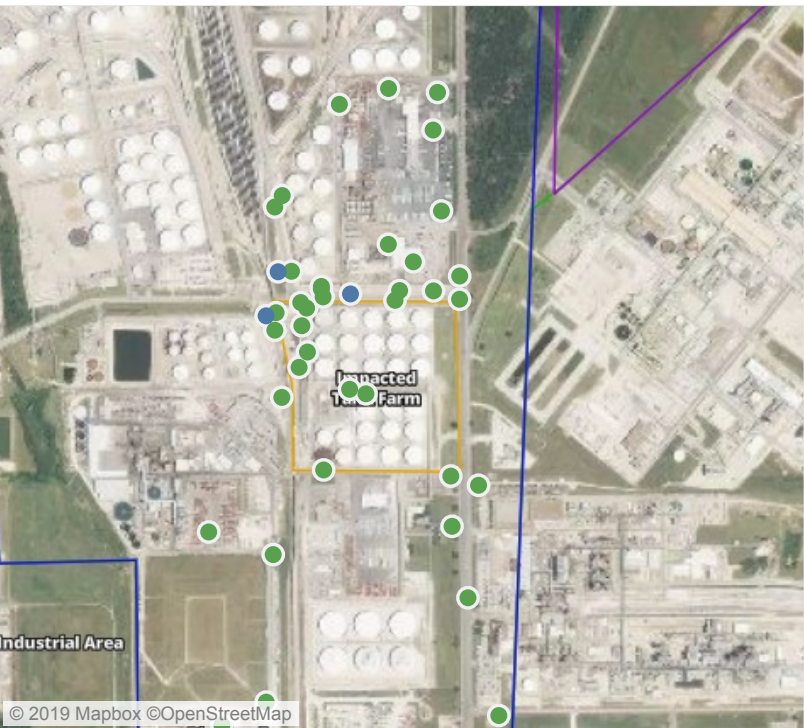
This data has been provided expeditiously to ITC and regulatory agencies for informational and/or operational purposes only. Data reported within this summary is preliminary in nature and has not undergone complete QA/QC (quality assurance/quality control) process. Until this complete QA/QC process is completed, the locations of each reading are approximate in nature and subject to further refinement. As some readings may represent non-breathing zone measurements, the data reported herein may not be suitable to assess potential occupational exposure. Site Assessment readings are not representative of an individual's breathing zone (e.g., container head space, ground level, directly above product, etc.).



Please Note: These updates display data from the 2nd 80's Fire site (Impacted Tank Farm), in the industrial areas surrounding the 2nd 80's Fire site (US Coast Guard Division E), within the Houston Ship Channel (US Coast Guard Divisions A-D), and in the industrial areas north and south of the Houston Ship Channel (Industrial Area). Real-time air monitoring data for the surrounding communities are communicated daily in a separate report.

Preliminary Hand- Held Air Monitoring Locations | ITC Deer Park Tank Fire

Reading Date
6/3/2019 3:00:00 PM to 6/3/2019 4:00:00 PM



Recent Benzene Detections

Location Category	Reading Date	Range of Detections
Division E	6/3/2019 15:11:06	0.04000 ppm
	6/3/2019 15:13:32	0.03000 ppm
	6/3/2019 15:48:22	0.04000 ppm

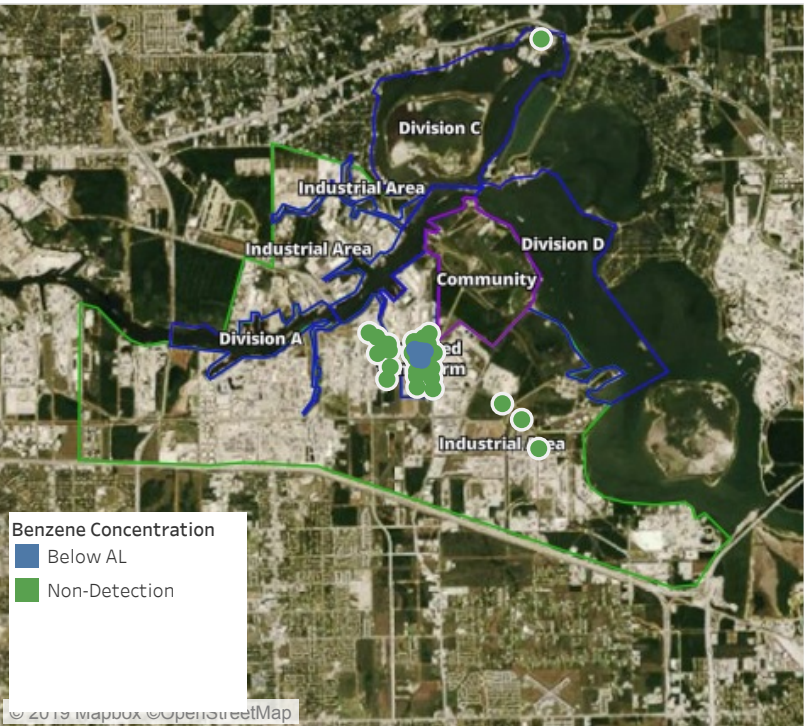
This data has been provided expeditiously to ITC and regulatory agencies for informational and/or operational purposes only. Data reported within this summary is preliminary in nature and has not undergone complete QA/QC (quality assurance/quality control) process. Until this complete QA/QC process is completed, the locations of each reading are approximate in nature and subject to further refinement. As some readings may represent non-breathing zone measurements, the data reported herein may not be suitable to assess potential occupational exposure. Site Assessment readings are not representative of an individual's breathing zone (e.g., container head space, ground level, directly above product, etc.).



Please Note: These updates display data from the 2nd 80's Fire site (Impacted Tank Farm), in the industrial areas surrounding the 2nd 80's Fire site (US Coast Guard Division E), within the Houston Ship Channel (US Coast Guard Divisions A-D), and in the industrial areas north and south of the Houston Ship Channel (Industrial Area). Real-time air monitoring data for the surrounding communities are communicated daily in a separate report.

Preliminary Hand- Held Air Monitoring Locations | ITC Deer Park Tank Fire

Reading Date
6/3/2019 4:00:00 PM to 6/3/2019 5:00:00 PM



Recent Benzene Detections

Location Category	Reading Date	Range of Detections
Division E	6/3/2019 16:15:18	0.02000 ppm
	6/3/2019 16:07:56	0.05000 ppm
	6/3/2019 16:04:47	0.02000 ppm
	6/3/2019 16:25:26	0.02000 ppm
	6/3/2019 16:25:00	0.05000 ppm
	6/3/2019 16:37:37	0.03000 ppm
Impacted Tank Farm	6/3/2019 16:17:39	0.04000 ppm
	6/3/2019 16:28:29	0.08000 ppm
	6/3/2019 16:58:24	0.05000 ppm

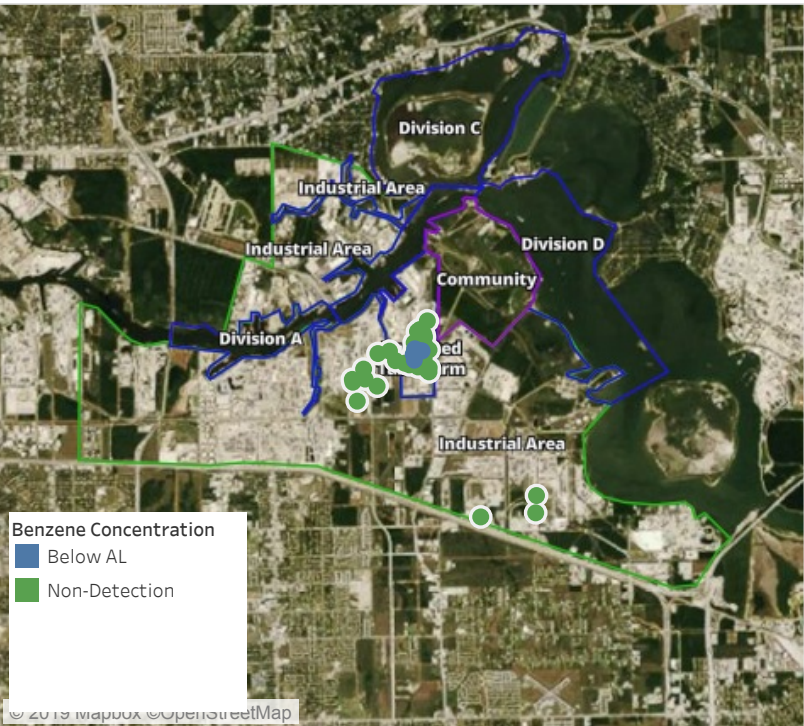
This data has been provided expeditiously to ITC and regulatory agencies for informational and/or operational purposes only. Data reported within this summary is preliminary in nature and has not undergone complete QA/QC (quality assurance/quality control) process. Until this complete QA/QC process is completed, the locations of each reading are approximate in nature and subject to further refinement. As some readings may represent non-breathing zone measurements, the data reported herein may not be suitable to assess potential occupational exposure. Site Assessment readings are not representative of an individual's breathing zone (e.g., container head space, ground level, directly above product, etc.).



Please Note: These updates display data from the 2nd 80's Fire site (Impacted Tank Farm), in the industrial areas surrounding the 2nd 80's Fire site (US Coast Guard Division E), within the Houston Ship Channel (US Coast Guard Divisions A-D), and in the industrial areas north and south of the Houston Ship Channel (Industrial Area). Real-time air monitoring data for the surrounding communities are communicated daily in a separate report.

Preliminary Hand- Held Air Monitoring Locations | ITC Deer Park Tank Fire

Reading Date
6/3/2019 5:00:00 PM to 6/3/2019 6:00:00 PM



Recent Benzene Detections

Location Category	Reading Date	Range of Detections
Division E	6/3/2019 17:00:40	0.02000 ppm
	6/3/2019 17:08:55	0.02000 ppm
	6/3/2019 17:04:56	0.02000 ppm
	6/3/2019 17:05:16	0.05000 ppm
	6/3/2019 17:10:21	0.03000 ppm
	6/3/2019 17:15:05	0.02000 ppm
	6/3/2019 17:42:41	0.02000 ppm
	6/3/2019 17:49:01	0.03000 ppm

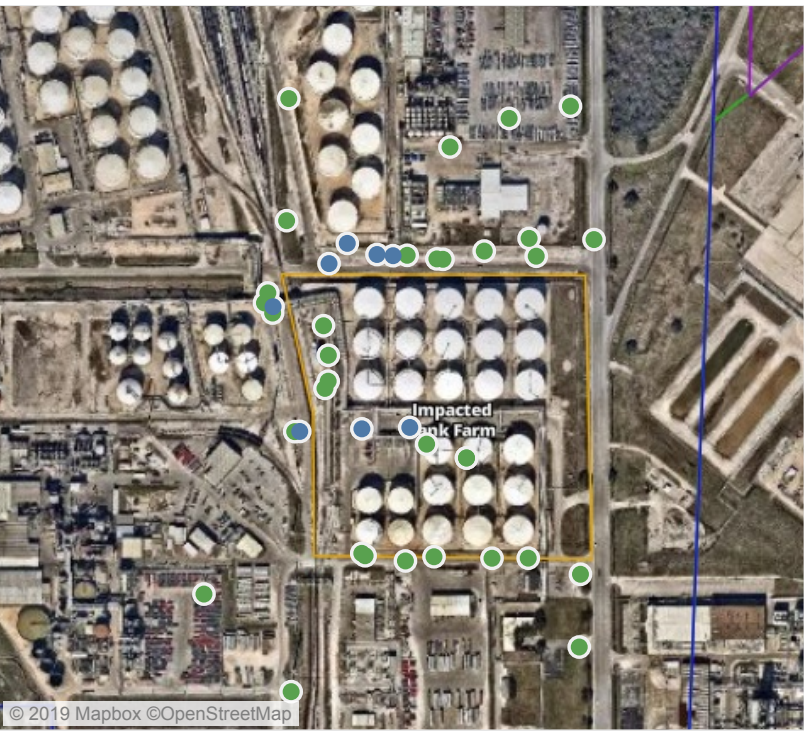
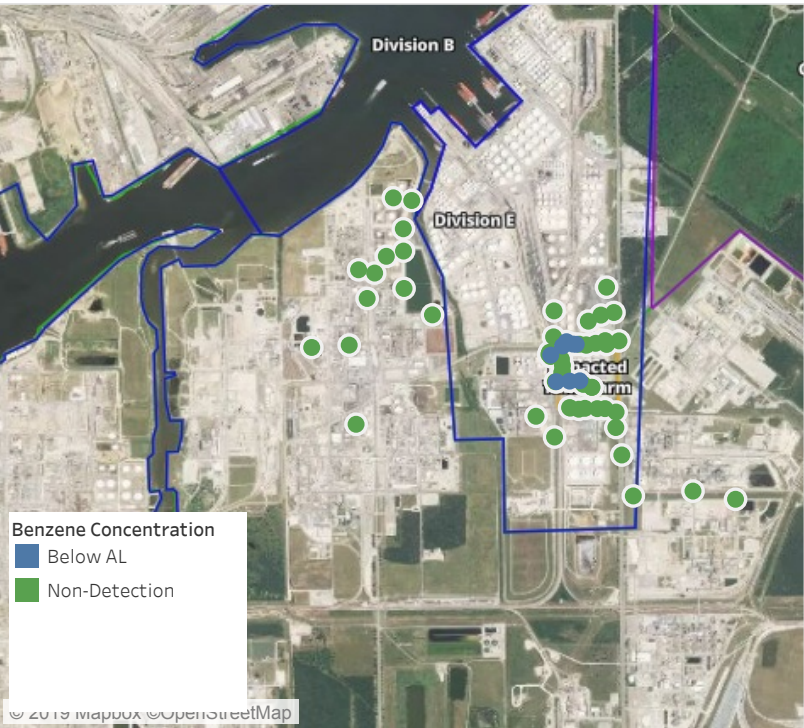
This data has been provided expeditiously to ITC and regulatory agencies for informational and/or operational purposes only. Data reported within this summary is preliminary in nature and has not undergone complete QA/QC (quality assurance/quality control) process. Until this complete QA/QC process is completed, the locations of each reading are approximate in nature and subject to further refinement. As some readings may represent non-breathing zone measurements, the data reported herein may not be suitable to assess potential occupational exposure. Site Assessment readings are not representative of an individual's breathing zone (e.g., container head space, ground level, directly above product, etc.).



Please Note: These updates display data from the 2nd 80's Fire site (Impacted Tank Farm), in the industrial areas surrounding the 2nd 80's Fire site (US Coast Guard Division E), within the Houston Ship Channel (US Coast Guard Divisions A-D), and in the industrial areas north and south of the Houston Ship Channel (Industrial Area). Real-time air monitoring data for the surrounding communities are communicated daily in a separate report.

Preliminary Hand- Held Air Monitoring Locations | ITC Deer Park Tank Fire

Reading Date
6/3/2019 6:00:00 PM to 6/3/2019 7:00:00 PM



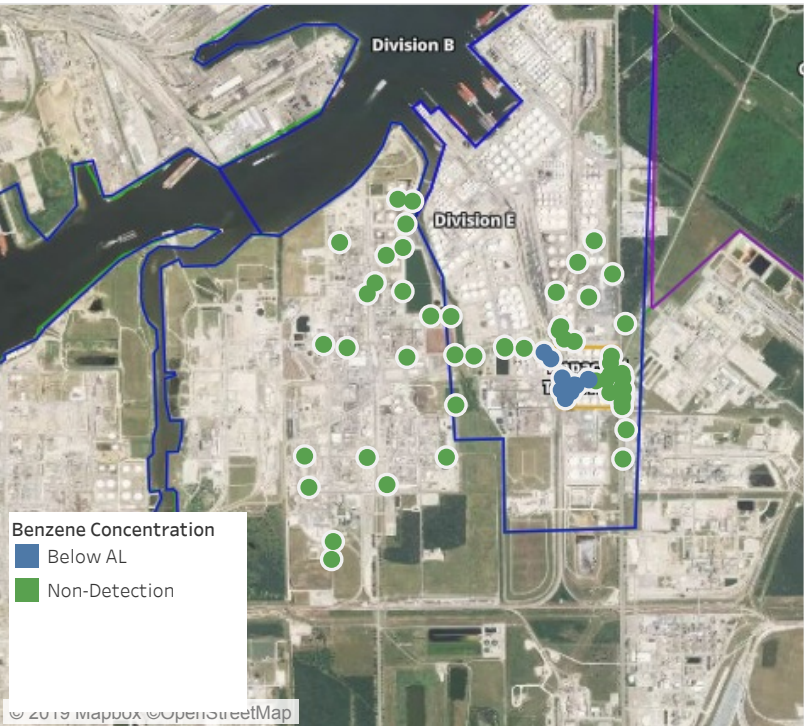
Recent Benzene Detections

Location Category	Reading Date	Range of Detections
Division E	6/3/2019 18:12:33	0.03000 ppm
	6/3/2019 18:05:48	0.05000 ppm
	6/3/2019 18:13:58	0.02000 ppm
	6/3/2019 18:16:38	0.03000 ppm
	6/3/2019 18:52:11	0.04000 ppm
Impacted Tank Farm	6/3/2019 18:56:35	0.02000 ppm
	6/3/2019 18:06:40	0.08000 ppm
	6/3/2019 18:54:55	0.06000 ppm

This data has been provided expeditiously to ITC and regulatory agencies for informational and/or operational purposes only. Data reported within this summary is preliminary in nature and has not undergone complete QA/QC (quality assurance/quality control) process. Until this complete QA/QC process is completed, the locations of each reading are approximate in nature and subject to further refinement. As some readings may represent non-breathing zone measurements, the data reported herein may not be suitable to assess potential occupational exposure. Site Assessment readings are not representative of an individual's breathing zone (e.g., container head space, ground level, directly above product, etc.).

Preliminary Hand- Held Air Monitoring Locations | ITC Deer Park Tank Fire

Reading Date
6/3/2019 7:00:00 PM to 6/3/2019 8:00:00 PM



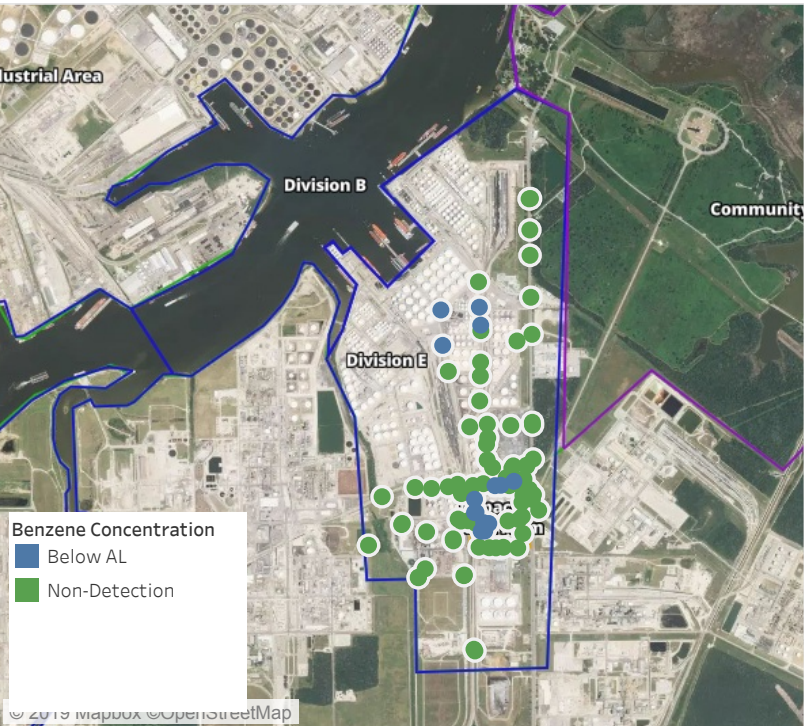
Recent Benzene Detections

Location Category	Reading Date	Range of Detections
Division E	6/3/2019 19:00:03	0.03000 ppm
	6/3/2019 19:46:07	0.02000 ppm
Impacted Tank Farm	6/3/2019 19:33:07	0.05000 ppm
	6/3/2019 19:36:35	0.10000 ppm
	6/3/2019 19:39:09	0.09000 ppm
	6/3/2019 19:42:05	0.03000 ppm
	6/3/2019 19:44:35	0.07000 ppm
	6/3/2019 19:48:10	0.05000 ppm
	6/3/2019 19:50:56	0.02000 ppm
	6/3/2019 19:53:08	0.02000 ppm

This data has been provided expeditiously to ITC and regulatory agencies for informational and/or operational purposes only. Data reported within this summary is preliminary in nature and has not undergone complete QA/QC (quality assurance/quality control) process. Until this complete QA/QC process is completed, the locations of each reading are approximate in nature and subject to further refinement. As some readings may represent non-breathing zone measurements, the data reported herein may not be suitable to assess potential occupational exposure. Site Assessment readings are not representative of an individual's breathing zone (e.g., container head space, ground level, directly above product, etc.).

Preliminary Hand- Held Air Monitoring Locations | ITC Deer Park Tank Fire

Reading Date
6/3/2019 8:00:00 PM to 6/3/2019 9:00:00 PM



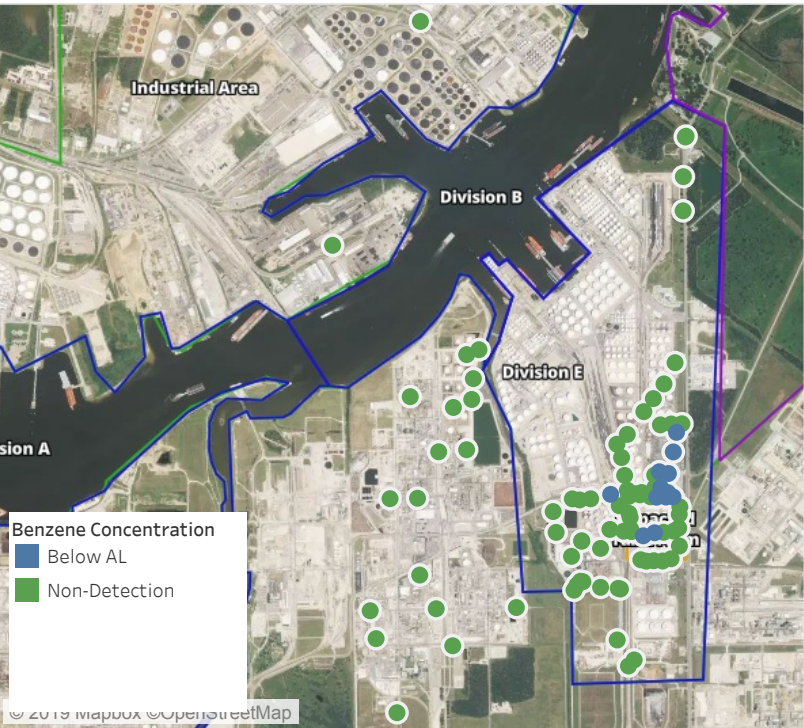
Recent Benzene Detections

Location Category	Reading Date	Range of Detections
Division E	6/3/2019 20:16:07	0.02000 ppm
	6/3/2019 20:10:01	0.03000 ppm
	6/3/2019 20:47:40	0.09000 ppm
	6/3/2019 20:49:14	0.04000 ppm
	6/3/2019 20:42:28	0.02000 ppm
	6/3/2019 20:44:02	0.03000 ppm
	6/3/2019 20:49:58	0.02000 ppm
Impacted Tank Farm	6/3/2019 20:01:33	0.06000 ppm
	6/3/2019 20:03:48	0.04000 ppm
	6/3/2019 20:05:40	0.04000 ppm
	6/3/2019 20:41:54	0.03000 ppm
	6/3/2019 20:50:23	0.03000 ppm
	6/3/2019 20:53:29	0.08000 ppm
	6/3/2019 20:56:01	0.03000 ppm

This data has been provided expeditiously to ITC and regulatory agencies for informational and/or operational purposes only. Data reported within this summary is preliminary in nature and has not undergone complete QA/QC (quality assurance/quality control) process. Until this complete QA/QC process is completed, the locations of each reading are approximate in nature and subject to further refinement. As some readings may represent non-breathing zone measurements, the data reported herein may not be suitable to assess potential occupational exposure. Site Assessment readings are not representative of an individual's breathing zone (e.g., container head space, ground level, directly above product, etc.).

Preliminary Hand- Held Air Monitoring Locations | ITC Deer Park Tank Fire

Reading Date
6/3/2019 9:00:00 PM to 6/3/2019 10:00:00 PM



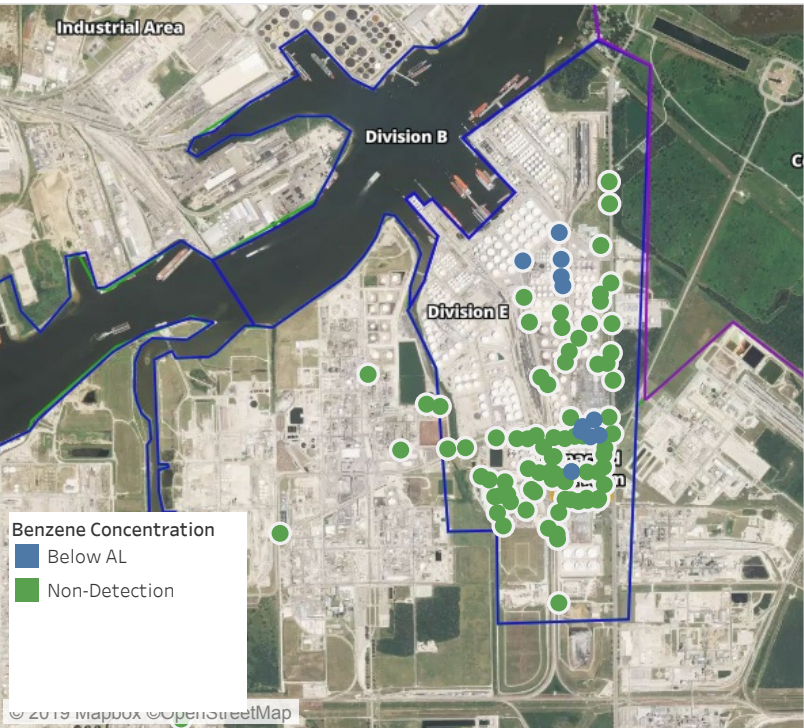
Recent Benzene Detections

Location Category	Reading Date	Range of Detections
Division E	6/3/2019 21:21:06	0.03000 ppm
	6/3/2019 21:25:27	0.05000 ppm
	6/3/2019 21:30:45	0.02000 ppm
	6/3/2019 21:30:23	0.03000 ppm
	6/3/2019 21:37:11	0.03000 ppm
	6/3/2019 21:44:28	0.07000 ppm
	6/3/2019 21:46:32	0.07000 ppm
	6/3/2019 21:49:55	0.03000 ppm
	6/3/2019 21:45:02	0.02000 ppm
	6/3/2019 21:49:03	0.05000 ppm
	6/3/2019 21:53:26	0.06000 ppm
	6/3/2019 21:23:10	0.04000 ppm
Impacted Tank Farm	6/3/2019 21:54:37	0.02000 ppm
	6/3/2019 21:57:54	0.02000 ppm

This data has been provided expeditiously to ITC and regulatory agencies for informational and/or operational purposes only. Data reported within this summary is preliminary in nature and has not undergone complete QA/QC (quality assurance/quality control) process. Until this complete QA/QC process is completed, the locations of each reading are approximate in nature and subject to further refinement. As some readings may represent non-breathing zone measurements, the data reported herein may not be suitable to assess potential occupational exposure. Site Assessment readings are not representative of an individual's breathing zone (e.g., container head space, ground level, directly above product, etc.).

Preliminary Hand- Held Air Monitoring Locations | ITC Deer Park Tank Fire

Reading Date
6/3/2019 10:00:00 PM to 6/3/2019 11:00:00 PM



Recent Benzene Detections

Location Category	Reading Date	Range of Detections
Division E	6/3/2019 22:27:51	0.0500 ppm
	6/3/2019 22:31:30	0.0700 ppm
	6/3/2019 22:29:12	0.1200 ppm
	6/3/2019 22:33:07	0.0600 ppm
	6/3/2019 22:34:44	0.0300 ppm
	6/3/2019 22:00:57	0.0600 ppm
	6/3/2019 22:03:55	0.0400 ppm
	6/3/2019 22:42:53	0.0500 ppm
	6/3/2019 22:46:49	0.0400 ppm
	6/3/2019 22:01:33	0.0300 ppm
Impacted Tank Farm	6/3/2019 22:03:32	0.0200 ppm

This data has been provided expeditiously to ITC and regulatory agencies for informational and/or operational purposes only. Data reported within this summary is preliminary in nature and has not undergone complete QA/QC (quality assurance/quality control) process. Until this complete QA/QC process is completed, the locations of each reading are approximate in nature and subject to further refinement. As some readings may represent non-breathing zone measurements, the data reported herein may not be suitable to assess potential occupational exposure. Site Assessment readings are not representative of an individual's breathing zone (e.g., container head space, ground level, directly above product, etc.).