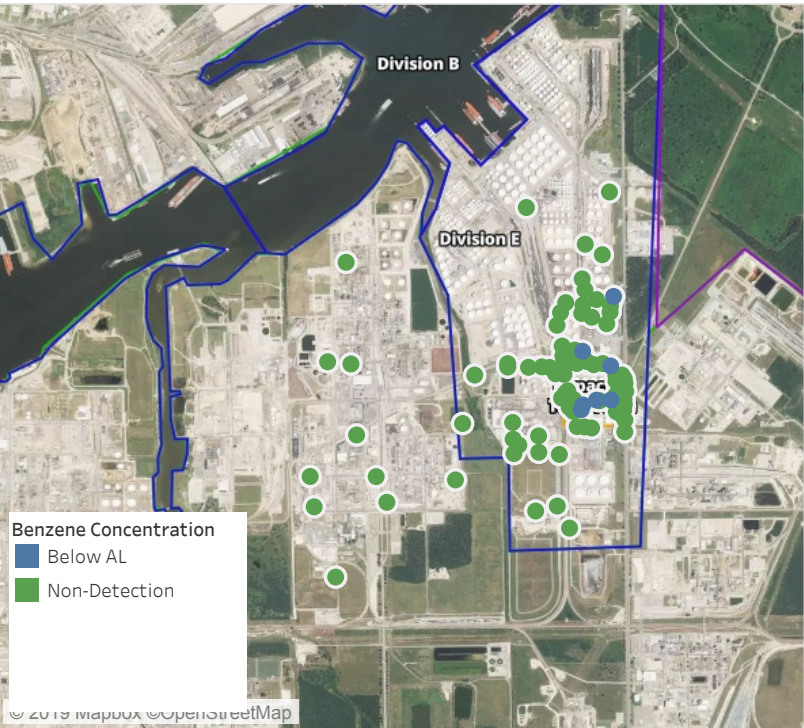


Preliminary Hand- Held Air Monitoring Locations | ITC Deer Park Tank Fire

Reading Date
6/3/2019 11:00:00 PM to 6/4/2019 12:00:00 AM



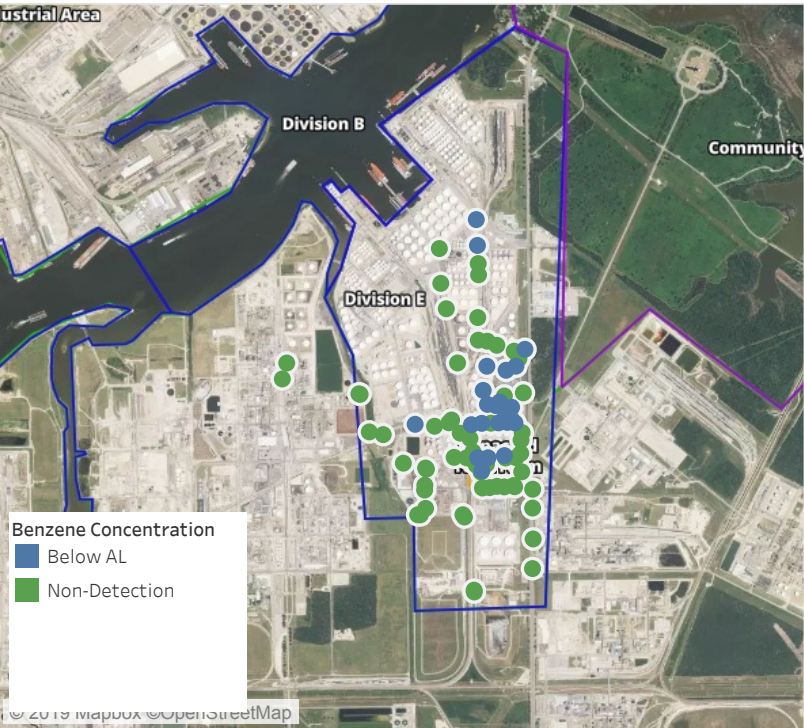
Recent Benzene Detections

Location Category	Reading Date	Range of Detections
Division E	6/3/2019 23:04:13	0.0300 ppm
	6/3/2019 23:25:07	0.0200 ppm
	6/3/2019 23:40:05	0.0600 ppm
Impacted Tank Farm	6/3/2019 23:10:12	0.0300 ppm
	6/3/2019 23:13:09	0.0200 ppm
	6/3/2019 23:18:26	0.0200 ppm
	6/3/2019 23:23:34	0.1400 ppm

This data has been provided expeditiously to ITC and regulatory agencies for informational and/or operational purposes only. Data reported within this summary is preliminary in nature and has not undergone complete QA/QC (quality assurance/quality control) process. Until this complete QA/QC process is completed, the locations of each reading are approximate in nature and subject to further refinement. As some readings may represent non-breathing zone measurements, the data reported herein may not be suitable to assess potential occupational exposure. Site Assessment readings are not representative of an individual's breathing zone (e.g., container head space, ground level, directly above product, etc.).

Preliminary Hand- Held Air Monitoring Locations | ITC Deer Park Tank Fire

Reading Date
6/4/2019 12:00:00 AM to 6/4/2019 1:00:00 AM



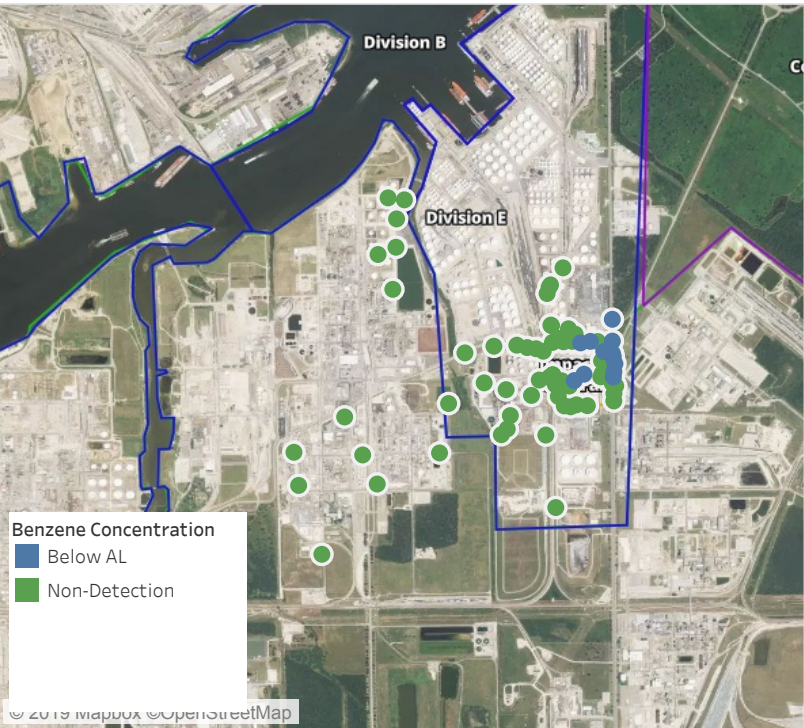
Recent Benzene Detections

Location Category	Reading Date	Range of Detections
Division E	6/4/2019 00:05:05	0.03000 ppm
	6/4/2019 00:15:58	0.06000 ppm
	6/4/2019 00:12:50	0.04000 ppm
	6/4/2019 00:25:04	0.06000 ppm
	6/4/2019 00:31:15	0.03000 ppm
	6/4/2019 00:34:09	0.03000 ppm
	6/4/2019 00:39:29	0.04000 ppm
	6/4/2019 00:36:53	0.03000 ppm
	6/4/2019 00:42:00	0.04000 ppm
	6/4/2019 00:43:37	0.05000 ppm
	6/4/2019 00:42:01	0.08000 ppm
	6/4/2019 00:23:01	0.05000 ppm
	6/4/2019 00:20:12	0.06000 ppm
	6/4/2019 00:37:47	0.02000 ppm
	6/4/2019 00:53:22	0.02000 ppm
	6/4/2019 00:35:11	0.05000 ppm
	6/4/2019 00:26:50	0.03000 ppm
	6/4/2019 00:50:14	0.03000 ppm
	6/4/2019 00:17:25	0.04000 ppm
	6/4/2019 00:32:59	0.02000 ppm
	6/4/2019 00:51:24	0.02000 ppm
Impacted Tank Farm	6/4/2019 00:29:44	0.03000 ppm
	6/4/2019 00:32:41	0.02000 ppm
	6/4/2019 00:41:20	0.03000 ppm
	6/4/2019 00:44:26	0.03000 ppm

This data has been provided expeditiously to ITC and regulatory agencies for informational and/or operational purposes only. Data reported within this summary is preliminary in nature and has not undergone complete QA/QC (quality assurance/quality control) process. Until this complete QA/QC process is completed, the locations of each reading are approximate in nature and subject to further refinement. As some readings may represent non-breathing zone measurements, the data reported herein may not be suitable to assess potential occupational exposure. Site Assessment readings are not representative of an individual's breathing zone (e.g., container head space, ground level, directly above product, etc.).

Preliminary Hand- Held Air Monitoring Locations | ITC Deer Park Tank Fire

Reading Date
6/4/2019 1:00:00 AM to 6/4/2019 2:00:00 AM



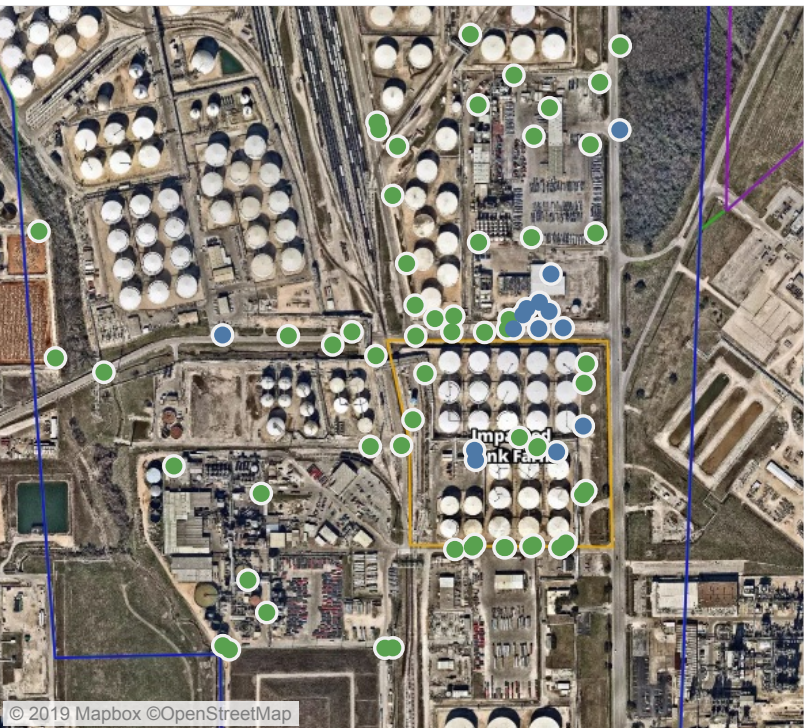
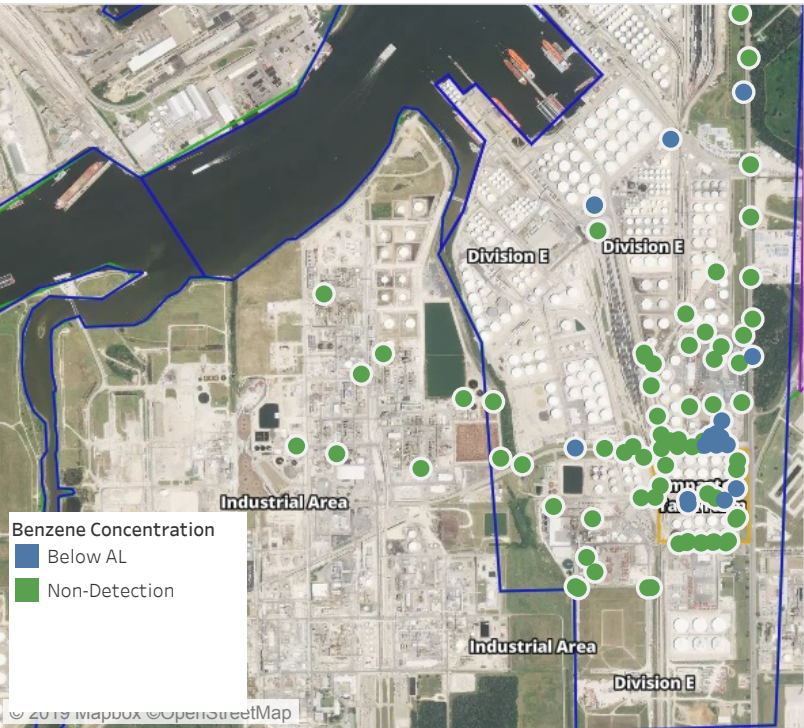
Recent Benzene Detections

Location Category	Reading Date	Range of Detections
Division E	6/4/2019 01:23:22	0.2000 ppm
	6/4/2019 01:27:56	0.1700 ppm
	6/4/2019 01:34:21	0.1000 ppm
	6/4/2019 01:40:01	0.1000 ppm
	6/4/2019 01:38:56	0.0500 ppm
	6/4/2019 01:46:06	0.1000 ppm
	6/4/2019 01:42:57	0.0200 ppm
	6/4/2019 01:46:17	0.0500 ppm
	6/4/2019 01:51:38	0.0800 ppm
Impacted Tank Farm	6/4/2019 01:57:19	0.0900 ppm
	6/4/2019 01:34:00	0.0200 ppm
	6/4/2019 01:38:40	0.0300 ppm
Industrial Area	6/4/2019 01:41:17	0.1100 ppm

This data has been provided expeditiously to ITC and regulatory agencies for informational and/or operational purposes only. Data reported within this summary is preliminary in nature and has not undergone complete QA/QC (quality assurance/quality control) process. Until this complete QA/QC process is completed, the locations of each reading are approximate in nature and subject to further refinement. As some readings may represent non-breathing zone measurements, the data reported herein may not be suitable to assess potential occupational exposure. Site Assessment readings are not representative of an individual's breathing zone (e.g., container head space, ground level, directly above product, etc.).

Preliminary Hand- Held Air Monitoring Locations | ITC Deer Park Tank Fire

Reading Date
6/4/2019 2:00:00 AM to 6/4/2019 3:00:00 AM



Recent Benzene Detections

Location Category	Reading Date	Range of Detections
Division E	6/4/2019 02:00:44	0.0500 ppm
	6/4/2019 02:04:36	0.0500 ppm
	6/4/2019 02:04:06	0.0300 ppm
	6/4/2019 02:01:20	0.0500 ppm
	6/4/2019 02:07:51	0.0900 ppm
	6/4/2019 02:15:29	0.0300 ppm
	6/4/2019 02:18:46	0.0200 ppm
	6/4/2019 02:35:49	0.0300 ppm
	6/4/2019 02:32:28	0.0300 ppm
	6/4/2019 02:07:35	0.0900 ppm
	6/4/2019 02:11:26	0.0700 ppm
	6/4/2019 02:50:44	0.0400 ppm
	6/4/2019 02:00:11	0.0600 ppm
Impacted Tank Farm	6/4/2019 02:38:33	0.1100 ppm
	6/4/2019 02:43:38	0.1300 ppm
	6/4/2019 02:51:43	0.0200 ppm
	6/4/2019 02:58:42	0.0300 ppm

This data has been provided expeditiously to ITC and regulatory agencies for informational and/or operational purposes only. Data reported within this summary is preliminary in nature and has not undergone complete QA/QC (quality assurance/quality control) process. Until this complete QA/QC process is completed, the locations of each reading are approximate in nature and subject to further refinement. As some readings may represent non-breathing zone measurements, the data reported herein may not be suitable to assess potential occupational exposure. Site Assessment readings are not representative of an individual's breathing zone (e.g., container head space, ground level, directly above product, etc.).

Preliminary Hand- Held Air Monitoring Locations | ITC Deer Park Tank Fire

Reading Date

6/4/2019 3:00:00 AM to 6/4/2019 4:00:00 AM



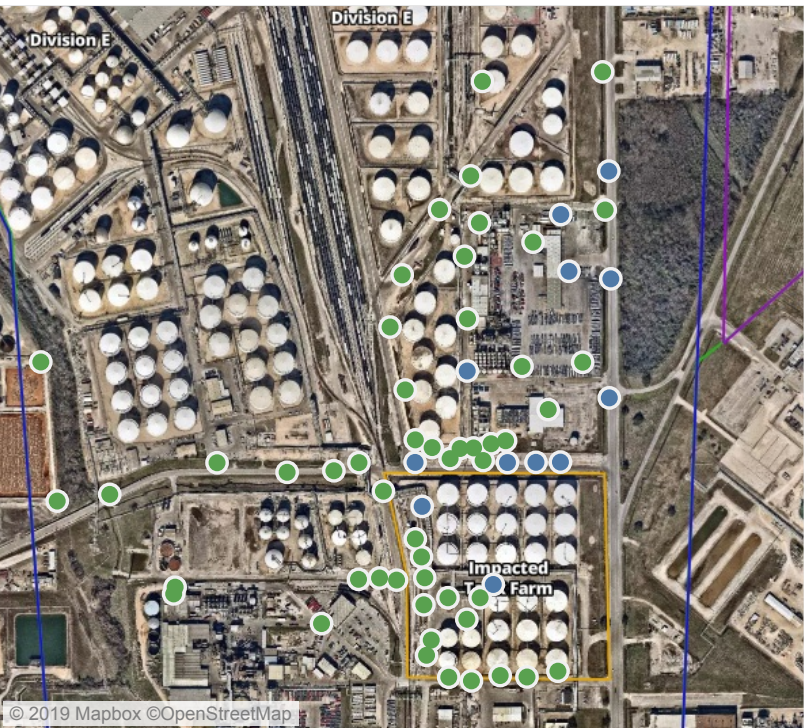
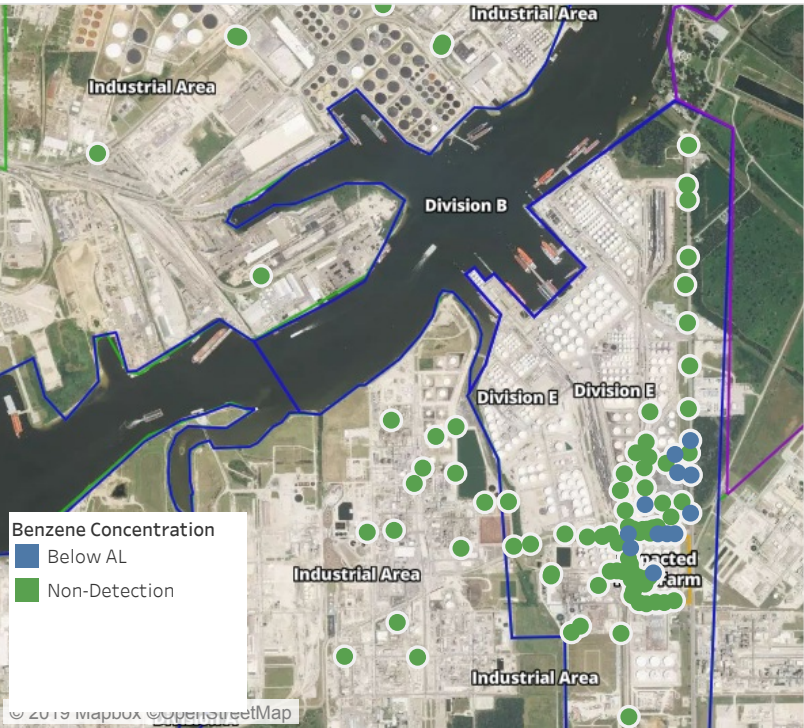
Recent Benzene Detections

Location Category	Reading Date	Range of Detections
Division E	6/4/2019 03:33:29	0.0200 ppm
	6/4/2019 03:29:39	0.1800 ppm
	6/4/2019 03:27:07	0.1800 ppm
	6/4/2019 03:31:15	0.1400 ppm
	6/4/2019 03:32:59	0.0800 ppm
	6/4/2019 03:46:11	0.0200 ppm
	6/4/2019 03:50:33	0.0300 ppm
	6/4/2019 03:55:46	0.0300 ppm
	6/4/2019 03:34:57	0.0200 ppm
	6/4/2019 03:37:53	0.0200 ppm
Impacted Tank Farm	6/4/2019 03:44:01	0.1000 ppm
	6/4/2019 03:02:39	0.0200 ppm
	6/4/2019 03:24:37	0.1200 ppm
	6/4/2019 03:31:42	0.1800 ppm
	6/4/2019 03:29:22	0.1400 ppm
	6/4/2019 03:27:09	0.1400 ppm

This data has been provided expeditiously to ITC and regulatory agencies for informational and/or operational purposes only. Data reported within this summary is preliminary in nature and has not undergone complete QA/QC (quality assurance/quality control) process. Until this complete QA/QC process is completed, the locations of each reading are approximate in nature and subject to further refinement. As some readings may represent non-breathing zone measurements, the data reported herein may not be suitable to assess potential occupational exposure. Site Assessment readings are not representative of an individual's breathing zone (e.g., container head space, ground level, directly above product, etc.).

Preliminary Hand- Held Air Monitoring Locations | ITC Deer Park Tank Fire

Reading Date
6/4/2019 4:00:00 AM to 6/4/2019 5:00:00 AM



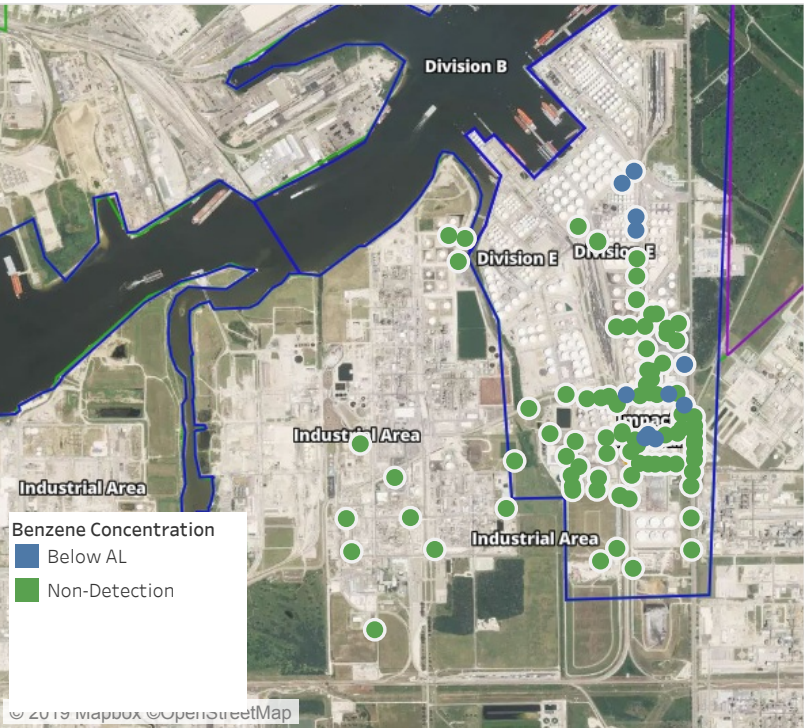
Recent Benzene Detections

Location Category	Reading Date	Range of Detections
Division E	6/4/2019 04:00:46	0.02000 ppm
	6/4/2019 04:48:18	0.04000 ppm
	6/4/2019 04:21:35	0.02000 ppm
	6/4/2019 04:18:42	0.04000 ppm
	6/4/2019 04:24:26	0.02000 ppm
	6/4/2019 04:31:43	0.03000 ppm
	6/4/2019 04:52:19	0.04000 ppm
	6/4/2019 04:58:43	0.05000 ppm
	6/4/2019 04:58:09	0.04000 ppm
	6/4/2019 04:48:56	0.02000 ppm
Impacted Tank Farm	6/4/2019 04:04:39	0.03000 ppm
	6/4/2019 04:34:40	0.02000 ppm

This data has been provided expeditiously to ITC and regulatory agencies for informational and/or operational purposes only. Data reported within this summary is preliminary in nature and has not undergone complete QA/QC (quality assurance/quality control) process. Until this complete QA/QC process is completed, the locations of each reading are approximate in nature and subject to further refinement. As some readings may represent non-breathing zone measurements, the data reported herein may not be suitable to assess potential occupational exposure. Site Assessment readings are not representative of an individual's breathing zone (e.g., container head space, ground level, directly above product, etc.).

Preliminary Hand- Held Air Monitoring Locations | ITC Deer Park Tank Fire

Reading Date
6/4/2019 5:00:00 AM to 6/4/2019 6:00:00 AM



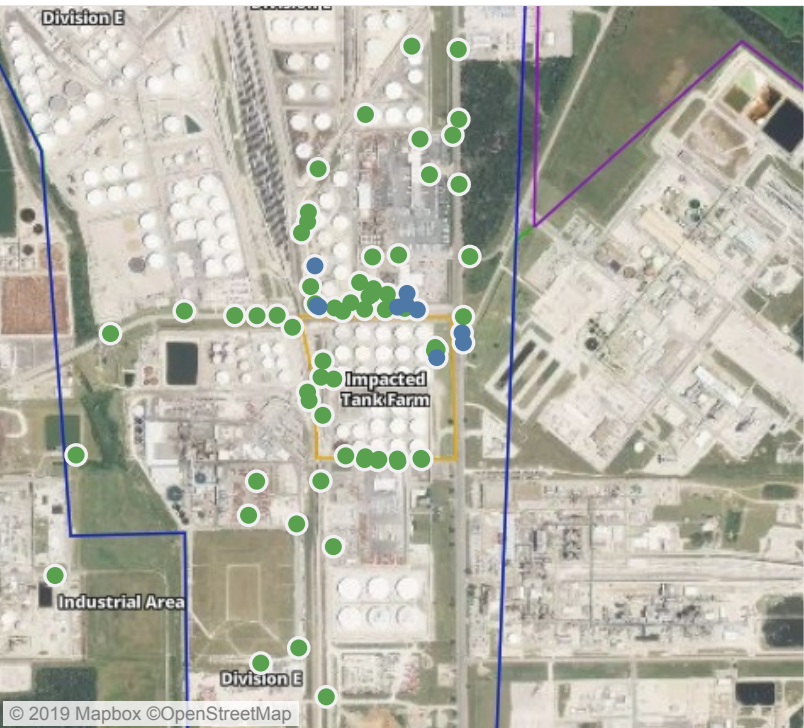
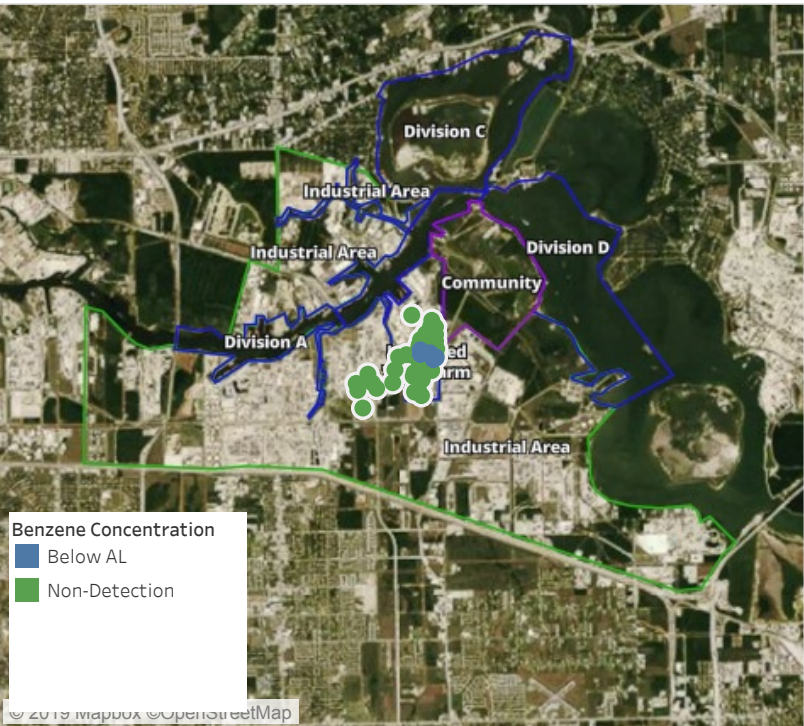
Recent Benzene Detections

Location Category	Reading Date	Range of Detections
Division E	6/4/2019 05:16:54	0.0300 ppm
	6/4/2019 05:13:34	0.1100 ppm
	6/4/2019 05:10:44	0.3400 ppm
	6/4/2019 05:15:10	0.0700 ppm
	6/4/2019 05:48:38	0.0300 ppm
	6/4/2019 05:46:47	0.0300 ppm
	6/4/2019 05:28:39	0.0800 ppm
Impacted Tank Farm	6/4/2019 05:15:36	0.0300 ppm
	6/4/2019 05:29:35	0.0200 ppm
	6/4/2019 05:32:16	0.0300 ppm
	6/4/2019 05:28:24	0.1000 ppm

This data has been provided expeditiously to ITC and regulatory agencies for informational and/or operational purposes only. Data reported within this summary is preliminary in nature and has not undergone complete QA/QC (quality assurance/quality control) process. Until this complete QA/QC process is completed, the locations of each reading are approximate in nature and subject to further refinement. As some readings may represent non-breathing zone measurements, the data reported herein may not be suitable to assess potential occupational exposure. Site Assessment readings are not representative of an individual's breathing zone (e.g., container head space, ground level, directly above product, etc.).

Preliminary Hand- Held Air Monitoring Locations | ITC Deer Park Tank Fire

Reading Date
6/4/2019 6:00:00 AM to 6/4/2019 7:00:00 AM



Recent Benzene Detections

Location Category	Reading Date	Range of Detections
Division E	6/4/2019 06:00:25	0.1000 ppm
	6/4/2019 06:01:44	0.0200 ppm
	6/4/2019 06:04:16	0.0200 ppm
	6/4/2019 06:06:36	0.1600 ppm
	6/4/2019 06:07:21	0.0200 ppm
	6/4/2019 06:12:09	0.0500 ppm
	6/4/2019 06:15:39	0.0300 ppm
	6/4/2019 06:03:57	0.0400 ppm
Impacted Tank Farm	6/4/2019 06:24:02	0.0400 ppm
	6/4/2019 06:32:01	0.1200 ppm

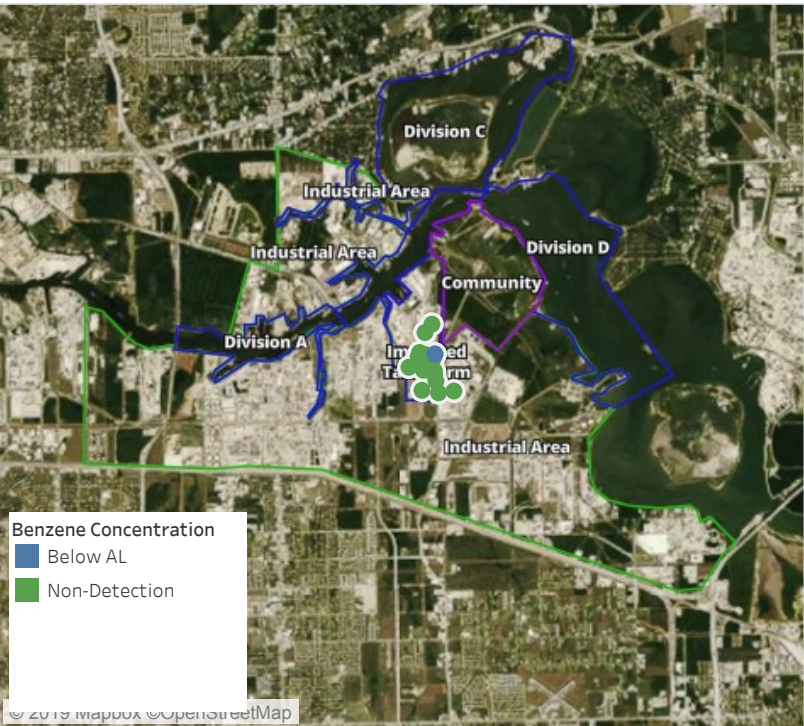
This data has been provided expeditiously to ITC and regulatory agencies for informational and/or operational purposes only. Data reported within this summary is preliminary in nature and has not undergone complete QA/QC (quality assurance/quality control) process. Until this complete QA/QC process is completed, the locations of each reading are approximate in nature and subject to further refinement. As some readings may represent non-breathing zone measurements, the data reported herein may not be suitable to assess potential occupational exposure. Site Assessment readings are not representative of an individual's breathing zone (e.g., container head space, ground level, directly above product, etc.).



Please Note: These updates display data from the 2nd 80's Fire site (Impacted Tank Farm), in the industrial areas surrounding the 2nd 80's Fire site (US Coast Guard Division E), within the Houston Ship Channel (US Coast Guard Divisions A-D), and in the industrial areas north and south of the Houston Ship Channel (Industrial Area). Real-time air monitoring data for the surrounding communities are communicated daily in a separate report.

Preliminary Hand- Held Air Monitoring Locations | ITC Deer Park Tank Fire

Reading Date
6/4/2019 7:00:00 AM to 6/4/2019 8:00:00 AM



Recent Benzene Detections

Location Category	Reading Date	Range of Detections
Division E	6/4/2019 07:24:11	0.04000 ppm
	6/4/2019 07:22:22	0.05000 ppm

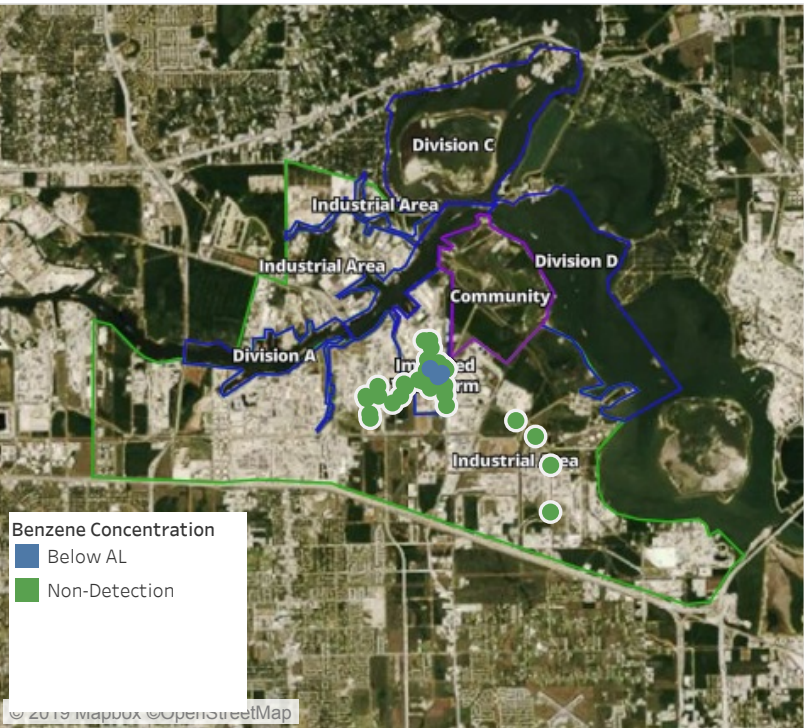
This data has been provided expeditiously to ITC and regulatory agencies for informational and/or operational purposes only. Data reported within this summary is preliminary in nature and has not undergone complete QA/QC (quality assurance/quality control) process. Until this complete QA/QC process is completed, the locations of each reading are approximate in nature and subject to further refinement. As some readings may represent non-breathing zone measurements, the data reported herein may not be suitable to assess potential occupational exposure. Site Assessment readings are not representative of an individual's breathing zone (e.g., container head space, ground level, directly above product, etc.).



Please Note: These updates display data from the 2nd 80's Fire site (Impacted Tank Farm), in the industrial areas surrounding the 2nd 80's Fire site (US Coast Guard Division E), within the Houston Ship Channel (US Coast Guard Divisions A-D), and in the industrial areas north and south of the Houston Ship Channel (Industrial Area). Real-time air monitoring data for the surrounding communities are communicated daily in a separate report.

Preliminary Hand- Held Air Monitoring Locations | ITC Deer Park Tank Fire

Reading Date
6/4/2019 8:00:00 AM to 6/4/2019 9:00:00 AM



Recent Benzene Detections

Location Category	Reading Date	Range of Detections
Division E	6/4/2019 08:05:20	0.0200 ppm
	6/4/2019 08:35:26	0.0500 ppm
Impacted Tank Farm	6/4/2019 08:06:05	0.0400 ppm
	6/4/2019 08:08:05	0.1400 ppm
	6/4/2019 08:34:28	0.0300 ppm

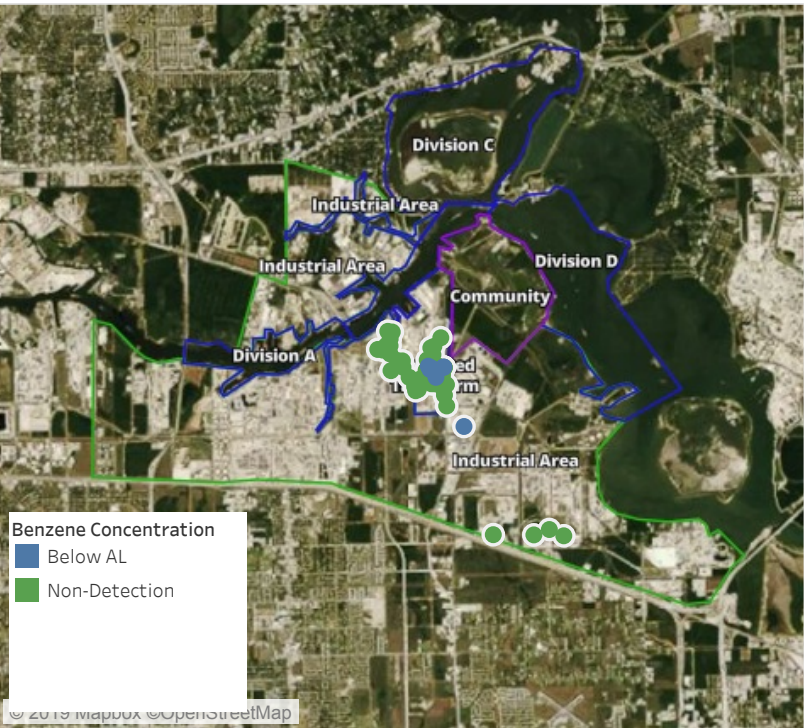
This data has been provided expeditiously to ITC and regulatory agencies for informational and/or operational purposes only. Data reported within this summary is preliminary in nature and has not undergone complete QA/QC (quality assurance/quality control) process. Until this complete QA/QC process is completed, the locations of each reading are approximate in nature and subject to further refinement. As some readings may represent non-breathing zone measurements, the data reported herein may not be suitable to assess potential occupational exposure. Site Assessment readings are not representative of an individual's breathing zone (e.g., container head space, ground level, directly above product, etc.).



Please Note: These updates display data from the 2nd 80's Fire site (Impacted Tank Farm), in the industrial areas surrounding the 2nd 80's Fire site (US Coast Guard Division E), within the Houston Ship Channel (US Coast Guard Divisions A-D), and in the industrial areas north and south of the Houston Ship Channel (Industrial Area). Real-time air monitoring data for the surrounding communities are communicated daily in a separate report.

Preliminary Hand- Held Air Monitoring Locations | ITC Deer Park Tank Fire

Reading Date
6/4/2019 9:00:00 AM to 6/4/2019 10:00:00 AM



Recent Benzene Detections

Location Category	Reading Date	Range of Detections
Division E	6/4/2019 09:04:27	0.0400 ppm
	6/4/2019 09:19:00	0.0800 ppm
	6/4/2019 09:18:13	0.0400 ppm
	6/4/2019 09:29:37	0.0400 ppm
	6/4/2019 09:32:33	0.0300 ppm
Impacted Tank Farm	6/4/2019 09:46:23	0.0400 ppm
	6/4/2019 09:47:19	0.1300 ppm
	6/4/2019 09:56:23	0.0300 ppm

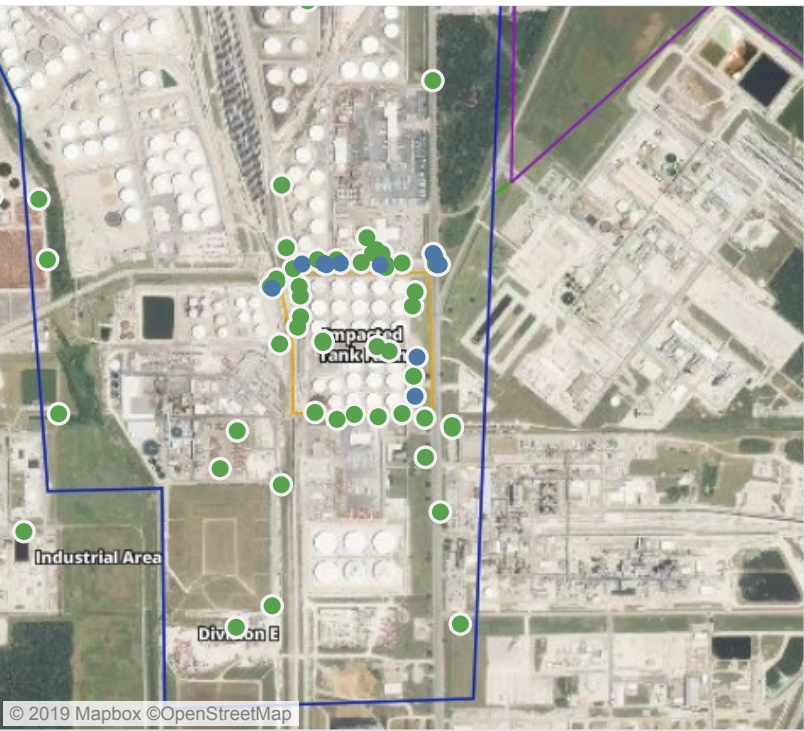
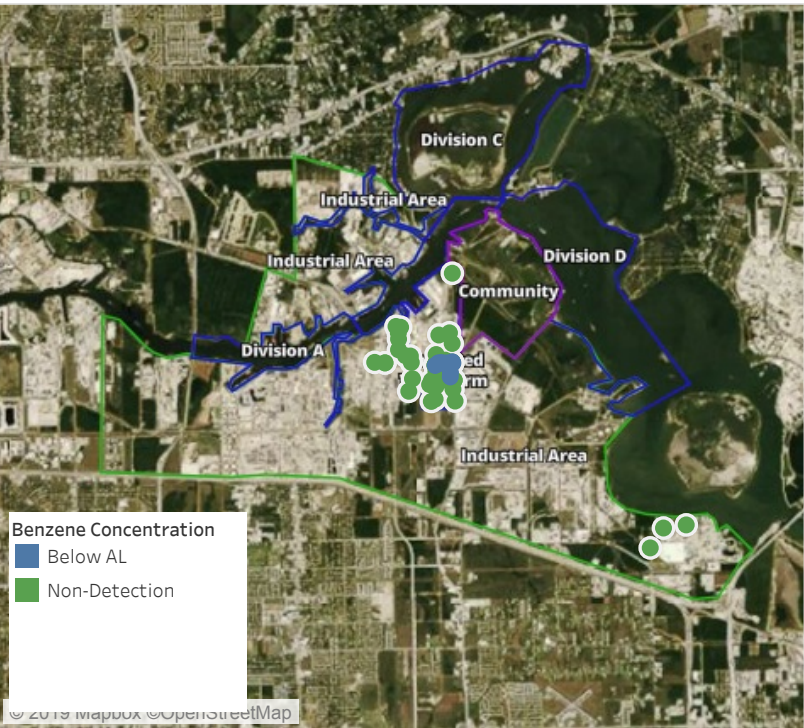
This data has been provided expeditiously to ITC and regulatory agencies for informational and/or operational purposes only. Data reported within this summary is preliminary in nature and has not undergone complete QA/QC (quality assurance/quality control) process. Until this complete QA/QC process is completed, the locations of each reading are approximate in nature and subject to further refinement. As some readings may represent non-breathing zone measurements, the data reported herein may not be suitable to assess potential occupational exposure. Site Assessment readings are not representative of an individual's breathing zone (e.g., container head space, ground level, directly above product, etc.).



Please Note: These updates display data from the 2nd 80's Fire site (Impacted Tank Farm), in the industrial areas surrounding the 2nd 80's Fire site (US Coast Guard Division E), within the Houston Ship Channel (US Coast Guard Divisions A-D), and in the industrial areas north and south of the Houston Ship Channel (Industrial Area). Real-time air monitoring data for the surrounding communities are communicated daily in a separate report.

Preliminary Hand- Held Air Monitoring Locations | ITC Deer Park Tank Fire

Reading Date
6/4/2019 10:00:00 AM to 6/4/2019 11:00:00 AM



Recent Benzene Detections

Location Category	Reading Date	Range of Detections
Division E	6/4/2019 10:04:08	0.04000 ppm
	6/4/2019 10:05:37	0.03000 ppm
	6/4/2019 10:08:52	0.02000 ppm
	6/4/2019 10:18:07	0.02000 ppm
	6/4/2019 10:27:13	0.04000 ppm
	6/4/2019 10:44:34	0.06000 ppm
	6/4/2019 10:48:30	0.02000 ppm
	6/4/2019 10:54:22	0.04000 ppm
	6/4/2019 10:58:15	0.05000 ppm
Impacted Tank Farm	6/4/2019 10:16:28	0.04000 ppm
	6/4/2019 10:06:10	0.08000 ppm

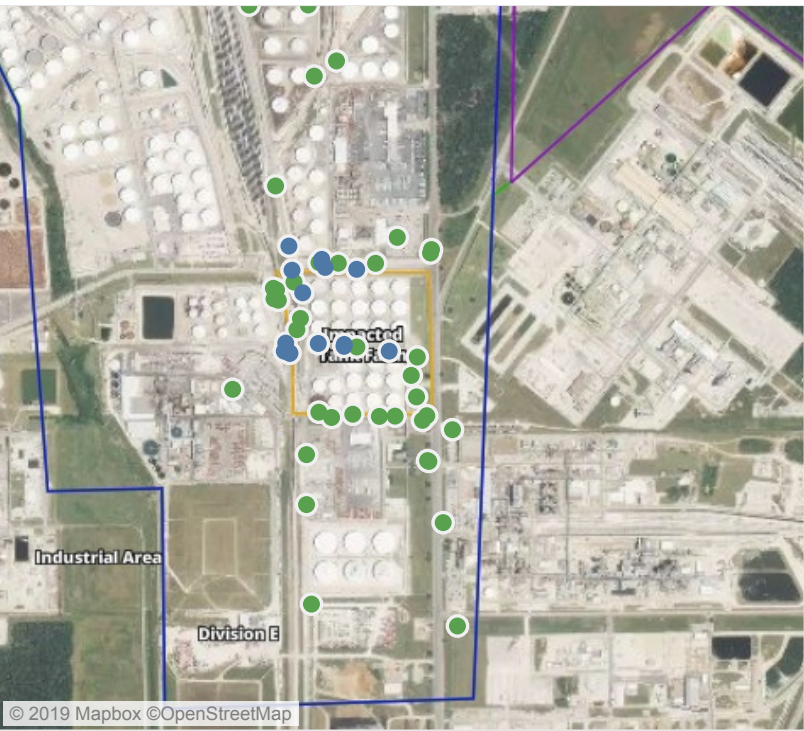
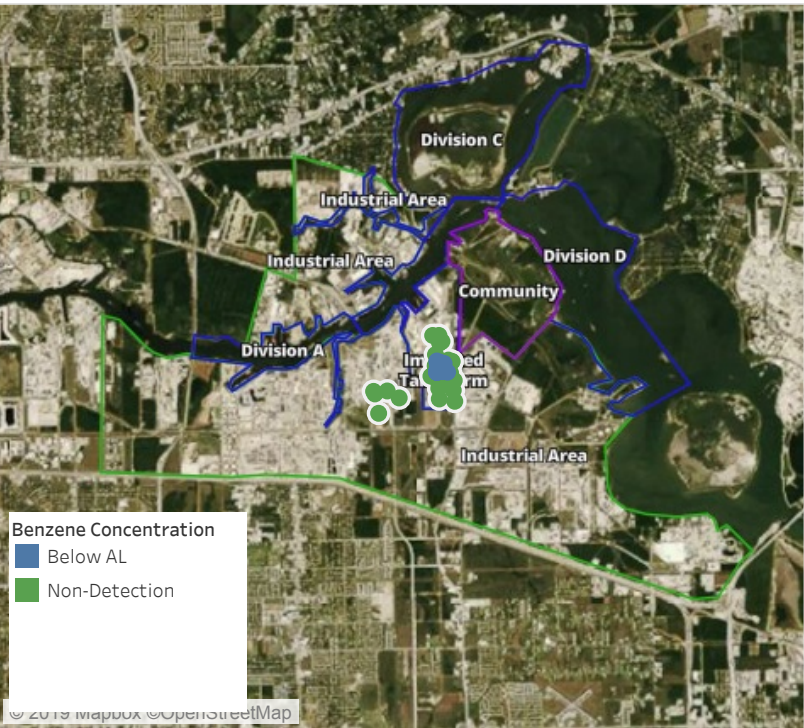
This data has been provided expeditiously to ITC and regulatory agencies for informational and/or operational purposes only. Data reported within this summary is preliminary in nature and has not undergone complete QA/QC (quality assurance/quality control) process. Until this complete QA/QC process is completed, the locations of each reading are approximate in nature and subject to further refinement. As some readings may represent non-breathing zone measurements, the data reported herein may not be suitable to assess potential occupational exposure. Site Assessment readings are not representative of an individual's breathing zone (e.g., container head space, ground level, directly above product, etc.).



Please Note: These updates display data from the 2nd 80's Fire site (Impacted Tank Farm), in the industrial areas surrounding the 2nd 80's Fire site (US Coast Guard Division E), within the Houston Ship Channel (US Coast Guard Divisions A-D), and in the industrial areas north and south of the Houston Ship Channel (Industrial Area). Real-time air monitoring data for the surrounding communities are communicated daily in a separate report.

Preliminary Hand- Held Air Monitoring Locations | ITC Deer Park Tank Fire

Reading Date
6/4/2019 11:00:00 AM to 6/4/2019 12:00:00 PM



Recent Benzene Detections

Location Category	Reading Date	Range of Detections
Division E	6/4/2019 11:12:38	0.0300 ppm
	6/4/2019 11:14:52	0.1200 ppm
	6/4/2019 11:08:15	0.1000 ppm
	6/4/2019 11:06:53	0.0900 ppm
	6/4/2019 11:11:15	0.0400 ppm
	6/4/2019 11:16:16	0.0300 ppm
	6/4/2019 11:10:02	0.0600 ppm
	6/4/2019 11:03:17	0.0700 ppm
	6/4/2019 11:26:29	0.0200 ppm
	6/4/2019 11:30:02	0.0200 ppm
Impacted Tank Farm	6/4/2019 11:02:28	0.1400 ppm
	6/4/2019 11:14:45	0.1700 ppm
	6/4/2019 11:23:16	0.0600 ppm
	6/4/2019 11:32:10	0.0600 ppm
	6/4/2019 11:40:47	0.0900 ppm

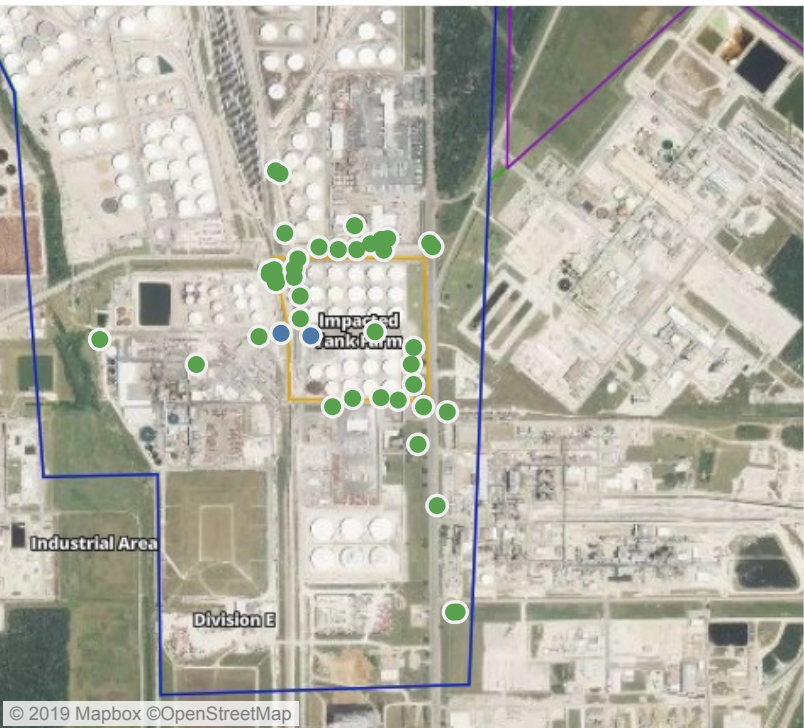
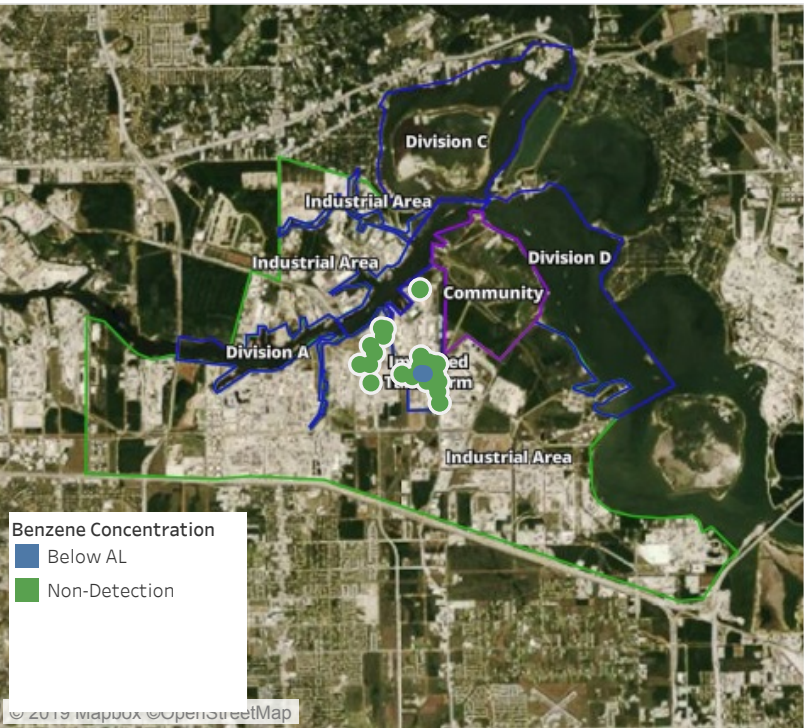
This data has been provided expeditiously to ITC and regulatory agencies for informational and/or operational purposes only. Data reported within this summary is preliminary in nature and has not undergone complete QA/QC (quality assurance/quality control) process. Until this complete QA/QC process is completed, the locations of each reading are approximate in nature and subject to further refinement. As some readings may represent non-breathing zone measurements, the data reported herein may not be suitable to assess potential occupational exposure. Site Assessment readings are not representative of an individual's breathing zone (e.g., container head space, ground level, directly above product, etc.).



Please Note: These updates display data from the 2nd 80's Fire site (Impacted Tank Farm), in the industrial areas surrounding the 2nd 80's Fire site (US Coast Guard Division E), within the Houston Ship Channel (US Coast Guard Divisions A-D), and in the industrial areas north and south of the Houston Ship Channel (Industrial Area). Real-time air monitoring data for the surrounding communities are communicated daily in a separate report.

Preliminary Hand- Held Air Monitoring Locations | ITC Deer Park Tank Fire

Reading Date
6/4/2019 12:00:00 PM to 6/4/2019 1:00:00 PM



Recent Benzene Detections

Location Category	Reading Date	Range of Detections
Division E	6/4/2019 12:00:25	0.05000 ppm
Impacted Tank Farm	6/4/2019 12:54:11	0.14000 ppm

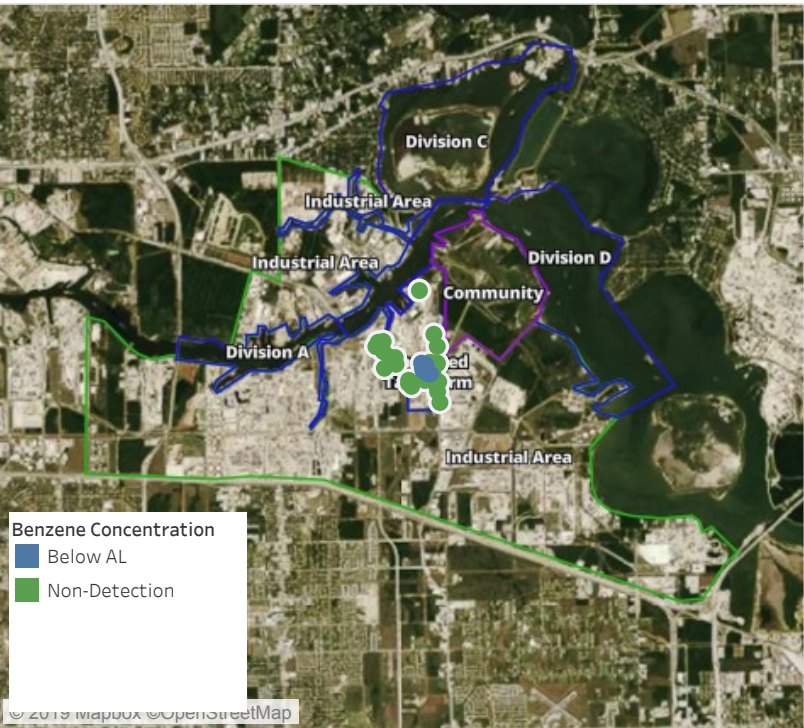
This data has been provided expeditiously to ITC and regulatory agencies for informational and/or operational purposes only. Data reported within this summary is preliminary in nature and has not undergone complete QA/QC (quality assurance/quality control) process. Until this complete QA/QC process is completed, the locations of each reading are approximate in nature and subject to further refinement. As some readings may represent non-breathing zone measurements, the data reported herein may not be suitable to assess potential occupational exposure. Site Assessment readings are not representative of an individual's breathing zone (e.g., container head space, ground level, directly above product, etc.).



Please Note: These updates display data from the 2nd 80's Fire site (Impacted Tank Farm), in the industrial areas surrounding the 2nd 80's Fire site (US Coast Guard Division E), within the Houston Ship Channel (US Coast Guard Divisions A-D), and in the industrial areas north and south of the Houston Ship Channel (Industrial Area). Real-time air monitoring data for the surrounding communities are communicated daily in a separate report.

Preliminary Hand- Held Air Monitoring Locations | ITC Deer Park Tank Fire

Reading Date
6/4/2019 1:00:00 PM to 6/4/2019 2:00:00 PM



Recent Benzene Detections

Location Category	Reading Date	Range of Detections
Division E	6/4/2019 13:09:25	0.03000 ppm
	6/4/2019 13:38:05	0.02000 ppm
	6/4/2019 13:42:20	0.11000 ppm
	6/4/2019 13:40:24	0.03000 ppm
	6/4/2019 13:50:09	0.05000 ppm
Impacted Tank Farm	6/4/2019 13:07:59	0.06000 ppm
	6/4/2019 13:06:49	0.05000 ppm
	6/4/2019 13:05:07	0.06000 ppm
	6/4/2019 13:08:54	0.02000 ppm
	6/4/2019 13:10:55	0.07000 ppm
	6/4/2019 13:17:51	0.03000 ppm
	6/4/2019 13:27:20	0.04000 ppm

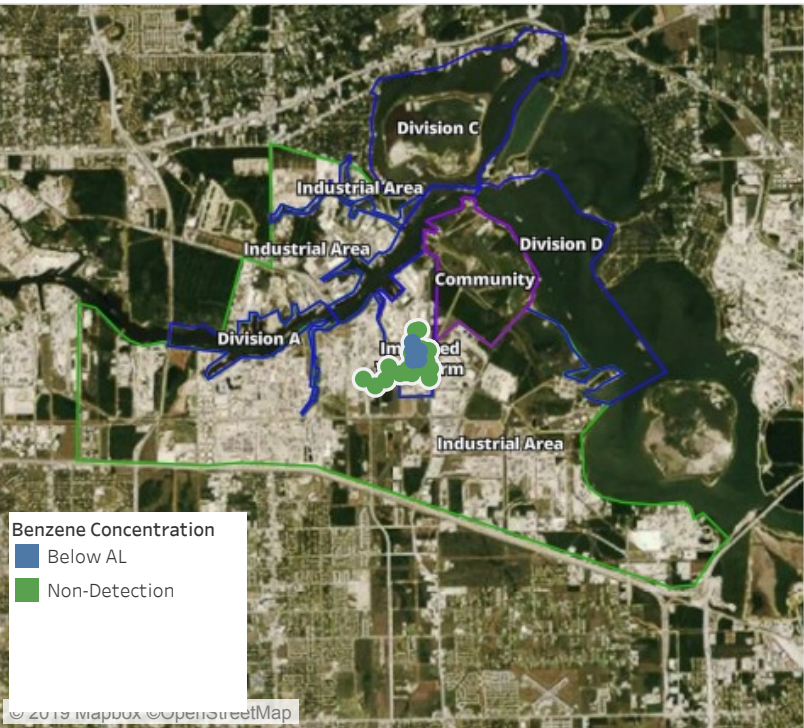
This data has been provided expeditiously to ITC and regulatory agencies for informational and/or operational purposes only. Data reported within this summary is preliminary in nature and has not undergone complete QA/QC (quality assurance/quality control) process. Until this complete QA/QC process is completed, the locations of each reading are approximate in nature and subject to further refinement. As some readings may represent non-breathing zone measurements, the data reported herein may not be suitable to assess potential occupational exposure. Site Assessment readings are not representative of an individual's breathing zone (e.g., container head space, ground level, directly above product, etc.).



Please Note: These updates display data from the 2nd 80's Fire site (Impacted Tank Farm), in the industrial areas surrounding the 2nd 80's Fire site (US Coast Guard Division E), within the Houston Ship Channel (US Coast Guard Divisions A-D), and in the industrial areas north and south of the Houston Ship Channel (Industrial Area). Real-time air monitoring data for the surrounding communities are communicated daily in a separate report.

Preliminary Hand- Held Air Monitoring Locations | ITC Deer Park Tank Fire

Reading Date
6/4/2019 2:00:00 PM to 6/4/2019 3:00:00 PM



Recent Benzene Detections

Location Category	Reading Date	Range of Detections
Division E	6/4/2019 14:15:31	0.02000 ppm
	6/4/2019 14:12:31	0.09000 ppm
	6/4/2019 14:09:02	0.03000 ppm
	6/4/2019 14:25:22	0.05000 ppm
	6/4/2019 14:15:41	0.03000 ppm
	6/4/2019 14:36:12	0.03000 ppm
	6/4/2019 14:41:20	0.06000 ppm
	6/4/2019 14:45:55	0.02000 ppm
Impacted Tank Farm	6/4/2019 14:50:59	0.03000 ppm
	6/4/2019 14:05:19	0.03000 ppm

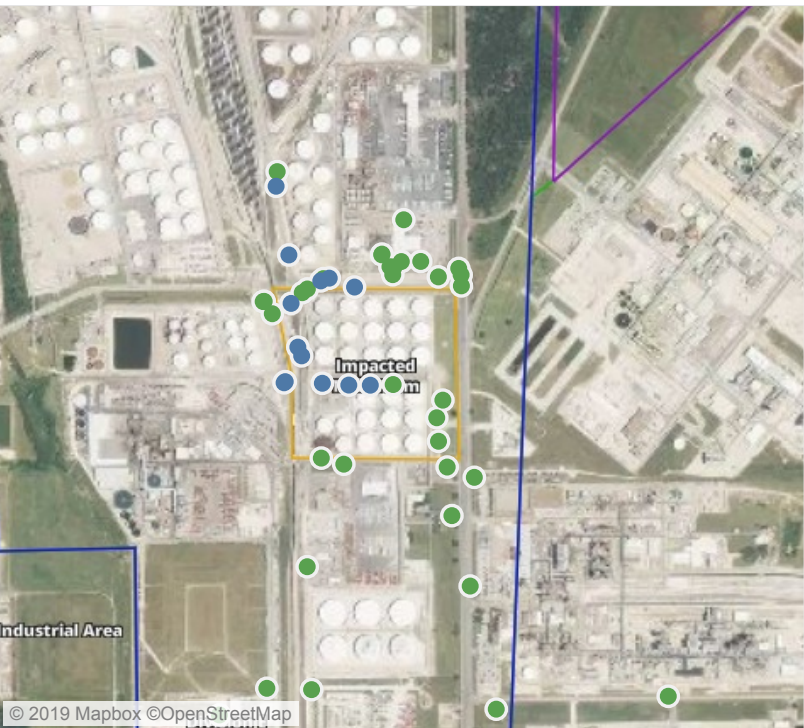
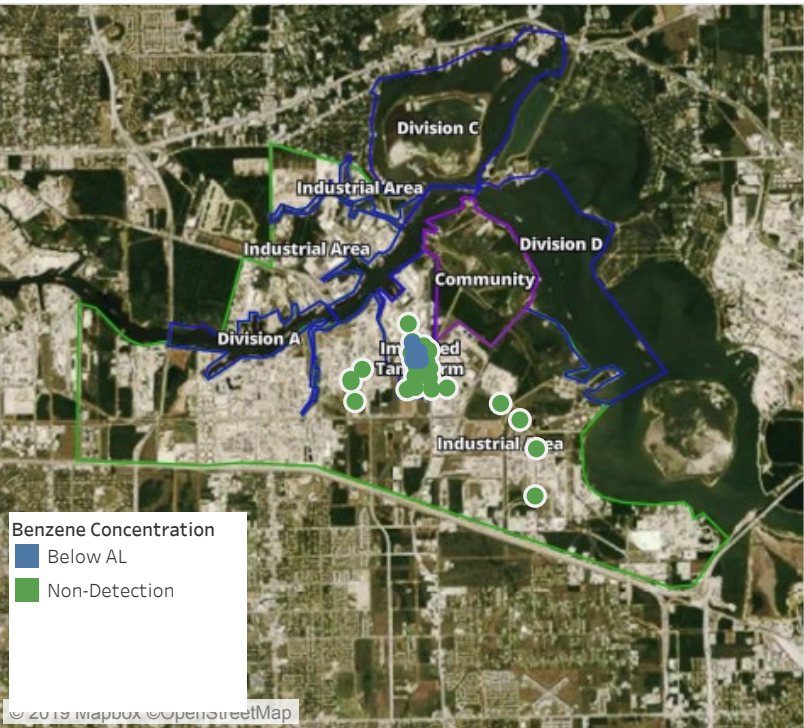
This data has been provided expeditiously to ITC and regulatory agencies for informational and/or operational purposes only. Data reported within this summary is preliminary in nature and has not undergone complete QA/QC (quality assurance/quality control) process. Until this complete QA/QC process is completed, the locations of each reading are approximate in nature and subject to further refinement. As some readings may represent non-breathing zone measurements, the data reported herein may not be suitable to assess potential occupational exposure. Site Assessment readings are not representative of an individual's breathing zone (e.g., container head space, ground level, directly above product, etc.).



Please Note: These updates display data from the 2nd 80's Fire site (Impacted Tank Farm), in the industrial areas surrounding the 2nd 80's Fire site (US Coast Guard Division E), within the Houston Ship Channel (US Coast Guard Divisions A-D), and in the industrial areas north and south of the Houston Ship Channel (Industrial Area). Real-time air monitoring data for the surrounding communities are communicated daily in a separate report.

Preliminary Hand- Held Air Monitoring Locations | ITC Deer Park Tank Fire

Reading Date
6/4/2019 3:00:00 PM to 6/4/2019 4:00:00 PM



Recent Benzene Detections

Location Category	Reading Date	Range of Detections
Division E	6/4/2019 15:01:07	0.02000 ppm
	6/4/2019 15:08:58	0.05000 ppm
	6/4/2019 15:31:27	0.09000 ppm
	6/4/2019 15:32:22	0.05000 ppm
	6/4/2019 15:37:35	0.02000 ppm
	6/4/2019 15:51:03	0.04000 ppm
	6/4/2019 15:59:36	0.02000 ppm
Impacted Tank Farm	6/4/2019 15:08:49	0.03000 ppm
	6/4/2019 15:00:15	0.06000 ppm
	6/4/2019 15:06:36	0.05000 ppm
	6/4/2019 15:19:29	0.08000 ppm
	6/4/2019 15:33:05	0.05000 ppm
	6/4/2019 15:15:34	0.04000 ppm

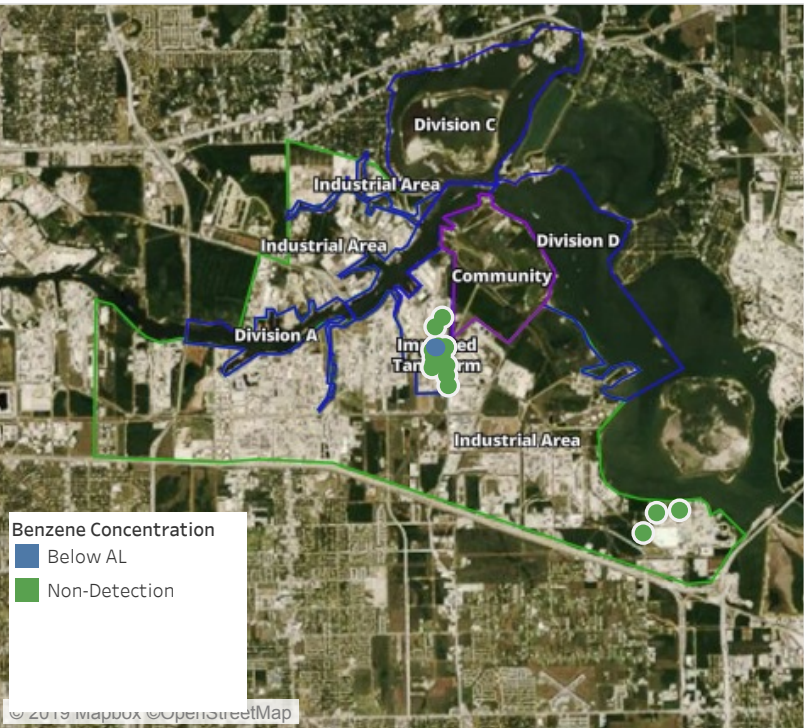
This data has been provided expeditiously to ITC and regulatory agencies for informational and/or operational purposes only. Data reported within this summary is preliminary in nature and has not undergone complete QA/QC (quality assurance/quality control) process. Until this complete QA/QC process is completed, the locations of each reading are approximate in nature and subject to further refinement. As some readings may represent non-breathing zone measurements, the data reported herein may not be suitable to assess potential occupational exposure. Site Assessment readings are not representative of an individual's breathing zone (e.g., container head space, ground level, directly above product, etc.).



Please Note: These updates display data from the 2nd 80's Fire site (Impacted Tank Farm), in the industrial areas surrounding the 2nd 80's Fire site (US Coast Guard Division E), within the Houston Ship Channel (US Coast Guard Divisions A-D), and in the industrial areas north and south of the Houston Ship Channel (Industrial Area). Real-time air monitoring data for the surrounding communities are communicated daily in a separate report.

Preliminary Hand- Held Air Monitoring Locations | ITC Deer Park Tank Fire

Reading Date
6/4/2019 4:00:00 PM to 6/4/2019 5:00:00 PM



Recent Benzene Detections

Location Category	Reading Date	Range of Detections
Division E	6/4/2019 16:05:31	0.06000 ppm
	6/4/2019 16:09:20	0.11000 ppm
	6/4/2019 16:11:54	0.06000 ppm

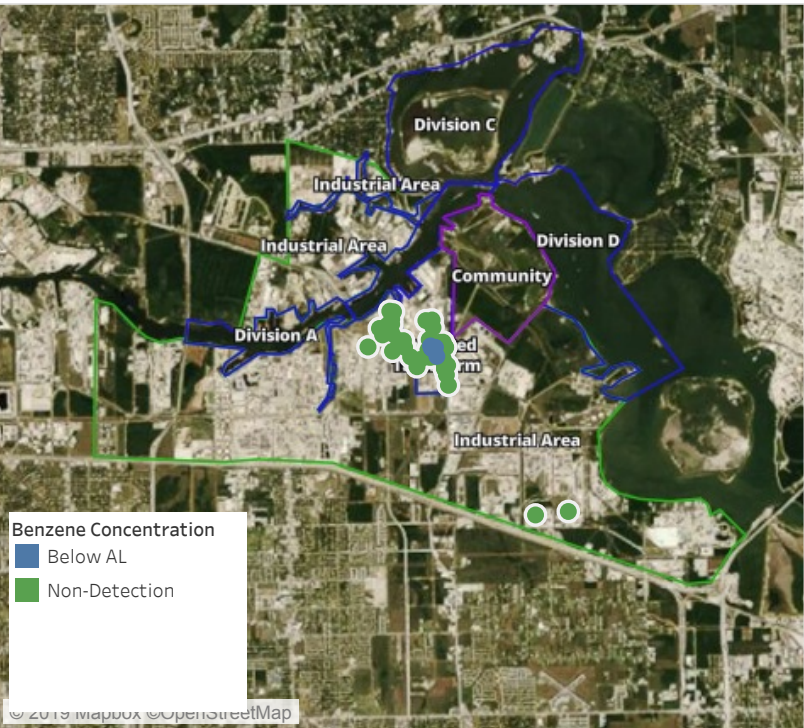
This data has been provided expeditiously to ITC and regulatory agencies for informational and/or operational purposes only. Data reported within this summary is preliminary in nature and has not undergone complete QA/QC (quality assurance/quality control) process. Until this complete QA/QC process is completed, the locations of each reading are approximate in nature and subject to further refinement. As some readings may represent non-breathing zone measurements, the data reported herein may not be suitable to assess potential occupational exposure. Site Assessment readings are not representative of an individual's breathing zone (e.g., container head space, ground level, directly above product, etc.).



Please Note: These updates display data from the 2nd 80's Fire site (Impacted Tank Farm), in the industrial areas surrounding the 2nd 80's Fire site (US Coast Guard Division E), within the Houston Ship Channel (US Coast Guard Divisions A-D), and in the industrial areas north and south of the Houston Ship Channel (Industrial Area). Real-time air monitoring data for the surrounding communities are communicated daily in a separate report.

Preliminary Hand- Held Air Monitoring Locations | ITC Deer Park Tank Fire

Reading Date
6/4/2019 5:00:00 PM to 6/4/2019 6:00:00 PM



Recent Benzene Detections

Location Category	Reading Date	Range of Detections
Division E	6/4/2019 17:19:09	0.08000 ppm
	6/4/2019 17:20:52	0.02000 ppm
	6/4/2019 17:23:25	0.03000 ppm
	6/4/2019 17:40:13	0.03000 ppm
	6/4/2019 17:48:23	0.03000 ppm
	6/4/2019 17:51:59	0.04000 ppm
Impacted Tank Farm	6/4/2019 17:53:38	0.03000 ppm
	6/4/2019 17:56:49	0.09000 ppm

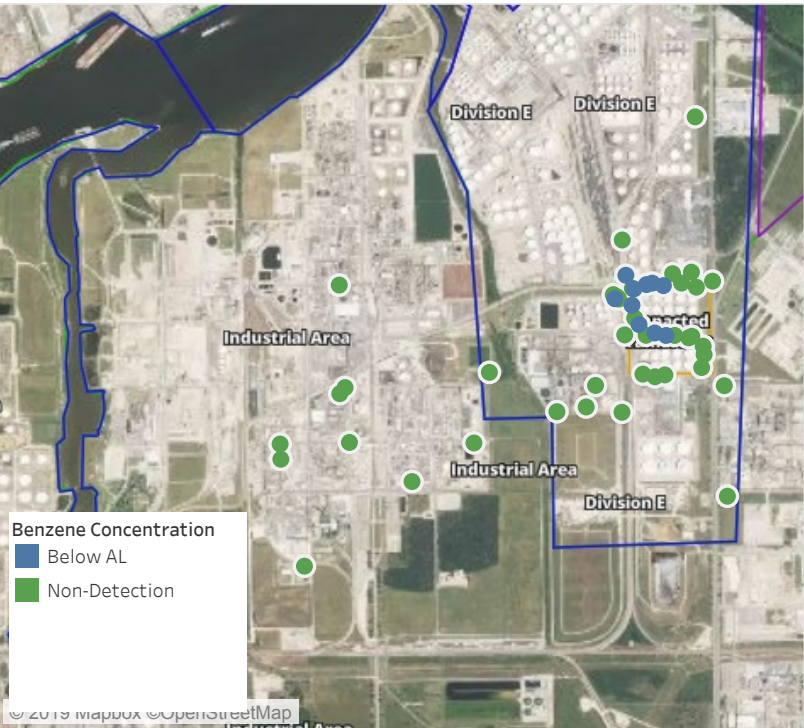
This data has been provided expeditiously to ITC and regulatory agencies for informational and/or operational purposes only. Data reported within this summary is preliminary in nature and has not undergone complete QA/QC (quality assurance/quality control) process. Until this complete QA/QC process is completed, the locations of each reading are approximate in nature and subject to further refinement. As some readings may represent non-breathing zone measurements, the data reported herein may not be suitable to assess potential occupational exposure. Site Assessment readings are not representative of an individual's breathing zone (e.g., container head space, ground level, directly above product, etc.).



Please Note: These updates display data from the 2nd 80's Fire site (Impacted Tank Farm), in the industrial areas surrounding the 2nd 80's Fire site (US Coast Guard Division E), within the Houston Ship Channel (US Coast Guard Divisions A-D), and in the industrial areas north and south of the Houston Ship Channel (Industrial Area). Real-time air monitoring data for the surrounding communities are communicated daily in a separate report.

Preliminary Hand- Held Air Monitoring Locations | ITC Deer Park Tank Fire

Reading Date
6/4/2019 6:00:00 PM to 6/4/2019 7:00:00 PM



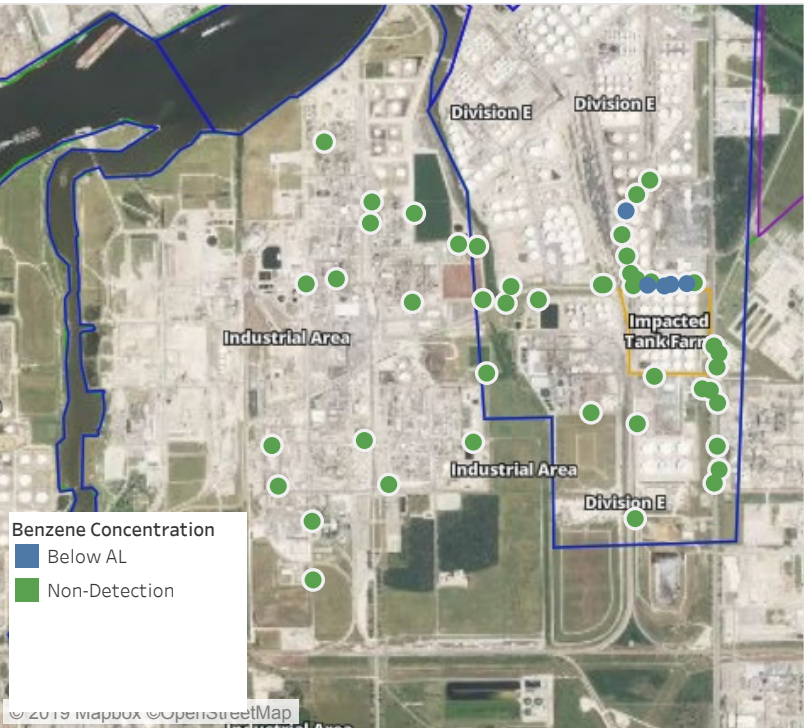
Recent Benzene Detections

Location Category	Reading Date	Range of Detections
Division E	6/4/2019 18:00:16	ppm
	6/4/2019 18:07:56	0.02000 ppm
	6/4/2019 18:13:46	0.02000 ppm
	6/4/2019 18:40:38	0.05000 ppm
	6/4/2019 18:45:27	0.04000 ppm
	6/4/2019 18:35:41	0.03000 ppm
	6/4/2019 18:53:23	0.03000 ppm
Impacted Tank Farm	6/4/2019 18:34:36	0.05000 ppm
	6/4/2019 18:38:58	0.05000 ppm
	6/4/2019 18:19:15	0.08000 ppm
	6/4/2019 18:47:51	0.07000 ppm

This data has been provided expeditiously to ITC and regulatory agencies for informational and/or operational purposes only. Data reported within this summary is preliminary in nature and has not undergone complete QA/QC (quality assurance/quality control) process. Until this complete QA/QC process is completed, the locations of each reading are approximate in nature and subject to further refinement. As some readings may represent non-breathing zone measurements, the data reported herein may not be suitable to assess potential occupational exposure. Site Assessment readings are not representative of an individual's breathing zone (e.g., container head space, ground level, directly above product, etc.).

Preliminary Hand- Held Air Monitoring Locations | ITC Deer Park Tank Fire

Reading Date
6/4/2019 7:00:00 PM to 6/4/2019 8:00:00 PM



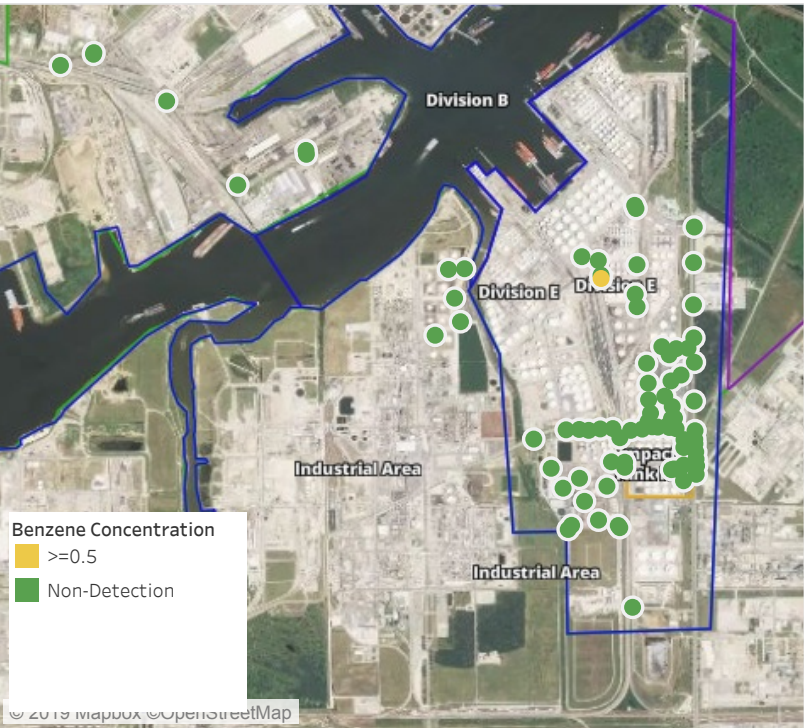
Recent Benzene Detections

Location Category	Reading Date	Range of Detections
Division E	6/4/2019 19:31:46	0.02000 ppm
	6/4/2019 19:51:17	0.02000 ppm
	6/4/2019 19:48:55	0.02000 ppm
	6/4/2019 19:46:45	0.03000 ppm
	6/4/2019 19:53:22	0.02000 ppm

This data has been provided expeditiously to ITC and regulatory agencies for informational and/or operational purposes only. Data reported within this summary is preliminary in nature and has not undergone complete QA/QC (quality assurance/quality control) process. Until this complete QA/QC process is completed, the locations of each reading are approximate in nature and subject to further refinement. As some readings may represent non-breathing zone measurements, the data reported herein may not be suitable to assess potential occupational exposure. Site Assessment readings are not representative of an individual's breathing zone (e.g., container head space, ground level, directly above product, etc.).

Preliminary Hand- Held Air Monitoring Locations | ITC Deer Park Tank Fire

Reading Date
6/4/2019 8:00:00 PM to 6/4/2019 9:00:00 PM



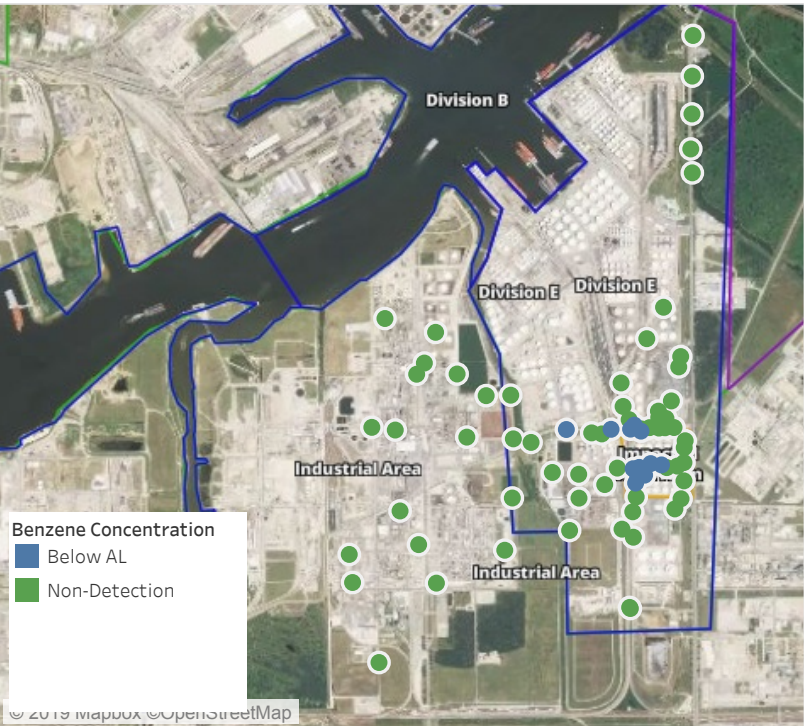
Recent Benzene Detections

Location Category	Reading Date	Range of Detections
Division E	6/4/2019 20:46:12	0.5400 ppm

This data has been provided expeditiously to ITC and regulatory agencies for informational and/or operational purposes only. Data reported within this summary is preliminary in nature and has not undergone complete QA/QC (quality assurance/quality control) process. Until this complete QA/QC process is completed, the locations of each reading are approximate in nature and subject to further refinement. As some readings may represent non-breathing zone measurements, the data reported herein may not be suitable to assess potential occupational exposure. Site Assessment readings are not representative of an individual's breathing zone (e.g., container head space, ground level, directly above product, etc.).

Preliminary Hand- Held Air Monitoring Locations | ITC Deer Park Tank Fire

Reading Date
6/4/2019 9:00:00 PM to 6/4/2019 10:00:00 PM



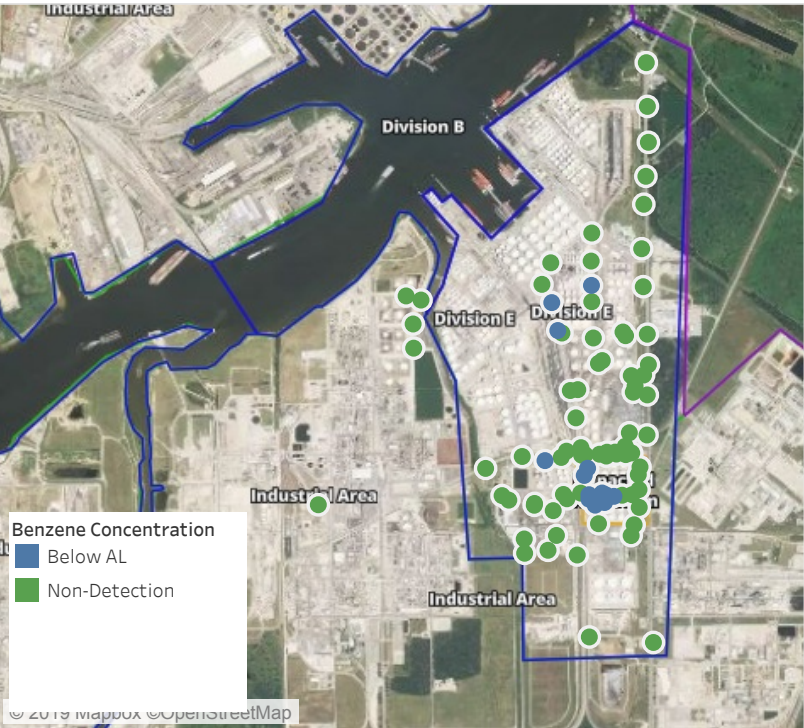
Recent Benzene Detections

Location Category	Reading Date	Range of Detections
Division E	6/4/2019 21:32:51	0.0200 ppm
	6/4/2019 21:31:25	0.0200 ppm
	6/4/2019 21:11:38	0.0200 ppm
	6/4/2019 21:26:40	0.0300 ppm
	6/4/2019 21:34:27	0.0700 ppm
Impacted Tank Farm	6/4/2019 21:25:10	0.2300 ppm
	6/4/2019 21:29:42	0.1900 ppm
	6/4/2019 21:34:04	0.1800 ppm
	6/4/2019 21:36:46	0.1200 ppm
	6/4/2019 21:39:34	0.1000 ppm
	6/4/2019 21:44:00	0.2000 ppm
	6/4/2019 21:49:14	0.1100 ppm
	6/4/2019 21:53:07	0.1400 ppm
	6/4/2019 21:56:47	0.1200 ppm

This data has been provided expeditiously to ITC and regulatory agencies for informational and/or operational purposes only. Data reported within this summary is preliminary in nature and has not undergone complete QA/QC (quality assurance/quality control) process. Until this complete QA/QC process is completed, the locations of each reading are approximate in nature and subject to further refinement. As some readings may represent non-breathing zone measurements, the data reported herein may not be suitable to assess potential occupational exposure. Site Assessment readings are not representative of an individual’s breathing zone (e.g., container head space, ground level, directly above product, etc.).

Preliminary Hand- Held Air Monitoring Locations | ITC Deer Park Tank Fire

Reading Date
6/4/2019 10:00:00 PM to 6/4/2019 11:00:00 PM



Recent Benzene Detections

Location Category	Reading Date	Range of Detections
Division E	6/4/2019 22:45:26	0.0200 ppm
	6/4/2019 22:50:33	0.2000 ppm
	6/4/2019 22:53:44	0.0600 ppm
	6/4/2019 22:42:26	0.0200 ppm
Impacted Tank Farm	6/4/2019 22:01:12	0.0300 ppm
	6/4/2019 22:03:38	0.0400 ppm
	6/4/2019 22:06:32	0.0300 ppm
	6/4/2019 22:41:41	0.0500 ppm
	6/4/2019 22:44:39	0.1100 ppm
	6/4/2019 22:48:39	0.1200 ppm
	6/4/2019 22:51:28	0.0600 ppm
	6/4/2019 22:53:51	0.0600 ppm
	6/4/2019 22:56:55	0.1400 ppm

This data has been provided expeditiously to ITC and regulatory agencies for informational and/or operational purposes only. Data reported within this summary is preliminary in nature and has not undergone complete QA/QC (quality assurance/quality control) process. Until this complete QA/QC process is completed, the locations of each reading are approximate in nature and subject to further refinement. As some readings may represent non-breathing zone measurements, the data reported herein may not be suitable to assess potential occupational exposure. Site Assessment readings are not representative of an individual's breathing zone (e.g., container head space, ground level, directly above product, etc.).