

Preliminary Hand- Held Air Monitoring Locations | ITC Deer Park Tank Fire

Reading Date
6/4/2019 11:00:00 PM to 6/5/2019 12:00:00 AM



Recent Benzene Detections

Location Category	Reading Date	Range of Detections
Impacted Tank Farm	6/4/2019 23:00:54	0.05000 ppm
	6/4/2019 23:05:06	0.05000 ppm
	6/4/2019 23:07:58	0.05000 ppm
	6/4/2019 23:10:38	0.06000 ppm
	6/4/2019 23:13:49	0.06000 ppm
	6/4/2019 23:16:18	0.06000 ppm

This data has been provided expeditiously to ITC and regulatory agencies for informational and/or operational purposes only. Data reported within this summary is preliminary in nature and has not undergone complete QA/QC (quality assurance/quality control) process. Until this complete QA/QC process is completed, the locations of each reading are approximate in nature and subject to further refinement. As some readings may represent non-breathing zone measurements, the data reported herein may not be suitable to assess potential occupational exposure. Site Assessment readings are not representative of an individual's breathing zone (e.g., container head space, ground level, directly above product, etc.).

Preliminary Hand- Held Air Monitoring Locations | ITC Deer Park Tank Fire

Reading Date
6/5/2019 12:00:00 AM to 6/5/2019 1:00:00 AM



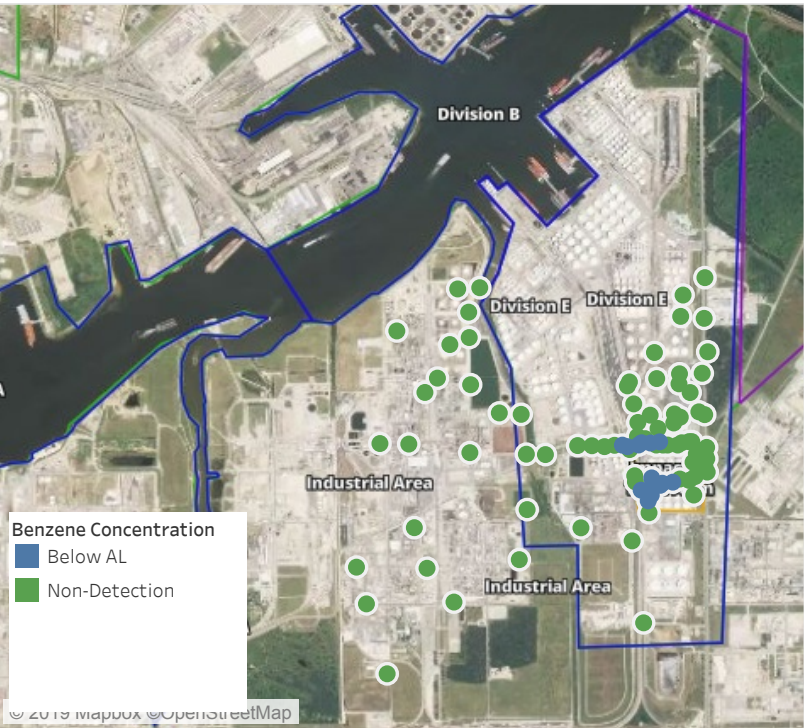
Recent Benzene Detections

Location Category	Reading Date	Range of Detections
Division E	6/5/2019 00:45:10	0.02000 ppm
	6/5/2019 00:38:08	0.09000 ppm
	6/5/2019 00:55:49	0.03000 ppm
	6/5/2019 00:47:11	0.04000 ppm
	6/5/2019 00:50:05	0.02000 ppm
Impacted Tank Farm	6/5/2019 00:06:05	0.09000 ppm
	6/5/2019 00:11:09	0.02000 ppm
	6/5/2019 00:13:54	0.11000 ppm
	6/5/2019 00:21:15	0.08000 ppm
	6/5/2019 00:24:29	0.11000 ppm
	6/5/2019 00:27:17	0.05000 ppm
	6/5/2019 00:32:20	0.03000 ppm
	6/5/2019 00:35:44	0.03000 ppm
	6/5/2019 00:38:43	0.03000 ppm
	6/5/2019 00:41:31	0.04000 ppm
	6/5/2019 00:44:21	0.06000 ppm
	6/5/2019 00:46:43	0.04000 ppm

This data has been provided expeditiously to ITC and regulatory agencies for informational and/or operational purposes only. Data reported within this summary is preliminary in nature and has not undergone complete QA/QC (quality assurance/quality control) process. Until this complete QA/QC process is completed, the locations of each reading are approximate in nature and subject to further refinement. As some readings may represent non-breathing zone measurements, the data reported herein may not be suitable to assess potential occupational exposure. Site Assessment readings are not representative of an individual's breathing zone (e.g., container head space, ground level, directly above product, etc.).

Preliminary Hand- Held Air Monitoring Locations | ITC Deer Park Tank Fire

Reading Date
6/5/2019 1:00:00 AM to 6/5/2019 2:00:00 AM



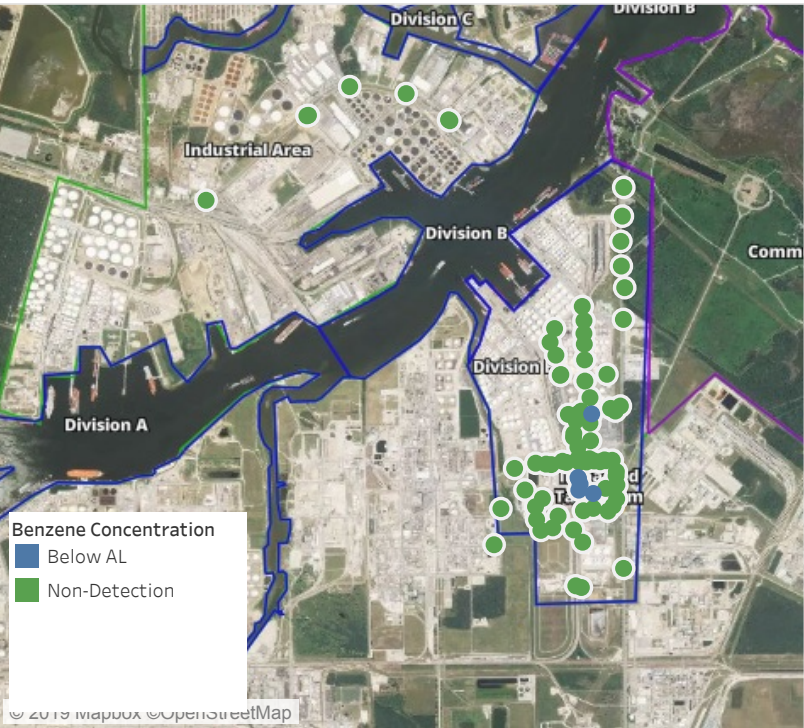
Recent Benzene Detections

Location Category	Reading Date	Range of Detections
Division E	6/5/2019 01:17:07	0.03000 ppm
	6/5/2019 01:29:52	0.03000 ppm
	6/5/2019 01:22:46	0.05000 ppm
	6/5/2019 01:27:48	0.04000 ppm
	6/5/2019 01:25:14	0.04000 ppm
	6/5/2019 01:20:03	0.03000 ppm
Impacted Tank Farm	6/5/2019 01:32:10	0.06000 ppm
	6/5/2019 01:38:32	0.10000 ppm
	6/5/2019 01:42:42	0.11000 ppm
	6/5/2019 01:46:44	0.08000 ppm
	6/5/2019 01:50:27	0.07000 ppm
	6/5/2019 01:53:33	0.09000 ppm
	6/5/2019 01:56:46	0.03000 ppm
	6/5/2019 01:59:39	0.03000 ppm

This data has been provided expeditiously to ITC and regulatory agencies for informational and/or operational purposes only. Data reported within this summary is preliminary in nature and has not undergone complete QA/QC (quality assurance/quality control) process. Until this complete QA/QC process is completed, the locations of each reading are approximate in nature and subject to further refinement. As some readings may represent non-breathing zone measurements, the data reported herein may not be suitable to assess potential occupational exposure. Site Assessment readings are not representative of an individual's breathing zone (e.g., container head space, ground level, directly above product, etc.).

Preliminary Hand- Held Air Monitoring Locations | ITC Deer Park Tank Fire

Reading Date
6/5/2019 2:00:00 AM to 6/5/2019 3:00:00 AM



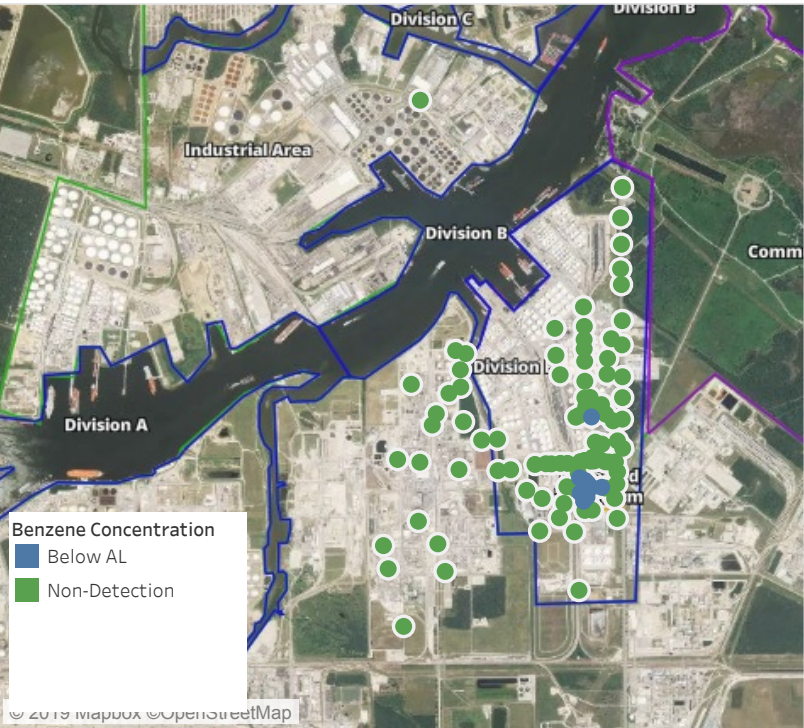
Recent Benzene Detections

Location Category	Reading Date	Range of Detections
Division E	6/5/2019 02:58:13	0.1200 ppm
Impacted Tank Farm	6/5/2019 02:02:58	0.0200 ppm
	6/5/2019 02:05:18	0.0400 ppm
	6/5/2019 02:08:10	0.0400 ppm
	6/5/2019 02:10:41	0.0300 ppm
	6/5/2019 02:58:44	0.0400 ppm

This data has been provided expeditiously to ITC and regulatory agencies for informational and/or operational purposes only. Data reported within this summary is preliminary in nature and has not undergone complete QA/QC (quality assurance/quality control) process. Until this complete QA/QC process is completed, the locations of each reading are approximate in nature and subject to further refinement. As some readings may represent non-breathing zone measurements, the data reported herein may not be suitable to assess potential occupational exposure. Site Assessment readings are not representative of an individual's breathing zone (e.g., container head space, ground level, directly above product, etc.).

Preliminary Hand- Held Air Monitoring Locations | ITC Deer Park Tank Fire

Reading Date
6/5/2019 3:00:00 AM to 6/5/2019 4:00:00 AM



Recent Benzene Detections

Location Category	Reading Date	Range of Detections
Division E	6/5/2019 03:27:52	0.1500 ppm
Impacted Tank Farm	6/5/2019 03:01:18	0.0200 ppm
	6/5/2019 03:04:03	0.0500 ppm
	6/5/2019 03:06:44	0.0700 ppm
	6/5/2019 03:09:20	0.0800 ppm
	6/5/2019 03:12:06	0.0700 ppm
	6/5/2019 03:14:53	0.0500 ppm
	6/5/2019 03:20:16	0.0700 ppm
	6/5/2019 03:23:12	0.0700 ppm
	6/5/2019 03:27:17	0.0800 ppm
	6/5/2019 03:29:29	0.0200 ppm

This data has been provided expeditiously to ITC and regulatory agencies for informational and/or operational purposes only. Data reported within this summary is preliminary in nature and has not undergone complete QA/QC (quality assurance/quality control) process. Until this complete QA/QC process is completed, the locations of each reading are approximate in nature and subject to further refinement. As some readings may represent non-breathing zone measurements, the data reported herein may not be suitable to assess potential occupational exposure. Site Assessment readings are not representative of an individual's breathing zone (e.g., container head space, ground level, directly above product, etc.).

Preliminary Hand- Held Air Monitoring Locations | ITC Deer Park Tank Fire

Reading Date
6/5/2019 4:00:00 AM to 6/5/2019 5:00:00 AM



Recent Benzene Detections

Location Category	Reading Date	Range of Detections
Division E	6/5/2019 04:44:15	0.03000 ppm
Impacted Tank Farm	6/5/2019 04:16:51	0.09000 ppm
	6/5/2019 04:20:30	0.03000 ppm
	6/5/2019 04:25:17	0.02000 ppm
	6/5/2019 04:29:08	0.08000 ppm
	6/5/2019 04:34:36	0.08000 ppm

This data has been provided expeditiously to ITC and regulatory agencies for informational and/or operational purposes only. Data reported within this summary is preliminary in nature and has not undergone complete QA/QC (quality assurance/quality control) process. Until this complete QA/QC process is completed, the locations of each reading are approximate in nature and subject to further refinement. As some readings may represent non-breathing zone measurements, the data reported herein may not be suitable to assess potential occupational exposure. Site Assessment readings are not representative of an individual's breathing zone (e.g., container head space, ground level, directly above product, etc.).

Preliminary Hand- Held Air Monitoring Locations | ITC Deer Park Tank Fire

Reading Date

6/5/2019 5:00:00 AM to 6/5/2019 6:00:00 AM



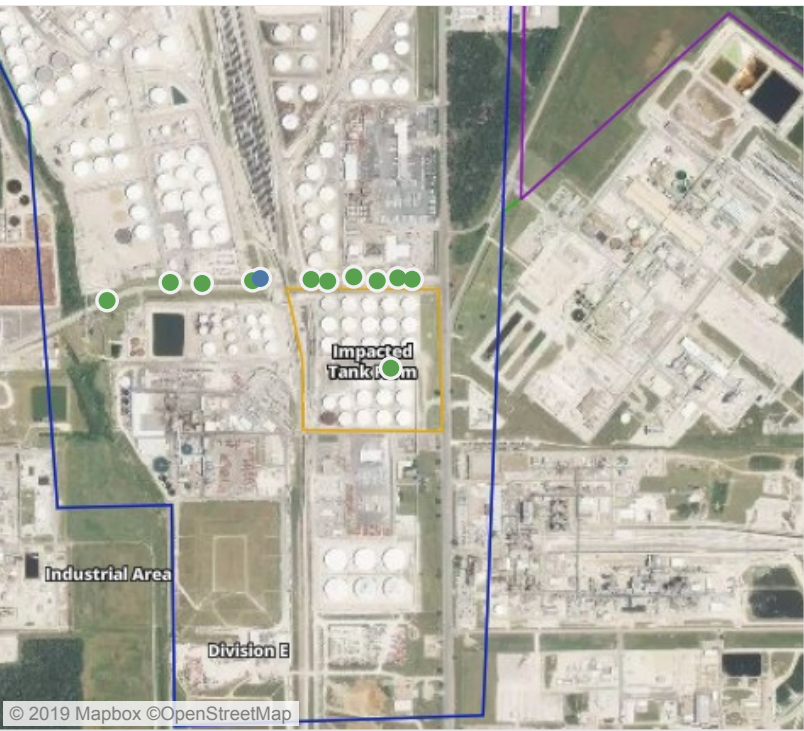
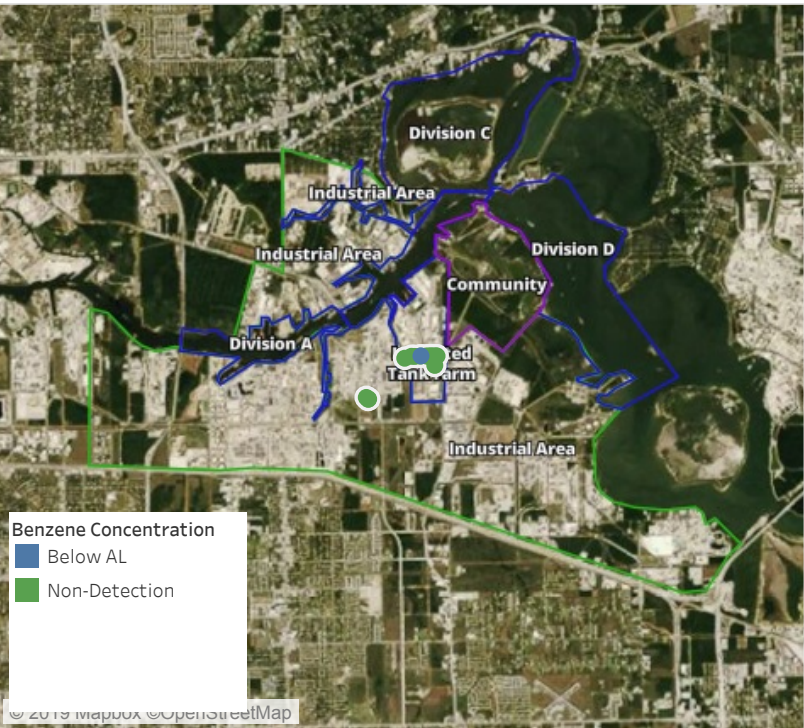
Recent Benzene Detections



This data has been provided expeditiously to ITC and regulatory agencies for informational and/or operational purposes only. Data reported within this summary is preliminary in nature and has not undergone complete QA/QC (quality assurance/quality control) process. Until this complete QA/QC process is completed, the locations of each reading are approximate in nature and subject to further refinement. As some readings may represent non-breathing zone measurements, the data reported herein may not be suitable to assess potential occupational exposure. Site Assessment readings are not representative of an individual's breathing zone (e.g., container head space, ground level, directly above product, etc.).

Preliminary Hand- Held Air Monitoring Locations | ITC Deer Park Tank Fire

Reading Date
6/5/2019 6:00:00 AM to 6/5/2019 7:00:00 AM



Recent Benzene Detections

Location Category	Reading Date	Range of Detections
Division E	6/5/2019 06:43:40	0.03000 ppm

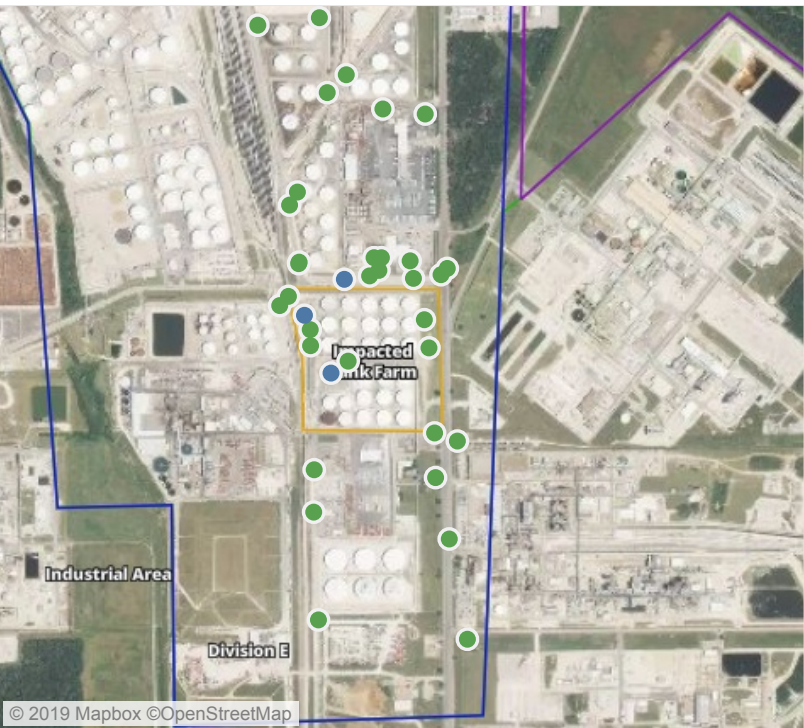
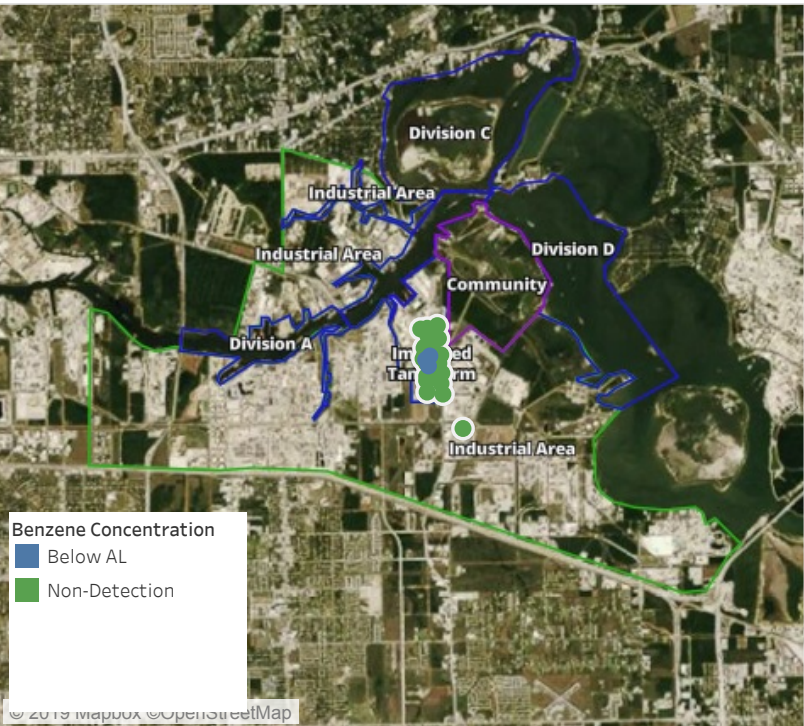
This data has been provided expeditiously to ITC and regulatory agencies for informational and/or operational purposes only. Data reported within this summary is preliminary in nature and has not undergone complete QA/QC (quality assurance/quality control) process. Until this complete QA/QC process is completed, the locations of each reading are approximate in nature and subject to further refinement. As some readings may represent non-breathing zone measurements, the data reported herein may not be suitable to assess potential occupational exposure. Site Assessment readings are not representative of an individual's breathing zone (e.g., container head space, ground level, directly above product, etc.).



Please Note: These updates display data from the 2nd 80's Fire site (Impacted Tank Farm), in the industrial areas surrounding the 2nd 80's Fire site (US Coast Guard Division E), within the Houston Ship Channel (US Coast Guard Divisions A-D), and in the industrial areas north and south of the Houston Ship Channel (Industrial Area). Real-time air monitoring data for the surrounding communities are communicated daily in a separate report.

Preliminary Hand- Held Air Monitoring Locations | ITC Deer Park Tank Fire

Reading Date
6/5/2019 7:00:00 AM to 6/5/2019 8:00:00 AM



Recent Benzene Detections

Location Category	Reading Date	Range of Detections
Division E	6/5/2019 07:28:49	0.03000 ppm
Impacted Tank Farm	6/5/2019 07:41:12	0.06000 ppm
	6/5/2019 07:53:54	0.06000 ppm

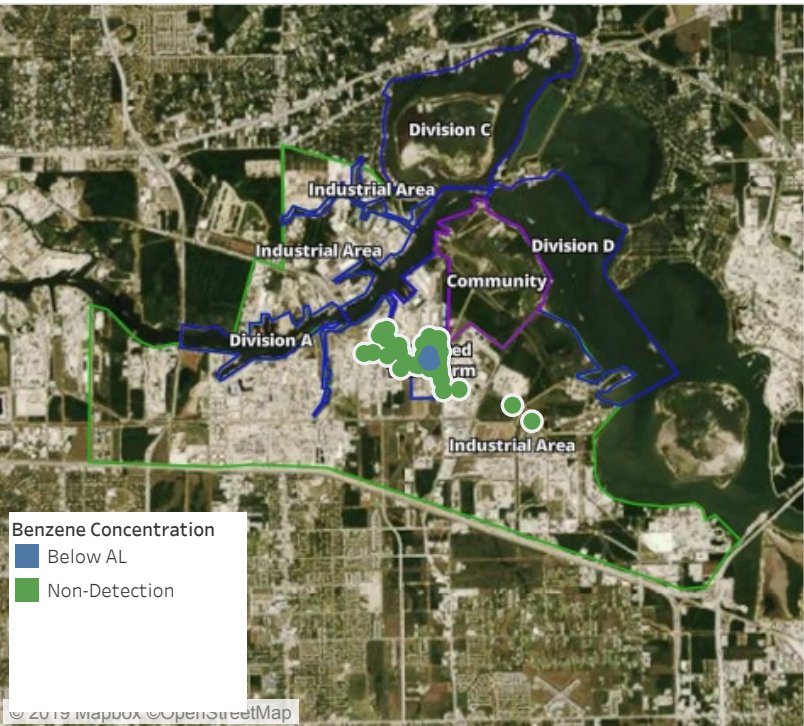
This data has been provided expeditiously to ITC and regulatory agencies for informational and/or operational purposes only. Data reported within this summary is preliminary in nature and has not undergone complete QA/QC (quality assurance/quality control) process. Until this complete QA/QC process is completed, the locations of each reading are approximate in nature and subject to further refinement. As some readings may represent non-breathing zone measurements, the data reported herein may not be suitable to assess potential occupational exposure. Site Assessment readings are not representative of an individual's breathing zone (e.g., container head space, ground level, directly above product, etc.).



Please Note: These updates display data from the 2nd 80's Fire site (Impacted Tank Farm), in the industrial areas surrounding the 2nd 80's Fire site (US Coast Guard Division E), within the Houston Ship Channel (US Coast Guard Divisions A-D), and in the industrial areas north and south of the Houston Ship Channel (Industrial Area). Real-time air monitoring data for the surrounding communities are communicated daily in a separate report.

Preliminary Hand- Held Air Monitoring Locations | ITC Deer Park Tank Fire

Reading Date
6/5/2019 8:00:00 AM to 6/5/2019 9:00:00 AM



Recent Benzene Detections

Location Category	Reading Date	Range of Detections
Division E	6/5/2019 08:00:59	0.02000 ppm
Impacted Tank Farm	6/5/2019 08:04:09	0.04000 ppm
	6/5/2019 08:37:54	0.05000 ppm
	6/5/2019 08:53:15	0.03000 ppm

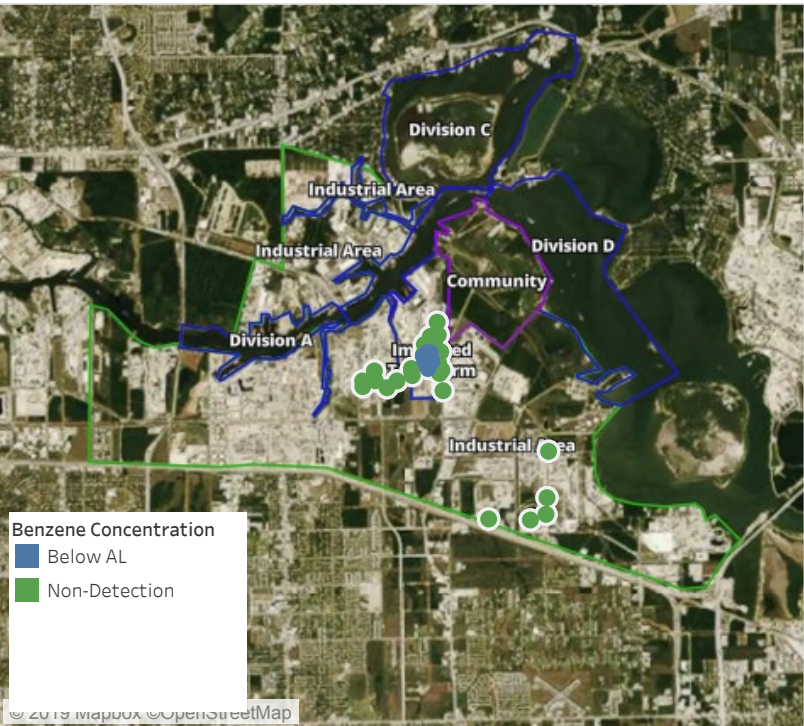
This data has been provided expeditiously to ITC and regulatory agencies for informational and/or operational purposes only. Data reported within this summary is preliminary in nature and has not undergone complete QA/QC (quality assurance/quality control) process. Until this complete QA/QC process is completed, the locations of each reading are approximate in nature and subject to further refinement. As some readings may represent non-breathing zone measurements, the data reported herein may not be suitable to assess potential occupational exposure. Site Assessment readings are not representative of an individual's breathing zone (e.g., container head space, ground level, directly above product, etc.).



Please Note: These updates display data from the 2nd 80's Fire site (Impacted Tank Farm), in the industrial areas surrounding the 2nd 80's Fire site (US Coast Guard Division E), within the Houston Ship Channel (US Coast Guard Divisions A-D), and in the industrial areas north and south of the Houston Ship Channel (Industrial Area). Real-time air monitoring data for the surrounding communities are communicated daily in a separate report.

Preliminary Hand- Held Air Monitoring Locations | ITC Deer Park Tank Fire

Reading Date
6/5/2019 9:00:00 AM to 6/5/2019 10:00:00 AM



Recent Benzene Detections

Location Category	Reading Date	Range of Detections
Division E	6/5/2019 09:20:15	0.04000 ppm
	6/5/2019 09:24:58	0.04000 ppm
	6/5/2019 09:26:46	0.03000 ppm
	6/5/2019 09:21:07	0.02000 ppm
	6/5/2019 09:26:31	0.02000 ppm
Impacted Tank Farm	6/5/2019 09:00:12	0.07000 ppm
	6/5/2019 09:01:00	0.03000 ppm
	6/5/2019 09:27:47	0.06000 ppm

This data has been provided expeditiously to ITC and regulatory agencies for informational and/or operational purposes only. Data reported within this summary is preliminary in nature and has not undergone complete QA/QC (quality assurance/quality control) process. Until this complete QA/QC process is completed, the locations of each reading are approximate in nature and subject to further refinement. As some readings may represent non-breathing zone measurements, the data reported herein may not be suitable to assess potential occupational exposure. Site Assessment readings are not representative of an individual's breathing zone (e.g., container head space, ground level, directly above product, etc.).

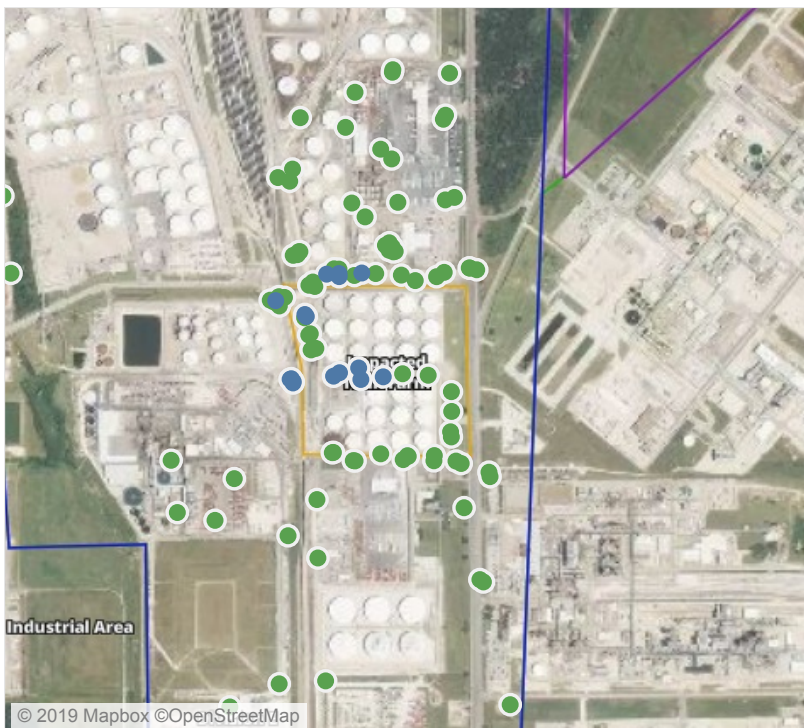
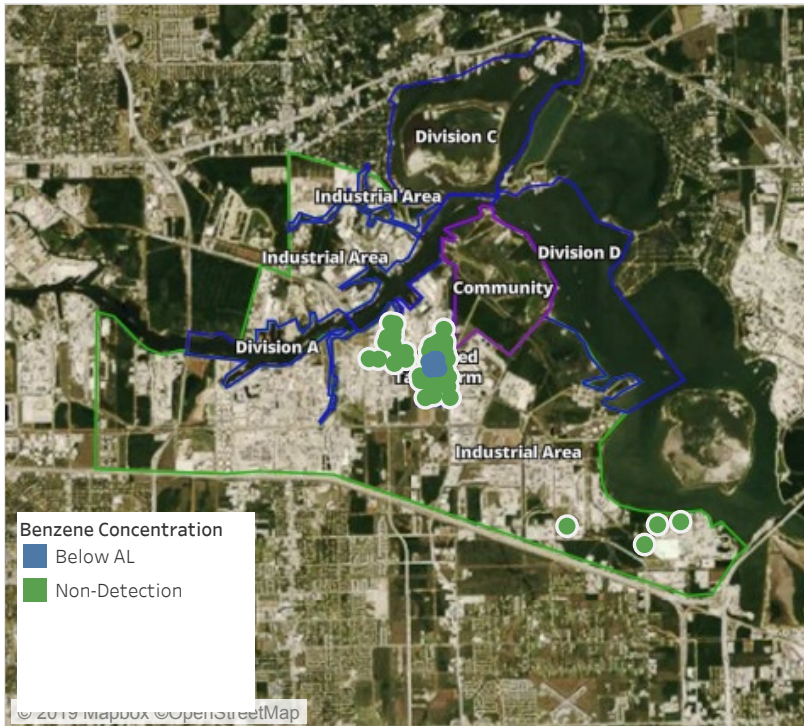


Please Note: These updates display data from the 2nd 80's Fire site (Impacted Tank Farm), in the industrial areas surrounding the 2nd 80's Fire site (US Coast Guard Division E), within the Houston Ship Channel (US Coast Guard Divisions A-D), and in the industrial areas north and south of the Houston Ship Channel (Industrial Area). Real-time air monitoring data for the surrounding communities are communicated daily in a separate report.

Preliminary Hand- Held Air Monitoring Locations | ITC Deer Park Tank Fire

Reading Date

6/5/2019 10:00:00 AM to 6/5/2019 11:00:00 PM



Recent Benzene Detections

Location Category	Reading Date	Range of Detections
Division E	6/5/2019 10:17:05	0.02000 ppm
	6/5/2019 10:13:04	0.02000 ppm
	6/5/2019 10:37:49	0.08000 ppm
	6/5/2019 10:42:43	0.04000 ppm
	6/5/2019 10:33:16	0.09000 ppm
	6/5/2019 10:48:20	0.04000 ppm
	6/5/2019 11:18:28	0.02000 ppm
	6/5/2019 11:56:40	0.03000 ppm
Impacted Tank Farm	6/5/2019 12:09:00	0.02000 ppm
	6/5/2019 10:03:25	0.04000 ppm
	6/5/2019 10:20:19	0.05000 ppm
	6/5/2019 10:39:41	0.09000 ppm
	6/5/2019 11:04:10	0.07000 ppm
	6/5/2019 11:04:06	0.05000 ppm
	6/5/2019 11:44:19	0.09000 ppm
	6/5/2019 12:02:39	0.03000 ppm

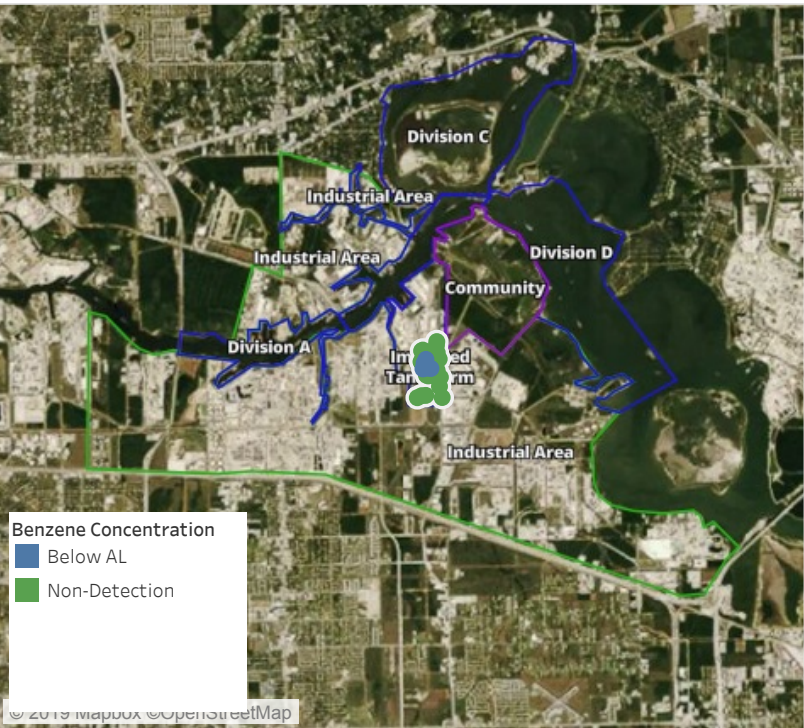
This data has been provided expeditiously to ITC and regulatory agencies for informational and/or operational purposes only. Data reported within this summary is preliminary in nature and has not undergone complete QA/QC (quality assurance/quality control) process. Until this complete QA/QC process is completed, the locations of each reading are approximate in nature and subject to further refinement. As some readings may represent non-breathing zone measurements, the data reported herein may not be suitable to assess potential occupational exposure. Site Assessment readings are not representative of an individual's breathing zone (e.g., container head space, ground level, directly above product, etc.).



Please Note: These updates display data from the 2nd 80's Fire site (Impacted Tank Farm), in the industrial areas surrounding the 2nd 80's Fire site (US Coast Guard Division E), within the Houston Ship Channel (US Coast Guard Divisions A-D), and in the industrial areas north and south of the Houston Ship Channel (Industrial Area). Real-time air monitoring data for the surrounding communities are communicated daily in a separate report.

Preliminary Hand- Held Air Monitoring Locations | ITC Deer Park Tank Fire

Reading Date
6/5/2019 11:00:00 AM to 6/5/2019 12:00:00 PM



Recent Benzene Detections

Location Category	Reading Date	Range of Detections
Division E	6/5/2019 11:18:28	0.02000 ppm
	6/5/2019 11:56:40	0.03000 ppm
Impacted Tank Farm	6/5/2019 11:04:10	0.07000 ppm
	6/5/2019 11:04:06	0.05000 ppm
	6/5/2019 11:44:19	0.09000 ppm

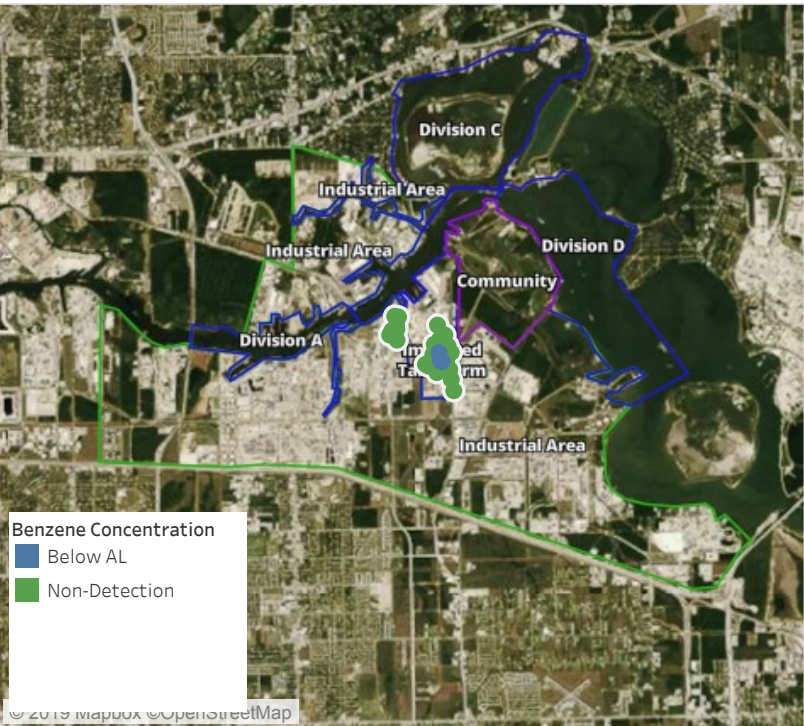
This data has been provided expeditiously to ITC and regulatory agencies for informational and/or operational purposes only. Data reported within this summary is preliminary in nature and has not undergone complete QA/QC (quality assurance/quality control) process. Until this complete QA/QC process is completed, the locations of each reading are approximate in nature and subject to further refinement. As some readings may represent non-breathing zone measurements, the data reported herein may not be suitable to assess potential occupational exposure. Site Assessment readings are not representative of an individual's breathing zone (e.g., container head space, ground level, directly above product, etc.).



Please Note: These updates display data from the 2nd 80's Fire site (Impacted Tank Farm), in the industrial areas surrounding the 2nd 80's Fire site (US Coast Guard Division E), within the Houston Ship Channel (US Coast Guard Divisions A-D), and in the industrial areas north and south of the Houston Ship Channel (Industrial Area). Real-time air monitoring data for the surrounding communities are communicated daily in a separate report.

Preliminary Hand- Held Air Monitoring Locations | ITC Deer Park Tank Fire

Reading Date
6/5/2019 12:00:00 PM to 6/5/2019 1:00:00 PM



Recent Benzene Detections

Location Category	Reading Date	Range of Detections
Division E	6/5/2019 12:09:00	0.02000 ppm
Impacted Tank Farm	6/5/2019 12:02:39	0.03000 ppm
	6/5/2019 12:16:42	0.03000 ppm

This data has been provided expeditiously to ITC and regulatory agencies for informational and/or operational purposes only. Data reported within this summary is preliminary in nature and has not undergone complete QA/QC (quality assurance/quality control) process. Until this complete QA/QC process is completed, the locations of each reading are approximate in nature and subject to further refinement. As some readings may represent non-breathing zone measurements, the data reported herein may not be suitable to assess potential occupational exposure. Site Assessment readings are not representative of an individual's breathing zone (e.g., container head space, ground level, directly above product, etc.).

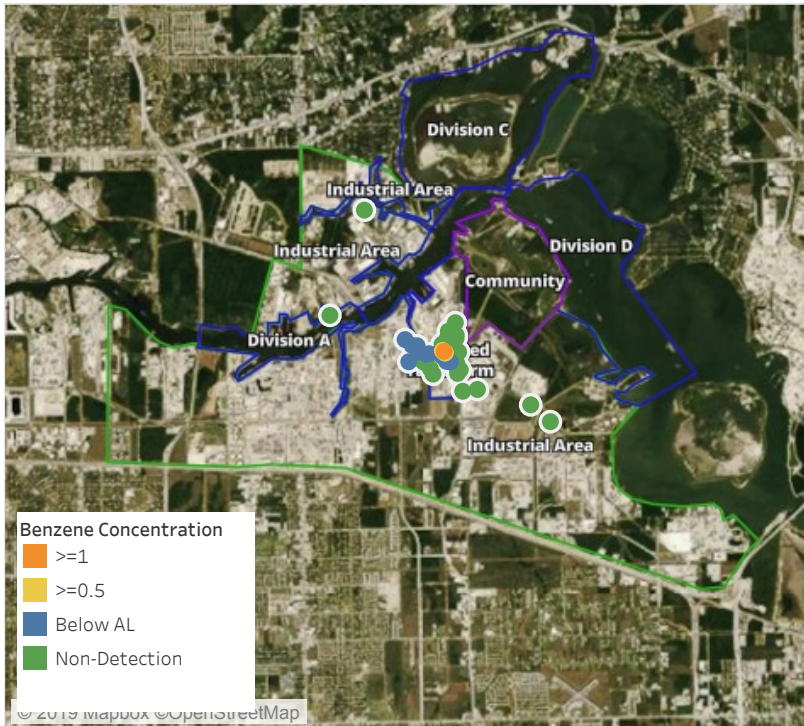


Please Note: These updates display data from the 2nd 80's Fire site (Impacted Tank Farm), in the industrial areas surrounding the 2nd 80's Fire site (US Coast Guard Division E), within the Houston Ship Channel (US Coast Guard Divisions A-D), and in the industrial areas north and south of the Houston Ship Channel (Industrial Area). Real-time air monitoring data for the surrounding communities are communicated daily in a separate report.

Preliminary Hand- Held Air Monitoring Locations | ITC Deer Park Tank Fire

Reading Date

6/5/2019 1:00:00 PM to 6/5/2019 2:00:00 PM



Recent Benzene Detections

Location Category	Reading Date	Range of Detections
Division E	6/5/2019 13:28:38	0.550 ppm
	6/5/2019 13:34:45	1.680 ppm
	6/5/2019 13:45:01	0.020 ppm
	6/5/2019 13:41:41	0.290 ppm
	6/5/2019 13:50:12	0.090 ppm
	6/5/2019 13:38:55	0.050 ppm
	6/5/2019 13:28:00	0.570 ppm
	6/5/2019 13:30:00	0.680 ppm
	6/5/2019 13:33:00	0.810 ppm
Impacted Tank Farm	6/5/2019 13:36:00	0.710 ppm
	6/5/2019 13:07:22	0.030 ppm
	6/5/2019 13:22:16	0.100 ppm
	6/5/2019 13:30:21	0.120 ppm
Industrial Area	6/5/2019 13:51:10	0.040 ppm
	6/5/2019 13:15:15	0.050 ppm
	6/5/2019 13:39:01	0.050 ppm
	6/5/2019 13:29:12	0.040 ppm
	6/5/2019 13:53:29	0.030 ppm
	6/5/2019 13:57:04	0.030 ppm

This data has been provided expeditiously to ITC and regulatory agencies for informational and/or operational purposes only. Data reported within this summary is preliminary in nature and has not undergone complete QA/QC (quality assurance/quality control) process. Until this complete QA/QC process is completed, the locations of each reading are approximate in nature and subject to further refinement. As some readings may represent non-breathing zone measurements, the data reported herein may not be suitable to assess potential occupational exposure. Site Assessment readings are not representative of an individual's breathing zone (e.g., container head space, ground level, directly above product, etc.).

Reading Date
6/5/2019 1:00:00 PM to 6/5/2019 2:00:00 PM

Benzene Action Level Concentration (ppm)
 >=1

PRELIMINARY
Recent Benzene Detections Greater than 1.00 ppm

Reading Date	Location Category	GPS	Google Maps URL	Range of Detections
6/5/2019 13:34:45	Division E	29.7335920,-95.0930340	https://www.google.com/maps/search/?api=1&query=29.7335920,-95.0930340	1.680 ppm

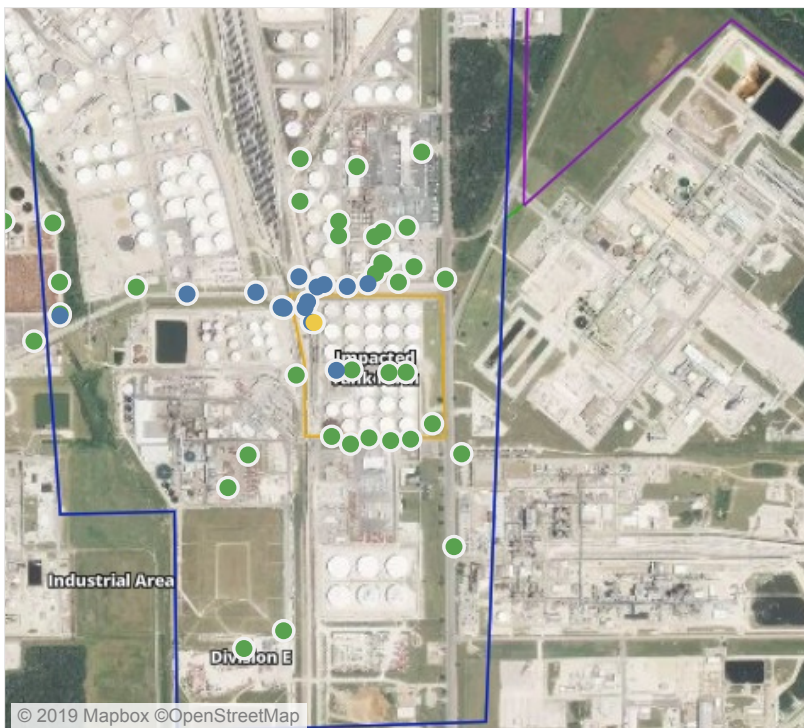


Please Note: These updates display data from the 2nd 80's Fire site (Impacted Tank Farm), in the industrial areas surrounding the 2nd 80's Fire site (US Coast Guard Division E), within the Houston Ship Channel (US Coast Guard Divisions A-D), and in the industrial areas north and south of the Houston Ship Channel (Industrial Area). Real-time air monitoring data for the surrounding communities are communicated daily in a separate report.

Preliminary Hand- Held Air Monitoring Locations | ITC Deer Park Tank Fire

Reading Date

6/5/2019 2:00:00 PM to 6/5/2019 3:00:00 PM



Recent Benzene Detections

Location Category	Reading Date	Range of Detections
Division E	6/5/2019 14:23:19	0.1000 ppm
	6/5/2019 14:19:38	0.0600 ppm
	6/5/2019 14:31:19	0.0500 ppm
	6/5/2019 14:26:17	0.0700 ppm
	6/5/2019 14:31:01	0.0300 ppm
	6/5/2019 14:23:34	0.0400 ppm
	6/5/2019 14:10:00	0.0400 ppm
	6/5/2019 14:50:06	0.1500 ppm
	6/5/2019 14:57:10	0.0700 ppm
Impacted Tank Farm	6/5/2019 14:53:01	0.0700 ppm
	6/5/2019 14:33:49	0.1100 ppm
	6/5/2019 14:55:53	0.1100 ppm
	6/5/2019 14:10:48	0.0900 ppm
	6/5/2019 14:06:21	0.0700 ppm
Industrial Area	6/5/2019 14:58:08	0.8300 ppm
	6/5/2019 14:04:12	0.0300 ppm

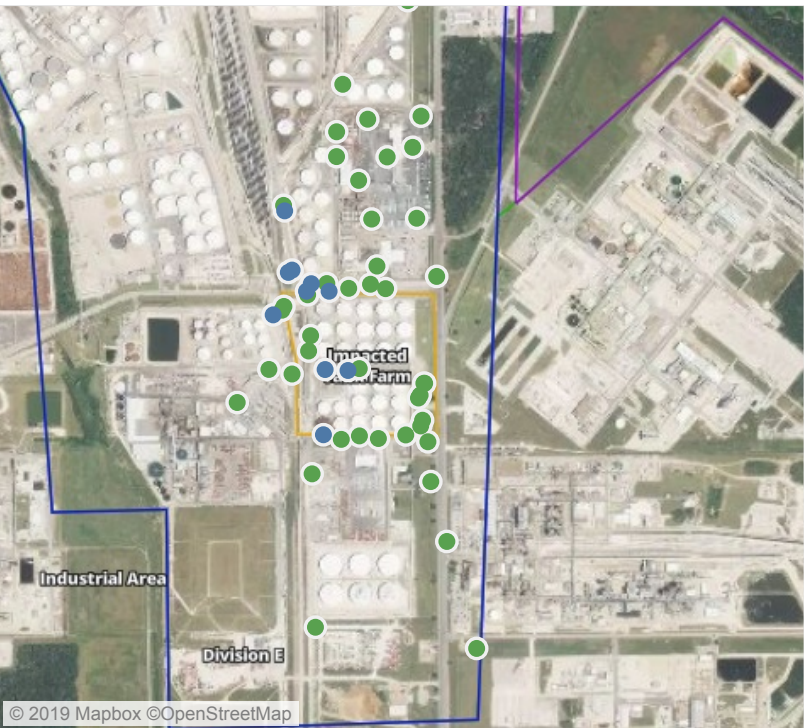
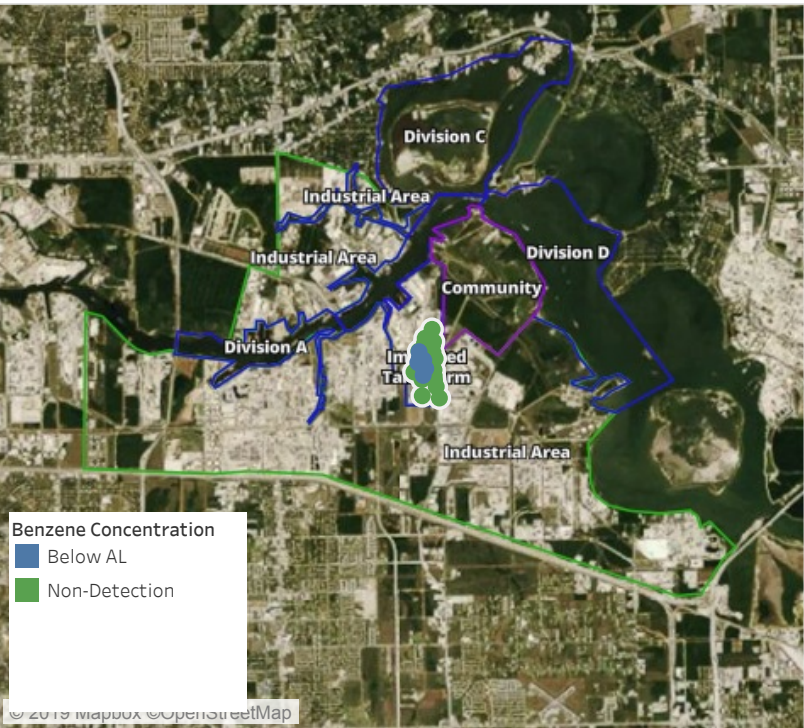
This data has been provided expeditiously to ITC and regulatory agencies for informational and/or operational purposes only. Data reported within this summary is preliminary in nature and has not undergone complete QA/QC (quality assurance/quality control) process. Until this complete QA/QC process is completed, the locations of each reading are approximate in nature and subject to further refinement. As some readings may represent non-breathing zone measurements, the data reported herein may not be suitable to assess potential occupational exposure. Site Assessment readings are not representative of an individual's breathing zone (e.g., container head space, ground level, directly above product, etc.).



Please Note: These updates display data from the 2nd 80's Fire site (Impacted Tank Farm), in the industrial areas surrounding the 2nd 80's Fire site (US Coast Guard Division E), within the Houston Ship Channel (US Coast Guard Divisions A-D), and in the industrial areas north and south of the Houston Ship Channel (Industrial Area). Real-time air monitoring data for the surrounding communities are communicated daily in a separate report.

Preliminary Hand- Held Air Monitoring Locations | ITC Deer Park Tank Fire

Reading Date
6/5/2019 3:00:00 PM to 6/5/2019 4:00:00 PM



Recent Benzene Detections

Location Category	Reading Date	Range of Detections
Division E	6/5/2019 15:00:27	0.03000 ppm
	6/5/2019 15:04:58	0.11000 ppm
	6/5/2019 15:08:00	0.02000 ppm
	6/5/2019 15:12:00	0.10000 ppm
	6/5/2019 15:29:48	0.02000 ppm
	6/5/2019 15:35:10	0.03000 ppm
Impacted Tank Farm	6/5/2019 15:43:24	0.03000 ppm
	6/5/2019 15:17:34	0.06000 ppm
	6/5/2019 15:25:17	0.08000 ppm
	6/5/2019 15:34:21	0.03000 ppm

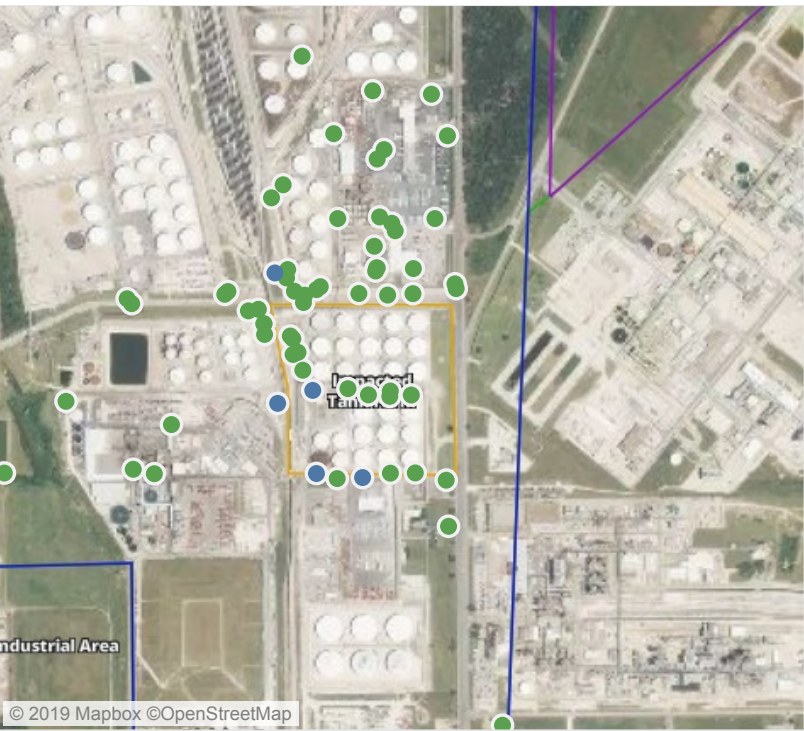
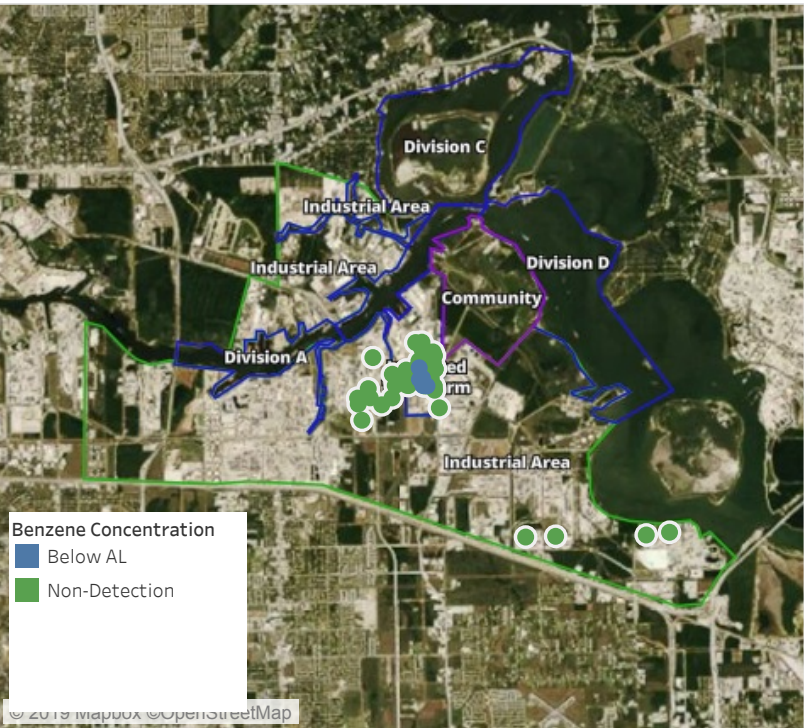
This data has been provided expeditiously to ITC and regulatory agencies for informational and/or operational purposes only. Data reported within this summary is preliminary in nature and has not undergone complete QA/QC (quality assurance/quality control) process. Until this complete QA/QC process is completed, the locations of each reading are approximate in nature and subject to further refinement. As some readings may represent non-breathing zone measurements, the data reported herein may not be suitable to assess potential occupational exposure. Site Assessment readings are not representative of an individual's breathing zone (e.g., container head space, ground level, directly above product, etc.).



Please Note: These updates display data from the 2nd 80's Fire site (Impacted Tank Farm), in the industrial areas surrounding the 2nd 80's Fire site (US Coast Guard Division E), within the Houston Ship Channel (US Coast Guard Divisions A-D), and in the industrial areas north and south of the Houston Ship Channel (Industrial Area). Real-time air monitoring data for the surrounding communities are communicated daily in a separate report.

Preliminary Hand- Held Air Monitoring Locations | ITC Deer Park Tank Fire

Reading Date
6/5/2019 4:00:00 PM to 6/5/2019 5:00:00 PM



Recent Benzene Detections

Location Category	Reading Date	Range of Detections
Division E	6/5/2019 16:17:34	0.03000 ppm
	6/5/2019 16:30:00	0.04000 ppm
	6/5/2019 16:57:15	0.02000 ppm
Impacted Tank Farm	6/5/2019 16:21:17	0.06000 ppm
	6/5/2019 16:26:32	0.03000 ppm

This data has been provided expeditiously to ITC and regulatory agencies for informational and/or operational purposes only. Data reported within this summary is preliminary in nature and has not undergone complete QA/QC (quality assurance/quality control) process. Until this complete QA/QC process is completed, the locations of each reading are approximate in nature and subject to further refinement. As some readings may represent non-breathing zone measurements, the data reported herein may not be suitable to assess potential occupational exposure. Site Assessment readings are not representative of an individual's breathing zone (e.g., container head space, ground level, directly above product, etc.).



Please Note: These updates display data from the 2nd 80's Fire site (Impacted Tank Farm), in the industrial areas surrounding the 2nd 80's Fire site (US Coast Guard Division E), within the Houston Ship Channel (US Coast Guard Divisions A-D), and in the industrial areas north and south of the Houston Ship Channel (Industrial Area). Real-time air monitoring data for the surrounding communities are communicated daily in a separate report.

Preliminary Hand- Held Air Monitoring Locations | ITC Deer Park Tank Fire

Reading Date
6/5/2019 5:00:00 PM to 6/5/2019 6:00:00 PM



Recent Benzene Detections

Location Category	Reading Date	Range of Detections
Division E	6/5/2019 17:09:40	0.0200 ppm
	6/5/2019 17:37:23	0.0800 ppm
	6/5/2019 17:46:12	0.1200 ppm
	6/5/2019 17:49:32	0.0600 ppm
	6/5/2019 17:44:37	0.0700 ppm
	6/5/2019 17:39:19	0.0600 ppm
Impacted Tank Farm	6/5/2019 17:26:06	0.0600 ppm
	6/5/2019 17:17:45	0.0300 ppm

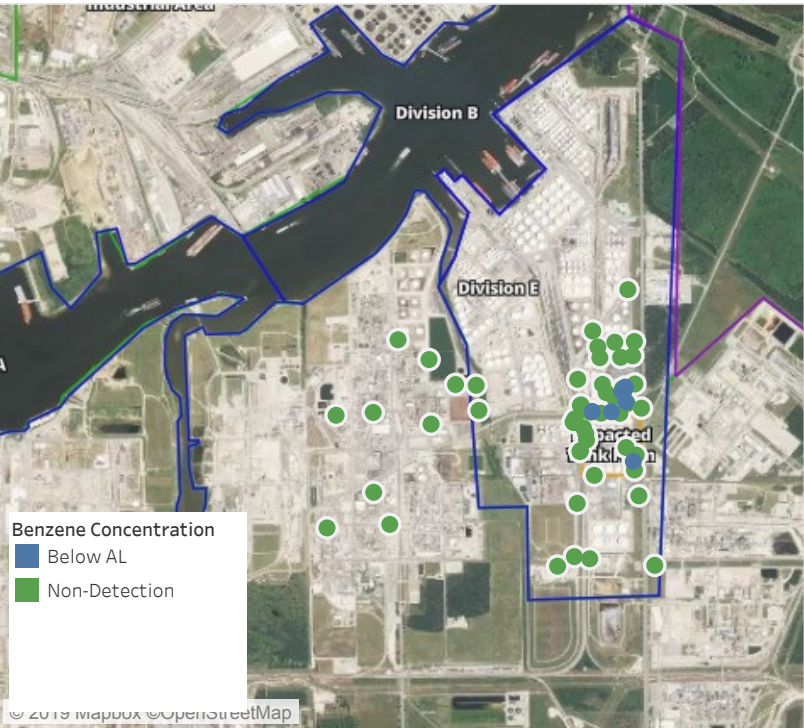
This data has been provided expeditiously to ITC and regulatory agencies for informational and/or operational purposes only. Data reported within this summary is preliminary in nature and has not undergone complete QA/QC (quality assurance/quality control) process. Until this complete QA/QC process is completed, the locations of each reading are approximate in nature and subject to further refinement. As some readings may represent non-breathing zone measurements, the data reported herein may not be suitable to assess potential occupational exposure. Site Assessment readings are not representative of an individual's breathing zone (e.g., container head space, ground level, directly above product, etc.).



Please Note: These updates display data from the 2nd 80's Fire site (Impacted Tank Farm), in the industrial areas surrounding the 2nd 80's Fire site (US Coast Guard Division E), within the Houston Ship Channel (US Coast Guard Divisions A-D), and in the industrial areas north and south of the Houston Ship Channel (Industrial Area). Real-time air monitoring data for the surrounding communities are communicated daily in a separate report.

Preliminary Hand- Held Air Monitoring Locations | ITC Deer Park Tank Fire

Reading Date
6/5/2019 6:00:00 PM to 6/5/2019 7:00:00 PM



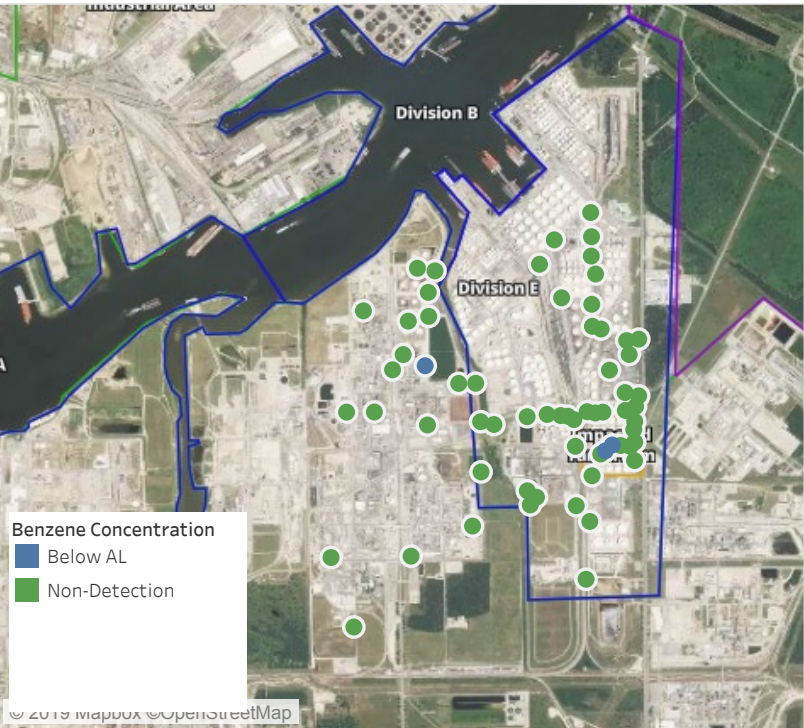
Recent Benzene Detections

Location Category	Reading Date	Range of Detections
Division E	6/5/2019 18:38:34	0.03000 ppm
	6/5/2019 18:35:59	0.03000 ppm
	6/5/2019 18:41:05	0.02000 ppm
	6/5/2019 18:34:26	0.05000 ppm
	6/5/2019 18:47:24	0.05000 ppm
Impacted Tank Farm	6/5/2019 18:33:55	0.05000 ppm
	6/5/2019 18:35:26	0.05000 ppm

This data has been provided expeditiously to ITC and regulatory agencies for informational and/or operational purposes only. Data reported within this summary is preliminary in nature and has not undergone complete QA/QC (quality assurance/quality control) process. Until this complete QA/QC process is completed, the locations of each reading are approximate in nature and subject to further refinement. As some readings may represent non-breathing zone measurements, the data reported herein may not be suitable to assess potential occupational exposure. Site Assessment readings are not representative of an individual's breathing zone (e.g., container head space, ground level, directly above product, etc.).

Preliminary Hand- Held Air Monitoring Locations | ITC Deer Park Tank Fire

Reading Date
6/5/2019 7:00:00 PM to 6/5/2019 8:00:00 PM



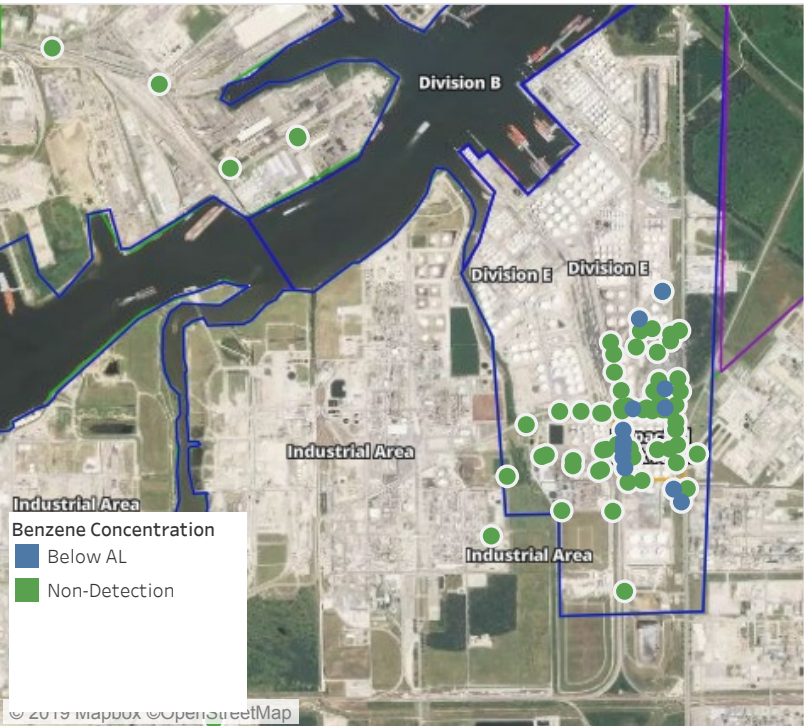
Recent Benzene Detections

Location Category	Reading Date	Range of Detections
Impacted Tank Farm	6/5/2019 19:45:46	0.02000 ppm
	6/5/2019 19:50:16	0.03000 ppm
Industrial Area	6/5/2019 19:49:29	0.05000 ppm

This data has been provided expeditiously to ITC and regulatory agencies for informational and/or operational purposes only. Data reported within this summary is preliminary in nature and has not undergone complete QA/QC (quality assurance/quality control) process. Until this complete QA/QC process is completed, the locations of each reading are approximate in nature and subject to further refinement. As some readings may represent non-breathing zone measurements, the data reported herein may not be suitable to assess potential occupational exposure. Site Assessment readings are not representative of an individual's breathing zone (e.g., container head space, ground level, directly above product, etc.).

Preliminary Hand- Held Air Monitoring Locations | ITC Deer Park Tank Fire

Reading Date
6/5/2019 8:00:00 PM to 6/5/2019 9:00:00 PM



Recent Benzene Detections

Location Category	Reading Date	Range of Detections
Division E	6/5/2019 20:42:33	0.05000 ppm
	6/5/2019 20:44:20	0.02000 ppm
	6/5/2019 20:16:22	0.02000 ppm
	6/5/2019 20:36:57	0.02000 ppm
	6/5/2019 20:40:42	0.02000 ppm
	6/5/2019 20:39:07	0.09000 ppm
	6/5/2019 20:47:10	0.07000 ppm
Impacted Tank Farm	6/5/2019 20:09:30	0.03000 ppm
	6/5/2019 20:15:06	0.02000 ppm
	6/5/2019 20:18:18	0.03000 ppm
	6/5/2019 20:21:20	0.03000 ppm
	6/5/2019 20:24:20	0.02000 ppm
	6/5/2019 20:26:40	0.02000 ppm

This data has been provided expeditiously to ITC and regulatory agencies for informational and/or operational purposes only. Data reported within this summary is preliminary in nature and has not undergone complete QA/QC (quality assurance/quality control) process. Until this complete QA/QC process is completed, the locations of each reading are approximate in nature and subject to further refinement. As some readings may represent non-breathing zone measurements, the data reported herein may not be suitable to assess potential occupational exposure. Site Assessment readings are not representative of an individual's breathing zone (e.g., container head space, ground level, directly above product, etc.).

Preliminary Hand- Held Air Monitoring Locations | ITC Deer Park Tank Fire

Reading Date
6/5/2019 9:00:00 PM to 6/5/2019 10:00:00 PM



Recent Benzene Detections

Location Category	Reading Date	Range of Detections
Division E	6/5/2019 21:16:56	0.0200 ppm
	6/5/2019 21:09:10	0.0200 ppm
	6/5/2019 21:15:14	0.1700 ppm
	6/5/2019 21:15:52	0.0300 ppm
	6/5/2019 21:21:21	0.0400 ppm
	6/5/2019 21:33:11	0.0400 ppm
Impacted Tank Farm	6/5/2019 21:27:12	0.0200 ppm
	6/5/2019 21:33:19	0.0400 ppm
	6/5/2019 21:37:22	0.0500 ppm
	6/5/2019 21:33:48	0.0200 ppm

This data has been provided expeditiously to ITC and regulatory agencies for informational and/or operational purposes only. Data reported within this summary is preliminary in nature and has not undergone complete QA/QC (quality assurance/quality control) process. Until this complete QA/QC process is completed, the locations of each reading are approximate in nature and subject to further refinement. As some readings may represent non-breathing zone measurements, the data reported herein may not be suitable to assess potential occupational exposure. Site Assessment readings are not representative of an individual's breathing zone (e.g., container head space, ground level, directly above product, etc.).

Preliminary Hand- Held Air Monitoring Locations | ITC Deer Park Tank Fire

Reading Date
6/5/2019 10:00:00 PM to 6/5/2019 11:00:00 PM



Recent Benzene Detections

Location Category	Reading Date	Range of Detections
Division E	6/5/2019 22:07:46	0.0200 ppm
	6/5/2019 22:03:51	0.0300 ppm
	6/5/2019 22:06:35	0.0700 ppm
	6/5/2019 22:31:27	0.0500 ppm
	6/5/2019 22:34:39	0.0200 ppm
	6/5/2019 22:33:03	0.0400 ppm
	6/5/2019 22:23:09	0.2000 ppm
	6/5/2019 22:18:03	0.0400 ppm
	6/5/2019 22:23:55	0.0400 ppm
Impacted Tank Farm	6/5/2019 22:54:37	0.0600 ppm
	6/5/2019 22:17:51	0.0200 ppm
Industrial Area	6/5/2019 22:51:30	0.0300 ppm
	6/5/2019 22:37:19	0.0400 ppm
	6/5/2019 22:31:49	0.0400 ppm
	6/5/2019 22:34:36	0.0400 ppm

This data has been provided expeditiously to ITC and regulatory agencies for informational and/or operational purposes only. Data reported within this summary is preliminary in nature and has not undergone complete QA/QC (quality assurance/quality control) process. Until this complete QA/QC process is completed, the locations of each reading are approximate in nature and subject to further refinement. As some readings may represent non-breathing zone measurements, the data reported herein may not be suitable to assess potential occupational exposure. Site Assessment readings are not representative of an individual's breathing zone (e.g., container head space, ground level, directly above product, etc.).