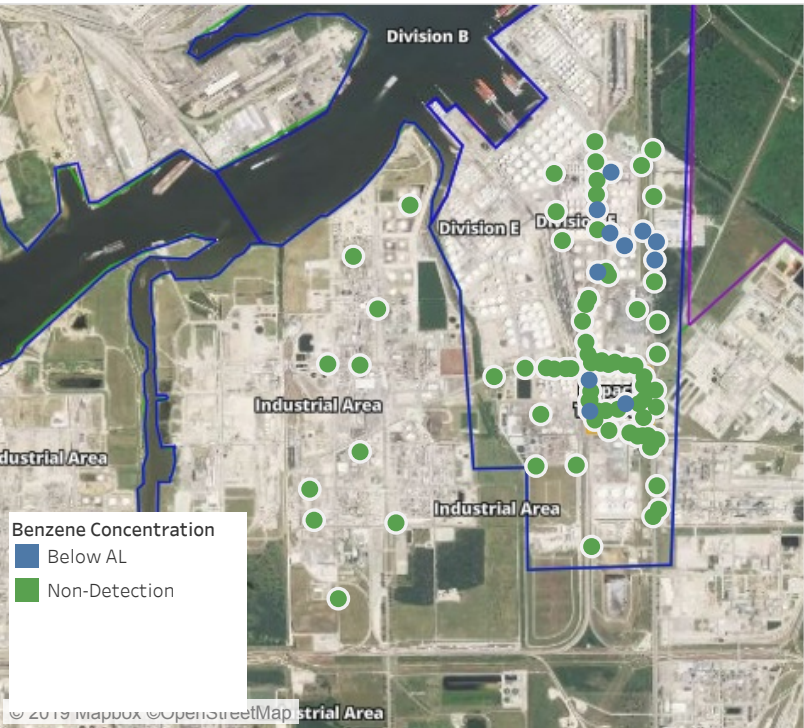


Preliminary Hand- Held Air Monitoring Locations | ITC Deer Park Tank Fire

Reading Date
6/5/2019 11:00:00 PM to 6/6/2019 12:00:00 AM



Recent Benzene Detections

Location Category	Reading Date	Range of Detections
Division E	6/5/2019 23:39:51	0.0300 ppm
	6/5/2019 23:43:56	0.0200 ppm
	6/5/2019 23:21:31	0.0200 ppm
	6/5/2019 23:24:42	0.1600 ppm
	6/5/2019 23:42:07	0.0900 ppm
Impacted Tank Farm	6/5/2019 23:10:21	0.0300 ppm
	6/5/2019 23:23:11	0.0300 ppm
	6/5/2019 23:30:48	0.0200 ppm
Industrial Area	6/5/2019 23:34:57	0.0300 ppm
	6/5/2019 23:38:04	0.0300 ppm
	6/5/2019 23:31:55	0.0400 ppm

This data has been provided expeditiously to ITC and regulatory agencies for informational and/or operational purposes only. Data reported within this summary is preliminary in nature and has not undergone complete QA/QC (quality assurance/quality control) process. Until this complete QA/QC process is completed, the locations of each reading are approximate in nature and subject to further refinement. As some readings may represent non-breathing zone measurements, the data reported herein may not be suitable to assess potential occupational exposure. Site Assessment readings are not representative of an individual's breathing zone (e.g., container head space, ground level, directly above product, etc.).

Preliminary Hand- Held Air Monitoring Locations | ITC Deer Park Tank Fire

Reading Date
6/6/2019 12:00:00 AM to 6/6/2019 1:00:00 AM



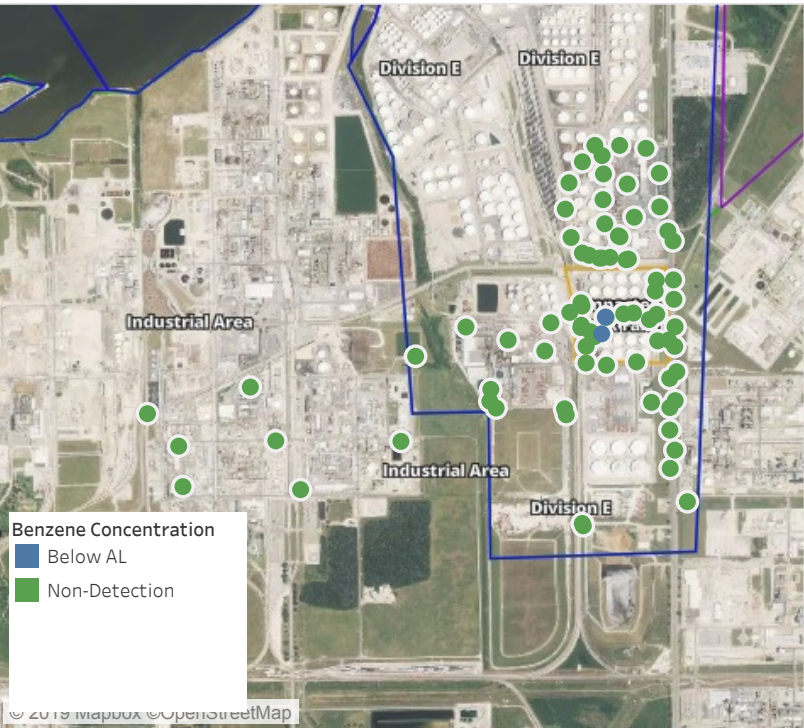
Recent Benzene Detections

Location Category	Reading Date	Range of Detections
Division E	6/6/2019 00:43:24	0.0200 ppm
	6/6/2019 00:41:41	0.0300 ppm
Impacted Tank Farm	6/6/2019 00:11:22	0.0500 ppm
	6/6/2019 00:17:55	0.0200 ppm
	6/6/2019 00:20:31	0.0200 ppm
	6/6/2019 00:18:22	0.0200 ppm
	6/6/2019 00:31:09	0.1100 ppm
	6/6/2019 00:34:00	0.2100 ppm
	6/6/2019 00:40:06	0.0400 ppm

This data has been provided expeditiously to ITC and regulatory agencies for informational and/or operational purposes only. Data reported within this summary is preliminary in nature and has not undergone complete QA/QC (quality assurance/quality control) process. Until this complete QA/QC process is completed, the locations of each reading are approximate in nature and subject to further refinement. As some readings may represent non-breathing zone measurements, the data reported herein may not be suitable to assess potential occupational exposure. Site Assessment readings are not representative of an individual's breathing zone (e.g., container head space, ground level, directly above product, etc.).

Preliminary Hand- Held Air Monitoring Locations | ITC Deer Park Tank Fire

Reading Date
6/6/2019 1:00:00 AM to 6/6/2019 2:00:00 AM



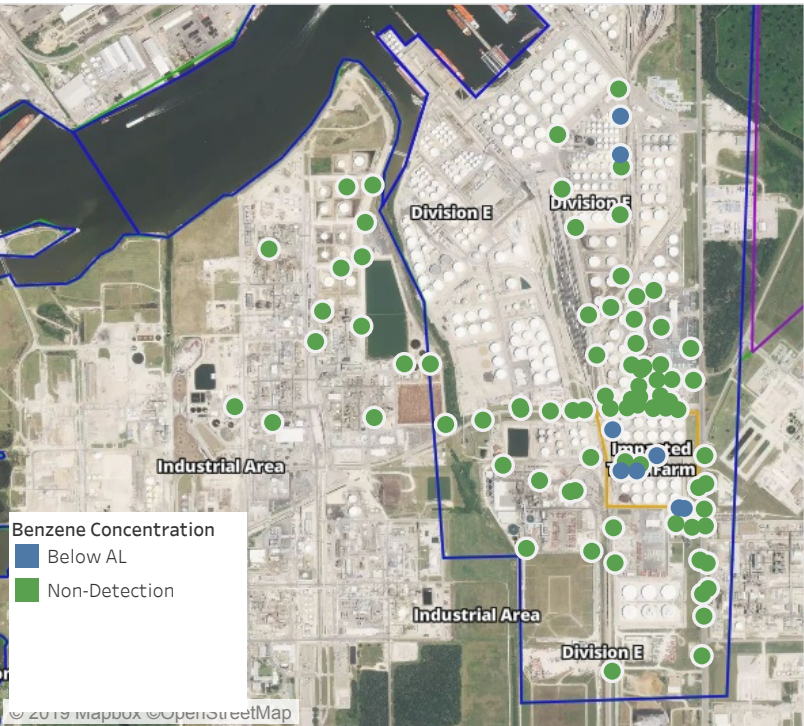
Recent Benzene Detections

Location Category	Reading Date	Range of Detections
Impacted Tank Farm	6/6/2019 01:22:23	0.02000 ppm
	6/6/2019 01:29:48	0.02000 ppm

This data has been provided expeditiously to ITC and regulatory agencies for informational and/or operational purposes only. Data reported within this summary is preliminary in nature and has not undergone complete QA/QC (quality assurance/quality control) process. Until this complete QA/QC process is completed, the locations of each reading are approximate in nature and subject to further refinement. As some readings may represent non-breathing zone measurements, the data reported herein may not be suitable to assess potential occupational exposure. Site Assessment readings are not representative of an individual's breathing zone (e.g., container head space, ground level, directly above product, etc.).

Preliminary Hand- Held Air Monitoring Locations | ITC Deer Park Tank Fire

Reading Date
6/6/2019 2:00:00 AM to 6/6/2019 3:00:00 AM



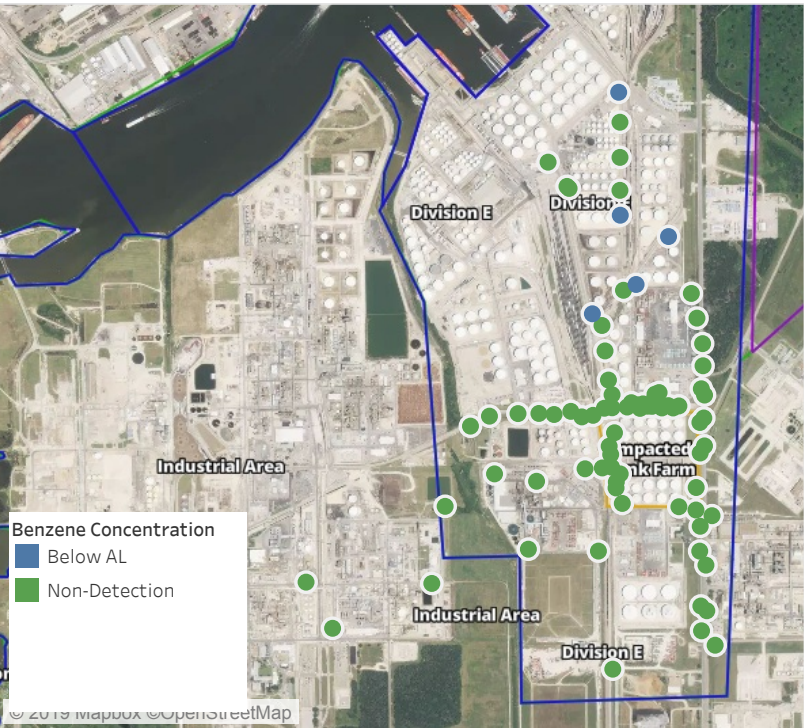
Recent Benzene Detections

Location Category	Reading Date	Range of Detections
Division E	6/6/2019 02:12:58	0.2200 ppm
	6/6/2019 02:22:14	0.0200 ppm
	6/6/2019 02:35:36	0.2100 ppm
	6/6/2019 02:25:18	0.0200 ppm
Impacted Tank Farm	6/6/2019 02:01:16	0.0200 ppm
	6/6/2019 02:46:49	0.0200 ppm
	6/6/2019 02:50:07	0.0200 ppm
	6/6/2019 02:59:33	0.0600 ppm

This data has been provided expeditiously to ITC and regulatory agencies for informational and/or operational purposes only. Data reported within this summary is preliminary in nature and has not undergone complete QA/QC (quality assurance/quality control) process. Until this complete QA/QC process is completed, the locations of each reading are approximate in nature and subject to further refinement. As some readings may represent non-breathing zone measurements, the data reported herein may not be suitable to assess potential occupational exposure. Site Assessment readings are not representative of an individual's breathing zone (e.g., container head space, ground level, directly above product, etc.).

Preliminary Hand- Held Air Monitoring Locations | ITC Deer Park Tank Fire

Reading Date
6/6/2019 3:00:00 AM to 6/6/2019 4:00:00 AM



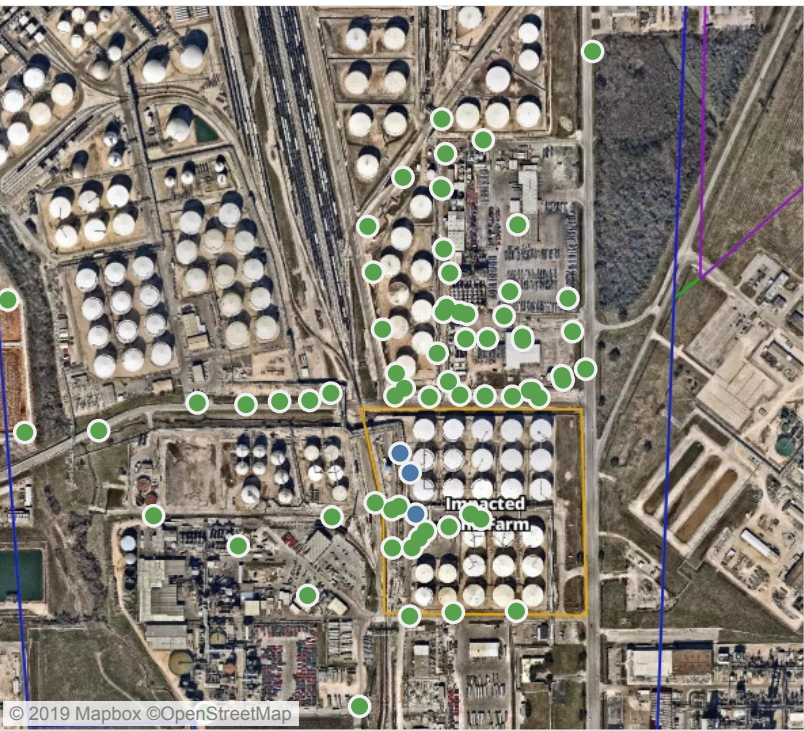
Recent Benzene Detections

Location Category	Reading Date	Range of Detections
Division E	6/6/2019 03:21:36	0.04000 ppm
	6/6/2019 03:04:45	0.02000 ppm
	6/6/2019 03:19:43	0.02000 ppm
	6/6/2019 03:37:19	0.10000 ppm
	6/6/2019 03:45:40	0.02000 ppm

This data has been provided expeditiously to ITC and regulatory agencies for informational and/or operational purposes only. Data reported within this summary is preliminary in nature and has not undergone complete QA/QC (quality assurance/quality control) process. Until this complete QA/QC process is completed, the locations of each reading are approximate in nature and subject to further refinement. As some readings may represent non-breathing zone measurements, the data reported herein may not be suitable to assess potential occupational exposure. Site Assessment readings are not representative of an individual's breathing zone (e.g., container head space, ground level, directly above product, etc.).

Preliminary Hand- Held Air Monitoring Locations | ITC Deer Park Tank Fire

Reading Date
6/6/2019 4:00:00 AM to 6/6/2019 5:00:00 AM



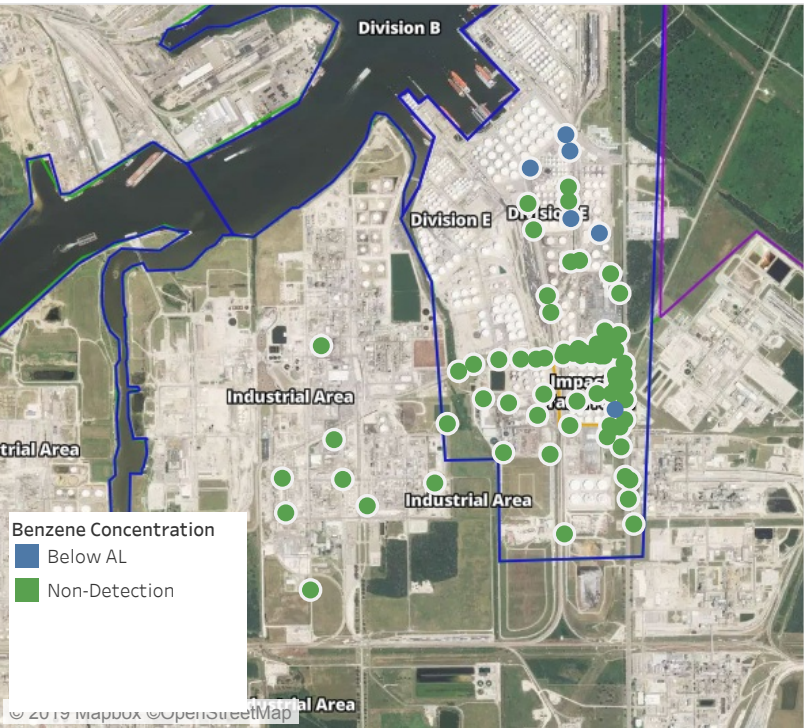
Recent Benzene Detections

Location Category	Reading Date	Range of Detections
Impacted Tank Farm	6/6/2019 04:24:58	0.02000 ppm
	6/6/2019 04:53:20	0.02000 ppm
	6/6/2019 04:56:37	0.02000 ppm

This data has been provided expeditiously to ITC and regulatory agencies for informational and/or operational purposes only. Data reported within this summary is preliminary in nature and has not undergone complete QA/QC (quality assurance/quality control) process. Until this complete QA/QC process is completed, the locations of each reading are approximate in nature and subject to further refinement. As some readings may represent non-breathing zone measurements, the data reported herein may not be suitable to assess potential occupational exposure. Site Assessment readings are not representative of an individual's breathing zone (e.g., container head space, ground level, directly above product, etc.).

Preliminary Hand- Held Air Monitoring Locations | ITC Deer Park Tank Fire

Reading Date
6/6/2019 5:00:00 AM to 6/6/2019 6:00:00 AM



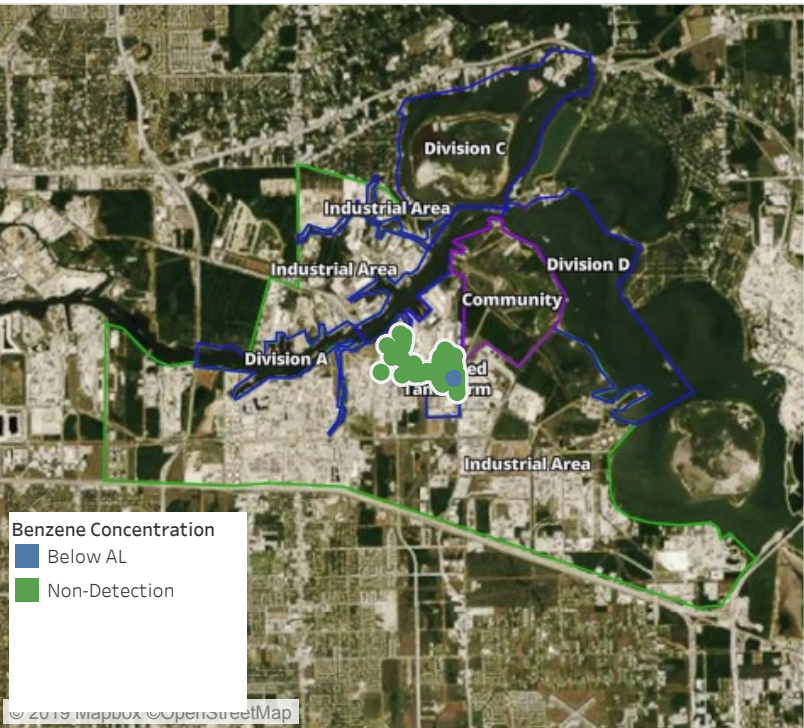
Recent Benzene Detections

Location Category	Reading Date	Range of Detections
Division E	6/6/2019 05:22:01	0.1400 ppm
	6/6/2019 05:42:15	0.0500 ppm
	6/6/2019 05:32:33	0.0300 ppm
	6/6/2019 05:28:43	0.0600 ppm
	6/6/2019 05:34:37	0.0200 ppm
Impacted Tank Farm	6/6/2019 05:23:42	0.1500 ppm

This data has been provided expeditiously to ITC and regulatory agencies for informational and/or operational purposes only. Data reported within this summary is preliminary in nature and has not undergone complete QA/QC (quality assurance/quality control) process. Until this complete QA/QC process is completed, the locations of each reading are approximate in nature and subject to further refinement. As some readings may represent non-breathing zone measurements, the data reported herein may not be suitable to assess potential occupational exposure. Site Assessment readings are not representative of an individual's breathing zone (e.g., container head space, ground level, directly above product, etc.).

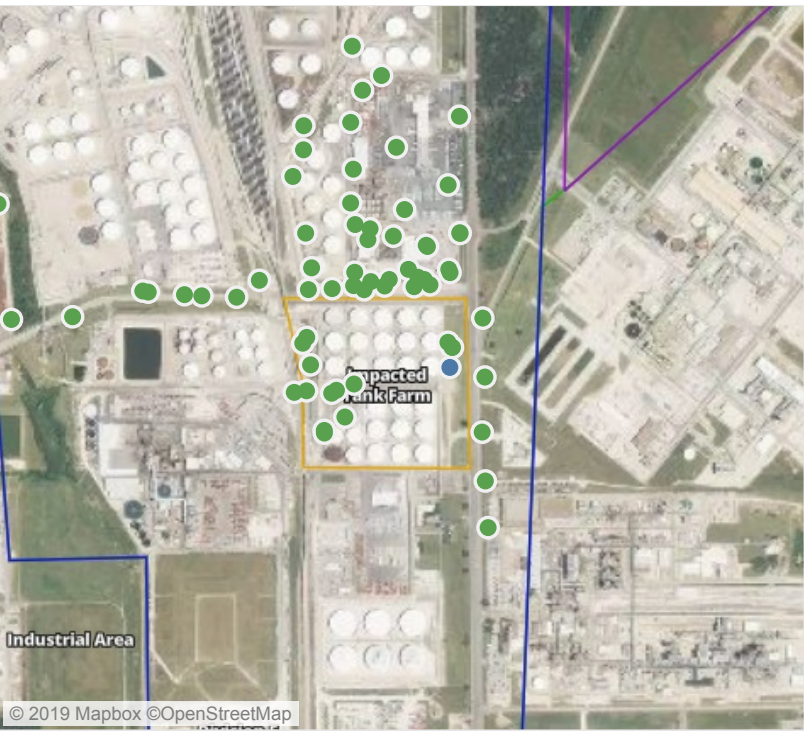
Preliminary Hand- Held Air Monitoring Locations | ITC Deer Park Tank Fire

Reading Date
6/6/2019 6:00:00 AM to 6/6/2019 7:00:00 AM



Recent Benzene Detections

Location Category	Reading Date	Range of Detections
Impacted Tank Farm	6/6/2019 06:22:18	0.02000 ppm



This data has been provided expeditiously to ITC and regulatory agencies for informational and/or operational purposes only. Data reported within this summary is preliminary in nature and has not undergone complete QA/QC (quality assurance/quality control) process. Until this complete QA/QC process is completed, the locations of each reading are approximate in nature and subject to further refinement. As some readings may represent non-breathing zone measurements, the data reported herein may not be suitable to assess potential occupational exposure. Site Assessment readings are not representative of an individual's breathing zone (e.g., container head space, ground level, directly above product, etc.).



Please Note: These updates display data from the 2nd 80's Fire site (Impacted Tank Farm), in the industrial areas surrounding the 2nd 80's Fire site (US Coast Guard Division E), within the Houston Ship Channel (US Coast Guard Divisions A-D), and in the industrial areas north and south of the Houston Ship Channel (Industrial Area). Real-time air monitoring data for the surrounding communities are communicated daily in a separate report.

Preliminary Hand- Held Air Monitoring Locations | ITC Deer Park Tank Fire

Reading Date
6/6/2019 7:00:00 AM to 6/6/2019 8:00:00 AM



Recent Benzene Detections

Location Category	Reading Date	Range of Detections
Division E	6/6/2019 07:30:35	0.08000 ppm
	6/6/2019 07:29:45	0.02000 ppm
	6/6/2019 07:38:40	0.10000 ppm
	6/6/2019 07:46:19	0.02000 ppm
	6/6/2019 07:56:57	0.05000 ppm
	6/6/2019 07:58:09	0.04000 ppm
Impacted Tank Farm	6/6/2019 07:51:51	0.11000 ppm
	6/6/2019 07:54:56	0.04000 ppm

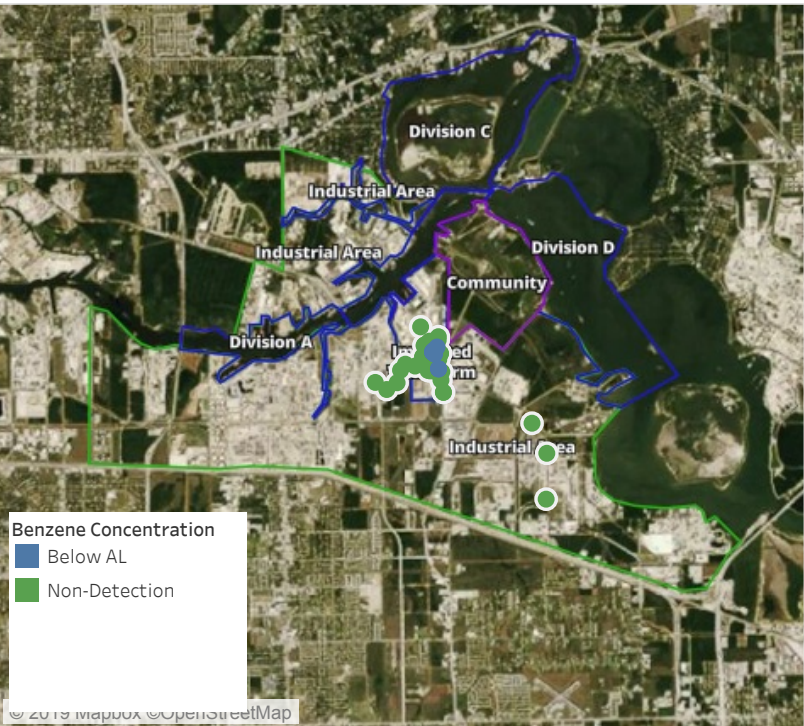
This data has been provided expeditiously to ITC and regulatory agencies for informational and/or operational purposes only. Data reported within this summary is preliminary in nature and has not undergone complete QA/QC (quality assurance/quality control) process. Until this complete QA/QC process is completed, the locations of each reading are approximate in nature and subject to further refinement. As some readings may represent non-breathing zone measurements, the data reported herein may not be suitable to assess potential occupational exposure. Site Assessment readings are not representative of an individual's breathing zone (e.g., container head space, ground level, directly above product, etc.).



Please Note: These updates display data from the 2nd 80's Fire site (Impacted Tank Farm), in the industrial areas surrounding the 2nd 80's Fire site (US Coast Guard Division E), within the Houston Ship Channel (US Coast Guard Divisions A-D), and in the industrial areas north and south of the Houston Ship Channel (Industrial Area). Real-time air monitoring data for the surrounding communities are communicated daily in a separate report.

Preliminary Hand- Held Air Monitoring Locations | ITC Deer Park Tank Fire

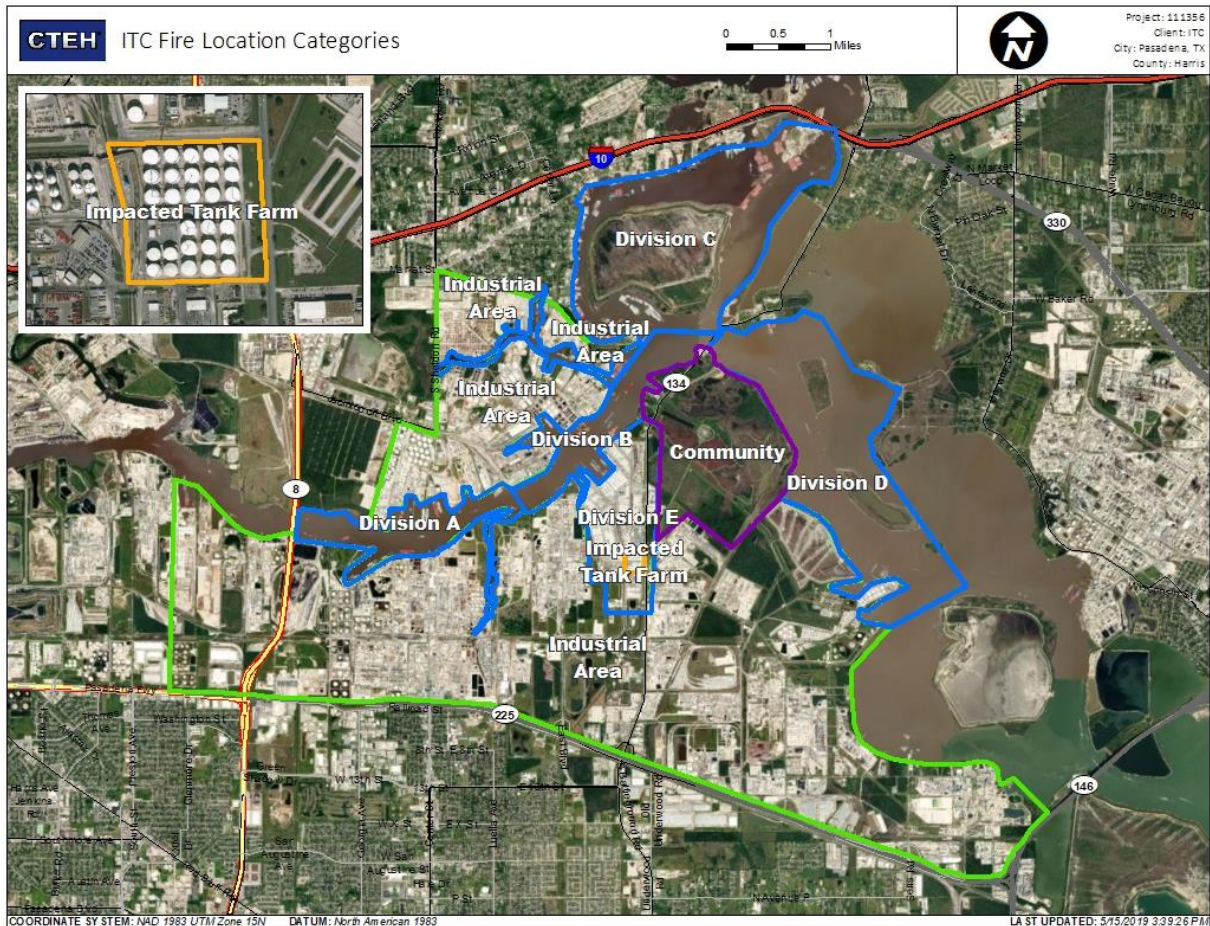
Reading Date
6/6/2019 8:00:00 AM to 6/6/2019 9:00:00 AM



Recent Benzene Detections

Location Category	Reading Date	Range of Detections
Division E	6/6/2019 08:20:15	0.02000 ppm
	6/6/2019 08:09:39	0.05000 ppm
	6/6/2019 08:19:47	0.03000 ppm
	6/6/2019 08:24:32	0.04000 ppm
	6/6/2019 08:42:58	0.02000 ppm
	6/6/2019 08:55:24	0.05000 ppm
	6/6/2019 08:35:42	0.03000 ppm
	6/6/2019 08:48:31	0.02000 ppm
	6/6/2019 08:42:10	0.02000 ppm
Impacted Tank Farm	6/6/2019 08:34:12	0.03000 ppm
	6/6/2019 08:05:52	0.04000 ppm
	6/6/2019 08:04:54	0.06000 ppm
	6/6/2019 08:03:47	0.07000 ppm

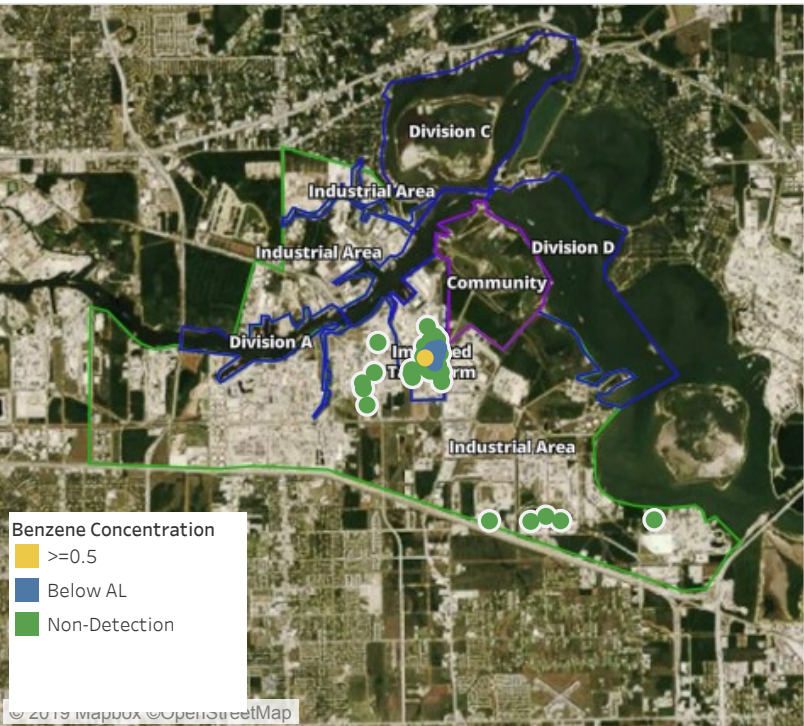
This data has been provided expeditiously to ITC and regulatory agencies for informational and/or operational purposes only. Data reported within this summary is preliminary in nature and has not undergone complete QA/QC (quality assurance/quality control) process. Until this complete QA/QC process is completed, the locations of each reading are approximate in nature and subject to further refinement. As some readings may represent non-breathing zone measurements, the data reported herein may not be suitable to assess potential occupational exposure. Site Assessment readings are not representative of an individual's breathing zone (e.g., container head space, ground level, directly above product, etc.).



Please Note: These updates display data from the 2nd 80's Fire site (Impacted Tank Farm), in the industrial areas surrounding the 2nd 80's Fire site (US Coast Guard Division E), within the Houston Ship Channel (US Coast Guard Divisions A-D), and in the industrial areas north and south of the Houston Ship Channel (Industrial Area). Real-time air monitoring data for the surrounding communities are communicated daily in a separate report.

Preliminary Hand- Held Air Monitoring Locations | ITC Deer Park Tank Fire

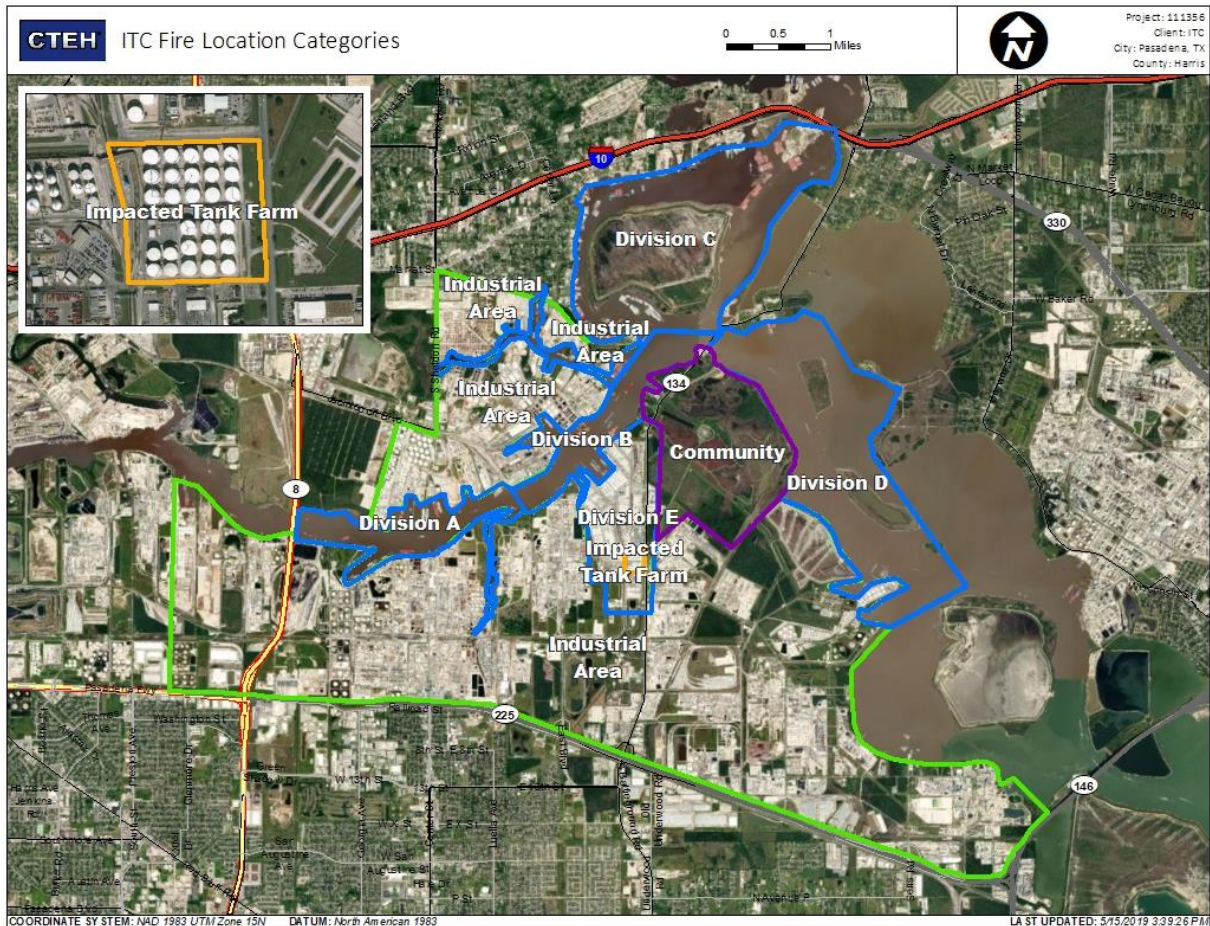
Reading Date
6/6/2019 9:00:00 AM to 6/6/2019 10:00:00 AM



Recent Benzene Detections

Location Category	Reading Date	Range of Detections
Division E	6/6/2019 09:24:36	0.0300 ppm
	6/6/2019 09:17:18	0.0300 ppm
	6/6/2019 09:25:32	0.0300 ppm
	6/6/2019 09:30:49	0.0200 ppm
	6/6/2019 09:44:49	0.0200 ppm
Impacted Tank Farm	6/6/2019 09:01:45	0.8000 ppm
	6/6/2019 09:30:01	0.0700 ppm

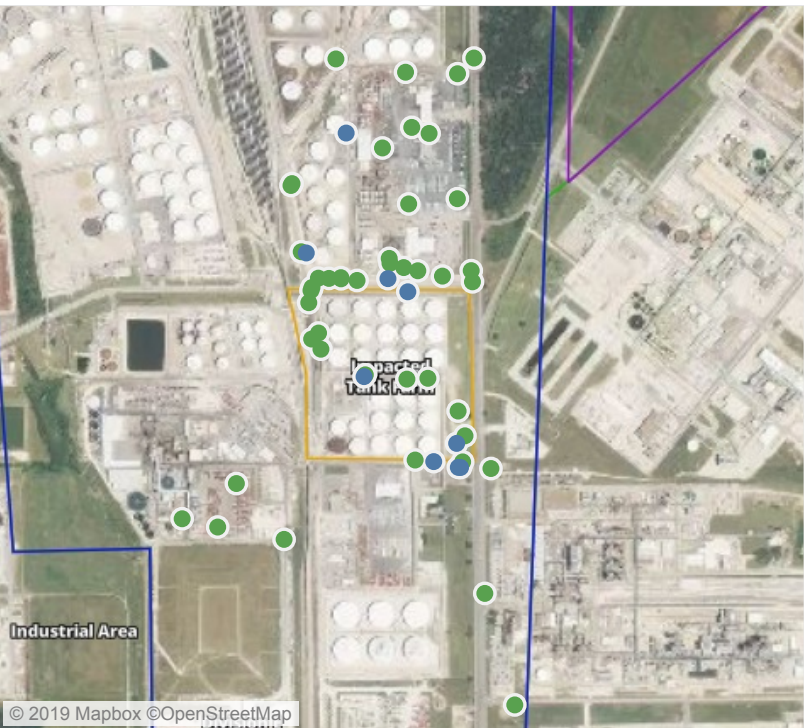
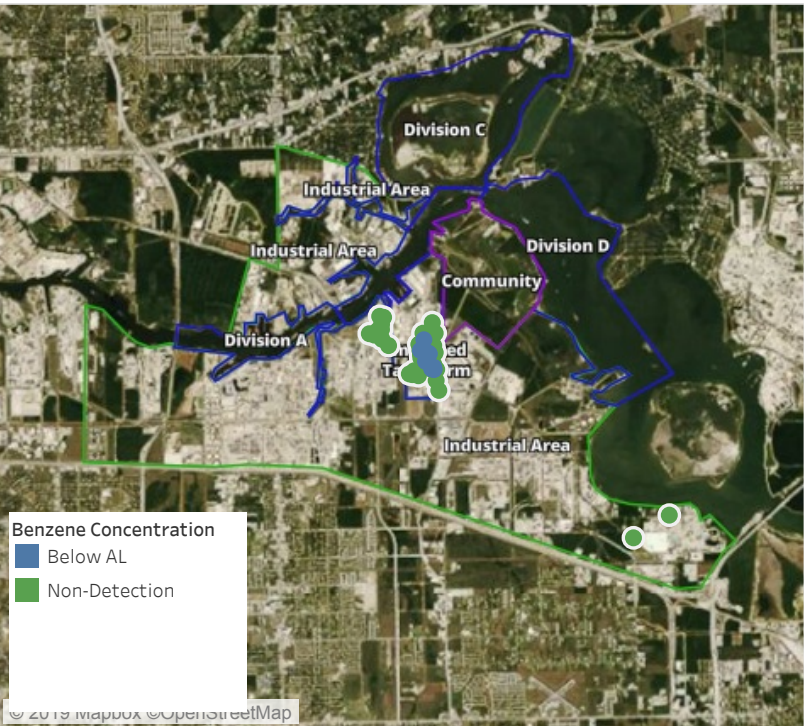
This data has been provided expeditiously to ITC and regulatory agencies for informational and/or operational purposes only. Data reported within this summary is preliminary in nature and has not undergone complete QA/QC (quality assurance/quality control) process. Until this complete QA/QC process is completed, the locations of each reading are approximate in nature and subject to further refinement. As some readings may represent non-breathing zone measurements, the data reported herein may not be suitable to assess potential occupational exposure. Site Assessment readings are not representative of an individual's breathing zone (e.g., container head space, ground level, directly above product, etc.).



Please Note: These updates display data from the 2nd 80's Fire site (Impacted Tank Farm), in the industrial areas surrounding the 2nd 80's Fire site (US Coast Guard Division E), within the Houston Ship Channel (US Coast Guard Divisions A-D), and in the industrial areas north and south of the Houston Ship Channel (Industrial Area). Real-time air monitoring data for the surrounding communities are communicated daily in a separate report.

Preliminary Hand- Held Air Monitoring Locations | ITC Deer Park Tank Fire

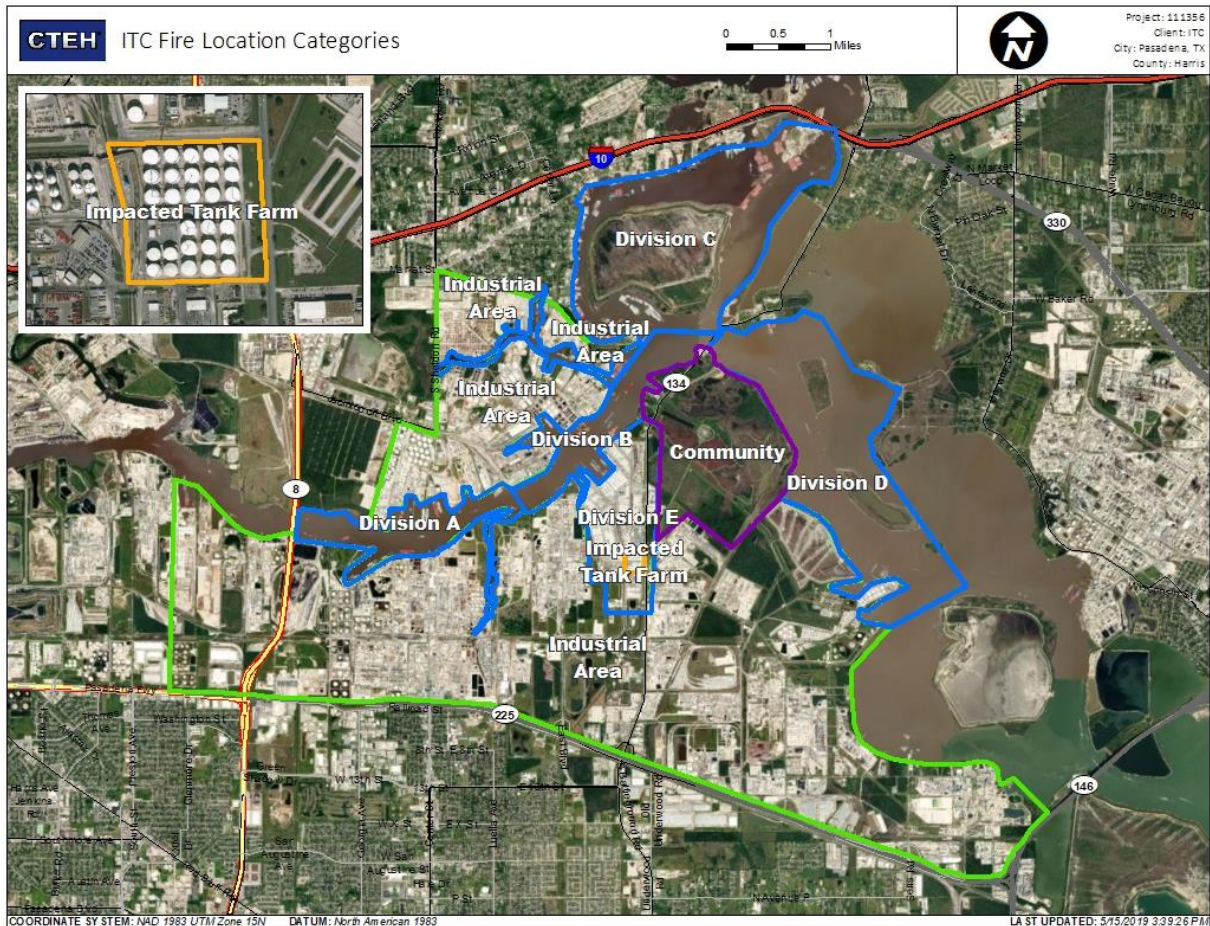
Reading Date
6/6/2019 10:00:00 AM to 6/6/2019 11:00:00 AM



Recent Benzene Detections

Location Category	Reading Date	Range of Detections
Division E	6/6/2019 10:19:12	0.0400 ppm
	6/6/2019 10:22:53	0.0400 ppm
	6/6/2019 10:29:17	0.0200 ppm
	6/6/2019 10:48:21	0.0200 ppm
	6/6/2019 10:52:50	0.0300 ppm
	6/6/2019 10:53:36	0.0600 ppm
Impacted Tank Farm	6/6/2019 10:55:49	0.0700 ppm
	6/6/2019 10:47:38	0.1300 ppm
	6/6/2019 10:59:09	0.1500 ppm

This data has been provided expeditiously to ITC and regulatory agencies for informational and/or operational purposes only. Data reported within this summary is preliminary in nature and has not undergone complete QA/QC (quality assurance/quality control) process. Until this complete QA/QC process is completed, the locations of each reading are approximate in nature and subject to further refinement. As some readings may represent non-breathing zone measurements, the data reported herein may not be suitable to assess potential occupational exposure. Site Assessment readings are not representative of an individual's breathing zone (e.g., container head space, ground level, directly above product, etc.).



Please Note: These updates display data from the 2nd 80's Fire site (Impacted Tank Farm), in the industrial areas surrounding the 2nd 80's Fire site (US Coast Guard Division E), within the Houston Ship Channel (US Coast Guard Divisions A-D), and in the industrial areas north and south of the Houston Ship Channel (Industrial Area). Real-time air monitoring data for the surrounding communities are communicated daily in a separate report.

Preliminary Hand- Held Air Monitoring Locations | ITC Deer Park Tank Fire

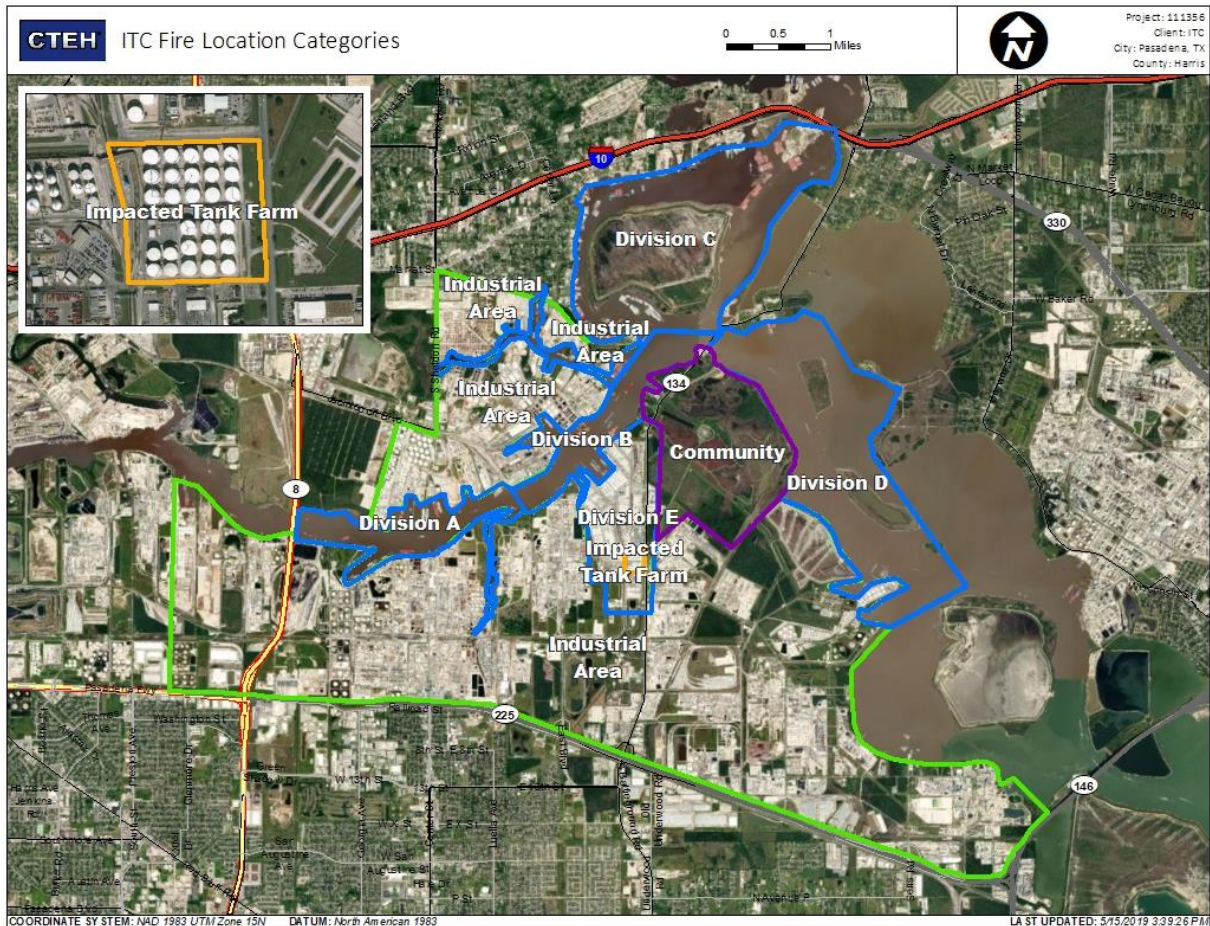
Reading Date
6/6/2019 11:00:00 AM to 6/6/2019 12:00:00 PM



Recent Benzene Detections

Location Category	Reading Date	Range of Detections
Division E	6/6/2019 11:43:52	0.0500 ppm
	6/6/2019 11:39:56	0.0600 ppm
	6/6/2019 11:20:53	0.0500 ppm
	6/6/2019 11:29:07	0.0800 ppm
	6/6/2019 11:38:50	0.1300 ppm
Impacted Tank Farm	6/6/2019 11:07:52	0.1200 ppm
	6/6/2019 11:39:05	0.0300 ppm

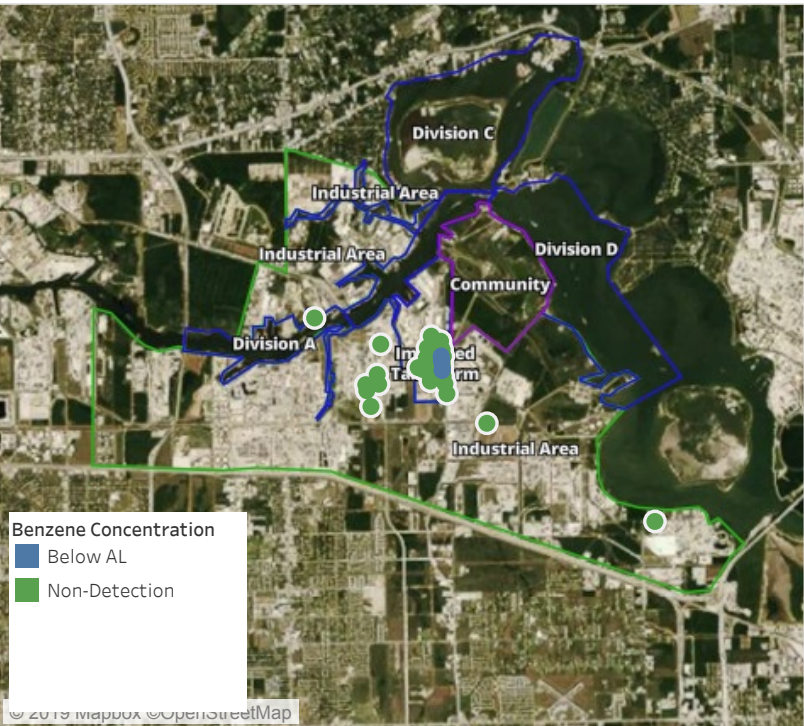
This data has been provided expeditiously to ITC and regulatory agencies for informational and/or operational purposes only. Data reported within this summary is preliminary in nature and has not undergone complete QA/QC (quality assurance/quality control) process. Until this complete QA/QC process is completed, the locations of each reading are approximate in nature and subject to further refinement. As some readings may represent non-breathing zone measurements, the data reported herein may not be suitable to assess potential occupational exposure. Site Assessment readings are not representative of an individual's breathing zone (e.g., container head space, ground level, directly above product, etc.).



Please Note: These updates display data from the 2nd 80's Fire site (Impacted Tank Farm), in the industrial areas surrounding the 2nd 80's Fire site (US Coast Guard Division E), within the Houston Ship Channel (US Coast Guard Divisions A-D), and in the industrial areas north and south of the Houston Ship Channel (Industrial Area). Real-time air monitoring data for the surrounding communities are communicated daily in a separate report.

Preliminary Hand- Held Air Monitoring Locations | ITC Deer Park Tank Fire

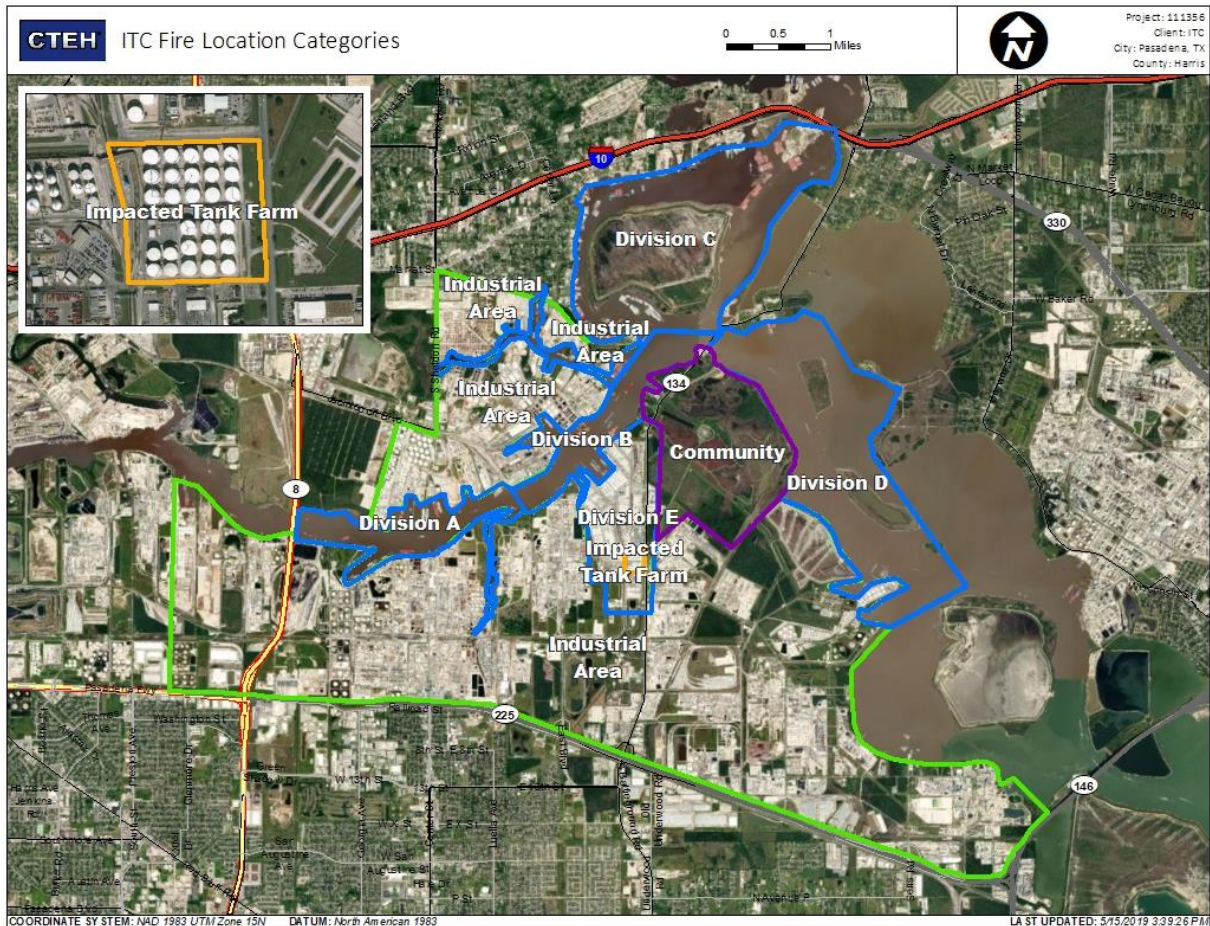
Reading Date
6/6/2019 12:00:00 PM to 6/6/2019 1:00:00 PM



Recent Benzene Detections

Location Category	Reading Date	Range of Detections
Division E	6/6/2019 12:35:45	0.0400 ppm
Impacted Tank Farm	6/6/2019 12:05:30	0.0600 ppm
	6/6/2019 12:19:47	0.2200 ppm
	6/6/2019 12:33:21	0.2300 ppm
	6/6/2019 12:46:27	0.0300 ppm
	6/6/2019 12:43:39	0.0600 ppm

This data has been provided expeditiously to ITC and regulatory agencies for informational and/or operational purposes only. Data reported within this summary is preliminary in nature and has not undergone complete QA/QC (quality assurance/quality control) process. Until this complete QA/QC process is completed, the locations of each reading are approximate in nature and subject to further refinement. As some readings may represent non-breathing zone measurements, the data reported herein may not be suitable to assess potential occupational exposure. Site Assessment readings are not representative of an individual's breathing zone (e.g., container head space, ground level, directly above product, etc.).



Please Note: These updates display data from the 2nd 80's Fire site (Impacted Tank Farm), in the industrial areas surrounding the 2nd 80's Fire site (US Coast Guard Division E), within the Houston Ship Channel (US Coast Guard Divisions A-D), and in the industrial areas north and south of the Houston Ship Channel (Industrial Area). Real-time air monitoring data for the surrounding communities are communicated daily in a separate report.

Preliminary Hand- Held Air Monitoring Locations | ITC Deer Park Tank Fire

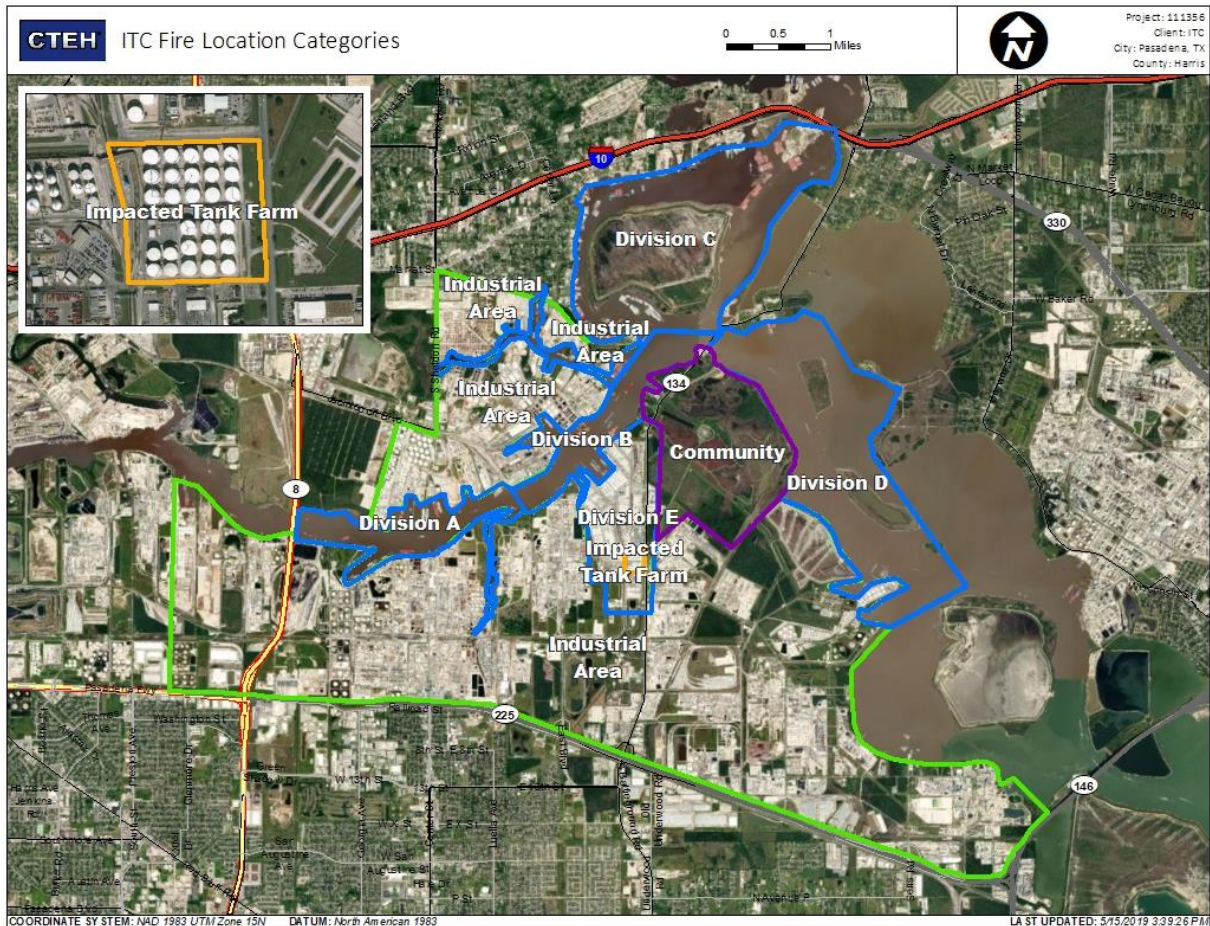
Reading Date
6/6/2019 1:00:00 PM to 6/6/2019 2:00:00 PM



Recent Benzene Detections

Location Category	Reading Date	Range of Detections
Division E	6/6/2019 13:10:42	0.0600 ppm
	6/6/2019 13:05:02	0.2400 ppm
	6/6/2019 13:00:15	0.0600 ppm
	6/6/2019 13:06:30	0.0700 ppm
	6/6/2019 13:16:53	0.0300 ppm
Impacted Tank Farm	6/6/2019 13:45:21	0.0700 ppm
	6/6/2019 13:04:07	0.1100 ppm
	6/6/2019 13:17:57	0.1800 ppm

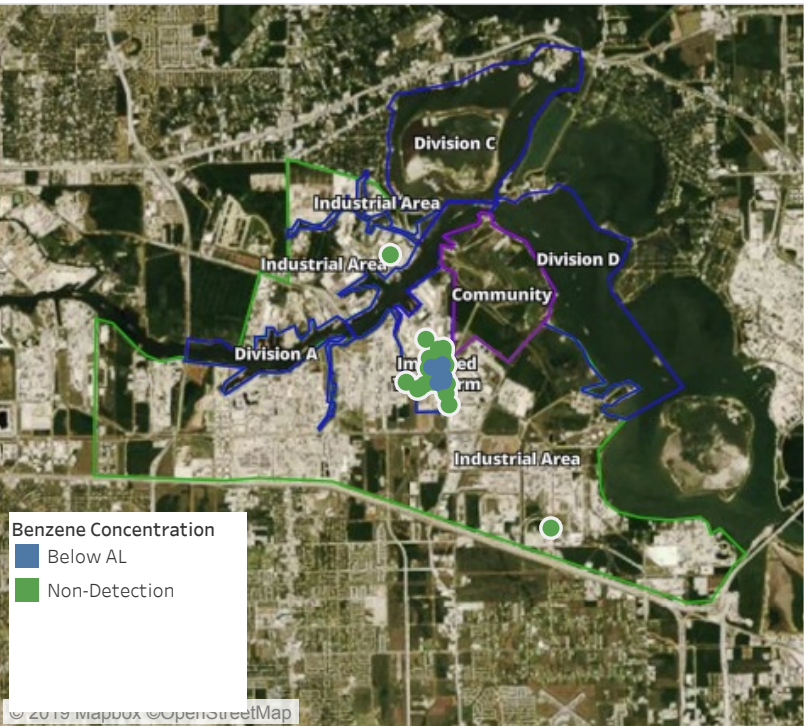
This data has been provided expeditiously to ITC and regulatory agencies for informational and/or operational purposes only. Data reported within this summary is preliminary in nature and has not undergone complete QA/QC (quality assurance/quality control) process. Until this complete QA/QC process is completed, the locations of each reading are approximate in nature and subject to further refinement. As some readings may represent non-breathing zone measurements, the data reported herein may not be suitable to assess potential occupational exposure. Site Assessment readings are not representative of an individual's breathing zone (e.g., container head space, ground level, directly above product, etc.).



Please Note: These updates display data from the 2nd 80's Fire site (Impacted Tank Farm), in the industrial areas surrounding the 2nd 80's Fire site (US Coast Guard Division E), within the Houston Ship Channel (US Coast Guard Divisions A-D), and in the industrial areas north and south of the Houston Ship Channel (Industrial Area). Real-time air monitoring data for the surrounding communities are communicated daily in a separate report.

Preliminary Hand- Held Air Monitoring Locations | ITC Deer Park Tank Fire

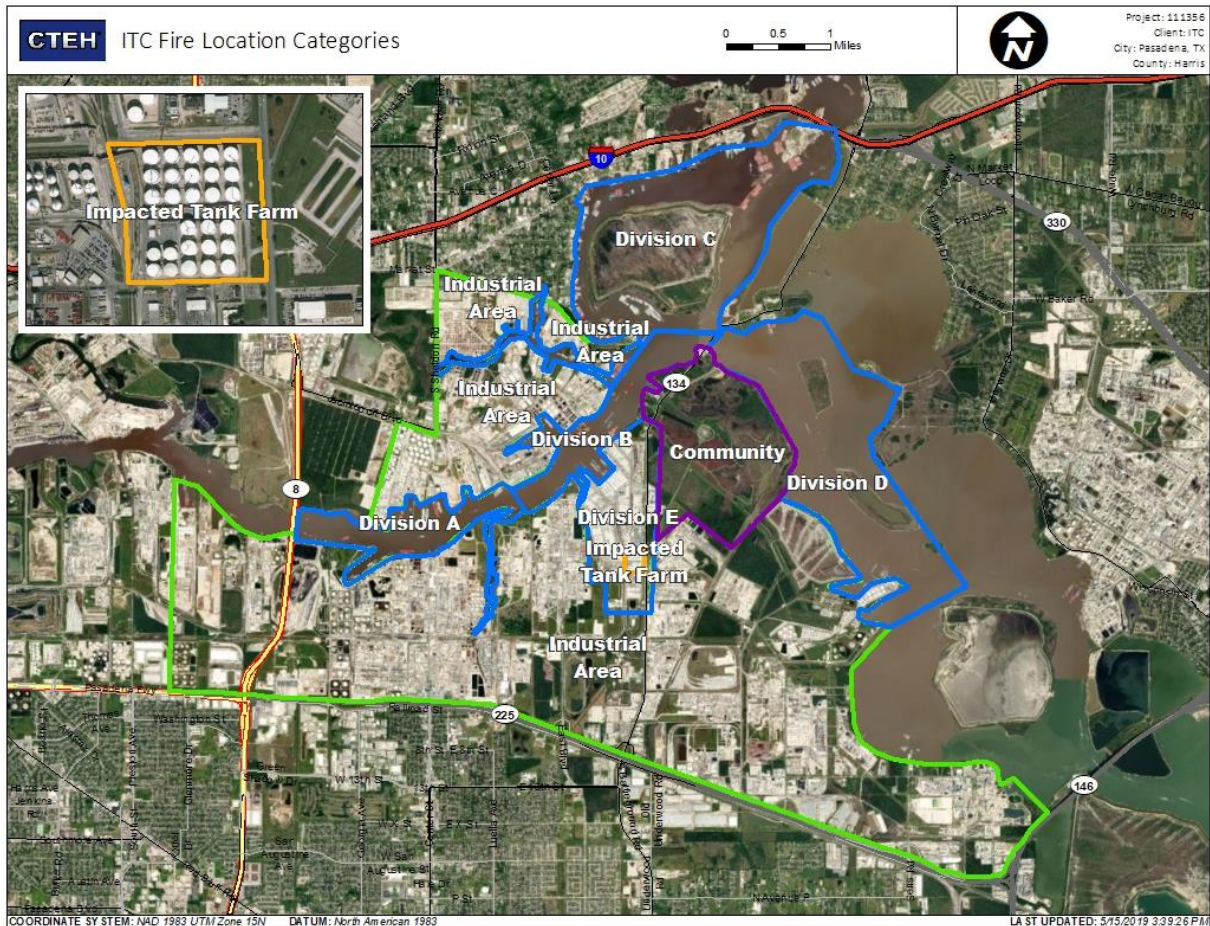
Reading Date
6/6/2019 2:00:00 PM to 6/6/2019 3:00:00 PM



Recent Benzene Detections

Location Category	Reading Date	Range of Detections
Division E	6/6/2019 14:08:37	0.0400 ppm
	6/6/2019 14:16:22	0.0700 ppm
	6/6/2019 14:54:06	0.0400 ppm
Impacted Tank Farm	6/6/2019 14:14:56	0.1800 ppm
	6/6/2019 14:17:01	0.1200 ppm
	6/6/2019 14:42:01	0.1000 ppm
	6/6/2019 14:12:06	0.1700 ppm
	6/6/2019 14:35:43	0.1000 ppm

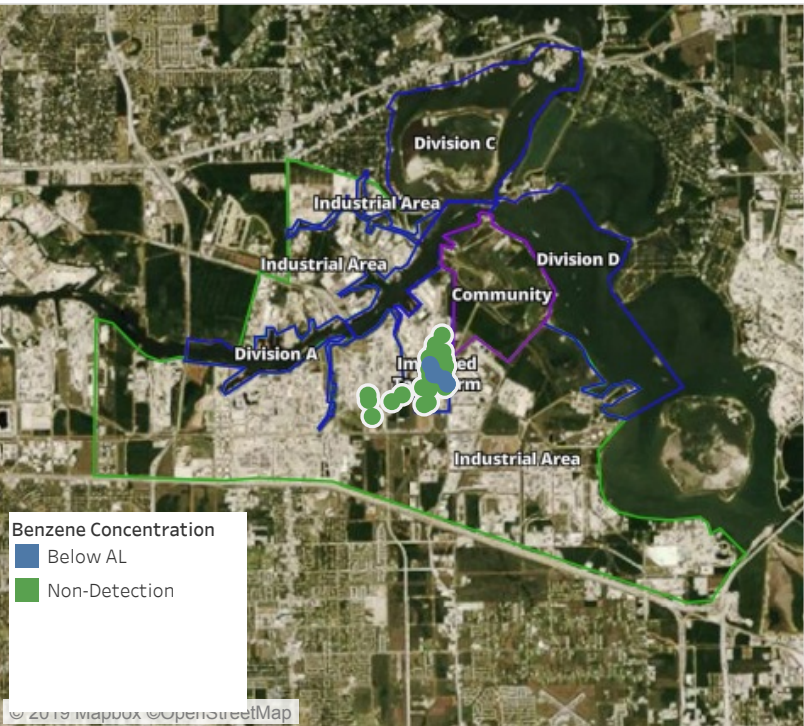
This data has been provided expeditiously to ITC and regulatory agencies for informational and/or operational purposes only. Data reported within this summary is preliminary in nature and has not undergone complete QA/QC (quality assurance/quality control) process. Until this complete QA/QC process is completed, the locations of each reading are approximate in nature and subject to further refinement. As some readings may represent non-breathing zone measurements, the data reported herein may not be suitable to assess potential occupational exposure. Site Assessment readings are not representative of an individual's breathing zone (e.g., container head space, ground level, directly above product, etc.).



Please Note: These updates display data from the 2nd 80's Fire site (Impacted Tank Farm), in the industrial areas surrounding the 2nd 80's Fire site (US Coast Guard Division E), within the Houston Ship Channel (US Coast Guard Divisions A-D), and in the industrial areas north and south of the Houston Ship Channel (Industrial Area). Real-time air monitoring data for the surrounding communities are communicated daily in a separate report.

Preliminary Hand- Held Air Monitoring Locations | ITC Deer Park Tank Fire

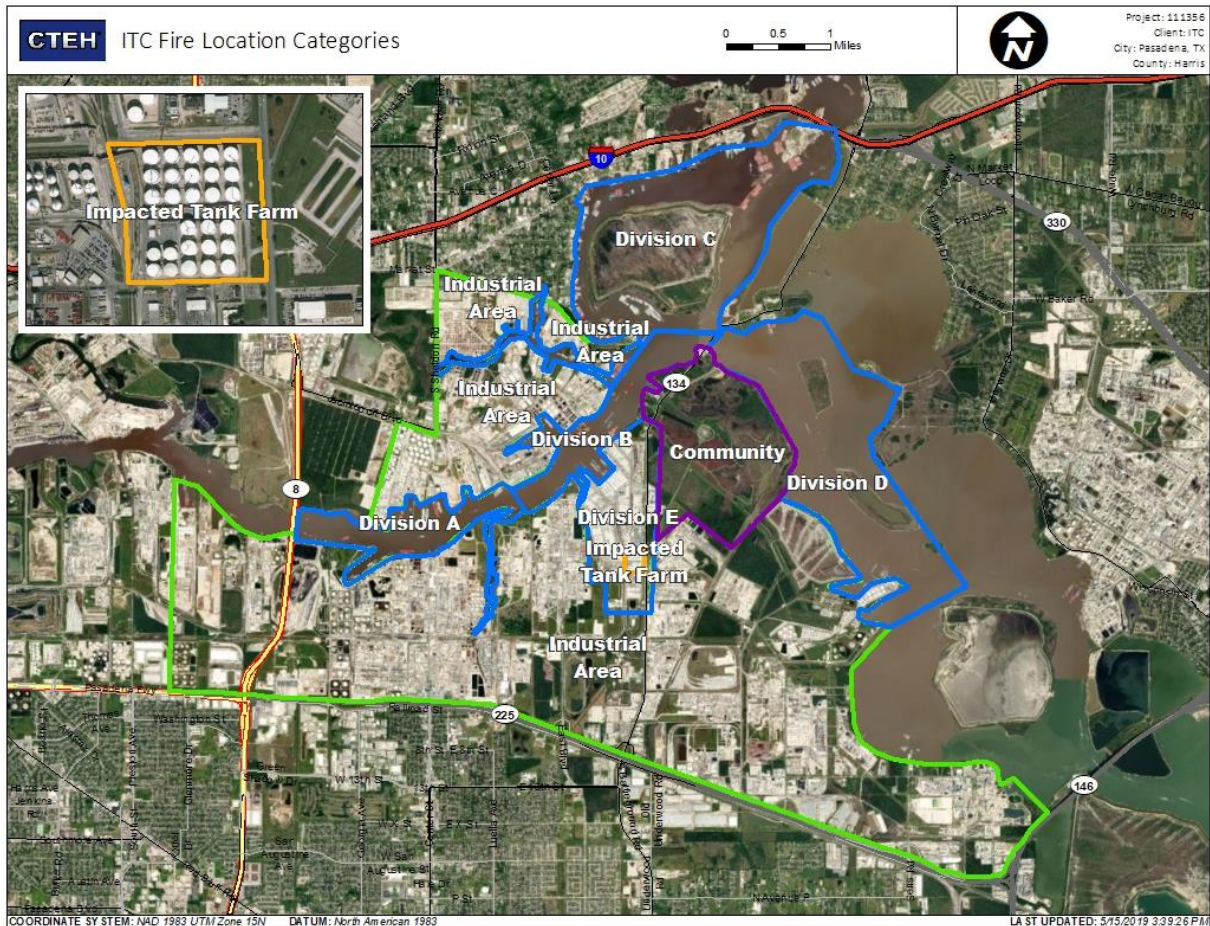
Reading Date
6/6/2019 3:00:00 PM to 6/6/2019 4:00:00 PM



Recent Benzene Detections

Location Category	Reading Date	Range of Detections
Division E	6/6/2019 15:10:37	0.0500 ppm
	6/6/2019 15:13:07	0.0600 ppm
	6/6/2019 15:54:59	0.0800 ppm
Impacted Tank Farm	6/6/2019 15:13:55	0.1600 ppm
	6/6/2019 15:39:52	0.0600 ppm
	6/6/2019 15:50:01	0.0400 ppm

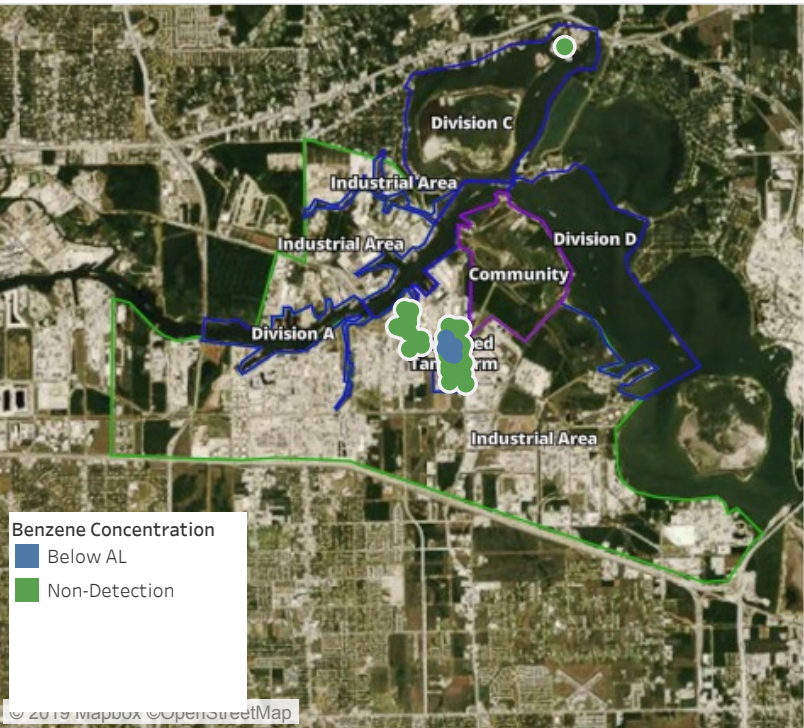
This data has been provided expeditiously to ITC and regulatory agencies for informational and/or operational purposes only. Data reported within this summary is preliminary in nature and has not undergone complete QA/QC (quality assurance/quality control) process. Until this complete QA/QC process is completed, the locations of each reading are approximate in nature and subject to further refinement. As some readings may represent non-breathing zone measurements, the data reported herein may not be suitable to assess potential occupational exposure. Site Assessment readings are not representative of an individual's breathing zone (e.g., container head space, ground level, directly above product, etc.).



Please Note: These updates display data from the 2nd 80's Fire site (Impacted Tank Farm), in the industrial areas surrounding the 2nd 80's Fire site (US Coast Guard Division E), within the Houston Ship Channel (US Coast Guard Divisions A-D), and in the industrial areas north and south of the Houston Ship Channel (Industrial Area). Real-time air monitoring data for the surrounding communities are communicated daily in a separate report.

Preliminary Hand- Held Air Monitoring Locations | ITC Deer Park Tank Fire

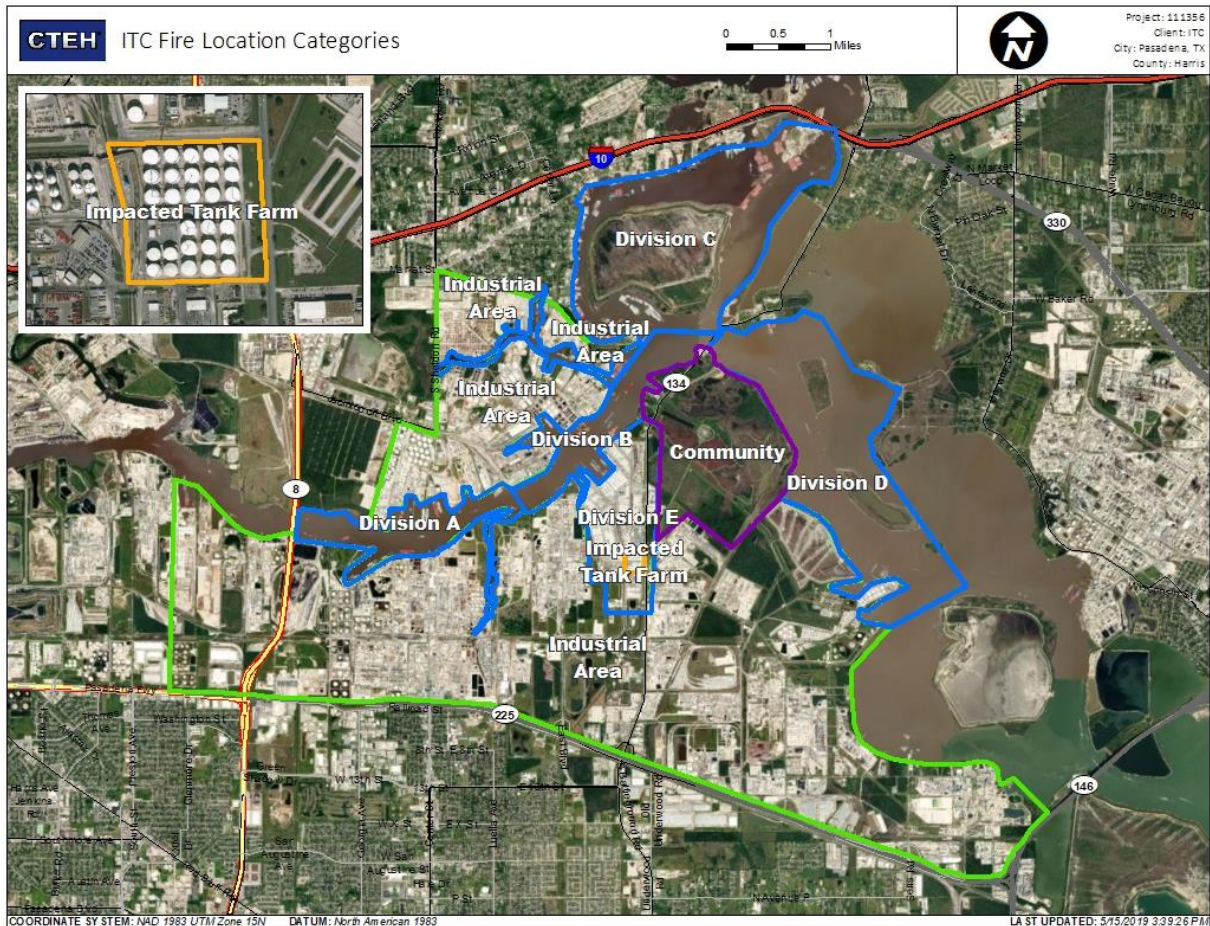
Reading Date
6/6/2019 4:00:00 PM to 6/6/2019 5:00:00 PM



Recent Benzene Detections

Location Category	Reading Date	Range of Detections
Division E	6/6/2019 16:03:24	0.0200 ppm
	6/6/2019 16:18:54	0.1100 ppm
	6/6/2019 16:33:29	0.1500 ppm
	6/6/2019 16:34:14	0.0200 ppm
	6/6/2019 16:37:28	0.0200 ppm
	6/6/2019 16:30:39	0.0400 ppm
	6/6/2019 16:37:46	0.0500 ppm
	6/6/2019 16:42:07	ppm
	6/6/2019 16:47:45	0.0400 ppm
Impacted Tank Farm	6/6/2019 16:01:33	0.0500 ppm
	6/6/2019 16:40:03	0.0800 ppm
	6/6/2019 16:54:04	0.1200 ppm

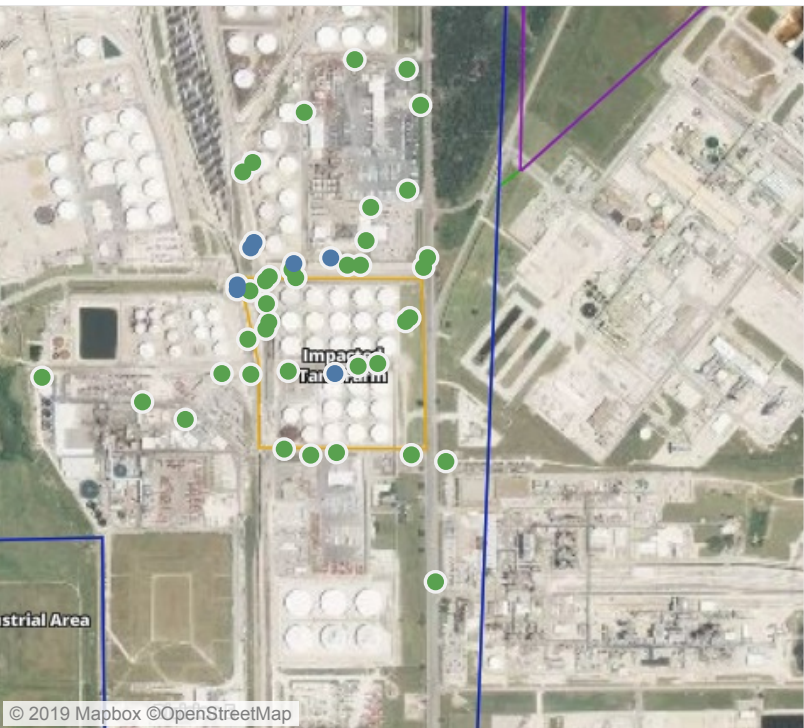
This data has been provided expeditiously to ITC and regulatory agencies for informational and/or operational purposes only. Data reported within this summary is preliminary in nature and has not undergone complete QA/QC (quality assurance/quality control) process. Until this complete QA/QC process is completed, the locations of each reading are approximate in nature and subject to further refinement. As some readings may represent non-breathing zone measurements, the data reported herein may not be suitable to assess potential occupational exposure. Site Assessment readings are not representative of an individual's breathing zone (e.g., container head space, ground level, directly above product, etc.).



Please Note: These updates display data from the 2nd 80's Fire site (Impacted Tank Farm), in the industrial areas surrounding the 2nd 80's Fire site (US Coast Guard Division E), within the Houston Ship Channel (US Coast Guard Divisions A-D), and in the industrial areas north and south of the Houston Ship Channel (Industrial Area). Real-time air monitoring data for the surrounding communities are communicated daily in a separate report.

Preliminary Hand- Held Air Monitoring Locations | ITC Deer Park Tank Fire

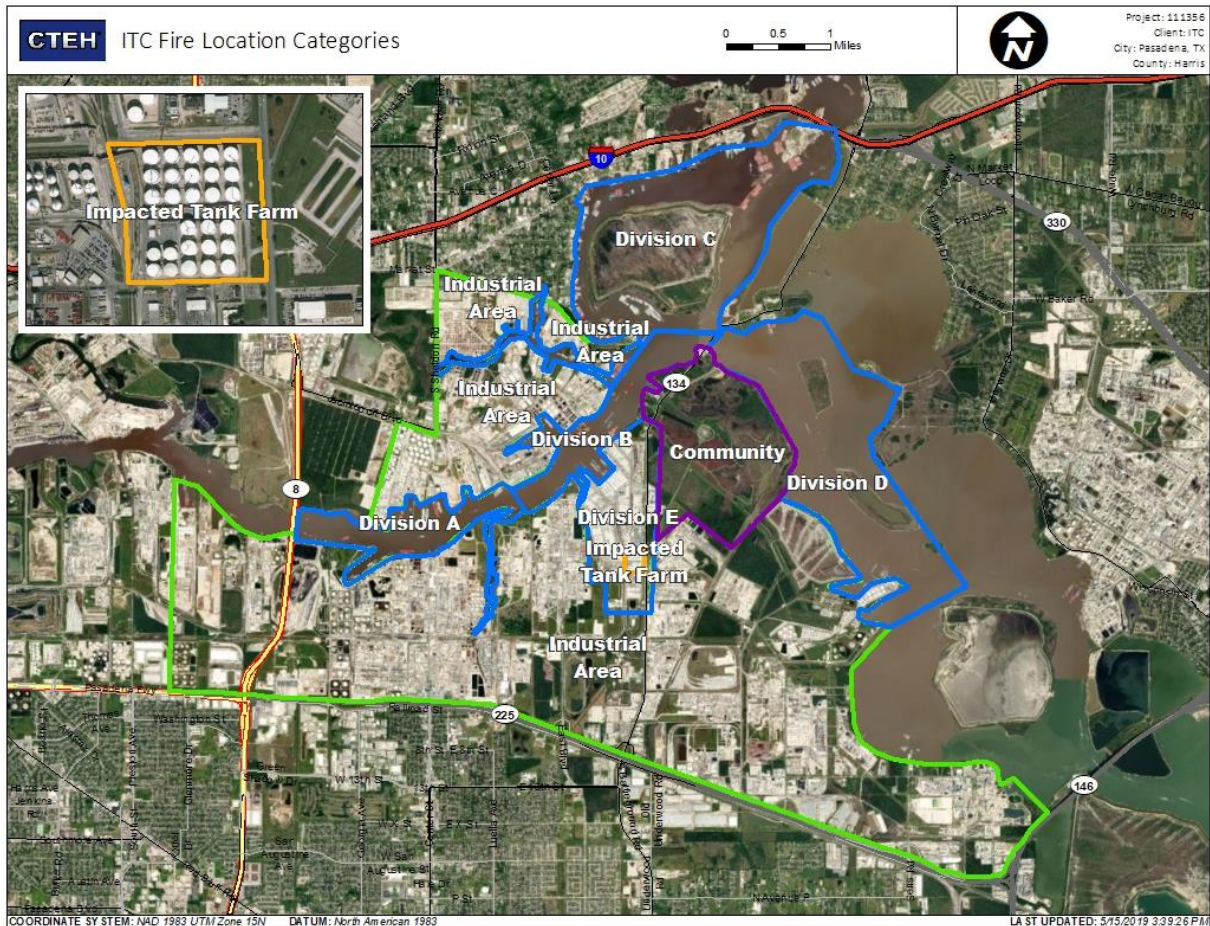
Reading Date
6/6/2019 5:00:00 PM to 6/6/2019 6:00:00 PM



Recent Benzene Detections

Location Category	Reading Date	Range of Detections
Division E	6/6/2019 17:06:52	0.06000 ppm
	6/6/2019 17:23:43	0.07000 ppm
	6/6/2019 17:26:35	0.03000 ppm
	6/6/2019 17:51:39	0.04000 ppm
	6/6/2019 17:39:47	0.03000 ppm
Impacted Tank Farm	6/6/2019 17:18:59	0.03000 ppm
	6/6/2019 17:04:56	0.06000 ppm

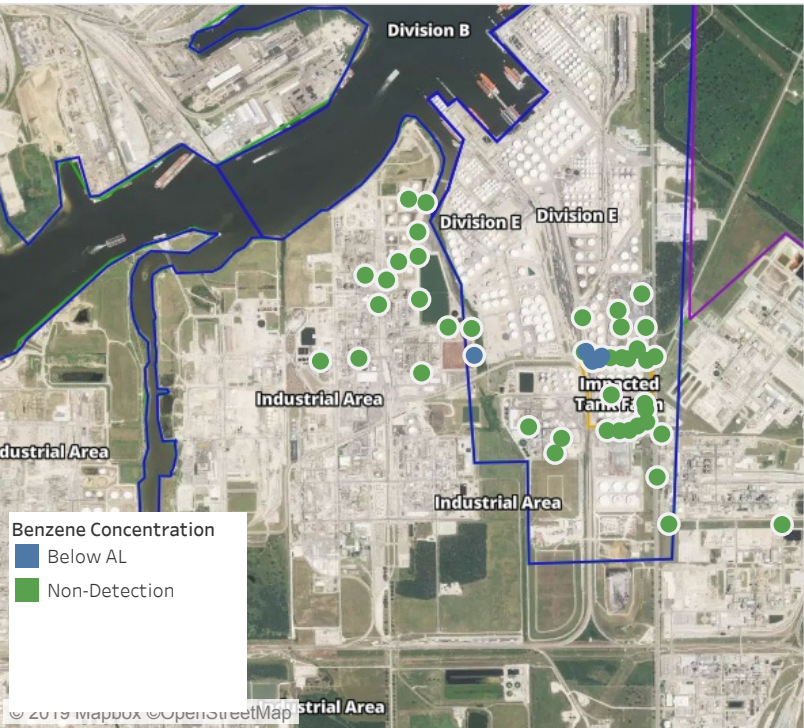
This data has been provided expeditiously to ITC and regulatory agencies for informational and/or operational purposes only. Data reported within this summary is preliminary in nature and has not undergone complete QA/QC (quality assurance/quality control) process. Until this complete QA/QC process is completed, the locations of each reading are approximate in nature and subject to further refinement. As some readings may represent non-breathing zone measurements, the data reported herein may not be suitable to assess potential occupational exposure. Site Assessment readings are not representative of an individual's breathing zone (e.g., container head space, ground level, directly above product, etc.).



Please Note: These updates display data from the 2nd 80's Fire site (Impacted Tank Farm), in the industrial areas surrounding the 2nd 80's Fire site (US Coast Guard Division E), within the Houston Ship Channel (US Coast Guard Divisions A-D), and in the industrial areas north and south of the Houston Ship Channel (Industrial Area). Real-time air monitoring data for the surrounding communities are communicated daily in a separate report.

Preliminary Hand- Held Air Monitoring Locations | ITC Deer Park Tank Fire

Reading Date
6/6/2019 6:00:00 PM to 6/6/2019 7:00:00 PM



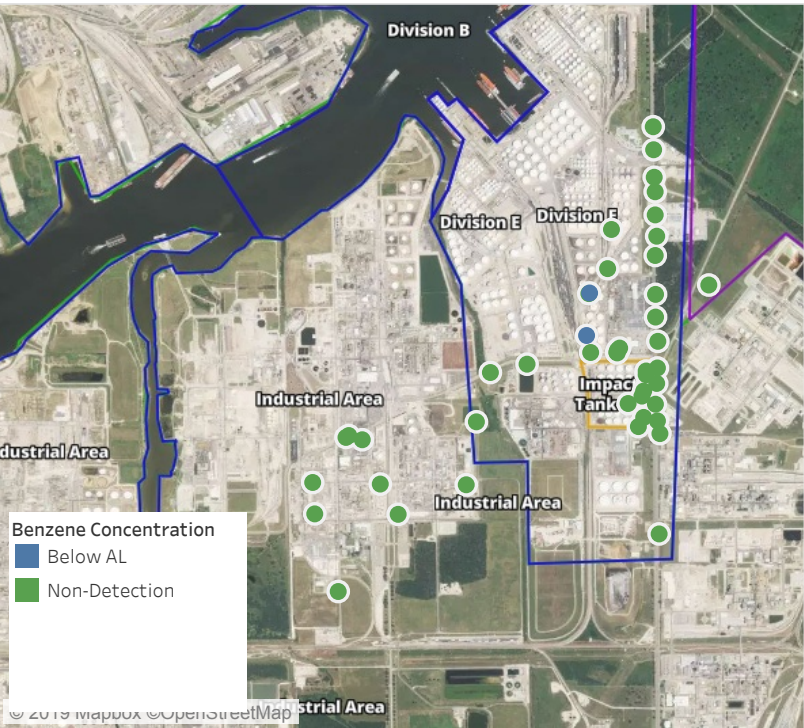
Recent Benzene Detections

Location Category	Reading Date	Range of Detections
Division E	6/6/2019 18:07:16	0.03000 ppm
	6/6/2019 18:14:56	0.02000 ppm
	6/6/2019 18:42:34	0.03000 ppm
	6/6/2019 18:46:57	0.02000 ppm
	6/6/2019 18:53:08	0.04000 ppm
Industrial Area	6/6/2019 18:39:16	0.02000 ppm

This data has been provided expeditiously to ITC and regulatory agencies for informational and/or operational purposes only. Data reported within this summary is preliminary in nature and has not undergone complete QA/QC (quality assurance/quality control) process. Until this complete QA/QC process is completed, the locations of each reading are approximate in nature and subject to further refinement. As some readings may represent non-breathing zone measurements, the data reported herein may not be suitable to assess potential occupational exposure. Site Assessment readings are not representative of an individual's breathing zone (e.g., container head space, ground level, directly above product, etc.).

Preliminary Hand- Held Air Monitoring Locations | ITC Deer Park Tank Fire

Reading Date
6/6/2019 7:00:00 PM to 6/6/2019 8:00:00 PM



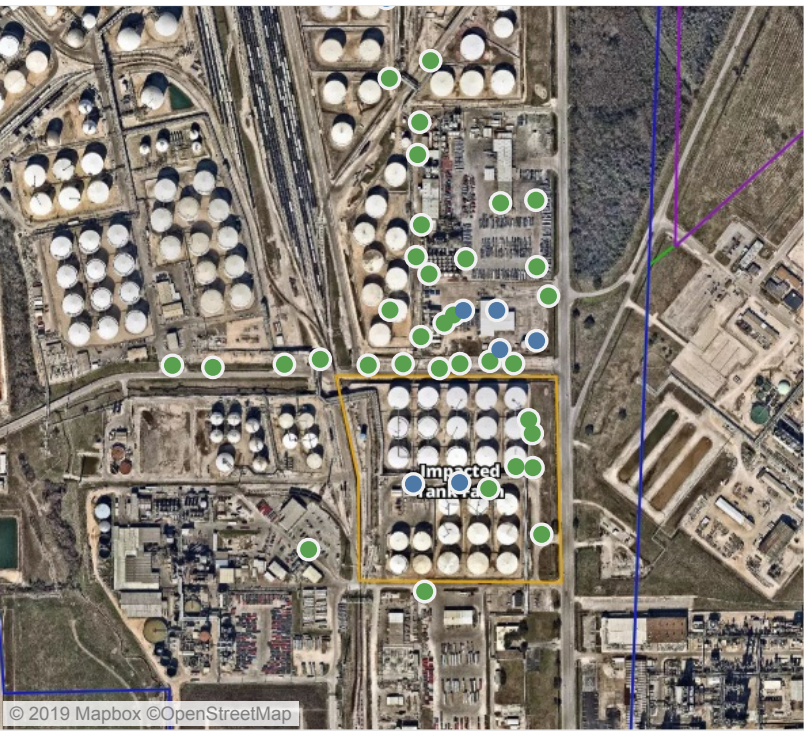
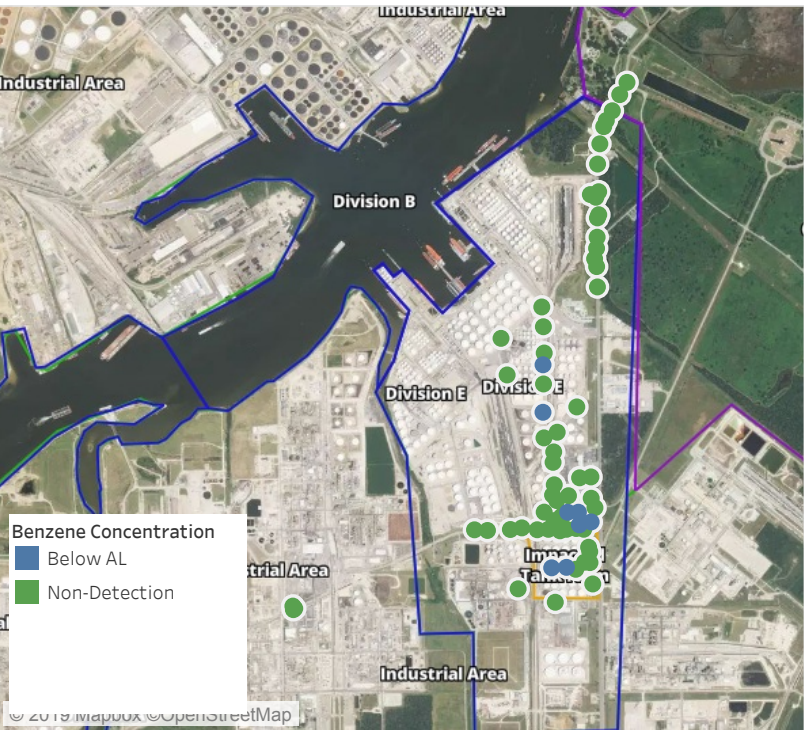
Recent Benzene Detections

Location Category	Reading Date	Range of Detections
Division E	6/6/2019 19:26:18	0.02000 ppm
	6/6/2019 19:30:17	0.02000 ppm

This data has been provided expeditiously to ITC and regulatory agencies for informational and/or operational purposes only. Data reported within this summary is preliminary in nature and has not undergone complete QA/QC (quality assurance/quality control) process. Until this complete QA/QC process is completed, the locations of each reading are approximate in nature and subject to further refinement. As some readings may represent non-breathing zone measurements, the data reported herein may not be suitable to assess potential occupational exposure. Site Assessment readings are not representative of an individual's breathing zone (e.g., container head space, ground level, directly above product, etc.).

Preliminary Hand- Held Air Monitoring Locations | ITC Deer Park Tank Fire

Reading Date
6/6/2019 8:00:00 PM to 6/6/2019 9:00:00 PM



Recent Benzene Detections

Location Category	Reading Date	Range of Detections
Division E	6/6/2019 20:34:53	0.0300 ppm
	6/6/2019 20:24:00	0.0300 ppm
	6/6/2019 20:11:07	0.0400 ppm
	6/6/2019 20:02:59	0.0300 ppm
	6/6/2019 20:41:52	0.0200 ppm
Impacted Tank Farm	6/6/2019 20:44:53	0.0700 ppm
	6/6/2019 20:42:04	0.1500 ppm
	6/6/2019 20:59:06	0.0200 ppm

This data has been provided expeditiously to ITC and regulatory agencies for informational and/or operational purposes only. Data reported within this summary is preliminary in nature and has not undergone complete QA/QC (quality assurance/quality control) process. Until this complete QA/QC process is completed, the locations of each reading are approximate in nature and subject to further refinement. As some readings may represent non-breathing zone measurements, the data reported herein may not be suitable to assess potential occupational exposure. Site Assessment readings are not representative of an individual's breathing zone (e.g., container head space, ground level, directly above product, etc.).

Preliminary Hand- Held Air Monitoring Locations | ITC Deer Park Tank Fire

Reading Date
6/6/2019 9:00:00 PM to 6/6/2019 10:00:00 PM



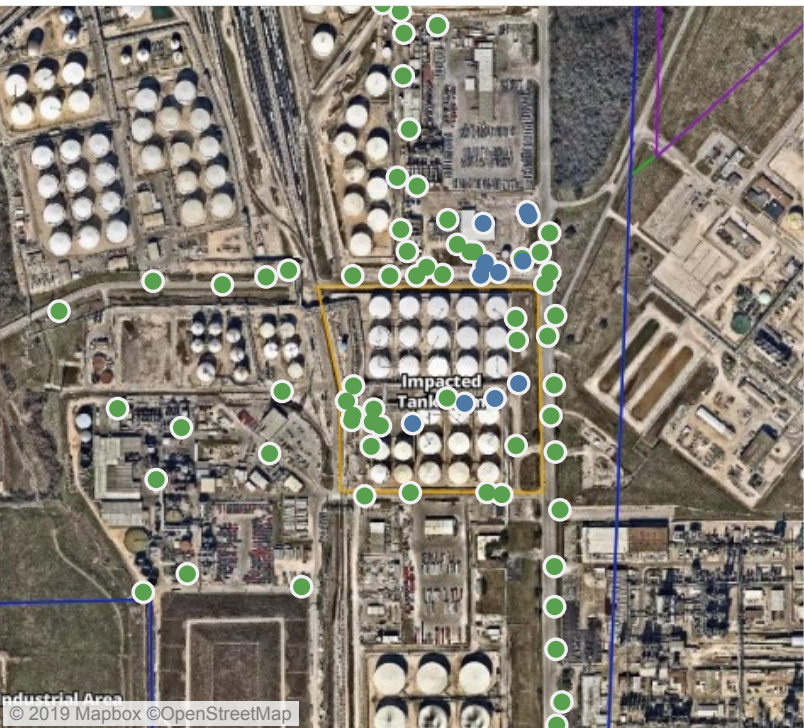
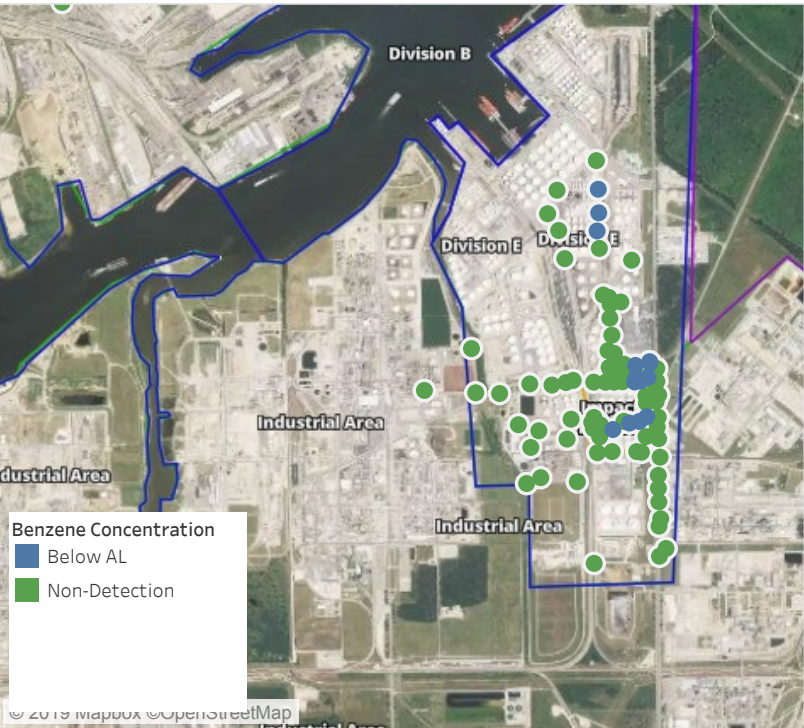
Recent Benzene Detections

Location Category	Reading Date	Range of Detections
Division E	6/6/2019 21:08:17	0.02000 ppm
	6/6/2019 21:02:37	0.02000 ppm
	6/6/2019 21:24:18	0.02000 ppm
	6/6/2019 21:29:24	0.03000 ppm
	6/6/2019 21:36:03	0.03000 ppm
	6/6/2019 21:39:49	0.03000 ppm
	6/6/2019 21:54:52	0.05000 ppm
	6/6/2019 21:44:57	0.09000 ppm
Impacted Tank Farm	6/6/2019 21:03:25	0.02000 ppm
	6/6/2019 21:17:18	0.10000 ppm

This data has been provided expeditiously to ITC and regulatory agencies for informational and/or operational purposes only. Data reported within this summary is preliminary in nature and has not undergone complete QA/QC (quality assurance/quality control) process. Until this complete QA/QC process is completed, the locations of each reading are approximate in nature and subject to further refinement. As some readings may represent non-breathing zone measurements, the data reported herein may not be suitable to assess potential occupational exposure. Site Assessment readings are not representative of an individual's breathing zone (e.g., container head space, ground level, directly above product, etc.).

Preliminary Hand- Held Air Monitoring Locations | ITC Deer Park Tank Fire

Reading Date
6/6/2019 10:00:00 PM to 6/6/2019 11:00:00 PM



Recent Benzene Detections

Location Category	Reading Date	Range of Detections
Division E	6/6/2019 22:03:52	0.0300 ppm
	6/6/2019 22:12:48	0.0200 ppm
	6/6/2019 22:06:46	0.0300 ppm
	6/6/2019 22:09:36	0.0800 ppm
	6/6/2019 22:02:23	0.0600 ppm
	6/6/2019 22:06:26	0.0400 ppm
	6/6/2019 22:38:24	0.0900 ppm
	6/6/2019 22:39:42	0.0800 ppm
	6/6/2019 22:41:59	0.0400 ppm
	6/6/2019 22:58:14	0.0500 ppm
Impacted Tank Farm	6/6/2019 22:51:22	0.0200 ppm
	6/6/2019 22:19:03	0.1400 ppm
	6/6/2019 22:16:56	0.1200 ppm
	6/6/2019 22:21:06	0.0200 ppm
	6/6/2019 22:36:49	0.0200 ppm

This data has been provided expeditiously to ITC and regulatory agencies for informational and/or operational purposes only. Data reported within this summary is preliminary in nature and has not undergone complete QA/QC (quality assurance/quality control) process. Until this complete QA/QC process is completed, the locations of each reading are approximate in nature and subject to further refinement. As some readings may represent non-breathing zone measurements, the data reported herein may not be suitable to assess potential occupational exposure. Site Assessment readings are not representative of an individual's breathing zone (e.g., container head space, ground level, directly above product, etc.).