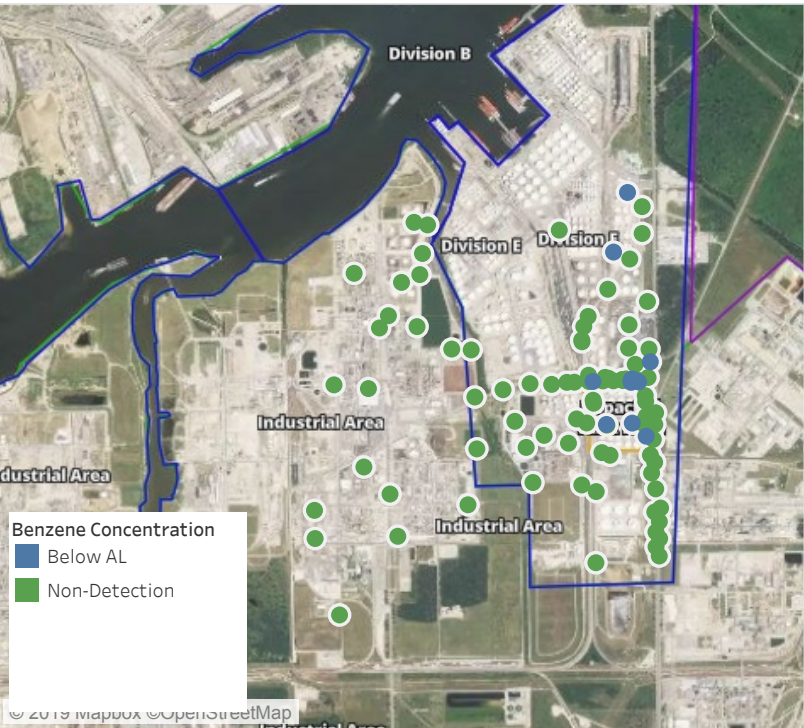


Preliminary Hand- Held Air Monitoring Locations | ITC Deer Park Tank Fire

Reading Date
6/6/2019 11:00:00 PM to 6/7/2019 12:00:00 AM



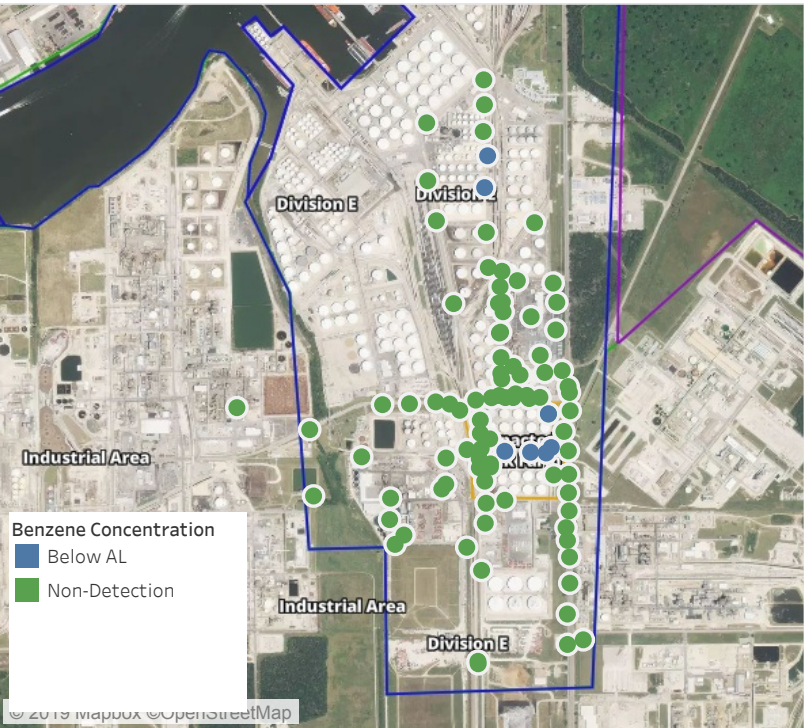
Recent Benzene Detections

Location Category	Reading Date	Range of Detections
Division E	6/6/2019 23:01:52	0.0600 ppm
	6/6/2019 23:03:01	0.0400 ppm
	6/6/2019 23:41:23	0.0600 ppm
	6/6/2019 23:39:06	0.0300 ppm
	6/6/2019 23:19:32	0.0200 ppm
	6/6/2019 23:24:15	0.0600 ppm
	6/6/2019 23:37:11	0.0200 ppm
	6/6/2019 23:46:08	0.0200 ppm
Impacted Tank Farm	6/6/2019 23:20:13	0.1300 ppm
	6/6/2019 23:23:55	0.1000 ppm
	6/6/2019 23:51:10	0.0600 ppm

This data has been provided expeditiously to ITC and regulatory agencies for informational and/or operational purposes only. Data reported within this summary is preliminary in nature and has not undergone complete QA/QC (quality assurance/quality control) process. Until this complete QA/QC process is completed, the locations of each reading are approximate in nature and subject to further refinement. As some readings may represent non-breathing zone measurements, the data reported herein may not be suitable to assess potential occupational exposure. Site Assessment readings are not representative of an individual's breathing zone (e.g., container head space, ground level, directly above product, etc.).

Preliminary Hand- Held Air Monitoring Locations | ITC Deer Park Tank Fire

Reading Date
6/7/2019 12:00:00 AM to 6/7/2019 1:00:00 AM



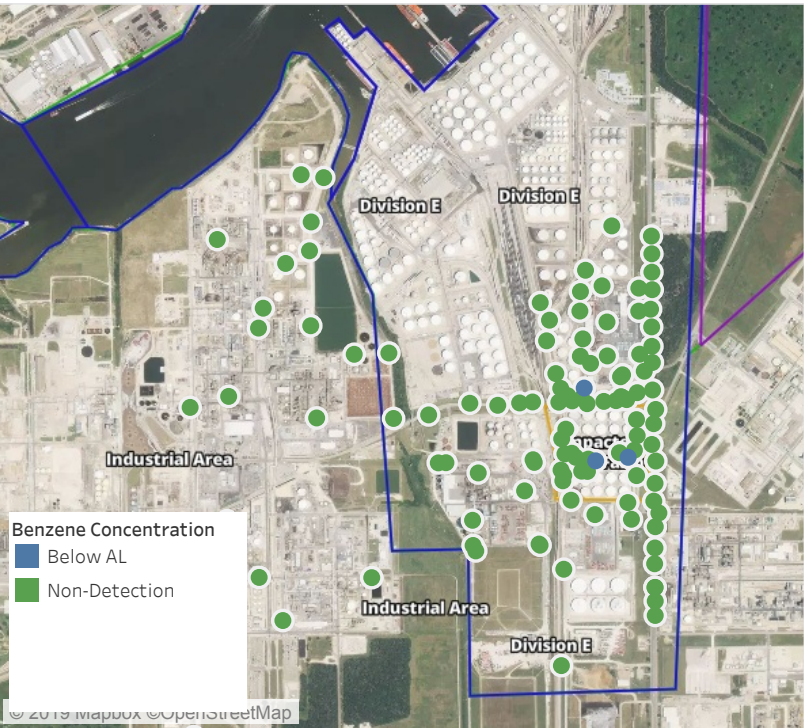
Recent Benzene Detections

Location Category	Reading Date	Range of Detections
Division E	6/7/2019 00:36:25	0.03000 ppm
	6/7/2019 00:34:44	0.05000 ppm
Impacted Tank Farm	6/7/2019 00:01:17	0.03000 ppm
	6/7/2019 00:25:57	0.02000 ppm
	6/7/2019 00:22:33	0.10000 ppm
	6/7/2019 00:17:47	0.02000 ppm
	6/7/2019 00:24:22	0.11000 ppm

This data has been provided expeditiously to ITC and regulatory agencies for informational and/or operational purposes only. Data reported within this summary is preliminary in nature and has not undergone complete QA/QC (quality assurance/quality control) process. Until this complete QA/QC process is completed, the locations of each reading are approximate in nature and subject to further refinement. As some readings may represent non-breathing zone measurements, the data reported herein may not be suitable to assess potential occupational exposure. Site Assessment readings are not representative of an individual's breathing zone (e.g., container head space, ground level, directly above product, etc.).

Preliminary Hand- Held Air Monitoring Locations | ITC Deer Park Tank Fire

Reading Date
6/7/2019 1:00:00 AM to 6/7/2019 2:00:00 AM



Recent Benzene Detections

Location Category	Reading Date	Range of Detections
Division E	6/7/2019 01:03:35	0.0200 ppm
Impacted Tank Farm	6/7/2019 01:21:13	0.0200 ppm
	6/7/2019 01:44:46	0.1500 ppm

This data has been provided expeditiously to ITC and regulatory agencies for informational and/or operational purposes only. Data reported within this summary is preliminary in nature and has not undergone complete QA/QC (quality assurance/quality control) process. Until this complete QA/QC process is completed, the locations of each reading are approximate in nature and subject to further refinement. As some readings may represent non-breathing zone measurements, the data reported herein may not be suitable to assess potential occupational exposure. Site Assessment readings are not representative of an individual's breathing zone (e.g., container head space, ground level, directly above product, etc.).

Preliminary Hand- Held Air Monitoring Locations | ITC Deer Park Tank Fire

Reading Date
6/7/2019 2:00:00 AM to 6/7/2019 3:00:00 AM



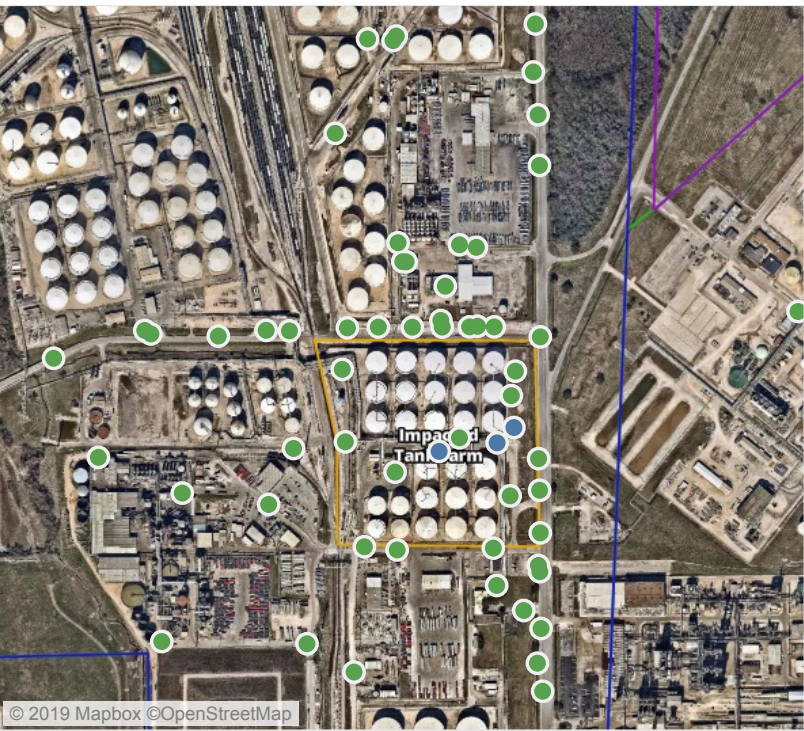
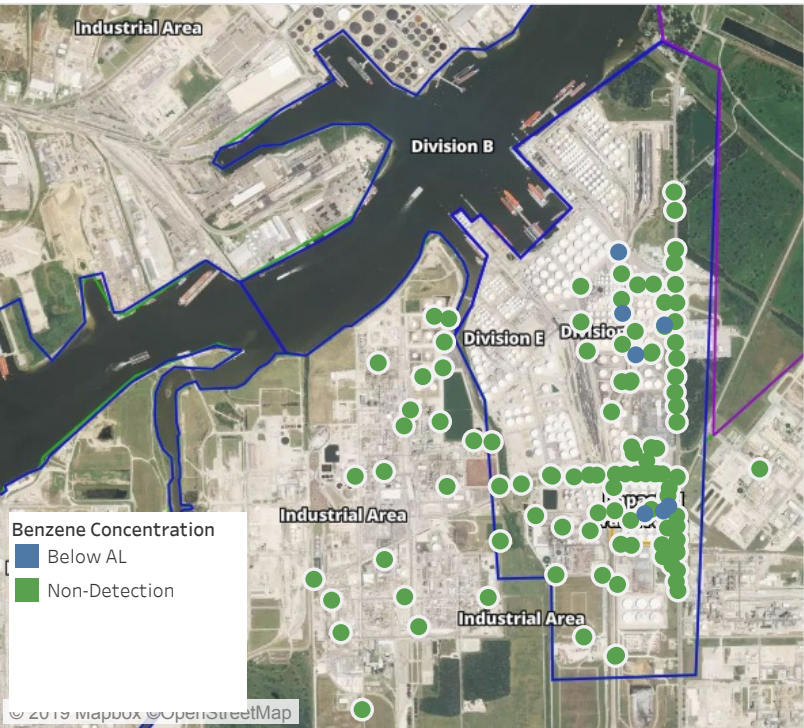
Recent Benzene Detections

Location Category	Reading Date	Range of Detections
Division E	6/7/2019 02:05:59	0.04000 ppm
	6/7/2019 02:08:01	0.09000 ppm
Impacted Tank Farm	6/7/2019 02:25:03	0.02000 ppm
	6/7/2019 02:31:51	0.02000 ppm
	6/7/2019 02:39:24	0.02000 ppm
	6/7/2019 02:41:36	0.02000 ppm

This data has been provided expeditiously to ITC and regulatory agencies for informational and/or operational purposes only. Data reported within this summary is preliminary in nature and has not undergone complete QA/QC (quality assurance/quality control) process. Until this complete QA/QC process is completed, the locations of each reading are approximate in nature and subject to further refinement. As some readings may represent non-breathing zone measurements, the data reported herein may not be suitable to assess potential occupational exposure. Site Assessment readings are not representative of an individual's breathing zone (e.g., container head space, ground level, directly above product, etc.).

Preliminary Hand- Held Air Monitoring Locations | ITC Deer Park Tank Fire

Reading Date
6/7/2019 3:00:00 AM to 6/7/2019 4:00:00 AM



Recent Benzene Detections

Location Category	Reading Date	Range of Detections
Division E	6/7/2019 03:10:30	0.0500 ppm
	6/7/2019 03:48:43	0.0400 ppm
	6/7/2019 03:30:44	0.1000 ppm
	6/7/2019 03:35:57	0.0200 ppm
Impacted Tank Farm	6/7/2019 03:29:41	0.1400 ppm
	6/7/2019 03:23:56	0.0200 ppm
	6/7/2019 03:55:05	0.0300 ppm

This data has been provided expeditiously to ITC and regulatory agencies for informational and/or operational purposes only. Data reported within this summary is preliminary in nature and has not undergone complete QA/QC (quality assurance/quality control) process. Until this complete QA/QC process is completed, the locations of each reading are approximate in nature and subject to further refinement. As some readings may represent non-breathing zone measurements, the data reported herein may not be suitable to assess potential occupational exposure. Site Assessment readings are not representative of an individual's breathing zone (e.g., container head space, ground level, directly above product, etc.).

Preliminary Hand- Held Air Monitoring Locations | ITC Deer Park Tank Fire

Reading Date
6/7/2019 4:00:00 AM to 6/7/2019 5:00:00 AM



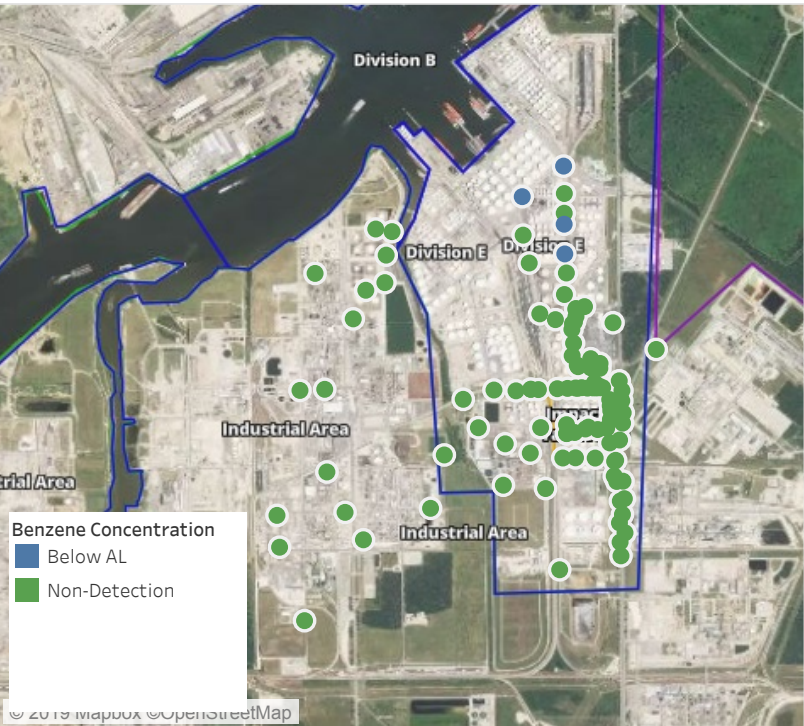
Recent Benzene Detections

Location Category	Reading Date	Range of Detections
Division E	6/7/2019 04:27:36	0.0500 ppm
Impacted Tank Farm	6/7/2019 04:33:19	0.1300 ppm
	6/7/2019 04:22:47	0.0200 ppm

This data has been provided expeditiously to ITC and regulatory agencies for informational and/or operational purposes only. Data reported within this summary is preliminary in nature and has not undergone complete QA/QC (quality assurance/quality control) process. Until this complete QA/QC process is completed, the locations of each reading are approximate in nature and subject to further refinement. As some readings may represent non-breathing zone measurements, the data reported herein may not be suitable to assess potential occupational exposure. Site Assessment readings are not representative of an individual's breathing zone (e.g., container head space, ground level, directly above product, etc.).

Preliminary Hand- Held Air Monitoring Locations | ITC Deer Park Tank Fire

Reading Date
6/7/2019 5:00:00 AM to 6/7/2019 6:00:00 AM



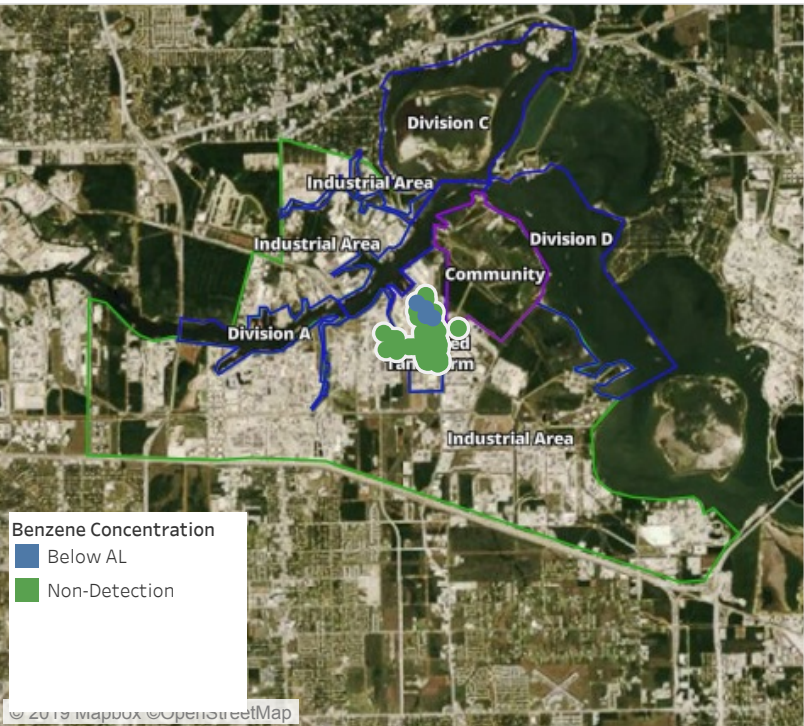
Recent Benzene Detections

Location Category	Reading Date	Range of Detections
Division E	6/7/2019 05:24:01	0.1300 ppm
	6/7/2019 05:26:11	0.0700 ppm
	6/7/2019 05:32:26	0.0200 ppm
	6/7/2019 05:30:32	0.0200 ppm

This data has been provided expeditiously to ITC and regulatory agencies for informational and/or operational purposes only. Data reported within this summary is preliminary in nature and has not undergone complete QA/QC (quality assurance/quality control) process. Until this complete QA/QC process is completed, the locations of each reading are approximate in nature and subject to further refinement. As some readings may represent non-breathing zone measurements, the data reported herein may not be suitable to assess potential occupational exposure. Site Assessment readings are not representative of an individual's breathing zone (e.g., container head space, ground level, directly above product, etc.).

Preliminary Hand- Held Air Monitoring Locations | ITC Deer Park Tank Fire

Reading Date
6/7/2019 6:00:00 AM to 6/7/2019 7:00:00 AM



Recent Benzene Detections

Location Category	Reading Date	Range of Detections
Division E	6/7/2019 06:27:39	0.02000 ppm
	6/7/2019 06:12:58	0.09000 ppm
	6/7/2019 06:19:23	0.02000 ppm
	6/7/2019 06:11:12	0.06000 ppm

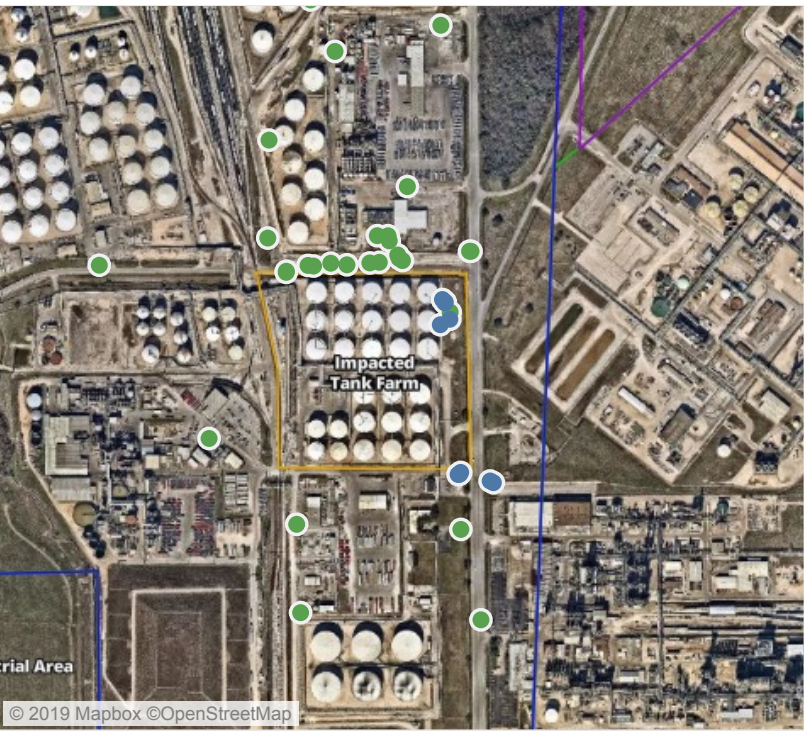
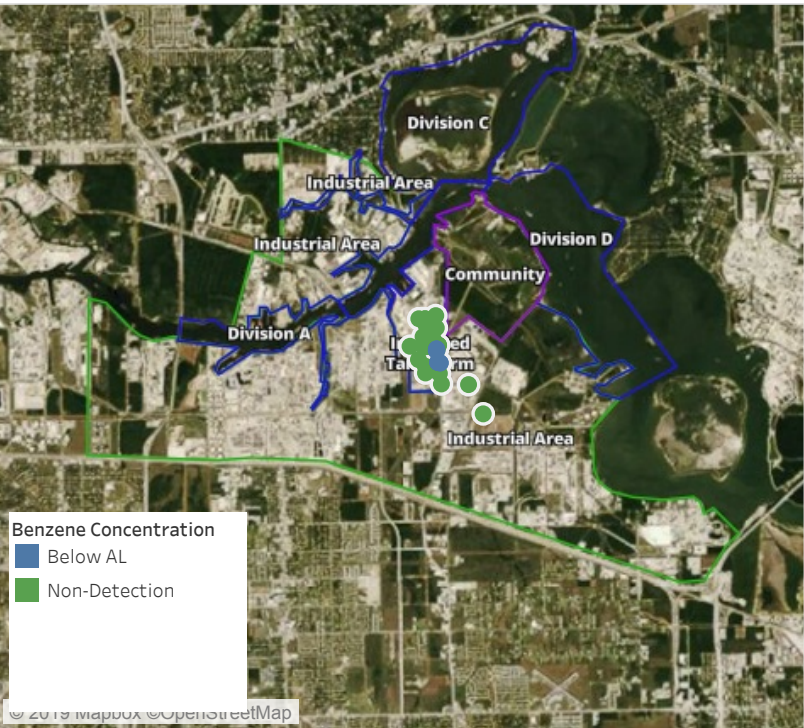
This data has been provided expeditiously to ITC and regulatory agencies for informational and/or operational purposes only. Data reported within this summary is preliminary in nature and has not undergone complete QA/QC (quality assurance/quality control) process. Until this complete QA/QC process is completed, the locations of each reading are approximate in nature and subject to further refinement. As some readings may represent non-breathing zone measurements, the data reported herein may not be suitable to assess potential occupational exposure. Site Assessment readings are not representative of an individual's breathing zone (e.g., container head space, ground level, directly above product, etc.).



Please Note: These updates display data from the 2nd 80's Fire site (Impacted Tank Farm), in the industrial areas surrounding the 2nd 80's Fire site (US Coast Guard Division E), within the Houston Ship Channel (US Coast Guard Divisions A-D), and in the industrial areas north and south of the Houston Ship Channel (Industrial Area). Real-time air monitoring data for the surrounding communities are communicated daily in a separate report.

Preliminary Hand- Held Air Monitoring Locations | ITC Deer Park Tank Fire

Reading Date
6/7/2019 7:00:00 AM to 6/7/2019 8:00:00 AM



Recent Benzene Detections

Location Category	Reading Date	Range of Detections
Division E	6/7/2019 07:21:55	0.08000 ppm
	6/7/2019 07:25:20	0.05000 ppm
	6/7/2019 07:39:26	0.09000 ppm
	6/7/2019 07:37:34	0.04000 ppm
	6/7/2019 07:57:30	0.03000 ppm
Impacted Tank Farm	6/7/2019 07:24:47	0.04000 ppm
	6/7/2019 07:28:10	0.11000 ppm
	6/7/2019 07:45:36	0.03000 ppm
	6/7/2019 07:49:50	0.10000 ppm
	6/7/2019 07:48:59	0.03000 ppm

This data has been provided expeditiously to ITC and regulatory agencies for informational and/or operational purposes only. Data reported within this summary is preliminary in nature and has not undergone complete QA/QC (quality assurance/quality control) process. Until this complete QA/QC process is completed, the locations of each reading are approximate in nature and subject to further refinement. As some readings may represent non-breathing zone measurements, the data reported herein may not be suitable to assess potential occupational exposure. Site Assessment readings are not representative of an individual's breathing zone (e.g., container head space, ground level, directly above product, etc.).



Please Note: These updates display data from the 2nd 80's Fire site (Impacted Tank Farm), in the industrial areas surrounding the 2nd 80's Fire site (US Coast Guard Division E), within the Houston Ship Channel (US Coast Guard Divisions A-D), and in the industrial areas north and south of the Houston Ship Channel (Industrial Area). Real-time air monitoring data for the surrounding communities are communicated daily in a separate report.

Preliminary Hand- Held Air Monitoring Locations | ITC Deer Park Tank Fire

Reading Date
6/7/2019 8:00:00 AM to 6/7/2019 9:00:00 AM



Recent Benzene Detections

Location Category	Reading Date	Range of Detections
Impacted Tank Farm	6/7/2019 08:06:14	0.0500 ppm
	6/7/2019 08:09:58	0.1600 ppm
	6/7/2019 08:26:16	0.0700 ppm
	6/7/2019 08:19:11	0.0300 ppm
	6/7/2019 08:31:16	0.1200 ppm
	6/7/2019 08:31:10	0.0300 ppm
	6/7/2019 08:34:04	0.0600 ppm
	6/7/2019 08:51:03	0.0900 ppm
	6/7/2019 08:54:47	0.0600 ppm

This data has been provided expeditiously to ITC and regulatory agencies for informational and/or operational purposes only. Data reported within this summary is preliminary in nature and has not undergone complete QA/QC (quality assurance/quality control) process. Until this complete QA/QC process is completed, the locations of each reading are approximate in nature and subject to further refinement. As some readings may represent non-breathing zone measurements, the data reported herein may not be suitable to assess potential occupational exposure. Site Assessment readings are not representative of an individual's breathing zone (e.g., container head space, ground level, directly above product, etc.).



Please Note: These updates display data from the 2nd 80's Fire site (Impacted Tank Farm), in the industrial areas surrounding the 2nd 80's Fire site (US Coast Guard Division E), within the Houston Ship Channel (US Coast Guard Divisions A-D), and in the industrial areas north and south of the Houston Ship Channel (Industrial Area). Real-time air monitoring data for the surrounding communities are communicated daily in a separate report.

Preliminary Hand- Held Air Monitoring Locations | ITC Deer Park Tank Fire

Reading Date
6/7/2019 9:00:00 AM to 6/7/2019 10:00:00 AM



Recent Benzene Detections

Location Category	Reading Date	Range of Detections
Division E	6/7/2019 09:34:17	0.0900 ppm
	6/7/2019 09:42:55	0.0300 ppm
	6/7/2019 09:44:18	0.1000 ppm
Impacted Tank Farm	6/7/2019 09:14:03	0.0400 ppm
	6/7/2019 09:26:48	0.1300 ppm
	6/7/2019 09:34:07	0.1100 ppm
	6/7/2019 09:38:10	0.1500 ppm

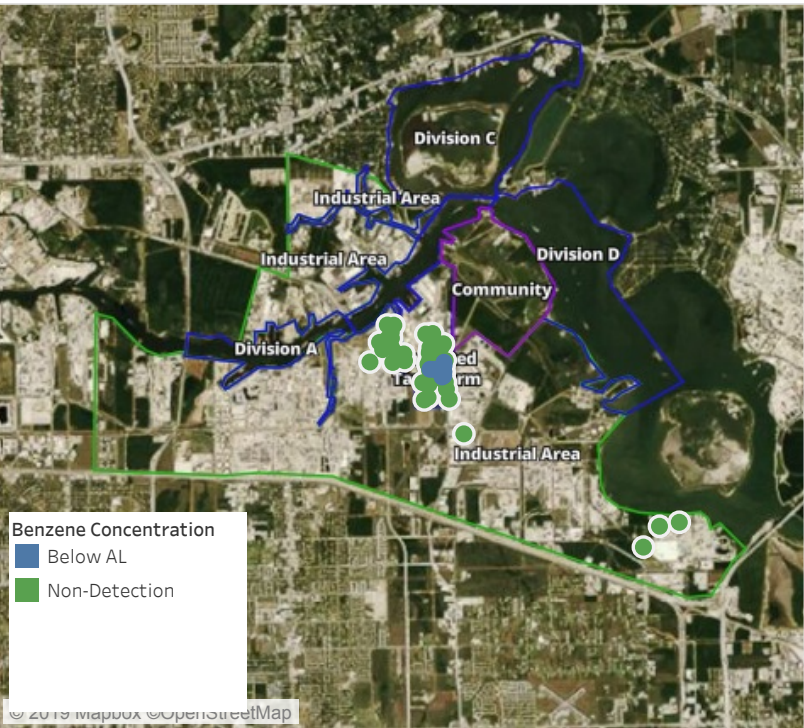
This data has been provided expeditiously to ITC and regulatory agencies for informational and/or operational purposes only. Data reported within this summary is preliminary in nature and has not undergone complete QA/QC (quality assurance/quality control) process. Until this complete QA/QC process is completed, the locations of each reading are approximate in nature and subject to further refinement. As some readings may represent non-breathing zone measurements, the data reported herein may not be suitable to assess potential occupational exposure. Site Assessment readings are not representative of an individual's breathing zone (e.g., container head space, ground level, directly above product, etc.).



Please Note: These updates display data from the 2nd 80's Fire site (Impacted Tank Farm), in the industrial areas surrounding the 2nd 80's Fire site (US Coast Guard Division E), within the Houston Ship Channel (US Coast Guard Divisions A-D), and in the industrial areas north and south of the Houston Ship Channel (Industrial Area). Real-time air monitoring data for the surrounding communities are communicated daily in a separate report.

Preliminary Hand- Held Air Monitoring Locations | ITC Deer Park Tank Fire

Reading Date
6/7/2019 10:00:00 AM to 6/7/2019 11:00:00 AM



Recent Benzene Detections

Location Category	Reading Date	Range of Detections
Division E	6/7/2019 10:05:15	0.0300 ppm
	6/7/2019 10:31:33	0.0300 ppm
Impacted Tank Farm	6/7/2019 10:02:27	0.0300 ppm
	6/7/2019 10:21:06	0.0500 ppm
	6/7/2019 10:23:09	0.1100 ppm
	6/7/2019 10:06:15	0.1700 ppm
	6/7/2019 10:07:12	0.0400 ppm
	6/7/2019 10:15:30	0.1000 ppm
	6/7/2019 10:05:01	0.1100 ppm
	6/7/2019 10:25:52	0.0400 ppm
	6/7/2019 10:13:58	0.1300 ppm
	6/7/2019 10:12:38	0.1100 ppm
	6/7/2019 10:24:38	0.0700 ppm
	6/7/2019 10:18:33	0.0500 ppm
	6/7/2019 10:41:47	0.1200 ppm

This data has been provided expeditiously to ITC and regulatory agencies for informational and/or operational purposes only. Data reported within this summary is preliminary in nature and has not undergone complete QA/QC (quality assurance/quality control) process. Until this complete QA/QC process is completed, the locations of each reading are approximate in nature and subject to further refinement. As some readings may represent non-breathing zone measurements, the data reported herein may not be suitable to assess potential occupational exposure. Site Assessment readings are not representative of an individual's breathing zone (e.g., container head space, ground level, directly above product, etc.).



Please Note: These updates display data from the 2nd 80's Fire site (Impacted Tank Farm), in the industrial areas surrounding the 2nd 80's Fire site (US Coast Guard Division E), within the Houston Ship Channel (US Coast Guard Divisions A-D), and in the industrial areas north and south of the Houston Ship Channel (Industrial Area). Real-time air monitoring data for the surrounding communities are communicated daily in a separate report.

Preliminary Hand- Held Air Monitoring Locations | ITC Deer Park Tank Fire

Reading Date
6/7/2019 11:00:00 AM to 6/7/2019 12:00:00 PM



Recent Benzene Detections

Location Category	Reading Date	Range of Detections
Division E	6/7/2019 11:33:58	0.07000 ppm
	6/7/2019 11:32:31	0.03000 ppm
	6/7/2019 11:35:21	0.04000 ppm
	6/7/2019 11:51:17	0.02000 ppm
Impacted Tank Farm	6/7/2019 11:16:07	0.04000 ppm
	6/7/2019 11:27:06	0.06000 ppm
	6/7/2019 11:50:16	0.10000 ppm

This data has been provided expeditiously to ITC and regulatory agencies for informational and/or operational purposes only. Data reported within this summary is preliminary in nature and has not undergone complete QA/QC (quality assurance/quality control) process. Until this complete QA/QC process is completed, the locations of each reading are approximate in nature and subject to further refinement. As some readings may represent non-breathing zone measurements, the data reported herein may not be suitable to assess potential occupational exposure. Site Assessment readings are not representative of an individual's breathing zone (e.g., container head space, ground level, directly above product, etc.).



Please Note: These updates display data from the 2nd 80's Fire site (Impacted Tank Farm), in the industrial areas surrounding the 2nd 80's Fire site (US Coast Guard Division E), within the Houston Ship Channel (US Coast Guard Divisions A-D), and in the industrial areas north and south of the Houston Ship Channel (Industrial Area). Real-time air monitoring data for the surrounding communities are communicated daily in a separate report.

Preliminary Hand- Held Air Monitoring Locations | ITC Deer Park Tank Fire

Reading Date
6/7/2019 12:00:00 PM to 6/7/2019 1:00:00 PM



Recent Benzene Detections

Location Category	Reading Date	Range of Detections
Division E	6/7/2019 12:46:56	0.04000 ppm
	6/7/2019 12:48:54	0.10000 ppm
	6/7/2019 12:51:10	0.04000 ppm
Impacted Tank Farm	6/7/2019 12:08:15	0.02000 ppm
	6/7/2019 12:27:36	0.05000 ppm
	6/7/2019 12:59:47	0.07000 ppm
	6/7/2019 12:52:20	0.04000 ppm
	6/7/2019 12:57:54	0.07000 ppm

This data has been provided expeditiously to ITC and regulatory agencies for informational and/or operational purposes only. Data reported within this summary is preliminary in nature and has not undergone complete QA/QC (quality assurance/quality control) process. Until this complete QA/QC process is completed, the locations of each reading are approximate in nature and subject to further refinement. As some readings may represent non-breathing zone measurements, the data reported herein may not be suitable to assess potential occupational exposure. Site Assessment readings are not representative of an individual's breathing zone (e.g., container head space, ground level, directly above product, etc.).



Please Note: These updates display data from the 2nd 80's Fire site (Impacted Tank Farm), in the industrial areas surrounding the 2nd 80's Fire site (US Coast Guard Division E), within the Houston Ship Channel (US Coast Guard Divisions A-D), and in the industrial areas north and south of the Houston Ship Channel (Industrial Area). Real-time air monitoring data for the surrounding communities are communicated daily in a separate report.

Preliminary Hand- Held Air Monitoring Locations | ITC Deer Park Tank Fire

Reading Date
6/7/2019 1:00:00 PM to 6/7/2019 2:00:00 PM



Recent Benzene Detections

Location Category	Reading Date	Range of Detections
Division E	6/7/2019 13:09:25	0.1700 ppm
	6/7/2019 13:06:52	0.0400 ppm
	6/7/2019 13:19:30	0.0300 ppm
	6/7/2019 13:28:42	0.0300 ppm
	6/7/2019 13:50:01	0.0500 ppm
Impacted Tank Farm	6/7/2019 13:02:19	0.1400 ppm
	6/7/2019 13:45:52	0.0900 ppm
	6/7/2019 13:59:06	0.0400 ppm

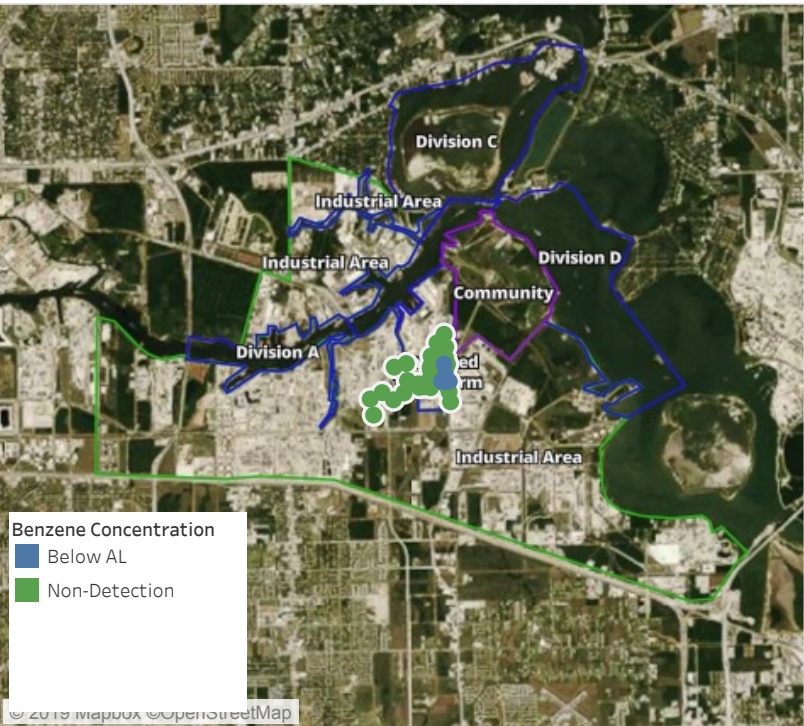
This data has been provided expeditiously to ITC and regulatory agencies for informational and/or operational purposes only. Data reported within this summary is preliminary in nature and has not undergone complete QA/QC (quality assurance/quality control) process. Until this complete QA/QC process is completed, the locations of each reading are approximate in nature and subject to further refinement. As some readings may represent non-breathing zone measurements, the data reported herein may not be suitable to assess potential occupational exposure. Site Assessment readings are not representative of an individual's breathing zone (e.g., container head space, ground level, directly above product, etc.).



Please Note: These updates display data from the 2nd 80's Fire site (Impacted Tank Farm), in the industrial areas surrounding the 2nd 80's Fire site (US Coast Guard Division E), within the Houston Ship Channel (US Coast Guard Divisions A-D), and in the industrial areas north and south of the Houston Ship Channel (Industrial Area). Real-time air monitoring data for the surrounding communities are communicated daily in a separate report.

Preliminary Hand- Held Air Monitoring Locations | ITC Deer Park Tank Fire

Reading Date
6/7/2019 2:00:00 PM to 6/7/2019 3:00:00 PM



Recent Benzene Detections

Location Category	Reading Date	Range of Detections
Division E	6/7/2019 14:21:28	0.0200 ppm
	6/7/2019 14:36:22	0.0800 ppm
	6/7/2019 14:33:10	0.0700 ppm
	6/7/2019 14:30:00	0.0200 ppm
	6/7/2019 14:52:25	0.1000 ppm
	6/7/2019 14:50:24	0.0200 ppm
	6/7/2019 14:56:42	0.1800 ppm
	6/7/2019 15:00:00	0.1000 ppm
Impacted Tank Farm	6/7/2019 14:20:54	0.1300 ppm
	6/7/2019 14:24:03	0.0300 ppm

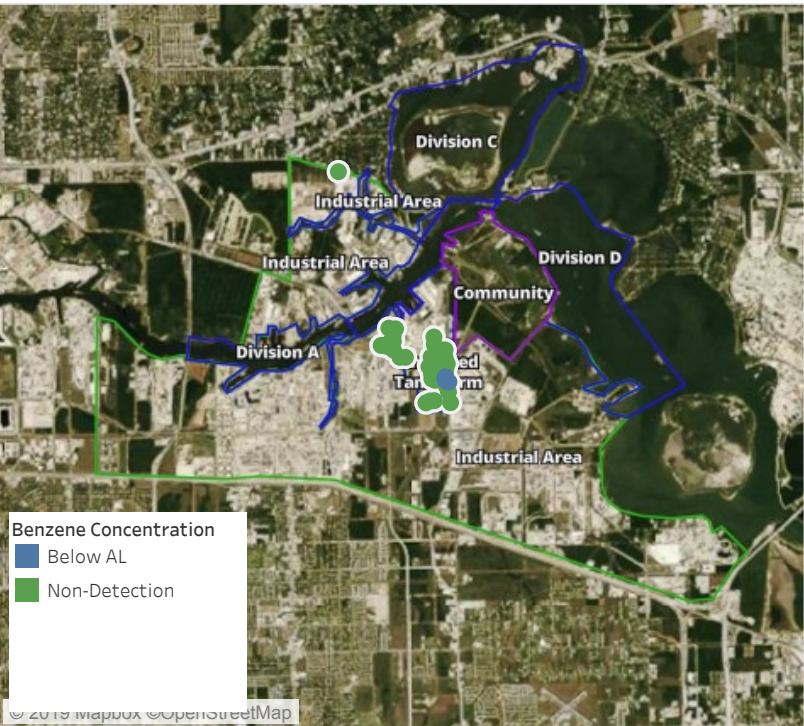
This data has been provided expeditiously to ITC and regulatory agencies for informational and/or operational purposes only. Data reported within this summary is preliminary in nature and has not undergone complete QA/QC (quality assurance/quality control) process. Until this complete QA/QC process is completed, the locations of each reading are approximate in nature and subject to further refinement. As some readings may represent non-breathing zone measurements, the data reported herein may not be suitable to assess potential occupational exposure. Site Assessment readings are not representative of an individual's breathing zone (e.g., container head space, ground level, directly above product, etc.).



Please Note: These updates display data from the 2nd 80's Fire site (Impacted Tank Farm), in the industrial areas surrounding the 2nd 80's Fire site (US Coast Guard Division E), within the Houston Ship Channel (US Coast Guard Divisions A-D), and in the industrial areas north and south of the Houston Ship Channel (Industrial Area). Real-time air monitoring data for the surrounding communities are communicated daily in a separate report.

Preliminary Hand- Held Air Monitoring Locations | ITC Deer Park Tank Fire

Reading Date
6/7/2019 3:00:00 PM to 6/7/2019 4:00:00 PM



Recent Benzene Detections

Location Category	Reading Date	Range of Detections
Division E	6/7/2019 15:00:00	0.1000 ppm
	6/7/2019 15:36:34	0.0400 ppm
	6/7/2019 15:49:38	0.0500 ppm
Impacted Tank Farm	6/7/2019 15:47:48	0.1000 ppm
	6/7/2019 15:59:37	0.1700 ppm
	6/7/2019 15:51:33	0.1300 ppm
	6/7/2019 15:53:08	0.0900 ppm

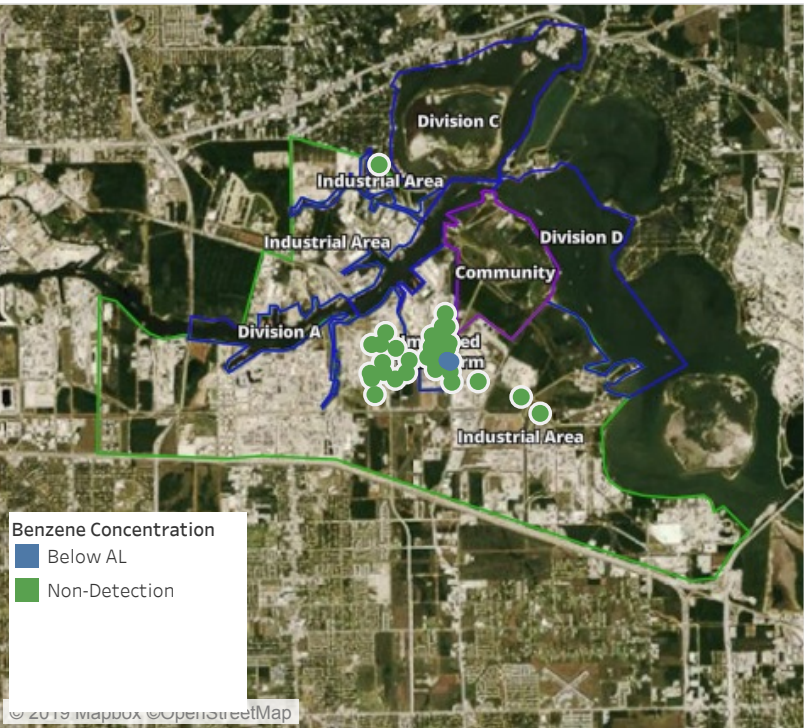
This data has been provided expeditiously to ITC and regulatory agencies for informational and/or operational purposes only. Data reported within this summary is preliminary in nature and has not undergone complete QA/QC (quality assurance/quality control) process. Until this complete QA/QC process is completed, the locations of each reading are approximate in nature and subject to further refinement. As some readings may represent non-breathing zone measurements, the data reported herein may not be suitable to assess potential occupational exposure. Site Assessment readings are not representative of an individual's breathing zone (e.g., container head space, ground level, directly above product, etc.).



Please Note: These updates display data from the 2nd 80's Fire site (Impacted Tank Farm), in the industrial areas surrounding the 2nd 80's Fire site (US Coast Guard Division E), within the Houston Ship Channel (US Coast Guard Divisions A-D), and in the industrial areas north and south of the Houston Ship Channel (Industrial Area). Real-time air monitoring data for the surrounding communities are communicated daily in a separate report.

Preliminary Hand- Held Air Monitoring Locations | ITC Deer Park Tank Fire

Reading Date
6/7/2019 4:00:00 PM to 6/7/2019 5:00:00 PM



Recent Benzene Detections

Location Category	Reading Date	Range of Detections
Division E	6/7/2019 16:42:09	0.0200 ppm
	6/7/2019 16:40:08	0.0500 ppm
	6/7/2019 16:50:13	0.0600 ppm
	6/7/2019 16:52:19	0.1300 ppm
	6/7/2019 16:54:26	0.0900 ppm

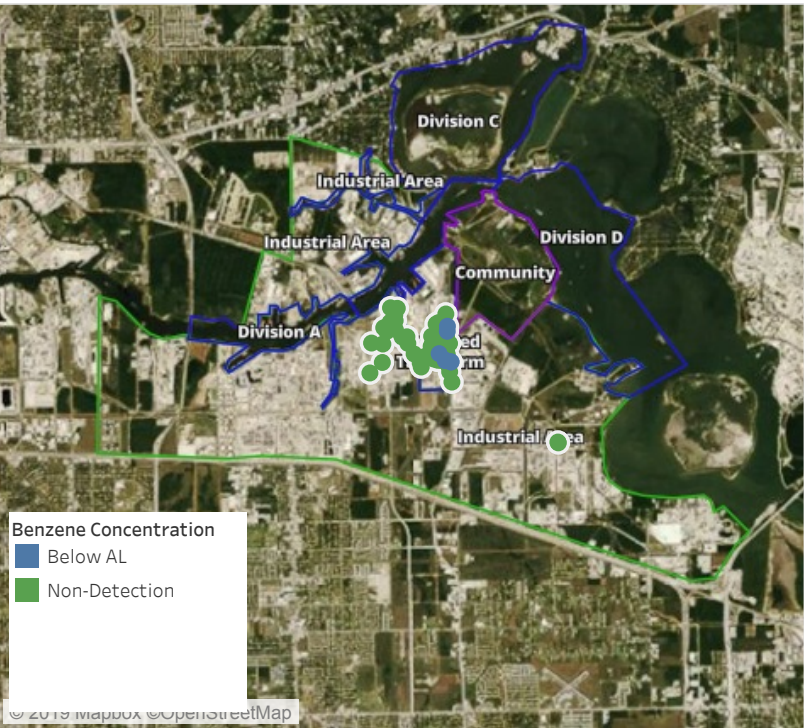
This data has been provided expeditiously to ITC and regulatory agencies for informational and/or operational purposes only. Data reported within this summary is preliminary in nature and has not undergone complete QA/QC (quality assurance/quality control) process. Until this complete QA/QC process is completed, the locations of each reading are approximate in nature and subject to further refinement. As some readings may represent non-breathing zone measurements, the data reported herein may not be suitable to assess potential occupational exposure. Site Assessment readings are not representative of an individual's breathing zone (e.g., container head space, ground level, directly above product, etc.).



Please Note: These updates display data from the 2nd 80's Fire site (Impacted Tank Farm), in the industrial areas surrounding the 2nd 80's Fire site (US Coast Guard Division E), within the Houston Ship Channel (US Coast Guard Divisions A-D), and in the industrial areas north and south of the Houston Ship Channel (Industrial Area). Real-time air monitoring data for the surrounding communities are communicated daily in a separate report.

Preliminary Hand- Held Air Monitoring Locations | ITC Deer Park Tank Fire

Reading Date
6/7/2019 5:00:00 PM to 6/7/2019 6:00:00 PM



Recent Benzene Detections

Location Category	Reading Date	Range of Detections
Division E	6/7/2019 17:31:49	0.0800 ppm
	6/7/2019 17:33:07	0.0400 ppm
	6/7/2019 17:28:37	0.0900 ppm
	6/7/2019 17:34:13	0.1400 ppm
	6/7/2019 17:32:21	0.1400 ppm
	6/7/2019 17:42:15	0.0300 ppm
	6/7/2019 17:48:06	0.0400 ppm
Impacted Tank Farm	6/7/2019 17:31:50	0.0800 ppm

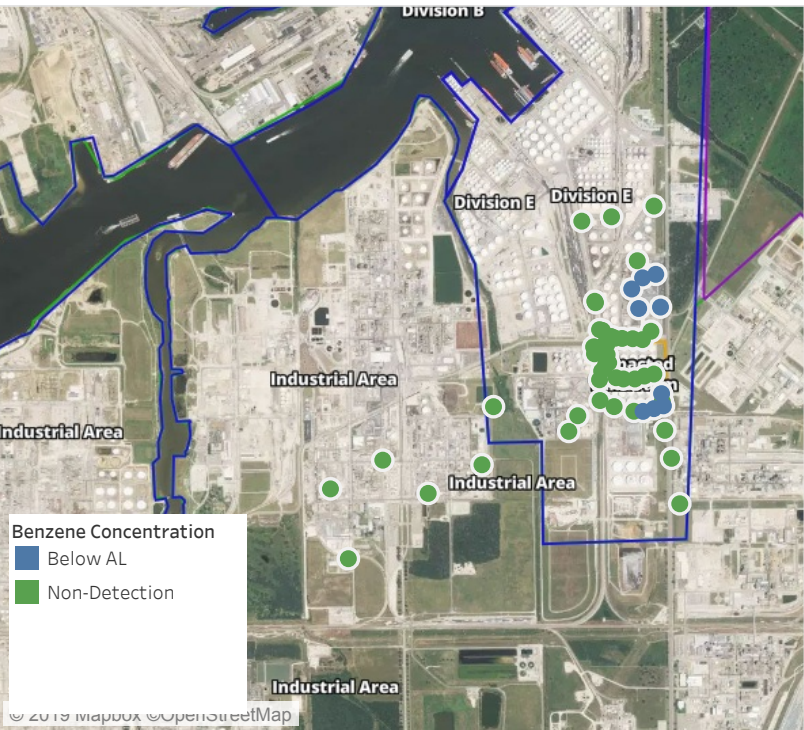
This data has been provided expeditiously to ITC and regulatory agencies for informational and/or operational purposes only. Data reported within this summary is preliminary in nature and has not undergone complete QA/QC (quality assurance/quality control) process. Until this complete QA/QC process is completed, the locations of each reading are approximate in nature and subject to further refinement. As some readings may represent non-breathing zone measurements, the data reported herein may not be suitable to assess potential occupational exposure. Site Assessment readings are not representative of an individual's breathing zone (e.g., container head space, ground level, directly above product, etc.).



Please Note: These updates display data from the 2nd 80's Fire site (Impacted Tank Farm), in the industrial areas surrounding the 2nd 80's Fire site (US Coast Guard Division E), within the Houston Ship Channel (US Coast Guard Divisions A-D), and in the industrial areas north and south of the Houston Ship Channel (Industrial Area). Real-time air monitoring data for the surrounding communities are communicated daily in a separate report.

Preliminary Hand- Held Air Monitoring Locations | ITC Deer Park Tank Fire

Reading Date
6/7/2019 6:00:00 PM to 6/7/2019 7:00:00 PM



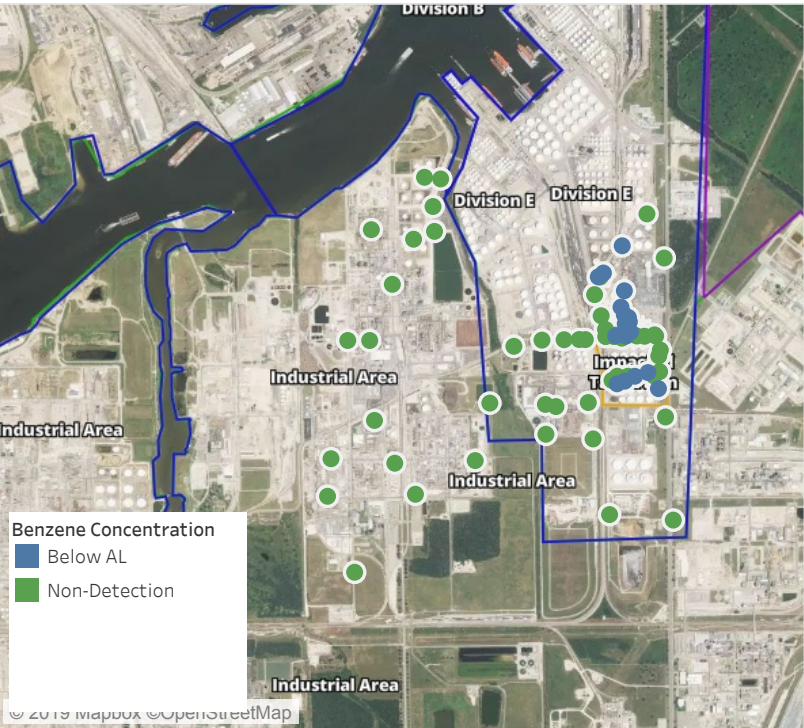
Recent Benzene Detections

Location Category	Reading Date	Range of Detections
Division E	6/7/2019 18:08:15	0.0700 ppm
	6/7/2019 18:15:41	0.0500 ppm
	6/7/2019 18:23:14	0.0200 ppm
	6/7/2019 18:35:27	0.0300 ppm
	6/7/2019 18:44:05	0.0500 ppm
	6/7/2019 18:40:05	0.1400 ppm
	6/7/2019 18:45:55	0.0300 ppm
	6/7/2019 18:59:13	0.0300 ppm
Impacted Tank Farm	6/7/2019 18:29:43	0.0500 ppm

This data has been provided expeditiously to ITC and regulatory agencies for informational and/or operational purposes only. Data reported within this summary is preliminary in nature and has not undergone complete QA/QC (quality assurance/quality control) process. Until this complete QA/QC process is completed, the locations of each reading are approximate in nature and subject to further refinement. As some readings may represent non-breathing zone measurements, the data reported herein may not be suitable to assess potential occupational exposure. Site Assessment readings are not representative of an individual's breathing zone (e.g., container head space, ground level, directly above product, etc.).

Preliminary Hand- Held Air Monitoring Locations | ITC Deer Park Tank Fire

Reading Date
6/7/2019 7:00:00 PM to 6/7/2019 8:00:00 PM



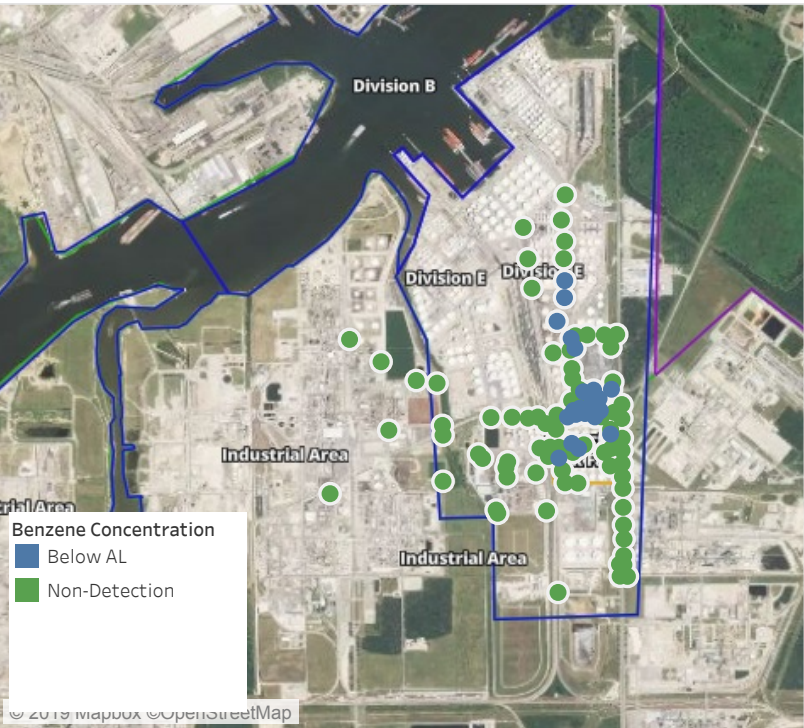
Recent Benzene Detections

Location Category	Reading Date	Range of Detections
Division E	6/7/2019 19:42:16	0.07000 ppm
	6/7/2019 19:21:50	0.05000 ppm
	6/7/2019 19:47:03	0.05000 ppm
	6/7/2019 19:42:48	0.04000 ppm
	6/7/2019 19:40:58	0.05000 ppm
	6/7/2019 19:56:13	0.02000 ppm
	6/7/2019 19:37:54	0.03000 ppm
	6/7/2019 19:41:36	0.03000 ppm
	6/7/2019 19:49:48	0.04000 ppm
	6/7/2019 19:52:37	0.05000 ppm
Impacted Tank Farm	6/7/2019 19:59:12	0.05000 ppm
	6/7/2019 19:56:45	0.07000 ppm
	6/7/2019 19:34:20	0.04000 ppm
	6/7/2019 19:38:15	0.02000 ppm
	6/7/2019 19:47:33	0.02000 ppm
	6/7/2019 19:52:13	0.02000 ppm
	6/7/2019 19:59:14	0.02000 ppm

This data has been provided expeditiously to ITC and regulatory agencies for informational and/or operational purposes only. Data reported within this summary is preliminary in nature and has not undergone complete QA/QC (quality assurance/quality control) process. Until this complete QA/QC process is completed, the locations of each reading are approximate in nature and subject to further refinement. As some readings may represent non-breathing zone measurements, the data reported herein may not be suitable to assess potential occupational exposure. Site Assessment readings are not representative of an individual's breathing zone (e.g., container head space, ground level, directly above product, etc.).

Preliminary Hand- Held Air Monitoring Locations | ITC Deer Park Tank Fire

Reading Date
6/7/2019 8:00:00 PM to 6/7/2019 9:00:00 PM



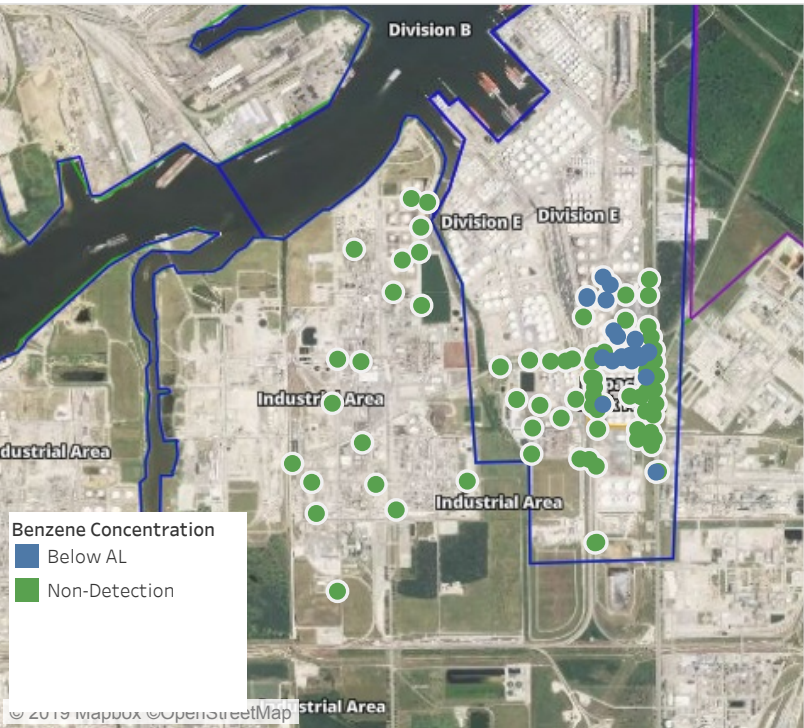
Recent Benzene Detections

Location Category	Reading Date	Range of Detections
Division E	6/7/2019 20:02:54	0.06000 ppm
	6/7/2019 20:05:37	0.07000 ppm
	6/7/2019 20:13:05	0.05000 ppm
	6/7/2019 20:16:23	0.05000 ppm
	6/7/2019 20:20:05	0.05000 ppm
	6/7/2019 20:25:45	0.05000 ppm
	6/7/2019 20:09:09	0.05000 ppm
	6/7/2019 20:28:19	0.02000 ppm
	6/7/2019 20:21:19	0.03000 ppm
	6/7/2019 20:29:39	0.03000 ppm
	6/7/2019 20:36:01	0.05000 ppm
	6/7/2019 20:33:48	0.05000 ppm
	6/7/2019 20:32:06	0.04000 ppm
	6/7/2019 20:41:13	0.05000 ppm
	6/7/2019 20:38:51	0.04000 ppm
	6/7/2019 20:31:22	0.06000 ppm
	6/7/2019 20:29:16	0.07000 ppm
	6/7/2019 20:23:18	0.02000 ppm
	6/7/2019 20:43:09	0.03000 ppm
	6/7/2019 20:30:49	0.02000 ppm
Impacted Tank Farm	6/7/2019 20:46:33	0.03000 ppm
	6/7/2019 20:50:52	0.03000 ppm
	6/7/2019 20:47:56	0.04000 ppm
	6/7/2019 20:05:31	0.02000 ppm
	6/7/2019 20:08:43	0.02000 ppm
	6/7/2019 20:56:30	0.02000 ppm
	6/7/2019 20:58:59	0.02000 ppm

This data has been provided expeditiously to ITC and regulatory agencies for informational and/or operational purposes only. Data reported within this summary is preliminary in nature and has not undergone complete QA/QC (quality assurance/quality control) process. Until this complete QA/QC process is completed, the locations of each reading are approximate in nature and subject to further refinement. As some readings may represent non-breathing zone measurements, the data reported herein may not be suitable to assess potential occupational exposure. Site Assessment readings are not representative of an individual's breathing zone (e.g., container head space, ground level, directly above product, etc.).

Preliminary Hand- Held Air Monitoring Locations | ITC Deer Park Tank Fire

Reading Date
6/7/2019 9:00:00 PM to 6/7/2019 10:00:00 PM



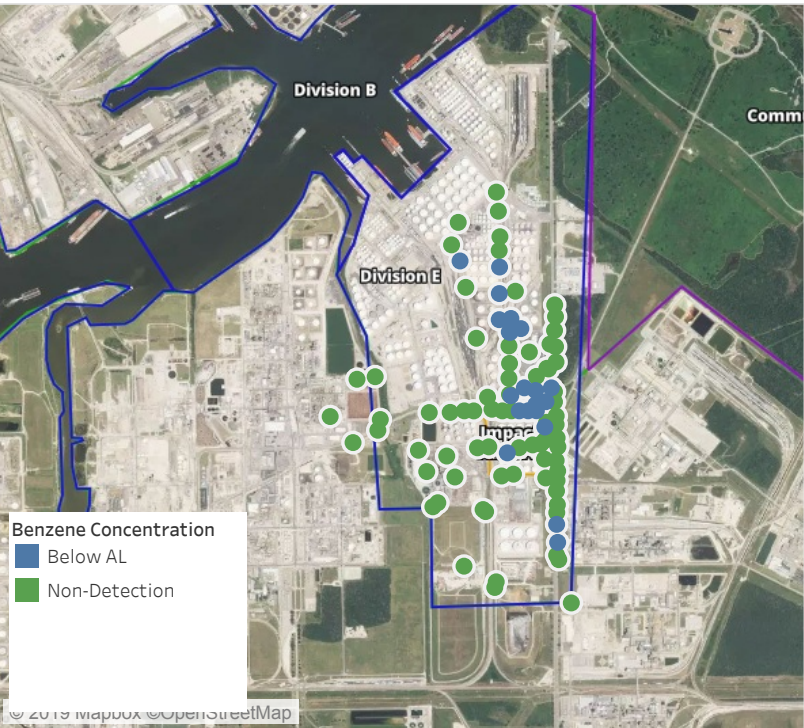
Recent Benzene Detections

Location Category	Reading Date	Range of Detections
Division E	6/7/2019 21:27:44	0.02000 ppm
	6/7/2019 21:34:03	0.02000 ppm
	6/7/2019 21:42:47	0.03000 ppm
	6/7/2019 21:15:24	0.02000 ppm
	6/7/2019 21:04:03	0.02000 ppm
	6/7/2019 21:11:19	0.03000 ppm
	6/7/2019 21:23:25	0.02000 ppm
	6/7/2019 21:49:06	0.03000 ppm
	6/7/2019 21:06:42	0.02000 ppm
	6/7/2019 21:43:40	0.03000 ppm
	6/7/2019 21:38:35	0.03000 ppm
	6/7/2019 21:19:46	0.04000 ppm
	6/7/2019 21:14:53	0.03000 ppm
	6/7/2019 21:25:01	0.03000 ppm
	6/7/2019 21:46:05	0.03000 ppm
	6/7/2019 21:34:16	0.02000 ppm
	6/7/2019 21:31:27	0.02000 ppm
	6/7/2019 21:39:48	0.09000 ppm
	6/7/2019 21:55:00	0.05000 ppm
Impacted Tank Farm	6/7/2019 21:57:28	0.07000 ppm
	6/7/2019 21:50:12	0.04000 ppm
	6/7/2019 21:01:51	0.03000 ppm
Impacted Tank Farm	6/7/2019 21:12:31	0.02000 ppm

This data has been provided expeditiously to ITC and regulatory agencies for informational and/or operational purposes only. Data reported within this summary is preliminary in nature and has not undergone complete QA/QC (quality assurance/quality control) process. Until this complete QA/QC process is completed, the locations of each reading are approximate in nature and subject to further refinement. As some readings may represent non-breathing zone measurements, the data reported herein may not be suitable to assess potential occupational exposure. Site Assessment readings are not representative of an individual's breathing zone (e.g., container head space, ground level, directly above product, etc.).

Preliminary Hand- Held Air Monitoring Locations | ITC Deer Park Tank Fire

Reading Date
6/7/2019 10:00:00 PM to 6/7/2019 11:00:00 PM



Recent Benzene Detections

Location Category	Reading Date	Range of Detections
Division E	6/7/2019 22:04:04	0.11000 ppm
	6/7/2019 22:06:28	0.02000 ppm
	6/7/2019 22:09:06	0.02000 ppm
	6/7/2019 22:21:55	0.03000 ppm
	6/7/2019 22:03:12	0.03000 ppm
	6/7/2019 22:27:34	0.04000 ppm
	6/7/2019 22:24:34	0.05000 ppm
	6/7/2019 22:31:50	0.10000 ppm
	6/7/2019 22:30:17	0.04000 ppm
	6/7/2019 22:43:13	0.07000 ppm
	6/7/2019 22:44:04	0.02000 ppm
	6/7/2019 22:46:28	0.02000 ppm
	6/7/2019 22:49:11	0.03000 ppm
	6/7/2019 22:33:16	0.02000 ppm
	6/7/2019 22:28:49	0.04000 ppm
	6/7/2019 22:45:23	0.02000 ppm
	6/7/2019 22:42:09	0.04000 ppm
	6/7/2019 22:57:57	0.03000 ppm
	6/7/2019 22:39:04	0.04000 ppm
Impacted Tank Farm	6/7/2019 22:22:14	0.02000 ppm
	6/7/2019 22:51:36	0.02000 ppm

This data has been provided expeditiously to ITC and regulatory agencies for informational and/or operational purposes only. Data reported within this summary is preliminary in nature and has not undergone complete QA/QC (quality assurance/quality control) process. Until this complete QA/QC process is completed, the locations of each reading are approximate in nature and subject to further refinement. As some readings may represent non-breathing zone measurements, the data reported herein may not be suitable to assess potential occupational exposure. Site Assessment readings are not representative of an individual's breathing zone (e.g., container head space, ground level, directly above product, etc.).