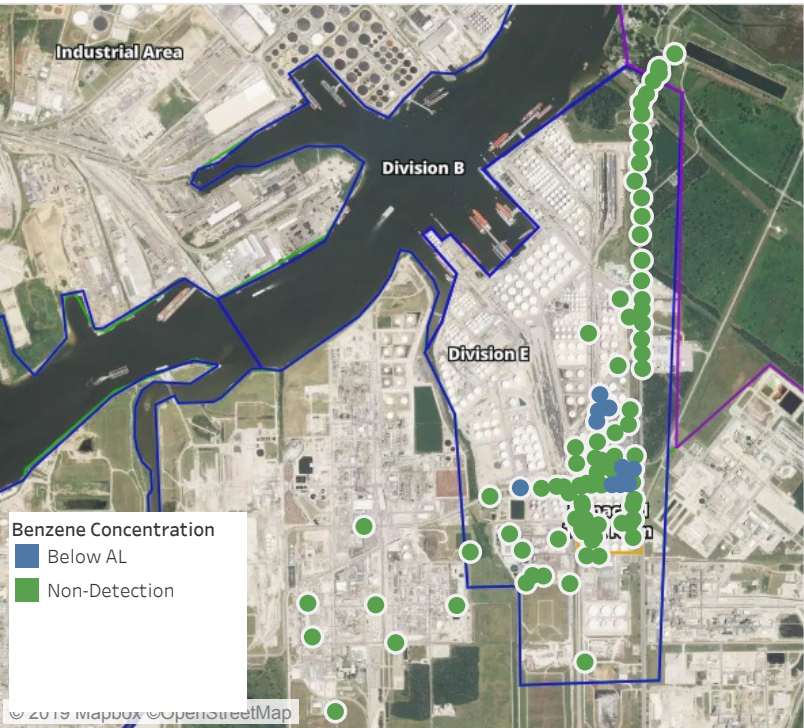


Preliminary Hand- Held Air Monitoring Locations | ITC Deer Park Tank Fire

Reading Date
6/7/2019 11:00:00 PM to 6/8/2019 12:00:00 AM



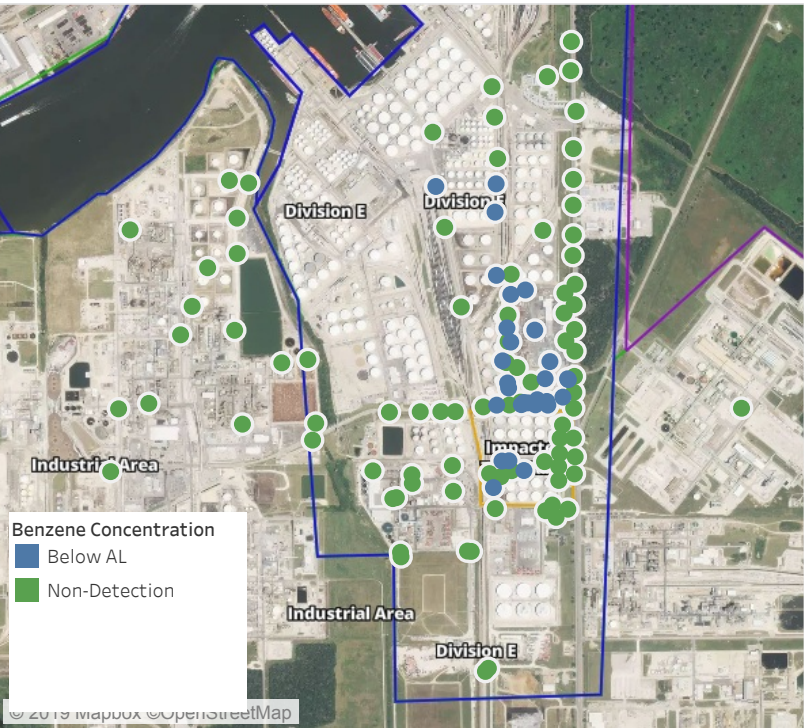
Recent Benzene Detections

Location Category	Reading Date	Range of Detections
Division E	6/7/2019 23:30:38	0.03000 ppm
	6/7/2019 23:23:55	0.06000 ppm
	6/7/2019 23:20:10	0.04000 ppm
	6/7/2019 23:43:14	0.05000 ppm
	6/7/2019 23:16:04	0.02000 ppm
	6/7/2019 23:13:04	0.03000 ppm
	6/7/2019 23:10:10	0.02000 ppm
	6/7/2019 23:47:45	0.02000 ppm
	6/7/2019 23:03:27	0.03000 ppm
	6/7/2019 23:51:27	0.02000 ppm
	6/7/2019 23:14:42	ppm
	6/7/2019 23:56:04	0.03000 ppm

This data has been provided expeditiously to ITC and regulatory agencies for informational and/or operational purposes only. Data reported within this summary is preliminary in nature and has not undergone complete QA/QC (quality assurance/quality control) process. Until this complete QA/QC process is completed, the locations of each reading are approximate in nature and subject to further refinement. As some readings may represent non-breathing zone measurements, the data reported herein may not be suitable to assess potential occupational exposure. Site Assessment readings are not representative of an individual's breathing zone (e.g., container head space, ground level, directly above product, etc.).

Preliminary Hand- Held Air Monitoring Locations | ITC Deer Park Tank Fire

Reading Date
6/8/2019 12:00:00 AM to 6/8/2019 1:00:00 AM



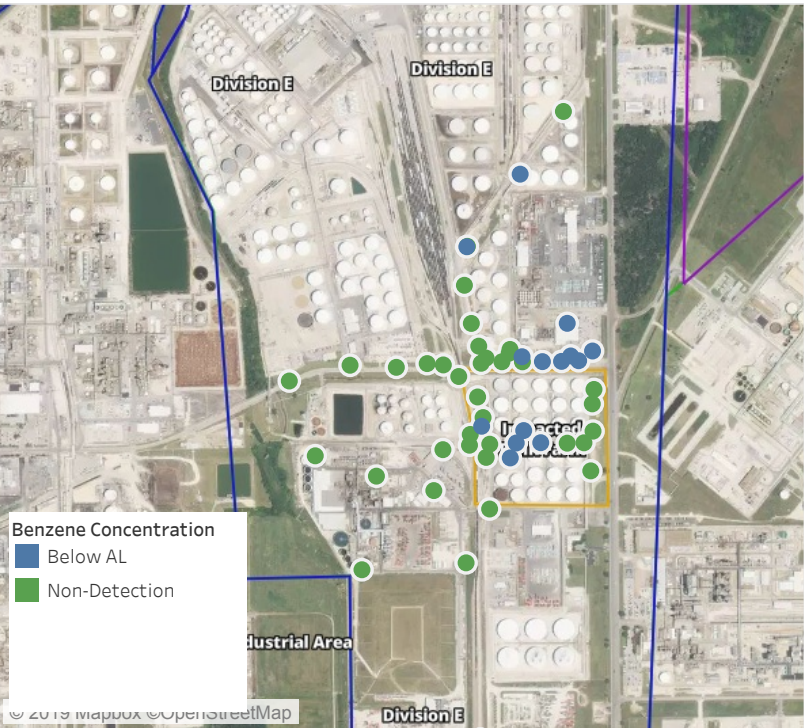
Recent Benzene Detections

Location Category	Reading Date	Range of Detections
Division E	6/8/2019 00:03:23	0.0300 ppm
	6/8/2019 00:17:37	0.0200 ppm
	6/8/2019 00:12:57	0.0400 ppm
	6/8/2019 00:09:42	0.0400 ppm
	6/8/2019 00:29:22	0.0200 ppm
	6/8/2019 00:31:50	0.0300 ppm
	6/8/2019 00:20:27	0.0200 ppm
	6/8/2019 00:39:47	0.0300 ppm
	6/8/2019 00:34:35	0.0300 ppm
	6/8/2019 00:45:41	0.0200 ppm
	6/8/2019 00:48:44	0.0200 ppm
	6/8/2019 00:42:12	0.0200 ppm
	6/8/2019 00:36:41	0.0300 ppm
	6/8/2019 00:40:04	0.0500 ppm
	6/8/2019 00:38:37	0.1300 ppm
	6/8/2019 00:48:21	0.0200 ppm
	6/8/2019 00:35:52	0.0400 ppm
	6/8/2019 00:29:27	0.0600 ppm
	6/8/2019 00:41:23	0.0300 ppm
	6/8/2019 00:32:38	0.0700 ppm
Impacted Tank Farm	6/8/2019 00:24:59	0.0300 ppm
	6/8/2019 00:53:42	0.0200 ppm
	6/8/2019 00:47:23	0.0300 ppm
	6/8/2019 00:31:36	0.0300 ppm
	6/8/2019 00:22:18	0.0300 ppm
Impacted Tank Farm	6/8/2019 00:35:39	0.0200 ppm
	6/8/2019 00:39:49	0.0300 ppm
	6/8/2019 00:45:39	0.1200 ppm
	6/8/2019 00:56:56	0.0200 ppm

This data has been provided expeditiously to ITC and regulatory agencies for informational and/or operational purposes only. Data reported within this summary is preliminary in nature and has not undergone complete QA/QC (quality assurance/quality control) process. Until this complete QA/QC process is completed, the locations of each reading are approximate in nature and subject to further refinement. As some readings may represent non-breathing zone measurements, the data reported herein may not be suitable to assess potential occupational exposure. Site Assessment readings are not representative of an individual's breathing zone (e.g., container head space, ground level, directly above product, etc.).

Preliminary Hand- Held Air Monitoring Locations | ITC Deer Park Tank Fire

Reading Date
6/8/2019 1:00:00 AM to 6/8/2019 2:00:00 AM



Recent Benzene Detections

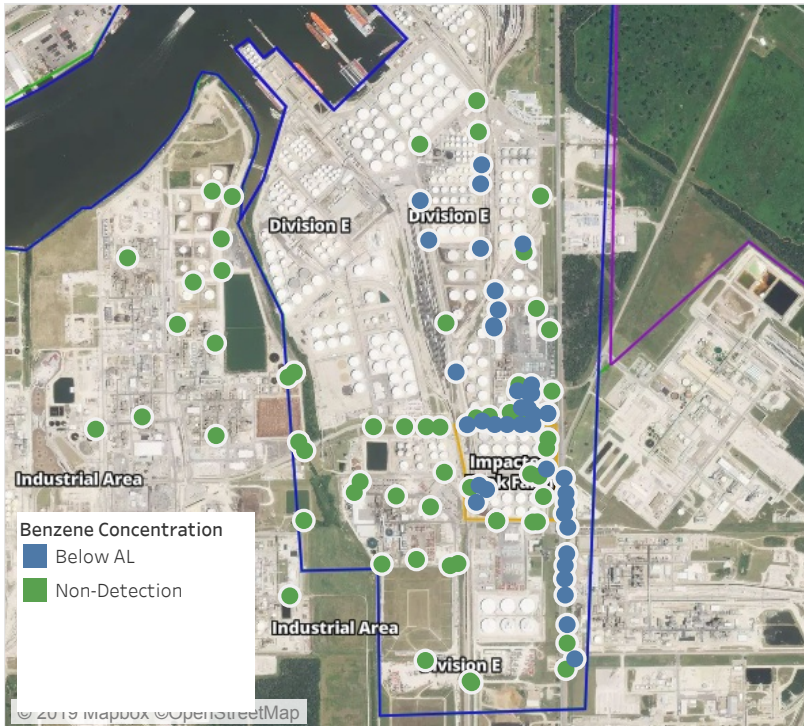
Location Category	Reading Date	Range of Detections
Division E	6/8/2019 01:12:22	0.04000 ppm
	6/8/2019 01:01:41	0.04000 ppm
	6/8/2019 01:06:40	0.02000 ppm
	6/8/2019 01:24:46	0.02000 ppm
	6/8/2019 01:28:11	0.06000 ppm
	6/8/2019 01:06:03	0.02000 ppm
	6/8/2019 01:09:09	0.02000 ppm
	6/8/2019 01:03:37	0.02000 ppm
	6/8/2019 01:29:06	0.03000 ppm
Impacted Tank Farm	6/8/2019 01:06:33	0.09000 ppm
	6/8/2019 01:50:24	0.02000 ppm
	6/8/2019 01:54:18	0.04000 ppm
	6/8/2019 01:57:08	0.03000 ppm
	6/8/2019 01:59:48	0.02000 ppm

This data has been provided expeditiously to ITC and regulatory agencies for informational and/or operational purposes only. Data reported within this summary is preliminary in nature and has not undergone complete QA/QC (quality assurance/quality control) process. Until this complete QA/QC process is completed, the locations of each reading are approximate in nature and subject to further refinement. As some readings may represent non-breathing zone measurements, the data reported herein may not be suitable to assess potential occupational exposure. Site Assessment readings are not representative of an individual's breathing zone (e.g., container head space, ground level, directly above product, etc.).

Preliminary Hand- Held Air Monitoring Locations | ITC Deer Park Tank Fire

Reading Date

6/8/2019 2:00:00 AM to 6/8/2019 3:00:00 AM



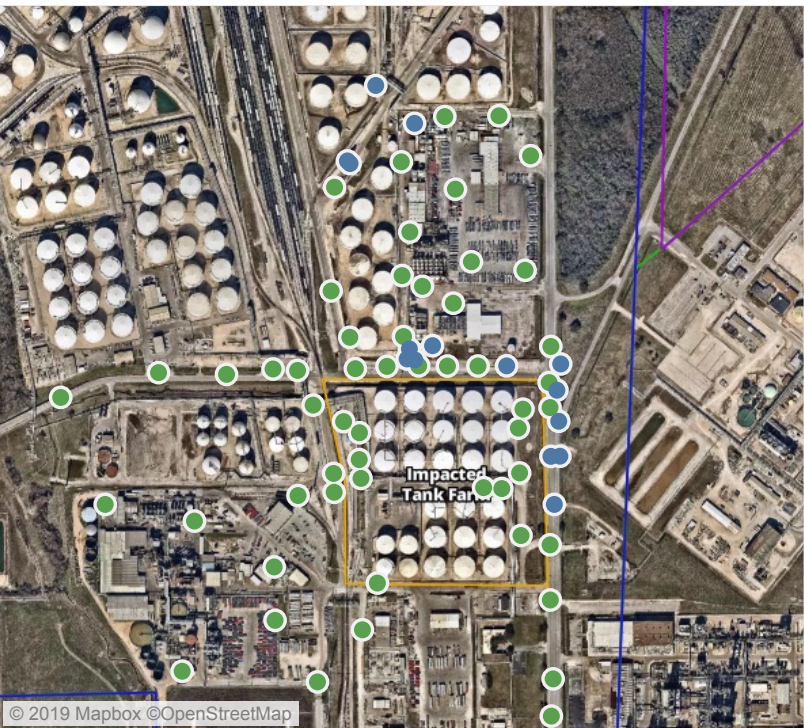
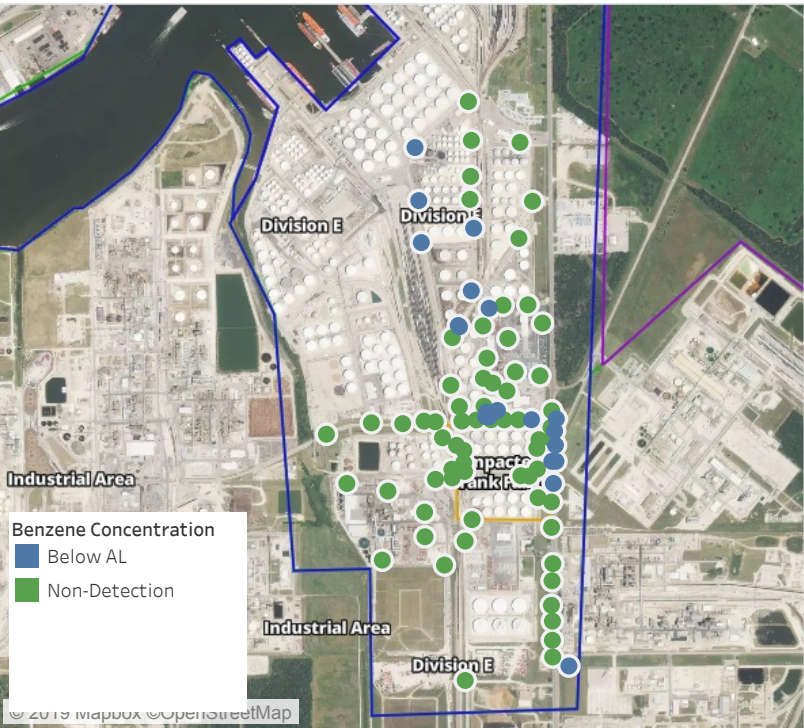
Recent Benzene Detections

Location Category	Reading Date	Range of Dete..
Division E	6/8/2019 02:08:16	0.02000 ppm
	6/8/2019 02:06:18	0.09000 ppm
	6/8/2019 02:09:08	0.02000 ppm
	6/8/2019 02:16:13	0.02000 ppm
	6/8/2019 02:21:25	0.03000 ppm
	6/8/2019 02:23:47	0.03000 ppm
	6/8/2019 02:08:01	0.03000 ppm
	6/8/2019 02:18:18	0.02000 ppm
	6/8/2019 02:26:56	0.02000 ppm
	6/8/2019 02:21:52	0.02000 ppm
	6/8/2019 02:32:07	0.02000 ppm
	6/8/2019 02:28:40	0.02000 ppm
	6/8/2019 02:24:40	0.02000 ppm
	6/8/2019 02:18:47	0.02000 ppm
	6/8/2019 02:01:01	0.08000 ppm
	6/8/2019 02:17:37	0.09000 ppm
	6/8/2019 02:20:46	0.08000 ppm
	6/8/2019 02:30:19	0.02000 ppm
	6/8/2019 02:38:51	0.03000 ppm
	6/8/2019 02:41:04	0.04000 ppm
	6/8/2019 02:45:06	0.02000 ppm
	6/8/2019 02:09:02	0.03000 ppm
	6/8/2019 02:00:10	0.02000 ppm
	6/8/2019 02:15:10	0.03000 ppm
	6/8/2019 02:29:06	0.02000 ppm
	6/8/2019 02:52:17	0.03000 ppm
	6/8/2019 02:38:09	0.03000 ppm
	6/8/2019 02:21:56	0.02000 ppm
	6/8/2019 02:35:37	0.03000 ppm
	6/8/2019 02:32:51	0.03000 ppm
	6/8/2019 02:29:44	0.02000 ppm
	6/8/2019 02:26:48	0.02000 ppm
	6/8/2019 02:51:23	0.02000 ppm
	6/8/2019 02:57:21	0.03000 ppm
	6/8/2019 02:52:57	0.03000 ppm
	6/8/2019 02:59:49	0.02000 ppm
	6/8/2019 02:55:11	0.02000 ppm
Impacted Tank Farm	6/8/2019 02:15:23	0.02000 ppm
	6/8/2019 02:17:43	0.05000 ppm
	6/8/2019 02:23:19	0.08000 ppm
	6/8/2019 02:53:33	0.03000 ppm

This data has been provided expeditiously to ITC and regulatory agencies for informational and/or operational purposes only. Data reported within this summary is preliminary in nature and has not undergone complete QA/QC (quality assurance/quality control) process. Until this complete QA/QC process is completed, the locations of each reading are approximate in nature and subject to further refinement. As some readings may represent non-breathing zone measurements, the data reported herein may not be suitable to assess potential occupational exposure. Site Assessment readings are not representative of an individual's breathing zone (e.g., container head space, ground level, directly above product, etc.).

Preliminary Hand- Held Air Monitoring Locations | ITC Deer Park Tank Fire

Reading Date
6/8/2019 3:00:00 AM to 6/8/2019 4:00:00 AM



Recent Benzene Detections

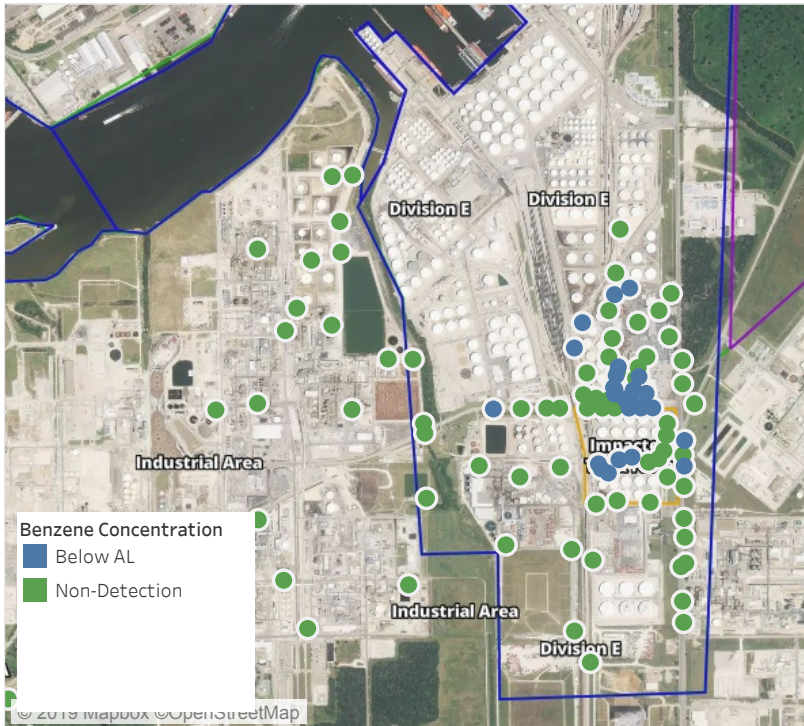
Location Category	Reading Date	Range of Detections
Division E	6/8/2019 03:00:23	0.0200 ppm
	6/8/2019 03:04:46	0.0200 ppm
	6/8/2019 03:06:33	0.0200 ppm
	6/8/2019 03:08:38	0.0200 ppm
	6/8/2019 03:03:59	0.0200 ppm
	6/8/2019 03:01:52	0.0200 ppm
	6/8/2019 03:15:48	0.0600 ppm
	6/8/2019 03:16:12	0.0200 ppm
	6/8/2019 03:31:29	0.1800 ppm
	6/8/2019 03:44:58	0.1100 ppm
	6/8/2019 03:46:41	0.0900 ppm
	6/8/2019 03:40:20	0.0200 ppm
	6/8/2019 03:43:37	0.0500 ppm
	6/8/2019 03:20:25	0.0200 ppm
	6/8/2019 03:18:00	0.0300 ppm
	6/8/2019 03:28:52	0.0200 ppm
	6/8/2019 03:42:24	0.0600 ppm
	6/8/2019 03:29:29	0.0500 ppm
	6/8/2019 03:58:46	0.0500 ppm
	6/8/2019 03:56:18	0.0500 ppm

This data has been provided expeditiously to ITC and regulatory agencies for informational and/or operational purposes only. Data reported within this summary is preliminary in nature and has not undergone complete QA/QC (quality assurance/quality control) process. Until this complete QA/QC process is completed, the locations of each reading are approximate in nature and subject to further refinement. As some readings may represent non-breathing zone measurements, the data reported herein may not be suitable to assess potential occupational exposure. Site Assessment readings are not representative of an individual's breathing zone (e.g., container head space, ground level, directly above product, etc.).

Preliminary Hand- Held Air Monitoring Locations | ITC Deer Park Tank Fire

Reading Date

6/8/2019 4:00:00 AM to 6/8/2019 5:00:00 AM



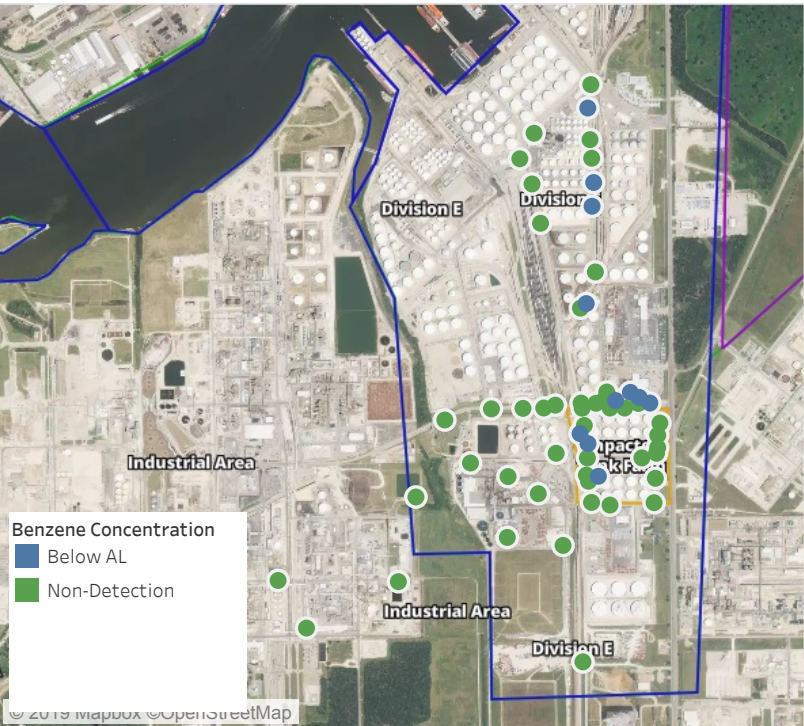
Recent Benzene Detections

Location Category	Reading Date	Range of Detections
Division E	6/8/2019 04:03:06	0.04000 ppm
	6/8/2019 04:06:10	0.04000 ppm
	6/8/2019 04:10:43	0.02000 ppm
	6/8/2019 04:15:41	0.03000 ppm
	6/8/2019 04:22:46	0.02000 ppm
	6/8/2019 04:29:55	0.02000 ppm
	6/8/2019 04:28:15	0.03000 ppm
	6/8/2019 04:07:50	0.04000 ppm
	6/8/2019 04:27:09	0.03000 ppm
	6/8/2019 04:31:44	0.02000 ppm
	6/8/2019 04:25:21	0.02000 ppm
	6/8/2019 04:22:10	0.03000 ppm
	6/8/2019 04:10:50	0.03000 ppm
	6/8/2019 04:23:34	0.02000 ppm
	6/8/2019 04:53:55	0.04000 ppm
	6/8/2019 04:50:20	0.02000 ppm
	6/8/2019 04:52:04	0.04000 ppm
	6/8/2019 04:45:22	0.04000 ppm
	6/8/2019 04:48:22	0.05000 ppm
	6/8/2019 04:49:43	0.02000 ppm
	6/8/2019 04:44:32	0.02000 ppm
Impacted Tank Farm	6/8/2019 04:27:42	0.03000 ppm
	6/8/2019 04:32:07	0.04000 ppm
	6/8/2019 04:36:01	0.02000 ppm
	6/8/2019 04:43:53	0.02000 ppm
	6/8/2019 04:47:55	0.05000 ppm

This data has been provided expeditiously to ITC and regulatory agencies for informational and/or operational purposes only. Data reported within this summary is preliminary in nature and has not undergone complete QA/QC (quality assurance/quality control) process. Until this complete QA/QC process is completed, the locations of each reading are approximate in nature and subject to further refinement. As some readings may represent non-breathing zone measurements, the data reported herein may not be suitable to assess potential occupational exposure. Site Assessment readings are not representative of an individual's breathing zone (e.g., container head space, ground level, directly above product, etc.).

Preliminary Hand- Held Air Monitoring Locations | ITC Deer Park Tank Fire

Reading Date
6/8/2019 5:00:00 AM to 6/8/2019 6:00:00 AM



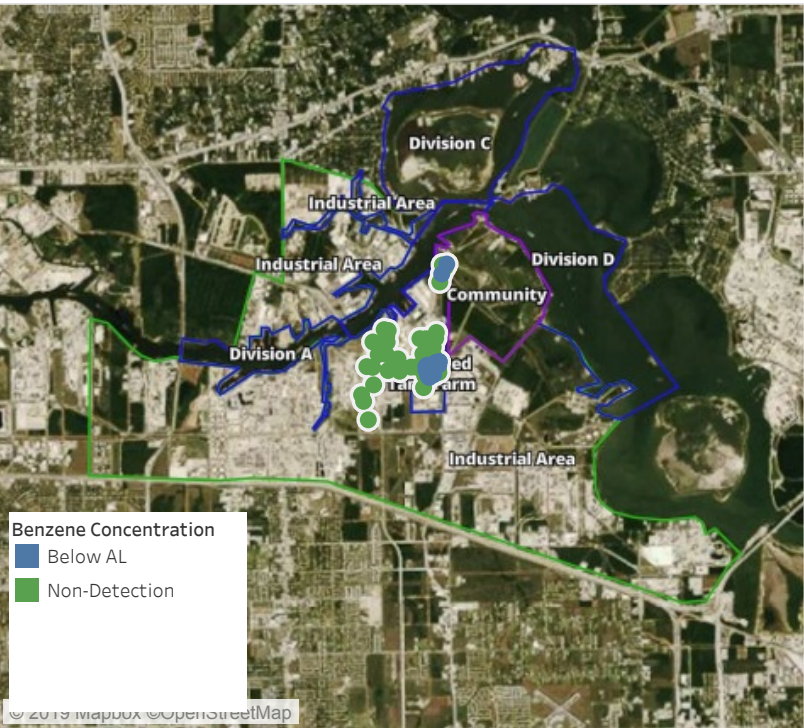
Recent Benzene Detections

Location Category	Reading Date	Range of Detections
Division E	6/8/2019 05:13:25	0.03000 ppm
	6/8/2019 05:19:15	0.02000 ppm
	6/8/2019 05:11:54	0.06000 ppm
	6/8/2019 05:27:44	0.04000 ppm
	6/8/2019 05:04:38	0.02000 ppm
	6/8/2019 05:41:40	0.02000 ppm
	6/8/2019 05:51:29	0.02000 ppm
Impacted Tank Farm	6/8/2019 05:47:00	0.02000 ppm
	6/8/2019 05:01:01	0.04000 ppm
	6/8/2019 05:14:08	0.02000 ppm
	6/8/2019 05:18:16	0.02000 ppm

This data has been provided expeditiously to ITC and regulatory agencies for informational and/or operational purposes only. Data reported within this summary is preliminary in nature and has not undergone complete QA/QC (quality assurance/quality control) process. Until this complete QA/QC process is completed, the locations of each reading are approximate in nature and subject to further refinement. As some readings may represent non-breathing zone measurements, the data reported herein may not be suitable to assess potential occupational exposure. Site Assessment readings are not representative of an individual's breathing zone (e.g., container head space, ground level, directly above product, etc.).

Preliminary Hand- Held Air Monitoring Locations | ITC Deer Park Tank Fire

Reading Date
6/8/2019 6:00:00 AM to 6/8/2019 7:00:00 AM



Recent Benzene Detections

Location Category	Reading Date	Range of Detections
Division E	6/8/2019 06:05:31	0.02000 ppm
	6/8/2019 06:02:45	0.04000 ppm
	6/8/2019 06:06:10	0.02000 ppm
	6/8/2019 06:13:39	0.02000 ppm
	6/8/2019 06:27:31	0.02000 ppm
	6/8/2019 06:28:11	0.03000 ppm
	6/8/2019 06:44:25	0.05000 ppm
	6/8/2019 06:41:23	0.03000 ppm
	6/8/2019 06:25:06	0.07000 ppm
	6/8/2019 06:17:55	0.05000 ppm
Impacted Tank Farm	6/8/2019 06:49:46	0.03000 ppm
	6/8/2019 06:11:53	0.02000 ppm
	6/8/2019 06:16:25	0.10000 ppm
	6/8/2019 06:20:32	0.09000 ppm
	6/8/2019 06:23:39	0.05000 ppm
	6/8/2019 06:33:43	0.09000 ppm
	6/8/2019 06:39:03	0.09000 ppm
	6/8/2019 06:42:53	0.02000 ppm
Industrial Area	6/8/2019 06:45:45	0.04000 ppm
	6/8/2019 06:05:20	0.02000 ppm
	6/8/2019 06:12:12	0.02000 ppm

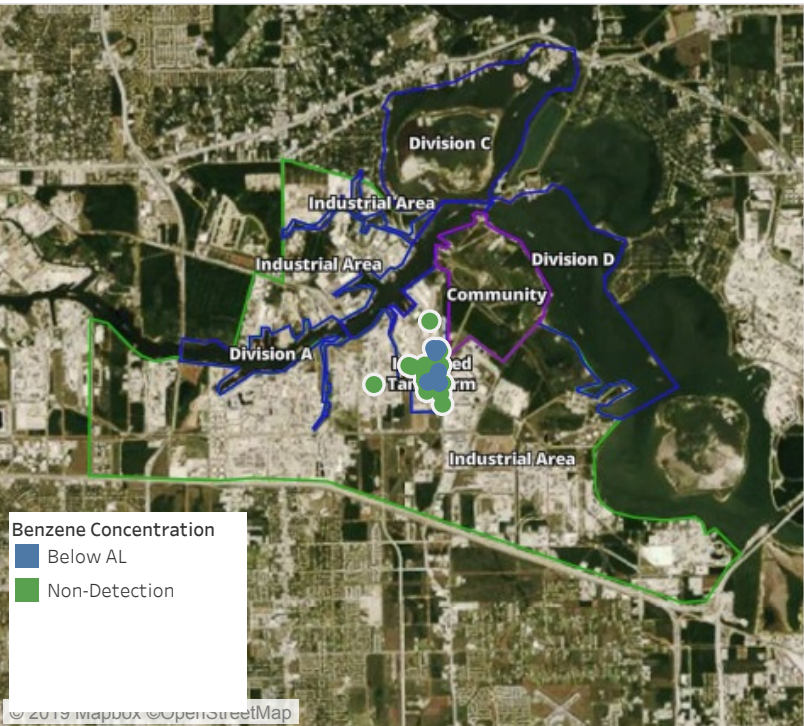
This data has been provided expeditiously to ITC and regulatory agencies for informational and/or operational purposes only. Data reported within this summary is preliminary in nature and has not undergone complete QA/QC (quality assurance/quality control) process. Until this complete QA/QC process is completed, the locations of each reading are approximate in nature and subject to further refinement. As some readings may represent non-breathing zone measurements, the data reported herein may not be suitable to assess potential occupational exposure. Site Assessment readings are not representative of an individual's breathing zone (e.g., container head space, ground level, directly above product, etc.).



Please Note: These updates display data from the 2nd 80's Fire site (Impacted Tank Farm), in the industrial areas surrounding the 2nd 80's Fire site (US Coast Guard Division E), within the Houston Ship Channel (US Coast Guard Divisions A-D), and in the industrial areas north and south of the Houston Ship Channel (Industrial Area). Real-time air monitoring data for the surrounding communities are communicated daily in a separate report.

Preliminary Hand- Held Air Monitoring Locations | ITC Deer Park Tank Fire

Reading Date
6/8/2019 7:00:00 AM to 6/8/2019 8:00:00 AM



Recent Benzene Detections

Location Category	Reading Date	Range of Detections
Division E	6/8/2019 07:40:12	0.0800 ppm
	6/8/2019 07:51:31	0.0300 ppm
	6/8/2019 07:57:00	0.2400 ppm
	6/8/2019 07:55:04	0.1600 ppm
	6/8/2019 07:52:32	0.2800 ppm
	6/8/2019 07:57:50	0.0500 ppm
Impacted Tank Farm	6/8/2019 07:21:26	0.1400 ppm
	6/8/2019 07:37:25	0.2000 ppm
	6/8/2019 07:46:04	0.1000 ppm
	6/8/2019 07:39:07	0.0700 ppm
	6/8/2019 07:42:12	0.1100 ppm

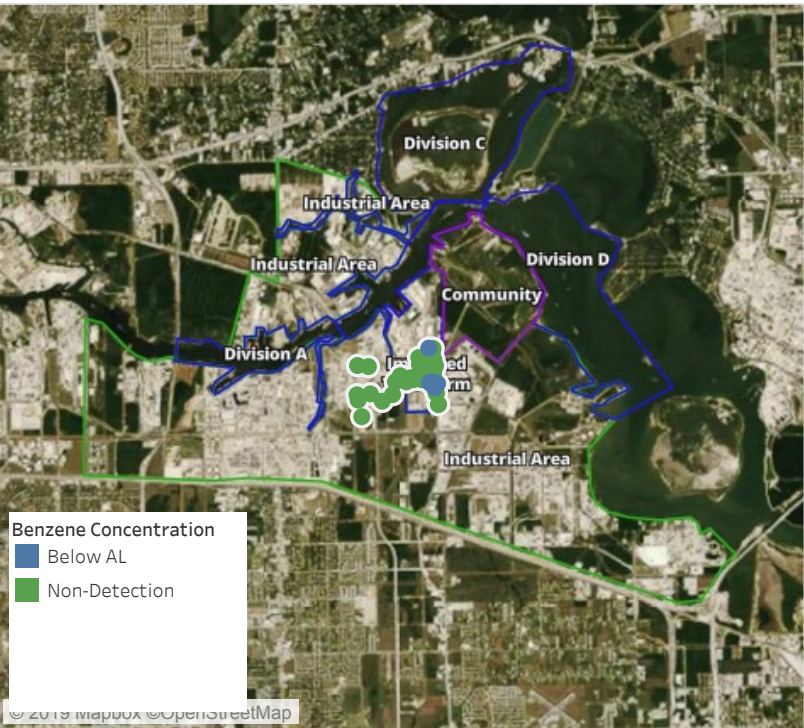
This data has been provided expeditiously to ITC and regulatory agencies for informational and/or operational purposes only. Data reported within this summary is preliminary in nature and has not undergone complete QA/QC (quality assurance/quality control) process. Until this complete QA/QC process is completed, the locations of each reading are approximate in nature and subject to further refinement. As some readings may represent non-breathing zone measurements, the data reported herein may not be suitable to assess potential occupational exposure. Site Assessment readings are not representative of an individual's breathing zone (e.g., container head space, ground level, directly above product, etc.).



Please Note: These updates display data from the 2nd 80's Fire site (Impacted Tank Farm), in the industrial areas surrounding the 2nd 80's Fire site (US Coast Guard Division E), within the Houston Ship Channel (US Coast Guard Divisions A-D), and in the industrial areas north and south of the Houston Ship Channel (Industrial Area). Real-time air monitoring data for the surrounding communities are communicated daily in a separate report.

Preliminary Hand- Held Air Monitoring Locations | ITC Deer Park Tank Fire

Reading Date
6/8/2019 8:00:00 AM to 6/8/2019 9:00:00 AM



Recent Benzene Detections

Location Category	Reading Date	Range of Detections
Division E	6/8/2019 08:00:46	0.1900 ppm
	6/8/2019 08:02:54	0.1400 ppm
	6/8/2019 08:13:21	0.0800 ppm
	6/8/2019 08:20:24	0.1600 ppm
	6/8/2019 08:21:18	0.0900 ppm
	6/8/2019 08:23:50	0.1700 ppm
	6/8/2019 08:25:29	0.1200 ppm
	6/8/2019 08:40:44	0.1900 ppm
	6/8/2019 08:58:15	0.0200 ppm
	6/8/2019 08:49:42	0.2600 ppm
	6/8/2019 08:56:35	0.3000 ppm
	6/8/2019 08:59:08	0.4400 ppm

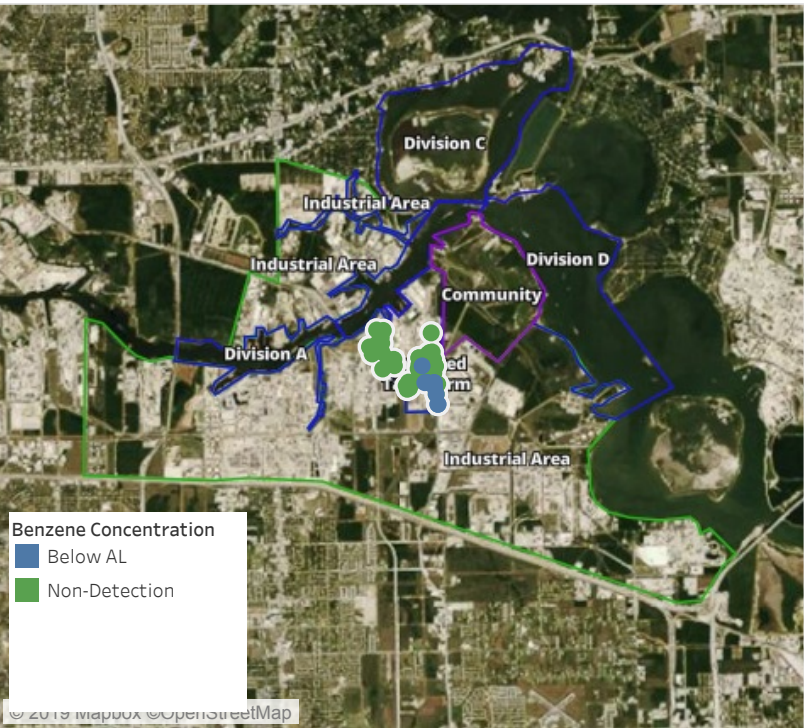
This data has been provided expeditiously to ITC and regulatory agencies for informational and/or operational purposes only. Data reported within this summary is preliminary in nature and has not undergone complete QA/QC (quality assurance/quality control) process. Until this complete QA/QC process is completed, the locations of each reading are approximate in nature and subject to further refinement. As some readings may represent non-breathing zone measurements, the data reported herein may not be suitable to assess potential occupational exposure. Site Assessment readings are not representative of an individual's breathing zone (e.g., container head space, ground level, directly above product, etc.).



Please Note: These updates display data from the 2nd 80's Fire site (Impacted Tank Farm), in the industrial areas surrounding the 2nd 80's Fire site (US Coast Guard Division E), within the Houston Ship Channel (US Coast Guard Divisions A-D), and in the industrial areas north and south of the Houston Ship Channel (Industrial Area). Real-time air monitoring data for the surrounding communities are communicated daily in a separate report.

Preliminary Hand- Held Air Monitoring Locations | ITC Deer Park Tank Fire

Reading Date
6/8/2019 9:00:00 AM to 6/8/2019 10:00:00 AM



Recent Benzene Detections

Location Category	Reading Date	Range of Detections
Division E	6/8/2019 09:09:54	0.0400 ppm
	6/8/2019 09:18:55	0.0200 ppm
	6/8/2019 09:19:44	0.0300 ppm
	6/8/2019 09:16:43	0.0700 ppm
	6/8/2019 09:20:56	0.0600 ppm
	6/8/2019 09:23:47	0.0300 ppm
	6/8/2019 09:35:55	0.0200 ppm
	6/8/2019 09:47:39	0.2000 ppm
	6/8/2019 09:43:52	0.2100 ppm

This data has been provided expeditiously to ITC and regulatory agencies for informational and/or operational purposes only. Data reported within this summary is preliminary in nature and has not undergone complete QA/QC (quality assurance/quality control) process. Until this complete QA/QC process is completed, the locations of each reading are approximate in nature and subject to further refinement. As some readings may represent non-breathing zone measurements, the data reported herein may not be suitable to assess potential occupational exposure. Site Assessment readings are not representative of an individual's breathing zone (e.g., container head space, ground level, directly above product, etc.).



Please Note: These updates display data from the 2nd 80's Fire site (Impacted Tank Farm), in the industrial areas surrounding the 2nd 80's Fire site (US Coast Guard Division E), within the Houston Ship Channel (US Coast Guard Divisions A-D), and in the industrial areas north and south of the Houston Ship Channel (Industrial Area). Real-time air monitoring data for the surrounding communities are communicated daily in a separate report.

Preliminary Hand- Held Air Monitoring Locations | ITC Deer Park Tank Fire

Reading Date
6/8/2019 10:00:00 AM to 6/8/2019 11:00:00 AM



Recent Benzene Detections

Location Category	Reading Date	Range of Detections
Division E	6/8/2019 10:06:00	0.0200 ppm
	6/8/2019 10:16:21	0.2000 ppm
	6/8/2019 10:23:11	0.2300 ppm
Impacted Tank Farm	6/8/2019 10:01:19	0.0300 ppm
	6/8/2019 10:07:29	0.1500 ppm
	6/8/2019 10:04:11	0.0900 ppm
	6/8/2019 10:10:18	0.1600 ppm
	6/8/2019 10:29:44	0.0300 ppm

This data has been provided expeditiously to ITC and regulatory agencies for informational and/or operational purposes only. Data reported within this summary is preliminary in nature and has not undergone complete QA/QC (quality assurance/quality control) process. Until this complete QA/QC process is completed, the locations of each reading are approximate in nature and subject to further refinement. As some readings may represent non-breathing zone measurements, the data reported herein may not be suitable to assess potential occupational exposure. Site Assessment readings are not representative of an individual's breathing zone (e.g., container head space, ground level, directly above product, etc.).



Please Note: These updates display data from the 2nd 80's Fire site (Impacted Tank Farm), in the industrial areas surrounding the 2nd 80's Fire site (US Coast Guard Division E), within the Houston Ship Channel (US Coast Guard Divisions A-D), and in the industrial areas north and south of the Houston Ship Channel (Industrial Area). Real-time air monitoring data for the surrounding communities are communicated daily in a separate report.

Preliminary Hand- Held Air Monitoring Locations | ITC Deer Park Tank Fire

Reading Date
6/8/2019 11:00:00 AM to 6/8/2019 12:00:00 PM



Recent Benzene Detections

Location Category	Reading Date	Range of Detections
Division E	6/8/2019 11:06:23	0.02000 ppm
	6/8/2019 11:22:59	0.05000 ppm
	6/8/2019 11:31:36	0.02000 ppm
	6/8/2019 11:34:49	0.02000 ppm
	6/8/2019 11:58:42	0.04000 ppm
	6/8/2019 11:52:54	0.04000 ppm

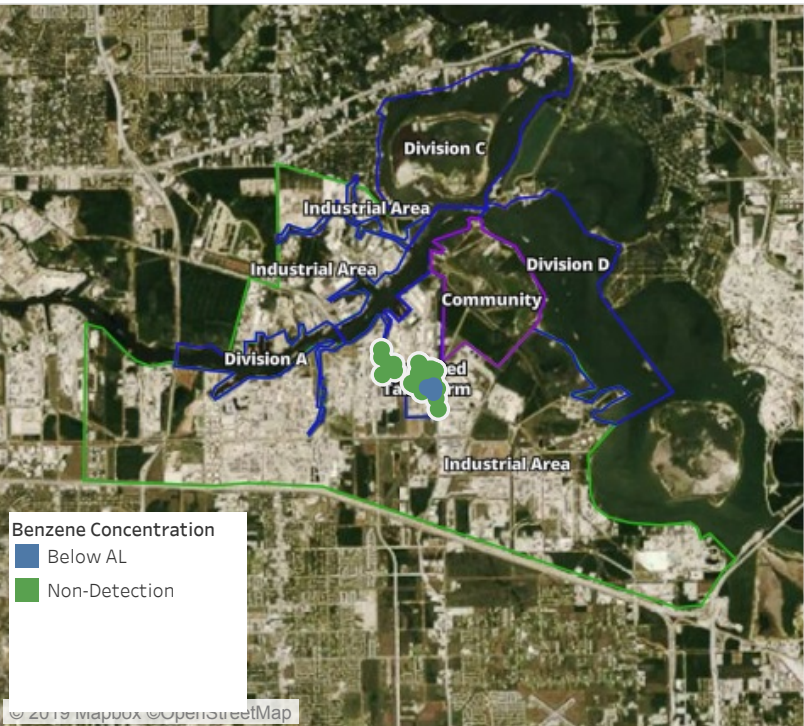
This data has been provided expeditiously to ITC and regulatory agencies for informational and/or operational purposes only. Data reported within this summary is preliminary in nature and has not undergone complete QA/QC (quality assurance/quality control) process. Until this complete QA/QC process is completed, the locations of each reading are approximate in nature and subject to further refinement. As some readings may represent non-breathing zone measurements, the data reported herein may not be suitable to assess potential occupational exposure. Site Assessment readings are not representative of an individual's breathing zone (e.g., container head space, ground level, directly above product, etc.).



Please Note: These updates display data from the 2nd 80's Fire site (Impacted Tank Farm), in the industrial areas surrounding the 2nd 80's Fire site (US Coast Guard Division E), within the Houston Ship Channel (US Coast Guard Divisions A-D), and in the industrial areas north and south of the Houston Ship Channel (Industrial Area). Real-time air monitoring data for the surrounding communities are communicated daily in a separate report.

Preliminary Hand- Held Air Monitoring Locations | ITC Deer Park Tank Fire

Reading Date
6/8/2019 12:00:00 PM to 6/8/2019 1:00:00 PM



Recent Benzene Detections

Location Category	Reading Date	Range of Detections
Division E	6/8/2019 12:21:46	0.0700 ppm
	6/8/2019 12:18:15	0.1300 ppm
	6/8/2019 12:25:17	0.0300 ppm
	6/8/2019 12:49:12	0.2200 ppm
	6/8/2019 12:48:25	0.2100 ppm
Impacted Tank Farm	6/8/2019 12:52:31	0.1300 ppm
	6/8/2019 12:14:20	0.0400 ppm

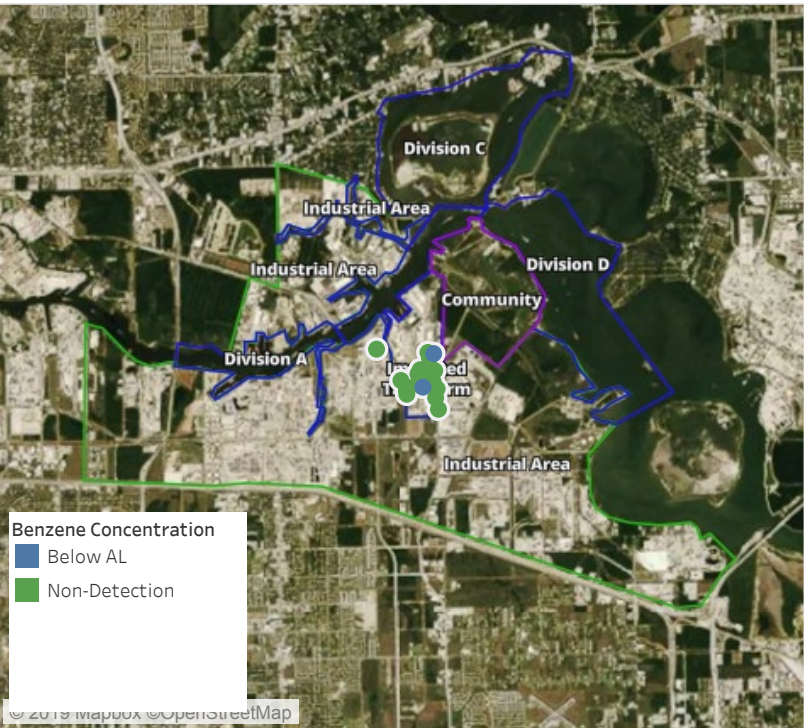
This data has been provided expeditiously to ITC and regulatory agencies for informational and/or operational purposes only. Data reported within this summary is preliminary in nature and has not undergone complete QA/QC (quality assurance/quality control) process. Until this complete QA/QC process is completed, the locations of each reading are approximate in nature and subject to further refinement. As some readings may represent non-breathing zone measurements, the data reported herein may not be suitable to assess potential occupational exposure. Site Assessment readings are not representative of an individual's breathing zone (e.g., container head space, ground level, directly above product, etc.).



Please Note: These updates display data from the 2nd 80's Fire site (Impacted Tank Farm), in the industrial areas surrounding the 2nd 80's Fire site (US Coast Guard Division E), within the Houston Ship Channel (US Coast Guard Divisions A-D), and in the industrial areas north and south of the Houston Ship Channel (Industrial Area). Real-time air monitoring data for the surrounding communities are communicated daily in a separate report.

Preliminary Hand- Held Air Monitoring Locations | ITC Deer Park Tank Fire

Reading Date
6/8/2019 1:00:00 PM to 6/8/2019 2:00:00 PM



Recent Benzene Detections

Location Category	Reading Date	Range of Detections
Division E	6/8/2019 13:31:29	0.08000 ppm
Impacted Tank Farm	6/8/2019 13:25:06	0.03000 ppm

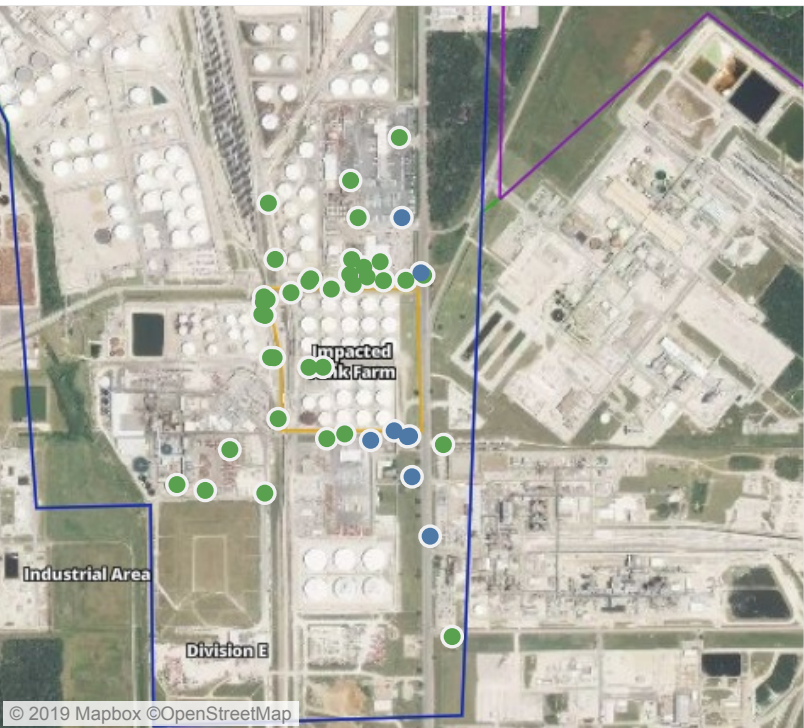
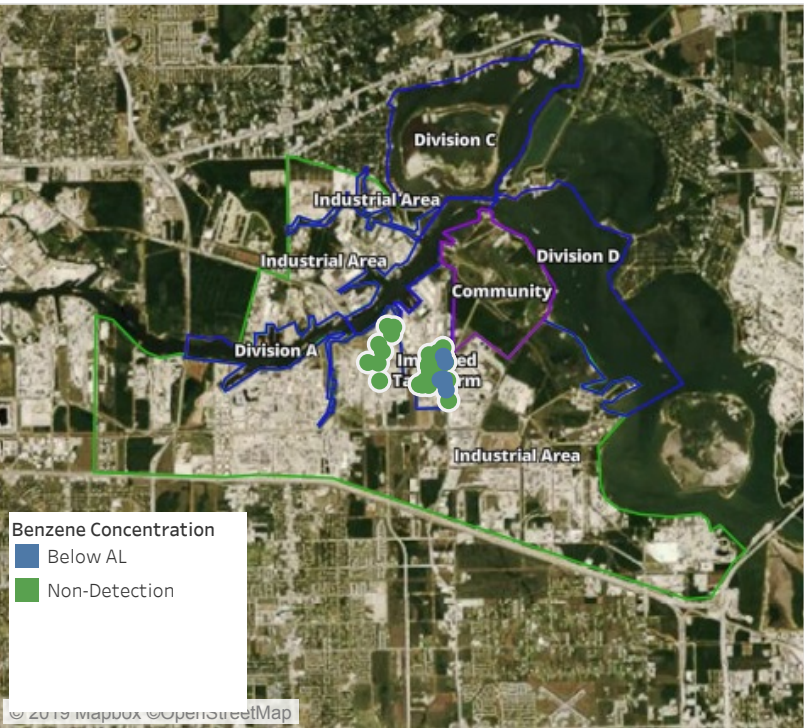
This data has been provided expeditiously to ITC and regulatory agencies for informational and/or operational purposes only. Data reported within this summary is preliminary in nature and has not undergone complete QA/QC (quality assurance/quality control) process. Until this complete QA/QC process is completed, the locations of each reading are approximate in nature and subject to further refinement. As some readings may represent non-breathing zone measurements, the data reported herein may not be suitable to assess potential occupational exposure. Site Assessment readings are not representative of an individual's breathing zone (e.g., container head space, ground level, directly above product, etc.).



Please Note: These updates display data from the 2nd 80's Fire site (Impacted Tank Farm), in the industrial areas surrounding the 2nd 80's Fire site (US Coast Guard Division E), within the Houston Ship Channel (US Coast Guard Divisions A-D), and in the industrial areas north and south of the Houston Ship Channel (Industrial Area). Real-time air monitoring data for the surrounding communities are communicated daily in a separate report.

Preliminary Hand- Held Air Monitoring Locations | ITC Deer Park Tank Fire

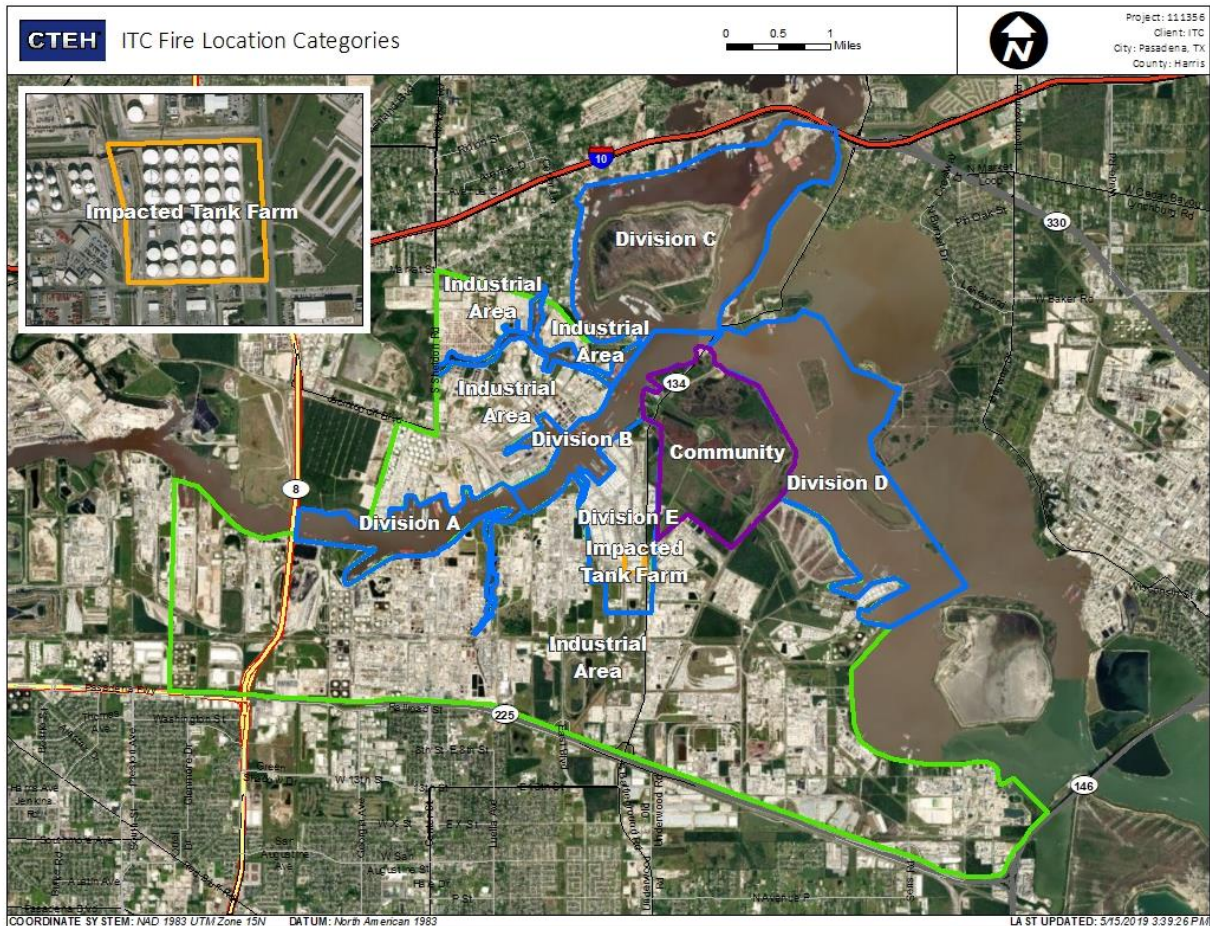
Reading Date
6/8/2019 2:00:00 PM to 6/8/2019 3:00:00 PM



Recent Benzene Detections

Location Category	Reading Date	Range of Detections
Division E	6/8/2019 14:07:55	0.1400 ppm
	6/8/2019 14:08:28	0.1900 ppm
	6/8/2019 14:07:47	0.0300 ppm
	6/8/2019 14:01:23	0.0700 ppm
	6/8/2019 14:00:13	0.0300 ppm
	6/8/2019 14:13:58	0.1200 ppm
	6/8/2019 14:38:00	0.0200 ppm
	6/8/2019 14:27:47	0.0300 ppm

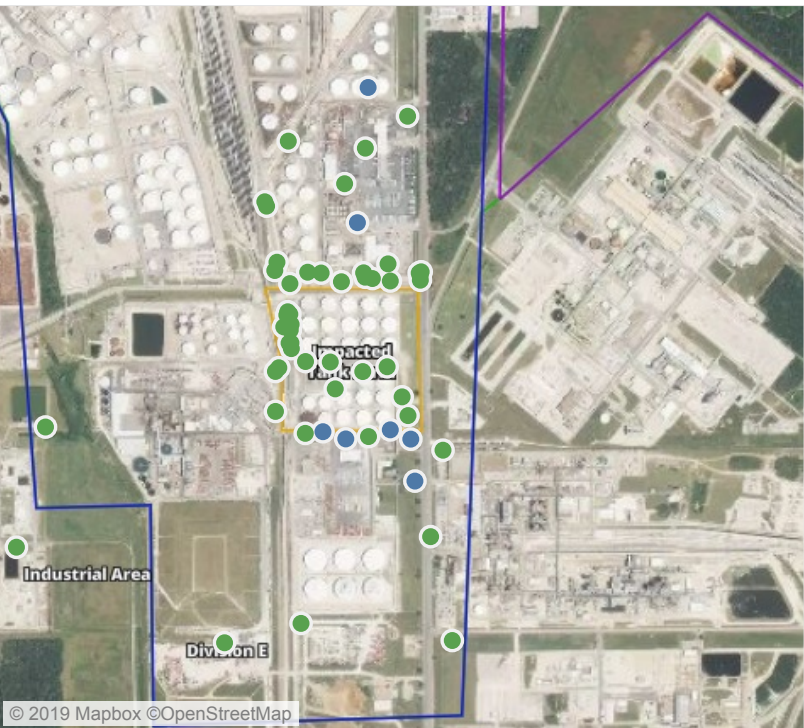
This data has been provided expeditiously to ITC and regulatory agencies for informational and/or operational purposes only. Data reported within this summary is preliminary in nature and has not undergone complete QA/QC (quality assurance/quality control) process. Until this complete QA/QC process is completed, the locations of each reading are approximate in nature and subject to further refinement. As some readings may represent non-breathing zone measurements, the data reported herein may not be suitable to assess potential occupational exposure. Site Assessment readings are not representative of an individual's breathing zone (e.g., container head space, ground level, directly above product, etc.).



Please Note: These updates display data from the 2nd 80's Fire site (Impacted Tank Farm), in the industrial areas surrounding the 2nd 80's Fire site (US Coast Guard Division E), within the Houston Ship Channel (US Coast Guard Divisions A-D), and in the industrial areas north and south of the Houston Ship Channel (Industrial Area). Real-time air monitoring data for the surrounding communities are communicated daily in a separate report.

Preliminary Hand- Held Air Monitoring Locations | ITC Deer Park Tank Fire

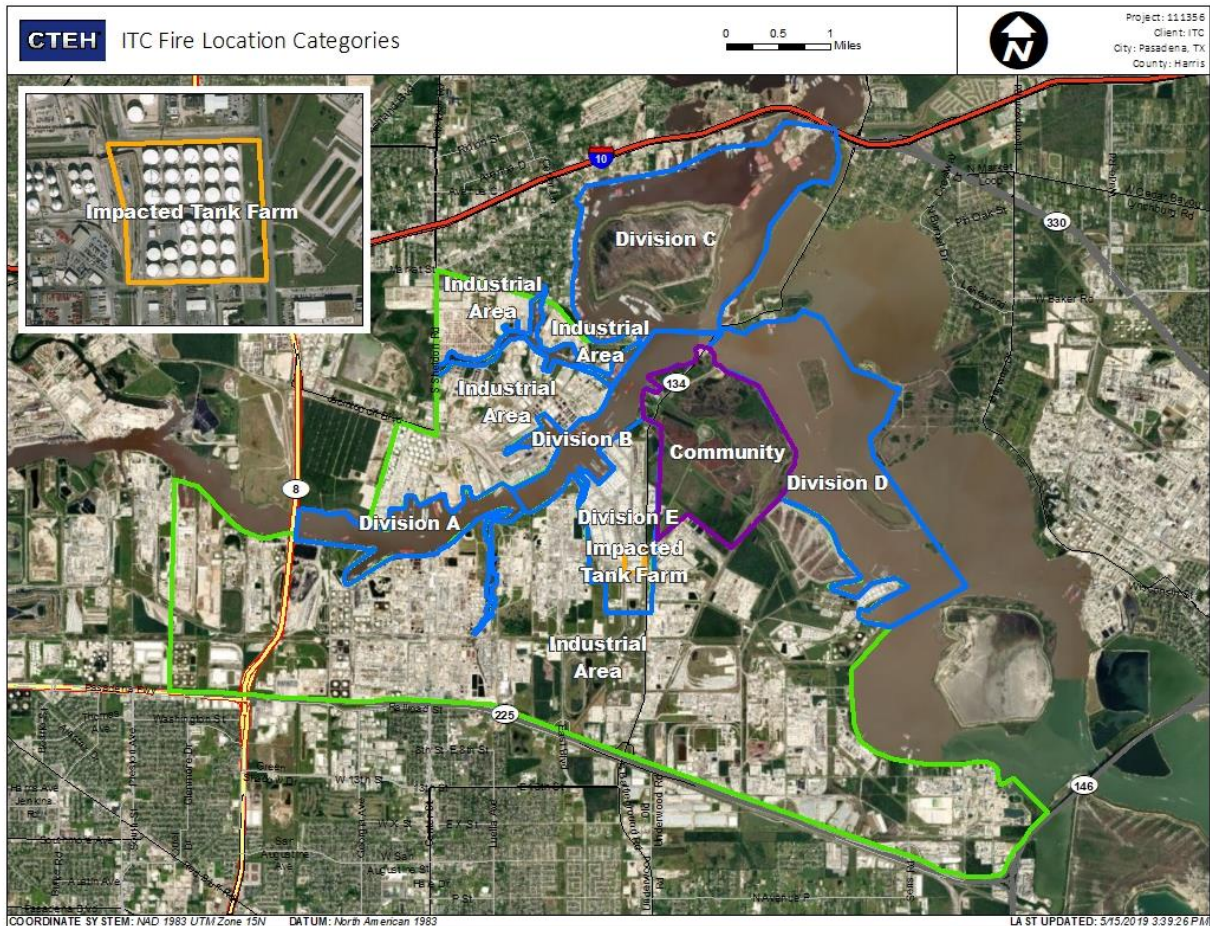
Reading Date
6/8/2019 3:00:00 PM to 6/8/2019 4:00:00 PM



Recent Benzene Detections

Location Category	Reading Date	Range of Detections
Division E	6/8/2019 15:13:57	0.06000 ppm
	6/8/2019 15:04:15	0.05000 ppm
	6/8/2019 15:16:06	0.04000 ppm
	6/8/2019 15:24:59	0.07000 ppm
	6/8/2019 15:34:28	0.05000 ppm
	6/8/2019 15:30:29	0.06000 ppm
	6/8/2019 15:54:49	0.02000 ppm

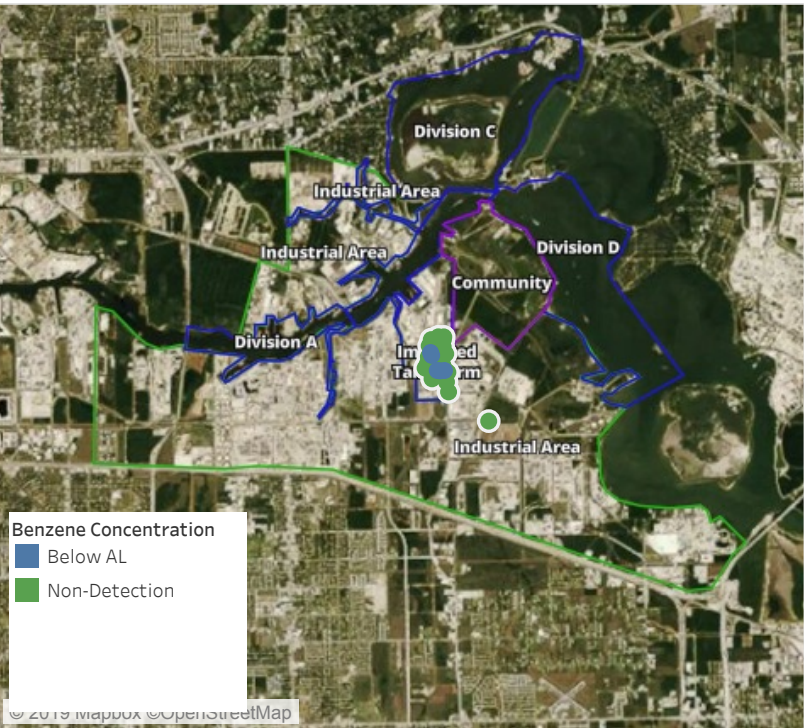
This data has been provided expeditiously to ITC and regulatory agencies for informational and/or operational purposes only. Data reported within this summary is preliminary in nature and has not undergone complete QA/QC (quality assurance/quality control) process. Until this complete QA/QC process is completed, the locations of each reading are approximate in nature and subject to further refinement. As some readings may represent non-breathing zone measurements, the data reported herein may not be suitable to assess potential occupational exposure. Site Assessment readings are not representative of an individual’s breathing zone (e.g., container head space, ground level, directly above product, etc.).



Please Note: These updates display data from the 2nd 80's Fire site (Impacted Tank Farm), in the industrial areas surrounding the 2nd 80's Fire site (US Coast Guard Division E), within the Houston Ship Channel (US Coast Guard Divisions A-D), and in the industrial areas north and south of the Houston Ship Channel (Industrial Area). Real-time air monitoring data for the surrounding communities are communicated daily in a separate report.

Preliminary Hand- Held Air Monitoring Locations | ITC Deer Park Tank Fire

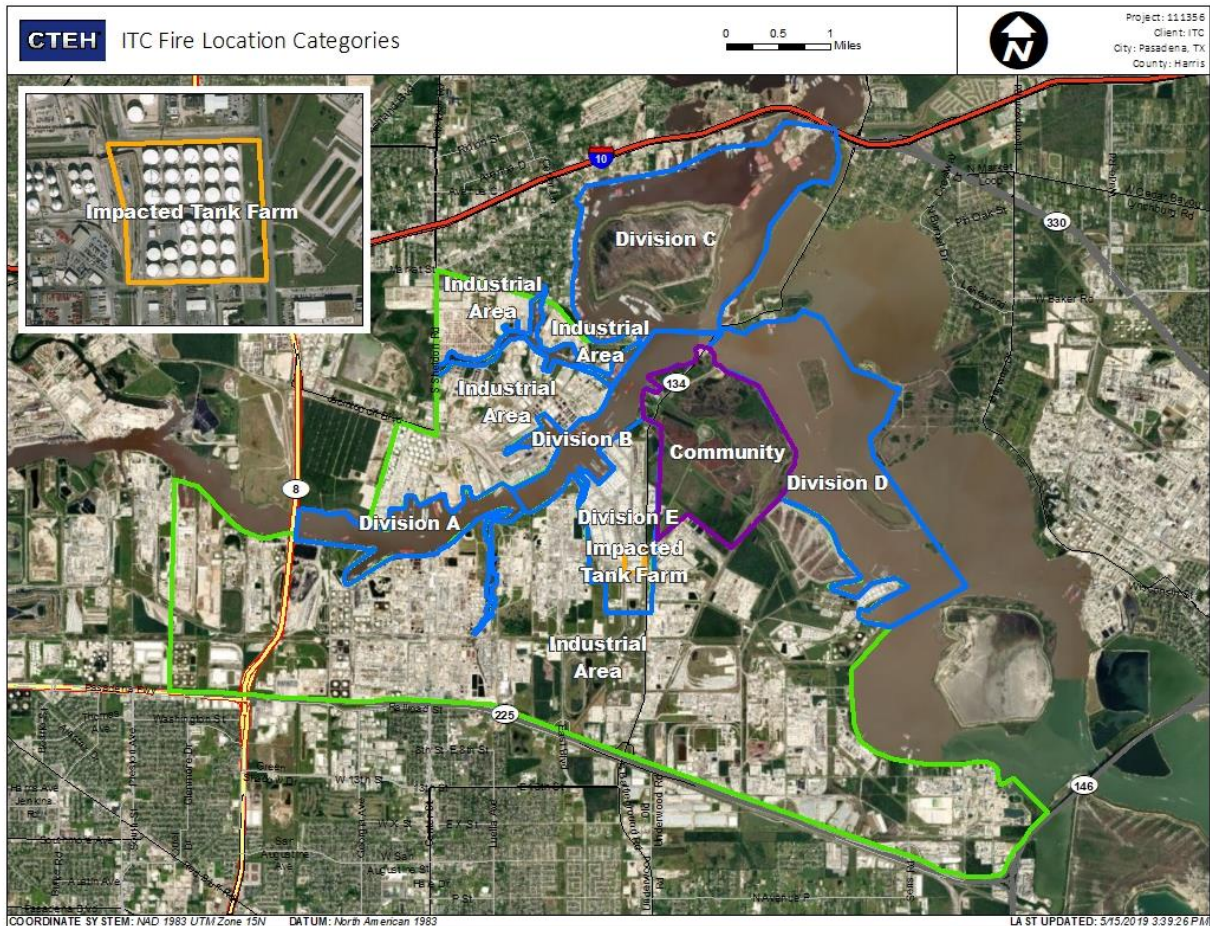
Reading Date
6/8/2019 4:00:00 PM to 6/8/2019 5:00:00 PM



Recent Benzene Detections

Location Category	Reading Date	Range of Detections
Division E	6/8/2019 16:09:21	0.03000 ppm
	6/8/2019 16:08:46	0.03000 ppm
	6/8/2019 16:59:29	0.02000 ppm
Impacted Tank Farm	6/8/2019 16:55:45	0.06000 ppm
	6/8/2019 16:58:35	0.04000 ppm

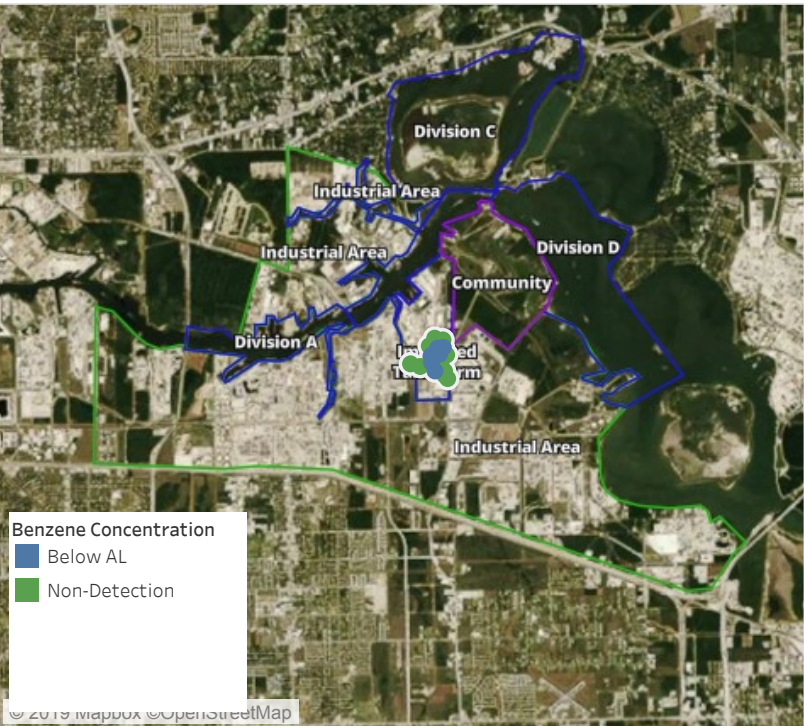
This data has been provided expeditiously to ITC and regulatory agencies for informational and/or operational purposes only. Data reported within this summary is preliminary in nature and has not undergone complete QA/QC (quality assurance/quality control) process. Until this complete QA/QC process is completed, the locations of each reading are approximate in nature and subject to further refinement. As some readings may represent non-breathing zone measurements, the data reported herein may not be suitable to assess potential occupational exposure. Site Assessment readings are not representative of an individual's breathing zone (e.g., container head space, ground level, directly above product, etc.).



Please Note: These updates display data from the 2nd 80's Fire site (Impacted Tank Farm), in the industrial areas surrounding the 2nd 80's Fire site (US Coast Guard Division E), within the Houston Ship Channel (US Coast Guard Divisions A-D), and in the industrial areas north and south of the Houston Ship Channel (Industrial Area). Real-time air monitoring data for the surrounding communities are communicated daily in a separate report.

Preliminary Hand- Held Air Monitoring Locations | ITC Deer Park Tank Fire

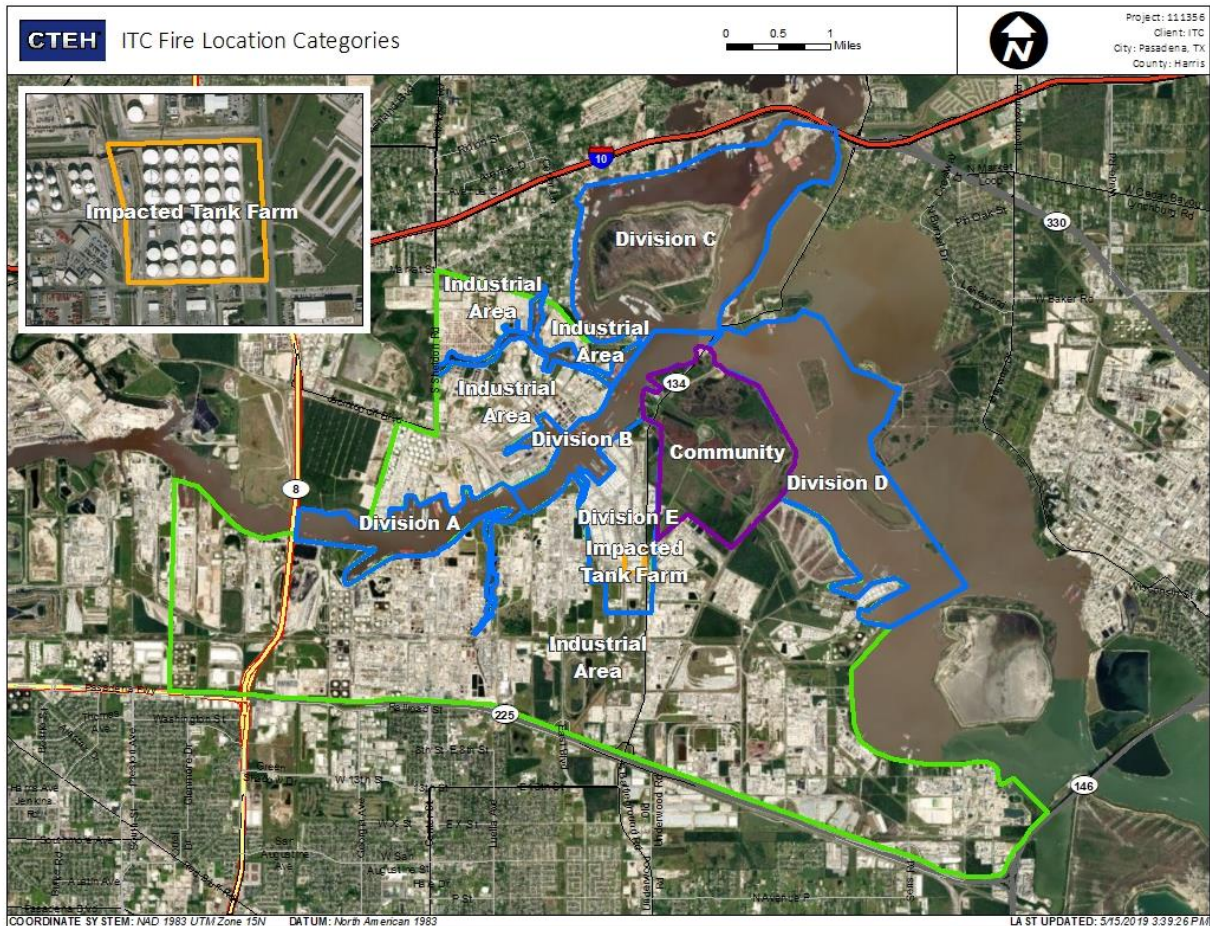
Reading Date
6/8/2019 5:00:00 PM to 6/8/2019 6:00:00 PM



Recent Benzene Detections

Location Category	Reading Date	Range of Detections
Division E	6/8/2019 17:08:05	0.03000 ppm
	6/8/2019 17:20:33	0.03000 ppm
	6/8/2019 17:27:49	0.02000 ppm
	6/8/2019 17:49:41	0.02000 ppm
Impacted Tank Farm	6/8/2019 17:01:45	0.04000 ppm
	6/8/2019 17:00:25	0.03000 ppm

This data has been provided expeditiously to ITC and regulatory agencies for informational and/or operational purposes only. Data reported within this summary is preliminary in nature and has not undergone complete QA/QC (quality assurance/quality control) process. Until this complete QA/QC process is completed, the locations of each reading are approximate in nature and subject to further refinement. As some readings may represent non-breathing zone measurements, the data reported herein may not be suitable to assess potential occupational exposure. Site Assessment readings are not representative of an individual's breathing zone (e.g., container head space, ground level, directly above product, etc.).



Please Note: These updates display data from the 2nd 80's Fire site (Impacted Tank Farm), in the industrial areas surrounding the 2nd 80's Fire site (US Coast Guard Division E), within the Houston Ship Channel (US Coast Guard Divisions A-D), and in the industrial areas north and south of the Houston Ship Channel (Industrial Area). Real-time air monitoring data for the surrounding communities are communicated daily in a separate report.

Preliminary Hand- Held Air Monitoring Locations | ITC Deer Park Tank Fire

Reading Date

6/8/2019 6:00:00 PM to 6/8/2019 7:00:00 PM



Recent Benzene Detections



This data has been provided expeditiously to ITC and regulatory agencies for informational and/or operational purposes only. Data reported within this summary is preliminary in nature and has not undergone complete QA/QC (quality assurance/quality control) process. Until this complete QA/QC process is completed, the locations of each reading are approximate in nature and subject to further refinement. As some readings may represent non-breathing zone measurements, the data reported herein may not be suitable to assess potential occupational exposure. Site Assessment readings are not representative of an individual's breathing zone (e.g., container head space, ground level, directly above product, etc.).

Preliminary Hand- Held Air Monitoring Locations | ITC Deer Park Tank Fire

Reading Date

6/8/2019 7:00:00 PM to 6/8/2019 8:00:00 PM



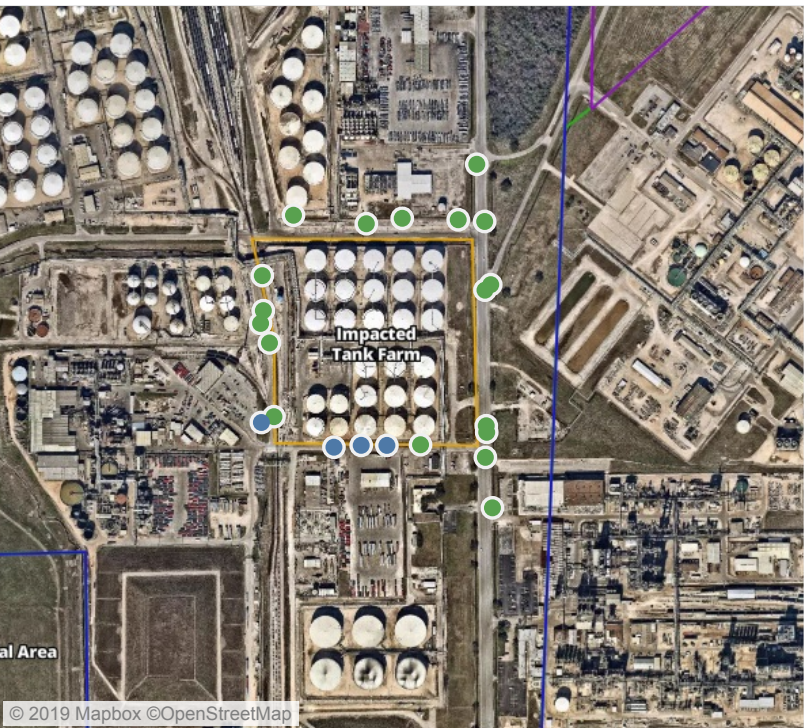
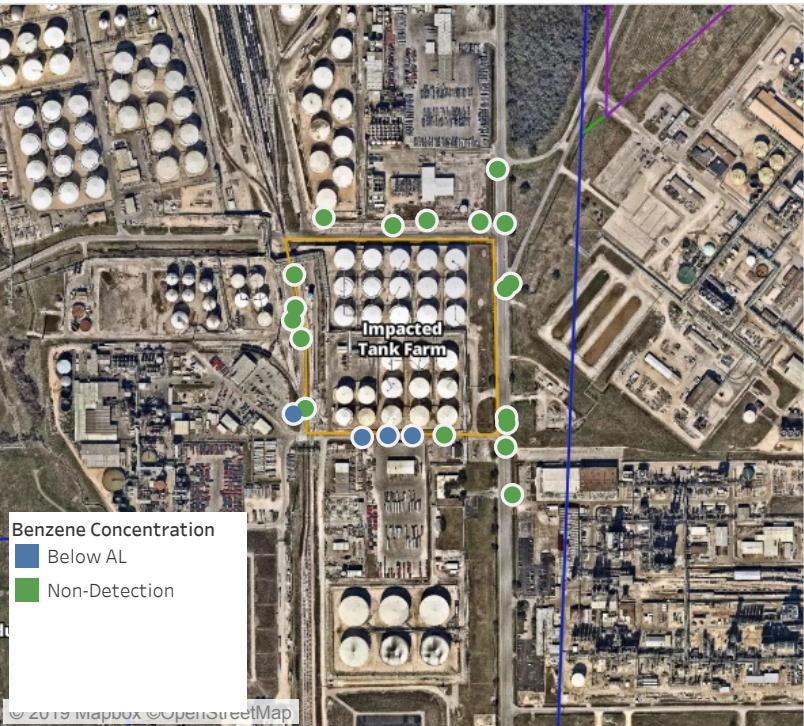
Recent Benzene Detections



This data has been provided expeditiously to ITC and regulatory agencies for informational and/or operational purposes only. Data reported within this summary is preliminary in nature and has not undergone complete QA/QC (quality assurance/quality control) process. Until this complete QA/QC process is completed, the locations of each reading are approximate in nature and subject to further refinement. As some readings may represent non-breathing zone measurements, the data reported herein may not be suitable to assess potential occupational exposure. Site Assessment readings are not representative of an individual's breathing zone (e.g., container head space, ground level, directly above product, etc.).

Preliminary Hand- Held Air Monitoring Locations | ITC Deer Park Tank Fire

Reading Date
6/8/2019 8:00:00 PM to 6/8/2019 9:00:00 PM



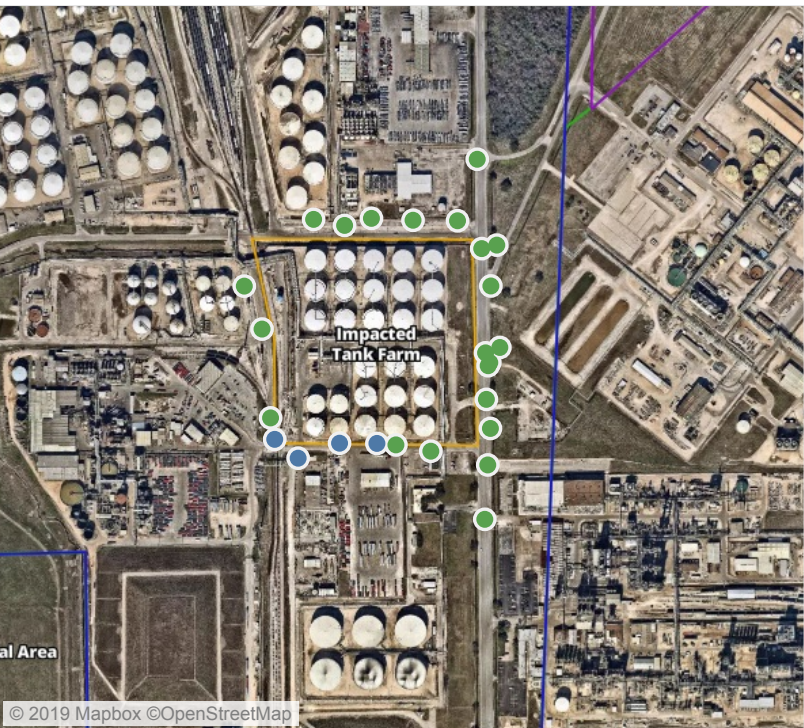
Recent Benzene Detections

Location Category	Reading Date	Range of Detections
Division E	6/8/2019 20:15:13	0.06000 ppm
	6/8/2019 20:17:25	0.10000 ppm
	6/8/2019 20:19:53	0.11000 ppm
	6/8/2019 20:23:02	0.02000 ppm

This data has been provided expeditiously to ITC and regulatory agencies for informational and/or operational purposes only. Data reported within this summary is preliminary in nature and has not undergone complete QA/QC (quality assurance/quality control) process. Until this complete QA/QC process is completed, the locations of each reading are approximate in nature and subject to further refinement. As some readings may represent non-breathing zone measurements, the data reported herein may not be suitable to assess potential occupational exposure. Site Assessment readings are not representative of an individual’s breathing zone (e.g., container head space, ground level, directly above product, etc.).

Preliminary Hand- Held Air Monitoring Locations | ITC Deer Park Tank Fire

Reading Date
6/8/2019 9:00:00 PM to 6/8/2019 10:00:00 PM



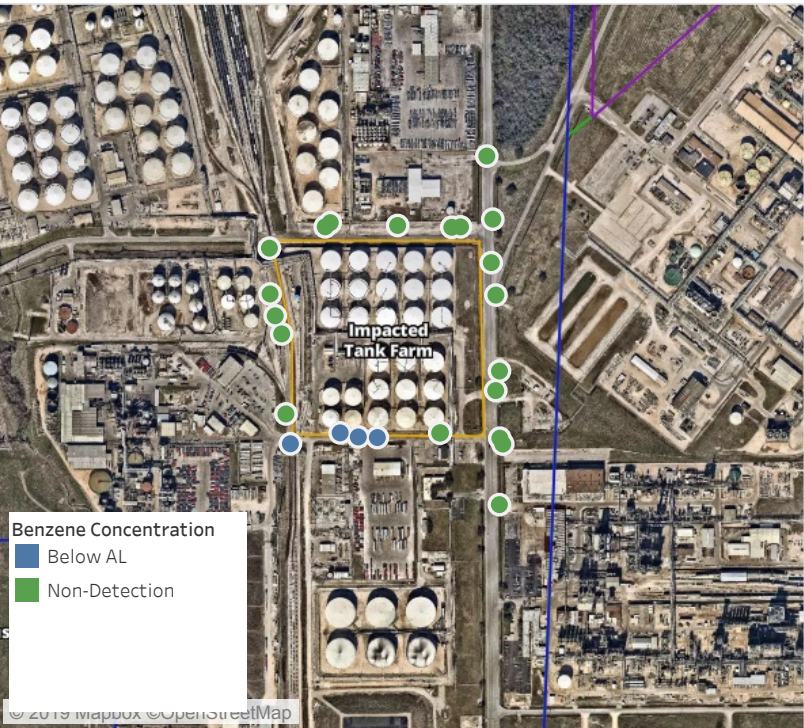
Recent Benzene Detections

Location Category	Reading Date	Range of Detections
Division E	6/8/2019 21:18:02	0.0300 ppm
	6/8/2019 21:19:51	0.2200 ppm
	6/8/2019 21:22:28	0.1200 ppm
	6/8/2019 21:24:46	0.0300 ppm

This data has been provided expeditiously to ITC and regulatory agencies for informational and/or operational purposes only. Data reported within this summary is preliminary in nature and has not undergone complete QA/QC (quality assurance/quality control) process. Until this complete QA/QC process is completed, the locations of each reading are approximate in nature and subject to further refinement. As some readings may represent non-breathing zone measurements, the data reported herein may not be suitable to assess potential occupational exposure. Site Assessment readings are not representative of an individual’s breathing zone (e.g., container head space, ground level, directly above product, etc.).

Preliminary Hand- Held Air Monitoring Locations | ITC Deer Park Tank Fire

Reading Date
6/8/2019 10:00:00 PM to 6/8/2019 11:00:00 PM



Recent Benzene Detections

Location Category	Reading Date	Range of Detections
Division E	6/8/2019 22:16:10	0.0500 ppm
	6/8/2019 22:17:56	0.2300 ppm
	6/8/2019 22:19:42	0.1000 ppm
	6/8/2019 22:22:06	0.0200 ppm

This data has been provided expeditiously to ITC and regulatory agencies for informational and/or operational purposes only. Data reported within this summary is preliminary in nature and has not undergone complete QA/QC (quality assurance/quality control) process. Until this complete QA/QC process is completed, the locations of each reading are approximate in nature and subject to further refinement. As some readings may represent non-breathing zone measurements, the data reported herein may not be suitable to assess potential occupational exposure. Site Assessment readings are not representative of an individual's breathing zone (e.g., container head space, ground level, directly above product, etc.).