

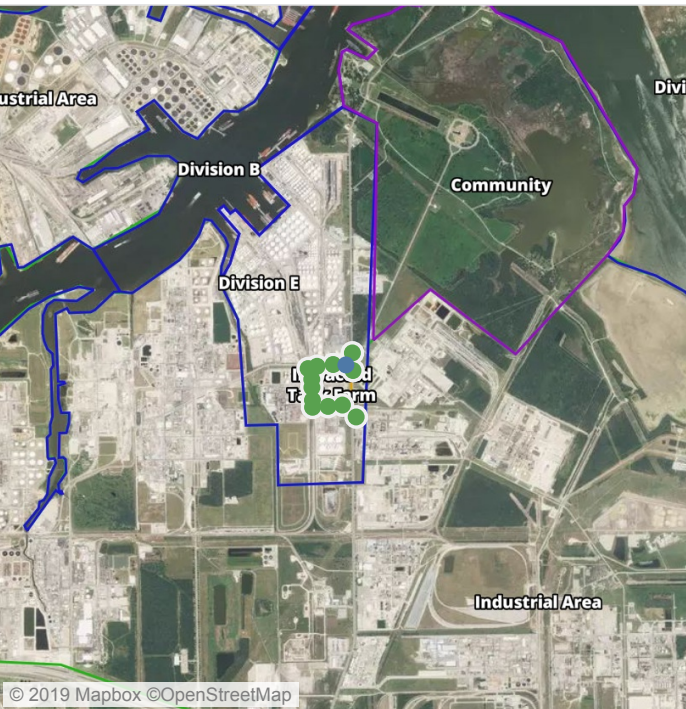
Preliminary Hand- Held Air Monitoring Locations | ITC Deer Park Tank Fire

Reading Date
6/19/2019 11:00:00 PM to 6/20/2019 12:00:00 AM



Recent Benzene Detections

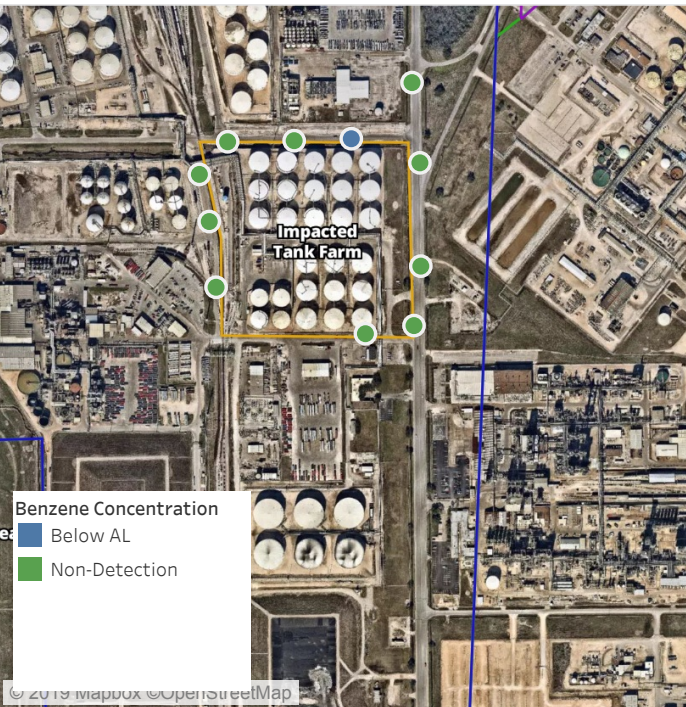
Location Category	Reading Date	Range of Detections
Division E	6/19/2019 23:50:39	0.03000 ppm



This data has been provided expeditiously to ITC and regulatory agencies for informational and/or operational purposes only. Data reported within this summary is preliminary in nature and has not undergone complete QA/QC (quality assurance/quality control) process. Until this complete QA/QC process is completed, the locations of each reading are approximate in nature and subject to further refinement. As some readings may represent non-brea..

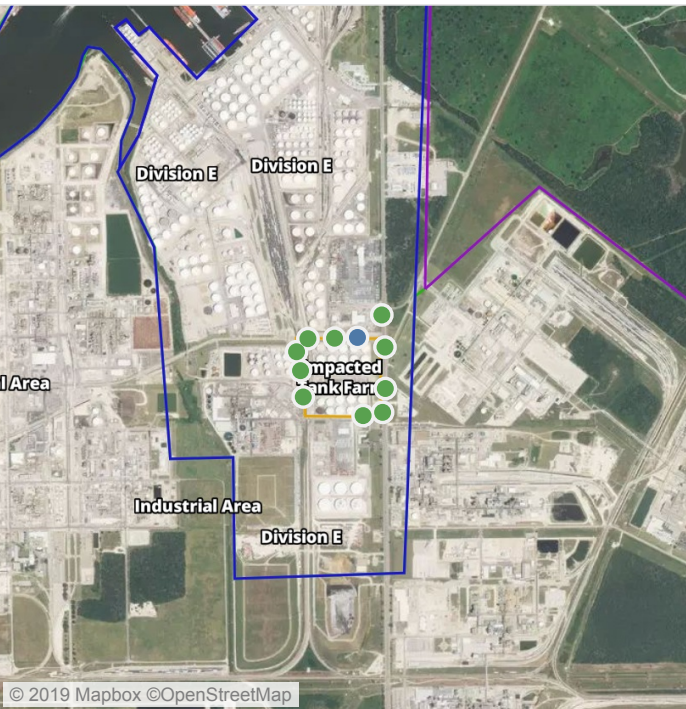
Preliminary Hand- Held Air Monitoring Locations | ITC Deer Park Tank Fire

Reading Date
6/20/2019 12:00:00 AM to 6/20/2019 1:00:00 AM



Recent Benzene Detections

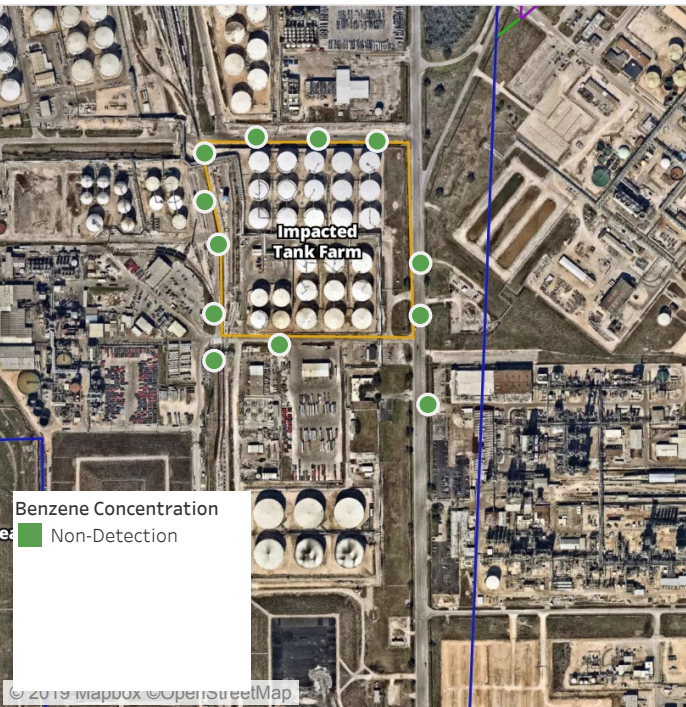
Location Category	Reading Date	Range of Detections
Division E	6/20/2019 00:05:49	0.04000 ppm



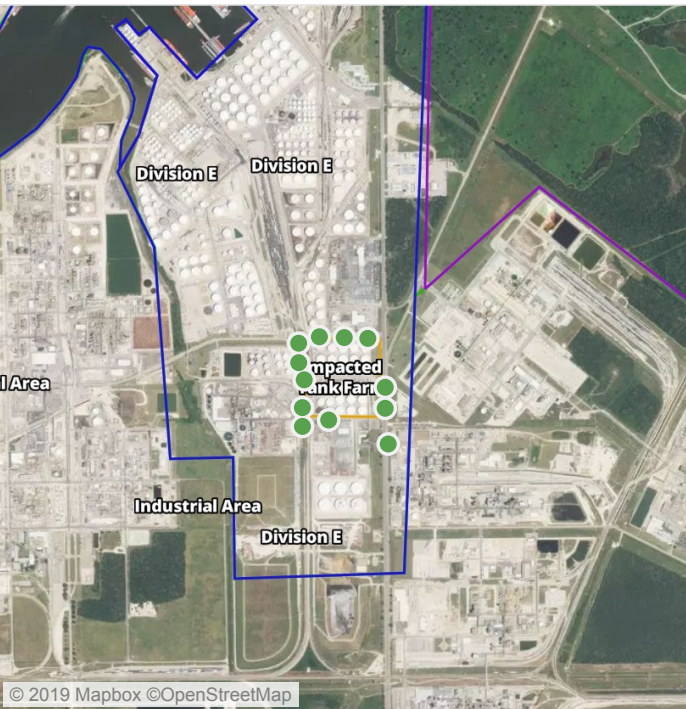
This data has been provided expeditiously to ITC and regulatory agencies for informational and/or operational purposes only. Data reported within this summary is preliminary in nature and has not undergone complete QA/QC (quality assurance/quality control) process. Until this complete QA/QC process is completed, the locations of each reading are approximate in nature and subject to further refinement. As some readings may represent non-brea..

Preliminary Hand- Held Air Monitoring Locations | ITC Deer Park Tank Fire

Reading Date
6/20/2019 1:00:00 AM to 6/20/2019 2:00:00 AM



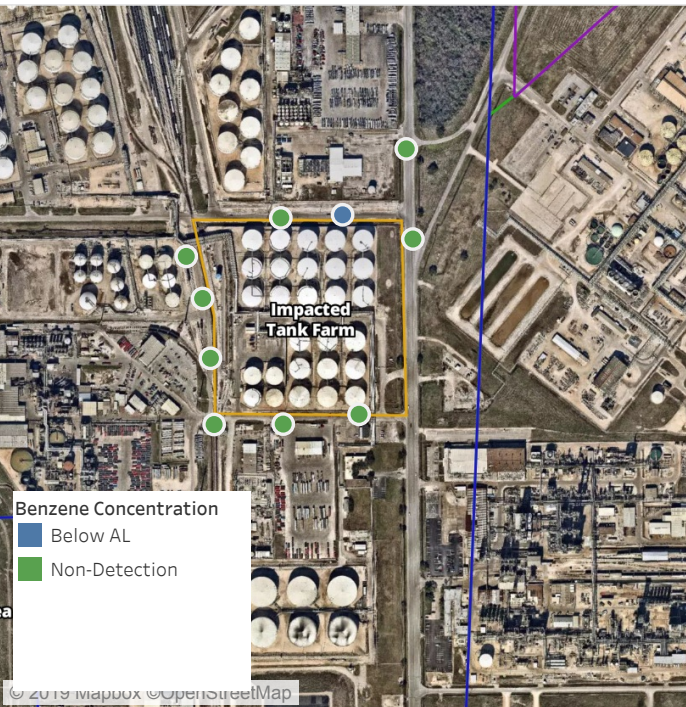
Recent Benzene Detections



This data has been provided expeditiously to ITC and regulatory agencies for informational and/or operational purposes only. Data reported within this summary is preliminary in nature and has not undergone complete QA/QC (quality assurance/quality control) process. Until this complete QA/QC process is completed, the locations of each reading are approximate in nature and subject to further refinement. As some readings may represent non-brea..

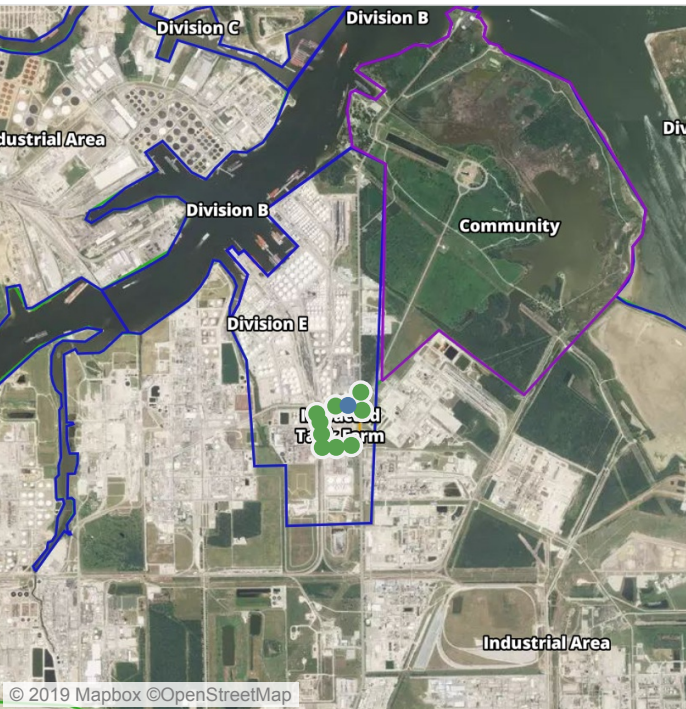
Preliminary Hand- Held Air Monitoring Locations | ITC Deer Park Tank Fire

Reading Date
6/20/2019 2:00:00 AM to 6/20/2019 3:00:00 AM



Recent Benzene Detections

Location Category	Reading Date	Range of Detections
Division E	6/20/2019 02:53:01	0.08000 ppm



This data has been provided expeditiously to ITC and regulatory agencies for informational and/or operational purposes only. Data reported within this summary is preliminary in nature and has not undergone complete QA/QC (quality assurance/quality control) process. Until this complete QA/QC process is completed, the locations of each reading are approximate in nature and subject to further refinement. As some readings may represent non-brea..

Preliminary Hand- Held Air Monitoring Locations | ITC Deer Park Tank Fire

Reading Date
6/20/2019 3:00:00 AM to 6/20/2019 4:00:00 AM



Recent Benzene Detections

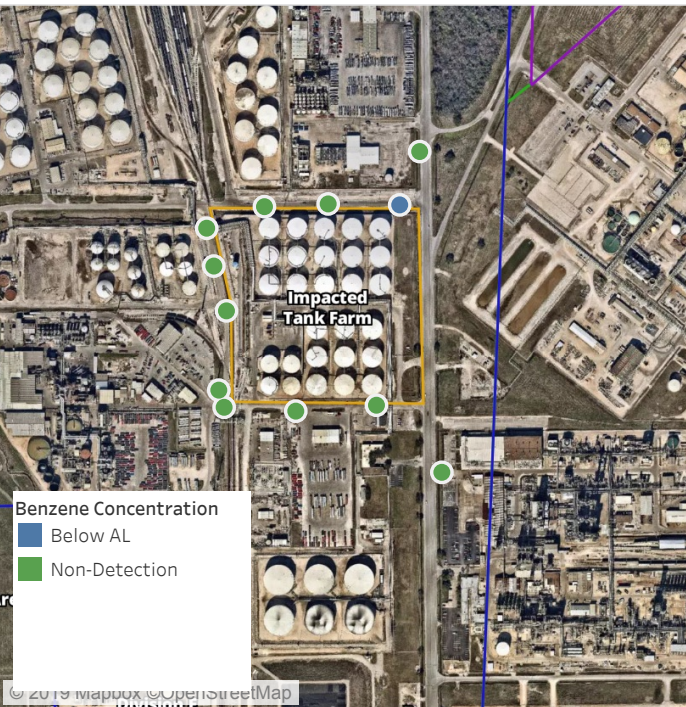
Location Category	Reading Date	Range of Detections
Division E	6/20/2019 03:01:34	0.10000 ppm
	6/20/2019 03:08:59	0.09000 ppm



This data has been provided expeditiously to ITC and regulatory agencies for informational and/or operational purposes only. Data reported within this summary is preliminary in nature and has not undergone complete QA/QC (quality assurance/quality control) process. Until this complete QA/QC process is completed, the locations of each reading are approximate in nature and subject to further refinement. As some readings may represent non-brea..

Preliminary Hand- Held Air Monitoring Locations | ITC Deer Park Tank Fire

Reading Date
6/20/2019 4:00:00 AM to 6/20/2019 5:00:00 AM



Recent Benzene Detections

Location Category	Reading Date	Range of Detections
Division E	6/20/2019 04:54:15	0.07000 ppm



This data has been provided expeditiously to ITC and regulatory agencies for informational and/or operational purposes only. Data reported within this summary is preliminary in nature and has not undergone complete QA/QC (quality assurance/quality control) process. Until this complete QA/QC process is completed, the locations of each reading are approximate in nature and subject to further refinement. As some readings may represent non-brea..

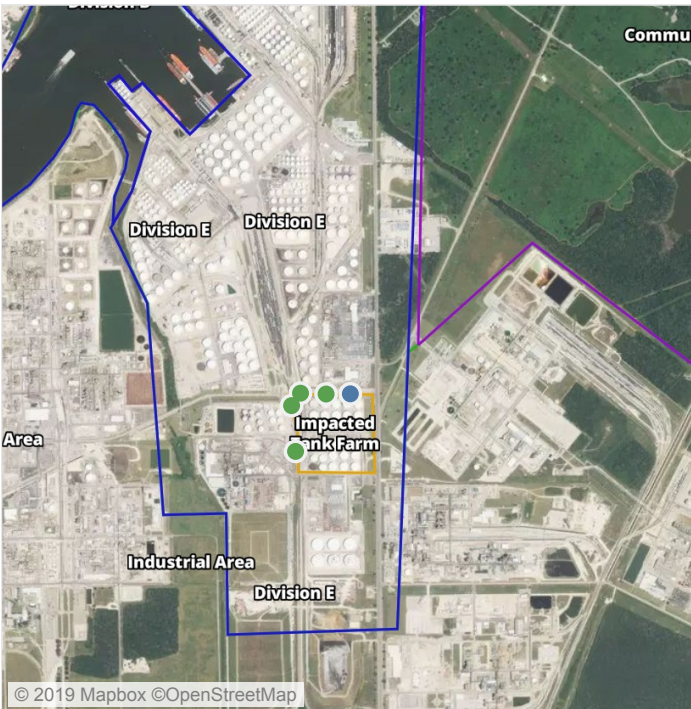
Preliminary Hand- Held Air Monitoring Locations | ITC Deer Park Tank Fire

Reading Date
6/20/2019 5:00:00 AM to 6/20/2019 6:00:00 AM



Recent Benzene Detections

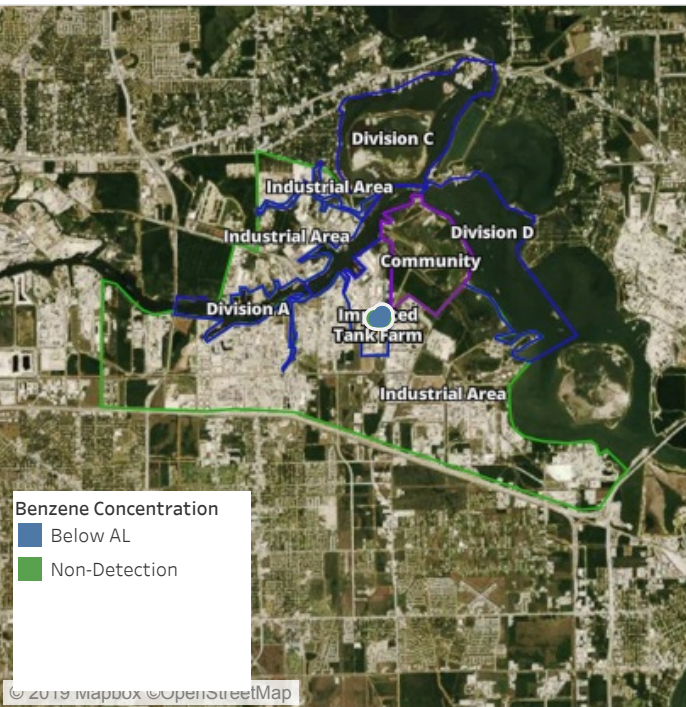
Location Category	Reading Date	Range of Detections
Division E	6/20/2019 05:06:55	0.08000 ppm



This data has been provided expeditiously to ITC and regulatory agencies for informational and/or operational purposes only. Data reported within this summary is preliminary in nature and has not undergone complete QA/QC (quality assurance/quality control) process. Until this complete QA/QC process is completed, the locations of each reading are approximate in nature and subject to further refinement. As some readings may represent non-brea..

Preliminary Hand- Held Air Monitoring Locations | ITC Deer Park Tank Fire

Reading Date
6/20/2019 6:00:00 AM to 6/20/2019 7:00:00 AM



Recent Benzene Detections

Location Category	Reading Date	Range of Detections
Division E	6/20/2019 06:09:51	0.06000 ppm
	6/20/2019 06:19:26	0.02000 ppm
	6/20/2019 06:27:50	0.04000 ppm
	6/20/2019 06:12:00	0.05000 ppm



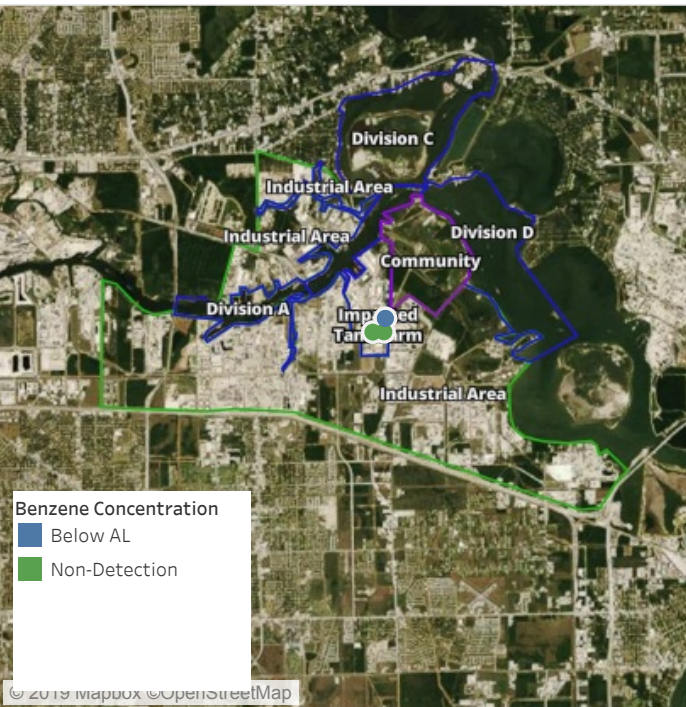
This data has been provided expeditiously to ITC and regulatory agencies for informational and/or operational purposes only. Data reported within this summary is preliminary in nature and has not undergone complete QA/QC (quality assurance/quality control) process. Until this complete QA/QC process is completed, the locations of each reading are approximate in nature and subject to further refinement. As some readings may represent non-brea..



Please Note: These updates display data from the 2nd 80's Fire site (Impacted Tank Farm), in the industrial areas surrounding the 2nd 80's Fire site (US Coast Guard Division E), within the Houston Ship Channel (US Coast Guard Divisions A-D), and in the industrial areas north and south of the Houston Ship Channel (Industrial Area). Real-time air monitoring data for the surrounding communities are communicated daily in a separate report.

Preliminary Hand- Held Air Monitoring Locations | ITC Deer Park Tank Fire

Reading Date
6/20/2019 7:00:00 AM to 6/20/2019 8:00:00 AM



Recent Benzene Detections

Location Category	Reading Date	Range of Detections
Division E	6/20/2019 07:53:25	0.06000 ppm
	6/20/2019 07:54:20	0.11000 ppm



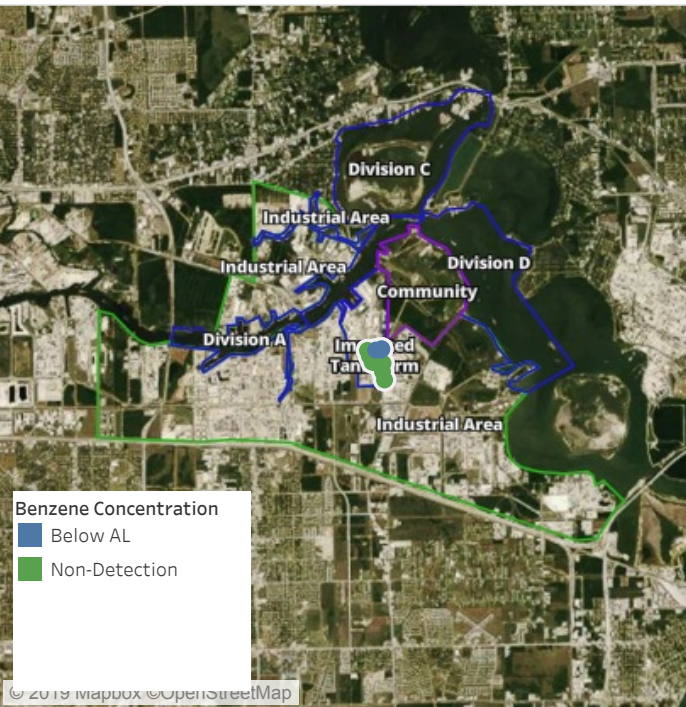
This data has been provided expeditiously to ITC and regulatory agencies for informational and/or operational purposes only. Data reported within this summary is preliminary in nature and has not undergone complete QA/QC (quality assurance/quality control) process. Until this complete QA/QC process is completed, the locations of each reading are approximate in nature and subject to further refinement. As some readings may represent non-brea..



Please Note: These updates display data from the 2nd 80's Fire site (Impacted Tank Farm), in the industrial areas surrounding the 2nd 80's Fire site (US Coast Guard Division E), within the Houston Ship Channel (US Coast Guard Divisions A-D), and in the industrial areas north and south of the Houston Ship Channel (Industrial Area). Real-time air monitoring data for the surrounding communities are communicated daily in a separate report.

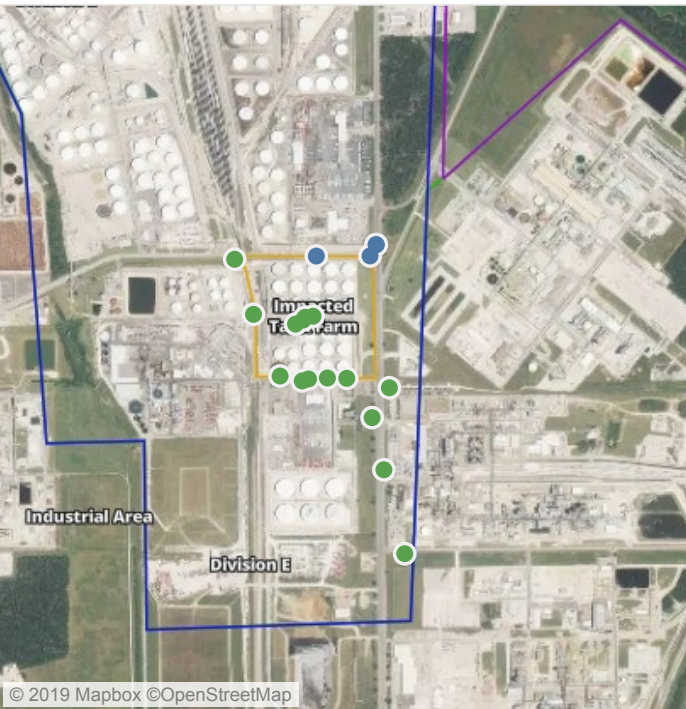
Preliminary Hand- Held Air Monitoring Locations | ITC Deer Park Tank Fire

Reading Date
6/20/2019 8:00:00 AM to 6/20/2019 9:00:00 AM



Recent Benzene Detections

Location Category	Reading Date	Range of Detections
Division E	6/20/2019 08:36:39	0.1500 ppm
	6/20/2019 08:50:59	0.0600 ppm
	6/20/2019 08:52:23	0.0900 ppm
	6/20/2019 08:53:23	0.0200 ppm



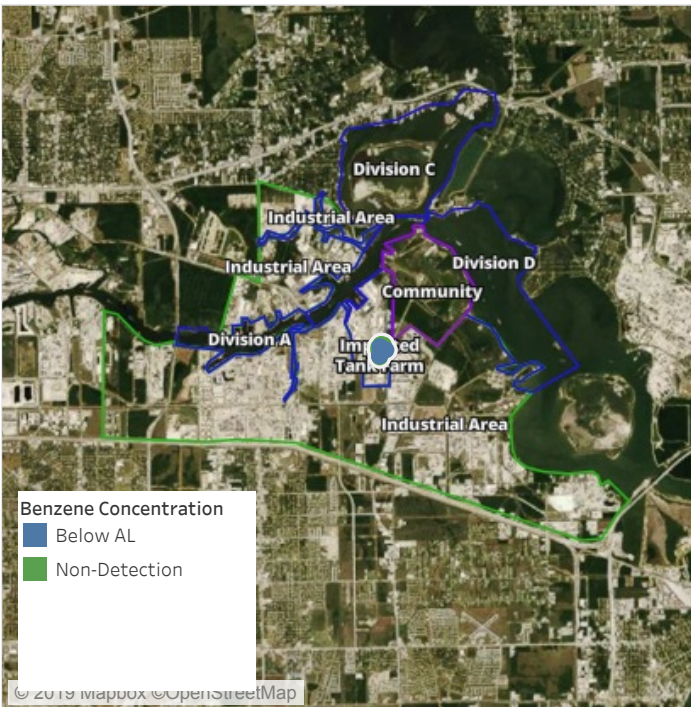
This data has been provided expeditiously to ITC and regulatory agencies for informational and/or operational purposes only. Data reported within this summary is preliminary in nature and has not undergone complete QA/QC (quality assurance/quality control) process. Until this complete QA/QC process is completed, the locations of each reading are approximate in nature and subject to further refinement. As some readings may represent non-brea..



Please Note: These updates display data from the 2nd 80's Fire site (Impacted Tank Farm), in the industrial areas surrounding the 2nd 80's Fire site (US Coast Guard Division E), within the Houston Ship Channel (US Coast Guard Divisions A-D), and in the industrial areas north and south of the Houston Ship Channel (Industrial Area). Real-time air monitoring data for the surrounding communities are communicated daily in a separate report.

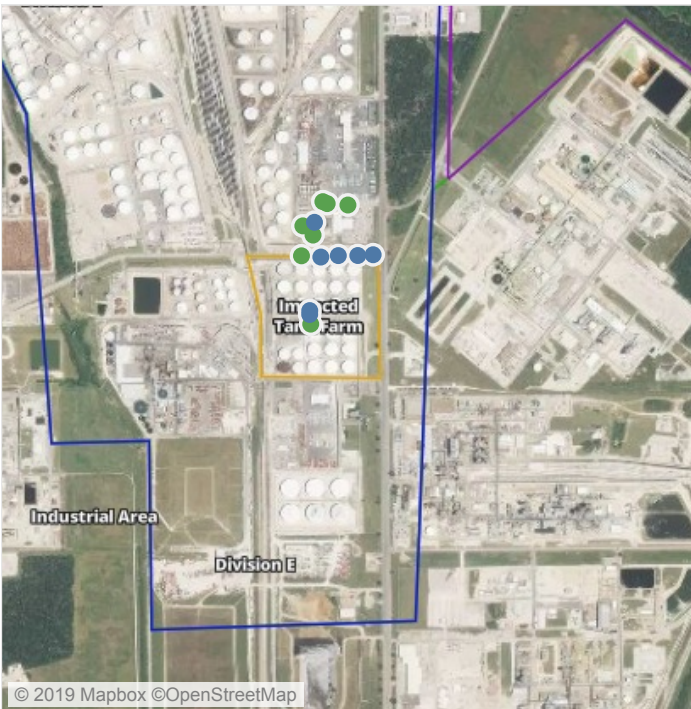
Preliminary Hand- Held Air Monitoring Locations | ITC Deer Park Tank Fire

Reading Date
6/20/2019 9:00:00 AM to 6/20/2019 10:00:00 AM



Recent Benzene Detections

Location Category	Reading Date	Range of Detections
Division E	6/20/2019 09:13:28	0.0700 ppm
	6/20/2019 09:21:26	0.0500 ppm
	6/20/2019 09:25:26	0.0500 ppm
	6/20/2019 09:29:41	0.1000 ppm
	6/20/2019 09:42:40	0.0800 ppm
Impacted Tank Farm	6/20/2019 09:11:38	0.0200 ppm
	6/20/2019 09:42:16	0.2500 ppm



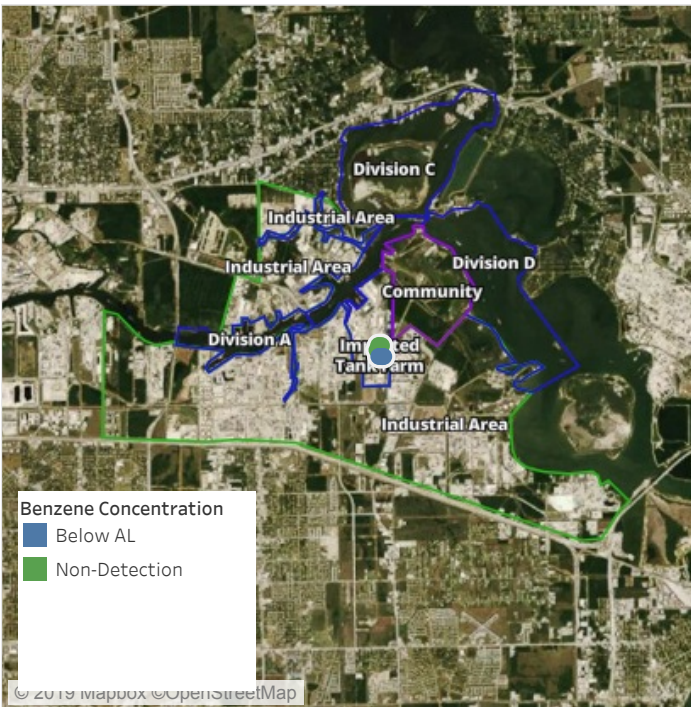
This data has been provided expeditiously to ITC and regulatory agencies for informational and/or operational purposes only. Data reported within this summary is preliminary in nature and has not undergone complete QA/QC (quality assurance/quality control) process. Until this complete QA/QC process is completed, the locations of each reading are approximate in nature and subject to further refinement. As some readings may represent non-brea..



Please Note: These updates display data from the 2nd 80's Fire site (Impacted Tank Farm), in the industrial areas surrounding the 2nd 80's Fire site (US Coast Guard Division E), within the Houston Ship Channel (US Coast Guard Divisions A-D), and in the industrial areas north and south of the Houston Ship Channel (Industrial Area). Real-time air monitoring data for the surrounding communities are communicated daily in a separate report.

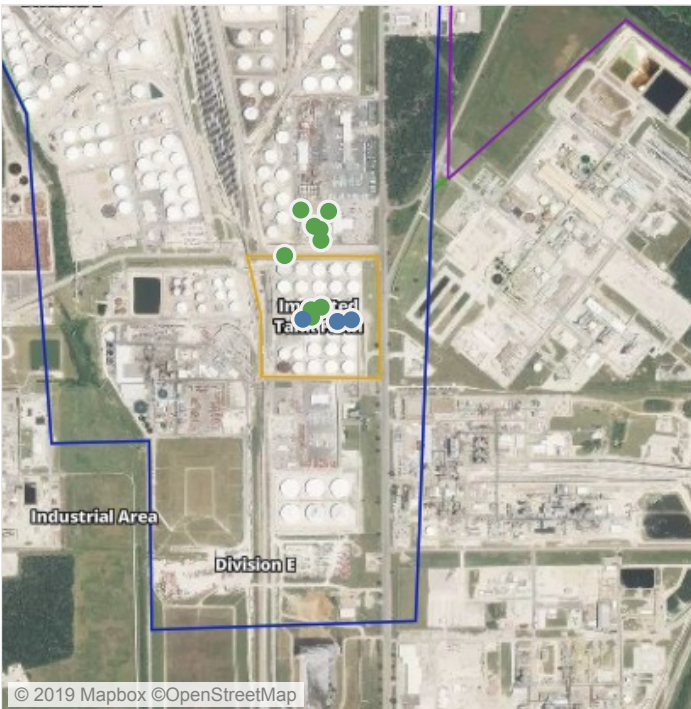
Preliminary Hand- Held Air Monitoring Locations | ITC Deer Park Tank Fire

Reading Date
6/20/2019 10:00:00 AM to 6/20/2019 11:00:00 AM



Recent Benzene Detections

Location Category	Reading Date	Range of Detections
Impacted Tank Farm	6/20/2019 10:34:27	0.3500 ppm
	6/20/2019 10:46:54	0.0900 ppm
	6/20/2019 10:57:01	0.0200 ppm



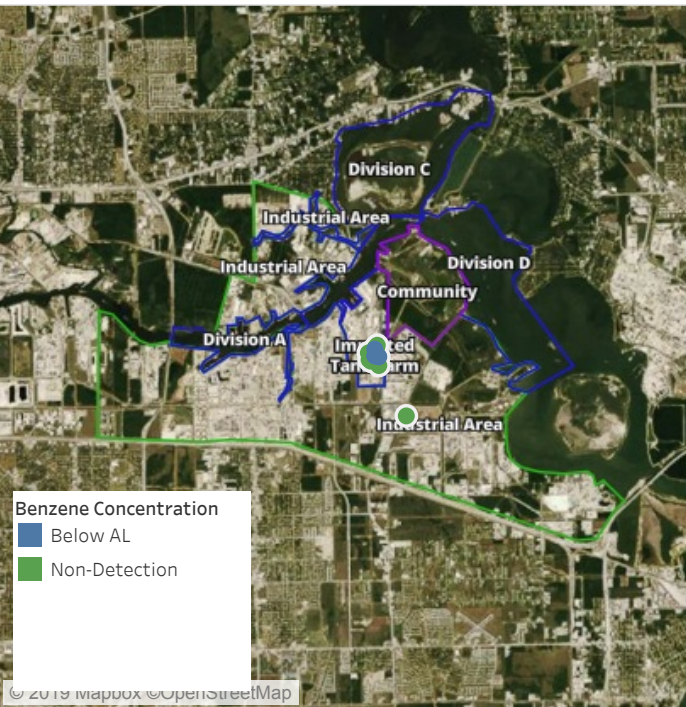
This data has been provided expeditiously to ITC and regulatory agencies for informational and/or operational purposes only. Data reported within this summary is preliminary in nature and has not undergone complete QA/QC (quality assurance/quality control) process. Until this complete QA/QC process is completed, the locations of each reading are approximate in nature and subject to further refinement. As some readings may represent non-brea..



Please Note: These updates display data from the 2nd 80's Fire site (Impacted Tank Farm), in the industrial areas surrounding the 2nd 80's Fire site (US Coast Guard Division E), within the Houston Ship Channel (US Coast Guard Divisions A-D), and in the industrial areas north and south of the Houston Ship Channel (Industrial Area). Real-time air monitoring data for the surrounding communities are communicated daily in a separate report.

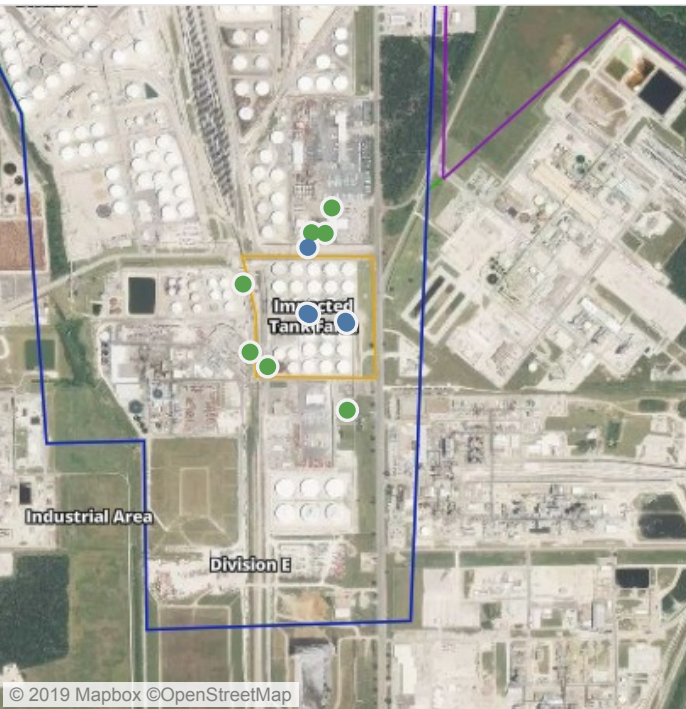
Preliminary Hand- Held Air Monitoring Locations | ITC Deer Park Tank Fire

Reading Date
6/20/2019 11:00:00 AM to 6/20/2019 12:00:00 PM



Recent Benzene Detections

Location Category	Reading Date	Range of Detections
Division E	6/20/2019 11:33:47	0.0900 ppm
Impacted Tank Farm	6/20/2019 11:21:17	0.0400 ppm
	6/20/2019 11:31:15	0.1700 ppm
	6/20/2019 11:46:03	0.0200 ppm
Industrial Area	6/20/2019 11:21:13	0.1400 ppm



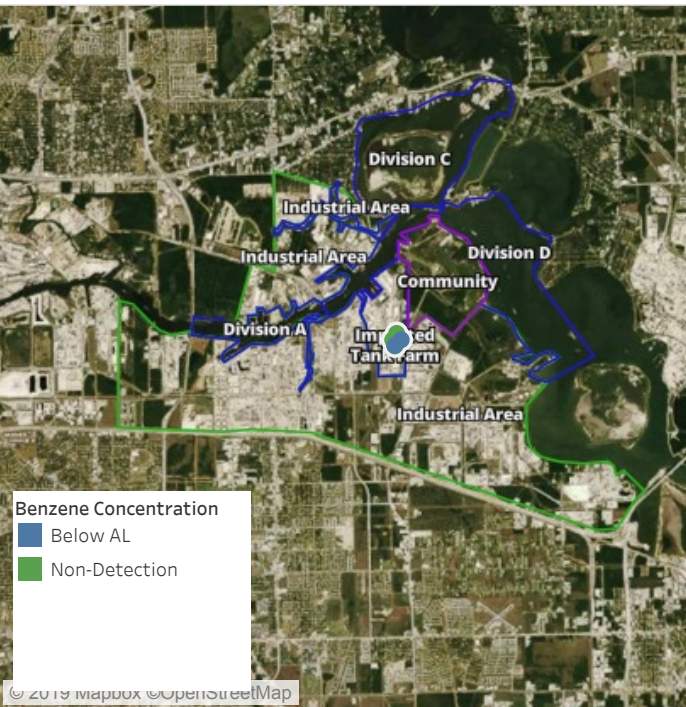
This data has been provided expeditiously to ITC and regulatory agencies for informational and/or operational purposes only. Data reported within this summary is preliminary in nature and has not undergone complete QA/QC (quality assurance/quality control) process. Until this complete QA/QC process is completed, the locations of each reading are approximate in nature and subject to further refinement. As some readings may represent non-brea..



Please Note: These updates display data from the 2nd 80's Fire site (Impacted Tank Farm), in the industrial areas surrounding the 2nd 80's Fire site (US Coast Guard Division E), within the Houston Ship Channel (US Coast Guard Divisions A-D), and in the industrial areas north and south of the Houston Ship Channel (Industrial Area). Real-time air monitoring data for the surrounding communities are communicated daily in a separate report.

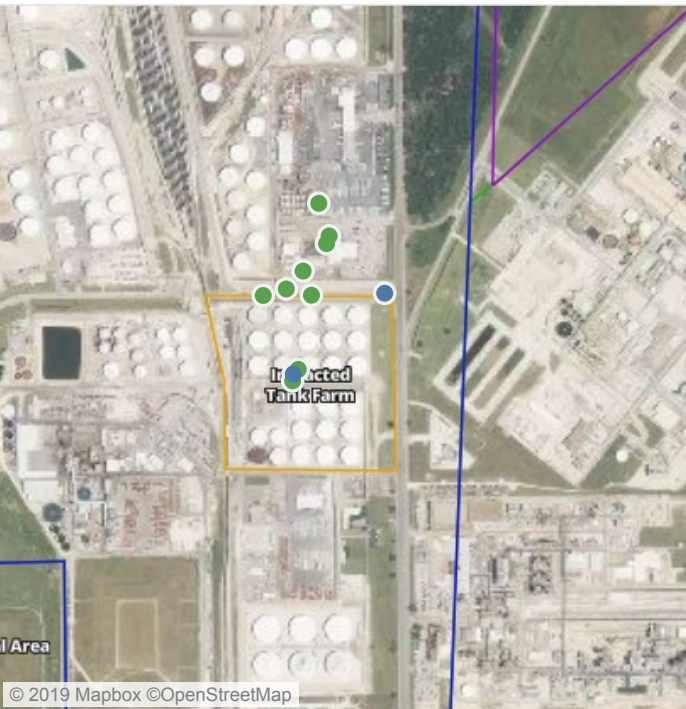
Preliminary Hand- Held Air Monitoring Locations | ITC Deer Park Tank Fire

Reading Date
6/20/2019 12:00:00 PM to 6/20/2019 1:00:00 PM



Recent Benzene Detections

Location Category	Reading Date	Range of Detections
Division E	6/20/2019 12:07:44	0.06000 ppm
Impacted Tank Farm	6/20/2019 12:28:26	0.03000 ppm



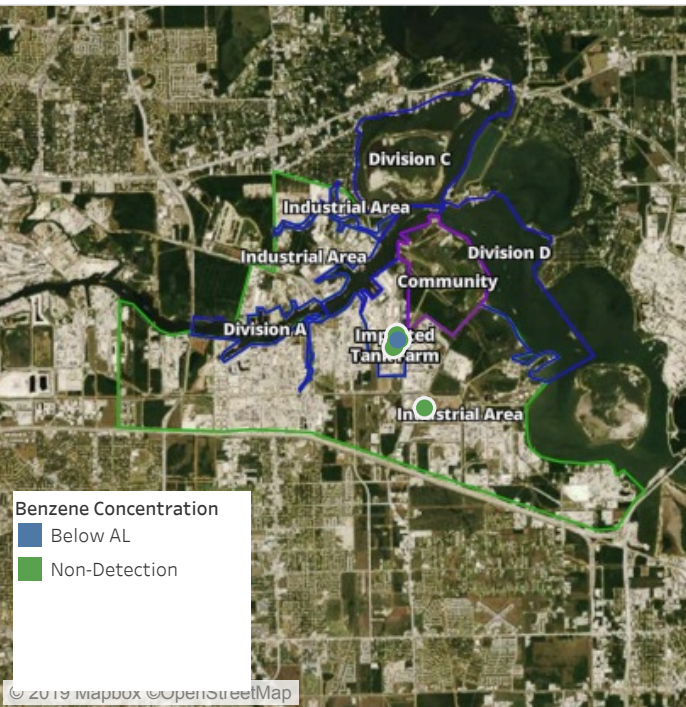
This data has been provided expeditiously to ITC and regulatory agencies for informational and/or operational purposes only. Data reported within this summary is preliminary in nature and has not undergone complete QA/QC (quality assurance/quality control) process. Until this complete QA/QC process is completed, the locations of each reading are approximate in nature and subject to further refinement. As some readings may represent non-brea..



Please Note: These updates display data from the 2nd 80's Fire site (Impacted Tank Farm), in the industrial areas surrounding the 2nd 80's Fire site (US Coast Guard Division E), within the Houston Ship Channel (US Coast Guard Divisions A-D), and in the industrial areas north and south of the Houston Ship Channel (Industrial Area). Real-time air monitoring data for the surrounding communities are communicated daily in a separate report.

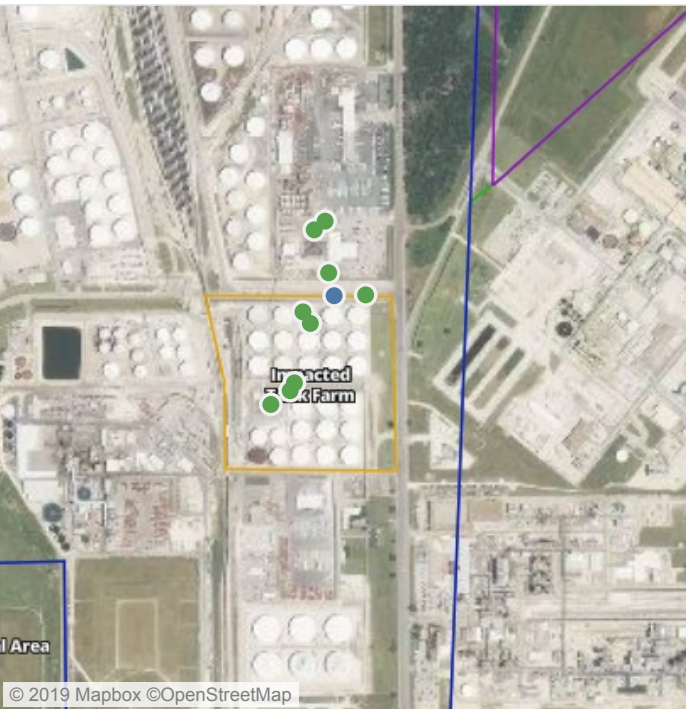
Preliminary Hand- Held Air Monitoring Locations | ITC Deer Park Tank Fire

Reading Date
6/20/2019 1:00:00 PM to 6/20/2019 2:00:00 PM



Recent Benzene Detections

Location Category	Reading Date	Range of Detections
Division E	6/20/2019 13:04:17	0.02000 ppm



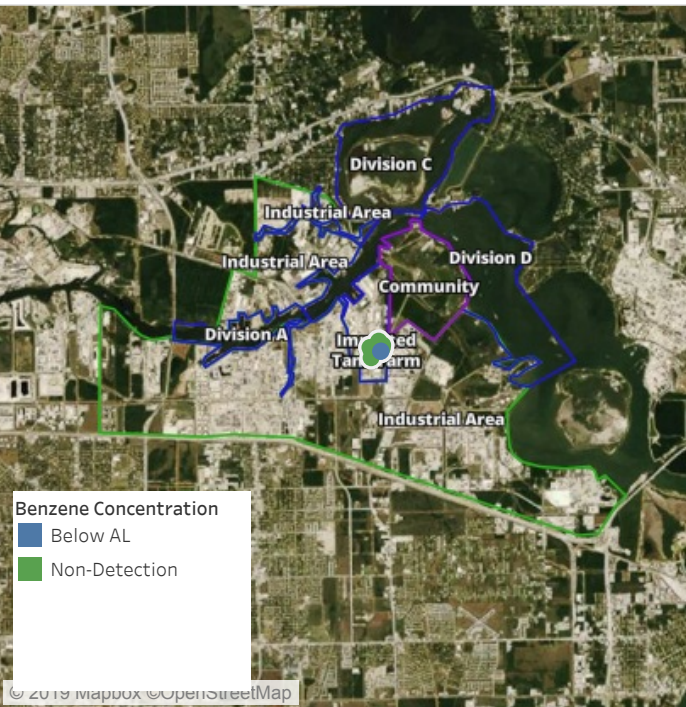
This data has been provided expeditiously to ITC and regulatory agencies for informational and/or operational purposes only. Data reported within this summary is preliminary in nature and has not undergone complete QA/QC (quality assurance/quality control) process. Until this complete QA/QC process is completed, the locations of each reading are approximate in nature and subject to further refinement. As some readings may represent non-brea..



Please Note: These updates display data from the 2nd 80's Fire site (Impacted Tank Farm), in the industrial areas surrounding the 2nd 80's Fire site (US Coast Guard Division E), within the Houston Ship Channel (US Coast Guard Divisions A-D), and in the industrial areas north and south of the Houston Ship Channel (Industrial Area). Real-time air monitoring data for the surrounding communities are communicated daily in a separate report.

Preliminary Hand- Held Air Monitoring Locations | ITC Deer Park Tank Fire

Reading Date
6/20/2019 2:00:00 PM to 6/20/2019 3:00:00 PM



Recent Benzene Detections

Location Category	Reading Date	Range of Detections
Impacted Tank Farm	6/20/2019 14:10:25	0.21000 ppm
	6/20/2019 14:24:17	0.19000 ppm



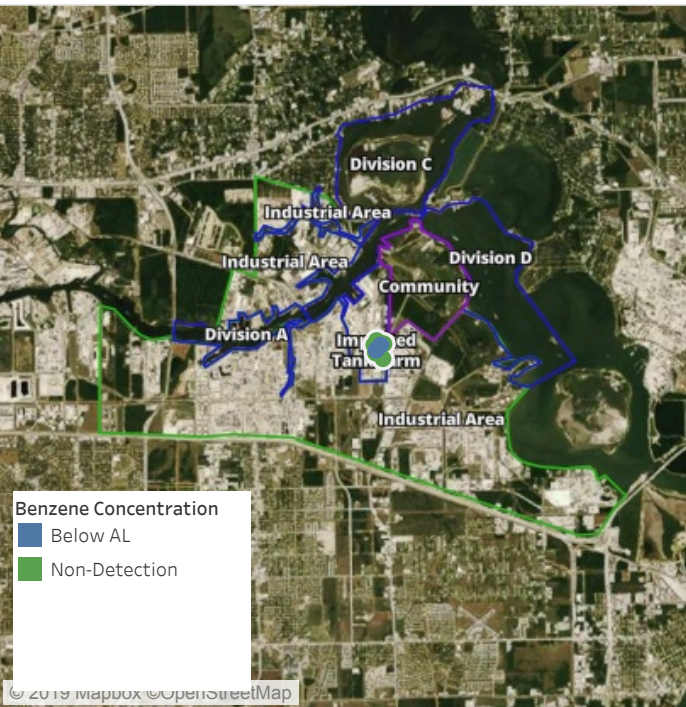
This data has been provided expeditiously to ITC and regulatory agencies for informational and/or operational purposes only. Data reported within this summary is preliminary in nature and has not undergone complete QA/QC (quality assurance/quality control) process. Until this complete QA/QC process is completed, the locations of each reading are approximate in nature and subject to further refinement. As some readings may represent non-brea..



Please Note: These updates display data from the 2nd 80's Fire site (Impacted Tank Farm), in the industrial areas surrounding the 2nd 80's Fire site (US Coast Guard Division E), within the Houston Ship Channel (US Coast Guard Divisions A-D), and in the industrial areas north and south of the Houston Ship Channel (Industrial Area). Real-time air monitoring data for the surrounding communities are communicated daily in a separate report.

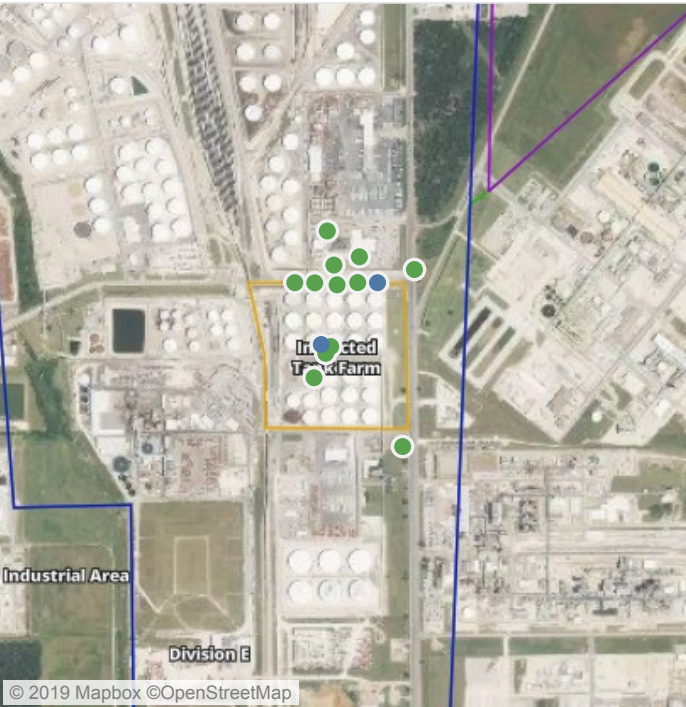
Preliminary Hand- Held Air Monitoring Locations | ITC Deer Park Tank Fire

Reading Date
6/20/2019 3:00:00 PM to 6/20/2019 4:00:00 PM



Recent Benzene Detections

Location Category	Reading Date	Range of Detections
Division E	6/20/2019 15:13:43	0.05000 ppm
Impacted Tank Farm	6/20/2019 15:18:37	0.02000 ppm



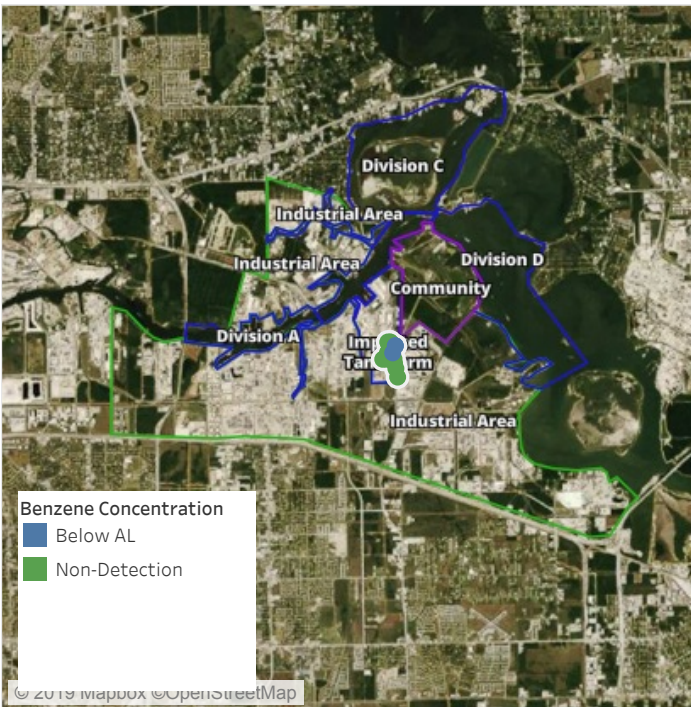
This data has been provided expeditiously to ITC and regulatory agencies for informational and/or operational purposes only. Data reported within this summary is preliminary in nature and has not undergone complete QA/QC (quality assurance/quality control) process. Until this complete QA/QC process is completed, the locations of each reading are approximate in nature and subject to further refinement. As some readings may represent non-brea..



Please Note: These updates display data from the 2nd 80's Fire site (Impacted Tank Farm), in the industrial areas surrounding the 2nd 80's Fire site (US Coast Guard Division E), within the Houston Ship Channel (US Coast Guard Divisions A-D), and in the industrial areas north and south of the Houston Ship Channel (Industrial Area). Real-time air monitoring data for the surrounding communities are communicated daily in a separate report.

Preliminary Hand- Held Air Monitoring Locations | ITC Deer Park Tank Fire

Reading Date
6/20/2019 4:00:00 PM to 6/20/2019 5:00:00 PM



Recent Benzene Detections

Location Category	Reading Date	Range of Detections
Division E	6/20/2019 16:18:08	0.06000 ppm
	6/20/2019 16:19:07	0.03000 ppm
Impacted Tank Farm	6/20/2019 16:27:52	0.11000 ppm



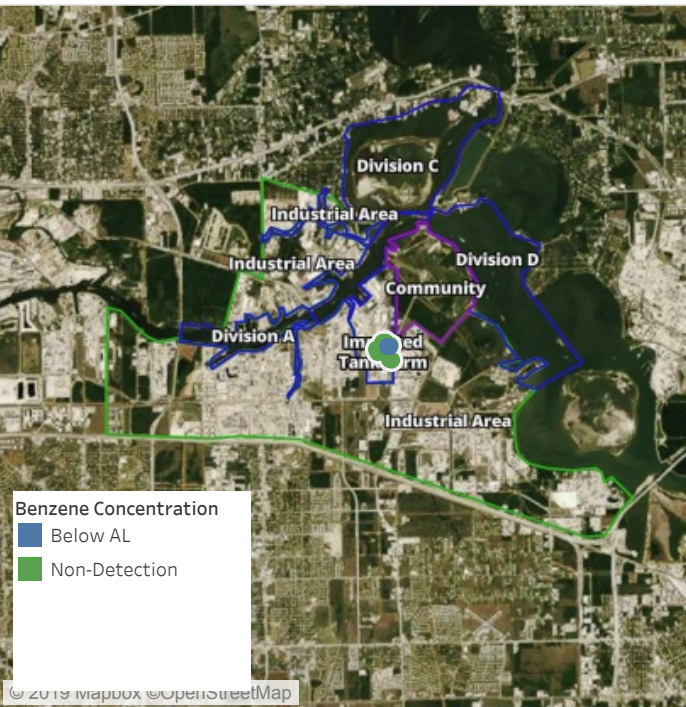
This data has been provided expeditiously to ITC and regulatory agencies for informational and/or operational purposes only. Data reported within this summary is preliminary in nature and has not undergone complete QA/QC (quality assurance/quality control) process. Until this complete QA/QC process is completed, the locations of each reading are approximate in nature and subject to further refinement. As some readings may represent non-brea..



Please Note: These updates display data from the 2nd 80's Fire site (Impacted Tank Farm), in the industrial areas surrounding the 2nd 80's Fire site (US Coast Guard Division E), within the Houston Ship Channel (US Coast Guard Divisions A-D), and in the industrial areas north and south of the Houston Ship Channel (Industrial Area). Real-time air monitoring data for the surrounding communities are communicated daily in a separate report.

Preliminary Hand- Held Air Monitoring Locations | ITC Deer Park Tank Fire

Reading Date
6/20/2019 5:00:00 PM to 6/20/2019 6:00:00 PM



Recent Benzene Detections

Location Category	Reading Date	Range of Detections
Division E	6/20/2019 17:49:07	0.06000 ppm
	6/20/2019 17:56:40	0.03000 ppm



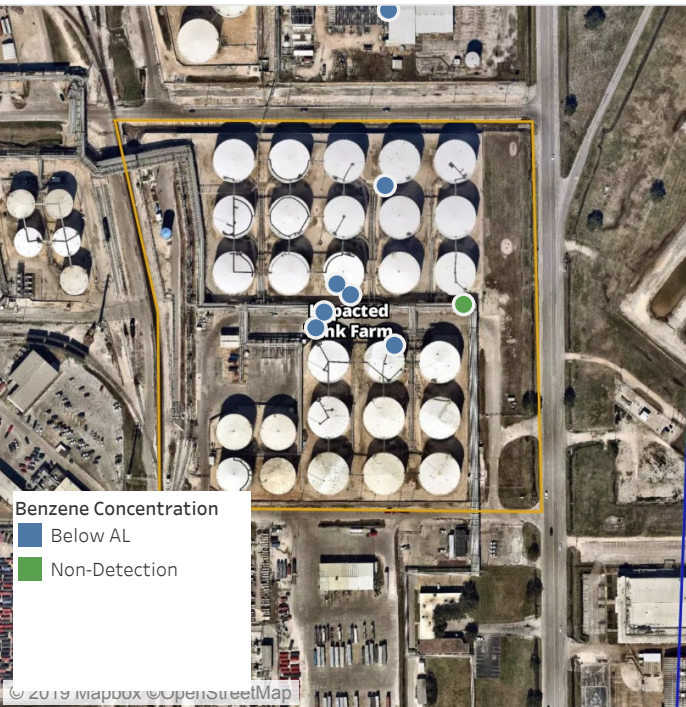
This data has been provided expeditiously to ITC and regulatory agencies for informational and/or operational purposes only. Data reported within this summary is preliminary in nature and has not undergone complete QA/QC (quality assurance/quality control) process. Until this complete QA/QC process is completed, the locations of each reading are approximate in nature and subject to further refinement. As some readings may represent non-brea..



Please Note: These updates display data from the 2nd 80's Fire site (Impacted Tank Farm), in the industrial areas surrounding the 2nd 80's Fire site (US Coast Guard Division E), within the Houston Ship Channel (US Coast Guard Divisions A-D), and in the industrial areas north and south of the Houston Ship Channel (Industrial Area). Real-time air monitoring data for the surrounding communities are communicated daily in a separate report.

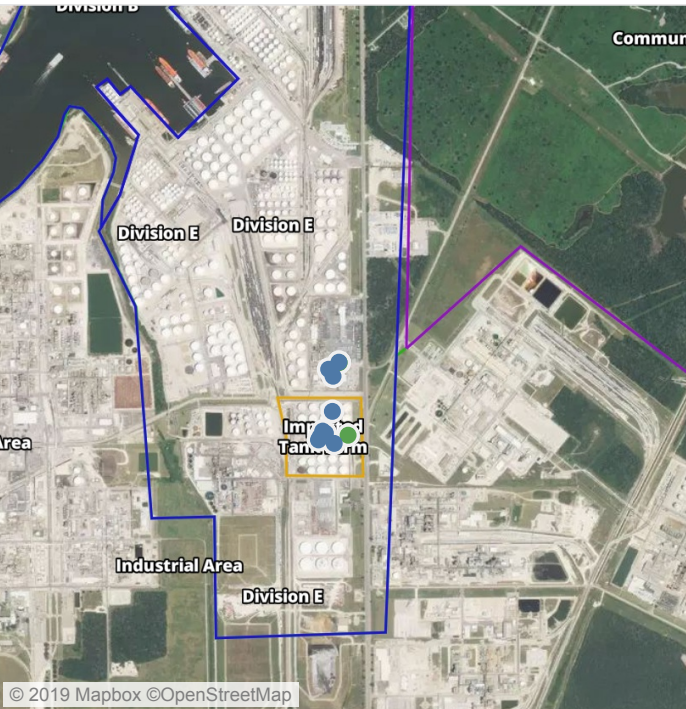
Preliminary Hand- Held Air Monitoring Locations | ITC Deer Park Tank Fire

Reading Date
6/20/2019 6:00:00 PM to 6/20/2019 7:00:00 PM



Recent Benzene Detections

Location Category	Reading Date	Range of Detections
Division E	6/20/2019 18:00:45	0.03000 ppm
	6/20/2019 18:03:13	0.04000 ppm
	6/20/2019 18:18:55	0.04000 ppm
	6/20/2019 18:31:09	0.03000 ppm
Impacted Tank Farm	6/20/2019 18:05:08	0.05000 ppm
	6/20/2019 18:25:41	0.02000 ppm
	6/20/2019 18:30:42	0.11000 ppm
	6/20/2019 18:42:44	0.07000 ppm
	6/20/2019 18:54:40	0.08000 ppm



This data has been provided expeditiously to ITC and regulatory agencies for informational and/or operational purposes only. Data reported within this summary is preliminary in nature and has not undergone complete QA/QC (quality assurance/quality control) process. Until this complete QA/QC process is completed, the locations of each reading are approximate in nature and subject to further refinement. As some readings may represent non-brea..

Preliminary Hand- Held Air Monitoring Locations | ITC Deer Park Tank Fire

Reading Date
6/20/2019 7:00:00 PM to 6/20/2019 8:00:00 PM



Recent Benzene Detections



This data has been provided expeditiously to ITC and regulatory agencies for informational and/or operational purposes only. Data reported within this summary is preliminary in nature and has not undergone complete QA/QC (quality assurance/quality control) process. Until this complete QA/QC process is completed, the locations of each reading are approximate in nature and subject to further refinement. As some readings may represent non-brea..

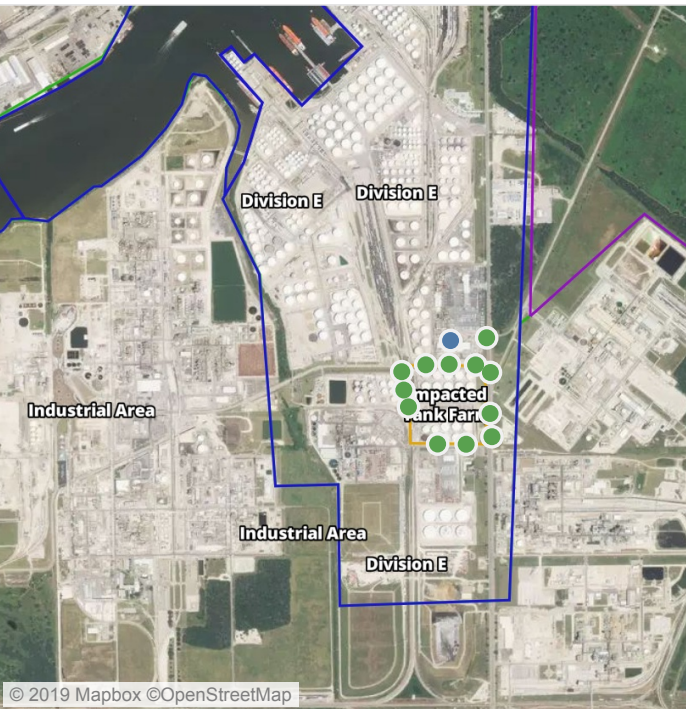
Preliminary Hand- Held Air Monitoring Locations | ITC Deer Park Tank Fire

Reading Date
6/20/2019 8:00:00 PM to 6/20/2019 9:00:00 PM



Recent Benzene Detections

Location Category	Reading Date	Range of Detections
Division E	6/20/2019 20:57:21	0.04000 ppm



This data has been provided expeditiously to ITC and regulatory agencies for informational and/or operational purposes only. Data reported within this summary is preliminary in nature and has not undergone complete QA/QC (quality assurance/quality control) process. Until this complete QA/QC process is completed, the locations of each reading are approximate in nature and subject to further refinement. As some readings may represent non-brea..

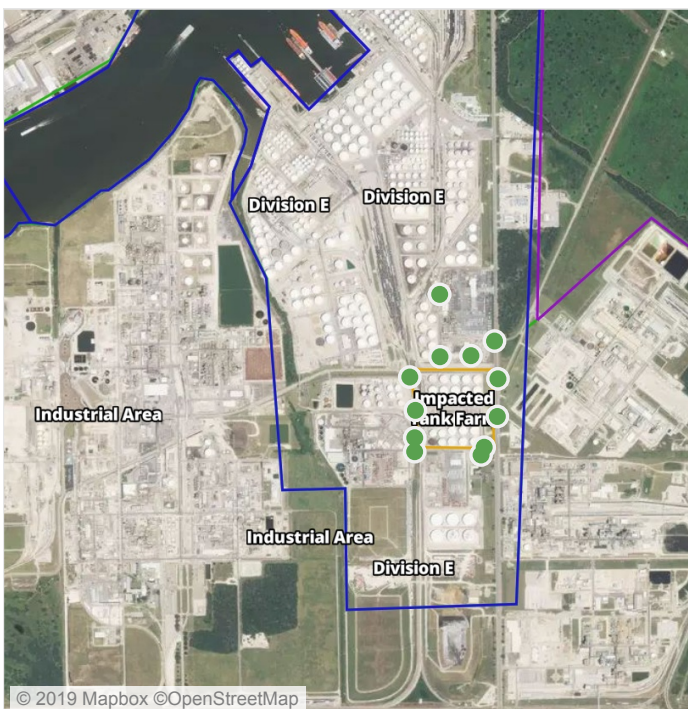
Preliminary Hand- Held Air Monitoring Locations | ITC Deer Park Tank Fire

Reading Date

6/20/2019 9:00:00 PM to 6/20/2019 10:00:00 PM



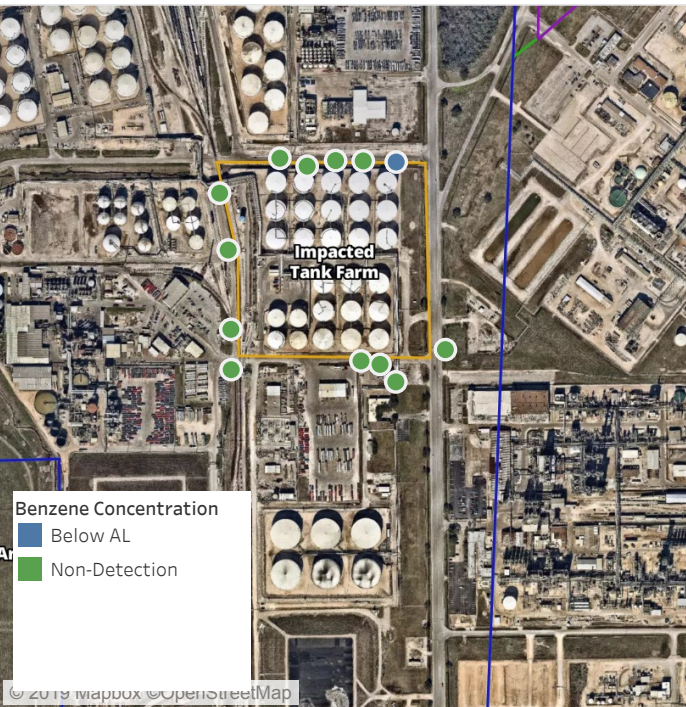
Recent Benzene Detections



This data has been provided expeditiously to ITC and regulatory agencies for informational and/or operational purposes only. Data reported within this summary is preliminary in nature and has not undergone complete QA/QC (quality assurance/quality control) process. Until this complete QA/QC process is completed, the locations of each reading are approximate in nature and subject to further refinement. As some readings may represent non-brea..

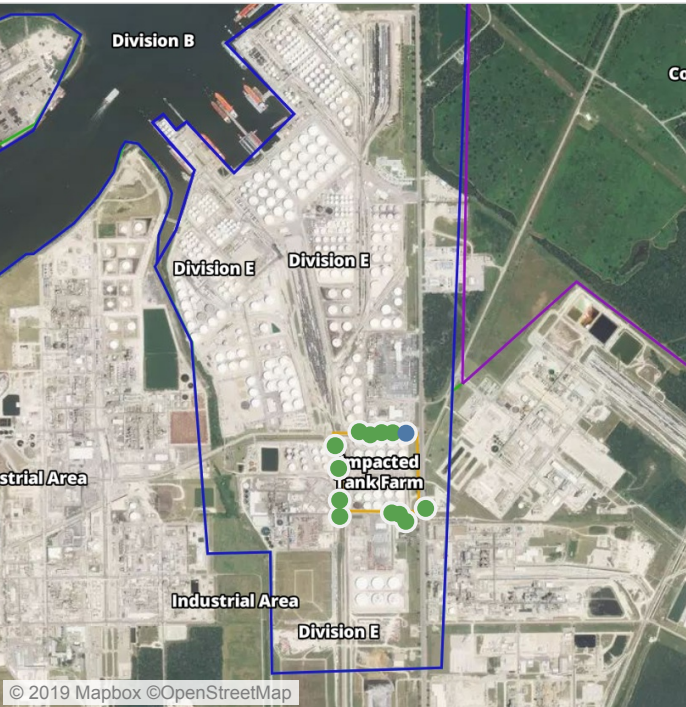
Preliminary Hand- Held Air Monitoring Locations | ITC Deer Park Tank Fire

Reading Date
6/20/2019 10:00:00 PM to 6/20/2019 11:00:00 PM



Recent Benzene Detections

Location Category	Reading Date	Range of Detections
Division E	6/20/2019 22:14:50	0.3000 ppm



This data has been provided expeditiously to ITC and regulatory agencies for informational and/or operational purposes only. Data reported within this summary is preliminary in nature and has not undergone complete QA/QC (quality assurance/quality control) process. Until this complete QA/QC process is completed, the locations of each reading are approximate in nature and subject to further refinement. As some readings may represent non-brea..