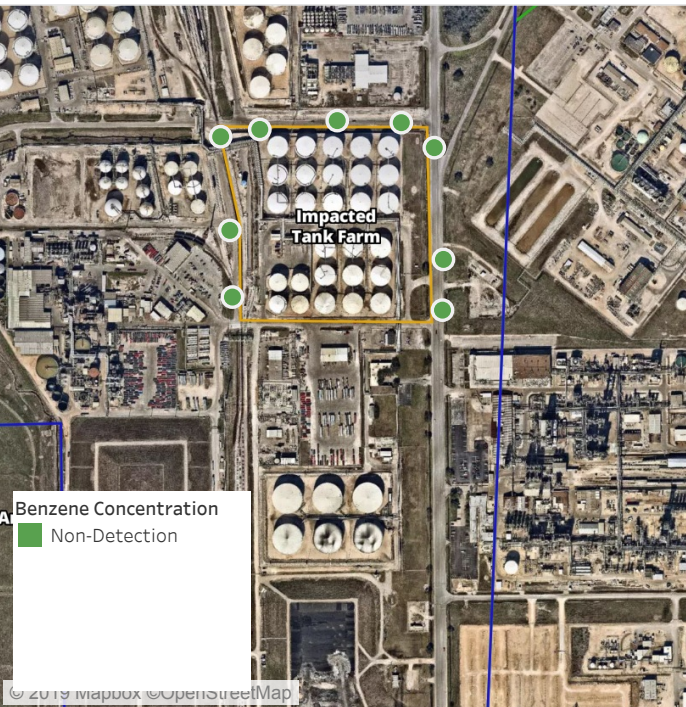
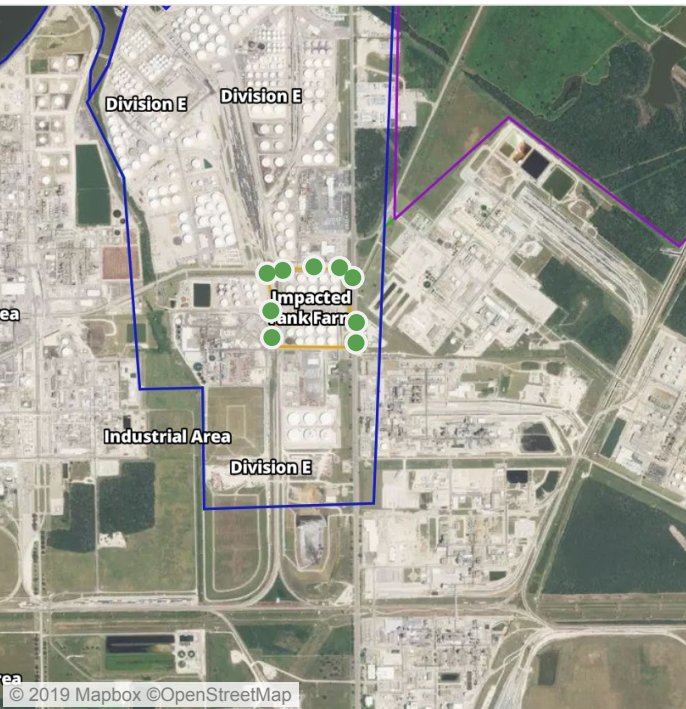


Preliminary Hand- Held Air Monitoring Locations | ITC Deer Park Tank Fire

Reading Date
7/2/2019 11:00:00 PM to 7/3/2019 12:00:00 AM



Recent Benzene Detections

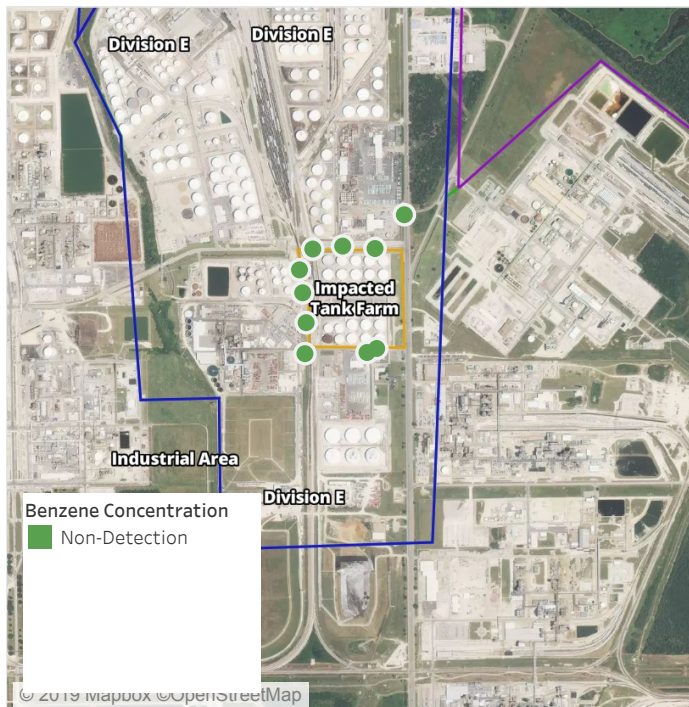


This data has been provided expeditiously to ITC and regulatory agencies for informational and/or operational purposes only. Data reported within this summary is preliminary in nature and has not undergone complete QA/QC (quality assurance/quality control) process. Until this complete QA/QC process is completed, the locations of each reading are approximate in nature and subject to further refinement. As some readings may represent non-brea..

Preliminary Hand- Held Air Monitoring Locations | ITC Deer Park Tank Fire

Reading Date

7/3/2019 12:00:00 AM to 7/3/2019 1:00:00 AM



Recent Benzene Detections



This data has been provided expeditiously to ITC and regulatory agencies for informational and/or operational purposes only. Data reported within this summary is preliminary in nature and has not undergone complete QA/QC (quality assurance/quality control) process. Until this complete QA/QC process is completed, the locations of each reading are approximate in nature and subject to further refinement. As some readings may represent non-brea..

Preliminary Hand- Held Air Monitoring Locations | ITC Deer Park Tank Fire

Reading Date

7/3/2019 1:00:00 AM to 7/3/2019 2:00:00 AM



Recent Benzene Detections



This data has been provided expeditiously to ITC and regulatory agencies for informational and/or operational purposes only. Data reported within this summary is preliminary in nature and has not undergone complete QA/QC (quality assurance/quality control) process. Until this complete QA/QC process is completed, the locations of each reading are approximate in nature and subject to further refinement. As some readings may represent non-brea..

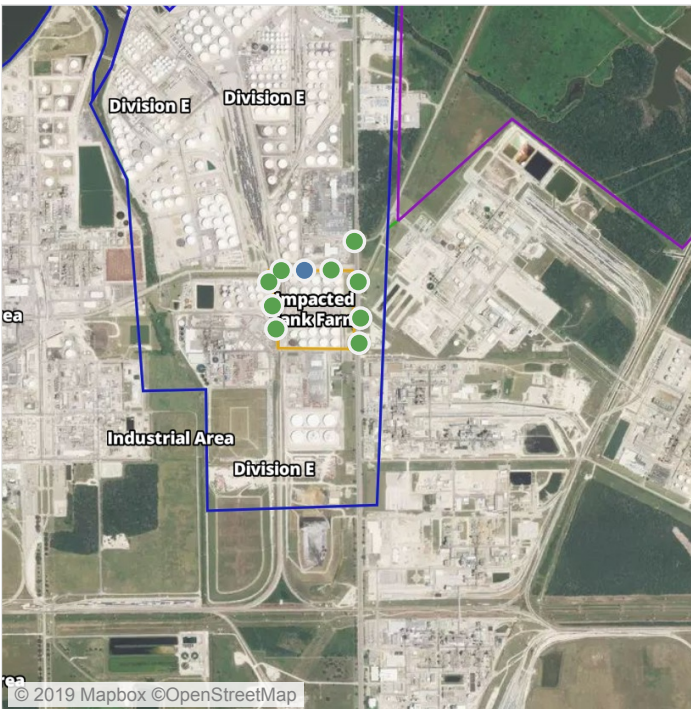
Preliminary Hand- Held Air Monitoring Locations | ITC Deer Park Tank Fire

Reading Date
7/3/2019 2:00:00 AM to 7/3/2019 3:00:00 AM



Recent Benzene Detections

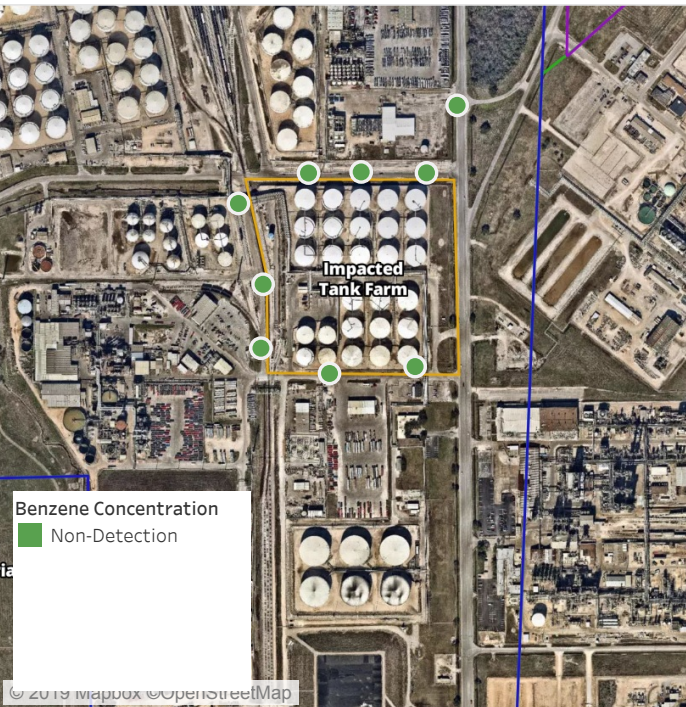
Location Category	Reading Date	Range of Detections
Division E	7/3/2019 02:13:01	0.04000 ppm



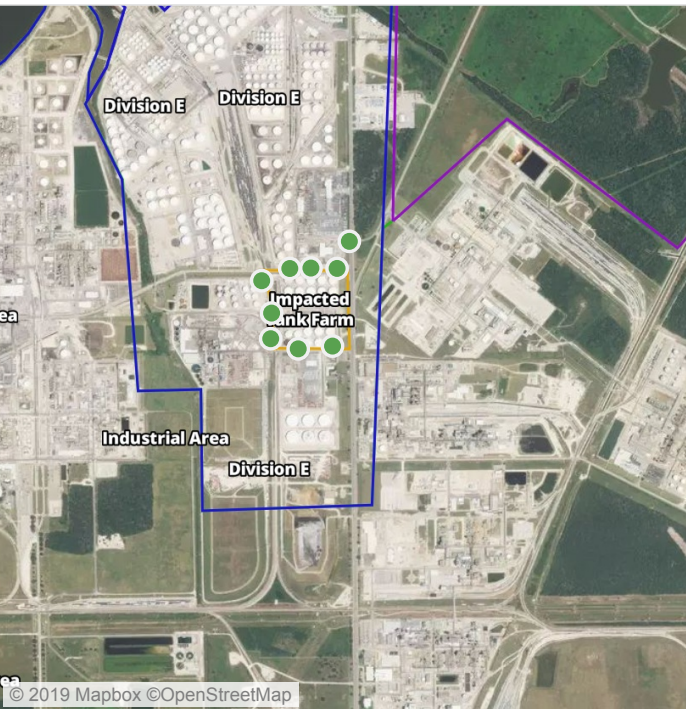
This data has been provided expeditiously to ITC and regulatory agencies for informational and/or operational purposes only. Data reported within this summary is preliminary in nature and has not undergone complete QA/QC (quality assurance/quality control) process. Until this complete QA/QC process is completed, the locations of each reading are approximate in nature and subject to further refinement. As some readings may represent non-brea..

Preliminary Hand- Held Air Monitoring Locations | ITC Deer Park Tank Fire

Reading Date
7/3/2019 3:00:00 AM to 7/3/2019 4:00:00 AM



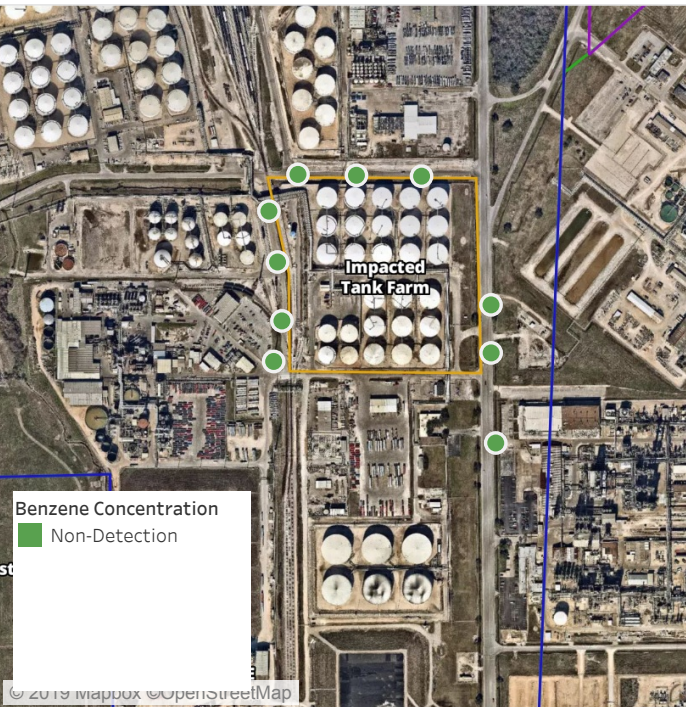
Recent Benzene Detections



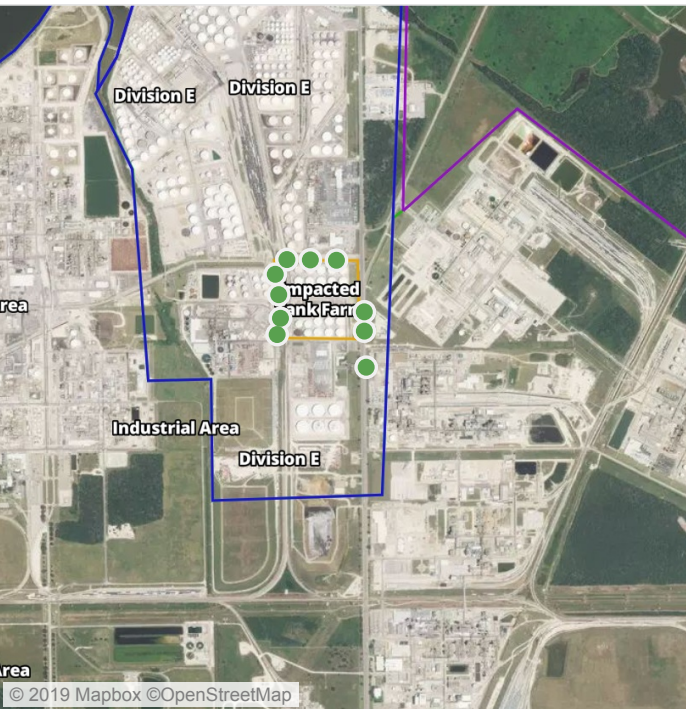
This data has been provided expeditiously to ITC and regulatory agencies for informational and/or operational purposes only. Data reported within this summary is preliminary in nature and has not undergone complete QA/QC (quality assurance/quality control) process. Until this complete QA/QC process is completed, the locations of each reading are approximate in nature and subject to further refinement. As some readings may represent non-brea..

Preliminary Hand- Held Air Monitoring Locations | ITC Deer Park Tank Fire

Reading Date
7/3/2019 4:00:00 AM to 7/3/2019 5:00:00 AM



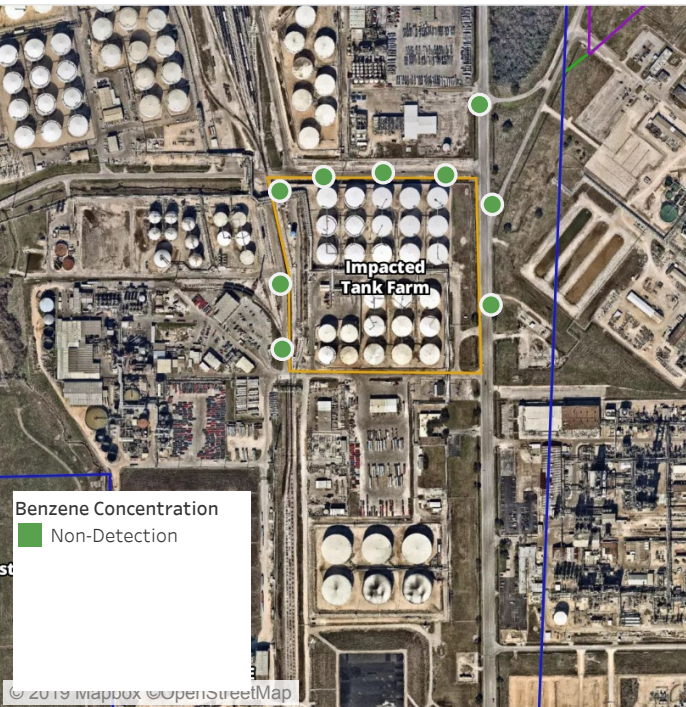
Recent Benzene Detections



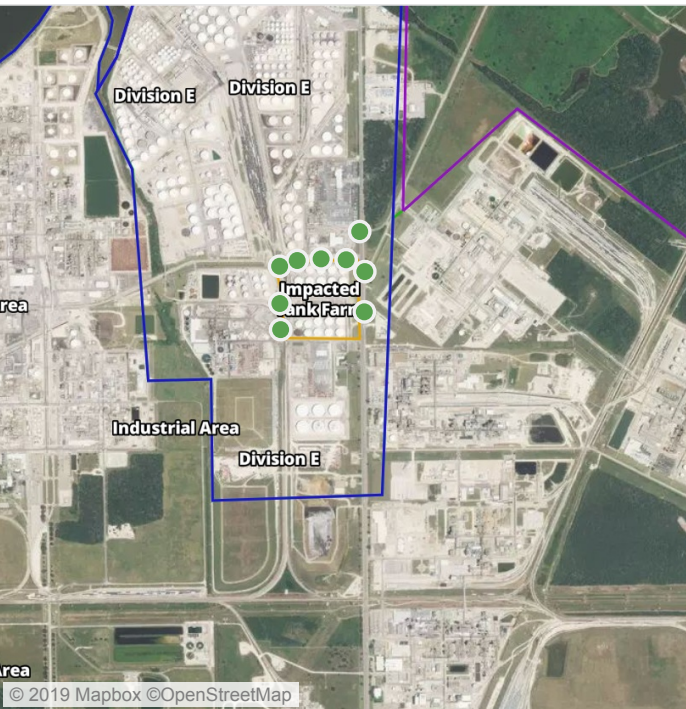
This data has been provided expeditiously to ITC and regulatory agencies for informational and/or operational purposes only. Data reported within this summary is preliminary in nature and has not undergone complete QA/QC (quality assurance/quality control) process. Until this complete QA/QC process is completed, the locations of each reading are approximate in nature and subject to further refinement. As some readings may represent non-brea..

Preliminary Hand- Held Air Monitoring Locations | ITC Deer Park Tank Fire

Reading Date
7/3/2019 5:00:00 AM to 7/3/2019 6:00:00 AM



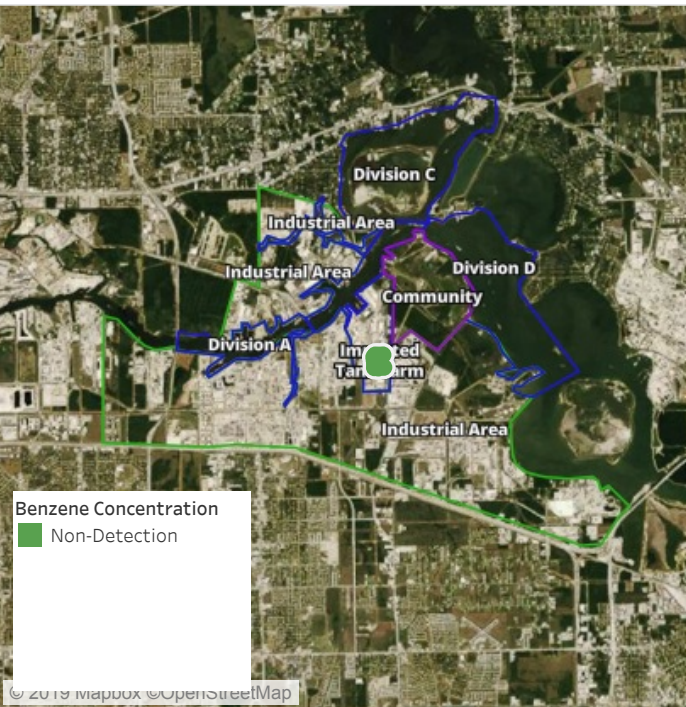
Recent Benzene Detections



This data has been provided expeditiously to ITC and regulatory agencies for informational and/or operational purposes only. Data reported within this summary is preliminary in nature and has not undergone complete QA/QC (quality assurance/quality control) process. Until this complete QA/QC process is completed, the locations of each reading are approximate in nature and subject to further refinement. As some readings may represent non-brea..

Preliminary Hand- Held Air Monitoring Locations | ITC Deer Park Tank Fire

Reading Date
7/3/2019 6:00:00 AM to 7/3/2019 7:00:00 AM



Recent Benzene Detections



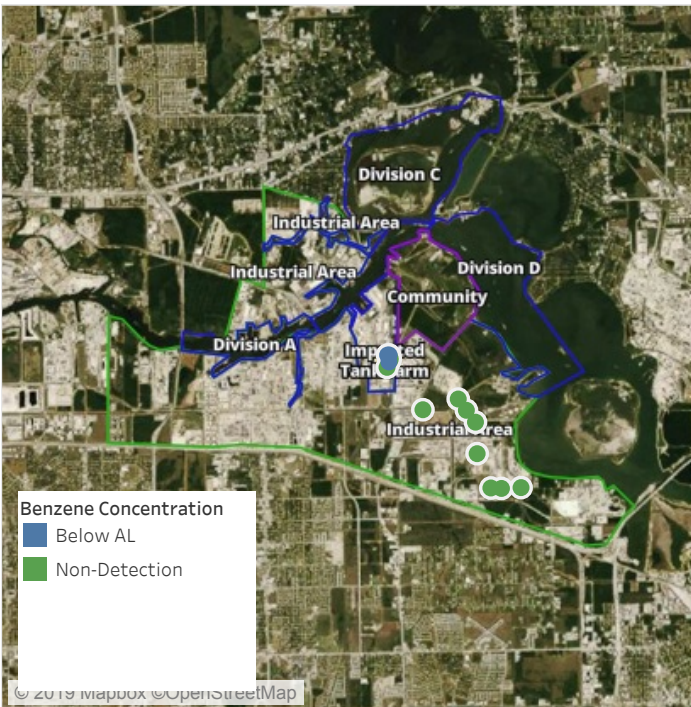
This data has been provided expeditiously to ITC and regulatory agencies for informational and/or operational purposes only. Data reported within this summary is preliminary in nature and has not undergone complete QA/QC (quality assurance/quality control) process. Until this complete QA/QC process is completed, the locations of each reading are approximate in nature and subject to further refinement. As some readings may represent non-brea..



Please Note: These updates display data from the 2nd 80's Fire site (Impacted Tank Farm), in the industrial areas surrounding the 2nd 80's Fire site (US Coast Guard Division E), within the Houston Ship Channel (US Coast Guard Divisions A-D), and in the industrial areas north and south of the Houston Ship Channel (Industrial Area). Real-time air monitoring data for the surrounding communities are communicated daily in a separate report.

Preliminary Hand- Held Air Monitoring Locations | ITC Deer Park Tank Fire

Reading Date
7/3/2019 7:00:00 AM to 7/3/2019 8:00:00 AM



Recent Benzene Detections

Location Category	Reading Date	Range of Detections
Division E	7/3/2019 07:48:04	0.0600 ppm
	7/3/2019 07:52:30	0.0600 ppm
Impacted Tank Farm	7/3/2019 07:11:38	0.2100 ppm



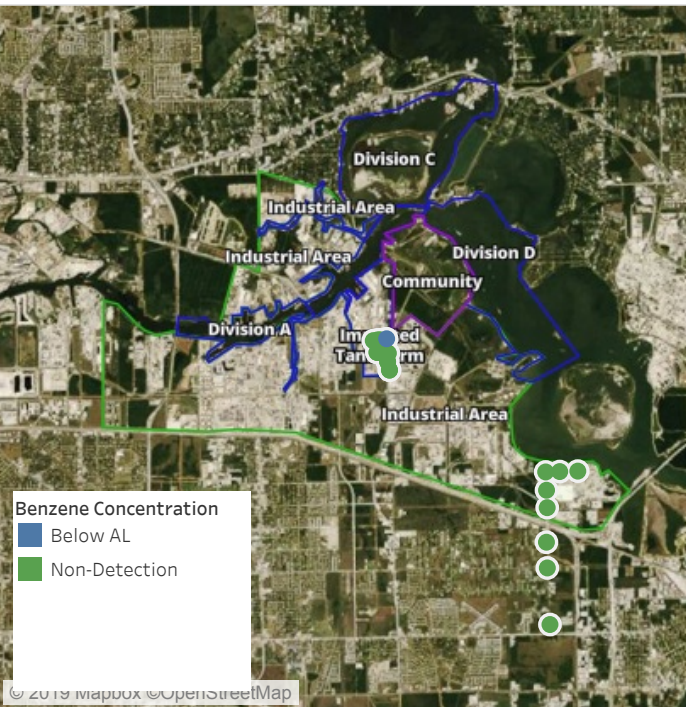
This data has been provided expeditiously to ITC and regulatory agencies for informational and/or operational purposes only. Data reported within this summary is preliminary in nature and has not undergone complete QA/QC (quality assurance/quality control) process. Until this complete QA/QC process is completed, the locations of each reading are approximate in nature and subject to further refinement. As some readings may represent non-brea..



Please Note: These updates display data from the 2nd 80's Fire site (Impacted Tank Farm), in the industrial areas surrounding the 2nd 80's Fire site (US Coast Guard Division E), within the Houston Ship Channel (US Coast Guard Divisions A-D), and in the industrial areas north and south of the Houston Ship Channel (Industrial Area). Real-time air monitoring data for the surrounding communities are communicated daily in a separate report.

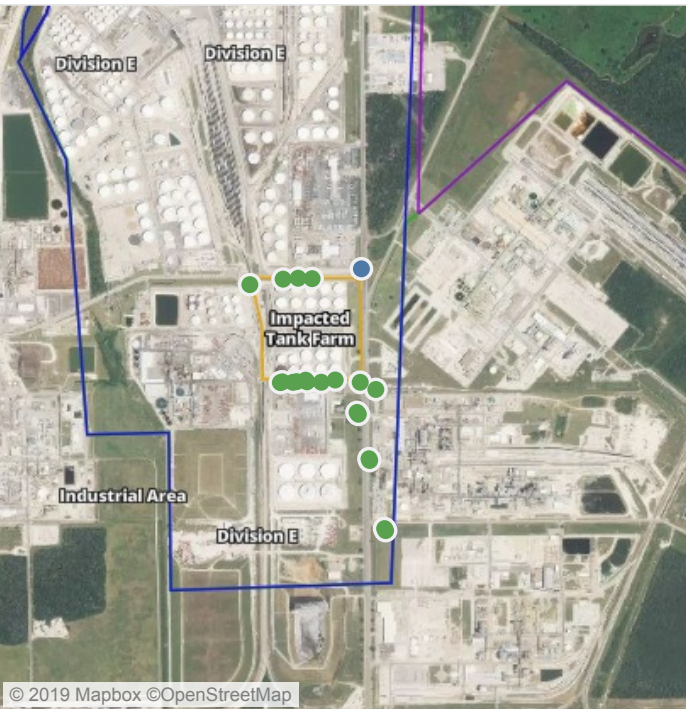
Preliminary Hand- Held Air Monitoring Locations | ITC Deer Park Tank Fire

Reading Date
7/3/2019 8:00:00 AM to 7/3/2019 9:00:00 AM



Recent Benzene Detections

Location Category	Reading Date	Range of Detections
Division E	7/3/2019 08:28:55	0.02000 ppm



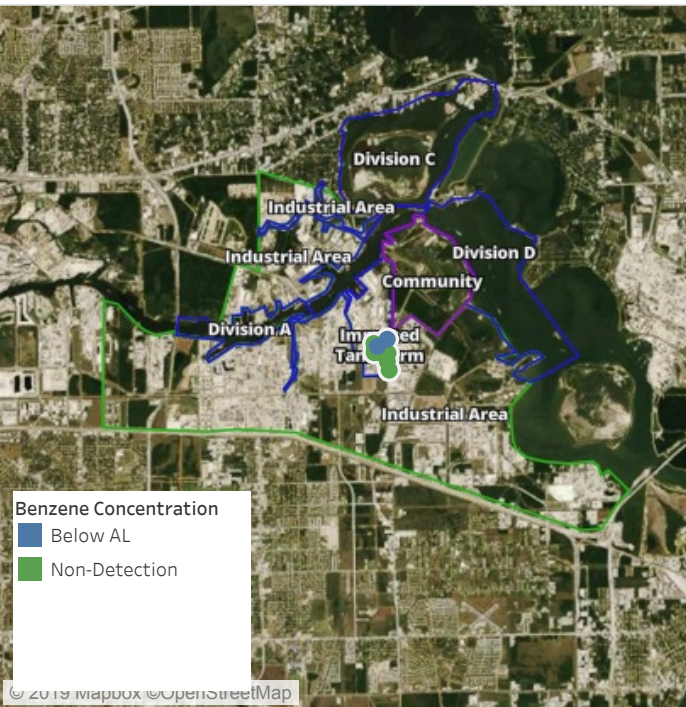
This data has been provided expeditiously to ITC and regulatory agencies for informational and/or operational purposes only. Data reported within this summary is preliminary in nature and has not undergone complete QA/QC (quality assurance/quality control) process. Until this complete QA/QC process is completed, the locations of each reading are approximate in nature and subject to further refinement. As some readings may represent non-brea..



Please Note: These updates display data from the 2nd 80's Fire site (Impacted Tank Farm), in the industrial areas surrounding the 2nd 80's Fire site (US Coast Guard Division E), within the Houston Ship Channel (US Coast Guard Divisions A-D), and in the industrial areas north and south of the Houston Ship Channel (Industrial Area). Real-time air monitoring data for the surrounding communities are communicated daily in a separate report.

Preliminary Hand- Held Air Monitoring Locations | ITC Deer Park Tank Fire

Reading Date
7/3/2019 9:00:00 AM to 7/3/2019 10:00:00 AM



Recent Benzene Detections

Location Category	Reading Date	Range of Detections
Division E	7/3/2019 09:25:01	0.06000 ppm
Impacted Tank Farm	7/3/2019 09:49:15	0.02000 ppm



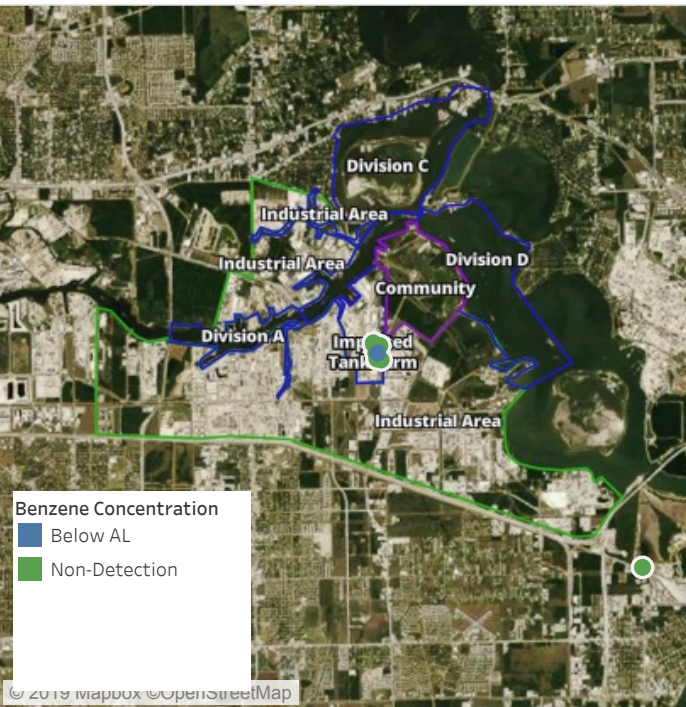
This data has been provided expeditiously to ITC and regulatory agencies for informational and/or operational purposes only. Data reported within this summary is preliminary in nature and has not undergone complete QA/QC (quality assurance/quality control) process. Until this complete QA/QC process is completed, the locations of each reading are approximate in nature and subject to further refinement. As some readings may represent non-brea..



Please Note: These updates display data from the 2nd 80's Fire site (Impacted Tank Farm), in the industrial areas surrounding the 2nd 80's Fire site (US Coast Guard Division E), within the Houston Ship Channel (US Coast Guard Divisions A-D), and in the industrial areas north and south of the Houston Ship Channel (Industrial Area). Real-time air monitoring data for the surrounding communities are communicated daily in a separate report.

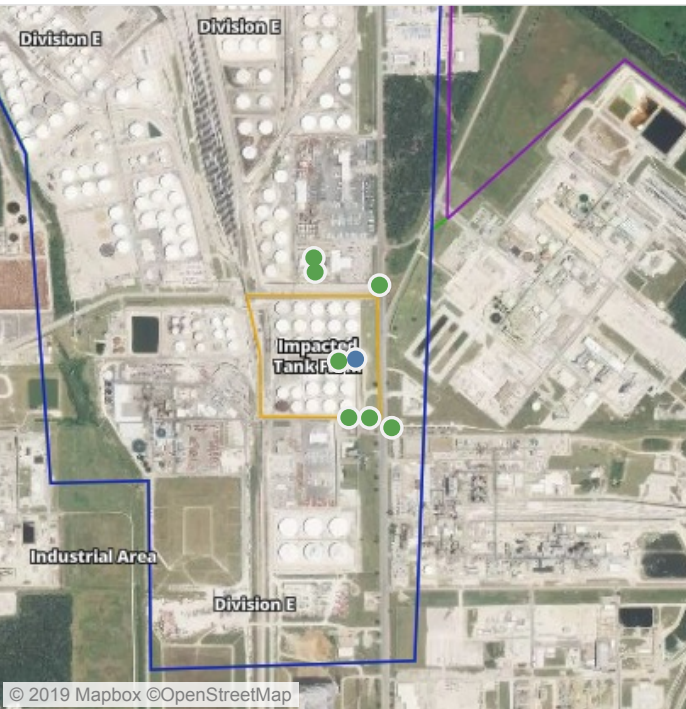
Preliminary Hand- Held Air Monitoring Locations | ITC Deer Park Tank Fire

Reading Date
7/3/2019 10:00:00 AM to 7/3/2019 11:00:00 AM



Recent Benzene Detections

Location Category	Reading Date	Range of Detections
Impacted Tank Farm	7/3/2019 10:07:58	0.1000 ppm



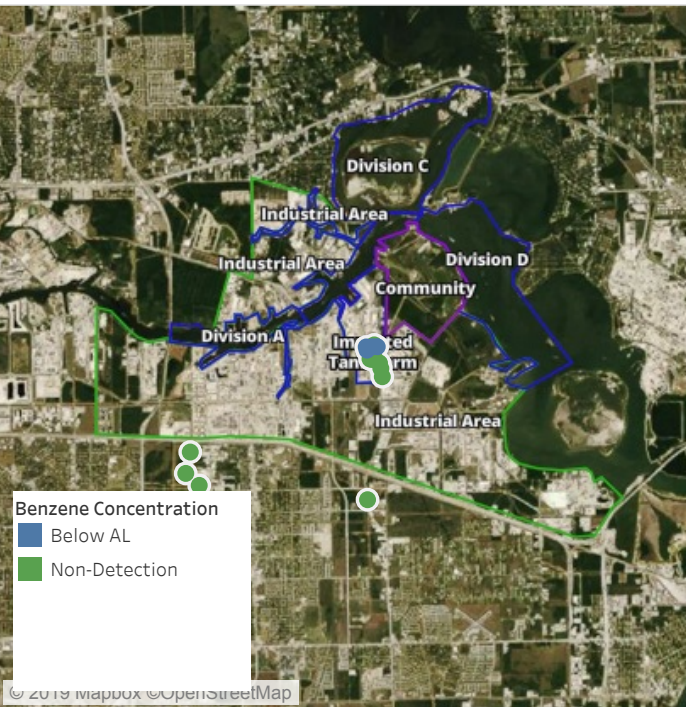
This data has been provided expeditiously to ITC and regulatory agencies for informational and/or operational purposes only. Data reported within this summary is preliminary in nature and has not undergone complete QA/QC (quality assurance/quality control) process. Until this complete QA/QC process is completed, the locations of each reading are approximate in nature and subject to further refinement. As some readings may represent non-brea..



Please Note: These updates display data from the 2nd 80's Fire site (Impacted Tank Farm), in the industrial areas surrounding the 2nd 80's Fire site (US Coast Guard Division E), within the Houston Ship Channel (US Coast Guard Divisions A-D), and in the industrial areas north and south of the Houston Ship Channel (Industrial Area). Real-time air monitoring data for the surrounding communities are communicated daily in a separate report.

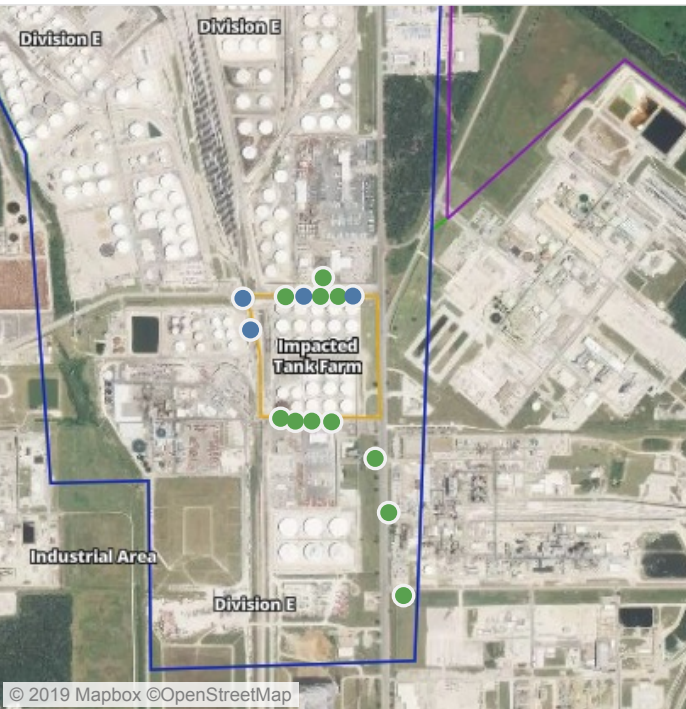
Preliminary Hand- Held Air Monitoring Locations | ITC Deer Park Tank Fire

Reading Date
7/3/2019 11:00:00 AM to 7/3/2019 12:00:00 PM



Recent Benzene Detections

Location Category	Reading Date	Range of Detections
Division E	7/3/2019 11:11:48	0.03000 ppm
	7/3/2019 11:39:09	0.06000 ppm
	7/3/2019 11:51:01	0.03000 ppm
	7/3/2019 11:53:58	0.04000 ppm



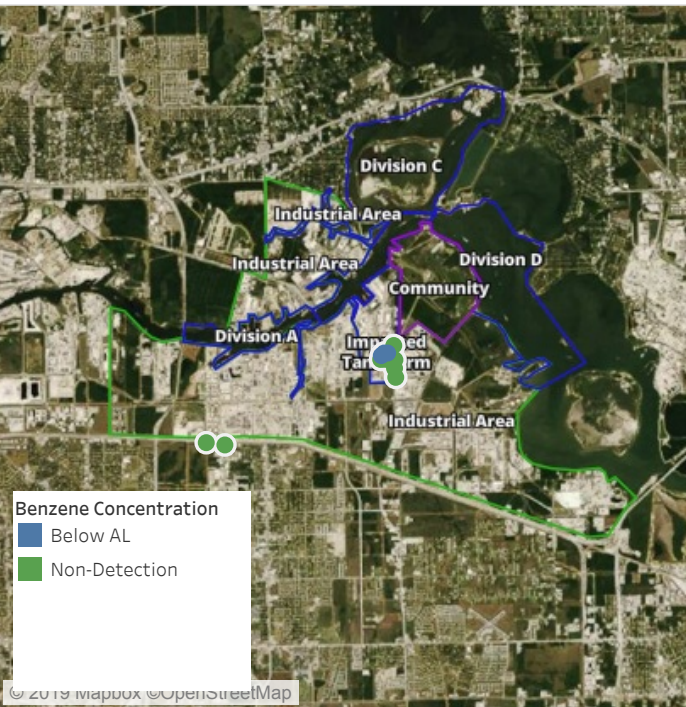
This data has been provided expeditiously to ITC and regulatory agencies for informational and/or operational purposes only. Data reported within this summary is preliminary in nature and has not undergone complete QA/QC (quality assurance/quality control) process. Until this complete QA/QC process is completed, the locations of each reading are approximate in nature and subject to further refinement. As some readings may represent non-brea..



Please Note: These updates display data from the 2nd 80's Fire site (Impacted Tank Farm), in the industrial areas surrounding the 2nd 80's Fire site (US Coast Guard Division E), within the Houston Ship Channel (US Coast Guard Divisions A-D), and in the industrial areas north and south of the Houston Ship Channel (Industrial Area). Real-time air monitoring data for the surrounding communities are communicated daily in a separate report.

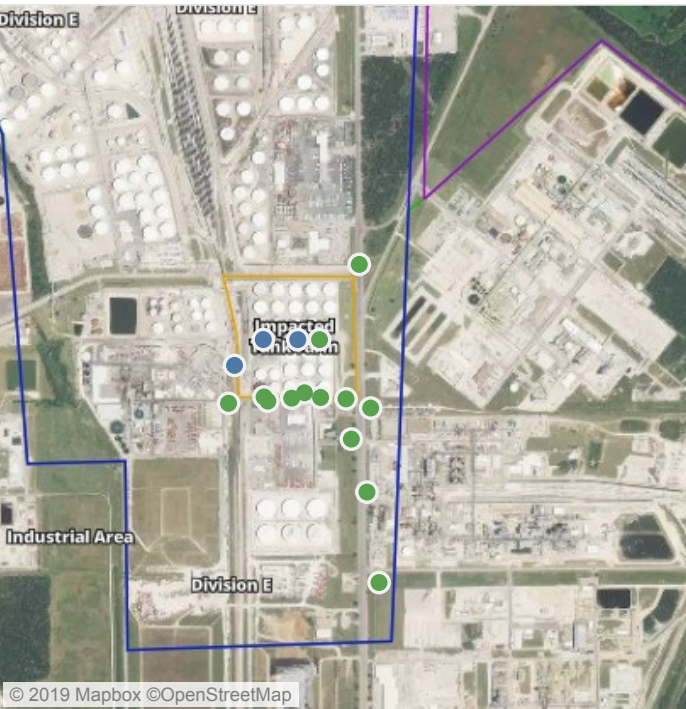
Preliminary Hand- Held Air Monitoring Locations | ITC Deer Park Tank Fire

Reading Date
7/3/2019 12:00:00 PM to 7/3/2019 1:00:00 PM



Recent Benzene Detections

Location Category	Reading Date	Range of Detections
Division E	7/3/2019 12:01:10	0.0200 ppm
Impacted Tank Farm	7/3/2019 12:13:31	0.0500 ppm
	7/3/2019 12:21:31	0.2000 ppm



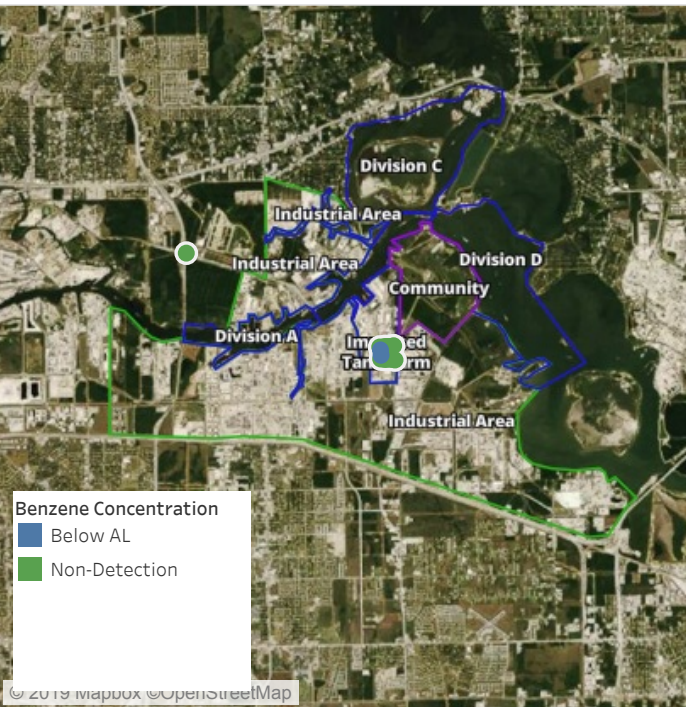
This data has been provided expeditiously to ITC and regulatory agencies for informational and/or operational purposes only. Data reported within this summary is preliminary in nature and has not undergone complete QA/QC (quality assurance/quality control) process. Until this complete QA/QC process is completed, the locations of each reading are approximate in nature and subject to further refinement. As some readings may represent non-brea..



Please Note: These updates display data from the 2nd 80's Fire site (Impacted Tank Farm), in the industrial areas surrounding the 2nd 80's Fire site (US Coast Guard Division E), within the Houston Ship Channel (US Coast Guard Divisions A-D), and in the industrial areas north and south of the Houston Ship Channel (Industrial Area). Real-time air monitoring data for the surrounding communities are communicated daily in a separate report.

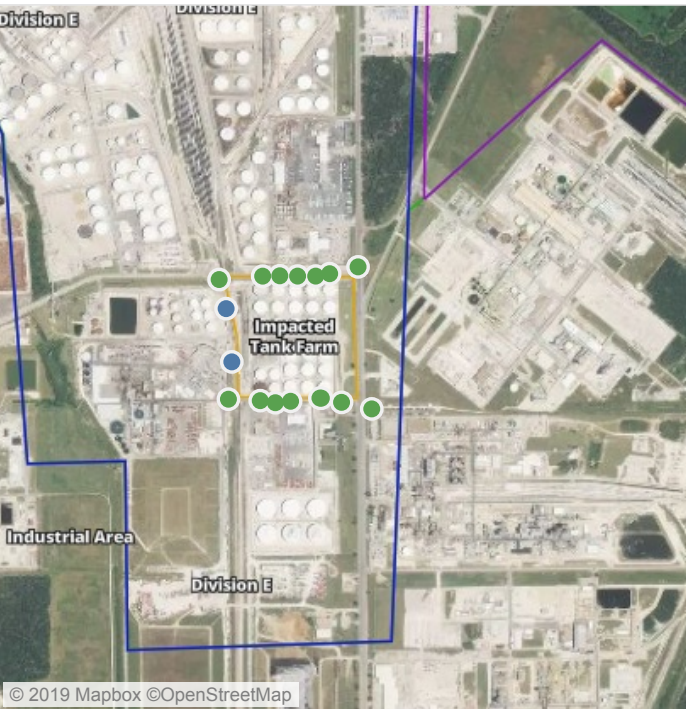
Preliminary Hand- Held Air Monitoring Locations | ITC Deer Park Tank Fire

Reading Date
7/3/2019 1:00:00 PM to 7/3/2019 2:00:00 PM



Recent Benzene Detections

Location Category	Reading Date	Range of Detections
Division E	7/3/2019 13:46:47	0.06000 ppm
	7/3/2019 13:53:28	0.02000 ppm



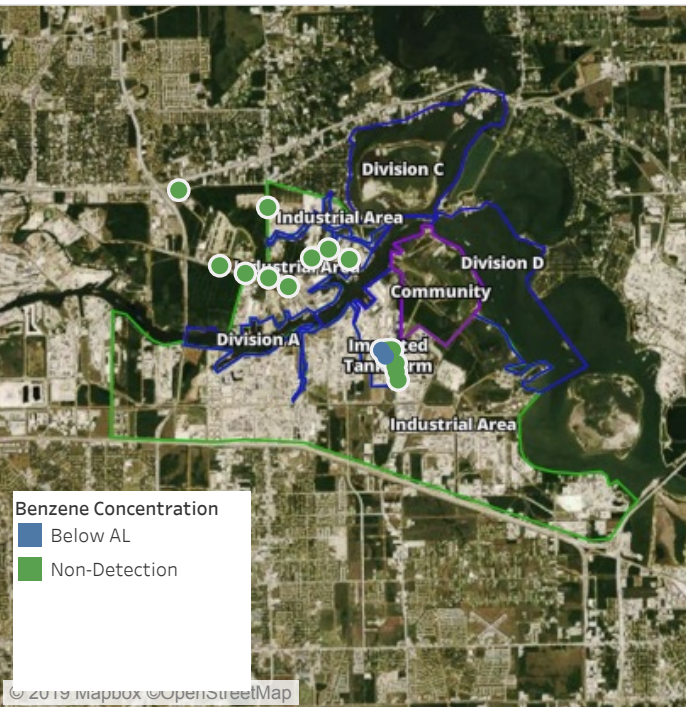
This data has been provided expeditiously to ITC and regulatory agencies for informational and/or operational purposes only. Data reported within this summary is preliminary in nature and has not undergone complete QA/QC (quality assurance/quality control) process. Until this complete QA/QC process is completed, the locations of each reading are approximate in nature and subject to further refinement. As some readings may represent non-brea..



Please Note: These updates display data from the 2nd 80's Fire site (Impacted Tank Farm), in the industrial areas surrounding the 2nd 80's Fire site (US Coast Guard Division E), within the Houston Ship Channel (US Coast Guard Divisions A-D), and in the industrial areas north and south of the Houston Ship Channel (Industrial Area). Real-time air monitoring data for the surrounding communities are communicated daily in a separate report.

Preliminary Hand- Held Air Monitoring Locations | ITC Deer Park Tank Fire

Reading Date
7/3/2019 2:00:00 PM to 7/3/2019 3:00:00 PM



Recent Benzene Detections

Location Category	Reading Date	Range of Detections
Division E	7/3/2019 14:57:03	0.03000 ppm
Impacted Tank Farm	7/3/2019 14:04:15	0.03000 ppm



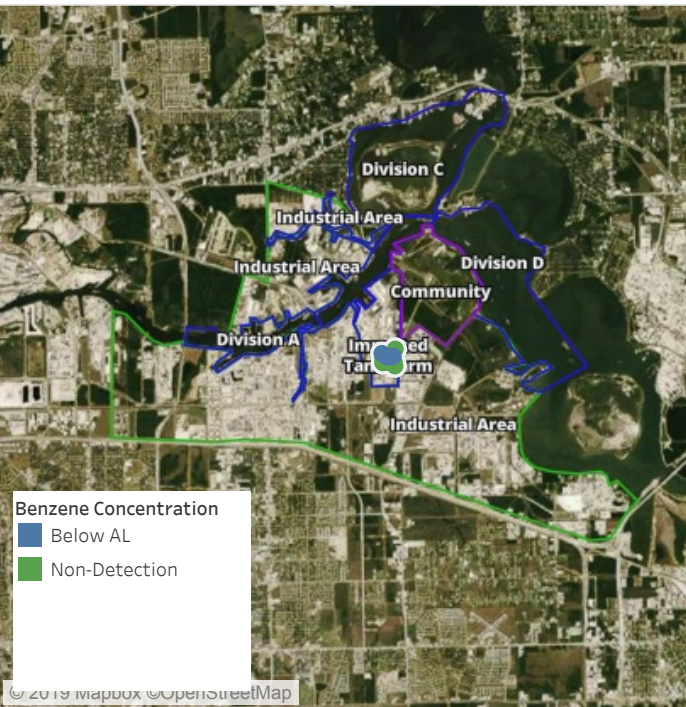
This data has been provided expeditiously to ITC and regulatory agencies for informational and/or operational purposes only. Data reported within this summary is preliminary in nature and has not undergone complete QA/QC (quality assurance/quality control) process. Until this complete QA/QC process is completed, the locations of each reading are approximate in nature and subject to further refinement. As some readings may represent non-brea..



Please Note: These updates display data from the 2nd 80's Fire site (Impacted Tank Farm), in the industrial areas surrounding the 2nd 80's Fire site (US Coast Guard Division E), within the Houston Ship Channel (US Coast Guard Divisions A-D), and in the industrial areas north and south of the Houston Ship Channel (Industrial Area). Real-time air monitoring data for the surrounding communities are communicated daily in a separate report.

Preliminary Hand- Held Air Monitoring Locations | ITC Deer Park Tank Fire

Reading Date
7/3/2019 3:00:00 PM to 7/3/2019 4:00:00 PM



Recent Benzene Detections

Location Category	Reading Date	Range of Detections
Division E	7/3/2019 15:00:03	0.05000 ppm
Impacted Tank Farm	7/3/2019 15:24:59	0.10000 ppm
	7/3/2019 15:30:44	0.05000 ppm
	7/3/2019 15:35:42	0.09000 ppm
	7/3/2019 15:39:26	0.03000 ppm
	7/3/2019 15:42:09	0.04000 ppm



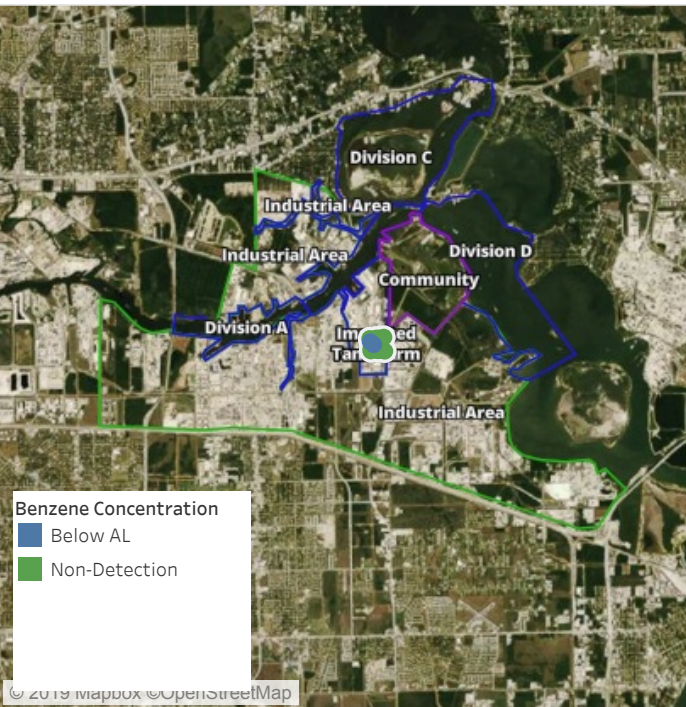
This data has been provided expeditiously to ITC and regulatory agencies for informational and/or operational purposes only. Data reported within this summary is preliminary in nature and has not undergone complete QA/QC (quality assurance/quality control) process. Until this complete QA/QC process is completed, the locations of each reading are approximate in nature and subject to further refinement. As some readings may represent non-brea..



Please Note: These updates display data from the 2nd 80's Fire site (Impacted Tank Farm), in the industrial areas surrounding the 2nd 80's Fire site (US Coast Guard Division E), within the Houston Ship Channel (US Coast Guard Divisions A-D), and in the industrial areas north and south of the Houston Ship Channel (Industrial Area). Real-time air monitoring data for the surrounding communities are communicated daily in a separate report.

Preliminary Hand- Held Air Monitoring Locations | ITC Deer Park Tank Fire

Reading Date
7/3/2019 4:00:00 PM to 7/3/2019 5:00:00 PM



Recent Benzene Detections

Location Category	Reading Date	Range of Detections
Division E	7/3/2019 16:38:14	0.04000 ppm
Impacted Tank Farm	7/3/2019 16:57:37	0.03000 ppm



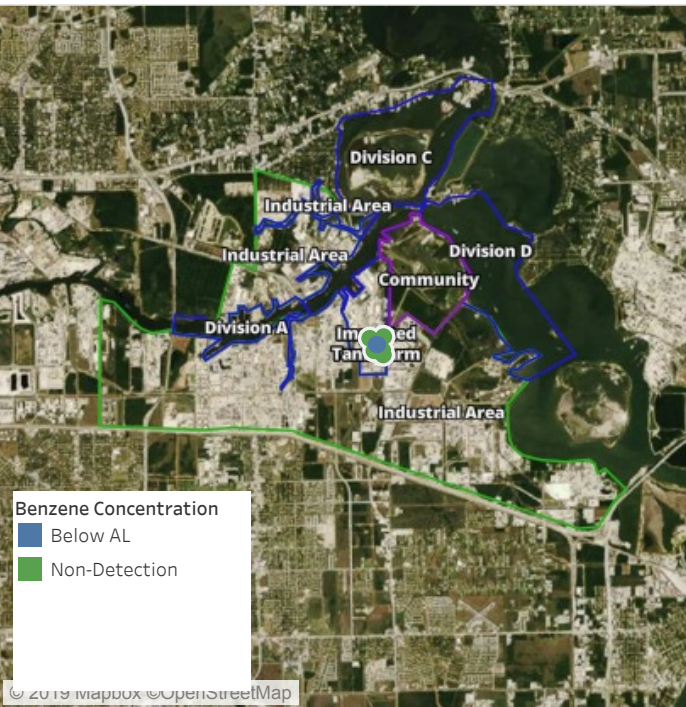
This data has been provided expeditiously to ITC and regulatory agencies for informational and/or operational purposes only. Data reported within this summary is preliminary in nature and has not undergone complete QA/QC (quality assurance/quality control) process. Until this complete QA/QC process is completed, the locations of each reading are approximate in nature and subject to further refinement. As some readings may represent non-brea..



Please Note: These updates display data from the 2nd 80's Fire site (Impacted Tank Farm), in the industrial areas surrounding the 2nd 80's Fire site (US Coast Guard Division E), within the Houston Ship Channel (US Coast Guard Divisions A-D), and in the industrial areas north and south of the Houston Ship Channel (Industrial Area). Real-time air monitoring data for the surrounding communities are communicated daily in a separate report.

Preliminary Hand- Held Air Monitoring Locations | ITC Deer Park Tank Fire

Reading Date
7/3/2019 5:00:00 PM to 7/3/2019 6:00:00 PM



Recent Benzene Detections

Location Category	Reading Date	Range of Detections
Impacted Tank Farm	7/3/2019 17:01:40	0.09000 ppm
	7/3/2019 17:05:47	0.09000 ppm



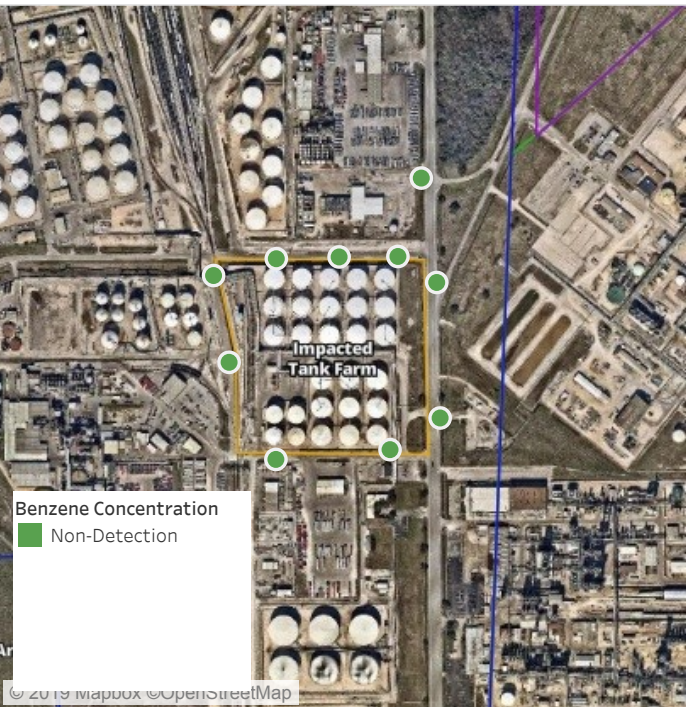
This data has been provided expeditiously to ITC and regulatory agencies for informational and/or operational purposes only. Data reported within this summary is preliminary in nature and has not undergone complete QA/QC (quality assurance/quality control) process. Until this complete QA/QC process is completed, the locations of each reading are approximate in nature and subject to further refinement. As some readings may represent non-brea..



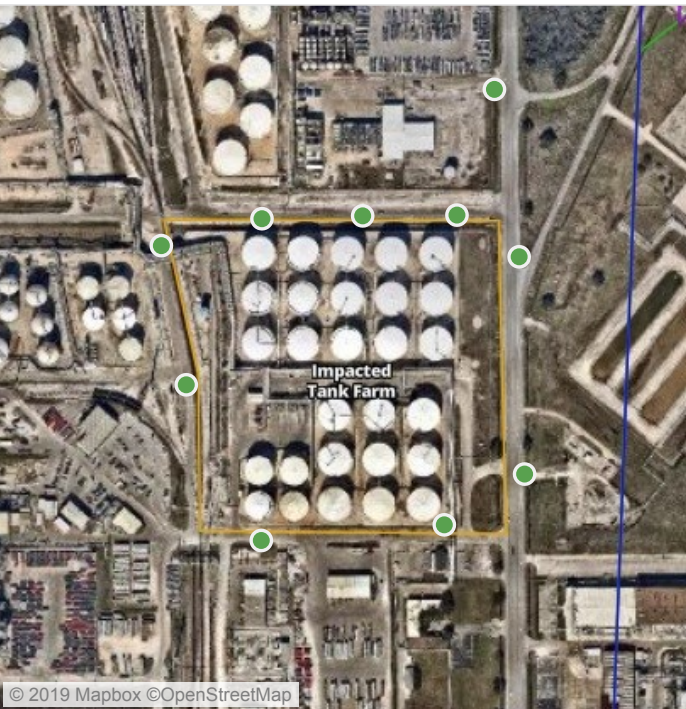
Please Note: These updates display data from the 2nd 80's Fire site (Impacted Tank Farm), in the industrial areas surrounding the 2nd 80's Fire site (US Coast Guard Division E), within the Houston Ship Channel (US Coast Guard Divisions A-D), and in the industrial areas north and south of the Houston Ship Channel (Industrial Area). Real-time air monitoring data for the surrounding communities are communicated daily in a separate report.

Preliminary Hand- Held Air Monitoring Locations | ITC Deer Park Tank Fire

Reading Date
7/3/2019 6:00:00 PM to 7/3/2019 8:00:00 PM



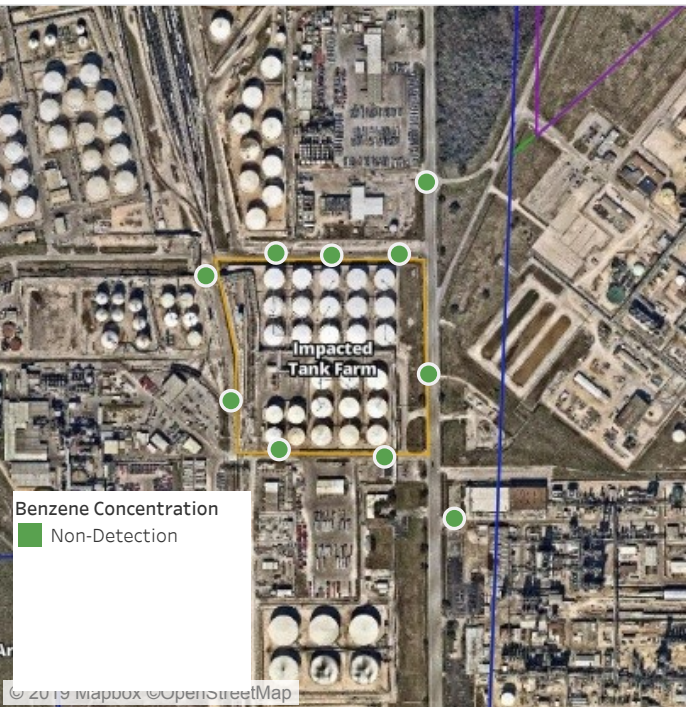
Recent Benzene Detections



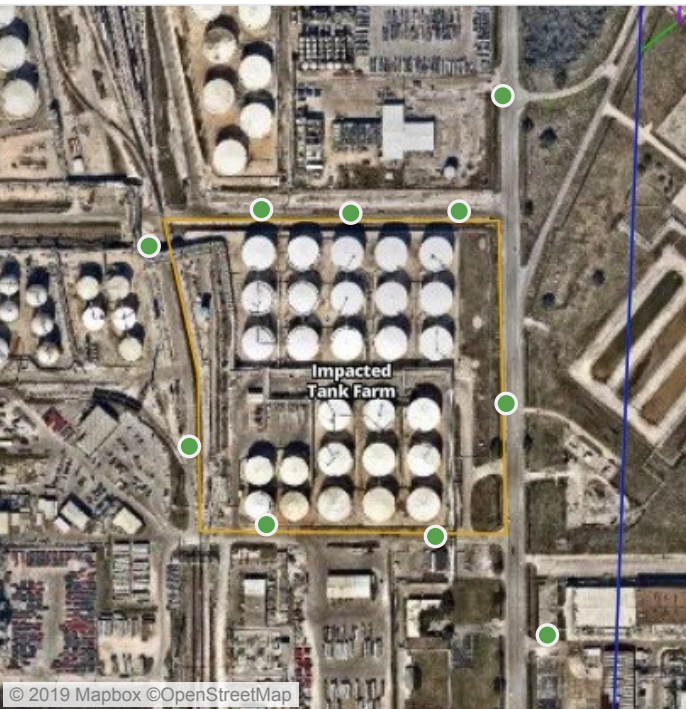
This data has been provided expeditiously to ITC and regulatory agencies for informational and/or operational purposes only. Data reported within this summary is preliminary in nature and has not undergone complete QA/QC (quality assurance/quality control) process. Until this complete QA/QC process is completed, the locations of each reading are approximate in nature and subject to further refinement. As some readings may represent non-brea..

Preliminary Hand- Held Air Monitoring Locations | ITC Deer Park Tank Fire

Reading Date
7/3/2019 8:00:00 PM to 7/3/2019 9:00:00 PM



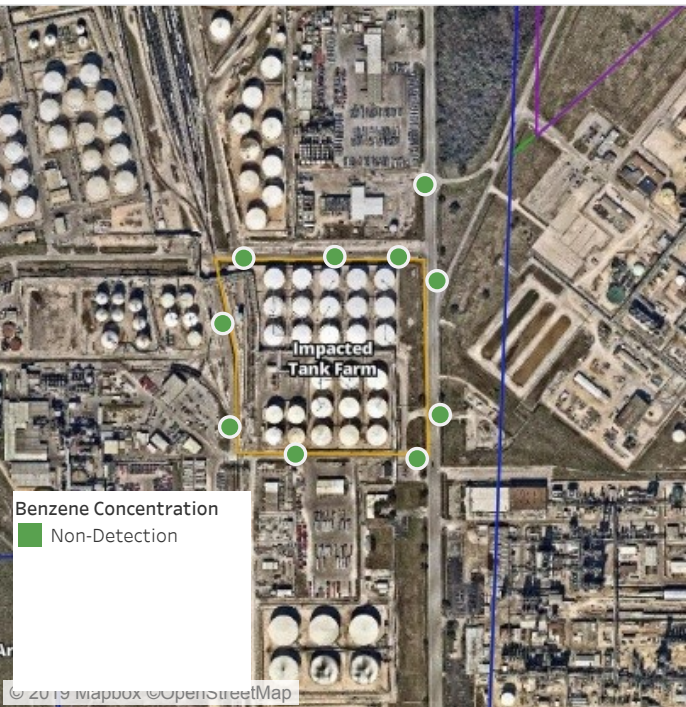
Recent Benzene Detections



This data has been provided expeditiously to ITC and regulatory agencies for informational and/or operational purposes only. Data reported within this summary is preliminary in nature and has not undergone complete QA/QC (quality assurance/quality control) process. Until this complete QA/QC process is completed, the locations of each reading are approximate in nature and subject to further refinement. As some readings may represent non-brea..

Preliminary Hand- Held Air Monitoring Locations | ITC Deer Park Tank Fire

Reading Date
7/3/2019 9:00:00 PM to 7/3/2019 10:00:00 PM



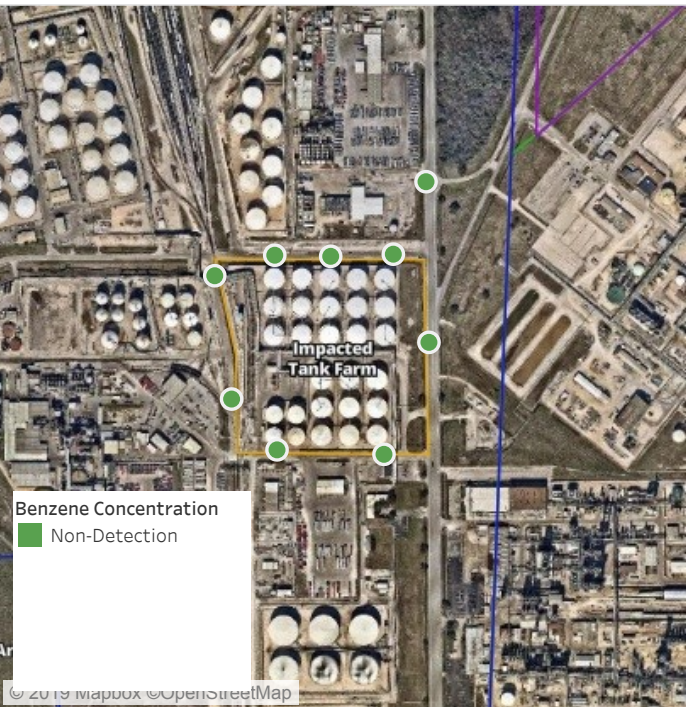
Recent Benzene Detections



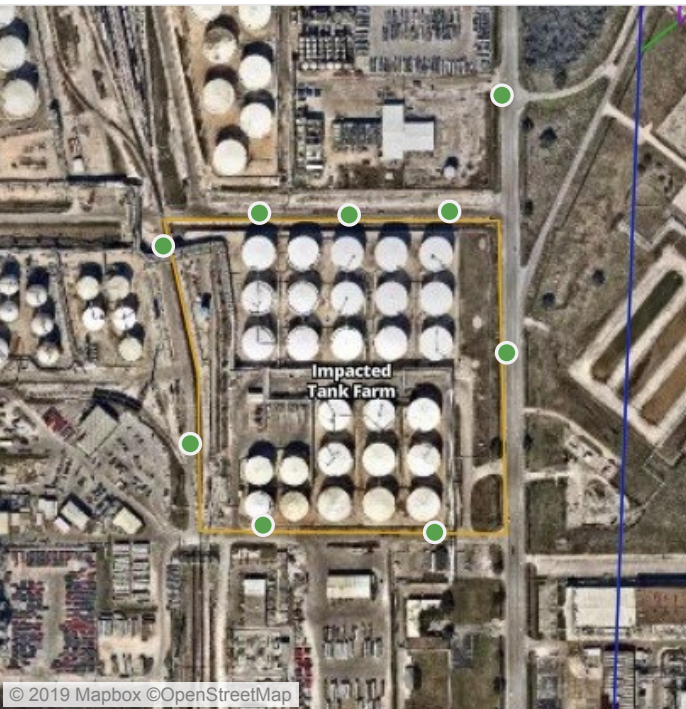
This data has been provided expeditiously to ITC and regulatory agencies for informational and/or operational purposes only. Data reported within this summary is preliminary in nature and has not undergone complete QA/QC (quality assurance/quality control) process. Until this complete QA/QC process is completed, the locations of each reading are approximate in nature and subject to further refinement. As some readings may represent non-brea..

Preliminary Hand- Held Air Monitoring Locations | ITC Deer Park Tank Fire

Reading Date
7/3/2019 10:00:00 PM to 7/3/2019 11:00:00 PM



Recent Benzene Detections



This data has been provided expeditiously to ITC and regulatory agencies for informational and/or operational purposes only. Data reported within this summary is preliminary in nature and has not undergone complete QA/QC (quality assurance/quality control) process. Until this complete QA/QC process is completed, the locations of each reading are approximate in nature and subject to further refinement. As some readings may represent non-brea..